

DISTANCES FROM SIDE STAKES FOR CROSS-SECTIONING
SLOPE 1 TO 1. ROADWAY OF ANY WIDTH

	0	1	2	3	4	5	6	7	8	9	
0	0.00	0.10	0.20	0.30	0.40	0.50	0.60	0.70	0.80	0.90	0
1	1.00	1.10	1.20	1.30	1.40	1.50	1.60	1.70	1.80	1.90	1
2	2.00	2.10	2.20	2.30	2.40	2.50	2.60	2.70	2.80	2.90	2
3	3.00	3.10	3.20	3.30	3.40	3.50	3.60	3.70	3.80	3.90	3
4	4.00	4.10	4.20	4.30	4.40	4.50	4.60	4.70	4.80	4.90	4
5	5.00	5.10	5.20	5.30	5.40	5.50	5.60	5.70	5.80	5.90	5
6	6.00	6.10	6.20	6.30	6.40	6.50	6.60	6.70	6.80	6.90	6
7	7.00	7.10	7.20	7.30	7.40	7.50	7.60	7.70	7.80	7.90	7
8	8.00	8.10	8.20	8.30	8.40	8.50	8.60	8.70	8.80	8.90	8
9	9.00	9.10	9.20	9.30	9.40	9.50	9.60	9.70	9.80	9.90	9
10	10.00	10.10	10.20	10.30	10.40	10.50	10.60	10.70	10.80	10.90	10
11	11.00	11.10	11.20	11.30	11.40	11.50	11.60	11.70	11.80	11.90	11
12	12.00	12.10	12.20	12.30	12.40	12.50	12.60	12.70	12.80	12.90	12
13	13.00	13.10	13.20	13.30	13.40	13.50	13.60	13.70	13.80	13.90	13
14	14.00	14.10	14.20	14.30	14.40	14.50	14.60	14.70	14.80	14.90	14
15	15.00	15.10	15.20	15.30	15.40	15.50	15.60	15.70	15.80	15.90	15
16	16.00	16.10	16.20	16.30	16.40	16.50	16.60	16.70	16.80	16.90	16
17	17.00	17.10	17.20	17.30	17.40	17.50	17.60	17.70	17.80	17.90	17
18	18.00	18.10	18.20	18.30	18.40	18.50	18.60	18.70	18.80	18.90	18
19	19.00	19.10	19.20	19.30	19.40	19.50	19.60	19.70	19.80	19.90	19
20	20.00	20.10	20.20	20.30	20.40	20.50	20.60	20.70	20.80	20.90	20
21	21.00	21.10	21.20	21.30	21.40	21.50	21.60	21.70	21.80	21.90	21
22	22.00	22.10	22.20	22.30	22.40	22.50	22.60	22.70	22.80	22.90	22
23	23.00	23.10	23.20	23.30	23.40	23.50	23.60	23.70	23.80	23.90	23
24	24.00	24.10	24.20	24.30	24.40	24.50	24.60	24.70	24.80	24.90	24
25	25.00	25.10	25.20	25.30	25.40	25.50	25.60	25.70	25.80	25.90	25
26	26.00	26.10	26.20	26.30	26.40	26.50	26.60	26.70	26.80	26.90	26
27	27.00	27.10	27.20	27.30	27.40	27.50	27.60	27.70	27.80	27.90	27
28	28.00	28.10	28.20	28.30	28.40	28.50	28.60	28.70	28.80	28.90	28
29	29.00	29.10	29.20	29.30	29.40	29.50	29.60	29.70	29.80	29.90	29
30	30.00	30.10	30.20	30.30	30.40	30.50	30.60	30.70	30.80	30.90	30
31	31.00	31.10	31.20	31.30	31.40	31.50	31.60	31.70	31.80	31.90	31
32	32.00	32.10	32.20	32.30	32.40	32.50	32.60	32.70	32.80	32.90	32
33	33.00	33.10	33.20	33.30	33.40	33.50	33.60	33.70	33.80	33.90	33
34	34.00	34.10	34.20	34.30	34.40	34.50	34.60	34.70	34.80	34.90	34
35	35.00	35.10	35.20	35.30	35.40	35.50	35.60	35.70	35.80	35.90	35
36	36.00	36.10	36.20	36.30	36.40	36.50	36.60	36.70	36.80	36.90	36
37	37.00	37.10	37.20	37.30	37.40	37.50	37.60	37.70	37.80	37.90	37
38	38.00	38.10	38.20	38.30	38.40	38.50	38.60	38.70	38.80	38.90	38
39	39.00	39.10	39.20	39.30	39.40	39.50	39.60	39.70	39.80	39.90	39
40	40.00	40.10	40.20	40.30	40.40	40.50	40.60	40.70	40.80	40.90	40
41	41.00	41.10	41.20	41.30	41.40	41.50	41.60	41.70	41.80	41.90	41
42	42.00	42.10	42.20	42.30	42.40	42.50	42.60	42.70	42.80	42.90	42
43	43.00	43.10	43.20	43.30	43.40	43.50	43.60	43.70	43.80	43.90	43
44	44.00	44.10	44.20	44.30	44.40	44.50	44.60	44.70	44.80	44.90	44
45	45.00	45.10	45.20	45.30	45.40	45.50	45.60	45.70	45.80	45.90	45
46	46.00	46.10	46.20	46.30	46.40	46.50	46.60	46.70	46.80	46.90	46
47	47.00	47.10	47.20	47.30	47.40	47.50	47.60	47.70	47.80	47.90	47
48	48.00	48.10	48.20	48.30	48.40	48.50	48.60	48.70	48.80	48.90	48
49	49.00	49.10	49.20	49.30	49.40	49.50	49.60	49.70	49.80	49.90	49
50	50.00	50.10	50.20	50.30	50.40	50.50	50.60	50.70	50.80	50.90	50

Distance of slope stake from side or shoulder stake for any width roadway, slope 1 to 1. If ground is nearly level, the out or fill at side stake is located by the double entry method in left column and top row. The number in body of table in same row and column gives distance from side stake to slope stake. If ground is not level estimate the difference in elevation between the side stake and slope stake, lower target by this amount if cut, elevate if fill. Add this amount to cut or fill and find distance in table. Set up rod at this point, and line of sight should cut target. If it does not make the slight adjustment necessary.

TABLE XIII—CORRECTIONS FOR TANGENTS AND EXTERNALS

These corrections are to be added to the approximate values, found by dividing the tangent, or external, for a 1° curve (Table VIII) by the degree of curve, in order to obtain the true tangents, or externals. Intermediate values may be obtained by interpolation.

FOR TANGENTS ADD

Central Angle	DEGREE OF CURVE													
	5°	10°	15°	20°	25°	30°	35°	40°	45°	50°	55°	60°	65°	70°
10°	.03	.06	.09	.13	.16	.19	.22	.25	.28	.31	.34	.38	.42	.46
15°	.04	.10	.14	.19	.24	.29	.34	.39	.45	.51	.53	.58	.63	.68
20°	.06	.13	.19	.26	.32	.39	.45	.51	.58	.65	.72	.79	.84	.90
25°	.08	.16	.24	.33	.40	.49	.58	.67	.75	.83	.90	.99	1.06	1.14
30°	.10	.19	.29	.39	.49	.59	.69	.79	.89	.99	1.09	1.20	1.29	1.39
35°	.11	.22	.34	.47	.58	.69	.79	.81	.92	1.04	1.29	1.42	1.54	1.66
40°	.13	.26	.40	.53	.67	.80	.93	1.06	1.20	1.34	1.49	1.64	1.79	1.94
45°	.15	.30	.44	.60	.76	.91	1.06	1.21	1.37	1.52	1.70	1.87	2.04	2.21
50°	.17	.34	.51	.68	.85	1.02	1.19	1.36	1.54	1.72	1.91	2.10	2.29	2.48
55°	.19	.38	.57	.76	.95	1.14	1.32	1.52	1.72	1.92	2.14	2.35	2.56	2.77
60°	.21	.42	.63	.84	1.05	1.27	1.49	1.71	1.94	2.17	2.38	2.60	2.83	3.07
65°	.23	.46	.69	.93	1.16	1.40	1.64	1.88	2.13	2.38	2.63	2.88	3.13	3.39
70°	.25	.51	.76	1.02	1.28	1.54	1.80	2.06	2.33	2.60	2.88	3.16	3.44	3.72
75°	.27	.56	.83	1.12	1.40	1.69	1.98	2.27	2.57	2.87	3.16	3.47	3.78	4.09
80°	.30	.61	.91	1.22	1.53	1.84	2.15	2.46	2.78	3.10	3.44	3.78	4.12	4.46
85°	.33	.66	1.00	1.33	1.68	2.02	2.36	2.70	3.05	3.40	3.77	4.14	4.55	4.89
90°	.36	.72	1.09	1.45	1.83	2.20	2.57	2.94	3.32	3.70	4.10	4.50	4.91	5.32
95°	.39	.79	1.19	1.55	2.00	2.40	2.80	3.20	3.61	4.02	4.40	4.98	5.38	5.83
100°	.43	.88	1.30	1.74	2.18	2.62	3.06	3.50	3.95	4.40	4.88	5.37	5.85	6.34
110°	.51	1.03	1.56	2.08	2.61	3.14	3.67	4.21	4.76	5.31	5.86	6.43	7.01	7.60
120°	.62	1.25	1.93	2.52	3.16	3.81	4.45	5.11	5.77	6.44	7.12	7.80	8.50	9.22

FOR EXTERNALS ADD

Central Angle	DEGREE OF CURVE													
	5°	10°	15°	20°	25°	30°	35°	40°	45°	50°	55°	60°	65°	70°
10°	.001	.003	.004	.006	.007	.008	.009	.011	.012	.014	.015	.017	.018	.020
15°	.003	.007	.010	.014	.018	.023	.027	.029	.032	.035	.039	.043	.047	.051
20°	.006	.011	.017	.022	.028	.034	.038	.045	.051	.057	.063	.070	.076	.083
25°	.009	.018	.027	.036	.046	.056	.065	.074	.083	.093	.106	.120	.127	.135
30°	.013	.025	.038	.051	.065	.078	.090	.103	.116	.129	.149	.170	.179	.188
35°	.018	.035	.054	.072	.086	.109	.131	.153	.175	.197	.213	.230	.247	.264
40°	.023	.046	.070	.093	.117	.141	.172	.203	.234	.265	.277	.290	.315	.341
45°	.030	.060	.093	.119	.153	.184	.216	.254	.289	.325	.351	.378	.411	.445
50°	.037	.075	.116	.151	.189	.227	.266	.305	.345	.384	.425	.467	.508	.550
55°	.046	.093	.142	.188	.236	.283	.332	.381	.420	.479	.530	.582	.641	.700
60°	.056	.112	.168	.225	.283	.340	.398	.457	.516	.575	.636	.697	.774	.851
65°	.067	.135	.204	.273	.343	.412	.483	.554	.625	.697	.711	.845	.922	1.01
70°	.080	.159	.240	.321	.403	.485	.568	.652	.735	.819	.906	.994	1.08	1.17
75°	.095	.182	.286	.383	.480	.578	.678	.777	.877	.977	1.07	1.18	1.29	1.39
80°	.110	.220	.332	.445	.558	.671	.787	.903	1.02	1.13	1.25	1.38	1.50	1.62
85°	.128	.259	.391	.524	.657	.790	.926	1.06	1.20	1.34	1.47	1.62	1.76	1.91
90°	.149	.299	.450	.603	.756	.910	1.07	1.22	1.38	1.54	1.70	1.87	2.03	2.20
95°	.174	.350	.522	.706	.885	1.06	1.25	1.43	1.62	1.80	1.99	2.18	2.38	2.58
100°	.200	.401	.604	.809	1.01	1.22	1.43	1.64	1.85	2.06	2.28	2.50	2.73	2.96
110°	.268	.536	.806	1.08	1.35	1.63	1.91	2.20	2.48	2.76	3.05	3.35	3.66	3.96
120°	.360	.721	1.08	1.45	1.82	2.19	2.57	2.95	3.33	3.72	4.11	4.50	4.91	5.32

INDEX

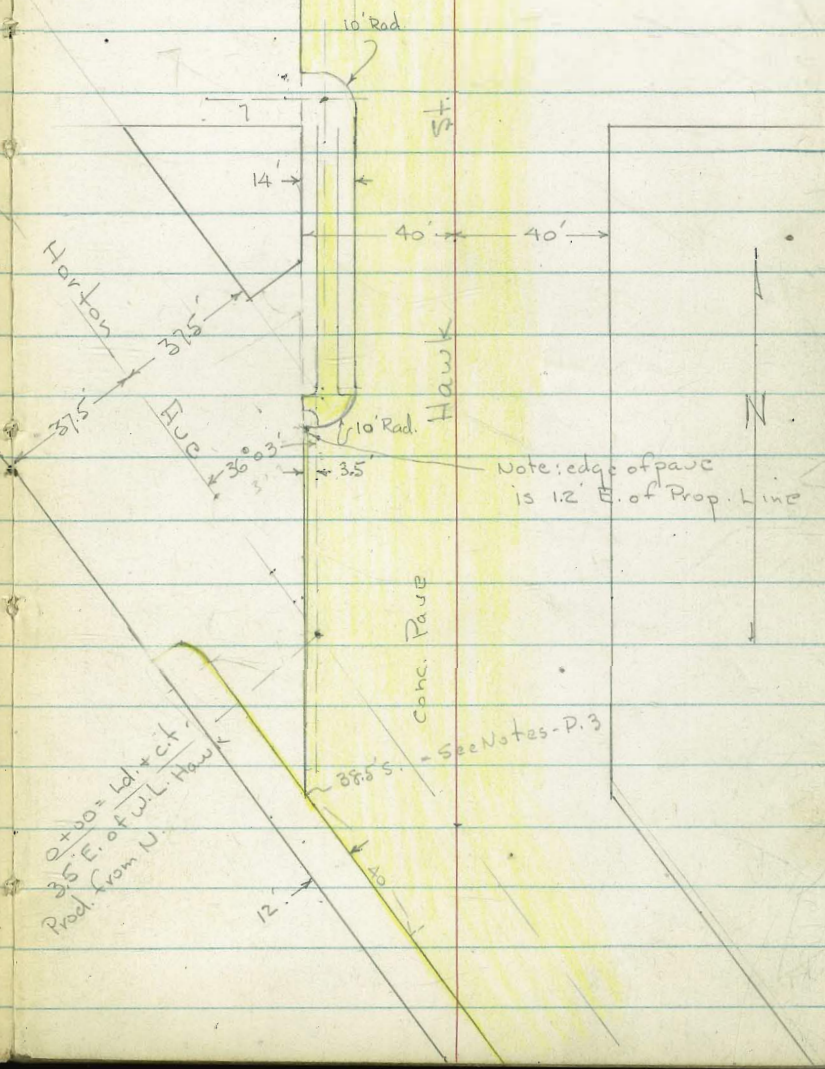
Pg

X-sec - Plis, Sassafras, Horton - Jackdaw ^{et al} 1-27
 X-sec Oliver Pl & Oliver Court 28
 + serving Lots 38 thru 56 Cataline Villas
 " Alley Bk 39 Pt. Loma Hgts. 42
 E. OF 15th & South of EST
 X-sec Alley Bk 7 - Culverwells Add. 52

Z = 368 = Full Mon.

closed.

Spruce st.



11 40
331
15 7

INDEXED
APR 28 1952

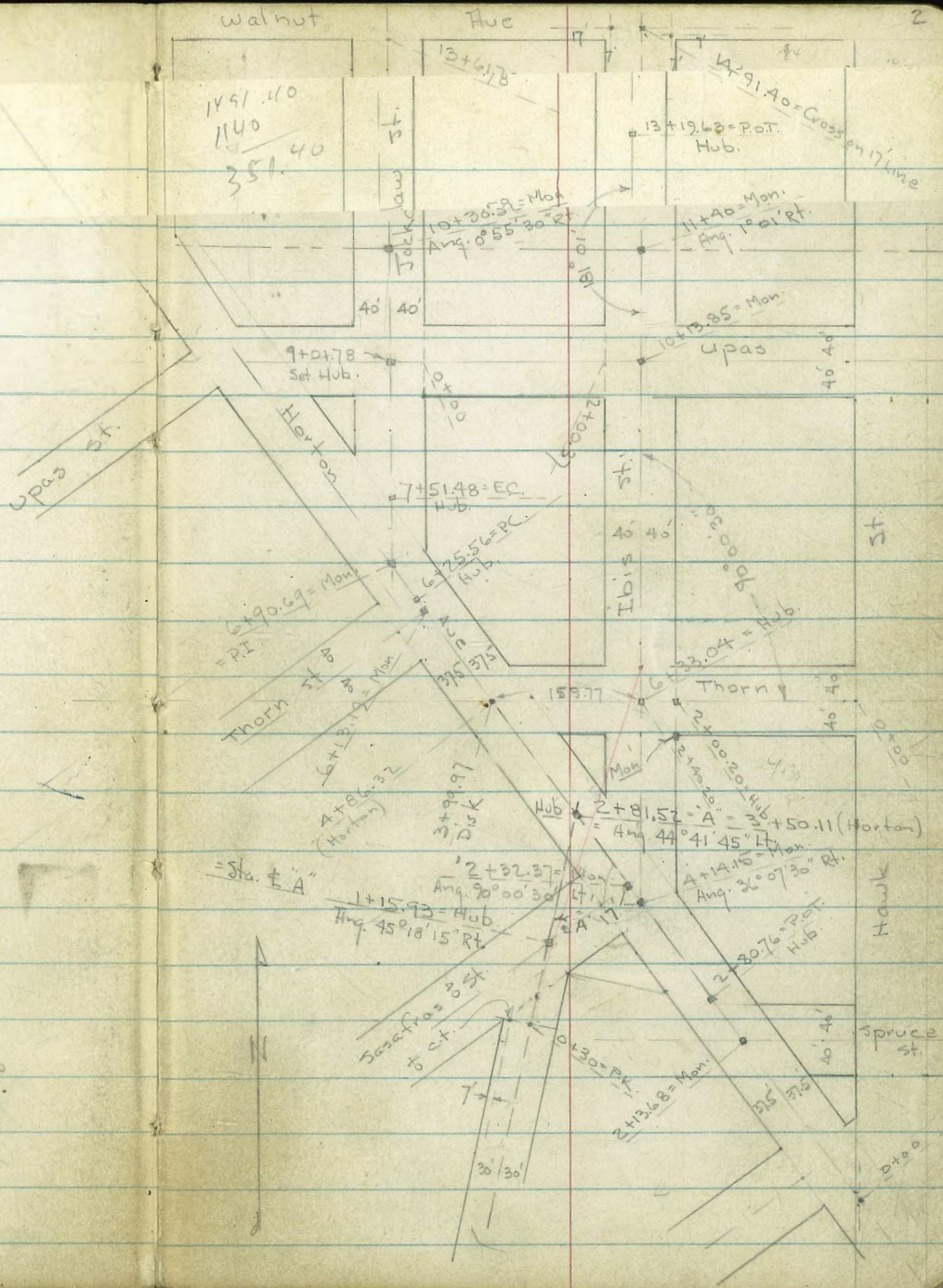
Reduced & Plotted
5-2-52
H. Mills

Curve Data: $\Delta = 36^\circ 04' 30''$
 $\pm R = 200'$
 $L = 125.92$
 $T = 65.13$

ch = 25.17

6+25.56 = P.C. $3^\circ 36' 27''$
6+50.74 $7^\circ 12' 54''$
6+75.93 $10^\circ 49' 21''$
7+01.12 $14^\circ 25' 48''$
7+26.30 $18^\circ 02' 15''$
7+51.48 = E.C.

613.15
486.32
126.83



walnut

Huc

2

1+91.10
1140
351.40

13+19.63 = P.O.T. Hub.
11+40 = Mon. Avg. 1° 01' Rt.

10+30.58 = Mon. Avg. 0° 55' 30" Rt.

11+40 = Mon. Avg. 1° 01' Rt.

40' 40'

10+13.85 = Mon.

40' 40'

9+01.78 = Set Hub.

Horton

7+51.48 = E.C. Hub.

6+25.56 = P.C. Hub.

2+00.57

st.

40' 40'

10+00.00 = Hub.

st.

6+90.69 = Mon.

Thorn

6+13.72 = Mon.

3+96.97 = Hub.

159.77

Thorn

2+80.76 = P.O.T. Hub.

40' 40'

2+40.20 = Hub.

4.33

st.

2+81.52 = A = 3+50.11 (Horton)

Avg. 44° 41' 45" Lt. Mon.

40' 40'

1+15.93 = Hub.

Avg. 45° 18' 15" Rt.

40' 40'

2+32.37 = Mon.

Avg. 20° 00' 30" Lt.

40' 40'

2+80.76 = P.O.T. Hub.

2+13.68 = Mon.

40' 40'

2+40.20 = Hub.

2+14.15 = Mon.

40' 40'

10+30 = P.C.

2+13.68 = Mon.

40' 40'

7+

30' 30'

st.

spruce st.

st.

Lt. Rt. = E.

= w.l. Hawk

X-Sect. Horton Ave + Ibis St.
From Hawk to Walnut. - See sketch - P.

1 + 2

5981 3-13-52 7.0.

w.o. 25020

56.5 N. = end of cb.

28 N.

0 + 00

20 S.

38.5 S. of 0 + 00 = w.l. + w.cb. of Horton

40' South along w.cb. of Horton

Begin Sections Normal to Hawk st. - w.l. of

		195.08		190.29	
Set BM.	4.79	196.30	2.74	191.51 = N.E.	
B.M.	11.85	194.25		181.18	
				182.40 = Mon.	

Hawk as base line - + Dist. N. + S. from 0 + 00 l.d.v.t.

195.08
196.50

l.d.v.t. Horton + Spruce

± Spruce + Horton - Book 1451 - P. 18 - Has been Moved.

190.25	191.60	191.60	189.71
4.83	5.48	5.48	5.37
0.7 =	1.2 =	1.2 =	2.0 =
Top-end	cut-edge	cut-edge	cut-edge
cb.	conc.	conc.	conc.
190.08	189.97	190.06	
5.00	5.11	5.02	
0.9	9	14	
edge	cut-edge		
190.34	190.25	190.55	
4.74	4.83	4.53	
0.6	5	14	
edge			
190.48	190.47	190.91	
4.60	4.61	4.17	
0.4 =	3 =	14	
edge	cut-edge		
conc.	conc.		
3.93	4.56	4.02	
Top	cut-edge	cut-edge	
	191.52	191.66	
	3.60	3.02	
	cut-edge	cut-edge	
	191.46	191.46	
	3.02	3.02	
	Top	Top	

Lt.

Rt. = E. 4

κ = Base = W.L. Hawk.

100' N. = end. - (Thru Drive)

65.5' N. = opp. P.C. 10' Rad.

Middle of 10' Rad. Ret.

Sections along W.L. Hawk Cont.

188.65	188.73	188.84	188.04
6.43	6.35	7.04	7.04
on br.	9.5	14 =	27
	edge	gut	
	walk		

190.2	190.20	189.52	189.48
9	4.88	5.56	5.60
	14	9.4	27
	Top		

189.20	189.60
4.88	5.48
Top	gut.

195.08
194.30

Lt. SW. #

Rt. NE.

1+57.3 - 43.3 Lt. = SE. Cor. New House 76.33 = floor.

Reg. Regular Sections of Horton.

T.P. 184.94 182.08
2.86 186.16 12.00 182.30
122

1+50 - Conc. Patio behind fence

22.7 15.5 11.9 10.7 10.3 10.2 9.4 4.57 6.0 6.0
50 37.5 30.24 15 15 15 25.4 25.4 37.5 45
184.8 184.9 185.1 184.51 189.14 = on Patio 189.1

1+24.8 - 42.2 Lt. = End of New Bldg - gr. at Cor = 83.4

85.8 9.2 8.8 7.9 7.8 7.06 7.1
42.4 45 37.5 20 15 25.6 27.2 = along gar. 184.0
By New Bldg. Top Conc. at fence

1+00 - 22.4 Rt. = 6" Tree

187.5 186.3 184.9 188.8 189.2 189.4 180.25 184.1 184.22
7.6 6.8 6.2 6.3 5.9 5.7 4.83 7.0 6.86
45 37.5 30 20 15 31.2 25.5 26 floor
Top cb. chd. ground. gar.

0+71 - 27.8 Lt. = Tel. pole # 615520 - H
26 Rt. = Cor. Gar. - Conc. floor

0+99 - 25.5 Rt. = Reg. Picket fence - Cor. found.

0+47 -

0+30 - 26.7 Lt. = 16" Pepper

0+18.5 - 27.5 Lt. = end cb.

0+19 - 29.7 Lt. = P. Pole # 3198

0+10 - 25.6 Lt. = P.C. 16' Rad. Ret.

190.3 189.80 189.6 190.0 190.2 190.26 191.10 190.26 190.26
4.8 5.28 5.5 5.1 4.9 4.82 4.98 4.82 4.82
37.5 25.6 9.4 13 3.9 12 25 37.5
Top edge fut.

0+00 = Id. c.t. 3.5' W. of w.L. Hawk Prod. S.

190.60 190.34 189.64 190.36 190.30 190.25 190.55 190.53
44.8 4.70 5.44 4.72 4.78 4.83 4.53 4.55
37.5 29.2 25.6 3.6 on C.T. 3 20 37.5
on Dr. walk fut. in Dr. edge Conc.

0-29 = opp. w.L. Hawk + w. cb. Horton.

191.3 191.15 190.53 190.39 191.22
3.8 3.93 4.56 4.19 3.86.
37.5 Top cb. fut. 195.08
191.30

Horton

Lt. Rt.

4+50

133.7	134.0	135.7	145.4	149.1	158.4	166.6	171.3
25.6	25.3	23.6	13.9	10.2	0.9	+7.3	+12.0
45	40	18	7		20	40	60

4+14.15 = Sect. 90° to Forward Tang.

129.6	131.3	131.5	140.6	149.6	159.3	165.3	166.7
29.7	28.0	27.8	18.7	9.7	0.0	+6.0	+7.4
60	40	30	25		20	40	50

= E Ibis

4+14.15 = Ang Pt. - Sect. 90° to Back Tang

121.4	134.6	136.3	144.9	150.84	158.2	163.1	166.5
31.9	24.7	23.0	14.4	9.2	1.1	+3.8	+7.2
60	42	37.5	12	on Mon.	20	37.5	50

3+80

175.9	142.3	144.2	144.7	156.1	163.1	166.8	164.9
33.4	12.0	15.1	9.6	2.9	+3.8	+7.5	+9.6
40	35	28	13		20	37.5	50

T.P.

0.07	159.34	13.02	159.27
	160.56		160.49
	1.22		1.22

to ground level at Bottom
Top of Bank
+ Conc. Drain

159.34	160.56
--------	--------

3+50

152.5	153.8	161.6	163.5	165.7	168.7	171.1
19.8	18.5	10.7	8.8	6.6	3.6	1.2
37.5	29	10		20	37.5	50

T.P.

0.44	172.29	13.09	171.85
	173.51		173.07
	1.22		1.22

159.7	163.8	170.4	172.5	173.9	175.0	176.1
25.2	21.1	14.5	12.4	11.0	9.9	8.8
50	37.5	20	15		37.5	50

3+00 - Note: Cut bank on Lt. is about 50 High

Sect. OK

2+50

164.9	172.8	177.1	177.2	177.3	177.7	180.3	181.6	183.4
15.0	12.1	7.8	7.7	7.6	7.2	4.6	3.1	1.5
50	37.5	27	15		22	27	37.5	50

2+13.64 = + Mon. = B.M.

3.76	891.18	182.45
------	--------	--------

2+00

175.0	174.0	180.6	181.5	181.7	182.3	181.6	180.1	181.1	182.1	182.4
11.1	7.8	4.3	3.4	3.2	2.6	3.3	1.8	+2.2	+3.2	+3.5
50	37.5	24	15		26	15	25	27	37.5	45

1+87 - 53.5 Lt. = NE Cor New Bldg.

1+94 - 25.3 Rt. = end Conc. found + fence

184.94	183.7	182.04
186.16	1.2	+3.10
	25.3	Top Conc.

Ibis

7

Lt.

±

Rt.

7+50

141.0	141.0	142.2	145.7	145.4	146.1	148.0	151.1	153.8	157.9
21.1	21.1	19.9	16.4	16.7	16.0	14.1	11.0	9.3	4.2
60	40	39.3	20	10	15	30	40	60	

at fence

T.P.

0.42

162.05

~~163.27~~

12.97

161.63

162.85

~~161.63~~

162.05

~~163.27~~

7+00 = 4' S. of N. side of House

141.1	141.6	150.8	150.3	149.6	161.3	163.6	168.5	172.1
33.5	33.0	23.8	24.3	25.0	13.3	11.0	6.1	1.9
44.8 = along House	40	28	14	5	20	40	60	

6+73.04 = N.I.

Sect OK.

141.6	140.2	157.4	153.0	151.8	166.6	170.0	175.3
33.0	32.4	21.8	22.6	22.8	8.0	4.6	+0.7
40	36	30	15	8	20	40	

edge of Corn
walk

6+33.04 = ± Thorn

149.4	153.0	152.6	152.7	166.7	171.2	175.4
25.2	21.6	22.0	21.9	8.4	3.4	+1.2
40	28	13	3	20	40	

Thorn + Ibis

Set B.M. on Mon. - S.E. Cor.

1.98

172.62

~~173.84~~

5+93.04 = S.L. Thorn

142.7	143.6	151.1	150.7	150.1	150.8	163.7	157.1	172.4
31.9	31.0	23.5	23.9	24.5	23.8	10.9	7.5	1.8
40	35	25	13	5	10	20	40	

5+50

130.0	138.8	139.2	146.7	146.3	146.9	156.4	162.4	176.3	177.5
44.6	35.8	35.4	27.9	28.3	27.7	16.2	12.2	4.3	+2.9
70	40	35	25	4	10	20	40	60	

T.P.

15.33

174.60

175.82

0.07

159.27

~~160.49~~~~175.81~~

5+00

134.3	140.4	140.5	140.6	148.3	153.5	160.2	170.8	174.6
25.0	18.9	18.8	18.7	11.0	5.8	+0.9	+10.2	+15.3
50	40	30	8	3	20	40	60	

159.34

Ibis.

Lt.

Rt.

9+13 = 4' Rt. = 4 Conc. Steps.

9+11 = 59.5 Lt. = 2' Gar. Dirt floor

wall. + end N. + S. wall

9+06 = 27.8 Lt. = 1 P. pole # 3360 + 28 Lt. = Ely. of 8" Conc.

9+00 - See New Sect - R 77

	160.97		149.09
= Nail in Pole	159.97		
T.P.	11.88	162.19	150.31
		2.22	1.22

8+50

8+45 = 39.2 Lt. = Req. 8" Conc. Ret. wall + fence

8+00

See outlet from Thorn St. Sections
Cold lay approach

7+68 = 28.2 Lt. = inlet of 22" steel Culvert - Rough

7+80 = 39.8 Lt. = 2' 9" Conc. Dr.

Set B.M. on Pole below 7 = spike 12.98 149.07
150.29

7+57 = 27.4 Lt. = 2' P. pole = # P 3318

144.4
16.6
59.5 floor.
145.4
147.92
147.91
15.6 13.05 13.06
ground 39.8 = 29 = Top wall
144.1 144.2 147.90 147.4 147.3 151.2 154.7 158.4
16.9 16.8 13.07 13.6 12.7 9.8 6.3 2.2
59 40 39.1 20 20 40 60
By Gar. Top wall 160.97
9+06 - Lt. 159.97 162.19

144.1 144.2 147.91 147.6 147.0 152.5 155.0 156.4 160.0
18.0 17.9 14.14 14.5 14 9.6 7.1 5.3 2.1
50 40 39.2 wall 8 25 40 55

147.97
14.15
39.2 = Top wall
143.5 143.8 145.5 145.0 146.7 147.1 149.5 152.6 153.0 159.2
18.6 18.3 16.6 17.1 15.4 15.0 12.6 9.5 9.1 2.9
49.2 40 30 15 5 8 25 40 60
along House 141.52
20.53
28.2
139.92
147.27
I.P. of 22.13 19.78
Pipe 60 39.8 = Dr.

162.05
161.63
163.27

153.8
7.20
41 =
Bot. Step
161.04
+ 0.11
60.3 = Top Step.

Ibis

11+00

T.P.

12.79

178.50

199.72

0.35

185.71

186.93

22

10+53.85 = N.L. Upas. - 7' Rt. - Sewer M.H.

10+38.85 =

T.P.

13.10

186.06

187.28

0.26

172.96

174.18

22

10+13.85 = E

Set. B.M. on E Mon. = 10+13.85

T.P.

12.54

173.22

174.44

0.29

160.68

161.90

22

10+04 = Cross 24" C.I. Water Main

9+73.85 = S.L. of Upas - See New Sect. P. 77

9+35

Lt.

E

Rt.

9

197.3	199.6	197.8	196.3	197.2	196.5	177.3	170.6	174.6	174.0
+0.8	+1.1	0.7	2.2	5.3	12.0	21.2	17.9	27.9	24.4
60	40	20	10	198.50	20	40	50	67.4	floor
				199.72				at	
								House	

183.5	186.9	185.3	178.5	176.9	172.3	166.2	166.4	165.7
2.6	+0.8	0.8	7.6	7.87	13.8	19.9	19.7	20.4
60	40	20	7=rim	20	30	40	60	

179.9	180.7	178.3	175.1	169.4	164.6	164.0	164.9	163.3
6.2	5.4	7.8	11.0	16.3	17.5	22.1	21.2	22.8
60	40	20	186.06	10	20	30	40	60
			187.28					

162.4	162.6	168.1	164.7	161.5	158.6	160.7	159.0
4.4	4.6	5.1	8.5	11.7	14.6	12.5	14.2
60	40	20	16	20	40	60	

160.13
0.84
Top = Covered.
17 = Top exposed.
156.78

155.1	156.3	156.0	154.3	154.0	155.6	157.5
5.9	4.7	5.0	6.7	7.0	5.4	3.5
60	40	20	20	40	60	

147.2	147.9	144.0	144.4	151.3	154.8	159.0
13.8	13.1	13.0	11.6	9.7	6.2	2.0
60	40	20	160.97	20	40	67.4
			157.97			along
			162.19			House

Ibis

13+50

13+37- 52.8 Lt. = Star. way Back
 † Conc. Porch to large House
 249.01 235.84
 T.P. 13.17 250.23 105 237.06
 122 122

13+00

12+50

T.P. 13.17 236.89 0.37 223.72
 238.11 224.94
 122 122

12+00

T.P. 13.04 224.09 0.32 211.05
 225.31 212.27
 122 122
 B.M. = Nail in Pole Below 3.88 207.49
 208.71
 122

11+47- 26' Lt. † P. pole 3418

Set. B.M. on Mon. 940 201.97
 203.19
 122

11+40 = Mon. on Sub. line = Ang. Pt.
 Note: should this be a jog or Angle?

T.P. 12.98 211.37 0.11 198.39
 212.59 199.61
 122 122

11+10- 65.5 Rt. † frame House - Dirt Dr. to Ibis
 South

242.1 Lt. 241.9 241.2 † 239.8 Rt. 231.6 231.3 231.3
 6.9 7.1 7.8 9.2 12.2 17.85 17.7 17.7
 50 40 20 20 20 38 40 50
 in Dirt Dr. Top Conc. Wall

242.51 242.01 249.01
 6.50 7.00 52.8
 56.9 Floor House Top Conc. Porch 250.23

239.3 237.5 235.7 234.5 231.4 227.7
 +2.4 +0.6 1.2 2.4 5.5 14.2 29.8
 51 40 20 20 20 40 67
 at House Toe
 227.6 227.6 227.4 225.5 219.0 208.6 196.9
 9.3 9.3 9.5 11.4 17.9 28.4 40.0
 50 40 20 20 40 70 = Toe

216.6 217.3 216.5 214.9 206.7 206.1 200.0 192.6
 7.3 6.8 7.6 11.2 17.4 18.0 24.1 31.5
 50 40 20 20 20 30 40 60

225.31
 224.09

205.6 205.1 203.4 202.0 197.6 194.6 190.0 184.9
 5.8 6.3 8.0 9.4 13.8 16.8 21.4 26.5
 60 40 20 20 30 40 60

211.37
 212.59

198.50 177.6 174.10
 199.72 ground at House 24.40 floor

Ibis

Lt.

Rt.

11

Jackdaw 235.78
 B.M. = Top - N.E. Hyd. Walnut r 13.23 237.00
 243.75
 Set B.M. on S.E. 7' of 526 244.97
 122

14+94.4 = S. curb. to West.

14+88.4 = S. curb to East.

See Detail - P. 12

+ Curb + walks.
 14+74.4 = S.L. of Walnut Ave = edge Conc. pave

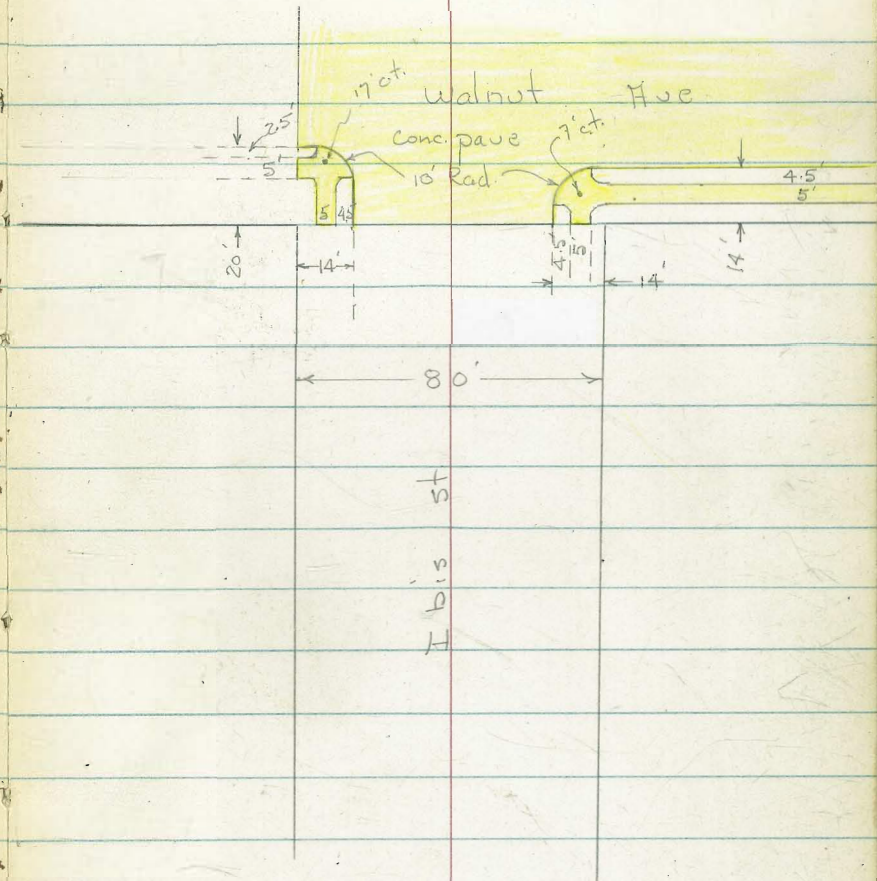
14+50

14+15 - 44.2 Rt. = 15 Conc. Dr

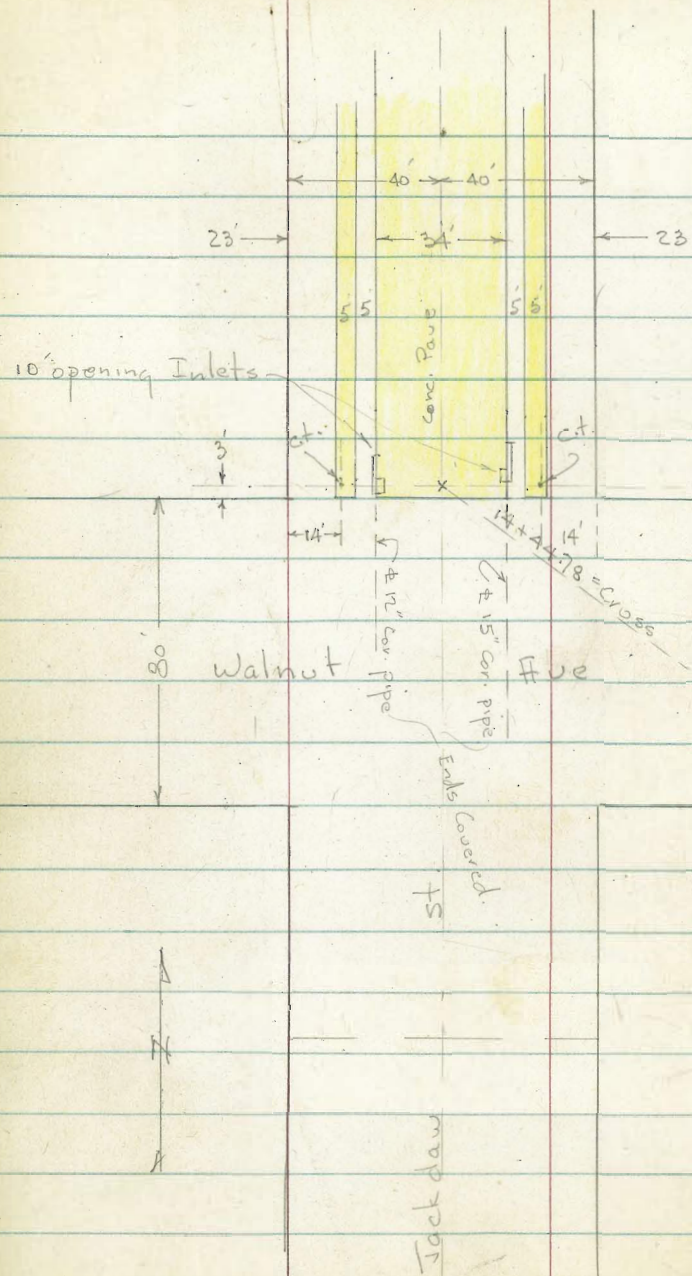
14+00

13+88 - 39.5 Rt. = 8' Conc. Dr. to Sing. Car

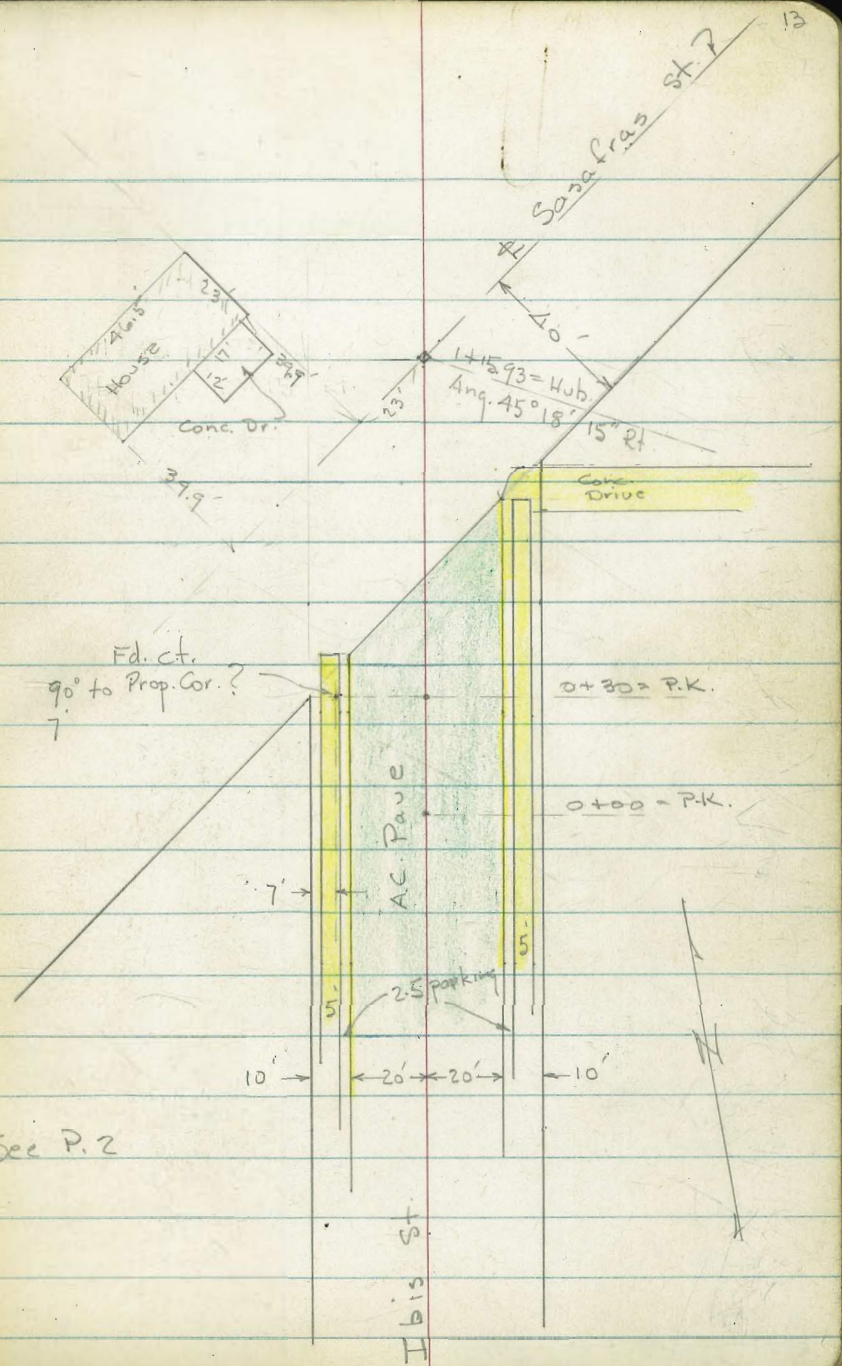
244.14	243.57	244.19	243.52	243.67	243.58		
4.87	5.50	4.82	5.49	5.34	5.43		
Top = 40	Top = 40	Top = 36	Top = 26				
end ob. 9ft.	9ft.	9ft.	9ft.				
244.14	243.51	243.49	243.39	243.15	243.11	243.66	243.04
4.87	5.50	5.52	5.62	5.86	5.90	5.35	5.47
Top	26.9	13		26	36	Top	40
	9ft.				9ft.	P.D.	9ft.
243.51	244.32	244.16	243.55	243.61	243.55	243.37	243.08
3.9	4.69	4.85	5.46	5.40	5.46	5.64	5.93
40	35.3	Top	25.8	13	13	26.5	Top
	wly. of walk		9ft.		Conc.	9ft.	Top
							El. Walk
244.9	244.8	244.6	244.5	244.7	244.7	244.4	
4.1	4.2	4.4	4.5	4.3	4.3	4.6	
50	40	20		20	40	45.8 = at	
						House	
						243.57	
						5.50	5.44
						44.2	46.8
						Dr	Floor
						244.8	244.7
						6.2	6.3
						20	50
						240.65	240.82
						8.36	8.19
						39.5	43
						Dr.	floor - gar
						249.01	
						250.23	



4.5-5



See P. 2



Lt.

⊕

Rt.

Req. X-Sections of Ibis - Sasafra
- Horton + Jackdaw - N. to Walnut
See sketch - P. 2 - also Detail of
curbs + Pauc of Ibis - P. 13

INDEXED
JUN 2 1952

1+15.93 = Sect. 90° to Forward Tang.

See P. 75 for New Sect. on ⊕ Prod. ahead.

1+15.93 = Ang. Pt. Sect. 90° to Back Tang.

	121.4	121.5	121.3	122.39	122.9	123.61	144.26
	7.1	7.0	7.2	6.97	5.6	4.85	4.20
	50	40	15	10	39	52.5	edge Dr.
122.18	5.78	6.14	7.2	7.1	6.07	4.9	4.3
59.5	40.3	20	7	10	30	50	3.4
Conc. at House	edge Conc. Dr.		on Hub.				
Grav.							
121.8	122.2	121.3	121.4	122.39	123.6	144.4	145.1
+1.3	6.3	7.0	8.1	6.8	5.41	4.76	4.41
60	40	30	20		20.4	22.6	27.6
					Conc. Dr. = gut.	walk	on Dr.

New Elev. in Red.

0+80.4 = end curb + walk on ⊕ = curb broken for Drive

0+60.2 = ± at edge of A.C. pauc

0+40.3 = end cb. + walks on Lt.

0+00 - See Detail - P. 13

B.M. = Sw. B.P. 8.45 128.46 120.01
Ibis + Sasafra

	121.6	121.0	120.0	121.62	121.97	122.19	122.13
	6.9	7.5	8.5	6.84	6.49	6.27	5.33
	40	30	20	edge	10	20.3	Top
120.10	8.36	8.42	9.10	8.27	7.69	7.26	7.04
27.3	19.8	10	10	10	20.3	20.3	Top
Cor. walk	Top	end cb.	gut. = edge				
	118.72	9.74	10.40	9.11	8.71	7.89	7.89
	118.26	Top	19.9		20.2	Top	Top
	120.57	cb.	gut		gut.	cb.	cb.

128.46

5+96.5 11.2 Rt. = end 6" retaining wall

5+93 = 26' Rt. = s.w. cor Garage

5+85

5+53 13.5 Rt. Begin 6" Ret. wall edge of 4' walk

5+45

150.24
3.67
11.2
Top wall 142.37
11.54
26
on drive

16.81 16.41 15.94 15.60 15.17 15.13 148.72 141.12 141.33 141.22

+14.2 +10.2 +5.5 +2.1 2.2 2.6 5.19 12.79 12.58 12.69

50 37.5 25 15 13 12.5 12.5 on drive 48.6

154.3 154.3 150.8 148.9 9.52 Top wall 143.2 138.31 138.91 138.08

+5.4 +0.4 3.1 7.1 9.3 10.7 15.60 15.00 15.83

50 37.5 25 15 9 12.5 22.8 25

w edge dr. cast edge wall dr. Top edge wall dr. By house

153.91

T.P. 12.85 153.91 0 11 141.06

= Crack on Dr.

5+06.9 = Edge of Dr. + E

New Fill

Disk - 4+86.32

Check B.M. on

9.56 131.61

557 477 139.6 138.11 132.74 132.67 133.41 131.22 130.65

+7.2 +4.3 1.6 3.1 7.43 7.50 2.76 9.45 10.52

50 37.5 20 5 10.4 14.9 on Dr. 37.5

edge Dr. Top wall on Dr.

131.63 = B. 2026 - P. 7

for loc. of Drives + House See B. 2026 - P. 7 + 2

4+75 = Sly. of 10' conc. Dr.

141.9 139.6 135.9 131.46 130.91 130.3 130.1

+1.7 1.6 5.3 9.71 10.26 10.9 11.1

50 37.5 15 9 = Cor. 1 = Cor. Dr. 20 37.5

134.4 131.1 127.5 127.3 127.7 128.4 127.5

6.8 10.1 13.7 13.9 13.5 12.8 12.7

50 37.5 27 20 20 37.5

142.15 14.02 = Cor. 14.00 13.96 23.2 = Cor.

2.4 along edge along edge

141.17

4+14 = edge Conc. Slab

58 18

Jackdaw

73.16
- 0.37

73.53

8+00

7+51.48 = E.C. = \pm Jackdaw - 80' st.

7+26.30

7+01.12 Jackdaw

6+93 - 12' Lt. = \pm Sewer Mt. + 0.37

T.P. 8.19 173.16 0.17 164.97

6+75.93 Haxton

6+50.74 - sect Radial on Curve

B.C. Cont.

6+25.56 = B.C.

T.P. 11.36 165.14 0.13 153.78

Lt.

\pm

et.

17

193.1	185.9	173.2	168.1	162.2	155.9	151.0
+19.9	+12.7	+0.5	5.1	11.9	17.3	22.2
60	40	20		20	40	60
186.5	174.9	170.9	164.53	154.5	154.2	142.4
+13.3	+5.7	2.3	8.63	14.7	19.0	24.8
60	40	20	on top	20	40	60
189.1	183.4	177.1	167.8	160.0	155.0	142.2
+15.9	+10.2	+3.9	5.4	13.2	18.2	25.0
60	40	20		20	39.1	60
190.9	184.0	172.5	164.0	160.5	154.5	147.0
+17.7	+10.8	+4.3	4.7	12.7	18.7	26.2
60	40	20		20	40	70

155.6	179.4	171.7	166.4	160.3	157.3	151.8
+20.5	+14.3	+6.6	+1.3	4.8	7.8	13.3
50	37.5	15		15	30	50
174.3	166.0	160.2	160.0	159.5	153.8	151.8
+9.2	+0.9	4.9	5.1	5.6	11.3	13.3
37.5	15	5		8	20	37.5

170.1	163.4	157.9	151.63	157.0	151.9	150.32	147.06	142.23
+5.0	1.7	2.2	7.51	8.1	13.2	14.82	17.48	17.91
37.5	20	5	on top	5	15	26	33	37.5
			165.14					

153.91

Top of wall
Bot. of step
wly. of
at
distance
walk

Jackdaw

11+50

11+00

10+70

T.P. 12.40 185.16 0.22 172.76 =

Set B.M. on Prop pipe 8.48 164.50

10+30.58 = Ang. Pt. at Sub. Line - 40' Lt. = pipe = B.M.

10+00

9+42 = Approx. N.L. Upas

9+02 = ±

T.P. 12.60 172.98 12.78 160.38

8+62 = Approx. S.L. Upas

8+30

Lt.

±

Rt.

18

170.3	171.4	173.1	175.9	170.5	176.6	185.2	186.0	192.4
14.9	13.4	12.1	9.2	8.7	8.6	0.0	+0.8	+7.2
60	40	20	15	27	35	40	60	60
172.1	167.0	166.9	166.5	170.2	170.9	172.0	177.4	184.5
12.1	18.2	18.3	16.7	15.0	14.3	13.2	7.6	0.7
65	54	40	20	15	30	40	60	60
171.4	165.7	165.0	165.7	166.3	167.4	167.3	172.4	177.7
13.3	19.5	20.2	19.5	18.9	17.8	17.9	12.8	7.5
60	50	40	20	15	30	40	60	60
Nail in Post.				185.16				
175.2	164.5	161.7	161.4	160.33	162.2	165.3	169.0	
+2.2	8.5	11.3	11.2	12.65	10.8	7.7	4.0	
60	40	20	ground	20	20	40	60	
				on Mon				
172.9	167.3	159.9	159.3	159.2	159.6	161.0		
+3.9	5.7	13.1	13.7	13.8	13.4	12.0		
60	40	20	20	40	60	60		
180.8	173.0	166.6	164.5	158.5	156.1	154.6	154.3	
+7.8	0.0	6.4	8.5	14.5	16.9	18.4	18.7	
60	40	30	15	20	40	60	60	
181.1	171.3	170.8	164.3	161.3	156.0	154.1	152.7	
+13.1	+6.3	-2.2	8.7	11.7	17.0	18.9	20.3	
60	40	20	16	25	40	60	60	
				172.98				
171.6	184.7	172.8	171.5	168.3	159.5	153.9	152.7	
+22.4	+11.5	0.4	1.7	12.9	13.7	19.3	20.5	
60	40	20	20	20	35	40	60	
183.9	181.1	185.7	178.4	161.2	157.2	152.2		
+20.7	+4.9	+12.7	+5.0	2.8	12.0	16.0	21.0	
60	40	35	25	20	40	60	60	
				173.16				

Jackdaw

T.P. 4.33 237.11 1.57 232.78

13+90

Lt. Rt.
 $\frac{22.3}{60}$ $\frac{21.4}{40}$ $\frac{25.3}{20}$ $\frac{20.6}{10}$ $\frac{26.6}{20}$ $\frac{22.6}{20}$ $\frac{22.6}{40}$ $\frac{23.3}{50}$

T.P. 10.80 234.35 0.11 223.55

13+65

$\frac{20.6}{60}$ $\frac{20.6}{40}$ $\frac{20.6}{20}$ $\frac{20.4}{20}$ $\frac{21.1}{20}$ $\frac{22.1}{40}$ $\frac{22.7}{50}$

T.P. 12.73 223.66 0.10 210.93

T.P. 13.21 211.03 0.30 197.82

Lath = 13+03

13+30

$\frac{18.5}{60}$ $\frac{19.1}{40}$ $\frac{19.0}{20}$ $\frac{20.2}{20}$ $\frac{20.7}{60}$ $\frac{20.4}{20}$ $\frac{21.3}{40}$ $\frac{21.9}{60}$

13+00

$\frac{18.3}{60}$ $\frac{18.6}{40}$ $\frac{18.5}{30}$ $\frac{19.3}{15}$ $\frac{19.4}{20}$ $\frac{20.2}{40}$ $\frac{20.3}{40}$ $\frac{20.9}{60}$

T.P. 13.27 198.12 0.31 184.85

Lath = 12+60

12+50

$\frac{17.2}{60}$ $\frac{17.9}{40}$ $\frac{18.0}{25}$ $\frac{18.4}{15}$ $\frac{19.1}{15}$ $\frac{18.3}{15}$ $\frac{19.4}{25}$ $\frac{19.5}{40}$ $\frac{19.9}{60}$

12+00 = on Conc. = 3.3 S. of Nly. edge

$\frac{15.0}{60}$ $\frac{12.2}{40}$ $\frac{17.7}{20}$ $\frac{18.36}{17}$ $\frac{18.40}{17}$ $\frac{18.32}{20.5}$ $\frac{18.5}{27}$ $\frac{18.8}{40}$ $\frac{18.2}{60}$

11+77.3 = \perp at Sly. of Rough Conc. Slab. - Normal to St.

$\frac{17.74}{5.42}$ $\frac{17.72}{5.34}$ $\frac{17.75}{5.91}$
 12 = Cor. Conc. 185.16 25 = Cor. Conc.

Jackdaw

Lt. Rt.

P. 11
check B.M. = Top of Hyd 1.38 235.73

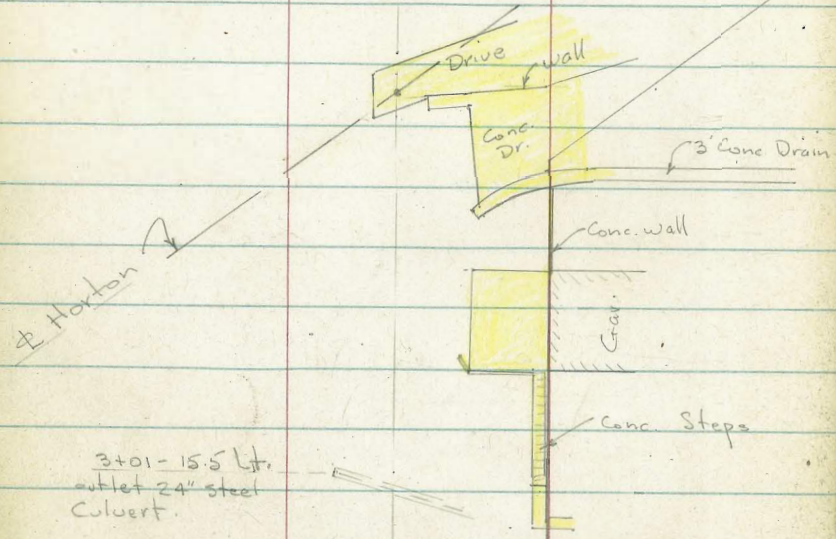
235.78 - P. 11

14+71.78 = shows grade of Improvements

Jackdaw to N.
14+41.78 = N.L. Walnut = end of Pavement & curbs. on
see sketch - P. 13

235.49	234.95	235.76	235.74	236.56
1.62	2.16	1.35	1.37	0.55
Top cb.	gut.		gut.	Top cb.
239.4	232.13	232.01	231.08	231.65
3.7	4.98	5.10	6.03	5.46
40	26.9	Top	16.9	8
Cor. walk	end cb.	gut.		
232.16	232.28	232.02	232.94	233.16
4.5	4.83	5.09	4.17	3.95
8	8	17.2	Top	27.1
		gut.	end cb.	Cor. walk
232.13	233.0	231.3	232.3	233.0
4.8	5.1	5.8	4.8	4.1
20	4.8	20	20	3.4
237.11				40
				235.4
				1.7
				70

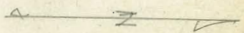
14+15



3+01-15.5 Lft.
outlet 24" steel
culvert.

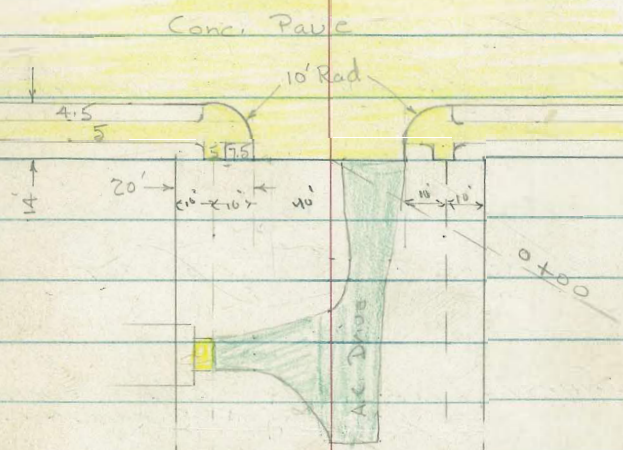
$2 \times 80.2 = \text{wall}$

Thorn St.



Hawk

St.



10' closing

Thorn St.

10' closing

See Pg. 40

Indexed

Lt. E Rt. 22

Begin. X-SECT. THORN ST.

WEST LINE HAWK TO HORTON

0+50 34.5 Rt = E GARAGE 8.5 APRON

199.4 191.6 200.4 201.20 200.93 200.15 200.37 200.45
 18.0 138 13.0 12.13 12.46 13.24 13.02 12.90
 50 40 25 13
 st edge h.c. pav. 20 30 edge conc. apron. 39.5 floor garage

0+39 = E and east edge of AC approach to GARAGE

11.23

0+25

0+20 23' Rt - E T. pole # D 37596T

202.5 203.4 204.2 204.64 204.29 204.4 205.9 206.40 207.45 207.45 207.4
 10.9 10.0 9.2 8.75 9.10 8.0 7.5 6.99 5.94 5.94 6.0
 50 40 25 15 5 20 30.9 37 40 42.8
 st edge h.c. pav. st edge h.c. pav. 2' WALK 3' WALK on WALK along curb house

0+00 = WEST LINE HAWK - edge concrete pave begin 16' strip AC pave

206.7 207.25 207.21 206.61 207.57 207.63 208.25 208.31 208.9
 6.7 6.14 6.18 6.78 5.82 5.76 5.14 5.03 5.0
 40 32.2 Top 20 20.3 Top 32.8 40
 st edge h.c. pav. Gut. Gut. Top 1/4" edge 5' WALK

0-14 = WEST CURB LINE HAWK ST.

205.07 204.41 207.17 206.46 207.27 206.66 206.77 207.15 207.41 207.53 208.25 207.70 208.30 209.75 210.43
 8.32 8.98 6.22 6.93 6.26 7.36 6.24 5.98 5.86 5.14 5.69 5.09 3.64 2.96
 Top Gut. Top Gut. Top 30 pc. 20 20 30 pc. Top 6" Top 70 Gut. Top

213.39

6.10 207.29

S.W. LTT THORN & HAWK

9.76 213.39 1.52 203.63

13.24 205.15 0.11 191.91

B.M. 10.84 192.02

181.18 Mon.
 Corroded elev.
 - 1.22 FROM

E SPRUCE & HORTON
 182.40

See page 7 for Intersection

Lt.

Q

Rt.

23

6.96 172.61 = B.M. on T MOEN & IBIS
NON. S.E. COR

2+00.20 2+2 HUB EAST LINE IBIS ST.

172.8 174.2 175.9 177.3 175.5
6.8 5.4 3.7 2.3 4.1
40 20 20 40

T.P. 3.78 179.57 12.20 175.79

179.57

1+75

177.9 180.1 182.1 182.8 183.5 181.8 177.0
8.1 7.3 4.9 5.2 4.5 7.0 11.0
50 40 20 20 40 60

T.P. 0.21 187.99 13.23 187.78

187.99

1+50

184.4 185.3 186.6 187.5 186.8 186.5 182.3
16.6 15.7 14.4 13.5 14.2 14.5 18.7
50 40 20 20 40 60

1+00

182.8 183.4 183.9 184.5 184.3 183.3 182.4
8.2 7.6 7.1 6.5 6.7 7.7 12.6
50 40 20 20 40 60

0+75

186.7 186.9 186.0 189.2 189.7 184.5 187.7
4.3 4.1 3.0 1.8 1.3 2.5 3.3
50 40 20 20 40 60

0+73 = WEST end of A.C. Pav.

189.08 189.38
1.93 1.63
13 NTH edge
Sth edge N.C. Pav. N.C. Pav.
201.01

T.P. 0.78 201.01 13.16 200.23

213.39

X-Sect Thorn
Ibis to Horton

3+60

Indexed

3+54 - 19.3 Rt = wly. of Dr.

3+30

3+28 = 19 Rt. - sly. + wly. of 6" Conc. wall along Conc. Dr.

T.P. 0.85 134.24 11.19 133.39

3+15

3+07.6 - 36.6 Rt = Top of 3 Conc Steps

P. 8 for Inlet.

3+01 - 15.5 Lt = outlet of 24" steel pipe - See

see sketch - P. 21

3+00

2+87.3 - 36.5 Rt = Beg 3 Conc. wall - sly. edge

T.P. 2.92 144.58 11.75 141.66

2+80.20 = wly. Ibis.

B.M. 4.34 153.41

149.07 = Nail =

Nail in Pole - P. 8 - 7+57 153.41

4.
127.9
6.3
40
128.7
5.5
20
128.9
5.3
128.9
5.3
11
± Drain
Pit
129.7
4.5
20
131.1
3.1
40
132.43
1.81
40.1
Top
wall

127.2
2.0
60
127.4
6.4
40
129.6
4.6
20
129.4
4.4
130.84
3.40
19
Dr.
131.29
2.95
40 = floor
Gar.
133.39
0.85
19
Top wall
Dr.
134.24
130.83
3.41
40.2 = Cov.
Gar.
131.40
2.84
40 = Dr.
at Cov.
of Gar.

131.4
13.2
50
133.5
11.1
40
133.6
6.0
20
139.7
4.9
140.6
4.0
20
141.21
3.37
36.6
Top
steps
139.53
5.05
36.2
Top
wall
along
steps
137.24
6.34
36.7
Top
Steps

136.10
8.48
15.5 = I.E. of
Pipe
137.3
7.3
50
139.5
5.1
40
140.0
4.6
20
140.6
4.0
141.0
3.6
20
141.39
3.19
36.5
sly. walk
141.65
2.93
36.5
walk
141.1
3.5
46.6 = at House
141.73
2.85
46.4 =
at House

142.6
10.8
40
146.9
6.5
20
144.58
4.1
144.3
150.4
3.0
20
141.4
12.0
40

Thorn

Lt.

±

Rt.

on Disk
Check B.M.

262 131.62

131.61 = P. 16

3+99.97 = Disk = ± Horton = End. - Sect. 90° to ±

Thorn

131.6	132.1	130.7	131.21	131.62	132.99	134.08	131.91	132.22	132.63
2.6	2.1	3.5	3.03	2.62	1.25	0.16	2.33	2.02	1.61
40	25	15	5.9		20	35.6	233	39	39
			sl. of Dr.		on upper Dr.	upper Dr.	lower Dr.	Dr.	Top step

3+81.5 - 49.6 = Dr. + Wall at House

130.81	131.82	130.69
3.43	2.42	3.55
49.6	Top Wall	in Drain.
Dr.		

3+80.5 - 40' Rt. = Dr. + Wall

120.62	130.30	131.68
3.56	2.94	2.56
Dr.	20.8 = Dr.	Top Wall

3+71.5 - 20.8' Rt. = Beg. Conc. Dr.

130.56	131.48
3.68	4.76
20	21 = in Drain
Top Wall	

3+69.5 - 20' Rt. = end of 6" Conc. wall - wly. of 3' Conc. Drain.

134.24

Beq. X-Sect. of Upas St. from
Jackdaw to Ibis - sketch P. 2

Indexed

1+93 10.1 RT = 4.2 x 4.2 concrete water manhole

1+60

T.P. 8.91 174.07 0.18 165.16

1+30

1+00

0+60

0+30

0+00 = East line Jackdaw

B.M. 0.84 165.34

164.50 = pipe
P. 18

LT

E

RT

20

164.6
9.5
50

180.6
46.5
40

173.6
0.5
18

169.7
4.9
16

168.99
5.08
Pipe
manhole

162.2
11.3
16

154.8
19.3
24

155.1
19.0
40

151.1
23.0
60

174.07

150.1
114.8
50
TOP
BANK

176.0
110.7
40

172.9
116.0
23

165.3
0.0
17

161.4
3.5
18

158.0
7.3
24

152.5
12.8
40

152.3
13.0
60

150.9
14.4
60

161.9
3.4
60

161.6
3.7
40

158.6
6.7
20

156.6
8.7
20

152.7
12.6
20

150.5
14.8
25

149.9
16.4
40

147.6
16.7
60

158.6
6.7
60

157.5
7.8
40

156.2
10.1
20

152.7
12.6
20

150.7
14.6
40

146.4
16.9
60

146.1
17.2
60

156.3
9.0
60

154.6
10.7
40

153.6
11.7
20

151.7
13.6
20

151.6
13.7
20

150.5
14.8
40

150.4
14.9
60

154.6
10.7
40

154.3
11.0
20

153.9
11.4
20

153.9
11.4
20

153.5
11.8
40

165.34

Lt

E

Rt

27

961 164.46 =

Mon. E I.B13 + UP13 164.98 see page 9

2+02 40' Rt = E Sewer manhole

155.82
18.25
rim manhole

See page 9 for Intersection

2+10.37 = West line I.B13

14.2	17.1	16.4	15.9	15.0
+14.1	+5.63.0	5.7	17.2	18.1
10	20	13	24	40

174.07

D. Smith
C. Allen
R. Taylor
R. Parks

"X" Sec Oliver Pl + Oliver Ct. WD# 25020
which are openings in BIK 294 6-18-52

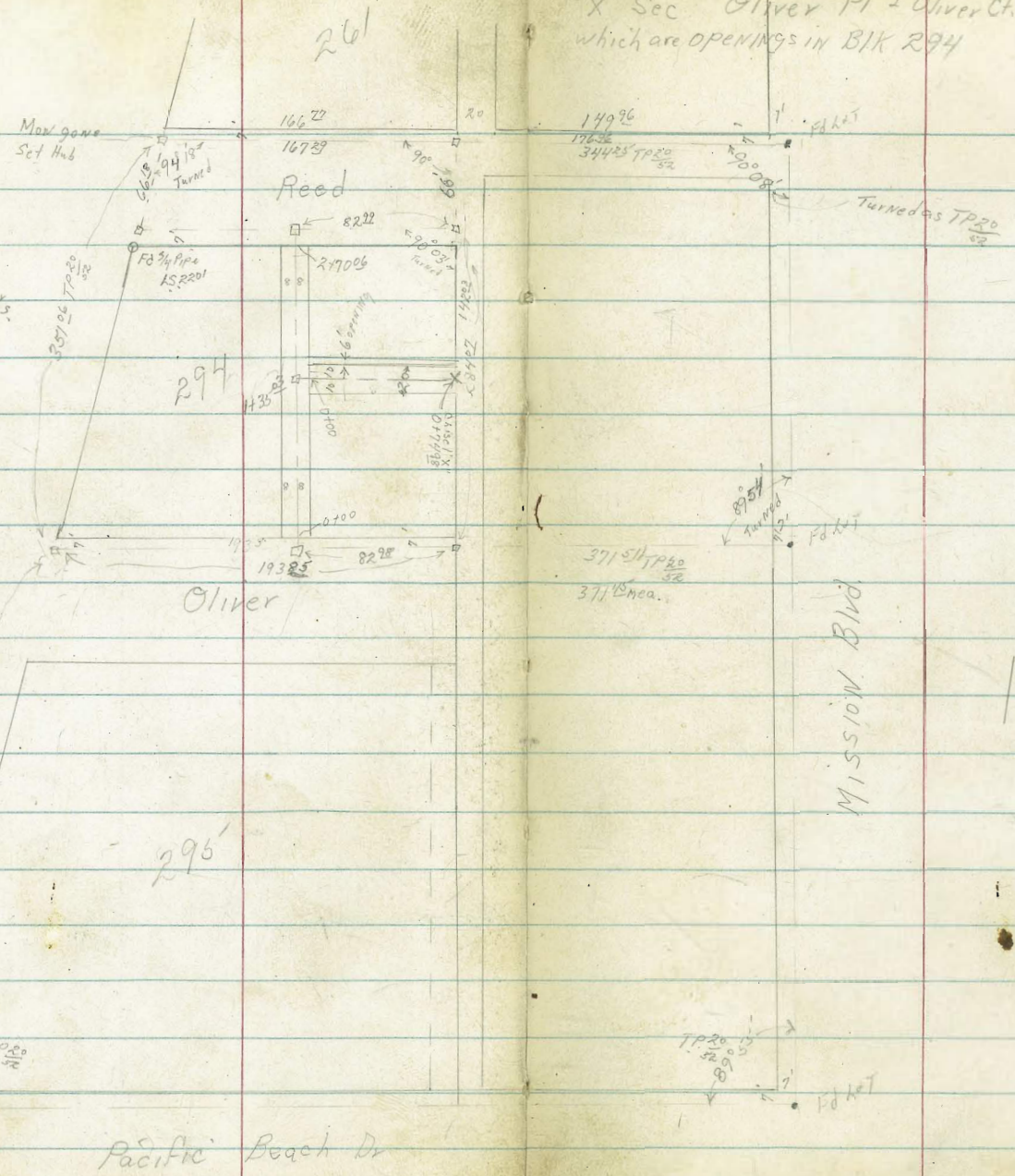
Ref-TP 20
p 32

B-14-5

5408-L
4573-B - for further
openings
TP sheet # 1746.

□ = set 2x2 Hubs + Disks

sketch showing
own improvements
p 34



INDEXED
Raw
JUN 19 1952

Mission Blvd

Pacific Beach Dr

"X" Sec Oliver Ct.

Lt = West

Base
Line

Rt = East

0+43 16⁴ Rt NW cor apt Bldg

0+24 8¹ Lt SE Cor single garage ^{opens Southerly} con floor & drive

6.97
2²⁵
92
drive

7.02
2⁷⁰
81
Floor

0+17 16⁴ Rt SW cor apt Bldg

0+15 16⁴ Rt E 4' con walk

5.02
4.70
16.4
walk

0+00

7.15 4.50 6.3 6.2 6.0 4.8 4.1

2⁵⁷ 3²² 3⁴ 3⁵ 3² 4² 5⁶

20² 9⁴ 8 8 16 25

drive drive

0-14² 8¹ Rt end row walk + cb comb.

6.55 5.82 5.72 5.15 4.49 4.20 3.28

3¹¹ 3²⁰ 4⁰ 4⁵⁷ 5²³ 5⁵² 6⁴¹

20² 10³ 8 8 8 16 5⁰

on drive on drive on drive on drive walk walk walk

0-20⁵ N Cb line Oliver

7.4 6.28 5.58 5.32 4.87 4.1 4.33 3.7 4.09 2.7 3.15

2³ 3⁴⁴ 4⁴ 4¹⁰ 4⁸⁵ 5⁶ 5³⁹ 6⁰ 5⁶³ 7⁰ 6⁵¹

50 20² 10³ 8 8 8 8 16 16 3⁰ 5⁰

on drive on drive on drive on drive on drive on drive on drive on drive on drive on drive

3¹ thick

TP₂ 5³⁹ 9⁷² 2²¹ 4³³

TIP 4⁵⁰ 7²⁴ 4²⁴ 2⁷⁴

BM 0⁶⁹ 7⁶⁸ 6⁹⁹

BP North end
Mission Beach
Sea Wall

9⁷²

1445 Nly paving Oliver Pl

1435⁰³ E Oliver Pl.

1425 Sly Oliver Pl.

1400

TP3 572 10⁸⁰ 469 503

0475

0450

0445 83 Lt NE cor garage

0445 164 Rt E 3' cow walk

Lt West

Base
Line

Rt = East

00

34	35	44	48	47	47
11 ²	8	96	46	8	82
7.0	7.0	6.8	5.94	5.9	5.99
32	38	40	486	42	481
16	10	8	8	16	25
6.9	6.7	6.6	6.5	6.2	6.31
32	42	42	43	46	47
16	10	8	8	8	16
7.2	7.2	7.4	6.9	6.7	5.9
36	36	34	32	42	42
16	10	8	8	16	16
7.7	7.9	8.2	8.3	6.4	5.7
20	18	15	14	33	40
16	8	8	8	16	25
6.6	6.1	5.1	5.5	5.2	
32	36	36	42	45	
15	8	8	8	16	

TP 972

510
462
164
walk

2+26 9² Lt & 4' cow walk2+25 12³ Rt SW cor apt & garage 3 cow floor & apron2+18 12⁵ Rt & 8" Power Pole C 7272+17 8¹ Lt NE cor garage cow floor & apron2+03 8² Lt S.E cor garage cow floor & apron

2+00

1+95 8³ Lt Begin cow work1+93 15⁴ Rt NW cor New Bldg under const1+51 15⁴ Rt SW cor New apt Bldg under const

Lt to West

Base
Line

Rt to East

7.14

~~3.66~~12
walk

6.92

3⁸⁸9³
walk

4L 6.7

4S 6.3

4E 6.16

4W 6.24
15⁴
Floor

7.18

~~6.78~~3⁶²12¹
Floor

6.91

3⁸⁹8¹
apron

7.05

~~7.05~~3⁷⁵12²
Floor

6.85

3⁸⁵8²
apron

6.95

6.7

6.48

3⁸⁵12
on cow4¹4³²4⁸5¹

6.83

3⁷²8²
cow

7.3

~~3.5~~

12

6.8

4⁰

8

6.4

4³10⁸⁰

6.2

4⁶

8

5.8

5⁰

15

2190³ S'ly Cb King Reed st

2184² 8⁵th end walk

2170⁰⁶ S'ly Reed st

2167 11²th NE cor Apt Bldg with garages opening

2164 12²th RT NW cor apt bldg support cor.

2160 12²th RT end garages aprons

2150 9⁰th LT End apron to garages

2129 9⁰th LT SE cor Apt Bldg + garages cut floor + apron

	Lt West		Base	Rt East	
	5	5	4.7	5	5
37	13	5.14	4.7	5.14	4.6
50	33	5.66	6	5.66	5.05
	12	12	8	12	12
	drive end	drive end		cut	cut

5.1	4.9	4.8	5.18	5.16	4.17
5.7	5.9	6	5.62	5.64	6.63
12	8		8.5	12	3.0
			walk end	walk	walk

6.5	6.0	5.5	5.2	5.2
4.3	4.8	5.5	5.6	5.6
12	8		8	12

7.78	7.75
3.08	3.05
11.2	13.1
Floor	drive

6.01	6.19
4.79	4.61
12.5	15.2
apron	Floor

7.79	7.17	6.4	5.8	6.0	6.05	6.26
3.01	3.63	4.4	5.2	4.8	4.2	4.54
12	9		8	12	12.5	15.2
Floor	apron				apron	Floor

7.79	7.31
3.4	3.49
12	8
Floor	apron

X" sec Oliver Pl

Lt-North Base Rt-South
 2.9 2.75 2.47
 42 507 541
 16 92 102

0774²⁸

0774 15² Lt SE cor New Bldg under const

0741

4.6 4.37 4.11 4.40
 32 343 371 342
 16 92 102

0708 Prop to South

5.7 5.98 5.68 6.01
 22 184 214 181
 16 92 102

0707⁴ 15² Lt SW cor New Bldg under const

0707 Prop to North

5.82 6.03 5.73 6.06
 20 172 209 176
 16 92 102

0700³ Beg in cow paving

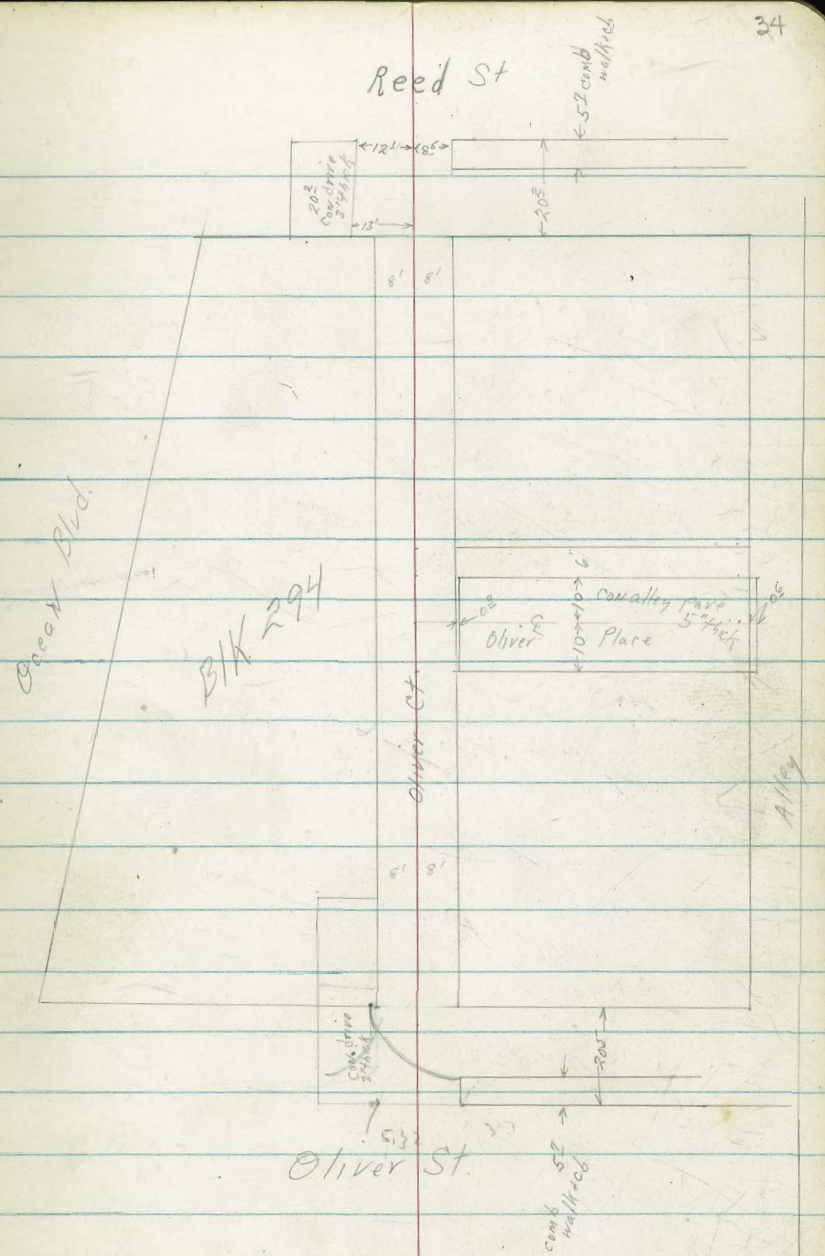
6.1 6.34 6.01 6.32
 12 148 181 151
 16 92 102

0700

6.2 6.0 5.9 6.1
 16 18 19 17
 16 10 10

TR3 272 782 527 503

7 7 188



B.M. starting

3³⁶ 7⁰⁰ 6⁹⁹

TP4 9³⁵

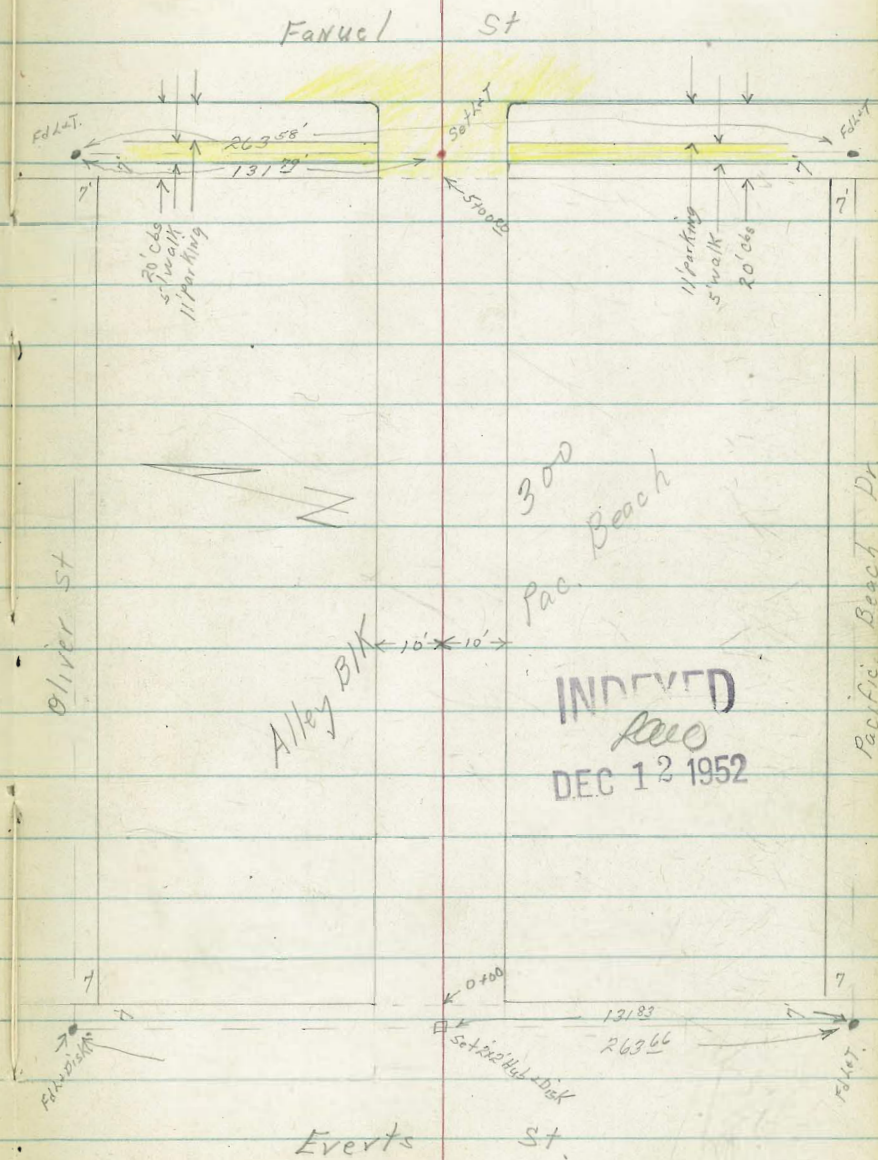
10³⁶

6⁸¹ 1⁰¹

D. Smith
Gallen
R. Taylor
O.P. Parks

"X" Sec. Alley BIK 300 Pacific Beach
Oliver + Pacific Beach Dr. Fannell + Everts.

WO # 25020 35
12-11-52



Lt = North

Rt = South

Taken out. 2/16/55
Remains

1712 10° Lt & double garage con floor + apron

19.84
224
20
floor

19.91
267
10
apron

93 Rt Begin 4' con block wall
1700 6° Rt Site Pole # JPA 1220

19.2
22
23

19.4
22
10

19.1
30
10

19.5
20
99

19.6
35
99

18.83
+175
92
25

feeding top wall

0750

13.5
36
23

13.9
32
10

14.0
42
10

13.1
40
10

13.0
41
25

0700 Fly Events

19.0
41
60

12.5
46
40

17.7
42
10

11.7
54
10

11.3
58
10

10.8
63
40

10.8
63
60

0-77

12.7
44
60

12.1
50
40

11.5
56
10

11.1
60
10

11.3
50
10

10.7
64
40

10.6
65
60

0-20

11.5
56
60

11.3
50
40

10.8
63
10

10.6
65
10

10.0
72
40

9.7
74
60

TP₂

589

1708

805

1119

Hub & Alley RT Line Events

1708

TP₁

238

1924

556

1686

N.W.B.P. Fawcett, Oliver

BM

140

2242

2102

2150 7⁵ RT E 10" tel Pole # SPA 1250

2100 10° RT End 4 garages con floor + apron

1763 18° Lt End 3 garages con floor

1750 10° RT Begin 4 garages con floor + apron

1733 16° Lt Begin 3 garages con floor

1728 9² RT End 4' con block wall

TP₃ 5⁰⁹ 20²³ -19⁴ 15¹⁴

1718 9² RT E 3' con walk

Lt = North

RT = South

27

15.9	15.7	15.1	15.5	14.6
43	45	51	42	54
25	10	10	25	

15.7	15.0	14.9	14.8	14.86
50	52	58	59	537
25	10	10	apron	17 floor

15.98
475
162
floor

15.3	14.5	13.7	14.58	14.86
42	52	65	565	537
15	10	10	apron	17 floor

15.97
476
162
floor

13.9	14.1	10.81
63	68	42
92	92	92
92	footing	top wall

π 20 23

13.99
309
92
walk

π 17 08

Lt = North Lt = South

4750

177	175	168	177	169
50	53	52	55	58
25	10	10	25	

4437 9 1/2 ft single garage cow floor + apron

1857	1770
422	496
142	92
Floor	apron

4400 8 3/4 ft 12" tel pole # JPA1280

175	172	164	167	167
52	55	63	60	60
25	10	10	25	

3792 13 1/2 ft single garage dirt floor

160
67
135
Floor

3786 10 1/2 ft single garage cow floor + apron

1773	1730
52	544
152	110
Floor	apron

TP4 422 2274 228 1795

2274

3773 7 3/4 ft dead man

3750

171	168	162	165	162
32	35	40	37	40
25	10	10	25	

3700

165	163	158	159	156
37	39	41	43	46
25	10	10	25	

2023

Lt = North

Rt = South

BM starting

169

21²³ 21²³

21²³ 236

5420²⁰ Wly c6 line Fanuel.

5400²⁰ Wly Fanuel begin con pav.

18.54	17.93	17.70	17.09	17.01	16.85	16.62	16.61	17.24	15.75	16.32
420	481	504	565	573	589	613	613	550	622	642
60	60	12	12	10		10	12	12	60	60
66	94	86	94				94	86	94	86

18.14	17.82	17.55	17.12	17.17	17.98	17.73
413	422	519	562	557	526	514
25	92	92		108	108	85
66	94	94		94	86	85
end				end	end	

22 74

Roberts

Re-X-Section Thorn (a portion)

Lt

E

47 40

Cota

Moore

Fullen

3-9-53

K10 #25020

From Hawk St. West to Brook

See Page 21

0+82.4 29' Lt. begin conc. Apron Double Garage

195.27
12.75
35.6
conc.
Flar

195.17
12.85
29.1
conc.

195.12
13.0
22

196.5
11.5

196.3
11.7
17

196.1
11.9
30

0+81 31' Lt. End Conc. Pav. Yard

196.9
11.1
31.3
conc.

INDEXED

MAY 15 1953

0+62 31' Lt. Begin Conc. Pav. Yard

197.7
10.3
31.6
conc.

0+50

200.2
7.8
30

200.2
7.8
20

200.1
7.4

200.6
7.4
7
Edge
Ac.

200.1
7.7
22
Ac

200.3
7.7
30
Edge
conc.
Apron

0+25

205.8
2.2
40

205.2
2.8
30

204.2
3.8
20

204.2
3.8

204.6
3.4
16

205.7
2.3
19

205.5
2.5
30

0+00 West Line Hawk K (See page 22 for levels)

BNI

0.73 208.02 X

SW 21907
207.29 Hawk & Thorn

208.02 X

checked back Flat!

unchanged to visit

1710

Brook in Ground

1937	1938	1937	1941	1940	1927
145	142	143	139	140	153
40	30	21		12	30

1700

295 Lt End Conc Apron

19527	19500	1942	1942	1942	1942
12.75	13.02	13.8	13.0	13.4	13.4
352	296	21		18	30
Flow	conc				

208.02 ↑

208.02 ↑

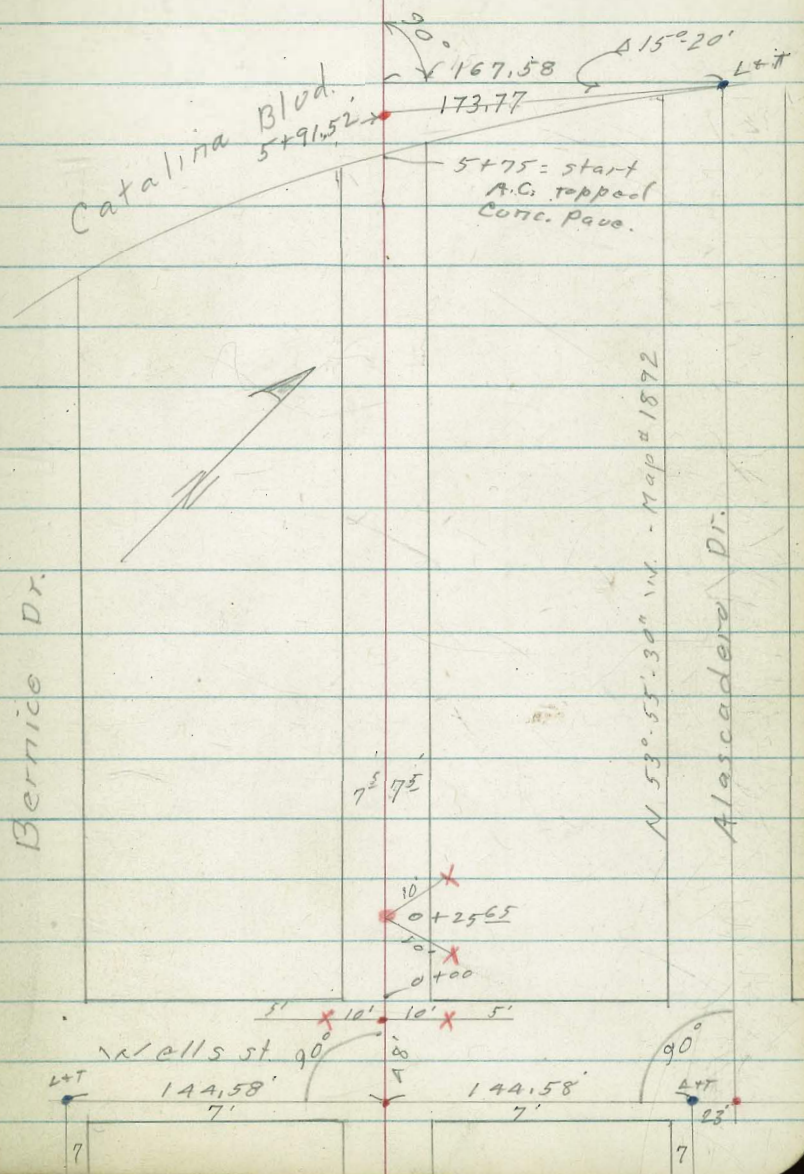
Alley serving Lots 38 thru 56
Catalina Villas
Also BIK 39. Pt. Loma Hgts.

INDEXED
MAY 15 1953

CHS. W.A. 25020
Begg 5-14-53
oltman
Schelin

F.B. 2015-P 24
Map # 1892
T.P. sheet # 7A1

- denotes Fd. point as noted
- X " cut cross in walk or drive
- " set nail
- " set 1/2" disk
- B.W. " base of wall footing
- T.W. " top of wall



Levels

Sketch - P-42
 T.P. = N.E. 1/4, 10' P.O.T.
 R.R. cross 0.41 172.03 1.49 171.62

7³ RT. = end conc. wall.
 0+19 - 7⁴ RT. = start conc. drive

171.7	171.7	171.0	170.9	171.4	171.1	171.61	171.71
1.4	1.4	2.1	2.2	1.7	2.0	1.50	1.40
10	7 ³	6		7 ³ end	7 ³ B.W.	7 ⁴ apron	18 Cor. Floor

0+16 7⁶ Lt. = end conc. BIK wall.

170.5	171.4
2.6	1.7
7 ⁶ B.W.	7 ⁶ end

0+13 7⁵ RT. = Face of wall.

168.2	170.2
4.9	2.9
7 ⁵ B.W. to east	7 ⁵ B.W. to west

0+01 7⁵ RT. = line of wall

168.6	167.9
4.5	5.2
7 ⁵ end.	7 ⁵ B.W.

0+00 { 7⁵ RT. = start 5' High conc. BIK wall
 7⁵ RT. = end cl.
 7⁸ Lt. = start 6' High conc. BIK wall.
 7⁴ Lt. = end cl.

167.7	168.36	168.0	167.9	167.29	167.3
5.4	4.75	5.1	5.2	5.82	5.8
7 ⁸ B.W.	7 ⁴ cl. + end.		7 ⁵ end	7 ⁵ cl.	7 ⁵ B.W.

for data back of Sta. 0+00

173.11

See recent X-sec. of Wells St.

B.M. #1 4.92 173.11 - 168.19

N.E. 7' Lt. Bernice Dr. + Wells.

0+98	conc. blk wall. 8 ² Lt. = start 1' high N. + S.	164.7 7.3 8.2 B.W.	165.1 6.9 8.2 G.d.					
0+97	7 ² Rt. = end drive		165.1 6.9 7.5	165.3 6.7	165.4 6.6 A	166.6 5.4 7.5	166.71 5.32 7.7 drive	168.41 3.62 23 Corr
0+82	7 ⁵ Rt. = start conc. drive					167.51 4.7 7.5 G.d.	167.71 4.72 7.5 Dr.	168.41 3.62 23 Over floor
0+50	7 ⁵ Rt. = end conc. block wall 7 ⁵ Lt. = end conc. block wall	169.6 2.4 7.9 B.W.	169.9 2.1 7.5 G.d.	169.6 2.4	170.2 1.8 7.5 G.d.	169.8 2.2 7.5 B.W.		
0+41	7 ⁵ Rt. = 9 ⁴ wide opening thru wall				170.4 1.6 7.5 G.d.	170.93 1.10 7.5 average level of opening		
0+33	7 ² Rt. = start 6' high blk. wall 7 ⁴ Rt. = end conc. drive		171.4 0.6 7.2	171.2 0.8	171.57 0.46 7.4 drive	171.4 0.6 7.5 B.W.	171.7 1.3 7.5 B.W.	
0+27	7 ⁵ Lt. = start 5' high conc. blk. wall	171.1 0.9 7.5 B.W.	171.9 0.1 7.5 G.d.					

172.03

1+50 7⁵ Rt. = \neq N.t.s. conc. wall

0.0	2.3	1.6	1.2	1.0	1.2	1.7	1.7
7 ⁵	7 ⁵	7 ⁵		7 ⁵	7 ⁵	7 ⁵	7 ⁵
T.W.	B.W.				B.W.	T.W.	

160.22

T.P. 1107 160.22 12.88 159.15

1+49 7⁸ Lt. = end wall

10.0	13.7	13.0					
7 ⁸	7 ⁸	7 ⁸					
T.W.	B.W.	Grd					

1+35 8² Lt. = start conc. block wall

10.0	11.3	10.2					
8 ²	8 ²	8 ²					
T.W.	B.W.	Grd					

1+17 7⁵ Rt. = end conc. drive apte

8.0	8.0	8.8	8.8	8.6	7.84		
10	7 ⁵	4		5	7 ⁵		
					Grd		
					+ Dt.		

1+03 7² Rt. = start conc. Dr.

164.0	164.2	165.2	165.0	165.2	164.8	164.82	164.61
8.0	7.8	6.8	7.0	6.8	7.2	7.21	7.42
20	8 ⁵	7 ⁵		7 ⁵	Grd	Dt.	17
							Car Floor

1+00 7² Rt. = 8" pole # 49.3512 H

172.03

2+99 8² Lt = end conc. block wall149.3
+0.5

145.5

145.7

T.P.

3.3

3.1

B.W.

8²

148.83

T.P. 0.92 148.83 12.31 147.91

2+72 8² Lt = start conc. block wall149.5
10.7

147.7

148.8

T.W.

12.5

11.4

8²

B.W.

8²

2+51 7' Mt. = 8" pole # 493513 H

2+50 7⁸ Lt = end wall

150.2

149.5

150.5

2.0

10.6

9.7

150.2

T.W.

7⁸7⁵

10.0

B.W.

2+24 7⁷ Lt = start conc. block wall

157.4

151.5

152.7

2.8

8.7

7.5

T.W.

7²7²

B.W.

2+16 - 7² Lt = end wall

157.4

152.7

153.0

2.8

7.5

7.2

T.W.

7²7²

B.W.

2+00 7² Lt = start conc. block wall

157.4

153.0

154.1

2.8

7.2

6.1

153.7

T.W.

7²7⁵

6.5

B.W.

160.22

153.6

153.2

4+22 8⁴ Lt. & 3' wide conc. walk

5.24 131.64
134.9 18⁴ walk
5.17 131.1
5.1 131.8
8² 8² 8²
T.W. B.W.

4+20 8² Lt. end wall

7⁹ pt = end wall
62 RF 29" pole # 49351A H

4+00 8¹ Lt. = start conc. block wall

5.0 131.9 5.0 0.5 136.4 6.0 130.9 1.0 135.9 1.8 135.1
20 8¹ 8¹ 7⁵ 6 7⁵ 7⁹ 7⁹
T.W. B.W. B.W. T.W. B.W. T.W.
0.6 136.3 0.6 + 1.0 140.9 1.5 135.4 0.8 136.1
20 8² 8² 8²

3+99⁵ 8² Lt. = end wall

T.P. 0.85 136.88 12.80 136.03

136.88

3+53 7³ pt. = start conc. wall.

141.2 136.8 140.5 140.5
7.6 12.0 8.3 8.5 8.7 140.1
7⁸ 7⁸ 7⁵ 7⁵ 7³ 9.4 8.70
T.W. B.W. T.W. B.W. T.W.

3+50 7⁸ pt = start conc. block wall

145.6 145.5 145.7 147.8
3.2 3.3 3.1 1.0
7⁵ 7⁵ 7⁵ 15

3+00

148.83

4

4+83 8' Lt = ~~blk.~~ ^{step} down in top of wall

127.6
9.3
8
T.W.
to west
5.7
8
T.W.
to east
131.2

4+70 8² Rt = B.C. 5'± Rad. curve wall.

9.6
8²
B.W.
10.4
8²
B.W.
7.5
T.W.

128.70
8.18
114
Con
Floor
128.60
8.28
8²
apron

4+69 } 8² Lt = end apron.
7² Lt = start conc. block wall

127.11
5.7
T.W.
7.9
B.W.
9.8
8.8
7²
6
9.0
9.1
127.3
9.6

127.5
9.4
7²

4+51 8⁵ Lt = start conc. apron.
8' Lt = end wall

128.84
8.04
8²
apron
131.5
5.4
8
T.W.
128.1
8.8
8
B.W.
128.8
8.1
8

4+50 7² Rt = start conc. block wall

128.7
8.2
7²
7.9
129.0

129.4
7.5
7²
B.W.
138.3
8.6
7²
B.W.
129.3
7.6
7²
T.W.

4+49 - 8¹ Lt = start conc. block wall

131.5
5.4
8¹
T.W.
128.0
8.8
8¹
B.W.
129.3
7.6
8¹

136.88

Levels Cont P 51

± nail sta 5+91.52

T.P. 5.63 124.04 7.95 118.41

5+72 7.9 ft. = start conc. cl.
 = start A.C. topped
 = start conc. p.due.
 = end wall

119.50							
6.86	7.24	6.1	7.0	7.0	6.8	6.7	6.9
79	79	79	79	75		5	75
86	8	T.W.	B.W.				

5+70 6' RT. = dead man

5+50 6² RT = 10" pole # 493515H

5+39 8' Lt = face of wall

	123.6		122.5				
2.8		3.9		3.4	3.7	3.5	
8L		8L		75		75	
T.W.		B.W.					

5+32 - 8' Lt = start conc. wall.

123.8							
2.6	3.5	3.2					
T.W.	8L	8L					
	B.W.						

T.P. 1.78 126.36 12.30 124.58

5+04 7' Lt = end wall

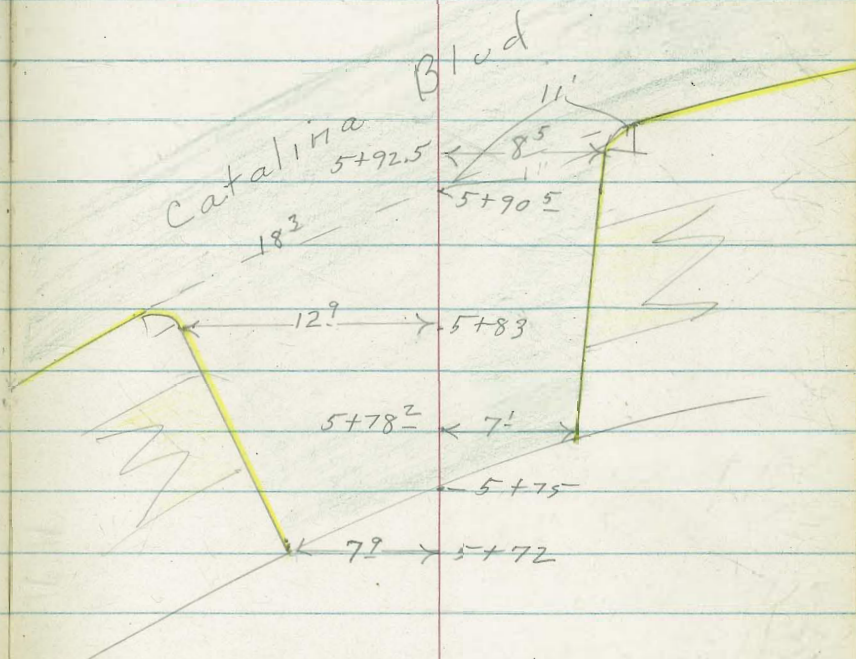
		123.6					
9.3	13.3		11.9				
78	78		78				
T.W.	B.W.						

5+00

		125.1		125.0		125.3	
11.8			11.9			11.6	
75						75	

136.88

126.36



Alley BIK 7 - Culverwell's Add.
See page 82

for Drive

0+19 - 10' LT = 4 12' wide opening in wall

0+00 ³ 10' RT = begin 6' high Cyclone fence

0+00 = } 10' LT = begin 10' wide Conc Wall
w/ cyclone fence at top.
Ely Line 15th ST - end Curb RT + Left

0-11^E = Alley Return F.C.S.

0-14 = Ely Curb Line 15th ST

LT = N14

RT = S14

53

48.25
31³
25
Ac

47.29
40⁹
10
Ac

46.60
78
4

46.60
100
4
10
Ac

48.22
47.82
47.98
45.98
46.71
46.27

316
25
Ac

356
10²
Top
Wall

340
10²
Base
Foot
ing

540
10²
cb

467
10²
cut

511
10²
cut

45.97
46.18
46.43

541
520
495

100
cut

100
Top
cb

46.36
502
100
cb

45.95
512
100
cut

POOR condition

45.56
582
100
cut

46.00
300
100
cb

44.72
76
100
cut

44.15
72
100
cb

TP
INLET
NECOK

48.44
47.98
47.44
46.95
46.55
45.92
46.85

4290
100
cb

340
100
cut

394
50
cb

443
50
cut

503
125
cb

546
125
cut

553
10
Ac

45.69
45.48
45.44
45.74
44.77
45.24

569
10
cut

580
125
cut

594
125
cb

554
125
cb

661
50
cut

614
50
cb

TP₂ 3.73 51.38 11.25 47.65

TP₁ 5.69 58.90 13.13 53.21

BM 0.53 66.34 65.81

51.38. T

SWBP - 17th + FS.

Alley BIK 7-
Culverwell's Add

LT=NY

RT=SLY

5-4

99 LT = begin 4' high board fence
1400-10⁰ LT = end cyclone fence

0 9	50.5	1	50.3	50.7	50.3	50.4
25		10			10	25

0492-10² RT = 1/2 Nly half
Dirt Floor double garage

50.1
14
109
Dirt Floor

0482 11^{1/2} RT = 1/2 sly half
Dirt Floor (shack) double garage

50.1
12
11 1/2
Dirt Floor

0470-11² RT = 1/2 single garage (shack)
Dirt Floor

49.9	49.7	49.7	49.4	49.3
15	17	20	20	20
25	10	10	10	11 1/2 Floor Dirt

0450-5 } 9⁶ LT = begin 5' high cyclone fence
9⁴ LT = 1/2 10" pole (Telephone) # 822551)

Wall w 6' high cyclone fence
0450 = Ely edge A.C. Pave - 9⁶ LT = end 10" conc

22	49.08	47.4	47.67	47.60	48.07	48.0
25	230	40	37	70	33	32
	99 Top Wall	99 Footing	99		10 Acin Pool cond.	25

0429-11⁰ RT = end cyclone fence to NE
COK AC Parking Lot

51.38

Alley BIK 7. Culver Wells
Add.

LT = N14

Alley

Ref = 514 - 6-5

TP₂ Starting BM 0.53 65.81 ✓

TP₄ 13.13 66.34 4.48 53.21

No Radius on Returns

2 + 14.42 = Wly Curb line 16th St 570

100
cb

51.60

100
90T

52.30

50
cb

51.88

50
90T

52.63

100
cb

52.23

100
90T

52.37

30
90T

52.47

5-22
90T

52.87

100
cb

53.69

50
90T

53.08

50
cb

53.36

100
90T

edge H.C. is Rough

2 + 0.42 = Wly Line 16th + Wly edge H.C. Pavc

53.09

460

99
cb

52.7

510

20

52.3

14

51.7

10

51.5

6

51.2

10

52.89

580

20

51.59

10

51.26

73

51.3

64

51.2

10

51.7

10

51.9

100

52.4

120

52.4

10

52.74

495

100

52.93

476

100

52.94

461

100

52.94

461

100

52.94

461

100

52.94

461

100

52.94

461

100

52.94

461

100

52.94

461

100

52.94

461

100

52.94

461

100

52.94

461

100

52.94

461

100

52.94

461

100

52.94

461

100

52.94

461

100

52.94

461

100

52.94

461

100

52.94

461

100

52.94

461

100

52.94

461

100

52.94

461

100

52.94

461

100

52.94

461

100

52.94

461

100

52.94

461

100

52.94

461

100

52.94

461

100

52.94

461

100

52.94

461

100

52.94

461

100

52.94

461

100

52.94

461

100

52.94

461

100

52.94

461

100

52.94

461

100

52.94

461

100

52.94

461

100

52.94

461

100

52.94

461

100

52.94

461

100

52.94

461

100

52.94

461

100

52.94

461

100

52.94

461

100

52.94

461

100

52.94

461

100

52.94

461

100

52.94

461

100

52.94

461

100

52.94

461

100

52.94

461

100

52.94

461

100

52.94

461

100

52.94

461

100

52.94

461

100

52.94

461

100

52.94

461

100

52.94

461

100

52.94

461

100

52.94

461

100

52.94

461

100

52.94

461

100

52.94

461

100

52.94

461

100

52.94

461

100

52.94

461

100

52.94

461

100

52.94

461

100

52.94

461

100

52.94

461

100

52.94

461

100

52.94

461

100

52.94

461

100

52.94

461

100

52.94

461

100

52.94

461

100

52.94

461

100

52.94

461

100

52.94

461

100

52.94

461

100

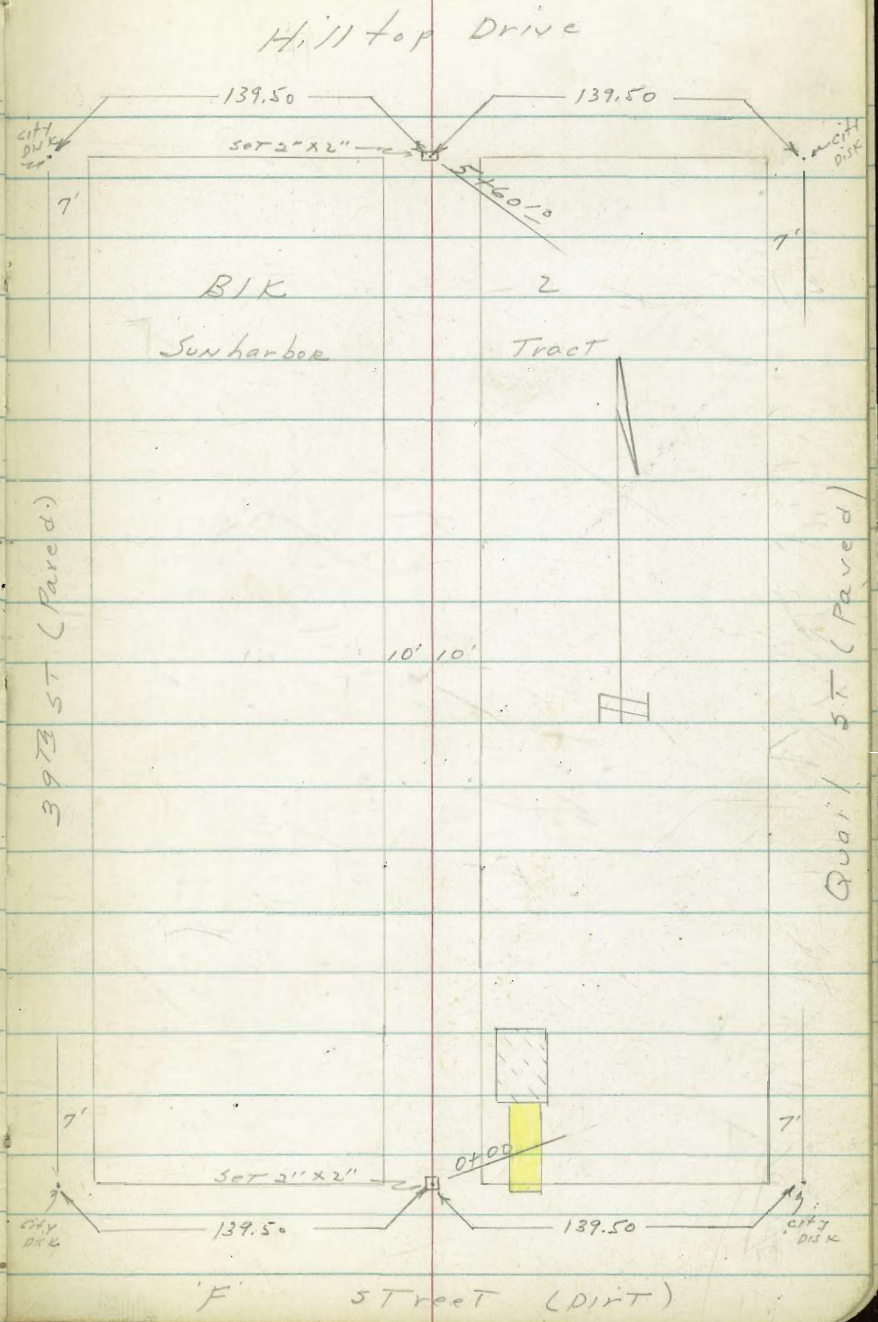
52.94

461

INDEXED
 SEP 24 1953

52

x-sec Alley BIK 2, Sun harbor Tract
 W.O # 25020
 9-23-52
 Allen, C. Ref. TP sheet # 3463
 Shepard, D Filed Map # 1619
 Sissert, D
 Powell, C See page 57 Per Levels



Levels for Alley BIK 2, Sunharbor Tract
See sketch page 56

LT = W14

2

rt = 24y. 57

0+44⁵ 13⁴ Rt = begin 5' high cyclone fence

143.4	143.2	143.6	144.2	144.3	144.4	145.3	144.7	146.5
4 ⁴	4 ²	3 ¹⁰	3 ²	3 ¹	3 ⁰	2 ¹	2 ⁵	0 ⁷
25	13	10	8		7	10	130	135

0+44-13⁰ Rt = NW COR NTS garage

0+21-12⁶ Rt = SW COR 2 CAR garage entrance

FRONT 'F' ST

142.8	141.5	141.2	141.1	142.7	142.7	142.9	143.7	143.7	145.74	145.74	145.75
4 ⁶	5 ²	6 ²	6 ³	4 ¹	4 ¹	4 ¹	3 ²	3 ¹	16 ¹	16 ¹	16 ⁰
100	50	10		10	9	10	12	16	16	23	31

0+00 = N14 Line 'F' ST

141.3	142.3	142.4	142.6	141.3	141.3	141.72	141.72	141.72
6 ¹	5 ¹	5 ⁰⁰	4 ⁰⁰	6 ¹	5 ¹	5 ⁶³	5 ⁶³	5 ⁶³
10	12	16	100	10	12	16	16	31

0-02⁵ 16⁰ Rt = SW COR NTS DRIVE WAY

142.4	141.4	140.9	141.72	142.4	141.6	141.72	141.72	141.72
5 ⁰	6 ⁰	6 ¹	5 ⁶³	5 ⁶³	5 ¹⁰⁰	5 ⁶³	5 ⁶³	5 ⁶³
100	50		16	16	16	16	16	31

0-25 = 2 'F' ST

147.35 X

BM- 4.40 147.35

142.95

NWBP Quail & 'F' ST.

LT=wly

⊕

Rt=ely-

1+50

144.8	144.8	144.8	147.6	147.8	147.8	148.6
97	97	97	69	67	67	59
25	10	7	3	10	25	

1+34 73 LT=BEGIN 5' HI. CYCLONE FENCE

144.8

1+21 20^E LT=⊕ FRAME HOUSE

97	800	146.5	146.9	147.3	148.1
20 ^E	20 ^E				
GROUND	FLOOR				
	144.6	144.8	146	147.3	148.1
	99	97	76	7	64
	10	6		10	25

1+15

1+11 12³ END- 4' HI. WOODEN FENCE
RT.=5' HI. CYCLONE FENCE ⊕ BEGIN

1+07 67 LT.=⊕ 10" POWER POLE (562047-H)
NO.

7.21 154.48 0.08 147.27

No. 1 in pile 562047-H
27 542 1419

1+00

144.2	144.9	146.4	154.48	147.0	147.2
32	25	10	9	4	2
25	10	4	0	10	25

0+90 - 7° LT=⊕ Deadition

0+60

143.3	143.8	144.9	145.8	145.7	146.2	147.1	147.4
41	36	25	15	12	15	03	010
25	13	10	7		10	13	25

147.35

2+47 0² LT. ♀ M.H.

2+43 8⁰ LT. ♀ DEAD MAN ANCHOR

2+32 12⁷ RT. BEGIN 4⁵ HI. CHICKEN WIRE FENCE

2+21 9⁵ LT. BEGIN 4' HI. HOG WIRE FENCE

2+10 } 16⁰ RT. ENTRANCE TO FRAME DWELLING
12⁰ RT. ♀ 6' WIDE CONCRETE PORCH

2+00

1+98 13⁰ RT. END 5' HI. CHICKEN WIRE FENCE

1+85 7⁴ LT. = END 5' HI. CYCLONE FENCE

1+62 } 13⁰ RT. = BEGIN 5' HI. CHICKEN WIRE FENCE
13⁰ RT. = END 4' HI. WOODEN FENCE

LT. = W/LY

RT. = ELY

39.66
3 82
03
RIM

80.051
47.051
4 40
4 24
12 0
PORCH
5 41
10 0
16 0
FLOOR
0.051
4 5
2 5

145.6
8 9
50
8 5
25
46.8
7 3
10
148.2
6 3
6
5 9
1486

15748 7

LT. = WLY.

RT. ELY

⌘ BEGIN 4' HI. CYCLOPE FENCE

11⁷ LT. = END 4' HI. PICKET FENCE

CLOTHESLINE

3+35.5

17⁶ RT. = BEGIN 8' WIDE CON. SLAB UNDER

3+34

10⁶ RT. = END 2 CAR GARAGE - CON. FLOOR & APRON

& APRON

3+18

10⁹ RT. = BEGIN 2 CAR GARAGE - CON. FLOOR

3+11

15⁰ RT. = END 5' HI. BOARD FENCE

3+00

12⁷ LT. = BEGIN 4' HI. PICKET FENCE

2+63

13⁵ RT. = BEGIN 5' HI. BOARD FENCE

2+62

7⁷ LT. = ⌘ 12" POWER POLE (NO NUMBER)

2+61

9⁵ LT. = END 4' HI. HOG WIRE FENCE

2+59

13⁶ RT. = END 4⁵ HI. CHICKEN WIRE FENCE

2+50

154.45
 6⁰³
 146
 153.97
 0⁵¹
 10⁶ APRON
 14 APRON
 154.18
 0²³
 17⁵ FLOOR
 0³⁰
 14⁴ FLOOR

150.1
 4⁴
 25
 151.1
 3⁰
 10
 151.9
 2⁶
 10
 152.4
 2¹
 10
 153.5
 1⁰
 25

146.8
 7⁷
 25
 147.0
 7⁵
 10
 150.1
 4⁴
 9
 150.9
 3⁶
 10
 151.3
 3⁰
 10
 152.1
 2⁴
 25
 154.48

4+25 - 10[±] RT. = END 6' HI. CON. BLOCK WALL (UNDER CONST.)

4+09.5 - 10³ RT. = BEGIN 6' HI. CON. BLOCK WALL (UNDER CONST.)

4+00 -

3+88 - 8[±] LT. = 3' HI. HOG WIRE FENCE

3+86 - 10[±] LT. = END 4' HI. CYCLONE FENCE

3+60 - 7⁹ LT. = 10" POWER POLE NO. P-375662

3+59.5 - 14⁹ RT. = END 8' WIDE CON. SLAB UNDER CLOTHESLINE

3+50

T.P. 2. 13.05 167.02 π 0.51 153.97

LT. = WLY.

9² 157.3
25 10 6

9² 158.8
10 6

7⁷ 159.6

7¹ 159.9

RT. = ELY

6¹⁶ 160.4
10[±] 10[±] 11⁵ 14² 25

GROUND FOOTINGS

8¹⁷ 158.7
10³ 10³ 10³ 10³

GROUND FOOTING

11⁸ 157.2
25 10 6

11³ 155.7
10 6

9⁴ 157.6
6 9³ 157.7

15^{7.9} 157.9
10 25

9¹ 158.8
10 25

15^{2.5} 152.5
14⁵ 14¹ 11⁹ 10⁶

15^{2.9} 152.9
10 6

15^{6.0} 156.0
10⁶

15^{6.4} 156.4

15^{6.5} 156.5
10⁵ 9²
10 25

15^{7.8} 157.8

15^{1.9} 151.9
15² 14⁹ 13⁶ 13³

15^{2.1} 152.1
10 6

15^{3.4} 153.4
13³

15^{3.8} 153.8

15^{4.1} 154.1
12⁹ 12³
10 25

12²¹ 14⁹

CON. SLAB
15^{4.7} 154.7

167.02 π

154.48 π

L.T. = WLY.

RT. = ELY.

62

4+98 - 15⁵ LT. = ENTRANCE FRAME DWELLING

162.30
4.72
15.5
FLOOR

4+83 - 8⁵ LT. = DEAD MAN ANCHOR.

(BEHIND FENCE)

4+81 - 20⁶ RT. = SINGLE GARAGE CON. FLOOR

0.19
19.66
20.6
FLOOR

4+78 - 10³ RT. BEGIN 7' HI. BOARD FENCE

166.03

4+72 - 20⁶ RT. = SINGLE GARAGE CON. FLOOR

0.99
20.6
FLOOR

4+71.5 - 98 LT. = BEGIN CON BLOCK WALL

160.7	161.1	165.1	163.2
6.3	5.9	1.5	3.8
10.3	10.3	10.2	9.8
FOOTING	WLY. GROUND	TOP WALL	ELY. GROUND

4+67 - 8⁹ LT. = 12" POWER POLE NO. P-77372

4+60 - 10⁰ LT. END 3' HI. HOG WIRE FENCE

159.6	160.5	161.7	161.7	161.9	161.9
7.4	6.5	5.3	5.3	5.1	5.1
25	10	6	10	25	25

4+50

167.02 T

LT. = WLY.



RT. = ELY.

64

B.M.

0.87

<170.71>
170.73

S.W. B.P. QUAIL & HILLTOP

5+75 - GROUND & STREET APPROX SAME

54	67	59	37	19
100	50	50	50	100
166.2	164.7	165.7	167.9	170.7

5+68-10± LT. = & 10" POWER POLE - NO. P. 77363

171.60 T

INDEXED

JER
JAN 5 1954

CROSS SECTIONS FOR GRADE ESTABLISHMENT

ALLEY BK. 214 PACIFIC BEACH W.C. 25020

Tie Sheet No 1616

J. Pt. Book 20
4

J.A. Stampfer



MORRELL ST

Unimproved M. 284.94 Dirt

209.86 TR 20 P 99

Set Hub & Disk M 142.47

4+99.90

C.T. • 66'

FACT C.T.

FACT DIST. 15220'

ST

(214)

GARNET ST

HORN BLEND ST.

0+40
End 8" Curb

P.L. 8

0+00

C.T. • 66'

Set Hub & Disk

M 141.985

M 349.97

LAMONT ST

A.C. PAVT

Ed. T. C.T. S.E. Cor. Hornblend
& Lamont

1-4-54

66

Lt. # Rt.

CROSS SEC'S ALLEY BLK 214 PAC-BEACH.
FOR GRADE ESTABLISHMENT NO. 25020

Stamper
Huffman
Nordahl
Sherry

0-07⁶ & Sidewalk Sec.

63.06	63.86	62.5-	22.2	62.0	62.10	61.83
4.77	4.97	5.3	5.6	5.8	5.73	6.00
25	10 ²	10 ²	0	10	10	25
S.W.	cb	gut		gut	cb	S.W.

0-12 - 10³ ft. & 2' Pepper Tree

62.82	62.14	61.94	61.83	62.00
5.01	5.69	5.89	6.00	5.83
10 ²	10 ²	0	10	10
cb	gut		gut	cb

0-15 Edge Pavt.

0-20 Ely Cb. Lamont

62.89	62.35	62.56	62.08	62.07	61.81	61.48	61.46	61.93	61.12	61.69
4.94	5.98	5.27	5.75	5.76	6.82	6.35	6.37	5.90	6.71	6.14
25	25	11	11	10	0	10	11	11	25	25
cb	gut	cb	gut			gut	cb	gut	cb	cb

0-40 & Lamont & Sewer M.H.

64.25	63.62	62.99	62.37	61.79	61.36	60.73
3.58	4.21	4.84	5.88	6.04	6.47	7.10
75	50	25	0	25	50	90

+5.97 67.83

B.M. -1.38 61.86

B.M. +12.87 63.24 50.37

0-07 & Alley Hub & Disk
N.W. B.P. GRAND & LAMONT

TK 67.83

1-4-54

67

X-SEC'S ALLEY BLK-214 CONTD.

Lt. E Rt.

0+97 9³ Lt. & TP N^o 500291-H.

0+81 Begin 4' Bd fence ~ 10³ Rt

0+63- & 8' Sing. Car Grad 13³ Rt.

0+58 9' Rt & PP N^o A-1906

0+50

0+40 - 10³ Lt. End 8" Curb

0+14. 9^o Lt & TP. N^o 500292-H.

0+00 Ely Line Lamont End Cb Rt.

62.96
4.87
92
Arvon
4.65
133
Floor

62.8
5.0
20
62.8
5.0
10
62.7
5.1
0
62.7
5.1
10
62.6
5.2
25

63.03
4.80
10^o
Top cb.

63.2
4.6
25
62.87
4.96
10
cb
flush
62.4
5.4
0
62.1
5.7
6
62.4
5.4
7
62.15
5.68
10
cb
flush
61.9
5.9
25

67.83

1-4-54

X-SEC'S-ALLEY BLK 214 - CONT'D

Lt. & Rt.

2+99 10'-Rt End 5' Bd. fence

2+88 86' Rt & PP. N^o A-1952

2+87 & 3' Walk 10⁵ Lt.

2+50 & Sewer M.H.

2+49 9² Lt. & TP N^o D-17945T

+4.54 67.17

2+33 End 4' Lath fence 11'-Lt.

T.P. -5.20 62.63
Begin 5' Board fence 10² Rt

2+27 End 8' High Shed 10² Rt

Begin 8' High Shed 10² Rt.

2+14⁵ End 6' Shed 10² Rt

Begin 6' High Shed 10² Rt.

2+00 End 6⁵ Bd. fence & 6" Conc. ftg. 10'-Rt.

1+97 Begin 4' Lath fence 10² Lt.

1+85 Begin 6" Conc. ftg. for 6⁵ Bd. fence 10² Lt.

67.83

63.42	63.23	62.8							
375	394	44							
205	105	10							
on Walk	on Walk	Ground							
62.63	62.63	62.63	62.63						
4.1	3.8	4.3	4.54	4.6	4.2	4.3	5.4	5.6	
25	11	10	Rim	6	10	11	12	25	

△ 67.17

Top Wly Rim Sewer M.H. Sta. 2+50

63.2	62.7	62.6							
4.6	5.1	5.2	5.2	4.9	5.2	5.36	5.96	5.8	
25	10	0	5	7	10	10	10	25	

Ground
Top
Bot
Top ftg.
Bot ftg.

62.53
5.30
10⁸

62.47
5.85
10⁸

61.87
61.98

△ 67.83

1-4-54

X-SEC'S ALLEY BLK 214 - CONTD.

Lt. ← Rt.

3+76 9" Lt. & T.P. N^o B-17944-T

3+60 & 17'2" Cor Good 9.5 Rt.

3+57 & 8' Parallel x 3.5' Conc. Slab 11.5 Rt.

3+50

3+00

60.97
6.20
9.5
Conc. floor

63.50
3.67
11.5
Top Work

63.6	62.9	62.2	62.1	62.1	61.2	60.8
3.6	4.3	5.0	5.1	5.1	5.9	6.4
20	10	8	5, 10	5	10	20

63.0	62.8	62.7	62.3	62.1	62.4	61.5	62.8
4.2	4.4	4.5	4.9	5.1	4.8	5.7	6.4
15	10	8	6	0	6	10	15

@BM

↗ 67.17

1-4-34

X-SEC'S ALLEY BLK 214 CONT'D

Lt. E Rt.

4+07 E 1.5' Conc. Ribbon Singl. Con 11⁶/₄

62.45
4.72 5.14
15² 11⁶
floor Apron

4+03 E 1.5 Wide Conc Ribbon Singl. Con 11⁶/₄

62.42
4.75 5.18
15² 11⁶
floor Apron

4+03 E P.P. N^o A-1976 9² Ft.

4+00

62.2
5.0 5.7 6.3 6.4
15 10 11 20
62.2 61.6 61.5 60.9 60.8
5.5 5.6 5.7 6.3 6.4
7 0 10 11 20

3+87⁵ ^{4.5' High} Begin B Conc. Blk Wall 10³ Ft.

61.3
5.9 6.40
10³ 10³
Ground ft

67.17

1-4-54

72

X-54'S ALLEY BIK 214 CONT'D

Lt.

€

Rt.

faces Morrell St.
4+77 - Begin frame Garage 9' Rt

4+77 End 6' Board fence 9' Rt.

4+58 € 3' Conc. Walk 10' Lt.

4+54 Begin 6' Board fence w 9' Rt

4+50

5.6	6.2	1	6.1	6	6.3	6	6.0	9	6.1	1
5.1	5.6	5.6	6.3	6	6.3	6	6.0	9	6.1	1
15	10	10	6	6	6.3	6	6.0	9	6.1	1

@ Bldg

4+36 End 4⁵ High 8" Conc Bk Wall 10' Rt.

60.44
6.73
102
€ Walk

6.0
102
Ground

6.94
102
ftg

60.23

Σ 67.17

1-4-54

X-SEC'S ALLEY BIK 214

Lt. E Rt.

Top N.W. Disk Morrell
TP. & Hornblend -10.52 54.22

62.2	61.4	60.6	59.99	58.6	57.6	56.8
2.5	3.3	4.1	4.75	6.1	7.1	7.9
75	50	25	0	25	50	75

5+3990 E Sewer M.H.
E Morrell St.

W/4 R/m

5+24 Top Sec.

60.5	59.9	59.5	57.2	56.6
4.2	4.8	5.2	5.5	6.1
25	10	0	10	25

5+20 Top Sec.

64.2	61.8	61.0	60.2	59.8	59.8	60.0	59.3
2.5	2.9	3.7	4.5	4.9	4.9	4.7	5.4
25	15	10	8	0	5	10	25

5+18- 79' Lt. E P.P.N° 4474

100' Lt. E TP. No. D-17943-T.
4+9990 W/4 Line Morrell St.

6	6	6	6	6	6	6	6
1.8	1.2	0.6	0.3	0.1	0.4	0.4	0.1
2.9	3.5	4.1	4.4	4.6	4.3	4.3	4.6
25	10	7	8	4	5	10	25

Facing Morrell St. (Dist floor)
4+975 End frame Gar 9° Pt.

64.74

487 64.74

T.B.M. -7.30 59.87

67.17

Top Hub & Disk E Alley Sta 5+06.90 W/4 7' Hub

1-4-54

ALLEY BLK. 214 CONTD

Sta.	+	H.I.	-	Flow.
------	---	------	---	-------

B.M.			11.51	50.40 ~ 50.37
------	--	--	-------	---------------

	1.92	61.91		
--	------	-------	--	--

T.B.M.			2.48	59.99
--------	--	--	------	-------

	8.25	62.47		
--	------	-------	--	--

				54.22
--	--	--	--	-------

Top N.E. Disk Hornblend & Lamont

Begin Cross Sections of New Φ of Horton - See Sketch - P. 2 = Called "A" Line
 W.O. 32105 - 3-9-57- 7.0.

Ibis Produced ahead to Φ of Lt. Φ = "A" Line Rt. 75

2+81.52

25.3 25.7 26.8 26.06 26.2 29.7 29.2 33.9 42.3
 50 30 15 on Hub. 2 11 25 30 43
 Ely. of Dirt Dr. Top

2+40

24.3 23.5 25.4 26.6 25.2 25.1 31.4 36.8 36.0
 50 30 20 8 20 30 41 50 = edge of oil
 Wly. of Dirt Dr.

2+00

25.0 22.7 23.6 23.4 23.3 32.4 31.4 32.6
 50 30 20 30 38 41 60
 oil

1+70

22.9 22.0 22.0 22.4 22.6 29.0 28.1 29.1
 50 30 15 11 26 32 54
 oil

1+66 - 74.5 Lt. = Cor. of Conc. Block wall 31.5 = gr. at wall
 74.5

1+40

24.0 21.5 21.4 21.6 21.6 21.7 26.8 25.3 25.6 27.4
 49.5 38 30 15 3 15 22 41 50
 at wall oil

1+35.7 - 45.6 Lt. = Beg. outside of 8" Conc. Block wall 23.3

1+27.8 - 38.9 Lt. = Cor. = Beg. 3.8 Conc. walk along House 45.6 - ground at wall 23.00
 38.9 = Conc.

1+21.5 - 33.6 Lt. = outside Cor. of Bottom of 3.5 wood steps - from Apt. above Gar

1+20 - 31.9 Lt. = Cor. of Conc. Landing for Steps 22.36
 31.9 = Cor. of Conc.

1+15.93 = Φ Sasafras 22.68 22.32 22.0 21.5 21.3 21.8 24.2 23.2 24.1 25.1
 58.5 40 30 21 7 6 11 32 50
 See P. 14 - Same Φ Prod. ahead. Conc. at edge Conc. out strip

1+10 - 37.6 Rt. = Φ 3' Conc. walk 25.04 25.05
 37.6 50.3 = opp. Cor. of House
 walk

B.M. = S.W. B.P.

120.01

Cont from P. 14 - New Elev. Shown in Red.
 Actual Elev. Shown - 100 fig. Not shown.

Ibis = Sasafras

Lt. Rt.

10+13.85 - Sect. OK from Here - P. 9

10+03 68.6 64.9 61.6 56.9 57.6 58.2 58.4
40 20 15 25 40 50

9+91 57.9 57.9 56.3 55.3 55.6 55.9 58.0
40 20 12 34 40 70 Dr.
A.C.

9+73.85 = S.L. Upas 55.8 53.9 52.7 53.3 54.8 56.0 57.1 57.5
40 20 15 34 40 42 50
A.C.

9+67 51.7 52.0 51.4 52.6 53.8 55.5 57.0 57.6
40 15 15 29 40 42 50
9+60 = 38.9 Rt = ± 5" Euc.
9+56 = 44.1 Lt = ± 10" Conc. Dr.
51.71 51.56 Dr.
58.5 = Gate 44.1

9+35 51.1 51.0 51.0 48.2 49.0 49.7 51.7 54.6 56.8 56.7
57 40 31 20 10 24 40 42 50
By Cor. of House A.C.

9+25 46.7 46.9 47.5 48.5 48.6 50.9 52.4 54.2 57.2 57.5
50 40 20 5 15 30 40 42 50
A.C. Dr.

9+06 - See P. 8 for Pole & Wall on Lt.

9+00 45.0 47.93 48.0 47.4 48.0 50.6 52.6 55.0 59.2 59.6
40 39 30 20 11 35 40 43 50
in yard. Top wall A.C. Dr.

8+70.5 - 18.3 Rt = ± 8" Euc.

8+70 44.2 47.90 48.0 47.7 47.9 48.2 50.4 53.8 54.6 56.5 60.0
40 39 25 15 5 10 25 35.5 40 42 50
Yard. Top wall A.C. Dr.

+ 39' Lt = Ely. of 8" Conc. wall + Fence to N.

8+45 - 36 Lt = end Brick wall

44.24 47.90 48.08
on Patio 39 36 - Top wall
Top of wall

8+35 - 19.5 Rt = ± 5" Euc.

8+30 44.13 44.17 47.94 47.6 46.8 47.4 48.0 53.1 59.60 63.50
51 36.4 35.4 15 5 12 40 60
Conc. at House Patio Cont. wall gr. edge of A.C. Dr.

120.01 = S.W. B.P. Sasafra + Ebis

131.63 = Disk in Dr.

207.72 = N.W. B.P. Thorn + Union

74.44

74.44

$\frac{2.6}{71.8} = \text{ground}$

$\frac{1.89}{15.32} = \text{flood}$

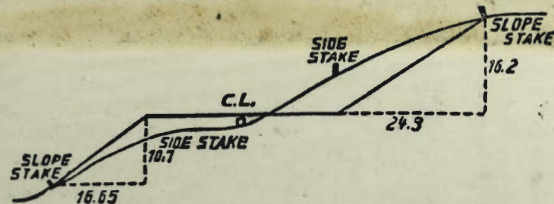
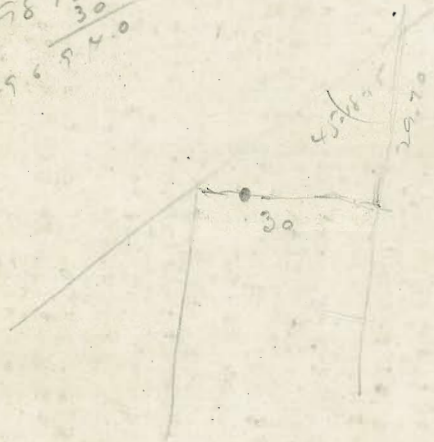
99.7

99.72

$\frac{71.8}{27.9}$

$\frac{75.32}{24.40}$

$\frac{98.98}{30}$
296.940



DISTANCES FROM SIDE STAKES FOR CROSS-SECTIONING.
SLOPE 1 1/4 TO 1. ROADWAY OF ANY WIDTH.

	0	.1	.2	.3	.4	.5	.6	.7	.8	.9	
0	0.00	0.15	0.30	0.45	0.60	0.75	0.90	1.05	1.20	1.35	0
1	1.50	1.65	1.80	1.95	2.10	2.25	2.40	2.55	2.70	2.85	1
2	3.00	3.15	3.30	3.45	3.60	3.75	3.90	4.05	4.20	4.35	2
3	4.50	4.65	4.80	4.95	5.10	5.25	5.40	5.55	5.70	5.85	3
4	6.00	6.15	6.30	6.45	6.60	6.75	6.90	7.05	7.20	7.35	4
5	7.50	7.65	7.80	7.95	8.10	8.25	8.40	8.55	8.70	8.85	5
6	9.00	9.15	9.30	9.45	9.60	9.75	9.90	10.05	10.20	10.35	6
7	10.50	10.65	10.80	10.95	11.10	11.25	11.40	11.55	11.70	11.85	7
8	12.00	12.15	12.30	12.45	12.60	12.75	12.90	13.05	13.20	13.35	8
9	13.50	13.65	13.80	13.95	14.10	14.25	14.40	14.55	14.70	14.85	9
10	15.00	15.15	15.30	15.45	15.60	15.75	15.90	16.05	16.20	16.35	10
11	16.50	16.65	16.80	16.95	17.10	17.25	17.40	17.55	17.70	17.85	11
12	18.00	18.15	18.30	18.45	18.60	18.75	18.90	19.05	19.20	19.35	12
13	19.50	19.65	19.80	19.95	20.10	20.25	20.40	20.55	20.70	20.85	13
14	21.00	21.15	21.30	21.45	21.60	21.75	21.90	22.05	22.20	22.35	14
15	22.50	22.65	22.80	22.95	23.10	23.25	23.40	23.55	23.70	23.85	15
16	24.00	24.15	24.30	24.45	24.60	24.75	24.90	25.05	25.20	25.35	16
17	25.50	25.65	25.80	25.95	26.10	26.25	26.40	26.55	26.70	26.85	17
18	27.00	27.15	27.30	27.45	27.60	27.75	27.90	28.05	28.20	28.35	18
19	28.50	28.65	28.80	28.95	29.10	29.25	29.40	29.55	29.70	29.85	19
20	30.00	30.15	30.30	30.45	30.60	30.75	30.90	31.05	31.20	31.35	20
21	31.50	31.65	31.80	31.95	32.10	32.25	32.40	32.55	32.70	32.85	21
22	33.00	33.15	33.30	33.45	33.60	33.75	33.90	34.05	34.20	34.35	22
23	34.50	34.65	34.80	34.95	35.10	35.25	35.40	35.55	35.70	35.85	23
24	36.00	36.15	36.30	36.45	36.60	36.75	36.90	37.05	37.20	37.35	24
25	37.50	37.65	37.80	37.95	38.10	38.25	38.40	38.55	38.70	38.85	25
26	39.00	39.15	39.30	39.45	39.60	39.75	39.90	40.05	40.20	40.35	26
27	40.50	40.65	40.80	40.95	41.10	41.25	41.40	41.55	41.70	41.85	27
28	42.00	42.15	42.30	42.45	42.60	42.75	42.90	43.05	43.20	43.35	28
29	43.50	43.65	43.80	43.95	44.10	44.25	44.40	44.55	44.70	44.85	29
30	45.00	45.15	45.30	45.45	45.60	45.75	45.90	46.05	46.20	46.35	30
31	46.50	46.65	46.80	46.95	47.10	47.25	47.40	47.55	47.70	47.85	31
32	48.00	48.15	48.30	48.45	48.60	48.75	48.90	49.05	49.20	49.35	32
33	49.50	49.65	49.80	49.95	50.10	50.25	50.40	50.55	50.70	50.85	33
34	51.00	51.15	51.30	51.45	51.60	51.75	51.90	52.05	52.20	52.35	34
35	52.50	52.65	52.80	52.95	53.10	53.25	53.40	53.55	53.70	53.85	35
36	54.00	54.15	54.30	54.45	54.60	54.75	54.90	55.05	55.20	55.35	36
37	55.50	55.65	55.80	55.95	56.10	56.25	56.40	56.55	56.70	56.85	37
38	57.00	57.15	57.30	57.45	57.60	57.75	57.90	58.05	58.20	58.35	38
39	58.50	58.65	58.80	58.95	59.10	59.25	59.40	59.55	59.70	59.85	39
40	60.00	60.15	60.30	60.45	60.60	60.75	60.90	61.05	61.20	61.35	40
41	61.50	61.65	61.80	61.95	62.10	62.25	62.40	62.55	62.70	62.85	41
42	63.00	63.15	63.30	63.45	63.60	63.75	63.90	64.05	64.20	64.35	42
43	64.50	64.65	64.80	64.95	65.10	65.25	65.40	65.55	65.70	65.85	43
44	66.00	66.15	66.30	66.45	66.60	66.75	66.90	67.05	67.20	67.35	44
45	67.50	67.65	67.80	67.95	68.10	68.25	68.40	68.55	68.70	68.85	45
46	69.00	69.15	69.30	69.45	69.60	69.75	69.90	70.05	70.20	70.35	46
47	70.50	70.65	70.80	70.95	71.10	71.25	71.40	71.55	71.70	71.85	47
48	72.00	72.15	72.30	72.45	72.60	72.75	72.90	73.05	73.20	73.35	48
49	73.50	73.65	73.80	73.95	74.10	74.25	74.40	74.55	74.70	74.85	49
50	75.00	75.15	75.30	75.45	75.60	75.75	75.90	76.05	76.20	76.35	50

THE NATIONAL BLANK BOOK COMPANY
HOLYOKE MASSACHUSETTS
NEW YORK CHICAGO BOSTON SAN FRANCISCO