

JAN 1 1965

DISTANCES FROM SIDE STAKES FOR CROSS-SECTIONING
SLOPE 1 TO 1. ROADWAY OF ANY WIDTH

	0	.1	.2	.3	.4	.5	.6	.7	.8	.9	
0	0.00	0.10	0.20	0.30	0.40	0.50	0.60	0.70	0.80	0.90	0
1	1.00	1.10	1.20	1.30	1.40	1.50	1.60	1.70	1.80	1.90	1
2	2.00	2.10	2.20	2.30	2.40	2.50	2.60	2.70	2.80	2.90	2
3	3.00	3.10	3.20	3.30	3.40	3.50	3.60	3.70	3.80	3.90	3
4	4.00	4.10	4.20	4.30	4.40	4.50	4.60	4.70	4.80	4.90	4
5	5.00	5.10	5.20	5.30	5.40	5.50	5.60	5.70	5.80	5.90	5
6	6.00	6.10	6.20	6.30	6.40	6.50	6.60	6.70	6.80	6.90	6
7	7.00	7.10	7.20	7.30	7.40	7.50	7.60	7.70	7.80	7.90	7
8	8.00	8.10	8.20	8.30	8.40	8.50	8.60	8.70	8.80	8.90	8
9	9.00	9.10	9.20	9.30	9.40	9.50	9.60	9.70	9.80	9.90	9
10	10.00	10.10	10.20	10.30	10.40	10.50	10.60	10.70	10.80	10.90	10
11	11.00	11.10	11.20	11.30	11.40	11.50	11.60	11.70	11.80	11.90	11
12	12.00	12.10	12.20	12.30	12.40	12.50	12.60	12.70	12.80	12.90	12
13	13.00	13.10	13.20	13.30	13.40	13.50	13.60	13.70	13.80	13.90	13
14	14.00	14.10	14.20	14.30	14.40	14.50	14.60	14.70	14.80	14.90	14
15	15.00	15.10	15.20	15.30	15.40	15.50	15.60	15.70	15.80	15.90	15
16	16.00	16.10	16.20	16.30	16.40	16.50	16.60	16.70	16.80	16.90	16
17	17.00	17.10	17.20	17.30	17.40	17.50	17.60	17.70	17.80	17.90	17
18	18.00	18.10	18.20	18.30	18.40	18.50	18.60	18.70	18.80	18.90	18
19	19.00	19.10	19.20	19.30	19.40	19.50	19.60	19.70	19.80	19.90	19
20	20.00	20.10	20.20	20.30	20.40	20.50	20.60	20.70	20.80	20.90	20
21	21.00	21.10	21.20	21.30	21.40	21.50	21.60	21.70	21.80	21.90	21
22	22.00	22.10	22.20	22.30	22.40	22.50	22.60	22.70	22.80	22.90	22
23	23.00	23.10	23.20	23.30	23.40	23.50	23.60	23.70	23.80	23.90	23
24	24.00	24.10	24.20	24.30	24.40	24.50	24.60	24.70	24.80	24.90	24
25	25.00	25.10	25.20	25.30	25.40	25.50	25.60	25.70	25.80	25.90	25
26	26.00	26.10	26.20	26.30	26.40	26.50	26.60	26.70	26.80	26.90	26
27	27.00	27.10	27.20	27.30	27.40	27.50	27.60	27.70	27.80	27.90	27
28	28.00	28.10	28.20	28.30	28.40	28.50	28.60	28.70	28.80	28.90	28
29	29.00	29.10	29.20	29.30	29.40	29.50	29.60	29.70	29.80	29.90	29
30	30.00	30.10	30.20	30.30	30.40	30.50	30.60	30.70	30.80	30.90	30
31	31.00	31.10	31.20	31.30	31.40	31.50	31.60	31.70	31.80	31.90	31
32	32.00	32.10	32.20	32.30	32.40	32.50	32.60	32.70	32.80	32.90	32
33	33.00	33.10	33.20	33.30	33.40	33.50	33.60	33.70	33.80	33.90	33
34	34.00	34.10	34.20	34.30	34.40	34.50	34.60	34.70	34.80	34.90	34
35	35.00	35.10	35.20	35.30	35.40	35.50	35.60	35.70	35.80	35.90	35
36	36.00	36.10	36.20	36.30	36.40	36.50	36.60	36.70	36.80	36.90	36
37	37.00	37.10	37.20	37.30	37.40	37.50	37.60	37.70	37.80	37.90	37
38	38.00	38.10	38.20	38.30	38.40	38.50	38.60	38.70	38.80	38.90	38
39	39.00	39.10	39.20	39.30	39.40	39.50	39.60	39.70	39.80	39.90	39
40	40.00	40.10	40.20	40.30	40.40	40.50	40.60	40.70	40.80	40.90	40
41	41.00	41.10	41.20	41.30	41.40	41.50	41.60	41.70	41.80	41.90	41
42	42.00	42.10	42.20	42.30	42.40	42.50	42.60	42.70	42.80	42.90	42
43	43.00	43.10	43.20	43.30	43.40	43.50	43.60	43.70	43.80	43.90	43
44	44.00	44.10	44.20	44.30	44.40	44.50	44.60	44.70	44.80	44.90	44
45	45.00	45.10	45.20	45.30	45.40	45.50	45.60	45.70	45.80	45.90	45
46	46.00	46.10	46.20	46.30	46.40	46.50	46.60	46.70	46.80	46.90	46
47	47.00	47.10	47.20	47.30	47.40	47.50	47.60	47.70	47.80	47.90	47
48	48.00	48.10	48.20	48.30	48.40	48.50	48.60	48.70	48.80	48.90	48
49	49.00	49.10	49.20	49.30	49.40	49.50	49.60	49.70	49.80	49.90	49
50	50.00	50.10	50.20	50.30	50.40	50.50	50.60	50.70	50.80	50.90	50

Distance of slope stake from side or shoulder stake for any width roadway, slope 1 to 1. If ground is nearly level, the cut or fill at side stake is located by the double entry method in left column and top row. The number in body of table in same row and column gives distance from side stake to slope stake. If ground is not level estimate the difference in elevation between the side stake and slope stake, lower target by this amount if cut, elevate if fill. Add this amount to cut or fill and find distance in table. Set up rod at this point, and line of sight should cut target. If it does not make the slight adjustment necessary.

TABLE XIII—CORRECTIONS FOR TANGENTS AND EXTERNALS

These corrections are to be added to the approximate values, found by dividing the tangent, or external, for a 1° curve (Table VIII) by the degree of curve, in order to obtain the true tangents, or externals. Intermediate values may be obtained by interpolation.

FOR TANGENTS ADD

Central Angle	DEGREE OF CURVE													
	5°	10°	15°	20°	25°	30°	35°	40°	45°	50°	55°	60°	65°	70°
10°	.03	.06	.09	.13	.16	.19	.22	.25	.28	.31	.34	.38	.42	.46
15°	.04	.10	.14	.19	.24	.29	.34	.39	.45	.51	.53	.58	.63	.68
20°	.06	.13	.19	.26	.32	.39	.45	.51	.58	.65	.72	.79	.84	.90
25°	.08	.16	.24	.33	.40	.49	.58	.67	.75	.83	.90	.99	1.06	1.14
30°	.10	.19	.29	.39	.49	.59	.69	.79	.89	.99	1.09	1.20	1.29	1.39
35°	.11	.22	.34	.47	.58	.69	.79	.81	.92	1.04	1.29	1.42	1.54	1.66
40°	.13	.26	.40	.53	.67	.80	.93	1.06	1.20	1.34	1.49	1.64	1.79	1.94
45°	.15	.30	.44	.60	.76	.91	1.06	1.21	1.37	1.52	1.70	1.87	2.04	2.21
50°	.17	.34	.51	.68	.85	1.02	1.19	1.36	1.54	1.72	1.91	2.10	2.29	2.48
55°	.19	.38	.57	.76	.95	1.14	1.32	1.52	1.72	1.92	2.14	2.35	2.56	2.77
60°	.21	.42	.63	.84	1.05	1.27	1.49	1.71	1.94	2.17	2.38	2.60	2.83	3.07
65°	.23	.46	.69	.93	1.16	1.40	1.64	1.88	2.13	2.38	2.63	2.88	3.13	3.39
70°	.25	.51	.76	1.02	1.28	1.54	1.80	2.06	2.33	2.60	2.88	3.16	3.44	3.72
75°	.27	.56	.83	1.12	1.40	1.69	1.98	2.27	2.57	2.87	3.16	3.47	3.78	4.09
80°	.30	.61	.91	1.22	1.53	1.84	2.15	2.46	2.78	3.10	3.44	3.78	4.12	4.46
85°	.33	.66	1.00	1.33	1.68	2.02	2.36	2.70	3.05	3.40	3.77	4.14	4.55	4.89
90°	.36	.72	1.09	1.45	1.83	2.20	2.57	2.94	3.32	3.70	4.10	4.50	4.91	5.32
95°	.39	.79	1.19	1.55	2.00	2.40	2.80	3.20	3.61	4.02	4.40	4.98	5.38	5.83
100°	.43	.86	1.30	1.74	2.18	2.62	3.06	3.50	3.95	4.40	4.88	5.37	5.85	6.34
110°	.51	1.03	1.56	2.08	2.61	3.14	3.67	4.21	4.76	5.31	5.86	6.43	7.01	7.60
120°	.62	1.25	1.93	2.52	3.16	3.81	4.45	5.11	5.77	6.44	7.12	7.80	8.50	9.22

FOR EXTERNALS ADD

Central Angle	DEGREE OF CURVE													
	5°	10°	15°	20°	25°	30°	35°	40°	45°	50°	55°	60°	65°	70°
10°	.001	.003	.004	.006	.007	.008	.009	.011	.012	.014	.015	.017	.018	.020
15°	.003	.007	.010	.014	.018	.023	.027	.029	.032	.035	.039	.043	.047	.051
20°	.006	.011	.017	.022	.028	.034	.038	.045	.051	.057	.063	.070	.076	.083
25°	.009	.018	.027	.036	.046	.056	.065	.074	.083	.093	.106	.120	.127	.135
30°	.013	.025	.038	.051	.065	.078	.090	.103	.116	.129	.149	.170	.179	.188
35°	.018	.035	.054	.072	.086	.109	.131	.153	.175	.197	.213	.230	.247	.264
40°	.023	.046	.070	.093	.117	.141	.172	.203	.234	.265	.277	.290	.315	.341
45°	.030	.060	.093	.119	.153	.184	.216	.254	.289	.325	.351	.378	.411	.445
50°	.037	.075	.116	.151	.189	.227	.266	.305	.345	.384	.425	.467	.508	.550
55°	.046	.093	.142	.188	.236	.283	.332	.381	.420	.479	.530	.582	.641	.700
60°	.056	.112	.168	.225	.283	.340	.398	.457	.516	.575	.636	.697	.774	.851
65°	.067	.135	.204	.273	.343	.412	.483	.554	.625	.697	.711	.845	.922	1.01
70°	.080	.159	.240	.321	.403	.485	.568	.652	.735	.819	.906	.994	1.08	1.17
75°	.095	.182	.286	.383	.480	.578	.678	.777	.877	.977	1.07	1.18	1.29	1.39
80°	.110	.220	.332	.445	.558	.671	.787	.903	1.02	1.13	1.25	1.38	1.50	1.62
85°	.128	.259	.391	.524	.657	.790	.926	1.06	1.20	1.34	1.47	1.62	1.76	1.91
90°	.149	.299	.450	.603	.756	.910	1.07	1.22	1.38	1.54	1.70	1.87	2.03	2.20
95°	.174	.350	.522	.706	.885	1.06	1.25	1.43	1.62	1.80	1.99	2.18	2.38	2.58
100°	.200	.401	.604	.809	1.01	1.22	1.43	1.64	1.85	2.06	2.28	2.50	2.73	2.96
110°	.268	.536	.806	1.08	1.35	1.63	1.91	2.20	2.48	2.76	3.05	3.35	3.66	3.96
120°	.360	.721	1.08	1.45	1.82	2.19	2.57	2.95	3.33	3.72	4.11	4.50	4.91	5.32

INDEX

Page

X-SECT. RIGEL ST. MAIN to Cottonwood 1 to 6
 X-Sect Alleys - Blk 30 - Lexington PK 7-9
 X-SECT 4546 ST. MKT ST. SLY to R.R. 23
 X-SECT 7044 ST. ELCATON SLY to Colony Rd 37

X-SECT. RIGEL ST.

1+18.5 24.5' LT E ^{PAVE} ~~CH~~ ^{TP} m.H.
 28' LT BK edge VAULT
 1+17 214.8' LT Bq Conc. Wat. VAULT (UNFINISHED)
 1+11 30.2' LT Bq Conc. PLATFORM END A.C. (A.C. CONT. BK CONC.)

6.79
 24.5
 TP m.H.
 LT 5.78 5.75
 28' TP VAULT 14.8
 7.48 7.43 6.69
 4.2 30.2 30.2
 BK CONC TP CONC A.C.

RT

1+36 24.0 LT. Tel. Pole #4970.14 H

6.97 6.2 6.66 6.4 6.23 6.81 6.22 6.3 6.3
 50 50 30 30 30 11 19 30 40
 PAV PAV Grid Edge PAV Edge PAV

1+00

6.9 5.9 6.20 6.76 6.2 6.3 6.4
 50 30 11 Edge PAV 18 Edge PAVE 30 50

0+70 ♀ Air Drive RT Lumber Yd - Sgt Smith

0+59 56' LT Bq Conc. Slab - along Front Bldg
 67' LT Bq Bldg

7.48 7.43
 69 Floor 56 Can
 6.5 5.9 6.26 6.70 6.06 6.2 6.2
 50 30 11 Edge PAV 19 Edge PAV 30 40

0+50

0+40 30.3' LT Bq A.C. PAV. (PK'G AREA)

7.13 6.90 6.74 6.7
 75 50 30.3 30.3
 PAV PAV PAV Grid

0+31

24.7 LT Tel. Pole #4970.13 H

0+11

24.6 LT Deadman

0+05

24.3 RT Flyd

6.65 6.61 6.01 6.21
 30 W 23 23
 CB E

0+00 N.L. MAIN Beg. 6' Chicken Wire Fence 38.2 RT

6.42 6.44 5.77 6.21 5.90 6.53 6.57
 28' Edge Walk 27.8 28' 21.3 21.3 6.21 6.21 7 28.4 Edge Walk, PK

15' CB Rod:
 0-06 = CB line w/ly
 6' Comp. CB-WALK
 1 1/2" N/L MAIN - to Ely only - (New CB to w/ly)

6.49 5.99 6.58 6.02 6.62 6.06 6.08 6.08
 100 100 23 30 35 35 23
 CB 100 CB 100 CB BL 6

0-12

6.55 5.99 6.61 6.07 6.07 6.08 6.07 5.9 6.44 5.81 6.00
 CB 100 G 100 CB 40 G 40 20 20 40 6 CB 40 100 6 100 20

0-40 ♀ MAIN

6.56 6.57 6.57 6.42 6.28
 100 50 50 100

Set T.B.M ON (NE CORNER) = 6.53 Air Elev Rod
 0+00 21.7 RT

6.28 Direct Elev Rod

6.28 Elev B.M. Chd S.C. MAIN - W/L RIGAL

X-SECT. RIGEL ST. (CONT.)

LT. E RT

2+80 23.3 LT. Tel. Pole # 2200

2+45 E 14' DIRT DRIVE 27.

6.3
50

6.4
30

6.47
10
Edge
PAV

6.95

6.41
17
Edge
PAV

6.4
30

6.2
40

2+30 END Cold-LAY LT 29.4 LT

6.59

29.4
BK edge
Cold-LAY

6.48
10
Edge
PAV

7.06

6.43
17
Edge
PAV

6.46
30

6.5
40

2+25 END Build'g 29.5 LT Beg 8' Corrug. Iron Fence 29.54

2+17 E 10' DRIVEWAY - CONC FLOOR 29.5 LT

7.00
29.5

2+00 END CONC APRON 27.5 LT Front of Driveway 1+86 E DOORWAY

1+94 Beg CONC APRON 27.5 LT

1+78 (City Carpet Chgo. Co.)

1+61 Beg Build'g 29.5 LT

6.99
27.5 CONC

6.91
29.5
Asphalt
At edge ally.

6.65
10
Edge
PAV

7.07

6.33
17
Edge
PAV

6.2
30

6.0
40

6.99
27.5
CONC

7.00
29.5
CONC. Floor elev

7.00
29.5
CONC. Floor elev

1+60 Beg Cold-LAY LT

6.40
29
Edge
Cold Lay

6.55
10
Edge
PAV

6.79

6.26
16
Edge
PAV

6.1
30

6.0
40

1+50.19 E 20' ALLEY LT. 29.1 RT E M.H.

1+49.94 30.2 LT end CON. PLATFORM

1+36 30.2 LT end A.C. Beg CON. PLATFORM

1+25 14.7 end WAT-VAULT - Same Elev as S'ly edge

1+24.5 30.2 LT end CON. PLATFORM of Beg A.C. - Same Elev. CONC.

(See ALLEY SECTIONS)

6.1
50

6.2
30

6.60
10
Edge
PAV

6.97

6.27
16
Edge
PAV

6.16
29.1

6.1
30

6.20
50

7.44
44.2
BK CON
SLAB

7.44
30.2
A.C.
(x CONC)

7.42
44.2
BK

7.70
30.2
CONC

7rd

X-SECT Rigel ST (Cont)

LT. ♀ RT.

4+25

6.6	3.8	5.01	5.40	5.00	5.0	2.0	1.6
8.5	5.9	7.05	7.41	7.05	6.3	4.1	3.4
50	30	Edge Pav.		16	30	36	50
				Edge Pav.			

4+21

22.3 LT " J.P. 2180 Ale

7.4	4.2	5.2	5.56	5.87	5.70	5.4	1.6
9.3	6.9	7.3	7.56	7.89	7.44	7.2	3.6
50	38	30	Edge Pav.		17.7	30	50
					Edge Pav.		

4+00.38

N.L. DA/Bergia

-0.7	3.3	6.11	6.12	5.74	6.05	5.89	6.31	6.34	5.5	4.6	4.7
50	30	25.5	20.5	20.5		20.4	20.4	25.5	30	28	50
		Edge Bridge	Toward Pav. CB			Pav	To Wood CB	Edge Bridge			

3+83 at 4

END Bridge

3+59

on diagonal - along ♀ Creek

-4.5	-4.2	-4.2	6.43	6.41	6.04	6.24	5.97	6.37	6.39	-4.2	-4.0	-2.5
50	Bottom creek 30	26	25.5	20.5	20.5		20.4	20.4	25.5	Bottom creek 26	30	50
			Edge Bridge	To Wood CB	Pav.		Pav.	To Wood CB	Edge Bridge			

3+30

END of Conting. 11' W Fence 29' LT.

3+35.8

Bed Bridge at 9 (see sketch) X-SECT on diagonal // to bridge

+0.8	-3.8	-3.8	6.47	6.47	6.07	6.37	6.18	6.48	6.51	4	-1.0	1.1
50	30	26	25.5	20.5	20.5		20.4	20.4	25.5	26	30	50
			Bottom creek	Back walk Edge Bridge	Toward CB	Pav	Pav	To Wood CB	Back walk Edge Bridge		Bottom creek	

3+20

0.6	3.7		6.04	6.50	6.18	5.8	5.2	5.15
40	30		16		19	30	50	55
			Edge Pav.		Edge Pav.			Mid.

3+00.38

END S.L. DA/Bergia 6' Chicken-wire Fence 30.6 RT

5.5	6.0	6.6	6.17	6.65	6.04	5.8	5.3	5.1
50	40	29	11		17	30	50	100
grd	grd		Edge Pav.		Edge Pav.			

X-SECT. Rigel ST (CONT.)

LT E RT.

6+00				6.6 50	7.2 30	8.15 14.7 E.PAV.	8.75	8.24 14.4 E.PAV.	10.0 20	11.0 30
5+75					6.8 30	6.98 14.7 E.PAV.	7.53	6.97 14.6 E.PAV.	8.2 20	9.2 30
5+50				5.7 50	5.7 30	5.95 14.7 E.PAV.	6.40	5.97 14.3 E.PAV.	7.9 30	9.0 50
5+39	21.5 LT ^{TL} 2160 To Pole									
5+25	2 HOUSES (sets low) 37.4 LT. END NEW STRUCTURE 37 FT			5.91 37.4 Floor Elev	5.0 30	5.37 15.8 E.PAV.	5.52	5.07 14.4 E.PAV.	6.1 30	6.83 37 Floor ANV
5+19	22.4 LT Deadman									
5+00						4.40 30	4.57 14.3 E.PAV.	4.77	4.39 12.2 E.PAV.	4.5 30
4+94	36.5 LT END HOUSE.					5.18 36.5 Floor				
4+75				4.2 30	4.19 14.4 E.PAV.	4.80	4.17 12.4 E.PAV.	4.0 30		
4+70	36.2 LT Big House (sets low)			4.85 4.18 36.5 Floor Elev						
4+68	10" Pepper tree 23 LT									
4+50				4.0 50	4.4 30	4.38 6.37 E.PAV.	4.98 6.77	4.15 6.07 EDGE PAV	4.4 5.1 30	2.9 4.8 40 BASE NEXT STRUCTURE
									40' A.P.P. prox. Floor Level	6.82 2.8

X. Sect. Rigel ST. (CONT.)

CHK- 6.26 = 6.28 B.M. Ch □ S. cb. MAIN W/LINE Rigel

7+4075 ♀ Cottonwood

11.30	13.47	14.33	15.16	15.23	15.43	16.7	17.1	17.4
100	50	30	15.3	✓	16	30	50	100
Cold-Lay Cottonwood	Cold-Lay Cottonwood	Cold-Lay Cottonwood	E.PAY.		E.PAY.			

7+19 ♀ Cold-Lay on Cottonwood

12.99	13.90	14.41	14.95	14.66	15.99	16.5
50	30	15.2		16	30	50
Cold-Lay Cottonwood	Cold-Lay Cottonwood	E.PAY.		E.PAY.		

700.75 S.LINE Cottonwood

11.0	12.5	13.1	13.52	14.10	13.93	15.4	15.6	16.1	16.3	14.1
100	50	30	15.1		15.1	21	30	50	60	100
			E.PAY.		E.PAY.					

6+99 21.4LT. Pole #P2100

6+50

10.0	10.7	10.69	11.38	11.14	13.4	13.8
40	30	14.6		14	19	30
		E.PAY.		E.PAY.		

X Sections - 7/22/52

Alley N. of Juniper St.

from Alley E of 39th St
to Marigold St.

AND

Alley E. of 39th St.

from Sycamore Dr.
to Juniper St.

Harold M. Teqvst
- R.E. 2151 -

Field Party

Frank Southworth
Commins
Reynolds

INDEXED
law
NOV 17 1952

D. Smith
J. Rorer
R. Taylor
Wm. Fish

WO 25020
8-20-53

"X" Sec Clove St.

Inge low to Garrison W for profile only

Fd 2' 1/2" 10
L.S. 2201

Mon 5/27

Inge low St
213533

9

2100³³

Fd Cow Hill

0+00

Hugo St

2134²⁹ 2

179970

0+00

0-35
Garrison St

S. 1
R.
W.

Lt-Wly ♀ Rt-Ely
129.26
4⁸⁸ 4⁹² 4⁹⁸
25 35 45

1756 21° N 1/2 3' con. walk

0792

136.7
128.5
129.4
129.16
126
56 42
35 35

1750

127.51
127.93
128.07
6⁶³ 6²¹ 6⁰⁷
20 25 39
Rt. Fly

0765

1712 20° N 1/2 16' con drive

0740

134.0
127.4
128.1
04 62 60
35 35

1700

137.3
126.1
128.7
734 80 54
35 35

0750

129.0
125.3
124.5
51 80 96
35 35
10 123 93

0700 Nly Garrison

top of elev. end NE Net Garrison + Close
check P lev

126.9
124.7
122.17
93 94 1197
35 35 Ac.

0-35 ♀ Garrison

BM 747 134.14

126 Ed Spike in Pit
674 NE Cor
Garrison +
Close

Lt-Wly ♀ Rt-Ely 10
125.7
84 92 102
35 35
124.2
123.2
123.2
INDEXED
JEP
AUG 20 1953

122.1
124.2
115.8
120 92 183
35 35

127.0
124.9
122.0
74 92 121
35 35

133.7
126.3
124.2
04 78 92
35 35

135.2
127.9
124.9
714 623 92
35 MH 35
119

138.4
128.7
129.1
743 54 50
35 35

1799° Sly Hugo

1790 28° N 1/2 7' con drive

128.97
129.12
57 482
282 35

π 134.14

2135³³ E Ingelow

132.5	128.9	125.0
16	52	96
30		35

2400³³ Sly Ingelow

132.5	126.2	125.1
16	72	90
35		35

1770

134.4	125.2	125.8
703	89	83
35		35

1758 27° RT E 6' con walk

125.78	125.95
836	819
29	35

1740

133.2	124.9	125.9
09	93	83
35		35

1735 27° RT E 4' con walk

125.78	125.92
836	822
275	35

1712 27° RT E N° con drive

125.84	126.24
830	790
272	362
	Floor

7 134¹⁴

Alley Blk 3, 8,

1+00

95.5 95.4 95.3 94.7 94.7
7.5 7.5 10 15

0+83.3 = Beg. 6" Conc. Tile Wall 8' Lt

99.2 95.1
8 8
Top Bottom Footing

0+58 = E. Pole 11-810 7' Rt. Elev. +

0+57.5 = End 6" Conc. Tile Wall on Rt.

95.4 95.1 94.8 94.6 97.37 92.2
7.5 7.5 7.5 7.5 7.5 7.5
Top Bottom Footing

0+25

95.4 94.8 94.3 94.2 97.3 92.2
12.5 7.5 7.5 7.5 7.5 7.5
Ground Top Bottom Footing

0+03

94.43 93.4 95.2 92.2
8.2 7.5 7.5 Bottom Footing
Top Bottom Wall Top Wall

0-02 = Beg. 6" Conc. Blk Wall on Lt.

0+00 = Beg. 6" Conc. Tile Wall on Rt = Sec.

94.43 93.42 93.17 92.63 92.79 92.90
8.2 7.5 7.5 7.5 7.5
Top cb. Gut. Por. Gut. Gut.
0-02

0-10 = NELY Cb. Mission Blvd

94.50 92.98 93.37 92.81 92.70 92.42 92.19 92.16 92.74 92.95 91.51
50 50 106 106 75 75 105 105 50 50
Cb. cb Gut. Por. Por. Por. Gut. cb Gut. cb

Please verify this BM.

~~Est 107.08~~ 98.54
Direct Elev. Rod used.

BM
NW. S.P. Mission Blvd. & Sapphire
Also Notation FB 1837-40

FB 1837
50

2+68.5 = Beg Conc. Apron 3 Car Garage
TR 98.37

98.04 98.09
14 17
on Conc. Conc.
Apron Floor

2+50

98.8 98.5 98.1 98.5 97.7
12 7.5 7.5 12.5

2+33.3 = End 6' Board Fence 68 Lt

2+08 = L Elec Pole PA 820 6.5' Ht

2+00 Fence 7' Ht at this stn

98.5 97.7 97.6 97.5 96.9 96.7
7 4 5 7.5 12
at Fence

1+58 = Beg. 6' High Board Fence 74 Lt

1+50

97.5 97.0 96.7 96.6 96.4 96.1
15 7.5 7.5 7.5 11.5
at House

1+48 = L Garage on Lt.

TR 96.20

97.48
15
Conc.
Floor

1+08.5 = End 6" Conc. Tile Wall

99.95 98.2
8 8
Top Bottom
Footing

Alley Blk 3, 8.

Lt.

E

Sta.

15

4+50

1004	1004	999	998	997	992
125	7.5	4		7.5	12.5

4+00

999	999	992	991	989	983
125	7.5	4		7.5	12.5

3+58 = 1/2 Floor Plate A 830 6.5' R₁

3+53.5 = Final Conc. Apron Dble Garage

100.00	99.50
16	9.1
Conc.	Toe Conc. Apron

3+50

99.50	99.5	99.1	98.9	98.1
9.1	7.5		7.5	12.5
Toe				
Conc. Apron				

3+39 = Beg. Conc. Apron Dble Garage

100.07	99.58
16.1	9.1
Conc. Floor	Toe Conc. Apron

3+08 End Conc. Apron

97.95	97.91
8	14
Top 8" Wall	Conc. Apron

3+00

99.6	99.4	98.7	98.3	97.8	97.96	98.00
12.8	7.5		7.5	12.5	14	17
					Apron	Floor

Alley Bk 3, 8.

Lt.

Q.

17.

16

6+50.5 = End 4 Car Garage

107.7	107.2	106.6	106.6	106.5	107.0	107.0
17.7	7.5	9.5		5.5	7.5	12.5
Dirt Floor						

6+35

107.5	107.2	107.0	106.9	106.6
17.7	7.5		7.5	12.5
Dirt Floor				

6+17 Beg. 4 Car Garage Dirt Floor

107.1
17.7
Dirt Floor

6+00

106.6	106.3	105.8	105.7	105.5
12.5	7.5		7.5	12.5

5+50

104.4	104.3	104.1	104.0	104.0	103.5
12.5	7.5		7.5	9.5	12.5

5+41.3 = End Board Fence 7.2 ft.

TR

101.67

5+13.5 = 1/2 Elev. Pole PA 850 7' Ht.

5+00

102.0	102.0	101.7	101.6	101.3	100.8	100.8
12.5	7.5	4		7.5	10	15

4+96 Beg. 5' Board Fence 7.2 ft.

Alley Blk. 3, 8,

Lot

2

FF

17

1001
 Chk. Starting BM 98.54
 98.53
 TP 99.77
 TP 102.53

G+63.12 = SWLY cb. Bayard st
 TP Nail to G+63.12 105.57

108.27	107.79	106.46	105.96	105.90	105.67	105.31	105.19	105.67	103.36	103.82
50	50	95	95	75		75	93	93	50	50
cb	Gut.	cb.	Gut.	Gut.	Gut.	Gut.	Gut.	Tapcb	Gut.	cb

G+58.12 = SWLY Line Bayard

106.44	106.01	105.77	105.72	105.94
75	75	Por.	75	75
cb.	Gut.		Gut.	cb

CROSS SECTION ALEY BLK. 2

OCEAN VILLA TRACT

Cont. P-20

0+70

1075	1072	1066	1055	1068	1068	1068
20	15	12	7.5		7.5	15

0+35

1069	1056	1055	1060	1061
18	7.5		7.5	12
			Low n.	Low n.

0+15

1063	1053	1036	1037	1039	1048	1060	1058
15	10	7.5		3	5	7.5	12
						Low n.	Low n.

0+01 76' RT $\frac{1}{4}$ Elec Pole #PA 802

0+00 - NELY Line Mission Blvd.

10239	10205	10153	10164	10122
7.5	7.5		7.5	7.5
cb.	Gut.		Gut.	cb

0-07

0+00 - NELY Line Mission Blvd.

10220	10173	10138	10130	10170
7.5	7.5		7.5	7.5
cb.	Gut.		Gut.	cb

0-10 - NELY Cb. Mission Blvd.

10215

50

cb

10226	10222	10159	10158	10137	10122	10118	10171	10030	10084
50	10.5	10.5	7.5	50	7.5	10.5	10.5	50	50
Gut	cb	Gut	Gut	Loc	Gut	Gut	cb	Gut	cb
	EC	EC	EC		EC	EC	EC		

98.54

B.M. N.Y.B.P. Mission Blvd. o Sapphire
p-13

CROSS SECTION ALLEY BLK. 2

OCEAN VILLA TRACT

2+00

1+89.5 = E Elec Pole JPA 822

1+75.5 = End Conc. Apron

1+67 = Beg. Conc. Apron

1+52 = E MH

Rim = 109.63

1+50

1+29 = End Conc. Apron Dble Garage

1+09 = Beg. Conc. Apron Dble. Garage on Rt

1+00 = E Elec. Pole PA 814

T.P.

7.3' Rt.

107.60

Lt.

Rt.

Rt.

20

1109
12

1108
7.5

1107

1103
7.5

1098
15

in yard
Lower

11188
28

Conc. Floor.

11052
8.8

Conc. Apron

11186
28

Conc. Floor.

11031
8.8

Conc. Apron

1103
12

1098
7.5

1095

1096
7.5

1092
12

Lower

10867
12

Conc. Apron

10879
16

Conc. Floor.

10847
12

Conc. Apron

10879
16

Conc. Floor

108.1
12

107.8
7.5

1078

108.0
7.5

107.8
15

Alley Blk 2
Ocean Villa Tract

Lt. L Rt. 21

4+00

1143 1142 1138 1136 1135
12 7.5 7.5 12.5

3+50

1138 1138 1132 1131 1112 1112
12 7.5 4 7.5 15

3+33 = 1/2 Elec Pole #PA 842 67 Rt

Conc. Floor

3+17 = End Conc Apron 3 Car Garage on Rt

11179 11164 11183
78 125 178
Apron Brk Conc Floor
Apron Apron

T.P

11178

3+00

1127 1127 1118 11178 11158 11184
12 7.5 7.8 12.5 178
Apron Apron Conc Floor

Conc. Floor

2+90 = Beg. Conc. Apron 3 Car Garage on Rt

11178 11150 11186
7.8 12.5 178
Conc. Apron Brk Conc. Conc. Floor
Apron Apron

2+83 = End Warehouse 14' H. Conc. Floor

2+50

1124 1120 1116 1114 1108 1105
14 7.5 3 7.5 12.5
at Blk on Ground

2+22 = 1/2 Doorway Warehouse

11450 1114
14 14
Conc. Floor Ground

2+08 = Beg. Warehouse 14' H. Conc. Floor

Alley Bk 2

Ocean Villa Tract

Lt.

L

Rt.

22

chk. starting B.M.

98.54

T.D.

102.33

T.D.

102.87

4+33 = 1/2 Elec. Pole 2' Lt

4+32.15 = End

1154
12

115.7
7.5

115.27
on
Pipe

115.2
7.5

1197
12.5

4+16 = 1/2 Garage on Rt Conc. Floor

1151
12

115.0
7.5

1146

113.9
7.5

113.86
18.2

Conc. Floor

4+10.5 = 1/2 4" Soil Cleanout

11419

0.9
Bell Soil Pipe

4+06.5 = 1/2 Garage on Rt Conc. Floor

113.84

18.2
Conc. Floor

BASE-LINE

16.00' WALK - 4.5' 20.5' 14.5' 4.5' WALK NO. 08

24.5' DEP. F-100 WALK

K' ST. (Approx. 2)

B.C.

5' Comb. WALK 10.0'

11+66

12+08

4.5' WALK NO. 10

4.5' WALK - 10.0'

CHK. CONST. PLANS
FOR DATA ON K' ST.

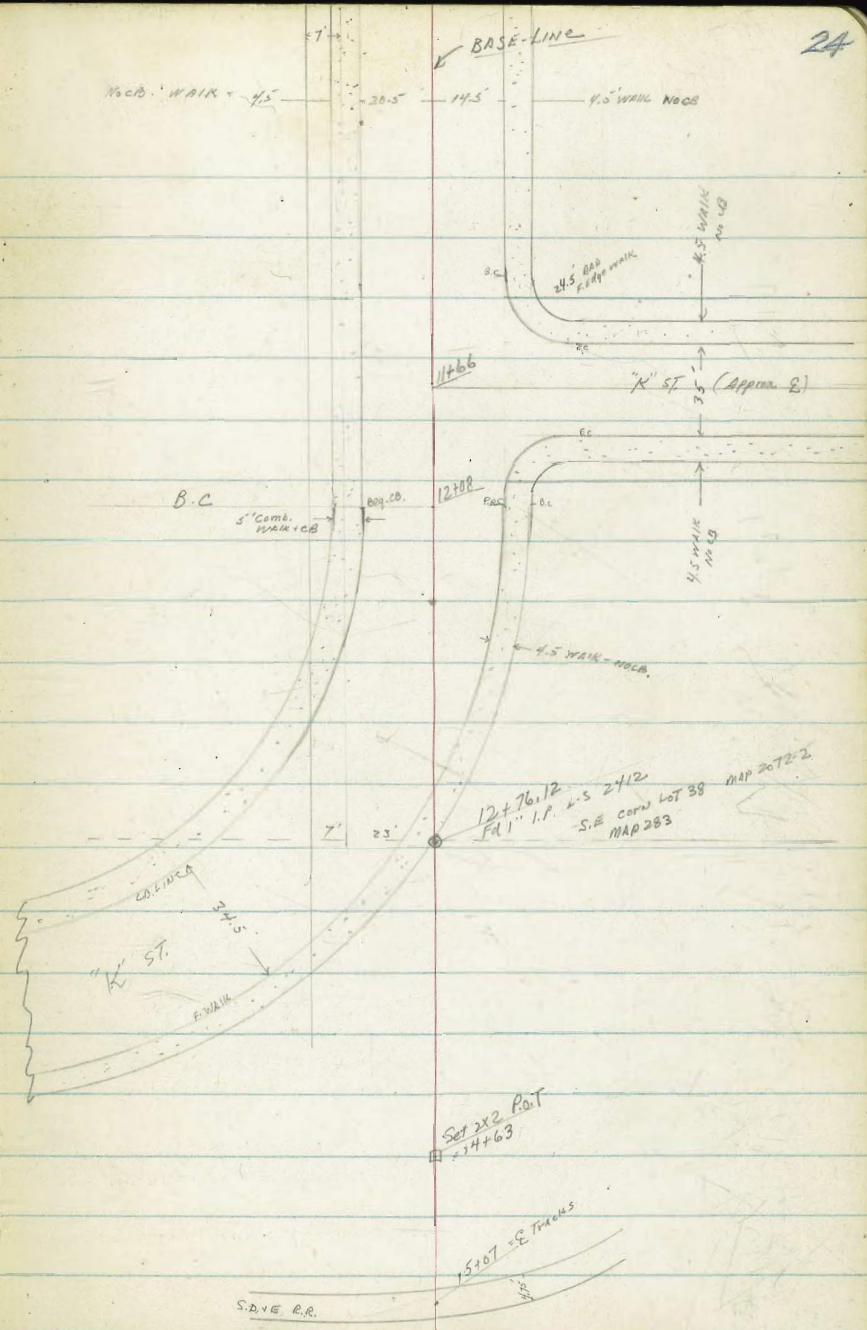
12+76.12
Pd 1" I.P. L.S. 2412
S.E. CORN. LOT 38 MAP 20722
MAP 283

COLLIER
K' ST.
F-100 WALK

Set 2x2 Post
#34463

15107 SE Trac 45

S.D. & E.R.



X-SECT 75th ST
MARKET ST. SLY

(Ely) LT.

RT. (W'y)

0+43.3 25' LT & NEEDMAN

0+08.5 14' LT = 4' CB (See sketch)

158.47
5.30
10
CB
5.76
10
C
5.59
158.02
158.18

0+04 25' RT & 25' CONC WALK Meets RR & WALK

0+00 = S Line MKT

5.1 4.9 5.0 4.76 5.13 5.57 5.54 5.44 5.79 5.22 4.97 5.24 5.15
30 40 30 26.90 16.8 16.8 17 20 20 25 30 40 50
158.9 158.8 159.01 158.64 158.20 158.23 158.33 157.96 158.55 158.80 158.6 158.1 158.5
7.7 7.5 7.43 7.84 5.34 5.33 5.32 5.76 5.09 7.89 5.1 5.2
50 40 34.2 20 20 4 20 20 25 40 50
159.1 159.3 159.34 158.93 158.48 158.44 158.45 158.01 158.68 158.88 158.7
RR WALK RR WALK RR WALK RR WALK RR WALK RR WALK
CONC & A.C. FLUSH

0-10 { 20' RT CB EC
Edge Conc Pav. - Beg A.C. Pav.
20' LT CB EC

0-15.7 32.9' LT & M.H. (Water Dept)

0-17.5 Set Along RR WALKS

0-22 30.3' LT & GATE VALVE (Water)

0-30 = Sly CB Line MKT ST

0-50 = & EXIST IMPROVEMENTS MKT ST

(0+00 = S Line MKT)

NOTES: NO WALKS 1/2" 45' are shown
5/4 of 45' are

B.M. 4.92 163.77

158.85 = N.W. B.P. MARKET & 45th

163.77

X-SECT 45' H (CONT)

RAISE-LINE

2+11 25' RT E 3.0' CON WALK (Flush with Sidewalk)
 2+05 26.7 RT E Pole # P178738
 2+00

1551
 876 87 868 876 908 902 878
 30 30 19 14 14 13 13
 W BK CB C HP
 1551.67 155.25 885 9.18
 30 30 WALK 40
 155.31 155.3 155.1
 8.46 8.5 8.7 8.8
 25 30 40 50
 W

1+86.5 35.3 RT E 6" Tree

1+54.5 25' RT E 2.5' CON WALK (meets 5' walk)

1+50

1+00

156.0 156.1 156.01 155.98 155.62 155.66
 7.8 7.7 7.6 7.7 8.5 8.1
 30 30 30 30 30 30
 66 67 68 69 70 71
 30 30 BK W BK CB C C HP
 156.64 156.49 156.95 157.07 156.84
 7.12 6.82 6.70 6.6 6.7
 20 20 BK W 30 40
 804 759 745 74 75
 20 20 25 30 40
 156.3 156.14 156.3 156.3
 ON WALK
 156.22 156.23
 7.55 7.54
 30 40
 156.3 156.4
 7.5 7.4
 40 50
 156.3 156.4
 6.8 6.8
 50 50

0+99.5 26.2' RT E Deadman

0+84.8 26.5 RT E Pole # P 178625

0+79.2 25' RT E 2.8' CON WALK (meets 5' walk)

0+69.5 26 RT E Deadman

0+56.3 25.3 RT E Pole (no number)

0+50

157.9 157.9 157.76 157.73 157.38 157.43
 5.9 6.9 5.9 6.04 6.39 6.34
 30 30 BK W BK CB C HP
 157.48 157.23 157.80 157.92 158.0
 6.29 6.54 5.97 5.85 5.8
 20 20 25 30 40
 C CB BK WALK
 6.48 6.64
 30 40
 ON WALK
 158.1

163.77

K-SECT. 45' TL (CONT.)

LT.

RT.

3+46 35' RT & 2' Palm Tree

3+31.5 35' RT & 12" Tree

3+16.5 35' RT & 2' PALM Tree
26.8 RT & Pole # P 178739

3+07 25' RT. 3' CONC. WALK (Flush with 50' grade)

3+00

2+82.5 35' RT & 6" Tree

2+68 21.3 LT & Fire Hyd.

2+30

2+35.5 35.5' RT & 6" Tree

2+30.5 20' RT & 14' Drive-way

T.P. 1.32 156.01 9.08 154.69

Pole-LINE

152.6	152.6	152.54	152.44	152.00	152.07	152.23	152.02	152.62	152.70	152.17	157.9
3.4	3.4	3.47	3.57	4.01	3.94	3.78	3.96	3.39	3.31	3.3	4.1
50	30	19 BR W	14 CR	14 G	13 LP		20 G	20 CR	25 OK W	30 WALK	40 WALK

153.6	153.7	153.86	153.87	153.41	153.45	153.71	153.51	154.03	154.11	154.1	153.5
2.4	2.3	2.15	2.24	2.60	2.56	2.30	2.50	1.98	1.90	1.9	2.1
50	30	19 OK W	14 CR	14 G	13 LP		20 G	20 CR	25 OK W	30 WALK	40 WALK

154.09	154.45
1.22	1.56
20	25
LP	OK WALK

156.01

1-SECT 45th (cont.)

3404 18.75 RT & 2.5 x 3.5 INLET
 16" Culvert Apparently drains Wky. to inlet #1 on
 Flower St. (DWG. 4688-L)
 may maximize (No other outlet found)

5.9 150.2
 50
 6.1 149.9
 30
 6.26 149.75
 19
 6.36 149.65
 14
 6.47 149.34
 14
 6.70 149.31
 13
 6.91 149.10
 9

148.83 10.46
 18.75 F. Line
 149.54 7.17
 149.55 20
 149.55 9.46
 25
 149.55 148.84
 149.56 8.43
 159.55 149.56
 30
 159.6 40

4495 28' RT & Pole P178740
 4487 25' RT & 3' CON. WALK curb
 4469 28' RT & Pole # JC 272106

7.18 149.59
 20
 6.47 149.57
 20
 6.44 149.57
 40
 ON WALK

4452.1 10' RT & WATER DEPT. MANH

6.0 150.0
 50
 6.2 150.0
 30
 6.08 149.93
 19
 6.60 DRIVE
 14 149.71
 14
 6.39 149.42
 13
 6.39 149.42
 24
 6.39 149.42
 24

149.41
 149.62
 149.42
 149.82
 150.03
 150.0
 150.0

4450

6.0 150.0
 50
 6.2 150.0
 30
 6.08 149.93
 19
 6.60 DRIVE
 14 149.71
 14
 6.39 149.42
 13
 6.39 149.42
 24

149.41
 149.62
 149.42
 149.82
 150.03
 150.0
 150.0

4405 25' RT & 3' CON. WALK (Fluik)

5.3 150.7
 50
 5.4 150.6
 30
 5.60 150.4
 19
 5.67 150.34
 14
 6.10 149.91
 14
 6.02 149.99
 13
 5.90 150.21
 9

149.99
 150.45
 150.29
 150.29
 150.4
 150.2
 150.2

4400

5.3 150.7
 50
 5.4 150.6
 30
 5.60 150.4
 19
 5.67 150.34
 14
 6.10 149.91
 14
 6.02 149.99
 13
 5.90 150.21
 9

149.99
 150.45
 150.29
 150.29
 150.4
 150.2
 150.2

3479 35.4 RT & 8" Tree

4.6 151.4
 50
 4.9 151.1
 30
 4.74 DRIVE
 19 151.29
 14
 5.24 150.27
 14
 5.21 150.80
 13
 4.95 151.06
 9

150.83
 151.32
 151.38
 151.5
 151.2

3450

4.6 151.4
 50
 4.9 151.1
 30
 4.74 DRIVE
 19 151.29
 14
 5.24 150.27
 14
 5.21 150.80
 13
 4.95 151.06
 9

150.83
 151.32
 151.38
 151.5
 151.2

156.01

X-SECT. 454h (CONT.)

T.P. 4.92 154.13 6.71 149.21

8463 16.5 LT E.M.H. Sence

8461 28.5 LT E.P. (no number)

8450

8423.3 25 RT 3' CONC. WALK

8400

7478 20.1 LT 5' Five-HYA

7468 14' LT = L. LT. CB LINE (see sketch)
= END CONC. 9UT. LT. & CB RT L. + CONC. 4.5 WALK ON LT.

7450

7427 25 RT 3' CONC WALK (Flush)

7400

LT.

RT.

BASE-LINE

142.09

150.9
150.4
149.2
149.84
149.70

5.0
5.5
6.00
6.00
6.22
6.02

40
30
19
19
12.5
6

OK
OK
F
F
W
W

150.7
150.9
150.45
150.52
150.30
150.30

5.2
5.0
5.07
5.40
5.62
5.62

40
30
19
19
12.5
6

OK
OK
F
F
W
W

141.0
150.05
150.95
150.67
150.72
150.38
150.38
150.45
150.45
150.57

4.9
4.87
4.87
5.25
5.20
5.54
5.54
5.47
5.35

50
40.5
34
34
14.5
14.5
14
13
13

OK
CB
CB
9UT
CB, END
9UT
9UT
4P

151.1
151.12
150.96
150.68
150.49
150.47
150.56
150.70
150.37
150.54
150.62
150.17
150.17
151.0
151.1

4.8
4.80
4.78
5.24
5.43
5.35
5.36
5.22

50
40.5
34
34
15
14
13
4P

OK
CB
CB
9UT
OK
OK
4P

151.5
151.36
151.28
151.00
150.67
150.59
150.69
150.93
150.74
150.9
151.06
151.1
151.3

4.4
4.56
4.64
4.82
5.25
5.33
5.23
4.99

50
40.5
34
34
15
14
13
4P

OK
CB
CB
9UT
OK
OK
4P

155.92

8470.8

X-SECT 45' H (CONT.)

3 = E.C. CLAUDIA

2

1

9178.1 WALK B.C.'S S'EAST & S.WEST - CLAUDIA 14546

91336 = S LINE - FRONT WALK - CLAUDIA

9136 = approx E CLAUDIA

Notes all shots on Pav on Claudia taken in dip gull approx. 2' off front-walk.

918.4 = N LINE - FRONT - WALK - CLAUDIA

3 = WALK E.C. (on CLAUDIA)

2

1

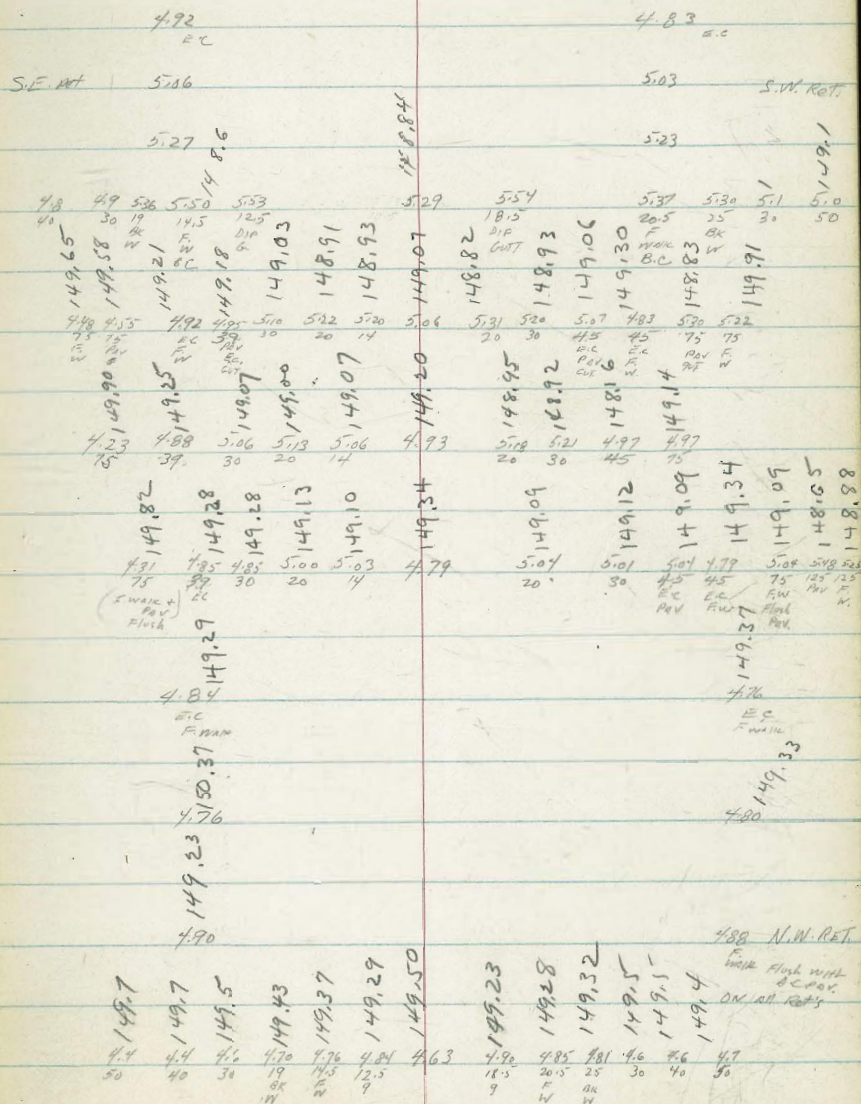
8194 + = WALK B.C.'S CLAUDIA ST. 45' H

WALK Returns: L: 40'
divided into 30's
shots shown around pits 45' 1-2' etc

N.E. Rd.

BASE-LINE

31



154.13

X-SECT. 45th (CONT.)

11742 20.5 RT E 18' DRIVEWAY

11224 145 LT - BC N EAST 45 26 PK

11403 25 RT E 2' CON WALK

11400

10463 25 RT E 2' CON WALK

10459 24.4 LT E 46 x 2' S.D.G. & E. VANE (gas)

10450

10416 25 RT E 2.0 CON WALK

10700

T.P. 3.83 150.60 7.36 146.77

9493.2 40.5 RT E Pole (no number)

LT.

RT.

BASELINE

146.57

3.8	3.9	4.24	4.25	4.41	4.21
30	30	19	14.5	12.5	
		OK	F	G	
		W	W		

4.51	4.30	4.25	4.3	4.3
18.5	20.5	25	30	40
G	F	OK		
	W	W		

3.80	3.86	3.90
25	30	40

146.77

147.09

3.4	3.6	3.79	3.81	4.00	3.71
40	30	19	14.5	12.5	
		OK	F	G	
		W	W		

4.00	3.83	3.80	3.8	3.8
18.5	20.5	25	30	40
G	F	OK		
	W	W		

3.10	3.31	3.39
25	30	35 40

149.3	148.3	147.67	147.67
2.3	2.3	2.93	2.93
40	30	19	14.5
		OK	F
		W	W

147.88

147.44	147.57	147.83	147.5	147.4
3.16	3.09	2.97	3.1	3.2
18.5	20.5	25	30	40
G	F.W	OK		
		W		

148.45

148.8

1.4	1.7	2.02	2.15	2.27	2.00
50	30	19	14.5	12.5	
		OK	F	G	
		W	W		

2.44	2.65	2.82
25	30	35 40

2.35	2.47	2.10	2.2	2.2
18.5	20.5	25	30	40 50
G	WALK	OK		
		WALK		

150.60

X-SECT 454W (CONT.)

3 = EC "K" ST.

2

S.E. Ret.

1

12408 = (P.R.C.)
14.5 LT = B.C. of SEAST. Ret
[CB BC 20' RT (Opp CB RT)]

JMP'S on 454W CONVERT INTO "K"
[CHK Const. Plans THIS AREA]

11483.5 = Front-WALK LINE 5'24" "K"

11466 = APPROX. E "K" FLY

11464 = 25' RT 2' CON. WALK

11448.5 = Line NLY WALK-FRONT "K"
(all pay shots in dip GUTT approx 2' OFF Front-WALK)

3 = EC "K"

2

1

N.E. Ret.

WALK "K" = 40'
DIV. INTO 3' Sds 12.3 Sds.

LT.

RET.

4.96 5.03
FW 6

5.13
F
W

5.27
F
W

5.0 5.0 5.30 5.32 5.34 5.59
F0 30 19 14.5 12.5
BK F G
W W

4.33 4.45 4.80 4.84 4.91 5.03 5.10 5.33 5.37
100 100 50 50 39 39 30 14
F W G W G F G

4.08 4.67 4.90 5.15 5.17 5.11 5.07
100 50 39 30 14 12.5

4.35 4.52 4.88 4.94 4.96 4.96 4.95 4.90
100 100 50 50 39 39 30 14
FW G F W F G
EC

4.26 4.96
FW E.C
E.C. DIP GUT
E.C. OFF WALK

4.90
FW

4.62
FW

BASE-LINE

145.21
145.43
145.73
146.14

5.92 5.92 5.63 5.7 6.0
20 20 25 30 40
G BK W

5.51 5.39 5.29 5.40 5.3
18.5 20.5 25 30 50
G F BK W

5.34 5.08 5.00
18.5 20.5 25
G W W

4.95 5.04 5.01
25 30 50

5.11 5.07 4.71 4.8 5.0
18.5 20.5 25 30 50
G F BK W
(LID)

150.60

X-SECT. 454h (Cont.)
 4"K": Radial Sect's on "K" Wly, 454h
 AT 25' ARC INTERVALS ON NLY CB Line "K"
 (Wly CB. 454h)
 Numbered 1-2-3 etc. beg. AT B.C. on 454h (2108)

E.C. (on "K" ST.)

6

5

4

3

2

1

CURVE DATA BASED ON EXISTING CB, 454h (WLY CB, "K") CIRC. PLANS
 $\Delta = 100^{\circ} 00' 30''$ P.T.
 TAN = 112'
 C.B. L = 164'
 C.R. RAD = 97'
 Radius, Front-Edge WALK 5 1/4" K = 128.5'

T.P. 6.46 150.43 6.63 143.97

12108 = B.C. EXIST. IMP'S: (See Pg. 33 For Sect. here.)
ON DIFF. H.I.

NOTE: { SECTIONS TAKEN AROUND CURVE RADIAL TO EXIST IMPROV'S. TO
 SHOW GRADE OF "K" WLY 454h
 See Pg 35 For CONTINUATION SECT'S ON 454h

LT

EXIST.
 Imp's
 "K"

RT

7.60 7.70 7.93
 BK F G
 WALK W

7.37 7.62 7.63
 BK F G
 W WALK
 UP. BLUE

6.67 6.63 6.72
 BK F G
 W W

6.11 6.20 6.25
 BK F G
 W W

5.68 5.70 5.80
 BK F G
 W W

5.37 5.33 5.46
 BK F G
 WALK W

5.20 5.30 5.42
 BK F W G
 W 17.5 17.5

141.15
 142.6
 143.07
 143.49
 143.91
 144.33
 144.70
 145.13

8.08 8.04 7.97
 C TP BK
 CB W

8.28 7.77 7.76
 G TP BK
 CB W

7.93 7.71 7.36
 G TP BK
 CB W

7.59 6.98 6.93
 G TP BK
 CB W

7.13 6.71 6.57
 G CB BK
 W

6.71 6.28 6.20
 G TP BK
 CB W

6.32 5.96 5.74
 G CB BK
 W

150.43

V-SECT 4544 (Cont)

LT.

BASE-LINE

RT.

CHK 3.10 158.93 = 158.85 (Sec B.M.)

T.P 8.50 162.03 1.69 153.53

T.P 5.08 155.22 0.29 150.14

154045 = E INNER RAIL (WLY RAIL)
ON CURVE

14498 = Toe R.R. CUT

14467 = Rim of Rail Road CUT

129.2	17.75	131.22	151.71
	30		30
	TP		TP
	RAIL		RAIL
130.0	19.2	131.2	131.2
	30		30
	TP		TP
	RAIL		RAIL
146.8	19.2	144.2	144.1
	30		30
	TP		TP
	RAIL		RAIL
3.6	6.2	6.2	6.2
50	30	30	30
	TP		TP
	RAIL		RAIL
146.4	18.9	144.4	144.4
	30		30
	TP		TP
	RAIL		RAIL
150.0	131.5	150.43	131.5
	30		30
	TP		TP
	RAIL		RAIL

X-SECT TOLL EL CATON to Colony Rd

0-59 35' LT Beg Bldg (Start)
 0-54 35' LT Edge 5' Cons. Walk ACCESS Frontage Bldg (E + WEST WALK)

0-103 21.7' E Pole # P-78400 x 32.5' RT E Steel. 5th Ev

NOTE: 150ft. P.L. PKG LOTS EXTEND FROM CB LINE EL CATON
 OR TO RIDG'S 3' LT. + RT. FROM EXIST. EDGE PAT TOLL

0-00 = S. Line EL CATON
 0-01.5 22.5' RT E TRAFFIC SIGNAL
 0-04 = CB B.C.

MID-RT CB Ret's { CB R = 10'
 CB L = 15.8' RT
 CB L = 15.3' LT

0-11.2 { 32.5' RT E TRAFFIC SIGNAL + 35.5' RT E TRAFFIC CONTROL BOX + 39.5' RT ST
 { 31' LT E TRAFFIC SIGNAL + 40' LT E 12' Palm Tree

0-14 Sky CB Line CATON

0-50 = E EL CATON (AC PAT) 100' ST. - 14 PKG. SKY

0-M. 5.92 470.18 464.26 = S.W.B.P. EL CATON 870' ST. 470.18

(2nd) LT. E RT (WALK)

465.18 465.18 465.02 465.23
 5.00 5.00 5.16 5.25
 5.00 5.00 5.16 5.25
 465.09 465.10 465.02 465.23
 5.00 5.00 5.16 5.25
 5.00 5.00 5.16 5.25
 464.95 464.98 464.91 464.17 464.26
 5.23 5.40 5.87 6.01 5.92 6.60 6.54 6.26 6.27
 5.0 3.0 2.0 1.8 1.7 2.0 3.0 3.0
 on asph. CUTT. on asph.

LIGHT.

465.3 465.0 465.02 464.63 464.49
 4.9 5.2 5.16 5.55 5.69 6.25 5.91 5.9 6.0
 5.0 3.0 20.35 20.35 6.25 19.65 19.65 30. 50
 ON ASPH. RT. CB END G. (on asph. Pav) PKG LOT

465.10 464.62 463.81 464.26
 5.89 5.56 6.37 5.92
 CB. a CO CO
 465.13 464.63 463.75 464.15
 5.25 5.55 6.42 6.03
 CB C CB

465.78 465.45 465.04 465.01 464.77 464.62 464.27 463.87 463.75 464.29 463.44 463.93 462.55
 Drive 4.50 4.72 5.12 4.97 5.44 5.56 5.91 6.31 6.43 5.99 6.24 6.25 7.63 Drive
 100 100 50 30 30 20 20 30 30 30 50 40 100
 CB C C C C C C C C C C C C C C

465.97 465.19 464.48
 4.21 4.99 5.70
 100 100 100
 (at way end comb) 100 ft. E. 1/4 end (Rt. + Islay) 100 ft.

X-SECT 704L (CONT)

1+60 (Sly line Alley)
 1+59 { 22.4 RT & Pole P 71098
 { 22.1 HT & Pole " JP 275311 (?) observed

1+46 11.7 RT & SO. GLE M.A.
 T.P. 3.12 465.64 766 462.52
 1+40 (N Alley Line) 30' RT END INCINERATOR
 END ASPH. Pav Area RT

1+38.5 31.3 LT END Conc. Drive

1+35 30' RT END Store Bldg & Bay Brick Incinerator 30' RT

1+31.5 2.6 LT Tow'ly Edge 6.5' wide Traffic Pressure Plate (Flush with Pav)

1+28 31.2 RT Bay 10.5' wide Conc. Drive

1+27 3/4 LT END Picket Fence

1+15 31.3 LT & Sid. Con. Walk
 (41.7 LT & House)
 (30.3 LT to 5' Con. Pavch.)
 25.3 LT & 5.0 wide
 Con. Steps (4 steps
 & Area)

1+00 30.9 LT Bay 3' Picket Fence
 30' RT Bay Bldg (Store)

0+99 35' LT END Store Bldg

0+94 { 30' RT Edge 6' Con. Walk (EXTENSIVE F.W. ACROSS)
 END ASPH. Pav Area LT (Front Bldg)

463.2 2.4 50
 462.9 2.7 30
 LT 462.1 3.5 20
 462.37 3.27 15
 E Pav
 Σ 462.78 2.86
 RT 462.44 3.20 14
 462.0 3.6 20
 462.3 3.3 30
 462.2 3.4 50

463.6 6.6 30
 463.1 7.1 30
 462.4 7.8 20
 462.58 7.6 15
 E Pav
 463.73 6.45 50
 Drive
 463.45 6.73 41
 LIP
 Drive
 462.98 2.66 11.7
 RT
 462.92 7.26 16
 L-RT
 GUT
 462.78 7.00 20
 462.78 7.40 30
 462.9 7.3 50
 9'wd
 0.5' ELEV
 Edge ASPH
 (Flush with grad)

463.70 6.48 50
 Drive
 463.42 6.76 31.2
 LIP
 Drive

464.0 6.2 30
 463.8 6.4 30
 463.0 7.2 20
 463.4 6.8 15
 466.10 7.08 70
 Pav
 464.00 6.8 35.3
 Walk
 463.90 6.28 31.3
 Edge

463.68 6.50
 463.06 7.12 17
 463.09 2.09 20
 463.26 6.72 30
 ASPH
 462.66 6.57 30
 WALK
 463.73 6.45 30
 WALK
 463.66 6.52 50
 WALK

464.13 6.05 35
 463.36 6.83 20
 463.37 6.81 18
 463.79 6.39
 463.15 7.03 17
 Cot
 463.17 7.01 20
 463.38 6.80 30
 ASPH
 463.65 6.53 30
 WALK
 463.48 6.53 50
 WALK
 463.65 6.53 50
 WALK

X-SECT 70-4 (CONT)

- 0+51 22.1 RT Bay 3' Picket Fence
- 0+50 Soil Sample here
- 0+43 25.6 LT E Eucalyptus (tree) (End Row of 4 trees)
24"
- 0+29 29.7 RT Bay 4' Board Fence (Fence has 56 bolts)
every 12.3 FT
- 0+18 27.5 LT E 24" Eucalyptus Tree (Bay Row of 4 trees)
evenly spaced

T.P. 6.48 467.09 5.03 460.61

3+70.02 = S Line AMHERST [-0.100 ahead] (See sketch)

3+65 } 19.0 LT E Pole # P 71040
6.0 RT E Deadman

3+53 = Sky Edge East Pav. AMHERST

3+40.02 = E AMHERST

3+32 = N Sky Edge East Pav. AMHERST

3+27 13.5 RT E Gas Valve

41

42

RT

41

462.7 462.1 461.6 461.08 461.31 460.89 461.2 461.0 460.6 460.7

5.4 5.0 5.5 6.01 5.78 6.20 5.9 6.1 6.5 6.4
50 30 20 // E. Pav. flush with 20.0 12 15 20 30 30
E. Pav. flush with 20.0

460.6

5.0
75

460.3 460.39 460.65 460.06 460.16 460.5 460.1 459.2 458.6

5.3 5.35 4.99 5.58 5.0 5.1 5.5 6.4 7.0
58.5 30 30.75 24 20 18.5 30 50
Elev 24.0 2.0 21.00 2.0 22.00 2.0 22.00
Pav. 24.0 2.0 21.00 2.0 22.00 2.0 22.00

460.21 460.20 460.28 460.42 460.39 459.95 459.76 459.11 459.12 458.76 458.49

5.45 5.44 5.36 5.22 5.15 5.19 5.10 6.53 6.52 6.88 7.15
75 30 30 20 20 20 16 20 20 30 50
edge pav. flush with 20.0 edge pav. flush with 20.0

460.18 460.04 460.04 460.17 460.18 460.13 460.92 459.51 458.95 458.79 458.58

5.46 5.60 5.60 5.47 5.46 5.51 5.62 6.13 6.69 6.85 7.06
75 30 30 20 20 20 16 20 20 30 50
edge pav. flush with 20.0 edge pav. flush with 20.0

460.14 460.12 460.08 459.96 459.95 460.02 460.00 459.56 458.78 458.58 458.22

5.45 5.52 5.56 5.60 5.69 5.62 5.64 6.08 6.86 7.06 7.42
75 30 30 30 20 20 15 20 20 30 50
edge pav. flush with 20.0 edge pav. flush with 20.0

458.78
6.86
13.5

X SECT. 704th ST (CONT.)

- 1432 34.9 LT & 2.0 CON. WALK
27.3 RT END CON DRIVE 1 Bay 8" wide Con. Coping
- 1426 46.7 RT & Single 99V.
- 1422 26.6 RT = 8V4 grade Conk. WALK & Drive
25.8 RT Bay Camb. WALK & Con. Drive
- 1416 30.6 RT END Brick wall
- 1405 28.0 LT Bay 2nd Row Eucalyptus (3 trees 12" 4")
21.5 LT Bay Row of Eucalyptus Trees (3 trees av. 18" 5" av. 10")
- 1400 20.9 LT END Picket Fence
- 0196.5 20' LT & 7' Con. Drive (9V4 approx 12.5 av
2 approx 12.5 av)
- 0177 26.8 RT & 10' Con. Drive ; 42.0 RT & Single 99V.
- 0175 21.2 LT & 3.0 Con. WALK
- 0167 25.4 RT Bay 8" high 4" wide Brick wall
- 0166 30.2 RT END 4' Board Fence

LT

E

RT

463.26
3.83 4.08
40 34.7
WALK EIP

461.97 462.15 461.55 461.46
5.12 4.94 5.54 5.63
29.3 27.3 27.3 4.5
EIP Con. FTG Drive

461.37
5.72
46.7
FTG

461.94 461.36
5.15 5.73
EIP Drive

461.98 462.99 461.75 460.92
5.11 4.10 5.24 6.17
30.6 30.6 30.6 4.5
WALL FTG EIP Con.

462.8
4.9 5.1
50 30

462.0
5.3
20

461.8
5.26
E.PAV.

461.83
4.98

462.11
5.38
10
CONV

461.71
5.6
20

461.5
5.9
30

461.2
5.9
40

461.2

462.14
4.95 5.24
30 20
Drive EIP

461.85
5.24
20
EIP

462.04
5.05 5.27
30 21.2
WALK EIP

461.82
5.27
21.2
EIP

461.07
6.00 4.2
26.8 4.2
EIP FTG

460.73
6.36
4.2
FTG

461.47
5.62 4.62
25.6 25.6
Tr FTG

462.47
4.62
25.6
FTG

467.09

XSECT 7076 (CONT)

2450

2415

2410

2400

1788.5

1786.5

1774.5

1770

1762

T.P.

1755

1750

25.3 L^RE Bay 4" wide temporary con. blk. Coping
19.5 RT to ELY END 4.5 wide Rock wall (E/W WALL)

18.0 L^RE 9.5 Con. Drive 7 1/2 R to Fl 99K

29.3 L^RE 2.5 Con WALK

20.1 RT E 3.0 Con WALK (WALK ON CURVE)

19.4 RT to ELY END 4" wide Con. WALL (E/W WALL)

16 RT E 8' Con Drive - No garage

30.2 RT END Coping

6.22 471.22 2.09 465.00

19.2 RT E Pole P 71093

25 LT END 2nd Row Trees

18.5 L^RE END Row Edge Trees

468.6
2.6
5.0

467.4
5.8
3.0

466.1
5.1
2.0

465.06
6.16
11
E.PAV

465.24
5.98

464.83
6.39
11
E.PAV

465.1
6.1
2.0

465.3
5.9
3.0

465.3
5.9
4.0

464.92
6.30
19.5
7.0

466.2
4.60
17.5
7.6

464.98
6.84
18.0
up Pav

464.64
6.58
2.0

465.41
5.81
3.0

468.31
2.97
7.3
Fl.

465.9
5.5
5.0

464.9
6.3
3.0

464.4
6.8
2.0

463.70
7.52
11
E.PAV

464.24
6.98

463.67
7.55
11
E.PAV

463.5
7.7
2.0

463.4
7.8
3.0

463.2
8.0
4.0

465.10
6.12
1.0
WALK

464.80
6.42
3.0

464.78
6.44
2.93
4.0

463.45
7.77
2.0
E.PAV

463.27
7.95
3.0
WALK

463.13
8.07
3.8
WALK

463.46
7.76
19.4
7.0
E.PAV

464.52
6.70

463.02
8.20
16
E.PAV

462.70
8.52
3.0
Drive

462.47
8.75
4.0

462.58
8.64
30.2
7.0

463.18
8.04
30.2
7.6

464.6
2.5
5.0

463.4
3.7
3.0

463.2
3.9
2.0

462.62
4.47
11
E.PAV

471.22
3.97

463.12
4.52
11
E.PAV

462.57
4.3
16

462.8
4.7
2.0

462.4
4.7
3.0

462.4
4.7
4.0

467.09

X-SECT. 7024 (CONT)

3461 20.9 RT E 8' CON. DRIVE 1 130' RT FLAG

3450

3417 16.8 RT E 30° Tiro - EUCALYPTUS

3400

2479 14.1 RT E 11.0 CON. DRIVE; 83' RT FLAG

2475

2474 18.6 RT E Pole # P 71024

2472.5 20.5 RT ELY END 6" wide CON. Rd. WALL (E & W RT)

2460 13.1 RT E DNL - sensor

2459 19.4 RT E 8' CON. DRIVE 2 978' RT. FL. PAR.

2453.5 21.3 LT to Wly end 6" CONC. CUR. WALL (RT & W RT)

2453 22.4 LT. END Temp Coping

LT.

E

RT

45

471.0 470.5 469.9 469.5 467.2 466.75 466.80 466.20 466.75 466.91 465.18
 0.2 0.7 1.3 1.7 4.0 4.47 4.42 2.02 4.9 4.6 4.5 6.04
 40 30 20 15 12 8.6 12 20 30 40 130
 E.PAV. E.PAV. E.PAV. FI.

469.9 469.4 468.5 468.1 466.3 466.01 466.16 465.56 466.4 466.8 465.7
 13 18 27 31 49 5.21 5.06 5.66 4.8 4.1 4.5
 40 30 20 15 12 9.3 11.6 20 30 40
 E.PAV. E.PAV. E.PAV. FI.

470.4 468.2 467.7 467.2 465.7 465.53 465.70 465.58 466.36 466.36 464.71
 0.8 3.0 3.5 4.0 5.5 5.69 5.52 5.64 4.86 4.86 6.51
 50 30 20 15 12 7.3 6.08 14.1 20 30 83
 E.PAV. E.PAV. E.PAV. Drive FI.

470.4 468.2 467.7 467.2 465.7 465.53 465.70 465.14 465.45
 0.8 3.0 3.5 4.0 5.5 5.69 5.52 6.08 5.77
 50 30 20 15 12 7.3 11.6 14.1 40
 E.PAV. E.PAV. Drive (See above)

465.14 465.45
 6.08 5.77
 11.6 14.1
 40 Drive (See above)

466.49 467.34
 4.73 3.88
 20.5 20.5
 TP → E.P.

464.92 465.24 465.27 465.40 465.55
 6.30 13.1 Rim 5.98 5.98 5.82 5.67
 19.4 20 30 47.8
 Lip FI.

466.5 467.14
 4.7 4.02
 21.3 21.3
 TP TP

471.22

INDEXED

DEC 2 1954

Stake proposed opening NELY COR TO ^{TR}
and AMHERST ST.

Stubs on points as shown

C. ALLEN, D. Sisson, C. Powell

12-1-54

Ref Page 37- TP Sheet 4304

See DWG 5396-B.

Mohawk

ST

18

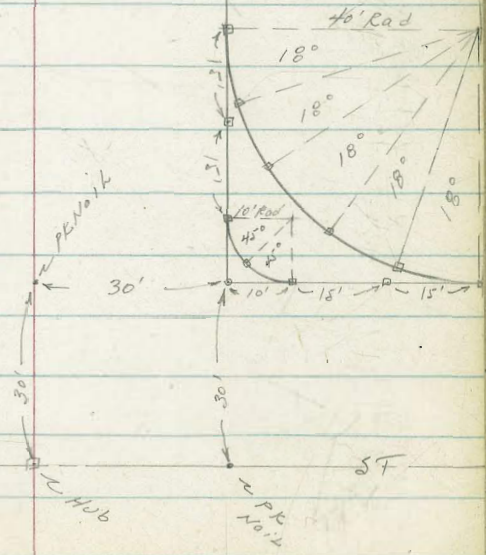
20' 06" Rad
Hub used
for line

EL COJON

BLVD.



AMHERST



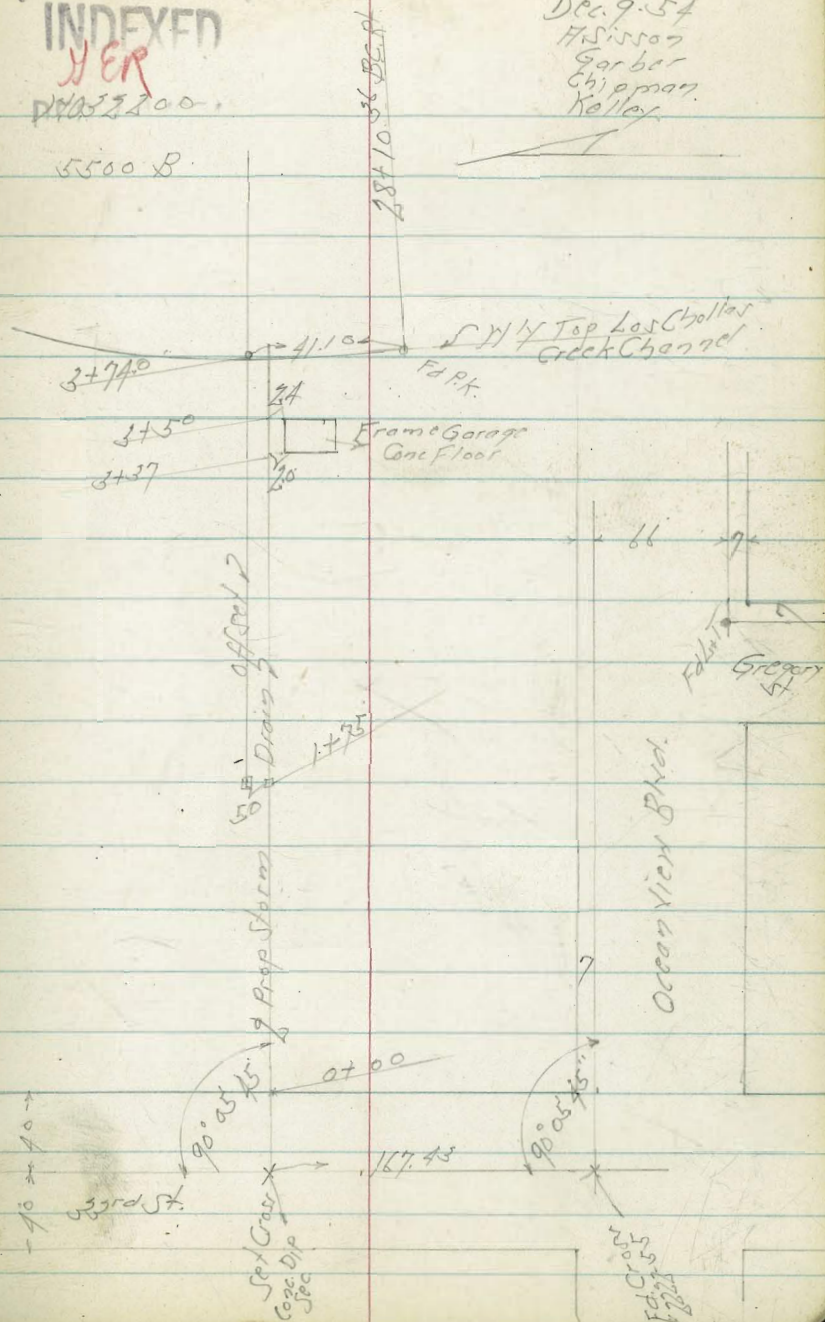
Proposed Storm Drain Lots G & H. Blk 7
 Central Homestead
 North of Ocean View Blvd. 33rd St. to Nabors.
 Levels next page

INDEXED
 YER
 2222-200.

5500 B

Dec. 9-54
 H. Sisson
 Garber
 Chipman
 Kelley

49



F.H. Haberdisc
 7199.72
 #2222-55

W.N

B

Rt. 5

+75 10' Rt. Wire Fence

101 112 130 140 142
10 5 5 10

+50 7' Rt. Wire Fence

93 101 125 138 140
10 5 5 10

+17 30' Rt. N 4 5' Diam Fuc. Tree

+70

90 95 109 134 134
10 5 5 10 10
3. Wire Fence

+63 60' Rt. of B: N 4 5' Wood Wire Fence

+50

89 88 92 104 125
10 5 5 10

0+0 = F.L. 33rd St.

84 85 85 88 124
10 5 5 10

0-40 = 33rd St.

884 855 857
10-Cont 10-Cont 10-Cont

BM

SEBP
14.80 Ocean View
733rd
(14.92)

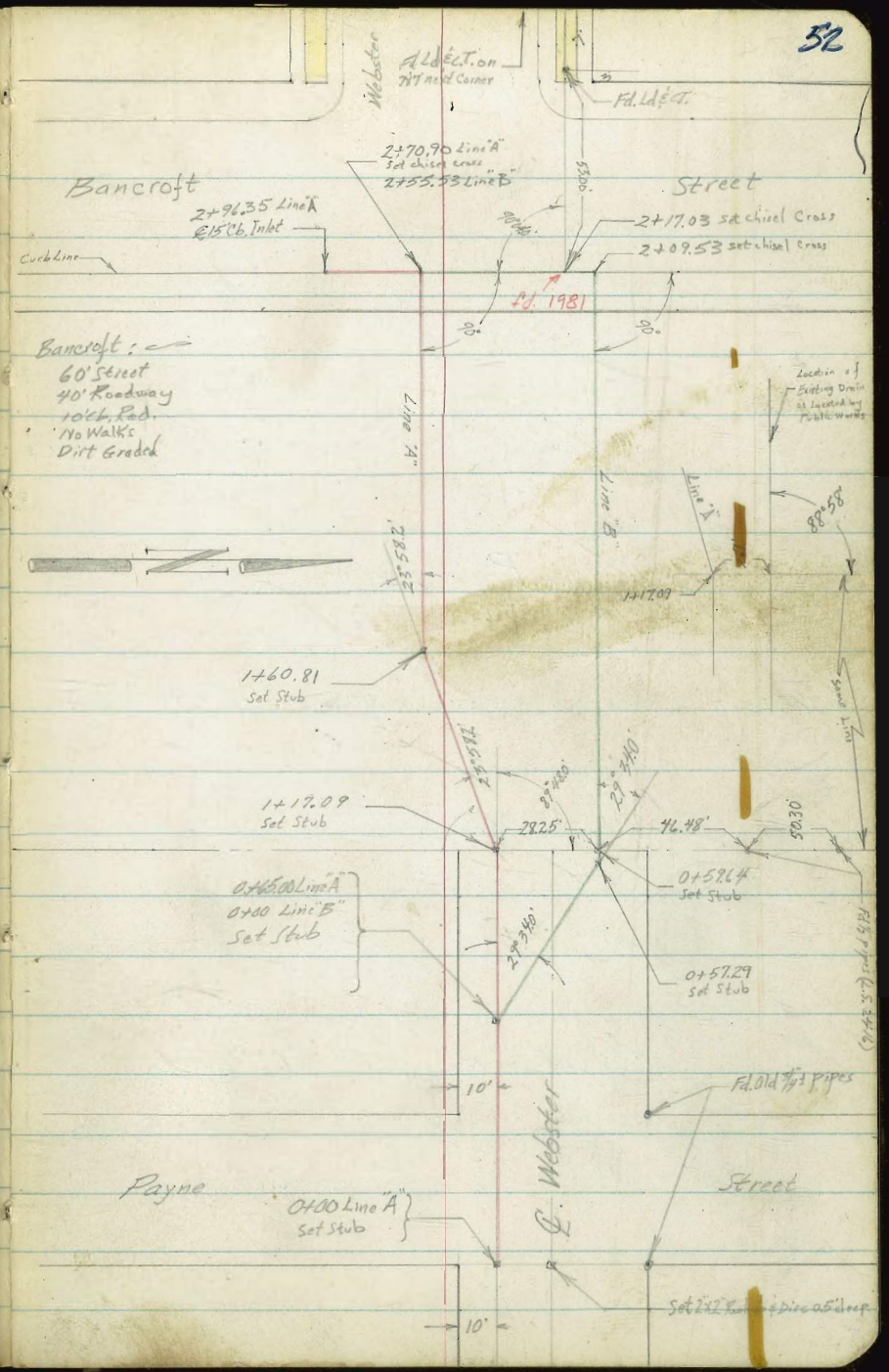
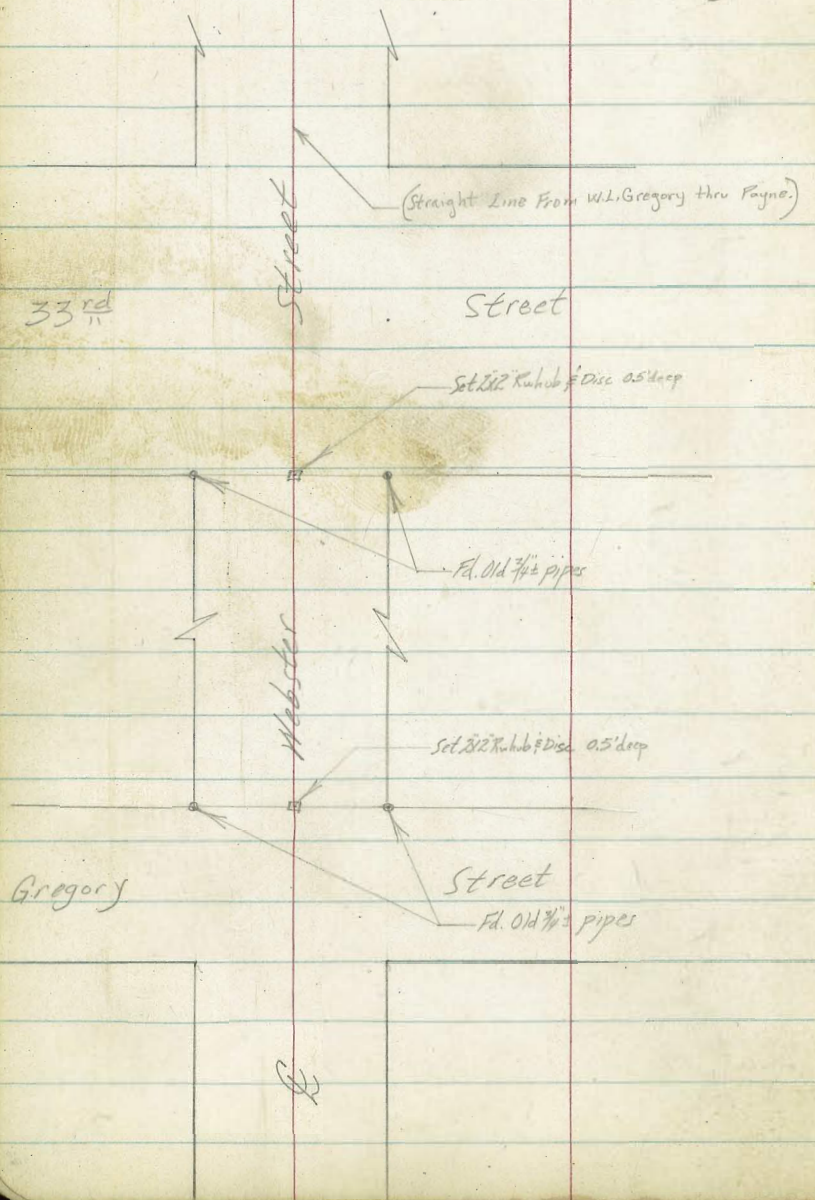
BM

SEBP
17.04 Ocean View
799rd

		Lt.	B	Rt.	
+92	= N'y. Bottom Conc Channel	2 $\frac{0}{10}$	1.97	1.93	
+74	= N'y. Top Conc. Los Chollas Creek Channel	14.07	14.01	13.99	14.00
+50		15.6	14.9	15.3	15.0
+48	0.6 Rt = Fly Wire Fence				
+25	0.0 = Woven Wire Fence	9.6	13.9	15.1	14.9
+16	4' Lt = Sly 18" Willow Tree				
340	1.0 Lt = Woven Wire Fence	9.4	9.2	13.2	15.0
+85	3.0 Rt of B = N'y 14" Diam Fir Tree				
+50	0.5 Rt Woven Wire Fence	9.1	10.0	13.8	14.0
200	0.0 Rt Wire Fence	10.5	11.6	13.8	14.0
+92	2.0 Rt of B = N'y 5.0" Diam Fir Tree				14.2

Roberts
Cota
Moralez
Kelly
1-31-55
INO.#21307

Survey for Proposed Storm Drain
In Webster St., Bancroft
M & R
see F.B. 1381 pg 7 & 79 F.B. 579 pg. 41



Cont'd From Page 52

"A" Line

J.M.T.
6.6.53

Lt

±

R

53

0+35 { 68 Lt to Near Edge P.Pole # P3275
0.2 Lt to Near Edge clothes Line Pole

20.6

14.0

0+01 0.3' R 24" Iron Curvert (outlet)

19.3

17.44

15.3

17.6

GRD

0.3

INVERT

0+00 East Line Payne Street

18.3

16.3

check 13.07 21.53 = 21.56 Top of fire hydrant SE. Corner 33rd & Webster

T.P. 0.18 34.60 X 13.17 34.42

34.60 X

T.P. 0.37 47.59 13.04 47.22

T.P. 0.28 60.26 13.27 59.98

T.P. 0.13 73.25 13.31 73.12

B.M. 1.31 86.43

sw 10th 2d & cr.
8512 Webster & 32nd

1712

44.3

3.0

1701

39.3

8.0

T.P.

12.84 47.30 $\bar{\Delta}$ 0.14 34.46 *47.30 $\bar{\Delta}$

0790

33.6

0.8

0773

28.2

6.4

0769 Hit Pile of Junk $\frac{1}{2}$ clothes line Pole

23.5

11.1

0765 = 0100 Line B

0750 56 Lt. to dead man

34.60 $\bar{\Delta}$ 34.60 $\bar{\Delta}$

1768.81 - 3 Rt to S.E. Corner garage

1766 3" Peach tree on £

1761 3° Rt to clothes Line Pole

1760.81 4 Rt. 3324 to Fence (Rt Lt to forward tan.)

51.3

54

49.3

7.4

1739

T.P. 9.67 56.72 π 0.25 47.0556.72 π

46.3

1.0

1720

45.2

2.1

1717.09 4 Left

4730 π 4730 π

T.P. 2.20 61.89 (NWBP

Bancroft, Webster)

58.08

57.11

53.19

6.01

6.98

10.90

cb

Guts

INVERT

2+96.35 ♀ 15 Curb Inlet

2+70.90 L Lt ^{East} (Corbline Bancroft)

58.52

58.19

5.57

5.9

cb

Gut

2+59.9 2 1/2 Lt to End Fence
1 1/2 Rt to Conc drive

58.7

5.4

T.P. 7.78 64.09 ♂ oil 56.61

64.09

2+42.3 { 2 1/2 Rt to Conc. Drive
7 Lt to NW Corner House
2 1/2 Lt to fence

57.1

+0.4

2+05.8 4 1/2 Rt to Conc. Driveway (South Edge)
7 Lt to NE. Corner House

53.9

2.8

1+88.8 3 1/2 Lt to fence
3 Rt. to S.W. Corner Garage

52.8

3.9

56.72 ♂

56.72 ♂

Cont'd From Page 56

Line "B"

24

E

Rt. 57

0+60.3 Hit fence. 3 ft to fence corner

0+57.29 L: Left

43.7

11.3

T.P. 12.20 55.05 ∇ 0.18 42.85

55.05 ∇

0+41

40.3

2.7

0+21

33.0

10.0

0+10

27.5

15.5

0+00 = 0+65 Line "A"

23.5

17.5

T.P. 8.57 43.03 ∇ 37.46* Pg 64

43.03 ∇

1+73 } 18 Lt End fence
 22 Lt Begin conc block wall
 32 Lt to NW Corner House

57.2
 8.3

1+60 33 Rt to S.E. Corner House

55.5
 10.0

1+47.60 31 Lt to N.E. Corner House

T.P. 11.38 65.48 π 0.95 57.10

65.48 π

1+34 22 Lt to fence

53.6
 1.5

1+05

51.3
 3.8

0+76

48.3
 6.8

55.05 π

55.05 π

check

360 61.88 NWBP Bancroft $\frac{1}{2}$ Webster

2155.53 = 2 + 70.90 Line "A"

2+34.5 3rd Lt center MH

2109.53 L Left (East Curb Line Bancroft)

59.79 59.48

569 60
Curb Gut

2+08 0.8 Rt & Gas Valve(?)

59.7

58

1+99.5 Hit Fence. 2nd Lt End curb block wall1+91.5 2nd Rt to Free Standing TV Antenna

59.1

64

1+84.2 3rd Rt to S.W. Corner House

65.48 T

65.48 T

check

$$3.66 \quad 85.09 = 85.12$$

T.P.

$$11.05 \quad 88.75 \quad 0.47 \quad 77.70$$

T.P.

$$12.83 \quad 78.17 \quad 0.14 \quad 65.34$$

$$65.48 \pi$$

37
41
54
37
93
19

- 0
- 1
- 2
- 3
- 4
- 5
- 6
- 7
- 8
- 9
- 10
- 11
- 12
- 13
- 14
- 15
- 16
- 17
- 18
- 19
- 20
- 21
- 22
- 23
- 24
- 25
- 26
- 27
- 28
- 29
- 30
- 31
- 32
- 33
- 34
- 35
- 36
- 37
- 38
- 39
- 40
- 41
- 42
- 43
- 44
- 45
- 46
- 47
- 48
- 49
- 50

100.07
 100.00
 100.00
 100.00
 100.64
 32.20
 125.18
 658.09



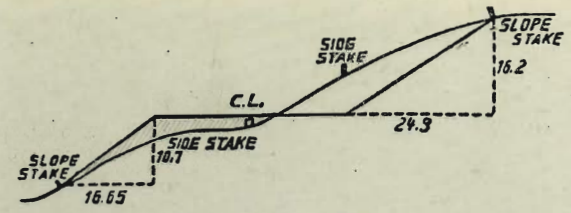
21.56 SETUP Fire Hyd
 23 p/water

2550
 12752

346
 23.3

420
 235
 195

128.23



DISTANCES FROM SIDE STAKES FOR CROSS-SECTIONING.
SLOPE 1 1/2 TO 1. ROADWAY OF ANY WIDTH.

	0	.1	.2	.3	.4	.5	.6	.7	.8	.9	
0	0.00	0.15	0.30	0.45	0.60	0.75	0.90	1.05	1.20	1.35	0
1	1.50	1.65	1.80	1.95	2.10	2.25	2.40	2.55	2.70	2.85	1
2	3.00	3.15	3.30	3.45	3.60	3.75	3.90	4.05	4.20	4.35	2
3	4.50	4.65	4.80	4.95	5.10	5.25	5.40	5.55	5.70	5.85	3
4	6.00	6.15	6.30	6.45	6.60	6.75	6.90	7.05	7.20	7.35	4
5	7.50	7.65	7.80	7.95	8.10	8.25	8.40	8.55	8.70	8.85	5
6	9.00	9.15	9.30	9.45	9.60	9.75	9.90	10.05	10.20	10.35	6
7	10.50	10.65	10.80	10.95	11.10	11.25	11.40	11.55	11.70	11.85	7
8	12.00	12.15	12.30	12.45	12.60	12.75	12.90	13.05	13.20	13.35	8
9	13.50	13.65	13.80	13.95	14.10	14.25	14.40	14.55	14.70	14.85	9
10	15.00	15.15	15.30	15.45	15.60	15.75	15.90	16.05	16.20	16.35	10
11	16.50	16.65	16.80	16.95	17.10	17.25	17.40	17.55	17.70	17.85	11
12	18.00	18.15	18.30	18.45	18.60	18.75	18.90	19.05	19.20	19.35	12
13	19.50	19.65	19.80	19.95	20.10	20.25	20.40	20.55	20.70	20.85	13
14	21.00	21.15	21.30	21.45	21.60	21.75	21.90	22.05	22.20	22.35	14
15	22.50	22.65	22.80	22.95	23.10	23.25	23.40	23.55	23.70	23.85	15
16	24.00	24.15	24.30	24.45	24.60	24.75	24.90	25.05	25.20	25.35	16
17	25.50	25.65	25.80	25.95	26.10	26.25	26.40	26.55	26.70	26.85	17
18	27.00	27.15	27.30	27.45	27.60	27.75	27.90	28.05	28.20	28.35	18
19	28.50	28.65	28.80	28.95	29.10	29.25	29.40	29.55	29.70	29.85	19
20	30.00	30.15	30.30	30.45	30.60	30.75	30.90	31.05	31.20	31.35	20
21	31.50	31.65	31.80	31.95	32.10	32.25	32.40	32.55	32.70	32.85	21
22	33.00	33.15	33.30	33.45	33.60	33.75	33.90	34.05	34.20	34.35	22
23	34.50	34.65	34.80	34.95	35.10	35.25	35.40	35.55	35.70	35.85	23
24	36.00	36.15	36.30	36.45	36.60	36.75	36.90	37.05	37.20	37.35	24
25	37.50	37.65	37.80	37.95	38.10	38.25	38.40	38.55	38.70	38.85	25
26	39.00	39.15	39.30	39.45	39.60	39.75	39.90	40.05	40.20	40.35	26
27	40.50	40.65	40.80	40.95	41.10	41.25	41.40	41.55	41.70	41.85	27
28	42.00	42.15	42.30	42.45	42.60	42.75	42.90	43.05	43.20	43.35	28
29	43.50	43.65	43.80	43.95	44.10	44.25	44.40	44.55	44.70	44.85	29
30	45.00	45.15	45.30	45.45	45.60	45.75	45.90	46.05	46.20	46.35	30
31	46.50	46.65	46.80	46.95	47.10	47.25	47.40	47.55	47.70	47.85	31
32	48.00	48.15	48.30	48.45	48.60	48.75	48.90	49.05	49.20	49.35	32
33	49.50	49.65	49.80	49.95	50.10	50.25	50.40	50.55	50.70	50.85	33
34	51.00	51.15	51.30	51.45	51.60	51.75	51.90	52.05	52.20	52.35	34
35	52.50	52.65	52.80	52.95	53.10	53.25	53.40	53.55	53.70	53.85	35
36	54.00	54.15	54.30	54.45	54.60	54.75	54.90	55.05	55.20	55.35	36
37	55.50	55.65	55.80	55.95	56.10	56.25	56.40	56.55	56.70	56.85	37
38	57.00	57.15	57.30	57.45	57.60	57.75	57.90	58.05	58.20	58.35	38
39	58.50	58.65	58.80	58.95	59.10	59.25	59.40	59.55	59.70	59.85	39
40	60.00	60.15	60.30	60.45	60.60	60.75	60.90	61.05	61.20	61.35	40
41	61.50	61.65	61.80	61.95	62.10	62.25	62.40	62.55	62.70	62.85	41
42	63.00	63.15	63.30	63.45	63.60	63.75	63.90	64.05	64.20	64.35	42
43	64.50	64.65	64.80	64.95	65.10	65.25	65.40	65.55	65.70	65.85	43
44	66.00	66.15	66.30	66.45	66.60	66.75	66.90	67.05	67.20	67.35	44
45	67.50	67.65	67.80	67.95	68.10	68.25	68.40	68.55	68.70	68.85	45
46	69.00	69.15	69.30	69.45	69.60	69.75	69.90	70.05	70.20	70.35	46
47	70.50	70.65	70.80	70.95	71.10	71.25	71.40	71.55	71.70	71.85	47
48	72.00	72.15	72.30	72.45	72.60	72.75	72.90	73.05	73.20	73.35	48
49	73.50	73.65	73.80	73.95	74.10	74.25	74.40	74.55	74.70	74.85	49
50	75.00	75.15	75.30	75.45	75.60	75.75	75.90	76.05	76.20	76.35	50