

JAN 1 1965

DISTANCES FROM SIDE STAKES FOR CROSS-SECTIONING
SLOPE 1 TO 1. ROADWAY OF ANY WIDTH

	0	.1	.2	.3	.4	.5	.6	.7	.8	.9	
0	0.00	0.10	0.20	0.30	0.40	0.50	0.60	0.70	0.80	0.90	0
1	1.00	1.10	1.20	1.30	1.40	1.50	1.60	1.70	1.80	1.90	1
2	2.00	2.10	2.20	2.30	2.40	2.50	2.60	2.70	2.80	2.90	2
3	3.00	3.10	3.20	3.30	3.40	3.50	3.60	3.70	3.80	3.90	3
4	4.00	4.10	4.20	4.30	4.40	4.50	4.60	4.70	4.80	4.90	4
5	5.00	5.10	5.20	5.30	5.40	5.50	5.60	5.70	5.80	5.90	5
6	6.00	6.10	6.20	6.30	6.40	6.50	6.60	6.70	6.80	6.90	6
7	7.00	7.10	7.20	7.30	7.40	7.50	7.60	7.70	7.80	7.90	7
8	8.00	8.10	8.20	8.30	8.40	8.50	8.60	8.70	8.80	8.90	8
9	9.00	9.10	9.20	9.30	9.40	9.50	9.60	9.70	9.80	9.90	9
10	10.00	10.10	10.20	10.30	10.40	10.50	10.60	10.70	10.80	10.90	10
11	11.00	11.10	11.20	11.30	11.40	11.50	11.60	11.70	11.80	11.90	11
12	12.00	12.10	12.20	12.30	12.40	12.50	12.60	12.70	12.80	12.90	12
13	13.00	13.10	13.20	13.30	13.40	13.50	13.60	13.70	13.80	13.90	13
14	14.00	14.10	14.20	14.30	14.40	14.50	14.60	14.70	14.80	14.90	14
15	15.00	15.10	15.20	15.30	15.40	15.50	15.60	15.70	15.80	15.90	15
16	16.00	16.10	16.20	16.30	16.40	16.50	16.60	16.70	16.80	16.90	16
17	17.00	17.10	17.20	17.30	17.40	17.50	17.60	17.70	17.80	17.90	17
18	18.00	18.10	18.20	18.30	18.40	18.50	18.60	18.70	18.80	18.90	18
19	19.00	19.10	19.20	19.30	19.40	19.50	19.60	19.70	19.80	19.90	19
20	20.00	20.10	20.20	20.30	20.40	20.50	20.60	20.70	20.80	20.90	20
21	21.00	21.10	21.20	21.30	21.40	21.50	21.60	21.70	21.80	21.90	21
22	22.00	22.10	22.20	22.30	22.40	22.50	22.60	22.70	22.80	22.90	22
23	23.00	23.10	23.20	23.30	23.40	23.50	23.60	23.70	23.80	23.90	23
24	24.00	24.10	24.20	24.30	24.40	24.50	24.60	24.70	24.80	24.90	24
25	25.00	25.10	25.20	25.30	25.40	25.50	25.60	25.70	25.80	25.90	25
26	26.00	26.10	26.20	26.30	26.40	26.50	26.60	26.70	26.80	26.90	26
27	27.00	27.10	27.20	27.30	27.40	27.50	27.60	27.70	27.80	27.90	27
28	28.00	28.10	28.20	28.30	28.40	28.50	28.60	28.70	28.80	28.90	28
29	29.00	29.10	29.20	29.30	29.40	29.50	29.60	29.70	29.80	29.90	29
30	30.00	30.10	30.20	30.30	30.40	30.50	30.60	30.70	30.80	30.90	30
31	31.00	31.10	31.20	31.30	31.40	31.50	31.60	31.70	31.80	31.90	31
32	32.00	32.10	32.20	32.30	32.40	32.50	32.60	32.70	32.80	32.90	32
33	33.00	33.10	33.20	33.30	33.40	33.50	33.60	33.70	33.80	33.90	33
34	34.00	34.10	34.20	34.30	34.40	34.50	34.60	34.70	34.80	34.90	34
35	35.00	35.10	35.20	35.30	35.40	35.50	35.60	35.70	35.80	35.90	35
36	36.00	36.10	36.20	36.30	36.40	36.50	36.60	36.70	36.80	36.90	36
37	37.00	37.10	37.20	37.30	37.40	37.50	37.60	37.70	37.80	37.90	37
38	38.00	38.10	38.20	38.30	38.40	38.50	38.60	38.70	38.80	38.90	38
39	39.00	39.10	39.20	39.30	39.40	39.50	39.60	39.70	39.80	39.90	39
40	40.00	40.10	40.20	40.30	40.40	40.50	40.60	40.70	40.80	40.90	40
41	41.00	41.10	41.20	41.30	41.40	41.50	41.60	41.70	41.80	41.90	41
42	42.00	42.10	42.20	42.30	42.40	42.50	42.60	42.70	42.80	42.90	42
43	43.00	43.10	43.20	43.30	43.40	43.50	43.60	43.70	43.80	43.90	43
44	44.00	44.10	44.20	44.30	44.40	44.50	44.60	44.70	44.80	44.90	44
45	45.00	45.10	45.20	45.30	45.40	45.50	45.60	45.70	45.80	45.90	45
46	46.00	46.10	46.20	46.30	46.40	46.50	46.60	46.70	46.80	46.90	46
47	47.00	47.10	47.20	47.30	47.40	47.50	47.60	47.70	47.80	47.90	47
48	48.00	48.10	48.20	48.30	48.40	48.50	48.60	48.70	48.80	48.90	48
49	49.00	49.10	49.20	49.30	49.40	49.50	49.60	49.70	49.80	49.90	49
50	50.00	50.10	50.20	50.30	50.40	50.50	50.60	50.70	50.80	50.90	50

Distance of slope stake from side or shoulder stake for any width roadway, slope 1 to 1. If ground is nearly level, the out or fill at side stake is located by the double entry method in left column and top row. The number in body of table in same row and column gives distance from side stake to slope stake. If ground is not level estimate the difference in elevation between the side stake and slope stake, lower target by this amount if cut, elevate if fill. Add this amount to cut or fill and find distance in table. Set up rod at this point, and line of sight should cut target. If it does not make the slight adjustment necessary.

TABLE XIII—CORRECTIONS FOR TANGENTS AND EXTERNALS

These corrections are to be added to the approximate values, found by dividing the tangent, or external, for a 1° curve (Table VIII) by the degree of curve, in order to obtain the true tangents, or externals. Intermediate values may be obtained by interpolation.

FOR TANGENTS ADD

Central Angle	DEGREE OF CURVE													
	5°	10°	15°	20°	25°	30°	35°	40°	45°	50°	55°	60°	65°	70°
10°	.03	.06	.09	.13	.16	.19	.22	.25	.28	.31	.34	.38	.42	.46
15°	.04	.10	.14	.19	.24	.29	.34	.39	.45	.51	.58	.65	.72	.79
20°	.06	.13	.19	.26	.32	.39	.45	.51	.58	.65	.72	.79	.84	.90
25°	.08	.16	.24	.33	.40	.49	.58	.67	.75	.83	.90	.99	1.06	1.14
30°	.10	.19	.29	.39	.49	.59	.69	.79	.89	.99	1.09	1.20	1.29	1.39
35°	.11	.22	.34	.47	.58	.69	.79	.81	.92	1.04	1.29	1.42	1.54	1.66
40°	.13	.26	.40	.53	.67	.80	.93	1.06	1.20	1.34	1.49	1.64	1.79	1.94
45°	.15	.30	.44	.60	.76	.91	1.06	1.21	1.37	1.52	1.70	1.87	2.04	2.21
50°	.17	.34	.51	.68	.85	1.02	1.19	1.36	1.54	1.72	1.91	2.10	2.29	2.48
55°	.19	.38	.57	.76	.95	1.14	1.32	1.52	1.72	1.92	2.14	2.35	2.56	2.77
60°	.21	.42	.63	.84	1.05	1.27	1.49	1.71	1.94	2.17	2.38	2.60	2.83	3.07
65°	.23	.46	.69	.93	1.16	1.40	1.64	1.88	2.13	2.38	2.63	2.88	3.13	3.39
70°	.25	.51	.76	1.02	1.28	1.54	1.80	2.06	2.33	2.60	2.88	3.16	3.44	3.72
75°	.27	.56	.83	1.12	1.40	1.69	1.98	2.27	2.57	2.87	3.16	3.47	3.78	4.09
80°	.30	.61	.91	1.22	1.53	1.84	2.15	2.46	2.78	3.10	3.44	3.78	4.12	4.46
85°	.33	.66	1.00	1.33	1.68	2.02	2.36	2.70	3.05	3.40	3.77	4.14	4.55	4.89
90°	.36	.72	1.09	1.45	1.83	2.20	2.57	2.94	3.32	3.70	4.10	4.50	4.91	5.32
95°	.39	.79	1.19	1.55	2.00	2.40	2.80	3.20	3.61	4.02	4.40	4.98	5.38	5.83
100°	.43	.86	1.30	1.74	2.18	2.62	3.06	3.50	3.95	4.40	4.88	5.37	5.85	6.34
110°	.51	1.03	1.56	2.08	2.61	3.14	3.67	4.21	4.76	5.31	5.86	6.43	7.01	7.60
120°	.62	1.25	1.93	2.52	3.16	3.81	4.45	5.11	5.77	6.44	7.12	7.80	8.50	9.22

FOR EXTERNALS ADD

Central Angle	DEGREE OF CURVE													
	5°	10°	15°	20°	25°	30°	35°	40°	45°	50°	55°	60°	65°	70°
10°	.001	.003	.004	.006	.007	.008	.009	.011	.012	.014	.015	.017	.018	.020
15°	.003	.007	.010	.014	.018	.023	.027	.029	.032	.035	.039	.043	.047	.051
20°	.006	.011	.017	.022	.028	.034	.038	.045	.051	.057	.063	.070	.076	.083
25°	.009	.018	.027	.036	.046	.056	.065	.074	.083	.093	.106	.120	.127	.135
30°	.013	.025	.038	.051	.065	.078	.090	.103	.116	.129	.149	.170	.179	.188
35°	.018	.035	.054	.072	.086	.109	.131	.153	.175	.197	.213	.230	.247	.264
40°	.023	.046	.070	.093	.117	.141	.172	.203	.234	.265	.277	.290	.315	.341
45°	.030	.060	.093	.119	.153	.184	.216	.254	.289	.325	.351	.378	.411	.445
50°	.037	.075	.116	.151	.189	.227	.266	.305	.345	.384	.425	.467	.508	.550
55°	.046	.093	.142	.188	.236	.283	.332	.381	.420	.479	.530	.582	.641	.700
60°	.056	.112	.168	.225	.283	.340	.398	.457	.516	.575	.636	.697	.774	.851
65°	.067	.135	.204	.273	.343	.412	.483	.554	.625	.697	.771	.845	.922	1.01
70°	.080	.159	.240	.321	.403	.485	.568	.652	.735	.819	.906	.994	1.08	1.17
75°	.095	.182	.286	.383	.480	.578	.678	.777	.877	.977	1.07	1.18	1.29	1.39
80°	.110	.220	.332	.445	.558	.671	.787	.903	1.02	1.13	1.25	1.38	1.50	1.62
85°	.128	.259	.391	.524	.657	.790	.926	1.06	1.20	1.34	1.47	1.62	1.76	1.91
90°	.149	.299	.450	.603	.756	.910	1.07	1.22	1.38	1.54	1.70	1.87	2.03	2.20
95°	.174	.350	.522	.706	.885	1.06	1.25	1.43	1.62	1.80	1.99	2.18	2.38	2.58
100°	.200	.401	.604	.809	1.01	1.22	1.43	1.64	1.85	2.06	2.28	2.50	2.73	2.96
110°	.268	.536	.806	1.08	1.35	1.63	1.91	2.20	2.48	2.76	3.05	3.35	3.66	3.96
120°	.360	.721	1.08	1.45	1.82	2.19	2.57	2.95	3.33	3.72	4.11	4.50	4.91	5.32

INDEX

Pgs

Levels-curbs etc 5th, n. of Pennsylvania	1
X-SEC Alley, BKA ^{Chalworth Estates} 130k 75 PR ^{Lot 111}	5
X-SECT ALLEY B/K 42 Ocean Beach. EBERS to S. cliffs	9
Alley B/K 42 - O/B. Ebers-Sunset	10
X-SEC La Paloma - Savoy-Catalina	19
X-SEC Hill St. Cornish Dr. to Alexandria	25
" " Sta 0+00 - 6+643	30
X-SECT 54th PIROTTA to LAUREL ^{LOC. + Elev's}	31
Levels on NW curb Ect. Cumberland + Calle ^{Trepadoca}	
X-SECT. EGRET: Tooley ST to 60th	63

Cross Section East Side 5th Ave
Pennsylvania to Evans Pl.
Also North Side Pennsylvania East of 5th Ave
Levels next page

April 1-52

H. J. Simon

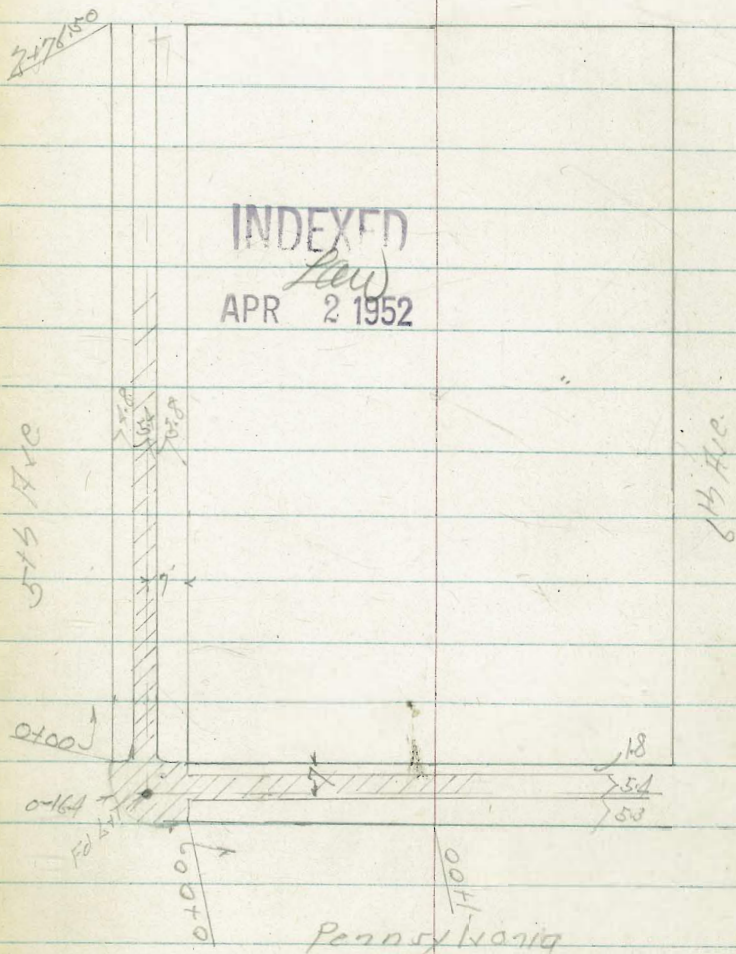
Garber

Rorer

Fritz

No. 20006

Evans Place



INDEXED
Lee
APR 2 1952

Pennsylvania

Blk. South

5th Ave.

Fast/Curb
Barclays

Rt. East 2

+75

283.78
57.5
10.6
Walk

283.15
488
0.0-15

283.21
482
1.8
Walk

283.33
470
10.2
Walk

+70

282.57
541
0.0

283.00
503
0.0

283.03
500
48

283.15
488
10.2

+75

282.03
57.5
0.0

282.83
520
0.0

282.89
57.4
4.8

282.99
57.0
10.2

+50

282.15
57.8
0.0

282.53
565
0.0

282.66
527
4.8

282.74
520
10.2

+25

281.85
60.8
0.0

282.40
566
0.0

282.47
556
48

282.62
591
10.2

040 = North Line Pennsylvania

282.78
62.5
0.0

282.19
584
0.0-15

282.35
518
1.8
Walk

282.43
510
10.2
Walk

BM 578 28803

NM 69
Pennsylvania
+5th Ave
28225

5th Flc.

St. East.

6

BM

354

288.87

H.M.B.P.
Robinson
4th Flc.

TP

7.63

292.41

3.25

284.78

+76.50

South Line Evans Place

283.75	284.21	284.81	284.87
4.88	3.82	4.72	3.16
6.0	6.0	6.0	6.0
4.8	4.8	4.8	4.8
10.2	10.2	10.2	10.2
283.61	284.04	284.15	284.24
4.12	4.99	4.88	4.79
6.0	6.0	6.0	6.0
4.8	4.8	4.8	4.8
10.2	10.2	10.2	10.2
283.42	283.91	284.05	284.09
4.12	4.90	4.90	4.90
6.0	6.0	6.0	6.0
4.8	4.8	4.8	4.8
10.2	10.2	10.2	10.2
283.22	283.67	283.80	283.87
4.76	4.36	4.32	4.16
6.0	6.0	6.0	6.0
4.8	4.8	4.8	4.8
10.2	10.2	10.2	10.2
283.12	283.57	283.58	283.69
4.91	4.16	4.45	4.34
6.0	6.0	6.0	6.0
4.8	4.8	4.8	4.8
10.2	10.2	10.2	10.2
282.97	283.32	283.40	283.50
5.06	4.71	4.63	4.63
6.0	6.0	6.0	6.0
4.8	4.8	4.8	4.8
10.2	10.2	10.2	10.2
288.05			

+50

+25

2+0

+75

1+50

288.05

Cross Section North Side Pennsylvania R.R.
100' East of 5th Ave.

St=North

1+0

284.96 284.77 284.52 283.93
2.80 2.79 3.04 3.13
10.7 5.3 0.0-cb 0.0-gal

+75

284.37 284.26 283.94 283.41
5.19 3.30 3.12 4.15
10.7 5.3 0.0-cb 0.0-gal

+50

283.74 283.60 283.35 282.76
3.82 3.91 4.31 4.80
10.7 5.3 0.0 0.0

0+25

283.14 283.00 282.75 282.14
4.42 4.56 4.81 5.12
10.7 5.3 0.0 0.0

0+00: East Line

282.55 281.43 281.17 281.70
5.01 5.13 5.39 5.86
10.7 5.3 6.0-cb 6.0-gal
Mark Mark

0-10.2

282.12 281.73
5.44 5.83
0.0 0.0

0-16.4

282.11 281.70
5.45 5.86
0.0-cb 0.0-gal

BM

5.31

285.56

282.25

N.W.R.P.
Penns.
+57.52

287.56

X-Sect. 20' Alley in Block 75 - Point Loma Hts.
and Block A - Chatsworth Estates

- Maps - 2397 - + 1106

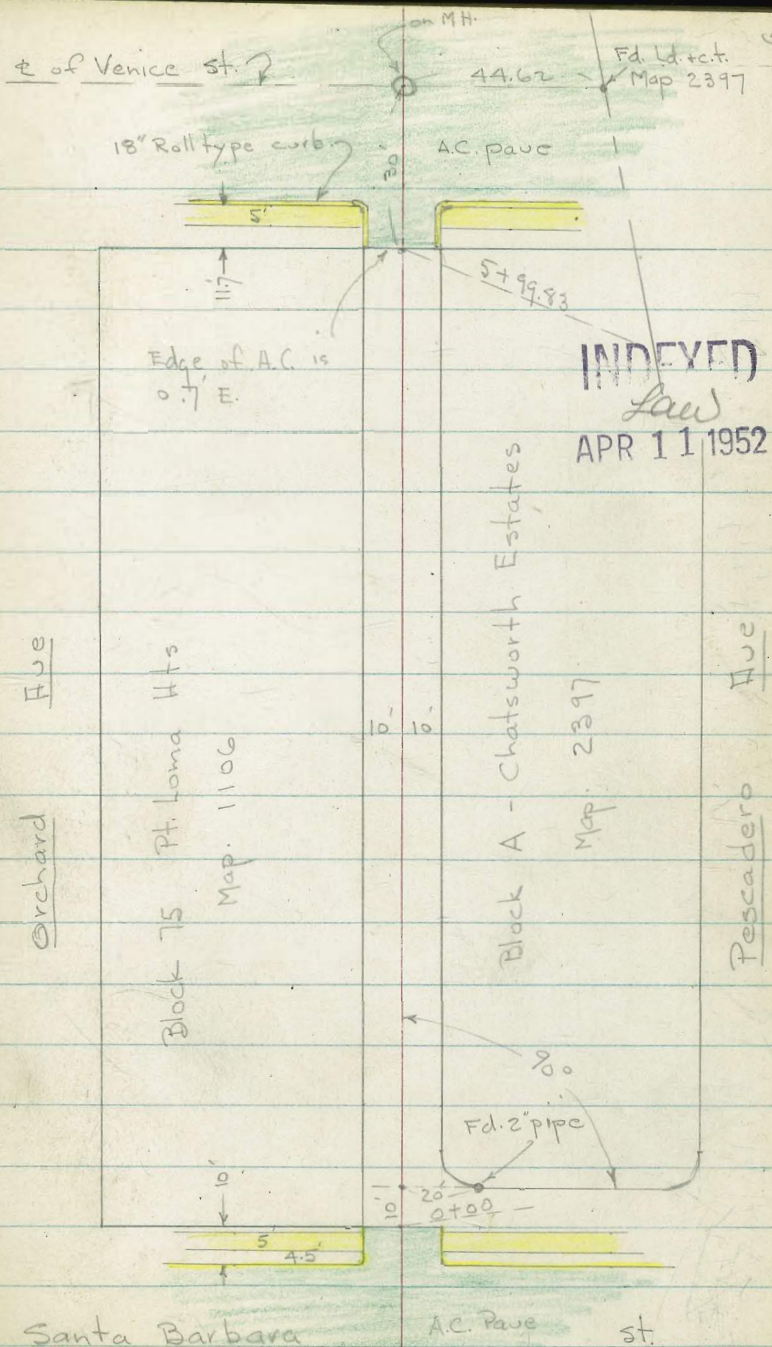
5980

4-10-52

7.0.

w.o. 25020

Reduced & Plotted
4-14-52
H. Mills



X-Sept - 20' Alley - See Sketch - P. 5

Lt. # Rt.

1+50 - 10.7' Rt. = end wall

246.6	246.2	245.7	245.2	245.44	244.9
1.4	1.8	2.3	2.8	2.52	6.1
5	10		10	10.7	Bottom wall

B.M. - Nail in Pole Below 1.02 246.94

1+00 - 8.7' Lt. = t. P. pole # P.A. 4385

247.3	247.3	245.1	245.1	245.45	
0.7	0.7	2.2	2.9	2.51	
15	10	7	10	11.2 = Top wall	

0+75 - 11.4' Rt. - Beg. 8" Conc. Wall

245.8	244.9	242.8	242.6	245.1	244.4
2.2	2.1	5.2	5.4	2.55	6.6
15	10	5	10	11.4 = Top wall	11.4 = Bottom wall

0+50

244.6	244.6	239.8	238.9	238.7	238.2
3.4	3.4	2.2	1	2.3	1.8
20	15	10	10	10	15

0+10

0+00 = E.L. Santa Barbara St. = edge AC rchs.

241.30	240.56	238.20	237.55	237.29	237.71
8.85	9.39	10.20	10.67	10.25	
Top	Top	Top	Top	Top	Top
6.66	7.40	8.96	9.69	10.41	11.09
Top	40	Top	10	41	10.53
	gut.	2 Rad.			13.30
					12.63

T.P. 10.25 247.96 12.31 237.71 247.96

T.P. on B.P. 0.20 250.02 7.73 249.82 = S.E. B.P. Orchard + Santa Barbara

B.M. 7.19 257.55 250.36 = Sw. B.P. - Dol. Mart + Santa Barbara

T.P. 1.91 225.31 12.79 223.40

5+14- 10.4 Rt. = Beg. 8" Block wall

5+00

4+50- 10.1 Rt. = end wall

4+30.5 = Sewer M.H. 7.98 = Rim

4+00

3+50

T.P. 0.63 236.19 12.40 235.56

3+11- 27' Lt. = 2" Doub. Grav. Conc floor

3+00- 10.5' Rt. = Beg. 8" Conc Block wall + fence

2+50

2+00

Lt. # Rt.

11.2
225.0

11.5
224.7

11.4
224.8

224.3

11.9
10.4
ground.

222.0

14.2
10.29
Bot. wall Top

225.94

11.2
225.0

11.5
224.7

11.4
224.8

10.8
10

10.8
10

220.77

5.2328
5.1
5

5.2322
5.0
5

5.2320
5.2
5

5.2324
5.0
5

5.2322
5.0
5

5.42
wall Top

5.2328
5.4
5

5.2322
5.8
5

5.2320
6.0
5

5.2324
5.8
5

5.2322
5.6
5

5.42
wall Top

5.2328
5.4
5

5.2322
5.8
5

5.2320
6.0
5

5.2324
5.8
5

5.2322
5.6
5

Dirt Dr. yard.

1.8
15

2.3
10

2.2
10

1.7
10

1.46
10.1
Top
M.H.

11.24
236.72

11.24
236.72

11.24
236.72

11.24
236.72

11.24
236.72

11.24
27 = floor

11.24
27 = floor

11.24
27 = floor

11.24
27 = floor

11.24
27 = floor

10.9
15

10.7
10

10.6
10

10.2
10

11.0
10.5
D. Home
Top

238.4

5.2401
5.9
5

5.2411
5.9
5

5.2412
5.8
5

5.2414
5.6
5

5.2411
5.9
5

5.2450
5.9
5

5.2448
5.9
5

5.2446
5.8
5

5.2444
5.6
5

5.2418
5.9
5

5.2450
5.9
5

5.2448
5.9
5

5.2446
5.8
5

5.2444
5.6
5

5.2418
5.9
5

247.96

Sty. at Alley Venice

BM = Nail in Guy Pole 4.42 220.89

= S.E. Id. + Disk - Venice + Orchard. 8.84 216.47

216.36?

6 + 13.5 = gutter edge of Roll cb.

218.72	218.93	219.04	219.25	219.70
6.59	6.38	6.27	6.06	5.61
to gut.	to gut.		to gut.	to gut.

6 + 11.5 = Line along top of Roll cb.

218.77	218.17	218.89	219.07	219.25	219.49	219.95
6.34	6.14	6.42	6.24	6.06	5.82	5.36
to Top	to Top	to gut.		to gut.	to Top	to Top

6 + 00.5 = edge AC pave + curbs (18' Roll type)

218.29	218.07	217.20	218.40	218.65
6.02	6.24	6.11	5.91	5.66
to edge Conc. Roll	to edge Conc. Roll	to on AC	to edge Conc. Roll	to edge Conc. Roll

5 + 99.83 = w.L. Venice Ave

5 + 63.5 = end wall = 10.7' Rt.

221.6	221.74	225.69
3.7	4.07	+0.38
to 10.7' ground	to Bot.	to Top

5 + 50

223.1	221.9	221.8	221.9	221.70
2.2	3.4	3.5	3.4	+0.39
to 15	to 10		to 10	to 10.5
				to Top Wall

225.31

Clark 6-27-52
Shepherd W.O. 25020
Bruner
Bryson

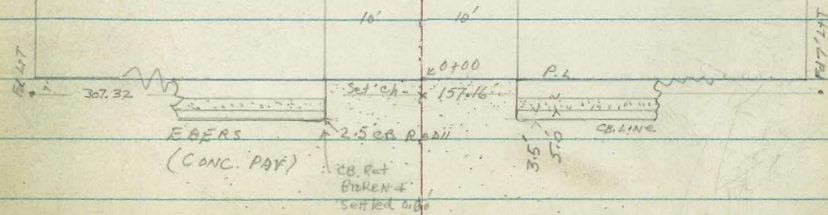
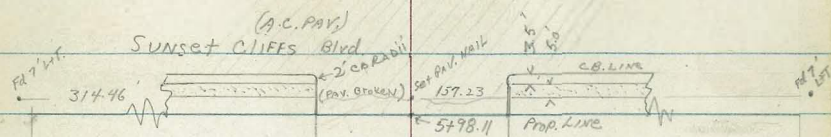
X-SECT. ALLEY BIK 42 OCEAN

BEACH, EBERS to Sunset Cliffs

Notes: Pg. 10

INDEXED
Low
JUN 30 1952

9



X. SECT. ALLEY BIK 42 OCEAN
BEACH, EBERS to SUNSET CLIFFS

Indevid
7-752

LT.

E

RT.

10

0+42.5

8.30' LT Beg 6' Hedge

0+38

9.8' LT Beg 1.5' Cove walk // to Alley
9.8' LT END Porch

37.19
7.30
9.8
WALK

0+26.5

9.9' LT Beg Porch-house
6.5' LT END garden

0+25

38.0
37.5
37.6
37.4
38.2
6.7 7.2 7.1 7.3 6.5
10 5 7 7 10

0+05

6.5' LT Beg ornamental garden

0+01

10.15' RT Beg 6' Wooden Fence

0+00

N/WX P.L. EBERS

0-12

CB; LIVE EBERS

36.27 38.81
35.76 38.73
37.65 38.26
37.09 39.25
38.59 39.39
38.57 39.25
38.17 39.27
38.40 38.79
38.72 39.27
38.19 39.69
38.10 40.19
38.10 41.04
38.10 41.53
8.48 8.3 5.88 5.76 5.93 5.44 5.30
100 100 50 50 100 100 100
CB C CB C CB C CB C CB C CB C
12.5 12.5 6.37 6.29 5.97 5.90 5.40 5.00 4.50 3.65 3.16
CB C CB C CB C CB C CB C CB C
36.42 37.97 39.34 40.65 41.95
8.07 6.72 5.38 4.04 2.74
100 50 100

0-30

E EBERS (conc. Pav)

44.69

9.03

44.69

35.66

5/E

B.P. EBERS + PT. LOMA

T.P. 1.68 36.50 7.87 34.82

1700

0198 8.8' LT ♀ Pole PA. 4716

0193 13.20' RT ♂ single gar

0183 11.1' LT ♀ single-gar (used as res.)

0180 8' LT END 6' Hedge

0169 11.2' RT END 6' Fence

0150

0147 9.8' LT END 1.5 WALK

LT. ♀ RT.

36.50

$\begin{matrix} 34.9 \\ 9.8 \\ 10 \\ 6 \end{matrix}$
 $\begin{matrix} 34.6 \\ 10.1 \\ 6 \end{matrix}$
 $\begin{matrix} 34.5 \\ 10.2 \\ 6 \end{matrix}$
 $\begin{matrix} 34.7 \\ 10.0 \\ 10 \end{matrix}$
 $\begin{matrix} 35.2 \\ 9.5 \\ 15 \end{matrix}$

$\begin{matrix} 35.9 \\ 8.8 \\ 13.20 \\ \text{DIT} \end{matrix}$

$\begin{matrix} 35.6 \\ 9.1 \\ 11.1 \\ \text{Floor} \end{matrix}$

$\begin{matrix} 36.6 \\ 8.1 \\ 10 \end{matrix}$
 $\begin{matrix} 36.8 \\ 8.3 \\ 5 \end{matrix}$
 $\begin{matrix} 36.5 \\ 8.2 \\ 8 \end{matrix}$
 $\begin{matrix} 36.5 \\ 8.2 \\ 8 \end{matrix}$
 $\begin{matrix} 36.7 \\ 8.0 \\ 10 \end{matrix}$

$\begin{matrix} 36.93 \\ 7.7 \\ 9.8 \\ \text{WALK} \end{matrix}$

LT. \$ RT.

2+40 18.0 RT. Bag 2-car gar
 2+36 20.5 RT. END 2-car gar
 2+28 9.1 LT & Deadman
 2+17 7.9 LT Bag 5' Fence
 2+15 19.9 RT. Bag 2-car gar Conc Floor, No Apron

2+09 14.8 LT & gar. div. Floor.

T.P. 1.90 31.81 6.59 29.91

2+00 9.0 LT Pale RA 4734

1+50

1+18 (13.15 LT Floor 2-car
 END) 11.95 Apron

1+01 (13.2 LT Floor " "
 Bag) 12 LT Apron 2-Car gar

79.79
 2.02
 20.2
 Floor

79.95
 1.86
 19.9
 Floor

2.4
 14.8
 DIV

31.81

30.2 20.4 30.0 29.9 30.0 30.4 30.4
 6.3 6.1 6.5 6.6 6.5 6.1 6.1
 25 10 5 6 6 10 25
 32.7 32.9 32.6 32.5 32.2 33.0 33.3
 38 36 39 42 43 35 32
 25 15 10 7 10 25

1.76 1.88
 13.15 11.95
 Floor Apron
 34.87 34.83
 1.63 1.67
 13.2 12
 Floor Apron

36.50

3+12
3+00
12.60 LT Floor
10.5 LT Apron

25.28
6.53
12.6
Floor
79.99
6.82
10.5
Apron
25.3
6.5
10
DIRT
25.1
6.7
5
25.5
6.3
10
25.8
6.0
20

2+93.50
12.5 LT Floor
10.5 LT Apron

75.36
6.45
12.5
Floor
75.36
6.45
10.5
Apron

2+93.5
12.6 LT Floor
10.4 LT Apron

76.15
5.66
12.6
Floor
75.57
6.24
10.4
Apron

2+77
12.40 LT Beg 8-car gar.
(10.35 LT Apron)

76.07
5.64
12.40
Floor
76.17
5.74
10.35
Apron
DIRT
26.5
4.9
10
26.9
4.5
20

2+75
10.35 LT Beg 8-car gar Apron

2+74
10.11 RT Beg 5' Fence
10 LT END 5' Fence

2+72
9.0 LT & Pole PA 4750

2+65
18.0 RT END 2-car gar

27.8
7.0
20
27.9
3.9
10
3
27.9
3.9
6
27.9
3.6
10
28.49
3.32
18
Floor

2+50

2+43
18.0 RT Floor 2-car gar

28.87
2.79
18.0
Floor

31 81

3+99 10.30' RT Bay Apron 2-car gar
 8.7' LT & Pole # 4766
 10.20' LT END Comb, Dwelling + garage

3+92.5 10.20 LT & OF gar

3+78 10.30 LT Joq in Dwelling

3+61 12' LT Bay Dwelling + single gar.

T.P. 309 26.51 839 23.42

3+54 9.0' LT & Hedge + Shrub 4' high

3+50

3+47 10.5' LT & 3' walk

3+46 12.6' LT END 8-car gar
 12.6' LT Floor

3+44 10.5' LT Apron

3+29 12.6' LT Floor
 10.5' LT apron

3+27 12.6' LT Floor
 10.5' LT Apron

3+25

3+23 10.5' RT END 5' Fence

LT. £

RT
 3.80 3.27
 10.3 12.30
 Lip Brk

22.40
 4.11
 10.14
 Floor

20.8
 5.7
 12
 Floor

26.51

22.28 23.2
 20 8.6 23.4
 29.21 15 10 8.4
 1.00 7.64 8.3
 20 10.5
 WALK E. WALK

29.69 29.19
 7.17 7.67
 12.6 10.5
 Floor Apron

29.67 29.55
 7.14 7.26
 12.6 10.5
 Floor apron

25.33 29.10
 6.48 7.11
 12.6 10.5
 Floor Apron

29.8 29.7
 7.0 7.4
 10 10
 Brk

31.81

LT. E RT.

4+51

15.9 LT Beg 4-Car gar 11.9 Apron

21.51
5.00
15.9
Floor
21.35
5.16
25
WALK
21.30
5.21
11.9
Apron
21.28
5.23
11.9
Apron
21.1
5.4
10
DRT

4+50

21.2
21.0
21.2
5.3
5.5
5.3
10
20

4+48

11.9 LT Beg ^{WALK &} apron 4-Car gar

21.30
5.21
11.9
Apron

4+47

17.1 RT END 2-Car gar 14.2 apron

21.89
4.62
17.2
Apron
22.21
4.30
17.6
Apron
22.59
3.92
17.1
Floor
22.53
3.98
17.2
Floor

4+27

17.2 RT Beg 2-Car gar 14.6 apron

21.2
3.3
20
21.3
5.2
10
21.6
4.9

21.7
4.8
10
21.9
4.6
20

4+22

12.6 RT END 2-Car gar
10.3 RT apron

22.75
3.76
10.3
Apron
23.25
3.76
12.10
Floor

4+02

12.10 RT Beg 2-Car gar
10.40 RT apron

22.80
3.71
10.40
Apron
23.25
3.76
12.1
Floor

4+00

21.7
4.8
20
22.1
4.4
10
22.0
4.5
22.4
4.1
10
DRT

26.51

LT. ♀ RT.

T.P. 484 25.64 5.71 20.80

5147 11.9' ♀ 3 WALK

5146 15.90 LT END 4-Car gar; 11.90 Apron

5122 15.90' LT Floor 11.90 apron

5101 15.9' LT Reg 4-Car gar 11.90 apron

5100

4497.5 11.9' LT ♀ 7' CONC WALKWAY

4497 8.8' LT ♀ Pole # 82 4784

4494 15.9' LT END 4-Car gar 11.90 apron

4475

21.25 5.68 20.83
20 WALK
5.26 15.90 Floor
20.76 5.75 11.90 Edge
20.83 WALK
5.68 11.90 Apron

21.27 5.24 15.9 Floor
20.83 5.68 11.90 Apron

21.28 5.23 15.9 Floor
21.04 5.47 11.90 Apron

20.6 5.9 10 BIT
21.1 5.4
20.7 5.8 10
20.8 5.7 20

21.05 5.46 20 WALK
21.18 5.33 11.9 Edgewalk

21.51 5.00 15.9 Floor
21.17 5.34 11.9 Apron

21.50 5.21 15.9 Floor
21.18 5.33 11.9 Apr.
21.0 5.5 10 BIT
20.9 5.6
20.8 5.7 10
20.9 5.6 20

26.51

0+10.11 S/Ely CO Line Sunset CLIFFS

18.89
 19.64
 19.21
 19.27
 19.13
 19.30
 19.29
 19.74
 19.32
 19.20
 19.50
 20.08

Mix 6.75 6.60 6.00 6.43 6.37 6.51 6.34 6.35 5.90 6.32 5.74 6.14 5.56
 1/10 1/10 5/0 5/0 12 12 10 10 10 12 12 5/0 5/0 100 100
 CB C CB C CB C (Broken Pav) C CB + CB C - 200

5+98.11 S/Ely PL. Sunset CLIFFS

19.74
 19.4
 19.6
 19.63
 19.81

5.70 6.2 6.0 6.01 5.83
 9.65 9.65 10.10 10.10
 TP CB C OIL + DOWN PAV. (Broken Pav + Cold-LAY) TrCB

5+94 20' LT END CONC Floor + FATN Service STATION
17.3 RT END 4-Car gar + apts

20.43
 5.21
 20
 Floor + TP FATN

5+92 12.50 RT END APRON 4-Car gar

20.58
 5.06
 12.50
 Lip Apron

5+90 17.3 RT END Floor 4-Car gar

20.91
 4.67
 17.3
 Floor

5+75

20.21 20.93 20.0
 5.43 5.21 5.6 5.20.0 5.2 5.10 4.75
 20 20 10 10 12.4 17.3
 Floor TP FATN Apron Floor

5+54 17.3 RT Beg 4-Car gar + apts. 12.4 apron

20.56 20.91
 5.08 4.73
 12.4 17.3
 Apron Floor
 5.87 4.75
 12.40 17.3
 Apron EX apron

5+51.50 12.4 RT. Beg apron 4-Car gar + apts

5+50

20' LT Beg CONC. Floor + FATN Service STATION
12.3 RT, 9' 3' CONC. WALK.

20.21 20.94 20.9
 5.43 5.20 5.2 5.3 5.1 5.02 4.76 4.64
 20 20 10 10 10 12.3 17 20
 Floor TP FATN Floor Edge WALK Pk WALK WALK

25.64

check 2.30 28.14 = 28.13 N/W B.P. Pescadero + Sunset Cliffs

T.P 9.23 30.44 4.43 21.21

check: 4.43 21.21 = 21.11 N/W B.P. BIRANDA + Sunset Cliffs

6+28.11

E SUNSET CLIFFS

19.72	19.59	19.03	20.05	20.10
6.22	6.05	5.51	5.59	5.54
100	50		50	100

25.64

Roberts
Cota
Moore
Pulley
7-18-52
W.O. 25020

X-Section La Paloma Street

Savoy to Catalina

Map 1378 Map 1962

INDEXED
Law
JUL 21 1952

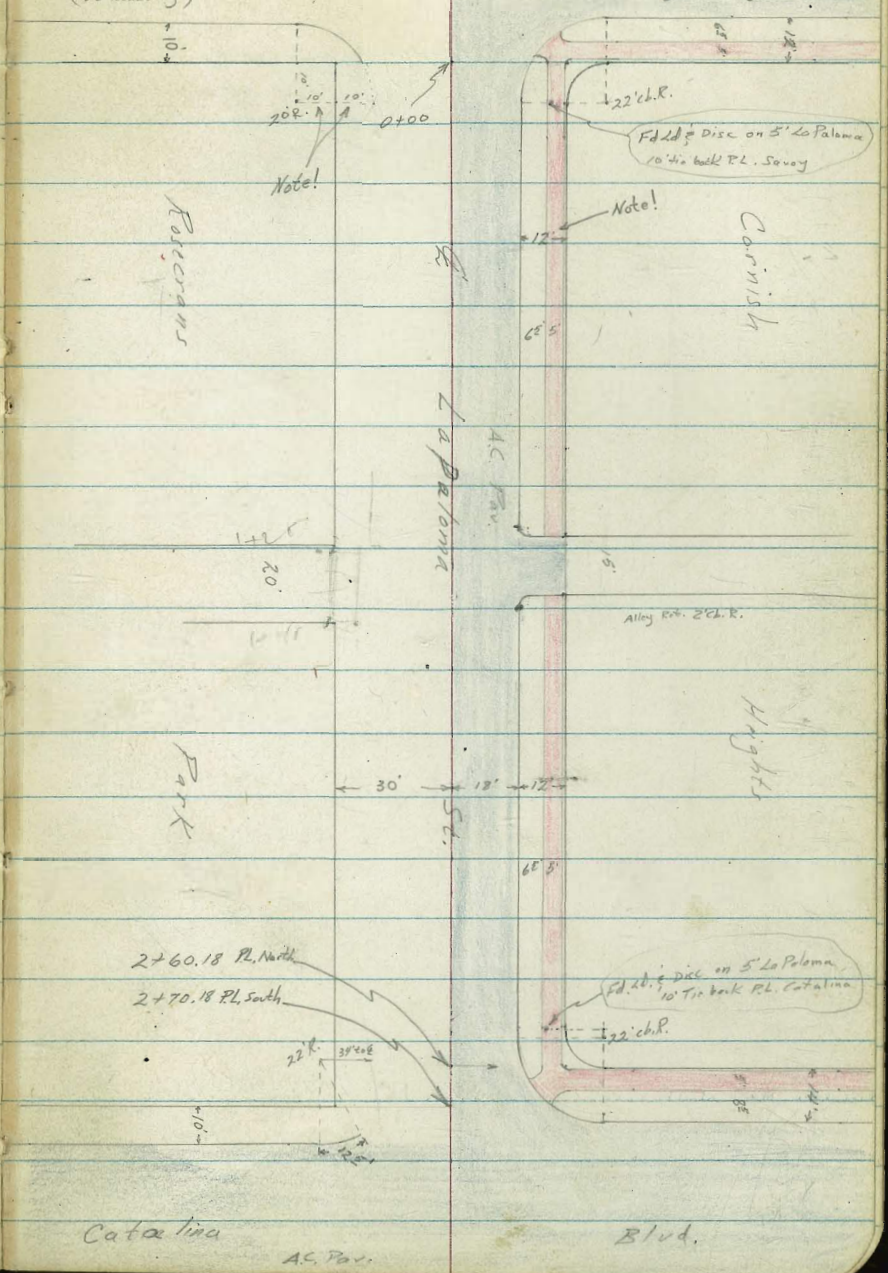
Reduced & Plotted
O.T.J.



(Not Paved)
Savoy
(40' Parkway)

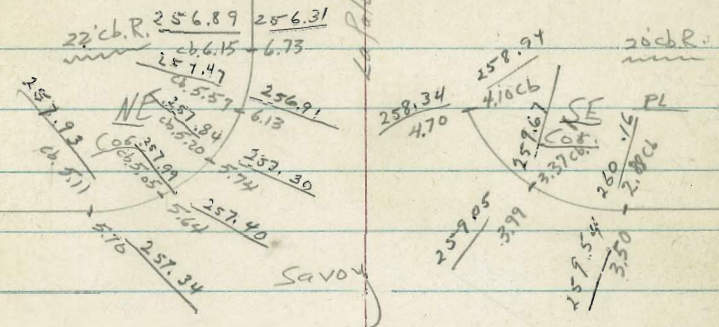
A.C. Pav.
5 ft.
36' Parkway

19



0+00 East Line Savoy

5.47	257.57	5.53	258.51
20.3	6.02	22.7	4.70
cb	6.02	cut	cb
	257.02		259.34
			158.9
		3.1	259.9
		2.6	260.4
		2.1	260.9



0-10 Curb Line to South

5.05	259.99	3.50	259.54
		40	260.16
		cut	cb
		1.60	261.44
		1.00	262.04

0-12 Curb Line to North

5.53	257.51	5.24	257.70
100	256.89	18	258.10
cb	6.15	cut	cb
	5.11		257.93
	5.70		257.34

± Savoy

5.08	257.96	4.04	259.00
100	256.26	18	258.63
	4.78	cut	cb
	1.60		261.34
	4.41		258.63

Rough Subgrade

T.P. 409 263.04 ± 159 258.95

263.04 ±

T.P. 12.78 26.054 0.27 247.76

BM 12.57 248.03 235.76 NWBP

Catalina & La Paloma

T.P. 041 250.63 T 12.82 250.22

0+77 30' Rt begin 6" conc. ^{Rt.} Wall



0+77 18' Rt End Conc. Driveway

0+62 18' Rt begin conc. Driveway

0+52 22' Rt to center 6" Eucalyptus Tree

0+50

9.45
18'
cb

258.59
10.13
18'
6"t

9.25

6.5
30

1.3
50

0+31 22' Rt to center 6" Euc. Tree

0+12 22' Rt to center 2" Acacia Tree

263.04 T

9.4
30'
6"t

252.78
10.26
18'
conc

9.12
18'
conc

256.5
30

9.253.1
FW
at

255.08
7.96
30
conc

255.64
7.40
30
conc

1.3
50

8.2
30'
Top

257.56
5.49
45
Floor

257.53
5.41
45
Floor

1.3
50

263.04 T

Cont'd From Page 21

26

1745 33' Rt begin conc wall

1739 BC Alley cb. Ret.

1737

1725 299' Rt. End Conc Ret. Wall

1722

1720 BC Alley cb. Ret.

1700

250.63A

246.13
450 510
18 18
cb Gutt

246.45
418 427 436 483 497 410
30 30 20 20 18
cb Gutt cb Gutt

247.66
297 352
18 18
cb Gutt

248.40 248.78
123 185
18 18
cb Gutt

245.97
4.76 4.6 3.4 1.9
5 15 30
246.0 247.2 252.5

246.53
247.50 247.6 248.8 248.6
3.5 2.0 1.8 2.0 40.6 0.6
15 299 299 299 50
GRD Foot Top

247.78
2.85
281 340 303 367 373
30 30 20 20 18
cb Gutt cb Gutt

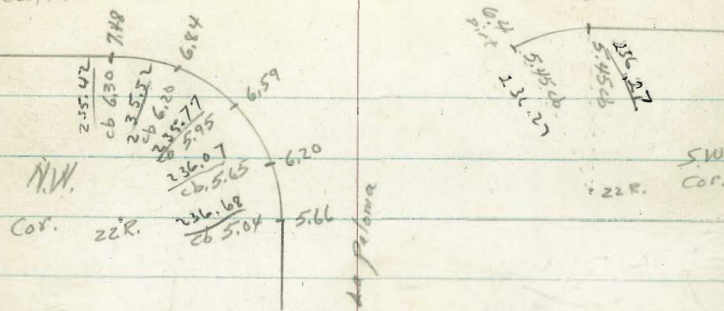
249.64 250.1 252.0 253.2
0.99 0.5 1.7 2.6
10 30 30

22

250.63A

Cont'd From Page 22

←
Catalina



2+52 Opp. BC Cb Return

5.04	5.66	7.81	3.4	3.4	1.7	1.5
18	18		12	30	35	50
cb	Gutt.					
236.68	335.06	236.91	238.3	238.3	240.0	240.2

T.P. 371 241.72 π 12.12 238.51

241.72 π

2+00

241.05	240.41	241.30	241.4	243.0	243.5	246.5	246.6
9.58	10.22	9.33	7.2	7.6	7.1	4.1	4.0
18	18		3	10	30	34	50
cb	Gutt.						

1+90 28° R & 4 1/2' brick walk (5 steps)

244.22	243.59	244.42	244.5	246.1	246.5	247.20	247.17
6.41	7.04	6.21	6.1	4.5	4.1	3.43	3.46
18	18		3	10	30	36	36
cb	Gutt.					Brick	Brick

1+62.5 31° R & 3' brick walk

250.63 π

250.63 π

Cont'd From Page 23

Lt

\$

Rt

24

check

6.29

235.43 = 235.46

3+10.7 East Edge Paving

9.54
100

9.02
50

8.40

7.84
50

7.10
100

233.05

233.50

234.72

234.76

235.46

3+00.18

8.67
100

8.22
50

7.60

6.96
50

6.26
100

2+80.18

Curb Line to South

234.72

8.22
100

6.30
40

7.48
40

6.57
18

235.46

6.63

6.58
18

6.61
34

5.75
34

5.57
105

4.64
105

2+74.18

Curb Line to North

cb

Gutt

cb

Gutt

18

6.26

2+70.18

West Line Catalina Rosecrans Park

236.14

235.58

235.61

5.95

5.1
8

5.1
30

4.9
30

2+60.18

West Line Catalina Cornish Hts.

5.58
193
cb

6.14
193
Gutt

6.11
18

5.34

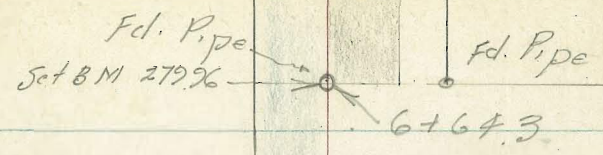
241.72x

241.72x

CROSS SECTION - Hill St.
Between CORNISH DRIVE AND ALEXANDRIA

Walker
Pope
R. Dission
7-26-52

Azusa Vista School HO. 25010



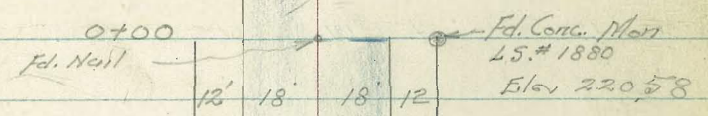
Notes Reduced
8-4-52 HR

Alexandria St.

INDEXED
JUL 28 1952



Set B.M. on Mon 30' Ft. 0+00	0.11	220.58		
TP #11	1.73	220.69	1313	218.26
TP #10	1.08	232.09	1268	231.01
TP #9	0.66	243.69	1322	243.03
TP #8	0.52	256.25	1278	255.73
TP #7	0.90	268.51	1316	267.61
on Pipe & Hill + W.L. Sunset Ridge Subdivision.				
TP #6	0.81	280.77	745	279.96
TP #5	0.08	287.41	1079	287.33
TP #4	0.55	298.12	1221	297.57
TP #3	10.74	309.78	030	299.04
TP #2	12.63	299.34	016	286.71
TP #1	13.30	286.87	020	273.57
	13.12	273.77		260.65



W. B. Cotchina
Santa Barbara

Hill Street - Cross sections

2+50

2+00

1+60 20' R/L E Elec. Pole JP#4341

TR#13 1291 24434 093 231.43

1+50

1+00

0+69 Pole Anchor 20' R/L

TR#12 1268 23186 151 219.18

0+50

0+49 20' R/L E Elec. Pole #P-4355

0+00

0-50

220.69

Lt.					Rt.	
240.15	239.50	239.61	237.74	239.3	240.3	239.5
4.19	4.84	4.73	4.42	5.0	4.0	4.8
18	18	9		18	30	35
cb.						

234.89	234.29	234.39	234.66	234.2	236.6	236.6	235.0
9.45	10.05	9.95	9.68	10.1	7.7	7.7	9.3
18	18	9	244.34	18	23	30	35
cb.							

229.64	229.03	229.20	229.42	229.0	232.0	231.9
2.22	2.83	2.66	2.44	2.9	4.1	0.0
18	18	9		18	30	35
cb.						

223.82	223.94	224.08	223.7	229.9	231.5
8.04	7.92	7.78	8.2	2.0	0.4
18	9		18	30	35
Gut.			231.86		
in Drive					

219.21	218.57	218.70	218.96	218.4	225.8	226.9	228.4
1.48	2.12	1.99	1.83	2.3	4.51	4.2	4.77
18	18	9		18	30	33	40
cb	Por.	Por.					

213.87	213.33	213.49	213.64	213.54	213.26	213.86	220.3	220.7
6.82	7.96	7.20	7.05	7.15	7.43	6.83	0.4	0.0
18	18	9	Nail	9	18	18	30	35
			Por.					

208.69	208.06	208.30	208.47	208.35	208.01	208.68	213.0
12.00	12.63	12.39	12.22	12.34	12.68	12.01	7.7
18	18	9	9	18	18	18	30
cb.	Gut.	Por.	220.69	Por.		cb.	

Hill Street - Cross Sections

Lt.

R

FR

4+50

4+21 ^{19.5'} Rt = Pole Anchor

4+00

3+91 20' Rt = Elec. Pole #4307

TP#15 1311 267.44 030 254.33

3+65

3+30.5

3+10.5 = Brk.

2+90.5 = Brk.

TP#14 1037 254.69 008 244.26

2+70 Elec Pole 19.5' Rt #P4335

244.34

264.14	263.43	263.68	263.89	263.2	266.0	274.9	275.2
332	401	376	358	42	14	75	78
18	18	9		18	20	23	30
cb.							

257.88	257.24	257.45	257.68	256.9	262.8	263.3	262.1
956	1020	999	976	105	46	41	53
18	18	9		18	25	30	35
cb.							

253.57	252.77	253.16	253.34	252.5	253.5	257.1	256.9	255.5
106	166	147	129	21	11	25	23	10
18	18	9		18	22	27	30	35
cb.								

249.22	248.60	248.73	249.02	248.5	250.4	250.8	249.0
541	603	590	561	61	42	38	56
18	18	9		18	20	30	35
cb.							

246.73	246.13	246.30	246.55	246.4	248.6	247.7	246.5
790	850	833	808	82	60	69	81
18	18	9		18	25	30	35
cb.							

244.49	243.89	244.05	244.25	243.7	245.2	244.9	243.7
1014	1074	1058	1038	109	94	97	109
18	18	9		18	26	30	35
cb.							

254.63

Hill Street - Cross Sections

6+15.5

bt	ft	ft	ft	ft	ft	ft	ft
276.95	277.04	277.02	276.8	277.3	279.9	269.9	
3.20	3.11	3.13	3.4	0.9	0.3	1.03	
18	9	Rim	18	19	32	33	
		144					
		2.5					

5+97.5 = 14 cb. Alexandria

275.86	275.90	276.06	276.0	277.4	278.7	268.2	258.2
4.29	4.25	4.09	4.2	2.8	1.5	12.0	3.20
18	9		17	18	23	24	40
							Approx.

5+97 = 19' RT Pole (Tel) # 578606

5+75

274.78	274.17	274.33	274.47	274.2	275.7	277.7	277.8	267.8	256.2
5.37	5.98	5.82	5.68	6.0	4.5	2.5	2.4	12.4	3.40
18	18	9		16	18	20	26	27	40
cb.									Approx.

5+40

272.23	271.64	271.87	272.05	272.0	276.2	276.2	266.2	255.2
7.92	8.51	8.28	8.10	8.2	4.0	4.0	14.0	2.50
18	18	9		18	21	32	33	45
cb.								Approx.

5+10

270.02	269.38	269.58	269.81	270.2	275.6	275.7	275.7
10.13	10.77	10.57	10.34	10.0	2.6	4.5	4.5
18	18	9		18	23	30	35
cb.							

4+96

20' RT = Tel. Pole 57-H

4+90

268.40	267.71	267.90	268.14	268.1	270.4	274.9	275.5	275.6
11.75	12.44	12.25	12.01	12.1	9.8	5.3	4.7	4.5
18	18	9		18	19	23	30	35
cb.			280.15					

TP#16

12.75 280.15 0.04 267.40

4+70

266.40	265.70	265.96	266.13	265.8	267.1	275.1	275.2
10.4	1.74	1.48	1.31	1.6	0.3	1.77	1.78
18	18	9		17	18	23	30
cb.	Ent.						
			267.44				

267.44

Hill Street - Cross sections

Lt. S Rt.

				0.04
chk. Starting B.M.	1403		260.65	260.61
TR #22	0.04	274.64	1709	274.60
TP #21	0.25	287.69	1251	287.44
TP #20	0.83	299.95	952	299.12
TP #19	10.66	308.64	073	297.98
chk TR #5		1140		287.31
TR #18	12.06	298.71	164	286.65

G+90

G+64.3

chk. on TP #6				279.96 = P-25
TP #17	8.33	288.29	018	279.97

G+33.3 = E. ch. Alexandria

280.15

282.45	281.84	282.10	282.27	281.99	281.67	281.58	282.06
5.84	6.45	6.19	6.02	6.30	6.62	6.71	6.23
18	18	9		9	16.5	18	18
cb					Lip Conc.		cb
					Gutter		

280.33	279.69	279.92	280.09	280.07	279.61	279.53	279.99	281.50
7.76	8.60	8.37	8.20	8.27	8.68	8.76	8.30	8.79
18	18	9		9	16.5	18	18	30
cb					Lip Conc.		cb	on Pipe
					Gutter			

288.29

277.68	277.99	278.05	277.9	277.9	280.4	280.9	278.9
2.47	2.16	2.10	2.9	2.3	4.02	4.07	1.3
18	9		18	19	20	30	34
		280.15					

Re-X-Sect. Sly. 1/2 of Hill St. Showing
Changes in Dirt Due to Const. of School
Prop. - See Sketch - P. 25 And orig Notes.

#6562

9-24-52 - 7.0.

W.O. 62283

3+50

51.45 50.9 51.6 52.9 44.9
edge 16 17 30 48
Toe

3+00

45.35 45.1 45.7 46.3 44.5
edge 15 16 30 38
Toe

2+50

39.92 39.5 39.9 39.0 37.5
edge 16 17 30 50
in Drive

2+00

34.66 34.3 34.8 35.4 26.8
edge 7 18 30 47=Toe
Top

1+50

29.42 28.9 29.6 29.8 26.3
edge 17 18 30 38
Toe

1+00

24.08 23.9 25.2 26.5
edge 17 30 40
Driveway Level Field

0+50

18.86 18.4 19.4 19.5
edge of 17 18 30 = Toe of
Pave Bank

Note: A wall to go in on bank at Rt.

0+00 = Beg. New School prop. on Rt.

INDEXED

Law

SEP 25 1952

200' fig. not noted.

13.64 13.26 13.86 14.5
Actual Elev. Shown on Nail 18 30 +
got end lev. Toe of Bank

P

Rt.

		Req. Sect. See P. 29 for	80.09	79.99 18 Top cb	81.9 20	83.0 30	83.1 50	84.5 85 Top of bank			
6+64.3 = Beg. cb. on Rt.											
6+33.3			78.05 edge	77.9 18	79.3 20	80.0 30	80.2 34	75.4 45	61.4 47	60.9 93 Top slope	
6+15.5			77.02	76.7 18	77.8 20	79.5 30	78.8 33	60.5 38 Top	58.7 75	Top of slope	
5+97.5	-81 28 - 40		76.06	75.7 17	77.0 19	77.3 24	67.5 28	58.6 37	58.2 57	47.0 85	46.6 100
5+50			72.72	72.6 17	73.4 18	73.5 25	68.15 30	60.4 52	46.4 61	46.0 80 Toe	
5+00			68.93 edge	68.9 16	69.8 18	69.9 30	70.1 40	45.6 63 Top	45.7 80 Toe		
4+50			63.89 edge	63.5 16	64.7 18	64.8 30	65.2 40	45.4 64 Top	45.1 70 Toe		
4+00			57.68 edge	57.1 15	58.3 17	58.9 30	59.6 41 Top	45.0 64 Toe			

Clank
Shepherd
Bruner
O'Neil
5-14-53
W.O. 26005

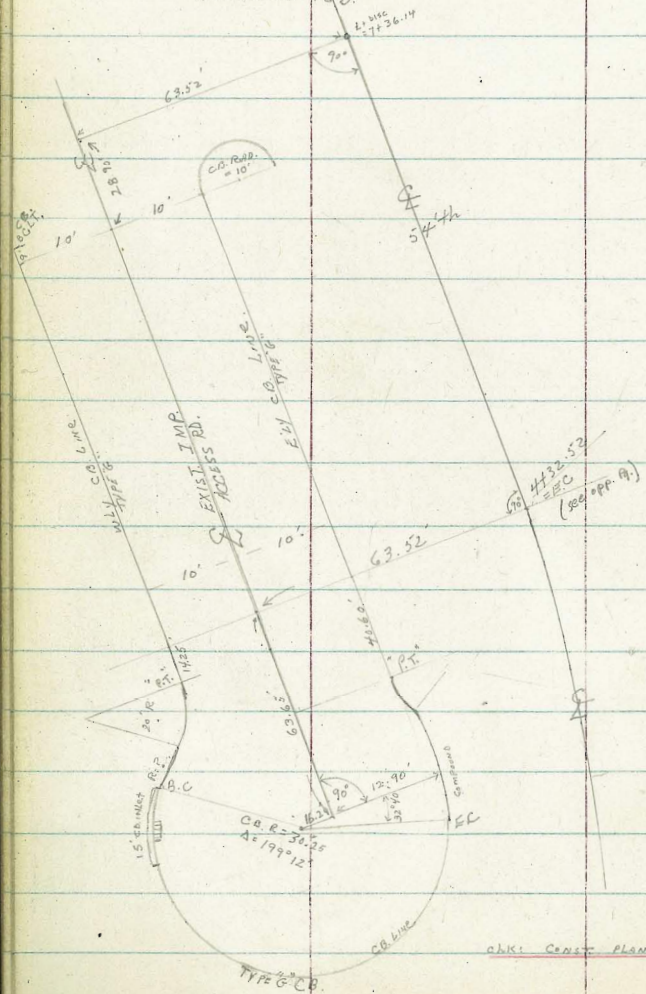
X-SECT 54th - PIROTTE to
LAUREL

DATA: FA 2165-1-16 ✓
MAPS: 2876-3
2505-3

SKETCH NOT TO SCALE
NOTES: A, 32.

LAUREL

DETAIL IMP. N.W. 54th
ACCESS RD.



CLAS. CONST. PLANS:

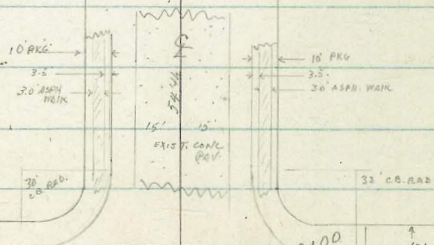
54th ST - PIROTTE
TO LAUREL

INDEXED
MAY 20 1953

$\Delta = 37^\circ \text{LT}$
 $SR = 300'$

B.C.

Fd. Leab. Div.
2+39.79 = B.C.



(MAP 2505-3)
N.W. PIROTTE

PIROTTE

Fd. Leab. Div.
R.E. 1534

PIROTTE

X-SECT 544H - Piratke to LAUREL

(NLY) LT.

♀

RT (E'LY)

32

T.P. - 7.81 268.19 6.27 260.38

1+12.5 66.4 RT. END House & Porch (60.4 RT to Porch)

1+02.5 24 W. WALL 36.5 to lower step (5 steps) 4' wide

0+92 60.4 RT Bay Con. Porch 4 Steps (2' high Brick Coping Extends Across Porch 1/3.2 West of Porch Fronted)

0+76 66.4 RT Bay House

0+53 = CB BC LT

0+50 = CB BC RT

M.A. PTS. Returns

0+23 = NLY CB Line Piratke
WLY of 544H

0+18 = NLY CB Line Piratke
E'LY of 544H

0+00 = 544H Piratke
(♀ STATIONS + ALL OUTS From ♀ 544H)

T.P. 5.85 266.65 9.81 260.80

B.M. 1.52 270.61 269.09 = SE TP HYP
LAUREL + 544H

NOTES: For 60.4 ELEV IMPROVEMENTS
 WLY 544H ST. See Pg. 39 Notes.
 From Porch to S. Line clear view - monitor

DRIVE 7.84
30 30
29 60T

7.46

7.83 7.18 6.93 4.23
30 30 40 56.5
6 CA 40W 1/2W
RT Steps

1.30
60.4
Porch

8.07 7.43
30 30
60T CA

0.60 3.9
66.4 66.4
FLOOR Ground

7.57 8.20
30 30
28 60T

8.24 7.60
30 30
60T CA

8.29 8.89
CA 60T
mid RT

8.54 7.90
60T CA
mid RT

11.73 12.33 10.17 10.80 8.50 8.16
77 77 60 60 30
CA 60T 60T
E.C.

8.19

8.42 7.89 7.49 6.71 6.16
30 62 62 87 87
60T CA 60T CA

54' TH (CONT.)

LT.

E

RT

2103.5

E 2' CONC. WALL 42.8 RT. Bay 4 - 2.3' steps with 4' rise

8.07	7.45	7.63
30	30	40
5	CB	TP
		SHD

2101

Job in house - 64.3 RT.
 } 60.3 RT. Bay Conc. Porch Steps (Steps Face N'ly)

2100

8.14	8.77
30	30
CB	60T

8.23

8.14	7.57
30	30
60T	CB

1488

62.3 RT Bay house

0.29	3.6
62.3	62.3
FLEV	Ground

1470

E 8' CONC. DRIVE 72.5 to Garage

8.56	7.99	7.75	4.30	3.96
30	33	40	57	72.0
5	81L	81L	81L	FL Garage

1464

68.5 RT END house - 72.5 RT to garage (15' wide) attached to house

4.3
68.5
Ground

1450

8.32	8.98
30	30
CB	60T

8.60

8.24	8.17
30	30
FVT	CB

1441.6

Job in house, 68.5 RT.

1429.5

60.5 RT. Bay house { 1' high CONC. BLK. RET. WALL BEG. 2' SLY OF HOUSE & EXTENDS 19.4' ACROSS FRONTAGE OF HOUSE 2.7' W'LY OF HOUSE.

1.24	4.6
60.5	60.5
FLEV	Ground

268.19

54th (CONT.)

LT.

E

RT.

2+99 61.1 RT Bay house (House Jabs Ely 8' At 12.2' ahead N'ly)
 0.99 5.1
 61.1 61.1
 Floor ground

2+75 67.4' RT END House - Bay garage (attached to house) 3' BK OF House (Tab)

2+50 11.33 11.93 11.16 10.76 10.30
 3.0 3.0
 CB G

2+47 61.0' RT Bay House (House Jabs 6' Ely, 15' N'ly) OF S.W. CORNER
 2.57 5.8
 61 61
 Pkwy. ground

T.P. 8.48 271.62 5.05 263.14 271.62

NOTE: From B.C only all imp.s ELY 54. EXCEPT Houses shown in F.B. 2165-16
 Hence only houses are shown from here on A Long ELY 54th ST.
 61.2 RT Bay 3' conc. BK WALL - Extends 7.8 N'ly to meet house at STA. 2+47

2+39.79 = } B.C LT. 54th ST. = 0-19373 F.B. 2165-1-16
 8.00 8.59 7.87 7.75 7.09
 3.0 3.0
 CB G

2+38 60.3 RT 9' 2.5 wide, 18" high Conc. BK "Flower-Box"

2+32 60.3 RT Bay Conc. Slab - Extends From N'ly edge drive to conc. BK "Pantry" (above)

2+28 9' 90' Drive - 73 RT to Garage
 7.82 7.20 7.02 3.79 2.27
 3.0 3.3 4.0 5.4 7.3
 G BK BK BK BK F.garage

2+20 64.3 RT END house + Bay 12' attached garage 73 RT
 3.2
 64.3
 ground

2+09 60.3 RT END Conc. Porch steps + Bay 4' conc. WALK
 EXTENDS ACROSS front of House to meet drive
 3.25 6.84
 60.3 60.3
 11850 TP
 Steps Park

268.19

54th (CONT.)

LT.

Q

RT.

35

3+85± 50.4+ LT - RT. ELY CB ACCESS RD. (see sketch)

9.99 10.45
50.41 50.4
CB C

3+85 59.5 RT END HOUSE

3+52 68.2 RT Bay House

1.34 3.6
CB Floor CB ground

3+50

10.58 11.12 10.20 10.63
10.2 10.2
N44 ELY CB C
ACCESS RD. ACCESS RD.

10.10

3+40 50.1 RT Q E & West CONC PAVK Ret. WALK. AV. HT 3.5

3+37± 42.0 LT - E.C. 30' CB RADIUS ACCESS RD (see sketch)

10.20 10.70
4.2 4.2
CB C

3+30± Section along S. Line Clearview

10.83 11.35
CB 32.40 C
END PAV

10.36

9.76
NO PAV. CB 31.5
END

3+30 69.5 RT END HOUSE - Bay gar (ATTACHED TO HOUSE - TO E 5' 4' ELY)

3+20 95' RT Q 4' CONC WALK // to S. Line Clearview

10.38 10.80
22' BK FIRM LIP
(LIP ALONG WALK)

3+05 (approx STA. RADIAL 395±) 65'± SLY P.T.O.F. 30' CB RADIUS TURNAROUND - NLY ACCESS RD (see detail sketch Pg. 9 FOR EXACT LOC.)

10.54 11.01
6.0 6
CB C

3+00

11.01 11.64 10.76
30 30
CB C

10.63 9.95
30 30
C CB

271.62

54th (Cont.)

LT.

♀

RT

5400

857	9.03	8.59	8.61	8.11	8.88
73.5	73.5	63.5	53.5	53.5	
CB	G	PAV	G	CB	

WLY ACCESS RD.

4489 55.6' RT Beg House (TOLLS 6' ELY 12.2 ahead)

0.27	3.6
53.5	53.5
Floor	Ground

4480 56.0 RT END HOUSE

4460

9.56	9.97	9.54	9.06	9.47
73.5	73.5	G	53.5	
CB	G		CB	

WLY ACCESS RD.

4439 55.5' RT Beg house

1.88	4.6
53.5	53.5
1 st floor	ground

F.P 6.88 271.84 6.66 264.96

271.84

NOTE: All Houses to West of Access Rd WLY of 54th St. ARE A MINIMUM OF 20.7 BK OF WLY CB LINE.

4433.52 = F.C. of 54th

Drive	10.06	9.62	9.65	9.19	9.42
CB	73.5	73.5	G	53.5	
WLY CB LINE	G			2' CB	
ACCESS RD.		PAV		ACCESS RD	

4432 56.0' RT END HOUSE

4419 LT-RT WLY CB ACCESS RD. See sketch

9.79	10.26
CB	G
RT WLY CB LINE	ACCESS RD.

4400

10.16	9.70	9.62
52	52	52
G	CB	CB
24' CB LINE		ACCESS RD.

3492 58' RT Beg house

2.23	4.2
52	58
Floor	Ground

271.62

54th (CONT.)

LT.

E

RT.

6+80 56.0 RT. END HOUSE = LAST HOUSE E'ly 54th & S'ly Laurel

6+50

DRIVE	6.22	5.75	5.25	6.32
	73.5	73.5	53.5	53.5
	CB	G	G	CB

WLY Access RD

6+39 680 RT Beg House & GAR, ATTACHED (Tags 7' WLY) & TAGS 5.5 WLY 14.5' AHEAD

2.80	4.8
Floor	68.8
	DIT

6+30 56.0 RT END house

6+00

DRIVE	7.12	6.72	6.74	6.26	7.66
	73.5	63.5	53.5	53.5	
	CB	G	Pav	G	CB

WLY Access RD.

5+89 55.0 RT Beg house + garage attached (Tags 1' E'ly) 17' ahead

0.46	3.3
53	55
Floor	Ground

5+85 401 RT END WALL (this wall begun #2165 - not ended)

5+68 61.0 RT END house - Beg gar (ATTACHED) TAGS 5' E'ly

5+50

DRIVE	8.06	7.70	7.22	8.32
	73.5	73.5	53.5	53.5
	CB	G	G	CB

WLY access RD.

5+38 56.0 RT Beg house (TAGS 5' E'ly 14' AHEAD)

0.46	3.1
56	56
Floor	Ground

5+34.5 401 RT Beg 2' CON. BK Ret. WALL

5+26

61.60 RT END HOUSE
(8' CONC DRIVE #2165-18 SHOWN AS 8+90 = 5+28.5)
should be 0+96.5

271 84

LT.

E

RT.

NOTE: { See Pg 39 For Loc & Elev. IMP'S WLY 54'4h
From Pirothe to S Line Clearview Manor

CHK:

2.77 269.07 = 269.09 (see PM)

7+17.24

= mid-pt Ely CB ret Wly Access RD.

405 4.56

43.5 43.5

CB G

Mid-pt

Ely CB ret

Wly Access rd.

4.23

7+10.24

= CB, BC, Wly CA - Access RD.

449 4.88

73.5 73.5

CB G

7+07.24

= CB, B, C Ely CB ret on Wly Access RD. (see sketch)

461 5.07

464

461 4.14

4.22 4.24

4.57

73.5 73.5

63.5

53.5 53.5

33.5 33.5

CB G

CB

CB

CB G

54¹/₂ ST.
 LOC. 4 Elev. IMP. S W/ly 54¹/₂th
 From PiratE To S/ly Linc Clearview Manor

(N/ly) LT

1+85 62.0' LT Bdg house (Tags 2' E/ly 14' ahead)

5.35	7.5
62	62
Floor	ground

1+54.5 40.0' LT END 3' Fence - mate E.W. 3' Fence
61.5' LT END BRICK WALL

1+44 60.0' LT END house + Bdg 3.5' brick wall 61.5' LT

1+29 64.6' LT = Tag in house (Tags 4.6' E/ly)

1+06 9.8' Drive

9.50	6.28	6.30	6.89
73.7	36.7	33.7	30
9.5' Floor	DRIVE	DRIVE	DRIVE

1+01 73.9' LT. Bdg 9¹/₂ house (attached) / Tags 9' E/ly
12' ahead

6.08	6.10
64.6	64.6
Floor	ground

0+95 40' LT end RAIL Fence & Bdg 3' Cyclone Fence

0+74 60.0' LT END house

0+49 40' LT = P.C. in 3' RAIL-Fence (11' to ST.)

0+44 78.0' LT Bdg house (Tags E/ly 18' - 5' FT ahead)

9.0	8.5	7.50
78	60	60
Ground	ground	Floor

all outs From E 54¹/₂

(0+00 = E PiratE) See sketch

T.P.	2.79	2.65.95	870	263.16	
	9.79				265.95

B.M.	2.77	271.86	269.09 = S.E. (T.P. 11/10)
			LAUREL + 54 ¹ / ₂ th

LT. $\frac{C}{E}$

CHK: 1.68 269.11 - 269.09 (See 8.M)

T.P. 6.90 270.79 2.06 263.89

2.5' cyclone Fence // to wall + 1' sly of wall
6' wide Conc. Ret. Wall runs // to Sly Line elevated MANAY-ANDAZO Ely of Wily Line 5441

2159.5# RADIAL 5441 = 8' Conc. Drive

6.83	5.50	5.50	6.18
6.69	36.8	37.8	3.0
Floor gar	BRK	BRK	LIP
(RADIAL FROM)	DRIVE	DRIVE	

2139.79 = BC LT 5441 Tie to house here 66.0' LT. (see below for loc.)
garage

2120 60.0' LT Beg house (Jobs 6' wly 15' ahead of J. 165)
wly 1' again 17.6 ahead at attached garage
gar 12' wide

5.29	7.0
60	60
Flow	ground

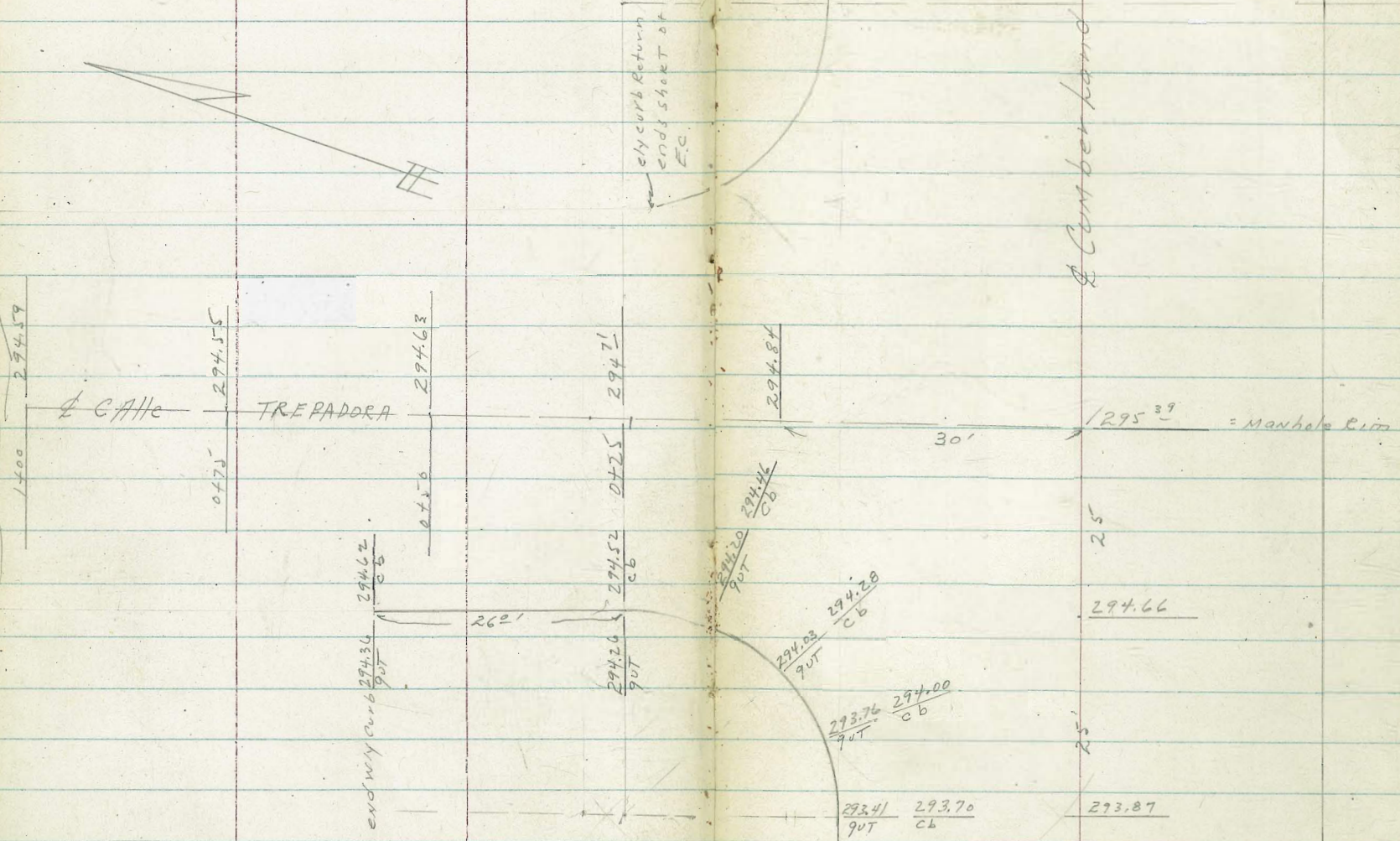
2109.5 73.6 LT END gar
7.5' cyclone Fence, mod's N'ly Cor. Garage continues // to BR TANAGER 5441.5T. to sly line clearview marker

2105 8' Drive

8.04	5.77	5.80	6.41
73.6	36.7	37.5	3.0
Floor	BRK	BRK	LIP
gar		DRIVE	

1199 64.1 LT = Job 9.5 wly to attached gar.

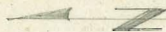
Check on Curb elevations on westly side
 intersection Calle Trepadora + Cumberland
 Grade Book 280-59
 VVO # 25020 - 8-17-53
 C. Allen, Dick Sisson, C. Powell



west side
 BM - Used B.C. top curb, Cumberland and
 Trepadora - shown as having been checked
 on Page 59 - G. 280
 elev = 293.70

INDEXED
 HER
 AUG 18 1953

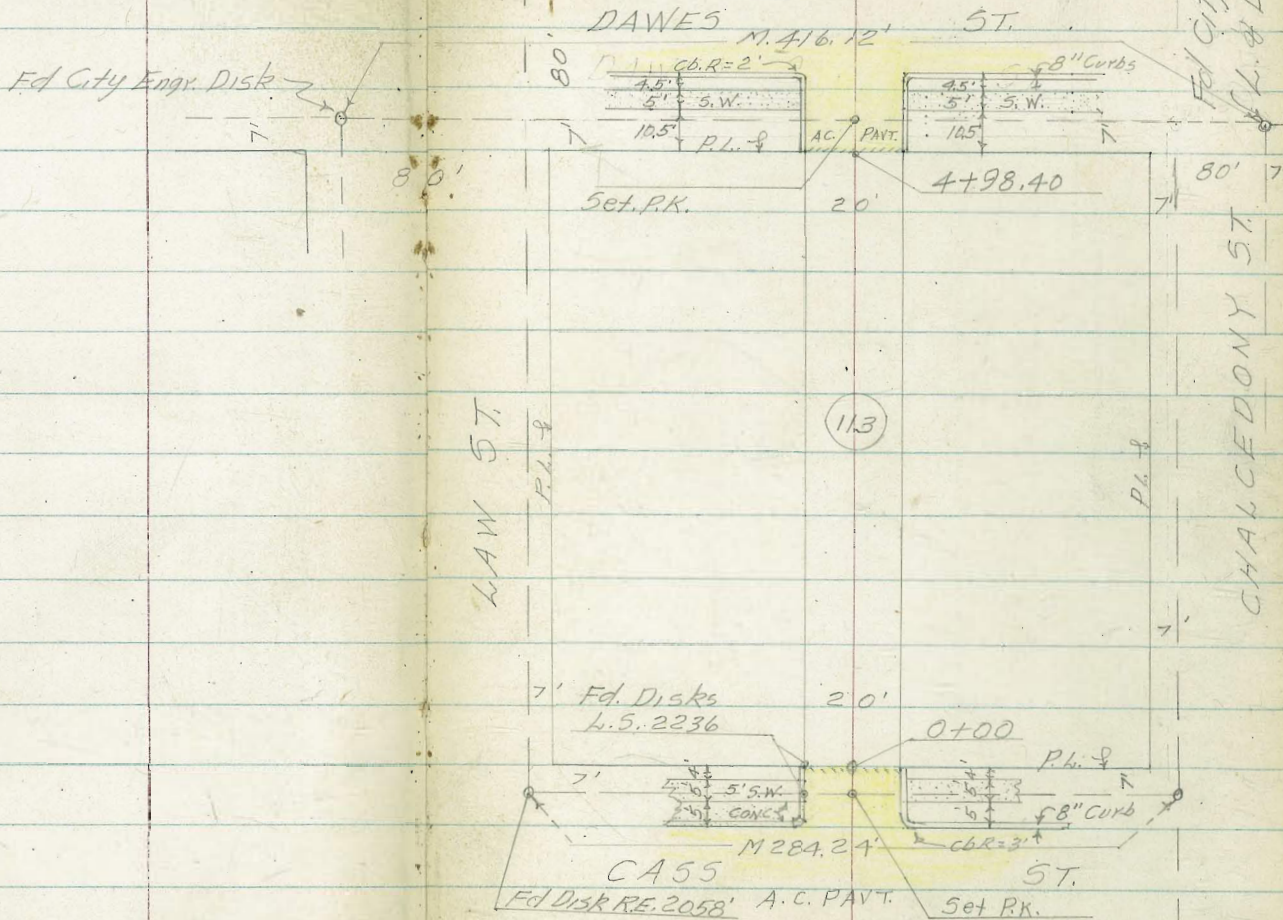
8-26-53



BASELINE SKETCH FOR CROSS SECTIONS OF ALLEY

TP. Sheets 1772-3

BLOCK 113 PACIFIC BEACH W.O. 25020



CROSS SECTIONS OF ALLEY BLK 113
PACIFIC BEACH W.O. 25020

Ely Prop Cass St,
0+00 End Curb & A.C. Pavt.

0-11 E.C. Curb Ret, R=3'

0-14 Ely Cb. Line Cass St.

0-40 & Cass St.

B.M. 10.86

70.41

59.55

S.W. 7'ct. $\frac{1729}{5}$

Chalcedony & Cass St's

8-26-53

Stampfer
Huffman
Sherry

(23)

Lt. North & Rt. South

64 ^{7L}	64 ⁵⁵	64 ³⁷	63 ²⁴	63 ²²	64 ¹³	64 ¹¹
5.7	586	604	647	643	628	6.3
20	98	98	0	10E	10E	20
	cb	Gut		Gut	cb	

64 ⁶³	64 ^{3L}	63 ^{9L}	63 ⁵⁶	63 ⁴⁴	63 ⁵²	63 ²¹
578	605	650	685	697	693	6.5
20	98	98	0	10E	10E	20
	cb	Gut		Gut	cb	

65 ¹²	64 ⁵³	64 ⁶⁹	64 ⁸¹	64 ⁸⁹	63 ⁸¹	63 ²⁷	63 ⁵²	63 ²⁰	63 ²⁴	62 ²⁵	63 ⁶⁹	62 ⁴⁵	63 ¹¹
522	588	572	648	592	660	664	689	716	645	746	672	796	730
50	50	25	25	13	13	10	0	10	13	13	25	25	50
cb	Gut	cb	Gut	cb	Gut			Gut	cb	Gut	cb	Gut	cb
			BC.	BC.				BC.	BC.				

65 ⁰²	64 ⁵²	63 ^{9L}	63 ⁴²	62 ⁹⁷
539	589	6.45+N.H.R.10	6.92	7.44
50	25	0	25	50

10.41

8-26-53

CROSS SEC'S ALLEY BLK 113 CONTD.

1+19 End Conc Ramp 2-Car Gar on Lt.

North	Lt.	689	689	689	689
1.55	2.32				
302	224				
floor level	conc Ramp				

1+03 Begin Ramp 2-Car Gar on Lt.

1.55	2.29
303	225
floor level	conc Ramp

1+00

679	679	679	679	679
2.8	3.3	3.5	3.5	3.9
20	10	0	10	20

1+00-9' RT. P.P. No PA 1010

0+77 Deadman 9' RT.

669	669	669	669	669
4.2	4.0	4.3	4.4	4.9
20	10	0	10	20

0+50

659	659	659	659	659	659
5.0	4.5	4.8	4.8	4.6	5.2
20	10	8	0	6	10

0+25 Break.

70.41

70.41

8-26-53

CROSS SEC'S ALLEY BLK. 113 CONTD.

North Lt. & Rt. South

2+26 10.4' Rt. End Hot house & Shed 6' High

2+00

75.89	75.87	75.91	75.91	75.91
8.1	8.4	8.7	8.7	9.0
20	10	0	10	20

~~76.61~~

2+00 Lt. 10.7' Begin 5' Bd Fence
 Log in fence 12.5 End W fence
 Begin Shed & Hot house 10.3' Rt.
 2+00 End 5' Bd Fence 10.3 Rt.

TP. +7.24 76.61 -1.04 69.37

1+50

75.89	75.91	75.91	75.91	75.91	75.91
2.2	2.5	2.8	3.0	2.7	2.4
20	10	0	7	10	15

@Bldg

70.41

1+25 9.9' Rt. Begin 5' Board Fence

1+21 12.4' Lt. Cor 5' Board fence

70.41

CROSS SEC'S ALLEY BLK. 113 CONTD.

8-26-53
North Lt. & Rt. South

3+50 - 10' Lt. Begin 5' Board Fence

70.4	69.9	69.9	69.9	69.9
6.5	6.7	7.0	7.0	7.0
20	10	0	10	20

3+24 Begin 6' Board fence 82 Rt.

3+07 & Sing Car Gro on Rt.

69.9	68.9	68.9	68.9	68.9
7.4	7.8	8.0	8.0	7.8
20	10	0	10	20

76.9
7.67
203
cool floor

3+00

Lt. 10' End 4' Riket fence
3+00 Rt 10' End 6' Board fence

2+77 & 3.5' Conc Walk on Rt.

68.9	67.9
8.51	8.80
102	202
& Walk	Walk

76.61

76.61

8-26-53

CROSS SEC'S ALLEY BLK 113 CONTD.

North Lt. & Rt. South

(conc Ftg)
 10⁰ Lt. End 6' Board fence
 4+49 - 10¹ Rt. Begin 6' fence + Hathouse
 4+48 - 11⁴ Rt. End 5' Board Fence

72⁴ 71⁶
 420 499
 10² 10¹
 TOP Bot
 CONC ftg

10¹ Lt. Begin 6' Board fence
 4+00 - 10² Lt. End 5' Board fence

7⁸/₁₁ 7⁴/₁₁ 7⁴/₁₁ 7⁴/₁₁ 7¹/₁₁
 48 52 55 52 55
 20 10 0 10 20

11³ Rt. Begin 5' Bd fence
 3+99 - 9³ Rt. & PP NE PA 1080

3+91 End 2-Car Gar on Rt.

70⁸ 71⁰
 580 559
 119 152
 CONC CONC
 Ramp floor

3+76 Begin Conc Ramp 2-Car Gar on Rt.

70² 71¹
 586 557
 119 152
 CONC CONC
 Ramp floor

3+75 9⁴ Rt End 6' Board fence

76.61

76.61

L. Binbell
~~Aug 27 1953~~
 Aug 27 1953

8-26-53

CROSS SEC'S ALLEY BLK. 113 CONTD.

B.M. - 8.78 68.77 ✓
 5+38 ± & Dawes St.

LT	+	RT
68.72	1.729	S.E. Cor 10' R.P.
5	73.02	Chalcedony & James
446	4.94	5.34
50	25	5.89
		25
		50
		M.H.
		R.H.

5+18 ± W/ly Curb Line Dawes St.

72.57	72.03	72.25	71.88	71.85	71.72	71.42	71.83	71.25	71.15	71.69
5.03	5.52	5.30	5.71	5.70	5.83	6.06	6.12	5.60	6.40	5.87
25	25	12	12	10	0	10	12	12	25	25
cb	Gut	cb	Gut				Gut	cb	Gut	cb
		4.57	5.10				6.89	6.21		
		50	50				50	50		
	72.35	72.24	71.81	71.79	71.51	71.25	71.25	71.25		

5+16 ± B.C. Curb Ret. R=2'

5.2	5.31	5.71	5.76	6.04	5.60	5.8
20	10	10	0	10	10	20
	cb	Gut		Gut	cb	

104R End 6' Board fence + Conc Fly Rt.
 4+98 ± W/ly Line Dawes St. Edge Point

77.55 ✓

72.25	72.51	72.16	72.20	71.92	72.19	73.04	71.93
4.8	5.04	5.39	5.35	5.63	5.36	4.51	5.62
20	10	10	0	10	10	10	10
	cb.	Gut		5.5	Gut	cb	TOP Bot.
				20			Fly Fly.

TP. +5.04 -4.10 72.51 ✓

72.32	72.32	72.32	72.32	72.32
4.2	4.2	4.6	4.5	4.2
20	10	0	10	10

@B/11

76.61

INDEXED
 SER
 AUG 27 1953

76.61

X-sec Alley Block 66, Normal Hts.

10-19-53.

WO# 32355

C. Allen,

D. Sisson

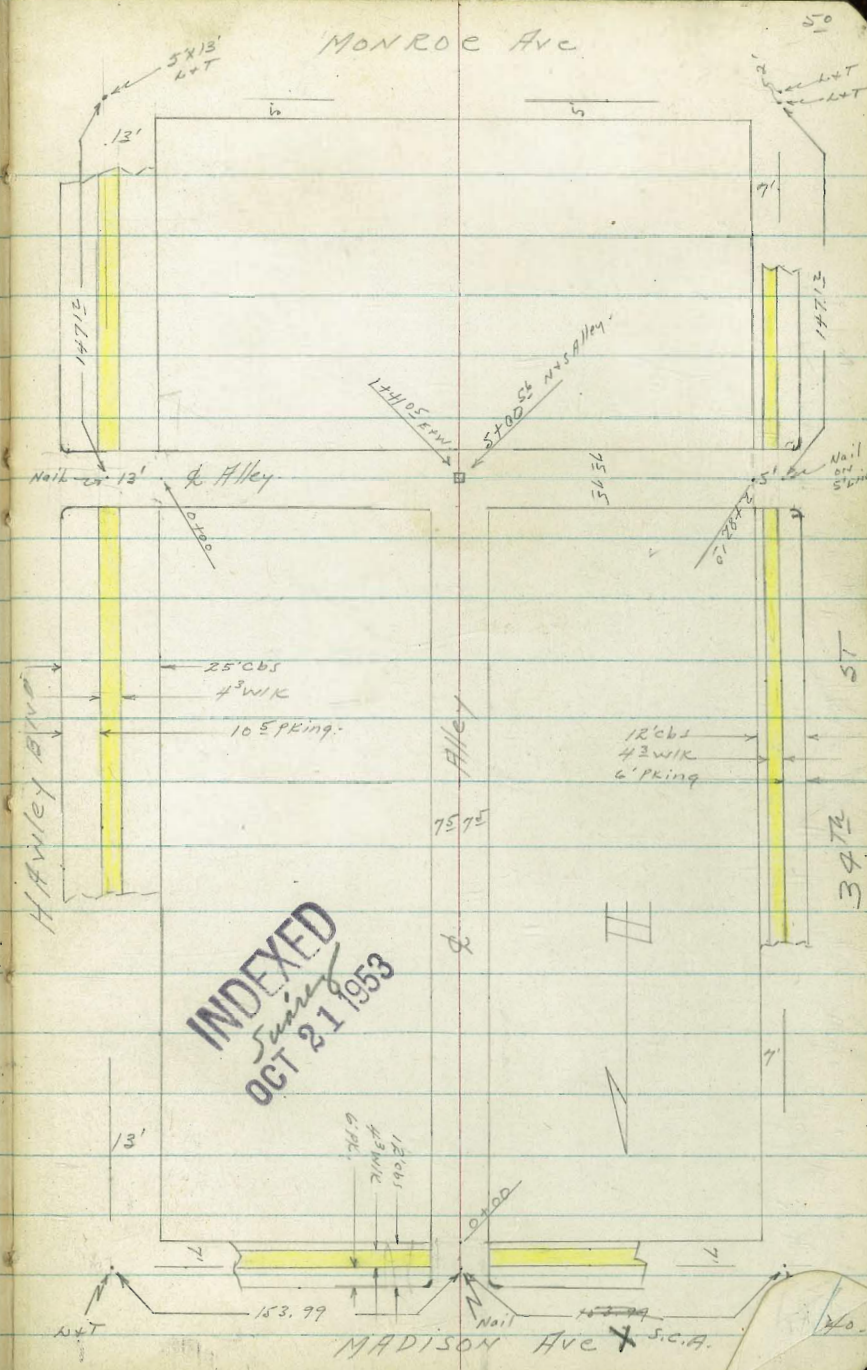
C. Powell

Ref. TP sheets 3587, 3586

FB 1842-29

File Map #1048-

NOTES REDUCED BY RWB



Levels Alley Block 66 - Normal Hts.
North + South Alley of T

LT = Ely

N+S
Alley

RT = Wily

51

0+02⁸-4⁵ LT = 2 8" Water gate Valve -

0+00 = Sly Madison Ave - 7² Rt = Sly end of wly curb

0-0⁶ = Sly edge AC Paving - Poor Condition

All of AC Paving in Alley entrance in poor Condition

0-01³ } 7¹ LT = Sly end of Ely curb (2 car)
7¹ LT = NECOR CONC Ramp to N+S garage

0-10 = EC's 2' Radius Alley Returns - Returns in poor Condition

0-12 = Sly Cb line Madison - Curbs in poor Condition

BM. 3.61 393.89

390.28

SW Lot - 13 Hawley Blvd + 7' Madison - FB 1842 - 40.

		389.75					
		414					
		415	gate Valve				
	390.06			389.4			
		390.06					
	3 ⁸³	388	4 ⁴	4 ⁵	4 ⁵	4 ^{4.8}	4 ⁵
	7 ²	7 ²	7 ²	7 ²	7 ²	7 ²	7 ⁵
		on CONC Ramp	ground		Dirt	Top cb	
		389.4		389.3			
		4 ⁵		4 ⁶			
		7 ²					
		AC					
		389.4		389.4			
		4 ⁵		4 ⁵		4 ^{4.8}	
		7 ²		7 ²		7 ²	
		AC				Top cb	
		389.59		389.67			
		4 ³⁰		4 ²²			
		7 ²		7 ²			
		end curb		NECOR Drive			
		389.40		388.91			
		4 ⁴⁹		4 ⁹⁸			
		7 ²		7 ²			
		cb		90T			
	389.66						
		389.12		388.95			
		389.46		388.91			
		4 ⁴³		4 ⁹⁴			
		4 ⁷⁷		4 ⁹⁹			
		50		7 ⁵			
		cb		90T			
				BC			
		388.77		388.66			
		5 ¹²		5 ²³			
		50		5 ²⁶			
		cb		90T			
				BC			
		389.01		388.76			
		4 ⁸⁸		5 ¹³			
		50		4 ⁸⁹			
		cb		7 ²			
				66			
		388.57		389.00			
		5 ³²					
		50					
		cb					
		388.95					
		4 ⁹⁴					
		50					
		cb					

393.89 T

Levels - T Alley Block 66, Normal Hts

N+S Alley of 'T'
7th RT = begin 5' high Board fence

145 - 8th RT SECOR Stucco Dwelling

14th LT = Wly of frame house

0+40 - 9th LT = Joq in frame House

0+27 - 9th LT = NW COR Frame House ON CONC piers

0+23⁵ - 7th LT = SW COR 2 car N+S garage

0+20

0+09 - 7th RT = NE COR stucco Dwelling

7th LT = S.W COR 2 car garage conc floor

0+05⁵ - 7th LT = S.W COR ^{conc} RAMP to 2 car garage

LT = eLy

N+S Alley

RT = Wly

52

392.9	391.3	391.3	391.1	392.97
10	26	16	28	092
9 th Floor	75	75	8 th Floor	8 th Floor
391.50	391.2	391.1	391.1	391.1
23.9	22	2100	2100	2100
76 Floor	9 th Floor	75	8 th Floor	8 th Floor
391.4	391.9	391.1	390.9	390.9
25	25	28	210	30
76 Floor	75	75	75	8 th Floor
391.50	391.37	391.1	390.9	393.0
239	25	28	210	092
7 th Floor	75	75	75	72 Floor
391.50	391.37	391.1	390.9	393.0
239	25	28	210	092
7 th Floor	75	75	75	72 Floor

393.89

Levels T Alley Block 66, Normal Hts.
N+S Alley.

0+80

0+75 - 4² Rt = 2 Water Meter

garages are straight

0+73 - 7⁶ Rt = Jog in Conc Apron for 4 car garage

0+60

0+56 - 7⁴ Rt = begin 4 car garage - Conc
Floor + Apron.

0+53 - 7⁶ Rt = 5' wide E+W Conc Walk

TP, 3.84 395.46 227 391.62

0+50 - 8⁰ LT = begin 4⁵ high fence
Chicken wire

0+45 - 14² LT = SW corner frame house on conc
Pier

LT = e1y

391.6
3 9
7 5

4
N+S
Alley
4 2
391.3

Rt = w1y -

391.4
4 1
7 5

391.8

3 7
2 5

391.8

3 7
7 5

391.7

3 8

391.49

3 9 7
7 6
Apron -

391.5

4 0
7 5

391.49

3 9 7
7 4
Apron

391.51

3 9 5
10 2
Conc
Floor

391.4

4 3 2
7 6
W/K

391.13

4 3 3
17 6
W/K

395.46 x

393.89 x

Levels in Alley BIK 66 - Nakima Hts
 N+S Alley of T

LT = e17

RT = w17x

54

11² LT = SE COR of CONC slab
 1717- 8² LT = SW COR of CONC slab

390.99	390.99
4 ⁵²	4 ⁵²
11 ²	8 ²
SE COR	SW COR
slab	slab

14² LT = NE COR of CONC slab
 1710- 8² LT = NW COR of CONC slab

391.10	391.10
4 ³⁶	4 ³⁶
14 ²	8 ²
NE COR	NW COR

1701- 6⁰ RT = d 12" power pole # PH 4585

391.3	391.2	391.1	391.0	391.2
4 ²	4 ³	4 ⁴	4 ⁵	4 ³
25	75		75	25

0494⁵ = d 8⁵ wide CONC slab for parking

391.10	391.12
4 ³⁶	4 ³⁴
8 ⁵	2 ³⁵
Ely Slab	w/lot
	slab

Apartments Above garage

0490- 8⁶ RT = end of car with CONC floor + Apron

391.97	391.97
3 ⁹⁹	3 ⁹⁹
8 ⁶	10 ²
Apron	Floor

0488- 8¹ LT = end 4⁵ high chicken wire fence

395.46 x

X-sec T Alley BIK 66, Normal Hts
N+S Alley

LT = city

♀

RT = wly

55

2716- 18⁵ RT = ♀ single garage - dirt floor

390.3

5²
18⁵
Dirt floor

2703- 3² RT = ♀ water meter box

390.1
5¹⁴
25

390.2

5¹³
75

390.3

5¹²

390.3

5¹²
75

389.9

5¹⁶
25

1797- 5⁵ RT = ♀ 12" power pole # PA4571-

1783- 6³ RT = ♀ water meter -

390.8

390.8

390.5

390.3

389.9

1750- 7⁸ LT = begin 6' high barbed fence

47

47

5¹⁰

5¹²

5¹⁰

390.89

390.84

462

462

10⁸
SECR
WALK

8³
SWCOR
WALK

390.90

390.90

456

456

11⁴
NECR
CONC WALK

8⁶
NW
COR WALK

Parallel to ♀ Alley -
1746- 8³ LT = SW COR 2⁵ wide N+S CONC WALK

Parallel to ♀ Alley -
1718- 8⁶ LT = NW COR OF 2⁵ wide N+S CONC WALK

395.46 x

X-sec 'T' Alley BIK 66, Normal Hts
 N + S Alley.

4 + 49 - 8' LT = 4" Conc Pipe Drain from yard

4 + 32 - 4' RT = Dead Man.

4 + 10 - 4' RT = Water Meter Box.

4 + 01 - 8' LT = 4" Home Made Conc Pipe Drain from yard.

4 + 01 - 5' RT = 12" Power Pole # PA 4535

4 + 00 - 9' RT = end fence + 8' LT = begin board fence

3 + 76 - 5' RT = Water Meter box

3 + 50

3 + 49 - 7' RT = end board fence + begin lath fence

3 + 27 - 3' RT = Water Meter Box

3 + 00 - 8' LT = begin 6' high board fence

2 + 99 - 5' RT = 12" power pole # PA 4551

2 + 78 - 4' RT = Water Meter Box

2 + 50

2 + 40 - 8' LT = end 6' high board fence

2 + 39 - 3' RT = Water Meter box

2 + 25 - 7' RT = 5' high lath fence.

LT = 014
 RT = W14

389.4
 8 1/2
 1 1/2

389.7	389.9	389.8	389.3	389.7	389.7	389.7
5 100	5 16	5 17	6 11	5 100	5 100	5 80
10 2	25	75	6 11	73 city of LATH Fence	75	25
390.0	390.0	390.0	389.6	389.7	389.8	
5 15	5 15	5 15	5 19	5 18	5 7	
25	75	75		75	20	
390.2	390.2	390.0	390.0	390.3	390.1	
5 13	5 13	5 15	5 15	5 14	5 14	
25	75	75		75	25	
390.0	390.4	390.3	390.4	390.1	390.1	
5 5	5 1	5 2	5 2	5 4	5 4	
25	75	75	75	25	25	

395.46 x

X-sec 'T' Alley BIK 66. Normal Hts
N + d Alley.

LT = 0.14

RT = 0.11 - 57

See Page 58 for sections on E+W Alley.

TP₃ - Start, BM 4.30 390.28 ✓

TP₂ 5.18 394.58 6.06 389.40

on Hub 5400.56

Side Shot -

6.02

Hub & Alloys

389.44

See page 58 for E+W Alley sections

4+93⁰⁰ = Nly of E+W Alley

389.7

5¹⁰⁰
7¹⁵

389.6

9¹⁹

389.5

6¹⁰
7¹⁵

4+90⁵ 4³ LT = 8" gate valve cover

389.5
6¹⁰
4⁸

4+84- 8⁰ LT = end 2' hedge

4+66- 8¹ LT = begin 2' wide eugenia hedge

4+66- 6' RT = water Meter Box

8¹ LT = end 6' high board fence

4+50 } 7² RT = end Lath fence

389.7

5¹⁰⁰
7¹⁵

389.4

6¹

389.4

6¹
7¹⁵

389.1

6¹⁴
2⁵

395.46 T

X-sec T alley BIK 66, Noerial Hts.
 E+W. Alley -
 See page 50 to 57 for N+S Alley.
 See sketch Page 50

0+20-

0+11 = 7' LT = begin 5' Conc block wall -

end AC. Pave - Poor Condition

0+00 = Wly Line Hawley Blvd

0-09- 7' Rt = begin 3' wide Eugenia Hedge

Poor Condition

0-10' = Wly edge Walk + Wly end Alley Curbs

Alley Returns & Alley Curbs should be replaced

0-23 = Corb EC - 2' Radius Alley Returns - Poor Condition

Curbs on Hawley in Poor Condition

0-25 = Wly curb line Hawley Blvd

B.M. 6.18 395.62

side shot on Hub
 & Alley - Page 57 -
389.44

LT = 517

Ret. Nly -

158

Station	Notes	Elev	Dist	Angle	Notes	Elev	Dist	Angle
391.3		391.0	46	72		391.0	46	75
391.3		391.0	46	72		391.0	46	75
390.3		389.9	57	72		389.9	57	75
390.4		389.9	57	72		389.9	57	75
389.75		389.75	58	72		389.75	58	75
389.75		389.75	58	72		389.75	58	75
389.67		389.31	63	72		389.31	63	75
389.62		389.18	64	72		389.18	64	75
389.18		389.18	64	72		389.18	64	75
389.15		389.15	63	72		389.15	63	75
389.22		389.22	64	72		389.22	64	75
389.51		389.51	61	72		389.51	61	75
389.35		389.35	62	72		389.35	62	75
389.69		389.69	62	72		389.69	62	75
395.62		395.62				395.62		

X-sec 'T' Alley BIK 66, Normal Hts.
 E+W Alley
 See sketch Pages 50

LT = 514

d.
 E.W.
 Alley

rt Nly - 59

1400-

390.6	390.5	390.2	390.3	390.4
4 ¹⁰ 25	5 ¹ 75	4 ¹ 75	5 ³ 75	5 ² 25

0488-19⁵ LT=d Single garage DIRT Floor

391.2
 4⁴
 19⁵
 DIRT Floor

0481-7² LT=end 5' high Conc block wall

390.3
 390.7
 7²
 Footing

0490

390.7	390.7	390.8	390.6	390.6
4 ² 7 ² Nlyot Wall	4 ² 7 ² 75	4 ⁸ 75	5 ¹⁰ 75	5 ¹⁰ 10 ⁵

0464-8^t rt = 9 wooden steps to front house

391.17
 4⁵
 8⁴
 Top Bottom
 Step

391.43
 3¹⁹
 10²
 Porch

0459-8^o rt = 2 end 3' wide Eugenia Hedge

391.3	391.3	391.1	391.0	391.0
4 ³ 7 ² Nlyot Wall	4 ¹⁰ 75	4 ⁵ 75	4 ⁶ 75	4 ⁶ 25

0440

395.62

X-sec T. Alley BK 66, Normal Hts

E & W Alley -
See sketch pages 50 -

1+75-

1+64- 7⁴ Rt = ϕ Shack garage - DIRT floor
Will fall down any time

1+48⁵⁵ = Wly line N+S Alley -

1+48- 7⁸ LT = begin 3⁵ high picket fence

1+46- 7⁸ LT = ϕ Power pole (10") # PA 3424

1+410⁵ - = ϕ N+S Alley -

See page 50 + 57
1+33.55 = Ely line of N+S Alley

Frame Dwelling
1+19-10¹ Rt = ϕ Steps (wooden) to

6 389.3

25

LT = 514

6 389.2

7 14

ϕ
E & W
Alley
6 389.1

6 14

Rt = Nly

6 389.0

7 14

6 389.1

7 25

60

389.6

6 10
25

389.6

6 10
7 14

389.5

6 14

6 389.1

7 4

FLOOR

389.5

6 14
7 15

390.1

6 14
12

389.7

5 10
7 14

389.6

6 10

389.5

6 14
7 15

389.8

5 10
7 14

389.7

6 10

389.6

6 10
7 15

370.34

5 28

10 2

TOP BOTTOM
STEP

370.74

4 68

11 4

Topstep
Purch

395.68

X-sec T Alley BIK 66. Normal Hts

E+W Alley-

2+33- } 7[±] LT=begin 2[±] high wire fence.
6[±] LT= & Water Meter Box

2+23- 6[±] RT=begin Picket Fence (4' high)

TP1 3.83 392.58 6.87 388.75

2+12- 15[±] LT= & single garage conc floor

2+11- 7[±] RT= SW COR 4' wide E+W CONC WALK
Parallel to & Alley-

2+00

1+99- 8[±] LT= end chicken wire fence

1+92[±]- 13[±] RT= & doorway to stucco Dwelling

1+91- 7[±] RT= Parallel to & Alley-
SECOR 4' wide E+W CONC WALK

+ Begin chicken wire fence

1+82- 7[±] LT= end Picket Fence

LT= sky

E+W Alley

ret= nly = 61

389.26

392.58 x

6³⁶
15[±]
CONC FLOOR

388.9

389.03

6[±]
7[±]
9[±]

6⁵⁹
7[±]
SW
COR WIK

6⁵⁰
11[±]
NW COR
WALK

389.1

389.1

388.8

6[±]
25

6[±]
75

6[±]
100

6[±]
75

6[±]
100

389.71

5[±]
90

13[±]
100
FLOOR

388.8

389.54

389.62

6[±]
78
9[±]

6[±]
100
7[±]
SECOR
WALK

6[±]
110
11[±]
SECOR
WALK

395.62 x

X-sec T Alley BIK 66, Normal HTS

E+W Alley

TP₃ SW 7' x 5' 2 1/2" T Handley + Minore 4.87 390.29
TP₂ 5.60 395.16 3.02 389.56

2+94¹⁰ = Fly Curb Line 34th ST

2+92¹⁰ = Curb EC - 2' Radius

Curbs are in very poor condition

2+83⁸ = Fly edge Walk + Fly end Alley curbs

Fly edge AC Pav. - Poor Condition
7 3/4" RT = end picket fence
7 1/2" LT = end wire fence

2+82¹⁰ Fly Line 34th ST

2+81⁵ 4" LT = gate valve cover (water)

2+60

2+40

INDEXED
OCT 21 1953

LT = 5.14

E+W Alley

RT = N.Y. 62

INDEXED

OCT 21 1953

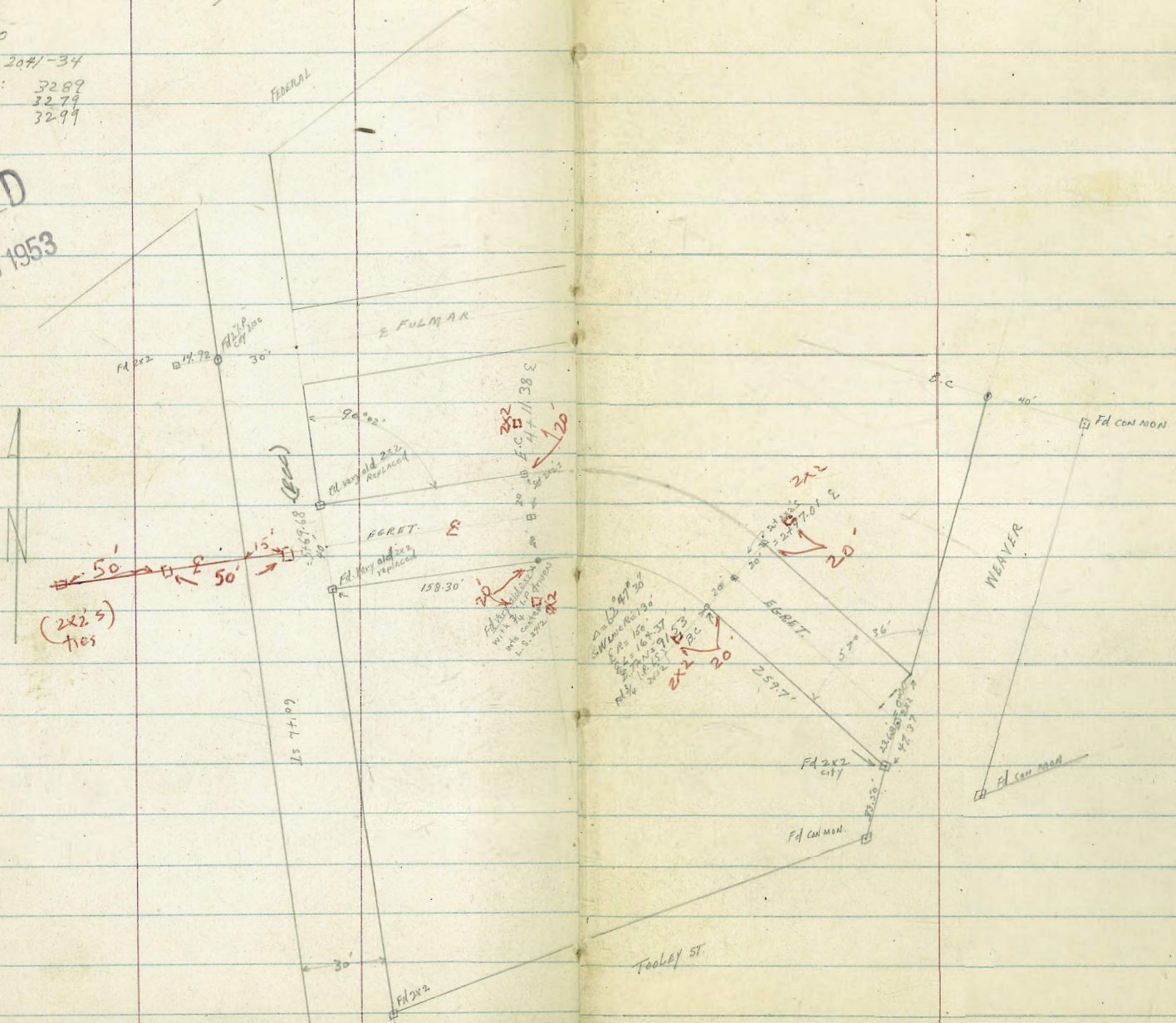
386.78	386.93	387.10	386.86	386.93	387.10	387.26	387.07	387.18
5 ⁸⁰ 100 cb	5 ¹⁵ 100 90T cb	5 ⁴⁸ 95 cb	5 ⁷⁵ 95 90T 13c	5 ⁶⁵ 75	5 ⁴⁴ 75	5 ⁵¹ 92 90T 13c	5 ⁵¹ 100 90T cb	5 ³⁰ 100 cb
	387.25		387.01		387.24	387.34		
	5 ³³ 75 cb		5 ³³ 75 90T cb		5 ³⁴ 75 90T cb	5 ²⁴ 75 90T cb		
	387.50		387.56		387.60	387.65		
	5 ⁰⁸ 75 cb		5 ⁰² 75 90T cb		4 ⁹⁸ 75 90T cb	5 ⁰⁵ 75 90T cb		
					90T tens are higher than curbs			
	387.8		387.67		387.51	387.65		387.9
	4 ⁸ 25		4 ⁹¹ 75		4 ⁰⁷ 75	4 ⁹³ 75		4 ¹⁷ 25
	387.50		388.4		388.0	388.4		
	5 ⁰⁸ 40 2cap		4 ⁷⁵ 75		4 ¹⁶ 75	4 ¹² 75		
	388.7		388.7		388.3	388.5		388.5
	3 ⁹ 10e N.Y. of Stucco House 95		3 ⁹ 75		4 ¹³ 68 18/40T Fence	4 ¹ 75		4 ¹ 15
					392.58 X			

Clark
Shepherd
Driver
Owell
11-10-53
No. 25020

Ref: FB. 2041-34
Tie-Sheets: 3289
3279
3299

INDEXED
MER
NOV 12 1953

X-SECT. EGRET = TOOLEY ST
NWLY to 6044



X-SECT. EGRET
TOOLEY to 60th

LT.

RT

2+00

1+50

1+00

T.P.

0.54

379.81

12.92

379.27

379.81

0+50

20' LT. END toe FILL

0+40

27' LT. END Shoulder FILL

0+12.69

= N.E. CORN. EGRET-WEAVER

0+00

0-12.69

= S.W. CORN. EGRET & WEAVER

0-23.5+

= APPROX E WEAVER
SECT. ALONG E WEAVER

(0+00 - E EGRET & W 1/4 LINE WEAVER

B.M.

0.70

392.19

391.49 = CON. MON

N.E. WEAVER & TOOLEY
F.B. 2041-38 B.M. #3

uniform

uniform

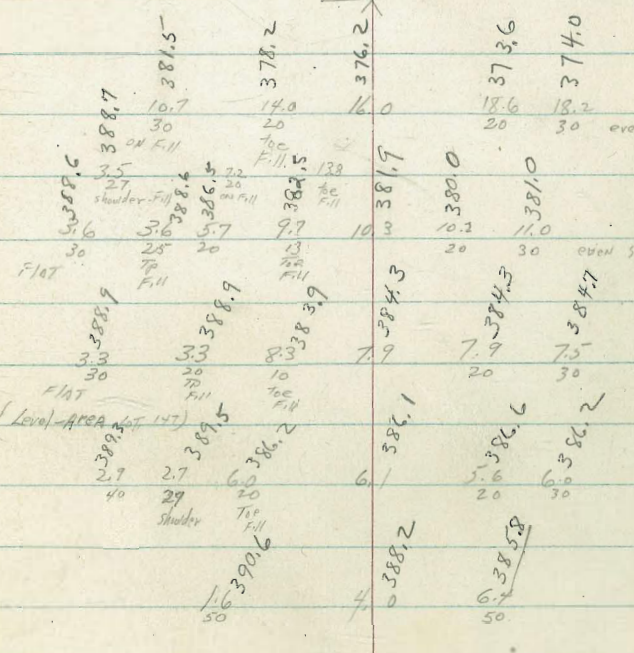
uniform slope

even slope

AREA LEVEL - PORTION
LOT 147
no bridge

Sections at H. 4. 6

(Level) AREA LOT 147



N. SECT EGRET (CONT.)

5+9968 = W. Loc
 3769.68 = E. Linc 68+4
 5700
 4150
 4111.38 = E.C
 3770.28
 3+29.19
 2789.10
 Notes: Curve div. 4 pts
 3/4 - 41.09 etc
 2+47.01 E.C
 T.P.

Sect at Pk's for Tang
 Sections Radial
 Sect 90° to ax tang.

2.10 368.66 13.25 366.56

	LT.	E	PT.
	+4.5 50	359.7	349.4
	+5.1 50	361.4	354.4
	+2.1 30	361.4	356.2
Uniform	370.8	361.4	358.0
	+2.1 30	362.5	359.1
Uniform	370.0	362.5	359.1
	+1.3 30	364.7	357.1
Uniform	364.7	362.7	357.1
	+2.4 40	371.1	359.3
	+0.7 30	369.4	356.1
	+0.5 40	369.2	359.3
	+1.7 30	367.0	356.1
	+0.7 40	369.4	357.3
	+2.6 30	366.1	359.3
	+5.0 20	363.7	357.3
Uniform	366.1	361.4	355.8
	+0.6 30	367.3	352.2
	+4.8 20	364.4	352.2
Uniform slope	362.9	357.2	347.7
	+9.2 20	357.2	347.7
Uniform slope	362.9	358.0	352.3
	+11.5 20	357.2	347.7
	+15.7 20	357.2	347.7
	+19.3 30	357.2	347.7
	+368.66		

X SECT EGRET (CONT.)

CHK:

0.88 391.49 = 391.49 (See B.M.)

T.P. 12.63 392.37 0.25 379.74

T.P. 12.72 379.99 1.39 367.27

D. Smith
J. Royer
R. Taylor
R. Hamilton

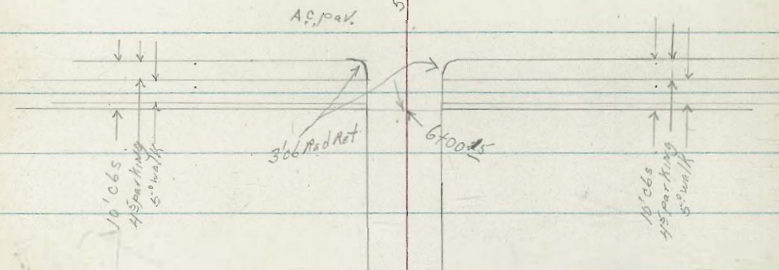
INDEXED
MER
DEC 3 1954

WO# 25020
12/2/54

Froude

FD PK Mill
ONE 1/4 7' Line + 2 1/2" by 1 1/2"
FB 2142-17
St

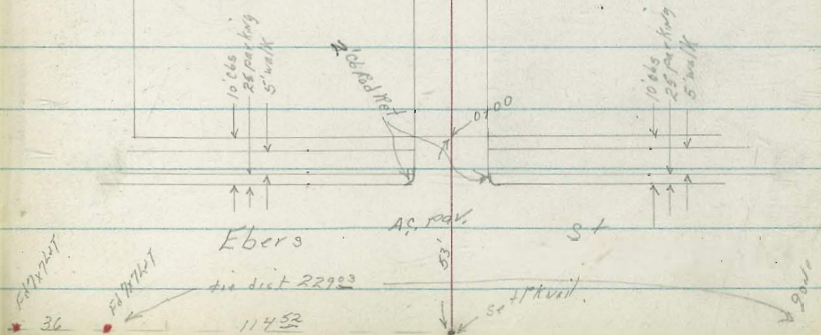
67



Muir Ave

Long Branch Ave

← T →



Ebers

A.P. Pav.

St

36

11452

Air duct 22933

11452

Sc + P. Mill.

900

Lt - Nly

Rt - Sly

TP₂ 10¹⁹ 45⁸¹ 0⁷⁵ 35⁶² Nail in Pole

0+74 6⁵ RT E. 16" P.P. 6 # PL 2-15

0+50

34.7
12 2¹ 34.3
15 7⁵ 5 33.6
24 2² 34.0
4 7⁵ 34.2
18 34.6
1¹⁰ 34.6

0+44 11³ RT E. single garage cor floor spread

34.1
2³ 33.9
12 7⁵ 4 32.7
3² 32.7
6 33.2
7⁵ 33.7
12 33.9
17⁶ 34.91
14⁴ 34.93
11² 17⁶
13³ 14⁴
Nail Floor

0+25

0+21 7² Lt end hedge

0+13 6³ Lt E 5 wide board steps to house

0+19 7⁹ Lt to SE cor house

5⁷ Lt Begun hedge

0+06 8⁰ Lt SW cor house

0+00 Fly Prop Ebers edge AC Pav 2.06 ends

32.28
4⁰⁹ 4¹⁹ 31.18
7⁴ 4²¹ 31.46
2⁴ 4³⁸ 31.99
7⁴ 3²⁵ 32.42
2⁴ 2⁵

0-10 Fly CS Line Ebers

31.88
31.24
31.95
31.36
32.03
31.2
31.43
31.76
31.52
31.51
32.08
31.53
31.50
32.32
4¹⁷ 5¹³ 4¹⁸ 5⁰¹ 4³⁴ 4²⁵ 4²⁴ 4²¹ 4²⁵ 4²⁶ 4²⁷ 4²⁷ 4²⁸
50 50 25 25 95 95 75 75 75 95 95 95 25 25 50 50
15 2⁴ 2⁶ 2⁵ 2⁵ 2⁶ 2⁴ 2⁴ 2⁴ 2⁴ 2⁴ 2⁴ 2⁴ 2⁴ 2⁴ 2⁴ 2⁴

BM

3⁰² 33³⁵

SEBP King Grand Ebers

TP₁

4²⁵ 36³⁷ 4⁶⁸ 31⁶²

SEBP Main Ebers

BM

6¹⁸ 36³⁰ 30¹²

SWBP Voltair Ebers

π 36³⁷

Lt = Nly

RT = Sly

3+00

2+98 7° RT 14" PPole # JPA 4660

2+97 8° Lt end 4car garage con floor apron

2+84 92 Rt E double garage dirt floor

2+53 8° Lt Begin 4car garage apt over con floor apron

2+51 8° Lt E 3' con walk

2+50

2+47 5° Lt E 5' x 3' con slab trash can holder

2+39 8° Rt E double garage dirt floor

2+00

1+86 7° RT 14" PPole # PA 4674

1+50

1+00

58	57	54	51	48	45
40.0	40.1	40.4	40.7	41.3	41.5
15	15	15	15	15	15
40.3	40.04	40.77	40.5	40.5	40.5
143	143	143	143	143	143
40.12	40.03	40.12	40.12	40.12	40.12
559	678	678	678	678	678
143	82	82	82	82	82
143	143	143	143	143	143
38.60	38.60	38.60	38.60	38.60	38.60
42	42	42	42	42	42
80	80	80	80	80	80
38.49	38.49	38.49	38.49	38.49	38.49
72	72	72	72	72	72
15	15	15	15	15	15
38.5	38.5	38.5	38.5	38.5	38.5
72	72	72	72	72	72
15	15	15	15	15	15
38.3	38.3	38.3	38.3	38.3	38.3
72	72	72	72	72	72
15	15	15	15	15	15
38.1	38.1	38.1	38.1	38.1	38.1
72	72	72	72	72	72
15	15	15	15	15	15
39.1	39.1	39.1	39.1	39.1	39.1
72	72	72	72	72	72
15	15	15	15	15	15
39.5	39.5	39.5	39.5	39.5	39.5
72	72	72	72	72	72
15	15	15	15	15	15
39.5	39.5	39.5	39.5	39.5	39.5
72	72	72	72	72	72
15	15	15	15	15	15
37.2	37.2	37.2	37.2	37.2	37.2
86	86	86	86	86	86
15	15	15	15	15	15
37.5	37.5	37.5	37.5	37.5	37.5
82	82	82	82	82	82
15	15	15	15	15	15
37.1	37.1	37.1	37.1	37.1	37.1
82	82	82	82	82	82
15	15	15	15	15	15
37.3	37.3	37.3	37.3	37.3	37.3
85	85	85	85	85	85
15	15	15	15	15	15
37.5	37.5	37.5	37.5	37.5	37.5
83	83	83	83	83	83
15	15	15	15	15	15
38.8	38.8	38.8	38.8	38.8	38.8
72	72	72	72	72	72
15	15	15	15	15	15
37.0	37.0	37.0	37.0	37.0	37.0
88	88	88	88	88	88
15	15	15	15	15	15
38.8	38.8	38.8	38.8	38.8	38.8
70	70	70	70	70	70
15	15	15	15	15	15
36.7	36.7	36.7	36.7	36.7	36.7
95	95	95	95	95	95
15	15	15	15	15	15
36.1	36.1	36.1	36.1	36.1	36.1
92	92	92	92	92	92
15	15	15	15	15	15
36.2	36.2	36.2	36.2	36.2	36.2
96	96	96	96	96	96
15	15	15	15	15	15
36.2	36.2	36.2	36.2	36.2	36.2
96	96	96	96	96	96
15	15	15	15	15	15
36.6	36.6	36.6	36.6	36.6	36.6
92	92	92	92	92	92
15	15	15	15	15	15
35.6	35.6	35.6	35.6	35.6	35.6
102	102	102	102	102	102
15	15	15	15	15	15
35.5	35.5	35.5	35.5	35.5	35.5
103	103	103	103	103	103
15	15	15	15	15	15
35.2	35.2	35.2	35.2	35.2	35.2
106	106	106	106	106	106
15	15	15	15	15	15
35.3	35.3	35.3	35.3	35.3	35.3
105	105	105	105	105	105
15	15	15	15	15	15
35.3	35.3	35.3	35.3	35.3	35.3
105	105	105	105	105	105
15	15	15	15	15	15
36.0	36.0	36.0	36.0	36.0	36.0
98	98	98	98	98	98
15	15	15	15	15	15
36.4	36.4	36.4	36.4	36.4	36.4
94	94	94	94	94	94
15	15	15	15	15	15

45.81

5740 11⁵ RT E single garage con Floor

5704 15² LT Begin 4 car garage con Floor LOPON

5700 7⁰ RT E 14" P Pole # JPA4618

4786 8⁰ RT E 6' wide con walk

JP₃ 9⁵³ 53⁴³ 12 43²⁰

4750

4700

3797 7⁰ RT E 10" PPole # JPA4634

3750

3735 (13² LT E single garage con Floor
13² RT E double garage dirt Floor

3701 E SM4

LT=My

E

RT=Shy

70

4578	765	80	44.7	44.6	45.2	45.3
792 Floor	158	82	44.7	44.6	45.2	45.3
	86	82	82	88	88	81
	15	75	4	4	75	75
	43.6	43.7	53.43	43.7	41.0	44.1
	15	75	10	10	12	12
	42.5	42.6	42.5	42.7	43.1	43.1
	32	32	3	3	22	22
	15	75	75	75	15	15
	41.1	41.1	41.3	41.7	41.8	41.4
	42	42	45	44	40	40
	15	75	75	75	75	75
55 40.8 13 ² Floor			40.53			41.4
			528			44 13 ² Floor
			45.81			

6
11⁵ Floor
46.91

Lt-Nly

♀

Rt-Sly

21

BM starting

6⁰⁴ 30¹³

TP3

452

36¹⁷

9²²

31⁶⁵

TP4

0²⁶

41⁵⁷

12¹²

41³¹

6+16¹⁵ wly of Line Froude

47.75
47.06
48.04
47.35
48.17
47.58
47.63
47.71
47.78
47.77
48.40
47.85
48.58
48.15
48.83

548 639 539 604 526 585 580 578 565 566 503 558 485 528 460
50 50 25 25 103 103 75 75 103 103 25 25 50 50
16 9ut 06 9ut 06 9ut 9ut 9ut 9ut 9ut 9ut 9ut 9ut 9ut 9ut

6+00²⁵ wly Prop Froude edge AC pav end C6

48.41
48.13
47.90
48.20
48.56
47.82

578 530 553 523 487 561
78 75 78 78 78 123
9ut 9ut 9ut 9ut 9ut 9ut

5483 10² RT end

575 561
102 123
9ut Floor
47.66 47.81

5456 10² RT Begin 3 car garage con Floor apron

46.1 46.0 46.0 46.4 46.7
73 74 72 70 62
15 75 75 75 15

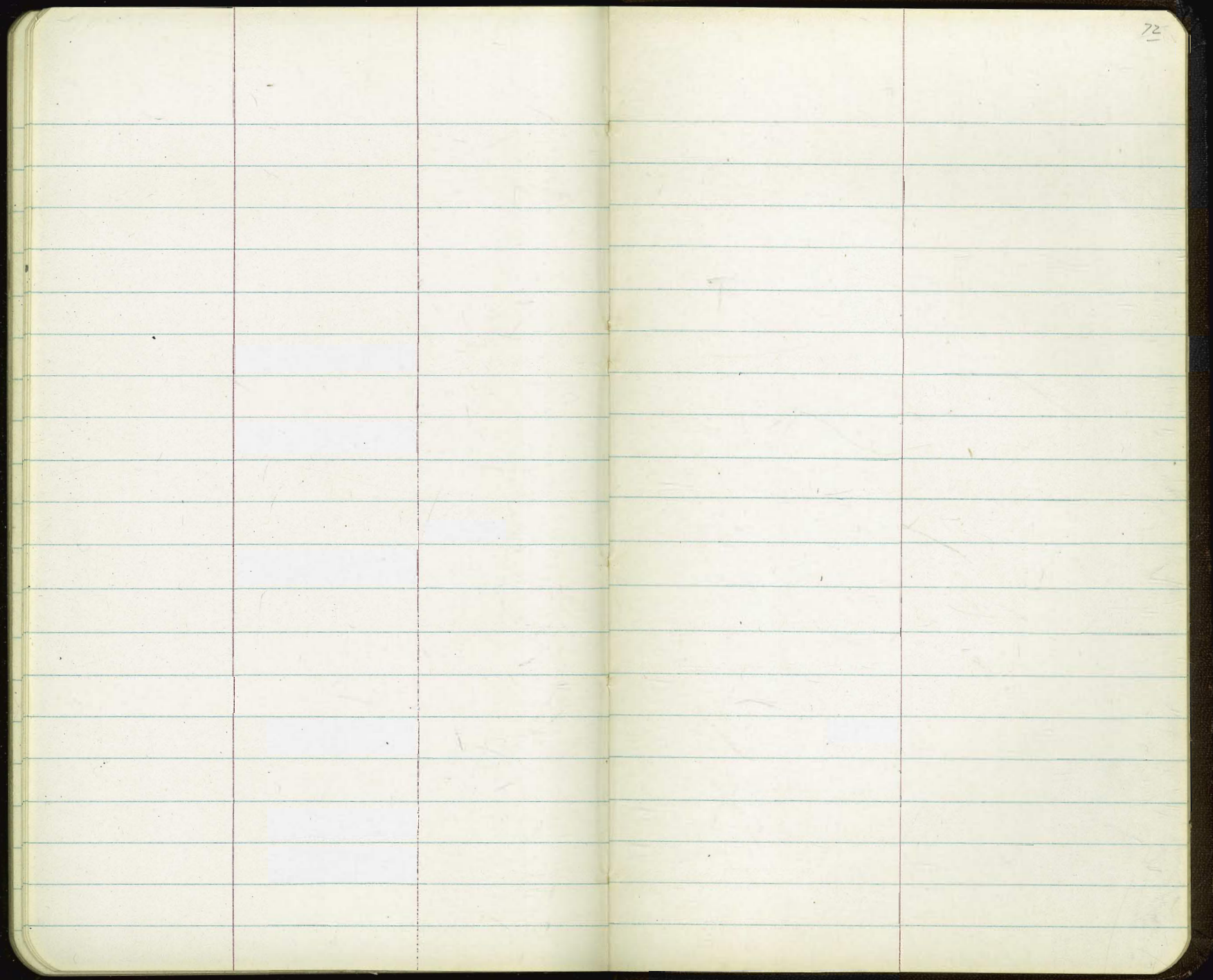
527 562
107 123
9ut Floor

5450

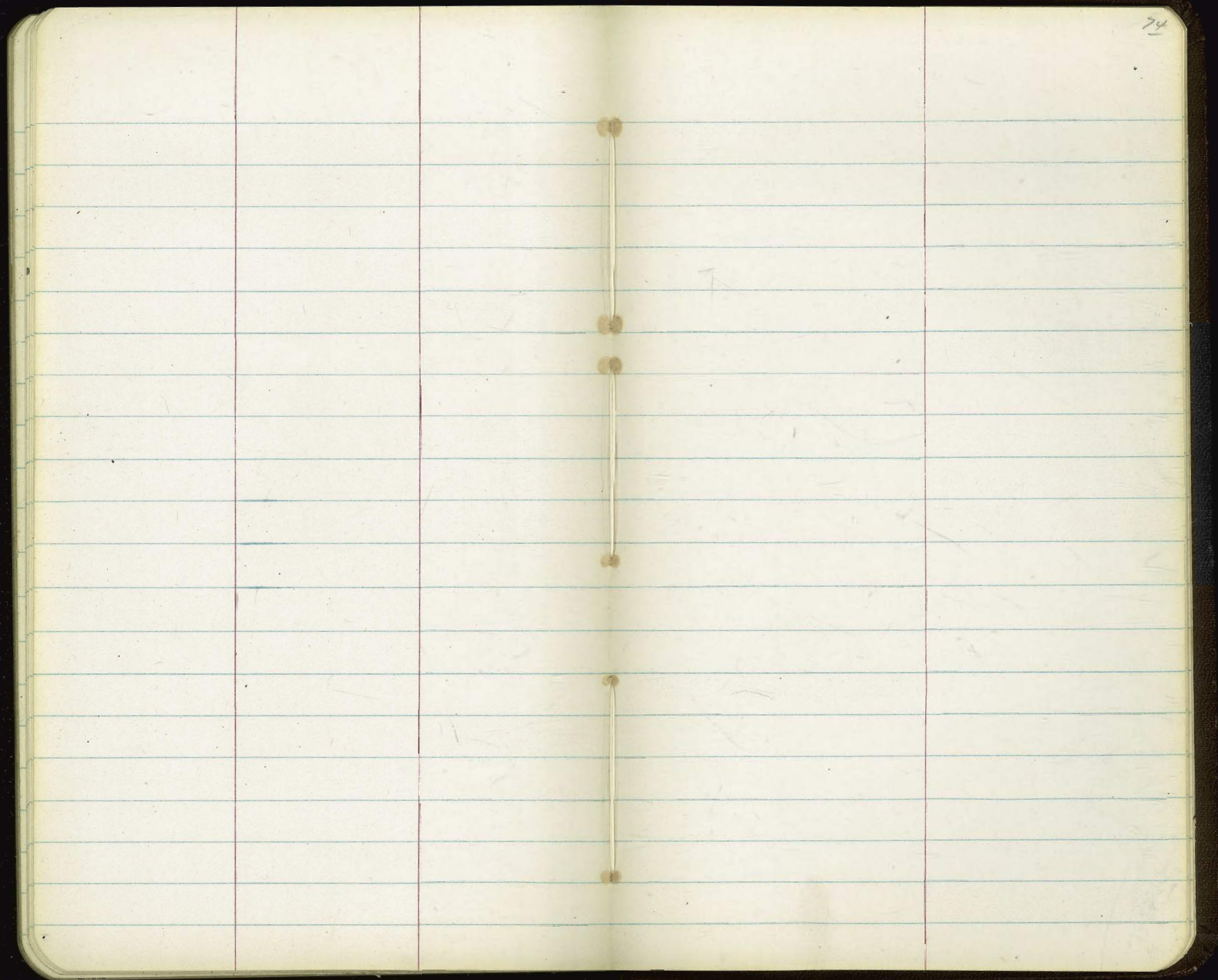
5446 15² Lt End 4 car garage con Floor apron

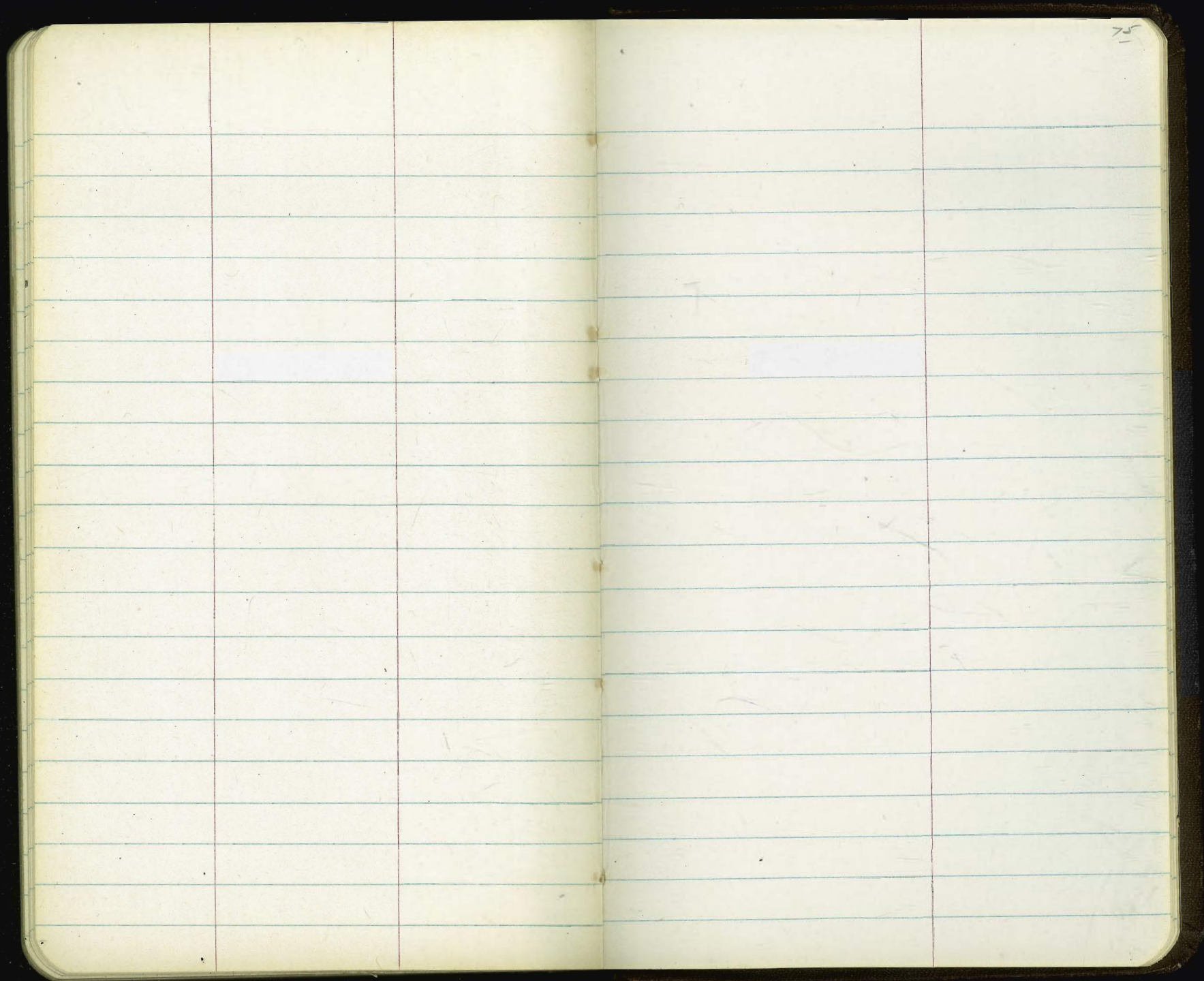
45.77
45.47 45.96
70 152
Floor apron

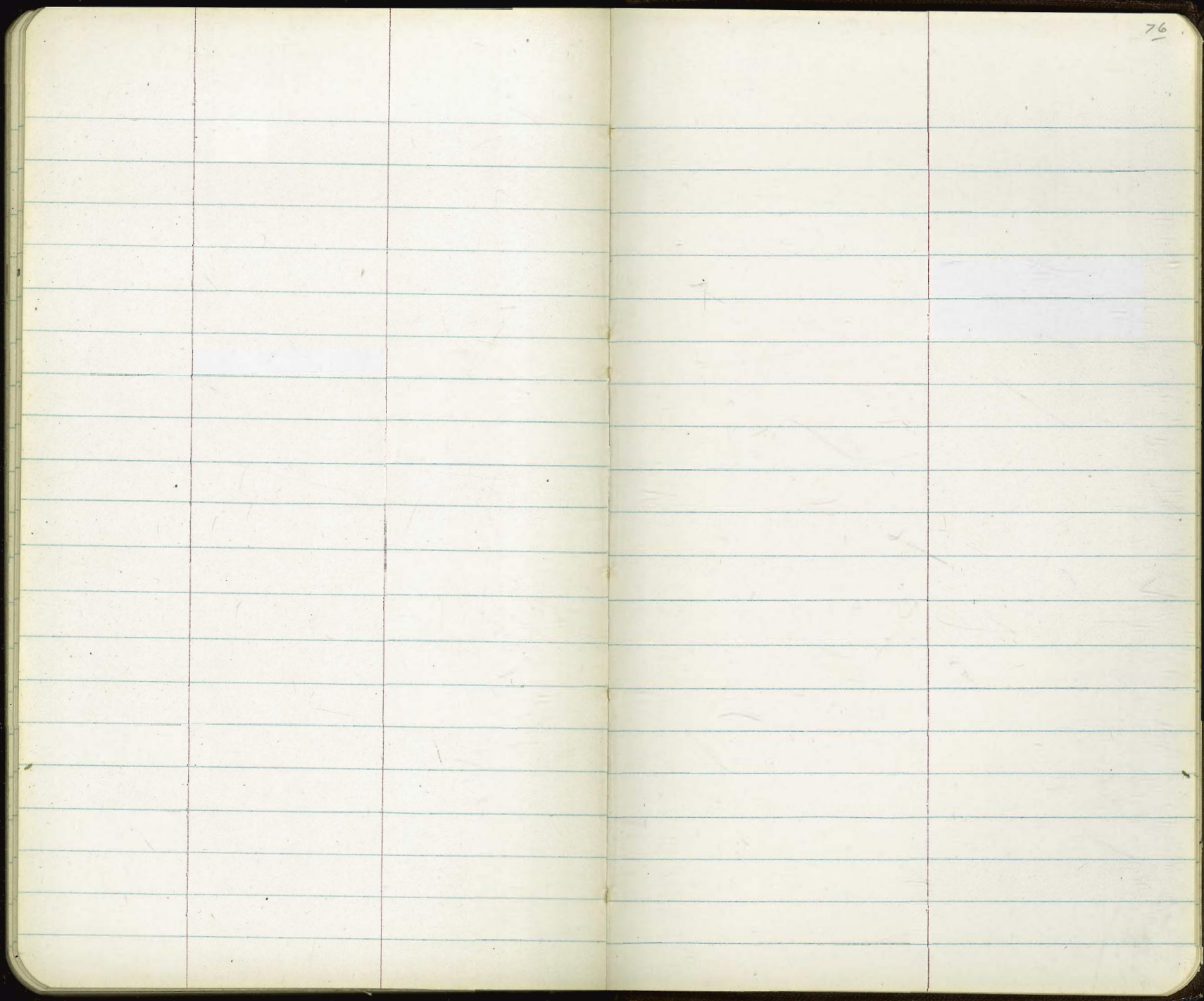
53⁴³



The image shows an open notebook with two facing pages. Both pages are cream-colored and feature light blue horizontal ruling. The notebook is bound in the center, and the dark cover is visible at the edges. The pages are blank, with no writing or markings. The page number '73' is printed in the top right corner of the right-hand page.





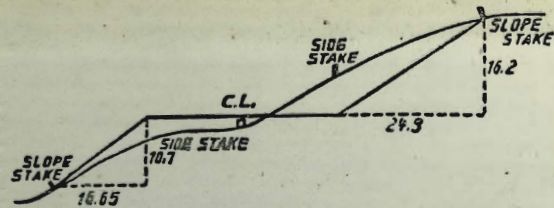


An open notebook with two blank, lined pages. The pages are cream-colored with light blue horizontal ruling. The notebook has a dark cover visible around the edges. The page number '78' is written in the top right corner of the right page. There are some faint, illegible marks on the pages, possibly from previous use or scanning artifacts.

S.E. Cox 10' R.P.

Chalkedony 68.72

+
Pauwes



DISTANCES FROM SIDE STAKES FOR CROSS-SECTIONING.

SLOPE 1½ TO 1. ROADWAY OF ANY WIDTH.

	0	.1	.2	.3	.4	.5	.6	.7	.8	.9	
0	0.00	0.15	0.30	0.45	0.60	0.75	0.90	1.05	1.20	1.35	0
1	1.50	1.65	1.80	1.95	2.10	2.25	2.40	2.55	2.70	2.85	1
2	3.00	3.15	3.30	3.45	3.60	3.75	3.90	4.05	4.20	4.35	2
3	4.50	4.65	4.80	4.95	5.10	5.25	5.40	5.55	5.70	5.85	3
4	6.00	6.15	6.30	6.45	6.60	6.75	6.90	7.05	7.20	7.35	4
5	7.50	7.65	7.80	7.95	8.10	8.25	8.40	8.55	8.70	8.85	5
6	9.00	9.15	9.30	9.45	9.60	9.75	9.90	10.05	10.20	10.35	6
7	10.50	10.65	10.80	10.95	11.10	11.25	11.40	11.55	11.70	11.85	7
8	12.00	12.15	12.30	12.45	12.60	12.75	12.90	13.05	13.20	13.35	8
9	13.50	13.65	13.80	13.95	14.10	14.25	14.40	14.55	14.70	14.85	9
10	15.00	15.15	15.30	15.45	15.60	15.75	15.90	16.05	16.20	16.35	10
11	16.50	16.65	16.80	16.95	17.10	17.25	17.40	17.55	17.70	17.85	11
12	18.00	18.15	18.30	18.45	18.60	18.75	18.90	19.05	19.20	19.35	12
13	19.50	19.65	19.80	19.95	20.10	20.25	20.40	20.55	20.70	20.85	13
14	21.00	21.15	21.30	21.45	21.60	21.75	21.90	22.05	22.20	22.35	14
15	22.50	22.65	22.80	22.95	23.10	23.25	23.40	23.55	23.70	23.85	15
16	24.00	24.15	24.30	24.45	24.60	24.75	24.90	25.05	25.20	25.35	16
17	25.50	25.65	25.80	25.95	26.10	26.25	26.40	26.55	26.70	26.85	17
18	27.00	27.15	27.30	27.45	27.60	27.75	27.90	28.05	28.20	28.35	18
19	28.50	28.65	28.80	28.95	29.10	29.25	29.40	29.55	29.70	29.85	19
20	30.00	30.15	30.30	30.45	30.60	30.75	30.90	31.05	31.20	31.35	20
21	31.50	31.65	31.80	31.95	32.10	32.25	32.40	32.55	32.70	32.85	21
22	33.00	33.15	33.30	33.45	33.60	33.75	33.90	34.05	34.20	34.35	22
23	34.50	34.65	34.80	34.95	35.10	35.25	35.40	35.55	35.70	35.85	23
24	36.00	36.15	36.30	36.45	36.60	36.75	36.90	37.05	37.20	37.35	24
25	37.50	37.65	37.80	37.95	38.10	38.25	38.40	38.55	38.70	38.85	25
26	39.00	39.15	39.30	39.45	39.60	39.75	39.90	40.05	40.20	40.35	26
27	40.50	40.65	40.80	40.95	41.10	41.25	41.40	41.55	41.70	41.85	27
28	42.00	42.15	42.30	42.45	42.60	42.75	42.90	43.05	43.20	43.35	28
29	43.50	43.65	43.80	43.95	44.10	44.25	44.40	44.55	44.70	44.85	29
30	45.00	45.15	45.30	45.45	45.60	45.75	45.90	46.05	46.20	46.35	30
31	46.50	46.65	46.80	46.95	47.10	47.25	47.40	47.55	47.70	47.85	31
32	48.00	48.15	48.30	48.45	48.60	48.75	48.90	49.05	49.20	49.35	32
33	49.50	49.65	49.80	49.95	50.10	50.25	50.40	50.55	50.70	50.85	33
34	51.00	51.15	51.30	51.45	51.60	51.75	51.90	52.05	52.20	52.35	34
35	52.50	52.65	52.80	52.95	53.10	53.25	53.40	53.55	53.70	53.85	35
36	54.00	54.15	54.30	54.45	54.60	54.75	54.90	55.05	55.20	55.35	36
37	55.50	55.65	55.80	55.95	56.10	56.25	56.40	56.55	56.70	56.85	37
38	57.00	57.15	57.30	57.45	57.60	57.75	57.90	58.05	58.20	58.35	38
39	58.50	58.65	58.80	58.95	59.10	59.25	59.40	59.55	59.70	59.85	39
40	60.00	60.15	60.30	60.45	60.60	60.75	60.90	61.05	61.20	61.35	40
41	61.50	61.65	61.80	61.95	62.10	62.25	62.40	62.55	62.70	62.85	41
42	63.00	63.15	63.30	63.45	63.60	63.75	63.90	64.05	64.20	64.35	42
43	64.50	64.65	64.80	64.95	65.10	65.25	65.40	65.55	65.70	65.85	43
44	66.00	66.15	66.30	66.45	66.60	66.75	66.90	67.05	67.20	67.35	44
45	67.50	67.65	67.80	67.95	68.10	68.25	68.40	68.55	68.70	68.85	45
46	69.00	69.15	69.30	69.45	69.60	69.75	69.90	70.05	70.20	70.35	46
47	70.50	70.65	70.80	70.95	71.10	71.25	71.40	71.55	71.70	71.85	47
48	72.00	72.15	72.30	72.45	72.60	72.75	72.90	73.05	73.20	73.35	48
49	73.50	73.65	73.80	73.95	74.10	74.25	74.40	74.55	74.70	74.85	49
50	75.00	75.15	75.30	75.45	75.60	75.75	75.90	76.05	76.20	76.35	50

THE NATIONAL BLANK BOOK COMPANY

HOLYOKE

MASSACHUSETTS

NEW YORK

CHICAGO

BOSTON

SAN FRANCISCO