

DISTANCES FROM SIDE STAKES FOR CROSS-SECTIONING  
SLOPE 1 TO 1. ROADWAY OF ANY WIDTH

	0	.1	.2	.3	.4	.5	.6	.7	.8	9	
0	0.00	0.10	0.20	0.30	0.40	0.50	0.60	0.70	0.80	0.90	0
1	1.00	1.10	1.20	1.30	1.40	1.50	1.60	1.70	1.80	1.90	1
2	2.00	2.10	2.20	2.30	2.40	2.50	2.60	2.70	2.80	2.90	2
3	3.00	3.10	3.20	3.30	3.40	3.50	3.60	3.70	3.80	3.90	3
4	4.00	4.10	4.20	4.30	4.40	4.50	4.60	4.70	4.80	4.90	4
5	5.00	5.10	5.20	5.30	5.40	5.50	5.60	5.70	5.80	5.90	5
6	6.00	6.10	6.20	6.30	6.40	6.50	6.60	6.70	6.80	6.90	6
7	7.00	7.10	7.20	7.30	7.40	7.50	7.60	7.70	7.80	7.90	7
8	8.00	8.10	8.20	8.30	8.40	8.50	8.60	8.70	8.80	8.90	8
9	9.00	9.10	9.20	9.30	9.40	9.50	9.60	9.70	9.80	9.90	9
10	10.00	10.10	10.20	10.30	10.40	10.50	10.60	10.70	10.80	10.90	10
11	11.00	11.10	11.20	11.30	11.40	11.50	11.60	11.70	11.80	11.90	11
12	12.00	12.10	12.20	12.30	12.40	12.50	12.60	12.70	12.80	12.90	12
13	13.00	13.10	13.20	13.30	13.40	13.50	13.60	13.70	13.80	13.90	13
14	14.00	14.10	14.20	14.30	14.40	14.50	14.60	14.70	14.80	14.90	14
15	15.00	15.10	15.20	15.30	15.40	15.50	15.60	15.70	15.80	15.90	15
16	16.00	16.10	16.20	16.30	16.40	16.50	16.60	16.70	16.80	16.90	16
17	17.00	17.10	17.20	17.30	17.40	17.50	17.60	17.70	17.80	17.90	17
18	18.00	18.10	18.20	18.30	18.40	18.50	18.60	18.70	18.80	18.90	18
19	19.00	19.10	19.20	19.30	19.40	19.50	19.60	19.70	19.80	19.90	19
20	20.00	20.10	20.20	20.30	20.40	20.50	20.60	20.70	20.80	20.90	20
21	21.00	21.10	21.20	21.30	21.40	21.50	21.60	21.70	21.80	21.90	21
22	22.00	22.10	22.20	22.30	22.40	22.50	22.60	22.70	22.80	22.90	22
23	23.00	23.10	23.20	23.30	23.40	23.50	23.60	23.70	23.80	23.90	23
24	24.00	24.10	24.20	24.30	24.40	24.50	24.60	24.70	24.80	24.90	24
25	25.00	25.10	25.20	25.30	25.40	25.50	25.60	25.70	25.80	25.90	25
26	26.00	26.10	26.20	26.30	26.40	26.50	26.60	26.70	26.80	26.90	26
27	27.00	27.10	27.20	27.30	27.40	27.50	27.60	27.70	27.80	27.90	27
28	28.00	28.10	28.20	28.30	28.40	28.50	28.60	28.70	28.80	28.90	28
29	29.00	29.10	29.20	29.30	29.40	29.50	29.60	29.70	29.80	29.90	29
30	30.00	30.10	30.20	30.30	30.40	30.50	30.60	30.70	30.80	30.90	30
31	31.00	31.10	31.20	31.30	31.40	31.50	31.60	31.70	31.80	31.90	31
32	32.00	32.10	32.20	32.30	32.40	32.50	32.60	32.70	32.80	32.90	32
33	33.00	33.10	33.20	33.30	33.40	33.50	33.60	33.70	33.80	33.90	33
34	34.00	34.10	34.20	34.30	34.40	34.50	34.60	34.70	34.80	34.90	34
35	35.00	35.10	35.20	35.30	35.40	35.50	35.60	35.70	35.80	35.90	35
36	36.00	36.10	36.20	36.30	36.40	36.50	36.60	36.70	36.80	36.90	36
37	37.00	37.10	37.20	37.30	37.40	37.50	37.60	37.70	37.80	37.90	37
38	38.00	38.10	38.20	38.30	38.40	38.50	38.60	38.70	38.80	38.90	38
39	39.00	39.10	39.20	39.30	39.40	39.50	39.60	39.70	39.80	39.90	39
40	40.00	40.10	40.20	40.30	40.40	40.50	40.60	40.70	40.80	40.90	40
41	41.00	41.10	41.20	41.30	41.40	41.50	41.60	41.70	41.80	41.90	41
42	42.00	42.10	42.20	42.30	42.40	42.50	42.60	42.70	42.80	42.90	42
43	43.00	43.10	43.20	43.30	43.40	43.50	43.60	43.70	43.80	43.90	43
44	44.00	44.10	44.20	44.30	44.40	44.50	44.60	44.70	44.80	44.90	44
45	45.00	45.10	45.20	45.30	45.40	45.50	45.60	45.70	45.80	45.90	45
46	46.00	46.10	46.20	46.30	46.40	46.50	46.60	46.70	46.80	46.90	46
47	47.00	47.10	47.20	47.30	47.40	47.50	47.60	47.70	47.80	47.90	47
48	48.00	48.10	48.20	48.30	48.40	48.50	48.60	48.70	48.80	48.90	48
49	49.00	49.10	49.20	49.30	49.40	49.50	49.60	49.70	49.80	49.90	49
50	50.00	50.10	50.20	50.30	50.40	50.50	50.60	50.70	50.80	50.90	50

Distance of slope stake from side or shoulder stake for any width roadway, slope 1 to 1. If ground is nearly level, the out or fill at side stake is located by the double entry method in left column and top row. The number in body of table in same row and column gives distance from side stake to slope stake. If ground is not level estimate the difference in elevation between the side stake and slope stake, lower target by this amount if cut, elevate if fill. Add this amount to cut or fill and find distance in table. Set up rod at this point, and line of sight should cut target. If it does not make the slight adjustment necessary.



TABLE XIII—CORRECTIONS FOR TANGENTS AND EXTERNALS

These corrections are to be added to the approximate values found by dividing the tangent, or external, for a 1° curve (Table VIII) by the degree of curve, in order to obtain the true tangents, or externals. Intermediate values may be obtained by interpolation.

FOR TANGENTS ADD

Central Angle	DEGREE OF CURVE													
	5°	10°	15°	20°	25°	30°	35°	40°	45°	50°	55°	60°	65°	70°
10°	.03	.06	.09	.13	.16	.19	.22	.25	.28	.31	.34	.38	.42	.46
15°	.04	.10	.14	.19	.24	.29	.34	.39	.45	.51	.53	.58	.63	.68
20°	.06	.13	.19	.26	.32	.39	.45	.51	.58	.65	.72	.79	.84	.90
25°	.08	.16	.24	.33	.40	.49	.58	.67	.75	.83	.90	.99	1.06	1.14
30°	.10	.19	.29	.39	.49	.59	.69	.79	.89	.99	1.09	1.20	1.29	1.39
35°	.11	.22	.34	.47	.58	.69	.79	.81	.92	1.04	1.29	1.42	1.54	1.66
40°	.13	.26	.40	.53	.67	.80	.93	1.06	1.20	1.34	1.49	1.64	1.79	1.94
45°	.15	.30	.44	.60	.76	.91	1.06	1.21	1.37	1.52	1.70	1.87	2.04	2.21
50°	.17	.34	.51	.68	.85	1.02	1.19	1.36	1.54	1.72	1.91	2.10	2.29	2.48
55°	.19	.38	.57	.76	.95	1.14	1.32	1.52	1.72	1.92	2.14	2.35	2.56	2.77
60°	.21	.42	.63	.84	1.05	1.27	1.49	1.71	1.94	2.17	2.38	2.60	2.83	3.07
65°	.23	.46	.69	.93	1.16	1.40	1.64	1.88	2.13	2.38	2.63	2.88	3.13	3.39
70°	.25	.51	.76	1.02	1.28	1.54	1.80	2.06	2.33	2.60	2.88	3.16	3.44	3.72
75°	.27	.56	.83	1.12	1.40	1.69	1.98	2.27	2.57	2.87	3.16	3.47	3.78	4.09
80°	.30	.61	.91	1.22	1.53	1.84	2.15	2.46	2.78	3.10	3.44	3.78	4.12	4.46
85°	.33	.66	1.00	1.33	1.68	2.02	2.36	2.70	3.05	3.40	3.77	4.14	4.55	4.89
90°	.36	.72	1.09	1.45	1.83	2.20	2.57	2.94	3.32	3.70	4.10	4.50	4.91	5.32
95°	.39	.79	1.19	1.55	2.00	2.40	2.80	3.20	3.61	4.02	4.40	4.98	5.38	5.83
100°	.43	.86	1.30	1.74	2.18	2.62	3.06	3.50	3.95	4.40	4.88	5.37	5.85	6.34
110°	.51	1.03	1.56	2.08	2.61	3.14	3.67	4.21	4.76	5.31	5.86	6.43	7.01	7.60
120°	.62	1.25	1.93	2.52	3.16	3.81	4.45	5.11	5.77	6.44	7.12	7.80	8.50	9.22

FOR EXTERNALS ADD

Central Angle	DEGREE OF CURVE													
	5°	10°	15°	20°	25°	30°	35°	40°	45°	50°	55°	60°	65°	70°
10°	.001	.003	.004	.006	.007	.008	.009	.011	.012	.014	.015	.017	.018	.020
15°	.003	.007	.010	.014	.018	.023	.027	.029	.032	.035	.039	.043	.047	.051
20°	.006	.011	.017	.022	.028	.034	.038	.045	.051	.057	.063	.070	.076	.083
25°	.009	.018	.027	.036	.046	.056	.065	.074	.083	.093	.106	.120	.127	.135
30°	.013	.025	.038	.051	.065	.078	.090	.103	.116	.129	.149	.170	.179	.188
35°	.018	.035	.054	.072	.086	.109	.131	.153	.175	.197	.213	.230	.247	.264
40°	.023	.046	.070	.093	.117	.141	.172	.203	.234	.265	.277	.290	.315	.341
45°	.030	.060	.093	.119	.153	.184	.216	.254	.289	.325	.351	.378	.411	.445
50°	.037	.075	.116	.151	.189	.227	.266	.305	.345	.384	.425	.467	.508	.550
55°	.046	.093	.142	.188	.236	.283	.332	.381	.420	.479	.530	.582	.641	.700
60°	.056	.112	.168	.225	.283	.340	.398	.457	.518	.575	.636	.697	.774	.851
65°	.067	.135	.204	.273	.343	.412	.483	.554	.625	.697	.771	.845	.922	1.01
70°	.080	.159	.240	.321	.403	.485	.568	.652	.735	.819	.906	.994	1.08	1.17
75°	.095	.182	.266	.353	.440	.528	.617	.707	.797	.877	.971	1.07	1.18	1.29
80°	.110	.220	.332	.445	.558	.671	.787	.903	1.02	1.13	1.25	1.38	1.50	1.62
85°	.128	.259	.391	.524	.657	.790	.926	1.06	1.20	1.34	1.47	1.62	1.76	1.91
90°	.149	.299	.450	.603	.756	.910	1.07	1.22	1.38	1.54	1.70	1.87	2.03	2.20
95°	.174	.350	.522	.706	.885	1.06	1.25	1.43	1.62	1.80	1.99	2.18	2.38	2.58
100°	.200	.401	.604	.809	1.01	1.22	1.43	1.64	1.85	2.06	2.28	2.50	2.73	2.96
110°	.268	.536	.806	1.08	1.35	1.63	1.91	2.20	2.48	2.76	3.05	3.35	3.66	3.96
120°	.360	.721	1.08	1.45	1.82	2.19	2.57	2.95	3.33	3.72	4.11	4.50	4.91	5.32

INDEX

	Sta Barbara to	Page
X- Sec Alley - Blk 87 - Pt Loma Hts	Quizot	1
X- Sec " Blk 139 City Hts	Redwood to Quince	7
" " Blk 138 " "	" "	13
" " Blk 123 " "	Redwood Thom	17
" " Blk 110 " "	myrtle to Thom	22
" " Blk 92 " "	myrtle to Dwight	28
" " Blk 143 " "	Seattle to Quince	34

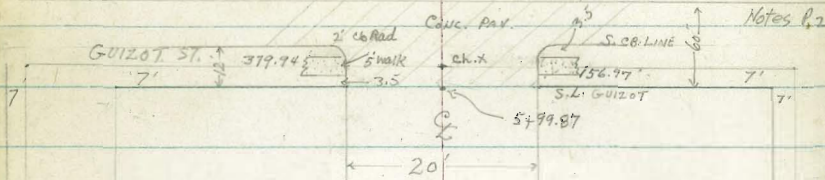


Reduced & Plotted  
4-18-52  
H. Mills

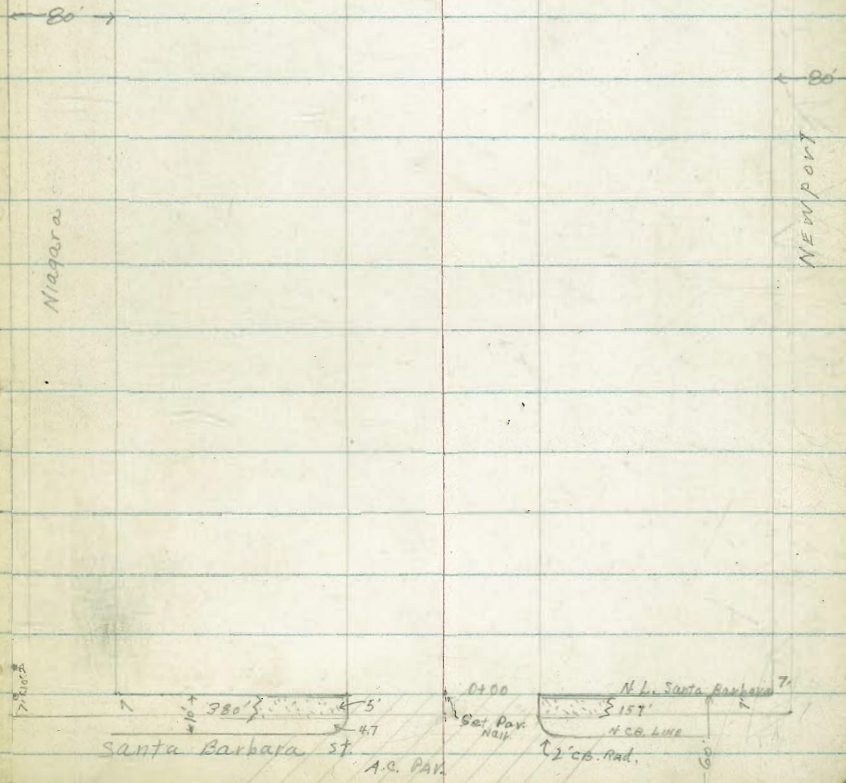
Clark 4-16-52  
Shepard W.O. 25020  
Bruner  
Bryson

1.

X-SECT. ALLEY 'BL'K 87. Pt. LOMA HTS.



INDEXED  
Law  
APR 17 1952









X Sect Alley BLK 87 (cont)

2+00	9.3' LT. to Pole # PA 4440 END 5' CONC. BRK WALL 10.6 RT.	1944 48 40	1940 5.2 25	1941 3.1 10	1894 3.8	1890.2 6.22 10.6 B. Fd. To	189.88 5.36 10.6 T. Fd. - ground Level	189.7 6.5 25
1+70	Req. 5' CONC. BRK WALL 10.4' RT.					189.67 5.57 10.4 B. Fd. To	189.21 5.07 10.4 T. Fd. - ground Level	
1+62.5	END 2 car gar 54.5 RT 9.85 RT to apron					190.23 4.51 9.85 196.90 4.34 10 apron	189.72 5.52 54.5 189.90 5.34 54.5 CONC Floor	
1+50	Req 2 car gar 54.5 RT. 10' RT to CONC apron END 5' steel wire Fence 10.4' LT.	1911 4.1 25	190.8 4.4 10	192.7 4.5		190.8 4.4 10 M. 29 4.35	190.6 4.6 25 191.74 4.48 25 CONC. Ribbon	
1+40	2 7' Ribbon Drive 10.1 RT. (2' ribbons)					10.1 CONC. Ribbon		
1+30	END 6' WOV. WIRE Fence 10.1' RT.							
1+15	Req 6' WOV. WIRE Fence 10.15 RT END 5' Board Fence 10.15 RT	192.41 2.83 25	191.93 3.31 9.85			191.48 3.76 10.15 B. Fd.	192.38 2.86 10.15 To CONC Fd. To	
1+14	9.85' LT to 8.5' CONC Drive					191.77 3.47 10.12 B. Fd.	192.37 2.97 10.12 T. Fd. - ground Level	
1+01	Req 5' Board Fence on CONC Fd. 10.1' RT.							
T.P.	3.30 195.24 6.47 191.94				195.24			
1+00	Req 5' steel wire Fence 10.3 RT END LOTHE Fence 10.3 RT	192.2 6.2 15	192.2 6.2 10	192.0 6.4		192.1 6.3 10	192.1 6.3 15	
					198.41			



X-SECT Alley BIK 87 (CONT.)

↓ 4400 3+85 → 11.2 LT END 2' Ret wall & Beg 1' Conc Walk  
 380 END 2-car gar. LT. 17.1' 10.1' LT to CONC. APRON.  
 3+75 10.3 RT. & 2.5' CONC. WALK  
 3+64 Beg 2-car gar 17.1' LT Floor 10.1' LT to 16' CONC APRON  
 3+50 Beg 5' Board Fence on CONC FATH 10.35 RT  
 3+09 18.1 RT & 1-car gar CONC Floor  
 T.P. 3.64 190.03 8.85 186.39  
 ↓ 3+00 9.5 LT & Pole #44450 END 4' CONC. BIK WALK 10.8 LT & M.H.  
 2+82 9.9 RT to 9' 3' CONC WALK  
 2+79 10.2 LT & 3' CONC WALK  
 ↓ 2+50 Beg 4' CONC. Block Wall 10.65 LT.  
 2+43 & 2-car gar. 57 RT CONC Floor

185.54  
 4.49  
 11.2 Footing  
 187.24 3.3 5.2 4.4 5.2 5.2 5.8 6.4  
 15 11.2 10 10.2 25.  
 2.79 3.99  
 17.1 CONC Floor 10.1 apron  
 157.24 186.37  
 2.79 3.66  
 17.1 CONC Floor 10.1 apron  
 186.4 5.59  
 3.6 4.1 4.6  
 15 10  
 184.8 184.8  
 184.2 183.6  
 5.05 10.3 CONC WALK  
 184.8  
 185.79  
 185.3  
 5.30  
 20  
 184.73  
 3.82  
 18.1 CONC Floor  
 190.03  
 187.4 186.7 187.3  
 7.8 8.5 7.9 8.97  
 15 10.8 10 10.1  
 B.M. FATH M.H.  
 186.8 186.4  
 7.78 4.9  
 187.46  
 187.0 187.54 188.0  
 7.54 7.70 7.2 7.4  
 188.10 188.2  
 6.5 7.0 7.2 7.4  
 20 10.65 10 10  
 B.M. FATH  
 188.2  
 188.2  
 7.42  
 57 CONC Floor  
 195.24



X- SECT. Alley BIK 87 (CONT.)

5495					1840	1791	1791	1775	1767	176.9	180.5	180.5	180.7
					+2.8	2.1	2.1	3.7	4.5	4.3	0.7	0.7	0.5
					15	13.7	10	7	5	5	8	10	15
T.P.	2.76	181.20	11.59	178.44	1849	1821	1817	1805	18120	1794	1816	1818	1813
5475					5.1	7.9	8.3	9.5	10.2	10.6	8.4	8.2	8.7
					15	13.7	10	7	5	7	10	25	
5473		13' LT 6" SEWER CLEANOUT			1848	1823	7.3		1822	1821	1815	1813	
					1832	1827	1827						
5450		13.7' LT CONC BIK WALL 2' High to 10's high at 5499.87			5.2	7.5	6.7	6.8	7.3	7.8	7.9	8.5	8.7
					15	13.7	10	10	8	10	15	25	
					base	1850	1847	1830	1823	1828	1825	1824	
5448					5.0	5.3	7	7.8	7.8	7.2	6.5	6.6	
					15	10	7	10	10	15	25		
5407		29.24' 1-car gar. CONC Floor		27.2' LT 8' CONC apron	186.65	186.49			184.3	183.5	184.8	183.9	183.2
					3.38	3.54			5.7	5.2	6.1	6.8	
					29.2	27.2			5	10	12	25	
5400		10.7' LT END 7' Board Fence CONC FATH			186.65	186.2	185.28	185.3	185.3	184.3	183.5	184.8	183.9
					4.0	4.75	4.7	5.7	5.7	5.2	6.1	6.8	
					15	10.7	10	10	5	10	12	25	
4499		8.7' LT Pole PA 4494			187.47	186.65	185.28	185.3	185.3	184.3	183.5	184.8	183.9
4478		10.7' LT 7' Board Fence			2.56	3.38	4.4	4.8	4.8	5.6	6.5	6.0	6.7
4465		29.34' 1-car gar CONC Floor		185.29	29.3	28.5	28.5	4.4	4.8	5.6	6.5	6.0	6.7
					186.9	185.75	185.8	4.4	4.8	5.6	6.5	6.0	6.7
4450		END 16' CONC. Ret WALL 12.9' LT			3.1	4.30	4.2	4.9	4.9	5.0	5.65	4.84	6.7
		END 5' Board Fence on CONC FATH 10' LT			20	10.9	10	10	10	10	10	10	25

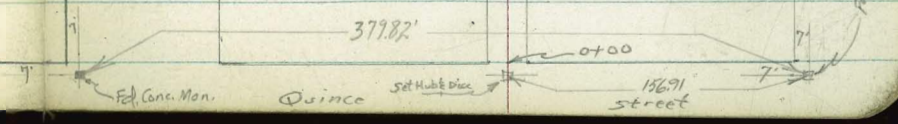
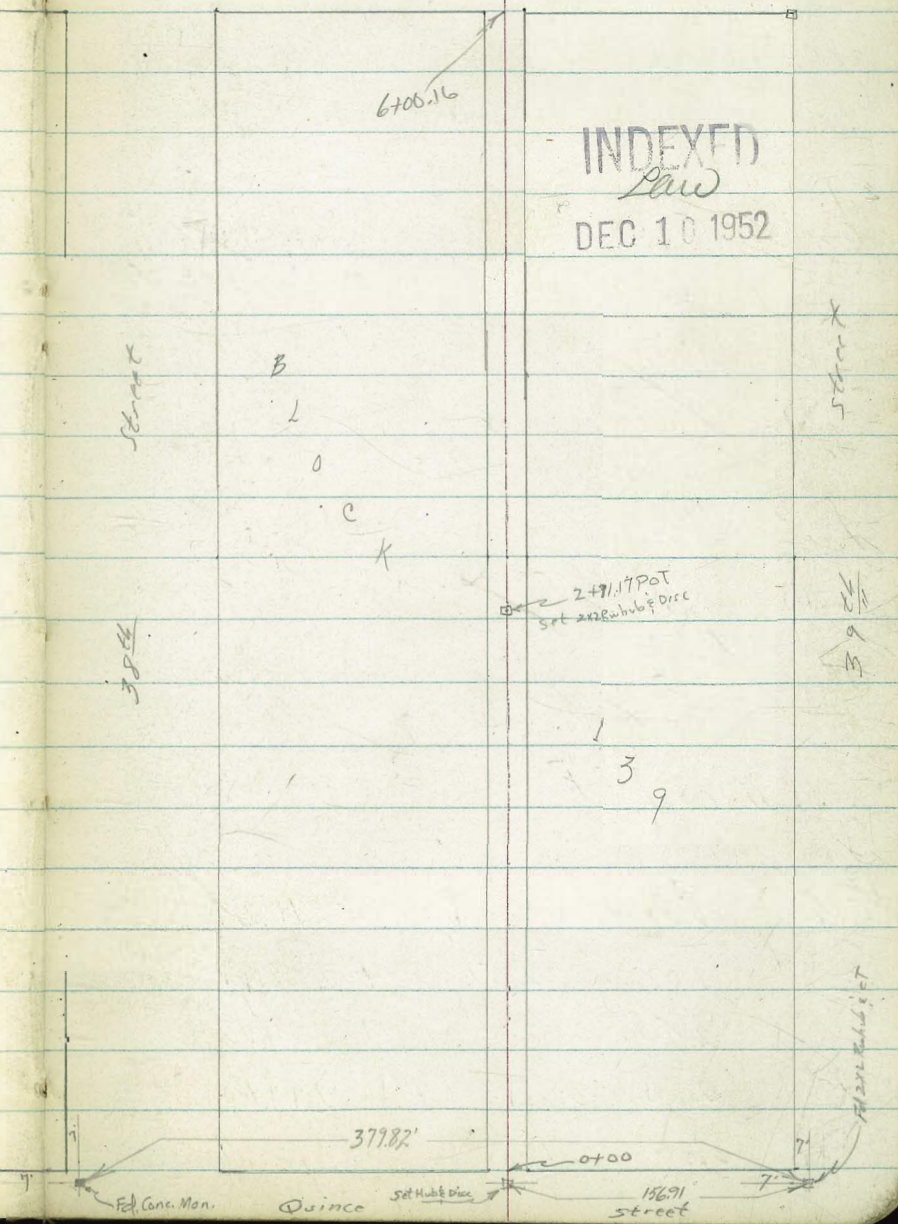
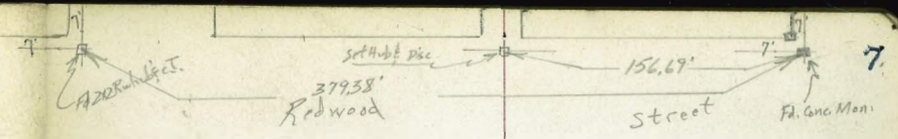






Robert's  
Cota  
Moore  
Allen  
11-13-52  
W.D. 25020

X-Section Alley Block 139 City Heights  
Quince to Redwood  
Between 35th & 39th





Contd From Page Seven

H1

H1

0+65

0+35

0+19

0+00

North Line Quince

Q Quince

B.S.

F.S.

T.P.

5.54

276.81 12.24 271.27

T.P.

1.02

283.51 7.14 282.49 Hub NE Corner Quince @ 39'

T.P.

2.50

289.63 12.97 287.13

T.P.

0.30

300.10 8.51 299.80

BM

5.34

308.31 302.97 NWBP  
40' @ Redwood

Lt

F

Rt

8

271.9

4.9  
30

269.6

7.2  
35

265.7

11.1  
50

258.4

17.6  
50

273.2

3.6  
10

271.1

5.7  
10

266.1

10.7  
35

258.4

18.4  
45

273.5

3.3  
10

271.2

5.6  
10

263.8

13.5  
10

262.2

14.6  
20

273.2

3.6  
10

269.9

6.9  
10

266.1

10.7  
10

265.0

11.8

272.4

4.4  
25

268.6

8.2  
20

271.5

5.3  
33

272.1

4.7  
50

275.8

1.0  
50

271.4

5.4  
40

273.6

3.2  
50



Cont'd From Page Eight

Bl 134 North in

Lt

R

Rt

9

2+50

11.6  
20

10.8  
10

288.9  
290.3  
10.2

10.4  
10

290.1  
10.3  
30

T.P.

11.82 300.487 0.22 288.66

300.487

2+15 9<sup>2</sup> Lt to center P.P. # PA 3033

285.58  
3.3  
30

286.6  
2.3  
10

286.5  
2.4

286.3  
2.6  
10

283.7  
5.2  
50

2+00

1+50

7.8  
30

281.6  
7.3  
10

281.0  
7.9

281.4  
7.5  
10

7.5  
50

T.P.

12.28 288.887 0.21 276.60

288.887

1+00

274.5  
2.3  
30

275.4  
1.4  
10

275.3  
1.5

275.9  
0.9  
10

276.0  
0.8  
30

0+97<sup>5</sup>

9<sup>2</sup> Lt to center P.P. # PA 3001

272.9

273.7

274.3

274.6

274.4

276.2

0+80

3.9  
30

3.1  
10

2.5

2.2  
10

2.4  
30

0.6  
50

276.817

276.817



4+94 9<sup>l</sup> Rt End shed begin Chain Link fence4+76 8<sup>l</sup> Rt Shed & Garage  
7<sup>l</sup> Rt End Fence

4+50

4+00

3+89 7<sup>l</sup> Rt End shed begin wood fence3+76<sup>l</sup> 8<sup>l</sup> Rt begin shed

3+50

3+45 8<sup>l</sup> Lt to center P.P. # PA 3053

3+00

296.0  
4.0  
20296.8  
3.7  
10297.2  
3.3297.5  
3.0  
10296.9  
3.6  
297.5  
3.0  
20295.4  
5.1  
20295.8  
4.7  
10296.0  
4.5296.4  
4.1  
10296.6  
3.7  
20293.4  
7.1  
20294.0  
6.7  
10294.3  
6.2294.6  
5.9  
10294.7  
5.8  
25292.2  
8.3  
15292.4  
8.1  
10292.6  
7.9292.7  
7.8  
10292.9  
7.6  
25



£ Redwood

2891  
11.0 6.7 4.9 1.6  
50 25 50

6+00.16

South Line Redwood

279.3 287.7 289.4 291.6 294.0 296.5  
20.8 12.4 10.7 8.5 6.1 3.6  
50 10 10 10 20 50

5785

286.9 289.0 289.4 290.3 294.2  
13.2 11.1 10.7 9.8 5.9  
50 10 10 10 40

T.P.

703

300.13A

739

293.16

300.13A

5750

290.5 293.5 294.6 295.1 295.9  
10.0 7.0 5.9 5.4 4.6  
50 10 10 10 30

5727

9<sup>E</sup> Rt End Fence

295.5 295.9 296.2 296.5 296.7  
5.0 4.6 4.3 4.0 3.8  
20 10 10 10 20

5700

4496

8<sup>S</sup> Lt to center P. Pole # PA 3075

300.48A

300.48A



Contd From Page Eleven

12

check

5.04 302.99 = 302.97

TP

8.58

308.03

0.68

299.45

300.137

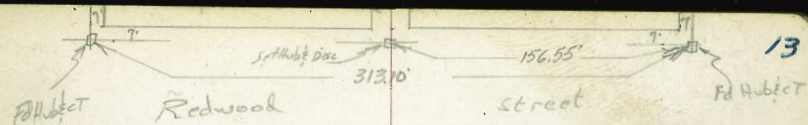


Roberts

same time  
as  
Pg 57

X-Section Alley Bk. 138 City Heights

Quince to Redwood  
Between 39th & 40th



INDEXED  
Law  
DEC 10 1952

Street X

B

L

O

C

K

1

3

8

FA Subject



313.86' setback line 156.93' Street

Roberts

410



Cont'd From Page Thirteen

2+00

1+50

1+00

0+50

0+00 North Line Quince

Q Quince

TP 8.54 299.36T 2.38 290.82

TBM 10.71 293.20 282.49 Hub

14

E

R

14

296.6

2.8

20

295.4  
4.0  
20

294.0  
5.4  
20

293.4  
6.0  
20

291.7  
7.7  
50

296.6

2.8

10

295.5  
3.9  
10

294.1  
5.3  
10

293.6  
5.8  
10

292.6  
6.8  
10

290.8  
8.6  
50

297.1

2.3

20

295.6  
3.8  
20

294.8  
4.6  
20

293.8  
5.6  
20

292.7  
6.7  
50

292.7  
7.7  
50

297.2

2.2

10

296.1  
3.3  
10

295.0  
4.4  
10

294.2  
5.2  
10

292.9  
6.5  
10

293.1  
6.3  
50

297.2

2.2

20

296.4  
3.0  
20

295.5  
3.9  
20

294.8  
4.6  
20

293.7  
5.7  
50

NE Corner 39<sup>th</sup> E Reduced  
See page 8

299.36T



Contd From Page Fourteen

Lt

Rt

Rt 15

5+00

5' Lt to center P.Pole # PA3075

300.9  
4.2  
20  
5.2  
10  
5.2  
299.9

298.4  
6.7  
10  
8.3  
20  
296.8

4+50

300.7  
4.4  
20  
5.0  
10  
5.4  
299.7

299.4  
5.7  
10  
6.2  
20  
298.8

4+00

300.2  
4.9  
20  
4.9  
10  
5.4  
299.7

299.2  
5.9  
10  
6.6  
20  
298.5

3+50

299.7  
5.4  
20  
5.6  
10  
5.7  
299.4

299.1  
6.0  
10  
6.5  
20  
298.6

3+00

298.6  
6.5  
20  
6.5  
10  
5.6  
299.5

299.1  
6.0  
10  
6.8  
20  
298.3

T.P.

Rt 7.02  
305.05 A 1.33  
298.03

305.05 A

2+50

297.6  
1.8  
20  
2.97.8  
1.6  
10  
297.9  
1.5

298.2  
1.2  
10  
298.0  
1.4  
20

299.36 A

299.36 A



Contd From Page 15

Lt

£

Rz 16

check

2.07 302.98 = 302.97

£ Redwood

303.0	302.3	300.8	299.9	302.1	
2.1	2.8	4.3	5.2	3.0	2.0
100	50		17	50	100

5+99.25

Sly Line Redwood

302.1	302.1	301.8	301.3	301.7
3.0	3.0	3.3	3.8	3.4
20	10		10	20

5+50

302.5	302.1	301.3	295.4	289.5
2.6	3.0	3.8	9.7	15.6
20	10		10	20

305.05

305.05







T.P. 6.55 311.22A 2.6 304.67

1+90 8<sup>5</sup> ft to center PPole # PA 3143

1+50

1+00 10<sup>0</sup> ft End Fence

0+70 7<sup>4</sup> ft to center PPole # PA 3145

0+50

0+04 11<sup>2</sup> ft to center 40" Eucalyptus

Pond in Street at Alley

0+00 North Line Redwood

(9<sup>3</sup> ft begin board fence)

BN 4.31 307.28A

302.97 NW3P

40<sup>0</sup> ft of Redwood

304.2	303.9	304.1	304.2	304.3
3.1	3.4	3.2	3.1	3.0
25	10		10	25
304.2	304.0	303.7	303.5	303.8
3.1	3.3	3.6	3.8	3.0
25	10		10	25
303.8	303.4	302.8	302.6	303.8
3.5	3.9	4.5	4.7	4.5
25	10		10	25
303.4	301.3	300.6	301.5	302.9
3.9	6.0	6.7	5.8	4.4
50	10		10	50

307.28A



Cont'd From Page 14

24

Q

R

19

3+50

90° Lt to center P.P. # P.A.

56  
25 3057.6

56  
10 3057.6

5.3 3057.9

55  
10 3057.7

5.5  
25 3057.7

3+40

92° Lt to center Tree 16" Pepper

58  
25 306.4

60  
10 305.2

6.2 305.0

6.2  
10 305.0

6.0  
25 305.2

3+00

2+92.5

132° Lt & Garage Opening

Double  
Garage

61.8  
132  
conc. 305.04

2+80

132° Lt & Garage Opening

61.8  
132  
conc. 305.04

2+50

67.5  
25 304.5

67  
10 304.5

6.4 304.8

6.6  
10 304.6

6.3  
25 304.9

2+00

61.9  
25

5.9  
10 305.3

6.7 304.5

7.1  
10 304.1

7.2  
25 304.0

311.22K

311.22K



Cont'd from Page 19

R 20

		304.5	304.5	304.4	304.4		
5+00		6.7 25	6.7 10	6.8	6.8 10		7.2 25
4+71	11 <sup>5</sup> R <sup>4</sup> NW Cor. Garage opening on North					6.22 11 <sup>3</sup> conc	304.0
4+71	8 <sup>0</sup> L <sup>4</sup> to center P.P. 10 <sup>2</sup> PA 3275						
4+50		5.6 25	5.9 10	5.6	5.7 10		6.1 25
4+44	10 <sup>8</sup> R <sup>4</sup> & Single garage					5.7 10 <sup>8</sup> Dirt	295.5
4+00	9 <sup>3</sup> L <sup>4</sup> End Shed	5.6 25	5.4 10	5.9	5.8 10		
3+92 <sup>5</sup>	12 <sup>4</sup> R <sup>4</sup> & Single garage					5.15 11 <sup>2</sup> Apron conc.	306.05
3+80	9 <sup>4</sup> L <sup>4</sup> begin shed						5.17 12 <sup>5</sup> conc

311.22T

311.22T



Contd From Page 20

check

Long shot  
3.70 302.90 = 302.97

T.P.

7.59 306.60 6.50 299.01

Thorn 240  
SW 7x7 hub

£ Thorn

6+16

T.P.

4.21 305.51  $\pi$  9.92 301.30

549928

South Line Thorn

5450

5407

13<sup>9</sup> Lt & Single Garage

31122  $\pi$

24

£

21

300.8

300.2

4.7  
50

5.3

5.8  
50

299.7

300.7

300.0

4.8  
50

5.5

6.3  
50

299.2

305.51  $\pi$

301.7

301.1

301.2

300.8

300.6

9.5  
25

10.1  
10

10.0

10.4  
10

10.6  
25

303.7

303.4

303.6

303.2

302.7

7.5  
25

7.8  
10

7.6

8.0  
10

8.5  
25

304.2

7.0  
13  
Drt

31122  $\pi$



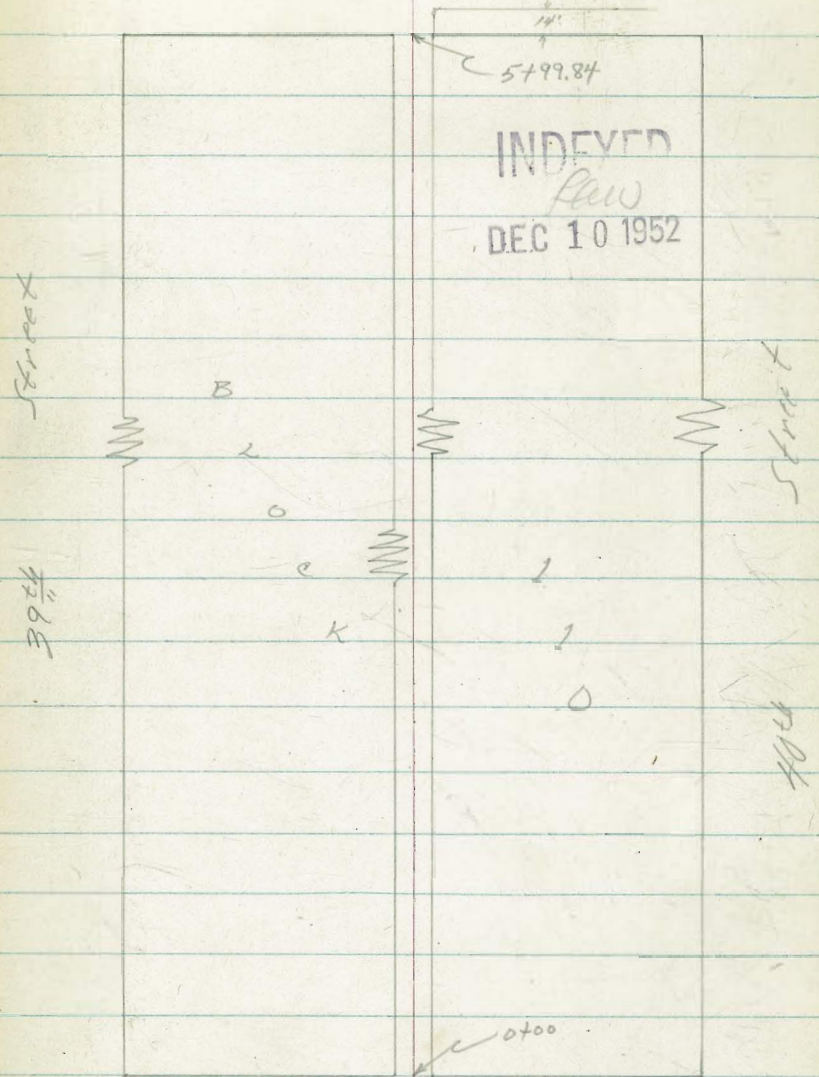
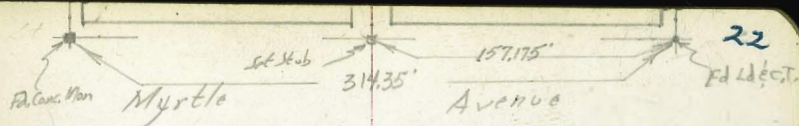
Robert

Same time  
as  
p. 37

# X-Section Alley Block 110

Thorn St. to Myrtle Ave.  
Between 39<sup>th</sup> and 40<sup>th</sup>

City  
Heights



Thorn  
See page 17.

Street



0+83 Sewer Exposed to Here

0+72 9' Lt to center T. Pole # PA3315

0+60

0+29

0+01 Sewer line exposed (6 pipes in open)

0+00 North Line Thorn

0-30

TBM

2.55

301.56 A

299.01 SW 717 Hub  
Thorn & Kitt

296.11

5.45  
Top  
Sewer  
Pipe

284.0  
11.6  
20

287.0  
14.6  
10

288.8  
12.8

291.9  
9.7  
10

292.7  
8.9  
20

277.5  
24.1  
35

280.8  
20.8  
10

282.6  
18.0

284.9  
16.7  
10

289.7  
11.9  
16

296.0  
5.6  
27

295.61

5.95  
Top  
Sewer  
Pipe

288.6  
13.0  
50

286.2  
15.4  
27

294.9  
6.7  
10

295.8  
5.8

297.4  
4.2  
10

298.8  
2.8  
50

300.8

0.8  
50

300.2

1.4

299.6

2.0  
50

301.56 A



Cont'd From Page 23

2450

2400

1497

8<sup>3</sup> Lt to center P.Pole # PA3345

1463

9<sup>3</sup> Lt @ 3<sup>3</sup> Conc

1450

1448

9<sup>3</sup> Lt begin picket fence

1402

8<sup>3</sup> Lt to center P.Pole # PA 3315

1400

T.P.

10.59 308.78A 3.37 298.19

30156A

24

6.3  
20

8.2  
25

9.2  
20  
conc

10.0  
20

16.8  
30

5.8  
10

7.7  
10

8.7  
9  
conc

9.5  
10

11.5  
10

5.5  
10

7.2

300.2

12.7

308.78A

5.1  
10

6.8  
10

8.4  
10

10.4  
10

308.78A

4.6  
25

6.0  
25

8.0  
25

9.7  
25

3041.2

24



Cont'd From Page 24

Lt

Q

R 25

4+00

307.3  
7.9  
25

707.9  
7.3  
10

307.7  
7.5

308.2  
7.0  
10

308.7  
6.5  
11

308.9  
6.3  
25

3+98.5

8' Lt to center P. Pole # PA3401

306.9

3+70

11.5' Lt Q Single Garage

8.3  
11.8  
Dirt

T.P.

8.53

315.18X 2.13 306.65

315.18X

3+50

306.6  
2.2  
10

306.3  
2.5

307.0  
1.8  
10

307.4  
1.4  
25

3+46

11' Lt End Picket Fence  
9' Lt Q 3' Conc. Walk

305.98  
2.80  
20  
conc

306.46  
2.32  
9  
conc

304.1

304.7

305.0

305.1

305.6

306.1

3+00

7.7  
25

4.5  
12

3.8  
10

3.7

3.2  
10

2.7  
25

2+96.5

8' Lt. to center P. Pole # PA3375

308.78X

308.78X



TR 627 320.14 N 131 313.87

5499.84 South Line Myrtle

(Curb covered with yards of dirt.  
Putting in water line.)

5450

5400

4499 8 1/2 ft to center P. Pole # PA3475

4470 11 1/2 ft R & Single Garage

4458 20 1/2 ft R & Single Garage

4450

315.18 N

312.8	313.4	313.1	313.5	314.2
2.3	1.8	2.1	1.7	0.9
50	10		10	50
312.1	312.3	312.3	312.8	313.0
3.1	2.9	2.9	2.4	2.2
25	10		10	25
310.7	311.4	311.2	311.5	311.8
4.5	3.8	4.0	3.7	3.4
25	10		10	12
310.26			310.8	
4.92			4.4	
20 1/2			1 1/2	
20 ft			dirt	
311.9	309.5	309.6	310.0	310.4
6.3	5.7	5.6	5.2	4.8
25	10		10	25

315.18 N



Contd from Page 26

26

♀

27

27

check

723 299.01 = 299.01

T.P.

237

306.24

11.26

303.87

T.P.

0.71

315.13

5.79

314.35

♀ Myrtle

6.7  
50

313.4

6.9  
213.2

5.4  
50

314.7

South Curb Line Myrtle

(Estimating Ground. Tree up)

8.3  
50

311.8

7.8  
10

312.3

7.7  
51.4

313.4

7.53  
12  
66

312.61

6.32  
50  
66

313.82

320.14 π

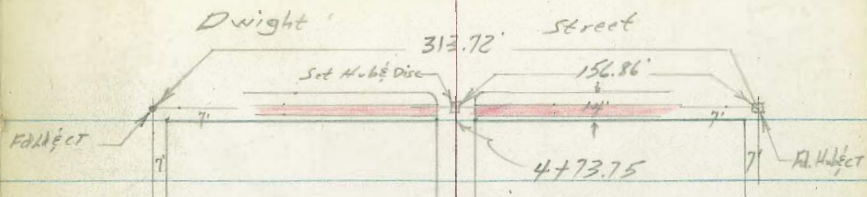
320.14



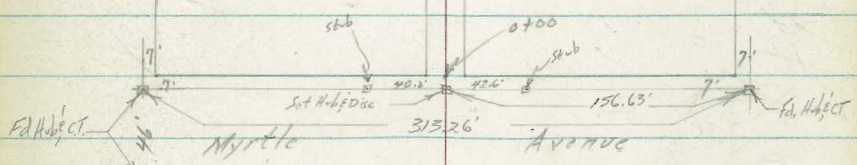
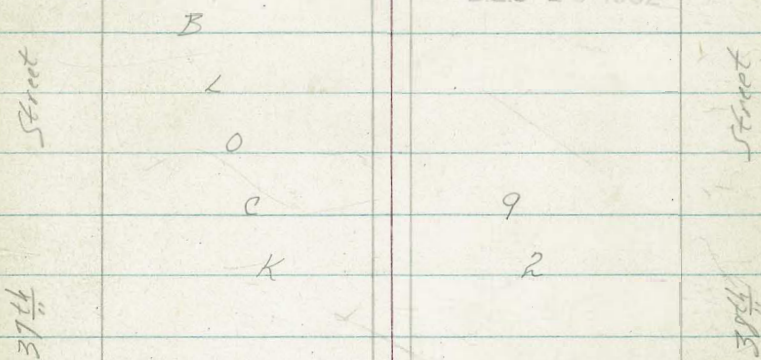
Roberts  
Same Time  
as  
Page 7

X-Section Alley Block 92  
From Myrtle to Dwight  
Between 37th and 38th  
See T.P. 22, page 4

City  
Heights



INDEXED  
Law  
DEC 10 1952









Cont'd From Page 29

2+09

T.P.

0.76 288.45  $\pi$  12.31 287.69

1480

T.P.

6.46 300.00  $\pi$  12.67 293.54

1457

72' Lt. to center P. Pole # PA3553

1445

1438.52 P.O.T. Set 2x2 R. hubs c.T. 5' East of  $\mathcal{L}$

1400

10<sup>E</sup> Lt. to No. End Double garage

0+84

10<sup>S</sup> Lt. to So. End Double garage

306.23  $\pi$

Lt

+1.7  
20

0.8  
10

6

287.7

289.3

300.00  $\pi$

1.3  
20

1.5  
12

3.7  
10

10.7

14.8  
10

19.7  
25

302.4  
2.8  
20

300.6  
5.6  
10

299.5  
6.7

299.0  
7.3  
10

294.9  
11.3  
22

140  
10<sup>E</sup>  
Floor

161  
Rt  
conc  
Apron

304.62  
2.7

302.9  
33  
10

299.3  
6.9  
25

140  
10<sup>S</sup>  
Floor

161  
Rt  
conc  
Apron

306.23  $\pi$

Rt 30

278.0

10.5  
10

14.4  
20

Rt

287.7

289.3

300.00  $\pi$

299.5

304.62

306.23  $\pi$



3+70

304.7  
70  
20

305.8  
5.9  
10

307.9  
3.8  
10

310.9  
0.1  
10

312.9  
+1.2  
20

3+53 8<sup>2</sup> Lt to Center PPI# A3573

T.P. 12.01 311.71  $\pi$  0.49 298.70

311.71  $\pi$

3+35

290.0  
10.2  
20

293.5  
6.7  
10

296.4  
3.8  
10

297.6  
2.6  
5

304.2  
+4.0  
10

310.2  
+10.0  
20

T.P. 12.04 300.19  $\pi$  0.30 288.15

300.19  $\pi$

3+00

276.5  
11.7  
24

281.9  
6.3  
10

287.0  
1.2  
10

289.7  
+1.5  
10

293.7  
+5.5  
20

2+63

274.9  
13.3  
20

274.5  
13.7  
10

273.2  
15.0  
20

276.2  
12.0  
10

280.9  
7.3  
20

2+40

279.8  
8.4  
20

276.9  
11.3  
10

271.6  
16.6  
10

270.7  
17.5  
10

268.4  
19.8  
20

288.45  $\pi$

288.45  $\pi$



4+61 72' Lt & 15' Conc Walk

318.23  
3.79  
20  
conc

318.36  
3.66  
72  
conc

4+45

316.7  
5.3  
18

317.5  
4.5  
10

317.5  
4.5

318.1  
3.9  
10

318.7  
3.3  
20

4+22E 59' Lt & 6' Conc Steps

319.14  
3.86  
118  
Porch

318.13  
3.89  
82  
TOP  
STEPS

316.59  
5.43  
59  
Bottom  
STEPS

4+10

315.2  
6.8  
10

316.8  
5.2

316.7  
5.3  
10

319.9  
5.1  
20

4+09

313.0  
9.0  
20

314.4  
7.6  
10

313.3  
8.7

317.3  
7.7  
4

316.9  
5.5  
5

316.9  
5.5  
10

316.8  
5.2  
20

3+94 Begin of Car Ramp on Conc. piers in Alley

3+80

311.4  
10.6  
20

311.5  
10.5  
10

311.9  
10.1

311.9  
10.1  
5

313.9  
8.1  
10

313.7  
8.3  
20

T.P. 12.63 32 2.02  $\nabla$  2.32 309.39

322.02  $\nabla$

311.71  $\nabla$



Check to  
BM →

2.04 319.98 = 317.94

Q Dwight

South Curb Line Dwight

4480<sup>3</sup>

{ 6' Lt North Edge Walk  
10' Lt Begin Curb

4475

6' Lt South Edge Walk

4473.75

{ South Line Dwight  
9' Rt. Begin Curb

322.02 π

3.88	318.14	3.6	318.4	4.3	317.7	5.1	316.9
50		5.0				5.0	
cb							
4.6	317.4						
50							
gut.							
4.28	317.74						
12							
cb							
5.2	316.8						
10							
cb							
5.1	316.9						
10							
cb							
5.4	316.6						
10							
cb							
5.5	316.5						
13							
gut.							
4.99	317.23						
13							
cb							
6.1	315.9						
50							
gut.							
5.31	316.41						
50							
cb							
4.18	317.84						
10'							
conc							
4.53	317.49						
6'							
conc							
4.03	317.99						
10							
conc							
4.1	317.9						
10							
cb							
4.9	317.1						
10							
cb							
4.39	317.63						
9.9							
cb							
4.4	317.6						
9.9							
cb							

322.02 π



Roberts

Some Time  
at  
Page 7

X-Section Alley B.K. 143 <sup>SP1</sup> <sup>High</sup>

From Seattle to Quince  
Between 38th & 39th Streets  
See TP. 22 page 21

Block  
see Page 7

139

34

Quince

Street

INDEXED  
Law  
DEC. 10 1952

Production of  
the S of Alley  
in Block 139

B

L

O

P

K

4

3

Street

38th

526-105

39th

Notes:

Office did not want to spend time to  
tiepoint Seattle Street. Wash Freeway  
has cut off corner 38th & Seattle.

P.C.C.

10±05

12±05 pipe

Seattle

Street



1+13

261.8  
+1.6  
20  
17  
10  
195.41  
5.3  
10  
5.3  
20  
6.2  
30  
254.0

1+00

262.0  
+1.8  
20  
17  
10  
32.58  
5.5  
10  
6.3  
20  
253.9

0+99

7<sup>3</sup> Rt to center Pole # ?

0+82

32<sup>8</sup> Rt & Single Garage

32.8  
Dirt  
Floor  
6.6  
253.6

T.P.

1.73 260.20  $\Delta$  12.86 258.47

260.20  $\Delta$

0+50

264.0  
7.3  
20  
9.1  
10  
12.8  
14.2  
10  
14.7  
20  
256.6

0+00

South Line Quince

270.2  
11  
50  
7.3  
10  
9.0  
10.1  
10  
12.5  
50  
258.8

T.P.

0.52 271.33  $\Delta$  13.04 270.81

271.33  $\Delta$

TBM

1.36 283.85

282.49 711 Hub NE Corner

Quince # 394 See page 8



Cont'd From Page 35.

Lt

Rt 36

2+30

5,254.9  
20

6.5  
10

252.4  
7.8

8.2  
10

9.250.9  
19

2+22

3.1  
20

4.1  
10

4.4  
3

6.3  
19

7.4  
10

8.4  
12

8.6  
19

2+02

19<sup>th</sup> Rt @ Doorway of House

4.8  
19<sup>th</sup>  
Floor

0.3  
20

1.3  
10

2.6  
2

3.8  
10

5.1  
10

5.1  
12

7.0  
12<sup>th</sup>

7.3  
19<sup>th</sup>

2+00

+0.5  
20

0.3  
10

1.4  
3

3.2  
10

5.2  
10

6.1  
20<sup>th</sup>  
Pt

1+77

20<sup>th</sup> Rt begin conc. Rt. wall runs into House.

261.3  
+1.1  
20

261.3  
+1.1  
12

258.8  
+1.4  
10

256.4  
3.8

255.1  
5.1  
10

254.6  
5.6  
19

247.8  
12.4  
23

247.4  
12.9  
33

1+60

261.8  
+1.6  
20

258.8  
1.4  
10

256.2  
4.0

254.6  
5.4  
10

254.6  
5.6  
21

248.2  
11.5  
23

248.2  
12.0  
35

1+16

260.20K

260.20K



3+34

12' Rt to SE. Cor. Single garage. Opening on So.

249.2  
5.4  
127  
Dirt  
Floor

3+14

3<sup>rd</sup> Rt to Deadman

T.P.

4.14 254.63  $\pi$  0.11 250.49

254.63  $\pi$

3+01

2<sup>nd</sup> Rt to center P.Pole # PA2955

3+00

	253.2			
+1.9		251.7		
20		10	250.2	
			3.1	248.2
			10	247.2
				4.1
				20

2+90

2+69.85 = 56  
2+59.15  $\frac{2.28}{59}$   
0.10W.

	250.7			
0.6		249.6		
10		1.7	247.4	
			3.9	242.7
			10	241.8
				8.6
				20

2+64

Debris in bottom. deep??

237.4		236.4		234.0
13.9		14.9		11.3
10				10
				19.5
				25

T.P.

2.02 251.27  $\pi$  10.95 249.25

251.27  $\pi$

260.20  $\pi$



Cont'd From Page 37

Lt

Q

Rt 38

5+25

244.8  
9.8  
20  
244.6  
10.0  
10  
244.5  
10.1  
10  
244.6  
10.0  
10  
244.9  
10.2  
20

5+06

244.9  
9.7  
20  
244.7  
9.9  
10  
244.7  
9.9  
10  
245.2  
9.4  
10  
244.8  
9.8  
20

5+02

252.5  
2.1  
20  
250.7  
3.9  
10  
247.0  
7.6  
10  
246.2  
8.4  
10  
245.1  
9.5  
20

4+50

254.1  
0.5  
20  
252.7  
1.9  
10  
251.1  
3.5  
10  
249.6  
5.0  
10  
247.9  
6.7  
20

4+12

22<sup>nd</sup> Rt Q Doorway house

249.4

5.2

22<sup>nd</sup>  
Floor

4+00

253.7  
+0.9  
20  
254.2  
0.4  
10  
252.4  
2.2  
10  
251.0  
3.6  
10  
249.3  
5.3  
20

3+50

257.1  
+2.5  
20  
255.2  
+0.6  
10  
253.2  
1.4  
10  
251.7  
2.9  
10  
249.5  
5.1  
20

25463A

25463A



Cont'd From Page 38

Lt

2

RT

39

T.P. 20 0.85 242.46T 13.02 241.61

6+00

245.7  
8.9  
20  
244.2  
10.4  
10  
243.6  
11.0  
10  
243.1  
11.5  
10  
241.9  
12.7  
20

5+78

247.5  
7.1  
20  
246.1  
8.5  
10  
244.6  
10.0  
10  
243.6  
11.0  
10  
243.6  
11.0  
20

5+57

244.0  
0.6  
20  
249.6  
5.0  
10  
246.1  
8.5  
20  
244.1  
10.5  
10  
243.7  
10.9  
20

5+50

254.0  
2.7  
20  
250.9  
3.7  
10  
247.8  
6.8  
5  
246.5  
8.1  
10  
245.0  
9.6  
10  
244.2  
10.4  
13  
243.8  
10.8  
20

5+45

250.7  
2.9  
20  
250.2  
4.4  
10  
248.8  
5.8  
10  
245.4  
9.2  
10  
244.0  
10.6  
15  
244.0  
10.6  
20

5+33

250.5  
4.1  
20  
249.4  
5.2  
10  
248.1  
6.5  
10  
246.7  
7.9  
8  
245.4  
9.2  
10  
244.0  
10.6  
15  
244.1  
10.5  
20

25463T

25463T



Cont'd From Page 39

26

2

22

40

T.P. 0.49 217.83  $\bar{\Delta}$  12.95 217.34

8+50

218.0  
12.3  
20  
218.7  
11.6  
10  
217.7  
12.6  
13.2  
10  
217.1  
12.7  
20

8+00

224.3  
6.0  
20  
224.2  
6.1  
10  
223.1  
7.2  
7.3  
10  
223.0  
7.6  
20

7+50

229.6  
0.7  
20  
229.1  
1.2  
10  
229.0  
1.3  
228.8  
1.4  
10  
228.5  
1.9  
20

T.P. 0.60 230.29  $\bar{\Delta}$  12.77 229.69

230.29  $\bar{\Delta}$

7+00

235.5  
7.0  
20  
235.2  
7.3  
10  
234.9  
7.6  
234.1  
8.4  
10  
234.7  
8.8  
20

6+50

241.7  
0.8  
20  
240.6  
1.9  
10  
240.1  
2.4  
239.5  
3.0  
10  
238.5  
4.0  
20

242.46  $\bar{\Delta}$

242.46  $\bar{\Delta}$



Contd From Page 40

T.P. 12.62 206.65 0.99 194.03

10+85 IN BOTTOM OF CANYON (see x-sect. of Lexington)

10+25

T.P. 1.15 194.12A 12.56 192.97

10±05 Approx. North Line Seattle

9+50

T.P. 0.66 205.53A 12.96 204.87

9+00

217.83A

24

Q

RE 41

167.4

26.7

190.6

3.5

194.12A

194.3

203.8

192.4

193.2

193.6

23.5  
50

14.5  
20

13.1  
10

12.3

11.9  
10

11.5  
50

200.7

200.8

201.4

5.5  
20

4.8  
10

4.7

4.1  
10

3.5  
20

205.53A

208.8

209.1

209.6

209.9

209.5

9.0  
20

8.7  
10

8.2

7.9  
10

8.3  
20

217.83A



Cont'd From Page 41

Lt

Q

R7 42

check

4.41 282.50 = 282.49

T.P. 7.41 286.91 2.06 279.50

T.P. 12.33 281.56 0.39 269.23

T.P. 13.06 269.62 0.27 269.56

T.P. 12.19 256.83 0.15 244.64

T.P. 12.75 244.79 0.11 232.04

T.P. 12.87 232.15 0.34 219.28

T.P. 13.09 219.62 0.12 206.53

20665X



D. Smith  
R Taylor  
B. Fish

wo# 32458  
8-18-54

43

X Sec 63rd St  
El Cajon to Choctaw Dr.  
(old Catactiv Dr)

INDEXED  
SER  
AUG 20 1954

Note: All stations are the same as FB 1854/2

You will have to hook up  
ROW & opening sheets

as I haven't been given same)

New ROW  
Nly El Cajon

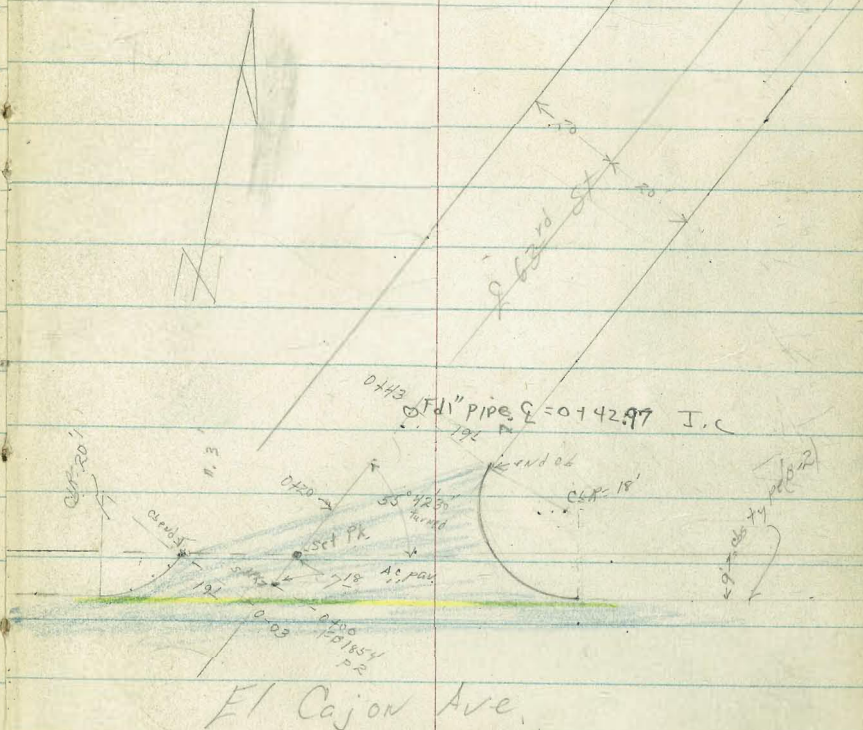
FO Mill  
1/2 mile  
50' x 10' x 5' S  
1/2 mile

marked by stop sign  
El Cajon

see FB 1854 pg 2, 3, 4  
for rest of sketch

117466 BC  
FB 1854/2

150' min  
5'



Intersection El Cajon & 63rd St











2122 19<sup>6</sup> 42 14" 19% 4 gene

2+16° J

TP<sub>2</sub>

488

469 61

528

464 22

on left 5' line  
177485  
BC

1795 47

1774<sup>85</sup> BC

1750

1738 15<sup>3</sup> At Begin con 26 + walk see sketch FB1854-2

1700

use FB  
1854- for all cor. locations on  
Ely or RT No change val.

LT = Wly

RT = Ely

46

4650	4650	4646	4648	4649	4645	4642	4650	
46	46	52	48	47	52	53	479	46
35	20	17	10 oil edge		75 oil edge	20 oil edge	20 oil edge	35

π 469 61

4649	4650	4647	4648	4650	4646	4643	4642	4646	4649
58	52	62	52	52	61	64	529	586	58
40	20	14	8 oil edge		74 oil edge	15 oil edge	26 oil edge	20 oil edge	35

4649	4648	4650	4651	4646	4642	4640	4643	4648
58	59	52	56	61	65	522	589	52
40	20	72 oil edge		72 oil edge	15 oil edge	23 oil edge	20 oil edge	35

4647	4650	4650	4647	4643	4647	4643	4646	4640	4649
55	53	57	53	54	62	64	586	587	58
40	20	15	72 oil edge		8 oil edge	15 oil edge	15 oil edge	20 oil edge	35

4645	4649	4640	4648
62	583	587	589
152 oil edge	26 oil edge	175 oil edge	211 oil edge

4641	4647	4643	4647	4645	4647	4648	4645	4648	4651
46	50	54	53	52	55	52	62	52	56
40	20	12	8 oil edge		6 oil edge	10 oil edge	15 oil edge	20 oil edge	30

π 470 72



Lt. Wly

9

HT-ELY

47

3+93<sup>05</sup> E.C.

3+80 21<sup>4</sup> Lt & 12" con walk

3+79 17<sup>4</sup> Lt & 18" Acacia tree

3+61 19<sup>2</sup> Lt Ely end E-W 6" ob type con wall

3+6177<sup>2</sup> Lt & 12" popl #P76044

3+56<sup>23</sup>

3+47 19<sup>5</sup> Lt. Ely end 3' high 1' wide hedge runs E-W

3+24<sup>8/10</sup>

3+09 18<sup>2</sup> Lt Ely end 3' high 1' wide hedge runs E-W

2+93 19<sup>5</sup> Lt end 3' high 1' wide hedge

2+93 18<sup>2</sup> Lt Ely end 4' picket fence runs E-W

2+80

2+58 16<sup>8</sup> Lt & 2<sup>1</sup>/<sub>2</sub> con walk

2+43 20<sup>0</sup> Lt Begin 3' high 1' wide hedge

2+36<sup>2</sup> E.C.

2+22 20<sup>8</sup> Lt Ely end 4' bath fence runs E-W

464.7 464.7 464.7 464.3 464.4 464.0 463.8 464.11 464.7 464.5  
 42 42 54 53 52 56 58 550 534 51  
 40 20 15 73 10 15 15 20 35  
 nl edge nl edge  
 464.91 464.91  
 470 490  
 314 214  
 474 474

464.4 464.07 464.6  
 52 454 52  
 192 192 192  
 facing top 9d

464.8 464.6 464.3 464.4 464.5 464.2 464.1 464.21 464.6 464.8  
 48 50 53 51 51 54 55 540 492 48  
 35 20 13 65 10 15 15 20 35  
 nl edge nl edge cut on wlk

465.2 465.0 464.9 464.5 464.6 464.7 464.3 464.1 464.32 464.0 464.8  
 44 46 47 51 50 47 53 55 520 501 48  
 35 20 16 15 87 10 15 15 20 35  
 nl edge nl edge

465.1 465.0 465.0 464.6 464.6 464.9 464.4 464.1 464.45 464.7 465.2 465.2  
 45 46 46 50 50 42 52 55 56 494 44 43  
 35 20 17 16 87 10 15 15 20 25 35  
 nl edge nl edge

465.09 465.04 465.00  
 452 457 461  
 30 20 162  
 wlk wlk

465.0 464.9 464.6 464.8 464.9 464.4 464.0 464.58 464.90 465.2  
 46 42 50 48 47 52 56 503 471 44  
 35 20 18 10 28 15 15 20 35  
 nl edge nl edge

T 469 61



335 Nly of PI  
 Nly of live Rose St extended 2<sup>63</sup> ss Semitan  
 31' Nly of PI 26° Rt Begin 4' wire fence

15 Nly of PI  
 Sly of live Rose St taken along line of  
 2 63<sup>ss</sup> Semitan to Nly of PI

5  
 8700 20° Lt 14" P<sub>10</sub> 76045

4  
 8198 BC 6 LI, 2 - Semitan

sub

A  
 5483 18° Lt end of 2 AC paving Lt half of St,  
 2 ss semitan for out  
 5476 20° Rt end 4 1/2 wire fence

4474 18° Lt 2' on walk

445338 BC

4447 20° Lt Begin Fly edge planting bed rock hind

4431 21° Rt Begin 4 1/2 wire fence

4430 20° Lt Fly end 5' wire fence runs E-W

4430 22° Rt wly edge 4 1/2 wide hedge

4426

4414 18° Lt 2 20° umbrella tree

LT = Wly  
 46383 46335 46364 46317 46313 46349 46376 46380 4634 4632 46362 4637 4639  
 578 626 577 644 648 613 585 581 62 64 577 57 57  
 71 71 26 26 18 9 3 3 11 160 160 20 30  
 65 sut BC, sut sut

46335 46377 46326 46327 46360 46395 46407 4634 4634 46377 4638 4630  
 626 584 635 634 601 566 559 62 62 584 58 56  
 64 24 24 17 9 3 13 176 176 20 30  
 sut 50, 24 sut 9 3 edge 900 BC, 13 oil edge

4644 4644 46375 46327 46360 46398 4635 4635 46381 4638 4639  
 52 53 586 634 595 563 61 61 580 58 52  
 30 20 18 18 9 12 172 172 20 35  
 BC, sut

4646 4646 46381 46325 46379 46406 4636 4636 46384 4637 4641  
 50 50 580 626 588 555 60 60 575 58 55  
 30 20 18 18 9 12 152 152 20 30  
 BC, sut

4645 4645 4640 4640 4642 4636 4636 46389 4640 4644  
 48 53 55 56 54 60 61 573 56 53  
 35 20 18 9 11 15 15 20 30  
 oil edge

4646 4644 4645 4641 4641 4643 4639 46361 46420 4648  
 50 53 52 55 55 53 52 600 541 53  
 35 20 18 14 8 15 15 20 30  
 oil edge

46961



taken along  
6461 3/4 c6 line Choctaw St extended

SE Return BC63<sup>rd</sup> called @ 6720<sup>18</sup> 1/2 c6

6724 24° RT end 4' wire fence

6720<sup>18</sup>

TP<sub>3</sub>

505 469<sup>13</sup>

613 463<sup>18</sup>

6700

5760 18° RT E 3' dia tel MH.

5756<sup>83</sup> EC

c6 BC Lt. is 35' Nly of PT on semi tan,  
E 55 semi tan, Dir out.

Lt = Wly

RT = Ely

463.56 49  
557 507  
1005 1005  
547 55

462.14 462.65 463.05 463.30 463.7 462.8 462.91 464.08 463.72

699 648 608 52 63 622 505 505

208 203 9 9 17 205 505 505

c6 cut 9 9 17 205 505 505

463.46 463.0 463.07 464.08 463.15 464.06 463.24 463.69 463.28 463.72

547 61 606 535 528 507 524 544 585 541

BC out 45 1/4 2 1/2 c6 2 3/4 c6 2 F.C. c6

63 45 2 1/2 4 1/2 4 1/2 2 3/4 2 3/4 2 3/4

10 ea 4 parts 18' c6 Rod 40' Long.

463.63 462.39 463.33 462.85 463.22 463.47 463.1 463.0 463.46 463.7 463.9

55 624 580 528 521 521 60 61 567 54 52

35 20 18 18 9 2 1/2 11 15 15 20 30

wly cut 9 9 9 9 9 9 9 9 9 9

469<sup>13</sup>

462.6 462.16 463.44 463.35 462.90 463.24 462.47 463.3 463.2 463.48 463.2 464.2 464.2

60 60 61 62 62 63 64 63 64 63 52 54 54

35 23 20 18 18 9 9 9 15 20 23 30

wly cut 9 9 9 9 9 9 9 9 9 9 9 9

57

463.6 463.9 463.51 463.06 463.44 463.70 463.3 463.0 463.9 463.6 464.1 464.1

60 52 60 655 612 591 63 66 602 60 55 55

35 20 18 18 9 9 10 15 15 20 23 30

cut 9 9 9 9 9 9 9 9 9 9 9

AC, edge cut c6

464.0 463.7 463.58 463.09 463.47 463.75 463.80 463.4 463.2 463.63 463.7

56 52 603 652 644 586 581 63 64 528 52 52

35 20 18 18 9 23 11 15 15 20 30

c6 cut 9 9 9 9 9 9 9 9 9 9 9

BC, edge cut 75

469<sup>61</sup>







Original notes may be found in  
W.O. Folder 21335 on Print 5634-B

sub  
4-5-55

B.M. L & Disk in Ch. SW. Cor. Tulip & Trailing.  
EL 198.26

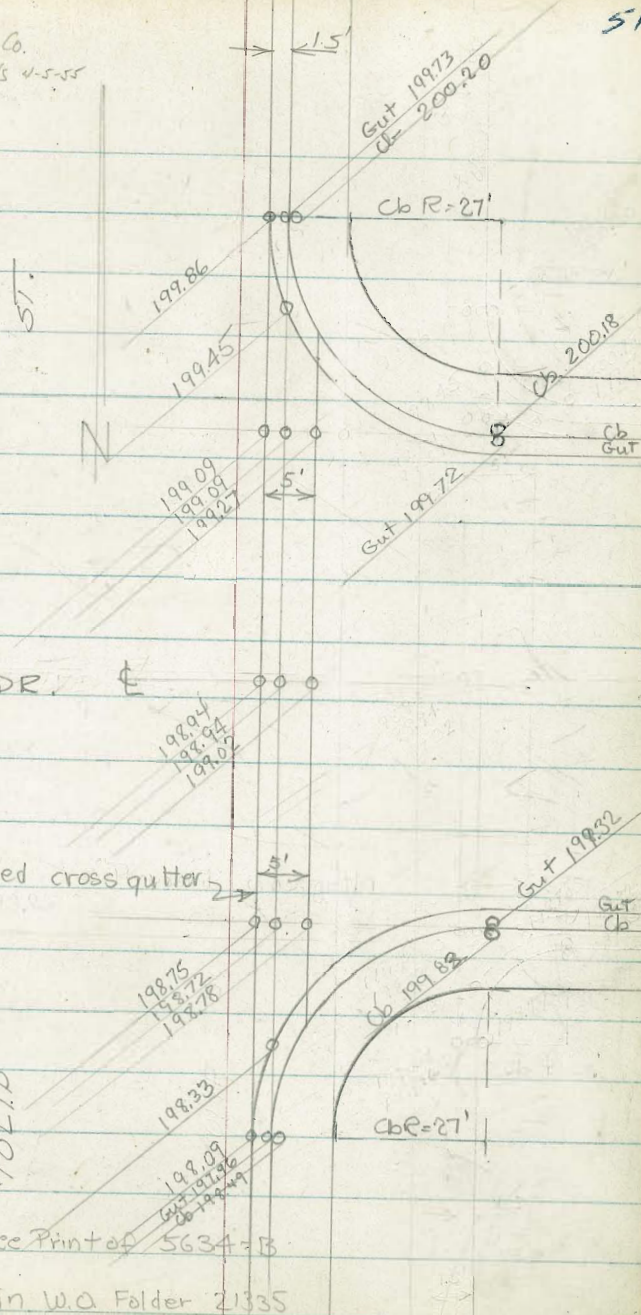
W.O. 21335  
Osborne & Co.  
by Reynolds 4-5-55

TRAILING DR. E

Proposed cross gutter

TULIP

See Print of 5634-B  
in W.O. Folder 21335







































































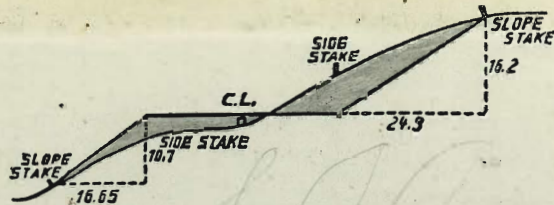












**DISTANCES FROM SIDE STAKES FOR CROSS-SECTIONING.**

SLOPE  $1\frac{1}{2}$  TO 1. ROADWAY OF ANY WIDTH.

	0.	.1	.2	.3	.4	.5	.6	.7	.8	.9	
0	0.00	0.15	0.30	0.45	0.60	0.75	0.90	1.05	1.20	1.35	0
1	1.50	1.65	1.80	1.95	2.10	2.25	2.40	2.55	2.70	2.85	1
2	3.00	3.15	3.30	3.45	3.60	3.75	3.90	4.05	4.20	4.35	2
3	4.50	4.65	4.80	4.95	5.10	5.25	5.40	5.55	5.70	5.85	3
4	6.00	6.15	6.30	6.45	6.60	6.75	6.90	7.05	7.20	7.35	4
5	7.50	7.65	7.80	7.95	8.10	8.25	8.40	8.55	8.70	8.85	5
6	9.00	9.15	9.30	9.45	9.60	9.75	9.90	10.05	10.20	10.35	6
7	10.50	10.65	10.80	10.95	11.10	11.25	11.40	11.55	11.70	11.85	7
8	12.00	12.15	12.30	12.45	12.60	12.75	12.90	13.05	13.20	13.35	8
9	13.50	13.65	13.80	13.95	14.10	14.25	14.40	14.55	14.70	14.85	9
10	15.00	15.15	15.30	15.45	15.60	15.75	15.90	16.05	16.20	16.35	10
11	16.50	16.65	16.80	16.95	17.10	17.25	17.40	17.55	17.70	17.85	11
12	18.00	18.15	18.30	18.45	18.60	18.75	18.90	19.05	19.20	19.35	12
13	19.50	19.65	19.80	19.95	20.10	20.25	20.40	20.55	20.70	20.85	13
14	21.00	21.15	21.30	21.45	21.60	21.75	21.90	22.05	22.20	22.35	14
15	22.50	22.65	22.80	22.95	23.10	23.25	23.40	23.55	23.70	23.85	15
16	24.00	24.15	24.30	24.45	24.60	24.75	24.90	25.05	25.20	25.35	16
17	25.50	25.65	25.80	25.95	26.10	26.25	26.40	26.55	26.70	26.85	17
18	27.00	27.15	27.30	27.45	27.60	27.75	27.90	28.05	28.20	28.35	18
19	28.50	28.65	28.80	28.95	29.10	29.25	29.40	29.55	29.70	29.85	19
20	30.00	30.15	30.30	30.45	30.60	30.75	30.90	31.05	31.20	31.35	20
21	31.50	31.65	31.80	31.95	32.10	32.25	32.40	32.55	32.70	32.85	21
22	33.00	33.15	33.30	33.45	33.60	33.75	33.90	34.05	34.20	34.35	22
23	34.50	34.65	34.80	34.95	35.10	35.25	35.40	35.55	35.70	35.85	23
24	36.00	36.15	36.30	36.45	36.60	36.75	36.90	37.05	37.20	37.35	24
25	37.50	37.65	37.80	37.95	38.10	38.25	38.40	38.55	38.70	38.85	25
26	39.00	39.15	39.30	39.45	39.60	39.75	39.90	40.05	40.20	40.35	26
27	40.50	40.65	40.80	40.95	41.10	41.25	41.40	41.55	41.70	41.85	27
28	42.00	42.15	42.30	42.45	42.60	42.75	42.90	43.05	43.20	43.35	28
29	43.50	43.65	43.80	43.95	44.10	44.25	44.40	44.55	44.70	44.85	29
30	45.00	45.15	45.30	45.45	45.60	45.75	45.90	46.05	46.20	46.35	30
31	46.50	46.65	46.80	46.95	47.10	47.25	47.40	47.55	47.70	47.85	31
32	48.00	48.15	48.30	48.45	48.60	48.75	48.90	49.05	49.20	49.35	32
33	49.50	49.65	49.80	49.95	50.10	50.25	50.40	50.55	50.70	50.85	33
34	51.00	51.15	51.30	51.45	51.60	51.75	51.90	52.05	52.20	52.35	34
35	52.50	52.65	52.80	52.95	53.10	53.25	53.40	53.55	53.70	53.85	35
36	54.00	54.15	54.30	54.45	54.60	54.75	54.90	55.05	55.20	55.35	36
37	55.50	55.65	55.80	55.95	56.10	56.25	56.40	56.55	56.70	56.85	37
38	57.00	57.15	57.30	57.45	57.60	57.75	57.90	58.05	58.20	58.35	38
39	58.50	58.65	58.80	58.95	59.10	59.25	59.40	59.55	59.70	59.85	39
40	60.00	60.15	60.30	60.45	60.60	60.75	60.90	61.05	61.20	61.35	40
41	61.50	61.65	61.80	61.95	62.10	62.25	62.40	62.55	62.70	62.85	41
42	63.00	63.15	63.30	63.45	63.60	63.75	63.90	64.05	64.20	64.35	42
43	64.50	64.65	64.80	64.95	65.10	65.25	65.40	65.55	65.70	65.85	43
44	66.00	66.15	66.30	66.45	66.60	66.75	66.90	67.05	67.20	67.35	44
45	67.50	67.65	67.80	67.95	68.10	68.25	68.40	68.55	68.70	68.85	45
46	69.00	69.15	69.30	69.45	69.60	69.75	69.90	70.05	70.20	70.35	46
47	70.50	70.65	70.80	70.95	71.10	71.25	71.40	71.55	71.70	71.85	47
48	72.00	72.15	72.30	72.45	72.60	72.75	72.90	73.05	73.20	73.35	48
49	73.50	73.65	73.80	73.95	74.10	74.25	74.40	74.55	74.70	74.85	49
50	75.00	75.15	75.30	75.45	75.60	75.75	75.90	76.05	76.20	76.35	50

THE NATIONAL BLANK BOOK COMPANY  
 HOLYOKE MASSACHUSETTS  
 NEW YORK CHICAGO BOSTON SAN FRANCISCO