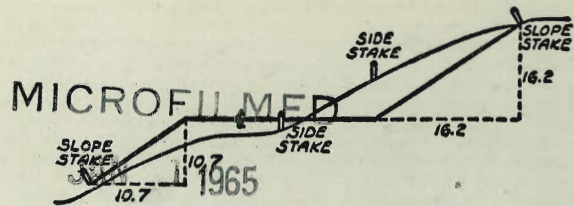


2199

1911-ACT. X-SECT.

PAK BOOK



DISTANCES FROM SIDE STAKES FOR CROSS-SECTIONING
SLOPE 1 TO 1. ROADWAY OF ANY WIDTH

	0	.1	.2	.3	.4	.5	.6	.7	.8	.9	
0	0.00	0.10	0.20	0.30	0.40	0.50	0.60	0.70	0.80	0.90	0
1	1.00	1.10	1.20	1.30	1.40	1.50	1.60	1.70	1.80	1.90	1
2	2.00	2.10	2.20	2.30	2.40	2.50	2.60	2.70	2.80	2.90	2
3	3.00	3.10	3.20	3.30	3.40	3.50	3.60	3.70	3.80	3.90	3
4	4.00	4.10	4.20	4.30	4.40	4.50	4.60	4.70	4.80	4.90	4
5	5.00	5.10	5.20	5.30	5.40	5.50	5.60	5.70	5.80	5.90	5
6	6.00	6.10	6.20	6.30	6.40	6.50	6.60	6.70	6.80	6.90	6
7	7.00	7.10	7.20	7.30	7.40	7.50	7.60	7.70	7.80	7.90	7
8	8.00	8.10	8.20	8.30	8.40	8.50	8.60	8.70	8.80	8.90	8
9	9.00	9.10	9.20	9.30	9.40	9.50	9.60	9.70	9.80	9.90	9
10	10.00	10.10	10.20	10.30	10.40	10.50	10.60	10.70	10.80	10.90	10
11	11.00	11.10	11.20	11.30	11.40	11.50	11.60	11.70	11.80	11.90	11
12	12.00	12.10	12.20	12.30	12.40	12.50	12.60	12.70	12.80	12.90	12
13	13.00	13.10	13.20	13.30	13.40	13.50	13.60	13.70	13.80	13.90	13
14	14.00	14.10	14.20	14.30	14.40	14.50	14.60	14.70	14.80	14.90	14
15	15.00	15.10	15.20	15.30	15.40	15.50	15.60	15.70	15.80	15.90	15
16	16.00	16.10	16.20	16.30	16.40	16.50	16.60	16.70	16.80	16.90	16
17	17.00	17.10	17.20	17.30	17.40	17.50	17.60	17.70	17.80	17.90	17
18	18.00	18.10	18.20	18.30	18.40	18.50	18.60	18.70	18.80	18.90	18
19	19.00	19.10	19.20	19.30	19.40	19.50	19.60	19.70	19.80	19.90	19
20	20.00	20.10	20.20	20.30	20.40	20.50	20.60	20.70	20.80	20.90	20
21	21.00	21.10	21.20	21.30	21.40	21.50	21.60	21.70	21.80	21.90	21
22	22.00	22.10	22.20	22.30	22.40	22.50	22.60	22.70	22.80	22.90	22
23	23.00	23.10	23.20	23.30	23.40	23.50	23.60	23.70	23.80	23.90	23
24	24.00	24.10	24.20	24.30	24.40	24.50	24.60	24.70	24.80	24.90	24
25	25.00	25.10	25.20	25.30	25.40	25.50	25.60	25.70	25.80	25.90	25
26	26.00	26.10	26.20	26.30	26.40	26.50	26.60	26.70	26.80	26.90	26
27	27.00	27.10	27.20	27.30	27.40	27.50	27.60	27.70	27.80	27.90	27
28	28.00	28.10	28.20	28.30	28.40	28.50	28.60	28.70	28.80	28.90	28
29	29.00	29.10	29.20	29.30	29.40	29.50	29.60	29.70	29.80	29.90	29
30	30.00	30.10	30.20	30.30	30.40	30.50	30.60	30.70	30.80	30.90	30
31	31.00	31.10	31.20	31.30	31.40	31.50	31.60	31.70	31.80	31.90	31
32	32.00	32.10	32.20	32.30	32.40	32.50	32.60	32.70	32.80	32.90	32
33	33.00	33.10	33.20	33.30	33.40	33.50	33.60	33.70	33.80	33.90	33
34	34.00	34.10	34.20	34.30	34.40	34.50	34.60	34.70	34.80	34.90	34
35	35.00	35.10	35.20	35.30	35.40	35.50	35.60	35.70	35.80	35.90	35
36	36.00	36.10	36.20	36.30	36.40	36.50	36.60	36.70	36.80	36.90	36
37	37.00	37.10	37.20	37.30	37.40	37.50	37.60	37.70	37.80	37.90	37
38	38.00	38.10	38.20	38.30	38.40	38.50	38.60	38.70	38.80	38.90	38
39	39.00	39.10	39.20	39.30	39.40	39.50	39.60	39.70	39.80	39.90	39
40	40.00	40.10	40.20	40.30	40.40	40.50	40.60	40.70	40.80	40.90	40
41	41.00	41.10	41.20	41.30	41.40	41.50	41.60	41.70	41.80	41.90	41
42	42.00	42.10	42.20	42.30	42.40	42.50	42.60	42.70	42.80	42.90	42
43	43.00	43.10	43.20	43.30	43.40	43.50	43.60	43.70	43.80	43.90	43
44	44.00	44.10	44.20	44.30	44.40	44.50	44.60	44.70	44.80	44.90	44
45	45.00	45.10	45.20	45.30	45.40	45.50	45.60	45.70	45.80	45.90	45
46	46.00	46.10	46.20	46.30	46.40	46.50	46.60	46.70	46.80	46.90	46
47	47.00	47.10	47.20	47.30	47.40	47.50	47.60	47.70	47.80	47.90	47
48	48.00	48.10	48.20	48.30	48.40	48.50	48.60	48.70	48.80	48.90	48
49	49.00	49.10	49.20	49.30	49.40	49.50	49.60	49.70	49.80	49.90	49
50	50.00	50.10	50.20	50.30	50.40	50.50	50.60	50.70	50.80	50.90	50

Distance of slope stake from side or shoulder stake for any width roadway, slope 1 to 1. If ground is nearly level, the cut or fill at side stake is located by the double entry method in left column and top row. The number in body of table in same row and column gives distance from side stake to slope stake. If ground is not level estimate the difference in elevation between the side stake and slope stake, lower target by this amount if cut, elevate if fill. Add this amount to cut or fill and find distance in table. Set up rod at this point, and line of sight should cut target. If it does not make the slight adjustment necessary.

INDEX

Pg 5

TABLE XIII—CORRECTIONS FOR TANGENTS AND EXTERNALS

These corrections are to be added to the approximate values, found by dividing the tangent, or external, for a 1° curve (Table VIII) by the degree of curve, in order to obtain the true tangents, or externals. Intermediate values may be obtained by interpolation.

FOR TANGENTS ADD

Central Angle	DEGREE OF CURVE													
	5°	10°	15°	20°	25°	30°	35°	40°	45°	50°	55°	60°	65°	70°
10°	.03	.06	.09	.13	.16	.19	.22	.25	.28	.31	.34	.38	.42	.46
15°	.04	.10	.14	.19	.24	.29	.34	.39	.45	.51	.53	.58	.63	.68
20°	.06	.13	.19	.26	.32	.39	.45	.51	.58	.65	.72	.79	.84	.90
25°	.08	.16	.24	.33	.40	.49	.58	.67	.75	.83	.90	.99	1.06	1.14
30°	.10	.19	.29	.39	.49	.59	.69	.79	.89	.99	1.09	1.20	1.29	1.39
35°	.11	.22	.34	.47	.58	.69	.79	.81	.92	1.04	1.29	1.42	1.54	1.66
40°	.13	.26	.40	.53	.67	.80	.93	1.06	1.20	1.34	1.49	1.64	1.79	1.94
45°	.15	.30	.44	.60	.76	.91	1.06	1.21	1.37	1.52	1.70	1.87	2.04	2.21
50°	.17	.34	.51	.68	.85	1.02	1.19	1.36	1.54	1.72	1.91	2.10	2.29	2.48
55°	.19	.38	.57	.76	.95	1.14	1.32	1.52	1.72	1.92	2.14	2.35	2.56	2.77
60°	.21	.42	.63	.84	1.05	1.27	1.49	1.71	1.94	2.17	2.38	2.60	2.83	3.07
65°	.23	.46	.69	.93	1.16	1.40	1.64	1.88	2.13	2.38	2.63	2.88	3.13	3.39
70°	.25	.51	.76	1.02	1.28	1.54	1.80	2.06	2.33	2.60	2.88	3.16	3.44	3.72
75°	.27	.56	.83	1.12	1.40	1.69	1.98	2.27	2.57	2.87	3.16	3.47	3.78	4.09
80°	.30	.61	.91	1.22	1.53	1.84	2.15	2.46	2.78	3.10	3.44	3.78	4.12	4.46
85°	.33	.66	1.00	1.33	1.68	2.02	2.36	2.70	3.05	3.40	3.77	4.14	4.55	4.89
90°	.36	.72	1.09	1.45	1.83	2.20	2.57	2.94	3.32	3.70	4.10	4.50	4.91	5.32
95°	.39	.79	1.19	1.55	2.00	2.40	2.80	3.20	3.61	4.02	4.40	4.98	5.38	5.83
100°	.43	.86	1.30	1.74	2.18	2.62	3.06	3.50	3.95	4.40	4.88	5.37	5.85	6.34
110°	.51	1.03	1.56	2.08	2.61	3.14	3.67	4.21	4.76	5.31	5.86	6.43	7.01	7.60
120°	.62	1.25	1.93	2.52	3.16	3.81	4.45	5.11	5.77	6.44	7.12	7.80	8.50	9.22

FOR EXTERNALS ADD

Central Angle	DEGREE OF CURVE													
	5°	10°	15°	20°	25°	30°	35°	40°	45°	50°	55°	60°	65°	70°
10°	.001	.003	.004	.006	.007	.008	.009	.011	.012	.014	.015	.017	.018	.020
15°	.003	.007	.010	.014	.018	.023	.027	.029	.032	.035	.039	.043	.047	.051
20°	.006	.011	.017	.022	.028	.034	.038	.045	.051	.057	.063	.070	.076	.083
25°	.009	.018	.027	.036	.046	.056	.065	.074	.083	.093	.106	.120	.127	.135
30°	.013	.025	.038	.051	.065	.078	.090	.103	.116	.129	.149	.170	.179	.188
35°	.018	.035	.054	.072	.086	.109	.131	.153	.175	.197	.213	.230	.247	.264
40°	.023	.046	.070	.093	.117	.141	.172	.203	.234	.265	.277	.290	.315	.341
45°	.030	.060	.093	.119	.153	.184	.216	.254	.289	.325	.351	.378	.411	.445
50°	.037	.075	.116	.151	.189	.227	.266	.305	.345	.384	.425	.467	.508	.550
55°	.046	.093	.142	.188	.236	.283	.332	.381	.420	.479	.530	.582	.641	.700
60°	.056	.112	.168	.225	.283	.340	.398	.457	.516	.575	.636	.697	.774	.851
65°	.067	.135	.204	.273	.343	.412	.483	.554	.625	.697	.771	.845	.922	1.01
70°	.080	.159	.240	.321	.403	.485	.568	.652	.735	.819	.906	.994	1.08	1.17
75°	.095	.182	.266	.353	.440	.528	.617	.707	.797	.890	.987	1.07	1.18	1.29
80°	.110	.220	.332	.445	.558	.671	.787	.903	1.02	1.13	1.25	1.38	1.50	1.62
85°	.128	.259	.391	.524	.657	.790	.926	1.06	1.20	1.34	1.47	1.62	1.76	1.91
90°	.149	.299	.450	.603	.756	.910	1.07	1.22	1.38	1.54	1.70	1.87	2.03	2.20
95°	.174	.350	.522	.706	.885	1.06	1.25	1.43	1.62	1.80	1.99	2.18	2.38	2.58
100°	.200	.401	.604	.809	1.01	1.22	1.43	1.64	1.85	2.06	2.28	2.50	2.73	2.96
110°	.268	.536	.806	1.08	1.35	1.63	1.91	2.20	2.48	2.76	3.05	3.35	3.66	3.96
120°	.360	.721	1.08	1.45	1.82	2.19	2.57	2.95	3.33	3.72	4.11	4.50	4.91	5.32

X-sec Noyes - Road to Oliver & Alleys 1-11
 X-sec 33d - Imperial - Steel & 33d, 2nd Steel 12
 Loma Alta #1 Sewer Levels 14-37
 X-SECT. VENICE - BRIGHTON TO VOLTAIRE 42
 X-sec 68th - AMHERST TO EL CAJON BVD 68-74

D. Smith
C. Allen
H. Taylor
H. Parks

"X" Sec Noyes St Btwn Oliver + Reed

also Alleys 281, 280.

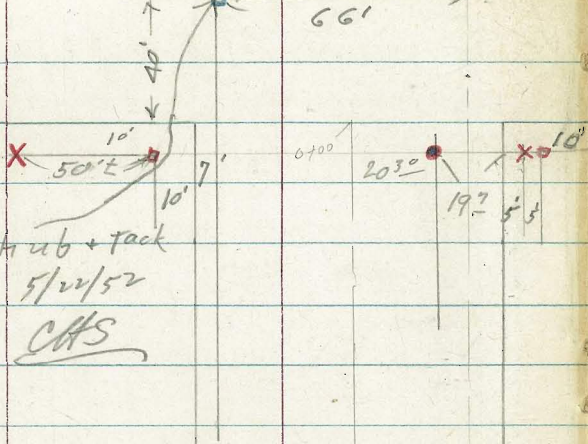
Mon seems to be out

Oliver St

With 62251

4-2-52

pg 1



INDEXED

APR 3 1952

□ = set 1/2 disk

X = cut cross in conc.

□ = Fd 1/2 + tack

● = Fd City disk

■ = Fd. conc. mon.

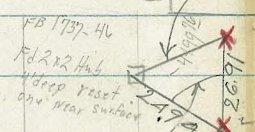
5/22/52

C.H.S.

Alley BIK

2A.9

Alley BIK



Cross in conc. apron

Cross in conc. apron

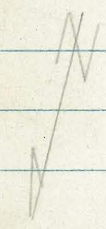
Replaced w/1/2

Fd. 5/22/52 C.H.S.

280

24.9-18-30

281



20' cbs
5' parking
5' walk
30' offset

edge con pav cbs

30' offset
20' cbs
5' walk
5' parking

check plans paving of Reed for intersection

Fd S + Disk Why? Noyes

Reed St

73'

40'

Alley B/M 281
 10° Pt Begin 4' Lath Fence
 0-13° 10° Lt End con wall 3" wide

0-41 10° Lt Begin con wall 3" wide

0-25

0-13 7° Rt E Read man

0-00 10° Lt Begin 4' Pocket Fence

0-10 8° Rt E 8" Power Pole # P 4215

0-25

0-40

B/M 547 2891

23⁴⁴
 Hub line
 wh. 7210
 Morell
 E Alley B/M 282
 FB 1737-46

2
 Lt. North E Rt. South
 24.4 26.20 24.0 24.6 24.2 24.3 24.1
 45 22 42 42 42 46 48
 20 10 10 10 10 20
 Topwall Rooting

26.19 24.6
 22 43
 10 10
 top Rooting

26.0 26.0 25.4 25.3 25.4 24.8
 22 22 35 35 35 44
 10 8 6 10 20

26.6 26.0 25.5 25.2 25.0
 23 22 32 32 32
 20 10 10 20

25.9 24.6 24.0 23.4 23.1
 32 43 42 55 58
 35 10 10 20

25.7 24.7 24.2 23.5 23.1
 32 43 42 54 58
 35 10 10 20

2891

Lt = North R = South 3.

TR 019 16 22 12 18 16 73

3700

21997² Rt E 6" Power Pole # 562263 H

2475

2450

2400

1750

1449 8² Rt E 6" Power Pole # 562262 H

95 H End Lot 6 Fence

1400 10² Lt End Picket Fence

17.3 17.7 17.7 16.9 16.4 16.4 16.6 17.1 18.2 18.1
 11.6 11.2 11.2 12.6 12.5 12.5 12.2 11.8 10.2 10.2
 20 10 8 6 6 10 13 15 20

18.4 18.7 18.7 18.0 18.3 18.6 19.0 19.0
 10.5 10.2 10.2 10.2 10.2 10.3 9.2 9.2
 20 10 8 6 7 10 20

19.1 19.2 18.9 18.9 18.6
 9.5 9.2 10.2 10.2 10.3
 20 10 10 20

18.7 18.7 18.5 18.4 18.3
 10.3 10.2 10.2 10.5 10.5
 20 10 10 20

19.6 19.3 18.7 19.0 18.6
 9.3 9.2 10.2 9.2 10.3
 20 10 10 20

20.8 20.9 20.6 20.7 20.2
 8.1 8.0 8.2 8.2 8.2
 20 10 20 10 20
 28 21

3786 10⁵ Lt E single garage con floor

3783 18° N+E single garage con floor

3776 10⁴ Lt E single garage con floor

3766 10⁴ Lt E single garage con floor

Note: all garages are apt. garages but floors are staired

3752 11² Lt E 2' con walk

3750

3724 10² Lt E 2" pipe clothes pole

3716 10² Lt E 2" pipe clothes pole

3709 10² Lt E 2" pipe clothes pole

3705

Lt=North

E

N=South

4.

12.66
426
104
floor

12.91
401
180

129.8
394
104
floor
13.01
391
104
floor

13.89
303
112
walk

13.8	13.5	13.3	13.4	15.3	15.4
32	34	35	35	16	15
20	10		10	12	20

16.0	15.1	15.6	15.7	15.1	15.7	17.9	17.8
12	18	12	12	12	12	11	13
20	10	7	16	10	11	13	20

Lt North

E

Rt South

5

4441 18° Rt
10° Lt E single garage con floor

10.07

6.85

10°
floor

10.40

6.82

18°
floor

4431 10° Lt E single garage con floor

10.57

6.35

10°
floor

10.77

6.15

18°
floor

4431 18° Rt E single garage con floor

11.04

5.88

10°
floor

11.29

5.63

18°
floor

4422 10° Lt E single garage con floor

11.05

5.87

10°
floor

11.99

4.83

18°
floor

4419 18° Rt E single garage con floor

4413 10° Lt E single garage con floor

4403 18° Rt E single garage con floor

11.19

5.23

10°
walk

4403 10° Lt E 8' con walk

11.4

5.5

10

11.3

5.6

10

11.4

5.5

10

11.6

5.3

15

4400

12.01

4.9

10.4
con

3795 10° Lt E 9' con walk

12.30

4.62

18°
floor

3793 18° Rt E single garage con floor

16.92

w/ly Noyes St
4199 10² Lt & 6' con walk

4198 10² Lt & 4' con walk

4196 10² Rt End 4 car garage con Floor & apron

4196 10² Lt End

4156 10² Lt Begin 4 car garage con Floor & apron

4156 10² Rt Begin 4 car garage con Floor & apron

4153 10² Rt & 7' con walk

4150 10² Lt & 11' con walk

4149 7⁴ Lt & 9' tel Pole # 562264H

Lt-North

8.55 8.1 6.9 7.1
8.37 8.2 7.0
10² 10 5
walk

Rt-South

9.2
7.2
10²
walk

9.22
7.2
10²
walk

9.23 8.97
7.09 7.23
10² 15²
apron Floor

9.57 8.68
7.35 8.24
15² 10²
Floor apron

9.61 9.11
7.31 7.81
13.9 10²
Floor apron

8.86 8.99
8.06 7.23
10² 15²
apron

8.84
8.08
10²
walk

9.06 9.1 9.2 8.8
7.86 7.8 7.7 8.1
10² 10 10
con walk

7/16 92

Alley BIK 280

0747 10⁴ Lt & 5' con walk

0739

0729

0719

0709 10⁴ Lt & single garage con floor apron
4 garages to apts floors are staired

0703 10⁴ Lt & 2⁵ con walk

0700 Ely Noyes

TP₂

92⁴

15⁴¹

102⁵

617

Herb W 7 Noyes
& Alley 281

Lt = North

9.34

6.07

10⁴

walk

9.28

8.85

6.13

6.56

15³

10⁴

Floor

Apron

8.40

8.21

7.01

7.20

15³

10⁴

Floor

Apron

7.61

7.59

7.80

7.88

15³

10⁴

Floor

Apron

7.33

7.23

8.08

8.18

15³

10⁴

Floor

Apron

6.95

8.46

10⁴

walk

7.0

6.6

5.6

5.3

4.7

8.7

8.8

9.8

10.1

10.7

15

10

10

20

π 15⁴¹

RT = South

7

2t=North

E

RT=South

8

7P₃=7P₂ 6⁹⁹ 12²⁶ 9²⁴ 6¹⁷

1450

15.0	13.9	12.9	12.8	12.4	11.4
04	15	25	26	30	40
20	10	5		10	20

1425

13.1	12.6	12.3	11.9	7.7
23	28	34	35	42
20	10		10	20

1400

12.4	11.7	11.3	11.0	10.8	10.0
30	32	44	44	46	54
20	10	9		10	20

0475

11.0	10.4	9.4	9.4	8.6	6.4
44	50	60	60	68	90
20	10		10	20	30

0450 7⁹ RT & power pole # 562265 H

9.6	9.2	8.6	7.9	7.2
58	62	68	75	82
20	10		10	20

7 15 41

Noyes St
Oliver to Reed

1400

0487 38³ Lt Begin 2nd con walk 11 to line

0475 27² Lt & 8" Power Pole #P4224

0450

0446 27⁵ Lt & Dead man

0400 N line Oliver

0-15

0-40 E Oliver St

Lt = West E Lt = East

9

8.6	8.6	4.2	4.0	3.8	3.6	4.1	5.2
3 ⁶	3 ⁶	8 ⁰	8 ²	8 ⁴	8 ⁶	8 ¹	7 ⁰
40	38	25	20		20	40	60

8.55
3²
38³
walk

8.9	8.9	3.5	3.3	2.0	2.6	3.6	4.0
3 ³	3 ³	8 ²	8 ⁹	9 ²	9 ⁶	8 ⁶	8 ²
55	40	27	20		20	40	60

6.9	3.4	2.8		2.1	.9	1.0
5 ³	8 ⁸	9 ⁴		10 ¹	11 ³	11 ²
40	27	20			20	40

4.2	2.9	2.1	1.3	.5
8 ⁰	9 ³	10 ¹	10 ⁹	11 ²
40	20		20	40

6.5	3.7	2.8	2.1	1.1	.6	1
5 ²	8 ⁵	9 ⁴	10 ¹	11 ¹	11 ⁶	12 ¹
30	40	20		20	40	90

π 12 26

1490
2490

1485
2485 37° Lt. End 3' walk || to line

1472 37° Rt End 2' walk || to line

1466 37° Rt Begin 2' con walk || to line

37° Lt Begin 3' con walk || to line
1445 N Line Alley

1435 E Alley

1425 S Line Alley

1410 38° Lt end 2' con walk || to line

Lt-West				Rt-East			
10.5	10.3	6.0	6.9	6.9	7.4	10.5	
12	12	6.2	5.3	5.3	4.8	1.3	
40	35	20		20	26	40	

9.70
2.56

7.42
2.84
37°
walk

7.70
4.56
37°
walk

8.0	8.21	5.6	5.2	4.9	4.8	6.7
4.2	3.29	6.6	7.0	7.3	7.4	5.5
40	37°	24	20		20	40

walk

7.2	5.0	4.6	4.7	5.5
5.0	7.2	7.6	7.5	6.2
40	20		20	40

8.4	6.0	4.8	4.2	4.6	5.2
3.2	7.2	7.4	8.0	7.6	7.0
40	23	20		20	40

9.01
3.25
38°
walk

12 26

BM 289 ✓ 23⁵⁴ ✓ 23⁵⁴ ✓
 TP₂ 6⁸¹ 26⁴³ 4³⁵ 19⁶² ✓
 TP₃ 8⁴⁶ 23⁹⁷ 2⁰⁵ 15⁵¹ ✓
 ✓ 23⁵⁴ ✓
 SW 7' Con Man
 Pacific Beach D.
 Morrell St

2489⁸⁴ S obline Reed

Mid Pt Returns as exist from BC to end

2468⁸⁴ Stone Reed Edge Con Paving

2430

TP₄ 10⁴⁴ 17⁵⁶ 5¹⁴ 7¹²

BC

12.84	12.25	12.58	11.96	11.95	11.86	12.53	12.53	12.76	13.16	13.74	15.31	15.92
472	531	428	560	561	570	503	503	480	440	382	25	13
100	100	30	50	40	20	20	40	50	50	100	100	28
cb	cut	cb	cut					cut	cb	cut	cb	cb

12.33
 523 587
 cb cut

12.28
 523 410
 cut cb

12.2	11.82	11.58	10.88	11.31	11.46	11.44	11.38	12.08	12.35	13.0
53	524	598	668	625	610	613	618	518	523	45
40	30	212	212	20	10	212	212	30	30	40
	walk	cb	cut	end		cut	cb	walk	cb	end

11.6 11.4 8.7 8.9 8.9 9.2 12.11 12.4
 52 61 93 86 86 83 54 51
 40 38 20 20 23 37 40

17⁵⁶

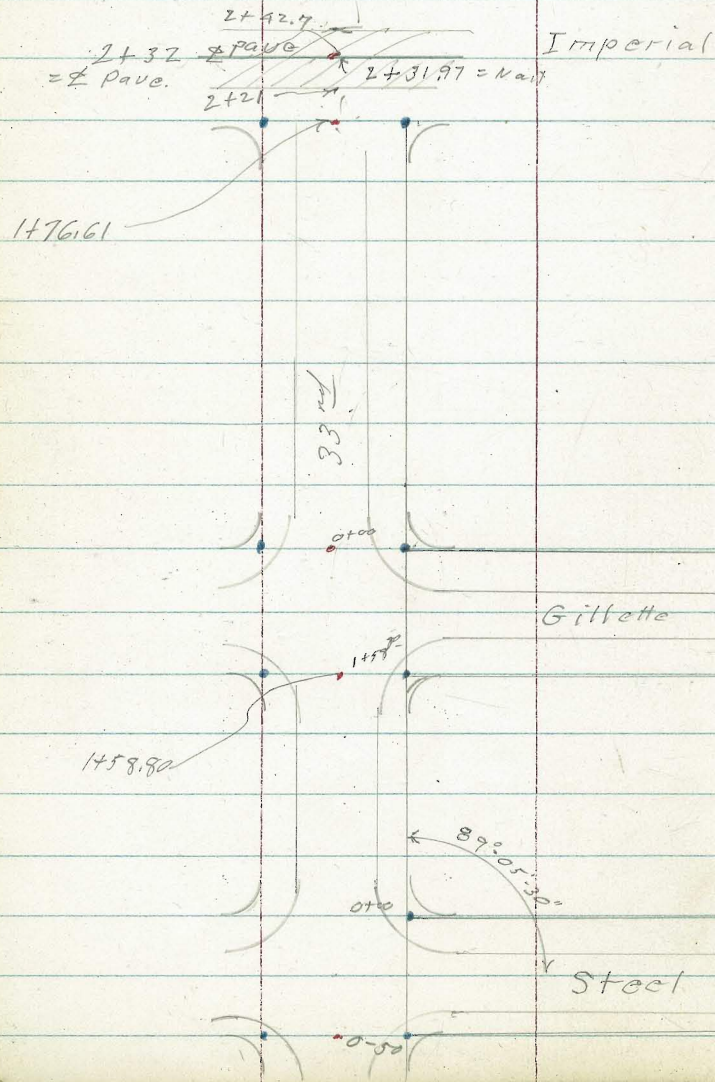
X-sec. Steel (33rd to 34)
Gillette (33rd to 34)
33rd (Steel to Imperial)

INDEXED

Law

MAY 15 1952

See also Bk 2204 - 1



LOMA ALTA No 1

Levels on Existing Sewer M.H. 5

in WHITTIER ST

From BANNING To VOLTAIRE St.

Walker
Pope Sketch P. 13 NO. 32,198
Hoffman
Presley 2-12-52 Cont. P. 15

Rim MH#2 6.00 44.51

Invert "2 11.46 39.05

TR #2 0.40 50.51 12.69 50.11

on Hub 6.14 56.66

Rim MH#1 2.33 60.47

Invert "1 13.65 48.15

~~12.74~~ 50.06

TR #8 0.90 62.80 8.14 61.90

TR #7 1.52 70.04 10.70 68.52

SW. Gr. Mendocino - Voltaire 71.10

Chk. Pipe FB. 3060-42 8.10 71.12

TR #6 1.29 79.22 11.60 77.93

TR #5 3.13 82.53 0.30 86.40

TR #4 12.22 86.70 0.35 74.48

TR #3 12.10 74.83 0.06 62.73

TR #2 13.14 62.79 0.55 49.65

TR #1 10.96 50.20 0.89 39.24

10.07 40.13 30.06

Returned by
P. 11, 17, 52

INDEXED
RAW
SEP 25 1952

1+43.14 "F" Line P. 13

on c.t. Ld. Pkg. SW. Voltaire
7' Line Cutolina & Cutolina
Approx 5' Line Voltaire

FB 2060-42

on Cop Tack Ld Pkg.
W. Line Mendocino 8' Ld.
NE 7' Line Voltaire St.

NW. B.P. Voltaire & Bolinas

B.M.

SW. B.P. Voltaire & Ebers St.

Cont. from P-14

30.66 Cont. P-16

(MH#6)	5 West on cb.	842	22.19
Rim MH#6		1027	20.34
Invert "		1645	14.16
Rim MH#5		427	26.34
Invert "		1035	20.26
TP#11	064 30.66	1145	29.97
(MH#4)	4.5 ft. on cb.	730	34.12
MH#4	Invert	1462	26.80
" "	Rim	831	33.11
TP#10	111 41.42	1020	40.31
(MH#3)	4.5' NE. = on cb.	102	40 ³
M.H.#3	Rim	1104	39.47
" "	Invert	1732	33.19
	5051 π		

Lorna Alta No 1

Levels for Proposed Sewer

"A" Line

(Location P-13) No. 32198

Walker

Pope

Huffman 9-19-51

Fresley

2750

Cont. P-17

2700

1750

TR#12

12.42

35.91

7.12

23.49

1700

0785

0755

0719.39

0700

30.61

Lt.

2
"A" line

Rt.

16

28.24

7.67

10.15
10.76

23.76

12.15

35.91

23.15

7.46

22.97

7.54

21.21

9.40

30.98

9.63

1.25
on led. Pk.

20.94

9.67

on Posing

21.83

8.78

on Pk. Nail

30.61

INDEXED
SEP 25 1951

"A" Line Cont. from P-16

"A"
Line

17

5+43.01 = Δ 97°00'30" L.

8.5

5+34.5 = End Conc. Pav.

TP#15 8.31 68.27 0.82 59.26

5+20

5+00

4+50

TP#14 12.83 60.78 0.51 47.95

4+00

3+50

TP#13 13.22 48.46 0.67 35.24

3+00

Cont from P-16

35.91

62.4

5.9
Ground

62.18

609
on Hub

617.2

6.35

68.27

60.74

0.04

58.36

2.42

51.98

8.80

60.78

45.63

2.83

36.3

39.37

12.2

9.09

60
Lowest
Point

48.46

30.7

27.14

5.2

2.77

70

35.91

"A" Line Cont. from P-17

8+85 = NW Side of House on Lt.

8+60
Spk. in Pole
TR#16 11.54 76.45 336 64.91 ✓

8+04 Floor of Basement → - 15.5

8+11

8+00

7+40

7+00

6+54.22 = Δ 38° 04' Lt

6+00

68.27

59.4
17.0 } 62.0
80 } 14.4
Floor Basement
With Laundry
Tubs
78
44.8
11.6
35
45.3
11.1

58.3
18.1
71
64.3
12.1
30
63.8
12.6
76.45

52.8

71
SE Cor House
Basement
With
Laundry
58.6
97
45
59.74
8.53
45
SW Cor House
Ground
Floor
61.9
6.4
6.6

60.1
6.2

8.2
7.1

60
SE L Cor House
on Ground.
6.7
6.6

62.5
5.8
0
Ground
62.31
5.96
Hub

6.0
6.3

68.27

"A" Line Cont. from P-18

"A"
Line

chk. on TP # 6-P-14 090 77.23 ✓

10+80.06 = End of "A" line

10+90

10+17.42 = POT. on PK Nail

10+07.50 = Beg. Kiphult Pav.

TP # 17 3.66 78.83 128 75.17 ✓

10+00

9+60

9+30

9+00

76.45

67.13	64.4	63.5	75.4	
217	14.4	15.3	34	2.05
70	51	38	Edge of Bluff	Rearing.
Basement				76.27
Spruce				2.56
House				

77.13

170

77.48

1.35

76.78

2.05

Rearing.

76.27

2.56

78.83 ✓

3.4

15.4

10

77.2

52

62.7

7.7

60 ↓

10.0

76.45

"B" Line on Voltaire St.
Between Catalina & Mendocino

Cont. P-21 Location P-13

2+50

2+13.76 = P.O.T.

2+00

1+75

~~1+75~~

1+50

1+00

0+50

0+33.25 = $\Delta 107^{\circ}45'14''$

0+00 = Existing MH #1

726

6916

61.90 ✓

TP#8

Lt.

Q

Rt.

20

INDEXED

SEP 25 1952

65.16

64.1

400

51

60

64.06 ✓

Rear of

Std. on Grounds

510

07.74

New 1

63.69

547

61.08

57.2

52.2

48.8

638

120

170

204

48

48

83

Floor

Ground.

Floor

House

Basement

with

Laundry

62.55

61.6

53.2

51.7

661

7.6

16.0

17.5

30

47

60

61.80

736

61.38

778

61.40

776

60.46

870

1111

6916

"B" Line

			0.01
chk on TP #6 P-14	821	77.93	77.94

6+31.54 = End "B" Line

TP	9.54	86.15	138	76.61	56.67
----	------	-------	-----	-------	-------

5+62.85 = A 19° 38' 30" RT

5+00

4+50

4+00

chk TP #5 P-14	17.99	68.52	
TP	9.48	57.95 065	68.51

3+75

3+50

3+25

3+00

62.16

Lt.

R
"B" Line

RT 21

77.14

901

86.15

7.43

3.56

73.41

4.58

71.75

624

70.11

7.88

77.99

~~57.95~~

68.45

0.71

66.79

2.37

62.16

73.2

4.8

30

65.8

12.2

38

52.7

20.3

50

61.1

8.1

5.7

S.F. Cor Bldg
on Ground

53.7

15.8

0.0

on
1" Soil Line

Louis Alter NO 1
Levels Proposed Sewer

"C" line
Walker Location P-13
Pope
Kuffman
Presley
9-22-52

3+00

2+42

2+00

1+50

1+00

0+65 42 - POT.

0+50

0+00

831

86.14

7793 v

BM on TP #6 P-14

E
"C" line

22

INDEXED
SEP 23 1952

84.59
1.55

83.37 78.8 78.4

77.7 73 77.7
71

82.2 82.2
on Ground on Ground
at Capt. Quarters

39

80.83 79.9 76.0

531 6.2 10.1
30 70

79.36

678

78.50

764

78.24

770

77.13

201

chk on TP #5-P-14 402 $\frac{0.0}{8640}$
 8639 ✓

5+35.12 End "C"-Line

8673
368

4+82.13

87.18
323

4+50

8681
360

4+00

86.06 85.3 79.7
 435 51 107
 30 70

3+50

85.35
506

3+45

78.2 78.67
 12.2 1174
 112.0 112
 Garage on Ground Flood Garage with Laundry Trays.

3+11

80.4 77.0
 10.0 134
 77.0 129
 NW Cor NW Cor
 House Ground. Garage

TP 582 ✓ 90.41 155 ✓ 84.59

90.41

86.14

Walker
Rope
Huffman

Lorain Alley No 1

"D"-Line, Levels Proposed Sewer
Location P-13.

2+50 → Cor. P. 25

2+05 = East Edge Store Bld. on Lt.

2+00

1+50

1+00

0+90

0+50

0+32.3 = P.O.T. = East
7-Line cutline

0+00

8.70

70.60

61.90

TP 8

Lt.

Lt.
"D"-Line

24

65.78
482

61.4
92
60
Ground
at Bld.

64.87
573

63.96
6.64

62.94

59.7
129
60
NE. Cor
Bld. on Grd.

62.4
82
60
Floor
Bld.

7.66

62.00
8.60

61.73
8.87

61.40
9.20

70.60

INDEXED
SEP. 25 1952

"D" - Line - Proposed Sewer

Lt.

2" Line

25

6+03.0 House Fugas San Clemente

65.4
10.1
103'
SW of House
Ground

5+96.26 = POT.

71.51
4.01

5+50

71.12
4.40

5+00

70.49
5.03

TP 5.91 75.52 0.99 69.61 ✓

75.52

4+50

69.58
1.02

4+00

68.60
3.00

3+50

67.62
2.98

3+00

66.70
3.90

2+57

70.60

64.9
5.7
60
on 4" Soil line

70.60

D-Line

on Hub

5+32.12 F-line

12.76

50.84 ✓

Conc. Man

8.00

55.60 ✓

S.W. Cor. San Clemente & Whittier

T.P.

0.88

63.60 ✓

12.80

62.72 ✓

6+96.26 = End "C" line

6+50

6+33

75.52

D-Line

55.59 P34

61.01	72.1	72.01
14.5	3.4	3.51
90	30	
on Ground	SE cor	
NE cor	Store Bld.	
Store Bld.		

71.91
3.61

62.3
13.2
104
on 4"
Soil Pipe

75.52

Form Alter. No 1

Levels - Proposed Sewer

Walker
Rope "5" Line, Location P-13

Huffman

Presley

7-22-52

1+50

→ cont. of
p. 28

1700

0+99.38

= End Conc. Pav.

0+32.5±

West Curb

0+19.38

= E. gutter

0+06.5

= gutter

0+05

on curb

0+00 = E. MN #5

277 39.74

2227

"5" Line

INDEXED
SEP 25 1952

27

25.5

25.7

14.2

140

67

Back of house
on ground

27.0

12.7

27.03

12.71

25.96

13.79

25.72

14.02

26.17

13.57

Gutter

27.52

13.22

curb

39.74

Temp.
B.M. on TP #11 P. 15

"E"-Line

chk. 2+00 "A" Line P-16 12.60

5+81.70 = End "E"-Line

5+50

5+00

4+50

4+00

3+50

2+96

2+86

2+50.24 = A 127°19'30" Lt

2+00

00/
25.15
25.14

Lt

30.7 30.7
9.0 9.0
45 30

27.9 28.0
11.8 11.7
45 32

Rt

28

"E"-Line

35.10

4.4
on Hub.

33.9

5.8

33.6

6.1

3.5

4.2

37.6

2.1

35.1

4.5

40.1

70.4

40.4

70.7

33.98

5.76
on Hub.

27.14

12.6

32.74

Levels "G" Line Proposed Sewer
Loma Alta No 1

Walker Location P-13

Pope
Huffman
Proseley

9-22-52

Cont'd P-30

2+00

TR 12.78 42.01 0.37 36.23

1+50

TR 11.35 36.60 0.81 25.25

1+12.55 - A RA

1+00

0+50

0+00

5.08 2.606

2.098

B.M. on C.T. W. Plg
125' Lt 0+17.39 P-16

"G" Line

29

INDEXED
SEP 25 1952

41.8

41.5

40.5

7.2

7.5

8.5

15

15

49.01

31.6

28.5

24.6

5.0

8.1

12.0

15

15

36.60

21.8

20.44

19.9

4.3

5.62

6.2

15

on Hub

15

18.3

18.9

7.8

7.2

15

18.9

19.6

7.2

8.5

15

20.41

5.65

"G" Line

5+00

Cont. P. 31

4+50

4+00

3+70

3+46.81 - Δ 54°28' RT

3+00

2+85

2+50

TP 11.25 5941 0.85 48.16

2+32.20 = P.O.T.

4901

Lt.

"G" Line

Rt. 30

51.3

3.1

51.4

5.0

50.9

8.5

49.4

10.0

47.6

11.8

15

47.2

12.2

15

49.2

10.2

15

48.71

10.7

15

48.1

0.9

15

47.97

11.44

on Hub

49.2

10.2

50.0

2.4

49.0

10.4

5941

48.16

0.85

4901

48.6

10.9

15

50.6

8.8

15

50.7

8.7

15

49.3

10.1

15

47.6

1.4

15

"G" - line

7+17.78 = ^{Reg. Conc. Pav.} ~~1/2~~ line Whittier St

TP 6.53 54.42 11.52 47.89

7+00

+75

+50

6+25

6+00

+75

+50

5+25

Cont. from P 30 5941

Lt.

R

Rt

31

46.28
8.14

54.42

47.4

12.0

49.7

27

52.2

72

54.6

4.8

56.3

3.1

57.5

19

58.1

13

58.1

13

5941

"G" Line

Lt.

"G"
Line

Rt.

32

7+53.05 = $\frac{1}{2}$ Exist. MH #2

7+24.78

39.05
invert
P-14

44.51 ✓
2.91
Rim
MH

45.88

45.88

8.54
0.36

8.54

on Lt.
Ld. Ply.

54.42

Loma Alta 491
Levels Proposed Sewer.

Walker "F" Line Location P-13

Pope
Huffman
Prosley
9-22-52

Cont. P-33

2+00

1+50

1+43.14 on Hub P-14 = 56.66

1+25

TR. 1089 64, 79 0.52 53.90

1+00

0+60

0+35.36 = End Long. Pos

0+00 = Existing MH #2

54.42

Q
"F" Line

RECORDED
SEP 25 1952

58.2

66

57.0

78

55.3

2.5

64.79

55.2

52.2

2.1

o/c'd
Rel.

48.3

6.1

o/c'd
Rel.

46.84

75.8

44.51

39.05 991

invert Rm

P-14 54.42

"F"-Line

chk. Mon P-26 1122 5559 ✓
5+32.12

5+00

4+83

4+50

7P 4.99 66.81 2.97 61.82 ✓

4+00

3+60

3+00

3+67 = End oiled Rd.

2+58

64.79

Lt. Lt. Lt.

44¹ 50.7

22.1 10.1

50 56.1

10.7

56⁰ 60.9

10.8 5.9

50

42.9

3.9

66.81

49⁰ 59⁹ 63⁰

15.8 4.9 1.8

50 15

51⁰ 62⁰ 63⁰

13.2 2.8 1.2

50 25

60⁰

4.8

59.1

5.7

59.1

5.7

64.79

Home Alter N. 91

Levels, Proposed Sewer Blk. 13

Walker
Pope
Huffman
Presley

Location P-13

9-22-52

2+50

678

3.2

661

2+00

49

64.6

1+50

63.5

64

1+20

7.5

64.1

1+00

70.

69

at office
on ground.
Plumbing
outlet here

0+50

63.8

72

0+31 = End R.C. Paving = Beg. oil Pav

63.53

74.5

0+21

63.38

760

This line

64.06

0+00 = 2+1376 "8" Line P-13

692

70.98

6.92

70.98

6406 ✓

Temp.

B.M. on PK Nail 2+1376 P-20

Alley Blk 13 - Lottin Alley (101)
Levels Proposed Sewer

Cont. P-37

5+89.78

5+85

5+50

5+00

TP 2.21 87.49 0.38 78.28

4+50

3+90

TP 8.57 78.66 0.89 70.09

3+50

3+00

70.98

4

2

PA 36

INDEXED

SEP 25 1952

82.78

1.71

0.7 Spike

83.1

4.4

80.9

6.6

77^{1/2}

79.0

100
70

8.5

87.49

0.9

7.6

2.7

72^{3/4}

72.2

6.4

6.5

100

78.66

0.3

10.3

0.7

68.6

2.4

70.98

5

Horizon Alta No 1

37

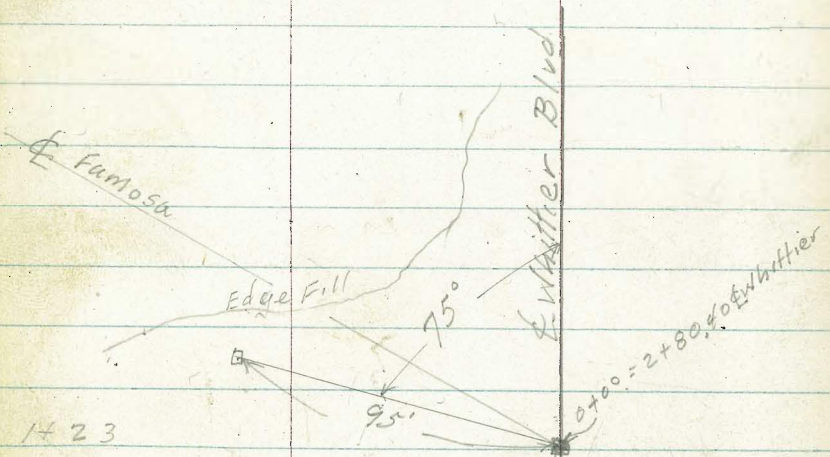
B/k. 13.

CHK on				<u>0.03</u>
T.P. #8 P-14		12.74		61.90 ✓
				61.93 ✓
T.P.	333	74.67	952	71.34 ✓
T.P.	121	80.86 ✓	7.84	79.65 ✓
		87.49		

Loma Alta No. 1
 Alignment change Line "H" Famosa

12-23-52

Pope
 Huffman
 Presley



1423

1703

0+95

0+50

B.M. 535 64.54 59.19

495
 15.0
 57.2
 7.5
 51.9
 57.2
 57.2
 56.9
 49.6
 6.6
 10
 Should be 7.32445
 7.6
 7
 TOP
 20
 TOP
 58.6
 58.4
 58.8
 5.9
 6.1
 5.7
 10
 10

B.M. = Hub 0+00 "H" Line 64.54

Locals Proposed Sewer, "H" Line

Walter
Pope
Huffman
9-24-52

17 1/2 Famosa Blvd.
from Whittier East
Location P-13

Lt

L

39

1+48.04 = End

1+00

0+70

0+50

Chk Sta 3+00 P-34

48 60.0

0+00 = E. Whittier Blvd

6.57 63.23 56.66

45 1/2

42 1/2

174
30

21.2

39 1/2

23.3

50

46 1/2

48 1/2

14.4

16.6

50

58 1/2

52 1/2

54

11.2

10.0

30

60

58 1/2

44

59 1/2

59.19

3.8

4.04

Ground.

on Hub
63.23

B.M. on Hub 1+43.14 P-33

12-23-52

Pope
Huffman
Presley

Loma Alta No. 1

40

Levels Proposed Sewer "E" Line

Angle Point Changed To sta. 2+60.67 Def. Δ 127'40" Lt.

Chk. B.M.	12.33	29.97	Lt.	$\frac{L}{10}$	Rt.
6+15			37.50	37.50	40.5
			7.0	4.50	1.8
			10	4.46	10
6+00			35.0	35.7	37.6
			7.3	6.6	4.7
					10
5+60			33.5	39	37.6
			8.7	7.3	4.5
			10		10
5+20 = 12" Cypress Tree .82 Rt.			33.2		
5+00			9.1	7.2	5.2
			10		10
			33.3	37.2	42.1
4+50			7.0	5.1	+0.2
			10		10
			34.9	40.3	42.3
4+00			7.4	2.0	0.0
			10		10
			36.7	40.4	43.1
3+50			5.6	1.9	+0.8
			10		10
			40.3	39.7	50.4
3+05.77 P.O.T.			2.0	+2.6	+8.1
			10		10
45.10			32.6	34.8	39.2
2+60.67			9.7	7.62	3.1
			10	4.16	10
				42.30	

12.33

42.30

29.97

Temp
B.M. on T.P. #11 P. 15

Loma Alta No. 1

12-23-52
Dope
Huffman
Presley

Levels Proposed Sewer Line "I"

E

1+05

66.3	66.0	65.8	64.9	63.2
7.8	8.14	8.3	9.2	10.9
10	Hub	10	22	6.7
			Ground	Soil pipe

0+65

69.0	69.3	69.4
5.1	4.8	4.7
10		10

0+35 Edge Paving

70.51	70.60	70.58
3.63	3.54	3.56
10		10

0+00

1127
287
P.K. Nail =

BM

263

74.14

71.51

BM = P.K. & Disk 549626 "D" Line

Clark
Shepherd
Bruner
Owens

W.O. 32095
3-8-53

DATA: F.B. 1365.2

MAPS: 2809
1842
1078

Tie-st. 750
Cdn. St. 129

X-SECT VENICE - BRIGHTON to
VOLTAIRE

INDEXED
RAW

MAR 11 1953

Notes p. 43

Sketch not to scale:

2 1/2' cold-lay berm outside
from C.A. and N.W. side MUR 1425'
into Venice, carrying water into
12' wide (C.A.) cold-lay ditch.
Very flat.

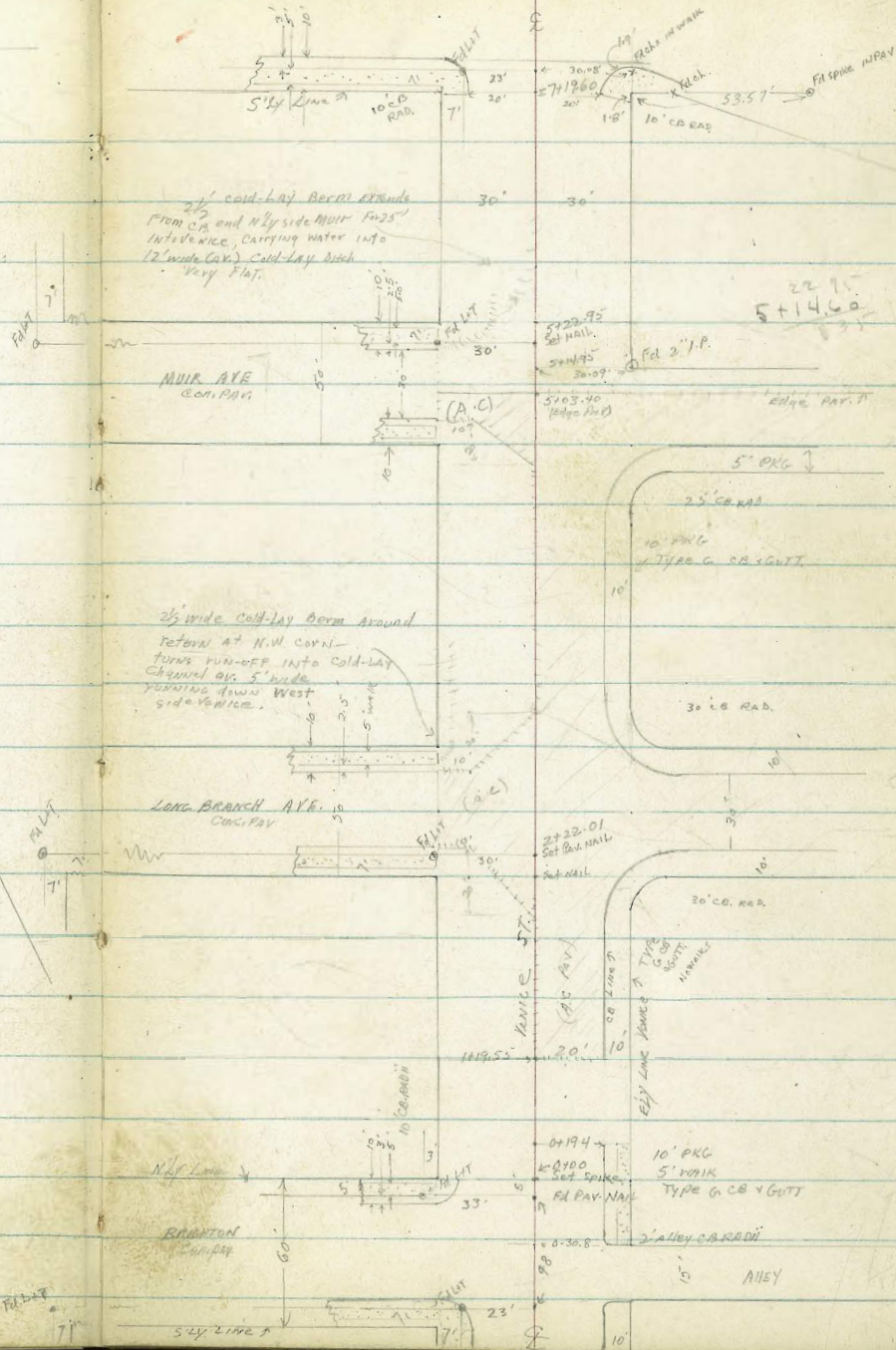
MUR AVE
C.A. Pav.

LONG BRANCH AVE.
C.A. Pav.

BRIGHTON
C.A. Pav.

VOLTAIRE ST.

42



X-SECT, VENICE (CONT.)

LT.

±

RT

4475±

CB. LINE MULY, FAJ

(No grad. breaks on Sely Ret)

113.6 112.2 109.2 108.8 109.06 108.8 106.76 107.25 105.77 105.17
 4.0 5.4 8.4 8.8 8.50 8.8 10.0 10.31 11.77 12.39
 40 30 24 20 10 20 45 45 70 70
 C.L. Arch C.E.C. MULY

4470±

1/2 IN Pav at ± (See sketch)

116.6 115.8 114.5 111.7 111.1 109.44 110.80 111.28 111.5
 1.0 2.8 3.1 5.9 6.5 8.12 6.76 6.28 6.1
 40 30 24 23 20 20 20 20 30
 C.L. Arch Pav Edge C

4450±

CB. BC RT - MULY

T.P.

0.75 117.56 111.24 116.81

117.56

4400

21.5 RT & Deadman

120.8 120.0 119.1 117.2 116.7 117.11 116.63 117.09 116.9
 7.3 8.1 9.0 10.9 11.4 10.94 11.42 10.94 11.2
 40 30 23 22.5 20 20 20 20 30
 C.L. Arch Pav Edge T.C.B.

3483

22' LT & Deadman

122.1
 6.0
 31.0
 FTG
 Wall

3469

31.0 LT END. Conc. Blk wall 6' high here

3464

22.0' RT & Pole #5775 96-N

3461

22.5' LT & Pole #2130

127.1 124.2 123.3 122.50 122.86 122.19 122.63 122.9
 1.0 3.9 4.8 5.55 5.49 5.86 5.42 5.2
 40 30 20 16 14 20 20 30
 C.L. Arch Pav Edge T.C.B.

3450

T.P.

1.38 129.05 115.3 126.67

128.05

3428

3' END Break IN Wall - CONTINUES 3' high here
 36.0' LT END 2 Car gar 31.0' LT APPROX

127.7 129.40 129.16
 10.3 8.80 9.04
 31 36.0 31.44
 FTG Wall Floor

138.20

N. SECT VENICE (cont.)

LT.

RT.

5463 END CLAY ditch - water is cutting into street from here to Vittoria, etc

5450 T.P. 0.98 106.72 11.82 105.74

5433 30' LT & Anchor Pole

5429.95 1/4 Line MUIR - W 1/4

5427.45 = BK edge walk 30' LT

5422.45 = Front edge walk 30' LT

5421 = AMICABE across Venice Rail Fence 3.7 high

5419.95 = N 1/4 CB. LINE MUIR - W 1/4, 30.3 LT to CB END

5415.3 = Shoulder - Cut R14

5414 24' RT Bay 3.7 high RAIL - AMICABE Fence along W side Venice

5403.40 = END Pav. (see sketch)

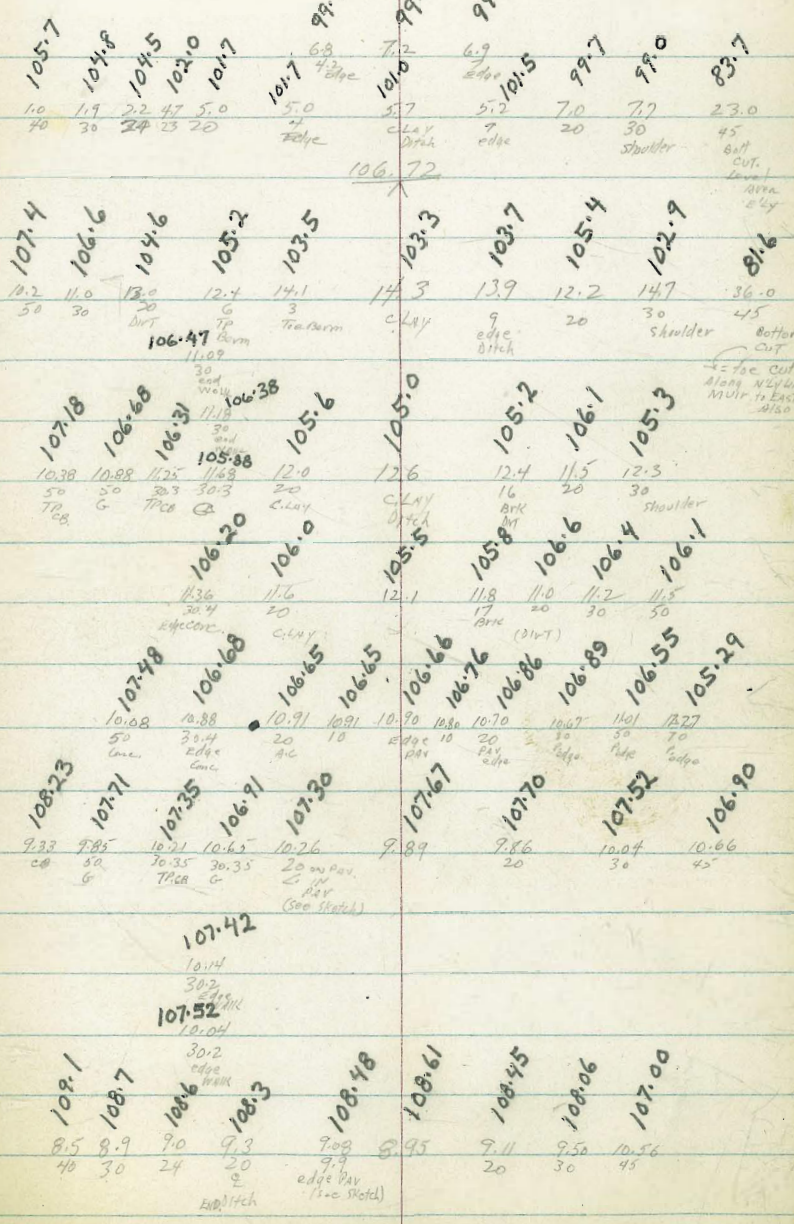
4489.95 = 30.35 LT end CB = CB Line MUIR, W 1/4

4479 31' LT & Pole # 4401

4487.45 = Front Edge Walk

4482.45 30.2 LT - BK Edge Walk

4479.95 = 20' LT & END CLAY Ditch = S 1/4 Line MUIR, W 1/4



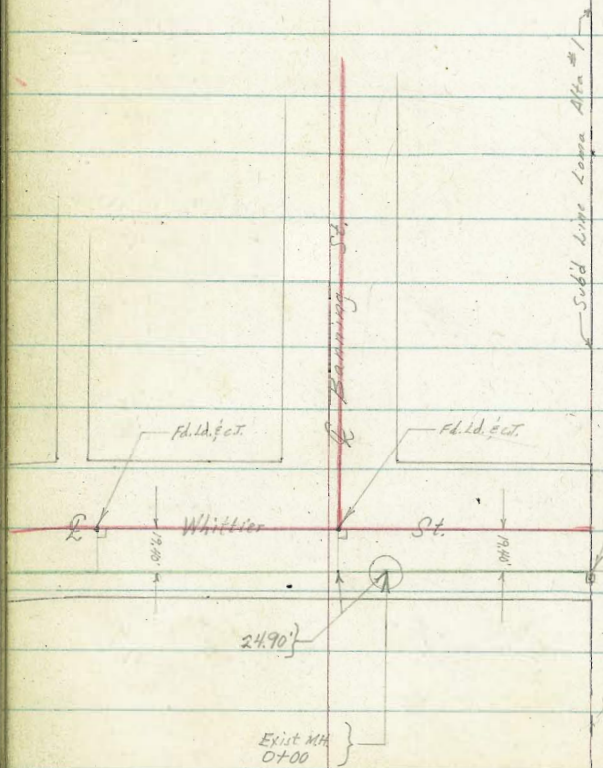
117.56

Roberts
Cota
Moore
Morales
5-21-53
No. 2112

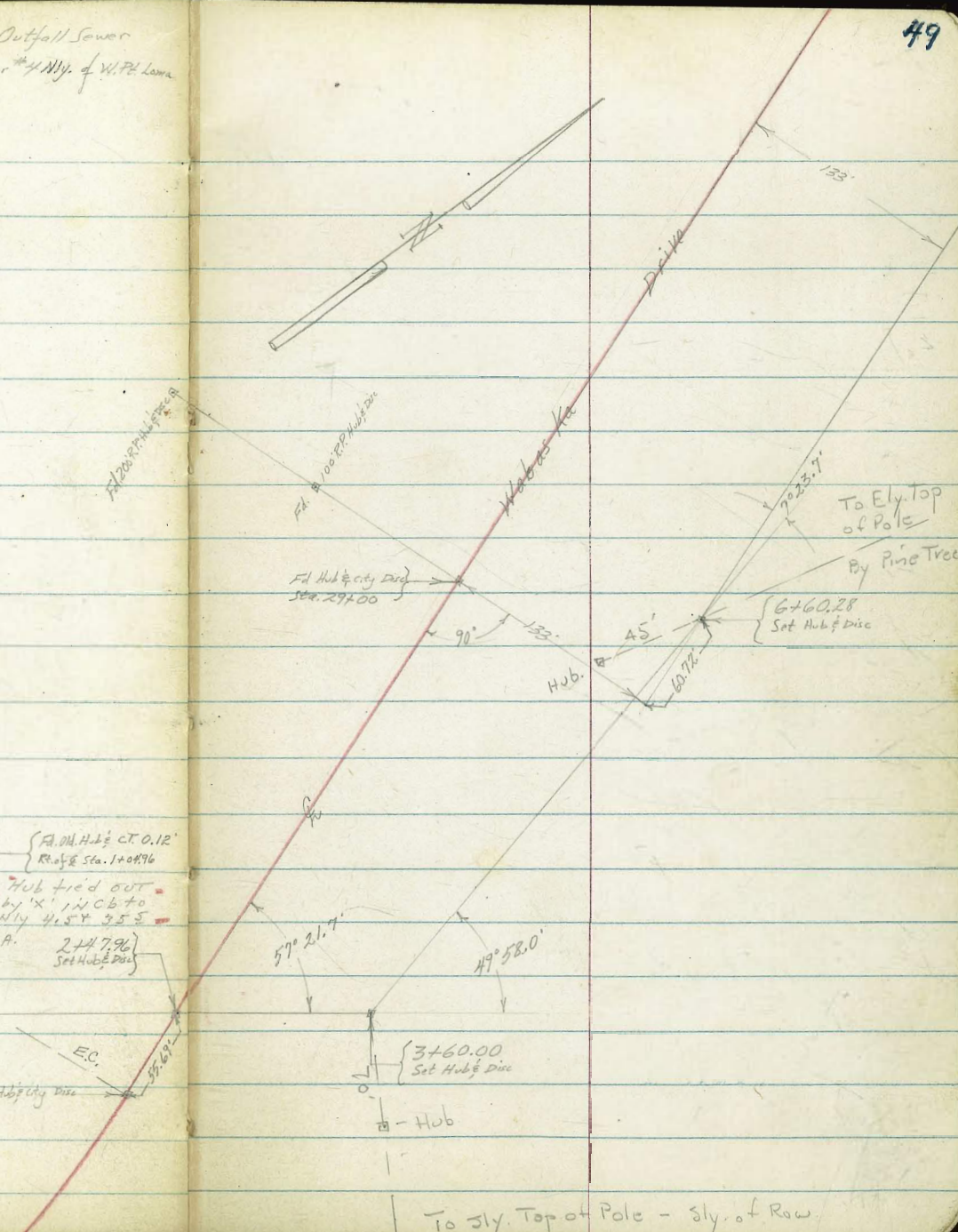
Preliminary Survey of Collier Park Outfall Sewer
From Whittier & Banning Sts. to Trunk Sewer * 1/4 My. of W.P. Lane

See Page 13 This FB.

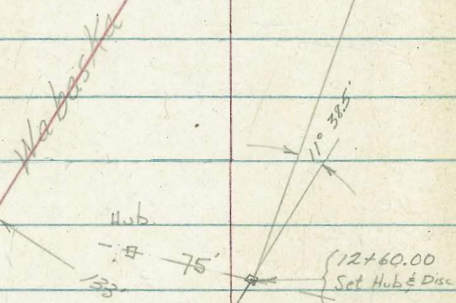
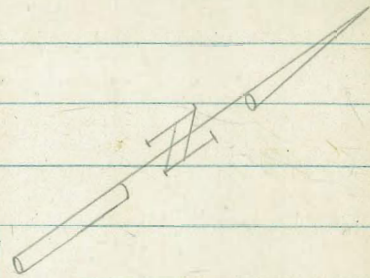
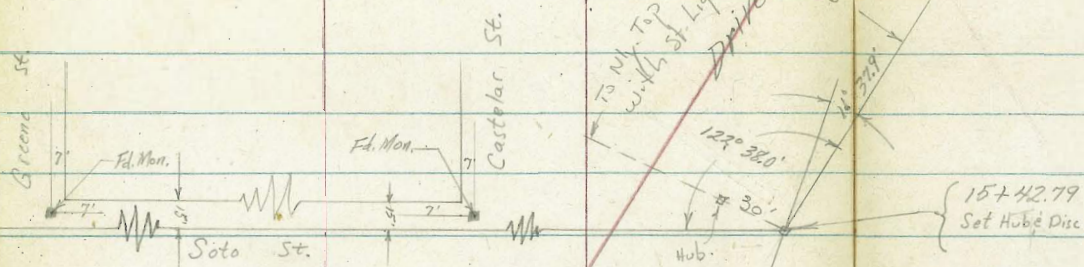
INDEXED
Raw
MAY 29 1953



{ F.A. Hub & C.T. 0.12'
Ref. & Sta. 1+0876
Hub tied out
by X in CB to
W by 41.54 35.5
S.C.P. 2+117.96
Set Hub & Disc
E.C.
F.A. Hub & City Disc

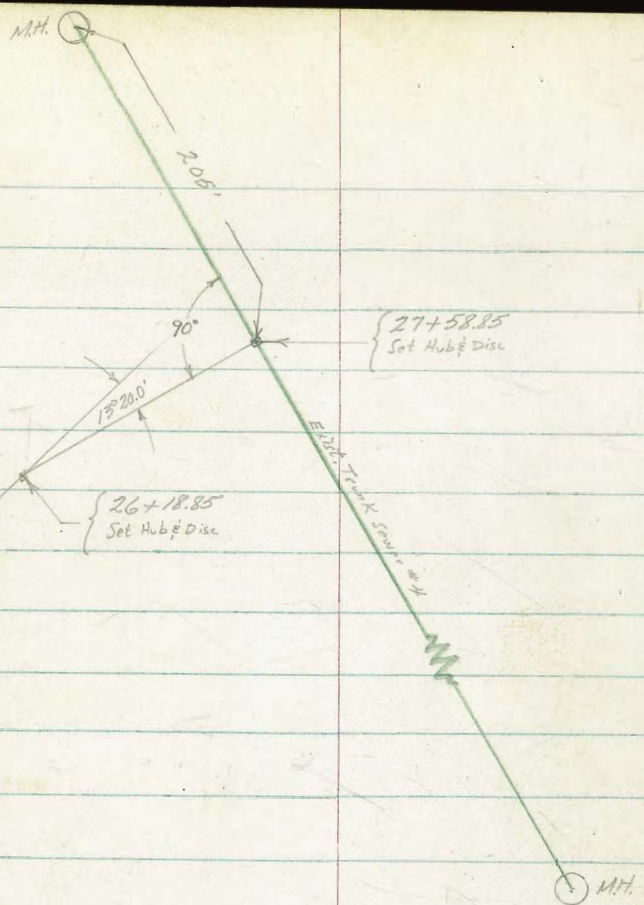
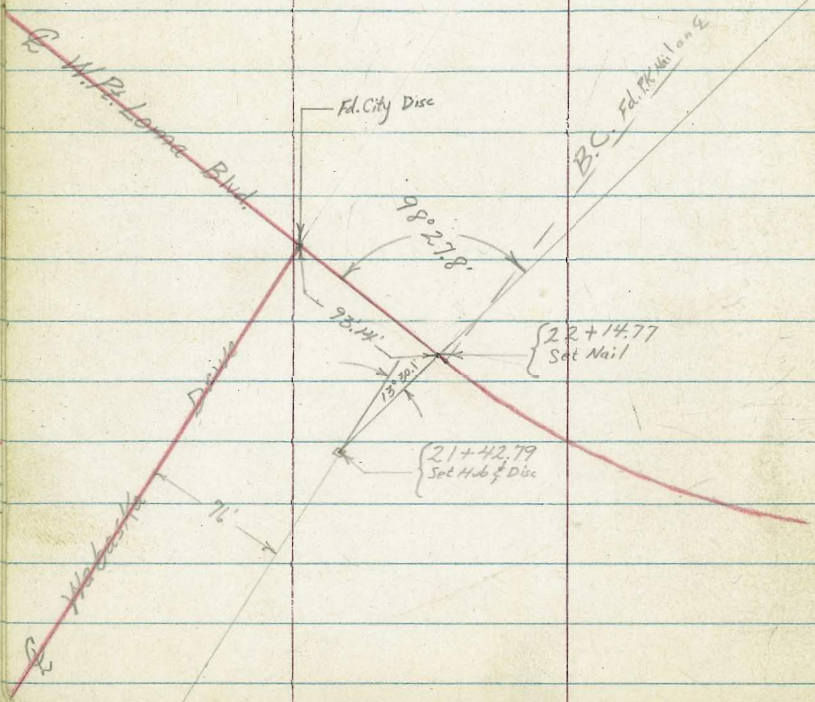
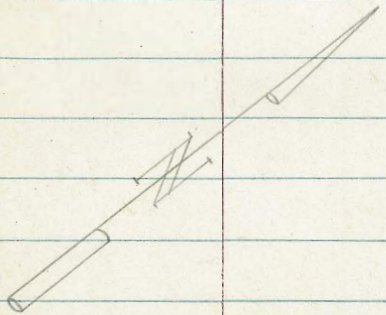


To Sly. Top of Pole - Sly. of Row



To Nly
Top of Pole
By Pine Tree

The difference in angles at 12+60.00 and 15+42.79
could be due to slight chaining error in setting
offsets or due to saggy ground at each
set up of theodolite.



1+00

20.6

45

0+96 37 lt to center 14" Tree

21.0

0+52

41

0+49 Leaves A.C. Driveway

20.6

45

0+40.5 Hit A.C. Driveway

20.6

45

0+37

21.4

37

0+00 Existing M.H.

(Rim good for ground)

22.16

296 Rim

14.22

10.90 Invert

B.M.

417 25.12 X

20.98

2d. C. & Banning and G. Whittier

See Page 16

25.12 X

1740

17.8

73

1732

19.8

53

1727

18.9

62

1724

17.8

73

1715

18.1

70

1713

20.2

49

1405 { Found no curtain beyond paving.
 425 Lt to back Edge of End Paving

25.12A

25.12A

Cont'd From Page 53

Lt

RE 54

3+00

16.5

8.6

2+50

16.4

8.7

2+09

17.1

8.0

2+06

16.3

8.8

1+90

16.4

8.7

1+85

17.1

8.0

1+55

16.7

8.4

25.12A

25.12A

5450

17.9
6.2
20

16.5
7.6

15.3
8.8
20

5435

15.6
8.5

5400

16.1
8.0
20

16.1
8.0

15.9
8.2
20

4450

15.8
8.3
20

15.8
8.3

15.9
8.2
20

4400

16.0
8.1
20

16.1
8.0

16.0
8.1
20

T.P.

8.01 24.13 π 9.00 16.12

24.13 π

3+60.00 ANGLE POINT LEFT

Section taken at Right Angles to ground tangent.

16.1
9.0
20

16.2
8.9

16.1
9.0
20

25.12 π

25.12 π

7+00

21.0	18.1	15.1	15.1
3.1	60	9.0	9.0
20		11	20

6+80

19.8
4.3

6+60.28

Section at Right Angles to forward tangent
ANGLE POINT LEFT

25.0	19.4	14.9	15.0
+0.9	47	9.2	9.1
20		13	20

6+30

19.8
4.3

6+13

21.1
20

6+06

21.7	20.0	19.9	15.9
24	4.1	4.2	8.2
20		10	26

5+70

16.6
7.5

Cont'd From Page 56

LT

RT 57

9+50

16.8	13.9	14.8	14.9
5.4	8.3	7.4	7.3
20	7		20

T.P. 6.70 22.16X 8.67 15.46

22.16X

9+20

14.4	14.9	15.0
9.7	9.2	9.1
20		20

8+50

14.8	14.9	14.9
9.3	9.2	9.2
20		20

8+00

14.3	14.5	14.8
9.8	9.6	9.3
20		20

7+50

15.1	14.8	14.9
9.0	9.3	9.2
20		20

7+15

15.4
8.7

24.13X

24.13X

Cont'd From Page 57

Lt

E

58

12+90

13.6

8.6

12+60.00

Section at Right Angles to back tangent
ANGLE POINT LEFT

15.4

14.0

13.5

13.5

6.8

8.2

8.7

8.7

22

16

20

12+00

15.6

14.4

14.1

14.1

6.6

7.8

8.1

8.1

20

13

20

11+50

16.2

14.3

13.9

14.4

14.4

6.0

7.9

8.3

7.8

7.8

26

20

7

20

11+00

16.0

13.8

14.7

14.6

6.2

8.4

7.5

7.6

20

14

20

10+50

15.9

14.2

14.2

14.9

14.7

6.3

8.0

8.0

7.3

7.5

20

14

4

20

10+00

16.6

14.6

14.0

14.8

14.9

5.6

7.6

8.2

7.4

7.3

20

10

7

20

22.16T

22.16T

15+00

12.9

13.3

14.0

6.5
20

6.1

5.4
20

14+50

14.1

14.5

14.3

5.3
20

4.9

5.1
20

14+00

14.6

14.0

14.0

4.8
20

5.4

5.4
20

13+50

15.5

14.1

13.9

13.5

3.9
~~2.5~~
255.3
15

5.5

5.9
20

13.7

5.7

13+10

T.P.

3.80

19.39A 6.57

15.59

19.39A

13+00

16.1

15.9

13.5

13.6

6.1
206.3
5

8.7

8.6
20

22.16A

22.16A

Cont'd From Page 59

Lt

Rt 60

17+30

14.2	14.6	13.8	14.5	14.9
8.3	7.9	8.7	8.0	7.6
14		4	8	20
200				700

T.P. 7.95 22.51A 4.83 14.56

22.51A

17+00

13.9

5.5

16+50

13.5

5.9

16+10

13.1

6.3

16+00

14.0

5.4

15+42.79

Section at Right Angles to back tangent
ANGLE POINT RIGHT

13.8	13.0	13.5
5.6	6.4	5.9
20		20

19.39A

19.39A

Cont'd From Page 60

19409

19405 31 Lt & 24" Corr. I. Culvert

19400

18445

18438

18400

17450

22.51 A

Lt

14.26

8.25
57
Inch

17.8

4.7

10
Toe

17.4

5.1

5

14.0

8.5

9
Toe

14.5

8.0

12
Toe

15.7

6.8

15.2

7.3

16.0

6.5

16.8

5.1

13.6

8.9

13.8

8.7

Toe

13.8

8.7

6
Toe

13.5

9.0

5

13.8

8.7

12
Toe

20.5

2.0

5

14.2

8.3

6
Toe

13.7

8.8

21
Toe

16.7

5.8

9

22.51 A

R2

61

Cont'd From Page 61

Lt

R

R

62

TP 1.33 19.56 428 18.23

21+42.79 ANGLE POINT RIGHT

21+00

20+50

20+08

19+89

19+50

22.51

18.2

4.3

19.0

3.5

19.5

3.0

19.6

2.9

7.0

16.0

6.5

7.0

15.0

7.5

22.51

Contd From Page 62

Lt

Rt 63

22+44-

15.6
4.0

22+39.5

Edge A.C. Paving

14.6
5.0

22+14.77

West Point Loma Blvd.

15.7
3.9

21+89

Edge A.C. Paving

14.3
5.3

21+86

15.9
3.7

21+76

15.8
3.8

21+70

18.7
0.9

1956A

1956A

Cont'd From Page 63

24+00

23+70

23+50

23+00

22+74

T.P.

22+57

19.56A

2.87

10.48A

11.95

7.61

To:

Lt

2.3
8.2
50

2.6
7.9
34

3.8
6.7
24

4.5
6.0

5.6
4.9
18

2.7
7.8
30

2.5
8.0
50

2.1
8.4
50

2.5
8.0
19

3.8
6.7
11

3.5
7.0

2.7
7.8
5

2.8
7.7
50

2.0
8.5
50

2.6
7.9

2.7
7.8
50

2.2
8.3
50

2.9
7.6

2.5
8.0
50

3.5
7.0

10.48A

15.9

3.7

19.56A

Rt

64

Cont'd From Page 64

26+55

7.4	4.3	4.9	5.8	6.4	2.7	3.1
31	6.2	5.6	4.7	4.1	7.8	7.4
52	35	5		9	19	50

26+18.85

Section at Right Angles to back tangent
ANGLE POINT RIGHT

5.1	5.1	5.4	5.4	5.4	6.8	2.5	2.6
5.4	5.4	5.1	5.1	5.1	3.7	8.0	7.9
50	50	10	17	30	50		

26+00

5.2	5.2	5.3	5.7	5.3	6.8	2.5	2.5
5.2	5.2	5.3	5.7	5.2	3.7	8.0	8.0
10	17	30	50	10	17	30	50

25+50

4.4	4.4	5.0	5.0	5.7	2.7	2.1
6.1	6.1	5.5	5.5	4.8	7.8	8.4
50	50			23	34	50

25+00

4.6	4.6	3.9	3.9	4.2	6.1	6.1	2.4	2.2
5.9	5.9	6.6	6.6	6.3	4.4	4.4	8.1	8.3
50	50			7	15	23	37	50

24+45

2.8	2.8	3.3	3.3	3.8	6.5	5.3	2.4	2.4
7.7	7.7	7.2	7.2	6.7	4.0	5.2	8.1	8.1
50	50			7	16	27	43	55

24+25

2.6	2.7	3.8	4.6	6.6	6.8	2.7	2.5
7.9	7.8	6.7	5.9	3.9	3.7	7.8	8.0
50	38	17		16	27	40	50

10.48X

10.48X

Check

7.02 14.14 = 14.16

T.P. 11.85 2.116 1.17 9.31

27+58.85 Intersection with 24" Trunk Sewer #4

27+48

27+37

27+10

26+90

10.48 PM

City Disc @ Wabaska Dr. & E Wood Point - Anna Boulevard

-3.37	4.8	5.5	7.3	3.7	2.6	0.5	0.7	-3.75
12.85	57	20	3.2	6.8	7.9	10.0	9.8	14.23
205	50	22	10		30	27	50	INVERT
INVERT								M.H.
4.9	5.2	7.5	3.9	3.7	3.6	0.3	1.5	
5.6	5.3	3.0	6.6	6.8	6.9	10.2	9.0	
50	25	12	3		30	40	50	
4.9	4.9	7.4	4.2	4.2		4.5		
5.6	5.6	3.1	6.3	6.3	6.0			
50	28	18	6		50			
5.0	5.0	7.7	4.3	4.9	4.3	3.9	3.0	2.7
5.5	5.5	2.8	6.2	5.6	6.2	6.6	7.5	7.8
50	45	32	20		12	35	40	50
5.2	7.7	4.3	4.3	6.7	2.9	3.4		
5.3	2.8	6.2	6.2	3.8	7.6	7.1		
50	40	25	11		10	50		

10.48 PM

Survey to locate depth of
existing sewer at end of
Whittier Street

See Sketch Pg. 49

Notes entered
by Carson
6-29-53

Notes copied from
Blueprints No.
3754-L + 3755-L

			11.62	<u>11.24</u>	Invert
TP			10.91	<u>11.95</u>	Top Sewer Pipe
TP	2.94	22.86	7.09	<u>19.92</u>	Top end Ely cb line Whittier + Nly line Loma Alta Marl
TP	0.91	27.01	13.23	26.10	
TP	0.44	39.33	12.40	38.89	
TP	0.93	51.29	12.93	50.36	
TP	0.36	63.29	13.24	62.93	
T.P.	1.11	76.17	12.96	75.06	
	1.52	84.02		<u>86.50</u>	N.W.B.P. Bolinas + Voltaire
		π			

X-sec 68th ST. Amherst to
EL CAJON BND.

0+04- 22° LT = 2 Deadmen.

4" Conc Base

292 LT = begin 1st high board fence with

292 Rt = begin 3' high cyclone fence

0+00 = Nly Line Amherst ST 4³ 4⁴
100 50.

0-25- Nly edge Rough AC Pav. Amherst

0-30 = 2 Amherst ST - 2 Sewer Manhole

0-45 = Sly edge ± 20's strip Rough AC Pav
on Amherst

0-52- 22° LT = 12" power pole # P77674

0-60 = Sly Line Amherst ST

TP, 4.13 456.04 7.65
BM. 2.16 459.56
1/2° IR. NE Prop. cor
6.872 = Amherst
451.91
457.40

LT = Wly

68th

Rt = eLy. 69

452	44	74	84	84	84	84	84	84	84	84
451	154	454	454	454	454	454	454	454	454	454
360	4 ³	4 ⁰	4 ²	4 ⁸	5 ⁰	5 ¹	4 ³	4 ³	4 ⁶	4 ⁷
292	292	292	22	20	12	15	30	50	100	
Top Footing		9r								
Base		Base								

450	24	7	24	24	10	10	10	10	10	10	
454	154	154	154	154	454	454	454	454	454	454	
5 ¹	4 ⁹	4 ⁸	4 ⁹	5 ⁰³	5 ²	5 ³	5 ⁰	4 ⁶			
150	100	50	30	Riff	30	50	100	150			
on Rough AC				AC same	on Rough AC						

450	14	4	4	4	4	4	4	4	4	4
454	054	054	054	054	054	054	054	054	054	054
5 ⁹	5 ⁴	5 ³	5 ¹	5 ⁶	5 ⁸	5 ²				
100	50	30		30	50					
										81° Approx Wly Line 68 th to 69 th

456.04 x
SW BP - 68th & EL CAJON.

X-sec 68th St - Fitzherst to
FL CAJON.

eugenia hedge

0+66 - 21° LT = ϕ begin 3' wide + 4' high

29° et = begin conc drive for 2 car garage

0+65 - 29° et = end 3' high cyclone fence

DIRT DRIVE

0+57 - 29° LT = ϕ end 4" curb ETW for

garage is way back.

0+52⁵ = ϕ 9' wide dirt drive on left

0+50

curb for dirt drive

4" conc base base turns 90° to west to form

0+48 - 29° LT = end 1⁵ high board fence with

0+24 - 22° LT = ϕ 12" Power pole # P77572

LT = W14

ϕ
6872

Et. ch 70

30
453

58
453

274
293
Drive

246
540
Garage
Floor

20
453

24
452

14
453

2³⁴
29⁸
Top
Curb

3¹
29⁸
Footing

2⁹
29⁸
Ground

84
452

04
453

84
452

24
452

34
452

84
451

44
452

44
452

64
452

3²
50

3⁰
30

3²
21

3⁸
17

8
12

4²
12

3⁶
15

3⁶
30

3⁴
50

39
453

64
452

24
452

26⁵
Top
Base

3⁴
Footing
Base
29⁸

3¹
Ground
29⁸

456.04 x

X-sec 68th ST

TP₂ 5.67 459.45 2.26 453.78

1725

1720-21⁵ LT = ϕ end 3' wide ^{hedge} + 4' high eugenia

1719-29⁶ Rt = ϕ 2⁵ wide Conc walk

1700

} opening in hedge for walk
0+90, 21² LT = ϕ 2⁵ wide Conc walk

} 29² Rt = begin 3' high cyclone fence
0+84, 29³ Rt = end Conc drive for double garage

LT = WLY

ϕ
68th

Rt = rly 71

$\overline{454.54}$	$\overline{454.44}$	$\overline{453.84}$	<u>459.45</u>	$\overline{454.24}$	$\overline{453.54}$	$\overline{454.24}$	$\overline{454.54}$
15	16	25	23	25	100	15	15
30	20	16	2	12	15	30	30

$\overline{454.64}$	$\overline{454.44}$	$\overline{453.84}$	$\overline{453.44}$	$\overline{453.34}$	149	152
14	16	22	29	27	296	296
40	30	19	17	12	Walk	Walk
					$\overline{453.04}$	$\overline{454.04}$
					30	20
					12	15
						20
						30
						50

$\overline{454.04}$	$\overline{453.94}$
203	206
312	212
Walk	Walk

$\overline{453.64}$	$\overline{453.58}$
240	246
293	548
Drive	garage
	Floor

456.04 x

LT = W14

687

RT = e14

72

1482 - 30° LT = 3' wide Conc Walk

40° Walk Eyedog house	40° Walk	30° Wall				
454.55	454.55	454.55	454.55	454.55	454.55	454.55
47	51	53	48	51	44	40
30	21	18		13	17	30

1470° = N14 Line Alley

29	30
100	150

453.65	454.55	454.55	454.55	454.55	454.55	454.55	454.55	454.55
58	53	49	52	54	48	54	44	42
150	100	50	30	18	RM ground same	13	23	30

1460° = Sewer Man hole

1451 - 22° LT = 10" Power pole - # JP 76261

29° RT = end 3' high cyclone fence.

West Conc Block Wall

1450° = 3/4 Line Alley, why end 4' high East + 30°

454.55	454.55	453.85	454.55	453.85	454.55	455.05	454.55
49	49	56	52	55	46	44	50
30	20	19		17	18	300 ground	300 Footing

1441 - 21° RT = Fire Hydrant

459.45 - X

X-sec 68th St. Amberst to EL Cajon

LT=W14

68th St

ct=ch 74

TP₁ Starting B.M. 4.75 $\langle 457.90 \rangle$
457.39

Barbell
Aug 21, 1953

3+64^{ft} = ϕ EL Cajon B.V.D.

457.47	457.47	457.83	458.00	458.20
467	445	431	414	394
80	30		30	80
457.02	456.34	457.21	457.50	457.01
457.02	456.34	457.21	457.50	457.01
512	580	492	564	505
150	150	100	100	50
Ob	90T	Ob	90T	90T
457.33	456.47	457.27	456.20	457.06
457.33	456.47	457.27	456.20	457.06

3+24^{ft} = sly curb line EL Cajon -

481	547	477	544	533	518	508	505	516	517	454
50	50	30	30	20	10		10	20	30	30
Ob	90T	Ob	90T	Ob					90T	Ob
		BC	BC						BC	BC
457.33	456.47	457.27	456.20	456.81	456.96	457.06	457.09	456.98	456.27	457.60

TP₂ 4.75 462.14 2.06 457.39

457.05	456.47	462.14	457.92
457.05	456.47	462.14	457.92
240	304	296	236
200	200	200	200
Ob	90T	90T	Ob

3+14^{ft} = 20° RT + 20° RT = BC la curb Returns

459.45 x

Replace Lot Corner
Lot 19 BIK 16 Loma Alta #1

C.H.S.

9-2-54

B099

W.O. 20006

Schelin
Pulley

Map. #1078

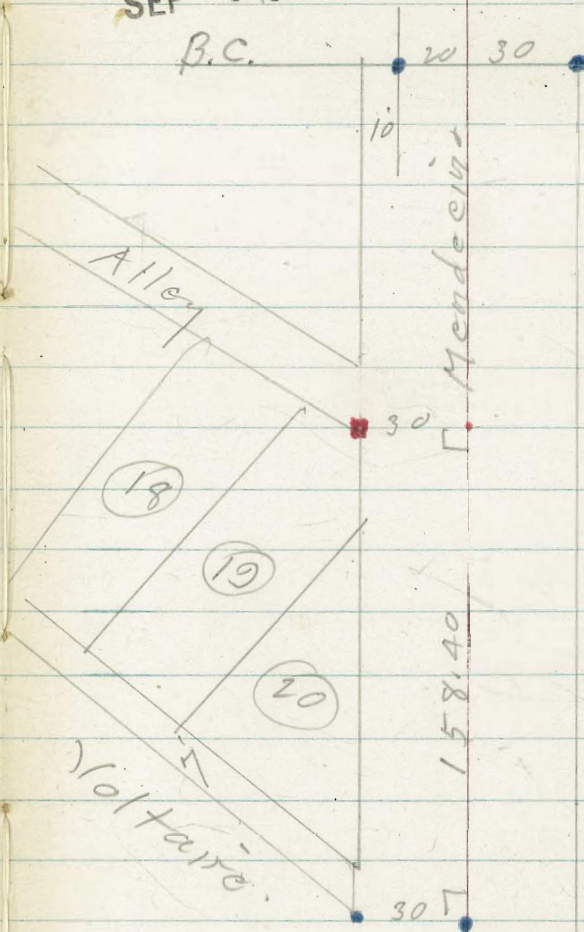
F.B. 1838 - P 70

● = Fd. Fd City disk or L+T

■ = Set 1/2" disk

INDEXED
JER
SEP 3 1954

B.C.



158.40
10.61
169.01

N 53° 56' E
N 63° 17' E

27
17
285

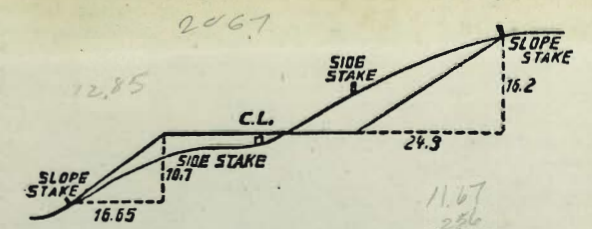
43
15
18

48.62
33.25
15.37

73
28
9.5
32.95

600
3246 South
2959
3200
396

42.30
7.21
35.09



DISTANCES FROM SIDE STAKES FOR CROSS-SECTIONING.
SLOPE 1 1/2 TO 1. ROADWAY OF ANY WIDTH.

	0	.1	.2	.3	.4	.5	.6	.7	.8	.9	
0	0.00	0.15	0.30	0.45	0.60	0.75	0.90	1.05	1.20	1.35	0
1	1.50	1.65	1.80	1.95	2.10	2.25	2.40	2.55	2.70	2.85	1
2	3.00	3.15	3.30	3.45	3.60	3.75	3.90	4.05	4.20	4.35	2
3	4.50	4.65	4.80	4.95	5.10	5.25	5.40	5.55	5.70	5.85	3
4	6.00	6.15	6.30	6.45	6.60	6.75	6.90	7.05	7.20	7.35	4
5	7.50	7.65	7.80	7.95	8.10	8.25	8.40	8.55	8.70	8.85	5
6	9.00	9.15	9.30	9.45	9.60	9.75	9.90	10.05	10.20	10.35	6
7	10.50	10.65	10.80	10.95	11.10	11.25	11.40	11.55	11.70	11.85	7
8	12.00	12.15	12.30	12.45	12.60	12.75	12.90	13.05	13.20	13.35	8
9	13.50	13.65	13.80	13.95	14.10	14.25	14.40	14.55	14.70	14.85	9
10	15.00	15.15	15.30	15.45	15.60	15.75	15.90	16.05	16.20	16.35	10
11	16.50	16.65	16.80	16.95	17.10	17.25	17.40	17.55	17.70	17.85	11
12	18.00	18.15	18.30	18.45	18.60	18.75	18.90	19.05	19.20	19.35	12
13	19.50	19.65	19.80	19.95	20.10	20.25	20.40	20.55	20.70	20.85	13
14	21.00	21.15	21.30	21.45	21.60	21.75	21.90	22.05	22.20	22.35	14
15	22.50	22.65	22.80	22.95	23.10	23.25	23.40	23.55	23.70	23.85	15
16	24.00	24.15	24.30	24.45	24.60	24.75	24.90	25.05	25.20	25.35	16
17	25.50	25.65	25.80	25.95	26.10	26.25	26.40	26.55	26.70	26.85	17
18	27.00	27.15	27.30	27.45	27.60	27.75	27.90	28.05	28.20	28.35	18
19	28.50	28.65	28.80	28.95	29.10	29.25	29.40	29.55	29.70	29.85	19
20	30.00	30.15	30.30	30.45	30.60	30.75	30.90	31.05	31.20	31.35	20
21	31.50	31.65	31.80	31.95	32.10	32.25	32.40	32.55	32.70	32.85	21
22	33.00	33.15	33.30	33.45	33.60	33.75	33.90	34.05	34.20	34.35	22
23	34.50	34.65	34.80	34.95	35.10	35.25	35.40	35.55	35.70	35.85	23
24	36.00	36.15	36.30	36.45	36.60	36.75	36.90	37.05	37.20	37.35	24
25	37.50	37.65	37.80	37.95	38.10	38.25	38.40	38.55	38.70	38.85	25
26	39.00	39.15	39.30	39.45	39.60	39.75	39.90	40.05	40.20	40.35	26
27	40.50	40.65	40.80	40.95	41.10	41.25	41.40	41.55	41.70	41.85	27
28	42.00	42.15	42.30	42.45	42.60	42.75	42.90	43.05	43.20	43.35	28
29	43.50	43.65	43.80	43.95	44.10	44.25	44.40	44.55	44.70	44.85	29
30	45.00	45.15	45.30	45.45	45.60	45.75	45.90	46.05	46.20	46.35	30
31	46.50	46.65	46.80	46.95	47.10	47.25	47.40	47.55	47.70	47.85	31
32	48.00	48.15	48.30	48.45	48.60	48.75	48.90	49.05	49.20	49.35	32
33	49.50	49.65	49.80	49.95	50.10	50.25	50.40	50.55	50.70	50.85	33
34	51.00	51.15	51.30	51.45	51.60	51.75	51.90	52.05	52.20	52.35	34
35	52.50	52.65	52.80	52.95	53.10	53.25	53.40	53.55	53.70	53.85	35
36	54.00	54.15	54.30	54.45	54.60	54.75	54.90	55.05	55.20	55.35	36
37	55.50	55.65	55.80	55.95	56.10	56.25	56.40	56.55	56.70	56.85	37
38	57.00	57.15	57.30	57.45	57.60	57.75	57.90	58.05	58.20	58.35	38
39	58.50	58.65	58.80	58.95	59.10	59.25	59.40	59.55	59.70	59.85	39
40	60.00	60.15	60.30	60.45	60.60	60.75	60.90	61.05	61.20	61.35	40
41	61.50	61.65	61.80	61.95	62.10	62.25	62.40	62.55	62.70	62.85	41
42	63.00	63.15	63.30	63.45	63.60	63.75	63.90	64.05	64.20	64.35	42
43	64.50	64.65	64.80	64.95	65.10	65.25	65.40	65.55	65.70	65.85	43
44	66.00	66.15	66.30	66.45	66.60	66.75	66.90	67.05	67.20	67.35	44
45	67.50	67.65	67.80	67.95	68.10	68.25	68.40	68.55	68.70	68.85	45
46	69.00	69.15	69.30	69.45	69.60	69.75	69.90	70.05	70.20	70.35	46
47	70.50	70.65	70.80	70.95	71.10	71.25	71.40	71.55	71.70	71.85	47
48	72.00	72.15	72.30	72.45	72.60	72.75	72.90	73.05	73.20	73.35	48
49	73.50	73.65	73.80	73.95	74.10	74.25	74.40	74.55	74.70	74.85	49
50	75.00	75.15	75.30	75.45	75.60	75.75	75.90	76.05	76.20	76.35	50

THE NATIONAL BLANK BOOK COMPANY
HOLYOKE MASSACHUSETTS
NEW YORK CHICAGO BOSTON SAN FRANCISCO