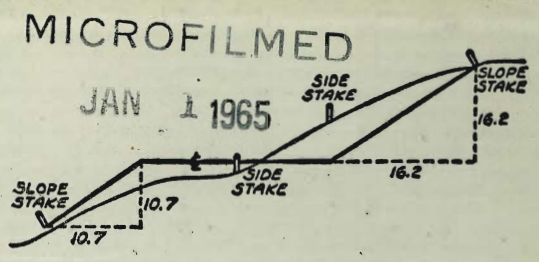


2200

1911-ACT. X-SECT.

INDEX BOOK



DISTANCES FROM SIDE STAKES FOR CROSS-SECTIONING  
SLOPE 1 TO 1. ROADWAY OF ANY WIDTH

	0	.1	.2	.3	.4	.5	.6	.7	.8	.9	
0	0.00	0.10	0.20	0.30	0.40	0.50	0.60	0.70	0.80	0.90	0
1	1.00	1.10	1.20	1.30	1.40	1.50	1.60	1.70	1.80	1.90	1
2	2.00	2.10	2.20	2.30	2.40	2.50	2.60	2.70	2.80	2.90	2
3	3.00	3.10	3.20	3.30	3.40	3.50	3.60	3.70	3.80	3.90	3
4	4.00	4.10	4.20	4.30	4.40	4.50	4.60	4.70	4.80	4.90	4
5	5.00	5.10	5.20	5.30	5.40	5.50	5.60	5.70	5.80	5.90	5
6	6.00	6.10	6.20	6.30	6.40	6.50	6.60	6.70	6.80	6.90	6
7	7.00	7.10	7.20	7.30	7.40	7.50	7.60	7.70	7.80	7.90	7
8	8.00	8.10	8.20	8.30	8.40	8.50	8.60	8.70	8.80	8.90	8
9	9.00	9.10	9.20	9.30	9.40	9.50	9.60	9.70	9.80	9.90	9
10	10.00	10.10	10.20	10.30	10.40	10.50	10.60	10.70	10.80	10.90	10
11	11.00	11.10	11.20	11.30	11.40	11.50	11.60	11.70	11.80	11.90	11
12	12.00	12.10	12.20	12.30	12.40	12.50	12.60	12.70	12.80	12.90	12
13	13.00	13.10	13.20	13.30	13.40	13.50	13.60	13.70	13.80	13.90	13
14	14.00	14.10	14.20	14.30	14.40	14.50	14.60	14.70	14.80	14.90	14
15	15.00	15.10	15.20	15.30	15.40	15.50	15.60	15.70	15.80	15.90	15
16	16.00	16.10	16.20	16.30	16.40	16.50	16.60	16.70	16.80	16.90	16
17	17.00	17.10	17.20	17.30	17.40	17.50	17.60	17.70	17.80	17.90	17
18	18.00	18.10	18.20	18.30	18.40	18.50	18.60	18.70	18.80	18.90	18
19	19.00	19.10	19.20	19.30	19.40	19.50	19.60	19.70	19.80	19.90	19
20	20.00	20.10	20.20	20.30	20.40	20.50	20.60	20.70	20.80	20.90	20
21	21.00	21.10	21.20	21.30	21.40	21.50	21.60	21.70	21.80	21.90	21
22	22.00	22.10	22.20	22.30	22.40	22.50	22.60	22.70	22.80	22.90	22
23	23.00	23.10	23.20	23.30	23.40	23.50	23.60	23.70	23.80	23.90	23
24	24.00	24.10	24.20	24.30	24.40	24.50	24.60	24.70	24.80	24.90	24
25	25.00	25.10	25.20	25.30	25.40	25.50	25.60	25.70	25.80	25.90	25
26	26.00	26.10	26.20	26.30	26.40	26.50	26.60	26.70	26.80	26.90	26
27	27.00	27.10	27.20	27.30	27.40	27.50	27.60	27.70	27.80	27.90	27
28	28.00	28.10	28.20	28.30	28.40	28.50	28.60	28.70	28.80	28.90	28
29	29.00	29.10	29.20	29.30	29.40	29.50	29.60	29.70	29.80	29.90	29
30	30.00	30.10	30.20	30.30	30.40	30.50	30.60	30.70	30.80	30.90	30
31	31.00	31.10	31.20	31.30	31.40	31.50	31.60	31.70	31.80	31.90	31
32	32.00	32.10	32.20	32.30	32.40	32.50	32.60	32.70	32.80	32.90	32
33	33.00	33.10	33.20	33.30	33.40	33.50	33.60	33.70	33.80	33.90	33
34	34.00	34.10	34.20	34.30	34.40	34.50	34.60	34.70	34.80	34.90	34
35	35.00	35.10	35.20	35.30	35.40	35.50	35.60	35.70	35.80	35.90	35
36	36.00	36.10	36.20	36.30	36.40	36.50	36.60	36.70	36.80	36.90	36
37	37.00	37.10	37.20	37.30	37.40	37.50	37.60	37.70	37.80	37.90	37
38	38.00	38.10	38.20	38.30	38.40	38.50	38.60	38.70	38.80	38.90	38
39	39.00	39.10	39.20	39.30	39.40	39.50	39.60	39.70	39.80	39.90	39
40	40.00	40.10	40.20	40.30	40.40	40.50	40.60	40.70	40.80	40.90	40
41	41.00	41.10	41.20	41.30	41.40	41.50	41.60	41.70	41.80	41.90	41
42	42.00	42.10	42.20	42.30	42.40	42.50	42.60	42.70	42.80	42.90	42
43	43.00	43.10	43.20	43.30	43.40	43.50	43.60	43.70	43.80	43.90	43
44	44.00	44.10	44.20	44.30	44.40	44.50	44.60	44.70	44.80	44.90	44
45	45.00	45.10	45.20	45.30	45.40	45.50	45.60	45.70	45.80	45.90	45
46	46.00	46.10	46.20	46.30	46.40	46.50	46.60	46.70	46.80	46.90	46
47	47.00	47.10	47.20	47.30	47.40	47.50	47.60	47.70	47.80	47.90	47
48	48.00	48.10	48.20	48.30	48.40	48.50	48.60	48.70	48.80	48.90	48
49	49.00	49.10	49.20	49.30	49.40	49.50	49.60	49.70	49.80	49.90	49
50	50.00	50.10	50.20	50.30	50.40	50.50	50.60	50.70	50.80	50.90	50

Distance of slope stake from side or shoulder stake for any width roadway, slope 1 to 1. If ground is nearly level, the cut or fill at side stake is located by the double entry method in left column and top row. The number in body of table in same row and column gives distance from side stake to slope stake. If ground is not level estimate the difference in elevation between the side stake and slope stake, lower target by this amount if cut, elevate if fill. Add this amount to cut or fill and find distance in table. Set up rod at this point, and line of sight should cut target. If it does not make the slight adjustment necessary.

TABLE XIII—CORRECTIONS FOR TANGENTS AND EXTERNALS

These corrections are to be added to the approximate values, found by dividing the tangent, or external, for a 1° curve (Table VIII) by the degree of curve, in order to obtain the true tangents, or externals. Intermediate values may be obtained by interpolation.

FOR TANGENTS ADD

Central Angle	DEGREE OF CURVE													
	5°	10°	15°	20°	25°	30°	35°	40°	45°	50°	55°	60°	65°	70°
10°	.03	.06	.09	.13	.16	.19	.22	.25	.28	.31	.34	.38	.42	.46
15°	.04	.10	.14	.19	.24	.29	.34	.39	.45	.51	.53	.58	.63	.68
20°	.06	.13	.19	.26	.32	.39	.45	.51	.58	.65	.72	.79	.84	.90
25°	.08	.16	.24	.33	.40	.49	.58	.67	.75	.83	.90	.99	1.06	1.14
30°	.10	.19	.29	.39	.49	.59	.69	.79	.89	.99	1.09	1.20	1.29	1.39
35°	.11	.22	.34	.47	.58	.69	.79	.89	.99	1.09	1.20	1.31	1.42	1.54
40°	.13	.26	.40	.53	.67	.80	.93	1.06	1.20	1.34	1.49	1.64	1.79	1.94
45°	.15	.30	.44	.60	.76	.91	1.06	1.21	1.37	1.52	1.70	1.87	2.04	2.21
50°	.17	.34	.51	.68	.85	1.02	1.19	1.36	1.54	1.72	1.91	2.10	2.29	2.48
55°	.19	.38	.57	.76	.95	1.14	1.32	1.52	1.72	1.92	2.14	2.35	2.56	2.77
60°	.21	.42	.63	.84	1.05	1.27	1.49	1.71	1.94	2.17	2.38	2.60	2.83	3.07
65°	.23	.46	.69	.93	1.16	1.40	1.64	1.88	2.13	2.38	2.63	2.88	3.13	3.39
70°	.25	.51	.76	1.02	1.28	1.54	1.80	2.06	2.33	2.60	2.88	3.16	3.44	3.72
75°	.27	.56	.83	1.12	1.40	1.69	1.98	2.27	2.57	2.87	3.16	3.47	3.78	4.09
80°	.30	.61	.91	1.22	1.53	1.84	2.15	2.46	2.78	3.10	3.44	3.78	4.12	4.46
85°	.33	.66	1.00	1.33	1.68	2.02	2.36	2.70	3.05	3.40	3.77	4.14	4.55	4.89
90°	.36	.72	1.09	1.45	1.83	2.20	2.57	2.94	3.32	3.70	4.10	4.50	4.91	5.32
95°	.39	.79	1.19	1.55	2.00	2.40	2.80	3.20	3.61	4.02	4.40	4.98	5.38	5.83
100°	.43	.86	1.30	1.74	2.18	2.62	3.06	3.50	3.95	4.40	4.88	5.37	5.85	6.34
110°	.51	1.03	1.56	2.08	2.61	3.14	3.67	4.21	4.76	5.31	5.86	6.43	7.01	7.60
120°	.62	1.25	1.93	2.52	3.16	3.81	4.45	5.11	5.77	6.44	7.12	7.80	8.50	9.22

FOR EXTERNALS ADD

Central Angle	DEGREE OF CURVE													
	5°	10°	15°	20°	25°	30°	35°	40°	45°	50°	55°	60°	65°	70°
10°	.001	.003	.004	.006	.007	.008	.009	.011	.012	.014	.015	.017	.018	.020
15°	.003	.007	.010	.014	.018	.023	.027	.032	.035	.039	.043	.047	.051	.055
20°	.006	.011	.017	.022	.028	.034	.038	.045	.051	.057	.063	.070	.076	.083
25°	.009	.018	.027	.036	.046	.056	.065	.074	.083	.093	.106	.120	.127	.135
30°	.013	.025	.038	.051	.065	.078	.090	.103	.116	.129	.149	.170	.179	.188
35°	.018	.035	.054	.072	.086	.109	.131	.153	.175	.197	.213	.230	.247	.264
40°	.023	.046	.070	.093	.117	.141	.172	.203	.234	.265	.277	.290	.315	.341
45°	.030	.060	.093	.119	.153	.184	.216	.254	.289	.325	.351	.378	.411	.445
50°	.037	.075	.116	.151	.189	.227	.266	.305	.345	.384	.425	.467	.508	.550
55°	.046	.093	.142	.188	.236	.283	.332	.381	.420	.479	.530	.582	.641	.700
60°	.056	.112	.168	.225	.283	.340	.398	.457	.516	.575	.636	.697	.774	.851
65°	.067	.135	.204	.273	.343	.412	.483	.554	.625	.697	.711	.845	.922	1.01
70°	.080	.159	.240	.321	.403	.485	.568	.652	.735	.819	.906	.994	1.08	1.17
75°	.095	.182	.266	.353	.440	.528	.617	.707	.797	.887	1.07	1.18	1.29	1.39
80°	.110	.220	.332	.445	.558	.671	.787	.903	1.02	1.13	1.25	1.38	1.50	1.62
85°	.128	.259	.391	.524	.657	.790	.926	1.06	1.20	1.34	1.47	1.62	1.76	1.91
90°	.149	.299	.450	.603	.756	.910	1.07	1.22	1.38	1.54	1.70	1.87	2.03	2.20
95°	.174	.350	.522	.706	.885	1.06	1.25	1.43	1.62	1.80	1.99	2.18	2.38	2.58
100°	.200	.401	.604	.809	1.01	1.22	1.43	1.64	1.85	2.06	2.28	2.50	2.73	2.96
110°	.268	.536	.806	1.08	1.35	1.63	1.91	2.20	2.48	2.76	3.05	3.35	3.66	3.96
120°	.360	.721	1.08	1.45	1.82	2.19	2.57	2.95	3.33	3.72	4.11	4.50	4.91	5.32

INDEX

Page

- X-sec - Wightman Ely Swift - 35th 1
- X-sec - Jennings - Silvergate to Albion 5
- X-SECT. DIAMOND, MISSION Blvd to CASS 10
- X-sec Albion - Jennings to Talbot 19-25
- " Albion " " " Ely. 2533
- Blk - 37 - O.B. X-sec. 34
- " 37 - Profile - NW line Lot 30 47
- X-sec E 1/2 64th - from Caterlin 52
- X-sec. Alleghany St, Reo Drive to Sea Breeze 56
- X-SECT. WESTPORT. Alleghany N 1/4 73

D. Smith  
C. Allen  
R. Parks

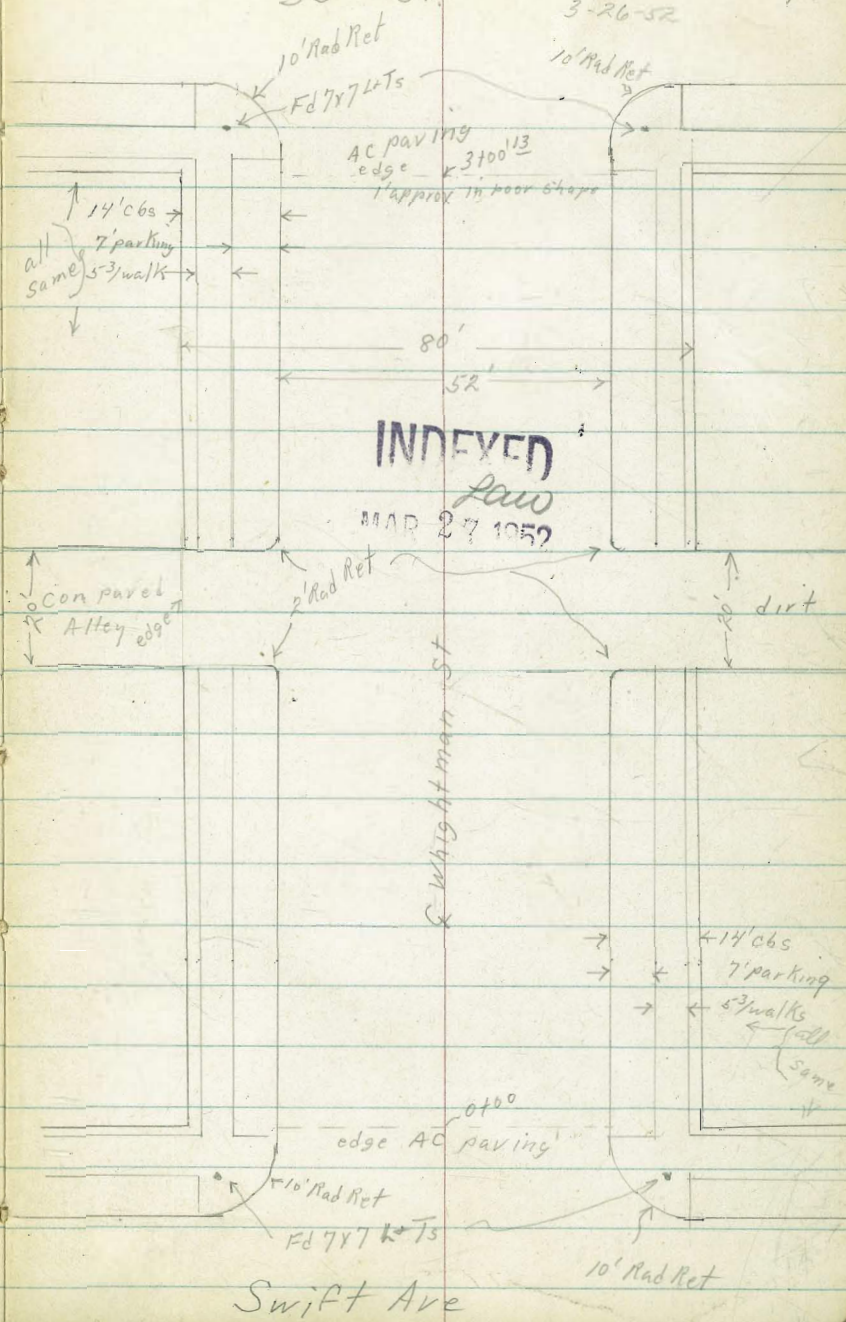
# Cross Sec. Waightman St

Swift Ave to 35th St

35th St

WO # 31616  
3-26-52

1



Reduced by  
R. W. Allen  
3-31-52

Swift Ave

10' Rad Ret

edge AC paving

10' Rad Ret

Fd 7x7 L&Ts

Waightman St

dirt

10' Rad Ret

INDEXED  
LAW

ROAD 27 1052

80'

52'

AC paving  
edge 3'00'13'  
Approach in rear steps

10' Rad Ret

Fd 7x7 L&Ts

10' Rad Ret

14' cbs  
7' parking  
5' walk  
all same

14' cbs  
7' parking  
5' walk  
all same



Lt = North

Nt = South

2

1740.07 wly Alley

345.29	345.29	344.89	344.1	344.9	344.9	344.5	343.6	344.07	344.93
2 <sup>36</sup>	2 <sup>36</sup>	2 <sup>26</sup>	2 <sup>26</sup>	2 <sup>22</sup>	2 <sup>13</sup>	3 <sup>23</sup>	4 <sup>2</sup>	3 <sup>58</sup>	3 <sup>22</sup>
40	40	26	26	13	13	26	26	40	40
end	cut	cut	cut			cut	cut	cut	cut
	edge								

1700

343.15	343.05	342.4	343.1	343.2	342.5	342.4	342.25	342.26
4 <sup>50</sup>	4 <sup>60</sup>	5 <sup>3</sup>	4 <sup>6</sup>	4 <sup>5</sup>	5 <sup>2</sup>	5 <sup>3</sup>	5 <sup>46</sup>	5 <sup>29</sup>
33	26	26	13	13	13	26	26	33
walk	cut	cut				cut	cut	walk

0782 Lt & 16' drive

342.33	341.59
5 <sup>32</sup>	6 <sup>05</sup>
33	26
walk	cut

6750

340.78	340.77	339.45	340.4	340.6	340.2	338.9	339.84	339.88
6 <sup>27</sup>	6 <sup>94</sup>	7 <sup>2</sup>	7 <sup>0</sup>	7 <sup>0</sup>	7 <sup>4</sup>	8 <sup>2</sup>	7 <sup>21</sup>	7 <sup>67</sup>
33	26	26	13	13	13	26	26	33
walk	cut	cut				cut	cut	walk

0400 East Prop Swift St edge AC paving

338.65	338.53	338.35	337.71	337.84	337.78	337.39	336.83	337.40	337.56	337.65
9 <sup>0</sup>	9 <sup>13</sup>	9 <sup>30</sup>	9 <sup>94</sup>	9 <sup>81</sup>	9 <sup>87</sup>	10 <sup>25</sup>	10 <sup>25</sup>	10 <sup>25</sup>	10 <sup>09</sup>	10 <sup>0</sup>
40	33	26	26	13	13	26	26	33	33	40
walk	cut	cut	cut			cut	cut	walk	walk	

Mid pt Return

335.35	337.60	336.74	337.37
9 <sup>30</sup>	10 <sup>03</sup>	10 <sup>21</sup>	10 <sup>28</sup>
33	26	26	33
cut	cut	cut	cut

0-14 East C6 Swift

338.96	338.38	338.28	337.81	337.52	337.15	336.83	336.44	337.36	334.63	335.16
7 <sup>69</sup>	8 <sup>27</sup>	9 <sup>28</sup>	9 <sup>84</sup>	10 <sup>13</sup>	10 <sup>50</sup>	10 <sup>82</sup>	11 <sup>2</sup>	10 <sup>33</sup>	13 <sup>02</sup>	12 <sup>00</sup>
65	65	40	40	26	10	26	40	40	65	65
cut	cut	cut	cut			cut	cut	cut	walk	cut

BM 10<sup>23</sup> 347<sup>65</sup>

337<sup>42</sup>

N.W. pt  
Swift +  
whiplash

347<sup>65</sup>

3700<sup>13</sup> wly Prop 35<sup>st</sup> Edge AC parking

2759 RT E 7<sup>1</sup> drive

2750

2707 RT E 10<sup>1</sup> drive

2700

T.P. 960 356<sup>89</sup> 0<sup>36</sup> 347<sup>29</sup>

1760<sup>07</sup> Ely Alley

1750<sup>07</sup> E Alley

Lt = North  
 352.89 40  
 352.67 33 walk  
 352.42 26 cb  
 351.81 26 8<sup>1</sup>  
 352.20 13  
 RT = South  
 352.25 13  
 351.99 26  
 351.65 26 out cb  
 352.03 33 walk  
 352.23 46  
 352.3 46

349.41  
 7<sup>48</sup>  
 41<sup>1</sup>  
 26  
 350.12  
 6<sup>22</sup>  
 33  
 walk

350.34 6<sup>55</sup>  
 33 walk  
 350.06 6<sup>83</sup>  
 26 cb  
 348.6 8<sup>3</sup>  
 26  
 349.9 7<sup>0</sup>  
 13  
 350.2 6<sup>7</sup>  
 13  
 349.8 7<sup>1</sup>  
 13  
 348.9 8<sup>0</sup>  
 26  
 349.67 7<sup>22</sup>  
 26 cb  
 349.72 7<sup>12</sup>  
 33 walk

347.06  
 9<sup>83</sup>  
 41<sup>0</sup>  
 26  
 347.74  
 9<sup>15</sup>  
 33  
 walk

347.96 8<sup>23</sup>  
 33 walk  
 347.75 9<sup>14</sup>  
 26  
 346.7 10<sup>2</sup>  
 26  
 347.7 9<sup>2</sup>  
 13  
 347.8 9<sup>1</sup>  
 13  
 347.3 9<sup>5</sup>  
 13  
 346.5 10<sup>4</sup>  
 26  
 347.11 9<sup>78</sup>  
 26  
 347.41 9<sup>48</sup>  
 33 walk

345.67 198  
 40 cb ent  
 346.11 154  
 46 out  
 345.95 120  
 26  
 345.1 26  
 26  
 345.8 13  
 13  
 345.9 12  
 13  
 345.5 23  
 13  
 344.7 20  
 26  
 345.31 234  
 26  
 345.56 209  
 40  
 26  
 40

345.25 240  
 40  
 344.9 28  
 26  
 345.4 23  
 13  
 345.5 22  
 13  
 344.9 22  
 26  
 344.3 34  
 26  
 345.5 24  
 40  
 cont par.  
 289<sup>1</sup>

T 347<sup>65</sup>

Lt. North

Rt = South 4

BM

4<sup>34</sup>

✓  
352<sup>52</sup> NWBP 35<sup>43</sup>  
352<sup>55</sup> Wightman

3+14<sup>13</sup> Wly C6 Line 35<sup>43</sup>

Mid Pt Returns

353.22	352.78	352.58	352.13	352.18	352.38	351.73	351.53	352.13	349.89	350.60
367	411	431	476	471	451	516	536	476	700	629
90	90	40	40	26		24	40	40	90	90
C6	gut	C6	gut				gut	C6	gut	C6

352.57	352.13
432	476
C6	gut

351.64	352.09
525	480
gut	C6

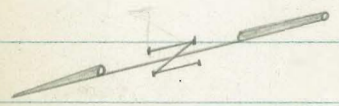
π 356<sup>89</sup>

Roberts  
Cota  
Moore  
Pollen  
6-24-52  
WD.# 32091

X-Section Jennings Street  
Silvergate to Albion  
T.P. 26 pg. 22

Albion St.

Opening?



28.76

36.50

33.20

25.1'

50.57

\* chisel core in NE Cor.  
conc. Driveway

Fd. Conc. Mon.  
1 + 87.54 (T.P. Dist.)

\* chisel core in NW Cor.  
conc. Driveway

Jennings Street  
Opening?

0700

Fire Hydrant  
25.5'

25.0'

Fd. Condition

Silvergate Ave.

35'

25'

87.26

5

INDEXED  
Lew  
JUN 25 1952



Cont'd From Page 5

Lt.

8

Rt.

6

0-175

27<sup>L</sup> Lt & 2<sup>E</sup> Conc Walk

276.73

273.43

275.43

275.58  
3.65  
272  
cont

0-21

25' Lt begin conc. D.K. Wall

25  
25  
Top

3.8  
25  
Bot

3.8  
25  
GRD

0-25.5

13' Rt to center Fire hydrant

30  
35  
276.23

35  
25  
274.73

4  
275.23

3.8  
25  
275.43

2.8  
50  
276.43

2.1  
10  
277.13

0-35

Mon. Line Silvergate

8.6  
35  
270.63

7.9  
25  
271.33

6.9  
10  
272.33

6.3  
272.93

6.5  
20  
272.73

5.9  
25  
274.23

4.7  
35  
274.53

0-60

Westerly Line Silvergate

11.4  
35  
267.83

11.4  
25  
267.83

11.1  
11  
268.13

10.3  
268.93

10.0  
5  
269.23

10.0  
25  
269.23

8.6  
35  
270.63

-1-10

13.6  
35  
265.63

13.4  
25  
265.83

12.8  
17  
266.43

12.1  
8  
266.13

12.4  
266.83

11.9  
267.33

11.7  
25  
267.53

9.5  
30  
269.73

9.0  
35  
270.23

-1-60

TBM

5.03

279.23

274.20

3-Nails P.R. #P3601

Jennings & Silvergate 58267 Pg 79

279.23

Contd From Page 6

Lt

R

R 7

0+82 27<sup>3</sup> Rt End Drive

0+72 26' Lt Begin cypress Hedge

0+67 27<sup>3</sup> Rt begin conc Drive

0+63<sup>E</sup> 26' Lt & 14' Conc Drive

0+56<sup>E</sup> 25' Lt End conc. BK Wall

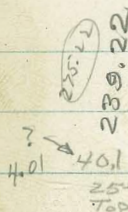
0+50

0+37<sup>E</sup> 17<sup>3</sup> Lt to center P. Pole # C 3580

0+05 47<sup>6</sup> Rt & 3' curving Conc. Walk

0+00 Ely Line Silvergate

27923A



269.65	271.85	270.20	272.03	271.99
7.38	7.24	7.03	7.24	7.24
27 <sup>3</sup>	43 <sup>3</sup>	27 <sup>3</sup>	43 <sup>3</sup>	43 <sup>3</sup>
conc	Floor	conc	Floor	Floor
271.23	271.65	271.43	270.23	271.83
7.58	7.2	7.8	9.0	7.4
26 <sup>1</sup>	26 <sup>1</sup>	25	25	35
conc	conc			
273.23	273.33	271.93	270.23	270.93
6.0	5.9	7.8	9.0	8.3
25	18		25	28
275.93	275.73	275.13	274.53	274.63
33	35	41	47	46
25	10		25	35
				274.65
				458
				476
				conc
				274.65
				275.03
				42
				50

27923A



check

4.82 264.41 = 264.43

chisel cross in conc. Driveway 33.20' from Mon. GB267 pg 79

3+27

245.73  
23.5'

2+95

Edge Cliff

10.3  
25' 258.93

10.5 258.73

10.0  
25' 259.23

2+50

8.6  
25' 260.63

8.4 260.83

8.1  
15' 261.13

7.3 261.93

7.2  
25' 262.03

2+12

252 Rt End Drive

showing no more improvements

264.66

4.87  
252  
conc

264.36

264.83

1+96

252 Rt begin Conc Drive

4.57  
252  
conc

4.40  
43  
flow

264.83

264.73

1+89.34

Mon. Line Albion

8.8  
100 260.43

7.0  
50 262.23

6.0  
25 263.23

5.1 264.13

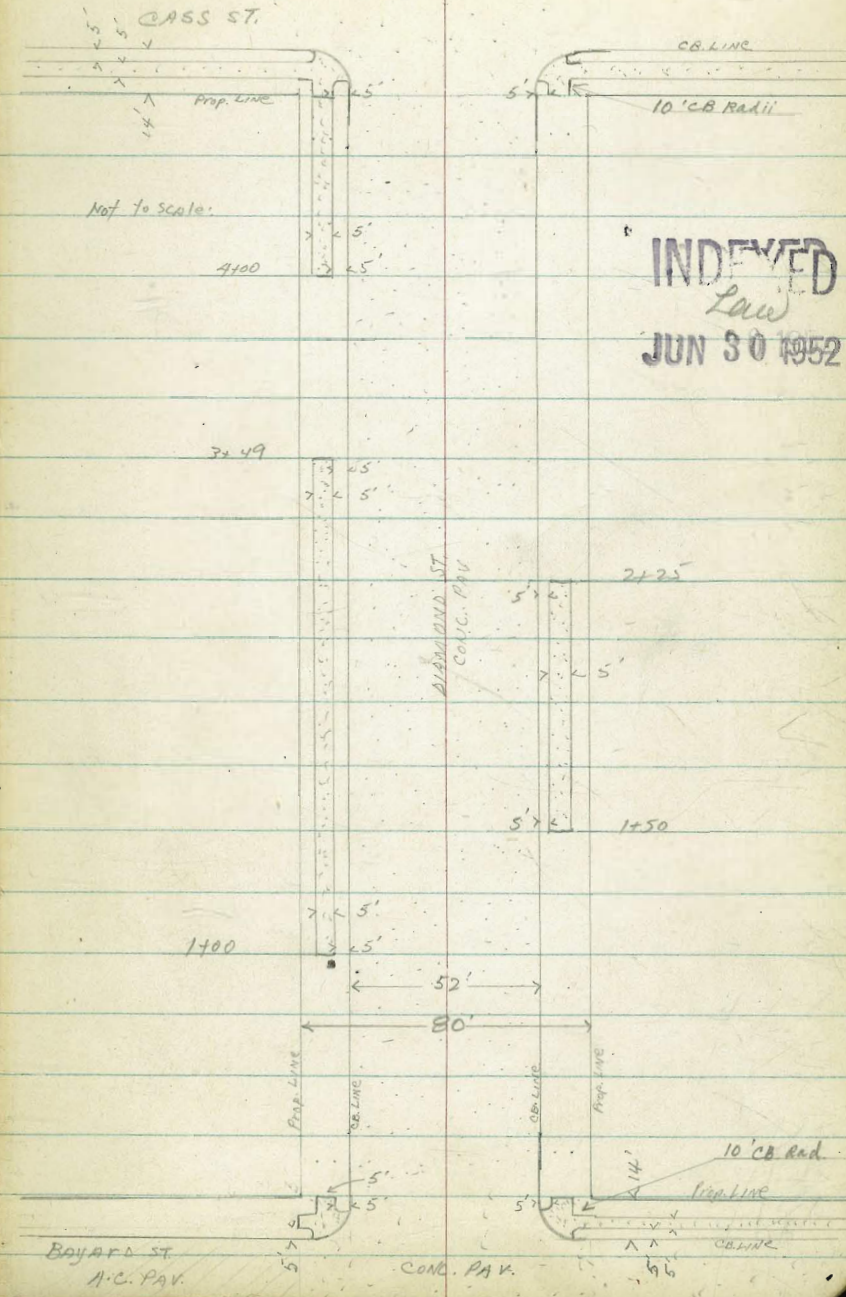
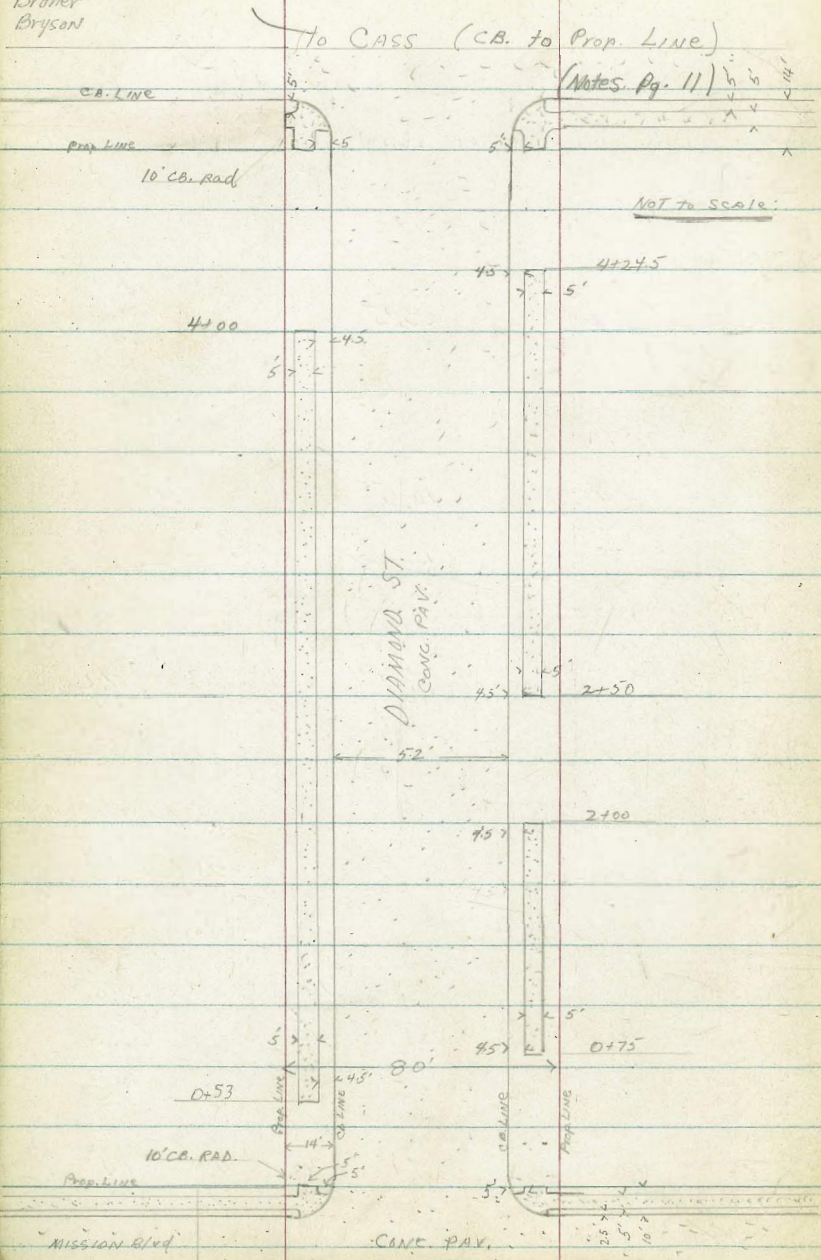
4.8  
14 264.43

4.4  
17 264.83

4.4  
25 264.83

4.5  
35 264.73

6-26-52  
 Clark, Shephard, W.O. 32144 X-SECT. DIAMOND - MISSION Blvd  
 Croner Bryson



X-SECT. DIAMOND - MISSION Blvd.

to CASS (Curb to P. Line)  
(R DIAMOND For Alignment)

1400			
0+98.5	35.5' RT & 2.5 CONC WALK		
0+85	35.5' LT & 4' CONC WALK + Steps		
0+76.5	35.5' RT & CONC WALK 3' wide		
0+75	Req 5' CONC. WALK RT (30.5')		
0+63	27.5' LT Post		
0+61.5	27.5' LT MAIL Box		
0+60	27.5' LT " "		
0+53	Req 5' CONC WALK 34.5' LT		
0+50			
0+00 = E/W Line	MISSION Blvd.		
10.08	41.00	30.92	S/W

LT.	RT
33.90 710 40	32.00 9.00 TP CB
33.32 768 38.5 0 WALK	32.07 8.97 30.5 E. WALK
33.18 798 36 TPCB	32.22 8.80 30.5 E. WALK
33.02	32.20 8.78 35.5 WALK
	32.35 8.67 40 Prop
34.57 6.43 40 TP Step	
33.52 7.48 38.5 WALK	
33.28 7.72 35.5 WALK	
	31.90 9.10 35.5 CONC
	31.82 9.18 30.5 E. WALK
	31.90 9.10 35.5 CONC
	32.01 8.99 40 CONC
	32.01 8.99 40
33.80 7.4 40	
32.95 8.05 36 E. WALK	
32.80 8.20 31 E. WALK	
32.56 8.44 26 TPCB	
32.51 8.49 26 TPCB	
32.70 8.38 40	
32.28 8.72 36 E. WALK	
32.23 8.77 31 E. WALK	
32.02 8.98 26 TPCB	
31.51 9.49 26	
31.04 9.26 36 TPCB	
31.16 9.84 31 E. WALK	
31.20 9.80 36 E. WALK	
31.60 9.44 40	
31.01 9.17 40	

B.P. MISSION Blvd + DIAMOND 41.00

		LT.	RT.
2+27	£ 2.5' PARKING WALK LT. (CB. to house)		
2+24	border shrub 1.5' BK CB RT.		
2+17	35.5' RT £ 3.0' CONC WALK		
2+00	30.5' RT END 5' CONC SIDE WALK		
1+93.5	£ 2.5' WALK (EXTENDS BK SIDEWALK TO HOUSE)		
1+91.5	£ 3.0' WALK LT. (EXTENDS CB TO HOUSE)		
1+65	£ 3.5' WALK RT. (BK SIDEWALK TO HOUSE)		
1+53.50	£ 2.0' PARKING WALK LT. (CB. TO HOUSE)		
1+50			
1+34	£ 2.5' CONC. PARKING WALK LT. (CB TO HOUSE)		
1+29	£ 3.5' CONC PARKING WALK RT. (CB TO HOUSE)		
1+08	£ 10.5' DRIVE RT.		

34.40  
 34.35  
 34.25  
 34.11

32.96  
 33.14  
 33.35  
 33.40  
 33.40

34.20  
 33.75  
 33.65  
 33.57

32.45  
 32.49  
 32.52  
 32.70

41.00







2400

1788

1784.5

1780.5

1760.5

1750

1735

1725

1707.5

1700

0765.5

0750

0740

£ 3' walk RT (CB to sidewalk)

£ 2.5' walk RT (BK sidewalk to house)

£ 3' walk LT (BK sidewalk to house)

£ 8' Drive LT.

36' RT Bq. 3' picket Fence

31' RT Bq. 5' conc. Sidewalk

£ 3' Brick walk RT 36.50

£ 3' conc. park walk LT. (CB to House)

£ 8' Drive LT.

31' LT Bq. 5' conc. sidewalk

£ 4' conc walk 40' LT.

£ 10' conc. drive 38' RT.

526  
40

366  
36  
BW

573  
31  
EW

586  
26  
CB

576  
40

634  
36  
BW

643  
31  
EW

655  
26  
CB

67  
40  
LT

710  
36  
BW

712  
31  
EW

719  
26  
CB

677  
50  
WALK

710  
40  
EDGE  
WALK

767  
26  
CB

75  
40

788  
26  
CB

936  
26  
CB

952  
27  
CB

888  
38  
E. drive

882  
40

844  
55  
Floor

46.45

LT.

£

RT.

41.19

40.79

40.72

40.59

30.85

40.11

40.02

39.90

39.75

39.35

39.33

39.26

38.95

38.64

37.69

37.09

36.93

37.57

37.66

37.63

38.81

742  
26  
CB

740  
31  
EW

729  
36  
CW

733  
40

810  
26  
CB

803  
31  
EW

790  
36  
CW

800  
40

830  
26  
CB

803  
31  
EW

790  
36  
CW

800  
40

830  
26  
CB

803  
31  
EW

790  
36  
CW

800  
40

876  
26  
CB

803  
31  
EW

790  
36  
CW

800  
40

936  
26  
CB

952  
27  
CB

888  
38  
E. drive

882  
40

844  
55  
Floor

37.09

36.93

37.57

37.66

37.63

38.81

39.03

39.05

39.16

39.15

38.35

38.42

38.55

38.45

38.15

38.74

38.80

38.80

LT. RT.

3+49	31' LT END 5' CONC WALK LT.	42.85	42.74	42.61	42.49		
3+48.5	2' Conc WALK RT. (CB to House)	3.6 40	3.71 36	3.84 31	3.96 26 CB	40.98	41.25
3+43.5	2.5' WALK LT. BK. Sidewalk to Dwelling					5.47 26 CB	5.20 40 WALK AL
	9.5' Conc. slab LT. CB to Edge WALK						
3+05	10' Drive RT.					6.57 26 LIP DRIVE	6.0 31 BK. DRIVE
3+04	(Conc) on LT. 8' Slab - CB to Edge WALK + 2' (Conc) ON LT. BK. Sidewalk to House	42.35	42.31	42.03	41.91	40.34	40.35
3+00		4.1 40	4.32 36 B.W	4.42 31 E.W	4.54 26 CB	6.11 26 CB	6.10 40 DIRT + GRASS-LAY
2+99	Shrub 2' BK. CB LT.						
2+91.5	8' Drive LT.						
2+85	2' Shrub 2' BK. CB LT.	41.65	41.41	41.39	41.21	39.67	39.45
2+50		4.8 40	5.04 36	5.12 31	5.24 26 CB	6.78 26 CB	7.00 40
2+31	3' Brick WALK LT (BK. sidewalk to house)						
2+25	36' RT end 3' Picket Fence 3.0 RT END 5' CONC. Side WALK					39.30	39.45
						7.15 26 CB	7.00 31 E.W
							6.91 36 B.W
							7.00 40

416.45

LT

Q

RT

17

425.5 } Q E. Ribbon  
 4433 } Q 10' DRIVE RT 1.5' Ribbons  
 4729.5 } E W. Ribbon  
 4430 } E .21 DRIVE LT.  
 36' RT END 5' Hedge

T. P. 5.95 49.70 2.70 43.75

4420.5 } Q EAST 1.5' Ribbon RT  
 4418 } Q 10' DRIVE RT + 1.5' Ribbons  
 4415.5 } E WEST 1.5' Ribbon RT

4403 } 36.50 LT Beg Rank Fence  
 4400 } 31' LT Beg 5' Conc Sidewalk

3791 } Q 3' WALK (CB to House)  
 3774 } 36' RT Beg 5' Hedge  
 3751.5 } Q 2' Conc WALK RT (CB to House)  
 3750

43.65  
 29 43.25  
 70 36 B.W  
 325 43.20  
 31 E.W  
 331 43.14  
 26 C.B

41.61  
 749 42.21  
 31 Ribbon  
 8.09 7.54  
 26 LIP 42.22 31  
 7.48 7.13  
 31 42.35  
 Ribbon Ribbon

49.70  
 41.44  
 5.01 42.16  
 26 4.33  
 LIP 31 Ribbon  
 Drive 4.29  
 42.18  
 4.27 42.34  
 31 42.35  
 Ribbon 4.11  
 40 Ribbon

41.70  
 4.75 41.02  
 26 42.09  
 C.B 40  
 4.89 4.36 4.06  
 26 40 50  
 C.B WALK WALK

41.01  
 5.45 41.43  
 26 40  
 C.B W.BT  
 41.25  
 5.44 5.2  
 26 40  
 C.B

(See pred. pg)

46.45

Marks Reduced  
by Douglas -  
7.52

check: 12.20 37.50 = 3750 = N/W BP DIAMOND + BAYARD

5400

= W/LY Line Cass  
362 RT. END 4' CONC. WALK

45.00  
44.66  
44.56  
44.50  
4.7  
5.04  
5.14  
5.20  
40  
36  
31  
26  
EW  
CB

42.98  
43.04  
43.08  
43.07  
6.72  
6.66  
6.62  
6.63  
26  
31  
36  
40  
CB  
E.W.  
B.W  
4' WALK

4491

37' LT. END RAIL-Fence LEFT

4475

362' RT Beg. 4' CONC WALK (extends to Bldg on Prop. L)

4471

4' CONC WALK LT. (BK Sidewalk to house)

4439

2' 3' CONC WALK RT (CB to house)

4450

49.10  
43.97  
43.90  
43.84  
5.4  
5.78  
5.80  
5.86  
40  
36  
31  
26  
B.W  
E.W  
CB

42.41  
42.57  
42.87  
7.29  
7.17  
6.83  
26  
31  
40

49.70

42.31  
42.80  
7.39  
26  
CB  
6.9  
40

SMITH 9-30-52  
Allen  
Parks  
Taylis  
W.O.# 32091

X-sec Jennings-Albion 200' ELY

X-sec Albion-Jennings to  
Talbat

28.09 21.91 50'  
2480' JOHN ST

2450'

30'



Albion ST

Note: Alley is used

15'

See TIE OUT!

6B267

opening  
Sheet 4334-B

30'

Replaced with  
CBSPike barrel  
all 1/2" sea

opening  
Sheet 4334-B

25'

Jennings  
To West

36.50

29.76

33.76

PL 183  
extended  
4500 ORINGS

INDEXED  
OCT 10 1952

19

642028

Sail Sample  
& Inez + Albion

Fd. Mem  
549028  
26.44

Inez

30'

546028

30'

opening  
Sheet 4365-B

Albion ST

Alley is not used

Revised by  
de laun  
10-21-52

3402

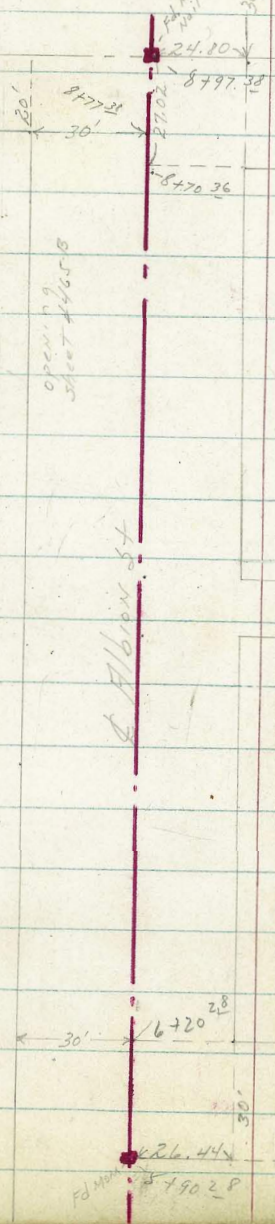
27.93

30'

30'

2480'

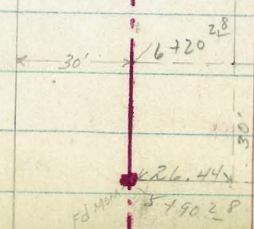
John ST



Nyline Pl 183  
Talbot St

Ally is used  
for gully  
to south

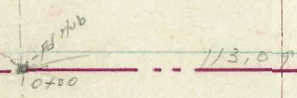
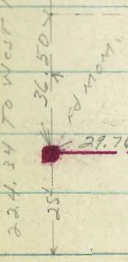
Albion St



J Inez

Albion St

224.34 TO WEST MAIL FOUND & CHECKED



Nyline Pl. 183  
Jennings St

X-sec JENNINGS

LT = NORTH

RT = SOUTH 21

0-06-17' RT Begin 8' wide Floral planting

0-07-26° RT ely (end) Driveway

0-09-24° RT & Dead Marr

0-09-15° RT & 14" guy pole # JP3499

0-24-26° RT = Begin Driveway

0-26<sup>76</sup> 3' RT = & SMH

0-29<sup>76</sup> & Albion

0-52-28° LT = & 14" Power Pole # 900

0-57-25° RT = & 4' wide Walk

0-59<sup>76</sup> Wly Albion ST

BM. 4.61 269.04 x

chisel X 3320 From  
MOM - 6B267 - P.79  
264.43 - FB 2200  
9.

264.38	264.61
4.66	4.45
26.0	36.0
Drive	Drive

264.68	264.74
4.36	4.30
26.0	36.0
Drive	Drive

262.7	263.2	263.6	264.1	264.20	264.8	264.8
6.3	5.0	5.0	4.9	4.84	4.2	4.2
36.5	25	15	15	3 P.M.	25	35
PROP				264.6	PROP	

264.24	264.64
2.80	2.80
25.5	35.5
WIK	WIK

264.6	264.4	263.4	264.7	265.4	266.5	266.7
4.4	4.6	5.6	4.3	3.5	2.5	2.3
36.5	25	15	15	25	25	35
PROP				PROP		

269.04 x



0463- 3' RT SMH

0450

0438-17<sup>3</sup> RT=  $\phi$  3' wide CONC walk

0429-38<sup>7</sup> LT=  $\phi$  9<sup>6</sup> CONC walk + steps

0425

0420-24<sup>1</sup> RT= Begin 8" CONC Wall - Board Fence Atop

0408-17<sup>2</sup> RT=  $\phi$  Dead Man

0400 Fly Line Albion ST

LT = North

$\phi$

RT = South 22

259.53  
9<sup>1</sup>  
3  
RIM

260.2	259.9	259.7	260.0	260.4	261.0	261.3	261.5
8 <sup>8</sup>	9 <sup>5</sup>	9 <sup>3</sup>	9 <sup>0</sup>	8 <sup>6</sup>	8 <sup>0</sup>	7 <sup>7</sup>	7 <sup>5</sup>
36.5	25	15		15	23	25	35

261.62	261.80
7 <sup>4</sup> <sub>2</sub>	7 <sup>2</sup> <sub>4</sub>
17 <sup>3</sup> <sub>1</sub>	27 <sup>3</sup> <sub>3</sub>
WIK	WIK

261.29	260.84
7 <sup>7</sup> <sub>5</sub>	8 <sup>2</sup> <sub>0</sub>
40 <sup>6</sup>	38 <sup>2</sup>
TOP	WIK
PARCEL	

261.0	260.8	260.8	261.2	261.5	262.4	262.3	262.5
8 <sup>0</sup>	8 <sup>2</sup>	8 <sup>3</sup>	7 <sup>8</sup>	7 <sup>5</sup>	6 <sup>6</sup>	6 <sup>7</sup>	6 <sup>5</sup>
36.5	25	15		15	24 <sup>1</sup>	25	35

263.89	262.1
5 <sup>1</sup> <sub>5</sub>	6 <sup>9</sup>
24 <sup>1</sup>	24 <sup>1</sup>
TOP	6 <sup>rd</sup>
Wall	FOOTING

261.7	261.9	262.1	262.5	262.8	263.5	264.5
7 <sup>3</sup>	7 <sup>2</sup>	6 <sup>2</sup>	6 <sup>5</sup>	6 <sup>2</sup>	5 <sup>5</sup>	4 <sup>5</sup>
36.5	25	15		15	25	35
PROP					PROP	

269.04  $\pi$

1440

141309

Non- P.L. Cor.

TP<sub>1</sub>

0.09 256.61 - 12.52 256.52

1400

0491-23° RT= end 8" wide Conc wall

0478<sup>6</sup> Guardrail fence 90° to line

0476- Top Bank

0465- 21° RT end floral planting 6' wide

LT= North

RT= South 25

232.8	233.7	235.6	237.3	236.3	237.8
23 <sup>8</sup>	22 <sup>9</sup>	21 <sup>0</sup>	19 <sup>3</sup>	20 <sup>3</sup>	18 <sup>8</sup>
50	36 <sup>5</sup>	20		25	50
	Prof				

245.1	243.7	240.7	243.0	243.9	244.3	244.6	245.9	249.9
11 <sup>5</sup>	12 <sup>2</sup>	13 <sup>2</sup>	13 <sup>6</sup>	12 <sup>7</sup>	12 <sup>3</sup>	12 <sup>0</sup>	10 <sup>7</sup>	6 <sup>7</sup>
50	36 <sup>5</sup>	30	28	15		15	25	50
	Prof							

				<u>256.61</u>				
252.0	248.6	248.6	249.8	250.4	253.0	253.2		
17 <sup>0</sup>	20 <sup>4</sup>	20 <sup>4</sup>	19 <sup>3</sup>	18 <sup>6</sup>	16 <sup>0</sup>	15 <sup>8</sup>		
50	36 <sup>5</sup>	30	15		25	50		
	Prof							

255.0	260.13
14 <sup>0</sup>	8 <sup>9</sup>
23 <sup>4</sup>	23 <sup>4</sup>
Footing	Top Wall

258.4	258.8	258.9	258.7	258.8	259.3	259.2	258.9
10 <sup>6</sup>	10 <sup>2</sup>	10 <sup>1</sup>	10 <sup>3</sup>	10 <sup>3</sup>	9 <sup>7</sup>	9 <sup>0</sup>	10 <sup>1</sup>
46	36 <sup>5</sup>	25	15		15	25	25
	Prof						

269.04

LT = NORTH

RT = SOUTH 24

Start

BM

2.05

241501 x 33.20 from  
M OAM

264.44

TP<sub>2</sub>

9.97

266.49

0.09

256.52

1468

221.9  
342  
50

223.4  
333  
36.6  
Prop

225.3  
373  
20

226.6  
3010

225.9  
302

226.4  
302  
50

256.61 x

X-sec Hkbrion ST - Jennings to  
Talbot  
W 0 4 32 0 91

LT = West

Right: east

INDEXED  
RAW  
OCT 10 1952

1+16-21<sup>E</sup> LT = wly Conc Block Fence L & end planting

1+12-22<sup>o</sup> LT =  $\phi$  15" power pole # 948

1+00

262.5	262.0	261.6	260.1	259.0	259.1	258.7	259.1	259.2	258.8
36	41	45	60	71	70	74	70	69	73
45	30	22	15	13		17	18	30	45

0+61-22<sup>E</sup> RT = wly<sup>id</sup> Conc Block Fence L to line

0+50

264.0	263.5	261.5	260.6	261.0	260.4	260.7	260.7	259.9
21	26	46	55	51	52	54	55	62
45	30	15	13	51	18	19	30	45

0+43-29<sup>L</sup> RT =  $\phi$  15' Wide Conc Driveway

260.77	260.43
5-31	5-64
291	394
Drive	Drive

0+31-20<sup>o</sup> RT  $\phi$  6" Pole JP # 901

0+11-20<sup>o</sup> RT =  $\phi$  Deadman

0+00 = Nly line JENNINGS ST

Begin planting  
25<sup>o</sup> RT (Floral)

264.8	264.6	263.6	262.0	262.7	262.1	261.8	261.1
13	75	25	41	34	40	43	50
40	30	15	13		18	30	50

0-7-22<sup>E</sup> LT =  $\phi$  15" Power Pole # 900

0-10-31<sup>E</sup> LT =  $\phi$  4' wide Hedge

B.M. 165 266.08

CHISEL CROSS 33.20.00  
Mon. Jennings & Hkbrion  
S B 267-P 79  
264.43

266.08 \*

LT = West

⊘

RT = East

26

2422 - 30° LT & 16' Wide Conc Drive

258.72  
736  
40.2  
Drway

257.76  
832  
30.2  
Drway

2415 - 20° Lt = end floral plant

2415 - 20° Rt = begin floral + shrub planting

2406 - 28° Rt = & 8' Wide Conc Drive

255.11  
1097  
289  
Drway

255.22  
1086  
389  
Drway

2400

258.8  
73  
45

258.6  
75  
30

256.9  
92  
18

255.6  
105  
12

255.6  
105  
10

255.1  
110  
18

255.4  
107  
19

255.1  
110  
30

255.0  
111  
40

1492 - 18° Rt = wly end brick wall L &

1475 - 19° Rt = begin floral planting

1472 - 30° Lt = & 14' wide Conc Drive

259.13  
695  
40.2  
Drway

258.91  
717  
30.2  
Drway

1465 - 28° Rt = & 3' Conc. Walk

256.96  
912  
282  
Walk

256.97  
911  
382  
Walk

1450

1425 - 31° Lt = end 4' wide cypress hedge

1414 - 20° Rt = & 12" Tel pole # 5P 915

260.1  
60  
40

260.0  
61  
30

258.4  
71  
16

257.6  
85  
13

257.3  
88  
8

256.6  
95  
18

257.0  
91  
19

256.9  
92  
30

257.1  
90  
45

266.08π

LT = West

Rt = east 27

2433 - 23' Rt =  $\phi$  12" Euc. tree

2421 - 24' Rt =  $\phi$  12" Euc. tree

2410' Nly line John St. (16' Rt begin (shrub planting))

253.8	253.9	253.8	251.2	251.4	251.5	252.3	252.4	252.2	251.5	249.4	246.0
26	25	26	52	50	48	44	40	42	42	70	104
45	30	22	13	15	16	20	53	78	103	128	178
						PIP					Comp

2482 - 45' Rt =  $\phi$  14" power pole - # 3591.

2480' - 3' Rt =  $\phi$  SMH -  $\phi$  John St.

254.7	254.7	254.7	253.0	252.0	252.6	252.66	252.5	253.4	249.7	247.7
12	12	12	34	44	38	24	22	30	67	87
45	30	23	16	14	38	15	17	30	103	128
						3 SET SMH RIM				Rim Canyon

TP, 3.30 256.40 12.98 253.10

256.40

2450' sly John St.

2450' 18' Rt. end floral + shrub planting

2446 = 202 Rt =  $\phi$  8" tel pole 477625H

2446 - 21' Lt =  $\phi$  14" power pole # 998

256.0	256.0	256.0	254.4	253.6	253.7	253.5	254.0	254.2
10	10	10	11	12	12	12	12	11
45	30	25	16	13	18	19	28	09

266.08 X

Lt = west

Rt = east

21

4132 - 21<sup>6</sup> Rt = end 2' Rail fence

4125

4120 - 28<sup>5</sup> Lt = end 3' Rail fence

4120 - 22<sup>0</sup> Lt =  $\phi$  15" power pole #102

4113 - 27<sup>2</sup> Rt =  $\phi$  10' wide conc Drive Way

<sup>248.8</sup> 76	<sup>248.5</sup> 79	<sup>246.8</sup> 96	<sup>246.7</sup> 97	<sup>246.9</sup> 95	<sup>250.0</sup> 64	<sup>250.2</sup> 62	<sup>250.1</sup> 57
45	30	14		15	20	30	40

<sup>249.46</sup> 69	<sup>250.64</sup> 57
272 Drwa	372 Drwa

4100 - 38<sup>5</sup> Lt =  $\phi$  18' wide Drive Way

3496 - 21<sup>5</sup> Rt =  $\phi$  9" tel pole # 92670 H.

3483 - 24<sup>2</sup> Lt =  $\phi$  6" Euc. tree,

3470 - 24<sup>0</sup> Rt =  $\phi$  6" Euc. Tree,

3470 - 22<sup>0</sup> Rt = begin 2' Rail fence.

3459 - 23<sup>0</sup> Lt =  $\phi$  2" pine tree.

3458 - 24<sup>5</sup> Rt  $\phi$  8" Euc. tree

3452 - 20<sup>6</sup> Rt  $\phi$  3' wide conc walk.

<sup>249.85</sup> 65	<sup>249.83</sup> 67	<sup>249.7</sup> 62	<sup>249.3</sup> 71	<sup>248.1</sup> 83	<sup>247.9</sup> 85	<sup>247.8</sup> 86	<sup>251.0</sup> 51	<sup>251.1</sup> 53	<sup>251.3</sup> 51
185 Drwa	384 Drwa	30	21	13		14	21	30	45

<sup>251.62</sup> 478	<sup>251.76</sup> 464
206 WIK	306 WIK

3451 - 22<sup>3</sup> Lt =  $\phi$  1" Acacia tree

3450 - 27<sup>7</sup> Lt = begin 3' rail fence

<sup>250.7</sup> 57	<sup>250.8</sup> 56	<sup>250.6</sup> 58	<sup>249.8</sup> 65	<sup>250.0</sup> 64	<sup>249.8</sup> 66	<sup>250.6</sup> 58	<sup>251.8</sup> 46	<sup>251.7</sup> 42	<sup>251.7</sup> 42
15	30	16	13		15	17	23	30	40

256 40 x

LT = West

⊕

RT = east

29

5430

65	48	50	81	71	9	67	62	42	42	36
239.0	240.7	239.7	237.1	235.1	238.6	238.8	238.6	240.8	241.3	241.9
48	30	23	21	10	10	17	24	27	70	

5400

40	30	27	24	22	10	46	43	11	07	10
242.5	243.2	243.4	242.5	240.2	241.2	241.4	241.3	244.4	244.8	246.5

4491 - 26° RT = ⊕ 8' wide conc Drive

023	+127
262 Drive	362 Drive

TP<sub>2</sub>

175 245.46 12.69 243.71

245.46

4485 - 19° RT = end planting

4475

117	107	114	137	129	128	113	91	89
244.7	245.7	245.0	242.7	243.5	243.2	245.1	247.3	247.5
45	30	23	20	14	19	27	45	

4467 - 16° RT = ⊕ 3' wide Brick walk + steps

11.55	906	523
160	270	370
5200 bottom		Walk

4450

85	87	95	118	111	111	96	85	85	85
248.0	247.7	246.8	244.6	245.3	245.3	246.8	247.9	247.9	247.9
45	30	22	18	15	18	27	30	75	

256.40



Lt = West

Et = east

6465-18° LT begin floral planting -  
Row sprinklers at 25' LT.

6460-32° Lt = 10' conc drive

225.86	226.25	226.3	226.6	228.0	226.5	229.7	230.8	231.2
952	913	91	88	74	68	57	46	13
Dr way	Dr way	30	16	14	16	26	40	

6420. Nly line Inez st.

228.6	229.8	229.4	230.8	231.2	232.3	233.2	234.4	235.4
68	56	60	46	42	31	21	10	01
45	30	18	16	14	15	26	50	81

6409. 31° LT & 3' conc walk

229.76	230.99
62	39
41.9	31.9
WIK	WIK

5490<sup>28</sup> - Et Inez st.

229.8	232.2	232.4	232.1	233.3	233.7	234.8	235.6	237.2	237.9
46	32	30	33	21	17	06	03	18	25
46	30	25	16	14	16	26	50	81	

TP3 1.00 235.38 11.58 233.88

5475-32<sup>34</sup> 12' Conc Drive

231.29	233.05
77	124
42.5	32.5
Dr way.	Dr way

5460<sup>28</sup> sly line Inez st.

5453-26° LT & 12" power pole #1084

5448-24° Rt = 8" Tel pole # JP1047

235.4	236.0	236.0	234.6	235.0	236.2	236.2	237.1	238.1	238.9
98	95	95	102	95	93	84	74	66	66
40	30	23	20	10	14	26	50	81	

245.46 X

Lt = west

Rt = east 31

7460 - 18' Rt begin floral planting

7454 - 25' Lt = begin 6' board fence

7452<sup>8</sup> Nly line alley to east

68	52	41	51	46	46	38	07
50	30	24	15	16	16	25	50
2206	222.2	223.2	222.1	222.8	222.8	223.6	226.7

7437<sup>8</sup> sly line alley to east

46	39	42	42	3	6	27	0
50	30	25	18	15	15	26	50
222.8	223.5	223.2	222.7	223.6	223.8	224.7	227.4

TP4 3.16 227.35 11.19 224.19 #1074

227.357

7431 - 21' Lt & 15" power pole # 1074

7425 - 32' Lt = & 15' conc. driveway

7417 - 18' Lt end floral plant (25' Lt = end Line Sprinklers)

7405 - 21' Lt = & 8" tel pole # JP 1073

7400

102	102	101	11	99	92	82	64	54
40	30	20	16	15	19	26	40	
224.7	224.7	224.8	224.3	225.5	226.2	227.0	229.0	230.0

6490 - 11' Rt = & 10' wide conc + brick drive

91	88	84	62
11	13	17	27
Dr.	Dr.	Dr.	Dr.
226.21	226.56	226.99	228.59

237.38 T

LT = West

Rt = East

32

TP5 5.08 222.99 9.44 217.91

222.99 X

6" Rt = 2x2 Gas + Elec Vault.

22" Rt = end floral planting

8+70<sup>36</sup> 3/4 line to bot easterly.

217.4	217.9	217.1	216.8	218.1	218.20	218.5	219.0	221.0	220.7
10 <sup>0</sup>	9 <sup>5</sup>	10 <sup>3</sup>	10 <sup>5</sup>	9 <sup>8</sup>	9 <sup>5</sup>	8 <sup>9</sup>	8 <sup>4</sup>	6 <sup>4</sup>	6 <sup>7</sup>
50	30	23	18		6 <sup>4</sup>	15	24 <sup>8</sup>	30	40

Vault  
R120

8+53 - 23" Rt = 2 F.H.

8+50 - 21" Rt = 8" Tol pile # 92673H

8+38 - 32" Rt = Single Garage Conc Floor

No apron

221.41  
5 94  
122  
Floor

8+35

218.0	218.7	218.9	217.9	218.6	219.3	221.2	221.4
9 <sup>4</sup>	8 <sup>7</sup>	8 <sup>5</sup>	9 <sup>5</sup>	8 <sup>8</sup>	8 <sup>1</sup>	6 <sup>2</sup>	6 <sup>0</sup>
50	30	20	17		15	25	30

8+05 - 19" Rt = 3' conc walk + steps

221.25  
6<sup>10</sup>  
Bottom  
step

223.20  
4<sup>15</sup>  
25<sup>6</sup>  
Walk

223.27  
4<sup>08</sup>  
52<sup>6</sup>  
Walk

8+00

219.6	220.6	220.5	219.7	219.5	220.5	221.4	223.2	223.1
7 <sup>0</sup>	6 <sup>8</sup>	6 <sup>8</sup>	7 <sup>7</sup>	7 <sup>1</sup>	6 <sup>9</sup>	6 <sup>0</sup>	4 <sup>2</sup>	4 <sup>3</sup>
50	30	20	17		15	19	25	40

7+85 - 24" Rt = end 6' board fence

227.35 X

Lt = West

Rt = East

NOV 10 1952

B.M.

Max Albion + Talbot  
See FR 1699 - P 66

5.68 217.31 (217.35)

8+97<sup>38</sup> - Talbot st.

213.91	214.76	215.71	216.63	217.30	217.93	218.49	218.89	219.67	220.31	220.85
908	823	728	636	569	506	450	410	332	260	214
100	75	50	30	15	15	248	50	75	100	

8+79 - sly edge AC.

213.95	214.56	215.38	216.29	217.12	217.92	218.55	218.81	219.45	220.40	221.06
904	843	761	670	587	507	444	418	354	279	193
100	75	50	30	15	AC	15	25	50	75	100

8+77<sup>38</sup> - sly line Talbot Westerly

213.8	215.1	215.9	216.4	217.0	217.8	218.6	218.8	219.6	220.9	221.3
92	72	71	66	60	52	42	42	34	21	12
100	75	50	30	15	15	25	50	75	100	

222.99 π

Alley Bk. 37 Ocean Beach

INDEXED

JAN 15 1953

34

1-8-53

W.O. 32070

Sammerneyer

Begg

Oltman

Powell

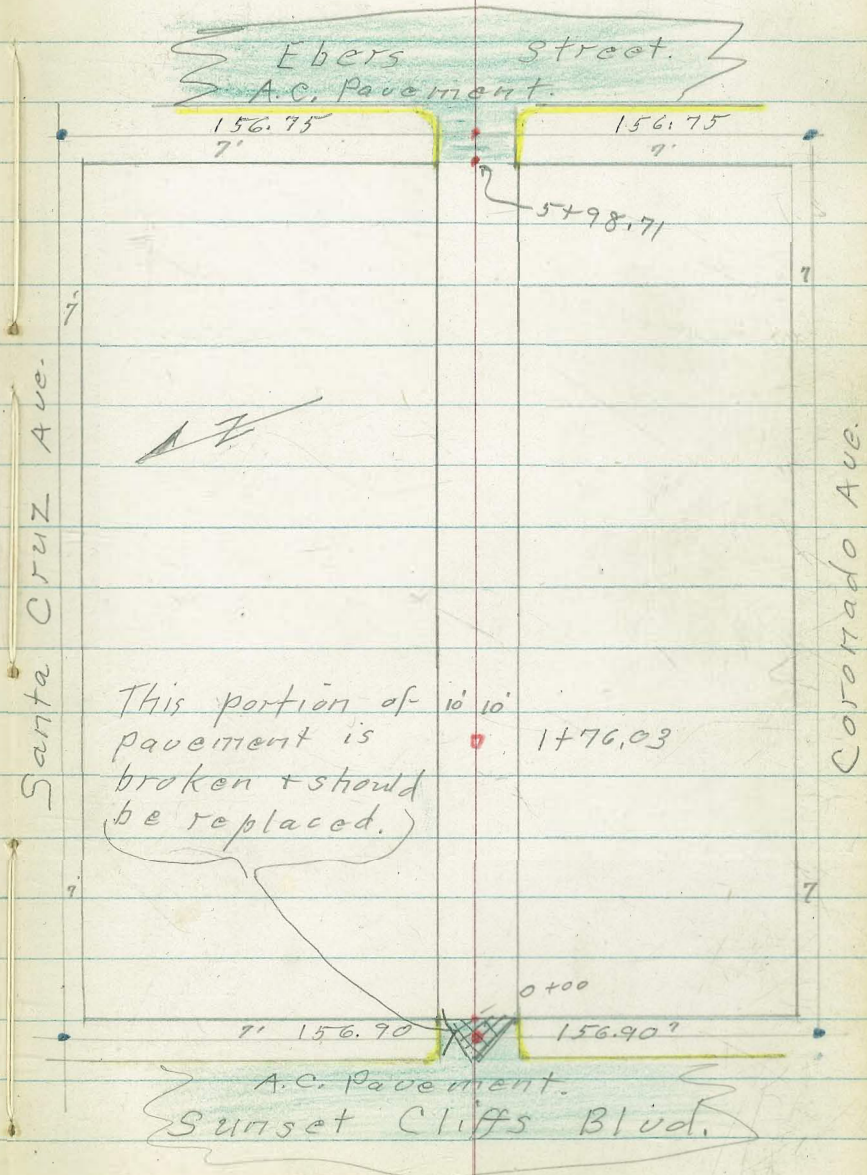
- denotes found L.T.
- " set P.K. nail in pave.
- " " 1/2" + disk

distances chained as shown.

T.W. denotes top of wall.

B.W. " Base of wall, or footing

out to poles = &





Alley Blk. 37. O.B.

T.R. 12.66 76.8 <sup>1</sup>/<sub>2</sub> 0.59 6419  
 { 10<sup>8</sup> Rt = toward alley.  
 with Conc. wall side  
 0+02 { 10<sup>2</sup> Lt. = start steps. built  
 = end curbs. +  
 pavement. (should come out.)  
 start 1/2" thick rock & oil  
 0+00 = Ely. line Sunset Cliffs Blvd.  
 replaced - see page 34.  
 0-06 = ctr. pavement to be

0-10 { 9<sup>1</sup>/<sub>2</sub> Rt. } = E.C. 2' Rad. Cl. Ret.  
 10<sup>2</sup> Lt.

0-12 cont.

{ 12' Rt. } = B.C. - 2' Rad. Cl. Ret.  
 12' Lt.

0-12 = Ely. cl. line Sunset Cliffs Blvd.

0-30 = Ely. Sunset Cliffs Blvd.

10.55 6478 - 54.23

61.35 61.3 61.2 61.2 61.22  
 3.43 3.5 3.6 3.6 3.56  
 10<sup>2</sup> 10 10 10 10.8  
 Bottom of Steps Bottom of Steps  
 61.13 61.01 60.79 60.97 61.08  
 3.65 3.77 3.99 3.81 3.70  
 10<sup>2</sup> 10<sup>2</sup> 97 97 97  
 Cl. C. C. Cl.

60.94 60.60 60.31 60.81  
 3.84 4.18 4.47 3.97  
 10<sup>2</sup> 10<sup>2</sup> 97 97  
 Cl. C. C. Cl. E.C.

55.16 55.52 56.18 56.28  
 6.62 7.26 8.60 8.00  
 70 70 70 70  
 Cl. C. C. Cl.

60.88 60.38 60.43 60.35 60.28 60.22 60.73  
 3.90 4.40 4.35 4.43 4.50 4.56 4.05  
 12 12 10 10 10 12 12  
 Cl. C. C. Cl. B.C. Cl. B.C.

57.29 60.53 60.76 60.58 56.38  
 7.09 4.25 4.02 4.20 3.40  
 70 10 64.78 10 70

S.E. B.P. Santa Cruz + Sunset Cliffs Blvd.

BIK. 37 - O.B.

0+57 - 10<sup>6</sup> RT. = start 4' wide Conc. <sup>steps</sup>

0+56 - <sup>steps</sup> 10<sup>2</sup> Lt. = start 4' wide Conc. 16" diam.  
 8<sup>3</sup> RT. = Pole # A. 4792

0+50

0+41 <sup>75</sup> 12<sup>4</sup> RT. } = 6" wide wall.  
 12<sup>4</sup> Lt. } = 6" wide N. + S. Conc.

0+40 11<sup>2</sup> RT. } = 3' wide walk + drain  
 11<sup>2</sup> Lt. } = 3' wide Conc. Comb.

0+38<sup>5</sup> 10<sup>6</sup> RT. } = end of E + W. walk  
 10<sup>2</sup> Lt. }

0+15 10<sup>1</sup> RT. } = end steps - start  
 10<sup>2</sup> Lt. } conc. walk

	72.2	72.7	72.5	72.6	71.0	71.74
	4.6	4.1	4.3	4.2	5.8	5.11
	10	8		8	10	10 <sup>6</sup>
						top of bottom step
	71.86	71.4	72.5	72.4	71.0	
	4.99	5.4	4.3	4.7	5.8	
	10 <sup>2</sup>	10	8	8	10	
						top of bottom step
	71.0	70.8	70.9	70.7	70.8	70.2
	5.8	6.0	5.9	6.1	6.0	6.7
	25	10	7	6	9	10
	69.5	68.2	69.0	69.2	69.1	69.0
	7.3	8.0	7.8	7.6	7.7	7.7
	12 <sup>4</sup>	12 <sup>4</sup>	10	7	7	10
	T.W.					12 <sup>4</sup>
						T.W.
	68.99	68.90		68.97	69.03	
	7.96	8.05		7.88	7.82	
	21 <sup>2</sup>	11 <sup>2</sup>		11 <sup>2</sup>	21 <sup>2</sup>	
		walk		walk		
	68.83	68.67	68.51	68.7	68.98	
	8.02	8.18	8.34	8.1	7.87	
	10 <sup>2</sup>	10 <sup>2</sup>		10	10 <sup>6</sup>	
	walk				walk	
	67.38	64.10	63.55	64.01	67.32	
	9.55	12.75	13.30	12.84	9.53	
	10 <sup>2</sup>	10 <sup>2</sup>		10 <sup>2</sup>	10 <sup>2</sup>	
	top of steps				top of step	
	on walk		76.84		start walk.	



0498- 10' Lt. = ± 4" drain thru wall

wall on sly. edge of walk.

0493 - 10' Lt. = start 5' high Conc.

wall built on Nly edge of walk.

0487- 10' Lt. = start. 5' high Conc.

T.P. 10.41 86.10 116 75.68  
8" Diam.  
0467 - 10<sup>2</sup> Lt. = pole 309355 H

0464 Cont.

195 Rt. } Car, west front. floor.  
195 Lt. } = 4 doorway to Sing. Conc.  
10<sup>2</sup> Lt. } = top end - Conc. steps.  
10<sup>6</sup> Rt. } = start 3<sup>5</sup> wide Conc. walk.  
(Conc. wall under steps.)

0461

7973					
6.37					
10 <sup>1</sup>					
I.E.					
	7997	790	782	789	789
	6.13	7.1	7.7	7.2	7.2
	10 <sup>1</sup>	10		10	10 <sup>6</sup>
	on walk				
	7908	782	774	761	7633
	7.02	7.7	8.7	8.0	7.77
	10 <sup>1</sup>	10		10	10 <sup>6</sup>
	on walk				on walk.

86.10

	7130	713		706	7063
	5.55	5.5		6.2	6.22
	195	15		15	195
	± Bar.				± Car.
	75.55	75.55	73.9	73.3	73.7
	1.30	1.30	2.9	3.5	3.1
	12	10 <sup>2</sup>	10	10	2.10
	2	top of			106
	walk	steps.			top of
					steps
		73.5	72.8	73.3	74.25
		3.3	4.0	3.5	74.25
		10		10	

76.85

Alley Blk 37.013,

16<sup>5</sup> Rt. = ± 18' wide level Conc. slab.  
1+28 13<sup>2</sup> Lt. = end Conc. apron

82.44  
3.66 17 Gar. Floor  
82.45  
3.65 132 apron  
83.24  
2.86 165

to double Gar

1+14 13<sup>2</sup> Lt. = start Conc. apron

82.44  
3.66 17 Gar.  
82.104  
4.06 132 Apron

1+12 - 10<sup>3</sup> Lt. = ± 3<sup>2</sup> wide Conc. walk

82.55 3.55 27 iron walk  
82.42 3.68 17  
81.55 4.55 102  
81.1 5.10 10  
80.9 5.2  
81.0 5.1 10

1+08<sup>E</sup> 10<sup>8</sup> Lt. = ± Conc. slab. for burner  
13<sup>2</sup> Lt. = ± Brick trash burner  
16' Rt. = ± 18' wide level Conc. slab.

83.44  
5.66 132 slab at burner  
80.42  
5.68 108 Conc.  
80.76  
5.35 165 slab.

1+07 - 10<sup>2</sup> Lt. = end wall + walk

80.4 5.7 102  
80.4 5.7 10  
80.2 3.9  
80.6 5.5 10

1+00<sup>5</sup> 10<sup>1</sup> Lt. = ± 4" drain thru. wall.

79.26  
6.34  
102  
I.E.

1+00 - 10<sup>5</sup> Rt. = end wall + walk.  
= end rock + oil. (should come out)

79.7 6.4 10  
79.4 6.7  
79.6 6.5 10  
79.6 6.5 105  
80.5 5.6 13  
80.5 5.6 20  
86.29

Bk. 37.0B,

6.86 89.04<sup>5</sup>

1+83 10<sup>4</sup> Lt. = Brk. in apron grade.

1+76 10<sup>4</sup> Lt. = Pole # 473028 H (8" diam)

double Bar. under Apt. Bldg.  
also start conc. apron to  
also = west face E+W. Conc. wall  
1+75- 10<sup>4</sup> Lt. = end 6" Conc. wall

to come out  
2' wide 2" thick rough Conc.  
1+67- 8' Lt. = start of average

1+49 9' Rt. = pole # A 4776 (14" diam)

T.P. 7.89 95.94 0.08 86.02

1+48 10<sup>5</sup> = start wall.  
6" wide Conc.

conc. walk.

1+28<sup>L</sup> 10<sup>4</sup> Lt. = start 3<sup>E</sup> wide. E+W

set. B.M. on P.O.T. 1/2 - 1+76.03

90.25 90.40  
5.16 5.51  
195 104  
Bar floor Apron  
90.45  
5.46  
104  
Apron

95.5 99.45 99.5 98.9 99.0 99.2 98.6  
10.4 6.46 6.4 7.0 6.9 6.7 7.3  
10<sup>4</sup> 10<sup>4</sup> 10 5 10 20  
B.W T.W.

95.94

84.9 85.0 85.28 85.3 85.2 86.2  
1.2 0.07 0.82 0.8 0.9 0.1  
10<sup>5</sup> 10<sup>5</sup> 10<sup>5</sup> 10 10  
B.W. T.W. walk

83.45 82.9 82.9 82.7 83.0  
2.65 3.2 3.2 3.4 3.1  
12<sup>E</sup> 10<sup>4</sup> 10 10  
L walk

86.09<sup>10</sup>

Blk. 37.0, B.

2+40 18' RT. =  $\pm$  Sing. Cor. dirt. floor

96.1	95.9	95.5	95.4	95.7	96.0
6.0	6.2	6.6	6.7	6.4	6.1
20	10	7		10	18

10<sup>2</sup> Lt. = start link wire fence

2+37<sup>5</sup> 10<sup>3</sup> Lt. = end Conc. block wall

94.4	95.5
7.7	6.6
10.3	10
B.W.	

2+32<sup>5</sup> 10<sup>3</sup> Lt. =  $\pm$  3<sup>5</sup> walk thru wall.

95.70	95.50
6.40	6.60
20.3	10.3
	walk

2+31 18' RT. =  $\pm$  Sing. Cor. dirt floor

T.P. 7.12 102.09 0.93 94.98

95.0
7.1
18
10
102.09

2+15

94.3	93.6	93.6	93.6
1.6	2.3	2.3	2.3
10		10	20

1+96 Cont.

90.6
5.3
10.2
B.W.

start 5' high Conc. block wall.

1+96 10<sup>2</sup> Lt. = end apron

(9' Lt. = end 2' wide (average) + 2" thick rough Conc. to come out)

90.75	90.20	91.61	91.6	91.8	91.3	90.9
5.16	5.24	4.30	4.3	4.1	4.6	5.0
19 <sup>E</sup>	13 <sup>E</sup>	10 <sup>E</sup>	10		10	20
Cor.	Apron	Apron				
Floor						
				95.98		

BIK. 37-01B.

2+90

2+89- 10' RT. start board fence.

2+87. 9<sup>2</sup> Lt. L in sly. edge drive

	97.5	97.3	97.4	98.2
	4.6	4.8	4.7	3.9
	10		5	10
	97.49	97.33		
	4.61	4.77		
	102	97		
	on drive			

2+83- 12<sup>2</sup> RT. =  $\frac{1}{2}$  Sing. Car. Conc. Floor

	98.1	98.40
	4.0	3.70
	12	12 <sup>2</sup>
		Floor

2+81 - 18<sup>2</sup> Lt. = end wire fence.

	97.07	97.29	97.18
	5.03	4.81	4.92
	18	11	10
	Nly. Edge drive	on drive	sly edge drive

2+74 8<sup>2</sup> Lt. = pole # A 4754 (14" diam.)

to Sing Car. (west front)

2+66 10' Lt. = start conc. drive  
11' Lt. = L Lt. in fence.

	96.74	96.9	96.8	97.4
	5.36	5.2	5.3	4.7
	10	10		10
	Apron.			

2+64 17 RT. =  $\frac{1}{2}$  Sing Car. Conc. floor

	97.5	97.53
	4.6	4.57
	17	17
		Car Floor

2+57- 11' Lt. =  $\frac{1}{2}$  3' wide Conc. walk.

	96.70	96.60
	5.40	5.50
	21	11
	on walk	

102, 99<sup>10</sup>

B/K.37-0.B.

43

T.P. 1.20 98.29 5102 97108

T.P. Nail in pole # A 4736 (3+73) <sup>sta.</sup>

3+92 13<sup>7</sup> Rt = 18" Conc. walk

95.5	95.5	94.8	94.8	94.8	95.7	95.7	96.1
6.6	6.6	7.3	7.3	7.3	6.4	6.13	5.9±
30	10	5		5	10	132	232
							walk

3+73 9' Rt = Pole # A. 4736 (14" diam)

3+60

95.7	96.3	96.7	97.3
6.4	5.8	5.4	4.8
10		10	20

3+49 - 9<sup>9</sup> Lt = Conc block wall. 6" wide N.T.S. 4' High

96.1	96.8
6.0	5.3
99	99
B.W.	End

3+48 10<sup>3</sup> Lt = end wire fence.

3+25 { 10' Rt = end board fence.  
 9<sup>3</sup> Lt = pole # J.P.A. 4731 (8" diam.)  
 10<sup>2</sup> Lt = start chain link fence.  
 10<sup>2</sup> Rt = 3' wide Conc. walk.

3+22 { 8<sup>2</sup> Rt = 3' wide Conc. stop

97.5	97.1	97.7	98.17	98.42
4.6	5.0	4.4	3.93	3.68
10		8	8 <sup>2</sup>	10 <sup>2</sup>
		End.	stop	walk

2+99 15' Lt = end drive  
 Conc. Floor - west front.  
 20' Lt = door to Gar.

97.46	97.40
4.64	4.70
20	15
Gar.	apron
floor	
	102. 29

B/k. 37 - d.B.

4+97 10<sup>8</sup> Rt. = end hedge.

4+75

board gate on 3x3 posts, thru hedge.

4+72 - 10' Rt. = 3' wide 7' high

4+53 9<sup>4</sup> Lt. = 7" diam pole # 415525 H

4+45 9' Lt. = 3' hedge

93.9	94.0	93.7	93.8	94.3	94.3
4.4	4.3	4.6	4.5	4.0	4.0
30	16		7	10	20

dirt floor

4+30 18<sup>6</sup> Lt. = {Board} 5' High Car  
{Batt} 5' High hedge

4+24 10<sup>6</sup> Rt. = start 3' wide 5'

4+20 - 14<sup>6</sup> Rt. = end 3 car. Car

4+16 14<sup>6</sup> Rt. = 3<sup>rd</sup> door to Car

92.4	93.1	93.4	93.0	93.5	93.7
5.9	5.2	4.9	5.3	4.8	4.6
20	10	8		8	10

93.10  
5.8  
1.85

95.3  
3.0  
14.6

4+07. 14<sup>6</sup> Rt. = 2<sup>nd</sup> door to Car

92.6	93.6	94.0	94.1	94.2	95.9	95.4
5.7	4.7	4.3	4.2	4.1	3.3	2.9
30	10	9		3	10	14.6

Floor dirt

3+98. 14<sup>6</sup> Rt. = 1<sup>st</sup> door to Car  
dirt floor.

3+94 14<sup>6</sup> Rt. = start 3 car garage

95.5  
2.8  
14.6

BIK. 37.0.B,

£

45

5+43 9<sup>2</sup> Lt. = end conc. apron

98.75	98.6	98.2	98.3	98.9
5.77	5.9	6.3	6.26	5.6
99	99		61	10
Apron	Ord.			

5+35 27' Lt. = £ double Gar.

99.00	98.46	98.39
5.52	6.06	6.13
24	99	99
Floor	Apron.	Ord.

5+27 10<sup>5</sup> Lt. = end board fence.  
9.9 Lt. = start conc. apron

98.10	97.5
6.42	7.0
99	99
Apron	Ord.

5+17 10' Rt. = start conc. block  
wall, 5' High

96.8	95.9
7.7	8.6
10	10
	B.W.

5+10 13<sup>9</sup> Rx. = £ Sing Gar. Conc. Floor

95.7	95.5	95.8	96.4	97.22
8.8	9.0	8.7	8.1	7.30
10		6	10	139
	104.52			Conc. Floor

T.P. Pole  
#A4708 8.53 104.52 2.29 95.99

94.7	94.9	95.1	95.6	95.7
3.6	3.4	3.2	2.7	2.6
10		7	10	20

5+00 Rt. = 15" diam pole #A4708

4+99- 10<sup>5</sup> Lt. = start board fence.

98.28



Alley Bk 37 O.B

9.16 97.96

6+10<sup>7</sup> = wly cl. line Ebers.

6+08<sup>2</sup> } 10' Lt.  
10' Rt. } = B.C. 2' Rad cl. Ret.  
T.P. Nail  
6+05<sup>1</sup> } 5.84 107.12 3.24 101.28

10' Rt } = start conc. curbs.  
10' Lt }

5+98<sup>71</sup> = start A.C. Pave.  
= wly. line Ebers

5+98 - 9<sup>5</sup> Lt = 10" diam pole # J.P.A. 4703

5+80 14<sup>2</sup> Lt = end house

5+52 - 14<sup>2</sup> Lt = start stucco house wall.

5+49 - 10<sup>8</sup> Rt = end conc. block

97.97 = Top. Hydt S.E Santa Cruz + Ebers

96.87 98.27  
8.25 8.85  
62 62  
cl. G  
102.71 103.37  
4.41 3.75  
62 62  
a cl

101.49 100.50 101.02 101.26 101.51 101.54 102.16  
5.65 6.22 6.10 5.86 5.61 5.58 4.96  
10 10 10 10 12 12  
cl. E.C. a cl. E.C.

101.65 101.22 101.64 102.13  
5.47 5.90 5.48 4.79  
10 10 10 10  
cl. a cl. B.C.

101.71 101.58 101.6 101.32 102.1 101.78 102.22  
2.81 2.94 2.9 3.20 2.4 2.74 2.30  
10 10 10 10 10 10  
cl. G. end. end. G. cl.

101.3 101.1 101.2 101.7  
3.2 3.4 3.3 2.8  
10 7 10

99.2 98.1  
5.3 6.4  
108 108  
end B.W.

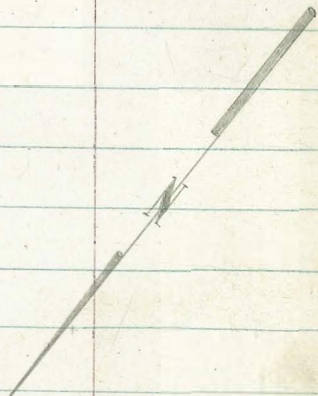
104.50

Roberts  
Cota  
Moore  
Ellis  
2-13-53  
W.D. # 32070

Storm Drain Survey For BK. 37, Ocean Beach  
Between lots 30 & 31

See Page 34 this F.E.  
Alley Cross Section

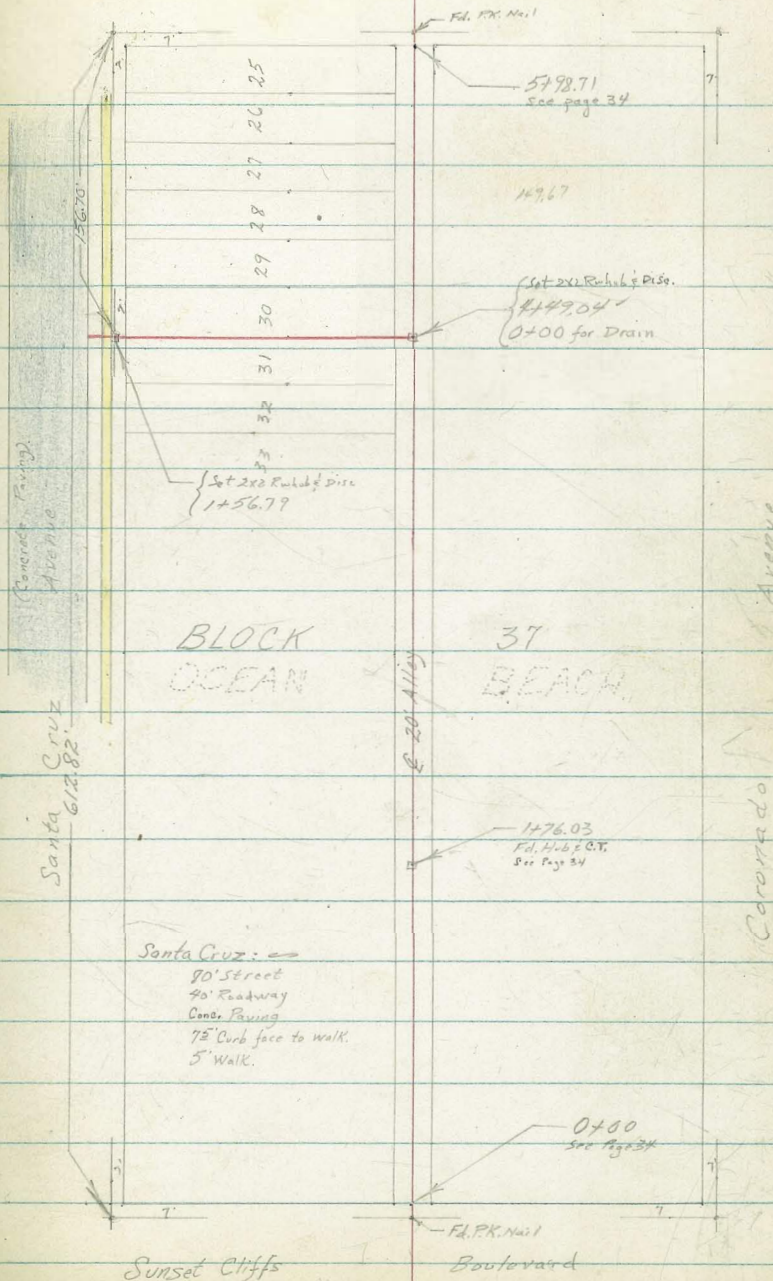
INDEXED  
FEB 18 1953



Ebers

Street

43



Santa Cruz: ←  
90' Street  
90' Roadway  
Concrete Paving  
78" Curb face to walk.  
5' Walk.

Sunset Cliffs

Boulevard

Cont'd From Page 47

Lt

E

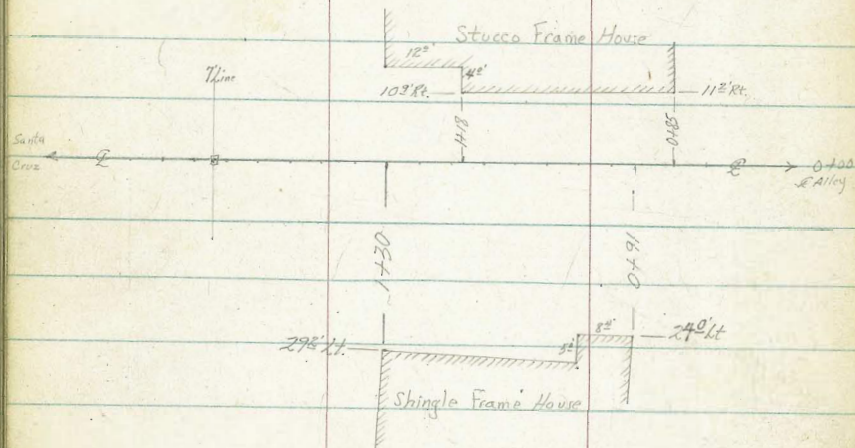
Rt 48

0+09± 35' Rt. to center F.P.C. # 415525H

0+00 Center Line of Alley

93.1

19



Notes reduced by  
L. G. Carson  
2-25-53

TR 515 95.04 N 9.34 89.89

95.04 N

TBM 126 99.23 N

97.97 Top of Arant SE Corner  
Santa Cruz Ebers  
(See page 46)

0+67 7<sup>2</sup> R to center 3' Citrus Tree

0+56 7<sup>2</sup> R to center 3' Citrus Tree

0+41<sup>2</sup> 7<sup>2</sup> R to center 2' Fruit Tree

0+40

91.3	91.5	92.7	93.6	93.7
3.7	3.5	2.3	1.4	1.3
10	1		6	10

0+36 3<sup>2</sup> Lt to center 6" Ornamental tree

0+35 14<sup>0</sup> Lt End single garage

0+29 8<sup>2</sup> Lt to center 7" Fruit Tree

0+19<sup>2</sup> 0<sup>2</sup> Lt begin lath fence

0+18 14<sup>0</sup> Lt begin Single garage

0+10 Alley Line

93.0

2.0

95.04 T

95.04 T

Cont'd From Page 49

Lt

1744

88.8

6.2  
10

88.8

6.2  
2

89.3

5.7

90.5

4.5  
6

90.9

4.1  
10

1730

7° Rt to center 1" Cleander Tree

88.9

6.1  
10

88.9

6.1  
2

89.2

5.8

90.8

4.2  
6

91.2

3.8  
10

1725

1724<sup>5</sup>

50° Rt to center 3" Peach Tree

1716<sup>5</sup>

38° Lt to center 8" Citrus Tree

1702<sup>5</sup>

46° Rt to center 2" Fig Tree

1700

89.5

5.5  
10

89.5

5.5  
2

89.9

5.1

91.5

3.5  
5

91.4

3.6  
10

0+93

99° Lt to center 8" Fig Tree

0+85<sup>5</sup>

45° Rt to center 3" Peach Tree

90.2

4.8  
10

90.4

4.6  
1

91.0

4.0

91.7

3.3  
6

92.0

3.0  
10

0+80

05° Lt End Lath Fence

95.04 X

95.04 X

Rt

10

check

110 97.97 = 97.97

T.P. 5.87 99.07 1.84 93.20

1469.79 Curb Line Santa Cruz

88.93 6.07 Curb	88.34 6.70 Gutter	89.52 5.48 Curb	89.98 6.06 Gutter	90.26 4.78 Curb	89.64 5.40 Gutter
25				25	

1462.29 Walk Edge

89.31 5.73 10 conc	89.58 5.46 conc	89.92 5.12 10 conc
89.46	89.69	89.99

1459.29 Line Walk Edge

5.58 10 conc	5.35 conc	5.05 10 conc
--------------------	--------------	--------------------

1449.79 Prop. Line Santa Cruz

89.4 5.6 10	89.8 5.0	90.3 4.1 10
-------------------	-------------	-------------------

Roberts  
Cota  
Moore  
6-9-53

X-Section Ely Hall 64th St.  
For Quantities  
Catoctin to Masita

140.62309

105416

1425

INDEXED  
JUN 22 1953

1400

0+75

0+50

0+28.2 Opposite BC Curb Ret. N.E. Corner

0+00 Curb B.C. on 64th, N.W. Cor. 64th & Catoctin

TBM

6.43 465.03X

458.60 Top Curb  
BC on 64th  
NW Cor 64th

Catoctin

X

Rt

459.44  
5.59 5.7 6.2 5.64  
11 18 18  
9 6

459.24  
5.79 6.0 6.5 5.88  
11 18 18  
9 6

459.99  
6.04 6.2 6.6 6.11  
11 18 18  
9 6

458.72  
6.31 6.3 6.9 6.38  
10 18 18  
9 6

458.57  
6.52 6.6 7.0 6.52  
11 18 18  
9 6

458.15  
6.88 7.0 7.3  
13 25

465.03X

Cont'd From Page 52

3400

459.12  
5.91  
6  
12  
458.9  
6.5  
18  
5  
458.5  
5.8  
18  
6

2775

459.37  
5.66  
6  
12  
459.1  
5.9  
6  
18  
5  
459.0  
6.0  
18  
5  
458.9  
6.0  
18  
4

2450

459.52  
5.57  
6  
13  
459.3  
5.7  
6  
18  
5  
459.0  
6.0  
18  
4  
459.10  
5.93  
18  
4

2125

459.64  
5.39  
6  
13  
459.4  
5.6  
6  
18  
9  
459.2  
5.8  
18  
4  
459.17  
5.8  
18  
4

2100

459.69  
5.34  
6  
13  
459.4  
5.6  
6  
18  
6  
459.2  
5.8  
18  
4  
459.20  
5.8  
18  
4

1475

459.69  
5.34  
6  
14  
459.4  
5.6  
6  
18  
9  
459.2  
5.8  
18  
4  
459.21  
5.8  
18  
4

1750

459.61  
5.42  
6  
12  
459.4  
5.6  
6  
18  
5  
459.0  
6.1  
18  
5  
459.59  
5.44  
18  
6

46503A

46505A



Cont'd From Page 53

# +75

8.71	456.32	8.73	456.16
10	456.0	18	456.66
		9	66

4+50

8.30	456.73	8.4	456.6
		12	456.3
		9	65

4+25

7.86	457.17	7.9	457.1
		13	457.7
		9	66

4+00

7.38	457.65	7.4	457.6
		14	457.2
		9	66

3+75

7.01	458.02	6.9	458.1
		12	457.8
		9	66

3+50

6.63	458.40	6.6	458.4
		13	458.1
		9	66

3+25

6.24	458.79	6.2	458.8
		13	458.2
		9	66

465.03A

465.03A

Contd From Page 54

£

Rt 55

4+82

445.03 T

456.25-	456.02	456.16	456.62
879	901	8.87	8.41
	10	18	19
		9	06

465.03 T

Roberts  
Cota  
Morales  
W.O.#32007  
4-23-53

X-Section Allegado Street

Roo Drive to Sea Breeze

Sec F.B. 1692 pg. 1

ON ROAD CHECK LOOK FOR PAVING  
THAT NEEDS REPLACING!

EXISTING PAVING ONLY IN FAIR CONDITION

INDEXED

JUL 27 1953

REDUCED NOTES - R.W.B.

Notes for side walks added 6/9/55

56

4 1/2" Pipe  
Fd-6/7/55  
in P.V.T.

4120.72

0+00

5756.36

0+00

2977.02

2786.38

0+00

0+00

0-7.15

Fd. 2 1/2" P.V.T.

0-37.15

0-63.62

0-81.94

E Sea Breeze

E West Park

NOTE!  
PAVING ONLY IN FAIR  
CONDITION

E Rancho

(Block Length  
from F.B. 1692.)

E Roo Drive

Not to scale!





Contd From Page 58

1 2708 20° RT & 15' con drive way ✓ ✓

2400

1498 21<sup>3</sup> RT, CENTER PP# 18199A

1486 21° RT, CENTER PP# 8797A ✓

1467 22° RT, DEAD MAN ✓ ✓

1463-25<sup>6</sup> RT =  $\frac{1}{2}$  Water Meter ✓

1458 25<sup>1</sup> RT BEGIN WOOD FENCE ✓ ✓

1451 21<sup>5</sup> RT, PP# 87973 ✓ ✓

1450

225.08 A

Lt

R

RT

LR

225.1

224.76

223.6

223.15

222.53

223.16

223.1

20 0.92 1.5 1.98 2.55 1.92 1.9  
10 30 20 20 20 20 30  
A.C. A.C. GWT. OB.

222.5  
20  
20  
222.2  
27  
223.46  
30  
223.88

223.99

222.60

221.5

221.29

220.90

221.53

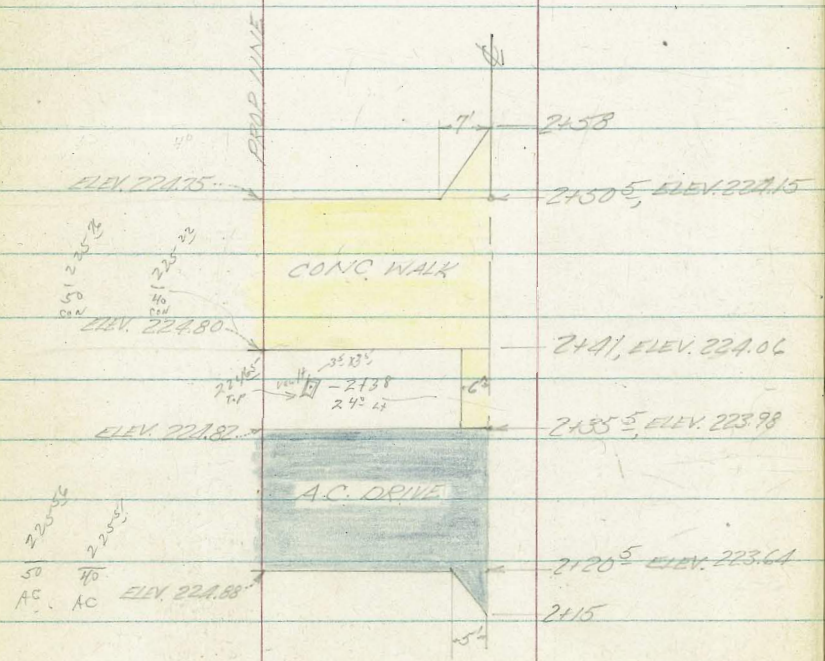
221.8

1.59 2.18 3.6 3.79 4.18 3.55 3.8  
10 30 11 20 20 20 30  
A.C. A.C. GWT. OB.

225.08 A

2141, 30° LT. END A.C. PARKING LOT

2174 25° RT., END WOOD EDGE ✓ ✓



Φ RANCHO DRIVE

WEST CURB LINE RANCHO DRIVE

2186.38 WEST LINE RANCHO DRIVE

370A 2 1/2 LT. FIRE HYD.  
AT RT. ANGLE ✓

2197- 22<sup>3</sup> RT = d 3" IP. For st. sign (std)

2191 22<sup>4</sup> RT CENTER LIGHT POLE #181675 ✓  
AT RT. ANGLE

2189- 22<sup>3</sup> RT = d 4" x 4" Wood Post for sign

T.P. 553 229.69 π 0.92 224.16

2150

225.08 π

SECTIONS TAKEN PARALLEL TO RANCHO DRIVE

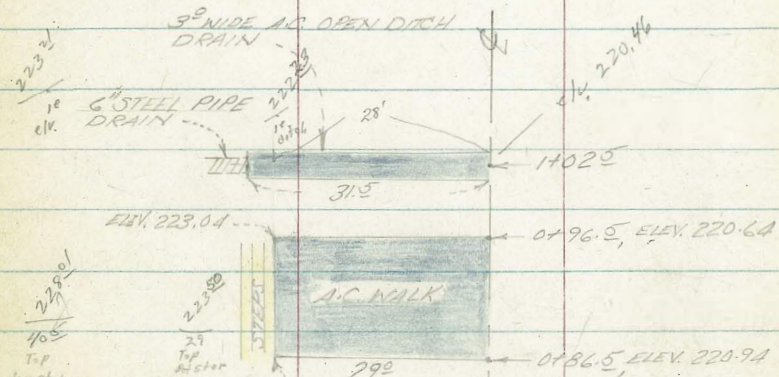
LT.	RT.	61
17 19	218.0	
41 39	225.6	
43 29	225.9	
5.9 11	224.9	
579	223.90	
676 32	224.04	
838 50	223.21	
	222.93	
	221.31	
18 19	227.9	
41 32	225.6	
45 11	225.2	
565	224.04	
676 20.5	223.21	
710 85	222.29	
838 65	221.93	
	220.88	
	221.50	
20 12	227.7	
43 31	225.9	
47 15	225.0	
558	224.11	
676 20.2	223.21	
838 65	222.80	
	221.9	
20 10	225.1	
43 30	224.8	
47 10	224.11	
558	223.13	
676 20	223.77	
838 65	223.8	
229.69 π		
225.08 π		



0+74-25<sup>±</sup> RT = & Water Meter ✓

1400

1/5" wide x 3" high  
 0+74-22<sup>±</sup> RT = & Nly end of N+S Eugenia Hedge



0+74-26<sup>±</sup> RT = & Water Meter ✓

0+50

0+08-23<sup>±</sup> RT = & Gas co ✓  
 gate valve

0+00 EAST LINE RANCHO

EAST CURB LINE RANCHO DRIVE

229.69 11.1

67 68 69

227.3	223.8	222.6	227.74	219.93	220.04	220.0
21 5.9	71	1.95	1026	965	97	
10	30	21	20	20	50	
			6	08.		
227.9	225.8	224.7	222.8	221.14	221.09	221.69
18	39	5.0	6.9	7.55	8.60	8.00
10	30	20	8		20	30
					60.	05.
228.2	225.6	224.8	223.53	221.47	223.13	221.7
15	4.1	1.9	1.16	7.22	1.52	7.0
11	31	21		205	225	52
				60.	08.	
228.2	225.5	224.9	223.74	222.78	221.32	221.89
15	4.2	4.8	5.95	6.91	7.37	6.80
11	31	19		22	33	39
					40	50
					60.	08.
					60.	08.
					60.	08.

229.69 11.1

228.74

3407 - 20° RT = 7' CONC DRIVE ✓

3400

2477<sup>5</sup> - 25<sup>5</sup> RT = 4 Water Meter ✓

2450

2447 - 20° RT = 10° CONC DRIVE ✓

2431 20° RT CENTER 10° WIDE CURB INLET ✓  
PIPE GOING SOUTHERLY

2417 - 26° RT = 4 Water Meter ✓

2400

1482<sup>5</sup> - 20° RT = 8° CONC DRIVE ✓

1453 - 25<sup>5</sup> RT = 4 Water Meter ✓

1450

1433 - 22° RT = 4 Hedge 2' wide + 4<sup>5</sup> high ✓  
Nly end of Nth Eugenia

1424 - 20° RT = 7' CONC DRIVE ✓

TP

497 223.95 H.L. 10.7 / 218.98

1402<sup>5</sup>

CENTER OF DRAIN (SEE SKETCH PG 62)

229.69 A

LT.

RT.

RT.

222.5	222.5	222.5	222.5	217.62	216.23	217.49	217.49
+15	+15	+15	+15	6.53	7.72	6.46	6.34
40	40	40	40	20	20	20	20
30	30	30	30	25	GRATE	CB.	CB.
27	27	27	27	20	17.09	20	20
14	14	14	14	20	INVERT	18" PIPE	18" PIPE
10.5	10.5	10.5	10.5	5.15	216.83	217.49	217.49
218.30	218.30	218.30	218.30	217.89	216.83	217.49	217.49
217.62	217.62	217.62	217.62	217.89	216.83	217.49	217.49
217.55	217.55	217.55	217.55	217.89	216.83	217.49	217.49
218.16	218.16	218.16	218.16	217.89	216.83	217.49	217.49
218.1	218.1	218.1	218.1	217.89	216.83	217.49	217.49
223.7	223.7	223.7	223.7	218.99	217.93	218.53	218.53
0.5	0.5	0.5	0.5	1.96	6.02	5.42	5.2
10	10	10	10	20	20	20	20
30	30	30	30	27	6	CB.	30
27	27	27	27	6	217.93	218.53	218.53
1.8	1.8	1.8	1.8	1.96	217.93	218.53	218.53
222.1	222.1	222.1	222.1	218.99	217.93	218.53	218.53
221.0	221.0	221.0	221.0	218.99	217.93	218.53	218.53
219.3	219.3	219.3	219.3	218.99	217.93	218.53	218.53
223.20	223.20	223.20	223.20	223.95 H.L.	223.95 H.L.	223.95 H.L.	223.95 H.L.
6.49	6.49	6.49	6.49	9.22	9.22	9.22	9.22
31.5	31.5	31.5	31.5	20	20	20	20
INVERT	INVERT	INVERT	INVERT	IN	IN	IN	IN
6" PIPE	6" PIPE	6" PIPE	6" PIPE	DITCH	DITCH	DITCH	DITCH

229.69 A

4+58-25<sup>5</sup> RT = 2 Water Meter ✓

4150

LT.	RT.
9.1 10	2215.5
10.7 30	2213.9
11.1 28	2213.5
13.02	221.56
13.99 20 C	220.59
15.34 20 CB	221.24
15.4 30	221.2

TP. 12.75 234.58 H.I. 212 221.83

4+24-20<sup>0</sup> RT = 2 11<sup>5</sup> Conc Drive ✓

4100

LT.	RT.
11.0 10	223.0
0.6 30	223.9
1.5 26	221.5
2.0 19	222.0
3.17	222.33
4.16 20 C	219.99
3.89 20 CB	220.06
3.7 30	220.3

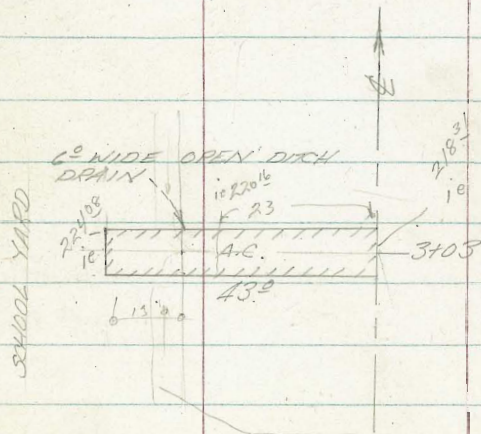
3+97-25<sup>5</sup> RT = 2 Water Meter ✓

3+66-20<sup>0</sup> RT = 2 9<sup>5</sup> Conc Drive ✓

3+50

LT.	RT.
10.7 10	223.3
1.9 30	223.7
2.7 25	221.3
4.72	219.23
5.16 20 C	218.99
4.81 20 CB	219.14
4.6 50	219.4

3+37-5<sup>5</sup> RT = 2 Water Meter ✓



223.95 H.I.

223.95 H.I.

68891

5496, 28° LT. CENTER PP #88896

EAST CURB LINE WEST PORT

CENTER LINE WEST PORT

5476, 28° LT. DEAD MAN

WEST CB. LINE WEST PORT

5456.36 WEST LINE WESTPORT

5418- 25° RT = \$ Water Meter ✓

5400

4486- 20° RT = \$ 16' Drive Way ✓

231.58 H.I.

1.6	1.9	3.8	5.91	5.96	6.25	5.65	7.06	228.14
40	30	6		20	0.80	0.80	0.50	228.14
231.1	230.6	229.2	228.38	228.11	228.25	227.59	227.59	228.14
3.5	4.0	5.1	6.20	6.47	6.33	6.79	7.06	228.14
40	30	3		20	30	50	0.50	228.14
228.5	229.1	228.2	227.57	227.14	227.24	227.86	227.86	227.19
6.1	5.5	6.1	7.01	7.14	7.31	6.72	7.99	227.19
20	30	3		20	30.5	30.5	0.50	227.19
228.1	228.2	220.5	226.38	226.99	226.9	226.7	226.7	226.7
6.5	6.1	7.53	8.20	7.59	7.7	7.9	7.9	226.7
50	30		20	20	20	30	50	226.7
226.5	225.5	225.1	223.91	222.99	223.60	223.3	223.3	223.3
8.1	9.1	9.5	10.67	11.59	10.98	11.7	11.7	223.3
40	30	27		20	20	55	50	223.3

231.58 H.I.





T.P. 608 280.52 H.I. 228 274.2A

3450

276.0	276.5	274.9	273.95	272.77	273.39	273.5
10.5	0.0	21	2.77	3.75	3.15	3.0
40	30	16		20	20	30
				6	CB.	

3493-20.67 RT = 3' conc walk ✓

3400

275.7	274.9	272.2	272.07	271.12	271.74	271.8
0.8	1.6	4.9	1.15	5.40	1.78	4.7
40	30	17		20	20	30
				6	CB.	

3480-25' RT = Water Meter ✓

3472-20' RT = 12' conc Drive ✓

3460, 29' LT BEGIN 8" CONC BRICK WALL GOING N. RTH & SOUTH

3450, 27' LT CENTER 1" WIDE FLAGSTONE WALK ✓

3451-26' LT = Water Meter ✓

3450

271.50	271.31	271.21	269.40	268.37	268.98	269.0
5.2	5.21	5.31	7.12	8.15	7.54	7.5
40	30	27.5		20	20	30
		LIP		6	CB.	
270.9	270.7	269.6		268.37	268.98	269.0
5.6	5.8	6.9		8.15	7.54	7.5
40	30	14		20	20	30
				6	CB.	

3420-25' RT = Water Meter ✓

3411-20' RT = 15' conc Drive ✓

3400

268.7	267.9	265.83	264.56	265.18	265.3
7.8	8.1	10.69	11.96	11.34	11.2
40	30		20	20	30
			6	CB.	

276.52 H.I.

276.52 H.I.

11-9-53  
D. Smith  
J. Porter  
A. Taylor  
P. Fish

X Sec Alley BIK 14  
Roseville Hts.

1430 in canyon sketch P19

1105

0799 9<sup>8</sup> Lt & double garage con floor & apron

0782 7<sup>1</sup> Lt end 5<sup>5</sup> Board fence

0775

0750

0748 6<sup>8</sup> Lt Begin 5<sup>5</sup> board fence

0746 7<sup>2</sup> Lt & 4<sup>5</sup> con walk

0742 8<sup>1</sup> Lt end & 4 high 3 wide hedge

0724 6<sup>9</sup> Lt & double garage con floor & apron

0708 8<sup>3</sup> Lt & 4 high 3 wide Eugenia hedge begin

0700 Fly Albion St.

0-D13 8<sup>1</sup> Lt & 8" tel pole #JP915

BM

6<sup>12</sup> 262<sup>13</sup>

256<sup>26</sup>

1965-2784  
2nd 5' con walk  
026

Lt-Nly

Wo # 32091 70

251.89

251.69

16<sup>24</sup> 10<sup>44</sup>  
14<sup>5</sup> 9<sup>8</sup>  
Floor Apron

255.64

255.66

6<sup>48</sup> 6<sup>42</sup>  
13 72  
w/k w/k

2499.9	2444.9	2449.8	2448	2448
18 <sup>6</sup>	17 <sup>2</sup>	17 <sup>3</sup>	16 <sup>2</sup>	17 <sup>3</sup>
12 <sup>2</sup>	10 <sup>2</sup>	10 <sup>5</sup>	10 <sup>6</sup>	10 <sup>3</sup>
15	8	6	8	13
251.89	251.69	251.6	251.5	251.8
8 <sup>0</sup>	7 <sup>8</sup>	8 <sup>2</sup>	8 <sup>0</sup>	7 <sup>2</sup>
13	8	6	8	13
255.6	255.5	255.5	255.7	256.1
6 <sup>5</sup>	6 <sup>6</sup>	6 <sup>6</sup>	6 <sup>4</sup>	6 <sup>0</sup>
13	8	6	8	13
256.3	256.4	256.7	257.7	257.9
5 <sup>8</sup>	5 <sup>7</sup>	5 <sup>4</sup>	4 <sup>4</sup>	4 <sup>3</sup>
13	8	8	16	

T 262<sup>13</sup>



D. Smithy Alled.

X Sec Allegheny St

Lt. Nly

wt 32007

11-13-53

St. Sly

71

TP<sub>2</sub> 8<sup>83</sup> 232<sup>86</sup> 3<sup>74</sup> 224<sup>03</sup>

TP<sub>1</sub> 10<sup>49</sup> 227<sup>97</sup> 1<sup>94</sup> 217<sup>48</sup>

0715 20° Fly @ 90°

0710<sup>69</sup> Fly @ 90°

0700 @ 90°

0-37<sup>15</sup> Fly @ 90°

0-63<sup>43</sup> Wly @ 90°

BM 12<sup>53</sup> 219<sup>42</sup>

206<sup>89</sup>

SW BP.  
Allegheny  
St.

110.09  
109.78  
109.57  
110.24

9<sup>83</sup> 9<sup>64</sup> 9<sup>80</sup> 9<sup>18</sup>  
10 20 20 20  
24 26

213.4  
212.4  
211.3  
210.4  
209.68  
209.36  
209.07  
208.07  
209.90  
209.9

212.2  
211.3  
210.4  
209.6  
208.83  
208.86  
208.78  
208.71

210.5  
209.8  
209.0  
208.69  
208.94  
208.04  
207.92  
207.78  
207.5

209.7  
208.7  
207.9  
207.82  
207.90  
207.97  
206.93  
206.39  
206.33  
206.75  
206.7

219.421

TP<sub>3</sub> 8<sup>87</sup> 228<sup>80</sup> 12<sup>93</sup> 219<sup>93</sup>

0+10<sup>69</sup> Ely Rancho @ 90°

0+00 Ely @ 90°

3+13<sup>4</sup> E Rancho Dr @ 90°

2+97<sup>07</sup> Wly Rancho @ 90°

42	75	80	90	95	100	105	98	102
40	30	20	10	9	10	20	20	30
218.2	215.4	214.7	223.9	223.18	212.76	221.35	213.00	212.7
218.3	215.6	214.7	214.1	213.54	213.07	212.66	212.54	213.10
45	73	82	82	93	97	100	103	96
40	30	20	10	9	10	20	25	25
218.0	215.6	215.2	214.4	213.91	213.51	213.10	212.59	
42	73	77	85	89	93	96	102	
40	30	20	10	9	10	20	30	
218.4	218.1	215.8	215.4	214.7	214.04	213.59	213.11	213.81
45	42	76	75	80	82	92	94	95
40	40	30	20	10	9	10	20	20
218.4	218.1	215.8	215.4	214.7	214.04	213.59	213.11	213.81
45	40	30	20	10	9	10	20	20
218.4	218.1	215.8	215.4	214.7	214.04	213.59	213.11	213.81

232<sup>86</sup>



X SECT. WEST PORT

(Wey) FT. 229.6  
 229.6  
 229.6  
 RT. (E.W.)

0-25	Brk-ground				10.1 50	226.1 229.6	8.6 25	6.6 229.58	229.6	231.8 44 25	233.8 33 50					
0-28.5	S M.H.					225.76		7.62 Rim M.H.	228.98	229.30	230.15					
0-30	= S. ALLEGANY & Edge EXIST CONC. Pav. (Dirt Flush with Edge Pav)				10.44 50	224.96 227.11	9.03 25	8.47 15	7.72 CONC	6.30 15	6.07 25	3.18 50				
0-50	= S. CB. LINE ALLEGANY				12.15 75 68	12.74 75 68	10.84 50	10.29 50	9.89 25	9.69 25	9.01 15	7.97 CONC				
MO. PTS	CA Pts	CA. L = 16.5				227.75 8.45 CB	227.05 9.15 G			7.45 15	6.87 25	6.23 25	4.7 50	3.53 50	1.79 70	1.19 70
						227.75 8.45 CB	227.05 9.15 G			7.45 15	6.87 25	6.23 25	4.7 50	3.53 50	1.79 70	1.19 70
0-60 (S. Line ALLEGANY)						227.0 9.2 25	228.02 8.18 CB	227.40 8.80 15 CB	7.82	228.38	228.48	236.06	230.0			
T.P.	9.10	236.20	1.79	227.10		226.1	226.28	225.69	236.20	226.63	226.64	227.24	227.8			
0-110 (50.54 S. Line ALLEGANY)						2.8 25 94	2.61 15 98	3.20 15 C	2.26 CONC Pav	2.25 15 C	1.65 15 CB	1.1 25 94				
T.P.	12.67	228.89	0.01	216.22					228.89							
B.M.	12.78	216.23		203.45					S.W. B.P. Runcho & Potomac							

K SECT WESTPORT (CONT.)

1400

F/RT	17.2	17.0	16.7	12.0	11.7	9.1	7.5
	50	30	14	4		30	50
	222.6	227.7	228.1	228.4	231.1	233.9	236.0
~ F/RT - (Schoolyard)	17.5	17.4	16.9	17.0	13.6	12.7	9.5
	50	30	12	6		21	30
	PL	PL					PL
							237.6
							236.5

0150

0147 27.7 LT END Steel-Wire Backstop

0136 27.7 LT L BACKSTOP

0132 31.9 LT Beg 10' Steel-Wire Back-stop (School)

T.P. 12.86 245.12 3.94 232.26

245.12

0113 18.4T to END to high E + W 1/4 Steel-Wire Fence school-yard

0110 29 RT E 5" WALNUT TREE

0106 16.4 RT E DEADMEN

0100 - K' Line ALLEGHANY

0-02 16' RT E Pole # 88896  
76' LT E DEADMEN

	226.70	228.0	229.5	230.5	230.9	232.2	234.4	236.20
	9.0	8.2	6.7	5.7	5.3	4.0	1.8	0.00
	30	30	12	8		12	30	50
		PL					PL	

236.20

R-SECT. WESTPORT. (CONT.)

5100 - EVEN - Slope to Butt. Canyon - approx.  
350' Beyond Shoulder

4100 approx shoulder canyon

370

345

3162

304 FT to END of 10' high F.W. by steel wire fence

3150

3100

2150

2700

1750

221.0

221.1  
50

230.5

14.6  
50

231.1

14.0  
50

228.1

17.0  
50

222.5

17.6  
50

226.8

FLAT  
50

222.1

FLAT  
50

227.2

FLAT  
50

227.7

FLAT  
50

230.5

12.1  
30

233.0

17.0  
30

222.4

17.7  
30

227.4

17.7  
30

227.5

17.6  
30

227.9

17.2  
30

234.0

11.1  
30

237.6

16.1  
29

227.9

17.4  
24

227.7

17.4  
24

228.0

17.1  
21

228.3

16.8  
20

237.4

7.7  
13

237.6

6.1  
8

239.0

6.1  
8

238.9

6.2  
8

236.9

8.2  
6

235.0

10.1  
5

237.4

4.1  
4

240.8

4.7  
4

240.4

4.7  
4

239.9

5.2  
8

237.4

7.7  
7

235.2

9.9  
9

245.5

9.6  
9

240.6

4.1  
4

240.8

4.7  
4

240.4

4.7  
4

241.5

3.6  
30

238.5

6.6  
30

245.1

0.0  
30

245.3

10.2  
30

246.7

11.6  
30

246.2

11.6  
30

244.8

0.3  
50

240.5

4.6  
50

247.8

17.3  
30

247.7

17.3  
30

250.1

15.0  
50

249.4

14.3  
50

248.3

13.0  
75

248.1

13.0  
75

249.1

16.0  
50

246.6

15.5  
75

252.0

16.9  
75

252.1

17.0  
75

248.6

13.0  
75

248.3

13.2  
75

X-SECT WESTPORT (CONT.)

CHK 10.78 203.49 = 203.45 (see 13.11)

T.P. 3.06 213.77 10.39 210.71

T.P. 0.01 221.10 12.86 221.09

T.P. 1.02 233.95 12.19 232.93

INDEXED

JUN 10 1958

X-sec Allegheny for 140'

Ely of Sea Breeze -

5' Parking, 4' Walk

Sly side of Allegheny ST

1440 - 25° RT = NWly cor of 4' side walk ON

1435 - 20° RT = end Depressed curb for Drive

Drive NOT YET BUILT - gar. under const. Flood only

1417 - 20° RT = Begin Depressed curb for Drive

1400

0475 - 21 1/2° RT =  $\phi$  water meter  $\checkmark$

0450

22° RT =  $\phi$  Fire Hyd.  $\checkmark$

30' curb Radius

0425 - 20° LT = curb E.C. ON LT. (NELY)  $\checkmark$

25' Radius

0415 - 20° RT = Curb E.C. ON SELY Return  $\checkmark$

0400

42° RT = cb B.C. 15' Rad To Sly

Sea Breeze NOT Paved - std cb on Wly & Type G ON Ely Sly

0-10 = Ely Curb line Sea Breeze to  $\checkmark$

LT = Nly

18

2

RT = Sly

78

82 <sup>9</sup>	80 <sup>88</sup>	80 <sup>84</sup>	80 <sup>85</sup>	81 <sup>20</sup>	80 <sup>80</sup>	81 <sup>29</sup>	81 <sup>44</sup>	81 <sup>52</sup>	82 <sup>0</sup>
30	24 <sup>5</sup>	20 <sup>0</sup>	20 <sup>0</sup>	20 <sup>0</sup>	20 <sup>0</sup>	25	29	30	30
	Nly of	T.C.	9UT	9UT	cb	NWly	SWly		
	WALK					curb	curb		

80 <sup>62</sup>	80 <sup>72</sup>	82 <sup>33</sup>
20 <sup>0</sup>	20 <sup>0</sup>	36 <sup>0</sup>
9UT	Lip	9UT
		Block

79 <sup>92</sup>	80 <sup>0</sup>	82 <sup>33</sup>
20 <sup>0</sup>	20 <sup>0</sup>	36 <sup>0</sup>
9UT	Lip	9UT
		Block

81 <sup>8</sup>	79 <sup>55</sup>	79 <sup>45</sup>	78 <sup>96</sup>	79 <sup>58</sup>	79 <sup>27</sup>	79 <sup>77</sup>	80 <sup>±</sup>
30	24 <sup>5</sup>	20 <sup>0</sup>	20 <sup>0</sup>	20 <sup>0</sup>	20 <sup>0</sup>	20 <sup>0</sup>	30
	Nly of	T.C.	9UT	9UT	T.C.		
	WALK						

80 <sup>7</sup>	78 <sup>77</sup>	78 <sup>70</sup>	78 <sup>23</sup>	78 <sup>60</sup>	78 <sup>36</sup>	78 <sup>86</sup>	79 <sup>7</sup>
30	24 <sup>5</sup>	20 <sup>0</sup>	20 <sup>0</sup>	20 <sup>0</sup>	20 <sup>0</sup>	20 <sup>0</sup>	30
	Nly of	T.C.	9UT	9UT	T.C.		
	WALK						

79 <sup>8</sup>	78 <sup>12</sup>	77 <sup>92</sup>	77 <sup>50</sup>	77 <sup>27</sup>	77 <sup>43</sup>	77 <sup>93</sup>	78 <sup>2</sup>
30	24 <sup>5</sup>	20 <sup>0</sup>	20 <sup>0</sup>	20 <sup>0</sup>	20 <sup>0</sup>	20 <sup>0</sup>	30
	Nly of	T.C.	9UT	9UT	T.C.		
	WALK						

78 <sup>4</sup>	77 <sup>01</sup>	76 <sup>88</sup>	76 <sup>43</sup>	76 <sup>85</sup>	76 <sup>55</sup>	77 <sup>05</sup>	77 <sup>2</sup>	77 <sup>3</sup>
30	24 <sup>5</sup>	20 <sup>0</sup>	20 <sup>0</sup>	20 <sup>0</sup>	20 <sup>0</sup>	20 <sup>0</sup>	30	40
	Nly edge	T.C.	Type G	Type G	T.C.			
	4 1/2' walk							

76 <sup>21</sup>	76 <sup>71</sup>
20 <sup>0</sup>	20 <sup>0</sup>
9UT	T.C.
E.C.	E

76 <sup>75</sup>	76 <sup>25</sup>	75 <sup>21</sup>	76 <sup>02</sup>	75 <sup>64</sup>	75 <sup>35</sup>	75 <sup>84</sup>	75 <sup>6</sup>
33	33	20	20	25	25	25	30
T.C.	9UT	20	20	25	25	25	30
	EN Ret			Type G	EN Ret		

76 <sup>02</sup>	75 <sup>35</sup>	75 <sup>69</sup>	75 <sup>45</sup>	74 <sup>83</sup>	74 <sup>20</sup>	74 <sup>68</sup>
30	20 <sup>0</sup>	20 <sup>0</sup>	20 <sup>0</sup>	33	45	45
30	20 <sup>0</sup>	20 <sup>0</sup>	20 <sup>0</sup>	33	45	45
Direct	Rad used			add no 200	to elev.	



264.432 - distance 33.75 from man.  
Albin & Jennings

274.41 SW 6P

2 + 11

1269

1334

379

255

5.82

9.77

10.09

20594

11.12

25501

280.32

591

27441

221.83

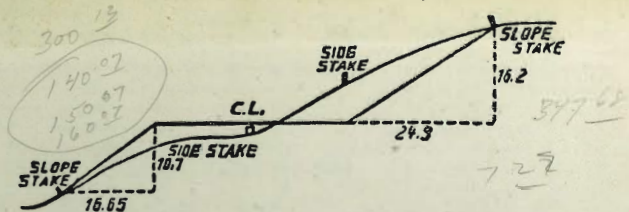
35

10

63

25

25



**DISTANCES FROM SIDE STAKES FOR CROSS-SECTIONING.**

SLOPE 1 1/2 TO 1. ROADWAY OF ANY WIDTH.

	0	.1	.2	.3	.4	.5	.6	.7	.8	.9	
0	0.00	0.15	0.30	0.45	0.60	0.75	0.90	1.05	1.20	1.35	0
1	1.50	1.65	1.80	1.95	2.10	2.25	2.40	2.55	2.70	2.85	1
2	3.00	3.15	3.30	3.45	3.60	3.75	3.90	4.05	4.20	4.35	2
3	4.50	4.65	4.80	4.95	5.10	5.25	5.40	5.55	5.70	5.85	3
4	6.00	6.15	6.30	6.45	6.60	6.75	6.90	7.05	7.20	7.35	4
5	7.50	7.65	7.80	7.95	8.10	8.25	8.40	8.55	8.70	8.85	5
6	9.00	9.15	9.30	9.45	9.60	9.75	9.90	10.05	10.20	10.35	6
7	10.50	10.65	10.80	10.95	11.10	11.25	11.40	11.55	11.70	11.85	7
8	12.00	12.15	12.30	12.45	12.60	12.75	12.90	13.05	13.20	13.35	8
9	13.50	13.65	13.80	13.95	14.10	14.25	14.40	14.55	14.70	14.85	9
10	15.00	15.15	15.30	15.45	15.60	15.75	15.90	16.05	16.20	16.35	10
11	16.50	16.65	16.80	16.95	17.10	17.25	17.40	17.55	17.70	17.85	11
12	18.00	18.15	18.30	18.45	18.60	18.75	18.90	19.05	19.20	19.35	12
13	19.50	19.65	19.80	19.95	20.10	20.25	20.40	20.55	20.70	20.85	13
14	21.00	21.15	21.30	21.45	21.60	21.75	21.90	22.05	22.20	22.35	14
15	22.50	22.65	22.80	22.95	23.10	23.25	23.40	23.55	23.70	23.85	15
16	24.00	24.15	24.30	24.45	24.60	24.75	24.90	25.05	25.20	25.35	16
17	25.50	25.65	25.80	25.95	26.10	26.25	26.40	26.55	26.70	26.85	17
18	27.00	27.15	27.30	27.45	27.60	27.75	27.90	28.05	28.20	28.35	18
19	28.50	28.65	28.80	28.95	29.10	29.25	29.40	29.55	29.70	29.85	19
20	30.00	30.15	30.30	30.45	30.60	30.75	30.90	31.05	31.20	31.35	20
21	31.50	31.65	31.80	31.95	32.10	32.25	32.40	32.55	32.70	32.85	21
22	33.00	33.15	33.30	33.45	33.60	33.75	33.90	34.05	34.20	34.35	22
23	34.50	34.65	34.80	34.95	35.10	35.25	35.40	35.55	35.70	35.85	23
24	36.00	36.15	36.30	36.45	36.60	36.75	36.90	37.05	37.20	37.35	24
25	37.50	37.65	37.80	37.95	38.10	38.25	38.40	38.55	38.70	38.85	25
26	39.00	39.15	39.30	39.45	39.60	39.75	39.90	40.05	40.20	40.35	26
27	40.50	40.65	40.80	40.95	41.10	41.25	41.40	41.55	41.70	41.85	27
28	42.00	42.15	42.30	42.45	42.60	42.75	42.90	43.05	43.20	43.35	28
29	43.50	43.65	43.80	43.95	44.10	44.25	44.40	44.55	44.70	44.85	29
30	45.00	45.15	45.30	45.45	45.60	45.75	45.90	46.05	46.20	46.35	30
31	46.50	46.65	46.80	46.95	47.10	47.25	47.40	47.55	47.70	47.85	31
32	48.00	48.15	48.30	48.45	48.60	48.75	48.90	49.05	49.20	49.35	32
33	49.50	49.65	49.80	49.95	50.10	50.25	50.40	50.55	50.70	50.85	33
34	51.00	51.15	51.30	51.45	51.60	51.75	51.90	52.05	52.20	52.35	34
35	52.50	52.65	52.80	52.95	53.10	53.25	53.40	53.55	53.70	53.85	35
36	54.00	54.15	54.30	54.45	54.60	54.75	54.90	55.05	55.20	55.35	36
37	55.50	55.65	55.80	55.95	56.10	56.25	56.40	56.55	56.70	56.85	37
38	57.00	57.15	57.30	57.45	57.60	57.75	57.90	58.05	58.20	58.35	38
39	58.50	58.65	58.80	58.95	59.10	59.25	59.40	59.55	59.70	59.85	39
40	60.00	60.15	60.30	60.45	60.60	60.75	60.90	61.05	61.20	61.35	40
41	61.50	61.65	61.80	61.95	62.10	62.25	62.40	62.55	62.70	62.85	41
42	63.00	63.15	63.30	63.45	63.60	63.75	63.90	64.05	64.20	64.35	42
43	64.50	64.65	64.80	64.95	65.10	65.25	65.40	65.55	65.70	65.85	43
44	66.00	66.15	66.30	66.45	66.60	66.75	66.90	67.05	67.20	67.35	44
45	67.50	67.65	67.80	67.95	68.10	68.25	68.40	68.55	68.70	68.85	45
46	69.00	69.15	69.30	69.45	69.60	69.75	69.90	70.05	70.20	70.35	46
47	70.50	70.65	70.80	70.95	71.10	71.25	71.40	71.55	71.70	71.85	47
48	72.00	72.15	72.30	72.45	72.60	72.75	72.90	73.05	73.20	73.35	48
49	73.50	73.65	73.80	73.95	74.10	74.25	74.40	74.55	74.70	74.85	49
50	75.00	75.15	75.30	75.45	75.60	75.75	75.90	76.05	76.20	76.35	50

THE NATIONAL BLANK BOOK COMPANY  
 HOLYOKE MASSACHUSETTS  
 NEW YORK CHICAGO BOSTON SAN FRANCISCO