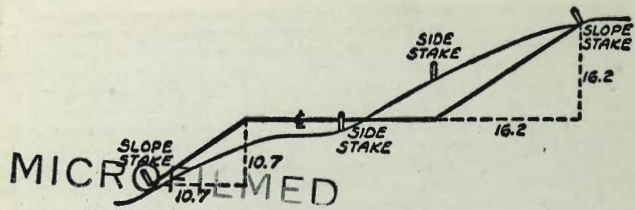


2201

1911-ACT X-SECT

BRISTOL BORN



MICROFILMED

JAN 1 1965

DISTANCES FROM SIDE STAKES FOR CROSS-SECTIONING  
SLOPE 1 TO 1. ROADWAY OF ANY WIDTH

	0	.1	.2	.3	.4	.5	.6	.7	.8	.9	
0	0.00	0.10	0.20	0.30	0.40	0.50	0.60	0.70	0.80	0.90	0
1	1.00	1.10	1.20	1.30	1.40	1.50	1.60	1.70	1.80	1.90	1
2	2.00	2.10	2.20	2.30	2.40	2.50	2.60	2.70	2.80	2.90	2
3	3.00	3.10	3.20	3.30	3.40	3.50	3.60	3.70	3.80	3.90	3
4	4.00	4.10	4.20	4.30	4.40	4.50	4.60	4.70	4.80	4.90	4
5	5.00	5.10	5.20	5.30	5.40	5.50	5.60	5.70	5.80	5.90	5
6	6.00	6.10	6.20	6.30	6.40	6.50	6.60	6.70	6.80	6.90	6
7	7.00	7.10	7.20	7.30	7.40	7.50	7.60	7.70	7.80	7.90	7
8	8.00	8.10	8.20	8.30	8.40	8.50	8.60	8.70	8.80	8.90	8
9	9.00	9.10	9.20	9.30	9.40	9.50	9.60	9.70	9.80	9.90	9
10	10.00	10.10	10.20	10.30	10.40	10.50	10.60	10.70	10.80	10.90	10
11	11.00	11.10	11.20	11.30	11.40	11.50	11.60	11.70	11.80	11.90	11
12	12.00	12.10	12.20	12.30	12.40	12.50	12.60	12.70	12.80	12.90	12
13	13.00	13.10	13.20	13.30	13.40	13.50	13.60	13.70	13.80	13.90	13
14	14.00	14.10	14.20	14.30	14.40	14.50	14.60	14.70	14.80	14.90	14
15	15.00	15.10	15.20	15.30	15.40	15.50	15.60	15.70	15.80	15.90	15
16	16.00	16.10	16.20	16.30	16.40	16.50	16.60	16.70	16.80	16.90	16
17	17.00	17.10	17.20	17.30	17.40	17.50	17.60	17.70	17.80	17.90	17
18	18.00	18.10	18.20	18.30	18.40	18.50	18.60	18.70	18.80	18.90	18
19	19.00	19.10	19.20	19.30	19.40	19.50	19.60	19.70	19.80	19.90	19
20	20.00	20.10	20.20	20.30	20.40	20.50	20.60	20.70	20.80	20.90	20
21	21.00	21.10	21.20	21.30	21.40	21.50	21.60	21.70	21.80	21.90	21
22	22.00	22.10	22.20	22.30	22.40	22.50	22.60	22.70	22.80	22.90	22
23	23.00	23.10	23.20	23.30	23.40	23.50	23.60	23.70	23.80	23.90	23
24	24.00	24.10	24.20	24.30	24.40	24.50	24.60	24.70	24.80	24.90	24
25	25.00	25.10	25.20	25.30	25.40	25.50	25.60	25.70	25.80	25.90	25
26	26.00	26.10	26.20	26.30	26.40	26.50	26.60	26.70	26.80	26.90	26
27	27.00	27.10	27.20	27.30	27.40	27.50	27.60	27.70	27.80	27.90	27
28	28.00	28.10	28.20	28.30	28.40	28.50	28.60	28.70	28.80	28.90	28
29	29.00	29.10	29.20	29.30	29.40	29.50	29.60	29.70	29.80	29.90	29
30	30.00	30.10	30.20	30.30	30.40	30.50	30.60	30.70	30.80	30.90	30
31	31.00	31.10	31.20	31.30	31.40	31.50	31.60	31.70	31.80	31.90	31
32	32.00	32.10	32.20	32.30	32.40	32.50	32.60	32.70	32.80	32.90	32
33	33.00	33.10	33.20	33.30	33.40	33.50	33.60	33.70	33.80	33.90	33
34	34.00	34.10	34.20	34.30	34.40	34.50	34.60	34.70	34.80	34.90	34
35	35.00	35.10	35.20	35.30	35.40	35.50	35.60	35.70	35.80	35.90	35
36	36.00	36.10	36.20	36.30	36.40	36.50	36.60	36.70	36.80	36.90	36
37	37.00	37.10	37.20	37.30	37.40	37.50	37.60	37.70	37.80	37.90	37
38	38.00	38.10	38.20	38.30	38.40	38.50	38.60	38.70	38.80	38.90	38
39	39.00	39.10	39.20	39.30	39.40	39.50	39.60	39.70	39.80	39.90	39
40	40.00	40.10	40.20	40.30	40.40	40.50	40.60	40.70	40.80	40.90	40
41	41.00	41.10	41.20	41.30	41.40	41.50	41.60	41.70	41.80	41.90	41
42	42.00	42.10	42.20	42.30	42.40	42.50	42.60	42.70	42.80	42.90	42
43	43.00	43.10	43.20	43.30	43.40	43.50	43.60	43.70	43.80	43.90	43
44	44.00	44.10	44.20	44.30	44.40	44.50	44.60	44.70	44.80	44.90	44
45	45.00	45.10	45.20	45.30	45.40	45.50	45.60	45.70	45.80	45.90	45
46	46.00	46.10	46.20	46.30	46.40	46.50	46.60	46.70	46.80	46.90	46
47	47.00	47.10	47.20	47.30	47.40	47.50	47.60	47.70	47.80	47.90	47
48	48.00	48.10	48.20	48.30	48.40	48.50	48.60	48.70	48.80	48.90	48
49	49.00	49.10	49.20	49.30	49.40	49.50	49.60	49.70	49.80	49.90	49
50	50.00	50.10	50.20	50.30	50.40	50.50	50.60	50.70	50.80	50.90	50

Distance of slope stake from side or shoulder stake for any width roadway, slope 1 to 1. If ground is nearly level, the cut or fill at side stake is located by the double entry method in left column and top row. The number in body of table in same row and column gives distance from side stake to slope stake. If ground is not level estimate the difference in elevation between the side stake and slope stake, lower target by this amount if cut, elevate if fill. Add this amount to cut or fill and find distance in table. Set up rod at this point, and line of sight should cut target. If it does not make the slight adjustment necessary.

TABLE IX  
MIDDLE ORDINATES OF RAILS  
Length of Rail (feet)

C	R	30	28	26	24	22	20	C	R	30	28	26	24	22	20
o	Feet	Inch	Inch	Inch	Inch	Inch	Inch	o	Feet	Inch	Inch	Inch	Inch	Inch	Inch
0-20	17189	.08	.07	.06	.05	.04	.03	8	716.8	1.88	1.64	1.42	1.20	1.01	.84
0-40	8594	.16	.14	.12	.10	.08	.07	9	637.3	2.12	1.84	1.60	1.35	1.14	.94
1-0	5730	.24	.20	.18	.15	.13	.10	10	573.7	2.36	2.05	1.78	1.50	1.27	1.04
1-20	4297	.31	.27	.23	.20	.17	.13	11	521.7	2.59	2.26	1.95	1.65	1.39	1.15
1-40	3438	.39	.34	.29	.25	.21	.17	12	478.3	3.83	2.47	2.15	1.81	1.54	1.26
2-0	2865	.47	.41	.35	.30	.25	.20	13	441.7	3.05	2.66	2.30	1.96	1.66	1.36
2-20	2456	.55	.48	.41	.35	.29	.23	14	410.3	3.30	2.87	2.48	2.10	1.78	1.46
2-40	2149	.63	.55	.47	.40	.33	.27	15	383.1	3.54	3.08	2.68	2.26	1.91	1.57
3-0	1910	.71	.62	.53	.45	.38	.31	16	359.3	3.76	3.28	2.83	2.40	2.04	1.67
3-20	1719	.78	.68	.59	.50	.42	.35	17	338.3	4.00	3.48	3.02	2.57	2.16	1.78
3-40	1563	.86	.75	.65	.55	.46	.38	18	319.6	4.21	3.67	3.18	2.70	2.28	1.87
4-0	1433	.94	.82	.71	.60	.50	.42	19	302.9	4.45	3.89	3.36	2.86	2.41	1.98
4-20	1323	1.02	.89	.77	.65	.55	.45	20	287.9	4.70	4.09	3.55	3.00	2.54	2.09
4-40	1228	1.10	.96	.83	.70	.59	.48	22	262.0	5.16	4.44	3.84	3.30	2.80	2.29
5	1146	1.18	1.03	.89	.75	.63	.52	24	240.5	5.64	4.92	4.20	3.59	3.04	2.50
6	955.3	1.41	1.23	1.06	.90	.76	.62	26	222.3	6.07	5.29	4.58	3.88	3.29	2.70
7	819.0	1.65	1.44	1.24	1.05	.89	.73								

TABLE X  
SHORT RADIUS CURVES

Radius Feet	Chord Feet	Central Angle	Deflection Angle	Deflection for 1 Foot
35	10	16-26	8-13	49.3
45	10	12-46	6-23	38.3
50	15	17-16	8-38	34.5
60	15	14-22	7-11	28.8
75	15	11-30	5-45	23.0
100	20	11-30	5-45	17.3
120	20	9-34	4-47	14.3
150	20	7-39	3-49	11.5
190	25	7-32	3-46	9.15
200	25	7-10	3-35	8.6
225	25	6-25	3-12	7.7
240	25	5-58	2-59	7.2
250	25	5-44	2-52	6.9
275	25	5-12	2-36	6.2
288	50	9-58	4-59	6.0
300	50	9-32	4-46	5.7
350	50	8-12	4-06	4.9
376	50	7-40	3-50	4.6
400	50	7-10	3-35	4.3
410	50	7-00	3-30	4.2

To find length of curve divide angle from P. C. to P. T. by central angle of chord, and multiply by length of chord.

Index

Pgs

X-sec Alley Blk-75 Ocean Beach 1-7  
 " 55th - Faulconer to Laurel 8  
 Faulconer from  
 " Pandler St. to Balboa Vista Dr. 12  
 Blackton DR.  
 X-SECT. 41st, Broadway to C 16  
 X-SECT Broadway, 41st to 42nd (notes) 20  
 " Morell Fortuna St. to Crown Pt. 26  
 OR.  
 " Crown Pt. Dr. Morrell to P.B. Drive 28  
 Fortuna  
 Prop. drain Crown Pt. Dr. North of 36  
 X-sec Alley Blks 226, 227, 228, 230, 231, 232, 233 47

D. Smith  
E. Allen  
R. Parks

wo# 31994  
3-27-52

Cross Sec Alley Bk 75  
Ocean Beach

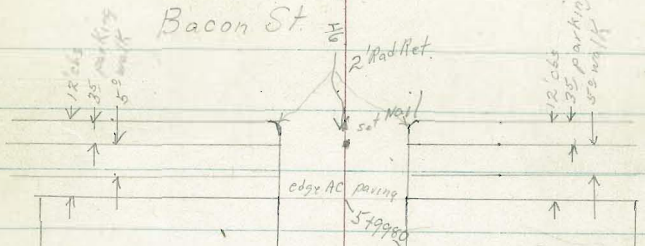
Radnet  
Pltts  
F. Adams  
Am

777441

3/3 43 set Nat  
156.23

1  
18.47  
717

Bacon St.



INDEXED  
Law  
MAR 27 1952

BK 75

Cape May Ave

Ocean Beach

Saratoga

14  
comp  
cb  
1/4

10400  
edge AC paving  
set Nat

10414  
comp  
1/4

2 Rad Net  
Abbott St

Lt = North

RT = South

2

0448 10<sup>2</sup> Lt Begin 3' con block wall

0448 10<sup>3</sup> Lt End 4 car garage - cent floor + apron

0425

0412 9<sup>2</sup> Rt. 8' con trash slab

0405 10<sup>2</sup> Lt Begin 4 car garage con floor + apron

0404 8<sup>2</sup> Rt. 14' Power Pole # PA5096

10<sup>2</sup> Lt Begin ramp walk to garage apron

0400 East line Abbott St edge AC parking - Cbs

0-10 Fly Cb Line Abbott St

TP, 4<sup>88</sup> 11<sup>98</sup> 549 710

BM, 320 1259 887

NW BP  
Abbott  
Cape May

12.41	8.7
7043	33
10 <sup>2</sup>	10 <sup>2</sup>
top	parting
9.19	9.25
222	223
183	10 <sup>2</sup>
floor	apron

8.23	8.6	8.3	8.6	8.7
325	34	37	34	33
10 <sup>2</sup>	10		10	13
apron				

9.16	8.37	8.72
282	32	325
182	10 <sup>2</sup>	92
floor	apron	con

7.57	7.29	7.17	6.83	7.17	7.29
443	429	481	513	481	469
10 <sup>2</sup>	92	92	95	95	95
cb	94	94	94	94	94

7.21	7.13	7.17	6.60	6.60	6.52	6.45	6.44	7.03	5.86	6.47
427	485	481	538	539	526	553	554	475	612	581
60	60	12	12	10	10	12	12	12	60	60
cb	94	94	94			94	94	94	94	94

11<sup>98</sup>

1457 10<sup>2</sup> Lt E 3<sup>2</sup> con walk

1450 10<sup>2</sup> Lt End 9' board fence

1432 21<sup>2</sup> RT E double garage dirt floor

1412 10<sup>2</sup> Lt Begin 9' Board fence

1407 14<sup>2</sup> Lt E single garage dirt floor

1401 8<sup>2</sup> RT E 9" Power Pole # PA 5076

140

1400 10<sup>2</sup> Lt End 3' con block wall

0499 12<sup>2</sup> RT End 4car garage dirt floor

0464 12<sup>2</sup> RT Begin 4car garage dirt floor

0462 9<sup>2</sup> RT E 2<sup>2</sup> walk

0450

Lt-North

S

RT=South

3

11.1  
0.8  
10<sup>2</sup>  
walk

11.0

0.2  
10

10.3

10.6

10.6

1.7  
10

1.4  
10

1.4  
15

1.8

2.2  
21<sup>2</sup>

10.0  
2.0  
14<sup>2</sup>  
dirt floor

13.0

7.0

10<sup>2</sup>  
for wall

2.3

2.2

10<sup>2</sup>, 10  
footings

10.1

1.2

19.6

4

9.9

2.1  
10

9.7

2.3

12<sup>2</sup>  
dirt floor

9.8

2.2

12<sup>2</sup>  
dirt floor

2.4

2.4

9<sup>2</sup>  
walk

9.8

9.0

2.8

3.0

9.2

2.8

10

11.98

Lt. North E Rt. South 4

2450

11.2 11.2 11.2 11.2 10.6  
 53 53 53 53 52  
 30 70 10 30

2440 11<sup>2</sup> Lt E double garage dirt floor

10.1  
 54  
 11.2  
 dirt  
 floor

2439 13<sup>4</sup> Rt E double garage con floor + apron

11.2 11.35  
 5-27 5-20  
 132 142  
 apron floor

2425 9<sup>6</sup> Lt End 3<sup>5</sup> Board Fence

2400 10<sup>2</sup> Lt Begin 3<sup>5</sup> Board Fence

2400 8<sup>2</sup> Rt E 15" Power Pole # PA5064

11.3 11.5 11.0 11.2 10.8  
 8-2 5-0 5-5 5-3 5-2  
 15 10 10 20

1798<sup>5</sup> 10<sup>2</sup> Lt E 3' con walk

493  
 10<sup>2</sup>  
 walk  
 11.21 11.55

1797 10<sup>2</sup> Lt End 4 car garage con floor + apron

477 493  
 128 100  
 floor apron

1758 Rt<sup>3</sup> Rt E single garage dirt floor

40.5  
 6-0  
 212  
 floor  
 dirt

1753 10<sup>2</sup> Lt Begin 4 car garage con floor + apron

11.68 11.41  
 480 502  
 128 100  
 floor apron

TP2 5<sup>23</sup> 16 48 1 33 10<sup>65</sup>

11 16 48

4460

4450

4425

4400 9<sup>2</sup> RT & 12" Power Pole # PA5036

3462 18<sup>5</sup> RT & double garage can floor

3450

3437 13<sup>2</sup> RT & double garage can floor apron

3400 9<sup>4</sup> RT & 16" Power Pole # PA5042

Ht = North

2

RT = South

5

25	34	3	39	42	78
10	4		5	10	20

32	22	3	34	33	
30	10		10	20	

20	33	32	29	28	
30	10		10	30	

33	28	2	25	25	
20	10		10	30	

125	127	132	135	128	184
40	38	3	38	32	185
15	10		10	30	floor

325	377			
175	132			
Floor	Apron			

43	45	46	48	42
30	10		10	30
	16	48		



5499<sup>80</sup> 10<sup>3</sup> RT End 6 car garage con floor & apron  
wly Bacon St Edge AC paving

TP<sub>3</sub> 3<sup>54</sup> 11<sup>38</sup> 8<sup>64</sup> 7<sup>84</sup>

5452 10<sup>0</sup> RT Begin 6 car garage con floor & apron

5442

5425

5423 13<sup>3</sup> RT Begin 6' con black wall

5400 9<sup>3</sup> RT & 14" Power pole # PA 5014

4477 11<sup>3</sup> LT Begin wood Bldg wood floor

11<sup>North</sup> RT=South 6

7.35	7.02	6.81	7.13	7.30	7.52	7.54
403	420	452	425	408	426	354
98	92	102	102	102	142	
62	94	54	54	66	apron floor	

8.4	8.2	7.5	7.7	7.32	7.53
82	83	92	94	96	895
15	10	6		102	136
				apron	floor

11.1	9.4	9.2	8.9	8.8	8.4
54	67	62	76	77	84
15	10		10	13	15

12.95	12.55	10.5	10.4	10.5	8.3
35	50	60	6	60	82
10	8	3		10	15

7.6	13.78
82	270
132	132
foot wall	top wall

13.1	11.1	11.4	11.1	9.7	8.3	8.0
34	56	54	54	71	82	85
10	3		4	10	15	20

13.9	16.48
26	
113	
floor	

Lt = North

L

Rt = South

7

Start BM. NW 1/4 Cope May + Abbott 4.46 (8.89) 8.90

TP4 6.09 (13.36) 4.11 7.37

6 + 11<sup>80</sup> W/4 C6 Bacon St

4.53	5.01	4.22	4.80	4.54	4.78	4.72	4.81	4.47	4.73	4.17
60	60	12	12	10	10	10	12	12	60	60
C6	Sut	C6	BC	Sut		94T	C6	Sut	C6	

11 38

X-Section 55<sup>th</sup> St. from Faulconer  
to Laurel - See B. 2165 - P. 1 for  
Sketch

3+00

23.8 25.1 25.7 25.9 26.3 29.1 30.4  
40 30 20 20 20 30 40

2+50

24.4 25.7 26.6 26.9 27.4 29.8 32.1  
40 30 20 20 20 30 40

2+00

25.4 26.8 28.0 28.4 29.0 31.6 33.8  
40 30 20 20 20 30 40

1+50

27.4 28.8 30.2 30.6 31.2 34.1 36.2  
40 30 20 20 20 30 40

1+00

28.2 29.7 31.7 32.4 32.8 36.4 37.3  
40 30 20 20 20 30 40

0+55 - 22.5' St. + Gray Pole

29.3 30.9 33.2 34.2 35.4 38.4 39.2  
40 30 15 20 20 30 40

0+30

32.8 33.8 34.8 35.9 39.5  
30 15 20 30

is 0.5' S. - Rods are on edge.

0+00 = S.L. of Sub. - Edge of A.C. pave

32.91 33.50 34.68 35.62 36.16  
30 20 20 30

B.M. = + in Mt. S. Rim  
+ 55<sup>th</sup> + Faulconer.

3346.8

300 Elev. not Noted.

Actual Elev. Shown.

Lt.

+

Rt.

INDEXED

Law

JUL 7 1952

55+1

7+00

6+50

6+10 - 17 Rt. = ± 3' Conc. Walk

6+00

5+85 - 16.2 Rt. = ± 8' Conc. Dr.

5+50

5+00

4+50

4+00

3+50

Lt.

±

Rt.

9

06.3 07.3 08.7 10.3 10.9 12.8 14.1 15.0  
40 30 20 30 12 20 30 40

07.3 08.0 08.9 10.2 10.8 13.3 14.8 15.4  
40 30 20 12 20 30 40

12.82 15.60 17.26  
17 walk 30 45

09.1 09.6 10.3 11.2 11.8 13.6 15.7 17.0  
40 30 20 12 20 30 40

12.83 15.66 17.35  
16.2 30 45  
Dr. Dr.

10.9 11.5 12.2 12.8 14.9 16.2 17.0  
40 30 20 20 30 40

13.6 14.5 15.3 15.4 16.2 17.5 18.5  
40 30 20 20 30 40

16.9 17.8 18.8 19.1 19.7 21.7 22.5  
40 30 20 20 30 40

20.3 21.5 21.6 22.1 22.3 25.9 26.6  
40 30 20 20 30 40

22.4 23.6 23.9 24.3 24.0 27.9 28.7  
40 30 20 20 30 40

55<sup>th</sup>

Lt.

±

Rt

10

S.E. 55<sup>th</sup> + Laurel  
check P.M. = 7 in Dr.

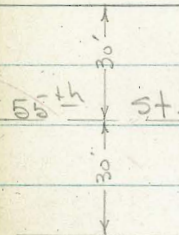
316.00

7 + 71.33 = opp. P.C. on Lt.

7 + 35

06.7	07.7	08.3	10.34	10.7	11.8	12.9	14.1
40	30	20	on stub.	12	20	30	40

06.4	07.2	08.9	10.4	11.0	12.5	13.9	14.8
40	30	20		12	20	30	40



Note: 0+00 shown in  
55th Sections - P. 8 is  
0.31 N. of True Line.

Cross in Rim 119 South.

3+70.15

st.

Faulconer

10

Fd. stub.

Randlev st.

Blackton Dr.

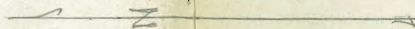
0+00

0+11

0+20

3+20

Cross in cb.  
B.M.



8795.4  
Balboa Vista Dr.

St.

Faulconer

2" pipe

X-Section Faulkner - from Randleu  
to Balboa Vista Dr. - sketch - P. 11

Lt.

±

Rt.

12

~~INDEXED~~  
INDEXED  
JUL <sup>paid</sup>  
7 1952

1+20

12.1	14.0	15.1	16.5	16.96	16.25	16.73	17.5
40	30	20		19.7 edge	35 gut.	Top	45

0+85 = opp. E.C. of curb on Rt.

11.7	13.0	13.9	14.8	14.77	14.10	14.55	15.4
40	30	20		20.1 edge	35 gut.	Top	45

0+60

12.4	13.3	13.7	14.06	13.77	13.39	13.89
30	20		19.9 edge	35	48.5 gut.	Top

0+55 = opp. Ang. in pave edge

12.3	13.1	13.7	13.95	13.73	13.30	13.82
30	20		19.9 edge	35	51.1 gut.	Top

0+30 = ±

11.6	12.5	12.9	12.71	13.05	13.24	12.93	13.39
30	20		7.7 edge	20	35	50.6 gut.	Top

0+13.8 = Cor. of Conc. gut. + A.C. pave

11.75 = Cor. of  
gut.

0+12.3 = end of cb. + 1.5' Conc. gutter - (G Type)

10.7	11.7	11.61	12.07	12.74	12.32	13.32
30	20	gut.	Top	23 Top	gut.	45 on Dr.

0+00 - 1.5' Lt. = ± P. pole # 37654 - 24.6' Lt. = ±

Dead man

11.6	12.1	12.7	13.1	13.3
30	25		30	

0+00 = w.l. Randleu. Prod.

BM = Cross in S. cb.

313.40

300' Elev. Not Noted.

Lt.      ±      Rt.

4+50

43.3 42.7 40.7 40.1 40.61 39.97 40.45  
40 30 20 17 18.0 Cb.  
gut

4+20

40.3 40.0 38.1 37.5 37.59 36.89 37.40  
40 30 20 17.5 18.1 Cb  
gut

3+88

No. Ob. Line 55<sup>th</sup>

35.8 35.7 35.4 35.54 35.29 34.42  
40 30 20 18 35

3+70.15

± 55<sup>th</sup>

34.8 34.8 34.5 34.68 34.64 34.17  
40 30 20 18 35

+52

So. Ob. Line 55<sup>th</sup>

33.4 33.6 33.5 33.60 33.90 33.43  
40 30 20 18.4 35.0

3+20

29.6 30.4 31.1 31.97 32.38 31.76 32.25  
40 30 20 19.8 35.2 Top  
Cvt

B.M. - x on Mt. So. Rim 55<sup>th</sup> & Faulconer 334.68

3+00

28.0 28.4 29.3 30.1 30.95 30.26 30.72 30.6  
40 30 20 19.7 35. Top 40  
edge gut

2+50

22.2 23.7 25.4 26.3 27.02 26.27 26.76 26.9  
40 30 20 19.8 35. Top 40  
edge gut

2+00

17.5 19.4 21.0 22.7 23.13 22.39 22.90  
40 30 20 19.8 36 40-sh  
edge gut in Dr. on Dr.

1+60

14.9 16.2 17.5 19.0 20.03 19.39 19.87 20.5  
40 30 20 19.7 35 Top 45  
edge gut

B.M.



Lt.

E

Rt.

8+95.4

E. Bilbao Vista (North)

48.7	47.7	46.6	45.50	44.95	44.27
40	30	20		18	50

8+77

Oppo. Nly Pt. on Cb. Rt.

50.1	47.3	46.4	45.46	45.18	43.89
40	30	20		18	50

8+45.4

Cb. B.C. Rt. Falconer &amp; Timothy

52.6	51.4	48.6	46.9	46.77	45.95	46.46
40	30	20	16		18	Cb
					gut	

B.M. Top F. Hy. S/W Falconer &amp; Timothy 348.90 (Rev. 398.94)

8+00

54.1	52.5	50.7	49.2	48.99	48.33	48.81
40	30	20	15		18	Cb
					gut	

7+50

53.7	53.6	54.6	52.5	51.8	51.55	50.88	51.40
40	32	30	20	17		18	Cb
						gut	

7+00

51.4	56.0	53.8	52.9	53.20	52.56	53.03
40	30	20	17		18	Cb
					gut	

6+50

55.7	55.9	52.9	53.48	52.86	52.93
40	30	20		18	18
				gut	Drive

+25.4

Sewer M.H.

53.05

6+00

54.5	54.0	51.5	52.29	51.59	52.09
40	30	20		18.0	Cb
				gut	

5+50

52.0	51.4	48.7	49.88	49.07	49.58
40	30	20		17.9	Cb
				gut	

5+00

48.0	47.5	45.5	45.2	45.75	45.10	45.60
40	30	20	18		18.1	Cb
					gut	

Lt.

±

Rt.

9+44

End of Pav. &amp; Improvement

47.8	47.6	45.4	44.96	44.28	44.77
40	30	20		18	CB
				94	

9+13

Nly Cb. Line Timothy

48.5	47.6	46.1	45.21	44.73	43.82
40	30	20		18	50

Clark 7-21-52  
Chepard W.O. 32131  
BRUNER  
BRYSON

X-SECT. 41<sup>st</sup> B'dway to C  
X-SECT. Broadway 41<sup>st</sup> to 42<sup>nd</sup> - -

Page 20

INDEXED  
PL 10  
JUL 23 1952

S. Line C<sup>1</sup> ST.

Fd 1" I.P.

29.99

Fd old 2x2

3+00

30'

Fd old 2x2

S. Line C<sup>2</sup>

Fd 2x2+CT

N

41<sup>st</sup> ST

30' 30'

Fd 1" I.P.

L.S. 2317

29.91

0+00

N. Line B'dway

30'

Broadway

04'

40'

30'

Fd old 2x2

S.L. B'dway

Fd 7" L & DISCS  
7' OFF LINE W/4 LINE  
ON P.L. Hill Top (check)

set for nail

23'

Fd Conc. man  
2 4137 - Hill Top

S. Line Hill Top

WEST LINE 42<sup>nd</sup>

E. LINE 42<sup>nd</sup>

60'

L.S. 2336

Fd 1" I.P.

85

Fd 1" I.P.

L.S. 2236

N.W. Hill Top

set ch. in CONC. DRIVE  
#1175 B'dway

set ch. in DRIVE  
#1185 B'dway

57.05'

57.65

Fd 1" I.P.

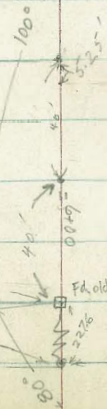
L.S. 2236

N.W. Hill Top

Fd old 2x2+CT

59.97'

N.W. Hill Top



X. SECT 41ST BRIDWAY to 'C'

0+56 30' RT. Bay 8" Conc. Ret wall

0+50

0+45 30' RT. END CONC Ret wall

0+0.1 28' LT 9. No Number

0+00 N.W. Bridway. 30' LT Bay 8" Conc. Ret wall

0-40 E. Bridway

LT. E. RT.

169.20 169.80 170.80 172.10 173.70  
 13.3 12.7 11.7 10.3 8.8  
 50 30 30 30 30  
 30 Foot Wall 30 TP Wall 31 BR Wall W yd.

173.30 175.28 174.70  
 9.0 7.22 7.8  
 30 Foot Wall 30 TP Wall 31 BR Wall W yd.

168.00 169.10 171.70 172.90 173.70  
 14.5 13.4 10.8 10.1 8.8  
 100 50 30 30 30  
 173.70 173.80 172.70 172.90 172.90  
 8.8 9.1 9.8 10.1 10.1  
 100 50 50 30 30  
 30 Foot Wall 30 TP Wall 31

182.50

T.B.M.	9.54	182.50 ✓	5.08	172.96	✓	178.144	✓	178.144	✓	SW Cor 41st + Bridway
T.P.	7.57	178.04 ✓	0.63	170.47 ✓	✓					
T.P.	12.32	171.10 ✓	0.46	158.78 ✓	✓					
T.P.	11.79	159.24 ✓	0.33	147.45 ✓	✓					
T.P.	13.10	147.78 ✓	0.13	135.68 ✓	✓					
B.M.	10.42	135.81 ✓		125.39		N/W B.P.				41st + Market

LT E RT

2100

191.92 8.7 40  
182.02 8.5 30  
182.42 8.1 28  
192.72 7.8 2  
182.92 6.6 30  
185.12 5.4 31  
185.52 5.0 40

1498

26.5' RT & 3' CONC. WALK

183.69 6.83 26.5  
183.77 6.75 30  
185.11 5.41 32  
185.50 5.02 40  
T.P. WALK  
T.P. WALK  
T.P. WALK

T.P.

8.18 190.52 0.16 182.34

190.52

1461

3.191.00 3.5 50  
3.191.10 3.4 30  
3.191.20 4.0 2  
3.191.30 2.6 2  
3.191.40 1.3 30  
3.191.50 1.3 31  
3.192.00 1.3 31  
3.192.10 2.6 2  
3.192.20 1.3 30  
3.192.30 1.3 31  
3.192.40 1.3 31  
3.192.50 1.3 31

1460

N.L. Alley (map)

1495

176.00 6.5 50  
175.90 6.6 30  
176.00 6.5 18  
176.10 6.4 2  
177.00 5.5 15  
179.10 3.4 15  
179.60 2.9 30  
180.50 2.0 50

1440

S.L. 20' Alley (map)

170.00 12.1 50  
171.20 11.3 30  
174.80 7.7 18  
176.20 6.3 15  
176.60 3.9 15  
177.60 4.0 30  
178.50 3.6 30  
179.30 3.2 30  
180.60 2.5 40  
DIT Floor 33  
DIT Floor 33  
Footng 33  
Footng 33  
Footng 33

1435

33' RT. END 2-CAR GAR.

1417

33' RT. Beg 2-Car gar.

174.80 3.7 33  
176.76 3.7 33  
176.20 6.3 33  
DIT Floor 33  
DIT Floor 33  
Footng 33  
Footng 33

1400

170.00 12.5 50  
170.80 12.1 30  
171.30 11.1 1  
172.60 9.9 30

174.80 2.7 30  
176.00 5.7 35  
177.20 5.3 50

0715

30' RT. END CONC. WALL.

182.50

173.90 8.6 30  
176.28 6.2 36  
175.70 5.8 31  
BK WALL  
WALK

LT      £      RI

check 7.71 172.97 = 172.71 ✓  
walk in Pile T.B.M see pg 17

T.P. 1.46 180.68 ✓ 11.30 179.22 ✓

3+30 = 2 "C" to West of 2 list

179.32 182.12 184.82 185.52 185.82 184.02  
11.2 7.4 5.7 5.0 4.7 6.5  
150 100 50 50 50 100

3+00 5 "C"

182.72 183.92 184.72 184.82 185.52 186.72 186.02 186.52  
7.8 6.6 5.8 5.7 5.0 3.8 3.6 4.0  
140 100 50 30 30 30 50 100

2+50

185.12 185.12 185.52 184.72 184.72 186.02 186.52  
5.4 5.4 5.0 5.8 5.8 4.5 4.0  
40 30 21 18 30 30 40

2+25

183.22 183.22 183.92 183.62 185.42 185.92  
7.3 7.3 6.6 6.9 5.1 4.6  
40 30 2 30 40

2+01

3/6 LT 2 4.5 Cont walk

182.13 182.12  
8.39 8.30  
40 3/6  
walk walk

190.52

INDEXED  
JUL 28 1952  
Rice

X-SECT. BROADWAY, 41ST to 42ND

1+50

1+35

1+25

1+16

1+00

0+75

0+50

0+25

0+00

0-30

8.84

181.80

172.96 SPIKE IN

Pole (see preced. pg.)

39.9 LT & 4' CONC WALK

40' LT & 8' DRIVE 65' LT FLOOR PAR.

32.0' RT. & Pole 178145

39.9' LT EWS WALL

38.8' LT & 4' WALK (Lower Step)

39.6' LT & 5' CONC WALK

39.6' LT Bay 8' wide Conc. Ret. Wall  
N. Line Broadway

& 41st

LT

E

RT

181.10  
0.7  
50  
180.60  
1.2  
40  
178.70  
3.1  
15  
176.40  
5.4  
10

180.20  
1.6  
50  
179.50  
2.3  
40  
177.20  
4.6  
14  
175.50  
6.3  
10

175.00  
6.4  
175.00  
6.7  
89  
174.50  
7.3  
18  
174.50  
9.7  
40  
173.50  
10.3  
50

181.91  
0.07  
65  
Floor  
178.00  
2.91  
40  
LP

178.00  
3.8  
50  
177.10  
3.7  
41  
176.07  
3.73  
39  
177.20  
4.0  
39  
177.20  
4.6  
37  
174.90  
7.0  
11

171.00  
4.9  
60  
170.80  
5.0  
41  
170.00  
4.8  
40  
173.80  
8.0  
11  
173.50  
8.3

176.55  
5.25  
50  
WALK  
174.60  
5.20  
39.6  
LP

176.10  
5.7  
50  
176.20  
5.6  
41  
174.49  
5.37  
39.6  
TI-WALL  
173.40  
8.7  
100  
174.00  
7.8  
39.6  
100

172.00  
9.4  
172.00  
10.1  
13  
171.70  
11.7  
40  
170.10  
13.3  
100  
173.80  
11.5  
40  
170.20  
14.8  
100  
169.50

181.80

3+30 34.0' LT &amp; 8' Drive 60' Floor gar.

3+25 35.5' LT &amp; pole # JP 378240

3+23

3700

2+93 40' RT &amp; Ribb (15) Drive 65' Floor gar.

2+83 34' LT &amp; 9' Drive 60' LT Floor gar.

2+75

2+50

2+42 37' RT &amp; Ribbon (15) Drive 63' to Floor gar.

2+01 31.5' RT &amp; pole # 371644

2+00

1492

37.3 RT & 8' Drive 65' to Floor gar.  
30' LT & 10" palm

1479

30' LT &amp; 8' Palm

LT S RT

171.61 171.47 171.42  
10.19 10.33 10.38  
60 40 34  
Floor Lip

172.40 172.30 172.60 172.40 172.30 172.20 169.90  
7.4 7.5 9.2 9.4 7.5 11.6 11.9  
30 40 14 11 40 50

175.10 174.60 174.30 174.40 174.10 174.50 174.80  
6.7 7.0 7.5 7.4 7.7 10.3 7.0  
50 40 12 14 40 50

171.77 171.67 170.55  
10.23 10.13 11.25  
40 40 65  
W Ribb E. Ribb Floor

178.61 175.14 174.98  
6.12 6.66 6.82  
60 40 34  
Floor Lip

179.00 178.70 176.50 175.90 176.10 171.80 171.60  
3.2 3.2 5.3 5.9 5.7 4.0 10.2  
50 40 13 8 40 50

179.10 178.70 177.10 176.90 176.60 172.20 171.20  
2.7 3.1 4.7 4.9 5.2 9.1 10.0  
50 40 12 8 40 50

181.30 181.00 180.60 177.30 177.00 177.00 172.00 172.00 171.50 172.69 172.62 171.20  
0.5 0.8 1.2 4.5 # 4 4.7 9.7 10.3  
50 40 34 # # 0 40 50

9.11 9.16 10.60  
W. Ribb E. Ribb Floor

172.19 171.39  
9.66 10.52  
37.3 65  
Lip Floor

181.80



4476

36.3' LT & 4' Walk

LT.      £      RT.

170.12  
3.38      4.96  
60      36.3  
Walk      Lip

4459

35' LT & Ribb Drive (2.0)      70' to Floor gar.

171.29      168.03      169.46      168.49  
2.11      3.57      5.04      5.86  
70      88      E.Rib      W.Rib  
Floor

4.66  
40  
E.Rib at P.LINE

5.06      5.07      3.57      2.11  
35      35      58      70  
W.Rib      E.Rib      BK      Floor

4452

33.5' RT & Pole # 51

4450

168.90      168.50      167.50      165.32  
4.6      5.0      6.0      8.2  
50      40      25      12

8.8      9.16.20      10.3      10.6  
11      40      50

4400

169.10      168.60      167.80      165.90  
4.4      4.9      5.7      7.6  
50      40      25      12

7.3      7.5      9.4      10.0  
11      40      50

4.2      4.8      5.5      7.5  
50      40      25      12

7.1      7.3      6.8      5.7  
11      40      50

3498

T.P.

6.27 173.50      5.03 167.25

173.50

3457

40' RT & B Drive      No gar.

170.64      170.64      170.66      170.06      169.64      169.76  
1.6      1.6      1.6      2.2      2.6      2.5  
30      40      37      35      12      11

4.86      5.31  
40      60  
2/P      Drive

169.76      168.58      168.26  
2.5      3.7      4.0  
11      40      50

3450

33' RT & Pole # 371645

3442

39' RT & Ribb (3.0) Drive      63' Floor gar.

169.03      169.11      168.66      169.45  
2.33      2.45      2.60      2.81  
39      39      45      63  
W.Rib, E.Rib      BK      Floor

T.P.

1.01 172.26      10.55 171.25

172.26

T.P.

11.15 174.96 7.64 163.86

6400

Wlk 42'nd

5490

44.4 RT & 8.5' Drive 60' to Floor gar

5479

28.5' LT & 3' walk

5472

5.5' RT & House

5460

26' LT & 8' Drive 67' to Floor

5450

5442

39.0 RT & Ribb. (2.5) Drive 65' to Floor gar.

5400

4492

37.5 RT & 8' Drive 64' Floor gar.

4484

37.5 RT & 2.5 WALK

LT. S. RT.

170.60 167.80 164.50 164.80 164.50 162.50 161.90 160.10 158.80  
2.9 5.7 7.0 8.7 9.0 11.0 11.6 13.4 14.7  
125 65 40 12 40 60 100 150

162.30 162.34  
11.2 11.18  
44.4 60  
Lip Floor gar.

166.78 165.91  
6.72 7.59  
40 walk 28.5  
Lip

161.44 161.03  
5.06 5.47  
67 Floor 60 Brk

166.68 165.54  
6.82 7.93  
40 26  
Lip

162.91 162.91  
11.23 5.5  
Floor House

Note. Floor of this House below level of garage & all others above gar. Elevations.

167.70 166.70 165.70 164.30 164.20 163.60 162.70 162.70  
6.3 7.3 8.1 9.2 9.3 9.9 10.8 11.3  
50 40 25 12 11 40 50

161.58 162.61 161.81  
10.72 10.87 11.67  
39 38  
Walk ERIB Floor

168.60 168.10 166.20 164.00 164.30 163.70 162.20 161.70  
1.9 5.4 7.3 9.0 9.2 9.8 11.3 11.8  
50 40 25 12 11 40 50

162.16 161.40 161.34  
11.34 12.10 12.16  
37.5 56 64  
Lip Brk Floor

162.69 162.79 161.21  
10.86 11.21  
37.5 56  
Lip walk

173.50

LT.      E      RT.

Check 11.49 152.98 = 152.94 = S/W.B.P. 42nd Hilltop

T.P.

0.49

164.47 ✓

10.78

163.98 ✓

6130

G 42nd

172.46  
1.5  
150

170.56  
4.4  
100

167.66  
7.3  
50

164.96  
10.0

162.56  
12.4  
50

160.36  
14.6  
100

158.76  
16.7  
150

174.96

Cross Sec. Morell St.  
 Crown Pt. OR.  
 P.B. Drive to Fortuna

C.H. Sommermer  
 Beqq  
 Oltman  
 Powell

1-30-53  
 no. 32074

• Lentes Fdi. Conc. Mon

Tie point distances used  $\frac{T.R. 20}{Page 16}$

G.M. = Chisel cross in Ely. ob. Brown  
 Point Drive + on & Fortuna.  
 produced - EL = 11.87 (= B.M. 47  
 FB 2225-P 37)

Sec F.B. 2225

Reduced  
 B.L.C.  
 2/21/53

0+00 "C" line

Blue line 0+00

~~Do not use~~  
 Int. N.W. ly line

C.R. Dr. and

Ely. 11' line

Morell

0+62.05 Ely. Crown Pt. Dh.  
 + Ely. 11' line Morell  
 5-7-53  
 CROWN

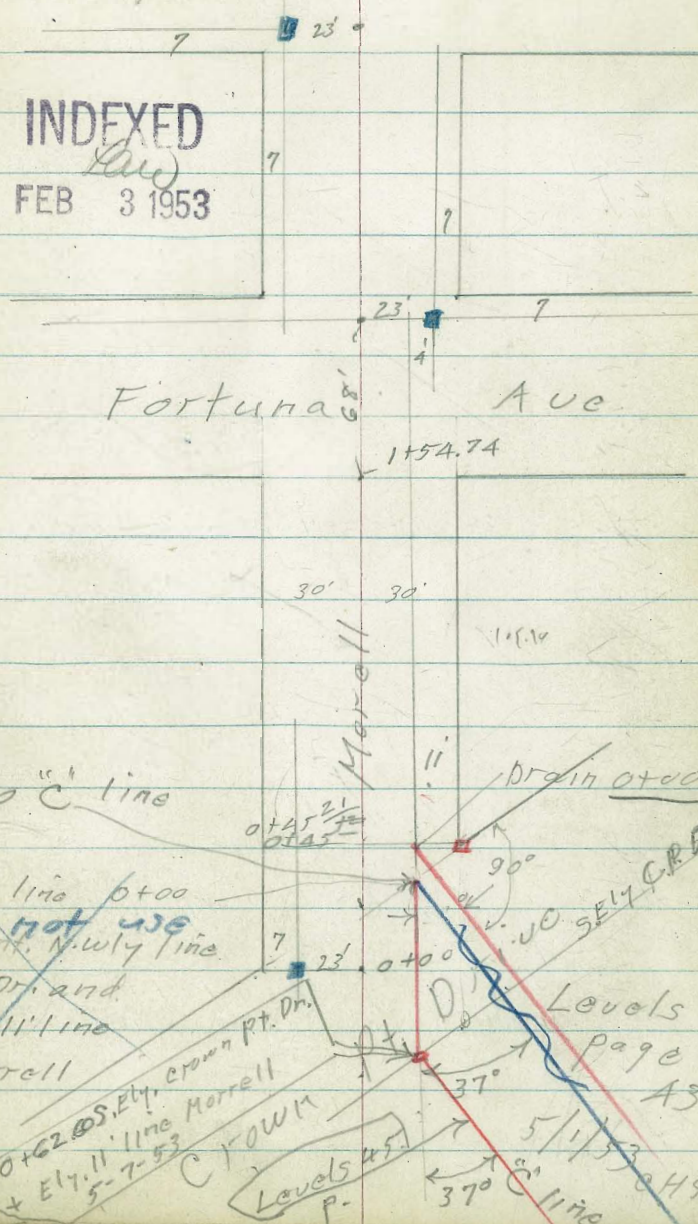
Levels 45  
 P.

Levels  
 page A3  
 5/1/53  
 37°  
 37°  
 "C" line

INDEXED  
 FEB 3 1953

Pacific Beach Dr.

Fortuna Ave



Morell

±

26

0+44 - 32<sup>E</sup> Lt. ± ribbon drive

18.9 <sup>b</sup>	18.86
2.37	2.47
525	325

0+23 32<sup>E</sup> Lt. ± 2<sup>5</sup> wide conc. walk

19.09	19.1 <sup>0</sup>
2.24	2.23
525	325
on walk	

0+00 - 30' Rt = top of bank

19.0	18.6	17.7
2.3	2.7	3.6
30		30

0 - 30 ± = top of bank

19.0	16.9
2.3	3.4
30	

0 - 60 30' Lt. ± top of bank

18.8
2.5
30

(0+00 = N. wly line crown point drive) <sup>on left</sup>

21.33

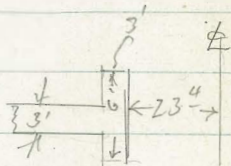
B.M. #1 9.46 21.33 - 11.87

Cross in O. ± Fortuna - Ely. of Pacific Beach Drive <sup>FB 2225</sup>  
37

Morell

1+54.74

1+51 - 23' Lt. = Ctr. Fire Hydr.



26' Lt. = 3' wide walk and 6' walk + =

1+34 23' Lt. = 6' wide walk

1+00

0+98 - 30' Lt. = end fence

0+54 30' Lt. = start picket fence

0+50

17.5	17.1	15.8	15.1	15.6	16.9	17.2
3.8	4.2	5.5	5.6	5.5	4.4	4.1
30	25	20		10	12	30

16.63  
4.50  
23  
Top of base flange

17.6	17.3	17.3	17.4	16.8	17.1	17.0	17.4	19.3
3.65	3.70	3.70	3.9	4.5	4.2	4.3	3.9	4.0
38	30	23	23	20		11	12	30

8.1  
walk  
The same

18.1	17.3	18.0	17.7	18.1	18.1
3.2	4.0	3.3	3.6	3.2	3.2
30	20		25	30	40

18.9	18.3	19.0	18.6
2.4	3.0	2.3	2.7
30	20		30

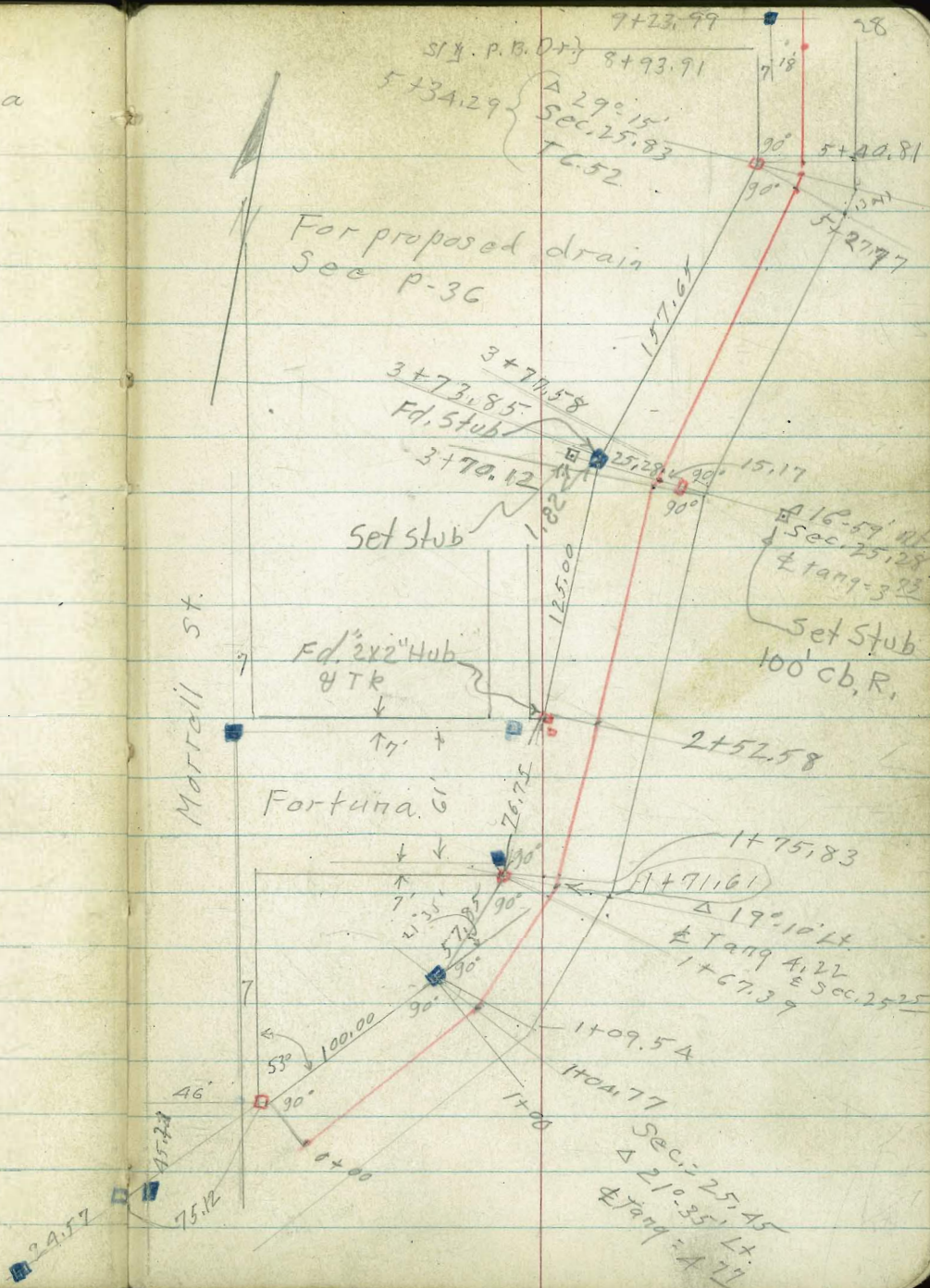
21.33

CROWN POINT DRIVE  
Morrell to North of Fortuna

C.H.S.  
Begg  
oltman  
Schelin

INDENTED  
Law  
MAR 31 1953

Reduced - B.L.C.  
3/31/53



Crown Point Drive

1+04.77

16.1	16.1	15.1	13.7	13.29	13.5
6.2	6.2	7.2	8.6	9.03	8.8
25	12	10		14	25
				cc. + Gnd.	

1+03- 25' Mt = start 3' high cobb. wall.

1+02- 1.6' Mt = start conc. curb. very poor condition

13.48  
8.84  
15  
cc.

1+00

16.1	16.1	15.1	14.0	12.7
6.2	6.2	7.2	8.3	9.6
25	12	10		25

0+50

17.4	16.8	16.8
4.9	5.5	5.5
25		25

0+00 = 90° to N.Ely. Cor. Marrell + C.P. Drive

18.3	18.0	17.7	16.0
4.0	4.3	4.6	6.3
25	22.32	21	25
		7.8	

B.M. 1

7.22 22.32

15.10

N.E. 7' Men Marrell + Fortuna

FB 2225  
56



2+43- 1A Rt = end cobble wall  
 Rt = end cobble wall

11.8  
 10.5  
 25

11.6  
 10.8

11.3  
 11.0  
 14

11.69  
 10.63  
 14  
 cl

11.7  
 10.6  
 25

2+00

1+85 2A<sup>6</sup> Rt = start cobble wall

12.6  
 9.7  
 25

12.1  
 10.2

11.7  
 10.6  
 14

12.10  
 10.22  
 14  
 cl

12.2  
 10.1  
 25

1+75<sup>83</sup> 1A<sup>5</sup> Rt. (cl. broken)

14.7  
 7.6  
 25

14.1  
 8.2  
 20

12.9  
 9.4  
 16

12.4  
 9.9

12.4  
 9.9  
 15

12.4  
 9.9  
 25

1+71<sup>61</sup> = Δ 19° 10' Lt.  
 25' Rt. = end cobble wall

14.7  
 7.6  
 25

14.1  
 8.2  
 20

12.9  
 9.4  
 16

12.4  
 9.9

12.4  
 9.9  
 15

12.4  
 9.9  
 25

1+67<sup>39</sup>

14.7  
 7.6  
 25

14.1  
 8.2  
 20

13.0  
 7.3  
 16

12.5  
 9.8

12.22  
 10.10  
 14  
 cl.

12.4  
 9.9  
 14  
 cl.

12.3  
 10.0  
 25

1+09<sup>59</sup>

16.1  
 6.2  
 25

16.1  
 6.2  
 12

15.1  
 7.2  
 10

13.5  
 8.8

13.14  
 9.18  
 14  
 cl.

13.4  
 8.9  
 25

cl.  
 cl.  
 cl.

22.32

C.P. Dr.

3+46 31<sup>1</sup> Lt. = N. Ely. Cor. car part.

3+44 27<sup>6</sup> Lt. = S. Ely. Cor. 3' wide N. + S. Conc. walk.

Note { T.S. = Toe slope.  
E.F. denotes Edge (or top) of Fill  
S.F. denotes start New fill port

3+35 - 29' Lt. = S. Ely. Cor. Conc. car.

T.P. 4.96 15.05 12.23 10.09

3+19 24<sup>5</sup> Rt. = end cobble wall

3+12 14<sup>2</sup> Rt. = end conc. cl.

3+00

25' Rt. = start cobble wall

2+52<sup>58</sup> 90° to Nly. line Fortuna

14<sup>4</sup> Rt. = start conc. curb  
(poor condition)

10.03  
5.02  
31<sup>1</sup> car. part.

9.96  
5.07  
27<sup>6</sup>  
walk

10.09	9.9	9.5	10.5	10.5	2.4	2.0
4.96	5.1	5.5	4.5	4.5	12.6	13.0
29	25		15	30	45	60
Conc.			S.F.	E.F.	T.S.	

15.05

10.0	10.3	10.56	10.7
12.3	12.0	11.74	11.6
	14	14 <sup>2</sup>	25
		cc	

10.5	10.2	10.76	10.6
11.8	12.1	11.56	11.7
25		14 <sup>4</sup>	25
		cc	

11.6	11.3	11.3	11.5
10.7	11.0	11.00	10.8
25		14 <sup>4</sup>	25
		cc	

22.32

C.P. Drive

4+26 25<sup>9</sup> Lt = N. Ely. Cor. Conc. Ramp

10.37  
4.68  
25<sup>9</sup>  
Ramp.

4+02 25<sup>E</sup> Lt. S. Ely. Cor. Conc. Ramp  
to double Car

11.30  
3.75  
41  
Car.  
Floor

10.03  
5.02  
25<sup>E</sup>  
Ramp.

4+00

9.5	9.3	8.8	9.7	9.6	8.8
5.5	5.7	6.2	5.3	5.4	6.2
25		11	20	25	60
			S.F.		E.F.

3+86 38<sup>1</sup> Lt = N. Ely Cor. House

10.0  
5.0  
38  
Cnd.

3+73<sup>85</sup> = Δ 16°-59' RA

9.8	9.8	9.3	9.0	9.8	9.1	2.5
5.2	5.2	5.7	6.0	5.2	5.9	18.4
30	25		12	25	60	125
			S.F.		E.F.	17 Marsh

3+70<sup>12</sup>

9.8	9.2	9.1	9.8
5.2	5.8	5.9	5.2
25		12	25

3+61 31<sup>4</sup> Lt = N. Ely. Cor 3' walk

10.20  
4.85  
31<sup>4</sup>  
walk

3+47 31<sup>7</sup> Lt = S. Ely. Cor House

9.9  
5.1  
31<sup>2</sup>  
Cnd.

15.05

C.P. Drive

#

33

5+27.77 = ~~79~~ 15' Lt.

12.3	11.8	11.2	11.6	10.4	3.9	-3.2
4.4	4.9	5.5	5.1	6.3	12.8	19.7
25	22		2	9	25	48
						T.S.

5+20 - Nt. end of new fill.

12.3	11.3	11.7	11.1
4.4	5.4	5.0	5.6
25		1	10
			E.F.

5+09 <sup>263</sup> Lt. = 35' wide conc. walk

13.3	12.61	12.4
3.40	4.08	4.3
363	263	26
	walk	

TIP 4106 16.69 21.42 12.63

1.6.69

4+87- 26<sup>5</sup> = N.Ely. Cor. conc. drive

12.70	12.3
2135	2.7
265	25
apron	

4+80

11.9	11.3	10.2	9.8	2.5	11.0
3.1	3.7	4.8	5.2	17.5	19.0
25		25	33	51	75
			E.F.	T.S.	Marsh

4+77- 26<sup>5</sup> Lt. = S.Ely. Cor. conc. drive

13.65	12.45
1.40	2.60
43	265
Cor. floor	drive

4+60

11.2	10.8	10.0	8.0	9.6	9.5	11.0
3.8	4.2	5.0	7.0	5.4	5.5	19.0
25		26	31	44	50	70
		S.E.			E.F.	T.S.

15.05

## C.P. Drive

34

T.P. 3.33 ✓ 16.12 ✓ 3.90 ✓ 12.79 ✓

7+00

15.6 15.0 12.6 12.6 12.3 12.7 11.0 6.2  
 1.1 1.7 4.1 4.1 4.4 4.0 5.7 10.5  
 25 18 17 10 12 25 50

6+50

14.8 13.2 13.1 12.5 13.3 10.3 9.0 8.2  
 1.9 3.5 3.6 4.2 3.4 6.4 7.7 8.5  
 25 17 8 10 25 30 50

6+40 Ad Lt = N. Ely. Car-house

15.7  
 1.0  
 40  
 Ord.

6+00

14.2 12.7 12.0 11.7 12.0 9.7 5.9  
 2.5 4.0 4.7 5.0 4.7 7.0 10.8  
 25 16 8 10 25 50

5+70

13.6 13.4 12.1 11.4 11.0 11.0 8.4  
 3.1 3.3 4.0 5.3 5.7 5.7 8.3  
 25 18 17 6 10 25

5+40.81

12.3 11.8 11.1 11.4 9.6 5.8 3.3  
 4.4 4.9 5.6 5.3 7.1 10.9 20.0  
 25 21 1 10 25 52

5+34<sup>29</sup> Δ 29° 15 Lt.

11.3 11.8 11.3 11.5 9.3 4.1 3.2  
 4.4 4.9 5.4 5.2 7.4 12.6 19.7  
 25<sup>82</sup> 22 1 12 25<sup>83</sup> 50

T.S.

16.69

9+23.99 18<sup>00</sup> ~~At~~ = Conc. Mon.

8.5	7.30	7.9	7.4	6.0	3.2	0.8	1.1
7.8	8.82	8.2	8.7	10.1	12.9	15.3	15.0
25	18	18		18	25	30	40
	Mon	Wed		Wed.			

8+93.91 = Sly line Pac. Beach Dr.

8.3	8.3	7.0	7.0	2.0	1.1	1.0
7.8	7.8	9.1	9.1	14.1	15.0	15.1
25	10		12	25	37	50

8+60

10.1	9.3	8.7	8.7	7.9	8.4	7.4	2.1	0.4	0.4
6.0	6.8	7.4	7.4	8.2	7.7	8.7	14.1	15.7	15.7
35	28	27	25	1		14	25	40	50

8+00

12.6	11.8	9.9	9.9	9.5	10.3	7.6	3.1
3.6	4.3	6.2	6.2	6.6	5.8	8.5	13.0
25	20	18		9	10	25	50

7+50

13.6	12.9	11.4	11.4	10.6	11.2	8.1
2.5	3.2	4.7	4.7	5.3	4.9	8.1
25	20	18		10	12	25

16.12

Crown Pt. Drive

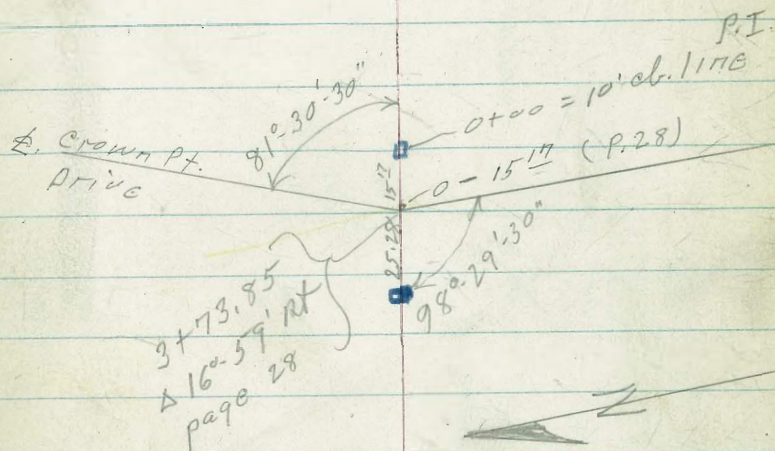
Proposed drain North of Fortuna  
C.H.S. 3-30-53

36

■ denotes Fd. Mon.

□ " " Hub.

Reduced - T.S.L.C.  
3/31/53



Prop. drain

37

1+35

$\frac{-3.1}{15.2}$   
5

$\frac{-3.1}{15.2}$

$\frac{-3.1}{15.2}$   
5

1+25 End new fill

$\frac{0.7}{11.4}$   
5

$\frac{0.7}{11.4}$

$\frac{0.5}{11.6}$   
5

0+85

$\frac{1.7}{10.4}$   
5

$\frac{1.5}{10.6}$

$\frac{1.5}{10.6}$   
5

0+40

$\frac{9.3}{2.8}$   
5

$\frac{9.3}{2.8}$

$\frac{9.3}{2.8}$   
5

0+10<sup>11</sup> = P.T. Ely line Crown Pt. Dr.

$\frac{9.9}{2.2}$

(on new fill)

0+00 = P.T. Ely (10') ab. line Crown Pt. Dr.

$\frac{9.5}{2.6}$   
5

$\frac{9.6}{2.5}$

$\frac{9.6}{2.5}$   
5

20.1 12.08 6.61 10.07

1.58 16.68 15.10

12.08

N.E. 7' Mon. Morrell + Fortuna



2400

$\frac{-4.6}{16.7}$	$\frac{-4.6}{16.7}$	$\frac{4.6}{16.7}$
5		5

1789

$\frac{-4.6}{16.7}$	$\frac{-4.6}{16.7}$	$\frac{4.6}{16.7}$
5		5

1785

$\frac{-3.6}{15.7}$	$\frac{-3.6}{15.7}$	$\frac{3.6}{15.7}$
5		5

1758± = cross sewer line

$\frac{-3.2}{15.3}$	$\frac{-3.2}{15.3}$	$\frac{3.2}{15.3}$
5		5

Crown Point Drive at Lamont.

3-30-53

w.o.# 21078.

C.H.S.

Bay  
Oltman  
Sholin

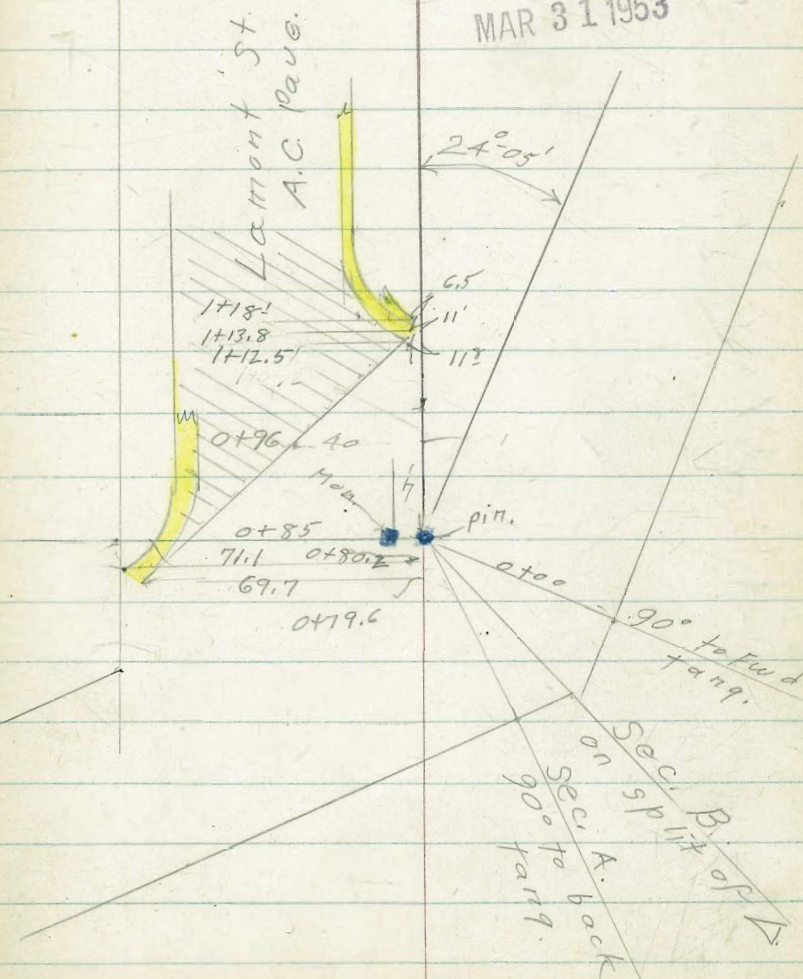
Book T.P.# 10-P-17

INDEXED  
Law  
MAR 31 1953

See Lamont St. Const. plans.  
for Cl. + Pav. on Lamont.  
Sheet #9337-L.

old Prop. Cor Nly. Crown Pt. Dr. and  
Ely. Lamont. = Sta. 0+85

See F.B. 2044-P 59



Lamont St.  
 Crown point Dr. at Lamont

B.L.

49

Ely line  
 Lamont.

0+80<sup>±</sup> - 71' Lt. = start conc. cb.

18.4  
 4.28  
 71  
 86

17.64  
 4.78  
 71  
 8

40' Lt. = start Rock + oil Pave.

+ A.C. Pave  
 0+79<sup>±</sup> - 69' Lt. = start Conc. gutter

18.2  
 3.5  
 80

17.65  
 4.77  
 69  
 A.C.  
 + gutter

17.8  
 4.6  
 40  
 E.P.

5.1  
 5.1

102' Lt. = N.W. edge & Pave. pave.

0+60 68' Lt. = S.E. edge Rock + oil

17.2  
 4.5  
 10

16.5  
 4.4  
 102  
 E.P.

16.1  
 4.3  
 80

17.2  
 4.6  
 68  
 E.P.

17.6  
 4.8  
 40

5.2  
 5.2

0+40 = top of bank

18.4  
 4.3  
 T.B.

0+00 - 80' Lt. = top of bank

19.5  
 2.9  
 80  
 T.B.

22.42 ✓

1.50 22.42 ✓ - 20.92

S.E. 7' disk Roosevelt + Lamont

Lamont.

B. L.

41

Pin = Base.

Section A. see page 39.

Lamont.

see sheet 9337 L for

1+18<sup>L</sup> 6<sup>S</sup> Lt. = back side of walk

18 <sup>S</sup>	18 <sup>S</sup>
4.05	3.9
6 <sup>S</sup>	
walk	

1+13<sup>8</sup> 11<sup>L</sup> Lt. = start conc. curb + walk.

18 <sup>S</sup>	11 <sup>L</sup>	18 <sup>S</sup>
4.20	4.70	4.0
11 <sup>L</sup>	11 <sup>L</sup>	
06	G	

1+12<sup>S</sup> 11<sup>S</sup> Lt. = start conc. gutter + A.C. Pav.

18 <sup>S</sup>	17 <sup>S</sup>
4.55	4.8
11 <sup>S</sup>	
conc. gutter	

0+96- 40' Lt. = sly edge A.C. Pav on Lamont.

18 <sup>S</sup>
11
4.61
40
pave

22.42<sup>d</sup>

Crown Point Drive

See sketch - P-39

base line = N.W. ly. line

Crown Point Drive

B.L.

42

Reduced B<sub>3</sub> Lockhead  
9-1-53

1+00

182	182	175	175	180	182
4.1	4.2	4.9	4.9	3.6	4.2
5		3	28	30	37
					T.B.

0+50

178	174	174	184	165
4.6	5.0	5.0	4.0	5.9
5		29	30	55
				T.B.

0+00 (see page 39)

173	168	183	178	154
5.1	5.6	4.1	4.6	7.0
	26	30	56	73
				T.B.

Sec. B. - (page 39)

173	169	184	162
5.1	5.5	4.0	6.2
	24	27	70
			T.B.

T.B. = Top of bank

Sec. A. - (P-39)

172	172	182	172
5.1	5.2	4.1	4.5
	24	26	56
			T.B.

22.42

Proposed Drain  
 Morrell St.  
 Sketch - page 25

±

43

For area north of Crown  
 Point Dr. See Cross Sec. P-25-27

INDEXED  
 Law  
 MAY 4 1958

0+79

6.8	4.2	16.8	-1.8	-1.9
3.0	5.6	3.0	11.6	11.7
20	9		10	20
loose Fill	start loose fill			

T.P. 1.84 ✓ 19.79 ✓ 12.95 ✓ 7.95 ✓

9.79 ✓

0+65

16.3	9.2	8.2	13.7	13.9
8.6	11.6	12.7	7.2	7.0
25	10		20	30
loose fill	Loose Fill			

0+46

18.3	18.3	18.3
2.6	2.6	2.6
5		5

0+00

18.7  
 2.2

20.90

9.03 ✓ 20.90 ✓ — 11.87 ✓

B.M. #1 P-26

1+50 in marsh

-4.6  
13.8

1+42

-2.2  
12.053' Mt. = M.H. 7  
63' Mt. = M.H. 5  
M.H.s sealed.

1+05 = cross sewer

-1.7  
11.5

0+83

3.9	-1.8	-1.9	-2.1
5.9	11.6	11.7	11.9
20	7		10
loose fill	start		
	loose fill	9.79	

0+00 = S. Ely line crown Pt. Dr.  
+ Ely line Morrell produced.

0+62<sup>60</sup> - 90° to Fwd. Tang.

14.6  
5.5  
14.1  
6.0  
10

+ Ely. 11' line Morrell.  
= S. Ely line crown Pt. Dr. (50' straight)

0+62<sup>60</sup> =  $\frac{1}{2} \Delta$  37° Lt.  
Sec. 90° to back tang.

13.9  
6.2  
10  
14.6  
5.5  
14.7  
5.4  
10

0+5A

Reduced B.L.C.  
5/12/53

16.8  
3.3  
10  
18.1  
1.5  
18.6  
1.6  
10

0+48

15.5  
4.6  
10  
17.1  
3.0  
16.1  
2.0  
10

0+35

18.1  
2.0  
10  
18.1  
2.0  
18.1  
2.0  
10

0+00 + Ely. 11' line Morrell  
N. W. 1/4 line crown Pt. Dr.

18.7  
1.4

8.20 20.07 - 11.87

BM#1-P-26

20.07



±

1+40 17 marsh

-4.0 -4.0 -4.0  
13.7 13.7 13.7  
10 10 10

1+25

-2.3 -2.4 -2.8  
12.0 12.1 12.2  
10 10 10

0+89 3<sup>5</sup> RT. = ctr. sealed M.H.

-2.2 -3.8 -1.5 0.25 -2.0 -2.2  
11.9 11.5 11.2 9.46 11.7 11.9  
10 2 3.5 6 10  
Cord. ± M.H. Cord.  
cover

0+80

-0.1 1.1 -0.3  
9.8 8.6 10.0  
10 10 10

0+75

2.7 3.2 3.0 7.0 7.2  
7.0 6.5 6.7 2.7 2.5  
10 6 7 10

T.P. 2.43 9.71 12.79 7.28

9.71

0+70

9.8 10.5 10.1  
10.3 9.6 10.1  
10 10 10

20.07

Rain + Cold

Alleys NOT X-sec in Numerical order.

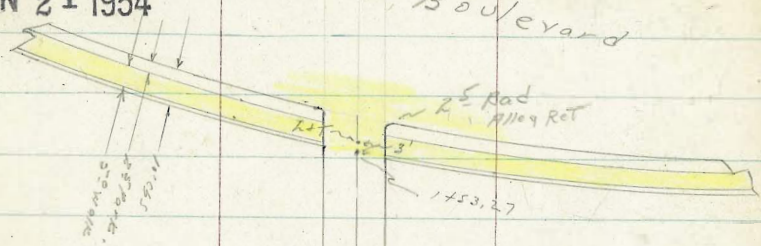
INDEXED

JAN 21 1954

CONT facing page

Redlined SW. Reynolds 1/10/54

Mission Boulevard

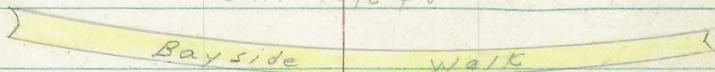


X-sec Alleys BIKs 226, 227, 228, 230, 231, 232, 233.

WO # 32215 1-7-53 C. Allen, D. Sisson, Powell

Ref. TP 25-, TP sheet # 1299. file map # 1651

CONT Page 48



Verona Court

BLK

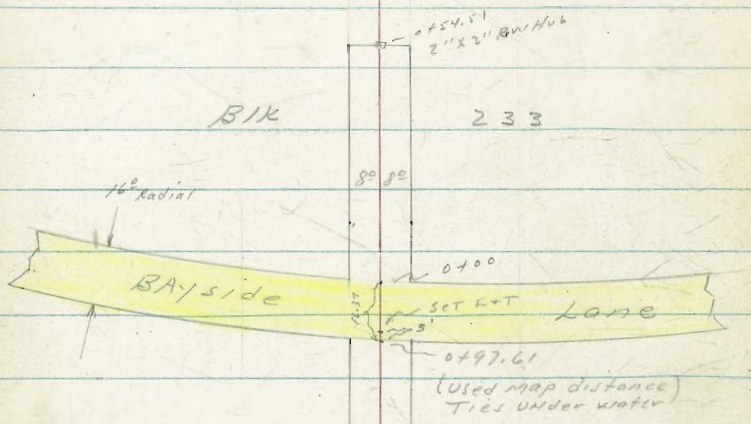
231

Venice Court

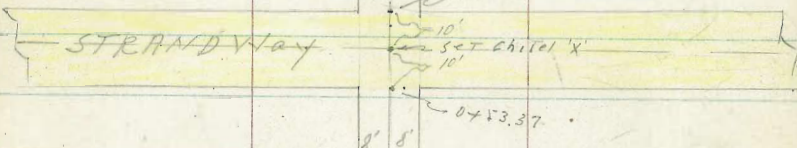
Verona Court

BIK

233



Venice Court



BLK

230

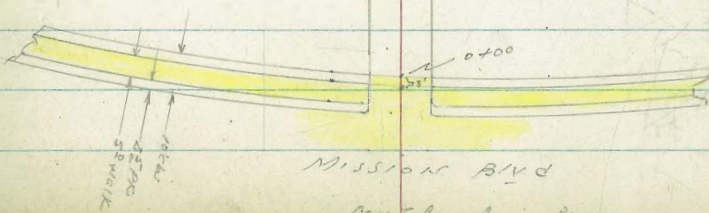
Garage facing Allee

0400 2\"/>

Ocean Front Walk

BIK

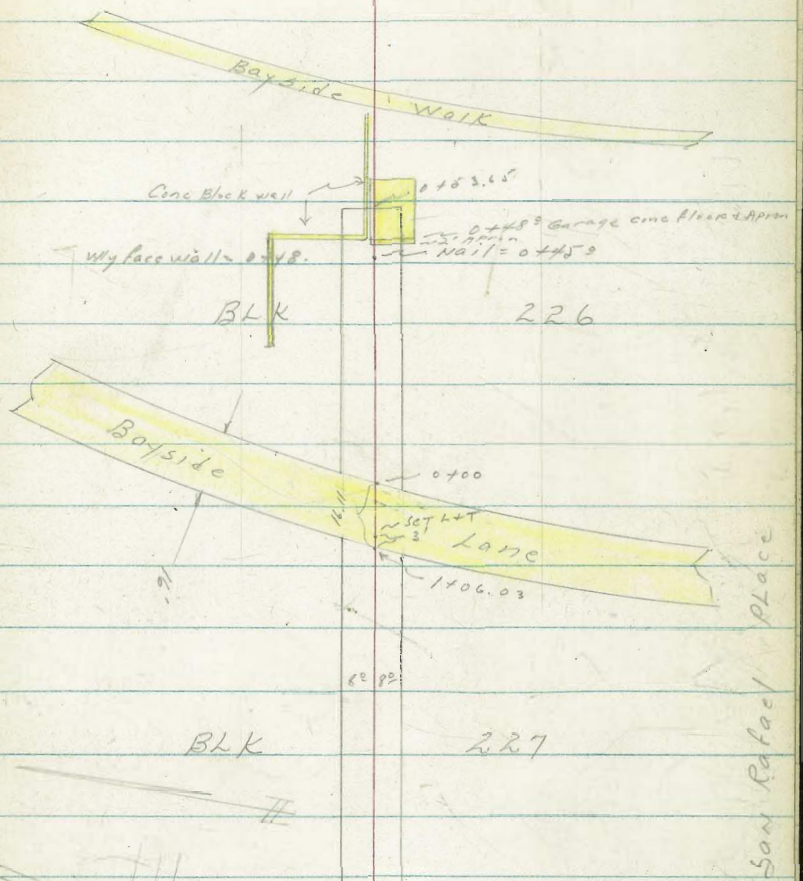
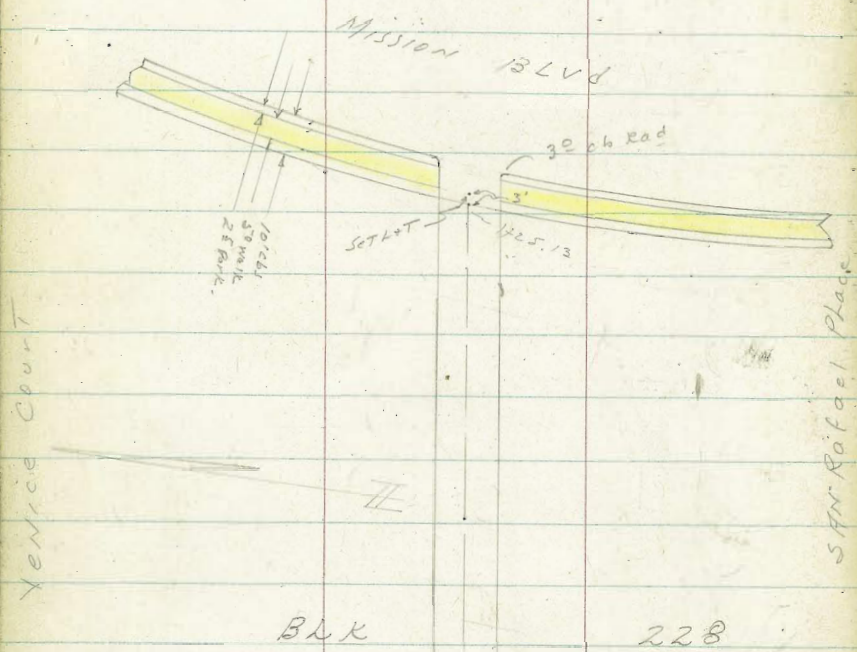
232



Mission Blvd

CONT from facing page

CONT Racing Page



BLK 229

X-sec Alleys BIKS 226, 227, 228.  
230, 231, 232, 233 Mission Beach  
see sketches pages 47, 48.

X-sec Alley 230 MR. See sketch page 47  
Conc Floor

0+0<sup>8</sup>-0<sup>2</sup> RT= SE COR E+W stucco garage

0<sup>2</sup> RT= Sly wall stucco garage

0+00 = Wly end Alley BIK 230

0-01 6<sup>2</sup> RT= NW COR CONC Apron to house

0-03<sup>5</sup> 6<sup>0</sup> RT= NE COR frame house

0-23<sup>4</sup> 6<sup>0</sup> RT= NW COR frame house

garage attached to house. conc floor

0-24<sup>4</sup> 0<sup>2</sup> RT= SW COR of E+W stucco.

TP 5.26 9.61 6.81 4.35

BM 4.05 11.16 7.11

LT= NLY

RT= Sly 49

Alley  
BIK 230

5<sup>34</sup> 5<sup>34</sup> 5<sup>3</sup>  
4<sup>37</sup> 4<sup>37</sup> 4<sup>3</sup>  
8<sup>0</sup> 0<sup>2</sup> 0<sup>2</sup>  
on concrete CONC floor

5<sup>3</sup> 5<sup>3</sup> 5<sup>37</sup> 5<sup>33</sup>  
4<sup>3</sup> 4<sup>3</sup> 4<sup>24</sup> 4<sup>28</sup>  
0<sup>2</sup> 6<sup>2</sup> 8<sup>0</sup>  
Nly edge  
conc walk

5<sup>31</sup> 5<sup>33</sup>  
4<sup>24</sup> 4<sup>28</sup>  
6<sup>2</sup> 8<sup>0</sup>  
NW COR conc

5<sup>4</sup>  
4<sup>2</sup>  
6<sup>0</sup>  
9<sup>2</sup>

4.8

4.8  
6<sup>0</sup>  
9<sup>2</sup>

4.8

4.8

0<sup>2</sup>

9.61

BP in Seawall San Rafael Place

X-sec Alley BIK 230 - M.B.

0+27- } 8° RT = NW COR conc Apron for Apt house  
8° LT = SW COR frame house

0+26- 7° RT =  $\phi$  10" power pole # None

0+23<sup>E</sup> 6° RT = NELY COR conc apron for Apt

0+22<sup>E</sup> 9° LT =  $\phi$  3' conc walk

0+10- } 14° RT = Nly wall Apt house  
6° LT = Nly edge conc apron for Apt

0+03<sup>E</sup> } 9° LT = NE COR Apron to garage  
0° LT = SE COR Apron to garage

0+01<sup>E</sup> 0° RT =  $\phi$  water meter

LT = N14

51  
45  
8°  
grat sludge

$\phi$   
Alley  
BIK  
230

RT = S14

537  
424  
8°  
conc

531  
424  
10°  
conc

513  
448  
6°  
conc

513  
448  
8°

512  
449  
14°  
Nly  
house

504  
457  
15°  
conc walk

504  
457  
9°  
conc walk

514  
42  
8°

50  
40

516  
443  
6°  
Nly edge  
conc

516  
443  
8°

517  
444  
14°  
conc

513  
448  
9°  
NE COR

518  
443  
0°  
SE COR

460  
501  
0°  
Tap cut off valve

961 T

X-sec Alley BIK 230 N/B.

Ahead. } Ely edge 20' conc pave  
Ely Line strand way  
0+73.37 back = 0+00 } Alley BIK 231 Ahead

0+63.37 = 1/2 strand way + 1/2 20' conc pave.

} Wly edge 20' conc strip pave strand way.  
0+53.37 = } Wly Line strand way.

} 10° RT = NECOR conc block apt house  
0+53.37 } 8° RT = NECOR ETW conc apron.

0+52.2 = 8° AT = SECOR Prefab house

0+52 - 7° RT = 1/2 12" power pole # P3916.

0+51.5 = 7° RT = 1/2 water meter.

} 8° AT = sly frame house  
0+40 } 8° RT = Nly edge of ETW apron

0+35 - 5° RT = 1/2 Dead man -

0+34 - 7° RT = 1/2 water meter

0+32 - 7° AT = 1/2 water meter

LT = Nly

RT = Nly

424 439 444 454 471  
5-37 5-22 5-17 5-07 4-90  
50 80 80 50  
conc conc conc conc

411 421 435 437 460  
5-50 5-30 5-26 5-24 5-01  
50 80 80 50  
conc conc conc conc

426 432 435 458 481  
5-35 5-09 5-06 5-03 4-20  
50 80 80 50  
conc conc conc conc

46 526 548  
5-2 4-25 4-23  
80 80 100  
9r NECOR WALK  
AT NLY HOUSE

484 46  
4-77 5-0  
80 80  
Floorcky. ground

51 51 52 534 539  
44 44 425 422  
80 80 10  
9r conc conc WALK

961 x

X-500 Alley 231

LT = Nly.

Alley 231

RT = Sly. 24

0+30- 8° RT = <sup>Floor</sup> single garage DIRT

2.6  
3.1  
8.0  
Dirt floor

0+28- 8° <sup>Walk</sup> RT = sly edge 3' wide conc.

3.29 2.71 2.66  
2.0° 3.38 3.43  
10° 10° 8°  
Top step Bottom step

0+26- 9° LT = S Ely stucco Dwelling

6.09 2.1  
0.0° 3.4  
5.3 9.3  
Floor 9r

0+22- 8° RT = N. Ely cor 2 story stucco Dwelling

3.1 4.93  
3.0 1.6  
8.0 8.0  
9r Floor

7.8 = Nly edge conc step to bldg  
7' x 3.5'

0+20- 4° RT = Nly edge Rough conc Apron

3.3 3.1 3.3 3.4 4.93  
2.8 3.0 2.8 2.55 1.82 1.6  
8.0 4.5 4.5 7.8 7.8  
9r conc Bottom step Top step

} 8° RT N. Wly cor stucco Dwelling  
0+00- 9° LT = S. W. cor stucco Dwelling

6.09 4.5  
0.0° 1.6  
9.5 9.5  
Floor 9r 4.5 4.93  
8.5 8.5  
9r Floor

6.09 X

TP<sub>2</sub>

5.53

6.09

7.05

0.56

Nail in P.P.# A742-

RT sta 1400

9.61 X

X-sec Alley 231-

LT = N14

♀  
Alley  
231

RT = S14 53

77<sup>8</sup> RT = SW COR E+W WALK  
0+56-6<sup>3</sup> RT = NW COR E+W WALK RT to alley

0.9  
5<sup>2</sup> 1.33 1.28  
476 481  
6<sup>3</sup> 6<sup>3</sup> 7<sup>3</sup>  
9<sup>2</sup> WALK WALK

0+52-8<sup>2</sup> RT = ♀ entrance way to house

1.11  
498  
8<sup>2</sup>  
Floor

0+51-7<sup>4</sup> RT = ♀ water meter

0+50-8<sup>0</sup> RT = NWly cor frame house

1.0 1.11  
5L 490  
8<sup>0</sup> 8<sup>0</sup>  
9<sup>2</sup> Floor

0+49-7<sup>4</sup> RT = ♀ water meter

0+48-10<sup>3</sup> LT = ♀ 2<sup>5</sup> Long E+W conc block wall + Apron

0.7 1.4  
5<sup>2</sup> 4<sup>2</sup>  
10<sup>3</sup> 10<sup>3</sup>  
Foot 9<sup>2</sup> 3<sup>9</sup> 1.97  
10<sup>2</sup> 8<sup>2</sup>  
Chor Apron

0+46-8<sup>4</sup> LT = end 2 car garage - Conc floor

0+40

2.0 1.7 1.7 1.8  
4L 4<sup>4</sup> 4<sup>4</sup> 4<sup>3</sup>  
8<sup>0</sup> 4<sup>0</sup> 8<sup>0</sup>

0+37-7<sup>3</sup> RT = ♀ Power pole (8") A736

0+31-8<sup>4</sup> LT = begin 2 car garage  
Conc Floor + Apron - Dwelling above

2.13 1.95  
396 414  
10<sup>2</sup> 8<sup>2</sup>  
Floor Apron

6.09 x



X-sec Alley 231-1113

LT = N14

Alley  
231-

RT = S14 51

0+86 - 8<sup>2</sup> LT = SW cor conc patio

0.58  
618  
8<sup>2</sup>  
Conc patio

0+80 - 8<sup>4</sup> LT = 1/2 single garage conc floor

0.19 0.00 0.2 0.3  
628 61 59 58  
8<sup>2</sup> 8<sup>2</sup> 8<sup>2</sup>

0+78 - 13<sup>6</sup> RT = SWLY cor conc patio  
8<sup>1</sup> RT = NWLY cor conc patio

0.39 0.46  
570 563  
8<sup>2</sup> 13<sup>5</sup>  
NWLY cor SWLY cor  
patio

0+75 - 8<sup>1</sup> RT = 1/2 6' wide conc walk

0.3 0.79 0.71  
58 530 538  
8<sup>2</sup> 8<sup>2</sup> 18<sup>2</sup>  
9r Walk Walk

0+72 - 8<sup>0</sup> RT = NELY cor Proxm house

0.5 1.53  
57 456  
8<sup>0</sup> 8<sup>0</sup>  
9r Floor

0+63 - 7<sup>2</sup> RT = SELY cor walk  
6<sup>4</sup> RT = NELY cor EDW walk to Alley

0.7 1.18 1.17  
54 491 492  
64 64 73  
9r Walk Walk

0+60

0.7 0.16 0.3 0.8 1.19 1.19  
52 55 53 53 490 490  
25 8<sup>0</sup> 64 64 54 walk  
9r NWLY Walk 78

6.09  $\pi$

X-sec Alley 131K 231

LT = N14

Alley  
231

RT = S14 - 55

1434 - 7<sup>9</sup> LT = begin frame garage + Bldg

0.1  
6<sup>2</sup>  
7<sup>9</sup>  
Floor  
Dirt

1433 - 8<sup>6</sup> RT = <sup>No Apron</sup> single garage - conc floor

0.03  
6<sup>05</sup>  
8<sup>5</sup>  
Floor

1425 } 8<sup>2</sup> RT = NELY cor conc patio  
10<sup>6</sup> LT = 2' wide conc walk

-0.15  
6<sup>24</sup>  
10<sup>6</sup>  
walk

-0.1  
6<sup>2</sup>  
8<sup>0</sup>

0.11  
6<sup>2</sup>

0.0  
6<sup>1</sup>  
8<sup>0</sup>

0.23  
5<sup>86</sup>  
8<sup>2</sup>  
NELY cor  
conc patio

1412 7<sup>8</sup> RT = single water meter

1406 - 8<sup>2</sup> LT = <sup>No Apron</sup> single garage - conc floor

0.04  
6<sup>13</sup>  
8<sup>2</sup>  
Floor

1400<sup>1</sup> - 8<sup>6</sup> RT = <sup>gate Locked - No OUTS</sup> NWLY cor conc patio

0.13  
5<sup>96</sup>  
8<sup>0</sup>  
NWLY cor patio

1400 } 7<sup>3</sup> RT = 4" power pole A742

8<sup>3</sup> LT = SELV cor conc patio

-0.14  
6<sup>23</sup>  
8<sup>3</sup>  
SELV cor  
Patio

-0.1  
6<sup>2</sup>  
8<sup>0</sup>

0.0  
6<sup>1</sup>  
5<sup>9</sup>  
8<sup>0</sup>

13<sup>3</sup> RT = <sup>Board fence tops patio</sup> SELV cor patio corner

0+99 - 7<sup>9</sup> RT = NELY cor conc patio

0+97 - 7<sup>5</sup> RT = single water meter

0+96 - 7<sup>5</sup> LT = single water meter

0.41  
5<sup>68</sup>  
7<sup>9</sup>  
NELY cor

0.46  
5<sup>61</sup>  
13<sup>2</sup>  
SELV cor  
conc patio

6.09 π

X-sec Alley BIK 231 M.B.

LT = NLY

Alley  
231

RT = SLY

< 7.117

TP5. Start BM. 0.86 7.12 ✓

TP4 7.82 7.98 4.88 0.16

2' Alley extended = 14' x 2' 5' grate on sumpp  
Sec taken on arc to show cb + gut

1+63<sup>27</sup> = Wly curb line MISSION Blvd

-0.43	-0.81	-0.28	-0.69	-0.72	-0.71	-0.74	-0.65	-0.32	-0.67	-0.29
5.51	5.85	5.32	5.73	5.76	5.81	5.75	5.67	5.36	5.66	5.33
SO cb	SO gut	112 ob BC	110 gut BC	80	Top Grate	80	116 gut BC	116 Top cb BC	50 gut	50 cb

TP3 5.11 5.04 6<sup>19</sup> - 0<sup>07</sup>

5.04 X

1+55-7<sup>7</sup> LT = Curb in very poor cond.  
Wly end Nly curb

6 <sup>34</sup>	6 <sup>28</sup>
7 <sup>7</sup>	7 <sup>7</sup>
Top cb	gut

1+54.48 = S Ely Prop per sub Map

Sec taken along Arc to show conc Alley Apron

1+53<sup>27</sup> Wly Line MISSION Blvd per tie points

-0.25	-0.17	-0.23	-0.16	-0.10
6 <sup>34</sup>	6 <sup>28</sup>	6 <sup>32</sup>	6 <sup>25</sup>	6 <sup>19</sup>
Top cb	gut	ON RIM MH	gut	Top cb

cb is lower than gut

1+53-7<sup>7</sup> LT = end from bldg  
SELY COR

-0.23  
6<sup>32</sup>  
ON RIM  
SMH

1+52<sup>5</sup> = Sewer Man hole

1+51<sup>80</sup> = Prop to South per map

1+51-8<sup>1</sup> RT = Curb in poor condition  
Wly end Sly curb Return

6.09 X

-0.16	-0.10
6 <sup>25</sup>	6 <sup>19</sup>
8 <sup>1</sup> gut	8 <sup>1</sup> Top cb

X-sec Alley 228 Mission Beach  
 Note Alleys NOT taken in Numerical  
 order Due to heavy rains having some alleys  
 flooded.

0+20

0+18- 7° Rt =  $\frac{1}{2}$  Water meter

8' LT = NWly cor walk below

0+15- 6' LT = SWly cor 1' wide Conc walk  
 Parallel to  $\frac{1}{2}$  alley.

0+00- 8° LT = SWly cor (begin) 2 story stucco Dwelling

FLy edge 20' Conc strip on strandway.

0+00 = FLy Line strand way - wly line. BK 228.

0-10 =  $\frac{1}{2}$  20' Conc strip on strandway.

wly edge 20' Conc paving

0-20 = wly line strand way & FLy Prop Line BK 229

TP, 5.37 10.47 6.14 5.10

BM

4.13 11.24

7.11

LT = NY

Alley  
228

IRT = 514 37

3.85	3.85	3.9	3.8	3.8
6' $\frac{1}{2}$	6' $\frac{1}{2}$	6' $\frac{1}{2}$	6' $\frac{1}{2}$	6' $\frac{1}{2}$
8°	6' $\frac{1}{2}$	6' $\frac{1}{2}$		8°
ONWALK	TOP WALK	SLY WALK		GROUND

4.11	4.11
6' $\frac{3}{8}$	6' $\frac{3}{8}$
8' $\frac{1}{2}$	6' $\frac{1}{2}$
NWly cor	SWly cor

5.47	5.0
5' $\frac{1}{2}$	5' $\frac{1}{2}$
8°	8°
Floor	9"

4.77	5.07	5.12	5.22	5.87
5' $\frac{6}{8}$	5' $\frac{4}{8}$	5' $\frac{3}{8}$	5' $\frac{2}{8}$	4' $\frac{6}{8}$
50°	8°		8°	50°

4.71	4.96	5.03	5.12	5.83
5' $\frac{7}{8}$	5' $\frac{5}{8}$	5' $\frac{4}{8}$	5' $\frac{3}{8}$	4' $\frac{6}{8}$
50°	8°		8°	50°

4.92	5.19	5.27	5.33	5.96
5' $\frac{5}{8}$	5' $\frac{2}{8}$	5' $\frac{2}{8}$	5' $\frac{1}{8}$	4' $\frac{5}{8}$
50°	8°		8°	50°

10.47 T

BP. Seawall & San Rafael Place

X-sec Alley BIK 228 - M.B.

LT = N14

2  
Alley  
228

RT = S14

59

0440-

22  
8<sup>3</sup>  
8<sup>2</sup>

21  
8<sup>4</sup>

21  
8<sup>4</sup>  
8<sup>2</sup>

0434 - 8<sup>3</sup> RT = Step up in floor frame house

25  
8<sup>2</sup>  
8<sup>3</sup>  
9r.

367  
680  
8<sup>3</sup>  
Floor

} 8<sup>4</sup> LT = begin frame house  
0428 - 8<sup>3</sup> RT = begin frame house

442  
605  
8<sup>4</sup>  
Floor

310  
75  
8<sup>4</sup>  
9r.

219  
76  
8<sup>3</sup>  
9r.

304  
743  
8<sup>3</sup>  
Floor

0427 - 8<sup>4</sup> LT = 2<sup>5</sup> Conc walk with steps

447  
630  
120  
ON  
Porch

417  
630  
92  
TOP  
Porch

357  
690  
92  
Sly Butt  
Porch

357  
690  
84  
Sly edge  
Walk

307  
74  
84  
9r.

0426 - 8<sup>6</sup> RT = 3' Conc walk

290  
757  
85  
Walk

288  
759  
185  
Walk

0425 - 8<sup>3</sup> LT = end (SELY COR) 2 story Dwelling Stucco

547  
500  
8<sup>3</sup>  
Floor

31  
73  
8<sup>3</sup>  
Ground

} 8<sup>3</sup> LT = NELy COR below walk  
0424 - 6<sup>7</sup> LT = SELy COR 1<sup>6</sup> wide Conc walk  
Parallel to Alley

310  
687  
8<sup>3</sup>  
NELy COR

51  
35  
688  
62  
SELy COR

10.47 X

X-sec Alley BIK 228 M.B.  
 0483-7<sup>5</sup> RT = 2 12" PP # PA742  
 0482-7<sup>0</sup> LT = 2 Water Meter

0480-

0478-9<sup>8</sup> RT = begin 2 story stucco Dwelling

0475-8<sup>0</sup> RT = begin 2' FWW walk (conc)  
 Parallel to 2' alley.

13<sup>5</sup> LT = 2 entrance - dirt floor.  
 opening to wly.

0474-8<sup>2</sup> LT = Swly cor single garage

0460

7<sup>2</sup> RT = 2 Water Meter

0449-8<sup>4</sup> RT = 2 2<sup>5</sup>' conc walk

8<sup>4</sup> RT = end (N Fly cor) frame Dwelling  
 0448-8<sup>4</sup> LT = end (SE Fly cor) frame Dwelling

LT = NLY

4  
 Alley  
 BIK  
 228

RT = SLY - 59

0.6  
 9<sup>3</sup>  
 8<sup>0</sup>

0.5  
 10<sup>0</sup>

0.7  
 9<sup>8</sup>  
 8<sup>0</sup>  
 9<sup>1</sup>  
 NLY walk

0.81  
 9<sup>66</sup>  
 8<sup>2</sup>  
 Top  
 Walk

1.39  
 9<sup>08</sup>  
 9<sup>2</sup>  
 Floor

0.86  
 9<sup>61</sup>  
 8<sup>0</sup>  
 NW Fly cor  
 walk

0.86  
 9<sup>61</sup>  
 10<sup>0</sup>  
 Swly  
 cor walk

10.3

0.5

10<sup>2</sup>

10<sup>0</sup>

13<sup>5</sup>  
 DIRT Floor

8<sup>2</sup>

9<sup>1</sup>

11

11

9<sup>4</sup>

9<sup>4</sup>

20

8<sup>0</sup>

10

9<sup>5</sup>

9<sup>5</sup>

8<sup>0</sup>

0.6

9<sup>9</sup>

25

1.57

8<sup>90</sup>

8<sup>4</sup>

Walk

1.67

8<sup>80</sup>

18<sup>4</sup>

Walk

14.4

1.7

6<sup>05</sup>

8<sup>8</sup>

8<sup>4</sup>

9<sup>1</sup>

Floor

8<sup>4</sup>

1.6

8<sup>9</sup>

8<sup>4</sup>

9<sup>1</sup>

3.67

6<sup>80</sup>

8<sup>4</sup>

Floor

10.47x

X-sec Alley BIK 228 - MB.

9<sup>o</sup> RT- SELY COR 2' CONC WALK  
1422<sup>5</sup> - 7<sup>o</sup> RT= NELY COR 2' CONC WALK Parallel to d

TP<sub>2</sub> 5.35 5.51 10.31 0.16

1420 - 5<sup>3</sup> LT= 5' wide CONC porch

1418 - 7<sup>5</sup> LT= Water meter

8<sup>o</sup> LT= NELY COR below WALK

1415 - 6<sup>6</sup> LT= SELY COR CONC WALK parallel to d

1413 - 8<sup>o</sup> RT= Stopopin WALK ON RT.

1403 - 7<sup>4</sup> RT= Nly edge Water meter partially set <sup>in walk</sup>

7<sup>9</sup> LT= begin (SELY COR) Frame Dwelling

7<sup>9</sup> LT= NWLY COR WALK TP to d.  
Parallel to d Alley

1400 } 6<sup>5</sup> LT= SWLY COR ELY CONC WALK

0992 - 8<sup>1</sup> LT= END (SELY COR) Frame garage

LT= N14

2  
Alley  
BIK 228  
RT= Sly  
0.1  
0.84  
0.85  
5.4  
4.67  
4.66  
7.2  
7.9  
9.2  
9r  
NELY  
COR  
SELY  
COR

5.51 X

0.43  
10<sup>04</sup>  
8<sup>o</sup>  
Sly house  
on porch  
0.38  
10<sup>09</sup>  
5<sup>3</sup>  
CONC  
Porch  
0.45  
10<sup>02</sup>  
5<sup>3</sup>  
9r

0.38  
10<sup>09</sup>  
8<sup>o</sup>  
NELY  
0.38  
10<sup>09</sup>  
6<sup>6</sup>  
SELY

0.47  
10<sup>00</sup>  
8<sup>o</sup>  
Low  
PART  
0.83  
9<sup>64</sup>  
8<sup>o</sup>  
High  
PART WALK

0.86  
0.45  
0.42  
0.13  
0.1  
0.12  
0.60  
0.60  
9<sup>61</sup>  
10<sup>02</sup>  
10<sup>05</sup>  
10<sup>02</sup>  
10<sup>04</sup>  
10<sup>03</sup>  
9<sup>87</sup>  
9<sup>87</sup>  
7<sup>2</sup>  
7<sup>2</sup>  
6<sup>5</sup>  
6<sup>5</sup>  
7<sup>2</sup>  
8<sup>o</sup>  
8<sup>o</sup>  
10<sup>02</sup>  
Floor  
Walk  
Sly  
Walk  
9r  
Nly Walk  
Top  
Walk

10.47 X

X-sec Alley BIK 228.

See page 62 for X-sec Alley BIK 227

TP<sub>3</sub> 3.83 4.72 4.62 0.89

Angle of Alley in relation to cbs NOT considered  
Both alley Apron Curb's in poor condition

Section taken along curb

2<sup>7</sup> RT = 2<sup>5</sup> x 2' grate over sump

1435<sup>13</sup> - Wly curb line Mission Blvd (10' cbl)

1426.11 = Prop to North - 7<sup>9</sup> LT = Wly end  
Wly Alley cb

Blvd on arc - Section taken on arc  
1425<sup>13</sup> - L alley intersects Wly line Mission

1425 - 8° AT = SELY CURB Pacific Dwelling

1423<sup>64</sup> = 8° RT = Prop to South Wly end sly Alley  
Curb

LT = Wly

Alley  
BIK 228

RT = Sly 61

4.72 π

Alley extended  
Nail in Power Pole #6921 Middle Mission Blvd + d

-0.42 0.08  
5-93 5-43  
50 50  
9UT CB

-0.03 -0.55 0.11 -0.44 -0.46 0.48 -0.61 -0.50 -0.49 0.01  
5<sup>54</sup> 6<sup>06</sup> 5<sup>40</sup> 5<sup>25</sup> 5<sup>97</sup> 5<sup>29</sup> 6<sup>12</sup> 6<sup>01</sup> 6<sup>02</sup> 5<sup>10</sup>  
50 50 10<sup>2</sup> 10<sup>2</sup> 8<sup>0</sup> 2<sup>7</sup> 8<sup>0</sup> 12<sup>0</sup> 12<sup>0</sup>  
ob 9UT CB 9UT BC 9UT BC 9UT BC

0.21 0.17  
5<sup>30</sup> 5<sup>34</sup>  
Top cb 9UT

0.21 0.17 0.15 0.12 0.21  
5<sup>30</sup> 5<sup>34</sup> 5<sup>36</sup> 5<sup>37</sup> 5<sup>30</sup>  
Top cb 9UT ON SMH 9UT Top cb  
Blvd

0.71 0.31  
4<sup>80</sup> 5<sup>2</sup>  
8<sup>0</sup> 8<sup>0</sup>  
Floor T-

0.3 0.12 0.17 0.21  
5<sup>2</sup> 5<sup>33</sup> 5<sup>37</sup> 5<sup>30</sup>  
8<sup>0</sup> Riff SMH 8<sup>0</sup> 8<sup>0</sup>  
9UT 9UT Top cb

5.51 π



X-sec Alley 131K 227 - Mission Beach  
See sketch page 48.

LT = N14

Alley  
227

RT = S14-

62

Dirt Floor

0+26 - 8' RT = begin 2 car stucco garage

10.1  
5.4  
8.2  
9.4

10.9  
5.6  
8.2  
Floor  
(RILT)

0+19 - } 7' RT = 6 water meter  
          } 9' RT = 2 3' wide conc walk

10.57  
5.29  
9.8  
walk

10.58  
5.33  
19.2  
walk

0+11 - 7' LT = 2' conc walk

0.56  
5.28  
17.8  
walk

0.49  
5.21  
8.0

0.49  
5.21  
7.8  
walk

0+02 - 7' LT at 90° to Ely end Nly curb

0.57  
5.29  
7.2

0.88  
5.60  
7.9  
cut

Sec taken in P.L. to show conc.

0+00 = 2 Alley intersects Arc of Ely line Mission Blvd

0.57  
5.29  
0.6  
Ely end Nly curb

0.88  
5.60  
9.0  
cut

0.84  
5.58  
9.0  
Ely end sty curb

0.89  
5.61  
9.0  
Ely end sty curb

0.49  
5.21  
0.6  
Ely end sty curb

0-01 <sup>90°</sup> - 8' RT = Ely end sty curb

0.189  
5.61  
8.0  
cut

0.49  
5.21  
8.0  
Top  
0.6

sect taken along arc of curbs

0-10 = Ely curb line - Mission Blvd

0.61  
5.33  
5.0  
0.6  
cut

0.99  
5.71  
5.0  
cut

0.53  
5.27  
11.3  
0.6  
BC

0.89  
5.61  
11.3  
9.0  
cut  
BC

0.89  
5.61  
8.0

0.88  
5.60

0.84  
5.58  
8.0

0.79  
5.51  
10  
cut  
BC  
in drive

0.168  
5.40  
5.0  
9.0  
cut  
0.6

0.22  
5.00

H.I. brought forward from page 61.

4.72 π

forwarded  
from page 61

X-sec Alley BIK 227-MB.

LT=Nly

Alley  
BIK  
227.

RT=sky- 63

3.61 T

Ty 4.30 3.61 5<sup>41</sup> - 0.69

Nail in Pole 7<sup>5</sup> RT sta # 0+67- # PA 818-

0+78- 7<sup>4</sup> LT= 2<sup>5</sup>' wide conc walk

13<sup>1</sup> 13<sup>6</sup>  
6<sup>09</sup> 6<sup>08</sup>  
17<sup>4</sup> 7<sup>4</sup>  
Walk Walk

0+70

0+69- 8<sup>0</sup> LT= begin 2<sup>5</sup>' high Picket fence

17 11 13 13 12  
59 58 60 60 59  
25 80 80 25

0+67- 7<sup>5</sup> RT= 12" PP # PA 818-

0+51- 9<sup>5</sup> RT= 2 Water meter

0.44 0.59  
5<sup>16</sup> 5<sup>31</sup>  
18<sup>0</sup> 8<sup>0</sup>  
Walk Walk

0+49- 8<sup>0</sup> LT= 2' conc walk

0+47- 6<sup>3</sup> LT= 2 Water meter

DIRT FLOOR  
0+47- 8<sup>1</sup> RT= end 2 car stucco garage

1.1 1.1  
58 58  
81 81  
9r DIRT  
Floor

0+35

0.8 1.0 1.0 0.9  
55 52 52 56  
15 80 80 80

4.72 T

X-Sea Alley BIK 227- 17B

LT = Nly

Alley  
227.

RT = S14- 64

0+25

-12  
48  
80

-12  
48

-12  
48  
80

0+20 - 9<sup>o</sup> RT = 2 Water Meter

0+15 - 6<sup>5</sup> RT = 2 Nly edge of 4' x 3' Conc Block

-14  
50  
65  
91  
10-65  
426  
65  
TOP  
Block

Block 226.

0+00 = Ely Line Bayside Lane and Begin Alley

-144  
505  
505  
Ely edge 16' Conc  
Strip

-154  
515  
80

-162  
523  
80  
Ely edge 16' Conc Strip

-171  
538  
50

1414<sup>03</sup> - 4 Bayside Lane - 16' wide + Paved

With Conc

-167  
528  
50

-171  
532  
80

Alley BIK 226

-177  
538

-177  
538  
80

-191  
558  
50

7<sup>9</sup> LT = end 2 story stucco Dwelling

sect taken on arc of wly edge conc pave  
Bayside Lane

1706.03 = intersection of Alley and Arc Wly Line

-144  
505  
50  
Wly edge  
conc pave

-150  
511  
80

-169  
530

-160  
521  
80  
Wly edge conc pave  
Bayside Lane

-169  
530  
50

0+85 - 7<sup>7</sup> LT = begin 2 story stucco Dwelling

-090  
451  
72  
Floor

-12  
48  
72  
ground

0+82 - 7<sup>0</sup> LT = 2 Water Meter

3.61 x

X-Soc Alley RIK 226 - Mission Beach

LT=NM

Ally  
226

RT=Sty

65

394 X

TP5 4.56 3.94 4.23 -0.62

Nail in oak garage 8° RT 0 to 0 Alley RIK 233

Block wall encroach

0+53.65 = Ely end Alley - garage + conc

Floor + Apron opens to sty

0<sup>1</sup> RT = NW cor single garage conc

0<sup>3</sup> LT = SWly cor 6' conc Block Jags to Ely

0+48 - 7<sup>7</sup> LT 6' high conc Block wall Jags sty.

2.9	1.09	2.00	1.0
6.5	4.5	5.6	4.6
7.2	7.2	0.3	0.3
Foot	ground	Foot	ground

-0.79	-0.79
4.40	4.40
0.1	4.2
Floor	opening
gar	garage

0+46 - 0<sup>5</sup> RT = NW cor conc Apron

-1.08	-0.99
4.69	4.60
0.5	9.2
NW cor	SW cor
Apron	Apron

0+45 - 7<sup>7</sup> LT = Sty side Block Wall

-1.0
4.6
7.2
Sty wall

1.0	1.0
4.6	4.6
	8.2

0+34 - 7<sup>2</sup> LT = of water meter

0+27 - 7<sup>5</sup> RT = of water meter

0+26 - 7<sup>8</sup> LT = begin 6' high conc block wall

-2.2	-1.2
5.8	4.8
7.8	7.8
Footing	ground

3.61 X

X-Sec Alley BIK 233 - Mission Beach

opens to Wly.

0+58- 0<sup>2</sup> LT= SWly cor garage conc floor

7<sup>9</sup> LT= end frame house

0+54 51= Ely end Alley

0+38- 8<sup>4</sup> & 10" anchor pole

0+32- 8<sup>4</sup> LT= begin frame house

0+28- 7<sup>0</sup> LT= & water meter

0+25

0+11<sup>5</sup> 8<sup>4</sup> RT= & water meter

0+10- 7<sup>8</sup> RT= end single garage

7<sup>6</sup> RT= begin single garage - dirt floor

0+00= Ely Bayside Lane & begin Alley 233

0-08= & Bayside Lane - 1/2" strip conc

H.I. Brought forward from page 65

LT= Nly

Alley  
BIK  
233

RT= Sly - 66

10.80

10.80

474

474

4<sup>2</sup>  
Entrance  
Floor

0<sup>2</sup>  
Floor

0.84

10.8

478

47

7.9  
Floor

7.9  
grat  
sly house

0.84

1.1

478

5.0

8.4  
Floor

8.4  
ground

1.1

5.0

8.0

1.18

1.0

5.13

4.9

0.1405

1  
ground

1.1

5.0

8.0

1.2

5.1

2.5

1.3

5.2

8.0

1.2

5.1

8.0

1.2

5.1

2.5

107

1.21

1.36

1.06

1.29

1.47

5.01

5.25

5.30

5.0

5.23

5.36

5.0

8.0

7.6  
Dirt  
Floor

8.0

5.0

1.31

1.38

1.46

1.44

1.66

5.25

5.32

5.40

5.38

5.60

5.0

8.0

8.0

8.0

5.0

3.94 from page 65

X-sec Alley BIK 233-MB

67

CONT Page 68

TP <sub>8</sub> Starting	BM Page 57	3.34	(7.11)	7.07
TP <sub>7</sub>	4.20	10.41	3.24	6.21
TP <sub>6</sub>	8.91	<u>9.45</u>	3.40	0.54

3.94 K

X-sec Alley B/C 232-0.13

LT=Nly

RT=517.

68

Below garage is converted to Dwelling

Floor + Apron

0+02 - 6<sup>±</sup> RT = begin single gar conc

0+01 - 7<sup>±</sup> RT = Water Meter

Taken on edge Conc Apron

0+00 = Alley + Ely Line Mission Blvd

Ely end sly curb at Ely Line Mission Blvd

Curbs Alley Returns + Apron <sup>Peak condition</sup> curb in

3' cb Rad in Alley Ret

0-10 = Ely Curb Line Mission Blvd

Note - all of Alley Apron + part of

Alley Under Water - 1-20-54 -

BM = 5.29 4.11 - 1.18

	-0.65	-1.36	-1.21	-1.35	-0.81
	476	547	532	546	477
	7 <sup>±</sup>	7 <sup>±</sup>	8 <sup>±</sup>	8 <sup>±</sup>	8 <sup>±</sup>
	90° to TC	90° to TC	90° TC	90° TC	TC
				-1.35	-0.66
				546	477
				8 <sup>±</sup>	8 <sup>±</sup>
				90° TC	TC
				-1.05	-0.67
				516	478
				512	477
				40	40
				90° TC	90° TC
	0.74	1.07	-0.70	-1.19	-1.24
	485	518	481	530	536
	50	50	11 <sup>±</sup>	11 <sup>±</sup>	8 <sup>±</sup>
	TC	90° TC	TC	90° TC	TC
				4.11	4.11

TP on hub at 54.51 Page 66

X-sec Alley BIK 232

LT=NY

Alley  
BIK  
232

RT=SY

69

0+30 - } 8' LT = 2' wide Conc Walk  
6' LT = Water Meter

-0.73  
484  
180  
Walk

-0.74  
485  
80  
Walk

0+27 - } Conc Walk Parallel to Alley  
8' RT = Nly edge of 1' wide E+W  
Conc Floor + Apron  
8' RT = end single garage

-0.81  
492  
85  
Apron

-0.81  
492  
85  
Walk

-0.53  
466  
100  
Floor

0+27 8' LT = Water Meter

Below garage appears to be converted to Dwelling

0+22 8' LT = single garage Conc Floor

-0.94  
505  
81  
Floor - No Apron -

0+17 8' RT = begin single garage Conc Floor + Apron

-0.80  
491  
85  
Apron

-0.53  
466  
100  
Floor

0+15 6' RT = 2' wide Conc Walk

-0.85  
496  
65  
NY Walk

-0.79  
490  
165  
Walk

0+14 6' RT = Conc Floor + Apron  
end single garage

-0.84  
495  
65  
Apron

-0.81  
492  
85  
Floor

4.11 K



X-sec Alley BIK 232 MIB.

0+51- 7<sup>4</sup> Conc floor + Apron  
LT=end 2 car garage

0+50

0+45- 8<sup>0</sup> RT=begin 2 car garage - Conc floor  
No Apron

0+45- 6<sup>9</sup> RT= 10" power pole # PA812

0+43<sup>5</sup>- 8<sup>0</sup> RT= 30' wide Conc Walk

0+41<sup>5</sup>- 8<sup>8</sup> RT= Water meter

0+41- 8<sup>4</sup> RT= end 1<sup>5</sup> wide E/W Conc Walk  
Parallel to alley -

0+32- 7<sup>4</sup> LT=begin 2 car garage  
+ Apron  
Conc floor

LT=NY

Alley  
BIK  
232

RT=514 10

0.91  
5<sup>02</sup> 5<sup>21</sup>  
8<sup>0</sup> 7<sup>4</sup>  
Floor Apron

0.91 1.10 1.1 1.1 1.1 0.97  
5<sup>02</sup> 5<sup>21</sup> 5<sup>2</sup> 5<sup>2</sup> 5<sup>2</sup> 5<sup>08</sup>  
8<sup>0</sup> 7<sup>4</sup> 7<sup>4</sup> 8<sup>0</sup> 8<sup>0</sup>  
Side of 90' Floor Side of Apron ground NY car floor

0.97  
5<sup>08</sup>  
8<sup>0</sup>  
Floor

0.99 0.99  
5<sup>10</sup> 5<sup>10</sup>  
8<sup>0</sup> 18<sup>0</sup>  
NY of Walk Walk

0.98  
5<sup>09</sup>  
8<sup>4</sup>  
NECOR Walk

0.81 0.91  
4<sup>92</sup> 5<sup>02</sup>  
8<sup>0</sup> 7<sup>4</sup>  
Floor Apron

4.11 π

X-sec. Alley BIK 232 - M.B.

0+95 - 8° RT = end 2<sup>nd</sup> car garage  
Conc Floor - No Apron

0+80 - 7' LT =  $\phi$  Dead Man.

} 8° RT = begin 2<sup>nd</sup> car garage

0+79 - 8° RT = end Conc Block Dwelling

0+76 - 7° LT =  $\phi$  Water Meter

0+75 - 8° LT = end (SELYCOR) Stucco Dwelling

0+75 - 6'  $\phi$  Water Meter

0+61 - 8° LT =  $\phi$  Entrance to Stucco Dwelling  
*grade is critical*

0+60 - } 8° RT = begin Conc block Dwelling  
2 story -  
Floor - No Apron  
} 8° RT = end 2<sup>nd</sup> car garage - Conc

*(Watch this house for grade)*

0+54 - 8° LT = SWLYCOR Stucco Dwelling

LT-N14

Alley  
BIK  
232

RT=514. 75

139 1.00  
5.5 5.11  
8° ground 8° Conc floor

1.2 -0.99  
5.2 5.10  
8° ground 8° Conc floor

1.1

5.2

8° ground

1.2

5.3

8°

1.14

5.25

8° Floor

1.1

5.2

1.2

5.3

8°

1.1

5.2

8° ground

-0.89

5.00

8° Conc floor

1.14

5.25

8° Floor

1.1

5.2

8° ground

4.11 x

X-sec Alley BIK 232-MB

LT=N14

Alley  
BIK  
232

RT=514

72

TP, starting BM- 5.29 - 1.18

For Bayside Lane - See 0-08 page 66

Section taken on Arc -

Distance taken from map - Ties under H<sub>2</sub>O.  
+ w/ edge Conc

0+97  $\frac{6}{\pm}$  = W/ly Line Bayside Lane

110

119

135

128

119

5-21

5-30

5-46

5-39

5-30

50

80

80

50

(5788264)

0+95  $\frac{5}{-}$  - 7  $\frac{5}{-}$  LT =  $\frac{1}{4}$  10" anchor pole

4.11 -  $\frac{1}{2}$

X Sec Alley BIK 229  
Mission Beach

see sketch p 48

(end of Allis)  
(over)

0+53<sup>33</sup> 3<sup>rd</sup> RT SE cor apron into single garage

con floor & apron opens Ely

0+53 2<sup>nd</sup> RT E water meter box

0+34 16<sup>th</sup> RT E single garage con floor

0+29 8<sup>th</sup> RT E water meter box

0+28 6<sup>th</sup> RT con walk 2' wide

9<sup>th</sup> RT S

0+27 7<sup>th</sup> RT E water meter box

0+19 7<sup>th</sup> LT NW cor garage begin 4' board fence

0+17 7<sup>th</sup> LT E deadman

0+10

0+01 6<sup>th</sup> LT E 12" PPole # P3904

Begin

0+00 7<sup>th</sup> RT S edge 2' wide con walk 11' to line

0+00 Wly Strandway edge con pad

0+00 7<sup>th</sup> LT NE cor garage opens to Strandway

0-10 E Strandway

TP 6<sup>13</sup> 11<sup>19</sup> 6<sup>11</sup> 5<sup>06</sup>

BM 406 11<sup>17</sup> 7<sup>11</sup>

B P is seawall  
San Rafael PI

LT-Sly

E

RT-Nly

73

5<sup>19</sup> 5<sup>17</sup> 5<sup>103</sup> 5<sup>10</sup> 5<sup>10</sup>  
5<sup>2</sup> 5<sup>27</sup> 5<sup>12</sup> 5<sup>6</sup> 5<sup>21</sup>  
8<sup>0</sup> Hub 3<sup>2</sup> apron SE cor 8<sup>0</sup> apron NW cor 11<sup>3</sup> apron NE cor

5<sup>10</sup>  
5<sup>30</sup>  
16<sup>3</sup>  
floor

6<sup>0</sup> 6<sup>0</sup> 6<sup>24</sup> 6<sup>1</sup>  
5<sup>2</sup> 5<sup>3</sup> 4<sup>25</sup> 5<sup>1</sup>  
8<sup>0</sup> 6<sup>2</sup> 8<sup>0</sup>  
walk 3<sup>0</sup>

6<sup>1</sup> 6<sup>1</sup> 6<sup>04</sup>  
5<sup>1</sup> 5<sup>1</sup> 5<sup>15</sup>  
7<sup>2</sup> 7<sup>0</sup>  
walk

6<sup>30</sup> 6<sup>20</sup> 5<sup>37</sup> 5<sup>13</sup>  
5<sup>29</sup> 5<sup>29</sup> 5<sup>27</sup> 6<sup>06</sup>  
8 7<sup>2</sup> 8  
walk

5<sup>14</sup> 5<sup>07</sup> 4<sup>28</sup> 4<sup>91</sup> 4<sup>87</sup>  
6<sup>25</sup> 6<sup>12</sup> 6<sup>21</sup> 6<sup>28</sup> 6<sup>32</sup>  
15 8 8 15

11<sup>19</sup>

Lt = Sly

S

At = Nly

74

BM starting

438

74

TP<sub>2</sub>

527

11 49

492

622

0+54<sup>3</sup> 7<sup>2</sup> Lt end 4' Board fence

0+54<sup>8</sup> 0<sup>6</sup> Lt NE cor house

647

422

0<sup>5</sup>  
floor

0+54<sup>1</sup> 2<sup>5</sup> Rt = SE cor garage + single cor floor ground

opens Ely

570

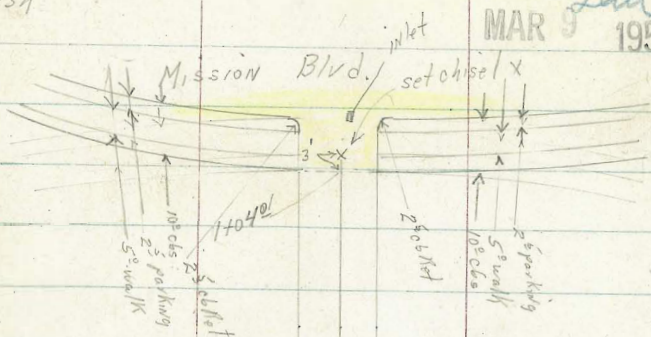
549

2<sup>5</sup>  
floor

7 11 19

D. Smith  
J. Rorer  
R. Fish

INDEXED  
MAR 9 1954  
Law



Alley

B/K 223

Strand Way

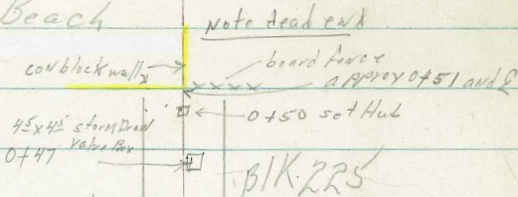
Alley

B/K 222

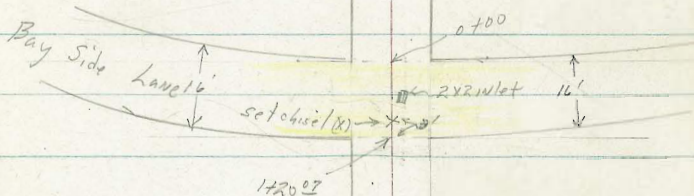
note dead end

0+50<sup>33</sup> set Hub

W<sup>#</sup> 32215 75  
5-8-54  
Cross Sec Alleys B/K 222 thru 225 incl  
Mission Beach



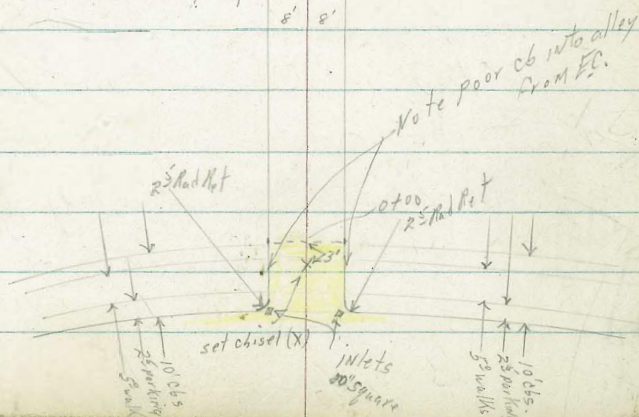
Alley



see FB 2300 pl for notes

B/K 224

Alley



Note poor c6 into alley from EC.

X Sec Alley Blk 222  
Mission Beach

0454 Rt Begin cov slab

0453<sup>3</sup>

6<sup>3</sup>Lt W/ end of fence

0453 Begin 5' Picket fence (SE cor) of which is on E

0452 1<sup>3</sup>Lt to 3' board fence to live

0452 2<sup>3</sup>Lt NW cor apron to garage

0448 6<sup>3</sup>Rt (2) water meter boxes

0443 8<sup>2</sup>Rt & kin walk grade

0443 10<sup>2</sup>Lt NE cor apron to single garage

0436 9<sup>2</sup>Lt & water meter

0427 7<sup>3</sup>Lt NW cor garage opens to strandway

0421 6<sup>3</sup>Lt & dead man

0420 6<sup>3</sup>Lt & water meter

0401 7<sup>2</sup>Lt & 14" pipe # P2892  
8<sup>2</sup>Rt Begin 2' wide cov walk to live

0400 W/ Strandway edge cov path

0400 7<sup>3</sup>Lt NE cor garage opens to strand way

0-10 E Strand way

TP 515 1122 542 607

BM 438 1149 74 D.P. Scawall  
San Pedro Pl

Lt = Sly

2

Rt = 11/2

75

5.63 5.56 5.51 5.9 5.9 5.82  
5.59 5.66 5.5 5.5 5.5 5.80  
8<sup>2</sup> w/k 2<sup>2</sup> w/k 8 8 5.50 w/k

5.64 5.61  
5.58 5.61  
122 2<sup>2</sup>  
Floor apron

5.64 5.66  
5.58 5.56  
122 102  
Floor apron

6.0 5.9 6.1 6.44  
5.2 5.3 5.1 4.28  
8<sup>2</sup> 8 8<sup>2</sup> w/k

5.95 6.01 6.03  
5.27 5.21 5.17  
8 8

5.70 5.74 5.78 5.81 5.84  
5.52 5.48 5.44 5.41 5.38  
16 8 8 16

1122

X Sec Alley BIK 223  
Mission Beach

Lt = Nly

2

Rt = Sly

77

0762 6<sup>2</sup> Rt E 14" P.P. Lk A 736

0760

0756 6<sup>8</sup> Rt E water meter

0750 6<sup>2</sup> Rt end con apron

0750 7<sup>4</sup> Rt NW cor house

0740

0739 B. K. W. apron + walk grades

0728 6<sup>4</sup> Rt Begin con apron to single garage con flow  
(82 Lt end brick area)

0726 6<sup>8</sup> Lt begin con walk N to line

0724 7<sup>6</sup> Rt NE cor garage opens to Strand way

0711 7<sup>8</sup> Lt end con walk begin brick (house) area

0710

0702 7<sup>6</sup> Lt Begin 2 con walk N to line

0713 7<sup>3</sup> NW cor single garage opens to Strand way

0701 8<sup>2</sup> Rt E water meter box

0700 Fly Strand way edge con part

225  
827 91 91 90 82  
62 63 5 72  
w/k

2.63 2.6 2.7 2.55 2.99  
859 85 85 829 833  
63 63 63 80  
w/k

3.60 3.5 3.5 3.4 3.56 3.79  
762 77 72 78 764 779  
70 70 60 63 80  
w/k

3.79 3.4 3.4 3.5 4.00 4.19  
743 75 78 77 722 703  
70 70 60 63 80  
w/k

4.03 4.32  
719 700  
63 80  
ground floor

4.24  
628  
63  
w/k

5.16  
526  
75  
w/k

5.25 5.7 5.3 5.3 5.5 5.7  
547 55 59 59 57 55  
70 72 4 6 72

6.06  
5.16  
76  
w/k

5.90 5.66 5.83  
533 534 539  
80 80

7 11 22



cont FB2300-1

TP 460 451 1137 - 015

2<sup>nd</sup> RT & 1<sup>st</sup> x 2<sup>nd</sup> inlet box

1415+ wly clb Mission Blvd.

1404<sup>01</sup> wly Mission Blvd. edge con pav

0489 5<sup>2</sup> RT end rough con slab

0488 7<sup>2</sup> RT water meter  
8<sup>2</sup> RT begin fence.

0485 8<sup>2</sup> RT NE cor bldg

0483 5<sup>4</sup> RT Begin rough con slab

0479 6<sup>6</sup> RT water meter

0476 6<sup>25</sup> RT end con walk 11 to house

0476 7<sup>8</sup> RT NW cor house

04

0471 9<sup>5</sup> RT single garage board floor

0466 7<sup>3</sup> RT NE cor house

Lt = Nly

E

RT = Sly

7<sup>8</sup>

0.04	0.52	0.53	0.64	0.49	0.45
11 <sup>8</sup>	11 <sup>24</sup>	11 <sup>25</sup>	11 <sup>55</sup>	11 <sup>27</sup>	11 <sup>67</sup>
8 <sup>0</sup>	8 <sup>0</sup>	8 <sup>2</sup>	8 <sup>8</sup>	8 <sup>8</sup>	10 <sup>5</sup>
cl		grate		grate	roof damp

0.17	0.29	0.25	0.31	0.41
10 <sup>25</sup>	10 <sup>23</sup>	10 <sup>27</sup>	10 <sup>21</sup>	10 <sup>21</sup>
8 <sup>20</sup>	8 <sup>20</sup>	7 <sup>35</sup>	7 <sup>35</sup>	
cl	grate	grate	cl	

10<sup>2</sup>  
10<sup>20</sup>  
5<sup>2</sup>  
con

1.24  
9<sup>28</sup>  
5<sup>2</sup>  
con

1.2	1.57	1.4	1.4	1.5
70 <sup>0</sup>	96 <sup>5</sup>	98	98	92
8 <sup>0</sup>	6 <sup>23</sup>	6 <sup>3</sup>	5	7 <sup>8</sup>
dirt	wlk			

1.15  
9<sup>6</sup>  
9<sup>5</sup>  
floor

11/22

TP

171

170

07

07

07

078

077

077

077

07

077

076

24-05  
2 | 65 <sup>115</sup> 55  
32-58  
2405

9.75 To Pipe  
LS. 2236

1+55.07 = P.O.T. Nail

1+71.33  
 W.O. 31973

TOP F.W. N.E.  
 ABBOTT EDWANTON

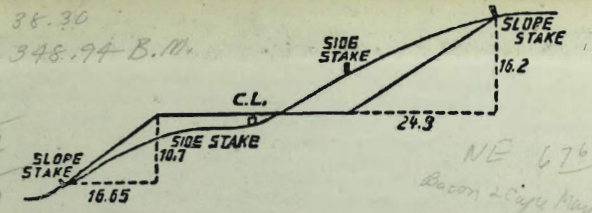
Faulkner.

334.68 = +

316.00

SE D - Laurel +55<sup>th</sup>

4858



DISTANCES FROM SIDE STAKES FOR CROSS-SECTIONING.  
 SLOPE 1 1/2 TO 1. ROADWAY OF ANY WIDTH.

	0	.1	.2	.3	.4	.5	.6	.7	.8	.9	
0	0.00	0.15	0.30	0.45	0.60	0.75	0.90	1.05	1.20	1.35	0
1	1.50	1.65	1.80	1.95	2.10	2.25	2.40	2.55	2.70	2.85	1
2	3.00	3.15	3.30	3.45	3.60	3.75	3.90	4.05	4.20	4.35	2
3	4.50	4.65	4.80	4.95	5.10	5.25	5.40	5.55	5.70	5.85	3
4	6.00	6.15	6.30	6.45	6.60	6.75	6.90	7.05	7.20	7.35	4
5	7.50	7.65	7.80	7.95	8.10	8.25	8.40	8.55	8.70	8.85	5
6	9.00	9.15	9.30	9.45	9.60	9.75	9.90	10.05	10.20	10.35	6
7	10.50	10.65	10.80	10.95	11.10	11.25	11.40	11.55	11.70	11.85	7
8	12.00	12.15	12.30	12.45	12.60	12.75	12.90	13.05	13.20	13.35	8
9	13.50	13.65	13.80	13.95	14.10	14.25	14.40	14.55	14.70	14.85	9
10	15.00	15.15	15.30	15.45	15.60	15.75	15.90	16.05	16.20	16.35	10
11	16.50	16.65	16.80	16.95	17.10	17.25	17.40	17.55	17.70	17.85	11
12	18.00	18.15	18.30	18.45	18.60	18.75	18.90	19.05	19.20	19.35	12
13	19.50	19.65	19.80	19.95	20.10	20.25	20.40	20.55	20.70	20.85	13
14	21.00	21.15	21.30	21.45	21.60	21.75	21.90	22.05	22.20	22.35	14
15	22.50	22.65	22.80	22.95	23.10	23.25	23.40	23.55	23.70	23.85	15
16	24.00	24.15	24.30	24.45	24.60	24.75	24.90	25.05	25.20	25.35	16
17	25.50	25.65	25.80	25.95	26.10	26.25	26.40	26.55	26.70	26.85	17
18	27.00	27.15	27.30	27.45	27.60	27.75	27.90	28.05	28.20	28.35	18
19	28.50	28.65	28.80	28.95	29.10	29.25	29.40	29.55	29.70	29.85	19
20	30.00	30.15	30.30	30.45	30.60	30.75	30.90	31.05	31.20	31.35	20
21	31.50	31.65	31.80	31.95	32.10	32.25	32.40	32.55	32.70	32.85	21
22	33.00	33.15	33.30	33.45	33.60	33.75	33.90	34.05	34.20	34.35	22
23	34.50	34.65	34.80	34.95	35.10	35.25	35.40	35.55	35.70	35.85	23
24	36.00	36.15	36.30	36.45	36.60	36.75	36.90	37.05	37.20	37.35	24
25	37.50	37.65	37.80	37.95	38.10	38.25	38.40	38.55	38.70	38.85	25
26	39.00	39.15	39.30	39.45	39.60	39.75	39.90	40.05	40.20	40.35	26
27	40.50	40.65	40.80	40.95	41.10	41.25	41.40	41.55	41.70	41.85	27
28	42.00	42.15	42.30	42.45	42.60	42.75	42.90	43.05	43.20	43.35	28
29	43.50	43.65	43.80	43.95	44.10	44.25	44.40	44.55	44.70	44.85	29
30	45.00	45.15	45.30	45.45	45.60	45.75	45.90	46.05	46.20	46.35	30
31	46.50	46.65	46.80	46.95	47.10	47.25	47.40	47.55	47.70	47.85	31
32	48.00	48.15	48.30	48.45	48.60	48.75	48.90	49.05	49.20	49.35	32
33	49.50	49.65	49.80	49.95	50.10	50.25	50.40	50.55	50.70	50.85	33
34	51.00	51.15	51.30	51.45	51.60	51.75	51.90	52.05	52.20	52.35	34
35	52.50	52.65	52.80	52.95	53.10	53.25	53.40	53.55	53.70	53.85	35
36	54.00	54.15	54.30	54.45	54.60	54.75	54.90	55.05	55.20	55.35	36
37	55.50	55.65	55.80	55.95	56.10	56.25	56.40	56.55	56.70	56.85	37
38	57.00	57.15	57.30	57.45	57.60	57.75	57.90	58.05	58.20	58.35	38
39	58.50	58.65	58.80	58.95	59.10	59.25	59.40	59.55	59.70	59.85	39
40	60.00	60.15	60.30	60.45	60.60	60.75	60.90	61.05	61.20	61.35	40
41	61.50	61.65	61.80	61.95	62.10	62.25	62.40	62.55	62.70	62.85	41
42	63.00	63.15	63.30	63.45	63.60	63.75	63.90	64.05	64.20	64.35	42
43	64.50	64.65	64.80	64.95	65.10	65.25	65.40	65.55	65.70	65.85	43
44	66.00	66.15	66.30	66.45	66.60	66.75	66.90	67.05	67.20	67.35	44
45	67.50	67.65	67.80	67.95	68.10	68.25	68.40	68.55	68.70	68.85	45
46	69.00	69.15	69.30	69.45	69.60	69.75	69.90	70.05	70.20	70.35	46
47	70.50	70.65	70.80	70.95	71.10	71.25	71.40	71.55	71.70	71.85	47
48	72.00	72.15	72.30	72.45	72.60	72.75	72.90	73.05	73.20	73.35	48
49	73.50	73.65	73.80	73.95	74.10	74.25	74.40	74.55	74.70	74.85	49
50	75.00	75.15	75.30	75.45	75.60	75.75	75.90	76.05	76.20	76.35	50

THE NATIONAL BLANK BOOK COMPANY  
 HOLYOKE MASSACHUSETTS  
 NEW YORK CHICAGO BOSTON SAN FRANCISCO