

DISTANCES FROM SIDE STAKES FOR CROSS-SECTIONING
SLOPE 1 TO 1. ROADWAY OF ANY WIDTH

	0	.1	.2	.3	.4	.5	.6	.7	.8	.9	
0	0.00	0.10	0.20	0.30	0.40	0.50	0.60	0.70	0.80	0.90	0
1	1.00	1.10	1.20	1.30	1.40	1.50	1.60	1.70	1.80	1.90	1
2	2.00	2.10	2.20	2.30	2.40	2.50	2.60	2.70	2.80	2.90	2
3	3.00	3.10	3.20	3.30	3.40	3.50	3.60	3.70	3.80	3.90	3
4	4.00	4.10	4.20	4.30	4.40	4.50	4.60	4.70	4.80	4.90	4
5	5.00	5.10	5.20	5.30	5.40	5.50	5.60	5.70	5.80	5.90	5
6	6.00	6.10	6.20	6.30	6.40	6.50	6.60	6.70	6.80	6.90	6
7	7.00	7.10	7.20	7.30	7.40	7.50	7.60	7.70	7.80	7.90	7
8	8.00	8.10	8.20	8.30	8.40	8.50	8.60	8.70	8.80	8.90	8
9	9.00	9.10	9.20	9.30	9.40	9.50	9.60	9.70	9.80	9.90	9
10	10.00	10.10	10.20	10.30	10.40	10.50	10.60	10.70	10.80	10.90	10
11	11.00	11.10	11.20	11.30	11.40	11.50	11.60	11.70	11.80	11.90	11
12	12.00	12.10	12.20	12.30	12.40	12.50	12.60	12.70	12.80	12.90	12
13	13.00	13.10	13.20	13.30	13.40	13.50	13.60	13.70	13.80	13.90	13
14	14.00	14.10	14.20	14.30	14.40	14.50	14.60	14.70	14.80	14.90	14
15	15.00	15.10	15.20	15.30	15.40	15.50	15.60	15.70	15.80	15.90	15
16	16.00	16.10	16.20	16.30	16.40	16.50	16.60	16.70	16.80	16.90	16
17	17.00	17.10	17.20	17.30	17.40	17.50	17.60	17.70	17.80	17.90	17
18	18.00	18.10	18.20	18.30	18.40	18.50	18.60	18.70	18.80	18.90	18
19	19.00	19.10	19.20	19.30	19.40	19.50	19.60	19.70	19.80	19.90	19
20	20.00	20.10	20.20	20.30	20.40	20.50	20.60	20.70	20.80	20.90	20
21	21.00	21.10	21.20	21.30	21.40	21.50	21.60	21.70	21.80	21.90	21
22	22.00	22.10	22.20	22.30	22.40	22.50	22.60	22.70	22.80	22.90	22
23	23.00	23.10	23.20	23.30	23.40	23.50	23.60	23.70	23.80	23.90	23
24	24.00	24.10	24.20	24.30	24.40	24.50	24.60	24.70	24.80	24.90	24
25	25.00	25.10	25.20	25.30	25.40	25.50	25.60	25.70	25.80	25.90	25
26	26.00	26.10	26.20	26.30	26.40	26.50	26.60	26.70	26.80	26.90	26
27	27.00	27.10	27.20	27.30	27.40	27.50	27.60	27.70	27.80	27.90	27
28	28.00	28.10	28.20	28.30	28.40	28.50	28.60	28.70	28.80	28.90	28
29	29.00	29.10	29.20	29.30	29.40	29.50	29.60	29.70	29.80	29.90	29
30	30.00	30.10	30.20	30.30	30.40	30.50	30.60	30.70	30.80	30.90	30
31	31.00	31.10	31.20	31.30	31.40	31.50	31.60	31.70	31.80	31.90	31
32	32.00	32.10	32.20	32.30	32.40	32.50	32.60	32.70	32.80	32.90	32
33	33.00	33.10	33.20	33.30	33.40	33.50	33.60	33.70	33.80	33.90	33
34	34.00	34.10	34.20	34.30	34.40	34.50	34.60	34.70	34.80	34.90	34
35	35.00	35.10	35.20	35.30	35.40	35.50	35.60	35.70	35.80	35.90	35
36	36.00	36.10	36.20	36.30	36.40	36.50	36.60	36.70	36.80	36.90	36
37	37.00	37.10	37.20	37.30	37.40	37.50	37.60	37.70	37.80	37.90	37
38	38.00	38.10	38.20	38.30	38.40	38.50	38.60	38.70	38.80	38.90	38
39	39.00	39.10	39.20	39.30	39.40	39.50	39.60	39.70	39.80	39.90	39
40	40.00	40.10	40.20	40.30	40.40	40.50	40.60	40.70	40.80	40.90	40
41	41.00	41.10	41.20	41.30	41.40	41.50	41.60	41.70	41.80	41.90	41
42	42.00	42.10	42.20	42.30	42.40	42.50	42.60	42.70	42.80	42.90	42
43	43.00	43.10	43.20	43.30	43.40	43.50	43.60	43.70	43.80	43.90	43
44	44.00	44.10	44.20	44.30	44.40	44.50	44.60	44.70	44.80	44.90	44
45	45.00	45.10	45.20	45.30	45.40	45.50	45.60	45.70	45.80	45.90	45
46	46.00	46.10	46.20	46.30	46.40	46.50	46.60	46.70	46.80	46.90	46
47	47.00	47.10	47.20	47.30	47.40	47.50	47.60	47.70	47.80	47.90	47
48	48.00	48.10	48.20	48.30	48.40	48.50	48.60	48.70	48.80	48.90	48
49	49.00	49.10	49.20	49.30	49.40	49.50	49.60	49.70	49.80	49.90	49
50	50.00	50.10	50.20	50.30	50.40	50.50	50.60	50.70	50.80	50.90	50

Distance of slope stake from side or shoulder stake for any width roadway, slope 1 to 1. If ground is nearly level, the cut or fill at side stake is located by the double entry method in left column and top row. The number in body of table in same row and column gives distance from side stake to slope stake. If ground is not level estimate the difference in elevation between the side stake and slope stake, lower target by this amount if cut, elevate if fill. Add this amount to cut or fill and find distance in table. Set up rod at this point, and line of sight should cut target. If it does not make the slight adjustment necessary.

TABLE XIII—CORRECTIONS FOR TANGENTS AND EXTERNALS

These corrections are to be added to the approximate values, found by dividing the tangent, or external, for a 1° curve (Table VIII) by the degree of curve, in order to obtain the true tangents, or externals. Intermediate values may be obtained by interpolation.

FOR TANGENTS ADD

Central Angle	DEGREE OF CURVE															
	5°	10°	15°	20°	25°	30°	35°	40°	45°	50°	55°	60°	65°	70°		
10°	.03	.06	.09	.13	.16	.19	.22	.25	.28	.31	.34	.38	.42	.46		
15°	.04	.10	.14	.19	.24	.29	.34	.39	.45	.51	.53	.58	.63	.68		
20°	.06	.13	.19	.26	.32	.39	.45	.51	.58	.65	.72	.79	.84	.90		
25°	.08	.16	.24	.33	.40	.49	.58	.67	.75	.83	.90	.99	1.06	1.14		
30°	.10	.19	.29	.39	.49	.59	.69	.79	.89	.99	1.09	1.20	1.29	1.39		
35°	.11	.22	.34	.47	.58	.69	.79	.81	.92	1.04	1.29	1.42	1.54	1.66		
40°	.13	.26	.40	.53	.67	.80	.93	1.06	1.20	1.34	1.49	1.64	1.79	1.94		
45°	.15	.30	.44	.60	.76	.91	1.06	1.21	1.37	1.52	1.70	1.87	2.04	2.21		
50°	.17	.34	.51	.68	.85	1.02	1.19	1.36	1.54	1.72	1.91	2.10	2.29	2.48		
55°	.19	.38	.57	.76	.95	1.14	1.32	1.52	1.72	1.92	2.14	2.35	2.56	2.77		
60°	.21	.42	.63	.84	1.05	1.27	1.49	1.71	1.94	2.17	2.38	2.60	2.83	3.07		
65°	.23	.46	.69	.93	1.16	1.40	1.64	1.88	2.13	2.38	2.63	2.88	3.13	3.39		
70°	.25	.51	.76	1.02	1.28	1.54	1.80	2.06	2.33	2.60	2.88	3.16	3.44	3.72		
75°	.27	.56	.83	1.12	1.40	1.69	1.98	2.27	2.57	2.87	3.16	3.47	3.78	4.09		
80°	.30	.61	.91	1.22	1.53	1.84	2.15	2.46	2.78	3.10	3.44	3.78	4.12	4.46		
85°	.33	.66	1.00	1.33	1.68	2.02	2.36	2.70	3.05	3.40	3.77	4.14	4.55	4.89		
90°	.36	.72	1.09	1.45	1.83	2.20	2.57	2.94	3.32	3.70	4.10	4.50	4.91	5.32		
95°	.39	.79	1.19	1.55	2.00	2.40	2.80	3.20	3.61	4.02	4.40	4.85	5.38	5.83		
100°	.43	.86	1.30	1.74	2.18	2.62	3.06	3.50	3.95	4.40	4.88	5.37	5.85	6.34		
110°	.51	1.03	1.56	2.08	2.61	3.14	3.67	4.21	4.76	5.31	5.86	6.43	7.01	7.60		
120°	.62	1.25	1.93	2.52	3.16	3.81	4.45	5.11	5.77	6.44	7.12	7.80	8.50	9.22		

FOR EXTERNALS ADD

Central Angle	DEGREE OF CURVE															
	5°	10°	15°	20°	25°	30°	35°	40°	45°	50°	55°	60°	65°	70°		
10°	.001	.003	.004	.006	.007	.008	.009	.011	.012	.014	.015	.017	.018	.020		
15°	.003	.007	.010	.014	.018	.023	.027	.029	.032	.035	.039	.043	.047	.051		
20°	.006	.011	.017	.022	.028	.034	.038	.045	.051	.057	.063	.070	.076	.083		
25°	.009	.018	.027	.036	.046	.056	.065	.074	.083	.093	.106	.120	.127	.135		
30°	.013	.025	.038	.051	.065	.078	.090	.103	.116	.129	.149	.170	.179	.188		
35°	.018	.035	.054	.072	.086	.109	.131	.153	.175	.197	.213	.230	.247	.264		
40°	.023	.046	.070	.093	.117	.141	.172	.203	.234	.265	.277	.290	.315	.341		
45°	.030	.060	.093	.119	.153	.184	.216	.254	.289	.325	.351	.378	.411	.445		
50°	.037	.075	.116	.151	.189	.227	.266	.305	.345	.384	.425	.467	.508	.550		
55°	.046	.093	.142	.188	.236	.283	.332	.381	.420	.479	.530	.582	.641	.700		
60°	.056	.112	.168	.225	.283	.340	.398	.457	.516	.575	.636	.697	.774	.851		
65°	.067	.135	.204	.273	.343	.412	.483	.554	.625	.697	.771	.845	.922	1.01		
70°	.080	.159	.240	.321	.403	.485	.568	.652	.735	.819	.906	.994	1.08	1.17		
75°	.095	.182	.266	.353	.440	.528	.617	.707	.797	.887	1.07	1.18	1.29	1.39		
80°	.110	.220	.332	.445	.558	.671	.787	.903	1.02	1.13	1.25	1.38	1.50	1.62		
85°	.128	.259	.391	.524	.657	.790	.926	1.06	1.20	1.34	1.47	1.62	1.76	1.91		
90°	.149	.299	.450	.603	.756	.910	1.07	1.22	1.38	1.54	1.70	1.87	2.03	2.20		
95°	.174	.350	.522	.706	.885	1.06	1.25	1.43	1.62	1.80	1.99	2.18	2.38	2.58		
100°	.200	.401	.604	.809	1.01	1.22	1.43	1.64	1.85	2.06	2.28	2.50	2.73	2.96		
110°	.268	.536	.806	1.08	1.35	1.63	1.91	2.20	2.48	2.76	3.05	3.35	3.66	3.96		
120°	.360	.721	1.08	1.45	1.82	2.19	2.57	2.95	3.33	3.72	4.11	4.50	4.91	5.32		

INDEX

Page

X-SECT. ALLEY BRK 7-City H'ys Annex

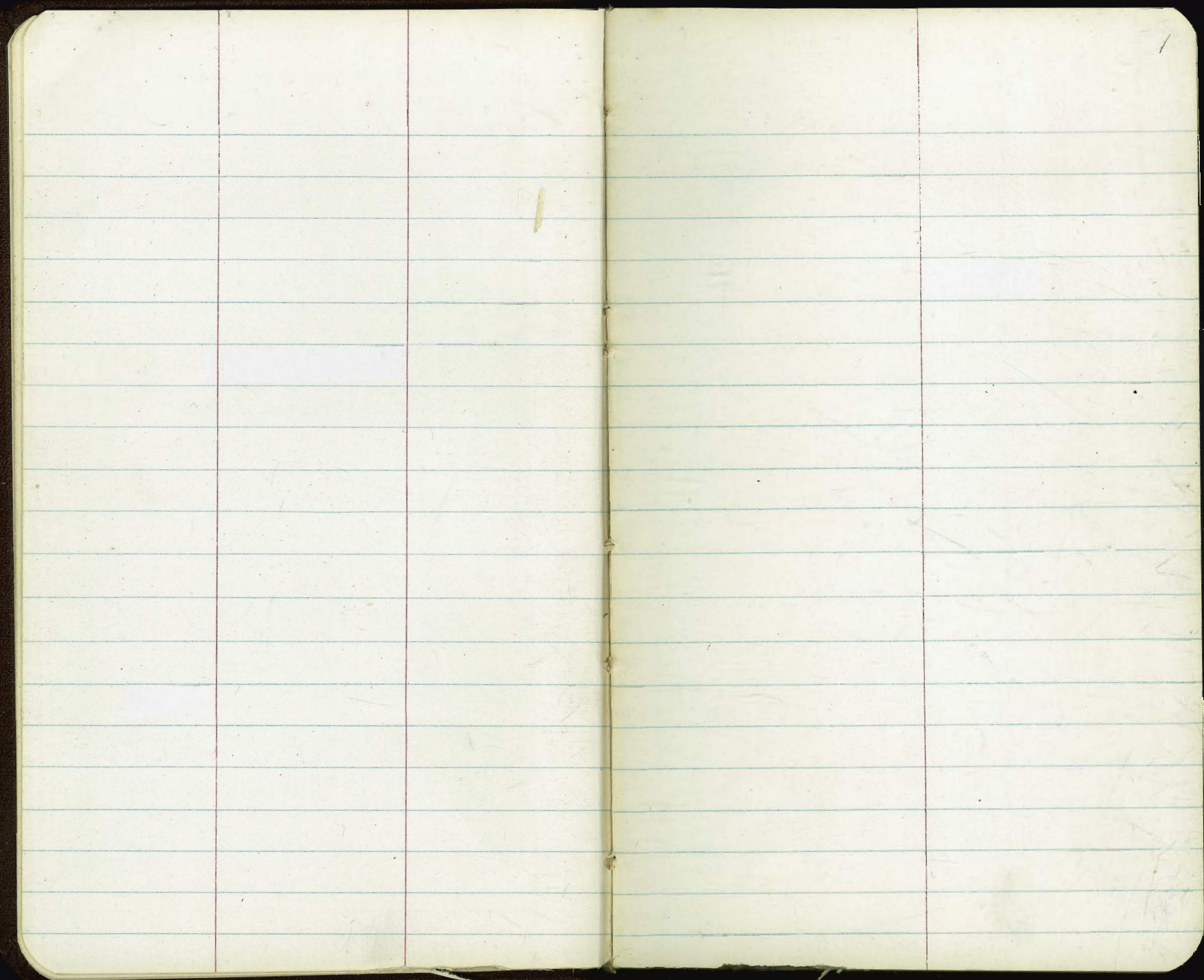
2-5

X-sec Milton - Galveston to Ilhon

6-8

X-SECT. GEORGIA ST. - MYRTLE to UPAS

9



Alley Blk 7 - City Hts

LT ♀ RT

4+26 10' LT. Beg. 5' Board Fence
 4+20 94' LT ♀ meter
 4+05 ENCL 4' Latho + chicken-wire Fence 10. RT.

4+00 345.6 345.9 346.4
 10 10

3+90 7.7' RT ♀ meter
 3+77 Beg 4' Latho + chicken-wire Fence 10.5 RT.

3+65 96' LT ♀ meter
 3+33 7.6' RT to ♀ meter

3+00 87' LT. ♀ water meter 344.7 344.6 344.4
 10 10

2+39 8.8 LT. ♀ meter
 2+50 8.2' RT ♀ water meter

2+26 New Car N. 2-Car gar. 21.5 RT. Conc. Floor 344.08
 21.5

2+05 S.W. Car Two - car gar. 21.5 RT. Conc. Floor 344.00
 21.5

T.P. 342.57 Direct-ckv Rod 342.57 342.57

Alley B'K 7 - City H'gs

LT. ♀ RT

5121

♀ #2 garage (scablow)

347.54
10.6

5105

S/E CORN. COMBINATION Apt. & Garage (4-Car) ^{Numbered 1-4} From Site! For Ref:
10.6' LT to CONC. Floor

347.56
10.6

5104

10.6 RT ♀ meter

5100

346.8
10

346.9
0

346.9
10

4+99

9.0' LT ♀ meter

4+92

N/E CORN 2-Car gar, 14.0' LT to CONC. Floor

347.04
14.0

4+79

8.6' RT ♀ meter

4+70

S/E CORN TWO-CAR garage 14.1' LT to CONC. Floor

347.01
14.1

4+66

END 5' Board Fence 10.2' LT

4+47

Water meter 8.4 LT to ♀ Box

4+46

8.6 LT } ♀ meters
8.2 RT }

4+36

♀ Single garage, 4.5' RT to ♀ 8.5' wide apron, CONC.
13.8' RT to CONC. Floor

346.38
4.5

346.52
13.8

T.P

345.99 Direct-Elev Rod 345.99 345.99

Alley Bk 7 - City H'rs

LT. £ RT

" 348.33 348.37 = N/W B.P. Dwight = 45'4"
 Check: 347.60 347.53 = N/W B.P. Dwight + Highland

6+41 £ Dwight (Paved Street)

347.54 347.78 347.94
 50 0 50

6+15.31 S. CL. LINE Dwight

347.24 347.33 347.53 347.67
 tp.cb 50 tp.cb 12 12 tp.cb 50 tp.cb
 346.81 346.95 347.03 347.04 347.16
 gutter 50 gutter 12 0 12 gutter 50 gutter

6+01.21 - edge Pav. S/W Dwight

347.73 347.75 347.28 347.25
 tp.cb 9.9 gutter 9.9 0 9.9 tp.cb
 gutter 9.9 gutter 9.9 0 9.9 gutter

T.P. 347.20 Invt. Elev. Rod 347.20 347.20

5+75 8.2' LT. £ meter

5+50

347.5 347.5 347.5
 10 0 10

5+49 N/W Conv. Comb. Apt 4-Car garage 10.8 LT. to conc floor

347.55
 10.8

5+45 N/W Conv. 2-Car gar 10.1 RT to conc floor N. 20.2 RT to conc floor

347.48 348.01
 10.1 20.2

5+32 £ 3 garage 10.6 LT. to conc

347.51
 10.6

5+26 3.4 LT £ meter

5+23 S/W Conv. 2-Car gar 10.5 RT to conc floor N. 20.2 RT to conc floor

347.18 347.92
 10.5 20.2

X-Sect. Milton from E.L. of Galveston - to Ithion St.

See B. 2261 - P-2 for Sections to w.

Orig. B.M. = Sw. B.P. Erie + Milton. 42.03

3+09.62 = E to N.

2+93-20.8 Lt. = E St. Drain M.H. Rim = 122.25

2+71-27 Rt. = E P. pole # 4499

2+69.62 = w.L. Hartford to N.

2+35

2+00

1+50

1+20-27.5 Rt. = E P. pole # 4449

1+00

0+50

0+00 = E.L. Galveston

B.M. - S.E. Hub. 82.46

See T.P. sheets for sketch.

10-24-52 7.0.

W.O. 21053

Lt

Rt

Rt

INDEXED
Law
OCT 27 1952

23.4 24.3 24.8 25.0 24.7 24.0 27.6 28.6
100 40 20 15 24 40 50

14.1 17.0 19.1 20.6 21.1 20.9 20.1 19.2 22.0 23.4
50 40 26 15 13 28 35 40 50

09.9 10.9 12.5 15.4 15.9 16.0 15.1 16.1 18.5
50 40 30 14 13 24 40 50

04.7 06.1 08.1 09.8 10.4 10.4 09.6 10.6 11.7 13.3
50 40 27 15 100 fig not shown 14 25 30 40 50

197.9 98.5 100.6 102.0 102.1 102.0 104.2 104.7 106.2
50 40 27 12 24 31 40 50

90.6 91.2 92.9 93.7 93.8 96.9 97.7 98.5
50 40 20 24 30 40 50

83.1 84.2 85.1 85.4 85.2 87.7 88.5 89.4
50 40 20 22 29 40 50

77.5 78.3 78.6 77.9 78.9 78.3 82.5 82.8 86.1
50 40 23 20 20 34 40 80

Actual Elev. Shown.

Illion + Milton

157.62 = Book 21 80-P.23

Lt.

±

Rt.

B.M. = S.W. spike in Pole

157.60

5+30

62.9	61.6	60.3	54.2	54.0	54.7	54.1	57.5	57.6	57.4
50	40	35	27	15		20	30	40	50

5+28-40 Rt. = Beg. picket fence

5+19-40.5 Rt. = ± 18' Conc. apron to Doub. Gar.

57.22	57.34
40.5	49 = 1100
apron	Gar.

5+10-40' Rt. = end fence

5+00

57.9	57.4	57.8	51.7	51.8	52.2	52.4	57.0	57.1	56.8
50	40	33	27	15		25	35	40	50

4+71-26.5 Rt. = ± P. pole # 4549

4+60

50.9	51.5	51.8	46.4	47.2	47.3	46.8	53.4	53.4	57.4
50	40	32	25			10	23	32	40 50

4+30

45.4	45.9	45.4	40.2	42.1		41.6	49.3	49.1	49.1
50	40	30	25			25	35	40	50

4+10-40.3 Rt. = Beg. Picket fence

4+00

39.9	39.6	39.3	36.6	36.7	36.7	36.2	46.0	46.1
50	40	30	24		14	25	40	50

3+80 - Ely. of graded rd. to Rt

38.3	37.7	36.8	33.4	33.0	33.2	33.2	33.8	34.5	38.5
50	40	32	24	15		15	30	40	75

3+55 = outs are along edge of graded roadway ^{to Rt}

31.4	31.5	31.0	29.5	29.1	29.3	29.2	29.3	30.6	37.1
50	40	32	27	15		15	30	40	80

3+45

29.4	29.8	27.8	28.1	27.8	27.8	32.9	33.5	34.9
100	40	20		15	26	30	40	50

3+26-28.1 Rt. = ± P. pole #

B.M. 127.56
4511 in pole

Milton

Lt.

±

Rt.

8

Pave broken out at 40' Lt.

along cb.

6+77.24 = E. cb. - cb. to Rt. on Ang. took Sect.

59.11	54.60	57.62	57.11	56.73	56.54	56.41	55.90	55.00	53.37	53.78	51.62	52.05
Top 100	gut.	Top 61.8	28	14			25	40	61	Top 80	80	80
		= P.C.	gut.						gut.	P.C.	gut.	Top

(sewer)
6+59.8 = ± M.H. + Wly. edge of A.C. pave

59.30	58.16	57.19	56.61	56.49	55.98	55.08	53.74	52.19
100	70	40	20	on Rim	20	40	60	80
							on edge	

6+45

58.9	56.9	56.4	56.1	56.1	54.8	51.4
100	40	20		20	40	80

6+34-25.8 Rt. = ± St. Drain M.H.

62.8	61.0	60.4	56.4	55.9	55.7	56.41	54.8	51.6
60	40	35	25		12	25.8	40	75
						M.H. Top		

6+21-28 Rt. = ± P. pole # 4599

6+19.24 = W. L. Illion

63.3	61.9	60.7	56.2	55.8	55.7	56.5	56.3	56.3
50	40	33	23		18	27	40	50
							56.46 = Top 40	

6+15-40 Rt. = ± 7.5' Conc. Slab for Phone Booths

6+00

63.2	63.2	61.8	55.7	55.8	55.5	56.4	56.2	55.8
50	40	34	23		18	30	40	50

5+81-41 Lt. = end wall

?	63.3
Top	41 = ground

5+65

63.3	63.0	55.2	55.4	55.1	56.5	55.9	55.7
40	35	24		18	30	45	50
By wall							

5+59-40 Rt. = end fence

5+45-40.8 Lt. = Beg. Conc. Block wall

64.22	62.6
Top wall	40.8 = ground.

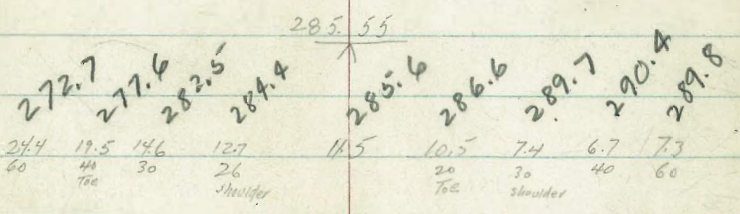
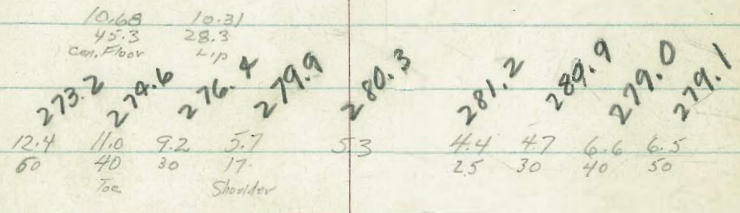
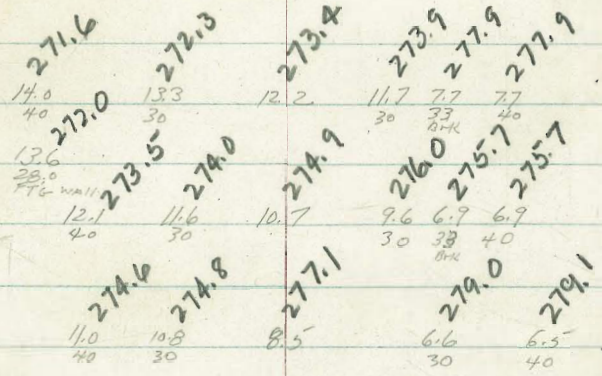
X-SECT. GEORGIA - MYRTLE to UPAS

1+216 { 28.2 RT ESE. west Ret wall
 1+213 31.0 RT end Stone wall
 1+21 28.0 LT END CON. WALL
 1+00
 0+80 - BRK
 0+76.5 30' RT Beg 12' stone wall (FB 1713-34)
 0+76 27.9 RT Beg 2's Mortarless Con. BRK WALL
 0+72 RT E 10' DRIVE (as shown FB 1713-38)
 0+68 28.3 LT E 11' Con. Drive - Single GRK 45.3 LT
 0+64 31.6 RT END LATHE HOUSE
 0+60 = SLY MYRTLE to EASTLY
 0+58 31.6 RT Beg 6' LATH HOUSE
 T.P. 0.00 285.55 11.53 285.55
 0+30 E MYRTLE
 0-00.8 Edge EXIST. Pav
 For Sect. here see FB 1713-32
 B.M. 3.03 297.08 294.05 - N.W. B.P.

(E'ly) LT.

E

RT. (W'ly)



289.54

7.54 Lath Pav

MYRTLE Y INDIA NA

297.08

GEORGIA ST (CONT)

Li £ RT

4+37 = 15' ± S. of £ UPAS (Profile Along UPAS on this Line to avoid rough country & cuts along £ UPAS)

4+08.02 E.M.H. 1.5 to EAST of £ Georgia

3+71.9 = N44 Line UPAS (MAP)

3+75 B.M. £ 40' LT on toe slope

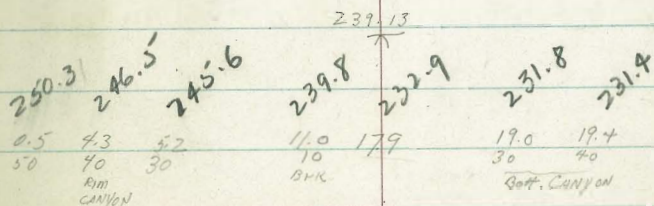
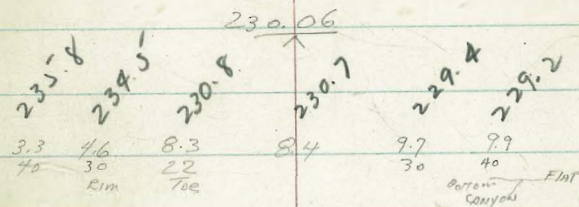
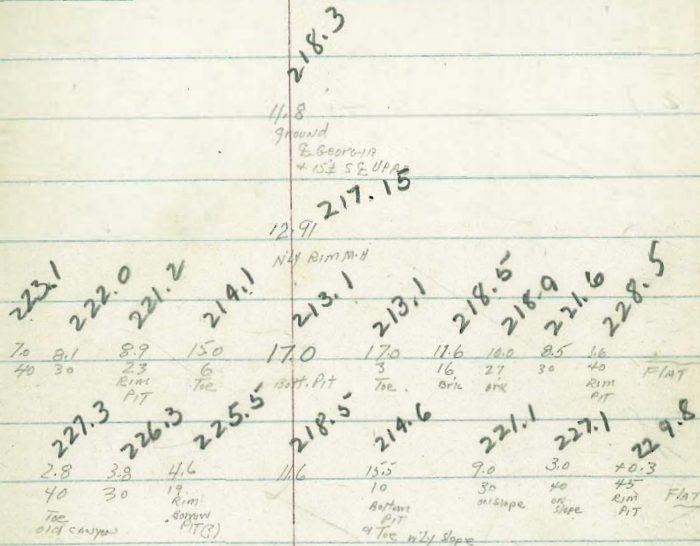
T.P. 3.23 230.06 12.30 226.83

3+36 = B.M. £

T.P. 0.29 239.13 11.97 238.84

3+00 = Toe Slope of Georgia 40' LT = Rim Canyon

T.P. 0.25 250.81 12.26 250.56



250.81

GEORGIA ST (CONT.)
(PROFILE UPAS)

1+50

TR 2.52 220.76 11.82 218.24

1+00

0+50

(E Georgia = 0+00)

Profile Along Line 15'S E UPAS : From E Georgia to Florida

1+50

1+00

0+50

(E Georgia = 0+00) see preced. pg

Profile Along Line 15+ S. of E UPAS
From E Georgia to West

15+ S E UPAS

6.3 214.5

220.76

13.2 216.9

12.5 217.6

11.8 218.3

230.06

+28.4 201.7

+14.7 215.4

+0.5 229.6

11.8 218.3

230.06
11.1
218.9

230.06

GEORGIA ST (CONT.) PROFILE UPAS

15 ± 5 UPAS

CHK 5.15 198.00 = 198.01 = S W.B.P. MYRTLE & FLORIDA

CHK 2.76 200.39 = 200.30 = TP E.H.D. SR MYRTLE & FLORIDA

T.P. 4.45 203.15 1.15 198.70

3+49+ = W.Y. edge of Florida (pic sheet)
15 ± 5 E

3+00

T.P. 2.99 199.85 12.02 196.86

2+50

T.P. 0.06 208.88 11.94 208.82

2+00

Reduced
May 20, 5:13
2007

6.73

193.12

5.4

194.5

199.85

10.8

198.1

208.88

13.7

207.1

220.76

Roberts Survey For Proposed Storm Drain

Cota

Moore

Morales

9-16-53

W.O.# 32288

15th Imperial to 19th E

Switzer Creek Drain

See FB2211 pg 18 (My part.)

See FB2209 pg 39 (My part.)

INDEXED
OCT 5 1953

2" Street



12.51

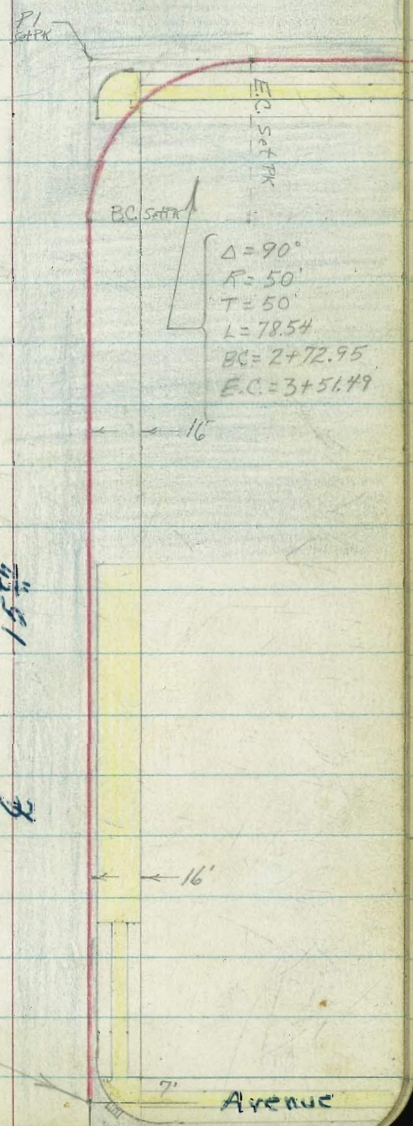
8

0+00
equals 0+06.16 FB.2211
Fd. PK. 1st

Imperial

FLGT.

Avenue



$\Delta = 90^\circ$
 $R = 50'$
 $T = 50'$
 $L = 78.54$
 $BC = 2 + 72.95$
 $E.C. = 3 + 51.49$

16'

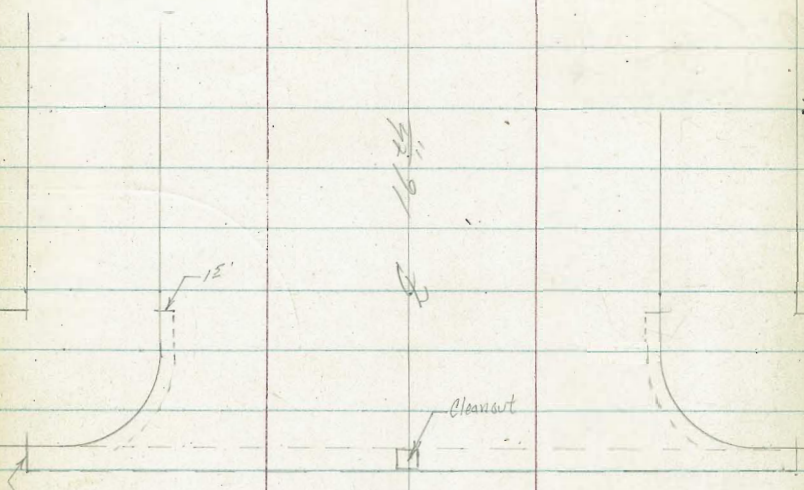
16'

7'

7'

"K"

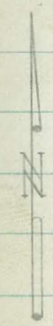
St. 16



TYPICAL GUTTER DRAIN
Not to Scale

St. 16

St. 15



$\Delta = 90^\circ 10.0'$
 $R = 60'$
 $T = 60.17'$
 $L = 94.42'$
 $PC = 4+84.61$
 $EC = 5+76.03$

$\left\{ \begin{array}{l} 8+84.2 \text{ EC} \\ 92' \text{ to Cb.} \end{array} \right.$

St. 15
 St. 16
 St. 17

← 24' →

← 92' to Cb. →

Fd.C.T.

7' Set PK

St. PK BC

Pl Set PK

2"

Fd.C.T.

St.

3+51.49

EC

16'

16'



"J"

St. 17

{ 12+58.5 BC
8' to ch.



St.
16th
St.

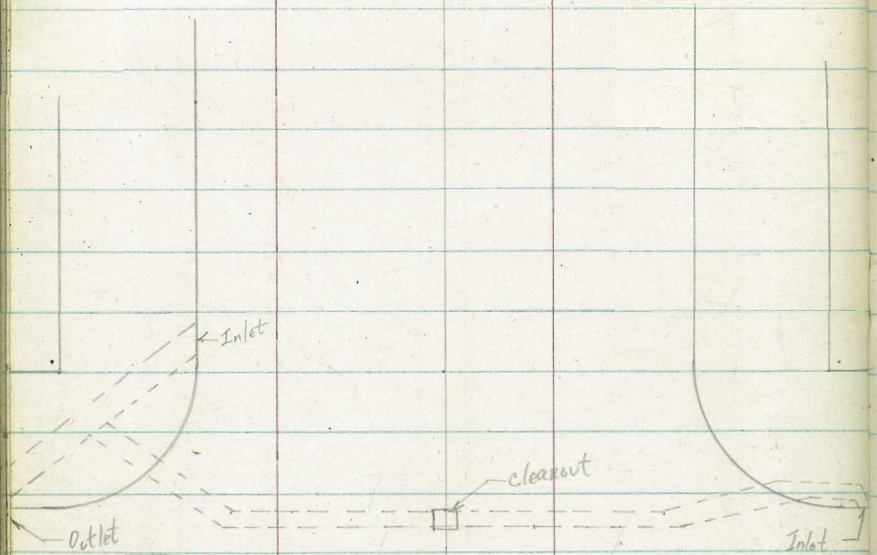
{ 9+56 BC.
9' to ch.

"K"

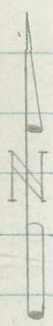
St.

Island

Ave. 18



Typical Modified Gutter Drain.
Not to Scale.



"J"

St.

16+39.8 BC
82 to cb

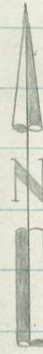
49
8

13+41.3 BC
85 to cb.

Market

St.

{ 20+26.5 EC.
75 to cb.



St
1691
2

{ 17+16.8 EC.
83 to cb.

Island

Ave.

"G"

St. 20



25

42 91

3

21+20BC
75 to cb.

Market

St.

"F"

St. 21

(28+12.5 BC.
80 to Cb.



St.

42' 91

3

(25+08.3 BC.
75 to Cb.

"G"

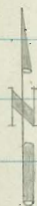
St.

(24+32.5 BC
72 to Cb.

"E"

St. 22

{ 31790 BC.
92 to Cb.



St.

16 1/2

St.

{ 28888 BC
85 to Cb.

"F"

St.

Broadway

23

(35+75.1 B.C.
98 to cb.

24



75

79

8

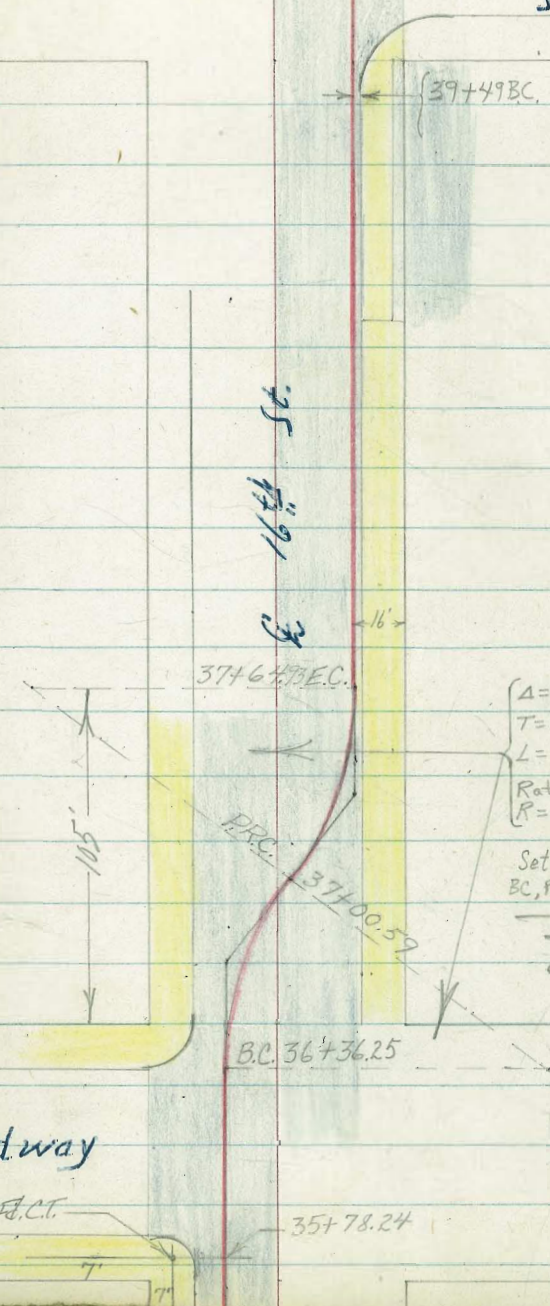
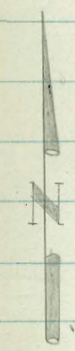
(32+66.5 B.C.
93 to cb.

"E"

St.

"C"

St. 24



$\Delta = 36^\circ 52.2'$
 $T = 33.38'$
 $L = 64.34'$
 $\text{Rate} = 17.1887$
 $R = 100'$

Set P.K. Nails on
BC, P.C., E.C. & P.L.

Broadway

A.C.T.

"B" St.

25

BC. 43+43.43 SetPK Nail

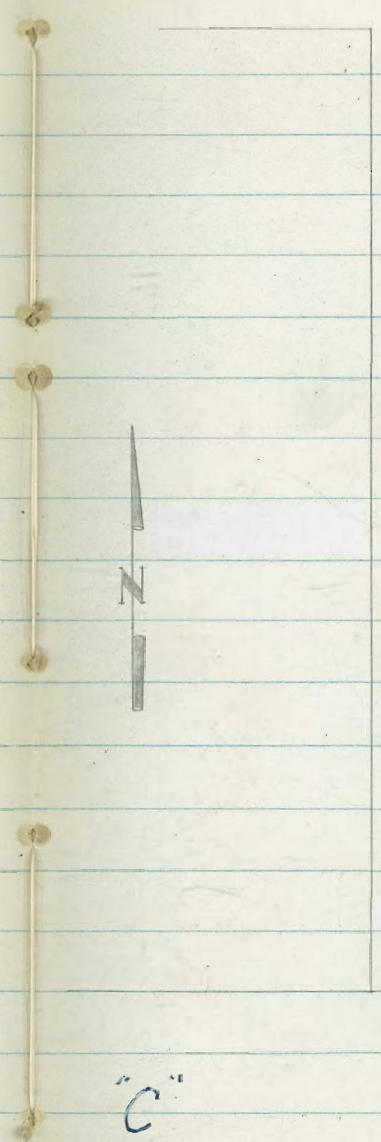
16

St.
16
St.

40+51 BC.

St.

"C"



16th St.

$\Delta = 90^{\circ}02'$
 $R = 60'$
 $T = 60.03'$
 $L = 94.28'$
 $EC = 43 + 43.43$
 $EC = 44 + 37.71$

17th St.

Set P.K. P.I.

17'

"B"

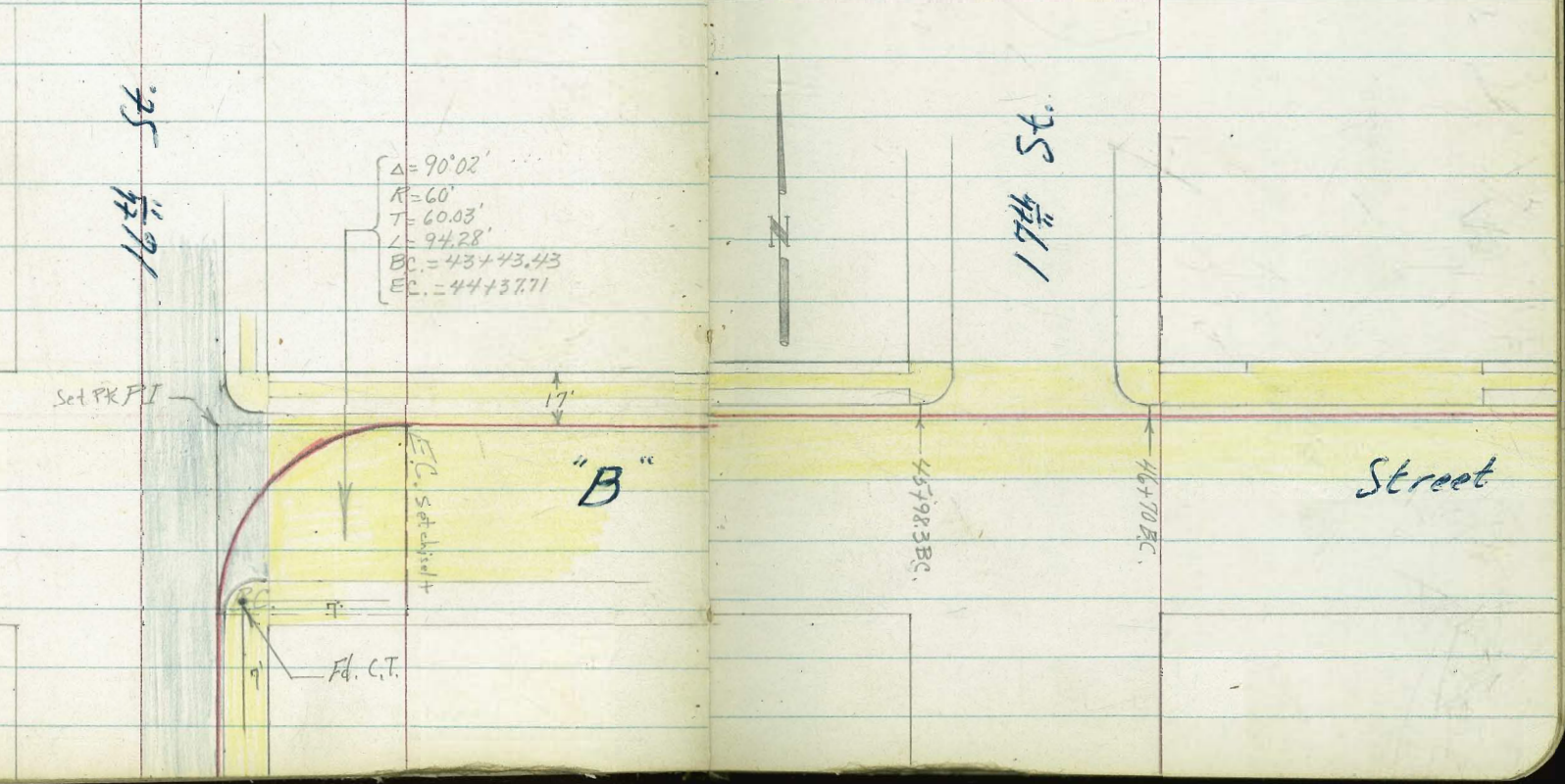
E.C. Set Obs'd +

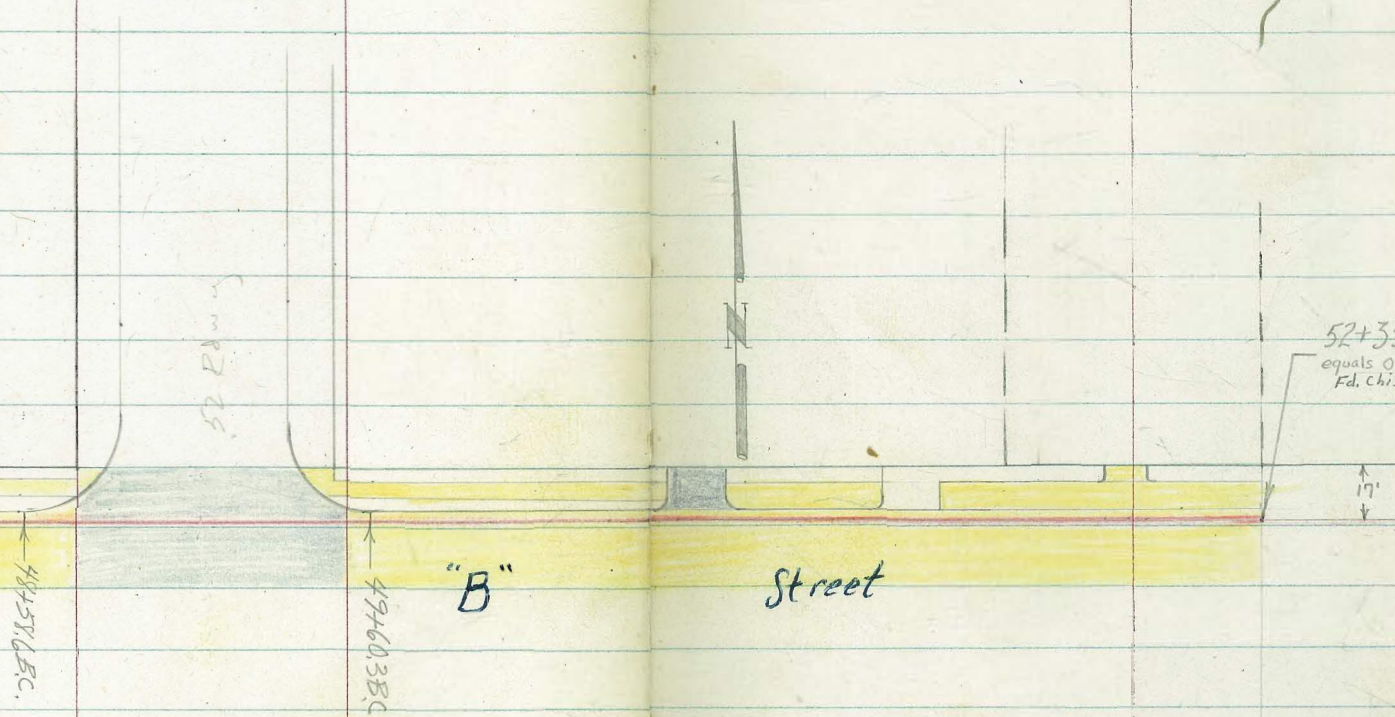
Fd. C.T.

45 + 98.3 B.C.

46 + 70 B.C.

Street





52+57.65 C.

18+81 St.

52+60.38 C.

"B"

Street

19+61 St.

52+35.36
equals 0+0.0 FB 2209
Ed. chisel cross.

↑ 17' ↓

Contd From Page 27

Elevs Reduced
C/S 10/6/53

Lt.

R

Rt

28

0+63.2 Cross Gas Line

0+57 begin walk from curb to Prop.

0+38.8 3^E Rt to center P.Pole #JR109

0+31

} 2 - 4" drains in curb

0+28.5

0+13^E BC Curb Return

0+00 North 7' Line Imperial

0-01.2

7^E Rt & 16' curb Inlet } Invert
(See FB 2211 for

0-75.5 23^E Rt to center MH I.E. = 2.48

T.P. 785 16.38 \uparrow 520 8.53

T.P. 570 13.73 417 8.03

B.M. 9.20 12.20 3.00 Imperial $\frac{1}{15}$ "
NEBP

9.49	9.07	8.83	8.76	9.38	9.53	9.52
687	731	755	762	700	685	686
24	3		2 Gut	2 cb	11	16

8.73	8.36	8.14	7.96	8.50	8.55	8.66	8.68
765	802	824	842	788	783	772	777
24	2		2 Gut	2 cb	6	11	16

8.42	8.30	8.18	7.48	8.31	8.45
796	808	828	876	807	793
24	3		72 GATE	72 cb	16

✓ 16.38 \uparrow

Cont'd From Page 28

Lt

R

Rt

29

1759 End Curb

11.02	11.04	10.61	10.60	11.11	11.24
536	534	517	518	527	514
24	8		2	2	16
			Gut	cb	

1758.4 4" drain in curb

1757 End Walk begin A.C. Pav. Par R. Lot. 35' Rt to center P. Pole # 143R

1754.1 Cross water Lateral

1750.7 4" drain in curb

1717.7 Cross Gas Line

1717.3 4" drain in curb

10.15	9.76	9.58	9.53	10.52	10.51
623	662	680	685	606	587
24	3		2	6	16
			Gut	Drive	

1700

0787.5 Cross water Lateral

0781 3" drain in curb

1638π

1638π

3+08

♀ crosses signs of a ditch parallel to

2" st in 15th st (Dead 2" water line.)

3+03.7

90° Lt begin curb & walk (Radial)

2+87

Do not understand what this is.

2+85.8

26" Lt Radial to center MH IE = 8.57

2+72.95 B.C.

2+50

2+00

1+68

13.61	13.54	13.32	13.95	13.83	14.02	14.03
277	284	306	243	255	236	235
24	19	9	9		7	16
		9.4	6			
	13.14		13.16	12.87	13.63	13.74
	3.24		3.22	3.51	2.75	2.64
	24		8		12	16
	12.69		12.90	12.71	12.62	13.33
	3.69		3.48	3.07	3.76	3.05
	24		7		2	10
	12.38		12.58	12.28	12.20	12.93
	4.00		3.80	4.10	4.18	3.45
	24		10		2	11
	11.64		11.73	11.35	11.28	11.81
	4.74		4.65	5.03	5.10	4.57
	24		10		2	8
	11.13		11.23	10.79	10.74	11.15
	5.25		5.15	5.59	5.64	5.23
	24		10		2	7
						11.47
						4.91
						16

16.38

16.38

3+74.3 3rd R^o to center P. Pole # 1511

3+51.49 EC

3+37.5 ♀ hits curb face

3+25.2 4th Lt Radial to center fire hydrant

3+21.7 5th Lt Radial to center steel pole # 1501R

3+15.3 ♀ crosses 2" water line (live!) goes to main in "L" St.
Has meter at curb.

3+12.3 2nd R^o Radial to End of Conc. Ret. Wall with fence on top. Transit Co. Plans Available.

T.P. 1132 25.45 ↑ 225 1413 2" ± 15th
SE 7' CT.

3+10.3 Hit walk

16.38 ↑

15.89	15.15	14.64	14.54	15.02	15.15	15.19	15.25
9.56	10.30	10.81	10.91	10.43	10.30	10.26	10.2
24	7		2 Gut	2 Cb	6 walk	11 walk	16
15.07	14.47	14.63	14.13	14.81	14.85	15.15	16.57
10.37	10.98	10.82	11.32	10.64	10.60	15.3	8.74
24	7	cb	Gut	42 walk	92 walk	146 GRD	146 TOP wall
13.68	13.52	14.07	14.23	14.28	15.80	14.13	14.12
11.77	11.93	11.38	11.22	11.17	9.65	11.32	11.33
24	132 Gut	131 cb		2 walk	2 Top wall	32 Park 2st	16
13.71	13.38	14.04	14.22	14.12	14.11		
2.67	2.99	2.34	2.16	2.26	2.27		
24	136 Gut	136 cb		4	16		

16.38 ↑

5+40

5+39.5

22° Lt Radial to center MH.
Drop MH - INVERT shot on Highest inlet from
the east. Big pipe or tank. No ladder
in MH, to inspect.

5+20

5+10 12# Rt Radial to center P. Pole # 1599

4+81.61 B.C.

4+87.5 38° Lt Radial to center MH. I.E. = 4.86 +

Same big tank

4+82.5 38° Lt Radial to center MH. I.E. = 4.14 +

4+52

4+17.5 16° Rt End Ret wall with fence on top.

25.45 ↑

Lt

20.54	12.40					
22	22					
Bottom	INVERT					
4.91	13.05					
21.22	21.46	21.19	21.57			
4.23	3.99	4.26	3.88			
24	16		16			
20.85	20.80	20.58	20.40	20.16		
4.60	4.65	4.17	5.05	5.29		
24	152		7	16		
20.68	20.63	20.40	20.15	19.82	20.09	
4.77	4.87	5.05	5.30	5.63	5.53	5.36
24	115	11		92	92	16
				Gut	cb	
20.09	19.37	18.68	18.57	18.91	19.09	19.20
5.36	6.08	6.77	6.88	6.54	6.36	6.25
24	9		2	2	62	115
			Gut	cb	walk	16
19.06	18.49	17.77	17.65	18.03	18.05	
6.39	6.96	7.68	7.80	7.42	7.4	
24	10		2	2	16	
			Gut	cb		
17.95	17.35	16.65	16.52	17.02	17.15	18.76
7.50	8.10	8.80	8.73	8.73	8.3	6.69
24	9		2	2	16	10.55
			Gut	cb	Gut	Top
						175
						Ret
						24

25.45 ↑

6+37 11^I Lt to center Light standard #4216

6+28.5 11^Q Lt to center P.P. # JR 210

5+90

5+80.5 12^Q Lt Street Sign

5+79.3

5+76.03 EC

5+64.3 Q crosses Q Gutter Drain parallel to 2nd St.

5+60

5+48.7 Q crosses Gas Line?

25.45 X

22.75	22.25	22.08	21.65	22.21	22.63	23.08	23.35
2.7	3.2	3.37	3.80	3.24	2.82	2.37	2.10
24	20	92 cb	92 gut	5		7	16

22.35	22.12	20.78	21.91	20.78	22.07	22.59	22.92	23.17
3.1	3.32	4.67	3.54	4.67	3.38	2.86	2.53	2.28
24	198 walk	149 Walk	92 Gut	92 Top	81 Gut	81 Top	7	16

21.95	20.76	21.96	22.02	22.12	22.42	21.01
3.5	4.69	3.49	3.43	3.33	3.03	4.44
24	22 ^v gut	22.2 cb	8		9	17 Invert Center of Clearcut

25.45 X

7+32 4" drain in curb
 7+31 Cross water (probably dead)

7+24 Cross sewer lateral

7+16.5 center 4-4" drains side by side in curb

7+10 Cross Gas

7+08 Cross Gas (probably Dead)

7+05.5 Cross water Lateral

7+00

T.P. 791 31.12 \uparrow 224 23.21

6+50

25.45 \uparrow

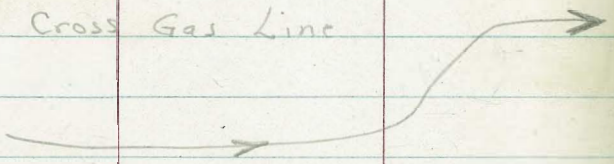
23.92	23.76	23.72	23.70	23.30	24.16	24.57	24.91
72	736	740	742	782	6.96	6.55	6.21
24	192	172	98	98		7	16
	walk	walk	cb	cut			

31.12 \uparrow

23.15	22.88	22.56	23.19	23.48	23.95	24.25
23	257	289	226	197	1.50	1.20
24	92	92	4		7	16
	cb	cut				

25.45 \uparrow

8+35	Begin solid walk Curb to Prop.								
8+50		5.9 24	5.30 196	5.45 143	6.05 98 cut	5.84 6.5	5.9	4.73 7	4.33 16
8+03	Cross Gas Line		25.22 59 24	24.97 6.15 96 cb	24.52 6.60 96 cut	24.75 6.37 6	25.27 5.85	25.85 5.27 7	26.39 4.92 16
8+00									
7+83	Cross water Lateral								
7+80	Cross water Lateral								
7+78.3	4" drain in curb								
7+60	1 1/2 Lt to center Light Std. # 4218								
7+54	1 1/2 Lt to center P.Pale # JR246								
7+50			6.8 24	6.97 92 cb	7.05 92 cut	6.39	6.39	5.99 7	5.69 16



31.12 π

31.12 π

Contd From Page 35

9+44.8 - ♀ Crosses Gutter drain parallel to "K" St. (No Cleanout.)

9+22

9+11.2 Cross water Main

9+05

8+84.2 Opposite Curb BC

8+80.2 11^o Lt to center P. Pole # 298

8+79.6 16^o Rt to center NH I.E. = Cannot obtain

8+75.8 11^o Lt to center Light Std. # 4220

8+69.2 Cross Water Lat.

8+60.3 Cross Sewer Lat.

31.12

Lt	25.30	26.58	26.63	26.95	27.25	27.52	36
	5.82	4.54	4.49	4.17	3.87	3.60	4.22
	23E	23E	9		7	16	56L
	INVERT						INVERT

	26.27	26.88	27.10	27.36
	4.85	4.24	4.02	3.76
	23		7	16

	25.92	26.34	26.75	27.00	27.25
	5.20	4.78	4.57	4.12	3.87
	24	10		7	16

	26.02	26.04	25.92	26.42	26.74	27.11
	5.10	5.08	5.20	4.70	4.38	4.01
	24	72	92		62	16
		cb	cut			

	26.09	25.97	25.64	26.34	26.69	27.07
	5.03	5.15	5.48	4.78	4.43	4.05
	24	92	92		62	16
		cb	cut			

31.12

10+21.8 11² Lt to center Light Std. #22210+08.5 10⁸ Lt to center P. Pole #J316T.P. 5.51 32.48 ∇ 4.15 26.9732.48 ∇

10+00

4.23	4.46	4.90	4.64	4.15	3.75	3.45
23	72 cb	92 gut	55		7	16
26.89	26.66	26.22	26.48	26.97	21.37	27.67

9+65.6

4.27	4.47	5.02	4.53	4.20	3.83	3.54
23	93 cb	93 gut	46		7	16
26.85	26.65	26.10	26.59	26.92	27.29	27.58

9+62 11² Lt Street Sign

4.27	5.68	4.48	5.67	4.47	4.20	3.85	3.57
24	92 Inv.	92 cb	74 Inv.	74 Pav		7	16
26.85	25.44	26.64	25.45	26.65	26.92	27.27	27.55

9+60.8

4.32	4.35	4.52	4.20	3.95	3.56
24	19	93 cb gut		7	16
26.80	26.77	26.60	26.92	27.27	27.56

9+56 Opposite Curb R.C.

31.12 ∇ 31.12 ∇

11+35 - Cross water Lateral

11+10.5 End solid walk - sta. 45' - 55'

11+09 4" Drain in Curb

11+00

10+91.6 Cross water Lat.

10+61.5 4" drain in curb

10+58.2 Cross water Lat.

10+53 Cross Gas Lat.

10+50

10+32.5 Cross Sewer Lat.

32.48 ⌥

27.26	27.12	26.58	26.96	27.36	27.75	28.07
5.22	5.36	5.90	5.52	5.12	4.73	4.41
23	9L	9L	5		7	16
	cb	cut				

27.02	26.83	26.37	26.73	27.17	27.67	27.86
5.46	5.65	6.11	5.75	5.31	4.81	4.62
218	9L	9L	5		7	16
	cb	cut				

32.48 ⌥

12+58.8 { 17' R to center MH I.E. = Cannot obtain
Opposite Curb RC 15' Rad.

12+56.5 10' L to center P.Pole # J398

12+52.2 10' L to center light std. # 4226

12+35.5 begin solid walk cb to Prop.

12+34.5 Cross water Lateral

12+33.3 Cross Gas Lat.

12+00

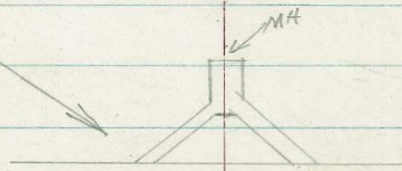
11+50

11+42 10' L to center light std. # 4224

11+37 10' L to center P.Pole # 344

32.48

27.74	27.48	26.89	27.55	27.95	28.28	28.53
4.74	5.00	5.59	4.98	4.53	4.20	3.95
23	88 cb	98 Gut	5		7	16



Here's the Reason!

27.68	27.22	26.87	27.32	27.69	28.11	28.38
4.8	5.26	5.61	5.6	4.89	4.37	4.10
24	88 cb	82 Gut	4		7	16
27.28	27.16	26.71	27.30	27.55	27.96	28.25
5.2	5.32	5.77	5.8	4.93	4.52	4.23
24	90 cb	90 Gut	32		7	16

32.48

Cont'd from Page 29

13+52.5

4 1/2 x 10.5' drain in curb

27.54
5.68
24
27.68
5.54
18.2
27.62
5.60
8.6
Cb
26.83
6.39
8.6
Invert
27.40
5.82
5
27.84
5.38
27.82
28.27
4.95
7
28.66
4.56
16

13+44.5

11 1/2' to Street Sign

10' comb. Curb & walk

13+41.3

Opposite Curb BC 15' Red.

27.76
5.76
19
27.57
5.65
8.5
Cb
27.12
6.10
8.5
Gut
27.55
5.67
4
27.86
5.36
28.25
4.97
7
28.61
4.61
16

13+26

10 1/2' center cleanout

6.90
10.3
Invert

26.22

27.20

27.42

27.95

28.22

28.67

26.85

13+25

♀ crosses gutter drain. Rebuilt on both ends. Appears to Angle No. to go behind N. Cb. line in J. 6 1/2' st. seems to be angle point in drain.

7.00
32.3
Invert
↑
rot at Rd. Cb Line
6.02
19
5.80
11
5.27
5.00
7
4.53
16
6.57
17.2
Invert center of clean out.

T.P.

5.49 33.22 N 47.5 27.73

33.22 N

13+00

27.49
4.99
22.5
27.60
4.88
7
27.95
4.53
28.26
4.22
7
28.60
3.88
16

26.28

26.86

28.65

28.01

28.28

28.56

26.66

12+15.5

(Don't know if built on St. Grade.)

♀ crosses ♀ gutter drain

This gutter drain has been rebuilt on both ends. Now angles somewhere Lt. of ♀.

32.48 N

6.20
33
outlet
Invert
↑
rot at Rd. Cb Line
5.62
23.5
4.83
6
4.47
4.20
7
4.92
16
5.82
17
Invert center of clean out.

32.48 N

Cont'd From Page 10

15+00

14+91.3

14+88

14+65.2

14+50

14+39

14+00

13+97.5

13+93.3

13+91.5

Walk now comb. 10' cb & walk
Cross gas lateral

4" Drain in curb

Begin solid walk cb to Prop
Cross water & sewer laterals

End 10' comb. walk & cb - std. 3-52

10' Lt to center Light std. #4228

10' Lt to center P. Pole #J410

Cross water Later

33.22 X

28.52	Lt	28.29	27.80	28.07	29.32	29.02	29.19
4.7	4.93	5.42	5.15	4.70	4.20	4.03	
22	82 cb	82 gut	5		7	16	

28.32	27.97	27.53	27.86	28.32	28.72	29.02
4.9	5.25	5.69	5.36	4.90	4.50	4.20
24	85 cb	85 gut	5		7	16

27.75	27.80	27.72	27.29	27.58	28.01	28.44	28.80
5.47	5.42	5.50	5.93	5.64	5.21	4.78	4.42
24	186	85 cb	85 gut	5		7	16

33.22 X

Rt #

16+415 9' Lt to center P Pole # JR498

16+413 17' Rt to center MH I.E. = Cannot Obtain

16+39.8 Opposite Curb RC 15 Rad

16+32.8 10' Lt to center Light Std. # 4232

16+22 Cross water Lateral

16+00

15+67 Cross dead water Lateral

15+50

15+22.5 10' Lt to center Light Std. # 4238

15+13.5 10' Lt to center P Pole # JR444

T.P. 5.82 34.38 ∇ 4.66 28.5634.38 ∇ 33.22 ∇

29.08	28.85	28.60	28.91	29.25	29.56	29.77
5.3 22	5.53 8 ² cb	5.78 8 ² Gut	5.47 5	5.13	4.82 7	4.61 16

28.68	28.65	28.26	28.98	29.26	29.63
5.7 23	5.73 8 ² cb	6.12 8 ² Gut	5.46	5.02 7	4.75 16

28.58	28.50	28.09	28.36	28.72	29.08	29.35
5.8 23	5.88 8 ² cb	6.29 8 ² Gut	6.02 4.5	5.66	5.30 7	5.03 16

17+60 9' 24" to center P.Pole #JR510

29.51
29.38
28.95
29.21
29.82
30.70
30.45

17+27

4.87 5.00 5.43 5.17 4.56 4.18 3.98
20 81 81 52 7 16
cb cut

No walk A.C.

17+22 10' 24" to Street Sign in big conc. base

29.23 28.70 29.36 28.20 29.48 29.81 30.12 30.38
5.00 5.15 5.02 6.18 4.90 4.57 4.26 4.00
24 16 82 82 6.5 6.5 7 16
cut cb cut top

17+20.7

17+16.8 Opposite Curb BC 10' Rad

28.22 29.44 29.55 29.79 29.99 30.30 28.50
6.16 4.94 4.83 4.59 4.39 4.08 5.88
22 22 7 7 7 16 18
Gutter Top center of Cleanout

17+05.5 G crosses Gutter drain (no change)

16+79

29.17 29.24 29.54 29.74 30.04 28.07
5.21 5.14 4.84 4.64 4.34 28.07
21 9 7 7 16

16+55.5 G crosses Gutter Drain
Been rebuilt on both ends.
Contact Peck out Angle point.

27.55 28.53 29.20 29.40 29.64 29.91 28.07
6.83 5.85 5.18 4.98 4.74 4.47 6.31
34 21 4 7 7 16 17.8
Invert Invert center of Cleanout

3438 T

Not Re. 25 Ch. Line Island

3438 T

Contd From Page 43

Lt

R

Rt

44

18+852

10' Lt to center P. Pole # 546

18+66

4" Drain in Curb

18+52.8

Cross water lateral

18+50

18+06.2

Cross Water lateral

T.P.

7.08 38.44 \uparrow 3.02 31.36

18+00

17+795

92' Lt to Light Std. # 4234

17+65

34.38 \uparrow

7.03 24	31.81	7.05 76 cb	7.39 76 Gut	31.39	31.05	6.75	31.69	6.31 7	32.43	6.00 16	32.84
------------	-------	------------------	-------------------	-------	-------	------	-------	-----------	-------	------------	-------

30.72	30.48	30.15	30.64	30.95	31.35	31.60
3.66 24	3.90 12	4.23 8 Gut	3.74 3	3.43	3.03 7	2.78 16

30.22	30.06	29.63	30.20	30.38	30.77	31.06
4.11 24	4.32 8 cb	4.75 80 Gut	4.12 25	4.00	3.61 7	3.32 16

34.38 \uparrow

Cont'd From Page #4

20+00

19+97.5 18" R_L to center M.H. IE = 28.86

19+72 Cross Gas Lateral

19+64.5 4" drain in curb

19+64.2 10" 24" Bus stop sign

19+54.2 Begin solid work cb to Prop

19+50

19+45.5 Cross water Lateral

19+03.8 4" Drain in curb

19+02 9" 24" to center light std. #4236

19+00

38.44 ∇

33.95	4	33.71	4	33.02	33.89	39.27	34.60	7	75
449	473	5.42	484	455	417	3.84			
21	76	76	4		7	16			
	cb	gut							

32.94	32.93	32.39	32.66	33.02	33.48	33.90
550	551	6.05	578	542	4.96	454
24	12	73	4	7	16	
	No	cb	gut			

32.18	32.19	31.73	32.34	32.79	33.16
6.26	6.25	6.71	6.10	5.65	5.28
24	10 ³	72	7	16	
	No	cb	gut		

38.44 ∇

T.P. 8.98 42.79 ∇ 4.63 33.81

20+70

39.33
4.11
24
39.57
3.87
10
39.76
3.68
39.87
3.57
5
35.12
3.32
10
35.31
3.18
16

20+37.5 ∇ crosses ∇ gutter drain

32.75
5.69
21 3/4
Gut.
33.99
4.50
21 3/4
Top
34.17
4.27
0
34.47
3.97
34.69
3.75
7 1/2
Top
33.23
5.21
7 1/2
Invert
center of
cleanout
35.01
3.43
16

20+26.5 Opposite Curb BC 10 Rad

34.09
4.36
21
34.04
4.70
7 1/2
Gut.
cb
34.32
4.12
34.58
3.86
7
34.87
3.57
16

20+20

34.21
4.23
21
33.92
4.52
7 1/2
cb
33.72
4.72
7 1/2
Gut
33.88
4.56
5
34.20
4.24
34.54
3.96
7
34.80
3.64
16

20+19.5 9' Lt to center Traffic Light

20+16.6 9' Lt to center P Pole # JR 598

20+12.5 9' Lt to center Light Std # 4238

38.44 ∇

38.44 ∇

21+90.7 9¹ Lt to center P. Pole # JR610

21+73.3 Cross water Lateral

21+63.6 9⁵ Lt to center light std. # 4240

21+34

21+27 Lt Q 35x0.5' Drain in curb

21+21.3 9⁵ Lt to Street Sign

21+20 Opposite BC Curb .15 Rd

solid walk

21+03.7 Q Crosser Q Gutter drain
Mod. field on N.W. corner
could not open cleanouts

20+90

42.79x

34.20	34.03	33.70	34.06	34.39	34.89	35.31
8.49	8.76	7.09	8.73	8.40	7.90	7.48
21	75 cb	75 Gut	3		7	16
34.21	34.04	33.23	33.99	34.37	34.88	35.28
8.58	8.75	9.56	8.80	8.42	7.91	7.51
21	75 cb	75 Gut	3		7	16
	34.27	34.06	33.90	34.39	34.87	35.27
	8.52	8.73	8.89	8.40	7.92	7.52
	21	75 cb	75 Gut		7	16
	32.60	33.66	34.12	34.23	34.53	34.91
	10.19	9.13	8.67	8.56	8.26	7.88
	35 Invert	19	66 TOP Cleanout	53		7
	34.02	34.13	34.53	34.72	34.81	35.11
	8.77	8.66	8.26	8.07	7.98	7.68
	27	20	7		4	10
						16
						35.29
						34.34
						58.7 Top Cleanout Inlet

42.79x

Cont'd From Page #7

23+50

23+43 90° Lt to center Light Std. # 4244

23+35 90° Lt to center P. Pole #2

23+00

22+82.2 End Solid walk Std. - 42-53

22+57.3 90° Lt to center Light Std. # 4242

22+50

22+40 Cross water Lateral

22+17 8° Lt. to dead man

22+00

42.79

Lt.

37.8
5.0
22

37.28
5.51
75
cb

36.94
5.85
75
gut

37.50
5.29

37.92
4.87
7

Rt
38.25
4.54
16

#8

37.0

5.8
22

36.58

6.21
75
cb

36.23

6.56
75
gut

36.79

6.00

37.17

5.62
7

37.47

5.32
16

36.54

6.25
21

36.21

6.58
17

35.78

7.01
75
cb

35.44

7.35
75
gut

35.74

7.05
4

36.05

6.74

36.44

6.35
7

36.73

6.06
16

35.44

7.35
21

35.22

7.57
11

34.64

8.15
75
gut

34.92

7.87
4

35.25

7.24

30.67

7.12
7

36.00

6.79
16

42.79

24+80

38.85
9.08
24
39.28
8.65
7
39.57
8.36
7
39.73
8.20
7
39.9
7.94
16

24+58

38.60
9.33
24
39.07
8.86
7
39.33
8.60
7
39.54
8.39
7
39.72
8.21
16

24+58.2 Cross water Main

38.8
38.61
38.26
38.99
38.78
39.13
39.47

24+32.5 Opposite curb RC 12 Rad

9.1
24
9.32
72
cb
9.61
72
Gut
9.45
4
9.15
7
8.80
7
8.46
16

24+30.4 18" RA to center MH J.E. = Cannot Obtain

24+27.8 90° Lt to center P. Pole # JR69D

24+23.5 95° Lt to center light std. # 4246

38.18
9.75
24
38.31
9.58
172
38.04
9.89
75
cb
37.68
10.25
75
Gut
38.25
9.68
38.67
9.26
7
39.10
8.93
16

T.P. 9.64 47.93A 450 38.29

47.93A

23+95 Cross water Lateral

42.79A

26709 4" drain in curb

42.98	42.71	42.34	42.95	43.86	43.74
495	522	539	498	457	479
21 1/2	72	72		7	16
	cb	Gut			

26700

25760 Cross water Lateral

257525 94' Lt to center PPole # 724

40.95	40.59	40.35	40.53	40.91	41.32	41.65
6.98	734	758	740	782	661	628
21 1/2	75	75	45		7	16
	cb	Gut				

25750

257488 96' Lt to center Light Std # 4248

39.78	39.67	39.05	39.22	39.82	40.31	40.69
8.15	8.26	8.88	8.71	8.11	7.62	7.24
21 1/2	15	75	4		7	16
		Gut				

25719

25+10.2 95' Lt Street Sign

39.47	39.13	38.18	38.14	39.09	39.64	40.15	40.49
8.46	8.80	9.75	9.79	8.84	8.29	7.78	7.44
22	75	75	5	5		7	16
	cb	Gut	Gut	Top			

25+08.3 Opposite Curb BC 12 Pad

solid walk

37.96	39.10	39.32	39.62	39.93	40.20
997	883	861	831	800	773
21 1/2	21 1/2			7	16
Gut	Top	6L Top			
		cleanout			

24794.6 ♀ crosses gutter drain could not open cleanout

39.89
804
53E
gutter
40.56
737
432
Top
Curb
Cleanout

47937

47937

26+88.5 - Cross water Lateral

26+81 96' Lt to center P. Pole #7

26+61.2 4" drain in curb

T.P. 1116 5739 ~~ft~~ 170 46.23

5739 ~~ft~~ ✓

26+50

44.97	44.79	44.35	44.99	45.38	45.70
296	314	358	294	255	223
218	72 cb	79 Gut		7	16

26+43.5 Cross water Lateral

26+36.5 99' Lt to street Light #4250

26+31.8 99' Lt to Parking Meter

26+24 Cross gas Lateral

26+11 4" drain in curb

4793 ~~ft~~

4793 ~~ft~~ ✓

Cont'd From Page 51

28+00

5167	Lt	51.14	51.01	50.55	50.71	51.09
572	6.25	6.38	6.84	6.68	6.30	
23	18	82	82	5		
		cb	gut			

51.93
5.96
7

51.65
5.74
16

52

27+73

Cross water lateral

27+64.5

10² Lt to Bus sign

49.1

48.95

48.43

48.99

48.38

47.65

27+50

8.3	8.44	8.96	8.40	8.01	7.74
24	82	82		7	16
	cb	gut			

27+36

Cross Gas Lateral

27+35

Cross water lateral

27+29

10⁸ Lt to center 26" Palm tree

27+22.5

10² Lt to center Light Std. # 4252

27+10

End solid walk Std 45-53

47.25

47.13

46.83

46.43

47.02

47.37

47.71

27+00

10.14	10.26	10.56	10.96	10.37	10.02	9.68
22	121	8	8		7	16
		cb	gut			

57.39

57.39

28+50.5

51.40	51.59	51.74	51.98	52.17	52.44
5.79	5.80	5.64	5.41	5.22	4.95
24	18	8		7	16

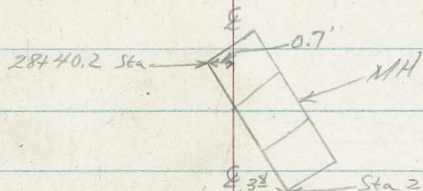
28+23

(Sta. OK)

51.59	51.12	51.57	51.89	52.11	52.26
5.80	6.27	5.82	5.51	5.28	5.13
12 ³ cb	12 ³ Gut	6		7	16

28+38

22³ Lt to water gate



28+36

22³ Lt to water gate

28+31.5

19³ Lt to near edge MH $\frac{6^\circ}{19^\circ}$

51.70	51.49	51.10	51.58	51.89	52.03
-------	-------	-------	-------	-------	-------

28+12.5

Opposite Curb BC 12 Rad

5.69	5.90	6.29	5.81	5.50	5.36
24	8 cb	8 Gut		7	16

28+06.5

9⁸ Lt to center P.P. 1/2[#] JR 798

28+02

10⁸ Lt to center light std # 4254

57.39 ∇

57.39 ∇

Contd From Page 53

Lt

R

Rt 54

29+90.5 End Solid wall Std 45-533

52.53	52.01	51.65	52.70	52.92	52.70
486 24	538 87 cb	574 82 Gut	529	497 7	469 16

29+50

29+45 ^{Doubtful} Cross Gas Lateral ???

29+36 10⁵ Lt ^{center} to Light. Std. #4256

29+20.5 10³ Lt to center PPole #?

51.84	51.49	51.13	51.31	51.79	52.17	52.48
555 24	590 85 cb	626 85 Gut	608 82	560	522 7	491 16

28+96

28+91.5 11⁰ Lt Steat Sign

51.66	51.44	50.39	50.39	51.39	51.82	52.17	52.49
573 24	595 85 cb	700 85 Gut	700 63 Gut	606 63 Top	555	522 7	490 16

28+90.7

solid wall

28+888 Opposite Curb BC 12 Rd

50.09	51.45	51.97	52.19	52.96	51.21
735 224 Gutter	594 148 Tip center cleanout	542	520 7	493 16	618 378 Gutter

28+75 G crosses & Gutter Drain
Could not open cleanout

5739A

5739A ✓

30+91.5 10⁶ Lt to center P.Pole #7

30+77 Cross Gas Lateral ???

30+64.5 Cross Water Lateral

30+50.6 Begin Solid walk at N. Alley
no. Rod and Returns

30+27.5 10³ Lt to center P.Pole # ?

30+23 10⁸ Lt to center Light Std. # 4258

30+18 Cross Gas Lateral

30+15 Cross water Lateral

30+00

T.P. 650 59.30 \uparrow 459 52.80

57.39 \uparrow

53.07	52.74	52.44	52.92	53.20	53.42
6.23	6.36	6.86	6.38	6.10	5.88
23	8 ⁸ cb	8 ⁸ cut		7	16

52.9	52.29	51.89	52.50	52.77	53.02
6.4	7.01	7.41	6.80	6.53	6.28
24	8 ⁷ 4	8 ⁷ 4		7	16

59.30 \uparrow

Cont'd From Page 55

Lt

℄

Rt

56

31+41.5

4" Drain in curb

31+29.6

Cross water Lateral

31+19

Cross Gas Lateral

31+15.8

4" Drain in curb

31+15

4" drain in curb

31+10.5 10² ft to center Light Std. #4260

31+03

Cross water Lateral

31+00

54.01	53.40	53.08	52.68	53.27	53.54	53.84
5.29	5.90	6.22	6.62	6.03	5.76	5.46
23	19	8 ² 6	8 ² 6ut		7	16

30+98.6

11" to Parking meter

30+92

Cross Gas Lateral

5930A

5930A

Cont'd From Page 56.

solid walk

32+66.5 - Opposite Curb BC, 10 Rad

32+54 \angle crosses & gutter drain

32+31

32+28.7 - 17° Rt to ^{center} MH (opening not over center of MH - center about 3' to the west.)

32+21 23° Lt to water gate

32+13 51° Rt to center MH I.E. = 43.10

31+90 Opposite Curb BC 15 Rad

31+88.7 11° Lt to center Pole #R898

31+86 11° Lt to center Light Std. #4262

31+66 11° Lt to Parking meter

31+50

31+45.8 11° Lt to Parking meter

5930 ∇

4

8

Rt

57

52.68	53.78	54.06	54.34	54.51	54.72	53.67
6.62 23 ^e Gutter	5.52 23 ^e Top	5.24 13 ^e Top	4.96	4.79 7	4.58 16	5.63 57 ^e Gutter

53.91	54.08	54.32	54.47	54.63
5.37 23	5.22 9	4.91	4.83 7	4.67 16

54.20	53.92	53.43	53.81	54.04	54.30	54.54
5.10 23	5.38 9 ^e cb	5.87 9 ^e Gut	5.49 33	5.26	5.00 7	4.76 16

MINUTE = 34.05
Not at
Rad.

5930 ∇

Contd from Page 57

34+00

33+73.3

Cross Gas lateral

33+50

33+31.6

11³ Lt to center Light Std. #4264

33+27.0

11⁴ Lt to center P.Pole #910

T.P. 6.42 60.49 ∇ 5.23 54.07

33+00

32+77

32+71

59.30 ∇

Lt

54.63

5.86
235

54.38

6.13
23

54.42

6.07
96
cb

54.14

6.35
95
cb

54.09

6.40
96
Gut

53.84

6.65
95
Gut

54.64

5.85

54.33

6.6

54.87

5.60
7

54.62

5.87
7

55.14

5.35
16

54.89

5.60
16

58

60.49 ∇

54.13

5.17
23

53.93

5.37
23

53.88

5.42
23

53.86

5.44
94
cb

53.84

5.46
93
cb

53.63

5.67
92
Gut

53.45

5.85
93
Gut

54.14

5.16

54.17

5.13

54.20

5.10

54.93

4.87
7

54.43

4.87
7

54.46

4.84
7

54.70

4.60
16

54.70

4.60
16

54.69

4.61
16

59.30 ∇

35+50

35+04.6 Cross water Lateral

T.P. 5.46 61.03 ∇ 492 55.57

35+00

34+85 11 $\frac{1}{2}$ Lt to center light std. #426834+71.2 11 $\frac{1}{2}$ Lt to center P. Pole JP 590

34+59 4" drain in curb

34+50

34+06 2" Drain in Curb

34+04 11 $\frac{1}{2}$ Lt to center right std. #4266
60.49 ∇

Lt

55.89	55.66	55.20
5.14	5.37	5.83
24	10	10
	cb	gut

55.60	55.74
5.43	5.29
	7

Rt 59

55.86
5.17
16

61.03 ∇

55.51	54.77	55.01	55.22	55.43	55.59
4.98	5.72	5.48	5.25	5.06	4.90
232	92	5		7	16
	gut				

55.13	54.74	54.43	54.68	54.97	55.23	55.33
5.36	5.75	6.06	5.81	5.52	5.26	5.16
232	92	92	5		7	16
	cb	gut				

60.49 ∇

Contd From Page 59

This was above and beyond call of
A filthy filthy job.

checked 8-9-55 R
Good 37.47

36+24

36+16²

36+11

35+95⁵

35+94

Curb Returns) SW-IE=52.99 SE-IE=53.25

Broadway } NW-IE=52.18 NE-IE=53.07

35+88

35+76² 50³ R to center MH IE=45.61

35+82.3

Crude Curb inlet on left

35+75¹

Opposite Curb BC 10 Rad

35+65

120 Lt to center Light Std. #4270

61.03 T

Lt

55.41

5.62
24

55.83

5.20
24

55.58

5.45
24

55.16

5.87
24

55.91

5.12
24

55.48

5.55
12

55.80

5.23
12

55.75

5.28
7

55.70

5.93
17

55.56

5.47
12
cb

55.67

5.36
98
cb

R

55.55

5.48

55.83

5.20

55.72

5.31

55.77

5.26

55.70

5.33

55.66

5.37

55.63

5.40
7

55.84

5.19
7

55.72

5.31
7

55.73

5.30
7

55.77

5.26
7

55.93

5.10
7

R

55.72

5.31
16

55.81

5.17
16

55.65

5.38
16

55.73

5.30
16

55.78

5.25
16

55.83

5.20
16

60

61.03 T

Cont'd from Page 60

37+50

37+48.6 56 Rt Radial to center Light Std. #4273

37+25

37+00.59 P.R.C.

36+75

36+54 15 Rt Radial to center M.H.I.E. = 38.15
SEA. walk Lt. Solid walk Rt.

36+49.7 10² Lt Radial to cb B.S. 14 Rad

36+40.4 14² Lt Radial to center 10' Curb inlet
 Each Curb return in 16" & Edge has an inlet.
 could not determine where drainage goes. Do not believe
 that it crosses this proposed line

36+36.25 B.S.

6103A

Station	Dist	Elev	Dist	Elev	Dist	Elev	Dist	Elev	Dist	Elev	Dist	Elev
		57.20		57.10		56.89		56.97		56.26		56.76
	3.83		3.93		4.14		4.56		4.77		4.27	
	24		16		7				32		31	
		56.86		56.88		56.50		56.18		55.93		56.96
	4.17		4.15		4.53		4.85		5.10		4.71	
	24		16				5		106		106	
		56.58		56.05		56.48		56.33		55.57		56.32
	4.45		4.98		4.60		4.83		4.70		4.90	
	37		37		18		10		274		274	
		56.91		55.76		55.73		56.03		56.18		56.13
	5.12		5.67		5.30		5.00		4.89		5.06	
	18E		18E		11		9		22		373	
		55.91		55.76		55.73		56.03		56.18		56.13
		56.03		55.63		55.08		55.60		55.79		55.82
	5.00		5.40		5.75		5.60		5.43		5.24	
	24		102		102		43		11		20	
		55.71		52.11		54.58		55.36		55.69		55.78
	5.72		8.92		6.45		5.67		5.47		5.34	
	145		143		143		53		7		16	
		55.05		54.97		55.36		55.56		55.69		55.72
	5.98		6.06		5.65		5.45		5.34		5.31	
	24		13		8		7		7		16	

6103A

61

Cont'd From Page 61

Lt

Q

Rt

62

38+50.7 Cross water lateral

38+50

58.29
6.66
24

58.09
6.81
11

57.70
7.20

57.61
7.29
2
Gut

58.08
6.82
2
cb

58.26
6.64
16

38+14.7 4th Rt to center light std. #4275

38+12.5 4th Rt to Parking Meter

38+10.4 4" Drain in curb

38+08.9 4" Drain in curb

T.P. 7.08 64.90 ∇ 3.21 57.82

64.90 ∇

38+00

57.71
3.32
24

57.50
3.53
9

57.11
3.92

57.03
4.00
2
Gut

57.58
3.45
2
cb

57.81
3.22
16

37+65.6 3rd Rt to Parking Meter

37+64.93 E.C.

57.32
3.71
24

57.07
3.96
9

56.63
4.40

56.58
4.45
12
Gut

57.09
3.94
12
cb

57.32
3.71
16

61.03 ∇

61.03 ∇

39+74

513
24

59.77

527
8

59.63

561
6

59.29

583
6

59.07

586
16

59.04

39+59.3

6^L RT to Stop sign

39+57.4

23^S RT to center MH J.E. = 51.97

547
24

59.43

564
12

59.26

609

58.47

613
2
Gut

58.17

568
2
cb

59.22

536
16

59.54

39+49

Opposite Curb BC 25 Rad

39+47.5

4^o RT to center Fire Hydrant

39+04.6

4^o RT to center Light Std. # 7277

39+02.4

Cross water Lateral

39+00

605
24

58.85

627
12

58.63

664

58.26

673
2
Gut

58.17

606
2
cb

58.84

593
16

58.97

38+80

End Solid walk - Comb 26 & walk 10'

38+63.5

4^o RT to Parking meter

38+61.3

6" drain in curb

38+58.7

Cross Gas Lateral

6490π

6490π

Cont'd From Page 63

40+95

T.P

11.74

74.05 π

2.59

62.31

62

62.35

11.70
24

62.25

11.80
10

61.94

12.11
24

61.89

12.16
24

62.54

11.51
24

62.65

11.40
16

64

40+68.5

Cross water Lateral

40+57.3

3 $\frac{1}{2}$ Rt to street sign

solid walk

40+51

Opposite curb BC

2589D

60.85

405
24

60.65

425
9

60.32

458
24

60.34

456
24

60.98

392
24

61.10

380
16

40+45.8

4 $\frac{1}{2}$ Rt to center Traffic Light

60.43

447
24

60.25

465
9

59.91

499
24

59.82

508
11

60.48

442
24

60.39

451
16

40+32

40+25^E

48⁶
2+

12" Drain must cross over line
343' to center Drain Inlet

IE = 56.00

40+17

60.22

464
24

60.16

474
12

60.07

483
24

59.95

495
16

39+90.3

Cross water Main

39+83

59.89

501
24

59.86

504
11

59.74

516
24

59.41

549
16

64.90 π

64.90 π

42+89.2 - Cross water Lateral

42+50

57.78	67.99	67.88	67.95	68.52	68.77
6.27	6.06	6.17	6.10	5.53	5.28
24	12		2 Gut	2 Cb	16

42+43.3 3rd Rt abandoned oil refill for Laundry.
Lifted cover - old oil - mess!

42+40.9 4" drain in curb

42+31.2 Cross water Lateral

42+29.7 4" drain in curb

42+00

66.02	66.14	65.92	65.93	66.52	66.69
8.03	7.91	8.13	8.12	7.53	7.36
24	12		2 Gut	2 Cb	16

41+88.3 4th Rt to center P.P. # P113341+74.5 3rd Rt to deadman

41+50

64.29	64.32	64.03	64.00	64.71	64.75
9.76	9.73	10.02	10.05	9.34	9.30
24	10		2 Gut	92	16

74.05 X

74.05 X

43+59 { I.E. = 63.97
5² Radial to MH for Water Gate

{ 46' - center MH cover to West Edge
14' - center MH cover to East Edge } { 12' - center MH cover to S. Edge
48' - center MH cover to N. Edge

43+55 29³ Radial to center MH I.E. = 62.77

43+44.2 Opposite Curb BC 10 Red

43+43.43 BC.

71.33
909 71.42 71.83 72.12
2 2
Gut CB 16

43+39.3 4" drain in curb

43+37.8 3² Rt to center Fire Hydrant

43+37.1 23⁴ Lt to center MH I.E. = 64.96

43+34 3² Rt to center T Pole # D5970T

43+30.2 3⁴ Rt Stop sign

43+06

69.75 70.04 70.01 70.05 70.60 70.80
10.67 10.38 10.41 10.37 9.82 9.62
24 12 2 2 16
Gut CB

T.P. 920 80.42 T 283 71.22

80.42 T

42+91.9 4" drain in curb

74.05 T

44+65.1 Cross Gas Lateral
 44+63.8 1/4 Lt to center T. Pole # D5968T
 stx walk Lt
 44+37.71 EC. { 11/4 Rt to Ditch (Water)
 { 7/4 Rt to Ditch (Gas)

74.5	74.40	73.57	73.62	73.42	73.16
5.9	6.02	6.85	6.80	7.00	7.26
17	75	3 Got		12	23

44+10

74.96	74.79	74.02	73.87	73.58	73.29	73.09
5.46	5.63	6.40	6.55	6.84	7.13	7.33
17	103 cb	103 Got		11	19	23

44+08 E Crosses Ditch (Gas)
 44+03.5 1/6 Lt Radial to center T. Pole # 309080A
 44+01.5 E Crosses Ditch

43+88 E Leaves AC. hits Conc. Paving

74.03	73.97	73.65	73.50	72.32
6.39	6.45	6.77	6.92	8.10
20	10		5	28

43+60 E crosses old ditch ? Water Main

43+60.5 7/8 Lt Radial to Gate Valve ← To turn gate in MH without opening MH

43+60

72.17	72.93	72.28	72.07	71.54	71.93
8.25	7.99	8.4	8.35	8.88	8.49
24	16	7		192 Got	172 cb

80.42 ↑

80.42 ↑

T.P. 3.78 75.89 \uparrow 8.31 72.11

46+34 64 Rt to center MH

46+08

45+98.3 Opposite Curve BC 10 Rod

45+73.7 Cross water Lateral

45+51 46 24 to center T. Pole # JP1674

45+50

44+88.8 Cross water Lateral

44+85

80.42 \uparrow

72.36

8.06
17

71.98

8.44
13
cb

72.1

8.3
17

73.7

6.7
17

72.87

7.55
123

74.0

6.4
17

71.46

8.96
13
out

71.99

8.43
3
cb

72.69

7.78
3
cb

73.60

6.82
3
cb

71.27

9.15
7

71.29

9.13
3
Gut

71.96

8.46
3
Gut

72.86

7.56
3
Gut

72.00

8.42

71.21

9.21

71.28

9.14

71.97

8.45

72.90

7.52

71.47

8.95
9

71.12

9.30
10

71.30

9.12
10

72.03

8.39
7

72.89

7.53
11

71.14

9.28
23

70.92

9.50
23

71.14

9.28
23

71.80

8.62
23

72.59

7.83
2363.65
E/4V
64
M.H.80.42 \uparrow

47+31.6

4" drain in curb

47+21

Cross ^{Sewer ← one or other} water lateral

47+20

47+09

4" drain in cb.

47+05

Cross Gas Lateral

46+99

Begin Solid walk to Prop.

46+74.5

4" Lt to center T Pole # D27377T

Begin 10' comb cb & walk

46+70

Opposite Cb BC 10 Rad

46+60.1

75.89 ∇

71.56	70.99	70.33	70.37	70.37	70.18
4.34	4.90	5.56	5.52	5.52	5.71
17	3	3		10	23
	cb	Gut			

72.17	71.99	71.28	71.32	71.31	71.00
3.72	3.90	4.61	4.57	4.58	4.89
17	3	3		8	23
	cb	Gut			
	72.05	71.42	71.23	71.05	70.89
	3.84	4.47	4.66	4.84	5.00
	13	13		10	23
	cb	Gut			

75.89 ∇

Contd. From Page 69

48+58.6 } 13 Rt to ditch (water)
 73 Rt to ditch (Gas)
 Opposite Curb BC 30 Rad

48+55.7 4⁵ Lt to center T. Pole #402760H

48+32.3 Cross water Lateral

48+13

47+99 Cross water Lateral

47+75 4⁴ Lt to center T. Pole #JP1730

47+74 End Solid walk - Std 42-52

47+66.5 4" Drain in Curb

47+60

47+45 Cross water Lateral

47+33.6 Cross Gas Lateral

75.89 ∇

68.83	68.20	67.62	67.60	67.54	67.23
7.0	7.59	8.27	8.29	8.33	8.66
17	3	3		9	23
cb		Gut			

69.89	69.23	68.51	68.50	68.44	68.14
6.0	6.66	7.38	7.39	7.45	7.75
17	3	3		10	23
	cb	Gut			

70.80	70.34	70.19	69.49	69.51	69.48	69.24
5.09	5.55	5.70	6.40	6.38	6.41	6.65
17	13	3	3		10	23
		cb	Gut			

75.89 ∇

Contd From Page 70

49+54

49+43

16.8 Lt to center Traffic Signal

49+40.5

(AC Pav. 18th Pl to P.L.)

49+44.5

Rt to center MH

T.P. 469

72.82 ∇ 7.76 68.13

48+88

48+74

9.7 Lt to Pull box (High voltage)

48+66.3

6³ Lt to Street Traffic Light (Signal)

48+60.5

5⁶ Lt to center 8" Palm Tree

75.89 ∇

68.25
457
17

67.92
490
32
cb

67.50
532
32
out

67.32
550

67.17
565
10

66.82
600
23

71

67.67
515
17

67.39
543
6

67.37
545

67.08
574
11

66.63
619
23

68.38
444
17

68.08
474
10

67.76
506

67.44
538
12

67.14
568
23

58.96
62.2
15.

67.57
832
17

67.39
850
8

67.19
870

66.88
901
11

66.51
938
23

72.82 ∇

75.89 ∇

Cont'd From Page 71

71

72

51+01.2 4⁸ Lt to center Light Std. B1

50+98.8 ^{Begin 9⁸ comb. cb} Opposite Curb BC 4 Rad.

50+60

50+53.1 Opposite Curb BC 4 Rad to City jbs.

50+34.1 ^{4⁸} Rt to nearst Traffic Signal Impulse Box

4⁸ Lt to Pull Box center

50+15

50+11 4⁸ Lt to Deadman

49+92.7 4⁸ Lt to center Guy Pole # 517289A

49+66.3 ^{4⁵-5} Opposite Curb BC 2⁰ Rad

49+59.7 4⁸ Lt to Stop sign

72.82 ∇

65.02	64.48	64.17	63.65	63.72	63.87	63.86
7.8	8.34	8.65	9.17	9.10	8.95	8.96
17	12 ^E	3	3		11	23
	64.65		64.68	64.80	60.92	64.72
	8.17		8.14	8.02	11.90	8.10
	17		3		11	23
	AL		3			
			cb			

67.72	66.72	66.47	65.90	65.93	65.98	65.82
5.1	6.1	6.35	6.92	6.89	6.84	7.00
17	13'	3	3		11	23
		cb	Gut			

72.82 ∇

51+84.4 8° Rt to center Gas Valve

51+75.7 15° Lt to center 8" Palm Tree

51+58.2 Begin comb. curb walk 9' wide

51+55.4 96° Lt to center MH

T.P. 795 71.02 π 975 63.07

78.25
96
I.F.
S

71.02 π

51+50

63.02

62.44

62.50

62.76

62.74

98
 π
AC

10.38
3
clear
clear

10.32

10.06

10.08

11

23

51+41 Opposite Curb BC 4' Rad

51+32.6 Cross water Lateral

51+30.5 Cross Gas Lateral

72.82 π

72.82 π

check

0.82

70.20 = 70.23

SEBP 20' ± B

61.36 = 61.40 FB2209PS 44

52 + 35.36 = 0+00 FB2209

(52 + 06.8 15' Lt to center 8" Palm tree.)

52 + 15.8 End driveway

52 + 00

63.62	61.74	61.86	62.32	62.45
7.4	9.28	9.16	8.70	8.57
17	3		11	23
	6ft			

57 + 93

curb on each side to Comb. Cb & walk
Opposite Σ 12' Drive to City yard.

71.02 ⚡

71.02 ⚡

70.23 SEEP
20th & E

18.39

55.86
1939
37.47

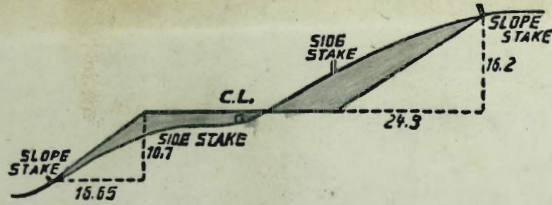
53.92
16.99

36.93
6.17
43.10

B. 2180 - P. 23

11.17
5.82
14.99

72.82
13.86
59.96



DISTANCES FROM SIDE STAKES FOR CROSS-SECTIONING.
SLOPE 1 1/2 TO 1. ROADWAY OF ANY WIDTH.

	0	.1	.2	.3	.4	.5	.6	.7	.8	.9	
0	0.00	0.15	0.30	0.45	0.60	0.75	0.90	1.05	1.20	1.35	0
1	1.50	1.65	1.80	1.95	2.10	2.25	2.40	2.55	2.70	2.85	1
2	3.00	3.15	3.30	3.45	3.60	3.75	3.90	4.05	4.20	4.35	2
3	4.50	4.65	4.80	4.95	5.10	5.25	5.40	5.55	5.70	5.85	3
4	6.00	6.15	6.30	6.45	6.60	6.75	6.90	7.05	7.20	7.35	4
5	7.50	7.65	7.80	7.95	8.10	8.25	8.40	8.55	8.70	8.85	5
6	9.00	9.15	9.30	9.45	9.60	9.75	9.90	10.05	10.20	10.35	6
7	10.50	10.65	10.80	10.95	11.10	11.25	11.40	11.55	11.70	11.85	7
8	12.00	12.15	12.30	12.45	12.60	12.75	12.90	13.05	13.20	13.35	8
9	13.50	13.65	13.80	13.95	14.10	14.25	14.40	14.55	14.70	14.85	9
10	15.00	15.15	15.30	15.45	15.60	15.75	15.90	16.05	16.20	16.35	10
11	16.50	16.65	16.80	16.95	17.10	17.25	17.40	17.55	17.70	17.85	11
12	18.00	18.15	18.30	18.45	18.60	18.75	18.90	19.05	19.20	19.35	12
13	19.50	19.65	19.80	19.95	20.10	20.25	20.40	20.55	20.70	20.85	13
14	21.00	21.15	21.30	21.45	21.60	21.75	21.90	22.05	22.20	22.35	14
15	22.50	22.65	22.80	22.95	23.10	23.25	23.40	23.55	23.70	23.85	15
16	24.00	24.15	24.30	24.45	24.60	24.75	24.90	25.05	25.20	25.35	16
17	25.50	25.65	25.80	25.95	26.10	26.25	26.40	26.55	26.70	26.85	17
18	27.00	27.15	27.30	27.45	27.60	27.75	27.90	28.05	28.20	28.35	18
19	28.50	28.65	28.80	28.95	29.10	29.25	29.40	29.55	29.70	29.85	19
20	30.00	30.15	30.30	30.45	30.60	30.75	30.90	31.05	31.20	31.35	20
21	31.50	31.65	31.80	31.95	32.10	32.25	32.40	32.55	32.70	32.85	21
22	33.00	33.15	33.30	33.45	33.60	33.75	33.90	34.05	34.20	34.35	22
23	34.50	34.65	34.80	34.95	35.10	35.25	35.40	35.55	35.70	35.85	23
24	36.00	36.15	36.30	36.45	36.60	36.75	36.90	37.05	37.20	37.35	24
25	37.50	37.65	37.80	37.95	38.10	38.25	38.40	38.55	38.70	38.85	25
26	39.00	39.15	39.30	39.45	39.60	39.75	39.90	40.05	40.20	40.35	26
27	40.50	40.65	40.80	40.95	41.10	41.25	41.40	41.55	41.70	41.85	27
28	42.00	42.15	42.30	42.45	42.60	42.75	42.90	43.05	43.20	43.35	28
29	43.50	43.65	43.80	43.95	44.10	44.25	44.40	44.55	44.70	44.85	29
30	45.00	45.15	45.30	45.45	45.60	45.75	45.90	46.05	46.20	46.35	30
31	46.50	46.65	46.80	46.95	47.10	47.25	47.40	47.55	47.70	47.85	31
32	48.00	48.15	48.30	48.45	48.60	48.75	48.90	49.05	49.20	49.35	32
33	49.50	49.65	49.80	49.95	50.10	50.25	50.40	50.55	50.70	50.85	33
34	51.00	51.15	51.30	51.45	51.60	51.75	51.90	52.05	52.20	52.35	34
35	52.50	52.65	52.80	52.95	53.10	53.25	53.40	53.55	53.70	53.85	35
36	54.00	54.15	54.30	54.45	54.60	54.75	54.90	55.05	55.20	55.35	36
37	55.50	55.65	55.80	55.95	56.10	56.25	56.40	56.55	56.70	56.85	37
38	57.00	57.15	57.30	57.45	57.60	57.75	57.90	58.05	58.20	58.35	38
39	58.50	58.65	58.80	58.95	59.10	59.25	59.40	59.55	59.70	59.85	39
40	60.00	60.15	60.30	60.45	60.60	60.75	60.90	61.05	61.20	61.35	40
41	61.50	61.65	61.80	61.95	62.10	62.25	62.40	62.55	62.70	62.85	41
42	63.00	63.15	63.30	63.45	63.60	63.75	63.90	64.05	64.20	64.35	42
43	64.50	64.65	64.80	64.95	65.10	65.25	65.40	65.55	65.70	65.85	43
44	66.00	66.15	66.30	66.45	66.60	66.75	66.90	67.05	67.20	67.35	44
45	67.50	67.65	67.80	67.95	68.10	68.25	68.40	68.55	68.70	68.85	45
46	69.00	69.15	69.30	69.45	69.60	69.75	69.90	70.05	70.20	70.35	46
47	70.50	70.65	70.80	70.95	71.10	71.25	71.40	71.55	71.70	71.85	47
48	72.00	72.15	72.30	72.45	72.60	72.75	72.90	73.05	73.20	73.35	48
49	73.50	73.65	73.80	73.95	74.10	74.25	74.40	74.55	74.70	74.85	49
50	75.00	75.15	75.30	75.45	75.60	75.75	75.90	76.05	76.20	76.35	50

THE NATIONAL BLANK BOOK COMPANY
 HOLYOKE MASSACHUSETTS
 NEW YORK CHICAGO BOSTON SAN FRANCISCO