

TABLE XIII—CORRECTIONS FOR TANGENTS AND EXTERNALS

These corrections are to be added to the approximate values, found by dividing the tangent, or external, for a 1° curve (Table VIII) by the degree of curve, in order to obtain the true tangents, or externals. Intermediate values may be obtained by interpolation.

FOR TANGENTS ADD

Central Angle	DEGREE OF CURVE													
	5°	10°	15°	20°	25°	30°	35°	40°	45°	50°	55°	60°	65°	70°
10°	.03	.06	.09	.13	.16	.19	.22	.25	.28	.31	.34	.38	.42	.46
15°	.04	.10	.14	.19	.24	.29	.34	.39	.45	.51	.53	.58	.63	.68
20°	.06	.13	.19	.26	.32	.39	.45	.51	.58	.65	.72	.79	.84	.90
25°	.08	.16	.24	.33	.40	.49	.58	.67	.75	.83	.90	.99	1.06	1.14
30°	.10	.19	.29	.39	.49	.59	.69	.79	.89	.99	1.09	1.20	1.29	1.39
35°	.11	.22	.34	.47	.58	.69	.79	.81	.92	1.04	1.29	1.42	1.54	1.66
40°	.13	.26	.40	.53	.67	.80	.93	1.06	1.20	1.34	1.49	1.64	1.79	1.94
45°	.15	.30	.44	.60	.76	.91	1.06	1.21	1.37	1.52	1.70	1.87	2.04	2.21
50°	.17	.34	.51	.68	.85	1.02	1.19	1.36	1.54	1.72	1.91	2.10	2.29	2.48
55°	.19	.38	.57	.76	.95	1.14	1.32	1.52	1.72	1.92	2.14	2.35	2.56	2.77
60°	.21	.42	.63	.84	1.05	1.27	1.49	1.71	1.94	2.17	2.38	2.60	2.83	3.07
65°	.23	.46	.69	.93	1.16	1.40	1.64	1.88	2.13	2.38	2.63	2.88	3.13	3.39
70°	.25	.51	.76	1.02	1.28	1.54	1.80	2.06	2.33	2.60	2.88	3.16	3.44	3.72
75°	.27	.56	.83	1.12	1.40	1.69	1.98	2.27	2.57	2.87	3.16	3.47	3.78	4.09
80°	.30	.61	.91	1.22	1.53	1.84	2.15	2.46	2.78	3.10	3.44	3.78	4.12	4.46
85°	.33	.66	1.00	1.33	1.68	2.02	2.36	2.70	3.05	3.40	3.77	4.14	4.55	4.89
90°	.36	.72	1.09	1.45	1.83	2.20	2.57	2.94	3.32	3.70	4.10	4.50	4.91	5.32
95°	.39	.79	1.19	1.55	2.00	2.40	2.80	3.20	3.61	4.02	4.40	4.98	5.38	5.83
100°	.43	.86	1.30	1.74	2.18	2.62	3.06	3.50	3.95	4.40	4.88	5.37	5.85	6.34
110°	.51	1.03	1.56	2.08	2.61	3.14	3.67	4.21	4.76	5.31	5.86	6.43	7.01	7.60
120°	.62	1.25	1.93	2.52	3.16	3.81	4.45	5.11	5.77	6.44	7.12	7.80	8.50	9.22

FOR EXTERNALS ADD

Central Angle	DEGREE OF CURVE													
	5°	10°	15°	20°	25°	30°	35°	40°	45°	50°	55°	60°	65°	70°
10°	.001	.003	.004	.006	.007	.008	.009	.011	.012	.014	.015	.017	.018	.020
15°	.003	.007	.010	.014	.018	.023	.027	.029	.032	.035	.039	.043	.047	.051
20°	.006	.011	.017	.022	.028	.034	.038	.045	.051	.057	.063	.070	.076	.083
25°	.009	.018	.027	.036	.046	.056	.065	.074	.083	.093	.106	.120	.127	.135
30°	.013	.025	.038	.051	.065	.078	.090	.103	.116	.129	.149	.170	.179	.188
35°	.018	.035	.054	.072	.086	.109	.131	.153	.175	.197	.213	.230	.247	.264
40°	.023	.046	.070	.093	.117	.141	.172	.203	.234	.265	.277	.290	.315	.341
45°	.030	.060	.093	.119	.153	.184	.216	.254	.289	.325	.351	.378	.411	.445
50°	.037	.075	.116	.151	.189	.227	.266	.305	.345	.384	.425	.467	.508	.550
55°	.046	.093	.142	.188	.236	.283	.332	.381	.420	.479	.530	.582	.641	.700
60°	.056	.112	.168	.225	.283	.340	.398	.457	.516	.575	.636	.697	.774	.851
65°	.067	.135	.204	.273	.343	.412	.483	.554	.625	.697	.771	.845	.922	1.01
70°	.080	.159	.240	.321	.403	.485	.568	.652	.735	.819	.906	.994	1.08	1.17
75°	.095	.182	.266	.353	.440	.528	.617	.707	.797	.887	.977	1.07	1.18	1.29
80°	.110	.220	.332	.445	.558	.671	.787	.903	1.02	1.13	1.25	1.38	1.50	1.62
85°	.128	.259	.391	.524	.657	.790	.926	1.06	1.20	1.34	1.47	1.62	1.76	1.91
90°	.149	.299	.450	.603	.756	.910	1.07	1.22	1.38	1.54	1.70	1.87	2.03	2.20
95°	.174	.350	.522	.706	.885	1.06	1.25	1.43	1.62	1.80	1.99	2.18	2.38	2.58
100°	.200	.401	.604	.809	1.01	1.22	1.43	1.64	1.85	2.06	2.28	2.50	2.73	2.96
110°	.268	.536	.806	1.08	1.35	1.63	1.91	2.20	2.48	2.76	3.05	3.35	3.66	3.96
120°	.360	.721	1.08	1.45	1.82	2.19	2.57	2.95	3.33	3.72	4.11	4.50	4.91	5.32

INDEX

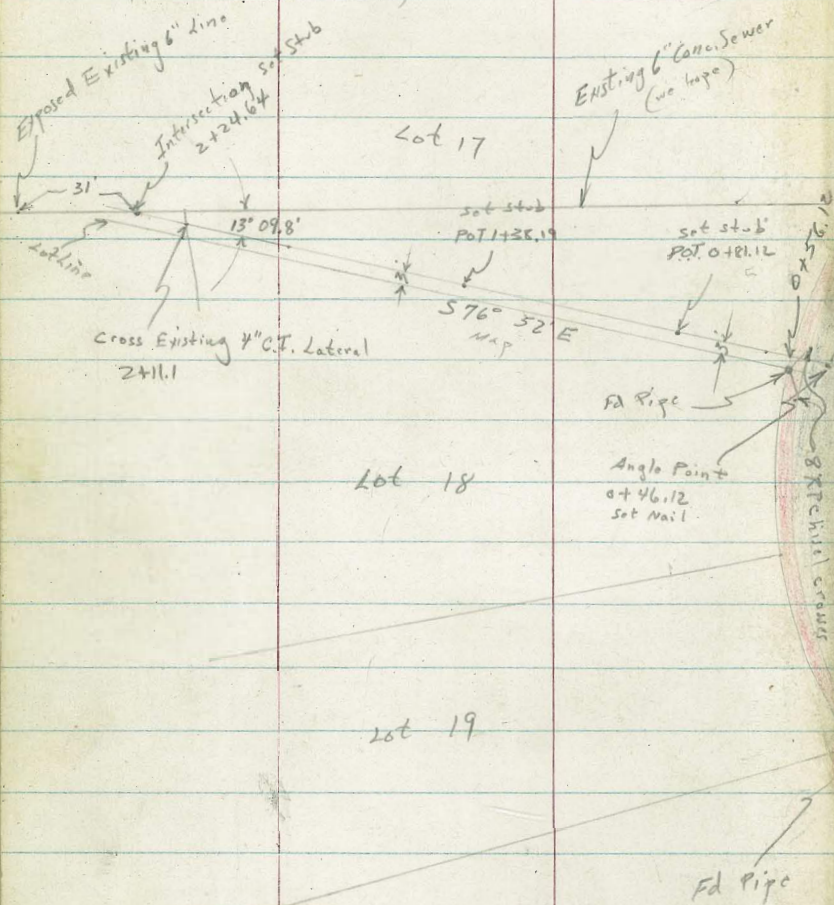
Pgs

Profile - pro. sewer - Kalmia Place - nr 30th 1-4
 " " " 63d & Imperial 5-12
 Sewer line, { 63rd Alley - Blk G. (Encanto Hts) 13-14
 " " 67th Survey 16
 Line change - Balboa Pk. sewer 20
 1 Blks. E. + F. Home Gardens 55
 Proposed Sewer - Gage Dr + Inez St 58

Roberts
Cota
Moore
Pollen
4-16-52
W.O. 20069

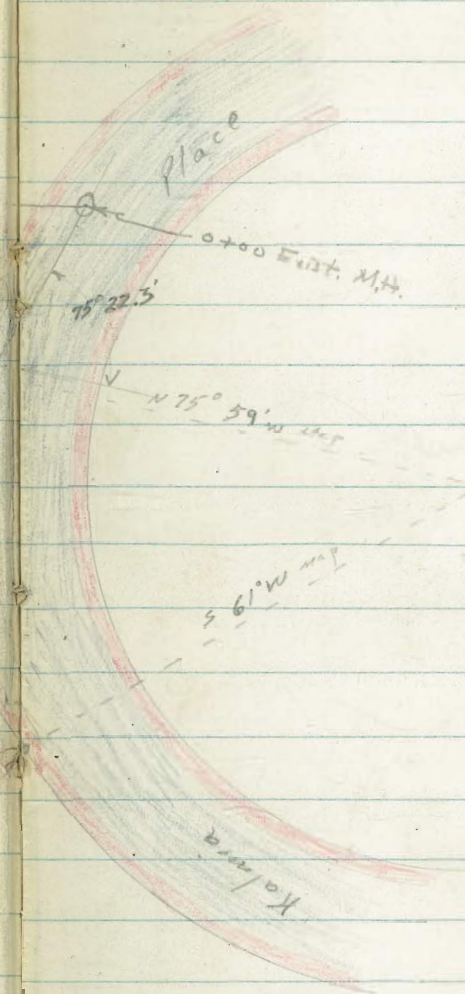
Survey for Proposed Sewer
Kalmia Place between Lot 17 & 18

Map 1746



Staked - 6-4-52 See GB297pg 4

INDEXED
Lace
APR 17 1952



Kalmia Place: -

- 35' Street
- 25' Roadway
- 5' comb. walk & cb.
- Ac. Pav.

Cont'd From Page 1

2

2

0+83 3' Lt to walk
Crosses Eugenia Hedge

6
258.9
55

0+56.12 3' Lt to walk
Back edge walk

516
Good for Ground

0+51.12 Curb Line

556 531
Gutter Curb

0+46.12 L Right

18.2
555

0+00 Existing M.H. in Kalmia Place
Could not locate MH 20' Wly of this MH.

259.22

5.14
MH
Rim

11.50
INVERT

252.86

T.P. 1.83 264.36 T 13.04 262.53

264.36 T

T.P. 0.69 275.57 12.57 274.88

Not My Day

B.M. 1.37 287.45

SEBP
Kalmia $\frac{1}{2}$ 29th

Cont'd From Page 2

T.P. 0.13 205.96 15.73 205.83

1487 33' Lt to Dead man

T.P. 0.25 221.56 π 15.96 221.31

1470 33' Lt to Center P. Pole # PC2450

T.P. 0.35 237.27 15.72 236.92

1443 12' Lt to Cypress Tree

1440

1428 67' Lt to End Steps attached to House

T.P. 0.34 252.64 π 12.06 252.30

0496

264.36 π

221.56 π

~~252.64~~

40

264.36 π

Check

$$1.35 \quad 286.09 = 286.08$$

T.P. 11.31 287.44 0.59 276.13

T.P. 12.65 276.72 0.52 264.07

T.P. 12.93 264.59 0.24 251.66

T.P. 15.21 251.90 0.15 236.69

T.P. 15.53 236.84 0.20 221.31

T.P. 15.68 221.51 0.13 205.83

31' wly of Intersection (exposed 6" Line)

20.3

Top
6" Line

199.4

2+24.64 Intersection with 6" Conc. Line

6.6

2+11.1 Crosses 4" C1, Lateral

3.68

Top
Lateral

205.98A

205.98A

Roberts Sewer Survey in Alley B.K.G Encanto Hts

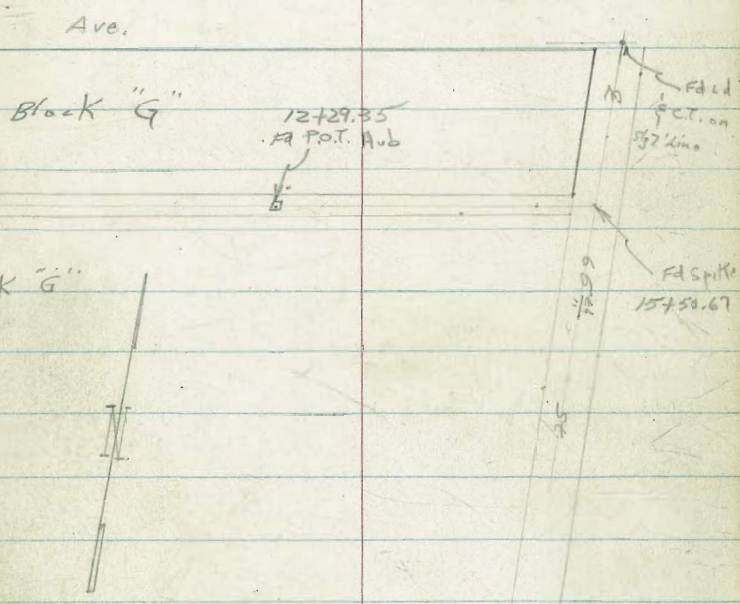
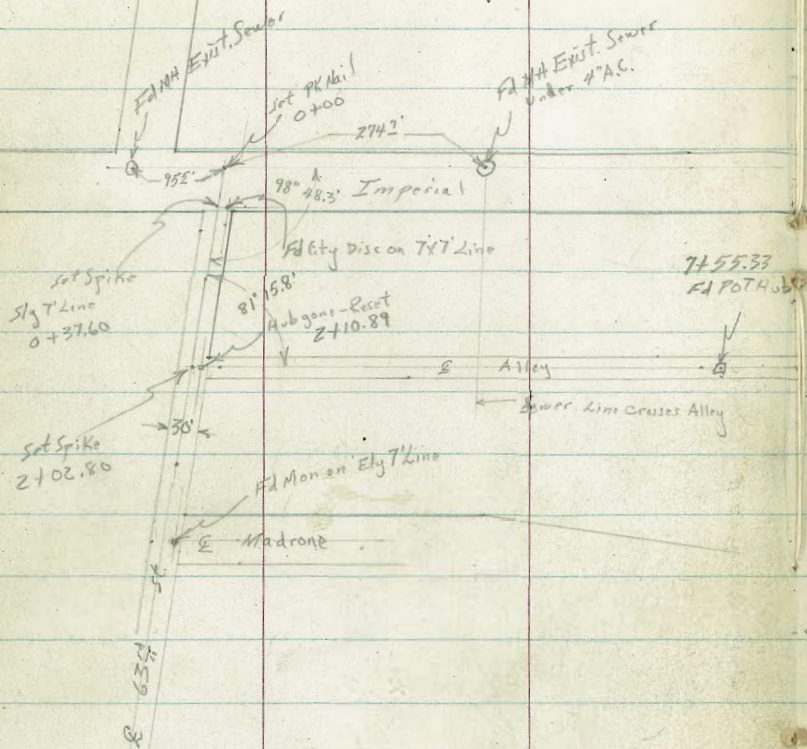
Cota
Moore
Fuller
6-16-52
W.O.# 32196

See FB 1677 pg 53

Note: ADD. LEVELS ON 63rd pg. 13

5

INDEXED
Rec'd
JUN 17 1952



Reduced & Plotted
7-1-52
H. Mills

Cont'd From Page 5

Lt

E

Rt

6

1750

218.3

7.9

1700

214.7

11.5

T.P. 12.44 226.22 π 0.73 213.78

226.22 π

0770

212.3

2.2

0735

218.4

5.1

0700

208.03

201.88

6.48

12.63

~~7.17~~

~~15.78~~

ON AC, TAV.

2742

MH

208.99

5.53

AC

207.34

7.17

RIM

75.2

MH

198.73

15.78

INVERT

set BM

428

210.23

SE 7' 2" Pcty Disc

63rd of Imperial

BM

189

214.51 π

212.62

SE Top Fire Hydr

63rd of Imperial

214.51 π

Cont'd From Page 6

8

7

3+50

219.8

45

3+00

220.5

3.8

TP. 201 224.33T 390 222.32

224.33T

2+50

221.3

49

2+15

222.3

3.9

2+12

222.2

40

2+02.80 < Lt

222.3

3.9

226.22T

226.22T

Cont'd From Page 7

T.P. 10.18 229.52 4.99 219.34

6400

5450

5400

4473 (approx.) Sewer Lateral Crosses Alley

4450

4400

22433T

8

219.3

5.0

218.7

5.6

218.8

5.5

218.6

5.7

218.4

5.9

219.0

5.3

22433T

Cont'd From Page 8

T.P. 13.00 242.14 0.38 229.14

7+00

8+50

8+00

7+50

7+00

6+50

229.52 π

8

9

228.8

0.2

227.4

2.1

225.6

3.9

223.4

6.1

221.7

7.8

220.3

9.3

229.52 π

Cont'd From Page 9

10

12+00

252.7
2.2

11+50

250.7
8.2

11+00

246.1
8.8

T.P. 12.90 254.91 $\bar{\Delta}$ 0.13 242.01

254.91 $\bar{\Delta}$

10+50

241.4
0.7

10+00

236.4
5.7

9+50

232.0
10.1

242.14 $\bar{\Delta}$

242.14 $\bar{\Delta}$

cont'd From Page 10

15700

14750

14700

T.P.

1.25

252.34 π

3.80

257.11

13750

13700

12750

254.91 π

②

247.1

5.2

248.5

3.8

250.1

2.2

252.34 π

251.5

3.4

252.7

2.2

252.9

2.0

254.91 π

check

10.15

221.11 = 221.14

SE, RP
65th & Imperial

T.P

1.76

231.26

13.01

229.50

T.P

0.44

242.51

10.27

242.07

242.4

9.9

15750.67

2 65th

252.347

252.347

Clark
Shepherd
Bruner
Bryson
8-12-52
W.O. 32196

SEWER LINE 63' rd, From E
(B.K.G.)
From Alley bet. Imp. & Madrone, Southerly
Encanto H76

2 Levels on 63d.

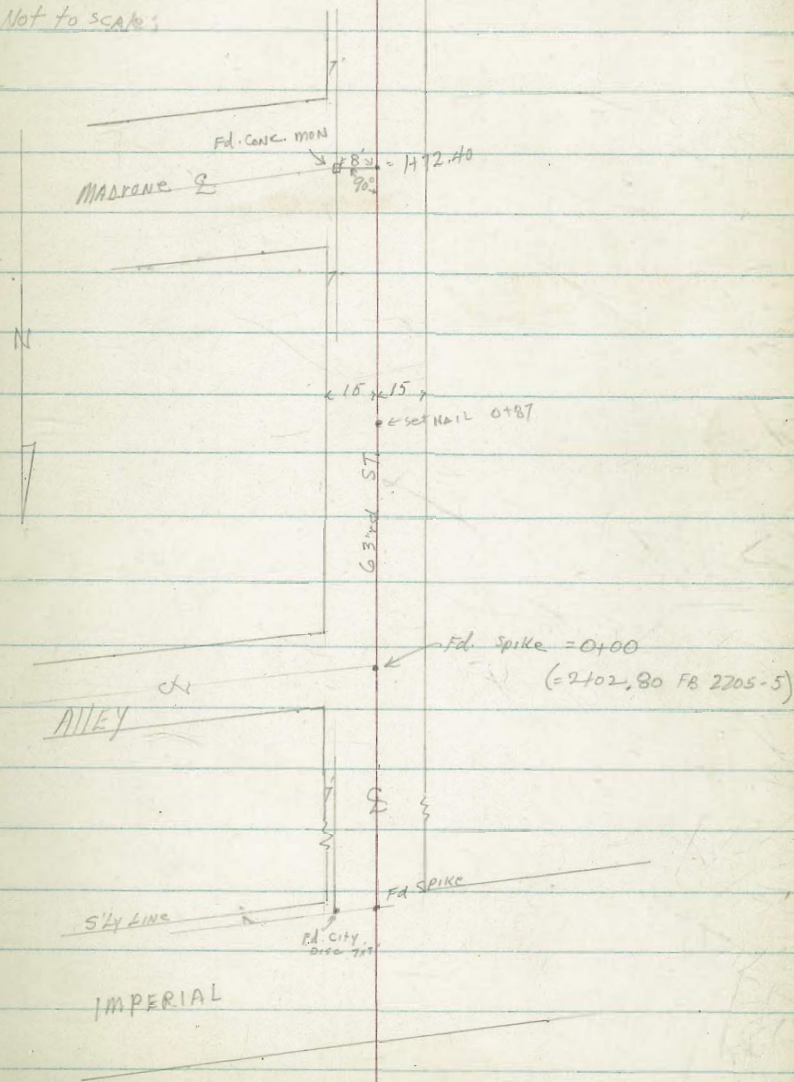
Reduced & Plotted
H. Mills
5-18-52

INDEXED
Law
AUG 13 1952

DATA: FB 2205-5
MAP 4634-B

SEE SKETCH, Pg. 5 FB 2205

Not to Scale



SEWER Line 63rd (Cont.)

LT C RT

1+72.40 (90° to Mon E Madrone & E 47' Line 63rd)

2410
+0.6
50

236.4
4.0

236.1
4.3
45

205.9
4.5

205.9
4.5

1+50

2399
0.5
50

235.1
5.3

232.7
6.7
40

225.5
7.9
100

T.P. 8.10 240.44 1.95 232.34

240.44

1+00

2337
0.6
50

230.8
3.5

230.5
3.8
15

229.8
4.5
60

231.3
3.0
100

0+87

2317
2.6
50

230.3
4.0
30

229.6
4.7

229.0
5.3
15

227.8
6.5
50

229.8
4.5
100

0+50

2277
6.6
15

226.3
8.0

226.2
8.1
15

224.6
9.7
65

226.6
7.7
100

0+00 = SPIKE @ Alley Bk G + E 63rd

224
11.9

222.9
12.1
15

222.0
12.3
50

220.6
13.7
82

217.9
16.4
100

T.P. 10.75 234.29 1.05 223.54

234.29

B.M.

11.97 224.59

212.62

JE 4
F/H 2

63rd & Imp.

SEWER LINE 63rd (cont.)

15

check: 8.72 212.63 = 212.62 SE T&E H/A

T.P. 2.20 221.55 11.35 219.35

T.P. 1.35 230.70 11.09 229.35

SURVEY - PROPOSED SEWER

IN 67TH ST.

From Akins St To Brooklyn

Walker
Pope
Freedley
10-22-52

140. 62294

Please Plot Tics on Tie sheet.

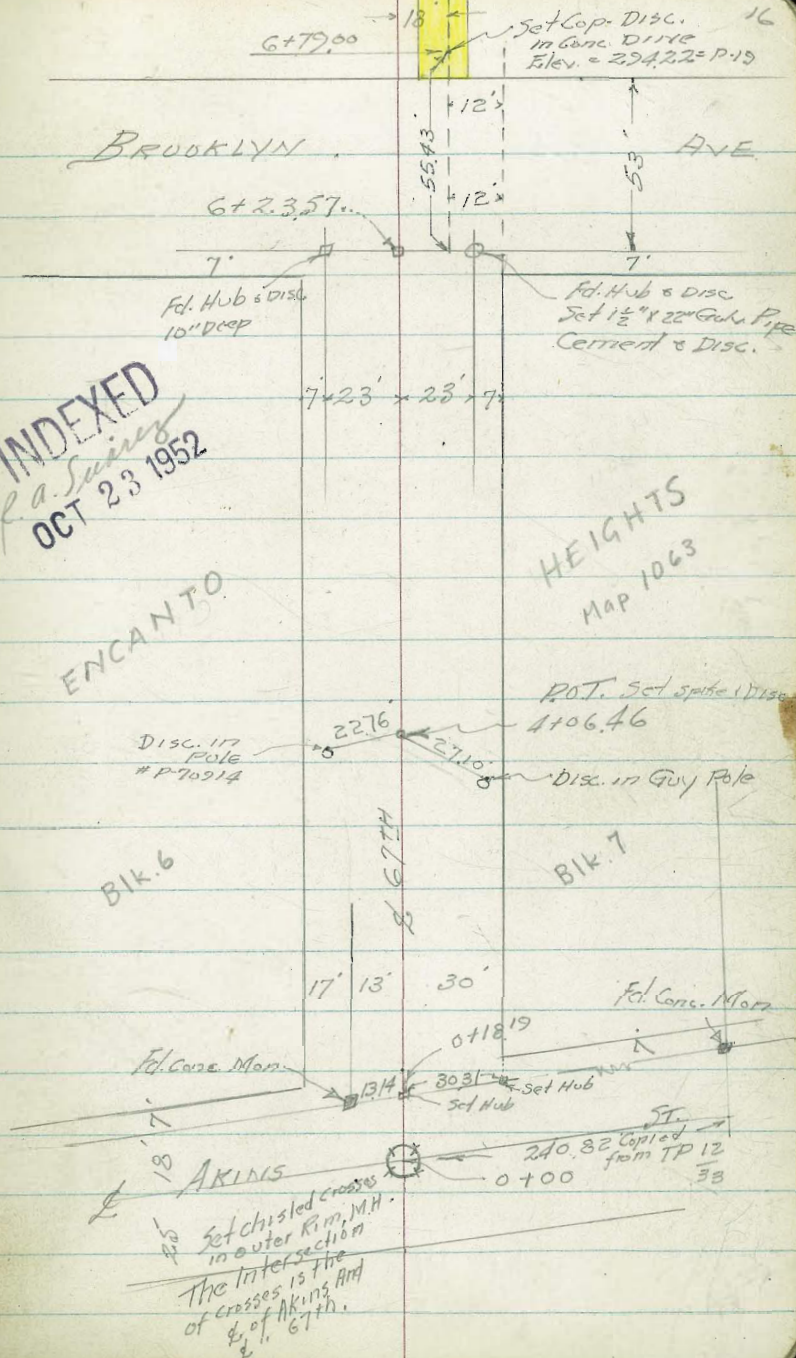
568' 8" VC sewer staked

6306-75

INDEXED
P.A. Swain
OCT 23 1952

ENCANTO

HEIGHTS
MAP 1063



67TH ST. - SEWER
 Stations
 TP 12.89 $\langle 252.09 \rangle$ 039 $\langle 239.50 \rangle$

1+50

1+00

0+50

TP 12.46 $\langle 239.89 \rangle$ 7.81 $\langle 227.43 \rangle$

0+18.18

Invert
 0+02± = Hub End 14.96 \checkmark 220.28
 0+00 Invert Main Line 15.38 \checkmark 219.86
 0+00 = % Above Rim MH 7.01 \checkmark 228.23

4.84 $\langle 235.24 \rangle$ \checkmark 230.40

Lt. Lt. Rt. 17

Cont. P. 18

$\langle 252.09 \rangle$

\checkmark 226.6
 13.3
 100

\checkmark 227.0
 12.9
 50

\checkmark 231.5
 74

Above

\checkmark 224.9
 15.0
 100

\checkmark 229.2
 10.7

\checkmark 224.9
 15.0
 100

\checkmark 227.89
 12.0

\checkmark 228.4
 11.5
 70

$\langle 239.89 \rangle$

\checkmark 226.19
 8.45
 13.14 on Day
 on Mon.

\checkmark 227.43
 7.81
 on Hub

Map.
 1008-D

B.M. SW. Cap. Tack
 7' Line Imp.
 11th. Wood Street 1857

$\langle 235.24 \rangle$

67TH ST. SEWER

Lt.

L.

ST 18

TP 12.81 $\langle 288.31 \rangle$ 0.70 $\langle 275.50 \rangle$
 4+50 0.6

275.6
 0.6
 150

275.6
 0.6

4+00

269.5
 6.7
 100

270.1
 5.5

276.30

TP 12.62 $\langle 276.30 \rangle$ 0.45 $\langle 263.51 \rangle$

3+50

264.0
 0.0

3+00

256.9
 7.1

TP 12.57 $\langle 263.96 \rangle$ 0.70 $\langle 251.39 \rangle$

$\langle 263.96 \rangle$

2+50

248.5
 3.6

2+00

240.9
 11.2
 100

239.5
 12.6

$\langle 252.09 \rangle$

$\langle 252.09 \rangle$

6+79.00

5th Brooklyn + 6th

chk 2 Hubs in Pole

6.35

289.58

289.50

FB. 1557

42

6+46.57 = 2. Brooklyn

TR 82.9

295.85

0.75

287.56

6+33.57

6+00

5+50

5+00

4+40 = opp. Plumbing Root of House

288.31

LT INDEPENDENT

OCT 23 1957

1.63

1.81

on Cop Disc

17 Drive Way

289.8

6.1

295.85

287.56

0.75

on Hub.

285.2

2.2

100

286.1

2.2

282.8

5.5

279.1

9.2

100

279.6

8.7

275.5

12.8

2.75

at House Ground

288.31

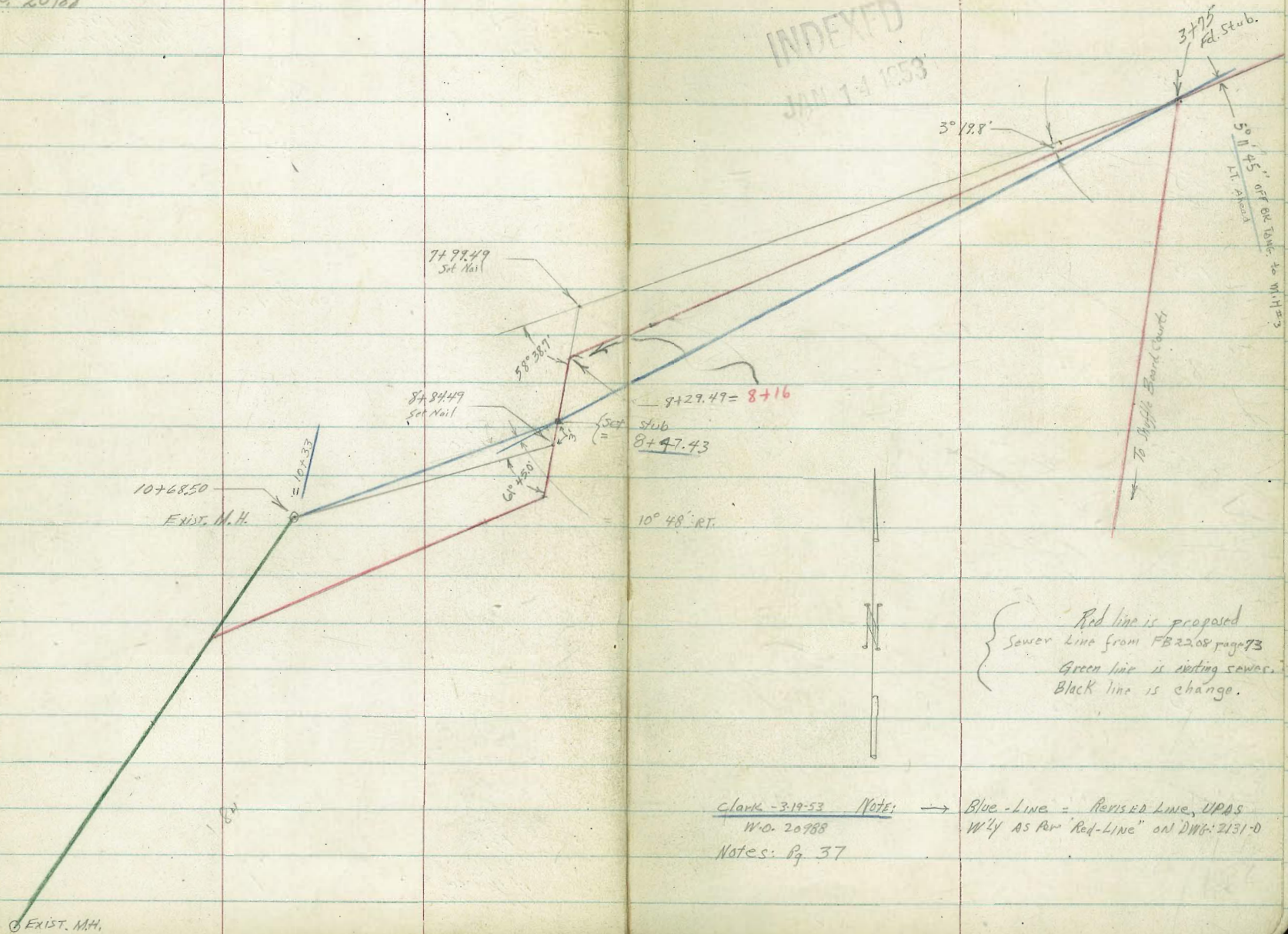
294.22

19

Roberts
Cata
Moore
Fillon
12-4-52
W.O. # 20988

Survey For Proposed Sewer in Balboa Park
Begin in Upas between Arizona and Arnold
(Line change from survey in FB2268 pg 73)

INDEXED
JUN 14 1953



Red line is proposed
Sewer Line from FB2268 page 73
Green line is existing sewer.
Black line is change.

clark - 3-19-53 NOTE: →
W.O. 20988
Notes: Pg. 37

Blue-Line = Revised Line, UPAS
W'LY AS PER 'Red-Line' ON DWG: 2131-D

0-34 15' Rt to deadman

0-49.5 13' Rt to center P.P. 1/2 PA3425

0-50

263.8[✓]
52

0-76.5 2' Rt Begin Board Fence

0-83.5 86' Lt to NW Corner House

269.2[✓]
+0.2
86[±]
Floor0-85.5 88[±] Rt. to N.E. Corner House271.5[✓]
+2.6
88[±]
Floor0-87 43[±] Lt. to S.W. Cor. Garage with plumbing.267.5[✓]
1.5
43[±]
Floor-1-00 { 100' North of Existing NH in Alley at Vpas between
Arizona and Arnold = 0+00 }264.0[✓]
79

T.P.

5.01 < 268.95[✓] > 772 < 263.94[✓] >< 268.95[✓] >

B.M.

1.71 < 271.66[✓] >269.95 NWCP
Vpas and Arizona

T.P. 8.28 $\langle 279.51 \text{ ft} \rangle$ 0.70 $\langle 271.23 \rangle$

0+00 Existing M.H. 2' Rt to Curb Face

0-04^g Begin A.C. Paving

0-09 94' Lt to SW Corner House

0-09^I $\left. \begin{array}{l} 5' \text{ Rt} \\ 47' \text{ Rt} \\ 90' \text{ Rt} \end{array} \right\}$ to S.E. Corner Houses

0-10² 20' Rt begin Curb

0-13 15' Rt End fence

0-18 17' Lt to SW Corner House

T.P. 7.99 $\langle 271.93 \text{ ft} \rangle$ 5.01 $\langle 263.94 \rangle$

0-30 1' Rt to deadman

$\langle 268.95 \text{ ft} \rangle$

263.61 ✓
832
Rim

263.57 ✓
836
A.C.

265.8 ✓
61
94
Floor

265.4 ✓	266.2 ✓	271.1 ✓
65	57	0.8
52 Floor	47 Floor	90 Floor

265.8 ✓
61
17
Floor

$\langle 271.93 \text{ ft} \rangle$ ✓

6+00

277.2
2.3

5+50

277.5
2.0

5+00

276.8
2.7

4+50

274.6
1.9

4+38 Edge AC Paving

274.0
5.5

4+00

273.5
6.0

3+75 L. Pt. Rt. Begin Line change

272.9
7.5272.9
6.6

<279.51π>

<279.51π>

7+91 14^E Lt to center 3" Cedar

7+86 12' Lt: to center 8" Acacia

7+71 12^E R to center 6" AcaciaT.P. 3.85 $\left\langle \begin{array}{c} \downarrow \\ 280.33 \text{ X} \end{array} \right\rangle$ 3.03 $\left\langle \begin{array}{c} \downarrow \\ 276.48 \end{array} \right\rangle$ $\left\langle \begin{array}{c} \downarrow \\ 280.33 \text{ X} \end{array} \right\rangle$

7+50

276.4^v
3.1

7+00

277.9^v
1.6

6+50

277.5^v
2.0

6+08 Edge AC Pave

277.2^v
2.3 $\left\langle \begin{array}{c} \downarrow \\ 279.51 \text{ X} \end{array} \right\rangle$ $\left\langle \begin{array}{c} \downarrow \\ 279.51 \text{ X} \end{array} \right\rangle$

8+84.49 L. Rt.

275.0
538+57 11⁵ Rt to center 8" Acacia8+51 8⁵ Rt to center 3" Cedar

8+50

275.31
50

8+47.6

13⁸ Lt
6⁵ Rt (begin curb)8+08 8³ Rt to center 3" Cedar8+02 12³ Rt to center 8" Acacia275.6
4.7

7+99.49 L. Left

7+87 Edge oil Pave

275.7
4.6

<280.33π>

<280.33π>

9469 9' Rt to center 18" Acacia

T.P. 2.66 $\langle 276.04 \pi \rangle$ 6.95 $\langle 273.38 \rangle$

$\langle 276.04 \pi \rangle$

9457 Line crosses wood bicycle stand

9450

273.9
6.4

9431 10' Rt to SE Corner Tennis Ct. Fence

9428

274.6
5.7 271.9
8.4
10

9419 16' Lt to center 18" Acacia

9405 Line crosses wood bicycle stand

9400

275.2
5.1

9419.7 Line hits curb face

274.68 275.29
5.65 5.64
Gutter Curb

$\langle 280.33 \pi \rangle$

$\langle 280.33 \pi \rangle$

Cont'd From Page 26

24

25

26

27

10+68.50

Existing MH.

269.51[✓]
6.53
Rim MH

270.8
73

10+50

270.3[✓]
5.7

10+00

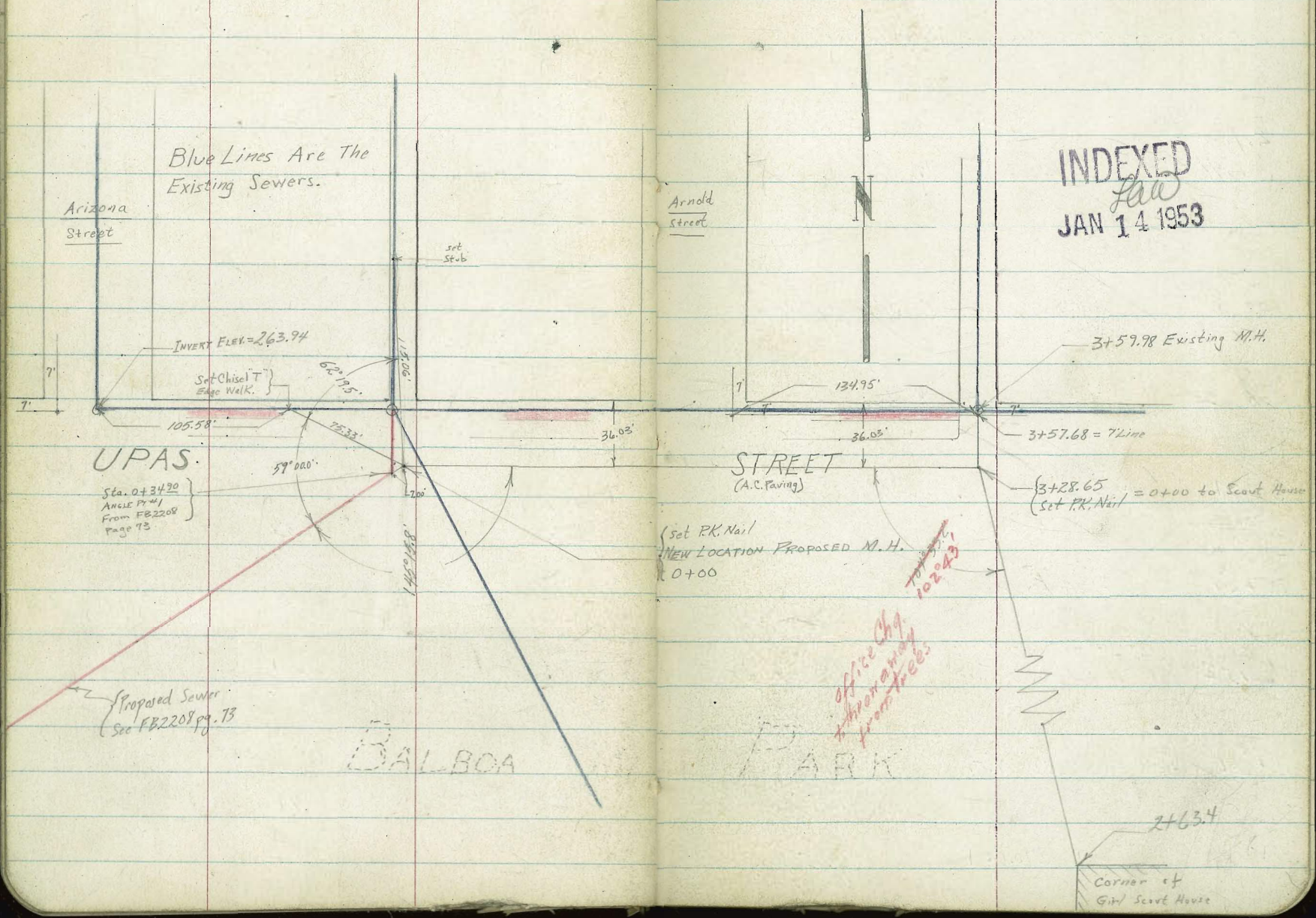
271.9[✓]
4.1

{276.04[✓]π}

{276.04[✓]π}

Roberts
Cota
Moore
Pollen
Abreuilla
1-13-53
W.O. #20988

Preliminary Survey for Sewer in
Upas Arizona to Alley East of Arnold
(Line change from Survey in FB2208 pg. 73)
See FB2208



INDEXED
Law
JAN 14 1953

Office Chg.
temporarily
from trees.
102043

2163.4
Corner of
Girl Scout House

Cont'd From Page 28

Line From New Proposed M.H. Wly to Intersection with existing line
From Arizona to Alley - between Arnold & Arizona.

Lt

E

Rt

29

0+48

Fly edge next driveway

264.13 ✓
5.31

0+46^E

Leave wly edge conc. Driveway

264.66 ✓
5.38

0+38^I

Hit Curb face & Driveway (10' opening)

263.83 ✓
6.21
Gutt.

0+33^E

8^S Rt to center 24" Palm Tree

0+31

6^S Rt to Deadman

0+24^E

12^S Rt to center 15" Palm Tree

0+15^E

{ 12^S Rt to center P. Pole JP 2524
11^S Rt to Curb Face

263.91 ✓
6.13

0+00 NEW PROPOSED M.H.

BM

0.09

{ 270.04 K }

269.95 NWBD
Upper & Arizona

{ 270.04 K }

0+75.33 Intersection with existing line.

265.43
4.61

0+63⁵ At Sly Edge Walk

265.09
4.95

0+63 45' Lt to center 14" Palm Tree

0+57 Sly Edge Driveway

264.97
5.07

{270.04π}

{270.04π}

Cont'd From Page 30

Line from New Proposed MH Nly to intersection
with existing line in Alley - between Arizona & Arnold

1+74 make this

1+15.06 Intersection with existing line.

0+80^E 3° Lt to center P.Pole # PA3425

0+60

0+36^Z 6° Lt to end curb

0+35^Z Edge AC Paving

0+31 4³ Lt to center existing MH.

0+18^E { 6° Lt to curb face
7⁵ Lt to center P.Pole # JP2524

0+00 NEW PROPOSED MH.

{ 270.04 }
}

2+

E

PA 31

263.91
6.1

263.5
6.5

263.47
6.57

263.91
6.13

{ 270.04 }
}

Cont'd From Page 31

Line from New Proposed Mt. Ely to Alley
East of Arnold Street. Upas Street

2+00

1+88

1+50

1+00

0+50

0+00 NEW PROPOSED M.H.

<270.04*

26

¢

RT

32

261.58 ✓
8.46

261.38 ✓
8.66

262.21 ✓
7.93

262.50 ✓
7.34

263.28 ✓
6.76

263.91 ✓
6.13

<270.04*

T.P. 0.56 <268.40π> 2.20 <267.84>

3+59.98 Existing M.H.

3+46.5 { 108.27 to center P.Pole #P2574
72.24 to Curb Face

3+44.2 Edge A.C. Paving

3+28.65 ANGLE POINT LEFT

2+75

2+50

<270.04π>

267.90
2.14
Rise
260.01
9.97
Invert

3+13.3

267.64
2.40

267.84
2.20

264.10
5.94

262.84
7.20

<270.04π>

2+55

11'

Lt to center 18" Euc. Tree

2+53

Hit 6' Chain Link Fence

2+50

5'

2+49

Hit Rt Cor 6' Wireline fence Post

2+49

9.5'

Rt to center 15" Euc. Tree

2+43²

15'

Lt to center 8" Euc. Tree

2+396

9'

Lt to center 30" Euc. Tree

2+38

10'

Lt to center 14" Euc. Tree

2+00

1+50

<268.40T>

262.8 ✓
56

261.5 ✓
6.9

<268.40T>

Cont'd From Page 35

LT

E

RT 36

Check

139

269.94 = 269.95

Starting B.M.

T.P.

830

271.33

537

263.03

2163⁴

Northwest Corner Girl Scout House

(8' East due to change here)

Girl Scouts

44+

3.0 Floor

2160

153

7/8

to center 12"

Euc. Tree

[268.40 π]

[268.40 π]

Clark
Shepherd
Bruner
Owens

W.O. 20988
3-19-53

UPAS ST. WLY OF ARNOLD

Revised Line AS Per Red-Line, DWG. 2131-D

M.H. #4 S'ly to EXIST M.H.

See sketch Pg. 20 - Blue-Line = CHANGE

6+00

4.0' LT \pm 6'x6' (OK) Post
Lot

5+62

= sky edge Pav.

5+50

INDEXED
Law
MAR 24 1953

5+00

4+93

4+50

oil Pav.

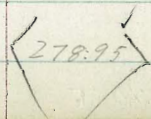
4+277 = 1/2" Edge Pav.

4+00

3+75 = L LT 5" 1/4" 45 = Beg. Line change

B.M

9.00



269.95 - N.W. B.P.
UPAS & ARIZONA

37

277.6
1.3

276.65
2.30

Edge Pav.

276.83
2.12
Pav.

276.58
2.37
Pav.

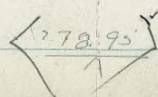
276.44
2.51
Pav.

274.65
4.30
Pav.

273.69
5.76
Pav.

273.5
5.4

272.9
6.05
oil 576



Line change (cont)

8

38

7+54.5 = NLY Edge Cold-Lay Pav along Nly of Pool

7+51 = 8' 15" wide x 2' high hedge // to Lane

7+50

7+47 = 3.0 RT & 10" Locust ACACIA

7+36 = 6.6 LT & 12" Palm

7+28 = 6.4 LT & 4" Cypress

7+21 = 5.0 LT & 8" Palm

276.9
3.9
CL Pav

277.8
3.0

7+00

278.6
2.2

6+50

278.6
2.2

T.P. 2.62 $\langle 280.80 \rangle$ 0.77 $\langle 278.18 \rangle$

$\langle 280.90 \rangle$

6+10 SWK

278.1
0.8

6+08 2.1 RT & 6" x 6" PKG. LOT POST

$\langle 278.95 \rangle$

Line change (cont.)

8+47.43 = \angle RT 10° 48'

8+33+ approx \angle LANE

8+297 = FC CB. Ely side of N.S. LANE lying Wly of MUNICIPAL Pool Bldg
8+29 END LAWN

8+17 - 6.4 RT. \angle 2.0 ACACIA Tree

8+01. 12.4 LT \angle 18' Cluster Palms

8+00

7+83 - 6.0 LT \angle 2.0' ACACIA

7+84 Beg LAWN

7+80 = - \angle 1.5' wide \times 2.0' high hedge // so CB.

7+79

7+78 = CB. FC Ely side LANE

7+73.5 - 3.8 LT to N.W. Cor 35' CON. WALK
RUNNING 90° to Co Line, to WOMEN'S Rest-Room

7+66 = \angle C-LAY PAV

\angle

275.03
5.77
on slab

275.0
2.6
C-LAY

274.9
5.9
GUTT. C/LAY
5.0
LAWN
275.62
5.17
TP CO
275.8

276.3
4.5

276.9
3.9
GUTT
276.3
4.5
GUTT
276.77
4.03
TP CO

276.8
4.0

280.80

Line change (CONT.)

9+49

B+K

9+33

7.5 RT. = E 18" ACACIA Tree

9+30

= B+K

T.P.

3.70

275.98

8.52

272.28

9+23.5

= E BIK-ROCK (out Perm)

9+00

8+95

8.65 RT. = S.E. CORN. TENNIS COURTS

8+90 B+K

8+80

B+K

8+67.93

= C 3in/Bike-Rock (overall length 50)
 OF RACK
 ROWS N 45
 LINE FAIR 90 N. OF SIDEWALK

8+55

8+54.73

= FC W/4 CB.

E
 274.9 ✓
 3.1

273.5 ✓
 2.5

275.98 ✓

274.2 ✓
 6.6

2718
 7.00
 8.65
 COR. COURT

273.2 ✓
 7.6

275.1 ✓
 5.7

272.7 ✓
 6.1
 GOTT

275.3 ✓
 5.5
 DHT

275.32 ✓
 5.46
 TP
 CB

280.80 ✓

Line change (cont.)

9

CHK:

6.40 269.58 - 269.51 = 1.11
M.H.
See Pg 27

10+33

= 9 EXIST M.H. = (10+68.50 old line Pg 20)

10+00

269.6 ✓
6.40
at R.M.

270.8 ✓
5.2

9+70

oil - PAV

271.8 ✓
#2

9+55

= N/4 Edge OIL-PAV Along Lane running
E-W. From Center municipal Pol Bldg

272.0 ✓
#10

275.98 ✓

Survey to extendd EXIST sewer in
 Harrison Ave sk of Cervantes to
 LOT COR IN LOT 92 — Las Alturas Villa Sites
 map 501

WO # 62330

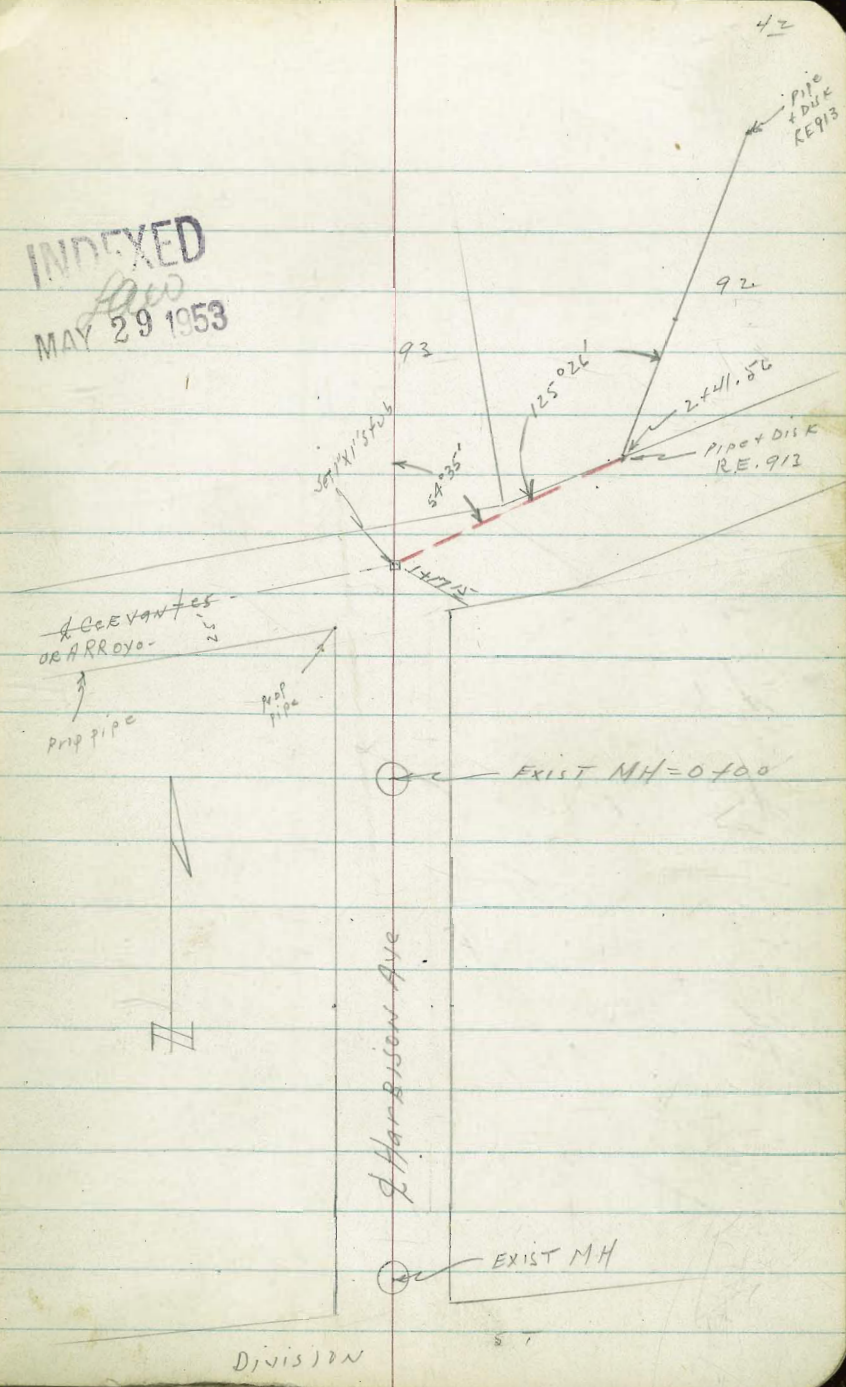
O. Allen

D. Sisson

Schutte

See page 43 for profile

INDEXED
 MAY 29 1953



Division

See page 42 for sketch

Sewer
182.2
4 7

1+50

1+17.5 L.R.T. - 54°35' - elev on split pipe

181.7
5²
10
181.6
5³
10
181.4
5⁵
10

1+00

0+93 = N4 end poor Coldlay ST - end curbs L+R

0+50

0+00 = EXIST MH in Harrison Ave

0+00 = EXIST MH in Harrison Ave

B.M. 10.64 186.90

F.L. EXIST MH
176.26

shown as F.L. Elev. exist MH-

186.90

181.6
5³
181.8
5¹
181.6
5¹⁰
181.6
5²⁴
B.M.
SMH.

Cont from page 43

100' Nly of Lot Cor along Lot Line

1774
Sewer
9 5

50' Nly Lot Cor at 2+41⁵⁶ on Lot Line

1776
7 3

2+41⁵⁶ End proposed Sewer Line

182.0
4 9

2+14

183.3
W 6

2+12

182.0
4 9

2+00

182.3
4 6

1+75

182.5
4 4

186.90 7

D. Smith
J. Rorer
R. Taylor
B. Fish

wo# 25020
1-7-54

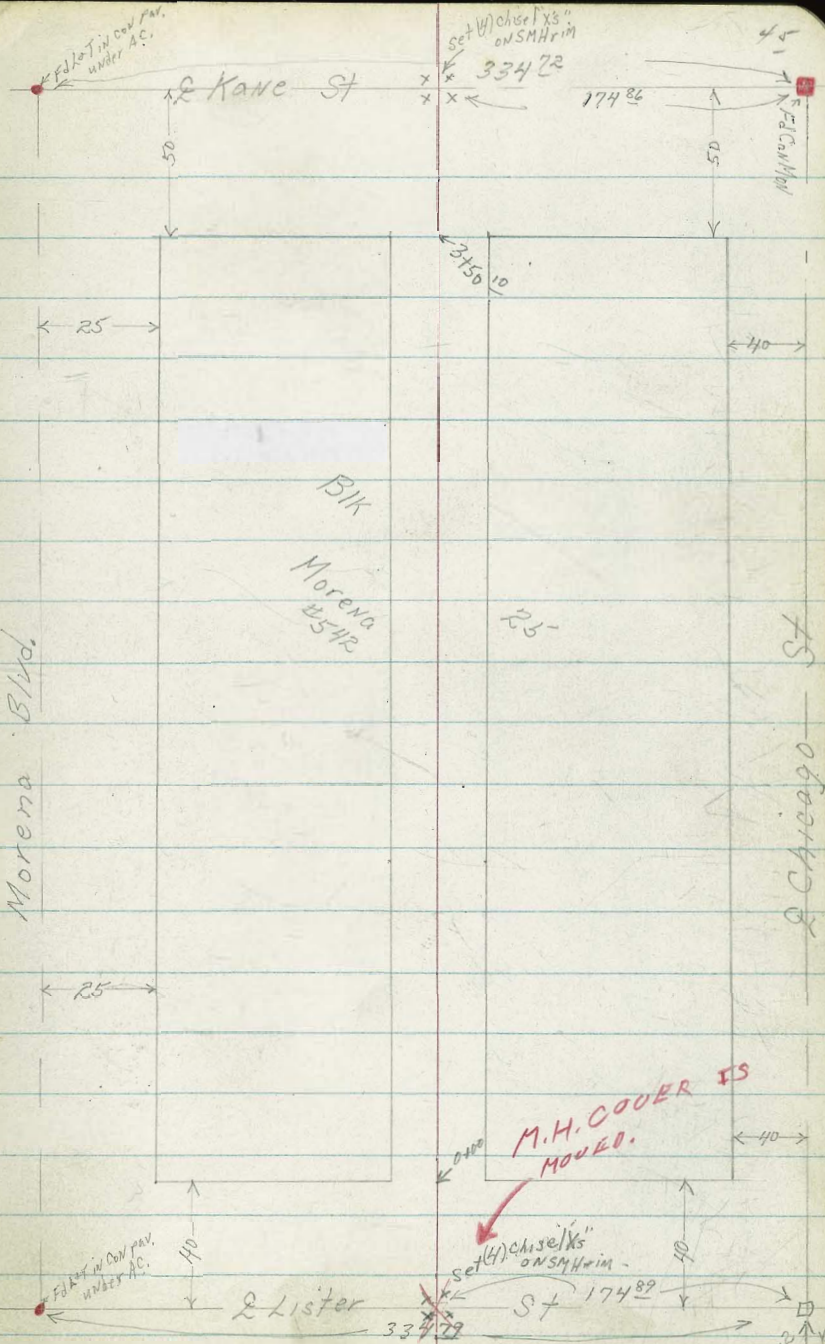
X. Sec Alley BIK 25 Morena

INDEXED
JER

JAN 8 1954

Re: FBI FB 1502-48 ties

Chicgo + Morena, Lister + Kane



FBI
Hull + Dist

3727 10' Lt end con block wall

3700

2775 10' Lt begin 4 high con block (6") wall

2750 10' Rt end fence picket

2749 8' Lt & 8" P Pole #A3171

2748^s 8' Lt End AC parking Area

2725 8' Rt & 9' con slab drive entrance to yard

2700

1775 8' Lt begin in AC paving parking Area

1750

TP4 563 18⁴⁰ 551 12³¹

1725 8' Lt & 8" P Pole #PA3129

Lt = Wly E Rt = Fly 47

104 top	104 Footing	104 9d	5 ¹³ 10	5 ¹³ 10	5 ⁰ 8	4 ² 10	3 ⁴ 20
16.82	11.9	13.3	13.1	13.2	13.4	14.3	15.0

76 ¹ top	6 ⁷ Footing	5 ³ 9d	13.0	13.1	13.1	13.0	13.1	13.5	11.8
16.79	12.7	13.1	13.7	13.1	13.0	13.1	13.5	11.8	

6 ¹⁹ AC	5 ⁵⁸ AC	5 ⁵³ AC	5 ⁴ 20	5 ³ 10	5 ⁴ 8	5 ⁵ 6	5 ⁴ 8	5 ³ 10	4 ² 20	4 ⁶ 20
12.21	12.82	12.87	13.1	13.7	13.1	13.0	13.1	13.5	11.8	11.8

6 ⁶² AC	6 ¹³ AC	6 ¹³ AC	6 ⁰	5 ⁸ 8	5 ² 10	4 ² 20	5 ² 10	4 ² 20	5 ² 10	4 ² 20
11.98	12.01	11.78	12.27	12.28	12.4	12.6	13.2	13.7	13.28	13.48

6 ⁷⁴ AC	6 ³⁹ AC	6 ¹³ AC	6 ⁰	5 ⁸ 8	5 ² 10	4 ² 20	5 ² 10	4 ² 20	5 ² 10	4 ² 20
11.5	12.0	12.4	12.4	12.6	13.2	13.3	13.2	13.3	13.2	13.3

18⁴⁰

18³⁸

Lt = Wly

♀

Rt = Ely

48

BM starting

5⁰¹

42⁰⁴

✓ 42⁰⁷

SWBP
Milton
Erie.

TP₈ 8²⁴

47⁰⁵

13²²

38³¹

TP₇

11⁶²

39⁶³

0⁴⁰

28⁰¹

TP₆

12¹³

28⁴¹

3⁰⁰

16²⁸

TP₅

7⁰⁶

19²⁸

6¹⁸

12²²

4400⁰ & Kane St

5 ⁶	5 ⁰	4 ²	3 ⁹⁸	3 ⁶	3 ²	2 ²
50	25	10	1M	10	25	50
12.8	13.4	14.0	14.42	14.8	15.2	16.2

3477 8⁶ Lt & 8" P.P. 1[#] P 3949

5 ⁶	4 ⁶	4 ³	4 ²	4 ³	4 ²	3 ⁵	2 ⁰	1 ⁶
50	18	10	8	8	10	25	50	
12.8	13.8	14.1	14.2	14.1	14.2	14.9	15.6	16.8

3475

3463 10¹ Lt & 12" Pepper tree

3460 10² Rt & 12" tree

345 0¹ Sly Kane St

4 ⁸	4 ⁶	4 ¹	4 ⁸	4 ³	3 ¹	2 ²	2 ⁶
25	15	10	10	7	10	12	25
13.6	13.8	13.7	13.6	14.1	15.3	15.5	15.8

3437 10² Lt & double garage incl floor + apron

4⁸
20²
Apron

5¹³
10²
apron

T 18⁴⁰

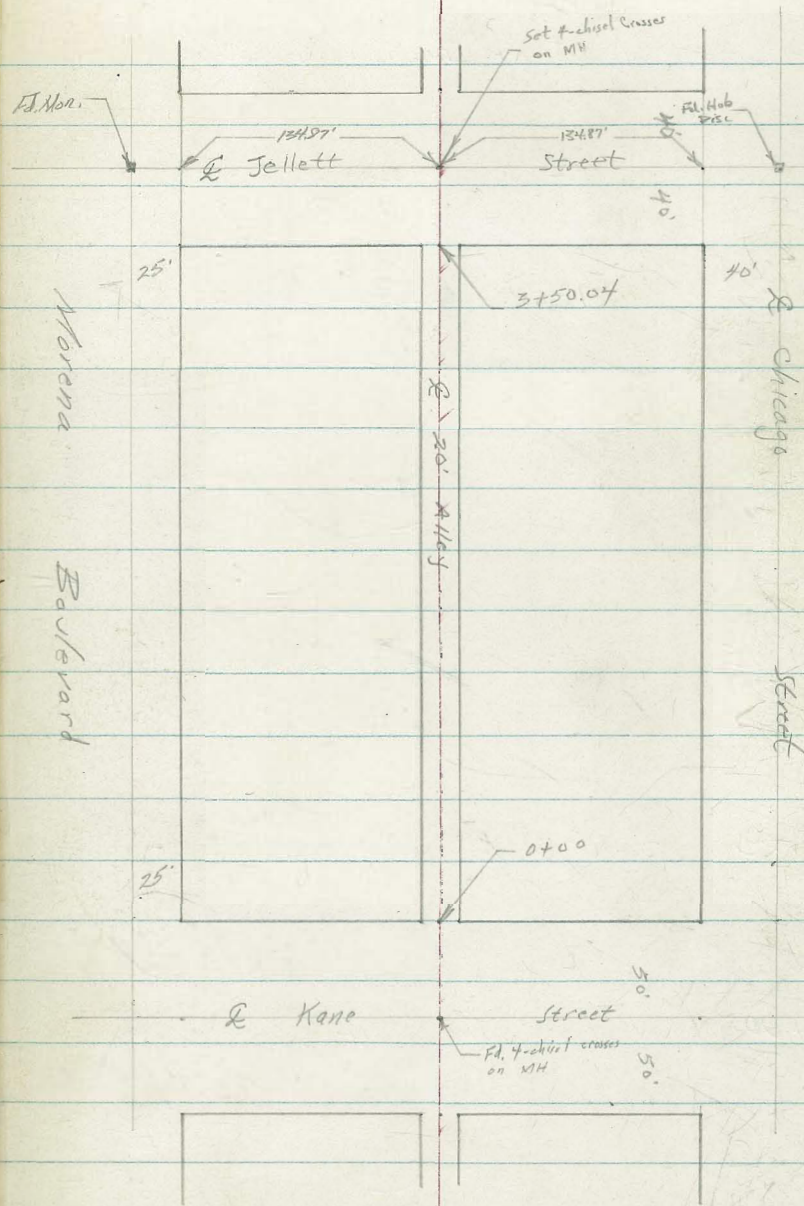
Roberts
Cota
Moore
Morales
1-27-54
W. 25020

X-Section Alley Blk. 24, Morena

Kane to Jellett
Between Morena & Chicago

F.B. 1502 pg 48 and pg 45 H's F.E.

INDEXED
JER
FEB 1 1954



Cont'd From Page 47

48

49

50

51

R
0
1
2
3
4
5
6
7
8
9
10
11
12
13
14
15
16
17
18
19
20

0+96.5 { 8.5 RT begin picket fence
8.5 RT End dwelling w/ garage

0+91 8.6 RT & single garage Attached

0+65 9.0 RT End fence begin dwelling

0+50 { 8.9 RT to center P. Pole # P3329
9.2 RT begin 2nd fence
9.2 RT to center 20" cypress trees

0+45 16.5 RT End Garage

0+23 16.4 RT begin Double garage

0+00 North line Kane

TBM

5.04

19.46 ∇

14.42 Rim of

VA & Alley & Kane see page 48.

18.91
16.81
2.10
8.6
cont
Floor

14.8	15.1	15.1	16.0	16.0
4.7	4.4	4.4	3.5	3.5
20	10	10	10	20

16.81
2.10
16.4
cont
Floor

16.81
2.10
16.4
cont
Floor

14.5	14.6	15.1
5.0	4.9	4.4
10	10	10

19.46 ∇

T.P. 6.97 25.33 ∇ 110 18.36

1750

1749 7th Rt End picket fence

1734 8th Rt End Lath house begin picket fence.

17265 8th Lt to center T.P. Pole # PA 3247

1724 9.7 Lt End Bldg. with garage }
 0490 10th Lt begin Bldg. with garage }

1710 8th Rt End fence begin Lath house.

1707 10th Lt & Single garage

1700

19.46 ∇

17.8
17
20

18.2
13
10

19.4
11

19.2
0.3
10

20.0
+05
20

16.99
2.47
10th
conc
Floor

16.7
2.8
10

16.7

17.2
2.3
8

17.2
2.3
10

17.7
1.8
20

19.46 ∇

2+26 90° Lt to Deadman

2+21 82° Rt End Lath house

2+08 82° Rt begin Lath House

2+04 23° Lt to center single garage opening
which opens to South

2+00

1+83 185° Rt to center 10' opening of
garage opening to North

1+72.5 271° Lt End double garage

1+56.5 278° Lt begin double garage

25.33A

19.3
6.0
23
Floor

19.1

19.6

19.8

6.2
205.7
10

5.5

5.0
10

20.3

4.5
20

20.48

4.85
182
CONC
Floor18.20
7.13
271
CONC
Floor

18.20

7.13
278
CONC
Floor19.04
6.29
182
CONC
Apron

18.58

6.75
181
CONC
Apron

25.33A

3770

3768

3750.04 South Line Jellet

3700

2794 8th Lt to dead man2752 8th Lt to center P.Pole #PA3271

2750

2748 9th Lt to center 18" Pappas Tree

25.33T

4

5.8	19.5
50	10
20.5	21.3
4.8	1.4
50	10

4.2	3.5
20	10
21.1	21.8
4.5	4.1
20	10

4.2	3.5
20	10
21.1	21.8
4.5	4.1
20	10

4.2	3.5
20	10
21.1	21.8
4.5	4.1
20	10

4.7	4.3
20	10
20.6	21.0
4.7	4.4
20	10

8

3.8	21.5
10	10
21.8	21.5
3.5	2.4
10	10

3.2	2.9
10	10
22.1	22.4
3.1	2.6
10	20

3.2	2.9
10	10
22.1	22.4
3.1	2.6
10	20

3.2	2.9
10	10
22.1	22.4
3.1	2.6
10	20

4.1	3.3
10	20
21.2	22.0
4.1	3.3
10	20

8

2.0	23.3
50	10
23.9	23.3
1.4	2.4
50	10

2.0	23.3
50	10
23.9	23.3
1.4	2.4
50	10

2.0	23.3
50	10
23.9	23.3
1.4	2.4
50	10

2.0	23.3
50	10
23.9	23.3
1.4	2.4
50	10

53

25.33T

check

16.89 14.44 = 14.42

3 + 90.04 @ Jellett

25.33

19.1
56
30

22.03
330
Rim
MH
M2 +

23.5
1.8
50

25.33

Sewer Prelim.
Gregory St.
Webster Ave. to J.H. Orcutt's Sub.

INDEXED
JER
MAY 3 1954

C.H.S.
Begg
Schelin
Pullen

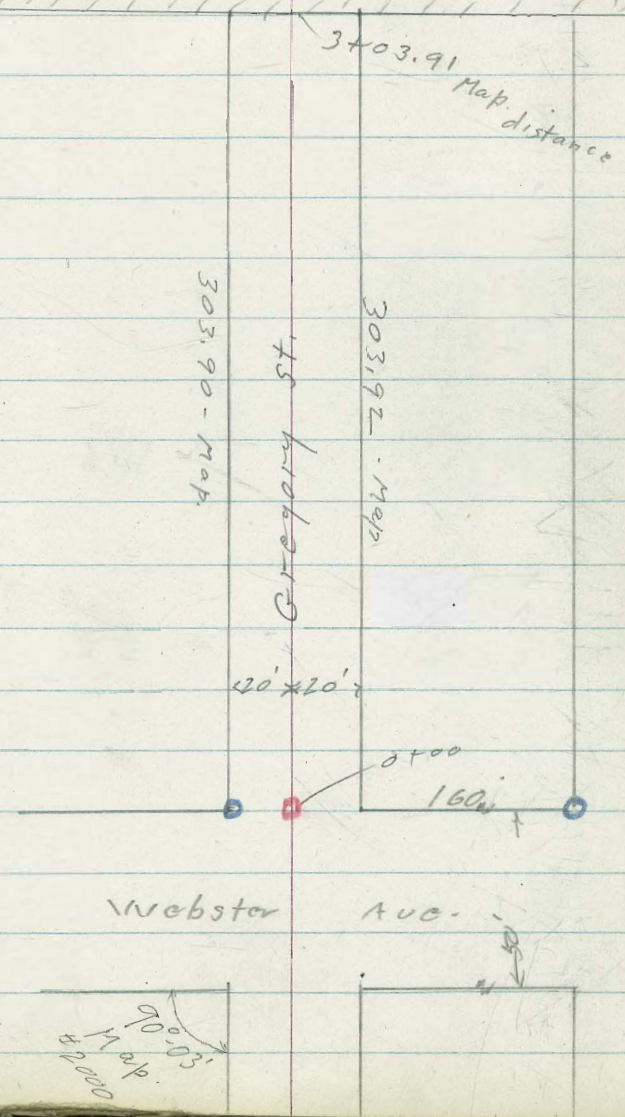
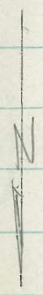
4-29-54
V.I.O.#32425

J.H. Orcutt's Sub.
Map # 426

- denotes Fd. 3/4" pipe
- " set 1/2 + disk.

Ref. FB. 1381-P-7
Map # 2000

Ground shots shown at
front + back of each house



90° 03'
Map # 2000

Gregory St.

1755 36' Rt. = N.E. Cor. House

T.P. 4.56 22.36 5.07 17.80

Note This house is served by 33rd St.
line
(fenced + gate locked)

1730 53' Rt. = ~~House~~ (yard is
Not needed.)

B.M.#3 5.45 22.87 5.63 17.42

0+00 = sly line Webster

+ west sewer
0-25 = Webster = Existing east

B.M.#2 3.78 23.05 5.45 19.27

T.P. 5.10 24.72 5.99 19.62

B.M.#1 4.78 25.61 -- 20.83

16.2 17.9 18.6 18.6 20.2
6.2 4.15 3.18 3.8 2.2
100 36 73 ↑
vacant prop. Quad. at Floor
house

22.36

Reduced by
Supper 5/14/54

5.0 4.2
53' ground

22.87

1/2 + disk. on ~~at~~ at 0+00

13.32 16.90 18.00 14.27 12.27
9.73 6.15 5.1 3.78 10.78
86 86 220 220
I.E. Rim M.H. Rim I.E.
M.H.

23.05

Ely^{cross}
Rim M.H. Webster + 33rd

S.W. L + T. Gillette + 33rd

Gregory

4.81 20.83

B.M.#1 - page 56

T.P. 6.08 25.64 4.15 19.56

T.P. 6.30 23.71 4.95 17.41

2+76 59 1/2 N.W. Cor. House

2+70 40' RT. = N.E. Cor. House

1+42 61' RT. = N.E. Cor. House

2+35 69 1/2 N.W. Cor. House

1+95 60' RT. = N.E. Cor. House



17.7 15.9 16.2 18.0
4.7 6.5 6.2 4.0
5.9 8.8 ↑
End. at house Floor

17.7 18.2 18.4 20.0
4.7 4.2 4.0 2.4
4.0 6.4 ↑
End. at house Floor

17.7 18.2 18.4 20.6
4.7 4.2 4.0 1.8
6.1 8.2 ↑
End. at house Floor

16.5 16.0 16.1 17.7
5.9 6.4 6.3 4.7
10.5 6.9 ↑
End. at house Floor

17.8 18.3 18.4 20.4
4.6 4.1 4.0 2.4
6.0 8.5 ↑
End. at house Floor

22.36

Levels for proposed sewer in
Inez St wly from Gage Dr.

LT=514

Prop
sewer

RT=514

57

0+25.35^o RT= sly bank channel of ^{Creek}

0+07 = ely edge cold lay paving strip

0+00 = g^o MH# 14 - 10847-L - shown as g^o Inez St to ^{ELy-}

TP ₉	7.76	175.15	7.98	167.39
TP ₇	1.80	175.37	12.84	173.57
TP ₆	0.31	186.41	13.21	186.10
TP ₅	0.19	199.41	13.05	199.24
TP ₄	0.30	212.29	13.22	211.99
TP ₃	1.00	225.21	13.36	224.21
TP ₂	0.05	237.57	13.32	237.52
TP ₁	0.43	250.84	12.75	250.41
B.M.	0.55	263.16		262.61

169.2	168.8	167.7	166.9	166.3	165.7	165.7
6 ^o	6 ⁺	7 ⁺	8 ³	14 ⁹	14 ⁵	7 ⁵
10		10	35	45	54	62
			sly top	Bottom	Bottom	NTY Top Channel

167.6
7⁶

167.8	167.39	162.87	167.0
7 ⁺	7 ⁷	12 ²⁸	8 ²
10	R ¹¹ MH	JE g ^o v.c. sewer	10

175.15^x

Chisel square sly R¹¹ Manhole g^o Inez + Gage Dr

NW BP - Albion + Jennings St

Proposed Sanitary Sewer Inez St

LT = Sly. RT = Wly 60

2
Prop
Sewer

TP₉ 10.80 185.58 0.37 174.78

185.58 ✓

Property owner Reports this house served
by Lateral to 8" v.c. in gage dr. Wly of HH #14
Wly top bank creek channel

1400 - 73° RT = 2 Frame House

171.3 171.6 172.0 174.3 177.1 181.6
3 9 3 6 3 2 0 9 + 1 9 7 6 4
10 18 26 73° 73°
grat House Floor

0+95 = 2° LT = d 14" clump at willow trees

171.0 163.8 163.6 167.9
4 2 11 4 11 6 7 3
22° 20 Bottom 10
TOP TOP
Bank Bank

0+85 = Wly bottom creek channel.

169.8 169.2 162.9 162.4
5 4 6 0 12 3 12 8
10 3 10

TP 0+51 = bottom channel Wly + Sly creek

169.2 169.0 162.9 162.7
6 0 6 2 12 3 12 5
10 Top 5 10
Bank Bottom channel BOT.

TP 0+50 - 2 Prop sewer intersects Ely bank creek

No information enveloping
RT = 1/2" Pipe - R.E. 913

TP 0+32⁵⁵ - 25⁵⁰

175.15 ✓

Levels / Prop. Sewer In 25

Floor of House is at least 15' higher than

1485-100' ± RT = 2 story frame House

1475

1462

1460

1450

1447⁰ - 26⁶⁹ - RT = 2 1/2" pipe RE 9/13

1425

LT = 511-

Proposed
sewer

RT = N14

61

181.5
4 1/2

178.8
6 8

177.5
8 1/2

176.5
9 1/2
10

176.4
9 1/2

176.3
9 3/8
10

173.2
12 1/4
10

172.7
12 9

173.6
12 0
10

185.58 X

Proposed Sewer Inez

AT=514

Proposed
Sewer

RT=NIY- 62

2+26-43° RT- d Frame House

199.6 206.6

72 09

43° 43°
9" Floor

0 TP11 12.25 207.46 0.74 195.21 ✓

207.46 π

194.0
20

6 2+25

192.6
34
10

192.2
38

192.5
40
10

2+20

185.8
102
10

186.5
95

188.3
77
10

7 2+00

195.95 π ✓

7 TP10 - 10.96 195.95 0.59 184.99 ✓

185.58 π

Prop Sewer Inez st

LT=51y

Prop Sewer

RT=Nly- 63

TP₁₄ 7.27 239.07 0.47 231.80

239.07

TP₁₃ 13.35 232.27 0.14 218.92

3400

209.6	217.3	219.6	220.9	222.9	224.5
95	18	05	18	38	54
100	25	10		10	25

2470- 58° RT=8 Frame House

204.8	206.7	209.2	208.6	207.7	209.6	211.3	219.2
14 ³	12 ⁴	9 ⁹	10 ⁵	11 ⁴	9 ⁵	7 ⁸	7 ¹⁴
100	50	10	10	25		58° 9" at Hud	58° Floor

219.06 π

TP₁₂ 12.45 219.06 0.85 206.61

2460

204.8
27

2453 -46° LT=2 Frame House

200.20	203.42	200.9	201.7	201.8	202.7
726	404	66	58	57	48
46° IE 4" Latent	46° Floor	46° 9" at House	10		10

207.46 x

Prop Sewer Inez st

TP ₁₀ - Starting BM	1.70	<262.617	262.62 ✓
TP ₁₁	8.98	264.32	2.51 255.34
TP ₁₂	11.70	257.85	0.47 246.15
TP ₁₅	12.37	246.62	4.82 234.25 ✓

10⁵ LT = SELy cor Frame House

See C. Moore's encroachment Survey

3+98⁹ Ely Wall Frame House

3+86⁵³ = Ely Inez ST. 111.44 Ely Intersection

Albion + Ely Line PL 183

3+50-38⁰ LT = Rinn Canyon

N14

3+33²⁸ P.O.T.

Tied to Pepper tree + private pole
See sketch
2' x 2" Rinn Hub

3+23 - 32⁰ RT = Canyon Rinn
Frame House

LT = 514

Prop Sewer

RT = N14 64

13P NW cor Jennings + Al. brook

237.1	237.1	237.12
2 ⁰	2 ⁰	1 ⁵
10 ⁵ ground	ground at House	Floor

236.9⁰
2¹⁷
ON Hub

234.4	234.9	234.3	234.6
4 ⁷	4 ²	4 ⁸	4 ⁵
38 ⁰ Rinn	10		10

231.3⁵
7⁷²
ON Hub

216.0
23¹
100

229.4
9⁷
22

230.0
9¹

230.9
8²
32⁰ ground House

230.97
8¹⁰
32⁰ Floor

239.07

Roberts
Korer
Moore
7-1-55
W.O.#25020

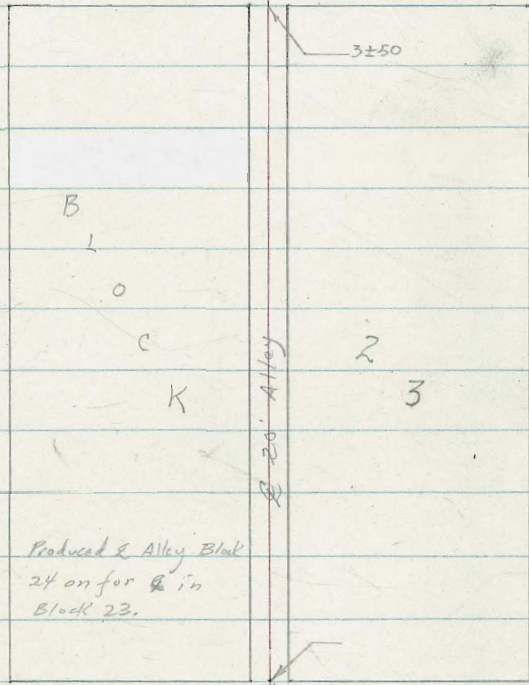
X-Section Alley Block 23, Morena

See Pg. 49

INDEXED
JER
JUL 5 1955

Ingulf

St.



3±50

B

L

O

C

K

2

3

Morena Blvd.

20' Alley

Produced & Alley Block
24 on for & in
Block 23.

Chicago St.

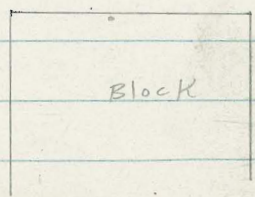
Jellet

40'

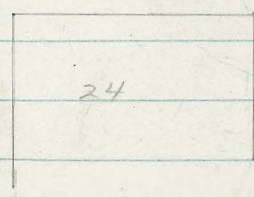
40'

SE

Fd # chisel + on MH



Block



24

Cont'd From page 65

0+53

19.2	19.2	23.3	24.3	24.1	24.0	27.2	27.2	27.6
76	76	35	25	27	28	24	24	0.8
30	21	15	10		5	8	10	20
AC	AC							

0+49

{ 7¹/₂ R to begin Hedge
8¹/₂ L to NE. P. Pole # A3313

0+45

19.2	19.2	24.1	25.9	25.8	25.2	25.9
76	76	27	29	30	16	0.9
30	21	10		5	10	20
AC	AC					

0+23

Jog in AC park. Lot

18.7	19.6	23.1	23.5	23.2	23.0	23.6	23.8	24.3
81	72	37	33	36	38	32	30	25
40	24	12	10		5	7	10	20
AC	AC	AC						

0+00 North Line Tallet

19.0	20.1	22.6	22.8	22.5	22.6	23.1	23.5	23.9
78	67	42	40	43	42	37	33	29
40	27	14	10		4	3	10	20
AC	AC	AC						

0-02 14^o Lt begin AC park. Lot see 0+00 for elev.

0-12 8^o R to Near Edge 48' Euc Tree

0-25

18.9	22.6
79	42
50	50

BM

4.80

26.83 ∇

chisel Crad on
22.03 MH ₅₄

26.83 ∇

Lt

R

R

66

1+82

72	27.7	72	27.7	68	28.1	66	28.3	63	28.6
20		10				10		20	

1+50

8¹ Lt to NE Pole #13341

86	26.3	76	27.3	81	26.8	76	27.3	74	27.5
20		10				10		20	

1+08

7⁰ Rt end hedge

24.4		24.8		26.3		26.1		26.9		27.0
10.5		10.1		86		88		8.8		8.0
30		17		10		6		8		10

1+00

T.P. 8.79 34.88 ∇ 0.74 26.09

34.88 ∇

0+72

19.1	19.3	24.1	25.1	24.8	24.8	27.3	26.2	26.2
7.7	7.5	2.7	1.7	1.9	2.0	-0.5	0.6	0.6
30	21	16	10	6	8	10	20	
AC	AC							

0+70

9³ Lt to deadman

19.1	19.3	24.0	24.9	24.7	24.6	27.2	27.4	27.4
7.7	7.5	2.8	1.9	2.1	2.2	+0.4	+0.6	+0.6
30	21	15	10	6	8	10	20	
AB	AC							

0+69

26.83 ∇

26.83 ∇

Cont'd From Page 67

2450

9th Lt End fence

2449

8th Lt N.E. Pole #A3365

2442

2433

2432

8th Lt End Hedge

2413

8th Lt begin Eugenia Hedge

2400

9th Lt begin wire fence

1483

34.88

Lt

E

Rt

68

	29.2	29.5	30.0	33.2	33.8
	5.7	5.4	4.9	3.7	1.1
	20	10		10	20
	28.6	29.1	29.7	30.1	32.6
	6.3	5.8	5.2	4.8	1.3
	20	10		7	10
	28.4	28.5	28.9	29.4	32.3
	6.5	6.4	6.0	5.5	2.6
	20	10		5	7
	27.7	28.0	28.9	29.7	30.5
	7.2	6.9	6.0	5.5	4.4
	20	10		5	10
	27.7	27.7	28.2	28.3	30.0
	7.2	7.2	6.7	6.6	4.9
	20	10		5	10
					4.3
					20
					30.6

34.88

Cont'd From Page 68

check 7.67 22.03 = 22.03

T.P. 1.96 29.70 9.67 27.74

3+87

3+50 So. Line Ingulf

3+00

T.P. 7.47 37.41 K 4.94 27.94

34.88 K

Lt

E

Rt

69

18.8

18.6
25

27.0

10.4
25

29.7

7.7
20

30.6

6.8
10

30.5

6.9
10

31.6

5.8

31.2

6.2

18.2

19.2

32.0

5.4
10

32.5

4.9
10

34.4

3.0
20

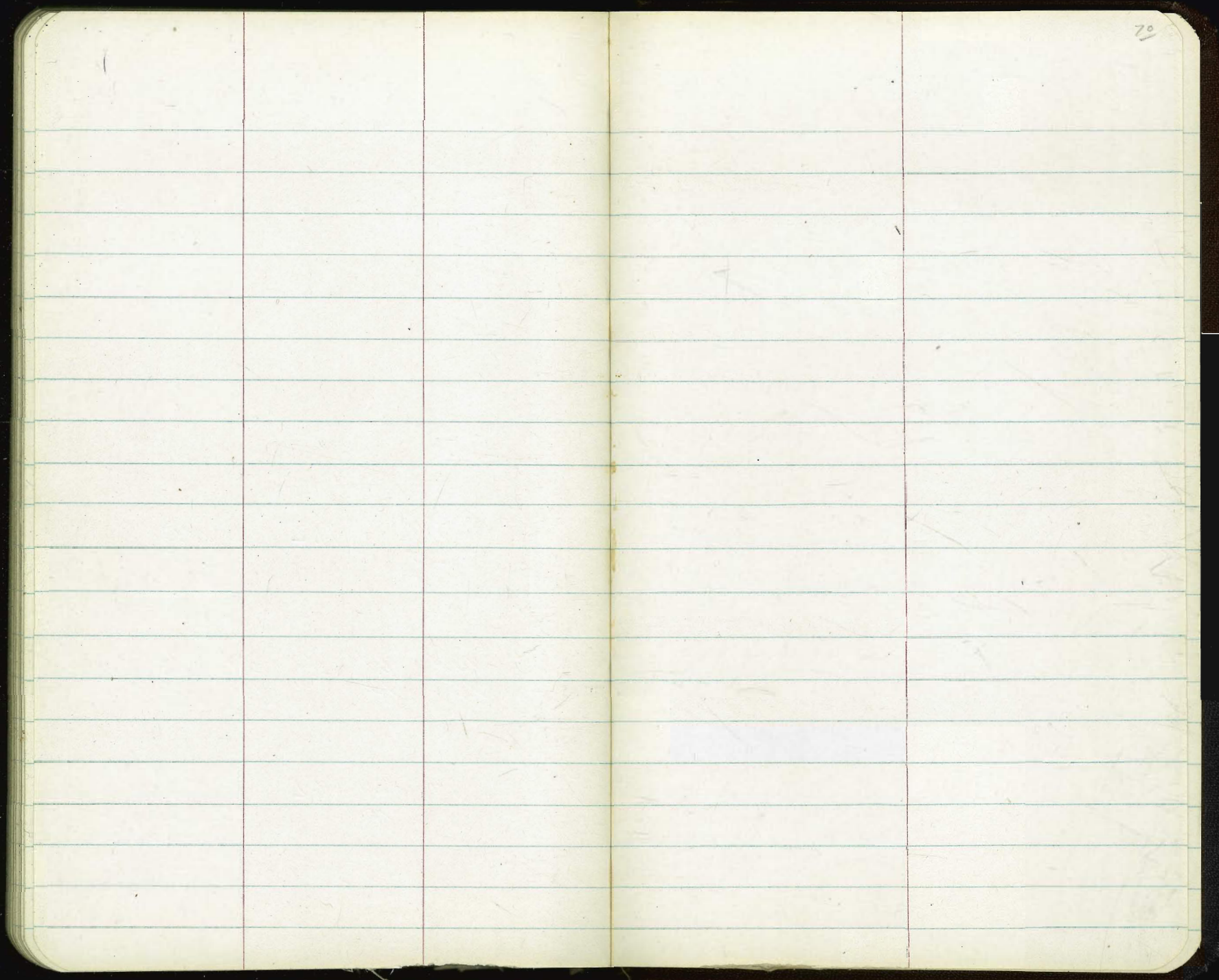
33.0

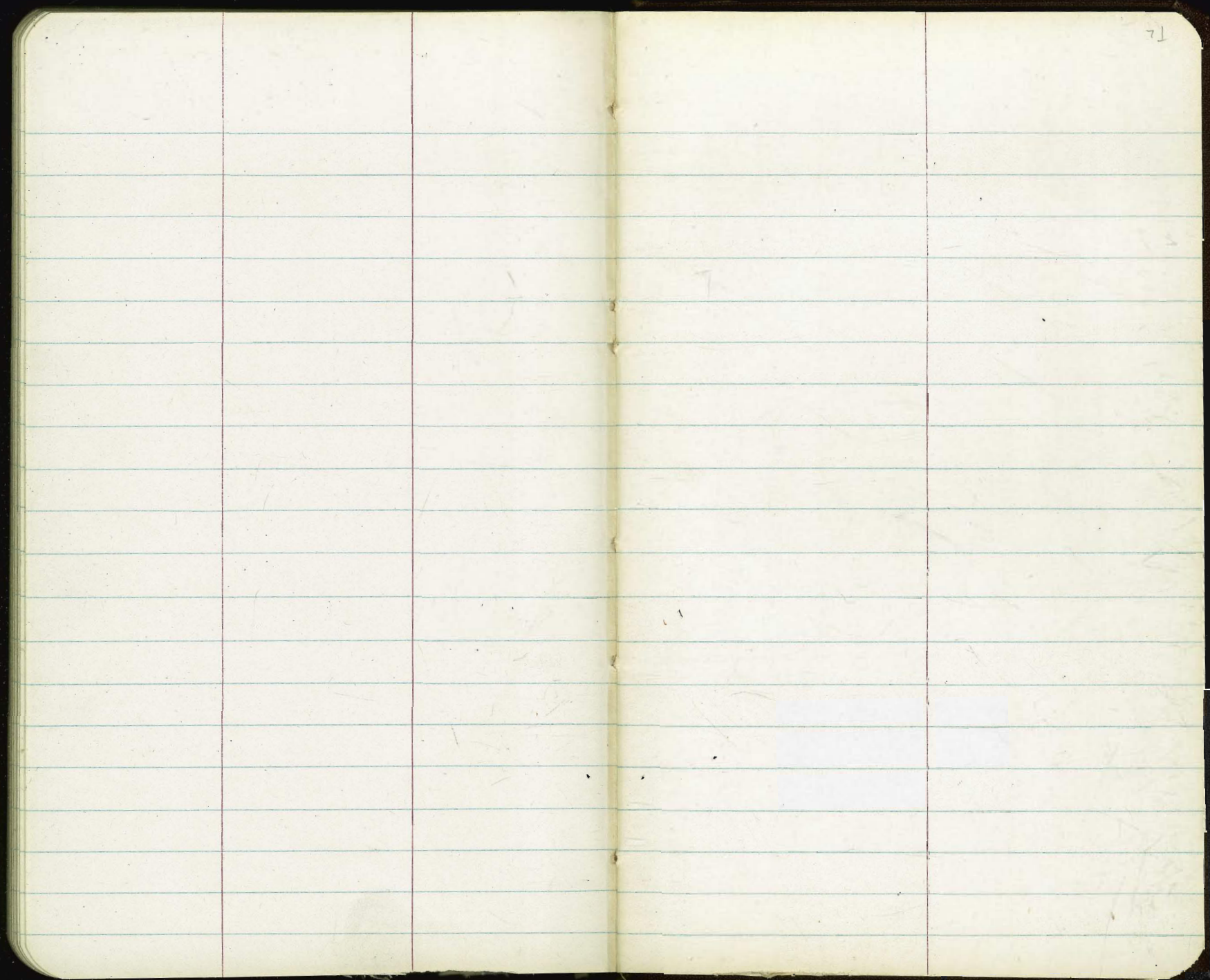
4.0
20

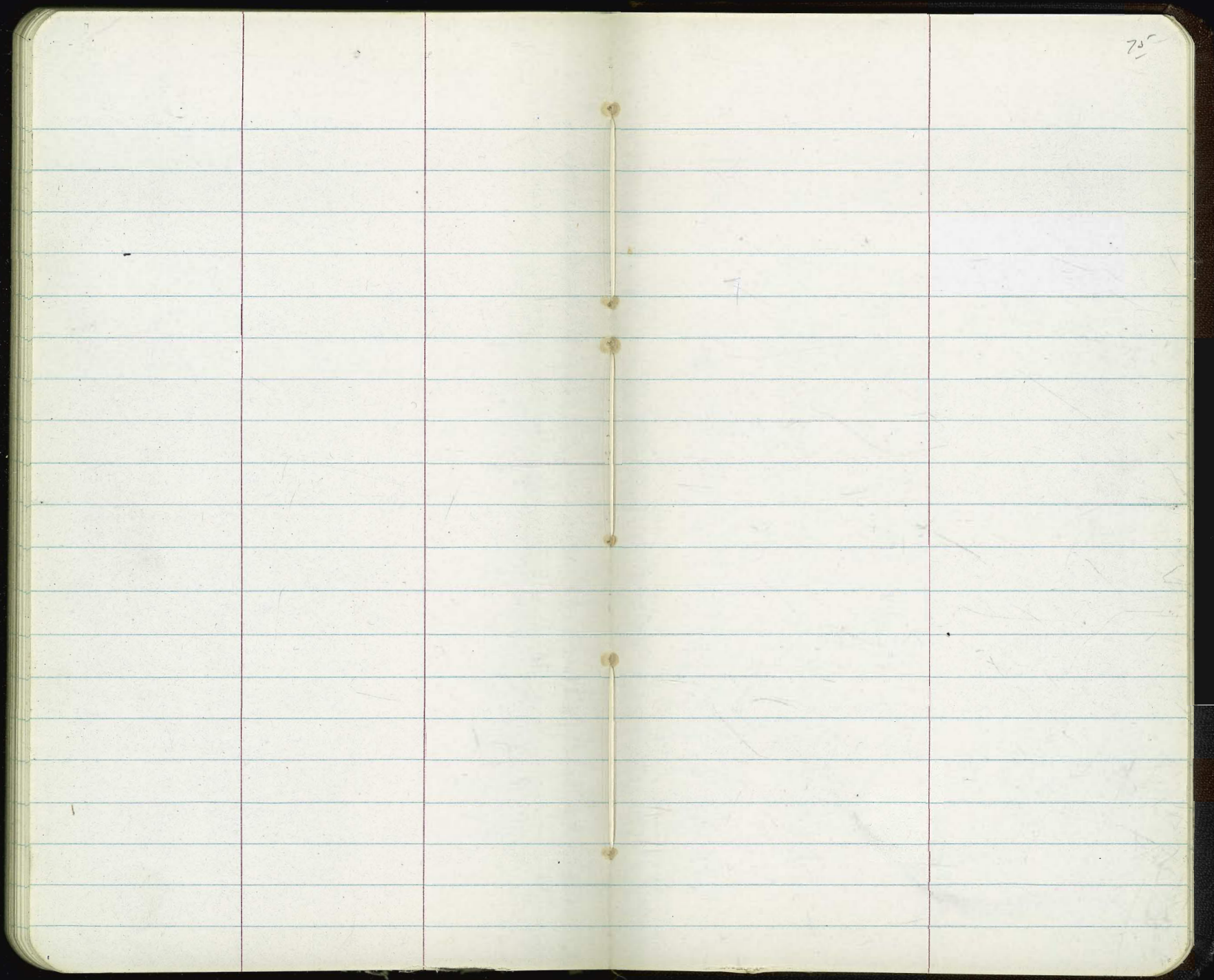
19.4

18.0
25

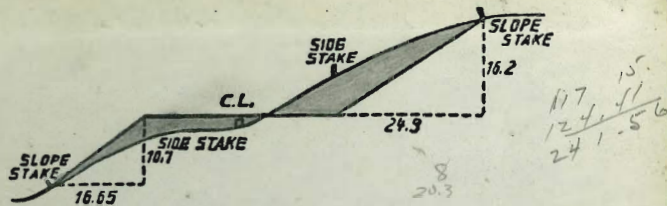
37.41 K







75



DISTANCES FROM SIDE STAKES FOR CROSS-SECTIONING.

SLOPE 1 1/2 TO 1. ROADWAY OF ANY WIDTH.

	0	.1	.2	.3	.4	.5	.6	.7	.8	.9	
0	0.00	0.15	0.30	0.45	0.60	0.75	0.90	1.05	1.20	1.35	0
1	1.50	1.65	1.80	1.95	2.10	2.25	2.40	2.55	2.70	2.85	1
2	3.00	3.15	3.30	3.45	3.60	3.75	3.90	4.05	4.20	4.35	2
3	4.50	4.65	4.80	4.95	5.10	5.25	5.40	5.55	5.70	5.85	3
4	6.00	6.15	6.30	6.45	6.60	6.75	6.90	7.05	7.20	7.35	4
5	7.50	7.65	7.80	7.95	8.10	8.25	8.40	8.55	8.70	8.85	5
6	9.00	9.15	9.30	9.45	9.60	9.75	9.90	10.05	10.20	10.35	6
7	10.50	10.65	10.80	10.95	11.10	11.25	11.40	11.55	11.70	11.85	7
8	12.00	12.15	12.30	12.45	12.60	12.75	12.90	13.05	13.20	13.35	8
9	13.50	13.65	13.80	13.95	14.10	14.25	14.40	14.55	14.70	14.85	9
10	15.00	15.15	15.30	15.45	15.60	15.75	15.90	16.05	16.20	16.35	10
11	16.50	16.65	16.80	16.95	17.10	17.25	17.40	17.55	17.70	17.85	11
12	18.00	18.15	18.30	18.45	18.60	18.75	18.90	19.05	19.20	19.35	12
13	19.50	19.65	19.80	19.95	20.10	20.25	20.40	20.55	20.70	20.85	13
14	21.00	21.15	21.30	21.45	21.60	21.75	21.90	22.05	22.20	22.35	14
15	22.50	22.65	22.80	22.95	23.10	23.25	23.40	23.55	23.70	23.85	15
16	24.00	24.15	24.30	24.45	24.60	24.75	24.90	25.05	25.20	25.35	16
17	25.50	25.65	25.80	25.95	26.10	26.25	26.40	26.55	26.70	26.85	17
18	27.00	27.15	27.30	27.45	27.60	27.75	27.90	28.05	28.20	28.35	18
19	28.50	28.65	28.80	28.95	29.10	29.25	29.40	29.55	29.70	29.85	19
20	30.00	30.15	30.30	30.45	30.60	30.75	30.90	31.05	31.20	31.35	20
21	31.50	31.65	31.80	31.95	32.10	32.25	32.40	32.55	32.70	32.85	21
22	33.00	33.15	33.30	33.45	33.60	33.75	33.90	34.05	34.20	34.35	22
23	34.50	34.65	34.80	34.95	35.10	35.25	35.40	35.55	35.70	35.85	23
24	36.00	36.15	36.30	36.45	36.60	36.75	36.90	37.05	37.20	37.35	24
25	37.50	37.65	37.80	37.95	38.10	38.25	38.40	38.55	38.70	38.85	25
26	39.00	39.15	39.30	39.45	39.60	39.75	39.90	40.05	40.20	40.35	26
27	40.50	40.65	40.80	40.95	41.10	41.25	41.40	41.55	41.70	41.85	27
28	42.00	42.15	42.30	42.45	42.60	42.75	42.90	43.05	43.20	43.35	28
29	43.50	43.65	43.80	43.95	44.10	44.25	44.40	44.55	44.70	44.85	29
30	45.00	45.15	45.30	45.45	45.60	45.75	45.90	46.05	46.20	46.35	30
31	46.50	46.65	46.80	46.95	47.10	47.25	47.40	47.55	47.70	47.85	31
32	48.00	48.15	48.30	48.45	48.60	48.75	48.90	49.05	49.20	49.35	32
33	49.50	49.65	49.80	49.95	50.10	50.25	50.40	50.55	50.70	50.85	33
34	51.00	51.15	51.30	51.45	51.60	51.75	51.90	52.05	52.20	52.35	34
35	52.50	52.65	52.80	52.95	53.10	53.25	53.40	53.55	53.70	53.85	35
36	54.00	54.15	54.30	54.45	54.60	54.75	54.90	55.05	55.20	55.35	36
37	55.50	55.65	55.80	55.95	56.10	56.25	56.40	56.55	56.70	56.85	37
38	57.00	57.15	57.30	57.45	57.60	57.75	57.90	58.05	58.20	58.35	38
39	58.50	58.65	58.80	58.95	59.10	59.25	59.40	59.55	59.70	59.85	39
40	60.00	60.15	60.30	60.45	60.60	60.75	60.90	61.05	61.20	61.35	40
41	61.50	61.65	61.80	61.95	62.10	62.25	62.40	62.55	62.70	62.85	41
42	63.00	63.15	63.30	63.45	63.60	63.75	63.90	64.05	64.20	64.35	42
43	64.50	64.65	64.80	64.95	65.10	65.25	65.40	65.55	65.70	65.85	43
44	66.00	66.15	66.30	66.45	66.60	66.75	66.90	67.05	67.20	67.35	44
45	67.50	67.65	67.80	67.95	68.10	68.25	68.40	68.55	68.70	68.85	45
46	69.00	69.15	69.30	69.45	69.60	69.75	69.90	70.05	70.20	70.35	46
47	70.50	70.65	70.80	70.95	71.10	71.25	71.40	71.55	71.70	71.85	47
48	72.00	72.15	72.30	72.45	72.60	72.75	72.90	73.05	73.20	73.35	48
49	73.50	73.65	73.80	73.95	74.10	74.25	74.40	74.55	74.70	74.85	49
50	75.00	75.15	75.30	75.45	75.60	75.75	75.90	76.05	76.20	76.35	50

THE NATIONAL BLANK BOOK COMPANY
 HOLYOKE MASSACHUSETTS
 NEW YORK CHICAGO BOSTON SAN FRANCISCO

2795
 272.9
 66
 330
 nly+

27199
 265.61
 882

54
 24

648
 615
 1263

276.04
 649
 21955

270.04
 610
 26394

717
 861
 1578

1155
 911
 244

79949
 88
 88444

79949
 30
 82949

816
 816
 441