

DISTANCES FROM SIDE STAKES FOR CROSS-SECTIONING
SLOPE 1 TO 1. ROADWAY OF ANY WIDTH

	0	.1	.2	.3	.4	.5	.6	.7	.8	.9	
0	0.00	0.10	0.20	0.30	0.40	0.50	0.60	0.70	0.80	0.90	0
1	1.00	1.10	1.20	1.30	1.40	1.50	1.60	1.70	1.80	1.90	1
2	2.00	2.10	2.20	2.30	2.40	2.50	2.60	2.70	2.80	2.90	2
3	3.00	3.10	3.20	3.30	3.40	3.50	3.60	3.70	3.80	3.90	3
4	4.00	4.10	4.20	4.30	4.40	4.50	4.60	4.70	4.80	4.90	4
5	5.00	5.10	5.20	5.30	5.40	5.50	5.60	5.70	5.80	5.90	5
6	6.00	6.10	6.20	6.30	6.40	6.50	6.60	6.70	6.80	6.90	6
7	7.00	7.10	7.20	7.30	7.40	7.50	7.60	7.70	7.80	7.90	7
8	8.00	8.10	8.20	8.30	8.40	8.50	8.60	8.70	8.80	8.90	8
9	9.00	9.10	9.20	9.30	9.40	9.50	9.60	9.70	9.80	9.90	9
10	10.00	10.10	10.20	10.30	10.40	10.50	10.60	10.70	10.80	10.90	10
11	11.00	11.10	11.20	11.30	11.40	11.50	11.60	11.70	11.80	11.90	11
12	12.00	12.10	12.20	12.30	12.40	12.50	12.60	12.70	12.80	12.90	12
13	13.00	13.10	13.20	13.30	13.40	13.50	13.60	13.70	13.80	13.90	13
14	14.00	14.10	14.20	14.30	14.40	14.50	14.60	14.70	14.80	14.90	14
15	15.00	15.10	15.20	15.30	15.40	15.50	15.60	15.70	15.80	15.90	15
16	16.00	16.10	16.20	16.30	16.40	16.50	16.60	16.70	16.80	16.90	16
17	17.00	17.10	17.20	17.30	17.40	17.50	17.60	17.70	17.80	17.90	17
18	18.00	18.10	18.20	18.30	18.40	18.50	18.60	18.70	18.80	18.90	18
19	19.00	19.10	19.20	19.30	19.40	19.50	19.60	19.70	19.80	19.90	19
20	20.00	20.10	20.20	20.30	20.40	20.50	20.60	20.70	20.80	20.90	20
21	21.00	21.10	21.20	21.30	21.40	21.50	21.60	21.70	21.80	21.90	21
22	22.00	22.10	22.20	22.30	22.40	22.50	22.60	22.70	22.80	22.90	22
23	23.00	23.10	23.20	23.30	23.40	23.50	23.60	23.70	23.80	23.90	23
24	24.00	24.10	24.20	24.30	24.40	24.50	24.60	24.70	24.80	24.90	24
25	25.00	25.10	25.20	25.30	25.40	25.50	25.60	25.70	25.80	25.90	25
26	26.00	26.10	26.20	26.30	26.40	26.50	26.60	26.70	26.80	26.90	26
27	27.00	27.10	27.20	27.30	27.40	27.50	27.60	27.70	27.80	27.90	27
28	28.00	28.10	28.20	28.30	28.40	28.50	28.60	28.70	28.80	28.90	28
29	29.00	29.10	29.20	29.30	29.40	29.50	29.60	29.70	29.80	29.90	29
30	30.00	30.10	30.20	30.30	30.40	30.50	30.60	30.70	30.80	30.90	30
31	31.00	31.10	31.20	31.30	31.40	31.50	31.60	31.70	31.80	31.90	31
32	32.00	32.10	32.20	32.30	32.40	32.50	32.60	32.70	32.80	32.90	32
33	33.00	33.10	33.20	33.30	33.40	33.50	33.60	33.70	33.80	33.90	33
34	34.00	34.10	34.20	34.30	34.40	34.50	34.60	34.70	34.80	34.90	34
35	35.00	35.10	35.20	35.30	35.40	35.50	35.60	35.70	35.80	35.90	35
36	36.00	36.10	36.20	36.30	36.40	36.50	36.60	36.70	36.80	36.90	36
37	37.00	37.10	37.20	37.30	37.40	37.50	37.60	37.70	37.80	37.90	37
38	38.00	38.10	38.20	38.30	38.40	38.50	38.60	38.70	38.80	38.90	38
39	39.00	39.10	39.20	39.30	39.40	39.50	39.60	39.70	39.80	39.90	39
40	40.00	40.10	40.20	40.30	40.40	40.50	40.60	40.70	40.80	40.90	40
41	41.00	41.10	41.20	41.30	41.40	41.50	41.60	41.70	41.80	41.90	41
42	42.00	42.10	42.20	42.30	42.40	42.50	42.60	42.70	42.80	42.90	42
43	43.00	43.10	43.20	43.30	43.40	43.50	43.60	43.70	43.80	43.90	43
44	44.00	44.10	44.20	44.30	44.40	44.50	44.60	44.70	44.80	44.90	44
45	45.00	45.10	45.20	45.30	45.40	45.50	45.60	45.70	45.80	45.90	45
46	46.00	46.10	46.20	46.30	46.40	46.50	46.60	46.70	46.80	46.90	46
47	47.00	47.10	47.20	47.30	47.40	47.50	47.60	47.70	47.80	47.90	47
48	48.00	48.10	48.20	48.30	48.40	48.50	48.60	48.70	48.80	48.90	48
49	49.00	49.10	49.20	49.30	49.40	49.50	49.60	49.70	49.80	49.90	49
50	50.00	50.10	50.20	50.30	50.40	50.50	50.60	50.70	50.80	50.90	50

Distance of slope stake from side or shoulder stake for any width roadway, slope 1 to 1. If ground is nearly level, the cut or fill at side stake is located by the double entry method in left column and top row. The number in body of table in same row and column gives distance from side stake to slope stake. If ground is not level estimate the difference in elevation between the side stake and slope stake, lower target by this amount if cut, elevate if fill. Add this amount to cut or fill and find distance in table. Set up rod at this point, and line of sight should cut target. If it does not make the slight adjustment necessary.

TABLE XIII—CORRECTIONS FOR TANGENTS AND EXTERNALS

These corrections are to be added to the approximate values, found by dividing the tangent, or external, for a 1° curve (Table VIII) by the degree of curve, in order to obtain the true tangents, or externals. Intermediate values may be obtained by interpolation.

FOR TANGENTS ADD

Central Angle	DEGREE OF CURVE													
	5°	10°	15°	20°	25°	30°	35°	40°	45°	50°	55°	60°	65°	70°
10°	.03	.06	.09	.13	.16	.19	.22	.25	.28	.31	.34	.38	.42	.46
15°	.04	.10	.14	.19	.24	.29	.34	.39	.45	.51	.55	.58	.63	.68
20°	.06	.13	.19	.26	.32	.39	.45	.51	.58	.65	.72	.79	.84	.90
25°	.08	.16	.24	.33	.40	.49	.58	.67	.75	.83	.90	.99	1.06	1.14
30°	.10	.19	.29	.39	.49	.59	.69	.79	.89	.99	1.09	1.20	1.29	1.39
35°	.11	.22	.34	.47	.58	.69	.79	.89	1.04	1.29	1.42	1.54	1.66	
40°	.13	.26	.40	.53	.67	.80	.93	1.06	1.20	1.34	1.49	1.64	1.79	1.94
45°	.15	.30	.44	.60	.76	.91	1.06	1.21	1.37	1.52	1.70	1.87	2.04	2.21
50°	.17	.34	.51	.68	.85	1.02	1.19	1.36	1.54	1.72	1.91	2.10	2.29	2.48
55°	.19	.38	.57	.76	.95	1.14	1.32	1.52	1.72	1.92	2.14	2.35	2.56	2.77
60°	.21	.42	.63	.84	1.05	1.27	1.49	1.71	1.94	2.17	2.38	2.60	2.83	3.07
65°	.23	.46	.69	.93	1.16	1.40	1.64	1.88	2.13	2.38	2.63	2.88	3.13	3.39
70°	.25	.51	.76	1.02	1.28	1.54	1.80	2.06	2.33	2.60	2.88	3.16	3.44	3.72
75°	.27	.56	.83	1.12	1.40	1.69	1.98	2.27	2.57	2.87	3.16	3.47	3.78	4.09
80°	.30	.61	.91	1.22	1.53	1.84	2.15	2.46	2.78	3.10	3.44	3.78	4.12	4.46
85°	.33	.66	1.00	1.33	1.68	2.02	2.36	2.70	3.05	3.40	3.77	4.14	4.55	4.89
90°	.36	.72	1.09	1.45	1.83	2.20	2.57	2.94	3.32	3.70	4.10	4.50	4.91	5.32
95°	.39	.79	1.19	1.55	2.00	2.40	2.80	3.20	3.61	4.02	4.40	4.85	5.38	5.83
100°	.43	.86	1.30	1.74	2.18	2.62	3.06	3.50	3.95	4.40	4.88	5.37	5.85	6.34
110°	.51	1.03	1.56	2.08	2.61	3.14	3.67	4.21	4.76	5.31	5.86	6.43	7.01	7.60
120°	.62	1.25	1.93	2.52	3.16	3.81	4.45	5.11	5.77	6.44	7.12	7.80	8.50	9.22

FOR EXTERNALS ADD

Central Angle	DEGREE OF CURVE													
	5°	10°	15°	20°	25°	30°	35°	40°	45°	50°	55°	60°	65°	70°
10°	.001	.003	.004	.006	.007	.008	.009	.011	.012	.014	.015	.017	.018	.020
15°	.003	.007	.010	.014	.018	.023	.027	.029	.032	.035	.039	.043	.047	.051
20°	.006	.011	.017	.022	.028	.034	.038	.045	.051	.057	.063	.070	.076	.083
25°	.009	.018	.027	.036	.046	.056	.065	.074	.083	.093	.106	.120	.127	.135
30°	.013	.025	.038	.051	.065	.078	.090	.103	.116	.129	.149	.170	.179	.188
35°	.018	.035	.054	.072	.086	.109	.131	.153	.175	.197	.213	.230	.247	.264
40°	.023	.046	.070	.093	.117	.141	.172	.203	.234	.265	.277	.290	.315	.341
45°	.030	.060	.093	.119	.153	.184	.216	.254	.289	.325	.351	.378	.411	.445
50°	.037	.075	.116	.151	.189	.227	.266	.305	.345	.384	.425	.467	.508	.550
55°	.046	.093	.142	.188	.236	.283	.332	.381	.420	.479	.530	.582	.641	.700
60°	.056	.112	.168	.225	.283	.340	.398	.457	.516	.575	.636	.697	.774	.851
65°	.067	.135	.204	.273	.343	.412	.483	.554	.625	.697	.771	.845	.922	1.01
70°	.080	.159	.240	.321	.403	.485	.568	.652	.735	.819	.906	.994	1.08	1.17
75°	.095	.182	.266	.353	.440	.528	.617	.707	.797	.877	.970	1.07	1.18	1.29
80°	.110	.220	.332	.445	.558	.671	.787	.903	1.02	1.13	1.25	1.38	1.50	1.62
85°	.128	.259	.391	.524	.657	.790	.926	1.06	1.20	1.34	1.47	1.62	1.76	1.91
90°	.149	.299	.450	.603	.756	.910	1.07	1.22	1.38	1.54	1.70	1.87	2.03	2.20
95°	.174	.350	.522	.706	.885	1.06	1.25	1.43	1.62	1.80	1.99	2.18	2.38	2.58
100°	.200	.401	.604	.809	1.01	1.22	1.43	1.64	1.85	2.06	2.28	2.50	2.73	2.96
110°	.268	.536	.806	1.08	1.35	1.63	1.91	2.20	2.48	2.76	3.05	3.35	3.66	3.96
120°	.360	.721	1.08	1.45	1.82	2.19	2.57	2.95	3.33	3.72	4.11	4.50	4.91	5.32

INDEX

Sewer Survey - St Charles St 1
 Eleva for Pump. Sta. Druckers Sub 3
 Alignment Sewer - muerlands 7
 Sewer - Sunshine Gardens 37

Pgs

Survey for Prop. Sewer in St. Charles
St. S. of Cadiz

5772

4-29-52 7.0.

W.O. 62256

See 6740-L

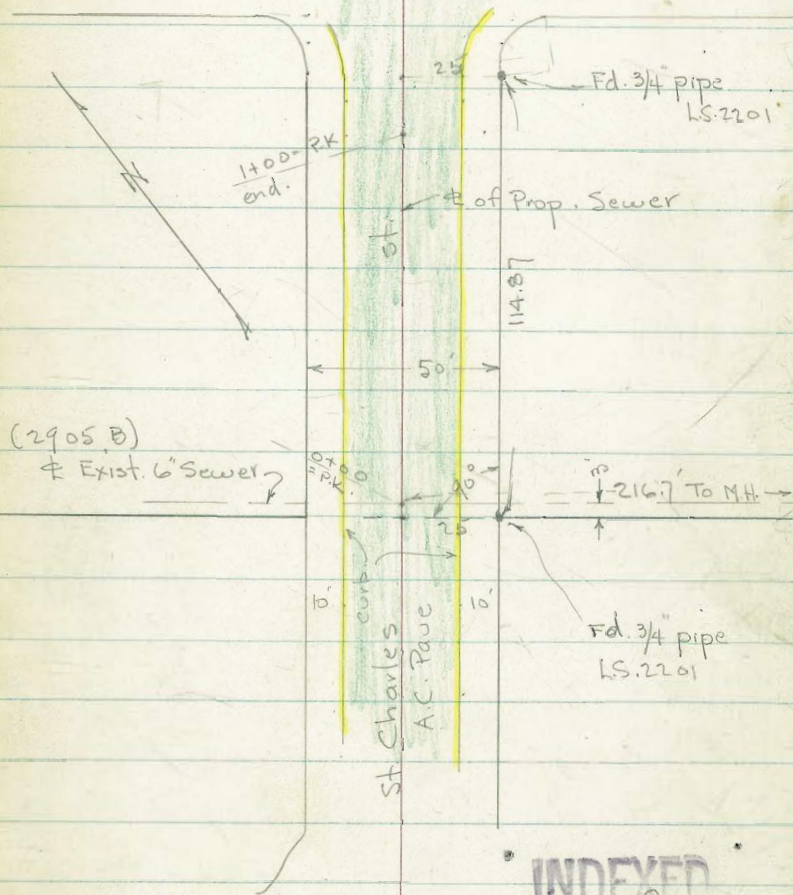
Deed 12-71

2883-B.

2905-B.

Cadiz

St.



INDEXED
Law
JUN 17 1952

Levels along Φ of Prop. Sewer + Laterals.
see sketch - P. 1

Lt.

Rt.

1+00 = end.

3.67
7.76

0+92 = opp. Lat.

5.30 6.13 34.5 floor.	4.33 7.1 25	4.14 7.29 Top	3.67 7.76 4.7 got.	3.78 7.65	3.42 8.01 15.3 got.	3.57 7.56 Top	3.83 7.6 25	4.44 6.98 35 floor.
--------------------------------	-------------------	---------------------	-----------------------------	--------------	------------------------------	---------------------	-------------------	------------------------------

0+70 = opp. Lat. - Both sides

5.43 6.00 34.5 floor.	4.63 6.8 25	4.50 6.93 Top	4.03 7.40 14.7 got.	4.10 7.83	3.69 7.74 15.3 got.	4.22 7.21 Top	4.03 7.4 25	4.90 6.53 35 floor.
--------------------------------	-------------------	---------------------	------------------------------	--------------	------------------------------	---------------------	-------------------	------------------------------

0+15 = opp. Lat. from Houses - Plumber says about 2' Below ground at Prop.

6.31 5.12 34.5 floor. at House	5.13 6.3 25	5.37 6.06 Top cb.	4.88 6.55 14.7 got.	5.00 6.43	4.49 6.94 15.3 got.	5.02 6.41 Top cb.	3.05 6.4 25	5.54 5.87 35 floor.
--	-------------------	----------------------------	------------------------------	--------------	------------------------------	----------------------------	-------------------	------------------------------

Pipe about 2' Below

216.7' Rt. = Exist. M.H.

0+00 = Φ St. Charles - S.N. of Lot Line

5.21
6.22 AC. Pavc

11.43

19.68
216.7
I.E. of

4.25

9.21
2.22

T.P. 10.35' 11.43 7.11 1.08 = B.P. in Head wall - 1.05 - Book

B.M. 5.50 8.19 2.69 = B.P. in cb. S. side Barnett + Lytton. 6740-L

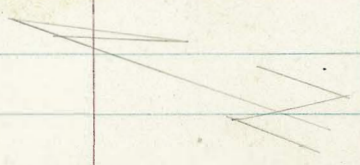
6" Sewer at M.H.

D. Smith
C. Allen
R. Taylor

Proposed Sewerage for Druckers Sub

File Map 1584

fa McFarlane



3/11/52

Pump Sta. BK 3

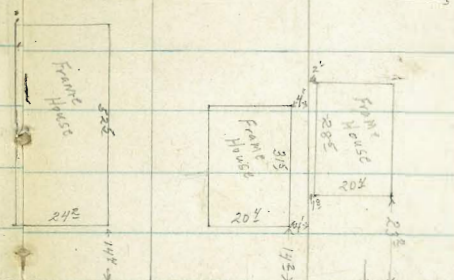
9

10

11

35'

12



Wot 20997 3
6-16-52

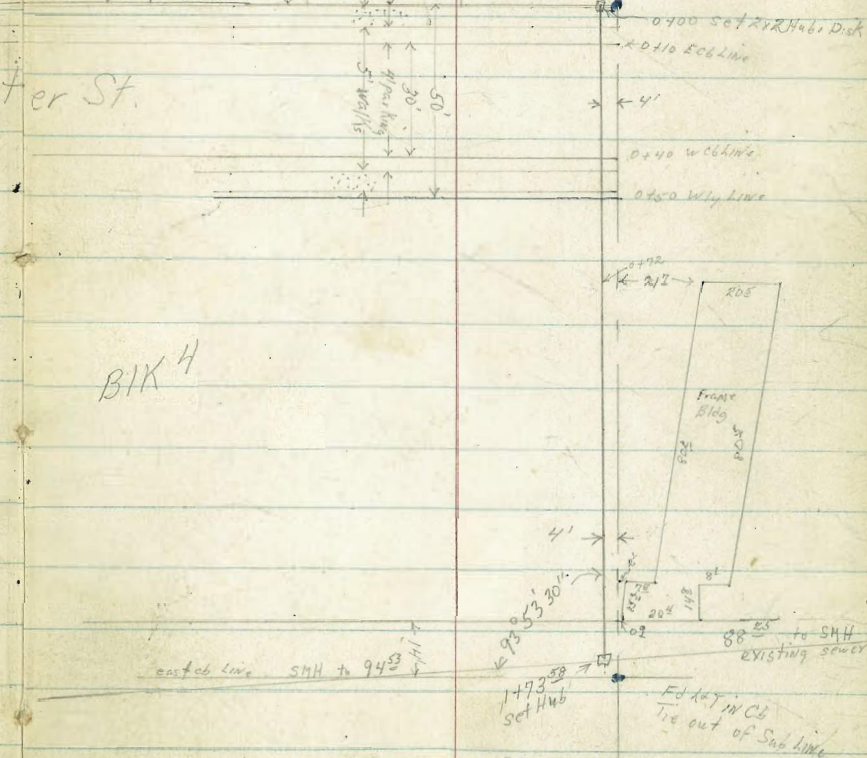
Jupiter St.

BK 4

Midway Dr

INDEXED

JUN 17 1952



Ltc South

Baschins
N North of Sub Rts North

0-30

1.47
83
2.07
72
16
2.17
76
36

0-75

1.37
80
1.07
87
16
1.07
87
36

Floor elv of House Lot 11 B/K 3

1/32
5 1/2

Floor elv of House Lot 10 B/K 3

1/32
5 3/4

Floor elv of House Lot 9 B/K 3

1/32
5 29

2 26

Set BP NW cor
681 Tea P. c. Island
W. Point Loma + Midway

TP 672 977 390 305

BM 466 701 235

Nashville
Midway Dr.
Chisel x INCS
W. Front of
Hickory Store
Hendricks sign out elv of BM on Head wall

977

Lt. South

Base Mt. North

5

$+0.37$	$+0.27$	-0.13
94	95	99
4		16

0750

0742.5 2° Lt E Power Polr # 4575

0740

$+0.78$	-0.26	-0.22	-1.03	-0.13	-0.22
10 ²	10 ²	10 ²	10 ²	10 ²	10 ²
4	4	16	16	36	36
Sat	Sat	Sat	Sat	Sat	Sat

0725

-0.33	-0.33	
10 ⁶	10 ⁶	10 ²
4		16
		36
		86

0710 Ely cb Jupiter St

$+0.39$	-0.23	-0.29	-0.18	-0.43	-0.18
10 ²	10 ¹⁶	10 ⁴	10 ¹⁶	10 ²	92 ⁵
4	4	Sat	CS	16	16
Sat	CS	Sat	CS	Sat	CS

0700

0.17	0.57	0.17
96	93	96
	16	36

0-15

2.07	2.07	2.17
72	72	76
	16	36

π 977

Starting BM

5²⁶

2³⁴

2³⁵

TP₂

4³⁷

7⁶⁰

6⁵⁴

3²³

SMH 94⁵³ RT or North of Line

x 2.89
6⁸⁸
rim 1e

-7.46
16²³
1e

SMH 88²⁵ South of L.O.P. Line

x 4.17
5⁶⁰
rim

-7.09
16²⁶
1e

1778 E.C. Midway

x 3.36
6⁴¹
sat

H.00
5²⁷
CS

1773⁵⁸

x 3.57
6²⁰
Hub

1750

x 3.27
6³
4

x 3.17
6⁶
14

1700

+1.87
7²
4

+1.87
7²

+1.67
8¹
16

T. 9²⁷

Survey for Prop. Sewer along the
 Nly. Line of Muirlands - Map. 2024
 from Exist. Sewer at Muirlands Dr.
 + Muirlands Vista Way to Muirlands Hts. Sub.

6-19-53 7.0.
 Hatch
 Whipple
 Taylor

W.O. 21075

2+26.41 = lat pipe = Ang. in Bndry.
 Ang. $50^{\circ} 49' 40''$ Lt.

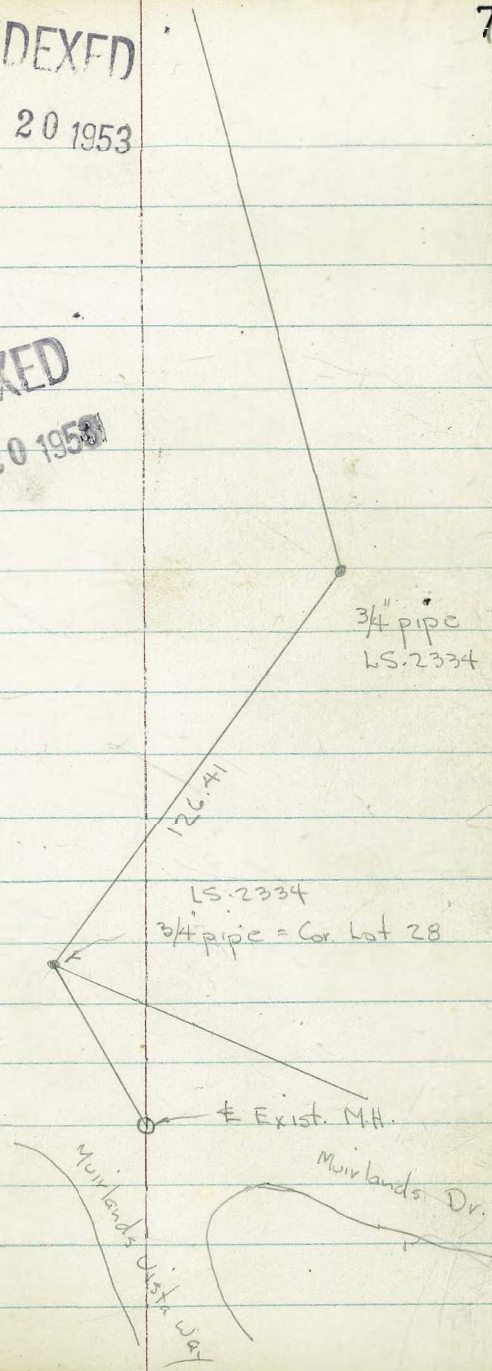
1+00 = $3/4$ " pipe + ct.
 Ang. $75^{\circ} 40'$ Rt.

0+57.62 = \pm of Exist. M.H.
 See Pbn - 7954-L

-9.32 From
 Rim

INDEXED
 JUL 20 1953

INDEXED
 JUL 20 1953



10 + 22.69 = old Hub. Ang. $8^{\circ}22'15''$ Rt.

8 + 50 = set Hub. - Ang. $18^{\circ}48'15''$ Rt.

No pt. Fd.

7 + 12.12 = $3/4''$ pipe L52334

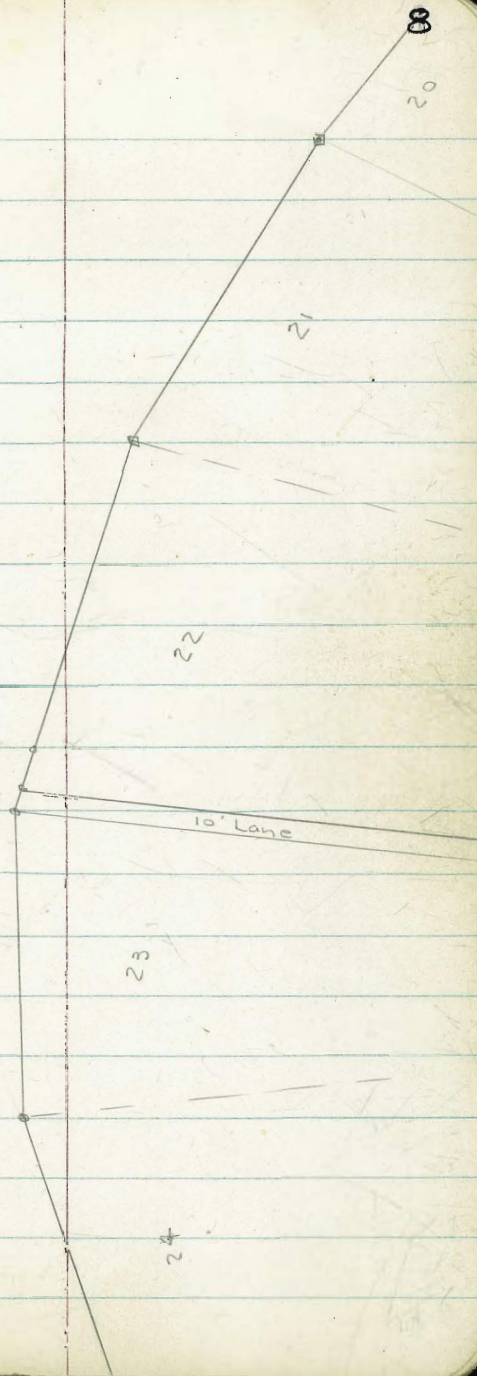
6 + 96.35 = $3/4''$ pipe - L5.2201 - Lot 22

6 + 86.34 = Ang. $20^{\circ}37'$ Rt.

= $3/4''$ pipe

5 + 40.26 - Ang. $14^{\circ}42'40''$ Rt.

= $3/4''$ pipe



25+35.71 - Cross in Pave - Ang. $35^{\circ} 57' 30''$ Lt.

25+08.79 - 12.05' Lt. at 90° = Ld + ct.

22+44.88 - 8.93' Rt. - at 90° = $\frac{3}{4}$ " pipe + ct.

21+54.16 - 5.10' Lt. at 90° = $\frac{3}{4}$ " pipe + ct.

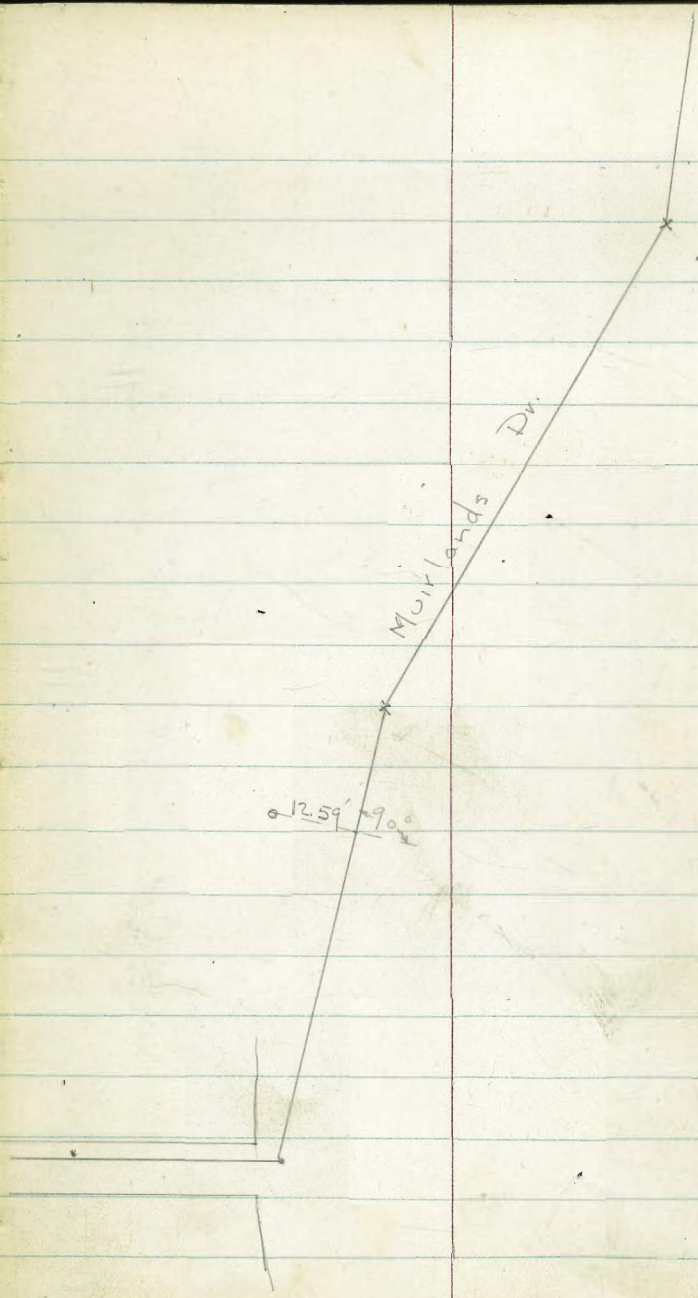
20+72.53 = Cross in Pave - Ang. $55^{\circ} 26'$ Rt.

20+07.22 = 12.59' Lt. at 90° = $\frac{3}{4}$ " pipe + ct. - E at PC

100' Rad. Curve.

18+97.50 = P.K. in Dr. - Ang. $75^{\circ} 50'$ Lt.

10



36+16.66 = P.K. = Ang. $30^{\circ} 19'$ Lt.

35+85.93 = Int. = 34+34.33 on La Canada Line
P.O.T. Ang. $44^{\circ} 34'$ Rt. To Line

34+64.00 - 0.13' Rt. = spike = (± on PL. Line?)

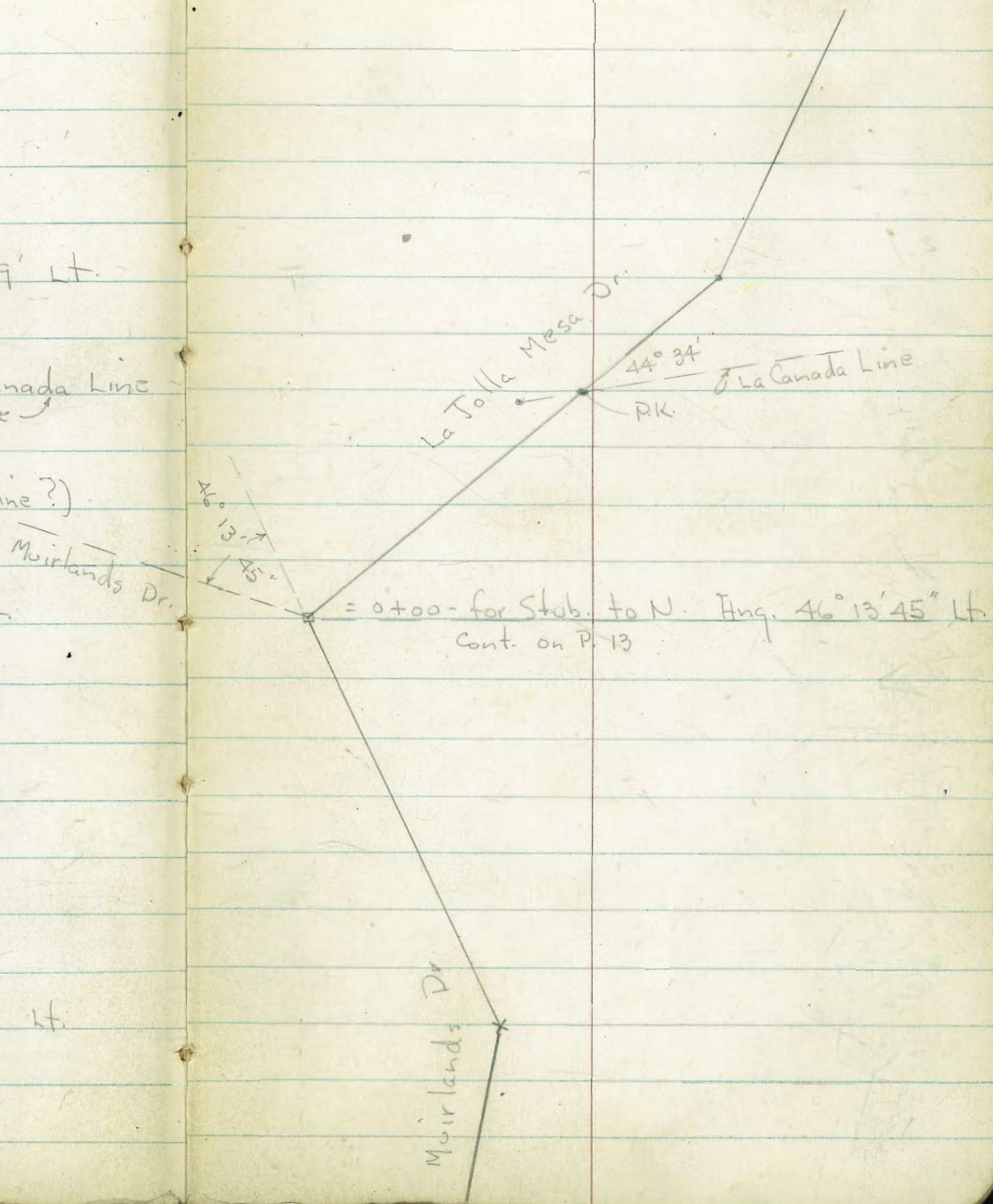
31+02.24 = Hub = Ang. $108^{\circ} 08' 30''$ Rt.

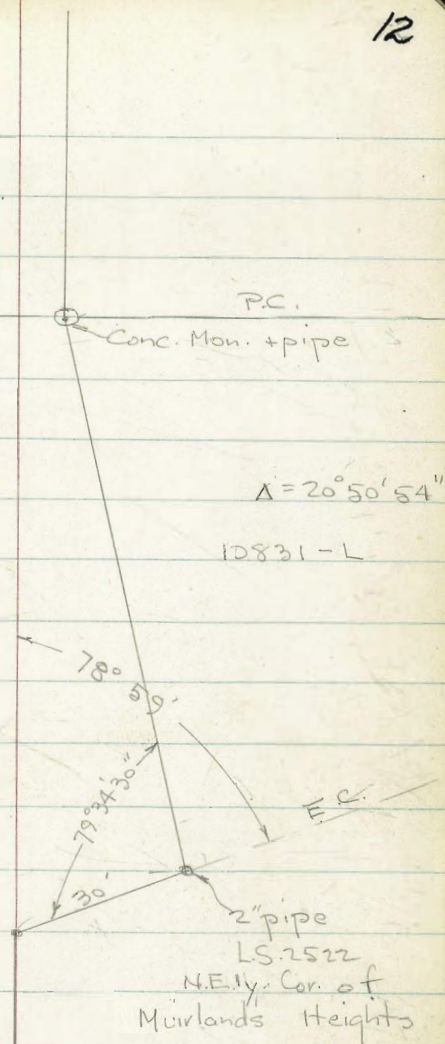
29+87.12 - 4.92' Lt. at 90° = City Disk

29+72.73 - 4.88' Lt. at 90° = Ld. + ct.

27+97.47 - 4.28' Lt. at 90° = Ld. + ct.

27+50.00 = Cross = Ang. $32^{\circ} 55' 30''$ Lt.





End.

38+94.12

= P.K. = Ang. $78^{\circ} 59'$ Rt. 30' To 2" pipe

Req. Levels along \pm of prop. Sewer
in Muirlands - See sketch - P. 7

Lt

Φ

Rt

T.P. 4 8.33 394.47 386.14

1+00 = Ang. Pt. - Sect. 90° to Forward Tang.

373.52
7.3
20

373.93
6.89
on Pipe

375.22
5.6
30

0+57.62 = \pm Exist. M.H. - 8" Sewer

Reduced 7-20-53
D. Dawson

373.45
7.39
Rim
373.46
7.16

364.11
16.71
I.R. of M.H.

0+48.3 = edge of A.C. pave

Muirlands \rightarrow Muirlands Vista way

Set B.M. = \square = N.W. end Ret. - 9.00 371.82

+ 6.89 380.82 - 12.56 373.93 = pipe 1+00

380.82

+ 0.35 386.49 - 13.31 386.14 = T.P. 4

B.M. on pipe 2+26.41 - 5.93 393.52

+ 0.69 399.45 - 13.25 398.76 = stab - 300

+ 0.23 412.01 - 13.30 411.78

B.M. + 0.28 425.08 424.80

B.M. = B.P. - 5' N. of F.H. - Swly. Cor. Solymar +
Muirlands Dr.

10 + 65

T.P. 12.75 423.26 100 410.51

10 + 22.69 = Hub. = Ang. Pt. - Sect. on split

9 + 70

9 + 50

T.P. 13.19 411.81 6.51 398.32 = stub 9+10

9 + 00

8 + 50 = Hub. - Ang. Pt. - Sect. on split

8 + 00

Lt.

+

Rt.

409.8

415.9

422.8

13.5
10

7.4

0.5
15

423.26

405.5

410.51

418.5

424.34 =
on R.P. Hub.

6.0
10

1.00
on Hub.

+ 7.0
15

403.4

407.9

414.7

8.1
10

3.6

+ 3.2
15

400.6

404.1

411.3

10.9
10

7.4

0.2
15

411.51

394.5

398.4

404.8

10.3
10

6.7

0.0
15

392.4

396.17

401.9

12.4
10

6.66
on Hub.

2.9
15

394.5

399.1

407.2

10.3
10

5.7

+ 2.4
15

404.83

13+07-13' Rt. = ± 1" Pine

13+05-6.3' Rt. = ± 1" Pine

13+00

12+98-11.5' Rt. = ± 1" Euc.

12+94.5-4' Rt. = ± 1" Pine

12+88-84' Rt. = ± 1" Pine

12+78-72' Rt. = ± 1" Pine

12+61 = ♀ of Cross 6" Conc. Drain pipe

12+56-3+7 Rt. = ± 1" Euc.
= old Hub.

12+53.61 = Ang. Pt. Sect. on split

T.P. 1 7.49 423.88 6.87 416.39

12+49-5' Rt. = ± 2" Euc.

12+30

12+00

11+50

11+00

Lt.

±

Rt.

18

415.0
8.9
10

417.3
6.6

421.4
2.5
20

418.7
5.2
10

419.18
420.11

4.10 = Top of pipe

3.77
on Hub.
423.88

423.2
0.7
15

418.2
5.1

419.5
3.8

422.1
1.2
15

415.3
8.0
10

417.9
5.4

421.9
1.4
15

414.5
8.8
10

417.8
5.5

424.2
+ 0.9
15

413.8
9.5
10

418.2
5.1

424.3
+ 1.0
15

423.26

14+15- 14.7' Rt. = ± 3" Acacia
 14+11- 11' Rt. = ± 8" Pine
 14+07- 12.5' Rt. = ± 5" Acacia
 14+06- 18.5' Rt. = Beg. 12" Rock + Conc. wall - 8' High
 14+00
 13+99- 20' Rt. = ± 3" Acacia
 13+98- 11.4' Rt. = ± 1" Pine
 13+90- 21' Rt. = ± 8" Avacado
 13+81- 12' Rt. = ± 10" Acacia
 13+77- 20' Rt. = ± 6" Avacado
 13+73- 0.5' Lt. = ± 6" Euc.
 13+64- 4' Rt. = ± 6" Euc.
 13+63- 19' Rt. = ± 6" Orange - Yum Yum.
 13+50- 13.3' Rt. = 4" Fruit Tree
 13+43- 6' Rt. = ± Shrub.
 13+32- 13' Rt. = ± 1" Pine
 13+26- 12' Rt. = ± 1" Pine
 13+19- 16' Rt. = ± 1" Euc.
 13+13- 7' Rt. = ± 1" Pine

Lt. R Rt. 19

4/13.6
 10.3
 10
 7.9
 4/16.0
 3.5
 15
 420.4
 3.0
 18.5 = ground at Bot. Top
 + 5.5
 425.9
 + 2.0
 30
 429.4

4/13.5
 10.4
 10
 8.2
 4/15.7
 4.7
 15
 423.0
 0.9
 30

423.88

Lt.

±

Rt.

14+86-20' Rt. = ± Shrub.

14+82-19.5' } Rt. = ± Shrubs.

14+81-14.5' Rt. = ± 8" Pine

14+75-22.5' Rt. = ± 3" Acacia

14+71-22.7' Rt. = Cor. of Wall - Round.

14+67-15' Rt. = ± 8" Pine

14+64-12' Rt. = ± 2" Acacia

14+63-23.2' Rt. = Bot. of Wall

14+60-7.6 + 18' Rt. = ± Shrubs

14+55-9' Rt. = ± Shrub.

14+53.5'-14.8' Rt. = ± 8" Pine

T.P. 10.11 427.56 6.43 417.45

14+50

14+47-11' Rt. = ± Shrub.

14+39-4' Rt. = ± Shrub + 11' Rt. = ± 6" Pine

14+35-17.3' Rt. = Bot. of Wall

14+32-5' Rt. = ± Shrub + 14' Rt. = ± Shrub.

12.5' Rt. = ± 10" Pine

14+24-4' Rt. = ± Shrub

14+19-19.8' Rt. = Bot. of Wall

14+19-7.5' Rt. = ± Shrub.

424.4

3.2
22.7
Bot.

429.7

+ 2.1
Top wall

424.1

3.5
23.2 =
Bot. wall

427.56

414.1

9.8
10

417.1

6.8

420.8

3.1
10

422.6

1.3

19 = Bot. of
wall

429.5

+ 5.6
Top
wall

421.7

2.2

17.3 = Bot. of
wall

421.4

2.5

19.8 = ground
at Bot.

423.88

T.P. 10.71 435.62 2.65 424.91 = pipe
16+17.80

16+00

15+52.20 = Ang. Pt. - Sect. 90° to Forward Tang.

15+35

15+32 - 17.3' Rt. = ± 2" Euc.

15+31 - 14' Rt. = ± 3" Holley.

15+31 - 32' Lt. = ± 1 1/2" Euc.

15+24 - 7' Rt. = ± 3" Euc.

15+19 - 8' } Rt. = ± 2" Holley Trees

15+13.5 = ± 2" Avacado

15+11 - 9' Rt. = ± shrub.

15+02.5 - 22' Rt. = ± 2" Avacado

15+00 - 14.8' Rt. = ± 2" Lemon

14+94 - 6' Rt. = ± 3" Loguat

14+92 - 18' Rt. = ± 2" Tree

14+91 - 22.5' Rt. = ± 4" Acacia

Lt.

Rt.

418.6	421.2	424.5	428.9
9.0	6.4	3.1	+1.3
10	10	3	15
		421.62	425.9
		5.94	1.7
		419.1	15
		8.5	423.6
		11.2	4.0
		10	15
			428.1
			+0.5
			30

414.2	417.5	423.1	427.3
13.4	10.1	4.5	0.3
10	15	30	

427.56

T.P. 12.50 460.67 0.44 448.17

18+05

17+80

T.P. 13.05 448.61 0.06 435.56 = ^{Hub} 17+64.21

17+64.21 = Ang. Pt.

17+53

17+49 = ϕ Wash

17+45

17+30

17+00

16+50

Lt. Rt.
 447.4 442.5
 1.2 4.5 5.1 6.1
 15 7 15
 440.7 444.1
 7.9 10.6 14.8 11.8 11.8
 15 5 7 15
 438.0 433.8 436.8 436.8
 ϕ Wash

437.1
 + 1.05
 10
 9° To Forward Tang
 433.8
 1.8
 10
 9° To Back Tang
 448.61
 435.56
 0.06 on Hub.
 432.4
 3.2

422.6
 13.0
 12
 in wash
 427.1
 8.5
 ϕ Wash
 431.5
 4.1

428.7
 5.9
 10
 426.9
 8.7
 10
 424.2
 11.4
 10
 432.1
 3.3
 429.9
 5.7
 426.9
 8.7
 435.62
 435.8
 + 0.2
 15
 0.4347
 15.9
 15
 431.8
 3.8
 15

196 3366

19+08

18+98.5 - 4' Rt. = End. Conc. Block wall

wall - By 18+97.5
on B - on N. end of Conc.

Set: B.M. 10.03 474.99 4.82 464.96

18+97.50 = Ang. Pt.

18+85 = end planting at edge of A.C. Dr. (wly)

- 21.6 Rt = Cor. of Grav. + wly. of A.C. Dr.

18+78 - \pm = edge of flower planting

T.P. 9.29 469.78 0.18 460.49

18+70 - 21.8 Rt. = Brick wall of Grav.

+ 69 - 10' Rt. = \pm 3" Pine

18+53 - 8' Rt. = \pm 2" Lemon

18+46 - 2' Rt. = \pm 5" Pine

18+39 - 8.4 Rt. = \pm 2" Lemon

18+30 - 12.5' Rt. = \pm 5" Pine

	Lt.	Rt.	
	462.8	463.5	463.91
	12.2	11.50	11.08
	15		10.80
edge of	edge of		4.7
Planting	A.C. + Planting		edge Conc.
			12.30
			4
			on A.C.
			11.02
			15.5
			464.96
			Top of
			wall

474.99

462.11
7.67
on PK
461.03
8.75
on A.C.

458.3
11.5
20
458.2
11.6
9
460.3
9.5

456.1
13.71
21.6 = A.C. Dr.
at Gar.

469.78

457.7
3.0
15
457.2
3.5

456.29
4.38
21.8 on Conc.
walk along
Grav.

452.0

451.6
9.1
15
460.67

451.5
9.2
15

T.P. 10.54 485.23 0.30 474.69

20+55

20+20

20+06 - 7' Rt. = ± 16" Palm

19+90

19+63 - 11' Rt. = ± of Inlet of 12" pipe - 4' x 10" Headwall
Planting Back of gut. on E.

19+53 - 20.9 Lt. = ± face of 4.4 x 8" Headwall + outlet

19+28.2 - 3.5' Rt. = ± of Tel. Co. M.H. - 4' E+W
5' N+S.
consider ± as N+S.

19+22 - 4.5' Rt. = ± M.H. Lid - 3' Diam.
Gas + Elec. M.H.

19+21.3 - 3.2' Rt. = ± of 5.5' E+W + 6.8' N+S.

19+21.3 = W. edge of Conc. pave.
2' Rock + Conc gutter on Ely edge of Conc pave

	Lt.	±	Rt.
	473.76		473.69
	123	1.30	1.42
	471.32	23 edge of gut.	473.57
	471.09	20.1 edge	473.29
	470.70	4.29	473.14
	470.49	4.50	473.60
	470.29	4.00	
	470.1	4.3	
	3.67	3.90	1.70
	24 edge	4	0.7 edge
	469.28	4.29	470.6
	4	2	1.81
	5.71	15	2.7
	19.5 edge	468.98	3.5 Top
	6.01	468.47	4
	9.3	468.23	4 Top edge
	Conc.	468.72	4 Top edge
		6.52	468.86
		6.76	9.23
		3.1	11.13
		4	11 = Top Wall
		465.76	11 = I.E. of Rpe
		466.79	
		464.44	
		466.6	
		466.69	
		466.43	
		465.99	
		465.99	
		9.10	
		10.7 edge	
		457.93	
		17.06	
		3.5 Bot. of Box	
		465.04	
		9.90	
		464.79	
		10.20 = Rim	
		4.5	
		455.86	
		19.13	
		3.2 Bot. of Box	
		464.63	
		10.36	
		10.7	
		464.18	
		10.81	
		21.2 edge	
		11.7	
		10.05	
		474.99	
		Conc. edge	

21+79 - 78.4' Lt. = N.W. Cor. of Large House = outlet.

T.P. 9.90 494.55 0.58 484.65

22+00

21+78.5 - 9.2' Lt. = ± Bot. of 3.5' Conc. Steps

21+70 - 13.4' Rt. = 7' Beg. Conc. Dr.

21+66 - 19' Rt. = ± 20' Palm

21+55 - 9.8' Lt. = ± Tel. M.H. - full of water.

21+50 - 13' Lt. = ± Gas M.H. = Full of water

21+18.5 - 6.5' Rt. = ± 12" Palm

21+10

21+06 - 24.2' Lt. = end Dr.

20+77 - 16.8' Lt. = Beg. Conc. Dr.

S.E. Cor. of Large House

20+72.53 90° to Forward Tang. - 45.3' Lt. = 3.2' from

20+72.53 = Ang. Pt. Sect. 90° to Forward Tang.

20+57 - 15.7' Rt. = ± 16" Palm

482.40 Lt.

± Rt.

12.15 = ground
78.4 = 2' cut to pipes

494.55

487.93

484.14

483.83

483.97

484.04

484.24

484.36

484.24

+ 2.7

1.09

1.40

1.26

1.19

0.99

0.87

0.99

15

5.5

4.5

2.8

±

7.3

17.4

19.3

486.91

482.56

+ 1.68

2.67

16.3 = Top step.

9.2 = Bot.

308

13.4 = Dr.

473.69

480.95

11.54

4.28

473.16

480.60

9.8 = Rim.

M.H.

480.66

480.67

480.67

483.6

480.66

480.63

1.6

4.57

4.60

12.07

4.63

4.57

4.56

4.56

27.6

19.3

17.2

13

6.6

±

4

4 (got. same)

478.46

478.18

478.12

477.83

477.34

477.12

477.53

477.47

6.77

7.05

2.11

7.40

2.89

8.11

7.70

7.8

24.5

24.3

22.3

12.1

2.2

0.2

Top

10

Top

got

edge

±

edge

got

Top

±

477.99

7.24

24.2

Dr.

476.17

9.06

16.8 = Dr.

472.03

13.2

+ 34.5 = 45.3 = ground

NE. Cor. = Plumbing outlet

476.12

9.11

15.9

Top

472.43

12.8

475.73

9.44

15.2

got

473.75

11.48 = Floor

Elev.

474.90

10.33

on Cross

9

edge

474.17

11.06

9

edge

473.89

11.34

11.2

got

474.30

10.93

12

Top

474.0

11.2

20

485.23

rr. Biddle Lt.
 Cd. Mitchel

Rt. 26

23+67-14.5 Lt. = end Hedge
 23+59-14 Lt. = Sly of 3' Hedge - 5' High
 23+55-15 Lt. = \pm Shrub.
 23+50-97 Lt. = out lot by NW Cor. of Large House
 23+53-19.7 Lt. = end wall

499.11
 7.30 floor Elev.
 495.8
 10.6 97 = ground
 496.21
 11.2 19.7 = at Cor.
 11.52
 10 edge
 494.89
 11.49
 494.92
 11.61
 10.2 edge
 494.80

23+31-10.1 Lt. = end of cb. along Dr.

493.73
 12.68
 16.6 Top cb.
 493.93
 12.48
 10 Top cb.
 493.35
 13.06
 10.1 = gut + Dr.
 491.91
 14.50
 8.3 = gut + Dr.
 506.41

23+12-8.3 Lt. = end. cb. along Dr.

493.8
 0.8
 16.3 by wall
 492.6
 2.0
 13.7 by wall
 491.83
 2.72
 8.2 gut
 489.24
 5.31
 5.5 gut
 491.89
 2.66
 6.2 edge
 489.40
 5.15
 3.5 edge
 491.93
 2.62
 3.9 \pm
 489.45
 5.10
 6.6 \pm
 506.41

T.P. 12.29 506.41 0.43 494.12

Set. B.M. = \square on cb. 0.57 493.98

23+10-16.5 Rt. = end Dr.

491.86
 2.69
 13.9 edge
 491.89
 16.5 = gut + Dr.
 489.40
 5.15
 19.4 Dr.
 489.45
 5.10
 16.6 edge
 489.51
 5.04
 6.6 \pm
 489.45
 5.10
 16.6 edge
 489.40

22+74-19.4 Rt. = Beg. Dr. Conc.

22+64.5-10.7 Lt. = \pm 12" Tree

22+61-12.3 Lt. = Beg. Conc. Block Wall

489.3
 5.3
 10
 486.75
 7.80
 3.3 Top
 486.34
 8.21
 2.6 gut
 486.44
 8.11
 0.7 edge
 486.74
 7.81
 9.3 \pm
 486.86
 7.69
 19.3 edge

22+08-20.5 Rt. = end Dr.

494.55
 9.68
 20.5 = Dr.

T.P. 13.28 519.42 0.27 506.14

25+60

25+35.71 = Ang. Pt. - Sect. 90° to back Tang.

25+21.5 - 11 Rt.

Req. Hedge N. of gut. on N.

25+09.5 - 2.2 Lt. = Ang. in edge of Conc.

25+00

24+99 - 15.8 Lt. = \pm Tel. M.H.

24+93 - 16.5 Lt. = \pm Gas Co. M.H.

24+86 - 13.7 Lt. = N.W. Cor. Large House - probable outlet.

24+69 - 7 Lt. = \pm 16 Gas Valve Cap.

24+67.6 - 13 Rt. = Ang. in edge of Conc.

24+52.5 - 14.3 Rt. = E.C. pave edge \perp Ang. pt.

24+33 - 13 Rt. = \pm 16° Palm

24+30

24+10 - 9.5 Rt. = \pm F.H.

24+00 - still planting - S. of Pave

Lt.

\pm

Rt.

27

504.24

2.17

16.7

edge

503.51

2.90

26

edge

504.66

1.75

6.1

\pm

503.41

3.00

15.7

\pm

504.81

1.60

4.9

edge

502.66

3.75

0.6

edge

504.90

1.51

7

gut.

502.46

3.95

3

gut.

504.75

1.66

7.8

Top

502.71

3.20

3.9

Top

505.19

1.22

16

fence

501.9

4.5

13.5

By cyclone fence

501.16

2.25

2.2

500.76

5.32

30

drive begin

500.81

5.60

24.0

drive

500.76

5.65

21.5

edge

500.73

5.68

11.5

edge

500.56

5.85

1.2

edge

500.31

6.1

1.2

edge

500.31

6.1

1.2

edge

500.31

6.1

1.2

edge

500.31

6.1

1.2

edge

500.31

6.1

1.2

edge

500.31

6.1

1.2

edge

500.31

6.1

1.2

edge

500.31

6.1

1.2

edge

500.31

6.1

1.2

edge

500.31

6.1

1.2

edge

500.31

6.1

1.2

edge

500.31

6.1

1.2

edge

500.31

6.1

1.2

edge

500.31

6.1

1.2

edge

500.31

6.1

1.2

edge

500.31

6.1

1.2

edge

500.31

6.1

1.2

edge

500.31

6.1

1.2

edge

500.31

6.1

1.2

edge

500.31

6.1

1.2

edge

500.31

6.1

1.2

edge

500.31

6.1

1.2

edge

500.31

6.1

1.2

edge

500.31

6.1

1.2

edge

500.31

6.1

1.2

edge

500.31

6.1

1.2

edge

500.31

6.1

1.2

edge

500.31

6.1

1.2

edge

500.31

6.1

1.2

edge

500.31

6.1

1.2

edge

500.31

6.1

1.2

edge

500.31

6.1

1.2

edge

500.31

6.1

1.2

edge

500.31

6.1

1.2

edge

500.31

6.1

1.2

edge

500.31

6.1

1.2

edge

500.31

6.1

1.2

edge

500.31

6.1

1.2

edge

500.31

6.1

1.2

edge

500.31

6.1

1.2

edge

500.31

6.1

1.2

edge

500.31

6.1

1.2

edge

500.31

6.1

1.2

edge

500.31

6.1

1.2

edge

500.31

6.1

1.2

edge

500.31

6.1

1.2

edge

500.31

6.1

1.2

edge

500.31

6.1

1.2

edge

500.31

6.1

1.2

edge

500.31

6.1

1.2

edge

500.31

6.1

1.2

edge

500.31

6.1

1.2

edge

500.93

5.48

11 = Cor. Conc.

Req. gut.

499.71

5.32

30

drive begin

499.81

5.60

24.0

drive

499.76

Sw. Cor. Inspiration + Muirlands

B.M. = spike in Post

4.76 520.65

T.P.

6.99

525.41

1.00

518.42

outlet.

27+73- 92.5 Lt. = NW. Cor. of large House = Can be

27+50.00 = Ang. Pt. Sect. 90° to Forward Tang.

27+39 end 2' conc. and rock gut. 58 et.

27+29 = end 2' conc. and rock gut and begin AC gut 120 Rt.

27+25

27+00

26+68- 24 Lt. = end of 8" Conc. wall along Dr.

26+50

26+34- 84 Lt. = N.W. Cor. large House - can be outlet

26+20- end Hedge behind gut on Lt.

26+00

Lt.

±

Rt.

28

510.52
8.9
93.5 = at Cor.
516.30
212 = floor

518.00
1.42
215
Top
Roll

517.59
1.83
20
AC gut.

517.62
1.80
19
edge

518.07
1.38
8.8
±

518.32
1.10
1.3
edge

518.8'
0.6
12 = fence

517.78
1.64
5.8
edge

517.71
1.71
8.0
gut

518.11
1.31
8.5
Top

517.34
2.08
15.0
Top

517.03
2.39
13.9
gut.

517.07
2.35
12.0
edge

516.99
2.43
2.59
±

516.97
2.45
10.4

514.69
4.73
15

515.20
4.22
7
Beg. AC Dr.

514.96
4.46
6
gut.

515.09
4.33
4
edge

515.17
4.25

515.24
4.18
6.4
±

515.29
4.13
16.5
edge

515.14
4.28
8.5
gut.

517.32
21

513.48
5.94
Top

512.74
6.68
24 = AC

510.17
9.25
15
±

511.27
8.15
3
±

511.11
8.31
inlet.

511.22
8.20
12
edge

511.62
7.80
11.1
±

511.83
7.59
21.1
edge in gravel Dr.

504.72
14.7
84
ground

510.62
11.80 = floor.

507.25
12.17
4.4
edge

507.42
12.00

507.66
11.76
5.8
±

508.00
11.42
16.3
edge

519.42

29+55 - 12.5' Lt. = House in Rear 1 cut may do.
Pt. of outlet for low Guest

29+40

29+00

28+89 - 14.7' Lt. = Φ 13' Conc. Dr.

28+61 - End A.C. + Beg. Conc. g. Her on N.

28+50 - Planting N. of edge

28+42.3 - 5.5' Rt. = Beg. Conc. apron along edge

28+26 - 14.5' Lt. = Φ 14' A.C. Dr.

T.P. 4.87 525.52 4.76 520.65

28+00

27+86 - 16.7' Lt. = Φ 3' Conc. walk

27+85.7 - 9.5' Lt. = Φ Tel. M.H.

27+80.3 - 11.4' Lt. = Φ Gas. Co. M.H.

27+80.3 - 4.8' Lt. = Φ 16" Gas Valve cap

513.52 Lt. Rt. 29
12.00 13.2
floor of guest house ground - 1 cut.
520.50
5.02 5.23 4.77 4.68 4.08
15.9 14.9
520.32 Top 520.29 edge
5.20 5.52 5.13 5.07 5.2
520.19 15.8 14.7 5.4 4.82
Top 520.32 edge Conc.
5.33 5.20 5.67
25 19.5 14.7 = edge
520.01 519.51 519.47 + Drill
5.51 6.01 6.05 5.60 5.54 4.69
16.5 15.7 14.5 5.5 15.5
Top gut. edge edge = on Conc.
517.22 519.56 519.28
8.30 5.96 6.24
32 18 14.5
end A.C. Dr. Dr. +
+ Beg. Conc. edge Conc. 525.52
519.50 519.02 519.03 519.35 519.43
5.91 6.39 6.38 6.06 5.98 5.90 5.71
16 15.3 14.3 4.4 5.7 15 = A.C.
Top AC - gut. edge
518.33 519.30
7.08 6.11
25 16.7 = walk
walk
525.41

33+50

33+00

32+62 - 19.5' Rt. = ± Pole # P 6268

32+50 - 22' Rt. - Mark on Pav. - for water line?

32+18 - 12.7' Lt. = ± 19' Conc. Dr.

32+00

31+70

31+30

31+02 .24 = Ang. Pt.

30+98 = edge A.C.

30+83.5 = A.C. stripe

31

527.5	0.3	2.8	2.66	2.51	2.91	1.8
1.8	23.6	1.6	13	3.24	12.5	20 = lawn
22	525.6	525.95	edge	526.06	edges	526.6
3.0	526.30	525.00	edge	525.17	525.61	20
21	525.18	4.3	4.25	4.13	3.69	20
3.48	18	11	525.05	524.67	12	20
22.3	525.18	edge	524.39	4.63	edge	3.9
4.1	15	4.91	524.32	13.5	edge	20
5.12	5.7	12.7	524.33	5.42		
4.1	525.2	5.12	524.32	5.42		
10	4.1	5.7	524.32	5.42		
3.6	525.70	edge	523.81	5.42		
10	4.8	5.7	523.81	5.42		
	524.56	edge A.C.	523.81	5.42		
	523.28	edge A.C.	523.81	5.42		
	6.02 = as Hub.		523.81	5.42		
	522.75		523.81	5.42		
	6.55		523.81	5.42		
	529.30		523.81	5.42		

36+50 19' Lt = Gas.
 36+30 - 2.5' Lt = Water
 36+30 - 11.8' Rt = Tcl. pole # 566561+H
 Ang Pt.
 36+16.66 - Sect. 90° to Forward Tang.

T.P. 7.83 538.24 5.58 530.41 = ^{Pole} 36+30

36+00

35+63 - 13' Lt = Gas
 19' Rt = Water

35+50

35+00 - 9.5' Lt = Gas
 - 6.5' Rt = Water

34+71 - 21.3 Rt = P. pole # P 6198

34+71 - 6.3' Rt = Water gate - 8"

34+50

34+16 - 9.8' Lt = Gas - marked

T.P. 6.92 535.99 0.23 529.07 = ³⁴⁺⁷⁰ Rt.

34+15 - 5.5' Rt = Water

34+00

Lt. 528.87
 9.37 9.45
 15.2
 edge
 529.18
 9.06 8.95
 12 on P.K.
 529.29
 8.97
 1.5
 edge
 Rt. 530.01
 8.23 11.
 edge
 530.3
 18.4
 fence
 32

528.59
 9.65 9.06 8.95
 24.5 12 on P.K.
 edge
 529.27
 8.97
 1.5
 edge
 529.44
 8.7 = fence

528.60
 7.39 6.93 6.91
 21 9.5
 edge
 529.08
 7.02
 5
 edge
 528.97
 6.7
 12.1 = fence

528.69
 7.3 7.68 7.26
 20 13
 edge
 528.31
 7.51
 11.5
 edge
 528.69
 7.3
 18.8 = fence

528.57
 7.42 7.94 7.64
 20 11.5
 edge
 528.31
 7.04
 14
 edge
 527.95
 7.0
 21 = wire fence

528.51
 7.5 8.33 8.18
 20 12
 edge
 527.66
 8.53
 11.5
 edge
 527.46
 6.7
 20
 Lawn

529.8
 0.5 2.3 2.17 1.89
 21 15 13
 edge
 527.0
 527.13
 535.99
 527.41
 529.30
 2.30 0.7
 12 20
 edge Lawn
 527.00
 528.6

539.24
 5.87
 532.37

Lt.

#

Rt.

= \pm of Pauc
 check P.K. at End of LaCanada line 936

38+94.12 = end. - Sec. Radial - (see sketch)

38+87 - 11' Lt. = ϕ 18" Euc.

38+79 - 10.2' Lt. = ϕ 12" Euc.

38+73 - 9.5' Lt. = ϕ 18" Euc.

38+50 - 18.8' Rt. = water

38+20 - 3.7' Rt. = Gas

38+01 - 36.5' Rt. = ϕ P. pole # P. 6154

38+00

37+50

37+20 = ϕ Gas.

37+16 - 14' Rt. = Water

37+00

533.5	532.86	533.14	533.37	533.29	532.37
4.7	5.38	5.0	4.87	4.95	5.87 = on Pipe
20	4.8	on PK. 7	7	20	30 = Prop. Pipe
	edge		edge	edge	
	532.2	531.8	532.02	532.66	532.71
	5.0	4	6.22	5.58	5.63
	15		2	14	25
			edge	edge	fence
	531.4	530.74	531.15	531.89	531.94
	6.8	5	7.09	6.35	6.30
	15		44	16	29.4
			edge	530.38	edge
	530.3	530.1	531.16	531.16	531.10
	7.9	1	7.36	7.08	7.14
	10		25	15	28
			edge	edge	fence
	529.46	529.90	530.46	530.57	530.9
	8.78	8.24	7.78	7.67	7.3
	4.8		9	22.4	29
	edge	538.24		edge	fence

3+40.8 - 3.7 Rt. = Ang. in edge of Conc. - Beg. A.C.

3+33 - ± at edge of Conc.

3+20.

523.37
 4.28
 Top
 cb.

522.36
 5.29
 26.3
 gut.

522.20
 5.45
 24
 edge

522.79
 4.86
 13.6
 "

523.25
 4.40
 2.1
 edge

523.3
 4.4

523.00 Rt.
 4.65
 3.7 = Conc.
 3.5241
 6
 14 = By Last Tree

3+15 - 10.3 Lt. = Clean out at S. side of Large House (Vacant)

519.75
 7.90
 floor
 Elev.

518.55
 9.1
 10.3 = ground.

2+87 - 18.2 Lt. = end cb. at Driveway

523.08
 4.57
 Top
 cb.

522.61
 5.04
 17.3
 gut.

522.55
 5.10
 15.7
 edge

523.13
 4.52
 5.8
 "

523.37
 4.28

523.51
 4.14
 4.4
 edge

524.9
 2.8
 21 = Trees

2+55.5 - 6.5 Lt. = end Conc. apron at edge

523.25
 4.40
 14.6
 Top
 cb.

522.75
 4.90
 14.6
 gut.

522.71
 4.94
 13.1
 edge

523.30
 4.30
 3.2
 "

523.44
 4.21

523.68
 3.97
 6.9
 edge

524.38
 3.27
 2.0
 on Conc.
 Dr.

2+17 - 15.4 Lt. Beg. 6" Conc. cb. - 1.5' from edge of pave

520.40
 7.25
 on Dr.

522.53
 5.12
 19.2
 Beg. Conc.
 Dr.

522.67
 4.98
 14.7
 edge

523.25
 4.40
 4.7
 "

523.48
 4.17

523.67
 3.98
 5.3
 edge

523.91
 3.74
 9.8
 edge
 Dr.

524.1
 3.6
 15.7
 By
 Brick
 Post

2+04 - 4.5 Rt. = Beg. Conc. Dr. at edge of pave

1+80.07 = Ang. Pt. Sect. 90° To Back Tang

522.66
 4.99
 19.7
 edge

523.23
 4.42
 9.5
 "

518.75
 8.90
 floor
 of House

513.75
 13.9
 11.5 = ground.

523.60
 4.08
 0.7 = edge

524.85
 2.8
 12 = Trees

1+78 - 11.5 Lt. = Pickup Pt. Near SW Cor. of Large House

527.65

35' E of End.

Set B.M. in Gyp Pole

0.25 532.24

" " = C.A. Lt. - 3+11.40

9.60 522.89

4+85.70 = end at Sub. Line ± of LaCumbre Dr.

4+45

4+00

Houses on Both Sides are High

3+65

T.P. 9.13 532.49 4.29 523.36 = PK Ang. Pt.

3+61.58 = Ang. Pt. - Sect. 90° To back Tang.

3+56 - 21.8 Lt. = ± Gas Co. MH.

3+51 - 13.5 Lt. = Asq. in Conc. + A.C.

Lt

±

Rt.

36

529.39

3.10
16.2
edge

529.20

3.29
on Hub.

529.49

3.18
15' = edge A.C.

526.93

5.56
16.5
edge

526.40

6.09

526.52

5.97
17.2
edge

524.93

7.56
19.3
edge A.C.
Bog. Cont. Dr.

524.64

7.85

524.52

7.97
18.5 = edge

523.45

9.04
17.5
edge A.C.

523.44

9.05

523.30

9.19
20.5
edge A.C.

522.52

5.13 4.86 = S. Rim
29
20.8 =
1's. of ±
of Tel. Co. MH.

522.79

522.91

4.74

532.49

523.36

4.29

on PK.

17.8 edge
Cont.

522.99

4.99 = S. Rim
21.8

523.20

4.45

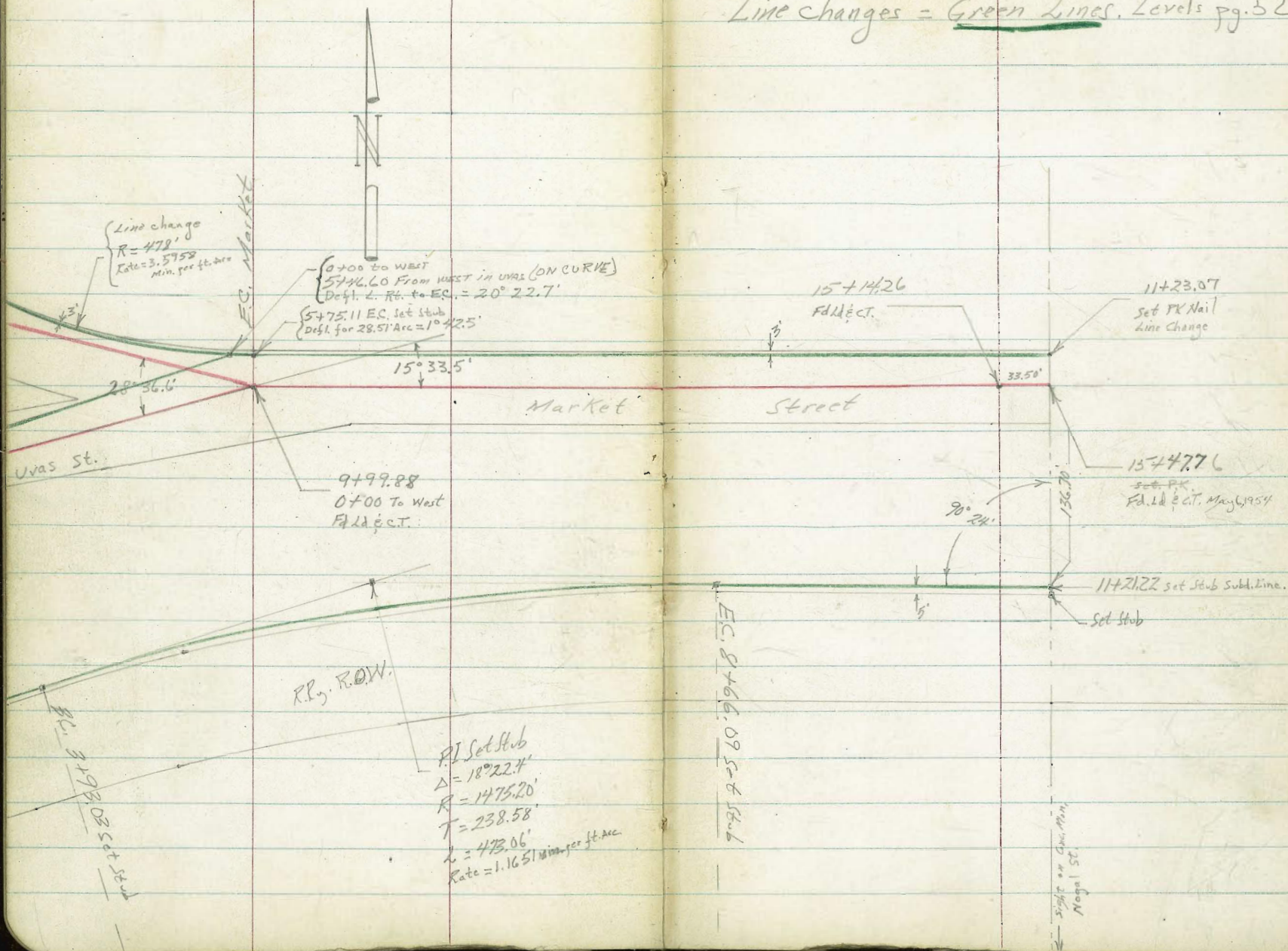
523.45

4.2
10

4.66
13.5

527.65

Line changes = Green Lines. Levels pg. 52



0+25

89.0
4.9
15
90.0
3.9
15
90.8
3.1
15

0+22.4 { 104' Rt. (Parallel to 47th) to Ry. Bridge Abut.
East Edge Walk

535 88.59

0+19. Crosses Telephone Conduit

0+17 West Edge Walk

553 88.41

0+15.75 East Curb line 47th

87.98

59.6

Gutter

55.5

Curb

88.39

0+00 Intersection with Existing 18" Sewer
in Forty-seventh Street.

10.56

72.15

MH

INVERT

57.1

AC

over

Conc.

88.23

17.39

29270

MH

INVERT

76.53

BM 9.55 93.94

NEBP
84.39 Para to 47th

93.94

Cont'd from Page 39

Lt

R

Rt 40

0+99.7 5¹/₂' Rt to So. End 24" RCP Drain

27" Section not Grouted Good

88.30
16.33
5¹/₂
INVERT

0+94 10¹/₂' Rt to ^{North} End 24" C.M.P. under Ry.

87.68
16.95
10¹/₂
INVERT

0+92

95.4
9.2
14
95.5
9.1
13.5
10
91.1
11.5
17
93.1

0+87 9³/₂' Rt to S.E. Corner House

95.4
9.2
10
95.1
9.5
15
95.2
9.4
15

0+83

0+61 18⁰/₂' Rt to S.W. Corner House

T.P. 12.01 104.63 π 132 92.62

104.63 π

0+37

91.2
2.7
15
91.9
2.0
10.2
5
94.1
10.7
15
94.6

93.94 π

93.94 π

Contd from Page 40

2+51.14 - L Left & Aurora

2+25

1+86

1+60

1+35

1+13

1+06.6 Cross & RCP 24" Drain

104.63K

Lt

Σ

Σ 41

+0.2 ^{104.8}

0.5 ^{104.1}

² 102.9
1.7
15

¹ 102.9
1.7
15

¹ 102.9
1.7
15

^{97.3}
7.3
15

^{98.1}
6.5
15

^{100.3}
4.3
15

^{95.6}
9.0
15

^{95.6}
9.0
15

^{95.4}
9.2
15

^{95.6}
9.0
15

^{94.6}
10.0
15

^{92.7}
11.9
18

^{91.71}
12.92
Top
of
Drain

104.63K

Contd From Page 41

Lt

Q

R 42

1700 C Aurora

109.9
57

0750 Q Aurora

109.1
65

4732.81 L. Rt Q Uves. = 0700 to North

108.1
75

4400

107.6
80

3450

106.8
87

3700

105.9
97
106.1
95
107.1
85
15
100
106.5
9.1

T.P.

11.31 115.61A 0.33 104.30

115.61A

104.63A

5750

7.3

108.3

5700 In Uvas Street

7.1

108.5

2775 E Aurora

10.4

116.0

2750 E Aurora

0.2

115.4
108.4

2700 E Aurora

1.4

114.2
107.2

1450 E Aurora

7.0

111.6
104.6

115.61 T

115.61 T

T.P. 8.18 135.59 π 0.05 127.41

8+00

126.0
1.5 5.2 11.8
50 100

7+50

120.3
7.2 11.5 16.4
50 100

T.P. 12.30 127.46 π 0.45 115.16

127.46 π

7+00

113.9
1.7 4.1 5.4 7.1 108.5
7 50 100

6+50

109.1
6.5 9.5 11.4 104.2
50 100

6+00

108.4
7.2 9.1 10.9 104.7
50 100

115.61 π

115.61 π

Cont'd From Page 44

1+50

1+00

0+50 to West in Market

9+99.88 L: Rt Q Market 0+00 to west

9+51.5

Edge Paving

9+00

8+50

135.59 ∇

Lt

Q

Rt

45

130.67
492

130.91
468

131.33
426

131.7
3.93
129.5
6.1
127.8
50
7.8
100

131.1
450

~~131.1~~
130.6
5.0
6.3
129.3
50

129.7
5.9
129.1
6.5
46
Floor
4622

135.59 ∇

11+50

11+20

T.P. 436 135.57 A 438 131.21

11+00

10+73

10+50 to East in Market

2+25

2+00

135.59 A

131.31
426

40 131.6
5.6 7.1 128.5
50 70 100
135.57 A

131.62
3.97
40 131.6
5.3 130.3
29 47 116.4
131.74
3.85 49 15.6 18.7
29 46 90
110.6

5.0 130.58

132.63
476

135.59 A

14750

6.49	129.08			
	128.7	7.2	101	11.7
	125.5	31	40	66
				123.9
				114.1
				21.5
				100

14400

6.10	129.47			
	128.9	6.7	10.0	18.3
	125.6	31	38	100
				117.3

13750

5.80	129.71			
	129.7	6.2	13.4	16.1
	122.7	30	43	95
				119.5

13400

5.47	130.10			
	130.5	5.1	11.0	13.4
	126.6	31	46	85
				122.2

12750

4.99	130.58			
	129.8	5.8	10.8	12.8
		50	100	

12400

4.55	131.02			
	130.6	5.0	10.0	
	125.6	50	85	

135.57A

135.57A

Cont'd From Page 47

Lt

Q

Rt 48

checked to Orig. B.M.

check

400 131.57 = 131.36

Q Lt & CT EC Market See FB 1846 pg 68

15497.76 End

15400

135.57A

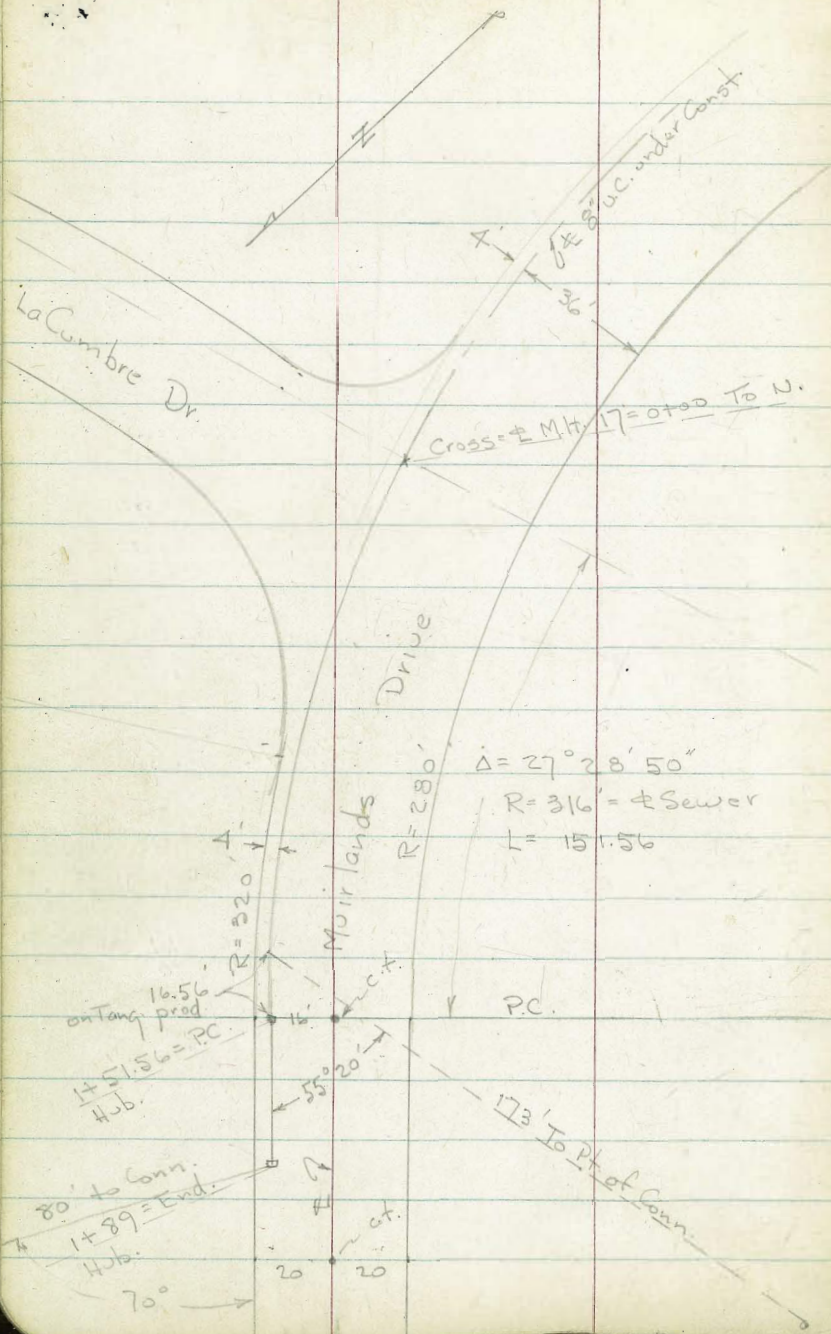
	128.45		
7.12	8.0	15.6	21.7
	24	36	70

	128.74		
6.83	70	120	204
	29	65	90

135.57A

INDEXED
JER
FEB 18 1954

49



Beq. Levels along \pm of Prop. Sewer in Muirlands Drive from M.H. 17 - LaCumbro

Dr. - See Plan - 2227-D.

w.O. 21075 - 2-17-54 7.0.

Sketch - P. 49

0 + 90.93

22.26 21.64 21.60
Top 28.3 26
gut edge

22.04 22.28 22.25 22.51 22.56 23.5 24.4 24.8
16 6 gut 4.2 1.7
 \pm edge conc. Top cb. edge Brick walk lawn

0 + 86 = edge of Brick walk

24.08 = walk

0 + 81.7 = edge of Brick walk at steps

24.06

Top walk

0 + 60.62

19.52 19.5
floor 70.2 = ground

House - about \pm

22.53 22.83 22.94 24.8
1.4 Top 4 = edge 10
gut Rock cb. Brick on lawn

0 + 44.5 - 8.3 Rt. - Cor. of Conc. Pav. - Shows ang.

22.42 21.76 21.71 22.26 22.63
Top 28.3 26 16 0.8
gut \pm edge Conc.

22.79
8.3 = Cor. Conc.

0 + 38.4 = Beq. Conc. Pav.

22.84

0 + 30.31 - Sect. Radial

22.62 21.87 21.98 22.44 22.84 22.96 23.34 24.3
Top 28.3 26 16.1 6.2 on A.C.
cb gut edge Conc. \pm edge Conc. 16 24 = edge A.C.

See Gas & Tel. M.H. on P. 36

0 + 00 = \pm M.H. 17 - Plan 2227-D

23.00

See P. 35 for Conn. to Sly. of House on Lt

500' Dig. Not Noted.

B.M. = ct. - P. 36

522.89

Actual Elev. Shown.

~~to stop line there~~
~~House on Pt. Can Conn. By P.C. if want~~

1+89 = end.

19.56 19.30
 Top 28.7
 cb. got

19.32 19.39 19.29 19.19 19.63 20.1
 26 16 6 9.2 4.2
 edge ± edge Top Rock
 Conc. Conc. cb.

22.0
 80 = gr. at Conn.
 Point-See
 sketch

20.5 20.7
 4 10

1+82 = ± 4" wall = Nly. of Conc. Dr.

20.22 21.96 20.5
 Conc. Dr. Top wall gr.

1+66.6 = ± 4" Brick wall - sly. Conc. Dr.

20.77 22.14 21.5
 Conc. on Top
 Drivehead wall gr.

Planting in Between

1+54 = ± 4" Brick wall

22.70 21.6
 Top wall ground

Buried - 2' cut. should make it.
 Line to Conn. at Copleys House - Present Line is

1+35 = 16.56 from P.C. on Tang. Prod. = ± int. with

18.70 16.2 22.8
 floor of 173 = ground.
 House at Conn. pt.

1+51.56 - 4' Rt. - end Brick wall + Beg. wire fence 2' at 21.06
 Top 28.7 26.2
 cb. got edge

21.24 21.24 21.07 21.47 21.47 21.7 21.7 22.1
 16 6 9.2 4.2 1.6 4 10
 on edge Top edge walk

1+21.24

19.8 21.70 21.50
 50 28 26
 in Dr. edge Conc.
 got

21.82 21.85 21.82 22.16 22.14 23.1 24.2 24.7
 16 6 9.2 4.1 1.7 4 10
 ± edge Top edge walk

1+10 - 95'

Line thru gravel Dr.
 Lt. = Possible Conn. to N. end of

20.00 19.5
 floor. 95 = ground

Large House - sly. Shown on P. 35 - Conc. Slab floor - should

Conn. at Both ends.

Roberts Re-alignment Proposed Sewer Sunshine Gardens

Cota
Moore
Maralez
4-6-54
H.O.#32349

See Page 37 & 38 For Sketch.

1+00

IND
JER
MAY 10 1954

0+50

0+14

0+08

0+00 = 2+51.14 @ Aurora @ 5 Nly of No. Line R.Ry. Rd.

TP 4.73 109.54 Δ 0.53 104.81 on 0+00 hub

TP 12.11 105.34 0.25 93.23

BM 9.09 93.48
NEEP
84.39 Para @ 47 ft

26

2

27

52

106.3

32

107.0

25

107.1

24

105.4

21

107.1

4.73
on hub

109.54 Δ

Notes reduced
5-10-54
R. J. Cannon

Cont'd From Page 52

4

5

RE 53

3710

104.5
50

3700

104.2
53

2769

99.5
10.0

2750

103.8
57

2700

103.7
58

1750

104.9
36

1725

105.9
36

109.54A

109.54A

Cont'd From Page 53

Lt

E

Rt 54

5+00

5.3

110.7

4+50

3.9

112.1

4+00

6.8

109.2

3+93.03 BC

7.2

108.8

T.P. 7.48 116.00 \uparrow 1.02 108.52

116.00 \uparrow

3+50

2.1

107.4

3+19.48 = 0+00 to North

3.81
on stub

109.54 \uparrow

109.54 \uparrow

Cont'd From Page 54

7437

7400

6490

6459

6429

6400

5450

110.00 ∇

H

115.4
0.6

110.7
5.3

110.2
5.8

107.4
105.4
8.6
2.5

10.6

110.2

5.8

110.3

5.7

110.7

5.3

110.00 ∇

R 55

Cont'd From Page 55

8+50

8+32

8+08

8+00

7+75

7+50

T.P. 3.84 119.78 $\bar{\pi}$ 0.06 115.94

116.00 $\bar{\pi}$

H

E

R 56

109.0

10.8

111.2

3.6

116.0

3.8

116.0

3.8

116.1

3.7

116.0

3.8

119.78 $\bar{\pi}$

Cont'd From Page 56

9+62

9+50.58 POT. Set stub

9+50

9+18

9+00

8+73

8+66.09 EC

119.787

Lt

Q

RR 57

116.5

33

116.3

35

114.9

49

112.4

74

114.1

107.4

57

12.4

20

107.9

11.9

119.787

Cont'd From Page 57

26

Σ

RR 58

Continued on next page.

Set TBM 5.55 128.08 = 11423.07 ONPK Nail 3' So. of No. Line Market & East Line Subd.

T.P. 4.10 133.63 0.31 129.53

T.P. 12.71 129.84 2.65 117.13

11421.22 END (S. SP. LINE)

10+80

10+30

10+00

119.78

101.7

18.1

103.9

15.9

105.9

13.9

110.5

9.3

119.78

2+00

109.3
7.6

7.1450

108.8
51

1+00

108.4
55

0+50

108.7
52

0+25

108.7
5.2

0+00 = 4+32.81 £ Aurora & £ Uyas

107.97
6.51
on hub

TR

9.07 113.88 ∇

104.81 on hub

See pg. 52

113.88 ∇

Contd From Page 59

4400

T.P. 10.11 135.93 π 0.09 125.82

3450

3475 15th ft. to center Guy Pole #471545

3400

2+71.32 = 1774.53 From South in Plantano

T.P. 12.79 125.91 π 0.76 113.12

2450

113.88 π

22

S

π

60

129.0
6.9

135.93 π

124.3
1.6

118.8

7.1

117.76
11.15
on stub

125.91 π

112.4

1.5

113.88 π

Cont'd From Page 60

5746.60

(ON CURVE)

5728.6

No. Edge Paving

5700

4763.5

So. Edge Paving

4750

4735.7

18' Lt to center Gas Valve

4735.5

3' Rt to center P. Pole # 477544

4730

135.93 A

Lt

Rt

130.4

Rt 61

55

131.01

472

131.21

472

130.84

5.09

130.5

5.4

130.5

5.4

135.93 A

Cont'd From Page 61

Lt

Rt

Rt 62

T.P. 3.62 134.45 ∇ 5.10 130.83

7+50

higher

130.9
5.0

7+13 Cross water lateral

7+00

higher

131.2
4.7

6+50

higher

131.3
4.6

6+34 18' Rt to center P. Pole # 471543

6+00

136.0 133.0 131.4 131.1
+0.1 2.7 4.5 4.8
50 8 5

check

4.40 131.53 = 131.57

see pg. 48 Ld. & W. & Market

5+75.11 EC.

70' Rt to Pav. Edge

130.5

5.4

135.93 ∇

135.93 ∇

Contd From Page 62

Lt.

Rt

Rt

63

128.73

10+0.0

7' Rt to Pav. Edge (old Conc.)

5.72

129.11

9+50

5.34

9+23.55

{ Begin fullwidth paving on left plus walk.
(Must be opening on Tele. Co. Property.)

129.90

129.26

129.31

7.55

5.19

5.14

8

8

cb

gut

Word almost missed for needs.

8+94.1

12' Lt

618" RCP Culvert (6' Hdw.)
We cross this.

130.13

127.43

129.8

4.32

7.02

4.7

12

12

TOP
HAWL

INVERT

130.1

8+50

Stations OK.

← higher

4.4

8+86.7

4 1/2' Rt

to center Tele. M.H.

8+73.5

12' Rt

to center P.Pole - 477542

130.7

8+00

7' Rt

to Pav. Edge

← higher

3.8

134.45 X

134.45 X

Cont'd From Page 63

Lt

£

Rt

64

Continued next page.

check

6.48 127.97 = 128.08 See pg. 58.

127.97

11723.07

6.48

11400

128.72 128.02 128.01

5.73 6.43 6.44

83
cb out

10788

Cross Gas Lateral

10782

Cross water lateral

128.40

10450

605

13445 π

13445 π

Cont'd From Page 64

Lt

£

RR 65

see next Page

2+97.8 4³ Lt to center Tele. Co. MH

123.9 125.4 130.0 130.07 129.98 129.8 130.1 145.1

117 102 56 549 560 58 55 +9.5 higher
 100 75 50 37 7 2 17

EP EP

2+50 7 Lt to Pav. Edge

2+00 7 Lt to Pav. Edge

1+50 7 Lt to Pav. Edge

1+00 7 Lt to Pav. Edge

0+50 7 Lt to Pav. Edge

130.0 130.0 142.3

56 56 +6.7 higher
 4 13

130.2 130.4 141.3

54 52 +5.7 higher
 4 11

130.5 130.7 139.9

51 49 +4.3 higher
 4 13

130.5 130.9 137.4

51 47 +1.8 higher
 5 12

130.5

51

0+00 = 5+46.60 Now going west on Market

TRM 40513558 π

131.53 EC π Market

135.58

Cont'd From Page 65

28

E

R

66

1774.53

Uvas St. = 27132

114.76
= 4.76
See pg. 60
379

1758

114.2
24

1750

112.1
6.5

1700

106.1 107.8 109.3 110.3
12.5 10.8 9.3 8.3
60 24 12
Bottom

higher →

0750

109.4 107.4 108.1
14.2 11.2 10.5
60 26
Bottom

higher →

0700 Going North in Plantens St.

105.8
12.8

TEM

12.82

118.55 T

105.73

See pg. 54
on 0700 Stub

118.55 T

74

75

18 + 97.50 = PK. in Dr. 75° 50' Lt.
20 + 07.22 = 12.59' Lt. at 90° = 3/4" pipe + ct. = ^{at PC.}
20 + 72.53 = Cross. Ang. 55° 26' Rt.

21 + 54.16 - 5.10' Lt. = 90° = 3/4" pipe + ct.
22 + 44.88 - 8.93' Rt. at 90° pipe + ct.
25 + 08.79 - 12.05' Lt. at 90° = Id. + ct.
25 + 35.71 = Ang. = Cross

27 + 50.00 = Cross - Ang. 32° 55' 30" Lt.
27 + 97.47 - 4.28' Lt. = Id. + ct.
29 + 72.73 - 4.88' Lt. = Id. + ct.
29 + 87.12 - 4.92' Lt. = City Disk
31 + 02.24 = Hub. - Ang. 108° 08' 30" Rt.

spike - .13' Rt. - 34 + 64.00

35 + 85.93 = Int. = 34 + 34.33 on Canada
Ang. 44° 34' Rt.

78° 59' Rt.

18 + 97.50
17 + 64.21

133.29

179 59 60
71 51 30

108° 08' 30"

19 + 90
17.22

20 + 07.22

10.39 Rm
780

1739

45.05
17

44.88

54.15

25 + 08.46
33

08.79

179.60
85.49
94.12

130.83
536
136.19
467
131.52

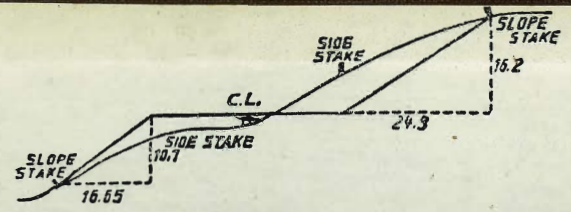
27

6+86.34
5+40.26
146.08

13593
440
13153

6+86.34
153.33
839.67

6+86.34
163.66
850.00



DISTANCES FROM SIDE STAKES FOR CROSS-SECTIONING.
SLOPE 1 1/2 TO 1. ROADWAY OF ANY WIDTH.

	0	.1	.2	.3	.4	.5	.6	.7	.8	.9	
0	0.00	0.15	0.30	0.45	0.60	0.75	0.90	1.05	1.20	1.35	0
1	1.50	1.65	1.80	1.95	2.10	2.25	2.40	2.55	2.70	2.85	1
2	3.00	3.15	3.30	3.45	3.60	3.75	3.90	4.05	4.20	4.35	2
3	4.50	4.65	4.80	4.95	5.10	5.25	5.40	5.55	5.70	5.85	3
4	6.00	6.15	6.30	6.45	6.60	6.75	6.90	7.05	7.20	7.35	4
5	7.50	7.65	7.80	7.95	8.10	8.25	8.40	8.55	8.70	8.85	5
6	9.00	9.15	9.30	9.45	9.60	9.75	9.90	10.05	10.20	10.35	6
7	10.50	10.65	10.80	10.95	11.10	11.25	11.40	11.55	11.70	11.85	7
8	12.00	12.15	12.30	12.45	12.60	12.75	12.90	13.05	13.20	13.35	8
9	13.50	13.65	13.80	13.95	14.10	14.25	14.40	14.55	14.70	14.85	9
10	15.00	15.15	15.30	15.45	15.60	15.75	15.90	16.05	16.20	16.35	10
11	16.50	16.65	16.80	16.95	17.10	17.25	17.40	17.55	17.70	17.85	11
12	18.00	18.15	18.30	18.45	18.60	18.75	18.90	19.05	19.20	19.35	12
13	19.50	19.65	19.80	19.95	20.10	20.25	20.40	20.55	20.70	20.85	13
14	21.00	21.15	21.30	21.45	21.60	21.75	21.90	22.05	22.20	22.35	14
15	22.50	22.65	22.80	22.95	23.10	23.25	23.40	23.55	23.70	23.85	15
16	24.00	24.15	24.30	24.45	24.60	24.75	24.90	25.05	25.20	25.35	16
17	25.50	25.65	25.80	25.95	26.10	26.25	26.40	26.55	26.70	26.85	17
18	27.00	27.15	27.30	27.45	27.60	27.75	27.90	28.05	28.20	28.35	18
19	28.50	28.65	28.80	28.95	29.10	29.25	29.40	29.55	29.70	29.85	19
20	30.00	30.15	30.30	30.45	30.60	30.75	30.90	31.05	31.20	31.35	20
21	31.50	31.65	31.80	31.95	32.10	32.25	32.40	32.55	32.70	32.85	21
22	33.00	33.15	33.30	33.45	33.60	33.75	33.90	34.05	34.20	34.35	22
23	34.50	34.65	34.80	34.95	35.10	35.25	35.40	35.55	35.70	35.85	23
24	36.00	36.15	36.30	36.45	36.60	36.75	36.90	37.05	37.20	37.35	24
25	37.50	37.65	37.80	37.95	38.10	38.25	38.40	38.55	38.70	38.85	25
26	39.00	39.15	39.30	39.45	39.60	39.75	39.90	40.05	40.20	40.35	26
27	40.50	40.65	40.80	40.95	41.10	41.25	41.40	41.55	41.70	41.85	27
28	42.00	42.15	42.30	42.45	42.60	42.75	42.90	43.05	43.20	43.35	28
29	43.50	43.65	43.80	43.95	44.10	44.25	44.40	44.55	44.70	44.85	29
30	45.00	45.15	45.30	45.45	45.60	45.75	45.90	46.05	46.20	46.35	30
31	46.50	46.65	46.80	46.95	47.10	47.25	47.40	47.55	47.70	47.85	31
32	48.00	48.15	48.30	48.45	48.60	48.75	48.90	49.05	49.20	49.35	32
33	49.50	49.65	49.80	49.95	50.10	50.25	50.40	50.55	50.70	50.85	33
34	51.00	51.15	51.30	51.45	51.60	51.75	51.90	52.05	52.20	52.35	34
35	52.50	52.65	52.80	52.95	53.10	53.25	53.40	53.55	53.70	53.85	35
36	54.00	54.15	54.30	54.45	54.60	54.75	54.90	55.05	55.20	55.35	36
37	55.50	55.65	55.80	55.95	56.10	56.25	56.40	56.55	56.70	56.85	37
38	57.00	57.15	57.30	57.45	57.60	57.75	57.90	58.05	58.20	58.35	38
39	58.50	58.65	58.80	58.95	59.10	59.25	59.40	59.55	59.70	59.85	39
40	60.00	60.15	60.30	60.45	60.60	60.75	60.90	61.05	61.20	61.35	40
41	61.50	61.65	61.80	61.95	62.10	62.25	62.40	62.55	62.70	62.85	41
42	63.00	63.15	63.30	63.45	63.60	63.75	63.90	64.05	64.20	64.35	42
43	64.50	64.65	64.80	64.95	65.10	65.25	65.40	65.55	65.70	65.85	43
44	66.00	66.15	66.30	66.45	66.60	66.75	66.90	67.05	67.20	67.35	44
45	67.50	67.65	67.80	67.95	68.10	68.25	68.40	68.55	68.70	68.85	45
46	69.00	69.15	69.30	69.45	69.60	69.75	69.90	70.05	70.20	70.35	46
47	70.50	70.65	70.80	70.95	71.10	71.20	71.40	71.55	71.70	71.85	47
48	72.00	72.15	72.30	72.45	72.60	72.75	72.90	73.05	73.20	73.35	48
49	73.50	73.65	73.80	73.95	74.10	74.25	74.40	74.55	74.70	74.85	49
50	75.00	75.15	75.30	75.45	75.60	75.75	75.90	76.05	76.20	76.35	50

THE NATIONAL BLANK BOOK COMPANY
HOLYOKE MASSACHUSETTS
NEW YORK CHICAGO BOSTON SAN FRANCISCO