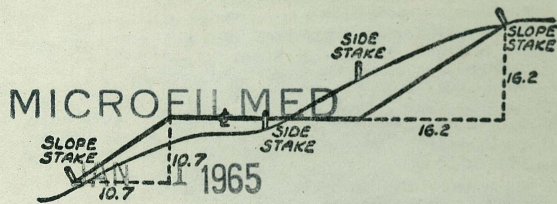


2216

TECOLOTE SEWER—

JUNE 1911



DISTANCES FROM SIDE STAKES FOR CROSS-SECTIONING
SLOPE 1 TO 1. ROADWAY OF ANY WIDTH

	0	.1	.2	.3	.4	.5	.6	.7	.8	.9	
0	0.00	0.10	0.20	0.30	0.40	0.50	0.60	0.70	0.80	0.90	0
1	1.00	1.10	1.20	1.30	1.40	1.50	1.60	1.70	1.80	1.90	1
2	2.00	2.10	2.20	2.30	2.40	2.50	2.60	2.70	2.80	2.90	2
3	3.00	3.10	3.20	3.30	3.40	3.50	3.60	3.70	3.80	3.90	3
4	4.00	4.10	4.20	4.30	4.40	4.50	4.60	4.70	4.80	4.90	4
5	5.00	5.10	5.20	5.30	5.40	5.50	5.60	5.70	5.80	5.90	5
6	6.00	6.10	6.20	6.30	6.40	6.50	6.60	6.70	6.80	6.90	6
7	7.00	7.10	7.20	7.30	7.40	7.50	7.60	7.70	7.80	7.90	7
8	8.00	8.10	8.20	8.30	8.40	8.50	8.60	8.70	8.80	8.90	8
9	9.00	9.10	9.20	9.30	9.40	9.50	9.60	9.70	9.80	9.90	9
10	10.00	10.10	10.20	10.30	10.40	10.50	10.60	10.70	10.80	10.90	10
11	11.00	11.10	11.20	11.30	11.40	11.50	11.60	11.70	11.80	11.90	11
12	12.00	12.10	12.20	12.30	12.40	12.50	12.60	12.70	12.80	12.90	12
13	13.00	13.10	13.20	13.30	13.40	13.50	13.60	13.70	13.80	13.90	13
14	14.00	14.10	14.20	14.30	14.40	14.50	14.60	14.70	14.80	14.90	14
15	15.00	15.10	15.20	15.30	15.40	15.50	15.60	15.70	15.80	15.90	15
16	16.00	16.10	16.20	16.30	16.40	16.50	16.60	16.70	16.80	16.90	16
17	17.00	17.10	17.20	17.30	17.40	17.50	17.60	17.70	17.80	17.90	17
18	18.00	18.10	18.20	18.30	18.40	18.50	18.60	18.70	18.80	18.90	18
19	19.00	19.10	19.20	19.30	19.40	19.50	19.60	19.70	19.80	19.90	19
20	20.00	20.10	20.20	20.30	20.40	20.50	20.60	20.70	20.80	20.90	20
21	21.00	21.10	21.20	21.30	21.40	21.50	21.60	21.70	21.80	21.90	21
22	22.00	22.10	22.20	22.30	22.40	22.50	22.60	22.70	22.80	22.90	22
23	23.00	23.10	23.20	23.30	23.40	23.50	23.60	23.70	23.80	23.90	23
24	24.00	24.10	24.20	24.30	24.40	24.50	24.60	24.70	24.80	24.90	24
25	25.00	25.10	25.20	25.30	25.40	25.50	25.60	25.70	25.80	25.90	25
26	26.00	26.10	26.20	26.30	26.40	26.50	26.60	26.70	26.80	26.90	26
27	27.00	27.10	27.20	27.30	27.40	27.50	27.60	27.70	27.80	27.90	27
28	28.00	28.10	28.20	28.30	28.40	28.50	28.60	28.70	28.80	28.90	28
29	29.00	29.10	29.20	29.30	29.40	29.50	29.60	29.70	29.80	29.90	29
30	30.00	30.10	30.20	30.30	30.40	30.50	30.60	30.70	30.80	30.90	30
31	31.00	31.10	31.20	31.30	31.40	31.50	31.60	31.70	31.80	31.90	31
32	32.00	32.10	32.20	32.30	32.40	32.50	32.60	32.70	32.80	32.90	32
33	33.00	33.10	33.20	33.30	33.40	33.50	33.60	33.70	33.80	33.90	33
34	34.00	34.10	34.20	34.30	34.40	34.50	34.60	34.70	34.80	34.90	34
35	35.00	35.10	35.20	35.30	35.40	35.50	35.60	35.70	35.80	35.90	35
36	36.00	36.10	36.20	36.30	36.40	36.50	36.60	36.70	36.80	36.90	36
37	37.00	37.10	37.20	37.30	37.40	37.50	37.60	37.70	37.80	37.90	37
38	38.00	38.10	38.20	38.30	38.40	38.50	38.60	38.70	38.80	38.90	38
39	39.00	39.10	39.20	39.30	39.40	39.50	39.60	39.70	39.80	39.90	39
40	40.00	40.10	40.20	40.30	40.40	40.50	40.60	40.70	40.80	40.90	40
41	41.00	41.10	41.20	41.30	41.40	41.50	41.60	41.70	41.80	41.90	41
42	42.00	42.10	42.20	42.30	42.40	42.50	42.60	42.70	42.80	42.90	42
43	43.00	43.10	43.20	43.30	43.40	43.50	43.60	43.70	43.80	43.90	43
44	44.00	44.10	44.20	44.30	44.40	44.50	44.60	44.70	44.80	44.90	44
45	45.00	45.10	45.20	45.30	45.40	45.50	45.60	45.70	45.80	45.90	45
46	46.00	46.10	46.20	46.30	46.40	46.50	46.60	46.70	46.80	46.90	46
47	47.00	47.10	47.20	47.30	47.40	47.50	47.60	47.70	47.80	47.90	47
48	48.00	48.10	48.20	48.30	48.40	48.50	48.60	48.70	48.80	48.90	48
49	49.00	49.10	49.20	49.30	49.40	49.50	49.60	49.70	49.80	49.90	49
50	50.00	50.10	50.20	50.30	50.40	50.50	50.60	50.70	50.80	50.90	50

Distance of slope stake from side or shoulder stake for any width roadway, slope 1 to 1. If ground is nearly level, the cut or fill at side stake is located by the double entry method in left column and top row. The number in body of table in same row and column gives distance from side stake to slope stake. If ground is not level estimate the difference in elevation between the side stake and slope stake, lower target by this amount if cut, elevate if fill. Add this amount to cut or fill and find distance in table. Set up rod at this point, and line of sight should cut target. If it does not make the slight adjustment necessary.

TABLE XIII—CORRECTIONS FOR TANGENTS AND EXTERNALS

These corrections are to be added to the approximate values, found by dividing the tangent, or external, for a 1° curve (Table VIII) by the degree of curve, in order to obtain the true tangents, or externals. Intermediate values may be obtained by interpolation.

FOR TANGENTS ADD

Central Angle	DEGREE OF CURVE													
	5°	10°	15°	20°	25°	30°	35°	40°	45°	50°	55°	60°	65°	70°
10°	.03	.08	.09	.13	.16	.19	.22	.25	.28	.31	.34	.38	.42	.46
15°	.04	.10	.14	.19	.24	.29	.34	.39	.45	.51	.53	.58	.63	.68
20°	.06	.13	.19	.26	.32	.39	.45	.51	.58	.65	.72	.79	.84	.90
25°	.08	.16	.24	.33	.40	.49	.58	.67	.75	.83	.90	.99	1.06	1.14
30°	.10	.19	.29	.39	.49	.59	.69	.79	.89	.99	1.09	1.20	1.29	1.39
35°	.11	.22	.34	.47	.58	.69	.79	.81	.92	1.04	1.29	1.42	1.54	1.66
40°	.13	.26	.40	.53	.67	.80	.93	1.06	1.20	1.34	1.49	1.64	1.79	1.94
45°	.15	.30	.44	.60	.76	.91	1.06	1.21	1.37	1.52	1.70	1.87	2.04	2.21
50°	.17	.34	.51	.68	.85	1.02	1.19	1.36	1.54	1.72	1.91	2.10	2.29	2.48
55°	.19	.38	.57	.76	.95	1.14	1.32	1.52	1.72	1.92	2.14	2.35	2.56	2.77
60°	.21	.42	.63	.84	1.05	1.27	1.49	1.71	1.94	2.17	2.38	2.60	2.83	3.07
65°	.23	.46	.69	.93	1.16	1.40	1.64	1.88	2.13	2.38	2.63	2.88	3.13	3.39
70°	.25	.51	.76	1.02	1.28	1.54	1.80	2.06	2.33	2.60	2.88	3.16	3.44	3.72
75°	.27	.56	.83	1.12	1.40	1.69	1.98	2.27	2.57	2.87	3.16	3.47	3.78	4.09
80°	.30	.61	.91	1.22	1.53	1.84	2.15	2.46	2.78	3.10	3.44	3.78	4.12	4.46
85°	.33	.66	1.00	1.33	1.68	2.02	2.36	2.70	3.05	3.40	3.77	4.14	4.55	4.89
90°	.36	.72	1.09	1.45	1.83	2.20	2.57	2.94	3.32	3.70	4.10	4.50	4.91	5.32
95°	.39	.79	1.19	1.55	2.00	2.40	2.80	3.20	3.61	4.02	4.40	4.98	5.38	5.83
100°	.43	.86	1.30	1.74	2.18	2.62	3.06	3.50	3.95	4.40	4.88	5.37	5.85	6.34
110°	.51	1.03	1.56	2.08	2.61	3.14	3.67	4.21	4.76	5.31	5.86	6.43	7.01	7.60
120°	.62	1.25	1.93	2.52	3.16	3.81	4.45	5.11	5.77	6.44	7.12	7.80	8.50	9.22

FOR EXTERNALS ADD

Central Angle	DEGREE OF CURVE													
	5°	10°	15°	20°	25°	30°	35°	40°	45°	50°	55°	60°	65°	70°
10°	.001	.003	.004	.006	.007	.008	.009	.011	.012	.014	.015	.017	.018	.020
15°	.003	.007	.010	.014	.018	.023	.027	.029	.032	.035	.039	.043	.047	.051
20°	.006	.011	.017	.022	.028	.034	.038	.045	.051	.057	.063	.070	.076	.083
25°	.009	.018	.027	.036	.046	.056	.065	.074	.083	.093	.106	.120	.127	.135
30°	.013	.025	.038	.051	.065	.078	.090	.103	.116	.129	.149	.170	.179	.188
35°	.018	.035	.054	.072	.086	.109	.131	.153	.175	.197	.218	.230	.247	.264
40°	.023	.046	.070	.093	.117	.141	.172	.203	.234	.265	.277	.290	.315	.341
45°	.030	.060	.093	.119	.153	.184	.216	.254	.289	.325	.351	.378	.411	.445
50°	.037	.075	.116	.151	.189	.227	.266	.305	.345	.384	.425	.467	.508	.550
55°	.046	.093	.142	.188	.236	.283	.332	.381	.420	.479	.530	.582	.641	.700
60°	.056	.112	.168	.225	.283	.340	.398	.457	.516	.575	.636	.697	.774	.851
65°	.067	.135	.204	.273	.343	.412	.483	.554	.625	.697	.711	.845	.922	1.01
70°	.080	.159	.240	.321	.403	.485	.568	.652	.735	.819	.906	.994	1.08	1.17
75°	.095	.182	.286	.383	.480	.578	.678	.777	.877	.977	1.07	1.18	1.29	1.39
80°	.110	.220	.332	.445	.558	.671	.787	.903	1.02	1.13	1.25	1.38	1.50	1.62
85°	.128	.259	.391	.524	.657	.790	.926	1.06	1.20	1.34	1.47	1.62	1.76	1.91
90°	.149	.299	.450	.603	.756	.910	1.07	1.22	1.38	1.54	1.70	1.87	2.03	2.20
95°	.174	.350	.522	.706	.885	1.06	1.25	1.43	1.62	1.80	1.99	2.18	2.38	2.58
100°	.200	.401	.604	.809	1.01	1.22	1.43	1.64	1.85	2.06	2.28	2.50	2.73	2.96
110°	.268	.536	.806	1.08	1.35	1.63	1.91	2.20	2.48	2.76	3.05	3.35	3.66	3.96
120°	.360	.721	1.08	1.45	1.82	2.19	2.57	2.95	3.33	3.72	4.11	4.50	4.91	5.32

INDEX

Alignment - Tecolote Sewer

Midway St. Tie points and encroachments

Ties to Calumet Ave & Chelsea Ave in Cliffside

Millard Prop. line as per 5361-B.

Page 119

10-11

13-15

16

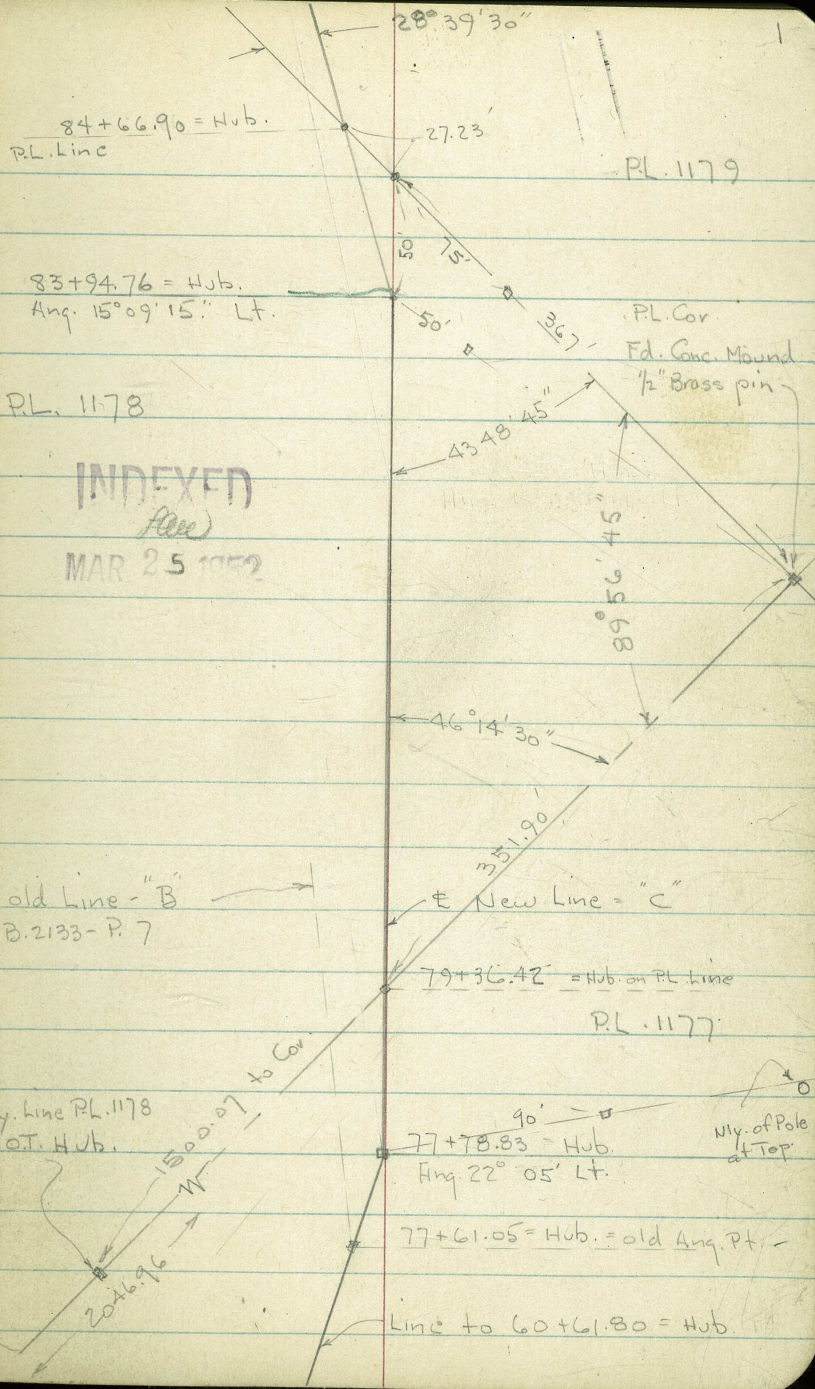
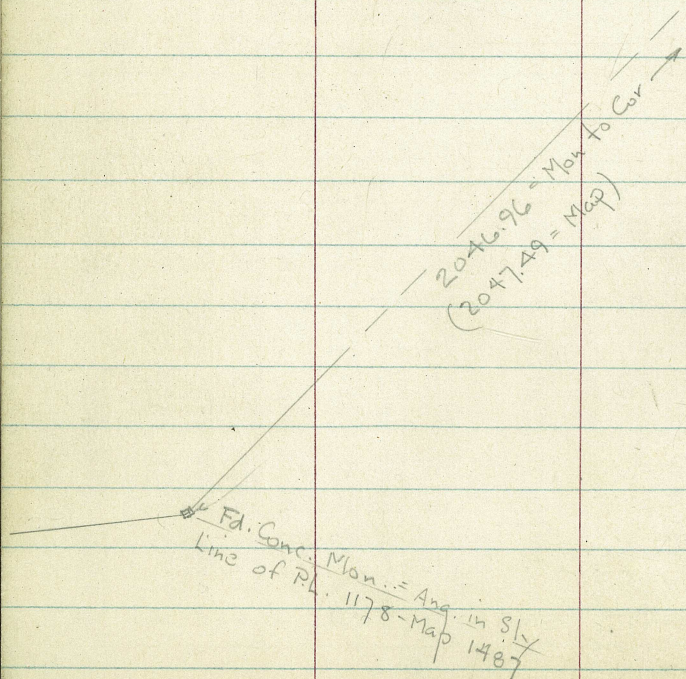
New Alignment of Tecolote Sewer

from Sta. 77+61.05 to Sta. 105+00

Plan- 9402-L - 1692-D - Book 2133

5768 ^{FB 1450} ^{FB 877} 3-14-52 - 7.0.

W.O. 20434 $\frac{2133}{18}$



PL. 1178
INDEXED
(file)
 MAR 25 1952

95+00.07 P.O.T. Hub.
inside fence

94+21.69 Hub.
Ang. 15° 09' 14" Lt.
75'

sty. of Knot Hole
Bot. of Pole

89+95.84 = P.O.T. Hub.
N. of Large Tree

89+08.23 Hub.
Ang. 15° 09' 14" Lt.
75'

Disk in
Pepper

Nly. Top of Pole

Sly. of P.L. Line
Top of Hill

70'

82'

Pipe = P.L. Cor.

105+00 = Hub. on "P" Line
Ang. Pt.
= 104+98.71 = New Sta.

10420

76'

103+34.48 Hub.
Ang. 7° 54' Lt.

Top of
Tallest
Pole

99+35.11 = Hub.
Ang. 14° 19' 45" Lt.

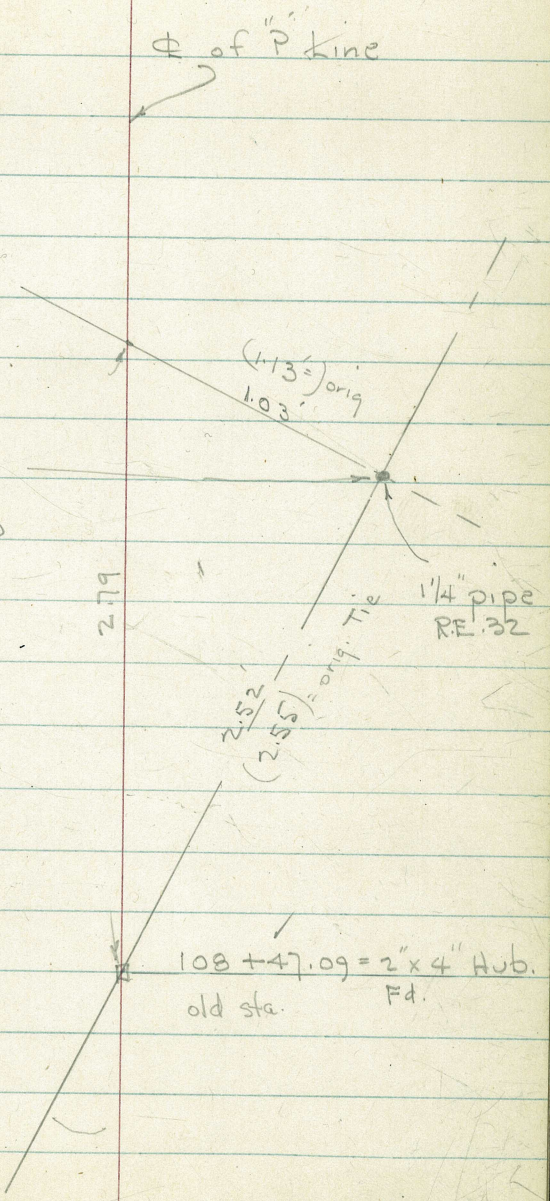
85'

Disk in Pole

Pipe has replaced orig. point found close enough
To use our figured Tie - B. 2133 - P. 11

NE. Cor.
P.L. 1178

Sec. orig. Tie
B. 2133 - P. 11



108 + 47.09 = 2" x 4" Hub.
old sta. Fd.

Levels along \pm of New Alignment
of Trunk Sewer - See sketch - P. 1

Lt. # Rt.

85+00			68.4	
84+50			68.8	
83+94.70 = Ang. Pt.			69.14	= Hub.
83+50			68.8	
83+00		66.4	67.5	69.1
82+50		10		10
82+00			67.5	
81+50			66.1	
81+00			64.4	
80+50			63.7	
80+00			63.9	
79+50		62.0	63.0	64.1
79+00		10		10
79+00			62.8	
79+00			60.6	
78+50			58.3	
78+00			56.5	
77+78.83 = New Ang. Pt.			55.89	= Hub.

B.M. = Hub. - 77+61.05 54.95
B. 2133 - P. 36

Actual Elev. Shown.

92+00

91+75 - 18' Rt. = ± 24" Pepper - clump

91+50

91+36 - 7' Rt. = ± 24" Pepper - clump

91+00

90+50

90+00

89+92 = ± 48" Euc. Tree Line thro 2 trunks

89+50

89+08.16 = Ang. Pt

88+50

88+00

87+50

87+00

86+50

86+00

85+70 - 1' Rt. = ± Clump of Willow Trees

85+44 Bank

85+39 = ± Creek

85+35 = Bank

Lt.

±

Rt.

69.6

69.5

70.4

72.5

73.6

73.7

73.83 = Hub.

70.1

68.4

65.7

66.2

68.0

69.8

69.8

67.4

63.9

66.8

Lt.

#

Rt.

7

97+38 = Bed.		66.0		
97+15 = Bed.		66.2		
97+10		67.8		
97+05 = Bed.		66.1		
96+80 = in Bed		66.4		
96+70 = Bank		67.7		
96+60 = in N.W. Cor. of Bed. sludge bed. - Dirt		66.2		
96+18 = 3' Rt. = Wly. of Top of Bank to 25' wide	69.6 10	69.2	68.2 3 = Top Bank	63.4 7 = Bottom
96+00		70.3		
95+79.9 = Wly. of Conc chamber - Wly. 5.2' is Conc. slab. 17' long & 9' wide	71.53 = Top of slab. 5.8 = Cor.		71.00 = Top of Wall 3.3 = Cor.	
95+62.7 = Sly. of Valve + Pump chamber - Conc.	71.53 = slab. 3 = Cor.	64.02 = Bottom - Conc.	71.02 6 = Cor.	
95+53.5 = 6.3' Rt. = E P. pole				
95+50		71.9		
95+00		72.5		
94+66 = Cross Cyclone fence				
94+21.62 = Ang. Pt.		72.93	= on Hub.	
94+00		72.9		
93+50		72.1		
93+00		71.4		
92+50		70.4		

Lt.

#

Rt.

8

101+00

75.6

100+50

74.3

100+00

72.9

99+63 = Cross Wood posts
Wire fence - 66.1 ft. = Cor.

99+62

72.1

99+58

67.6

99+35.08 = Ang Pt. = on Bank
shows wly. line of beds.

67.63 = Hub.

99+22 = Bed - to Lt. = NW Cor. in Bottom

65.6

98+95 = Bed

65.6

14 =
N.E. Cor.

98+83 = Bank

67.2

98+71 = Bed.

65.6

98+45 = Bed.

65.6

98+30 = Bank

68.1

98+15 = Bed.

66.3

97+93 = Bed.

65.7

97+87 = Bank

67.9

97+84 = Bed.

66.0

97+58 = Bed.

66.2

97+50 = Bank

67.8

lt.

♀

rt.

9

105+00 = old Ang. Pt.

104+50

104+00

103+50

103+34.48 = Ang. Pt.

103+00

102+50

102+00

101+50

72.30 - Hub. = Top burned

72.2

was 72.40
B-2133 - P. 41

71.9

72.0

73.3

71.9

72.2

72.5

75.9

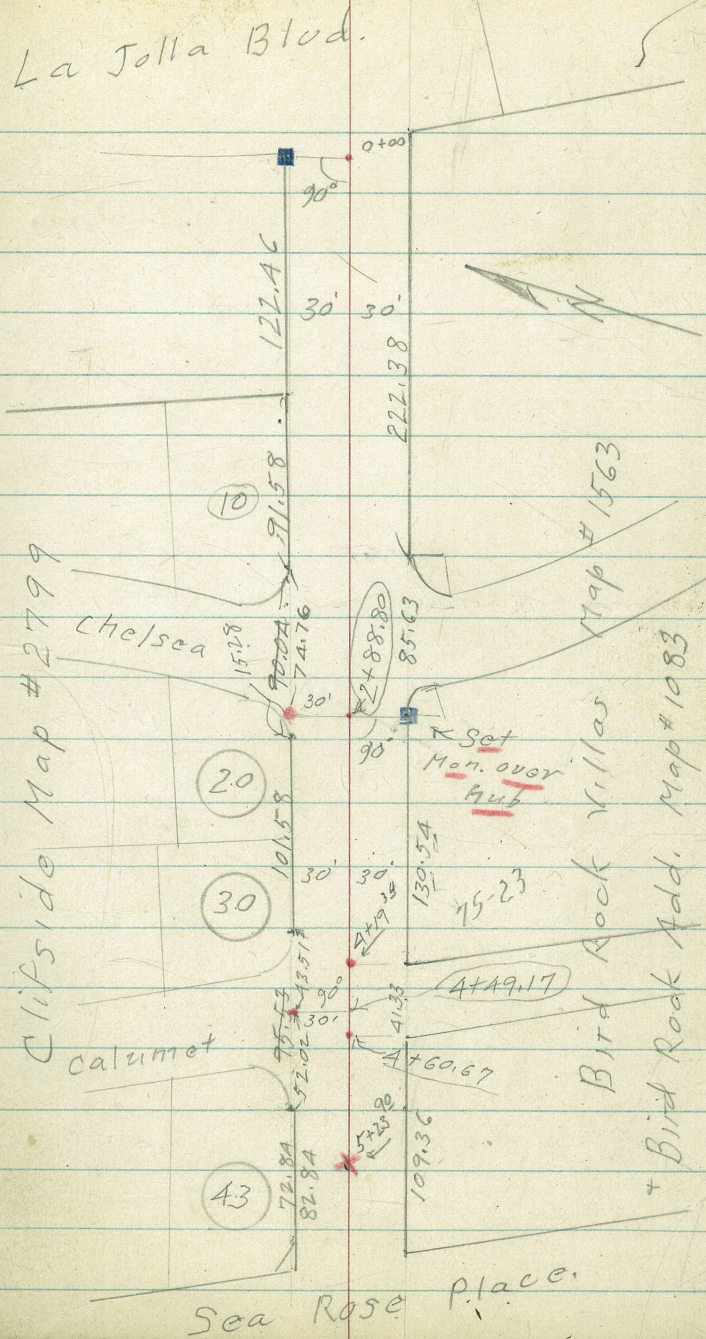
Encroachments
 Midway Street
 Calumet to Sea Rose Place.

INDEXED
 FEB 2 1954

C.H.S.
 Beeg
 Schelin
 pullin

1-27-54
 W.O. # 20008 ✓
 Map # 2799
 1083
 1563

- denotes Ed. conc. Man.
 - " " " 1/2 hub + tack
 - " " Set. P.K. Nail.
 - " " " dist in lead
 - x " " cut cross in curb
- distances shown along lot line are map distances.



Encroachments in
Midway Street.

West of Calumet Ave

C.H.S.

Begg

Schelin

Pullen

1-29-54

w.o. 20008

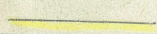
Map # 2799

" 1083

" 1563

F.B. 1813-P58

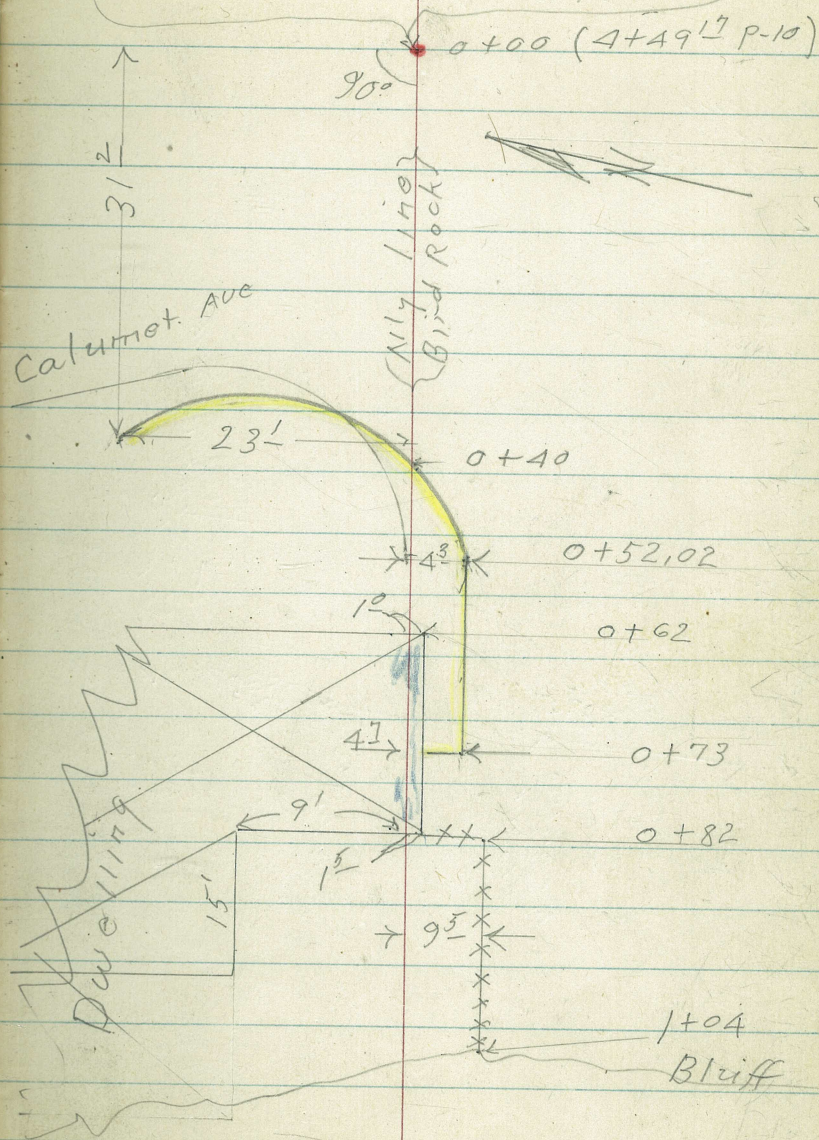
"

 Denotes 6" wide 4' high
conc. block wall

4+49'1" on Nly. line of Midway
street (Page 10) = 0+00 page 11

xxxxxx denotes stake fence

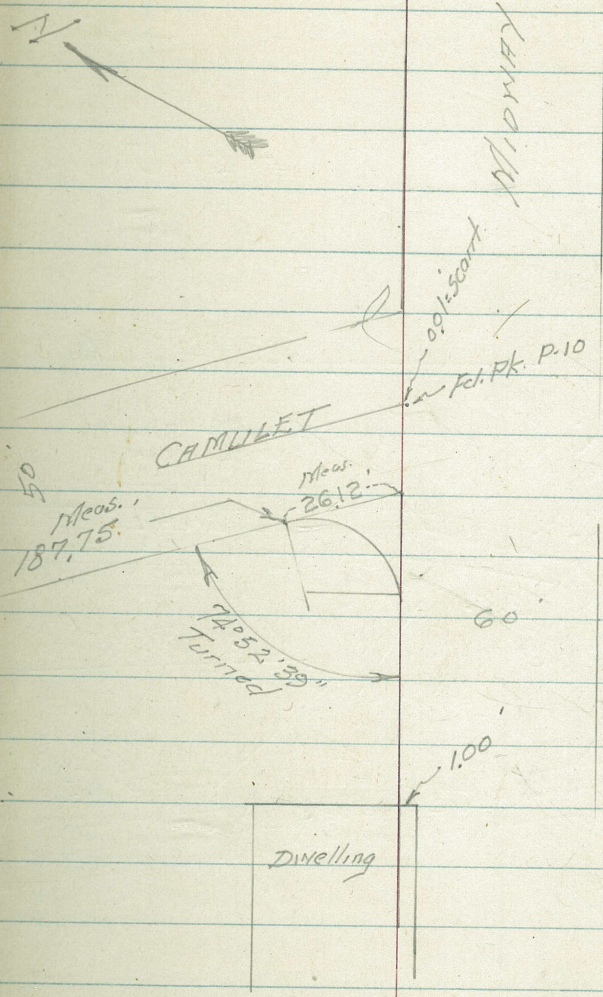
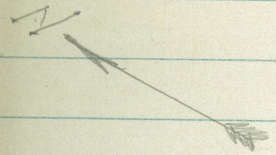
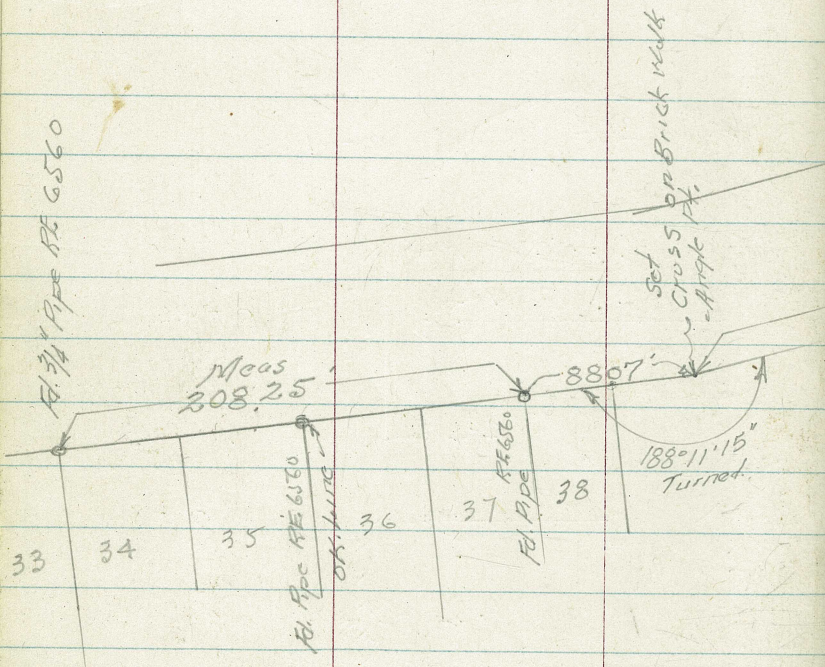
Nly line Bird Rock
& Calumet See page 10



Re Check ~ Encroachments
on Midway

Walker
Pope
Oltman
Olson
5-13-54

140 20008



Tie Points in Cliffs side

INDEXED
C.H.S. HER
486 799
Pulled 1954

7-27-54

Book-T.P-30-P3+4.
" 2216 - P-10
Map. 2799

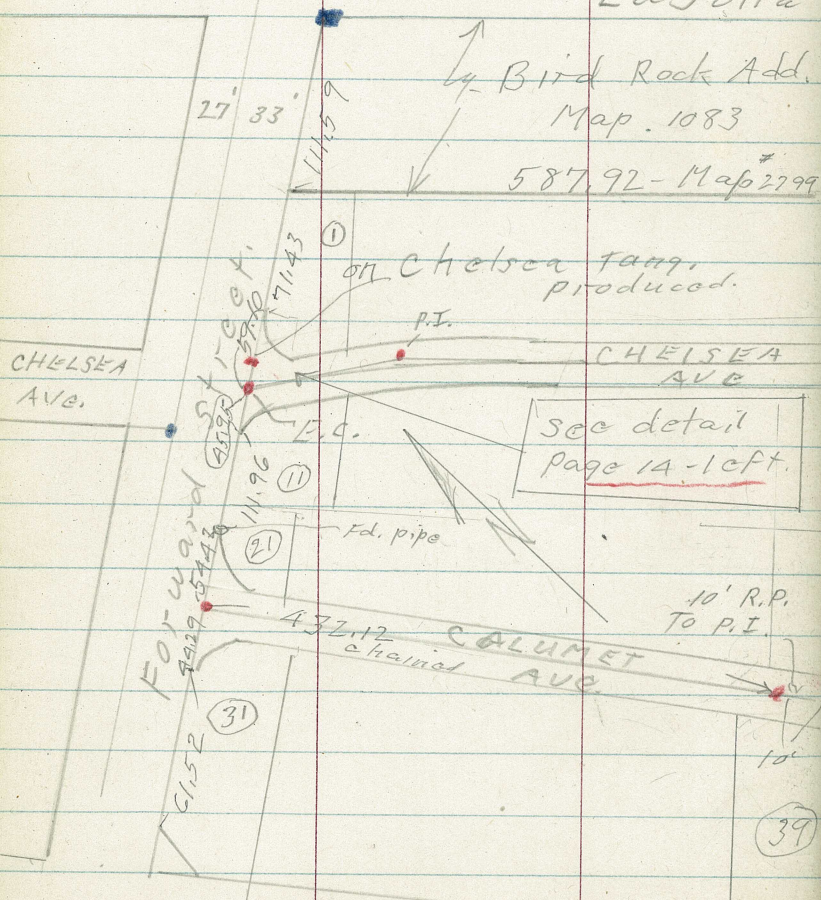
- denotes city Mon. Found.
- " " L+T "
- " Point set
- " " Found & reset.
- ① " Lot #1 - etc.

La Jolla Blvd.

4 Bird Rock Add.
Map. 1083

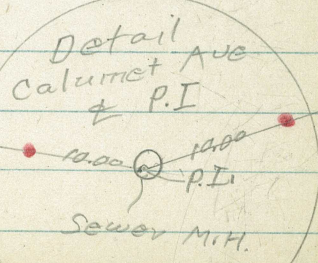
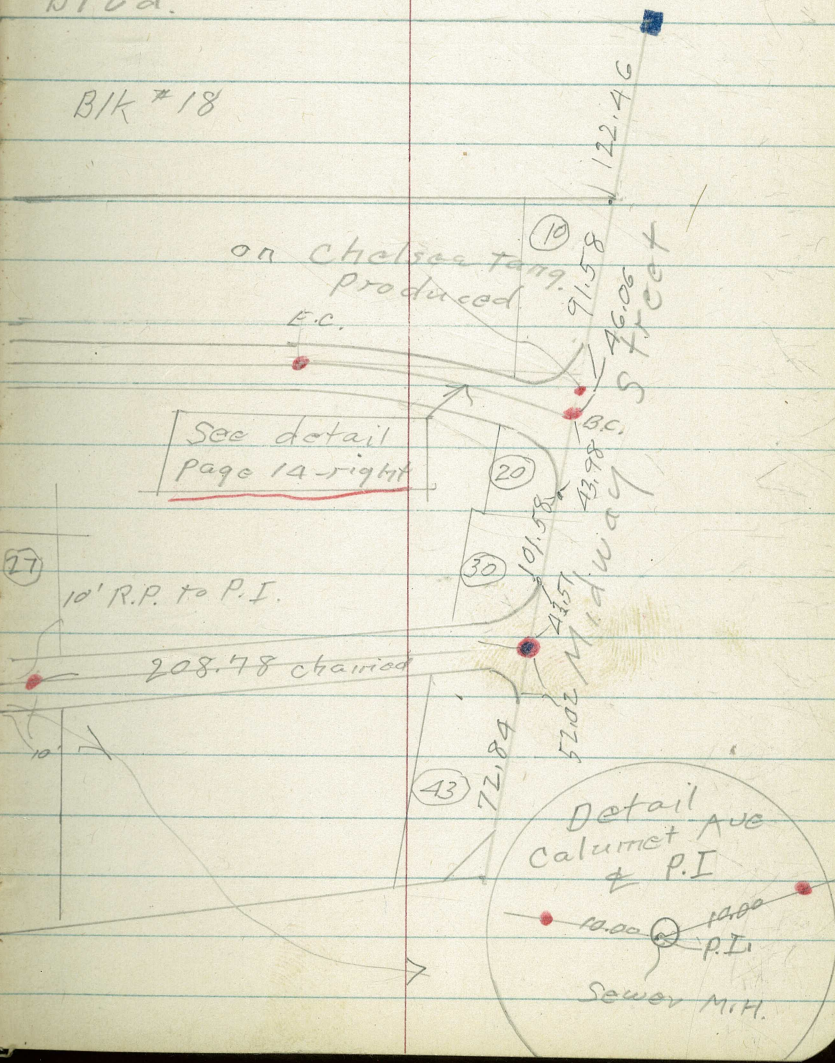
BIK #18

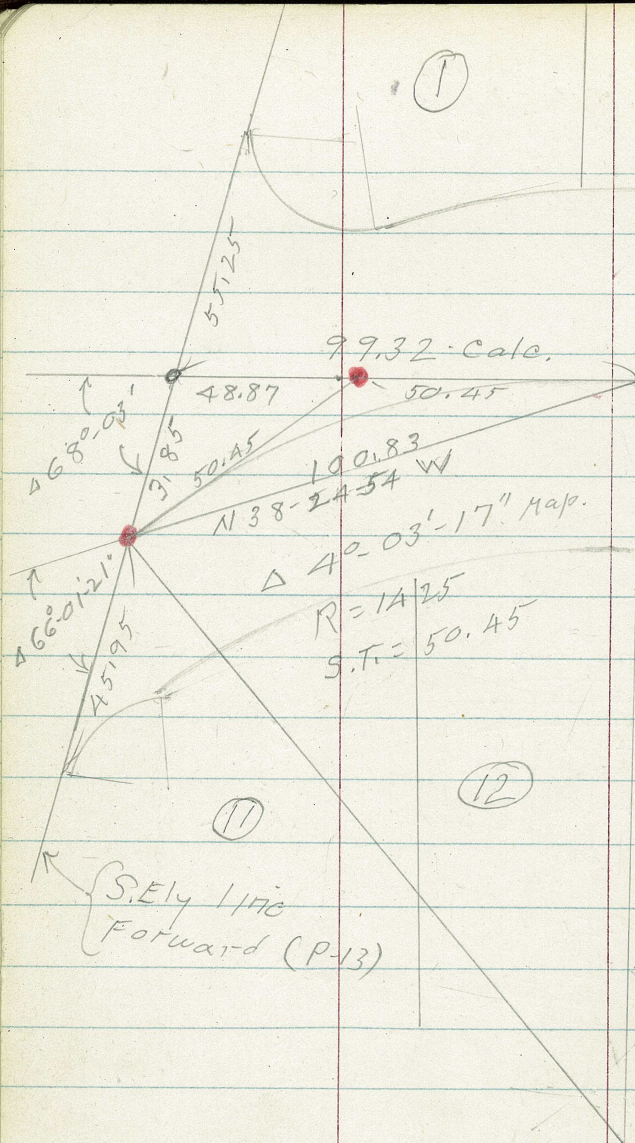
587.92 - Map 2799



on Chelsea tang. produced

See detail Page 14-right





①

②

4' M
Chelsea
Ave.
N 32-23-15 W

● denotes set P.K. Nail & Disk

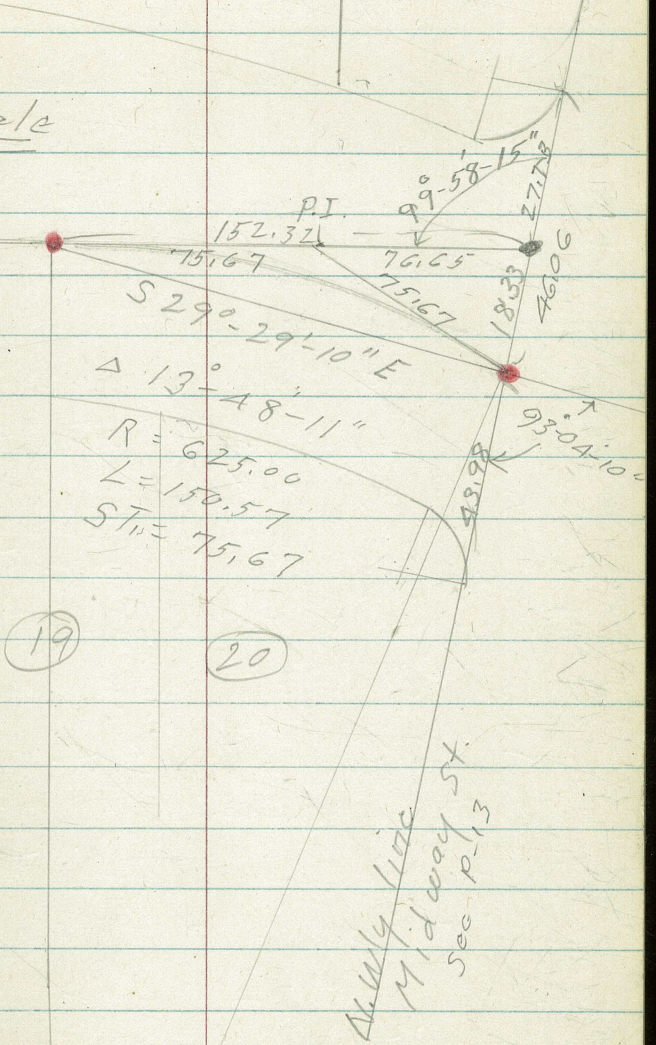
○ " Set P.K. Nail

⑨

⑩

14

No-scale



S. Ely line
Midway St.
Sec. P. 13

Note 8/9/54.

See Page 13

Found but one pipe + disk that looked like original stake of Cliffside survey. Position of this point was within 0.03' of position as set from tie points on Forward St. & on Midway Street.

(T.P. Book 30 - P-3+4 and $\frac{FB 2216}{p 10}$)

I used above mentioned tie points to set points for Chelsea ave and for Calumet ave.

I also found 8 or 10 other survey points. These points do not check each other for line or distance, some being as much as 0.15' out of true position. I

15
therefore disregarded these points as they appear to be the re-surveys which I have been informed are in dispute.

A. Hammermeyer

Stake Proposed Prop. Line

J.H. Millard property.

West Muirlands Dr + Nautilus
staked as per sheet # 5361-B.

C.H.S.

7-28-54

Boyer

W.O. # 27526

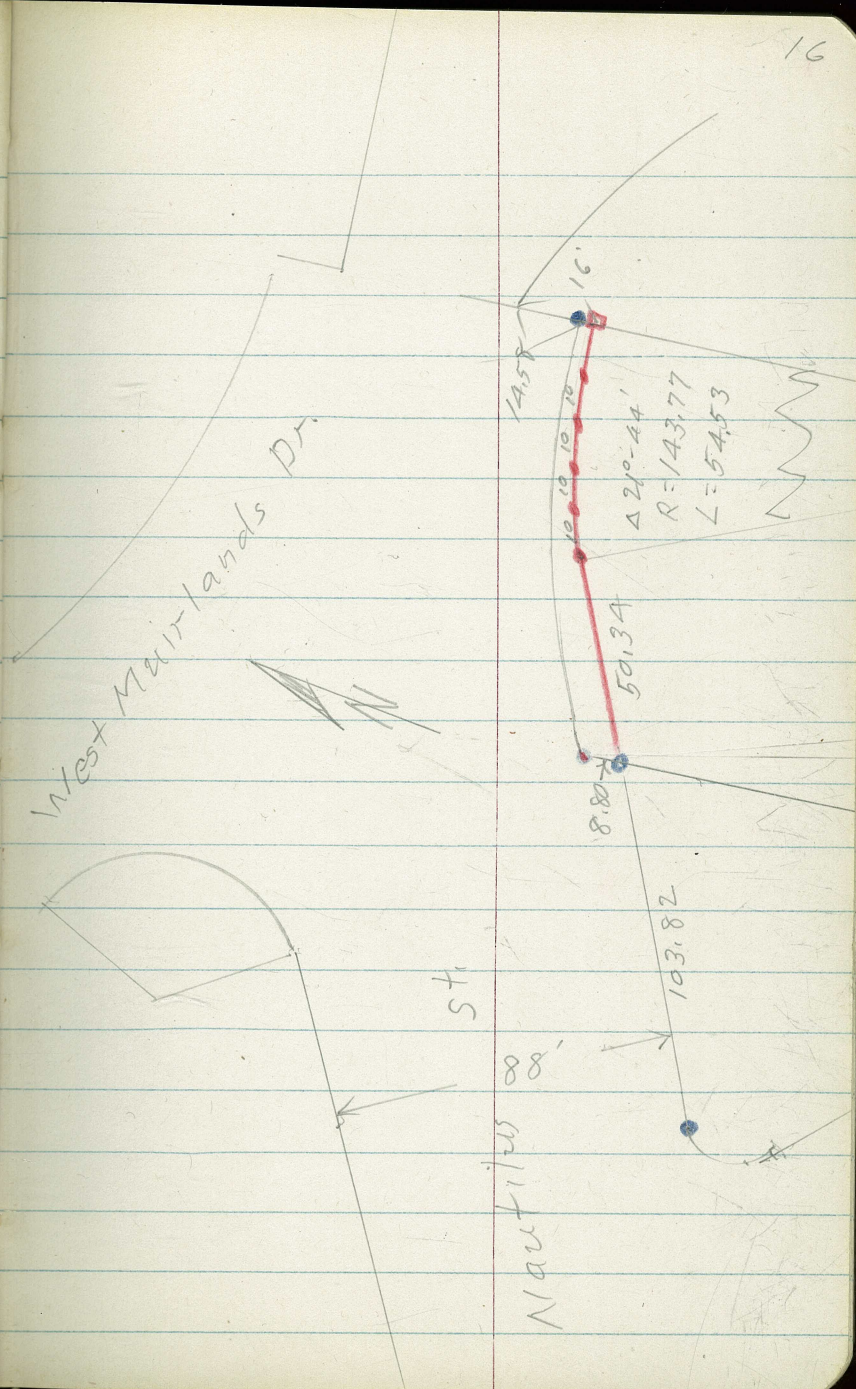
Pullen

• denotes Rd. pipe + dink

□ " set 1/2" dink

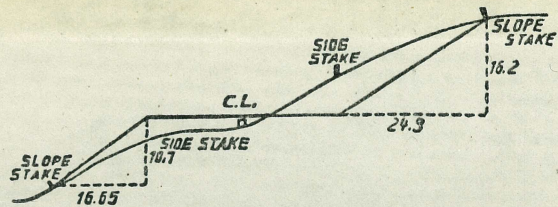
• " set Nail

prop. line outlined in
yellow paint where possible



N 63-35 E
41-32-21 W

105 07 21



DISTANCES FROM SIDE STAKES FOR CROSS-SECTIONING.
SLOPE 1½ TO 1. ROADWAY OF ANY WIDTH.

	0	.1	.2	.3	.4	.5	.6	.7	.8	.9	
0	0.00	0.15	0.30	0.45	0.60	0.75	0.90	1.05	1.20	1.35	0
1	1.50	1.65	1.80	1.95	2.10	2.25	2.40	2.55	2.70	2.85	1
2	3.00	3.15	3.30	3.45	3.60	3.75	3.90	4.05	4.20	4.35	2
3	4.50	4.65	4.80	4.95	5.10	5.25	5.40	5.55	5.70	5.85	3
4	6.00	6.15	6.30	6.45	6.60	6.75	6.90	7.05	7.20	7.35	4
5	7.50	7.65	7.80	7.95	8.10	8.25	8.40	8.55	8.70	8.85	5
6	9.00	9.15	9.30	9.45	9.60	9.75	9.90	10.05	10.20	10.35	6
7	10.50	10.65	10.80	10.95	11.10	11.25	11.40	11.55	11.70	11.85	7
8	12.00	12.15	12.30	12.45	12.60	12.75	12.90	13.05	13.20	13.35	8
9	13.50	13.65	13.80	13.95	14.10	14.25	14.40	14.55	14.70	14.85	9
10	15.00	15.15	15.30	15.45	15.60	15.75	15.90	16.05	16.20	16.35	10
11	16.50	16.65	16.80	16.95	17.10	17.25	17.40	17.55	17.70	17.85	11
12	18.00	18.15	18.30	18.45	18.60	18.75	18.90	19.05	19.20	19.35	12
13	19.50	19.65	19.80	19.95	20.10	20.25	20.40	20.55	20.70	20.85	13
14	21.00	21.15	21.30	21.45	21.60	21.75	21.90	22.05	22.20	22.35	14
15	22.50	22.65	22.80	22.95	23.10	23.25	23.40	23.55	23.70	23.85	15
16	24.00	24.15	24.30	24.45	24.60	24.75	24.90	25.05	25.20	25.35	16
17	25.50	25.65	25.80	25.95	26.10	26.25	26.40	26.55	26.70	26.85	17
18	27.00	27.15	27.30	27.45	27.60	27.75	27.90	28.05	28.20	28.35	18
19	28.50	28.65	28.80	28.95	29.10	29.25	29.40	29.55	29.70	29.85	19
20	30.00	30.15	30.30	30.45	30.60	30.75	30.90	31.05	31.20	31.35	20
21	31.50	31.65	31.80	31.95	32.10	32.25	32.40	32.55	32.70	32.85	21
22	33.00	33.15	33.30	33.45	33.60	33.75	33.90	34.05	34.20	34.35	22
23	34.50	34.65	34.80	34.95	35.10	35.25	35.40	35.55	35.70	35.85	23
24	36.00	36.15	36.30	36.45	36.60	36.75	36.90	37.05	37.20	37.35	24
25	37.50	37.65	37.80	37.95	38.10	38.25	38.40	38.55	38.70	38.85	25
26	39.00	39.15	39.30	39.45	39.60	39.75	39.90	40.05	40.20	40.35	26
27	40.50	40.65	40.80	40.95	41.10	41.25	41.40	41.55	41.70	41.85	27
28	42.00	42.15	42.30	42.45	42.60	42.75	42.90	43.05	43.20	43.35	28
29	43.50	43.65	43.80	43.95	44.10	44.25	44.40	44.55	44.70	44.85	29
30	45.00	45.15	45.30	45.45	45.60	45.75	45.90	46.05	46.20	46.35	30
31	46.50	46.65	46.80	46.95	47.10	47.25	47.40	47.55	47.70	47.85	31
32	48.00	48.15	48.30	48.45	48.60	48.75	48.90	49.05	49.20	49.35	32
33	49.50	49.65	49.80	49.95	50.10	50.25	50.40	50.55	50.70	50.85	33
34	51.00	51.15	51.30	51.45	51.60	51.75	51.90	52.05	52.20	52.35	34
35	52.50	52.65	52.80	52.95	53.10	53.25	53.40	53.55	53.70	53.85	35
36	54.00	54.15	54.30	54.45	54.60	54.75	54.90	55.05	55.20	55.35	36
37	55.50	55.65	55.80	55.95	56.10	56.25	56.40	56.55	56.70	56.85	37
38	57.00	57.15	57.30	57.45	57.60	57.75	57.90	58.05	58.20	58.35	38
39	58.50	58.65	58.80	58.95	59.10	59.25	59.40	59.55	59.70	59.85	39
40	60.00	60.15	60.30	60.45	60.60	60.75	60.90	61.05	61.20	61.35	40
41	61.50	61.65	61.80	61.95	62.10	62.25	62.40	62.55	62.70	62.85	41
42	63.00	63.15	63.30	63.45	63.60	63.75	63.90	64.05	64.20	64.35	42
43	64.50	64.65	64.80	64.95	65.10	65.25	65.40	65.55	65.70	65.85	43
44	66.00	66.15	66.30	66.45	66.60	66.75	66.90	67.05	67.20	67.35	44
45	67.50	67.65	67.80	67.95	68.10	68.25	68.40	68.55	68.70	68.85	45
46	69.00	69.15	69.30	69.45	69.60	69.75	69.90	70.05	70.20	70.35	46
47	70.50	70.65	70.80	70.95	71.10	71.25	71.40	71.55	71.70	71.85	47
48	72.00	72.15	72.30	72.45	72.60	72.75	72.90	73.05	73.20	73.35	48
49	73.50	73.65	73.80	73.95	74.10	74.25	74.40	74.55	74.70	74.85	49
50	75.00	75.15	75.30	75.45	75.60	75.75	75.90	76.05	76.20	76.35	50

THE NATIONAL BLANK BOOK COMPANY
HOLYOKE MASSACHUSETTS
NEW YORK CHICAGO BOSTON SAN FRANCISCO

41.33
20.665