

JAN 1 1965

DISTANCES FROM SIDE STAKES FOR CROSS-SECTIONING
SLOPE 1 TO 1, ROADWAY OF ANY WIDTH

	0	.1	.2	.3	.4	.5	.6	.7	.8	.9	
0	0.00	0.10	0.20	0.30	0.40	0.50	0.60	0.70	0.80	0.90	0
1	1.00	1.10	1.20	1.30	1.40	1.50	1.60	1.70	1.80	1.90	1
2	2.00	2.10	2.20	2.30	2.40	2.50	2.60	2.70	2.80	2.90	2
3	3.00	3.10	3.20	3.30	3.40	3.50	3.60	3.70	3.80	3.90	3
4	4.00	4.10	4.20	4.30	4.40	4.50	4.60	4.70	4.80	4.90	4
5	5.00	5.10	5.20	5.30	5.40	5.50	5.60	5.70	5.80	5.90	5
6	6.00	6.10	6.20	6.30	6.40	6.50	6.60	6.70	6.80	6.90	6
7	7.00	7.10	7.20	7.30	7.40	7.50	7.60	7.70	7.80	7.90	7
8	8.00	8.10	8.20	8.30	8.40	8.50	8.60	8.70	8.80	8.90	8
9	9.00	9.10	9.20	9.30	9.40	9.50	9.60	9.70	9.80	9.90	9
10	10.00	10.10	10.20	10.30	10.40	10.50	10.60	10.70	10.80	10.90	10
11	11.00	11.10	11.20	11.30	11.40	11.50	11.60	11.70	11.80	11.90	11
12	12.00	12.10	12.20	12.30	12.40	12.50	12.60	12.70	12.80	12.90	12
13	13.00	13.10	13.20	13.30	13.40	13.50	13.60	13.70	13.80	13.90	13
14	14.00	14.10	14.20	14.30	14.40	14.50	14.60	14.70	14.80	14.90	14
15	15.00	15.10	15.20	15.30	15.40	15.50	15.60	15.70	15.80	15.90	15
16	16.00	16.10	16.20	16.30	16.40	16.50	16.60	16.70	16.80	16.90	16
17	17.00	17.10	17.20	17.30	17.40	17.50	17.60	17.70	17.80	17.90	17
18	18.00	18.10	18.20	18.30	18.40	18.50	18.60	18.70	18.80	18.90	18
19	19.00	19.10	19.20	19.30	19.40	19.50	19.60	19.70	19.80	19.90	19
20	20.00	20.10	20.20	20.30	20.40	20.50	20.60	20.70	20.80	20.90	20
21	21.00	21.10	21.20	21.30	21.40	21.50	21.60	21.70	21.80	21.90	21
22	22.00	22.10	22.20	22.30	22.40	22.50	22.60	22.70	22.80	22.90	22
23	23.00	23.10	23.20	23.30	23.40	23.50	23.60	23.70	23.80	23.90	23
24	24.00	24.10	24.20	24.30	24.40	24.50	24.60	24.70	24.80	24.90	24
25	25.00	25.10	25.20	25.30	25.40	25.50	25.60	25.70	25.80	25.90	25
26	26.00	26.10	26.20	26.30	26.40	26.50	26.60	26.70	26.80	26.90	26
27	27.00	27.10	27.20	27.30	27.40	27.50	27.60	27.70	27.80	27.90	27
28	28.00	28.10	28.20	28.30	28.40	28.50	28.60	28.70	28.80	28.90	28
29	29.00	29.10	29.20	29.30	29.40	29.50	29.60	29.70	29.80	29.90	29
30	30.00	30.10	30.20	30.30	30.40	30.50	30.60	30.70	30.80	30.90	30
31	31.00	31.10	31.20	31.30	31.40	31.50	31.60	31.70	31.80	31.90	31
32	32.00	32.10	32.20	32.30	32.40	32.50	32.60	32.70	32.80	32.90	32
33	33.00	33.10	33.20	33.30	33.40	33.50	33.60	33.70	33.80	33.90	33
34	34.00	34.10	34.20	34.30	34.40	34.50	34.60	34.70	34.80	34.90	34
35	35.00	35.10	35.20	35.30	35.40	35.50	35.60	35.70	35.80	35.90	35
36	36.00	36.10	36.20	36.30	36.40	36.50	36.60	36.70	36.80	36.90	36
37	37.00	37.10	37.20	37.30	37.40	37.50	37.60	37.70	37.80	37.90	37
38	38.00	38.10	38.20	38.30	38.40	38.50	38.60	38.70	38.80	38.90	38
39	39.00	39.10	39.20	39.30	39.40	39.50	39.60	39.70	39.80	39.90	39
40	40.00	40.10	40.20	40.30	40.40	40.50	40.60	40.70	40.80	40.90	40
41	41.00	41.10	41.20	41.30	41.40	41.50	41.60	41.70	41.80	41.90	41
42	42.00	42.10	42.20	42.30	42.40	42.50	42.60	42.70	42.80	42.90	42
43	43.00	43.10	43.20	43.30	43.40	43.50	43.60	43.70	43.80	43.90	43
44	44.00	44.10	44.20	44.30	44.40	44.50	44.60	44.70	44.80	44.90	44
45	45.00	45.10	45.20	45.30	45.40	45.50	45.60	45.70	45.80	45.90	45
46	46.00	46.10	46.20	46.30	46.40	46.50	46.60	46.70	46.80	46.90	46
47	47.00	47.10	47.20	47.30	47.40	47.50	47.60	47.70	47.80	47.90	47
48	48.00	48.10	48.20	48.30	48.40	48.50	48.60	48.70	48.80	48.90	48
49	49.00	49.10	49.20	49.30	49.40	49.50	49.60	49.70	49.80	49.90	49
50	50.00	50.10	50.20	50.30	50.40	50.50	50.60	50.70	50.80	50.90	50

Distance of slope stake from side or shoulder stake for any width roadway, slope 1 to 1. If ground is nearly level, the out or fill at side stake is located by the double entry method in left column and top row. The number in body of table in same row and column gives distance from side stake to slope stake. If ground is not level estimate the difference in elevation between the side stake and slope stake, lower target by this amount if cut, elevate if fill. Add this amount to cut or fill and find distance in table. Set up rod at this point, and line of sight should cut target. If it does not make the slight adjustment necessary.

TABLE XIII—CORRECTIONS FOR TANGENTS AND EXTERNALS

These corrections are to be added to the approximate values, found by dividing the tangent, or external, for a 1° curve (Table VIII) by the degree of curve, in order to obtain the true tangents, or externals. Intermediate values may be obtained by interpolation.

FOR TANGENTS ADD

Central Angle	DEGREE OF CURVE															
	5°	10°	15°	20°	25°	30°	35°	40°	45°	50°	55°	60°	65°	70°		
10°	.03	.06	.09	.13	.16	.19	.22	.25	.28	.31	.34	.38	.42	.46		
15°	.04	.10	.14	.19	.24	.29	.34	.39	.45	.51	.53	.58	.63	.68		
20°	.06	.13	.19	.26	.32	.39	.45	.51	.58	.65	.72	.79	.84	.90		
25°	.08	.16	.24	.33	.40	.49	.58	.67	.75	.83	.90	.99	1.06	1.14		
30°	.10	.19	.29	.39	.49	.59	.69	.79	.89	.99	1.09	1.20	1.29	1.39		
35°	.11	.22	.34	.47	.58	.69	.79	.81	.92	1.04	1.29	1.42	1.54	1.66		
40°	.13	.26	.40	.53	.67	.80	.93	1.06	1.20	1.34	1.49	1.64	1.79	1.94		
45°	.15	.30	.44	.60	.76	.91	1.06	1.21	1.37	1.52	1.70	1.87	2.04	2.21		
50°	.17	.34	.51	.68	.85	1.02	1.19	1.36	1.54	1.72	1.91	2.10	2.29	2.48		
55°	.19	.38	.57	.76	.95	1.14	1.32	1.52	1.72	1.92	2.14	2.35	2.56	2.77		
60°	.21	.42	.63	.84	1.05	1.27	1.49	1.71	1.94	2.17	2.38	2.60	2.83	3.07		
65°	.23	.46	.69	.93	1.16	1.40	1.64	1.88	2.13	2.38	2.63	2.88	3.13	3.39		
70°	.25	.51	.76	1.02	1.28	1.54	1.80	2.06	2.33	2.60	2.88	3.16	3.44	3.72		
75°	.27	.56	.83	1.12	1.40	1.69	1.98	2.27	2.57	2.87	3.16	3.47	3.78	4.09		
80°	.30	.61	.91	1.22	1.53	1.84	2.15	2.46	2.78	3.10	3.44	3.78	4.12	4.46		
85°	.33	.66	1.00	1.33	1.68	2.02	2.36	2.70	3.05	3.40	3.77	4.14	4.55	4.89		
90°	.36	.72	1.09	1.45	1.83	2.20	2.57	2.94	3.32	3.70	4.10	4.50	4.91	5.32		
95°	.39	.79	1.19	1.55	2.00	2.40	2.80	3.20	3.61	4.02	4.40	4.98	5.38	5.83		
100°	.43	.86	1.30	1.74	2.18	2.62	3.06	3.50	3.95	4.40	4.88	5.37	5.85	6.34		
110°	.51	1.03	1.56	2.08	2.61	3.14	3.67	4.21	4.76	5.31	5.86	6.43	7.01	7.60		
120°	.62	1.25	1.93	2.52	3.16	3.81	4.45	5.11	5.77	6.44	7.12	7.80	8.50	9.22		

FOR EXTERNALS ADD

Central Angle	DEGREE OF CURVE															
	5°	10°	15°	20°	25°	30°	35°	40°	45°	50°	55°	60°	65°	70°		
10°	.001	.003	.004	.006	.007	.008	.009	.011	.012	.014	.015	.017	.018	.020		
15°	.003	.007	.010	.014	.018	.023	.027	.029	.032	.035	.039	.043	.047	.051		
20°	.006	.011	.017	.022	.028	.034	.038	.045	.051	.057	.063	.070	.076	.083		
25°	.009	.018	.027	.036	.046	.056	.065	.074	.083	.093	.106	.120	.127	.135		
30°	.013	.025	.038	.051	.065	.078	.090	.103	.116	.129	.149	.170	.179	.188		
35°	.018	.035	.054	.072	.086	.109	.131	.153	.175	.197	.213	.230	.247	.264		
40°	.023	.046	.070	.093	.117	.141	.172	.203	.234	.265	.277	.290	.315	.341		
45°	.030	.060	.093	.119	.153	.184	.216	.254	.289	.325	.351	.378	.411	.445		
50°	.037	.075	.116	.151	.189	.227	.266	.305	.345	.384	.425	.467	.508	.550		
55°	.046	.093	.142	.188	.236	.283	.332	.381	.420	.479	.530	.582	.641	.700		
60°	.056	.112	.168	.225	.283	.340	.398	.457	.516	.575	.636	.697	.774	.851		
65°	.067	.135	.204	.273	.343	.412	.483	.554	.625	.697	.771	.845	.922	1.01		
70°	.080	.159	.240	.321	.403	.485	.568	.652	.735	.819	.906	.994	1.08	1.17		
75°	.095	.182	.286	.383	.480	.578	.678	.777	.877	.977	1.07	1.18	1.29	1.39		
80°	.110	.220	.332	.445	.558	.671	.787	.903	1.02	1.13	1.25	1.38	1.50	1.62		
85°	.128	.259	.391	.524	.657	.790	.926	1.06	1.20	1.34	1.47	1.62	1.76	1.91		
90°	.149	.299	.450	.603	.756	.910	1.07	1.22	1.38	1.54	1.70	1.87	2.03	2.20		
95°	.174	.350	.522	.706	.885	1.06	1.25	1.43	1.62	1.80	1.99	2.18	2.38	2.58		
100°	.200	.401	.604	.809	1.01	1.22	1.43	1.64	1.85	2.06	2.28	2.50	2.73	2.96		
110°	.268	.536	.806	1.08	1.35	1.63	1.91	2.20	2.48	2.76	3.05	3.35	3.66	3.96		
120°	.360	.721	1.08	1.45	1.82	2.19	2.57	2.95	3.33	3.72	4.11	4.50	4.91	5.32		

INDEX

Pgs

X-Sec Thomas, Jewell to Kendall 1-8
 X-Sec. Fergus. Atkins - Brooklyn 9-22
 X-Sec. Aly. Bl. 69 Park Villa - Landis & Dwight 23

D. Smith
C. Allen
R. Taylor
R. Parks

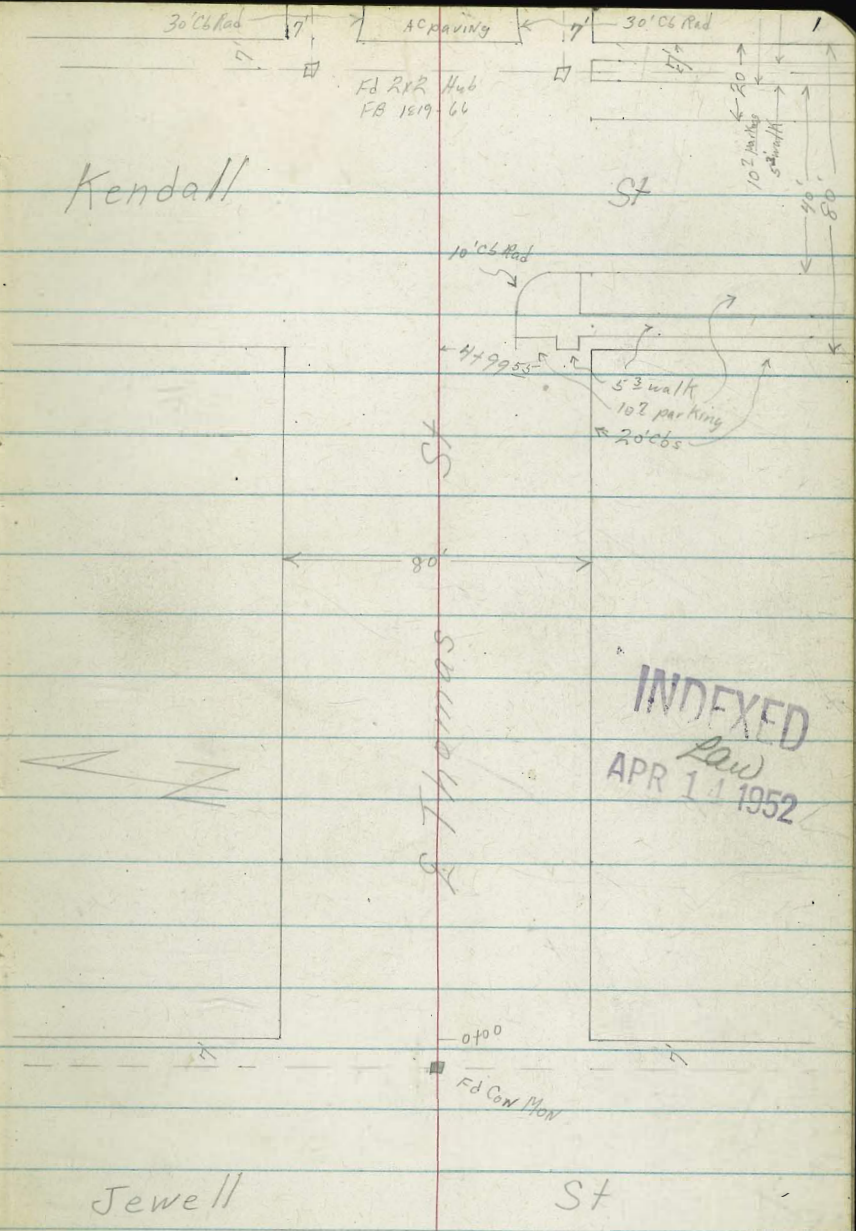
WO # 32073

4-10-52

Cross Sec Thomas AVE
Jewell St to Kendall St

REDUCED
5-13-52
Ryan

Note: Took soil sample @ 2700 10' south E



INDEXED
APR 1 1952

Lt. North

Q

Rt. South

2

0+36 41² RT & 24" Cypress tree

0+16 41³ RT & 8' drive

0+08 41⁴ RT & 22" Cypress tree

0+03 41⁵ RT & 26" Cypress tree

53.69 55.23
207 0.53
413 313
drive

0+00 Ely Line Jewell St

45.7 46.9 47.5 48.3 48.6 49.2 49.7 51.1 54.8
10² 8² 8² 7⁵ 7² 6⁶ 6¹ 42 1²
90 40 18 10 20 30 40 70

0-15

45.8 46.9 47.7 47.8 47.7 48.1 48.6 49.5 52.6
10² 8² 8⁶ 8² 8⁴ 7² 7² 6³ 3²
90 40 20 11 9 20 40 90

0-40 E Jewell St

46.0 46.5 47.0 47.6 48.8 49.0 52.2
9² 9³ 8² 8² 7² 6² 3²
90 40 20 30 40 90

0-60

46.1 46.3 46.6 47.3 47.6 48.4 48.7 51.8
9² 9⁵ 9² 8⁵ 8² 7² 7² 4²
90 40 20 22 30 40 90

0-80 Wly Line Jewell St

46.5 46.5 46.4 46.8 46.7 47.2 47.3 50.2
9² 9³ 9² 9² 8² 8² 8⁵ 5²
90 40 20 25 30 40 90

BM

392

5576

5784

NWBP
Grand
Jewell

x 5576

Lt=North

E

Rt=South

3

1725

50.5	52.0	53.8	55.0	55.4	56.1	57.3	57.7	57.9
11 ⁶	10 ⁴	8 ³	7 ¹	6 ²	6 ²	4 ³	4 ⁴	4 ³
50	40	25	14		20	30	40	50

1714 40³ Rt E 8' con drive

57.86	58.20
14 ²⁴	3 ²⁰
40 ³	50 ³
drive	

1700

49.4	50.6	52.2	53.7	55.8	55.0	56.8	57.4	57.7
12 ²	11 ⁵	9 ²	8 ²	8 ³	7 ¹	6 ³	4 ²	4 ²
50	40	20	10		21	23	40	50

0499 41² Rt E 36" Cypress tree

0480 43 Rt E 18" Cypress tree

TP, 6⁸⁶ 6²⁰ 0⁵² 55²⁴π 6²⁰

0475

48.1	48.9	49.8	51.4	52.3	53.6	54.7	56.0	56.7
7 ²	6 ²	6 ²	4 ¹	3 ⁵	2 ²	1 ⁴	10 ²	10 ²
50	46	30	15		20	24	40	50

0474 42² Rt E 30" Cypress tree0463 41⁶ Rt E 24" Cypress tree0451⁵ 36⁴ Rt E 3' con walk 2 steps0451⁵ 37³ Lt E 3' con walk 2 step

48.31	48.29	47.97
7 ⁴⁵	7 ⁴⁷	7 ²⁸
50 ³	40 ²	30 ³
walk	walk	50 ¹¹ step

54.65	54.97	55.13	55.83
1 ²¹	0 ⁸⁹	0 ⁶³	10 ⁶⁷
36 ¹	37 ⁵	40	47 ²
det. step	walk	walk	walk

0450

47.1	47.6	47.1	50.3	50.9	52.0	53.1	54.7	54.9	55.8		
8 ²	8 ³	6 ⁷	5 ⁵	4 ²	3 ⁸	2 ⁷	1 ⁴	1 ²	0 ²		
50	40	20	10		55	76	20	30	38	40	50

1797 39° Lt E 3' con walk

1788 40° Lt shot on wall

1776 40° Lt E 3' con walk

1775

1751 40° Lt Begin 3" con wall & fence on top

1750

1747 38° Rt E 3' con walk & step

1730 39° Rt E 8' con drive

Lt=North

E

Rt=South

4

56.39 56.45
57 56.5
49° 39°
walk

56.61 56.3
57 58
40° 40°
fence

56.28 56.43
58 56.7
50° 40°
walk

56.4 56.4 56.9 57.1 57.6 58.1 58.5 59.0
57 57 58 58 45 40 36 32
30 40 20 19 28 40 50

55.5 56.45
66 56.5
40° 40°
fence top wall

53.1 55.6 56.3 56.5 57.2 57.8 58.0 58.5 59.1
90 65 58 56 42 43 41 36 30
50 40 20 20 30 38 40 50

59.33 58.70 58.96
37 37 34
38 40 50
step walk

57.89 58.12 58.21
43 39 38
37 40 50

62°

Lt North

E Pt South

5

3717 40² RT E 8' con drive

347
40² drive
347
30²

3700

58.1	58.1	58.4	57.6	57.6	57.8	58.3	58.5	58.4
4 ²	4 ²	3 ²	4 ⁵	4 ⁵	4 ³	3 ⁵	3 ⁶	3 ⁷
50	40	20	11		20	35	40	50

2774 40⁶ RT End 3' high con block wall

57.5 60.53

4⁶ 1⁵²

4⁶ 4⁶

footing top wall

2753 40⁴ RT E 3' con walk

57.90 58.03

4²⁰ 4²²

40² walk

2750

56.7	57.1	57.3	57.7	57.7	57.9	58.0	58.1
5 ²	5 ²	4 ²	4 ⁴	4 ³	4 ²	4 ⁴	4 ²
50	40	20	13		20	40	50

2749 40³ LT E 2⁵ con walk

56.90 57.04

5²⁰ 5⁰⁶

50³ walk 40³

2734 40⁴ RT Begin 10' wide 3' high con block wall

57.5 60.56

4⁶ 1⁵⁴

40⁴ 40⁴

footing top wall

2733 39⁶ LT E 6' con drive

56.33 56.37

5²⁷ 5²³

40² 39²

drive

2727 40⁵ RT E 7' con ribbon drive 1⁵ ea

58.06 58.07

4⁰⁴ 4⁰³

40⁵ drive 50²

2725 40⁴ LT End 3' con wall with fence on top

56.77 56.4

5³³ 5²

40² 40²

top wall footing

2700

56.6	56.4	57.9	57.5	57.9	58.5	58.3	58.3	58.6
5 ⁵	5 ⁷	5 ²	4 ⁶	4 ²	3 ⁵	3 ⁵	3 ⁵	3 ⁵
50	40	20		20	30	35	40	50

7 6R 10

Lt = North E Rt = South

6

4472 38° Rt end Hedge

57.6	57.5	56.9	55.5	55.6	55.8	56.4	55.8
32	38	44	58	52	55	42	55
50	40	20	10		17	25	40

4450

4428 27° Rt 4' Clump cactus

4423 24° Rt E 6" Magnolia Tree

58.21 58.22

4422 38° Rt E 4' wide 6' high hedge

3'2 34
502 402
walk

4416 40° Lt E 2' con walk

4407 39° Rt E 8' con slab

56.78	57.18	57.18
435	415	415
395	404	504

TP2 443 61³³ 520 56⁹⁰

61³³

4400

58.2	58.6	58.0	56.9	56.1	57.0	56.9	57.2
32	35	44	52	54	51	52	42
50	40	20	12		20	40	80

3477 40° E 3' con walk

58.35 58.38
375 372
501 walk 401

3458 40° E 3' con walk

58.16 58.15
394 395
501 walk 401

3450

58.3	58.2	58.1	57.4	57.3	57.3	57.0	56.9
38	32	40	42	48	48	51	52
50	40	25	12		20	10	50

3434 40° Lt E 8' con drive

58.15 58.00
375 40
501 drive 401
62¹⁰

Lt=North & Rt=South 7

5739⁵³ E Kendall St

57.8 53.3 53.5 53.5 53.4 53.3 52.9
 8⁵ 8⁰ 7² 7⁸ 7² 8⁰ 8²
 90 40 20 20 40 90

5721

52.5 53.2 53.4 54.0 53.6 53.7 53.4
 8² 8⁴ 7² 7³ 7² 7⁶ 7²
 90 40 20 20 40 90

5719⁵⁵ Wly C6 Line Kendall

53.8 54.1 54.2 54.1 54.0 53.6 53.7 54.87 53.7 54.82 53.7 54.3
 7⁵ 7² 7⁴ 7² 7³ 7² 7⁶ 6⁴⁴ 7⁶ 6⁵¹ 7² 6²²
 90 40 30 20 20 30 30 40 40 90 90
 947 06 947 08 947 08

5404

54.3 54.2 54.1 54.3 54.97
 7⁰ 7⁴ 7² 7⁰ 6³⁶
 40 20 20 20
 94 80

4799⁵⁵ Wly Kendall end of walk Rt.

56.3 55.8 54.4 54.2 54.4 54.97 54.4 55.16 55.1
 5² 5⁵ 6² 7⁴ 6² 6³⁶ 6¹⁹ 6¹² 6²
 40 25 14 20 20 30 36 40
 947 06 947 06 walk walk

4796²⁵ RT E 4" tree

4775²⁴ RT E 14" tree

57.0 56.7 56.5 55.0 54.9 55.3 55.6 55.6 55.6
 4³ 4² 4² 6³ 6⁴ 6² 5² 5² 5²
 30 40 25 15 18 20 40 50

6/33

Lt = North

Rt = South

8

BM

9⁸³

51⁸¹ NWBP
51⁵⁰ Kendall
Grand

5479⁵⁵ Fly Kendall St end cbs walks + AC parking

53.91	53.77	53.66	53.00	53.25	53.19	53.00	52.56	53.19	53.27	53.33
7 ¹⁶	7 ⁵⁴	7 ⁶⁷	8 ³³	8 ⁰⁸	8 ¹⁴	8 ³³	8 ⁴²	8 ⁴⁴	8 ⁰⁶	8 ⁰⁰
350	300	218	218	10	10	218	218	30	350	
walk	walk	cs	sat			sat	cs _{end}	walk	walk	

5459⁵⁵ Fly cb line Kendall St.

53.0	53.0	53.2	53.5	53.2	53.1	53.81	52.8	53.38
8 ³	8 ³	8 ¹	7 ⁸	8 ¹	8 ³	7 ⁵²	8 ⁵	7 ⁹⁵
90	40	20		20	40	40	90	90
					sat	cs _{end}	sat	cs

7/6/33

Roberts
Cota
Moore
Ellen
7-31-52
W.O. 31732

X-Section Fergus Street

Akins to Brooklyn

FB 1660 pg 63

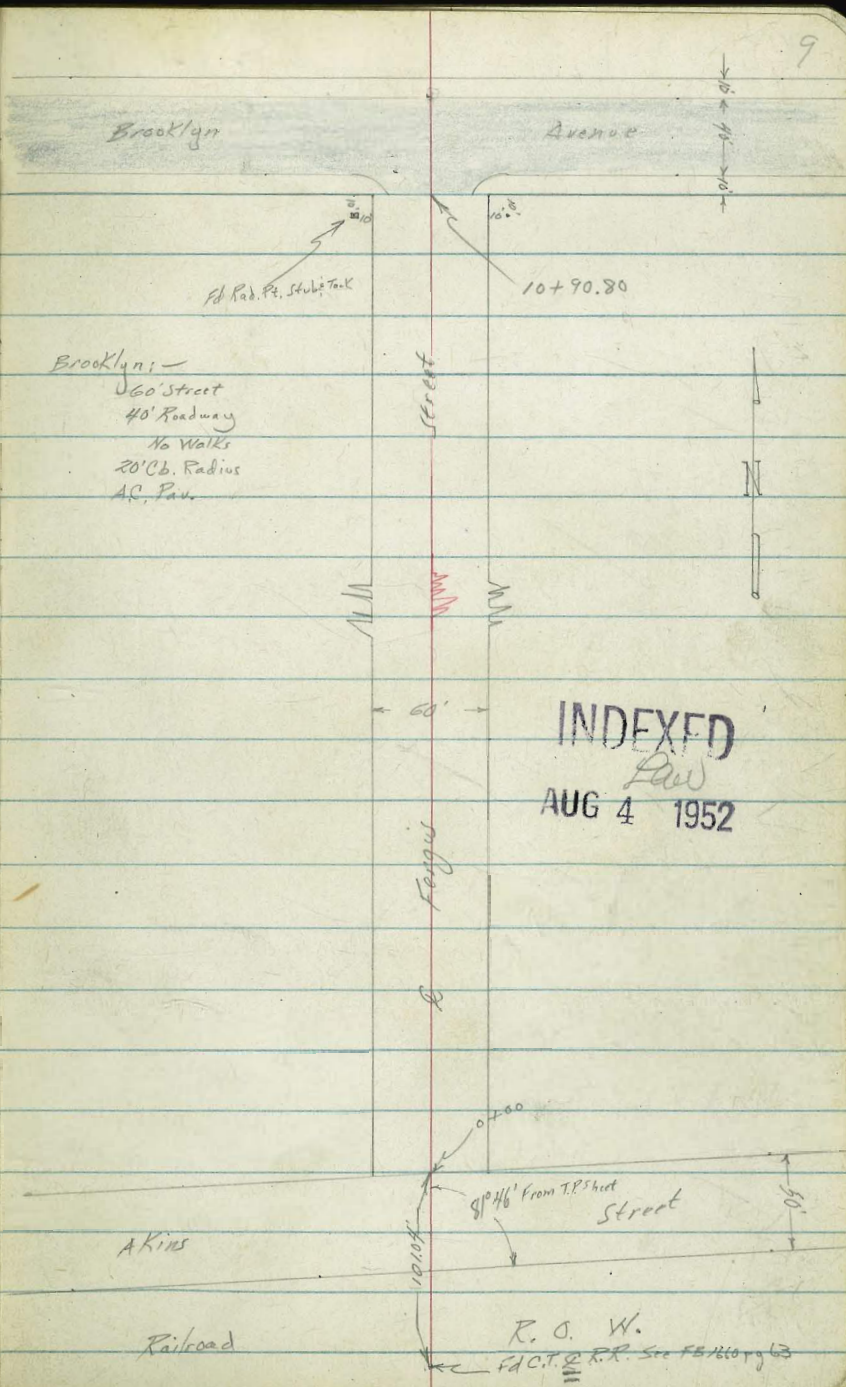
TP 3237 1/2 3247

Walker: - Ficus's delightfull hot muggy variety!

NOTE - GRADE BOOK No 284
STAKES ON BROOKLYN -

SHOW S.W. POLE-NAILED - 243.166
ARE ALL EL. TAKEN ON FERGUS ST
ARE 0.17' HIGH. F. ALUMINA - 8-18-52

FOR PAVEMENT ON FERGUS ST,
USE M.H. EL. & NOT SPIKE NOR X ON POLE -
ALUMINA - 8-2-52



Contd From Page 9

0+00

North Line Akins

$\frac{175.1}{9.1}$
100

$\frac{180.0}{7.2}$
30

$\frac{180.2}{70}$

$\frac{181.6}{56}$
25

$\frac{180.6}{66}$
30

$\frac{178.9}{8.3}$
100

0-25.26

E Akins

$\frac{176.5}{10.7}$
100

$\frac{174.5}{10.7}$
50

$\frac{177.4}{9.4}$

$\frac{180.2}{7.1}$
50

$\frac{179.1}{8.1}$
100

0-30

$\frac{177.4}{9.8}$

0-45

Creek Bottom

$\frac{172.9}{14.3}$

0-71

Creek bottom

$\frac{173.0}{14.2}$

0-93

Top Railroad bed.

$\frac{182.4}{4.8}$

TBM

6.91 187.15 π

180.24 $\frac{\text{Rim MH}}{\text{E of Fergus}}$

E Akins San FB1660

187.15 π

Contd From Page 10

1+60 base of 9" Ret. Wall

193.2	193.2	192.8	192.1	192.1	191.6	192.1	191.5	190.5
39	39	43	5.0	50	5.5	5.0	5.6	6.6
50	30	16	4		11	28.4	30	50

1+55 28¹ Lt to center 15" Pepper Tree

1+42 29² Lt begin picket fence

189.7	188.4	187.1	187.1	186.5	187.2	190.7	189.2
7.4	8.7	10.0	10.0	10.6	9.9	6.4	7.7
50	30	16		5	17	30	50

T.P. 10.33 197.12A 0.36 186.79

197.12A

0+93 22' Lt to center P. Pl # 278501

188.3	188.2	185.5	185.2	184.8	185.6	185.5	185.0
+1.1	+1.0	1.7	2.0	2.4	1.6	1.7	2.2
50	30	13		4	10	30	50

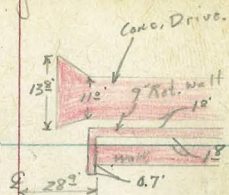
182.9	183.7	184.2	183.7	183.6	183.7	184.3	184.7	184.3
4.3	3.5	3.0	3.5	3.6	3.8	2.9	2.5	2.9
50	30	14	12	3	5	7	30	50

181.2	182.0	182.9	182.2	181.5	181.6	182.9	182.7	183.2
6.0	5.2	4.3	5.0	5.4	5.6	4.3	4.5	4.0
50	30	10	8		8	18	30	50

18715A

18715A

Cont'd From Page 11



46

£

R7

12

2+12 28th R7 £ 3rd Conc Walk

195.10 /
8.50
28th
conc

195.12 /
8.48
30
conc

T.P. 765 203.60 \uparrow 0.57 196.55 \checkmark SW Cor. Drive 2+15 Approx

203.60 \uparrow

2+00

195.1	195.0	194.0	193.2	195.1	194.9	195.1	195.1
7.05	0.1	1.1	1.9	1.5	2.2	2.0	1.0
50	30	15	13	13	30	30	50

1+97 22nd Lt to deadman

1+79 29th Lt End Picket Fence

1+71 28th R7 begin chain link fence

1+68 29th Lt £ 4' Conc Walk

194.71
2.41
30
conc

194.21
2.91
29th
conc

1+65⁵ 28th R7 £ 9' Conc drive with 9' Ret Wall on South

194.1	194.1	193.5	192.8	192.7	192.1	192.76	192.94	194.24	194.34
3.0	3.0	3.6	4.3	4.4	5.0	4.36	4.4	2.88	2.78
50	30	17	15	12	12	28 th	30	44	50
						conc	conc	conc	conc

197.12 \uparrow

197.12 \uparrow

3723 28^E Rt End wire fence3706 29^E Lt begin wire fence

3700

199.3	199.4	199.0	199.5	199.2	198.7	199.4	199.9
43	42	46	48	44	49	42	37
50	37	30	13		13	30	50

2783 29^E Rt begin wire fence2769 29^I Rt End chain link fence2766 33^I Lt & 3' conc walk

199.8	199.2	195.4	197.5	195.1	197.6	195.3	195.7
41	48	52	58	55	60	53	49
40 conc	33 conc	30	12		16	30	50

2722 29^E Rt & 9' conc Drive
This section good for one No. of Ret. Wall

197.5	197.4	197.1	196.4	196.7	196.1	195.90	197.26	197.44
5.8	6.2	6.5	7.2	6.9	7.5	6.80	6.34	6.16
50	30	15	13		13	24.2 conc	28 conc	50 conc

2718 29^E Lt to center F. Pole # JP171053

2715 Base Ret. Wall

197.9	197.4	196.5	196.0	196.4	195.7	196.5	195.2	195.2	195.1
5.7	6.2	6.8	7.6	7.2	7.9	7.1	8.4	8.4	8.5
50	30	15	13		12	28	29	30	50

Cont'd from Page 13

Lt

R

Rx 14

4459

{ 22° Rt to center 12" Pepper Tree
29° Rt & 3' conc walk

205.30
8.43
29°
conc

205.74
7.99
50
conc

4450

218° Rt to center 4" pepper Tree

203.2
105
50

204.1
96
30

204.1
96
16

203.5
102
14

204.3
94

204.5
92
30

204.6
91
50

4435E

217° Lt to center P Pole # JP171052

4432

29° Rt to chain link fence

201.4
12.3
50

202.2
11.5
30

202.4
11.3
16

201.9
11.8
14

202.4
11.3

202.5
11.2
30

202.9
10.8
50

4400

3492

298° Lt End wire fence

T.P.

12.17 213.73X 2.04 201.56

213.73X

3453E

282° Lt & 3' conc walk

2.62
50
conc

201.1
2.6
50

201.5
30
30

2.87
2.8
3.4
13

201.2
2.7

200.9
2.7

200.8
2.8
30

200.9
2.7
50

3450

203.60X

203.60X

5140 Base of Ret. wall

2101.6	2101.5	209.51	209.17	209.16	211.1	210.51
3.1	3.2	4.2	4.0	4.1	2.6	3.2
50	30	13		5	39	50

5720 29¹/₂ Lt £ 3¹/₂ conc walk

209.46	209.32
4.27	4.41
48	292
conc	conc

5703 29¹/₂ Rt £ 8 Conc Drive

208.16	208.51
5.57	5.23
292	50
conc	conc

4795 21¹/₂ Lt £ 11¹/₂ AC Drive

Section good for CRD No. 8 Ret. wall

208.14	207.9	206.9	206.0	206.51	206.4	207.2	207.2	208.0
5.3	5.9	6.8	7.7	7.2	7.3	6.5	6.5	5.7
50	30	218	13		6	8	30	50
AC.	AC.	AC.						

4788 Base of Ret. wall (conc. block)

206.5	207.2	206.4	205.6	206.1	206.0	206.6	206.9	207.7
7.2	6.5	7.3	8.1	7.6	7.7	7.1	6.8	6.0
51	30	18	14		6	8	30	50

4781 22¹/₂ Rt to center 12" pepper Tree

4771 22¹/₂ Rt to center 12" pepper Tree

Cont'd From Page 15

Lt

E

Rt

16

5794E

218 Lt to center P. Pole # JT 171050

shots on top Ret. wall good for GRD. to North

Section at base of Ret. wall

282 Lt End chain Link begin Brick Fence

5793

285 Rt begin Ret. Wall

215.0	214.6	214.0	213.4	213.7	213.5	214.1	213.9	214.1	214.0
10.9	11.3	11.9	12.5	12.2	12.4	11.8	12.0	12.0	11.9
50	30	15	13		6	8	285 GRD	285 GRD	285 Top
									50 50

5785

279 Rt E Conc walk

213.64	213.63
12.28	12.29
279	45
conc	conc

T.P.

12.52 225.92A 0.35 213.40

225.92A

5770

293 Lt E 36 Conc walk

212.66	212.52
1.87	1.21
48	292
conc	conc

5745

25 Lt E 10 Conc Drive

210.7	210.5	209.9	210.1	210.0	211.46	212.09	211.92
3.0	3.2	3.8	3.6	3.7	1.87	1.64	1.81
50	30	14		5	252 conc	28 conc	50 conc

5742E

25 Lt E 8 AC Drive

210.6	210.5	210.3
3.1	3.2	3.4
50	30	25
AC	AC	AC

213.73A

213.73A

Cont'd From Page 16.

←

⊥

Rt 17

7+00

223.4	223.1	222.0	221.2	221.0	221.4	221.2	221.2
2.5	2.8	3.9	4.7	4.9	4.1	4.7	4.4
50	30	17	13		11	30	50

6+89

29' Rt End Picket fence

6+73

29' Rt ⊥ 2⁵" Conc Walk

219.91	200.05
6.01	5.87
299	50
conc	conc

6+50

219.4	218.9	218.0	217.3	217.9	217.6	218.2	218.2	217.9
7.1	7.0	7.9	8.6	8.0	8.3	7.7	7.7	8.0
50	30	17	14		9	13	30	50

6+43

25' Rt ⊥ 7⁵" Conc Drive

217.91	217.26	217.36
8.01	7.66	7.56
25	30	50
conc	conc	conc

6+23⁵

29' Rt ⊥ 2⁵" Conc walk

217.15	217.14
8.77	8.74
29	50
conc	conc

6+22

29' Rt End Ret wall

216.3	216.6	217.12
7.6	9.3	8.80
29	29	29
Ret	GRD	Top

225.92X

225.92X

7+57 29 Rt End chainlink Fence

7+50

7+48 30² Lt E 8⁵' Conc Drive

7+42

30² Lt Begin Pickot Fence22² Lt to center P.Pole # P77305

7+35

30⁵ Lt E 8⁵' Conc Drive

7+30

28^I Rt E 4⁵' Conc walk

T.P.

1155 237.18A 0.29 22563

237.18A

7+26

20⁵ Rt to center Acacia

7+05

28² Rt begin chain link fence

225.92A

226.7	226.7	226.2	225.6	225.8	225.6	225.7	225.9
10.6	10.6	11.0	11.6	11.4	11.6	11.5	11.3
50	30	17	14	11	11	30	50

226.59	226.59
10.60	10.59
50	30
conc	conc

226.00	227.95
11.18	11.23
50	30
conc	conc

225.15	225.09
12.03	12.09
28	45
conc	conc

223.6	223.5	222.1	221.9	222.3	222.0	222.9	223.1	223.8	223.9
2.3	2.4	3.4	4.1	3.6	3.9	3.0	2.8	2.1	2.0
50	30	16	14	11	13	28	30	50	

225.92A

Cont'd From Page 18

Lt

R

Rt 19

8463 30⁴ Rt End Picket Fence

~~230.49~~
~~230.47~~

230.51

8457 30³ Lt & 3^E conc walk

669
48
conc

667
30²
conc

8450

230.2 7.0 50	230.3 6.9 30	230.4 6.8 16	230.1 7.1 15	230.6 6.6 11	230.3 6.6 18	230.6 6.3 30	230.9 6.3 50	230.9 6.3 50
--------------------	--------------------	--------------------	--------------------	--------------------	--------------------	--------------------	--------------------	--------------------

8410 29² Rt Begin picket fence

229.51

229.61

8404 32¹ Lt & 14³ conc Drive

8.67
50
conc

8.53
32¹
conc

8400

229.5 8.7 50	229.5 8.7 30	229.4 8.8 17	229.4 8.8	229.2 9.0 11	229.4 8.8 17	229.7 8.5 30	229.1 8.4 50
--------------------	--------------------	--------------------	--------------	--------------------	--------------------	--------------------	--------------------

7492 30² Lt End Picket Fence

227.95
9.23
29⁶
conc

7477 29⁶ Rt & 3' conc walk

228.10
9.08
27
conc

7466 20' Rt to center 10' Pepper Tree

237.18 X

237.18 X

Cont'd From Page 19

Lt

R

Rt 20

9+50

234.6	235.2	235.3	234.7	235.4	235.4	236.1	236.2
13.5	12.9	12.8	13.4	12.3	12.3	11.6	11.9
50	30	24	16		16	30	50

9+44

295' Rt @ 3' Conc walk

236.28	236.29
11.85	11.85
295	50
conc	conc

T.P. 12.88 248.13A 1.93 235.25

248.13A

9+18

232.7	233.5	233.7	233.0	234.0	233.9	235.0	235.8	235.7
4.5	3.7	3.5	4.2	3.2	3.3	2.2	1.4	1.5
50	30	20	17		12	28	30	50

9+17

295' Rt begin 0.2' curbing

232.7	233.5	233.6	233.0	234.0	233.8	234.2	235.1	236.0	234.2
4.5	3.7	3.6	4.2	3.2	3.4	3.0	2.1	1.2	3.0
50	30	20	17		12	27	29E	29E	50
						GED	Foot	Top	

9+00

232.1	232.6	232.6	232.2	233.1	233.0	233.3	233.4	233.5
5.1	4.6	4.6	5.0	4.1	4.2	3.9	3.8	3.7
50	30	17	15		13	20	30	50

8+93 21# Lt to center P. Pole # SP171048

237.18A

237.18A

Cont'd From Page 20

Lt

Q

Rt 21

10+77 226 Lt. to Dredman

10+58 225 Lt to center P.P. # JP171047

10+50

2391.8	2401.9	2411.5	2411.0	2411.9	2421.0	2421.0	2411.0	2411.0	2411.5	2431.9	2441.1
8.3	7.3	6.6	7.1	6.2	6.1	6.1	7.1	6.5	6.6	4.2	4.0
50	30	19	18	8	6	9	20	21	30	30	40

10+41 30 Rt begin conc block Ret Wall

2411.5	2401.7	2441.38
6.6	7.4	3.8
30	30	30
GRD	Foot	Top

when Q of wide drive shown; it is almost

Flat Grade!

10+33 30 Rt Q 145 Conc Drive

2411.05	2411.99	2421.20
7.08	6.14	5.93
30	38	50
conc	conc	conc

10+00

2371.51	2381.01	2371.41	2391.0	2391.8	2391.3	2391.8
10.6	10.1	10.3	9.1	9.3	8.8	8.3
50	30	22	17	30	50	

9+79E 297 Lt Q 2' Conc walk

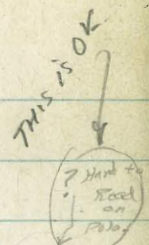
2361.91	2371.20
11.22	10.73
48	292
conc	conc

9+71 29E Rt End Curbing

2371.6	2371.0	2371.7
10.5	11.1	10.4
29E	29E	29E
GRD	Foot	Top

248.13A

248.13A



check Elev. in Grade book believe Osborn staked this.

check

4/30 243.83 = 243.66

Spike in pole S.W. Cor Fergus & Brooklyn

E Brooklyn

242.03	243.103	243.99	245.54	247.32
6.10	5.16	4.14	2.57	0.81
100	50		50	85

South Curb Line

241.71	241.09	242.86	242.20	242.87	243.49	243.54	244.03	244.68	246.68	247.31
6.42	7.05	5.27	5.93	5.26	4.64	4.59	4.10	3.45	1.45	0.82
100	100	90	90	20		20	40	40	90	90
cb	Gutt	cb	Gutt			Gutt	cb	Gutt	Gutt	cb

Center of Curb Returns (20' Rad.)

243.101	242.35	243.29	244.95
5.12	5.78	4.84	4.18
cb	Gutt	Gutt	cb

10+90.80 South Line Brooklyn (Begin Pav)

242.9	243.00	242.32	242.86	243.10	243.07	242.65	243.20	243.7
5.2	5.13	5.81	5.27	5.03	5.06	5.44	4.83	4.4
30	222	222	10		10	222	222	30
	cb	Gutt				Gutt	cb	

10+87 30' R End Ret Wall

242.9	242.4	243.23
5.2	5.7	2.80
30	30	30
Gutt	Gutt	Gutt

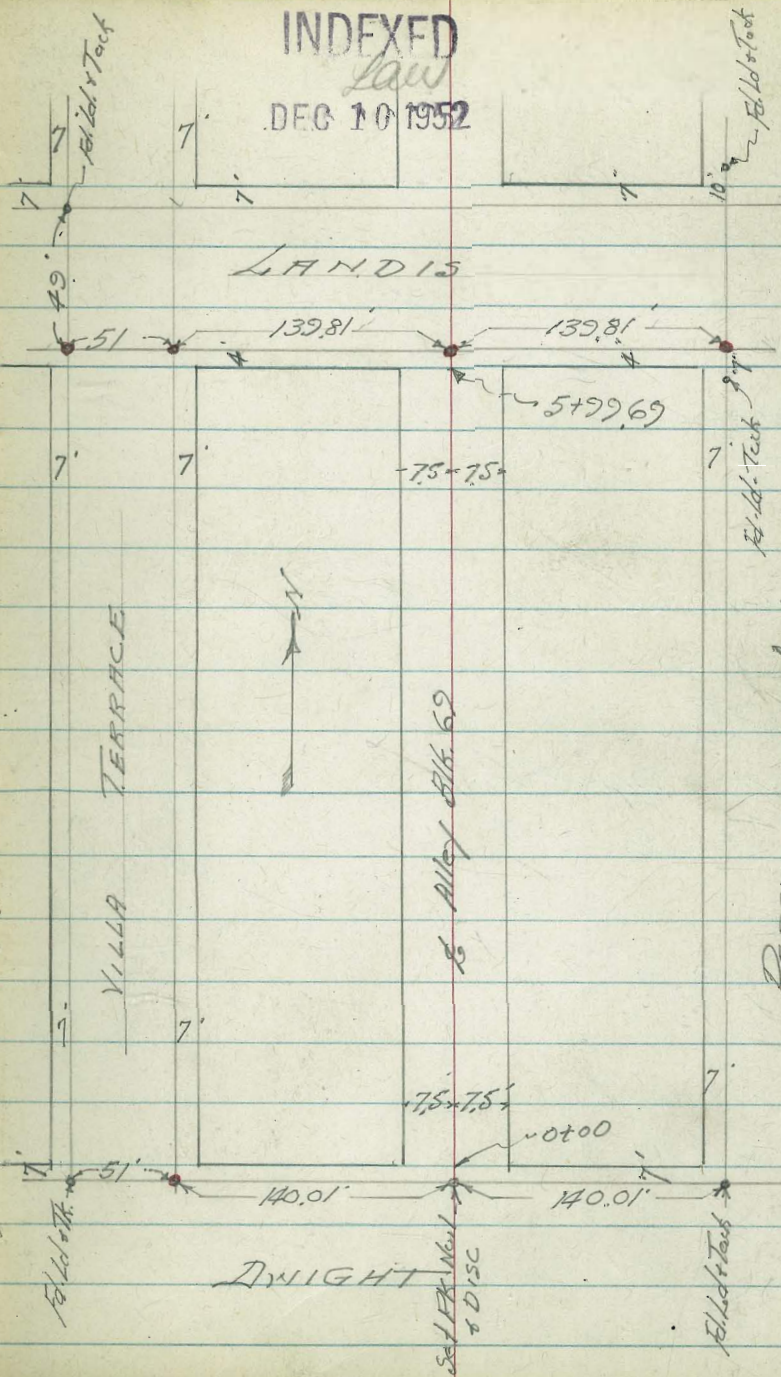
CROSS SECTION ALLEY BLK 69
 - PARK VILLAS.
 Between PERSHING AVE.
 And Villa Terrace

Walker
 Pope
 Huffman
 Presley
 12-9-52

MAP. 25020

• = Set Ld. & Disc.
 Please Plot on Tie sheet #251

Lands to Duongh



Alley Blk. 69 ~ Park Villas

Lt. Lt. Rt. 24

0+21 = End Garage 2.5' Rt. = St. Entrance
 = Beg. Conc. Patio 9.2' Lt.
 0+16 = End Garage 8.7 Lt. = St. Entrance

315.82 316.22 316.52
 9.2 8.2 8.5
 8.7 8.7 9.2
 Top Wall Top Patio
 Garage Wall 328.02 ✓

TP. 1169 326.02 ✓ 335 313.33 ✓

0+05

315.28 315.28 315.28 314.98 312.38 312.88 312.68 315.28 316.18 316.18
 14 14 14 3.7 4.3 4.2 4.0 14 0.5 0.5
 8.7 7.5 6.1 6 4 6 6.1 7.5 9.5
 at Garage of Garage Wall

Beg. Garage on Rt. St. Ent. 8.7 Lt. = Garage
 0+00 = N. Line DWIGHT 9.5 Rt. = "

310.98 310.98 311.19 311.68 311.93
 6.20 6.20 5.49 5.00 4.75
 7.6 7.6 Patch 7.3 7.3
 cb. Gut Patch Gut cb.

0-00.50 = Beg. Garage, St. Entrance 8.7 Lt.

0-03

0+00 = N. Line DWIGHT

310.36 310.22 310.21 311.98 311.89
 6.30 6.46 5.87 5.20 4.79
 7.6 7.6 Gut 7.4 7.4
 cb. Gut Gut cb.

Reduced by
 Ralph Barber
 12-11-52

0-10

308.51 307.69 310.13 309.70 310.58 311.22 311.73 312.22 312.45
 8.17 8.79 6.55 6.98 6.10 5.48 4.95 3.86 3.25
 2.5 2.5 7.5 7.5 7.5 7.5 7.5 2.5 2.5
 cb Gut cb Gut Gut cb Gut cb

0-30 = L

308.18 309.82 310.62 311.28 312.91
 8.50 6.86 6.06 5.40 3.77
 2.5 7.5 7.5 7.5 2.5

351 316.68 ✓ 1248 313.17 ✓

164 325.65 ✓ 324.01

316.68 ✓
 B.M. SE. DWIGHT. & PERSHING AVE

Alley Blk. 62 - Park Villas

Lt.

E.

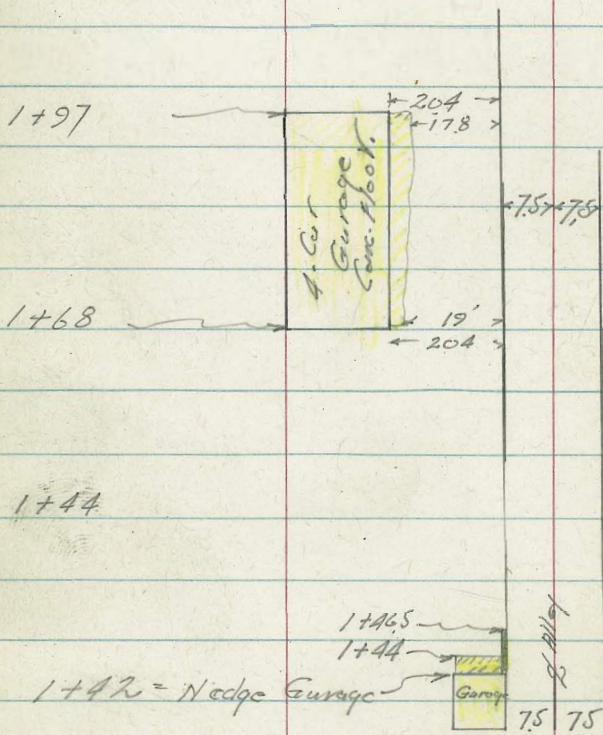
FF.

35

2+02. 6.6' Ht Power Pole A-3633

2+00 7.1' Ht Tel # Power Pole JPA 3632

21.52	22.72	22.82	22.92	23.12	24.42
3.5	3.3	3.2	3.1	1.9	0.6
20	7.5	5		4	7.5



21.22	21.12
3.80	3.90
20.4	17.8
Conc. Floor.	Top Apron

21.10	20.72
3.92	4.30
20.4	19
Floor Garage	Top Conc. Apron

20.45
4.57
12.6
Top Apron

20.67	21.02	21.42	21.52	21.52	22.82
4.35	4.00	3.6	3.5	3.5	2.2
12.6	7.5	4		3.5	7.5
Floor E.	E. Edge Garage				

1+35 = End Conc. Wall on FF

32.502

32.502

32.69
2.33
81
Top Wall

Alley Blk. 67-Park Villas

Lt.

L

Rt.

27

2+25 = 1/2 Sewer MH

324.88

4.84
Rim
MH

2+78 = 1/2 Meter Box

324.80

4.92
8.0
Top Meter

325.40
4.32
8.0
Top Box

2+60 = 1/2 Garage, Conc. Floor

322.32

7.4

23.2

Approx Floor Elev.

2+58 = 1/2 Garage, Conc. Floor & Apron

325.42

4.30
8.7
Top Apron

326.73
2.99
14.2
Floor

2+50

322.62 322.12 324.02 320.22
7.1 6.6 5.7 6.3
15 10 7.5 5

324.52

329.42
5.3
5

325.12
4.6
7.5

326.52
3.2
14

2+34 = 1/2 Meter Meter

Rim MH

TD 4.84 322.72 0.14 324.88

324.10

5.62
8.1
Top Meter

324.59

5.13
8.1
Top Box

2+25 = 1/2 Garage on Lt.

325.02

324.57

3.45

2.73

Conc. Floor 325.02

Alley Blk 29 - Park Villas

Lt.

L

Rt 28

TR 5.01 330.08[✓] 4.65 325.07[✓]

3+50

324.72	324.82	325.02	325.02	325.02	325.62
5.0	4.9	4.7	4.7	4.7	4.1
10	7.5	5		5	7.5

3+41 6.2' H. Power Pole A-3659

3+37

324.66	324.27	324.70	325.30
5.06	5.45	5.02	4.42
6.3	6.3	7.4	7.4
Top Box	Top Meter	Top Meter	Top Box

3+36 = L Meter

3+29 = North Edge Dble. Garage, Conc. Floor

323.10	322.07
6.62	6.65
2.5	2.2
Conc. Floor	Apron

3+12 = South Edge Dble, Garage, Conc. Floor

321.03	322.88
6.69	6.84
2.5	2.2
Conc. Floor	Apron

3+01 = L. Garage

321.07
6.65
3.5
Conc. Floor

3+00

6.7' Rt = Pole JPH #3642

329.72

323.52	324.22	324.92	324.82	325.02	326.02
6.2	4.9	4.8	4.9	4.7	4.7
1.5	7.5	5		3	8.7
			329.72		

Alley Blk. 69 - Park Villa 3

4+71 6.8' H = Beg 4' Wire Fence

4+55 = 1/2 Garage

4+50

TP. 676 332.66 418 325.90

4+42.5 6.2 Ht. Pole # D - 3320

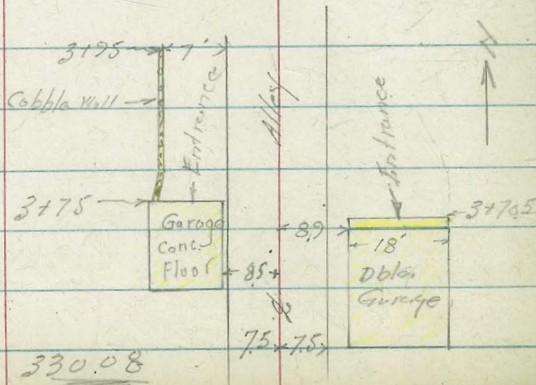
4+25.5 7.4 Ht. Pole # A 3662

4+00

3+95 = 1/2 Meter Meter

3+75

3+70



330.08

Lt. Lt. Rt. 39

325.74
6.2
12
Conc. Floor
325.66
7.1 6.9 6.8 6.7 5.6
12 7.5 332.66 4 7.5

324.98 324.98 325.08 325.68
5.60 5.1 5.0 4.4
14.5 7.5 7.5

Cobble Wall

324.26 325.51 325.95
5.82 4.57 4.13
13.3 11.3 11.3
Garage Floor Top Meter Top Box

325.87 325.99 325.90 325.92
4.21 4.09 4.18 4.16
8.9 21 36.9 26.9
Top 3+70 3+70S 3+70
3+70S Floor Apical Foot

330.58

Alley Blk. 37 Park Villas

Lit. L R.F. 30

Not Good Construction

5+50 = Big Cobble Ret. Wall 7.9' H

^{327.96}
 4.7
 7.5
^{328.06}
 4.6
^{328.16}
 4.5
 4
^{328.96}
 3.7
 7.5
^{328.46}
 4.2
 7.8
 Footing
^{331.74}
 0.92
 7.8
 Top
 Wall

5+37.5 6.7' Lt Power # Pole A 9687

5+22 = 2' Meter Box

^{327.22}
 5.44
 7.9
 Top
 Box
^{327.38}
 5.28
 7.9
 Top
 Meter

5+35

5+20 = 2' Meter Box (Not Taken in order)

^{327.90}
 5.26
 14.4
 Conc. Floor
^{327.33}
 5.33
 11.4
 Top
 Apron
 4.36
 7.5
 Top Meter
 3.76
 7.5
 Top
 Box

5+0.5 = Big 3 Car Garage

^{327.29}
 5.27
 14.4
 Conc. Floor
^{327.27}
 5.39
 11.4
 Top
 Apron

5+00 6.8' Lt End 4' Wire Fence

^{327.06}
 5.6
 9
^{327.26}
 5.4
 7.5
^{327.36}
 5.3
^{327.46}
 5.2
 5
^{328.26}
 4.4
 7.5

4+74.5 = 2' Conc Walk

^{327.96}
 4.70
 8.7

332.66

Alley Blk. 62 - Park Villas

Error = 0.04

chk. S.E. B.P. Landist
on disc. 670369

048

338.40 = Rec.
338.36 ✓

TR 12.44

338.84 ✓

6.26

326.40 ✓

6+29.7 = % Landis

6+09.7 = South Curb Landis

6+00 = South Edge Existing Conc. Pav.

5+93

68' RT = % Pole

447808-A

5+99.69 = South Line Landis

5+75 = 2' Meter Box (Not Taken in order)

5+85

326.66

Lt.

Rt.

Rt.

31

326.19
6.47
7.5

326.28
5.88

327.05
5.21
7.5

326.10
6.56
7.7
6

325.53
6.713
7.7

326.13
6.53

326.78
5.88
7.4
Gut

327.92
5.24
Gut

326.26
6.30
7.7
Topcb

326.29
6.37
7.7
Gut

326.60
6.06

327.17
5.49
7.4
Gut

327.74
4.92
7.4
Topcb

326.60
6.06

328.62
3.98
7.5
Top
Meter

329.28
3.38
7.5
Top
Box

327.76
4.9
1.2

328.76
4.3
7.5

328.96
3.7
5

328.66
4.0
326.66

328.8
3.8
4
Toe
Footings

329.76
2.9
8.2

332.51
0.18
8.2
Top Wall

X-sec Webster - 36th to Francis ST
 X-sec Pardee ST - Webster to Alley North
 of + parallel to Ocean View Blvd
 X-sec 36th ST - Ocean View to Imperial.
 No # 31769

3-20-53

Ref. FB 1547

C. Allen

T.P. Sheets. 336, 338,

D. Sisson

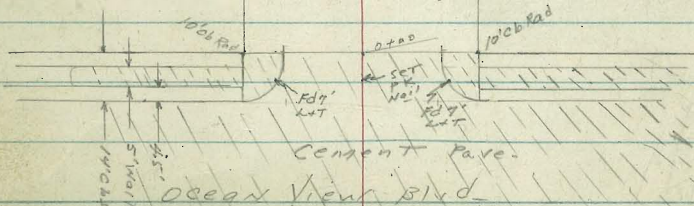
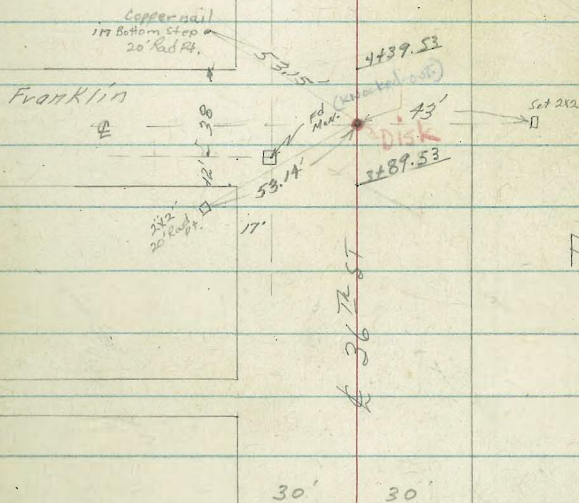
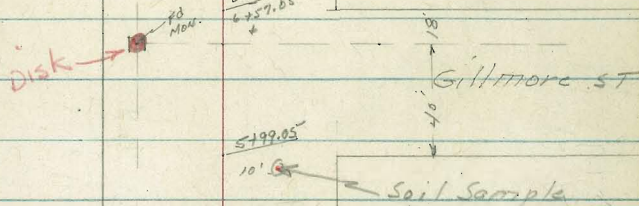
C. Powell

INDEXED
 LAW
 MAR 31 1953

Contin Page 32

32

X-sec 36th -
 Ocean View to
 Imperial -
 3-20-53
 No 31769.

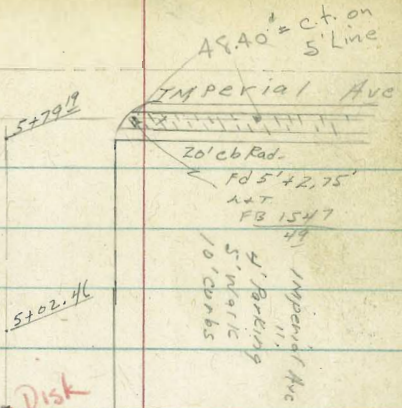


X-sec 36th -
Ocean View to

Imperial
W# 31769

Webster

60'



5+79.18

5+02.46

4+72.46

36th ST

Start on stop
Clark 6-21-54

16.31
17.95
FD Mon

17'

0+00

5+99.05

Gillmore ST

40'

30' 30'

Cont. from Page 32

Cont. on Page 34

X-sec Webster Ave
Francis ST. to
36th ST
W# 31769
3-20-53

33
Pardec ST

5+78.88

30' 30'

3+39.99

Disk

2+91.99

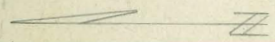
(OUT) SMH.

2+24.99

Webster Ave

35th

ST



30' 30'

0+00

Francis ST

229.97 - FD 2'42" RW W/HD DISK
FB 2033

4110
2444
2x22.25

X-sec - Pardee 34
ST - Webster Ave 34
sig. To Alley No. 64 + =
Oceanview

3-20-53

X-sec Webster Ave - 36th ST lowly

line of Francis

Webster

973991

Ave



30'
30'

36th ST

ST

Disk

add 2"x2" KH hub
replaced - 3-27-53

Webster Ave

30'

30'

30'

30'

6+28.88

6+28.88

6+28.88

6+28.88

6+28.88

6+28.88

6+28.88

6+28.88

6+28.88

6+28.88

6+28.88

6+28.88

6+28.88

6+28.88

6+28.88

6+28.88

6+28.88

6+28.88

6+28.88

6+28.88

6+28.88

6+28.88

6+28.88

Soil
sample
Here

Disk

25'
25'
Pardee ST.

Franklin

Soil sample
Here

C

Pardee

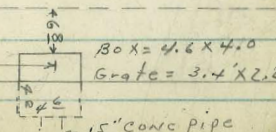
Ave

B

out. 12' 3 8'

Pipes
Alley

Disk



cont from page 83

X-sec 36th ST - Ocean View Blvd
to E Gillittone ST
See sketch page 32

0+50

INDEXED

MAR 21 1953

0+48 - 22° LT = 14" power pole #470

TP, 13.37 81.13 0.24 67.76

0+25

street roughly paved with cold lay.

Concrete Covered with AC. PVT.

0+00 - Nly line Ocean View Blvd

Mid points Returns - 16' Long (Arc)

0-14 Nly Curb line Ocean View Blvd.

B.M. checked by curls as
shown in FB 1547

B.M. 56 +3.76 68.00 x

S.E. Top Hyd. 30' x 4

67.24 View

LT = Wly

Rt = eLy.

35

71.73	72.63	69.73	69.53	70.33	69.93	70.73	73.63	79.73	80.43
9 [±]	8 [±]	11 [±]	11 [±]	10 [±]	11 [±]	10 [±]	7 [±]	1 [±]	0 [±]
50	30	23	15 old lay	10	10 old lay	19	26	30	50

81.13

65.60	65.80	66.00	66.40	65.80	69.70	77.20
2 [±]	2 [±]	2 [±]	6	2 [±]	4 1/2	58.80
50	30	24	12	26	36	ON BANK

63.10	62.78	62.40	62.99	62.64	62.25	61.80	61.85	62.03
4 [±]	5 [±]	5 [±]	5 [±]	5 [±]	5 [±]	6 [±]	6 [±]	5 [±]
30 on walk	198 cb	198 GUT DIRT	10	5 [±]	10	20 [±] GUT DIRT	20 [±] cb	30 Prop on Walk
		62.12			61.23			
		FB.1547-56			FB.1547-56			
	62.88	62.19			61.91	61.18		
	5 [±]	5 [±]			6 [±]	6 [±]		
	Wly cb	GUT			Ely cb	Ely GUT		

63.13	62.39	62.91	62.23	62.15	61.92	61.33	61.08	61.87	58.80	59.48
4 [±]	5 [±]	5 [±]	5 [±]	5 [±]	6 [±]	6 [±]	6 [±]	6 [±]	8 [±]	8 [±]
80 [±] cb	80 [±] GUT	30 [±] cb	30 [±] GUT	20	20	30 [±] GUT	30 [±] cb	80 [±] cb	80 [±] cb	

68.00 x

X-sec 367² - occarr view to Imperial

LT = W14

ct = ety -

36

1423 - 30⁷ LT = 4' 3" conc walk

1425

1400

1493 - 20⁵ ct = 4' 3" wide conc walk

0475

0466 - 22⁰ LT = 4' Deadman

77.38
37.5
40.7
WK
77.48
36.5
30.7
WK

77.83
33
30
79.23
19
16
79.13
20
12
cold
lay
80.23
09
10
cold
lay
80.03
11
20
81.13
00
30
82.13
10

76.43
47
30
76.93
42
13
cold
lay
77.73
54
10
cold
lay
77.53
36
19
78.53
26
30
81.13
00
50
84.73
47.53

78.61
252
205
WK
81.08
005
280
WK

74.73
64
30
73.63
75
14
cold
lay
73.43
72
9
edge
cold
lay
73.33
78
23
75.93
52
28
80.33
08
30
81.13
81.23
81.03

81.13

X-sec 26 ⁷²

LT = W14

Et-ely. 31

2408-28⁸ Rt- begin Conc Wall.

87.56	87.46	88.34
36	32	282
282	282	282
Grat Wall	Foot	Top

2400

79.66	80.96	83.36	82.86	83.86	85.08	87.36	88.56
15	10 ²	7 ⁸	8 ³	7 ³	6 ¹	3 ⁸	2 ⁶
50	30	14	12		15	30	50

1491-29⁹ Et-end 1' high Conc Wall.

87.46	87.26	88.30
37	32	286
292	299	299
Grat Wall	Foot	Top

1483-28¹ Rt- 3' conc walk.

87.60	88.91
356	225
28.4	384
WIK	WIK

1455 ± - 1/2 alley to west - 30° Rt- 1' high Conc Wall-

73.76	78.46	80.46	81.56	81.96	83.76	86.66	87.60	86.36
17 ⁴	12 ⁷	10 ⁷	9 ⁶	9 ²	7 ⁴	4 ⁵	3 ⁵⁶	4 ⁸
80	30	16		12	22	30	30	30
							TOP	Foot

1447- end rough Cold lay from 0400.

TR₂ 10.25 9.16 0.22 80.91

91.16 ✓

81.13 ✓

X-sec 36¹²

3+00

TP3

11.96

100.87

2.25

88.91

2+84-26² Rt = k 3' conc walk

2+50

2+48-21⁶ LT = 12" Power pile* None

2+17-28⁶ Rt = 3' wide walk

2+15-28⁶ Rt = end Conc Wall - .3 wide

LT = w14

Rt = E4.

38

84.77	86.47	88.67	88.37	88.87	89.17	91.57	92.27
16 ¹	14 ⁴	12 ²	12 ⁵	12 ⁰	11 ⁷	9 ³	8 ⁶
50	30	15	11		14	30	50

100.87 ✓

90.67

91.16

0⁴

0⁰⁰

26²
WIK

36²
WIK

81.06	83.76	86.16	85.76	86.46	87.36	89.16	89.56	89.96
10 ¹	7 ⁴	5 ⁰	5 ⁴	4 ⁷	3 ⁸	2 ⁰	1 ⁶	1 ²
50	30	14	12		14	25	30	50

88.18

89.50

2⁹⁸

1⁶⁶

28⁶
WIK

38⁶
WIK

87.96

87.68

88.16

3²

3⁴⁸

3⁰⁰

28⁶
Gr

28⁶
Foot

28⁶
Top

91.16 ✓

X-sec 36th - Oceanview to Imperial

4+39.53 - Nly line Franklin st to West

4+25. 30° RT = 2' wide Conc walk

4+14.53 = E Franklin st to West

3+89.53 = Sly Franklin st to West

3+88. 28° LT & 14" power pole #400

3+45

3+38. 30° RT & 8' solid drive

3+23. 30° RT = 3' conc walk

LT = Wly E et. ely 39

85.27	90.77	93.47	92.77	93.87	95.07	95.77	96.57	96.77
15 ⁶	10 ¹	7 ⁴	8 ¹	7 ⁰	5 ⁸	5 ¹	4 ³	4 ¹
80	30	11	8		14	16	30	50

96.72	96.83
4 ¹⁵	4 ⁰⁴
30°	40°
WIK	WIK

83.17	88.27	93.27	94.57	95.27	96.27
17 ²	12 ⁶	7 ⁶	6 ³	5 ⁶	4 ⁶
80	30		16	18	30

83.47	90.17	92.87	92.27	92.87	93.87	94.57	95.87	96.27
83.57		8 ⁰	8 ⁶	8 ⁰	7 ⁰	6 ³	5 ⁰	4 ⁶
17 ⁴	10 ²	10	9		15	17	30	50

86.67	88.27	91.17	91.37	91.77	93.27	93.77
14 ²	12 ⁶	9 ²	9 ⁵	9 ¹	7 ⁶	7 ¹
50	30	11		14	30	50

93.15	93.78
77 ²	70 ⁹
30°	50°
Dr.	F/90°
	single garage

92.80	93.25
80 ⁷	76 ²
30°	40°
WIK	WIK

100.87.7

X-sec 367

5470

5473-21° Rt = 1/2 anchor pole

5470-

5430-30° Lt = 1/2 3' wide Conc walk

5408-29° Rt = 1/2 8' Conc driveway

4490- Rt = 1/2 8' Conc drive

R 4450-30° Rt = begin 3' high Conc block wall

Lt = wly

90.97

91.87

94.27

94.47

94.77

95.67

96.77

97.17

97.27

99

90

65

64

61

52

41

37

35

50

30

9

16

17

22

30

50

Rt = eiy

40

91.27

91.97

93.77

95.07

95.17

95.37

96.17

96.87

99.37

99.37

95

82

71

58

57

55

47

40

35

35

50

30

14

9

17

18

21

30

50

91.69

92.07

918

880

40 1/2

30 1/2

WIK-

WIK

97.22

97.54

365

333

298

398

Dr

Dr

Gar.

27

back of P.L.

89.37

92.27

95.77

95.47

95.47

95.77

96.67

96.77

99.09

115

86

51

54

54

51

42

408

378

40

30

8

7

16

298

398

398

Dr

Dr

Gar

back of P.L.

96.47

99.83

95.87

44

104

50

304

304

304

Gr.

Top

Foot

100.87 ✓

X-sec 36th - Ocean View to Gillmore

xt = wly

kt = e ly. 41

Set BM

7.36

Men Nly 18' line,
Gillmore to Wly 17'
93.51 line 36th

6+57.05 = Nly line Gillmore = 0+00

ahead - See page 42.

6+28.05 = E Gillmore st. to east

6+23-29⁸ LT = E 8' conc Drive

6+08-33⁵ kt = E 14" power pole # 36.01

6+06-23² LT = E 12" anchor pole

E 5+99.05 = sly line Gillmore st to east

92.17	92.87	94.07	94.27	94.37	93.87	92.67
87	80	68	66	65	70	82
40	30	10		15	38	70

92.53	92.92
83 ⁵	79 ⁵
398	292
0-	0-

89.47	91.87	94.07	94.17	94.27	94.97	94.87	94.27	93.67
11 ⁴	90	68	67	66	52	60	66	72
80	30	10		16	18	30	60	90

100.87

X-sec 36th ST Nly line Gillmore ST
to Imperial Ave -
See sketch Page 33 -

0+75

0+70 - 31[±] RT. ϕ 3' CONC. WALK

0+50 - 29[±] LT. end 3' high Cyclone fence

0+15 - 30[±] RT = begin 3' high Cyclone fence

0+10 - 29[±] LT = ϕ 6[±] Conc drive

0+00 - 30[±] RT = begin 3[±] high latk fence

0+00 = Nly line Gillmore ST - For ϕ
and sly line Gillmore See page 41

0-25 - begin rough Cold lay 25[±] wide

BM. 8.15 101.66

Max. Nly 18' line
Gillmore at Wly 17'
93.51 line 36
Page 41

LEFT = WLY

RIGHT = ELY. 42

97.76	98.26	97.76	97.36	96.86	96.96	96.26
39	34	39	43	48	47	57
30	12	10		17	19	30

95.80	95.34
586	632
31 [±]	41 [±]
WALK	WLY.

96.16	96.76	97.16	96.56	96.56	96.06	96.16	95.46
55	49	45	51	51	55	55	62
30	14	12	9		16	18	30

cold.
lay

94.09	94.68
757	628
395	295
Dr.	Dr.

93.66	94.76	94.76	94.96	94.56	94.66	94.46	93.16
80	62	62	62	71	70	72	85
30	14	10		17	18	30	70

101.66 \checkmark

X-SEC 36⁷²

LT. = WLY

RT. = ELY. 43

1+44 20⁶ LT. = Φ 12" PEPPER TREE

1+35 20³ RT. = Φ 14" POWER POLE, NO. 261

1+25

99.26	99.56	99.06	98.46	97.96	97.46	97.66	96.56	95.06
2 ⁴	2 ¹	2 ⁵	3 ²	3 ⁷	4 ²	4 ⁰	5 ¹	6 ⁶
50	30	15	10		17	18	30	50

1+12 30⁷ RT. = 2² WIDE CONC. WALK

96.13	95.99
5 ⁵³	5 ⁶⁷
30 ⁷	40 ⁷

1+00 30⁰ LT. BEGIN 2⁵ HIGH WIRE FENCE

1+00

98.26	99.06	98.86	98.26	97.96	97.36	97.66	96.26	95.76
3 ⁴	2 ⁶	2 ⁸	3 ⁴	3 ⁷	4 ³	4 ⁰	5 ⁴	5 ²
50	30	13	10		17	18	30	50

0+97-31⁰ RT. = END 3⁵ HIGH LATH FENCE

101.66 π

X-sec 3672

LT = WLY. $\text{\textcircled{E}}$

RT = ELY $\text{\textcircled{N}}$

TP, 5.38 102.19 ✓ 4.85 96.81 ✓

102.19 ✓

2421 - 20" LT = $\text{\textcircled{E}}$ 3" elim tree

2413-27³ LT = $\text{\textcircled{E}}$ 3' conc walk

2404. 21⁰ LT = $\text{\textcircled{E}}$ 24" clump of Hibiscus

97.04

97.07

462

459

373
WIK

273
WIK

2400

97.36

97.26

97.06

96.86

96.36

96.66

95.76

95.26

43

44

46

48

53

50

52

64

50

30

13

15

16

30

50

97.85

97.96

381

370

347

298

1784 29⁸ LT = $\text{\textcircled{E}}$ 9' CONC. DRIVE

1763 19⁵ LT = $\text{\textcircled{E}}$ 24" PEPPER TREE

1750

98.66

98.66

98.56

97.96

97.56

99.06

97.16

96.16

94.56

30

30

31

32

41

46

45

55

71

50

30

15

12

16

18

30

50

101.66 $\text{\textcircled{N}}$

X-sec 36th

LT = wly

2

Rt = ely-

45

R+75- 30[±] Rt = begin 4' high picket fence.

R+75- 30[±] Rt = end 3' high cyclone fence

R+74- 20[±] & 12" power pole #231-

R+56- 21[±] LT = 6" tree (r)

R+54- 30[±] Rt = 3' conc walk

95.89

95.71

6³⁰

6⁴⁸

302
WIK

403
WIK

97.69

97.79

97.39

97.09

96.79

95.99

95.79

45

44

42

51

54

62

64

50

30

11

15

30

50

R+50

R+45- 20[±] LT = 6" tree (r)

97.26

97.35

~~97.36~~

493

484

409
Dr.

300
Dr.

R+37- 30[±] LT = 7" wide Ribbon Drive 2 ribbons

R+25- 30[±] Rt = begin 3' high cyclone fence

102.19 ✓

X-sec 36th

3+50

3+48- 20⁸ LT = 6" Olive tree.

3+42- 30⁶ LT = end 2' high Conc block wall.

3+25- 30³ Lt = begin 2' high cyclone fence

3+25- 30³ Rt = end 4' high picket fence

3+15- 30³ LT = 2⁵ Conc Walk

3+04- 30⁰ LT = begin 2' high Conc block wall.

3+00- 36² LT = 8' Conc drive

2+85- 29² LT = 12⁵ Conc drive

Lt = W14

Rt = e14 - 46

98.19	97.89	97.99	97.19	97.19	96.79	96.99	95.99	95.39
4 ⁰	4 ³	4 ²	5 ⁰	5 ⁰	5 ⁰	5 ²	6 ⁴	6 ⁸
50	30	20	11	5 ⁰	15	16	30	50

97.99	100.43	98.19
4 ²	1 ⁷	4 ⁰
30 ⁶ Foot	30 ⁶ Top	30 ⁶ Gr.

98.23	98.14
3 ⁹	4 ⁰
40 ³ WK	30 ³ WK

100.26	97.8	98.0
1 ⁹	4 ⁴	4 ²
30 ⁰ Top	30 ⁰ Foot	30 ⁰ Gr.

97.96	98.07	97.79	97.39	97.39	96.89	97.19	95.89	95.39
4 ²	4 ²	4 ⁴	4 ⁸	4 ⁸	5 ³	5 ⁰	6 ³	6 ⁸
40	30 ⁰ Dr Gr, Some	15	10	15	15	16	30	50

97.83	97.84
4 ³	4 ³
39 ² Dr	29 ² Dr

102.19

X-sec 36TH

Lt: W14

Rt: e14

3+50

98.19	97.89	97.99	97.19	97.19	96.79	96.99	95.79	95.39
4 ^e	4 ³	4 ²	5 ^e	5 ^o	5 ^e	5 ²	6 ^e	6 ^o
50	30	20	11		15	16	30	50

3+48- 20^e LT = 6" Olive tree.

97.99	100.43	98.19
4 ²	1 ⁷⁵	4 ^o
30 ⁶	30 ⁶	30 ⁶
Foot	Top	Gr.

3+42- 30⁶ LT = end 2' high Conc block wall.

3+25- 30³ Kt = begin 3' high cyclone fence

3+25- 30³ Rt = end 4' high picket fence

98.23	98.14
3 ⁹⁶	4 ²⁵
40 ³	30 ³
WE	WK

3+15- 30³ LT = 2^e Conc Walk

100.26	97.8	98.0
1 ⁹³	4 ⁴	4 ²
30 ^o	30 ^o	30 ^o
Top	Foot	Gr.

3+04- 30^o LT = begin 2' high Conc block wall.

97.96	98.07	97.79	97.39	97.39	96.89	97.19	95.89	95.39
4 ²³	4 ²	4 ¹	4 ⁸	4 ⁸	5 ³	5 ^o	6 ³	6 ⁸
40	30 ^o	15	10		15	16	30	50
	Dr.							
	Gr. Same							

3+00- 30^o LT = 8' Conc drive

97.83	97.84
4 ³⁶	4 ³⁵
397	292
Dr	Dr

2+85- 29² LT = 12^e Conc drive

10² 19

X-sec 36th

LT = wly

ct. ely. 47

4454 - 20⁵ LT = ϕ 36" euc. tree

97.69	96.79	96.79	96.59			
45	54	54	56	96.99	95.99	95.59
30	12		15	18	30	50

442.46 = sly line Webster St. to West

4433 - 20⁶ RT = ϕ 12" power pole # 221.

97.66	97.53
453	466
400	300
WIK	WIK

4423 - 30⁰ ϕ 3' conc walk

4400 - 30⁰ LT = ϕ 7' Driveway

97.56	97.44	96.79	96.89	96.69	96.99	95.59	96.19
463	475	54	53	55	52	66	60
40	300	10		15	18	30	50
Dr	Dr	Gr some					

3492 - 19⁶ LT = ϕ 36" euc. tree

97.46	97.48
473	471
400	300
Dr	Dr

3484 - 30⁰ = ϕ 7' wide ribbon Dr - 2' wide ripples

3475 - 31³ RT = end 3' high cyclone fence

97.98	97.87
421	432
400	300
WIK	WIK

3460 - 30⁰ LT = ϕ 3' conc walk

102.19 ✓

X-sec 36^B - Ocean view to Imperial

LT = Wly

RT = Ely. 48

5457- 40° RT = 4 13⁵ conc Billing station Dr. way

96.95
550
40°
Ely
Dr. way

TP2

7.60

101.45 ✓

8.34

S.E. 7' x 2.75 RP LT
30' h + 2Mperial
93.85 ✓

101.45 ✓

5444- 33° + 37° RT = 4 tank caps for underground gasoline storage

98.29

96.29

95.99

93.99

94.39

95.09

95.79

95.79

95.89

5442

39

59

63

83

73

72

64

64

63

5435- 31° RT = 4 Cap for underground gasoline storage tank

80

30

19

13

18

22

30

40

5432- 20° RT = 4 8" power pole # 205

5429- 21° LT = 4 12" pepper tree

97.49

96.69

95.59

95.89

95.89

96.39

96.49

96.69

5402.46 = Nly line Webster to Wly.

47

55

66

63

63

58

52

55

4498- 21° LT = 4 12" pepper tree

30

18

13

17

19

30

50

96.91

97.19

523

500

320
WIK

420
WIK

4494- 32° RT = 4 4' conc walk

97.09

96.79

96.59

96.19

96.19

4472.46 = 4 Webster ST to West

51

54

56

60

60

30

15

17

30

102.19 ✓

X-sec - 36th ocean view to Imperial

LT = Wly

+

et = 24-

49

BM. TP

3.52

S.F. BP. Southlook
+ Imperial
97.93

94.45

90.65

91.46

92.65

95.55

6407 - approx & Imperial from east

70

100

99

80

50

No information on closing of Imperial Ave

80
on DRYANT
ST

30

30

100-

A.C. at angle with & 36th

6406 - & 36th intersects A.C. Pt IMPERIAL

90.95

91.57

92.91

105

88

85

30
DIT

30
AC

5789.19 - sly curb line Imperial from east

extended

94.95

94.45

91.75

92.25

92.85

93.60

94.10

95.50

96.20

65

70

92

92

95

78

73

59

52

30

27

22

20

40

40

100

60

100

Fly end Curb

93.70

93.3

77

82

60

60

5779¹⁹ sly line Imperial Ave

98.85

95.45

94.85

91.95

92.65

93.35

93.95

95.65

26

60

65

95

88

81

75

58

50

30

25

19

25

30

80

101.45

X-sec Pardee st - from Alley North of
and Parallel to Oceanview Blvd and
Webster Ave - See sketch Page 34.

WO # 31769

50' wide

3-24-53

Allen
Powell
Schelin

INDEXED
MAR 31 1953

0-10 = Sly line 10' alley.

0-11 in yard house on dead end Pardee.

Box inlet $\phi = 39.5$ at ϕ Pardee. see sketch page 34.

TP, 4.90

74.00 ✓

0.73

69.10 ✓

74.00 ✓

BM: 5.59

69.83 ✓

64.24

S.E. Top Fire Hyd. 36th & Oceanview -

LT = West

ϕ cf. east 80

69.90	67.80	68.70	68.80	68.30	68.70	70.00
4 ¹	6 ²	5 ³	5 ²	5 ¹	5 ³	4 ⁰
100	50	25		25	50	100

69.90	67.70	67.40	67.60	67.90	68.50	70.00
4 ¹	6 ³	6 ⁶	5 ²	6 ¹	5 ⁵	4 ⁰
100	50	25		25	50	100

67.29

6²

Top of curb
over Box

66.36 64.94 64.96

764

906

904

39.5

39.5

39.5

GATE

BOTTOM

15.75" CONC

AT GUTTER

BOX

PIPE FLOWING

GUTTER

SOUTH

x-see Pardee -

LT = W/4

2

ct = cly -

51

opening in wall for drive

0+52-25° ct = 2 8' ribbon drive - 2' ribbons

69.80

69.89

4 20

4 11

25°

35°

Dr.

Dr.

69.70

69.00

69.30

68.80

69.70

4 3

5 0

4 7

5 2

4 3

25

10

17

25

0+50

68.60

69.50

5 4

4 5

25°

25°

Foot

Grat

Wall

0+46 25° LT = begin 3 1/2' high brick (clay) wall -

69.60

69.10

4 2

4 8

25°

25°

Grat

Foot

Wall

0+46-25° ct = begin 4' high conc block wall -

68.59

69.13

5 4

4 8 7

52°

60°

Apron

Floor

0+33. 52° ct = 4 single garage conc floor & Apron

appears to be 5' opening on north side alley to east

70.60

68.70

68.70

68.40

68.10

68.40

69.70

3 4

5 3

5 3

5 6

5 2

5 6

4 3

100

50

25

25

50

100

0+00 = Nly line 10' alley

74.00 ✓

25° RT = begin 3' high cyclone fence

0+92° 25° LT = begin 3' high cyclone fence

TR	5.36	75.99 ✓	3.37	70.63 ✓	
					75.99 ✓

Nycor. Walk 6+92 RT

69.30	70.10
47	39
25°	25°
Foot	Foot

0+92. 25° LT = end 3' high clay brick wall -

0+92. 25° RT = end 4' high Conc Block Wall

70.80	70.20
32	38
25°	25°
Gr	Foot.

0+72. 25° RT = 2' 3' Conc Walk

70.63	70.97
337	303
25°	35°
WIK	WIK.

0+72. 25° LT = 2' 3' Conc Walk

70.35	70.03
365	397
35°	25°
WIK	WIK

opening in wall for drive

0+53. 25° LT = 9' wide Conc driveway

70.03	69.85
397	415
35°	25°
Dr	Dr

74.00 ✓

X-sec Pardee

LT=Wly

¢

Rt=ely-

53

1745-25° Rt=¢ 7' conc drive

25° Rt=begin 3' picket fence

25° Lt=end 5' high cyclone fence

1738-25° Rt=end 3' high cyclone fence

1719-23° Lt=¢ 3' walk w/step

1719-25° Rt=¢ 3' conc walk

1719-25° Lt=¢ 3' conc walk

1700

1700

0498-25° Lt=¢ 7' ribbon drive - 2' strips

0498-25° Rt=¢ 7' conc drive

71.20	71.13	70.86
4 ⁷⁹	4 ⁸⁶	5 ¹³
342	242	238
WIK	WIK	step

71.64	72.64
4 ³⁵	3 ³⁵
25°	35°
Dr	Dr

71.01	71.59
4 ⁹⁸	4 ⁴⁰
25°	35°
WIK	WIK

70.79	70.49	69.79	69.89	69.59	70.69	71.79
5 ²	5 ⁵	6 ²	6 ¹	6 ⁴	5 ³	4 ²
40	25	12		15	25	40

70.68	70.59
5 ³¹	5 ⁴⁰
35°	25°
Dr	Dr

70.59	71.53
5 ⁴⁰	4 ⁴⁶
25°	35°
Dr	Dr

75.99 ✓
π

X-sec Pardee

LT=W14

rt=ely- 54

2+30²⁰ skyline Franklin Ave

73.13	72.83	73.03	72.73	71.93	72.43	72.33			
84	87	85	88	95	94	81.53	73.53	74.43	76.33
100	50	25	17	13		7	25	50	100

TP₃

9.06

81.53 ✓

3.52

72.47 ✓

S.W. 13' Mon Franklin
been with Hand 4 Pardee

81.53 ✓

2+28-26' rt=d 3conc walk w/step

73.90	74.34	74.80
209	65	19
264	270	370
step	WIK	WIK

2+00

72.99	72.49	72.19	71.39	71.69	71.69	72.59	72.79
28	30	35	38	46	43	34	32
40	30	25	16	12	12	25	40

1+84-25' rt=end 3' picket fence

72.17	73.07
382	222
252	352
WIK	WIK

1+64-25' rt=d 3' conc walk

71.39	70.49	70.69	70.69	71.79
46	55	53	53	42
25	12		15	25

1+50

75.99 ✓

X-sec Pardee ST

LT = W 14

RT = Ely

55

3+25-24^L RT = begin 4' high Conc block fence

76.43 75.73

5^L 5^R
24^L 24^R
Gr Foot

3+25-24^R LT = end 3' high cyclone fence

3+06-23^L LT = 3' Conc Walk

75.52 75.17 74.81
6^{0L} 6^{3L} 6^{7L}
34^R 24^R 23^L
WIK WE WK
BYK

3+00

75.33 75.03 74.43 73.93 74.23 74.23 74.93 75.43 76.53
6^{2L} 6^{5L} 7^L 7^{6L} 7^{3L} 7^{3L} 6^{6L} 6^L 5^{0L}
40 25 15 13 14 16 25 40

2+80³-24^R LT = begin 3' high cyclone fence

73.93 73.93 74.33 74.13 73.53 73.93 73.83 74.43 74.83 76.03 77.33
7^{6L} 7^{6L} 7^{2L} 7^{4L} 8^{0L} 7^{6L} 7^{7L} 7^L 6^{7L} 5^{5L} 4^{2L}
110 50 25 20 15 13 16 25 50 100

2+80²⁰ Nly line Franklin Ave

2+55²⁰ E Franklin Ave

73.23 73.03 73.13 73.23 73.83 74.83 76.63
8^{3L} 8^{5L} 8^{4L} 8^{3L} 7^L 6^{7L} 4^{2L}
100 50 25 25 25 50 100

2+38-25⁵ LT = 12" power pole # 562091H

2+32-17⁰ LT = 8" Pepper Tree

81.53 ✓

X-sec Pardee ST

LT: W14

Chely. 50

4425-24² RT = 2 7' Conc. Driveway

79.46 80.66

7²⁰ 6⁰⁰

24² 34²
Dr Dr

TP₄ 8.60 86.66 3.47 78.06

86.66

4400

78.83	77.73	77.13	76.43	77.13	77.13	77.83	78.63	80.03
27	38	48	51	4	4	37	29	15
40	25	15	13			13	15	25

3485-24⁴ RT = end 4⁵ Conc block wall.

77.93 77.23

3⁶ 4³
24⁴ 24⁴
Dr Foot

3460-23² RT = 2 3' conc walk

77.21 78.65

4³² 2⁸⁸
23.2 33.2
WK WK

3450

76.73	76.53	76.03	75.03	75.63	75.53	76.73
48	50	55	65	59	60	48
40	25	15	13			14

3433-24¹ RT = 2 8' conc driveway.

76.34 77.77

5¹⁷ 37⁶
24¹ 34¹
Dr Dr

81.53

x-sec Pan de

5400

4482-23⁶ LT=2⁵ Walk (concl w) step

4479-24⁹ Rt=d 3' conc Walk

4453-24⁶ Rt. 7' ribbon drive - 2' strips

4450

4445-24⁶ Rt=begin 1' high conc block wall w/ 3' high cyclone fence on top.

4442-26⁰ LT=d 4' conc walk w/step

LT=wly Rt=ely

80.66	80.56	80.16	79.56	79.76	79.96	80.86	81.66	82.56
6 ⁰	6 ¹	6 ⁵	7 ¹	6 ⁹	6 ⁷	5 ⁸	5 ⁰	4 ¹
40	25	15	12	6	12	16	25	40

80.65	80.47	79.91
6 ⁰¹	6 ¹⁹	6 ⁷⁵
35 ²	25 ²	23 ⁰
WIK	WIK	step

81.13	82.12
5 ⁵³	4 ⁵⁴
24 ⁹	34 ²
WIK	WIK

80.16	81.35
6 ⁵⁰	5 ³¹
24 ⁶	34 ⁶
04	04

80.16	79.76	78.86	78.46	78.46	78.76	80.06	81.46
6 ⁵	6 ²	7 ⁸	8 ²	8 ²	7 ⁹	6 ⁶	5 ²
40	25	15	12		14	25	40

79.86	79.36
6 ⁸	7 ³
24 ⁶	34 ⁶
6 ¹	10 ¹

79.96	80.01	79.35
6 ⁷⁰	6 ⁶⁵	7 ³¹
38 ⁵	28 ⁵	26 ⁰
WIK	WIK	WIK

86.66

X-sec Pardee ST

LT = wly

d Rt = ely

58

6400

5495-24⁶ LT = end 3⁵ high cyclone fence

83.26	83.36	82.86	83.16	82.86	84.06	85.36	86.96	87.76
3 ⁴	3 ³	3 ⁸	3 ⁵	3 ⁸	2 ⁶	1 ³	4 ⁰	4 ¹
40	25	12		12	14	25	28	40

5476-24⁴ LT = d 3' conc walk

82.54	82.72
4 ¹²	3 ⁹
34 ⁴	24 ⁴
WIK	WK

5450-24⁶ LT = begin 3⁵ high cyclone fence

82.06	81.76	81.76	81.06	81.26	81.56	82.26	83.86	85.36
4 ⁶	4 ⁹	4 ⁹	5 ⁶	5 ⁴	5 ¹	4 ²	2 ⁸	1 ³
40	25	14	12		12	14	25	40

5435-26⁴ Rt = 3' wide conc walk w/risers

83.05	84.80	85.07
3 ⁶	1 ⁸	1 ⁵
26 ¹	top riser	39 ¹
bottom	on walk	WK
Riser	29 ¹	

5428-25⁰ 3⁵ conc walk

81.36	81.31
5 ³⁰	5 ³⁵
35 ⁰	25 ⁰
WIK	WIK

5405-25¹ Rt = end 1' high block (conc) wall w/3' high cyclone fence entpy.

81.86	81.46
4 ⁸	5 ²
25 ¹	25 ¹
Gr	foot

86.66 ✓

x-see Pandee

LT=wly

RT=ely

51

7+07-27° RT=4' conc steps+walk -3 risers

86.84	88.71	89.01
547	380	350
272	323	423
BOTTOM	TORRISON	WIK
RISER	WALK	

7+00-

83.81	85.31	86.41	85.81	86.31	85.91	86.51	86.81	88.61	88.91
82	73	64	62	63	64	60	52	32	36
40	25	16	12		14	15	25	30	40

6+89-24° LT=end 3' high picket fence

6+68-26° RT=4' conc steps+walk -4 risers

86.59	88.14	88.34
592	437	417
266	308	402
BOTTOM	TORRISON	WIK
RISER	WALK	

6+50

84.11	85.11	85.41	84.51	85.01	84.81	85.41	85.51	87.51	
98.26	77.26	77.56	80	75	72	71	70	50	
	40	25	15	13		15	16	25	40

6+40-25° LT=begin 3' high picket fence

TP5

7.64 92.51 ✓ 1.79 84.87 ✓

92.51 ✓

6+25-22° RT=4' 3' conc steps+walk 4 risers

85.47	87.49	87.59
119	4083	4093
229	295	395
BOTTOM	TORRISON	WIK
RISER	+WALK	

83.97 84.29

6+20-24° LT=4' 3' conc walk

269 237
342 242
WIK WIK

86.66 π

X-sec Pardee

8+02-18° RT = 10" acacia tree

8+00-15° LT = 5' acacia tree

7+90-26° RT = begin 2' high conc wall-

7+89-26° RT = end 1' high rubble conc wall

16' LT = 4" acacia tree

7+78-18° RT = 7" acacia tree

7+46-22° LT = 4' conc steps - 3 risers

16' LT = 3" acacia tree

7+53-18° RT = 7' acacia tree

7+50

7+40-26° LT = begin 3' high cyclone fence

7+39-26° RT = 1' high rubble conc wall-

LT = W/Y

RT = E/Y

60

86.31	86.81	88.31	87.81	88.11	87.91	88.41	88.51	90.41	90.51
6 ^z	5 ^z	4 ^z	4 ^z	4 ^z	4 ^z	4 ^z	4 ^z	2 ^z	2 ^z
40	25	18	11		12	14	25	26	40

88.41

87.91

4^z 4^z
26^z 26^z
Gr Foot

88.41

88.41

4^z 4^z
26^z 26^z
Gr Foot
Some of Gr-

85.50

86.93

70^z 55^z
27^z 22^z
Bottom Riser Topriser
No walk beyond.

85.61	85.91	87.01	87.61	86.81	87.21	86.71	87.21	88.61	89.01
6 ^z	6 ^z	5 ^z	4 ^z	5 ^z	5 ^z	5 ^z	5 ^z	3 ^z	3 ^z
40	25	22	14	12		14	25	26	40

87.21

87.21

5^z 5^z
26^z 26^z
Gr Foot
Some of Ground

92.51 ✓

x-sec Pardee ST

LT = W 1/4

Q

RT = E 1/4 61

8+67-26° RT = 4' conc steps + walk - 3 risers

89.61	91.68	91.74
523	316	310
262	299	399
BOTTOM	TOP	WIK
RISER	RISER	WIK

TP 5.48 94.84 3.15 89.36

94.84 ✓

8+50

88.61	89.01	88.91	89.01	89.41	91.01	91.91
39	35	36	35	31	15	08
40	25	10		25	26	40

8+46 26³ RT = begin 1⁵' high Conc wall

89.41	88.91
31	36
263	263
Gr	Foot

8+46-28° LT = end 3' high cyclone fence

8+37-16° LT = 8" acacia tree

89.51	90.84
300	167
263	363
D-	D-

8+36-26³ RT = 8' conc Drive

8+32-26³ RT = end 2' high Conc wall

89.01	88.51
35	48
263	263
Gr	Foot

8+28-18° RT = 4" acacia tree

8+15-25⁴ RT = 4' wide conc steps + walk
4 risers

89.10	90.80	91.06
341	171	145
254	284	384
BOTTOM	TOP	WIK
RISER	RISER	WIK
WALK	WALK	

92.51 ✓

BM.

2.86

Cor Bottom step
SE Cor Pardee Webster
91.98 FBH47
#0

for burr see X-sec Webster page 63 et al.

9439-91 = 5 1/4 line Webster

89.34	89.34	88.94	89.74	90.24	90.84	91.24
55	55	52	55	46	40	36
25	12	10		19	21	25

3 riser 45° L. to Pardee 57
9438-25 = Rf. of 4' Conc Steps AND walk

91.99	92.99	93.26
285	185	158
25 E Bottom Riser	26 W Top Riser	36 W WIK

9420-24 = 2 1/2 3' Conc walk

89.96	90.02
488	482
34 E WIK	24 E WIK

9400

89.94	89.54	89.34	89.44	89.64	90.64	92.04	93.24
42	53	55	54	52	42	28	16
40	25	10		17	24	26	40

8491-26 = Rf. end 15' high Conc wall

90.34	89.84
45	50
26 E Gr	26 E Foot

9484 ✓
X

X-sec Webster Ave. Wly line Francis
to 36th ST
W0# 31769
3-27-53

LT = Wly

et = soon 63

Allen - See sketches pages 33+34-

A. Sisson

Powell

INDEXED
LW
MAR 31 1953

0+27.30² LT = begin 4⁵ high Conc block Wall-

0+00 = Ely Francis to South

0+25 = E Francis ST to South

0-50 = Wly line Francis ST to South

For recent cross-section of Francis see

FR-2053

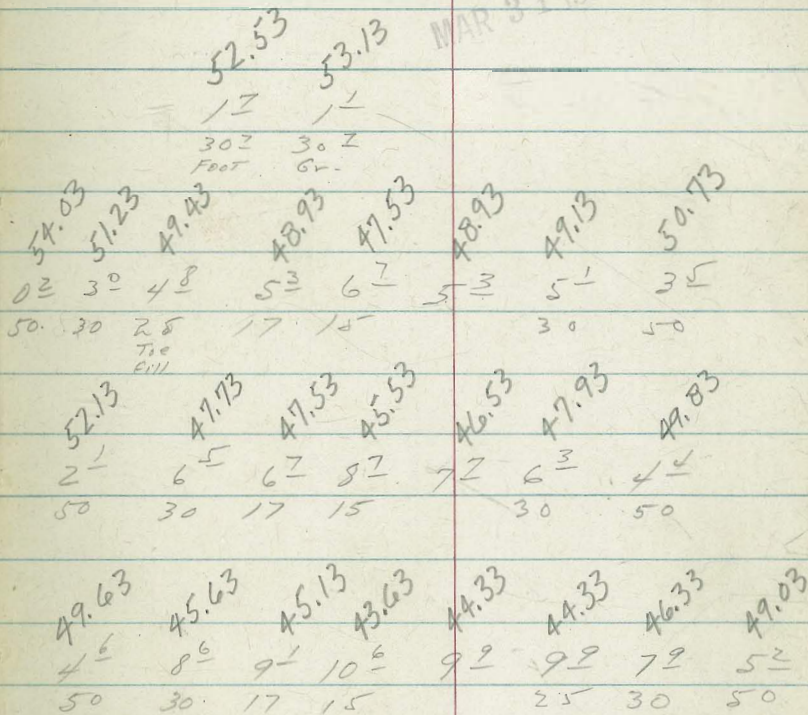
BM. 6.45 54.23

47.78

2"x2" RW. Hub - E Francis & North line Webster

FR 2053

42



54.23 ✓

X-sec Webster Ave. Wly line Francis to
2673 15

LT = N 14

RT = S 14

64

1436-30° LT = 8' conc Ribbon drive

1431-20° LT = 10" power pole #3472-

1425-17° LT = 10" Tel. pole #522084H-

1419-25° LT = 5" Evergreen tree

1405-17° LT = Deadman -

1400-

0490-27° LT = 5" evergreen tree-

0475-30° LT = end Bone black wall - Now 3' high

0455-30° LT = 4' Conc steps - 8 risers -

0450

TP,

11.91

65.90

0.34

53.89

65.80

54.23 7

3' steps

62.03

60.53

3 27

5 27

40°
Dr

30°
Dr

60.7

58.9

58.1

57.3

56.4

56.9

57.1

57.1

57.1

57.1

56.9

56.9

51

69

72

85

94

82

82

82

82

82

82

82

50

30

25

17

16

16

16

30

30

30

50

55.3

56.6

10 5

9 2

30 5

30 5

Foot.

Gr

59.93

55.56

58 7

16 2 4

37 4

30 4

TOP

BOTTOM

RISER

RISER

WALK

60.7

58.2

54.6

53.2

52.6

52.6

52.7

52.7

52.7

52.7

53.5

53.5

53.5

51

76

11 2

12 6

13 2

13 2

13 2

13 2

13 2

13 2

12 2

12 2

12 2

12 2

50

31

30

18

16

16

16

16

16

16

30

30

30

50

X-sec Webster Ave

LT=N¹⁴

21-514- 65

2+35

67.3	67.3	66.6	65.5	66.0	65.8	66.1
9 ²	9 ²	10 ⁶	11 ⁷	11 ³	11 ⁴	11 ¹
50	30	17	16		30	50

2+16 - 30° LT = 48' conc. drive

66.55
10⁶⁵
40^e Dr

66.13
11⁰⁷
30^e Dr

TP₂ 11.69 77.20 ✓ 0.29 65.51 ✓

77.20 ✓

2+00

65.7	64.9	64.1	63.5	63.6	63.9	64.0
0 ¹	0 ⁹	1 ²	2 ³	2 ³	1 ⁹	1 ⁸
40	30	16	15		30	40

1+77 - 26° LT = 3' wide Eugenia hedge

⊥ to Ⓢ

1+70

63.7	62.8	61.4	61.7	61.2	61.3
2 ¹	3 ⁰	4 ¹	4 ¹	4 ⁶	4 ⁵
40	30	16		30	40

Walk Flanked on both sides by 6" Eugenia bushes

1+56 - 21³ LT = 3' conc walk

63.19	62.86	61.58	61.50
26 ¹	29 ⁴	42 ²	43 ⁰
40	34 ⁰	30	21 ³
	Top steps	WIK steps	WIK

1+37:49 - d Alley to South + 5 M.H.

60.6	59.5	60.15	59.6	59.8	60.1
5 ³	6 ³	5 ⁵	6 ³	6 ⁰	5 ⁷
20 ⁰	17	30	30	50	10 ⁰
		Run start			

65.80 ✓

X-sec Webster -

LT = N14

X Rt = S14

66

3+60

76.3	75.6	73.9	73.2	72.7	72.8	72.8	73.4	75.2	75.9
09	16	33	40	45	45	44	38	20	13
40	32	30	18	16		12	30	30	50

3+46-17² LT = ϕ 10" anchor pole # 562086H-

71.9	72.5	71.9	71.7	71.4	72.0	71.9	71.8
53	47	53	55	58	52	53	54
100	50	30		25	30	50	100

3+34.99 = Fly line 35th ST

3+04.99 = ϕ 35th ST

70.3	70.4	70.3	70.3	70.2	70.5	70.8
69	68	69	69	70	67	64
100	50	30		30	50	100

R+95⁵ 12² LT = ϕ 4'x4' Gas + Elec Manhole

69.97
72.3
12²
Manhole

R+90⁵ = ϕ SMH.

69.82

738

Rim
SMH.

R+74.99 = Fly line 35th ST

69.4	69.6	69.5	69.5	68.6	68.7	68.6	69.4	69.5	69.7	70.4
78	76	77	79	86	85	86	78	77	75	68
100	50	30	17	16		15	18	30	50	100

R+72-20⁵ RT = ϕ 12" power pole # 3499

R+58-20⁵ RT = ϕ Deadmain

77.20 ✓

4+56⁹² = 2 Alley to South

TP₃ 841 94.60 ✓ 3.30 85.99 ✓

4+25 - Section out of position

4+57 - 21° LT = 6" acacia Tree

4+45 - 20° RT = 12" Power pole # P3525

4+28 - 30° LT = 6" conc. ribbon drive - 15 strips

4+00

TP₃ 12.32 89.29 ✓ 0.23 76.97 ✓

3+63 - 18° LT = 2 Dead Man

LT = N14 2 RT = S14 67

84.3	84.0	81.9	81.6	79.5	79.7	79.9	82.4	85.1	84.1	86.4
10 ² 10 ⁵	6	12 ²	13 ⁰	15 ¹	14 ⁹	14 ²	12 ²	9 ⁵	10 ⁵	8 ²
40	30	28	26	14		11	30	70	100	150

80.2	79.7	78.3	77.0	77.1	77.2	79.3	81.6	83.1	82.7
9 ⁴	9 ⁵	11 ⁰	12 ²	12 ²	12 ¹	10 ⁰	7 ²	6 ²	6 ⁵
40	30	23	14		12	26	30	32	50

79.94
79.73
93⁵ 95⁰
40² 30²
or or

80.6 80.3
87 90
32 50

79.1	79.8	77.5	76.2	75.4	75.2	75.2	76.3	76.8	78.5
10 ² 10 ⁵	11 ⁸	13 ¹	13 ⁹	14 ¹	14 ¹	13 ⁰	12 ⁵	10 ⁸	
40	32	30	19	16		12	14	27	30

89.29 ✓

77.20 ✓

285 RT = 2 12" Power Pole # 3549
5476 } 30° LT = 2 7' conc drive

5456 - 30° LT = 2 3' conc walk

5440 - 30° RT = 2 4" Holly tree

5400

4486 - 30° LT = begin cyclone fence (3' high)

4479 - 29° LT = 2 8' conc drive

4461 - 28° LT = 2 Conc Walk - 2 steps

4458 - 21° LT = 2 8" acacia tree

LT = N14

RT = S14

68

89.17 89.24

543 535

40° Dr 30° Dr

88.23 88.08

6.37 6.52

40° WK 30° WK

87.8	87.1	86.3	85.4	85.7	85.8	86.9	87.8	87.7	88.0
7 ³	7 ⁵	8 ³	9 ²	8 ²	8 ⁸	7 ⁷	6 ⁸	6 ⁷	6 ⁶
50	30	17	16		11	17	27	30	40

84.9	84.6	83.7	82.9	82.9	82.9	83.9	84.6	85.7	84.1
9 ⁷	10 ⁰	10 ⁹	11 ⁷	11 ⁷	11 ⁷	10 ⁷	10 ⁰	8 ⁹	7 ⁵
40	30	16	15		11	14	28	30	34

83.62 81.67

1098 1293

39° Dr 29° Dr

83.27 83.31 82.10

1133 1129 1250

41° Top Step + Walk 28° Bottom Step

94.60 ✓

6+60.

$\angle T = N14$ \angle $rt = 514.69$
 94.7 94.6 93.9 93.3 92.6 92.7 92.1 92.8 93.3 93.5
 68 68 76 82 82 88 94 87 82 80
 40 32 30 18 16 15 17 30 40

6+58-30² $\angle T = \angle$ 5' conc walk 4 steps - 2 risers

94.58 94.52 93.91
 680 696 757
 412 312 302
 WIK TOP BOTTOM
 Riser Riser

TP4

9.30

101.48 ✓

2.42

SFLY
 SETOP of LOWER STEP
 Webster - Pardee
 92.18 ✓ $\frac{552053}{42}$

101.48 ✓

6+28.88 = Fly line Pardee ST to South.

92.2 92.5 92.3 91.8 90.9 91.0 90.5 91.3 91.6
 24 21 23 28 37 36 44 33 30
 50 40 30 18 16 19 25 30

6+03.88 = \angle Pardee ST to South

90.9 90.6 89.7 88.8 89.6 89.9
 37 40 49 58 50 47
 50 30 18 16 30

5+86-30² $\angle T =$ end 3' high cyclone fence

89.2 89.3 89.4 87.8 88.1 88.3 88.9 89.3
 54 53 54 68 65 63 57 53
 40 30 25 16 14 16 30

5+78.88 = Wly Pardee ST to South

94.60 ✓

8+00

$\angle T = N 4$ $\angle T = S 4 - 20$
 100.8 100.7 99.2 98.1 98.0 97.8 98.3
 0 2 0 8 2 3 3 4 3 5 3 7 3 2
 40 35 30 16 13 30

7+75

100.5 100.4 98.8 97.4 97.6 97.2 97.8
 1 2 1 1 2 7 4 1 3 2 4 3 3 7
 40 35 30 16 13 30

7+61-30² $\angle T$ begin 4' high cyclone fence

7+51.59- \angle Alley to south

100.0 99.6 99.7 97.6 96.6 96.5 96.9 96.9 96.4 95.0
 1 5 1 3 2 8 3 2 4 2 5 2 4 6 4 6 5 1 6 5
 40 30 29 19 17 13 15 20 50 100
 actually along walk

7+50-18⁸ $\angle T = \angle$ 8' conc walk and risers on step

(151) 99.97 99.56 97.71 97.55 96.8
 1 2 1 2 3 7 3 3 4 7
 40 8 30 8 29 8 18 8
 WIK- Top riser WIK Bottom riser WIK

7+44 } 20² $\angle T = \angle$ 12" power pole #3525.
 7+44 } 20² $\angle T = \angle$ 10" anchor pole

7+30-27⁵ $\angle T = \angle$ 18" pepper tree

7+25

98.1 98.1 97.0 95.9 95.5 95.8 95.6 96.3
 3 4 3 4 4 5 5 5 6 0 5 7 5 2 5 2
 40 35 30 18 16 16 30

7+00

95.3 94.3 94.8 94.4 95.4 96.0
 6 2 7 2 6 7 7 1 6 1 5 5
 30 16 16 30 40

101.48 ✓

LT = N14

RT = S14. 71

REDUCED BY J.D. ELLIS 4-28-53

PAGES 35 TO 71 INCL.

SE BT SOUTH 100 FT IMPERIAL

3.31

98.00 (97.91)

Benches in this area in poor condition

TP 5.94 101.31 6.11 95.37

8+74.30 = Wly line 36⁷² ST

98.1	98.0	96.6	97.0	97.3	97.8
3 ⁴	3 ⁵	4 ⁹	4 ⁵	4 ²	3 ⁷
30	18	16		14	30

8+67-19² RT = ϕ Deadman.

8+50-20⁰ RT = ϕ 12" power pole # 3597.

99.5	99.1	98.7	98.3	97.5	97.5	97.7	98.2
2 ⁰	2 ⁴	2 ⁸	3 ²	4 ⁰	4 ⁰	3 ⁸	3 ³
40	35	30	18	16		14	30

8+26-30⁴ RT = end of 4' high Cyclone fence

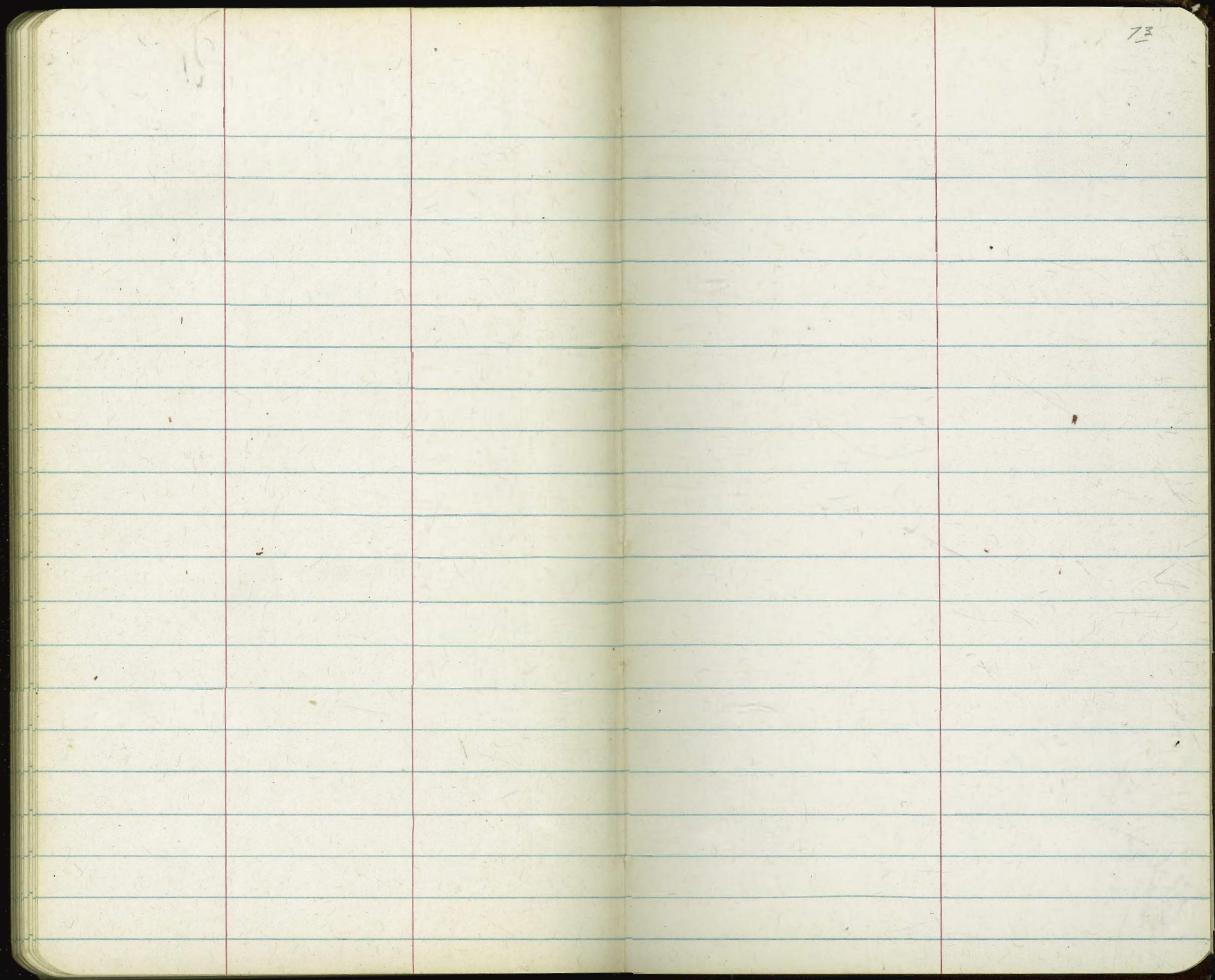
8+25

101.1	100.5	99.1	98.8	98.1	98.0	97.9	98.3
0 ⁴	1 ⁰	2 ⁴	2 ⁷	3 ⁴	3 ⁵	3 ⁶	3 ²
40	35	30	18	16		14	30

8+18-30⁴ RT = ϕ 9' conc drive

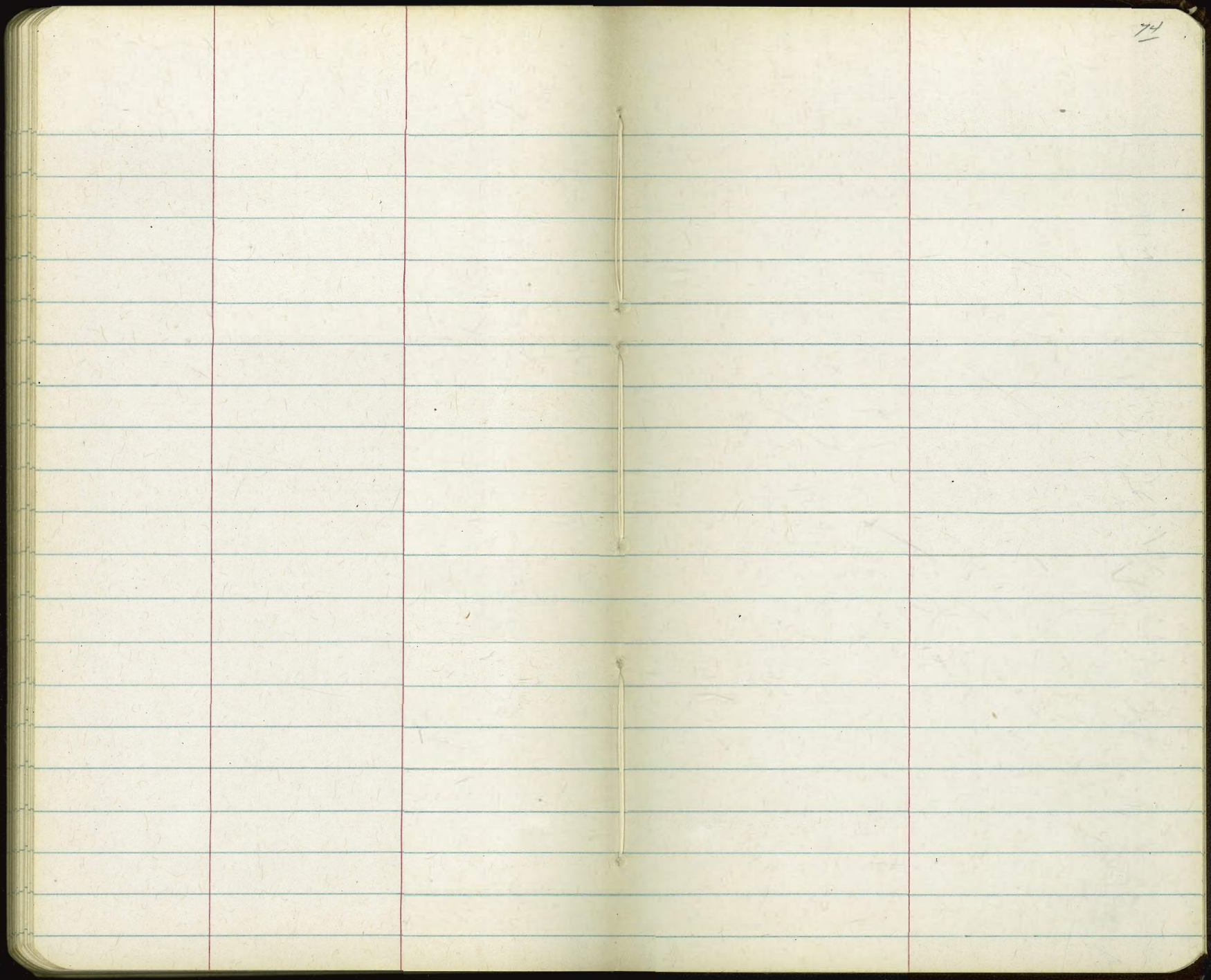
98.23	98.24
3 ²	3 ²
30 ⁴	40 ⁴
0 ¹	0 ¹

101.48 ✓



73

72



78

—

6

51st NW/8P

Kendall Sound

FB2007-34

52.41

rail SW/8.

Thomas David

300100.

8.81

291.

432

212

385
240
625
260
885

10 8764
10 9570
218334
1091.67

856
413

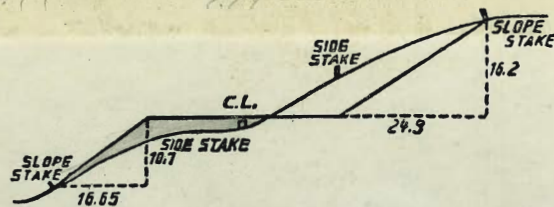
94
472.5
21.5

180.24 Rim 1/4

292
25

243.66 spike in pole 3.17

3+05
290.5
14.5



DISTANCES FROM SIDE STAKES FOR CROSS-SECTIONING.

SLOPE 1 1/2 TO 1. ROADWAY OF ANY WIDTH.

	0	.1	.2	.3	.4	.5	.6	.7	.8	.9	
0	0.00	0.15	0.30	0.45	0.60	0.75	0.90	1.05	1.20	1.35	0
1	1.50	1.65	1.80	1.95	2.10	2.25	2.40	2.55	2.70	2.85	1
2	3.00	3.15	3.30	3.45	3.60	3.75	3.90	4.05	4.20	4.35	2
3	4.50	4.65	4.80	4.95	5.10	5.25	5.40	5.55	5.70	5.85	3
4	6.00	6.15	6.30	6.45	6.60	6.75	6.90	7.05	7.20	7.35	4
5	7.50	7.65	7.80	7.95	8.10	8.25	8.40	8.55	8.70	8.85	5
6	9.00	9.15	9.30	9.45	9.60	9.75	9.90	10.05	10.20	10.35	6
7	10.50	10.65	10.80	10.95	11.10	11.25	11.40	11.55	11.70	11.85	7
8	12.00	12.15	12.30	12.45	12.60	12.75	12.90	13.05	13.20	13.35	8
9	13.50	13.65	13.80	13.95	14.10	14.25	14.40	14.55	14.70	14.85	9
10	15.00	15.15	15.30	15.45	15.60	15.75	15.90	16.05	16.20	16.35	10
11	16.50	16.65	16.80	16.95	17.10	17.25	17.40	17.55	17.70	17.85	11
12	18.00	18.15	18.30	18.45	18.60	18.75	18.90	19.05	19.20	19.35	12
13	19.50	19.65	19.80	19.95	20.10	20.25	20.40	20.55	20.70	20.85	13
14	21.00	21.15	21.30	21.45	21.60	21.75	21.90	22.05	22.20	22.35	14
15	22.50	22.65	22.80	22.95	23.10	23.25	23.40	23.55	23.70	23.85	15
16	24.00	24.15	24.30	24.45	24.60	24.75	24.90	25.05	25.20	25.35	16
17	25.50	25.65	25.80	25.95	26.10	26.25	26.40	26.55	26.70	26.85	17
18	27.00	27.15	27.30	27.45	27.60	27.75	27.90	28.05	28.20	28.35	18
19	28.50	28.65	28.80	28.95	29.10	29.25	29.40	29.55	29.70	29.85	19
20	30.00	30.15	30.30	30.45	30.60	30.75	30.90	31.05	31.20	31.35	20
21	31.50	31.65	31.80	31.95	32.10	32.25	32.40	32.55	32.70	32.85	21
22	33.00	33.15	33.30	33.45	33.60	33.75	33.90	34.05	34.20	34.35	22
23	34.50	34.65	34.80	34.95	35.10	35.25	35.40	35.55	35.70	35.85	23
24	36.00	36.15	36.30	36.45	36.60	36.75	36.90	37.05	37.20	37.35	24
25	37.50	37.65	37.80	37.95	38.10	38.25	38.40	38.55	38.70	38.85	25
26	39.00	39.15	39.30	39.45	39.60	39.75	39.90	40.05	40.20	40.35	26
27	40.50	40.65	40.80	40.95	41.10	41.25	41.40	41.55	41.70	41.85	27
28	42.00	42.15	42.30	42.45	42.60	42.75	42.90	43.05	43.20	43.35	28
29	43.50	43.65	43.80	43.95	44.10	44.25	44.40	44.55	44.70	44.85	29
30	45.00	45.15	45.30	45.45	45.60	45.75	45.90	46.05	46.20	46.35	30
31	46.50	46.65	46.80	46.95	47.10	47.25	47.40	47.55	47.70	47.85	31
32	48.00	48.15	48.30	48.45	48.60	48.75	48.90	49.05	49.20	49.35	32
33	49.50	49.65	49.80	49.95	50.10	50.25	50.40	50.55	50.70	50.85	33
34	51.00	51.15	51.30	51.45	51.60	51.75	51.90	52.05	52.20	52.35	34
35	52.50	52.65	52.80	52.95	53.10	53.25	53.40	53.55	53.70	53.85	35
36	54.00	54.15	54.30	54.45	54.60	54.75	54.90	55.05	55.20	55.35	36
37	55.50	55.65	55.80	55.95	56.10	56.25	56.40	56.55	56.70	56.85	37
38	57.00	57.15	57.30	57.45	57.60	57.75	57.90	58.05	58.20	58.35	38
39	58.50	58.65	58.80	58.95	59.10	59.25	59.40	59.55	59.70	59.85	39
40	60.00	60.15	60.30	60.45	60.60	60.75	60.90	61.05	61.20	61.35	40
41	61.50	61.65	61.80	61.95	62.10	62.25	62.40	62.55	62.70	62.85	41
42	63.00	63.15	63.30	63.45	63.60	63.75	63.90	64.05	64.20	64.35	42
43	64.50	64.65	64.80	64.95	65.10	65.25	65.40	65.55	65.70	65.85	43
44	66.00	66.15	66.30	66.45	66.60	66.75	66.90	67.05	67.20	67.35	44
45	67.50	67.65	67.80	67.95	68.10	68.25	68.40	68.55	68.70	68.85	45
46	69.00	69.15	69.30	69.45	69.60	69.75	69.90	70.05	70.20	70.35	46
47	70.50	70.65	70.80	70.95	71.10	71.25	71.40	71.55	71.70	71.85	47
48	72.00	72.15	72.30	72.45	72.60	72.75	72.90	73.05	73.20	73.35	48
49	73.50	73.65	73.80	73.95	74.10	74.25	74.40	74.55	74.70	74.85	49
50	75.00	75.15	75.30	75.45	75.60	75.75	75.90	76.05	76.20	76.35	50

THE NATIONAL BLANK BOOK COMPANY

HOLYOKE



MASSACHUSETTS

NEW YORK

CHICAGO

BOSTON

SAN FRANCISCO