

DISTANCES FROM SIDE STAKES FOR CROSS-SECTIONING
SLOPE 1 TO 1. ROADWAY OF ANY WIDTH

	0	.1	.2	.3	.4	.5	.6	.7	.8	.9	
0	0.00	0.10	0.20	0.30	0.40	0.50	0.60	0.70	0.80	0.90	0
1	1.00	1.10	1.20	1.30	1.40	1.50	1.60	1.70	1.80	1.90	1
2	2.00	2.10	2.20	2.30	2.40	2.50	2.60	2.70	2.80	2.90	2
3	3.00	3.10	3.20	3.30	3.40	3.50	3.60	3.70	3.80	3.90	3
4	4.00	4.10	4.20	4.30	4.40	4.50	4.60	4.70	4.80	4.90	4
5	5.00	5.10	5.20	5.30	5.40	5.50	5.60	5.70	5.80	5.90	5
6	6.00	6.10	6.20	6.30	6.40	6.50	6.60	6.70	6.80	6.90	6
7	7.00	7.10	7.20	7.30	7.40	7.50	7.60	7.70	7.80	7.90	7
8	8.00	8.10	8.20	8.30	8.40	8.50	8.60	8.70	8.80	8.90	8
9	9.00	9.10	9.20	9.30	9.40	9.50	9.60	9.70	9.80	9.90	9
10	10.00	10.10	10.20	10.30	10.40	10.50	10.60	10.70	10.80	10.90	10
11	11.00	11.10	11.20	11.30	11.40	11.50	11.60	11.70	11.80	11.90	11
12	12.00	12.10	12.20	12.30	12.40	12.50	12.60	12.70	12.80	12.90	12
13	13.00	13.10	13.20	13.30	13.40	13.50	13.60	13.70	13.80	13.90	13
14	14.00	14.10	14.20	14.30	14.40	14.50	14.60	14.70	14.80	14.90	14
15	15.00	15.10	15.20	15.30	15.40	15.50	15.60	15.70	15.80	15.90	15
16	16.00	16.10	16.20	16.30	16.40	16.50	16.60	16.70	16.80	16.90	16
17	17.00	17.10	17.20	17.30	17.40	17.50	17.60	17.70	17.80	17.90	17
18	18.00	18.10	18.20	18.30	18.40	18.50	18.60	18.70	18.80	18.90	18
19	19.00	19.10	19.20	19.30	19.40	19.50	19.60	19.70	19.80	19.90	19
20	20.00	20.10	20.20	20.30	20.40	20.50	20.60	20.70	20.80	20.90	20
21	21.00	21.10	21.20	21.30	21.40	21.50	21.60	21.70	21.80	21.90	21
22	22.00	22.10	22.20	22.30	22.40	22.50	22.60	22.70	22.80	22.90	22
23	23.00	23.10	23.20	23.30	23.40	23.50	23.60	23.70	23.80	23.90	23
24	24.00	24.10	24.20	24.30	24.40	24.50	24.60	24.70	24.80	24.90	24
25	25.00	25.10	25.20	25.30	25.40	25.50	25.60	25.70	25.80	25.90	25
26	26.00	26.10	26.20	26.30	26.40	26.50	26.60	26.70	26.80	26.90	26
27	27.00	27.10	27.20	27.30	27.40	27.50	27.60	27.70	27.80	27.90	27
28	28.00	28.10	28.20	28.30	28.40	28.50	28.60	28.70	28.80	28.90	28
29	29.00	29.10	29.20	29.30	29.40	29.50	29.60	29.70	29.80	29.90	29
30	30.00	30.10	30.20	30.30	30.40	30.50	30.60	30.70	30.80	30.90	30
31	31.00	31.10	31.20	31.30	31.40	31.50	31.60	31.70	31.80	31.90	31
32	32.00	32.10	32.20	32.30	32.40	32.50	32.60	32.70	32.80	32.90	32
33	33.00	33.10	33.20	33.30	33.40	33.50	33.60	33.70	33.80	33.90	33
34	34.00	34.10	34.20	34.30	34.40	34.50	34.60	34.70	34.80	34.90	34
35	35.00	35.10	35.20	35.30	35.40	35.50	35.60	35.70	35.80	35.90	35
36	36.00	36.10	36.20	36.30	36.40	36.50	36.60	36.70	36.80	36.90	36
37	37.00	37.10	37.20	37.30	37.40	37.50	37.60	37.70	37.80	37.90	37
38	38.00	38.10	38.20	38.30	38.40	38.50	38.60	38.70	38.80	38.90	38
39	39.00	39.10	39.20	39.30	39.40	39.50	39.60	39.70	39.80	39.90	39
40	40.00	40.10	40.20	40.30	40.40	40.50	40.60	40.70	40.80	40.90	40
41	41.00	41.10	41.20	41.30	41.40	41.50	41.60	41.70	41.80	41.90	41
42	42.00	42.10	42.20	42.30	42.40	42.50	42.60	42.70	42.80	42.90	42
43	43.00	43.10	43.20	43.30	43.40	43.50	43.60	43.70	43.80	43.90	43
44	44.00	44.10	44.20	44.30	44.40	44.50	44.60	44.70	44.80	44.90	44
45	45.00	45.10	45.20	45.30	45.40	45.50	45.60	45.70	45.80	45.90	45
46	46.00	46.10	46.20	46.30	46.40	46.50	46.60	46.70	46.80	46.90	46
47	47.00	47.10	47.20	47.30	47.40	47.50	47.60	47.70	47.80	47.90	47
48	48.00	48.10	48.20	48.30	48.40	48.50	48.60	48.70	48.80	48.90	48
49	49.00	49.10	49.20	49.30	49.40	49.50	49.60	49.70	49.80	49.90	49
50	50.00	50.10	50.20	50.30	50.40	50.50	50.60	50.70	50.80	50.90	50

Distance of slope stake from side or shoulder stake for any width roadway, slope 1 to 1. If ground is nearly level, the cut or fill at side stake is located by the double entry method in left column and top row. The number in body of table in same row and column gives distance from side stake to slope stake. If ground is not level estimate the difference in elevation between the side stake and slope stake, lower target by this amount if cut, elevate if fill. Add this amount to cut or fill and find distance in table. Set up rod at this point, and line of sight should cut target. If it does not make the slight adjustment necessary.

TABLE XIII—CORRECTIONS FOR TANGENTS AND EXTERNALS

These corrections are to be added to the approximate values, found by dividing the tangent, or external, for a 1° curve (Table VIII) by the degree of curve, in order to obtain the true tangents, or externals. Intermediate values may be obtained by interpolation.

FOR TANGENTS ADD

Central Angle	DEGREE OF CURVE													
	5°	10°	15°	20°	25°	30°	35°	40°	45°	50°	55°	60°	65°	70°
10°	.03	.06	.09	.13	.16	.19	.22	.25	.28	.31	.34	.38	.42	.46
15°	.04	.10	.14	.19	.24	.29	.34	.39	.45	.51	.53	.58	.63	.68
20°	.06	.13	.19	.26	.32	.39	.45	.51	.58	.65	.72	.79	.84	.90
25°	.08	.16	.24	.33	.40	.49	.58	.67	.75	.83	.90	.99	1.06	1.14
30°	.10	.19	.29	.39	.49	.59	.69	.79	.89	.99	1.09	1.20	1.29	1.39
35°	.11	.22	.34	.47	.58	.69	.79	.81	.92	1.04	1.29	1.42	1.54	1.66
40°	.13	.26	.40	.53	.67	.80	.93	1.06	1.20	1.34	1.49	1.64	1.79	1.94
45°	.15	.30	.44	.60	.76	.91	1.06	1.21	1.37	1.52	1.70	1.87	2.04	2.21
50°	.17	.34	.51	.68	.85	1.02	1.19	1.36	1.54	1.72	1.91	2.10	2.29	2.48
55°	.19	.38	.57	.76	.95	1.14	1.32	1.52	1.72	1.92	2.14	2.35	2.56	2.77
60°	.21	.42	.63	.84	1.05	1.27	1.49	1.71	1.94	2.17	2.38	2.60	2.83	3.07
65°	.23	.46	.69	.93	1.16	1.40	1.64	1.88	2.13	2.38	2.63	2.88	3.13	3.39
70°	.25	.51	.76	1.02	1.28	1.54	1.80	2.06	2.33	2.60	2.88	3.16	3.44	3.72
75°	.27	.56	.83	1.12	1.40	1.69	1.98	2.27	2.57	2.87	3.16	3.47	3.78	4.09
80°	.30	.61	.91	1.22	1.53	1.84	2.15	2.46	2.78	3.10	3.44	3.78	4.12	4.46
85°	.33	.66	1.00	1.33	1.68	2.02	2.36	2.70	3.05	3.40	3.77	4.14	4.55	4.89
90°	.36	.72	1.09	1.45	1.83	2.20	2.57	2.94	3.32	3.70	4.10	4.50	4.91	5.32
95°	.39	.79	1.19	1.55	2.00	2.40	2.80	3.20	3.61	4.02	4.40	4.98	5.38	5.83
100°	.43	.86	1.30	1.74	2.18	2.62	3.06	3.50	3.95	4.40	4.88	5.37	5.85	6.34
110°	.51	1.03	1.56	2.08	2.61	3.14	3.67	4.21	4.76	5.31	5.86	6.43	7.01	7.60
120°	.62	1.25	1.93	2.52	3.16	3.81	4.45	5.11	5.77	6.44	7.12	7.80	8.50	9.22

FOR EXTERNALS ADD

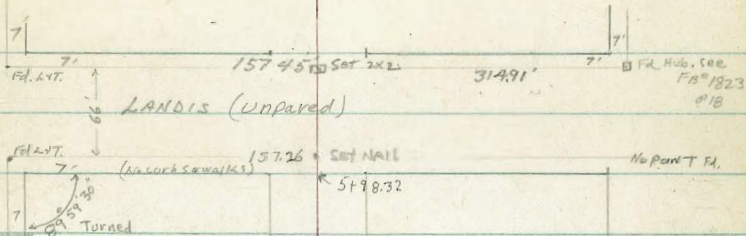
Central Angle	DEGREE OF CURVE													
	5°	10°	15°	20°	25°	30°	35°	40°	45°	50°	55°	60°	65°	70°
10°	.001	.003	.004	.006	.007	.008	.009	.011	.012	.014	.015	.017	.018	.020
15°	.003	.007	.010	.014	.018	.023	.027	.032	.035	.039	.043	.047	.051	
20°	.006	.011	.017	.022	.028	.034	.038	.045	.051	.057	.063	.070	.076	.083
25°	.009	.018	.027	.036	.046	.056	.065	.074	.083	.093	.106	.120	.127	.135
30°	.013	.025	.038	.051	.065	.078	.090	.103	.116	.129	.149	.170	.179	.188
35°	.018	.035	.054	.072	.086	.109	.131	.153	.175	.197	.213	.230	.247	.264
40°	.023	.046	.070	.093	.117	.141	.172	.203	.234	.265	.277	.290	.315	.341
45°	.030	.060	.093	.119	.153	.184	.216	.254	.289	.325	.351	.378	.411	.445
50°	.037	.075	.116	.151	.189	.227	.266	.305	.345	.384	.425	.467	.508	.550
55°	.046	.093	.142	.188	.236	.283	.332	.381	.420	.479	.530	.582	.641	.700
60°	.056	.112	.168	.225	.283	.340	.398	.457	.516	.575	.636	.697	.774	.851
65°	.067	.135	.204	.273	.343	.412	.483	.554	.625	.697	.771	.845	.922	1.01
70°	.080	.159	.240	.321	.403	.485	.568	.652	.735	.819	.906	.994	1.08	1.17
75°	.095	.182	.266	.353	.440	.528	.618	.707	.797	.887	1.07	1.18	1.29	1.39
80°	.110	.220	.332	.445	.558	.671	.787	.903	1.02	1.13	1.25	1.38	1.50	1.62
85°	.128	.259	.391	.524	.657	.790	.926	1.06	1.20	1.34	1.47	1.62	1.76	1.91
90°	.149	.299	.450	.603	.756	.910	1.07	1.22	1.38	1.54	1.70	1.87	2.03	2.20
95°	.174	.350	.522	.706	.885	1.06	1.25	1.43	1.62	1.80	1.99	2.18	2.38	2.58
100°	.200	.401	.604	.809	1.01	1.22	1.43	1.64	1.85	2.06	2.28	2.50	2.73	2.96
110°	.268	.536	.806	1.08	1.35	1.63	1.91	2.20	2.48	2.76	3.05	3.35	3.66	3.96
120°	.360	.721	1.08	1.45	1.82	2.19	2.57	2.95	3.33	3.72	4.11	4.50	4.91	5.32

INDEX

X-SECT Alley B/K 18 City Hts - Landis to Dwight 1-6
 X-Sec - Landis to Wightman Ogden 7-19
 X-Sec - Wightman - Ogden to 5th 20-25
 X Sec Alley B/K 86 Pt Loma Hts ^{Magna + Maragawset} _{Santa Barbara + Guizot} 26-31
 X Sec Alley B/K 16, Bird Rock City 32-39
 X-Sec Alleghany - Rachael to Rio 62-

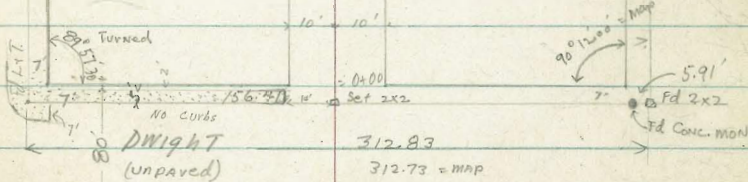
Clark 4-21-52
Shepherd W.O. 32001
Bruner
Bryson

X SECT ALLEY BIK 18
CITY HTS. between DWIGHT
and LANDIS, EAST OF Nile



Niles ST (paved)

INDEXED
Law
APR 24 1952



Notes: P. 2

X-SECT ALLEY BIK 18

DWIGHT to LANDIS - EAST of Nile

1+00 317.1
1.4
15 316.5
2.0
10 314.9
3.6
4 314.7
3.8
8 314.6
3.9
5 313.5
5.0
10 310.8
7.7
25 306.8
11.7
35
Shoulder

T.P. 3.60 318.49 6.94 314.89 318.49

0+85 10' LT of Pole # D-29654T

0+50 4.4
15 316.8
5.2
10 315.9
5.9
7 315.4
6.4
10 314.8
7.0
10 314.0
7.8
25 307.5
14.3
35
Shoulder

0+39 5' RT of 3" peppertree

0+01 8' LT of 2 Water meter boxes

0+00 of Alley & N.E. DWIGHT

0-07 Front edge WALK

0-14

0-40 of DWIGHT - not paved

4.68 321.83 317.15. = BM-B.P N/E Nile + DWIGHT 321.83

X-SECT. Alley B'K 18 DWIGHT to LANDIS (CONT.)

3+19 10.9' LT Bq Conc Wall 2' HT
 3+15 10.8' LT N/E cor. shed
 3+00 10.6 LT 1/2 Corn shed dirt Floor - CONC FDTN
 2+98 1' LT & M/H Sewer
 T.P 6.76 317.87 7.38 311.11

2+95 8' LT N/E cor. shed

2+74 8' LT S/E Corner old shed dirt Floor

2+73 8' LT & water meter

2+50

2+20 9' LT & water Meter

2+00 9' LT & Pole # PA 3633

1+70 9' LT & meter (water)

1+50

1+23 13.8' N/E Corn 2 car gar.

1+22 8' LT & water meter

1+03 13.8' S/E Corn 2-car garage (opens on N/E)

313.3
 4.6
 15
 314.3
 3.44
 10.6
 TO FTH
 319.92
 3.25
 10.8
 7.74
 10.9
 13. Wall
 5.5
 5.5
 8.74
 317.9
 312.5
 6.6
 311.3
 6.9
 10
 310.0
 7.9
 2.5
 310.0
 11.5
 60
 306.9
 317.87

313.5
 5.0
 15
 314.2
 4.3
 15
 2.316.5
 20
 316.1
 2.1
 10
 313.9
 4.6
 10
 313.9
 4.6
 1
 316.9
 1.6
 13.8
 13.8
 13.8
 Floor
 317.3
 6.2
 10
 317.7
 8
 315.7
 4
 317.9
 5.6
 10
 311.1
 7.4
 10
 310.5
 8.0
 10
 308.1
 10.4
 25
 308.9
 8.6
 25
 305.7
 12.8
 40
 304.7
 14.3
 40
 308.3
 10.2
 35

318.49

X-Sect Alley Blk 18 - Bright to Lewis (cont.)

- 4448 9' Beg wooden shed near
10' RT. N/W corner 1st Shed
- 4435 8.9' RT & water Meter
- 4432 9' RT SW Corn Corrup. Iron Shed dirt Floor
- 4431 8.7' LT & water meter
- 4429 9' RT to & 2' ch + walk
- 4400
- 3499 10.7' LT END Rubble wall
- 3488 17.2' RT & single gar dirt Floor
- 3481 8.2' RT & water Meter
- 3472 10.9' LT Beg. old Rubble wall
9' LT & meter (water)
- 3468 3.4' RT N Edge terraced area
- 3450 33.6' RT S Edge terraced area
- 3448 11.4' LT END 2' CON. WALL
- 3438 8.9' LT & Pole # PA 3453
- 3423 10.1' LT & water meter

315.4
2.5
20

344.8
3.1
11

344.1
3.8
10

312.8
5.1

312.6
5.3
10

311.8
6.1
11

309.4
8.5
50

313.3
4.6
9.9

312.9
5.0
7.9

312.42
5.45
7.2

311.99
5.88
9.8

311.8
6.1
11

309.4
8.5
50

311.4
6.5
17.2
dirt

311.9
6.0
34
Shoulder

307.9
10.0
35
Bottom

305.9
12
50

314.9
3.0
15

313.2
4.7
10

312.1
2.8

311.9
6.0
10

311.7
6.2
33.6
Shoulder

307.9
10.0
35
Bottom

305.9
12
50

313.02
4.85
11.4
8. wall

317.87

5450
 5449 14.7' LT ♀ Floor Single gar. 11.4' to apron
 5448 9.0' RT. 2 Water Meters
 5446 9.7' RT Beg 3.5' Board Fence
 7.9' RT END 5' Steel Wire Fence
 T.P. 709 321.99 2.97 314.90
 5417 10. RT Beg 5' Steel Wire Fence
 10.1 RT N/W Cor. gar. dirt Floor (unused)
 5410 8. RT ♀ Water meter
 5400 10. RT S/W Cor. gar - dirt Floor
 4499 9.4' LT ♀ Pole PA 36.75
 4490 11.5' LT ♀ Single gar. Cor. Floor 9.3 to Cor. Approval
 4484 9.2' LT ♀ Water meter
 4482 10' RT END wooden Shed gar.
 4475 10.0' ♀ Single gar. dirt Floor
 4461 8.9' RT ♀ Water meter
 4450

316.80
 5.19 316.7 316.7
 14.7 5.70 10 6.3 315.7
 11.40 10 6.6 315.4
 7.5 25 7.0 314.5

315.9
 2.0 315.3 314.7
 20 10 2.6 3.2 4.0 313.9 312.9 311.9
 10 40 75
 315.61 315.27
 2.36 2.60
 11.5 9.3

314.7 314.3 313.4
 3.2 3.6 4.5 4.4
 15 10 10 313.3
 312.1

X- Sect Alley B/K 18 - Dwight to LANDIS (Cont.)

check 1 9.61 317.16 = 317.15 $\frac{7}{10}$ B.P. Miles + Dwight

T.P. 5.14 326.77 0.36 321.63

6+38.32 $\frac{1}{2}$ LANDIS (unpaved)

319.7
2.3
100

318.3
3.7
50

317.9
4.6

315.3
6.7
50

312.9
9.1
100

6+12.32

316.2
3.8
50

317.5
4.5
10

317.1
4.9

316.7
5.3
10

315.0
7.0
50

6+11.77 76' LT $\frac{1}{2}$ Pole no 2

5798.32 9.7 RT END Board Fence S/L LANDIS

318.7
3.8
50

317.2
4.8
10

316.7
5.3

316.8
5.2
10

314.8
7.2
50

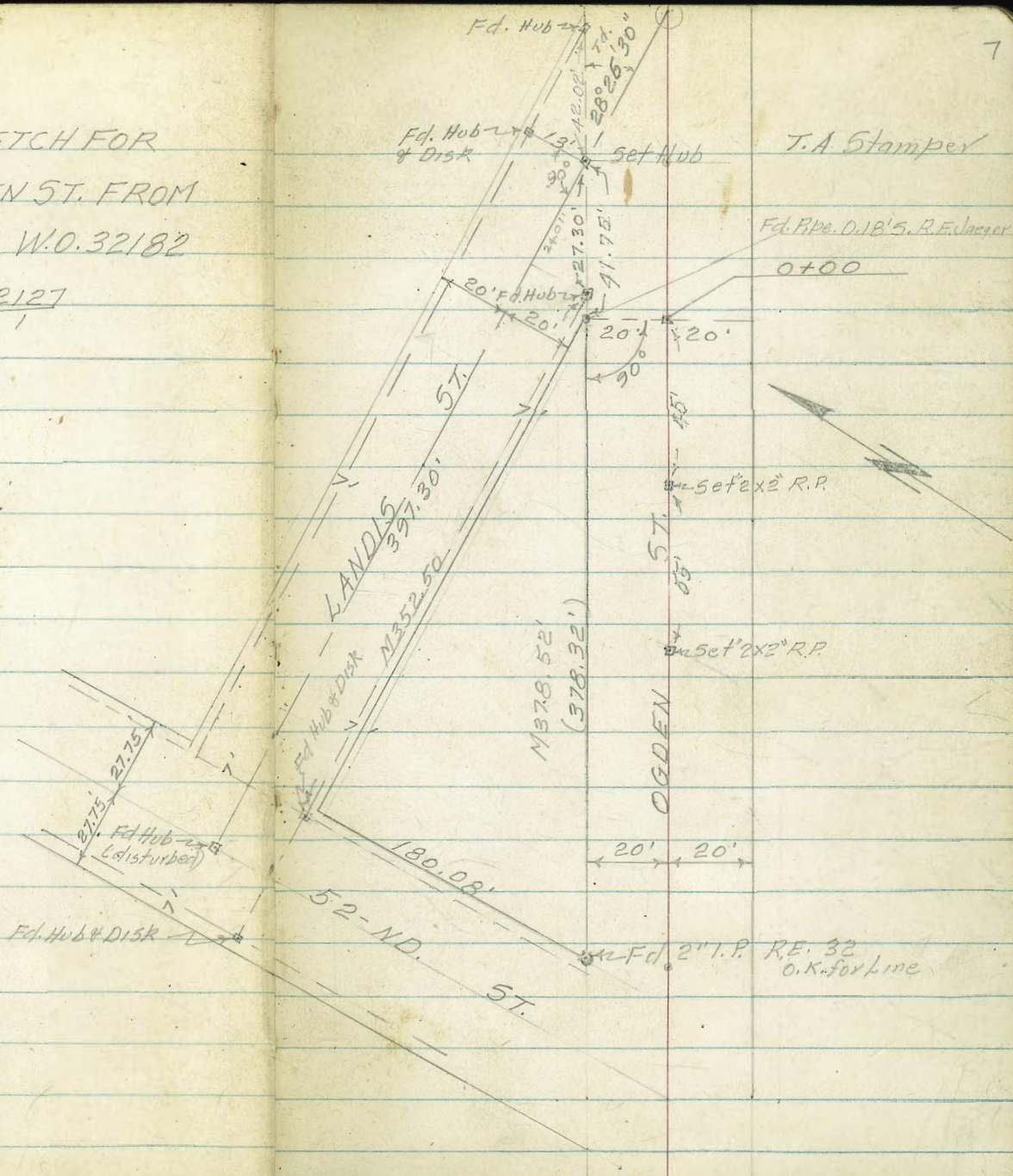
5197 8.9 LT $\frac{1}{2}$ Water Meter

5189 9.5' LT $\frac{1}{2}$ Water Meter

321.99
^

BASELINE LAYOUT SKETCH FOR
 CROSS SECTIONS OF OGDEN ST. FROM
 LANDIS TO WIGHTMAN ST. W.O. 32182
 REF. FIELD BOOKS 1553 2127
 OPENINGS 3584-B; 4377-B

INDEXED
 JUN 9 1953



OGDEN ST. BASELINE CONTD

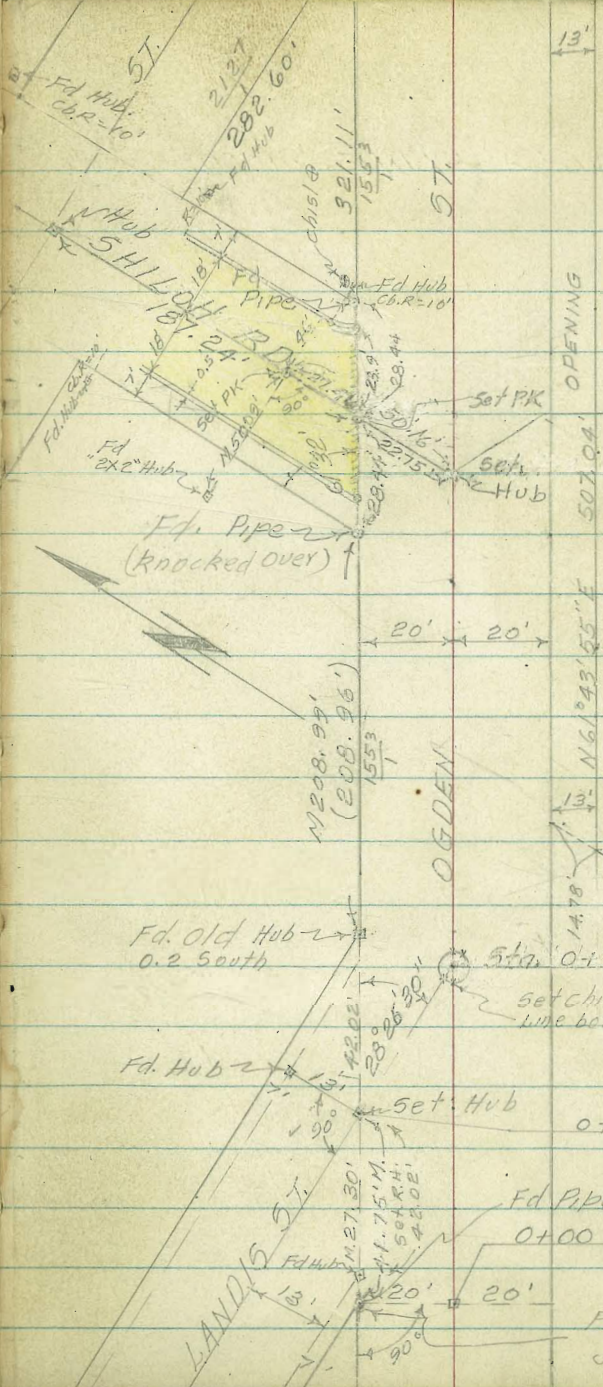
(8)

Stamper

Fd Hub. 258
C.B.R. = 10'

WIGHTMAN

589.74'



OPENING

Sta. 3+10.60

N 61° 43' 55" E

OGDEN

Fd. Old Hub
0.2 South

Sta. 0+78.26

Set chis/ on N.H. Rim
line both directions

Fd. Hub

Set Hub

0+42.02

R.E.

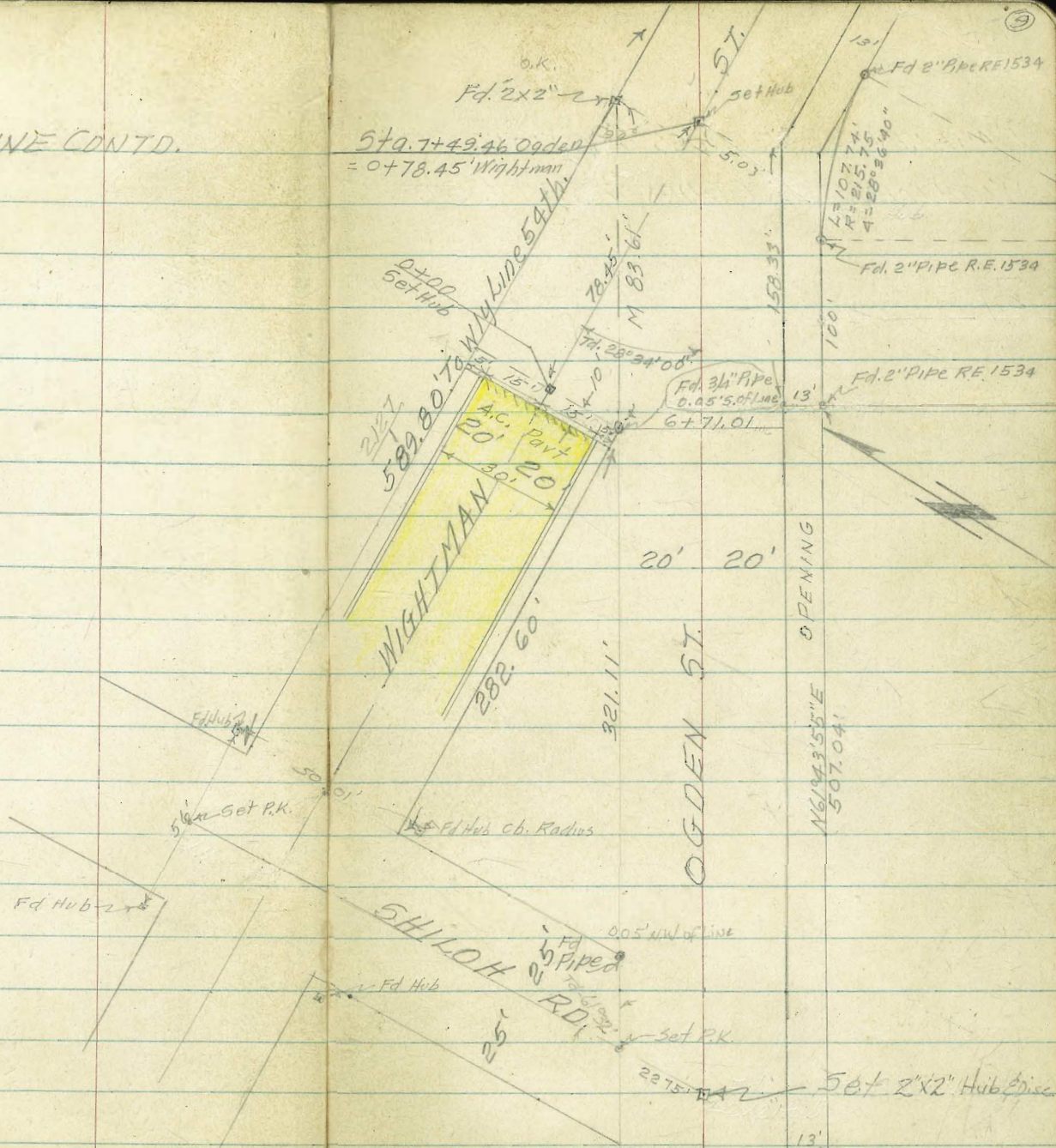
Fd Pipe Jaegger 0.185

0+00 Set Hub

Fd. I.P.R.E.
Jaegger

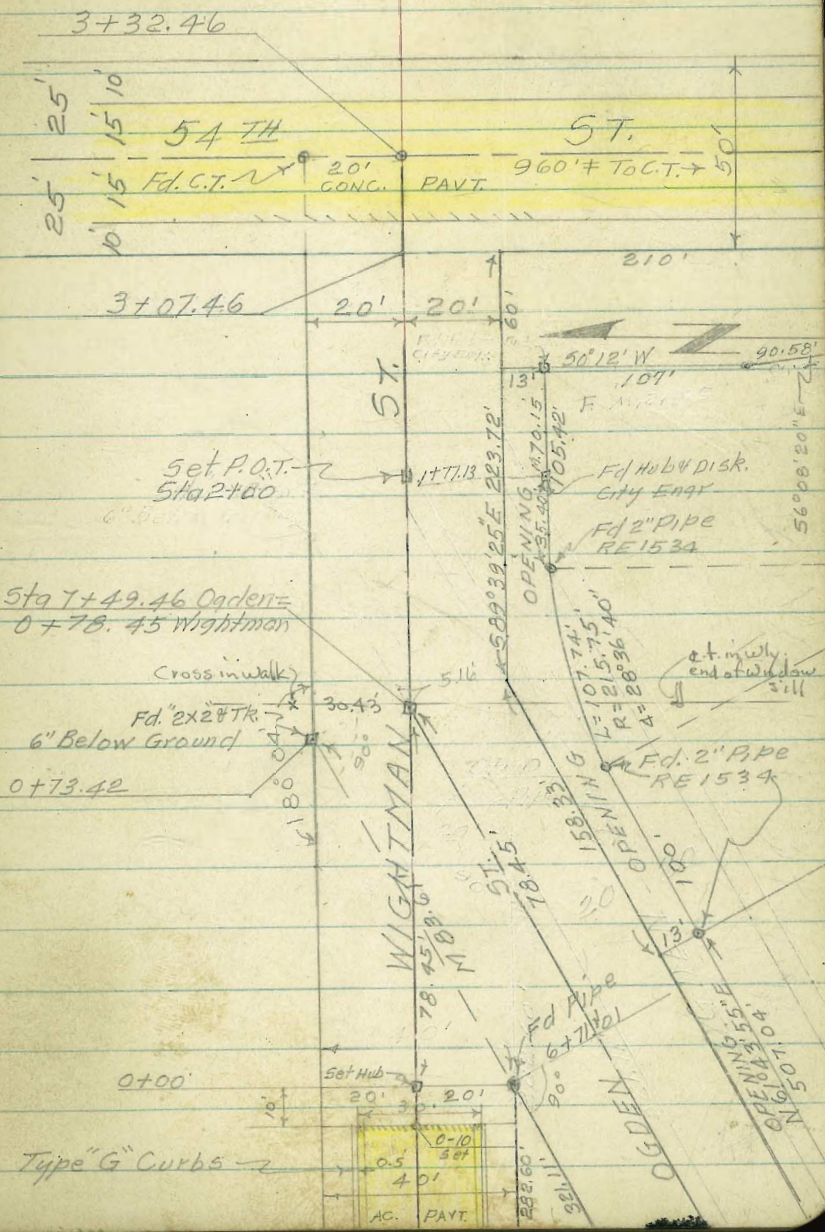
LANDS ST.

OGDEN ST. BASELINE CONTD.



BASELINE FOR CROSS SECTIONS OF
WIGHTMAN ST; OGDEN TO 54TH ST.

T.A. Stamper

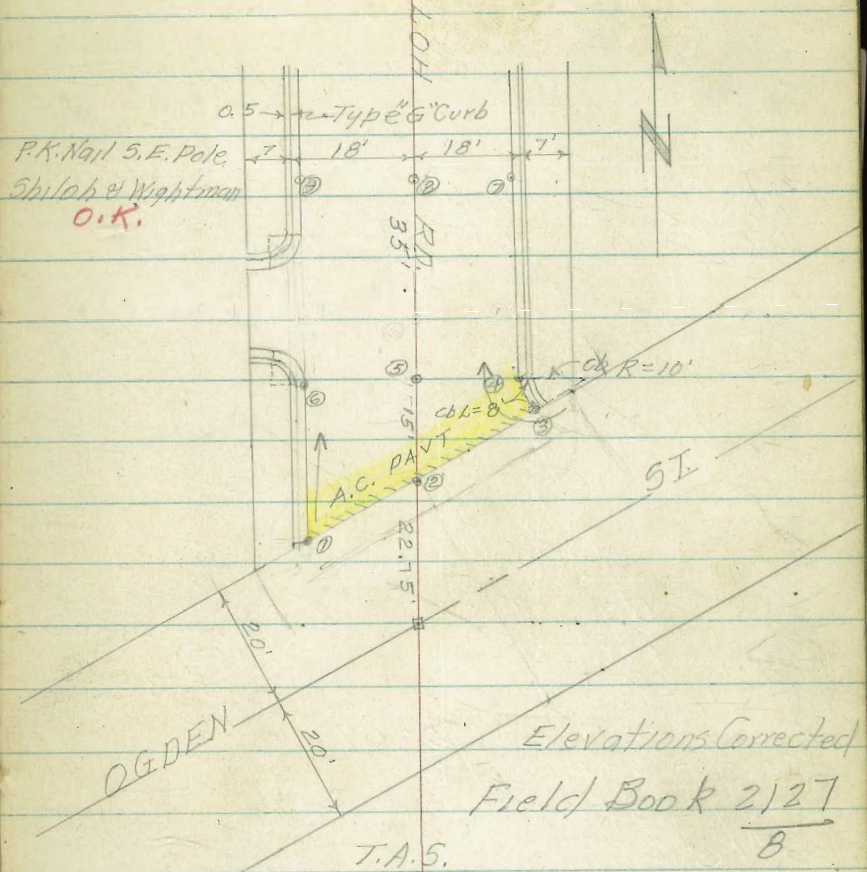


6-5-53
Stamper

INTERSECTION SHILOH & OGDEN

ELEVATIONS

Sta	± Road	Lip	Gutter	Top Ch
B.M.				2127 354.78 352.00 O.K.
1		353.54 356.32	353.44 356.22	353.90 356.68
2	353.96 356.74			
3		353.86 356.64	353.76 356.54	354.22 357.00
4		353.82 356.60	353.72 356.50	354.19 356.97
5	353.75 356.53			
6		353.20 355.98	353.10 355.80	353.57 356.35
7		353.22 356.00	353.11 355.89	353.57 356.35
8	353.30 356.08			
9		352.65 355.43	352.53 355.31	353.00 355.78



NOTE: The bench used was shown to be 354.78 & seemed O.K. however it was later found that this pole had been moved & lowered 2.78 feet.

6-8-53

CROSS SECTIONS OGDEN ST. FROM
LANDIS TO WIGHTMAN W.D. 32182

Lt. \$ Rt.

2.78' Correction

Stampel
Hoffman
Shorey
Sherry

Top Bank Sec 51y

0+78.96 \$ M.H. P.I. LANDIS & OGDEN

349.7	348.9	346.0	345.37	345.1	346.0	345.8
352.5	351.7	348.8	348.15	347.9	348.8	348.6
48	29	22	0	20	48	65

Wire fence

TOP M.H.

0+50

349.7	345.8	344.2	344.3	342.9	339.4	336.1	330.4
351.5	348.6	347.0	347.1	345.7	342.2	338.9	333.2
41	35	7	2	0	10	25	45
				349.1			
				351.9			
				50			

0+25

347.3	345.8	344.4	344.8	340.7	335.8	331.9
350.1	348.6	347.2	347.6	343.5	338.6	334.7
50	36	15	11	0	33	50
		348.9	348.4			
		351.7	351.2			
		75	55			

0+03 Spike N. side
P.P. 5267

349.58
346.74

T.B.M.

0+03 P. Pole No 5267 on Lt.

23
P.P.

0+00

345.0	345.6	344.6	344.2	342.75	336.9	332.8
347.8	348.4	347.4	347.0	345.63	339.7	335.6
26	25	18	6	0	22	50
				Hub flush		
		347.8	346.4			
		350.6	349.2			
		72	50			

0-45

344.8	343.9	343.1	343.2	341.33	339.2	334.2
347.6	346.7	345.9	346.0	344.11	342.0	337.0
27	35	13	4	0	20	50
	344.7	344.4				
	347.5	347.5	347.2	Hub flush		
	95	80	48			

(See Note)
Pg. 11

352.00
354.78

B.M.

See Pg. 11

6-5-53

X-SEC'S OGDEN ST. CONTD

Lt. E Rt.

2+00

353.8	354.0	353.4	352.8	352.9	352.5	352.8	352.4
356.6	356.8	356.2	355.6	355.7	355.3	355.6	355.8
50	29	12	10	0	24	26	50

1+74 End Ramp To Sing Car Gwy

351.39	351.35
351.17	351.13
33 ²	48 ²
Con Ramp	Floor Level

1+65 Begin Ramp To Sing Car Gwy

351.24	351.22
351.02	351.00
33 ²	48 ²
Con Ramp	Floor Level

1+60 P.Pole No 5281 On Rt

T.B.M.

351.12
~~352.90~~

Sta 1+60
Set Spike N. Side P.P. No 5281

28.0 V
P.P.

1+50

353.2	353.2	350.5	350.5	349.6	349.8	349.1
355.0	355.0	353.3	353.3	352.4	352.6	351.9
43	17	8	0	20	22	43

1+36 Deadman Gwy On Rt

2.8 3 V
Gwy Deadman

1+00

349.4	347.5	346.7	345.9	346.1	346.4	346.4
352.2	350.3	349.5	348.7	348.3	348.2	348.2
43	17	0	12	28	42	60

0+82 Cor Waved Wire fence On Lt.

27.8
Fence Cor.

6-5-53

X-SEC'S OGDEN ST. CONTD

Lt. # Rt.

Sec Normal To Shiloh
3+10.60 P.I. Shiloh & Ogden

352.92	353.58	353.97	353.5	354.2
355.70	356.36	356.75	356.3	357.00
100	50	22.8	15	0

E.P.

356.3
2.8
3.5
357
2.8
1.2

3+01 Wly cb face @ 90° of Shiloh Rd

353.90	353.44
356.68	356.22

20° 20°
cb Gut

3+00

354.0	353.8	353.34	354.2	353.8	354.3	354.3
356.8	356.6	356.12	357.0	356.6	357.1	357.1
39	21	12	0	21	30	45

2+77 End Ramp To Sing Car Gar on Rt.

353.86	354.11
356.64	356.89

28° 48°
Conc floor
Ramp Level

2+67 Begin Ramp to Sing Car Gar on Rt.

353.94	354.06
356.72	356.84

28° 48°
Conc floor
Ramp Level

2+50

353.7	353.6	353.6	353.2	353.4	353.5
356.5	356.4	356.4	356.0	356.2	356.3
40	20	0	26	30	48

2+25 End Ramp To Sing Car Gar on Rt.

353.14	352.96
355.92	355.74

28° 48°
Conc floor
Ramp Level

2+17 Begin Ramp To Sing Car Gar on Rt.

353.10	352.92
355.88	355.70

27° 48°
Conc floor
Ramp Level

6-5-53

X-SEC'S OGDEN ST. CONTD

Lt. & Rt.

T.P. 355.23
 ~~358.01~~
4+00

N.W. Cor Top Conc Ramp Sta 4+18 338' Rt.
355.2 355.1 355.5 355.0 355.2
~~358.0 357.9 358.3 357.8 358.0~~
32 17 0 20 48

3+74 & 3' Walk on Lt.

355.22
✓ ~~358.00~~
19 1/2
Top
Cobc walk

3+52 End Ramp To Sing Car Garden Rt

354.71 354.52
✓ ~~357.49~~ ~~357.30~~
27 1/2 53 1/2
Cone floor
Ramp Level

3+50 End Ramp

353.9 354.0 354.7 355.0 354.5 354.70 354.53
~~356.7 356.8 357.5 357.8 357.3 357.48 357.31~~
41 23 20 0 23 27 1/2 53 1/2

3+45 E.C. Flych face Shiloh on Lt.

354.22 353.77
~~357.00~~ ~~356.55~~
19 1/2 19 1/2
Cb Gut

3+43 Begin Ramp To Sing Car Garden Rt.

✓ 354.70 354.53
~~357.48~~ ~~357.31~~
27 1/2 53 1/2
Cone floor
Ramp Level

3+13 P. Pole on Rt. No 5301

28 1/2
PP

6-8-53

X- SEC'S OGDEN ST. CONTD.

Lt. # Rt.

5+00

355.3	355.4	355.5	355.1	355.4	355.6
355.1	358.2	358.3	357.9	358.2	358.4
50	18	0	17	24	50

4+88 P. Pole No 5319 on Rt.

287
P.P.

4+60 & 3' Walk on Lt.

355.48
~~358.26~~
 18 5
 Top of
 Walk

4+50

355.4	355.4	355.5	355.0	354.8
358.2	358.2	358.3	357.8	357.6
50	13	0	19	50

4+26 End Ramp To Sing Car Gar on Rt + Lt.

355.36	355.36	355.21	355.32
358.14	358.14	357.99	358.10
37 L	18 5	33 7	49 2
floor	conc	conc	floor
Level	Ramp	Ramp	Level
355.38	355.32		
358.16	358.12		
39 0	19 0		
floor	conc		
Level	Ramp		

4+21 Begin Conc Ramp To Sing Car Gar on Lt.

4+18 Begin Conc Ramp To Sing Car Gar on Rt.

355.29	355.28
358.01	358.06
33 8	49 2
conc	floor
Ramp	Level

6-8-53

77

X- SEC'S OGDEN ST. CONTD

Lt. Rt.

5+95 End Wire fence on Lt.

214
End wire
fence

5+80 End Conc Ramp

✓ 356.35	356.15
359.13	358.93
212	501
Conc Ramp	floor Level

5+70 Begin Conc Ramp To Sing Car Gar on Rt.

✓ 356.22	356.15
359.00	358.93
212	501
Conc Ramp	floor Level
355.7	357.04
358.5	359.83
334	✓ 334
Ground	Top Wall

5+64 End Conc Block Ret Wall on Rt.

5+51 Begin Woven Wire fence on Lt.

205
Wire fence

5+50

355.9	356.1	355.8	355.8	355.6	355.6	357.03
358.7	358.0	358.6	358.6	358.4	358.4	359.81
50	23	12	0	17	33.4	33.4
						Top Wall
355.6				355.9		
358.4				358.7		
34.0				50		
355.7						357.10
358.5						359.88
334						334
Ground						Top wall

5+35 Begin Conc Block Wall on Rt.

6-8-53

X-SEC'S OGDEN ST. CONTD

Lt. E Rt

7+00

355.5	356.1	355.9	355.7	355.6	355.8	356.04
358.3	358.9	358.7	358.5	358.4	358.6	358.82
46	29	17	0	18	33.3	33.3
				359.1		Top wall
				50		

6+85 Begin Conc Block Ret Wall Lat. #6" Comb Parallel to Corner Ely.

355.8	356.16	357.43
358.6	358.94	360.21
33.2	33.2	33.2
Ground	Top 6" Comb	Top Wall Conc Block

T.P.

355.86 ✓
~~358.64~~

Top Pipe

6+71.01 Cox Wightman & Ogden

353.0	355.0	355.7	355.7	355.6	355.4	355.7	355.7
357.8	357.8	358.5	358.5	358.4	358.2	358.5	358.5
39	25	24	20	0	15	25	50

Continuation of Wightman

6+57 Deadman Guy on Rt.

285
Deadman

6+50

355.3	355.7	355.6	355.8	355.5	355.7	355.8	355.6
358.1	358.5	358.4	358.6	358.3	358.5	358.6	358.4
35	32	14	0	16	22	33	50

6+36 P. Pole No 95323 on Rt

289
P.P.

6+00

356.0	356.1	355.9	356.0	355.7	356.0	355.8	355.6
358.8	358.9	358.7	358.8	358.5	358.8	358.6	358.4
50	37	18	0	16	17	34	50

6-8-53

X-SECS OGDEN ST. CONTD.

Lt. ♀ Rt.

Sta

Elev.

PLOT

Sec. Normal To Ogden
7+49.46 Pl. Ogden & Wightman

356.4	355.9	355.7	355.9	355.3	355.9	355.6	356.14
359.2	358.7	358.5	358.7	358.1	358.7	358.4	358.92
38	23	15	0	20	23	35	47.1

7+23 ♀ 3' Conc Walk on Rt Curves To East.

356.06	356.16
358.84	358.94
357	45.3
conc	R.C. Walk
WALK	E/y. Concave
	S/y.

CROSS SECTIONS OF WIGHTMAN ST
FROM OGDEN TO 54TH. NO. 32182

INT. ²⁰⁰
JUN 9 1953

N/L 6-8-53 S/L
L. & RT

0+29 ± 3.8' Walk on Lt (conc.)

355.92

~~358.70~~

20 ±

Conc Walk

0+00

356.2	355.90	355.0	354.8	355.2	355.0	355.7	355.7
359.0	358.48	357.8	357.6	358.0	352.8	358.5	359.5
20	20 ±	18	15	0	15	17	40

Conc Ret
Wall

0-07 ± 3.3' Conc. Walk on Lt.

355.96

~~358.74~~

20 ±

Conc Walk

0-10 Fly End Part Wightman St

356.1	355.93	354.95	354.49	355.23	355.17	355.07	355.53	355.55
358.9	358.71	357.73	357.27	357.85	357.95	357.85	358.31	358.3
35	20 ±	15	15	15	0	15	15	20

Conc cb Gut Lip

Retch

1" Wide

LIP Gut cb

355.5

~~358.3~~

31

355.7

~~358.5~~

40

0-60 Set on Part Wightman St

355.28	354.80	354.93	354.97	354.48	354.38	354.83
358.06	357.58	357.71	357.75	357.26	357.46	357.61
15	15	15	0	15	15	15

cb Gut LIP

LIP Gut cb

6-8-53

X- SEC'S WIGHTMAN ST. CONTD

Lt. † RT

0+87 End Picket Fence on Lt.

202
fence Cor.

Sec Normal To Wightman
0+78.45 Pl. Wightman & Ogden

356.4 355.8 355.9 355.5 355.3 355.6 355.7
~~359.2~~ ~~358.6~~ ~~358.7~~ ~~358.3~~ ~~358.1~~ ~~358.4~~ ~~358.5~~
37 20 0 18 20 23 39.3

356.06 356.2
~~358.84~~ ~~359.0~~
393 50

TOP 6"
Retwall

356.03

~~358.81~~

20⁵

Conc Walk

0+73 † 3' walk on Lt. (conc)

3' High
0+58 Begin Picket fence on Lt.

20B
fence Cor.

0+53 End Ramp To Sing Car Cor on Lt.

356.29 356.02
~~359.07~~ ~~358.86~~
422 213

floor Conc Ramp

Level 356.03 355.9 356.0 355.8 355.6 355.8
~~358.81~~ ~~358.7~~ ~~358.8~~ ~~358.6~~ ~~358.4~~ ~~358.6~~
213 14 0 9 31 50

Conc
Ramp

0+50

Begin Ramp To Single Car yard on Lt.
0+45 End 0.4' Conc Ret curb on Lt.

356.27 356.07 356.01
~~359.05~~ ~~358.85~~ ~~358.79~~
72⁵ 212 204

floor Conc Curb
Level Ramp Conc

6-8-53

X-SEC'S WIGHTMAN ST. CONTD.

Lt. C Rt.

1+13 Guy Pole on Lt.

145

Guy Pole

1+11 Deadman on Lt.

184

deadman

1+09 Beam Picket fence on Lt

205

fence cor

Ramp Back @ 90° To front line.
1+07 End Conc Ramp 2-Car Gar on Rt.

356.14 356.34

~~358.92~~ ~~359.12~~

394 580

Conc floor
Ramp Elev

1+00

356.3 355.9 355.6 355.6 355.2 355.8 355.6 356.0

~~359.1~~ ~~358.7~~ ~~358.4~~ ~~358.4~~ ~~358.0~~ ~~358.6~~ ~~358.4~~ ~~358.8~~

50 21 14 0 12 15 30 403

@ Ramp

0+91 Begin Conc Ramp 2-Car Gar on Rt.

356.20 356.39

~~358.98~~ ~~359.17~~

436 613

Conc floor
Ramp Elev

0+90 End Conc Ret Wall on Rt

356.12

~~358.90~~

312

End 6" Conc
Ret Wall

6-8-53

X-SEC'S WIGHTMAN ST. CONTD

Lt. ♀ Rt.

2+00

350.2	350.9	350.5	350.8	350.6	351.2	351.0
353.6	353.7	353.3	353.6	353.4	354.0	353.8
50	40	21	0	351.8	6 352.13	17
				354.6	355.0	
				33	50	

TP

351.14
~~353.92~~

opposite Sta 2+00 30' Lt on Rt. (Rock)

1+82 End Picket fence on Lt.

210
fence Cox

1+75

354.6	354.8	353.5	353.4	353.6	353.8	353.2	353.2
357.4	357.6	356.3	356.2	356.4	356.6	356.0	356.0
50	41	20	12	0	20	33	50
		53.6				53.5	

1+50

354.8	354.7	354.5	354.6	355.0	354.3	354.3
357.6	357.5	357.3	357.4	357.8	357.1	357.1
50	34	21	0	17	33	45

1+27 ♀ 4' Cox Walk on Lt.

355.24
~~358.02~~
20'
♀ Cox Walk

1+25 P.Pole on Rt. No 5345

267
P.P.

6-8-53

X-SEC'S WIGHTMAN ST. CONTD

Lt. C Rt.

3+11 Sec. on Toe of Slope

320.3 319.8 318.9 317.7 315.2
50 20 0 20 50

T.B.M.

322.29 =

322.29
P.P. 212.7
13

3+10 P. Pole N^o 70419 on Rt.

20.3
P.P.

3+00 Sec. on Top of Cpt Bank

327.0 327.9 327.9 329.7 330.1 331.2
50 25 0 20 40 50

TP

1.77
334.55

320.3
2

OK

2+75

330.4 330.7 331.9 333.3 334.0 335.5 334.5
~~332.2 333.5 334.7 336.1 336.8 338.3 337.7~~
50 35 18 0 6 10 15

TP

337.43
~~340.21~~

337.5 338.3
34 50

2+50

337.8 339.2 338.8 339.7 340.6 342.8 341.4
~~340.6 342.0 341.6 342.5 343.4 345.6 344.2~~
50 31 22 0 5 11 16

341.9 342.6
~~344.7 345.4~~
33 50

TP

344.825
~~347.605~~

2+25

346.2 345.3 346.1 346.1 346.9 346.9
~~349.0 348.1 348.9 348.9 349.7 349.7~~
50 24 0 0 17

347.37 347.51
~~350.1 350.3~~
33 50

D. Smith
R Taylor
J. Dyer
B. Fish

Wod 32329
9/14/53

X Sec Alley BIK 86 Pt Loma Hts

INDEXED
SEP 15 1953

Reduced by E.H.S.

Niagara St

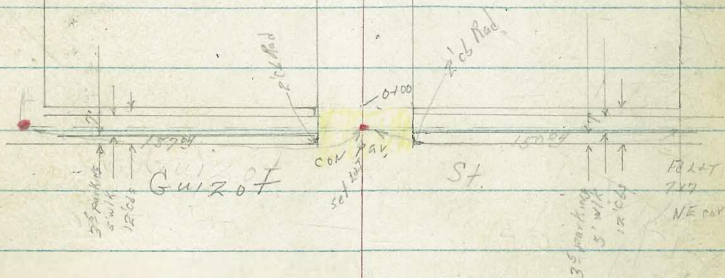
BIK

Pt Loma

86

Hts

Narragansett St



X Sec Alley Bk 86 Pt Lonia Hts.

1400 11² RT end 6' cov block wall 8" wide

0499 8² RT & 12" PPole # JPA 4480

0477 12² RT & 15" cov walk

TP₃ 8² 211²¹ 19¹ 202⁷⁷

0430 12² RT Begin 6' wall 8" wide cov block

0425

0400 Ely Guizot St edge cov parade

0412 Ely ab Line Guizot St

TP₂ 6² 203⁹⁶ 10²⁰ 197⁴⁶ on disk 17² line into Alley

TP₁ 0⁷⁰ 208¹⁶ 13¹⁰ 207⁴⁶

BM 18² 220⁵⁶ 218⁶⁷ SWBR Vairgansett & South Adams

LT. Nly
 203³¹ 203⁶¹ 203⁹¹ 204²¹ 204⁵¹ 204⁸¹ 204¹¹ 204⁴¹ 204⁷¹ 204⁰¹
 84 79 78 75 68 74 68 66
 15 10 6 10 11 11 11 11
 Footing 21
 204⁵³
 7.18
 12²
 walk

202²⁶ 202²⁶ 202¹⁶ 202³⁶ 202⁵⁶ 202²⁶ 202⁴⁶ 202¹⁶ 203²⁶
 12 12 18 15 14 10 15 02
 15 10 8 6 6 10 12 12
 Footing 21

201⁸⁶ 201³⁶ 201¹⁶ 200⁸⁶ 200⁵⁶ 200²⁶ 202³⁶ 202²⁶
 21 26 25 31 34 30 16 12
 15 10 8 5 6 10 20

200¹⁶ 197⁸⁸ 197²⁶ 197⁶⁶ 198¹² 198²²
 35 68 62 62 54 54
 10 10 10 10 10 10
 94 94 94 94 94 94

194⁸¹ 194⁴⁶ 197⁵¹ 196²¹ 196²⁶ 197²⁷ 197⁶³ 197²⁰ 198¹⁰ 199¹⁶ 200⁰²
 95 98 64 75 70 69 63 62 56 45 39
 62 62 12 12 10 6 10 12 12 62 62
 66 54 66 54 66 54 66 54 66 54 66
 203⁹⁶

2150

2140 13° RT double garage cov floor apron

2118 10° Lt SE cor garage opens Ely cov floor

2100 10° Lt SW cor garage opens Ely

2100 15° Rt end cov wall 4' 6" wide

2100 8° Rt & 10° P.P. 6 PA4466

2100 9° Lt end 3' board fence

1775 9° Lt end Lath fence 5' begin 3' board fence

1773 15° Rt Begin 4' cov wall 6" wall

1771 15° Rt & 2° cov walk

1761 7° Rt & double garage cov floor apron

1750 11° Rt end cov block wall

1750 9° Lt end wall under fence which still conta

1725 11° Rt Begin 5' cov block wall 6" wide

1721 10° Lt Begin 6' Lath fence with wall under

1710 14° Lt & double garage cov floor

Lt. Nly

2054
63
20
2062
55
10
2069
50
6
48
6
41
10
12
2078
32
20
2085
32
2078
384
2086
305
125
265
900
Floor

20482

689

102
Floor

2051
66
15
2052
60
10
2063
54
6
2063
54
6
2065
52
6
2073
45
10
2064
53
15
2072
46
15
Fencing
9d.

2061
56
15
Fencing
2070
42
15
9d.

2071
431
150
walk

2058
583
7
2061
432
15
Fencing
2059
58
117
9d.

2039
2042

2015
78
15

2052
72
11

2040
650
92
top
wall
Fencing
9d.

2050
62
92
9d.

2052
65
7

2051
60
10

206
56
10
117
Fencing
9d.

2048
62
117
9d.

2059
58
117
9d.

2061
50
17

2042
758
100
top
9d.

2043
75
100
9d.

2030
87
100
Fencing
9d.

2041
72
117
Fencing
9d.

2051
63
117
9d.

2070
807
140
Floor

T 2112

4750

4749 10' RT NE cor garage opens Sly

4732 10' RT NW cor garage opens Sly

4732 10' RT end 4 board fence

4725 8' RT & 9' Reach tree

4700 9' RT begin 4 board fence

3789 9' RT & double garage con floor + apron

3780 10' RT end con block wall

3778 8' RT & 2' 5' x 2' 3' con slab (trash) holder

3750 10' RT begin 5' con block wall 6' wide

5 7' RT & 10' RT 5 PA 4440
3700 (S) SMH

2769 11' RT & 1' 5' con walk

2760 25' 3' LT & double garage con floor

LT = N/4

207 ³	208 ²	209 ³	210 ¹	210 ³
32	30	25	23	16
26	10	5	10	14

RT = S/4

207 ⁵	208 ³	208 ⁴	208 ⁵	209 ¹	209 ⁵
41	34	31	29	26	23
15	70	5	5	10	15

209 ⁰¹	210 ¹²
220	154
92	192
gym	floor
208 ^{3/1}	209 ^{4/1}
34	27
102	102
footing	92

207 ³	207 ⁹	207 ⁶	207 ²	207 ⁸	208 ⁵	208 ²
44	38	41	38	37	38	35
15	10	7	6	10	10	footing

205 ⁹	206 ²	207 ⁶	207 ⁵	207 ⁸	208 ²¹	208 ⁵¹	208 ⁰⁰
58	55	44	44	32	35	32	32
17	12	10	114	5	10	15	32
205 ²							112
660							with
253							
floor							

217 91

5461 10⁵ Lt & double garage con floor apron

5450 10⁵ Lt end foundation

5442 10⁵ Rt & single garage con floor apron

5427 10⁵ Lt begin foundation to be

5413 11² Lt & double garage con floor apron

5400 12¹ Lt end con block wall

4490 9² Rt & double garage con floor apron

4475 12⁴ Lt begin 5⁵ con block 6' wide

4461 12² Lt & double garage con floor apron

TP4 650 215²⁶ 295 268⁷⁶

2452 7² Rt & 16' ppole # JPA 4428

30

L.H. Ny

RT-Sly

2092 2082 2092

618 634 531

295 285 105

Floor RT apron

2102 2082 2102

495 68 53

102 103 10

Top footing

2102 2102 2102

50 48 40 34

7 10 15

2112 2112 2112

384 228 270

108 322 375

apron RT floor

2102 2102 2082

493 52 68

105 102 105

Top footing

2082 2082 2092

657 662 563

29 25 112

Floor RT apron

2092 2092 2092

63 61 73

15 121 121 10

96 footing

2092 2092 2102

56 54 51

7 10 15

2102 2102

510 320

99 290

apron floor

2082 2072

66 76

124 124

51 51

2082 2082

620 650

202 122

Floor apron

215²⁶

Lt Nly

S RT = 54

BM start

- (-0²⁴) 218²⁰ ✓ 218⁶¹

6110 Wly Cl Santa Barbara

204 ¹²	203 ⁴⁴	206 ²³	206 ³³	206 ⁷⁶	207 ¹¹	207 ⁶⁹	207 ⁸⁶	208 ⁵⁶	211 ⁵⁴	211 ⁹²
14 ³⁶	15 ²²	11 ⁵³	12 ¹²	11 ²⁸	11 ³⁵	10 ²⁷	10 ⁶⁰	9 ²⁰	7 ²²	6 ⁵⁴
62	62	12	12	10		10	12	12	65	65
26	24	84	24			24	24	24	24	26

TP₂ 11²² 218⁴⁶ 7²² 209⁴⁴

6400 Wly Santa Barbara St edge Acropav w cbs

6400 10⁵ Lt end wall

207 ²⁷	218 ⁴⁶	208 ⁵⁴	208 ⁵⁹
7 ²²	8 ²⁶	7 ²⁷	7 ¹²
10	10	9 ²⁵	9 ²⁵
24	24	24	24

5489 10⁶ Lt Begin 4⁵ con block wall 6"

209 ³⁰	208 ³⁰	209 ⁵	209 ⁶	210 ¹	211 ⁵	211 ⁸
6 ⁰	7 ⁰	5 ²	5 ²	5 ²	3 ⁸	3 ⁵
103	106	63	6	10	15	15
24	fonting	209 ⁸³	209 ⁸³			

5775

5770 10⁵ Lt Begin con patio

215²⁶

D. Smith
J. Rorer
R. Taylor
B. Fish

(T)
X Sec Alley BIK No Bird
Blvd La Jolla Blvd + Chelsea
Forward + Bird Hook

Please Note; tie pts and sketch in FB1712-56
also Lookup opening + closing sheets
at sly end of N+S Alley.
check La Jolla Blvd coast Plans # 2244-D 1

0+47

0+23

0+02 7¹/₂ Rt Begin 4" con wall 4' high average

(all further sections taken at 90° to E unless stated)

0+00 Fly Chelsea edge con pav + cbs, taken along Propping

0-10 8¹/₂ Lt Begin 8" con wall 4' high average

0-15⁴² Fly Cb Chelsea taken along Line of Cbs

TP 72 6999 1237 6208

BM - 030 7445

74¹⁵ SW Tran
Hook
Forward

Rock City

Wot# 32231

32

2/10/54

Lt: Nly

INDEXED
SER
FEB 11 1954

N+Sly

66.73 66.73 66.73 66.73 66.73 66.73 66.73 66.73 66.73 66.73
+ 2²⁶ 302 20 24 22 24 19 22 42⁵⁰
82 82 75 5 4 72 72 75
Top wall Footing wall Top wall

66.01 66.00 66.00 66.00 66.00 66.00 66.00 66.00 66.00 66.00
70²⁸ 39 32 32 34 33 21 22 41⁵⁸
82 82 75 4 4 72 72 72
Top wall Footing wall Top wall Footing Top

66.06 66.06 66.06 66.06 66.06 66.06 66.06 66.06 66.06 66.06
0²⁸ 6¹⁶
82 82
Top wall Footing Footing Top

64.44 64.44 64.44 64.44 64.44 64.44 64.44 64.44 64.44 64.44
5⁵⁵ 5²⁶ 6¹⁷ 6⁰⁰ 5⁸⁴ 6¹⁵
72 72 72 72
cut cut cut cut

64.98 64.45 64.98 64.98 64.98 64.98 64.98 64.98 64.98 64.98
5⁰¹ 5⁵⁴ 5⁴⁴ 6¹⁶ 6²⁴ 6⁴⁰ 6⁵⁴ 6⁶⁶ 6¹⁴ 7⁶¹ 7⁰²
63 63 122 122 72 72 122 122 48 63
cut cut cut cut cut cut cut cut cut cut

6999

La Jolla Blvd FB2146-48 note will also be used in habitat and coast

PHOTOED
Hutchins
2/25/54

Lt-Nly Rt-Sly

1409⁹² Wly Alley

✓
6941
72
75

1407 6³ Rt & 10" + 1 Pole #582731H 0 ✓

✓
6923
73
72

1400 7² Lt end cov drive 0 ✓

✓
6953
708
163
Floor drive

0486 7² Lt Begin cov drive to single garage ^{0 cov floor} ✓

0477 7⁶ Rt begin & roots of 6' high cypress hedge

✓
6901
76
72
75

0475 5² Rt end cov drive 0 ✓

✓
6951
72
78
79
50
drive

TP₂ 8²¹ 76⁶¹ 15² 68⁴⁰

76⁶¹

0464 15² Rt begin cov drive to garage ^{single cov floor} ✓

✓
6942
157
50
drive

0463 7² Rt end 4" cov wall 0 ✓

✓
6977
12
73
72
Footing wall

0450 7² Lt end 8" cov wall 0 ✓

0448 4⁸ Rt & 2⁵ cov walk 2 ✓

✓
6929
120
48
walk

PROTECTED BY
Rocks

6999

2400

- 1499 7² RT NE cor Bldg new station } ^{Same bldg} ?
- 1489 8² LT Beg in bldg } ?
- 1475 75^{LT} end 6' Board fence
- 1456 7⁵ RT end 8" black wall ✓
- 1455 7⁴ RT & 3" Eucalyptus tree
- 1450
- 1444 7⁵ LT & 8" Eucalyptus ^{tree} & begin 6' board fence
- 1438 16⁵ LT end car drive ✓
- 1
- 1425³⁴ Fly Alley
- 1423 7² RT Begin 8" cur black wall 1' high ✓
- 1419 16⁵ LT Begin drive to double garage ^{car porch} ✓
- 1418 7⁵ RT end roots of Cypress hedge
- 1417⁶³ E Alley N15

✓ 72.91
 ✓ 72.41
 ✓ 73.01
 32 40 36

3475
 3+25

NO 2400

REPORTED TO ENGINEER

NAME OF HOMEOWNER FOR MUNICIPALITY: ATAI NISOB
 STREET ADDRESS: 325

TYPE OF REQUEST: COMPLAINT OTHER CLAIM GRABBER OTHER

AMOUNT OF REQUEST: 598.65 = 324.27

DATE: 325 600

REPORTED FOR ACTION TO: 598.65 = 49.89

DATE: 50 600

DO NOT COMPLETE THIS FORM IF REFERRED FOR ACTION TO: DATE

73 74 75 62
 75 76 63 75

7.76.61

PROTECT Health

Waiked

*2219
47*

W031924 - Hatch

No 2410

COMPLAINT OR INFORMATION REQUEST

REFERRED TO ENGINEERING DEPARTMENT BY _____

1. NAME OF INQUIRER Mrs. W. C. Madigan		2. STREET ADDRESS 4741 Niagara		3. TELEPHONE NO.	4. DATE 3/16/56	5. TIME 10:45
6. TYPE OF REQUEST						
<input checked="" type="checkbox"/> COMPLAINT	<input type="checkbox"/> CLAIMS	<input type="checkbox"/> GRADES	<input type="checkbox"/> DRIVEWAYS	<input type="checkbox"/> DRAINAGE	<input type="checkbox"/> SEWER	OTHER (SPECIFY)
7. NATURE OF REQUEST						
When alley was paved, her property markers were removed.						
<i>3475</i> <i>L35 - Blk 3 & D. B</i>						
<i>3425</i>						
<i>DO NOT COMPLETE BELOW THIS LINE</i>						
8. REFERRED FOR ACTION			9. ACTION TAKEN (SPECIFY)			
TO		DATE				
<i>DWS - Stamps Alley</i>						

No. 2410

REQUEST FOR INFORMATION

REFERRED TO ENGINEERING DEPARTMENT BY

375
325

Handwritten notes

1. NAME OF INQUIRY		2. STREET ADDRESS		3. TELEPHONE NO. & DATE		4. TIME	
324.27		X		3/16/56		10:45	
5. TYPE OF REQUEST		6. GRADE		7. CLIMATE		8. COMPLAINT	
600		325		X		X	
9. WHEN REQUEST TAKEN		10. DATE		11. SECTION TAKEN (SPECIFY)		12. OTHER (SPECIFY)	
49.89'		598.65		X		SD	
600		SD		When alley was removed, other property markers were removed.			
DO NOT COMPLETE BELOW THIS LINE							
REFERRED FOR ACTION							
DATE							

FORM 2110

0+30 -
 0+41 7¹ Lt 2 14" P Pole PA 5625 ✓
 0+37 7⁸ Lt. L. in wire fence ✓
 0+34 10⁵ Rt NW cor bldg garage 0 ✓
 0+14 10² Lt Beg in 6' high wire fence 0 ✓
 0+15 9⁴ Lt 2 deadman
 0+12 5³ Rt SW cor garage bldg 0 ✓
 0+07 4⁴ Rt SWly cor road drive into garage ✓

0+00 Nly Line of E-W Alley taken along
 Beg in N+S Alley

TP3 5²⁶ 7⁵⁰ 7⁵³ 6908
 on 2 Alleys
 Had note
 in Ken's
 2 reset it
 degree.

see La Jolla Blvd Parking widening
 Plans #2244-D

2425²⁶ Wly La Jolla Blvd. edge Ac parking
 note section taken along Lwis

Lt = Wly
 Rt = Ely
 69.34 ✓
 5² 5³ 5⁵
 15 75 75 37
 69.74 ✓
 5³ 4² 70.74 ✓

69.34 ✓
 5² 5³ 5³
 75 75

7504

7402 ✓
 259 257 255
 75 75

7601

NOTED BY
 Hiedtke

Lt=Wly ♀ Rt=Ely 36

2700 17^{1/2} Lt end 6' Board Fence ✓

1760 7^{1/2} Lt begin 6' board fence ✓

1759 6^{1/2} Lt & 12" P.P. 1/2 #PA 5647 ✓

1750 7^{1/2} Lt & 18' con drive + double garage con floor ✓

1735 7^{1/2} Lt end }
begin 6' Redwood picket fence ✓

1710 7^{3/4} Lt end 6" con wall w/ cyclone fence ✓

1707 8^{1/4} Rt SW cor bath house ✓

1703 8^{1/2} Rt end con parking area ✓

1700

0483 7^{1/2} Lt begin 6" con wall 1' high with cyclone fence on top ✓

0483 8^{1/2} Lt NE cor double garage ✓

0477 7^{1/2} Rt begin con parking area ✓

0465 12^{1/2} Lt SE cor double garage con floor ✓

0460 7^{1/2} Lt end 6' wire fence ✓

7094 ✓ 7064 ✓ 7024 ✓
41 44 43 22
75 75 75

7058 0 7015 0
446 489 53 51 42
172 72 75 15
Roor drive

7072 6842 ✓ 6984 ✓
432 643 52
72 72 72
top footing 9d.

7004
496
85 con
6974 ✓ 6974 ✓ 6994 ✓
53 53 51
75 75

7074 6842 ✓ 6974 ✓
420 640 53
72 72 72
top footing

6997
527
85
Roor

6974
530
122
Roor

6993
54
75
con

PLOTTED BY
Hedeker

T 75 04

3796 8¹ pt begin con drive to double garage ✓

3784 7¹ Lt end 6" block wall ✓

3750

3733 7⁶ Lt begin 6" con block wall 6' high ✓

3733 8⁵ Lt end 6" con block wall ✓

3720 7² Lt & 16" pp. l.c. #PA5665 ✓

3700

2781 8¹ Lt begin 6" con block wall 6' high ✓

2772 7⁴ Lt & 12" con drive & single garage con floor ✓

TP4 7⁹ 80¹² 2⁸ 72¹²

2750

2740 7⁶ Lt & 12" pp. l.c. #PA5657 ✓

2730 12² Lt & 12' double garage con floor ✓

pt-Wly

£

pt-Ely

37

72.97
6¹⁵ 5⁴
79. 72
Feeling 98 ✓

74.32 ✓
74.12 ✓
5⁸ 6⁰
75. 75. 15 ✓

75.16
47.96 41.8 75.94
81. 123
drive floor

73.37
73.22
6²⁵ 5²
75. 76
Feeling 96 ✓

72.44 73.52
76.4 6⁶
85. 85
Feeling 98 ✓

73.02 ✓
72.97 ✓
73.22 ✓
72.72
77. 78 62 64
75. 75 15

79.01
1¹¹ 8²⁶ 7¹
81 81 81
Feeling 91 ✓

72.21 72.24
73.1 77.8
152 74
Floor drive

80¹²
71.94 ✓
71.74 ✓
71.94 ✓
32 33 31 30 22.04
75. 75 15

72.14
220
122

75.04

NOTED BY
Harker

5730

5706 7² RT SW cor Bldg ✓

5700

4475 11² RT end cor walk 11 to line ✓

4465 7⁸ LT Begin 6" cob block wall 4' high ✓

4450

4445 8⁶ RT begin 2' cor walk 11 to line ✓

4437 7² LT Begin cor block bldg ✓

4437 7² LT end 12" wall ✓

4437 6⁵ LT 12" PP6 #PA5079 ✓

4421 8⁵ RT end cor drive to double garage ✓

4400 7² LT Begin 12" wall with fence on top ✓

Lt = Wly

RT = Ely

38

✓ 76.37	✓ 76.33	✓ 74.52
38	38	36
75		75

76.80
3.32
79
Floor

✓ 76.22	✓ 76.22	✓ 76.32	74.52
38	38	38	36
75	75	75	75

74.20 74.02
520 44
78 78
feeding 9d

✓ 75.72	✓ 75.62	✓ 75.52
44	45	44
75		73

75.40 74.71 75.02
428 54 42
72 72 72
top feeding 9d

75.24 74.02 74.92 74.92
488 60 52 52
72 72 72 72
top feeding 9d

75.53 75.94
458 48
8 172
drive floor

80.12

PLOTTED BY
Nestle

Lt = Wly

Rt = Ely

SWBP
Bird Rock Ave

BM

298 79⁰⁷ Latalk Bldg

5 547363 Sly ^{cut} of live Bird Rock Ave taken along

729	7303	7517	7458	7450	7501	7571	7658	7721
826	902	688	747	726	704	634	547	484
572	572	72	72	94	72	72	572	572
cb	cut	cb	cut	only	cut	cb	cut	cb

5 Note the Bird Rock entrance to Alley B1K16 is built as a driveway with a 15' drive and a 25' wide or deep for pitch to walk grade.

4 54683 Sly edge walk Bird Rock Ave taken along

7543	7545	7595
662	40	615
72		72

TP 647 82⁰⁵ 454 75⁵⁸

7 82⁰⁵

5 5468 82 Lt 8 14" P.P. h # P375⁰

7132	7102	7595	7623
38	46	42	39
72	0		72

5 5458²¹ Sly Bird Rock Ave taken along ^{line off}

0 5451 72 Rt NW cor bldg

5 5447 78 Lt end 6" cov block wall 4 5/8 high

4559	7140
453	32
78	78
Probing	9d

7 80¹²

PLATED BY
Hedtko
2/25/54

Roberts X-Section Alley Block 19, No. Shore Highlands

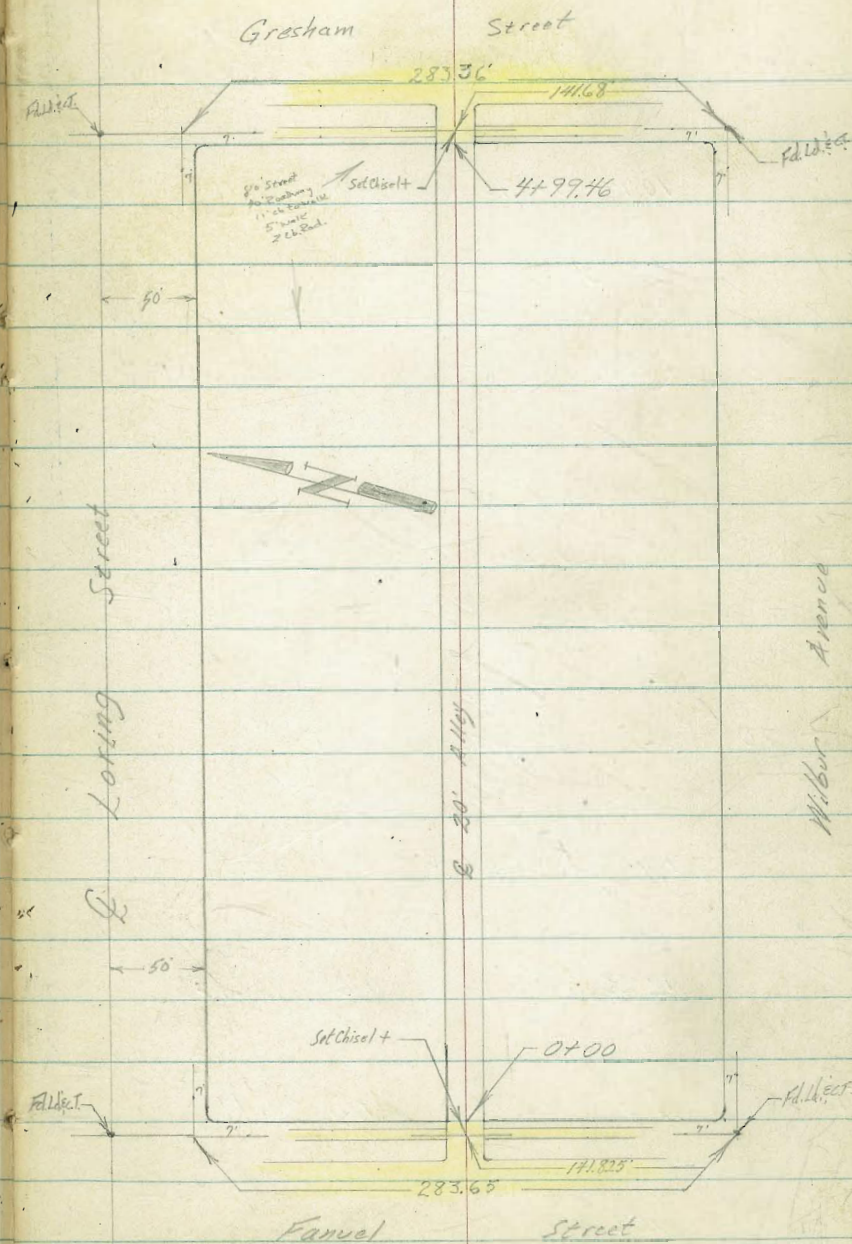
Cota
Moralez
10-5-54
W.O.# 31924

T.P. 20 p. 49

INDEXED
OCT 7 1954

Note: →

Make field check on both ends of
Alley to determine amount of alley curb
returns that need replacing.



Contd From Page 40.

Lt.

R

R

41

0+26

10^E { 26 Begin conc apron
Lt to End conc. black wall

134.05	133.49		133.5	132.7	132.5	132.6	132.0	132.1
5.80	7.26	Tool Box	7.3	8.1	8.3	2.2	8.8	2.7
16 ^E	10 ^E	10 ^E	10	5		10	10 ^E	10
Floor	Coll	Too Heavy To Move					Foot wall	Top

T.P.

10.94 140.75 π 6.37 129.81

ON THE CHANEL CROSS 0-07 ON E ALLEY.

140.75 π

0+00

{ 10^E R² Begin conc. black wall
10^E Lt Begin conc. black wall
EAST PROPERTY LINE FANUEL STREET

136.0	130.5	130.3	130.38	129.97	130.00	130.06	129.9	136.5
+1.8	5.7	5.35	5.80	6.32	6.18	6.12	6.3	+0.3
10 ^E	10 ^E	10 ^E	10 ^E		9 ^E	9 ^E	10 ^E	10 ^E
Top	Foot	cb.	Gut		Gut	cb	Foot	Top

0-20

EAST CURB LINE

131.34	131.71	130.70	130.07	129.58	129.16	129.74	127.12	127.25
3.84	4.47	5.48	6.11	6.60	7.02	6.44	7.06	8.43
30	30	12	12		12	12	30	30
cb	Gut	cb	Gut		Gut	cb	Gut	cb

0-40

E FANUEL STREET

131.78	125.7	127.51
4.44	6.66	8.67
30		30

T.P.

12.79 136.18 π 0.60 123.39

136.18 π

T.P.

12.23 123.99 4.76 111.76

T.P.

5.03 116.52 1.39 111.49

BM

12.62 112.88

NEBP
100 26 LAW & GRESHAM

T.P. 430 140.73 π 432 13643 nail in Pole #TAB20

1+00 { 10[±] Rt End conc block wall
9[±] Rt J. Near Edge T. Pole #TAB20
 \approx \approx

135.5
5.3 5.6 5.8 7.1 138.0
10 10 10 10[±] 10[±]
Foot Top

0+72 10[±] Lt end conc apron

135.03 134.77
5.72 5.98
16[±] 10[±]
Floor Conc

0+62 10[±] Rt & 11[±] opening in wall

133.60
7.15
10[±]
conc

0+58 11 Lt begin conc apron

135.04 134.37
5.71 6.43
16[±] 11
Floor conc

0+50 10[±] Rt End & begin wall

134.3 133.6 133.5 132.9 132.5 132.3
6.5 7.2 7.3 7.9 8.3 2.5
10 10 10 10[±] 10[±] 10[±]
Foot Foot Top
End Begin

0+44 10[±] Lt end conc apron

134.93 133.66
5.82 7.19
16[±] 10[±]
Floor Conc

0+28.5 10[±] Rt & 3[±] opening in wall

137.65
8.10
10[±]
conc

348 9² Rt End board fence3701 8² Rt to N.E. P. Pole * PA 1346
333700 10² Rt begin board fence
9² Rt End board fence

ONLY SHOWING FENCES IN ALLEY.

33

2450 9⁸ Rt to fence2436 10⁵ Rt to deadman2400 { 9⁷ Rt begin wood fence
10³ Lt End board fence with conc. base
8² Rt to N.E. P. Pole * PA 1340
331450 10⁵ Lt begin wood fence on conc. base.
(Conc. base laid on top of ground).1420 9² Rt to deadman1411 19⁶ Lt & conc. agron (double gauge)

140.73 X

Lt

Q

Rt

43

1361	1358	1354	1355	1351	1348
4.6	4.9	5.3	5.2	5.6	5.9
20	10	6		10	20

1340	1363	1356	1355	1357	1351	1346
3.7	4.4	5.1	5.2	5.0	5.6	6.1
20	10	4		7	10	20

1367	1363	1357	1356	1356	1352
4.0	4.4	5.0	5.1	5.1	5.5
20	10	5		10	20

1366	1362	1357	1358	1357	1353
4.1	4.5	5.0	4.9	5.0	5.4
20	10	5		10	10

13716	13650
3.57	4.23
25	196
Floor	Cont.

140.73 X

4+24	9 ⁸ Rt to L in fence							
4+00	{ 8 ⁸ Rt to N. E. P. Hole # JPA 1380 10 ⁸ Lt Endeavor block wall. 10 ⁸ Rt to fence	141.7	136.0	136.9	136.1	136.3	136.5	135.9
		+1.0 10 ⁸ Top	4.7 10 ⁸ Foot	3.8 10	4.6 5	4.4	4.2 10	4.8 20
3+87	10 ⁴ Lt & 3 ⁵ opening in wall		136.58					
			4.5 10 ⁴ conc					
3+74	10 ⁸ Rt begin board fence							
3+60	9 ² Rt & conc. apron (double garage) (showing 2 of aprons if flat.)						135.76	135.91
							4.97 9 ² conc	4.82 13 ² Floor
3+51	10 ⁵ Lt begin conc block wall	141.8	135.4	136.0				
		+1.1 10 ⁵ Top	5.3 10 ⁵ Foot	4.7 10 ² GRD				
3+50		136.4	136.1		135.6	135.3	135.0	
		4.3 20	4.6 10		5.1	5.4 10	5.7 20	
3+37	14 ⁶ Rt & conc. Apron (double garage)						134.96	135.10
							5.77 14 ⁶ conc	5.63 18 ² Floor
		140.73 \uparrow						140.73 \uparrow

Cont'd From Page #44

T.P. 5.28 140.98 π 5.03 135.70 {chisel cross
5706.46 on E Alley

4+99.46 WEST LINE GRESHAM STREET

4+77 1.18 Lt $\frac{1}{2}$ Conc. walk

4+75

4+50

4+40 11 $\frac{1}{2}$ Rt $\frac{1}{2}$ conc apron (double gauge)

4+29 11 $\frac{1}{2}$ Rt End board fence

4+25.5 { 10 $\frac{1}{2}$ Lt $\frac{1}{2}$ 10 conc block incinerator
9 $\frac{1}{2}$ Rt to deadman

140.73 π

Lt

E

Rt

45

136.26 136.17 135.73 135.85 135.88
3.97 4.56 5.00 4.88 4.85
10 $\frac{1}{2}$ 10 $\frac{1}{2}$ 9 $\frac{1}{2}$ 9 $\frac{1}{2}$
Cb Gt Gt Cb

136.25
2.48
11 $\frac{1}{2}$
conc

138.1 137.7 137.6 137.6 137.7
2.6 3.0 3.1 3.1 3.5
10 3 5 10

138.2 137.7 137.1 137.1 136.7 136.4
2.5 3.0 3.6 3.6 4.0 4.3
20 10 4 10 20

136.67 136.63
4.06 4.10
11 $\frac{1}{2}$ 16 $\frac{1}{2}$
conc Floor

136.3 137.7
4.4 3.5
10 $\frac{1}{2}$ 10 $\frac{1}{2}$
Foot GRD

140.73 π

Cont'd From Page 45

Lt

Rt

Rt 46

check 6.80 100.23 = 100.26

T.P. 353 107.03 12.82 103.50

T.P. 0.74 116.32 12.41 115.58

T.P. 0.17 127.99 13.16 127.82

5739.46 $\frac{1}{2}$ GRESHAM STREET

5719.46 WEST CURB LINE

140.98 π

^{138.48}
2.50
50

^{136.13}
4.85

^{133.66}
7.32
50

^{138.46}
2.52
50
cb

^{137.90}
3.08
50
gut

^{136.77}
4.21
12
cb

^{136.25}
4.73
12
gut

^{135.50}
5.48

^{134.88}
6.10
12
gut

^{135.57}
5.41
12
cb

^{132.90}
8.08
50
gut

^{132.55}
7.43
50
cb

140.98 π

INDEXED

MEER
JAN 25 1955

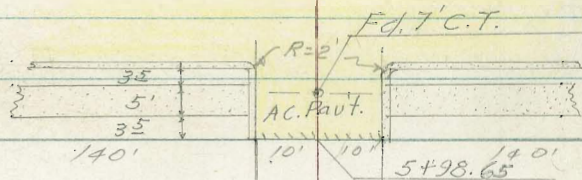
CROSS-SECTIONS ALLEY BLK 34

OCEAN BEACH W.O. 32520

Ref. F.B. 1557-63 1-24-55 T.A. Stampel 47
TP 777

EBERS

ST



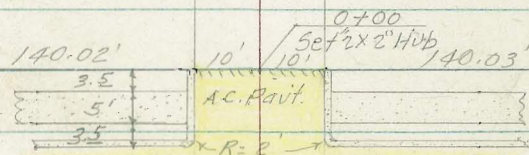
NIAGARA AVE

BLOCK

No 34

NIAGARA AVE

NARRAGANSETT



SUNSET CLIFFS

BLVD

Fd 7' C.T.

CROSS SECTIONS OF ALLEY BLK. 34
 OCEAN BEACH W.O. 32520

= End Curbs @ A.C. Pavt.
 0+00 = Fly Line Sunset Cliffs Blvd

0-01^B = 98 Lt. Begin Brick Wall

0-10 = E.C. Curb Returns


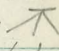
0-12 = Fly Curb Line Sunset Cliffs Blvd

0-30 ± Sunset Cliffs Blvd.

+ 2.27 34.37

B.M.

32.10

Lt. ± Rt.
 1-24-55 Stamper 
 Huffman 
 Sherwood ±
 Elmore ±

NOTE: (See Sketch Pg. 47)

	29.20		29.04		28.87		29.17		29.45
	517		533		550		520		492
	98		98		0		98		98
	cb		G		G		G		cb

4.30.12
 4.25
 Top Wall
 98

	29.01		28.66		28.54		28.81		29.16
	536		571		583		586		521
	10		10		0		10		10
	cb		G		G		G		cb
	E.C.		E.C.		E.C.		E.C.		E.C.

	28.70		28.21		28.89		28.39		28.43		28.52		28.68		28.69		28.25		28.93		29.37
	567		616		548		598		594		585		569		568		512		544		500
	25		25		12		12		10		0		10		12		12		25		25
	cb		G		cb		G				G		G		cb		G		G		cb
					B.C.								B.C.								

	28.15		28.50		28.45		29.09		29.43
	622		587		552		528		494
	50		25		0		25		50

34.37

SEBP. Sunset Cliffs & Narragansett

Lt. & Rt.

X-5FC'S ALLEY BLK 34

32.46

0+82- 13° Rt. & 12' Conc Carport.

1.91
13°
Conc

31.67 31.45

0+67- 11° Lt. Begin Conc Apron 2-Car Grow

2.70 2.92
13° 11°
Conc Apron

0+50

31.6 31.5 30.7 33.12 31.7 31.4 31.7
2.8 2.9 3.7 3.2 2.7 2.8 2.7
15 10 0 7 9 10 15

0+27- 11° Rt. & 3' Con Stoop Ants Table

31.34 33.06 33.06
3.03 1.31 1.31
11° 11° 134
ftg Top Top
Conc Conc @ Blkg

0+15 - 9° Lt. End Brick wall

30.88 29.99
3.49 4.38
9° 9°
Top Wall ftg

34.37

X- SEC'S ALLEY BLK. 34

1+23-24² Rt & 2-Car Gar

+4.67 38.47

Set PK. PP

TBM. N^o PA4790 -0.57 33.80

1+00

0+99⁵ 8² Rt & PP N^o PA4790

0+93⁵ 10³ Rt & Conc Apron Sing Gar

0+93⁵ 10² Lt & Conc Apron Sing Gar

0+87⁵ 11⁶ Lt End Con Apron 2-Car Gar

Lt & Rt

32.54
5.93
228
Apron
conc
32.63
5.89
24²
flood
conc.

38.47

31.7
2.7
15
31.7
2.7
10
31.6
2.8
0
31.9
2.5
10
32.1
2.3
15

31.57
2.70
13.2
flood
31.63
2.74
10²
Apron
31.89
2.53
10.3
Apron
31.89
2.48
13.1
flood

31.75
2.62
13.6
flood
31.61
2.76
11.6
Apron

34.37

Lt. E Rt.

X- SEC'S ALLEY BLK. 34

1+89⁵ 9² Lt. Begin 5³ Board fence

1+86-22² Rt. & Sing Gar

	34.69	34.88
	3.78	3.59
	202	222
	Apron	floor
	conc	conc

1+83- 12² Lt. & Sing Gar (Dirt floor)

32.8
5.7
12.2
Dirt floor

1+54-25² Rt. & 2-Cin Gar

	33.28	33.48
	5.19	4.99
	243	252
	Apron	floor
	conc	conc

1+50

32.2	32.2	32.2	32.5	32.9
6.3	6.3	6.3	6.0	5.6
15	10	0	10	25

3847

X- SEC'S ALLEY BLK. 34

2+40- 12^B Lt & 2-Car Gar (Dirt floor)

37.3
4.2
12.8
(Dirt floor)

2+32- 12² Rt & Sing Gar (Dirt floor)

2+28⁵ 9^B Lt End 5⁵ Board fence

37.2
4.3
12.3
(Dirt floor)

2+27- 9⁰ Lt & 2' Conc Walk

33.62 33.98
4.85 4.49
19⁰ 9⁰
onwalk onwalk

2+20⁵ 9³ Rt & PPN⁰ PA4760

2+20- 10⁵ Rt End Conc Apron 2-Car Gar

34.32 35.30
4.15 2.17
10.5 28.4
Apron floor

9^B Lt Begin 5⁵ Board fence

2+07- 9^B Lt End Frame Shed

2+00- 10⁰ Rt Begin Conc Apron 2-Car Gar

33.7 33.9 33.0 33.1 33.4 33.9 34.11 36.25 37.9
5.1 5.1 5.5 5.4 5.146 4.36 2.22 3.6
10 6 4 0 61010.6 28.5 30
@blk Apron floor Ground

9^B Lt Begin frame shed
1+97- 9^B Lt End 5⁵ Bd. fence

3847

Lt. & Rt

X- SEC'S ALLEY BLK. 34

2+92-11² Rt. & Sing Gar

357
2.8
112
(Dirt floor)

2+79-30² Lt. & Sing Gar (Dirt floor)

347
4.1
30⁴
(Dirt floor)

2+64-30² Lt. & 2-Car Gar

34A
4.1
30²
floor

2+50

345	34A	34.1	341	34.9	35.2
4.0	4.1	4.4	4.4	3.6	3.3
15	10	5	0	10	15

3847

X-SEC'S ALLEY BLK 34

3+33-13³ Lt & Sing Gar Conc floor

Lt

&

Rt

54

36.17
230
133
floor

3+19-10¹ Rt Begin Conc Carport

36.6
36.77
1.9 1.70
10.2 10.2
Dirt. (Conc floor)

3+12-10³ Rt & Sing Gar

36.32
2.15
10.3
conc floor

3+10-13² Lt & Sing Gar (Dirt floor)

35.6
2.9
13.2
(Dirt floor)

3+00

35.7 35.7 35.4 35.7 35.9
2.8 2.8 3.1 2.8 2.6
15 10 0 10 15

38.47

X- SEC'S ALLEY BLK. 34

3+90-46² Rt. & Singl. Gar Conc floor

3+78-11⁰ Rt. & 7' Conc walk

92 Lt. Begin 4' picket fence

3+74-9² Lt. End frame shed

+10.27 48.15

92 Lt. Begin frame shed

3+58-9² Lt. End 5² Bd fence

Set P.K.

T.B.M. PP No A4742 -0.59 37.88

3+50

3+49-8⁰ Rt. & PP No A4742

3+42-9² Lt. Begin 5² Board fence

3+42-10² Rt. End Conc Carport

38.47

Lt.

Rt.

Rt.

55

40.25
7.90
464
Conc floor

39.34
8.81
11⁰
onwalk

39.84
8.31
21⁰
onwalk

48.15

37.0	37.9	37.1	37.1	37.5	37.4	37.2
1.5	0.6	1.4	1.4	1.0	1.1	1.3
11	10	5	0	6	10	15

36.82
1.65
10²
Conc floor

38.47

X-SEC'S ALLEY BLK. 34

- 4+49⁵ - 9² ^{PL} RT & PPN^o PA4724
- 4+46⁵ - 11³ RT & 3^o ^{DIA.} Euc. Tree
- 4+40⁵ - 10² RT & 12" Euc Tree
- 4+35⁵ - 11³ RT & 14" Euc. Tree
- 4+30 - 11³ RT & 12" Euc. Tree
- 4+27 - 9^o RT & Deadman
- 4+24 - 9^o Lt End 4' Picket fence

4+20 - 28^o RT End 2-Car Gar

4+03 - 27² RT. Beg in 2-Car Gar Conc floor

4+00

40.75
7.42 6.17
20.1 28^o
Conc Apron floor

40.60
7.55 6.30
20.5 27.2
Apron floor
Conc Conc

38.6 39.4 39.0 39.5 40.2
9.6 8.8 9.2 8.7 8.0
20 10 0 10 20

4815

X-SECS ALLEY BLK 34

5+05- 10² Aluminum Shed on Top
Lt. Begin Conc Blk Wall

5+00

4+96⁵ 14² Lt. End Conc Apron 2-Car Gar

4+94- 16³ Rt. & Sing Gar (Dirt floor)

4+77³ 14⁶ Lt. Begin Conc. Apron 2-Car Gar

4+50

Lt. & Rt. (57)

46.67	44.71	45.0
1.49	3.44	3.2
10 ²	10 ²	10 ²
Top	ftg.	Ground.
Wall		

45.8	45.0	44.3	44.5	44.8
2.4	3.2	3.9	3.7	3.4
20	10	0	10	16

45.98	45.25
2.67	2.90
30 ²	14 ²
Floor	Apron

44.4
3.8
16 ⁵
Dirt floor

45.53	44.77
2.62	3.38
20 ²	14 ⁶
Floor	Apron

42	42.5	42	41.5	41.4	42.2	43.2
6.0	5.7	6.0	6.7	6.8	6.0	5.0
20	13	10	5	0	10	20

4815

Lt. - & Rt

X- 5E'S ALLEY BLK. 34

5+50

54.6	52.9	50.1	49.6	49.6	50.5	50.3
49	6.6	94	9.9	99	9.0	9.2
14	10	4	0	7	10	15
Top						

5+30

54.2	49.5	47.6	47.0	47.2	48.3
5.3	10.0	11.9	12.5	12.3	11.2
18	10	5	0	10	15
Top					

+1219 519 52

Set Nail in NE Cor
TP Frame Gar on Rt. -0.82 47.33
Approx Sta 5+20

59.52

5+19 - 16' Rt. & Sing Gar (Dirt Floor)

45.9
2.8
16.2
(Dirt Floor)

Aluminum Shed on Top

5+14 - 9' Lt. End Conc Bk Wall

44.90	46.60	45.4
3.25	1.55	2.8
98	98	98
ftg	Top	Ground
Wall		

5+09 - 16' Rt. & Sing Gar Conc Floor

45.46
2.69
16.6
Conc Floor

48.15

48.15

X-SEC'S ALLEY BLK 34

Lt. E Rt.

5798⁶⁵ = End Ftg. for Conc Blk Wall
= Wly R Ebers St.

55.92	55.82	55.68	56.14	56.57	57.02
3.60	3.70	3.84	3.38	2.95	2.50
10°	10°	0	10°	10°	10°
cb	G		G	cb	Top Wall

5794 - 10° Lt. End Conc Blk Wall
- 10° Lt. Begin 8" Conc. Wall

55.77	55.94	57.22	55.4
3.75	3.58	5.30	4.1
10°	10°	10°	10°
Top Wall	Ftg	Ftg	Ground
cb			

5761 - 10° Lt. Begin Conc Blk Wall

55.77	52.22	52.8
3.75	7.30	6.7
10°	10°	10°
Top Wall	Ftg	Ground

5758 - 10° Rt. Begin Conc Blk Wall

51.2	50.86	57.80
8.3	8.66	1.72
10°	10°	10°
Ground	Ftg	Top Wall

5753 - 15° Rt. & Surly Grd (conc floor)

50.95
8.57
15°
floor

59.52

X- SEC'S ALLEY BLK 34

Contd Next pg.

+0.42 53.39

T.P. - 11.51 52.97

B.M. - 9.28 55.20

+0.42 64.48

B.M. - 0.11 64.06

+5.55 64.17

T.P. - 0.90 58.62

6+28⁶⁵ = Ebers St.

6+10⁶⁵ = W/M Ch. line Ebers St.

6+08⁶⁵ B.C Carb Ret's

59.52

Listed in Bench Book
SERP Ebers & Niagara ??

64.13 MOORE
64.19 SERP Ebers & Narragansett 1577
66

55.00	55.76	56.41	57.03	57.75
4.52	3.76	3.11	2.49	1.77
50	25	0	25	50

55.49	54.89	55.84	55.28	55.34	55.60	55.86	55.89	56.45	56.27
4.03	4.63	3.68	4.24	4.18	3.92	3.66	3.63	3.07	3.25
25	25	12	12	10	0	10	12	12	25
cb	G	cb	G				G	cb	G

55.90	55.50	55.61	55.96	56.51
3.62	4.02	3.91	3.56	3.01
10	10	0	9	9
cb	G		G	cb

59.52

X SEC'S ALLEY BLK. 34

B.M.

- 9.95

32.11

Starting B.M. (see p 948)
- 32.10 SEBP Sunset Cliffs Blvd 4 Nantuxsett

+1.03

42.06

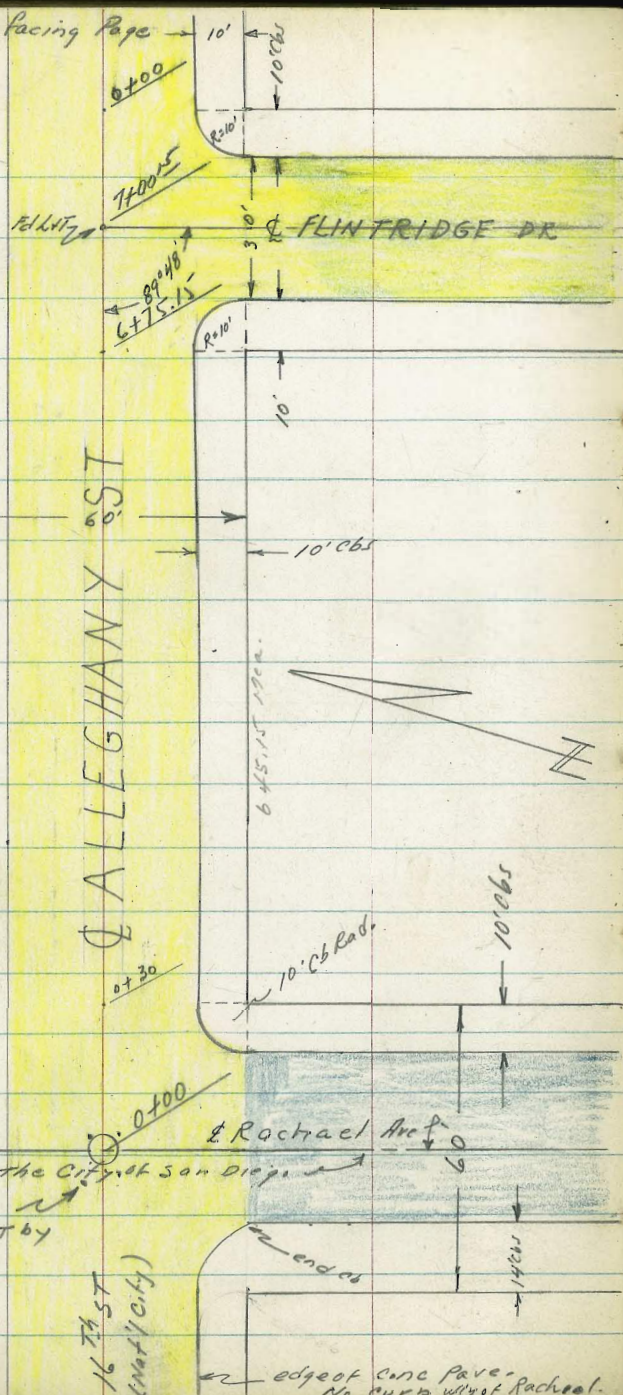
TP

- 12.36

41.03

53.39

Cont Facing Page

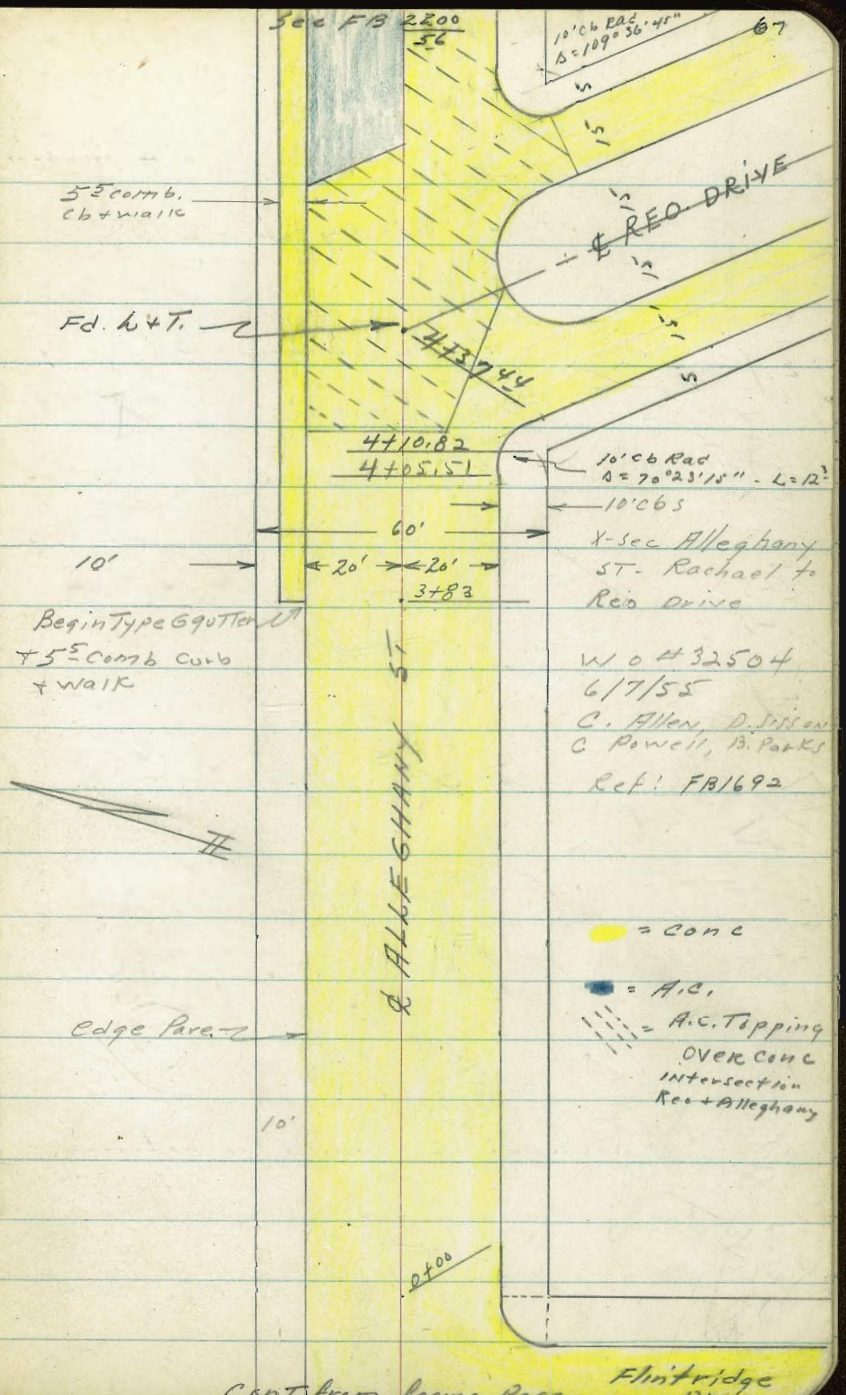


Boundary of the City of San Diego
 to Alleghany +
 Body Line Tied out by
 4 h+T's around
 S.M.H.

16th St
 (not in city)

edge of conc pave -
 No curb w/out Rachael.

Sec FB 2200
56



10' curb Rad
 $\Delta = 109^{\circ} 56' 41''$
 67

W 0432504
 6/7/55
 C. Allen, D. J. J. J.
 C. Powell, B. Parks
 Ref: FA/692

- = Conc
 - = A.C.
 - = A.C. Tapping
- OVER CONC
 INTERSECTION
 Red + Alleghany

Cont From Facing Page
 Flintridge Dr.

Levels Alleghany St
See sketch Page 62-
See also FB 1692-2-

E.P. = edge conc pave

1402 - 22² LT = ϕ 12" Power pole # 182864

1401 - 21² RT = ϕ Dead man. ✓

1400

0495 - 21² RT = ϕ Dead man. ✓

0478 - 21² RT = ϕ 10" Anchor Pole # 51695H.

0474 - 21² RT = ϕ 4" x 4" sign post (wood)
Speed Limit

0450

0435 - 21² RT = ϕ Fire Hyd. ✓

= Ely Line Rachael to Sly

0430 - 20² RT = Curb B.C. - 10' Rad

0428 - 22² RT = ϕ Street sign - std City of San Diego
3" IP.

30² RT = Cb B.C. 10' Cb Rad

30² RT = Sly edge Conc Pave

H.C. Paving along Curb Line in very Poor Cond.

0420 = Ely Curb Line Rachael to Sly

= ϕ S.M.H. (Nat'l City Sewer)

San Diego & Nat'l City

0400 = ϕ Rachael St = Bdy Line between

BM.

180.19

LT = Nly ϕ RT = Sly- 62

Water meters on RT are 2' back of face cb,
" " on LT are 8' Nly of Nly edge
of pavement

83 ²	81 ²	80 ⁵	81 ⁴	80 ⁵	81 ⁷	82 ³	82 ²
40	30	20 ²		20 ²	20 ²	30	40
		EP		90T	T.C.		

81 ⁶	80 ¹	79 ⁸	80 ²	79 ⁷	80 ⁵	81 ⁰
40	30	20 ²		20 ²	20 ²	30
		EP		90T	T.C.	

80 ¹	79 ⁴	79 ⁸	79 ⁴	80 ¹	80 ⁴
40	30	20 ²		20 ²	30
		E.P.		90T	T.C.
				B.C.	B.C.
				Conc	

81 ⁴	80 ²	79 ³	79 ⁶	79 ³	79 ¹	78 ⁶	79 ²
40	30	20		20	30 ²	30 ²	50
		E.P.			90T	T.C.	90T
					B.C.	B.C.	
					H.C. Poor condition		

80 ⁹	79 ⁸	78 ⁰	79 ³	79 ³	79 ³	79 ²
40	30	20		20	30 ²	50
		E.P.		Pin	Sly edge	on
				S.M.H.	Conc	9.C.

See FB 1692-1

SE 13P Alleghany + Rachael St

Direct elev Rad. add 100' to all elevs

X-sec Allegheny com

LT = Nly

♀

RT = Sly. 64

E.P. = edge conc pave

8608

30
Dr.

Water Meters RT are 2' ± back of curb
" " LT are 8' ± Nly of Nly edge of pave

2+53- 20° RT = ♀ 8' conc Drive ✓

8465 8477 8560 8572
200 200 233 25
9UT Lip Brk Dr -
Dr

2+50

855
40

855 850 850 8465
31 30± 30± 20°
9r 9r at wall E.P.

8504

8458 8470 859 862
200 200 30 40
9UT T.C.
W.
Drive
ON Lip

2+17- 23° LT = ♀ 12" Power Pole # P88112 ✓

2+14- 30° LT = begin 9" conc wall. ✓

8468 836 839
30± 30± 30±
Top Footing 9r
wall

2+12- 20° LT = end 12' conc Drive ✓

8443 8403 8373
300 250 200
Dr Dr Dr edge
Pave

2+00- 20° LT = begin 12' conc Drive (Solid) ✓

8435 8416 8383 8346 8382
40 30 250 200
Dr ON ON Dr E.P. + Dr

8345 8421 850 854
200 20 30 40
9UT T.C.

1+91- 20.67 RT = ♀ 3' wide conc walk ✓

8394 8437 8474
2057 25 300
walk walk walk

1+60- 20° RT = ♀ 8' wide solid conc Drive ✓

8244 8265 8370 8407
200 200 250 300
9UT Lip Dr. Dr.

1+50

837 828 8223 8265
40 30 20
E.P.

8220 8299 839 843
20 200 30 40
9UT T.C.

1+33- 20.67 RT = ♀ 3' wide conc walk ✓

8265 8298 8321
20.67 25 30
walk walk walk

1+10- 20° RT = ♀ 7' solid conc drive ✓

8128 8154 8221 8251
200 200 25 300
9UT ON Dr ON Dr

Direct Rod. add 100' to all elevs.

X-sec Alleghany cont

22' ± RT = 2 water meters

28' ± LT = 2 water meters

3485- 20.67 RT = 4° Conc Walk ✓

3483- 22⁶ RT = 12" power Pole # P88113 ✓

3472- 20.67 RT = 3' conc. Walk ✓

3450

3442- 20° LT = 8' Conc driveway ✓

3429- 20° RT = 8' wide Conc Driveway ✓

3400

2488 = 20° LT = end Conc Drive ✓

2473- 20° LT = begin Conc Drive ✓

2469- 20° RT = 9' wide Conc Drive ✓

2465- 30° LT = end 9" Conc Wall ✓

LT = nly

2

RT = Sly

65

8857 8862 8868
20.67 25 30°
Walk Walk Walk
+T.C.

8826 8824 8822
20.67 25 30°
Walk Walk Walk
+T.C.

88° 87³ 87¹¹ 87⁶⁰ 87¹⁸ 87⁶⁵ 87⁹ 88°
40 30 20° 20° 20° 30 40
E.P. 9UT T.C.

8755 8720 8696
30 25 20°
Dr. Dr E.P.+Dr.

8732 8715 8672 8658
30 25 20° 9UT
Dr LIP 20

864 857 8585 8621 8581 8645 871 873
40 30 20 20° 20° 30 40
E.P. 9UT T.C.

8599 8580 8561
30° 25° 20°
Dr Dr E.P.+Dr

8590 8551 8520
30 25 20°
Dr Dr E.P.+
Drive

8505 8522 8586 8590 8604
20° 20° 23° 25 30
9UT LIP Brk Dr Dr
LIP
Dr

8544 848 853
30° 30° 30°
Top Footing 9UT
Walk Wall

Direct Rod - add 100' to elevs

X-sec Alleghany -

22° ± RT = 4 water meters

28° ± LT = " " "

4450 - 20° RT = 8' conc Drive ✓

4435 - 20° RT = 10' conc + A.C. Drive ✓

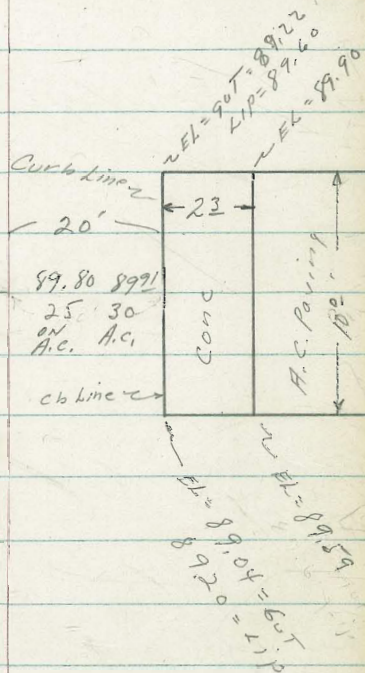
4405 - 22° LT = 4' Pe addition ✓

4400

LT = Nly

RT = Sly. 66

90 ⁸	90 ⁵	89 ⁹	89 ⁵³	89 ⁸⁶	89 ⁴⁶	89 ⁵⁷	90 ³⁹	90 ⁴²	90 ⁴⁵
40	30 ⁵	30	20 ⁰			20 ⁰	20 ⁰	25	30
			EP			90 ^T	Lip	Dr.	Dr.



4435

89 ³	88 ⁶	88 ³⁵	88 ⁷⁶	88 ³¹	88 ⁹⁰	89 ⁴	89 ⁰
40	30	20 ⁰			20 ⁰	20 ⁰	30
		EP			90 ^T	Lip	Dr.

Direct Rod - add 100 to elevs

X-sec Allegheny Cont

water meters LT are 28' ±

" " RT are 22' ±

5+51 - 30° LT = end 8" conc. Retaining wall ✓

5+50

5+46 - 20° RT = ϕ 8" wide Conc Driveway ✓

5+27 - 30° RT = ϕ 3' conc walk

5+00 - 20° RT = end Conc Drive ✓

5+00

4+98 - 20° RT = begin Conc Drive ✓
8" wide

4+98 - 30° LT = begin Conc Retaining wall ✓

4+95 - 20° LT = end Conc. Drive ✓

4+82 - 20° LT = begin Conc. Drive ✓

4+51 - 30° LT = ϕ 4' Conc. Walk

LT = Nly

ϕ

RT = Sly. 67

93⁸ 93⁷⁸ 92⁷ 92⁸
31 30° 30° 30°
grat Top wall Foot grat
Nly Sly wall

93⁸ 93⁶ 92⁸ 91⁸⁹ 92³¹ 91⁸⁷ 91⁹⁸ 92⁹⁰ 93⁰⁹
40 31° 30° 20° 20° 20° 30° 40°
grat grat E.P. 9UT Lip Dr ON ON
Nly wall Sly wall Dr Dr Dr

91⁷⁹ 91⁸⁸ 92⁶⁵ 92⁷⁷
20° 20° 25° 30°
9UT Lip Dr

92³¹ 92⁴⁶
30° 40°
walk walk

90⁹² 91¹¹ 91⁷² 91⁸³
20° 20° 25° 30°
9UT Lip Dr Dr

92⁸ 92⁸ 91⁷ 90⁷⁵ 91¹² 90⁷¹ 90⁸⁸ 91⁶⁶ 91⁷²
40 31 30 20° 20° 20° 30 40
grat grat E.P. 9UT Lip ON ON
Nly of wall wall Dr Dr

90⁶⁸ 90⁸⁸ 91⁴⁸ 91⁶³
20° 20° 25° 30°
9UT Lip Dr Dr

92² 92⁸⁰ 90³ 90⁹
31 30° 30° 30°
grat Top Foot grat
Nly wall Foot Sly wall

90⁹² 90⁷⁶ 90⁵⁷
30 25 EP+Dr
Dr Dr 20°

90⁸⁸ 90⁵⁸ 90²⁷
30 25 20°
Pr. Dr E.P.+Dr

90⁸³ 90⁶²

35⁵ 30⁵
walk walk
Direct Rod - add 100' to elev.

X-sec Alleghany Court

22' ± RT = water meters

28' ± LT = water meters

LT = Nly

RT = Sly. 68

29^o LT = begin Flag Stone Wall

6+63- 30^o LT = end Eugenia Hedge

96 ⁷	96 ⁸⁵	94 ⁴	95 ²
31	29 ⁸	29 ⁸	29 ⁸
grat	Top	Foot	grat
Nly			Sly Wall

6+50

96 ³	96 ²	94 ⁷	94 ³²	94 ⁷¹	94 ³⁴	94 ⁹³	95 ⁴	95 ⁵
40	35	30	20 ^o		20 ^o	20 ^o	30	40
			E.P.		90 ^o	T.C.		

Hedge 3' high

6+04- 30^o LT = begin 24" wide Eugenia

6+00

94 ⁸⁰	93 ⁹⁸	93 ¹⁸	93 ⁵³	93 ¹¹	93 ⁷⁷	94 ²	94 ²
40	30 ^o	20 ^o		20 ^o	20 ^o	30	40
ONDV	ONDV	E.P.		90 ^o	T.C.		

5+97- 20^o LT = 9' conc. driveway ✓

93 ⁸⁴	93 ³⁴	93 ⁰⁸
30 ^o	25 ^o	20 ^o
Dr	Dr	E.P. + Lip

5+79- 23⁵ LT = 12" power pole # P180584 ✓

5+66- 20^o LT = end conc. driveway ✓

93 ⁰⁸	92 ⁶⁵	92 ³²
30	25	20 ^o
Dr	Dr	E.P. + Lip

5+61- 20^o RT = 8' conc. Drive ✓

92 ¹⁸	92 ¹⁸	93 ¹⁰	93 ¹⁰
20 ^o	20 ^o	25	30
90 ^o	Lip	Dr	

5+51- 20^o LT = begin Conc. Drive way ✓

92 ⁸¹	92 ³⁷	91 ⁹⁴
30 ^o	25 ^o	20 ^o
Dr Direct	Dr	Rod - add 100' to elevations

X-sec Alleghany Court
 28° ± LT = 2 water meters
 22° ± RT = 2 water meters

LT = Nly

RT = Sly.

69

JRM - S Ely R.P. Flintridge Dr + Alleghany 19646

Ahead } = 0+00 } 20° RT = Ch R.C. - 10' Radius Return

6 7+25¹⁵ = Ely Line Flintridge drive

98 ¹	98 ²	98 ¹⁰	96 ⁶	95 ⁸⁶	96 ³³	95 ⁸⁵	96 ⁴⁸	96 ⁷	97 ⁰
40	31	29 ⁸	29 ⁸	20 ⁰		20 ⁰	20 ⁰	30	50
		grat	Top	grat	E.P.	grat	T.C.		
		Nly wall	Wly wall	Sly wall		R.C.	R.C.		

6 7+17⁵ = 31° RT = 4" x 4" post for stop sign (wood)

6 7+15¹⁵ = FLY curb line Flintridge Dr

98 ¹	98 ⁰	98 ⁰³	96 ⁵	95 ⁷⁰	96 ¹⁵	95 ⁸²	95 ⁸⁹	96 ⁴⁸	95 ²¹	95 ⁸⁶
40	31	29 ⁸	29 ⁸	20 ⁰		20 ⁰	30 ⁰	30 ⁰	100	100
		grat	Top	grat	E.P.		grat	T.C.	grat	T.C.
		Nly wall	Wly wall				E.C.	E.C.		

6

7+00¹⁵ = 2 Flintridge Dr to Sly.

97 ²	97 ⁶	97 ²⁰	96 ⁵	95 ³⁶	95 ⁸⁸	95 ⁸²	95 ⁸⁹	95 ⁴⁶
40	31	29 ⁸	29 ⁸	20 ⁰		20	30	100
		grat	Top	grat	E.P.			
		Nly wall	Wly wall					

5 6+97-27¹ LT = 3' wide Flag stone steps ✓

5 6+85¹⁵ = Wly Curb Line Flintridge Dr. Flintridge Paved with Conc

97 ⁰	97 ³	97 ³⁶	95 ⁷	95 ¹⁶	95 ⁵⁵	95 ⁴²	95 ⁴⁵	95 ⁶⁵	94 ⁰⁸	95 ²⁹
40	31	29 ⁸	29 ⁸	20 ⁰		20 ⁰	30 ⁰	30 ⁰	100 ⁰	100 ⁰
		Top	grat	E.P.		grat	T.C.	grat	T.C.	
		Wall	Wall				E.C.	E.C.		

34³ LT = 4 Deadman ✓

5 6+83-22⁶ LT = 12" Power pole # P 88625 ✓

20° RT = B.C. 10' Rad Return

5 6+75¹⁵ = Wly Line Flintridge Dr

97 ³	96 ⁸	96 ⁹⁶	95 ³	94 ⁹⁷	95 ³⁶	95 ⁰¹	95 ⁵⁰	95 ⁷	95 ⁸
40	30	29 ⁸	29 ⁸	20 ⁰		20 ⁰	20 ⁰	30	50
		Top	grat	E.P.		grat	T.C.		
		Wall	Sly wall			R.C.	R.C.		

5 6+74-22³ RT = 3" Street sign - Std city sign

Direct Rad add 100'

X-sec Alleghany Cont

22° RT = Water Meters
28° LT = Water Meters

LT = Nly

♀

RT = Sly. 70

0+86-29^E LT = begin Conc Drive

99²¹ 99⁰⁸
39^E 29^E
Dr- Dr

6: 0+74- 20.67 RT = ♀ 3' Conc Walk

98²⁹ 98⁴⁵ 98⁷⁰
20.67 25 30
Walk Walk

6: 0+55- 20° RT = ♀ 7' Conc Drive

97¹⁵ 97²⁸ 98⁰⁰ 98⁰⁶ 98²⁴
20° 20° 23⁵ 25 30
90T Lip Brk Dr

6 0+50

99⁵ 99³ 98⁴ 97² 97⁰⁴ 97.47 97⁰⁶ 97⁴⁵ 98¹ 98⁴
40 32 30 28 20° 20° 20° 30 40
E.P. 90T T.C.

Much higher than street paving

6 0+39- 32⁴ LT = ♀ 4 Conc Walk

99⁴⁰ 99³⁸
42⁴ 32⁴
Walk Walk

5 0+24- 20.67 RT = ♀ 3' Conc Walk

96.96 97.13 97²⁸
20.67 25° 30
Walk Walk

5 0+20- 29⁴ LT = end Flag Stone wall

98⁶ 98⁶⁴ 96¹ 96⁹
31 29⁴ 29⁴ 29⁴
grat Top Foot 9V
Nlyetman

5 0+13- 30° LT = end Conc Drive

98¹⁸ 96⁴⁵
40° 30°
Dr. Dr

5 0+05- 21^E RT = ♀ Fire HyD.

opening thru Flag Stone wall

5 0+00- 30° LT = begin Conc drive

98⁰⁴ 96⁸⁰
40° 30°
Dr Dr

Direct Red - add 100' fact

X-sec Alleghany cont

LT = Nly

♀

RT = Sly

♂

1773-20° LT = ♀ 8' Conc Drive ✓

200⁸⁹ 200⁴⁵ 200¹⁰

172-23° RT = ♀ evergreen shrub ✓
15' high
eugenia Hedge 1 to ♀

30 25° 20°
DR DR+EP

6 1460-23° RT = ♀ Nly end of N+S 2'x2' ✓

6 1755-20° RT = ♀ 8' Conc Driveway ✓

199⁶⁴ 199⁷⁸ 200⁴³ 200⁸⁰
20° 20° 25° 30°
9UT TIP DR

6 1750

200² 200⁶ 199⁵⁷ 200⁰⁰ 199⁵⁵ 200¹⁹ 200⁷ 201¹
40 30 20 20° 20° 30 40
EP 9UT T.C.

6 1428-20.67 RT = ♀ 3' Conc Walk ✓

199⁶² 199⁸⁶ 200¹⁰
20.67 25° 30°
WALK WALK WALK
+T.C.

5 1406-20° RT = ♀ 7' Conc Drive way ✓

198²⁸ 198⁵⁰ 199¹⁹ 199⁵¹
20° 20° 25° 30°
9UT TIP DR DR

5 1404-22° LT = ♀ 10" Power Pole # P180583 ✓

5 TBM-Nail in Power pole # P180583 = 200.06

Per Perpendicular to the
Hedge - 3' wide & 4' high

5 1700-24° RT = ♀ Nly end of N+S Eugenia ✓

199⁴ 198⁶ 198³³ 198.72 198³ 198⁸⁵ 199⁵ 199²
40 30 20° 20° 20° 20° 30 40
EP 9UT T.C.

5 D498-29° LT = end Conc Drive ✓

199²¹ 199²³
39° 29°
Drive Drive

DIRECT PLAU ROD

X-sec Allegheny cont

22° ± RT

2456 - 24° LT = ♀ 12" power pole #P88627 ✓

2455 - 20° RT = ♀ 7° conc walk ✓

2450

2449 - 29° LT = ♀ 8° conc driveway ✓

2435 - 20.67 RT = ♀ 3° conc walk ✓

2419 - 28° LT = ♀ 3° conc walk ✓

2405 - 20° RT = ♀ 7° conc driveway ✓

2400 - 22° RT = ♀ 2'x2' myrtle Nly end of N+S Hedge ✓

1476 - 23° RT = ♀ 1/2 high evergreen shrub ✓

1474 - 20.67 RT = ♀ 3' conc walk ✓

LT = Nly

♀

RT = Nly

72

20218 20223 20225 20316
20° 20° 25° 30°
9UT T.C.

2034 2028 20201 20248 20204 20245 2031-2033
40 30 20° 20° 20° 30 40
E.P. 9UT T.C.

20334 20278 20277
40° 30° 299
Dr Dr Dr

20231 20257 20225
20.67 25 30
walk walk walk
T.C.

20296 20191 20175
40 30 287
walk walk walk

20088 20088 20165 20180
20° 20° 25° 30°
9UT LIP Dr Dr

2026 2016 20074 20123 20074 20140 2016019
40 30 20° 20° 20° 30 40
E.P. 9UT T.C.

20076 20098 20123
20.67 25 30
walk + walk walk
T.C.

Direct Rod

X-Sec Alleghany cont

LT = Nly

RT = Sly 73

for Intersection of Alleghany + Reo Dr
See FB 1692 - 3-

TBM - SWBP Alleghany Reo - 206.82 {206.89}

+ Reo Drive

6 4410.82 - 30° RT = Swly Prop cor Alleghany

} 22° RT = 2 3" IP Street Sign (Std.)

6 4405.5' } 20° RT = cb BC - 10' Rad

6 4400

08⁶
40

07⁸
30

08¹⁰
25^E
Nly of
Walk

08⁰²
20^E
T.C.
9UT

07³⁶
20^E
9UT

07⁰⁶
20^E
9UT

06⁰⁴
20^E
T.C.

06⁷³
20^E
T.C.

06⁶
30

06³
40

6 3483 - 20° LT = begin 5^E Conc Curb + side

WALK

07⁵⁰

07⁴⁶

06⁷⁷

25^E
Nly of
Walk

20^E
T.C.

20^E
9UT

5 3450

07⁶
40

07⁰
35

05⁸
30

05⁶⁷
20^E
F.P.

05⁴⁶

04⁵⁷
20^E
9UT

05¹⁴
20^E
T.C.

05²
30

05³
40

5 3423 - 20⁶⁷ RT = 2 3' Conc WALK

04⁵¹
20.67
WALK +
T.C.

04⁵⁸
25^E
WALK

04⁶⁵
30^E
WALK

5 3400

06⁵
40

04²
30

03⁷⁶
20^E
F.P.

04⁰¹

03³⁷
20^E
9UT

03⁸⁴
20^E
T.C.

04¹
30

04²
40

5 2478 - 20.67 RT = 2 3' Conc WALK

203³⁷
20.67
WALK
+ T.C.

203⁵⁰
25^E
WIK

203⁶¹
30^E
WIK

5 2468 - 25⁴ LT = 2 4" x 4" Wood sign post

Post - Speed Limit

INDEXED

HER
JUN 10 1955

Direct Rod - add 200' to elevations

6

6

6

6

5

5

5

5

5

6

6

6

6

5

5

5

5

5

6

6

6

6

5

5

5

5

The image shows an open notebook with two facing pages. Both pages are cream-colored and feature light blue horizontal ruling. A vertical red margin line is drawn on each page, creating a narrow left margin. The notebook is bound in the center, and the dark cover is visible at the edges. The pages are otherwise blank, with no handwriting or printed text.

5

25

100

218.67
 189
 220.56
 13.10
 207.46
 8.70
 208.16
 10.70
 197.44

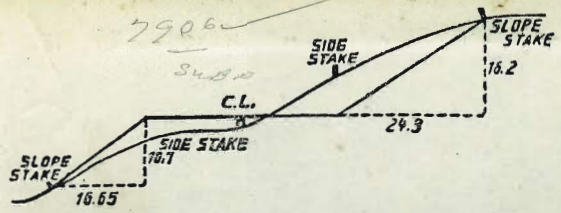
20816
 350
 20466

594
 466
 128

310.60
 78.96
 231.64

1976
 26
 20.02
 10.67
 135

69.99
 5.11
 64.98



DISTANCES FROM SIDE STAKES FOR CROSS-SECTIONING.
 SLOPE 1 1/2 TO 1. ROADWAY OF ANY WIDTH.

	0	.1	.2	.3	.4	.5	.6	.7	.8	.9	
0	0.00	0.15	0.30	0.45	0.60	0.75	0.90	1.05	1.20	1.35	0
1	1.50	1.65	1.80	1.95	2.10	2.25	2.40	2.55	2.70	2.85	1
2	3.00	3.15	3.30	3.45	3.60	3.75	3.90	4.05	4.20	4.35	2
3	4.50	4.65	4.80	4.95	5.10	5.25	5.40	5.55	5.70	5.85	3
4	6.00	6.15	6.30	6.45	6.60	6.75	6.90	7.05	7.20	7.35	4
5	7.50	7.65	7.80	7.95	8.10	8.25	8.40	8.55	8.70	8.85	5
6	9.00	9.15	9.30	9.45	9.60	9.75	9.90	10.05	10.20	10.35	6
7	10.50	10.65	10.80	10.95	11.10	11.25	11.40	11.55	11.70	11.85	7
8	12.00	12.15	12.30	12.45	12.60	12.75	12.90	13.05	13.20	13.35	8
9	13.50	13.65	13.80	13.95	14.10	14.25	14.40	14.55	14.70	14.85	9
10	15.00	15.15	15.30	15.45	15.60	15.75	15.90	16.05	16.20	16.35	10
11	16.50	16.65	16.80	16.95	17.10	17.25	17.40	17.55	17.70	17.85	11
12	18.00	18.15	18.30	18.45	18.60	18.75	18.90	19.05	19.20	19.35	12
13	19.50	19.65	19.80	19.95	20.10	20.25	20.40	20.55	20.70	20.85	13
14	21.00	21.15	21.30	21.45	21.60	21.75	21.90	22.05	22.20	22.35	14
15	22.50	22.65	22.80	22.95	23.10	23.25	23.40	23.55	23.70	23.85	15
16	24.00	24.15	24.30	24.45	24.60	24.75	24.90	25.05	25.20	25.35	16
17	25.50	25.65	25.80	25.95	26.10	26.25	26.40	26.55	26.70	26.85	17
18	27.00	27.15	27.30	27.45	27.60	27.75	27.90	28.05	28.20	28.35	18
19	28.50	28.65	28.80	28.95	29.10	29.25	29.40	29.55	29.70	29.85	19
20	30.00	30.15	30.30	30.45	30.60	30.75	30.90	31.05	31.20	31.35	20
21	31.50	31.65	31.80	31.95	32.10	32.25	32.40	32.55	32.70	32.85	21
22	33.00	33.15	33.30	33.45	33.60	33.75	33.90	34.05	34.20	34.35	22
23	34.50	34.65	34.80	34.95	35.10	35.25	35.40	35.55	35.70	35.85	23
24	36.00	36.15	36.30	36.45	36.60	36.75	36.90	37.05	37.20	37.35	24
25	37.50	37.65	37.80	37.95	38.10	38.25	38.40	38.55	38.70	38.85	25
26	39.00	39.15	39.30	39.45	39.60	39.75	39.90	40.05	40.20	40.35	26
27	40.50	40.65	40.80	40.95	41.10	41.25	41.40	41.55	41.70	41.85	27
28	42.00	42.15	42.30	42.45	42.60	42.75	42.90	43.05	43.20	43.35	28
29	43.50	43.65	43.80	43.95	44.10	44.25	44.40	44.55	44.70	44.85	29
30	45.00	45.15	45.30	45.45	45.60	45.75	45.90	46.05	46.20	46.35	30
31	46.50	46.65	46.80	46.95	47.10	47.25	47.40	47.55	47.70	47.85	31
32	48.00	48.15	48.30	48.45	48.60	48.75	48.90	49.05	49.20	49.35	32
33	49.50	49.65	49.80	49.95	50.10	50.25	50.40	50.55	50.70	50.85	33
34	51.00	51.15	51.30	51.45	51.60	51.75	51.90	52.05	52.20	52.35	34
35	52.50	52.65	52.80	52.95	53.10	53.25	53.40	53.55	53.70	53.85	35
36	54.00	54.15	54.30	54.45	54.60	54.75	54.90	55.05	55.20	55.35	36
37	55.50	55.65	55.80	55.95	56.10	56.25	56.40	56.55	56.70	56.85	37
38	57.00	57.15	57.30	57.45	57.60	57.75	57.90	58.05	58.20	58.35	38
39	58.50	58.65	58.80	58.95	59.10	59.25	59.40	59.55	59.70	59.85	39
40	60.00	60.15	60.30	60.45	60.60	60.75	60.90	61.05	61.20	61.35	40
41	61.50	61.65	61.80	61.95	62.10	62.25	62.40	62.55	62.70	62.85	41
42	63.00	63.15	63.30	63.45	63.60	63.75	63.90	64.05	64.20	64.35	42
43	64.50	64.65	64.80	64.95	65.10	65.25	65.40	65.55	65.70	65.85	43
44	66.00	66.15	66.30	66.45	66.60	66.75	66.90	67.05	67.20	67.35	44
45	67.50	67.65	67.80	67.95	68.10	68.25	68.40	68.55	68.70	68.85	45
46	69.00	69.15	69.30	69.45	69.60	69.75	69.90	70.05	70.20	70.35	46
47	70.50	70.65	70.80	70.95	71.10	71.20	71.40	71.55	71.70	71.85	47
48	72.00	72.15	72.30	72.45	72.60	72.75	72.90	73.05	73.20	73.35	48
49	73.50	73.65	73.80	73.95	74.10	74.25	74.40	74.55	74.70	74.85	49
50	75.00	75.15	75.30	75.45	75.60	75.75	75.90	76.05	76.20	76.35	50

THE NATIONAL BLANK BOOK COMPANY
 HOLYOKE MASSACHUSETTS
 NEW YORK CHICAGO BOSTON SAN FRANCISCO