

DISTANCES FROM SIDE STAKES FOR CROSS-SECTIONING
SLOPE 1 TO 1. ROADWAY OF ANY WIDTH

	0	.1	.2	.3	.4	.5	.6	.7	.8	.9	
0	0.00	0.10	0.20	0.30	0.40	0.50	0.60	0.70	0.80	0.90	0
1	1.00	1.10	1.20	1.30	1.40	1.50	1.60	1.70	1.80	1.90	1
2	2.00	2.10	2.20	2.30	2.40	2.50	2.60	2.70	2.80	2.90	2
3	3.00	3.10	3.20	3.30	3.40	3.50	3.60	3.70	3.80	3.90	3
4	4.00	4.10	4.20	4.30	4.40	4.50	4.60	4.70	4.80	4.90	4
5	5.00	5.10	5.20	5.30	5.40	5.50	5.60	5.70	5.80	5.90	5
6	6.00	6.10	6.20	6.30	6.40	6.50	6.60	6.70	6.80	6.90	6
7	7.00	7.10	7.20	7.30	7.40	7.50	7.60	7.70	7.80	7.90	7
8	8.00	8.10	8.20	8.30	8.40	8.50	8.60	8.70	8.80	8.90	8
9	9.00	9.10	9.20	9.30	9.40	9.50	9.60	9.70	9.80	9.90	9
10	10.00	10.10	10.20	10.30	10.40	10.50	10.60	10.70	10.80	10.90	10
11	11.00	11.10	11.20	11.30	11.40	11.50	11.60	11.70	11.80	11.90	11
12	12.00	12.10	12.20	12.30	12.40	12.50	12.60	12.70	12.80	12.90	12
13	13.00	13.10	13.20	13.30	13.40	13.50	13.60	13.70	13.80	13.90	13
14	14.00	14.10	14.20	14.30	14.40	14.50	14.60	14.70	14.80	14.90	14
15	15.00	15.10	15.20	15.30	15.40	15.50	15.60	15.70	15.80	15.90	15
16	16.00	16.10	16.20	16.30	16.40	16.50	16.60	16.70	16.80	16.90	16
17	17.00	17.10	17.20	17.30	17.40	17.50	17.60	17.70	17.80	17.90	17
18	18.00	18.10	18.20	18.30	18.40	18.50	18.60	18.70	18.80	18.90	18
19	19.00	19.10	19.20	19.30	19.40	19.50	19.60	19.70	19.80	19.90	19
20	20.00	20.10	20.20	20.30	20.40	20.50	20.60	20.70	20.80	20.90	20
21	21.00	21.10	21.20	21.30	21.40	21.50	21.60	21.70	21.80	21.90	21
22	22.00	22.10	22.20	22.30	22.40	22.50	22.60	22.70	22.80	22.90	22
23	23.00	23.10	23.20	23.30	23.40	23.50	23.60	23.70	23.80	23.90	23
24	24.00	24.10	24.20	24.30	24.40	24.50	24.60	24.70	24.80	24.90	24
25	25.00	25.10	25.20	25.30	25.40	25.50	25.60	25.70	25.80	25.90	25
26	26.00	26.10	26.20	26.30	26.40	26.50	26.60	26.70	26.80	26.90	26
27	27.00	27.10	27.20	27.30	27.40	27.50	27.60	27.70	27.80	27.90	27
28	28.00	28.10	28.20	28.30	28.40	28.50	28.60	28.70	28.80	28.90	28
29	29.00	29.10	29.20	29.30	29.40	29.50	29.60	29.70	29.80	29.90	29
30	30.00	30.10	30.20	30.30	30.40	30.50	30.60	30.70	30.80	30.90	30
31	31.00	31.10	31.20	31.30	31.40	31.50	31.60	31.70	31.80	31.90	31
32	32.00	32.10	32.20	32.30	32.40	32.50	32.60	32.70	32.80	32.90	32
33	33.00	33.10	33.20	33.30	33.40	33.50	33.60	33.70	33.80	33.90	33
34	34.00	34.10	34.20	34.30	34.40	34.50	34.60	34.70	34.80	34.90	34
35	35.00	35.10	35.20	35.30	35.40	35.50	35.60	35.70	35.80	35.90	35
36	36.00	36.10	36.20	36.30	36.40	36.50	36.60	36.70	36.80	36.90	36
37	37.00	37.10	37.20	37.30	37.40	37.50	37.60	37.70	37.80	37.90	37
38	38.00	38.10	38.20	38.30	38.40	38.50	38.60	38.70	38.80	38.90	38
39	39.00	39.10	39.20	39.30	39.40	39.50	39.60	39.70	39.80	39.90	39
40	40.00	40.10	40.20	40.30	40.40	40.50	40.60	40.70	40.80	40.90	40
41	41.00	41.10	41.20	41.30	41.40	41.50	41.60	41.70	41.80	41.90	41
42	42.00	42.10	42.20	42.30	42.40	42.50	42.60	42.70	42.80	42.90	42
43	43.00	43.10	43.20	43.30	43.40	43.50	43.60	43.70	43.80	43.90	43
44	44.00	44.10	44.20	44.30	44.40	44.50	44.60	44.70	44.80	44.90	44
45	45.00	45.10	45.20	45.30	45.40	45.50	45.60	45.70	45.80	45.90	45
46	46.00	46.10	46.20	46.30	46.40	46.50	46.60	46.70	46.80	46.90	46
47	47.00	47.10	47.20	47.30	47.40	47.50	47.60	47.70	47.80	47.90	47
48	48.00	48.10	48.20	48.30	48.40	48.50	48.60	48.70	48.80	48.90	48
49	49.00	49.10	49.20	49.30	49.40	49.50	49.60	49.70	49.80	49.90	49
50	50.00	50.10	50.20	50.30	50.40	50.50	50.60	50.70	50.80	50.90	50

Distance of slope stake from side or shoulder stake for any width roadway, slope 1 to 1. If ground is nearly level, the cut or fill at side stake is located by the double entry method in left column and top row. The number in body of table in same row and column gives distance from side stake to slope stake. If ground is not level estimate the difference in elevation between the side stake and slope stake, lower target by this amount if cut, elevate if fill. Add this amount to cut or fill and find distance in table. Set up rod at this point, and line of sight should cut target. If it does not make the slight adjustment necessary.

Sunset Cliffs + Orchard N.V. T.C.T.

B. 11. 30.04

5

TABLE IX

MIDDLE ORDINATES OF RAILS

Length of Rail (feet)

C o'	R Feet	30 Inch	28 Inch	26 Inch	24 Inch	22 Inch	20 Inch	C o	R Feet	30 Inch	28 Inch	26 Inch	24 Inch	22 Inch	20 Inch
0-20	17189	.08	.07	.06	.05	.04	.03	8	716.8	1.88	1.64	1.42	1.20	1.01	.84
0-40	8594	.16	.14	.12	.10	.08	.07	9	637.3	2.12	1.84	1.60	1.35	1.14	.94
1-0	5730	.24	.20	.18	.15	.13	.10	10	573.7	2.36	2.05	1.78	1.50	1.27	1.04
1-20	4297	.31	.27	.23	.20	.17	.13	11	521.7	2.59	2.26	1.95	1.65	1.39	1.15
1-40	3438	.39	.34	.29	.25	.21	.17	12	478.3	3.83	3.47	2.15	1.81	1.54	1.26
2-0	2865	.47	.41	.35	.30	.25	.20	13	441.7	3.05	2.66	2.30	1.96	1.66	1.36
2-20	2456	.55	.48	.41	.35	.29	.23	14	410.3	3.30	2.87	2.48	2.10	1.78	1.46
2-40	2149	.63	.55	.47	.40	.33	.27	15	383.1	3.54	3.08	2.68	2.26	1.91	1.57
3-0	1910	.71	.62	.53	.45	.38	.31	16	359.3	3.76	3.28	2.83	2.40	2.04	1.67
3-20	1719	.78	.68	.59	.50	.42	.35	17	338.3	4.00	3.48	3.02	2.57	2.16	1.78
3-40	1563	.86	.75	.65	.55	.46	.38	18	319.6	4.21	3.67	3.18	2.70	2.28	1.87
4-0	1433	.94	.82	.71	.60	.50	.42	19	302.9	4.45	3.89	3.36	2.86	2.41	1.98
4-20	1323	1.02	.89	.77	.65	.55	.45	20	287.9	4.70	4.09	3.55	3.00	2.54	2.09
4-40	1228	1.10	.96	.83	.70	.59	.48	22	262.0	5.16	4.44	3.84	3.30	2.80	2.29
5	1146	1.18	1.03	.89	.75	.63	.52	24	240.5	5.64	4.92	4.20	3.59	3.04	2.50
6	955.3	1.41	1.23	1.06	.90	.76	.62	26	222.3	6.07	5.29	4.58	3.88	3.29	2.70
7	819.0	1.65	1.44	1.24	1.05	.89	.73								

TABLE X

SHORT RADIUS CURVES

Radius Feet	Chord Feet	Central Angle	Deflection Angle	Deflection for 1 Foot
35	10	16-26	8-13	49.3
45	10	12-46	6-23	38.3
50	15	17-16	8-38	34.5
60	15	14-22	7-11	28.8
75	15	11-30	5-45	23.0
100	20	11-30	5-45	17.3
120	20	9-34	4-47	14.3
150	20	7-39	3-49	11.5
190	25	7-32	3-46	9.15
200	25	7-10	3-35	8.6
225	25	6-25	3-12	7.7
240	25	5 58	2-59	7.2
250	25	5 44	2-52	6.9
275	25	5-12	2-36	6.2
288	50	9-58	4-59	6.0
300	50	9-32	4-46	5.7
350	50	8-12	4-06	4.9
376	50	7-40	3-50	4.6
400	50	7-10	3-35	4.3
410	50	7-00	3-30	4.2

To find length of curve divide angle from P. C. to P. T. by central angle of chord, and multiply by length of chord.

TABLE XI

INCLINED DISTANCE OF 100 FT. REDUCED TO HORIZONTAL

Slope	Horizontal Distance	Correction	Rise	Slope	Horizontal Distance	Correction	Rise
0°00'	100.000	0.000	0.000	8°00'	99.027	0.973	0.139
15'	99.999	0.001	0.004	15'	98.965	1.035	0.143
30'	99.996	0.004	0.009	30'	98.902	1.098	0.148
45'	99.991	0.009	0.013	45'	98.836	1.164	0.152
1 00	99.985	0.015	0.017	9 00	98.769	1.231	0.156
15	99.976	0.024	0.022	15	98.700	1.300	0.161
30	99.966	0.034	0.026	30	98.629	1.371	0.165
45	99.953	0.047	0.031	45	98.556	1.444	0.169
2 00	99.939	0.061	0.035	10 00	98.481	1.519	0.174
15	99.923	0.077	0.039	15	98.404	1.596	0.178
30	99.905	0.095	0.044	30	98.325	1.675	0.182
45	99.885	0.115	0.048	45	98.245	1.755	0.187
3 00	99.863	0.137	0.052	11 00	98.163	1.837	0.191
15	99.839	0.161	0.057	15	98.079	1.921	0.195
30	99.813	0.187	0.061	30	97.992	2.008	0.199
45	99.786	0.214	0.065	45	97.905	2.095	0.204
4 00	99.756	0.244	0.070	12 00	97.815	2.185	0.208
15	99.725	0.275	0.074	15	97.723	2.277	0.212
30	99.692	0.308	0.078	30	97.630	2.370	0.216
45	99.657	0.343	0.083	45	97.534	2.466	0.221
5 00	99.619	0.381	0.087	13 00	97.437	2.563	0.225
15	99.580	0.420	0.092	15	97.338	2.662	0.229
30	99.540	0.460	0.096	30	97.237	2.763	0.233
45	99.497	0.503	0.100	45	97.134	2.866	0.238
6 00	99.452	0.548	0.105	14 00	97.030	2.970	0.242
15	99.406	0.594	0.109	15	96.923	3.077	0.246
30	99.357	0.643	0.113	30	96.815	3.185	0.250
45	99.307	0.693	0.118	45	96.705	3.295	0.255
7 00	99.255	0.745	0.122	15 00	96.593	3.407	0.259
15	99.200	0.800	0.126	15	96.479	3.521	0.263
30	99.144	0.856	0.131	30	96.363	3.637	0.267
45	99.087	0.913	0.135	45	96.246	3.754	0.271

For each foot take one one-hundredth of each reading.

TABLE XII

MINUTES IN DECIMALS OF A DEGREE.

0'30''	.00833	10'30''	.17500	20'30''	.34167	30'30''	.50833	40'30''	.67500	50'30''	.84167
1 00	.01667	11 00	.18333	21 00	.35000	31 00	.51667	41 00	.68333	51 00	.85000
30	.02500	30	.19167	30	.35833	30	.52500	30	.69167	30	.85833
2 00	.03333	12 00	.20000	22 00	.36667	32 00	.53333	42 00	.70000	52 00	.86667
30	.04167	30	.20833	30	.37500	30	.54167	30	.70833	30	.87500
3 00	.05000	13 00	.21667	23 00	.38333	33 00	.55000	43 00	.71667	53 00	.88333
30	.05833	30	.22500	30	.39167	30	.55833	30	.72500	30	.89167
4 00	.06667	14 00	.23333	24 00	.40000	34 00	.56667	44 00	.73333	54 00	.90000
30	.07500	30	.24167	30	.40833	30	.57500	30	.74167	30	.90833
5 00	.08333	15 00	.25000	25 00	.41667	35 00	.58333	45 00	.75000	55 00	.91667
30	.09167	30	.25833	30	.42500	30	.59167	30	.75833	30	.92500
6 00	.10000	16 00	.26667	26 00	.43333	36 00	.60000	46 00	.76667	56 00	.93333
30	.10833	30	.27500	30	.44167	30	.60833	30	.77500	30	.94167
7 00	.11667	17 00	.28333	27 00	.45000	37 00	.61667	47 00	.78333	57 00	.95000
30	.12500	30	.29167	30	.45833	30	.62500	30	.79167	30	.95833
8 00	.13333	18 00	.30000	28 00	.46667	38 00	.63333	48 00	.80000	58 00	.96667
30	.14167	30	.30833	30	.47500	30	.64167	30	.80833	30	.97500
9 00	.15000	19 00	.31667	29 00	.48333	39 00	.65000	49 00	.81667	59 00	.98333
30	.15833	30	.32500	30	.49167	30	.65833	30	.82500	30	.99167
10 00	.16667	20 00	.33333	30 00	.50000	40 00	.66667	50 00	.83333	60 00	1.00000

TABLE XIII—CORRECTIONS FOR TANGENTS AND EXTERNALS

These corrections are to be added to the approximate values, found by dividing the tangent, or external, for a 1° curve (Table VIII) by the degree of curve, in order to obtain the true tangents, or externals. Intermediate values may be obtained by interpolation.

FOR TANGENTS ADD

Central Angle	DEGREE OF CURVE													
	5°	10°	15°	20°	25°	30°	35°	40°	45°	50°	55°	60°	65°	70°
10°	.03	.08	.09	.13	.16	.19	.22	.25	.28	.31	.34	.38	.42	.46
15°	.04	.10	.14	.19	.24	.29	.34	.39	.45	.51	.53	.58	.63	.68
20°	.06	.13	.19	.26	.32	.39	.45	.51	.58	.65	.72	.79	.84	.90
25°	.08	.16	.24	.33	.40	.49	.58	.67	.75	.83	.90	.99	1.06	1.14
30°	.10	.19	.29	.39	.49	.59	.69	.79	.89	.99	1.09	1.20	1.29	1.39
35°	.11	.22	.34	.47	.58	.69	.79	.81	.92	1.04	1.29	1.42	1.54	1.66
40°	.13	.26	.40	.53	.67	.80	.93	1.06	1.20	1.34	1.49	1.64	1.79	1.94
45°	.15	.30	.44	.60	.76	.91	1.06	1.21	1.37	1.52	1.70	1.87	2.04	2.21
50°	.17	.34	.51	.68	.85	1.02	1.19	1.36	1.54	1.72	1.91	2.10	2.29	2.48
55°	.19	.38	.57	.76	.95	1.14	1.32	1.52	1.72	1.92	2.14	2.35	2.56	2.77
60°	.21	.42	.63	.84	1.05	1.27	1.49	1.71	1.94	2.17	2.38	2.60	2.83	3.07
65°	.23	.46	.69	.93	1.16	1.40	1.64	1.88	2.13	2.38	2.63	2.88	3.13	3.39
70°	.25	.51	.76	1.02	1.28	1.54	1.80	2.06	2.33	2.60	2.88	3.16	3.44	3.72
75°	.27	.56	.83	1.12	1.40	1.69	1.98	2.27	2.57	2.87	3.16	3.47	3.78	4.09
80°	.30	.61	.91	1.22	1.53	1.84	2.15	2.46	2.78	3.10	3.44	3.78	4.12	4.46
85°	.33	.66	1.00	1.33	1.68	2.02	2.36	2.70	3.05	3.40	3.77	4.14	4.55	4.89
90°	.36	.72	1.09	1.45	1.83	2.20	2.57	2.94	3.32	3.70	4.10	4.50	4.91	5.32
95°	.39	.79	1.19	1.55	2.00	2.40	2.80	3.20	3.61	4.02	4.40	4.85	5.38	5.83
100°	.43	.86	1.30	1.74	2.18	2.62	3.06	3.50	3.95	4.40	4.88	5.37	5.85	6.34
110°	.51	1.03	1.58	2.08	2.61	3.14	3.67	4.21	4.76	5.31	5.86	6.43	7.01	7.60
120°	.62	1.25	1.93	2.52	3.16	3.81	4.45	5.11	5.77	6.44	7.12	7.80	8.50	9.22

FOR EXTERNALS ADD

Central Angle	DEGREE OF CURVE													
	5°	10°	15°	20°	25°	30°	35°	40°	45°	50°	55°	60°	65°	70°
10°	.001	.003	.004	.006	.007	.008	.009	.011	.012	.014	.015	.017	.018	.020
15°	.003	.007	.010	.014	.018	.023	.027	.029	.032	.035	.039	.043	.047	.051
20°	.006	.011	.017	.022	.028	.034	.038	.045	.051	.057	.063	.070	.076	.083
25°	.009	.018	.027	.036	.046	.056	.065	.074	.083	.093	.106	.120	.127	.135
30°	.013	.025	.038	.051	.065	.078	.090	.103	.116	.129	.149	.170	.179	.188
35°	.018	.035	.054	.072	.086	.109	.131	.153	.175	.197	.213	.230	.247	.264
40°	.023	.046	.070	.093	.117	.141	.172	.203	.234	.265	.277	.290	.315	.341
45°	.030	.060	.093	.119	.153	.184	.216	.254	.289	.325	.351	.378	.411	.445
50°	.037	.075	.116	.151	.189	.227	.266	.305	.345	.384	.425	.467	.508	.550
55°	.046	.093	.142	.188	.236	.283	.332	.381	.420	.479	.530	.582	.641	.700
60°	.056	.112	.168	.225	.283	.340	.398	.457	.516	.575	.636	.697	.774	.851
65°	.067	.135	.204	.273	.343	.412	.483	.554	.625	.697	.771	.845	.922	1.01
70°	.080	.159	.240	.321	.403	.485	.568	.652	.735	.819	.906	.994	1.08	1.17
75°	.095	.182	.266	.353	.440	.528	.617	.707	.797	.877	.977	1.07	1.18	1.29
80°	.110	.220	.332	.445	.558	.671	.787	.903	1.02	1.13	1.25	1.38	1.50	1.62
85°	.128	.259	.391	.524	.657	.790	.926	1.06	1.20	1.34	1.47	1.62	1.76	1.91
90°	.149	.299	.450	.603	.756	.910	1.07	1.22	1.38	1.54	1.70	1.87	2.03	2.20
95°	.174	.350	.522	.706	.885	1.06	1.25	1.43	1.62	1.80	1.99	2.18	2.38	2.58
100°	.200	.401	.604	.809	1.01	1.22	1.43	1.64	1.85	2.06	2.28	2.50	2.73	2.96
110°	.268	.536	.806	1.08	1.35	1.63	1.91	2.20	2.48	2.76	3.05	3.35	3.66	3.96
120°	.360	.721	1.08	1.45	1.82	2.19	2.57	2.95	3.33	3.72	4.11	4.50	4.91	5.32

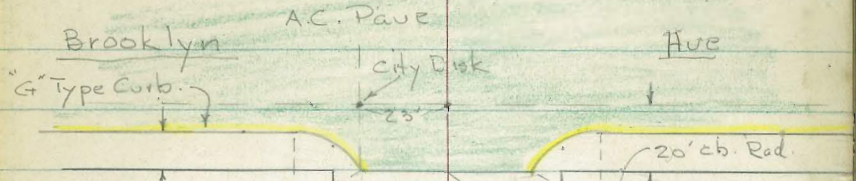
X-Sec 62d - Brooklyn to Akins on 1-9
 X-SEC'S OF ALLEY IN BLK 17 OCEAN BEACH 10-22
 10-21-52
 X-Sect. Wilson - N.E.S. of Dwight + Dwight 23-32
 E. + W. of Wilson.
 "X" Sec Polk Altadena to 52nd St 58-

INDEXED
Law

APR 21 1952

1

See Plan - 7973-L



Revised By J. A. ...
6-2-52

st.

62' rd



N

st.

62' rd



Akins

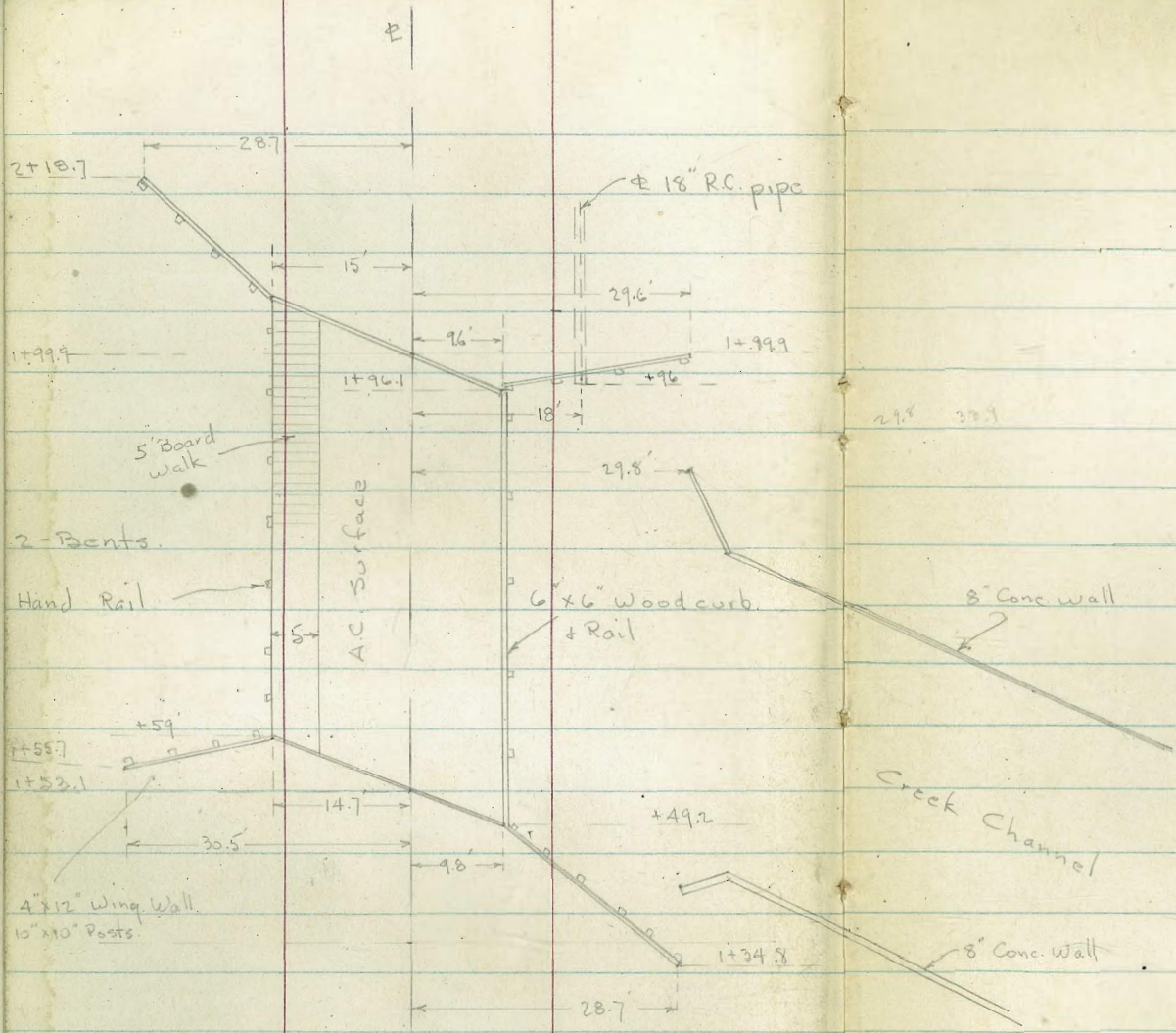
0+00

50'

Ave

Fd. Mon.

18" Culvert
See Darbys plan
for Loc. + Eleu.



Detail of Bridge

Scale 1" = 20'

Lt. # Rt.

X- Sect. 62nd St from Akins to
Brooklyn

6128 4-17-52 7.0...

W.O. 31732

T.P.

1+00 5.91 194.82 6.23 188.91

188.8
8.3
40
186.9
8.2
30
187.0
8.0
20
187.6
7.5
20
187.6
7.5
30
188.2
6.9
50

0+99-25' Rt. = # w.M.

8.40
25' pipe

0+94-28.2' Lt. = Beg. wire fence

0+96-20.6' Lt. = # P. pole # J.P. 171061

0+82-30' Rt. = # 10' Conc. Dr. to House

187.54
7.36
50
188.15
6.99
50 = Dr.

0+50.52 = N.L. - out to Normal Akins

9.6
50
184.9
9.2
30
185.7
9.4
20
186.7
9.0
20
187.3

8.1
7.6
50
187.49
7.6
20
187.5

7.187.8
7.187.8
30
5.188.3
5.188.3
50

0+25.26 = # = on Sewer MH

Traces of oil Pavement - Poor Cond.

0+00 = S.L. Akins - out Normal to Akins

188.0
1.1
50
8.4
30
7.5
20
187.3

195.14

Set B.M. 6.23 188.91

= spike in Pole

B.M. 4.95 195.14 ✓ 190.19

Book 2148 - spike in Pole - 20+00

New B.M. - HAS BEEN
SET AT 62nd BRUSHY LN.
B.W. B.P. ST. 247.85
F.A.
EL. 245.07

62nd

5

T.P. 13.33 207.88 0.27 194.55

3+60 - 287' Lt.-end fence

3+57 - 19.4' Lt. = P. pole # P 270401

3+38 - 28.5' Rt. = F 2' Conc. walk

3+30

3+16 - 52' Rt. = F 11' Conc. Dr.

3+06 - 29' Lt. = Beg. wire fence

3+00

2+90 - 27.2 Rt. = F W.M.

2+75

2+53 - 19.3 Lt. = P. pole # J.P. 171060

2+50

2+25

2+05 - Sect. 90° to F

	Lt.	+	Rt.
193.8	194.1	193.3	192.9
1.0	0.7	1.5	1.2
40	30	20	15
190.4	190.4	190.2	190.4
4.4	4.4	4.6	4.4
40	30	20	13
188.0	188.4	189.1	189.3
5.8	6.4	5.7	5.4
40	30	20	10
187.5	187.8	188.6	188.7
7.3	7.0	6.2	6.0
40	30	20	12
186.7	187.4	187.9	188.8
8.1	7.4	5.9	5.1
40	30	20	20
180.2	181.5	181.4	181.4
14.6	13.1	12.6	11.9
50	30	15	15
187.7	187.2	187.9	187.9
13.1	12.6	11.9	11.9
30	15	15	15
189.4	189.2	189.4	189.4
5.4	5.1	5.4	5.4
15	15	15	15
189.4	189.2	189.4	189.4
5.4	5.1	5.4	5.4
15	15	15	15
189.4	189.2	189.4	189.4
5.4	5.1	5.4	5.4
15	15	15	15
189.4	189.2	189.4	189.4
5.4	5.1	5.4	5.4
15	15	15	15

Creek in Creek Top-edge walk 194.82

62nd

6

5+13- 19.4 Lt. = ± w.M.

5+00

T.P. 11.51 219.02 0.37 207.51 = spike in pole - 4+69 Dr.

4+74- 32' Rt. = end wall

4+69- 18.5' Lt. = ± P. pole J.P. 171059

4+55- 23.7 Rt. = ± w.M.

4+51- 32.1 Rt. = Req. 6" Conc. block wall

4+50- 28.9' Lt. = ± 2.5' Conc. walk

4+45- 19' Lt. = ± w.M.

4+37- 32' Rt. = end wall at Dirt Dr.

4+34- 32' Rt. = Req. 6" Conc. block wall

4+27- 31' Rt. = ± w.M.

4+25- 28.6' Lt. = ± 8' Conc. Dr.

4+15- 29.1 Lt. = Req. Cyclone fence

4+07- 28.4 Lt. = ± 2.5' Conc. walk

4+03- 18.9' Lt. = ± w.M.

4+00

3+72- 26.2 Rt. = ± w.M.

Lt. 205.9

±

Rt.

210.4	10.17	19.4	9.8	10.9	11.6	12.1	12.6	12.2	12.0	12.1
8.6 Dr.	Pipe	30	20	14	206.9	206.4	206.9	207.0	206.9	
40	18.5 Lt.	30	20	14	219.02	16	20	30	40	
204.02	204.79	204.2	203.4	203.1	203.0	202.8	202.7	202.6	203.0	
1.86	3.09	3.7	4.5	4.8	4.9	5.1	5.2	4.9		
50	28.9	20	13	10	20	30	50	50		
walk	walk									
204.04	202.64									
3.84	5.24									
50	28.6									
198.71	201.15									
9.27	6.73									
18.9	50									
Pipe	walk									
200.6	199.2									
7.3	8.7									
40	30									
198.2	198.4									
9.7	9.3									
20	30									
198.2	198.6									
9.7	9.2									
40	40									
207.98	26.2 = pipe									

32 ground

5.2029
32.1 ground

Cravel Drive

5.3 32 ground

2.73 Top

8.17 31 pipe

62nd

7+00
 6+75 - 17.5' Lt. = † P. pole # J.P. 710698
 6+50
 6+45 - 28' Rt. = † W.M.

	Lt.	†	Rt.
	7.7 40	7.8 30	7.6 20
	220,28	224,2	224,4
	11.8 40	12.0 30	12.4 20
	220,0	219,6	219,0
	12.8 40	13.0 30	12.8 20
	219,2	223,5	223,7
	13.2 20	13.3 30	13.3 40
	218,8	218,7	218,7
	8.8 15	9.5 30	10.1 40
	223,2	222,5	221,9

T.P. 13.09 232.00 0.11

6+06 - 29.5 Rt. = end fence
 6+40 - 24.7 Rt. = wly. of 4" Conc. wall
 6+25 - 28.3 Rt. = † W.M.
 6+19 - 20.5' Lt. = † W.M.
 6+05 - 27.5' Lt. = Ely. of 8" Conc. wall

218.91
 † on wall below

232.00

0.11 Top	218.91	217.06	218.45
216.4	217.1	19.6	218.1
2.2 50	2.3 30	20.5 Pipe	0.9 24.7 ground
2.3 30	2.6 20	27.5 = ground.	0.57 Top
2.6 20	3.4 10		3.50 28.3 Pipe
3.4 10	3.9		
215.1	214.4		
216.4	214.2		
2.2 50	4.6 20		
2.3 30	4.8 30		
2.6 20	5.0 40		
3.4 10	5.0		
3.9	5.0		
215.1	214.0		
216.4	214.0		
2.2 50	211.0		
2.3 30	210.5		
2.6 20	211.0		
3.4 10	211.0		
3.9	211.0		
215.1	211.0		
216.4	211.0		
2.2 50	7.77		
2.3 30	26 = pipe		
2.6 20	8.5		
3.4 10	8.5		
3.9	8.5		
215.1	8.5		
216.4	8.5		

6+00
 - 30.1 Lt. = end fence
 5+77 - 29.1 Rt. = Beg. wire fence
 5+68 - 26 Rt. = † W.M.

216.4	216.7	216.4	215.6
2.2 50	2.3 30	2.6 20	3.4 10
2.3 30	2.6 20	3.4 10	3.9
2.6 20	3.4 10	3.9	4.6
3.4 10	3.9	4.6	4.8
3.9	4.6	4.8	5.0
215.1	214.4	214.2	214.0
216.4	214.2	214.0	214.0
2.2 50	211.0		
2.3 30	210.5		
2.6 20	211.0		
3.4 10	211.0		
3.9	211.0		
215.1	211.0		
216.4	211.0		
2.2 50	7.77		
2.3 30	26 = pipe		
2.6 20	8.5		
3.4 10	8.5		
3.9	8.5		
215.1	8.5		
216.4	8.5		

5+50
 5+23 - 29.1' Lt. = end fence + 29.8' Lt. = Beg. wire fence

219.02

Reduced & Plotted
27 March 11-3-52

W.O. 32069

T. Stamper

R. Sisson

R. Shorey

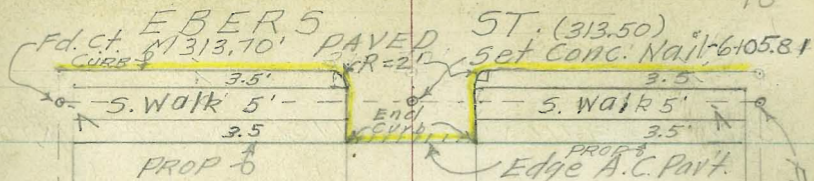
CROSS SECTIONS OF ALLEY IN BLOCK

No 17 OCEAN BEACH

Sta	+ H.I.	-	Elev.	See F.B. 1634 p 27. 7 C.T.N.W. Sunset Cliffs Orchard
B.M.	10.68	40.72	30.04	
TP.			0.23	40.49
	12.54	53.03		
TP.			0.010	53.02
	13.28	66.30		
T.B.M.		1.71	64.59	S.W. COR TOP CURB ORCHARD EBERS 2'E BUS STOP
T.B.M.			59.11	TOP COR. Nails 5' All in EBER ST. Sta 6 to 6.24
TP.			66.135	TOP R/H
TP.			75.11	Sta 3+93
TP.			84.50	OPP 2+91
TP.			93.71	OPP 2+00 (Rear) TOP R/H
TP.			102.75	0+75
T.B.M.			108.50	TOP E. R/H M.H. & FROUDE ST. CHISEL

NOTE: Direct Reading Rod used here on

10-20-52

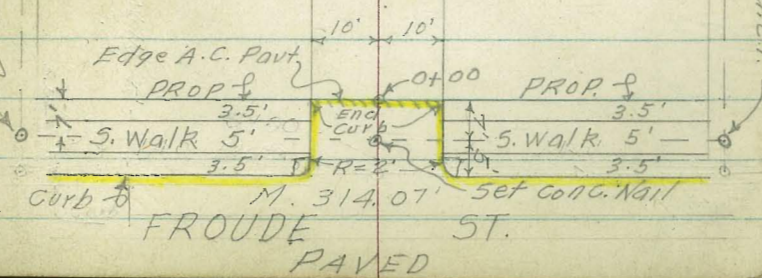


INDEXED
Laid
OCT 29 1952

RESCADERO AVE (612.381)
M 612.70

ORCHARD AVE
M 612.92
(612.29)

M 612.81
17



NOTE: Elev's taken with 10-21-52
 direct Reading Rod

CROSS SECTIONS BLOCK 17 OCEAN BEACH CONTD

0+02 - 0+11 (Wooden) GATE; CONC. BLOCK WALL

10

0+01 4" 12" DIA. P.P. # JPA 4602

8.5'

Beginning of 5' High Conc. Block Wall
 Base of Fig 1.5
 1.1' below Base of Wall

0+00 NORTH PROPLINE FROUDE ST.

107.25	106.98	107.51	108.90	108.48	108.83
9.9	9.9	10	10	10	10
END TOP CURB	Gut.		Gut.		END TOP CURB

0-10 CURB B.C. (R=2')

107.09	106.82	107.55	108.45	108.78
10	10	10	10	10
Curb E.C.	Gut	Gut	Curb E.C.	

0-12 NORTH GUTTER FROUDE ST.

105.95	105.46	106.96	106.59	106.71	107.58	108.41	108.61	108.99	110.06	110.58
25	25	12	12	10	10	12	12	25	25	25
Curb	Gut	Curb	Gut	Gut		Gut	Gut	Curb	Gut	Curb
		B.C.						B.C.		

0-30 4" FROUDE ST.

(4" TOP M.H. (Sewer))
 105.41 108.38 112.19
 36 34

B.M.

108.50

Top of East Rim of M.H. 4" FROUDE ST. Alley Intersection
 BIR 17. OCEAN BEACH

Lt. ♀ Rt.

X-SEC'S BLK 17 OCEAN BEACH CONT'D.

0+76.5

Edge of Conc.
Ramp to
(double Gar.)

102.60
9.9

0+75.5

Base of Conc
Block Wall
(5' High Lateral (incomplete))

102.7
9.8

Under Construction

0+75

Edge of
Conc. Ramp
(to Garage) Elev. Conc @
(Floor Level)

TOP Conc.
Patio

102.72 102.7 102.7 103.06

103.51
13.2
10.2

Wall → Wall →
TOP Ftg @ TOP Ftg @
(S. END) (N. END)

107.65 107.61
14.4 14.4

FOUNDATION IN ONLY

0+53. = 0+72.5 CONG. FTG. NEW GARAGE

0+50

@ Dog Run Conc. (wooden x plank)
TOP Conc. wall @ Wall

104.3 104.30 105.2 104.6

TOP Ftg @
S. END CONC. BASE
FOR GARAGE

105.5 106.5 107.1
110 15 20

(wooden)
@ Wall

106.7 106.3
10 10

Bot.
Ftg 132.4'
Below Base
Base Elev.

108.82 107.1
10.15 10

0+25 END OF CONG BLOCK WALL

10-21-52

13

Lt.

±

Rt.

X-SEC'S BLK. 17 OCEAN BEACH CONTD.

1+00

100.0	101.2	101.9
25	15	10

Beginning of
Base of 4.5 High CONC.
^{Box}
(Block Walls) Flg is 0.8'
below base
101.4 101.97* Gr. Same Elev
10.2

0+90

Top CONC. @
(Edge Ramp to Gar.)

102.89
10.2

0+87

Top CONC. @
(Floor Level to Gar.)

103.55
13.2

0+98

Top CONC. @ Edge of
(Ramp to double Gar.)

102.34
10

0+96

Top CONC. Floor
(Level double Gar.)

102.55
14

0+77.5

Top CONC. Floor
(Level double Gar.)

102.69
13.9

10-21-52

14

LT. ♀ RT.

X-SEC'S BLK 17 OCEAN BEACH CONT'D.

2+45

90.66	91.35
← 15.2	← 25.25
Edge Conc. Ramp	Top Conc @
to Double Gar.	Floor Level
91.16	91.29
15.35	25.45

2+30

2+25

91.1	91.2	91.5	90.5	91.2	91.7	92.1
20	15	10		10	20	25

♀ 12" P.P.

(N° JPA 4636)

2+00

92.5	94.0	8.8	93.2	93.9	94.3	95.0
20	10			10	15	25

End of
Base of 7.2' high Conc.
Block Wall, ^{Spot} Fig 151'
below base

TP

95.94

1+49

97.2	98.2	97.6	99.32
25	10		Gr. El. Same
			10.15

1+02 ♀ 12" DIA P.P. # JPA 4620

8.8

Lt. & Rt.

X-SEC'S BLK. 17 OCEAN BEACH CONTD.

Beginning of Conc. Ramp (to 51/2" Gar.)	↓	↑	TOP OF CONC @
			Floor Level
			84.03 87.09
			11.2 29.1

3+02.5

3+00

84.2	84.5	83.4	84.1	87.6
20	10		10	29

2+99 & 8" P.P. # JPA 4650

8.6

2+97.5

& TOP OF SEWER M.H.

83.66
0.2

2+75

87.2	86.2	85.1	86.4	89.9	89.8
25	10		10	10	25

TP

88.00

2+50

88.6	88.5	87.7	88.5	89.5	90.4
25	10		10	15	25

10-21-52

(16)

Lt.

±

Rt.

X-SEC'S BLK 17 OCEAN BEACH CONTD.

3+93

76.35	75.80
28.8	13
TOP CONC @	TOP CONC @ Ramp
Floor Level	to double Gar.

3+78

76.38	76.21
28.8	13

3+75

76.8	76.5	76.5	76.8	77.3
25	10		10	25

3+50

Lath.
@ fence

80.0	79.6	78.3	79.6	79.3	85.8
25	10		10	25	30

TP

80.175 ³⁺³⁸⁺

3+25

81.2	81.0	81.9	85.6	85.8
10		10	25	30

TOP CONC @	TOP CONC @
Edge Ramp	Floor Level
	to Single Gar.

3+10.5

83.60	87.09
11.2	29.1

X-SEC'S BLK. 17 OCEAN BEACH CONTD

10-21-52

(17)

Lt.

±

Rt.

4+50 - 4+60.7 FRAME BLOCK WALL

← @ Conc. Block Wall

Face of Frame Shed
← 10.7' Long - To North

70.9 71.1
10

71.5
9.1

Base Conc. Block Wall 4.2'
(High; Ftg. is 0.7' Below base)

4+49 BEGINNING OF CONC. BLOCK WALL

70.60
10.5

TP.

TOP RH

71.145 4+49

4+25

72.6 72.7 72.8
25 10

73.0 73.5
10 25

BEG - END

4+01 - 4+22 This Shed Encroaches 0.5'

Face of Frame Simple
Car Gar. with Lean-
to shed @ N. side

9.5

4+00

75.0 74.6 74.6
30 10

74.6 74.9
10 25

3+99 ± 12" P.P. # JPA 4670

8.7

10-21-52

Lt.

±

Rt.

(18)

X-SEC'S BLK. 17 OCEAN BEACH CONTD.

4+90

68.65	68.55
24.8	14.8
TOP CONC. @	Edge Conc.
Floor Level	Ramp to
	double gar

4+76

68.69	*lower	68.80
24.8	Than	14.8
	Front	

End Base Conc. Block Wall 4.2

wall High; On Ramp Conc.

4+76 END OF CONC. BLOCK WALL

68.78
16.5

4+75

69.6
10

69.5

70.1

9

* Face Bldg

To Face of Frame bldg
on Rear of Lot

4+71.5 FRAME BLDG ENCRACHES

9

Base of 3.5' High Conc
Block Wall, Ft 15 0.5
below base

4+69 * PT. IN CONC. BLOCK WALL
(STEPPED)

69.76
10.6

10-21-52

(19)

Lt. ♀ Rt

X-SEC'S BLK. 17 OCEAN BEACH CONTD

5+25

PATIO

65.7	66.0	66.3	66.1	66.79	67.57
25	20	10		9	28.2

Edge Conc.
Ramp to
PatioTOP Conc. Patio
@ Face of
Bldg

5+03

PATIO

67.51	67.66
9.1	28.2

Base of 1.7' high lateral
Conc. Ret. Wall 6" wide

5+03

PATIO RET. WALL

67.51
9.1

5+00

66.9	67.4	67.9	67.8	68.6
25	15	10		9

Face Frame Bldg

Base of 1.5' lateral/Conc.
Block Wall; Ftg is 0.2' below
base

4+99

11.4

4+99 ♀ 12" P.P. # JPA 4686

9.6

4+99 NORTH END FRAME BLDG

9

10-21-52

(20)

X- SEC'S B/K. 17 OCEAN BEACH CONTD

5+62

Edge of Conc. Ramp to Sing Car Gar.	TOP CONC @ Floor level
64.09	66.17
10	17.8

5+50

BEGINNING CONC. BLOCK WALL

Base of 3.5' high ^{Bot.} Conc. Block wall; Ftq is 0.6'
 Beginning below base
 63.80
 10.2

5+50

64.6	64.6	64.1	TOP CONC. RAMP to Single Car. Gar.	TOP CONC @ Floor level
20	10		64.78	66.21
			10	17.8

5+50

Base of 2.2' high conc. lateral Ret. wall
 1' Wide; Ftq is 0.4'
 Bot. below base
 64.78
 10

5+49

Base of 2.4' High lateral wall 0.6 wide; Ftq = 0
 65.62
 10

5+25

PATIO RET. WALL

6" wide
 Base conc. lateral wall
 1.4' high; Ftq is 0.4' below
 conc. base
 66.79 TOP Ramp
 9

10-21-52

(21)

Lt. & Rt.

X-SEC'S BLK 17 OCEAN BEACH CONTD.

B.M.

58.935

Chis @ on Easterly High Pt on Rim of M.H. & EBERS
& Alley Line BLK 17 O. Beach Intersection
 & Top M.H.

6+28.81 & EBERS STREET

57.87 58.52 58.88 59.19 60.22
33 10 10 30

6+10.81 SOUTH GUTTER EBERS ST.

58.64 58.00 59.19 58.63 58.98 59.49 60.17 60.46 61.11
33 33 12 12 12 12 30 30
Curb Gut Curb Gut Gut Curb Gut Curb

6+08.81 B.C. CURB. (R=2')

59.31 58.89 59.05 59.58 60.05
10.2 10.2 9.74 9.74
Curb Gut Gut Curb6+03 NORMAL CURB & END OF RET. WALL

59.40

10.2 Ramped
Curb

5+98.81 SOUTH PROPLINE EBERS ST.

60.12 59.29 59.51 59.90 60.20
10.2 10.2 9.74 9.74
Curb Gut Gut @ END Top Curb
 { 4' high Ret. WallTop Conc. Block @
Lt. 10.2 @ Flower Bed
5+90 ±Beg. of 6' wide Conc. Ret
Wall, Top Elev. Depth = 1.8'
 ↓ Below Top

T.P.

62.24

5+87

62.41

10.2

3.8' high
End Conc. Block Wall Base
Elev. Ft. = 1.6' Below baseBeginning of
Base Conc. Ret Wall
Bot. 2'
(2.7' high, Ft. is 0.4'
 below base

5+87

62.23

10.2

63.06

10

5+62

10-21-52

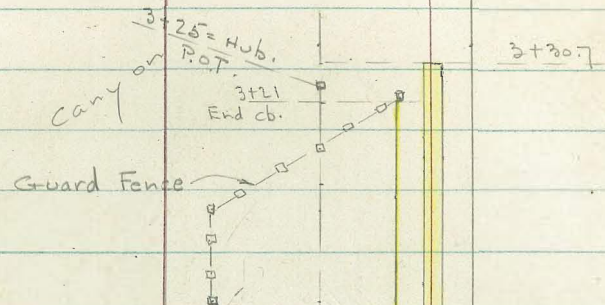
(22)

CHECK LEVELS FOR CLOSURE X-SECS.

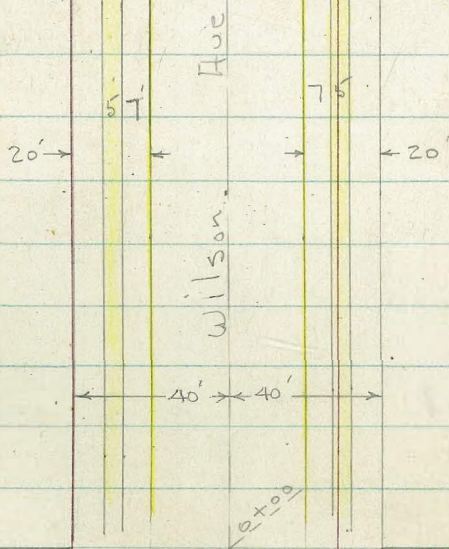
TP.	63.88	
T.P.	58.87	
T.P.	49.62	
TP.	40.16	
TP.	32.95	West Side Driveway Top Curb E. Side Orchard opp House
B. M.	30.02	30.04 7' C.T. N.W. COR. ORCHARD & SUNSET CLIFFS
BENCH.		Sta. 63+83.5 End Paving
IDENTIFICATION	32.39	32.4 See Sketch Pg 11, & Elev. Pg 27 F.B. No 1634

No 4778

± straight Thru
To Landis

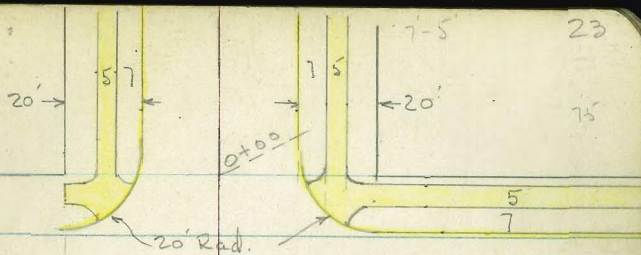


2+51.2
End. cb.



Dwight

1" DEXED
Laid
JAN 29 1953

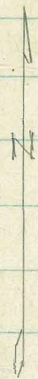
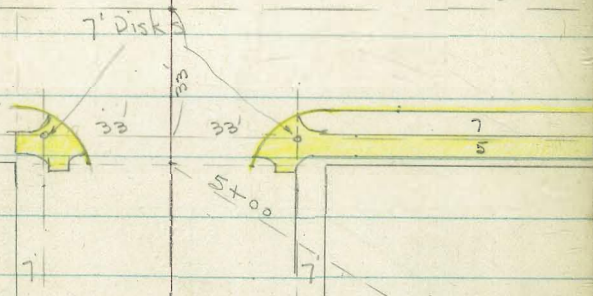


23

75

Dwight

st.



40' 40'

Wilson Ave

± Produced
straight Thru.

1+00
Hub.
P.O.T.

2 + 80.48 = H.W. POT.
Dwight

33'

7'

Fd. Cross - B. 1570
P. 38.

40'
40'

See P. 23

40' 40'

Wilson

Hue

90° 01'

89° 54' 30"

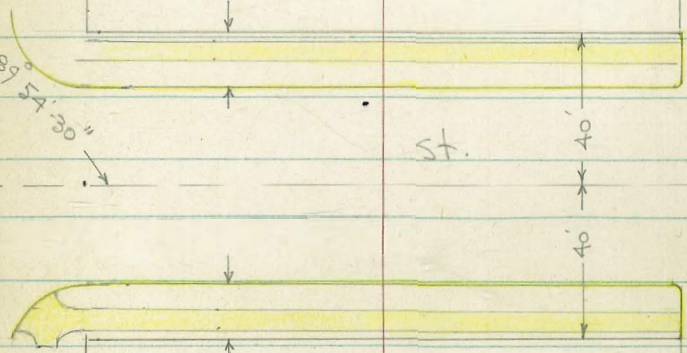
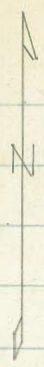
Dist Variable
See Notes.

St.

40'
40'

Ac. Paue

Line at 36th = Wly
7 cts.



$$\begin{array}{r} 400 \\ 25 \\ \hline 12.2 \end{array}$$

±

X-Sect. Wilson - N. + S. of Dwight

Lt.

Rt.

See sketch - P. 23 - 1-27-53 7.0.

6808 w.o. 31479

3+23 - 40.2 Lt. = 3' Conc. walk

18.88	18.96
52.3	40.2
at step.	walk

3+00

17.8	18.1	18.4	18.7	19.0	19.3
50	40	20		20	40

 +17.45 to lot corner - 53
 of 2-26
 Let's 27428

2+83 - 37.7 Lt. = 3' Conc. walk

17.56	17.56
48.8	37.7
at steps	walk

2+78 - 40.5 Rt. = 3.5' Conc. walk

18.88	18.97
40.5	54.4
	at porch

2+50 - 40.5 Rt. = end. fence

15.4	16.2	17.2	17.6	18.0	18.4
50	40	20		20	40

2+15 - 35.6 Rt. = 4' Conc. walk

17.50	17.47	17.38
35.6	40	45
walk		at steps

2+02 - 33.7 Rt. = Reg. Picket fence

2+00

11.9	12.4	14.3	15.4	16.1	16.6
50	40	20		20	40

1+50

07.2	08.6	10.8	12.4	13.4	14.4
50	40	20		20	40

1+00 = 400' S. of S.L. of Dwight

298.0	02.0	05.8	08.34	09.9	10.6	12.2
60	40	20		7	25	40

B.M. = N.W. B.P. 36 ± + Dwight 327.55

300' fig. Not shown.

Actual Elev. Shown.

322.96 = B.M. on S.E. 1' Disk - Dwight + Wilson

Lt.

±

Rt.

26

15' N. of S.L. = S. cb. line Dwight

22.58	21.9	22.0	22.1	22.1	22.4	22.93
Top =	39.7	20		20	40	Top = PC.
end cb.	gut.				gut.	

0.3' N. of Line

5+00 = S.L. of Dwight curb of Ret. ends

23.2	22.61	22.0	22.2	22.2	22.71	23.0
40	Top	20.9		20.8	Top = end	40
	end. cb.	gut.		gut.	cb.	

4+99 = Sly. of 5' walks on Ret.

22.90	22.83		22.90	22.95
32.2	27.2		27.8	32.8
walk			walk	

4+75 - 40.6 Lt. = ± 3' Conc. walk

23.36	23.29
50.6	40.5
at steps	walk

4+50

22.3	22.3	22.6	21.6	22.1	22.0
40	25	10		20	40

4+15 - 35' Lt. = ± 4' Conc. walk

22.15	22.23	22.25
-------	-------	-------

57.3	40	35	
at step	walk	21.38 = Top.	
		34.3	

4+01 - 34.3 Lt. = ± - Ely. of 12" Conc. wall

4+00

21.0	21.3	21.5	20.7	21.2	21.1
40	20	5		20	40

3+69 - 39.3 Rt. = ± 3' Conc. walk

20.92	20.96
39.3	51
walk	at porch

3+50

19.7	19.8	20.1	19.6	20.2	20.4
40	20	5		20	40

3+24 - 36.2 Rt. = ± 6' Brick Walk

19.85	19.72	19.70
36.2	40	49.4
walk	3' wide	at step

1+41 - ± 14' Conc. Dr. on Rt.
 of cb.
 1+12 - ± 14' Dri Sect. in cb. on Lt. - Dirt back

23.22	22.60		23.37	24.03
27.2	20.1 = on Dr.		20	27
walk			Dr.	walk

1+00

23.10	22.6	23.4	23.2	23.76
Top	20.1		20	Top
	gut.		gut.	

0+92 - ± 15' Conc. Dr. on Rt.
 0+61 - ± 14' Conc. Dr. on Lt.

23.05	22.46		23.19	23.88
27.1	20		20	26.9
walk	Dr.		Dr.	walk

0+50

22.98	22.4	23.2	23.0	23.62
Top	20		20.1	Top
	gut.		gut.	

0+39 - ± 15' Conc. Dr. on Rt.

23.00	23.65
20.1	27.1 = walk
Dr.	

0+07 = opp. PC. of 20' Rad. Ret.

22.92	22.2	22.9	22.7	23.42
Top = PC.	20.1		20.1	Top = PC.
	gut.		gut.	

80' N. = N.L. Dwight - 0+00 ahead

22.86	22.1	22.8	22.7	23.42
Top	21.4		21.3	Top
	gut.		gut.	

67' N. = N. cb. Line

22.79	21.8	22.1	22.5	22.6	22.8	23.53
Top =	40.5	20		20	40	Top = PC.
end cb.	gut.				gut.	

40' N = ±

22.5	22.6	22.8	23.0	23.2
40	20		20	40

Soil Sample taken in Int.

$$\frac{16}{100} \times 300$$

Lt.

±

Rt.

3+50 = Top on FL

$$\begin{array}{r} 90.7 \\ 70 \\ \hline \text{Bottom} \end{array}$$

$$\begin{array}{cccc} 91.5 & 295.8 & 03.8 & 15.2 \\ 50 & 40 & 20 & \\ \hline \text{Toe} & & & \end{array}$$

$$\begin{array}{ccc} 21.4 & 23.9 & 25.7 \\ 13 & 25 & 40 \end{array}$$

3+30.7 - 27 Rt. = End Walk

$$\begin{array}{cc} 24.61 & 24.70 \\ 27 & 32 \\ \hline \text{walk} & \end{array}$$

3+22 = 21.4 Rt. = ± Post = end fence

3+21 = 20' Rt. = end of curb.

$$\begin{array}{r} 287.8 \\ 100 \\ \hline \text{in Bottom} \end{array}$$

$$\begin{array}{cccc} 288.6 & 299.0 & 07.3 & 15.8 \\ 80 & 60 & 40 & 20 \\ \hline \text{Toe} & & & \end{array}$$

$$\begin{array}{cc} 23.7 & 24.42 \\ 20 & \text{Top} \\ \hline \text{cut.} & \text{end} \\ & \text{cb.} \end{array}$$

3+11 = ± 16 Conc. Dr. on Rt.

$$\begin{array}{cc} 24.00 & 24.51 \\ 20 & \\ \hline \text{Dr.} & 27 = \text{walk} \end{array}$$

3+09 = ± at ± of Post of fence

2+93 = 27.9 Lt. = ± Post = Ang. in fence

2+85 = Top of Bank on w.l.

fence - wire Mesh.

$$\begin{array}{cccc} 19.1 & 23.0 & 23.7 & 23.0 \\ 50 & 40 & 25 & 20 \\ \hline & & & \end{array}$$

$$\begin{array}{cc} 24.0 & 23.8 \\ 20.1 & \text{Top} \\ \hline \text{cut.} & \end{array}$$

2+70 = 27.8 Lt. = ± of sly. of 8"x8" Posts for Guard

2+51.2 = 20 Lt. = end curb

$$\begin{array}{cccc} 23.6 & 23.60 & 23.0 & 23.8 \\ 40 & & 20 & \\ \hline & \text{Top} & \text{cut.} & \\ & \text{end cb.} & & \end{array}$$

$$\begin{array}{cc} 23.8 & 24.20 \\ 20.1 & \text{Top} \\ \hline \text{cut.} & \end{array}$$

2+11 = end of walk on Lt.

$$\begin{array}{ccc} 23.63 & 23.57 & 23.42 \\ 32.1 & 27.1 & 20 \\ \hline \text{walk} & & \text{Top cb.} \end{array}$$

2+00

$$\begin{array}{ccc} 23.37 & 22.9 & 23.6 \\ \text{Top} & 20 & \\ & \text{cut.} & \end{array}$$

$$\begin{array}{cc} 23.5 & 24.06 \\ 20 & \text{Top} \\ \hline \text{cut.} & \end{array}$$

1+50

$$\begin{array}{ccc} 23.25 & 22.7 & 23.5 \\ \text{Top} & 20 & \\ & \text{cut.} & \end{array}$$

$$\begin{array}{cc} 23.3 & 23.91 \\ 20 & \text{Top} \\ \hline \text{cut.} & \end{array}$$

X- Sect. Dwight from Wilson to w.

See sketch- P. 24

1+62 - 28.3' Lt. = E P. pole # P3525

1+60 - 37' Lt. = Beg. E of 18" Hedge 2' High

19.2 20.1 20.4 18.3 18.9 19.2 20.4 20.3
80 40 25 20 24 28 40

1+39.5 - 40.5' Lt. = end wall

22.26 20.5
Top wall 40.5
gr.

1+25 - 38.4 Rt. = E 2' Conc. walk

21.40 21.15
38.4 50
walk walk

1+20

22.13 21.4 21.3 19.8 20.2 19.7 21.7 21.6
40.6 40 25 21 23 27 40
Top Wall

1+08 - 40.5' Lt. = Beg. 8" Conc. Block wall

22.21 21.9
Top wall 40.5
ground.

0+80

22.57 22.4 21.8 20.8 21.0 20.7 22.7 22.7
61.7 40 26 23 24 27 40
Conc. floor Gar.

0+40

23.3 22.9 21.5 21.9 21.6 22.9 23.2
40 27 24 25 27 40

0+00 = w.L. Wilson

22.58 21.9 22.5 21.9 22.79
Top 25.1 27 Top-end is
end is 0.3 E. 90+ 90+ 0.5 w.

B.M. = 7' Disk

322.96

3+05 - 16' Lt. = ± 16" Pepper.

3+02 - 40' Lt. = wall at Pilaster

2+95

10.9
40

11.13 10.1 10.5 10.8 09.3
Top wall 32.8 25 10

07.3 300.7 293.3
20 40 60

2+93 - 29' Lt. = Ang. in wall

2+88 - 28.8 Lt. = Req. 8" Conc. wall

11.39 10.5
Top 29=qr.

11.34 10.6

Top wall 28.8=qr.

2+87 - 27.8 Lt. = ± P. pole # P-3515

2+83.5 = Cross 16' Guard Rail - Poor Cond.

2+80.48 = Pot. Hub

311.95 on Hub.

2+75

13.0 13.2 13.0 11.7 12.4 12.1 13.7 13.8 8.8 299.0
50 40 30 22 16 19 26 40 60

2+40

14.7 15.4 15.9 15.0 15.1 14.6 15.3 13.8 13.4
60 40 23 19 17 19 40 50

2+20 - 23.2 Rt. = ± 6" Acacia

2+06 - 29.7 Rt. = ± 1" Shrub

2+00 = wly. of 3 Conc. walk on Rt.

18.1 18.5 17.0 17.3 16.6 15.30 15.82 18.96
40 25 21 22 28.4 40 42.5

1+93 - 30.8 Rt. = ± 1" Acacia shrub.

conc. walk at steps

1+87 - 30.8 Rt. = ± 12" Cluster of Bamboo

1+90 - 37' Lt. = end. ± Hedge

1+73 - 33.3 Lt. = ± 2.5 Conc. walk

20.10 20.06 19.56
51.9 40 33.3
at porch walk walk

1+65 - 36.5 Rt. = ± 3 Conc. walk

20.25 20.39
36.5 51.7
walk at stop

$$\begin{array}{r} 99.0 \\ 15.7 \\ \hline 83.6 \end{array}$$

$$\begin{array}{r} 03.0 \\ 8.6 \\ \hline 4.4 \end{array}$$
 32

Lt.

±

Rt.

3+25 = end.

08.2 08.4 08.2
50 40 25

294.4' 88.8 83.6
20 40

← Same slope

3+16.5 - 26' Lt. = ± 6" Acacia

3+19.5 - 40.8' Lt. = end wall at pilaster

09.24 08.5
Top wall 40.8 = gr.

3+14 - 27' Lt. = ± Guy Pole # 503330H

10.17 09.9
Top wall 27 = gr.

3+07 - 27' Lt. = Reg. 6" Conc. wall

X-sec 35th ST - Oceanview Blvd to Imperial

WO # 31769

C. Allen

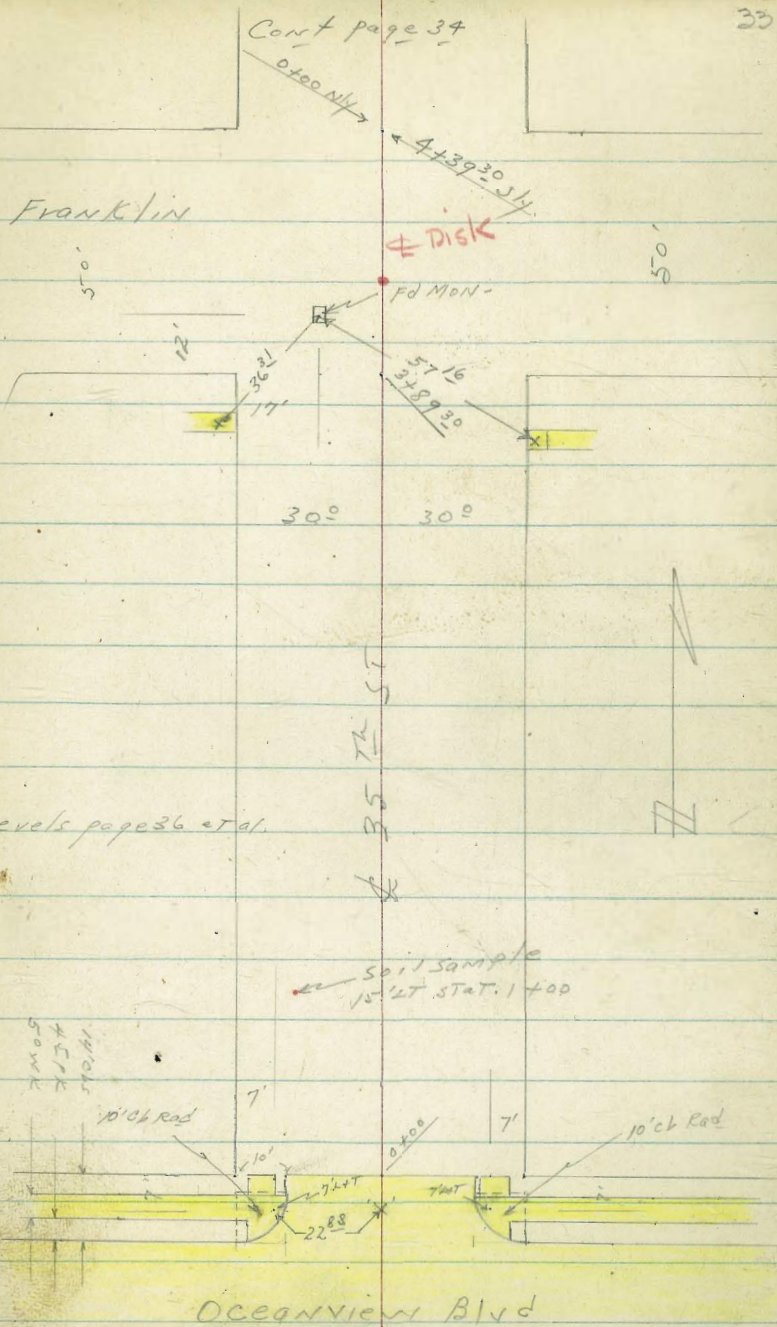
D. Sisson

G. Powell

Ref TP Sheets 336, 338, 151.

FB 2217-32-

INDEXED
Law
MAY 12 1953



X-sec 35th Ocean View to Imperial

Wo # 31769

Level's page 42

Canton page 35

2A

Webster

Ave

30'
30'



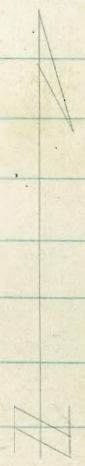
DISK

17'

30'

30'

35th ST



D 100

Franklin

Ave

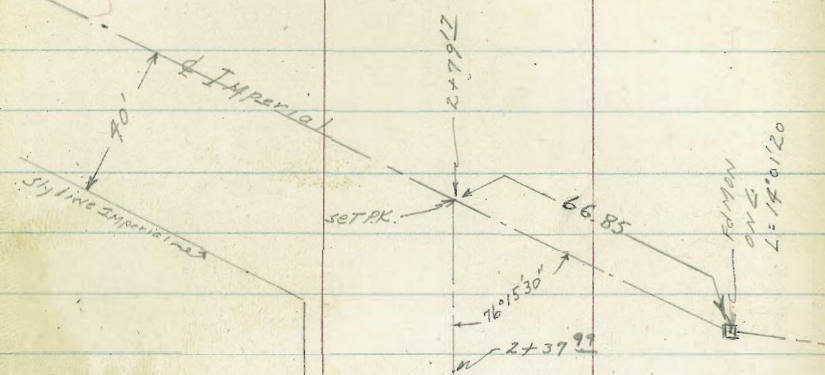
See Facing Page for ties Imperial

Public & Imperial
TERRACE
TELLING FRONT

X-SEC 35TH ST - Oceanview to Imperial

110 # 31769

Levels page 52

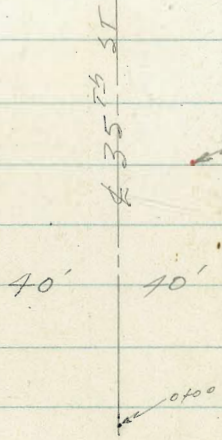
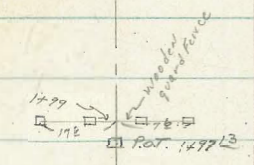


Levels page 52

NOTE: 35TH ST

angles 0°54'45"

To Right at Sly
Line Durant



Sail Sample
15' RT STAT. 1715

Levels page 50

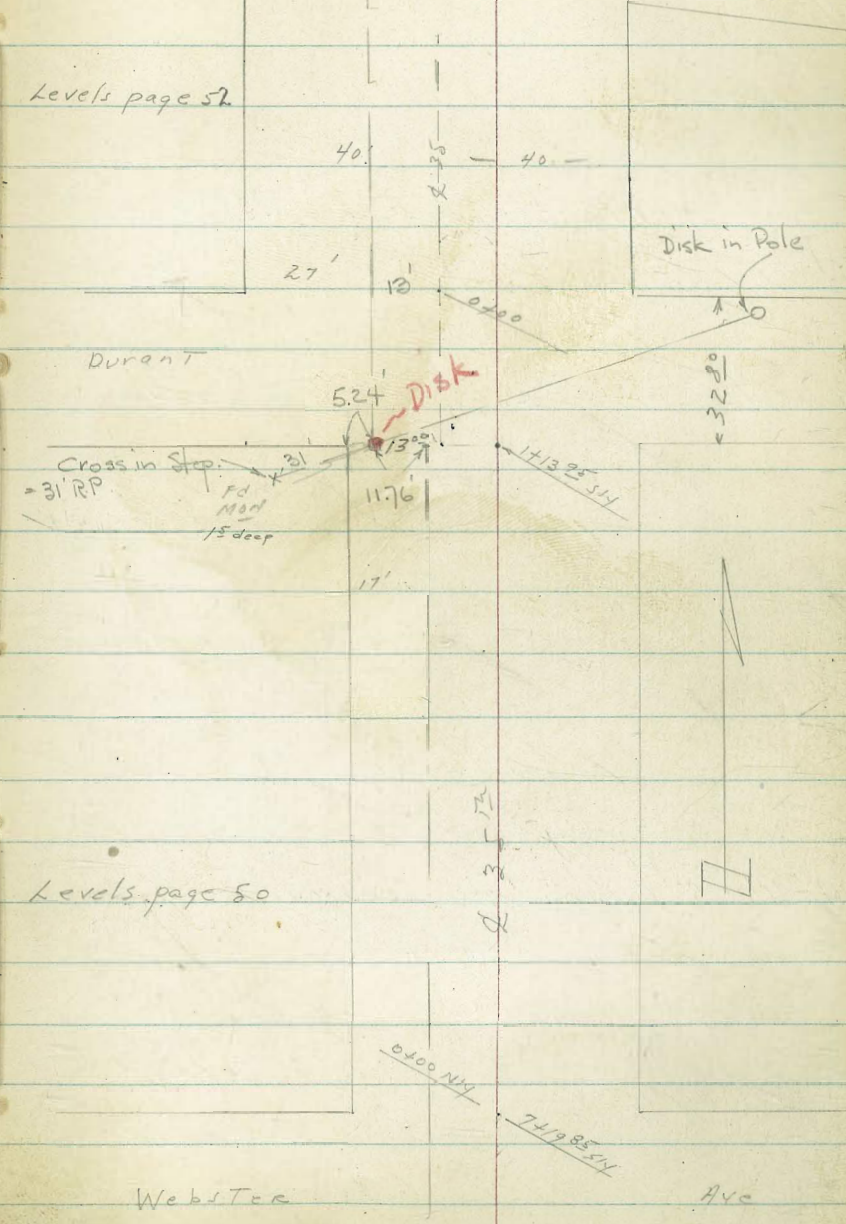
DURANT

32.80

ST

Webster

Ave



X-sec 35th ST

LT = W 17

St = cly.

36

61.5
90
100

65.3
52
50

66.5
40
50

66.3
42
100

0+00 = Nly Portland concrete + Nly Line Ocean View

66.11
442
275
BK, WK

65.85
46.8
201
Cb

65.24
529
201
GUT

65.66
487
10

65.89
44

65.71
482
10

65.24
526
201
GUT

65.86
467
201
Cb

66.08
445
275
BK, WK
WALK

0-04 - Curb E.C. - Both Curb returns
are in poor condition
should be replaced

65.86
467
201
EC
Cb

65.23
530
201
EC
GUT

65.26
527
201
EC
GUT

65.87
466
201
EC
Cb

60.76
977
100
Cb

60.01
1052
100
GUT

64.43
610
50
Cb

63.64
689
50
GUT

64.97
556
50
GUT

65.73
480
50
Cb

64.71
582
100
GUT

65.45
508
100
Cb

0-14 = Nly Curb line Ocean View Blvd

65.95
458
30
BC
Cb

65.14
539
30
BC
GUT

65.30
523
20

65.82
471

65.34
519
20

65.07
546
30
BC
GUT

65.85
468
30
BC
Cb

See sketch Page 33.

TP₁ 4.66 70.53 3.28

X' @ 35+ Nly Line Ocean View
65.87

70.53

SETUP F.H. 36+ Ocean View
64.24

BM 4.91 69.15

FB 2217 - Page 35.

LT = W 1/4

at = 1/4 37

0469-23^E LT = R 2' CONC WALK - UNFINISHED CON.

~~74.73~~
~~22-23~~
37⁵
33⁵
WK

~~74.08~~
~~22-08~~
41⁰
23⁵
WK

0460-28^o RT = E 3' CONC WALK

~~76.99~~
~~25-99~~
11⁹
28^o
WK

~~77.30~~
~~26-30~~
08⁸
38^o
WK

0450

~~74.4~~
~~22-4~~
38⁸
50
Top

~~75.0~~
~~22-0~~
32²
31
Top

~~74.7~~
~~22-7~~
35⁵
30
Toe

~~71.9~~
~~20-9~~
63³
26
Toe

~~70.7~~
~~18-7~~
75⁵
18

~~70.6~~
~~18-6~~
76⁶
7
Toe

~~70.6~~
~~18-6~~
76⁶
21
Top

~~70.9~~
~~18-9~~
73³
30

0473-19^o RT = E 24" pepper tree.

~~74.6~~
~~22-6~~
36⁶
50
Top

~~75.0~~
~~22-0~~
32²
32
Top

~~69.9~~
~~18-9~~
83³
29^o
Toe

~~68.6~~
~~17-6~~
96⁶
19
Toe

~~67.7~~
~~16-7~~
102²
18

~~67.9~~
~~16-9~~
103³
7
Toe

~~67.8~~
~~16-8~~
104⁴
7
Toe

~~70.6~~
~~18-6~~
16⁶
20

~~77.4~~
~~20-4~~
08⁸
30

~~77.7~~
~~20-7~~
05⁵
50

0402

~~73.6~~
~~14-6~~
45⁵
50
Top

~~74.7~~
~~15-7~~
32²
32
Top

~~67.1~~
~~11-1~~
29⁹
29
Toe

~~66.5~~
~~11-5~~
21¹
21
Toe

~~65.7~~
~~10-7~~
20⁰
20
Toe

~~66.1~~
~~10-1~~
12¹
12
Toe

~~66.6~~
~~10-6~~
11⁶
13
Toe

~~77.2~~
~~19-2~~
10⁰
25
Top

~~77.2~~
~~19-2~~
10⁰
30
Top

~~78.1~~
~~20-1~~
01¹
50
Top

TP, 7.78 78.18 0.13 70.40

78.18 T

041²⁵-10³ LT = E 2⁵ X 2⁵ Gas Co. MH.

~~65.82~~
47¹
12⁵
RIMMH.

70.53 T

LT = Wly

rt = eLy - 38

1450

73.8 44	74.1 44	73.9 43	73.6 46	73.8 44	74.2 40	74.9 33	75.1 31
50	30	16	15	15	30	50	

1445-30^s LT = 8' CONC Drive

74.16 402	74.16 402
405	305
Dr	Dr

1444-20^s = 18" Pepper tree

1435-27^s rt to Wly edge 3'x4 1/2' INCINERATOR ON CONC Base

1428-30^s LT = 3' CONC WALK - 20^s RT = 12" pepper tree

74.41 377	74.36 382
405	305
WC	WC

1400-20^s RT = 30" pepper Tree

74.8 34	74.6 36	74.0 42	73.9 43	73.8 44	76.3 19	76.3 19
50	30	15	8	8	30	50

0491-21^s LT = 10' CONC Apron to 7' CONC Ribbon Dr

2-2' Wide STRIPS

74.64 334	74.63 335	74.80 338	74.23 325
290	292	285	210
Dr	Beau	Dr	Apron
	Ribbon Dr	NARROW	

0475

75.1 31	75.0 32	75.0 32	73.3 49	72.8 54	72.9 53	73.7 45	76.6 16	76.9 13
50	30	28	17	90	9	30	60	

78.18 T

2-1⁸' STRIPS
2461- 29⁵ RT = ϕ 6⁵' Ribbon Drive

2452- 30⁷ LT = ϕ 1⁵' CONC WALK

TP₂ 5.25 78.24 5.19 72.99

2450

2443- 31⁴ RT = ϕ 8⁰' solid CONC Driveway

2400

1+73- 30⁵ RT = ϕ 3' CONC WALK

LT = W 14

35⁷²

RT = 04- 39

73.92
432
402
WK

73.98
426
302
WK

74.75
349
295
DR

76.01
223
395
DR

78.24 π

73.6 46 50	73.8 44 30	73.4 48 17	72.6 56 16	73.0 52 12	73.1 51 30	74.7 35 50	76.5 17
-----------------------------	-----------------------------	-----------------------------	-----------------------------	-----------------------------	-----------------------------	-----------------------------	-----------------------

75.14
304
314
DR

76.56
162
414
DR

74.1 41 50	74.0 42 30	73.8 44 17	73.1 51 16	73.3 49 11	73.4 48 12	73.8 44 30	74.6 36 50	75.7 25
-----------------------------	-----------------------------	-----------------------------	-----------------------------	-----------------------------	-----------------------------	-----------------------------	-----------------------------	-----------------------

75.19
299
305
WK

75.38
280
305
WK

78.18 π

4+02

69.6	70.4	71.5
80	78	67
50	30	15

RT = cly. 41
35B

72.2	72.3	72.6	72.8
60	57	56	57
15	15	30	50

4+00

70.6	71.7	71.8	71.5
76	65	64	62
50	30	15	14

72.3	72.1	73.3	73.4
59	61	51	48
15	15	30	50

3+97-30⁵ LT = 12" power pole # 3499

71.4	72.2	72.3	71.6
68	60	59	66
50	30	15	14

72.2	72.3	73.1	73.5	74.3
60	59	51	47	39
13	15	30	50	

3+89-30³⁰ = sly Line Franklin Ave

72.59	72.57
565	567
400 WK	300 WK

3+69-30² LT = 3' conc walk

3+63-30² RT = 3' conc steps + walk
1 Riser

74.04	74.60	75.07
420	364	317
302 Bottom step	312 Top step	419 WK

3+45

72.7	72.6	72.6	72.1
55	56	56	61
50	30	16	15

72.1	72.1	73.0	73.5	74.8
61	61	52	47	34
13	14	30	50	

78.24

0+50

0+28-30° Rt=q 5' cone steps + 3' Walk - 3 steps

0+03

4+39³⁰ Back = 0+00 Ahead = NLY Line Franklin

4+37-

4+30

4+14³⁰ = E Franklin Ave

LT = WLY

74.0	73.6	72.9	72.6	72.1
42	46	53	56	61
33	30	28	16	15

RT = eLy 42

72.6	72.5	73.0	73.5	74.6	75.5
56	57	52	47	36	27
13	14	27	30	32	

73.68	75.40	75.69
456	284	255
302	340	440
Bottom Step	Top Step	WK

72.9	73.3	72.5	72.3	71.9	72.5	73.3	75.4	75.9
53	49	57	59	63	57	49	28	23
50	30	27	15	13	25	30	50	

See sketch pages 33+34.

73.1	73.4	72.4	72.4	71.7	72.4	73.5	74.7	74.7
51	48	58	58	65	58	47	35	35
50	30	27	15	13	25	30	50	

72.5	72.2	72.4	73.4	73.7
57	60	58	48	45
50	30	30	50	50

70.4	71.0	72.4	73.0	73.3
78	78	58	52	49
50	30	30	50	50

69.1	70.8	71.4	72.3	73.0	73.3	74.1	73.8
91	74	68	59	52	49	41	44
100	50	30	30	50	100	150	

78.24x

LT=W14

3573

Rt=ely 43

1450

72.1	72.3	72.2	72.4	72.2	72.7	73.1	74.4
54	53	53	51	53	48	44	31
50	30	15		13	15	30	50

145-30° = 3' Wide Eugenia Hedge

1434-30° Rt=begin 4" wide Conc curbing

73.3	73.0	73.64
42	45	387
30°	30°	30°
Gr	Foot	Top

1421-19° Rt= 12" Pepper Tree

1414-30° Rt= 3' Conc steps + walk

TP3 5.01 77.51 5.74 72.50

77.51

73.52	74.88	75.10
399	263	241
30°	32°	42°
Bot. Step	Top Step	WK

1400

72.8	72.7	72.4	72.2	72.4	72.3	73.2	73.4	73.7	75.1
54	55	58	60	58	59	50	48	45	31
50	30	15	14		12	14	28	30	34

0498-20° Rt= 12" Pepper Tree

0496-32° LT= 8" Conc Driveway

73.18	73.16
506	508
420	320
Dr	Dr

0471-19° Rt= 6" Pepper Tree

78.24

LT = W14

3573

Study 44

1786-30° LT = 7° Ribbon Drive - 2-2' strips

72.44
507
402
Dr

72.55
496
302
Dr

1780° 30° Rt = begin Conc Block Wall

73.3
42
300
Gr

72.8
47
300
Foot

74.47
304
300
Topwall

1780-30° Rt = end 4" wide Conc curbing

73.3
42
300
Gr

73.0
45
300
Foot

73.74
377
300
Top

1780-30° LT = end 3' wide Eugenia Hedge

1773-30° Rt = begin 4" wide Conc curbing

73.2
43
300
Gr

73.0
45
300
Foot

73.73
378
300
Top

1769-30° Rt = 8° ^{Conc} Driveway

73.45
406
302
Dr

74.33
318
402
Dr

1765-30° Rt = end 4" Conc curbing

73.3
42
300
Gr

73.0
45
300
Foot

73.84
367
300
Top

1762-29° LT = 25' Conc Wall

72.31
520
392
WK

72.48
503
292
WK

77.51 X

LT=WIY

35²² rt=cky 45

R+R5- 30⁴ ft= Begin Clay BRICK Wall

73.1	72.8	76.57
4 ⁴	4 ⁷	0 ²⁵
30 ²	30 ²	30 ⁴
6r	FOOT	TOP WALL

R+R4- 30² ft= end CONC Block Wall-

73.1	72.6	74.37
4 ⁴	4 ⁹	3 ¹³
30 ²	30 ²	30 ²
6r	FOOT	TOP WALL

R+R5- 30² LT= 2 3' CONC WALL

72.57	72.60
4 ⁹³	4 ⁹⁰
40 ³	30 ³
WK	WK

77.50 T

TPA 4.69 77.50 4.70

72.81

House Number = 315 35²²

New Prop. pipe NW cor BRICK wall e/side street

R+R00

72.2	72.4	71.9	72.3	72.1	72.7	73.3
5 ¹³	5 ¹	5 ⁶	5 ²	5 ⁴	4 ⁸	4 ²
30	16	14	11	13	30	

1+89- 30² ft= 2 8' CONC Drive - opening in wall.

73.30	74.09
4 ²¹	3 ⁴²
30 ²	40 ²
Dr	Dr

77.51 T

3700

2+89 } 313 LT = 3' CONC WALK
340 Rt = 3' CONC WALK

2+69 - 30' = end Clay Brick Wall

2+54 - 31' LT = 3' CONC WALK

2750

2+47 - 30' Rt = 3' CONC WALK

LT = W14

Rt = W14 46

60	55	58	55	57	47	42
50	30	13	12	30	50	
70.7	72.0	71.7	72.0	71.8	72.8	73.3

600	534	434	324
313 WK	313 WK	340 WK	440 WK
71.5	72.16	73.16	73.76

47	50	098
304 Gr	304 Foot	304 Top Wall
72.8	72.5	76.52

592	587
415 WK	315 WK
71.58	71.69

60	57	56	53	58	45	36
50	30	13	12	30	50	
71.5	71.8	71.9	72.2	71.7	73.0	73.9

397	360
304 WK	408 WK
73.53	73.90

77.50 x

X-sec 35.75 Oceanview to Imperial.

3+60-30° LT= begin 4" conc curbing

3+50

3+44-30° LT= 3' conc walk

3+38-31° pt= 3' conc walk

Hedge 1 to 2

3+25-29° LT= Flyend 3' wide 4' high eucasia

3+22-31° pt= 4' conc Ribbon Drive

3+06 } 29° LT= 8' conc Ribbon Drive

2- 2' strips

3+06 } 32° pt= 4' conc Ribbon Drive

LT= W 14

3 1/2 Steely

47

72.44	71.9	72.2
5' 0 1/2	5' 6	5' 3
30°	30°	30°
Top	Foot	Gr
Curbing		

72.0	72.1	71.5	71.6	71.5	72.5	73.5
5' 5	5' 4	6' 0	5' 9	6' 0	5' 0	4' 0
50	30	13		12	30	50

72.33	72.44
5' 7	5' 0 1/2
40°	30°
WK	WK

72.88	73.39
4' 6 1/2	4' 11
31°	41°
WK	WK

72.70	73.54
4' 8 1/2	3' 9 1/2
31°	41°
Dr	Dr

71.39	72.10	71.98
6' 1/2	5' 2	5' 5 1/2
41°	31°	29°
Dr	Dr	Dr
	Brk	

72.64	73.23
4' 8 1/2	4' 2 1/2
32°	42°
Dr	Dr

77.5° X

LT= W 14

3573 et-ely 48

5400

69.4	70.9	70.9	71.1	70.8	71.9	72.6
81	66	66	68	67	56	49
50	30	13	12	30	50	

4450

70.3	71.1	71.2	71.3	71.1	72.2	73.0
72	64	63	62	64	53	45
50	30	13	12	30	50	

Flared Dr- 11' wide Apron + 7' wide Drive

4403-14° LT= 4' Conc Drive w + L Apron

72.11	72.44	71.50
539	504	600
398	298	148
Dr	Drive	Apron

4400

71.9	72.1	71.4	71.5	71.4	71.9	72.3	73.4	74.1
56	54	61	60	61	56	52	41	34
50	30	13	12	13	28	30	50	

3+99-29° LT= end 4' wide Conc curbing

72.43	71.8	72.1
507	57	54
298	298	298
Top	Foot	6'

3+76-30° LT= 4' 3' Conc Walk

72.45	72.44
505	506
400	300
WK	WK

77.50 T

TP₅ 6.06 76.74 6.82 70.68

5483-20² LT = 8" anchor pole (Power Line)

5476-19² LT = 8" Dead Man

5461-30⁵ LT = end of Woven Wire fence + Begin 4' high cyclone fence

5450

70.7	71.0	70.5	70.9	70.6	72.3	72.9
68	65	70	6	69	52	46
30	14	13	12	30	50	

5409-30⁵ LT = begin 4' high Woven wire fence

5409-30⁴ et = 3⁵' conc walk

72.03	72.48
547	502
30' WK	40' WK

2-12 strips

5402-29⁰ LT = 46' conc ribbon drive

69.82	70.57
765	693
390	290
0r	0r

77.50

LT = W 14

3 5/8 et = cly - 49

6² LT = 12' dia. Gasco gate valve

7+19.85 Back = 0+00 Ahead = Nly Line Webster

LT = Wly				2	Rt = eLy		50
69.3	70.1	69.8	69.82	3	57.5	70.7	71.7
74	66	62	69.2	6	50	60	50
30	12	10	62			15	30
			RIM				

7+02.9² LT = 4' 9' Gas Co. MH.

69.83
69.1
92
RIM
MH

6+89.85. 2 Webster Ave. - 14⁵ LT = 4.5 MH

68.5	69.69	70.1	70.8	71.5
82	70.5	6	59	52
30	14.5		15	30
	RIM			
	MH			

Benchmarks do NOT agree

30⁶ LT = end 4' dia. cyclot fence
6+59⁸⁵ = sly line Webster Ave

See FB 2217 - page 65 et. al. Per section on Franklin

69.2	69.6	69.0	70.0	70.5	71.1	71.7
75	71	71	61	62	56	50
30	13	12		15	25	30

6+44-212 Rt = 10" anchor pole #562085A (Telephone Co.)

69.3	69.9	70.2	69.6	70.3	70.2	70.8	71.8	74.6
74	68	65	71	64	65	59	49	21
50	30	13	12		15	16	30	50

6+25-212 Rt = Dead Man

6+00

69.0	70.1	70.5	70.1	70.6	70.1	70.8	72.2	74.4
71	66	62	66	61	66	59	45	23
50	30	13	12		15	16	30	50

76.74

1400 -

0+71-30³ Rt = 7' conc Drive

0+63-20² Lt = 8" Tel pole # 562087 H-

0+59-22² Lt = Power pole (10") #

0+54-30⁴ Rt = 7' conc Driveway

0+50

0+03

LT=VLY

357

Rt=ely 51

78	70	65	60	59	55	35	17
50	30	15		15	23	30	36

399	210
30.3	40.3
Dr	Dr

417	235
30.2	40.2
Dr	Dr

85	75	68	66	65	53	43	22
50	30	15		13	24	30	37

74	66	62	61	62	55	45	19
30	12	10		15	27	30	35

76.74 π

LT = W/Y

⊕

rt = ely.

52

For Xsec 35th Durant to Imperial
See page 52 - sketch page 35

TP6

6.19 70.55

Nail in Pole - 22 = LT stat. 0+59 - # 114 ?

69.0
77
100

75.0
47
50

76.4
0
100

1+13.95 = sly line Durant ST

69.7
70
50

70.3
64
30

70.4
63
15

71.0
57

71.3
54
15

72.7
40
28

73.6
34
30

74.9
18
37

76.74 X

X-sec 35th St. Durant to Imperial
W0 #31769.

LT = W14

35th Rt = cly - 5th

0+40

70.1	70.2	70.4	69.4	68.9	71.2	74.6	74.7	75.1
5 ⁶	5 ⁵	5 ³	6 ³	6 ⁸	4 ⁵	1 ¹	1 ⁰	0 ⁶
40	30	20	10	16	33	40	50	

0+38-20⁶ LT = 3' conc wall

70.07	70.20	70.38
5 ⁶³	5 ⁵⁰	5 ³²
40 ⁰	30 ⁶	20 ⁶
WK	WK	WK

0+21-32⁷ Rt = Deadman

0+03-32⁵ Rt = 10" telegraph pole #840425

0+00-19² LT = old picket fence

74.6	74.7	76.9
1 ²	1 ⁰	4 ²
35	40	70

Closing in street P

0+00 = N14 Line Durant St

70.0	70.5	70.8	70.6	70.4	72.7
5 ⁷	5 ²	4 ⁹	5 ¹	5 ³	3 ⁰
70	40	20	12	25	

75.70 X

BM

5.15 75.70

70.55

TP6 page 51 - Nail in pole

LT = W14

357

rt = 04 - 59

1+15- 46⁵ LT = Fly frame House

66.99

87

FLOOR
49

1+15- 17⁰ LT = 3' conc steps & walk - 3+ reads

65.69

65.75

67.45

102

925

825

330

230

193

WC

BOTTOM

Top/Top

1400

65.8

66.4

68.0

67.8

68.1

71.0

73.7

74.0

92

93

77

79

76

42

20

17

40

22

19

20

40

46

50

0+95- 22⁰ LT = end 3' wide eugenia Hedge

0+65 = 10' gap in hedge on left

0+60

69.4

69.5

69.7

68.9

68.5

69.6

72.1

74.3

75.3

63

62

60

68

72

61

36

14

04

60

40

20

10

14

40

45

70

0+45- 20⁰ LT = 3' wide eugenia Hedge

0+45- 19³ LT = 12" power pole # 92

0+44- 20³ LT = end old picket fence

75.70 π

LT=WIY

3573 Lt=city 53

Top U shaped Wash filled with Trash - some dirt

2400- 21⁵ LT= end 3⁵ high picket fence

6 ²	5 ⁶	5 ¹	4 ⁹	6 ⁵	6 ⁸	6 ^{4.5}	7 ^{0.0}	7 ^{2.0}	7 ^{2.3}
50	40	20	13	6	9	17	40	50	

1497- 20⁵ LT= 2 12" power pole #10-

1490- 25' LT= 2 8" Holly Tree

PT No 1497.13

TP, 6.22 71.33 10.59 65.11

71.33 X

1483- 51² LT= 2 city frame House

66.09
96
57
Floor

1483- 21⁶ LT= 2 3 wide Cinc walk

65.61	65.87	66.15
1009	983	955
400	316	216
WK	WK	WK

1465

65.5	66.0	66.9	66.8	70.6	72.1
102	97	88	89	51	36
40	23	8	8	16	40

1464- 21⁶ LT= begin 3⁵ high picket fence

1450

65.5	66.3	66.9	66.9	67.6	69.5	72.2	72.9
102	91	88	88	81	62	34	28
40	23	7	12	18	40	50	

75.70 X

2758-38° LT = ϕ 10" power pole P3495.

TP₃ 1.04 53.53 11.98 52.49

2798, Approx top cut bank Imperial

TP₂ 5.67 64.47 12.53 58.80

2737⁹⁹ skyline Imperial - Sec taken on

Diagonal

2730

2720 - 20° LT = ϕ Dead Man

2714

LT = W 14

ϕ
35°

et-oly 42

53.53 π

47.3	55.9	59.8	58.0	53.9	57.1	50.2	50.7	52.2	57.6	58.1	57.5
17 ³ 8 ⁵	42	65	106	13 ³	14 ²	13 ⁸	12 ³	69	63	70	
80	40	38	18	12	4	5	10	14	40	80	

64.47 π

64.7	62.9	60.6	56.6	55.7	52.2	52.0	52.1	58.1	60.6	62.0	61.5
6 ⁶	84	107	142	156	191	193	192	132	107	93	98
70	40	18	11	5	2	9	12	14	40	80	

64.0	63.6	63.4	54.2	53.3	53.4	59.4	62.5	61.6	60.7
73	77	79	171	180	172	119	88	97	106
50	40	18	5	9	12	15	40	50	

BOTT
WASH

65.7	66.3	63.5	62.7	57.5	66.1	70.2	72.3
56	510	78	86	1308	52	11	10
40	18	11	14	15	24	40	

71.33 π

LEWIS

3 1/2 1/2 at edge 53

TP ₁ - Starting BM			11.25	64.25
TP ₀	0.20	75.50	12.97	75.30
TP ₁	0.17	88.27	11.82	88.10
TP ₂	3.39	99.92	4.84	96.53
TP ₃	12.48	101.37	0.67	88.89
TP ₄	12.76	89.56	0.08	76.80
TP ₅	12.11	76.88	0.37	64.77
TP ₄	11.90	65.14	0.29	53.24

64.247

64.25

2+79 1/2 Imperial - Sec. to Face on Dia gage!

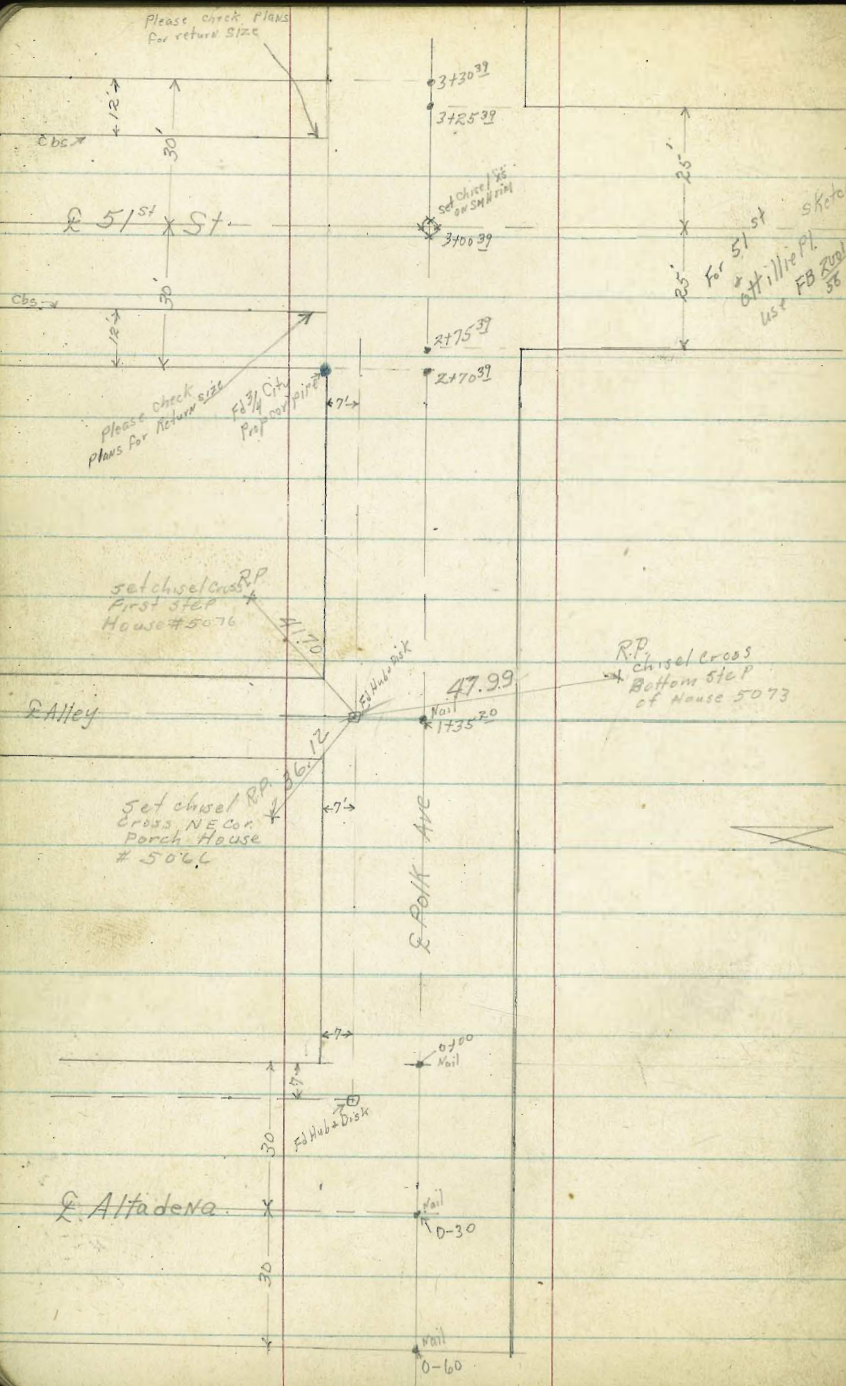
40.65	42.93	44.10	45.16	46.60	47.75	49.24
12.88	10.60	9.43	8.37	6.93	5.78	4.29
80	40	20	ON PK	20	40	66.85
			14.11			2.85

Section taken on dia along edge H.C.
2+63: Toe cut Bank + sly edge H.C. Pavc

39.97	42.60	43.81	45.11	46.28	47.39	49.02
12.56	10.93	9.72	8.42	7.25	6.14	4.51
80	40	20		20	40	66.85
						2.85

53, 53.

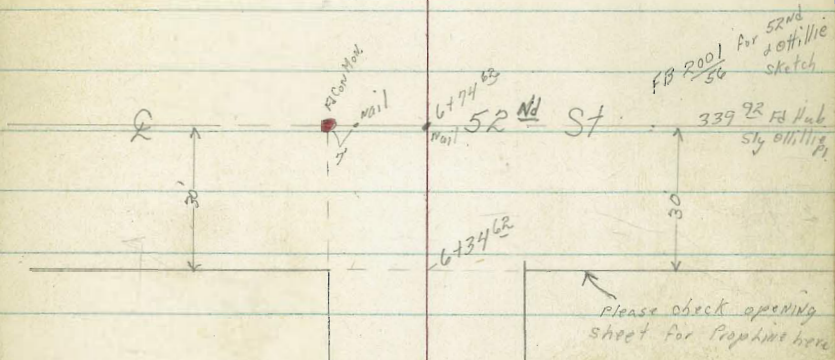
Please check plans
for return size



D. Smith
J. Rorer
R. Taylor
B. Fish

X" Sec Polk Ave
Altadena to 52nd St.

Wot # 32152 58
9-15-53



Ref. FB 2001-56
FB 2148-59

INDEXED
SEP
SEP 17 1953

"X" Sec. Polk Ave.
Altadena to 52nd St.

Lt-Nly

♀

Rt-Sly

59

0730

310.3 320.1 319.6 319.4 318.1 318.6 318.9 319.0 319.6 315.1
7⁸ 8⁰ 8⁵ 8⁷ 10² 9⁵ 9³ 9¹ 8⁵ 13⁰
50 35 20 16 12 20 34 41 50

0710

319.3 319.0 317.7 316.9 317.5 316.9 317.0 317.3 318.6 310.6
8⁸ 9⁴ 10⁴ 11² 10⁶ 11² 11⁴ 10⁸ 9⁵ 17⁵
50 32 23 20 8 20 30 35 50

0709 18² RT & 10" PPole #5053

317.7 317.6 316.4 316.7 316.7 315.8 315.4 316.1 316.8 305.6
10⁰ 10⁵ 11⁵ 11⁴ 11² 12³ 12² 12⁰ 11³ 22⁵
50 31 30 20 9 5 20 28 31 50

0700 Fly Altadena St.

0-08 19⁰ RT & deadman

316.0 315.7 316.2 315.1 315.9 314.0 312.9 315.3 297.7
12¹ 12⁴ 11² 13⁰ 14² 14¹ 15² 14² 30⁴
50 43 36 28 26 20 20 50

0-30 ♀ Altadena St.

0-36

315.4 314.6 313.9 312.3 312.4 311.6 310.5 308.6 297.5
12² 13⁵ 14² 15³ 15² 16⁵ 17⁶ 19⁵ 30⁶
50 40 29 20 16 15 20 50

0-60 Wly Altadena St

313.5 312.9 312.5 311.3 311.1 308.6 307.7 305.0 294.5
14⁶ 15² 15⁰ 16³ 17⁰ 19⁵ 20⁴ 23¹ 33⁶
50 32 30 20 13 15 20 50

TP

5²²

328¹³

14²

322³⁶

Map City
NW 1/4
5th & Polk
North W. Line
Polk
& 52nd St
FB 7001-60

BM

4¹⁸

323⁸⁵

319⁶⁷

π 328¹³

Lt = Nly

Q

Rt = Sky

60

1+73 20° Rt & 3° con walk

1+68 18° Lt & 4° con walk

1+50

1+41 19° Rt & 3° con walk

1+26 18° Rt & 10" P Pole #. P. 5075

1+25

1+03 14° Lt & 3° con walk

1+00 24° Rt & 4° con walk

0+75

0+50

326.91 327.13 327.14

122 100 099
30 20 18
wk

325.9 326.9 327.4 327.7 328.0

22 12 02 04 01
50 20 20 30

327.41 327.37

022 026
192 30
wk

326.1 326.2 326.4 326.2 326.6

22 12 12 12 22
40 20 20 50

325.95 325.93 325.94

218 220 219
30 20 14
wk

325.8 325.8 325.5 324.8 324.9 324.6 324.67 324.39

22 22 22 32 32 35 34 32
35 20 15 7 20 24 34
wk wk

324.4 324.6 323.8 322.9 322.8 322.5 321.5 321.2

32 35 43 52 53 56 64 62
50 20 14 6 20 20 50

321.7 321.3 321.4 320.4 320.9 320.4 319.9 319.6 319.6

62 62 62 72 72 72 82 85 85
50 20 12 8 10 20 30 30

π 328¹³

327.91 327.51

1022 1052
20 20
wk

TP₂ 513 325¹⁷ 809 320⁰⁴

2775³⁹ Wly 57st St Sly

2775 11² RT & 10" PPole JP 50.97

2770³⁹ Wly 51st St Nly

2750

2725

2708 42° RT & single garage dirt floor

2700

1775

Lt. Nly

2

RT - Sly

61

319.6 319.8 321.0 321.0 324.4
85 83 72 74 32 36 324.5
40 20 7 13 20

323.0 322.7 320.9 321.5 321.6 324.9
51 54 73 66 65 32 25 325.6
40 20 13 7 11 20

323.1 327.9 322.9 324.3 323.1 323.7
44 42 42 38 44 44 14 16 14 326.7 326.5
35 20 12 10 7 11 20 40

324.1 324.3 325.6 326.2 326.3 326.6 327.1 328.1 327.7
40 38 25 12 18 15 04 02 +04
35 30 20 12 7 20 30 50

327.2
+02
42°

325.3 326.6 327.5 327.5 328.0 327.4
28 15 06 06 +01 +02
15 20 8 20 50

326.3 327.1 327.7 328.1 327.6
18 10 02 02 +05
40 20 20 50

π 328.13

4100 20° Lt begin 5' board fence
20° Lt end 3' wide 5' high hedge

3194 26° RT & single garage con floor & apron

3165

3131 20° RT & 2' wide 4' high hedge

3130 39 Fly 51st St Nly

3130 21° Lt & 3' wide 5' high hedge

3125 39 Fly 51st St Sly

3118 39 Fly C6 line 51st St Nly

3100 39 S 51st St & SMH also

2782 39 Wly C6 line Nly

Note end of is on Ret. (not of line)

Lt=Nly

2

RT=Sly

62

320.4 319.8 319.3 318.7 318.4 318.4 318.5 318.1 318.0
4² 5⁴ 5² 7⁰ 6⁸ 6⁸ 6² 7⁶ 7²
50 20 17 14 8 13 20 30

318.03 318.17

7¹⁴ 7⁰⁰
262 302
apron floor

320.0 319.4 319.4 318.4 318.6 318.5 318.7 318.6 318.6
5² 5² 5⁸ 6⁸ 6⁶ 6² 6⁵ 6⁶ 6⁶
36 20 18 16 8 10 20 30

320.2 319.8 319.7 318.7 318.0 319.0 319.6 320.1
5⁰ 5⁴ 5⁵ 6⁵ 6² 6² 5⁵ 5¹
50 28 20 14 9 12 20

320.0 319.8 319.4 318.6 319.1 319.1 320.0 320.2
5² 5⁴ 5⁸ 6⁶ 6¹ 6¹ 5² 5⁰
50 28 20 14 10 16 20

319.92 319.46 319.34 318.84 319.19 318.64 319.0 319.3 319.4 319.9
5²⁵ 5²¹ 5²³ 6³³ 5²⁸ 6³³ 6² 5⁹ 5⁸ 5²
50 50 27 27 21 21 10 10 20
C6 24 C6 24 C6 24 10

319.66 319.15 319.61 319.5 320.03 320.67
5⁴⁶ 6² 6¹⁵ 5¹ 5¹⁴ 5¹ 5⁰ 320.2
50 27 20 10 10 10 20
edge SMH

319.73 319.42 319.56 319.07 319.99 320.7 320.2 320.2
5²⁴ 5²⁵ 5¹⁴ 6¹⁰ 5⁶⁷ 6¹⁵ 5⁰ 4⁵ 5² 5⁰
50 50 27 27 21 21 10 20
C6 24 C6 24 C6 24

π 325¹⁷

LT=Nly

RT=Sly

63

5750

5719 19^L RT & 3^o con walk5100 39^L RT & single garage con floor4494 19^L H & 4^o con walk4493 9^o RT & deadman
4492 21^L LT SW cor house4476 21^L LT SW cor house4473 9^L RT & 12" PPole # P31514465 18^o RT & 6" Eugenia bush4465 26^L RT Begin 5' Lattice fence4459 20^o RT & 7^o con drive4453 19^o RT & 3" Pepper tree

4450

4433 20^o RT & 3^o con walk4423 20^L LT ext 5' board fence

321.6 321.2 320.8 317.7 317.4
 3^o 4^o 4^L 7^o 7^o 8^L 5^o 5^L 5^L 319.3
 35 20 18 13 4 9 20 30

319.08 319.12
 6^o 6^o
 19^L 30
 wlk

321.7 321.1 318.3 318.0 318.0 319.2 319.1 319.25
 3^o 4^L 6^L 7^o 7^o 6^o 6^L 5^o
 30 20 13 4 14 20 39^L
 floor

320.80 320.67
 4^o 4^o
 20 17^L
 wlk

321.96

3^o
 21^L
 floor

320.7 318.5 318.3 318.2 318.2 318.2 318.8 318.8 318.4
 4^o 6^L 6^L 7^o 7^o 7^o 6^L 6^L 6^o
 40 20 14 13 7 13 20 35

319.02 319.78
 6^o 6^o
 20^o 30^o
 drive

320.6 320.4 318.2 318.2 318.2 318.8 318.7 318.4
 4^o 4^o 7^o 7^o 7^o 6^L 6^o 6^o
 40 20 14 7 13 20 35

318.66 318.95
 6^o 6^o
 20^o 30^o
 wlk

325.17

Lt = Mly

Q

Rt = Sly

64

BM starting

547

319²⁰

7.03

6734⁶²

321.6	319.7	319.4	318.4	317.7
36	56	58	68	75
50	20	15		20

6700 21² Rt end lattice fence

321.0	320.5	317.6	317.3	316.6	316.3	318.3	318.4
42	47	76	72	86	62	62	68
35	20	14		11	15	20	35

32512

"X" Sec 51st St
Ottillie Pl. to Polk

Sketch FB2001-54

Lt. Wly

Σ Mt. Ely

65

1137²⁷

305.0	305.6	308.4	308.9	309.4	310.3	311.1
10 ¹	9 ⁵	6 ²	6 ³	5 ²	4 ⁸	4 ⁰
40	25	15		11	25	35

1411³⁹

305.7	306.1	306.5	307.9	308.5	309.2	309.6	311.2
9 ²	9 ⁰	8 ⁶	7 ³	6 ⁶	5 ²	5 ⁵	3 ²
40	25	18	10		15	25	40

0496 Σ SMH

307.88

7²⁴

114

0491⁸²

304.5	305.2	306.5	307.3	307.9	308.5
10 ⁶	9 ²	8 ⁶	7 ⁸	7 ²	6 ⁶
50	25	15		15	25

0472²⁵

303.7	304.7	305.3	306.1	306.8	307.2
11 ⁴	10 ²	9 ⁸	9 ⁰	8 ³	7 ²
50	25	15		15	20

0436.12

305.3	305.1	302.9	302.7	302.0	309.2	309.9	305.5	305.5
9 ⁸	10 ⁰	12 ²	12 ⁴	12 ¹	10 ²	10 ²	9 ⁶	9 ⁶
35	25	20	15		5	15	25	35

0433 21⁴ Mt Σ 8" P P. 1⁴ P 4045

0400 SMH on Σ

303.7	301.1	299.1	301.0	301.95	302.1	304.3	304.9	307.8
11 ⁴	14 ⁰	16 ⁰	14 ¹	13 ²	13 ⁰	10 ⁸	10 ²	10 ³ 10 ⁰
44	25	18	10	14	7	16	20	25 50

684

315¹²

308²⁸

315¹²

3+20³³

2+98⁸⁰

2+77²⁵

2+55⁷⁰

2+34¹⁵ B.C. AT

TP

9⁸¹

323⁸⁹

10⁸⁴ 314⁸⁸

2 H₂O 2+34¹⁵
80

1+90⁵²

EC

213 AT & dead man

1+64¹⁵

Lt-Wly

RT = Ely

66

320.4	219.4	319.3	319.4	319.1	322.1	322.4	322.5
3 ⁵	4 ⁵	4 ⁶	4 ⁵	4 ⁸	0 ⁸	0 ⁵	0 ⁴
40	25	20		14	20	25	35

319.5	318.7	318.4	318.5	318.3	322.1	322.2	322.3
4 ⁴	5 ²	5 ⁵	5 ⁴	5 ⁶	0 ⁸	0 ⁷	0 ⁶
40	25	19		10	19	25	35

318.9	318.4	317.5	317.6	317.4	321.1	321.5	321.6
5 ²	5 ⁵	6 ⁴	6 ³	6 ⁵	2 ⁸	2 ⁴	2 ³
40	25	18		12	19	25	30

318.2	317.7	316.3	316.4	316.4	315.9	316.9	315.9
5 ²	6 ²	7 ⁶	7 ⁵	7 ⁵	8 ²	7 ⁶	8 ²
40	25	19	15		13	19	25

316.3	315.9	314.3	314.5	314.6	314.5	314.9	315.2
7 ⁶	8 ²	9 ⁶	9 ⁴	9 ³	9 ⁴	9 ²	8 ⁷
50	25	19	15		13	25	50

π 323⁸⁹

308.4	308.1	310.0	310.1	310.3	310.1	311.1	311.7
6 ²	7 ²	5 ¹	5 ²	4 ⁸	4 ⁴	4 ²	3 ⁴
45	33	25	15		15	25	35

306.6	306.1	308.9	309.2	309.2	309.1	309.2	300.0
8 ⁵	9 ²	6 ²	5 ²	5 ²	0 ²	5 ²	5 ¹
45	33	25	23	15		15	25

π 315¹²

TP, BM p 59

576

32239

403
NW Prop cov
city P. R.
Polk 151st St

LF-Wly

2

RT-Ely

67

5121⁴⁸ Sty Polk

324.6 320.2 320.3 319.9 320.5
3⁶ 8⁰ 7² 8³ 7² 8⁰
20' 15' 17 22 25

5100

326.2 325.7 320.6 320.7 320.4 320.8 320.4
2⁰ 2⁵ 7⁶ 7⁵ 7⁸ 7⁴ 7⁸
35' 25' 15' 14 25 35

4150

328.2 328.1 320.9 321.2 321.0 322.1 321.8 320.2
0⁰ 0¹ 7³ 7⁰ 7² 6¹ 6⁴ 8⁰
40 25 16 15 21 25 40

4406⁵⁵ EC

326.0 326.5 321.2 321.4 321.7 323.3 323.3
12² 11⁷ 7⁰ 6⁸ 6⁵ 4² 4²
35 25 15 18 25 40

3485⁰⁰

325.7 326.4 321.4 321.3 321.4 323.3 323.4
12⁵ 12⁴ 6⁸ 6⁸ 6⁸ 4² 4²
35 25 15 17 25 40

TP₂

6²⁵

328¹⁵

269

321²⁰

π 328¹⁵

3463⁴⁵

321.3 321.9 323.9 321.1 320.9 320.8 321.0 323.6 323.4 323.7
12⁶ 12⁰ 0⁰ 2⁸ 3⁰ 3¹ 2² 10³ 10⁵ 10⁷
40 25 22 19 12 15 22 25 35

3441²⁰

322.3 320.6 320.2 320.2 320.2 319.8 323.5 323.6 323.5
1⁶ 3³ 3² 3² 3² 4¹ 0⁴ 0³ 0⁴
40 25 20 10 15 20 25 35

π 323³⁹

D. Smith
3 Riser
8 Ties for
0.55h

X Sec Anna St

11-9-53

Ely RR Row. to Sherman Ave

see skto FB 2146-19 ← Please use for Location Pts, same etc as they
are still the same, etc.

2+50.

2+00

1+50

1+00

0+50

0+02 50° Lt SW cor New Bldg.

3+674 Sta FB 2146-19

= S Rd. Hub

0+00 Ely Santa Fe RR. Row.

BM

5⁸⁷

1846

1259

Wait in hole
#P1647
FB 2146-22

INTERVED
NOV 10 1953

Lt. Nly

Rt. Sly

68

12.1 11.6 11.8 11.4 11.2 10.6
6¹ 6² 6² 6² 7² 7²
40 25 19 25 40

12.5 12.0 12.5 12.5 11.4 11.2
6⁰ 6⁵ 6⁰ 6⁰ 7¹ 7³
40 25 19 25 40

12.7 12.9 12.7 13.2 13.5 12.2 12.3
5⁸ 5¹ 5⁸ 5³ 5⁰ 6² 6²
40 25 15 18 25 40

13.9 14.1 14.3 13.7 14.2 12.4 11.5 12.0
4⁶ 4⁴ 4² 4⁸ 4³ 6¹ 7² 6⁵
40 25 7 17 25 30 40

14.3 14.6 15.0 15.3 14.6 11.6 11.5
4² 3⁸ 3⁵ 3² 3⁹ 6² 7²
40 25 17 17 25 40

3⁸
Elev
50.

14.2 14.9 14.9 15.0 14.1 12.0 12.3
4³ 3⁶ 3⁶ 3⁵ 4⁴ 6⁵ 6²
40 25 17 17 25 40

1846

BM starting

27 1259 ✓ P68

54190 E int Sherman + Anna St Now Lt Dist ch. 8⁵⁹

5410 20° LF end ch. - pav.

5400

Please look up plans paving Sherman St

4485 E int end con pav.

4465 20° RT end ch. in RT.

4450

TP

459

15³⁰

9²⁵

10²⁷

4400

3450

3400

Lt - Nly

E RT - Sly

69

8.66 8.70

6⁶⁴ 7¹⁰
25² 25²
rad. cut

8.9 8.73 8.90 8.41 8.60

6⁴ 6⁵⁷ 6⁴⁰ 6⁸⁹ 6⁷⁰
25 15² 16² 25²
pav. edge

9.06

6³⁴ 8.82
pav.

9.7 9.4 9.2 9.2 9.9 10.0
20² 20²
cut edge

5⁶ 5² 6¹ 6¹ 5⁴ 5³
25 19 16 25 40

15³⁰

10.6 10.3 10.5 10.4 10.4

7² 8² 8² 8¹ 8¹
40 25 25 40 40

11.0 11.0 11.1 10.9 11.7 12.5

7⁵ 7⁵ 7⁴ 7⁶ 6⁸ 6²
40 25 12 25 40

11.7 11.5 11.7 11.3 10.7 10.8

6⁹ 7⁰ 6⁸ 7² 7⁸ 7²
40 25 18 25 40

18⁴⁶

Cross Section Hugo St.
Clove St South Easterly

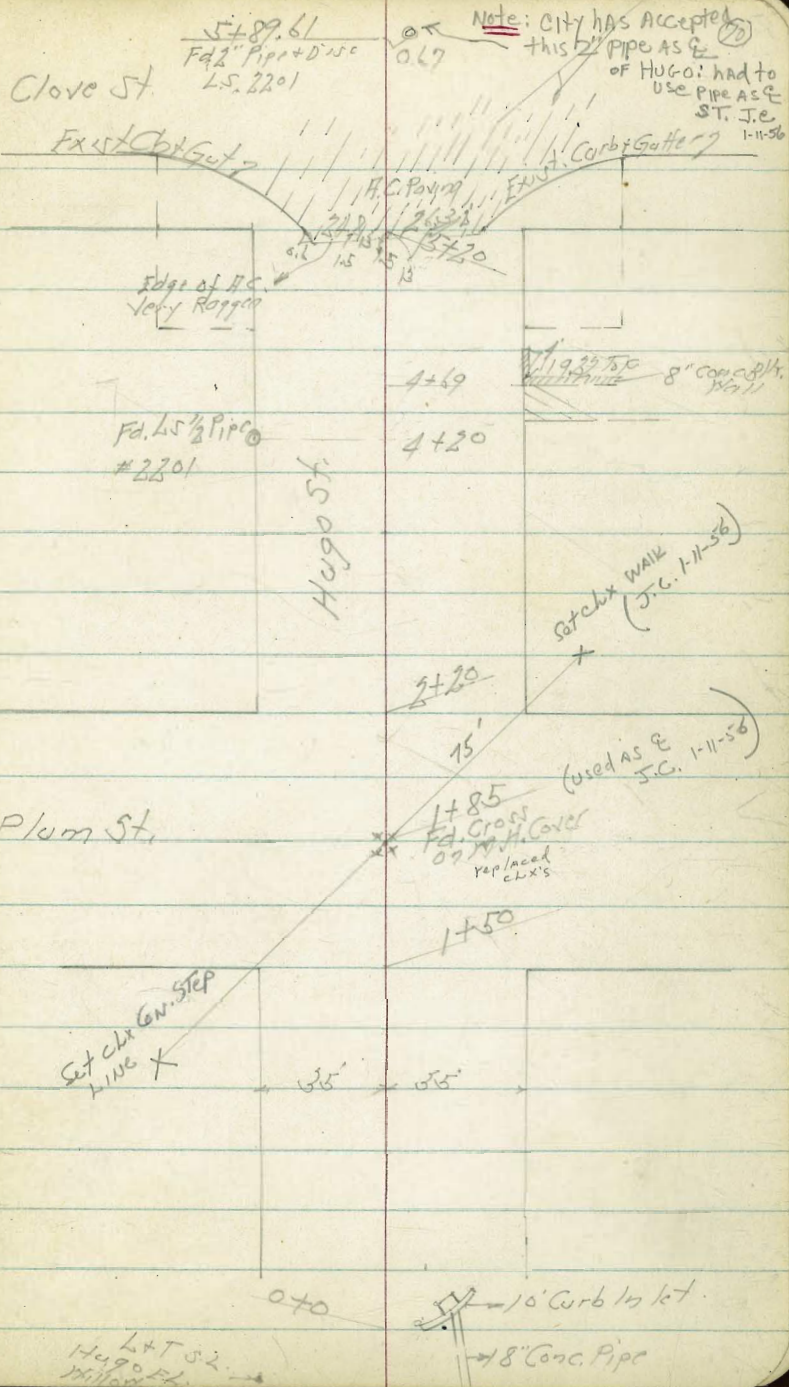
INDEXED

JER
FEB 15 1955

Feb. 14. 55

H. Simon
Garber
Chipman
Kelley

M.O. 3/15/55



Hugo St

Lt. SWly

♀

Rt. NWly

71

Bottom Found, 102.3
27.4

Top Wall 103.39
27.4

+72.0 27.4 Lt. Conc. Blk. Wall Rtl. to Road

Floor 102.97 102.68
50.3 32.7

+72.0 32.7 Lt. NWly Cor. Conc. Drive

Floor 102.97 102.06
50.3 32.7

+56.0 32.7 Lt. NEly Cor. Conc. Drive

+50

101.8 101.7 101.6 99.4 99.1 99.2 101.5 101.6
45 35 30 20 20 35 45

+49.5 24.3 Lt. P. Pole 3335

+45

98.9 99.7 98.8 98.8 98.7 100.6 101.0
45 35 20 23 35 45

+27 24.2 Lt. Deadman

+25

95.7 96.3 98.1 96.8 97.4 99.3 99.5 99.2
45 35 27 20 30 35 45

+15

94.0 95.4 95.3 98.5 96.7 95.5 97.6 96.0 95.5
45 35 30 20 10 18 35 45

Flow Line

92.40
10.0

Grate

95.28

+10.0

NWly Cor. Inlet

Top 96.34 Gt. 95.36
13.8 13.8

+05.3

SWly Cor. Inlet

Top 96.18 Gt. 95.15
3.8 3.8

0+00

96.39 NWly Cor
Inlet Sta. 0+05

92.4 93.2 93.5 93.9 92.2 89.1 85.8
45 35 15 23 35 45

Hugo St.

72

+68

1084 1098 1097 1072 1074 1074 1077 1079 1087
180 30 35 17 20 35 38

+50 =SEly of Plum

1086 1100 1095 1066 1068 1064 1078 1080 1081
100 30 35 17 20 35 38 100

+44.5

10998 10838 10685
30.4 = 50' 17" 32' 30" 21.3' 21.4' 21.5' 21.6' 21.7' 21.8' 21.9' 22.0'

+26

10990 10833 10633
30.5 = 50' 17" 32' 30" 21.4' 21.5' 21.6' 21.7' 21.8' 21.9' 22.0'

1+00

109.5 109.0 105.1 102.9 103.4 103.4 105.4 105.5
45 35 20 17 20 35 25

+99

26.7 Lt. Conc. Blk. Wall RAL to Road

Bot. Corn. Top Wall
Footing 104.3 106.48
26.7 26.7

0+98

103.07

105.0 104.9 104.1 102.6 103.2 103.1 105.4 105.5
45 35 20 17 20 35 45

Hugo St.

+70

11057 10940 1088 1092 1108 1111 1114
52: Garage 1st Floor
35: 1st Floor
35: 1st Floor
35: 1st Floor

+58

10920
35: 1st Floor
35: 1st Floor
35: 1st Floor

+45

1102 1092 1084 1089 1110 1114 1122
35 35 20 20 35 35 35

+30

11101 11150
35: 1st Floor
35: 1st Floor
35: 1st Floor

New Power Pole
340 W 47th
1843 11469

11468

+20 = H. 1/4 Plam

1100 1100 1095 1080 1085 1108 1114 1121 1122
100 50 35 20 20 35 35 50 100

+10 347 ft of 2 1/2" Power Pole #1448

+09 350 ft of 2" Anchor Pole #15987H

2+02

1096 1090 1086 1097 1082 1084 1088 1090 1095
100 50 35 37 20 20 35 50 100

+92 368 ft of 2" = Cable Dead End

1+85

1082 1102 1099 1080 1075 1082 1081 1082 1085 1091
100 50 40 35 17 35 35 35 50 100
35: 1st Floor
35: 1st Floor

+70

11470 11705 11700
31.5' Top Wall 29.5' Top Wall 29.5' Top Wall

25' Short Picket Fence

+64

11268 11241
51' Garage Concrete Floor 35' Garage Drive

+54

11111 11150
37' Garage Drive 35' Garage Drive

+49

11265 11239 11211 1105 1111
51' Garage Concrete Floor 35' Garage Drive 35' Garage Drive

11162 11110 11127
20 35' Garage Drive 35' Garage Drive

+21

220' Pt = SWY Top Pk #573965H

+20

257' Pt = SWY Short Picket Fence

+09

31.5' Stop ^{NEW} Post Pk #5419

370

1114 1110 1107 1093 1097 1110 1109 1110
45 35 31 24 23 35 30

+96

11133 1096
35' Top Wall 35' Garage Drive

2186

11054 10953
51' Garage Concrete Floor 37' Garage Drive

Hugo St

75

+45.5

11520 11560
35.3 54 5.4
Cor. Conc. 5.4
Driv. Conc. Foot

+29.5

11447
35.3 54
Cor. Conc. 5.4
Driv. Conc. Foot

+21

35' Lot of 1/2 - 114 Pole # 2443

1176 1170 1151 1129 1134 1144 1149 1154
45 35 28 18 22 35 35
To 8.5
Conc. Foot

+20

29' Lot of 1/2 - 114 Pole # 2443

1152 1150 1146 1128 1133 1129 1128
45 35 28 18 33 45

+08

11522 11475
50.6 35.3
Cor. Conc. 5.4
Driv. Conc. Foot

+10

1149 1145 1142 1120 1129 1124 1124 1121
45 35 31 24 20 35 45

+37.80

11106 11208
37.6 56.0
Cor. Conc. 5.4
Driv. Conc. Foot

BM

Hugo St.

13275 NEBP
Clover Fence 173371 - 1843-72
13988 NW Top of
Clover Hedge

5

BM

+55 = f. Clover

12913 12920 12865 12837 12815 12772 12727
10 35 13 13 35

+38 = Curb Line

12907 12859 12839 12771 12737 12721 12678 12660
60:cb 60:cb 35 13 13 35 80:cut
12709
60:cb

+29

1288 1284 12763 12707 12673 12647 12585 12635 1263
45 33:cb 33:cut 13 13 35:cut 35:cb 45

+20 = S Fly Clover St.

1294 1277 1271 12686 12638 12621 12589 12551 12500 12541 1256
38 35:29 248 13:rc 13:rc 25:cut 23:cb

+04 34' Lt. End Wire Fence Reg 6' Conc 1700 1700

+00 29.4' Lt. Nly Pox Pole #2191

+95 30' Lt of 1/2 = 1/2 8' Tree

1267 1262 1259 1230 1219 1225 1216 1225 1226
45 35 36 23 19 20 26 35

+69

1213 1215 1214 1190 1182 1177 1169 1163 1189 1180
45 35 35:cut 25 13 20 35 35:cut 35

+68 35' Lt. Nly Wire Fence

1213 1228 1189 1181 1175 1165 11554 11570
45 35 23 13 20 30:Combine
80:Wall

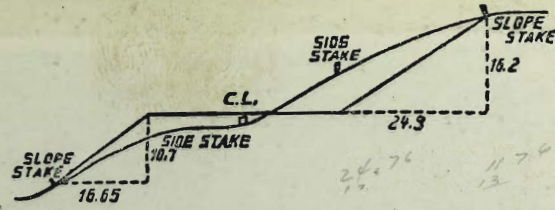
300.39
 16.57
 233.88

11520
 11561
 Orchard + Reservoir

73

5+78.54

17° 06' 17"



DISTANCES FROM SIDE STAKES FOR CROSS-SECTIONING.
 SLOPE 1 1/2 TO 1. ROADWAY OF ANY WIDTH.

	0	.1	.2	.3	.4	.5	.6	.7	.8	.9	
0	0.00	0.15	0.30	0.45	0.60	0.75	0.90	1.05	1.20	1.35	0
1	1.50	1.65	1.80	1.95	2.10	2.25	2.40	2.55	2.70	2.85	1
2	3.00	3.15	3.30	3.45	3.60	3.75	3.90	4.05	4.20	4.35	2
3	4.50	4.65	4.80	4.95	5.10	5.25	5.40	5.55	5.70	5.85	3
4	6.00	6.15	6.30	6.45	6.60	6.75	6.90	7.05	7.20	7.35	4
5	7.50	7.65	7.80	7.95	8.10	8.25	8.40	8.55	8.70	8.85	5
6	9.00	9.15	9.30	9.45	9.60	9.75	9.90	10.05	10.20	10.35	6
7	10.50	10.65	10.80	10.95	11.10	11.25	11.40	11.55	11.70	11.85	7
8	12.00	12.15	12.30	12.45	12.60	12.75	12.90	13.05	13.20	13.35	8
9	13.50	13.65	13.80	13.95	14.10	14.25	14.40	14.55	14.70	14.85	9
10	15.00	15.15	15.30	15.45	15.60	15.75	15.90	16.05	16.20	16.35	10
11	16.50	16.65	16.80	16.95	17.10	17.25	17.40	17.55	17.70	17.85	11
12	18.00	18.15	18.30	18.45	18.60	18.75	18.90	19.05	19.20	19.35	12
13	19.50	19.65	19.80	19.95	20.10	20.25	20.40	20.55	20.70	20.85	13
14	21.00	21.15	21.30	21.45	21.60	21.75	21.90	22.05	22.20	22.35	14
15	22.50	22.65	22.80	22.95	23.10	23.25	23.40	23.55	23.70	23.85	15
16	24.00	24.15	24.30	24.45	24.60	24.75	24.90	25.05	25.20	25.35	16
17	25.50	25.65	25.80	25.95	26.10	26.25	26.40	26.55	26.70	26.85	17
18	27.00	27.15	27.30	27.45	27.60	27.75	27.90	28.05	28.20	28.35	18
19	28.50	28.65	28.80	28.95	29.10	29.25	29.40	29.55	29.70	29.85	19
20	30.00	30.15	30.30	30.45	30.60	30.75	30.90	31.05	31.20	31.35	20
21	31.50	31.65	31.80	31.95	32.10	32.25	32.40	32.55	32.70	32.85	21
22	33.00	33.15	33.30	33.45	33.60	33.75	33.90	34.05	34.20	34.35	22
23	34.50	34.65	34.80	34.95	35.10	35.25	35.40	35.55	35.70	35.85	23
24	36.00	36.15	36.30	36.45	36.60	36.75	36.90	37.05	37.20	37.35	24
25	37.50	37.65	37.80	37.95	38.10	38.25	38.40	38.55	38.70	38.85	25
26	39.00	39.15	39.30	39.45	39.60	39.75	39.90	40.05	40.20	40.35	26
27	40.50	40.65	40.80	40.95	41.10	41.25	41.40	41.55	41.70	41.85	27
28	42.00	42.15	42.30	42.45	42.60	42.75	42.90	43.05	43.20	43.35	28
29	43.50	43.65	43.80	43.95	44.10	44.25	44.40	44.55	44.70	44.85	29
30	45.00	45.15	45.30	45.45	45.60	45.75	45.90	46.05	46.20	46.35	30
31	46.50	46.65	46.80	46.95	47.10	47.25	47.40	47.55	47.70	47.85	31
32	48.00	48.15	48.30	48.45	48.60	48.75	48.90	49.05	49.20	49.35	32
33	49.50	49.65	49.80	49.95	50.10	50.25	50.40	50.55	50.70	50.85	33
34	51.00	51.15	51.30	51.45	51.60	51.75	51.90	52.05	52.20	52.35	34
35	52.50	52.65	52.80	52.95	53.10	53.25	53.40	53.55	53.70	53.85	35
36	54.00	54.15	54.30	54.45	54.60	54.75	54.90	55.05	55.20	55.35	36
37	55.50	55.65	55.80	55.95	56.10	56.25	56.40	56.55	56.70	56.85	37
38	57.00	57.15	57.30	57.45	57.60	57.75	57.90	58.05	58.20	58.35	38
39	58.50	58.65	58.80	58.95	59.10	59.25	59.40	59.55	59.70	59.85	39
40	60.00	60.15	60.30	60.45	60.60	60.75	60.90	61.05	61.20	61.35	40
41	61.50	61.65	61.80	61.95	62.10	62.25	62.40	62.55	62.70	62.85	41
42	63.00	63.15	63.30	63.45	63.60	63.75	63.90	64.05	64.20	64.35	42
43	64.50	64.65	64.80	64.95	65.10	65.25	65.40	65.55	65.70	65.85	43
44	66.00	66.15	66.30	66.45	66.60	66.75	66.90	67.05	67.20	67.35	44
45	67.50	67.65	67.80	67.95	68.10	68.25	68.40	68.55	68.70	68.85	45
46	69.00	69.15	69.30	69.45	69.60	69.75	69.90	70.05	70.20	70.35	46
47	70.50	70.65	70.80	70.95	71.10	71.25	71.40	71.55	71.70	71.85	47
48	72.00	72.15	72.30	72.45	72.60	72.75	72.90	73.05	73.20	73.35	48
49	73.50	73.65	73.80	73.95	74.10	74.25	74.40	74.55	74.70	74.85	49
50	75.00	75.15	75.30	75.45	75.60	75.75	75.90	76.05	76.20	76.35	50

THE NATIONAL BLANK BOOK COMPANY
 HOLYOKE MASSACHUSETTS
 NEW YORK CHICAGO BOSTON SAN FRANCISCO