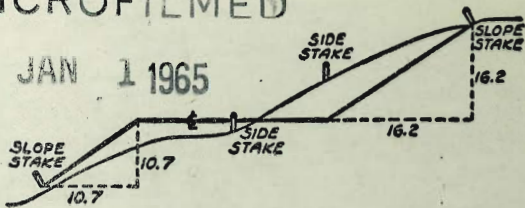




MICROFILMED

JAN 1 1965



DISTANCES FROM SIDE STAKES FOR CROSS-SECTIONING

SLOPE 1 TO 1, ROADWAY OF ANY WIDTH

	0	.1	.2	.3	.4	.5	.6	.7	.8	.9	
0	0.00	0.10	0.20	0.30	0.40	0.50	0.60	0.70	0.80	0.90	0
1	1.00	1.10	1.20	1.30	1.40	1.50	1.60	1.70	1.80	1.90	1
2	2.00	2.10	2.20	2.30	2.40	2.50	2.60	2.70	2.80	2.90	2
3	3.00	3.10	3.20	3.30	3.40	3.50	3.60	3.70	3.80	3.90	3
4	4.00	4.10	4.20	4.30	4.40	4.50	4.60	4.70	4.80	4.90	4
5	5.00	5.10	5.20	5.30	5.40	5.50	5.60	5.70	5.80	5.90	5
6	6.00	6.10	6.20	6.30	6.40	6.50	6.60	6.70	6.80	6.90	6
7	7.00	7.10	7.20	7.30	7.40	7.50	7.60	7.70	7.80	7.90	7
8	8.00	8.10	8.20	8.30	8.40	8.50	8.60	8.70	8.80	8.90	8
9	9.00	9.10	9.20	9.30	9.40	9.50	9.60	9.70	9.80	9.90	9
10	10.00	10.10	10.20	10.30	10.40	10.50	10.60	10.70	10.80	10.90	10
11	11.00	11.10	11.20	11.30	11.40	11.50	11.60	11.70	11.80	11.90	11
12	12.00	12.10	12.20	12.30	12.40	12.50	12.60	12.70	12.80	12.90	12
13	13.00	13.10	13.20	13.30	13.40	13.50	13.60	13.70	13.80	13.90	13
14	14.00	14.10	14.20	14.30	14.40	14.50	14.60	14.70	14.80	14.90	14
15	15.00	15.10	15.20	15.30	15.40	15.50	15.60	15.70	15.80	15.90	15
16	16.00	16.10	16.20	16.30	16.40	16.50	16.60	16.70	16.80	16.90	16
17	17.00	17.10	17.20	17.30	17.40	17.50	17.60	17.70	17.80	17.90	17
18	18.00	18.10	18.20	18.30	18.40	18.50	18.60	18.70	18.80	18.90	18
19	19.00	19.10	19.20	19.30	19.40	19.50	19.60	19.70	19.80	19.90	19
20	20.00	20.10	20.20	20.30	20.40	20.50	20.60	20.70	20.80	20.90	20
21	21.00	21.10	21.20	21.30	21.40	21.50	21.60	21.70	21.80	21.90	21
22	22.00	22.10	22.20	22.30	22.40	22.50	22.60	22.70	22.80	22.90	22
23	23.00	23.10	23.20	23.30	23.40	23.50	23.60	23.70	23.80	23.90	23
24	24.00	24.10	24.20	24.30	24.40	24.50	24.60	24.70	24.80	24.90	24
25	25.00	25.10	25.20	25.30	25.40	25.50	25.60	25.70	25.80	25.90	25
26	26.00	26.10	26.20	26.30	26.40	26.50	26.60	26.70	26.80	26.90	26
27	27.00	27.10	27.20	27.30	27.40	27.50	27.60	27.70	27.80	27.90	27
28	28.00	28.10	28.20	28.30	28.40	28.50	28.60	28.70	28.80	28.90	28
29	29.00	29.10	29.20	29.30	29.40	29.50	29.60	29.70	29.80	29.90	29
30	30.00	30.10	30.20	30.30	30.40	30.50	30.60	30.70	30.80	30.90	30
31	31.00	31.10	31.20	31.30	31.40	31.50	31.60	31.70	31.80	31.90	31
32	32.00	32.10	32.20	32.30	32.40	32.50	32.60	32.70	32.80	32.90	32
33	33.00	33.10	33.20	33.30	33.40	33.50	33.60	33.70	33.80	33.90	33
34	34.00	34.10	34.20	34.30	34.40	34.50	34.60	34.70	34.80	34.90	34
35	35.00	35.10	35.20	35.30	35.40	35.50	35.60	35.70	35.80	35.90	35
36	36.00	36.10	36.20	36.30	36.40	36.50	36.60	36.70	36.80	36.90	36
37	37.00	37.10	37.20	37.30	37.40	37.50	37.60	37.70	37.80	37.90	37
38	38.00	38.10	38.20	38.30	38.40	38.50	38.60	38.70	38.80	38.90	38
39	39.00	39.10	39.20	39.30	39.40	39.50	39.60	39.70	39.80	39.90	39
40	40.00	40.10	40.20	40.30	40.40	40.50	40.60	40.70	40.80	40.90	40
41	41.00	41.10	41.20	41.30	41.40	41.50	41.60	41.70	41.80	41.90	41
42	42.00	42.10	42.20	42.30	42.40	42.50	42.60	42.70	42.80	42.90	42
43	43.00	43.10	43.20	43.30	43.40	43.50	43.60	43.70	43.80	43.90	43
44	44.00	44.10	44.20	44.30	44.40	44.50	44.60	44.70	44.80	44.90	44
45	45.00	45.10	45.20	45.30	45.40	45.50	45.60	45.70	45.80	45.90	45
46	46.00	46.10	46.20	46.30	46.40	46.50	46.60	46.70	46.80	46.90	46
47	47.00	47.10	47.20	47.30	47.40	47.50	47.60	47.70	47.80	47.90	47
48	48.00	48.10	48.20	48.30	48.40	48.50	48.60	48.70	48.80	48.90	48
49	49.00	49.10	49.20	49.30	49.40	49.50	49.60	49.70	49.80	49.90	49
50	50.00	50.10	50.20	50.30	50.40	50.50	50.60	50.70	50.80	50.90	50

Distance of slope stake from side or shoulder stake for any width roadway, slope 1 to 1. If ground is nearly level, the cut or fill at side stake is located by the double entry method in left column and top row. The number in body of table in same row and column gives distance from side stake to slope stake. If ground is not level estimate the difference in elevation between the side stake and slope stake, lower target by this amount if cut, elevate if fill. Add this amount to cut or fill and find distance in table. Set up rod at this point, and line of sight should cut target. If it does not make the slight adjustment necessary.

TABLE XIII—CORRECTIONS FOR TANGENTS AND EXTERNALS

These corrections are to be added to the approximate values, found by dividing the tangent, or external, for a 1° curve (Table VIII) by the degree of curve, in order to obtain the true tangents, or externals. Intermediate values may be obtained by interpolation.

FOR TANGENTS ADD

Central Angle	DEGREE OF CURVE													
	5°	10°	15°	20°	25°	30°	35°	40°	45°	50°	55°	60°	65°	70°
10°	.03	.06	.09	.13	.16	.19	.22	.25	.28	.31	.34	.38	.42	.46
15°	.04	.10	.14	.19	.24	.29	.34	.39	.45	.51	.53	.58	.63	.68
20°	.06	.13	.19	.26	.32	.39	.45	.51	.58	.65	.72	.79	.84	.90
25°	.08	.16	.24	.33	.40	.49	.58	.67	.75	.83	.90	.99	1.06	1.14
30°	.10	.19	.29	.39	.49	.59	.69	.79	.89	.99	1.09	1.20	1.29	1.39
35°	.11	.22	.34	.47	.58	.69	.79	.81	.92	1.04	1.29	1.42	1.54	1.66
40°	.13	.26	.40	.53	.67	.80	.93	1.06	1.20	1.34	1.49	1.64	1.79	1.94
45°	.15	.30	.44	.60	.76	.91	1.06	1.21	1.37	1.52	1.70	1.87	2.04	2.21
50°	.17	.34	.51	.68	.85	1.02	1.19	1.36	1.54	1.72	1.91	2.10	2.29	2.48
55°	.19	.38	.57	.76	.95	1.14	1.32	1.52	1.72	1.92	2.14	2.35	2.56	2.77
60°	.21	.42	.63	.84	1.05	1.27	1.49	1.71	1.94	2.17	2.38	2.60	2.83	3.07
65°	.23	.46	.69	.93	1.16	1.40	1.64	1.88	2.13	2.38	2.63	2.88	3.13	3.39
70°	.25	.51	.76	1.02	1.28	1.54	1.80	2.06	2.33	2.60	2.88	3.16	3.44	3.72
75°	.27	.56	.83	1.12	1.40	1.69	1.98	2.27	2.57	2.87	3.16	3.47	3.78	4.09
80°	.30	.61	.91	1.22	1.53	1.84	2.15	2.46	2.78	3.10	3.44	3.78	4.12	4.46
85°	.33	.66	1.00	1.33	1.68	2.02	2.36	2.70	3.05	3.40	3.77	4.14	4.55	4.89
90°	.36	.72	1.09	1.45	1.83	2.20	2.57	2.94	3.32	3.70	4.10	4.50	4.91	5.32
95°	.39	.79	1.19	1.55	2.00	2.40	2.80	3.20	3.61	4.02	4.40	4.98	5.38	5.83
100°	.43	.88	1.30	1.74	2.18	2.62	3.06	3.50	3.95	4.40	4.88	5.37	5.85	6.34
110°	.51	1.03	1.56	2.08	2.61	3.14	3.67	4.21	4.76	5.31	5.86	6.43	7.01	7.60
120°	.62	1.25	1.93	2.52	3.16	3.81	4.45	5.11	5.77	6.44	7.12	7.80	8.50	9.22

FOR EXTERNALS ADD

Central Angle	DEGREE OF CURVE													
	5°	10°	15°	20°	25°	30°	35°	40°	45°	50°	55°	60°	65°	70°
10°	.001	.003	.004	.006	.007	.008	.009	.011	.012	.014	.015	.017	.018	.020
15°	.003	.007	.010	.014	.018	.023	.027	.029	.032	.035	.039	.043	.047	.051
20°	.006	.011	.017	.022	.028	.034	.038	.045	.051	.057	.063	.070	.076	.083
25°	.009	.018	.027	.036	.046	.056	.065	.074	.083	.093	.106	.120	.127	.135
30°	.013	.025	.038	.051	.065	.078	.090	.103	.116	.129	.149	.170	.179	.188
35°	.018	.035	.054	.072	.086	.109	.131	.153	.175	.197	.213	.230	.247	.264
40°	.023	.046	.070	.093	.117	.141	.172	.203	.234	.265	.277	.290	.315	.341
45°	.030	.060	.093	.119	.153	.184	.216	.254	.289	.325	.351	.378	.411	.445
50°	.037	.075	.116	.151	.189	.227	.266	.305	.345	.384	.425	.467	.508	.550
55°	.046	.093	.142	.188	.236	.283	.332	.381	.420	.479	.530	.582	.641	.700
60°	.056	.112	.168	.225	.283	.340	.398	.457	.516	.575	.636	.697	.774	.851
65°	.067	.135	.204	.273	.343	.412	.483	.554	.625	.697	.711	.845	.922	1.01
70°	.080	.159	.240	.321	.403	.485	.568	.652	.735	.819	.906	.994	1.08	1.17
75°	.095	.182	.286	.383	.480	.578	.678	.777	.877	.977	1.07	1.18	1.29	1.39
80°	.110	.220	.332	.445	.558	.671	.787	.903	1.02	1.13	1.25	1.38	1.50	1.62
85°	.128	.259	.391	.524	.657	.790	.926	1.06	1.20	1.34	1.47	1.62	1.76	1.91
90°	.149	.299	.450	.603	.756	.910	1.07	1.22	1.38	1.54	1.70	1.87	2.03	2.20
95°	.174	.350	.522	.706	.885	1.06	1.25	1.43	1.62	1.80	1.99	2.18	2.38	2.58
100°	.200	.401	.604	.809	1.01	1.22	1.43	1.64	1.85	2.06	2.28	2.50	2.73	2.96
110°	.268	.536	.806	1.08	1.35	1.63	1.91	2.20	2.48	2.76	3.05	3.35	3.66	3.96
120°	.360	.721	1.08	1.45	1.82	2.19	2.57	2.95	3.33	3.72	4.11	4.50	4.91	5.32

INDEX

E.W. MORSE

X-SECT ALLEY B/R 88 34th to 29th 2  
 X-Sec Haines - Diamond to Beryl 12  
 Elev Intersection Milton + Chicago }  
 " " " + Denver } 20  
 X-Sec Lister - Morena to Chicago 21  
 X-SEC LITTLEFIELD - MORENA TO FRANKFORT 26-61  
 X-Sec Ashton - Frankfort to Galveston 62-69

Clark  
Shepherd  
Bruwer  
W.O. 3/682  
10-2-52

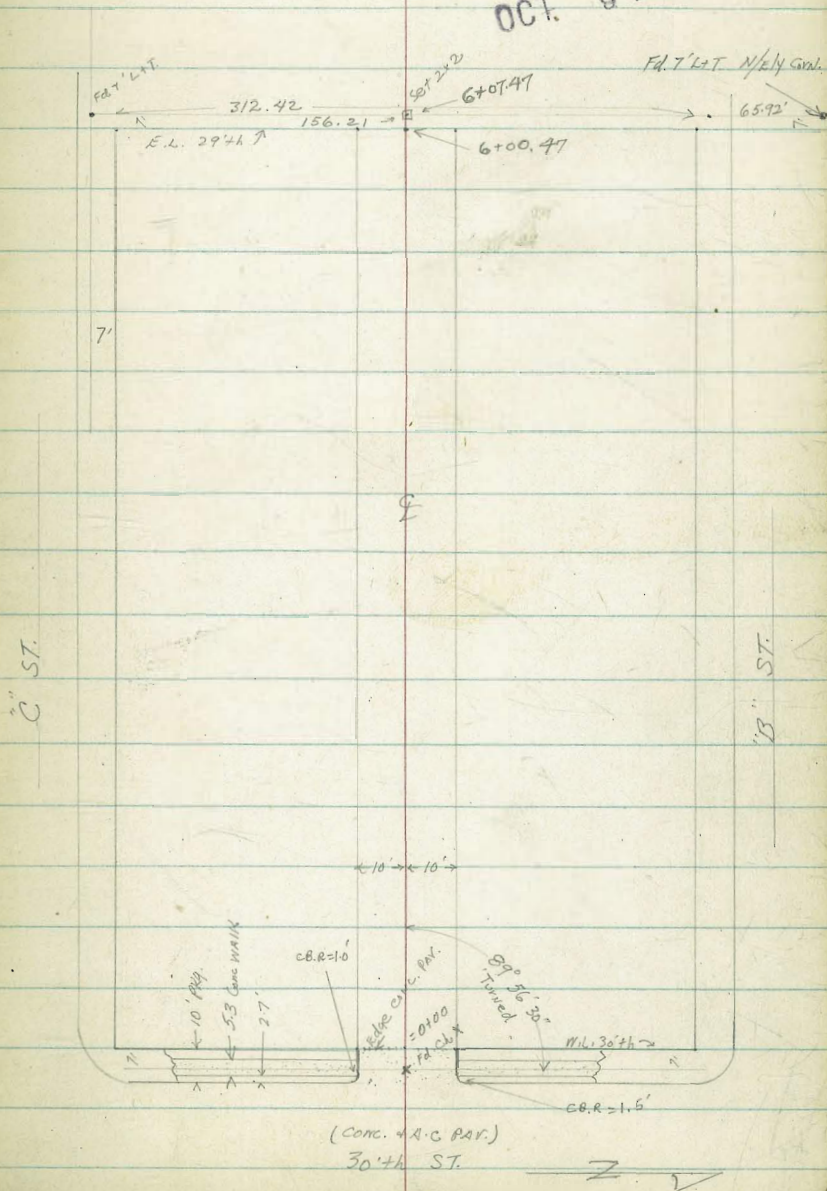
X-SECT. ALLEY BIK 88 - E.W.  
MORSE - 30<sup>th</sup> ST. to 29<sup>th</sup>

Notes Reduced 12-12-52 VEB.

INDIVIDUAL  
FILED  
OCT. 3 1952

DATA: F.B. # 1692  
Tie-sheet 102

SKETCH Not to Scale  
Notes Pg. 2



X-SECT. ALLEY BIK 88 E.W. MORSE

30<sup>th</sup> ST to 29<sup>th</sup>

LT

E

RT

0+39.5 10.3 LT END WING, House, Rests on TP Wall

T.P. 9.27 219.48 5.52 210.21

209.43  
10.05  
10.3  
TP WALL

219.48

INDEXED  
LOW  
DEC 31 1952

0+33.5 10.2 LT Bay Wing House, Rests on TP Ret WALL

0+31 0.50 LT & M.H

209.42  
5.31  
10.2  
TP WALL

206.23 208.80 208.23 208.19 208.63 209.93 210.35  
7.5 6.73 7.0 7.54 14.32 7.1 5.8 5.4  
.11 10 10 0.50 10 15 25  
DIT TP WALL DIT R.W. M.H

F.LINE

0+22 13 RT Bay 5' Hedge  
9.5 LT & Pole D.35 32.5 T

0+02.3 10.0 LT Bay Conc. Ret. WALL 8' wide

205.83 206.86 206.23  
7.70 8.87 7.5  
10 10 TP WALL 10 DIT  
F.W. WALL

0+00 Edge Conc Pav.  
W.L. 30<sup>th</sup>

0-10 W. CB LWC 30<sup>th</sup>

204.03 205.91 206.23 207.16 207.59  
9.70 7.76 7.50 8.57 8.14  
10.05 10.05 10.05 10.05 10.05  
TRCO CUT G. TRCB  
207.99 207.56 205.89 205.50 205.51 206.22 206.76 207.09 207.55 207.82 207.59  
12.74 15.17 9.94 12.23 11.8 9.51 8.77 8.84 8.18 5.89 5.30  
50 50 11 11 10 10 10 11.5 11.5 50 50  
TPCB CUT CB G. RI RI G CB GM CB

Note: No Further  
OUTS TAKEN  
Because of steep grade  
of 30<sup>th</sup>

0-30 E 30<sup>th</sup>

(0+00 = W. LWC 30<sup>th</sup>)

T.P. 7.52 215.73 ✓ 12.30 208.21 ✓

B.M. 0.19 220.51 ✓ 220.32 N.E. B.P. 30<sup>th</sup> 10 FB 1602-71

207.33  
12.70  
50

207.25  
8.48

211.24  
4.47  
50

215.73 ✓

LT.

♀

RT.

H20 10.1 RT END Board Fence

H10 10.1 LT ♀ Single gar, DIRT Floor

H02 9.8 RT Beg 6' Board Fence

H00

O+93 14.4 RT ♀ Single gar DIRT Floor

O+84 10. RT. Beg Coping Leading to gar. Ahead at angle (Broken + rotten)  
10.4 RT END Board Fence

O+76

O+75 10.2 LT Beg 7.5' Board Fence  
10.1 LT END CONC. Ret Wall

O+66 10' RT Beg 6' Board Fence  
12' RT END hedge

O+50

214.69  
4.8  
10

214.38  
5.1  
10.1  
DIRT

214.38  
5.1  
4.4  
10

213.78  
5.7  
15

214.08  
5.4  
10

213.44  
6.0

213.98  
5.5  
10

214.38  
5.1  
14.4  
DIRT

211.98  
7.5  
15

212.28  
7.2  
10

211.44  
7.8

212.11  
7.3  
10

212.28  
7.2  
20

206.48  
13.0  
12  
DIRT

205.50  
13.91  
10.1  
VTC  
wall

212.53  
6.85  
10.1  
T wall  
DIRT

212.28  
7.2  
10  
DIRT

211.44  
8.0

211.78  
7.7  
10

211.98  
7.5  
20

206.68  
12.8  
11  
DIRT

200.50  
8.98  
10.3  
T wall

200.08  
9.4  
10  
DIRT

209.38  
10.1

209.98  
9.5  
10

211.28  
8.2  
15

219.48 ✓

1450

214.18  
 5.30  
 14.1  
 Floor  
 gar

214.13  
 5.30  
 11.1  
 Lip  
 Apr.

214.18  
 5.3  
 10  
 DIRT

214.18  
 5.0

214.68  
 7.0  
 10

215.04  
 4.4  
 15

1449.5

10.1 RT 6' Board Fence (PART. OF shed)

1447

9.7 RT. & 1.5' Pepper tree

1445

13.4 RT END Apr. 2-Car gar, 15. to Floor

215.44  
 4.06  
 13.4  
 Lip

215.57  
 3.91  
 15

1441

11.1 LT Beg Conc Apr. 3-Car gar, 14.1 to Floor

214.16  
 5.30  
 14.1  
 Floor

214.41  
 5.07  
 11.1  
 Lip

1436.5

11.1 LT & 3' Conc WALK

214.45  
 5.03  
 14  
 WALK

214.43  
 5.05  
 11.1  
 Lip

1435

9.9 LT END Board Fence

1433

8.7 LT & Pole PA 2966

1425

13.4 RT Beg Conc Apron 2-Car gar 15 to Floor

215.33  
 4.15  
 13.4  
 Lip

215.47  
 4.01  
 15  
 Floor

219.48

2140

2139 17.7 RT end 3-car gar. CONC. Floor

2125 9. Center gar.

2111 17.9 RT Beg 3-car gar. CONC. Floor

2105 10.5 LT Beg 5.5' Board Fence  
10.4 LT END Bldg

2100

11915 14.1 RT END Apr. 2-car gar 15-3 Floor

1177 10.4 LT Beg old Bldg. BRICK FTN.

1175 14.1 RT CONC APR 2-car gar. 15.4 Floor

1172.5 11 LT END APR 3-car gar 14.0 to Floor

1165 9.9 RT END Board Fence (4 Shed)

LT.

210.88  
8.6  
15

211.96  
7.5  
10

210.99  
8.5  
15

211.98  
7.5  
10

RT.

212.08  
7.4  
10

212.38  
7.1  
10

212.48  
7.0  
15

212.08  
7.4  
10

212.08  
6.8  
10

213.46  
6.0  
14.9  
DIT

213.76  
5.72  
14.9  
Floor

212.81  
6.60  
10.4  
FTG.

213.27  
6.21  
10.4  
TOP FTN DIT

209.08  
10.4  
DIT

213.61  
5.87  
10.4  
Floor  
Doorway  
IN Bldg

213.44  
6.6  
10

212.98  
6.5

213.68  
5.8  
10

214.38  
5.1  
15

214.60  
4.88  
14.1  
Lip

214.62  
4.86  
15.3  
Floor

212.64  
6.84  
10.4  
FTG.

213.14  
6.34  
10.4  
TOP FTN

212.98  
6.5  
10.4  
DIT

214.63  
4.85  
14.1  
Lip

214.70  
4.78  
15.4  
Floor

214.13  
5.35  
14  
Floor

213.99  
5.49  
11  
Lip

219.48



LT. £ RT.

3+21 11.4 LT. END OF <sup>Cnc.</sup> Ret. WALL ⊥ to E Alley  
20' LT. END 2-Car gar.

206.71  
2.84  
20  
Floor  
TP  
WALL  
205.95  
3.60  
3.6  
11.4  
10  
205.95

205.75  
3.8  
206.25  
3.3  
10  
207.25  
2.3  
15

3+03.5 10-2 RT. Brg Cnc Brick Ret WALL

206.15  
2.80  
20  
Floor

209.16  
0.39  
TP WALL  
207.75  
1.8  
DIFT  
207.15  
2.4  
10.2  
FTC

3+03 20' LT Brg 2-car gar. Cnc Floor

3+02 10.0 RT £ 3' Cnc. WALK, 13.5 to Step.

209.91  
1.64  
10  
Lip  
208.47  
1.98  
11  
Brg  
208.41  
1.08  
13.5  
TP  
Step  
207.16  
0.29  
13.5  
TP  
Step  
207.42

207.15  
2.4  
15

207.55  
2.0  
10

207.35  
2.2

208.15  
1.4  
10

209.55  
0.00  
20

T.P. 2.27 209.55 12.20 207.28

209.55 ✓

2+75  
2+74 11 LT. END Board Fence  
9.5' Hig Pole # A 2926

209.18  
10.3  
15

210.38  
7.1  
10

209.98  
9.5

210.28  
7.2  
10

211.12  
8.3  
20

2+56 14.9 RT. £ Single gar. DIRT Floor

211.98  
7.5  
14.9

2+50

210.48  
9.0  
15

211.48  
8.0  
10

211.28  
8.2

212.18  
7.3  
10

212.28  
7.2  
15

2+44 16.1 RT. £ Single gar. DIRT Floor

212.48  
7.0  
16.1

219.48 ✓

LT.

Σ

RT.

7

3+91 103 LT & Deadman

3+80 84 RT & 4" Vert. Sewer Pipe

3+78

3+73 9.8 LT & Pole ± 2910

T.P. 0.91 200.75 9.71 199.84

3+61 9.1 RT Beg house - ON Conc. Pier  
9.2 RT END Board Fence

3+55

3+52 8.6 RT & 18" Pepper Tree

3+51 9.8 RT Beg 4' Board Fence

3+36 20.3 LT & Single gap Conc. Floor

3+34 0.2 RT M.H.

3+26 10.1 RT END Conc. Wall

184.55  
16.2  
50  
Excavated  
LOT  
FACE & CUT

184.75  
16.0  
12.5  
Toe  
CUT

195.45  
5.3  
10.8  
Shoulder  
CUT

195.05  
5.7  
10  
7.5

199.75  
3.0  
7.5

198.85  
1.9

199.65  
1.1  
9  
DIRT

191.65  
9.1  
20

196.45  
4.3  
10

198.45  
2.3  
8

198.95  
1.8

199.75  
1.0  
9  
DIRT

200.75 ✓

202.55  
7.0  
9.1  
DIRT

201.55  
8.00  
9.1  
FTG

203.52  
6.23  
9.1  
TP. Pier

200.25  
9.3  
25

202.25  
1.3  
10

203.15  
6.4

203.55  
6.0  
7.8

204.55  
3.0  
10

204.75  
4.8  
15

202.85  
6.70  
20.3  
Floor

203.85  
5.7  
10

204.55  
5.0  
5

204.65  
4.9

205.05  
4.5  
10

204.05  
3.5  
15

4.79  
RIM

11.28  
F. LINE

205.95  
5.6  
10.1  
DIRT

205.45  
4.1  
10.1  
FTG

209.47  
0.88  
TP. Pier

209.55 ✓

5731 0.30 RT 9 M.H

5700 8.7 RT END 5' Board Fence + Bag Wire Fence

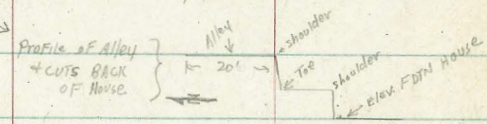
4772 20.3 LT END House

T.P. 0.21 189.56 11.40 189.35

4750 9.3 RT Bag 5' Board Fence  
8.8 RT END Chicken Wire Fence

4731 20.3 LT Bag House

4730



4700 8.3 RT Bag Chicken Wire Fence

3796 8.7 RT 9 2' CONC WALK

3795 8.6 RT END House

179.56 177.86 184.06 185.36 185.86 181.41  
 12.0 11.7 5.5 4.2 3.7 8.15  
 25 19 10 7 4 8.15  
 elev Lot

178.44 185.46 185.76 187.86 188.16 191.16 191.26 193.06  
 11.2 4.1 3.8 1.7 1.4 +1.6 +1.7 +3.5  
 20.3 19 10 6 9.3 10 20  
 TP CUT BK House  
 FDN House

189.56

185.35 186.15 190.61 191.25 193.65 193.75  
 15.4 14.6 10.4 7.5 7.1 1.0  
 20 10 10 15  
 Shoulder CUT Toe CUT Shoulder

178.12 178.22 185.15 186.15 185.15 194.05 196.65 197.25 198.25  
 22.63 22.53 15.6 14.6 16.6 8.1 3.5 2.5  
 20.3 20.3 20 12 10 8.3 10 15  
 DIRT TP FDN TP Toe CUT

185.25 185.55 193.55 194.55 192.05 197.35 197.75  
 13.5 12.2 11.2 6.2 3.7 3.4 3.0  
 30 14 11 8.3 10 15  
 elev. Toe Shoulder

185.65 194.15 194.64 196.15 197.45 198.25 199.25 194.35 199.75  
 15.1 6.6 6.1 7.6 3.3 2.5 1.5 1.4 1.0  
 14 12 10 6 8.3 9.0 10 15  
 toe Shoulder

198.75 199.09 199.25 199.97  
 2.0 1.66 1.50 0.78  
 8.5 8.7 10 15  
 DIRT LIP WALK WALK

200.75

LT.

Σ

RT.

Check: 0.14 220.29 ✓ - 220.32 - BM = 11/E BP B + 30.4h

T.P. 780 220.43 ✓ 0.05 212.63 ✓

T.P. 12.24 212.68 ✓ 0.89 200.44 ✓

T.P. 12.04 201.33 ✓ 0.27 189.29 ✓

6+00.47 E. Live 294h as per the sheet  
294h st. Does Not go through From 'C' to 'B'

5+50 8.5 RT END wire Fence

164.36  
25.7  
50

168.76  
20.8  
10

170.16  
19.4

170.96  
18.6  
10

173.96  
15.7  
50

171.86  
17.7  
20

176.86  
12.7  
10

178.66  
10.9

181.26  
8.3  
10

182.06  
7.5  
15

189.56 ✓

Missouri

st.

Chalcedony

st.

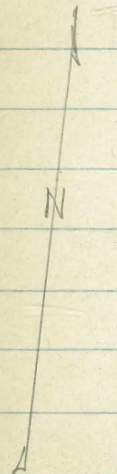
10

2+70.55

2+69.83

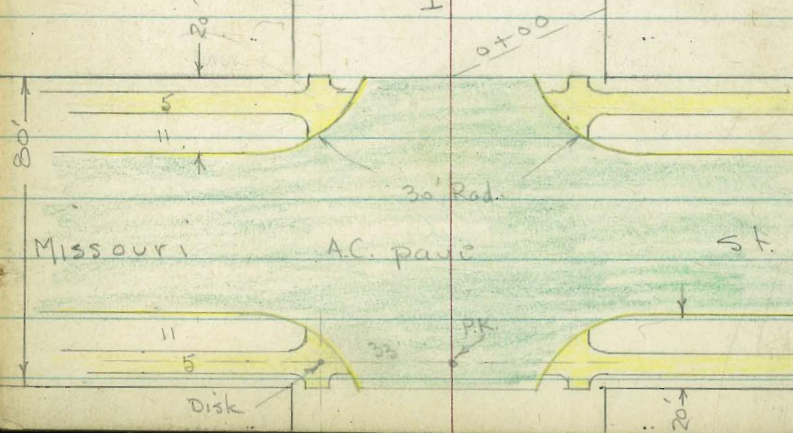
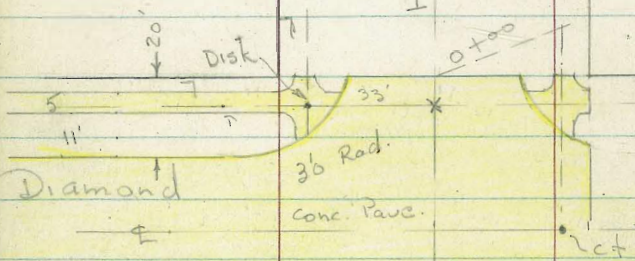
st.

st.



Haines

Haines



Law

st.

Beryl

st.

11

2+70.00  
nt.

Note: - walks +  
pave edge are off

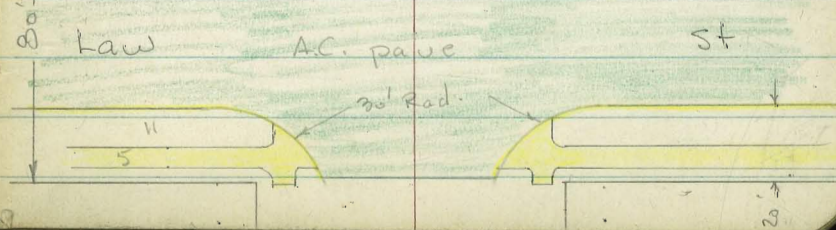
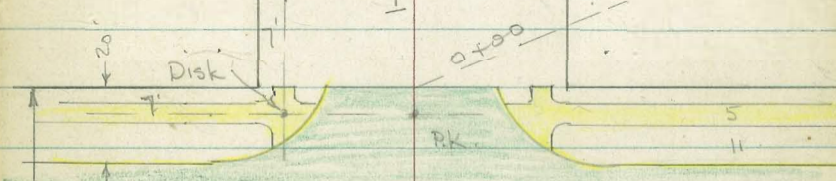
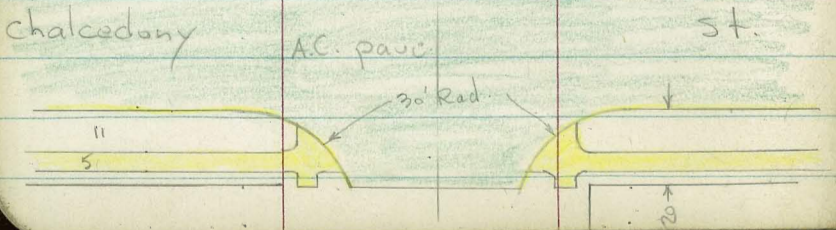
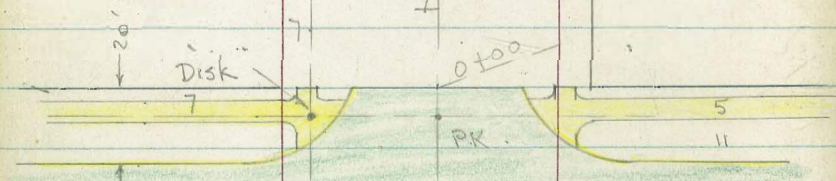
nt.

40' 40'

40' 40'

Haines

Haines



Conc. pave

Cross

30' Rad.

11'

5'

2+70.50

0+00

PK.

Law

A.C. pave

st.

20'

20'

Lt.      ⊕      Rt.

INDEXED  
MAR 31 1953

X-Sect. Haines - Diamond to Beryl

# 6843  
W.O. 32124 - 1-27-53 7.0.

0+78- 40' Rt. = ⊕ 16' Conc. Dr.

79.93 80.10  
40 50  
Dr. floor.  
gar.

0+60

78.8 78.8 78.1 78.7 78.7 78.3 78.8 79.5  
40 20 15 10 15 18 40

0+55- 23.1 Lt. = ⊕ 8' Dr. - 2' 2' Conc. Strips

78.88 78.73 78.91  
45 40 23.1  
floor Dr. Dr.  
gar.

0+54- 39.9 Rt. = ⊕ 3.5' Conc. walk

79.37 79.58  
39.9 50  
walk

0+51- 33.8' Lt. = end Ely. of 2' walk - at Dr.

78.79  
33.8

0+20

78.1 78.1<sup>6</sup> 78.13 78.2 77.1 77.6 77.2 77.9 78.4  
40 36.0 33.8 19 16 20 22 40  
walk

34' Lt. = Bcg. Ely. of 2' Conc. walk

0+00 = N.L. Diamond + edge of Conc. Pav. + cbs.

77.40 77.37 77.32 76.70 76.70 76.74 76.71 76.73 77.31 77.43 77.49  
36 31.1 21.2 10 10 21.2 Top 30.9 35.9  
walk end gut. cb. end walk.

0-18.7 - 39.2 Rt. = end Ret. - 30' Rad.

76.41 77.12  
39.2 Top  
gut.

0-20 = N. cb. Diamond

76.03 75.48 76.45 75.79 76.20 76.27 76.33 76.40  
Top 80 50 20 20 39.2  
gut. gut. edge  
Cont.

B.M. = c.t. = ⊕ Diamond + E. 7' line Haines 76.19

B.M. = c.t. ⊕ Diamond  
E.L. Ingraham 83.59

LT. ± RT

Set B.M. on S.W. 7' Disk

82.47

N.W.

N.E.

PC	82.29 Top	82.65 gut 2	83.50 Top	82.86 gut 1	N. end.	U. end.	82.88 gut 1	83.49 Top	82.68 gut 2	83.23 Top	PC
----	--------------	----------------	--------------	----------------	------------	------------	----------------	--------------	----------------	--------------	----

S.W.

S.E.

Elev. around Returns - 37' around - 3 parts - 12.3' each

PC	82.54 Top	81.98 gut 2	82.41 Top	81.84 gut 1	send.	S. end	81.87 gut 1	82.56 Top	82.13 gut 2	82.80 Top = PC	See +25'
----	--------------	----------------	--------------	----------------	-------	--------	----------------	--------------	----------------	-------------------	----------

2+70.55 = S.L. Missouri + edge of A.C. pave + cbs.

82.49	82.45	82.23	81.58	81.84	81.88	81.75	81.65	82.32	82.57	82.72
36.2	31.2	Top	21.7	10	10	21.8	Top	31.2	36.2	
walk	end.	gut.				gut.	end.	walk		

2+25

81.6	81.7	81.0	81.4	81.4	80.8	81.6	81.9
40	20	15	10		12	20	40

1+96 - 36' Rt. = ± 16' Conc. Dr.

81.47	81.68
36 Dr.	45 floor gar.

1+80

81.2	80.6	80.0	80.6	80.8	80.7	81.0
40	20	15	10		20	40

1+35 = in Alley.

79.2	79.7	79.7	79.3	80.0	80.0	79.8	80.0	80.2
75	40	20	15	10		20	40	80

1+23 - 25' Lt. = ± P. pole # 4724

1+00 - 40' Lt. = E 2' Conc. walk

79.50	79.47	79.4	78.8	79.4	79.4	79.2	79.7	79.7
52.7 at porch	40	20	15	10		15	25	40
	walk							

0+84 - 26' Lt. = ± 10' Pepper



Lt.

±

Rt.

1+45 - 40.1' Rt. = Beg. wly. of 4' Conc. walk

87.78  
40.1 = walk

1+43 - 32.5' Lt. = ± P. pole # P 4776

1+35 - in Alley

87.5 87.4 87.2 86.9 87.4 87.0 87.3 87.3 87.8  
80 40 20 15 18 20 40 80

1+02 - 40.2 Rt. = end wly. of walk

86.73  
40.2 = walk

1+00

86.6 86.5 86.2 86.5 85.8 86.4 86.68  
40 20 15 18 20 40.3  
walk

0+60

85.5 85.6 85.2 85.7 84.4 85.6 85.6 85.74  
40 20 15 18 20 40 40.3  
walk

0+35 - 40.4' Rt. = Beg. wly of 2.5' Conc. walk

85.61  
40.4 = walk

0+30

85.2 84.8 84.0 84.6 84.8 83.7 85.2 85.4  
40 25 20 10 18 22 40

80' N. = N.L. Missouri = 0+00 ahead. = edge A.C. pave  
± Cbs.

83.70 83.72 83.74 83.13 83.30 83.46 83.30 83.07 83.15 83.74 83.79  
36.1 31.1 Top 21.7 10 10 21.7 Top = 31.36  
'walk' gut. gut. end. 'walk'

60' N. = N. cb. Line

82.51 82.78 82.83 82.65 82.66 83.29  
50 20 20 59 Top = R.  
gut. in Dr. gut.

20' N. = S. cb. Line

82.53 81.86 82.13 82.05 81.98 82.18 82.82  
Top 9.50 20 20 50 Top =  
= P.C. 30' Rad. = R. gut. P.C.

Haines

60' N. = P. cb. Line

			Lt.	±		Rt.	
92.06	91.34	91.65	92.00	91.86	91.94	92.63	
Top = P.C.	50 got.	20		20	50 got.	Top = P.C.	

20' N. = S. cb. Line

91.06	90.58	90.83	91.06	90.94	91.12	91.65	
Top = P.C.	50 got.	20		20	50 got.	Top = P.C.	
30° Rad.							
N.W.				N.E.			

92.15	91.51	92.28	91.61			92.00	92.68	90.93	92.60
EC. Top	got.	Top	got.	N. end.		P. end.	got.	Top	got.
2		1				1	1	2	P.C. = 60' N.

Elev. around Returns - 37' around - 3 parts 12.3'

			S.W.				S.E.		
91.08	90.64	91.04	90.50			90.62	91.25	90.98	91.52
Top	got.	Top	got.	S. end.		S. end.	got.	Top	P.C. See 26' N.
2		1						2	
				91.37 43 = end walk					

S.L. Cont.

2+69.83 = S.L. of Chalcedony + edge of A.C. pav. + cbs.

91.12	91.02	90.85	90.20	90.50	90.59	90.43	90.26	90.92	91.19	91.22
36 walk	31	Top = end.	21.5 got.	10		10	21.6 got.	Top = end.	31 walk	36

2+50

91.4	91.1	89.7	90.1	89.4	90.3	90.8	90.84
40	25	18		20	25	40	43 walk

2+25

90.3	90.3	89.1	89.5	89.0	89.6	90.0	90.04
40	25	18		20	25	40	43 = walk

- 43 Rt. = Beg. wly. of 2' line walk

1+80 - 40' Rt. = end wly. of walk

89.0	88.9	87.8	88.5	87.7	88.3	88.77	88.86
40	25	18		20	22	40	43 end walk walk

Lt.      ±      Rt.

2+25

01.1   01.1   99.3   99.8   99.6   01.2   01.4  
40      25      20              18   30   40

2+16- 39.9' Rt. = ± 2' Conc. walk

01.21      01.32  
39.9      50  
walk      walk

2+00- 39.9' Rt. = ± 15' Conc. apron to Doub. Gar.

00.80      01.09  
39.9      44.7  
apron      floor  
gar.

1+90- 40.6' Lt. = ± 9' Conc. apron to Sing. Gar.

100.58      100.04  
42.6      40.6 = apron  
floor      gar.

1+80

99.9      99.3   97.8   98.5   98.0   99.6   99.9  
40      25      20              15      30      40 = By Conc. wall

1+35' = ± Sewer M.H. - in Alley

98.6      98.6   97.3   96.4   97.16   96.4   98.2   98.5   98.4  
80-      40      25      20      Ely. Rim      15      30      40      80

1+27- 39.4' Lt. = end fence

0+85

96.9      96.8   97.0   94.6   95.2   94.9   96.7   97.0  
40      38.5      22      18              15      30      40 = by fence

0+74- 40.2' Rt. = ± 7' Conc. Dr.

96.72      96.79  
40.2      50  
Dr.      Dr.

0+64- 38.1' Lt. = Beg. Lath Fence

0+35

94.9      95.2   92.8   93.6   93.4   95.2   95.4  
40      22      18              15      30      40  
By Hedge

80' N. = N.L. Chalcedony = 0+00 ahead = edge of A.C.

92.47   92.47   92.46   91.80   92.19   92.44   92.39   92.30   92.93   92.95   92.97  
36      31      Top      21.9      10      21.9      Top =      31.1      36.1  
walk      end      got.      got.      end      walk

Set B.M. = N.W. 7' Disk  
Chalcedony.

92.35



Haines

Set B.M. on S.E. 7 ct.

116.12

See Book 1593 - P. 13 - for Elev. of end of obs.

15.56 = 8.1593

2+70.58 = S.L. Beryl - Edge of Conc. pave 13

15.76	15.72	15.60	15.03	15.33	15.36	15.49	15.31	16.06	16.13	16.16
36.7	31.9		21.7	10		10	21.7	Top =	32.4	37.4
	walk		on line	gut = 0.5			gut.	on line		11.5 of line
	1.5			N.						- walk

2+30 - 27.6' Lt. = ± 1 1/2" Pine

2+29 - 28' Rt. = ± 6" Tree

2+25

14.0 13.7 12.9 13.6 13.5 14.8 15.2

2+19 - 28' Lt. = ± 10" Tree

40 25 18

- 37.8' Lt. = Beg. ± 1' Hedge - 2' high

2+14 - 37.1' Lt. = end apron

13.43

2+09 - 28.5' Rt. = ± 8" Tree

37.1 = apron

1+97 - 37.1' Lt. = Beg. Conc apron to Doub. gar.

13.71 13.12  
44.2 floor 37.1 = apron

1+80

11.9 11.9 11.5 12.1 11.8 12.6 13.5  
40 20 17 17 20 40 By wall

1+56 - 41.1' Rt. = ± Doub. Gar.

12.75  
41.1 = floor

1+35

10.5 10.5 10.4 10.5 10.4 10.9 11.2  
80 40 20 20 40 80

1+24 - 19.1' Lt. = ± P. pole # P 4874

0+90

08.8 08.7 09.0 08.7 08.5  
40 20 20 40

0+86 - 48' Rt. = ± Doub. Gar.

09.14  
48 = floor

Lt.      E      Rt.

20' N. - S. cb. Line of Beryl

30' Rad.  
Elev. around Returns - 37' around - 3-parts.

15.33	14.77	15.80	15.22	15.81	16.07	16.00	15.63	15.80	16.41	16.66	17.23
Top	100	Top	50	20		10	22	50	Top	100	Top
gut.		gut.	gut.			gut.	gut.	gut.	gut.	gut.	gut.
		= PCL							20' Rad.		

S. Co.

S. E.

15.16	15.76	15.10	15.62		16.00	15.43	16.04	15.52	
E.C.	gut.	Top	gut.	Top	S. end	S. end.	Top 1	Top 2	gut.
	2		1						

See Sect.

INDEXED

MAY 20 1953

Intersection

Milton +

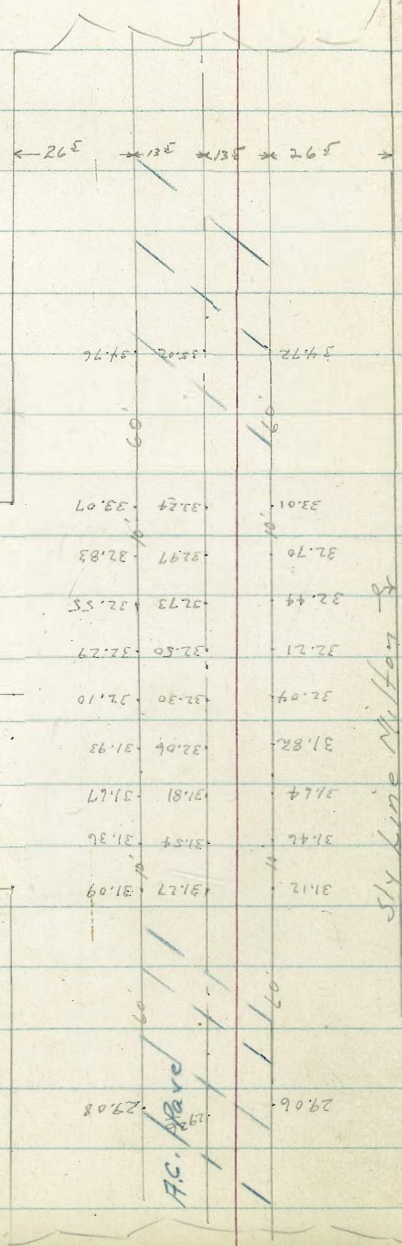
Denver

W<sup>o</sup># 32127

5-18-53

Allen, D. Sisson,  
C. Powell

90'  
40'  
Denver



W<sup>o</sup># 32127.

Direct elev  
Red used

BN = N.E. Top F.H.  
MILTON + DENVER  
FR 2194 - Page 52

20

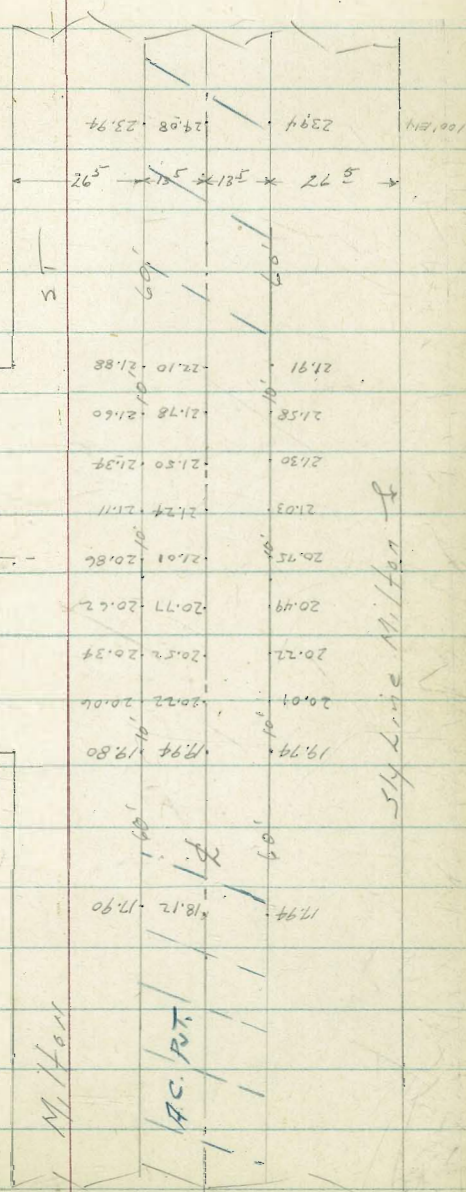
Intersections

Milton +

Chicago

Chicago St.

80'



X-sec Lister - Modena Blvd.  
To Chicago -  
No # 32127

Ref. FB 2194.

T.P. Sheet 1169.

C. Allen

D. Sisson

C. Powell

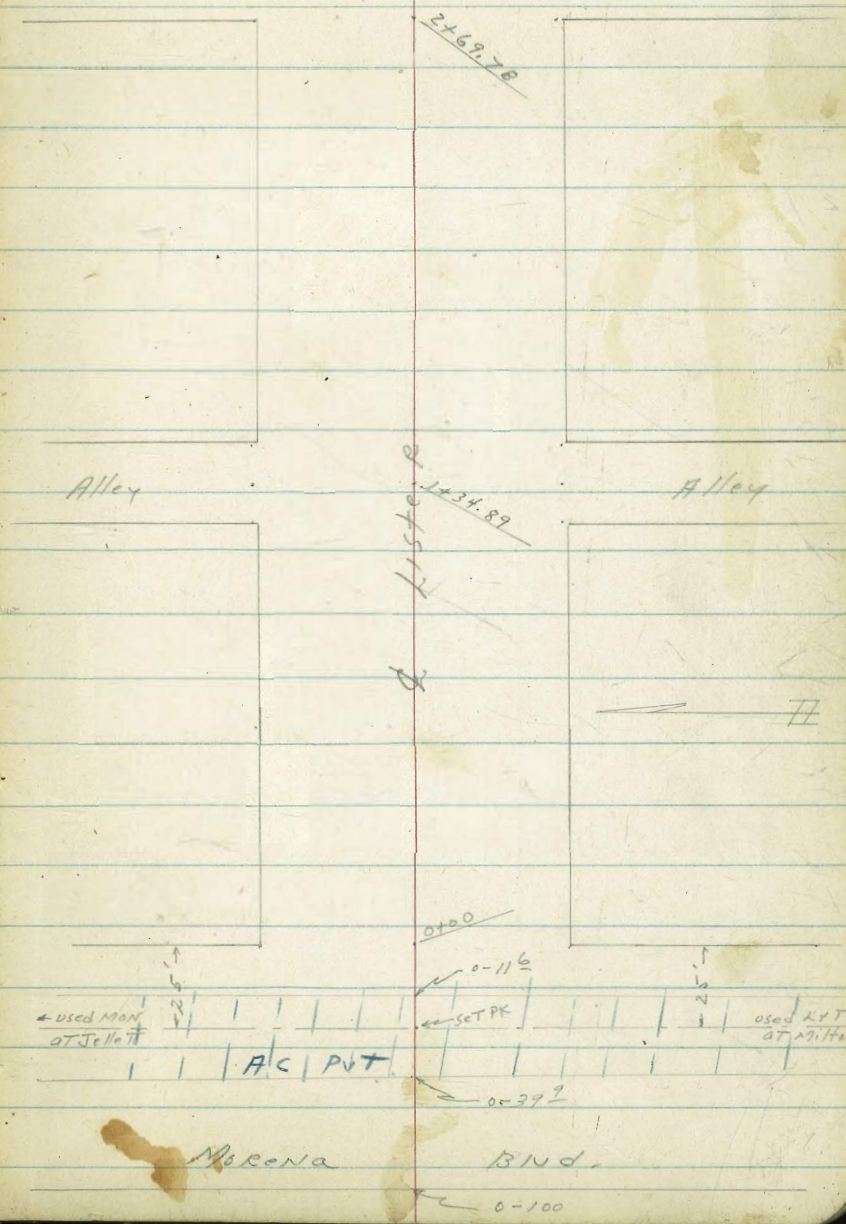
5-18-53

INDEXED  
JUL 30 1953

See page 22 for Levels.

Chicago

21





X-sec Lister - Morena Blvd  
To Chicago - see page  
21 for sketch

LT = N14

Lister

RT = S14 - 22

39<sup>2</sup> LT = Beg 3' CONC BLOCK Wall  
0-400 = Ely Line Morena Blvd

9.9	9.9	10.3	10.1	9.8	9.3	9.2	9.3	9.9	9.8	10.2
5 <sup>2</sup>	5 <sup>2</sup>	48	50	58	58	59	58	5 <sup>2</sup>	5 <sup>3</sup>	49
100	392	392	24	23		20	23	24	40	100
	FAT	CL								

0-11<sup>6</sup> = Ely edge H.C. Pavc Morena

9.04	9.29	9.37	9.25	9.28	9.32	9.34	9.36	9.46	9.50	9.68
6 <sup>10</sup>	585	577	589	586	582	580	578	568	564	526
100	40	20	20	10	10	20	20	30	40	100

0-25 = Approx E. H.C. Pavc Morena

9.49	9.72	9.79	9.87	9.96	10.00	10.16
565	542	535	527	518	514	498
100	40	20		20	40	100

0-39<sup>2</sup> = Wly edge H.C. Pavc Morena Blvd

9.08	9.26	9.29	9.42	9.60	9.68	9.88
606	588	585	572	554	546	526
100	40	20		20	40	100

0-50 = E Morena Blvd (scate)

8.4	9.1	9.2	9.3	9.4	9.3	9.3
67	60	59	58	57	58	58
100	40	20		20	40	100

TP, 4.15 15.14, 12.84, 10.79

15.14 T

B.M. 0.10 23.83

TP, page 41  
FB 2194  
23.73

S.E. top F.H. Lister + Chicago

X-sec Lister - Morena to Chicago

LT = N1/4

♀

Rt = S1/4 -

23

0+65 - 40° LT = begin 5' high Conc Block Wall -

10.7	11.2
44	39
40°	40°
Foot	Gr

0+63 - 37° LT = ♀ 4' wide Conc Walk

11.23	11.22	11.19
391	392	395
425	40	375
WK	WK	WK

0+55 - 25° LT = ♀ 11' wide Conc Driveway

11.25	10.65
389	449
408	258
Dr	Dr
Gar Hook	

0+50

11.3	10.7	10.1	10.6	10.0	10.6	10.7
38	49	50	45	51	45	44
40	22	21		22	23	40

0+47 - 39° LT = end Conc Block Wall -

11.6	11.1
35	40
398	398
Foot	Gr

0+31 - 39° LT = ♀ 3' conc walk

11.00	11.00
414	414
435	395
WK	WK

0+25 - 28° Rt = ♀ 36" Euc Tree

15.14 x

LT=N14

RT=514-24

1+70

13.0	13.1	13.5	13.1	13.4	13.1	13.8	13.8	13.8
10 <sup>2</sup>	10 <sup>6</sup>	10 <sup>2</sup>	10 <sup>6</sup>	10 <sup>3</sup>	10 <sup>6</sup>	9 <sup>2</sup>	9 <sup>2</sup>	9 <sup>2</sup>
60	40	19	18		18	19	40	60

1+45-40° RT= beg. 5' high Board Fence

7' high

1+44-35° LT= begin 2' wide engine hedge

T.P.<sub>2</sub>

10.11 23.76 1.49 13.65

23.76 T

1+34.89= E N+S. Alleys -

11.7	12.1	12.1	12.4	12.2	12.5	13.3
3 <sup>4</sup>	3 <sup>0</sup>	3 <sup>0</sup>	2 <sup>7</sup>	2 <sup>2</sup>	2 <sup>6</sup>	1 <sup>8</sup>
100	40	19		22	40	100

1+25-27° RT= 8" power pole # 3949

1+00-27° RT= Deadman

11.2	11.4	12.0	11.2	11.5	10.8	11.9	11.7	11.7
3 <sup>2</sup>	3 <sup>7</sup>	3 <sup>1</sup>	3 <sup>9</sup>	3 <sup>6</sup>	4 <sup>3</sup>	3 <sup>2</sup>	3 <sup>4</sup>	3 <sup>4</sup>
60	40	20	19		23	24	40	60

0+87-40° LT= end 5' high Conc Block wall.

10.9	11.3
4 <sup>2</sup>	3 <sup>8</sup>
40°	40°
Foot	Gr

15.14 T

TP<sub>3</sub> - Start BM:

0.04

(23.73)

23.72

LT = N14

Rtoely -

25

For sections on Chicago see FR 2194. Page 42.

2+69<sup>78</sup> = Wly Line Chicago ST

18.1	17.3	16.6	17.4	16.8	17.9	18.8
5 <sup>6</sup>	6 <sup>4</sup>	7 <sup>1</sup>	6 <sup>3</sup>	6 <sup>9</sup>	5 <sup>8</sup>	4 <sup>9</sup>
40	16	15		15	16	

Floral planting on both sides goes beyond

2+62 - 21° Rt = 3' conc walk

18.13	18.37	18.49
5 <sup>63</sup>	5 <sup>39</sup>	5 <sup>27</sup>
21° WK	31° WK	40° WK

2+35

16.7	15.7	15.3	15.8	15.5	16.6	17.7
7 <sup>0</sup>	8 <sup>0</sup>	8 <sup>4</sup>	7 <sup>9</sup>	8 <sup>2</sup>	7 <sup>1</sup>	6 <sup>0</sup>
40	15	14		14	15	40

2+32 - 40° Rt = end 5' high board fence  
 2+30 - 30° Lt = beg floral planting

2+20 - 25° Lt = 7' conc. bldg. Drive

2-2' strips

15.66	15.63	15.60
8 <sup>0</sup>	8 <sup>3</sup>	8 <sup>6</sup>
40° Dr	35° Dr	25° Dr

2+15 - 33° Lt = end 2' wide + 7' high euquia hedge

2+00

16.0	15.1	14.2	14.4	14.0	14.6	15.1
7 <sup>7</sup>	8 <sup>6</sup>	9 <sup>5</sup>	9 <sup>3</sup>	9 <sup>7</sup>	9 <sup>1</sup>	8 <sup>6</sup>
40	18	17		15	16	40

23.76

BASELINE SKETCH FOR CROSS SECTIONS  
 OF MILTON ST. FROM MORENA BLVD TO  
ILLION ST., LITTLEFIELD ST. FROM &  
MORENA BLVD TO E. LINE FRANKFORT ST.;  
JELLET ST. FROM W. LINE ERIE TO E. LINE  
FRANKFORT ST.; GALVESTON ST. FROM  
ORTEN TO GARDENA; GARDENA FROM  
FRANKFORT TO E. LINE GALVESTON ST.;  
FRANKFORT FROM & MILTON TO SIX LINE  
OF LITTLEFIELD ST.

INTERSECTION AT LISTER & ERIE STS.

W.O. 32127

NOTE:

City forces have added 3'± of Cold-  
 For X-sec's Milton St, see

F.B. 2224

47

also Ashton St

Map No 2209  
 Field Books

26

T.A. Stamper

2221-2194-1502

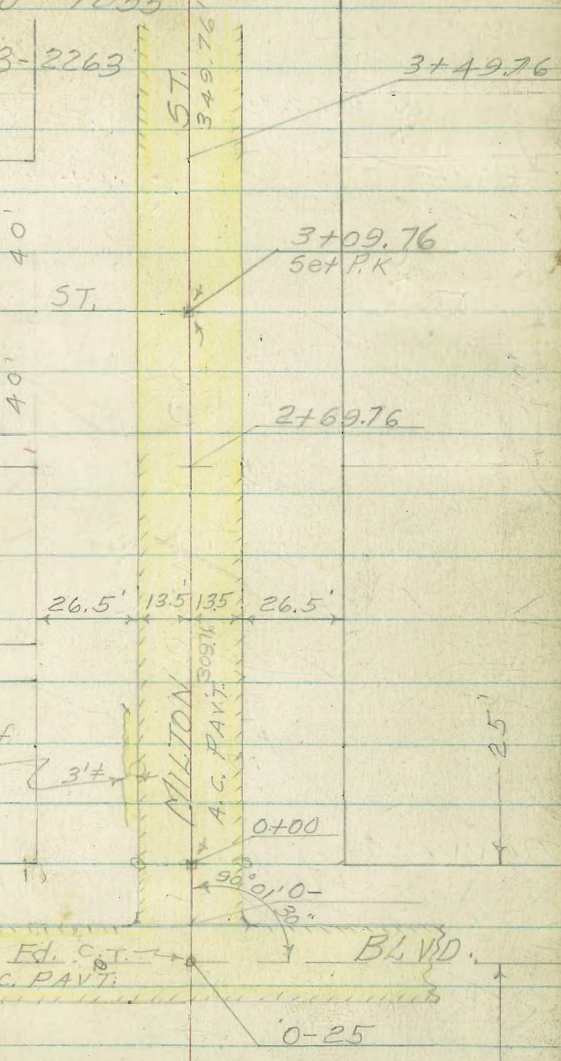
20

2180-1590-1855

1601-2223-2263

CHICAGO ST.

MORENA



MILTON ST.

3+49.76

3+49.76

3+09.76  
Set P.K.

2+69.76

26.5' 13.5' 135' 26.5'

MILTON

A.C. PAVT. 5097 1/2

3'±

0+00

96° 01' 00"

BLVD.

0-25

40'  
40'

25'

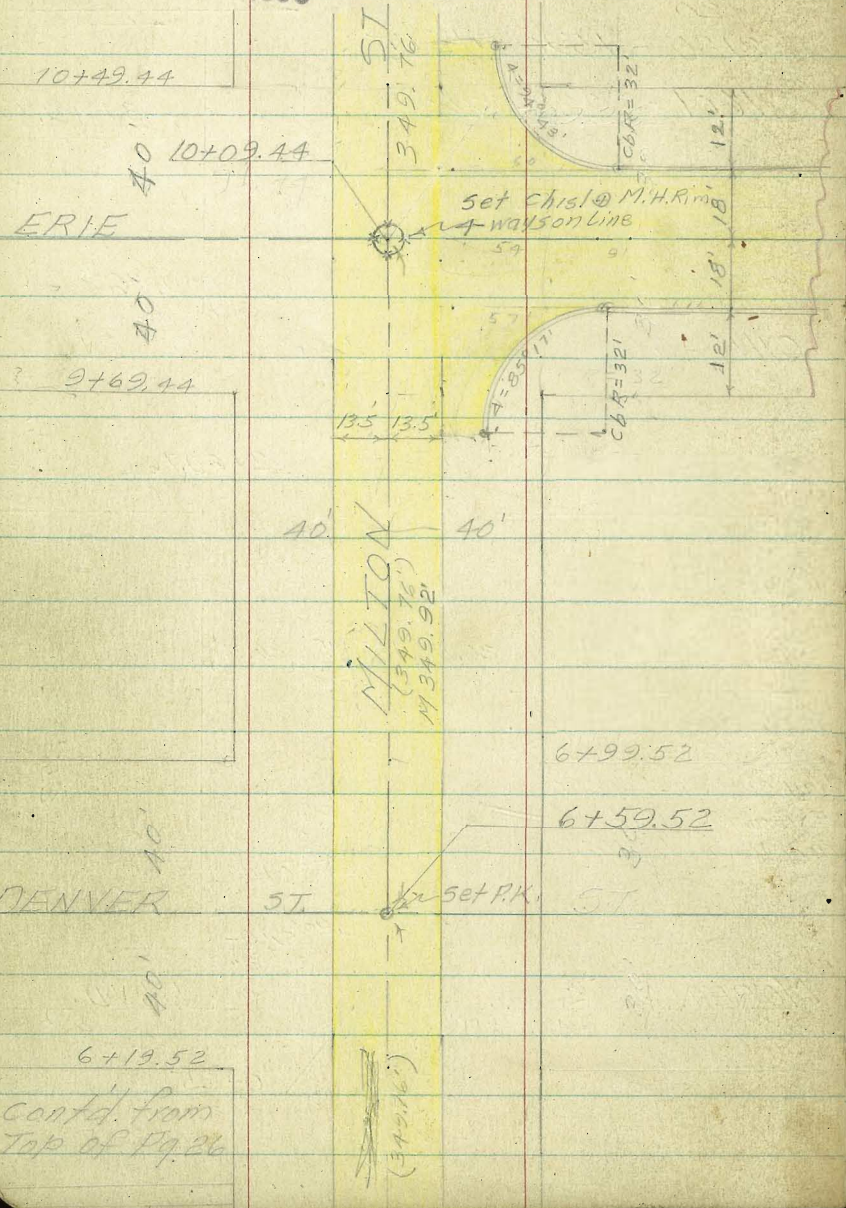
Fd. C.T.  
A.C. PAVT.

INDEXED

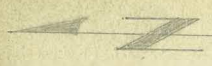
Law

MILTON BASELINE CONTD.

JULY 30 1953



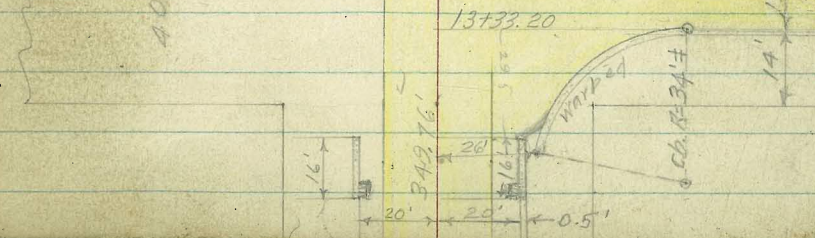
Contd. from  
Top of Pg. 26



17+51.20 End A.C. #  
Beg. Corp. Part.

GALVESTON

FRANKFORT



27

Stamper

Contd. on

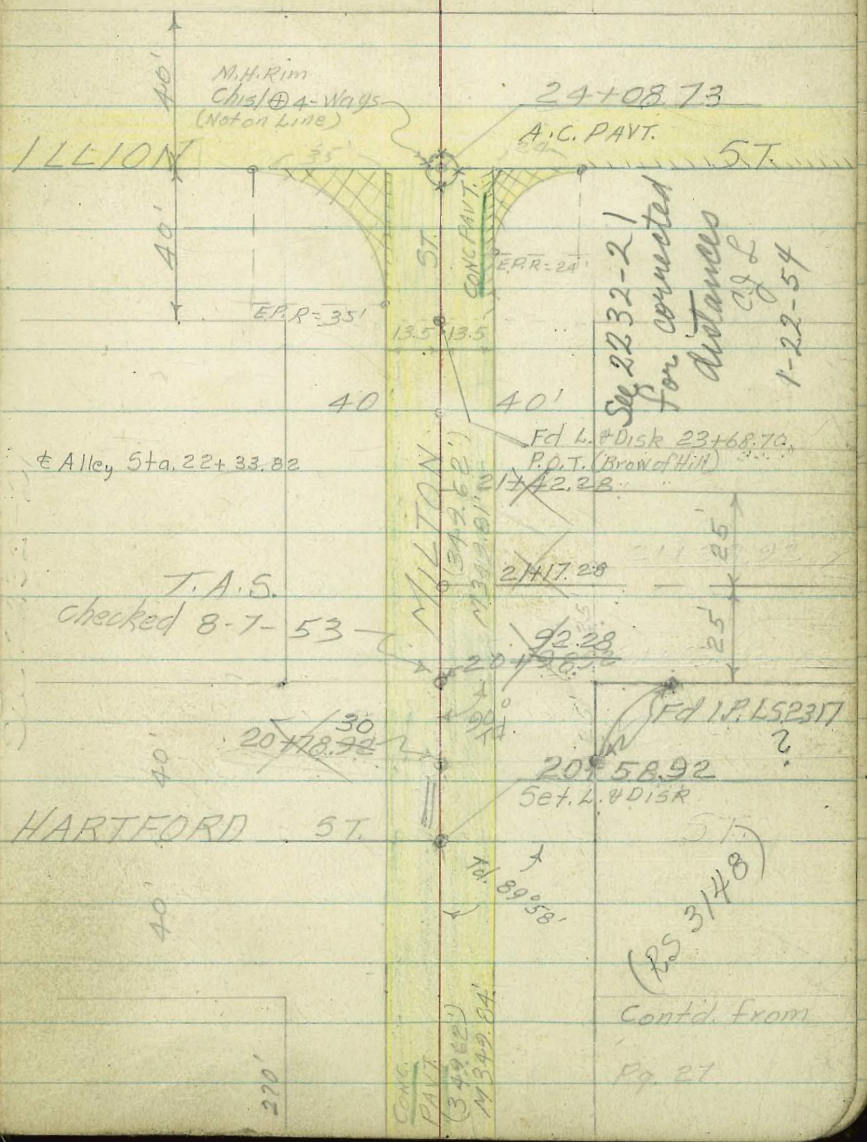
Pg. 28

57  
COM. (349.62)  
PAV. (349.84)

57  
A.C. PART  
(349.62)  
M 349.88

Stamper

MILTON ST. BASELINE CONT'D



MILTON

24+08.73

A.C. PAVT.

ST.

M.H. Rim  
Chis @ 4-Ways  
(Not on Line)

40'  
40'  
40'

E.P.R. = 35°

CONC. PAVT.

E.P.R. = 24°

See 2232-21  
for corrected  
distances  
1-22-54

Alley Sta. 22+33.82

Fd L. & Disk 23+68.70  
P.P.T. (Brow of Hill)

T.A.S.  
checked 8-7-53

2417.28

92.28

25'  
25'

30'  
20+10.78

20158.92

Set L. & Disk

Fd I.P. 152317

HARTFORD ST.

20189.58'

(RS 3/48)

Cont'd. from

Pg 27

20'

CONC.  
PAVT  
(34962)  
15349.84

BASELINE FOR CROSS SECTIONS OF LITTLEFIELD ST. FROM W. MORENA TO E. LINE FRANKFORT ST.

Sta

Elev

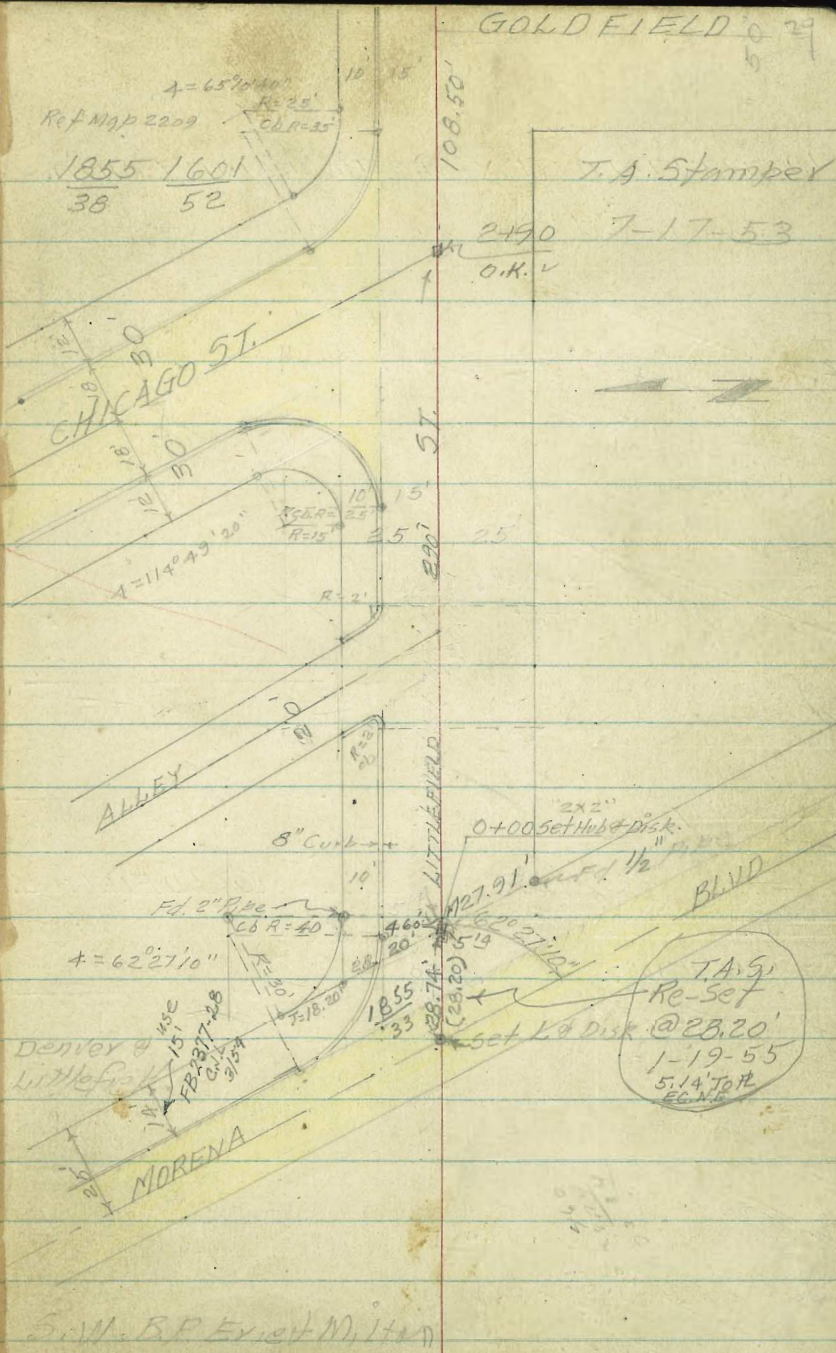
NOTE FOR BEST RESULTS (AND BY INSTRUMENTS FIGURED BETWEEN POINTS, USE DIMENSIONS IN X-SEC NOTES. ALSO - TERM "NORMAL TO" MEANS "PARALLEL TO" PROLONGATION OF "OR" USED HEREIN ALONG THE

J.C. Stampel  
3-24-54

INDEXED  
JUL 30 1958

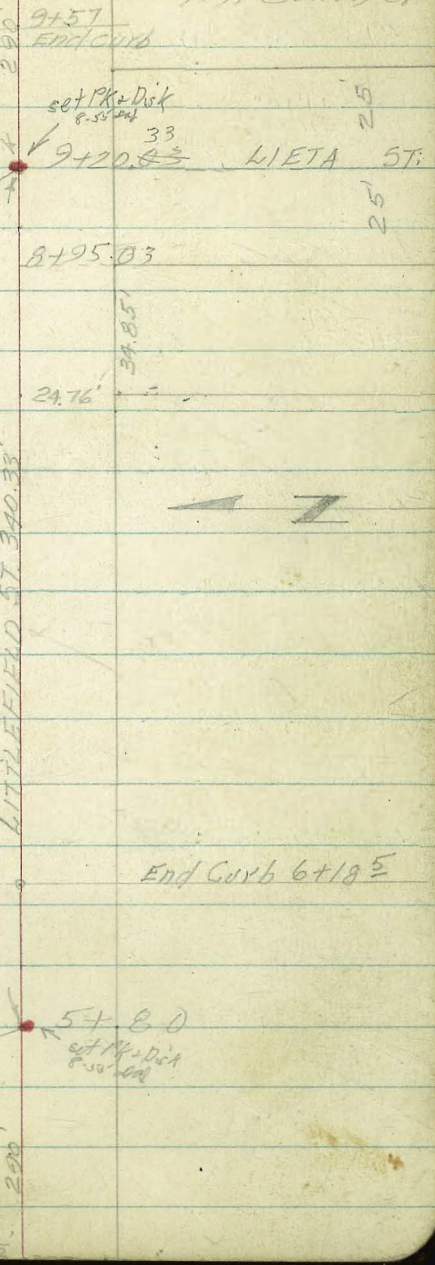
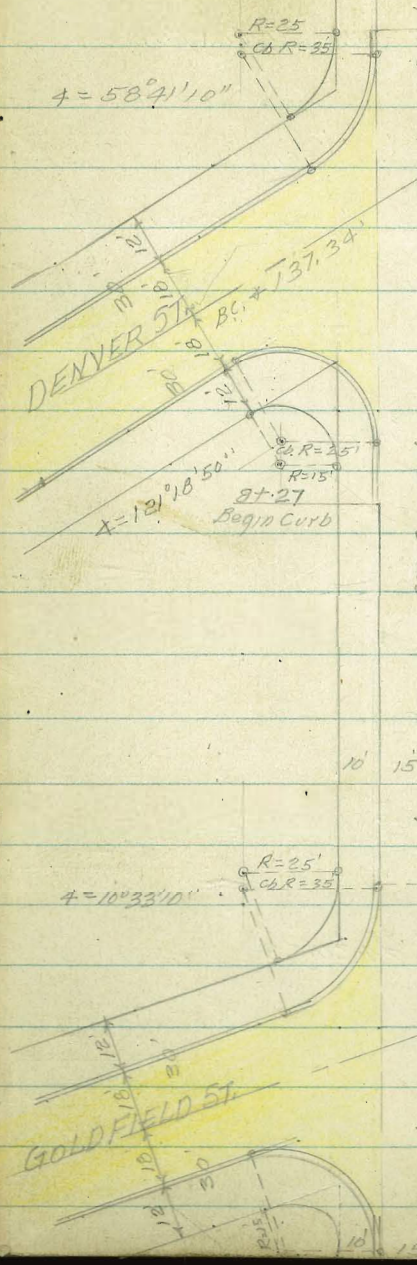
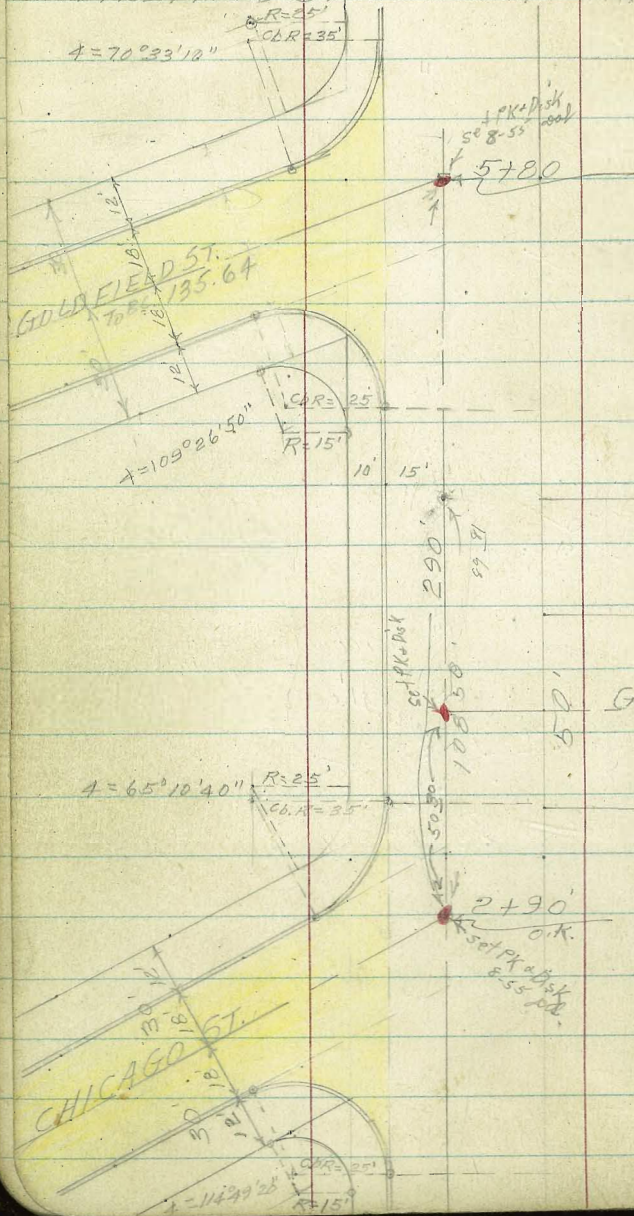
Guy Pole Approx 50' S/W of S.W. C.B.R.C.

T.B.M. R.P. Set P.R.	-5.37	43.56	
B.M. 6.90	48.93	42.03	
TP	0.60	23.44	13.01
TP	0.62	35.85	12.35
TP	1.94	47.58	3.70
TP	10.25	48.84	10.61
TP	2.48	49.20	2.92
TP	7.11	49.64	7.07
B.M. 7.57	49.60	42.03	





LITTLEFIELD ST X-SEC. BASELINE CONTO.

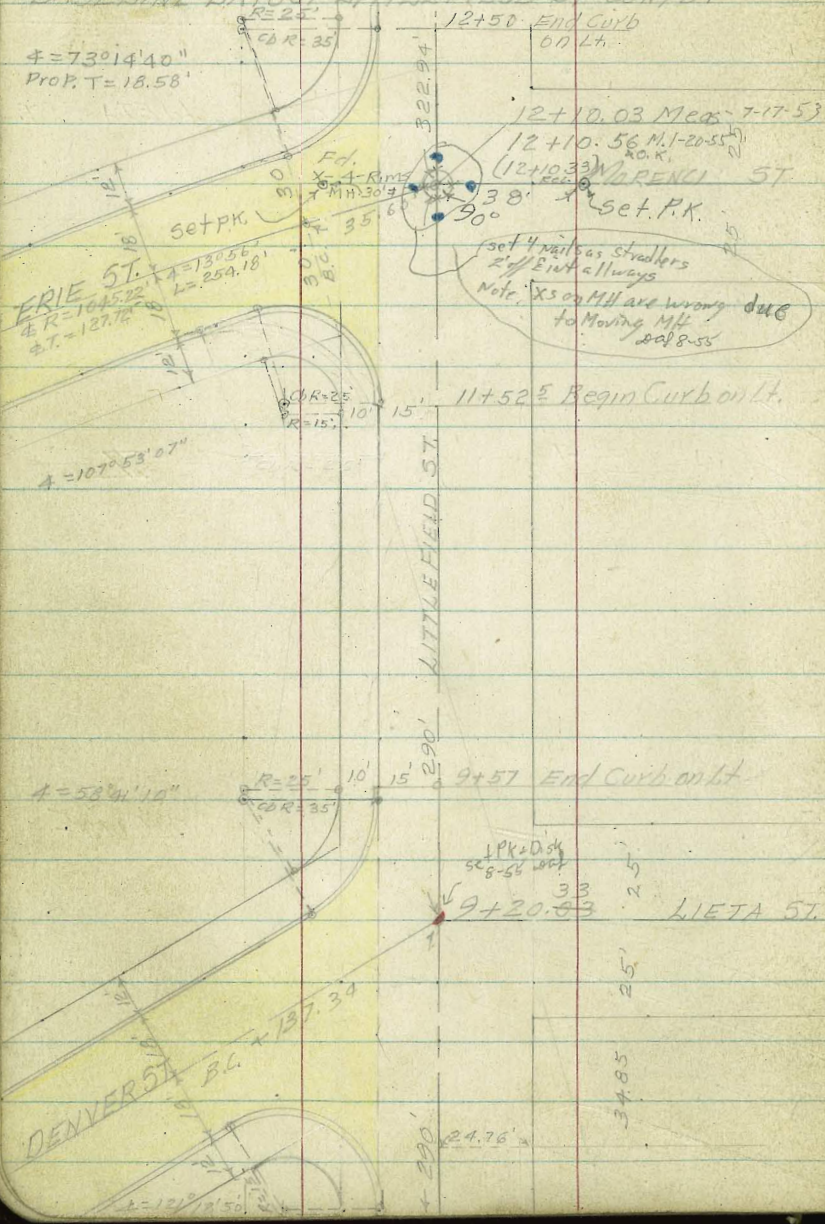


T. A. Stammer



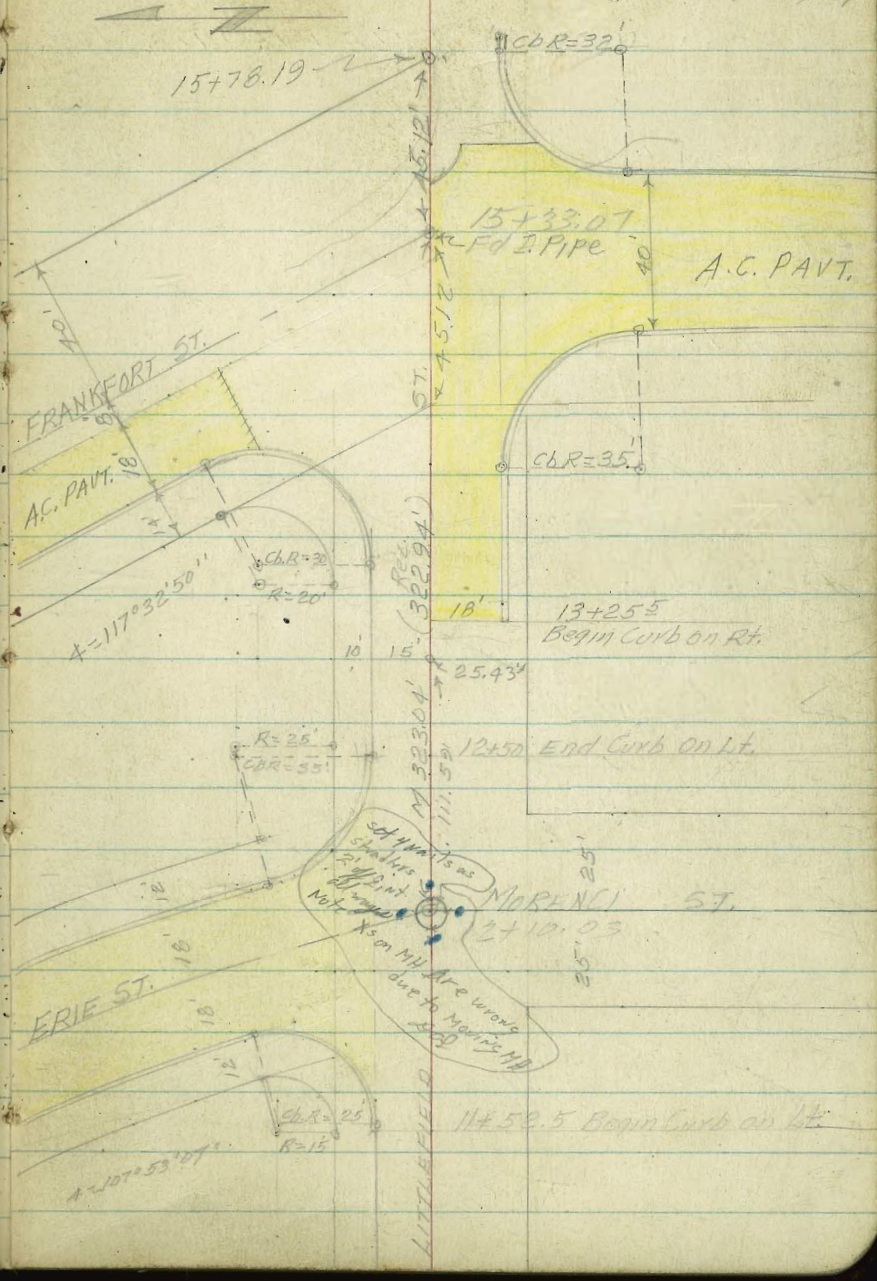
BASELINE LAYOUT LITTLEFIELD ST CONT'D.

$\Delta = 73^{\circ}14'40''$   
 Prop. T = 18.58'



T.A. Stamped 7-17-53

T. A. Stamped



CROSS SEC'S LITTLEFIELD ST.

NOTE:  
Rods shown E-00 7-17-53  
indicate Plus Rods and  
should be added to H.I. &

Stamper  
Huffman  
Schelin  
RT

0+04.6 Ch. E.C. Lt.

16.4	16.4	15.17	14.3	14.4	14.1	15.2	15.0	15.2
7.0	7.0	8.27	9.1	9.0	9.3	8.2	8.4	8.2
50	25	15	25	0	19	21	25	50
cb Gut								

0+00 Fly Prop Morena

16.4	16.0	14.86	13.9	14.1	14.0	14.8	14.6
7.0	7.4	8.58	9.5	9.3	9.4	8.6	8.8
50	25	15	15	0	20	25	50
cb							

0-06 Stop Sign Post Lt.

18  
4x4 Post

0-17 Guy Pole on Lt. No No

40  
Guy Pole

0-17.8 Sec Fly Ch. Morena-Normal To

14.24	13.65	14.30	13.74	13.84	13.98	14.24
9.26	9.79	9.14	9.70	9.60	9.46	9.40
50	50	37.5	37.5	0	50	75
cb Gut cb Gut B.C.-B.S.						

See F.B. 1855-39  
for NE return  
cpl

0-28.74 & Morena

13.49	13.74	14.01	14.27	14.36
9.25	9.70	9.43	9.17	9.08
100	50	0	50	85
A 23.44				

B.M. A 23.44

S.W.B.P. ERIC MITTON NOTE: See Pg 29  
for Turns

7-17-53

X-SEC'S LITTLEFIELD ST. CONTD

Lt      ♀      Rt.

1+00

18.9	18.4	18.45	17.4	17.8	17.6	17.8	17.56	17.62
4.5	5.0	4.99	4.0	5.6	5.8	5.6	5.88	5.82
50	25	15	15	0	9	11	23	33
		cb	gut				on Conc Patio	on Conc Patio

0+62<sup>s</sup> Begin Conc Patio on Rt.

16.85	17.30
6.59	6.19
20.3	20.3
Tap/Conc	Tap/Conc
	Lat.

0+60<sup>s</sup> ♀ 3' Walk on Rt.

16.44
7.00
20.9
Conc
Walk

0+50

17.3	17.0	16.82	15.9	16.2	15.9	16.1	16.2	16.29
6.1	6.4	6.62	7.5	7.2	7.5	7.3	7.2	7.15
50	25	15	15	0	10	17	25	35
		cb	gut					Tap/Conc Walk

0+25 F. Hyd on Rt.

15.82	17.2
	F.H.
7.62	
49.2	
Conc	
Walk	25.2
	P.P.

0+18 Begin Conc Walk 3' on Rt.

0+07 P.P. No 2407 Rt.

23.44

23.44

7-17-53

X-SEC'S LITTLEFIELD ST. CONTR

Ct.      £      Rt.

1+35 Begin 6' Board fence on Lt.

	258.			
	fence	18.6	19.0	
19.30	18.88			
4.14	4.56	4.8	4.8	4.8
50	28	16	8	10

1+35 £ Sec Normal To Alley Nly

1+34 P.P. 12" N° 3949

183  
4.P.P.

1+23 Sec Normal To Wly Alley Cb Line

19.00	18.59	18.92	18.44	18.1	18.6
444	4.85	4.52	5.00	5.3	4.8
275	275	90	190	14	0
cb	Gut	cb	Gut		
END		EC	EC		

1+44 B.C. Cb Ret Alley on Lt. R=2'

18.89	18.0
4.55	5.2
150	150
Top	Gut
cb	

1+10 £ 3' Conc # 7

18.31	17.66	17.68
5.13	5.78	5.26
205	233	333
Top Conc	up/£	£ walk
cb		

1+09 8" PP # 409965-H.

16.0  
PP.

1+09 End Conc Patio RT

17.65  
5.79  
235  
conc

23.44

23.44

7-17-53

X-SECS LITTLEFIELD ST CONTD

Lt. E Rt.

1+50

20.3	20.3	20.28	19.4	19.3	19.4	19.7	20.5	20.5
13.1	13.1	13.1	14.0	13.7	14.0	13.7	12.9	12.6
40	25	15	15	0	8	13	25	40
		cb	Gut					

33. 39

1+49 - Lat 4' Picket fence on Rt.

29 L fence

1+43<sup>5</sup> 3' Pepper Tree on Rt

28<sup>2</sup>

TBM, 10.59 33.39 - 0.64 22.80

B.C.N.W. RET Chicago + Littlefield

1+46<sup>5</sup> Sec Normal To Fly Cb Alley Nly

20.29	19.28	19.85	19.3	19.0	19.4
3.15	4.16	3.59	4.1	4.4	4.0
28	28	18E	18E	15E	15E
cb	Gut	cb	Gut		
		bc	bc		

1+39<sup>5</sup> E.C. Cb. Normal To Littlefield on Lt

	19.91	19.0
	3.53	4.4
	15 <sup>0</sup>	15 <sup>0</sup>
	cb	bc
	ec	Gut

1+38 Deadman on Rt

23.44

23.44

25<sup>2</sup>  
± Deadman

7-17-53.

X-SEC'S LITTLEFIELD ST. CONTD.

2700

LT.	¢	RT.
22.2	21.97	21.6
22.2	21.2	21.9
11.2	12.2	12.0
40	15	12
	15	15
	0	12
		15
		22
		23
		33

1+94 End 6' Board fence on Lt.

26°  
fence

1+90 2' Dia Palm Tree on Rt.

25°  
Tree

1+84<sup>3</sup> 2.5' Conc Walk on Rt.

21.24  
12.15  
22°  
Top Walk

1+82 4" Eugenia Tree on Rt.

27°

1+80 Shrub on Rt.

24°  
Shrub

1+76 4" Pine Tree on Rt.

28°  
Tree

1+58<sup>3</sup> Deadman on Rt.

33.39

33.39

20°  
Deadman

7-17-53

X-SEC'S LITTLEFIELD ST. CONTD

LT.                      RT.

2+48 7" Curb Lat on RT.

23.1    23.18  
10.3    10.21  
25°    25°  
Ground cb

2+42 4" Dia Metal Flagpole on RT

349  
Flag Pole

2+31 Tel Pole N° 49966-H on LT.

2+25 B.C. Cb. Ret on LT

17°										
Tel P	23.2	22.80	22.1	22.2	21.9	22.1	22.1	22.5	22.4	
	10.2	10.60	11.3	11.2	11.5	11.3	11.3	10.9	11.2	
	40	15°	15°	0	10	12	24	25	40	
		cb.	GUT							
		BC.	BC.							

2+18 8" Locust Tree on RT.

2+11 Lat 6" Curb on RT

355  
21.6    22.15  
11.8    11.24  
25°    25°  
Ground cb.  
21.65  
11.74  
23°  
Top Walk

2+09 4' 1.5' x 1.5' Conc. Pads 2.5' c-c on RT.

2+06 2' Dia Palm Tree on RT.

33.39

33.39

25°  
Tree



7-17-53

X- SEC'S LITTLEFIELD ST. CONTD.

Sta.

Lt. \$ Rt.

2+87 1/2 Begin 3' Woven Wire fence on Rt.

25.0  
fence  
cov.

Lat. Conc Blk Wall  
2+85 1/2 End Ramp 2-Car Gar on Rt. 4'

23.92 24.54 23.69 24.45  
9.47 8.85 9.60 8.94  
25.0 25.0 40 40  
Cov Ramp Top Conc Top  
Ramp Wall Floor Wall

2+69 1/2 Wly Ch. Chicago

24.11 23.61 23.69 23.6 23.5  
9.28 9.78 9.70 9.8 9.9  
55.0 55.0 15.1 14.0 0  
Cb EC, EP, Ground  
EC, Gut

2+69 Begin Conc Ramp 2-Car Gar on Rt.

23.89 23.82  
9.50 9.57  
25.0 40.0  
Conc Ramp Conc Floor

2+60 End 2.5' Conc Ribbon Sing Car Gar on Rt.

23.14  
10.25  
41.0  
Top Conc

2+52 1/2 2.5' Conc Ribbon Sing Car Gar on Rt.

23.14  
10.25  
41.0  
Top Conc

2+50

24.8 23.90 23.39 23.25 23.1 23.0 22.6 22.8 23.1 23.1  
9.6 9.49 10.00 10.14 10.3 10.4 10.8 10.6 10.3 10.3  
50 32 32 15 13 10 13 25 40  
Cb Gut EP

33.39

33.39

7-17-53

X-SEC'S LITTLEFIELD ST. CONT'D.

Sta.

3+41<sup>5</sup>  $\Phi$  Goldfield on RT.

	LH.	$\Phi$	RT.					
	26.9	26.2 <sup>2</sup>	26.55	25.80	25.17	25.5	24.5	24.5
	6.4	7.17	7.84	7.59	8.22	7.9	8.9	8.9
	40	150	150	0	11	13	22	50
		cb GUT.		5/4 Rim				
		EC, EC.		M.H.				

3+24 Deadman on RT

350  
Deadman

3+19<sup>5</sup> 12<sup>11</sup> R.P. No 3901 on RT.

Wly Goldfield

3+16<sup>5</sup> End Woven Wire fence on RT 25  
15.24

	26.2	25.36	24.82	24.6	24.3	25.3	25.2	24.7
	7.2	8.03	8.57	8.7	9.0	8.2	8.1	8.6
	38	16	16	0	10	15	25	50
		cb GUT						

160

$\Phi$  RR

3+09<sup>5</sup> Sec Fly Curb Normal To Chicago

	24.75	24.31	24.99	24.42	24.59	24.4
	8.49	9.08	8.40	8.97	8.80	9.0
	65	65	38	38	150	11
		cb GUT				0
		cb	BC	EP		
			BC	GUT		

3+00

	25.3	25.09	24.53	24.54	24.39	24.1	23.9	24.7	25.0	25.0
	8.1	8.30	8.86	8.85	9.00	9.2	9.4	8.6	8.3	8.3
	50	28	28	15	13	0	10	15	30	40
		cb	GUT	EP						

2+90 Sec on  $\Phi$  Normal To Chicago

	24.28	24.27	24.0	24.0
	9.11	9.12	9.4	9.9
	66	170	140	0
		Rest	EP	

33.39

33.39

7-20-53

X-SEC'S LITTLEFIELD ST. CONTD.

Lt. & Rt.

3+95 Begin 5' Conc Brk Wall on Lt.  
3+95 Sec on Drive

33.49 28.20 27.69  
(-0.10) 5.19 5.70  
254 254 150

Top Top LIP  
Conc Brk Brk on  
Wall Dr-way

3+75 Sec on Drive

27.0 27.01  
5.69 6.38  
252 150

Top LIP  
Brk Dr-way

3+71 1/2 Begin Driveway 25' on Lt.

27.30 26.71  
6.09 6.68  
150 150

cb Gut

3+68 1/2 Fire Hyd on Rt.

170  
F.H.

3+66 1/2 Begin 4" Mesh Wire Fence on Rt.  
Ely Line Goldfield on Rt.

27.9 27.15 26.45 26.5 25.9 26.5 26.9 26.6  
5.5 6.24 6.94 6.9 7.5 6.9 6.5 6.8  
36 15 15 0 11 13 25 45  
cb Gut

3+254 EC Ch Ret on Lt.

26.5 25.62 24.92 25.0 24.7 25.0 24.8  
6.9 7.77 8.47 8.4 8.7 8.4 8.6  
40 150 150 0 10 12 40

cb Gut

33.39

EC EC  
33.39

7-20-53

X- SEC'S LITTLEFIELD ST. CONTO

Lt.

C

Rt.

4+44<sup>5</sup> End 4' Mesh Wire fence on Rt

252

4+32 Ft. on Driveway Gut Sec

29.95	29.08
3.44	4.31
250	150
Top Brk,	LIP
Dr-Way	

4+30<sup>5</sup> Begin 20' Driveway on Lt

29.51	28.73
3.88	4.66
150	150
cb	GUT

4+30 12" P Pole N<sup>o</sup> P. on Lt. 170

170

4+29 End 5' Conc BIK fence on Lt

34.19	29.4
-0.80	4.0
253	253
	Ground

4+00

28.50	28.41	27.74	27.6	27.4	28.3	28.4	28.0
4.80	4.98	5.65	5.8	6.0	5.1	5.0	5.4
25	15	15	0	12	13	25	40
	cb	GUT					

3+97<sup>5</sup> End Driveway on Lt

33.39

28.29	27.65
5.10	5.74
150	150
cb	GUT

33.39

7-20-53

X-SEC'S LITTLEFIELD ST. CONTD.

Lt.                      \$                      Rt.

Sta.

4+91 \$ 2.5' Conc Walk on Lt

31.92	31.75
1.47	1.64
250	150
on Walk	\$ Walk

4+64 Begin 4" Mesh Wire fence on Rt.

250  
fence  
con.

4+60  
End Conc Ramp Sing Car Gar on Rt.

29.15	28.34
4.24	5.05
250	450
Conc Ramp	on Ramp

4+50<sup>0</sup> End Driveway on Lt

30.25	29.58
3.14	3.81
150	150
cb	Griff

4+50 Begin Conc Ramp Sing Car Gar on Rt.

30.2	30.25	29.58	29.1	28.9	29.3	29.10	28.31
3.1	3.14	3.81	4.3	4.5	4.1	4.29	5.08
40	15	15	0	11	14	250	450
	cb	Griff				Conc	Conc.

4+43 Sec on Driveway Toe

33.39

30.20	29.73
3.19	3.66
230	150
Top Berk	WIP
on Dr-way	33.39

X-SECS LITTLEFIELD ST. CONTD.  
Sta.

L.                      E.                      R1.

5+99 Sec Normal To Goldfield Ely Cb

34.78 34.45 35.00 34.54 34.88 35.3  
1049 1082 1027 1073 1039 10.0  
60 60 41<sup>2</sup> 41<sup>2</sup> 16 0  
Cb Gut      Cb B.C.      EP  
B.C. Gut

5+80 Sec. Normal To E Goldfield

34.02 34.43 34.59 34.6 34.5  
1125 1084 10.68 107 108  
80 50. 17 10 0  
EP

5+60<sup>3</sup> Sec. on Wly. Curb Normal To Goldfield

33.83 33.49 34.13 33.79 34.03 33.9 33.7  
1144 1178 1114 1148 1124 114 116  
71<sup>2</sup> 71<sup>2</sup> 51<sup>2</sup> 51<sup>2</sup> 16 10 0

5+50

EC EC EP  
33.9 Gut 34.16 33.75 33.80 33.7 33.2 32.6 33.9 33.7 33.1 33.0

TP 11.95 4.5 2.7 - 0.07

33.32 around Nly of N.Cb R.

2nd sp. in kley Head 37 278 15 13  
44 111 118 1147 116 12.1 127 11.4 11.6 12.2 12.3  
Cb Gut      EP      0 9 13 25 30 40

5+20<sup>5</sup> B.C. Cb. Ref. on L.

32.9 32.96 32.09 31.7 31.1 31.8 32.3 31.4 31.1  
0.5 244 1.30 1.7 2.3 1.6 1.1 2.0 2.3  
35 15 15 0 9 12 22 30 40  
Cb Gut

5+00

32.0 32.09 31.25 30.9 30.9 30.8 30.6 30.8  
1.4 1.30 2.14 2.5 2.0 2.6 2.8 2.6  
33 15 15 0 10 14 25 40  
Cb Gut

33.39

TA 33.39

X-SEC'S LITTLEFIELD ST. CONTD.

Lt. # Rt.

Sta.

7+00

41.4	41.1	40.7	39.9	40.6	41.2	41.9	40.8
133	13.6	14.0	14.8	14.1	13.5	12.8	13.9
40	15	12	0	10	15	20	26

6+50

39.3	38.9	38.1	38.5	38.9	39.0	39.5	38.2
15.4	15.8	16.6	16.2	16.8	15.7	15.2	16.5
40	15	13	0	9	14	20	30

6+47

Guy Pole No 557225-H

6+18.5 End Curb

167.  
 Reading  
 36.09  
 18.65 18.45  
 163, 15 15°  
 P.P. cb Gilt

T.B.M. 11.34 54.74 1.87 43.40

set Chris @ in Room of Sewer M.H. Sta 7+66

6+14-12" P. Pole No 4271 on Rt.

6+00

37.5	37.1	35.34	34.91	34.97	35.3	35.2	36.3	35.9	36.1
7.7	8.2	9.93	10.36	10.30	10.0	10.1	9.0	9.4	9.2
40	30	22.2	22.2	15.5	0	9	13	26	40

cb. Gilt EP.

45.27

X-SEC'S LITTLEFIELD ST. CONTD

Lt. & Rt.

Sta

8+00

44.7	44.7	44.6	44.0	44.1	43.5	44.7	43.8	43.7
10.0	10.0	10.1	10.7	10.6	11.2	10.0	10.9	11.0
40	31	16	14	0	10	16	26	40

7+92 L pt. 2" conc wall (flush)  
L pt. in Picket fence

44.40  
10.34  
25.0 22.4  
L pt. fence conc  
43.39 wall  
11.35  
0.5  
± M.H.

7+66 ± Sewer M.H. 0.5' Lt. Tot

7+50

43.0	43.0	43.1	42.6	42.7	42.1	42.9	42.3	42.2
11.7	11.7	11.6	12.2	12.0	12.6	11.8	12.4	12.5
40	25	16	13	0	10	14	26	40

7+44 10" P.P. N<sup>o</sup> 4081 on Rt

42.72  
12.02  
22.3  
Top Conc  
Wall 24.8  
fence  
cor

7+38 Begin 2" Conc wall (flush) on Lt.

7+29 Begin 4' Picket fence on Lt

7+24 Deadman on Lt

54.74

30.5  
Deadman  
± 54.74



X-SEC'S LITTLEFIELD ST. CONT'D

Sta

Lt      ♀      Rt

8+50

45.6	45.20	44.98	45.3	45.2	46.7	46.7	46.5
9.1	9.59	9.76	9.4	9.5	8.0	8.0	8.2
40	15 <sup>±</sup>	15 <sup>±</sup>	0	10	16	26	40
	cb	gut					

8+45<sup>5</sup> B.C. Ch. Ret on Lt.

45.18	44.90
9.56	9.84
15 <sup>±</sup>	15 <sup>±</sup>
B.C.	B.C.
cb	gut

8+27 Begin Curb on Lt

44.92	44.6
9.82	10.1
15 <sup>±</sup>	15
cb	gut

8+24 ♀ 2' Conc Ribbon Sing Car on Lt

45.09
9.65
16 <sup>±</sup>

8+19 ♀ 2' Conc. Ribbon Sing Car on Lt

45.06	Conc Ribbon
9.66	
3.82	

8+19 ♀ Conc Ribbon @ floor Sing Car on Lt

Conc Floor	45.14
9.60	
16 <sup>±</sup>	

8+08 ♀ Conc Ribbon @ floor Sing Car on Lt

Conc Floor	45.00
9.74	
3.52	

54.74

Conc Floor	54.74
------------	-------

X-SEC'S LITTLEFIELD ST. CONTD.

Sta

9+20.03 Sec Normal To  $\phi$  Leita To South  
Sec Normal To  $\phi$  Denver To North

45.51	46.04	46.72	47.0	46.8	45.9	45.4
923	8.70	8.02	7.7	7.9	8.8	9.3
90	50	20 <sup>0</sup>	0	9	24	50
EP						

9+00

46.16	46.42	46.4	46.4	46.2	45.6	45.2	45.9	45.9
858	8.31	8.3	8.3	8.5	9.1	9.5	8.8	8.8
50	16	12	0	10	19	40	50	60
EP								

8+99 Normal To Denver  
W/4 Cb Line Denver St.

45.16	44.66	45.49	45.10	46.09	46.3	46.4
938	10.08	925	967	8.65	8.48	8.3
80	80	618	618	19 <sup>0</sup>	130	
cb	cut	EG	EG	EP		
cb Gut.						

8+95.03 Sec @ 90° To Littlefield  
W/4 Prop Leita St.

46.07	46.27	46.2	46.2	45.6	45.6	46.7	45.8
867	8.47	8.5	8.5	9.1	9.1	8.0	8.9
50	16 <sup>4</sup>	0	7	16	23	28	50
EP							

8+90 Top Cutbank Sec on Rt.

45.92	46.12	46.3	46.2	45.6	45.6	47.2	47.6
882	8.62	8.4	8.5	9.1	9.1	7.5	7.1
50	16 <sup>4</sup>	0	5	13	21	24	50
EP							

8+61 End of Mesh Wire fence on Rt

8+60.18  
Mesh line

54.74

54.74

250  
fence cor.

X-SE'S LITTLEFIELD ST CONTR

LL

♀

RT.

9+64 10" R.P. No 4101 on Rt.

9+59 Fire Hydrant on Rt.

9+57 End Curb on Lt.

48.46 47.94  
6.28 6.80  
150 150  
cb Gut

48.12  
19.1  
6.62 E.P.P.  
170  
E.F.H.  
Top Base  
Flange

9+50 End Curb on Lt.

48.9 48.6 48.73 47.68 47.9 47.8 47.6 48.9 48.9  
5.8 6.1 6.0 7.06 6.8 6.9 7.1 5.8 5.8  
42 22 153 153 9 0 13 20 50  
cb Gut

9+45.03 Ely Lin bet 51g

48.7 48.7 47.85 47.1 47.14  
6.0 6.0 6.89 7.33 6.57 7.2 7.5 7.6  
45 28 170 170 8 0 14 41  
cb Gut

9+43 Top Sec: 6ly on bet h St.

8.04

48.6 47.75 47.92 47.90 47.6 47.0 47.0 46.7 48.7 49.0  
6.1 6.99 7.42 7.34 7.1 7.7 7.7 8.0 6.0 5.7  
44 174 174 174 0 14 30 50 48 60  
cb Gut

See Normal to Denver  
9+41 Ely Curb Line Denver St.

54.74

46.00 45.62 46.72 46.30 47.14 47.6  
8.74 9.12 8.02 8.44 7.60 7.1  
90 90 428 428 183 0  
cb Gut BC BC EP  
cb Gut 54.74

X-SEC'S LITTLEFIELD ST, CONTD.

Lt.    ⊕    Rt.

Begin 5' Board fence on Lt  
10+18 End Conc Ramp 2-Car Garage

51.47    50.97  
3.27    3.77  
34.2    25.2    24.2  
Conc Ramp    Conc Ramp fence

10+00 Begin Conc Ramp 2-Car Garage Lt

51.52    50.74    49.8    49.6    49.2    50.3    49.5    49.2  
3.22    4.00    4.9    5.1    5.5    4.4    5.2    5.3  
34.2    24.2    14    0    9    16    20    50  
Conc Ramp    Conc Ramp

9+98.5 ⊕ 3' Conc Walk on Lt

50.73  
4.01  
24.2  
⊕ Walk

⊕ 4" Tree on Lt  
9+97 End 2.5' Picket fence on Lt

23.5    21  
fence ⊕ Tree  
car

9+70-73 Cluster of shrubs on Lt.

18.2  
⊕ Cluster

9+70 Begin 2.5' Picket fence on Lt

54.74

23.4  
fence  
car  
\* 54.74

7-20-53

X-SEC'S LITTLEFIELD ST. CONTD

Lt.      ♀      RT

Sta

10+92 End Conc Ramp Sing Car Car <sup>on RT</sup>

52.95      52.95  
11.70      11.70  
25°      39°  
Conc Ramp      Conc Floor

Begin 6' Picket fence on Lt.  
10+89 End Conc Ramp 2-Car Gar on Lt

54.12      53.19  
10.73      11.46  
35° 24'      16°  
Conc fence Conc  
Pool Cor Ramp

10+81 1/2 Begin Conc Ramp Sing Car Garage <sup>RT</sup>

52.77      52.95  
11.88      11.70  
25°      39°  
Conc Ramp      Conc Floor

10+73 10" P.P. N° 4131 on RT

53.92      52.90      19°  
± P.P.

End 6' Picket fence on Lt  
10+71 Begin Conc Ramp 2-Car Gar on Lt

10.73      11.75  
35°      25° 16'  
Conc P. Conc  
Set P.K. Floor Periclans  
P.P. N° 4151 cor      64.65  
on RT sta. 10+73

T.P. 11.65      64.65      1.74      53.00  
Begin 6' Picket fence  
10+63 End 5' Board fence on Lt

248  
fence cor

10+50

51.7.      51.7      51.9      51.3      51.3      51.0      51.7      50.8      50.9  
3.0      3.0      2.8      3.4      3.4      2.7      3.0      3.9      3.8  
40      25      18.      15      0      10      14      21      50

54.74

54.74

X- SEC'S LITTLEFIELD ST, CONTD.

11+50

11+48 End 6' Picket fence on Lt

11+44 & 5' Brick & Conc Comb Walk on Rt.

11+24 Top Sec on Rt.

11+22 Top Sec on Rt.

11+00

64.65

7-20-53

Lt.      &      Rt.

57.8	57.4	56.7	56.8	57.0	57.3	57.0
6.8	7.2	7.9	7.8	7.6	7.3	7.6
50	16	13	0	11	18	31

24.6  
fence on

57.31	56.78
7.94	7.87
16°	25°
Brick Walk	Brick Comb Walk

55.1	54.8	55.7	56.3
9.5	9.8	8.9	8.3
0	11	18	35

54.9	54.6	54.6	54.7
7.	9.7	10.0	10.0
0	11	17	35

53.95	53.9	53.8	53.5	53.6	53.0	53.3	53.3	53.2
10.70	10.7	10.8	11.1	11.0	11.6	11.3	11.3	11.4
26	25	20	14	0	11	18	35	50

Conc  
Patio w/ side fence      64.65

7-20-53

X-SEC'S LITTLEFIELD ST. CONTD.

Lt.      ~~EC~~      Rt.

NOTE:

Sec on & Morenci To South

12+10.03 Sec on & Erie To North

59.46	60.22	60.41	60.81	60.5	60.6	60.6
5.19	4.43	4.24	3.84	4.1	4.0	4.0
50	20.5	13	0	14	38	50

EP. ~~EC~~ M.H.  
Top 3 (134)

12+00

59.52	59.99	60.09	60.0	60.0	60.3	60.2
5.13	4.66	4.56	4.6	4.6	4.3	4.4
50	20	12.5	0	12	34	50

EP

11+93 W/4 Curbline Erie St. N1/4

58.23	57.79	59.02	58.49	59.59	59.5
6.82	6.86	3.63	6.16	3.06	5.1
70	70	503	503	145	0

cb. Gut      cb. Gut EP.  
EC      EC

11+85.03 W/4 Line Morenci St. S1/4

58.89	59.41	59.37	59.1	58.9	59.2	58.6
5.76	5.34	5.28	5.5	5.7	5.4	6.0
50	19	138	0	11	19	50

EP

11+56 6" Peppred Tree on Lt.

37.2

279  
Tree

11+52.5 Begin Curbline Lt.

57.80	57.0
6.85	7.6
142	142

cb. Gut

64.65

64.65

7-20-53

X-SEC'S LITTLEFIELD ST. CONTD.  
Sta

Lt. Rt.

12+76 End Conc Ramp Sing Car on Lt

67.93 67.81  
5.62 5.74  
350 302  
conc floor conc ramp

+9.25 73.55

Deadman on Rt Lt  
12+68 Beg of Conc Ramp Sing Car on Lt  
N. Side -0.35  
T.B.M. Set P.K. P.P.N. 4201 Sta 12+92 64.30

67.92 67.76  
5.63 5.79  
352 312  
conc floor conc ramp  
73.55 Deadman

12+50 End Curb on Lt.

64.6 65.3 64.2 62.44 62.8 63.1 62.7 62.1 62.1 64.6 65.1 64.2  
60 (-0.7) 0.4 2.1 2.2 1.5 1.9 2.5 1.9 0.0 (-0.5) 0.4  
40 25 23 15 15 18 0 13 17 19 25 50  
cb  
Ground

12+42 12" P.P. N. 43.01 on Rt

20' E.P.P.

12+35.03 Ely Line Morenci 5/4

64.5 63.3 61.83 61.58 61.9 61.7 61.9 62.8 62.8 62.4  
0.1 1.3 2.2 3.0 2.7 2.9 2.7 1.8 1.8 2.2  
40 30 19 13 0 13 18 22 30 50  
T.P. E.P.  
cb

12+28 Ely Curb Line End St N/4  
64.65

60.70 (Finish)  
60.28 60.87 61.18 61.6  
3.95 4.37 3.78 3.47 3.0  
420 422 213 124 0  
B.C. B.C. 59.98 57.57 59.97  
cb gut 75 3.58  
64.65



7-21-53

X-SE'S LITTLEFIELD ST. CONTD

Lt. E Rt.

End 4 Board Fence on Rt.  
13+20 Begin A.C. Part

72.3	71.6	69.1	64.04	63.35	64.2	67.7	67.7
1.2	1.9	4.4	9.51	10.20	9.3	5.8	5.8
36	17	11	0	18	19	20	25.5
			EP	EP			fence
71.5	70.9	68.5	63.8	63.1	64.7	67.7	67.7
2.0	2.6	5.0	9.7	10.4	8.8	5.8	5.8
33	13	8	0	15	20	21	30

13+04 Top Sec N1/4

13+02 Deadman on Rt.

13+00 Toe Sec N1/4

69.5	68.9	63.8	63.1	64.7	67.7	67.7	136
4.0	4.6	9.7	10.4	8.8	5.8	5.8	Deadman
33	9	0	15	20	21	30	
			Toe	Toe			

12+96 Deadman on Rt.

12+90 Begin Board Fence 4' High on Rt.

200  
Deadman  
260  
fence  
cut

12+80 Top Bank Sec N1/4

68.8	68.7	68.7	64.6	63.3	62.7	63.6	66.8	66.5
4.7	4.8	4.8	8.9	10.2	10.8	9.9	6.7	7.0
36	29	17	8	0	14	15	19	30

12+78 Toe Sec N1/4

67.9	67.7	65.0	63.5	62.7	63.6	66.8	66.5
5.6	5.8	8.5	10.0	10.8	9.9	6.7	7.0
36	30	11	0	14	15	19	30

73.55

73.55

7-21-53

X-SEC'S LITTLEFIELD ST. CONTD

Lt.      ⊕      Rt.

13+10 Top Sec ON Driveway

63.55      63.94  
1000      9.61  
18°      213  
LIP      Break

13+38 End Conc Ramp Sing Car Gar

63.56      63.91      63.99      68.47      68.48  
9.99      9.64      9.56      5.08      5.07  
18°      212      235      251      520  
LIP      Break      Conc Top      Conc  
Ramp      Wall/Floor

13+27 Top Drive Way To Sing Car Gar on Rt

63.40      63.88      63.95      68.48  
1015      9.67      9.60      5.07  
18°      213      235      522  
LIP      Break      Conc Ramp      Conc Floor

13+25 1/2-8" Lateral Conc Block Wall

64.1      67.56  
9.4      5.99  
251      251  
Ground      Top  
Wall

13+25 1/2 Begin Curb on Rt.

63.35      63.84  
10.20      9.71  
18°      18°  
Gut      ch.

13+23 14" P.Pole No 4257 on Rt

73.55

73.55

200  
PP

7-21-53

Y-SECS LITTLEFIELD ST, CONTD.

Lt      &      Rt.

Sta

13+79 Begin Conc Ramp Sing Car <sup>Go on Rt.</sup>

64.02	64.37	64.48	65.45
9.53	9.18	9.07	8.10
18°	21°	23.5	37°
LIP	Bank	Conc	Break
		Ramp	
65.63			
7.92	64.02	64.38	
5.25	9.53	9.17	
9.00	18°	21°	
Floor			
LIP	Bank		

13+78 Top Driveway

13+77 Begin Driveway Sing Car <sup>on Rt.</sup>

64.00	64.33
9.55	9.22
18°	18°
Gut	cb

13+73 End Conc Blk Wall on Rt. <sup>4'</sup>

64.4	68.58
9.1	9.97
25'	25'
Gravel	Top
	Wall

13+30

72.5	71.4	68.1	64.2	64.09	63.69	64.07	64.2	68.49	68.6
1.2	2.1	5.9	9.3	9.46	9.86	9.28	9.3	5.06	4.9
36	19	11	2	0	18°	18°	25'	25'	30
					Gut	cb	Gravel	Top	Wall

13+41 E. End Driveway

73.55

63.56	63.95
9.99	9.60
18°	18°
Gut	cb

73.55

7-21-53

X-SEC'S LITTLEFIELD ST, CONTD

Sta

Lt.                      &                      Rt.

14+01 & 3' conc Walk on Rt.

64.62      64.98  
893      857  
18°      28°  
Walk on Walk

14+00

67.2    66.9    65.9    64.6    64.61    64.19    64.62    65.3  
6.3    6.6    7.6    8.9    8.97    9.36    8.93    8.2  
40    21    8    4    0    18°    18°    36  
Gut ch

13+89 End Driveway on Rt

64.13      64.47  
9.42      9.08  
18°      18°  
Gut ch

13+88 Top Driveway

64.12      64.52  
9.43      9.03  
18°      21°  
LIP Break

13+87 End Conc Ramp Sing Car Garage on Rt

64.11      64.51      64.58      65.44  
9.44      9.09      8.97      8.11  
18°      21°      23°      37°  
LIP Break Conc Break  
Ramp

73.55

65.63  
792  
73.55      525

7-21-53

Y-SECS LITTLEFIELD ST CONTO

Lt      &      RT

Sta

14+42 End Driveway

64.26    64.61  
9.29    8.94  
18°    18°  
Glt    Ch

14+41 Toe Driveway

64.27    64.56  
9.28    8.99  
18°    21°  
LIP    Edge  
Conc

14+39<sup>6</sup> End Conc Ramp <sup>on RT</sup> Sing Car Gro

64.25    64.60    64.53  
9.30    8.95    9.02  
18°    24°    42°  
LIP    Conc    Conc  
Ramp    Floor

14+31<sup>6</sup> Begin Conc Ramp <sup>on RT</sup> Sing Car Gro

64.24    64.55    64.52  
9.31    9.00    9.03  
18°    24°    42°  
LIP    Conc    Conc  
Ramp    Floor

14+30 Toe Driveway

64.24    64.53  
9.31    9.02  
18°    21°  
LIP    Edge  
Conc

14+29 Begin Driveway Sing Car

64.25    64.56  
9.30    8.99  
18°    18°  
Glt    Ch

73.55

73.55

7-21-53

X=SEC'S LITTLEFIELD ST. (CONTD)  
Sta

Lt.      ♀      Rt

1A+79 4" Locust (Robinia Pseudacacia)

274  
4 Trees

1A+75 Tel Pole N<sup>o</sup> 559507-H

20°  
Tel Pole

overl.  
1A+73 B.C. Curb Ret (cbr = 35')

64.66	63.92	63.9	64.49	64.15	64.51	64.4
889	963	26	906	9.40	9.04	9.1
38°	38°	31	0	18°	18°	40
cb	AC			Gut	cb	

1A+57 ♀ 3' Conc Walk on Rt.

64.54	64.51
9.01	9.04
18°	28°
conc	onwalk
walk	

1A+50

65.4	64.89	64.31	64.51	64.22	64.59	64.6
8.1	8.65	9.24	9.84	9.33	8.96	8.9
48	15°	15°	0	18°	18°	40
cb	Gut			Gut	cb	

1A+47 Begin Curb on Lt. B.C.  
73.55

64.90	64.35
8.67	9.20
15°	15°
cb	Gut

X 73.55

X-SEC'S LITTLEFIELD ST. CONTD.

15+50 Top Sec

15+45 Top Sec

15+45 E.P.

15+33.07 Sec Normal To Frankfort Sly  
Sec Normal To Frankfort Nly

15+24 Edge Pavt Sec Normal To Frankfort.

15+03.3 Wly Curb Sec Normal To Frankfort

15+00

14+02 16" P.P. N2 4299 021 Rt.

73.55

7-21-53

63.5	64.9	65.0	64.3	64.13	63.63	63.01
10.0	8.6	8.5	9.2	9.42	9.92	10.54
60	43	6	0	6	38	70
				EP		

64.46

9.09

63.7	64.2	64.61	64.09	63.28
9.8	9.3	8.94	9.46	10.27
70	35	0	28	60

64.47

64.19

64.3

64.59

9.08

9.36

9.2

8.96

74.4

54.4

25

0

E.P.

E.P.

64.52

63.90

64.03

64.48

9.03

9.65

9.52

9.07

65.5

65.2

45.2

0

cb cut

E.P.

3.04

2.60

85.5

85.5

cb cut

cut

64.1

64.1

64.46

63.83

64.23

63.9

9.4

9.4

9.09

9.72

9.32

9.6

47

20

0

30.5

30.5

50

E.P.

cut

cb

73.55

272  
R.P.

7-21-53

(6)

X-SEC'S LITTLEFIELD ST, CONTD

Sta

Lt. E Rt.

B.M. 4.75 64.16

3.43 68.91

T.B.M. -8.07 65.48

-69.12 N.W. B.P. Gardengr Frankfurt. 1855

16

Set P.K. Nly Side P.P.N. 4299 Sta 14+92

15+78.19 Sec Normal To Frankfurt  
Ely Prop Frankfurt Nly

63.7	64.9	65.3	65.5	63.4	62.93	63.38	63.8
9.8	8.6	8.2	8.0	10.1	10.62	10.17	9.7
70	60	0	4	7	19	19	30
					Gut	cb	

15+63. E. Part Sec 51/4

65.5	65.6	64.2	63.83	63.13	63.55
8.0	7.9	9.3	9.72	10.42	10.00
0	3	5	8	28	28
			E.P.	Gut	cb

15+55 Top Bank Sec

73.55

63.7	65.1	65.5	64.11	64.04	63.10
9.8	8.4	8.0	9.44	9.51	10.45
60	42	0	3	7.5	42
				E.P.	

73.55



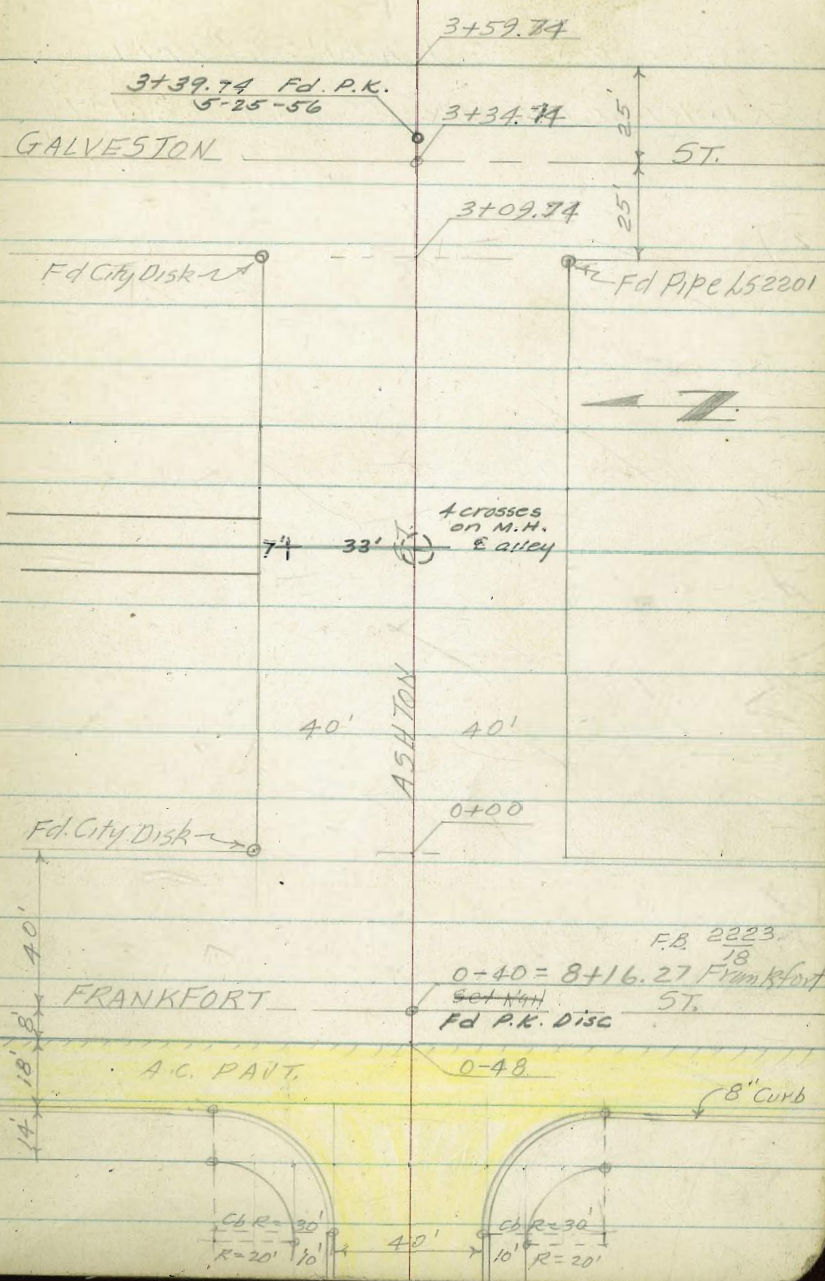
T.A. Stamped

CROSS SECTIONS OF ASHTON ST FROM  
FRANKFORT TO GALVESTON WD. 32127

REF F.B. 1502-2038-2223  
54 22 18

See also

INDEXED  
JUL 30 1953  
*ordered file*



Stampel (83)

7-28-53

φ Huffman  
φ Schelin

Lt. Rt.

CROSS SECTIONS OF ASHTON ST FROM  
FRANKFORT TO GALVESTON W.O. 32127

0-11 Top Bank Sec

57.1	57.1	56.3	56.5	56.7	57.0	57.1
100	100	108	106	109	101	100
50	18	15	0	18	22	50

0-16 Top Bank Sec

56.0	56.0	56.3	56.0	55.9
11.1	11.1	10.8	11.1	11.2
50	25	0	25	50

0-21 Toe Sec

55.7	55.7	55.6	55.5	55.4
11.4	11.4	11.5	11.6	11.7
50	25	0	25	50

0-40 φ Frankfort

55.55	55.40	55.37	55.27	55.16
11.56	11.71	11.74	11.89	11.95
50	25	0	25	50

0-48 Edge Part Sec Frankfort

67.11

11.26 67.11

B.M.

55.85 <sup>2283</sup>/<sub>28</sub>

P.K.E. Side P.P. N° 2698 Sta 7+71 Frankfort St.

7-28-53

X-SECS ASHTON ST. CONTD.

Lt.          C          Rt.

0+80 Top Sec on Rt.

62.7	62.6	61.9	62.4	61.5	61.7	61.2	61.9	62.6	63.6	63.7
4.4	4.5	5.2	4.7	5.6	5.4	5.9	5.2	4.5	3.5	3.4
50	40	31	18	15	0	15	16	22	40	50

0+79 C Lateral Conc Ret Wall on Rt

63.86  
3.25  
40.9 50

0+77 C Lateral Conc Ret Wall on Rt

Top Wall  
62.64  
4.47  
40.2

0+70 Toe Sec

62.3	61.8	61.4	61.6	60.8	61.1	60.6	61.2	61.5
4.8	5.3	5.7	5.5	6.3	6.0	6.5	5.9	5.6
50	38	34	17	14	0	15	16	50

Top Wall

0+50

61.1	60.9	60.2	60.5	59.6	59.8	59.4	60.1	61.1
6.0	6.2	6.9	6.6	7.5	7.3	7.7	7.0	6.0
50	39	35	17	14	0	15	17	43

@ B14

0+29 C 14" R.P.N. JP-4309 Rt

23  
C.R.P

0+00

68.8	59.0	57.9	57.9	57.0	57.1	56.9	57.8	58.6	58.7
8.3	8.1	9.4	9.2	10.1	10.0	10.2	9.3	8.4	8.4
50	40	24	17	14	0	15	19	33	50

67.11

^ 67.11

7-28-53

X-SEC'S ASHTON ST. CONTR.

Lt. E. Rt.

1+80 & 3" Tree on Lt.

300

& Tree

1+68 Top Bank Sec N 1/4

71.5	70.3	69.1	68.4	67.9	67.4	67.8	68.6	68.1	69.2
7.0	8.2	9.4	10.1	10.6	11.1	10.7	9.9	9.4	9.3
50	21	19	15	0	15	16	36	38	50

1+66 & 12" RR N° 472913-H

1+65 Begin 4' woven wire fence on Rt.

69.4	68.8	67.7	67.7	67.1	RR	68.3	68.7
9.1	9.7	10.8	10.8	11.4	10.2	9.8	400
50	23	14	0	15	39	50	force

1+62 Top Sec. N 1/4

68.8	68.4	67.1	67.39	66.5	67.4	68.5
9.7	10.1	11.4	11.15	12.0	11.1	10.0
50	26	13	0	15	24	50

1+54.8 & Alley Sec. 20 wide

N.R.M.

78.54

1+43 & 12" RR N° P-4349 on Rt.

12.68 78.54

TP 1.25 65.86

1+00

64.3	63.5	63.6	62.8	63.1	62.5	63.7	65.0	65.1
2.8	2.8	3.6	3.5	4.3	4.0	4.6	3.4	2.1
50	40	37	18	14	0	15	19	39

67.11

67.11

7-28-53

X-SEC'S ASHTON ST. CONTD.

Lt. & Rt.

2+28 & 9' Conc Ramp Sign Car Gas Lt.

74.83	74.68	73.93
3.71	3.86	4.61
51.47°	40°	26.5
Conc Ramp		

2+12 Top Sec on Lt.

74.2	73.9	72.5	71.8	71.4	71.3	71.0	72.0	72.9	73.2
4.3	4.6	6.0	6.7	7.1	7.2	7.5	6.5	5.6	5.3
50	36	19	17	13	0	14	17	40	50

2+23 & 3" Tree on on Lt.

30°									
& Tree									
71.7	71.8	70.7	70.2	69.8	70.6	70.9	71.7	71.7	71.7
6.8	6.7	7.8	8.3	8.7	7.9	7.6	6.8	6.8	6.8
50	20	15	0	15	16	34	38	50	50

2+00 Toe

1+91 & 5' Conc Stoop To 3' Conc Walk Lt.

71.56	71.44	70.80	70.79	70.3
6.28	7.10	7.74	7.75	8.2
38.1	20.1	20.2	16.2	16.1
on walk	Top walk	Conc Stoop	Top Conc Stoop	Conc Walk

1+82 & Deadman on Rt.

21° & Deadman

78.54

7-28-53

X-SECS ASHTON ST. CONTD.

Lt.                      E                      Rt.

2+89 E 8' RR, N<sup>o</sup> 537296-H on Rt

2+88 E 8' Conc Ramp S of Car on Lt.

7.04      85.31

79.73	79.06	
5.58	6.25	19 <sup>o</sup>
40 <sup>o</sup>	25 <sup>o</sup>	E RR
on Ramp E Ramp $\Delta$ 85.31		

TP                      0.27                      78   27

S.W. Cor Bot. Step To House N<sup>o</sup> 4540 N. Side Ashton

2+55 E 3' Conc Walk on Lt

77.30	76.76	76.26	75.7
1.24	1.78	2.28	2.8
40 <sup>o</sup>	30 <sup>o</sup>	20 <sup>o</sup>	20 <sup>o</sup>
on Walk on Walk E Walk Ground			

2+50

77.4	76.4	75.6	74.5	74.2	73.3	74.3	75.3	75.4	76.4	76.5
1.1	2.1	2.9	4.0	4.3	5.2	4.2	3.2	3.1	2.1	2.0
50	20	19	13	0	14	16	18	37	40	50

2+37 Top Sec on Lt

77.0	75.6	74.1	73.2	73.2	72.5	72.4	74.0	74.7	75.2
1.5	2.9	4.4	5.3	5.3	6.0	5.1	4.5	3.8	3.3
50	23	21	13	0	14	15	19	40	50

2+33 Lateral Conc Blk Wall on Lt  
Top Sec on Lt

74.7	74.9	74.7	74.0	72.9	72.9	72.1	73.3	74.0	74.5
38	60	3.8	4.5	5.6	5.6	6.4	5.2	4.5	4.0
50	40 <sup>o</sup>	40 <sup>o</sup>	27	13	0	14	17	40	50
Top Wall Ground									

78.54

$\Delta$  78.54

X-SEC'S ASHTON ST. CONT'D.

3+45 Toe Sec

3+39.74 to Galveston

3+13 Toe Sec on Rt.

Why Line Galveston End 4' Woven Wire Fence on Rt  
3+09.74 Lat. Corn BIK Ret pull on Lt

3+00

7-28-53

68

Lt.                      &                      Rt.

82.9	82.2	81.3	80.0	78.1
2.4	3.1	4.0	5.3	6.6
50	25	0	25	50

82.4	81.5		80.1	79.1	78.8
2.9	3.8		4.6	5.6	6.5
50	25		0	25	50

82.0	81.5	80.6	79.9						
3.3	3.8	4.7	5.4	6.0				79.3	79.0
50	40	22	17	0				19	50

81.3	81.2	81.3	80.7	79.9	79.2	79.0	78.3	79.0	78.9	79.9	80.0
4.0	0.59	4.0	4.6	5.4	6.1	6.3	7.0	6.3	6.4	5.4	5.8
50	40	40	26	19	13	0	13	17	34	40	50

Topsoil Ground                      Fence cut

80.8	80.4	79.4	78.3	78.1	77.3	79.1	78.5	79.6	
4.5	4.9	5.9	7.0	7.2	8.0	6.2	6.8	5.7	79.6
50	35	19	10	0	13	19	37	40	50

85.31

7-28-53

X- SEC'S ASHTON ST. CONT'D.

Lt.      E      Rt.

B.M.                      3.40      81.91

2223 2" Pipe Mk'd City Engr  
81.92      64      N.W. Prop Coy. Ashton/Galveston

3+59.74 Ely Line Galveston

83.9	82.1	82.0	80.9	79.4
1.4	2.6	3.3	4.4	5.9
50	25	0	25	50

3+47 Top Sec

83.6	82.6	81.4	80.1	79.5
1.7	2.7	3.9	4.6	5.8
50	26	0	25	50

85.31

85.31



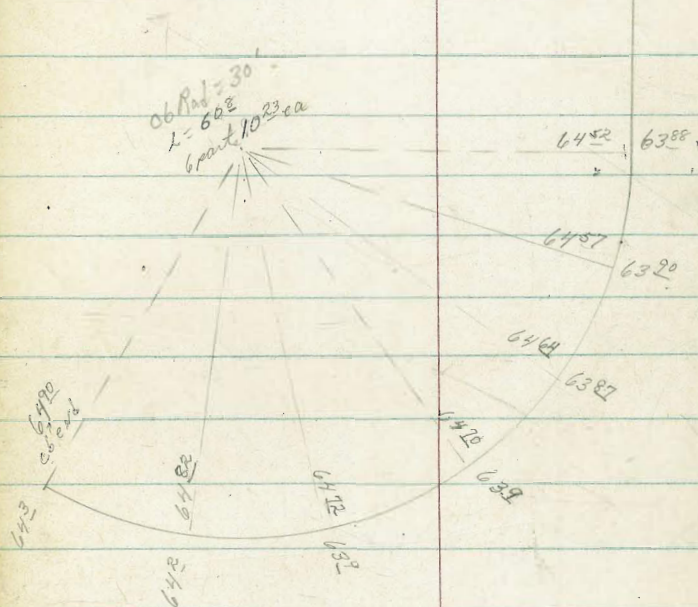
D. Smith  
J. Rorer  
R. Taylor  
B. Fish

NW Return Frankfort + Littlefield

Wot# 32127

(70)

CROSS SECTION 51



S. 1/4 14-47  
Littlefield  
P. 57

B.M.

642

N.W.D.P.  
Gardner  
Frankfort

elev. as shown

CROSS SECTIONS TO SHOW EXIST.  
EDGE OF PAVT.; LIP & TOP CURD  
FROM EIX LINE GALVESTON TO  
WLY LINE ILLION

Note Direct Elev Rod Used.

Lt  
Nly

Q. Rt  
Sly

Huffman (7)  
Chipman  
Taylor  
Blunt  
Steffens  
7-18-55

1+00

92.35	91.87	91.99	92.35	92.98	92.30	92.92	92.31	92.80
20	20	18.5	13.5	0	13.5	18.5	20	20
T.C.	Gut	Lip	E.P.		E.P.	Lip	Gut	T.C.

0+75

88.39	87.90	88.06	88.34	88.45	88.46	88.56	88.94	88.86
20	20	18.5	13.5	0	E.P.	Lip	20	20
cb	Gut	Lip	E.P.				Gut	T.C.

T.P.

87.27

0+50

84.53	84.07	84.19	84.61	84.58	84.55	84.65	84.63	
20	20	18.5	13.5	0	13.5	18.5	20	No
T.C.	Gut	Lip	E.P.		E.P.	Lip	Gut	cb

0+25

80.70	80.18	80.31	80.83	80.89	80.72	80.77	80.65	81.11
20	20	18.5	13.5	0	13.5	18.5	20	20
T.C.	Gut	Lip	E.P.		E.P.	Lip	Gut	T.C.

0+08 B.C. cb Ret  
Lt & Rt

78.09	77.59	77.75	78.31	78.57	78.35	78.22	78.08	78.55
20	20	18.5	13.5	0	13.5	18.5	20	20
Top cb	Gut	Lip	E.P.		E.P.	Lip	Gut	T.C.

0+02 Edge of Ext. Conc Pavt

= 17451.20  
Orig. X-Sec's  
See Pg 27

77.60	77.84	77.48
13.5	0	13.5
E.P.		E.P.

BM Top Styb  
see G-344

0+08

79.22

B.C.

NE Ret. Galveston & Milton

LT. E RT

(72)

CROSS SECTIONS MILTON CONT

7-18-55

3400

122.39 122.56 122.95 122.69 122.57 123.05  
13.5 0 13.5 18.5 20  
E.P. E.P. Lip Gut

2475

N.O. CB  
119.25 119.95 119.43 119.48 119.38 119.83  
13.5 0 13.5 18.5 20 20  
E.P. E.P. Lip Gut T.C.

2461<sup>89</sup>

B.C. NW Cb Ret Hartford N.Y.

117.83 117.36 117.45 117.37 117.59 117.48 117.76 117.61 118.07  
20 20 18.5 13.5 0 13.5 18.5 20 20  
T.C. Gut Lip E.P. E.P. Lip Gut Cb

2450

115.69 115.76 115.67 115.75 115.66 115.86 115.77 116.23  
20 20 18.5 13.5 0 13.5 18.5 20 20  
N.O. CB Gut Lip E.P. E.P. Lip Gut T.C.

T.P.

114.84

2425

112.12 111.60 111.76 111.72 111.90 111.72 111.89 111.74 112.22  
20 20 18.5 13.5 0 13.5 18.5 20 20  
T.C. Gut Lip E.P. E.P. Lip Gut T.C.

2400

108.12 107.65 107.77 107.74 107.98 107.78 108.00 107.85 108.29  
20 20 18.5 13.5 0 13.5 18.5 20 20  
T.C. Gut Lip E.P. E.P. Lip Gut T.C.

T.P.

105.45

1475

109.27 103.78 103.96 103.93 104.13 104.05 104.18 104.01 104.45  
20 20 18.5 13.5 0 13.5 18.5 20 20  
T.C. Gut Lip E.P. E.P. Lip Gut Cb.

1450 Ext. End Cb on Lt.

100.43 99.95 100.07 100.11 100.28 100.04 100.11 100.00 100.91  
20 20 18.5 13.5 0 13.5 18.5 20 20  
T.C. Gut Lip E.P. E.P. Lip Gut T.C.

T.P.

96.14

1420<sup>92</sup> B.C. NW Alley Ret.

95.59 95.74 95.27 95.56 95.83 95.60 95.73 95.63 96.05  
20 20 18.5 13.5 0 13.5 18.5 20 20  
T.C. Gut Lip E.P. E.P. Lip Gut Cb.

Lt. E Rt

CROSS SECTIONS MILTON CONT

7-18-55

1+20<sup>90</sup> B.C. NW. Alley Ret.

146.97	146.52	146.64	146.43	146.77	146.54	146.72	146.60	147.09
20	20	18.5	13.5	0	13.5	18.5	20	20
T.C	Gut	Lip	E.P		E.P	Lip	Gut	T.C.

1400

143.90	143.95	143.51	143.32	143.62	143.47	143.80	143.66	144.19
20	20	18.5	13.5	0	13.5	18.5	20	20
T.C.	Gut	Lip	E.P		E.P	Lip	Gut	T.C

T.P.

142.67

0+7243 B.C. SE. Cb Ret. Hartford Sly

139.78	139.30	139.95	139.32	139.58	139.48	139.94	139.81	140.25
20	20	18.5	13.5	0	13.5	18.5	20	20
T.C	Gut	Lip	E.P		E.P	Lip	Gut	T.C

0+50

136.38	135.90	135.98	135.99	136.27	136.11
20	20	18.5	13.5	0	13.5
T.C	Gut	Lip	E.P		E.P

T.P.

133.51

0+25

132.54	132.07	132.21	132.19	132.55	132.44
20	20	18.5	13.5	0	13.5
T.C	Gut	Lip	E.P		E.P

3+57<sup>84</sup> B.C. NE, Cb Ret  
= 0+08 Ahead.

130.10	129.59	129.74	129.78	130.10	130.01
20	20	18.5	13.5	0	13.5
T.C	Gut	Lip	E.P		E.P

3+25

128.48	128.84	128.88
13.5	0	13.5
E.P		E.P

3+16<sup>27</sup> B.C. S.W. Ret Hartford Sly

124.28	124.57	124.48	124.82	124.74	125.21
13.5	0	13.5	18.5	20	20
E.P		E.P	Lip	Gut	T.C

T.P.

124.18

CROSS-SECTIONS MILTON CONT.

Lt. E Rt

7-18-55

CX, P.K. P.P # 4549 150.52 ~ 150.51 G-344  
8

2+80

156.25 156.28 156.00  
13.5 0 13.5

2+61<sup>81</sup> B.C. Cb Ret Lt Rt (Illion)

156.61 156.14 156.27 155.98 156.12 155.91 155.80 155.70 156.19  
20 20 18.5 13.5 0 13.5 10.5 20 20  
T.C. Gut Lip EP

2+40

156.07 155.66 155.72 155.75 155.95 155.72 155.52 155.42 155.91  
20 20 18.5 13.5 13.5 18.5 20 20

2+20

155.57 155.13 155.25 155.27 155.55 155.31 155.24 155.12 155.68  
20 20 18.5 13.5 0 13.5 18.5 20 20

2+00

154.88 154.91 154.54 154.91 154.62 154.48 154.65 154.54 154.01  
20 20 18.5 13.5 0 13.5 18.5 20 20  
T.C. Gut Lip EP Lip Gut T.C

1+80

0:01

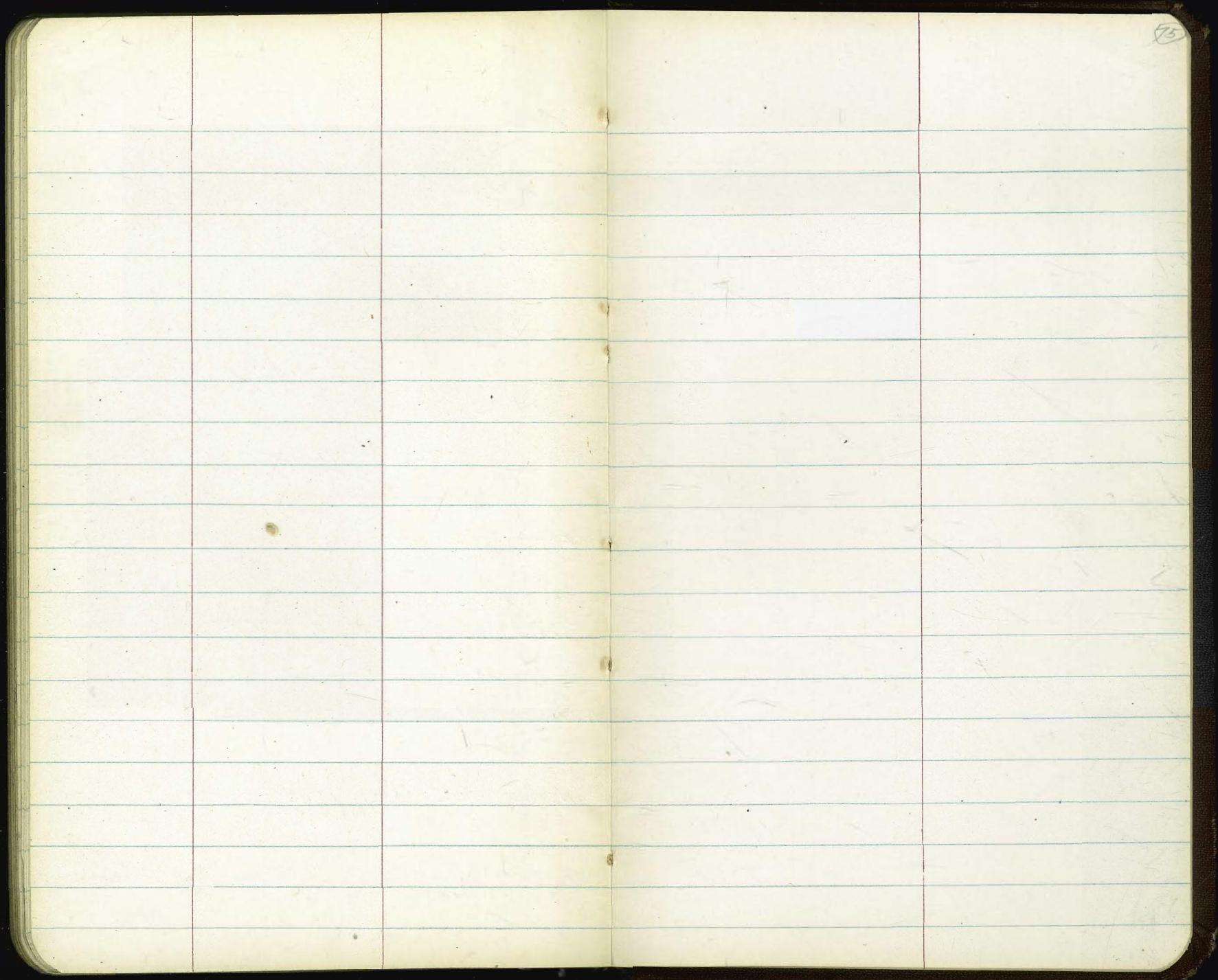
153.60 153.12 153.27 153.12 153.38 153.15 153.53 153.38 153.84  
20 20 18.5 13.5 0 13.5 18.5 20 20  
T.C. Gut Lip EP EP Lip Gut T.C

TP. see G-344-8  
CX, PK, PP, #4549

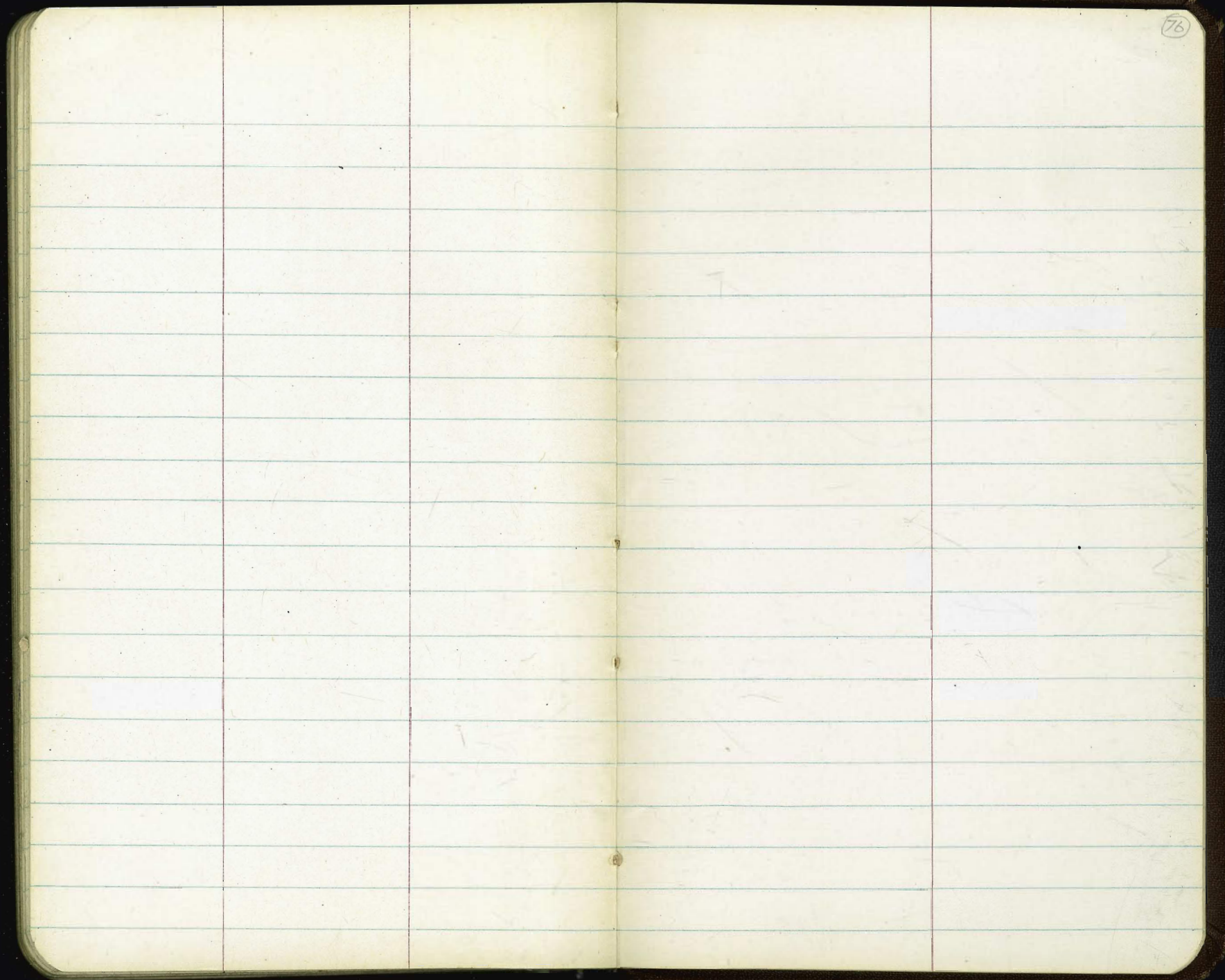
150.51  
150.52

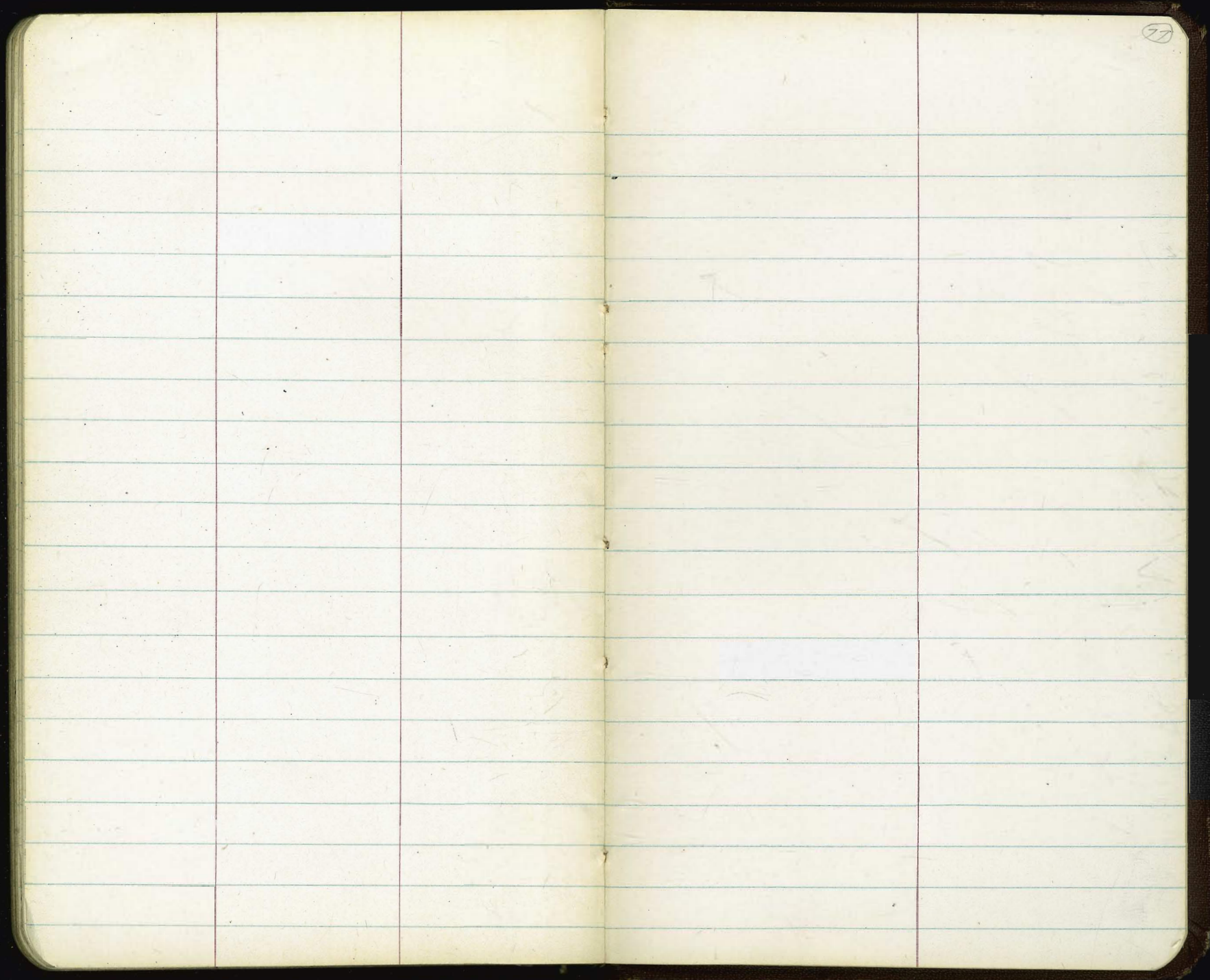
1+80<sup>90</sup> E.C. N.E. Alley Ret

150.74 150.27 150.38 150.06 150.37 150.11 150.44 150.38 150.88  
20 20 18.5 13.5 0 13.5 18.5 20 20  
T.C. Gut Lip EP EP Lip Gut T.C



73









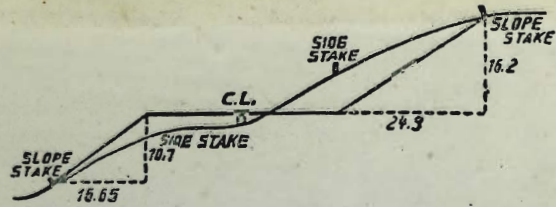
El. 81.92

$\frac{2223}{64}$

Pipe N.W. Prop  
Ashland & Galveston

5 80  
 2 90  
 -----  
 2 90

90  
 920  
 3 80  
 -----  
 3 40



**DISTANCES FROM SIDE STAKES FOR CROSS-SECTIONING.**

**SLOPE 1 1/2 TO 1. ROADWAY OF ANY WIDTH.**

	0	.1	.2	.3	.4	.5	.6	.7	.8	.9	
0	0.00	0.15	0.30	0.45	0.60	0.75	0.90	1.05	1.20	1.35	0
1	1.50	1.65	1.80	1.95	2.10	2.25	2.40	2.55	2.70	2.85	1
2	3.00	3.15	3.30	3.45	3.60	3.75	3.90	4.05	4.20	4.35	2
3	4.50	4.65	4.80	4.95	5.10	5.25	5.40	5.55	5.70	5.85	3
4	6.00	6.15	6.30	6.45	6.60	6.75	6.90	7.05	7.20	7.35	4
5	7.50	7.65	7.80	7.95	8.10	8.25	8.40	8.55	8.70	8.85	5
6	9.00	9.15	9.30	9.45	9.60	9.75	9.90	10.05	10.20	10.35	6
7	10.50	10.65	10.80	10.95	11.10	11.25	11.40	11.55	11.70	11.85	7
8	12.00	12.15	12.30	12.45	12.60	12.75	12.90	13.05	13.20	13.35	8
9	13.50	13.65	13.80	13.95	14.10	14.25	14.40	14.55	14.70	14.85	9
10	15.00	15.15	15.30	15.45	15.60	15.75	15.90	16.05	16.20	16.35	10
11	16.50	16.65	16.80	16.95	17.10	17.25	17.40	17.55	17.70	17.85	11
12	18.00	18.15	18.30	18.45	18.60	18.75	18.90	19.05	19.20	19.35	12
13	19.50	19.65	19.80	19.95	20.10	20.25	20.40	20.55	20.70	20.85	13
14	21.00	21.15	21.30	21.45	21.60	21.75	21.90	22.05	22.20	22.35	14
15	22.50	22.65	22.80	22.95	23.10	23.25	23.40	23.55	23.70	23.85	15
16	24.00	24.15	24.30	24.45	24.60	24.75	24.90	25.05	25.20	25.35	16
17	25.50	25.65	25.80	25.95	26.10	26.25	26.40	26.55	26.70	26.85	17
18	27.00	27.15	27.30	27.45	27.60	27.75	27.90	28.05	28.20	28.35	18
19	28.50	28.65	28.80	28.95	29.10	29.25	29.40	29.55	29.70	29.85	19
20	30.00	30.15	30.30	30.45	30.60	30.75	30.90	31.05	31.20	31.35	20
21	31.50	31.65	31.80	31.95	32.10	32.25	32.40	32.55	32.70	32.85	21
22	33.00	33.15	33.30	33.45	33.60	33.75	33.90	34.05	34.20	34.35	22
23	34.50	34.65	34.80	34.95	35.10	35.25	35.40	35.55	35.70	35.85	23
24	36.00	36.15	36.30	36.45	36.60	36.75	36.90	37.05	37.20	37.35	24
25	37.50	37.65	37.80	37.95	38.10	38.25	38.40	38.55	38.70	38.85	25
26	39.00	39.15	39.30	39.45	39.60	39.75	39.90	40.05	40.20	40.35	26
27	40.50	40.65	40.80	40.95	41.10	41.25	41.40	41.55	41.70	41.85	27
28	42.00	42.15	42.30	42.45	42.60	42.75	42.90	43.05	43.20	43.35	28
29	43.50	43.65	43.80	43.95	44.10	44.25	44.40	44.55	44.70	44.85	29
30	45.00	45.15	45.30	45.45	45.60	45.75	45.90	46.05	46.20	46.35	30
31	46.50	46.65	46.80	46.95	47.10	47.25	47.40	47.55	47.70	47.85	31
32	48.00	48.15	48.30	48.45	48.60	48.75	48.90	49.05	49.20	49.35	32
33	49.50	49.65	49.80	49.95	50.10	50.25	50.40	50.55	50.70	50.85	33
34	51.00	51.15	51.30	51.45	51.60	51.75	51.90	52.05	52.20	52.35	34
35	52.50	52.65	52.80	52.95	53.10	53.25	53.40	53.55	53.70	53.85	35
36	54.00	54.15	54.30	54.45	54.60	54.75	54.90	55.05	55.20	55.35	36
37	55.50	55.65	55.80	55.95	56.10	56.25	56.40	56.55	56.70	56.85	37
38	57.00	57.15	57.30	57.45	57.60	57.75	57.90	58.05	58.20	58.35	38
39	58.50	58.65	58.80	58.95	59.10	59.25	59.40	59.55	59.70	59.85	39
40	60.00	60.15	60.30	60.45	60.60	60.75	60.90	61.05	61.20	61.35	40
41	61.50	61.65	61.80	61.95	62.10	62.25	62.40	62.55	62.70	62.85	41
42	63.00	63.15	63.30	63.45	63.60	63.75	63.90	64.05	64.20	64.35	42
43	64.50	64.65	64.80	64.95	65.10	65.25	65.40	65.55	65.70	65.85	43
44	66.00	66.15	66.30	66.45	66.60	66.75	66.90	67.05	67.20	67.35	44
45	67.50	67.65	67.80	67.95	68.10	68.25	68.40	68.55	68.70	68.85	45
46	69.00	69.15	69.30	69.45	69.60	69.75	69.90	70.05	70.20	70.35	46
47	70.50	70.65	70.80	70.95	71.10	71.25	71.40	71.55	71.70	71.85	47
48	72.00	72.15	72.30	72.45	72.60	72.75	72.90	73.05	73.20	73.35	48
49	73.50	73.65	73.80	73.95	74.10	74.25	74.40	74.55	74.70	74.85	49
50	75.00	75.15	75.30	75.45	75.60	75.75	75.90	76.05	76.20	76.35	50

THE NATIONAL BLANK BOOK COMPANY  
 HOLYOKE MASSACHUSETTS  
 NEW YORK CHICAGO BOSTON SAN FRANCISCO