

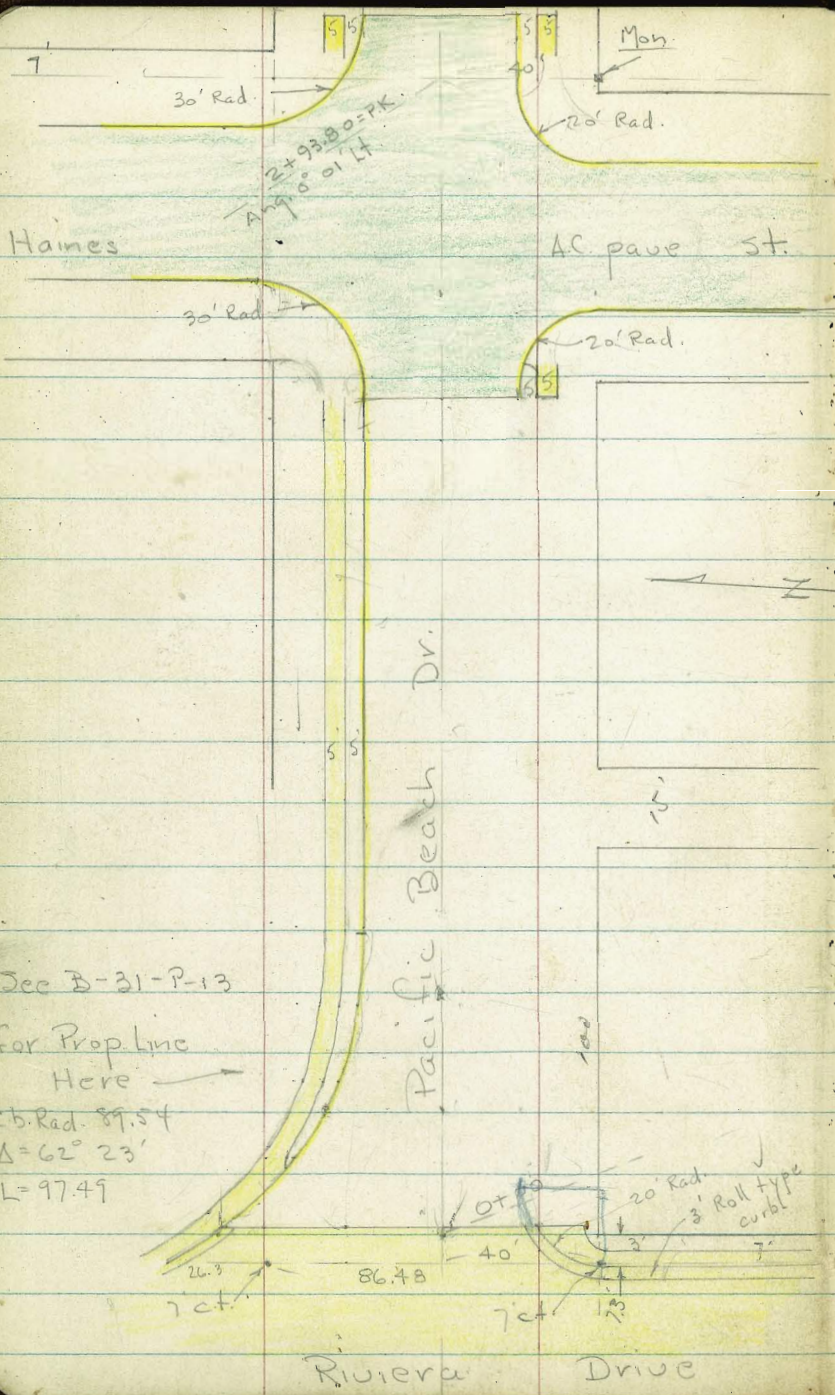
DISTANCES FROM SIDE STAKES FOR CROSS-SECTIONING
SLOPE 1 TO 1. ROADWAY OF ANY WIDTH

	0	.1	.2	.3	.4	.5	.6	.7	.8	.9	
0	0.00	0.10	0.20	0.30	0.40	0.50	0.60	0.70	0.80	0.90	0
1	1.00	1.10	1.20	1.30	1.40	1.50	1.60	1.70	1.80	1.90	1
2	2.00	2.10	2.20	2.30	2.40	2.50	2.60	2.70	2.80	2.90	2
3	3.00	3.10	3.20	3.30	3.40	3.50	3.60	3.70	3.80	3.90	3
4	4.00	4.10	4.20	4.30	4.40	4.50	4.60	4.70	4.80	4.90	4
5	5.00	5.10	5.20	5.30	5.40	5.50	5.60	5.70	5.80	5.90	5
6	6.00	6.10	6.20	6.30	6.40	6.50	6.60	6.70	6.80	6.90	6
7	7.00	7.10	7.20	7.30	7.40	7.50	7.60	7.70	7.80	7.90	7
8	8.00	8.10	8.20	8.30	8.40	8.50	8.60	8.70	8.80	8.90	8
9	9.00	9.10	9.20	9.30	9.40	9.50	9.60	9.70	9.80	9.90	9
10	10.00	10.10	10.20	10.30	10.40	10.50	10.60	10.70	10.80	10.90	10
11	11.00	11.10	11.20	11.30	11.40	11.50	11.60	11.70	11.80	11.90	11
12	12.00	12.10	12.20	12.30	12.40	12.50	12.60	12.70	12.80	12.90	12
13	13.00	13.10	13.20	13.30	13.40	13.50	13.60	13.70	13.80	13.90	13
14	14.00	14.10	14.20	14.30	14.40	14.50	14.60	14.70	14.80	14.90	14
15	15.00	15.10	15.20	15.30	15.40	15.50	15.60	15.70	15.80	15.90	15
16	16.00	16.10	16.20	16.30	16.40	16.50	16.60	16.70	16.80	16.90	16
17	17.00	17.10	17.20	17.30	17.40	17.50	17.60	17.70	17.80	17.90	17
18	18.00	18.10	18.20	18.30	18.40	18.50	18.60	18.70	18.80	18.90	18
19	19.00	19.10	19.20	19.30	19.40	19.50	19.60	19.70	19.80	19.90	19
20	20.00	20.10	20.20	20.30	20.40	20.50	20.60	20.70	20.80	20.90	20
21	21.00	21.10	21.20	21.30	21.40	21.50	21.60	21.70	21.80	21.90	21
22	22.00	22.10	22.20	22.30	22.40	22.50	22.60	22.70	22.80	22.90	22
23	23.00	23.10	23.20	23.30	23.40	23.50	23.60	23.70	23.80	23.90	23
24	24.00	24.10	24.20	24.30	24.40	24.50	24.60	24.70	24.80	24.90	24
25	25.00	25.10	25.20	25.30	25.40	25.50	25.60	25.70	25.80	25.90	25
26	26.00	26.10	26.20	26.30	26.40	26.50	26.60	26.70	26.80	26.90	26
27	27.00	27.10	27.20	27.30	27.40	27.50	27.60	27.70	27.80	27.90	27
28	28.00	28.10	28.20	28.30	28.40	28.50	28.60	28.70	28.80	28.90	28
29	29.00	29.10	29.20	29.30	29.40	29.50	29.60	29.70	29.80	29.90	29
30	30.00	30.10	30.20	30.30	30.40	30.50	30.60	30.70	30.80	30.90	30
31	31.00	31.10	31.20	31.30	31.40	31.50	31.60	31.70	31.80	31.90	31
32	32.00	32.10	32.20	32.30	32.40	32.50	32.60	32.70	32.80	32.90	32
33	33.00	33.10	33.20	33.30	33.40	33.50	33.60	33.70	33.80	33.90	33
34	34.00	34.10	34.20	34.30	34.40	34.50	34.60	34.70	34.80	34.90	34
35	35.00	35.10	35.20	35.30	35.40	35.50	35.60	35.70	35.80	35.90	35
36	36.00	36.10	36.20	36.30	36.40	36.50	36.60	36.70	36.80	36.90	36
37	37.00	37.10	37.20	37.30	37.40	37.50	37.60	37.70	37.80	37.90	37
38	38.00	38.10	38.20	38.30	38.40	38.50	38.60	38.70	38.80	38.90	38
39	39.00	39.10	39.20	39.30	39.40	39.50	39.60	39.70	39.80	39.90	39
40	40.00	40.10	40.20	40.30	40.40	40.50	40.60	40.70	40.80	40.90	40
41	41.00	41.10	41.20	41.30	41.40	41.50	41.60	41.70	41.80	41.90	41
42	42.00	42.10	42.20	42.30	42.40	42.50	42.60	42.70	42.80	42.90	42
43	43.00	43.10	43.20	43.30	43.40	43.50	43.60	43.70	43.80	43.90	43
44	44.00	44.10	44.20	44.30	44.40	44.50	44.60	44.70	44.80	44.90	44
45	45.00	45.10	45.20	45.30	45.40	45.50	45.60	45.70	45.80	45.90	45
46	46.00	46.10	46.20	46.30	46.40	46.50	46.60	46.70	46.80	46.90	46
47	47.00	47.10	47.20	47.30	47.40	47.50	47.60	47.70	47.80	47.90	47
48	48.00	48.10	48.20	48.30	48.40	48.50	48.60	48.70	48.80	48.90	48
49	49.00	49.10	49.20	49.30	49.40	49.50	49.60	49.70	49.80	49.90	49
50	50.00	50.10	50.20	50.30	50.40	50.50	50.60	50.70	50.80	50.90	50

Distance of slope stake from side or shoulder stake for any width roadway, slope 1 to 1. If ground is nearly level, the cut or fill at side stake is located by the double entry method in left column and top row. The number in body of table in same row and column gives distance from side stake to slope stake. If ground is not level estimate the difference in elevation between the side stake and slope stake, lower target by this amount if cut, elevate if fill. Add this amount to cut or fill and find distance in table. Set up rod at this point, and line of sight should cut target. If it does not make the slight adjustment necessary.

INDEX

Page	
1-12	X-Section Pacific Beach Dr. - Riviera to Jewell
13-17	X-section Alley B/K 3 ^{2nd} Park Add ^{Fortune} Pac Beach Dito Fortune Ingraham to Promontory
18-21	X-section - W. Ingraham for Str. Drains
22	X-section Alley B/K 58 Park-Villas
48	Sumac - Modesto to Laurel



Haines

AC pave st.

Pacific Beach Dr.

Riviera Drive

Dec B-31-P-13

for Prop. line

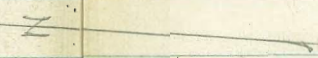
Here →

Cb. Rad. 89.54

$\Delta = 62^\circ 23'$

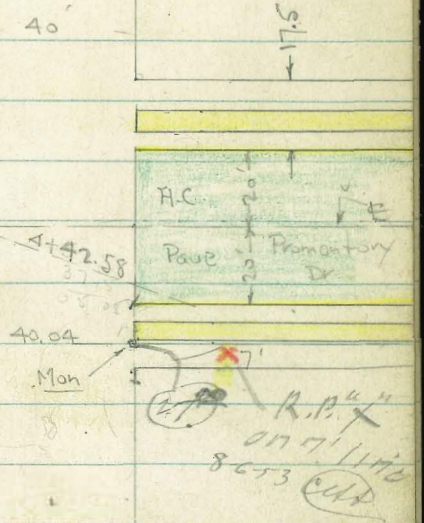
L = 97.49

5+42.58?



Pacific Beach Dr.

Haines st.



A.C. Pave Promontory Dr.

40.04 Mon

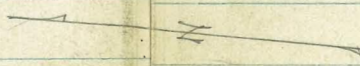
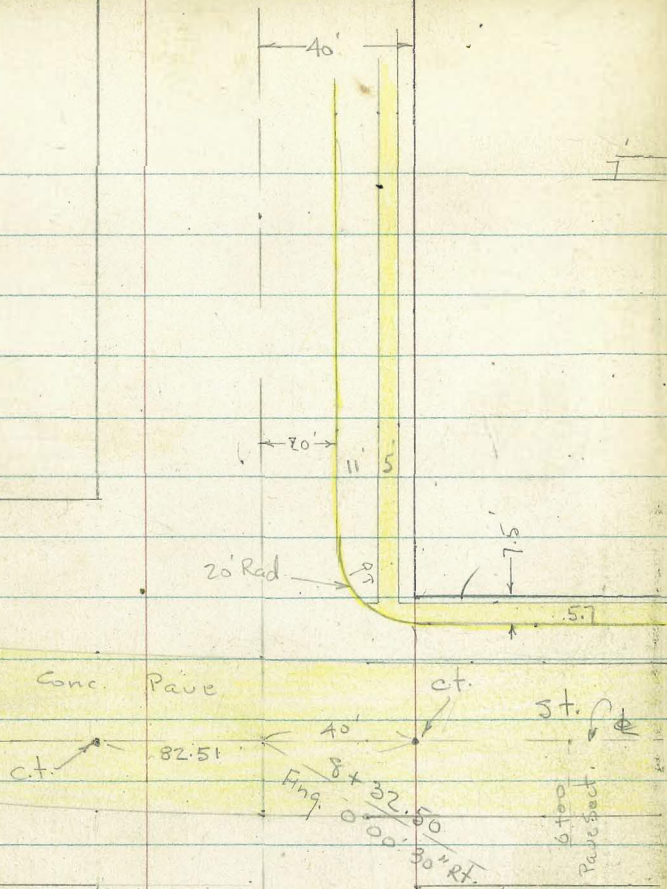
R.P. "X" on 7/11/10 8-53 (alt)

1470 - end Ingraham Sect.

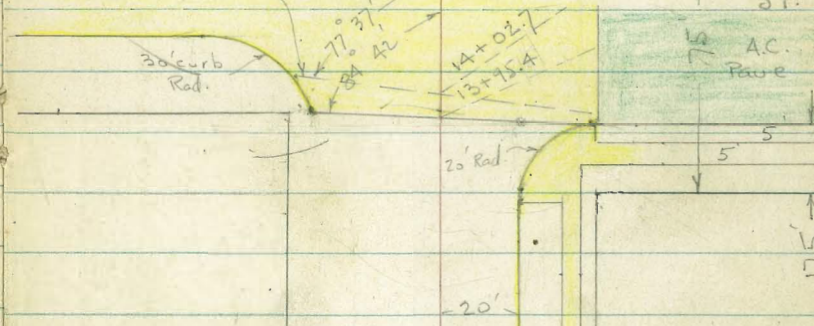
Ingraham

Pacific Beach Dr.

8+32.50
37.50
7+95.00



Jewell (Conc Pav) Line of Exist gutter.

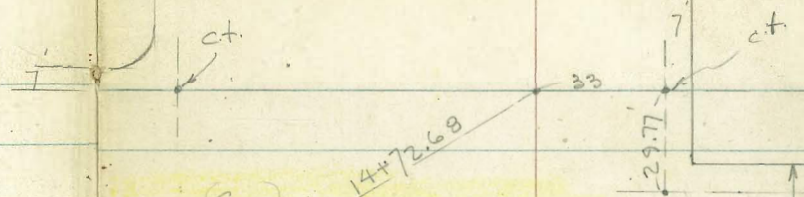


Pacific Beach Dr.

40'

75
22.77
97.77

14+72.68
97.77
13-74.91
13+15.4



Soil Samples Taken

5+80 + 11+00

γ-Sect. Pacific Beach Drive - from
Riviera Drive to Jewell.

7-1-52 - 7.0.

W.O.

1+10 = ♣ Alley on Rt

1+00 - 39.1 Rt. = end fence

0+99 - 20.5 Rt. = ♣ P. pole # P-1473

0+76 = P.C. of cb on Lt.

0+71 - 30.1 Rt. = ♣ Dead man

0+59 - 39.1 Rt. = Beg. Board Fence

0+50

0+20

Beg. Reg. curb on Lt.

0+02 = edge of Conc. pave + end of curb on Rt.

0+00 = E.L. Riviera Dr.

0-09 = low point of gut. on Roll curb to S.

Set B.M. = S.E. 7th. Riviera 29.95

B.M. = c.t. = ♣ Ingraham to N. 46.21
+ N.L. P.B. Dr.

INDEXED

Lew
JUL 3 1952

Note: ♣ used is line 40' from S.L.

39.16 38.6 39.2 39.8 40.5 41.9
Top 20 20 40 80
gut.

35.89 35.1 35.3 35.5 37.0 37.0
Top 20.2 20 20 40
gut.

33.58 32.5 33.0 33.0 33.5 35.4 35.7
Top 23.5 20 35 40 45.4
gut. along Gar.

30.67 29.5 30.5 30.6 30.6 31.4 34.0 34.3
Top 39 20 15 35 40 50
gut.

28.83 27.95 28.64 29.25 29.72 29.83 29.90 30.43 30.30 31.1
Top 57.8 40 20 10 22.5 24.2 36.7 40
gut. gut. Top Cor. walk

27.68 27.11 28.02 28.79 29.27 29.40 29.29 29.91 29.77 30.38
Top 73.4 50 20 20 40 40 80 80
edge walk gut. on Conc. pave gut. Top Top

Actual Elev. shown.

P.B. Dr.

Lt. † Rt.

2+80.8 = E. cb. to N.	50.68 Top = PC.	50.05 50 gut.	50.92 20	51.10	51.06 23.7 gut.	51.70 Top
2+72.6 = E. cb. to S.		50.48 40	50.83 20	51.03	51.13 20	50.98 40 gut.
2+40.8 = w. cb. to N.	50.14 Top	49.54 50 gut.	50.17 20	50.45	50.56 20	50.77 40
Set B.M. on S.W. 7' Disk	50.64					
2+32.5 = w. curb line to S.	50.08 Top	49.47 29.6 gut.	49.75 20	50.09	50.19 20	50.42 40 gut.
ϕ of Returns 30' Rad. on Lt. + 20' Rad. on Rt. (32.5 to w. end) (Note: PC on Rt. is 2.4' ahead)		49.43 gut	50.07 Top		50.54 Top	49.89 gut.
2+10.1 = edge of AC. pave + end of curbs.	48.87 Top	48.22 19.9 gut.	48.60 10	48.74	48.75 10	48.62 20 gut.
1+90		46.92 Top	46.3 20 gut.	47.1	47.5 15	49.4 30
1+50		43.02 Top	42.4 20 gut.	43.5	44.1 15	45.7 30
1+45 = 40.8' Rt. = Walk at Cdr. of Gar.					47.11 40.8 walk	47.12 43.8 at cor.
1+20 = 40.8' Rt. = Beg. 3' Conc. walk along Gar. 1 Apt.					41.81 40.8 walk	41.83 43.8 at Cor. of Gar.

P.B. Dr

Lt.

±

Rt.

4+19- 43.3 Rt. = end. at House - House Cont. at 43.3 out.

53.28 53.31
43.3 walk 47.3 at House

4+05- 43.2 Rt. = Beg. of Conc. walk to House.

53.23 53.23
43.2 47.2 = House

4+00

55.7 55.1 54.4 54.7 54.6 54.1 53.4 52.6
50 40 30 20 20 40 65
in Alley

3+91- 40.4 Lt. = ± 9.5 Conc. Dr.

56.55 55.64
floor 60 40.4
Gar. Dr.

3+70

56.3 56.0 55.1 55.1 55.3 55.5 54.9 54.7
50 40 20 15 20 40 50

3+45

56.6 56.3 55.0 53.9 54.0 54.4 54.9 55.6 55.3
50 40 30 15 15 20 40 50

3+30- 22.3 Lt. = ± Dead man

3+10.8 = Edge of A.C. page + end curbs.

55.5 52.12 52.04 51.96 51.37 51.45 51.60 51.48 51.37 51.96 52.04 52.10 55.5
40 29.9 24.9 Top 19.9 10 10 20.1 Top 25.2 30.2 40
walk' Top. Gut.

2+92.6 = E.C. of SE Ret.

51.17 51.83
20.1 Top
gut.

± of Returns 30 on Lt. 20' Rad. on Rt.

51.23 50.62
Top gut.
ENE. Ret.

51.67 51.03
Top gut.
± SE. Ret.

P.B. Dr.

42.58
27.53
80.05

05.08
2.5
12.58

Lt.

±

Rt.

6

5+62.58 = E. cb.

52.0 51.9 47.8 47.7 47.4 46.7 45.26 45.89 44.81 45.45
55 48 35 20 20 40.2 Top 80
gut. End. gut. Top
cb

5+42.58 = ±

51.4 50.4 48.4 48.3 48.0 47.4 46.14 45.68
50 40 30 20 1 20 40.3 80
edge
Ad.

5+30-45.9 Lt. = ± 25' Conc. walk

52.24 51.38
61 45.9
at House walk

5+22.58 = W. cb. Line

51.8 51.4 49.2 48.9 48.7 47.8 46.24 46.86 45.57 46.19
50 40 30 20 20 40.3 Top 80
gut. endbb gut. Top

5+17.58

46.97
40.3 = walk

Set. B.M. Top F.H. - S.E. Cor.

48.83

5+12.58 = wly. of 5' walk on Rt.

47.07
40.3
Cor. walk

5+05.08 = w.L. of Promontory

51.92 50.2 49.8 49.6 49.4 48.7 48.1
48.6 40 35 20 20 40

5+04-48.6 Lt. = ± of 8' Conc. Dr.

52.82 Dr. 51.92
70 48.6

4+90-47.7 Lt. = ± of 3' Conc. walk

53.33 52.23
56 walk 47.7

4+80

53.3 53.5 50.8 50.9 50.7 50.2 49.7 49.7
50 40 35 20 20 40 43.1
at House

4+40

54.5 53.8 52.7 52.9 52.8 52.7 52.2 52.0
50 40 35 20 20 40 43.1
Cor. House

R.B. Dr.

Lt. † Rt

6+96- 40.4' Rt. = Beg. Conc. apron to Doub. gar.

45.66 45.79
40.4 42.2 - floor
apron gar.

6+91- 46.4' Lt. = † 4' Conc. walk

47.73 47.39
58.4 46.4
at Porch - walk

6+87.6 = † Sewer M.H. + † of Alley to Rt.

47.4 46.8 45.9 45.8 45.93 45.2 45.2 45.0
50 40 35 20 sly. of 20 40 80
M.H. Rim

6+82- 39.4' Rt. = † P. pole # 1575

6+80- 40.1' Rt. = end wall

45.4
40.1 = at
wall

6+55- 40' Rt. = Beg 8" Conc. Block wall

45.5
40
at Cor.

6+53- Rt. = Ely. of Conc. Dr.

47.6 47.6 46.0 45.9 45.9 45.6 45.65
50 40 35 20 20 40.4
Dr.

6+38- 42' Rt. = end walk at Conc. Dr. - 40.4 Rt.
House = Ely. of 5.7' Conc. porch.

45.54 45.57 45.74
40.4 42 50.3
45.61 Dr. walk floor
42 = walk 45 = House gar.

6+22- 42' Rt. = Beg. Nly. of 3' Conc. walk along

6+05

48.8 48.3 46.7 46.6 46.4 46.3 46.2 46.1
50 40 35 20 20 40 45 = at
House

5+84- 48.2' Lt. = † 2' Conc. walk

52.13 51.94
60 48.2 = walk
walk

5+80.08 = E.L. Promontory

51.9 47.3 47.2 47.0 46.6 46.4
50 40 20 20 40

5+72.58 = Ely. of walk

46.02
40.3
walk

5+67.58 = wly. of 5' walk

45.96
40.3
walk

P.B. Dr.

0+00 = 40' S. of S.L. P.B. Dr.

Begin Paving Sections along \pm of Ingraham to South. - Prod. Thru Int. to N. See sketch

P. 2 - 0+00 is 40' S. of S.L. of P.B. Dr.

8+07

7+95 = W.L. of Ingraham to S. ✓

7+68 - 31.3' Rt. = \pm 2.5' Conc walk

7+59 - 46.2' Lt. = \pm 3' Conc walk

7+55

7+40 - 36' Lt. = \pm P. pole # 1578 ✓

7+38 - 31.3' Rt. = \pm 2.5' Conc. walk

7+22 - 46.2' Lt. = \pm 4' Conc walk

7+15 - 40.4' Rt. = end apron

7+06 - 46.4' Lt. = \pm 20" Conc. walk

8

Lt.

\pm

Rt.

45.57 45.90 45.50 45.2 45.77

20 edge Conc. 20.1 edge 30.2 9-ft Top cb.

Paving edges curve thru int.

45.9 45.6 45.7 45.8 45.8 45.7 45.7 45.8
100 50 40 20 20 40 80

46.5 46.2 45.9 45.8 45.9 45.5 45.6 45.6
50 40 30 20 20 40 80

45.92 46.19
31.3 40.2
walk at porch

47.66 47.00
58 46.2
walk

47.1 46.3 45.6 45.9 46.0 45.6 46.1 46.1
50 40 30 20 20 40 42.2 at House

45.71 46.10
31.3 40.2 at Porch
walk

47.96 47.68
58 46.2
at House walk

47.7 46.8 45.7 45.8 45.7 45.4 45.70
50 40 35 20 20 40.4 apron

47.73 47.55
60 46.4
walk

P.B. Dr.

Lt.

±

Rt.

9

8+70 = E.L. of Ingraham to S.

46.4	46.2	46.0	45.8	45.8	45.4	45.1	46.05
90	50	40	20		15	23.9	Top on Ret.
						gut	

Req. Regular Sections along ± of P.B. Dr.

1+70 = end - still on Pavé curve

7	45.76	46.30	46.45	46.30
	14.5		10	25.6
	edge			edge

1+45

45.71	46.29	46.37	46.16
16		10	24.1
edge			edge

1+22.51 = N.L. P.B. Dr.

45.65	46.24	46.30	46.09
17.5		10	23
edge			edge

1+00

45.59	46.22	46.17	45.96
18.6		10	22.1
edge			edge

0+80 = ± = 8+32.50 = ± of P.B. Dr.

45.52	45.96	46.11	46.02	45.76
19.5	10		10	21.2
edge				edge

0+60

45.60	46.04	45.68
20		20.5
edge		edge

0+52.3 = P.C. of Pavé edges.

45.60	45.88	46.03	45.91	45.65
20.1	10		10	20.3
edge				edge

0+40 = S.L. = opp. P.C. of 20' Rad. Ret. on Rt.

45.60	46.00	45.63	45.53	45.87
20.1		20.2	20.1	Top - PC
edge		edge	gut	

P.B. Dr.

11+06-34' Lt. = £ P. pole # 1636

11+00

45.8	45.7	45.5	45.6	45.6	46.23
50	40	20		20.1	Top
				gut.	

10+94-42.3 Lt. = £ 8' Conc. Dr.

10+87-42.3 Lt. = £ 3' Conc. walk

45.85	45.75				
57.7	42.3				
floor	45.92	Dr.	45.80		
gar.	56.3	at porch	42.3	walk	

10+50

46.1	45.9	45.8	45.8	45.7	46.44
50	40	20		20.2	Top
				gut.	46.00
				20.1	31.1
				Dr.	walk

10+24 = £ 16' Conc. Dr. on Rt.

10+07-42.8 Lt. = £ 3' Conc. Dr.

46.77	46.55				
53.5	42.8				
at porch	walk				

10+00

46.6	46.4	45.9	46.1	45.8	46.57
50	40	20		20	top
				gut.	

9+86-42.3 Lt. = £ 7.5' Conc. Dr.

46.58	46.26				
57.4	42.3				
floor	gar.	Dr.			

9+73-34.5 Lt. = £ P. pole # 1614

9+60

46.6	46.6	46.0	46.2	45.7	46.69
50	40	20		20.1	Top

9+50 = 34' Lt. = £ Dead man v

9+20

46.8	46.7	46.0	46.2	45.8	46.51
50	40	20		20.1	Top
				gut.	

8+82.5 = opp. P.C. of Ret.

46.1	46.7	46.7	45.7	45.9	45.3	46.18
90	50	40	20		20	Top-P.C.
					gut.	

RB. Dr.

13+05-34' Lt = \pm Deadman

13+00

12+99-34' Lt = \pm Guy Pole

12+65-42' Lt = \pm 3' Conc. walk

12+50

12+44-42.2 Lt = \pm 8' Conc. Dr.

12+36-34.1 Lt = \pm P. pole # 1656

12+24-42.2 Lt = \pm 8' Conc. Dr.

12+16-42.3 Lt = \pm 3' Conc. walk

12+00

11+50

11+35-42' Lt = \pm 3' Conc. walk

11+16-42.4' Lt = \pm 8' Conc. Dr.

Lt. E Rt.

45.0 45.5 44.9 45.2 44.8 45.44
50 40 20 20.2
gut. Top

45.38 45.37
52.2 42
at porch walk

45.3 45.2 44.9 45.1 44.9 45.64
50 40 20 20.3
gut. Top

45.32 45.32
57.7 42.2
floor gar. Dr.

44.63 45.08
57.4 42.2
floor gar. Dr.

44.81 45.21
56.7 42.3
at porch walk

45.3 45.2 45.1 45.1 45.0 45.90
50 40 20 20.1
gut. Top

45.8 45.6 45.3 45.3 45.3 46.10
50 40 20 20.2
gut. Top

46.13 46.22
54 42
at Porch walk 45.80
57.8 42.4
floor Dr.
gar.

P.B. Dr.

Lt. E Rt.

14 + 19.3 = w. cb. to N. 30' curb Rad Ret. 46.32
Top 45.77 45.54 44.96 45.04 45.08 45.08 45.06 44.92 44.68
100 Top 62 40 20 20 40 80
gut. = P.D. gut.

along gut. See sketch for angle
14 + 02.7 = Line of Exist. gutter in Conc. - Sect.
45.26 44.59 44.48 44.29 44.13 43.96
Top 43.8 20 20 41.9 at P.C.
gut.

13 + 95.4 = edge of Conc pave - Sect on edge
See sketch-P. 2 for angle
45.11 44.55 44.62 44.69 44.58 44.42 44.28 43.98
Top 34.1 20 10 10 20 36.2
end cb gut. Brk to do.

13 + 92.4 = w. cb. to S.
45.7 45.4 44.8 44.8 44.6 44.2 43.96 45.03 43.85
50 40 30 15 20 40 Top = 80
gut. P.C. gut. Top

13 + 81 - 34.2 Lt. = Tel. pole # 55.9542-H

13 + 74.91 = w.L. of Jewell to S.
45.2 45.4 45.4 44.6 44.9 44.4 45.13
50 40 30 20 20.5 Top
gut.

13 + 72.4 = P.C. of 20' Rad Ret. on Rt.
+ P.B. Dr.
44.4 45.15
gut. Top
Set B.M. on S.E. 7 ct. Jewell 45.99 20.2

13 + 45 - 42.7 Lt. = on 13' Conc. Dr.
45.05 44.72 44.8 44.8 45.2 44.6 45.26
58.2 42.7 40 20 20.2 gut. Top
class Dr. gut.

D. Smith
C. Allen
R. Taylor
S. Parks

X-sec Alley Blk 3 -
Second Fortuna Park

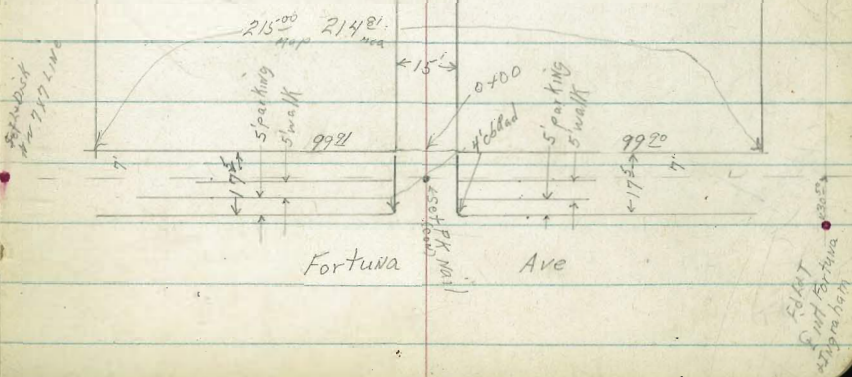
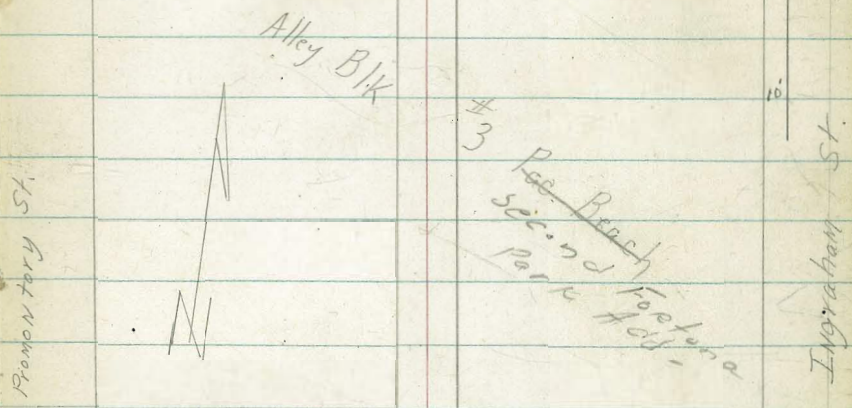
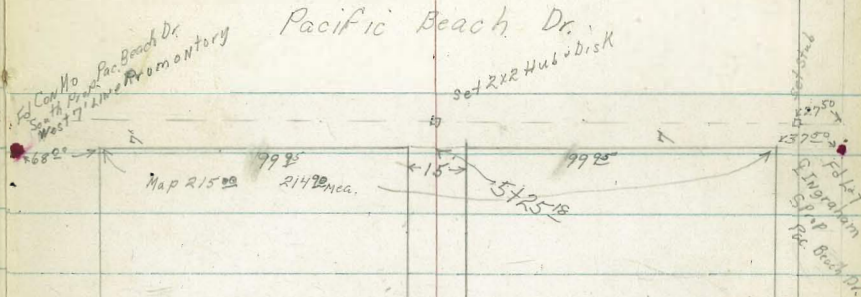
also X-sec W side Inghram
bet Pac. Beach Drive &
Fortuna Ave

pg 18

INDEXED
Law

SEP 19 1952

W 032.100
9-18-52



X Sec Alley BK 3 Pac Beach

Lt. West

2

RT = East

14

1767 7⁵ RT Begin con upon

46.43

46.12
75

1700 7⁶ Lt Begin 4' con block wall

1700 7⁴ RT end 4' Lath fence

0799 6⁶ Lt & 12" Power Pole # PA 4019

0750 7¹ RT Begin 4' Lath fence

0750 7² Lt end con wall

Notes Reduced Giblin

45.9

50.66

44.8

46.6

46.3

46.5

46.8

52.12

039.75

63.75

45.75

48.75

46.75

43.25

Top wall

Footing

47.3

47.66

47.3

47.5

47.5

47.9

47.9

38.12

339.72

38.72

36.75

36.75

32.75

32.25

Top wall

Footing 3d

47.4

47.8

47.7

48.0

48.7

48.3

32.12

33.75

34.75

31.75

24.12

28.25

0720

0700 7⁵ Lt Begin 12" wide con wall

47.75

46.3

46.57

46.32

46.12

46.30

46.65

0700 Nly Fortuna end AC & C6

330.75

43.75

42.75

42.75

42.75

42.75

44.0

Top wall

Footing

26 end

9ut

5ut

26 end

45.89

45.24

44.29

46.67

45.86

45.92

45.57

45.83

46.47

45.64

46.26

0-17⁵ Nly C6 Line Fortuna

516.365

581.365

476.115

538.115

519.75

5-19.75

5-08.75

522.115

458.115

541.365

477.365

26 9ut

26 9ut

26 9ut

26 9ut

26 9ut

26 9ut

26 9ut

26 9ut

26 9ut

26 9ut

26 9ut

TP

766

51.05

678

43.39

BM

326

50.17

46.21

N Prop Pac Beach 4.
& Ingraham 4.5

51.05

Lt=West

♀

Rt=East

15

2486 12³ Lt & double garage cov floor

4404
431
125
floor

43.45
43.88

2475 7⁵ Rt end 4 car garage cov floor apron

490
75
apron
447
75
floor

2450 6⁰ Lt & 9" Power Pole # PA4049

434
50
15
433
51
75
432
52
75
4353
482
75
cov
apron

2450 Best location approx Lot line IP drain needs to go West to Pion on lory

43.54
43.81
481
75
apron
454
75
150
floor

2425 7⁵ Rt Begin 4 car garage cov floor & apron

432
52
15
434
50
75
436
48
75
434
50
75
434
50
15

2400

434
48
15
50.49
72
top
wall
43.6
45
72
footing
44.1
43
75
44.9
35
75
45.0
34
75
477
22
15

1456 7³ Lt end 6' cov block wall

TP2 250 48-35 520 45-85

48 35
46.35
47.82
470
73
apron floor
323
113

1419 7³ Rt & Double garage cov floor & apron

5105

Lt = West

Rt = East

16

4150

4142 5⁰ Lt & Dead end

4129 8² Rt Begin 2⁵ con walk 11 to Alley

4124 5² Lt & 9" Power Pole # PA 4077

4100

3175 7⁰ Lt Begin 6' con block wall

3150

3137 6⁰ Lt & 9" Power Pole # PA 4065

3124 9⁰ Lt & single garage con floor

3100

318
75

306
75

306
75

346
82
walk

32
82
walk

443

446

447

444

442

41
15

38
75

32

40
75

43
15

50.40

+ 208
76
top wall

435

42

76
pooling

440

442

441

439

439

44
15

42
75

43

45
75

45
15

4394

441

96
floor

435

438

438

436

434

42
15

46
75

46

48
75

50
15

4835

BM Starting

391

46¹²

46²⁴

5142¹⁸

454	452	451	453	453
42	42	50	48	48
325	73		73	325

5125⁶ 56 Lt & 9" Power Pole # 1575

5125¹⁸ 78 Lt end 6' cinder block wall

5125¹⁸ S1/4 Pacific Beach Dr

5128⁵ RT NW cor garage con floor open Nly

588	440	455	451	452	4579
+0 ³⁸	61	46	50	42	431
76	76	75		73	83
Top wall	Footing				Floor

5100

452	456	450	450	451
42	45	51	51	50
15	73		73	15

4171 82 Rt end 2⁵ walk // to Line

4498	4533
512	477
82	115
con walk	Floor
	866

TP3

5³²

50¹⁰

35¹⁷

44⁷⁸

A 50¹⁰

D. Smith
C. Allen
A. Taylor
R. Parks

My Prop Pac Beach Dr

set stab
see sketch
p13.

My Prop Pac
Beach Dr

West Prop Ingraham St

base line

← 10' →

North Prop Fortuna

0+00

1:50e
con paving edge

sta 5+32.15

1+70

base line
← 10' →

Proposed
Ingraham

Storm Drain Profile
Fortuna to Haines St Inlet,

WOT 32100
9-18-52

118

12+92

Storm Drain Clean out

15' grate inlet
12+77

My Prop Reed St

Ingraham St

base line

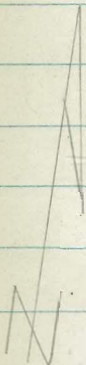
con paving edge

Oliver St.

40' →
10' →
FD 1+7
Inlet 1

West Prop

IMPROVED
SEP 1 1952



Sta	Lt=West	base LINE	Rt=East
2150	45 ² 42 10	44 ⁷ 54 7	45 ⁰⁴ 59 75 con edge
2100	45 ⁴ 42 10	44 ² 52 7	45 ⁰ 59 75 con edge
1750	46 ¹ 40 10	45 ³ 48 9	44 ⁸ 53 75 con edge
1700	46 ⁰ 41 10	45 ⁴ 42 9	44 ⁸¹ 53 75 con edge
0750	45 ⁵ 46 10	45 ¹ 50 8	44 ⁷² 51 75 con edge
0700 A edge	51 10	44 ⁸¹ 52 8	44 ³⁵ 52 9
BM	392	50 ¹³	

Sta	Lt=West	base LINE	Rt=East
TP1	571	52 ¹³	392
5132 ¹³ Jogzi IN LINE	45 ² 44 10	45 ² 44 10	46.21 45 ² 44 75 con edge
5100	45 ⁵ 46 10	45 ⁴ 42 5	45 ⁶ 45 75 con edge
4750	45 ⁵ 45 10	45 ³ 48 9	45 ⁴ 45 75 con edge
4700	45 ⁹ 43 10	45 ² 42 7	45 ¹ 50 75 con edge
3750	45 ⁴ 42 10	44 ⁹ 52 7	45 ²⁷ 45 75 con edge
3100		45 ⁰ 51 10	45 ⁰ 51 75 con edge
BM			50 ¹³

2 Lat Station
N.M.P. Pac Beach

Sta	Lt West	Base LINE	Nt East
8750	495 25 10	478 43 5	474 47 92 con edge
8700	480 41 10	475 46 5	470 51 10 con edge
7750	474 47 10	469 52 7	465 55 92 con edge
7700	472 42 10	467 54 5	462 52 95 con edge
6750	465 55 10	460 61 5	455 65 75 con edge
6700	460 61 10	457 64 5	454 65 42 con edge
5750	455 65 10	457 64 5	455 65 38 con edge
			5212

Sta	Lt West	Base LINE	Nt East	Ro
11750	462 40 10	460 42 9	454 45 10 con edge	
11700	478 24 10	465 37 3	464 38 10 con edge	
10750	469 33 10	462 35	462 34 10 con edge	
10704	488 14 10	484 202 walk	478 218 80 con edge	
9764 E Oliver	481 21 10	478 24	473 23 10 con edge	
TPe	219	5016	415 4797	
9724	490 31 10	484 37 7	484 38 8 con edge	
9700	492 22 10	481 40 5	475 46 52 con edge	

Sta Lt=West Base Line Rt=East

BM 6⁰³ 44¹³ ✓
 445 ✓
 2 1/2 int Red
 2 Ingraham

12192 1⁵ RT & clear out
 7 50
 16⁸¹ 6⁸⁹
 15 15
 10 11M

12177 6⁵ RT & grate
 54 6¹³ 6¹⁵ 702 1228
 10 60 60
 06 grate 100

12474
 44⁰³
 6¹³
 walk
 end

12471
 44¹⁶ 44¹⁶ 44¹⁶ 43²² 43³⁶
 54 58 6¹⁶ 6²⁴ 6⁵⁰
 10 90 90 10
 03 end 90 00
 02 edge

12450
 45⁷ 45⁷ 44⁶ 43⁷⁰ 46⁴⁶
 46 51 58 6⁴⁶
 10 5 100
 00
 00 edge

12400
 45⁷ 45⁷ 44⁶ 44⁶¹ 55⁵⁵
 45 51 54 55
 10 5 100
 00
 00 edge

π 5016

X-SECT ALLEY BIK 58 PARK VILLAS

Clark
Shepherd
Bruner
Oneil

UPAS to MYRTLE

W.O. 31538
3-2-53

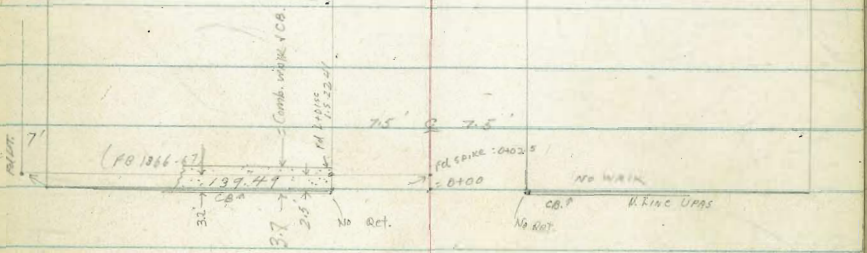
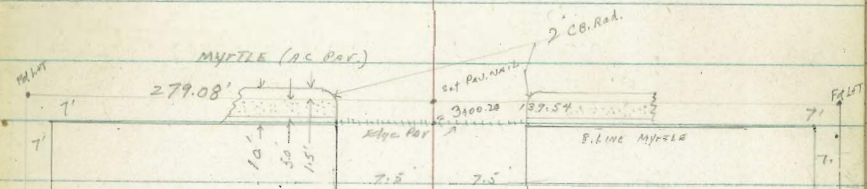
Sketch not to scale

Notes Pg. 23

Ref: FB-1366-67

INDEXED
MAR 31 1953

Reduced
3-3-53
N.H.



3344 57

FELTON

X-SECT. ALLEY BIK 58 - PARK VILLAS

T.P. 4.68 320.67 5.61 315.99

0+68 7.4 RT Beg 6' Board Fence
2' walk // to Alley Turns Conc. Pav. IN Yard

0+50

0+16 6.4 LT ♀ Pole No #

0+07 7.5 RT Top Step

0+03

KNR Cold-LAY
- DR WALK on LEFT

0+00

7.4 RT Beg 2 ³ _{steps} Conc. WALK // to Alley
Beg Broken Cold-Lay (should be removed)

0-00.67 = NLY CB Line Ups (1366-67)

0-12.5+ = ♀ EXIST PAV

B.M.

3.15 321.60

318.45 = NW B.P
UPAS 33' nly

LT.

♀

RT.

316.2	316.3	316.2	315.9	315.63	315.39
5.4	5.3	5.4	5.7	5.97	6.21
16	7.5		7.4	7.5	20
			DIRT	WALK	CONC. PAV. IN YD
316.7	317.8	316.6	316.4	316.1	316.15
4.9	4.42	5.0	5.2	5.5	5.45
10	7.6	7.5		7.5	7.5
	TP 6" wall	to alley		DIRT	WALK
317.6	317.3	316.9	317.2	317.57	317.5
4.0	4.3	4.7	4.4	4.03	4.1
14	7.5		7.5	7.53	25
			DIRT	ON WALK	
				317.84	
				3.76	
				7.5	
				TP 3" STED ON WALK // to alley	
	316.65	316.0	316.36	316.78	
	4.95	5.6	5.24	4.82	
	7.3	C.LAY	7.4	7.4	
	3 BK WALK		ON WALK	ON WALK	
				316.28	
				7.4	
				5.31	
				TOP 1ST STEP	
				7.4	
				ON WALK	

316.73	317.17	316.49	315.97	316.45	315.92	315.82	316.26	315.17	314.53
4.87	4.43	5.11	5.63	5.15	5.68	5.78	5.54	6.43	7.07
GUT. 7.5' CB	GUT. 5.0' DRIVE		GUT. 7.5' CB	END CB	(AC)	GUT. 7.5' CB	END CB	G. 5.0' CB	G. 7.5' CB
317.19	316.93	316.41	315.80	315.10					
4.41	4.67	5.19	5.80	6.50					
7.5	5.0	(AC)	5.0	7.5					

321.60

ALLEY BIK 58 (CONT.)

LT. £ RT

(Conc. APRON continues)

1+46 14.4 LT. END garages 8.5 to Lip.

316.68
3.99
14.4
Floor

316.23
4.44
8.5
LIP

314.50
6.17
7.9
LIP

314.33
6.32
13.2
Floor

1+41 13.2 RT £ Single gar 7.9 to Lip

1+31 £ 3rd gar.

316.73
3.74
14.4

316.16
4.57
8.4
LIP

1+21 £ 2nd gar

316.76
3.91
14.4
Floor

316.10
4.57
8.4
LIP

1+06 13.3 RT £ Single gar - Conc. Floor

314.24
6.43
13.3
Floor

1+04 14.4 LT Bay garages

316.75
3.92
14.4
Con. Floor

316.17
4.50
8.2
LIP

1+01 8.2 LT Beg APRON 4 Car gar
6.3 LT Pole PA 3421

316.24
4.93
Walls & half
No Floor

316.13
4.57
8.8
LIP

1+00 7.5 LT Beg 6" CONC DRAINAGE GUTT. 1 to
ALBY

315.8
4.9
15
DIT

315.81
4.86
15
CON
GUTT

315.8
4.9
7.5
DIT

315.66
5.01
7.5
LIP

315.4
5.3

315.03
5.64
7.5
LIP

315.0
5.7
7.5
315.09
5.58
CON. Floor

0+92 13.6 RT £ Single gar. 7.5 apron

0+86 6.5 LT £ dead-man
7.6 RT END 6' Fence 1 yard Pav.

315.39
5.28
7.6
CON
EDGE Pav
14.4

320.67

ALLEY BIK 58 (cont.)

			LT.	E.	RT.
3431.20 = E	MYTLE (AC PAV)		319.68 3.68 75	318.96 4.40 50	317.33 6.03 (P.C)
3410.20 = S 1/4 CB LIME MYTLE			318.41 4.95 6-75-20	317.92 5.34 6-30-28	316.35 6.98 7.13 7.5
3400.20	80 LT END 6" tile coping 7.55 LT to CB END 7.5 RT to CB END S.L. MYTLE & Edge A.C. PAV. in alley		318.28 6.63 6-95-20	317.73 6.23 7.3 P.I	316.23 7.13 7.25 6-95-28
2493	7.5" RT. end 2' con. WALK		317.22 6.14 CR	317.01 6.35 GUTT	316.62 6.74 (A.C)
2489	9.5 RT E 1' x 1' Kent under house		7.55		316.71 6.65 GUTT = CO SAME
2477	9.5 RT E 1.5 x 1.5 Kent under house				316.26 6.70 LIP WALK
2470	7.8 to FC 6" Coping // to alley Tile		317.4 6.0 7.8 TR	316.6 6.8 7.8 FTG	316.60 6.76 7.5 LIP WALK
2465	9.5 RT E 1' x 1' Kent under house				316.10 7.26 316.41 6.95 7.45 LIP WALK
2463.9	= E M.H.				315.92 7.44 9.5 Bottom Kent
2456	9.6 RT E Single gar 7.4 to Conc. WALK IN FRONT gar.				316.21 7.15 7.4 LIP WALK

323.36

Alley BK 58 (cont.)

CHK:

5.66

319.45 = 319.45 N.W. BP
WMSY 33.11

T.P. 1.07

324.11

0.32

323.04

Clark
Shepherd
Brumer
O'Neil
W.O. 31538
4-9-53

PROPOSED DRAIN
LOT 31, BIK 58 - PARK VILLAS

Ref: MAP 458 Notes: Pg 29
PNG: 4860-B

BBid ST

FdLAT

139.49'

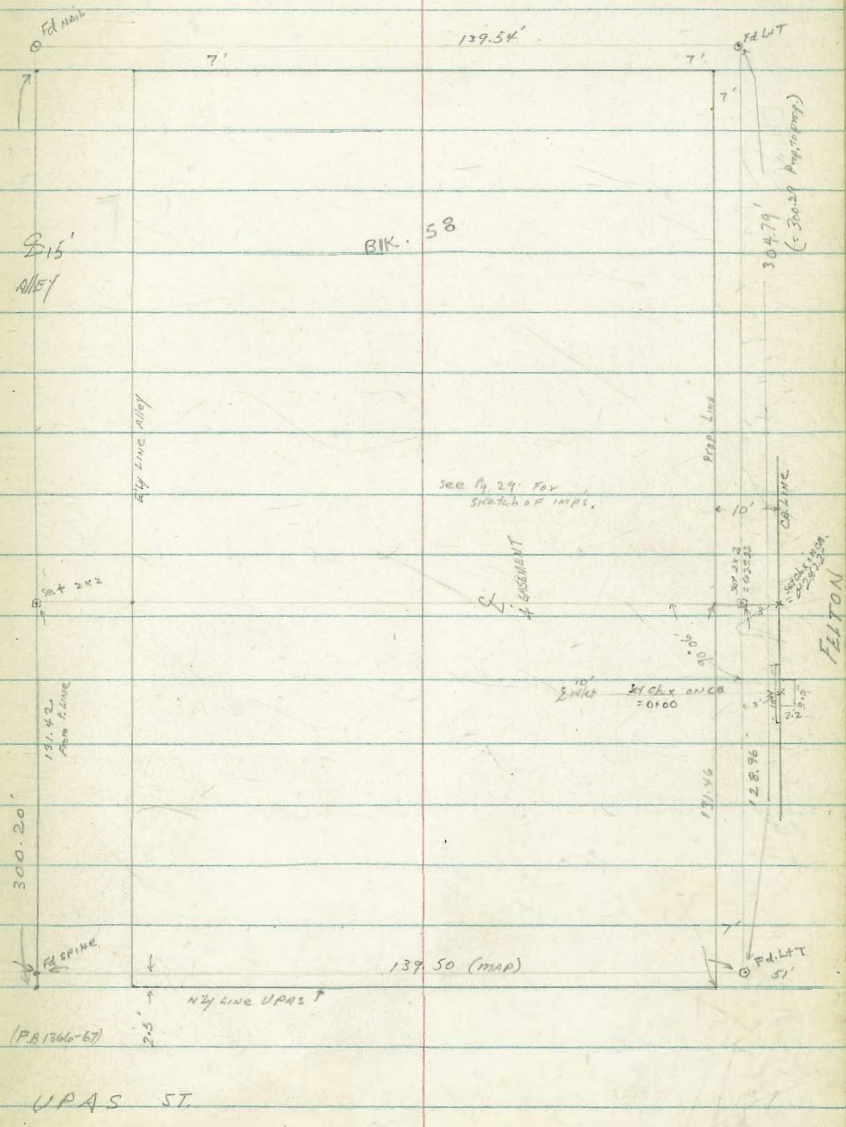
(P.B. 1366-67)

UPAS ST.

INDEXED
APR 9 1953

28

MYRTLE



Lot 31 (cont)

£

- 1433 4'0" LT £ 1" Plum Tree
- 1432.5 2'0" RT Beg. Rock + Grout Ret. wall 1.5 high + .50' wide
- 1427 4'5" LT £ 1" Lemon Tree
- 1421.5 6'0" LT £ 2" APRICOT Tree
- 1412 6'0" LT £ 1" GUAVA Tree
- 1100
- 0+77.28 END WALLS - Beg LAWN
2'0" RT Picket Fence 4' high
END house 5.7 RT
END house 2.0 LT
- 0+73.22
- 0+54.17 END Steps
- 0+52.17 Top Steps
- 0+48.82 Top Conc. Steps e'ly edge
- 0+47.22 (Beg Conc Steps
Beg house 2.0 LT
" " 5.7 RT.)

312.4
1.4
5

312.5
1.3

311.7
2.1
PTG

310.9
2.9
5

310.8
3.0

310.7
3.1
5

309.84
3.94
Edge WALL

309.5
4.3
5.7
IN CON. DRAIN

309.13
4.65
ON WALL

308.62
5.16
3
IN CON. DRAIN

310.78
3.00

308.58
5.20
WALK

308.52
5.26
4
ON SLAB,
(OPEN DRAIN)

31378

X-SECT. JAMACHA RD. (Cont.)

0-11 27.2 LTR Fire #13
 0-02 46.2 RT 18" tree
 0-00 = E LINE 69'±h - NLY
 0-11 23.6 RTE 2' CONC. WALK
 0-28 16.4 RTE 10" Palm
 0-40 = § 69'±h NLY 28.9 LTR 10" tree
 0-42 23.6 RT Bay 2' Picket Fence
 0-50 = Ely Line 69'±h to SLY
 0-62 = TP Ely Bank Ditch along 69'±h to SLY
 0-65 = § 69'±h to South (see sketch)

Note: For Sections 69'±h ST. Sec FB #1681-53

T.P. 0.46 252.81 9.27 252.35
 B.M. 1.07 261.62 260.55
 B.M. Not used → 253.44 = 5W. 2" Pipe Bent-over Box Culvert 69'±h & IMPERIAL OFFICE MAKE USE IN MASTER B.M. BOOK

(NLY) LT
 (For Sections)
 AS SHOWN ON SKETCH = 30' South of NLY LINE JAMACHA RD
 RT (Sly)

248.7
 4.1
 4.0
 4.7
 3.0
 P.H.
 248.1
 5.8
 2.0
 247.0
 5.6
 5
 247.7
 5.6
 247.2
 247.2
 5.6
 11
 247.7
 5.0
 16
 247.8
 5.2
 20
 P.H.
 247.6
 5.2
 20
 247.1A
 5.67
 23.6
 L/P
 247.1A
 5.67
 30
 on walk

247.16
 5.65
 5.0
 246.9
 5.9
 3.0
 246.9
 5.7
 2.0
 246.71
 6.0
 5
 246.53
 6.28
 6
 246.5
 6.3
 10
 247.5
 5.3
 16.2
 247.5
 5.3
 20
 246.7
 6.1
 23
 246.7
 6.6
 50
 oil pav

243.0
 2.8
 5.0
 192.8
 10.0
 37.5
 Cotton Ditch NLY
 246.8
 6.0
 2.5
 246.7
 6.6
 2.0
 246.6
 6.2
 6.2
 246.3
 6.5
 2.0
 246.3
 6.48
 5.0
 246.4
 6.4
 50
 245.3
 7.5
 7.5

252.81

Pole #73018 south side Jamacha at PIGEON ST. FB #1793-36
 Pipe

Jamacha Rd. (Cont.)

LT.

Σ

RT.

1+53 21.7' E Pole # 471188

1+50

1+02 22.7 RT & 10' Con. Drive - 90 to par

1+00

0+89

44.2 LT END PAR

0+87

30.2 LT END APRON

0+65

44.2 LT Beg 2-Cor. par - 30.2 LT apron
Con. Floor

T.P.

7.22 255.99 4.04 249.77

255.99

0+52

23.0 RT END 2' Pocket Fence

0+50

262
4.0
40
251.9
4.1
30
251.3
4.7
23
249.5
6.5
20
250.4
5.6
5
250.6
5.4

250.9
5.1
20
251.2
4.8
30
250.08
5.9
22.7
LIP
250.11
5.88
30
249.68
6.31
90
Flar

250.4
5.6
40
250.7
5.8
30
249.7
6.3
24
248.3
7.7
20
248.0
7.2
5
249.0
7.3

249.9
6.1
20
see above

249.94
6.55
30.2
4P

250.34
5.65
44.2
249.30
6.69
30.2
4P

249.3
5.5
40
248.8
4.0
30
247.5
5.3
20
247.9
4.9
5
248.0
4.8

248.6
4.2
15
248.3
4.5
20
248.0
4.8
30

252.81

JAMACHA RD (CONT)

3730

3712

453 LT and 900 4 apron

3700

2494

4530 LT Bay 2-Car gar - 30' to apron

2463

= 23.9 LT = E 3' CONC WALK

2450

T.P

8.04 263.05 0.98 255.01

29.8 LT Bay 3' Picket Fence

2434

= E Line Chester

2409

= E Chester

1484

{ 25.2 LT Pole 842764
- N. Line Chester

256.1 7.0 40
 255.9 7.2 30
 255.4 7.7 24
 255.9 7.2 20
 254.7 8.8 5
 254.4 8.7 5
 254.4 8.7 3
 254.8 8.3 5
 255.0 8.7 20
 254.8 8.3 30

256.17 6.88 45:30 FI
 255.14 7.91 30 4p

253.1 10.0 20
 253.6 7.5 5
 253.6 7.5 5
 254.1 7.5 3
 254.6 7.5 20
 254.6 8.5 30
 253.9 7.2 35

256.18 6.87 45:3 FI, cov.
 255.01 8.04 30 LIP

254.2 6.9 40
 254.1 7.0 30
 254.0 9.2 24
 254.1 8.84 30 WALK
 254.1 8.75 25.9 LIP
 254.7 10.4 5
 252.8 10.3 20
 253.0 10.1 20
 253.0 10.1 30

263.05

251.0 2.0 50
 253.7 2.3 30
 252.0 4.0 25
 252.0 3.5 20
 252.6 3.4 5
 252.4 3.6 20
 252.5 2.5 30

254.4 1.6 100
 253.5 2.5 50
 252.5 3.5 30
 251.6 4.4 20
 252.2 3.8 5
 252.33 3.66 RIM 114
 252.2 2.8 20
 252.0 4.0 30

253.1 2.9 30
 252.9 3.1 30
 252.6 3.5 24
 250.9 5.1 21
 251.5 4.5 5
 251.6 4.4
 251.6 4.4 20
 251.4 4.6 30

255.99

JANACHA RD (CONT.)

- 6104 56.0 LT END GAR
(For sat. 6:00 on 10/31)
5780 360' LT Beg 2-CAR GAR - CON FLOOR
- 5750 175 RTQ Pole # 770066
- 5742 313 LT & 2' CON. WALK
- 5700
- 4468 = E. LINE FLICKER
29.0' RTQ & 3' CON. WALK
- 4443 = E. FLICKER.
- 4418 = W. LINE FLICKER
- 4414 90' RTQ Single GAR. CON. FL.
- 4400
- 3488 20.3 RTQ 4' CON. WALK

LT E RT

1.4 261.63
56
71

154
56
71

259.6 259.4 259.9 257.9 257.5 257.5 257.5 258.1 258.1 257.9

25 40 30 28 23 5.2 5.2 5.6 5.6 5.6 5.0 5.0 5.2

259.36 259.09

267 276
40 40
WALK 40

4.2 258.9 258.6 257.9 256.8 256.1 256.1 256.7 256.7 257.4 257.5 257.3

40 30 26 20 5 3 6 20 30

258.4 258.0 257.4 256.2 256.2 256.3 256.3 256.5 256.9 257.0 256.9 256.9 256.40

47 57 57 6.7 6.7 6.8 6.8 6.8 6.3 6.1 6.06 6.15

40 30 25 23 20 5 4 5 20 29 30

258.4 257.9 256.2 255.8 256.0 256.06 256.1 256.6 256.5 256.4

73 57 30 6.9 7.3 7.1 6.9 7.0 3 5 6.6 6.7

257.4 257.3 257.0 255.1 255.5 255.6 255.6 256.0 255.9 255.9

40 30 26 20 5 2.5 2.5 2.2 2.2 7.2 7.2

257.1 257.0 255.9 254.7 255.1 255.3 255.3 255.6 255.7 255.7

50 6.1 7.2 8.4 8.0 7.8 7.8 7.8 7.5 7.4 7.4

40 30 24 20 5 7.8 4.8 5 7.5 20 30

255.37 255.41

7.08 7.64
20.3 30
4P WALK

JANACHA RD. (cont.)

LT. E RT.

7+22 70' RT. E Single gar dirt floor

7+18 = R. Line Pigeon

6+93 M.H.

T.P. 7.10 268.64 3.56 261.54

6+68 = H. Line Pigeon
27.5 LT E Pole # 756624

6+46 27.35 LT E 3' Con. Walk

6+42 23.2 RT E 2' Con. Walk

6+20 125' RT E Single gar. 115' to Lip apron

6+00

T.P. 457 265.10 2.52 260.53

260.1
8.5
70
Dirt

260.1
259.9

260.0
8.6
8.2
21
6.4
24
30
6.2
30
3.7
50

260.1
259.8
259.66
259.5
260.1
260.4
260.1

8.5
30
8.2
20
8.8
5
8.3
21
8.0
30
8.0
30
6.6
30
4.9
15

8.5
30
8.2
20
8.2
5
8.78
Rm 5
9.1
5
1.5
6

268.64

261.8
261.8
259.9
259.7
259.1
259.1
259.8
259.8

3.3
30
3.3
27
5.2
21
5.8
5
6.0
5
6.0
5
5.3
7
5.3
20
5.6
30

261.6
261.36
261.81

3.84
35
3.74
30
3.79
27.35
LIP

259.58
259.57

5.52
23.2
LIP

5.53
20
walk

260.4
260.0
259.1
258.3
258.7
258.2
257.9
258.7
259.0
258.8

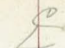
4.7
40
5.1
30
5.4
27
6.8
22
6.9
5
6.9
5
7.2
4
6.7
7
6.1
20
6.3
30

259.0
6.1
115'
LIP

4.7
125'
FH

265.10

JANACHA RD (CONT.)

LT.  RT.

8+62 21.9 RT ♀ 2.5 con. WALK

8+50

8+38 27.2 LT ♀ Pole # 84279-H

8+31 19.1 RT ♀ Pole # 375764

8+24 50 LT ♀ Single gar. 29.2 APRON-9.5

8+14 20.9 RT ♀ 3' con. WALK

8+00

7+87 45.8 RT ♀ Single gar 20.9 to 1 plant 8'

7+50

7+40 25.9 LT ♀ 3' con. WALK, 30.5 beg steps, 34.5 end steps
beg. WALK

265.4
3.2 3.7 3.9 6.7 6.3 6.3 6.2 5.3 5.9 6.1
40 30 27 21 5 6.3 4 7 20 30
262.3 262.9 263.3 262.7 262.5
5.65 5.65
21.9 30
LIP WALK

266.04 265.24 263.74
2.60 3.40 4.90
50 37 29.2
Fl. WALK LIP

265.0 264.3 263.9 261.9 261.3 261.3 261.3 261.0 261.7 261.7
3.6 4.3 4.7 7.2 7.3 7.3 7.3 6.6 6.9 6.7
40 30 27 21 5 7.3 3 6 20 30
262.00 261.99
6.64 6.65
20.9 34
LIP WALK

264.18 263.7 263.2 260.6 260.6 260.5 260.5 261.2 261.1 260.9
3.8 4.9 5.4 8.0 8.0 8.1 8.1 7.4 7.5 7.7
40 30 27 21 5 3 7 20 30
261.59 261.44
7.05 7.20
20.9 45.8
LIP FLOR

260.77 260.39 260.87 261.65
3.87 4.30 7.77 6.79
50 34.5 30.5 25.9

JAMACHA RD (CONT.)

10738 29.8 LT ♀ 8' Con. Drive (gar. behind house)

T.P 8.46 274.78 2.32 266.32

10700

9792 31.4 LT ♀ 2' Con WALK

9787 20.0 RT ♀ Pole # 73019

9782 27' LT ♀ Pole # 406844-H

9760.5 ♀ M.H.

9750

9730 37.2 LT ♀ Single gar 29.4 LT apron - 9' wide

9700

8784 95' RT ♀ Single gar - CON. Floor

LT ♀ RT 39
 268.49 268.28 267.83
 6.29 6.50 6.75
 40 32 29.8
 Once Brk

274.78

267.5 267.1 267.0 265.1 265.1 265.3 265.2 265.7 265.1 265.2
 1.1 1.5 1.6 3.5 3.2 3.3 3.4 2.9 3.2 3.4
 40 30 29 20 5 5 6 20 30

267.64 267.29
 1.00 1.35
 40 WALK 31.4 LIP

266.2 265.6 265.1 264.1 264.2 264.1 264.8 264.7
 2.4 3.0 3.5 4.5 4.4 4.5 4.4 3.9 3.8 3.9
 40 30 25 22 5 5 5 7 20 30

267.40 266.74 265.19
 1.24 1.90 3.45
 57.2 34.3 29.4
 FL Brk LIP

265.2 265.6 264.8 264.8 264.3 263.7 263.7 264.1 264.7 263.6
 2.4 3.0 3.8 5.8 5.3 5.4 5.4 4.5 4.9 5.0
 40 30 28 21 5 5 7 20 30

267.80
 5.84
 95
 11

268.64

JAMACHA RD (CONT.)

12+50

12+21

272 LTF Pole # 92449 H

12+00

12+97

350 LTF 6' Drive Ribbon (15' wide) - 103' LT 90°

11+73

305 LTF 8.5' Drive Ribbon 22.5' wide - 71' LT 90° Con. Ft.

11+53

22.5 LTF 3' Con. Walk

11+50

11+35

198 LTF Pole # 78955

11+20

10+50

LT
 771.4
 3.4
 40
 7.0
 30
 5.8
 19
 5.9
 5
 6.0
 3
 5.6
 5
 7.3
 20
 7.9
 30
 268.9
 268.8
 268.8
 269.2
 268.5
 266.9

271.2
 3.6
 40
 7.4
 30
 5.2
 20
 5.8
 19
 6.2
 5
 6.2
 3
 5.1
 5
 5.6
 20
 7.1
 20
 8.0
 30
 269.6
 269.0
 268.6
 268.7
 269.2
 267.7
 266.8

273.73
 1.05
 183
 Con. Ft.
 270.68
 1.10
 35.0
 W.P.
 270.75
 4.03
 25.0
 24
 LIP

273.07
 1.76
 91
 270.26
 4.52
 40
 W.P.
 270.23
 4.55
 40
 24
 Ribbon
 269.77
 5.01
 20.5
 24
 269.83
 24
 LIP

269.92
 7.86
 40
 WALK
 269.97
 5.71
 30
 WALK
 268.98
 5.85
 22.5
 LIP

269.8
 5.0
 40
 269.4
 5.4
 30
 268.7
 6.1
 19
 268.10
 6.8
 18
 267.7
 7.1
 5
 267.7
 7.1
 5
 267.8
 7.3
 5
 268.0
 6.8
 5
 267.2
 7.6
 20
 267.2
 8.0
 30
 266.8

268.9
 5.7
 40
 268.7
 6.1
 30
 268.7
 5.6
 23
 267.0
 7.8
 18
 266.9
 7.9
 17
 266.9
 8.9
 9
 266.10
 7.5
 5
 267.3
 8.4
 20
 266.4
 8.8
 30

268.5
 6.3
 40
 268.1
 6.7
 30
 267.7
 7.6
 22
 266.1
 8.7
 20
 266.3
 8.3
 5
 266.3
 8.6
 2
 266.2
 8.5
 2
 266.3
 8.1
 4
 266.7
 8.9
 20
 265.9
 7.1
 30
 265.7

JAMACHA RD (CONT.)

LT.

♀

RT.

41

14+25 18.7 RT ♀ P/b = 730.21

14+00

271.5 270.5 269.7 268.7 268.7 268.1 268.1 268.1 268.3 268.1 267.1
 3.6 4.6 5.9 6.4 6.9 7.0 7.0 7.0 6.8 7.0 8.0
 40 30 23 21 5 7.0 4 3 20 30

13+75 34.6 LT ♀ 8' Con. Drive 102.8 to 941

275.10 270.27
 10.03 4.80
 102.8 34.6
 Con. FL. 21P

13+54 34.04 ♀ 7.5' Con. Drive 103.6 941 Con. FL.

274.60 270.21
 0.47 4.88
 103.6 34.0
 Con. FL. 21P

13+50

271.1 270.1 269.0 268.4 268.4 268.3 268.7 267.6 267.1
 4.0 5.0 6.1 6.7 6.7 6.8 6.4 7.5 8.0
 40 30 21 3 3 4 3 20 30

13+06 -M.H.

268.38
 6.69
 15.11

T.P. 6.43 275.07 6.14 268.64

275.07

13+00

271.9 270.5 268.9 268.9 268.9 268.9 267.6 266.6
 2.9 4.3 5.9 5.9 5.9 5.9 7.2 8.2
 40 30 20 3 3 3 20 30

12+78 19.4 RT ♀ P/b = 730.20

12+68 27.3 LT ♀ F.H.V.

274.78

TAMACHA RD. (CONT)

LT. E RT.

42

16+00 12.9 RT end vinegar. converted to living quarters)

15+78 12.4 RT Bay Com. Drive - 41 1990

15+50

15+47

20.4 RT END Ret. Wall

T.P

5.62 274.05 6.64 268.73

15+00

14+57

27.0 LT E Roadman

14+50

14+48

20.2 RT Bay Com. Ret wall 1.0 high

14+43

26.5 LT E Pole # 92450-M

2704 2699 2699 2693 2687 2681 2681 2680 2681 26788 26744 26718

3.7 4.2 4.2 5.8 5.9 6.0 6.0 5.3 6.0 6.17 6.61 6.87

40 30 23 22 5 6 4 8 12 12.9 20 21.1 21.1 21.1

270.1 269.9 269.1 268.4 268.1 268.1 268.8 267.3 266.9 266.3 266.3

4.0 4.7 5.0 5.7 6.0 6.0 5.3 6.8 7.2 7.8

40 30 25 22 6 6 9 12 20 30

26736 26635

6.69 7.70

20.4 20.4

T.P. FTG

wall wall

274.05

27012 269.9 269.2 268.2 268.2 268.2 268.5 268.0 267.7 266.7

4.9 5.7 5.9 6.9 6.9 6.9 7.1 6.6 7.1 7.9 8.4

40 30 23 21 5 6 6 8 9 20 30

271.7 270.6 269.1 268.9 268.9 268.3 268.2 268.2 267.7 267.0

3.4 4.5 6.0 6.7 6.8 6.8 6.9 6.3 7.4 8.1

40 30 23 21 5 6 8 8 20 30

268.25 267.22

6.82 7.85

20.2 20.2

T.P. FTG

wall wall

275.07

18+00

17+85

24.5 RT C 2.5' COO. WALK

17+75

25.9 LT E Deadman

17+55

27.3 LT E F. 1/40.

17+51

26.2 LT E Pile # 410566-H

17+50

17+42

19.6 RT E Deadman

17+21

19.2 RT E Pile # 271219

17+16

15 RT E 6"x6" Con. Post - 3' above ground

17+00

16+48

= M.H

2.2711.5
40 27 271.4
3.3 269.6
4.5 20
4.2 269.9
5 270.0
RT. 2.8 271.3
20 3.0 271.1
271.22
2.83 2.70
21.5 38
LIP WALK

270.3
3.8 30
40 3.6 270.5
23 3.8 270.3
19 5.2
5.1 268.9
5 269.0
5.0 269.1
4.7 269.4
14 7.0 270.1
20 21 4.8 269.8
30 4.8 269.3

270.4
3.7 40
270.3
4.7 30
269.4
4.7 20
269.7
5.4 18
5.6 5
5.6 268.7
5.6 268.5
5.4 10
268.7
4.8 20
269.3
6.0 30
268.1
3.7 40
269.8
4.7 30
269.4
5.7 21
268.4
6.0 5
268.1
6.28 10
267.77
6.2 4
267.9
5.3 10
268.8
5.5 20
268.6
6.2 30
267.9

274.05

A.T. E P.T.

Chk's

3.30 27075=27075 F.B #1773 -41 = NAIL IN Pole # 271219

18+94.7 = E 3-5 ^{50%} ~~grains~~ (TYPE B2 Co. Nlati) 15² RT d 2.5² LT F2 CB FC.
(See app. 19)

271.01	270.17	270.78	270.77	270.17	271.04
3.04	3.88	3.27	3.28	3.88	2.01
24.4	24.4	5		15.9	15.9
TRCB	G			G	TRCB

18+43.55

24.7 15 Reg CB.

18+43.20

Reg Par. (A.C)

18+43.05

157 RT. Reg CB.

18+42

25.8 15 C. Bk # 590724-A

270.19	270.22	269.73	270.26	270.51	270.58	270.63	270.55	271.10	271
3.2	3.73	4.32	3.79	3.54	3.47	3.50	2.95	2.1	
30	24.7	24.7	15	5	5	15.7	15.7	20	
DRT	TRCB	G			G	G	CB.	DRT	

(TYPE C CB'S)
NO TRAILS

274.05

Proposed Drain - Tamacha Rd.

LT. E RT.

1475 3.6 LT E 3" Apricot Tree

T.P. 6.36 270.53 7.26 264.17

270.53

1459 E Crosses 2" water line at this pt. (water line runs to vt. of E)

1453 212 RT Bag chicken Fence

1450

264.4
7.0
10
264.7
6.7
10
264.5
6.9
10

1415

5.2
10
265.2
6.4
10
264.7
6.7
10

1400

4.5
10
265.7
5.7
10
265.5
5.9
10

0468

9' RT E 4" Bush

264.4
5.1
10
264.6
4.8
10
265.9
5.5
10

0450

97 RT END house

0431

9.5 RT Top in house

0420

14 RT Bag

0415

3 LT E water meter of Bag 2" temp. water pipe (on surface, roughly // to lane)

0400 S/W Line Tamacha Rd.

269.0
2.4
10
268.4
3.0
10
268.7
2.6
10
266
9.4 Floor
3.2
10

0-20 = S/W 20' Line TAMACHA Rd.

(see Pg 43)

For SECTION'S TAMACHA Rd. this area

268.4
3.0
50
267.28
3.68
268.0
3.4
DNT
E
268.1
3.3
50

Chicken Rim m.p. E

B.M.

0.68 271.43

270.75 = NAIL IN Pole
FB 1793-41

271219

271.43

Sumac

Modesto to Laurel

C.H.S.
B099
Schellin

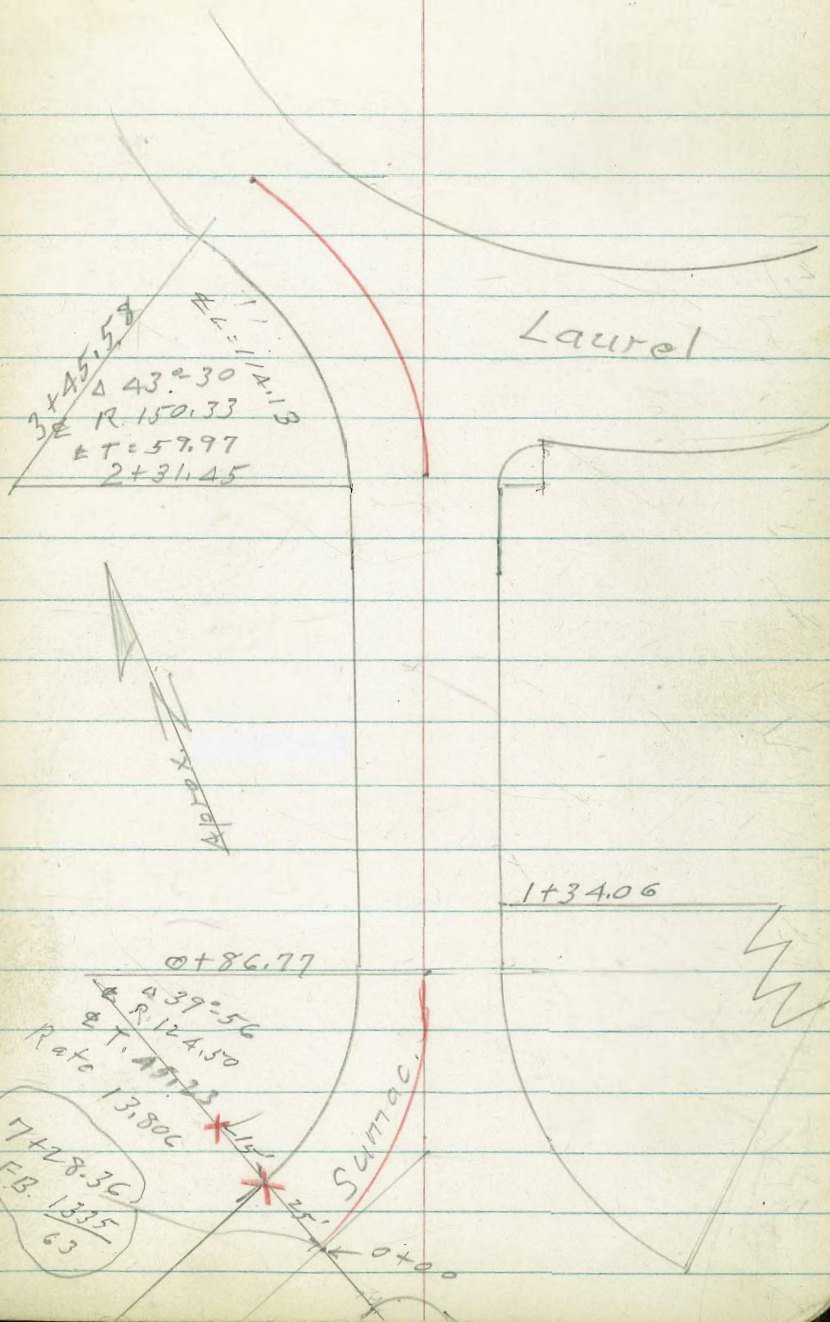
W.D. 25020

9-28-53

Ref. FB. 1335-P-63

7+28.36 (B.C.) $\frac{F.B. 1335}{63} = 0 + 00$ this book.

48



Sumac.

T.P. 4.92 266.31 6.11 261.39

0+50 25' Lt. = line of Hedge

0+48 - See page 52

0+33^E 25' Lt. = 10' wide Conc. Dr.

0+18 24' Lt. = start hedge

0+11^E 23' Lt. = 14' wide Conc. Dr.

0+00 (see sketch)

T.B.M.#2

5.33 262.17

T.P.#3

5.81 267.50 7.09 261.69

T.B.M.#1

0.40 268.78 1.94 268.38

T.P.#2

5.76 270.32 7.03 264.56

T.P.#1

1.15 271.59 11.03 270.44

1.30 281.47 280.17

	261.1							
	6.4	6.0	5.9	6.4				
Ord. at house	43	25		25				
	269.80	261.66	261.9	261.6				
	6.64	5.84	5.6	5.9	6.4			
Bas. floor	52	25		25	40			
	262.17	262.10	262.10					
	5.33	5.40	5.40					
Bas. floor	43	25	23					
	262.2	262.2	262.7	262.8				
	5.3	5.3	4.8	4.7	4.9	3.7	2.8	2.8
	40	25	15	267.50	15	25	35	80+
								Ord at house

Cross in drive - 25' Lt. 0+00.

Ely. edge M.H. Rim Modesto + Sumac.

(Marked 268.40)

Spike Pole # J.P. 2498 Laurel + Sumac

N.W. B.P. Maple (Now Sumac) + Fairmount

Dumac.

51

2+50

5.4	3.8	3.4	3.7	3.4	3.0	2.7
50	25	15	10	3.4	7	25
262.9	264.5	264.6	264.2	264.6	264.6	264.0
263.4	265.0	265.4	265.1	265.4	265.8	266.1

2+31⁴⁵ = B.C. Lt.

5.9	4.3	4.2	4.6	4.2	4.2	4.8	5.2
50	25	15	10	25	25	30	50
262.9	264.5	264.6	264.2	264.6	264.6	264.0	263.6
263.4	265.0	265.4	265.1	265.4	265.8	266.1	263.6

2+16- 25⁵ Lt. = end fence

2+12 = 25' Lt. = ϕ 8' wide A.C. drive

7.2	5.2
60	25
A.C. Car. port.	

2+07- 73' Lt. = wide House
N. Fly Cor. 30'

8.3	5.7	5.7	6.0	5.7	5.8	6.3	6.4	5.0
73	25	12	10	73	20	25	45	45
260.5	263.1	263.1	262.8	263.1	263.0	262.5	262.4	263.8
at house				Floor level				Grd porch

2+00 45' Rt. = ϕ 30' wide House

1+75- 14⁷ Lt. = 18' pole # J.P. 2A80

9.30	6.81	6.9	7.1	7.0	7.4	8.1	9.6
85	25	15	10	7.0	25	30	50
259.46	261.95	261.9	261.7	261.8	261.4	260.7	259.2
Bar. Floor	Dr. and						

1+62 25' Lt. = ϕ 10' wide Conc. drive

268.76

Sumac.

±

52

✓ see note page 49

0+48 - 6" RT = Ctr. M.H. ^{Sewer}

EL = 261.69 EL = 257.15
6" 6"
M.H. Cover I.E.

0.37 268.39

(268.38)
T.B.M. #1

See Laurel X Sec. for encroachments.

3+05 - 47' Ltr = S. Ely. Cor. 30' wide ^{House}

267.9 265.2
0.9 3.6

Floor level 3 Grd.

3+00

264.4 266.6 267.1 267.5
4.4 2.5 1.3 1.3 0.7 +0.8
50 25 15 15 15 25

2+85 14' Ltr = 20" pole # JP. 2498

263.6 266.6 265.8 266.5 267.0 267.1
5.2 3.0 2.2 3.0 2.3 1.8 1.7
50 25 18 10 15 25

2+75

268.76

Juniper

New Houses - Sumac - Ely
 0+002 = wly line Sumac to
 North. (Same as FB 1711 - P-32)

See F.B. 1711 - P-32

3+58 73' Rt. = N. Ely. Cor. House

268.6
 0.9 28
 5A 54
 Floor level Grid

7.4 6.6
 73 73
 Grid Floor level

3+52- 5A' Lt. = S. Wly. Cor. House

267.3
 2.2 4.6
 50 50
 Floor level Grid

2+73- 50' Lt. S.E. Cor. House

2+23 - 30' Lt. = ± 10' wide Conc. Dr

265.7
 3.8 5.18 6.27
 105 50 30
 Cor. drive 269.48
 Floor

T.P. 7.73 269.48 3.02 261.75

T.P. 12.01 264.77 5.48 252.76

T.P. 2.39 258.24 10.18 255.85

3.86 266.03 - 262.17

T.B.M. #2 P49 X in drive

Juniper

54

3.04 361.65-

(361.69)
M.H. RIM = T.P. #3 - P 49

T.P. 4.93 264.69 9.72 259.76

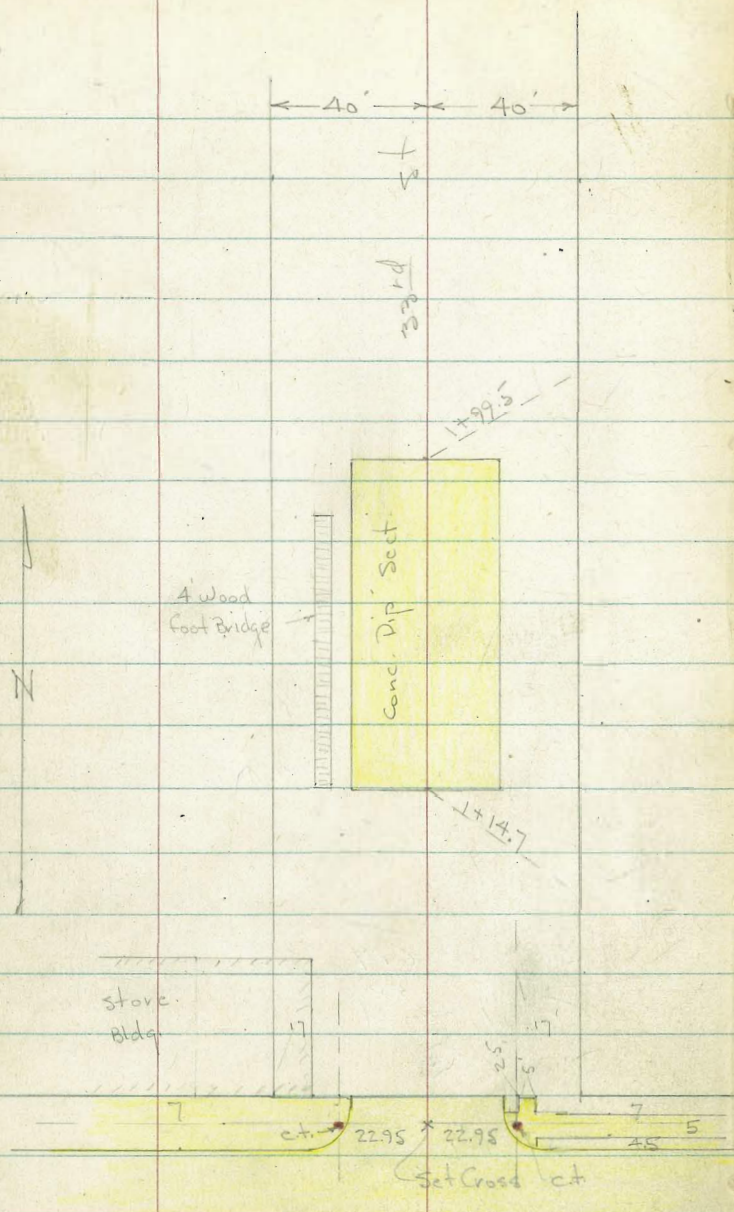
4+31 - 50' Lt. 2 S.Wly. Cor. House

263.5
6.0 6.9
50 50
Floor level and

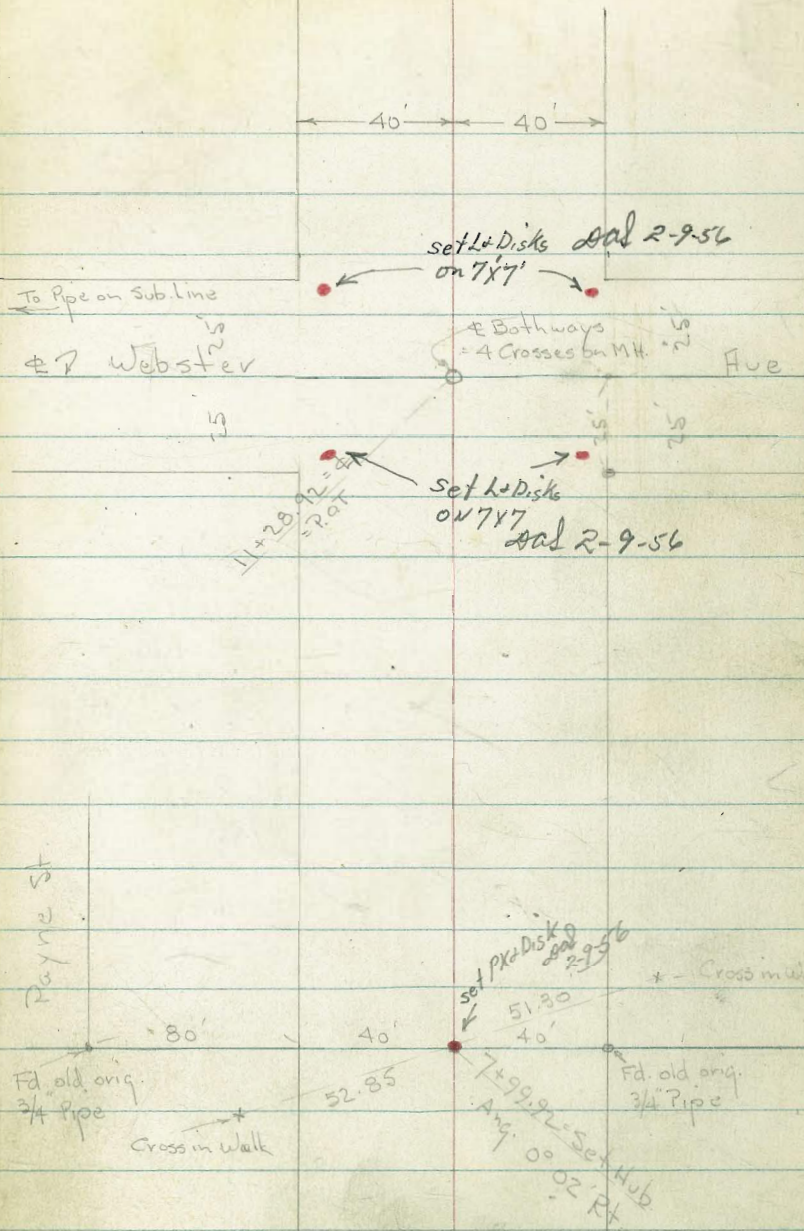
3+66 - 30' Lt. = 4' wide walk. Conc.

266.58
2.90 3.35
40 30
walk

269.48

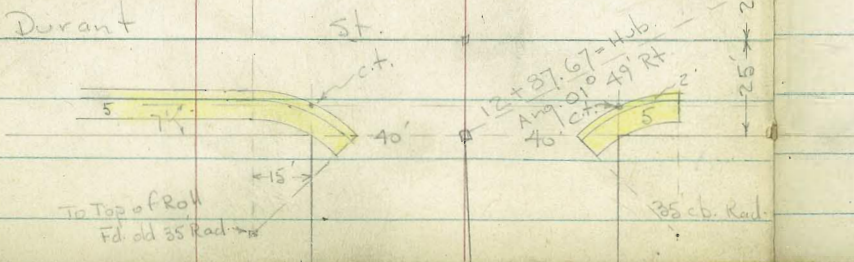
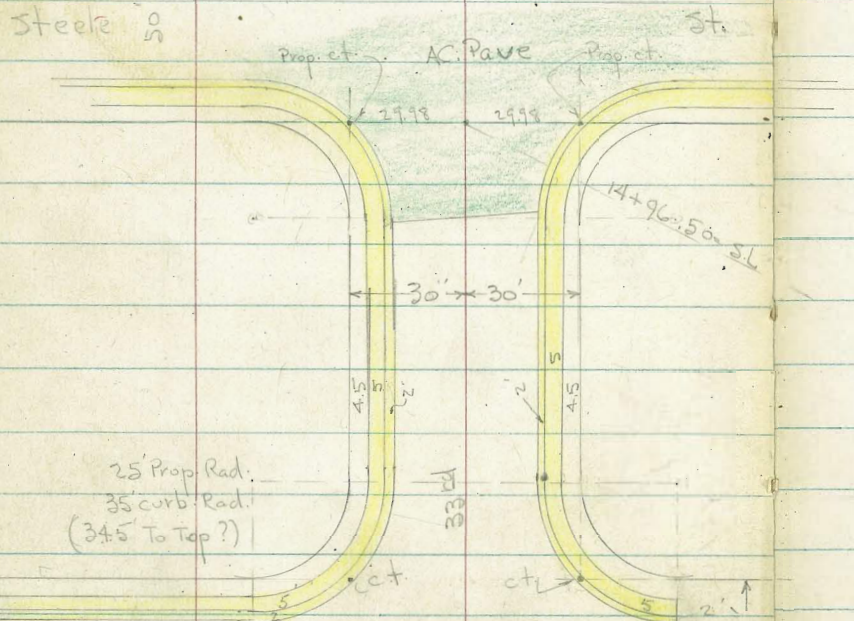
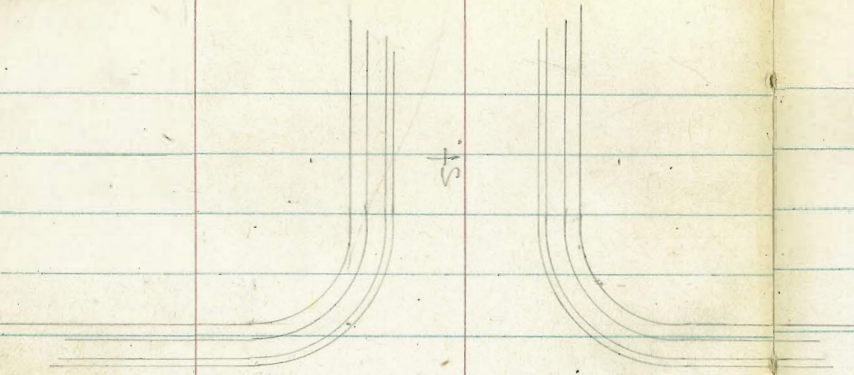


Ocean View Blvd.



Rayne St

INDEVER
YER
MAY 17 1954



Lt. ± Rt.

X-Section 33rd St. - Ocean View to

Steel - sketch - P. 55

W.O.

1+14.7 = SL. of Conc. Dip.

1+00.5 - 21.3 Lt. = E P. pole

1+00

0+98 - 36 Rt. = E 6" Peach

0+95 - 30.5 Rt. = Beg. New Hedge

0+50

0+36 - 30.4 Lt. = end Bldg. - Conc. Found

0+28 - 33 Rt. = E 2" Acacia edge of Planting

0+11 - 33 Rt. = E 2" Acacia

0+04 - 21.4 Lt. = E Tel. pole # 196975-H

0+00 = N.L. Ocean View + edge of Conc. Pave

± of Ret. - PC on S. to N.L. Soil around

0-14 = N. cb Line Ocean View.

B.M. = S.E. BP 33rd St Ocean View

14.92

07.4	08.2	13.1	13.8	10.67	10.86	11.11	12.7	13.0
102	60	40	25	19.7		18.7	30	40
channel				Cor.		Cor.		

13.9	13.6	11.1	11.3	11.3	12.6	13.0
40	24	18		18	30	40

14.0	14.1	12.5	12.8	12.4	13.9	14.1
40	30	18		17	30	40

15.64	14.2
Top Conc. found.	30.4 = gr. at Cor.

14.83	14.41	13.76	14.37	14.61	14.59	14.23	14.87	15.04	15.22
30	Top	19.8	10		10	20.2	Top	22.6	27.6
walk at Bldg end.				gut		gut	end. cb	end of walk	

N.W. Ret	13.83	14.43
	gut	Top

N.E. Ret	14.30	14.90
	gut	Top

14.43	15.86	14.44	14.24	14.00	14.42	14.10	14.74	14.52	14.40	14.91	14.39	14.98	14.71	15.30
Top	80	Top	40	gut	30	20		20	30	Top	40	Top	80	Top
	gut		gut		Top = PC				gut = PC	gut			gut	

Actual Elev. Shown.

2+25

2+00 - 21.7 Lt. = ± P. pole # P460

1+99.5 = end Conc. Dip Sect.

1+85 - 33.6 Lt. = Beg. wire fence

1+84 - 25.2 Lt. = end Ely. of 4' Bridge

1+80

1+65 = Brk in Bridge Profile

1+55

1+45 = 30' Rt. = end planting

1+30

1+25 = Brk in Bridge Profile

1+15.2 - 25' Lt. = Beg. Ely. of 4' Wood foot Bridge

Lt.

±

Rt.

28

13.7	13.3	11.1	11.4	11.2	12.5	13.7
40	22	17		18	23	40

13.7	13.6	10.89	11.06	11.24	14.0	14.4
40	25	19.7		18.7	30	40
		Cor.				

13.85

25.2

Deck

14.2	12.8	09.34	09.63	09.92	13.1	14.1	09.3
40	25	19.7		18.7	25	40	35
		edge		edge			uly of channel

13.4	13.4	10.1	14.60	08.24	08.65	08.98	09.0	08.9
60	45	40	25.2	19.7		18.7	40	75
			Deck of Bridge	edge		edge		± channel

13.2	07.5	07.99	08.56	09.04	08.9	08.8
58	40	19.7		18.7	40	60 = 5'
Top bank	N. edge channel	edge		edge		edge channel

07.6	07.9	08.02	08.74	09.19	12.3	12.4
60	40	19.7		18.7	30	40
edge channel		edge		edge		

07.2	07.8	10.1	09.27	09.74	10.15	12.4	12.9
75	40	30	19.7		18.7	30	40
channel			edge		edge		

14.72
25.1 = Deck

13.84
25 = Deck

4+36- 31' Rt. = Beg. Lath Fence

4+32- 31.8 Rt. = + 6" Pipe

4+27- 19.4' Rt. = + 3' Conc walk

4+25- 21.5 Lt. = + P. pole # 420

4+25- 34' Lt. = end + of Hedge

4+20- 32.3 Rt. = + 4" Pipe

4+04- 30.1 Rt. = + 3' Conc. Walk

4+01- 1' Rt. = + MH.

4+00 = on Sly Rim of Sewer MH

3+69- 32' Rt. = + 1" shrub

3+64- 27.3 Rt. = + 5' Conc. walk

3+59- 32' Rt. = + 1" shrub

3+50- 33.3 Lt. = + 4' Conc. walk thru Hedge

3+30- 34.5 Lt. = Beg. + of 3' cypress Hedge - 5' High

3+20- 33' Rt. = + 1 1/2" Cypress

3+16- 22' Lt. = + P. pole = BM 13.24 spike

3+15- 34' Lt. = end fence

3+00

2+50

Lt. + Rt.

14.17	14.62	14.98
19.4	40	52
walk		at porch

14.40	14.75	15.33
30.1	40	60
walk		walk

13.5	13.5	12.8	13.21	13.1	14.2	14.6
40	25	17	on Rim	16	30	40

14.07	14.16	14.86	14.94
27.3	31.4	30	40
walk	step		walk

13.52	13.35	12.3	12.6	12.4	13.6	14.0
44.6	33.3	17		16	30	40
at porch	walk					

13.7	13.0	11.9	12.1	12.0	12.5	13.1
40	25	17		17	25	40

13.9	13.0	11.3	11.7	11.6	12.6	13.5
40	21	17		18	25	40

6+21- 30' Rt. = ± 24" Tree

6+20- 41.4' Rt. = Bsq. Cyclone fence

6+05- 31.7' Lt. = ± 2' Conc. walk

6+00- 29.5' Rt. = ± 30" Tree + end fence

5+74- 31.5' Lt. = Bsq. lath fence

5+70- 30' Rt. = ± 30" Acacia (says Red.)

5+50

5+37- 21.5' Lt. = ± P. pole

5+10- 29.5' Rt. = ± 30" Tree + Bsq. barbwire fence

5+05- 40.1' Lt. = ± 3' Conc. walk

5+04- 33' Rt. = ± 24" Pepper

5+00

4+99- 31.5' Rt. = ± + wly. of 12" Conc. wall + fence

4+85- 31' Rt. = End. fence - goes E.

4+84- 40.1' Lt. = ± 10' Conc. Dr.

4+59- 33.3' Lt. = ± 7' Dr. - 2-20" Conc. strips

4+57- 28.5' Rt. = ± 4" Olive stump

4+50

4+46- 33.5' Lt. = ± 3' Conc. walk

15.13				15.68 walk			
45.7				31.7			
at House	15.4	15.6	15.1	15.4	15.3	16.0	16.5
	40	25	16		15	25	40

14.4	15.2	14.6	14.7	14.5	15.3	15.2
40	25	17		13	25	40

14.48	14.42
54.9	40.1
at porch	walk

14.4	14.5	13.9	14.1	13.9	14.9	14.7
40	25	18		12	25	40

14.7	17.16	17.11
21.5	Top	50
9r.	end.	Top
		wall

14.20				14.20
47				40.1
floor	13.43	13.39	13.34	Dr.
gar.	50	40	33.3	
		Dr.		

13.5	13.7	13.3	13.8	13.5	14.0	14.5
40	25	17		15	25	40

13.44	13.43
40	33.5
at porch	walk

334

INDEXED

NER

NOV 9 1954

7+99.92 Elev. on top of Water line, 11-8-54

7+89 - 36' Lt. = ± 4" Acacia

7+80 - 31.8' Lt. = ± 10" Cypress for Hedge

7+80 - 21.8' Lt. = ± P. pole # P. 270 = B.M. 17.93

7+73.5 - 42' Rt. = ± 2.5' Conc. walk

7+72 - 31' Lt. = ± 2.5' Conc. walk

7+60 - 32' Lt. = ± 8' Cypress for Hedge

7+52.5 - 40.5' Lt. = ± 6" Pine

7+52 - 29' Rt. = ± 24" Palm

7+51 - 30.3' Lt. = Beq. Picket fence

7+50 - 41.4' Rt. = end fence

7+00

6+92 - 29.5' Rt. = ± 30" Palm

6+86 - 31.3' Lt. = ± 2' Conc. walk

6+75 - 27' Lt. = ± 36" Tree

6+57.5 - 40.6' Rt. = ± 4' Conc. walk

6+57 - 21.5' Lt. = ± P. pole # P310

6+53 - 32' Rt. = end fence

6+50

6+45 - 27' Lt. = ± 36" Tree

Lt.

±

Rt.

61

15.23

18.32 18.41
42 50
walk

17.16 17.17 17.30
49 40 31
at porch walk

17.0 17.4 16.5 17.0 16.8 17.5 17.7
40 25 16 16 25 40

16.7 16.6 16.1 16.5 16.4 17.1 17.6
40 26 15 16 25 40

16.68 16.72
42.2 31.3
at porch walk

17.35
40.6
walk

16.0 16.1 15.6 16.0 16.0 16.6 17.2
40 25 15 16 25 40

33rd

8+87- 31.6 Lt. = ± 10" Acacia

8+83- 30.1 Lt. = ± 3.2' Conc. walk

8+79- 32' Lt. = ± 14" Acacia

8+72.5- 34.4 Rt. - end fence

8+67- 32' Lt. = ± 10" Tree

8+62- 34.3 Rt. = ± 3' Conc. walk

8+50

8+36- 34.1 Rt. = Beg. 4' Picket fence

8+33- 27' Rt. = E 4" Olive

8+31- 0.6 Rt. = ± Sewer M.H. 17.75 - S. Rim

8+27- 33' Lt. = ± 4" Shrub

8+21- 29.5 Lt. = ± 6" Tree

8+16- 30' Lt. = ± 2.5' Conc. walk

8+15- 38.7 Rt. = ± 2' Conc. walk

8+10- 29.5' Lt. = ± 14" Tree

8+08- 27' Rt. = ± 12" Olive

8+05- 33' Lt. = ± 6" shrub.

8+00 = By Any Pt. - See sketch

7+96- 36' Rt. = ± 12" shrub. cluster.

Lt. ± Rt. 62

17.78 17.80 17.89
48.6 40 30.1
at porch walk

18.63 18.71
34.3 46.9-at porch
walk

17.7 17.5 17.3 17.9 17.6 18.1 18.8
40 25 17 17 25 40

17.53 17.59 17.71
50.3 40 30
at porch walk

18.31 18.74
38.7 49.3
walk at porch

17.4 17.6 17.0 17.5 17.2 18.0 18.2
40 25 17 18 25 40

10+50

18.6	18.5	18.0	18.8	18.5	18.9	19.3
40	20	16		18	22	40

10+48- 39.5' Rt = ± 3.5' Conc. walk

19.31	19.17
39.5	50
walk	

10+47- 32.5' Lt = ± 4' Conc. walk

18.90	18.79
52	32.5
at porch	walk

10+36- 27.5' Rt = ± 30" Olive Stump

10+25.5- 34' Lt = ± 16" Acacia

10+24- 32' Lt = end picket + Beg. Cyclone fence

10+08- 32' Lt = Beg. Picket fence

10+00

18.2	18.3	17.8	18.5	18.2	18.7	19.0
40	25	17		18	22	40

9+83.5- 30' Lt = end ± of Hedge

9+82- 31.3' Lt = end fence

9+80- 27.5' Rt = ± 8" Acacia

9+63.5- 29.7' Lt = ± 2.5' Conc. walk

18.22	18.20	18.21
48.2	40	29.7
at porch		walk

9+52- 27.7' Rt = ± 24" Olive

9+50

18.3	17.9	17.6	19.2	18.0	18.6	18.7
40	25	18		18	22	40

9+44- 30' Lt = Beg. ± of 3' Hedge - 4.5' High - out side fence

9+03.5- 31.6' Lt = Beg. Cyclone fence

9+03- 30.2' Lt = end Picket fence

32' Lt = ± 10" Acacia

9+00- 21' Lt = ± Pipole # P250

18.0	17.8	17.5	18.0	17.8	18.5	18.6
40	25	16		18	22	40

33rd

Lt. &

Rt.

65

12+60 - 21.7 Rt. = 4' Brick walk

19.98 20.21 20.21
21.7 walk 40 58
at porch

12+50

19.5 19.3 18.9 19.4 19.2 19.9 20.21 20.2
40 18 16 19 22 32.9 40
fence found

12+33.5 - 22.5 Lt. = 4' P. pole # P. 190

32.9 Rt. = end 14" + Beg. 6' Conc. found for fence

12+33 - 18.5 Rt. = end Conc. Slab

19.37 19.86 20.16 20.18
18.5 edge 20.3 cor. slab 32.9 end slab on found. 40 found. To F.

12+27 - 22.5 Lt. = 18" Tree

12+14 - 18.5 Rt. = Beg. Conc. Roll put to Slab

19.41 19.79 19.96 20.10
18.5 edge 19.8 slab 32.9 at walk 40

12+04 - 19.7 Rt. = Beg. Conc. ornamental Slab - To fence

19.73 20.03
19.7 cor. 32.9 at fence

12+00 - Thru 11' Conc. Dr. on Rt. - Thru Conc. + fence

19.3 19.2 18.9 19.3 18.9 19.8 20.00 19.83 19.56
40 25 15 17 25 32.9 40 50
Dr. Dr.

11+94 - 32.1 Lt. = end 6" Conc. wall

19.33 19.34
40 32.1
on foot ing

11+72 - 24.3 Lt. = 4' 2.5' Conc. walk

19.40 19.37 19.24
45.1 40 24.3
at porch walk

11+66 - 32.9 Rt. = 6' Conc. walk Thru fence + Conc.

19.85 19.96 20.43
32.9 walk 40 55.7
at porch

11+53.92 = N.L.

19.3 19.1 18.8 19.3 18.6 19.6 19.82 19.9
40 25 16 18 25 33 40
Conc.

11+52.5 - 32 Lt. = Beg. 6" Conc. Block wall 2.5' High

19.17 19.25
40 = Conc footing 32 = Conc footing

Taken before adjusting B.M. on F.H. 22166
 Note: Elev. on Ret. in Int. are of High - were

W. end = P.C.

19.53 19.06 19.12
 Top gut edge

2/3

19.44 18.95 18.98
 Top gut edge

1/3

19.25 18.82 18.88
 Top gut edge

S. end.

19.35 18.87 18.92
 Top of Roll gut edge of gut - Lip.

S.W. Ret. 28.5 around - (Top of Roll) - 3 parts - 9.5 each

Rods around Returns - 35' Rad

12 + 97.17 = on Top of Roll cb. at P.C.

Cont. P. 67

12 + 87.67 = S.L. Durant - Ang. Pt.

Pt. of Roll cb. gut. is on prop. edge of walk is Rd. - 2 back on edge 2 back 7 back

12 + 85 = 43.5" Rt. = Ang. in Conc. found - goes E.

12 + 80.5 = 32.9' Rt. = Ang. in 6" Conc. found.

E. end = P.C.

19.10 19.05 19.55
 edge = Lip. gut Top

2/3

19.02 18.99 19.44
 edge gut Top

1/3

18.91 18.88 19.38
 edge gut Top

S. end

18.96 18.91 19.34
 edge gut gut Top of Roll + walk

S.E. Ret 28.2 around (Top of Roll) - 3 parts - 9.4

19.53 18.93 19.0 19.5 19.6 19.6 19.2 18.98 19.55
 55 42.4 25 12 12 25 43.5 55.7 = Top
 PC - Top edge of gut edge of end - Top
 gut

19.6 19.45 19.36 18.93 19.4 19.48 19.6 18.96 19.34 19.40 19.46
 4a 7-back 2-back 28.3 12 on hub 12 29 2 back 7 back 40
 = car Top Cor. of gut Cor. edge Red. Cor. walk on
 walk Top of Roll gut Top

20.33
 43.5 Top
 Conc

20.31
 32.9 =
 Top Conc

13 + 37.67 = N.L.

13 + 28.17 = Top at Roll at P.C.

13 + 12.67 = Durant

Cont. from P. 66 - Reg. Sections.

6 = P.C. = N. end.

19.81 Top
19.33 gut
19.38 edge

5 = 4/5

19.76 Top
19.30 gut
19.32

4 = 3/5

19.66 Top
19.18 gut
19.22

3 = 2/5

19.67 Top
19.20 gut
19.22

2 = 1/5

19.75 Top
19.29 gut
19.33

1 = P.C. - Wiend.

19.70 Top
19.26 gut
19.32 edge

N.W. Ret. 538' around (Top at Roll) 5 parts - 10.7

Rods around Returns on N. of Durant.

19.79 19.70 19.19 19.16 19.3 19.7 19.5 19.25 19.21 19.71 19.73
39.6 31.2 29.5 28.1 15 15 29.1 30.5 32.2 40.6
edge withk Top gut edge edge gut Top edge withk

19.70 19.32 19.2 19.5 19.8 19.5 19.1 19.27 19.71
55 Top=P.C. 42 edge gut 25 12 20 33 44 55.5
Top=P.C. edge gut edge gut Top=P.C.

19.5 19.4 19.2 19.7 19.5 19.4 19.4
55 40 20 20 40 55

6 =

19.37 edge
19.30 gut
19.79 Top

5 =

19.35
19.27
19.76

4 =

19.23
19.21
19.72

3 =

19.22
19.17
19.68

2 =

19.27 edge
19.20 gut
19.65 Top

1 = P.C. = E. end.

19.37 edge
19.29 gut
19.73 Top

NE Ret. 545' around - 5 parts - 10.9

check S.W. c.t. Gillette + 33rd 20.98
 □ in Top of walk
 check B.M. on Freeway - Steele St. 23.34
 Set B.M. on S.E. Top Hyd. - Steele 22.66

14+96.50 = S.L. of Steele

at ± - 0.7 ahead on E. gut. + 0.9' Back on W. gut. - Rods on edge
 14+71.50 = opp. P.C. of Ret. edge of A.C. pave is 0.2 ahead

14+35 = Thru Dr. on Lt.

14+17 = Sewer M.H. - S. Rim 20.24

14+00 = Thru Dr. on Rt.

13+62.67 = opp. P.C. of Ret.

20.83 = Book

23.27 - Marked

20.53 20.45 20.01 20.07 20.11 20.29 20.10 20.00 19.97 20.47 20.53
 fo 32 30 28.9 15 on PK 15 28.4 29.5 31.4 39.2
 edge of Top gut edge edge gut Top edge of walk

20.44 20.37 19.85 19.92 20.07 20.22 20.19 19.95 19.87 20.33 20.40
 25.7 20.7 19.6 18.6 9 9 18.6 19.6 20.7
 walk Top gut edge edge A.C. on edge edge gut Top walk

20.91 20.22 20.12 19.66 19.73 20.1 19.74 19.67 20.14 20.22
 34 25.6 20.6 19.5 18.5 19.8 19.8 20.9 25.9
 Dr. walk Top gut edge edge gut Top walk

20.02 19.96 19.47 19.54 19.8 19.55 19.47 19.97 20.05 21.16
 25.8 20.8 19.7 18.7 18.6 19.6 20.7 25.7 42.3
 walk Top gut edge edge gut Top edge floor
 white + gut Dr.

19.85 19.79 19.31 19.39 19.7 19.37 19.31 19.79 19.86
 25.6 20.6 19.5 18.5 18.7 20 20.5 25.8
 edge walk Top gut edge edge gut Top edge walk

X-Sect. Durant St. from Payne to
 Ely. end. - Sketch - P. 69
 W.O. 32200 - 5-13-54 - 7.0.

INDEXED Lt & Rt. 70
 JER
 MAY 17 1954

0+75
 0+44.5 = P.C. of Ret.
 † of S.E. Ret.
 0+35 = Top of Roll - end - P.C.
 0+20 = † Payne
 0+05 = Top of Roll = P.C. on Ret.
 † of Return - S.W.
 0+00 = W.L. of Payne on Rt. - at 90°
 0-04.5 = P.C. of 10' cb. Rad. - See sketch
 0-25 - Roll type cbs & walk cont. West.
 ends Covered
 B.M. = S.E. F.H.
 22.66 - P. 68

19.86	19.79	19.33	19.36	19.5	19.17	19.11	19.55	19.67
20.8	15.8	14.7	13.7		13.6	14.6	15.7	20.7
walk	Top	gut	edge		edge	gut	Top	walk
19.95	19.87	19.40	19.45	19.6	19.30	19.25	19.71	19.79
20.8	15.8	14.7	13.7		13.5	14.5	15.6	20.6
walk	Top	gut	edge		edge	gut	Top	walk
					19.24	19.20	19.68	
					edge	gut	Top	
19.98	19.92	19.40	19.46	19.7	19.4	19.61	19.12	19.19
20.8	15.8	14.7	13.7		14	25	gut edge	
walk	Top	gut	edge			Top=End	(to W)	
20.05	19.95	19.49	19.54	19.8	19.5	19.3	19.0	
20.8	15.8	14.6	13.6		14	25	50	
			edge					
20.08	19.99	19.53	19.61	19.9	19.5	19.93	19.35	19.44
20.8	15.8	14.7	13.7		14	25	gut edge	
walk	Top	gut	edge			Top=End	(To East)	
					19.25	19.21	19.72	
					edge	gut	Top	
20.13	20.02	19.59	19.66	19.8	19.41	19.38	19.56	19.96
20.8	15.8	14.7	13.7		13.6	14.6	15.7	20.7
walk	Top	gut	edge		edge	gut	Top=P.C.	walk
20.27	20.16	19.73	19.80	20.2	19.51	19.46	19.94	20.02
20.8	15.8	14.7	13.7		13.7	14.7	15.8	20.8
walk	Top	gut	edge		edge	gut	Top	walk

Actual Elev. Shown.

Durant

Lt E Rt 71

3+00

20.1	19.80	19.50	19.54	19.6	19.5	20.1	20.1
25	15.6	14.6	14.1		13	15	25
	Top	gut.	edge				

2+60

20.3	19.86	19.56	19.60	19.7	19.4	20.1	20.1
25	15.6	14.6	14.1		13	15	25
	Top	gut.	edge				fence

2+51 - 4.8' Rt. - E water MH. - 4'x4' Conc 19.66 = w. Rim

2+28 - 20.7 Lt. = 3' Conc. walk
24' Rt. = Beg. wire fence in Hedge

20.52	19.95
25	20.7
walk	walk

2+22 - 26.5' Rt. = Beg. E of 5' Hedge - 5.5' High

2+16.5 = 20.5 Lt. = Beg. 4" Conc cb. along flower bed
on Lt. - Roll cb. Continues - 1.5' wide

2+16.2 = opp P.C. - end cb + walk on Rt. - end walk

19.74	19.68	19.24	19.35	19.3	19.05	18.99	19.50	19.58
20.7	15.7	14.6	13.6		13.7	14.7	15.6	20.8
walk	Top	gut.	edge		edge	gut.	Top	walk
end					end	end	end	

2+00.65 = E.L. To S.

19.68	19.64	19.16	19.19	19.4	18.89	18.84	19.33	19.41
25.2	19.6	18.4	17.4		17	18	19.5	25.2
walk	Top	gut.	edge		edge	gut.	Top	walk

1+90.65 = E.L. To N.

19.66	19.17	19.19
27	25.3	24
Top	gut.	edge

See P. 66 for Int. - 33rd

1+30.65 = w.L. To N.

19.66	19.13	19.10
26.3	25	23.3
Top	gut.	edge

1+20.65 = w.L. To S.

19.75	19.67	19.21	19.27	19.3	18.87	18.82	19.27	19.32
23.7	18.3	17	16		16.5	17.5	18.8	24.6
walk	Top	gut.	edge		edge	gut.	Top	walk

1+05 = opp P.C.'s of Ret.

19.75	19.65	19.22	19.28	19.4	19.07	19.01	19.49	19.57
20.9	15.9	14.8	13.8		13.5	14.5	15.6	20.6
walk	Top	gut.	edge		edge	gut.	Top	walk

65 30

6+26.4 - 14' Lt. = end cb = ^{on edge of channel} Bank

6+25 - 23.5' Lt. = ± P. pole # 3362

6+19 - 22.5' Rt. = ± 10" Acacia

6+15.5 - 18.3 Rt. = ± of 5'x5' Conc. water Vault.

6+11.5 = Cross guard rail.

6+07 - 22.5' Rt. = ± 8" Acacia

6+00

5+89 - 22.5' Rt. = ± 8" Acacia

5+79.3 - 10.9 Rt. = ± 2-8" Gate Caps

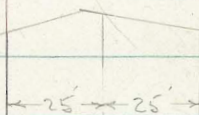
19.4	18.76	18.44	18.48	15.4	15.1	15.8
25	15.5	14.5	14	Top Bank to Channel	20	25
	Top	gut.	edge	(not Completed)		
		end				

19.3	18.79	18.49	18.53	18.2	17.3	18.78	18.74	18.5
25	15.5	14.5	14		15.8 Top	20.8	25	
	Top	gut.	edge		qr. Vault	Top		

19.2	18.86	18.53	18.57	18.6	18.1	18.6	18.5
25	15.5	14.5	14		10	12	25
	Top	gut.	edge				

INDEXED
 MAY 17 1954

Sub. Bound. 2



2+98.58 = 7' ct. shown on
 T.P. Sheet 150 - curb must
 go to here - covered.

split cbs. for
 line

5'

steel

35' cb. Rad.
 25' Prop Rad

24.93 ct. 24.93 ct.

A.C. Pavc

33rd

st.

st+00 = P.K.

GILLETTE ST.

X-SECTIONS
 LINE = \mathcal{C} GILLETTE
 ST.

0+00 = W. TERMINUS GILLETTE
 ST.

0+08 = 10' RT. WAT. G.V. & POSSIBLE
 B.O.

0+30 = 30' RADIUS PT.

2+73.79 = W/L 33RD ST. 24.93' LT. &
 WAT. G.V. 10' RT.

SEWER XING.)

3+03.79 = \mathcal{C} 33RD ST.
 SEW. M.H. 113 $\frac{1}{2}$ LT. &
 104 $\frac{1}{2}$ RT.

(SEWER IS DEEP ENOUGH TO
 GO OVER)

3+14 = G.V. 25' RT.

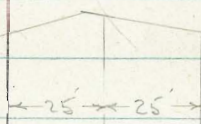
3+33.79 = E/L 33RD ST. &
 WAT. G.V. 10' RT.

(GROUND PROFILE IS SAME)
 AS F.B. 2222 Pg. 76 & 77
 NO CHANGES

R.D.S.

INDEXED
 MAY 17 1954

Sub. Bound. P



$2 + 30.58 = 7$ ct. shown on
 T.P. Sheet 150 - curb must
 go to here - covered.

split cbs: for
 line

st

stele

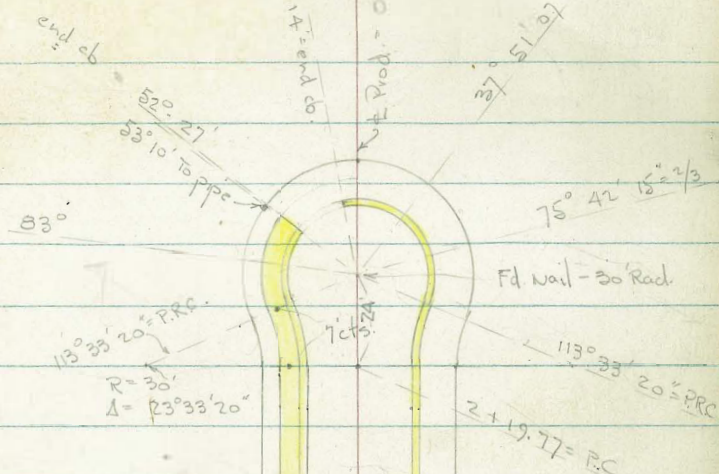
35' cb Rad.
 25' Prop Rad

24.93 ct.
 24.93 ct.

A.C. Pavc -

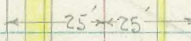
33' rd

st.



st

Stillette



25' Prop Rad
 0-35' curb Rad.

0+00 = P.K.

A.C. Pavc

33' rd

st

X-Section Steele St. from 33rd West.
 w.o. 32200 - 5-14-54 - 7.0 sketch-P. 74

75

2+55

Lt.			☐	Rt.			
36.3	37.4	38.8	32.7	30.8	29.4	28.9	28.4
35	25	5		13	18	25	35

2+35 = start cb Covered on Lt

23.46	22.99	23.06	24.6	25.2	25.9	26.1
15.8	14.7	13.7	10		14	25
Top	gut	edge				

2+15 = start cb Covered on Rt.

22.67	22.23	22.24	22.8	22.75	22.67	23.20
15.7	14.6	13.6		13.7	14.7	15.8
Top	gut	edge		edge	gut	Top

2+00

22.26	22.17	21.69	21.77	21.8	22.17	22.14	22.58	22.62
20.7	15.7	14.6	13.6		13.6	14.6	15.7	20.7
walk	Top	gut	edge		edge	gut	Top	walk

1+75

21.52	21.04	21.11	21.3	21.42	21.35	21.79
15.7	14.6	13.6		13.5	14.5	15.6
Top	gut	edge		edge		Top

1+50

21.05	20.60	20.67	20.9	20.96	20.93	21.42
15.9	14.8	13.8		13.4	14.4	15.5
Top	gut	edge		edge	gut	Top

1+00

20.64	20.21	20.26	20.6	20.52	20.45	20.93
15.8	14.7	13.7		13.6	14.6	15.7
Top	gut	edge		edge	gut	Top

0+65

20.60	20.12	20.19	20.3	20.35	20.31	20.82
15.8	14.7	13.7		13.6	14.6	15.7
Top	gut	edge		edge	gut	Top

0+25.2 = end A.C. Pavc + for P.C. of 35' Rad. Ret.

20.52	20.45	20.02	20.10	20.25	20.37	20.37	20.30	20.22	20.71	20.77
20.7	15.7	14.6	13.6	7		7	13.7	14.7	15.8	20.8
walk	Top	gut	edge				edge	gut	Top	walk

0+00 = W.L. of 33rd

20.37	19.97	20.03	20.17	20.17	20.18	20.61
26.8	25	23.8		23.2	24.5	26.2
Top	gut	edge		edge	gut	Top

B.M. = S.W. Top Hyd. - Steele
 + 33rd

22.66

λ-Sect. Gillette St. from 33rd - West
 W.O. 32200 - 5-14-54 - 7.0 - Sketch-P. 74

= 2.3 from Ely. of 10' Conc. Dr.
 2+19.77 = P.C. - 30' Rad. = Bcg. Cul de Sac

2+00

22.09 21.63 21.69 22.4 21.85 21.84 22.32 22.50 22.50
 15.8 14.7 13.7 13.6 14.6 15.7 25.4 7.6
 Top gut edge edge gut Top floor
 Dr. gar

1+62 - 15.7 Rt = ± 10' Conc. Dr. from cb.

22.17 22.58 23.11
 15.7 25 47.7
 Dr. floor.
 gar.

1+50

21.84 21.37 21.44 22.0 21.70 21.65 22.13 22.6
 15.8 14.7 13.7 13.6 14.6 15.7 25
 Top gut edge edge gut Top

1+00

21.68 21.23 21.30 21.9 21.51 21.46 21.95 22.5
 15.8 14.7 13.7 13.7 14.7 15.7 25
 Top gut edge edge gut

0+74 - 15.7 Rt = ± 10' Conc. Dr. from cb.

21.88 22.82 23.30
 15.7 25 47.7
 Dr. floor.
 gar.

0+65

21.56 21.13 21.18 21.6 21.42 21.36 21.82 21.7
 15.8 14.7 13.7 13.6 14.6 15.7 25
 Top gut edge edge gut Top

end walk on Rt.

0+25 = edge of A.C. pave. & P.C. of 35' Rad. Ret.

21.55 21.52 21.09 21.13 21.25 21.34 21.35 21.24 21.21 21.70 21.76
 20.8 15.8 14.7 13.7 7 13.7 14.7 15.8 20.8
 walk Top gut edge edge gut

0+00 = W.L. of 33rd

21.40 20.94 21.00 21.17 21.20 21.57
 26.9 25 24 25-gut. 26.8-Top
 Top gut edge edge
 Covered by
 A.C.

check B.M. = SE. BP. - Gillette & 33rd 21.28 = 21.16 - B 2204 - P 3

B.M. - Sw. Top Hyd.
 Steels

22.66

Lt.

±

Rt.

77

113° 33' 20" = P.R.C.

75° 42' 15" = 2/3 - at Top - wly. of Ely. 2' Conc. Strip of

37° 51' 07" = 1/3

Boq Sections to Rt - or N.

113° 33' 20" = P.R.C.

83° = Midway

52° 27' = end cb. + walk

10° 14' To Lt. or S. = end Roll cb.

0° = ± Prod. to w.

Rad. pt. = 2 + 43.77 on ± Str.

Showing Central Angles - Both ways.

Req. Rods around Cul de Sac - ± Prod.

22.5 22.39 21.93 21.98

30 20.8 19.7 18.7
Top gut. edge

22.8 22.53 22.03 22.10

30 20.7 19.6 18.6
Top gut. edge

22.00 21.96 22.43 22.64

18.6 19.6 20.7 30
edge gut. Top⁶ on Dr.
Dr.

21.70 21.65 22.10

18.6 19.6 20.7
edge gut. Top

22.14 21.66 21.71

20.7 19.6 18.6
Top gut. edge

21.87 21.83 22.29 22.40

18.6 19.6 20.7 25.7
Top gut. Top walk

23.0 22.63 22.12 22.19

30 20.7 19.5 18.5
Top gut. edge

22.4 22.23 22.17 22.63 23.1

± at 18.5 19.5 20.7 30
Rad. edge gut. Top

Note above (alt. to Save space)

to west of Rad. is 0° or Base line

INDEXED

JER

NOV 22 1954

ELEVATION OF TOP OF WATER MAIN
ON 33-RD ST. 10' N. OF THE SOUTH
LINE OF WEBSTER ST. NO. 32200

11-19-54

78

Stamper
Huffman
Nordahl
Elmore

TOP PIPE -7.55 16.79

+ 4.90 24.34

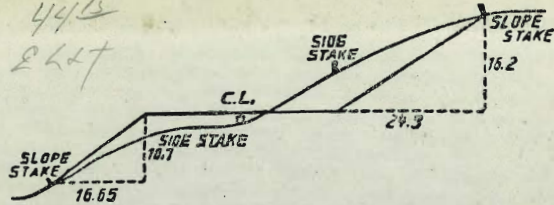
B.M. 19.44

Top Water Main. 10' N. 51me Webster St
10' E. of 33-rd. St.

Top of W4 Rim Sewer M.H. at 33-rd
of Webster (see Pg. 64)

261.69
 274
 257.15

2.16 = S.E. R.P.
 B. 2204-P. 3



DISTANCES FROM SIDE STAKES FOR CROSS-SECTIONING.
 SLOPE 1 1/2 TO 1. ROADWAY OF ANY WIDTH.

	0	.1	.2	.3	.4	.5	.6	.7	.8	.9	
0	0.00	0.15	0.30	0.45	0.60	0.75	0.90	1.05	1.20	1.35	0
1	1.50	1.65	1.80	1.95	2.10	2.25	2.40	2.55	2.70	2.85	1
2	3.00	3.15	3.30	3.45	3.60	3.75	3.90	4.05	4.20	4.35	2
3	4.50	4.65	4.80	4.95	5.10	5.25	5.40	5.55	5.70	5.85	3
4	6.00	6.15	6.30	6.45	6.60	6.75	6.90	7.05	7.20	7.35	4
5	7.50	7.65	7.80	7.95	8.10	8.25	8.40	8.55	8.70	8.85	5
6	9.00	9.15	9.30	9.45	9.60	9.75	9.90	10.05	10.20	10.35	6
7	10.50	10.65	10.80	10.95	11.10	11.25	11.40	11.55	11.70	11.85	7
8	12.00	12.15	12.30	12.45	12.60	12.75	12.90	13.05	13.20	13.35	8
9	13.50	13.65	13.80	13.95	14.10	14.25	14.40	14.55	14.70	14.85	9
10	15.00	15.15	15.30	15.45	15.60	15.75	15.90	16.05	16.20	16.35	10
11	16.50	16.65	16.80	16.95	17.10	17.25	17.40	17.55	17.70	17.85	11
12	18.00	18.15	18.30	18.45	18.60	18.75	18.90	19.05	19.20	19.35	12
13	19.50	19.65	19.80	19.95	20.10	20.25	20.40	20.55	20.70	20.85	13
14	21.00	21.15	21.30	21.45	21.60	21.75	21.90	22.05	22.20	22.35	14
15	22.50	22.65	22.80	22.95	23.10	23.25	23.40	23.55	23.70	23.85	15
16	24.00	24.15	24.30	24.45	24.60	24.75	24.90	25.05	25.20	25.35	16
17	25.50	25.65	25.80	25.95	26.10	26.25	26.40	26.55	26.70	26.85	17
18	27.00	27.15	27.30	27.45	27.60	27.75	27.90	28.05	28.20	28.35	18
19	28.50	28.65	28.80	28.95	29.10	29.25	29.40	29.55	29.70	29.85	19
20	30.00	30.15	30.30	30.45	30.60	30.75	30.90	31.05	31.20	31.35	20
21	31.50	31.65	31.80	31.95	32.10	32.25	32.40	32.55	32.70	32.85	21
22	33.00	33.15	33.30	33.45	33.60	33.75	33.90	34.05	34.20	34.35	22
23	34.50	34.65	34.80	34.95	35.10	35.25	35.40	35.55	35.70	35.85	23
24	36.00	36.15	36.30	36.45	36.60	36.75	36.90	37.05	37.20	37.35	24
25	37.50	37.65	37.80	37.95	38.10	38.25	38.40	38.55	38.70	38.85	25
26	39.00	39.15	39.30	39.45	39.60	39.75	39.90	40.05	40.20	40.35	26
27	40.50	40.65	40.80	40.95	41.10	41.25	41.40	41.55	41.70	41.85	27
28	42.00	42.15	42.30	42.45	42.60	42.75	42.90	43.05	43.20	43.35	28
29	43.50	43.65	43.80	43.95	44.10	44.25	44.40	44.55	44.70	44.85	29
30	45.00	45.15	45.30	45.45	45.60	45.75	45.90	46.05	46.20	46.35	30
31	46.50	46.65	46.80	46.95	47.10	47.25	47.40	47.55	47.70	47.85	31
32	48.00	48.15	48.30	48.45	48.60	48.75	48.90	49.05	49.20	49.35	32
33	49.50	49.65	49.80	49.95	50.10	50.25	50.40	50.55	50.70	50.85	33
34	51.00	51.15	51.30	51.45	51.60	51.75	51.90	52.05	52.20	52.35	34
35	52.50	52.65	52.80	52.95	53.10	53.25	53.40	53.55	53.70	53.85	35
36	54.00	54.15	54.30	54.45	54.60	54.75	54.90	55.05	55.20	55.35	36
37	55.50	55.65	55.80	55.95	56.10	56.25	56.40	56.55	56.70	56.85	37
38	57.00	57.15	57.30	57.45	57.60	57.75	57.90	58.05	58.20	58.35	38
39	58.50	58.65	58.80	58.95	59.10	59.25	59.40	59.55	59.70	59.85	39
40	60.00	60.15	60.30	60.45	60.60	60.75	60.90	61.05	61.20	61.35	40
41	61.50	61.65	61.80	61.95	62.10	62.25	62.40	62.55	62.70	62.85	41
42	63.00	63.15	63.30	63.45	63.60	63.75	63.90	64.05	64.20	64.35	42
43	64.50	64.65	64.80	64.95	65.10	65.25	65.40	65.55	65.70	65.85	43
44	66.00	66.15	66.30	66.45	66.60	66.75	66.90	67.05	67.20	67.35	44
45	67.50	67.65	67.80	67.95	68.10	68.25	68.40	68.55	68.70	68.85	45
46	69.00	69.15	69.30	69.45	69.60	69.75	69.90	70.05	70.20	70.35	46
47	70.50	70.65	70.80	70.95	71.10	71.25	71.40	71.55	71.70	71.85	47
48	72.00	72.15	72.30	72.45	72.60	72.75	72.90	73.05	73.20	73.35	48
49	73.50	73.65	73.80	73.95	74.10	74.25	74.40	74.55	74.70	74.85	49
50	75.00	75.15	75.30	75.45	75.60	75.75	75.90	76.05	76.20	76.35	50

THE NATIONAL BLANK BOOK COMPANY
 HOLYOKE MASSACHUSETTS
 NEW YORK CHICAGO BOSTON SAN FRANCISCO