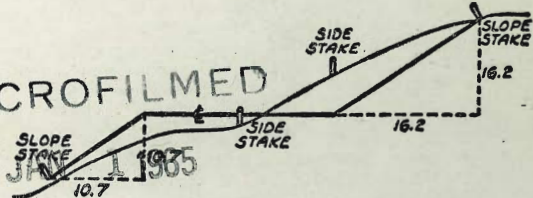


MICROFILMED

JAN 1 1935



DISTANCES FROM SIDE STAKES FOR CROSS-SECTIONING
SLOPE 1 TO 1. ROADWAY OF ANY WIDTH

	0	.1	.2	.3	.4	.5	.6	.7	.8	.9	
0	0.00	0.10	0.20	0.30	0.40	0.50	0.60	0.70	0.80	0.90	0
1	1.00	1.10	1.20	1.30	1.40	1.50	1.60	1.70	1.80	1.90	1
2	2.00	2.10	2.20	2.30	2.40	2.50	2.60	2.70	2.80	2.90	2
3	3.00	3.10	3.20	3.30	3.40	3.50	3.60	3.70	3.80	3.90	3
4	4.00	4.10	4.20	4.30	4.40	4.50	4.60	4.70	4.80	4.90	4
5	5.00	5.10	5.20	5.30	5.40	5.50	5.60	5.70	5.80	5.90	5
6	6.00	6.10	6.20	6.30	6.40	6.50	6.60	6.70	6.80	6.90	6
7	7.00	7.10	7.20	7.30	7.40	7.50	7.60	7.70	7.80	7.90	7
8	8.00	8.10	8.20	8.30	8.40	8.50	8.60	8.70	8.80	8.90	8
9	9.00	9.10	9.20	9.30	9.40	9.50	9.60	9.70	9.80	9.90	9
10	10.00	10.10	10.20	10.30	10.40	10.50	10.60	10.70	10.80	10.90	10
11	11.00	11.10	11.20	11.30	11.40	11.50	11.60	11.70	11.80	11.90	11
12	12.00	12.10	12.20	12.30	12.40	12.50	12.60	12.70	12.80	12.90	12
13	13.00	13.10	13.20	13.30	13.40	13.50	13.60	13.70	13.80	13.90	13
14	14.00	14.10	14.20	14.30	14.40	14.50	14.60	14.70	14.80	14.90	14
15	15.00	15.10	15.20	15.30	15.40	15.50	15.60	15.70	15.80	15.90	15
16	16.00	16.10	16.20	16.30	16.40	16.50	16.60	16.70	16.80	16.90	16
17	17.00	17.10	17.20	17.30	17.40	17.50	17.60	17.70	17.80	17.90	17
18	18.00	18.10	18.20	18.30	18.40	18.50	18.60	18.70	18.80	18.90	18
19	19.00	19.10	19.20	19.30	19.40	19.50	19.60	19.70	19.80	19.90	19
20	20.00	20.10	20.20	20.30	20.40	20.50	20.60	20.70	20.80	20.90	20
21	21.00	21.10	21.20	21.30	21.40	21.50	21.60	21.70	21.80	21.90	21
22	22.00	22.10	22.20	22.30	22.40	22.50	22.60	22.70	22.80	22.90	22
23	23.00	23.10	23.20	23.30	23.40	23.50	23.60	23.70	23.80	23.90	23
24	24.00	24.10	24.20	24.30	24.40	24.50	24.60	24.70	24.80	24.90	24
25	25.00	25.10	25.20	25.30	25.40	25.50	25.60	25.70	25.80	25.90	25
26	26.00	26.10	26.20	26.30	26.40	26.50	26.60	26.70	26.80	26.90	26
27	27.00	27.10	27.20	27.30	27.40	27.50	27.60	27.70	27.80	27.90	27
28	28.00	28.10	28.20	28.30	28.40	28.50	28.60	28.70	28.80	28.90	28
29	29.00	29.10	29.20	29.30	29.40	29.50	29.60	29.70	29.80	29.90	29
30	30.00	30.10	30.20	30.30	30.40	30.50	30.60	30.70	30.80	30.90	30
31	31.00	31.10	31.20	31.30	31.40	31.50	31.60	31.70	31.80	31.90	31
32	32.00	32.10	32.20	32.30	32.40	32.50	32.60	32.70	32.80	32.90	32
33	33.00	33.10	33.20	33.30	33.40	33.50	33.60	33.70	33.80	33.90	33
34	34.00	34.10	34.20	34.30	34.40	34.50	34.60	34.70	34.80	34.90	34
35	35.00	35.10	35.20	35.30	35.40	35.50	35.60	35.70	35.80	35.90	35
36	36.00	36.10	36.20	36.30	36.40	36.50	36.60	36.70	36.80	36.90	36
37	37.00	37.10	37.20	37.30	37.40	37.50	37.60	37.70	37.80	37.90	37
38	38.00	38.10	38.20	38.30	38.40	38.50	38.60	38.70	38.80	38.90	38
39	39.00	39.10	39.20	39.30	39.40	39.50	39.60	39.70	39.80	39.90	39
40	40.00	40.10	40.20	40.30	40.40	40.50	40.60	40.70	40.80	40.90	40
41	41.00	41.10	41.20	41.30	41.40	41.50	41.60	41.70	41.80	41.90	41
42	42.00	42.10	42.20	42.30	42.40	42.50	42.60	42.70	42.80	42.90	42
43	43.00	43.10	43.20	43.30	43.40	43.50	43.60	43.70	43.80	43.90	43
44	44.00	44.10	44.20	44.30	44.40	44.50	44.60	44.70	44.80	44.90	44
45	45.00	45.10	45.20	45.30	45.40	45.50	45.60	45.70	45.80	45.90	45
46	46.00	46.10	46.20	46.30	46.40	46.50	46.60	46.70	46.80	46.90	46
47	47.00	47.10	47.20	47.30	47.40	47.50	47.60	47.70	47.80	47.90	47
48	48.00	48.10	48.20	48.30	48.40	48.50	48.60	48.70	48.80	48.90	48
49	49.00	49.10	49.20	49.30	49.40	49.50	49.60	49.70	49.80	49.90	49
50	50.00	50.10	50.20	50.30	50.40	50.50	50.60	50.70	50.80	50.90	50

Distance of slope stake from side or shoulder stake for any width roadway, slope 1 to 1. If ground is nearly level, the cut or fill at side stake is located by the double entry method in left column and top row. The number in body of table in same row and column gives distance from side stake to slope stake. If ground is not level estimate the difference in elevation between the side stake and slope stake, lower target by this amount if cut, elevate if fill. Add this amount to cut or fill and find distance in table. Set up rod at this point, and line of sight should cut target. If it does not make the slight adjustment necessary.

INDEX

Vista Del Mar. Marine St. Nly	2
Alley Blk 15 Ocean Beach	6
+ - Sec Frankfort Littlefield to Milton	18-49
Gardena - Frankfort to Galveston	50-56
Galveston Gardena to Oyster	57-70

Cross Sec.

VISTA DEL MAR

Marline St to Niy. Termination

7-1-52

C.H.S.

Begg

Altman

Johns

N.O. 32076

• = F.d. L+T

X = cut across in place.

Map # 893 1/2

F.B. 1285-34

T.P. 30 - P24

Direct elevation rod used.

figures shown are elevations

B.W. = base of wall

T.W. = Top of wall

INDEXED

JUL

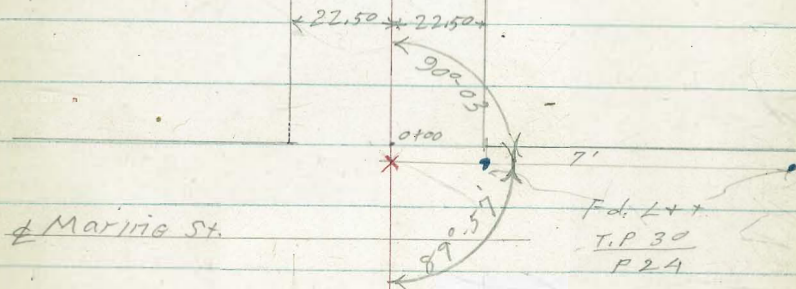
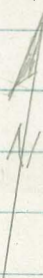
Law
2 1952

P

Golden Vista St.

1150

1100



R.P. Crosses on M.H. Rim

FB 1285-P34

.70

VISTA DEL MAR.

to come out

0+09 1944 = ct. 25 sq. ft. brick walk

28.3	22.4	23.4
22.5	22.5	22.6
T.W.	B.W.	Grd

RT } = end cl. + Comb. walk
LT }

0+00 Nly line Marine

23.4	23.44	23.39	22.90	23.31	23.35	23.71	23.91	24.1
22.5	22.3	17.4	17.4		17.7	17.7	22.8	30
	Back of walk	cc	G		G	cl	Back of walk	

27² RT = cl. Ret. B.C.

27¹ LT = cl. Ret. B.C.

0-10 Nly. cl. line Marine

	18.18	18.47		25.17	26.62	27.75
	100	95		72	90	100
	21.16	22.62	23.1	23.93	24.14	24.20
	50	27		27.3	47	50
		86.		cl. B.C.		

	17.44	17.80		23.89	24.77	26.25	27.21
	100	95		50	72	90	100

0-10⁰¹ Nly gutter line Marine

20.45	21.98	22.15	23.01	23.33	23.35	23.82
50	27	22.5		22.2	27.3	47

18.10	28.07
100	100

0-30

21.48	22.89	23.00	23.57	24.12	24.70	25.43	27.08
50	27	22.5		22.2	50	70	90

B.M. #2

Elev. = 23.89

B.M. #1

36.26 = Elev. Starting B.M.

Set B.M. N/Ely. 7' + Prop. Lat. Marine + Vista Del Mar.

N.W. B.P. Vista Del Mar + Sea Lane

VISTA DEL MAR.

1+22 22⁵ Lt. = end Conc. apron
to double Gar.

23.12	22.94
29	22 ⁵
Gar. Floor	Apron

1+00⁵ 22⁵ Lt. start Conc. apron

23.13	23.16
29	22 ⁵
Gar. Floor	Apron

1+00 22⁶ Lt. = end conc. block wall,

28.4	22.5	23.3	23.4	23.8	28.8	31.4
22 ⁶	22 ⁶	22 ⁵		16	22 ⁵	40
T.W.	B.W.					

0+92' 22⁵ Lt. = start Conc. block wall

28.4	22.7	23.4
22 ⁵	22 ⁶	22 ⁶
T.W.	B.W.	

0+92 22' Lt. = end conc. apron

23.12	22.97	23.30	23.05
29	23.7	23	22
Gar. Floor	on roll		

Garage

double Gar. - see sketch →

0+74' 22' Lt. = start Conc. apron to

Detail of apron

23.14	22.98	23.21	23.00
29	23.7	23	22
Gar. Floor	on roll		

0+74-22⁵ Lt. = end conc block wall

28.3	22.3	23.2	23.6	23.8	23.8	24.2	25.7
22 ⁵	22 ⁵	22 ⁵		15	17	22 ⁵	50
T.W.	B.W.						

0+25 22⁶ Lt. = face Conc. block wall
walk thru. gate in wall

28.1	22.4	23.2	23.4	23.8	23.4	24.7	25.2
22 ⁶	22 ⁶	22 ⁵		15	19	22 ⁵	30
T.W.	B.W.						

0+18 22⁵ Lt. = ± 3' wide brick

22.68	23.13
22 ⁵	22 ⁵

VISTA DEL MAR.

4

5

check B.M.#1

36.25^v (36.26)

check B.M.#2

23.89^v (23.89)

4+00

23.7

3+30

25.2

3+07

11.6

2+80

22.9

2+00

19.0 19.6 22.7 23.6 27.2 30.1 33.0
40 22.5 18 22.5 28 50

1+60

13.0 17.2 21.4 22.6 23.2 29.9 30.9
35 22.2 15 22.5 40 50

1+53 - 19' Lt. = dead man

1+35 19' Lt. = ctr. pole # 7A20

1+30 = end of job request.

18.7 21.9 22.6 23.1 23.6 27.4 31.0
38 26 22.5 17 22.5 50

Alley BIK 15 C.B.

INDEXED
PAID
JAN 26 1953

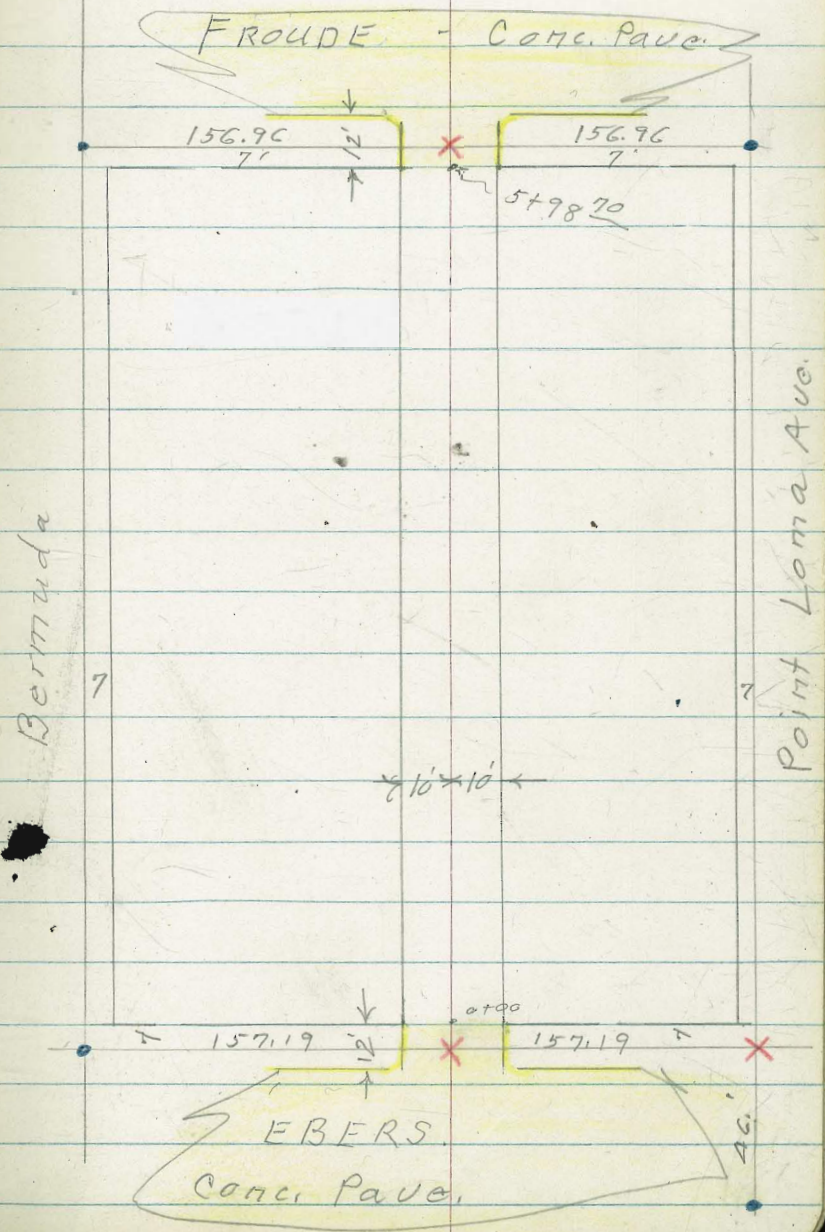
1-23-53

Sammermeyer
Beqq
Ottman
Powell

W.O.# 32140

T.P. sheet # 77A

- Denotes Fd. Lat.
- X. " cut cross in pave.
- B.W. " base of wall or footing.



BIK, 15 O.B.

0+45

0+41 13' end House NE cor

T.P. 10.17 53.16 1.43 42.99

0+15 13' RT = N.E. Cor House

10' Lt } = end curb,

9' RT }

0+00 = Ely like Ebers = end Conc. Pavd.

0-09⁵ 9' RT } = E.C. 2⁵ Rad. Cl. Rot.
10' Lt }

0-12 = Ely cl Ebers

0-30 = E Ebers

8.76 44.42 — 35.66

S.E.B.P. Ebers + Point Loma Ave.

44.8	44.0	43.5	44.2
8.4	9.2	9.7	9.0
10	16		10

53.16

42.2	41.3	41.0	41.0	42.3	42.4
2.2	3.1	3.4	3.4	2.1	2.0
10	4		4	10	13
					at house

40.47	40.35	39.72	39.75	39.82	39.8
3.95	4.05	4.70	4.67	4.60	4.6
10	10		99	99	10
cl	G		G	cl	

40.24	39.77	39.47	39.30	39.74
4.14	4.65	4.95	5.12	4.68
10	10		G	cl. E.C.
cl. E.C.	G		92	92

41.57	40.95	40.33	39.87	39.41	39.05	39.65	37.76	38.34
2.85	3.47	4.09	4.61	5.01	5.37	4.77	6.66	6.06
60	60	125	125		125	125	60	60
cl	G	cl	G		G	cl	G	cl

40.89	39.60	39.31	39.09	37.71
3.53	4.82	5.11	5.33	6.71
60	10	44.42	10	60

BL K15 O.B

2

8

0 + 98 7.3 R. 6" Area

0 + 89 end cone 9.4 R
slab

0 + 80 10 R start con slab

0 + 78 9.3' con w/ 11' R

0 + 76 9.9 R end apron

0 + 64 Drive 9.8' R 16 Rt gar

0 + 50 9 R = 16" Diarr Pole # PA 4688
53.16

				42.7
				10.5
				9.4
				47.55
47.7	46.4	46.1	46.2	
5.5	6.8	7.1	7.0	5.60
10	3		5	10

47.6	46.3	46.1	46.7	46.64	46.9
5.6	6.9	7.1	6.5	6.51	6.36
10	3		10	11	15

46.30
6.85
9.9

46.44	46.48
6.71	6.67
9.8	16

45.8	49.2	43.9	49.2	45.9
7.4	9.0	9.3	7.0	7.3
10	6		8	10
53.16				

BIK 15 OB

9

1 + 77 10 ft end of fence

1 + 74 11 ft of clump of 4 small pine

1 + 50 10 ft Lot h fence 10.3 ft 8"
cedar. — Branches in alley 5'

1 + 49 11 ft R 2 con walk

1 + 45 11.5 ft end gar apron

1 + 28 11.6 by gar apron dbl gar

1 + 26 11 R conc apron Dbl gar

1 + 00

53-16

52.1	50.8	50.7	50.6	
1.1	2.4	2.5	2.6	
10	5		10	
			50.57	50.71
			2.64	2.44
			11.2	21.2
51.43	51.3	50.35	50.5	50.46
1.72	1.9	2.8	2.7	2.69
11.5	10		10	11.2
				gar fl
51.91	51.65			
1.24	3.50			
17.7	11.6			
gar fl				
			50.10	50.49
			3.05	2.66
			11	16
				gar
48.7	47.7	47.9	47.5	48.4
4.5	5.5	5.8	5.7	4.8
10	6		5	10
		53-16		

BLK 15 0B

10

2+75 10 6R beg bd fence
8 8R Pole PA 4650

55.5 54.9 54.7

2+50 13 1/2 beg cedars row of
branches 4' in alley

4.4 5.0 5.2
10 10

2+40 18' 1/2 of conc car port

55.38 54.8 54.5 54.2
4.56 5.1 5.4 5.7
18 10 10
car port

2+38 18' 1/2 of sing gar

4.57 55.37
18

2+20 end of cedars NW
branches extend 4' in
alley

2+01 9 1 R PA 4600 Pole

2+00 11 1/2 beg Row Cedars

53.6 52.9 52.9
6.3 7.0 7.0
10 10

1+93 17 1/2 of sing gar dirt

53.9 6.0
17 gar

6.79 59.94
53.16 0.01 53.15

6.79 7.4

BLK 15 OB nail in Pole
PA 4640

6.74 66 24 044 59.50

3+48 13.2R of 3' conc wlk

3+37 16R dbl gar dirt ft

3+31 beg fence 10.5R

3+25 end fence 10.5R

3+20

3+10 of 10.5R/dl gar dirt ft

3+00

2+88 115ft end of Cedars
branches 4' in Alley

59.94

59.13

58.99

0.81

0.95

13.2

23.2

58.9

1.5

16

57.9

57.5

57.7

2.0

3.4

2.2

10

10

57.1

3.8

10.5

56.8

56.8

56.8

3.1

3.1

3.1

10.

10

59.94

4+10 10 5R beg fence 10 2/3 end of fence

3+95 11R end apron 16R floor

3+82 11 2 ft lath fence bay

3+79

3+75 13.8 ft of 8 wide conc apron

3+71

3+69 10 6 ft end of bd fence

3+53 11' 7" ^{beg} conc apron 4 car gar

3+51 of 3 conc Walk 13R

3+49 93 Pole 10" PA 4640

66.24

61.8
4.4
10
5.1
5.3
5
60.9
4.9
10 5

60.86
5.38
11
end of apron
60.94
5.30
16 gar fl

61.8
5.4
10
61.7
5.5
6
60.1
6.1
60.0
6.2
5
60.5
5.7
10
5.30
16 floor
60.68
5.56
10
apron

61.79
5.45
16.8
fl
61.2
5.4
10
60.54
5.70
13.8
59.9
6.3
5
59.7
6.5
59.5
6.7
5
60.0
6.2
10
60.09
6.20
11
59.93
6.31
16 gar fl

59.63
6.61
11
59.91
6.31
16
59.52
6.72
13
59.18
7.05
23

66.24

BLK 150B

4 + 50

65.0 64.8
1.2 1.4
10 80
64.0 64.3
2.2 1.9
10 10

4 + 43

23 ft Sgar

10.3 ft end base

64.05
2.19
23

4 + 42

10.0 ft face cone Pier for house

61.8 62.8
1.8 3.4
10.0 4
62.3 62.4
4.4 3.6
10.2 10

4 + 28

5 face cone Pier for house
9.8 ft end of cone wall

10.1 ft beg house

10.2 ft end of cone wall

10.2

4 + 23

9.2 ft of 3' gate thru wall

63.20
3.04
10.2

4 + 21

9.6 ft end slab

4 + 18

10.2 ft end bd fence

4 + 11

9 ft beg con slab

4 + 10

10.4 ft beg con blk wall 5' high

64.2
4.8
10.4
62.0
4.2
10.4

4 + 05

10.4 ft sing 9m

66.24

66.24

BLK N. OB

4 + 99 10 R end bd fence

4 + 89 84 L of 36 conc

4 + 88 9.0 R Pole 10" pole H 4622

4 + 87 10.3 R beg bd fence

4 + 70 19' lt of level conc apron of dbl gar
9.72 75.63 0.33 65.91

4 + 65 13 R of 25 conc walk

4 + 63 10.5' lt beg bd fence

4 + 56 9.7 H of 12 wide x 18 deep gar
bd a bottom on
17" od sills

67.6
8.0
10

66.8
8.8

66.7
9.2
7

66.7
8.9
10

65.2
1.00
73

65.0
1.2
9.7

66.24

65.63

9.35 9.41
2.2 garfl 19

65.26 66.22

BLK 15 OB

15

5 35 10.3 ft beg cor wall

71.4
4.2 3.2 1.0
bottom 10.3 top wall

5 + 53 10.3 ft 2' cor walk & drain

73.4
2.15 3.89
16 10.3

5 + 52 11.8 ft end of fence

72.3 71.3 71.0 71.1

5 + 50 end of

3.3 4.3 4.6 4.5
10 5 10

5 + 38 17.5 ft Sing gar cor floor

70.18
5.45
17.5

5 + 36 11.0 ft angle in fence

5 + 28 12.2 ft beg lath fence

5 + 16 17.5 ft Sing gar cor fl.

70.97 70.1 68.8 68.7
4.66 5.5 6.8 6.9
17.5 10 10
conc floor

5 + 00 9.8 ft end of lat fence

67.9 68.4 67.8 67.5 67.8
6.7 7.2 7.8 8.1 7.8
10 4 10 10

75.63

TP on \oplus on
7' line E of Alley

5.89 78.37 3.15 72.48

6 + 08 21 10 ft 10 R 2 1/2 Radius BC

10.2 ft end of conc wall
10 R 10 ft conc curb
Bag con paving
W line of Freud

5 + 98 70

5 + 95

5 + 75

5 + 6.8 10.2 ft 6x10" drain thru
wall

78 37

73.52

72.95

72.44

72.06

72.43

2.11

3.68

3.19

3.57

3.20

10

10

10

10

curb

9

6

74.8

72.9

73.41

73.17

72.57

72.53

72.53

1.0

2.7

2.22

2.46

3.12

3.10

3.00

10.2

10

10

base of wall

curb

ft

tip of wall

73.8

73.2

72.8

72.9

72.5

1.8

2.4

2.8

2.7

3.1

10

5

10

15

74.8

72.3

73.2

72.5

72.5

72.7

0.8

3.3

2.4

3.1

3.1

2.9

tot

10.2

10

line of wall

base

2.9

72.7

10.2

75.63

INDEXED

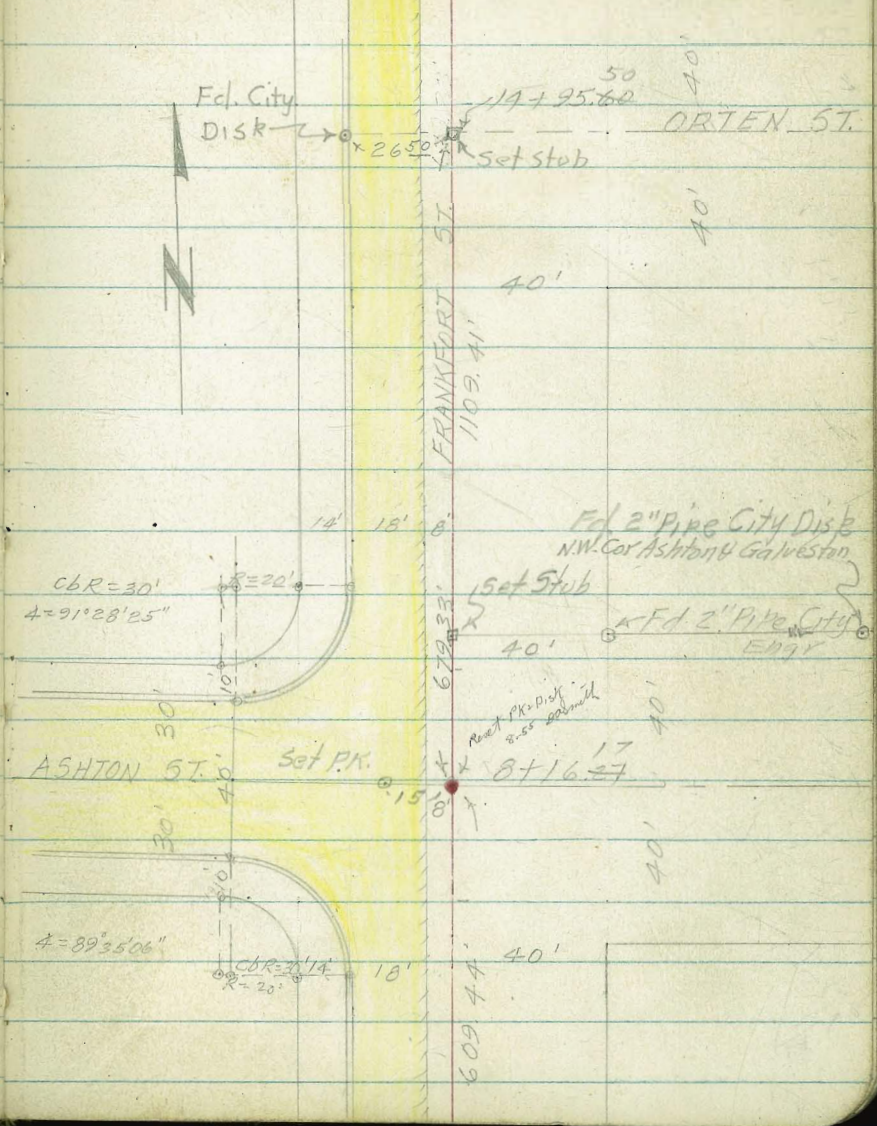
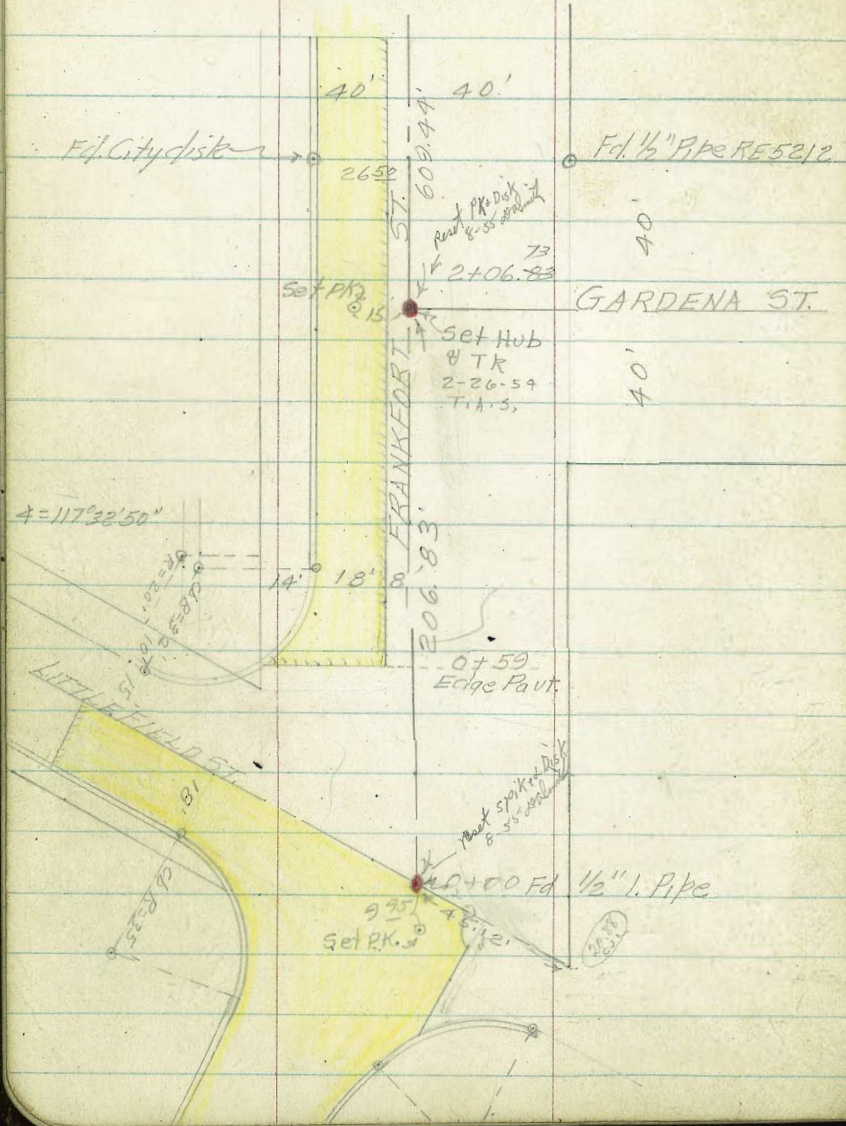
JUL 30 1953

CROSS SECTIONS FRANKFORT ST. LITTLEFIELD
TO MILTON ST. W.O. 32127

Ref Map 2309
F.B. 7502-1855-2221
2144-2180-1590
1601-2223-2263

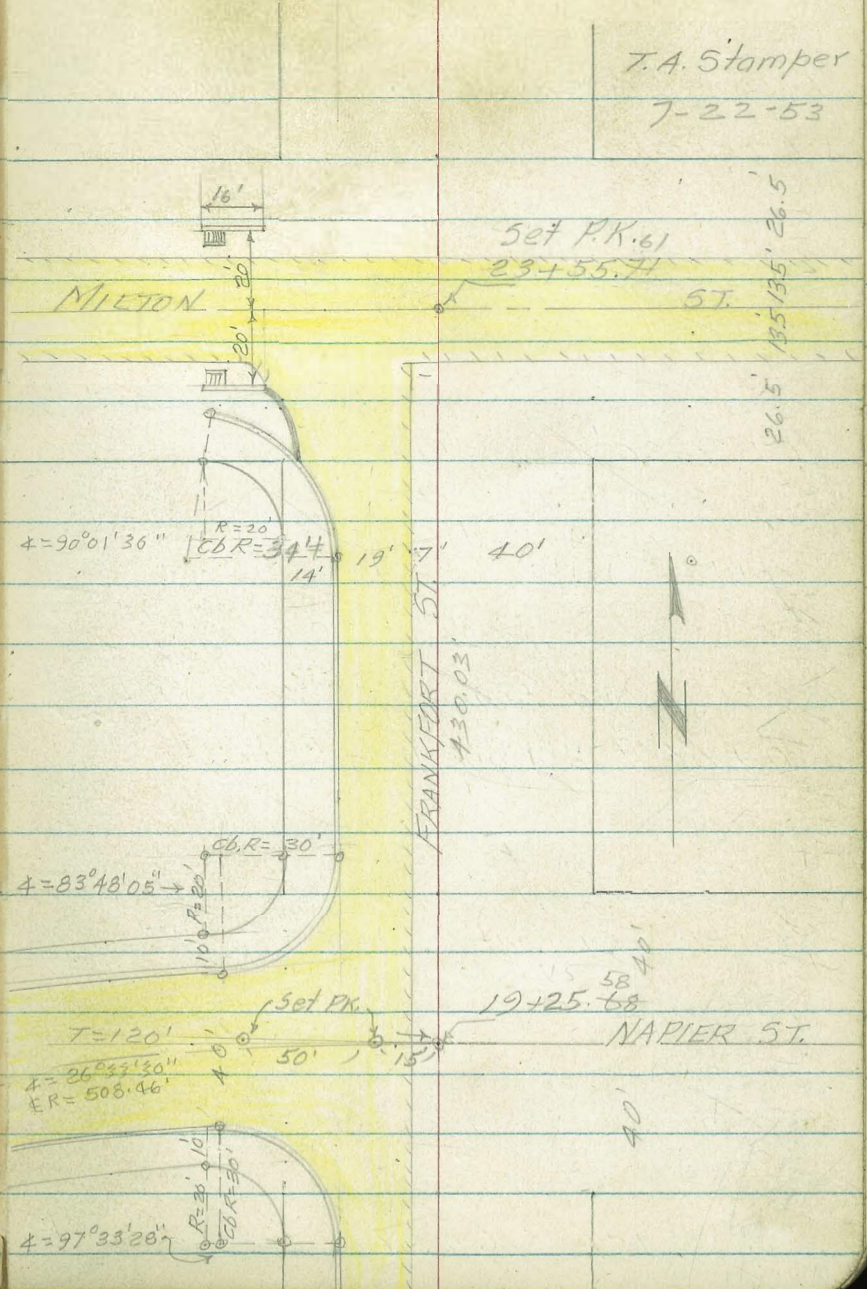
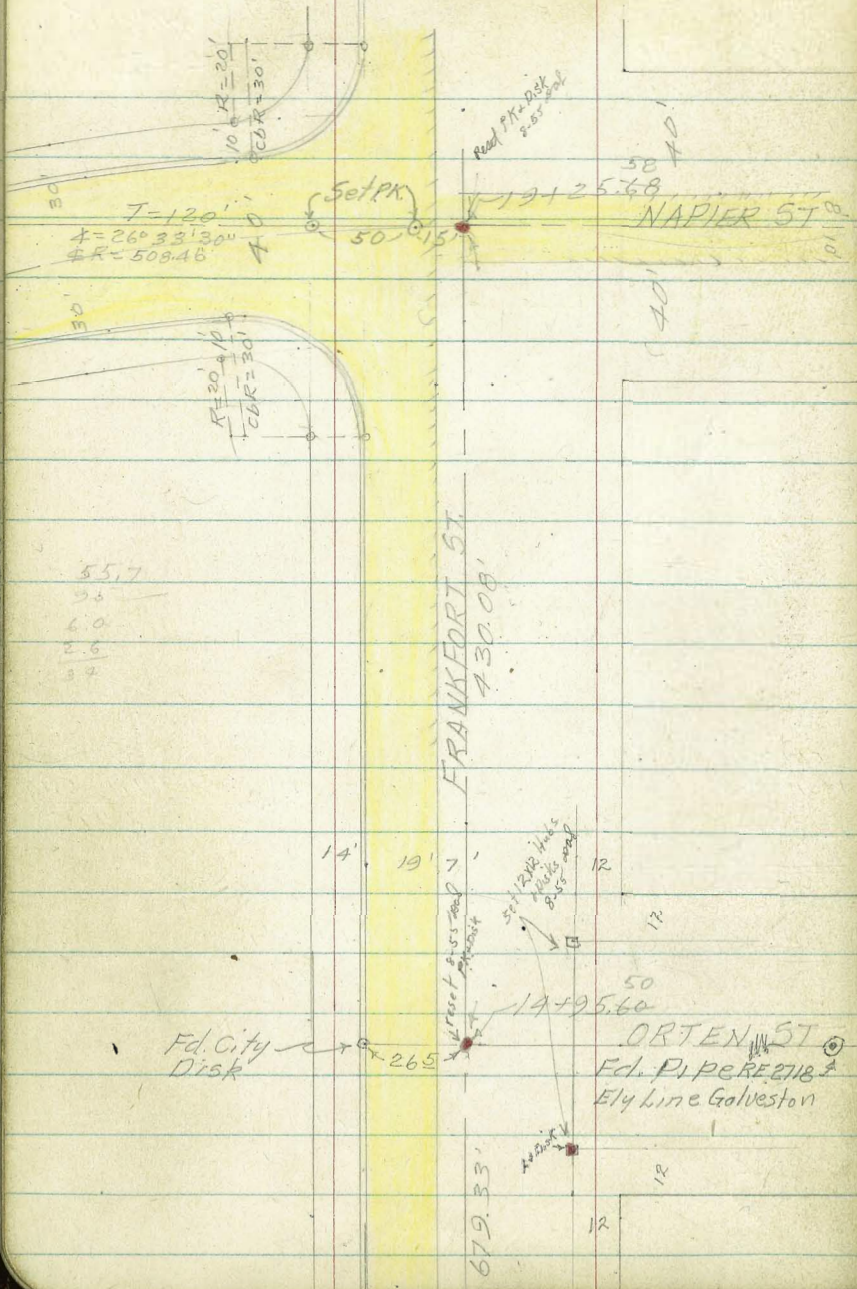
T. A. Stampler
7-22-53

(18)



FRANKFORT ST. BASELINE CONT'D

T.A. Stamper
7-22-53



NOTE - THE TERM "NORMAL TO" IS USED IN THESE NOTES TO MEAN "PARALLEL TO"
 J. McPartland 1-27-54

Stampers
+ Huffman
+ Schelin

7-22-53

CROSS SECTIONS FRANKFORT ST FROM LITTLEFIELD TO MILTON W.O. 32127

Lt. Rt.

0+27 + 2' Ribbon To Sing Gm on Rt.

65.26
3.70
38°

+ Conc Ribbon

0+20-2.0' + Conc Ribbon Sing Gm on Rt.

65.26
3.70
38°

375

+ Conc Ribbon

Normal to Littlefield
0+17.5 N.W. Ch. Ret B.C.

64.89 64.1
4.07 4.8
77° 77°
Cb. Gut

0+13 End Eugenia Hedge on Rt.

0+06 + 3' Conc Walk on Rt.

34° 65.53 65.47
45' 3.43 3.49
Hedge 38° 48°
+ Walk on walk

Begin Hedge on Rt. (Eugenia 6')
0+00 Edge Part Sec Normal to Littlefield

64.51 64.42 64.53 64.57 64.46 64.2 65.1 65.5
4.45 4.59 4.43 4.39 4.50 4.7 3.8 3.4
100 50 18 0 12 17 21 26 45
EP EP EP EP Top Top
Hedge

0-20 Sec Normal to Littlefield Slightly Curved

64.49 64.14 64.08 64.37 64.18 63.47 63.96 63.3A
4.47 4.82 4.88 4.59 4.78 5.49 6.00 5.68
69° 69° 49 24 0 20° 42° 42°
Cb. Gut AC AC AC EP Gut Cb.
B.C. E.C.

B.M. 484 68.96 64.12

N.W. B.P. Gardens + Frankfort 1855
16

7-22-53

X- SEC'S FRANKFORT ST. CONTD.
 1+57 & 14' RPAK N° P-2598 on Lt.
 1+56 10" Gully Pole N° on Rt.
Deadman

	Lt			Rt			
				232	353		
				± P.P.	± Gully Pole	± Deadman	
1+50	65.4	64.05	63.88	64.29	63.7	63.82	61.3
	35	491	5.08	467	52	5.4	7.6
	40	26°	26°	8	0	4	12
		St	Gut	EP			
		LIP					
		Dr.Wy					fence

1+19 Begin 3' Picket fence on Rt

									398
									fence cor.
1+00	65.2	64.6	63.91	64.48	63.8	63.7	61.9	61.4	
	3.7	450	5.05	448	51	5.2	7.0	7.5	
	40	26	26	8	0	4	11	50	
		cb	Gut	EP					

0+79 E.C. Curb Ret on Lt.

0+79	64.8	64.41	63.89	64.39	63.9	63.8	62.5	62.2
	1.1	455	5.07	457	5.8	5.1	6.4	6.7
	40	26	26	8	0	4	9	50
		cb	Gut	EP				

0+59 Edge Pavt. Sec.

0+59	64.66	63.82	64.18	63.9	63.6	63.1	63.8	
	4.30	514	4.78	5.0	5.3	5.8	5.7	
	34	34	8°	0	7	10	45	
		cb	Gut	EP				

0+50

0+50	64.72	63.7		64.0	63.6	63.9	63.5	63.4
	47	52		49	53	52	54	55
	43°	13°		8	10	40	50	
		cb	Gut					

68.26

68.96

7-22-53

X-SEC'S FRANKFORT ST. CONTD.

2+33 Toe Sec

64.7	63.73	63.65	64.01	63.3	61.0	59.3	59.0
17	276	285	248	3.1	5.4	7.1	7.4
32	26	26	8	0	21	38	60
	cb	cut	EP				
	DWHY						

2+10 Toe Sec Fly

64.8	64.25	63.78	64.12	63.6	62.3	59.6	59.0
1.6	224	271	237	2.8	4.1	6.8	7.4
40	26	26	8	0	12	50	63
	cb	cut	EP				

2+0683 & Grandon St To East.

64.8	64.36	63.76	64.15	63.6	62.3	61.6	60.4	59.6
1.6	213	273	235	2.8	4.1	4.8	6.0	6.8
40	26	26	8	0	12	32	50	63
	cb	cut	EP					
	66.49							

TP. 2.37 66.49 484 64.12

2+06 & M.H.

				63.93			
				5.03			
				1.5			
				EMH.			
65.3	64.30	63.82	64.20	63.6	63.0	61.9	60.5
36	466	514	476	5.3	5.9	7.0	8.4
40	26	26	8	0	5	16	45
	cb	cut	EP				

2+00

~~XX~~

1+6683 Sly Line Grandon on Rt.

68.96

1+65 End 3' Picket fence on Rt.

68.96

40's
Fence Cor

7-22-53

X-SEC'S FRANKFORT ST. CONT'D

Lt & Rt.

3+08 & 14" R.P. N^o2618 on Lt

290
±RB

63.15 62.70

3+07 & 7' Conc Ramp on Rt. Simp. Conc. Box

3.34 3.79
36° 46°

± Conc on Ramp
Ramp

3+00

65.8	64.9	63.64	63.10	63.49	63.1	62.8	63.1	62.7	62.4
0.6	1.5	2.85	3.39	3.00	3.3	3.6	3.3	3.7	4.0
40	30	26°	26°	8	0	14	20	47	50
cb cut EP.									

2+75 & 3' Conc S. Walk on Rt.

62.12 62.01

7.37 4.48
36° 46°

± Conc on Walk
walk

3436.0
00

2+46.83 N¹/₄ line Garden, Ely

64.5	64.12	63.56	63.92	63.4	61.7	61.9	60.6
2.0	2.37	2.93	2.57	3.1	4.8	4.5	5.8
32	26	26	8	0	19	20	50
cb cut EP.							

2+35 Top Sec. Ely

66.49

64.7	63.73	63.64	64.01	63.3	60.2	60.8	59.9	59.8
17	270	255	248	3.1	6.2	5.6	6.5	6.6
3/2	26	26	8	0	30	33	50	60
cut EP.								

66.49

7-22-53

X-SECS FRANKFORT ST. CONTD.

4+6) 7' Conc Ramp on Rt

4+50

	lt.	+	Rt.	
			65.29	65.39
			1.20	1.10
			50 ⁵	60 ⁵
			4 Conc on Ramp	
			Ramp	
62.2	62.4	61.2		
		61.12		
		60.50		
61.21	61.1	60.9	61.9	64.9
65.3				
43	41	5.3	5.37	5.99
5.28	5.4	5.16	4.6	1.2
50	30	27	26 ⁰	26 ⁰
			8	0
			17	33
			32	50
			Cb. Gut EP	

4+39 14" RR N=2646 on Lt

4+06 7' Conc Ramp Supp Car Garon Rt.

4+00

28⁰
4 P.P.

63.63	65.13
2.86	1.36
1.36	1.36
36 ⁰	46 ⁰
4 Conc on Ramp	
Ramp	

64.12	61.66	61.66	62.09	62.0	61.9	62.8	65.3	65.5
2.37	4.83	4.83	4.40	4.5	4.6	3.6	1.2	1.0
39	26	26	8	0	16	30	38	50
14 Conc on Ramp								
Ramp								

3+57 7' Conc Ramp Supp Car Gar Rt.

3+50

64.55	64.62
1.94	1.87
36 ⁰	46 ⁰
4 Conc on Ramp	
Ramp	

66.0	65.1	63.0	63.05	62.51	62.93	62.7	62.8	63.8	64.4	64.7
24.13	3.4	3.44	3.98	3.56	3.7	3.6	2.6	2.0	1.7	
40	30	27	26	26	8	0	16	25	40	50
Cb Gut 66.49										

66.49

7-22-53

X-SEC'S FRANKFORT ST. CONTD.

5+98 ± 3' Walk on Lt

RT	60.75	61.09
59.18		
7.31	5.74	3.40
364	398	498
± Walk	± Walk	↑
Bot		

5+97 ± 10" R.P. N^o 2680 on Lt

272
± RP

5+62 ± 7' Conc Ramp on Rt

61.12	61.94
5.37	4.55
40 ±	50 ±
± Conc	on Ramp
Ramp	

5+57 End Rock Wall on Rt.

60.5	63.55
6.0	3.95
40 ±	40 ±
Ground	Top
	Wall

5+50

59.5	59.18	58.76	59.14	59.1	59.2	60.5	62.5	62.7
7.0	7.31	7.73	7.35	7.4	7.3	6.0	3.9	3.8
32	26	26	8	0	20	40	40	50
	cb	cut	EP				?	

5+26 Begin Rock Wall on Rt.

60.8	63.33
5.7	3.16
40 ±	40 ±
Ground	Top
	Wall

5+00

61.1	60.12	59.57	60.17	60.2	60.0	60.7	61.0	64.7	64.7
5.4	6.37	6.92	6.32	6.3	6.5	5.8	5.5	1.8	1.8
40	26	26	8	0	17	21	34	42	52
	cb	cut	EP						

66.49

66.49

7-22-53

X-SEC'S FRANKFORT ST. CONT'D.

6+86 & 8' Conc Ramp Sing Car Gar Rt

58.92 60.03
6.66 5.55
39± 49±
& Conc on Ramp
Ramp

6+70 & Dirt Drive To Sing Car Gar Rt

57.4 59.5
8.2 6.1
23 45

6+61 End 2' Picket fence on Rt

6+50

42°
57.5 57.24 56.74 57.14 57.1 57.3
fence
8.1 8.34 8.84 8.44 8.5 8.3 7.3 5.6 5.1
46 26° 26° 8° 0 15 36 43 55
cb. GUT EP

6+48 & 3' Conc Walk on Rt

+6.58 65.58

59.38 60.13
6.20 5.45
40° 41.6 5.6
& Walk on Walk
Bot Step

6+26 Ream 2' Picket fence on Lt

65.58

TP. Set P.K. PP No 2680 56 5497 749 59.00

41.2
fence
60.19 60.73
6.30 5.76
39± 49±

6+16 & 9' Conc Ramp Sing Car Gar on Rt

6+00

66.49

58.1 58.25 57.65 58.19 58.1 58.1
& Conc on Ramp
8.4 8.24 8.84 8.30 8.4 8.4 58.1 59.2 60.7 61.1
20 22 22 8 0 22 24 37 41 47
cb GUT EP

66.49

7-22-53

X-SECS. FRANKFORT ST. CONT'D.

7+71 14" P.P. N^o 2698 on Lt

Lt. & Rt.

28°
+ P.P.

54.5	55.01	54.50	55.20	55.5	56.1	57.1	59.6
11.1	10.57	11.08	10.38	10.1	9.5	8.5	6.0
40	26°	26°	8°	0	23	27	50
	cb	Gut					

7+67 BC. Curb Ret Lt

7+7

7+56 & Deadman on Lt

28°
Deadman

54.7	55.41	54.78	55.28	55.6	56.1	57.0	54.8
10.2	10.17	10.80	10.30	10.0	9.5	8.6	5.8
40	26	26	8°	0	20	24	50
	cb	Gut	EP				

7+50

7+34 & 8' Conc Ramp Sing Car on Lt

58.08	59.96
750	5.62
40°	50°
& Conc Ramp	on Ramp

7+05 & Conc Walk & on walk on Lt

58.61	60.18
697	5.40
397	497
& Walk	on walk

7+00

56.2	56.5	56.32	55.75	56.24	56.2	56.6	57.6	58.8	60.2
24	21	26	26	8	0	21	23	40	50
40	33	26	26	8	0	21	23	40	50
		cb	Gut	EP					

65.58

7+ 65.58

7-22-53

X-SEC'S FRANKFORT ST. CONT'D.

8+16.27 Sec & Ashton St

+9.65 65.50

511 7+71

T.B.M. Set PK R.P. No 2628 9.73 55.85

8+00 Top Sec Ely

7+99 Top Bank Sec Ely

7+96 Sly Curb line Ashton Wly

7+76 Sly line Ashton St. on Rt

7+74 & Fire Hydrant on Rt

65.58

Lt. ± Rt.

53.95	54.80	55.35	55.7	56.3	57.6	58.5
11.55	10.70	10.15	9.8	9.2	7.9	7.0
21.50	26	8	0	20	50	65
			EP			

65.50

53.54	54.67	55.90	55.6	56.2	56.4	57.4
12.04	10.91	10.28	10.0	9.4	9.2	8.2
50	26	8	0	21	30	50
			EP			

55.6	56.2	58.2	58.2
10.0	9.4	8.4	7.9
0	21	30	50

53.68	53.28	54.60	55.30	55.6	56.1	57.2	58.3
11.36	12.36	10.98	10.28	10.0	9.4	8.2	7.2
55.2	55.2	26.2	8.2	0	21	30	50
cb gut		EP.					

54.5	54.77	54.33	55.16	55.5	56.2	56.9	59.6
11.1	10.81	11.25	10.42	10.1	9.4	8.7	6.0
40	26	26	8	0	23	26	50
4		gut		EP			

56.89

8.69

27.2

F.H.

65.58

Top Base line

7-22-53

X-SECS. FRANKFORT ST. CONTD.

Lt. & Rt.

8+67 EC Ch Ret. on Lt.

56.8	55.5 [↑]	54.98	55.57	55.8	56.4	57.1	57.2	58.5	59.6
87	993	1052	993	97	9.1	8.4	83	7.0	5.9
40	26°	26°	8°	0	19	20	35	27	50
	cb	Gut.	EP						

8+56.27 Nly Line Ashton Ely

56.3	55.4 ³	54.8 ⁵	55.4 ⁸	55.8	56.0	57.1	58.1	59.4
9.2	1007	1063	1002	97	9.5	8.4	7.4	6.1
40	28°	28°	8°	0	18	20	26	50
	cb	Gut	EP					

8+50

55.9	55.4 ⁰	54.7 ¹	55.4 ⁴	55.8	56.0	57.0	58.5
9.6	1010	1083	1066	97	9.5	8.5	7.0
412	312	312	8°	0	19	20	50
	cb	Gut	EP				

8+36 Curb Line Ashton Wly

54.00	53.5 ⁵	54.9 ²	55.3 ⁹	55.8	56.3	57.0	58.4
11.50	11.95	1058	10.11	97	9.2	8.5	7.1
56°	56°	26	8°	0	19	21	50
	cb	Gut	AC	EP			

8+32 Top Sec

53.9 ²	54.9 ²	55.4 ⁰	55.7	56.3	57.1	58.3
11.58	10.58	10.10	9.8	9.2	8.4	7.2
50	26	8	0	20	22	50
		EP				

8+30 Top Sec Ely

53.9 ²	54.9 ⁴	55.4 ⁰	55.7	56.3	57.4
11.58	1058	10.10	9.8	9.2	8.1
50	26	8°	0	22	50

65.50

7-22-53

X-SEC'S FRANKFORT ST. CONTD.

L. E R1.

9+57 E Lateral Conc Block wall on RT

56.8	58.4	61.28
87	71	422
24	403	203
Ground Topwall		

9+53 Top Bank Sec Ely

56.0	56.4	57.1	60.4	61.5
95	9.1	84	51	4.0
0	17	23	33	50

9+50

56.2	55.90	55.43	55.88	56.00	56.4	57.1	60.4	61.3
9.3	9.60	10.07	9.62	9.50	9.1	84	5.1	4.0
40	26	26	8	0	17	23	33	50
Cb Gcl EP								

9+20 Lateral Conc Block wall

57.2	54.90	60.43
83	560	5.07
286	282	32.6
Ground Water Topwall		

9+15 E 8' Conc Ramp Sing Car Garage RT

58.51	58.82
7.49	5.18
402	509
E Conc Ramp	on Ramp

9+00

56.8	55.74	55.27	55.66	55.9	56.2	58.2	60.1
8.7	9.76	10.23	9.84	9.6	9.3	7.2	5.4
40	26	26	8	0	18	26	50
Cb Gcl EP							

65.50

65.50

7-22-53

X-SEC'S FRANKFORT ST. CONTD

Lt. & Rt.

10+11 & 8' Conc Ramp To Sing Car on Rt.

57.66 60.54
7.89 4.96
34± 44±
Conc Ramp on Ramp

10+03 End Conc Blk Ret wall on Rt.

57.8 61.55
77 3.95
368 368
Ground Top Wall

10+00

55.9 56.13 55.54 56.07 56.1 56.4 57.9 61.55 61.8
9.8 9.37 9.96 9.43 9.7 9.1 7.6 3.95 3.7
40 26° 26° 0° 0° 20 37° 37° 50
ck out EB Ground Top wall

9+76 12" P.P. N° 2712 on Lt.

28°
P.P.

9+68 Begm Conc Blk Ret wall on Rt.

57.80 61.58
7.70 3.92
37° 37°
Ground Top Wall

9+63 & 8.0' Conc Ramp To Sing Car on Rt.

65.50

58.50 59.94
7.00 5.56
40± 50±
Conc Ramp on Ramp

65.50

7-22-53

X-SEC'S FRANKFORT ST. CONT'D.

LT. C RT.

11+00

56.1	56.50	55.92	56.55	56.4	56.3	56.7	57.2	59.4	59.9
94	900	958	895	91	9.2	8.8	8.3	6.1	5.6
40	26°	26°	8	0	14	16	37	38	50
			EP						

10+65 ± 8' Conc Ramp Sing. Cur. on RT

58.88	59.86
6.62	5.64
39.5	49.5
± Conc Ramp	on Ramp
58.5	60.10
7.0	5.46
39.2	39.2
Ground	Top Wall

10+36 ± 6" Lateral Conc Blk Wall on RT.

10+50

56.2	56.32	55.75	56.26	56.3	56.4	56.8	61.2
9.3	9.18	9.75	9.24	9.2	9.1	8.7	4.3
40	26°	26°	8°	0	16	33	50
			± GUT	EP			

10+18 ± 6" Lateral Conc Blk Wall on RT

	58.94
	6.56
34.5	34.5
Ground	Top
	Stepped wall
51.13	61.89
7.77	36.1
34.2	33.6
	38.5
Bottom	Top on walk
Steps	Step

10+16.5 ± 3' Conc Walk with Steps on RT

65.50

↑ 65.50

7-22-53

X-SEC'S FRANKFORT ST. CONT'D.

11+69 & 30" Eucalyptus on Rt.

21 1/2
& Tree

11+57 & 2' DIA. Eucalyptus on Rt.

31 1/2
& Tree

11+55 & 14" P.P. No 2742 on Lt.

283
& P.P.

57.8 60.80 58.2

11+54 End Conc Blk Wall on Rt.

7.7 4.70 7.3
392 392 403

Ground Top Ground

11+51 & 6" P.P. No 2739 on Rt.

21 1/2
& P.P.

11+50

56.7	56.71	56.20	56.75	56.6	56.4	56.8	57.8	60.80	58.2	58.1
9.3	8.79	9.30	8.75	8.9	9.1	8.7	7.7	4.70	7.3	7.4
40	26	26	8	0	12	15	392	392	403	50
cb	GUT	EP.					Ground @ wall	Top Wall	Ground	

57.63 58.39
7.87 7.11

11+30 & 3' Conc Walk on Rt.

& Walk on Walk

36 1/2 46 1/2 7.7
57.7 60.78 57.8
7.8 4.72 7.7
392 392 40

11+06 Begin Conc Blk Ret Wall on Rt.

65.50

Ground Top Wall Ground

65.50

7-23-53

X-SEG'S FRANKFORT ST. CONTD.

Lt. & Rt.

12+50

56.8	57.12	56.52	57.11	57.1	57.1	57.3	57.5	59.0
8.5	8.19	8.19	8.20	8.2	8.2	8.07	7.8	6.3
40	26°	26°	8°	0	10	12	20	50
- Ch GUT EP.								

12+15 End 2' Board fence on Rt

12+16 & 3' Conc Lateral Walk on Rt.

12+15 Begin 2' Board fence on Rt

7.74 65.31

Sta 11+55 - 7.93

T.B.M. Set P.K. P.P. No 2742 57.57

21 3	
fence 8	59.04
57.5	
7.73	6.27
248	36°
& Conc	on Walk
walk	

65.31

12+00

56.1	56.89	56.39	56.92	56.9	57.6	58.3
94	86	2.11	8.58	86	7.9	7.2
40	26°	26°	8°	0	33	50
- Ch GUT EP.						

57.09 57.54 58.04

841 7.96 7.46

223 26° 36°

& Conc on Ramp Ramp

11+97 & 7' Conc Ramp Supp Carlow on Rt.

65.50

65.50

7-23-53

X-SEC'S FRANKFORT ST. CONTD

Lt. E Rt.

13+10 ± 9' Conc Ramp Sing Car Conv on Rt

59.67 60.02
5.64 5.29
40° 50°
± Ramp on Ramp

13+05 Lateral Conc Blk Wall on Rt

59.3 61.18
6.0 4.13
39.8 39.8
Ground Top Wall

13+00

57.3 57.14 56.69 57.25 57.4 57.7 58.0 58.8 59.6
8.0 8.17 8.62 8.06 7.9 7.6 7.3 6.5 5.7
40 26° 26° 80° 0 11 13 33 50
CL G+ EP

12+87 ± 3' Grass Palm on Rt.

34°
± Tree
58.94 59.46
6.37 5.85
39.2 40.2
Conc on Ramp
Ramp

12+65 ± 9' Conc Ramp Sing Car Conv on Rt

58.6 60.49
6.7 4.82
40° 40°
Ground Top Wall

12+56 Lateral Conc Blk Wall on Rt

65.31

65.31

7-23-53

X-SEC'S FRANKFORT ST. CONTD.

Lt. ♀ Rt.

14+50

56.2	57.15	56.55	57.19	57.3	57.4	58.4	59.7	60.6
2.1	8.16	8.76	8.12	8.0	7.9	6.9	5.6	4.7
40	26°	26°	8°	0	10	13	28	50
	cb	cut	EP					

14+05 & 12" Eucalyptus on Rt.

405
& Tree

14+00

56.8	57.27	56.75	57.25	57.5	57.6	58.3	58.8	60.1	61.1
8.5	8.04	8.56	8.06	7.8	7.7	7.0	6.5	5.2	4.2
45	26°	26°	8°	0	9	12	20	28	50
5	cb	cut							

13+50

57.02	57.35	56.77	56.77	57.40	57.7	58.1	58.8	59.2	60.4	60.6
8.29	7.96	8.54	8.54	7.91	7.6	7.2	6.5	6.1	4.9	4.7
46	36°	26°	26°	8°	0	10	12	20	40	50

Dr. Way

13+36 - 12" P.P. N° 2780 on Lt.

← ?
of 3154

292	
# P.P. #2	
60.42	60.51
4.80	4.80
402	502
♀ walk	on walk

13+30 & 3' Cook Walk on Rt.

65.31

65.31

7-23-53

X-SEC'S FRANKFORT ST. CONT'D

Lt. & Rt.

14+97 ^{16'} Begin Curb Inlet on Rt. Lt.

56.96	56.25							
8.35	9.06							
26 ²	26 ²							
cb	Gut							
	Inlet							
56.9	56.98	56.31	56.98	57.4	58.1	59.3	60.0	
8.4	8.33	9.00	8.33	7.9	7.2	6.0	5.3	
40	26 ²	26 ⁰	8 ²	0	20	30	50	
	cb	Gut	EP					

14+95.60 & Oxten St Fly

56.9	56.98	56.31	57.08	57.4	57.9	58.3	59.2	
8.4	8.33	9.00	8.33	7.9	7.6	7.0	6.1	
40	26 ²	26 ²	8 ²	0	11	38	50	
	cb	Gut	EP					

14+92 Top Sec Fly

56.3	57.15	56.51	57.14	57.4	58.1	58.5	59.2	
9.0	8.16	8.80	8.17	7.9	7.2	6.8	6.1	
46	26 ²	26 ⁰	8 ²	0	28	30	50	

14+73 Top Sec Fly

56.3	57.15	56.51	57.14	57.4	57.8	59.5	60.3	
9.0	8.16	8.80	8.17	7.9	7.5	5.8	5.0	
46	26 ²	26 ²	8 ²	0	20	25	50	

14+71 Top Bank Sec Fly

56.2	57.15	56.55	57.19	57.3	57.4	58.8	59.8	60.6
9.1	8.16	8.76	8.12	8.0	7.9	6.5	5.5	4.7
40	26 ²	26 ²	8 ²	0	11	16	28	50
	cb	Gut	EP					

14+55.60 Fly Line Oxten St. Fly

65.31

↑ 65.31

7-23-53

X-SEC'S FRANKFORT ST. CONTD.

Lt. E Rt.

15+30

56.4	56.75	56.18	56.77	56.9	57.0	57.7	58.3	59.5
8.9	8.56	9.13	8.54	8.4	8.3	7.6	7.0	5.8
40	26°	26°	8°	0	8	10	24	50
	cb	Gut	EB					

15+40 E 8" Fig Shrub on Rt

27°
+ Tree

15+35.60 N/4 Line Ortop St. Ely

56.5	56.81	56.27	56.89	57.0	57.2	57.8	58.9	59.5
8.8	8.50	9.02	8.42	8.3	8.1	7.5	6.4	5.8
40	26°	26°	8°	0	6	10	32	50
	cb	Gut						

15+16 12" P.P. No 2802 on Lt

28°
+ P.P.

15+11 E 25 Grate on Lt.

56.96 56.13
8.35 9.18
26° 26°
cb Top Grate
Gut

15+00

56.8	55.96	56.18	57.02	57.4	58.0	58.8	59.7
8.5	9.35	9.13	8.29	7.9	7.3	6.5	5.6
20	26°	26°	8°	0	17	25	50
	cb	Gut					

65.31

65.31

7-23-53

X-SEC'S FRANKFORT ST. CONTD.

17+00

272 vt. = & P. pole

16+96 14" P.P. No 2852 on Lt.

16+93 Long & 10.5' Conc Steps on Rt.

16+50

2.68 66.69

Set P.K. E Side P.P. #2852

TBM Sta 16+26 8.30 57.01

16+00

15+99 & 6" Fig Shrub on Rt

15+79 & 4" Fig Shrub on Rt

65.31

Lt. & Rt.

55.0	56.0	56.13	55.51	56.23	56.3	56.5	56.8	58.8	60.6
117	107	105.6	111.2	104.6	10.4	10.2	9.8	7.9	6.1
45	36	26°	26°	8°	0	8	9	21	48
cb gut									

272
& P.P.

60.4	60.69
6.3	6.00
47°	47°
Ground	Top Rot Step

55.85	56.33	55.79	55.69	56.32	56.5	56.6	57.2	58.9	60.1
10.84	10.36	10.90	11.00	10.37	10.2	10.1	9.5	7.8	6.6
50	33	26°	26°	8°	0	8	10	27	50
on drive & gut L.P.									

56.44	56.54	55.97	55.97	56.59	56.6	56.7	57.3	58.7	59.7
8.87	8.77	9.34	9.34	8.72	8.7	8.6	8.0	6.6	5.6
40	33	26°	26°	8°	0	7	9	25	50
& gut EP Dr. way									

272
& Tree

265
& Tree

65.31

7-23-53

X-SEC'S FRANKFORT ST. CONTD.

Lt. & Rt.

18+00

55.3 55.78 55.22 55.86 56.3
 114 1091 1147 1083 104
 40 26° 26° 72° 0
 Ch Gut EP

56.4 56.8 61.1 61.7
 10.3 29 316 500
 6 8 38 58

17+85 End Conc Blk Ret Wall on Rt

60.7 61.64
 6.0 50.5
 40.4 40.4
 Ground Top Wall

17+50

54.9 56.0 56.01 55.46 56.04 56.2 56.6 57.1 60.1 60.4 61.57 61.9
 117 107 1068 1123 1063 10.5 10.1 9.6 6.6 6.3 5.12 4.8
 45 35 26° 26° 82° 0 8 9 35 41 41 50
 Ch Gut EP an wall

17+48 Begin Conc Blk Ret Wall on Rt

60.5 61.69
 6.2 50.2
 40.5 40.5
 Ground Top Wall

17+43 & 9' Conc Ramp Sing for Car on Rt

60.48 60.99
 6.21 5.70
 39.2 40.2
 Conc Ramp on Ramp

17+21 @ 85 Conc Ramp Sing for Car on Rt

59.76 60.31 60.79
 6.23 6.38 5.90
 33° 39° 49°
 Conc on Ramp on Ramp
 Ramp Ramp

66.69

66.69

7-23-53

X-SEG'S FRANKFORT ST. CONTD.

Lt. ♀ Rt.

18+83 ♀ Five Hydrant on Rt.

58.67

8.02

28.7

Top Bot

55.2	55.49	55.02	55.70	56.0	56.3	58.1	58.5	60.1	61.6	
11.5	11.26	11.67	10.99	10.7	10.4	F.H.	8.6	8.2	6.6	5.1
40	26°	26°	7°	0	3		19	22	25	50
	Ch	Gut	EP							

18+73 B.C. Ch. Ret on Lt.

18+71 ♀ Deadman on Rt.

24°

♀ Deadman

18+50

55.4	55.58	55.05	55.74	56.0	56.3	57.5	58.7	60.8	62.1
11.3	11.11	11.64	10.25	10.7	10.9	9.2	8.0	5.9	4.6
40	26°	26°	7°	0	7	10	23	27	50
	Ch	Gut	EP						

18+35 Lt 4' Picket fence on Rt.

40B
fence

18+33 ♀ 3' Conc Walk on Rt.

61.5	61.89	62.75
5.2	4.80	3.94
41B	41B	51B
♀ Walk on walk		

18+16 1/2" P.P. N° 2828 on Lt.

66.69

27 1/2
♀ P.P.

66.69

7-23-53

X-SEC'S FRANKFORT ST. CONTD.

Lt. E. Rt.

19+25.68 & Napier St

54.38	55.16	55.98	56.44	56.59	57.21	59.19	59.86
730	652	570	524	509	447	249	182
50	26	7	2	0	9	40	

± M.H.

19+15 Top Sec Ely & Slij EP Napier

54.24	55.16	56.40	57.66	59.72
744	652	528	402	126
50	36	0	15	50

19+11 Slij Curb Line Napier Top of Bmp Sec Ely

53.73	53.79	55.16	56.90	56.4	57.0	58.8	59.8	60.6
795	839	652	578	53	47	29	19	11
61°	61°	28	7°	0	9	18	32	50

cb. Gut

N.W. B.P. Frankfort & Napier

± 61.68

6.61 61.68

1055/3

B.M 11.62 55.07-55.03

55.13	54.3	54.51	54.04	55.02	55.72	56.1	56.5	57.6	59.6	61.3
124	122	126	116	107	106	70.2	9.1	7.1	5.9	
50	45	42	27	7	0	8	11	26	50	

cb. Gut EP

19+00

18+96 & Tol P. N° 43376-H. ONRT

24.3 Tol P.

18+05.63 Slij Prop Napier St Ely

55.0	55.17	54.65	55.69	56.0	56.4	58.4	60.2	61.3
117	112	104	110	107	103	83	65	52
15	30	30	7	0	8	15	26	50

cb. Gut EP

± 66.69

66.69

7-23-53

X-SEC'S FRANKFORT ST. CONTO

Lt. C Rt.

19+73 E.C. Ch. Ret on Lt.

55.2	55.09	54.60	55.24	55.10	55.7	56.6	57.6	58.5	59.9
6.5	6.59	7.08	6.44	6.1	6.0	5.1	4.1	3.2	1.8
40	26	26	7	0	6	8	25	30	50
Ch. Gut EP									

19+67 14" R.P. N° 293000 Lt

282 + R.P.	55.2	55.09	54.60	55.24	55.7	55.9	56.8	57.3	58.6	59.9
6.5	6.59	7.08	6.44	6.0	5.8	4.9	4.4	3.1	1.8	
40	26	26	7	0	6	9	22	33	50	
Ch. Gut EP										

19+65 6" Nly Line Napier St Fly

19+50 14" Palm Tree on Rt

55.0	55.18	54.68	54.97	55.60	55.93	56.27	57.17	57.6	59.9
6.7	6.50	7.00	6.71	6.08	5.75	5.5	4.6	4.1	1.8
50	392	392	7	0	7	11	21	28	50
Ch. Gut EP									
Tree									

Normal to Napier
19+49 Nly Ch. Line Napier Wly

54.82	55.00	54.28	55.60	55.93	56.2	57.1	57.6	59.9	
6.86	7.40	6.08	5.75	5.5	4.6	4.1	1.8		
532	532	7	0	7	11	21	50		
Ch. Gut EP									
B.C. B.C.									

19+36 Top Bank Sec Fly

54.44	57.13	55.87	56.3	56.8	57.3	58.2	60.1		
7.24	4.55	5.81	5.4	4.9	4.4	3.5	1.6		
50	26	7	0	9	12	23	50		
EP									

19+33 6" Nly EP Napier St Fly

54.44	57.13	55.87	56.47	57.26	57.87	59.61			
7.24	4.55	5.81	5.21	4.42	3.81	3.07			
50	26	7	0	12	23	50			
EP									

h. 68

55.13
61.68

X-SEC'S FRANKFORT ST. (CONT'D)

20+94 & 4.5' Conc Walk on Rt.

20+91 & 2' Dia Palm Tree on Rt.

20+56

20+04 & 6" Pepper Tree Shrub on Rt.

20+01 & 10" Tel P. 112 JP 2931 on Rt.

20+00

19+81 2' Dia Palm Tree on Rt.

61.68

7-23-53

Lt. ± Rt.

56.8 57.28 58.03
 4.9 4.40 3.65
 228 228 328
 & Walk on Walk

285
 & Tree

54.7	54.41	53.97	54.50	54.1	54.9	55.6	56.6	58.6	59.4
7.5	7.29	7.71	7.18	7.0	6.8	6.1	5.1	3.1	2.3
40	260	260	72	0	6	9	21	30	50
Cb GUT EP									

290

& Tree

240

& Tel P.

54.8	54.96	54.34	54.96	55.3	55.4	56.7	56.7	56.9	58.8	59.3
6.9	6.72	7.39	6.72	6.4	6.3	5.5	4.9	4.8	2.9	2.4
40	260	260	72	0	6	8	15	23	43	50
Cb GUT EP										

275

& Tree

61.68

7-23-53

X-SEC'S FRANKFORD ST. CONTD.

Lt. & Rt.

21+40 & 30' Dia Palm Tree on Rt.

285
& Tree

21+33 & 12" P.R. No on Lt.

280
& P.R.

21+19 & 12' Conc Ramp on Rt

57.66	58.10	58.98
4.02	3.58	2.70
315	338	438
Conc Pallet	Conc Ramp	on Ramp

21+15 & 2' Dia Palm Tree on Rt

285
& Tree

21+07 & 3-Pinna Pepped on Rt

290
& Tree

21+00

53.1	53.97	53.42	54.06	54.3	54.5	55.0	55.6	57.2	59.5
8.0	771	826	7627.4	7.2	6.7	6.1	15	22	
40	260	260	700	6	7	18	25	50	
	ok	cut	at						

61.68

61.68

7-23-53

X-SEC'S FRANKFORT ST. CONTD.

Lt. & Rt.

22+47 & 2' Dia Palm Tree on Rt

275
& Tree

22+20 & 2' Dia Palm Tree on Rt

270
& Tree

4.16 57.46

TP 8.38 53.30

22+00

52.7	53.12	52.53	53.19	53.5	53.6	54.0	54.7	55.8	57.8
8.9	8.56	9.15	8.49	8.2	8.1	7.7	7.0	5.9	3.9
40	26°	26°	7°	0	7	9	20	23	42
Cb. Gut EP									

21+93 & 3' Dia Palm Tree on Rt

270
& Tree

21+74 & 8" Tol. Pole No 307145-H on Rt

236
& Tol. P.

21+67 & 30" Dia Palm Tree on Rt

285
& Tree

21+50

52.9	53.54	52.98	53.65	54.1	54.3	54.8	55.7	58.4
8.8	8.14	8.78	8.03	7.6	7.4	6.9	6.0	3.3
45	26°	26°	7°	0	6	8	20	42
Cb Gut EP								

61.68

π 61.68

7-23-53

X- SEC 5 FRANKFORT ST. CONTD

Lt. & Rt.

22+96 & 12" P.P. N^o 2958 on Lt

28°
E.P.P.

22+93 B.C. Ch Ref on Lt

52.2	52.45	51.91	52.44	52.6	52.6	53.2	53.6	55.1
5.3	5.01	5.55	5.02	4.9	4.9	4.3	3.9	2.4
40	26°	26°	7°	0	10	12	28	50
	ch	cut	EP					

22+82 & 12" Pepper Tree on Rt.

28°
& Tree

22+71 & 20" Palm Tree on Rt.

28°
& Tree

22+62 & 6" Pepper Tree on Rt.

29°
& Tree

22+53 & 8" Pepper Tree on Rt.

29°
& Tree

22+50

52.4	52.68	52.13	52.79	52.9	52.9	53.4	53.5	55.3
5.1	4.78	5.33	4.67	4.6	4.6	4.1	4.0	2.2
40	26°	26°	7°	0	6	10	27	50
	ch	cut	EP					

57.46

57.46

7-23-53

X-SEC FRANKFORT ST. CONTD.

Lt. & Rt.

23+42[±] Sly Edge Pavt Sec Milton St

27
15

51.21	52.01	52.91	52.64	53.28	53.95	
6.25	5.45	5.05	4.82	4.18	3.51	
50	126	10	EP	25	50	

23+35[±] Top Sec

49.67	50.91	51.14	50.48	51.83	52.30	52.5	53.2	54.0
7.79	6.55	6.32	6.78	5.63	5.16	5.0	4.13	3.5
715	715	555	555	2628	0		22	50
ch	cut	ch	cut					
W End	1st	cut	cut					
1st								

23+31 & 12" Guy Pole on Rt.
Top Bank Sec

51.0	51.33	50.86	52.17	52.46	52.5	53.2	54.1	55.1
6.5	6.13	6.60	5.29	5.00	5.0	4.3	3.4	2.4
60	50	49	26	9	0	21	24	280
								50

23+25 & 2.5 Dia Palm Tree on Rt.

280
& Tree

23+15[±] Sly Lane Milton St.

51.7	52.07	51.38	52.38	52.7	52.9	53.8	54.0	54.8
5.8	5.39	6.08	5.08	4.8	4.6	3.7	3.5	2.7
43	330	330	130	0	13	16	32	50
cb	cut	EP						

23+100

51.9	52.39	51.88	52.43	52.6	52.6	53.2	53.6	55.0
5.6	5.07	5.58	5.03	4.9	4.9	4.3	3.9	2.3
40	260	260	9	0	10	12	28	50
cb	cut	EP						

57.46

57.46

7-23-53

X-56'S FRANKFORT ST. CONT'D.

Lt. E Rt.

B.M. 8.09 41.98 ~
0.71 50.07

42.03 S.W.B.P. Error Milton 2221
29-61

TP. 2.10 49.36

JP.
Set P.K. P.P. N° 4224 on N. Side Milton

B.M. 5.02 52.44 ~

Approx 200' Wly of E Frankfort St
S.W.B.P. Frankfort + Milton

23+ 55.71 E Milton St.

51.46 52.19 52.87 53.44 54.16
6.00 5.27 4.59 4.02 3.30
50 26 0 25 50

57.46

▲ 57.46

T.A. Stamper

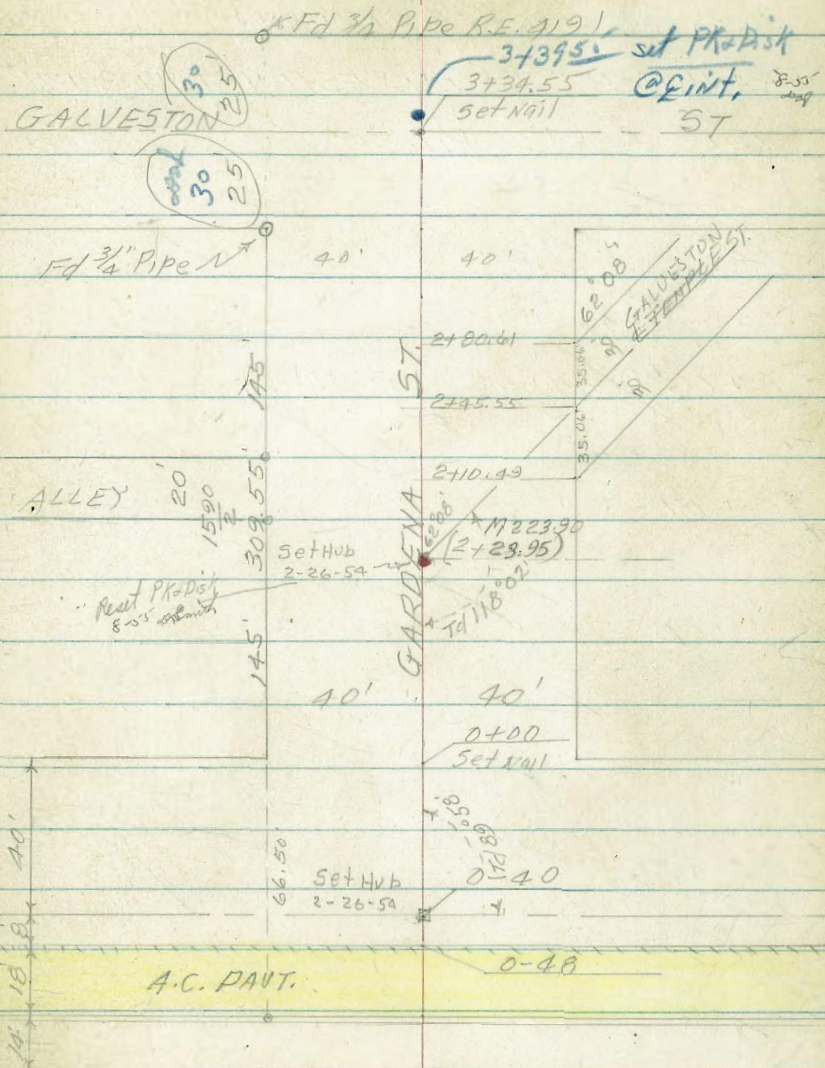
7-29-53



CROSS SECTIONS OF GARDENA ST. FROM
FRANKFORT TO GALVESTON W.D. 32127
Ref F.B. 1502-2221-2266-1855

INDEXED
Law
JUL 30 1953

See also FB 1590 - pg 2
Same thing



CROSS SECTION OF GARDENA ST. FROM
FRANKFORT TO GALVESTON ST. W.D. 32127

0+25 12" Pine on Lt.

0+22 14" P.P. N° P4307 on Rt.

0+10 Fire Hydrant on Rt

0+03 Dead man on Rt

0+00 *Dead man on Rt*

0+28 Toe Sec on Rt

0-35 Top Sec. Rt

0-40 & Frankfort St

0-48 Edge Pavt Frankfort St

B.M. 0.47 64.59

64.12

Stampfer

(51)

& Huffmann

7-27-53

& Schelin

Lt.

&

Rt.

42e

& Tree

29e

& P.P. 4.66
22E

& F.H.

Tape, Photo

29f

Deadman

60.6

61.8	61.3	60.7	59.8	60.3	61.2	61.1	60.6	60.6
28	33	39	48	43	39	35	4.0	4.0
50	42	31	27	6	3	0	25	50
62.5	62.7	61.6	62.1	62.3	62.2	61.9	61.5	61.5
21	24	30	25	2.3	24	27	3.1	3.1
50	44	40	16	0	8	17	50	50
62.7	62.8	63.2	63.3	63.5	63.5	63.5	63.5	63.5
19	1.8	1.4	1.3	1.1	1.1	1.1	1.1	1.1
50	25	0	25	50	50	50	50	50
63.4	63.5	63.8	63.6	63.7	63.7	63.7	63.7	63.7
1.4	1.1	0.8	1.0	0.9	0.9	0.9	0.9	0.9
50	25	0	25	50	50	50	50	50
63.87	64.02	64.16	64.23	64.29	64.29	64.29	64.29	64.29
0.72	0.57	0.43	0.36	0.30	0.30	0.30	0.30	0.30
50	25	0	25	50	50	50	50	50

64.59

N.W. R.P. Gardena & Frankfort 1855
16

X-SEC'S GARDENA ST. CONTD

0+00 14" PP N°-P-4395 on RT

0+24 End 4' Picket fence on RT

0+86 4' 8" Conc Ramp Sing Car Gal RT

0+66 4' 14' wide 2-Car Gal Conc Ramp on RT

0+50

0+41 4' Conc Walk on RT

7-27-53

LT C RT

57.8	57.6	57.3	56.7	56.8	57.0	57.1	57.9	58.6
6.8	7.0	7.3	8.4	7.8	7.6	7.5	6.7	6.0
50	35	34	10	7	0	11	14	50
								290 ± P.B

41°
fence cov

58.69	58.85
590	574
380	410
Conc Ramp	on Ramp

59.34

59.24

525	545
578	418
on Ramp	Conc Ramp

59.5	59.0	58.5	58.2	58.1	58.8	59.2	59.4	59.4
51	56	61	64	59	5.8	5.4	5.2	5.2
50	32	31	9	7	0	20	40	50

59.42

59.63

59.87

5.17	4.96	4.78
376	400	494

4' Walk on Walk

64.59

7-27-53

X-56'S GARDENA ST. CONTD

Lt. & Rt

1+82 12" Guy pole on Lt.

328
& Pole

1+80 Deadman on Lt

390
& deadman

1+66 Begun 3.5' Picket fence on Lt

403
fence
COO

1+54 ⁵ & M.H. APPROX & Alley

56.5	56.2	55.7	53.58	55.5	55.63	56.8	56.2	56.3
81	84	89	101	91	8.96	8.8	8.4	8.3
50	37	35	11	8	0	15	41	50

M.H.
Top V. Rim

1+50

56.6	56.5	56.0	54.8	55.5	55.6	56.1	56.4
80	81	86	98	91	9.0	8.5	8.2
50	43	32	11	9	0	16	50

1+44 Deadman on Lt.

480
& Deadman

X 64 59

7-27-53

X-SEC'S GARDEN A ST CONTD

Lt. C Rt

2+62 Begin 10' high x 5' Deep ^{Eugenia} Hedge Lt

305
± Hedge

2+54 ± 16' Conc Car Port on Lt

53.82 53.23
1077 1136
40± 30±
conc. conc.

2+140. C1 ± 14' V

2+45.55 ± Temple St Sly

54.1 53.4 52.8 51.9 50.8 49.1
105 11.2 11.8 12.7 13.8 15.5
50 31 27 0 25 50

2+75.55 ± Temple St Sly

2+33 End 4' Dickert fence on Lt

403
fence cor.

2+10.49 W/4 Line Temple St Sly

54.9 54.6 54.3 52.7 52.1 52.9 52.3 53.5 53.0
9.7 10.0 10.3 11.9 12.5 11.7 12.3 11.1 11.6
43 32 31 0 7 10 22 45 50

2+00 ± 10" RR No P4399 on Rt

55.2 54.9 54.6 52.7 53.5 53.3 53.8 54.1
9.4 9.7 10.0 11.9 11.1 11.3 10.8 10.5
43 33 31 0 3 21 42 50286
± PP

± 64.59

7-27-53

X-SEC'S GARDENA ST. CONTD.

Lt. C Rt

3+34.55 Galveston St.

50.5	49.8	49.2	48.9	49.4	49.9	49.5
3.4	4.1	4.7	5.0	4.5	8.0	10.2
50	21	0	7	14	20	50

3+23 Toe Sec.

50.6	50.0	49.4	49.3	49.4	46.9	46.1	46.2	43.5
3.3	3.9	4.5	4.6	4.5	7.0	7.8	8.7	10.4
50	23	0	7	14	20	28	31	50

3+19 18" Deadman RP, N^o P-0407 on Rt

3+09 55 Lateral Cobblestone Wall End 10 High x 5 Deep Hedge

52.7	54.4	51.9	51.4	51.1	50.3	49.7	49.6	49.9	49.7	47.7	47.2	46.4	45.5
17	0.50	2.0	2.5	2.8	3.6	4.3	4.3	4.0	4.2	6.2	6.7	7.3	8.7
50	40	40	30	25	24	0	7	8	15	21	29	33	50

Top Wall Ground

3+00

51.6	51.4	51.2	50.5	50.0	49.8	50.1	49.9	48.2	47.8	47.2
2.3	2.5	2.7	3.4	3.3	4.1	3.8	4.0	5.7	6.1	6.7
50	30	25	24	0	7	10	17	20	29	31

2+80.61 Fly Line Temple St Sly

52.5	52.3	51.1	50.7	50.2	51.2	50.5	47.8	49.7
1.4	1.6	2.8	3.2	3.7	2.7	3.4	6.1	4.2
50	30	24	0	10	13	20	38	50

2.69 53.94

TP. 64.59 13.34 51.25 w 51.27 1590 / 7 53.54

7-27-53

X-SEC'S GARDENA ST. CONTD.

Lt. E Rt.

B.M. -2.69 51.25

3+59 55 Ely Line Galveston St.

3+56 Top Sec.

53.94

1590
7

51.27 N.W. 1.P. Galveston & Gardena

51.6	51.3	50.0	49.5	48.9	48.6	48.7	47.7	43.1
2.3	2.6	3.9	4.4	5.0	5.3	5.2	6.2	10.8
50	40	30	27	0	7	14	17	50

50.2	49.7	49.0	48.7	48.5	47.7	42.6
3.7	4.2	4.9	5.2	5.4	6.2	11.3
50	27	0	6	15	18	50

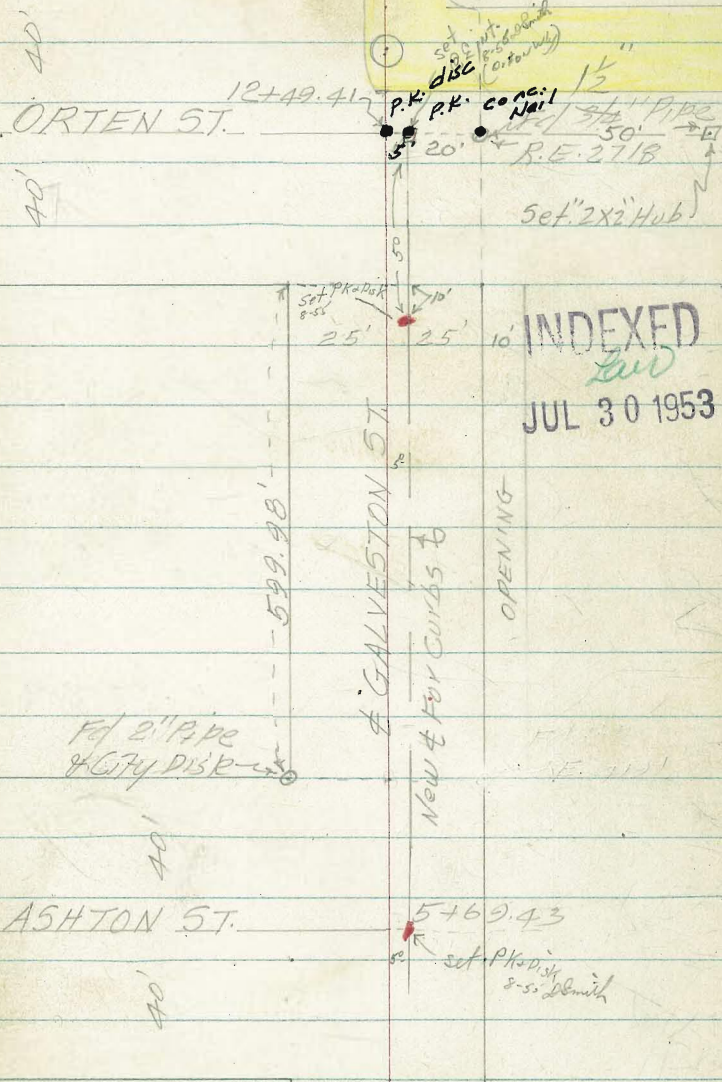
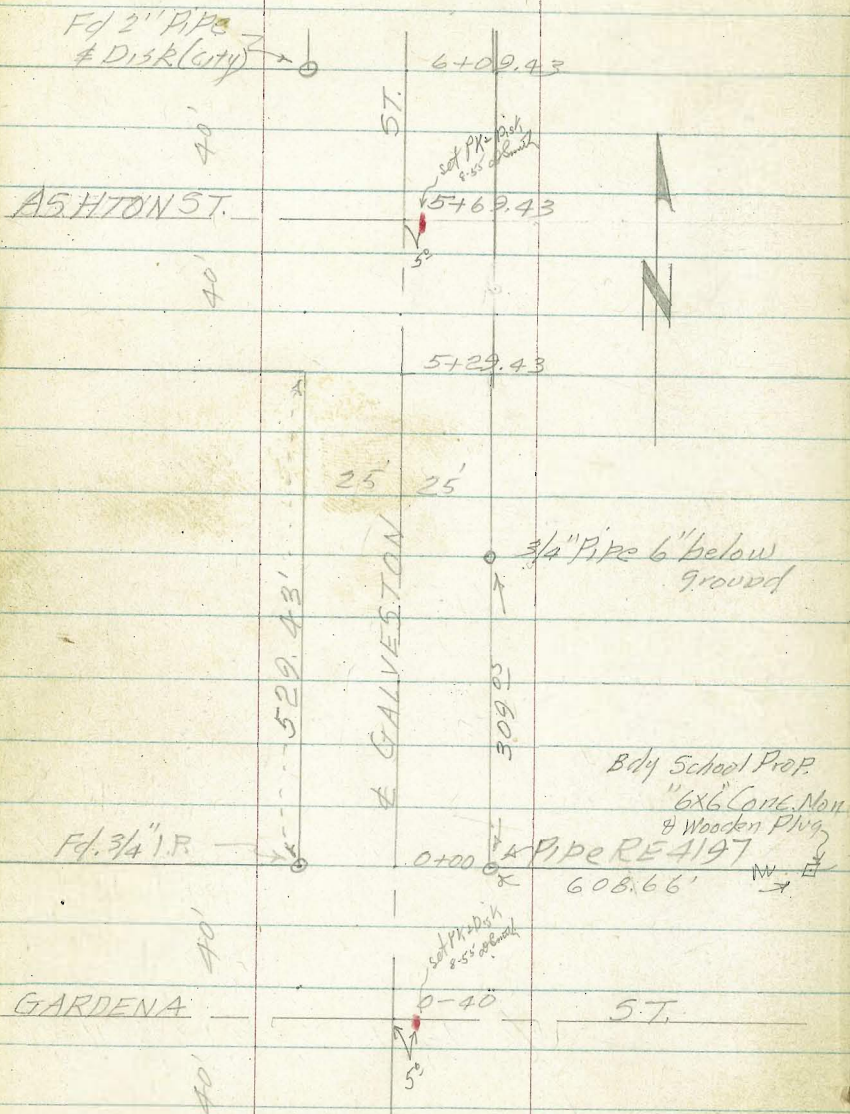
53.94

BASELINE LAYOUT - CROSS SEC'S OF
GALVESTON ST; GARDENA - ORTEN

W.O. 32127

T.A. Stamper
7-27-53

(57)



INDEXED
JUL 30 1953

7-27-53

X-SEC'S GALVESTON ST. GARDENA TO
ORTEN ST. W.D. 32127

L. ← R.

Begin #1 Bucket Fence on Lt.
0+36 End #3 Rock Wall on Lt.

55.39 53.1
10.57 128
25° 25° 25°
force Top wall Ground 65.96

TP 12.05 65.96 0.03 53.91
0+00 Begin ³⁰ Conc Rock Wall on Lt.

Top Disk RE #5212 Sta 0+55 on Lt. Pop. Apr. 50.9
52.4 54.4 51.9 50.3 50.3 50.1 51.0 50.9
1.5 (0.50) 2.0 3.6 3.6 3.8 2.9 3.0
40 25° 25° 14 0 22 25 50
Top Wall Ground

0-12 Top Bank Sec III, Toe Sec E

52.4 51.9 50.0 50.0 49.7 49.4
1.5 2.0 3.9 3.9 4.2 4.5
50 25 17 0 22 50

0-17 Toe Sec

51.0 50.3 49.9 49.9 49.2 49.7
2.9 3.6 4.0 4.0 4.7 4.2
50 25 16 0 27 50

0-40

50.6 49.7 49.1 48.9 48.8
3.3 4.2 4.8 5.0 5.1
50 25 0 25 50

2.69 53.94

53.94

B.M.

51.25

51.27 $\frac{1590}{7}$ N.W.I.P. Gardena to Galveston

7-27-53

X-SEC'S GALVESTON ST, CONTD

2+00

A	±	Rt				
60.3	59.3	59.0	58.9	59.7	58.4	
5.6	6.6	6.9	7.0	6.2	7.5	
30	20	0	11	14	50	
©B144						

1+50

59.8	56.4	55.9	55.9	56.4	55.4	
8.1	9.5	10.0	10.0	9.5	10.5	
50	15	0	13	15	50	

1+31 & 2' Dig RR No 2630 ON CT

1+00

168								
± RR								
56.1	55.0	54.3	53.9	53.7	53.3	53.9	54.6	54.0
10.8	10.9	11.6	12.0	12.2	12.6	12.0	11.3	11.9
50	25	16	13	0	17	20	25	50

0+55 End of Picket fence on th.

0+50

250								
fence								
53.9	53.6	51.9	51.7	51.5	52.4	52.8	52.2	
12.0	12.3	14.0	14.2	14.4	13.3	13.1	13.7	
45	26	14	0	19	21	25	50	

π 65.06

7-27-53

X-SEC'S GALVESTON ST. CONTD.

Lt. C Rt.

3+00

Top Sec.
2+83 Begin 2' Ricket fence on Lt

69.5	69.1	67.3	66.6	66.2	67.1	66.9	65.1	68.4
9.2	9.6	11.4	12.1	12.5	11.6	11.8	13.6	14.3
40	30	32	0	9	11	22	28	50
68.4	68.3		66.0	65.4	65.0	66.1	65.6	64.5
10.3	10.9		12.7	13.3	13.7	12.6	13.1	14.2
45	29	25	24.2	0	9	12	23	26
			fence	PP				50

Begin 2' Ricket fence on Lt
2+80 Top Sec.

66.6	66.5	65.6	64.8	64.8	65.5	65.1	63.9	63.0
12.1	12.2	13.1	13.9	13.9	13.2	13.6	14.8	15.7
45	36	22	0	9	12	23	28	50
			fence	PP				

2+30

+12.81. 78.77

Opp Sta 2+00 ±
TR. P.K. in Fence Past on Rt 65.96

2+33 Top Sec Wly

66.4	66.3	63.8	63.4	62.6	62.5	63.4	66.3	61.1
12.3	12.4	14.9	15.3	16.1	16.2	15.3	12.4	12.0
48	36	30	21	0	9	12	26	31
					78.77	60.4		

66.6	66.6	63.2	61.9	61.8	61.8	62.6	60.6	60.3
-0.7	-0.7	2.7	4.0	4.1	4.1	3.3	3.5	5.3
45	34	29	12	0	9	12	20	30
								50

2+31 Top Sec Wly

62.8	62.9	61.5	61.3	61.5	62.0	61.9	60.2	60.1
3.1	3.0	4.4	4.6	4.4	3.9	4.0	3.7	5.8
45	39	12	0	9	12	22	31	50

2+07 & 2' Dia Pepper Tree Lt

65.96

242
Tree 65.96

7-27-53

X-SEC'S GALVESTON ST. CONT'D.

LT ± RT

4+29 Begin 5' Woven Wire Fence on LT

253
fence 0

4+17 16' Wide
± Conc Ramp - 2' Low Cur on LT

75.11 74.97
366 380
448 416

4+00

on Ramp Conc Ramp
@ Floor 74.3 74.9 74.6 74.0 73.9 74.4 73.9 69.9
4.7 3.8 4.1 4.7 4.8 4.3 4.8 8.8
41 25 21 0 9 11 23 50

3+90 Begin - 2 Rail fence on RT 4' Wide

253
72.6 72.6 69.9 70.3 70.2 71.0 fence 69.6 67.8
61 61 88 87 85 7.7 8.1 9.1 10.9
38 26 21 0 9 12 24 28 50

3+47 Top Sec on West

3+43 4' Lateral Woven Wire fence

253
fence 70.8 70.9 70.4 69.9 69.6 70.4 70.4 69.3 67.6
7.9 7.8 8.3 8.8 9.1 8.3 8.3 9.4 11.9
46 25 21 0 9 11 23 28 50

3+41 Top Sec on West

3+13 ± 3' Conc Walk on LT

69.65 69.24
912 953
362 262
concrete ± Walk

3+10 End 2' Picket fence on LT

78.77

253
fence 78.77

X-SEC'S GALVESTON ST. CONT'D.

5+35 Top Sec To Lt.

5+29.43

End 5' Woven Wire fence with
5/4 line Ashton St.

10.61 89.08

TP

-0.30 78.47

5+00

4+50

4+34 Top Sec (on) Lt.

4+30 12" RR No 2684 on 24

78.77

7-27-53

Lt. ~~6~~ Rt.

77.6	79.2	79.4	79.5	80.3	80.5	78.2
1.5	9.9	9.7	9.6	8.8	8.6	10.9
50	25	0	10	12	25	50

78.0	79.9	79.1	79.2	79.2	79.9	80.3	77.7
11.1	22	10.0	9.9	9.9	9.2	8.8	11.2
50	25.3	25	21	0	10	12	25
	fence	89.08					50
	on						

78.7	79.7	78.4	78.1	77.7	78.9	78.6	74.7
0.0	-1.0	0.3	0.6	1.0	-0.2	0.1	4.0
50	25	22	0	9	11	21	50

77.5	78.0	76.9	76.5	76.1	76.6	76.7	71.8
1.2	0.7	1.8	2.2	2.6	2.1	2.0	6.9
35	25	23	0	9	11	21	50

76.6	77.5	76.1	75.8	75.4	76.2	75.9	71.0
2.1	1.2	2.6	2.9	3.3	2.5	2.8	7.7
42	25	20	0	9	11	20	50

75.1	76.0	75.6	75.1	75.9	75.7	70.5
3.6	2.7	3.1	3.6	2.8	3.0	8.2
42	22.5	22	0	9	11	18
						50

78.77

7-27-53

X-SEC'S GALVESTON ST. CONT'D.

6+00

79.3	81.4	81.1	81.8	83.1	83.2
2.85	2.7	8.0	7.3	6.0	5.9
44	21	15	0	17	50

5+90 Top Sec W/ly End 2-Rail fence

onset

79.0	81.0	80.5	81.5	83.2	83.2
10.1	8.1	8.6	7.6	5.9	5.9
50	23	16	0	25	50

5+83 Toe Sec W/ly

77.5	79.5	81.2	82.5	82.4
11.6	9.6	7.9	6.6	6.7
50	34	0	17	50

5+69.45 + Ashton St. W/ly

77.1	79.0	80.7	81.6	82.2	81.9
12.0	10.1	8.4	7.5	6.9	7.2
50	25	0	16	25	50

5+55 Toe Sec on Lt

76.3	78.1	79.3	80.1	80.5	81.1	81.8	81.3	80.7
12.8	11.0	9.8	9.0	8.6	8.0	7.3	7.8	8.4
50	28	18	0	10	13	24	39	50

5+50 Top Bank Sec on Lt

78.0	79.3	79.9	81.2	81.1	81.1	79.9
11.1	9.8	9.2	7.9	8.0	8.0	9.2
50	21	0	10	14	36	50

89.08

89.08

7-27-53

X-SEC'S GALVESTON ST. CONTD.

CT ± RT.

7+07 End Conc Blk Wall on Lt

81.3 83.31
7.8 5.77
276 272
Ground Top Wall

7+00

81.4 81.4 83.45 83.2 84.7 84.7 84.7 85.9 81.5 89.1
77 77 573 59 44 4.4 4.4 32 1.6 0.0
45 28 276 27 19 0 2 4 25 50

6+62 Begin 6" Conc Blk Ret

82.1 83.31 83.27
7.8 5.71 5.9
276 272
Ground Top Wall
behind wall (flush)

3'
END Conc Blk Wall
6+60 10" RP N^o 2712

86.01 83.1
3.07 6.0
250 250 220
Top Wall Ground & P.P.

6+50

81.5 86.02 82.9 83.0 83.6 83.7 85.0 86.0
7.6 3.06 6.2 6.1 5.5 5.4 4.1 3.1
253 25 25 18 0 7 10 50
1590 (Ground Top Wall)
73 212

6+37 Deadman on Lt

Sta 6+09. 43 N.W. Prop. Ashton & Galveston
TBM. To P. P. M^o City Eng^r 7/6 81.92

81.95 to Deadman

Begin 3' Conc Blk Wall on Lt
6+09 43 Nly Line Ashton St Wly

79.7 80.3 84.72 81.6 82.1 83.2 84.2 84.3
97.88 436 7.5 7.0 3.9 4.9 4.8
5038 250 250 0 15 30 50
Top Wall/Ground

6+09 Deadman on Lt

89.08

89.08

Deadman 290

7-27-53

X-SEC'S GALVESTON ST. CONT'D

Lt. C Rt.

8+00

81.4	80.8	83.5	83.6	84.0	84.5	86.6	88.5
10.2	9.8	7.1	7.0	6.6	6.1	4.0	2.1
50	38	19	1	0	1	25	45

7+62 Top Sec on Lt

80.3	80.9	84.2	84.2	85.2	87.9	89.4
10.3	9.7	6.4	6.4	5.4	2.7	1.2
47	31	21	2	0	27	45

7+58 Top Bond Sec on Lt

81.9	82.5	83.0	84.4	84.4	85.3	87.9	89.4
8.7	8.1	7.6	6.2	6.2	5.3	2.7	1.2
50	40	27	20	2	0	25	45

7+50 C 5mg Conc. Car Dirt floor on Lt.

82.8	82.7	84.5	84.5	85.9	89.1	89.6
7.8	7.9	6.1	6.1	4.7	1.5	1.0
42	27	20	2	0	25	50

90.60

6.98 90.60
E. Side RR N 2720 RR.

TP. Sta. 8+08 5.46 83.62

7+46 End 8" Con Blk Wall 93' Picket fence

82.80
6.28
25
Top wall
Flush

7+09 3' Picket fence on Top
Begin 8" Conc Ret Wall

82.88
6.20
25
Top wall
Flush
89.08

89.08

X-SEC'S GALVESTON ST. CONTD.

9+50

9+21 ± 12' Conc Ramp Sing Curant Lt

9+00

8+85 4' Lateral Warren Wire fence Lt

8+67 ± 13' Conc Ramp Sing Curant Lt

8+50

8+08 ± 10" R.P. No 2720 on Lt

90.60

7-27-53

Lt. ± Rt

79.8	80.5	80.8	80.8	80.8	82.4	83.4	85.4
108	10.1	9.8	9.8	9.8	8.2	7.2	5.2
40	16	15	0	4	6	25	50

80.10 80.37

10.50 10.23
39° 26°
conc floor Conc Ramp

78.4	80.4	81.7	81.4	81.2	81.9	83.2	84.1	86.5
122	11.2	9.9	9.2	9.4	8.7	7.9	6.5	4.1
45	42	23	18	0	2	8	25	50

196
wire fence

81.68 81.23
9.92 9.37
38° 28°

80.55	81.6	82.3	82.1	83.1	85.5	87.5
9.05	9.0	8.3	8.5	7.5	5.1	3.1
43	25	20	20	0	25	80

@ Conc
work to Day. 22°
± R.P.

± 90.60

7-27-53

X-SECS GALVESTON ST. CONTD.

Lt.	+	Rt.
79.5	79.6	79.3
79.3	79.3	79.3
81.2	81.2	82.9
11.1	11.0	11.3
11.3	11.3	11.3
9.7	9.7	7.7
36	16	12
0	9	15
		50

10+50

10+47 Begm 2' Eugenia Hedge on Lt

79.53 79.53

10+46

11.07 11.07
25° 142
on Ramp on Ramp

10+31 Begm 2' Eugenia Hedge on Lt
2' Eugenia Hedge on Lt
on Ramp on Ramp

79.61 79.65
10.99 10.95
25° 150 146
on Ramp on Ramp

10+17 Begm 10' Shrub on Lt

76.6 76.6
16° 140
Shrub 2' Eugenia

10+20

77.2	79.5	80.6	80.1	79.2	81.6	84.2
13.4	11.1	10.3	10.5	10.4	9.0	6.4
50	25	13	0	7	10	50

9+61 1/2" R.P. N° 2766 on Lt

80.07 73.2

9+60 6" Lat Conc Ret 11411 on Lt

10.53 174
25° LRP

90.60

Tap Wall 90.60

X-SECS: GALVESTON ST. CONT'D

7-27-53

L. C. R+

11+61 10" P.P. No 2790 on Lt

100
C.P.P.

74.5	75.0	78.1	77.6	77.7	77.7	78.3	79.6
11.4	10.9	7.8	8.3	8.2	8.2	7.6	6.3
50	37	10	7	0	13	16	50

11+50

75.6	77.9	78.0	78.0	77.7	78.5	79.4
10.3	8.0	7.9	7.9	8.2	7.4	6.5
50	12	8	0	11	14	50

11+12 Top Sec on Lt.

78.0	78.3	78.0	78.1	77.7	78.8	79.0	80.1
7.9	7.6	7.9	7.8	8.2	7.1	6.9	5.8
50	13	8	0	11	14	45	60

Top Sec Helpe
11+09 End 2' Eugenia on Lt.

77.9	78.2	78.1	78.1	77.9	78.4	79.2	81.2
8.0	7.7	7.8	7.8	8.0	7.3	6.8	5.8
50	17	9	0	11	13	41	50

11+00

TP. 6.43 85.98 11.05 7.9 55

85.98

10+98 1' Dig Tree 20' Spread on Lt.

90.60

270
C.P.P. 90.60

Y-SEG'S GALVESTON ST. CONTD.

12760 Begin A.C. Part

12750 ± Deadman on RT

B.M. 10.05 94.16 1.87 84.11

12749.41 ± Orten St. W

12740 ± Fire Hydrant on RT

12709.41 Sly Line Orten St W 1/4

12700.

85.98

	Lt	±	RT					
	78.6	78.9	80.2	82.8	82.66	83.57	84.30	87.10
	15.5	15.2	13.9	11.68	11.50	10.50	8.86	6.46
	50	40	25	22	0	8	25	50
				EP				

± 94.16

						250		
						± P. Man		
						3/4" Pipe ± Orten & E. Line Galveston.		
	84.22	15.00			81.8	83.1	84.3	87.0
	77.3	16						
	8.6	6.3	79.6		41	2.8	1.6	(-1.1)
	50	25			0	20	25	50

83.15

2.83

21°

± FH

	75.1	75.7	78.3	78.4	78.8	79.0	79.9	81.3
	10.8	10.2	7.6	7.3	7.1	6.9	6.0	4.6
	50	38	14	8	0	17	26	50

	74.7	76.9	78.0	78.1	78.3	78.4	79.1	79.9
	11.2	10.0	7.9	7.8	7.6	7.3	6.8	6.0
	50	32	14	7	0	16	18	50

± 85.98

7-27-53

X-SEC'S GALVESTON ST. CONTD.

Lt ⊕ Rt

B.M.	6.92	81.90	81.92	81.95
			(See p 64)	$\frac{1590}{13}$

471 88.82

B.M. 10.05 84.11

$\frac{1590}{16}$	84.22	Top $\frac{3}{4}$ " I.P. ⊕	Orten & Fly Line Galveston
			$\frac{15}{15}$

?

12+89.4) N 1/4 Line Orten St. Wly

80.8	83.0	84.73	85.06	86.66	88.7	90.0
13.3	11.1	9.43	9.10	7.50	5.4	4.1
50	23	4	0	28	38	50
		EP		EP		

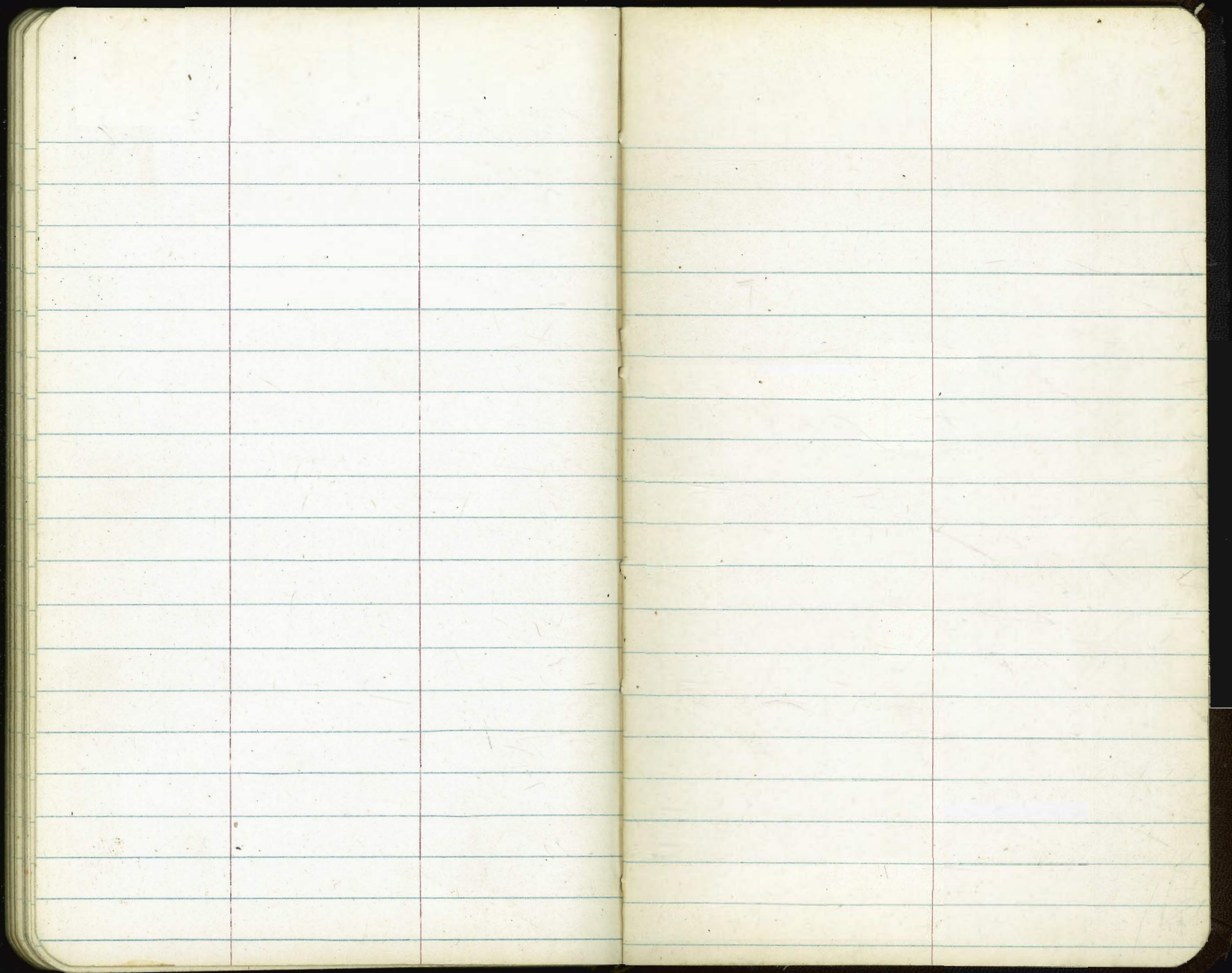
12+82 N 1/4 Edge Part Fly

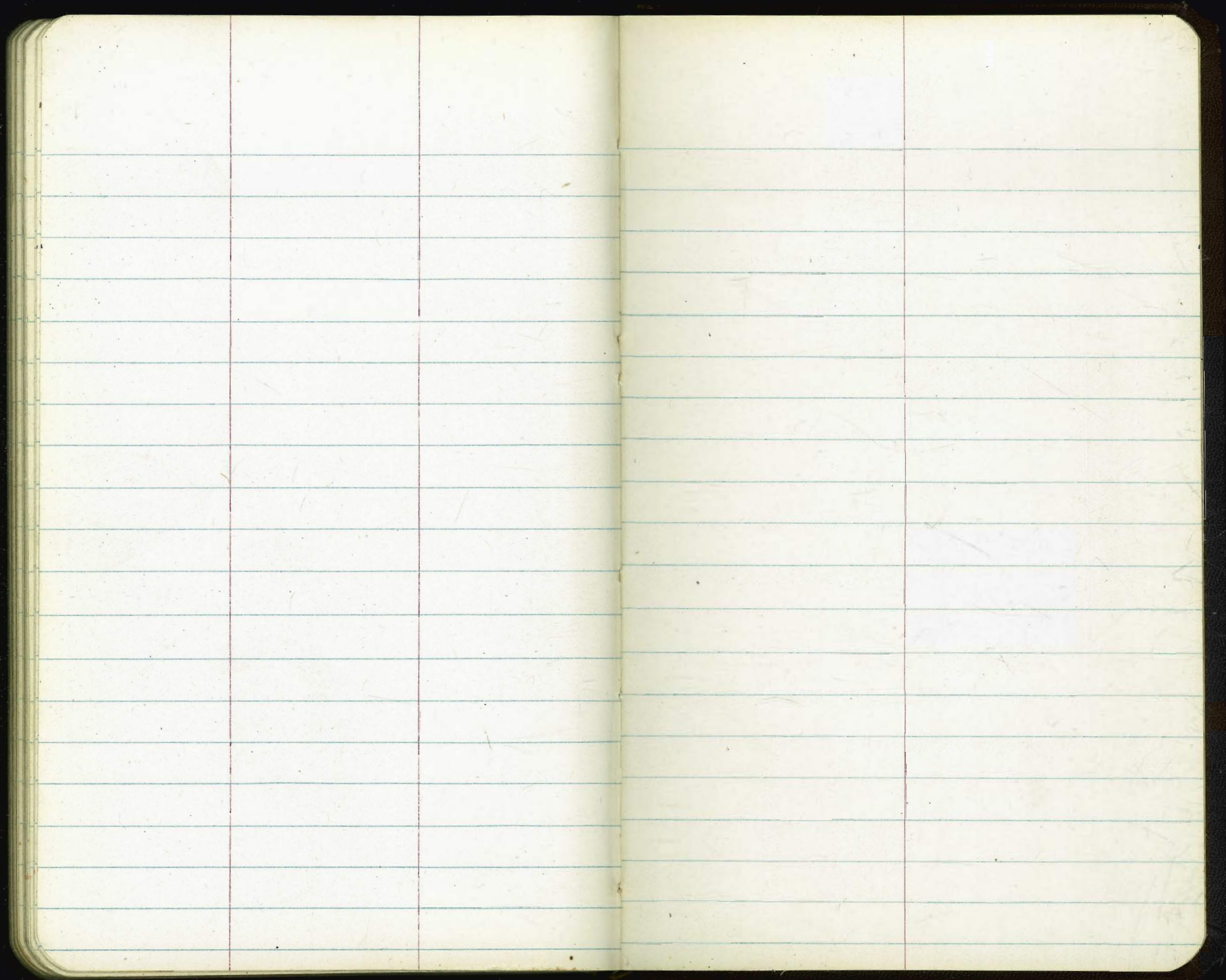
89.6	83.2	84.21	84.47	85.8.7	87.74
14.5	11.0	9.95	9.69	8.29	6.42
50	13	4	0	18	50
		EP			

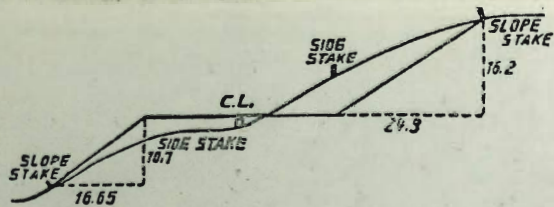
12+69.4 ⊕ Orten St Fly

89.4	82.90	83.31	83.59	85.74	87.02
14.8	12.6	10.85	10.57	8.42	6.39
50	21	4	0	25	50
		EP	⊕ MH		
			E. Rim		
			⊕ 94.16		

94.16







DISTANCES FROM SIDE STAKES FOR CROSS-SECTIONING.

SLOPE 1 1/4 TO 1. ROADWAY OF ANY WIDTH.

	0	.1	.2	.3	.4	.5	.6	.7	.8	.9	
0	0.00	0.15	0.30	0.45	0.60	0.75	0.90	1.05	1.20	1.35	0
1	1.50	1.65	1.80	1.95	2.10	2.25	2.40	2.55	2.70	2.85	1
2	3.00	3.15	3.30	3.45	3.60	3.75	3.90	4.05	4.20	4.35	2
3	4.50	4.65	4.80	4.95	5.10	5.25	5.40	5.55	5.70	5.85	3
4	6.00	6.15	6.30	6.45	6.60	6.75	6.90	7.05	7.20	7.35	4
5	7.50	7.65	7.80	7.95	8.10	8.25	8.40	8.55	8.70	8.85	5
6	9.00	9.15	9.30	9.45	9.60	9.75	9.90	10.05	10.20	10.35	6
7	10.50	10.65	10.80	10.95	11.10	11.25	11.40	11.55	11.70	11.85	7
8	12.00	12.15	12.30	12.45	12.60	12.75	12.90	13.05	13.20	13.35	8
9	13.50	13.65	13.80	13.95	14.10	14.25	14.40	14.55	14.70	14.85	9
10	15.00	15.15	15.30	15.45	15.60	15.75	15.90	16.05	16.20	16.35	10
11	16.50	16.65	16.80	16.95	17.10	17.25	17.40	17.55	17.70	17.85	11
12	18.00	18.15	18.30	18.45	18.60	18.75	18.90	19.05	19.20	19.35	12
13	19.50	19.65	19.80	19.95	20.10	20.25	20.40	20.55	20.70	20.85	13
14	21.00	21.15	21.30	21.45	21.60	21.75	21.90	22.05	22.20	22.35	14
15	22.50	22.65	22.80	22.95	23.10	23.25	23.40	23.55	23.70	23.85	15
16	24.00	24.15	24.30	24.45	24.60	24.75	24.90	25.05	25.20	25.35	16
17	25.50	25.65	25.80	25.95	26.10	26.25	26.40	26.55	26.70	26.85	17
18	27.00	27.15	27.30	27.45	27.60	27.75	27.90	28.05	28.20	28.35	18
19	28.50	28.65	28.80	28.95	29.10	29.25	29.40	29.55	29.70	29.85	19
20	30.00	30.15	30.30	30.45	30.60	30.75	30.90	31.05	31.20	31.35	20
21	31.50	31.65	31.80	31.95	32.10	32.25	32.40	32.55	32.70	32.85	21
22	33.00	33.15	33.30	33.45	33.60	33.75	33.90	34.05	34.20	34.35	22
23	34.50	34.65	34.80	34.95	35.10	35.25	35.40	35.55	35.70	35.85	23
24	36.00	36.15	36.30	36.45	36.60	36.75	36.90	37.05	37.20	37.35	24
25	37.50	37.65	37.80	37.95	38.10	38.25	38.40	38.55	38.70	38.85	25
26	39.00	39.15	39.30	39.45	39.60	39.75	39.90	40.05	40.20	40.35	26
27	40.50	40.65	40.80	40.95	41.10	41.25	41.40	41.55	41.70	41.85	27
28	42.00	42.15	42.30	42.45	42.60	42.75	42.90	43.05	43.20	43.35	28
29	43.50	43.65	43.80	43.95	44.10	44.25	44.40	44.55	44.70	44.85	29
30	45.00	45.15	45.30	45.45	45.60	45.75	45.90	46.05	46.20	46.35	30
31	46.50	46.65	46.80	46.95	47.10	47.25	47.40	47.55	47.70	47.85	31
32	48.00	48.15	48.30	48.45	48.60	48.75	48.90	49.05	49.20	49.35	32
33	49.50	49.65	49.80	49.95	50.10	50.25	50.40	50.55	50.70	50.85	33
34	51.00	51.15	51.30	51.45	51.60	51.75	51.90	52.05	52.20	52.35	34
35	52.50	52.65	52.80	52.95	53.10	53.25	53.40	53.55	53.70	53.85	35
36	54.00	54.15	54.30	54.45	54.60	54.75	54.90	55.05	55.20	55.35	36
37	55.50	55.65	55.80	55.95	56.10	56.25	56.40	56.55	56.70	56.85	37
38	57.00	57.15	57.30	57.45	57.60	57.75	57.90	58.05	58.20	58.35	38
39	58.50	58.65	58.80	58.95	59.10	59.25	59.40	59.55	59.70	59.85	39
40	60.00	60.15	60.30	60.45	60.60	60.75	60.90	61.05	61.20	61.35	40
41	61.50	61.65	61.80	61.95	62.10	62.25	62.40	62.55	62.70	62.85	41
42	63.00	63.15	63.30	63.45	63.60	63.75	63.90	64.05	64.20	64.35	42
43	64.50	64.65	64.80	64.95	65.10	65.25	65.40	65.55	65.70	65.85	43
44	66.00	66.15	66.30	66.45	66.60	66.75	66.90	67.05	67.20	67.35	44
45	67.50	67.65	67.80	67.95	68.10	68.25	68.40	68.55	68.70	68.85	45
46	69.00	69.15	69.30	69.45	69.60	69.75	69.90	70.05	70.20	70.35	46
47	70.50	70.65	70.80	70.95	71.10	71.25	71.40	71.55	71.70	71.85	47
48	72.00	72.15	72.30	72.45	72.60	72.75	72.90	73.05	73.20	73.35	48
49	73.50	73.65	73.80	73.95	74.10	74.25	74.40	74.55	74.70	74.85	49
50	75.00	75.15	75.30	75.45	75.60	75.75	75.90	76.05	76.20	76.35	50

THE NATIONAL BLANK BOOK COMPANY
 HOLYOKE MASSACHUSETTS
 NEW YORK CHICAGO BOSTON SAN FRANCISCO