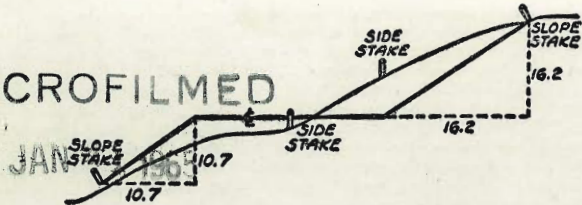


MICROFILMED



SILVER TERRACE
MAP 430

DISTANCES FROM SIDE STAKES FOR CROSS-SECTIONING
SLOPE 1 TO 1. ROADWAY OF ANY WIDTH

	0	.1	.2	.3	.4	.5	.6	.7	.8	.9	
0	0.00	0.10	0.20	0.30	0.40	0.50	0.60	0.70	0.80	0.90	0
1	1.00	1.10	1.20	1.30	1.40	1.50	1.60	1.70	1.80	1.90	1
2	2.00	2.10	2.20	2.30	2.40	2.50	2.60	2.70	2.80	2.90	2
3	3.00	3.10	3.20	3.30	3.40	3.50	3.60	3.70	3.80	3.90	3
4	4.00	4.10	4.20	4.30	4.40	4.50	4.60	4.70	4.80	4.90	4
5	5.00	5.10	5.20	5.30	5.40	5.50	5.60	5.70	5.80	5.90	5
6	6.00	6.10	6.20	6.30	6.40	6.50	6.60	6.70	6.80	6.90	6
7	7.00	7.10	7.20	7.30	7.40	7.50	7.60	7.70	7.80	7.90	7
8	8.00	8.10	8.20	8.30	8.40	8.50	8.60	8.70	8.80	8.90	8
9	9.00	9.10	9.20	9.30	9.40	9.50	9.60	9.70	9.80	9.90	9
10	10.00	10.10	10.20	10.30	10.40	10.50	10.60	10.70	10.80	10.90	10
11	11.00	11.10	11.20	11.30	11.40	11.50	11.60	11.70	11.80	11.90	11
12	12.00	12.10	12.20	12.30	12.40	12.50	12.60	12.70	12.80	12.90	12
13	13.00	13.10	13.20	13.30	13.40	13.50	13.60	13.70	13.80	13.90	13
14	14.00	14.10	14.20	14.30	14.40	14.50	14.60	14.70	14.80	14.90	14
15	15.00	15.10	15.20	15.30	15.40	15.50	15.60	15.70	15.80	15.90	15
16	16.00	16.10	16.20	16.30	16.40	16.50	16.60	16.70	16.80	16.90	16
17	17.00	17.10	17.20	17.30	17.40	17.50	17.60	17.70	17.80	17.90	17
18	18.00	18.10	18.20	18.30	18.40	18.50	18.60	18.70	18.80	18.90	18
19	19.00	19.10	19.20	19.30	19.40	19.50	19.60	19.70	19.80	19.90	19
20	20.00	20.10	20.20	20.30	20.40	20.50	20.60	20.70	20.80	20.90	20
21	21.00	21.10	21.20	21.30	21.40	21.50	21.60	21.70	21.80	21.90	21
22	22.00	22.10	22.20	22.30	22.40	22.50	22.60	22.70	22.80	22.90	22
23	23.00	23.10	23.20	23.30	23.40	23.50	23.60	23.70	23.80	23.90	23
24	24.00	24.10	24.20	24.30	24.40	24.50	24.60	24.70	24.80	24.90	24
25	25.00	25.10	25.20	25.30	25.40	25.50	25.60	25.70	25.80	25.90	25
26	26.00	26.10	26.20	26.30	26.40	26.50	26.60	26.70	26.80	26.90	26
27	27.00	27.10	27.20	27.30	27.40	27.50	27.60	27.70	27.80	27.90	27
28	28.00	28.10	28.20	28.30	28.40	28.50	28.60	28.70	28.80	28.90	28
29	29.00	29.10	29.20	29.30	29.40	29.50	29.60	29.70	29.80	29.90	29
30	30.00	30.10	30.20	30.30	30.40	30.50	30.60	30.70	30.80	30.90	30
31	31.00	31.10	31.20	31.30	31.40	31.50	31.60	31.70	31.80	31.90	31
32	32.00	32.10	32.20	32.30	32.40	32.50	32.60	32.70	32.80	32.90	32
33	33.00	33.10	33.20	33.30	33.40	33.50	33.60	33.70	33.80	33.90	33
34	34.00	34.10	34.20	34.30	34.40	34.50	34.60	34.70	34.80	34.90	34
35	35.00	35.10	35.20	35.30	35.40	35.50	35.60	35.70	35.80	35.90	35
36	36.00	36.10	36.20	36.30	36.40	36.50	36.60	36.70	36.80	36.90	36
37	37.00	37.10	37.20	37.30	37.40	37.50	37.60	37.70	37.80	37.90	37
38	38.00	38.10	38.20	38.30	38.40	38.50	38.60	38.70	38.80	38.90	38
39	39.00	39.10	39.20	39.30	39.40	39.50	39.60	39.70	39.80	39.90	39
40	40.00	40.10	40.20	40.30	40.40	40.50	40.60	40.70	40.80	40.90	40
41	41.00	41.10	41.20	41.30	41.40	41.50	41.60	41.70	41.80	41.90	41
42	42.00	42.10	42.20	42.30	42.40	42.50	42.60	42.70	42.80	42.90	42
43	43.00	43.10	43.20	43.30	43.40	43.50	43.60	43.70	43.80	43.90	43
44	44.00	44.10	44.20	44.30	44.40	44.50	44.60	44.70	44.80	44.90	44
45	45.00	45.10	45.20	45.30	45.40	45.50	45.60	45.70	45.80	45.90	45
46	46.00	46.10	46.20	46.30	46.40	46.50	46.60	46.70	46.80	46.90	46
47	47.00	47.10	47.20	47.30	47.40	47.50	47.60	47.70	47.80	47.90	47
48	48.00	48.10	48.20	48.30	48.40	48.50	48.60	48.70	48.80	48.90	48
49	49.00	49.10	49.20	49.30	49.40	49.50	49.60	49.70	49.80	49.90	49
50	50.00	50.10	50.20	50.30	50.40	50.50	50.60	50.70	50.80	50.90	50

Distance of slope stake from side or shoulder stake for any width roadway, slope 1 to 1. If ground is nearly level, the cut or fill at side stake is located by the double entry method in left column and top row. The number in body of table in same row and column gives distance from side stake to slope stake. If ground is not level estimate the difference in elevation between the side stake and slope stake, lower target by this amount if cut, elevate if fill. Add this amount to cut or fill and find distance in table. Set up rod at this point, and line of sight should cut target. If it does not make the slight adjustment necessary.

TABLE XIII—CORRECTIONS FOR TANGENTS AND EXTERNALS

These corrections are to be added to the approximate values, found by dividing the tangent, or external, for a 1° curve (Table VIII) by the degree of curve, in order to obtain the true tangents, or externals. Intermediate values may be obtained by interpolation.

FOR TANGENTS ADD

Central Angle	DEGREE OF CURVE													
	5°	10°	15°	20°	25°	30°	35°	40°	45°	50°	55°	60°	65°	70°
10°	.03	.06	.09	.13	.16	.19	.22	.25	.28	.31	.34	.38	.42	.46
15°	.04	.10	.14	.19	.24	.29	.34	.39	.45	.51	.53	.58	.63	.68
20°	.06	.13	.19	.26	.32	.39	.45	.51	.58	.65	.72	.79	.84	.90
25°	.08	.16	.24	.33	.40	.49	.58	.67	.75	.83	.90	.99	1.06	1.14
30°	.10	.19	.29	.39	.49	.59	.69	.79	.89	.99	1.09	1.20	1.29	1.39
35°	.11	.22	.34	.47	.58	.69	.79	.81	.92	1.04	1.29	1.42	1.54	1.66
40°	.13	.26	.40	.53	.67	.80	.93	1.06	1.20	1.34	1.49	1.64	1.79	1.94
45°	.15	.30	.44	.60	.76	.91	1.06	1.21	1.37	1.52	1.70	1.87	2.04	2.21
50°	.17	.34	.51	.68	.85	1.02	1.19	1.36	1.54	1.72	1.91	2.10	2.29	2.48
55°	.19	.38	.57	.76	.95	1.14	1.32	1.52	1.72	1.92	2.14	2.35	2.56	2.77
60°	.21	.42	.63	.84	1.05	1.27	1.49	1.71	1.94	2.17	2.38	2.60	2.83	3.07
65°	.23	.46	.69	.93	1.16	1.40	1.64	1.88	2.13	2.38	2.63	2.88	3.13	3.39
70°	.25	.51	.76	1.02	1.28	1.54	1.80	2.06	2.33	2.60	2.88	3.16	3.44	3.72
75°	.27	.56	.83	1.12	1.40	1.69	1.98	2.27	2.57	2.87	3.16	3.47	3.78	4.09
80°	.30	.61	.91	1.22	1.53	1.84	2.15	2.46	2.78	3.10	3.44	3.78	4.12	4.46
85°	.33	.66	1.00	1.33	1.68	2.02	2.36	2.70	3.05	3.40	3.77	4.14	4.55	4.89
90°	.36	.72	1.09	1.45	1.83	2.20	2.57	2.94	3.32	3.70	4.10	4.50	4.91	5.32
95°	.39	.79	1.19	1.55	2.00	2.40	2.80	3.20	3.61	4.02	4.40	4.98	5.38	5.83
100°	.43	.86	1.30	1.74	2.18	2.62	3.06	3.50	3.95	4.40	4.88	5.37	5.85	6.34
110°	.51	1.03	1.56	2.08	2.61	3.14	3.67	4.21	4.76	5.31	5.86	6.43	7.01	7.60
120°	.62	1.25	1.93	2.52	3.16	3.81	4.45	5.11	5.77	6.44	7.12	7.80	8.50	9.22

FOR EXTERNALS ADD

Central Angle	DEGREE OF CURVE													
	5°	10°	15°	20°	25°	30°	35°	40°	45°	50°	55°	60°	65°	70°
10°	.001	.003	.004	.006	.007	.008	.009	.011	.012	.014	.015	.017	.018	.020
15°	.003	.007	.010	.014	.018	.023	.027	.032	.035	.039	.043	.047	.051	
20°	.006	.011	.017	.022	.028	.034	.038	.045	.051	.057	.063	.070	.076	.083
25°	.009	.018	.027	.036	.046	.056	.065	.074	.083	.093	.106	.120	.127	.135
30°	.013	.025	.038	.051	.065	.078	.090	.103	.116	.129	.149	.170	.179	.188
35°	.018	.035	.054	.072	.086	.109	.131	.153	.175	.197	.213	.230	.247	.264
40°	.023	.046	.070	.093	.117	.141	.172	.203	.234	.265	.277	.290	.315	.341
45°	.030	.060	.093	.119	.153	.184	.216	.254	.289	.325	.351	.378	.411	.445
50°	.037	.075	.116	.151	.189	.227	.266	.305	.345	.384	.425	.467	.508	.550
55°	.046	.093	.142	.188	.236	.283	.332	.381	.420	.479	.530	.582	.641	.700
60°	.056	.112	.168	.225	.283	.340	.398	.457	.516	.575	.636	.697	.774	.851
65°	.067	.135	.204	.273	.343	.412	.483	.554	.625	.697	.771	.845	.922	1.01
70°	.080	.159	.240	.321	.403	.485	.568	.652	.735	.819	.906	.994	1.08	1.17
75°	.095	.182	.286	.383	.480	.578	.678	.777	.877	.977	1.07	1.18	1.29	1.39
80°	.110	.220	.332	.445	.558	.671	.787	.903	1.02	1.13	1.25	1.38	1.50	1.62
85°	.128	.259	.391	.524	.657	.790	.926	1.06	1.20	1.34	1.47	1.62	1.76	1.91
90°	.149	.299	.450	.603	.756	.910	1.07	1.22	1.38	1.54	1.70	1.87	2.03	2.20
95°	.174	.350	.522	.706	.985	1.06	1.25	1.43	1.62	1.80	1.99	2.18	2.38	2.58
100°	.200	.401	.604	.809	1.01	1.22	1.43	1.64	1.85	2.06	2.28	2.50	2.73	2.96
110°	.268	.536	.806	1.08	1.35	1.63	1.91	2.20	2.48	2.76	3.05	3.35	3.66	3.96
120°	.360	.721	1.08	1.45	1.82	2.19	2.57	2.95	3.33	3.72	4.11	4.50	4.91	5.32

INDEX

Pg

Alley - Blk 14 - Bird Rock ^{City} by the Sea	2-11
X-SECT, ALLEY BLK 51 - CITY HTS.	12
" " " " 2 Reeds Ocean Frank Add'n	22
X-sec Alley Blk 275 Pacific Beach	25
X-sec Valley place - 28 th To 29 th	31-36
City Dog Pound	39-41
X-sec Alley Blk 260 - UNIV HTS	50-54
X-sec Alley Blk 5, Pacific Beach Vista	55
X-SECT ALLEY BLK 20 PARADISE HILLS	70

Alley Bk 14 Bill Rock City 2-11

Alley Blk. 1A Bird Rock City (Map 976)
 and " Blk. 1A La Jolla Hermosa (Map 1810)
 X-sec. for grade establishment

CHS.
 Begg
 Altman

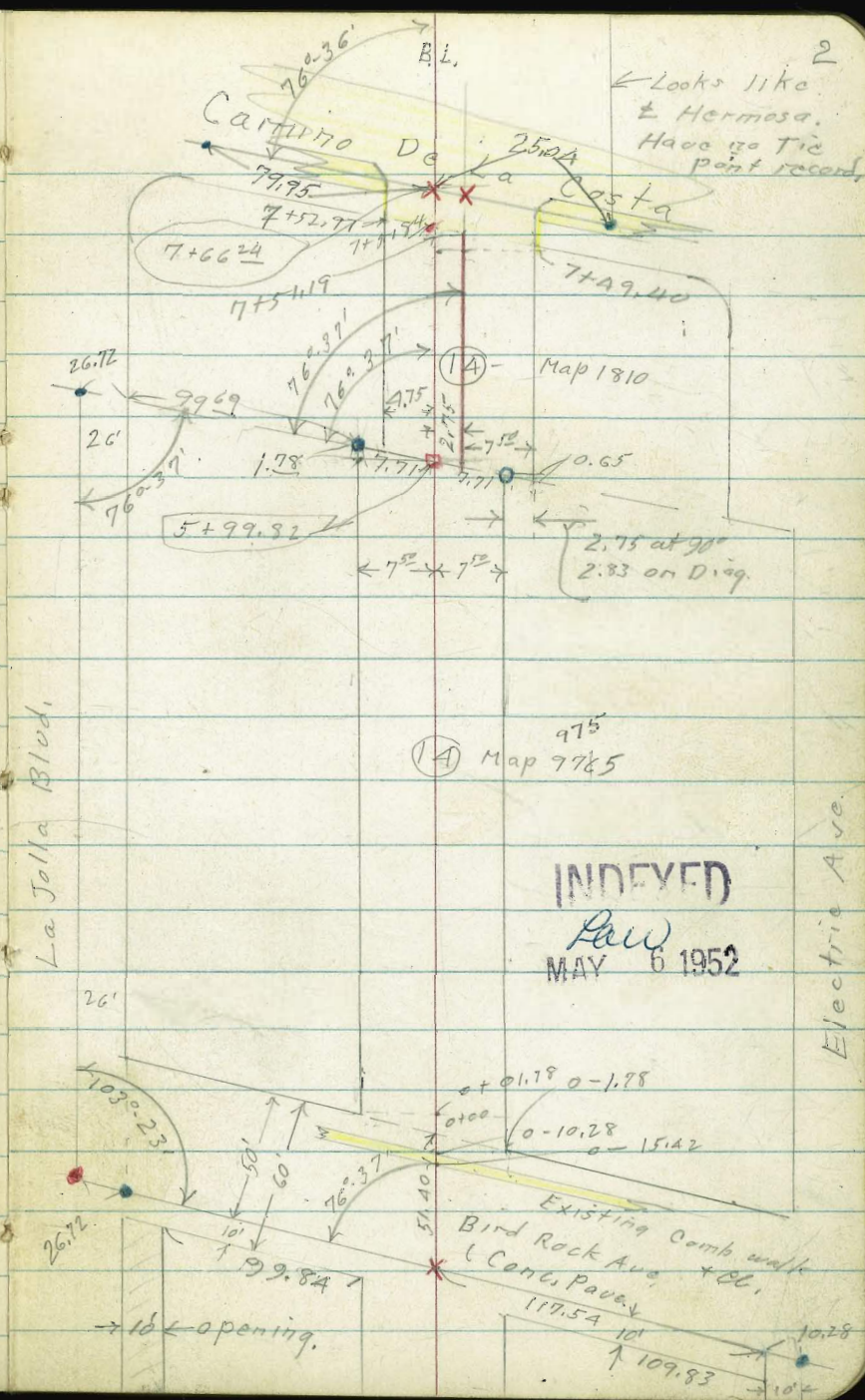
5/1/52
 W.O. 25020
 Map 1810
 " 1782

- = fd disk
- = " pipe - no disk
- = fd. L+T.
- = set nail in pavement
- = set. 1/2" disk
- X = cut cross in corr.

Tang function $13^{\circ}23' = .2379$

Secant $13^{\circ}23' = 1.0282$

Note (at sta. 7+52.27 Fd. Prop. pipe 5" Lt of Bl.
 this would throw an angle at sta. 5+99.82
 Do not have tie points in this area
 and property does not seem to fit
 Map #1810. Base line run straight
 thru. Check office for tie points



Alley BIK. 1A. Bird Rock.

B

304.3

0+00 = Nly. prop line Bird Rock. ^{Alley.} on $\frac{1}{4}$

81.8
4.5
75
4.3
4.0
75
82.0
82.3

0-178 75 ft. N. Ely. Prop. Cor.
Sections from here on at 90°

82.0
4.3
4.1
75
82.2

0-1028 Back edge of walk.
on Diag

81.63
4.62
75
4.60
4.38
75
81.63
81.87

125 ft }
32 ft } = end of drive

0-15.42 = Nly cl. line Bird Rock Ave
on Diag.

80.06 80.74 81.52 81.10 81.83 83.35 85.61
6.19 5.51 4.73 5.15 4.42 2.90 0.64
100 50 32 in drive 125 50 100
cl cl cl cl cl cl cl

0-15.42 = Nly gutter line Bird Rock. $\frac{1}{4}$
on Diag.

79.38 80.15 81.03 82.73 85.12
6.87 6.10 5.22 3.52 1.23
100 50 0 50 100
cl cl cl cl cl

0-30.84 Sec. on Diag.

79.47 80.51 81.51 83.30 85.49
6.78 5.74 4.74 2.95 0.76
100 50 86.25 50 100

719 86.25 - 79.06

S.W.B.P. Bird Rock Ave + La Jolla Blvd.

Reduced &
plotted
JMB
5/22/52

T.P. 5.53 88.70 4.00 83.17

63 Lt.
0+99 = end same

83.19

3.98
63
Floor.

0+84 63 Lt. = Start Car. + shed

Conc. floor

83.19

3.98
63
Floor.

0+75 29' Lt. = 3' wide doorway into

store Bldg.

81.21

5.96

27
doorway

0+57 - 33' Lt. = 3' wide doorway into

store Bldg.

81.21

5.96

33
doorway

82.0

82.1

82.2

5.1

5.0

75

T.P. 4.64 87.17 4.47 82.53

87.17

0+44 75 Lt. = End Conc. block Bldg.

82.2

4.8
75

0+04 - 46' Lt. = 5' High Car. CONC.

Floor

84.07

2.93

46

Floor

T.P. 4.78 87.00 4.03 82.22

87.00

0+01 78 = 71 Lt. = start Conc. block Bldg.
= N.W. prop. cor.

87.0

82.0

82.0

82.3

4.3

43

4.3

40

72

75

75

86.25

2401 7⁵ Lt. = end Conc. block wall

83.3 83.7
5.4 5.0
7⁵ 7⁵
base of wall G.

2400

83.9 83.7 83.9
4.8 5.0 4.8
7⁵ 7⁵

1780 7⁵ Lt. = end Conc. Apron.
Also 7⁵ Lt. = start 5' high Conc. block wall.

84.00 83.3 83.94
4.7 5.4 4.76
7⁵ 7⁵ 7⁵
G. Base wall Apron

1771 14⁸ Lt. = 2 Gar.

83.95
4.75
14⁸ Floor

1762 7⁵ Lt. = start Conc. apron to double garage

83.85
4.85
7⁵ Apron

1750

83.9 83.8 83.5 83.9 84.3
4.8 4.9 5.2 4.8 4.4
20 7⁵ 7⁵ 20

1700

83.2 83.4 83.5
5.5 5.3 5.2
7⁵ 7⁵

88.70

T.R 5.30 87.22 4.96 81.92

Nail in pole # P.A. 5753 3.29 83.59

4+00

82.5 82.1 82.3
4.4 4.8 4.6
75 75

3+63 5¹/₂ Lt. = end paved parking yard

82.2 82.1 82.1 82.3
4.7 4.8 4.8 4.6
1¹/₂ paved 5¹/₂ 75

3+35

80.9 81.8 81.9 82.0 82.4
6.0 5.1 5.0 4.9 4.5
30 75 52 75
pave Paved.

3+11 37' Lt. = ^{store Bldg.} 3' wide doorway into

81.20
5.68
37
doorway

T.R 4.44 86.88 6.26 82.44

86.88

3+00

83.2 82.2 82.6 82.9
82.6 5.5 6.5 6.1 5.8
20 75 75
paved paved

2+82 5¹/₂ Lt. = start paved parking yard

83.0 83.2 83.1 83.6 83.8
5.7 5.5 5.6 5.1 4.9
50 75 75 20

2+50

88.70

5403 17' Lt. = end service door

81.74
5.48
17
door way

5400

81.8 81.7 81.6 82.0
5.4 5.5 5.6 5.2
17 7.5 7.5

4489 18' Lt. = start 14' wide service door to store Bldg.

81.77
5.45
18
door way

4468 11' Lt. = 8' wide Conc. Apron To Sing. Car.

82.52 82.81
4.70 4.41
11
Apron Floor

4450

82.2 81.8 82.1
5.0 5.4 5.1
7.5 7.5

4434 8' Lt. = end Car.

82.24 82.92
4.98 4.30
8
Apron Floor

4418 8' Rt. = start conc. apron to double Car.

82.58 83.01
4.64 4.21
8
Apron Floor

87.22

to south.
6+01.60 - 7⁵ Lt = end wly line alley

to North
6+00.95 - 4.75 Lt = start wly line alley

on hwb → 4.73 80.56
1/4 p.o.t. on base line.
5+99⁸² = end of alley to south

5+99¹⁷ 2⁷⁵ Rt = start of alley to North

7⁵ Rt
5+98⁰⁴ = End Ely line alley to south

5+97³⁹ 10²⁵ Rt = start Ely line alley to North

TR, 4.42 85.29 6.35 80.87

5+50

81.0	81.1	81.1	81.1	81.5
4.3	4.2	4.2	4.2	3.8
7 ⁵	4 ⁵		2 ⁷⁵	10 ²⁵

81.0	81.1	81.1	81.1	81.4
4.3	4.2	4.2	4.2	3.9
7 ⁵	4 ⁵		2 ⁷⁵	10 ²⁵

81.1	81.1	81.0	81.4	81.5
4.2		4.2	4.3	3.9
7 ⁵	4⁵		2 ⁷⁵	7 ⁵
				10 ²⁵

81.1	81.0	81.0	81.4	81.5
4.2	4.3	4.3	3.9	3.8
7 ⁵		2 ⁷⁵	7 ⁵	10 ²⁵

	81.0	81.4
4.2	4.3	3.9
7 ⁵		7 ⁵

80.9	81.0	81.6
4.4	4.3	3.7
7 ⁵		10 ²⁵

85.29

81.2	81.4	81.9
6.0	5.8	5.3
7 ⁵		7 ⁵

87.22

T.P. 3.59 83.55 5.33 79.96

7+00

80.0 19.6 80.3
 5.3 5.7 5.0
 4.5 2.25 10.25

6+73 54 Lt. = start block wall.
 4' high Conc.

19.3 80.2
 6.0 5.1
 5.4 5
 Base of wall 6.2

6+50

80.3 80.4 81.13
 5.0 4.9 4.6
 4.75 2.75 10.25

6+47

80.3 80.4 81.10 81.15 81.17
 5.0 4.9 4.19 4.14 3.50
 4.75 2.75 10 10.25 17.2
 Apron & End. Apron Floor

6+30 - 9⁵ Rt. = start Double Cor.
 conc. apron to

81.19 81.34 81.85
 4.10 3.95 3.44
 9.5 10.25 13.5
 Apron Floor

see sketch - P. 2

4.75 Lt. = wly line alley

10²⁵ Rt. = Ely line Alley

& Alley to north is 2⁷⁵ Rt. of B.L.

7+61² 9² Rt. = B.C. 3' Rad. Ob. Rot

5⁸ Lt. = start alley Ob. + Pavc.

(See note P. 2 Costa

7+52⁹⁷ 4⁷⁵ Lt. = Sly. Camino De La

= Sly. Camino De La Costa
7+51.84 = 14⁷ intersect Conc. Pavc.

= Sly. Camino De La Costa
7+51¹² 2⁷⁵ Rt. = intersect Conc. Pavc on E

↓ see note P. 2.

10.25 Rt. = Sly. Camino De La Costa
Conc. Pavc.

7+49⁴⁰ 9² Rt. = start alley Ob. +

16' Lt. = E doors. (North front)
7+43 6² Lt. = end Gar.

Conc. block. Gar. North front.
7+23 6' Lt. = end wall. also = start

B.L.
18.21 18.21 18.72 10
5.34 5.34 4.83
9² 9²
G Ob. B.C.

18.70 18.21 18.35 18.41 18.45 18.43 18.97
4.85 5.34 5.20 5.14 5.10 5.12 4.58
5⁸ 5⁸ 4⁷⁵ 2⁷⁵ 9² 9²
Ob G Pavc G Ob

18.43
5.12
Pavc

18.48
5.07
2⁷⁵
Pavc.

18.7 18.5 18.6 19.1 18.41 19.05 19.2
4.9 5.1 5.10 4.5 5.14 4.50 4.4
4⁷⁵ 2⁷⁵ 9² 9² 9² 10
G Pavc Ob

4.12
1⁶
Floor

19.3 20.0 19.8 20.1 20.9
4.3 3.6 3.18 3.5 2.7
G G 4⁷⁵ 2⁷⁵ 10²⁵
Base Ob
wall

83.55

5	5.54	79.06	(79.06)
T.P.	5.38	84.60	3.34 79.22
T.P.	6.66	82.56	8.57 75.90 (75.84)
T.P.	4.53	84.47	3.61 79.94

7+82.68 = E. Camino de la Costa.

this sec. on Diagonal

7+67²⁶ = Sly. Ch. line Camino de la Costa

7+66 5⁶ Lt. = B.C. 3' Rad. Ch. Ref.

(Original B.M. - P-3)
S.W. B.P. Bird Rock Ave. + La Jolla Blvd.

= B.P. wly. Ch. Sly line La Jolla Hermosa

75.00 76.35 78.19 79.53 82.75
8.55 7.20 5.36 4.02 0.80
80 50 51 51 86

75.13 74.11 76.45 80.21 80.84 82.69 83.34
8.42 8.78 7.10 3.34 2.71 0.86 0.21
79 79 50 58 58 85 85
cc cc cc G cc G cc

76.02 78.46 77.93 78.05 78.07 78.25 78.80
7.53 5.09 5.62 5.50 5.48 5.30 4.75
50 72 72 283 134 134
G Ch. E.C. G G Ch. E.C.

78.51 77.99
5.04 5.56
56 56
Ch. B.C. G.

83.55

Clark
Shepherd
Bruner
Johns

8-28-52

W.O. 62286

X-SECT. AILEY BIK - 51

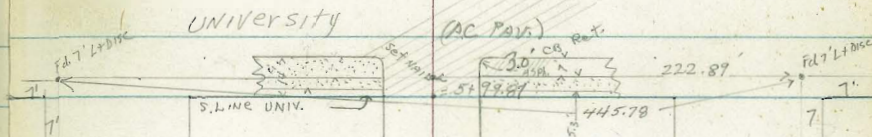
CITY HTS. WIGHTMAN to UNIVERSITY

INDEXED

REV

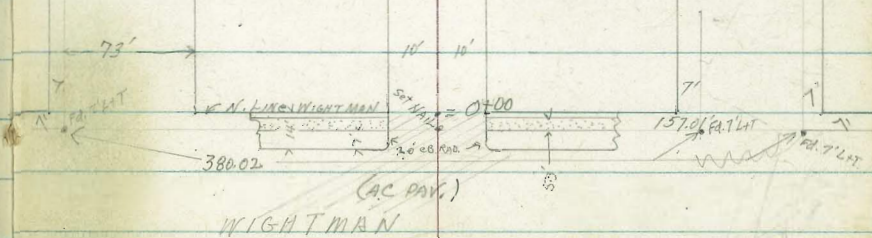
AUG 29 1952

12



4/57

MARI BARROUGH



X SECT. ALLEY BIK 51
 CITY HTS. - WIGHTMAN to UNIVERSITY

LT E PT 13

O+40 12.5 LT & 4.5 wide conc. steps (8 steps, 0.8 depth) 0.8 depth
 leading to basement 0.70 rise

34.62 34.60 39.66
 10.55 10.57 5.52
 Elev. Base Walk Bottom Steps
 19.5 12.5

O+31 11.2 LT & 5x1 conc. Window Casement

39.38 40.52
 5.79 7.65
 12.20 11.2 11.2
 Elev. Window SILL (Basement) Bot. Case.

O+15 12' RT Bag. house

41.0 41.6 42.1 43.6 41.2 43.37
 4.2 3.6 3.1 1.6 1.0 1.80
 10 8 8.5 12 12
 FING. FATN

T.P. 364 345.17 6.64 341.53

O+14 11.25 LT & 5' conc. Basement Window Casement (5x1')

39.51 39.47 40.85
 8.60 8.70 7.32
 14.25 11.25 11.25
 Elev. Window SILL Bot. Casement TP Casement

O+01 8.2 RT Reg. 2' wooden Red. Wall.

41.2 41.4 41.5 41.9 43.8 43.7 43.6
 7.0 6.8 6.7 6.3 4.4 4.5 4.6
 15 10 8 8.5 10 15

O+00 = N. Side WIGHTMAN, Edge Pav.

41.53 41.28 41.29 41.27 42.32
 6.64 6.87 6.88 6.40 5.85
 CB END 10.2 CB END 7.65 RT

O-14 N.C.B. Line WIGHTMAN

11.08 10.58 8.71 7.99 6.80 7.35 6.87 6.65 5.97 6.61 4.70 5.32 2.97 3.66
 100 100 50 50 12 12 10 10 10 12 12 50 50 100 100
 G. TRCA G. CO G. CO P1 CB C CO G CO. G

O-40 = E WIGHTMAN

37.43 10.74 8.73 6.73 5.03 3.30
 100 50 (A.C.PAY) 50 100

B.M. 1.08 348.17 347.09 N/W B.P. WIGHTMAN MARKET BOROUGH

348.17

LT

Q

RT

Station	Description	LT	Q	RT
1+06	8.4 RT Q 2.0' EUCALYPTUS	33.1	33.7	35.5
1+05		11.5 20	11.5 12	9.7 10
1+03	7.8 LT Q Meter	31.4	33.2	31.4
1+00	10.8 LT END WALL	7.8 20	12.00 10.8	7.8 10.8 TP wall
0+95	10.80 LT Beg Conc Ret Wall			7.85 10.8 TP wall
0+89	6.0 RT Q 1.5' EUCALYPTUS			
0+73	9.5 LT Q Pole PA 5817			
0+49	12.5 LT END // Conc. Walk			39.17 5.70 12.5
0+40	10.4 LT Q 2 W.M. Boxes			
0+47	9.4 RT Q 2 Met. Boxes	39.5	39.7	39.7
0+47	8.0 RT END 2' wooden Ret. Wall	5.1 30	5.5 12.5 Edge Walk	5.5 10
0+43	11.6 RT END House			40.2 40.3 40.4 41.5 43.4 42.1 43.0
0+42	(E. Edge) 12.5 LT Beg 3' Conc. Walk // to E Alley			4.9 4.8 4 3.7 3.8 8 8.5 10 2.3 2.2 11.2

345.17

Alley BIK 51 (CONT.)

LT.

♀

RT.

245

23.0 RT. Bay house

36.30

12.0

23.0

Floor elev

T.P.

11.31

348.30

8.18

336.90

42.6

38.3

37.0

348.30

36.8

37.8

38.8

2400

2.6

6.9

8.2

8.5

8.4

7.4

6.4

#2

30

10

10

10

20

30

1484

9.5 RT. & Meter

1475

31.9

7.3

30

31.3

13.9

30

31.3

13.9

15

33.4

11.0

10

36.4

8.8

4

36.4

8.8

36.9

8.3

10

37.3

7.9

20

39.9

5.3

30

1474

9.2 LT & Pole # PA 3837

1450

33.6

11.6

30

33.6

13.6

15

33.6

13.6

12

33.8

11.4

10

36.3

8.9

5

36.5

8.7

36.7

8.5

10

39.9

5.3

30

1430

10.1 LT & Meter

1428

9.6 RT & 2.0' EUC

33.9

11.3

14.9

Floor

34.5

10.7

10

36.8

8.4

5

36.8

8.4

36.9

8.3

10

42.9

2.3

30

1427

14.9 LT & single gpr. DIRT Floor

1424

8.2 RT & Meter

1423

9.2 RT & 2.0' Eucalyptus

34517

Alley BIK 51 (CONT.)

LT.

RT.

2+94

10.4 LT END GAR

5
K 5.5
2.8
10.4
Floor

2+76

10.4 LT Fl. Line 3" Pipe \perp to Alley
(Set IN GAR. FBTN.)

4.1
10.4
Fl. Line
K 5.5
K 2.0
K 5.5
K 4.1
2.8
5.8
2.8
4.2
10.4
10.4
10
Floor
DVT
Bott. Footing
TP
FBTN

2+75

10.4 LT Beg Simple gar // to alley (Doors ON X side)
DVT Floor

4.1
K 4.0
38.1
36.2
35.8
4.2
4.3
10.2
12.1
12.5
3
10
20
50

2+72

8.4 LT & Pde # one

2+53

3.0 RT & Storm Drain M.H

11.25

7.05
3.0
RM

2+51

8.0 LT & W. Meter

2+50

K 3.3
K 2.0
39.8
38.5
35.5
38.4
36.9
36.30
5.0
6.3
8.5
9.8
7.85
9.9
12.4
12.0
50
11
R
3

2+39

23.0 RT END house

2+36

11.6 RT & W. Meter

2+22

7.5 LT & W. Meter

348.30

Alley BIK 51 (Cont.)

LT

Q

RT

3+75 { 10.7' LT Bay shed no F&TN.
9.1' LT & Pole # none
20.1' LT. END GAR VAPTS.

3+64 20.1' LT. N. END DOORWAY

3+56 20.1' LT. S. END ENTRANCE

3+51 20.1' LT & Doorway to apt.

3+47 N. Edge Door, gar.

3+39 { 20.1' LT S. side gar, entrance
15.0' RT & Single gar. DIRT Floor

3+38 N. Side of door

3+28 20.1' LT. Bay 4-car gar. Vapts Cove Floor.
No APRONS

T.P. 638 353.55 1.13 347.17

3+25 8.3 RT. & meter
10.1' LT & 3.0' Cove WALK.

3+13 0.6 LT & meter

3+00

49.17
3.78
20.1
gar. Floor 49.17

3.78
20.1
gar. Floor

49.18
3.77
20.1
gar. Floor

49.16 48.9 47.8 47.6 45.7 36.9
3.79 4.7 5.8 6.0 7.9 16.7
20.1 10 Floor Doorway apt

3.74
20.1
gar. Floor

49.77
3.78
20.1
gar. Floor

3.81
20.1
gar. Floor

3.85
20.1
gar. Floor

47.5
6.1
15.0
DIRT

48.32
45.17
10.02
2 Lip

353.55

46.1 45.6 46.1 46.4 46.2 37.5 36.30
2.2 2.7 2.2 1.9 2.1 10.8 12.0
30 10 6 10 30 50

348.30

Alley BIK 51 (CONT.)

LT. E RT.

4476 10.6' LT & 20' CONC. WALK

4475 9.5' LT & Meter

4474 10.0' LT END GAR.

4469 10.0' LT & 2nd GAR (conc. Floor)

4458 10.8' LT Beg 2-car GAR

4455 10.0' LT to E. FACE OF 2.5' EUCAL. Tree

51.15 51.24

2.40 2.31

20 10.6

WALK LIP

51.33

2.22

10 Floor

3

51.

2.3

10.8

DIRT.

4450 10.0' RT to ASPHALT PARK LOT (Begin)

9.8' RT 7' steel wire Fence

4449 10.0' RT & 10' CONC. RET WALL ⊥ & ALLEY

4412 9.2' LT & W. Meter

51.1 50.9 50.6

2.5 2.7 3.0

20 10

50.7 51.5 51.31 51.23

2.9 2.24 2.32

9.8 10 2.0 3.0

Asph. Asph.

50.98 3.45

2.60 10 10.0

TP BOTN

WALL FATH

50.10

4403 10.7' LT & 2.0' CONC. WALK

50.40 50.35

3.15 3.20

2.0 10.7

WALK LIP

WALK WALK

4400

50.4 50.0 49.3 49.1 46.9 41.9 38.9

3.2 3.6 4.3 4.9 6.7 11.7 14.7

20 10 10 10 30 50 60

3493 10.1' LT END shed, Beg 8' Fence - Board

353.55

LT. £ RT.

53.13 52.97
4.95 5.11
20 10.3

5423.5 10.3 LT £ 5'0' CONC WALK

5421 10.05 LT END Bldg

5419 8.4 LT Beg Conc slab INALKY
(7x2 deep)

5414 9.8 RT Beg ENTRANCE to PK. LOT.

5408 9.8 RT END drive

5400

52.29
5.79
9.8
Asph.
52.32
5.76
9.8
Asph.
52.2
51.8
51.8
52.1
52.08
52.28
5.9
10
6.3
8
6.0
9
Asph.
6.00
10
Asph.
5.80
20
Asph.

4496.5 10.2 LT Beg Bldg

T.P. 6.36 358.08 1.83 351.72

4494 7.5 LT £ 5' CONC. WALK

4491 10. RT Beg Drive into PK. LOT.

4480 9.4' LT £ Pvc # PA3881

52.99 52.46 52.28 358.08
0.56 0.70 1.27
20 10.2 7.5
WALK ENT Lip

52.06
149
10
Asphalt

353.55

Alley BIK 57 City HTS (Cont.)

LT P RT

5199.87

100' LT END Bldg.
Beg Cold-LAY
S.L. UNIVERSITY
10.5' RT. END PKing LOT.

553.30
478 487
10 10
CRAV G
553.21
52.96
5.12
COLD-LAY
353.33
353.36
475 472 471 481
9.8 9.8 10.5 20
G CRAV ASPH ASPH

5180

0.2' LT & ST. MAIN W.H.

5.12
RM

5165

10.1 RT END 7' steel wire Fence

62.1
5.4 5.3
10 9
52.8
53.6 53.45 53.49
4.63 4.59
10.1 20
ASPH ASPH

5150

52.8
5.3 5.4
10 10
52.7
52.6 52.98 53.17
5.5 5.10 4.9
10 10.5 2.0
ASPH ASPH

5145

8.3 LT END DRIVE

53.31
4.77 5.28
10.7 8.3
Floor Lip

5137

Beg.
8.3 LT Lip DRIVE

53.31
4.77 5.37
10.7 8.3
Floor Lip

5135

10.05 RT END Drive PK. Lot.

52.60
5.48
10.05
ASPH

5130

10.2 LT Beg Bldg

52.12
536 5.46
20 10.2
LIP

5128

10.2 LT & ST. MAIN

358.08

LT.

C

RT.

Alley BIK 51. CITY HTS (cont.)

Check 8.58 347.09 = 347.09 = N/W

B.P. Wightman + Marlborough

T.P. 3.09 355.67 5.50 352.58

6+13.87 C UNIVERSITY

3.93
100

4.12
50

4.32

4.44
50

4.80
100

6+13.87 = S.C.B. LINE UNIVERSITY

4.68	5.00	4.89	5.13	5.08	5.32	5.33	5.41
100	100	50	50	75	13	10.	
CB	G	TP	G	TRCB	G	P.1	

5.74	5.43	5.15	5.50	5.22	5.83	5.50
10	13	12	50	50	100	100
P.1	G	CB	G	CB	G	CB

358.08

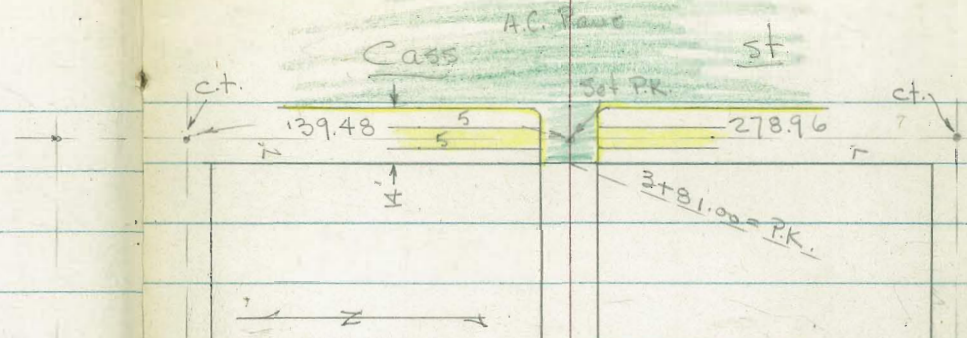
X-Sect. 15' Alley in Block 2
Reeds Ocean Front Add.
for Grade Est.

6517

11-25-52

7.0

w.o. 25020



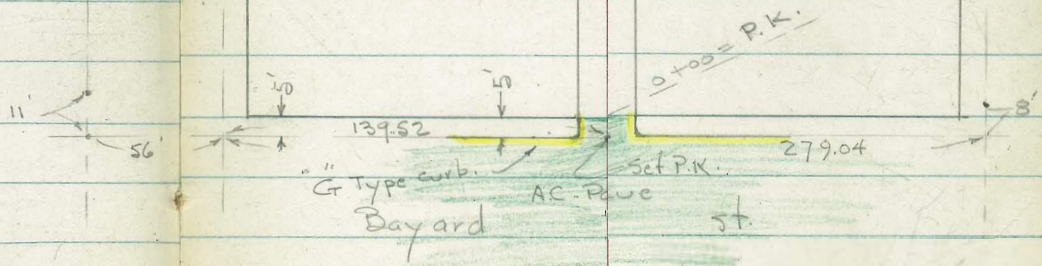
Block 2
Reeds Ocean
Front Add.
Map 913

N.Y. Line

Sapphire St

INDEXED
Law
NOV, 26 1952

Tourmaline



6" Type curb.
Bayard St

Lt. # Rt.

X-Sect. 15' Alley - in Block - 2'

See sketch - P.

2+00			11.9 15	11.2 7.5	11.2	11.1 7.5	10.7 15
------	--	--	------------	-------------	------	-------------	------------

2+50			11.0 15	10.6 7.5	10.2	10.1 7.5	09.8 15
------	--	--	------------	-------------	------	-------------	------------

2+45 - 7.6' Rt. = # P. pole # 446821 H

2+04.9 = # Sewer M.H. 09.73 = Rim

2+00			11.0	10.4 7.5	09.7	09.0 7.5	08.8 15
------	--	--	------	-------------	------	-------------	------------

1+50			10.2 15	09.7 7.5	08.8	07.8 7.5	07.6 15	04.8 60
------	--	--	------------	-------------	------	-------------	------------	------------

1+05 - 7.3' Rt. = # P. pole # A 940

1+00			08.2 15	08.1 7.5	07.7	07.1 7.5	06.8 15
------	--	--	------------	-------------	------	-------------	------------

0+50			09.2 15	09.2 7.5	08.9	08.0 7.5	06.3 15
------	--	--	------------	-------------	------	-------------	------------

0+00 = E.L. Bayard + edge of A.C. + Curbs.

0-05 = Ely. cb Line of Bayard.

B.M. = S.E. B.P. - Cass & Tourmaline 110.11
Book - 2020 - P. 46

07.03	06.49	06.20	06.23	06.34
Top	7.6		7.5	Top=end
end db.	gut.		gut.	

07.94	07.46	07.03	06.47	106.11	05.72	06.21	04.77	05.22
Top	30	Top	7.5	on P.K.	7.5	Top	30	Top
gut.	gut.	2' Rad.	gut.		gut.	2' Rad.	gut.	Top

Actual Elev. Shown.

Lt.

#

Rt.

3+95 = w. cb. Line

17.96	17.37	17.24	16.59	16.31	16.08	16.51	15.21	15.74
Top	30	Top	7.5		7.5	Top	30	Top
	gut.	3' Rad.	gut.		gut.	3' Rad.	gut.	

P.K. on 7' Line

116.41

3+81.00 = w.l. Cass = edge of

 † curbs.
 AC pave

17.29	17.06	16.58	16.71	16.80
Top	7.6		7.5	Top-end
-end	gut.		gut.	

3+40

17.6	14.2	13.7	13.5	13.4
15	7.5		7.5	15

D. Smith
C. Allen
P. Taylor
R. Parks
C. O'Neil

"X" Sec Alley Bk 274 Pacific Beach

W.O. #25020
1/22/53

25

E. Morell, n. of Reed

350
80
27°
13'

Profile 802-A

To Cor. Noyes
2' deep

Noyes St

35017

175°08'

Reed St

INDEXED
Law
JAN 23 1953

479925

Thomas St

Alley Bk

Pacific

274

Beach #791

Reed St

0400

Set
Hub

Morell St

35029

175°04'

Ed Hub Disk
0.25 ft of 2' dia

Reed St

From Noyes
6' deep

X Sec Alley BIK 274

Pacific Beach
Lt North

E

Rt South

0798 9⁶/₁₆ Lt End 6³/₁₆ Board Fence

30 65

0787 27⁸/₁₆ Rt E double garage con floor

769
278
Floor

0775

20 69 31.4
10 72 31.1
76 30.7
10 77 30.6

0750 9⁴/₁₆ Lt Begin 6³/₁₆ Board Fence

63 32.0
10 66 31.7
67 31.6
10 69 31.4
30 72 31.1

0401 10⁰/₁₆ Rt E 8" Tol P/o # 448809

33.8
45 33.4
30 42 33.4
10 42 32.9
54 33.3
30 50 32.6
50 51 31.2

0400 Ely Morell

0-20

33.7
46 33.6
30 42 33.5
10 42 34.4
50 33.3
30 50 33.0
50 51 32.5

0-40 E Morell

34.0
42 34.0
30 43 33.9
10 44 34.13
42 33.8
51 33.2
58 32.5

BM

184 3834

3650

NW Prop Pipe
Thomas
Morell

3834

92 RT Begin con wall with shed on top

1774 92 RT end Picket Fence

1765 10⁰ RT & 1² con walk

1762 92 RT begin 4' picket fence

1750

TP, 1⁸ 27⁵¹ 12⁶⁴ 25²⁰

1745 10² RT & single garage con floor & apron

1738 11⁰ RT end con walk 11 to Live

1737 14² LT & single garage con floor & apron

1730 10² RT Begin 2³ con walk 11 to Live

1725

1724 9⁰ RT & 8" tel pole # A2024

1704 11⁰ LT & 12 con walk

1762 92 RT & deadman

1700

Lt. North

E

RT-South

S

W

N

410

25.92

1.59

100

w/k

5.8

17

10

25.7

18

10

26.3

12

10

27.57

26.42

11.22

105

apron

26.65

11.69

130

floor

27.16

11.18

110

w/k

27.17

11.17

102

w/k

27.67

1067

20

floor

27.54

1020

142

apron

28.2

101

20

27.5

108

10

27.4

102

10

27.6

102

10

27.0

102

30

29.47

887

110

w/k

29.7

86

20

29.5

88

10

29.2

91

10

29.5

88

10

30.3

80

25

38.34

Lt = North

E

Rt = South

28

3700

189	18.1	17.8	19.4	17.7	17.4
86	94	97	82	98	102
20	10		5	10	15

2487 8° RT NE cor addition on house

2478 9° RT NW cor addition on house

2474 7° RT & 6" Pole # A2054

2450 11° RT end 2nd con walk // to line

190	18.5	18.8	18.3	17.96
85	89	87	92	95
20	10		10	11

2425 11° RT Begin 2nd con walk // to line

19.6	19.3	19.7	18.5	18.10
72	82	78	90	94
20	10		10	11

2421 7° RT & 8" Olive tree

2400

21.5	21.1	20.9	21.4	21.6
60	64	66	62	59
15	10		5	10

1490 92 RT end con wall with shed on top

1475

23.3	23.8	23.4	23.8	22.3	24.3
42	37	44	32	32	20
20	10		6	10	

2751

4460

4459 10² RT begin 3 car garage con floor apron

TP₂ 11²⁷ 29¹⁵ 10³³ 17¹⁸

4430

4426 15² RT 3¹ con walk

4404 8³ RT 8" pole JPA #2076

4400

3480 8⁴ RT end 3' picket fence

3450

3424 8¹ RT begin 3' picket fence

3407 11² RT 2⁵ con walk

Lt=North

10^{18.4}
15¹

10^{18.5}
10¹

11^{18.1}

RT=South

11^{17.84}
10²

11^{17.83}

29

11³²
10² apron
11²⁶
15² floor

17.89

29¹⁵

17.0
10⁵
15

16.9
10⁶
10

16.8
10⁷
10

16.2
11³
10

15.9
11⁶
20

17.10
10⁴
15⁰
wik

17.1
10⁴
20

16.6
10²
10

15.9
11⁶
3

15.1
12⁴
3

17.4
10²
6

16.8
10²
10

17.9
15.9
2

17.7
9.8
7

16.7
10⁸
10

16.5
10²
15

27.51

Lt-North

±

Rt-South

30

4 Starting BM 3.63 36.50

TP₁ 8.74 40.13 4.36 31.39

TP₂ 8.30 35.75 1.70 27.45

5139²⁵ ± Noyes

27.8 27.4 26.5 26.1 25.7 24.5 23.1
 14 18 22 34 35 42 64
 50 30 10 10 30 50

5119⁹⁵

25.6 25.4 25.1 24.3 24.3 24.3 23.2 22.2
 36 38 41 42 42 42 60 70
 50 20 20 10 10 10 30 50

5113 10³ Rt ± 14" Pole #4274

23.8 22.7 22.4 22.0 22.4 22.3
 54 65 68 72 67 68
 25 18 10 10 20

4199⁹⁵ w/ly Noyes end con retaining wall same top & base

17.4 17.8 17.76 17.80
 10³ Footing 10³ 10³
 11.39 11.35
 10³ apron 15-2 Floor

4189 10³ Rt Bedn con block retaining wall

4189 10³ Rt end 3 car garage con floor apron

20.5 20.4 19.6 17.81
 87 88 96 11.34
 15 10 10³

4480

x 29¹⁵

X-sec Valley Place - 28th to 29th sts

W0 # 25-020

3-13-53

Allen

Sisson

Powell

Ref: TP sheet 328.

TP Book # 11-

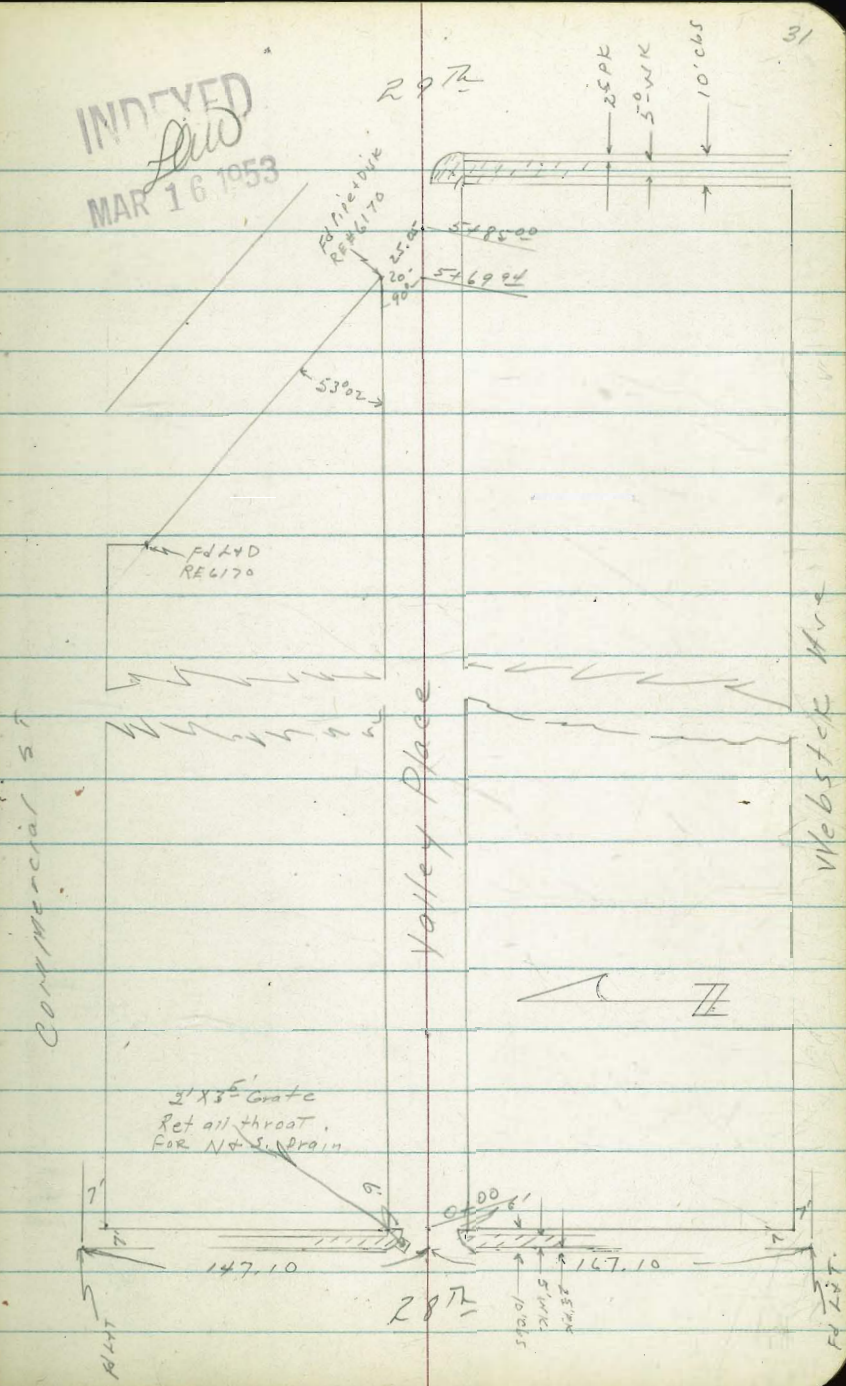
File Maps # 969, 281-

GB # 109

FB 469.

Opening sheet 2-84.

INDEXED
AW
MAR 16 1953



X-sec Valley Place - 28th to 29th

W 0#25020

See sketch page 31-

LT = N14

♀

RT = S14

32

0+62 - 20° RT end 3' high Block Wall

0+50

0+25

0+00 - 20' RT = begin 3' high Conc Block Wall

0+00 = Fly line 28th ST - Black Top Broken

0-10 = Fly Curb line 28th ST

TP₂ 3.11 72.78 5.55 69.67

TP₁ 6.51 75.22 7.52 68.71

BM 4.18 76.23

S.V. DP. 2912 +
IM Per 101 -
72.05

68.4	68.6	68.8	66.4	68.7	68.9	70.1	69.8
44	42	40	44	41	39	27	20
100	20	10	7		10	20	
	68.5			68.0			
	43	44	51	48	48	29	
	20	10	7		10	20	
						Prop	
	67.44			66.8	67.34	67.41	67.49
	534	548	620	610	544	537	509
	198	130	130		140	140	20
	Back	cb	b		6	cb	Back
	Edge	wk					edge
							wk
	66.79	66.21	67.17	66.48	66.46	66.84	66.23
599	657	561	630	632	521	585	580
100	100	240	240	14		14	240
cb	cb	bc	bc	g		g	bc
							cb
							242
							100
							100
							cb

72.78 ⌈

LT = N14

2

RT = S14

33

3400 - 10² RT = 5MH

2450

TP₃ 5.54 75.21 3.11 69.67

2700

1450

1405-22^o RT = Single Garage - DIRT floor

1400

5 ⁰	5 ⁰	5 ¹²	4 ⁵¹	4 ²	7 ^{0.2}	7 ^{0.2}	7 ^{0.70}	7 ^{1.0}	7 ^{1.2}
40	20	20	10 ² Rim	20	40	40	40	40	40
69.5	69.6	69.7	70.2	70.3	70.2	70.2	70.2	70.3	70.2
40	20	20	20	40	20	20	20	40	40
69.7	69.7	69.7	70.4	70.5	70.4	70.4	70.4	70.5	70.5
3 ¹⁰	3 ¹⁰	3 ¹	2 ⁴	2 ¹³	20	20	20	20	20
40	20	40	20	40	20	20	20	40	40
69.7	69.7	69.5	69.6	69.7	69.7	69.7	69.7	69.7	69.7
3 ¹	3 ¹	3 ³	3 ¹⁵	3 ¹	20	20	20	40	40
40	20	40	20	40	20	20	20	40	40
69.4	69.4	69.2	70.0	70.3	70.0	70.0	70.0	70.0	70.0
3 ⁴	3 ⁴	3 ⁶	22 ^o DIRT Floor	27	20	20	20	20	20
40	20	40	20	40	20	20	20	40	40

72.78

4450

4443- 19⁵ LT = k single garage - dirt floor

4400

3493- 20⁰ LT = k single garage - dirt floor

3478- 20⁰ Rt = k single garage - Conc floor

3450

3411- 20⁰ Rt = k single garage - Brick floor

LT = NY

70.2
50

20

70.2

50
19⁵
Floor

20.1

51

40

70.2

50

20

70.3

49

51

20⁰
Floor

70.2

50

20

70.2

Rt-514

570.1

51

20

70.7

45

20

71.0

42

40

70.72

449

20⁰
Floor

70.7

45

20

71.17

404

20⁰
Floor

7521

LT = N14

Ø

rt = sly. 35

5454 - 21° RT = 1/2 single garage - dirt floor

70.3
49
21°
Floor

5450

70.17
45
20

70.2
50

70.3
49
20

5409 - 21° RT = end 3 1/2 high Conc Block wall

70.4
48
21°
Gr
70.32

5404 - 21° RT = 4' Walk - opening in wall

489
21°
WIK

5400

70.5
42
40

70.4
48
20

70.3
49

70.4
48
20

70.5
42
40

4475 - 21° RT = Begin 3 1/2 high Conc Block wall

70.4
48
21°
G.

4455 - 18° RT = 1/2 single garage Conc floor + Apron

70.41
480
18°
Apron

70.38
483
234
Floor
Gar

75.21

Start B.M. TP2 4.41 72.04

TP5 7.75 76.45 6.49 68.70

6409.5 = Wly Corbline 29th to South

5499. 10² Rt = ϕ SMH

Section to Ren on Skew - 53002
5498. Begin AC Paving 29th St

5495. 150 Rt. end SW Return

TP4 5.55 75.19 5.57 69.64

5485.00 intersection Wly line opening and
 ϕ valley place

5469.94 90° 00' to NW prop cor.

LT = N14

ϕ Rt = 514 56

70.16 70.82 69.67 70.58 69.48 70.25
50.3 537 552 461 521 494
15 250 250 250 50 50
6 6 6 6 6 6

510.69.56
25 12

69.59 462
10² RM
10 73.67
10 10

70.8 70.67 70.91
42 452 428
150 150 200
6 Rurb BK. WIC.

75.19

51 69.15
20

69.8 70.5
42 20

48 70.4
20

70.0 70.4
52 48 20

75.21

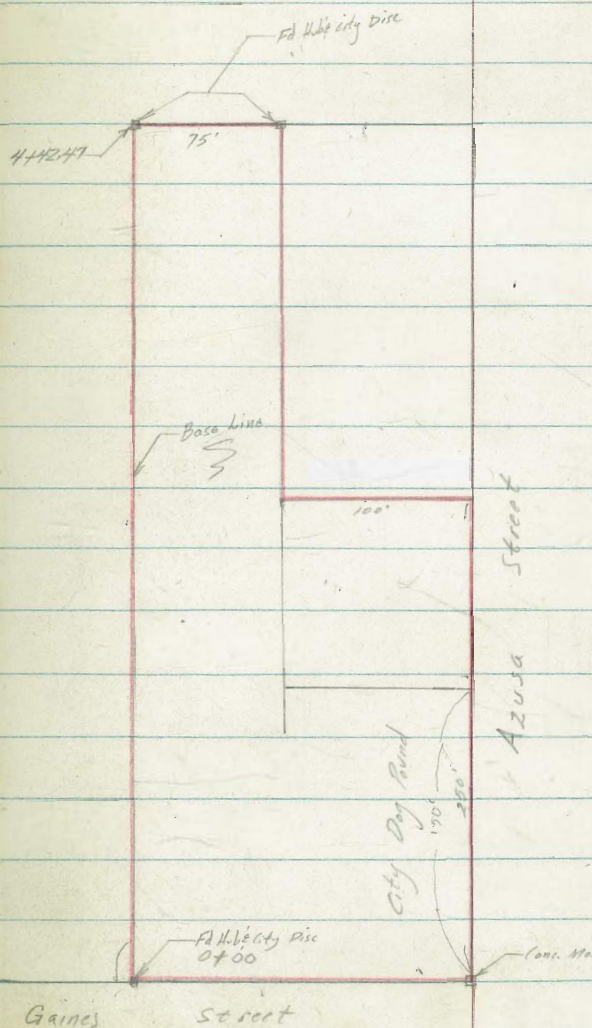
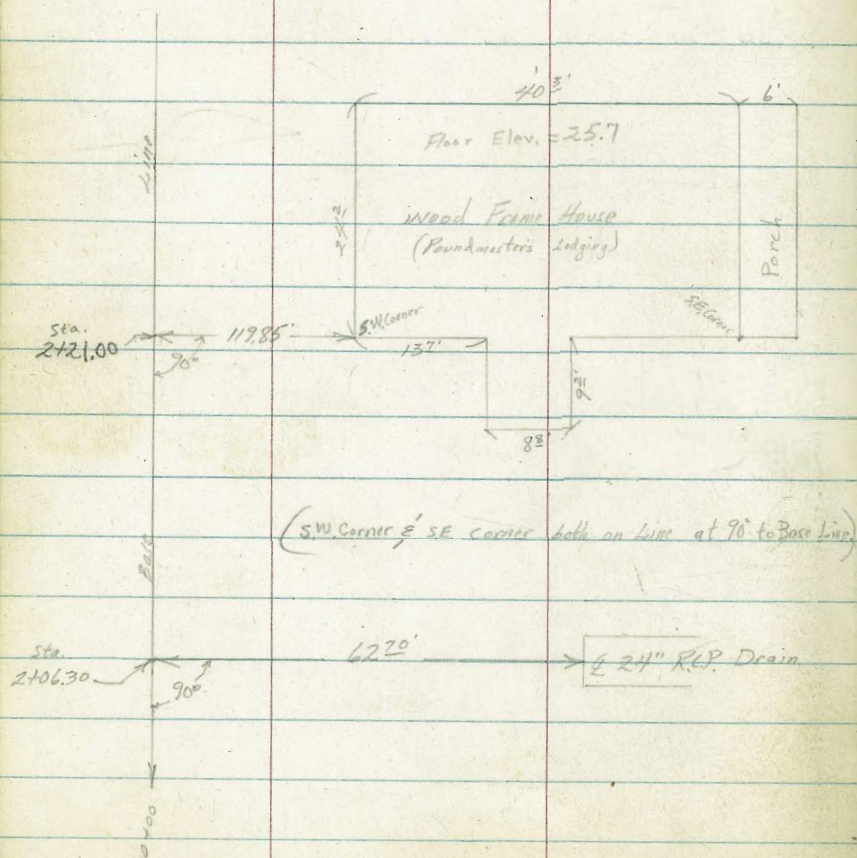
Roberts
Cota
Marr
Morales
6-5-53
W.G.# 20280

X-Section City Property at Dog Pound

Azusa & Gaines

See 20308 See Hand Copy 7552-

37



INDEXED
Law
JUN 4 1953

1+25

Base
Line
26.11
26.01
26.41
26.71
71
72
68
65
25
50
68
Stad

1+24 30° Pt to Center Pole

1+60

26.91
27.21
28.01
27.91
63
59
52
53
25
50
69
Fence

0+75

27.21
27.71
28.31
28.81
60
55
49
44
25
50
74

0+50

27.61
28.11
28.91
29.11
57
51
43
40
25
50
74

0+25

27.91
28.41
28.91
29.71
53
48
43
35
25
50
74
Flag.

0+01⁸ Base Line crosses road rail Fence

0+00 North Line Gaines

28.11
28.91
29.21
29.61
51
43
40
36
25
50
75

BM

2.57 33.21 A

30.64
Cont. Mon. N.W. Corner
Azusa & Gaines

33.21 A

23.37 25.57 26.47
 3.8 0.6 +0.3
 120 166 175 ←

2725

13.17 13.57 13.77 14.57 16.27 16.97 20.17
 130 126 129 116 99 92 60
 25 30 34 50 60 71

2706.30

622th Rt to ExA 24" RCP Drain

13.57 15.17 16.17 16.26 21.07
 126 110 100 991 51
 25 50 622 70
 INVERT

1493

13.97 15.57 17.17 21.47 23.37 25.77
 122 106 90 47 28 0.4
 25 59 70 125 175

1483

15.67 15.67 16.67 22.07 22.57
 105 105 95 41 36
 25 52 64 69

26.77
 +0.2
 175 ←

1475

Line crosses barbed-wire fence.

17.57 17.87 19.67 20.07 22.97 23.17 23.77
 86 83 65 61 32 30 19
 25 50 58 66 69 80 125

1450

23.37 23.87 24.77 25.27 25.17
 28 23 14 0.9 1.0
 25 50 56 68 80
 cross
 barbed wire
 fence

T.P.

2.83 26.17 987 23.34

26.17

33.21

3775

	13.97	14.57	15.67	16.67
12.2	11.6	10.5	9.5	
	25	50	75	

3750

	13.47	14.17	14.77	15.67
12.7	12.0	11.4	10.5	
	25	50	75	

3725

	12.77	13.57	14.57	16.67	20.17
13.9	12.6	11.6	9.5	6.0	
	10	38	50	75	

3700

	12.77	12.77	13.87	20.07	22.17	23.07
13.4	13.8	12.3	6.1	4.0	3.1	
	9	14	40	60	75	

2785

	12.57	12.47	14.47	19.47	23.57	23.87
13.3	13.7	11.7	6.7	2.6	2.3	
	10	15	35	65	75	

2775

	12.97	12.67	14.47	17.47	21.77	23.77	23.87
13.2	13.5	11.7	8.7	4.9	2.8	2.3	
	13	15	30	55	65	75	

2750

	13.47	12.77	13.57	16.57	20.77	20.47	21.97	25.97	26.07
12.7	13.4	12.6	9.6	5.4	5.7	4.2	0.6	0.5	
	17	21	48	55	72	120	166	175	

26.177

26.177

check 3.20 30.65 = 30.64

T.P. 865 33.85 0.97 25.20

4442.47 END OF CITY PROPERTY

	^{23.67} 2.5	^{18.57} 7.6	^{17.77} 8.4	^{17.77} 8.9	^{18.77} 7.8
		25	35	55	75

4428

	^{21.37} 4.8	^{16.77} 9.4	^{16.87} 9.3	^{17.47} 8.7
		30	50	75

4417

	^{14.17} 12.0	^{15.87} 10.3	^{16.77} 9.9	^{16.37} 9.8	^{17.17} 9.0
		12	25	50	75

4400

	^{14.47} 11.7	^{15.17} 11.0	^{15.97} 10.2	^{17.47} 8.7
		25	50	75

26.17A

26.17A

± Profile of Prop. Runway ±

- Gibbs Air Port - See Plan - 2152-D
 Beg. at wly. End of 8000' Runway = 10+00
 B. 1750 + Go East.

	Lt.	±	Rt.
24			414.4
23~			414.2
22~			414.9
21~ 15.69			415.2
20~			414.4
19			413.9
18~			412.7
17~			412.2
16~			412.1
15~ 12.84			412.7
14~			413.4
13~			412.2
12~			409.5
11+00			408.7
10+00			407.85 = on Hub.

Will use Sta. to E. as Shown - Beg at ¹⁰⁺⁰⁰

B.M. = Hub. 10+00
 on old ± #3 - B. 1750 - P. 77

410.18

Actual Elev. Shown.

Lt. ♀ Rt.

44 ~	417.0
43 ~	415.5
42 ~	414.6
41 ~	414.4
40 ~	413.8
39 ~	415.4
38 ~ 1560	415.7
37 ~	414.1
36 ~	415.7
35	415.3
34 ~	415.2
33 ~	415.8
32 ~	414.6
31 ~ 1770	417.7
30 ~	418.6
29 ~	420.6
28 ~	421.6
27 ~	420.3
26 ~	418.5
25 + 00	417.2

To E.
± Runway Cont.

Lt.

±

Rt.

44

63~

423.3

62~

424.2

61~

425.7

60~

427.3

59~

423.7

58~

422.2

57~

420.7

56~

421.8

55~

421.9

54~

23.23

423.2

53~

424.1

52~

423.3

51~

422.9

50~

422.2

49+15 = Cross wire fence

49~

421.7

48~

421.9

47~

421.8

46~

421.0

45~

19.02

419.0

± Runway To E.

Lt.

±

Rt.

45

83~

413.3

82~

414.9

81~

413.5

80~

415.6

79~

422.4

78~

420.3

77~ 19.42

416.2

76~

415.0

75~

414.3

74~

413.3

73~

413.4

72~

412.6

71~

411.5

70~

413.2

69~

416.9

68~ 19.73

421.2

67~

422.9

66~

425.1

65~

428.4

64~ 25.60

425.6

Lt. Rt.

Set. BM = spike in Pole # 4529 h 420.70

(No more runway here)

88+85 = edge of Bluff = end. Very steep - 45° inc. 418.4

88- 414.7

87- 409.5

86- 416.2

85+50 417.8

85- 417.1

84- 414.7

83+51.92 = Hub 413.39
on Hub

Beg. & Profile of Runway toward
 of 200' section - 10+00 to R. = 0+00 tow.

Lt.

±

Rt. = N.

47

11+14 = wly.	408.32
10+79 = Ely. of E. AC. Strip	407.51
10+51 = Wire Row. fence	406.0
10+40 = W. edge	406.68
10+25.31 = Pisk in ±	407.15
10+10.5 = E. edge Access Rd. pave - AC.	406.40
10+02 = Cross 2 - Tel. Cables - overhead	
10 -	405.80 = on Hub.
9 ~	404.2
8 ~	405.2
7 ~ 5.64	405.6
6 ~	406.1
5 ~	404.7
4 ~	406.2
3 ~	406.7
2 ~	406.0
1+00	407.9
0+00 = Hub. = 10+00 to R.	
BM = Hub. 0+00	407.85

Actual Elev. Shown

407.85
on Hub

Lt.

±

Rt.

48

25~		402.6
24~		403.8
23~		404.2
22+00		405.9
21+31.30 = W.L. of Mesa St.	E.L. - C.R.P. 7/53 - See Book 1758	405.82 = on Hub.
21~		405.5
20~		406.4
19~		406.6
18+00 = P.O.T. Hub.		406.93 on Hub.
17~		408.0
16~		409.0
15~		409.8
14~		410.7
13+00.42 = P.O.T. Hub.		410.70 = on Hub.
12+39 = W.L. of Rd.		411.11
12+09 = Ely. of Access Rd. - A.C.		412.10
12+03.5 = Wire Row fence		412.3
11+87 ¹¹⁰⁹ = W.L. of A.C.		407.51
11+53 = Ely. of W. strip - A.C.		408.27
11+33		406.6

Light Lane = Runway

Lt.

±

Rt.

49

40. - = Hub = End.

400.82 = on Hub

39 ~

400.9

38 -

402.2

37 ~

404.1

36 + 28.27 = Cross Sewer Line - under Const.
_{03.10}

36 + 00 = Hub - P.O.T.

402.60 = on Hub.

35 ~

399.8

34 -

397.7

33 ~

396.7

32 ~

397.7

31 ~

400.2

30 ~

402.3

29 ~

400.9

28 ~

401.2

27 ~ _{2.74}

402.8

26 ~

403.1

X-sec Alley BIK 260 - University Hts

Wo # 25020

10-13-53

O. Allen

D. Sisson

O. Powell

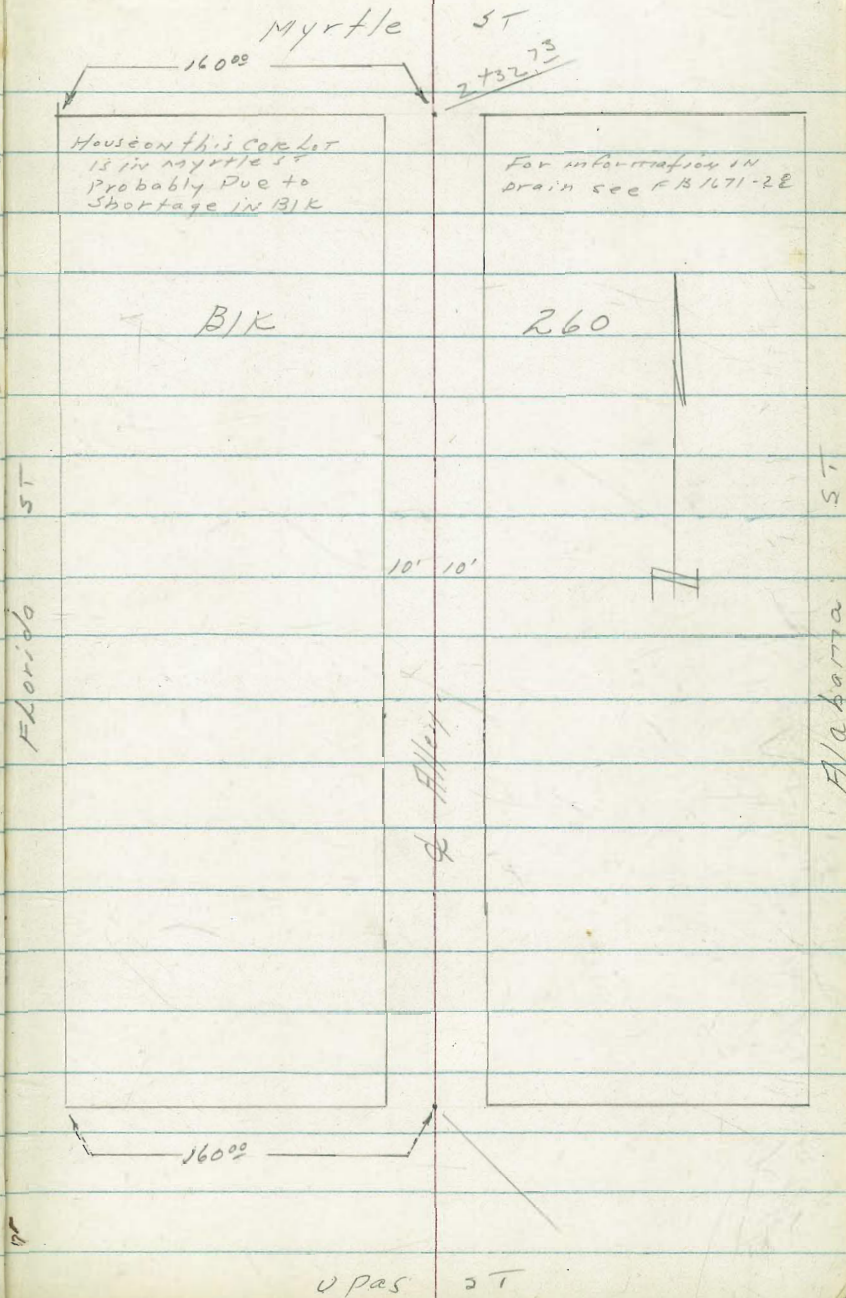
Ref. TP Sheet 342

FB-1594-53

1671-28

Grade Ordinance only.

INDEXED
JER
OCT 15 1953



X-Sec Alley BIK 260
 Univ Hts for Grade establishment
 See page 58.

0+52

0+25

0+00 = My Line Upac st

0-08

Break -

0-25 = ^{wild} Upac - Rough - ungraded.

TP₃ - 0.97 236.17 11.65 235.20

TP₂ 0.11 246.85 13.35 246.74

TP₁ 0.59 260.09 0.83 259.50

BM 8.83 260.33 251.50

LT = Wly

213.1

23¹

35

13.7

22¹

25

13.0

23²

50

19.7

16⁵

50

18.6

17⁶

50

213.8

22⁴

25

16.0

20²

10

226.20

10⁰

10

229.0

7²

231.9

230.4

5¹⁰

215.5

20⁵

10

Toe Slope

216.0

20²

10

Toe Slope

229.0

10⁰

10

225.8

10⁴

228.8

12⁹

232.1

4¹

230.4

5¹⁰

Pt = e. ly

232.2

4⁰

10

229.8

6⁴

10

233.3

2⁹

13

240.2

240.2

240.2

240.2

240.2

240.2

240.2

240.2

240.2

240.2

240.2

240.2

240.2

240.2

240.2

240.2

240.2

240.2

240.2

240.2

240.2

240.2

240.2

240.2

240.2

240.2

240.2

240.2

240.2

240.2

240.2

240.2

240.2

240.2

240.2

240.2

240.2

242.2⁵

20

29

Top Bill

236.2

0¹⁰

19

240.5

4³

50

240.2

240.2

240.2

240.2

240.2

240.2

240.2

240.2

240.2

240.2

240.2

240.2

240.2

240.2

240.2

240.2

240.2

240.2

240.2

240.2

240.2

240.2

240.2

240.2

240.2

240.2

240.2

240.2

240.2

240.2

240.2

240.2

240.2

240.2

240.2

240.2

NW BP - Upac + Alabama - 25 + My 06 Ec -

N.W. BP Myrtle + Alabama.

X-sec Alley BIK 260
UNIV HTS

2750

2438-6² LT = 4 6" Euc tree

2700

1477-8³ LT = 4 10" power pole # JPA 3455

1450

774 7.14 231.47 11.84 224.33

1425

1400

0473-8⁵ LT = 4 10" power pole # JPA 3409

0465

LT = 4.14

192 12.2
30

142 17.3
10

216.8
147
30

216.6
41
10

218.0
0
100

Rt = 0.14

12 219.3
10

12 218.9
10

233.9
+24
50

235.0
+31
10

239.1
+76
30

216.0
15
30

223.0
8
10

228.2
3
10

232.5
+10
10

241.5
+10
28

216.2
20
30

225.0
12
10

231.47
6
10

234.7
15
10

240.2
+40
22

208.7
27
40

218.8
17
28

220.9
15
15

225.9
10
10

230.5
5
10

236.2
0
10

245.6
+94
24
Top Bank

213.5
22
40

219.6
16
30

221.0
15
16
BRK

229.2
7
10
Top Bank

232.5
3
10

237.7
+10
10

242.2
+60
2.8
Top Bank
3.0 m² Fill Material

242.1
+59
50

236.17

X-sec Alley BIK 260
UNIV HTS

For Sections at Myrtle ST see FB 1671-28

Shortage in Block

3+32.73 = sly Myrtle ST
12° LT = 12' power pole # P2049

Flows to pipe 2+69 -
3+04-72° RT = Ely and 30" RCP Drain

For additional information see Canyon sec FB 1671-28

3+00-

Throat in Florida

Below Drains dump through Curb

open spot between these two drains

42° LT = inlet - 25' x 15' Box type Drain

2+69 } 30° LT = outfall 30" RCP Drain

TP5 2.76 222.01 12.22 219.25

LT = wly

9

RT = ely-

53

213.9

8-

30

2170

5-

10

217.2

4

8

217.7

4

10

221.1

0

30

212.55-

9

16

72°

IE

412.0

10°

30

212.3

9

16

70°

Box type

Culvert

215.3

6

10

216.1

5

7

216.2

100

10

216.9

5

10

216.5

5

30

Loose Fill Material

203.31

18

70

IE

Box type

Culvert

204.24

17

77

IE 30"

RCP

Drain

222.01 T

231.47

X-sec Alley BIK 260-
UNIN HTS-

TP9	Start, B M-		4.40	(251.50) 251.51
TP8	8.74	255.91	0.13	247.17
TP7	12.52	247.30	0.03	234.78
TP6	12.98	<u>234.81</u>	0.18	221.83

222.01 x

X-sec¹² Alley Block 5, Pacific Beach
 Visto - From La Jolla Mesa Drive
 To Cass St. Between Archer +
 Agate St.

LT = N14

4
 15'
 Alley

RT = S14

55

INDEXED
 JER
 DEC 1 1953

See FR 2164-19 for sketch

C. Allen, D. Sisson, C. Powell

W/O #25020

Ref: File Maps 930, 916

TP Sheets 1793, 1794 -

FR 2164-19

0-18[±] Fly edge AC. Pave La Jolla Mesa Dr. edge is rough

117.56

117.76

115.37

3.36
 50

5.16

7.05
 50

121.65

119.89

118.21

115.39

114.55

0-30 = La Jolla Mesa Drive + 24[±] AC. Pave

121
 100
 AC.

3.03
 50
 AC.

4.21
 AC.
 Pave

6.55
 50
 AC.

8.37
 100
 AC.

122.92 T

TP5 5.20 122.92 9.51 117.72

2" x 2" Rwhub Wly Line La Jolla Mesa Dr + d Alley Between Archer + Agate

TP4 0.96 127.23 12.44 126.27

TP3 0.32 138.71 8.17 138.39

TP2 0.59 146.56 13.31 145.97

TP1 0.61 159.28 0.88 158.67

2" x 2" Rwhub Wly 7' Carse + d Alley between Archer + Agate

BM 12.29 159.55 0.13 147.26

BM 12.54 147.39 134.85

SE BP - Turquoise + Cass St

X-500 Alley Block 5 Pacific Beach Vista

LT = N14

4
15
11/14

RT = S14

52

17' LT = entrance double garage

0+16- 7' LT = 5/4 edge Conc Drive

7' RT = begin 2' high hog wire fence
17' LT = SWCR Double garage conc floor
0+07- 7' LT = 5/4 edge Conc Drive

0+00- 7' LT = begin^{conc} Driveway for double garage

0+00- 7' LT = 5/4 end N+S Conc Block Wall-

0+00 = Ely La Jolla Mesa Drive

0-05-

21.46
146
147
Conc Floor
& Garage

220.69
223
79
5/4 Drive

121.38
154
174
Conc Floor
& Garage

20.38
254
72
5/4 Drive

119.00

119.5

294

34

76
Conc
Drive

76
ground

121.36

118.6

119.3

156
Top wall-
75

43
Footing
75

36
ground
75

2120.1

119.0

4118.3

50

37

5

3119.6
50

118.0

5117.7

49
75

52

5117.9

50

5

5117.3

72

3119.0

39

75

7115.8

71

4118.4

45

50

122.92 x

0+68.7⁹ RT = end 2 car garage - Conc Floor + Apron

and Apron
0+50.5 11⁰ LT = begin 2 car garage - Conc Floor

TP₆ 5.86 128.63 0.15 122.77

8¹ LT = S/E end N/S Conc Block wall -
+ Apron.
7⁹ RT = begin 2 car garage Conc Floor

0+50.78⁰ LT = end 6' high board fence

0+37.7⁴ RT = end 2⁵' high hog wire fence

0+34.7² LT = begin 6' high board fence

17¹ LT = S.E. cor Garage conc floor
0+25.18⁰ LT = S.E. cor Conc Drive

LT = N14

2
Alley

21180
683

RT = S140
22190
673

57

123.00

563
137
gar
Floor

122.83

580
118
Apron

79
Apron

92
gar floor

128.63 X

Nail in S.E. cor board fence 8⁰ LT of sta 0+50

0+123.4

126.17

121.0

121.5

121.9

121.6

121.67

121.82

121.95

25

+ 325

82

82

82

75

13

75

80

97

146
172
Conc Floor
garage

180
80
5/8" dge.
Drive

20
75

2
13
20.6

20.8
2
75

18
25

122.92 X

Alley B/K 5 - Pacific Beach Vista

1450-7^E Rt = begin 5' high board fence

LT = N14
124.4
42
25
124.0
46
75

Alley
123.9
42

Rt. S14
123.8
48
75
123.6
50
25

1497-7³ Rt = end 2 car garage - Conc floor + Apron

123.46
517
73
Apron
123.18
483
105
gar floor

1487-7³ Rt = begin 2 car garage - Conc floor + Apron

545
73
Apron
123.89
74
103
gar floor

1400⁵ 6⁵ Rt = 9" 10" Tel pole # A840-

123.9
42
25
122.8
5108
75

122.4
2

122.3
613
75
122.1
65
25

1400-7² Lt = end 4' high board fence

0496-7⁰ Rt = end 6' high lattice fence

124.88
475
179
Walk
123.83
480
79
Walk

0477-7² Lt = 3' brick walk (behind fence)

0475- } 9² Lt = begin 4' high board fence
10² Lt = end 2 car garage - Conc floor + Apron

125.5
53
25
123.08
555
132
gar floor
122.5
61
75
122.87
576
102
Apron

122.0
616

121.9
67
75
121.8
6100
25

0469-6⁴ Rt = begin 6' high lattice fence

128.63 T

Alley BK 5 - Pacific Beach Vista

LT = N14

Alley

RT = S14

59

3400

2473⁵ 8⁶ LT = SE Cor Doublegarage Conc Floor

129.7
128.21
126.0
141
100
85
ground
opening to ELY
Conc Floor

2453⁵ 8⁶ LT = SW Cor Doublegarage - Conc Floor
garage opens to ELY -

127.5
127.1
126.8

2450-7² RT = 2 10" top pole # A870

127.5
127.1
126.8

2427-15⁸ RT = 2 Car garage - Conc Floor + Apron

2409-7⁵ RT = end 5' high board fence

125.34
94.5
15.8
Apron
126.8
126.7
8.1
25
125.38
94.1
18.8
Conc floor

TP7 8.97 134.79 2.81 125.82

2417-0⁵ RT = 2 Sewer Manhole

2400

126.82
2.81
0.5
Rim

125.5
125.3
125.1
128.63
134.79
125.2
125.2

X-sec Alley BIKS. Pacific Beach Vista

LT = N14

Alley

RT = S14

60

No Drive behind fence 12/2/53

4408- 7⁸ rt = d 8⁶ wide gate through fence

3

7³ rt = begin 6⁶ high board fence

4400- 7² rt = end 6⁶ high Redwood fence

2

No Driveway - 6⁶ high Redwood fence
3459- 8⁵ rt = d 8⁵ wide gateway through

2

3450

2

3446- 8⁵ rt = S.E. cor single garage - conc floor

2

3442- 8⁸ rt = begin 6⁶ high Redwood board fence

11

garage opens to wly -
3424- 8⁵ LT = S.W. cor single garage - conc floor

2

2

133.2

16
78 ground
& gate

133.3

133.1

132.8

132.8

132.6

15
20

17
75

10

20
75

2
25

131.6

w/12
ground

131.8

131.6

131.3

131.0

130.7

10
25

12
75

15

100
75

1
25

131.3

30
85
ground

130.52

130.4

42.7

145
& pool on
concrete

44

85
ground

134.79

X-sec Alley BK 5 - Pacific Beach Vista

LT = NLY

15'
Alley

RT = SLY

61

5+38- 7⁶ LT-end Low incomplete conc block wall

5 ⁹²	6 ⁹	6 ⁵
Top Wall	Footing	7 ⁶
		9 ^{round}

5+27- 7⁴ LT-begin low conc block wall - incomplete

6 ⁰²	7 ⁰	6 ⁷
Top wall	Footing	9 ^r
Incomplete		

5+00-

7 ²	7 ⁵	7 ⁷
25	7 ⁵	

4+76- 9² LT = 24" Cypress Tree
Branches over hang Alley

4+68- 0⁵ RT = Sewer Manhole

8⁸
0.3
2.77
14H

143.86 T

TP8 9.70 143.86 0.63 134.16

Nails in telephone pole # JPA 880 - 7² pt station 4+17

4+50- 8² RT = end 6⁶ high board fence

0 ⁴	0 ⁰	0 ²	0 ¹⁵	0 ¹⁶
25	7 ⁵		7 ⁵	25

4+17- 7⁷ RT = 10" tel pole # JPA 880

134.79

X-sec Alley BKS Pacific Beach Vista

6700

5495-12⁰ Rt- of single garage - DIRT floor

No Drive behind wall - 12/2/53

5494-8⁰ LT- of 13' wide gateway through block wall

5477-5¹ Rt- of 12" Power pole # PA 900

5475-8⁰ LT- begins 6⁵' high conc block wall-

5463-5² Rt- of Deadman-

5450

5449-6⁵ Rt- of 2⁷' conc walk (N+S)

4 ¹	4 ¹	4 ¹	4 ¹	4 ²	4 ¹
139.7	139.5	139.5	139.3	139.2	138.9
25	8 ⁰ grat wall	75	75	75	25
		139.2			12 ⁸ DIRT floor
		4 ¹			
		8 ⁰ ground at gate			
		137.9			
		6 ⁰			
		8 ⁰ Footing			
		138.5			
		5 ⁴			
		25			
		137.9			
		6 ⁰			
		75			
		137.4			
		6 ⁵			
		137.3			
		6 ⁶			
		75			
		137.37			
		6 ⁴			
		6 ⁵ walk			
		137.34			
		6 ⁵			
		75			
		137.15			
		6 ⁷			
		17 ⁵ walk			
		143.86			

et=514- 62

X-sec Alley B/K 5 Pacific Beach Vista

7400

6+85 - 5² Rt = 10" Pole # PA 920

Note! North-South Storm Drain crosses Alley in

6+80 - Approx bottom of dip in Alley

6+60

6+50 - 8⁰ Lt = end 6⁵ high Conc block wall

6+41 - 7⁵ Rt = end 4' high picket fence

6+40

6+20

6+01 - 7⁸ Rt = begin 4' high picket fence

Station	Notes	1	2	3	4	5	6	7
6+85	5 ² Rt = 10" Pole # PA 920	142.4	141.6	138.3	138.5	138.6	139.3	137.5
6+80	Approx bottom of dip in Alley	141.7	141.6	138.3	138.5	138.6	139.3	137.5
6+60								
6+50	8 ⁰ Lt = end 6 ⁵ high Conc block wall	140.9	139.5	139.9	139.9	139.2	139.3	138.9
6+41	7 ⁵ Rt = end 4' high picket fence							
6+40				140.0	139.7		139.7	
6+20				140.2	140.1		139.6	
6+01	7 ⁸ Rt = begin 4' high picket fence							

143.86 T

X-sec Alley BK 5. Pacific Beach Vista

8+20

8+09. 8" Rt=L. 8" Euc tree overhangs Alley.

8+00

7+80

146.0	LT=14:4	145.4	145.7	RT=14	145.4
4 ⁶	5 ²	5 ²	4 ⁹	5 ²	5 ²
25	75	75	75	25	25

145.6	145.1	144.3	144.2	144.3	145.1	144.8
5 ⁰	5 ⁵	6 ³	6 ⁴	6 ³	5 ⁵	5 ⁸
25	80	75	6	40	70	25

145.6	143.4	142.7	142.6	142.6	144.5	144.1
5 ⁰	7 ²	7 ²	8 ⁰	8 ⁰	6 ¹	6 ⁵
25	15	75	40	75	75	25

150.60 T

Tp 11.84

150.60

5.10

138.76

Cluster Nails in pole # PA 920 - 5³ RT sta 6+85

7+60

146.4	140.8	141.0	140.9	140.7
+ 2 ⁵	3 ¹	2 ⁹	3 ⁰	3 ²
25	75	75	75	25

7+40

139.6	139.8	139.7	140.8
4 ³	4 ¹	4 ²	3 ¹
75	75	75	75

Rockfill

7+20

139.8	139.0	139.0	140.9
5 ¹	4 ²	4 ²	3 ⁰
75	75	35	75

Rockfill

143.86 T

X-sec Alley BIK Pac Beck Vista
CONT

LT= NLY

154114

RT= SLY

65

(Poor condition)

8494-6² LT= SLY Cor 3² wide E/W walk

See also encroachment survey #2114-19.

8485-9³ LT= SWLY Cor frame house

8471-8³ RT= L 17⁵ wide opening in
block wall for gate

8457-7³ LT= SWLY Cor shed (Conc Floor)

8450

8445-8³ Under construction - Footing in place
RT= begin conc block wall-

8440-7⁰ LT= SWLY Cor shed - Conc Floor

8435-6⁰ RT= L 12" power pole # PA946-

149.57

109

6²
SWLY Cor
walk

149.9

148.9

07⁰

17

Floor

9³
ground

147.6

2⁰

8³
ground

147.5

3¹

7³
ground

147.2

146.9

3⁴

7⁵

37

146.8

308

75

147.5

21

25

146.5

4¹

8³
gr.

145.3

5³

8³
Footing

146.77

4¹³

8³
Top
Wall
To be
higher

146.7

39

7⁰

ground

150.60 T

X-sec c Alley BIK 5 P.B. Vista

LT = NIY

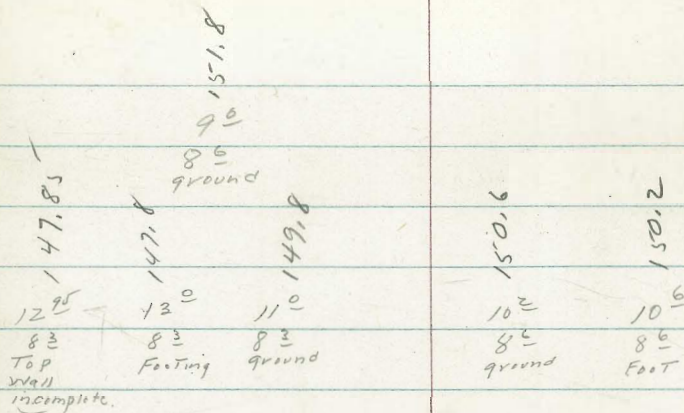
Alley RT = SLY 66

9444 - 8⁶ LT = ϕ 12⁵ wide opening in block wall for gate

9428 - 5² RT = ϕ 10" power pole SPH 964-

8⁶ LT = begin 6' high CONC block wall-

9426 } 8³ RT = end CONC block wall (under construction)



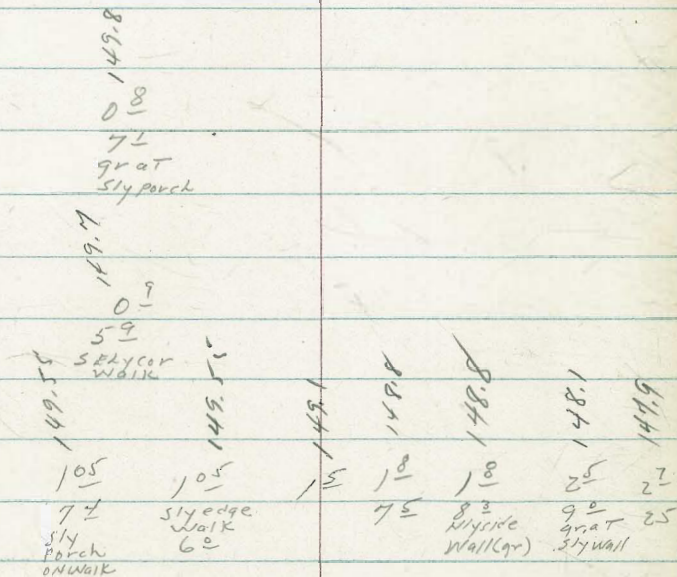
TP₀ 10.29 160.80 0.09 150.51

160.80 π

9412 } 9² LT = SELYCOR frame house
7¹ LT = SELYCOR frame porch - little value

9402 - 5³ LT = SELYCOR 3² wide F+W CONC WALK

9400



8496 - 7⁴ LT = SWLY COR shed porch attached to house - poor condition - little value

150.60 π

X-sec Alley BIK 5 P.B Vista cont

LT = N14

11/07

et. 514 67

10+46- 7⁵ LT = 5Wly cor single garage. concl floor

7⁵
ground
5ly gar

157.1
156.9

10+40

39
7⁵

156.6
4²

156.6
4²
7⁵

10+20

156.0
4⁸
7⁵

155.6
4²

155.7
4¹
7⁵

10+19- 6⁰ Rt = 6" 12" power pole # PA 982

154.5

6¹³
6¹
7⁵

154.5
6¹³

154.4
6⁴
7⁵
153.8
7⁰
25

10+00

25

8⁶ LT = end 6' high conc block wall.

9+68- Sewer Manhole

150.8
10⁰

8³³
8⁶
7⁵

152.31
8⁴⁹

152.0
8⁸
25

8⁶
Footing
151.8
9⁰
8⁶
5ly wall

Rim
SMH
151.5
9³³

151.2
9⁶
7⁵
9⁸⁴
8⁵
M ledge
Walk

151.08
9⁷²
18⁵

9+50

9+48- 8⁵ Rt = 7⁵ wide Brick walk

160.80 x

150.96
9⁸⁴
8⁵
Brick
Walk

151.08
9⁷²
1.85
Brick
Walk

X-sec Alley BIK 5 P.B. Vistas cont.

LT=N14

Alley

Rt=514-

68

11+03. 20° Rt-entrance stucco house

11+00

10+90-7³ front 5' high to 30' high wall -
LT= step down in top wall

10+83-7⁶ RT of 8' wide conc Apron to
single garage

10+80

10+67- } 7² LT= begin 5' high conc block wall -
7³ LT= SELY cor single garage

10+60

158.8
2⁰
7³
sly of
wall

158.4
2⁴

158.23
2⁵⁷
20⁰
conc
Porch
158.4
7⁵

158.42
2³⁸
20⁰
Floor
158.1
2¹¹
1⁵

158.3
2⁰
7³
ground
at sly wall -

158.0
2¹⁰⁰

158.43
2³⁷
7⁶
Nly edge
Apron
158.0
2¹⁸
7⁵

158.5
2³⁰
17⁶
gar floor
conc -
157.2
2¹⁶
2⁵

157.6
3²
7²
Footing
Wall
157.8
2⁰
7³
grat
wall+gar

157.3
3¹⁰
7⁵

157.3
3⁵

157.2
2¹⁶
7⁵

160.80 X

X-sec Alley 131K 5-

LT = Nly

d
Alley

ret-sly-

69

TP ₁₃			11.37	(134.85) 134.83
TP ₁₂	0.32	146.20	13.31	145.88
TP ₁₁	0.54	159.19	2.15	158.65

Starting BM Page 55

See improvement plans 105-232

Note: Cass St being improved this date 12-3-53

$\left. \begin{array}{l} 7^{\text{th}} \text{ LT} = \text{end } 1^{\text{st}} \text{ high Conc block wall} \\ 11+19^{39} \end{array} \right\} = \text{Wly. Cass St}$

8.65	8.85	7.12	7.85	9.85	4.85
15	15	16	21	22	24
25	7.5	7.5		7.5	25
	Footing	ground			at wall

becomes 1st high wall at this point
 11+05 - 7th LT = step down in wall -

160.80 K

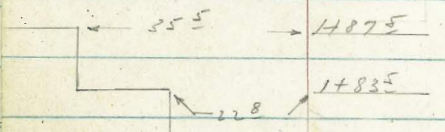
X-SECT ALLEY B/W 20 PARADISE HILLS - CUMBERLAND to ALBEMARLE

Clark
Bunker
Ono
1-18-54
W.D. 35020

REF: F.B. #1869-65
DWG: 4550-B

INDEXED

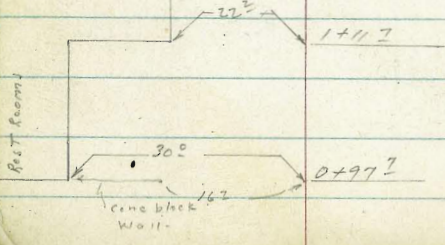
JAN 21 1954



See clay in
Red pages 72, 73

New Conc Block Bldg - To be Super Market

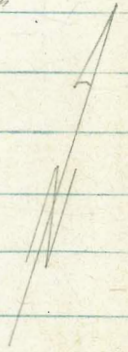
Alley Block 20



Sketch not to scale

Notes: Pg 71

Add'l information on bldg Added 4/26/54 Allen

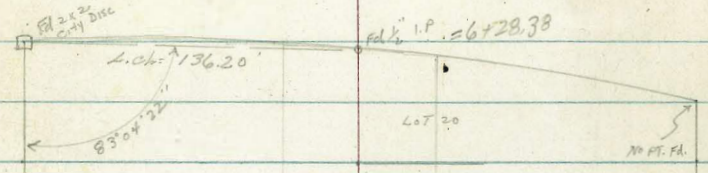


RED DRIVE

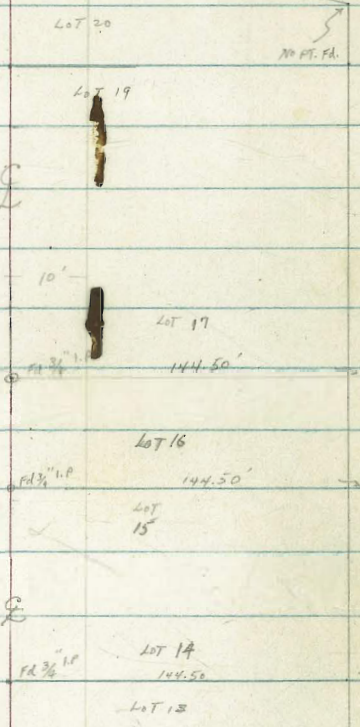
Note: For 1911 X-SECT'S:
See File L-25
W.D. 32985
9-22-60
CLARK

ALBEMARLE 60' ST. CONC PAV 10' PAV. STD. C&S - NO MARKS

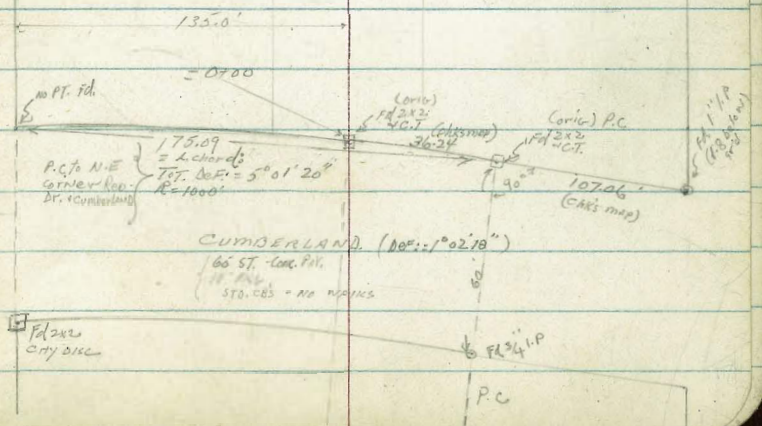
chk. map for curve DATA here



FL 2 1/2" CONC CITY CONC
FL 2 1/4" I.P. = 26+28.38



RANGE DRIVE



CUMBERLAND (DOR: 1° 02' 10")
66 ST. CONC PAV.
10' PAV.
STD. C&S - NO MARKS

FL 2 1/2" CONC CITY CONC

FL 2 1/4" I.P.

P.C.

X SECT ALLEY BIR 20 PARADISE
HILLS: CUMBERLAND TO ALBEMARLE

(WLY) LT

F

RT. (Ely)

0750

201.5
10.2
20

202.3
9.4
10

202.7
9.0
10

202.7
9.0
10

203.0
8.7
20

0721

9.7 RT ♀ $\frac{1}{2}$ " shrub

0728

9.2 RT ♀ $\frac{1}{2}$ " shrub

0700

SECT AT \perp to E Alley

203.5
9.2
20

205.7
8.8
20

204.1
7.6
20

204.1
7.9
20

203.7
7.9
20

203.8
7.9
20

0700

= NLY line (sect // to NLY line (CUMBERLAND)
OF CUMBERLAND

204.4
10.3
50

203.4
8.3
50

204.1
7.6
50

204.7
7.6
50

206.5
5.3
50

0-07.6

= CB FC 10' 4" E

204.11
7.5
50

203.47
8.2
50

204.1
7.6
50

204.67

205.58

205.12

205.27

206.82

0-10.30

= CB FC ♀ (sect Along ^{NLY} CB line)

201.90
7.8
50

201.27
8.2
50

204.06
7.4
50

204.67
7.3
50

205.58
6.12
50

205.12
5.57
50

205.27
5.77
50

206.82
5.0
50

0-14.2

= CB FC RT ♀

201.99
7.7
50

204.89
6.81
50

204.61
7.09
50

205.58
4.77
50

205.12
6.46
50

205.27
6.46
50

0-31.90 = ♀ CUMBERLAND (sect along E)

201.99
7.7
50

204.89
6.81
50

204.61
7.09
50

205.58
4.77
50

205.12
6.46
50

205.27
6.46
50

B.M.

129

211.70

210.41

S.W.B.P

Rincho Ar.

211.70

of CUMBERLAND

Alley BIK 20 (cont.)

1+83 35° LT. cor Bldg } To show Jog
22° LT. cor. Bldg.

1+67 } 5.9 RT Bay 5' Board Fence
6.2 RT END 3.5' Steel Fence

1+57 8.7 RT 4" tree

1+50

1+48.5 8.6 RT 3" Tree

1+30 8.7 RT 2" Tree

1+22 8.7 RT 3" Tree

T.P 3.59 203.95 11.34 200.36

1+112 22° LT. Bldg } To show Jog in bldg -
30° LT. bldg.

1+18 6.4 RT Bay 3.5 Steel-Wire Fence

1+00 } 30° LT. SELV cor conc block bldg } see sketch
0+97 } 16° LT. ELV end block wall. } page 70

0+94 2.0 RT Pole # JP 88589

0+57

LT Q RT

1974°
22°
Conc Floor

199.1 199.4 199.2 198.3 198.1 198.0
4.9 4.6 4.8 5.7 5.9 6.0
20 10 15 10 20
LAW PT

1974°
22°
Conc Floor

200.7 200.9 201.0 198.9 199.8 198.4
11.0 10.8 10.7 12.8 12.9 13.3
20 10 35 10 24
1974° 200° 196° 197°
30° 16° 16° 16°
Conc Floor Top wall Foot wall
201.5 202.2 202.8 200.4 200.4
10.2 9.5 8.9 11.3 11.3
20 10 70c 20

211.70

ALLEY BIK 20 (CONT.)

2450				7.1 20	196.7	7.4 20	196.6	7.4 20	196.6
2442	ARK E								
2432				7.6 20	196.4	7.7 20	196.3	8.4 20	195.6
2427		6.0' RT END 5' BOARD FENCE							
2426		20' RT E Pole # 88590							
2424		6.0' RT END shed (CONT. FENCE)							
2422		E gully to LT.							
2410									
2400									
1498		(6' wide) 5.6' RT Reg. shed (CONT FENCE)							

14875-35 E LT = NELY COR Bldg

1974.8
35 E
Floor

203.95

ALLEY BIK 20 (CONT)

LT.

Q

RT.

.81

214.40

24

468.5 10.1 RT END 1' wide CONC. FDTN
 463 1.5 RT & Pole JP 88592
 4450
 4408 10.1 RT Beg 1' wide CONC. FDTN
 4407 2.0 RT & Pole JP 182258
 T.P. 10.66 213.70 0.91 203.04
 4400
 3455 4.5 LT & Storm-Drain M.H.
 3450
 3443 2.0 RT & Pole JP 88591
 3400

202.3
 11.4
 20
 201.9
 11.0
 10
 202.6
 11.1
 203.5
 10.2
 10
 203.72
 9.92
 10.1
 10
 204.3
 9.4
 20
 204.97
 11.73
 10.1
 10
 200.96
 12.24
 10
 200.53
 2.7
 10
 200.7
 3.3
 20
 200.9
 3.1
 10
 201.3
 2.7
 10
 201.9
 2.1
 10
 204.0
 2.0
 20
 199.1
 4.8
 20
 199.6
 4.4
 10
 200.0
 4.0
 10
 199.4
 4.6
 10
 199.7
 4.3
 20
 197.8
 6.2
 20
 197.9
 6.1
 10
 197.6
 6.4
 10
 196.5
 7.3
 6
 196.5
 7.2
 10
 196.6
 7.4
 20

203.95

8.89
 10.1
 TP
 FDTN

204.97
 11.73
 10.1
 TP
 FDTN

204.0
 2.0
 20

199.7
 4.3
 20

196.6
 7.4
 20

ALLEY BIK 20 (CONT)

6+39.68 = CB FC 10 RT ♀
 6+37.83 = CB FC - ♀ (sect along sly. cb line AIBEMARLE)
 6+36 ♀ + ♀ # P 87554
 6+35.73 10 RT = CB FC
 6+28.38 (sect along line AIBEMARLE)
 6+28.38 - sly line AIBEMARLE (sect ⊥ to ♀)
 6+25 9.8 RT END CONC. BIK WALL (9.6 RT FC. FATN)
 6+00
 5+50 { 10.1 RT FC wall here
 10.0 " " FATN
 5+00 { 10.1 RT FC wall here
 9.8 RT to FC. FATN
 4+69 9.9 RT Beg 5' CONC. BIK WALL on CONC. FATN
 note: 9.9 RT to CONC. FATN
 10 RT to FC. WALL

75

	209.17 #53 5.16 TT 10 CB FAT	208.54 208.38 6.38 TT 50 CB FAT	LT 207.32 207.32	E 208.95 4.75 6.7 TT 50 CB FAT	RT 209.56 4.39 3.76 10 6.7 TT 50 CB FAT
					210.97 2.73 5.0 6.7
					211.58 2.12 7.28
					209.31 4.39 3.76 10 6.7
					209.74 3.76 7.28
					211.8 1.9 5.0
					209.2 4.0 10
					209.7 4.0 10
					200.2 3.5 2.0
					208.1 5.6 2.0
					208.5 5.2 1.0
					208.9 4.8 2.0
					209.2 4.6 9.8
					200.1 3.6 2.0
					209.1 4.6 2.0
					204.25 2.9 9.9 7.6 wall

213.70
/

ALLEY BRK 20' (CONT)

76

LT

E

RT

clx

3.95 209.84 = 209.83 =

S.W.B.P ALBEMARLE v Neo-drine.

T.P

413

213.79

404

209.66

658.23 = E ALBEMARLE

208.05

207.94

209.28

211.67

5.65

5.76

4.42

2.03

50

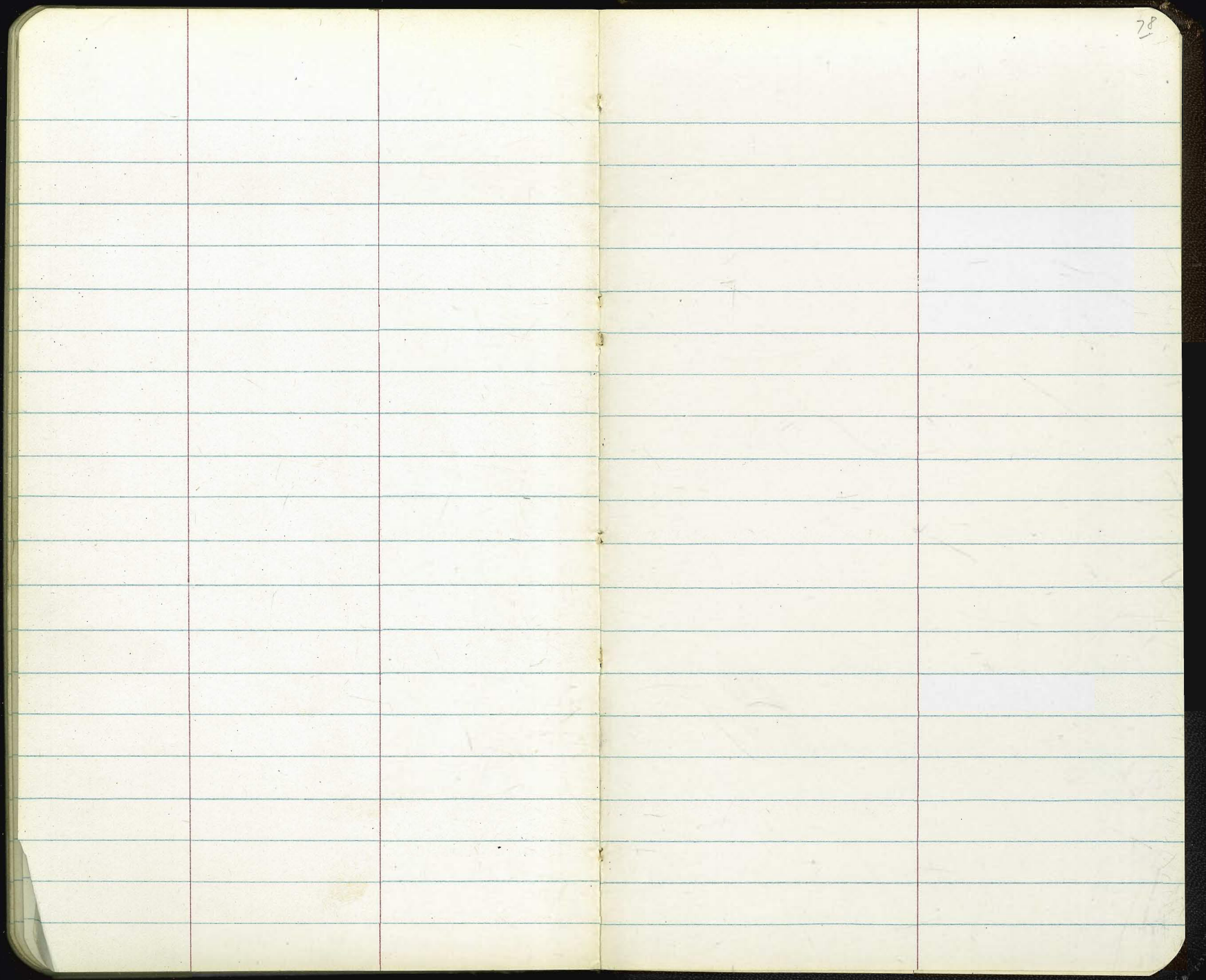
43

Cont. Pay.

50

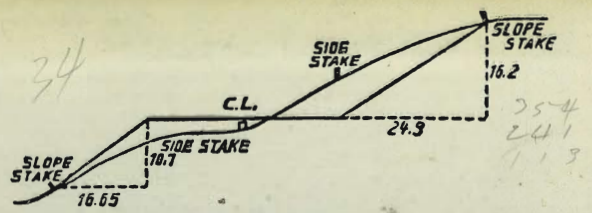
LOW PT
RET. CURVE

213.70



The image shows an open notebook with two facing pages. Both pages are cream-colored and feature light blue horizontal ruling. The notebook is bound in the center, and the dark cover is visible at the edges. The pages are otherwise blank, with no text or markings.

11895
 2379
 2 3.5685
 1.78 178
 178
 5140
 1024 - 3 356
 6168 1.187
 3084
 70.00
 56.41
 126.41
 26.72
 99.69
 26.2
 11870
 16618
 4748
 652850



DISTANCES FROM SIDE STAKES FOR CROSS-SECTIONING.
 SLOPE 1 1/2 TO 1. ROADWAY OF ANY WIDTH.

	0	.1	.2	.3	.4	.5	.6	.7	.8	.9	
0	0.00	0.15	0.30	0.45	0.60	0.75	0.90	1.05	1.20	1.35	0
1	1.50	1.65	1.80	1.95	2.10	2.25	2.40	2.55	2.70	2.85	1
2	3.00	3.15	3.30	3.45	3.60	3.75	3.90	4.05	4.20	4.35	2
3	4.50	4.65	4.80	4.95	5.10	5.25	5.40	5.55	5.70	5.85	3
4	6.00	6.15	6.30	6.45	6.60	6.75	6.90	7.05	7.20	7.35	4
5	7.50	7.65	7.80	7.95	8.10	8.25	8.40	8.55	8.70	8.85	5
6	9.00	9.15	9.30	9.45	9.60	9.75	9.90	10.05	10.20	10.35	6
7	10.50	10.65	10.80	10.95	11.10	11.25	11.40	11.55	11.70	11.85	7
8	12.00	12.15	12.30	12.45	12.60	12.75	12.90	13.05	13.20	13.35	8
9	13.50	13.65	13.80	13.95	14.10	14.25	14.40	14.55	14.70	14.85	9
10	15.00	15.15	15.30	15.45	15.60	15.75	15.90	16.05	16.20	16.35	10
11	16.50	16.65	16.80	16.95	17.10	17.25	17.40	17.55	17.70	17.85	11
12	18.00	18.15	18.30	18.45	18.60	18.75	18.90	19.05	19.20	19.35	12
13	19.50	19.65	19.80	19.95	20.10	20.25	20.40	20.55	20.70	20.85	13
14	21.00	21.15	21.30	21.45	21.60	21.75	21.90	22.05	22.20	22.35	14
15	22.50	22.65	22.80	22.95	23.10	23.25	23.40	23.55	23.70	23.85	15
16	24.00	24.15	24.30	24.45	24.60	24.75	24.90	25.05	25.20	25.35	16
17	25.50	25.65	25.80	25.95	26.10	26.25	26.40	26.55	26.70	26.85	17
18	27.00	27.15	27.30	27.45	27.60	27.75	27.90	28.05	28.20	28.35	18
19	28.50	28.65	28.80	28.95	29.10	29.25	29.40	29.55	29.70	29.85	19
20	30.00	30.15	30.30	30.45	30.60	30.75	30.90	31.05	31.20	31.35	20
21	31.50	31.65	31.80	31.95	32.10	32.25	32.40	32.55	32.70	32.85	21
22	33.00	33.15	33.30	33.45	33.60	33.75	33.90	34.05	34.20	34.35	22
23	34.50	34.65	34.80	34.95	35.10	35.25	35.40	35.55	35.70	35.85	23
24	36.00	36.15	36.30	36.45	36.60	36.75	36.90	37.05	37.20	37.35	24
25	37.50	37.65	37.80	37.95	38.10	38.25	38.40	38.55	38.70	38.85	25
26	39.00	39.15	39.30	39.45	39.60	39.75	39.90	40.05	40.20	40.35	26
27	40.50	40.65	40.80	40.95	41.10	41.25	41.40	41.55	41.70	41.85	27
28	42.00	42.15	42.30	42.45	42.60	42.75	42.90	43.05	43.20	43.35	28
29	43.50	43.65	43.80	43.95	44.10	44.25	44.40	44.55	44.70	44.85	29
30	45.00	45.15	45.30	45.45	45.60	45.75	45.90	46.05	46.20	46.35	30
31	46.50	46.65	46.80	46.95	47.10	47.25	47.40	47.55	47.70	47.85	31
32	48.00	48.15	48.30	48.45	48.60	48.75	48.90	49.05	49.20	49.35	32
33	49.50	49.65	49.80	49.95	50.10	50.25	50.40	50.55	50.70	50.85	33
34	51.00	51.15	51.30	51.45	51.60	51.75	51.90	52.05	52.20	52.35	34
35	52.50	52.65	52.80	52.95	53.10	53.25	53.40	53.55	53.70	53.85	35
36	54.00	54.15	54.30	54.45	54.60	54.75	54.90	55.05	55.20	55.35	36
37	55.50	55.65	55.80	55.95	56.10	56.25	56.40	56.55	56.70	56.85	37
38	57.00	57.15	57.30	57.45	57.60	57.75	57.90	58.05	58.20	58.35	38
39	58.50	58.65	58.80	58.95	59.10	59.25	59.40	59.55	59.70	59.85	39
40	60.00	60.15	60.30	60.45	60.60	60.75	60.90	61.05	61.20	61.35	40
41	61.50	61.65	61.80	61.95	62.10	62.25	62.40	62.55	62.70	62.85	41
42	63.00	63.15	63.30	63.45	63.60	63.75	63.90	64.05	64.20	64.35	42
43	64.50	64.65	64.80	64.95	65.10	65.25	65.40	65.55	65.70	65.85	43
44	66.00	66.15	66.30	66.45	66.60	66.75	66.90	67.05	67.20	67.35	44
45	67.50	67.65	67.80	67.95	68.10	68.25	68.40	68.55	68.70	68.85	45
46	69.00	69.15	69.30	69.45	69.60	69.75	69.90	70.05	70.20	70.35	46
47	70.50	70.65	70.80	70.95	71.10	71.25	71.40	71.55	71.70	71.85	47
48	72.00	72.15	72.30	72.45	72.60	72.75	72.90	73.05	73.20	73.35	48
49	73.50	73.65	73.80	73.95	74.10	74.25	74.40	74.55	74.70	74.85	49
50	75.00	75.15	75.30	75.45	75.60	75.75	75.90	76.05	76.20	76.35	50

THE NATIONAL BLANK BOOK COMPANY
 HOLYOKE MASSACHUSETTS
 NEW YORK CHICAGO BOSTON SAN FRANCISCO