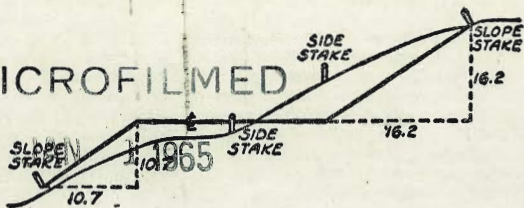


2228

GRADE ORDINANCE
X-SECT.

BASE 3441

MICROFILMED



DISTANCES FROM SIDE STAKES FOR CROSS-SECTIONING
SLOPE 1 TO 1, ROADWAY OF ANY WIDTH

	0	.1	.2	.3	.4	.5	.6	.7	.8	.9	
0	0.00	0.10	0.20	0.30	0.40	0.50	0.60	0.70	0.80	0.90	0
1	1.00	1.10	1.20	1.30	1.40	1.50	1.60	1.70	1.80	1.90	1
2	2.00	2.10	2.20	2.30	2.40	2.50	2.60	2.70	2.80	2.90	2
3	3.00	3.10	3.20	3.30	3.40	3.50	3.60	3.70	3.80	3.90	3
4	4.00	4.10	4.20	4.30	4.40	4.50	4.60	4.70	4.80	4.90	4
5	5.00	5.10	5.20	5.30	5.40	5.50	5.60	5.70	5.80	5.90	5
6	6.00	6.10	6.20	6.30	6.40	6.50	6.60	6.70	6.80	6.90	6
7	7.00	7.10	7.20	7.30	7.40	7.50	7.60	7.70	7.80	7.90	7
8	8.00	8.10	8.20	8.30	8.40	8.50	8.60	8.70	8.80	8.90	8
9	9.00	9.10	9.20	9.30	9.40	9.50	9.60	9.70	9.80	9.90	9
10	10.00	10.10	10.20	10.30	10.40	10.50	10.60	10.70	10.80	10.90	10
11	11.00	11.10	11.20	11.30	11.40	11.50	11.60	11.70	11.80	11.90	11
12	12.00	12.10	12.20	12.30	12.40	12.50	12.60	12.70	12.80	12.90	12
13	13.00	13.10	13.20	13.30	13.40	13.50	13.60	13.70	13.80	13.90	13
14	14.00	14.10	14.20	14.30	14.40	14.50	14.60	14.70	14.80	14.90	14
15	15.00	15.10	15.20	15.30	15.40	15.50	15.60	15.70	15.80	15.90	15
16	16.00	16.10	16.20	16.30	16.40	16.50	16.60	16.70	16.80	16.90	16
17	17.00	17.10	17.20	17.30	17.40	17.50	17.60	17.70	17.80	17.90	17
18	18.00	18.10	18.20	18.30	18.40	18.50	18.60	18.70	18.80	18.90	18
19	19.00	19.10	19.20	19.30	19.40	19.50	19.60	19.70	19.80	19.90	19
20	20.00	20.10	20.20	20.30	20.40	20.50	20.60	20.70	20.80	20.90	20
21	21.00	21.10	21.20	21.30	21.40	21.50	21.60	21.70	21.80	21.90	21
22	22.00	22.10	22.20	22.30	22.40	22.50	22.60	22.70	22.80	22.90	22
23	23.00	23.10	23.20	23.30	23.40	23.50	23.60	23.70	23.80	23.90	23
24	24.00	24.10	24.20	24.30	24.40	24.50	24.60	24.70	24.80	24.90	24
25	25.00	25.10	25.20	25.30	25.40	25.50	25.60	25.70	25.80	25.90	25
26	26.00	26.10	26.20	26.30	26.40	26.50	26.60	26.70	26.80	26.90	26
27	27.00	27.10	27.20	27.30	27.40	27.50	27.60	27.70	27.80	27.90	27
28	28.00	28.10	28.20	28.30	28.40	28.50	28.60	28.70	28.80	28.90	28
29	29.00	29.10	29.20	29.30	29.40	29.50	29.60	29.70	29.80	29.90	29
30	30.00	30.10	30.20	30.30	30.40	30.50	30.60	30.70	30.80	30.90	30
31	31.00	31.10	31.20	31.30	31.40	31.50	31.60	31.70	31.80	31.90	31
32	32.00	32.10	32.20	32.30	32.40	32.50	32.60	32.70	32.80	32.90	32
33	33.00	33.10	33.20	33.30	33.40	33.50	33.60	33.70	33.80	33.90	33
34	34.00	34.10	34.20	34.30	34.40	34.50	34.60	34.70	34.80	34.90	34
35	35.00	35.10	35.20	35.30	35.40	35.50	35.60	35.70	35.80	35.90	35
36	36.00	36.10	36.20	36.30	36.40	36.50	36.60	36.70	36.80	36.90	36
37	37.00	37.10	37.20	37.30	37.40	37.50	37.60	37.70	37.80	37.90	37
38	38.00	38.10	38.20	38.30	38.40	38.50	38.60	38.70	38.80	38.90	38
39	39.00	39.10	39.20	39.30	39.40	39.50	39.60	39.70	39.80	39.90	39
40	40.00	40.10	40.20	40.30	40.40	40.50	40.60	40.70	40.80	40.90	40
41	41.00	41.10	41.20	41.30	41.40	41.50	41.60	41.70	41.80	41.90	41
42	42.00	42.10	42.20	42.30	42.40	42.50	42.60	42.70	42.80	42.90	42
43	43.00	43.10	43.20	43.30	43.40	43.50	43.60	43.70	43.80	43.90	43
44	44.00	44.10	44.20	44.30	44.40	44.50	44.60	44.70	44.80	44.90	44
45	45.00	45.10	45.20	45.30	45.40	45.50	45.60	45.70	45.80	45.90	45
46	46.00	46.10	46.20	46.30	46.40	46.50	46.60	46.70	46.80	46.90	46
47	47.00	47.10	47.20	47.30	47.40	47.50	47.60	47.70	47.80	47.90	47
48	48.00	48.10	48.20	48.30	48.40	48.50	48.60	48.70	48.80	48.90	48
49	49.00	49.10	49.20	49.30	49.40	49.50	49.60	49.70	49.80	49.90	49
50	50.00	50.10	50.20	50.30	50.40	50.50	50.60	50.70	50.80	50.90	50

Distance of slope stake from side or shoulder stake for any width roadway, slope 1 to 1. If ground is nearly level, the cut or fill at side stake is located by the double entry method in left column and top row. The number in body of table in same row and column gives distance from side stake to slope stake. If ground is not level estimate the difference in elevation between the side stake and slope stake, lower target by this amount if cut, elevate if fill. Add this amount to cut or fill and find distance in table. Set up rod at this point, and line of sight should cut target. If it does not make the slight adjustment necessary.

TABLE XIII—CORRECTIONS FOR TANGENTS AND EXTERNALS

These corrections are to be added to the approximate values, found by dividing the tangent, or external, for a 1° curve (Table VIII) by the degree of curve, in order to obtain the true tangents, or externals. Intermediate values may be obtained by interpolation.

FOR TANGENTS ADD

Central Angle	DEGREE OF CURVE													
	5°	10°	15°	20°	25°	30°	35°	40°	45°	50°	55°	60°	65°	70°
10°	.03	.06	.09	.13	.16	.19	.22	.25	.28	.31	.34	.38	.42	.46
15°	.04	.10	.14	.19	.24	.29	.34	.39	.45	.51	.53	.58	.63	.68
20°	.06	.13	.19	.26	.32	.39	.45	.51	.58	.65	.72	.79	.84	.90
25°	.08	.16	.24	.33	.40	.49	.58	.67	.75	.83	.90	.99	1.06	1.14
30°	.10	.19	.29	.39	.49	.59	.69	.79	.89	.99	1.09	1.20	1.29	1.39
35°	.11	.22	.34	.47	.58	.69	.79	.81	.92	1.04	1.29	1.42	1.54	1.66
40°	.13	.26	.40	.53	.67	.80	.93	1.06	1.20	1.34	1.49	1.64	1.79	1.94
45°	.15	.30	.44	.60	.76	.91	1.06	1.21	1.37	1.52	1.70	1.87	2.04	2.21
50°	.17	.34	.51	.68	.85	1.02	1.19	1.36	1.54	1.72	1.91	2.10	2.29	2.48
55°	.19	.38	.57	.76	.95	1.14	1.32	1.52	1.72	1.92	2.14	2.35	2.56	2.77
60°	.21	.42	.63	.84	1.05	1.27	1.49	1.71	1.94	2.17	2.38	2.60	2.83	3.07
65°	.23	.46	.69	.93	1.16	1.40	1.64	1.88	2.13	2.38	2.63	2.88	3.13	3.39
70°	.25	.51	.76	1.02	1.28	1.54	1.80	2.06	2.33	2.60	2.88	3.16	3.44	3.72
75°	.27	.56	.83	1.12	1.40	1.69	1.98	2.27	2.57	2.87	3.16	3.47	3.78	4.09
80°	.30	.61	.91	1.22	1.53	1.84	2.15	2.46	2.78	3.10	3.44	3.78	4.12	4.46
85°	.33	.66	1.00	1.33	1.68	2.02	2.36	2.70	3.05	3.40	3.77	4.14	4.55	4.89
90°	.36	.72	1.09	1.45	1.83	2.20	2.57	2.94	3.32	3.70	4.10	4.50	4.91	5.32
95°	.39	.79	1.19	1.55	2.00	2.40	2.80	3.20	3.61	4.02	4.40	4.98	5.38	5.83
100°	.43	.86	1.30	1.74	2.18	2.62	3.06	3.50	3.95	4.40	4.88	5.37	5.85	6.34
110°	.51	1.03	1.56	2.08	2.61	3.14	3.67	4.21	4.76	5.31	5.86	6.43	7.01	7.60
120°	.62	1.25	1.93	2.52	3.16	3.81	4.45	5.11	5.77	6.44	7.12	7.80	8.50	9.22

FOR EXTERNALS ADD

Central Angle	DEGREE OF CURVE													
	5°	10°	15°	20°	25°	30°	35°	40°	45°	50°	55°	60°	65°	70°
10°	.001	.003	.004	.006	.007	.008	.009	.011	.012	.014	.015	.017	.018	.020
15°	.003	.007	.010	.014	.018	.023	.027	.029	.032	.035	.039	.043	.047	.051
20°	.006	.011	.017	.022	.028	.034	.038	.045	.051	.057	.063	.070	.076	.083
25°	.009	.018	.027	.036	.046	.056	.065	.074	.083	.093	.106	.120	.127	.135
30°	.013	.025	.038	.051	.065	.078	.090	.103	.116	.129	.149	.170	.179	.188
35°	.018	.035	.054	.072	.086	.109	.131	.153	.175	.197	.213	.230	.247	.264
40°	.023	.046	.070	.093	.117	.141	.172	.203	.234	.265	.277	.290	.315	.341
45°	.030	.060	.093	.119	.153	.184	.216	.254	.289	.325	.351	.378	.411	.445
50°	.037	.075	.116	.151	.189	.227	.266	.305	.345	.384	.425	.467	.508	.550
55°	.046	.093	.142	.188	.236	.283	.332	.381	.420	.479	.530	.582	.641	.700
60°	.056	.112	.168	.225	.283	.340	.398	.457	.518	.575	.636	.697	.774	.851
65°	.067	.135	.204	.273	.343	.412	.483	.554	.625	.697	.771	.845	.922	1.01
70°	.080	.159	.240	.321	.403	.485	.568	.652	.735	.819	.906	.994	1.08	1.17
75°	.095	.182	.286	.383	.480	.578	.678	.777	.877	.977	1.07	1.18	1.29	1.39
80°	.110	.220	.332	.445	.558	.671	.787	.903	1.02	1.13	1.25	1.38	1.50	1.62
85°	.128	.259	.391	.524	.657	.790	.926	1.06	1.20	1.34	1.47	1.62	1.76	1.91
90°	.149	.299	.450	.603	.756	.910	1.07	1.22	1.38	1.54	1.70	1.87	2.03	2.20
95°	.174	.350	.522	.706	.885	1.06	1.25	1.43	1.62	1.80	1.99	2.18	2.38	2.58
100°	.200	.401	.604	.809	1.01	1.22	1.43	1.64	1.85	2.06	2.28	2.50	2.73	2.96
110°	.268	.536	.806	1.08	1.35	1.63	1.91	2.20	2.48	2.76	3.05	3.35	3.66	3.96
120°	.360	.721	1.08	1.45	1.82	2.19	2.57	2.95	3.33	3.72	4.11	4.50	4.91	5.32

INDEX

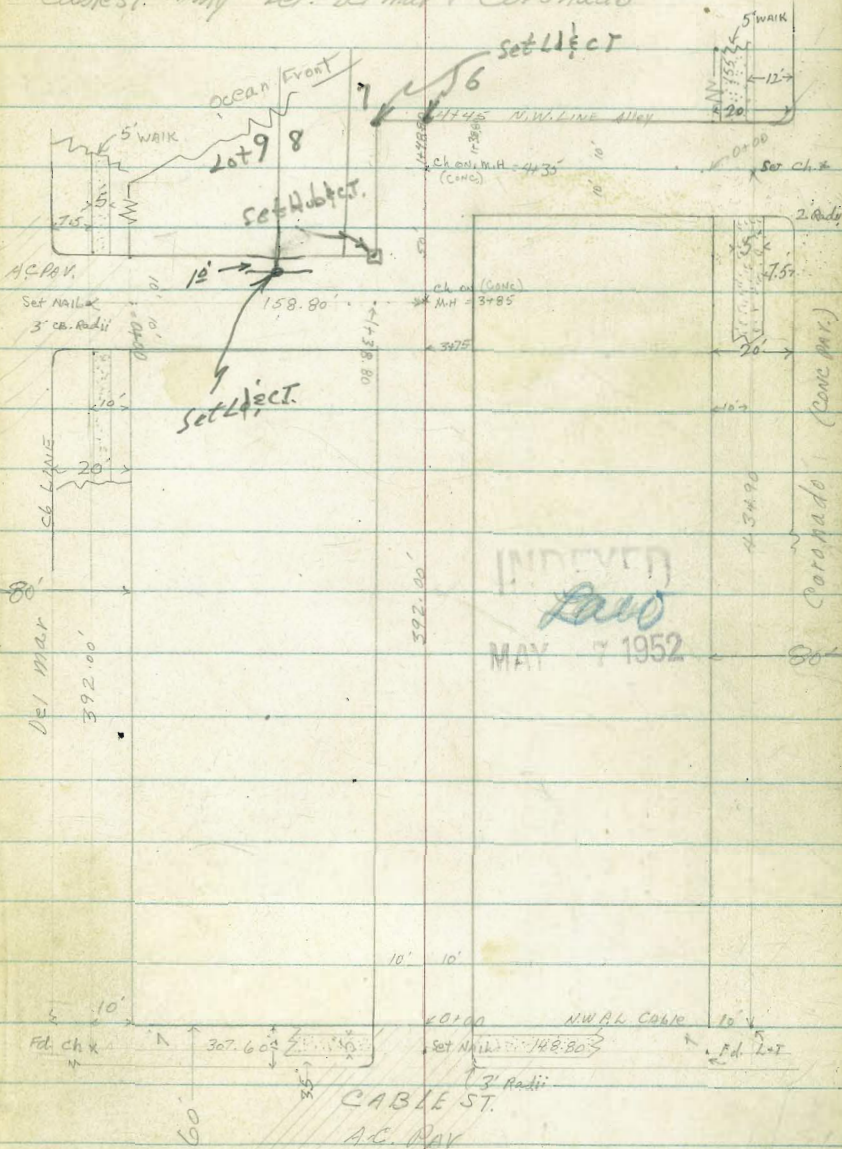
Page

X-SECT ALLEY BK 66 N/Wly Cable bet. Delmar & Coronado	1
X-SECT ALLEY BK 7 ALHAMBIA PK Marine to Centre Blvd	19
.. .. 8 College Plk, Unit #1	18
X-SEC ALLEY-B-290-P.B. Dawes-Everts	24
X-SEC ARMSTRONG ST-Baltic ST to Tecolote Rd	33
X-SEC FRONTIER ST FOR GRADE EST PAC-HI-WAY TO POSSEANS	47-69

Clark 5-2-52
 Shephard W.O. 25020
 Bruner
 Bryson

X-SECT ALLEY Bk 66 Ocean Beach

Cable St. NW 1/4 bet. Del mar + Coronado



Reduced & Plotted
 5-9-52
 H. M. 115

X. Sect. Alley BIK 66 Cable ST N/Wly.

LT. Q RT.

Station	Description	LT.	Q	RT.
1+00	9.8 RT END LATHE Fence	31.1 4.6 20	31.0 4.7 10	31.2 4.5 10 30.7 5.0 10 30.6 5.1 25
0+87	28.54' Single gar. dirt Floor 9.5 RT Beg LATHE Fence	31.1 4.0 21.5		
0+75	9.8 LT END 4' Board Fence			
0+68	19.0 RT & Single gar. CONC Floor 17. RT conc apron			30.57 5.20 17. 30.73 4.98 19
0+50	9.7 LT Beg 4' Board Fence 9.2 LT & Pole PA 4810 9.7 RT END 4' Board Fence	31.7 4.0 20	31.1 4.6 10	30.7 4.9 10 30.6 5.1 20
0+37	10' RT & 3' CONC WALK 10.1 LT & Single gar CONC Floor 7.7 to conc apron	31.76 3.93 10.1 Floor	31.57 4.34 aprons	30.76 4.95 10 WALK 30.79 4.92 15 WALK
0+27	9.8 RT. Beg 4' Board Fence			
0+20		31.7 3.9 14	31.7 4.0 10	31.8 4.9 10 30.8 4.9 20
0+00	N.W.L. Cable	31.76 4.93 10 11.8	30.60 5.11 10 5	31.8 5.53 10 11.8 30.39 5.32 10 11.8 30.61 5.10
0-12	N/W CB LINE Cable	31.76 3.76 100 CB	31.76 4.25 50 CB	31.76 4.47 50 CB 31.76 4.91 50 CB 31.76 5.21 10 G 31.76 5.70 13 CB 31.76 5.72 13 CB 31.76 6.27 50 CB 31.76 6.82 100 G 31.76 7.32 100 CB
0-30	Q Cable ST. AC Pat	31.76 3.92 100	31.76 4.66 50	31.76 5.28 50 31.76 6.03 50 31.76 6.59 100

713 35.71

28.58 SE R.P. Cable + Coronado

35.71

Alley BIK 66 (cont.)

2+50 10.7' LT EXD 5' CONC BIK WALL

2+17 10.6 RT Single gar - dirt Floor

2+09 10.7' LT Beg 5' CONC BIK WALL
9.8 RT END 5' Board Fence

2+00

1+96 17.0' LT Single gar Wood Floor

1+75 8.6' LT Pole # PA 4932

1+50

1+25

1+16 9.8 RT Beg 5' Board Fence

1+07 15.3 RT Single gar CONC Floor

T.P.

7.68 38.80 4.59 31.12

3.57
3.4 7.6
10.7 10.7
Bath, FATH, DIRT

3.27
6.1 5.3
10.7 10.7
B. FATH DIRT

3.27
5.1 5.4 5.7
20 10 10

3.26
5.2
17

3.25
6.5 7.1 7.3
25 10 10

3.15
7.3 7.5 7.7
20 10 10

3.26
5.2
10.6

3.28
6.0 5.8
10 25

3.15
7.3 7.3
10 25

3.1
7.9 8.4
10 25

30.68
8.12
15.3
Floor

38.80

Alley BIK 66 (cont.)

3+27	14.3 RT. Bay 2-car gar. 8.5 to apron (conc) Conc. Floor	4.2 20	5.5 10	6.4 10.1	5.23 8.3 Apron	5.06 14.3 Floor
3+25		4.5 5.0 20	4.7 5.8 10	6.7 3.8	7.0 3.5 10	7.4 3.1 2.0
3+12	15.4 RT END 3-car gar tpts.					3.73 7.11 15.4 Floor
3+08	10.6 LT of 2.5' CONC WALK		6.63 10.6 WALK	8.3 3.8	8.5	8.2 8.2 15
3+00		5.5 30	7.3 10	8.2	8.0 10	8.2
2+96	RT END 2-car gar 10.4 to apron	3.17 7.31 Floor	3.67 7.91 10.4 Apron			
2+80	15.4 RT Bay 3-car gar tpts. (under const.) 12.1 LT Bay 2-car gar 10.4 to Conc. Floor	3.15 7.33 12.1 Floor	3.29 8.19 10.4 Apron		3.30 8.18 15.4 Floor	
T.P.	8.64 46.48 0.96 37.84			46.48		
2+73	8.9 RT Pole # RA 4443	3.18 1.0 20	3.13 1.5 10	2.7 3.5	2.0 3.6 10	1.9 3.7 20
2+59	11.4 LT Single gar. 10.6 to CONC APR. Conc. Floor	3.5 2.3 30	1.48 11.4 Floor	1.69 10.6 Apron	3.53 3.0 10	3.54 3.4 10
2+50				3.5 3.5 10	3.5 3.4 10	3.50 3.8 25
					38.80	

Alley BIR 66 (CONT.)

4110					461	443	443
					3.9	4.2	5.7
					15	10	10
3195	N/W Line Alley to Del mar				455	445	446
					4.5	5.2	4.9
					25	10	10
3185	M.H.						
						5.70	
						RIM	
T.P.	5.40	49.95	1.93	44.55		49.95	
3175	S/E LINE Alley to Del mar				447	442	432
					1.8	2.3	3.3
					25	10	10
3174	9.6' LT of Deadman						42.77
3173	14.5' RT. END 2-Car gar 8.5 RT. conc apron						3.71
							8.5
							Apron
							3.60
							14.5
							Floor
3155	14.5' RT. Bay 2-Car gar 8.6 conc apron				426	427	42.80
					2.9	3.8	3.81
					25	10	8.6
							14.5
							Floor
3150					423	426	415
					3.2	3.9	4.7
					25	10	10
							5.0
							5.0
							2.5
3149	9.6' LT of Pole #1A 4968						
3145	14.3' RT. END 2-Car gar 8.5 to conc apron						41.81
							5.17
							8.5
							Apron
							5.00
							14.3
							Floor
					46.48		

Alley BIK 66 (cont.)

T. P. 4.82 51.92 2.85 47.10 (see Page 7.)

4445 N/wr Line Alley to Coronado

4444 120' LT' & 3' Cove Walk

4435 10' H

4425 S/E Line Alley to Coronado

	46.8	46.8	46.6	46.7
46.84	3.2	3.6	3.4	3.3
	20	10		10
		46.35		
341	3.60			
18	12			
WALK	WALK			
	46.6	46.2	3.87	45.2
	3.4	3.8	Rim	4.8
	25	10	45.5	10

49.95

X-SECT. ALLEY B/LK 66 - Del mar to N/Wly Alley

0+65 9.8' LT 15x15 Conc + Rock pillar IN Rock Fence
 0+58 11.4' LT & Single gar. 9.9 to conc apron
 0+50 9.5' LT END Lattice Fence

0+49 8.5' LT & Pole P1 3615

T.P. 2.17 50.34 3.75 48.17

0+19 7.2' LT & 3' conc walk Bottom Step 8.6 to top Step walk

0+15

0+10 10.3' LT & Single gar. dirt Floor

9.4' LT Bay Lattice Fence

0+00 - N/Wly LINE Del mar

0-20 N/Ely CB. L. Del mar

0-40 - & Del mar AS PAV

	LT	RT
46.6	47.4	
3.5	2.9	
9.8	9.8	
48.5	47.0	
1.8	2.4	3.2
20	10	7
	3.8	4.1
		4.6
		20

	LT	RT
48.0	47.5	
3.91	4.41	
8.6	7.2	
46.3	45.6	
4.1	5.1	5.6
10	10	2.5
47.5	47.5	
4.4	4.4	
10.3	10.3	
46.96	46.71	46.20
4.98	5.21	5.72
10.1	10.1	5.77
CB	G	9.85
48.4	47.2	46.15
46.8	46.7	46.38
46.19	45.85	45.54
3.78	4.40	5.21
5.0	5.0	5.65
5.0	5.0	5.73
CB	G	6.07
45.4	45.5	45.5
10	10	10
13	13	13
CB	G	CB
42.94	44.54	44.54
2.99	2.33	2.81
5.0	5.0	5.0
CB	G	CB
42.11	42.74	42.74
46.0	46.0	46.0
38.2	38.2	38.2
46	46	46
7.50	7.50	7.50
G. END PAV	G. END PAV	G. END PAV

(see Page 6) 51.92

Alley from sel mar Blk 66 (CONT.)

LT. E. RT.

T.P. 0.96 46.29 5.01 45.33

See pg. 9 46.29

1+38.80 S/W LINE N/wly Alley from cable str

44.7
5.6
10

44.4
5.9
10

44.5
5.8
10

1+00

46.2
4.1
20

46.3
4.0
10

46.0
4.3
7

45.4
4.9
10

45.3
5.0
10

45.4
4.9
13

0+99

9.8 LT ♀ 1.5x1.5 Rock + Conc Pillar in Rock Face

45.9
4.4
9.8
8. FTN
3.9
9.8
Bottom
FTN

46.5
3.8
9.8
Ground
3.1
9.8
Ground

0+90

9.8 1.7 ♀ 1.5x1.5 Rock + Conc. Pillar

0+86

13.6 RT Conc Bottom Step 3.5 Conc WALK
15.6 RT. to WALK

46.3
4.0
9.8
8. FTN

47.2
3.1
9.8
Ground

46.22
4.02
13.6
Step

47.23
3.1
15.6
WALK

0+83

9.8 LT ♀ 1.5x1.5 Conc + Rock Pillar

0+80

9.1 RT water meter

46.6
3.7
2.5
46.5

47.5
2.8
10
47.2
7

46.6
3.7
7

46.2
4.1

45.7
4.6
10

45.8
4.5
13

0+75

0+74

7.8 LT ♀ 1.5x1.5 rock + conc pillar

3.8
9.8
8. FTN

3.1
9.8
DIRT

46.8

47.20

0+73

13.7 RT ♀ 3' CONC WALK Bottom Step
15.7 RT to WALK

46.6
4.06
13.7
step

3.14
15.7
WALK

0+70

9' LT ♀ 3.5' CONC WALK

46.96
3.38
19
WALK

46.94
3.40
9.
WALK

50 34

X-SECT. Alley Bk 66 from Coronado to N/wly Alley

		LT.	RT.
0+76	10' RT. END 7.5 wall - Continue Fdtn + 2.5' conc walk // to alley		
		43.5 2.8 20	43.5 2.8 10
0+75			
		43.9 2.4 10	44.6 1.7 10
0+54	6' RT ♀ Pole # 4641841		
0+50		42.5 3.8 20	42.7 3.6 10
0+25		41.4 4.9 20	41.9 4.4 10
0+18	10' RT END. apt. Beg (7.5') conc wall high		
0+14	9.7 RT ♀ 4" sewer out Fall		
0+00	10' RT. Beg. Stucco Apt. S/wly LINE Coronado	40.91 5.38 10. CB	40.84 5.45 10. G
0-20	S/wly LINE Coronado	40.13 6.16 5.63 10 PAY	41.03 5.26 edge Pav. 10.1 G
0-40	♀ Coronado CONC. PAV.	32.37 100 PAY	32.90 100 PAY
		32.37 100 PAY	32.90 100 PAY
		36.97 50 PAY	36.97 50 PAY
		38.23 50 PAY	38.23 50 PAY
		38.44 50 PAY	38.44 50 PAY
		38.83 50 PAY	38.83 50 PAY
		40.13 6.16 5.63 10 PAY	41.03 5.26 edge Pav. 10.1 G
		41.79 4.50 10.1 G	42.40 3.89 10.1 CB
		41.84 3.95 5.0 G	42.27 2.69 5.0 CB.
		41.9 4.9 Bottom Fdtn Bldg 4.5 5.0 PAY	41.4 4.5 Bottom Fdtn Bldg 4.5 5.0 PAY
		41.16 0.13 100 CB	41.16 0.13 100 CB
		44.43 1.36 100 PAY	44.43 1.36 100 PAY

(see page 8) 46.29

Alky BIK 66 from Coronado (cont.)

1+29 10.6' RT. Beg CONC Wall 5' high
10.1' RT end CONC WALK

1+20 12.1' RT end 2-Car gar
CONTINUE APRON INTO 5' CONC WALK

1+05 30' LT Beg 4-Car gar DIRT FLOOR

1+03 12.1' RT. Beg 2-Car gar 10.1' CONC apron
CONC Floor

1+00

0+99 12.3' RT END 2-CAR GAR.

0+84 12.6' RT Beg 2-CAR GAR DIRT FLOOR

0+82 10' RT END 2.5' CONC WALK + FATH

T.P. 5.35 50.68 0.96 45.33

0+78 8.7' RT 2.5 x 2.5 x 2' high CONC. platform

LT.

E

RT.

46.61 46.76
4.07 3.92
10.1' WALK 46.88 20' WALK 46.99
4.10 3.69
10.1' apron 12.1' Floor

44.2
6.5
30 DIRT

44.2 44.3 44.9
6.5 6.4 5.8 5.3 4.8 4.5
20 10 7 10 20

44.98 46.98
4.20 3.70
10.1 apron 12.1 Floor

45.9 46.2
4.8 4.5
10 20

45.9
5.0
12.1 DIRT

45.6 5.1
12.6 Ground

45.56
5.12
10 WALK

50.68

Alley BK 66 from Coronado

check: 11.21 28.60 = 28.58 = S/e AP cable + Coronado

T.P. 1.42 39.81 12.29 38.39

1456 13.0 RT E Single garage 10.0 to Conc approx
Conc Floor

1448 9.7 RT E Pole PA 4988

1438.80 N/Ely Line N/wly Alley from Cable

1436 30' LT END 4-car gar.

46.13
4.55 4.01
10 13
APRON FLUR

45.3
5.4 4.9 4.0 3.8
10 10 20

44.1
6.0
30
divt

50.68

Clark
Shepherd
Bruner
Bryson

G-2452
W.O. 25020

X-SECT. ALLEY BIK 7 ALHAMBRA PK.

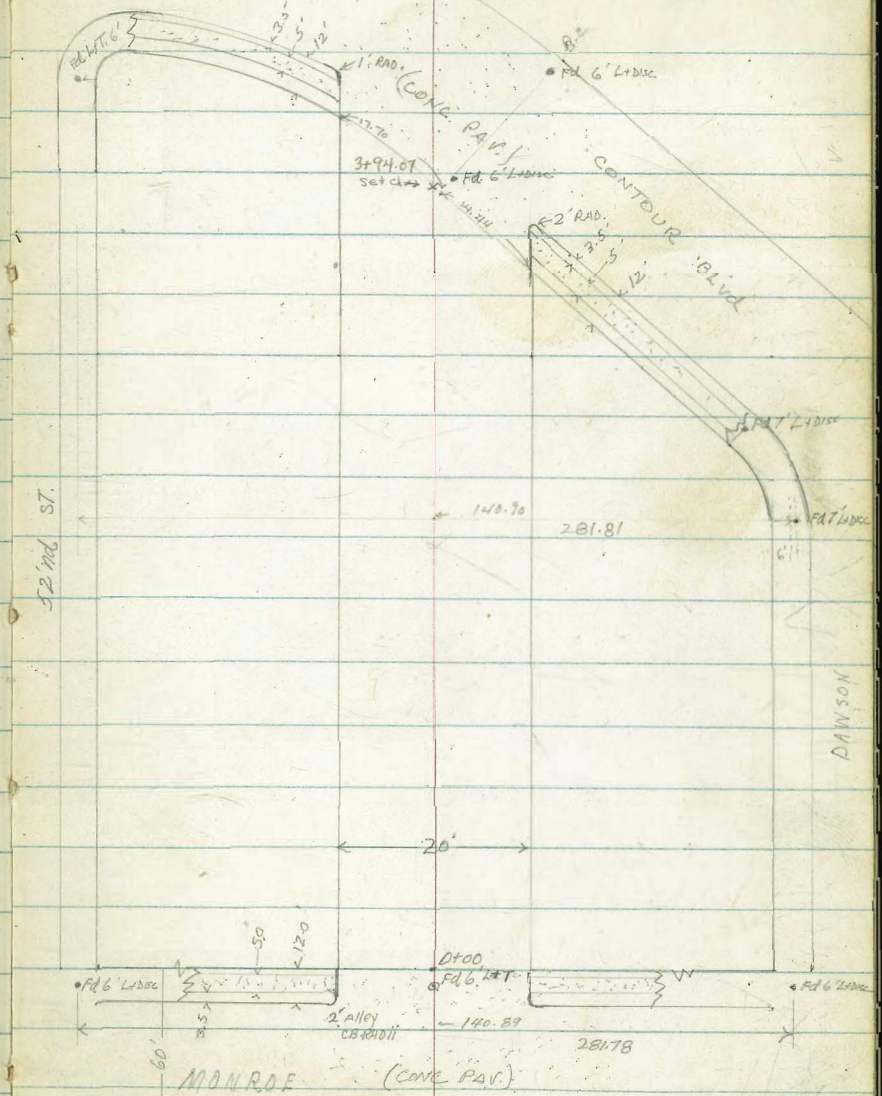
MONROE to Contour Blvd.

Notes Page: 13

Reduced & Plotted
C. Peterson
6-30-52

INDEXED
flw
JUN 26 1952

NOT TO SCALE:



X-SECT. ALLEY BIK 7 ALHAMBRA PR.

MONROE to CONTOUR Blvd

Indexed

0+63	9.70' RT END Woodshed
0+51	9.75' RT Beg Woodshed
0+50	
0+15	Brk
0+00	N/Hy Line Monroe
0-12	N/Hy Cb. Line MONROE
0-30	E MONROE

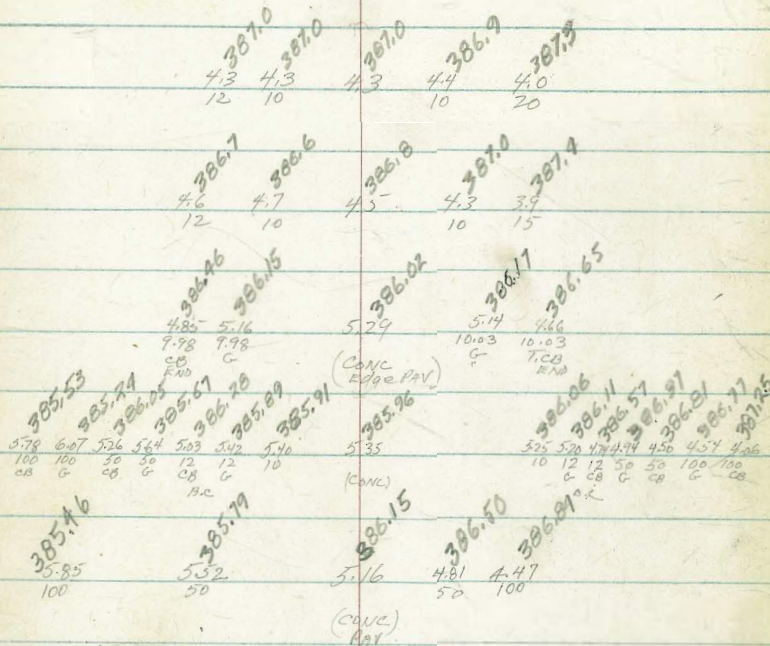
T.P. 4.72 391.31 3.17 386.59 (1)

T.P. 6.03 389.76 7.02 383.73

3.93 390.75 386.82 BM=

B.P. SW 57.57 4.61 Cajon

LT. E RT.



LT.

E

RT.

1+77

10.2' Bay 2-car gar + Conc. Apron

388.14
5.20 5.31
13.0 Floor Apron

1+71

10.3' LT END 2-car gar + apron

388.27 388.01
5.07 5.33
13 Floor Apron

1+51

10.3' LT Conc. apron 2-car gar.
10.3' LT END 6' Conc. Block Wall

388.24 388.00 386.9 387.7
5.10 5.34 6.4 5.6
13 Floor Apron Floor

1+50

387.1 387.9 388.1 388.5
5.4 5.2 4.8
10 20

1+195

10.5' LT Bay 6' Conc. Wall (Block)

386.56 387.26
6.78 6.00
10.5 Foot wall 21.7

1+19

14.6' LT END 2-car gar conc Floor

387.53
5.81
14.6 Conc Floor

1+03

14.6' LT Bay 2-car gar conc Floor

387.52
5.82
14.6 Conc Floor

1+00

8.0' LT. 9.P.6 # 458 381 H

387.2 387.7 387.6 387.6
6.1 5.6 5.7 5.7
15 10 10 20

0+98

14.5' LT E 2' WALK

387.29
6.05
14.5

T.P. 5.95 393.34 392 387.39

393.34

3+00

2+75

2+64

2+50

T.P.

2+04

2+01

2+00

1+98.7

1+97

1+91

Beg 10' LT WIRE FENCE
10' LT END 4' Picket Fence

10.1' RT Beg 4' picket Fence
9.3' RT to conc. distance 15' x 15'
At 8.5' intervals along fence

3.19

392.44

4.09 389.25

11.1' 5' conc slab

10' LT & Pole # D22466T

10.1' RT Beg 4' Picket Fence

10.2' LT & 3' conc walk

ENS 2' Car grade 13' LT Floor
10.25' to coll. apron

12.5' RT & 1-conc apr. conc floor

LT. E RT.
388.1 4.3 20
4.5 10
387.9
4.7 387.7
4.7 10
387.4
5.3 20

388.2 4.2 20
4.5 10
388.0
4.3 388.1
4.2 10
388.2

392.44

388.31
5.03
11.1
conc

3.3 15
5.3 10
388.0
5.1 388.2
5.0 10
5.1 15
388.3
388.2

388.18 5.16 15
WALK
5.11 10.2
WALK
388.23

388.21 5.13 10.25
Foot conc.
388.16 5.18 11.00
MASON CONC.

5.44 12.5
Floor Conc.
387.90

393.34

LT. 2 RT.

3181 opp. CD. END RT

388.7
3.7 3.8 4.7 5.4
15 11 10

386.25
6.19 58.5
10.1 10.1
5 FCB

3175

388.6
3.8 4.4 4.4
15 11 10

387.4
3.0 5.0
10 15

3169 9.9' LT. Bay Conc Block wall

388.70
3.74 5.1 4.1
9.9 9.9 9.9
T. WALL F.W. WALL DIVT

3163 15.4' LT End 2-car garage

388.52
3.92
15.4
conc. Floor

3150

387.9
4.0 4.7
10

387.5
4.9 5.0
10 20

3148.5 15.4' LT Bay 2-car gar, CONC Floor

388.23
4.01
15.4
conc Floor

3144 9.9' LT END 3' picket Fence

8.0' LT Dead Man

3125 10.0' LT END Wire Fence + Bay 3' Picket Fence
9.2' LT Pole # 434347H

3107 10.3' RT END 4' picket fence

392.44

LT. $\frac{1}{2}$ RT.

check 6.02 385.09 = 385.02 = N/W 6' L+T 52' int. Manroe

T.P. 2.91 391.11 4.24 388.20

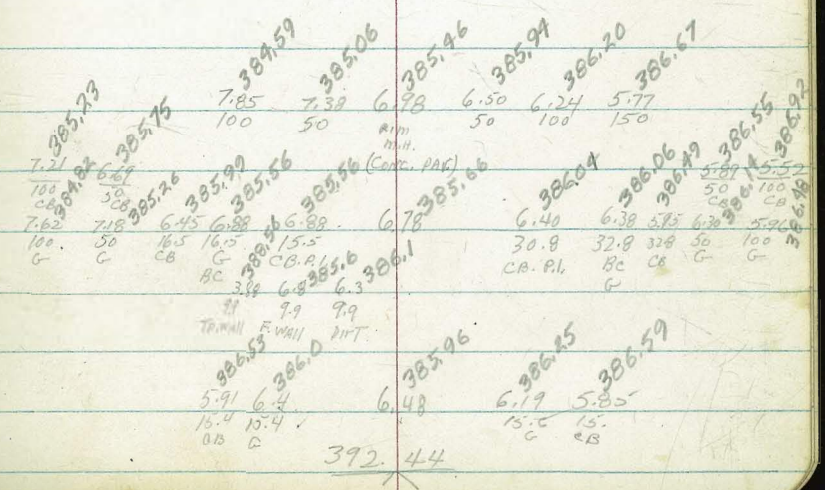
4+40.17 E Contour Blvd

4+12.47 S/Ly CB Line Contour

4+05.27 9.9' LT. END CONC BLOCK WALL

(3+94.07) = S/Ly LINE Contour Blvd.

3+93.40 Edge CONC. PAV. (Sect. Along diagonal // to Contour Blvd)



Roberts
Cota
Pollen
Chipman
8-21-52
WA 25020

X-Section Alley Block 8, College
Park Unit #1
College Ave. to Montezuma Rd.

Map 2196 T.P. 23 pg 30

Indexed
Plan

18

Montezuma Rd. :—
? Street
66' Roadway
AC, Pav.
52' Comb. Cb. & Walk on South
17' Cb. to P.L. on South
3' Cb. Rad.

Set Nail
3+00

112° 29' 08"

20'

10'

Ed 2" Pipe

Defl. = 5" 44"
Set Stub
2+29.6

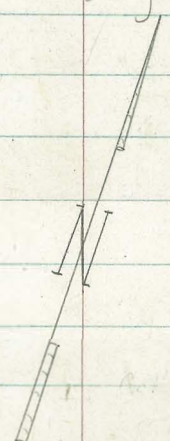
20'

Alley

Set Stub
1+20.2

Ed 2" pipes

College Place



Ed 2" Pipe

BC

9'

93.55'

College Avenue

20'

Set Nail

0+00

College Ave. :—
50' Street
52' Roadway
AC, Pav.
35' Cb. face to Walk
5' Walk
5' Cb. Rad.

Cont'd From Page 18

Lt.

Q

Rt

19

T.P. 8.17 457.76 ∇ 3.53

457.76 ∇

450.03
3.09
92
conc

450.14
2.98
15
conc.

0+48^E 92' Rt Q 2' Conc Walk

0+34^E 92' Rt Begin board fence

0+32^E 10^{ft} Lt Q 2' Conc Walk

449.52
3.60
20
conc

449.27
3.85
102
conc

0+00 } Edge Paving
East Prop. Line College Ave.

447.36
5.76
10
cb

447.25
5.87
10
gutt

446.92
6.20

447.18
5.94
10
gutt

447.27
5.85
10
cb

East Curb Line College Ave.

447.86
5.26
100
cb

447.26
5.86
100
gutt

447.63
5.47
50
cb

447.04
6.08
50
gutt

447.37
5.75
15
cb

446.77
6.35
15
gutt

446.93
6.07

446.10
7.02
15
gutt

446.78
6.34
15
cb

445.09
8.08
50
gutt

445.96
7.46
50
cb.

Q College Avenue

447.75
5.37
100

447.98
5.64
50

446.95
6.17

445.52
7.60
50

442.95
10.17
100

you tell
me.

NEBP

B.M.

3.74 453.12 ∇ 449.38 College Ave. $\frac{1}{2}$ Montezuma Rd.

453.12 ∇

Cont'd From Page 19

1+20.2 \triangle Alley (Section is 1 to 8 from 0+00)

1+00 20' Rt End 2-Car Garage

0+99 18' Lt End 2-Car Garage

0+86 20' Rt begin 2-Car Garage

0+85 17' Lt begin 2-Car Garage

0+74 9' Rt End Board Fence

0+73 10' Lt $\&$ 3' Conc Walk

0+50

457.76 ∇

Lt

$\&$

Rt

20

452.2
5.6
10

452.8
5.0
10

453.7
4.1
10

454.5
3.3
20

451.8
6.0
18

451.8
6.0
10

451.7
6.1
10

452.3
5.5
10

453.42
4.34
20
Floor

451.75
6.0
18
Floor

453.43
4.33
20
Floor

451.75
6.0
17
Floor

451.09
6.67
18
conc

450.96
6.80
10
conc

450.3
7.5
17

450.3
7.5
11

449.7
8.1
10

449.7
8.1
10

449.9
7.9
10

450.3
7.5
16

457.76 ∇

Cont'd From Page 20

Lt

R

R

21

2+29.6 L (Section on Split)

450.7	450.8	450.7	451.2	452.2	452.2
5.3	5.2	5.3	4.8	3.8	3.8
20	1001		1001	15	20

2+22 5^E Lt to center 16" Pepper Tree

2+141 8^R Lt to center T. Pole # J.P. 372760

2+02^E 98^{Lt} End Garage

2+00

450.0	451.1	451.5	452.8	452.8
5.0	4.9	4.5	3.2	3.2
10		10	14	20

T.P. 4.34 456.01 \uparrow 6.09

456.01 \uparrow

1+80 7^R Lt Begin Garage (opening on west)

1+50

452.2	452.2	452.6
5.6	5.6	5.2
10		10

1+20.2 L (Section is 1 to R from 120.2 to 220.6)

452.0	452.8	454.1	454.3
5.8	5.6	3.7	3.5
10		10	20

457.76 \uparrow

457.76 \uparrow

Cont'd From Page 21

Lt

℄

Rt

22

(x-section Parallel to Montezuma)
 Southerly of Montezuma Rd.

450.21	449.52	450.95	450.30	450.59	450.73	451.41	451.00	451.64
7.88	8.55	7.14	7.79	7.50	7.36	6.68	7.09	6.45
50	50	13	13		21	21	50	50
cb	gutt	cb	gutt		gutt	cb	gutt	cb

3+00.0

(x-section Parallel to Montezuma)
 Sly. Line of Montezuma Rd.
 Edge Paving

451.24	451.08	450.80	451.16	451.51
6.83	7.07	7.29	6.93	6.58
10.82	10.82		10.82	10.82
cb	gutt		gutt	cb

T.P. 7.04 458.09 ∇ 4.96

458.09 ∇

2+73 25⁵ ft End 4-Car Garage (unfinished)

451.47
 1.54
 25⁵
 Floor?

2+50

451.1	451.1	451.1	451.1	452.2	452.2
4.9	4.9	4.9	4.9	3.8	3.8
20	10		10	15	20

2+38 22³ ft begin 4-Car Garage (unfinished)

451.47
 4.54 ← According to surveying
 451.66
 7.35
 22³
 Top
 of Corner Found.
 { Do not know how floor is to be laid! }

456.01 ∇

456.01 ∇

Cont'd From Page 22

Lt

L

R

23

Checked by
P.C. Boyd
8-22-52

Check

8.71 449.38

Flat

Starting BM

(sect Parallel to Montezuma)

Montezuma Road

448.78

9.31
100

449.99

8.10
50

450.84

7.25

451.64

6.45
50

451.90

6.19
100

458.09 ↑

458.09 ↑

Allen
Sisson
Pinell
Schelm

2-13-53

INDEXED
100
FEB 17 1953

24

used 3/2
2 1/2" dia
Direct + Evert's

X-sec Alley BIK 290 - Pacific Beach

W.O.# 25020

Ref. TP Sheet # 1296

Sub Div Map 946-

Levels page 25.

Ed 7x7
10x 6 1/2 dia

141.97

141.97

EVERT'S

449990

504
1 1/2" dia
R.W.
5046



Reed

E Block 290

OLIVE ST

Ed 7x7
10x 6 1/2 dia

16' x 20'

142.16

142.16

0700

5046
1 1/2" dia
R.W.

Black Top

4' Rad

4' Rad

Dawles

Ed 7x7
10x 6 1/2 dia

Lt = N14

Rt = S14 25

10¹ Rt - begin rubble Conic Wall
0+00 } 10¹ Lt - begin brick Wall

403	5 ⁴	5 ³	5 ⁷	6 ⁰	2 ⁹
10 ^L	10 ^L	10 ^L	10 ^L	10 ^L	10 ^L
Top Wall	Footing	Gr	Gr	Foot	Top Rough

0+00 - 9³ Lt + 10² Rt - end Curbs - Type G Curbs

493	530	567	568	545	435
98	98	10 ²	10 ²	10 ²	12
cb	G	G	G	cb	

0-16 - BC Alley returns

5 ¹¹	5 ⁷²	6 ²⁷	5 ⁶¹
98	98	10 ²	10 ²
cb	G	G	cb

0-20 - N+S^{E14} curb line Dawes - Type G Curb

336	396	444	505	517	576	578	603	655	576	640	649	711	760	820
100	100	50	50	14	14	10	10	14	14	50	50	100	100	
cb	G	cb	G	cb	G			cb	G	cb	G	cb	G	

0-40 - k Dawes - Paved

359	465	547	566	595	683	792
100	50	100	10	50	100	

TP ₂	3.52	11.72	7.67	8.20	
TP ₁	1.26	15.87	11.35	14.61	
BM	1.93	25.96		24.03	

S.E. 7¹ Lt + T - Thomas + Everts
121K 290

11.72 π

LT = N14

2

RT = S14

26

0+50

35	36	39	39	39
25	10		10	21

0+44-11⁸ RT = 2 single garage - Conc Floor + Apron -

382	360
11 ⁸	13 ⁸
APRON	Gar. Floor

10¹ RT = 2 2⁵ wide walk

0+33-10⁸ LT = 2 2⁵ wide walk

352
10⁸
LT
WK

396
10¹
WK

0+25

4⁰
10

4²

3⁸
10

0+11-10⁰ LT = end brick wall

384	5 ¹	5 ⁰
10 ⁰ Top Wall	10 ⁰ Foot	10 ⁰ Gr

0+10-10² RT = end Conc rubble wall

5 ³	5 ⁰	3 ²
10 ² Gr	10 ² Foot	10 ² Top

11.72

Lt: N14

φ

rt: S14

27

1450-

4⁶
25

4⁶
10

4⁹

5⁰
10

5⁰
25

1407- 9⁸ Rt = φ single garage - dirt floor

5³
9⁸
dirt floor

1400- 9⁰ Rt = φ 10" power pole # PA 1120

5³
25

5³
10

5³

5³
10

5⁴
25

0+83- 10² Rt = φ single garage - Conc. Apron + Floor

5⁵⁰
10²
APRON

5³¹
12⁷
GAR
FLOOR

0+72- 10² Rt = φ single garage - Conc Apron + Floor

5⁵²
10²
APRON

5⁴⁰
12⁸
FLOOR

TP3 5.45 13.50 3.67 8.05

13.50x

11.72x

Lt = N14

4.

Rt = 54.

28

2+46- 9² Rt = end 4 car garage - Conc apron + floor

327 318
99 156
apron floor

2+25-

342 324
10² 156
apron floor

2+04- 10² Rt = begin 4 car garage - Conc apron + floor

347 326
10² 157
apron Gar
Floor

2+02- 10² Rt = 4' wide walk

350 373
10² 20²
WK WK

2+00

35 38 4² 38 37
25 10 10 20

1+64- 10² Lt = 1/2 single garage - Conc apron + floor

415 455
13² 10²
Floor apron

1+60- 10² Rt = 1/2 single garage - Conc Apron + Floor

475 458
10² 12²
Apron Floor

13.50

LT = N14

LT = S14

29

R 3402-11⁵ LT = ϕ Wide Walk

541 547
165 115
WK WK

R TP4 5.79 18.61 0.68

Nail in pole R+340
pole # P1170

12.82

18.61 x

R 3400

14 15 19 18 - 19
25 10 10 25

R+58- 12⁰ R+ = ϕ Single garage - Conc apron + floor

263 251
120 130
Apron Floor

R+50

28 29 33 31 33 34
25 10 10 15 25

R+475- 9⁰ R+ = ϕ 3' Wide Conc Walk

324 313
92 150
WK WK

13.50 x

4400

4 ²	5 ¹	5 ³	5 ²	5 ⁴
25	10		10	25

3458-12⁰ Rt: $\frac{1}{2}$ single garage. Conc Apron & floor

5 ⁷⁹	5 ⁵⁵
12 ⁰ Apron	13 ⁰ Floor

3430

4 ⁸	5 ⁶	5 ⁸	5 ⁹	6 ⁰
25	10		10	25

3447-16³ Lt = end of Car garage. Conc floor
No Apron

4 ⁸⁸
16 ³ Floor

3435-9⁵ Rt = $\frac{1}{2}$ 10" power pole P11703408-12⁰ Rt: $\frac{1}{2}$ single garage. Conc Floor apron

6 ⁶⁶	6 ⁶⁰
12 ⁰ Apron	13 ⁰ Floor

3403-16³ Lt = begin of Car garage. Conc floor
No Apron

4 ⁹²
16 ³ Floor

18.61A

NT = N14

Rt = S14

31

4474-9° Rt = 2 Single Car garage

412 393

4464-10° Rt = 10' power pole # JPA 1190

90 109
Apron Gar
Floor

4463-15° Lt = S.W. COR 20' N x 2 x 31' E.W. Conc Slab

253

150
S.W. COR
Slab

4450

35 42 46 45 42
25 10 10 25

4437-11³ Rt = 2 Single garage - Conc Floor & Apron

431 411

113 132
Apron Floor

4427-15° Lt = end double garage - Conc floor
No Apron

374

150
Floor

4419-10² Rt = 4' Conc Walk

460 459

107 152
WIK WK

4407-15° Lt = begin Double garage - Conc floor
No Apron

370

150
Floor

18.61

LT = N14

Rt = S14

32

S.E. 7' x 7'
Thomas Everts

TP7 Start BM

3.19

(24.03)

24.01

TP6

8.11

27.20

1.83

19.09

54 39.90 = Everts

30

100

50

25

51

10

52

10

54

25

57

100

62

100

5418-12' Rt = 10" Power pole # P4222

4+99⁸⁰ = Wly line Everts.

37

100

52

25

56

10

60

10

62

25

64

100

69

100

TP5

6.31

20.92

4.00

14.61

20.92 x

4+94-15⁸ Lt = S.E. cor. of 20' x 31' conc slab

26

10

S.E. cor
slab

18.61

X-sec Armstrong ST
 from beginning at
 NLY line PL 1203 at
 Baltic ST in Vista
 Park Unit #1 to
 East Tecolote Rd

Indexed
 8-21-53

8-18-53

C. Allen

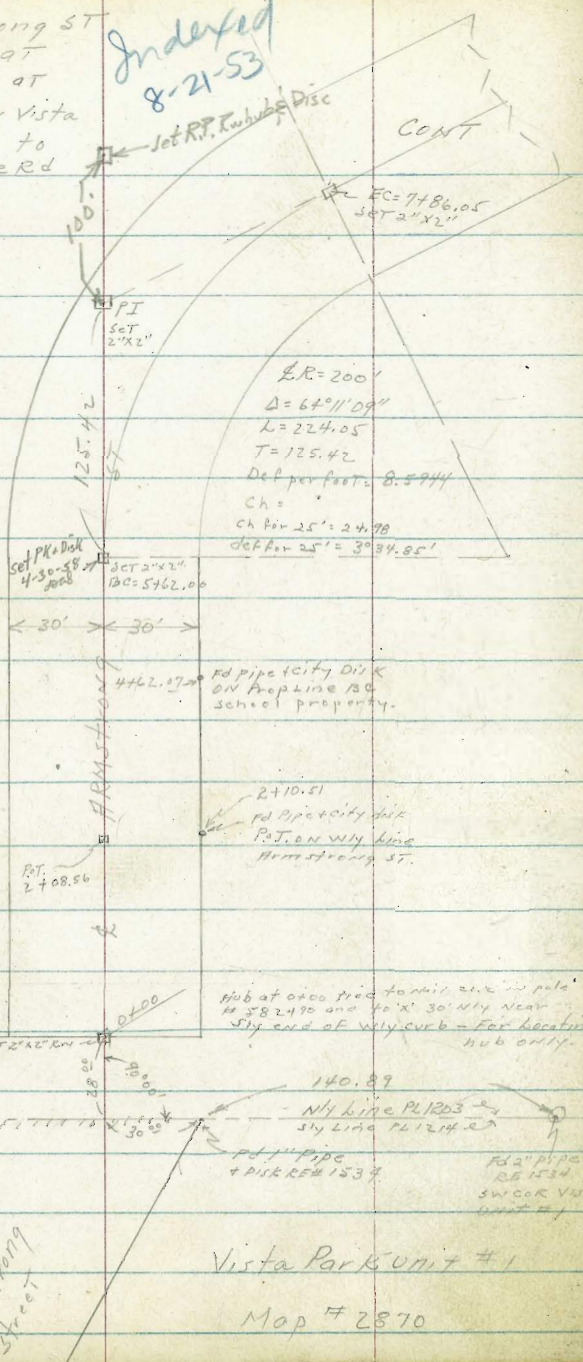
D. Sisson

C. Powell

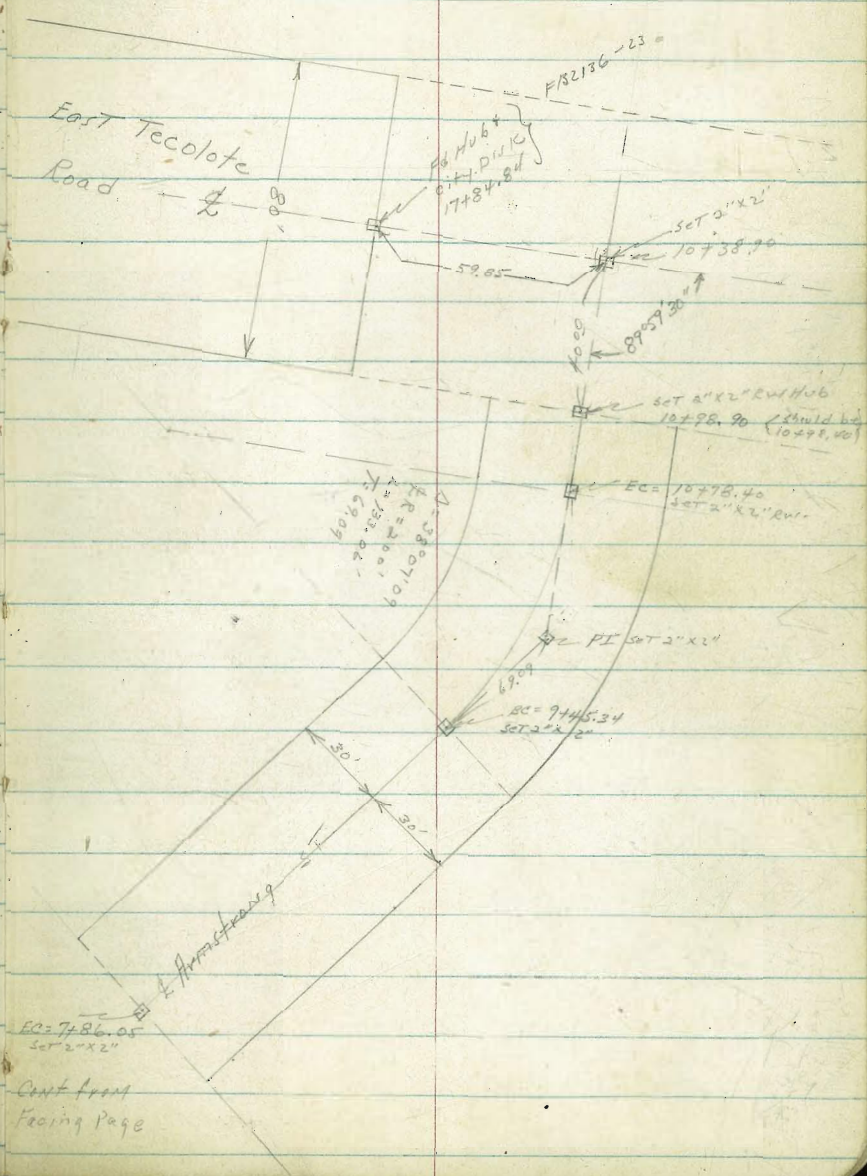
Ref 4994-B-

Map # 2870

FB 2136-23



For Re-Cross-section of Armstrong
 from 0+00 to 4+00 see page 42



X-sec. Armstrong ST - Baltic ST
to E. Tecolote Rd -
See sketch page 33 -

LT = 1E14

RT = W -

34

0+60

358.9
74
50
30
358.3
91
91
30
357.2
356.7
92
92
50
357.1

0+25 - toe Bill Lee Baltic ST

8" 358.1
50 Natural ground
8" 357.5
30 Natural ground
9" 357.1
12 Natural ground
8" 357.7
Fill
9" 357.2
30 Fill
10" 356.1
32 Natural ground
10" 356.0
50 Natural ground

Loose Fill in this area - could change at any time

0+00 = Sly Line Baltic ST

360.5
58
100
30
358.1
02
30
358.1
02
20
359.0
713
14
358.3
810
30
358.6
71
50
358.7
716
100
358.8
715

0-06-20² RT = 2 12" Power Pole # 582490-5P471091

13E RT = 5/8 end type 9 curb

Section taken along Nly Line PL 1203 from 2 Armstrong from 300' to extended

0-28 = Nly Line PL 1203

but NOT Paved - 8-19-53

Armstrong to North has in Curbs (Type G) on d sidewalks

5" 360.8
100
6" 360.1
50
6" 359.6
30
7" 357.0
13
7" 359.08
13E GUTTER
6.60
13E Type 6
6.35
6.35
30
357.92
357.1
357.1

366.27

TP5 6.60 366.27 6.60 359.67

Chief 'X' on top Wly Curb - intersection Nly Line PL 1203 & Wly Curb Line Armstrong - NW COR - Baltic ST & Armstrong ST.

TP4 1.35 366.27 3.71 364.92

on Hub of POT 2+08.58

TP3 7.02 368.63 12.82 361.61

TP2 7.22 374.43 1.69 367.21

TP1 7.17 368.90 5.96 361.73

BM- 2.22 367.69 365.47

'X' @ Linda Vista Rd + E Tecolote Rd - FA 2136 - 24

+500 Armstrong St.
Baltic to E. Tecolote

TP₆ 0.55 362.94 3.88 362.39

3400-

2450

2400-

1450

1400

HT: e14

RT: wly

35

16 364.7
50
27 363.6
30
4 362.94
5 361.5
5 361.0
30
5 361.0
50

13 365.0
50
22 364.1
30
26 363.7
30
28 363.5
30
30 363.3
50

02 365.6
50
09 365.4
30
4 364.9
30
24 363.9
30
21 363.2
50

21 363.7
50
32 363.1
30
40 362.3
30
39 362.4
30
4 362.0
50

74 358.9
50
72 359.1
30
71 359.2
30
64 359.9
30
57 360.6
50

366.27

X-sec Armstrong.

5+42⁰³ = Sky Line propose E+W Road

6 ⁵	7 ¹⁰	7 ⁵	8 ¹⁰
356.4	355.7	355.4	354.6
100	75	50	30

10 ⁰⁰	7 ¹⁰⁰	9 ¹⁰³	9 ¹⁰⁶	10 ¹⁰⁰
354.9	355.1	353.9	353.3	354.7
20	50	60	100	

5+12⁰⁷ = Proposed E+W Road.

6 ¹⁰	7 ¹⁰	7 ⁶	7 ⁹
356.9	355.9	355.3	355.0
100	75	50	30

7 ¹	7 ³	8 ¹⁰	9 ²	10 ¹⁰
355.8	355.6	354.6	353.7	354.6
20	50	80	100	

4+82⁰³ Nly Line Proposed East + West Road

5 ¹⁰	6 ⁵	6 ¹⁰⁰	7 ¹
357.7	356.4	356.1	355.4
100	75	50	30

7 ¹⁰	7 ⁹	8 ¹⁰	8 ¹⁰	9 ¹⁰
355.6	355.0	354.4	354.6	353.9
30	50	75	100	

4+62⁰⁷ = 20⁰⁰ Rt = R.S. School property

4+40

5 ¹⁰⁰	6 ¹⁰
357.1	356.9
50	30

7 ¹⁰	7 ¹⁰	7 ¹⁰
355.7	355.6	355.7
30	50	50

4+00

5 ¹⁰⁰	4 ¹⁰
359.1	358.3
50	30

5 ¹⁰⁰	5 ¹⁰⁰	5 ¹⁰⁰
357.4	357.1	357.2
50	50	50

3+50

0 ¹⁰	1 ⁷
362.4	361.2
50	30

3 ¹⁰	3 ¹⁰	4 ¹⁰
359.7	359.0	359.5
30	30	40

362.94

12° 36.28'

6+28 - 100' LT = NW RIM CANYON

9° 01.43'

6+00 - 150' LT = NW RIM CANYON

5° 26.58

5+75

1° 51.73'

TP7 2.46 356.57 8.83 354.11

P&C Hub - 5+62.00

Sections encurve are taken on Radial Line

5+62.00 = P&C to Right 200' Radius

LT	RT
2 1 100 Rim	2 1 100 Rim
353.9	354.1
1 8 50	1 8 50
354.2	353.9
1 0 30	1 0 30
355.6	353.0
1 8 150 Rim	2 1 30
354.8	353.9
0 6 100	2 1 30
356.0	353.4
1 1 50	2 1 30
355.5	353.2
1 1 30	2 1 30
354.9	353.2
0 1 50	2 1 30
355.8	353.9
1 1 30	2 1 30
355.1	353.2
356.57 x	
355.3	353.3
7 6 50	8 0 30
354.1	354.1
0 2 30	9 6 30
354.1	353.9
362.94.1	

52
100

sh
70° LT = RIM Canyon
55' RT = Nly RIM Canyon
7+25 = 10' RT = bottom Canyon

23° 20.83'

354.3	352.5	350.0	347.7	344.4	343.9	344.1	347.6	351.9	352.4	350.7
2 ¹⁰⁰	4 ⁷⁰	6 ⁵⁰	8 ³⁰	11 ¹⁵	12 ¹⁰	12 ¹⁰	9 ³⁰	7 ⁵⁵	4 ⁷⁰	5 ⁹⁰
	RIM							RIM		

20 LT = Bottom Canyon
7+00 = 14° RT = Nly RIM Canyon

19° 45.98' } From 6+75 shy to 7+00

353.6	352.0	347.5	344.7	344.4	347.9	350.7	351.9	352.4	351.1
3 ¹⁰⁰	4 ⁷⁵	9 ⁵⁰	11 ³⁰	12 ²⁰	8 ¹⁰	5 ¹⁴	4 ³⁰	3 ⁵⁰	5 ¹⁰⁰
	shy RIM			20 Bottom Canyon		RIM			

50' LT = bottom canyon
6+90 = Armstrong intersects Nly RIM Canyon

351.9	345.7	347.4	351.5	352.7	353.2
4 ¹⁰⁰	10 ⁵⁰	9 ³⁰	5 ¹⁰	3 ³⁰	3 ⁵⁰
	Bottom Canyon				

70° LT = bottom canyon
6+75 = 20° LT = Nly RIM Canyon

16° 11.13'

350.4	346.3	346.5	350.0	351.6	352.2	352.9	353.4
6 ¹⁰⁰	10 ⁷⁰	8 ⁵⁰	6 ³⁰	5 ²⁰	4 ¹⁰	3 ³⁰	3 ⁵⁰
	Bottom Canyon						

90' LT = bottom canyon
6+50 = 50' LT = Nly RIM Canyon

347.5	353.4	353.4	353.4	353.1	352.9
9 ⁹⁰	3 ⁵⁰	3 ³⁰	3 ³⁰	3 ³⁰	3 ⁵⁰
Bottom Canyon	RIM				

356.57

LT RT

7486.05 = EC

14' LT = Sky Rim
75' RT = NLY Rim
38° RT = bottom Canyon
32° 05.50'

355.0	352.3	351.5	350.4	347.6	342.4	339.9	347.9	347.1
16	4 ³	5 ¹	6 ²	90	13 ⁰⁰	16 ²	8 ⁷	9 ⁵
100	50	30	14 Rim		30	38 Bottom Canyon	75 NLY Rim	92

349.4
72
110

7406.05 = EC

32° 05.50'

348.1	349.7
8 ⁵	6 ¹
90	100

20° LT = Sky Rim Canyon
75° RT = NLY Rim Canyon
7475 = 38° RT = bottom Canyon

30° 30.53'

355.2	352.5	351.5	350.6	347.5	341.4	341.3	349.7
14	4 ¹	5 ¹	6 ⁰	9 ¹	14 ⁸	15 ³	6 ²
100	50	30	20 ⁰ Rim		30	38 Bottom Canyon	75 Rim

50 LT = Sky Rim Canyon
70 RT = NLY Rim Canyon
7450 = 30° RT = bottom Canyon

26° 55.68'

354.9	351.7	349.2	345.7	341.3	347.3	351.2
17	4 ²	7 ⁴	10 ¹	15 ¹⁰	9 ¹⁰	9 ⁴
100	50 Rim	30		30 Bottom Canyon	50	70 NLY Rim Canyon

356.57

LT = 514

RT NY

40

TP 8.94 358.50 7.01 349.56

358.50 π 80 RT = bottom Canyon
9400 - 20° RT = Sly Rim20
75 353.440
30 352.349
20
Rim 351.756
20
Rim 351.085
20 341.122
80
BOTT
Canyon 334.1200 RT = NY Rim
60 RT = bottom Canyon

8465 - intersects Sly Rim Canyon

26
75 354.040
30 352.357
Rim 350.912
30 344.320
60
BOTT
Canyon 335.546
200
Rim 35221
100 354.514
85 342.510
100 345.76
125 349.48425 20 LT = Sly Rim
47° RT = bottom Canyon40
50 352.640
30 351.557
20
Rim 350.9

85 345.1

15
20 341.418
47
BOTT
Canyon 337.911
65 345.6356.57 π

10+50 80° Rt = Sly Rim
14° 59.46'

10+25 - 40° Rt = Sly Rim
11° 24.61'

105. Rt = Bottom Canyon
10+00 - 24° Rt = Sly Rim
7° 49.76'

9+75 - 15° Rt = Sly Rim

9+45
4° 14.91'

Sections taken on Radial Line

9+45.34 = B.C. LT - 25° Rt = Sly Rim

	LT		CT	41			
10+50	5 10352.7 75	6 351.4 30	6 351.7 30	6 352.0 30	6 352.0 50	7 6 350.9 80 100 Sly Slope	
10+25	6 10352.5 75	7 10350.9 30	8 10349.4 30	9 6 348.9 20	10 6 348.2 40 Rim	11 6 346.9 50	12 6 342.4 75 Sly Slope
10+00	6 10352.2 75	7 6 350.9 30	8 6 349.4 30	9 6 347.6 24° Rim	10 6 345.5 30	11 6 328.5 105 Bottom Canyon	
9+75	6 352.5 75	7 6 351.5 30	8 6 347.9 30	9 6 344.9 15° Rim	10 6 345.4 30	11 6 332.5 70 Bottom Canyon	12 6 331.5 100 Sly Slope
9+45					18 3 340.2 100 ON N4 Slope		
9+45.34	5 10352.6 75	7 10351.3 30	8 10349.6 30	9 10346.7 25° Rim	10 10344.2 30	11 10332.5 70 Bottom	

LT = Ely

et - wly 42

INDEXED

AUG 21 1953

0¹⁰³ 58.5
2⁰⁰³ 55.7
200
W/Limits
Present grading
E. Tecolote Rd

TP ₁₁ Start BM Page 24	3.32	365.44	2565.47
TP ₁₀	5.49	368.77	256
TP ₉	7.42	365.84	0.08

200' LT = W/Limit of Present grading E. Tecolote Rd
Probably to be paved in Near Future.

10 + 38.90 = E Tecolote Rd to Ely
11 + 38.90

4 ⁸	4 ⁷	2 ¹	1 ⁹	2 ¹	3 ⁴	5 ²	7 ²
100	80	40	30	100	30	50	100

10 + 98.90 = Nly. Line East Tecolote Rd.
(should be 10 + 98.40 per 4994-A)

5 ⁰	4 ¹⁰⁰	4 ³	3 ¹⁰⁰	4 ¹⁰	4 ⁴	5 ¹
100	50	30	100	30	50	75

10 + 78.40 = EC

19° 03.59'

5 ⁹	5 ⁹	5 ¹⁴	4 ⁷	4 ¹²	4 ⁹	5 ⁴
75	50	30	47	30	50	75

558.50

Re X-sec of Armstrong St from
0+00 to 4+00 - see sketch page 33

LT = 441

Armstrong

RT = wly. 43

1+25

5	361.4	6	360.9	8	359.1	7	359.4	8	359.0
50		30		140 Top cut		180 Top cut	30	50 yard	

1+00

5	360.4	7	359.7	8	359.1	7	359.5	8	359.4
50		30		120		30	50 yard		

0+75- 80° ± RT = SECOR school bldg under Construction

7	359.4	8	358.9	9	358.1	9	358.0	7	359.6	8	359.1	8	358.67
50		30		10		18		30		50 yard		80 floor Bldg	

0+25

9	358.2	9	357.5	9	357.4	8	357.2	8	358.1
50		30		30		50 school yard			

0+00. sly line Baltic St to cly.

8	358.62	9	358.2	8	358.9	8	358.6	9	358.3
50		30		30		50 level of school yard			

No Curbs on sly side Baltic St

13' ± RT = face sly end wly curb Armstrong St
0-28 = sly edge H.C. Pav + wly line PL 1203

6	360.81	7	359.89	7	359.62	7	359.36	7	359.08	7	359.67	7	359.92	8	359.43
100		60		30		13' ± Type Gutter		13' ± Top Curb		22' ± Back Walk		30			

BM

7.66

367.33

359.67

367.33
'X' on wly end curb TP5 page 54.

Re x-sec Armstrong St.

LT = ELY

d Et = WLY.

44

2475

362.6	367.3	357.5	357.6	357.5
7	50	98	97	98
15	20	30	50	
Top CUT	Top CUT		Yard	

2450

364.5	363.9	363.3	363.5	357.4	357.9	357.7
2	24	10	38	95	94	96
50	30	15	21	30	50	
		Top CUT	Top CUT		Yard	

2425

365.4	365.0	364.7	364.3	358.1	358.1	357.8
2	2	6	30	92	92	95
50	30	14	22	30	50	
		Top CUT	Top CUT		Yard	

2400

365.5	364.9	364.3	363.4	358.5	358.4	358.2
2	2	30	39	88	89	91
50	30	14	22	30	50	
		Top CUT	Top CUT		Yard	

1475

364.3	364.5	363.6	363.4	358.9	358.8	358.9
2	2	7	39	84	85	85
50	30	14	20	30	50	
		Top CUT	Top CUT		Yard	

1450

362.0	362.7	362.2	362.4	358.9	359.1	358.9
4	6	1	49	84	85	85
50	30	14	19	30	50	
		Top CUT	Top CUT		Yard	

367. 331

Re X-sec Arristrong ST

LT = ELY

RT = WLY - 40'

3475

70	7	8	9	11	10	11
50	30	30	20	20	50	50
				3 1/2 ely walk		

31° RT = ely edge 3.5' wide N+S walk

3470 - 29° RT = end conc slab for trailer

3450

50	6	8	10	10	10	10
	30	30	30	30	30	30
			15 Top cut	18 Toe cut	29 1/2 ely edge slab	31 1/2 ely walk

3441 - 29° RT = begin conc slab for trailer

3425

50	4	6	7	10	10	10
	30	30	30	30	30	30
			13 Top cut	20 Toe cut	29 1/2 ely edge slab	50 yard

3400

50	3	5	6	10	10	10
	30	30	30	30	30	30
			14 Top cut	20 Toe cut	30	50 yard

367.33 X

Re x-sec Armstrong St

LT = ELY

2 ref. wly -

46

TP,

starting Bkfu.
7.66 359.67

Sections same from 4400 sly -

4400

	358.8	358.1	357.5	357.0	355.9	356.7
8 ¹⁵		9 ²	9 ⁸	10 ¹³	11 ⁴	11 ¹⁰
50		30		15	17	50

3498-21² = SE COR N45 3.5' wide CONC WALK

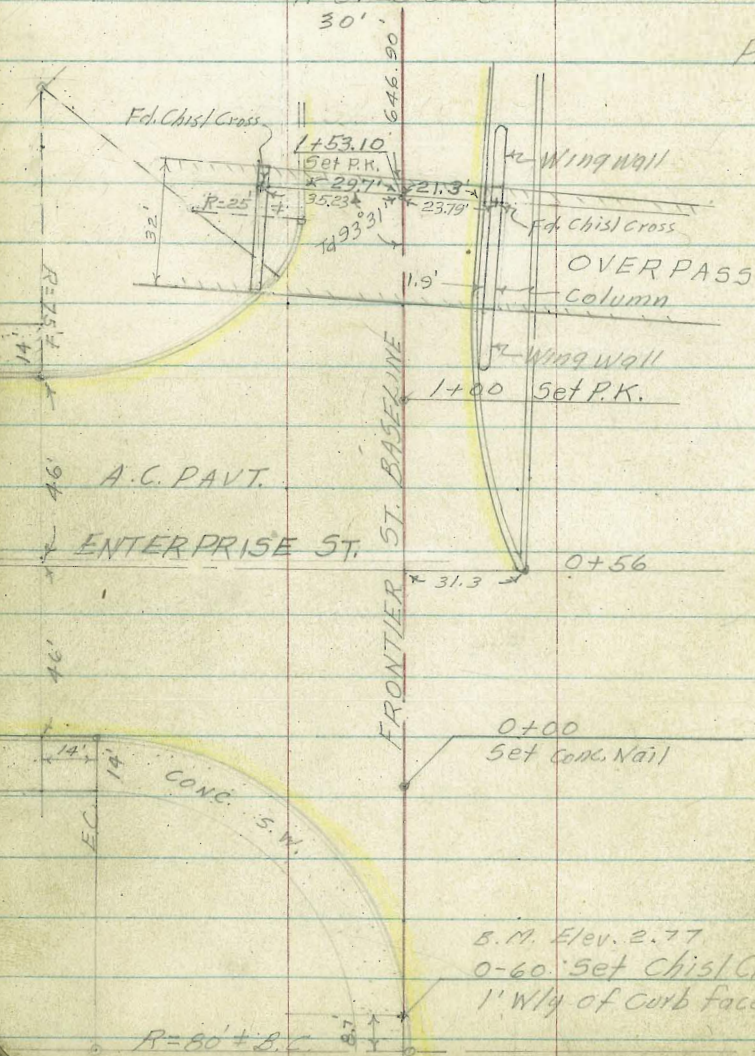
356.48
1080
310
city edge
walk

367.33 - 7

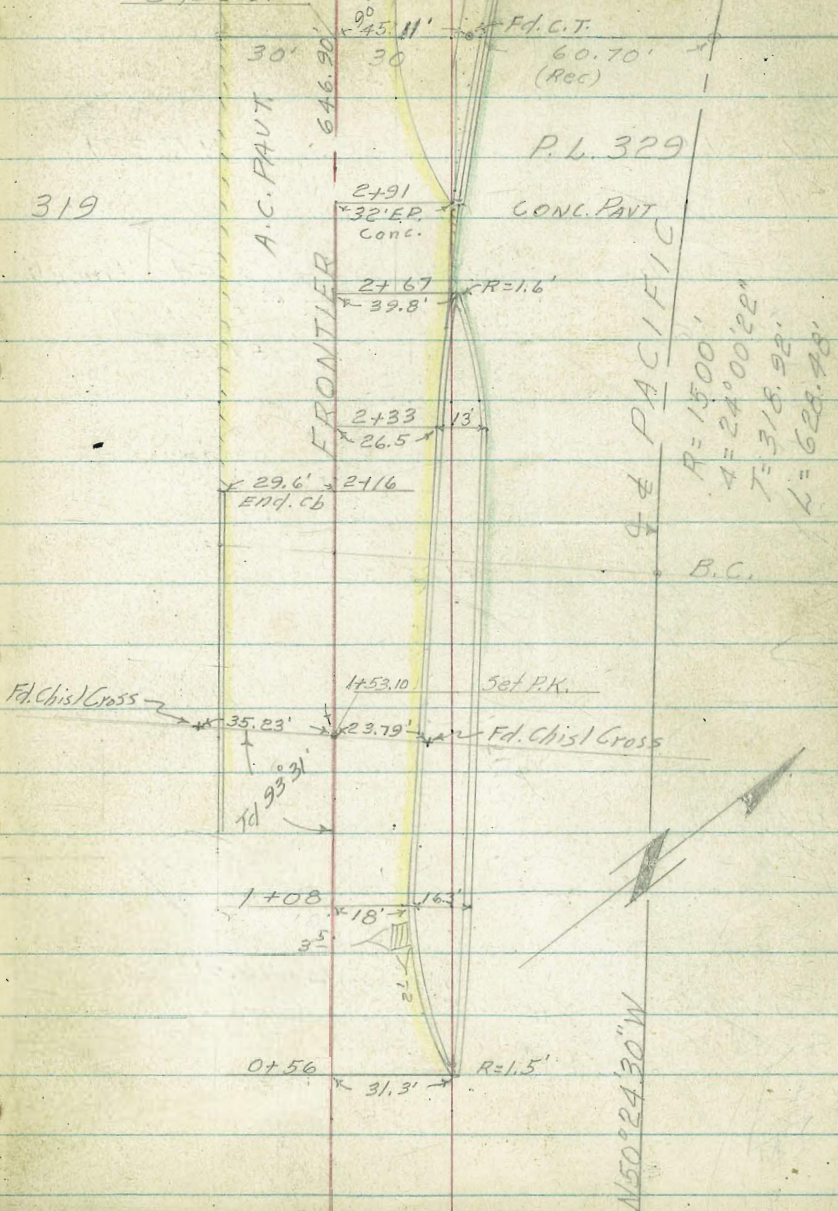
INDEXED
Law
APR 5 - 1954

CROSS SECTIONS FRONTIER ST FOR GRADE EST.
FROM PACIFIC HI-WAY TO ROSECRANS ST.

W.O. 25020



3+88
E/Inlet
T.A. Stampev
3-26-54
3+35.61



9+87
Inlet

30' 15.5'

P.L. 318

P.L. 331

Fd. L. & Disk

M 59.98

Fd. 1" Pipe & Disk

L.S. 2236

29.99

R.E. 4847

8+00

6+87
Inlet

30' 30'

P.L. 319

A.C. PAVT

FRONTIER

FLOW

BY 646.90' BASELINE

Fd. 3/4" Pipe Seta Conc

29.05

4+45.56

L.S. 2317

P.L. 330

17+06.5
Inlet

Flow

P.L. 333

A.C. PAVT

ST.

P.L. 317

P.L. 332

30' 15.5'

30' 30'

13+47
Inlet

Flow

Fd. L. & Disk

30.16

12+67.09

90°

90°

Fd. 2" Pipe
L.S. 2236

P.L. 318

12+41.76

P.L. 331

10+81
Inlet

Flow

10+98 - 27 ft.
& Storm Drain M.H.



P.L. 316

Fd. Nail

29.95

21+99

A.C. PAVT

BASELINE

ST.

Flow

FRONTIER

P.L. 334

Fd 3/4" Pipe in Conc
L.S. 2317

20+67
Inlet

30'

30'

Fd 3/4" Pipe No
Disk

29.86

20+05.57

P.L. 333

30'

155'

P.L. 317

FRONTIER

ROSECRANS

ST.

49

26+79.6 Edge Conc

Edge Conc. Pavt

88° 07' Angle Along Line of Conc.

26+90.65 Set PK

26+76.4 Ch. face CONC.

R=1.75

A.C.

26+76.29

Set Chst

26+61

26'

26+30.6 - 6' 47.76 ch face

26+04.13

26+07 End Ch - 19' Rt.

B.C. R=60' 4"

R=60'

ch. R=60'

26+21.8

End Ch.

R=60' B.C.

Fd. 3/4" Pipe in Conc.

L.S. 2317

Set PK

P.L. 316

P.L. 334

30'

155'

30'

30'

30.02'

Fd. 3/4" Pipe Set in Conc.

L.S. 2317

23+35.83

FRONTIER

Ref FB 2185; Sheet No 3 Opening
 T.P. Sheets 602-609-614
 R.S. Maps 544-901
 Lt. &

32

Rt. 3-26-54

Stampel
 X Huffman
 φ Nordahl
 φ Sherry

CROSS SECTION FRONTIER ST. FOR GRADE
 EST. FROM PACIFIC HI-WAY TO ROSECRANS ST.

W.O. 25020

Sta.	+	H. 1	-	Elev.	
	3.60	8.48	5.52	2.96	2.97
TP			3.94	4.88	4.88
	4.15	8.82			
TP			3.62	4.67	4.67
	4.36	8.29			
TP			4.05	3.93	3.92
	5.21	7.98			
T.B.M.			4.72	2.77	
	3.57	7.49			
TP			4.35	3.92	
	3.60	8.27			
TP			4.21	4.67	
	4.00	8.88			
TP			3.62	4.88	
	5.53	8.50			
B.M.				2.97	

Chisl. Cross Sta. 0-60 & Frontier Produced @
 Wly. side Pacific Hi-Way 1'-back of cb. face
 (see sketch)

Set P.K. P.P. No C-4327 Wly. Side Frontier St.

Set P.K. in Pole No 5 Wly. Side Frontier St

Set P.K. in Floodlight Pole No 7 Wly. Side Frontier St.

B.P. Wly. Curb Ref. @ Kutz & Rosecrans

Lt. & Rt.

3-29-54

X-SEC'S FRONTIER ST.

NOTE Direct Elev. Rod Used

1+05.5 - 18° Rt. Gut @ & 2' x 3' Grate + Cb. Inlet

1.47 2.48
18° 18°
To Grate Cb

1+02 NWLY Curbline Enterprise St.

2.50 2.00 1.99 1.93 1.77 2.48
89° 89° 30 0 18° 18°
Cb G G Cb
B.C. B.C.

& Enterprise St. Lt.
0+56 - 31.3 Rt. & Island Xise @ face Cb.

2.01 2.01 2.01 1.98 1.83 2.06 2.57 2.04 2.03
75 50 30 0 15 31 1/2 31 1/2 33 50
G Cb EP,
Pac.

0+10 SWLY Curbline Enterprise St.

2.45 1.97 1.97 1.98 1.97 1.99 2.06
75 75 30 0 12 31 50
Cb G EP,
Pac.
H.W.M.

B.M.

2.77

Top Christ Cross Sta 0-60 & (see sketch)

X- SEC'S FRONTIER ST.

2+33-26⁵ RT B.C. & Island Curb

262 3,24
262 263
G Ch

2+17⁵ 30⁶ Lt. & Flood/ite Pole N^o-2.

2+16-29⁶ Lt. End Curb

280 280 232
30 296 296
Cb G

2+00

277 277 271 225 247 227 289 280 264 193
50 30 296 296 0 24 24 30 38 38
A.C. Cb G G Cb Cb G

1+46-29⁵ H.E.C. Curb Ret Enterprise St.

267 267 221
30 295 295
Cb G

H.

E

Rt.

53

3-29-54

X - SEC'S FRONTIER ST.

3+06 - 16° Rt. BC AC Pavt

2.07

16°

EP

3+00

2.75 293 293 297 288 313 319 374 371

50 30 291 0 18° 30 32 353 375

EP

EP

Top Top Cb
Ac. S.W.

3.07

376

Gut

Rachway

2+91 - 32° Rt. EP AC & End Curb

3.06 373

320 320

G Cb

2+67 - 39^B Rt. & Nose Island

2.00 3.54

398 398

G Cb

3-29-54

X-SEC. FRONTIER ST.

5+97-16² Rt. & PP. N^o C-4327

5+85^o 31^o Lt. & Flood Light Pole N^o 3

5+00

90	0	89	7	00	48	49	55
2.94	295	295	2.98	3.05	3.52	3.54	3.60
50	30	295	0	158	235	30	50
		EP		EP	Top Conc		
					Pad.		

4+98-23⁵ Rt. & 18' Wide Conc. Pad Gas Sta

4+46-31^o Lt. & Guy Pole

4+45-17¹ Rt. & PP. N^o C-4305

Fd Bolt-PP. N^o C-4305
TP. Sta 4+45 17^o Rt.

4.47

4+00

2.84	290	290	2.77	2.83	3.27	3.62
50	30	291	0	16 ^o	30	50
		EP		EP		

46	50
3.50	3.55
235	335
Top Conc	Top Conc
Pad.	Pad.

3+88-4^o Lt. & 2^o Grate Inlet

-0.30	2.74
45	45
Bot Box	Top Grate

L. E. Rt.
4-2-54

X- SEC'S FRONTIER ST.

6+90-26⁴ Rt. & 2^{5 1/2}" Conc Pad filler to Gas Tank

352
264
+ Conc Pad,

6+87-5' Lt. & 2^{4 1/2}" Grate Inlet

-1.60 2.66
52 37
Bot box To Grate

6+85-26⁷ Rt. & 2^{5 1/2}" Conc Pad & 8" fuel Cap in E

350
261
+ TOP
Conc Pad

6+00

283 291 293 283 295 395 420 450
50 30 296 0 158 30 34 365
EP EP

443
40
Floor Serv.
Sty

X-SEC'S FRONTIER ST.

9+00

8+97- 28 RT. & PP. NO. C-4359

8+47- 30 $\frac{1}{2}$ RT. End Corr. Storage Bldg

Begin Corrugated Storage Bldg

8+09- 30 $\frac{1}{2}$ RT. & 8" Top x 12" Base Conc. Flg
TO Corr. Bldg.

8+00

7+47- 27 $\frac{1}{2}$ RT. & PP. NO. C-4341

7+00

LT. & RT. 56
4-2-59

2.82	2.91	2.97	3.00	3.0	-0.4	-0.4
50	30 $\frac{1}{2}$	0	15 $\frac{1}{2}$	26	30	50
	EP		EP			

2.50	4.67	3.6
30 $\frac{1}{2}$	30 $\frac{1}{2}$	30 $\frac{1}{2}$
flg	Top flg	Grout

2.81	2.82	2.92	2.94	3.65	4.33
50	30 $\frac{1}{2}$	0	15 $\frac{1}{2}$	30	50
	EP		EP		

2.80	2.84	2.70	2.92	3.33	4.18
50	30 $\frac{1}{2}$	0	15 $\frac{1}{2}$	30	50
	EP		EP		

X-SEC'S FRONTIER ST.

TR Top & But Nail Sta 11+00 3.35

11+96-27¹/₂ Rt. & PP. N^o 3

11+00

320	340	335	352	3.5	0.5	-1.0
50	30 ⁰	0	155	25	30	50
	EP		EP			

10+98-27⁰ Rt. & Storm Drain M.H. ^{2'-Dia.}

10+81 25⁰/₄ & 22¹⁰/₄ Grate Inlet

10+46-27¹/₂ Rt. & PP. N^o C-4373

-3.62	3.28	3.40	-3.60
25 ⁰	25 ⁰	27 ⁰	27 ⁰
Bot box	Top Gate	Top M.H.	Fl.

10+00

305	294	291	314	3.1	-0.6	-0.8
50	30 ⁰	0	155	26	30	50
	EP		EP			

9+98-31⁰ Lt. & F. Lite Pak N^o 4

9+87-5⁵/₄ & 29¹⁰/₄ Grate Inlet

-2.65	2.75
5 ⁵	5 ⁵
Bot box	Top Gate

9+71-30⁰ Rt. & 22' Gate To New Pipe Co Yard

3.00	2.3	-0.4
155	30 ⁰	50
EP	& Gate	Dirt.

X-SEC'S FRONTIER ST.

13+54-30⁵ Rt. to 6" Cypress Tree

13+47-6² Lt. to 2⁴" Grate Inlet

Lt. Rt.
4-2-54
-1.94 3.26
6² 6²
Bat box To Grate

13+47-27° Rt. to PR N° C-4405

13+00

373 3.69 3.44 3.77 37 29 1.8
50 30 0 115 26 30 50
EP. EP.

Dirt Drive
12+31-20⁵ Gate to Alamo Pipe Co Yard

3.78 3.4 3.1
155 30° 50
EP. Gate
Dirt

12+00

3.65 3.72 3.61 3.81 3.6 3.2
50 30° 0 115 30 50
EP. EP.

X-SEC'S FRONTIER ST.

15+45-32° Rt. & 10" Cypress Tree

15+14-31° Rt. & 6" Cypress Tree

15+09-30° Rt. & 12" Cypress Tree

30° Lt. & 20' "Opening to Mobile Home"

15+00-31° Rt. & 8" Cypress Tree

363	380	374	384	3.7	2.6	1.2	14
50	30°	0	155	26	30	35	50
	EP		EP				

14+95-27° Lt. & P.P. N° C-0425

14+87-32° Rt. & 8" Cypress Tree

14+71-31° Rt. & 8" Cypress Tree

14+35-31° Lt. & F. Lite Pole N° 6

14+33-31° Rt. & Cypress Tree

14+29-29° Rt. & 6" Cypress Tree

14+26-30° Lt. & 4" Cypress Tree

14+15-30° Lt. & 6" Cypress Tree

14+10-30° Lt. & 8" Cypress Tree

14+05-30° Lt. & 12" Cypress Tree

14+00

368	369	346	380	3.8	2.5	1.0	1.2
50	30°	0	155	26	30	35	50
	EP		EP				

13+99-30° Lt. & 8" Cypress Tree

13+90-29° Rt. & 8" Cypress Tree

X-SEC'S FRONTIER ST

- 16+60-31⁰ Rt. ϕ 6" Cypress Tree
 16+52-31³ Rt. ϕ 12" Cypress Tree
 16+45-26³ Rt. ϕ PP N^o C-4445
 16+37 31³ Lt. ϕ Guy Pole Pole N^o 537/81-H
 16+36 32³ Rt. ϕ 12" Cypress Tree
 16+19-30³ Rt. ϕ 12" Cypress Tree
 16+ 10-31³ Lt. ϕ Deadman
 16+08-29⁰ Rt. ϕ 10" Cypress Tree
 16+02-30⁰ Rt. ϕ 4" Cypress Tree
 16+00
 15+98-30⁵ Rt. ϕ 8" Cypress Tree
 15+87-30⁵ Rt. ϕ 8" Cypress Tree
 15+82-31³ Rt. ϕ 10" Cypress Tree
 15+79-28⁵ ϕ 13" Cypress Tree
 15+73-30⁵ ϕ 6" " "
 15+58-30⁵ Rt. ϕ 6" " "
 15+54-30⁵ Rt. ϕ 8" " "

Lt. ϕ Rt.

4-2-54.

60

3.45	3.65	3.62	3.76	3.6	27	11	1.1
50	30 ⁰	0	155	28	30	35	50
	ER		ER				

4-2-54

X- SEC'S FRONTIER ST,

18+48 - Rt. & 20' Gate to ^{Western Service} Equiv Co yard
18+48 - 31' Lt. & F. Lite Pole No 6

3.82 3.8 22
15.5 30 50
EP

18+00

3.95 3.83 3.67 3.85 4.2 2.4 2.2
50 30 0 15 30 35 50
EP EP

17+95-26³ Rt. & PR. No C-4465

17+32-29⁸ Rt. Begin 6' Cyclope fence

17+14-30² Rt. & 10" Cypress Tree

17+06⁵ - 6² Lt. & 24¹² Gate Inlet

-1.13 3.47
6 6
Botbox Top Gate

17+00

3.85 3.83 3.57 3.88 4.0 2.9 1.7 1.7
50 30 0 15 25 30 35 50
EP EP

16+97-29⁵ Rt & 6" Cypress Tree

16+82-30⁵ & 12" "

16+63-31² & 6" "

4-2-54

X-SEC'S FRONTIER ST.

20+55-31⁵ Lt. TR. N^o 5371808-H
Mobile
20+00-37⁵ Lt. E 43 Gate to Homes Lumber
Shed

370 361 353 373 38.17
50 30 0 15 30 35 50
EP EP

19+38-30^o Lt. E 20^o Gate to Amer. Pipe
Coast. Co. Yard

371 39
0 15 30
EP Gate

19+36-38^o Lt. E 30^o Gate to Homes
Mobile

382 365
38 30 0
EP

19+34-25^o EPP. N^o C-4491

19+00

395 373 371 375 39 22
50 30 0 15 30 45 50
EP EP

X-SEC'S FRONTIER ST

21+30-29⁵ Rt & 30' Gate to ^{20' A.C. Pavement Entr.} ~~Lower~~ Coal Col. Yard

374 397 396
146 271 300
EP. EP. A.C.

21+10-37⁵ Lt. & 30' Gate to ^{Yard} Mobile Homes

3.87 377.371
50 315.302
EP.

21+00-

3.87 371 354 3.76 3.7 3.6
50 307 0 146 30 38
EP. EP.

20+74-76³ Rt. & PPN^o C-4517

20+67-68 Lt. & 2⁴'¹² Grate 10/12

-0.36 336
68 68
Bot box Top Grate

PK T.P.N. 5371808-H
TP. Sta 20+55 Lt 4.78

4-2-54

X-SEC'S FRONTIER ST.

22+12-29^e Rt. End 8" Conc. Ret wall

3.64
29^e
Top Lock

22+00

3.85	3.71	3.67	3.79	38	3.67	280
50	309	0	146	2829'	30 ^e	
	EP.		EP.	Top	Conc	
				Conc Wall	Floor	

22+69-29^e Rt. End Conc. Bunker

22+74-29^e Rt. Begin Conc. ^{Aggregate} found. to Bunker

-29^e Lt. Begin 8" Conc. Ret. Wall

21+70-29^e Rt. End American Conc. Co Bldg

3.67 2.79
29^e 30^e
Top Wall Conc. floor
 yard level

21+40-29^e Rt. Begin American Conc. Co Bldg

X-SEC'S FRONTIER ST.

Lt. & RT. 65
4-2-54

24+00

325 377 377361 380 3.8250 1.85
50 31° 30°0 145 30 38 50
-Pant Line ER
A.I.A.C.

23+96 - 27° RT. & P.P. N° C-4667

23+79 - 29° RT. & 30° Gate Conc. Pipe & Constr Co
to American

378 372 342
145 29° 50
ER & Gate
A.C. Pant.

23+37 - 31° Lt. Begin A.C. Paving Area to
Western Service & Equip Co.

23+32 - 39° Lt. & F. Lite & Tel Pole N° 7-A.

23+00

380 361 365 372 4.0 3.70 3.92
50 30° 0 147 30 32 45
ER ER Conc. Conc
Pant Ramp
To bunker

21+97 - 26° RT. & P.P. N° C-4621

22+61 - 37° Lt. & F. Lite & Tel Pole N° 7

X-SEC'S FRONTIER ST.

25+71-27³ Rt. & PP. No. C-4685

25+50-28³ Rt. & 30' Gate to Loading Platform
Amer Constr.

382 382 380
140 280 388
EP Edge Conc. Conc.

25+00

4.10 382 367 382 4.3 2.5 1.8
50 30.2 0 14± 30 40 50
EP. line EP

24+69-32⁵ Lt. & PP No. J.P. 466B

24+26³ 7± Lt. & 2¹/₂' Grate Inlet

0.99 3.46
7± 7±
Bot box Top Grate

X- SEC'S FRONTIER ST.

26+30 - 6° Lt. face Center Island Nose

4.32 3.79
6° 6°
Cb G

26+22 - 32° Lt. & Tel Pole N° 537178-4

26+21.8° 30° Lt. Begin Curb

3.86 3.67
30° 30°
Cb G

26+07 - 19° Rt. Begin Curb

3.78 4.42
19° 19°
G Cb

26+04.13 - 29° Rt. BC, 6' High Cyclone fence
BC, Rt. + Lt. Prod Lines

3.95 3.78 3.80 3.79 42 1.8
50 30° 0 145 30 40
EP EP
Line

4-2-54

X-SEC'S FRONTIER ST.

2.85
0
Gut.

26+76⁴ Nly Line Curb Center Island.

2.76 3.28 3.36 3.48 2.91
26° 26° 0 22° 22°
G cb cb cb G

26+67-5ly Line Rosecrans

3.38 2.73 2.92 2.89 3.40 3.2 3.58 3.09 3.10 3.10 3.76
60° 60° 30° 22° 22° 0 16° 16° 30° 56° 56°
cb G G cb cb G G G cb

26+50

4.00 3.66 3.08 3.28 3.34 3.84 3.8 3.86 3.40 3.23 3.20 3.86
52° 43° 43° 30° 13° 13° 0 42° 42° 30° 34° 34°
Top Line cb G G cb cb G G G cb

3.8
47±
@fork

26+42³ Curb Line Center 1/5 lanes

4.00 3.52
0 0
cb G

4. € Rt. 69
4-2-54

X- SEC'S FRONTIER ST.

B. M. 2.97 ~~2.97~~ BR Wly Ch. Ref. Kurtz & Rosecrans

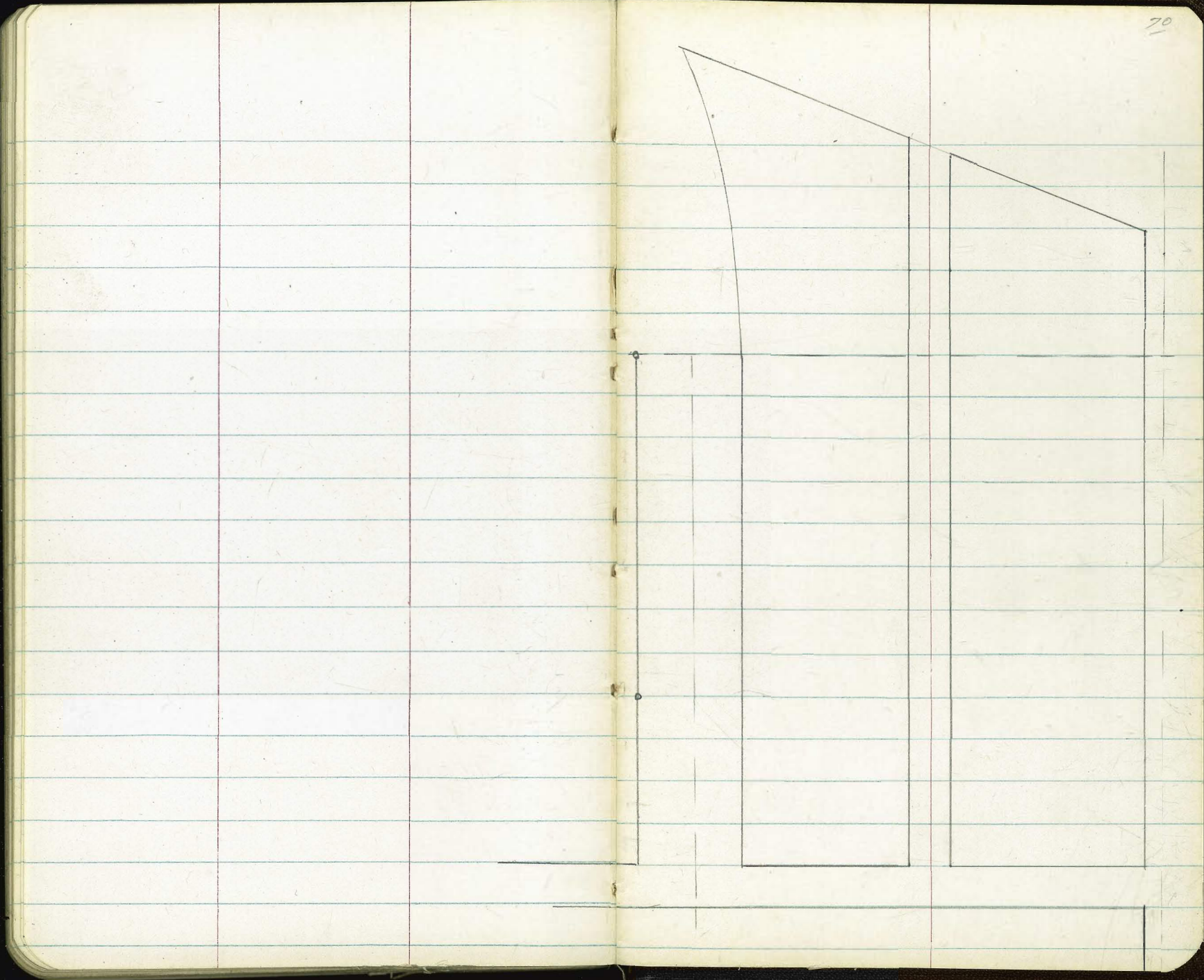
B. M. 3.36 Top Curb Chisl Cross & Sta 26+76.25 See Sketch
Pg 49

26+90.65 Sec. Along Conc. Pavt. SWLY

2.81	2.87	2.88	2.96	3.03	3.16	3.30
75	50	25	0	25	50	75

26+79^e Sec. Along Line Conc. Pavt. Rosecrans

2.66	2.70	2.76	2.82	2.89	3.02	3.16
75	50	25	0	25	50	75



The image shows an open notebook with two facing pages. The pages are cream-colored and feature light blue horizontal ruling. There are two vertical red margin lines on each page, one on the left and one on the right, creating three columns. The notebook is bound in the center, and the dark cover is visible at the edges. The pages are blank, with only a small circled number '77' in the top right corner of the right page.

307.50
 297.50
 148.75

349.94

384.32

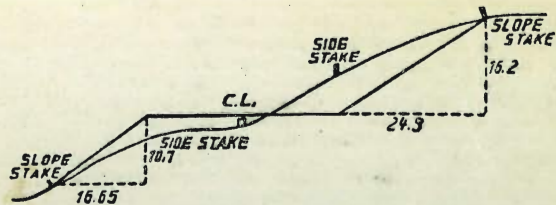
307.50

307.50
 1.0

284.32

297.50
 1.0
 148.75

283.94



DISTANCES FROM SIDE STAKES FOR CROSS-SECTIONING.

SLOPE 1 1/4 TO 1. ROADWAY OF ANY WIDTH.

	0	.1	.2	.3	.4	.5	.6	.7	.8	.9	
0	0.00	0.15	0.30	0.45	0.60	0.75	0.90	1.05	1.20	1.35	0
1	1.50	1.65	1.80	1.95	2.10	2.25	2.40	2.55	2.70	2.85	1
2	3.00	3.15	3.30	3.45	3.60	3.75	3.90	4.05	4.20	4.35	2
3	4.50	4.65	4.80	4.95	5.10	5.25	5.40	5.55	5.70	5.85	3
4	6.00	6.15	6.30	6.45	6.60	6.75	6.90	7.05	7.20	7.35	4
5	7.50	7.65	7.80	7.95	8.10	8.25	8.40	8.55	8.70	8.85	5
6	9.00	9.15	9.30	9.45	9.60	9.75	9.90	10.05	10.20	10.35	6
7	10.50	10.65	10.80	10.95	11.10	11.25	11.40	11.55	11.70	11.85	7
8	12.00	12.15	12.30	12.45	12.60	12.75	12.90	13.05	13.20	13.35	8
9	13.50	13.65	13.80	13.95	14.10	14.25	14.40	14.55	14.70	14.85	9
10	15.00	15.15	15.30	15.45	15.60	15.75	15.90	16.05	16.20	16.35	10
11	16.50	16.65	16.80	16.95	17.10	17.25	17.40	17.55	17.70	17.85	11
12	18.00	18.15	18.30	18.45	18.60	18.75	18.90	19.05	19.20	19.35	12
13	19.50	19.65	19.80	19.95	20.10	20.25	20.40	20.55	20.70	20.85	13
14	21.00	21.15	21.30	21.45	21.60	21.75	21.90	22.05	22.20	22.35	14
15	22.50	22.65	22.80	22.95	23.10	23.25	23.40	23.55	23.70	23.85	15
16	24.00	24.15	24.30	24.45	24.60	24.75	24.90	25.05	25.20	25.35	16
17	25.50	25.65	25.80	25.95	26.10	26.25	26.40	26.55	26.70	26.85	17
18	27.00	27.15	27.30	27.45	27.60	27.75	27.90	28.05	28.20	28.35	18
19	28.50	28.65	28.80	28.95	29.10	29.25	29.40	29.55	29.70	29.85	19
20	30.00	30.15	30.30	30.45	30.60	30.75	30.90	31.05	31.20	31.35	20
21	31.50	31.65	31.80	31.95	32.10	32.25	32.40	32.55	32.70	32.85	21
22	33.00	33.15	33.30	33.45	33.60	33.75	33.90	34.05	34.20	34.35	22
23	34.50	34.65	34.80	34.95	35.10	35.25	35.40	35.55	35.70	35.85	23
24	36.00	36.15	36.30	36.45	36.60	36.75	36.90	37.05	37.20	37.35	24
25	37.50	37.65	37.80	37.95	38.10	38.25	38.40	38.55	38.70	38.85	25
26	39.00	39.15	39.30	39.45	39.60	39.75	39.90	40.05	40.20	40.35	26
27	40.50	40.65	40.80	40.95	41.10	41.25	41.40	41.55	41.70	41.85	27
28	42.00	42.15	42.30	42.45	42.60	42.75	42.90	43.05	43.20	43.35	28
29	43.50	43.65	43.80	43.95	44.10	44.25	44.40	44.55	44.70	44.85	29
30	45.00	45.15	45.30	45.45	45.60	45.75	45.90	46.05	46.20	46.35	30
31	46.50	46.65	46.80	46.95	47.10	47.25	47.40	47.55	47.70	47.85	31
32	48.00	48.15	48.30	48.45	48.60	48.75	48.90	49.05	49.20	49.35	32
33	49.50	49.65	49.80	49.95	50.10	50.25	50.40	50.55	50.70	50.85	33
34	51.00	51.15	51.30	51.45	51.60	51.75	51.90	52.05	52.20	52.35	34
35	52.50	52.65	52.80	52.95	53.10	53.25	53.40	53.55	53.70	53.85	35
36	54.00	54.15	54.30	54.45	54.60	54.75	54.90	55.05	55.20	55.35	36
37	55.50	55.65	55.80	55.95	56.10	56.25	56.40	56.55	56.70	56.85	37
38	57.00	57.15	57.30	57.45	57.60	57.75	57.90	58.05	58.20	58.35	38
39	58.50	58.65	58.80	58.95	59.10	59.25	59.40	59.55	59.70	59.85	39
40	60.00	60.15	60.30	60.45	60.60	60.75	60.90	61.05	61.20	61.35	40
41	61.50	61.65	61.80	61.95	62.10	62.25	62.40	62.55	62.70	62.85	41
42	63.00	63.15	63.30	63.45	63.60	63.75	63.90	64.05	64.20	64.35	42
43	64.50	64.65	64.80	64.95	65.10	65.25	65.40	65.55	65.70	65.85	43
44	66.00	66.15	66.30	66.45	66.60	66.75	66.90	67.05	67.20	67.35	44
45	67.50	67.65	67.80	67.95	68.10	68.25	68.40	68.55	68.70	68.85	45
46	69.00	69.15	69.30	69.45	69.60	69.75	69.90	70.05	70.20	70.35	46
47	70.50	70.65	70.80	70.95	71.10	71.25	71.40	71.55	71.70	71.85	47
48	72.00	72.15	72.30	72.45	72.60	72.75	72.90	73.05	73.20	73.35	48
49	73.50	73.65	73.80	73.95	74.10	74.25	74.40	74.55	74.70	74.85	49
50	75.00	75.15	75.30	75.45	75.60	75.75	75.90	76.05	76.20	76.35	50

THE NATIONAL BLANK BOOK COMPANY

HOLYOKE



MASSACHUSETTS

NEW YORK

CHICAGO

BOSTON

SAN FRANCISCO