

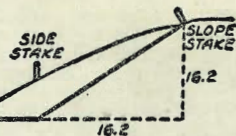
2229

STATE ORDINANCE
V. SECT.

STATE OF OHIO

MICROFILMED

JAN 1 1965
10.7



DISTANCES FROM SIDE STAKES FOR CROSS-SECTIONING
SLOPE 1 TO 1. ROADWAY OF ANY WIDTH

	0	.1	.2	.3	.4	.5	.6	.7	.8	9	
0	0.00	0.10	0.20	0.30	0.40	0.50	0.60	0.70	0.80	0.90	0
1	1.00	1.10	1.20	1.30	1.40	1.50	1.60	1.70	1.80	1.90	1
2	2.00	2.10	2.20	2.30	2.40	2.50	2.60	2.70	2.80	2.90	2
3	3.00	3.10	3.20	3.30	3.40	3.50	3.60	3.70	3.80	3.90	3
4	4.00	4.10	4.20	4.30	4.40	4.50	4.60	4.70	4.80	4.90	4
5	5.00	5.10	5.20	5.30	5.40	5.50	5.60	5.70	5.80	5.90	5
6	6.00	6.10	6.20	6.30	6.40	6.50	6.60	6.70	6.80	6.90	6
7	7.00	7.10	7.20	7.30	7.40	7.50	7.60	7.70	7.80	7.90	7
8	8.00	8.10	8.20	8.30	8.40	8.50	8.60	8.70	8.80	8.90	8
9	9.00	9.10	9.20	9.30	9.40	9.50	9.60	9.70	9.80	9.90	9
10	10.00	10.10	10.20	10.30	10.40	10.50	10.60	10.70	10.80	10.90	10
11	11.00	11.10	11.20	11.30	11.40	11.50	11.60	11.70	11.80	11.90	11
12	12.00	12.10	12.20	12.30	12.40	12.50	12.60	12.70	12.80	12.90	12
13	13.00	13.10	13.20	13.30	13.40	13.50	13.60	13.70	13.80	13.90	13
14	14.00	14.10	14.20	14.30	14.40	14.50	14.60	14.70	14.80	14.90	14
15	15.00	15.10	15.20	15.30	15.40	15.50	15.60	15.70	15.80	15.90	15
16	16.00	16.10	16.20	16.30	16.40	16.50	16.60	16.70	16.80	16.90	16
17	17.00	17.10	17.20	17.30	17.40	17.50	17.60	17.70	17.80	17.90	17
18	18.00	18.10	18.20	18.30	18.40	18.50	18.60	18.70	18.80	18.90	18
19	19.00	19.10	19.20	19.30	19.40	19.50	19.60	19.70	19.80	19.90	19
20	20.00	20.10	20.20	20.30	20.40	20.50	20.60	20.70	20.80	20.90	20
21	21.00	21.10	21.20	21.30	21.40	21.50	21.60	21.70	21.80	21.90	21
22	22.00	22.10	22.20	22.30	22.40	22.50	22.60	22.70	22.80	22.90	22
23	23.00	23.10	23.20	23.30	23.40	23.50	23.60	23.70	23.80	23.90	23
24	24.00	24.10	24.20	24.30	24.40	24.50	24.60	24.70	24.80	24.90	24
25	25.00	25.10	25.20	25.30	25.40	25.50	25.60	25.70	25.80	25.90	25
26	26.00	26.10	26.20	26.30	26.40	26.50	26.60	26.70	26.80	26.90	26
27	27.00	27.10	27.20	27.30	27.40	27.50	27.60	27.70	27.80	27.90	27
28	28.00	28.10	28.20	28.30	28.40	28.50	28.60	28.70	28.80	28.90	28
29	29.00	29.10	29.20	29.30	29.40	29.50	29.60	29.70	29.80	29.90	29
30	30.00	30.10	30.20	30.30	30.40	30.50	30.60	30.70	30.80	30.90	30
31	31.00	31.10	31.20	31.30	31.40	31.50	31.60	31.70	31.80	31.90	31
32	32.00	32.10	32.20	32.30	32.40	32.50	32.60	32.70	32.80	32.90	32
33	33.00	33.10	33.20	33.30	33.40	33.50	33.60	33.70	33.80	33.90	33
34	34.00	34.10	34.20	34.30	34.40	34.50	34.60	34.70	34.80	34.90	34
35	35.00	35.10	35.20	35.30	35.40	35.50	35.60	35.70	35.80	35.90	35
36	36.00	36.10	36.20	36.30	36.40	36.50	36.60	36.70	36.80	36.90	36
37	37.00	37.10	37.20	37.30	37.40	37.50	37.60	37.70	37.80	37.90	37
38	38.00	38.10	38.20	38.30	38.40	38.50	38.60	38.70	38.80	38.90	38
39	39.00	39.10	39.20	39.30	39.40	39.50	39.60	39.70	39.80	39.90	39
40	40.00	40.10	40.20	40.30	40.40	40.50	40.60	40.70	40.80	40.90	40
41	41.00	41.10	41.20	41.30	41.40	41.50	41.60	41.70	41.80	41.90	41
42	42.00	42.10	42.20	42.30	42.40	42.50	42.60	42.70	42.80	42.90	42
43	43.00	43.10	43.20	43.30	43.40	43.50	43.60	43.70	43.80	43.90	43
44	44.00	44.10	44.20	44.30	44.40	44.50	44.60	44.70	44.80	44.90	44
45	45.00	45.10	45.20	45.30	45.40	45.50	45.60	45.70	45.80	45.90	45
46	46.00	46.10	46.20	46.30	46.40	46.50	46.60	46.70	46.80	46.90	46
47	47.00	47.10	47.20	47.30	47.40	47.50	47.60	47.70	47.80	47.90	47
48	48.00	48.10	48.20	48.30	48.40	48.50	48.60	48.70	48.80	48.90	48
49	49.00	49.10	49.20	49.30	49.40	49.50	49.60	49.70	49.80	49.90	49
50	50.00	50.10	50.20	50.30	50.40	50.50	50.60	50.70	50.80	50.90	50

Distance of slope stake from side or shoulder stake for any width roadway, slope 1 to 1. If ground is nearly level, the cut or fill at side stake is located by the double entry method in left column and top row. The number in body of table in same row and column gives distance from side stake to slope stake. If ground is not level estimate the difference in elevation between the side stake and slope stake, lower target by this amount if cut, elevate if fill. Add this amount to cut or fill and find distance in table. Set up rod at this point, and line of sight should cut target. If it does not make the slight adjustment necessary.

TABLE XIII—CORRECTIONS FOR TANGENTS AND EXTERNALS

These corrections are to be added to the approximate values, found by dividing the tangent, or external, for a 1° curve (Table VIII) by the degree of curve, in order to obtain the true tangents, or externals. Intermediate values may be obtained by interpolation.

FOR TANGENTS ADD

Central Angle	DEGREE OF CURVE													
	5°	10°	15°	20°	25°	30°	35°	40°	45°	50°	55°	60°	65°	70°
10°	.03	.06	.09	.13	.16	.19	.22	.25	.28	.31	.34	.38	.42	.46
15°	.04	.10	.14	.19	.24	.29	.34	.39	.45	.51	.53	.58	.63	.68
20°	.06	.13	.19	.26	.32	.39	.45	.51	.58	.65	.72	.79	.84	.90
25°	.08	.16	.24	.33	.40	.49	.58	.67	.75	.83	.90	.99	1.06	1.14
30°	.10	.19	.29	.39	.49	.59	.69	.79	.89	.99	1.09	1.20	1.29	1.39
35°	.11	.22	.34	.47	.58	.69	.79	.89	.99	1.09	1.20	1.29	1.42	1.54
40°	.13	.26	.40	.53	.67	.80	.93	1.06	1.20	1.34	1.49	1.64	1.79	1.94
45°	.15	.30	.44	.60	.76	.91	1.06	1.21	1.37	1.52	1.70	1.87	2.04	2.21
50°	.17	.34	.51	.68	.85	1.02	1.19	1.36	1.54	1.72	1.91	2.10	2.29	2.48
55°	.19	.38	.57	.76	.95	1.14	1.32	1.52	1.72	1.92	2.14	2.35	2.56	2.77
60°	.21	.42	.63	.84	1.05	1.27	1.49	1.71	1.94	2.17	2.38	2.60	2.83	3.07
65°	.23	.46	.69	.93	1.16	1.40	1.64	1.88	2.13	2.38	2.63	2.88	3.13	3.39
70°	.25	.51	.76	1.02	1.28	1.54	1.80	2.06	2.33	2.60	2.88	3.16	3.44	3.72
75°	.27	.56	.83	1.12	1.40	1.69	1.98	2.27	2.57	2.87	3.16	3.47	3.78	4.09
80°	.30	.61	.91	1.22	1.53	1.84	2.15	2.46	2.78	3.10	3.44	3.78	4.12	4.46
85°	.33	.66	1.00	1.33	1.68	2.02	2.36	2.70	3.05	3.40	3.77	4.14	4.55	4.89
90°	.36	.72	1.09	1.45	1.83	2.20	2.57	2.94	3.32	3.70	4.10	4.50	4.91	5.32
95°	.39	.79	1.19	1.55	2.00	2.40	2.80	3.20	3.61	4.02	4.40	4.98	5.38	5.83
100°	.43	.86	1.30	1.74	2.18	2.62	3.06	3.50	3.95	4.40	4.88	5.37	5.85	6.34
110°	.51	1.03	1.56	2.08	2.61	3.14	3.67	4.21	4.76	5.31	5.86	6.43	7.01	7.60
120°	.62	1.25	1.93	2.52	3.16	3.81	4.45	5.11	5.77	6.44	7.12	7.80	8.50	9.22

FOR EXTERNALS ADD

Central Angle	DEGREE OF CURVE													
	5°	10°	15°	20°	25°	30°	35°	40°	45°	50°	55°	60°	65°	70°
10°	.001	.003	.004	.006	.007	.008	.009	.011	.012	.014	.015	.017	.018	.020
15°	.003	.007	.010	.014	.018	.023	.027	.032	.037	.043	.049	.054	.061	.067
20°	.006	.011	.017	.022	.028	.034	.038	.045	.051	.057	.063	.070	.076	.083
25°	.009	.018	.027	.036	.046	.056	.065	.074	.083	.093	.106	.120	.127	.135
30°	.013	.025	.038	.051	.065	.078	.090	.103	.116	.129	.149	.170	.179	.188
35°	.018	.035	.054	.072	.096	.109	.131	.153	.175	.197	.213	.230	.247	.264
40°	.023	.046	.070	.093	.117	.141	.172	.203	.234	.265	.277	.290	.315	.341
45°	.030	.060	.093	.119	.153	.184	.216	.254	.289	.325	.351	.378	.411	.445
50°	.037	.075	.116	.151	.189	.227	.266	.305	.345	.384	.425	.467	.508	.550
55°	.046	.093	.142	.188	.236	.283	.332	.381	.420	.479	.530	.582	.641	.700
60°	.056	.112	.168	.225	.283	.340	.398	.457	.516	.575	.636	.697	.774	.851
65°	.067	.135	.204	.273	.343	.412	.483	.554	.625	.697	.771	.845	.922	1.01
70°	.080	.159	.240	.321	.403	.485	.568	.652	.735	.819	.906	.994	1.08	1.17
75°	.095	.182	.266	.353	.440	.528	.617	.707	.797	.891	.987	1.07	1.18	1.29
80°	.110	.220	.332	.445	.558	.671	.787	.903	1.02	1.13	1.25	1.38	1.50	1.62
85°	.128	.259	.391	.524	.657	.790	.926	1.06	1.20	1.34	1.47	1.62	1.76	1.91
90°	.149	.299	.450	.603	.756	.910	1.07	1.22	1.38	1.54	1.70	1.87	2.03	2.20
95°	.174	.350	.522	.706	.885	1.06	1.25	1.43	1.62	1.80	1.99	2.18	2.38	2.58
100°	.200	.401	.604	.809	1.01	1.22	1.43	1.64	1.85	2.06	2.28	2.50	2.73	2.96
110°	.268	.536	.806	1.08	1.35	1.63	1.91	2.20	2.48	2.76	3.05	3.35	3.66	3.96
120°	.360	.721	1.08	1.45	1.82	2.19	2.57	2.95	3.33	3.72	4.11	4.50	4.91	5.32

Cushman to Littlefield
via Naples
Dorcas to
Knoxville

Alignment - Morena Blvd

1-54

MORENA BLVD - TIES TO AERIAL SURVEY

55

SURVEY PROPERTY TIES RELATION TO "P" LINE

58

ALIGNMENT "L" LINE - CUSHMAN TO BALBOA

59

Roberts
Cota
Mauro
Pike
5-7-52
W.O.# 20966

Survey for Proposed Alignment of
Morena Boulevard.
From Cushman St. to Littlefield St.

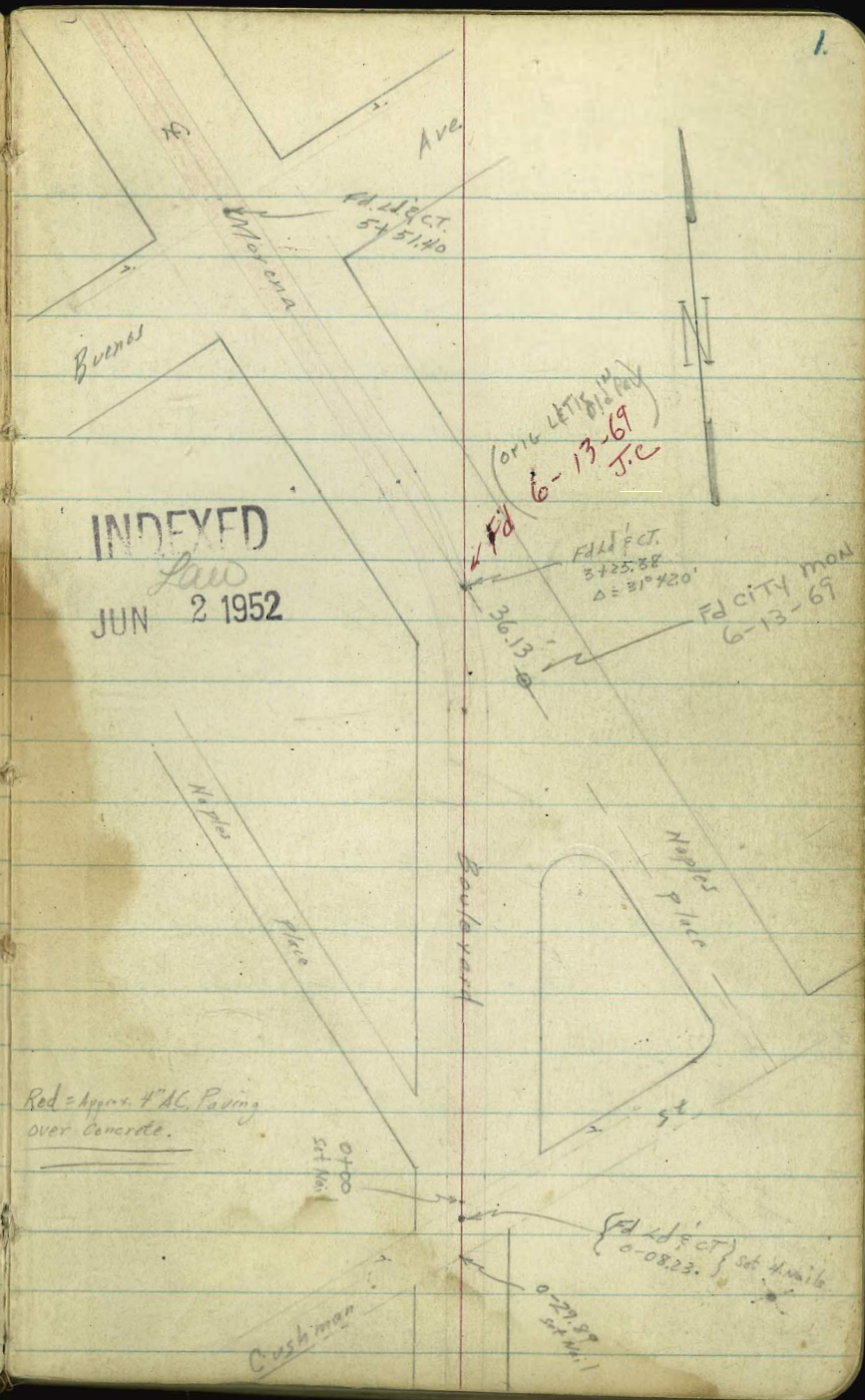
Note:
Line coordinated in Coordinate
Book No. 7 of McKee's file.

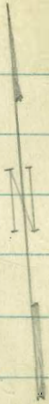
51.40
48.60
2.80

74.62
75.38

" P "

1.





Naples Street

Moravia

Street

Dorcas

Bowling

50 x 20 x 10' pie 94.92.34

fd. Conc. Mem. 94.58.07

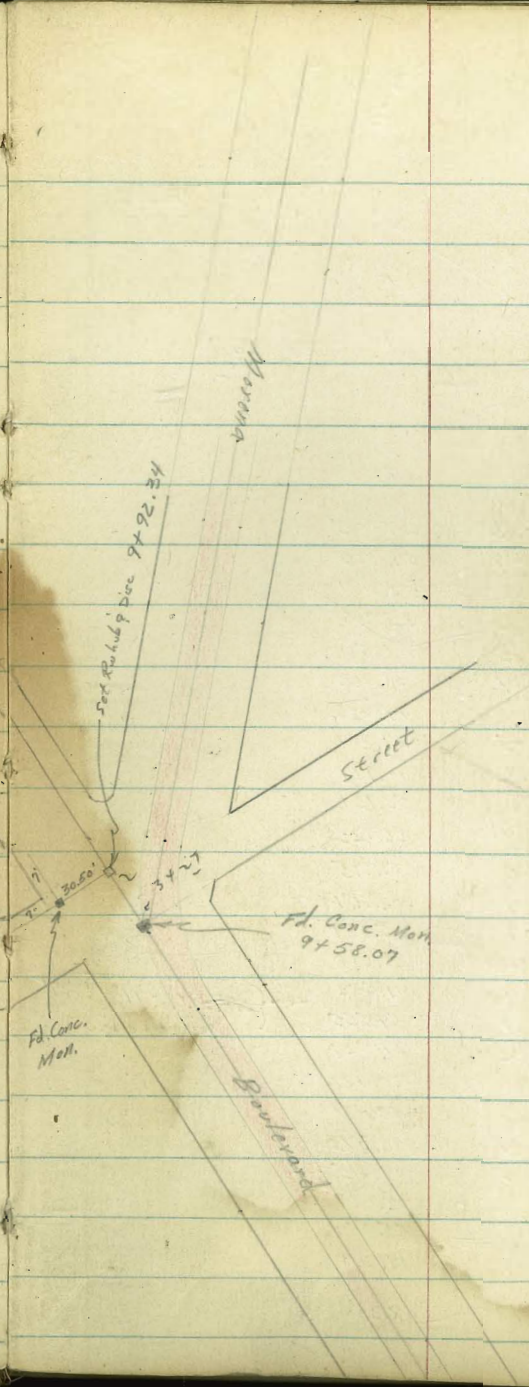
fd. Conc. Mem.

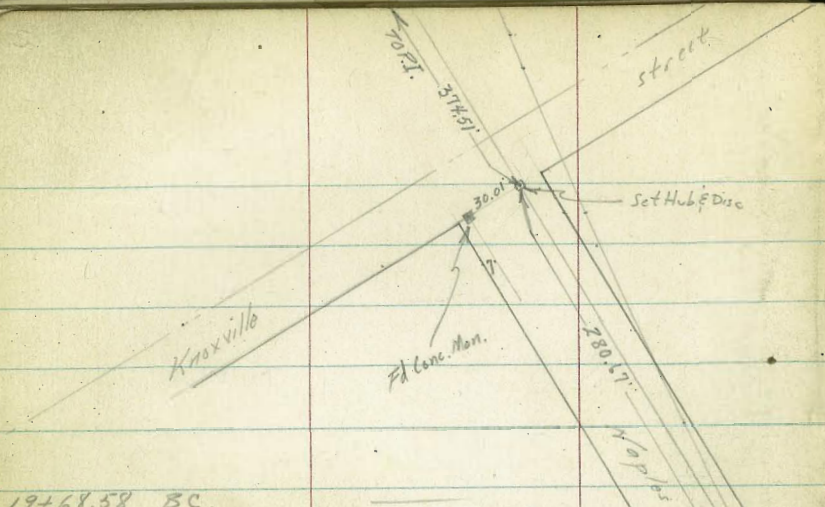
30.50

34.27

92.34
54.07
34.29
3.26
97.53

92.34
54.07
34.29
3.26
97.53



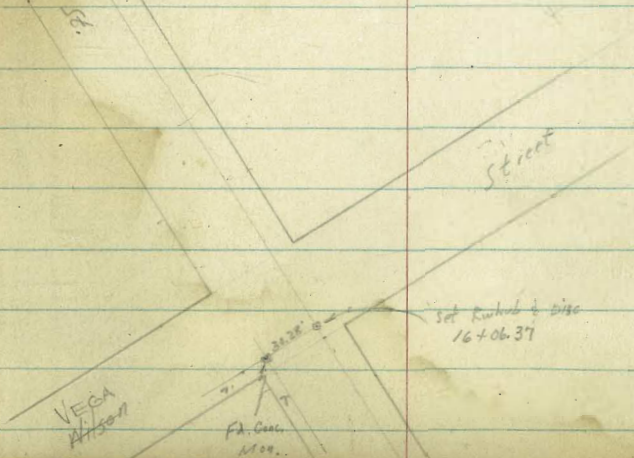


$R = 2000'$
 $\Delta = 36^\circ 16.6'$
 $L = 1266.29'$
 $T = 655.18'$
 $\text{Rate} = 0.85744'$ per ft. Arc.
 $50 \text{ Arc} = 50 \text{ chord}$
 $\frac{1}{2} = 18^\circ 08.3'$

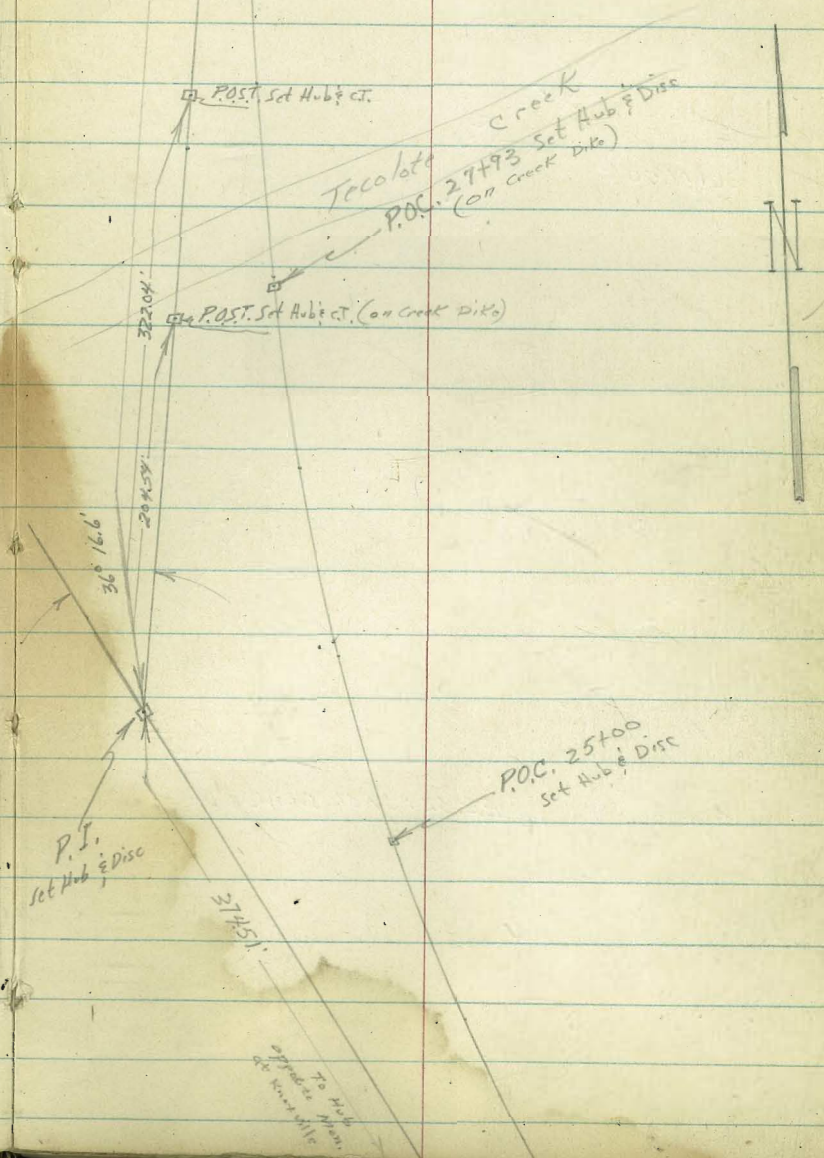
19+68.58 B.C.		
20+00	0°	27.003'
20+50	1	09.975
21+00	1	52.947
21+50	2	35.719
22+00	3	18.891
22+50	4	01.863
23+00	4	44.835
23+50	5	27.807
24+00	6	10.779
24+50	6	53.751
25+00 P.O.C. Set Hub & Disc	7	36.723
25+50	8	19.675
26+00	9	02.667
26+50	9	45.639
27+00	10	28.611
27+50	11	11.583
28+00	11	54.555
28+50	12	37.527
29+00	13	20.499
29+50	14	03.471
30+00	14	46.443
30+50	15	29.415
31+00	16	12.387
31+50	16	55.359
32+00	17	38.331
32+24.87 E.C.	18	08.300

27+93 P.O.C. $11^\circ 42.53'$
 Set Hub & Disc

B.C. 19+68.58 Set Hub & Disc



65511
TR. EC.



POST. Set Hub & Disc

Tecalote Creek
P.O.S. 27493 Set Hub & Disc
(on Creek Dike)

POST. Set Hub & Disc (on Creek Dike)

P.I.
Set Hub & Disc

P.O.S. 25400
Set Hub & Disc

37451

To Hub
at
Sanville

See opposite Page

5

Blvd.

36+92.13 Set Chisel cross on Conc.
(4" AC)

Fdld'ct.
44+19.18

36+18.50
Set Chisel Cross

Fdld'ct.

N

N

Santa Fe
Ry. W.

Paul St.

Blvd.

39+12.27
Set Chisel Cross

E.C. 32+34.87 Set Hub & Disc

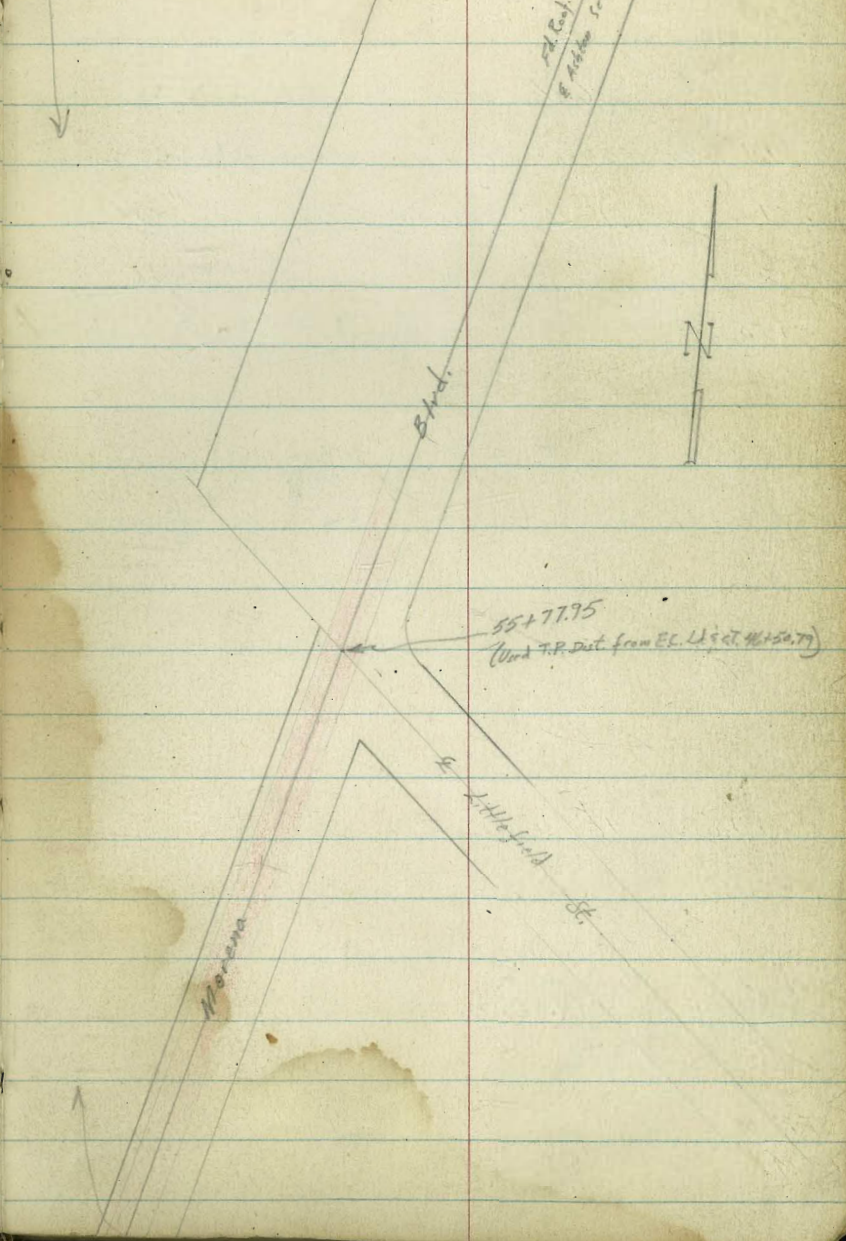
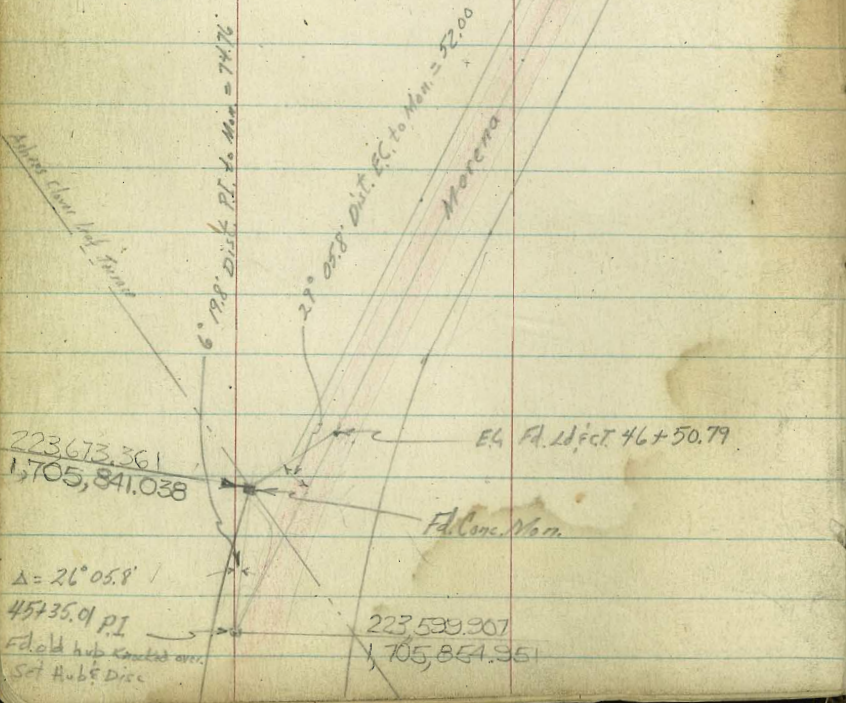
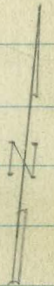
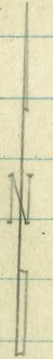
65514
70 FT.

Blvd.

Blvd.

From Opposite Page

See opposite page

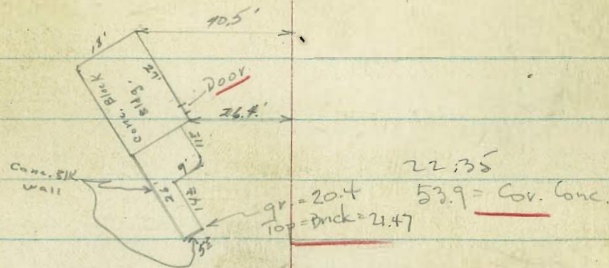


0+95.3 26.4 Lt to Bldg

0+87.7 53.7 Rt Begin 13' Conc. Island for Gas Pump

0+57 31' Lt to center T. Pole # 4784

0+50



21.1	20.9	20.7	20.0	20.45	20.68	20.18	21.0	21.3
6.1	6.3	6.5	7.2	6.76	6.53	6.73	6.2	5.9
75	50	20	15	8		12	50	75

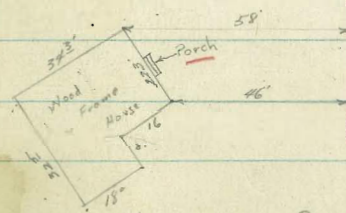
No. 2 Line Cushman & Morona

0+00 (Section Rt to Lt to R)

22.1	22.1	19.9	20.33	20.58	20.41	20.1	21.0	20.7
5.1	5.1	7.3	6.88	6.63	6.80	7.1	6.2	6.3
50	20	15	8		12	22	50	75

0-03 16.5 Lt to center 10" Acacia

0-10.6 76' Lt to House - ground at Cor. 22.1 Floor 24.20



0-29.89 (Rt Lt to R)

22.7	21.4	19.7	20.20	20.47	20.24	19.8	20.1	21.1
7.5	5.8	7.3	7.01	6.74	6.77	7.4	6.8	6.1
50	41	30	8		12	25	50	75

T.P. 5.66 27.21 X 3.14 21.55 ✓

B.M. 8.50 24.69 ✓

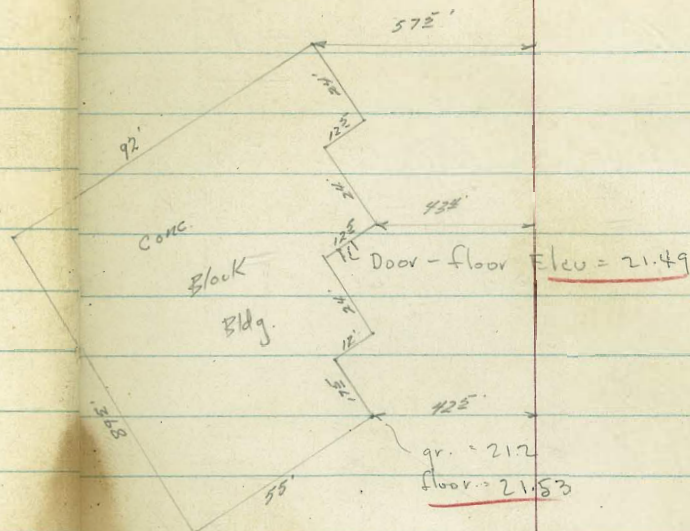
16.19 Conc. Mon
SWly Trip Corner
Darcas, Morona & Maphs

27.21 X

2438 27° Rt. to center P.P. # 412077H

2415 31° Lt. to center P.P. # P4964

1491 42° Lt. to Bldg.

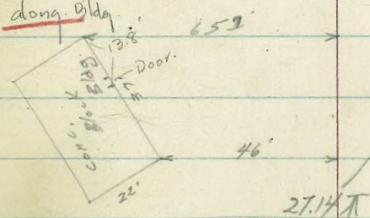


1471 54° Rt. End 15' conc. Island.

1450

21.1	20.3	20.69	20.96	20.81	21.1	22.0	22.2
6.0	6.8	6.45	6.18	6.33	6.0	5.1	4.9
54	16	8	12	23	24	54	

22.28
54.3 = Cov. Conc



1435 46° Lt. to Bldg.

T.P. 3.74 27.14 N 3.81 23.40

21.48
floor. 46
gr.

1423 26.8 Rt. Center P.P. # JP4965

1400

21.57	20.9	20.8	20.1	20.54	20.80	20.6d	20.9	21.1	22.2
6.3	6.4	7.1	6.67	6.41	6.60	6.3	5.5	5.0	
29 = floor	28	21	15	8	12	27	45	45	

Bldg. at door

27.21 N

27.21 N

Cont'd From Page 8

3+50.8 4852t to House 22.62 21.0
 Floor Elev. 49.5
 Elev. 91. at Cor.

3+38 2924 to center P. Pole #4944

3+25.38 PI 27' R on split to Center P. Pole # SP 4945
 Sect. on split

3+00

2+892 55' Lt to Bldg. 21.78 21.38
 Floor Elev. 55.1
 Elev. Conc. at Cor.

2+50

2+00

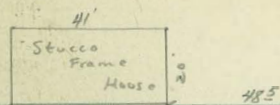
27.14A

Lt

E

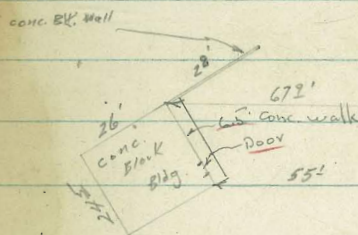
Lt

9



21.4	20.51	21.34	21.34	21.5	22.6	23.0
5.7	6.63	5.80	5.80	5.6	7.5	4.1
58	21.5	2	2	17	50	75

21.4	20.7	20.74	21.33	21.35	22.2	22.8
5.7	6.4	6.40	5.81	5.79	4.9	4.3
56	20	15.6	72	72	50	75



20.54	21.15	21.1	20.5	20.84	21.22	21.38	21.9	22.3
15	6.0	7.8	6.6	6.80	5.82	5.76	5.2	4.8
AC	AC by Bldg.		18	8		12	50	75

20.98	21.40	20.4	20.9	20.90	21.13	21.12	22.0	23.0
29	5.7	6.7	6.38	6.01	6.02	5.1	4.1	
Req. AC.	AC by Bldg.		8		12	50	75	

27.14A

New Data - in Red. 9-2-55 70.

4450

4447

28² Lt to center P. Pole # 4924

4428^E

37² Rt to right of sign pole (Steel)

4426

out 9-55
50² Lt to Pole

4407

47⁶ Rt to near side Foster & Kleiser Sign Board

4408.6

38¹ Rt to old Foundation

4400

T.P. 10

462

28.02 T

2.74

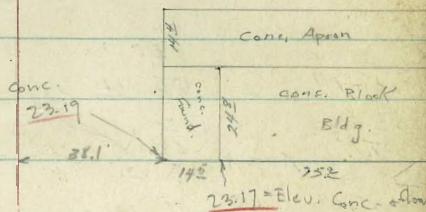
23.40

28.02 T

3450

27.14 T

21.9	21.8	21.1	20.82	21.09	20.97	21.3	22.5	22.9
61	62	6.9	720	6.83	7.05	6.7	55	5.1
75	22	20	10		10	21	38	57



21.6	21.5	20.74	21.11	21.13	21.5	22.8	23.0
6.4	6.5	7.28	6.91	6.89	6.5	5.2	5.0
63	20	10		10	23	50	75

20.9	21.0	20.66	21.29	21.29	21.5	22.9
6.2	6.1	6.48	5.85	5.85	5.6	4.2
50	38	15		70	22	75

27.14 T

Cont'd From Page 10

5438

5417

5408

5407

T.P.

5406

5400

4478

4470

60 Rt to Guy Pole
35' Lt to fire hydrant ✓

69 27.72 K 716 2086

49' Lt to center P. Pole # 305755H

28' Rt to center P. Pole # JP4917

42' Rt to Gas Station

28.02 K

Lt

R

Rt 11

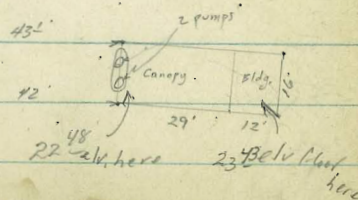
22.1	21.3	20.6	20.72	20.85	20.73	21.1	22.7	23.2
5.6	6.4	7.1	7.00	6.87	6.99	6.6	5.5	4.5
100	50	26	10		10	23	45	100

22.0	21.0	20.9	20.72	20.87	20.73	21.72	23.1
5.7	6.7	6.8	7.00	6.83	6.99	6.0	4.6
100	50	32	10		10	37	100

23.7	23.0	21.0	20.75	20.91	20.76	21.5	22.1	23.1
4.0	4.7	6.7	6.97	6.81	6.96	6.2	5.6	4.6
100	40	27	10		10	28	50	100

27.72 K

22.9	23.0	20.9	20.78	20.94	20.79	22.0	22.2	22.8
5.1	5.0	7.1	7.24	7.08	7.23	6.0	5.8	5.2
75	37	23	10		10	20	42	75



28.02 K

Contd From Page 11

6+00

5+89 - 13' Rt. - E Bell MH.

5+80 47° Rt to Bldg.

5+93.5 45° Lt to Avocado Trees

5+81.5 { 78° Lt to Avocado Trees
62° Lt to Avocado Trees
45°

5+66 { 78° Lt to Avocado Trees
62° Lt to Avocado Trees
45° Lt to Avocado Trees

5+61.5 - See sheet 1 for Bldg. on Rt.

5+60 26° Lt to center P.Pole # 4898

5+58 37° Lt begin Picket Fence

4+45 (con sta)
5+45 - New Sect. thru Ser. Sta. (Shell oil c)

5+45 31° Rt to Deadmark - GONE

5+50 54° Rt to Range Pole # P2004

5+45

27.72

Lt

Rt

Rt

12

24.3	23.9	23.1	20.5	20.63	20.84	20.61	20.7	22.0	22.3
3.4	3.8	4.6	7.2	7.09	6.88	7.11	7.0	5.7	5.4
58	36	17	15	10		10	20	28	47

Steel frame
449
126

479

23.03
c/v
Floor

23.25 22.60 22.20
94° 78° 56°
Floor sta ← behind
pumpkin

22.76 21.63 20.80 21.21 - Elev.
56.7 37.4 12
conc. at step edge of
conc.

23.4	23.1	22.2	20.7	20.73	20.86	20.75	21.0	22.4	22.3	22.8
4.3	4.6	4.5	7.0	6.99	6.86	6.97	6.7	5.3	5.4	4.9
100	50	26	18	10		10	22	26	50	100

27.72

6+50

T.P. 191 24.47A 5.16 22.56

6+46⁵ 51 Lt to 4" Grapefruit Tree

6+49 70² Lt to House

6+40.2 41² Rt to House

6+33 36² Lt Fence now on conc Foundation

6+14 38² Rt & 6² Conc Drive

6+07 36⁸ Lt & 3' Conc Walk

6+05 29' Rt to center P.P. # 2454H

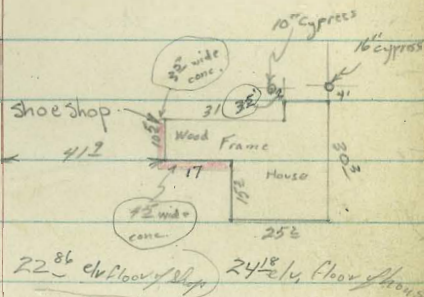
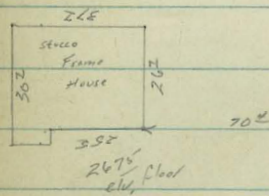
6+02⁵ Lt to House

27.72A

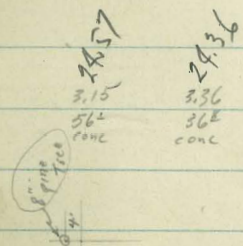
Lt

24.5	23.4	23.1	20.1	20.50	20.78	20.54	20.2	21.5	22.4
0	1.1	1.4	1.4	3.97	3.69	3.93	4.3	3.0	2.1
70	36	20	18	10		10	19	27	57

24.47A



22.52	22.21
5.20	5.45
382	872
conc	conc



27.72A

22.9	22.4	20.6	20.4	19.8	20.30	20.59	20.31	17.8	20.0	19.9
1.6	2.1	3.9	1.1	1.7	4.7	3.88	4.16	1.7	1.1	1.6
75	38	36	24	16	10		10	17	26	17

7+00

6+92

51 Lt to 1" Avocado

39 Lt to 2" Avocado

6+87

65 Lt to 4" Peach Tree

6+83[±]

36[±] Lt ~~Conc wall continues~~ - No fence
Picket fence changes to wire

6+77[±]

51 Lt to center 4" Orange Tree

6+62

51 Lt to center 5" Orange Tree

6+61

49[±] Lt to Lath house

6+60.5 - 53' Lt. - E of Sly. of 17.5' Sign - F. & K.

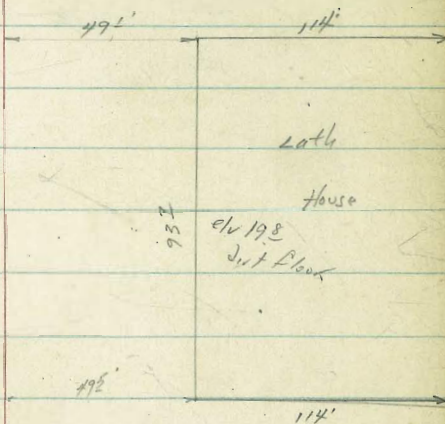
6+59

29[±] Lt to center P. Pole # 4864

6+53

36[±] Lt £ 3' Conc Walk

24.47 N



24.82
+0.53
67
conc

23.81
0.66
36[±]
conc

24.47 N

7+83 36[±] Lt End Picket on conc. foundation

7+72 88[±] Lt & House ← → ← →

7+74 { 50' Lt 2" Citrus Tree
45' Lt 3" Peach "
40' Lt 8" Peach "

7+69 50' Rt & 2' conc Walk

7+64 { 68' Lt 4" Peach Tree
59' Lt 5" Avocado "
50' Lt 4" Peach "

7+65.5 34.2' Rt - Beg. 8" cb

7+50

7+59 38.5' Rt - sly. of cyclone fence

7+57 34[±] Rt begin 8" curb

7+55 29[±] Lt to center P.Pole # 94844

7+58 36[±] Lt Begin Picket fence on conc foundation

7+36.1

7+08 47[±] Lt to Bldg

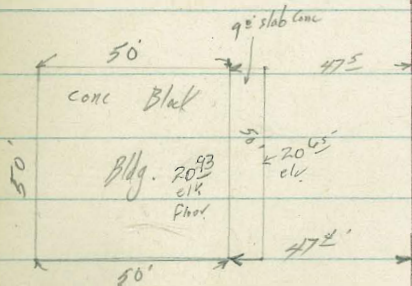
7+03 36[±] Lt End fence on conc foundation

7+03 { 65' Lt to 2" Peach
51' Lt to 2" Avocado

24.47

22¹⁵
88⁵
elv. floor

20.81	20.63	19.6	19.5	19.93	20.23	19.86	19.2	19.5	19.10
3.66	3.84	4.9	5.0	4.54	4.24	4.61	5.3	5.0	4.9
47 [±]	38 [±]	32	18	10		10	17	20	49



24.47

Contd from Page 15

8+08 57° NE cor con Area before Bldg
(La Jolla Ranch Mfg)

8+58 57° Lt to SE cor Bldg

8+57 29° Lt to center P. Pole # 4824

8+55 - 35.9' Lt. = end fence + planting

8+50

8+36 49° Rt to Lath House

8+35 - 51.2' Rt. - sly of 24' sign - F+K.

8+27 61° Lt to House

8+12 42° Rt to Bldg

8+09 - 37.3' Lt = Beg. Lath fence + planting

37.8' Lt = sly of cyclone fence

8+08 34° Rt End 8" curb (not set)

8+00

7+91 28° Lt to 14" Acacia Tree

24/47X

Lt

1968

578

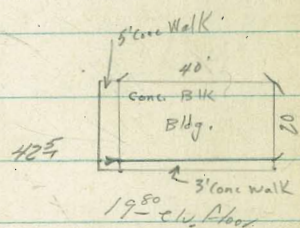
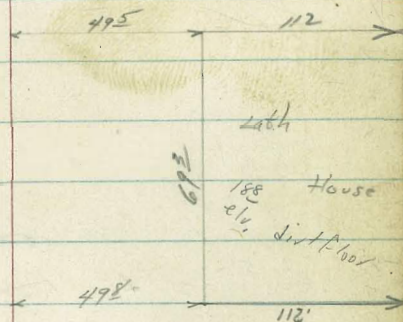
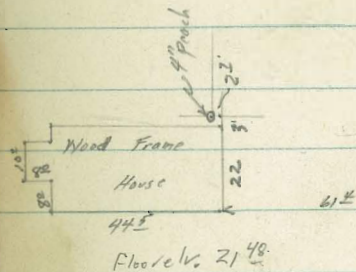
Floor
elv.

1856

338

AC parking
Area

18.00	18.4	18.6	19.3	19.44	19.43	19.06	18.5	18.8	19.1
65	61	5.9	5.2	5.03	5.04	5.41	6.0	5.7	5.3
65	33	29	21	10		10	17	23	49.5



18.7	18.7	18.9	19.6	19.80	19.51	18.8	19.2	19.8	20.0
58	58	5.7	4.6	4.67	4.96	5.7	5.3	4.7	4.5
75	50	27	10		10	17	22	43	75

24/47X

Rt 16

Cont'd From Page 16

9+99.8 56.7 Lt to Bldg.

check 6.02 22.21 π 7.15 16.19 Mon.

9+63 36⁶ Lt to fire hydrant

9+58.07

9+55[±] 30' Lt to Center P. Pole # 4800

9+25[±] 52' Lt to other end sign

9+08[±] 72⁶ Rt. to Bldg.
342 Lt to one end Foster & Kleiser Sign

T.P. 457 23.34 π 5.70 18.77

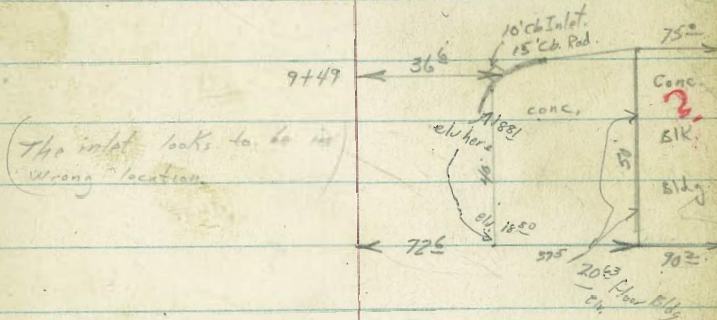
9+00 30' Lt to Guy Pole

8+91 30⁶ Rt to center P. Pole # JP 4833
24.47 π



Rt 17

16.7	16.9	17.3	18.6	18.99	18.24	18.1	18.9
6.6	6.4	6.0	4.7	1.35	5.10	5.2	4.4
100	50	24	8		28	50	100



The inlet looks to be in wrong location.

17.5	17.8	17.6	18.0	18.6	19.07	18.60	18.2	18.6
7.0	6.7	6.9	5.5	5.09	5.40	5.87	6.3	5.9
70	38	22	18	92		11	20	402

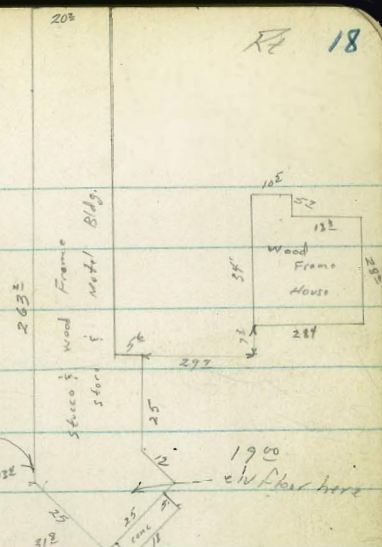
24.47 π

Cont'd From Page 17

Lt

Q

Rt 18



19⁰⁰ elev floor here

19⁰⁰ elev floor here

10+69 31' Rt to Bldg

10+50

16.8	16.9	17.5	17.0	17.0	18.1	18.2	18.6
5.4	5.3	4.7	5.2	4.6	4.1	3.8	3.5
75	50	30	25	25	50	50	67

10+46 29' Lt to center P.Pole # 584789

45' Lt to 8" cypress tree

10+36 30' Lt to cypress tree 6"

10+33 27' Lt to 11" cb with 6" opening on inlet (N. End)

4.61	17.98	16.81
7.60	4.23	5.40
27 [±] Invert	27 [±] cb	27 [±] Gutt

10+00

17.2	17.1	17.2	17.9	18.69	17.57	18.3	18.4
5.2	5.1	5.0	4.8	3.52	4.64	3.9	3.6
75	50	25	27 [±]	27 [±]	64 [±]	66	75

22.21A

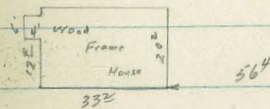
22.21A

Cont'd From Page 18

Lt

Rt 19

11+73 56^L Lt to House



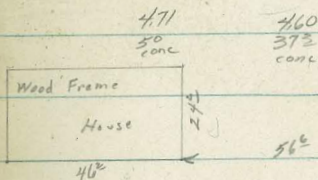
11+50^S 296 Lt to center P. Pole # 4775

11+50

178	178	173	176	176
44	44	49	46	46
75	50	25		132

11+47^E 37^L Lt to 10" Acacia
29^L Lt to 6" Acacia

11+28^E 37^L Lt & 4' conc walk



11+19 56^L Lt to House

11+10 11^E Rt to center P. Pole # SP 4780

11+01 30^L Lt to center 15" Acacia Tree

11+00 37^L Lt Begin picket fence

163	167	170	176	172
57	55	52	46	45
75	50	24		132

22.21 A

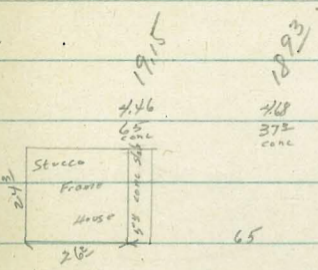
22.21 A

Cont'd From Page 19

13400 37⁵ Lt Wood picket changes to wire fence

LT Q 17 20
 182 182 5.185 182
 4.7 4.7 5.1 5.6 5.8 5.8 5.4 5.8
 75 50 30 27 3 4 134

12794 37³ Lt Q 2 strip Drive 12 strips 7 overall



12766 65 Lt to House

12750

188 184 183 179 172 172 184 181
 4.8 5.0 5.3 5.7 5.9 5.9 5.2 5.5
 75 50 30 27 3 5 134

12749 30⁶ Lt to center P. Pole # 4745

12700

183 182 182 178 174 174 183 177
 5.3 5.4 5.4 5.8 6.0 6.2 5.3 5.9
 75 50 37 25 3 5 134

11791^E 30' Lt to center 8" cypress

T.P. 5.80 23.61 T 4.40 17.81 23.61 T

11782^E 36² Lt 4 conc walk

18.23 18.17
 3.98 4.04
 50 362
 Conc Conc

22.21 T

22.21 T

13+52^E 37^E Rt to House

13+51^E 27^E Rt & 2^E Conc Walk

13+50 { 64' Lt 14" Tree
51^E Lt 6" Apricot
37^E Lt Begin picket Fence

13+38 37^E Lt end wire fence

13+37 41 Lt to center 15" Pepper Tree

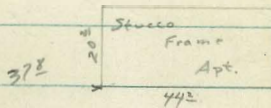
13+15 41^E Lt to center Pepper Tree 15"

13+10 37^E Lt & 2^E Conc Walk

13+03 65^E Lt to House

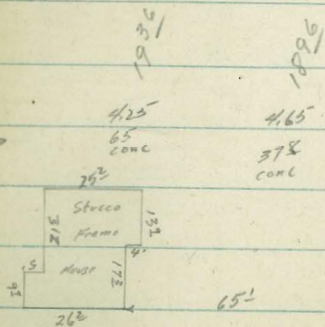
13+03 72 Lt to center 15" Pepper

23.617



18.14	18.23
5.47	5.38
37 ^E conc	40 ^E fine
18.1	18.1
5.5	5.5
28	40
5.7	5.7
75	75

19.2	18.9	18.4	18.1
4.4	4.7	5.2	5.5
75	50	27	5.5



23.617

Contd From Page 21

Lt

R

R

22

14+14E 37² Lt begin picket fence with 1x1' conc BK Posts.

14+13E 36' Lt & 2' conc walk

14+10 60.9' Lt to House

14+00

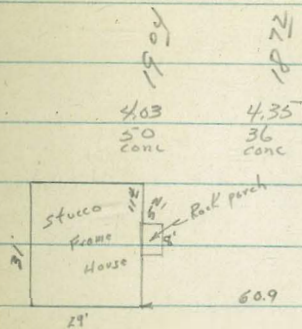
13+99 37³ Lt end of Picket fence

13+83 28' Rt & 2³ conc. walk

T.P. 3.85 23.07 π 4.39 19.22

13+63 37⁴ Lt & 3' conc. walk

23.61 π



19.4	19.4	18.72	18.91	17.5	17.4	17.1
3.7	4.0	4.9	5.1	5.6	5.7	6.0
75	50	26		12	50	75

17.90	17.90
5.7	5.17
28 conc	50 conc

1. 23.07 π

19.67	19.14
3.94	4.47
75 conc	37.5 conc

23.61 π

15733^S

12' Rt & 7' conc. Drive

15704^S

27^E Rt to House

15700

14784^E

12^E Rt & 7' Conc Drive

14755

27^E Rt to House

14750

14749

31^L Lt End Picket begin chain link fence

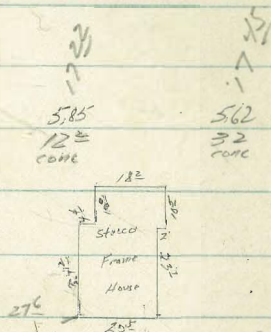
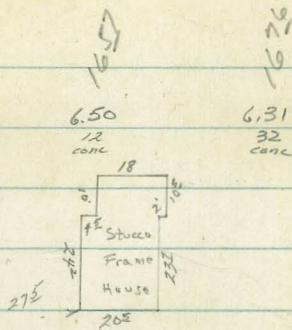
31^E Lt to center P. Pale # 94725

23.07A

18 ^E	17 ^E	17 ^E	16 ^E	16 ^E	17 ^E	16 ^E	16 ^E	16 ^E	21
4.9	5.3	5.4	6.2	6.4	6.1	6.2	6.7	6.9	7.5
75	50	32	28		4	26	50	75	

18 ^E	18 ^E	18 ^E	17 ^E	17 ^E	17 ^E	17 ^E	17 ^E	16 ^E	14 ^E
4.3	4.5	4.5	5.4	5.7	5.8	6.0	6.3	6.3	7.5
75	50	37	28		26	50	75		

23.07A



Cont'd From Page 23

Lt

£

Rt 24

16400

17.1	16 ¹	16 ³	15 ²	15 ⁶	15 ⁴	15 ⁴	14 ⁹
42	46	50	56	57	59	59	64
75	50	29	27		12	33	75

15499 12² Rt End fence
36² Lt End fence

15478

37² Lt £ 3² Conc walk

16 ⁹⁸	16 ⁹⁴
428	432
412	372
conc	conc

15467 59² Lt to House



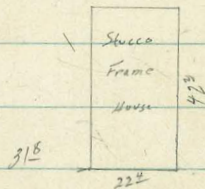
15459

12² Rt £ 11² Conc Drive

16 ¹⁷	16 ¹⁸
5.09	5.08
12	32
conc	conc

15453²

31² Rt to House



15450

11² Rt begin Picket fence
37² Lt End wire fence begin Picket fence

17 ⁸	17 ³	17 ¹	16 ³	16 ¹	16 ²	15 ⁹	15 ⁵
3.5	4.0	4.2	5.0	5.2	5.1	5.4	5.8
75	50	32	29		12	50	75

TP

2.04 21.26

19.22

21.26

17403 13° Rt Begin Conc. Apron
37° Lt Begin Conc. Apron

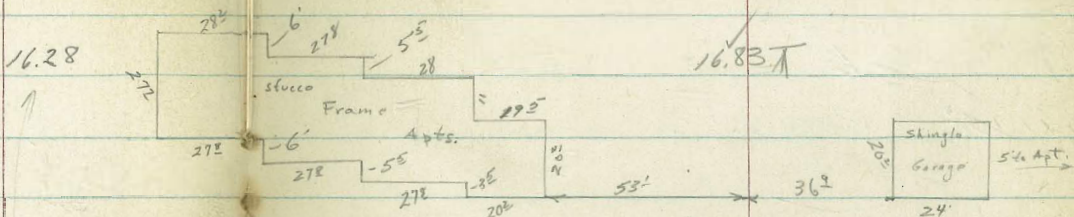
15.42
1.41
5.3
Floor

14.25
2.58
37°
conc.

3.70
1.9
conc.

13.13
4.10
36°
Floor

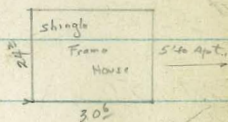
T.P. 055. 16.83 T
53° Lt to Apt. Bldg.
17403 36° Rt to Garage



17400

15.1	14.9	14.0	13.1	13.1	12.8	13.1	12.2	11.7	11.7
2.3	3.3	4.2	5.1	4.8	5.4	5.1	5.5	5.7	5.9
75	50	30	25	15	2	25	50	75	75

16+65 I 37° Rt to House



T.P. 196 18.24 T 498 16.28 Pole

16+50

16.5	16.1	15.2	15.0	14.6	14.4	13.1	13.4
4.1	5.2	5.6	6.3	6.7	6.9	7.5	7.9
75	50	32	27	25	50	70	70

16+51 33° Lt to center P. Pole # 84699

21.26 T

21.26 T

Cont'd From Page 25

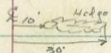
Lt

R

R

26

18+00 15' Rt to Hedge 200' long 37' Rt to Apricot 5"



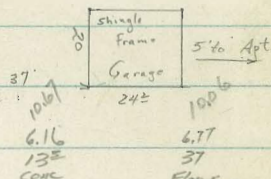
25	43	6.1	6.7	6.8	70	6.8	7.7	82	9.0
75	50	29	27	17		8	30	50	75

17+99 33' Lt to Center P.Pole # p4665

17+95 13' Rt End Conc Apron

6.57	6.75
132	372
conc	Floor

17+75 70' Lt to Center 18" Pepper Tree
37' Rt to Garage
13' Rt Begin Conc Apron



15.1	13.8	13.0	11.6	11.9	11.6	8.1	6.16	6.77
1.7	3.0	3.0	5.2	4.9	5.2	5.5	132	37
75	50	32	29	18	5	25	conc	Floor

17+50

17+37 37' Lt & 3' Conc Walk

0.83	2.80
75	372
conc	conc

17+36 15' Rt to Center Pepper Tree - 24"

17+23 13' Rt End Conc Apron
37' Lt End Conc Apron

1.41	2.76	4.22	4.11
532	372	132	262
Floor	conc	conc	Floor

16.83

16.83

18+35 29[°] Rt to 10" Tree
20[°] Rt to slender "

18+31⁵ 6[°] Rt to 8" Dead Tree

18+28³ 12[°] Rt & 3[°] Conc walk

18+24 26[°] Rt to 4" Tree

18+18 21[°] Rt to ^{Yak?} 5" ~~tree~~ Tree

18+14² 41[°] Rt to Center 8" Popper Tree
38[°] Rt to House

18+12 22[°] Rt & 2[°] Conc Walk

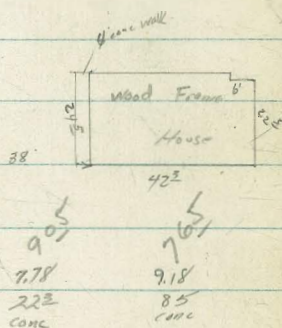
18+10 13[°] Rt Begin Cypress Hedge
6[°] Rt to center 12" Acacia

18+05^E 37[°] Rt to ²⁹ 7[°] X 29' conc. Garage platform

16.81A

8.84
7.99
12[°]
conc

8.49
8.34
36[°]
conc



9.07
7.78
22[°]
conc

7.67
9.18
85
conc

8.94
7.89
37[°]
conc

9.02
7.81
66[°]
conc

16.83A

Cont'd From Page 27

19+00

18+92

15³ Rt & Two-Strip Pine { 15 strips
6⁴ overall

18+88

13⁵ Rt End Cypress Hedge
6² Rt to 16" Acacia Tree

T.P. 2.56 9.18π 10.21 6.62

18+78⁵

28 Rt to 24" Pepper Tree

18+63⁵

65 Rt to 14" Acacia

18+60³

39³ Rt to House

18+52

42⁵ Lt to 17" Pepper Tree

18+51

50 Rt to 4" Acacia

18+50

16.83π

Lt

Rt

Rt 28

5.7	5.7	7.1	3.2	3.8	3.5	3.5	3.2	2.9	4.0	5.1
75	68	60	27	25	15	2		13	40	75

6.71
2.47
15²
conc

6.71
2.60
50²
conc

9.18π

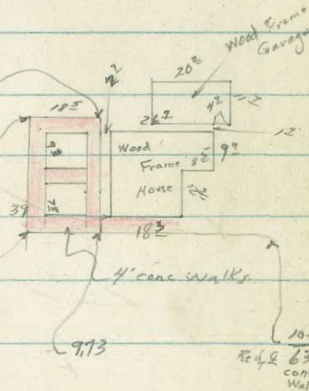
9.93

10.03

9.52

9.73

10.03
8.42
conc.
walk



9.2	9.7	8.5	9.1	8.1	8.1	8.3	7.8	6.4
7.1	7.1	8.3	9.0	8.7	8.8	8.5	9.0	10.3
75	45	29	25	13		3	35	75

16.83π

Cont'd From Page 28

19+68⁵⁸ BC

19+66 14th Rt to center 9" Pepper Tree
26th Rt to center 4 1/2" Palm Tree

19+58⁵ 5th Rt to Center 26" Palm Tree

19+56 8th Rt to center 30" Palm Tree

19+50

19+49 34 Lt to 2 Power Pole # P4637

19+30⁵ 13th Rt to Center Pole # P4641

19+13 25th Rt to 16" Elm Tree

19+05⁵ 39th Rt to Unfinished Bldg.

9.18X

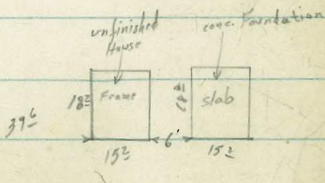
Lt

Rt

Rt

29

4	0	2	0	2	2	2
7.8	7.2	5.8	5.6	5.8	5.8	5.3
75	35	25	14		35	75



9.18X

22+00

01 /	41 /	4 N	4 N	m N	01 N	m N	01 N
6.1	6.4	5.8	5.8	5.6	4.9	5.6	5.9
75	41	15		19	40	50	75

21+50

01 /	41 /	4 N	01 N	N /	01 /	4 N
6.3	6.4	5.8	5.9	5.7	6.3	5.9
75	31	11		35	39	75

T.P.

5.35

7.85 X

6.68

2.50

7.85 X

21+00

m /	41 /	01 /	41 /	01 /	N /
7.9	7.8	7.6	7.7	7.6	7.5
75	30	9		35	75

20+50

N /	m /	41 /	m /	41 /	41 /
8.0	7.9	7.8	7.9	7.8	7.6
75	28	7		35	75

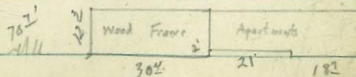
20+00

27 Rt to 30" Palm Tree

01 /	01 /	4 N	m N	01 N	01 N	4 N
8.2	7.4	7.1	6.9	7.2	6.6	6.8
75	30	28	6		35	75

19+83

70³ Rt to Apartments

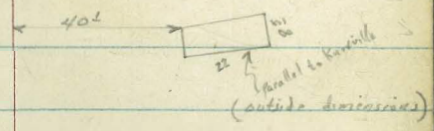


9.18 X

9.18 X

T.P. 424 824 π 3.85 400 NW cor. Fund

23+61 40' R to corner of foundation (wall 1'8" thick)



23+50

1.9	2.8	2.6	3.2	3.4
6.0	5.1	5.3	4.7	4.5
7.5	3.5		3.5	7.5

23+00

16' L to fence

2.1	2.5	2.8	2.8	3.0
5.8	5.4	5.1	5.1	4.9
7.5	3.5		3.5	7.5

22+87

5' L begin cypress hedge

22+86²

13' L to corner R. goes to save
E hits 6' Chain Link fence topped 5 strands

barbed wire - fence parallel to Knoxville

22+50

0.1	0.1	0.1	0.1	0.1
N	N	N	N	N
5.7	5.6	5.4	5.3	4.9
7.5	3.5		3.5	7.5

Check

5.99 1.86 = 2.06

Conc. Mon. Slightly Knoxville & wly 7 Line Naples

7.85 π

7.85 π

Contd From Page 31

26+50

T.P. 10.67 15.16 \bar{x} 3.75 4.49

26+00

Hedge begun at 22+87 paralleling fence and on this
 { E crosses cypress hedge row parallel to fence

25+89 $\frac{1}{2}$

{ E crosses Chain Link fence with 3 strands barb
 fence parallel to Knoxville.
 84 $\frac{1}{2}$ ft to corner ad wire

25+50

25+00⁰⁰ P.O.C. 61 $\frac{1}{2}$ ft to fence

24+54

{ E crosses cypress hedge parallel to Knoxville
 { Hedge begins at Hedge to left and goes Ely for road

24+50

24+00 36 $\frac{1}{2}$ ft to fence

8.24 \bar{x}

Lt

E

Rt

32

K ¹	K ²	K ²	K ⁶	K ⁶
11.1	11.0	11.0	10.6	10.6
75	35		35	75

15.16 \bar{x}

row.	5	8	1	0	2
	3.5	3.8	4.1	4.0	4.2
	4.7	4.4	4.1	4.2	4.0
	75	35		35	75

3.3	3.6	3.6	3.9	4.3
4.9	4.6	4.6	4.3	3.9
75	35		35	75

3.2	3.2	3.4	3.8	4.1
5.0	5.0	4.8	4.4	4.1
75	35		35	75

3.0	3.1	3.3	3.2	3.2
5.2	5.1	4.9	5.0	5.0
75	35		35	75

3.1	3.1	3.0	3.2	3.6
5.1	5.1	5.2	5.0	4.6
75	35		35	75

8.24 \bar{x}

Cont'd From Page 32

(58' L x 4.100' R x E Willow Trees)

28+35

Top Dike

8.2

9.0

8.4

6.4

7.7

7.0

7.2

6.6

8.8

7.5

75

35

35

75

28+23

Creek Bottom

4.1

4.3

4.8

4.4

4.7

11.1

10.9

10.4

10.4

10.5

75

35

35

75

28+02

Creek Bottom

3.9

4.4

4.6

4.6

4.8

11.3

10.8

10.6

10.6

10.4

75

35

35

75

27+93⁰⁰

F.O.C. Top of Dike

9.0

10.0

9.7

10.0

10.9

6.2

5.2

5.5

5.2

4.3

75

35

35

75

27+84

Bottom of Dike, Treadle Creek

5.2

5.3

5.3

5.3

4.9

10.0

9.9

9.9

9.9

10.3

75

35

35

75

27+50

4.7

4.9

4.5

5.1

4.7

10.5

10.3

10.7

10.1

10.5

75

35

35

75

27+00

4.3

4.3

4.6

4.4

4.5

10.9

10.9

10.6

10.8

10.7

75

35

35

75

15.16 X

15.16 X

Lt

R

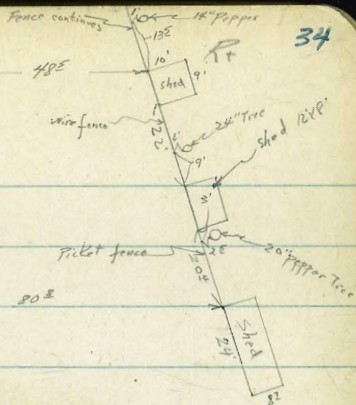
R

33

Cont'd From Page 33

2t

sta. 30+43E



34

29+86³ 80² R to shed (shed parallel to Moreña Blvd)

T.P. 363 879A 3.61 5.16

29+50

A ³	A ²	A ⁵	A ⁶	A ⁸
4.5	4.6	4.3	4.2	4.0
58	35		35	75
S.F. ROW Fence				

29+00

A ⁴	A ⁸	A ²	A ⁶	A ⁸
4.0	3.8	4.6	4.0	4.0
67 ⁺	25		35	75
Sartate Row Fence				

28+55

A ⁴	A ¹	A ⁵	A ⁸	A ⁸
3.4	5.1	3.3	3.0	3.0
75	35		35	75

28+45 Bottom like (secondary wash)

A ⁸	A ⁹	A ⁰	A ²	A ⁴
6.0	5.9	5.8	5.6	5.4
75	35		35	75

T.P. 3.09 8.77A 9.48 5.68

8.77A

15.16A

31+45 E Crosses fence ↓ to Marina Blvd.
(This fence Ends on fence crossed by E 31+23)

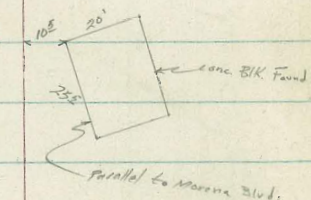
31+37^E 5'4" to 6" Acacia Tree

31+35^E 10^E Rt to 8" Foundation

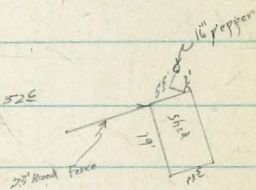
31+23 E Crosses fence (fence ends at Santa Fe ROW fence)

31+00 41^E to Santa Fe ROW fence

2.8	2.6	4.0
1.0	6.2	4.8
79	70	40



30+84 52^E Rt to shed (shed parallel to Marina Blvd)



30+50 45^E to Santa Fe ROW fence

4.2
4.6
45.5

4.1	4.9	4.9
4.7	4.9	4.9
	35	75

30+00 50^E Lt to Santa Fe ROW Fence

1.1	3.2	3.8	4.9
87	79	58	50

4.3	4.7	4.7
4.4	4.4	4.7
25	35	75

Contd From Page 35

Lt

£

Rt 36

33+02 - Opposite So. End Santa Fe Bridge C263

33+00

7.9	11.0	3.1	3.3	3.5	3.6
01	7.0	4.9	4.7	4.5	4.4
77	61	35		35	75

32+50

2.1	3.2	3.2	3.5	3.6
5.9	4.8	4.8	4.5	4.4
65 Total RR. Fill	30		35	75

T.P. 4.94 8.01 π 5.72 3.07

EC Hub

8.01 π

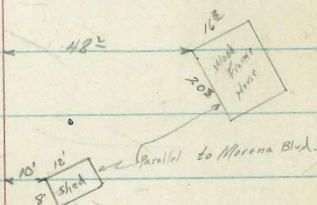
32+34.87 E.C.

32+21 40 Lt @ 5' x 5' Manhole

32+24.5 48' Rt to House

32+15 38' Lt Santa Fe ROW fence Ends

32+01 10' Rt to Shed



32+00 37' Lt Santa Fe ROW Fence

7.7	2.3	3.0	3.3	3.5	3.7
1.1	6.5	5.8	5.5	5.3	5.1
76	65	57		35	75

31+50

39 Lt to Santa Fe ROW Fence

3.5	3.5	3.6	4.0
5.3	5.3	5.2	4.8
39		35	75

8.79 π

8.79 π

PI chise
cross

TR 7.01 11.61x 3.41 4.60

1.5 1.1 2.4 3.1 3.2 5.2 4.9 3.9 3.8
6.5 6.9 5.6 4.9 4.8 2.8 3.04 4.07 7.2
66 78 38 22 27 372 626 75
Par. Edge Par. Edge

35715 4 4 1/2 corner of Sign board

35700

8.11 1.3 1.4 2.6 2.9 3.5 4.6 4.88
+0.1 6.7 6.6 5.4 5.1 4.5 3.4 3.13
76 65 44 36 35 38 742
Par. Edge

34794 11 Rt to Foster Kleser Sign board

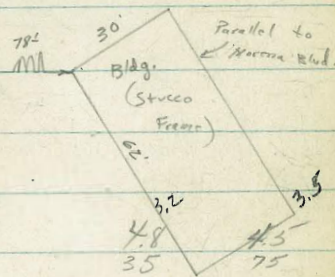
34750

0.7 2.0 3.1 3.2 3.6
73 5.0 4.9 4.8 4.5
65 27 35 75

34705 78 Rt to Bldg

34700

7.1 0.8 0.8 3.1 2.9 3.2 3.5
0.9 7.2 7.2 4.9 5.1 4.8 4.5
77 65 50 35 35 75



33750

99.4 0.0 1.3 3.0 3.2 3.6 3.9
8.6 8.1 6.7 5.0 4.8 4.4 4.1
62 52 39 24 35 75

36+47 36² Rt begin wire fence

36+45² 29¹ Lt to center P Pole #4098

36+41 63¹ Rt to House

36+25^E 32' Rt Inlet 18" RCP Culvert

36+24^E { E Hits Edge Paving
00 Lt & 13² Lt of E Conc Spillway
Storm Drain survey to be made Here See Ektowade!

36+13^Z 12² Lt Outlet 18" RCP Culvert

36+07 5² Rt & 7² Lt of E Conc Spillway

36+00

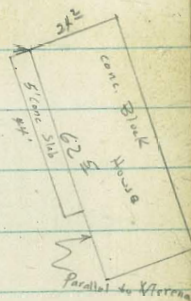
35+92 58 Rt to center T. Pole # 415052H

35+67 10^E Rt to center Guy Pole # D27403T

11.61 T

63^Z

11.98
32
INVERT



12.70
12
INVERT

8.2	1.5	1.5	3.6	4.8	4.7	3.57	2.6	3.4	4.7	5.2
3.4	10.1	10.1	8.0	6.8	6.90	8.04	9.0	8.2	6.7	6.4
77	66	40	9		92	32 ^Z	72	58	58	75
					EP	EP				

11.61 T

37+93 37² Rt begin Picket Fence37+74 37¹ Lt End wire fence

37+50

0.9	4.8	5.26	5.18	4.67	4.7	6.7	8.2
10.7	6.8	6.25	6.43	6.94	6.9	4.9	3.4
63	22	10		10	49	39	75

37+00

7.5	0.1	0.6	2.6	4.6	5.18	4.77	4.14	3.9	6.5	7.2
38	115	110	9.0	7.0	6.43	6.74	7.47	7.7	5.1	4.4
77	65	42	26	21	10		10	21	39	75

36+85⁵ 30² Rt to center T. Pole #JP4097

36+75 21 Lt to center Guy Pole #5856294

36+60 28 Lt to center 20" Acacia

36+55 36³ Lt to center 12" Acacia

36+50

0.6	1.4	1.0	1.0	4.92	4.6	3.7	2.9	5.5	6.8
11.0	10.2	10.6	6.6	6.69	7.01	7.90	8.7	6.1	4.8
68	38	27	15	58 AP		14 81	23	36	75

11.617

11.617

Cont'd From Page 39

T.P. 8.33 14.74 π 5.20 6.41

38+99^S 47^E RT to House

38+95 41^E RT to center 8" Tree

38+91^E 37^{RT} End Fence

38+60 42^E RT 6" Tree

38+50

0.8	0.4	1.4	2.5	5.1	5.9	5.94	5.72	5.4	12.0	13.8	14.1
10.8	11.2	10.2	7.1	6.5	5.71	5.67	5.89	6.2	+0.4	+1.2	+2.5
65	58	48	36	22	10		10	19	31	39	75

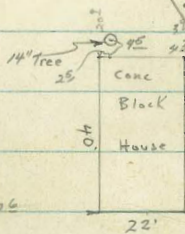
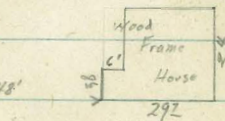
38+43 27' RT to center P. Pole # JPA4049

38+23 48^{RT} to House

38+16^E 40^{RT} center 7" Tree

38+00

7.7	0.8	0.8	2.9	5.4	5.39	5.59	5.28	5.4	8.5	11.7
3.9	10.8	10.8	8.7	6.2	6.22	6.02	6.33	6.2	3.1	+0.1
78	65	53	44	22	10		10	20	37	75



40
Conc Bldg.
(unfinished)
HOE

11.61 π

11.61 π

Contd From Page 40

41+00

40+50

40+02 31 Lt to center P. Pole # 3998

40+00

39+97 26 Rt to center T. Pole # 4150494

39+50

39+22 20⁵ Rt & Walk $\frac{1}{3}$ steps 4² wide

39+00

1474X

Lt

Rt

Rt 41

7 ⁰	9 ⁹³	1 ⁰	2 ¹	8 ⁷	8 ⁷⁸	8 ⁹⁹	8 ⁸	9 ⁵	9 ⁶	9 ⁸	10 ⁴
77	154	127	126	60	576	575	574	62	51	49	73
73	59	47	33	18	70		10	20	34	50	75

0.4	0.4	2 ⁰	4.4	7 ⁸	8 ¹³	8.41	8.18	7.8	9 ⁸	11.1
143	143	127	103	69	661	633	656	69	49	36
62	74	46	27	17	10		10	19	29	75

7.8	11.1	11.1	3.7	7.0	7.47	7.74	7.52	7.3	10.0	11.6
69	136	136	110	77	727	700	722	74	47	31
74	62	45	26	18	10		10	19	25	75

1.5	1.3	3.7	6.3	6.82	6.99	6.82	6.7	12.1	14.2	14.7
13.2	13.4	11.0	8.4	7.92	7.75	7.92	8.0	2.1	0.5	0.9
63	46	28	29	10		10	19	28	40	75

7.40	6.85	1.32
20 ³	25 ⁸	33
conv	Butt.	top
	steps	steps

7.7	0.6	2.1	6.2	6.23	6.41	6.21	6.1	12.5	13.0	13.5
7.0	14.1	12.6	8.5	8.51	8.33	8.53	8.6	2.2	1.7	1.2
77	65	44	20	10		10	18	29	48	75

1474X

Cont'd From Page 41

21

Q

R

42

Reduced by
R. Barber - 9-11-52

43+11E 23' Rt to center T. Pole # 415047H

8.07	3.87	4.57	13.97	14.67	14.87	14.66	14.17	14.87	15.97	17.97
10.6	14.8	14.1	4.7	4.0	3.80	4.01	4.5	3.8	2.7	0.7
58	44	36	20	10		10	18	35	50	75

43+00

42+71.4 34' Rt to center P. Pole # 3951

3.67	4.67	11.77	12.55	12.79	12.50	12.17	13.07	14.97
15.0	14.0	6.9	6.12	5.93	6.17	6.5	5.6	4.2
51	36	19	10		10	19	50	75

42+50

42+00

11.0	18.9	16.9	8.0	7.98	7.80	8.00	8.1	7.2	6.3
68	53	33	19	10		10	21	50	75

41+82 28E Lt to center 16" Acacia Tree

41+54 24E Rt to center T. Pole # 415048H

41+50

9.17	11.7	9.4	9.42	9.6	9.4	9.4	10.6	11.8
20.0	17.0	9.3	9.25	9.07	9.27	9.3	8.1	6.9
57	34	19	10		10	22	50	75

T.P.

573 18.67K 2.00 12.74

Nail in
Pole

18.67K

14.74K

Cont'd From Page 42

45+35.01 P.I. (Section on split)

45+00

44+65 21^{1/2} Rt to Center T. Pole #

44+50

44+19.18 B.C. of 20' Roadway

44+00

T.P. 8.87 27.14 X 0.40 18.27

43+50

18.67 X

Lt

Rt

Rt 43

9.54	9.34	17.64	19.34	20.79	22.99	22.99	22.73	22.06	21.94	21.74	34.94	36.04
17.6	17.8	9.5	7.9	4.4	4.2	4.15	4.4	5.08	5.7	5.4	7.8	9.3
28	22	15 ^{1/2}	9	4		3 ^{1/2}	13 ^{1/2}	23 ^{1/2}	30	39	68	90

9.34	15.54	17.64	22.44	28.54	22.55	21.65	20.84	22.04	36.64	36.94
17.8	11.6	9.5	4.7	4.6	4.59	5.49	6.3	5.1	7.85	7.8
28	23	15	9	3 ^{1/2}		16 ^{1/2}	24	59	88	100

4.54	8.14	11.24	13.94	21.24	21.18	20.96	20.18	19.74	21.74	23.04	39.44
18.6	19.0	15.9	13.2	5.9	5.96	6.18	6.96	7.4	5.4	4.7	12.3
42	36	33	24	14	8 ^{1/2}		10 ^{1/2}	19	45	100	125

8.74	7.44	7.74	9.04	18.84	19.24	19.72	18.44	17.74	21.54	22.04	21.54
10.4	19.7	19.4	18.1	8.3	7.90	8.02	8.70	9.4	5.6	5.1	5.6
47	47	37	33	18	10		10	19	48	61	120

27.14 X

8.27	6.17	7.67	14.07	16.87	16.98	16.52	14.07	18.87	20.77
10.4	12.5	11.0	2.6	1.80	1.69	2.15	2.6	7.02	7.21
53	42	32	18	10		10	19	42	75

18.67 X

1/2 in. missing for 21

Contd From Page 43

Lt

£

Rt

44

46+05⁶ 23 Lt to center Guy Pole

28⁵ Rt to center 9" Pepper Tree

46+05 19⁵ Rt to center P.Pole

46+03⁵ 32⁵ Lt Western Union Telegraph Pole
All in R.Ry. Row, But this one is closest.

46+00

9.59	9.49	20.59	23.94	27.54	23.09	23.00	22.85	22.04	22.29	30.19	31.69	34.09	34.49
172	172.6	3.2	3.6	4.1	4.4	4.29	5.10	4.9	4.30	4.15	4.69	4.73	
41	37	31	22	17	15	72	12	19	26	46	56	100	

45+98 22⁸ Rt Bottom Steps

45+80 41² Rt Top 2⁵ wide Conc Steps

45+71.6 70³ Rt to House

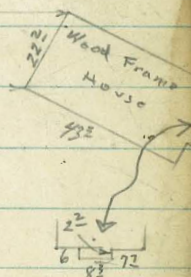
22.79
4.40
22⁸
conc

32.14
+5.0
41²
conc

45+92⁵ 5x

83²

72³



27.14x

27.14x

Cont'd From Page 44

Lt

Rt

Rt 45

+43 39° Rt 16" A

+36 29° Rt 8"

+29 31° Rt 14"

+27 24° Rt 6"

+20^E 28° Rt 9"

47+11^E 25° Rt to center 14" Pine Tree

47+00

9.63	9.63	17.93	18.93	20.33	21.23	21.23	20.53	21.13	21.07	20.61	20.43	25.33	25.93	29.93
15.3	15.3	7.0	6.0	4.6	3.7	3.9	4.4	5.80	3.86	4.32	4.5	10.4	11.0	15.0
66	61	56	48	45	33	21	19	10		10	172	20	44	100

46+50.79 E.C. 20' Roadway

46+50

9.83	9.83	19.33	23.33	22.33	22.33	21.93	22.23	22.01	21.22	21.33	27.63	31.43	32.93
15.1	15.1	5.6	1.6	2.6	2.6	3.0	2.70	2.92	3.63	3.6	12.7	16.5	18.0
56	50	45	33	26	20	18	10		10	172	22	75	100

46+21 18° Lt to center T. Pole # 415045 H

T.P. 103 24.93 A 3.24 23.90 27.14 A

24.93 A

Cont'd From Page 45

48 + 85 19th Rt to center P. Pole # 2371

48 + 67³ 79th Rt to Apartments

48 + 50

48 + 34 63rd Rt to House

48 + 00

47 + 74 17th Lt to center T. Pole # 4150444

47 + 50 29th Rt to center 12" Pine Tree

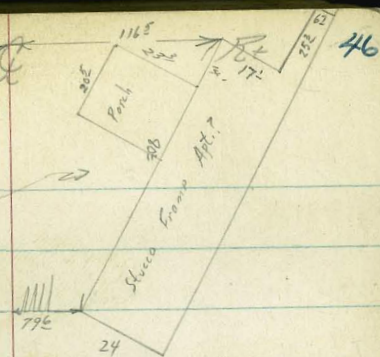
47 + 46⁵ 24th Rt Begin (T. Pole) Rail Fence

24.93X

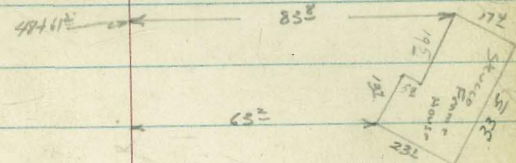
Lt

49458

All kinds of Conc. work
Fish pond, Terraces, Flower boxes, etc.
Peroglas, Love seats, you name them!

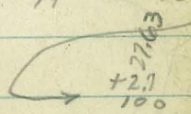


165	164	129	14.1	16.0	18.0	17.7	18.5	18.7	18.5	18.2	19.0	20.1	21.7	
90	85	81	50	28	19	18	10	6.42	6.21	6.42	6.7	5.9	4.8	3.2



9.33	9.33	14.93	17.23	19.33	19.63	18.73	19.34	19.52	19.51	18.83	19.63	20.93	24.93
156	156	100	77	56	53	6.2	5.59	5.41	5.62	6.1	5.3	4.0	0.0
84	78	74	32	23	19	17	10	10	10	17	19	32	100

16.2	9.73	9.73	14.03	14.93	20.23	19.63	20.13	20.24	20.03	19.43	22.03	23.43	24.03
76	71	68	26	18	17	10	4.80	4.64	4.90	5.3	2.9	1.5	0.9
10	10	173	19	26	50								



24.93X

Contd. From Page 46

Lt

§

R 47

49+01² 57 Rt 6" N

49+00 31² Rt 7"

48+98 49 Rt 6"

48+96² 42² Rt 8"

48+94 47² Rt 5"

48+88² 45² Rt 6"

48+87² 41 Rt 5"

48+84² 44 Rt 5"

48+80² 42² Rt 4¹/₂ center 5" Pine Tree

T.P. 2.64 21.57 N 7.06 17.93

24.73 N

10.0	10.0	12.4	13.8	15.7	17.5	17.1	17.72	17.93	17.8	17.6	18.4	19.8	20.1	21.6
11.6	11.6	9.0	7.8	5.9	4.1	4.5	3.85	3.64	3.80	4.0	3.2	1.8	1.5	0.0
97	92	88	50	26	17	17	10		10	17	19	50	63	75

21.57 N

Cont'd From Page 47

49+55E 40' RT to center 2" Pine Tree

49+54 50' RT to center 2" Spruce

49+50

12.4	15.1	16.9	16.3	16.95	17.2	16.96	17.1	17.7	18.7	20.6	22.2
9.2	6.5	4.7	5.3	4.62	4.40	4.61	4.5	3.9	2.9	1.0	0.6
93	31	19	17	10		10	19	21	50	90	98

49+31 33E RT 6"

49+30 43 RT to center 7" Pine Tree

49+28E 18E RT to center T. Pole #415643H

49+17 51 RT 4"

49+15 58 RT 6"

49+08 58 RT 4"

49+05E 52 RT to center 6" Pine Tree

21.57A

Lt

£

RT 48

21.57A

Cont'd From Page 48

50+80^E { 40 ft to 10" cypress Tree
 29 ft to 18" cypress Tree
 19^E ft to Fire Hydrant

50+53^L 19^E ft to center P. Pole #2399

50+50 Half and half

50+47 25^L ft end of Rail (Tel. Pole) Fence

50+00

49+88 29^L ft to center 6" Acacia

49+77^E 85^L ft to House (Apts?)

49+75 50^E ft to center 8" Tree

49+59 27^E ft to center 2" Palm Tree

21.57A

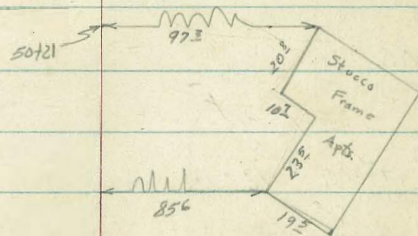
Lt

E

Rt 49

12.1	12.8	14.3	15.2	14.5	15.35	15.59	15.4	15.1	14.3	17.6	18.7
9.5	8.8	7.3	6.4	7.1	6.24	5.98	6.20	6.5	5.3	4.0	2.9
75	50	27	19	17	10		10	17	20	50	75

12.6	14.4	16.1	15.3	16.11	16.34	16.12	15.9	16.7	18.7	20.3
9.0	7.2	5.5	6.3	5.46	5.23	5.45	5.7	4.9	2.9	1.3
75	36	20	18	10		10	18	20	50	75



21.57A

Cont'd From Page 49

51+49 62' Lt End Row of Cypress Trees
 12 →

TR 5.00 20.75A 5.82 15.75 Nail in Pole

51+39E 62' Lt to Bldg. (Jeannine Branding Iron)

76 Lt Outlet
 51+23E 15E Lt & 2x2' inlet box

51+08 15E Rt & inlet 12" RCP culvert
 headwall → 2E

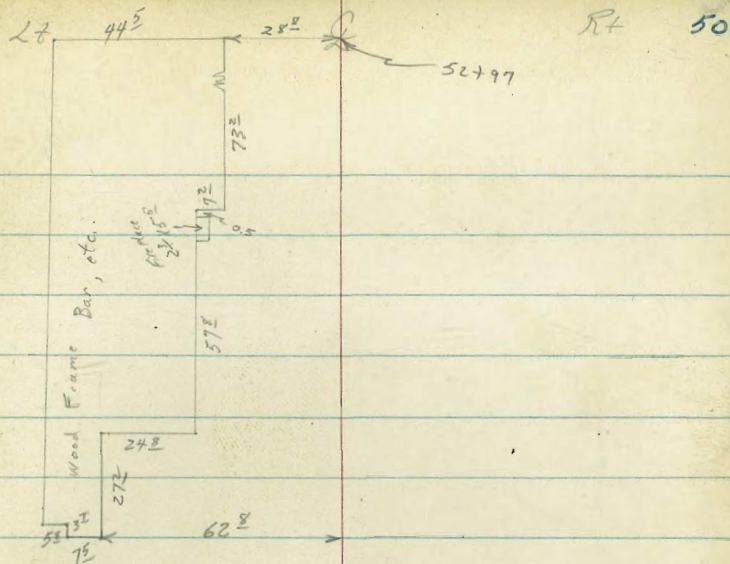
51+00

50+97E 42E Lt begin Conc block wall

50+84E 61 Lt begin Row of Cypress Trees

50+83 18E Lt to center T Pole #415042H

21.57A



12.58 10.53 7.19
 76 15E 15E
 INV. INV. GRATE

9.98
 13E
 INVERT

11.6	12.7	14.1	14.78	14.93	14.92	14.6	16.7	18.1
10.0	8.9	7.5	6.79	6.64	6.75	7.0	4.9	3.5
75	50	28	10		10	28	50	75

21.57A

52+98 72[±] Lt to center 18" cypress Tree
39[±] Lt to center 18" cypress Tree

52+50

13.8	14.3								
6.9	6.4	6.29	6.47	6.34	6.4	5.3	4.8	4.6	3.6
29	20	10		10	19	23	29	50	75

52+39 37[±] Rt to near edge Foster's ¹ ^{L to R} ² ^{L to R} ³ ^{L to R} ⁴ ^{L to R} ⁵ ^{L to R} ⁶ ^{L to R} ⁷ ^{L to R} ⁸ ^{L to R} ⁹ ^{L to R} ¹⁰ ^{L to R} ¹¹ ^{L to R} ¹² ^{L to R} ¹³ ^{L to R} ¹⁴ ^{L to R} ¹⁵ ^{L to R} ¹⁶ ^{L to R} ¹⁷ ^{L to R} ¹⁸ ^{L to R} ¹⁹ ^{L to R} ²⁰ ^{L to R} ²¹ ^{L to R} ²² ^{L to R} ²³ ^{L to R} ²⁴ ^{L to R} ²⁵ ^{L to R} ²⁶ ^{L to R} ²⁷ ^{L to R} ²⁸ ^{L to R} ²⁹ ^{L to R} ³⁰ ^{L to R} ³¹ ^{L to R} ³² ^{L to R} ³³ ^{L to R} ³⁴ ^{L to R} ³⁵ ^{L to R} ³⁶ ^{L to R} ³⁷ ^{L to R} ³⁸ ^{L to R} ³⁹ ^{L to R} ⁴⁰ ^{L to R} ⁴¹ ^{L to R} ⁴² ^{L to R} ⁴³ ^{L to R} ⁴⁴ ^{L to R} ⁴⁵ ^{L to R} ⁴⁶ ^{L to R} ⁴⁷ ^{L to R} ⁴⁸ ^{L to R} ⁴⁹ ^{L to R} ⁵⁰ ^{L to R} ⁵¹ ^{L to R} ⁵² ^{L to R} ⁵³ ^{L to R} ⁵⁴ ^{L to R} ⁵⁵ ^{L to R} ⁵⁶ ^{L to R} ⁵⁷ ^{L to R} ⁵⁸ ^{L to R} ⁵⁹ ^{L to R} ⁶⁰ ^{L to R} ⁶¹ ^{L to R} ⁶² ^{L to R} ⁶³ ^{L to R} ⁶⁴ ^{L to R} ⁶⁵ ^{L to R} ⁶⁶ ^{L to R} ⁶⁷ ^{L to R} ⁶⁸ ^{L to R} ⁶⁹ ^{L to R} ⁷⁰ ^{L to R} ⁷¹ ^{L to R} ⁷² ^{L to R} ⁷³ ^{L to R} ⁷⁴ ^{L to R} ⁷⁵ ^{L to R} ⁷⁶ ^{L to R} ⁷⁷ ^{L to R} ⁷⁸ ^{L to R} ⁷⁹ ^{L to R} ⁸⁰ ^{L to R} ⁸¹ ^{L to R} ⁸² ^{L to R} ⁸³ ^{L to R} ⁸⁴ ^{L to R} ⁸⁵ ^{L to R} ⁸⁶ ^{L to R} ⁸⁷ ^{L to R} ⁸⁸ ^{L to R} ⁸⁹ ^{L to R} ⁹⁰ ^{L to R} ⁹¹ ^{L to R} ⁹² ^{L to R} ⁹³ ^{L to R} ⁹⁴ ^{L to R} ⁹⁵ ^{L to R} ⁹⁶ ^{L to R} ⁹⁷ ^{L to R} ⁹⁸ ^{L to R} ⁹⁹ ^{L to R} ¹⁰⁰ ^{L to R}

52+29 18[±] Lt to center P. Pole #415041H

52+14[±] 20 Rt to center P. Pole #2431

52+00

13.7	14.2								
7.0	6.5	6.21	6.12	6.27	6.4	5.5	5.3	3.6	
37	20	10		10	18	20	38	75	

51+66[±] 40[±] Lt End Core Block Wall

51+63[±] 42[±] Lt to center Tree 18" cypress

51+50

12.9	13.1								
7.8	7.6	6.17	6.00	6.29	6.2	5.5	4.8	4.0	
60	40	10		10	16	20	50	75	

53+89^S 20 Rt to center T Pole #2471

53+88 72^S Lt to center Palm Tree 48"

53+82^S 18^S Lt to center T Pole #41504021

53+71^S 28^S Lt to Near Edge F&K Sign

53+50

10.4	12.2	12.9	14.24	14.99	14.25	14.1	14.7	15.5	15.5	16.1
10.4	86	79	6.51	6.26	6.50	6.7	6.1	5.3	5.3	7.7
75	50	28	10		10	17	19	26	50	75

53+62^S sta ok 72 Lt to center 10" Acacia Tree

53+46 74 Lt to center 36" Palm Tree

53+32 73 Lt to center 12" Acacia Tree

53+02 72 Lt to center 36" Palm Tree

53+00

11.2	12.9	14.2	14.33	14.56	14.34	14.3	15.8	16.1	16.8
94	79	66	6.42	6.19	6.41	6.5	5.0	7.7	4.0
75	50	20	10		10	11	25	50	75

20.75 π

20.75 π

Contd From Page 52

54+92 = 15⁶ RT to 12" Inlet Culvert
54+91 = 15⁶ LT to 12" outlet Culvert

54+50

54+19.7 = 26⁴ RT to Apts.

54+14⁶ = 72⁵ LT to center Palm Tree 30"

TP 5.19 19.01 π 6.93 13.82

54+00

20.75 π

Lt

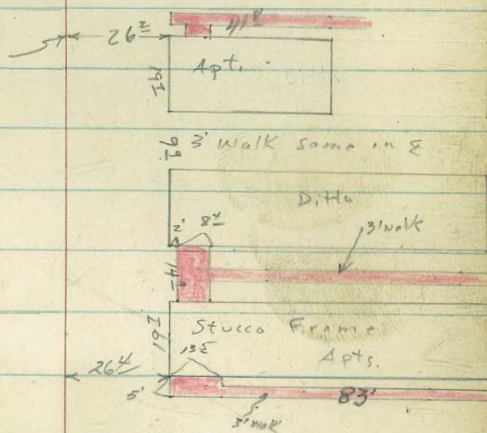
Rt

Rt 53

8.7 \pm
15⁶
INVERT

8.36
15⁶
Invert

10.8	11.6	12.3	13.7	13.6	14.12	14.58	14.16	13.8	14.6	15.5	16.7
8.2	7.4	6.7	5.3	5.7	4.89	4.63	4.85	5.2	4.4	3.5	2.3
75	50	30	20	18	10		10	18	21	26	75



19.01 π

8.6	9.4	10.6	11.8	12.43	12.7	12.49	12.3	12.9	13.8	14.6
10.4	9.6	8.4	7.0	6.58	6.34	6.52	6.7	6.1	5.2	4.4
75	50	26	17	10		10	18	23	50	75

20.75 π

Contd From Page 53.

24

£

RT

54

INDEXED
Low
JUN 2 1952

Check

7.05 11.96 = 11.93

chisel Square Black Signal Base 150 Wly Littlefield & Morena

See FB 1455 pg 39

55750

11.9	12.4	13.9	13.7	13.87	14.15	13.93	14.0	15.7	16.6
7.1	6.6	5.1	5.3	5.14	4.86	5.08	5.0	3.3	2.4
75	50	20	17	10		10	20	50	75

55739^E

39 RT to Fire Hydrant
20^E RT to center P. Pole # 2487

55734

18^E RT to center T. Pole # 415039H

55700

11.5	12.4	13.1	14.3	13.8	14.04	14.37	14.10	13.8	14.4	15.8	16.1	16.7
7.5	6.6	5.9	4.7	5.2	4.97	4.64	4.91	5.2	4.6	5.2	2.9	2.3
75	50	29	18	16	10		10	16	15	29	50	75

19.01A

19.01A

MORENA BLVD.
TIES TO AERIAL SURVEY.

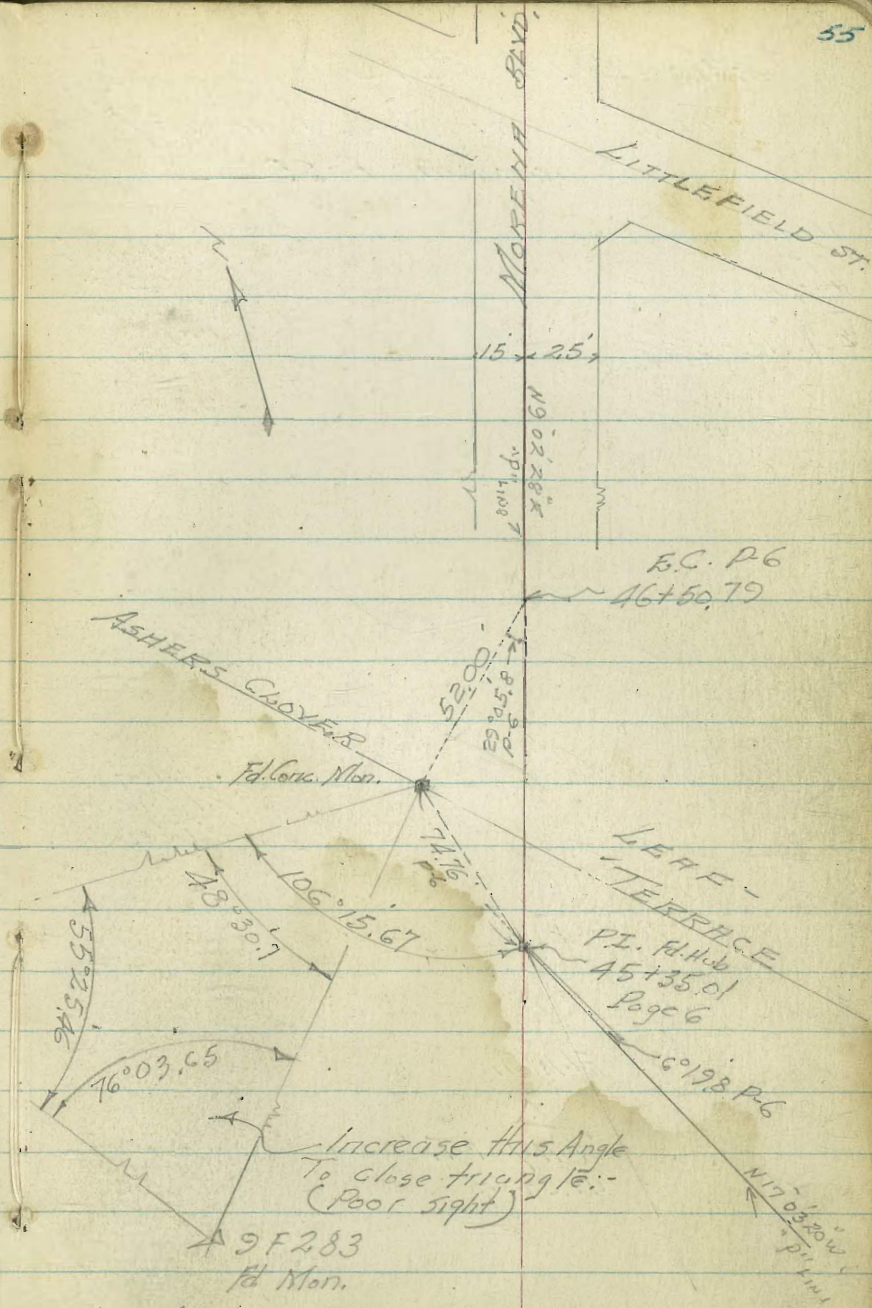
Walker
 Pope - A Wild T
 Hoffman
 Presley
 2-2-53

Cont. P-56

INDEXED
 App. 1953

1,696,957.29
 224,534.33

"BAY POINT"
 U.S.C. & G.S.
 Fd. Mon.



"MORENA BLVD"

TIES TO AERIAL SURVEY
Cont from P-55

Walker
Pope
H. H. H. H.
Presley
2-12-53

"HORSE
C.I. Δ
= Mission
BAY
DATA

INDEXED
APR 22 1953

Fd. Mon.
 Δ
"BAY PT."
U.S.C.T.G.S

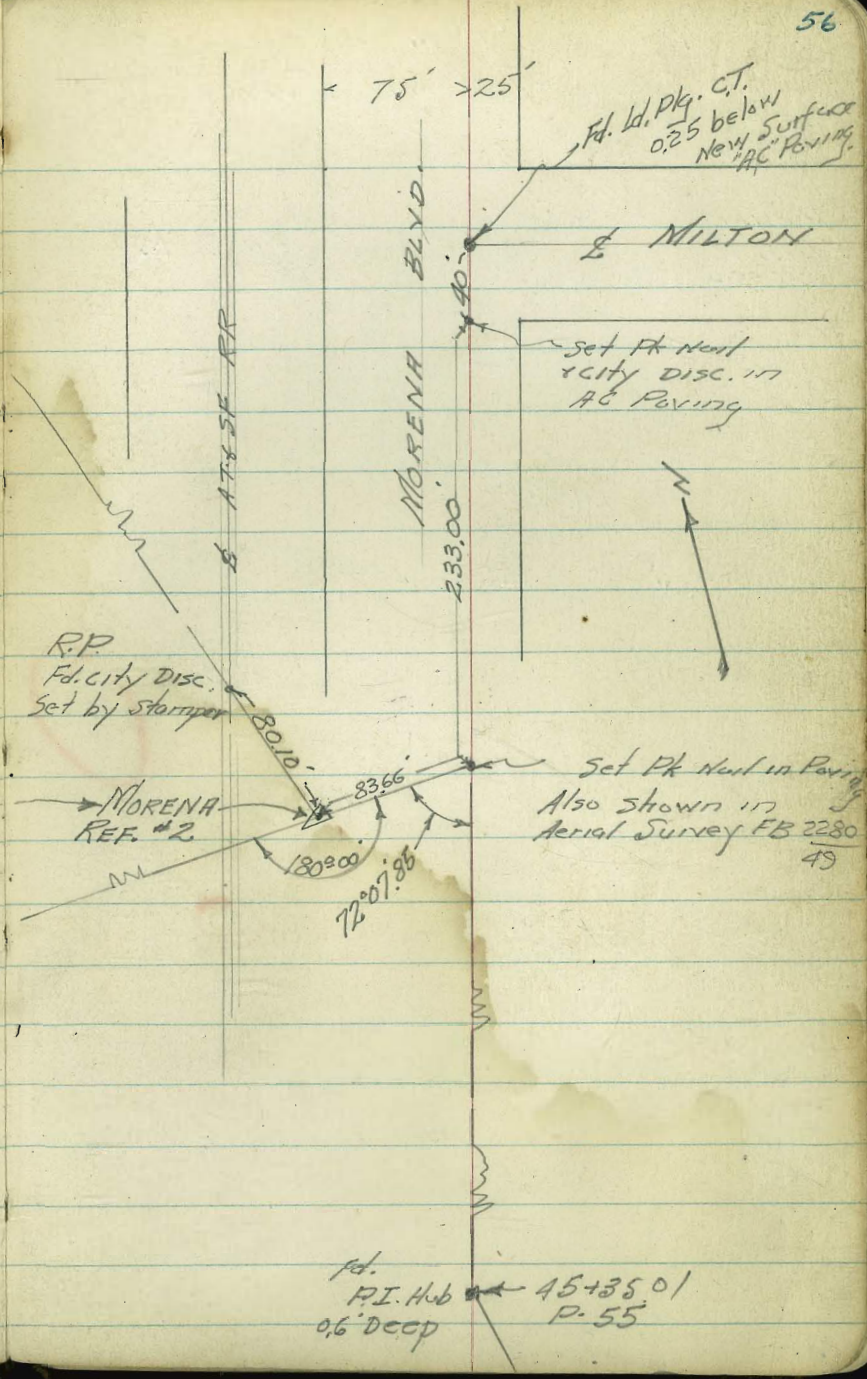
R.P.
Fd. City Disc.
Set by stamper

Ref
Fd. Conc. Mon.
3' Deep

MORENA
REF #2

Set Pk. Nail in Paving
Also shown in
Aerial Survey FB 2280
49

fd.
P.I. Hub \blacktriangle 45+35.01
0.6' Deep P. 55

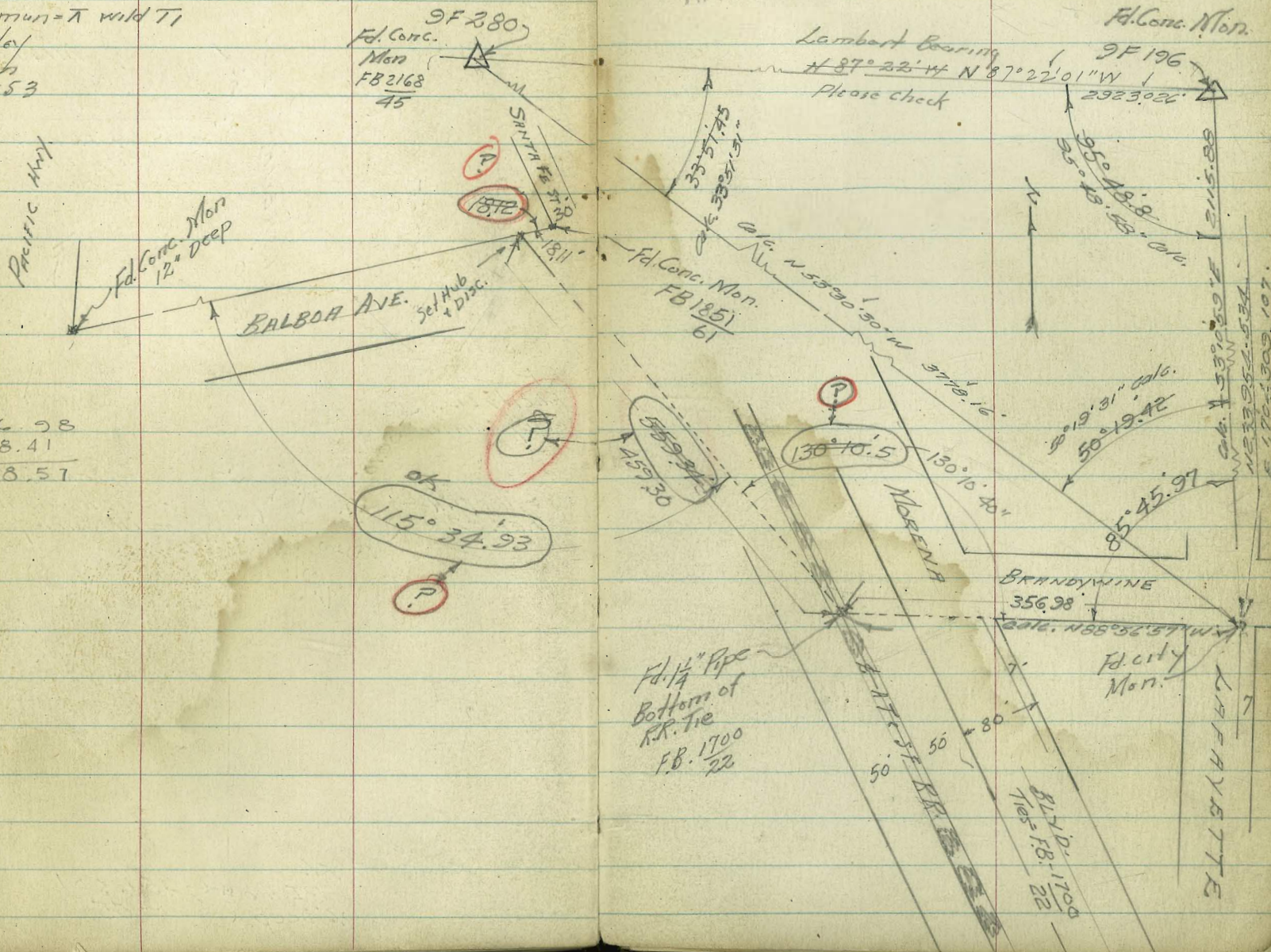


Morena Blvd
Ties To Aerial Survey

Walker
Huffman - A wild T1
Presley
Scholin
2-3-53

356.98
98.41

258.57



INDEXED

APR 22 1953

FB 2168-42

F.d. Conc. Mon.

9F 196

Lambert Bearing

87° 22' 44" N 87° 22' 01" W

Please check

2923.02'

95° 13' 58" calc.
215.88'

F.d. Conc. Mon.
FB 185
61

130° 10.5'

BRANDYWINE

356.98'

F.d. city Mon.

F.d. 1 1/4" Pipe
Bottom of
R.R. Tie
F.B. 1700
22

BLVD.
FB 11700
22

LAFAYETTE

Alignment Proposed
 Morena Boulevard "L" Line
 Cushman Ave to Balboa Ave

97+0	7° 39.20' ✓	
+75	6° 27.58' ✓	
+50	5° 15.96' ✓	A 40° 24' 21"
		R 600'
+25	4° 104.34' ✓	T 220.79'
		L 123.13' ✓
96+0	2° 52.76' ✓	E 39.33'
		D1 2.8648
+75	1° 41.10' ✓	
+50	0° 29.48' ✓	
95+39.71 B.C. Lt.	0° 00'	
0+97.04 Back		

4+38.94 Fd. Lt. Disc of Morena-Sherman+Hapa
 FR # 2192-1

Oct. 7-53
 H.S. 5307
 Garber
 Chapman
 Parks
 Kelley
 No. 22054

97+51.27
 p.o.c.
 69° 47.60'

Morona Blvd

95+39.71 B.C. Lt.
 0+97.04 Back

50' 9' 41'

Fd. Lt. Disc of
 S. R. K.

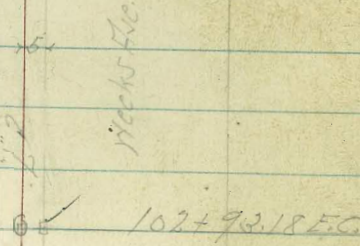
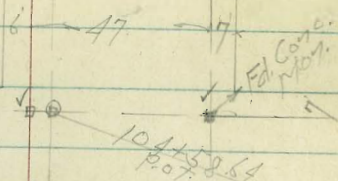
Alignment Proposed
 Morena Blvd. "L" Line
 Cushman Ave to Balboa Ave.

104+5864 P.O.T.

+93.18	FC	4° 22'	
+75		3° 50.75'	Δ 8° 44'
+50		3° 07.78'	R 1000
+25		2° 21.80'	T -76.36
102+0		1° 41.83'	L 152.41
+75		0° 58.85'	D1 1.7189
450		0° 15.88'	
101+40.77	BCR	0° 00'	

61

Buenos Ave



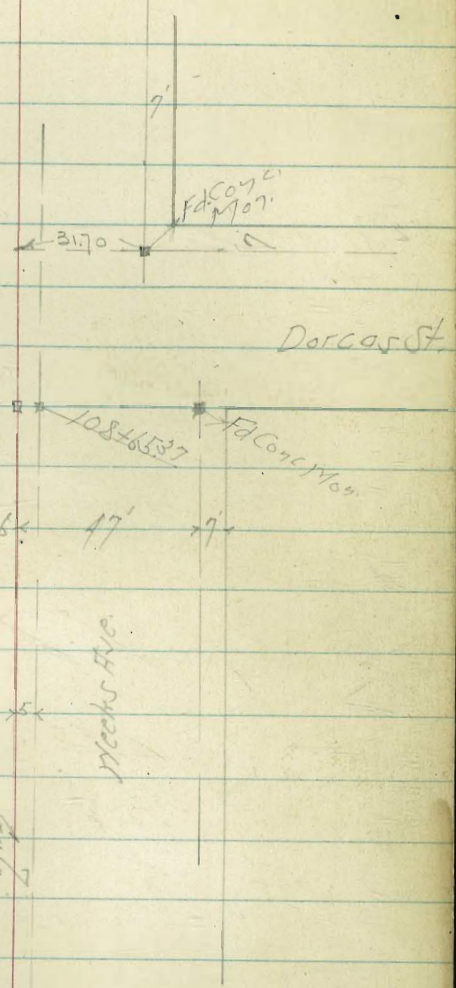
101+40.76 BCR

197.75

40' - 11' off.

108+66.04 = New Sta.

108+65.87 P.O.T.



Alignment Proposed
 Morena Blvd. "L" Line
 Cushman Ave. to Balboa Ave.

+50	10° 26.76" ✓	
+25	10° 05.27"	POC. SE of Crossover
120+0	9° 43.79" ✓	
+50	9° 00.82" ✓	
+38.24	8° 50.72" ✓	Mid Point
119+0	8° 17.83" ✓	1/2 Δ 17° 41' 26"
+50	7° 34.86" ✓	R 2000'
118+0	6° 51.89" ✓	T 637.92
+50	6° 08.92" ✓	1/2 1235.03
117+0	5° 25.94" ✓	F 99.37
+50	4° 42.97" ✓	D1 0.8594
116+0	4° 00.06" ✓	
+50	3° 17.03" ✓	POC.
115+0	2° 34.05" ✓	
+50	1° 51.08" ✓	
114+0	1° 08.11" ✓	
+50	0° 25.14" ✓	
113+20.73	0° 00'	BCR

alt 19.459



1/2

Morena Ave.

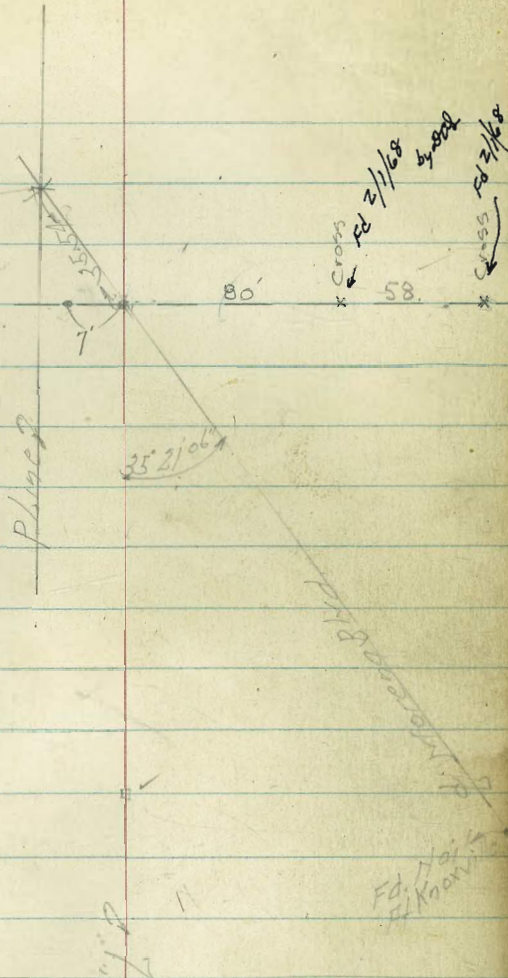
Vega St.

113+20.73 B.C.R.

136 + 08.63 POT - 136 + 06.07 ditch 7' Lt.

36 + 18.50 P
Page 5

PK-14
Tie
E side



132 + 40.94 POT

128 + 18.60 POT
N^y Bank Tocalote Creek

150+78.68	FC	13° 30.00'
+50		13° 05.34'
150+0		12° 22.37'
+50		11° 39.40'
149+0		10° 56.43'
+50		10° 13.46'
148+0		9° 30.49'
+50		8° 47.52'
147+0		8° 04.55'
+75		7° 43.06'
146+50		7° 21.58'

"
L.L. Line

13.47

Rippling

150+78.68 FC

Morena Blvd.

7.7

16140 P.O.T. offset line

15640 P.O.T. offset line

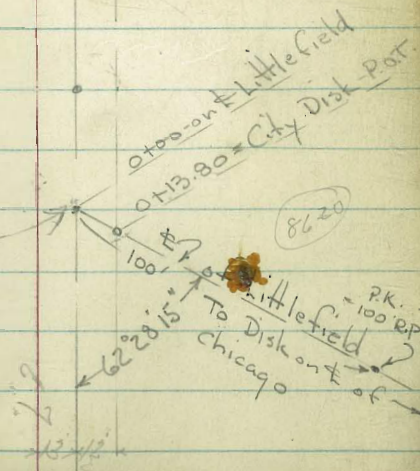
155+85.35 - Set P.K. on $\frac{1}{4}$ Littlefield

Sta checks off rd City Disk 8/14/69 *Ed Smith*

69

Maroon Blvd

$\frac{1}{4}$ " line

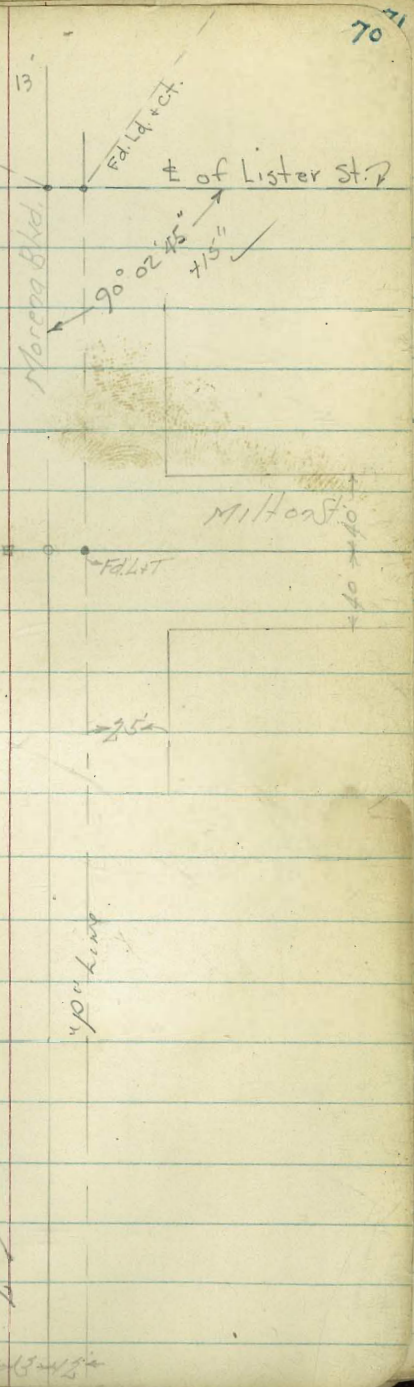


Alignment Proposed
Moreno Blvd. "L" Line

172+12.13 POT offset

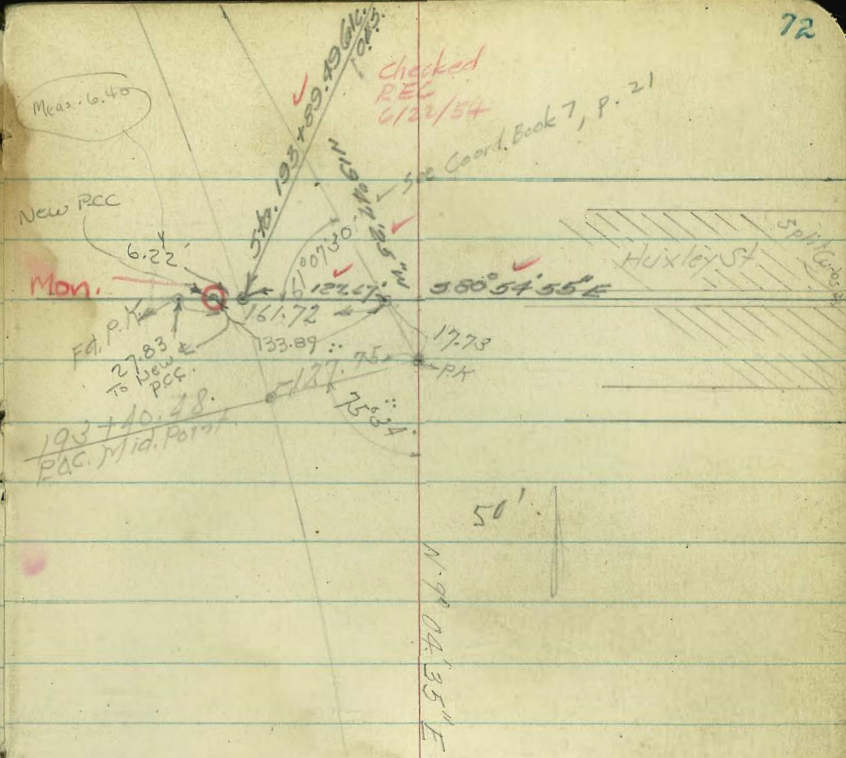
167+0 POT offset

176+42.20 Set Pk



Backed in =

7.50	8° 01.03' ✓
194+0	7° 39.10' ✓
+50	7° 17.18' ✓
+40.48 POC. Mid Point.	7° 13.00' ✓
193+0	6° 55.25' ✓
4.50	6° 33.33' ✓
192+0	6° 11.40' ✓
+50	5° 49.47' ✓
191+0	5° 27.55' ✓
+50 POC.	5° 05.62' ✓
190+0	4° 43.70' ✓
+50	4° 21.77' ✓
189+0	3° 59.85' ✓
+50	3° 37.97' ✓
188+0	3° 16.00' ✓
+50	2° 54.07' ✓
187+0 POC.	2° 32.15' ✓
+50	2° 10.22' ✓
186+0	1° 48.29' ✓



HUXLEY = CLAIREMOUNT

Alignment Proposed
Morena Blvd. L Line

17
13
30

Cross = P.O.T.
E. cb. of Island

+27.92 F.C.	14° 26'	
203+0	14° 13.76'	45 345° 46' 45"
+50	13° 51.83'	50 346° 08' 10"
202+0	13° 29.91'	53 346° 30' 06"
+50	13° 07.98'	346° 52'
+25	12° 57.02'	347° 03'
201+0	12° 46.06'	347° 13' 56"
+50	12° 24.13'	347° 35' 50"
200+0	12° 02.21'	347 57 45
+50	11° 40.28'	348 19 45
199+0	11° 18.36'	348 41 40
+50	10° 56.43'	349 03 30
198+0	10° 34.50'	349 25 30
+50	10° 12.58'	349 47 25
197+0	9° 50.65'	350 09 20
+50	9° 28.73'	350 31 15
+196+0	9° 06.80'	350 53 12
+50	8° 44.88'	
195+0	8° 22.95'	

Ran offset Line
5' W. of "L Line
7.0. 5-61

73

50 →

203+27.92 F.C. 17 15 005

PK in ERR = P.O.T. = 81.37' ± from L

PK

Fast Line of Morena Blvd. as per Vista Bldg #1

rd 1 1/2" Pipet DISCREP

203+25.33 - New

← 88 → Limits

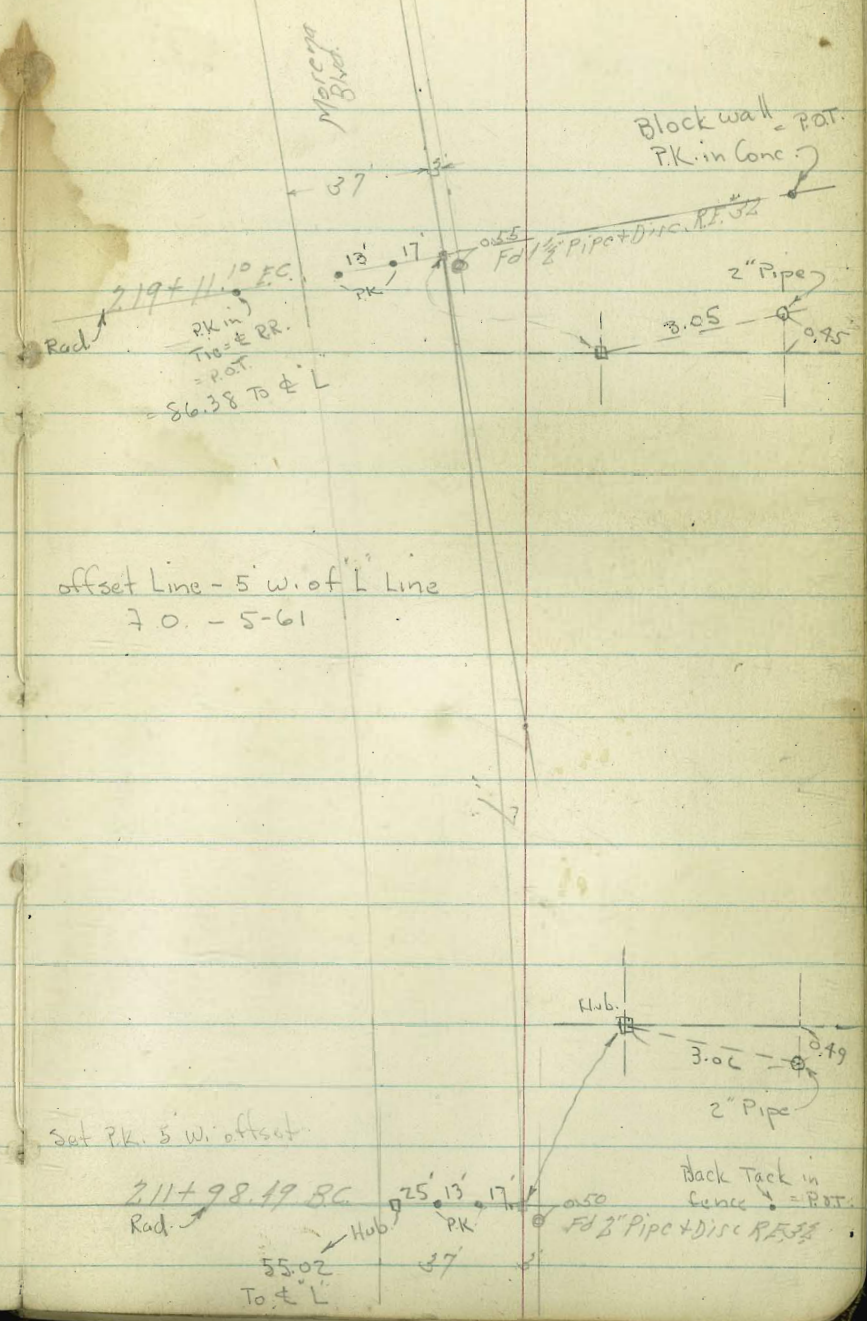
offset line 5' W. of
"L" Line - 7.0. - 5-61

Moreno Blvd.

30.58
15.22
3° 15.36

56.33
30.05
86.38

1	+11.10 F.C.	3° 30.58'	
	219+0	3° 27.30'	
	+50	3° 12.52'	
	218+0	2° 57.75'	27° 01' 10"
1	+50	2° 42.97'	23° 30' 25"
	217+0	2° 28.20'	R 5816.65
18	+50	2° 13.42'	T 356.75
	216+0	1° 58.65'	L 712.61
	+50	1° 43.87'	F 10.23
	215+0	1° 29.10'	D, 0.2955
	+50	1° 14.32'	
	214+0	0° 59.55'	
	+50	0° 44.77'	
1	213+0	0° 30.00'	
	+50	0° 15.22'	0° 15' 15"
	212+0	0° 00.44'	
	211+98.49 B.C. L	0° 00'	



Alignment Proposed
 Morera Blvd. L. Line
 Cushman Ave. to Balboa Ave.

Jan 2-54
 H. Sisson
 Chipman
 Pope
 D. Sisson

76

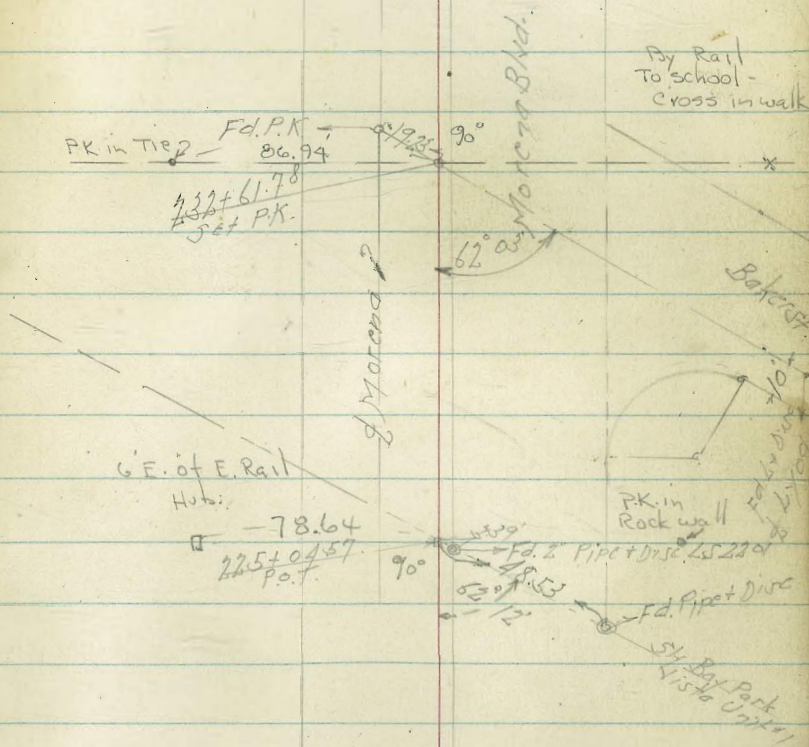
Set Sta. P.K.'s on S.W. offset.

235+00 P.O.T.

232+61.78 P.O.T. - Fd.

230+00 P.O.T.

225+01.57 P.O.T. Fd. - Set P.K. on 5' offset.



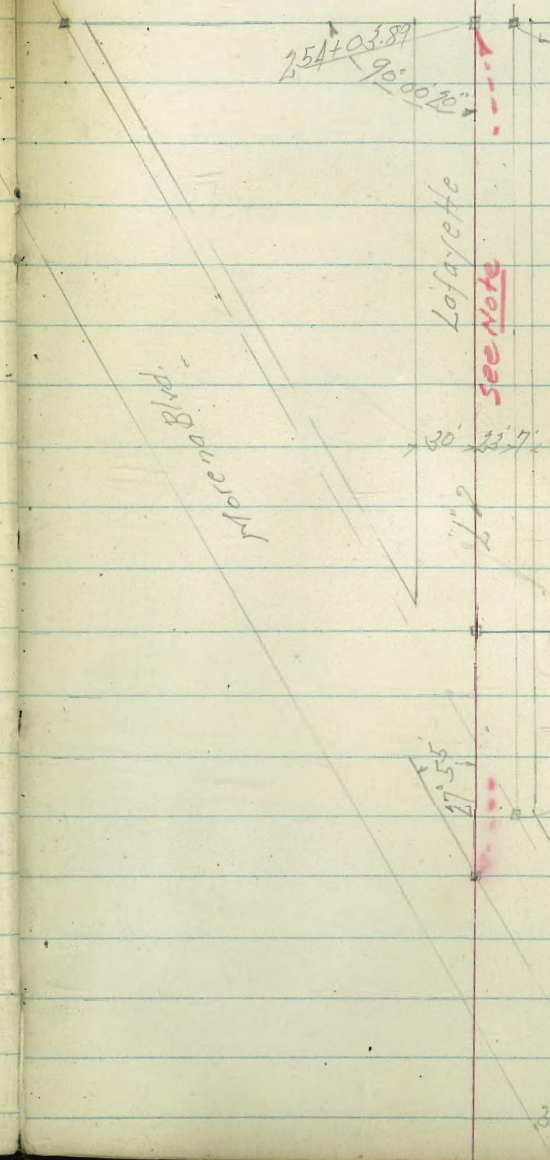
Bradyvine

254.03.89
 250 83 28

 320.61
 124.28

 444.89

+83.28 FC	13° 57.50'	
+50	12° 03.10'	
+25	10° 37.17'	A 27° 55'
250+0	9° 11.23'	R 500'
+75	7° 45.29'	T 124.28
+50	6° 19.35'	L 213.65
+25	4° 53.41'	Di 3.4377
249+0	3° 27.46'	
+75	2° 01.52'	
+50	0° 35.58'	
248+39.65 BCR	0° 00'	



Note:
 Distance appears to be
 7' too long according to
 Map 983 and Tie Point
 Sheet
 Coburn 7/22/54

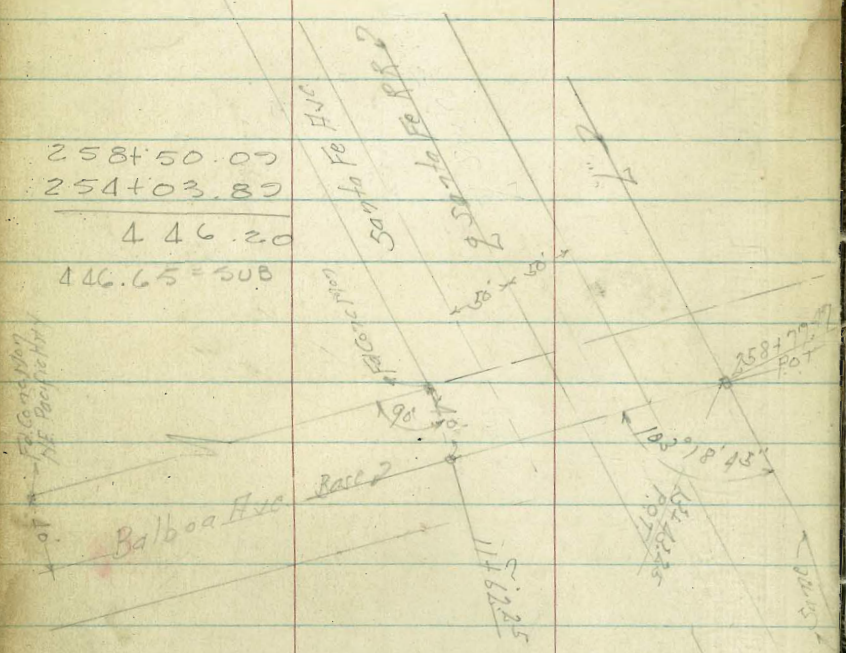
250+83.28 FC
 254+03.89
 250+83.28

 320.61
 124.28

 444.89

X- 259 19.22 258 77.89
 258 50.09
 63 13

258+50.09
 254+03.89
 446.20
 446.65 = SUB



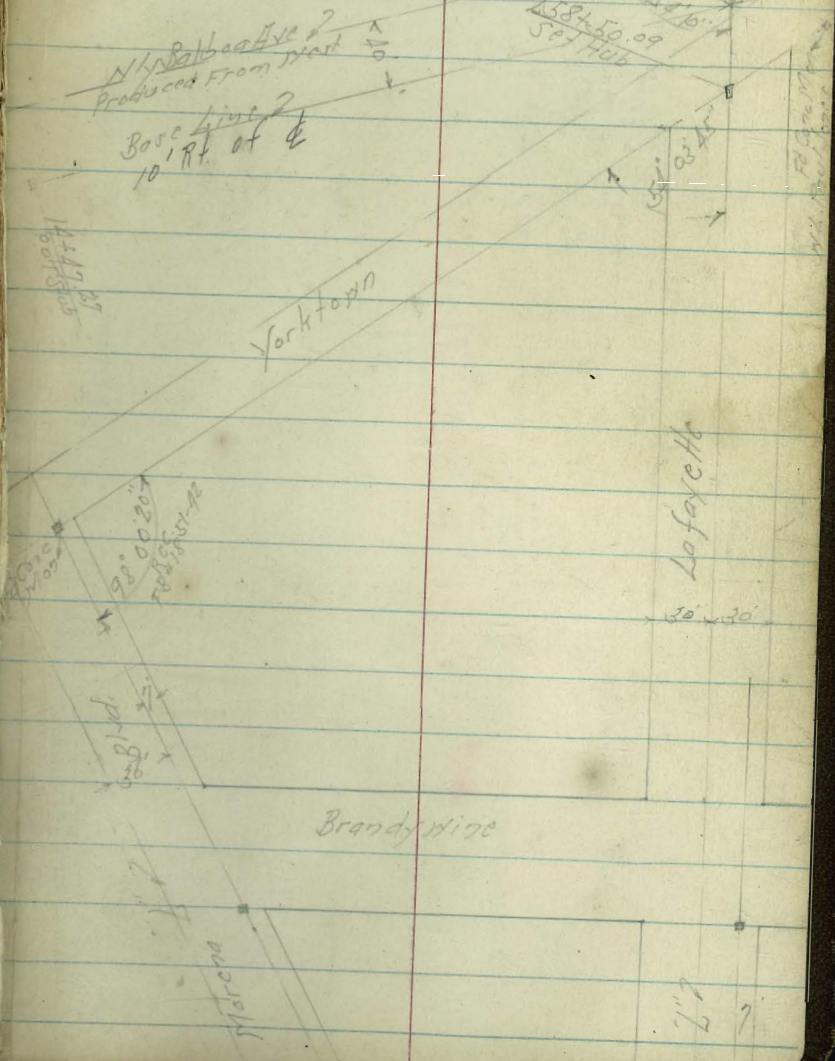
See 2378-1 for X-sections

more 80' etc

Jan. 29-54
 H. J. Jirson
 Gorber
 Chipman
 Parks
 Kelley

79

259+19.22
 258+77.89
 17+85+29.30
 258+50.09
 507.14



7' 7'

Survey Right of Way
 Morena Blvd. For S.W. Allen

Dec. 10-54

755555
 Garber
 Chipman
 Kallan

W/O 20006

Jenstar

Hub Set

9596 L

258

254

426

Fd. PK
 Page 66

3234

Morena Blvd.

12221

3750

1750

Proposed Morena Blvd.



111° 38' 54"

R 20

T 62.76

L 50.49

L+ - 124.95 - ϕ Tracks. = 0 + 55

125 + 55.76 = E.C. " " Line

20 Conc. Strip = \pm st.

87

50

55

- 55 -

32

F.O.'s Line

95

82 ϕ RR

13' East of FOS

6 14.15

0+00
Ang 42° 11' 15"

171.59.60
Ang 137° 50' 45"
42° 07' 15"

2865
191
925

299 52
152 04
147.48

6172
2767
3405

+23.24
335 rt

= 141 + 62.02 B.C.

43.84
29.80
73.64
5
78.64

521
532
7053

85 + 22.35
83 + 53.04
169 31

+41 = House 63'

Pole 458 (2970# 4078)

47 = fence 362' high

150

tree +55 (3 3/4" dia)

tree +60 (28° 20' dia)

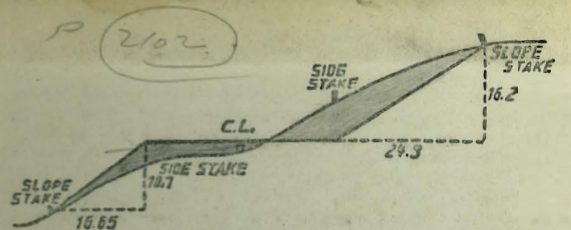
Pole 775 (21" #5156274)

+855 pole (30" #514697)

155 + 85.35

0 + 3.80 = Disk

62° 28' 15"



DISTANCES FROM SIDE STAKES FOR CROSS-SECTIONING.
SLOPE 1 1/2 TO 1. ROADWAY OF ANY WIDTH.

	0	.1	.2	.3	.4	.5	.6	.7	.8	.9	
0	0.00	0.15	0.30	0.45	0.60	0.75	0.90	1.05	1.20	1.35	0
1	1.50	1.65	1.80	1.95	2.10	2.25	2.40	2.55	2.70	2.85	1
2	3.00	3.15	3.30	3.45	3.60	3.75	3.90	4.05	4.20	4.35	2
3	4.50	4.65	4.80	4.95	5.10	5.25	5.40	5.55	5.70	5.85	3
4	6.00	6.15	6.30	6.45	6.60	6.75	6.90	7.05	7.20	7.35	4
5	7.50	7.65	7.80	7.95	8.10	8.25	8.40	8.55	8.70	8.85	5
6	9.00	9.15	9.30	9.45	9.60	9.75	9.90	10.05	10.20	10.35	6
7	10.50	10.65	10.80	10.95	11.10	11.25	11.40	11.55	11.70	11.85	7
8	12.00	12.15	12.30	12.45	12.60	12.75	12.90	13.05	13.20	13.35	8
9	13.50	13.65	13.80	13.95	14.10	14.25	14.40	14.55	14.70	14.85	9
10	15.00	15.15	15.30	15.45	15.60	15.75	15.90	16.05	16.20	16.35	10
11	16.50	16.65	16.80	16.95	17.10	17.25	17.40	17.55	17.70	17.85	11
12	18.00	18.15	18.30	18.45	18.60	18.75	18.90	19.05	19.20	19.35	12
13	19.50	19.65	19.80	19.95	20.10	20.25	20.40	20.55	20.70	20.85	13
14	21.00	21.15	21.30	21.45	21.60	21.75	21.90	22.05	22.20	22.35	14
15	22.50	22.65	22.80	22.95	23.10	23.25	23.40	23.55	23.70	23.85	15
16	24.00	24.15	24.30	24.45	24.60	24.75	24.90	25.05	25.20	25.35	16
17	25.50	25.65	25.80	25.95	26.10	26.25	26.40	26.55	26.70	26.85	17
18	27.00	27.15	27.30	27.45	27.60	27.75	27.90	28.05	28.20	28.35	18
19	28.50	28.65	28.80	28.95	29.10	29.25	29.40	29.55	29.70	29.85	19
20	30.00	30.15	30.30	30.45	30.60	30.75	30.90	31.05	31.20	31.35	20
21	31.50	31.65	31.80	31.95	32.10	32.25	32.40	32.55	32.70	32.85	21
22	33.00	33.15	33.30	33.45	33.60	33.75	33.90	34.05	34.20	34.35	22
23	34.50	34.65	34.80	34.95	35.10	35.25	35.40	35.55	35.70	35.85	23
24	36.00	36.15	36.30	36.45	36.60	36.75	36.90	37.05	37.20	37.35	24
25	37.50	37.65	37.80	37.95	38.10	38.25	38.40	38.55	38.70	38.85	25
26	39.00	39.15	39.30	39.45	39.60	39.75	39.90	40.05	40.20	40.35	26
27	40.50	40.65	40.80	40.95	41.10	41.25	41.40	41.55	41.70	41.85	27
28	42.00	42.15	42.30	42.45	42.60	42.75	42.90	43.05	43.20	43.35	28
29	43.50	43.65	43.80	43.95	44.10	44.25	44.40	44.55	44.70	44.85	29
30	45.00	45.15	45.30	45.45	45.60	45.75	45.90	46.05	46.20	46.35	30
31	46.50	46.65	46.80	46.95	47.10	47.25	47.40	47.55	47.70	47.85	31
32	48.00	48.15	48.30	48.45	48.60	48.75	48.90	49.05	49.20	49.35	32
33	49.50	49.65	49.80	49.95	50.10	50.25	50.40	50.55	50.70	50.85	33
34	51.00	51.15	51.30	51.45	51.60	51.75	51.90	52.05	52.20	52.35	34
35	52.50	52.65	52.80	52.95	53.10	53.25	53.40	53.55	53.70	53.85	35
36	54.00	54.15	54.30	54.45	54.60	54.75	54.90	55.05	55.20	55.35	36
37	55.50	55.65	55.80	55.95	56.10	56.25	56.40	56.55	56.70	56.85	37
38	57.00	57.15	57.30	57.45	57.60	57.75	57.90	58.05	58.20	58.35	38
39	58.50	58.65	58.80	58.95	59.10	59.25	59.40	59.55	59.70	59.85	39
40	60.00	60.15	60.30	60.45	60.60	60.75	60.90	61.05	61.20	61.35	40
41	61.50	61.65	61.80	61.95	62.10	62.25	62.40	62.55	62.70	62.85	41
42	63.00	63.15	63.30	63.45	63.60	63.75	63.90	64.05	64.20	64.35	42
43	64.50	64.65	64.80	64.95	65.10	65.25	65.40	65.55	65.70	65.85	43
44	66.00	66.15	66.30	66.45	66.60	66.75	66.90	67.05	67.20	67.35	44
45	67.50	67.65	67.80	67.95	68.10	68.25	68.40	68.55	68.70	68.85	45
46	69.00	69.15	69.30	69.45	69.60	69.75	69.90	70.05	70.20	70.35	46
47	70.50	70.65	70.80	70.95	71.10	71.25	71.40	71.55	71.70	71.85	47
48	72.00	72.15	72.30	72.45	72.60	72.75	72.90	73.05	73.20	73.35	48
49	73.50	73.65	73.80	73.95	74.10	74.25	74.40	74.55	74.70	74.85	49
50	75.00	75.15	75.30	75.45	75.60	75.75	75.90	76.05	76.20	76.35	50