

DISTANCES FROM SIDE STAKES FOR CROSS-SECTIONING
SLOPE 1 TO 1. ROADWAY OF ANY WIDTH

	0	.1	.2	.3	.4	.5	.6	.7	.8	.9	
0	0.00	0.10	0.20	0.30	0.40	0.50	0.60	0.70	0.80	0.90	0
1	1.00	1.10	1.20	1.30	1.40	1.50	1.60	1.70	1.80	1.90	1
2	2.00	2.10	2.20	2.30	2.40	2.50	2.60	2.70	2.80	2.90	2
3	3.00	3.10	3.20	3.30	3.40	3.50	3.60	3.70	3.80	3.90	3
4	4.00	4.10	4.20	4.30	4.40	4.50	4.60	4.70	4.80	4.90	4
5	5.00	5.10	5.20	5.30	5.40	5.50	5.60	5.70	5.80	5.90	5
6	6.00	6.10	6.20	6.30	6.40	6.50	6.60	6.70	6.80	6.90	6
7	7.00	7.10	7.20	7.30	7.40	7.50	7.60	7.70	7.80	7.90	7
8	8.00	8.10	8.20	8.30	8.40	8.50	8.60	8.70	8.80	8.90	8
9	9.00	9.10	9.20	9.30	9.40	9.50	9.60	9.70	9.80	9.90	9
10	10.00	10.10	10.20	10.30	10.40	10.50	10.60	10.70	10.80	10.90	10
11	11.00	11.10	11.20	11.30	11.40	11.50	11.60	11.70	11.80	11.90	11
12	12.00	12.10	12.20	12.30	12.40	12.50	12.60	12.70	12.80	12.90	12
13	13.00	13.10	13.20	13.30	13.40	13.50	13.60	13.70	13.80	13.90	13
14	14.00	14.10	14.20	14.30	14.40	14.50	14.60	14.70	14.80	14.90	14
15	15.00	15.10	15.20	15.30	15.40	15.50	15.60	15.70	15.80	15.90	15
16	16.00	16.10	16.20	16.30	16.40	16.50	16.60	16.70	16.80	16.90	16
17	17.00	17.10	17.20	17.30	17.40	17.50	17.60	17.70	17.80	17.90	17
18	18.00	18.10	18.20	18.30	18.40	18.50	18.60	18.70	18.80	18.90	18
19	19.00	19.10	19.20	19.30	19.40	19.50	19.60	19.70	19.80	19.90	19
20	20.00	20.10	20.20	20.30	20.40	20.50	20.60	20.70	20.80	20.90	20
21	21.00	21.10	21.20	21.30	21.40	21.50	21.60	21.70	21.80	21.90	21
22	22.00	22.10	22.20	22.30	22.40	22.50	22.60	22.70	22.80	22.90	22
23	23.00	23.10	23.20	23.30	23.40	23.50	23.60	23.70	23.80	23.90	23
24	24.00	24.10	24.20	24.30	24.40	24.50	24.60	24.70	24.80	24.90	24
25	25.00	25.10	25.20	25.30	25.40	25.50	25.60	25.70	25.80	25.90	25
26	26.00	26.10	26.20	26.30	26.40	26.50	26.60	26.70	26.80	26.90	26
27	27.00	27.10	27.20	27.30	27.40	27.50	27.60	27.70	27.80	27.90	27
28	28.00	28.10	28.20	28.30	28.40	28.50	28.60	28.70	28.80	28.90	28
29	29.00	29.10	29.20	29.30	29.40	29.50	29.60	29.70	29.80	29.90	29
30	30.00	30.10	30.20	30.30	30.40	30.50	30.60	30.70	30.80	30.90	30
31	31.00	31.10	31.20	31.30	31.40	31.50	31.60	31.70	31.80	31.90	31
32	32.00	32.10	32.20	32.30	32.40	32.50	32.60	32.70	32.80	32.90	32
33	33.00	33.10	33.20	33.30	33.40	33.50	33.60	33.70	33.80	33.90	33
34	34.00	34.10	34.20	34.30	34.40	34.50	34.60	34.70	34.80	34.90	34
35	35.00	35.10	35.20	35.30	35.40	35.50	35.60	35.70	35.80	35.90	35
36	36.00	36.10	36.20	36.30	36.40	36.50	36.60	36.70	36.80	36.90	36
37	37.00	37.10	37.20	37.30	37.40	37.50	37.60	37.70	37.80	37.90	37
38	38.00	38.10	38.20	38.30	38.40	38.50	38.60	38.70	38.80	38.90	38
39	39.00	39.10	39.20	39.30	39.40	39.50	39.60	39.70	39.80	39.90	39
40	40.00	40.10	40.20	40.30	40.40	40.50	40.60	40.70	40.80	40.90	40
41	41.00	41.10	41.20	41.30	41.40	41.50	41.60	41.70	41.80	41.90	41
42	42.00	42.10	42.20	42.30	42.40	42.50	42.60	42.70	42.80	42.90	42
43	43.00	43.10	43.20	43.30	43.40	43.50	43.60	43.70	43.80	43.90	43
44	44.00	44.10	44.20	44.30	44.40	44.50	44.60	44.70	44.80	44.90	44
45	45.00	45.10	45.20	45.30	45.40	45.50	45.60	45.70	45.80	45.90	45
46	46.00	46.10	46.20	46.30	46.40	46.50	46.60	46.70	46.80	46.90	46
47	47.00	47.10	47.20	47.30	47.40	47.50	47.60	47.70	47.80	47.90	47
48	48.00	48.10	48.20	48.30	48.40	48.50	48.60	48.70	48.80	48.90	48
49	49.00	49.10	49.20	49.30	49.40	49.50	49.60	49.70	49.80	49.90	49
50	50.00	50.10	50.20	50.30	50.40	50.50	50.60	50.70	50.80	50.90	50

Distance of slope stake from side or shoulder stake for any width roadway, slope 1 to 1. If ground is nearly level, the cut or fill at side stake is located by the double entry method in left column and top row. The number in body of table in same row and column gives distance from side stake to slope stake. If ground is not level estimate the difference in elevation between the side stake and slope stake, lower target by this amount if cut, elevate if fill. Add this amount to cut or fill and find distance in table. Set up rod at this point, and line of sight should cut target. If it does not make the slight adjustment necessary.

INDEX

Page	
1-3	X-Section Alley 167 - Mission Beach
4-9	X-Section Aly BIKD Alta Vista
10-14	X-Section Line betw. Lots C, and D, Blk. 1, Mission Bch.
16	{ Location of light standard on Broadway - Pac. Hwy. to 8 th Ave

X-Sect. Alley in Block 167 - Mission
Beach. for Grade est.

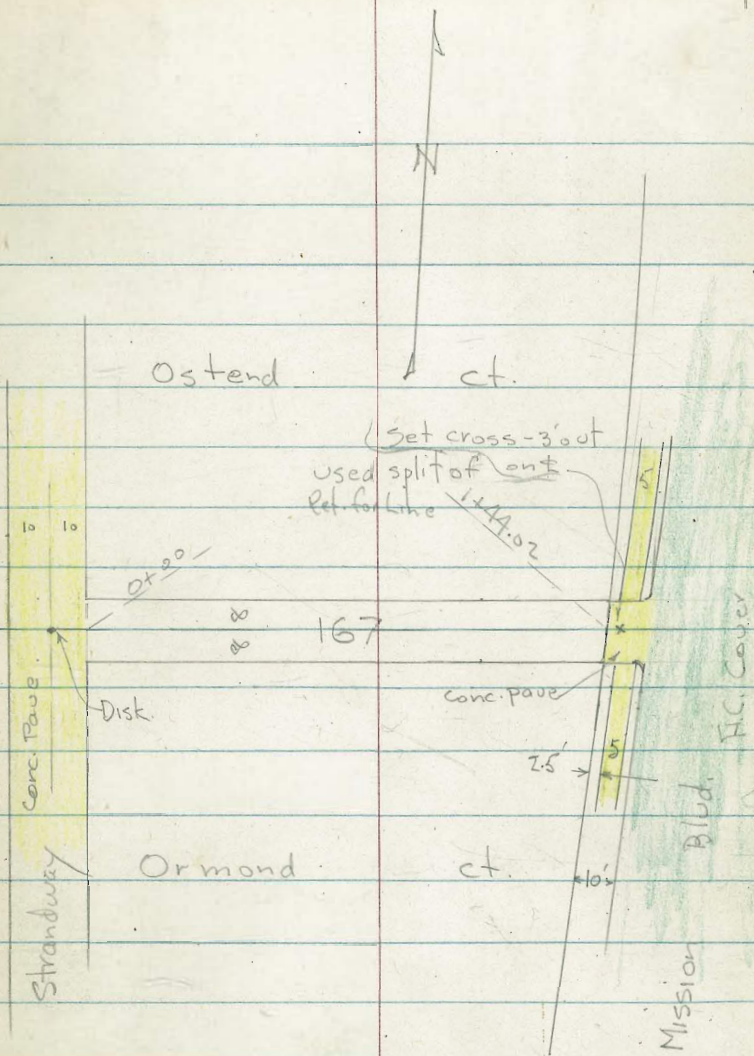
5997

6-13-52

- 7.0

w.O. 25020

Plotted



INDEXED
JUN 16 1952

X-Section 16' Alley in Block 167
 See P. 1 for Sketch.

0+84- 10.3' Rt. = Beg. Doub. Gar. Conc. floor.
 (Note: This is Cause of grade Est.)
 0+82.5- 13.5' Lt. = Ely. of opening Conc. floor.
 0+65- 13.4' Lt. = wly. of opening of Doub. Gar.

0+55.5- 8.2' Lt. = end apron

0+50

0+49- 7.5' Rt. = 10' Conc. apron

0+39.5- 8' Lt. = Beg. Conc. apron to Doub. Gar.

0+25

0+00 = E.L. Strandway = edge of Pav. - Note Dip.
 Drains down Alley.

0-10

B.M. = 1/4 Disk - Alley 167
 + Strandway

4.72

Lt.

1/4

Rt.

2

8.08
 13.5

3.12
 13.4 floor.
 gar.

3.67
 12.4
 gar.

2.90
 8.2 = apron

3.07
 8.1
 apron

2.9

2.9

3.2

3.40

3.80

7.4 apron.

3.41
 7.5
 apron

3.80
 9.5 = floor
 gar.

3.70
 12.1
 floor
 gar.

3.40
 8
 Apron

3.9
 8

3.8

4.2
 8

5.01
 25

4.97
 8

4.60

4.98
 8

5.03
 25

4.80
 50

4.71
 8

4.72

4.68
 8

4.80
 50

Actual Elev. Shown.

Alley 167

Lt. ± Rt.

+ Mission Blvd.
 Sect B.M. - w. 3' Lt. of Ostend ct. 0.19

1+54.02 = cb line - 2' Rt. - ± 2' x 2' Grate
 Sect. on wall.

1+44.02 = w.L. of Mission Blvd. + edge of Conc. ^{Pave}

1+41 - 8.9' Lt. = end House

1+33 = end Conc. slab. 8.1' Lt. - House Cont.

1+30

1+26 - 8.5' Rt. = end apron

1+22 - 8' Lt. = Beg. Conc. Slab. to House

1+08.5 - 8.5' Rt. = wly. of Conc. apron - Doub. gar.

B.M. = Nail in Pole - Rt. 0+69 3.79

1+12 - 8.5' Lt. = end apron

1+01 - 10.4 Rt. = End. Gar.

1+00

0+93.5 - 8.3' Lt. = Beg. Conc. Apron - Doub. gar.

-0.41	0.09	-0.46	-0.50	-0.58	-0.58	0.05	-0.41
50 gut.	Top 3' Rad.	8 gut.	± grate	2	8	Top 3' Rad.	50 gut.
	0.30	0.13	0.10	0.13	0.32		
	Top end cb.	8.05 gut.		8.05 gut.	Top end cb.		
0.76							
8.1							
Conc.	0.7		0.5	0.6			
	8			8			
					1.03		
					8.5		
					apron		
0.79	0.79						
8.6	8 - skb.						
at House					1.00	1.36	
					8.5	10.3	
					apron	floor.	
1.35							
8.5							
apron.							
						1.43	
						10.4	
						floor.	
			1.6	1.3	1.2		
			8		8		
2.43	1.65						
12.2	8.3 = apron						
floor.							

R.F. CROSS SECTION ALLEY BLK "D".
ALTA VISTA SUB.

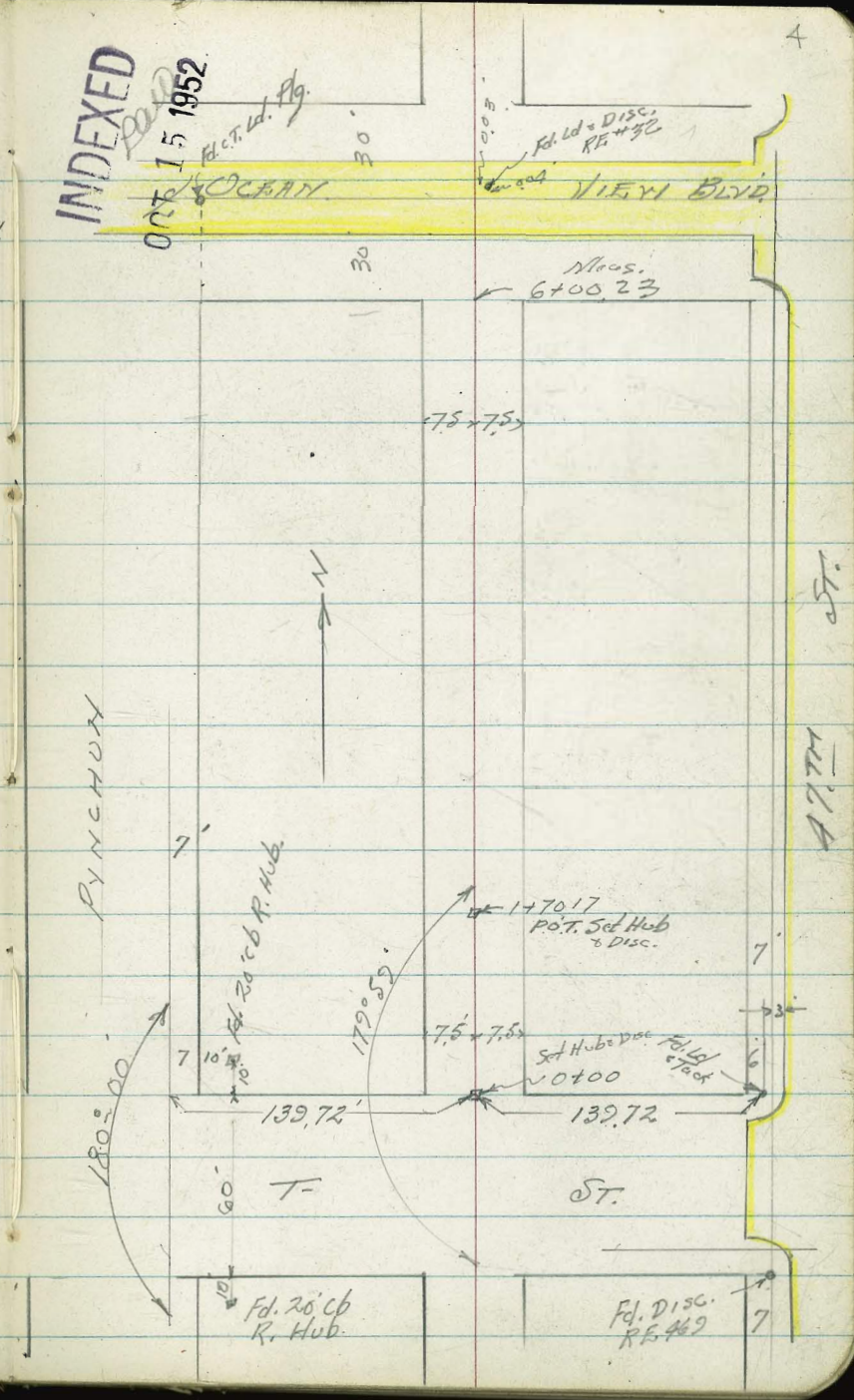
Between Pynchon & 47th St.
From T-ST. to OCEAN VIEW.

Original Sections FB 1727-38

Walker W/O 25020
Pope
Presley 10-14-52

(Plotted)

INDEXED
NOV 15 1952



Alley Blk. D - Alta Vista

Lt. 2 Ft. 5

1+01 = Beg 4' Chain wire fence 8.8' Lt

1+00 = End 5 1/2" Conc. Wall on Lt.

0+69.2 = Beg 5 1/2" Conc. Ret. Wall on Lt.

0+69 = End Conc. Drive & Dble Garage

0+53 = Beg Conc. Drive Dble Garage on Lt.

0+00 = N.L.T. St.

TR	8.08	123.95	150	115.87
	8.42	117.37		108.75

	118.30	119.2	119.0	119.4	120.6	120.9
	5.65	4.8	5.0	4.6	3.4	3.1
	10.1	7.5		4	7.5	15
	Top Wall					
	116.80	116.80	116.80	116.80	116.80	116.80
	7.15	10.1				
	10.1					
	Top Wall					
	115.08	115.22	116.20	117.4		
	8.87	8.73	7.75	6.6		
	27	24	10.8			
	Conc. Floor	Conc. Apron	Toe Apron			
	115.08	115.16	116.02	116.5	116.5	117.0
	8.87	8.19	7.93	7.5	7.1	7.0
	27	24	10.8	7.5	4	4
	Floor	Conc. Apron	Toe Conc. Apron			
	116.4	116.7	117.0	116.51	117.0	117.7
	7.6	7.3	7.0	7.44	6.8	6.0
	15	7.5	Ground	on Hub.	7.5	13
				123.95		

B.M. Ct. Ld. Pky. to Ocean View & Alley Blk. D.
FB 1727-41

Alley Blk. D. - Alta Vista

Lt.

Rt.

Rt.

6

2+65

114.8	114.8	114.2	114.2	114.9	115.0	115.0
4.6	4.6	5.2	5.2	4.8	4.4	4.4
15	7.5		4	5	7.5	15

2+50

115.7	115.5	115.4	115.5	115.7		
3.7	3.9	4.0	3.9	3.7		
15	7.5		7.5	15		

TR 3.55

119.42 808 115.87

119.42

2+00

120.2	120.0	119.4	119.4	119.1		
3.8	4.0	4.6	4.6	4.9		
15	7.5		7.5	15		

1+85

121.2	120.8	120.4	120.5	120.5		
2.8	3.2	3.6	3.6	3.5		
15	7.5		7.5	15		

1+70.17 on Pat H.b 340

(2+00 = End 4' lath Fence 7.0' Lt.)
 1+51 = Beg. 4' lath. Fence 7.2' Rt.

1+50 = End Chain Wire Fence on Lt. 88'

121.2	121.1	120.8	120.9	121.2		
2.8	3.0	3.2	3.1	2.8		
15	7.5		7.5	15		

1+46.5 = End Corrug. Iron Fence 7.0' Rt.

1+20

120.5	120.7	120.9	121.2	121.2		
3.5	3.3	3.1	2.8	2.8		
12.5	7.5		7.5	12.5		

1+16 = Beg. Corrug. Iron Fence 7.1' Rt.

123.95

123.95

Alley Bk.D. Alta Vista

4+25 = End Fence & Wall on Lt

4+245 72" Lt Pole P-37-8006

4+00 = E. Dble Gate in Ch. Wire Fence
NO WALL at this point.

= Beg. 4" Conc. Ret. Wall 11.1' Lt.

3+76 = Beg. 4' Chain Wire Fence 10.2' Lt.

3+50

3+45 = ^{House} New Foundation 16.6' Rt. - 2' MH

3+07

3+00

lt	ft	ft	ft	ft	ft	ft
6.91	11.8	11.8	11.8	11.8	11.8	11.8
110.0	110.0	110.0	110.0	110.0	110.0	110.0
9.4	8.8	8.5	7.9	7.4	6.8	6.2
	7.5		7.5	15	50	50
109.62	109.62	109.62	109.62	109.62	109.62	109.62
9.80	10.0	9.7	9.5	8.9	7.3	7.3
	11.1		7.5	15	50	50
109.2	109.2	109.2	109.2	109.2	109.2	109.2
10.2	10.0	9.6	9.6	9.6	8.9	8.9
	7.5		15	16.6	50	50
		109.82	109.82	109.82	109.82	109.82
		9.60	9.30	9.30	9.30	9.30
		16.6	16.6	16.6	16.6	16.6
			Top Fdn.			
9.3	8.6	8.4	8.4	7.7	7.6	6.4
	7.5		6	7.5	15	50
111.7	111.9	111.5	111.9	111.2	111.2	111.2
7.7	7.5	7.9	7.5	6.8	5.2	5.2
	7.5		5	7.5	15	15
		119.42				

Alley Blk D - Alta Vista

5+55

5+40

5+24 = N end Driveway Dble Garage

5+06 = Reg. Driveway Dble Garage

5+00

5+00 = 72 Lt. Pole J.P. # 77745

4+84 = 72 Lt Pole Anchor

4+55

4+50

	Lt.	Lt.	Lt.	Rt.	Rt.
	109.4	110.1	110.8	111.2	111.2
	10.0	9.3	8.6	8.2	8.2
	15	7.5	7.5	7.5	15
	110.5	111.2	111.5	112.1	112.8
	8.9	8.2	7.9	7.3	6.6
	15	7.5	7.5	7.5	15
				115.22	
				42.0	
				19.9	
				Conc. Floor	
				115.22	
				42.0	
				19.9	
				Conc. Floor	
				114.2	
	113.0	114.1	114.2	114.9	115.4
	6.4	5.3	5.2	4.5	4.0
	15	7.5	7.5	7.5	15
	112.8	114.1	114.2	114.8	115.9
	6.6	5.3	5.2	4.6	3.5
	15	7.5	7.5	7.5	13
	112.5	113.7	113.9	113.8	114.0
	6.9	5.7	5.5	5.6	5.1
	15	7.5	7.5	7.5	15
			119.42		
					115.8
					3.6
					2.0

Alley Blk. D - Alta Vista

Lt.

&

FF.

9

chk starting B.H. P-5 10.65 ²⁰²
108.75
108.77

6 + 30.23 = E. Pav.

107.15 108.02
12.27 11.13 10.66 10.24 9.04
30 75 75 75 30
Pav. Pav. Pav. Pav. Pav.

6 + 20.3 = South Edge East Cur. Pav.

107.04 108.27
12.38 11.15 10.70 10.27 9.04
30 75 75 75 30
Pav. Pav. Pav. Pav. Pav.

6 + 08 10.3' H = Pole # P-74275

6 + 00 23 = St. Ocean View Blvd.

108.3 108.7
11.1 10.7 10.3 2.7 2.6
15 75 75 75 15

5 + 25

119.42

108.4 108.9
11.0 10.5 10.0 9.0 8.6
15 75 75 75 15

119.42

SURVEY FOR PROPOSED SEWER EASEMENT
BETWEEN LOTS C & D BLOCK N^o 1 MISSION BEACH
CURVE DATA

$R=110' \Delta=115^{\circ}33'25'' d=15.62612181$



SAN DIEGO PLACE

5-12-53

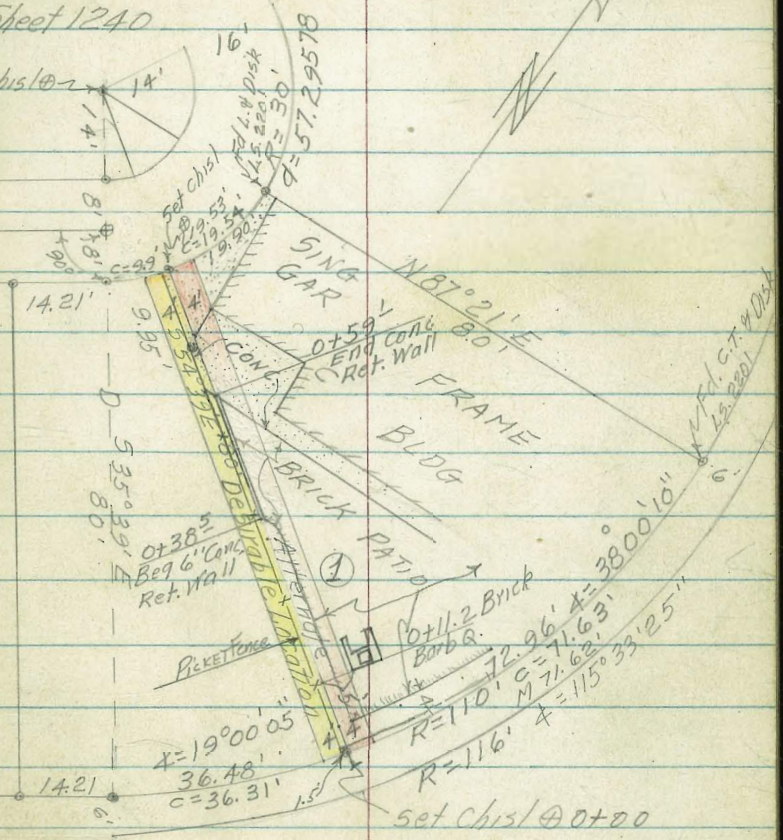
File Map N^o 1809

T. A. Stamper

Ref Dwg. 2.1.95

Tie Sheet 1240

Set Chis @ 0+



INDEXED
file
MAY 12 1953

5-12-53

CROSS SECTIONS OF PROPOSED
EASEMENT BETWEEN LOTS C. & D. BLK N^o 1
MISSION BEACH. W.O. 20637

Lt. & Rt

- Stampen
- Huffman
- Shorey
- Sherry

Note: Direct Elev. Rod. Used

0+04³ Begin Brick Patio

9.79 9.85
1.8' 10'
Car Brick
Patio

0+01⁴ Picket Fence

9.8
1.5 on Ground
Fence Cor.

0+00² N. Edge S. Walk

9.59 9.78 9.87 9.91
20 10 10
on walk on walk

0-05 S. Edge of S. Walk

9.46 9.66 9.75 9.80
20 10 10
on Walk on walk on walk

0-25

9.5 9.6 9.4
10 10

B.M.

USCGS

See p. 15
9.33

U.S.E.D. MON. Diego

(See Drg. No. 1375-D)

(1827/21 = 0.41 City)

X-SEC'S CONTD

5-12-53

0+49⁵ Deadman Guy

63
Deadman
guy

T.P. on conc wall El 11.90

0+38⁵ E.C. Brick Patio Beg 6" Conc. Ret. Wall.

10.5 11.00 10.71
Ground on Wall on patio

0+35⁵ B.C. Brick Patio To Lt.

10.60 10.83
2.0 10

0+25

10.0 9.8 10.00 10.20
10 1.8 10

0+15⁷ End Barb Q. Pit.

10.07 11.00 10.01 11.20
5² 5² 9³ 9⁵
Bottom Top Bottom Top

0+11² Begin 4.5' Brick Barbeque Pit.

9.95 11.15 9.99 11.22
5³ 5³ 9⁸ 9⁸
Bottom Top Bottom Top

X-SEC'S CONTD

5-12-53

Lt. † Rt.

0+80

10.9 10.85 10.86 10.88 11.27
10 1.2 0 0.8 101' x 1.5' Water
Meter Box0+73⁶ Car Frame Bldg11.29
2.4
Car Frame
Bldg

0+71 Car Picket Fence

11.10
1/2 on walk
Car Picket
Fence

0+70 8" Power Pole

2.2
8" P.P.0+59¹ End Conc. Ret Wall11.22 11.11
0 on wall 0 on walk

0+50

10.4 11.0 11.21 11.04 11.13
10 0 0 0.5' 10
on Ground on Wall

X-SEC'S CONT'D.

5-12-53

Lt. & R.T.

	0.00
Check Starting B.M. - Pg 11	9.33
	9.33
T.P. on 30' Rad Pt.	10.63

0+86 SEWER M.H.	10.76	10.90	11.13	4.46
	10		6	6
			TOP	F.L.
			SEWER M.H.	

Check Elev. U.S.C. + G.S. "Diego"
 against city B. M.
 n.e. cor. Mission Blvd & San Diego Place

INDEXED

FILED

MAY 25 1953

15

C.H.S.

Be99

oltman

schelin

5-23-53

W.O. 20005

Note.

N.E.B.P. San Diego Pl. and
 Mission Blvd (E.L.-119) is gone.

5.72 0.40

U.S.C + G.S. "Diego" (city datum)

T.P. 4.96 6.12 4.04 1.16

4.98 5.20 4.53 0.22

Mission Blvd.
 N.E.B.P. Alley south of Allerton Ct. +

5.60 4.75 - -0.85

N.E.B.P. San Louis Rey Place
 + Mission Blvd.

Location of light standards
on Broadway.
Pacific Hy. to 8th Ave.

South Side

Broadway 16
Distance
back of
curb width
curb to
prop.

Station

Standard
Number

0+00

= 0+00

2+75 = Ely line India

20

11-4-53
C.H.S.
Oltman
Schelin

INDEXED

JCR

NOV 5 1953

W.D. 32389

Wly. Side Broadway

Station

Standard
Number

Foot
back of
curb

width of cb.

2+74⁸

719

25

2+00 = Wly line India

= 0+00 India

1+58³

717

2⁵

20'

2+75 = Ely line

line India

2+00 = Wly

718

2.4

20'

0+80

715

2³

20'

0+00

5+50 = Ely line Kettner =

1+21³

716

2.4

0+11.4

714

2.5'

5+49

713

2²

20'

= 0+00 Kettner

5+50 = Ely line

4+75 = Wly line Kettner

Kettner

= Wly line of

4+75

712

2.4

4+20³

711

2²

20

3+77

710

2.4

3+60⁸

709

2⁴

20'

3+011

708

2.4

3+02⁵

707

2⁴

20

1+90

706

2.4

1+92

705

2⁵

20

0+12

702

2.4

20' curb

0+43

701

2⁵

20'

0+00 = 475' wly of wly. line Kettner

475' west of wly. line Kettner Blvd
0+00 =

North side of Broadway

sta.	standard number	Dist. back of curb.	curb width	
2+02 ⁷	742	2.5	20'	
1+19	740	2.5	20'	
0+36 ³	738	2.5	20'	
= 0+00 Union			} check street width. I have no tie points or Map. am using improvement	
2+66 = Ely line				
2+01 ⁶	736	2.4		20'
2+00 = Wly Union				
1+20	734	2.4		
0+41 ^E	732	2.4		
= 0+00 2+75 = Ely State				
2+00 ^E	730	2.4		
2+00 = Wly State				
1+24 ⁷	728	2.4		
0+38 ^E	726	2.4		
= 0+00 2+75 = Ely Columbia				
Columbia 2+00 = Wly	724	2.4		
1+21	722	2.4		
0+40	720	2.4	20'	
0+00 = Ely line India				

South Side Broadway 17

Station	standard Number	Distance back of curb	curb width
2+74 ^E	737	2.4	20.
Union St. 2+00 = Wly			}
1+59 ^E	735	2.4	
0+72 ⁹	733	2.4	
0+01 ³	731	2.4	
= 0+00 State St. 2+75 = Ely			
State St. 2+00 = Wly			
1+59	729	2.4	
0+73.8	727	2.4	
= 0+00 Columbia. 2+75 = Ely			
2+74 ^E	725	2.3	
Columbia. 2+00 = Wly			
1+60 ³	723	2.4	
0+82	721	2.3	20'
line India 0+00 = Ely			

North side of Broadway

Station	Standard Number	Feet back of curb	curb width
= 0+00			14'
line 3 rd			
2+80 = Wly Ely			
2+00 ⁸	760	2.5	20'
3 rd Ave			
2+00 = Wly			
1+19	758	2.4	}
0+39	756	2.4	
= 0+00			
2+80 = Ely. 2 nd			
line 2 nd Ave			
2+00 = Wly			
1+98 ⁹	754	2.4	
1+19 ⁵	752	2.4	
0+44 ²	750	2.4	
= 0+00			
2+80 = Ely. 1 st			
2+00 ⁶	748	2.4	
2+00 = Wly 1 st Ave.			
1+19 ⁷	746	2.4	
0+41 ²	744	2.4	20'
= 0+00 Front			
2+82 = Ely line			

South side Broadway 18

Station	Standard Number	Feet back of curb	width of curb.
= 0+00			
line 2 nd			20'
2+80 = Ely			
2 nd Ave.			
2+00 = Wly			
1+64 ⁵	753	2.3	}
0+70	751	2.3	
0+01 ⁹	749	2.3	
= 0+00			
First Ave.			
2+80 = Ely.			
1 st Ave			
2+00 = Wly			
1+73 ⁵	747	2.3	
1+02 ¹	745	2.3	
= 0+00 Front			
2+75 = Ely. 1 st Ave.	743	2.4	
11 th Front St.			
2+00 = Wly.			
1+62	741	2.4	
0+80	739	2.4	
Union St			
0+00 = Ely			20'

North side of Broadway

South side Broadway

Sta.	Standard Number	Feet back of curb	curb width	station	standard Number	Feet back of curb	curb width	
2+00 ^Z	786	2.4	14'	5th Ave. 20+00				
2+00 = Wly. 7 th				2+80 = Ely.				
1+18 ^E	784	2.4	}	line 5th Ave.			14'	
0+40 ^E	780	2.3		2+00 = Wly				
20+00				1+614	771	2.3		
line 6 th				0+79 ^E	769	2.4		
2+80 = Ely.				= 0+00	767	2.4	14'	
2+00 ^Z	778	2.3		line 4 th				
6 th St.				2+80 = Ely				
2+00 = Wly. line				2+023	765	2.4	} curb line produced from west.	
1+21 ^E	776	2.4		4 th Ave.				
0+40	774	2.3		2+00 = wly				
= 0+00			0+98	763	2.4			
2+80 = Ely. 5 th Ave			= 0+00					
line 5 th Ave			3 rd					
2+00 = wly			2+80 = Ely.					
1+99 ^E	772	2.4	2+79	761	2.4			
1+21	770	2.3	3 rd Ave.					
0+40	768	2.3	2+00 = wly			20'		
= 0+00			1+62 ^E	759	2.4			
2+80 = Ely. 4 th Ave			0+78	757	2.4			
4 th Ave.			0+00 ^E	755	2.4	10'		
2+00 = wly. line								
1+59	764	2.4						
0+41	762	2.3						
0+00 = Ely line 3 rd								

North Side of Broadway

Station	Standard Number	Feet back of curb	Curb width
---------	-----------------	-------------------	------------

Station	Standard Number	Feet back of curb	Curb width
---------	-----------------	-------------------	------------

8th Ave.
wly line
2+00 =

1+64 791 2.3

0+85⁴ 789 2.4

0+03 787 2.3

= 0+00
7th Ave.
2+80 = Ely.

7th Ave
2+00 = wly.

1+98⁵ 785 2.4

1+38⁷ 783 2.4

0+62² 781 2.4

0+01⁸ 779 2.3

= 0+00
2+80 = Ely. 6th
11th 6th
2+00 = wly.

1+61² 777 2.5

0+80⁵ 775 2.3

5th Ave
0+00 = Ely 773 2.5 14'

2+00⁶ 792 2.4

11th 8th Ave
2+00 = Wly

1+16 790 2.4

0+40 788 2.3

= 0+00 } 7th Ave.

2+80 = Ely line

14'

14'

INDEXED

JER

JAN 22 1954

TIES TO HARTFORD ST. SLY.

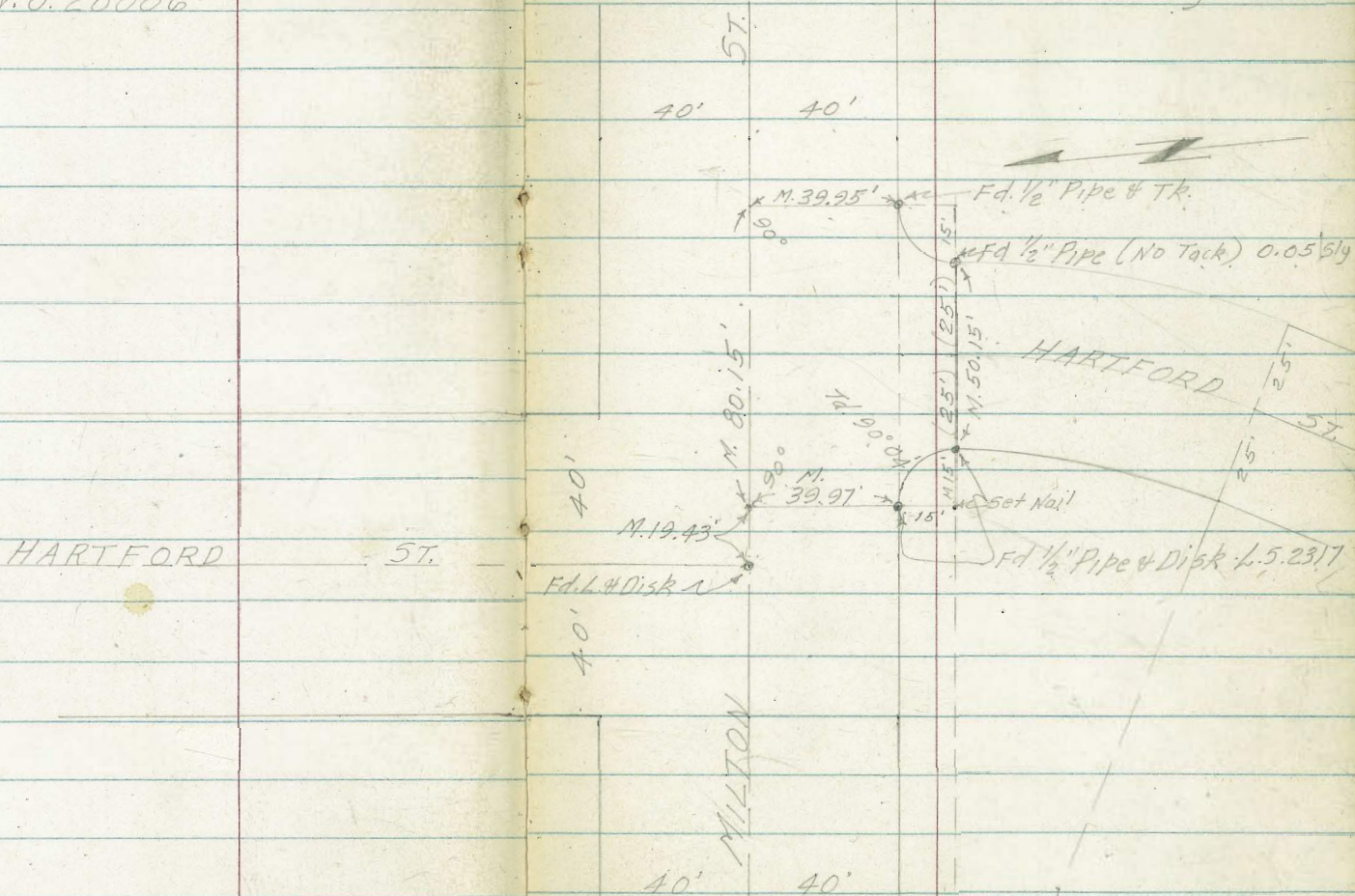
W.O. 20006

Fd L & Disk Wly Line
Illion St.

21

1-22-54

Stamper	☐
Huffman	⋈
Nordahl	⋈
Sherry	⋈



BOUNDARY SURVEY OF BLOCK "A" MONTEZUMA

TERRACE W.O. 20006

INDEXED

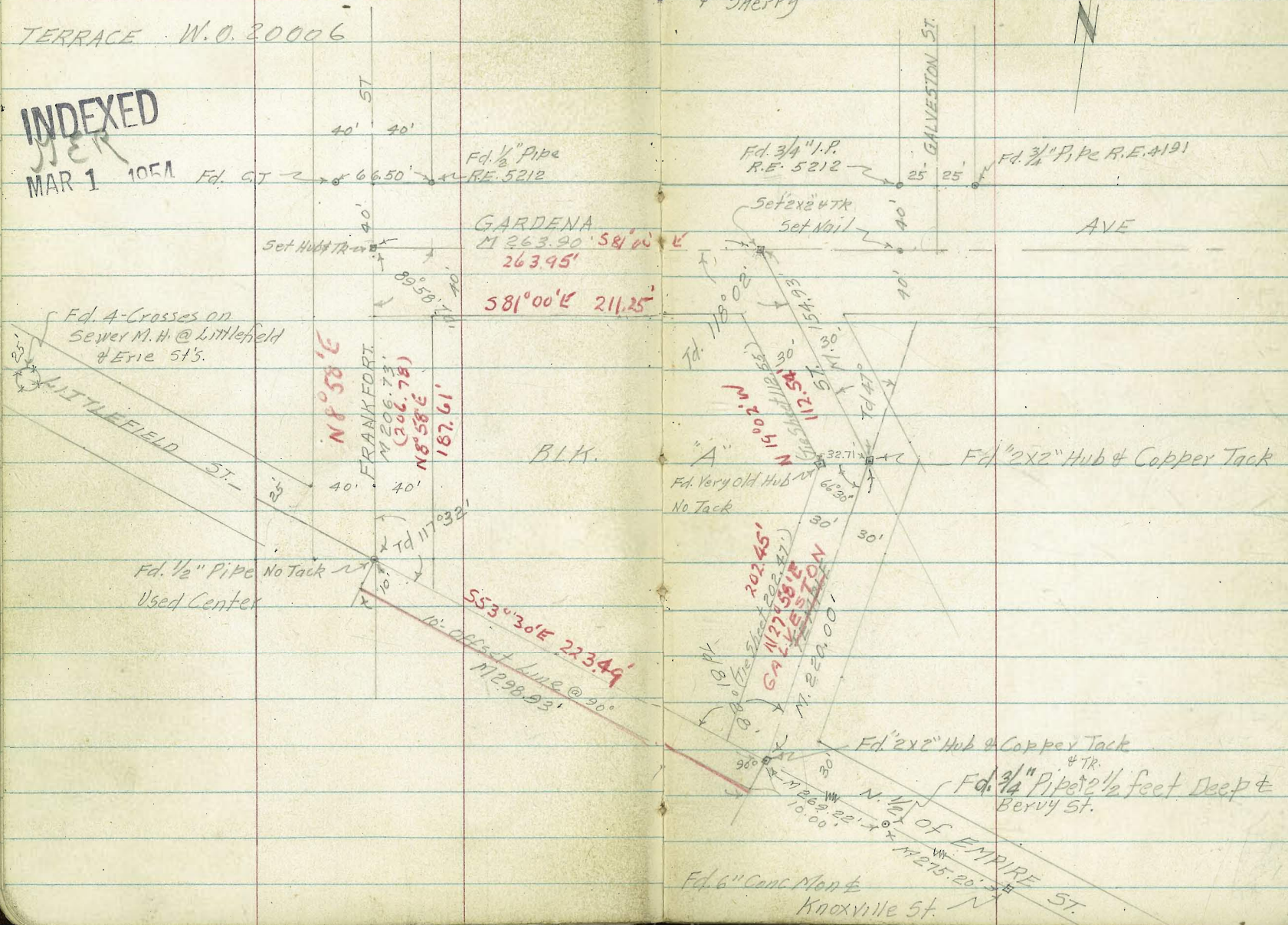
MAR 1 1954

2-26-54

- Stamp
- Huffman
- Nordahl
- Sherry

N 8° 51' 22" E

Y 32



GARDENA
M 263.90 581.00
263.95'
581°00'E 211.25'

FRANKFORT
M 206.73
(206.78)
N 8° 58' E
187.61'

10' offset line @ 90°
S 53° 30' E 223.49'
M 298.93'

BLK. "A"
Fd. Very old Hub
No Tack

Fd. 2x2" Hub & Copper Tack

Fd. 2x2" Hub & Copper Tack
& TR
Fd. 3/4" Pipe 1/2 foot Deep & Bervy St.

Fd. 6" Conc Man & Knoxville St
N 26° 22' E M 275.20'

D. Smith
J. Kirev
B. Fish
F. Nordahl

set Hub
& Disk

Reset Lot
in Cap. Man
which was
broken off.

W0#RS 020
5/21/54

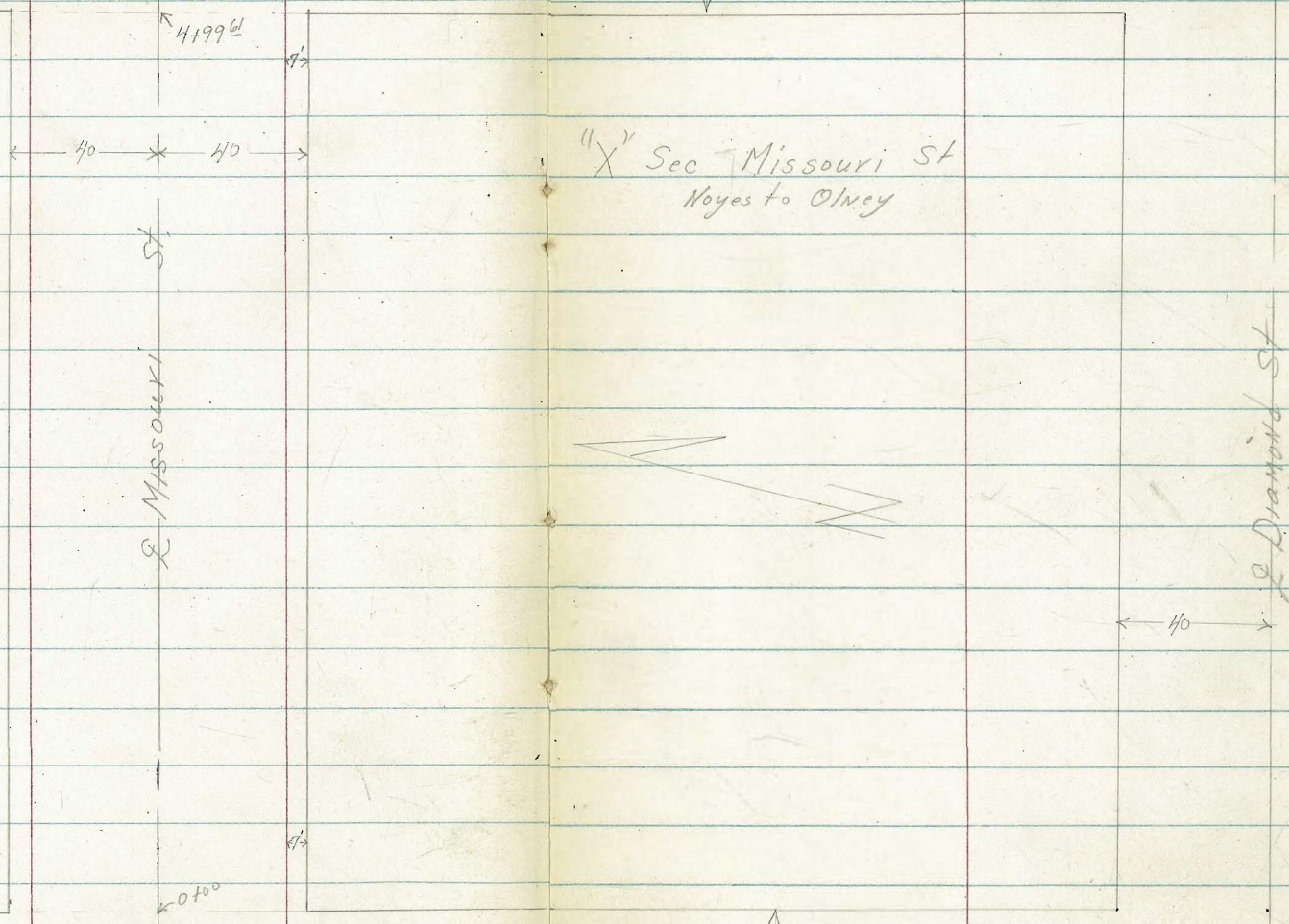
23

♀ Olney St.

31676
tin dist
used

INDEXED
EVA
MAY 24 1954

Ed Lot



"X" Sec Missouri St
Noyes to Olney

set H's
on Kim SMH X

Ed Cow Man

♀ Noyes St.

Ed Lot

"X" Sec Missouri St

Noyes to Olney

24

0-150 40⁴ RT end 3⁵ picket fence

3 ⁵	4 ²	5 ¹	6 ²	6 ⁸	7 ²	8 ⁸	9 ⁸
117.3	116.5	115.8	114.7	114.1	113.2	112.1	111.7
50	40	30	20		20	40	50

0+35 38⁸ RT & 3' con walk

8 ¹⁸	8 ²⁵	8 ⁶³
112.72	122.65	122.27
38 ⁸	40	50
	WIK	

0+50 Ely Line Noyes
39⁸ RT begin 3⁵ picket fence.

2 ⁸	3 ³	3 ⁶	4 ¹	6 ²	6 ⁸	7 ²	8 ²
118.1	117.6	117.3	116.0	114.8	114.1	113.0	112.7
50	40	30	23	20	40	50	

0-27

1 ¹	2 ¹	3 ⁶	4 ⁸	5 ²	7 ⁴	8 ²	8 ³	10 ²
119.8	118.0	117.3	116.1	115.0	113.5	112.5	113.0	112.6
75	50	40	20		25	32	40	50
							50	100

0-29

1 ¹	2 ¹	3 ⁶	4 ⁸	6 ²	7 ³	9 ⁸	9 ²	12 ⁰
119.8	118.0	117.3	116.1	114.8	113.6	111.7	111.2	108.0
75	50	40	20		20	40	50	100

0-40 & Noyes

0 ¹	2 ¹	3 ³	4 ⁸	6 ¹⁶	5 ²	7 ⁰	8 ¹	8 ⁶	11 ²
120.0	118.2	117.6	116.1	114.74	115.0	113.9	112.8	112.3	109.5
75	50	40	20	11M 31	31	20	40	50	100

TP₂ 8⁰⁴ 120²² 0⁷⁰ 112⁸⁶

TP₁ 13⁰⁴ 113⁵⁶ 0¹³ 100⁵⁵

BM 13⁰⁹ 100⁶⁸ 87⁵¹

& L+Disk Diamond St.
& W/Line Noyes St.
FB 2/6/38

T 12090

1790 40⁸ Lt 8° con drive

1784 39⁵ Rt 3° con walk

1763 39⁷ Rt 8° con drive

1750

1709 39⁸ Rt 8⁵ con drive

1702 38⁴ Rt 2⁵ con walk

1700

0767 40² Lt 5⁵ con & Brick walk

0758 39⁴ Rt 8° con drive

0754 39² Lt 10' con drive

Lt = My

20²² 118.68
50² 40⁵
drive

20²⁵ 118.15

3⁰ 117.9
50 40
4⁰ 116.9
40 25
4⁴ 116.5
20 20
5⁰ 115.1
6⁰ 114.6

112.30
860
39⁵ wlk 50
112.04
886
50
8²⁰ 112.50
890
39⁷ drive 50
112.4
8⁵ 112.00
112.1
8⁸ 50

4⁰ 116.9
50 40
4⁶ 116.3
50 20
5⁴ 115.5
20 20
6⁴ 114.5
6² 114.0
7⁴ 113.5
14 20
7² 113.0
20 40
9³ 111.6
50 50
9⁸ 111.1

3⁷⁹ 4³⁰
50² 40²
w/k

117.24
3⁵⁶ 4⁴⁶
50 39²
drive

111.15
90⁵ 8³⁸
39⁸ 50
111.57
9³⁷ 9³⁹ 9⁸⁵
38² 20 50
w/k
112.15
8²⁵ 9²¹
39⁴ 50
drive

120⁹⁰

3462 31² RT to NW cor Barn & garage comb dirt floor

3462 27³ Lt 2 3^o cov walk

3450

3447 39³ Lt 2 5' Elm tree

3412 40³ Lt 2 6² cov ribbon 2' ea ^{drive}

3400

R450

R437⁵ 40^o Lt 2 6² cov ribbon 2' ea ^{drive}

TP3 6²⁸ 120⁷⁵ 6⁴³ 114⁴⁷

R410 38² RT 2 11^o cov drive

R400

116.83
39² 50
43¹ 40
48⁴ 27³

119.35
140
50³ drive

118.49
119.6
118.6
117.9
116.7
115.7
114.9
114.2
113.9
112.8
112.0
111.2

118.5
117.9
116.8
116.0
115.7
114.4
114.0
113.0
112.3
111.8

118.6
117.6
116.9
115.8

120⁷⁵

115.0
114.5
113.9
112.4
112.0

120⁹⁰

81^o 112.8
39² floor

5428 wly gov Ag pav 24' wide & guttered

5418 15' L & 10" PPole 61436

5412 { 41' L & 12" Elm tree
33' L & 8" Elm tree

4499⁶ wly Olney St.

4489 21' RT & Fire Hyd.

4455 41' L & 8" cond drive

TP 447 114²⁷ 10²⁵ 109⁸⁰

ON Hwy
& RT
Olney & Massouri

4450

4400

3495 30' RT & 30" Peppertree

3493 30' RT to NE cor garage & Barn Comb. dirt floor

116.28 Lt = Nly
 100 50 40 20 10
 138 254 111.93 #2163
 109.27 Rt = Sly
 107.94 107.22 104.01 27
 20 40 50 100

114.0 0³ 16 20³ 29 32 48 54 52
 50 40 37 20 14 20 40 30
 113.5 112.7 112.0 111.4 110.6 109.5 108.9 108.4

114.53
 114.11
 70²⁶ 0¹⁶
 57^L 41^L
 drive

113.5 113.3 112.7 112.6 112.0 111.3 110.5 109.7 109.2
 7³ 7⁵ 8^L 8³ 8⁸ 9⁵ 10⁰ 11^L 11⁶
 50 40 35 20 15 20 40 50

115.8 115.3 113.9 112.5 112.1 111.1 110.7
 50 55 62 8³ 8² 9² 10^L
 50 40 20 20 40 50

T 120²⁵

Lt-Nly

Rt-Sly

28

87⁵⁹

11⁸⁸ 87⁵⁴

88²⁸

SE top
Aire Hyd.
Baromet - 80/100

TP₄ BM.

11³⁴

99⁴²

13²⁵

88⁰⁸

TP₅

0⁰⁵

101³²

12⁹⁰

101²⁸

543961 of Olney St

115.87	112.57	112.17	110.99	109.81	108.62	107.39	106.80	103.42
+160	150	210	328	446	565	688	747	1085
100	50	40	20		20	40	50	100

T 114²⁷

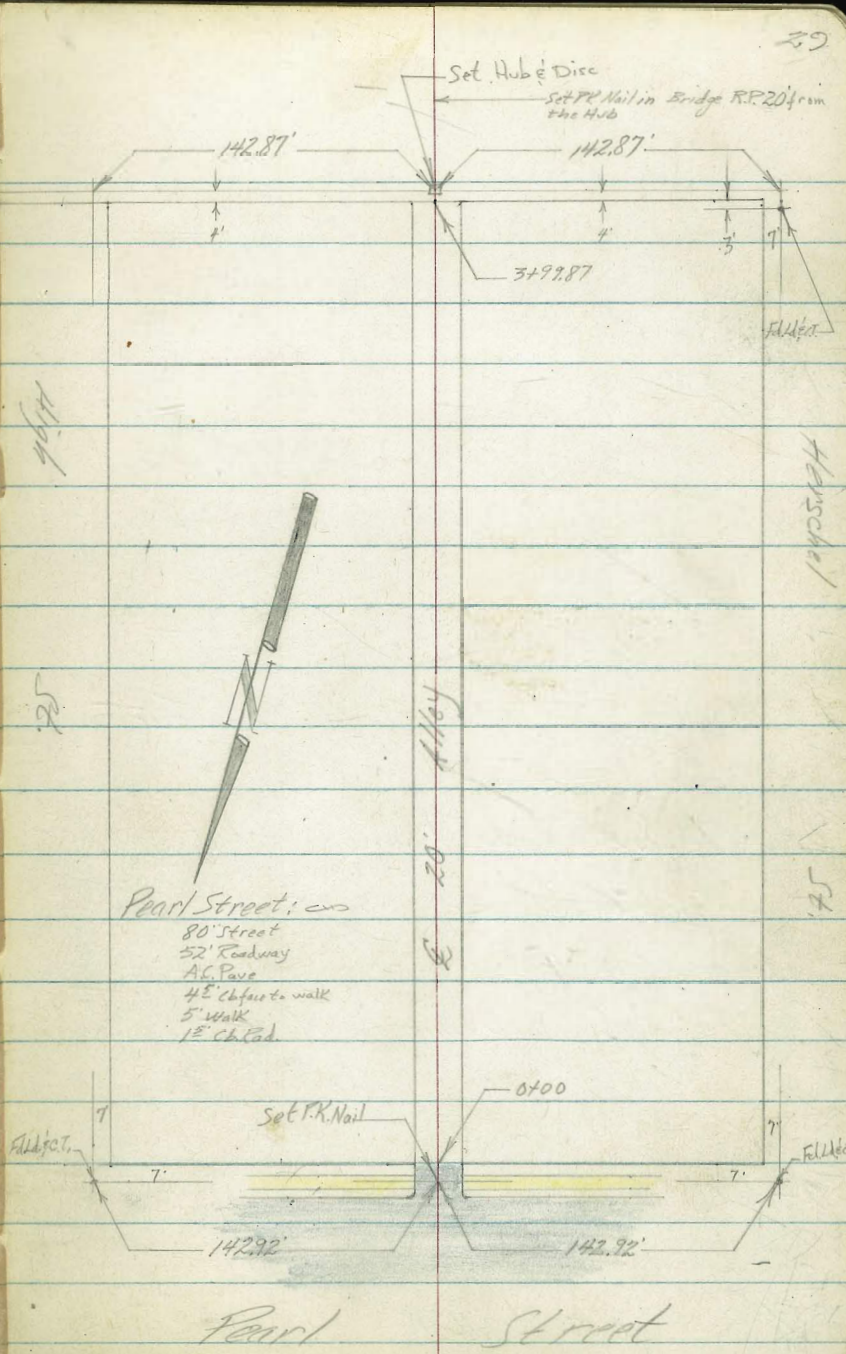
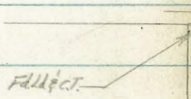
Roberts
Rorer
Moore
Morales
4-7-55
W.O. # 25020

X-Section Alley Block 15 Center Addition
to La Jolla Park

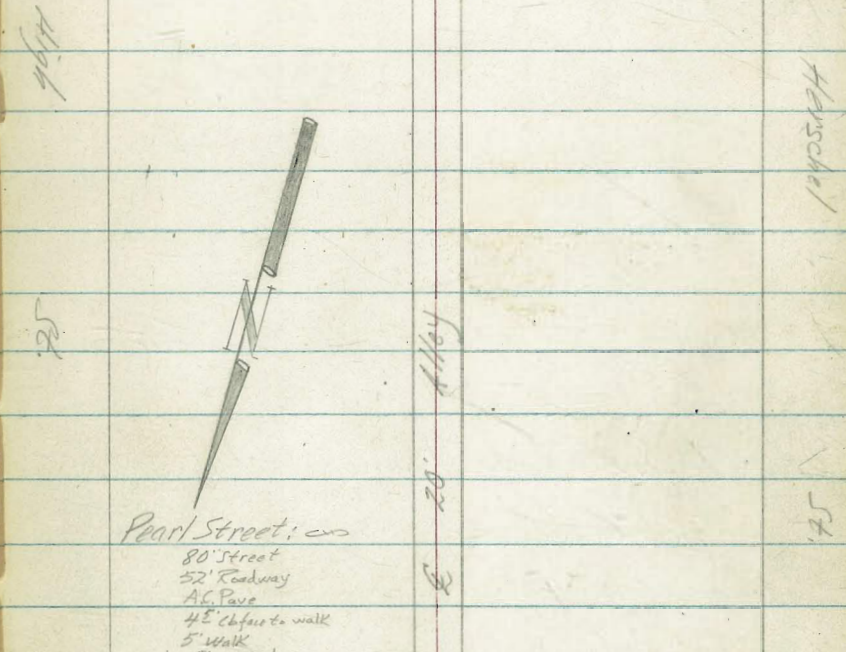
Map 915

INDEXED
APR 12 1955

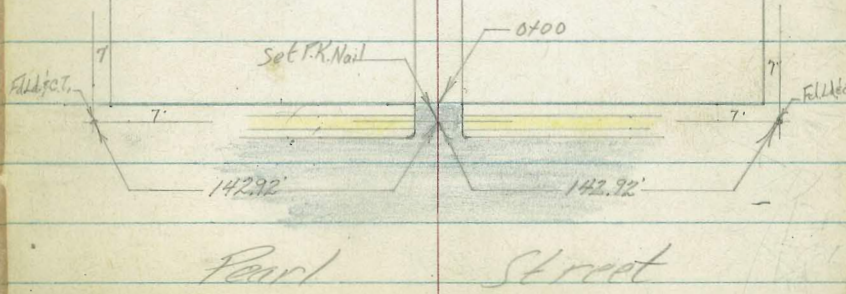
ck. by Roberts 9-19-56
W.O. # 32653
Notes Good, in fact,
Perfect!



Set Hub & Disc
Set 7/8\"/>



Pearl Street:
80' Street
52' Roadway
A.C. Pav
4\"/>



0+30

0.9	1.1	2.2	2.4	2.7	2.4	2.6
15	10	7		8	10	13
126.3	126.1	125.0	124.8	124.5	124.8	124.6

0+28.5

9¹/₂ Lt begin picket fence.

124.8	124.2	123.6	123.3	123.1	123.8	123.7
2.4	3.0	3.6	3.9	4.1	3.4	3.5
12	10	8		8	10	15
124.8	124.2	123.6	123.3	123.1	123.8	123.7

0+10

0+01

8° Rt to Near Edge 12" Palm Tree

0+00 South Line Pearl Street

(Make field check - some of paving bad)

478	476	477	535	521	
92	92		92	92	
cb	gut		gut	cb	
122.58	122.70	122.45	121.81	121.95	

0-14 So. Curb Line Pearl

319	313	453	500	5.50	5.87	5.49	7.30	6.87
50	50	115	115		115	115	50	50
cb	gut	cb	gut		gut	cb	gut	cb
123.97	123.53	122.63	122.16	121.66	121.29	121.67	119.86	120.28

0-40 E Pearl

123.70	121.87	120.10
3.46	5.29	7.06
50		50

BM

0.03 127.16

SWBP

127.13 Pearl St High

127.16

1425[±] 10[±] Lt End board fence begin Lath fence

1424 10[±] R & 1[±] conc walk

1400

0+70 9[±] Lt begin fence built on rubble wall; rocks,
pieces of conc. with no mortar.

0+66.5 8[±] R to Deadman

0+60 22[±] Lt & Single Garage
(If aprons flat or nearly flat show only center.)

T.P. 6.80 132.76 $\bar{\Delta}$ 120 125.96

0+50 { 9[±] Lt End fence
8[±] R to N.E. Power Pole # JPA 7475
≡≡≡

127.16 $\bar{\Delta}$

129.2	128.7	127.4	127.0	126.7	126.9	126.4	125.4	
36 20	41 10	54 10	58 6	61	59 6	64 10	74 20	
128.8	128.7	127.0	126.3	126.2	125.8	125.0	125.6	
40 20	41 9 [±]	58 9 [±]	65 5	66	70 6	78 10	72 12 [±] Fence	78 13
128.16		126.52						
460 228 Floor		624 10 Econc Apron 12' wide						
0.1 10	0.8 10	1.5 5	1.5	1.7 7	1.7 10	2.0 13 Fence	2.4 15	

132.76 $\bar{\Delta}$

126.91
5.85
10[±]
conc

126.30
6.46
20[±]
conc

125.5

8.3
20

2+00

1+89 14th Lt & Double Garage

1+87.5 9th Rt to End of E^W fence

1+86.5 8th Rt to N.E. Power Pole # JPA 7449

1+61 9th Lt to N.E. 6" Eugenia Tree

1+58 10th Lt End fence

1+53 9th Rt to N.E. 8" Shrub

1+50

1+33.5 16th Rt & Single Garage

132.76 X

2130.5
2.3
20

2130.0
2.8
10

2129.5
3.3
6

2129.2
3.6

1291
3.7
10

1292
3.6
14
24g

Rt 32

130.65
2.11
144
Floor

129.79
2.97
89
conc
Apron

128.6
4.0
20

128.6
4.2
10

128.3
4.5
6

127.9
4.9

127.8
5.0
8

127.3
5.5
10

127.0
5.8
20

126.96
5.80
15
conc
Apron

127.04
5.72
16
Floor

132.76 X

2+72.5 9^I Rt 63' opening to Patio

134.46

131.04

5.87
9I
conc

2+66 38^o Lt & Double garage

2.13
38
Floor

5.55
10
conc

2+64 9³ Rt begin board fence

130.30

2+58 14⁴ Rt & Single garage

130.70

6.29
14
conc
Floor

2+54 10⁶ Lt begin conc apron

(= 130.8)

5.89
10
conc

2+50

131.7

130.9

130.1

130.0

130.3

130.2

129.9

4.8
30

5.8
10

6.5
6

6.6

6.3
8

6.4
10

6.7
15

2+45.5 13² Rt End 4-Car garage

130.64

5.75
132
Floor

2+04 13³ Rt begin 4 Car garages under apartments.

129.69

6.70
132
Floor

T.P. 6.57 136.59 π 2.74 130.02

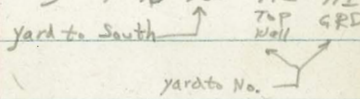
136.59 π

132.76 π

Lt 133.0 132.5 132.0 132.0 133.1 132.7 131.8 130.3 132.0 130.5 34

3+50 { 10 Lt begin picket fence.
9² Rt End grape stake fence begin board fence

3.6 4.1 4.6 4.6 3.5 3.9 4.8 6.3 4.6 6.1
20 10 7 5 7 10 10.5 11.2 11.2 11.2
GRD GRD GRD GRD GRD GRD GRD GRD GRD GRD



3+29 13² Lt to single garage opening to North

132.9 3.7 132.14 130.86 130.4
132 Floor Dirt

3+26.5 9² Rt 4 steps in Ret Wall

4.5 5.73 6.2
9.8 11.1 11.2
TOP Step Bottom Step GRD

3+05

132.6 132.1 132.9 132.1 132.0 132.0 130.3 130.2
4.0 4.5 4.7 4.5 4.6 4.6 6.3 6.4
20 10 6 10 11.2 11.2 20
West Edge Conc. Ret Wall

3+00.5 8² Rt to NE Power Pole #FA7425

132.3 131.9 131.6 131.9 131.8 131.0 131.0
4.3 4.7 5.0 4.7 4.8 5.6 5.6
20 10 5 10 11 20

3+00 9² Rt End picket begin grape stake fence

2+77.5 10⁶ Lt End conc apron

131.35 5.24 10⁵ Conc

2+74 9² Rt End board fence begin Picket fence on conc foundation - 3" thick setting on grd!

136.59A

136.59A

check

0.53 127.17 = 127.13

T.P.

1.71 127.70 10.60 125.99

4 + 06 8² Rt to N.E. Power Pole # JPA 9409

{ 99¹⁴ End fence
98^{Rt} End fence

3 + 99.87

{ South End Alley

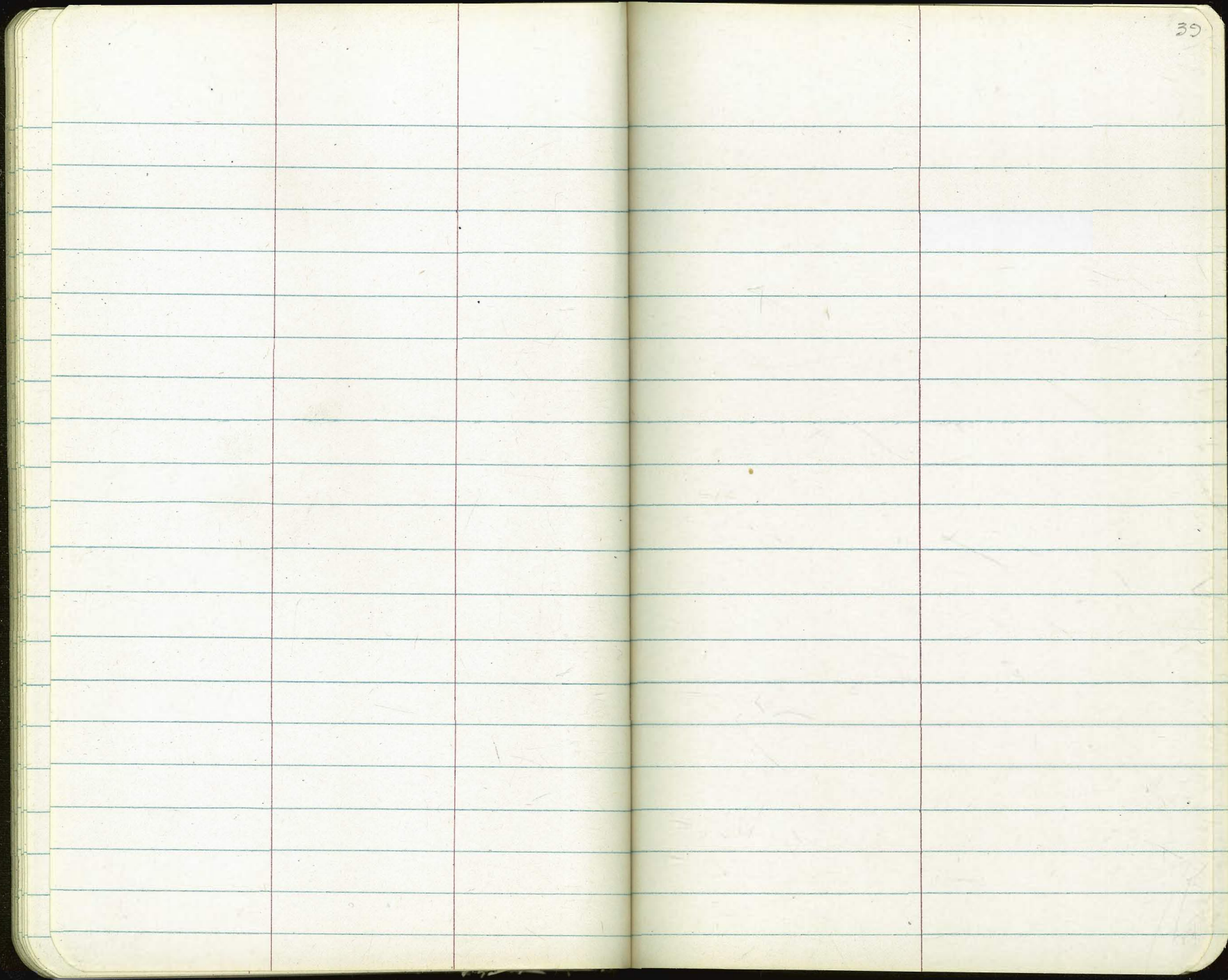
3 + 75

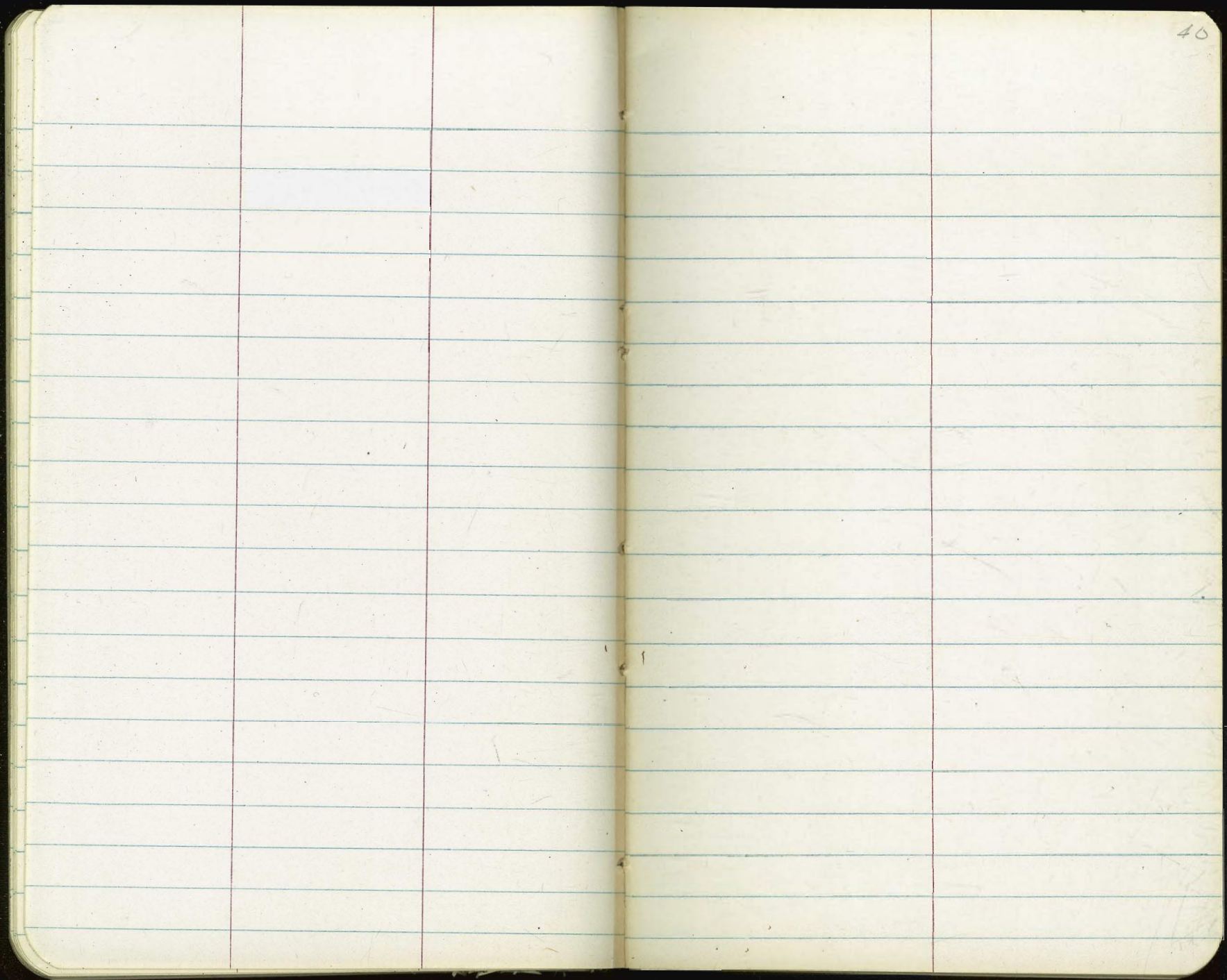
133.3	133.0	132.8	133.0	133.6	131.8	130.6	130.6
3.3	3.6	3.8	3.6	3.3	4.8	6.0	6.0
20	10		3	6	10	10 ²	20
132.9	132.6	132.5	132.7	133.1	131.0	130.4	130.4
3.7	4.0	4.1	3.9	3.5	5.6	6.2	6.2
20	10		3	7	10	10 ⁵	20

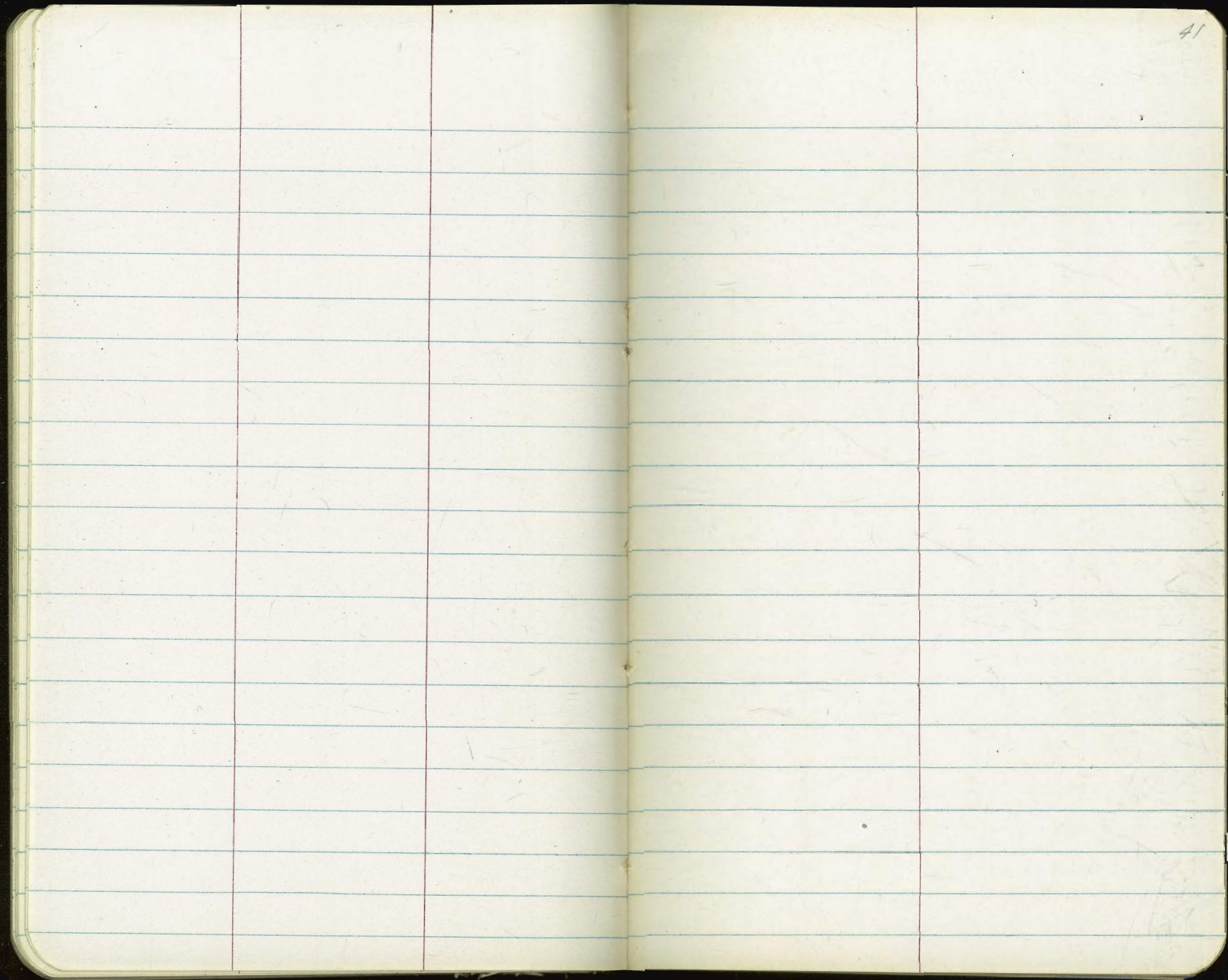
(133.3)

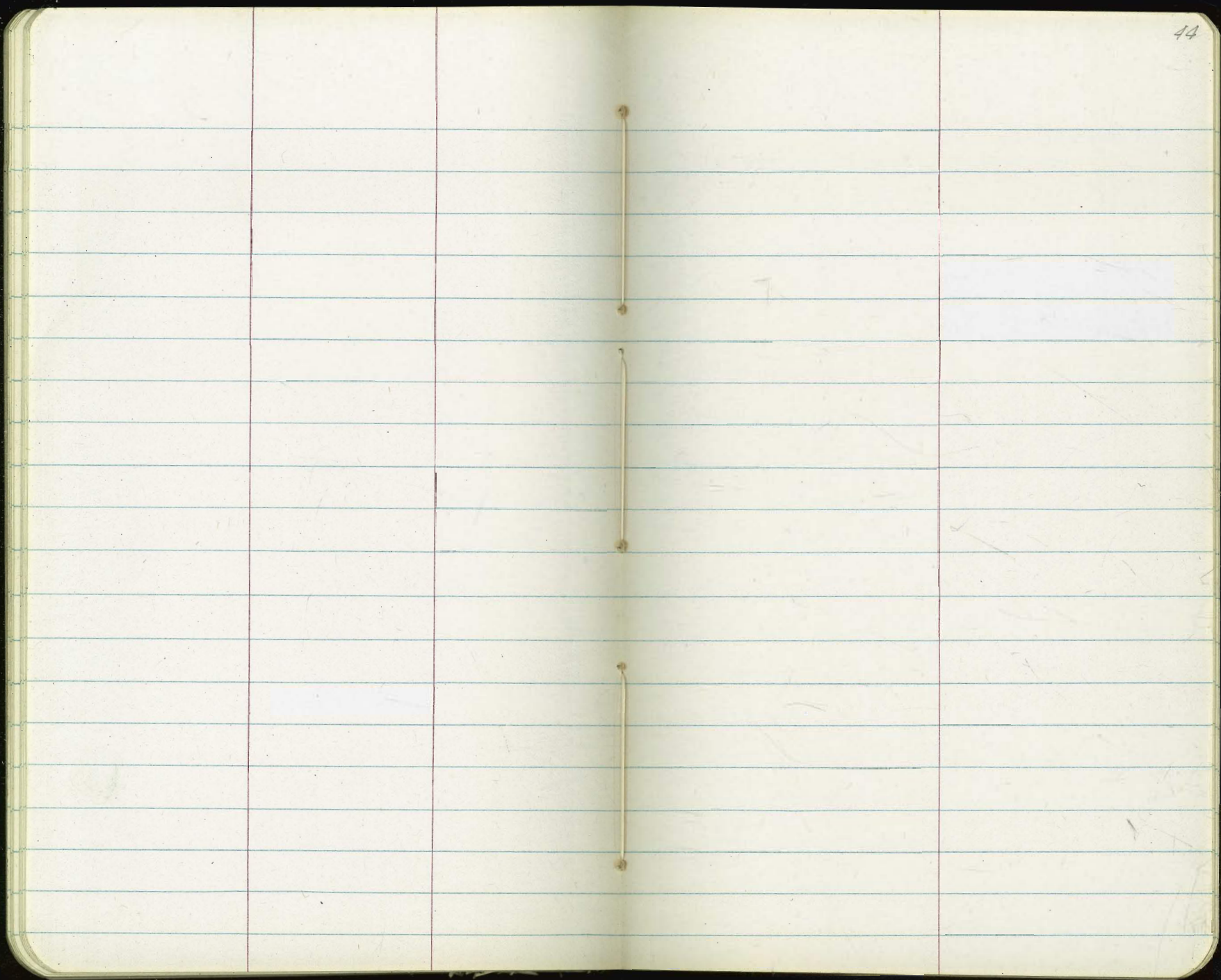
136.59A

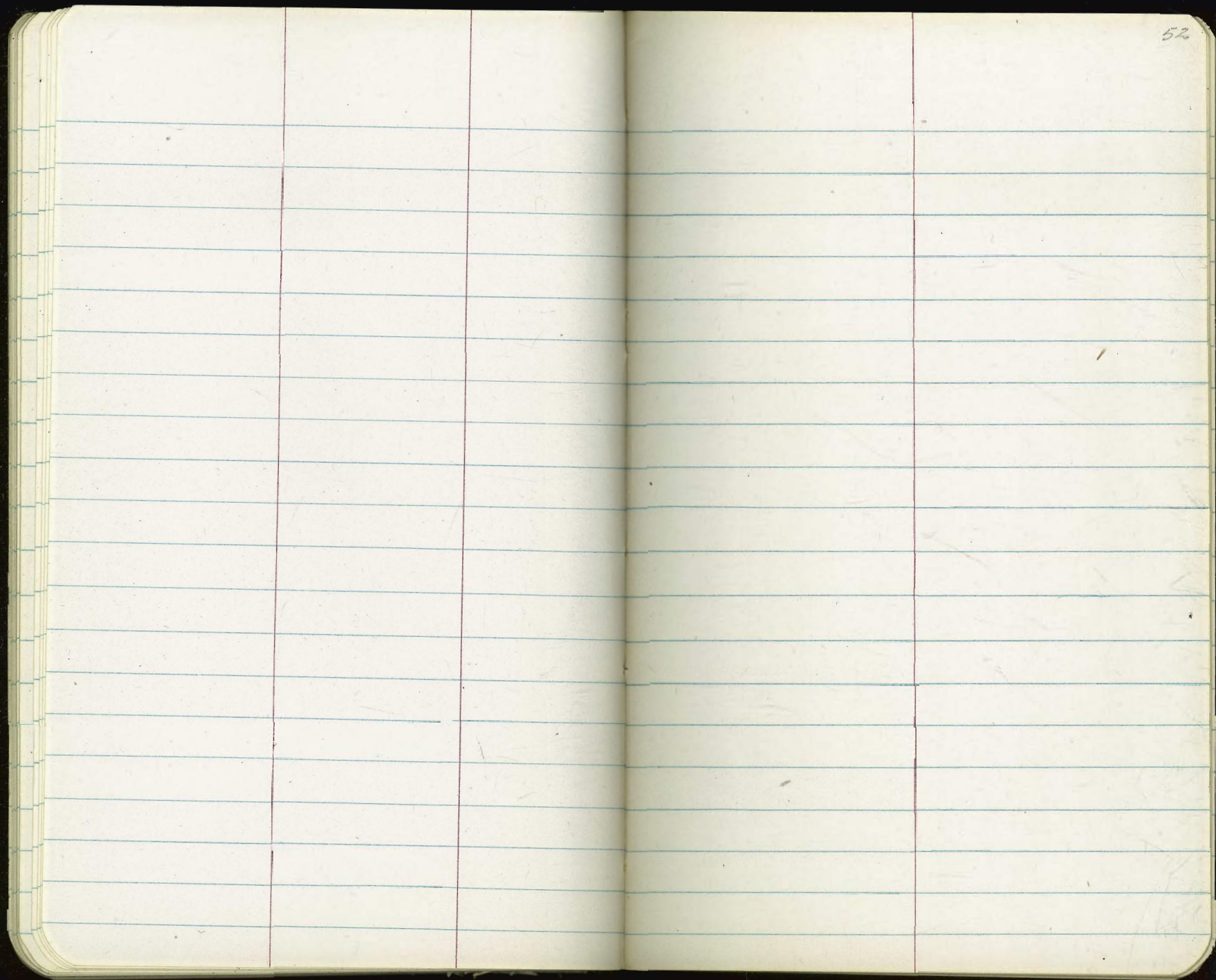
136.59A

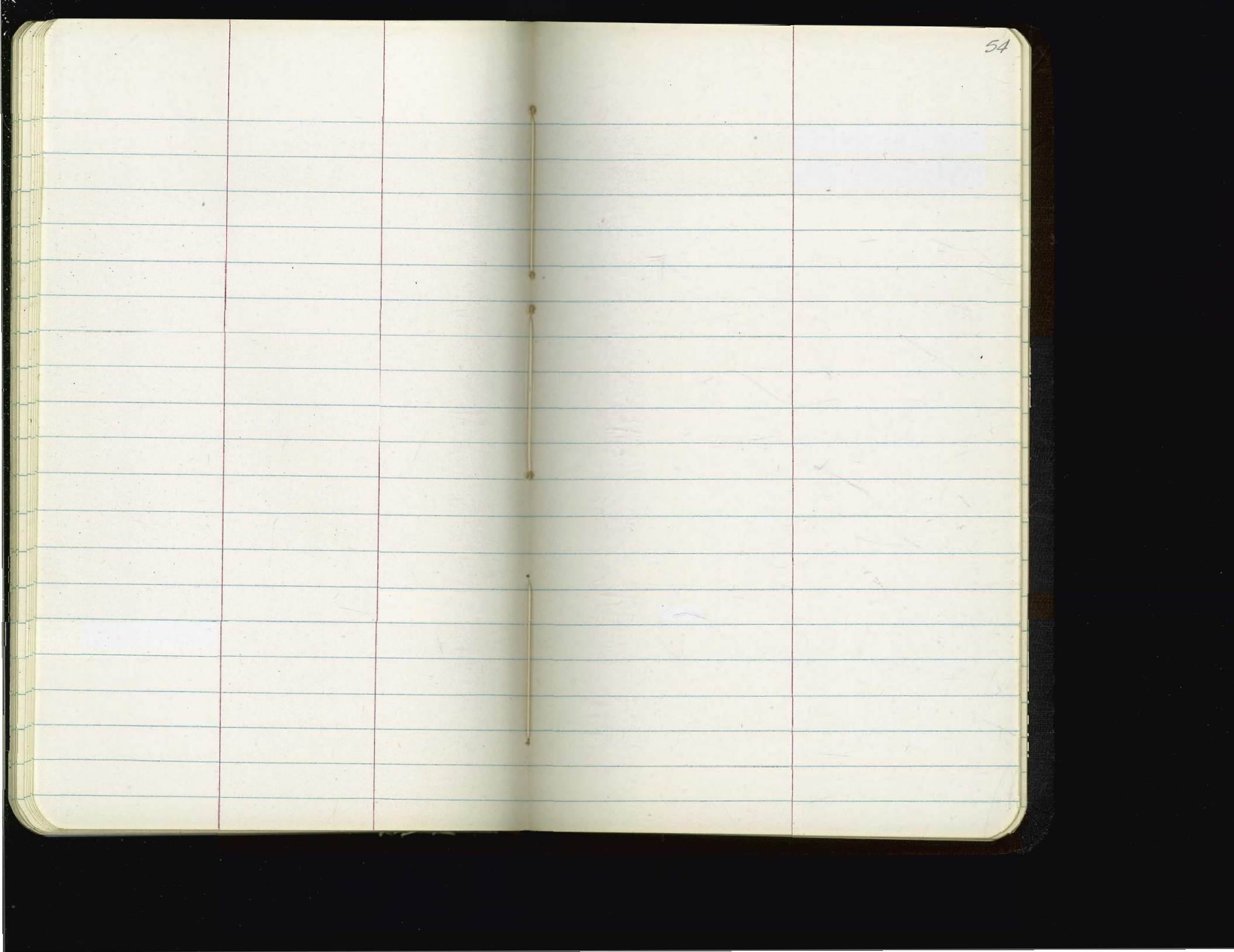


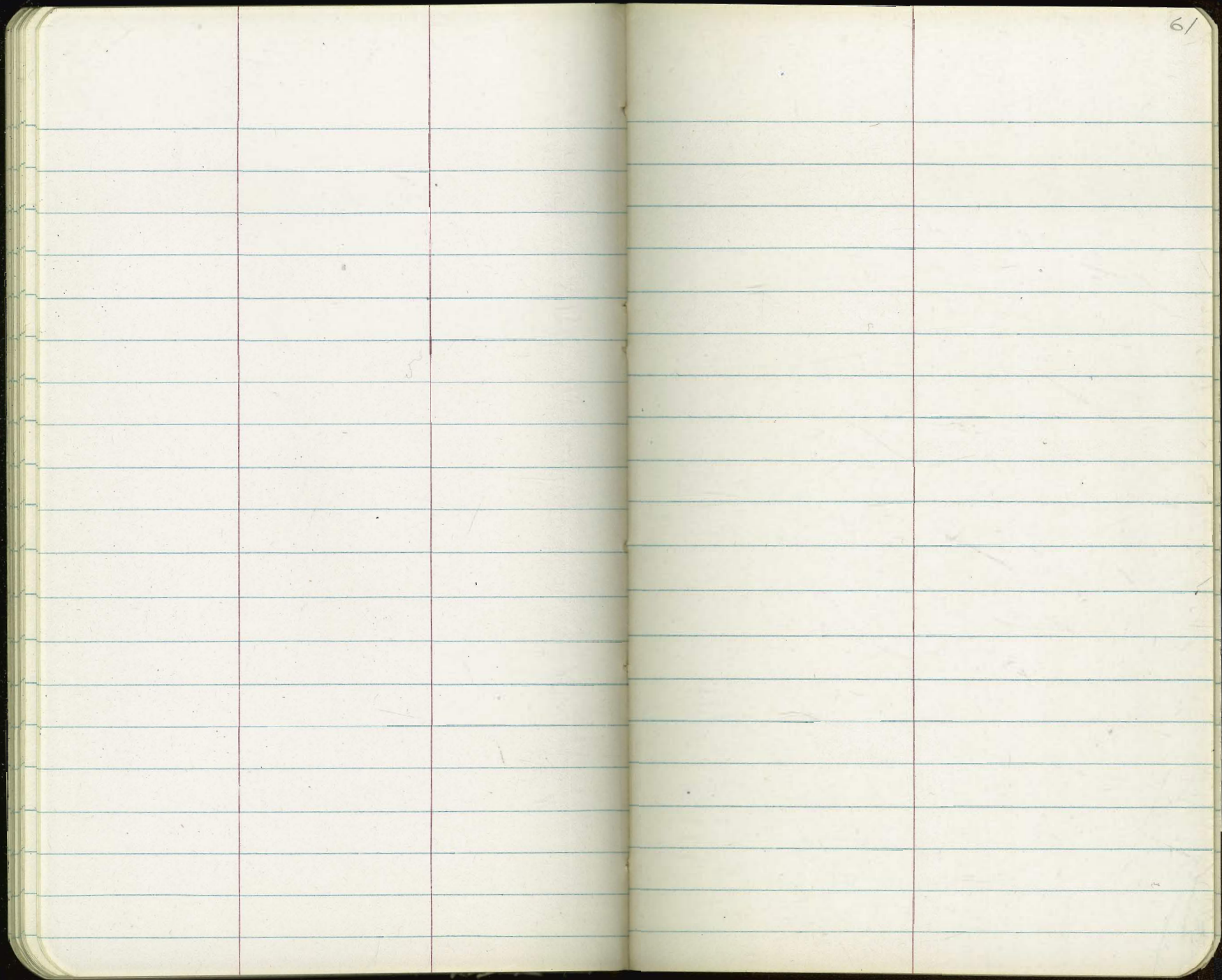




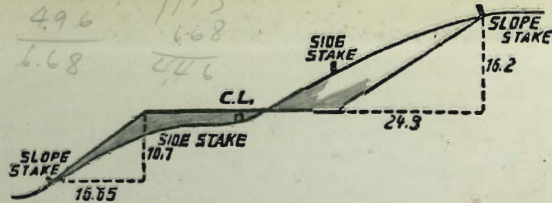








The image shows an open notebook with two facing pages. Both pages are cream-colored and feature light blue horizontal ruling. Each page is divided into three vertical columns by two faint red lines. The left page has a rounded outer edge on the left side. The right page has the number '70' printed in the top right corner. The notebook is bound in the center, and a dark, possibly black, cover is visible around the perimeter of the pages. The pages are otherwise blank, with no handwriting or printed text.



DISTANCES FROM SIDE STAKES FOR CROSS-SECTIONING.

SLOPE 1 1/2 TO 1. ROADWAY OF ANY WIDTH.

	0	.1	.2	.3	.4	.5	.6	.7	.8	.9	
0	0.00	0.15	0.30	0.45	0.60	0.75	0.90	1.05	1.20	1.35	0
1	1.50	1.65	1.80	1.95	2.10	2.25	2.40	2.55	2.70	2.85	1
2	3.00	3.15	3.30	3.45	3.60	3.75	3.90	4.05	4.20	4.35	2
3	4.50	4.65	4.80	4.95	5.10	5.25	5.40	5.55	5.70	5.85	3
4	6.00	6.15	6.30	6.45	6.60	6.75	6.90	7.05	7.20	7.35	4
5	7.50	7.65	7.80	7.95	8.10	8.25	8.40	8.55	8.70	8.85	5
6	9.00	9.15	9.30	9.45	9.60	9.75	9.90	10.05	10.20	10.35	6
7	10.50	10.65	10.80	10.95	11.10	11.25	11.40	11.55	11.70	11.85	7
8	12.00	12.15	12.30	12.45	12.60	12.75	12.90	13.05	13.20	13.35	8
9	13.50	13.65	13.80	13.95	14.10	14.25	14.40	14.55	14.70	14.85	9
10	15.00	15.15	15.30	15.45	15.60	15.75	15.90	16.05	16.20	16.35	10
11	16.50	16.65	16.80	16.95	17.10	17.25	17.40	17.55	17.70	17.85	11
12	18.00	18.15	18.30	18.45	18.60	18.75	18.90	19.05	19.20	19.35	12
13	19.50	19.65	19.80	19.95	20.10	20.25	20.40	20.55	20.70	20.85	13
14	21.00	21.15	21.30	21.45	21.60	21.75	21.90	22.05	22.20	22.35	14
15	22.50	22.65	22.80	22.95	23.10	23.25	23.40	23.55	23.70	23.85	15
16	24.00	24.15	24.30	24.45	24.60	24.75	24.90	25.05	25.20	25.35	16
17	25.50	25.65	25.80	25.95	26.10	26.25	26.40	26.55	26.70	26.85	17
18	27.00	27.15	27.30	27.45	27.60	27.75	27.90	28.05	28.20	28.35	18
19	28.50	28.65	28.80	28.95	29.10	29.25	29.40	29.55	29.70	29.85	19
20	30.00	30.15	30.30	30.45	30.60	30.75	30.90	31.05	31.20	31.35	20
21	31.50	31.65	31.80	31.95	32.10	32.25	32.40	32.55	32.70	32.85	21
22	33.00	33.15	33.30	33.45	33.60	33.75	33.90	34.05	34.20	34.35	22
23	34.50	34.65	34.80	34.95	35.10	35.25	35.40	35.55	35.70	35.85	23
24	36.00	36.15	36.30	36.45	36.60	36.75	36.90	37.05	37.20	37.35	24
25	37.50	37.65	37.80	37.95	38.10	38.25	38.40	38.55	38.70	38.85	25
26	39.00	39.15	39.30	39.45	39.60	39.75	39.90	40.05	40.20	40.35	26
27	40.50	40.65	40.80	40.95	41.10	41.25	41.40	41.55	41.70	41.85	27
28	42.00	42.15	42.30	42.45	42.60	42.75	42.90	43.05	43.20	43.35	28
29	43.50	43.65	43.80	43.95	44.10	44.25	44.40	44.55	44.70	44.85	29
30	45.00	45.15	45.30	45.45	45.60	45.75	45.90	46.05	46.20	46.35	30
31	46.50	46.65	46.80	46.95	47.10	47.25	47.40	47.55	47.70	47.85	31
32	48.00	48.15	48.30	48.45	48.60	48.75	48.90	49.05	49.20	49.35	32
33	49.50	49.65	49.80	49.95	50.10	50.25	50.40	50.55	50.70	50.85	33
34	51.00	51.15	51.30	51.45	51.60	51.75	51.90	52.05	52.20	52.35	34
35	52.50	52.65	52.80	52.95	53.10	53.25	53.40	53.55	53.70	53.85	35
36	54.00	54.15	54.30	54.45	54.60	54.75	54.90	55.05	55.20	55.35	36
37	55.50	55.65	55.80	55.95	56.10	56.25	56.40	56.55	56.70	56.85	37
38	57.00	57.15	57.30	57.45	57.60	57.75	57.90	58.05	58.20	58.35	38
39	58.50	58.65	58.80	58.95	59.10	59.25	59.40	59.55	59.70	59.85	39
40	60.00	60.15	60.30	60.45	60.60	60.75	60.90	61.05	61.20	61.35	40
41	61.50	61.65	61.80	61.95	62.10	62.25	62.40	62.55	62.70	62.85	41
42	63.00	63.15	63.30	63.45	63.60	63.75	63.90	64.05	64.20	64.35	42
43	64.50	64.65	64.80	64.95	65.10	65.25	65.40	65.55	65.70	65.85	43
44	66.00	66.15	66.30	66.45	66.60	66.75	66.90	67.05	67.20	67.35	44
45	67.50	67.65	67.80	67.95	68.10	68.25	68.40	68.55	68.70	68.85	45
46	69.00	69.15	69.30	69.45	69.60	69.75	69.90	70.05	70.20	70.35	46
47	70.50	70.65	70.80	70.95	71.10	71.25	71.40	71.55	71.70	71.85	47
48	72.00	72.15	72.30	72.45	72.60	72.75	72.90	73.05	73.20	73.35	48
49	73.50	73.65	73.80	73.95	74.10	74.25	74.40	74.55	74.70	74.85	49
50	75.00	75.15	75.30	75.45	75.60	75.75	75.90	76.05	76.20	76.35	50

THE NATIONAL BLANK BOOK COMPANY
 HOLYOKE MASSACHUSETTS
 NEW YORK CHICAGO BOSTON SAN FRANCISCO