

DISTANCES FROM SIDE STAKES FOR CROSS-SECTIONING
SLOPE 1 TO 1. ROADWAY OF ANY WIDTH

	0	.1	.2	.3	.4	.5	.6	.7	.8	9	
0	0.00	0.10	0.20	0.30	0.40	0.50	0.60	0.70	0.80	0.90	0
1	1.00	1.10	1.20	1.30	1.40	1.50	1.60	1.70	1.80	1.90	1
2	2.00	2.10	2.20	2.30	2.40	2.50	2.60	2.70	2.80	2.90	2
3	3.00	3.10	3.20	3.30	3.40	3.50	3.60	3.70	3.80	3.90	3
4	4.00	4.10	4.20	4.30	4.40	4.50	4.60	4.70	4.80	4.90	4
5	5.00	5.10	5.20	5.30	5.40	5.50	5.60	5.70	5.80	5.90	5
6	6.00	6.10	6.20	6.30	6.40	6.50	6.60	6.70	6.80	6.90	6
7	7.00	7.10	7.20	7.30	7.40	7.50	7.60	7.70	7.80	7.90	7
8	8.00	8.10	8.20	8.30	8.40	8.50	8.60	8.70	8.80	8.90	8
9	9.00	9.10	9.20	9.30	9.40	9.50	9.60	9.70	9.80	9.90	9
10	10.00	10.10	10.20	10.30	10.40	10.50	10.60	10.70	10.80	10.90	10
11	11.00	11.10	11.20	11.30	11.40	11.50	11.60	11.70	11.80	11.90	11
12	12.00	12.10	12.20	12.30	12.40	12.50	12.60	12.70	12.80	12.90	12
13	13.00	13.10	13.20	13.30	13.40	13.50	13.60	13.70	13.80	13.90	13
14	14.00	14.10	14.20	14.30	14.40	14.50	14.60	14.70	14.80	14.90	14
15	15.00	15.10	15.20	15.30	15.40	15.50	15.60	15.70	15.80	15.90	15
16	16.00	16.10	16.20	16.30	16.40	16.50	16.60	16.70	16.80	16.90	16
17	17.00	17.10	17.20	17.30	17.40	17.50	17.60	17.70	17.80	17.90	17
18	18.00	18.10	18.20	18.30	18.40	18.50	18.60	18.70	18.80	18.90	18
19	19.00	19.10	19.20	19.30	19.40	19.50	19.60	19.70	19.80	19.90	19
20	20.00	20.10	20.20	20.30	20.40	20.50	20.60	20.70	20.80	20.90	20
21	21.00	21.10	21.20	21.30	21.40	21.50	21.60	21.70	21.80	21.90	21
22	22.00	22.10	22.20	22.30	22.40	22.50	22.60	22.70	22.80	22.90	22
23	23.00	23.10	23.20	23.30	23.40	23.50	23.60	23.70	23.80	23.90	23
24	24.00	24.10	24.20	24.30	24.40	24.50	24.60	24.70	24.80	24.90	24
25	25.00	25.10	25.20	25.30	25.40	25.50	25.60	25.70	25.80	25.90	25
26	26.00	26.10	26.20	26.30	26.40	26.50	26.60	26.70	26.80	26.90	26
27	27.00	27.10	27.20	27.30	27.40	27.50	27.60	27.70	27.80	27.90	27
28	28.00	28.10	28.20	28.30	28.40	28.50	28.60	28.70	28.80	28.90	28
29	29.00	29.10	29.20	29.30	29.40	29.50	29.60	29.70	29.80	29.90	29
30	30.00	30.10	30.20	30.30	30.40	30.50	30.60	30.70	30.80	30.90	30
31	31.00	31.10	31.20	31.30	31.40	31.50	31.60	31.70	31.80	31.90	31
32	32.00	32.10	32.20	32.30	32.40	32.50	32.60	32.70	32.80	32.90	32
33	33.00	33.10	33.20	33.30	33.40	33.50	33.60	33.70	33.80	33.90	33
34	34.00	34.10	34.20	34.30	34.40	34.50	34.60	34.70	34.80	34.90	34
35	35.00	35.10	35.20	35.30	35.40	35.50	35.60	35.70	35.80	35.90	35
36	36.00	36.10	36.20	36.30	36.40	36.50	36.60	36.70	36.80	36.90	36
37	37.00	37.10	37.20	37.30	37.40	37.50	37.60	37.70	37.80	37.90	37
38	38.00	38.10	38.20	38.30	38.40	38.50	38.60	38.70	38.80	38.90	38
39	39.00	39.10	39.20	39.30	39.40	39.50	39.60	39.70	39.80	39.90	39
40	40.00	40.10	40.20	40.30	40.40	40.50	40.60	40.70	40.80	40.90	40
41	41.00	41.10	41.20	41.30	41.40	41.50	41.60	41.70	41.80	41.90	41
42	42.00	42.10	42.20	42.30	42.40	42.50	42.60	42.70	42.80	42.90	42
43	43.00	43.10	43.20	43.30	43.40	43.50	43.60	43.70	43.80	43.90	43
44	44.00	44.10	44.20	44.30	44.40	44.50	44.60	44.70	44.80	44.90	44
45	45.00	45.10	45.20	45.30	45.40	45.50	45.60	45.70	45.80	45.90	45
46	46.00	46.10	46.20	46.30	46.40	46.50	46.60	46.70	46.80	46.90	46
47	47.00	47.10	47.20	47.30	47.40	47.50	47.60	47.70	47.80	47.90	47
48	48.00	48.10	48.20	48.30	48.40	48.50	48.60	48.70	48.80	48.90	48
49	49.00	49.10	49.20	49.30	49.40	49.50	49.60	49.70	49.80	49.90	49
50	50.00	50.10	50.20	50.30	50.40	50.50	50.60	50.70	50.80	50.90	50

Distance of slope stake from side or shoulder stake for any width roadway, slope 1 to 1. If ground is nearly level, the cut or fill at side stake is located by the double entry method in left column and top row. The number in body of table in same row and column gives distance from side stake to slope stake. If ground is not level estimate the difference in elevation between the side stake and slope stake, lower target by this amount if cut, elevate if fill. Add this amount to cut or fill and find distance in table. Set up rod at this point, and line of sight should cut target. If it does not make the slight adjustment necessary.

TABLE XIII—CORRECTIONS FOR TANGENTS AND EXTERNALS

These corrections are to be added to the approximate values, found by dividing the tangent, or external, for a 1° curve (Table VIII) by the degree of curve, in order to obtain the true tangents, or externals. Intermediate values may be obtained by interpolation.

FOR TANGENTS ADD

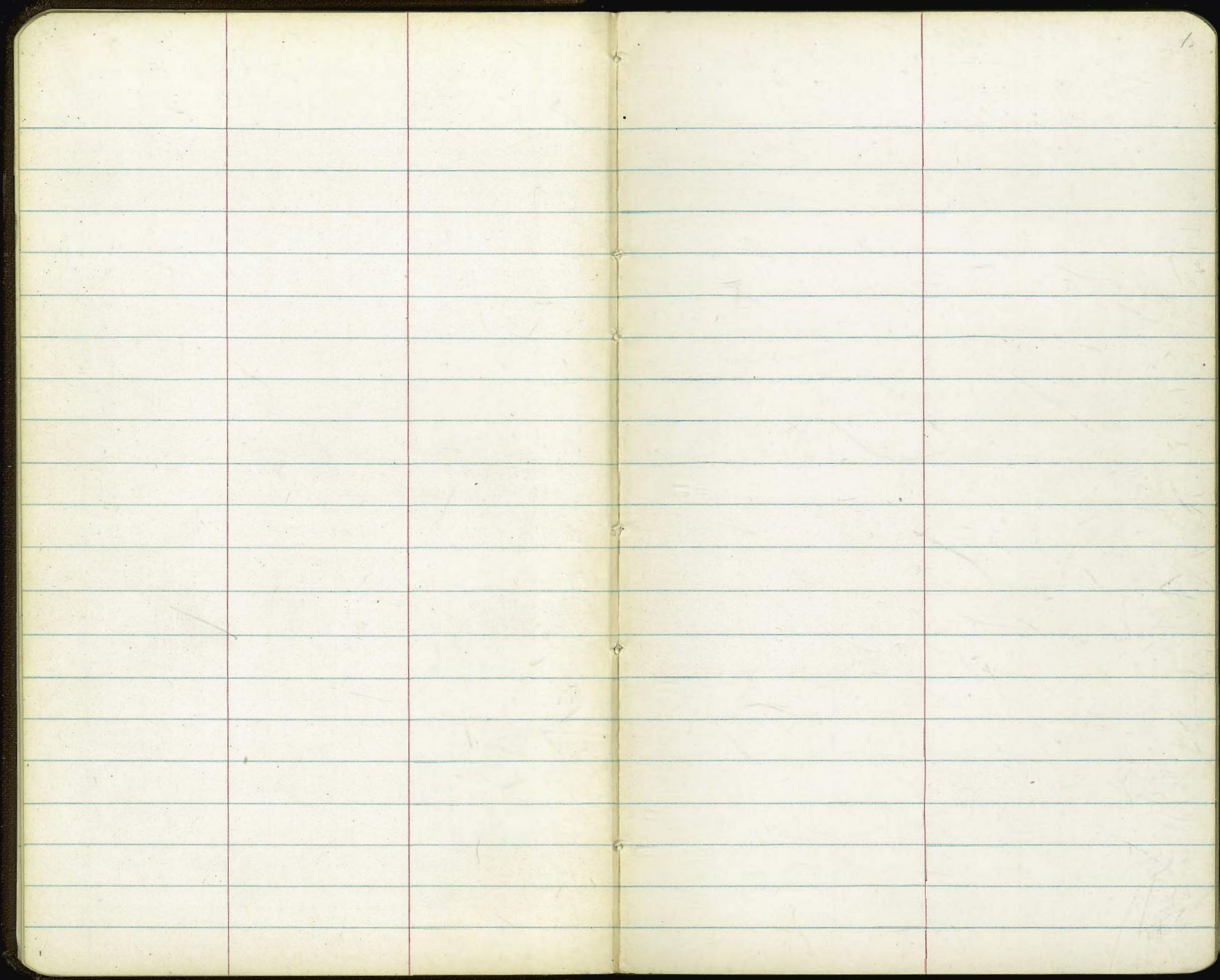
Central Angle	DEGREE OF CURVE													
	5°	10°	15°	20°	25°	30°	35°	40°	45°	50°	55°	60°	65°	70°
10°	.03	.06	.09	.13	.16	.19	.22	.25	.28	.31	.34	.38	.42	.46
15°	.04	.10	.14	.19	.24	.29	.34	.39	.45	.51	.58	.63	.68	.73
20°	.06	.13	.19	.26	.32	.39	.45	.51	.58	.65	.72	.79	.84	.90
25°	.08	.16	.24	.33	.40	.49	.58	.67	.75	.83	.90	.99	1.06	1.14
30°	.10	.19	.29	.39	.49	.59	.69	.79	.89	.99	1.09	1.20	1.29	1.39
35°	.11	.22	.34	.47	.58	.69	.79	.81	.92	1.04	1.29	1.42	1.54	1.66
40°	.13	.26	.40	.53	.67	.80	.93	1.06	1.20	1.34	1.49	1.64	1.79	1.94
45°	.15	.30	.44	.60	.76	.91	1.06	1.21	1.37	1.52	1.70	1.87	2.04	2.21
50°	.17	.34	.51	.68	.85	1.02	1.19	1.36	1.54	1.72	1.91	2.10	2.29	2.48
55°	.19	.38	.57	.76	.95	1.14	1.32	1.52	1.72	1.92	2.14	2.35	2.56	2.77
60°	.21	.42	.63	.84	1.05	1.27	1.49	1.71	1.94	2.17	2.38	2.60	2.83	3.07
65°	.23	.46	.69	.93	1.16	1.40	1.64	1.88	2.13	2.38	2.63	2.88	3.13	3.39
70°	.25	.51	.76	1.02	1.28	1.54	1.80	2.06	2.33	2.60	2.88	3.16	3.44	3.72
75°	.27	.56	.83	1.12	1.40	1.69	1.98	2.27	2.57	2.87	3.16	3.47	3.78	4.09
80°	.30	.61	.91	1.22	1.53	1.84	2.15	2.46	2.78	3.10	3.44	3.78	4.12	4.46
85°	.33	.66	1.00	1.33	1.68	2.02	2.36	2.70	3.05	3.40	3.77	4.14	4.55	4.89
90°	.36	.72	1.09	1.45	1.83	2.20	2.57	2.94	3.32	3.70	4.10	4.50	4.91	5.32
95°	.39	.79	1.19	1.55	2.00	2.40	2.80	3.20	3.61	4.02	4.40	4.98	5.38	5.83
100°	.43	.86	1.30	1.74	2.18	2.62	3.06	3.50	3.95	4.40	4.88	5.37	5.85	6.34
110°	.51	1.03	1.56	2.08	2.61	3.14	3.67	4.21	4.76	5.31	5.86	6.43	7.01	7.60
120°	.62	1.25	1.93	2.52	3.16	3.81	4.45	5.11	5.77	6.44	7.12	7.80	8.50	9.22

FOR EXTERNALS ADD

Central Angle	DEGREE OF CURVE													
	5°	10°	15°	20°	25°	30°	35°	40°	45°	50°	55°	60°	65°	70°
10°	.001	.003	.004	.006	.007	.008	.009	.011	.012	.014	.015	.017	.018	.020
15°	.003	.007	.010	.014	.018	.023	.027	.029	.032	.035	.039	.043	.047	.051
20°	.006	.011	.017	.022	.028	.034	.038	.045	.051	.057	.063	.070	.076	.083
25°	.009	.018	.027	.036	.046	.056	.065	.074	.083	.093	.106	.120	.127	.135
30°	.013	.025	.038	.051	.065	.078	.090	.103	.116	.129	.149	.170	.179	.188
35°	.018	.035	.054	.072	.086	.109	.131	.153	.175	.197	.213	.230	.247	.264
40°	.023	.046	.070	.093	.117	.141	.172	.203	.234	.265	.277	.290	.315	.341
45°	.030	.060	.093	.119	.153	.184	.216	.254	.289	.325	.351	.378	.411	.445
50°	.037	.075	.116	.151	.189	.227	.266	.305	.345	.384	.425	.467	.508	.550
55°	.046	.093	.142	.188	.236	.283	.332	.381	.420	.479	.530	.582	.641	.700
60°	.056	.112	.168	.225	.283	.340	.398	.457	.516	.575	.636	.697	.774	.851
65°	.067	.135	.204	.273	.343	.412	.483	.554	.625	.697	.771	.845	.922	1.01
70°	.080	.159	.240	.321	.403	.485	.568	.652	.735	.819	.906	.994	1.08	1.17
75°	.095	.182	.286	.383	.480	.578	.678	.777	.877	.977	1.07	1.18	1.29	1.39
80°	.110	.220	.332	.445	.558	.671	.787	.903	1.02	1.13	1.25	1.38	1.50	1.62
85°	.128	.259	.391	.524	.657	.790	.926	1.06	1.20	1.34	1.47	1.62	1.76	1.91
90°	.149	.299	.450	.603	.756	.910	1.07	1.22	1.38	1.54	1.70	1.87	2.03	2.20
95°	.174	.350	.522	.706	.885	1.06	1.25	1.43	1.62	1.80	1.99	2.18	2.38	2.58
100°	.200	.401	.604	.809	1.01	1.22	1.43	1.64	1.85	2.06	2.28	2.50	2.73	2.96
110°	.268	.536	.806	1.08	1.35	1.63	1.91	2.20	2.48	2.76	3.05	3.35	3.66	3.96
120°	.360	.721	1.08	1.45	1.82	2.19	2.57	2.95	3.33	3.72	4.11	4.50	4.91	5.32

INDEX

X-SECT. BEECH ST, 39th to 40th	2
X-SECT. 63rd, IMPERIAL to SULLIVAN	7
X-SECT. MALLARD; SPRINGFIELD to ALCEDO	15
X-SECT. MULBERRY; MALLARD to PARADISE	24
X-SECT. NARANJA, EUCLID to 54th	32
C.B. & PAV. Elev. S.E. Cor. IMPERIAL & EUCLID	41
X-SECT. ALLEY - B-34 MORENO	42
X-SECT. ALLEY BIK 101 FRANK & WILDES	51
Encroachments Fay & Pearl -	76
Marine & La Jolla - atid at	77
Prospect & Fay	78



LT S RT

3+10	Top BANK	8 0.2 12.2 6.5 7.0 7.0 Bottom Wash	8 3.8 8.5 8.0 8.0	8.1 8.2 8.0	9.1 9.2 9.1	8.5 8.5 8.5	9.0 8.5 8.5
3+00	W. Line 40' h (map) + Top BANK	12.8 5.0	12.1 3.0	12.8 5.0	12.8 5.0	12.8 5.0	12.8 5.0
2+50		12.8 5.0	13.3 3.0	13.1 5.0	13.1 5.0	13.1 5.0	13.1 5.0
2+22	Top Fill (EAST, Home Ave) + Bottom Wash	8.81 3.54 5.2 8.10 8.10 E. Edge Pav	8.81 4.30 3.1 8.10 8.10 E. Edge Pav	8.81 4.30 3.1 8.10 8.10 E. Edge Pav	8.81 4.30 3.1 8.10 8.10 E. Edge Pav	8.81 4.30 3.1 8.10 8.10 E. Edge Pav	8.81 4.30 3.1 8.10 8.10 E. Edge Pav
2+08	Edge Berm	5.75 4.27 1.48 4.27 5.75 E. Edge Pav	5.75 4.27 1.48 4.27 5.75 E. Edge Pav	5.75 4.27 1.48 4.27 5.75 E. Edge Pav	5.75 4.27 1.48 4.27 5.75 E. Edge Pav	5.75 4.27 1.48 4.27 5.75 E. Edge Pav	5.75 4.27 1.48 4.27 5.75 E. Edge Pav
1+95.60	E. Edge Pav. Home Ave	4.16 4.16 4.16 4.16 4.16 E. Edge Pav	4.08 4.08 4.08 4.08 4.08 E. Edge Pav	4.08 4.08 4.08 4.08 4.08 E. Edge Pav	4.08 4.08 4.08 4.08 4.08 E. Edge Pav	4.08 4.08 4.08 4.08 4.08 E. Edge Pav	4.08 4.08 4.08 4.08 4.08 E. Edge Pav
1+80.32	8 Pav. Home Ave	7.0 3.8 3.8 3.8 3.8 Top Fill	7.0 3.8 3.8 3.8 3.8 Top Fill	7.0 3.8 3.8 3.8 3.8 Top Fill	7.0 3.8 3.8 3.8 3.8 Top Fill	7.0 3.8 3.8 3.8 3.8 Top Fill	7.0 3.8 3.8 3.8 3.8 Top Fill
1+65.8	W. Edge Pav Home Ave	8.5 3.0 3.0 3.0 3.0 Top Fill	8.5 3.0 3.0 3.0 3.0 Top Fill	8.5 3.0 3.0 3.0 3.0 Top Fill	8.5 3.0 3.0 3.0 3.0 Top Fill	8.5 3.0 3.0 3.0 3.0 Top Fill	8.5 3.0 3.0 3.0 3.0 Top Fill
1+53	Top Fill	8.0 3.0 3.0 3.0 3.0 Top Fill	8.0 3.0 3.0 3.0 3.0 Top Fill	8.0 3.0 3.0 3.0 3.0 Top Fill	8.0 3.0 3.0 3.0 3.0 Top Fill	8.0 3.0 3.0 3.0 3.0 Top Fill	8.0 3.0 3.0 3.0 3.0 Top Fill

92.4
5.5
1.9

92.35

LT. E RT.

2+00	Toe Ridge				80 20	95.9	94.4	94.0	94.5	94.9
T.P.	11.63	103.89	0.09	92.26				103.89		
1+50					3.3 20	87.1	89.0	88.9	88.4	88.1
1+00					4.8 20	87.6	87.5	87.4	87.3	87.4
0+50	Top BANK				5.8 20	86.6	87.5	86.7	85.0	85.0
0+26	Toe BANK				6.0 20	86.0	84.9	85.7	83.6	84.8
0+00 = Nly Line	Beech ST				83.0 20	83.0	83.3	83.8	84.0	84.3
Boy Alley	BK 26				9.4 20	81.0	81.2	81.8	81.0	81.7
3+30	E 40'4h (map)				11.4 72 Toe BANK	81.0	84.2	84.7	84.3	84.1
					7.7 50 Toe BANK	84.5	84.5	83.8	81.0	81.1
					7.9 30 Toe BANK	84.5	84.5	83.8	81.0	81.1
								8.6	8.1	8.3
									30	50
										Uniform 7

92.35

Bottom map

Toe Fill Edge Home Ave

LT. & RT.

Check: 6.75 75.35 = 75.35 - 67.60 BP S/Wly Corn. Bridge, Home + Federal

T.P. 1.82 82.10 116.5 80.28

T.P. 0.14 91.93 12.10 91.79

3+20 ♀ Cedar (map) To Bench (HAND Level)
on Ridge Slope

2+90 ♂/y Line Cedar (map) Edge of Bench on Slope of Ridge (HAND Level)

2+75 (HAND Level)

2+50

	123.9	123.5	122.9	122.5	
	+20.0	+19.6	+19.0	+18.6	+15.6
	50	10		10	50
	119.1	118.4	117.7	116.9	116.79
	+15.2	+14.5	+13.8	+13.0	+12.90
	50	20	10		10
	114.3	113.5	112.6	112.3	111.6.0
	+10.4	+9.6	+8.7	+8.4	+6.1
	20	10		10	20
	103.5	102.9	102.9	102.2	102.2
	+4.6	+2.0	0.0	0.7	1.7
	20	10		10	20

103.89

Clark
Shepard
Bruner
Perkins
W.O. 25020
10-7-52

X-SECT 63rd - IMPERIAL
to SULLIVAN

Notes: P. 8

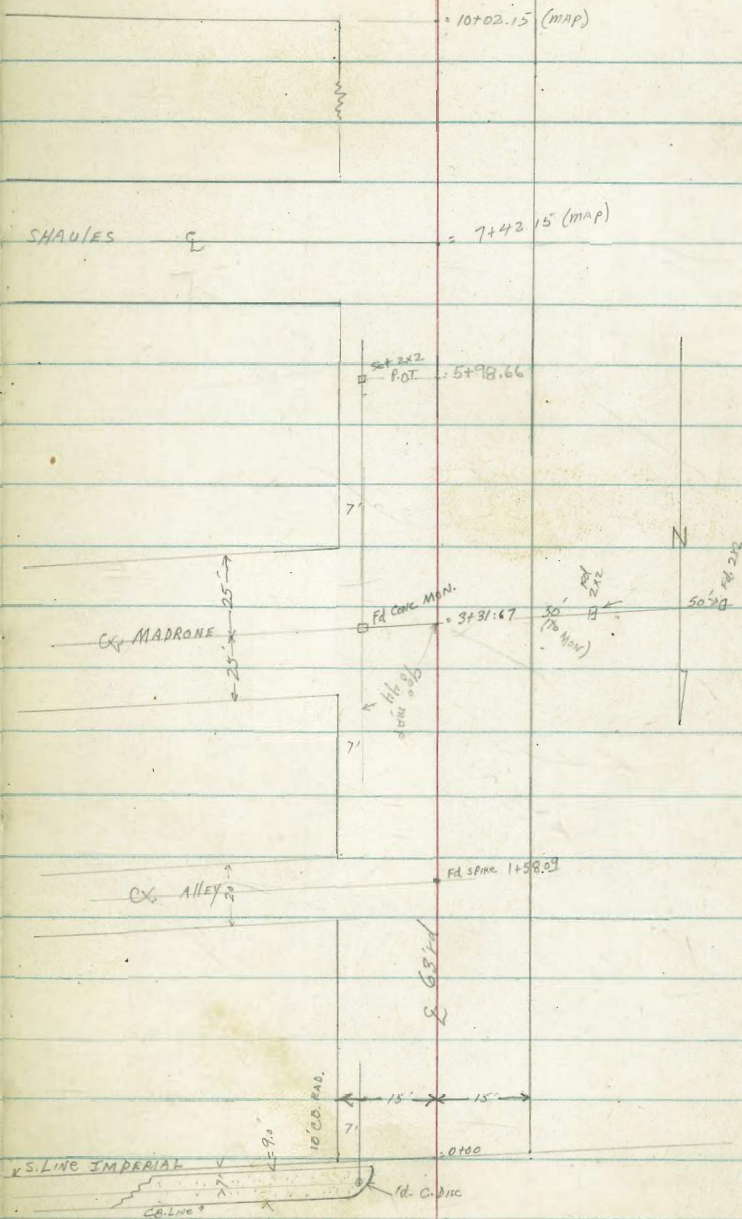
Sketch not to scale:

DATA: MAP Proj. SIX H. ENCANTO HTS. # 170
TIE SHEETS 3234-3236

INDEXED
Lew
OCT 29 1952

SULLIVAN

SHALES



X-SECT. 63rd

IMPERIAL to SULLIVAN

LT.

E

RT.

8

0+50

467 21492
25
465 21494
15
480 21473
11.5
5.57 21402
6.5
5.14

5.5 214.5
10
Edge CLAY
11
7.6 213.9
15
Brow
25
36 216.0

0+19

660 21299
25
636 21263
15
7.2 21337
10.5
6.3
7.9 21168
6.3
GUTT

7.75 211.55
8.04 211.5
10
Edge CLAY
12
7.6 213.0
15
Brow
25
5.7 213.9

0+18

15.8 LT to END Red WALL L to E 63rd

7.80 211.79
25
7.66 211.93
15
7.2 21232
10.5
6.3
7.24 211.65
6.3
GUTT
Cold-Lay

7.68 211.91
8.16 211.43
10
Edge CLAY
12
7.6 212.6
15
Brow
25
5.8 213.8

0+01

20.5' RT E Pole # 78830
(at 90° to E 63rd)

0+00 = S.L. IMP.

(Sect. along Line IMP.)

9.10 210.49
25
8.96 210.63
15.18
6.7
9.0 210.6
6.7
9.43 210.16
4.4
GUTTER

9.43 210.16
9.80 209.79
13
Edge CLAY
15.18
20
Brow
30
10.1 209.6
7.7 211.9
8.0 211.6

0-4.8

Sect. taken
Along Diagonal
on BACKWALK

4.8 LT Beg Drive (Cold-Lay) to Service Station

4.8 LT END CB.

208.92
100
209.73
50
209.37
50
210.01
100
7.28 210.31
15.18
BK
WALK
7.24 210.35
4.8
7.56 210.03
4.8
GUTT

9.77 209.82
10.35 209.74
15.18
209.06
209.74
208.07
11.52
50
12.5
100
DIT

0-13

Beg taken Cold-Lay on 63rd
= S.C.B. Line IMP. (Sect. along CB Line)

10.28 209.39
4.6
209.13
10.20
209.13
4.6
209.13
4.6
209.13

10.59 209.06
15.18
50
11.52
50
12.5
100
DIT

0-30.35 = E IMP.

(Section along E IMP.)

10.18 209.41
50
10.46
4.6
209.13
10.46
4.6
209.13

11.12 208.94
50
11.52
50
12.5
100
DIT

8 STATIONING.
(0+00 = S/Ly Line IMPERIAL)

B.M

6.97

219.59

212.62 T.P. 1440 S/E

63rd + Imperial

219.59

X-SECT. 63rd (Cont)

LT

E

RT

2+19

13.8 LT 3' CONC. WALK

227.5	287	3.50			
	25	13.8			
	WALK	4p			
227.1	207.1	226.6	225.13		
3.9	4.3	4.8	6.1		
20	15	14	13		
				Broken	
				to top	
				7	
				222.18	
				222.37	
				5.7	
				6.3	
				12	
				edge	
				5.8	
				15	
				225.6	
				5.9	
				25	
				225.5	

2+00

1+58.09

Walky LT. (Sect along E Alley)

221.4	10.0	7.3	9.6	9.6	9.5	9.6	9.4	9.4	222.0	222.0	225.5
	50	15.18	7	7	9	12	15.18	50			
					edge	Broken	Clay				
					9	12	15.18				
					edge	Broken	Clay				
					9	12	15.18				
					edge	Broken	Clay				
					9	12	15.18				
					edge	Broken	Clay				
					9	12	15.18				
					edge	Broken	Clay				
					9	12	15.18				
					edge	Broken	Clay				
					9	12	15.18				
					edge	Broken	Clay				
					9	12	15.18				
					edge	Broken	Clay				
					9	12	15.18				
					edge	Broken	Clay				
					9	12	15.18				
					edge	Broken	Clay				
					9	12	15.18				
					edge	Broken	Clay				
					9	12	15.18				
					edge	Broken	Clay				
					9	12	15.18				
					edge	Broken	Clay				
					9	12	15.18				
					edge	Broken	Clay				
					9	12	15.18				
					edge	Broken	Clay				
					9	12	15.18				
					edge	Broken	Clay				
					9	12	15.18				
					edge	Broken	Clay				
					9	12	15.18				
					edge	Broken	Clay				
					9	12	15.18				
					edge	Broken	Clay				
					9	12	15.18				
					edge	Broken	Clay				
					9	12	15.18				
					edge	Broken	Clay				
					9	12	15.18				
					edge	Broken	Clay				
					9	12	15.18				
					edge	Broken	Clay				
					9	12	15.18				
					edge	Broken	Clay				
					9	12	15.18				
					edge	Broken	Clay				
					9	12	15.18				
					edge	Broken	Clay				
					9	12	15.18				
					edge	Broken	Clay				
					9	12	15.18				
					edge	Broken	Clay				
					9	12	15.18				
					edge	Broken	Clay				
					9	12	15.18				
					edge	Broken	Clay				
					9	12	15.18				
					edge	Broken	Clay				
					9	12	15.18				
					edge	Broken	Clay				
					9	12	15.18				
					edge	Broken	Clay				
					9	12	15.18				
					edge	Broken	Clay				
					9	12	15.18				
					edge	Broken	Clay				
					9	12	15.18				
					edge	Broken	Clay				
					9	12	15.18				
					edge	Broken	Clay				
					9	12	15.18				
					edge	Broken	Clay				
					9	12	15.18				
					edge	Broken	Clay				
					9	12	15.18				
					edge	Broken	Clay				
					9	12	15.18				
					edge	Broken	Clay				
					9	12	15.18				
					edge	Broken	Clay				
					9	12	15.18				
					edge	Broken	Clay				
					9	12	15.18				
					edge	Broken	Clay				
					9	12	15.18				
					edge	Broken	Clay				
					9	12	15.18				
					edge	Broken	Clay				
					9	12	15.18				
					edge	Broken	Clay				
					9	12	15.18				
					edge	Broken	Clay				
					9	12	15.18				
					edge	Broken	Clay				
					9	12	15.18				
					edge	Broken	Clay				
					9	12	15.18				
					edge	Broken	Clay				
					9	12	15.18				
					edge	Broken	Clay				
					9	12	15.18				
					edge	Broken	Clay				
					9	12	15.18				
					edge	Broken	Clay				
					9	12	15.18				
					edge	Broken	Clay				
					9	12	15.18				
					edge	Broken	Clay				
					9	12	15.18				
					edge	Broken	Clay				
					9	12	15.18				
					edge	Broken	Clay				
					9	12	15.18				
					edge	Broken	Clay				
					9	12	15.18				
					edge	Broken	Clay				
					9	12	15.18				
					edge	Broken	Clay				
					9	12	15.18				
					edge	Broken	Clay				
					9	12	15.18				
					edge	Broken	Clay				
					9	12	15.18				
					edge	Broken	Clay				
					9	12	15.18				
					edge	Broken	Clay				
					9	12	15.18				
					edge	Broken	Clay				
					9	12	15.18				
					edge	Broken	Clay				
					9	12	15.18				
					edge	Broken	Clay				
					9	12	15.18				
					edge	Broken	Clay				
					9	12	15.18				
					edge	Broken	Clay				
					9	12	15.18				
					edge	Broken	Clay				
					9	12	15.18				

X-SECT. 63'rd (cont.)

LT. ♀ RT.

5+00

2757	2757.6	274.7	274.9	273.8	273.4
1.2	1.3	2.2	2.0	3.1	3.5
25	15		15	25	35

T.P. 12.27 276.90 0.98 264.63

276.90

4+73 5' LT Cog Wood Fence along Pathway

257.8	257.6	257.6	257.6	257.3
7.8	8.0	8.0	8.0	8.3
25	15		15	25

4+50

T.P. 11.38 265.61 0.36 254.23

265.61

4+23 18' LT ♀ 2' Cog Walk

2519.6	251.71	250.6	250.4	250.8
2.63	2.68			
25	18			
257.0	250.1	250.6	250.4	250.8
3.6	4.5	4.0	4.2	3.9
25	15		15	35
246.2	246.0	246.0	246.9	246.4
8.4	8.6	8.6	8.7	8.2
30	25		15	35

4+15

4+00 15' LT. DIRT DRIVE

254.69

A. SECT. 63'rd (CONT.)

LT. E RT.

T.P. 11.81 321.95
~~12.31~~ ~~322.45~~ 0.17 310.14

6+15 13 LT E Pole #173260

6+00 TP Shoulder

57.98 30 LT. to N/ly Edge House

T.P. 11.45 310.31 0.43 299.86

5+50 Top CUT-BANK above Road

T.P. 12.06 299.29 0.84 297.23

5736 Tie-CUT AT N/ly Edge Rd.

5730 15.0 LT. E 2.0' Conc. Walk

5720 1.5 LT. E 3.0' Conc Steps

5718 Top BANK 4 N/ly Edge of NLT Road

5705 1.0 LT. E 3' wide Conc. steps (2.5 LT E steps)

T.P. 11.49 288.07 0.32 276.58

1
 308.0
 307.0
 306.3

1.9 2.3
 25 15 3.3 4.0 4.4
 15 25

0.40
 3.0
 Floor

310.31

277.4
 277.4
 277.4

10.7 10.8 6.2 5.8 6.0 6.7
 35 25 15 15 25

299.29

286.8 286.5 286.5
 286.1 284.8 283.9

1.6 1.6 2.0 3.3 4.2
 25 15 15 25

1.30 1.35
 2.5 15.3
 WALK LIP PAK

3.20
 1.5
 Top step

285.8 285.7 284.8 283.9 283.5
 284.8

2.3 2.4 3.3 4.2 5.6
 25 15 25

277.48
 10.59
 2.5
 TP Bot. Step

288.07

X-SECT. 63rd (Cont.)

LT. R. RT.

T.P. 10.03 34134 165 331.31

9+00

8+50

8+00

T.P. 11.36 332.96 035 321.60

7+42.15 = 9 SHAVES

7+19 286 RT Anchor Pole
14 LT & Pole #P-171760

7+00

6+99 13 LT Deadman

6+87 22 LT N/y edge House

6+50

3339.8	335.7	329.7	324.8
+6.8	+2.7	3.3	8.2
.25	15	15	15
3335.6	329.9	326.2	322.4
+0.60	3.1	6.8	10.6
.25	15	15	15
327.7	322.5	320.9	321.1
5.3	6.4	9.5	11.9
.25	15	15	25
324.4	322.5	320.9	321.1
+6.4	+1.4	2.6	4.1
100	50	15	25
317.5	317.5	316.0	315.1
4.4	4.4	6.0	6.9
.21	15	15	25
321.60	313.0	311.9	311.3
0.35	9.0	10.1	10.7
27	15	15	15
Floor			
313.9	313.0	311.9	311.3
8.1	9.0	10.1	10.7
.25	15	15	15

321.95
322.45

X-SECT 63rd (CONT.)

LT E RT

(Levels cont on opp. page.)

T.P.	0.24	239.82	11.62	239.58
T.P.	0.15	251.20	11.36	251.05
T.P.	0.09	262.41	12.26	262.32
T.P.	0.44	274.58	12.31	274.14
T.P.	0.09	286.45	11.09	286.36
T.P.	0.53	297.45	11.11	296.92
T.P.	0.46	308.03	11.97	307.57
T.P.	0.15	319.54	11.32	319.39
T.P.	0.83	330.71	11.46	329.88

check:	6.91	212.11	212.62	Top
				F.Hyd
				S.E. 63rd
				Imp.
T.P.	2.09	219.02	11.52	216.93
T.P.	0.31	228.45	11.68	228.14

10+17.15	E	Sullivan (map)
10+02.15		1/4 Linc Sullivan
7+95		11.9 LT E Riv. Pinner
7+50		

354.3	347.1	337.0	332.5	327.0
+13.0	+5.8	4.3	8.8	12.3
50	25		15	25
348.2	343.8	337.1	332.2	329.1
+6.9	+2.5	4.2	7.1	12.2
25	15		15	25
342.9	338.7	333.5	329.9	326.2
+1.6	2.6	7.8	11.4	15.1
25	15		15	25

341.34

CLARK
ALLEN
BRUDER
PERKINS

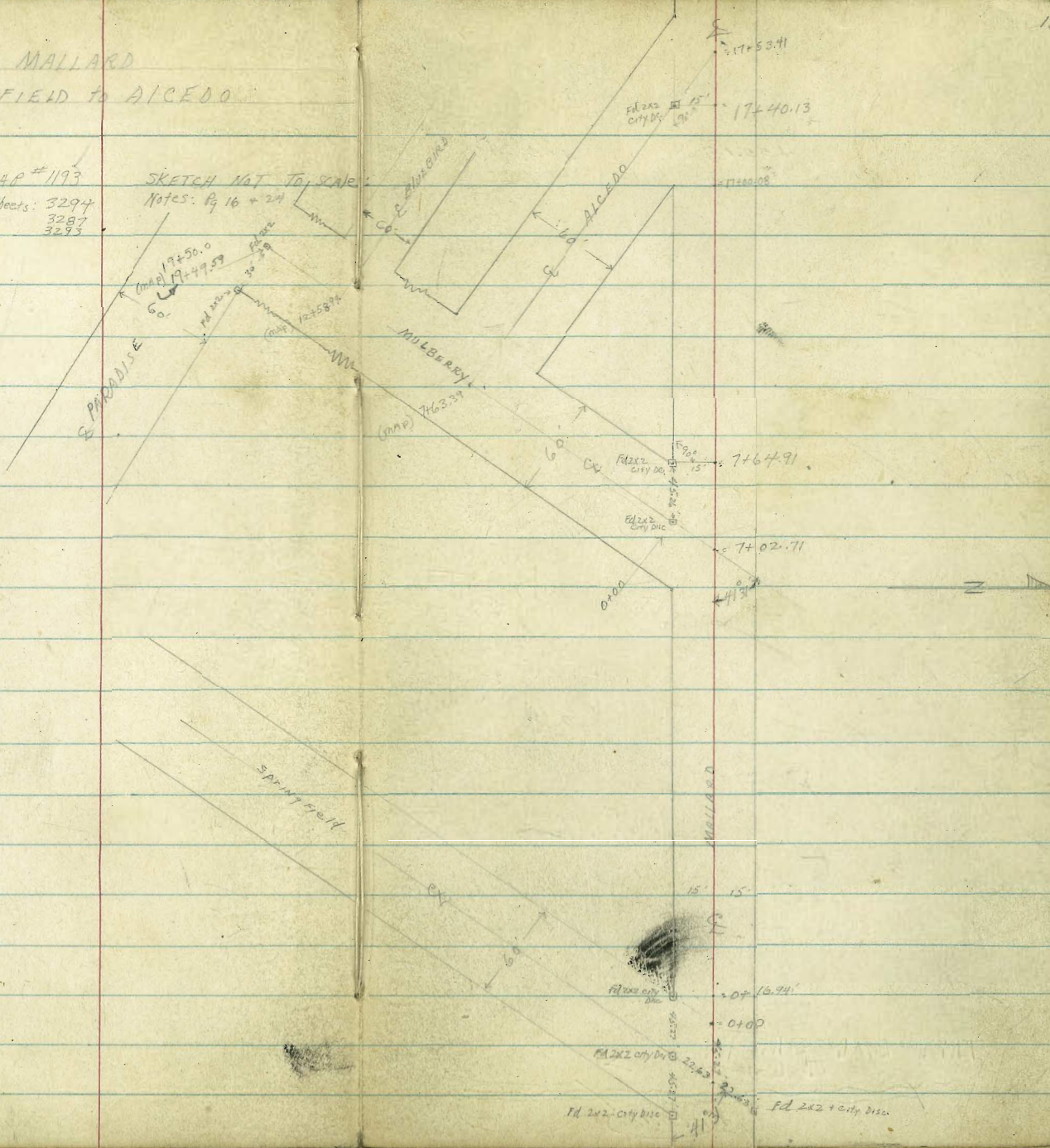
W.O. 25020
10-16-52

X-SECT. MALLARD
SPRINGFIELD TO ALCEDO

DATA: MAP #1193
Tie-Sheets: 3294
3297
3293

SKETCH NOT TO SCALE

Notes: Pg 16 + 24



INDEXED
OCT 29 1952

X-SECT. MALLARD (CONT.)

LT C RT

7+50

442.3	445.6	445.7	446.5	447.1	447.9	447.2	447.8	447.9
8.6	7.2	7.1	7.0	6.7	7.0	6.4	7.0	
50	15		10	15	25	15	25	

7+02-71

E. MALLARD & MULBERRY
(SECT. ALONG & MULBERRY)

442.5	445.1	445.7	446.0	446.7	447.1	447.5	447.8	447.9
8.1	7.9	7.8	8.2	8.0	8.1	8.1	8.1	8.1
100	50	22.63		12	22.63	30		

6+74

11.5 LT & Pole # P.170589

442.1	443.4	443.7	443.9	444.3	444.6	444.7	445.1	445.7
10.8	10.2	10.3	10.6	8.4	8.2			
25	15		8	15	25			

6+50

6+46

15.4 LT & 2.5' CONC. WALK

442.15	442.59							
10.74	10.30							
25	15.4							
WALK	LIP							

6+17

28.70 LT & SINGLE GRG. } BUILT AT L
to ST. LINE

442.04	442.79							
12.16	11.3							
28.7								
CONC. Floor								

6+15

13.1 LT & 9' CONC. APRON

442.1	442.5	442.6	442.9	443.1	443.7	443.8	443.9
13.2	12.1	12.3	12.3	9.5	9.4		
25	15		15	15	25		
	P.L.			P.L.			

6+00

T.P.

9.32

452.89 443.57
~~454.20~~ 11.61 ~~444.88~~

452.89
~~454.20~~

5+90

11 LT 18" PEPPER TREE

X-SECT. MALLARD (CONT.)

LT. E RT.

10711 146 LT & SMILE - 941. CONC APRON 9.2 LT

10700 12 LT & DEARMAN

9780

9769 11 31 LT & PIC # P 170582

9750

9700

T.P. 11.81 ~~464.08~~ ~~465.39~~ 0.62 ~~452.27~~ ~~453.58~~

8750

8700

459.77 461.08	459.83 461.14		
4.31 4.6 const. 1700	4.25 4.2 4.4		
459.1 460.4	459.4 460.7	461.0 462.3	451.9 462.9
5.0 25	4.0 15	3.1	2.6 10
459.2 461.5	461.0 462.3	461.8 463.2	459.2 460.5
3.9 25	3.1 15	2.3	2.2 15
			1.9 25
			452.3 463.6

459.9 459.6	459.5 460.1	459.2 461.5	459.9 461.2	460.1 461.4	461.1 462.4	461.8 462.7
5.8 25	4.5 15	3.9	4.2	4.0 15	3.0 20	2.7 25
459.0 455.3	459.7 456.0	459.8 456.5	459.2 455.7	459.5 457.2	459.9 457.2	459.8 457.1
10.1 25	9.4 15	8.9	9.7	9.5 14	8.2 15	8.3 25

464.08
465.39

451.9 452.6	451.1 452.4	451.2 452.5	450.4 451.7	450.2 451.7	450.5 451.8	451.1 452.4
1.6 25	1.8 15	1.7 2	2.5	2.5 13.5	1.4 15	1.8 25
449.0 449.9	449.1 449.8	449.2 449.9	449.4 449.9	449.4 449.9	449.4 449.9	449.4 449.9
1.3 25	1.8 15	1.7 5	2.5 2	2.5 14	1.4 15	1.8 25

452.27
453.58

X-SECT. MAILLARD (CONT.)

12+00

112.3 443.6	LT 111.8 441.1	111.5 441.9	£ 111.1 441.1	RT 109.9 440.6	110.1 441.4	109.1 440.4	108.1 440.1
10.8 25	11.3 15	11.5 1	13.0	13.8 13	13.0 15	14.0 25	14.0 40

11+96

14' LT & Deadman

11+90

7' LT & 10" Olive Tree

11+70

14' LT & Pole # P172926

~~114.4~~
~~446.63~~
~~115.32~~
~~110.59~~
~~446.90~~

11+58

15.1' LT & 5' Conc. Walk

7.81
25
WALK

7.54
15.1
LIP

~~115.2~~
~~446.8~~

~~115.2~~
~~446.7~~

~~110.8~~
~~447.7~~

~~111.6~~
~~447.1~~

~~111.6~~
~~447.1~~

~~110.8~~
~~446.7~~

11+50

7.8 25	7.7 15	7.3	8.5 15	8.5 16	7.7 20	7.5 25
-----------	-----------	-----	-----------	-----------	-----------	-----------

11+47

6' LT & 12" Olive Tree

11+32

6' LT & 12" Olive Tree

11+13

6' LT & 10" Olive Tree

T.P.

0.76

~~153.13~~
~~454.44~~

11.71

~~152.37~~
~~453.68~~

153.13
~~454.44~~

11+00

~~109.1~~
~~451.4~~

~~100.8~~
~~451.8~~

~~101.0~~
~~451.3~~

~~100.5~~
~~451.8~~

~~100.5~~
~~451.9~~

~~100.0~~
~~451.9~~

~~101.7~~
~~452.7~~

~~101.6~~
~~452.9~~

10+50

14.0
25

10.1
25

9.6
15
PL

14.1
15

12.7
20

12.5
25

8.4
15
PL

7.4
20

7.3
25

~~144.08~~
~~465.39~~

X-SECT. MALLARD (cont.)

LT. S RT

14450

419.4	417.5	415.4	412.2	412.2	413.2	411.9	413.5	413.5
420.7	418.4	417.9	417.5	18.5	415.2	414.4	414.4	413.6
+1.0	0.9	2.0	2.2	1.2	5.2	5.3	6.1	4.9
25	15	14		2	14	15	25	40

T.P.

0.95

418.41
~~419.72~~ 12.27
 418.77

418.41

14400

421.9	421.5	420.4	418.9	418.9	418.5	419.2	419.2	419.2
423.2	422.8	420.1	420.2	420.2	421.6	421.8	421.8	421.5
78	93	106	10.9	9.4	9.2	12.9	16.5	16.5
23	14		2	6	15	40	40	40
426.5	424.4	422.7	422.2	421.9	421.9	421.7	421.7	421.7
425.8	425.7	424.8	423.5	423.2	423.0	422.6	422.0	421.7
42	5.3	7.0	7.5	7.9	7.4	10.0	13.0	13.0
25	15	13	1	3	10	15	40	40

13450

T.P.

0.23

429.73
~~431.04~~ 12.04
 430.81

429.73

13407

12.17 g Pole # 270 235

13400

431.8	430.0	429.5	427.7	427.5	427.0	426.1	425.1	423.3	421.5
433.2	431.1	430.5	429.1	428.4	427.4	426.1	425.5	424.8	422.9
7.7	11.5	11.9	13.8	14.0	14.5	13.4	15.4	18.2	20.0
25	15	10	6.5	1	6	18	15	22	40
437.8	435.6	435.0	434.1	433.7	433.4	432.8	432.8	432.8	432.8
437.2	437.0	436.7	435.5	435.1	434.8	434.8	434.8	434.8	434.8
37	5.9	6.5	7.4	7.8	8.1	7.1	7.7	10.5	10.9
25	15	7	3	9	12	15	25	40	40

12450

T.P.

0.51

441.54
~~442.85~~ 12.10
 442.34

441.54

X-SECT. MAILLARD (CONT)

17+00

402.2	401.6	402.6
7.1	87	97
25	15	11
393.7	395.7	496.4
13.8	14.3	13.0
8	8	15
393.0	394.4	446.7
394.3	395.7	447.0
395.1	395.5	449.4
395.5	395.5	491.5

16+90

18 LT & Pole # 27166

405.0	407.0	408.3
1.7	2.4	2.4
25	15	11
402.9	406.7	407.6
406.7	406.7	407.6
407.6	407.6	407.6
407.6	407.6	407.6
407.6	407.6	407.6
407.6	407.6	407.6
407.6	407.6	407.6

16+50

T.P.

0.76

407.34

408.65

11.83

406.58

407.89

16+00

411.0	411.7	414.2
6.8	7.7	8.7
25	15	13
407.0	407.0	407.0
407.0	407.0	407.0
407.0	407.0	407.0
407.0	407.0	407.0
407.0	407.0	407.0
407.0	407.0	407.0
407.0	407.0	407.0

15+50

15+40

16.5 LT & 3' CONC. WALK

411.1	411.1	411.1
4.3	5.8	7.2
25	15	15
411.1	411.1	411.1
411.1	411.1	411.1
411.1	411.1	411.1
411.1	411.1	411.1
411.1	411.1	411.1
411.1	411.1	411.1

15+31

16 LT & DEADMAN

2.74	3.75	4.0
25	16.5	12
WALK	UP	

15+07

16 LT & Pole # 270936

411.0	411.0	411.0
0.8	2.2	2.2
25	15	13
411.0	411.0	411.0
411.0	411.0	411.0
411.0	411.0	411.0
411.0	411.0	411.0
411.0	411.0	411.0
411.0	411.0	411.0

15+00

418.41
419.72

X-SECT. MAILLARD (CONT.)

LT. E RT.

		check: 1.46	463.81 = 463.81 - see page 16
			465.12 = 465.17 - (NE) MON, 6946 MAILLARD
T.P.	8.76	465.27 466.58 0.08	456.51 457.82
T.P.	11.36	456.59 457.90 8.26	445.23 - see page 24 446.54 = S.W. Cor. 2x2, Maillard + Nutberry
T.P.	2.18	454.80 11.00	452.62
T.P.	3.23	463.62 0.75	460.39
T.P.	12.31	461.14 0.23	448.83
T.P.	11.76	449.06 0.30	437.30
T.P.	11.75	437.60 0.69	425.85
T.P.	11.95	426.54 0.09	414.59
T.P.	12.30	414.68 0.39	402.38
T.P.	11.79	403.77 6.36	390.98 = 2x2 Elev. Alcorno + S/4 Line Maillard

174 53.41 = S MAILLARD & S ALCORDO (sect. along S Alcordo)

174 40.13 L to S HUB ALCORDO See sketch.

T.P.	0.66	396.03 397.34 11.97	395.37 396.68	<u>396.03</u> 397.34
------	------	-----------------------------------	-----------------------------	------------------------------------

395.7	394.2	392.2	384.7	352.9	320.0	283.0	253.0	223.0	193.0
394.04	391.2	387.5	380.0	348.0	315.0	280.0	245.0	215.0	185.0
0.30	5.4	7.8	11.3	13.1	14.0	13.0	15.3	18.7	
50	25	15	12	10	8	11	15	25	
394.9	391.2	387.5	380.0	348.0	315.0	280.0	245.0	215.0	
5.1	5.8	6.3	10.1	10	3	11.2	12.4	13.0	
25	15	10	8		5	7	15	25	

Clark
Shepherd
Brumer
Perkins
N.O. 25020
10-21-57

X-SECT. MULBERRY
MALLARD to PARADISE

INDEXED

OCT 29 1952

LT RT
16.0 14.0 9.8 5.7 4.2
50 30 30 40

1450

1420

28 LT, Cluster Eucalyptus, av. 18" Diam.

2-Car garage to be built Adj to PATIO on SAME Level

1403

3 1/2 LT ENG CONC PATIO

1400

140.20 140.20
10.54 10.58
41 31.5
conc 5/10
10.58 10.4
31.4 30
5/10
140.20 140.4
1451
B.C. 2
146.9
148.2
147.9
3.7 30
30 40

0465

3 1/2 LT Bsq CONC SLAB (FRONT PATIO)
(Floor Level 1.0' Higher)

140.22 140.20
44.1 44.0
10.56 10.49
41 31
conc conc
144.2 144.9

0457

3 1/8 LT & Single GRV DKT floor

7.9 141.5
31.8 44.2
143.2
143.2
143.2
143.2
143.2
143.2

0450

26.8 LT & RR # P.170581

143.3 143.5
44.1 44.8
7.3 7.6
50 30
144.1 143.2
144.4 144.5
144.4 144.5
144.4 144.5
144.4 144.5

0400

♀ MULBERRY + Sky Line MALLARD (SECT)

143.3 143.5
7.5 6.7
55 45.26
144.4 144.4
144.4 144.4
144.4 144.4
144.4 144.4

0-22.63

♀ MALLARD 1/2 MULBERRY (SECT & MALLARD)

144.4 144.4
6.8 6.0
50 25
144.4 144.4
144.4 144.4
144.4 144.4
144.4 144.4

150.78

145.23 - See page 23 & 16

150.78

B.M.

5.55

452.09

444.54 - SW Pop. H 28, MALLARD & MULBERRY (P. 23)

Corrections
by O.P.S.

X-SECT. MULBERRY (CONT.)

LT. R. RT.

T.P. 0.09 ~~406.29~~ 407.60 11.88 ~~406.20~~ 407.51
4+50

4100

~~400.6~~ 401.9
17.5
40
406.3
~~407.6~~
11.8
40
408.7
~~409.0~~
9.4
30
411.6
~~411.9~~
10.4
40
412.1
~~412.4~~
6.0
30
413.2
~~413.5~~
4.9
40

T.P. 0.42 ~~418.08~~ 419.39 12.27 ~~417.66~~ 418.97

3+30

~~416.2~~ 417.5
13.7
40
417.7
~~419.0~~
12.2
30
418.2
~~422.5~~
7.7
40
418.08
~~419.39~~
2.4
30
419.3
~~420.6~~
0.6
40

T.P. 1.12 ~~429.93~~ 431.24 11.62 ~~428.81~~ 430.12

3+00

2+50

2+00

1+72

T.P. 0.95 ~~440.43~~ 441.74 11.20 ~~439.58~~ 440.89

29 LT cluster Eucalyptus . AV 18"

~~421.4~~ 422.7
19.0
40
425.2
~~427.5~~
15.2
40
430.2
~~431.5~~
10.2
40
431.4
~~432.7~~
8.8
30
431.6
~~432.9~~
8.2
PL
431.8
~~432.1~~
11.6
40
431.5
~~432.8~~
8.9
40
435.7
~~437.0~~
4.7
40
431.8
~~432.1~~
8.6
30
436.6
~~437.9~~
3.8
30
441.1
~~441.4~~
+0.7
30
PL
439.4
~~439.7~~
7.0
40
438.4
~~439.7~~
2.0
40

440.43
~~441.74~~

X- SECT. MULBERRY (CONT)

8+00		Bottom DRAW	
T.P.	0.90	372.68 373.99	11.28 373.09
7+6.339		E Alcedo (map)	
7+00			
T.P.	0.31	383.06 384.97	11.75 384.06
6+50			
6+00			
T.P.	0.29	394.50 395.81	12.08 395.52
5+50			
5+00			

367.9 369.2 375.9 377.2	48 40	68 30	72 27	365.0 366.3	7.7	370.0 371.3	57 30	RT 365.0 366.3
366.8 368.1 370.5 371.8	16.3 40	17.5 30	17.1 20	370.9 371.2	12.2	373.5 374.8	9.6 30	379.6 380.9
372.4 373.7				375.0 377.2	7.2	379.0 380.3	7.1 30	380.1 381.4
376.5 377.8				382.2 383.5	13.0 40	383.3 384.6	11.2 30	384.2 385.5
378.3 379.6				386.5 387.8	16.2 30	388.7 389.0	11.2 30	389.8 391.1
382.2 383.5	12.3 40			386.5 387.8	8.0	388.7 389.0	5.8 30	389.8 391.1
385.4 386.7	11.1 30			392.2 393.5	13.7	393.3 394.6	11.3 30	394.2 395.5
395.1 396.4	11.2 40			395.5 396.8	6.8 8	395.0 396.3	7.5 30	396.6 397.9
396.3 397.6	10.8 30			399.5 400.8	6.8	402.8 404.1	7.5 30	405.3 406.6
				406.25 407.60				

X-SECT MULBERRY - (CONT.)

LT.

£

RT.

10+70

Brow

422.5
403.8
31/40

401.6
402.9
4.0/30

399.0
400.3
6.6

355.1
340.4
16.5/30

385.7
387.0
17.7/40

T.P.

10.64

425.63
~~406.94~~

0.48

394.99
~~396.30~~

308.7
~~302.3~~
373.6

398.2
~~399.5~~

425.63
~~406.94~~

397.5
~~388.0~~

384.4
~~385.7~~

10+50

302.8
344.1
2.7/40

399.7
392.0
4.8/30

394.0
395.3
9.9

380.1
381.4
15.4/80

375.0
376.3
20.5/40

10+00

T.P.

11.76

395.47
~~396.78~~

0.24

383.71
~~385.02~~

352.8
384.1
1.2/40

381.9
383.2
2.1/30

395.47
~~396.78~~

371.8
373.1
12.2/30

370.1
371.4
13.9/40

9+50

T.P.

11.65

383.95
~~385.26~~

0.38

372.30
~~373.61~~

369.8
374.7
2.7/40

368.7
374.4
4.0/30

383.95
~~385.26~~

362.8
367.1
9.9/30

362.3
365.7
10.4/40

7+00

8+50

378.68
~~379.99~~

Y-SECT. MULBERRY (CONT)

14+00

380.7 382.0	379.8 381.1	376.9 377.6	372.8 374.1	371.8 373.1
20 40	29 30	6.4	9.9 30	10.9 40

T.P. 0.09

382.72 384.03	12.23	382.63 383.94
-----------------------------	-------	-----------------------------

382.72 384.03

13+50

386.6 388.9	385.7 387.2	382.2 383.5	376.7 378.0	375.1 376.4
8.3 40	9.2 30	2.7 5	18.2 30	19.5 40
397.8 399.1	396.9 398.2	395.2 396.5	386.9 388.2	384.8 386.1
+2.9 40	+2.0 30	+0.3 5	8.0 30	10.1 40

12+80

BRW

T.P. 1.90

394.86 396.17	11.02	392.96 394.27
-----------------------------	-------	-----------------------------

394.86 396.17

12+58.99 - E

Queering (map)

404.7 406.0	400.9 402.2	399.7 401.0	395.8 397.1	393.2 394.5	394.0 395.3	389.2 390.5	381.0 382.3
3.1 40	4.3 30	8.2 10	10.8 10	10.0 30	14.8 40	23.0 100	
400.6 401.9	399.0 400.3	398.0 399.3	395.9 397.2	394.1 395.4	392.1 393.4	387.2 388.5	
+0.7 40	0.00 30	3.4	4.1 10	8.7 30	9.9 40		

12+00

T.P. 4.99

403.98 405.29	6.64	403.98 405.29
-----------------------------	------	-----------------------------

403.98 405.29

11+50

405.6 406.9	404.6 405.9	401.1 402.4	399.9 401.2	397.2 398.5	393.6 394.9
0.00 40	1.0 30	4.5	5.7 20	8.4 30	12.0 40

405.63

~~406.94~~

X-SECT. MULBERRY (CONT.)

T.P.	12.28	441.03 442.34	0.12	428.75 430.06
17+00				
T.P.	12.24	428.87 430.18	0.15	416.63 417.94
16+50				
T.P.	11.70	416.78 418.09	0.12	405.08 406.39
16+00				
T.P.	11.66	405.20 406.51	0.39	393.54 394.85
15+50				
T.P.	12.12	393.93 395.24	0.91	381.81 383.12
15+00				
14+70		Toe		
14+50		Bottom NAIL - toe		

424.8 426.2	4.0 40	425.2 426.5	3.7 30	426.5 427.8	2.4	428.8 430.1	0.1 30	428.4 429.7	0.5 40
429.57		429.57		429.57		429.57		429.57	
412.7 414.0	4.1 40	413.1 414.4	3.7 30	414.4 415.7	2.4	416.9 417.6	0.5 30	417.8 418.5	10.4 40
416.78		416.78		416.78		416.78		416.78	
400.0 401.3	5.2 40	400.0 401.3	4.6 30	401.6 402.9	3.8	402.7 404.0	2.5 30	402.7 404.0	2.5 40
405.20		405.20		405.20		405.20		405.20	
387.2 388.5	5.5 40	387.1 388.4	6.8 30	387.1 388.4	6.8	387.1 388.4	6.8 30	387.1 388.4	6.8 40
393.93		393.93		393.93		393.93		393.93	
373.5 374.8	4.2 40	372.0 373.3	7.9 30	370.1 371.4	7.7	368.0 369.3	7.7 30	366.9 368.2	7.4 40
374.0		374.0		374.0		374.0		374.0	
370.1		370.1		370.1		370.1		370.1	
367.4 368.7	14.7 30	366.9 368.2	15.8 40	367.4 368.7	14.7	366.9 368.2	14.7	366.9 368.2	14.7
382.72		382.72		382.72		382.72		382.72	

X-SECT. MULBERRY (CONT)

LT.

C

RT.

19+49.59 = E/4 Line Paradise (MAD)

19+03 36.8 RT S/4 CORN House

19+00

18+80

T.P.

8.93

461.43

~~462.74~~

0.49

452.50

~~453.94~~

18+50

18+00

T.P.

12.37

452.99

~~454.20~~

0.44

440.62

~~441.99~~

17+50

~~457.4~~
~~458.7~~

4.0

~~458.1~~
~~459.4~~

3.3
30

~~459.0~~
~~459.9~~

2.8

~~459.0~~
~~460.9~~

1.8
30

~~459.7~~
~~461.0~~

1.7
40

~~455.4~~
~~456.7~~

6.0
40

~~455.0~~
~~456.9~~

5.8
30

~~459.0~~
~~459.9~~

3.4

~~458.7~~
~~459.6~~

2.7
30

460.21
461.52
1.22
36.8
Floor

~~458.9~~

2.5
40

~~459.8~~
~~459.7~~

11.6
40

~~451.8~~
~~453.6~~

9.6
30

~~455.2~~
~~456.5~~

6.2

~~454.4~~
~~455.7~~

4.0
30

~~458.3~~
~~458.6~~

3.1
40

461.43

~~462.74~~

~~442.9~~
~~444.7~~

12.6
40

~~441.1~~
~~443.4~~

8.9
40

~~448.3~~
~~449.6~~

11.7

~~452.5~~
~~453.8~~

0.5
30

~~452.3~~
~~453.6~~

0.7
40

~~440.7~~
~~442.0~~

12.3
30

~~445.2~~
~~446.5~~

7.8
30

~~441.7~~
~~443.0~~

11.3

~~441.3~~
~~442.6~~

11.7
30

~~440.9~~
~~442.2~~

12.1
40

452.99

~~454.20~~

~~432.9~~
~~433.8~~

8.1
40

~~438.0~~
~~434.9~~

7.4
30
PL

~~434.5~~
~~435.8~~

6.5

~~435.7~~
~~437.0~~

5.3
30
PL

~~436.0~~
~~437.3~~

5.0
40

471.03

~~472.34~~

X-SECT. MULBERRY (cont)

LI

Q

RT

check: 11.40
(with target)
A.O.:

445.32 = 445.23 500 page 23

446.63 = 446.54 = 2x2 Hub, S/W Cord. Mallard + MULBERRY

T.P.

7.36

456.72

~~458.09~~ 12.07

449.36

450.67

19479.59

= E PARADISE

452.7
~~456.0~~

4.7
100

458.6
~~457.9~~

2.8
50

459.2
~~458.2~~

30'

459.9
~~459.2~~

1.5

460.3
~~460.3~~

30'

460.5
~~461.8~~

0.9
50

461.4
~~458.74~~

0.00
100

461.43

Clark
Shepard
Bruner
Perkins

W.O. 25020
10-23-52

DATA: MAP 1988

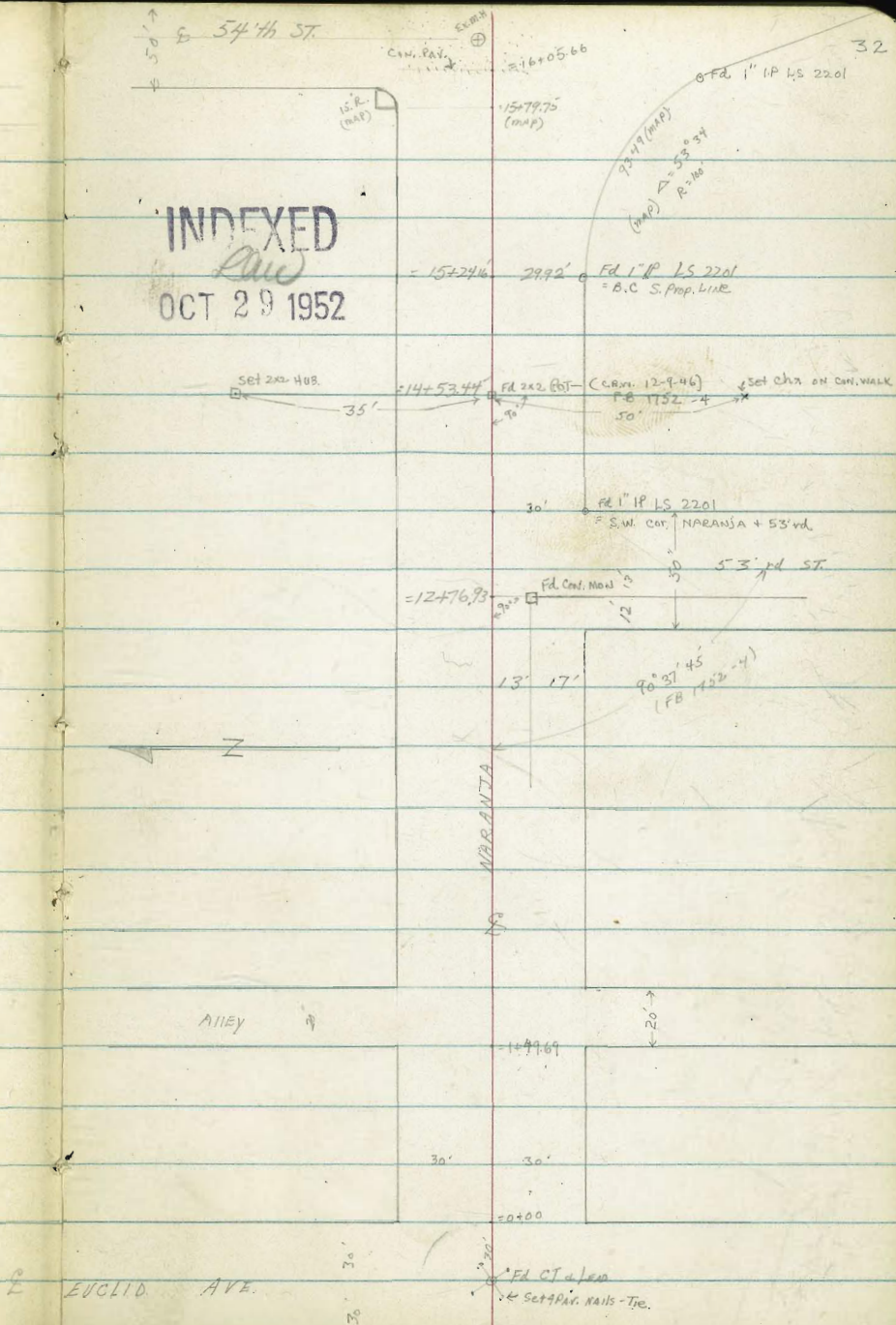
Tie Sheets: 3345 } No PTS.
3344 } SHOWN ON
3343 } Tie sheets

F.B. # 1752-4

X-SECT. NARANJA ST.
EUCLID to 54th

Notes: p. 33

INDEXED
OCT 29 1952



X-SECT. NARANJA
EUCIID to 54th

LT

E

RT

1451	230' LT & R/L - P170146					
1409	230' LT & DEADMAN					
1400		105.21 10.1 50	106.55	9.7 30	106.9	9 107.5
0467	28.3 LT & 2.5 CONC. WALK	11.39 40 WALK	11.03 28.3 LIP			76 30 109.0
0450		130 50	103.6	11.5 30	105.1	9.4 30 107.6
0400	E. Line EUCIID.	130 50	103.6	11.4 30 PL	105.7	9.7 30 AL 108.2
0-15	E. M.H.				106.26	10.34 Rm m.H.
0-16	E. Edge A.C. Pav. (over old - conc.)	103.79 13.00 75	103.60	12.58 50	104.02	10.26 7.0 50 109.59
0-30	E. EUCIID	12.81 80	104.27	12.33 50	106.63	9.77 6.44 50 110.16
					(A.C. Pav.)	1.98 100 114.62

10.12

116.60

106.48 - Elev. C.T. & NARANJA EUCIID (FB 1752-4)

116.60

X-SECT NARANJA (CONT)

LT

E

RT

7+00

110.6	114.1	116.2	116.5	116.1	116.3	117.5	119.8
15.5	13.0	10.9	10.6	11.0	10.8	9.6	7.3
50	30	21	19	7		30	50

3+50

9+35

22.6 LT & Pole P-17045

T.P. 11.66 127.10 1.16 115.44

3+00

109.4	127.10						
10.0	7.9	7.2	1.5	1.0	2.1	10.5	11.0
50	34	30	17	12	7	30	50

2+50

112.8	113.5	113.0					
7.8	3.8	2.6	3.4	1.6	1.0		
50	30	12	7	30	50		

2+00

113.7	113.3	113.3					
4.3	2.9	4.2	5.0	3.3	1.7		
50	50	10	8	30	50		

1+79

39.5 RT & 8' Drive Conc. (open shelter for car)

110.8	112.7	114.23	114.39				
112.8	2.37	39.5	47				
	LP		conc				

1+59.69

E 20' ALLEY

110.8	110.7	112.8	114.23	114.39			
10.4	6.0	5.8	5.3	6.3	5.9	4.5	2.8
80	70	30	12	8		30	80
		PL				PL	

116.60

X-SECT. NARANJA (Cont.)

LT.

8

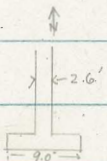
RT.

9+00	25' RT. Beg Series SMAN FOUR WALK	131.9 2.7 50	132.5 2.1 30	132.6 2.0	132.8 1.8 18	133.6 1.0 20	133.8 0.8 29.4	136.6 +2.0 31	136.71 +2.4 50
8+83	29.4' RT. Beg 3' CONC WALK (1' WIDE)						1.49 2.71 RT. WALK		
8+82	22.6' LT & Bldg P-170143		129.8 4.8 50	130.9 3.7 30	131.5 3.1	131.6 3.0 18	132.6 2.0 28	134.6 0.8 30	135.9 +1.3 50
8+50			128.5 5.0	129.5 5.0	130.4 4.2	130.4 4.2 18	131.1 3.0 20	132.1 2.0 30	134.4 0.2 50
8+45	22.7' LT. & DEADMAN		127.8 6.8 50	129.0 5.6 30	129.8 4.8	130.5 4.1 28	132.1 3.5 30	132.6 3.0 50	
8+00			128.1 6.5 50	128.9 5.7 30	129.1 5.5	130.1 4.5 28	131.3 3.3 30	132.0 2.6 50	
7+50			126.55						
7+00			128.1 6.5 50	128.9 5.7 30	129.1 5.5	130.1 4.5 28	131.3 3.3 30	132.0 2.6 50	
6+89	29.2' LT & 7' CONC. WALK, 8.5' LT GAR	8.06 8.5 Floor gar.	128.1 5.78 4.8 WALK	129.01 5.60 29.5 LIP	129.2 5.4 LIP				
6+67	29.5' LT & 7' CONC. WALK		128.7 5.9 50	128.7 5.9 30 PL	128.6 6.0	128.5 6.1 18	130.5 4.1 30 PL	131.1 3.5 50	
6+50									

134.61

X-SECT. NARANJA (CONT.)

				LT.	S	RT.
11+59	22' LT & Pole #	427476-11		133.8	134.5	134.2
11+50				7.0 50	6.9 30	7.2
11+00				135.4 50	134.6 30	135.3
10+50				6.0 50	5.4 30	6.1
10+11	29.7 RT. END CONC. WALL # 22' LT & Pole P-170142					134.7
10+05	25' RT. END. SERIES F. TRUSS					134.9
10+00				7.3 50	6.8 30	6.7
9+87	17.5 LT & 2.5' CONC. WALK (T. WALK.) <small>See above</small>			133.94	134.33	134.34
T.P.	6.88	141.38	0.11	7.4 50 WALK	7.05 30 WALK	7.04 17.5 LP
9+50				132.1	132.8	141.38
				1.5 50	0.8 30 PL	0.8
						133.9
						134.6
						134.7
						137.1
						137.6



134.61

X-SECT. NARANJA (CONT.)

14+26 30 RT₂ Gravel Drive

14+00

13+75

30' RT Bag 2.5' CONC. RET. WALL

13+50

T.P. 8.95 145.98 4.35 137.03

13+36 22' LT & DEADMAN

13+14.90 = E. Line 53rd ST.

13+06 22' LT & Pole # P-170144

12+89.90 = F.M.H. & 53rd ST.

12+64.90 = W. Line 53rd ST. 30.0' RT. END OF 18" CORR. PIPE. 30.5' LT. END OF COLVERT, 18" PIPE (CORR. IRON)

12+00

LT

\$

RT

140.8
5.2
30

140.7
5.3
30

139.2
6.8

140.9
5.1
30

142.7
3.3
31

142.8
3.2
50

141.7
7.3
30

142.7
3.3
50

138.2
7.8
50

138.1
7.9
30

137.6
8.4

138.2
7.8
24

139.3
6.6
30

139.9
6.1
50

6.08
30

RT FID.

145.98

136.3
5.1
50

136.4
5.0
30

136.0
5.4

135.8
5.6
30

135.7
5.7
50

136.1
5.3
75

135.4
6.0
30

6.1
9

134.58
6.80
RM.M.H.

134.5
6.6
30

134.7
6.7
50

134.4
6.0
75

125.1
16.3
30

129.37
12.0
30.5
F.LINE

130.9
10.5
30

132.6
8.8
27

134.4
7.9
6

134.0
7.4

134.0
7.4

134.2
7.2
27

134.4
7.4
30

133.90
9.48
30
F.LINE

133.0
8.4
50

133.9
7.5
75

130.6
10.8
50

131.2
10.2
30
PL

133.5
7.7

134.2
7.3
24

135.7
5.7
30
PL

136.9
4.5
50

141.38

X-SECT. NARANJA (CONT.)

		LT	RT
15+98	22.5' LT & Pole 272038 20' RT & Anchor-Pole	137.5 50	134.1 13
15+90		10.7 50	10.6 30
15+80		8.5 50	12.3 13
15+50	22' LT & DEADMAN	7.0 50	9.7 13
15+39	33.4' LT & 2' CONC. WALL	6.3 30	7.4 15
15+25		6.4 30	6.0 15
15+14	22' LT & Pole # P-170140	6.5 50	4.2 50
15+00		5.5 30	4.2 50
14+75	30' RT & 11' CONC. DRIVE, 55' to Floor gvc	5.6 50	3.72 30
14+50		5.0 30	3.37 30
14+34	30' RT. END CONC. WALL	5.0 30	2.94 30
		PL	PL
			4.60 30. G.M. FTNU

X-SECT. NARANJA. (Cont.)

LT. E RT.

check 11.68 106.50 = 106.48 = CT E EUCLID + NARANJA

T.P. 0.35 118.18 11.35 117.83

T.P. 0.38 129.18 12.01 128.80

T.P. 1.74 140.81 0.36 139.07

16+20.66 ± = E 54th (sect. along E 54th)

16+05 ± W/ly Edge Conv. Pav. at E NARANJA (sect. along Edge Pav.) (54th curves to S.EAST)

T.P. 4.81 139.43 11.36 134.62

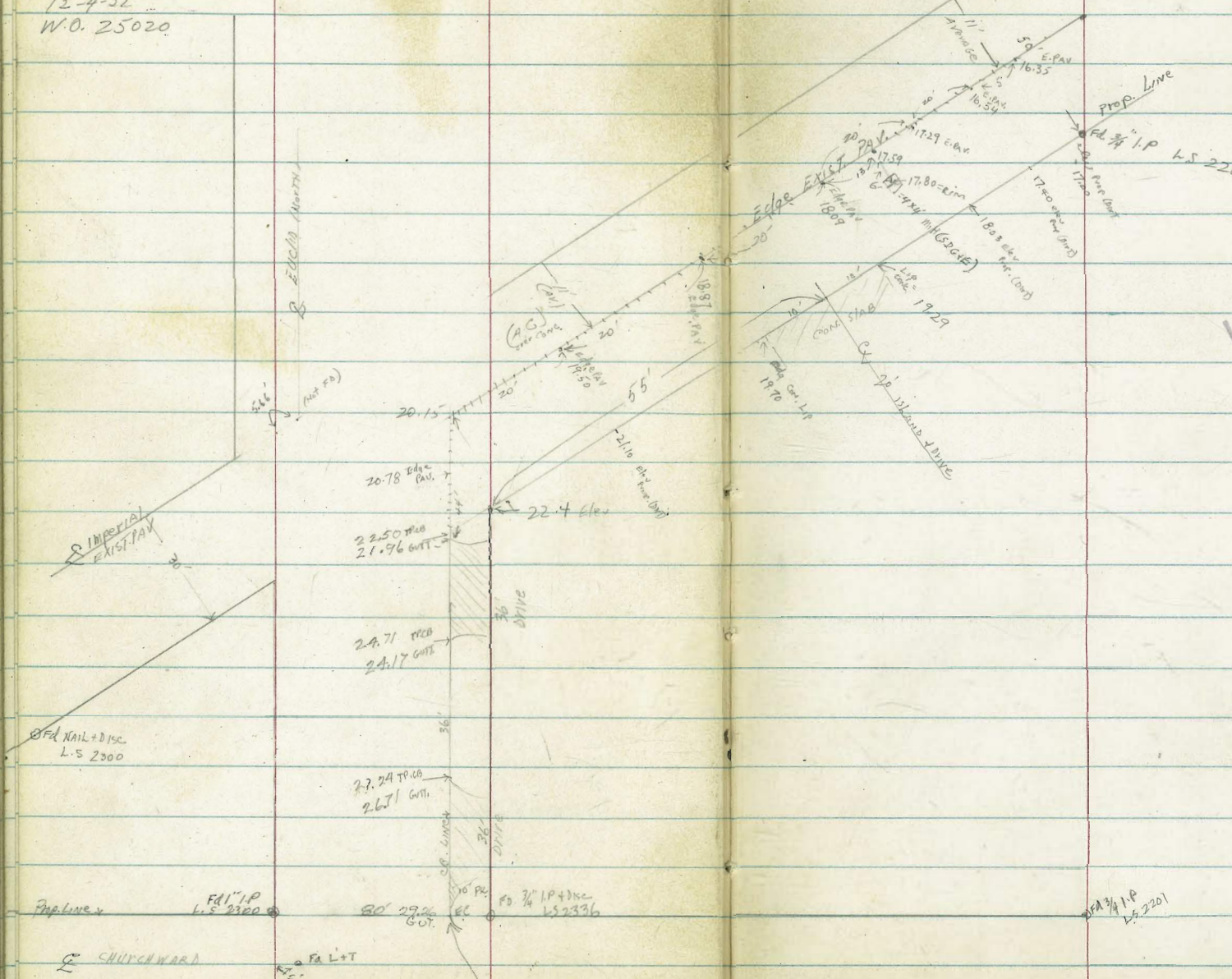
127.84	127.96	132.93	136.09	137.77
11.59	9.82	6.50	3.34	1.66
75	50	30	50	75
129.29	130.97	132.71	134.49	135.65
10.44	8.46	6.72	4.94	3.78
50	30	30	50	75

139.43

Clark
Shepherd
Brewer
Perkins

12-4-52
W.O. 25020

Elev. EXIST CB & Pave. S/E
Ret. EUCLID & IMPERIAL



INDEXED
Filed
5 1952
DEC

CHURCHWARD
B.M:

FA L+T
Direct Elev. Rod:

Assumed Elev = 30.0 to CB
at N.E. EC

D. Smith
C. Allen
R. Taylor
R. Parks
C. O'Neil

Cross Sec Alley BIK 34
Morena

INDEXED
JAN 15 1953

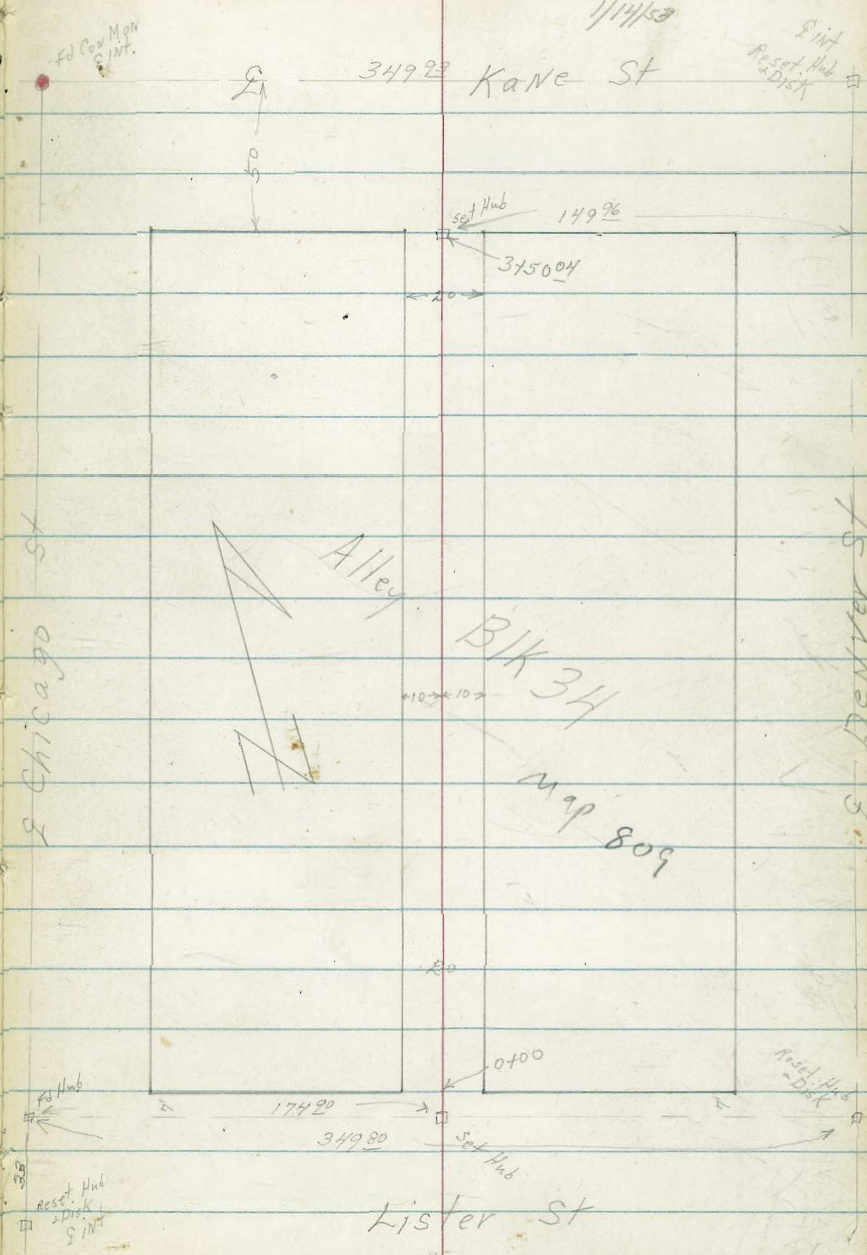
Ties FB 1502-48

W0# 25020 42

1/14/53

349²³ Kane St

Set Hub
Reset Hub
2 Disk



X" Sec Alley Bk 34 Morena

Lt. West

Rt. = East

43

0+75

25.9
62
25

26.3
65
10

26.8
12
26.8

27.1
60
10

27.2
52
25

0+71 9° Lt & Deadman

26.8
60
25

27.0
58
10

26.8
60
10

27.0
58
10

27.2
56
25

0+50 9° Lt & 6" Power Pole #PA3115

92 Lt Begin 4' Picket Fence

0+50 9° Lt End 4' Board Fence

27.0
58
25

27.4
54
10

27.5
53
10

28.1
47
10

28.3
45
25

0+25

10° Lt Begin 4' Board Fence

0+00 Nly Lister St.

27.2
56
25

28.1
42
10

28.1
42
10

28.4
44
10

28.5
43
25

0-17

26.0
68
50

27.2
56
25

27.7
51
10

27.6
52
10

28.3
45
10

28.6
42
25

29.0
38
50

0-20

25.5
73
50

26.5
63
25

26.9
52
10

27.2
51
10

27.6
58
10

28.0
48
25

28.8
40
50

TP₃ BM 519

3279 280 2760

Hub & Alley
N 7' Line
Lister

3279

TP₂ 225

3040 664 2815

TP₁

463 3429 1293 3016

BM

100 4309 4203

SWBP Erie
Milton

3+25 14° Rt & 10° con drive

3+00 10° Rt & 6' to 1 Pole # 574085 H

2+50 10° Lt End 35 Rail Fence

TPN 740 35⁸⁶ 4³³ 28¹⁶

2+21 9° Lt Beg in 35 Rail Fence

2+00 9° Lt & 6' Power Pole # PA 3159

1+50

1+14 10° Lt & double garage con floor + apron

1+00 10° Lt End 4' Picket Fence

Lt = West

Rt = East

4L	28.8	6R	29.7	56	30.3	48	31.1	44	31.38	37	32.15	39	32.49
25		10		10		10		10		21		31	
74	28.5	67	29.2	60	29.9	53	30.6	51	30.8				
25		10		10		10		25					

72	28.0	70	28.9	70	28.9	67	29.2	53	30.5
25		10		10		10		26	

6R	26.6	55	27.3	57	27.7	42	28.1	43	28.5
25		10		10		10		25	

67	26.1	59	26.9	54	27.4	48	28.0
25		10		10		25	

6 ⁵⁸	26.27	6 ⁷²	26.07
15° floor		10° apron	

4L	25.7	6R	26.8	56	27.2	51	27.7
25		15		10		25	

X 32 79

Lt = West

Rt = East

45

BM starting		096	42° ⁴ ✓ 42° ³
TP ₇	6 ²⁰	47 ⁰⁰	422 36 ⁸⁰
TP ₆	12 ⁸⁵	41 ⁰²	312 28 ¹²
TP ₅	3 ⁶²	31 ²⁹	812 27 ⁶⁷
		576	30 ⁰

S Prop Hub
Kane St
& Alley

3480

90	72	65	52	52	43	22
50	25	10		10	25	50
26.7	28.0	29.4	30.0	30.7	31.6	33.5

3477 6⁴ Lt & 9¹ Power Pole # JRA 3199

3462 9° Lt & 15" Pepper tree

3462 10° Rt & 12" Acacia tree

88	76	52	58	54	34	12
50	25	10	10	25	50	
27.6	28.8	30.0	30.1	30.8	32.5	34.2

3450⁰⁴ Sly Kane St

66	64	54	44	32
25	10	10	25	
29.3	29.8	30.5	31.5	32.2

T 35.86

D. Smith
J. Rorer
R. Taylor

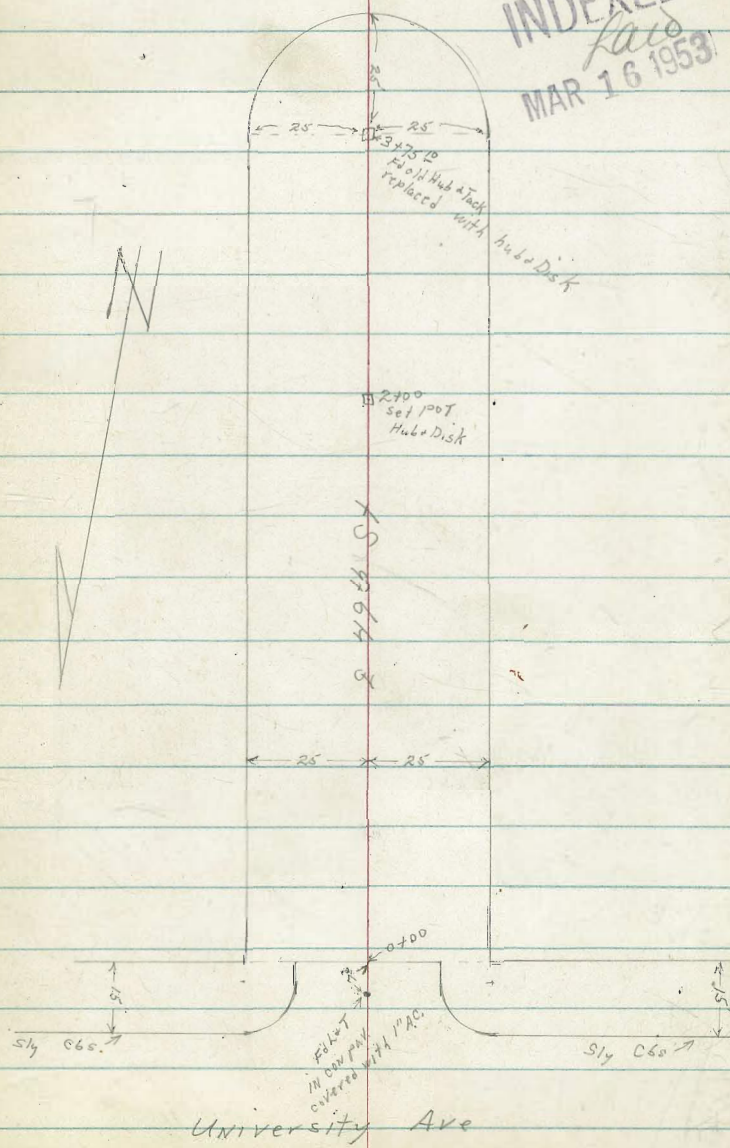
Cross Sec. 49th St

University Ave. South to termination

46
No. 25-020
3/13/53

Ref = tie sheet #3645

INDEXED
Laid
MAR 16 1953



D. Smith
J. Rorer
P. Taylor

X Sec 49th St University S to End

not 250.20
3/13/33

Lt = East

47

075

0758

0750

0725

0700 End cbs paving Sly Line University Ave.

0-05 EC Return cbs

0-10 Mid Pt Returns 10' ed Rad

0-15 Sly of Line University

TP

10¹⁵

327.7

13⁰⁷

317.02

BM

0³⁸

3.30⁰⁹

~~329.7~~
326.68

SWBP
University Ave
Estrella

0²⁸ 326.89

75

06

9ut

0⁸⁰ 326.37

75

06

9ut

1⁸⁴ 325.33

50

06

9ut

2⁴³ 324.74

50

06

9ut

3⁶¹ 322.56

25

06

9ut

4¹² 323.05

15

06

9ut

5⁵¹ 322.66

15

06

9ut

6¹⁹ 322.26

15

06

9ut

7⁵³ 321.54

15

06

9ut

8²¹ 320.96

25

06

9ut

9⁴⁷ 321.70

25

06

9ut

10²² 319.25

50

06

9ut

11⁰² 320.88

50

06

9ut

12¹⁰ 316.55

100

06

9ut

13¹⁰ 317.16

100

06

9ut

20 325.0

50

30 323.9

25

40 323.36

15

50 322.63

15

60 322.55

15

70 322.27

15

80 321.74

15

90 321.9

15

100 321.8

15

20 325.1

50

30 324.0

25

40 323.1

15

50 323.0

15

60 322.2

14

70 322.5

17

80 322.4

25

90 320.3

50

10 326.2

50

20 325.7

30

30 324.7

25

40 323.9

15

50 323.7

3

60 323.0

42

70 323.5

32

80 323.1

41

90 322.0

14

100 321.0

50

10 326.2

10

20 326.0

12

30 325.1

25

40 324.1

13

50 324.3

22

60 323.5

32

70 322.5

22

80 322.6.8

25

90 322.5.0

50

100 322.4.5

13

324.14
324.14

1775

Lt East 48
 332.5
 73² 72² 70² 12
 35 26 25 12
 327.0
 327.1
 325.9
 324.6
 Rt Wis +

1766 18" Lt & 3' conwalk & steps

331.57
 72³⁰ 104
 25 18
 walk dot stop

1750 16" Lt & 12" pipe # P3873

322.8
 73⁵ 72⁸ 71² 0² 2³⁰
 50 30 25 15 11
 326.8
 326.8
 323.7

1743 16" Lt & 8' con drive

332.46
 73¹² 70⁶² 70⁸²
 40 25 16
 drive drive drive

1725

333.8
 74⁵ 73² 72² 71²
 50 25 18 14
 326.2
 326.1
 326.2
 324.3

0795

334.0
 74² 73² 70² 72² 3²
 50 32 25 18 13
 325.5
 325.0
 325.6
 324.1

0785

326.2
 326.0
 325.0
 325.3
 324.7
 325.1
 325.2
 323.7

TP2

6⁸⁸

329²⁹

476

322⁴⁴

177 & 484
 South 71 line
 university

326.26

329.29

Lt. East

Q

Rt. West

49

3728 22 1/2 x 2 9' con drive

3725 17 1/2 x 2 dead man

3719 21 1/2 x 2 2' con walk

3700 17 1/2 x 2 12" pole #P3849

2784 18 1/2 x 2 9 1/2 con drive

2750

2725

2700

12 23 316.56
22 1/2 drive

13 10 316.19
25 35 drive

14 22 315.07

11 49 317.80
27 1/2 walk

11 46 317.64
25 walk

12 16 314.63
33

37 325.9
50

56 323.7
25

74 321.9
18

91 320.2
8

94 319.9

103 319.0
11

102 318.6
25

110 318.3
35

920 320.09
18 1/2 drive

927 319.55
25 drive

104 319.18
33 1/2 garage floor

403 329.6
50

02 328.4
27

30 326.3
25

48 324.5
18

52 323.7
12

56 322.9
11

65 322.8
20

78 321.5
25

93 320.0
50

115 330.8
40

70 329.9
27

06 328.7
25

34 325.9
18

44 324.9
12

48 325.1
42

48 324.5
10

42 324.4
19

2 323.3
25

82 320.4
50

123 331.6
40

15 330.8
27

70 329.9
25

30 326.3
14

10 326.3
9

32 326.1
16

35 325.8
25

42 324.6
25

72 312.7
58

~~326.26~~
~~326.29~~

BM starting

TP4
4125

1013

330²⁸

056

379²² 101

024

320¹⁵

4700

3489 27° RT E single garage con floor

3475 16³ RT E 6" pole

3473 16³ RT E 4" con retaining wall

3466 14³ RT E 5' con walk + steps

3469 15° RT E 8" Pepper

3440

3438 16° RT E 4" Santa Berry tree (Umbrella)

3433 21⁸ RT begin 4" con retaining wall

TP3

3⁷²

320³⁹

12⁶²

316⁶⁷

At-East

64
25

314.0

50
12

318.5

25
20

317.1

300
20

316.6

56
16

314.9

25⁵⁶
25
w/k

317.83

35
183
w/k

316.89

143
46
bot/step

315.98

414
50

3221.8

12
25

319.2

21
20

318.3

22
10

317.5

35
8

316.9

36
36

316.8

12
40

316.4

21
40

316.4

56
22

314.8

56
25

314.8

60
35

314.4

32
212
21

316.5

32
212
21

316.50

56
212
21

314.6

317.36

32039

At-West

50

20
10308.5

32.5

312.6

312.3

72
12

312.5

312.6

312.3

House

17
27

312.50

27
gar
floor

59
12

314.5

65
12

313.9

25
10

311.8

107
30

310.4

56
16
Top
wall

314.89

16
16
Footing

313.2

76
31

312.8

Clark
Shepherd
Bruner
ONeil
4-29-53
W.O. 31895

X-SECT. ALLEY Bk 101

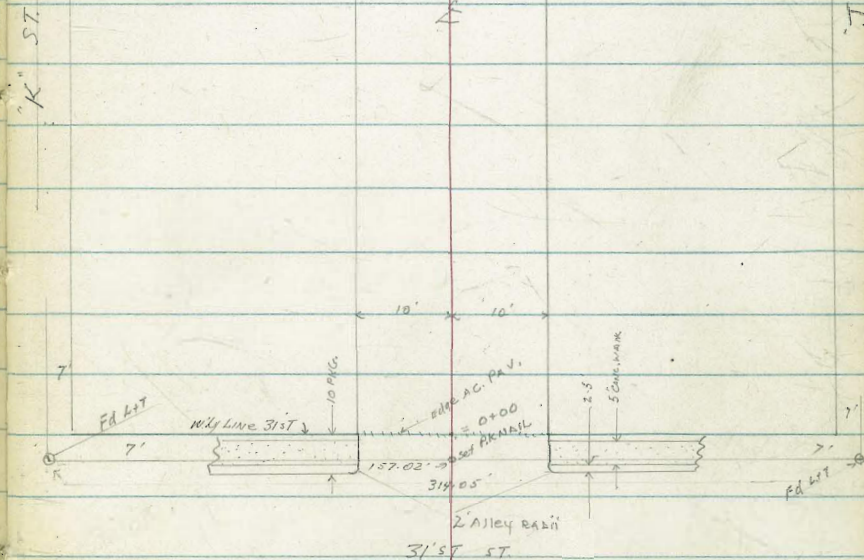
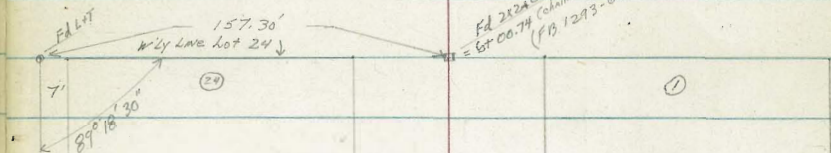
FRINK + WILDES

31' ST WLY

DATA: F.B. # 1293-65
T. SHEET # 139

Sketch NOT to scale
Notes: p52

INDEXED
APR 30 1953



L + S RT

0+70 9.7 LT Conc WALL - Meets apron to 3-car gar, 13.7 to gar.

76.05
76.69
76.1
4.62 4.88 5.5
13.7 9.7 9.7
Floor Lip Apron FTG Wall

0+54 { 9.8 LT Bay 1' high Conc. Ret. WALL (3' wire Fence on top)
9.8 LT END 2' car gar

77.46 75.8 76.59 76.0 75.8 75.9 76.2
4.11 5.2 4.98 5.6 5.8 5.7 5.4
9.8 9.8 9.8 5 10 15
TP FTG FTG
Wall Wall FTG

0+39 9.8 LT Bay 2-car gar - Conc. Floor
9.75 LT END Comb CB + PAVING IN YD
11.2 RT END 6' Board Fence

76.95 76.59 76.90 75.8
4.62 4.88 4.67 5.8
15 9.8 9.75 9.75
Conc. Wall TP Conc FTG
for Floor

0+33 9.0 RT F Pole #466351-H

77.23 77.04 76.4 76.3 76.3 77.0 76.8 76.7
4.34 4.53 5.2 5.3 5.3 4.6 4.8 4.9
13.5 9.8 9.8
WALL CB DIRT

0+25 9.85 LT 3.5' Comb. CB + WALL Meets Conc. Pav. in yard

0+24 10.4 RT end gar & Bay 6' Board Fence

0+07 10.1 FT. FC CB (CONTINUOUS) + 10.2 2' WIRE FENCE 3' high SET IN CONC. CB + WALL

0+05 10.5 RT Bay gar (opens 24")

77.04 77.13 77.13
4.53 4.44
10.7
Edge conc
WALL
(Faces 3' ST)
Floor

0+00 9.95 LT to CB. FC. + Dep. 3.5' Comb. CB + WALL to alley
Edge A-C
9.9 RT CB END

87.37 77.28 76.90 76.54 76.41 77.14
4.20 4.29 4.67 5.63 4.76 4.83
13.5 9.8 9.75
Rt Wall CB C
7.9 7.9
C CB

0+10 WLY CO. LINE 31ST

77.64 77.10 77.33 76.79 77.08 76.54 76.55 76.46 76.44 76.40 76.98 76.99 76.61 75.98 76.31
3.83 4.47 4.24 4.78 4.49 5.23 5.02 5.71 5.13 5.77 4.59 5.18 4.76 5.27 5.26
10 10 30 50 12 32 10 10 10 12 22 50 25 40 100
CB C CB C CB R. C CB C CB C CB

0+30 S 31ST

77.64 77.32 76.95 76.69 76.36
8.93 4.25 4.62 4.90 5.21
100 50 AC SURFACE 50 100

B.M.: 3.09 81.57 ✓ 78.48 = N.E. B.P. 31.57 9' RT ST. 81.57 ✓

Alley BIK 101 (cont.)

2401 ✓ 9.0 LT & Pole # A-3076
 2400 } 100' RT Beg shed
 14.0 RT END 2-Car gar

LT.	RT.
74.7	74.7
74.6	74.50
74.8	74.6
4.6	4.7
5.0	4.82
	14.0 Fl.gar
	4.7
	14 Dirt
	5.0

74.49

1783 13.9 RT Beg 2-car gar - Con. Floor

4.83
13.9
Floor

75.28

1775 9.65 RT END 2-CAR GAR

4.04

1759 9.5 RT Beg 2-car gar - Con. Floor
 9.5 RT END 5' Board Fence

7.65
75.27

4.05
7.5
Floor

T.P. 3.10 79.32 ✓ 5.35 76.22 ✓

79.32 ✓

1454 ✓ 7.7 RT & Pole # J.P.A. 3081

1450

74.5	74.7	74.9	74.9	74.9	74.6	74.5
7.1	6.9	6.7	6.7	6.7	7.0	7.1
2.5	1.5	1.0		6.	1.0	1.5

1425

74.9	74.8	75.1	75.1	75.1	74.8	75.1
6.7	6.8	6.5	6.5	6.5	6.8	6.5
2.0	1.5	1.0	7	7	1.0	1.5

1401 ✓ 8.1 LT & Pole # A-3088

1400 { 10.5 RT END 2-car gar - 9.65 RT Beg 5' Board Fence
 13.9 LT END 3-CAR GAR

76.48	76.22	75.9	75.4	75.9
5.09	5.35	6.3	6.2	5.8
13.7	9.7		10	10.5
Floor	2nd gar		Dirt	Floor

0480 { 10.5 RT Beg 2-CAR GAR Con. Floor

76.58
 76.51 | 75.76 |

13.7 LT END 1st GAR = BRK IN FLOOR ELEV'S. - NEXT 2 GAR ON SAME LEVEL
 7 Beg 2nd

4.99	5.06
13.7	9.7
Floor	2ip.
2nd gar	

5.81
10.5
Floor

81.57

1111' RT 101 (cont.)

LT. § RT.

4401 ✓ 9.5' LT Pole # A-3050

74.6	74.5	74.3	74.2	74.3	74.6	74.6
4.7	4.8	5.0	5.1	5.0	4.7	4.7
20	15	10		10	15	20

4400

3+91 12' 9 1/2" Single gar - dirt floor

4.7 74.6
12.9
Dirt

3+80 10.1' LT end 3' Board Fence
10.1' RT end 3' Board Fence

3+50 { 6.0' LT END shed - beg 3' board fence
9.8 RT Beg 3' Board Fence

73.6	73.9	73.8	74.3	74.3	74.6	74.8	74.9
5.7	5.6	5.5	5.0	5.0	4.7	4.5	4.4
50	20	15	10		10	15	20

3+45 9.9 RT END 5' Board Fence

3+27 9.85' LT END 4' Fence, beg. shed

3401 10' LT Beg 4' Board Fence
✓ 9.0' LT Pole # A-3062

74.2	74.2	74.6	74.6	74.8	75.0
5.1	5.1	4.7	4.7	4.5	4.3
20	15	10		10	15

3+00 ✓ 8.0' RT Pole # TPA 3061

2+75 10.0' RT Beg 5' Board Fence

2+70 14.4 RT E Single gar dirt floor

2+60 16.8 LT 9 Single gar dirt floor

2+50

74.0	74.3	74.3	74.3	74.8	74.9	74.9	74.3	74.3	74.0
5.3	5.0	5.0	4.5	4.6	4.6	5.0	5.0	5.30	
50	20	15	10		10	15	20	30	

74.77
4.55
16.9
1.9 1/2" gar

2+15 10.05 LT END shed

79. 32 ✓

Alley B/K 101 (CONT.)

LT. E PT.

5729 ✓ 8.7' LT E Pole² A-3034

5718 14.0' LT Single gar - Con. Floor

5700 9.6' RT Bay 6' Fence

4497 14.8 LT END 2-car gar

4495 10.3 RT E Single gar - DIRT FLOOR

4494 ✓ 9.0' LT E 2.9' EUC. TREE

4488 10 RT end Dwelling

4476 ✓ 14.8 LT Bay 2-car sheet metal frame gar, DIRT FLOOR
 ✓ 8.5' LT E 2.0' EUC. TREE

4459 9.9 RT Bay Frame House - Redwood FOTN, Cold

4450

4445 10.4 LT E Single gar - DIRT FLOOR
 4 shed

4430 ✓ 7.50 RT E Pole TPA 3045

4406 12.6' RT E Single - gar - DIRT FLOOR

73.64

5.68
14.0
Floor

73.8 73.8 73.9 73.8 73.9 73.8

5.5 5.5 5.4 5.5 5.4 5.3
20 15 10 20

74.0

5.8
14.8
DIRT

74.0

5.3
10.3
DIRT

73.8

5.5
10
FTG

74.2

5.20
17.8
DIRT

75.28 73.82

4.4 5.50
9.9 9.9
Floor FTG
FOTN

74.1 74.0 74.2

5.2 5.3 5.1
10. 20

74.2

5.1
10.4
DIRT

74.3

5.00
12.6
DIRT

79.32 ✓

Alley BIK 101 (CONT.)

see pg 57

LT. E RT.

6+50 X-SECT. 50± Ahead of END-ALLEY

73.7² 73.5 73.3 73.3 73.3 73.9
5.6 5.8 6.0 6.0 6.0 5.4
50 20 10 10 10 50

6+00.80 74 RT 6' Board meets N+S Fence which ENDS 090 RT OF E Proj Ahead

73.5 73.4 73.4 73.5 73.8 73.9
5.8 5.9 5.9 5.8 5.5 5.4
50 20 10 10 20 20

6+00.74 = W'ly Line Lot 24

5+92 14.0 LT E Single gar - CONC FLOOR

73.35
5.97
14.0
Floor

5+84 11.0 LT ENA 3' Picket Fence

5+74 ✓ 8.0 RT E Deadman

5+65 9.75 LT Beg 3' Picket Fence

5+58 ✓ 8.1 RT E pole # JA 3029

5+57 8.6 RT Beg 6' Board Fence

5+55 13.4 LT E Single gar CONC FLOOR

73.60
5.72
13.4
Floor

5+50

73.7 73.4 73.5 73.4 73.3 73.6
5.6 5.9 5.8 5.9 6.0 5.7
20 15 10 10 10 20

5+43 ✓ 7.0 LT E DEADMAN

8.8 RT. End 6' Board Fence

5+41 9.9 LT E IN 5' Board Fence

5+30 9.5 LT E IN 5' Board Fence

P

79.32

Alley BIK 101 (Cont.)

57

CHK.

3.11 78.47 ✓ = 78.48 NEB-P
31st 4K

T.P.

686

81.58 ✓

460

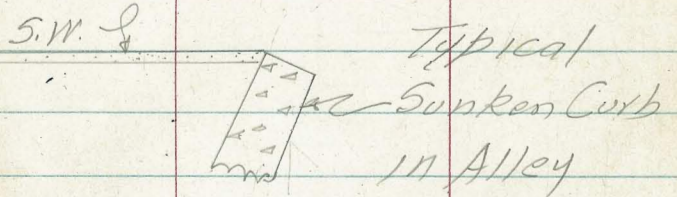
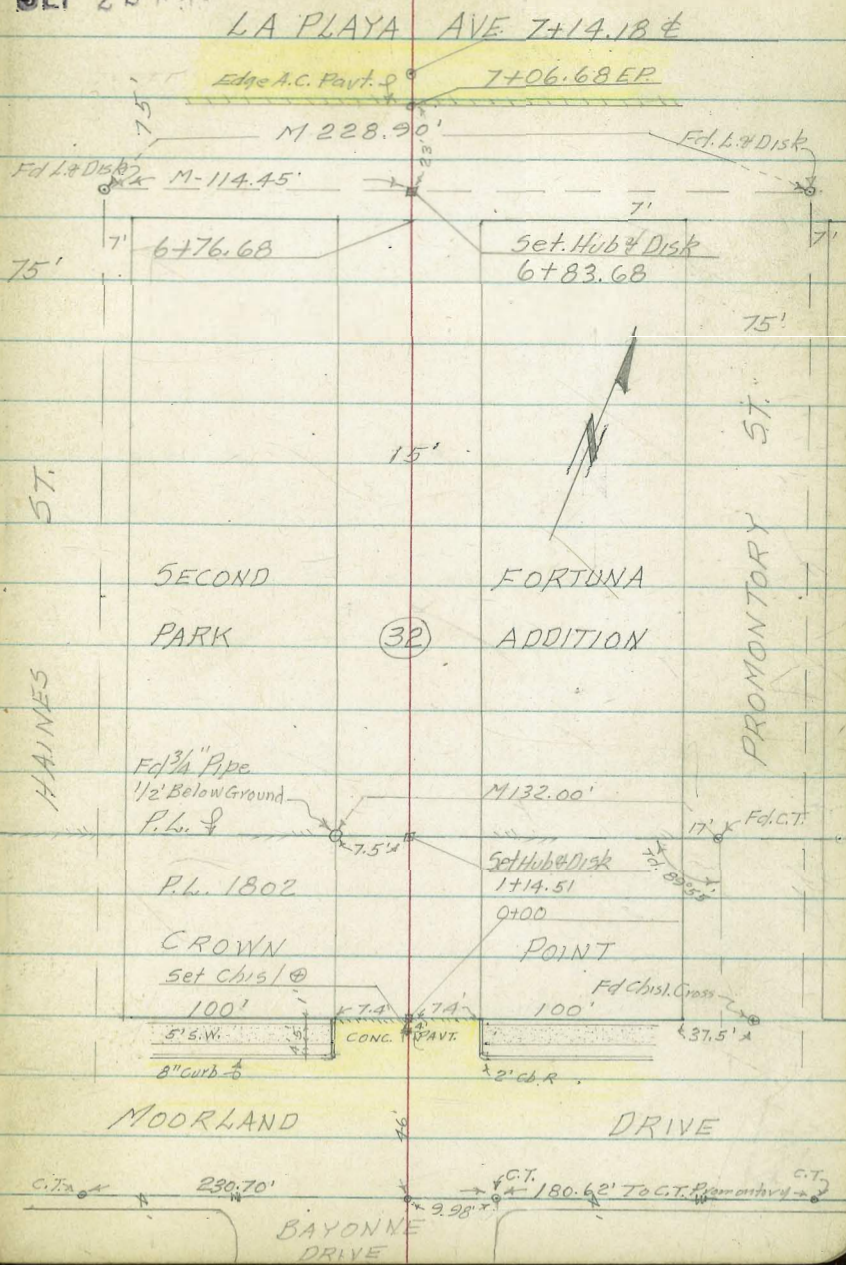
74.72 ✓

REDUCED 30 APRIL 1953

J. D. ELLIS

INDEXED
 SEP 22 1953
 T.A. Stamper
 9-18-53

CROSS SEC'S. FOR GRADE ESTABLISHMENT ALLEY
 BLK. 32, 2ND FORTUNA PARK W.D. 25020
 Ref. T.P. Sheets 1274-75



NOTE: Curbs From 0+00-17' in Alley
 To 0-08 are Sunken & Should be
 disregarded for Grade Establishing
 & Should be Replaced

9-21-53

(60)

X-SEC'S ALLEY BLK. 32 - CONT'D

Lt.

C

Rt.

0+33 End Conc. Patio 8⁰ Lt.38.11
25
41.32
8⁰
Top Patio0+3 End 7' High Hedge 7⁵ Lt. Top 3' Wide0+33 Deadman Gully 11⁸ Rt.

0+25 Break in Grade Sec.

41.25 40⁶ 406 405 406 409
8² 8² 7⁵ 0 7⁵ 7⁸
on Patio0+16 Begin Conc. Patio 8⁴ Lt.41.26
8⁴

Top Conc.

0+00 Nly Prop. Moorland Drive
End Curb @ E. Part,38⁸ 39.1 38.52 38.44 38.63 39.1 38.9
25 8 7.4 0 7.4 8 2.5
E.P. E.P.0-01 N. Line Side Walk Moorland Drive
3' Wide38.74 39.17 39.26 38.96 38.89
25 8⁰ 8⁰ 13 25

0-01 Begin 6' Eugenia Hedge 7.5' Lt. Top

Top SW

Top SW

9-21-53

X-5EG'S ALLEY BLK 32 - CONT'D

Lt. & Rt.

0+89⁵ - Begin 2-Car Gar on Rt. ^(Gar floor on Lt.)

40.08 398 40.15
122 174 174
Conc floor Ground Conc floor

0+88⁵ - Begin Conc Ramp 2-Car Gar on Lt.
- End 2' Picket fence 8' Rt.

39.67
76
Conc Ramp

0+74⁵ - & 14" ^{Approx 100' High} Radio Wooden Pole 12⁵' Rt.

0+62⁵ - Begin 2' High Picket fence 7.3 Lt.

0+59⁵ - & Rt. ^{2'} Conc. Walk 9⁵' Lt. &

40.52
95
on walk

0+50

40.81 40.5 40.3 40.0 40.0 40.2 40.4 40.0
9 9 7.5 4 0 7.5 15 30
Top Walk

0+45⁵ - 9⁵' Lt. Begin 2' Conc Walk &

40.90
95
on walk

9-21-53

X-SEC'S ALLEY BLK 32 - CONT'D

Lt

+

Rt

1+16 + P.R. 8' Lt. N^o PA-3717

1+14⁵ Begin 6' Board fence 8^o Lt

1+14⁵ End 7' Board fence 8' Lt

1+12 + Deadman 13' Rt. (Guy To Radio Pole)

1+06⁵ + Deadman 7^o Lt.

1+05 Begin 7' High Board fence 8' Lt.

1+05 7^o Lt. face 4' High R.R. Rail

T.P.

39.62

1+04 End Conc Ramp 2-Car Car on Lt.

39.62

7⁵

on Ramp

1+03 End 2-Car Car on Lt. & Rt.

40.08

12¹

Conc floor

39.4 40.14

17⁵ 17⁵

Ground Conc floor

1+00

40.09

39.60

39.5

39.5

39.5

39.4

12¹

7⁵

7⁵

0

7⁵

17⁵

Conc floor on Ramp

Ground

9-21-53

X- SEC'S ALLEY BLK 32- CONTD.

Lt. & Rt.

2+28⁵ Begin 4' Picket fence 8⁵ Lt.

2+13 End 5' Picket fence 8' Lt.

2+02 End 7' Lath fence & 7⁴ Rt.
(Honeysuckle)
Begin Wire Mesh fence of Vine Hedge

2+00

36.1 36.5 36.6 36.3 35.8 35.8
15 7.5 0 7 7.5 10

18+91⁵ Begin 7' Lath fence 7⁵ Rt.

18+91⁵ & Conc Pier 7⁵ Rt.

35.94 36.59
7.5 7.5
Bot Flg TOP
Conc Pier

18+76⁵ Begin 5' Picket fence
End 6' Board fence 8⁵ Lt

18+75⁵ face L Pt. frame Bldg 7⁴ Rt

36.66 37.61
7.4 7.4
Bot Flg TOP

18+67 Face L Pt. To frame Bldg 7⁴ Rt

36.80 37.67
7.4 7.4
Bot Conc Pier Flg TOP

1+57⁵ & 2x4 Post 7.2 Rt. 15 High
Supported on Conc. Pier 7⁵ Lt

37.35 38.32
7.6 7.6
Bot Flg TOP
6x6 Conc Pier

1+50

37.9 38.2 38.4 38.2 38.1
15 7.5 0 7.5 20

9-21-53

X-SEC'S ALLEY BLK 32-CONT'D.

Lt. E Rt.

3+48 E 2 1/2 Conc Walk 7 1/2 Rt.

324
7 1/2

on Walk

Also 7' Hedge
Wire + Board Fence

3+02 End Woven Wire # Beg } 7 1/2 Rt.

3+00

32.8 33.4 33.7 33.6 33.4
20 7 1/2 0 7 1/2 17

@ Conc,
Blk fence

2+80 Begin Wire fence 7 1/2 Rt.

T.B.M.

E.P.P. No. PA 3735 7 1/2 Lt. face 8

set P.K. E. side P.P. No. PA-3735 on W. side Alley

2+76 1/2 Begin 4 Conc Blk Wall 8 1/2 Lt. Wall

3778 3282 341
8 1/2 8 1/2 8 1/2

Top Bot flg around
Wall (Wall)

2+62 E 4' Conc Walk 8' Rt.

3473
8 1/2

on Walk

8' Vine Hedge on st.

2+60 End Woven Wire fence 8' 7 1/2 Rt.

2+50 Deadman Goy 7 1/2 Lt.

345 348 35.2 35.1 34.7
15 7 1/2 0 7 1/2 12

9-21-53

X- SEC'S ALLEY BLK 32- CONT'D.

Lt ⅈ Rt.

5400

31.1 31.1 31.1 31.22 31.38 31.54
20 75 0 75 7.7 166

4+82 Begin 4-Car Gar on Rt.

31.45 31.57
72 166
Conc Ramp Conc floor

4+81 ⅈ P.P. N° PA 3761 98° Lt.

Nly face 3' Lateral Cap Blk Wall
End 5' Board fence 92° Lt.

4+76 5 Begin Conc Ramp 78° Rt.

31.55
78
Conc Ramp

4+56 ⅈ Sing Car Gar (Dirt floor) 108° Lt.

31.4
102
Gravel

4+50

31.4 31.4 31.5 31.73 31.6
102 75 0 75 15
@ Gar (Dirt)

4+48 End 10' Wide x 12' High Vine Arbor 10° Lt.

4+36 Begin 5' Board fence 90° Rt.

9-21-53

X-SEC'S ALLEY BLK 32 - CONTD.

Lt. & Rt.

5+76⁵ & PR. N° PA 378/ 68 Lt.

5+76⁵ Begin 5' High Board fence 73 Rt.

5+67 9' Lt. & 4' Wide x 10' High 9' Long Bush

5+50

30.9 31.2 31.2 31.1 31.1
15 75 0 75 15

5+47⁵ End 6' Bd fence ~ 75 Rt

5+40 Begin 6' Wide x 10' High Hedge 8³ Lt
x 10' Long

13' Wide Possible future Gar. loc.
5+34 & Abandoned A.C. Slab 9³ Lt.

31.28 31.14
19³ 9³
A.C.

5+27 Begin 6' Board fence 7⁶ Rt.

5+26 End Conc. Ramp To Gar 7² Rt

31.27 31.44
7² 16³
Conc Ramp On Ramp

5+21 End 4' Car Gar On Rt.

31.28 31.56
7² 16³
Conc Ramp Car
Floor

X-SEC'S ALLEY BLOCK 32-CONTD.

9-21-53
Lt. € Rt.

7+00

28.6 28.6 28.6 28.8 28.6 28.6 28.7
50 25 75 0 75 25 50

6+97⁵ End 2' Picket fence 7² Lt.

6+91 € P.R. N° P1523 13² Lt.

6+90 Break in grade

30.8 31.2 31.0 30.4 30.0 29.8 30.5 30.5 29.9
50 25 75 70 0 75 12 25 50

T.B.M.

31.14

P.K. ELY Side P.R. N° P-1523 13² Lt. 5¹ 6+91

6+79 Beg in 2' Picket fence 7⁶ Lt.

6+77⁶⁸ € 2' Conc Walk 7⁶ Lt.

31.34 31.36
12 75
on Walk on Walk

6+75⁶⁸ End 2' High Conc BIR Wall
5ly Prop La Playa Ave

31.2 31.2 33.26 30.70 31.25 31.0 30.8 30.9
11 82 78 72 72 0 75 20
€ Top Betty Ground
Wall

9-21-53

X-SEC'S ALLEY BLK 32 - CONTD.

Lt

±

Rt

8.56

B.M.

33.870

33.865

N.W. B. P Ingraham & Moorland

T.P.

27.19

B.M.

28.89

N.E. Top F. Hyd Ingraham & La Playa

T.P.

27.50

7+14⁶⁸ ± La Playa Ave

28.88 28.96 28.73 28.76 28.45 28.33 28.25
75 50 25 0 25 50

Top M.H.

7+06⁶⁸ 5/4 E.P. La Playa

28.95 28.72 28.64 28.63 28.56 28.42 28.28
50 25 75 0 75 25 50

Clark
Shepard
Bryner
O'Neil
5-27-54
W.O. 25020

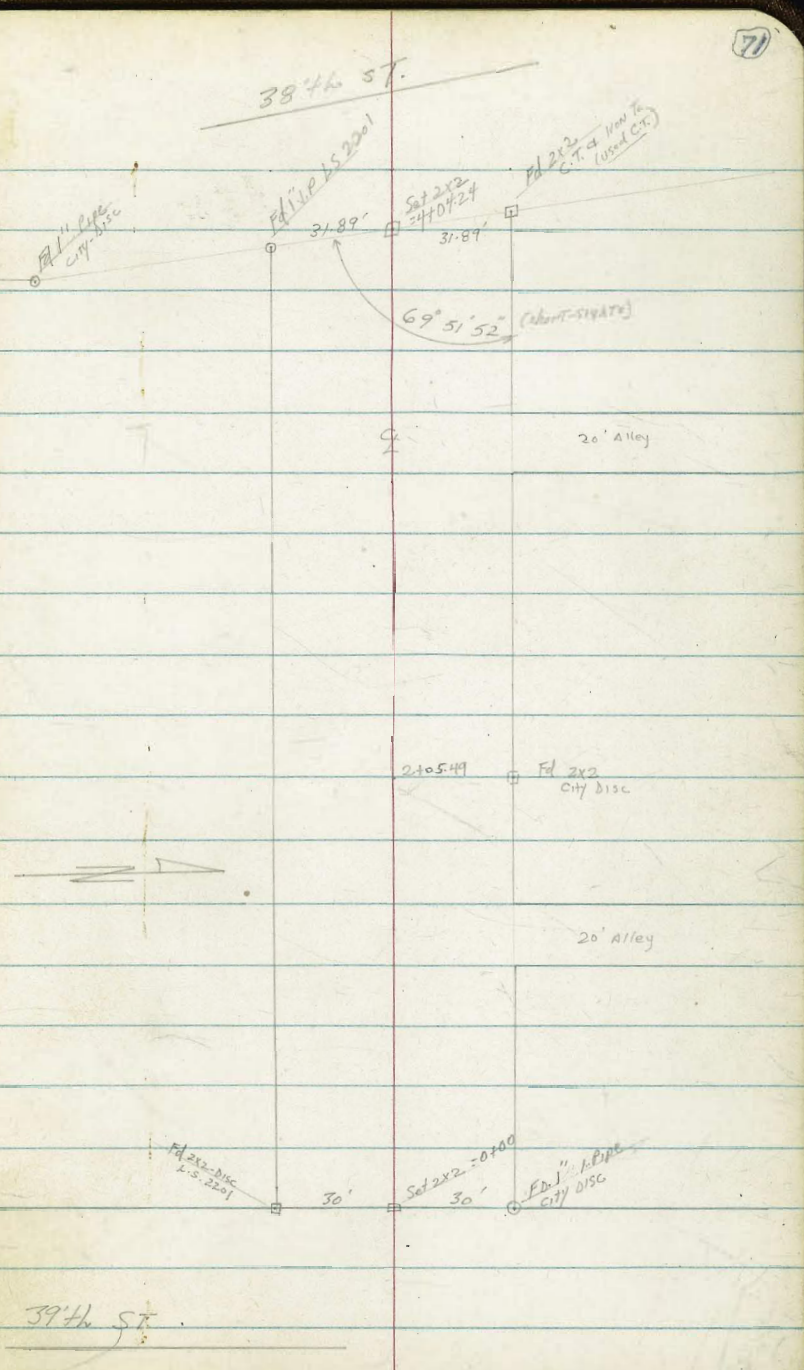
X-SECT. BEECH (EST. GRADE)

38th to 39th

Ref: F.B. 1437
T.S. 3480

Notes Pg. 72.

INDEXED
SER
JUN 2 1954



X-SECT. BEECH ST

17.00

146.6
50
115.9

110.0
30
119.5

125.5
50
131.2

10.7
30
135.0

EVEN Slope

T.P 12.71 130.48 0.18 117.77

130.48

04.50

7.2
50
110.8

6.4
30
111.6

0.9
117.1

13.0
30
121.0

Set T.B.M. NW 1/4 Sec 4 of 3944
Bench
W. Line 3944

04.00

113.91

Note: Ground being marked here

11.7
50
106.3

9.9
30
108.1

4.8
109.1

8.1
30
109.9

11.3
50
113.9

0.5
50
117.5

0-35 = Top BANK

0-40 = E 3944

99.5
18.5
50
111.2

17.7
30
100.6

12.5
50
115.5

7.1
30
108.9

5.8
50
112.2

6.8
50
111.2

0-90 = Toe BANK (Hand level) →

8.8
50
106.3

32.8
50
86.7

8.8
32.8

31.3
50

T.P 6.45 117.95 0.39 111.50

117.95

T.P 12.99 111.89 0.26 98.90

T.P 12.44 99.16 0.15 86.72

11.52 86.87

75.35 = S.W.B.P Bridge Federal Home AVE

X-SECT BEECH (CONT)

3+50

16.7
50 126.5
13.5
30 129.7
9.2 134.0
5.3
30 137.9
5.7
50 139.5

T.P. 0.67 143.21 12.46 142.54

3+20 Shoulder CANYON

17.4
50 137.6
15.5
30 139.5
11.7 143.21
7.3
30 147.7
5.0
50 150.0

3+00 BK

15.6
50 141.4
12.9
30 142.1
8.6 146.4
4.8
30 150.2
2.2
50 155.6

2+50

13.6
50 144.4
11.0
30 146.4
6.8 148.2
1.8
30 153.2
0.6
50 155.6

Set T.B.M on 2x2 HUB P.O.T on N'LY LINE BEECH
2+05.49 = 30' RT.C 164 153.36

2+00 = BK (Slope PLATTENS OFF)

19.4
50 135.6
14.5
30 140.5
8.5 146.5
2.0
30 153.0
1.5
50 156.5

T.P. 12.14 155.00 0.43 142.86

1+50

17.1
50 126.2
12.9
30 130.4
5.5 137.8
155.00
144.1
10.8
30 147.6
4.3
50 151.6

T.P. 13.08 143.29 0.27 130.21

143.29

Even Slope

Even Slope

X SECT. BEECH (CONT)

4446.7 + = S Beech { SECT TAKEN ALONG E 38° 44'

4446.7 + = S BEECH (SECT 90° Beech) E toe slope Ahead

4433 = Low-pt. Canyon

T.P. 10.71 120.88 863 110.17

Set T.B.M. 2x2 NUB NELY cont. Beech 38° 44' 863 110.17

4415.24 = 30' RT = NELY Corn. 38° 44' Beech

4409 = 30' RT = Beech Toe Slope

3493.24 30' LT = (Sects 90° to Beech) S.E.LY Corn. 38° 44' + BEECH

T.P. 1.00 118.80 12.63 117.80

T.P. 0.22 130.43 13.00 130.21

LT.

106.5
106.6
104.3
107.4
106.2
104.6
107.9
104.6

16.3
30

107.4
108.2
108.8
107.4
108.2
108.8

13.5

RT.

111.3
109.5
112.7
111.5
112.5
114.5

11.7
30

8.4
100

120.88

102.6

16.2
100

106.2

12.6
50

107.9

10.9
30

109.1

9.7

110.2

8.6
30

112.1

6.7
50

114.0

4.8
100

107.6

11.2
50

109.2

9.6
30

110.3

8.5

110.9

7.9
30

112.1

6.5
50

110.3

8.5
50

113.0

5.8
30

115.1

3.7

117.1

1.7
30

116.9

1.8
50

118.80

130.43

74

X-SECT BEECH (CONT)

LT.

E

RT.

CHK:

9.63 75.37 = 75.35
(see B.M)
Pg 72

T.P. 0.20 85.00 12.45 84.80

T.P. 0.19 97.25 11.85 97.06

T.P. 1.27 108.91 13.24 107.64

4789.3*

Sect. Along W.L. 38 1/2"
E Beech + W. Line 38 1/2"

4789.3*

(Sect 90° BEECH)
E Beech + W.L. 30" + L.

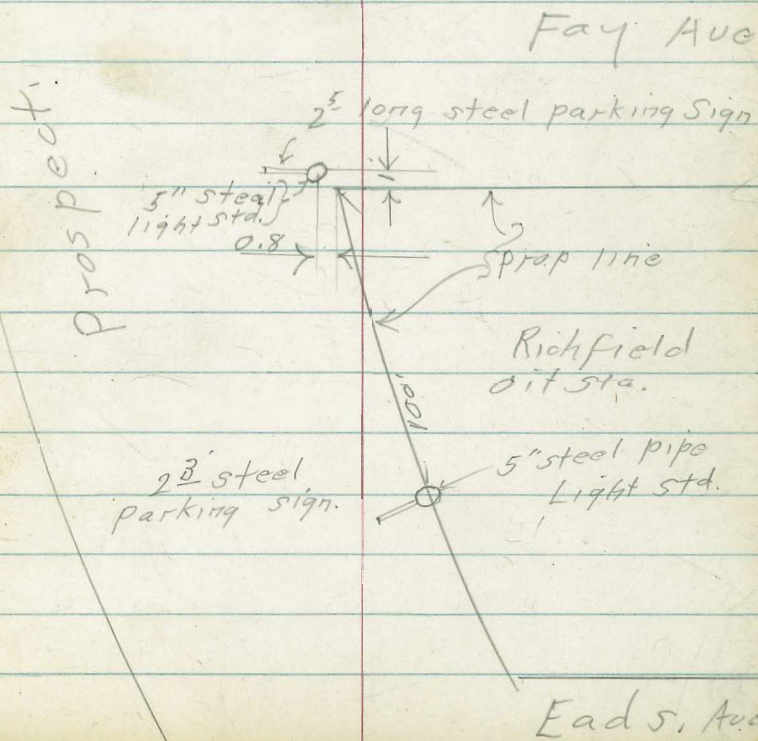
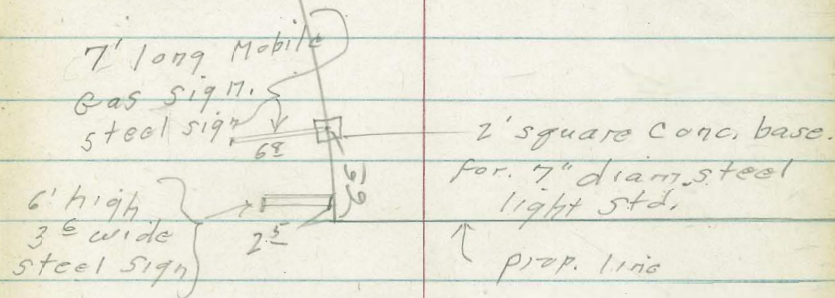
126.5	117.9	119.3	124.1	131.4	132.7
+5.6	3.0	1.8	#3.2	#10.5	+11.8
50	50*	PL		PL	50*
125.5	124.1	124.1	124.1	125.7	123.5
+5.4			#3.2	+4.8	+2.6
30				80	50

120.88

Encroachments
Prospect + Fay Ave

C.H.S.
Bey
Rullen.

7-2-54
W.O. 20006



Sign encroaching in Pearl.
between Eads + Fay.

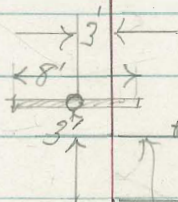
C.H.S.
Begg
Pullen

7-2-54
W.O. 20000

77

Fay. Ave

Pearl St.



8' long. Rickfield
+ car wash signs
on 5" steel post.

prop. line

prop line

Eads. Ave.

Encroachments

La Jolla Blvd + Marine St.

C.H.S.

7-259

Begg

W.O. 20006

Pullen.

check opening sheet
for Prop. line of La Jolla Blvd.
I do not have this info.

(add)

La Jolla
Blvd.

Marine St

Currier St.

prop. line

11' 1" to 90° to sign post.

6" steel pipe
standard.

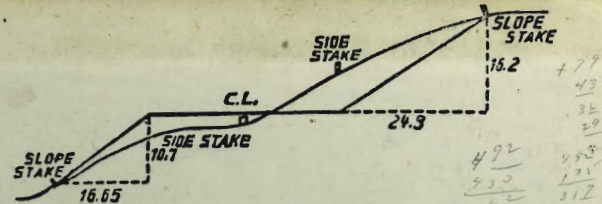
Diam.
5" long
circular
flying "A"
gas div sign.

Fd. Lvt. T.P. sheet
2149

prop line

540 1911 806-24

256-8 - 806-29



DISTANCES FROM SIDE STAKES FOR CROSS-SECTIONING.
SLOPE 1/2 TO 1. ROADWAY OF ANY WIDTH.

	0	.1	.2	.3	.4	.5	.6	.7	.8	.9	
0	0.00	0.15	0.30	0.45	0.60	0.75	0.90	1.05	1.20	1.35	0
1	1.50	1.65	1.80	1.95	2.10	2.25	2.40	2.55	2.70	2.85	1
2	3.00	3.15	3.30	3.45	3.60	3.75	3.90	4.05	4.20	4.35	2
3	4.50	4.65	4.80	4.95	5.10	5.25	5.40	5.55	5.70	5.85	3
4	6.00	6.15	6.30	6.45	6.60	6.75	6.90	7.05	7.20	7.35	4
5	7.50	7.65	7.80	7.95	8.10	8.25	8.40	8.55	8.70	8.85	5
6	9.00	9.15	9.30	9.45	9.60	9.75	9.90	10.05	10.20	10.35	6
7	10.50	10.65	10.80	10.95	11.10	11.25	11.40	11.55	11.70	11.85	7
8	12.00	12.15	12.30	12.45	12.60	12.75	12.90	13.05	13.20	13.35	8
9	13.50	13.65	13.80	13.95	14.10	14.25	14.40	14.55	14.70	14.85	9
10	15.00	15.15	15.30	15.45	15.60	15.75	15.90	16.05	16.20	16.35	10
11	16.50	16.65	16.80	16.95	17.10	17.25	17.40	17.55	17.70	17.85	11
12	18.00	18.15	18.30	18.45	18.60	18.75	18.90	19.05	19.20	19.35	12
13	19.50	19.65	19.80	19.95	20.10	20.25	20.40	20.55	20.70	20.85	13
14	21.00	21.15	21.30	21.45	21.60	21.75	21.90	22.05	22.20	22.35	14
15	22.50	22.65	22.80	22.95	23.10	23.25	23.40	23.55	23.70	23.85	15
16	24.00	24.15	24.30	24.45	24.60	24.75	24.90	25.05	25.20	25.35	16
17	25.50	25.65	25.80	25.95	26.10	26.25	26.40	26.55	26.70	26.85	17
18	27.00	27.15	27.30	27.45	27.60	27.75	27.90	28.05	28.20	28.35	18
19	28.50	28.65	28.80	28.95	29.10	29.25	29.40	29.55	29.70	29.85	19
20	30.00	30.15	30.30	30.45	30.60	30.75	30.90	31.05	31.20	31.35	20
21	31.50	31.65	31.80	31.95	32.10	32.25	32.40	32.55	32.70	32.85	21
22	33.00	33.15	33.30	33.45	33.60	33.75	33.90	34.05	34.20	34.35	22
23	34.50	34.65	34.80	34.95	35.10	35.25	35.40	35.55	35.70	35.85	23
24	36.00	36.15	36.30	36.45	36.60	36.75	36.90	37.05	37.20	37.35	24
25	37.50	37.65	37.80	37.95	38.10	38.25	38.40	38.55	38.70	38.85	25
26	39.00	39.15	39.30	39.45	39.60	39.75	39.90	40.05	40.20	40.35	26
27	40.50	40.65	40.80	40.95	41.10	41.25	41.40	41.55	41.70	41.85	27
28	42.00	42.15	42.30	42.45	42.60	42.75	42.90	43.05	43.20	43.35	28
29	43.50	43.65	43.80	43.95	44.10	44.25	44.40	44.55	44.70	44.85	29
30	45.00	45.15	45.30	45.45	45.60	45.75	45.90	46.05	46.20	46.35	30
31	46.50	46.65	46.80	46.95	47.10	47.25	47.40	47.55	47.70	47.85	31
32	48.00	48.15	48.30	48.45	48.60	48.75	48.90	49.05	49.20	49.35	32
33	49.50	49.65	49.80	49.95	50.10	50.25	50.40	50.55	50.70	50.85	33
34	51.00	51.15	51.30	51.45	51.60	51.75	51.90	52.05	52.20	52.35	34
35	52.50	52.65	52.80	52.95	53.10	53.25	53.40	53.55	53.70	53.85	35
36	54.00	54.15	54.30	54.45	54.60	54.75	54.90	55.05	55.20	55.35	36
37	55.50	55.65	55.80	55.95	56.10	56.25	56.40	56.55	56.70	56.85	37
38	57.00	57.15	57.30	57.45	57.60	57.75	57.90	58.05	58.20	58.35	38
39	58.50	58.65	58.80	58.95	59.10	59.25	59.40	59.55	59.70	59.85	39
40	60.00	60.15	60.30	60.45	60.60	60.75	60.90	61.05	61.20	61.35	40
41	61.50	61.65	61.80	61.95	62.10	62.25	62.40	62.55	62.70	62.85	41
42	63.00	63.15	63.30	63.45	63.60	63.75	63.90	64.05	64.20	64.35	42
43	64.50	64.65	64.80	64.95	65.10	65.25	65.40	65.55	65.70	65.85	43
44	66.00	66.15	66.30	66.45	66.60	66.75	66.90	67.05	67.20	67.35	44
45	67.50	67.65	67.80	67.95	68.10	68.25	68.40	68.55	68.70	68.85	45
46	69.00	69.15	69.30	69.45	69.60	69.75	69.90	70.05	70.20	70.35	46
47	70.50	70.65	70.80	70.95	71.10	71.25	71.40	71.55	71.70	71.85	47
48	72.00	72.15	72.30	72.45	72.60	72.75	72.90	73.05	73.20	73.35	48
49	73.50	73.65	73.80	73.95	74.10	74.25	74.40	74.55	74.70	74.85	49
50	75.00	75.15	75.30	75.45	75.60	75.75	75.90	76.05	76.20	76.35	50

THE NATIONAL BLANK BOOK COMPANY
 HOLYOKE MASSACHUSETTS
 NEW YORK CHICAGO BOSTON SAN FRANCISCO