

DISTANCES FROM SIDE STAKES FOR CROSS-SECTIONING
SLOPE 1 TO 1. ROADWAY OF ANY WIDTH

	0	1	2	3	4	5	6	7	8	9	
0	0.00	0.10	0.20	0.30	0.40	0.50	0.60	0.70	0.80	0.90	0
1	1.00	1.10	1.20	1.30	1.40	1.50	1.60	1.70	1.80	1.90	1
2	2.00	2.10	2.20	2.30	2.40	2.50	2.60	2.70	2.80	2.90	2
3	3.00	3.10	3.20	3.30	3.40	3.50	3.60	3.70	3.80	3.90	3
4	4.00	4.10	4.20	4.30	4.40	4.50	4.60	4.70	4.80	4.90	4
5	5.00	5.10	5.20	5.30	5.40	5.50	5.60	5.70	5.80	5.90	5
6	6.00	6.10	6.20	6.30	6.40	6.50	6.60	6.70	6.80	6.90	6
7	7.00	7.10	7.20	7.30	7.40	7.50	7.60	7.70	7.80	7.90	7
8	8.00	8.10	8.20	8.30	8.40	8.50	8.60	8.70	8.80	8.90	8
9	9.00	9.10	9.20	9.30	9.40	9.50	9.60	9.70	9.80	9.90	9
10	10.00	10.10	10.20	10.30	10.40	10.50	10.60	10.70	10.80	10.90	10
11	11.00	11.10	11.20	11.30	11.40	11.50	11.60	11.70	11.80	11.90	11
12	12.00	12.10	12.20	12.30	12.40	12.50	12.60	12.70	12.80	12.90	12
13	13.00	13.10	13.20	13.30	13.40	13.50	13.60	13.70	13.80	13.90	13
14	14.00	14.10	14.20	14.30	14.40	14.50	14.60	14.70	14.80	14.90	14
15	15.00	15.10	15.20	15.30	15.40	15.50	15.60	15.70	15.80	15.90	15
16	16.00	16.10	16.20	16.30	16.40	16.50	16.60	16.70	16.80	16.90	16
17	17.00	17.10	17.20	17.30	17.40	17.50	17.60	17.70	17.80	17.90	17
18	18.00	18.10	18.20	18.30	18.40	18.50	18.60	18.70	18.80	18.90	18
19	19.00	19.10	19.20	19.30	19.40	19.50	19.60	19.70	19.80	19.90	19
20	20.00	20.10	20.20	20.30	20.40	20.50	20.60	20.70	20.80	20.90	20
21	21.00	21.10	21.20	21.30	21.40	21.50	21.60	21.70	21.80	21.90	21
22	22.00	22.10	22.20	22.30	22.40	22.50	22.60	22.70	22.80	22.90	22
23	23.00	23.10	23.20	23.30	23.40	23.50	23.60	23.70	23.80	23.90	23
24	24.00	24.10	24.20	24.30	24.40	24.50	24.60	24.70	24.80	24.90	24
25	25.00	25.10	25.20	25.30	25.40	25.50	25.60	25.70	25.80	25.90	25
26	26.00	26.10	26.20	26.30	26.40	26.50	26.60	26.70	26.80	26.90	26
27	27.00	27.10	27.20	27.30	27.40	27.50	27.60	27.70	27.80	27.90	27
28	28.00	28.10	28.20	28.30	28.40	28.50	28.60	28.70	28.80	28.90	28
29	29.00	29.10	29.20	29.30	29.40	29.50	29.60	29.70	29.80	29.90	29
30	30.00	30.10	30.20	30.30	30.40	30.50	30.60	30.70	30.80	30.90	30
31	31.00	31.10	31.20	31.30	31.40	31.50	31.60	31.70	31.80	31.90	31
32	32.00	32.10	32.20	32.30	32.40	32.50	32.60	32.70	32.80	32.90	32
33	33.00	33.10	33.20	33.30	33.40	33.50	33.60	33.70	33.80	33.90	33
34	34.00	34.10	34.20	34.30	34.40	34.50	34.60	34.70	34.80	34.90	34
35	35.00	35.10	35.20	35.30	35.40	35.50	35.60	35.70	35.80	35.90	35
36	36.00	36.10	36.20	36.30	36.40	36.50	36.60	36.70	36.80	36.90	36
37	37.00	37.10	37.20	37.30	37.40	37.50	37.60	37.70	37.80	37.90	37
38	38.00	38.10	38.20	38.30	38.40	38.50	38.60	38.70	38.80	38.90	38
39	39.00	39.10	39.20	39.30	39.40	39.50	39.60	39.70	39.80	39.90	39
40	40.00	40.10	40.20	40.30	40.40	40.50	40.60	40.70	40.80	40.90	40
41	41.00	41.10	41.20	41.30	41.40	41.50	41.60	41.70	41.80	41.90	41
42	42.00	42.10	42.20	42.30	42.40	42.50	42.60	42.70	42.80	42.90	42
43	43.00	43.10	43.20	43.30	43.40	43.50	43.60	43.70	43.80	43.90	43
44	44.00	44.10	44.20	44.30	44.40	44.50	44.60	44.70	44.80	44.90	44
45	45.00	45.10	45.20	45.30	45.40	45.50	45.60	45.70	45.80	45.90	45
46	46.00	46.10	46.20	46.30	46.40	46.50	46.60	46.70	46.80	46.90	46
47	47.00	47.10	47.20	47.30	47.40	47.50	47.60	47.70	47.80	47.90	47
48	48.00	48.10	48.20	48.30	48.40	48.50	48.60	48.70	48.80	48.90	48
49	49.00	49.10	49.20	49.30	49.40	49.50	49.60	49.70	49.80	49.90	49
50	50.00	50.10	50.20	50.30	50.40	50.50	50.60	50.70	50.80	50.90	50

Distance of slope stake from side or shoulder stake for any width roadway, slope 1 to 1. If ground is nearly level, the cut or fill at side stake is located by the double entry method in left column and top row. The number in body of table in same row and column gives distance from side stake to slope stake. If ground is not level estimate the difference in elevation between the side stake and slope stake, lower target by this amount if cut, elevate if fill. Add this amount to cut or fill and find distance in table. Set up rod at this point, and line of sight should cut target. If it does not make the slight adjustment necessary.

TABLE XIII—CORRECTIONS FOR TANGENTS AND EXTERNALS

These corrections are to be added to the approximate values, found by dividing the tangent, or external, for a 1° curve (Table VIII) by the degree of curve, in order to obtain the true tangents, or externals. Intermediate values may be obtained by interpolation.

FOR TANGENTS ADD

Central Angle	DEGREE OF CURVE													
	5°	10°	15°	20°	25°	30°	35°	40°	45°	50°	55°	60°	65°	70°
10°	.03	.06	.09	.13	.16	.19	.22	.25	.28	.31	.34	.38	.42	.46
15°	.04	.10	.14	.19	.24	.29	.34	.39	.45	.51	.55	.63	.68	.74
20°	.06	.13	.19	.26	.32	.39	.45	.51	.58	.65	.72	.79	.84	.90
25°	.08	.16	.24	.33	.40	.49	.58	.67	.75	.83	.90	.99	1.06	1.14
30°	.10	.19	.29	.39	.49	.59	.69	.79	.89	.99	1.09	1.20	1.29	1.39
35°	.11	.22	.34	.47	.58	.69	.79	.81	.92	1.04	1.29	1.42	1.54	1.66
40°	.13	.26	.40	.53	.67	.80	.93	1.06	1.20	1.34	1.49	1.64	1.79	1.94
45°	.15	.30	.44	.60	.76	.91	1.06	1.21	1.37	1.52	1.70	1.87	2.04	2.21
50°	.17	.34	.51	.68	.85	1.02	1.19	1.36	1.54	1.72	1.91	2.10	2.29	2.48
55°	.19	.38	.57	.76	.95	1.14	1.32	1.52	1.72	1.92	2.14	2.35	2.56	2.77
60°	.21	.42	.63	.84	1.05	1.27	1.49	1.71	1.94	2.17	2.38	2.60	2.83	3.07
65°	.23	.46	.69	.93	1.16	1.40	1.64	1.88	2.13	2.38	2.63	2.88	3.13	3.39
70°	.25	.51	.76	1.02	1.28	1.54	1.80	2.06	2.33	2.60	2.88	3.16	3.44	3.72
75°	.27	.56	.83	1.12	1.40	1.69	1.98	2.27	2.57	2.87	3.16	3.47	3.78	4.09
80°	.30	.61	.91	1.22	1.53	1.84	2.15	2.46	2.78	3.10	3.44	3.78	4.12	4.46
85°	.33	.66	1.00	1.33	1.68	2.02	2.36	2.70	3.05	3.40	3.77	4.14	4.55	4.89
90°	.36	.72	1.09	1.45	1.83	2.20	2.57	2.94	3.32	3.70	4.10	4.50	4.91	5.32
95°	.39	.79	1.19	1.55	1.92	2.40	2.80	3.20	3.61	4.02	4.40	4.98	5.38	5.83
100°	.43	.86	1.30	1.74	2.18	2.62	3.06	3.50	3.95	4.40	4.88	5.37	5.85	6.34
110°	.51	1.03	1.56	2.08	2.61	3.14	3.67	4.21	4.76	5.31	5.86	6.43	7.01	7.60
120°	.62	1.25	1.93	2.52	3.16	3.81	4.45	5.11	5.77	6.44	7.12	7.80	8.50	9.22

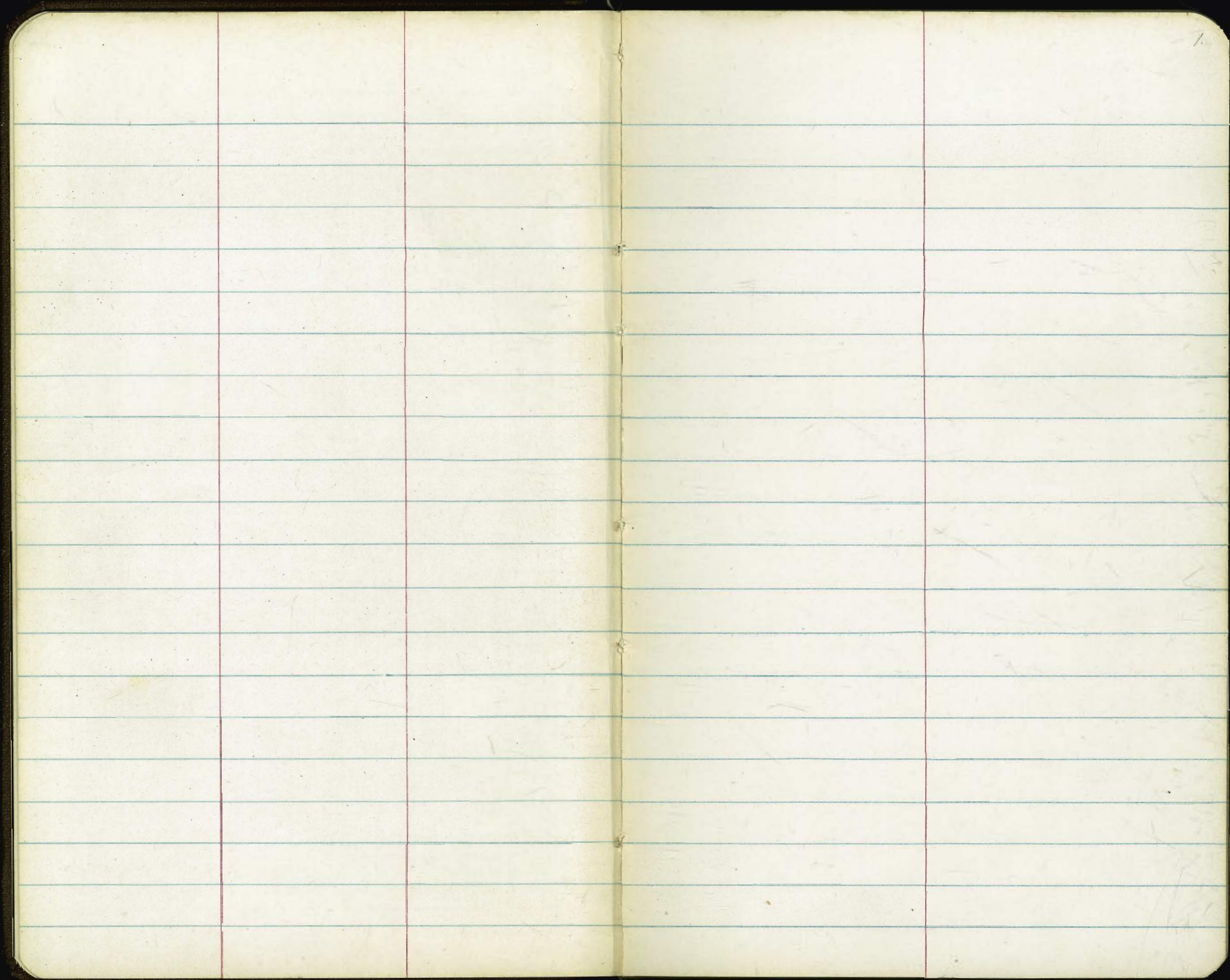
FOR EXTERNALS ADD

Central Angle	DEGREE OF CURVE													
	5°	10°	15°	20°	25°	30°	35°	40°	45°	50°	55°	60°	65°	70°
10°	.001	.003	.004	.006	.007	.008	.009	.011	.012	.014	.015	.017	.018	.020
15°	.003	.007	.010	.014	.018	.023	.027	.032	.035	.039	.043	.047	.051	.055
20°	.006	.011	.017	.022	.028	.034	.038	.045	.051	.057	.063	.070	.076	.083
25°	.009	.018	.027	.036	.046	.056	.065	.074	.083	.093	.106	.120	.127	.135
30°	.013	.025	.038	.051	.065	.078	.090	.103	.116	.129	.149	.170	.179	.188
35°	.018	.035	.054	.072	.086	.109	.131	.153	.175	.197	.213	.230	.247	.264
40°	.023	.046	.070	.093	.117	.141	.172	.203	.234	.265	.277	.290	.315	.341
45°	.030	.060	.093	.119	.153	.184	.216	.254	.289	.325	.351	.378	.411	.445
50°	.037	.075	.116	.151	.189	.227	.266	.305	.345	.384	.425	.467	.508	.550
55°	.046	.093	.142	.188	.236	.283	.332	.381	.420	.479	.530	.582	.641	.700
60°	.056	.112	.168	.225	.283	.340	.398	.457	.516	.575	.636	.697	.774	.851
65°	.067	.135	.204	.273	.343	.412	.483	.554	.625	.697	.711	.845	.922	1.01
70°	.080	.159	.240	.321	.403	.485	.568	.652	.735	.819	.906	.994	1.08	1.17
75°	.095	.182	.266	.353	.440	.528	.617	.707	.797	.887	1.07	1.18	1.29	1.39
80°	.110	.220	.332	.445	.558	.671	.787	.903	1.02	1.13	1.25	1.38	1.50	1.62
85°	.128	.259	.391	.524	.657	.790	.926	1.06	1.20	1.34	1.47	1.62	1.76	1.91
90°	.149	.299	.450	.603	.756	.910	1.07	1.22	1.38	1.54	1.70	1.87	2.03	2.20
95°	.174	.350	.522	.706	.885	1.06	1.25	1.43	1.62	1.80	1.99	2.18	2.38	2.58
100°	.200	.401	.604	.809	1.01	1.22	1.43	1.64	1.85	2.06	2.28	2.50	2.73	2.96
110°	.268	.536	.806	1.08	1.35	1.63	1.91	2.20	2.48	2.76	3.05	3.35	3.66	3.96
120°	.360	.721	1.08	1.45	1.82	2.19	2.57	2.95	3.33	3.72	4.11	4.50	4.91	5.32

INDEX

Pg.

X-SECT; ALLEY BIK 126 City Hts. Thorne to Redwood 2
 X-sec Waverly + Taft Aves - Midway St to Forward 10
 " " Taft " " 22
 " Alley Bk. 18 - City Hts 32
 " " " 122 " " 33
 " " " 67 " " 34
 " " " 89 " " 35
 Levels for water lines 45 to 57
 V sec Alley BIK 24 Sunset Cliffs + Devonshire 58.5
 O.B. Community Center grounds 69



X-SECT. ALLEY BIK 126 City Hts.

Thorn to Redwood

LT.

Q

RT.

Station	Description	LT.	Q	RT.
0+58	8.3' RT Q 2 - water meters			9.62
0+52	20.9' RT Q Sample, gas CONC. FLOOR			3.65 20.9 CONC. FLOOR
T.P.	518 313.27 233 308.09		313.27	
0+50		2.1 20	308.3	1.3 20
0+27	9' RT Q Water meter	307.9 2.5 20	307.0 3.4 10	308.6 1.8 10
0+02		4.6 7	305.8 46	307.6 2.8 10
0+00.8	Top +10.00 RT to 8' 1/6 wide Cobble + Conc wall 1' to N by Bottom 7.80		308.3	308.9
0+00	Top Line THORN	307.2 32 20	307.2 39 10	309.52 0.75 20
0-14	CB Live Thorn	306.8 8.6 100 (No obs. of walls)	306.5 7.1 50	309.52 9.8 100
0-40	Q THORN (unpared)	302.9 7.5 100	304.2 6.2 50	309.52 0.70 20
B.M.	8.60 310.42	301.82	N/W	310.42
			B.P. Marlborough + Thorn	

			LT.	Ⓢ	RT.
1+50			5.2 ₂₈ 307.8		5.3 ₂₀ 308.0
			5.4 ₁₀ 307.9		5.2 ₂₀ 308.1
1+35	10.7' LT & W. meter				
1+29	9.6' RT box 4' picket fence				
1+25	19.0' LT & Sing. gar	15.6' LT apron	5.47 19.0 Floor 307.80	5.60 15.6 Apron 307.67	
1+00				5.30 8.2 5.1 ₁₀ 308.27	5.2 ₆ 308.1 4.7 ₁₀ 308.9 4.6 ₂₀ 308.7
0+99	7.4' RT E. meter				
0+96	18.7' LT & Sing. gar	17.3' LT apron	5.09 10.7 Floor 308.18	5.18 17.3 Apron 308.09	
0+75	7.6' RT & Pole A 9.75		5.0 ₂₀ 308.3 4.7 ₁₀ 308.5	4.8 ₆ 308.8 4.5 ₁₀ 309.8	4.3 ₂₀ 309.0
0+65	33.6' LT & Sing. gar - dirt Floor		5.3 33.6 Dirt 308.0		
				313.27	

		LT.	R	RT.
2+50	9.4' RT. Beg 5' Picket Fence. 8.8' RT E Pole # PA 3201 7.4 RT END 4' Lath Fence	306.4 4.5 20	306.6 4.3 10	306.3 306.6 4.3 10 4.2 20
2+26	9.4' LT E W. Meter			
2+22	6.6' RT E W. Meter			
2+17	9.8' RT Beg 4' Lath Fence			
2+09	17.95' RT E SINGLE GAR CONC FLOOR			3.20 17.95 CONC FLOOR

T. P. 3.97 310.89 6.35 306.92

2+00		6.2 20	6.1 10	6.0 10	307.1 307.2 307.3 307.5 307.6
1+79	18.80 LT END 2-CAR GAR 11.4 LT APRON	4.97 10.8 Floor	5.32 11.4 Apron		308.130 308.172 308.199
1+65	8.2' RT E W. Meter				
1+64	10' RT END 4' Picket Fence				
1+64	9.0 RT E Pole # PA 3233				
1+63	8.9 RT E W. Meter				
1+55	19.1' LT Beg 2-Car gar & DWELLING 11.8 LT APRON	5.05 19.1 Floor	5.18 11.8 Apron		308.22 308.09

313.27

3+50

6.6
20
304.3LT
6.3
10
304.66.5
304.4RT
6.5
10
304.46.4
20
304.5

3+44

21.5 RT END 2-car gar.

5.6
21.5
305.3

DIT

4

3+27

21.7 RT Beg 2-car gar - dirt Floor

5.5
21.7
DIT

3+26

8.3 LT $\frac{1}{2}$ w. meter

3+25

8.6 RT $\frac{1}{2}$ w. meter

3+00

7.7 RT Beg 6' chicken wire Fence
8.9 RT END 5' Picket Fence5.3
20
305.65.3
10
305.65.5
305.45.0
10
305.94.9
20
306.0

2+99.5

10.9 LT END LATHE House

4.93
10.9
Cover

305.95

2+87

10.9 LT Beg LATHE House - CONC Floor
16.3 LT END Dwelling4.94
10.9
CONC.

306.37

2+59

16.3 LT Beg Dwelling

4.52
16.3
Floor

310.89

4+28 10.10. LT Beg 2-car gar apron. 17.8 to Floor gar

4+27 9.9 LT & W. Meter

4+10 14.9 LT & 3'x3' conc Slab Doorway dwelling

4+03 17.90 LT Beg Dwelling + garage

4+00 10.00 LT Check on 3/4" L.P. (manometer)

3+94 18.1 LT. END 2-car gar.

3+76 18.7 LT Beg 2-car gar. conc. Floor

T.P. 3.13 306.54 7.48 303.41

3+74 8.5 RT & Pole # A 3133

3+67 8.7 LTR W meter

3+63 9.5 LT & 10" popper tree

LT. RT.

302.55 302.50

3.99 4.04

17.8 10.10

Floor Apron

gar

303.24

3.30

14.9

Conc. Slab.

3.08

17.90

Floor

303.1

3.6 3.4 3.3 3.3 3.0 3.0

20 10 7 10 20

303.2 302.7 302.5 303.5

305.88

2.66

18.1

10.0

Floor

303.84

2.70

18.7

Conc. Floor

306.54

310.89

5750 10.01 LT Check on 3/4" I.P. (No number)

298.3
20
7.9
10
298.7
7.8
298.6
6
10
299.1
20
299.3
RT

5705 8.4' RT Pole # P.D. 3 115

300.9
5.6
20
300.6
5.9
10
300.4
6.1
300.4
6.1
10
300.9
5.6
20

5700 8.4' RT E.W. Meter

4774 7.4' RT Beg 6' Chicken wire Fence

4770 20' RT END 2-Car gar

4752 20' RT Beg 2-Car gar - Conc. Floor

4750 7.8' RT END 6' chicken wire Fence
10.00 LT check 3/4" I.P. (No number)

301.4
5.1
20
301.7
4.8
10
301.7
4.8
301.7
4.9
10
302.2
4.3
10
302.5
4.0
20
302.30
4.23
20
Floor
4.24
20
Floor

4747 17.9' LT END Apt + 2-Car gar apron

4.01
17.90
Floor
4.35
10.1
Apron

306.54

LT ♀ RT

Check: 0.26 301.76 = 301.82 N/W B.P. Marlborough + Thorn

T.P. 965 302.02 9.02 292.37

6439.25 ♀ Redwood

5499.25 NLY AL. REDWOOD

T.P. 486 301.39 10.01 296.53

5499.25 9.75 RT end 6' chicken wire fence
1/4 Live Redwood

5482 9.2 RT ♀ 4" tree

5457 8.6 RT ♀ 6" pepper tree

5452 8.2 RT ♀ 2" pepper tree

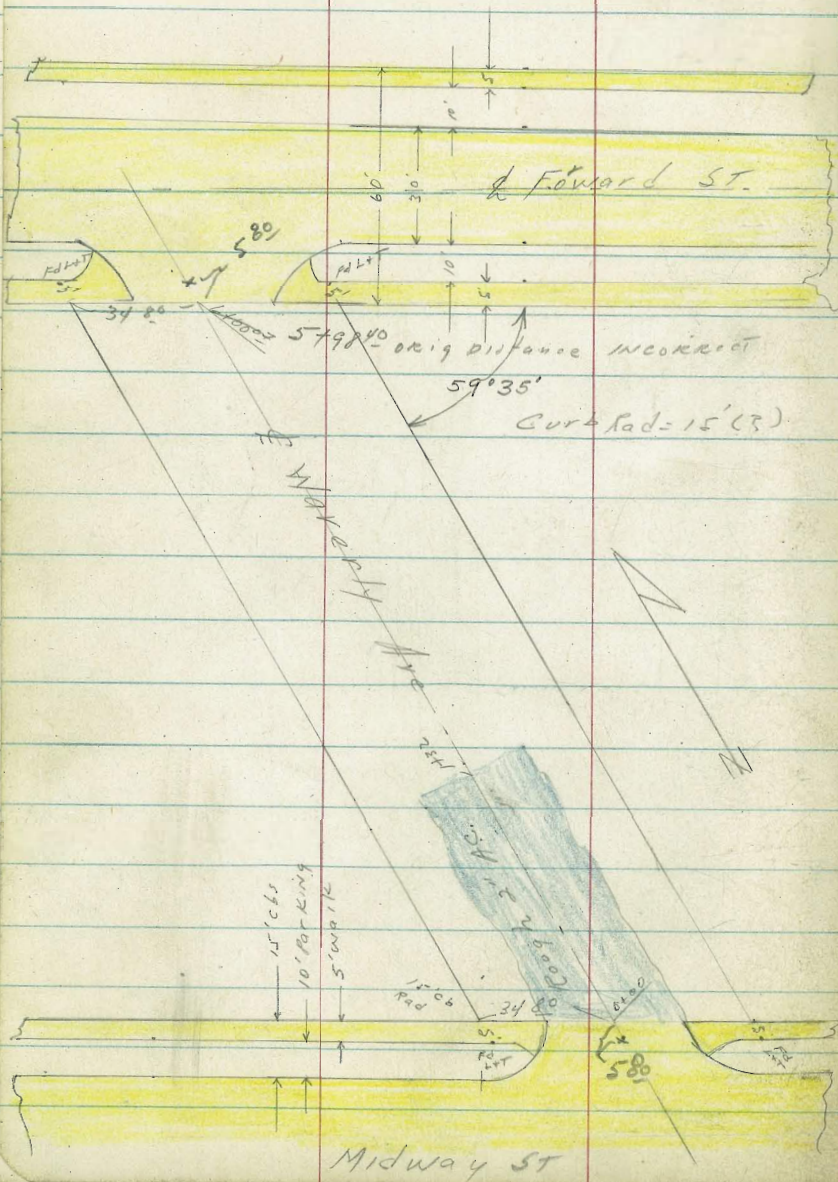
293.6	297.0	296.6	296.3	296.3	296.7	295.7	295.1
7.8	4.4	4.8	5.1	4.7	5.7	6.3	6.3
100	20	10	7	10	50	100	100
9.8	9.8	7.0	7.3	8.5	7.3	11.5	11.5
100	100	50	50	50	50	50	50
291.6	291.6	294.4	294.1	292.9	292.9	290.9	290.9

301 39

306.54

X-sec Loft Ave - Midway to Forward
 Allen and Waverly - Midway to Forward
 Park St No # 25-020 -
 Taylor
 Perkins
 11-18-52

Notes - Page 11

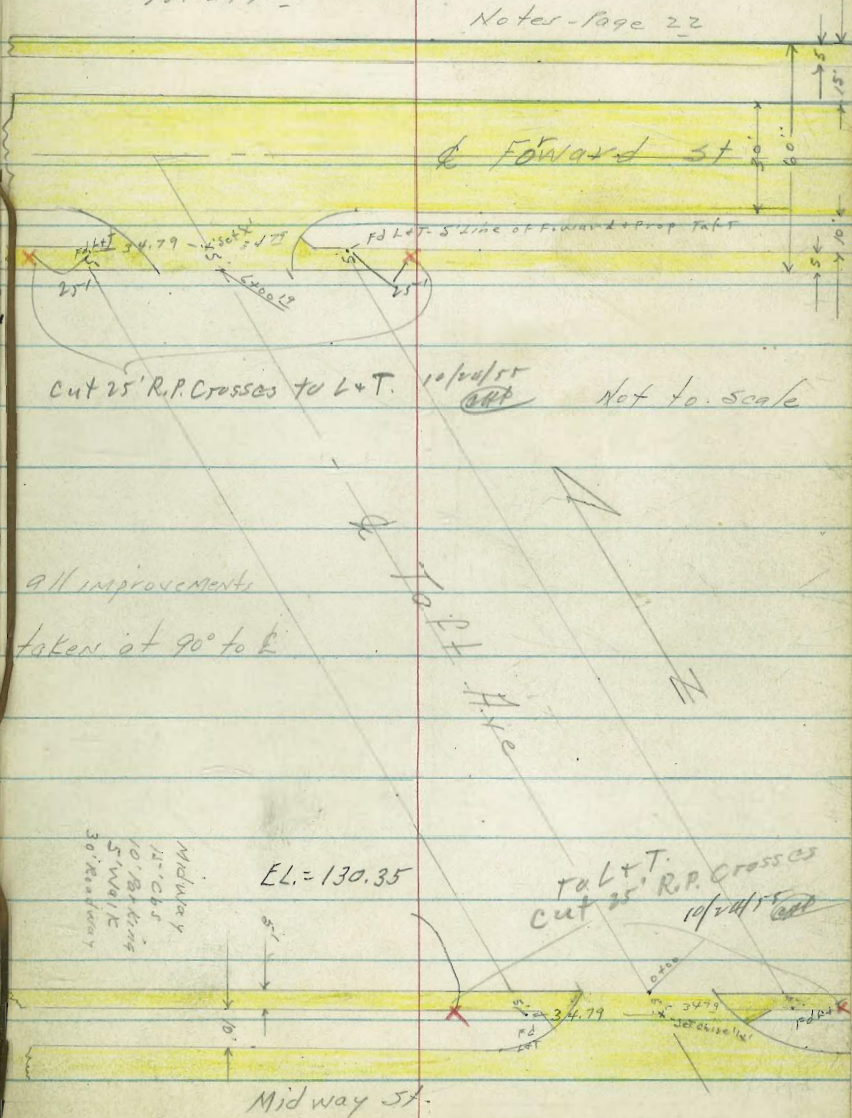


Ref: TP 1715
 TP - 1705
 TP 1706
 TP - 1706

INDEXED

NOV 20 1952

Notes - Page 22



all improvements
 taken at 90° to E

EL = 130.35

Midway
 15' C&G
 10' B&K
 5' W&L
 30' R.P. Crosses

X-sec Waverly Ave

LT= West

Rt= east

	483	108.94
EC - Waverly st	483	108.94
	109.17	
1/2	460	392
	109.42	109.85
	435	109.62
BC Midway st	435	109.62
Gutter		114.09
		368
		curb

North easterly Return - arc = 15° 2 parts 78 each

0-175 Nly Curb line Midway ST

875	105.02									
129	104.43									
6	106.32									
94	105.72									
94	108.06									
6	107.45									
6	108.63									
6	109.42									
6	110.09									
6	111.25									
6	111.89									
6	112.59									
6	113.22									

To Kenalong & Midway
0-35 = PI Midway + Waverly

790	105.87				
100	107.55				
	109.07				
	110.57				
	112.42				

TP, 4.70 113.77 1160 109.07

BM 0.67 120.67

BP NW
Bellevue + Midway
120.00

113.77

LT = West

RT = east

28

0+04. 30[±] RT = 3' Conc Walk

Sections from here taken 90° to E Waverly.

taken along prop line

0+00 - N/4 prop line Midway - edge part. Conc.

108.41	108.55	108.102	108.78	108.95	109.54	110.32
906	892	975	869	852	793	715
342	198	198		174	174	342
Prop	C6	G		G	C6	Prop

112.19
428
30E
WIK

160
35E
WIK

TP₂ 6.50 117.49 2.80 110.97

117.47

Prop Midway
EC. Waverly Ave

1/2

BC. Midway

NW Return. arc = 24' - 2 parts 12 each
15' Radius

60T 108.00

577

107.74

103

107.45

632

60T

577

C6

25.801

521

5-108.58

39

108.06

577

C6

113.77

1704-30³ Lt = end 4" cone wall

1400

0466-18⁶ Rt = begin brick wall - 3 bricks high

109.8	110.8	110.115	112.1	112.2	114.4	114.6
6 ² ₁	6 ¹ ₁	6 ¹⁰ ₁₅	5 ⁴ ₁	5 ¹⁰ ₁₅	5 ¹ ₃₀	2 ⁹ ₄₀
30 ³ Top Wall	30 ³ Foot	30 ⁶ Gr. Foot. Wall			30 prop	
111.26	109.3	110.8				

112.2	112.2	113.0
5 ³ ₁₈	5 ³ ₁₈	4 ⁵ ₁₈
18 ⁶ Gr	18 ⁶ Foot	18 ⁶ Top Wall

109.2	110.49
8 ³ ₃₂	6 ⁹ ₃₀
	30 ³ Top Wall

108.7	108.7	109.7	110.7	110.5	111.1	111.4	113.5	113.7
8 ⁸ ₃₀	7 ⁸ ₃₀	7 ⁸ ₃₀	6 ⁸ ₁₅	7 ⁰ ₁₃	6 ⁴ ₁	6 ¹ ₁₅	4 ⁰ ₃₀	3 ⁸ ₃₀
30 ³ Foot	30 ³ Gr	30						

0450 - 30³ Lt = begin cone wall - 4" wide 1st high

0428 - 31' Lt = 8" evergreen tree

117.47

Lt = West

Rt = east

111.57

111.75

1453- 30³ Lt = 3' Conc Walk

590
40³
WIK

572
30³
WIK

1452- 21⁰ Lt = 18" Euc. Tree.

112.7

112.8

112.4

112.7

113.6

115.3

115.0

115.56

1450- 30⁰ Rt = begin 4" conc wall.

48
40

47
30

51
15

418

319
15

212
300
Gr

25
300
Foot.

191
300
Top
Wall

1445- 18⁶ Rt = end 3 brick high wall.

35
186
Gr

35
186
Foot

202
186
Top
Wall

1424- 20⁰ Lt = 8" low palm tree.

110.58

110.61

1410- 30³ Lt = 14" Garage - Conc Floor
Conc Drive + Apron

689
243
CONC
FLOOR

686
303
PT

1409- 30⁰ Rt = 3' Conc Walk

210
40
R

114.32

214
40

114.63

117.47

Lt = West

Rt = east 16

3413-20° Lt = £ 16" Euc. tree

3400- Lt = £ Conc Drive

2492-29° Rt = £ 3' Conc Walk

2486-20° Rt = £ 26" Euc tree

2479-30° Lt = £ 3' Conc Walk

2472-20° Lt = £ 24" Euc tree

2464- £ Manhole

2450

114.20	114.62	114.7	116.3	5	116.5	117.6	119.0	119.4
75 ⁵	71 ³	71	55	5	13	42	28	24
41 ² Dr	31 ² Dr	30 ²	15			15	30	50
						118.81		
						294	277	
						295 WIK	40 WIK	
	114.30		114.71					
	74 ⁵	70 ⁴						
	40 ² WIK	30 ² WIK						
					115.87			
					578			
	113.1	114.4	115.6		P.M. S.M.H.			
	87	74	62		115.4	116.2	117.4	117.6
	50	30	15		6	56	44	42
						150	300	50
					121.75			

Lt = West

Q

Rt = east

17

4404- 18° Rt = Q 24" Euc tree

T.P. 6.91 125.25 3.41 118.34

4400

			125.25				
			<u>118.2</u>				
55	52	42	6	3	16	10	
50	30	15	15	30	50		

3493- 21° Lt = Q 22" Euc tree

3472- 29° Lt = Q 8' Conc Driveway

3453- 21° Rt = Lt = Q 26" Euc tree

3450-

3444- 29° Lt = Q 3' conc walk

3426- 20° Rt = Q 20" Euc tree

			115.40				
			<u>115.84</u>				
6	35	59	6	3	16	10	
39	3	29	15	30	50		
01		01					

			115.4				
			<u>115.8</u>				
6	60	48	6	3	16	10	
50	30	15	15	30	50		

			115.17				
			<u>115.65</u>				
6	58	60	6	3	16	10	
39	2	29	15	30	50		
WK		WALK					

			117.3				
			<u>117.9</u>				
			119.5				
			120.2				

121.75

Lt = West

4

Rt = east

18

5409-20° Lt. 6" Chinese elderberry

118.5

118.7

119.5

120.0

121.0

122.5

123.5

5400

68
5066
3058
1525
1343
1528
30100
50

4486-20° Rt = 14" tree (?)

117.75

118.21

750
380
WIK704
280
WIK

4476-22° Lt = 3' Conc Walk

4472-28° Rt = 3' Conc Walk

117.41

117.95

118.4

118.9

121.39

121.68

4450-29° Lt = 8' Conc Drive

784
390
10730
290
1062
156
15119.3
60
15120.5
48
30121.1
42
50

4431-22° Lt = 36" Euc. tree

116.63

116.99

862
390
WIK826
290
WIK

4427-29° Lt = 4' Flagstone Walk

125.25

Lt = West

±

Rt = east

19

Begin conc pave
6400⁰² sly line Forward - section taken on

122.27						
616	623	681	615	560	491	463
34.8 Prop	175 Cb Tangent	175 G Tangent		19.8 G BC	19.8 Cb BC	34.8 Prop

5499 - 23° Lt = 36" Evergreen tree

5481 - 21° Rt = 36" palm tree

5480 - 29° Lt = 8' Conc Drive

117.96	118.94	120.03
947	949	840
44 Dr	37.5 Brk Dr	29.5 Dr

TP 5 64 128.43 3.23 122.02

5450 -

119.4	119.8	121.0	128.43		
59	55	43	121.3	121.7	123.5
50	30	15	40	36	1.0
				15	30

5419 - 16° Rt = 14' Conc Driveway

121.42	122.08
3.8 Dr	2.7 Dr
16.2	26.2

125.25 ±

Lf = West

¢

Rt = east 29

EC - Forward ST

122.93
550

123.58
485

1/2

122.80
563

123.45
498

GUT

CB

121.62
681

122.20
623

BC - Waverly

EC - Forward Ave

121.32
71

121.91
650

1/2

121.44
699

122.11
632

S.E. Return - arc = 24° 2 parts 12° each

BC Waverly Ave

121.57
692
GUT

122.13
630
CB

S.W. Return - 15° Length of arc 7° each

126.78
165
142
GUT

127.40
103
143
CB

6417° Sly Curve line Forward ST

118.95
948
76°
CB

118.28
1015
76°
GUT

121.98
645
26°
CB

121.32
71
26°
GUT

121.88
655
19.8

122.34
609
550
42
BC
GUT

122.93
485
42
CB

123.58
498
93
G

124.83
260
93
CB

128.43

See page 22 for x-sec of
Taft Ave. Midway to Forward

Start BA NW 3P
Bellevue + Midway

11.32 120.06 (+0.06)

1.75 131.38 8.69 129.63

TPC 10.66 138.32 0.77 127.66

X-sec Taft Ave - Midway to Forward St

Allen
Taylor T
Parks
Perkins
NO #25020

INDEXED
JER
AUG 31 1954

Lt = West

Rt = east 22

EC: Taft Ave

132.01
4/68

132.69
4/00

1/2

132.20
4/49

132.74
3/95

NE. Return - Length of arc = 15° - 2 parts 7.5 each

BC: Midway

4/17
GUTTER

3/60
CURB

150.76	130.06	130.96	130.27	131.71	132.52	133.09	133.15	134.74
59 ³ 50 CB	66 ³ 50 G	57 ³ 44 ³ BC CB	64 ³ 44 ³ BC GUT	98 47	252 252 BC GUT	360 252 BC CB	254 50 G	190 50 CB
128.92	128.20	128.20	130.27	131.71	132.52	133.09	133.15	134.74
77 ¹ 100 CB	84 ⁹ 100 G	84 ⁹ 100 G	84 ⁹ 100 G	98 47	252 252 BC GUT	360 252 BC CB	254 50 G	190 50 CB
128.92	128.20	128.20	130.27	131.71	132.52	133.09	133.15	134.74
128.61	130.46	130.46	132.19	134.78	136.51	136.51	136.51	136.51
808	62 ³ 50	62 ³ 50	450	121	136.51	136.51	136.51	136.51
100	50	50	450	121	136.51	136.51	136.51	136.51

Section taken on skew.

0-17⁵ Nly Curb line Midway.

along line of Midway

0-35 = E Midway St. Section taken

6.23 136.69 0.19

130.46

136.69

BM. 10.65 130.65

NW 1/4 Bellevue + Midway St.
120.00

0+50

Sections from here on taken 90° to E. Tott.

0+19. 21° Rt = begin 4' high picket fence

Taken along line Midway
0+00 = Nly prop. line Midway St

TP 4.70

138.23 3.16

N.E. Prop. line
Midway + Tott

133.53

EC: Tott Ave

Gutter

130.91

131.41
131.28

N.W. Return. 24° 2 parts - 12 each.

BC = Midway

130.67
130.27
130.27
6.02

6.42

Cut

131.25
5.44

5.73

Cb.

136.69

Lt = West
131.1
7.50
132.0
6.30
132.0
6.15

133.0
5.22

Rt = east
133.3
7.14
134.7
5.16
136.2
2.30
136.7
1.51

6.25
34.8
Prop
131.28
6.81
198
Cb
131.42
7.15
198
6
130.92

6.60
131.63

6.39
17.3
6
131.84
5.25
17.3
Cb
132.48
4.86
34.8
Prop
133.37

Lt = West

4

Rt. east 24

1445 - 30° Rt = 4 3' wide Conc steps

5-0-10
138.30

30°
Bottom
Riser

2-9-1
140.36
402
Step

1428 - RR^S Rt = 4 8" OCOCIA

137.86

140.14

1412 - 28° Rt = 4 3' wide Conc steps

5-4-4

28°
Bottom
Riser

3-6-3
382
Step

TP₂ 8.82 143.30 3.75 134.48

143.30

137.3

136.5

139.5

1404 30° Rt end 8" conc wall

30°
9d

30°
Footing

30°
Top

1400

130.6

132.5

133.7

133.2

133.9

135.5

136.5

139.5

7-6

5-7

4-5

5-10

4

3-7

1-7

4-13

50

30

15

12

13

15

30

50

31.57

132.18

0493 - 30' LT 4 8' Conc. Drive

6-6

6-0

0474 30° Rt 9 3' conc steps & walk

1-0

3-0

137.98

30°
Top
60' Step

0467 - 25° RT = end 4' high picket fence

0464 30° Rt Begin 8" conc wall

138.23

138.6

138.4

139.80

30°
9d

30°
Footing

30°
Top

Lt = West

Rt = east 25

2462 - 30° Rt end & 15' high Cypress hedge

	138.3	138.2	138.4	138.8	138.8	139.5	141.2
50	50	30	15	45	15	30	50
	50	50	49	45	45	30	20

2450

2444 - 31' Lt = & 3' Conc Walk

	138.11	138.11
41	519	519
WIK	31	WIK

2420 - 30° Lt = & 8" Locust tree

	135.1	135.6	136.4	136.7	137.3	138.0	139.1
50	80	30	15	60	15	30	50
	80	77	68	66	60	53	42

2400

1483 - 28° Rt = ^{begin} & 15' high Cypress hedge.

	133.6	134.0	134.8	134.6	135.1	135.6	137.8	140.4
50	90	30	15	12	8	15	30	40
	90	80	80	80	80	77	55	29
	40	40	30	30	30	30	30	30
	WIK	WIK	WIK	WIK	WIK	WIK	WIK	WIK
	134.39	86.5	135.65					

1469 - 30° Lt = & 3' Conc Walk

1450

143 30

Lt = West

Rt = east 26

3448 - 22° Rt = 24" Whispering pine

141.52

141.75

3431 30° Rt = 9¹/₂ conc driveway

145.25

145.41

3430 - 30° Lt = 3' conc. walk

818
402
WIK

725
305
WIK

30
conc
Elevations

55
Floor

3430 - 20° Lt = 12' whispering pine

3427 - 21° Rt = 15" (P) tree

TP₃ 173 149.70 133. 141.97

149.70

2490 - 21° Rt = 8" Olive tree

140.15

140.00

2487 - 30° Lt = 10' Conc Driveway

315
405
Dr

330
305
Dr

2469 - 21° Rt = 18" Evergreen tree

139.77

2464 - S.M.H. on Taft

313
LIM
SMH

143.30 x

Lt=west

⊕

Rt= east

27

4+43- 30° Rt= end 7" East+West Conc Wall

1-	1-	+1 ¹ / ₅
30°	30°	30°
Feet	Gr	Top Wall

4+25- 47° Rt & Double Garage. Conc Floor+Apron ^{15' wide}

149.44	149.80
026	+010
470	49
Apron	Car floor

4+12- 31° Rt= ⊕ 3' Conc Walk

148.39	148.90
131	080
31°	41°
WK	WK

4+00

143.8	144.4	144.6	145.1	146.1	146.6	149.0
5 ¹ / ₂	5 ³ / ₈	5 ¹ / ₂	6	3 ⁶ / ₈	1 ¹ / ₂	0 ² / ₈
50	30	15		15	30	50

3+61- 29° Lt= ⊕ 3' Conc Walk

141.9	142.3	143.5	143.5	143.0	143.4	144.0	145.8	146.4	146.9
78	74	6 ² / ₈	6 ² / ₈	6 ¹ / ₂	6	5 ¹ / ₂	3 ⁹ / ₈	3 ³ / ₈	2 ¹⁰ / ₈
50	30	15	13	8	6	13	18	30	50
		723	705						
		39°	29°						
		WK	WK						

3+50-

149.70 X

5760 - 29° Lt = begin 10" Conc wall.

5750

5741 - 29° Lt = 3' Conc Walk

5734 - 21° Lt = 30" Whispering Pine

5715 - 20° Lt = 12" (?) tree -

5700 - 30° Rt = begin Conc block wall

4797 - 30° Lt = 3' Conc. Walk

4792 - 20° Lt = 14" Ever green -

TP4 662 153.89 2.43 147.27

Lt = West

Rt = east 28

146.5
75
298
Foot
147.53
6
298
TOP
Wall
68
298
Gr. at
Wall
147.0

146.0
79
50
146.7
75
30
146.65
72
39
WK
147.7
62
15
148.8
51
149.3
46
15
150.3
10
16
150
152.99
50
0.90
50

146.65
72
39
WK
146.99
6
29
WK

145.6
8
50
146.0
79
30
146.8
7
15
147.7
6
15
148.3
56
15
149.7
42
30
149.8
41
30
152.26
15
30
149.6
40
30
Foot

145.46
8
40
WK
145.84
8
30
WK

153.89

6+17⁶⁹. Sly Curb line Forward 2T.

Lt = West				Rt = east			
14500	14810	14743	14769	14809	14950	14889	14935
889	579	646	620	580	539	500	454
78 ³ Cb	28 ³ Cb BC	28 ³ G BC	15	15	15	30	43 ⁵ G BC
14500	14810	14743	14769	14809	14950	14889	14935
889	579	646	620	580	539	500	454
78 ³ Cb	28 ³ Cb BC	28 ³ G BC	15	15	15	30	43 ⁵ G BC

Wall on left ends of Property and abut on back edge walk

6+00¹⁹. Sly line Forward 3T. section taken along line forward.

148.44	148.54	147.98	148.59	148.88	149.45	150.19
545	535	521	530	501	444	370
348	174 Cb	174 G	5	196 G	196 Cb	348 Prop

Sections from here on taken TT to Forward

5+85-30² Rt = end Conc block wall.

150.2	149.8	152.19
32	41	179
30 ² Gr	30 ² Foot.	30 ² Top wall

Improvements taken 90° to L Tail.

151.39	147.5	147.5
250	64	64
292 Top of Block wall	292 Foot of Block wall	292 Gr. at Block wall

5+77-298² Rt = end 10" Conc wall + begin Conc block wall.
Lt?

147.65	146.5	147.5
625	42	64
292 Tip Wall	292 Foot Wall	292 Gr. at Wall

153.89

Lf = West & Rt = east 30

Cont on page 31

Gutter 149.97
Curb 149.56

EC Forward 4.53 92

148.90
148.41

1/2 499 433

148.87
149.44
502 445

BC Taft ST

Gutter 147.43
Curb 148.10

EC Forward ST 6.46 577

147.60
157.51
629 559

1/2 629 559

147.77
148.40

BC Taft ST

612 549
Gutter Curb

S.E. Return - L = 24⁶ - 2 parts 12³ each

S.W. Return 15' length 2 parts - 7⁵ each

153.89

start BM -

10.59 120.03 (0.03)

TP₆ 0.29 130.62 12.22 130.33

TP₅ 0.10 142.55 11.44 142.45

153.89

Roberts
Cota
Moore
Follen
1-19-53
W.O. #25-020

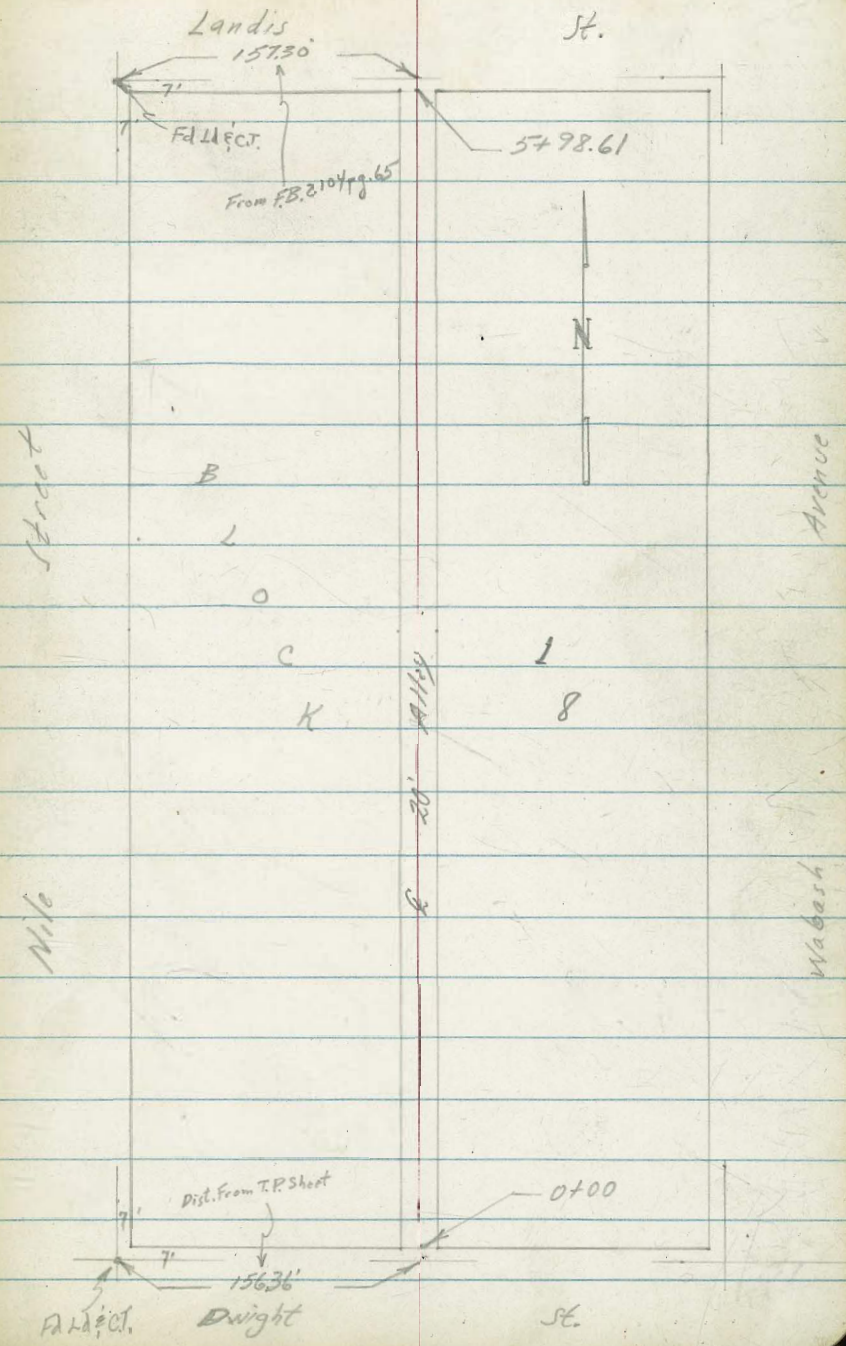
X-Section Alley Bk. 18, City Hqs
Dwight to Landis
Between Nile & Wabash

T.P. 3577

INDEXED

JAN 30 1953

FOR LEVELS SEE PAGE 39

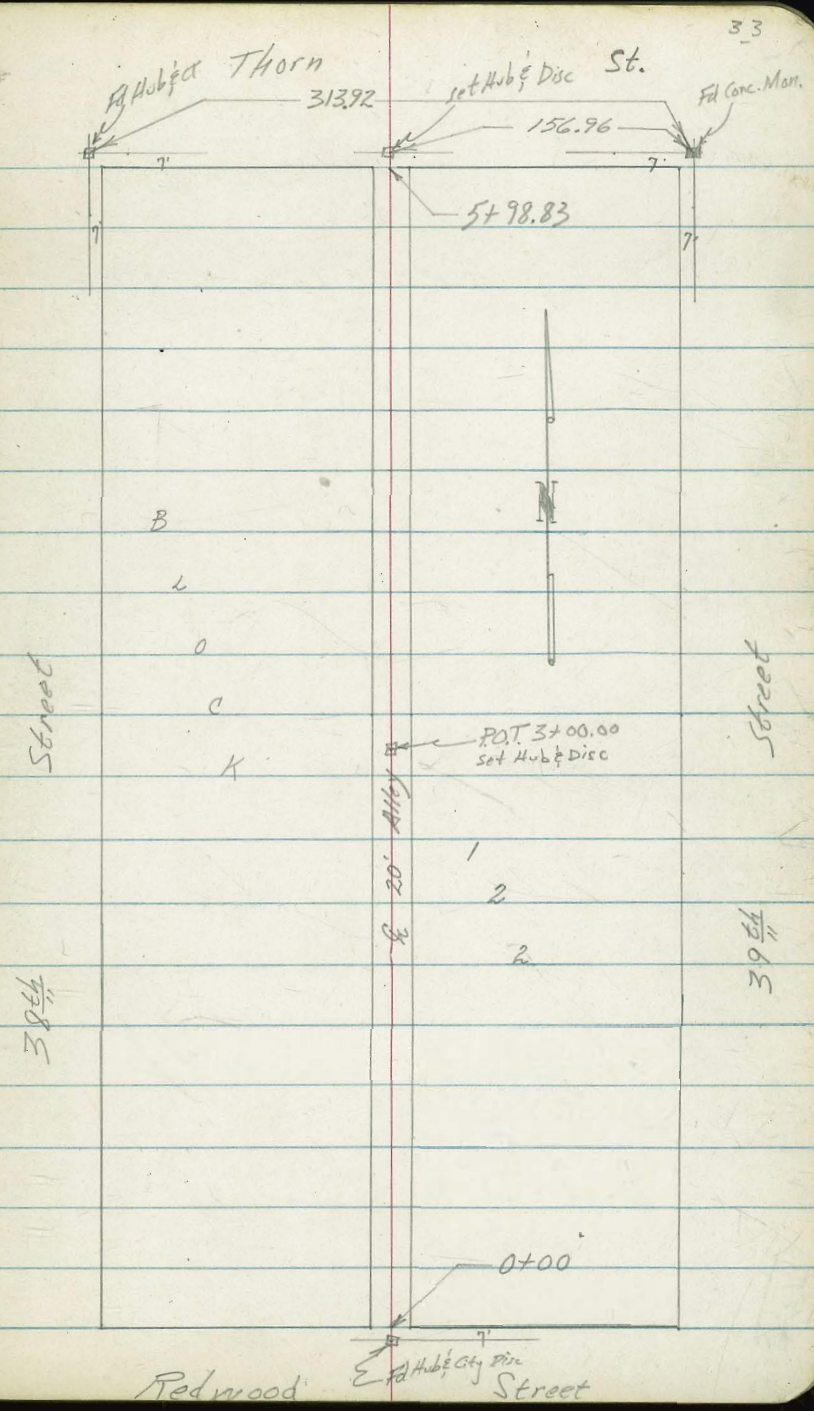


Roberts
Cota
Moore
Fellen
1-22-53
W.O.# 25120

X-Section Alley Bk. 122, City Heights
Redwood to Thorn
Between 38th & 39th
T.P. 3524

INDEXED
Law
JAN 30 1953

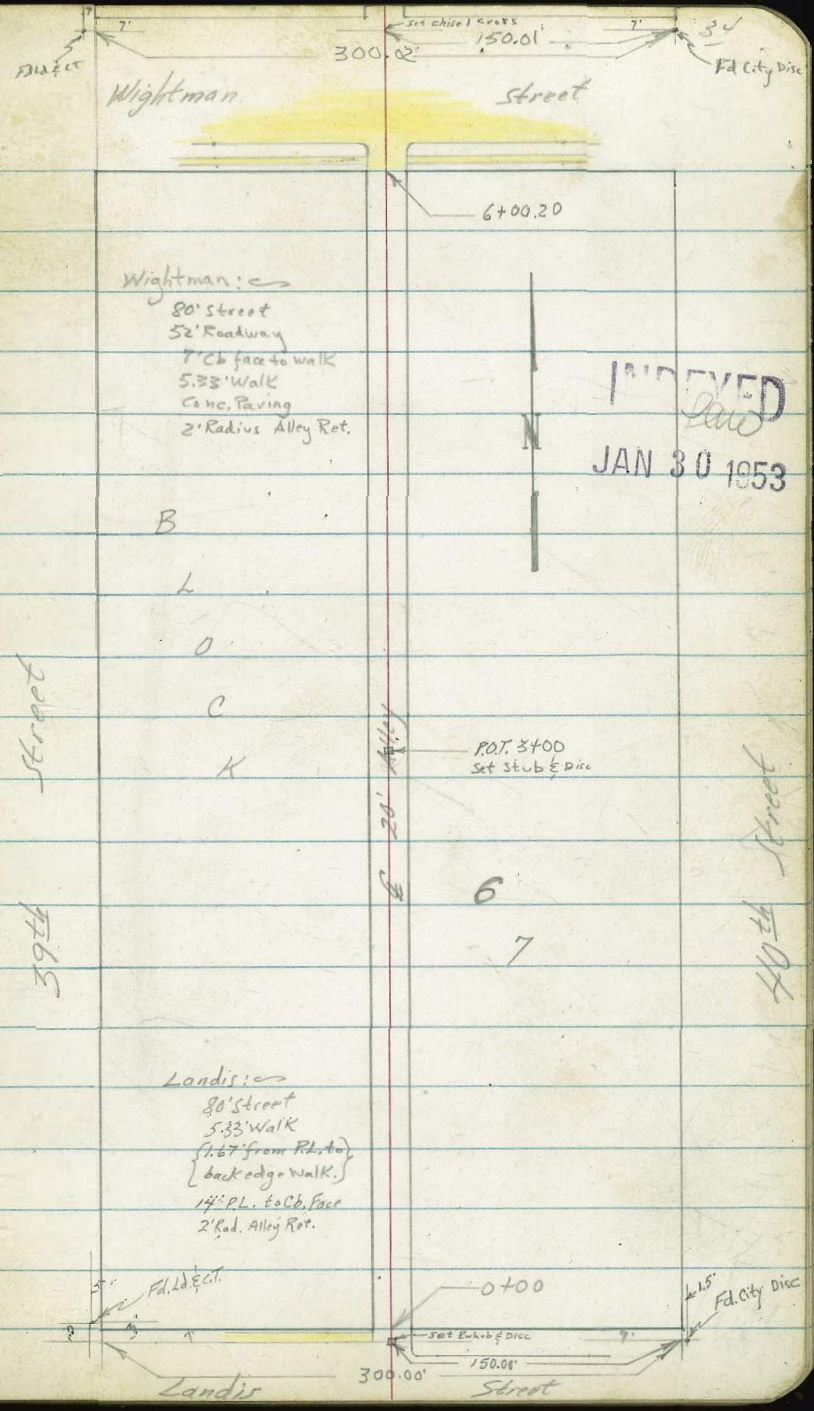
FOR LEVELS SEE PAGE 36



Roberts
Cota
Moore
Fellen
1-28-53
W.O. # 25020

X-Section Alley Bk. 67, City Heights
Landis to Wightman
Between 39th & 40th St.
T.P. 3543

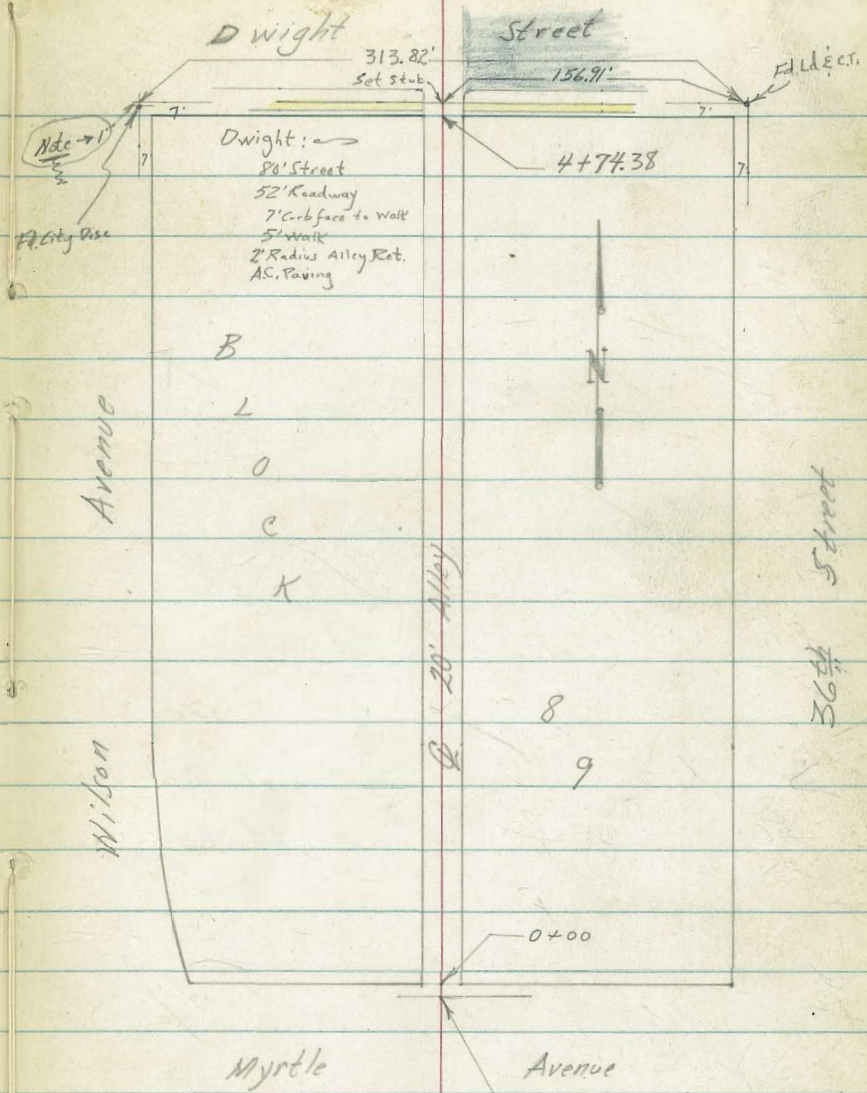
FOR LEVELS SEE PAGE 45



Roberts
Cata
Moore
Riley
1-30-53
W.D.# 25026

X-Section Alley Blk. 88 City Heights
Myrtle to Dwight
Between Wilson & 36th
T.P. 3535

FOR LEVELS SEE PAGE 53



Dwight: ->
80' Street
52' Roadway
7' Curb face to Walk
5' Walk
2' Radius Alley Ret.
A.C. Paving

Note ->
City Use

Wilson Avenue

B

L

O

C

K

Myrtle Avenue

Avenue

Set Stub by producing No. 7
Line Myrtle from 37th Cherokee
and intersecting E of Alley
Produced down from
Zandic and Dwight

INDEXED
Law
JAN 30 1953

Levels on Alley BK. 122, City Heights

2+00	8 th Lt to center P. Pole # A3133	2.3 20	303.3	2.0 10	303.6	1.8 10	303.8	1.5 20	304.1
1+50		3.6 20	302.0	3.1 10	302.5	3.0 10	302.6	2.7 10	302.9
1+22	10 th Rt End Picket Fence								
1+17	7 th Lt to Deadmen								
1+00	{ 9 th Rt begin Picket Fence 8 th Lt to center P. Pole # PA3121	5.1 25	300.5	4.5 10	301.1	4.2 10	301.4	3.7 10	301.9
0+50		7.7 25	297.9	6.6 10	299.0	6.1 10	299.5	5.7 10	299.9
0+00	NORTH LINE REDWOOD STREET	15.9 100	289.7	12.9 50	292.7	10.1 10	295.5	8.8 8	296.8
TR	9.76 305.64 Δ 12.02 295.88								305.64 Δ
BM.	4.93 307.90								

N.W.B.P.
40th E Redwood

Cont'd From Page 36

				Lt	♀	R	37
4431	11 5/8' Lt 6" Conc. Stoop			307.37	307.38		
				408 152 at base conc.	407 112 conc.		
4403	10 8/16' to center 8" Acacia Tree			306.3	306.15		
4400				5.2 20	5.0 10	4.8 10	4.7 20
				305.6	306.2	306.0	306.7
3450	8 3/4' to center T.P. # 516435H			5.9 20	5.3 10	5.5 10	5.1 20
				304.7	305.0	305.2	306.4
3400	9 3/4' Lt End Fence			6.8 20	6.5 10	6.3 10	6.0 20
				303.8	304.1	304.4	305.5
2450				7.7 20	7.4 10	7.2 10	6.8 20
				304.7	304.3	304.4	304.7
2401	9 3/4' Lt Begin 6' Chicken wire fence						
T.P.	6.96 311.45π 115 30449					311.45π	
	305.64π						

Cont'd From Page 37

Check 3.57 302.98 = 302.97

T.P. 0.60 306.55 6.15 305.95

Q THORN

5798.83 SOUTH LINE THORN STREET

T.P. 5.00 312.10A 4.35 307.10

5750

5729 85' to deadman

5709 65' to center P.P. # A 3267

5700

4750

311.45A

Lt

R

Rt

38

305.1

305.8

306.7

306.8

306.5

7.0

6.3

5.4

5.3

5.6

100

50

50

100

305.4

306.2

307.0

306.9

307.1

307.1

307.1

6.7

5.9

5.1

5.2

5.0

5.0

5.0

100

50

10

50

10

50

100

312.10A

307.1

307.3

307.4

307.6

307.7

4.4

4.2

4.1

3.9

3.8

20

10

10

20

307.2

307.3

307.4

307.6

307.8

4.3

4.2

4.2

3.9

3.7

20

10

10

20

307.1

307.1

307.0

307.2

307.4

4.4

4.4

4.5

4.3

4.1

20

10

10

20

311.45A

Levels on Alley B/K/D, City Hts.

0+50				5.0 15	316.9	5.5 10	316.4	6.5	315.4	6.4 10	315.5	8.3 18	313.6	14.6 30	307.3
0+40	#1' Rt to center 8' Popper Tree				318.3		316.4		316.0				315.9		301.3
0+00	North Line Dwight			3.65 30 conc.	318.23	4.09 138 conc.	317.79								
0-02	North Edge walk				317.18										
0-07	South Edge Walk			3.70 30 conc.	317.18	4.17 138 conc.	317.71		317.0						
Q Dwight Street															
T.P.	476	321.88	5.34		317.12				321.88						
T.P.	191	322.46	9.43		320.55										
BM	0.94	329.98			329.04										

NEBP
Sandis E Boundary

Mabash
Canyon

Cont'd From Page 39

Lt

Q

Rt 40

2+94

79' Lt to NE corner shed.

2+74

78' Lt to SE Corner Shed (12' x 20')

2+50

2+00

9' Lt to center P.Pole # PA3633

1+50

T.P.

3.26 317.50 T 7.64 314.24

317.50 T

1+00

0+86

18' Lt to center P.Pole # D29654 T

321.88 T

321.88 T

3.5 20	318.4	3.1 10	316.9	6.1 20	315.8	6.4	315.5	7.1 10	314.8	8.0 20	312.9
2.1 20	319.8	3.6 10	318.3	5.3	316.6	6.1 10	315.8	9.0 30	312.9	15.6 30	306.3
1.2 20	320.7	1.6 10	320.3	3.8 10	318.0	4.4 10	317.5	6.2 20	315.7		
4.4 15	317.5	5.4 10	316.5	7.1 4	314.8	7.3	314.6	7.5 6	314.4	8.3 10	313.6
								12.1 30	309.8	17.2 40	304.7

Wash

Canon

Cont'd From Page 40

Lt R Rt 1/1

T.P. 5.92 318.23 5.19 312.31

3+50

314.3
32
20
312.3
42
10
312.0
56
10
311.9
60
28

3+48 11³/₄' Lt End conc. Ret. Wall

314.70
2.80
11³/₄
Top
313.2
43
11³/₄
GRD
313.0
45
11³/₄
Foot

3+39 14' Rt Q Single Garage (In sad shape)

311.60
5.90
14
conc

3+38 8¹/₂' Lt to center P.P. # PA3653

3+20 10¹/₂' Lt begin conc. wall (Retaining)

314.40
3.10
10¹/₂
Top
312.3
5.2
10¹/₂
GRD
312.2
5.3
10¹/₂
Foot

3+16 10¹/₂' Lt to NE Corner Work Shop

314.37
3.15
10¹/₂
Top
312.40
5.10
10¹/₂
Foot

3+00 10³/₄' Lt to SE Corner Work shop

314.36
314
10³/₄
Top
312.47
5.09
10³/₄
Foot
312.0
5.5
10
311.2
6.3
310.8
6.7
10
306.2
11.3
50

317.50

317.50

Cont'd From Page 41

Lt

Rt

Rt

Lt

4+50

3.5
20

314.7

4.2
10

314.0

5.0
50

313.2

4.9
92

313.3

4+48

{ 92' Rt begin shed
92' Rt End shed

4+31

92' Rt begin shed

4+29

106' Rt. & 2' Conc. Wall

4+00

2.5
20

315.7

2.7
12

315.5

4.4
10

313.8

5.6
10

312.6

5.8
10

312.4

7.3
20

310.9

6.28
106
conc

311.95

6.88
20
conc

311.43

3+99

106' Lt End Conc. Ret. Wall

2.89
106
Top

315.34

4.9
106
Foot

314.3

4.7
106
GRD

314.5

3+89

172' Rt & Single Garage

3.00
103
Top

315.2

4.7
103
GRD

313.5

5.3
103
Foot

312.9

7.1
172
Dirt

311.1

3+72

103' Lt begin Conc. Ret. Wall

318.23A

318.23A

Cont'd From Page 42

Lt

Q

Rt

43

T.P. 598 322.16A 2.05 316.18

316.79

316.21

5+48^E 14^E Lt Q Single Garage

1.44
1.42
Floor

2.02
1.85
conc.
Apron

5+46 { 9^E Rt begin board fence
9^E Rt End chain link fence

5+18 9^E Rt begin 5' chain link fence.

5+00

2.0
20

3.0
10

3.6

3.8
10

4+98 9^E Lt to center P. Pole # PA 3675

4+90 11^E Lt Q 8' Single Garage

2.82
1.5
Floor

3.35
89
conc.
Apron

4+85 10^E Rt Q 2' Conc. Walk

4.34
106
conc

4+82 10^E Rt End Shed

34

4+76 10^E Rt Q Garage entrance

102
Dirt

318.23A

318.23A

Cont'd From Page #3

Lt

Q

Rt

#4

check

130 329.07 = 329.04

T.P.

8.31 330.37 0.10 322.06

Q Landis Street

2.5	3	19.7	3.1	3	18.1	3.1	3	17.2	7.1	3	15.1	9.2	3	13.0
100			50			50			50			100		

5798.61

South Line Landis

{ 97 Rt End Fence

4.7	5.1	3	17.5	5.2	5.5	3	16.7	6.5	3	15.7
30	10			10	10			10		

5+50

6.0	6.6	6.8	7.2	7.6
10		10	12	20
3	3	3	3	3
16.2	15.6	15.4	15.0	14.5

322.167

322.167

Levels on Alley Bk. 67, City Hts.

Lt

Rt

Rt 45

0+00 North Line Landis

17' R + 14' Garage opening
on Landis St.

2.0	4.5	1.9	4.5	4.3	4.5	4.2	4.5
25 Top wall	25 GRD	10 ⁴ Top wall	10 ⁴ GRD		10 ² Gutt	10 ² cb	17 ² Floor
333.0	330.5	333.1	330.5	330.7	330.5	330.33	330.50

North Edge Walk

-1.67

330.44
4.51
9²
CONC.

South Edge walk

-7

4.61
9²
CONC.

North Curb Line Landis

-14

5.9	5.5	5.0	5.1	5.2	4.95	5.4	4.81	5.8	4.71
100	50	10	50	12 Gutt	12 cb	50 Gutt	50 cb	100 Gutt	100 cb
329.1	329.5	330.0	330.0	329.8	330.00	329.6	330.14	329.2	330.24

Landis Street

-40

5.5	5.3	5.0	4.9	4.8
100	50	50	50	100
329.5	329.7	330.0	330.1	330.2

T.P. 4.84 334.95 T 9.77 330.11

334.95 T

T.P. 0.14 339.88 7.75 339.74

BM 3.93 347.49 T

NWBP
343.56 Wightman & Central

0+93 10^{SE} Rt & Car Port

7.6
10^{SE}
Dirt

0+80 10^{SE} Rt End wire Fence

0+52 9^{SE} Lt to center P. Pole # PA 3703

0+50 9^{SE} Rt Begin 4' wire fence

9.0 8.6 8.7 8.4 8.2
20 10 10 21

0+44 14^{SE} Lt Single Garage

8.64 8.78
14^{SE} Floor CONC Apron
335.38 335.07

T.P. 9.87 344.02 π 0.80 334.15

344.02 π

0+18 11^{SE} Rt End Garage

0.6 0.6 2.4 2.4 2.4 0.8 4.2 4.5
132 10 7 3 10 11 20

0+03

333.29
1.66 4.2 3.5
10^{SE} Foot 10^{SE} 9^{SE}
Top Foot 9^{SE}
END OF WALL

334.95 π

334.95 π

Cont'd From Page 46

2+21

16' Lt to center opening Single garage which opens to the south.

Lt

4.8
16.4
Floor
339.20

Rt

Rt 47

2+10

14' Rt & Single Garage

4.6
14.4
Floor
339.41

2+00

{ 99' Lt End Fence
98' Rt End Shed

5.6
20
338.4

5.1
10
338.9

5.4
338.6

5.4
10
338.6

5.2
20
339.8

1+70

98' Rt Begin Shed

338.07

338.29

1+56^E

10 1/2' Rt & Single Garage

5.95
7.2
Done
Apron
9 wide

5.73
10 1/2
Floor

1+50

72' Lt to center P.Pole # PA3721

6.8
20
337.2

6.3
10
337.7

6.5
337.5

6.4
10
357.8

6.4
20
337.6

1+06

10' Rt & Garage opening in shed.

836.7

7.3
10
Dirt

1+00

98' Lt Begin 5' Board Fence

7.7
20
336.3

7.2
10
336.8

7.6
336.4

7.6
10
336.4

7.4
20
336.6

344.02X

344.02X

Cont'd From Page 47

Lt

Rt

Rt 48

3+10

9⁸' Rt & Single Garage

7.6
98
Dirt
341.2

T.P.

7.87 348.84X 3.05 340.97

348.84X

3+00

3.5
20
340.5

3.1
10
340.9

3.2
340.8

3.0
10
341.0

2.7
20
341.3

2+90

15⁹' Rt & Double Garage

3.6
10
Dirt
340.4

3.89
15
Floor
340.13

2+73

10⁷' Rt & Single Garage

2+68

9⁷' Rt End Fence

2+52

9²' Rt Begin 5⁵' Picket Fence

3.8
20
340.2

3.8
10
340.2

4.0
340.0

4.3
10
339.7

4.6
20
339.4

2+50

2+38

8⁷' Lt to center P.Pile # PA3735

344.02X

344.02X

Cont'd From Page 48

4400

3796 10' Lt & 3' Conc. Walk

3777 78' Lt to center P. Pole # PA3759

3769 136' Lt & Single Garage

3764 10' Lt end conc. Fdn.

3755^E 92' Lt & 3' Conc. Walk

3750

3724 10' Lt Begin 6" conc. Fdn. of board fence

348.84π

Lt

6.0
20
342.8

6.0
10
342.8

6.342.6
2

6.0
10
342.8

Rt

6.0
8
342.8

49

6.23
10²
Conc
342.61

7.0
136
Dirt
341.8

6.0
10²
Top
342.8

7.3
10²
Foot
341.5

6.9
10²
GRD
341.9

6.170
92
100%
342.14

7.0
10
341.8

7.1
341.7

6.8
10
342.0

6.8
20
342.0

6.7
102
Top
Fdn.
342.1

8.0
102
Foot
340.8

7.6
102
GRD
341.2

348.84π

Cont'd From Page 49

5713 10²' Rt End fence

T.P. 1.76 345.83 π 4.77 344.07

5706 9²' Lt End Shed

5700 { 9²' Rt begin 5²' board fence
 { 9²' Lt begin shed

4784 15²' Lt ϕ Single Garage

4775 8²' Lt to center P. Pole PA3775

4767 11²' Lt ϕ Single Garage

4758 12²' Rt ϕ Single Garage

4750

4743 15²' Rt ϕ Single Garage

348.84 π

Lt

ϕ

Rt ϕ

	344.0	344.2	344.2	344.2	344.2
	4.8	4.6	4.6	4.6	4.6
	20	10		10	20
344.6	344.96				
4.68	4.88				
15 ²	11 ²				
Floor	conc				Apron
	343.77				
	5.07				
	11 ²				
	Floor				
				343.41	
					343.63
				5.43	5.21
				10 ²	12.6
				conc	Floor
				Apron	
				343.6	
				5.2	5.2
				10	20
				343.45	
				5.39	
				15 ²	
				Floor	

348.84 π

Cont'd From Page 50

5+93.8 9' Rt begin 8" Conc. Ret. Wall

Lt	Rt	5
344.1	344.1	344.5
1.7	1.7	4.3
15	10	6
GRD	9' Foot	9' Top

5+75 9' Lt & 3' Conc. Walk

344.6	344.62
1.7	1.2
15	9.6
conc	conc

5+72 9' Lt NE. Corner House

343.9	344.0
1.9	1.8
9.4	9.4
Foot	GRD

5+65

343.8	343.8	343.8	344.1	344.7	344.8
1.9	2.0	2.0	1.3	1.1	1.0
9.3	7	8	10	20	

5+50 14' Rt & Single Garage

344.1	344.9	344.2	344.62
1.7	1.9	1.6	1.21
9.5	10	14.9	Floor

5+33 9' Lt SE Corner House

344.32	344.21	344.1	2.1
1.51	1.62	1.7	9.6
13.2	9.2	9.6	9.6
Floor	conc	GRD	Foot
	Apron		

5+28 13' Lt & Single Garage

345.83π

345.83π

check

2.28 343.55 = 343.56 Starting B.M.

Wightman Street +40

South Curb Line Wightman +14

6+00.20 South Line Wightman { Wallendon P.L. and Foot in on Level with top of curb.

340.15	339.49	340.61	339.95	5.51	340.32	340.90	4.35	341.48
5.61	6.34	5.22	5.88	5.0	5.87	5.80	5.0	4.93
50	50	12	12	10	10	10	12	50
cb	Gutt	cb	Gutt				Gutt	cb
340.88	340.67	340.38	340.83	340.83	340.83	340.83	341.10	340.63
4.95	5.16	5.15	5.00	4.73	5.00	4.73	5.20	4.99
10	10	9.2	9.2	9.2	9.2	9.2	50	50
cb	Gutt	Gutt	Gutt	Gutt	Gutt	Gutt	Gutt	cb

345.83X

345.83X

Cont'd From Page 53

Lt

Q

Rt 54

2+01 148' Rt Begin Double Garage

10.86
99
cont
Apron

937
142
Floor

I.P. 10.22 322.81 π 0.30 312.59

322.81 π

2+00

1.2
20

1.3
10

0.310.9

1.6
51

0.1
10

1+86 88' Lt. to center P.P. (c) # PA3529

3.6
20

4.2
10

4.2

3.9
10

3.2
20

1+50

1+29 46' Rt Q Single Garage

4.2
20

5.5
10

5.5

5.6
10

5.8
25

3.2
46
Dirt

307.14

307.11

1+00

0+95 279' Rt Q Single Garage

5.75
25
cont
Apron

5.44
279
Floor

312.89 π

312.89 π

Cont'd from Page 54

Lt

Rt

Rt 55

3+59 ^E	11 ¹ Lt to End of Conc. Apron	273 30 ^L Floor	320.07	270 11 ^L conc	320.11				
3+50				300	319.8	33	319.5	3.3	319.5
				10				2.4	320.4
								20	320.4
3+44 ^E	11 ¹ Lt to beginning of Conc. Apron to Garage	283 30 ^L Floor	319.98	294 11 ^L conc	319.84				
3+00				58	317.0	6.6	316.2	6.6	316.2
				20				5.7	317.1
				10	316.6	10		10	318.3
								11	318.3
								15	318.7
2+86	8 ¹ Lt to center P. Pole # PA3549								
2+50				9.2	313.6	9.8	313.0	9.7	313.1
				10				7.9	314.9
					313.4			20	315.3
2+17	14 ¹ Rt End Double Garage								
								9.95	312.86
								142	313.46

322.81 π

322.81 π

Contd From Page 55

Lt

£

Rt

53

4+50

6.0 323.9
20
6.0 323.9
103 GRD
5.73 324.12
92 Top
6.3 323.6
92 GRD
6.4 323.5

5.9 324.0
10

5.1 324.8
20

4+20^E

9' Lt begin 1-Course conc. block wall

6.73 323.12
92 Top
7.2 322.7
92 Foot
7.1 322.8
92 GRD

4+19

10' Lt 6" conc. walk

6.73 322.92
20 conc
6.73 322.90
10' conc

T.P.

7.44 329.85 π 0.40 322.41

329.85 π

4+12

9' Lt to End of Conc. Apron

0.26 322.55
10' conc
BRK
0.53 322.28
9' conc

4+06

24' Lt 2 of the Garage

0.26 322.55
29L Fib
322.45
0.36 322.01
103 conc
BRK
0.80 322.01
82 conc

4+00

8' Lt to beginning conc Apron of Single Garage

0.9 321.9
0.3 322.5
10
0.0 322.8
20

322.81 π

322.81 π

Cheek

2.32

327.53 = 327.55

Starting B.M.

R Dwight Street

	6.1	5.4	4.8	4.49	3.89	3.25
	100	50		10	50	100
	323.8	324.5	325.1	325.36	325.96	326.60

South Curb Line Dwight + 14

549	6.7	4.92	5.6	5.5	5.4	5.21	5.16	4.62	4.64	4.15
50	50	12	12	10		10	12	12	50	50
cb	Gutt	cb	Gutt	cb		AC	Gutt	cb	Gutt	cb
324.36	323.7	324.93	324.3	324.5	324.5	324.64	324.69	325.23	325.21	325.70

+ 74.38 South Line Dwight

} 98 Lt. End Conc. BK. Wall

4.65	5.27	5.6	5.5	5.5	5.2	4.42
10	98	98	98		10	10
TOP	TOP	Foot	GRD		Gutt	cb
cb	Mail					
325.20	324.58	324.3	324.4	324.4	324.65	325.43

329.85

329.85

1725

1700

075 9° Lt & 15" Power Pole # PA1051

0750

0725

0700 Nly Guizot end of edge AC paving

0-12 Nly of Guizot

TP

505

71.89

191

66.84

BM

12.35

68.75

56.40

S.F.M.P.
Guizot
Sunset Club

Lt=West

61.5

63.5
87
25

64.8
72
25

65.4
65
25

66.3
56
25

67.24
46
10

63.05

704
50
66

63.52

837
50
94

66.84

505
125
66

66.30

559
125
94

66.47

543
10

67.25

464

67.02

489
10

67.49

464

68.41

388
10

68.70

369
125
94

68.20

321
125
66

69.68

321
125
66

10.78

111
50
94

71.33

056
50
66

71.89

Lt=West

61.5

63.5
87
25

64.8
72
25

65.4
65
25

66.3
56
25

67.24
46
10

63.05

704
50
66

63.52

837
50
94

66.84

505
125
66

66.30

559
125
94

66.47

543
10

67.25

464

67.02

489
10

67.49

464

68.41

388
10

68.70

369
125
94

68.20

321
125
66

69.68

321
125
66

10.78

111
50
94

71.33

056
50
66

71.89

Lt=West

61.5

63.5
87
25

64.8
72
25

65.4
65
25

66.3
56
25

67.24
46
10

63.05

704
50
66

63.52

837
50
94

66.84

505
125
66

66.30

559
125
94

66.47

543
10

67.25

464

67.02

489
10

67.49

464

68.41

388
10

68.70

369
125
94

68.20

321
125
66

69.68

321
125
66

10.78

111
50
94

71.33

056
50
66

71.89

Lt=West

61.5

63.5
87
25

64.8
72
25

65.4
65
25

66.3
56
25

67.24
46
10

63.05

704
50
66

63.52

837
50
94

66.84

505
125
66

66.30

559
125
94

66.47

543
10

67.25

464

67.02

489
10

67.49

464

68.41

388
10

68.70

369
125
94

68.20

321
125
66

69.68

321
125
66

10.78

111
50
94

71.33

056
50
66

71.89

Lt=West

61.5

63.5
87
25

64.8
72
25

65.4
65
25

66.3
56
25

67.24
46
10

63.05

704
50
66

63.52

837
50
94

66.84

505
125
66

66.30

559
125
94

66.47

543
10

67.25

464

67.02

489
10

67.49

464

68.41

388
10

68.70

369
125
94

68.20

321
125
66

69.68

321
125
66

10.78

111
50
94

71.33

056
50
66

71.89

Lt=West

61.5

63.5
87
25

64.8
72
25

65.4
65
25

66.3
56
25

67.24
46
10

63.05

704
50
66

63.52

837
50
94

66.84

505
125
66

66.30

559
125
94

66.47

543
10

67.25

464

67.02

489
10

67.49

464

68.41

388
10

68.70

369
125
94

68.20

321
125
66

69.68

321
125
66

10.78

111
50
94

71.33

056
50
66

71.89

Lt=West

61.5

63.5
87
25

64.8
72
25

65.4
65
25

66.3
56
25

67.24
46
10

63.05

704
50
66

63.52

837
50
94

66.84

505
125
66

66.30

559
125
94

66.47

543
10

67.25

464

67.02

489
10

67.49

464

68.41

388
10

68.70

369
125
94

68.20

321
125
66

69.68

321
125
66

10.78

111
50
94

71.33

056
50
66

71.89

Lt=West

61.5

63.5
87
25

64.8
72
25

65.4
65
25

66.3
56
25

67.24
46
10

63.05

704
50
66

63.52

837
50
94

66.84

505
125
66

66.30

559
125
94

66.47

543
10

67.25

464

67.02

489
10

67.49

464

68.41

388
10

68.70

369
125
94

68.20

321
125
66

69.68

LT=West

RT=East

3100 10' Lt end bldg

86	76	67	63	64
25	10	10	25	

2192 8' Lt & double garage con floor apron in bldg

558	553
102	80
Floor	Apnd

2176 10' Lt & single garage con floor in bldg

526	526
102	102
55.46	55.44

2157 7' Lt & 35' x 35' con porch to door in bldg

439	441	53.5	55.9	56.4	56.7
10	76	44	40	35	32
Floor		10	10	25	

2150
2125 10' Lt Begin Con block bldg SE cor

2124 8' Lt & 12' Power Pole # PA 1061

TP₂ 0⁸² 59⁸⁵ 12⁸⁶ 59⁸³

2100

57.7	58.3	59.85	59.4	60.2
142	136	133	125	117
25	10	10	10	25

1750

59.9	61.3	61.3	61.9	63.1
120	106	106	100	88
25	10	10	10	25

71.82

Lt=West

Rt=East

61

6730

41.0	41.3	41.3	41.9	42.8
7°	62	62	62	52
25	10	10	10	25

6700

41.3	41.9	41.8	42.3	43.4
62	62	62	57	46
25	10	10	10	25

5750

42.3	42.5	42.9	43.5	43.6
57	55	52	45	44
25	10	10	10	25

5725 9° Lt & 14" Power Pole #PA 1081

5700

43.8	44.4	44.4	45.0	45.3
42	36	36	30	27
25	10	10	10	25

4750

45.9	46.3	46.4	46.4	46.8
21	17	16	16	12
25	10	10	10	25

TP3 104 4728 1221 4694

4400

47.1	48.5	47.98	48.4	48.9
108	114	115	115	110
25	10	10	10	25

3774 9° Lt & 12" Power Pole #PA 1071

3750

50.2	50.9	50.8	50.9	51.2
97	90	92	90	87
25	10	10	10	25

5985

BM starting 0⁹⁵ 56.39 -001
 T. 19 10⁵³ 5734 127 46.71
 7+76⁰¹ Sly cb line Froude

edge AC paving end obs
 7+64⁰¹ 1° 20.25' Sly Froude
 c = 140¹

7+50 1° 09.52

7+25 0° 50.21

7+00 0° 30.90'

c = 250⁰
 6+95 8⁰ Lt & dead man.
 80 Lt & 12" power pole # PA 1091

6+75 0° 11.59'
 c = 14⁵⁷

6+60¹³ BC Lt.

Lt-West
 38.96 38.30 37.46 38.87 38.94 37.16 39.24 37.16 37.88 37.68
 90² 90⁶⁸ 85²² 91¹¹ 90⁴ 8¹² 8⁷⁴ 8⁸² 8¹⁰ 8³⁰ 7⁶
 25 50 12 12 10 8 10 12 12 40 46
 94 94 86 94 10 86 94 86 94 94 62

	37.82	39.46	39.76	39.85	40.12
	8 ¹⁶	8 ⁵²	8 ⁵²	8 ¹³	7 ⁸⁶
	92	92	92	92	92
	of	out	out	out	of
	end			of	of
	49.2	41.0	41.4	41.5	41.3
	78	70	66	65	62
	25	10	10	10	25
	40.4	40.7	40.9	41.2	41.8
	76	73	72	68	62
	25	10	10	10	25
	41.0	41.1	40.9	41.2	41.6
	70	62	71	68	64
	25	10	10	10	25
	40.5	40.6	40.9	41.4	41.8
	75	74	71	66	62
	25	10	10	10	25
	40.5	41.0	40.8	41.3	42.0
	75	70	72	67	61
	25	10	10	10	25

7 47 28

INDEXED

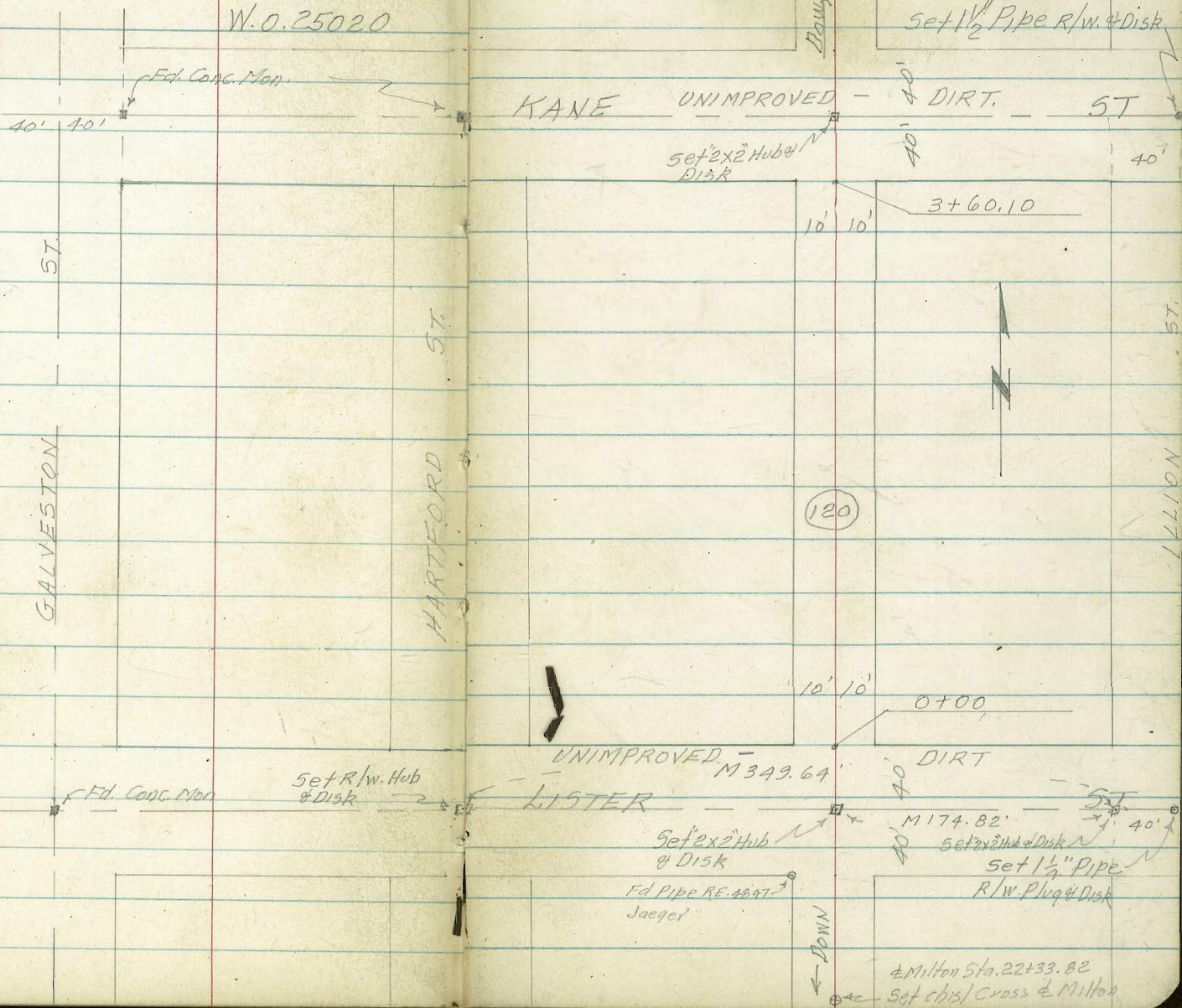
SEP 24 1953

CROSS SECTIONS ALLEY BLK 120 MORENA

W.O. 25020

Map 809 - Morena
Ref F.B. 1502
T.P. Sheet 1166

T.A. Stamps



Set 1 1/2" Pipe R/W. & Disk

KANE UNIMPROVED - DIRT. ST

Set 2x2 Hub & Disk

3+60.10

120

LISTER UNIMPROVED - DIRT

Set R/W. Hub & Disk

Set 2x2 Hub & Disk

Ed. Pipe RE. 4897 Jaeger

Set 2x2 Hub & Disk

Set 1 1/2" Pipe R/W. Plug & Disk

± Milton Sta. 22+33.82
Set chis/cross ± Milton

CROSS SEC'S ALLEY BLK. 120 MORENA

FOR EST. GRADE W.O. 25020

0+04 ^{Top Sec} Begin 5' Woven Wire fence 11.8' Lt.

0+02 Top Sec

0+02 Begin 5' Woven Wire fence

0+00 Begin 4' Wire mesh fence 10' Rt.

0-20

0-40 @ Lister St.

+5.84 162.46

TP

-3.89

156.62

B.M. +2.91

160.51

157.60

Stamp

Huffman

9-23-53

Nordahl

Sherry

Lt

+

Rt

NOTE: Rods Shown Thus (-0.0) are Plus and are added to H.I.

10.6	10.2	10.2	5.5	4.9	4.3	1.6	0.9	(-2.7)	165.2
43	27	12	10	0	4	6	10	40	175.2
153.5	154.6	157.5	158.0	157.6	158.2	160.9	161.4	(-2.7)	165.2
9.0	7.9	5.5	5.5	4.7	4.3	1.6	0.9	(-2.7)	165.2
43	30	10	10	0	4	6	10	40	165.2

9.0	7.9	5.5	4.7	4.3	1.6	0.9	(-2.7)	165.2
43	30	10	0	4	6	10	40	165.2
153.5	154.6	157.0	157.8	158.2	160.9	161.4	(-2.7)	165.2
9.0	7.9	5.5	4.7	4.3	1.6	0.9	(-2.7)	165.2
43	30	10	0	4	6	10	40	165.2

9.4	7.2	5.0	4.2	4.0	1.5	0.0	(-1.5)	164.0
42	25	10	0	3	10	20	30	164.0
153.1	155.3	157.5	158.3	158.5	161.0	162.5	(-1.5)	164.0
9.4	7.2	5.0	4.2	4.0	1.5	0.0	(-1.5)	164.0
42	25	10	0	3	10	20	30	164.0

12.3	7.9	5.3	4.48	3.1	1.4	0.4	Continues
50	25	10	0	10	25	32	up
150.2	154.5	157.2	157.98	159.4	161.1	162.1	
12.3	7.9	5.3	4.48	3.1	1.4	0.4	Continues
50	25	10	0	10	25	32	up

162.46

F.B. 2221 - X-sec's Milton St.

Spike P.P. S.W. Cor. 11/10th & Milton St's

9-23-53

CROSS SECS ALLEY BLK 120 - CONT'D.

Lt. & Rt.

TP. +0.48 151.96 -10.98 151.48

S.E. Cor Top Conc Walk

0+71 & 4' Conc Walk ~ 10' Lt.

149.65
12.81 11.05 11.00
155 123 101

Bot. Side Walk on Walk

0+69 End 6" Conc Wall To & - 13' Lt.

149.51
1295 1059 1106
13E 13E 121

Top Patio Top Wall Ground

0+55 Tel Pole N° 537242-H 10' Rt.

Begin Thicket of Shumac 6' Wide 6' Ht. To &

0+50 & 4' Eucalyptus Tree 12' Rt.

149.81 151.87 151.19 152.1 153.9 154.3 154.7
1265 1059 10.6 10.4 8.6 8.2 7.8 7.4 5.8 4.5 3.2 1.3 1.3
13E 128 120 11 10 9 0 3 5 10 15 20 27
Patio Top Wall

0+25 & 8" Eucalyptus Tree 12' Rt.

149.96 151.88 151.9 152.3 155.8 156.5 156.5 158.5 160.3 161.3 164.5
1259 1058 10.6 10.2 6.7 6.0 6.0 4.0 2.2 1.2 -2.0
13E 132 12.5 11 10 9 0 4 6 10 30
Patio Wall

0+05 Begin 6" Conc Ret Wall 2' High 13' Lt.

Patio Also

162.46

150.34 152.03 152.1 152.3 157.2
12.12 10.43 10.4 10.253
13E 13E 13E 11 8
Top Top Ground
Patio Wall
(conc) X 162.46

9-23-53

CROSS SECS. ALLEY BLK-120-CONTD.

Lt & Rt

1+30

1+15 & 4" Euc. Shrub 12' Rt

1+01 & 4" Eucalyptus Shrub 12' Rt

1+00 Lateral 5' Wire Mesh fence 12' Lt

0+95 End Shumac Thicket 6' Wide 6' Rt Top

0+91 & 8" Eucalyptus Tree 12' Rt

0+81 & 6" Eucalyptus Tree 12' Rt

0+75 & 6" Eucalyptus 12' Rt

End Woven wire fence 5' High 11 9' Lt.
0+73 End PATIO 13' Lt.

143.0	146.3	148.7	149.1	149.3	151.0	152.9	156.5
9.0	5.7	3.3	2.9	2.7	1.0	(0.9)	(4.5)
30	13	10	0	3	35	10	25
				Toe	Top		

150.1	150.3	151.3	151.5	157.8	153.1	154.7	156.5
1.9	1.7	0.7	0.5	0.2	(-1.1)	(-2.7)	(-4.5)
14	12	10	0	2	3	10	20

149.54
2.42
130
Top patio

151.96

151.96

CROSS SEC'S ALLEY BLK 120-CONTD.

2+01 \pm Tel Pole N^o 484138-H 9⁵ RT

TBM. 71.35 147.46 -5.85 146.11

2+00

1+75

1+50

1+30 \pm 4" Euc. Shrub 12' RT.

1+25

151.96

9-23-53

Lt. \pm RT

Set P.K. W. Side Tel Pole N^o 484138-H Sta 2+01

136.9	141.5	144.3	144.4	147.6	145.5	145.3	144.9
15.1	10.5	7.7	7.6	7.4	6.5	6.1	2.1
30	10	4	0	7	9	10	30
	Toe			Toe	Top		

137.1	142.1	144.5	144.5	144.6	146.1	146.3	150.9
14.9	9.9	7.5	7.5	7.4	5.9	5.7	1.1
30	10	4	0	6	8	10	30
	Toe			Toe			

138.0	142.5	144.7	145.1	145.5	147.5	152.0
14.0	9.5	7.3	6.9	6.5	4.4	0.0
30	10	5	0	5	10	30
	Toe	Top		Toe		

139.8	143.5	144.8	146.6	146.9	147.1	148.7	150.0	154.5
12.2	8.5	7.2	5.4	5.1	4.9	3.3	2.0	-2.5
30	13	10	6	0	4	5	10	30
	Toe				Toe			

151.96

9-23-53

CROSS SEC'S ALLEY BLK 120 - CONTD.

Lt C Rt.

Deadman 31° Rt
3+76 C Tel Pole N° 484137-H 10' Rt

3+60 10 5/4 Prop Kane St

3+50 END 4' Woven Wire fence 10° Rt.

3+00

2+50

147.46

7.1392

149.1

12.8	8.4	6.9	4.5	(-0.3)
30	10	0	10	30

140.4

12.9	8.1	7.6	6.3	6.3	4.4	2.0	(-0.2)
30	10	5	2	0	10	16	30

135.6

11.9	7.9	6.4	6.7	5.5	3.2	(-0.2)
30	10	5	3	0	10	30

135.9

11.6	6.8	5.6	6.0	4.8	2.9	(-1.0)
30	10	5	3	0	10	30

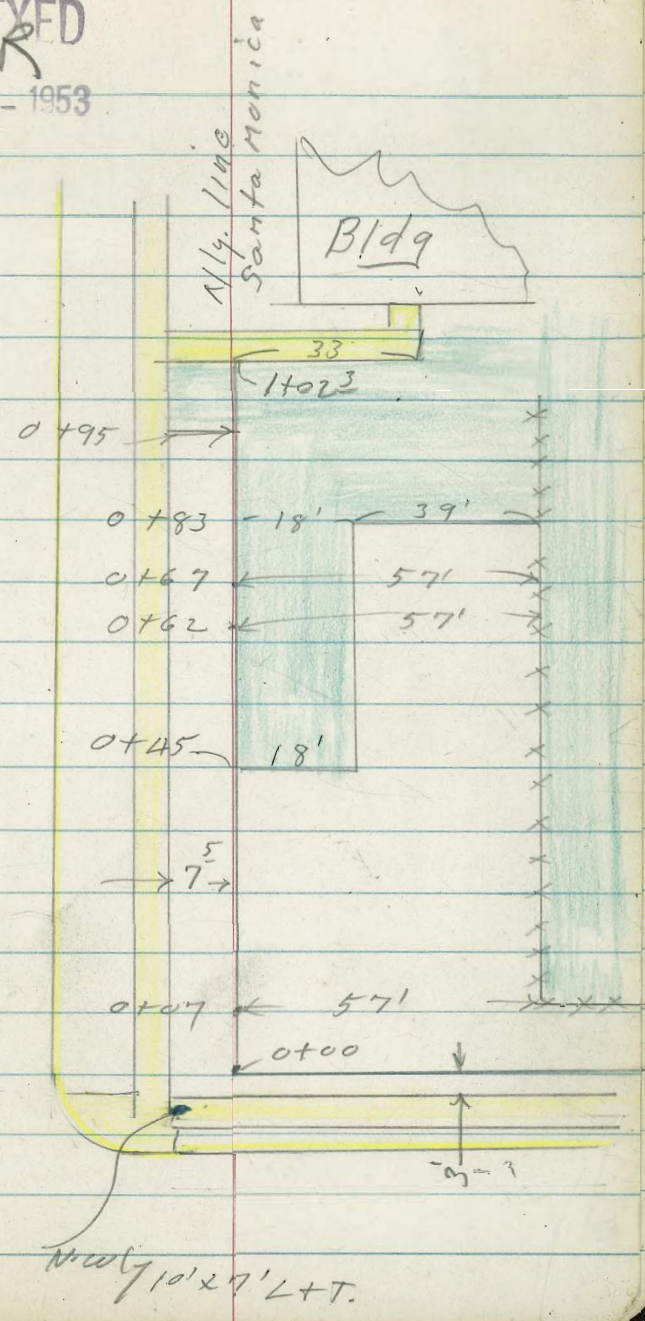
147.46

O. B. Community Center
X-sec. for Prop. Shuffle
Board Courts

C.H.S. 11-2-53
Begg W.O. 20723
Altman
Schelin

INDEXED
MER
NOV 4 - 1953

yellow denotes concrete
Green " " Black top.
B.L. = Nly line Santa Monica
0+00 = Wly line Ebers.
E.W. denotes edge of walk
E.P. = edge of ~~for~~ black top.



Ocean Beach
Community Center

B.L.

70

0+45- } = start black top

also = start black top
link fence.

0+07 - 57' Mt. = start chain

0+00

0-03⁵ = wly edge Ebers
walk on

T.P. 3.96 51.01 3.22 47.05

7.26 50.27 - 43.01

46.21	46.23	47.27
4.8	4.78	7.79
56	57	67
	E.P.	

45.01	45.41	46.18	46.01
6.00	5.60	4.83	5.0
75	E.P.	18	19
E.W.		E.P.	End

46.76	46.91	46.41	46.41	46.43	46.51
4.25	4.1	4.6	4.6	4.58	4.5
75		30	36	57	67
E.W.				E.P.	

47.10	47.21	47.01	46.71
3.91	3.8	4.0	4.3
75		30	57
E.W.			

47.13	47.20	46.95	46.64
3.88	3.81	4.06	4.37
75		30	57

51.01

S.W.B.P. Ebers & Newport

1700

42.41	42.55	42.91	43.08	43.58
8.60	8.46	8.10	7.43	7.43
75		18	57	65
E.P. & E.W.				

0+95 = start black top to left.

42.64	42.92.
8.37	8.09
75	
E.P. & E.W.	

0+88

42.98	43.21	45.64.	45.41	43.81	43.71.
8.03	7.70	5.37	5.60	7.20	7.30
75		18	57	65	75
E.W.					

0+83

43.16	43.58	45.87	45.97.	43.90
7.85	7.43	5.14	5.08	7.11
75	E.P.	18	57	65
E.W.				

0+67 57' RT = sly edge black top

45.98	47.09.	43.90
5.03	6.92	7.11
57	65	75
E.P.	on black top	

top.

0+62 57' RT = sly edge black

46.15	46.17	46.05
4.86	4.87	4.96
57	65	75
E.P.	on black top	

51.01

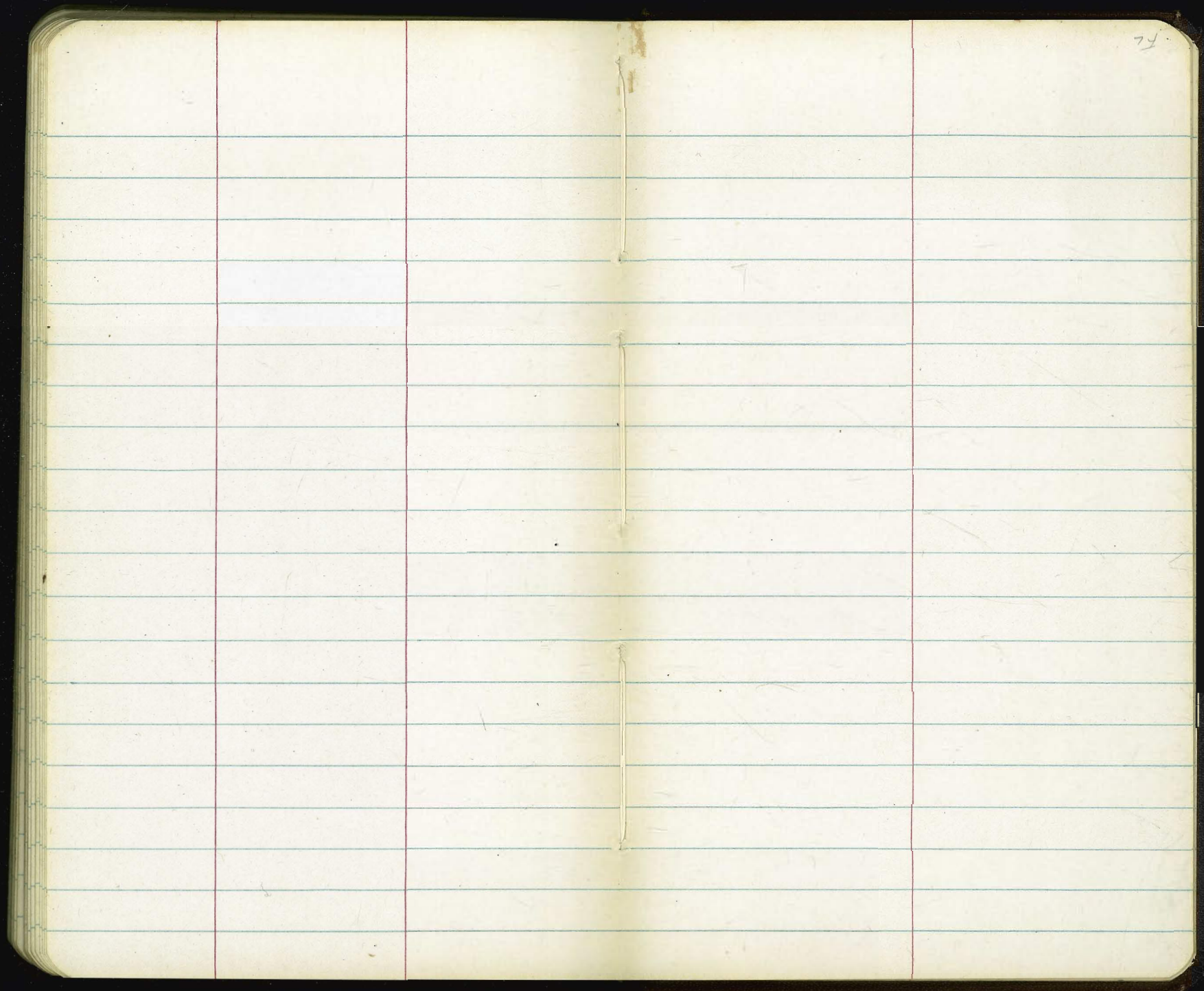
step to Bldg.
 1+06³ 30' AX. = 6' wide conc.

57' AX. = end fence.
 1+02³ = Ely edge 4 walk

42.78	42.49.	42.90	42.26.	42.57.
8.73	8.52	8.11	7.75	7.44
75	E.W	13	33	75
E.W.	+ pause	walk	walk	pause
+ pause		+ pause	+ pause	

51.01

42.80
7.21
 30
 stop



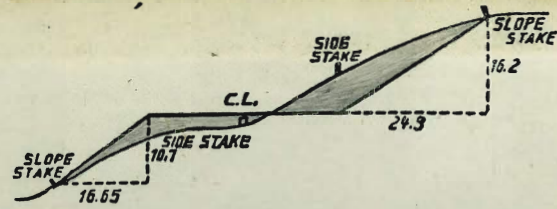
72

6.002
 6.00
 93.8

301.50
 150.75

345.09 N.Y.
 543.56

Elev.



DISTANCES FROM SIDE STAKES FOR CROSS-SECTIONING.
 SLOPE 1 1/2 TO 1. ROADWAY OF ANY WIDTH.

	0	.1	.2	.3	.4	.5	.6	.7	.8	.9	
0	0.00	0.15	0.30	0.45	0.60	0.75	0.90	1.05	1.20	1.35	0
1	1.50	1.65	1.80	1.95	2.10	2.25	2.40	2.55	2.70	2.85	1
2	3.00	3.15	3.30	3.45	3.60	3.75	3.90	4.05	4.20	4.35	2
3	4.50	4.65	4.80	4.95	5.10	5.25	5.40	5.55	5.70	5.85	3
4	6.00	6.15	6.30	6.45	6.60	6.75	6.90	7.05	7.20	7.35	4
5	7.50	7.65	7.80	7.95	8.10	8.25	8.40	8.55	8.70	8.85	5
6	9.00	9.15	9.30	9.45	9.60	9.75	9.90	10.05	10.20	10.35	6
7	10.50	10.65	10.80	10.95	11.10	11.25	11.40	11.55	11.70	11.85	7
8	12.00	12.15	12.30	12.45	12.60	12.75	12.90	13.05	13.20	13.35	8
9	13.50	13.65	13.80	13.95	14.10	14.25	14.40	14.55	14.70	14.85	9
10	15.00	15.15	15.30	15.45	15.60	15.75	15.90	16.05	16.20	16.35	10
11	16.50	16.65	16.80	16.95	17.10	17.25	17.40	17.55	17.70	17.85	11
12	18.00	18.15	18.30	18.45	18.60	18.75	18.90	19.05	19.20	19.35	12
13	19.50	19.65	19.80	19.95	20.10	20.25	20.40	20.55	20.70	20.85	13
14	21.00	21.15	21.30	21.45	21.60	21.75	21.90	22.05	22.20	22.35	14
15	22.50	22.65	22.80	22.95	23.10	23.25	23.40	23.55	23.70	23.85	15
16	24.00	24.15	24.30	24.45	24.60	24.75	24.90	25.05	25.20	25.35	16
17	25.50	25.65	25.80	25.95	26.10	26.25	26.40	26.55	26.70	26.85	17
18	27.00	27.15	27.30	27.45	27.60	27.75	27.90	28.05	28.20	28.35	18
19	28.50	28.65	28.80	28.95	29.10	29.25	29.40	29.55	29.70	29.85	19
20	30.00	30.15	30.30	30.45	30.60	30.75	30.90	31.05	31.20	31.35	20
21	31.50	31.65	31.80	31.95	32.10	32.25	32.40	32.55	32.70	32.85	21
22	33.00	33.15	33.30	33.45	33.60	33.75	33.90	34.05	34.20	34.35	22
23	34.50	34.65	34.80	34.95	35.10	35.25	35.40	35.55	35.70	35.85	23
24	36.00	36.15	36.30	36.45	36.60	36.75	36.90	37.05	37.20	37.35	24
25	37.50	37.65	37.80	37.95	38.10	38.25	38.40	38.55	38.70	38.85	25
26	39.00	39.15	39.30	39.45	39.60	39.75	39.90	40.05	40.20	40.35	26
27	40.50	40.65	40.80	40.95	41.10	41.25	41.40	41.55	41.70	41.85	27
28	42.00	42.15	42.30	42.45	42.60	42.75	42.90	43.05	43.20	43.35	28
29	43.50	43.65	43.80	43.95	44.10	44.25	44.40	44.55	44.70	44.85	29
30	45.00	45.15	45.30	45.45	45.60	45.75	45.90	46.05	46.20	46.35	30
31	46.50	46.65	46.80	46.95	47.10	47.25	47.40	47.55	47.70	47.85	31
32	48.00	48.15	48.30	48.45	48.60	48.75	48.90	49.05	49.20	49.35	32
33	49.50	49.65	49.80	49.95	50.10	50.25	50.40	50.55	50.70	50.85	33
34	51.00	51.15	51.30	51.45	51.60	51.75	51.90	52.05	52.20	52.35	34
35	52.50	52.65	52.80	52.95	53.10	53.25	53.40	53.55	53.70	53.85	35
36	54.00	54.15	54.30	54.45	54.60	54.75	54.90	55.05	55.20	55.35	36
37	55.50	55.65	55.80	55.95	56.10	56.25	56.40	56.55	56.70	56.85	37
38	57.00	57.15	57.30	57.45	57.60	57.75	57.90	58.05	58.20	58.35	38
39	58.50	58.65	58.80	58.95	59.10	59.25	59.40	59.55	59.70	59.85	39
40	60.00	60.15	60.30	60.45	60.60	60.75	60.90	61.05	61.20	61.35	40
41	61.50	61.65	61.80	61.95	62.10	62.25	62.40	62.55	62.70	62.85	41
42	63.00	63.15	63.30	63.45	63.60	63.75	63.90	64.05	64.20	64.35	42
43	64.50	64.65	64.80	64.95	65.10	65.25	65.40	65.55	65.70	65.85	43
44	66.00	66.15	66.30	66.45	66.60	66.75	66.90	67.05	67.20	67.35	44
45	67.50	67.65	67.80	67.95	68.10	68.25	68.40	68.55	68.70	68.85	45
46	69.00	69.15	69.30	69.45	69.60	69.75	69.90	70.05	70.20	70.35	46
47	70.50	70.65	70.80	70.95	71.10	71.25	71.40	71.55	71.70	71.85	47
48	72.00	72.15	72.30	72.45	72.60	72.75	72.90	73.05	73.20	73.35	48
49	73.50	73.65	73.80	73.95	74.10	74.25	74.40	74.55	74.70	74.85	49
50	75.00	75.15	75.30	75.45	75.60	75.75	75.90	76.05	76.20	76.35	50

THE NATIONAL BLANK BOOK COMPANY
 HOLYOKE MASSACHUSETTS
 NEW YORK CHICAGO BOSTON SAN FRANCISCO