

DISTANCES FROM SIDE STAKES FOR CROSS-SECTIONING  
SLOPE 1 TO 1. ROADWAY OF ANY WIDTH

	0	.1	.2	.3	.4	.5	.6	.7	.8	.9	
0	0.00	0.10	0.20	0.30	0.40	0.50	0.60	0.70	0.80	0.90	0
1	1.00	1.10	1.20	1.30	1.40	1.50	1.60	1.70	1.80	1.90	1
2	2.00	2.10	2.20	2.30	2.40	2.50	2.60	2.70	2.80	2.90	2
3	3.00	3.10	3.20	3.30	3.40	3.50	3.60	3.70	3.80	3.90	3
4	4.00	4.10	4.20	4.30	4.40	4.50	4.60	4.70	4.80	4.90	4
5	5.00	5.10	5.20	5.30	5.40	5.50	5.60	5.70	5.80	5.90	5
6	6.00	6.10	6.20	6.30	6.40	6.50	6.60	6.70	6.80	6.90	6
7	7.00	7.10	7.20	7.30	7.40	7.50	7.60	7.70	7.80	7.90	7
8	8.00	8.10	8.20	8.30	8.40	8.50	8.60	8.70	8.80	8.90	8
9	9.00	9.10	9.20	9.30	9.40	9.50	9.60	9.70	9.80	9.90	9
10	10.00	10.10	10.20	10.30	10.40	10.50	10.60	10.70	10.80	10.90	10
11	11.00	11.10	11.20	11.30	11.40	11.50	11.60	11.70	11.80	11.90	11
12	12.00	12.10	12.20	12.30	12.40	12.50	12.60	12.70	12.80	12.90	12
13	13.00	13.10	13.20	13.30	13.40	13.50	13.60	13.70	13.80	13.90	13
14	14.00	14.10	14.20	14.30	14.40	14.50	14.60	14.70	14.80	14.90	14
15	15.00	15.10	15.20	15.30	15.40	15.50	15.60	15.70	15.80	15.90	15
16	16.00	16.10	16.20	16.30	16.40	16.50	16.60	16.70	16.80	16.90	16
17	17.00	17.10	17.20	17.30	17.40	17.50	17.60	17.70	17.80	17.90	17
18	18.00	18.10	18.20	18.30	18.40	18.50	18.60	18.70	18.80	18.90	18
19	19.00	19.10	19.20	19.30	19.40	19.50	19.60	19.70	19.80	19.90	19
20	20.00	20.10	20.20	20.30	20.40	20.50	20.60	20.70	20.80	20.90	20
21	21.00	21.10	21.20	21.30	21.40	21.50	21.60	21.70	21.80	21.90	21
22	22.00	22.10	22.20	22.30	22.40	22.50	22.60	22.70	22.80	22.90	22
23	23.00	23.10	23.20	23.30	23.40	23.50	23.60	23.70	23.80	23.90	23
24	24.00	24.10	24.20	24.30	24.40	24.50	24.60	24.70	24.80	24.90	24
25	25.00	25.10	25.20	25.30	25.40	25.50	25.60	25.70	25.80	25.90	25
26	26.00	26.10	26.20	26.30	26.40	26.50	26.60	26.70	26.80	26.90	26
27	27.00	27.10	27.20	27.30	27.40	27.50	27.60	27.70	27.80	27.90	27
28	28.00	28.10	28.20	28.30	28.40	28.50	28.60	28.70	28.80	28.90	28
29	29.00	29.10	29.20	29.30	29.40	29.50	29.60	29.70	29.80	29.90	29
30	30.00	30.10	30.20	30.30	30.40	30.50	30.60	30.70	30.80	30.90	30
31	31.00	31.10	31.20	31.30	31.40	31.50	31.60	31.70	31.80	31.90	31
32	32.00	32.10	32.20	32.30	32.40	32.50	32.60	32.70	32.80	32.90	32
33	33.00	33.10	33.20	33.30	33.40	33.50	33.60	33.70	33.80	33.90	33
34	34.00	34.10	34.20	34.30	34.40	34.50	34.60	34.70	34.80	34.90	34
35	35.00	35.10	35.20	35.30	35.40	35.50	35.60	35.70	35.80	35.90	35
36	36.00	36.10	36.20	36.30	36.40	36.50	36.60	36.70	36.80	36.90	36
37	37.00	37.10	37.20	37.30	37.40	37.50	37.60	37.70	37.80	37.90	37
38	38.00	38.10	38.20	38.30	38.40	38.50	38.60	38.70	38.80	38.90	38
39	39.00	39.10	39.20	39.30	39.40	39.50	39.60	39.70	39.80	39.90	39
40	40.00	40.10	40.20	40.30	40.40	40.50	40.60	40.70	40.80	40.90	40
41	41.00	41.10	41.20	41.30	41.40	41.50	41.60	41.70	41.80	41.90	41
42	42.00	42.10	42.20	42.30	42.40	42.50	42.60	42.70	42.80	42.90	42
43	43.00	43.10	43.20	43.30	43.40	43.50	43.60	43.70	43.80	43.90	43
44	44.00	44.10	44.20	44.30	44.40	44.50	44.60	44.70	44.80	44.90	44
45	45.00	45.10	45.20	45.30	45.40	45.50	45.60	45.70	45.80	45.90	45
46	46.00	46.10	46.20	46.30	46.40	46.50	46.60	46.70	46.80	46.90	46
47	47.00	47.10	47.20	47.30	47.40	47.50	47.60	47.70	47.80	47.90	47
48	48.00	48.10	48.20	48.30	48.40	48.50	48.60	48.70	48.80	48.90	48
49	49.00	49.10	49.20	49.30	49.40	49.50	49.60	49.70	49.80	49.90	49
50	50.00	50.10	50.20	50.30	50.40	50.50	50.60	50.70	50.80	50.90	50

Distance of slope stake from side or shoulder stake for any width roadway, slope 1 to 1. If ground is nearly level, the cut or fill at side stake is located by the double entry method in left column and top row. The number in body of table in same row and column gives distance from side stake to slope stake. If ground is not level estimate the difference in elevation between the side stake and slope stake, lower target by this amount if cut, elevate if fill. Add this amount to cut or fill and find distance in table. Set up rod at this point, and line of sight should cut target. If it does not make the slight adjustment necessary.

TABLE XIII—CORRECTIONS FOR TANGENTS AND EXTERNALS

These corrections are to be added to the approximate values, found by dividing the tangent, or external, for a 1° curve (Table VIII) by the degree of curve, in order to obtain the true tangents, or externals. Intermediate values may be obtained by interpolation.

FOR TANGENTS ADD

Central Angle	DEGREE OF CURVE													
	5°	10°	15°	20°	25°	30°	35°	40°	45°	50°	55°	60°	65°	70°
10°	.03	.06	.09	.13	.16	.19	.22	.25	.28	.31	.34	.38	.42	.46
15°	.04	.10	.14	.19	.24	.29	.34	.39	.45	.51	.53	.58	.63	.68
20°	.06	.13	.19	.26	.32	.39	.45	.51	.58	.65	.72	.79	.84	.90
25°	.08	.16	.24	.33	.40	.49	.58	.67	.75	.83	.90	.99	1.06	1.14
30°	.10	.19	.29	.39	.49	.59	.69	.79	.89	.99	1.09	1.20	1.29	1.39
35°	.11	.22	.34	.47	.58	.69	.79	.81	.92	1.04	1.29	1.42	1.54	1.66
40°	.13	.26	.40	.53	.67	.80	.93	1.06	1.20	1.34	1.49	1.64	1.79	1.94
45°	.15	.30	.44	.60	.76	.91	1.06	1.21	1.37	1.52	1.70	1.87	2.04	2.21
50°	.17	.34	.51	.68	.85	1.02	1.19	1.36	1.54	1.72	1.91	2.10	2.29	2.48
55°	.19	.38	.57	.76	.95	1.14	1.32	1.52	1.72	1.92	2.14	2.35	2.56	2.77
60°	.21	.42	.63	.84	1.05	1.27	1.49	1.71	1.94	2.17	2.38	2.60	2.83	3.07
65°	.23	.46	.69	.93	1.16	1.40	1.64	1.88	2.13	2.38	2.63	2.88	3.13	3.39
70°	.25	.51	.76	1.02	1.28	1.54	1.80	2.06	2.33	2.60	2.88	3.16	3.44	3.72
75°	.27	.56	.83	1.12	1.40	1.69	1.98	2.27	2.57	2.87	3.16	3.47	3.78	4.09
80°	.30	.61	.91	1.22	1.53	1.84	2.15	2.46	2.78	3.10	3.44	3.78	4.12	4.46
85°	.33	.66	1.00	1.33	1.68	2.02	2.36	2.70	3.05	3.40	3.77	4.14	4.55	4.89
90°	.36	.72	1.09	1.45	1.83	2.20	2.57	2.94	3.32	3.70	4.10	4.50	4.91	5.32
95°	.39	.79	1.19	1.55	2.00	2.40	2.80	3.20	3.61	4.02	4.40	4.98	5.38	5.83
100°	.43	.86	1.30	1.74	2.18	2.62	3.06	3.50	3.95	4.40	4.88	5.37	5.85	6.34
110°	.51	1.03	1.56	2.08	2.61	3.14	3.67	4.21	4.76	5.31	5.86	6.43	7.01	7.60
120°	.62	1.25	1.93	2.52	3.16	3.81	4.45	5.11	5.77	6.44	7.12	7.80	8.50	9.22

FOR EXTERNALS ADD

Central Angle	DEGREE OF CURVE													
	5°	10°	15°	20°	25°	30°	35°	40°	45°	50°	55°	60°	65°	70°
10°	.001	.003	.004	.006	.007	.008	.009	.011	.012	.014	.015	.017	.018	.020
15°	.003	.007	.010	.014	.018	.023	.027	.029	.032	.035	.039	.043	.047	.051
20°	.006	.011	.017	.022	.028	.034	.038	.045	.051	.057	.063	.070	.076	.083
25°	.009	.018	.027	.036	.046	.056	.065	.074	.083	.093	.106	.120	.127	.135
30°	.013	.025	.038	.051	.065	.078	.090	.103	.116	.129	.149	.170	.179	.188
35°	.018	.035	.054	.072	.086	.109	.131	.153	.175	.197	.213	.230	.247	.264
40°	.023	.046	.070	.093	.117	.141	.172	.203	.234	.265	.277	.290	.315	.341
45°	.030	.060	.093	.119	.153	.184	.216	.254	.289	.325	.351	.378	.411	.445
50°	.037	.075	.116	.151	.189	.227	.266	.305	.345	.384	.425	.467	.508	.550
55°	.046	.093	.142	.188	.236	.283	.332	.381	.420	.479	.530	.582	.641	.700
60°	.056	.112	.168	.225	.283	.340	.398	.457	.516	.575	.636	.697	.774	.851
65°	.067	.135	.204	.273	.343	.412	.483	.554	.625	.697	.771	.845	.922	1.01
70°	.080	.159	.240	.321	.403	.485	.568	.652	.735	.819	.906	.994	1.08	1.17
75°	.095	.182	.286	.383	.480	.578	.678	.777	.877	.977	1.07	1.18	1.29	1.39
80°	.110	.220	.332	.445	.558	.671	.787	.903	1.02	1.13	1.25	1.38	1.50	1.62
85°	.128	.259	.391	.524	.657	.790	.926	1.06	1.20	1.34	1.47	1.62	1.76	1.91
90°	.149	.299	.450	.603	.756	.910	1.07	1.22	1.38	1.54	1.70	1.87	2.03	2.20
95°	.174	.350	.522	.706	.885	1.06	1.25	1.43	1.62	1.80	1.99	2.18	2.38	2.58
100°	.200	.401	.604	.809	1.01	1.22	1.43	1.64	1.85	2.06	2.28	2.50	2.73	2.96
110°	.268	.536	.806	1.08	1.35	1.63	1.91	2.20	2.48	2.76	3.05	3.35	3.66	3.96
120°	.360	.721	1.08	1.45	1.82	2.19	2.57	2.95	3.33	3.72	4.11	4.50	4.91	5.32

INDEX

Page

1-3 = Levels on Stores in Encanto

A-8 - Alley Congress Hgts Add.

9-13 X-5 ECL 15TH COMMERCIAL & VIC. NLY 5-26-53

53 - Alley BIK 29 Loma Alta #2

Imperial Avenue

W.O. 25010  
1-14-53

Levels on Store fronts + Pavc

10' out from  $\pm$  and lower gutter.

$\pm$  is  $\pm$  used in Book 2148-P.15

Sta. shown are those used on Profile sheet. No. 3225 - 9+10.06 = S.W. Prop. Cor. of 65<sup>th</sup>

1+90 =  $\pm$  Barber + Dress shop

1+71 =  $\pm$  Shoe Shop

1+47 =  $\pm$  Restaurant

1+31 =  $\pm$  Market

0+94 =  $\pm$  Cleaners

0+70 =  $\pm$  Drug

0+46 =  $\pm$  Hardware

B.M. = S.W. 7<sup>th</sup> Disk - 63<sup>rd</sup> + Imperial 210.22

Lt.

$\pm$

Rt.

INDEXED  
PAID  
JAN 15 1953

1456 1430 15.58  
10 28.9 = floor.

13.88 14.92 16.62  
10 26.9 28.9  
Bot. of floor.  
step.

13.55 13.34 14.36  
11 28.8 = floor.

12.84 14.11  
11 28.7 = floor.

11.88 12.99 15.09  
10 27.7 21.1  
Bot. of floor  
steps

11.30 12.46  
10 28.5 = floor.  
gut. in Door

10.77 11.64 13.43  
10 25.8 29.6

low in gut. Bottom of steps. floor  
= on walk

Actual Elev. Shown -

		Lt.	±	Rt.	2
5+33 = ±	Variety Store		20.58	20.55 6	22.90 32.9 = floor
4+91 = ±	Liq. Store		20.16	20.12 7	22.53 31.4 = floor
4+49 = 19" Rt. = ±	30" Euc.			19.59 8	21.93 30.3 = floor
4+27 = ±	Mens. Shop				
4+04 = 19" Rt. = ±	24" Euc. tree				
4+02 = ±	Real Estate		19.37	19.34	21.28 28.9 = floor
3+78 = ±	App'l Shop			18.88 8	21.23 31 = floor
3+52 =	end steps.				
3+23 = 25.1 Rt. =	Beq. bot. of Conc. Steps		18.40	18.24 10	19.74 25.3 Bot. of step.
				18.91	22.63 29.2 = floor
3+15 = ±	Barber Shop.			25.1 = walk Bot. of steps	22.45 29 = floor
2+76 =	Found. of New Bldg.		17.42 10	20.30 30 floor	
2+42	± of Beer Parlor		16.60	16.38 10	18.77 31.1 = Top found.
				15.56 10	17.00 28.8 floor.

Actual Elevations shown

⊕

Rt.

3

⊕ Shown in B. 2148

9 + 10.06 = opp. Prop. Cor. = opp. 40 + 41.4 on

20 93 20.87 21.39  
10 29.8 = Cor. of Bldg.

8 + 68 = ⊕ Beauty Shop.

21.04 21.80  
10 29.9 = floor.

8 + 30 = ⊕ Plumbing Shop.

21.30 21.26 22.03  
10 29.9 = floor.

7 + 91 = ⊕ Steps

21.57 21.57 23.50  
7 29.5 = Bot. of Steps

7 + 39 = ⊕ Steps to House

22.05 24.15  
7 30.1 = Bot. of Steps

7 + 38 - 19.5 Rt. = ⊕ 10' Acacia

6 + 91 = ⊕ Conc. Steps

22.24 22.29 24.04  
6 28.2 = Bot. of Steps

6 + 52 = ⊕ Elect. Shop

22.06 23.74  
7 29.7 = floor

6 + 11 = ⊕ Bakery + Cafe

21.54 21.52 23.53  
7 32 = floor

5 + 79 = ⊕ Post Office

21.10 23.53  
7 33 floor

Congress Heights Add.  
 Cross section Alley East of Jewell  
 and south of Monmouth Drive.

C.H.S.  
 Begg  
 Altman  
 Schelin

Apr. 2, 1953

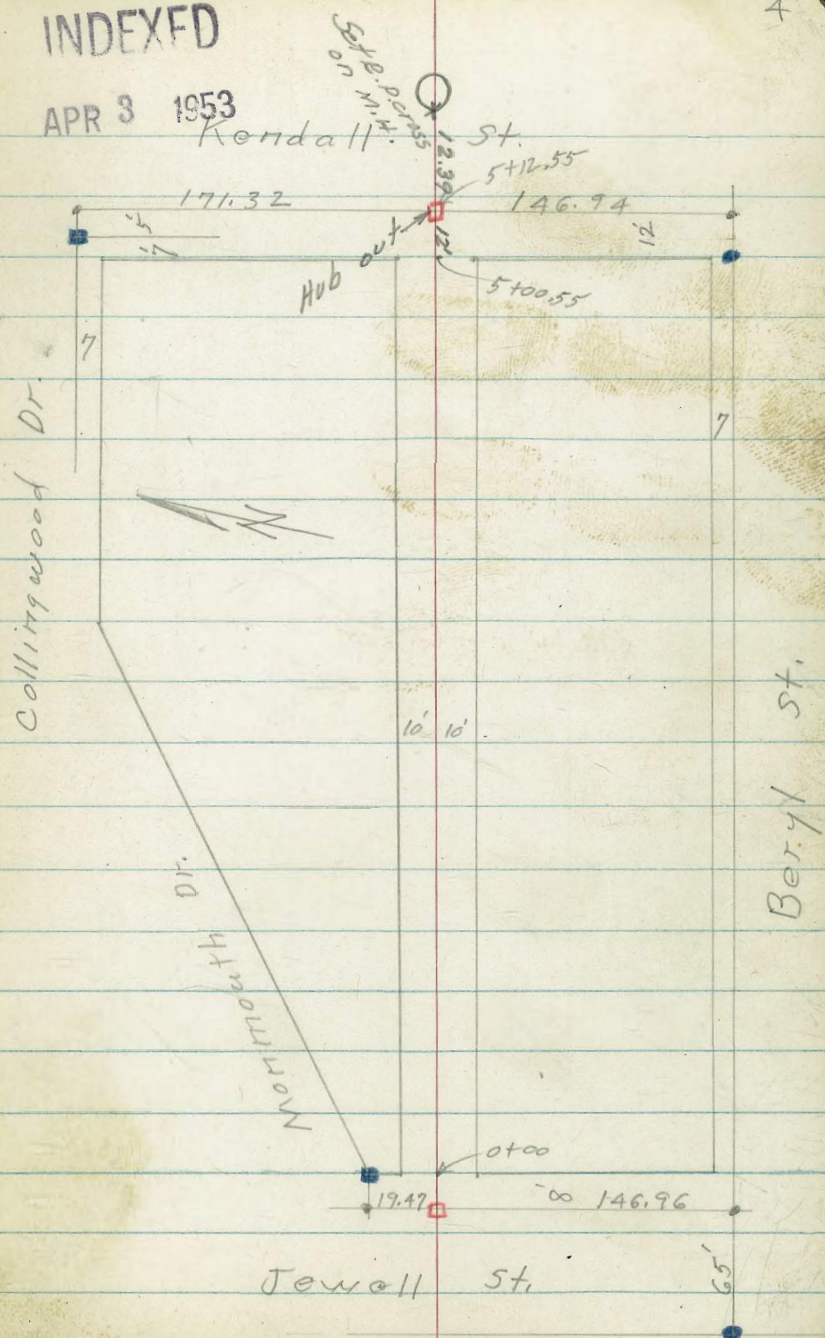
Map 1627

T.P. Book #20 - Page 57

- denotes Ed. conc. Mon.
- " " city disk
- " " set 1/2 hub + disk
- " " Temp. point set.
- t.w. " top of wall
- B.W. " base of wall

INDEXED

APR 3 1953



Alley Congress Hgts

T.P. 5.22 182.88 4.19 177.66

0+50

178.2  
3.7  
10

177.4  
4.5  
10

177.0  
4.9  
10

175.1  
6.8  
15

0+16 - 10<sup>5</sup> East Front.  
RT = N.E. Cor. Gar.

176.75  
5.10  
21  
± door.

0+00 - 10<sup>4</sup> Lt. = start a high Conci wall.

177.4  
4.5  
102  
B.W.

178.2  
3.7  
10

177.2  
4.7  
10

176.7  
5.2  
10

0+01 - 10<sup>3</sup> RT = N.W. Cor. stucco Gar.

176.7  
5.2  
103  
end.

0-08 T.B.M. on hub 5.20 166.27

181.9  
0.0  
40

180.5  
1.4  
35

177.7  
4.2  
10

176.7  
5.2  
10

175.8  
6.1  
10

171.6  
10.3  
60

0-40 = ± Jewell

10.38 181.85 0.05 171.47

181.85

11.37 171.52 - 160.15

N.E.B.P. Beryl + Jewell



1+36 10<sup>4</sup> Lt. = end conc. apron

178.84  
4.04  
15  
Car.

178.63  
4.25  
10<sup>4</sup>

1+29 9<sup>8</sup> Rt. = start Conc. wall  
5' High.

177.06  
5.3  
9<sup>8</sup>

177.6  
6.2  
9<sup>8</sup>  
B.W.

1+26 - 16' Rt. = 4' Conc. walk

5.82  
16

5.80  
26

1+24 16' Rt. = end conc. apron

177.02  
5.86  
16

177.10  
5.78  
22  
Car Floor

1+21 10<sup>2</sup> Lt. = start conc. apron  
to double Car.

178.85  
4.03  
15  
Car. floor

178.52  
4.36  
10<sup>2</sup>

1+12 - 10' Lt. = end of 4' high wall

177.4  
5.5  
10  
B.W.

178.8  
4.2  
10  
End

1+04 16<sup>4</sup> Rt. = start conc. Apron to  
double Car.

177.1  
5.88  
16<sup>4</sup>

177.10  
5.78  
22  
Car. Floor

1+00

178.5  
4.14  
10

177.9  
5.10

177.8  
5.1  
10

176.8  
6.1  
20

182.88

Nail in pole # PA. 1760

T.P. 7.01 183.87 6.02 176.86

3+17 1A<sup>7</sup> to west front bar.  
Lt. = s.w. cor. conc. apron

3+01 9<sup>9</sup> Rt. = start 12" wide  
conc. wall

3+00

2+50

2+00

1+50 9<sup>8</sup> Rt. = end conc. wall

178.08  
4.80 6.16  
30.5 14.7  
N.W. Cor. S.W. Cor.

174.6  
8.3 10.4 7.5  
9.9 9.9 9.9  
T.W. B.W.

176.0 175.4  
6.9 7.5 7.5 8.5 10.7  
20 10 10 20

176.0 175.4  
5.6 6.9 7.5 7.7 8.1 9.0  
20 10 7 10 20

178.5 177.5  
4.4 5.4 6.1 6.1 6.7 7.3  
20 10 7 10 20

179.3 178.9  
3.6 4.0 5.0 5.5 6.2 6.2  
20 10 9.8 9.8 20  
B.W.

182.88

8.23 170.37 (170.39)

T.P. 1.26 178.60 12.55 177.34

5+40<sup>55</sup> = ~~4~~ Kendall

5+00<sup>55</sup> = wly line Kendall

4+50

T.P. 8.75 189.89 2.73 181.14

4+00

3+50 9<sup>9</sup> RK = end Conc. wall

3+25 Lt. = S.W. Cor. Cor

N.E.B.P. Beryl + Kendall

0.0 189.9  
50 10 185.4  
5.3 184.6  
6.6 183.3  
10.3 179.6  
10 60

1.9 188.0  
20 10 185.4  
5.2 184.7  
5.3 184.6  
6.3 183.6  
20 20

4.1 185.8  
20 10 183.8  
7.0 182.9  
6.5 183.4  
6.2 183.7  
7.3 182.6  
20 20

189.89

2.4 181.5  
20 10 180.3  
4.1 179.8  
4.0 179.9  
4.6 179.3  
10 20

5.6 178.3  
20 10 176.6  
7.8 176.1  
8.1 175.8  
10.7 173.2  
8.2 175.7  
10.5 173.4  
8.1 175.8  
12 12  
Grid Grid  
Grid B.W. T.W. Grid Grid

178.32  
5.55 177.2  
20 10 176.0  
8.7 175.2  
9.4 174.5  
8.9 175.0  
10.3 173.6  
12 12  
Grid Grid  
Grid T.W. Grid  
west East  
of wall

183.87

CROSS SECTIONS OF 15TH ST. FROM  
 NLY. LINE ALLEY ON 15TH SLY TO  
 COMMERCIAL ST. W.O. 25020

B.M.	7.32	$\frac{1619}{51}$
Sta 0+00 N.L. Alley		
0 = E 15th St.	7.43	
Rt. 13 = W. 1/4	7.18	
Rt. 26 = W. Gut.	6.70	
Rt. 26	7.14	
Rt 40	7.19	
Rt 40	7.32	

Sta 0+20

0	7.34	
Rt 13	7.09	
Rt 26	6.62	
Rt 40	7.23	

Sta 0+29 Beg Conc. Apron

0	7.28	
Rt 13	7.05	
Rt 26	6.56	
Rt 40	7.15	

NOTE: 5-26-53  
 For B.L. Sketch See 1619  
 Levels taken with direct  
 reading rod

W.L. Prop. N. Alley Top cb.

New A.C. Pavt.

W. Gut.

cb.

Pavt.

cb.

Gut.

NOTE: 15th. St. Was Re-surfaced  
 Throughout this area

5-25-53

Gut. 16th Commercial

Stampet  
 Huffman  
 Shorey  
 Sherry

9

INDEXED  
 MAY 27 1953

X-SEC'S 15TH ST. CONTD.

5-26-53

Sta. 0+31 N.L. 6' Loading Plat-  
-form

0	7.26	
Rt 13	7.03	
Rt 26	6.57	Gut
Rt 36	7.00	Toe at Berm
Rt 36 <sup>5</sup>	7.26	Top Rolled A.C. Berm
Rt 37	7.03	Toe
Rt 38 <sup>5</sup>	7.09	Part @ Base Platform

Sta 0+50

0	7.15	
Rt 13	6.93	
Rt 26	6.55	Gut
Rt 36	6.85	Toe
Rt 36 <sup>5</sup>	7.06	Top A.C. Berm
Rt 37	6.85	Toe
Rt 38 <sup>5</sup>	6.86	Part @ Base Platform

X-SEC'S 15TH ST. CONTD.

5-26-53

End A.C. Berm  
Sta 0+78 S.L. Platform

0	7.06	
Rt 13	6.83	
Rt 26	6.46 ✓	Beginning of - Gut. Top / Wide Metal Grate Cover Over 0.6' Deep Drain
Rt 36	6.78	Toe
Rt 36.5	6.96	Top A.C. Berm
Rt 37	6.79	Toe
Rt 38.5	6.78	
Rt. 45	7.18	Part @ Bldg (Ice Plant)

Sta 1+08

0	7.00	
Rt 13	6.78	
Rt 26	6.36	Gut
Rt. 45	6.82	

Sta 1+26

0	6.91	
Rt 13	6.71	
Rt 26	6.32	Gut
Rt. 45	6.78	

X-SEC'S 15TH. ST. CONTD.

5-26-53

Sta 1+49 End New A.C.

0	6.66
Rt 13	6.53
Rt 26	6.12
Rt 45	6.66

GUT.

Sta 1+60.5 End Pavt Sec

0	6.46
Rt 18	6.19
Rt 25	6.05
Rt. 25	5.42
Rt 34	6.10

Top 1' Wide x 0.6' Deep Metal Grate  
drain @ S. End  
F.L. Drain @ S. End.

W.L. Pavt.

TP 7.03

54Y. R.R. Embankment  
Sta 1+74 Top Bank Sec.

0	6.3
Rt 13	6.1
Rt. 25	5.9
Rt 41	5.6
Lt. 14	6.4
Lt. 35	6.5
Lt 41	6.8

X-SEC'S 15TH ST CONTD

5-26-53

Sta. 1+82 & Ditch Sec.

0	5.3
Rt. 13	5.3
Rt. 26	5.2
Rt. 40	4.9
Rt. 55	4.6
Lt. 13	5.4
Lt. 26	5.6
Lt. 47	5.9
Lt. 67	6.1
B.M.	7.31 ~ 7.32



Roberts X-Section Driveway at City Yards

Cota

Morales

7-9-53

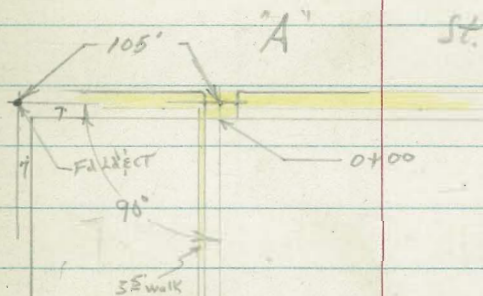
WA 20008

W O 20716

INDEXED  
Law  
JUL 14 1953

Q

18th



"A" Street: -  
 80' Street  
 52' Roadway  
 195' Walk Comb. 1' cb.  
 30' Sid.  
 17' Driveway  
 3' cb. Rd.

0+10		62.27	63.77	73.47	73.57	74.0	74.51
		13.4	11.9	2.2	2.1	1.7	1.16
		14 <sup>3</sup>	8	5		9 <sup>E</sup>	9 <sup>E</sup>
						cut	cb

0+02	6 <sup>2</sup> Lt to End Conc Rd. Wall Parallel to "A"	62.27	68.57	73.47	74.17	74.57	75.12
		13.4	7.1	2.2	1.5	1.1	0.55
		10	7	6 <sup>2</sup>		9 <sup>E</sup>	9 <sup>E</sup>
		Bottom	Sub	Top		cut	cb

0+00	So. Line "A" End cb on Lt.	73.96	73.77	74.27	74.67	75.34
		1.71	1.9	1.4	1.0	0.33
		7 <sup>2</sup>	7 <sup>2</sup>		9 <sup>E</sup>	9 <sup>E</sup>
		cb	cut		cut	cb

0-04.3	{ Begin 3 <sup>E</sup> Walk Parallel to our Line [ End Conc begin Soil Mix Pavmt.	73.90	73.68	74.17	74.81	75.07
		1.77	1.79	1.50	0.16	0.60
		7 <sup>2</sup>	7 <sup>2</sup>		9 <sup>E</sup>	9 <sup>E</sup>
		cb	cut		cut	cb

0-14	Sly Curb Line "A" Street	73.51	72.83	73.60	74.21	74.90
		2.16	2.84	2.07	1.46	0.77
		10 <sup>2</sup>	10 <sup>2</sup>		12 <sup>3</sup>	12 <sup>3</sup>
		cb	cut		cut	cb
						7 <sup>L</sup>

T.P.	1.77	75.67	8.84	73.90	75.67
------	------	-------	------	-------	-------

BM	2.12	82.74	80.62, "A" @ 18 <sup>th</sup>	SE 7' 20" @ 18 <sup>th</sup>
----	------	-------	-------------------------------	------------------------------

Cont'd From Page 15

L+

R+ 16

0+80

60.97	61.07	66.77	68.77	68.77	70.17
14.7	14.6	8.9	6.9	6.9	5.5
30	9	7.5	4		25

0+70

60.97	60.97	67.67	70.77	69.57	70.47
14.7	14.7	8.0	4.9	6.1	5.2
30	10	7	4		25

0+60

60.47	60.47	70.87	70.17	70.57
14.2	14.2	4.8	5.5	5.1
25	10	6.2		20

0+48

BC CURB ON RIGHT

61.67	61.67	70.67	70.87	70.87	71.47
14.0	14.0	5.0	4.8	4.8	4.20
25	10.2	7		9.5	9.5
				cut	cb

0+40

61.77	61.67	70.67	71.37	71.37	72.07
13.7	14.0	5.0	4.3	4.3	3.60
25	11	6		9.5	7.5
				cut	cb

0+30

61.27	72.07	72.17	72.17	72.86
13.4	3.6	3.3	3.3	2.81
11	7		9.2	9.2
			cut	cb

0+20

61.27	61.27	72.77	72.97	73.07	73.74
13.4	13.4	2.9	2.7	2.6	1.92
10.2	11.2	5		9.2	9.5
				cut	cb

75.67  $\pi$ 75.67  $\pi$

check 3.64 80.62 = 80.62

T.P 9.18 87.26 0.59 75.08

1+20

60.7	61.0	62.67	66.97
18.0	14.7	13.0	8.7
30	8		25

1+10

60.77	61.07	64.17	64.17	65.87
14.9	14.6	11.5	11.5	9.8
30	10	5		25

1+00

60.87	61.07	66.17	66.0	69.07
14.8	14.6	9.5	9.7	6.6
30	10	3.2		25

0+90

60.87	60.87	65.17	67.37	67.67	69.77
14.8	14.6	10.7	8.3	8.0	8.9
30	9	7	4		25

75.67A

75.67A

INDEXED

OCT 14 1953

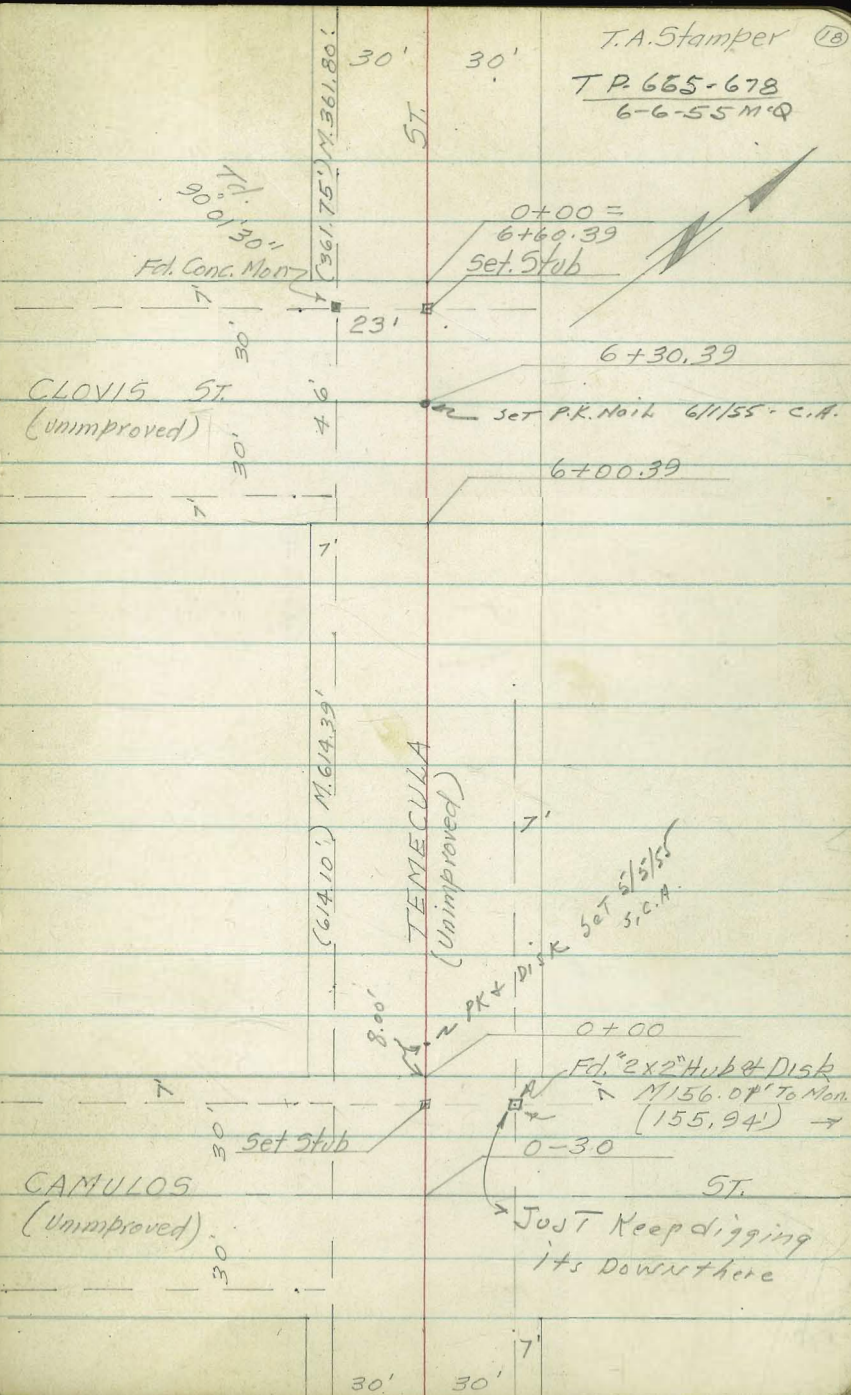
CROSS SECTIONS OF TEMECULA ST. FROM CAMULOS

To & W. PT. LOMA BLYD W.O. 32159

NOTE: Soil Sample taken at Sta. 4+50 &  
Temecula Street

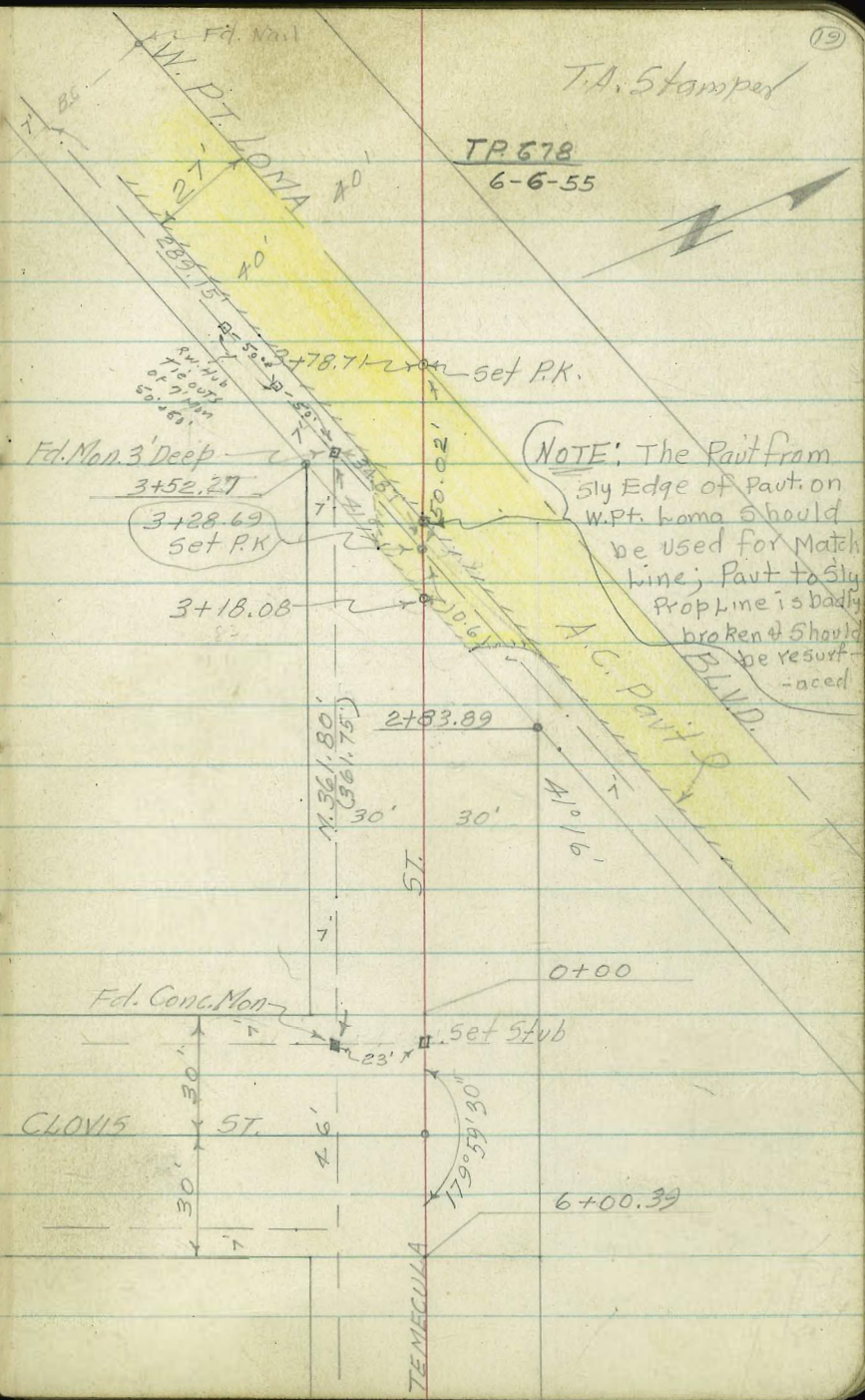
Ref T.P. Book No 1375  
7

Plotted  
11-3-53  
R.H.



T.A. Stamper (18)  
T.P. 665-678  
6-6-55 M.Q.

BASELINE SKETCH FOR X-SEC'S TEMECULA ST.



CROSS SEC'S TEMECULA ST. & CAMULOS TO &

WEST POINT LOMA BLVD. W.O. 32159

0-06<sup>5</sup> & P.P. N<sup>o</sup> 2790 32' Lt.

0-07

0-10

0-18

0-30 & Camulos St.

T.B.M. #2 78.28 19.20 -12.53 10.92

T.B.M. #1 +0.00 23.45 -10.51 23.45

B.M. +0.35 33.96 33.61  $\frac{21.69}{48}$

9-29-53

Lt.

&

Rt.

Stamp  
K Huffman  
& Nordahl  
& Sherry

20

NOTE: Rods Shown Thus (-0.0) are Plus  
= Rods & are added To H.I.

12.2	10.9	10.0	9.0	8.9	8.7	8.9	13.2
7.0	8.3	9.2	10.2	10.3	10.9	10.3	6.0
75	50	30	21	0	30	45	75

11.5	10.0	9.4	8.8	8.7	8.1	8.2
7.7	9.2	9.8	10.4	11.0	11.1	11.0
75	50	30	0	30	50	75

11.6	10.3	9.5	8.8	8.2	8.2	8.1	8.3
7.6	8.9	9.7	10.4	11.0	11.0	11.1	10.9
75	50	30	0	25	30	45	75

13.1	11.3	10.1	9.2	8.6	8.2	7.9	8.2	9.4
6.1	7.9	9.1	10.0	10.6	11.0	11.3	11.0	9.8
100	75	50	25	0	25	50	75	100

Set P.K. 5ELY Side P.P. N<sup>o</sup> 2790 32' Lt. & Temecula  
 Set P.K. 5/4 Side P.P. N<sup>o</sup> 2748 N/4 Side Camulos & Temecula  
 5.E.7' Conc. Mon Camulos & Mentone

9-29-53

(2)

X-SEC'S TEMECULA ST. CONT'D

Lt.      &      Rt.

Sta

1+00

	22.5	20.2	19.9	17.4		17.5	17.6	20.7	21.0		21.2
	7.8	10.1	10.4	12.9	12.8	12.7	9.6	9.3	9.1		
	50	30	18	12	0	15	17	30	50		
			Top	Toe		Toe	Top				

+ 11.50      30.34

30.34

TP.      -0.36      18.84

0+50

	11.9	10.7	11.0	11.9		11.9	11.7	12.5	13.8		16.7
	7.3	8.5	8.2	7.3	7.3	7.5	6.7	5.4	2.5		
	50	30	20	15	0	17	18	30	50		

0+27 & 8" Cypress      33<sup>2</sup> Rt.

0+05

	10.8	10.4	9.0		9.4	8.9	10.8	12.9	13.7
	8.4	8.8	10.2	9.8	10.3	8.4	6.3	5.5	
	50	30	15	0	26	30	39	50	

0+00 NW 1/4 Line Camulos St.

	10.8	10.3	8.4		9.0	8.6	10.1	11.2	12.3
	8.4	8.9	10.4	10.2	10.6	9.1	8.0	6.9	
	50	30	15	0	26	30	40	50	

19.20

& Deadman ~ 41<sup>6</sup> Rt.  
0-05 & Gully Pole      35<sup>5</sup> Rt.

19.20



9-29-53

X-SEC'S TEMECULA ST CONT'D

Lt.                      Rt.

1+44 ± 2' Conc Ribbon Nly Sing Car Gav

	25.74	24.80
4.60		5.54
393		295
on Ribbon		Conc Ribbon

1+39 ± 2' Conc. Ribbon Sly Sin Car Gav

	25.74	24.79
4.60		5.55
393		293
on Ribbon		Conc Rib

1+38 End Conc Blk Ret Wall 292 Lt.

	25.18	24.9
5.16		5.4
291		297
Top Wall		Ground

1+37 ± 2<sup>5</sup> Walk 30' Rt.

	21.94	22.24
8.40		8.06
30 <sup>±</sup>		40 <sup>±</sup>
± Walk		Walk

1+03 Begin 3<sup>5</sup> Conc Blk Wall (Ret) <sup>fac</sup> 29<sup>±</sup> Lt.

	24.84	20.8
5.50		9.5
29 <sup>±</sup>		29 <sup>±</sup>
Top Wall		Ground

30.34

9-29-53

X-SEC'S TEMECULA ST. CONT'D.

Lt.                      Rt.

Sta.

2+01 & 6" Lateral Conc Ret Wall 1'-High 30' Lt.

	29.82	28.9
	0.52	1.4
	302	302
	Top Wall	Ground

2+00 End 3' Picket fence 29<sup>B</sup> Lt.

	30.3	28.8	28.2	26.5	26.3	25.8	25.6
	0.0	1.5	2.1	3.8	4.0	4.5	4.7
	50	30	25	10	0	30	48
							@ 18/14

1+82 & 3' Conc. Walk 29<sup>B</sup> Lt.

	24.66	24.71
	5.68	5.63
	298	298
	+ Walk	Walk

1+68 & 8' Conc Drive - 2' Car Gar. 29<sup>B</sup> Rt.

	24.52	24.58
	5.82	5.76
	298	298
	- Ramp	on Ramp

1+57 Begin 3' High Picket fence 29<sup>B</sup> Lt.

1+50

	26.9	24.6	23.9	22.1	22.7	22.3	23.0	23.3
	3.4	3.7	4.4	7.2	7.6	8.0	7.3	7.0
	50	30	19	13	0	18	30	50

30.34

30.34

9-29-53

(29)

X-56'S TEMECULA ST. CONT'D

2+18  $\pm$  2' Walk on Rt. 29<sup>3</sup>Rt

Lt.	$\pm$	Rt.
		26.98
		7.06
		295
		7.52
		393
		$\pm$ Walk
		onWalk

2+16<sup>5</sup>  $\pm$  3' Walk on Lt. 38<sup>2</sup>Lt.

	31.08	30.67
	2.96	3.37
	50 <sup>0</sup>	381
	onWalk	$\pm$ Walk

2+15 End Ramp Sing Gar on Lt. 44<sup>2</sup>Lt.

	31.08	30.84
	2.96	3.20
	50 <sup>0</sup>	442
	on Ramp	Ramp

2+05 Begin Ramp Sing Gar 34<sup>2</sup>Lt.

	31.02	30.85	29.88
	3.02	3.19	4.16
	50 <sup>0</sup>	443	342
	on Ramp	Blank	Conc Ramp

2+04 End 3" Conc. Wall Planter Box 30<sup>3</sup>Lt.

	29.47	29.2
	4.57	4.8
	30 <sup>3</sup>	30 <sup>3</sup>
	Top Wall	Ground

2+01.3 Begin 3" Wide X 6" High Conc Planter Box 30<sup>3</sup>H.

	29.35	28.9
	4.69	5.1
	30 <sup>3</sup>	30 <sup>3</sup>
	Top Wall	Ground

+ 4.22 34.04

TP

30.34 - 0.52 29.82

$\nearrow$  34.04

9-29-53

X-SEC'S TEMECULA ST CONT'D

Lt. E Rt.

End 2' Hedge 30' Lt.  
3+00 ± 6" Lateral Conc Ret Wall 1' High 30' Lt.

	36.55	35.2	33.9	33.4	32.9		32.5	31.9	31.13	30.0
Top Wall	6.68	8.0	9.3	9.8	10.3	10.7	11.3	12.1	13.2	
Ground	30.4	30.4	24.17	16		0	16	30	50	
				37.2	6.0	50				

2+78 ± 3' Conc Walk 26' Lt

	35.98	34.96	34.20	33.6
on Walk	7.85	8.27	9.03	9.6
Top Walk	36.3	28.6	26.6	26.6
Top Ground				

TP. +9.94 43.23 -0.75 33.29

43.23

2+55 Begin 2' High Hedge 30' Lt.

± 2 1/2" Wide x 5" High Lateral Hedge 30' Lt.  
2+50 ± 6" Lateral Conc Ret Wall 1.5' High 30' Lt.

	32.4	32.3	32.24	32.1	31.9	29.9	29.5	29.0	29.2	29.1	28.9	28.1	28.2
Top Wall	16	17	20	21	21	4.5	5.0	4.8	4.9	5.1	5.9	5.8	
Ground	50	45	30	26	15	0	15	17	28	30	40	50	

2+32 ± 3' Walk on Lt. 17' Lt

	31.79	31.26	30.59	29.44	29.1
on Walk	2.25	2.78	3.25	4.60	4.9
Top Walk	38.2	30.4	20	17.2	17.2
Top Ground					

34.04

34.04

9-29-53

X-SEC'S TEMECULA ST. CONTD.

Lt.                      E                      Rt.

3+60 E 3' Walk on Rt.                      30' Rt.  
3+30 End 3' Woven Wire Fence 30' Rt.

34.43  
8.80  
30.2  
± Walk  
34.08  
9.15  
4.00  
Walk

3+50 E 8" Conc Blk. Ret Wall Lateral 3' High 30' Lt.

40.95  
2.28    5.4  
30.8    30.8    30.8  
Top Wall Ground

3+50 End 8" Conc Blk Ret Wall                      30' Lt.

39.5    37.79    37.8    36.3    35.7    35.2    34.5    34.6    33.6    33.1  
3.7    5.46    5.4    6.9    7.5    8.0    8.7    8.6    9.6    10.1  
50    30.0    30.0    18    16    0    14    24    30    43  
Top Wall Ground                      © Parsh

E 4" Lateral Conc Blk. Wall 1'-High 30' Rt.  
3+25 Begin 3' Woven Wire Fence 30' Lt.

32.9  
10.3  
30.2  
Ground  
33.95  
9.28  
30.2  
Top Wall

3+16 Begin 8" Conc Blk Ret Wall 1'-High 30' Lt.

36.97    36.1  
6.26    7.1  
30.2    30.2  
Top Wall    Ground

3+08 E 7' Conc. Ramp To Sing Gar 45' Lt.

37.09  
6.14  
4.53  
± Ramp

43.23

43.23

X-SEC'S TEMECULA ST. CONT'D.

9-29-53

4. € Rt.

4+16 € 25' Walk 233 Rt.

	37.27	36.33	36.00
	5.96	6.90	7.23
	233	303	403
€ Walk		Walk	Walk
		Break	

4+00

42.4	42.1	41.1	39.0	38.2	37.6	37.4	36.8	37.0	36.8	35.7	34.6
0.8	1.1	2.1	4.2	5.0	5.6	5.8	6.4	6.2	6.4	7.5	8.6
47	34	30	25	22	12	0	14	16	21	30	50

@ Bldg

3+85 € 8" Lateral Conc Blk Wall 3' High 30<sup>3</sup> Lt.

42.14	38.5
1.09	4.7
303	303
Top wall	Ground

3+78 € 3' Walk 273 Rt.

35.53	34.50
7.70	8.73
273	403
€ Walk	Walk

3+69 € 3' Conc Walk 283 Lt. <sup>9.5 stop</sup>

40.52	40.15	37.55
2.71	3.08	5.58
433	333	283
€ Walk	Top Walk	Bot stop

3+60 Begin 3' Picket fence 303 Rt.

43 23

43 23

X-SEC'S TEMECULA ST. CONT'D.

4+56 to 6" Evergreen <sup>6' High</sup> 4' Spread 30' RT

4+53 to 2' Walk 31' RT

4+50 to 8" Evergreen <sup>8' High</sup> Tree 5' Spread 9' RT

4+37 End 3' Picket fence 30' RT

4+35 Begin 4' Picket fence 29' LT

4+29 End Ramp Sing Gar

4+20 Begin Ramp Sing Gar 30' LT

43.23

9-29-53

(28)

Lt.

to

Rt.

36.43  
6.80  
31.6  
+walk

36.28  
6.95  
41.6  
walk

44.5  
42.5  
42.0  
39.6  
38.8  
38.2  
37.7  
37.1  
36.4  
35.9

(-1.3) 0.7 1.2 3.6 4.4 5.0 5.5 6.1 6.8 7.3

50 30 24 16 8 22 27 30 32 50

43.07  
0.16  
45.5  
floor

41.67  
1.56  
305  
Ramp

43.05  
0.18  
45.2  
floor

41.54  
1.69  
302  
Ramp

43.23

9-29-53

X-SEC'S TEMECULA ST. CONT'D

Lt.      &      Rt.

5+05 & Dirt Drive Sing Gar on Lt.

44.6  
5.0  
400  
Ground

43.0  
6.6  
300  
Ground

5+00 Lateral Picket fence 3' High 30' Lt.

45.1  
4.5  
45  
40

44.6  
5.0  
40

43.0  
6.6  
30

40.7  
8.9  
18

39.9  
9.7  
0

38.7  
10.9  
22

38.3  
11.3  
30

38.2  
11.4  
46

@ Bldg

4+99 & 2' Conc Ribbon Sing Gar 45<sup>5</sup> Lt.

45.16  
4.43  
45.5  
& Ribbon

4+94 & 2' Ribbon Sing Gar. 45<sup>5</sup> Lt.

45.07  
4.52  
45.5  
& Ribbon

4+91 End 3' Picket fence 29<sup>5</sup> Lt.

4+73 Begin 3' Wide x 4' High Hedge. 29<sup>5</sup> Rt &

10.93  
+ 44.23  
49.59  
50.59

Checked 10-1-53  
T.A.G.

TP

43.23 - 4.57 38.66

49.59  
+ 50.59



9-29-53

X-SEC'S TEMECULA ST. CONTD.

Lt.                      E                      Rt.

5+50

46.3	45.2	43.6	42.4	41.0	40.6	40.0	40.3	40.3	40.8	39.6	38.3	36.8
3.3	4.4	6.0	7.2	8.6	9.0	9.6	9.3	9.3	8.8	10.0	11.3	12.8
50	36	30	27	18	0	12	13	15	16	23	30	50

5+26 E 2' Walk with Steps                      26<sup>S</sup>

45.44	45.11	42.23
4.15	4.48	7.36
42.5	32.5	26.5
Walk	Top Walk	Bot. Step

5+23 <sup>Wide</sup> E 3' x 4' Lateral Hedge 26<sup>S</sup> Rt

5+23<sup>S</sup> End Conc Ramp Sing Cur on Rt.

38.23	38.62	38.19
11.36	10.97	11.40
242	278	378
Ramp	Ramp	Ramp
	Break	

5+08<sup>S</sup> End 3' Wide x 4' High Hedge 29<sup>S</sup> Rt. E  
Begin Ramp Sing Cur

38.26	38.61	38.17
11.33	10.98	11.42
252	278	378
Ramp	Ramp	Ramp
	Break	

49.59  
~~50.59~~

49.59  
A 50.59

X-SEC'S TEMECULA ST. CONTD.

6+43 Top Rd. Cutbank Sec. Wly.

6+40 Toe Rd. Cut Wly

6+30.39  $\pm$  Clovis St.

6+04 Toe Sec. Cutbank.

6+06  $\pm$  P.P.N<sup>o</sup> P-2799 32' Lt.

TBM #3 5.85. <sup>49</sup> 50.65 - 5.79 <sup>3</sup> 48.80

6+00.39 Set Line Clovis St.

5+91  $\pm$  Deafman 30' Lt.

5+85 63' Walk on Lt.

49.59  
50.59

9-29-53

(31)

Lt.

$\pm$

Rt.

47.2	45.2	43.6	42.5	42.1	41.8	41.6	41.1	41.6	40.8	39.1	37.0
2.5	4.5	6.1	7.2	7.6	7.9	8.1	8.6	8.1	8.9	10.6	12.7
75	50	33	30	29	25	0	7	14	22	30	50

46.1	43.8	42.1	42.2	41.6	41.1	41.6	40.8	39.1	37.0
3.6	5.9	7.6	7.5	8.1	8.6	8.1	8.9	10.6	12.7
75	50	30	14	0	7	14	22	30	50

48.6	46.4	44.1	43.3	42.6	42.6	41.6	41.3	41.8	41.1	39.2	36.8
1.1	3.3	5.6	6.4	7.1	7.1	8.1	8.4	7.9	8.6	10.5	12.9
100	75	50	42	30	25	0	8	14	20	30	50

46.2	44.6	43.3	42.3	41.6	41.1	41.3	39.0	36.7
3.5	5.1	6.4	7.4	8.1	8.6	8.4	10.7	13.0
75	50	30	22	0	10	14	30	50

$\nearrow$  49  
50.65

Set P.K. Nly Side P.P.N<sup>o</sup> P-2799

47.9	46.2	45.0	43.4	42.9	42.2	41.5	40.9	40.6	38.8	36.7
1.7	3.4	4.6	6.2	6.7	7.4	8.1	8.7	9.0	10.8	12.9
75	50	38	30	28	20	0	11	18	30	50

45.33	43.36	42.0
4.26	6.23	6.6
35'	31'	31'
Walk	8/step	Ground
49.59		
$\nearrow$ 50.59		

X-SEC'S TEMECULA ST. CONT'D.

9-30-53

Lt. E Rt.

0+71 ± Deadman 22' Lt.

± 8' Ramp Sing Car Gar 29' E Lt.  
0+50 Begin 5' High Board fence 30' Lt.

45.8	45.1	41.3	40.81	40.2	40.0	39.5	39.5	38.8	38.85	38.83
3.9	4.6	8.4	8.84	9.5	9.7	10.2	10.2	10.9	10.80	10.82
50	31	30	20 <sup>5</sup>	20 <sup>6</sup>	0	13	29 <sup>0</sup>	29 <sup>8</sup>	29 <sup>8</sup>	30
@ Bd. Top cb. Ground Ret Wall						± Ramp Ground Ramp				
						12.63				
						40 <sup>±</sup>				
						Floor				

0+48 ± P/Bk N<sup>o</sup> 4415 22<sup>3</sup> Lt.

0+20 ± 3" Shrub 4' Spread X 4' High 23<sup>5</sup>

0+15 ± 3' Walk & Steps 30<sup>0</sup> Lt.

44.86	43.95	42.49	42.0
4.79	5.70	7.16	7.7
42 <sup>2</sup>	32 <sup>2</sup>	30 <sup>0</sup>	30 <sup>0</sup>
± Walk ± Walk		Top Step Ground	

0+13<sup>5</sup> End 6" Conc Blk Ret Wall 30<sup>2</sup> Lt.

43.62	42.1
6.03	7.6
30 <sup>2</sup>	30 <sup>2</sup>
Top Wall	Ground

0+08 ± 3" Shrub 4' Spread 4' High 23' Lt  
To be Removed

→ Begin 4" Sub-Standard Corb 30<sup>±</sup> Lt.  
Begin 6" Conc Blk Ret Wall 2' High 30<sup>2</sup> Lt.

0+00 = NWLY LINE CLOVIS ST.  
6+60.39

43.82	42.3	41.46	41.3	40.9	41.0	40.4	39.5	37.2	36.7
5.83	7.4	7.99	8.4	8.8	8.7	9.3	10.2	12.5	13.0
30 <sup>4</sup>	30 <sup>2</sup>	20 <sup>5</sup>	0	9	13	25	30	43	50
Top Wall Ground Top cb.									

2.1	4.5	7.0
75	50	50.65

9-30-53

X-SEC'S TEMECULA ST. CONT'D.

Lt.      €      Rt.

+1.60      4  
3~~7~~.75

TP      -12.15      3~~7~~.15

2+00

42.9	41.9	38.2	35.7	30.8	30.6	30.5	31.1	31.1	33.9	33.8	33.8
2.4	3.4	7.1	9.6	14.5	14.7	14.8	14.2	14.2	11.4	11.5	11.5
50	40	30	22	17	0	20	21	24	27	30	34
Toe						Toe					

1+50

43.0	41.6	39.9	39.6	35.4	35.6	35.2	34.6	35.6	35.5	36.6	36.7	34.6	32.6
2.3	3.7	5.4	5.7	9.9	9.7	10.1	10.7	9.7	9.8	8.7	8.6	10.7	12.7
34	30	26	22	20	10	0	18	20	24	28	30	38	45

44.9  
0.4  
50

31.4  
13.9  
50

1+40 End 4" Curb <sup>Table</sup> Removed 20' Lt.

39.0      36.3  
6.30      9.0  
20'      20'  
Top Ch      Ground

TBM. 1.50      5  
4~~8~~.30 - 5.85      3  
4~~8~~.80 } 31 (See p. 1)

45.9  
44.4  
40.5  
-0.6      7.8  
30'      30'

1+25 End 5' Board fence 30' Lt.

Ground Ground  
Inside Wall @ Ret Wall

1+00 to 4' steps 31' Lt.

45.48	45.29	40.56	40.6	39.97	39.2	38.2	37.6	39.2	38.7	38.0	34.9	34.2	
4.7	4.36	9.09	21	26.8	10.5	11	5	12.1	10.5	11.0	11.7	14.8	15.5
50	42	31	30	20	20	0	16	18	28	30	42	50	
Walk Top Steps			Bot Step			Ch Ground							

49  
52.65

49  
52.65

9-30-53

(34)

X-SEC'S TEMECULA ST. CONT'D

CL

E

RT

3+00 Sec. @ 90° to E Temecula

<sup>32.3</sup> (-2.5)	<sup>35.6</sup> (-0.8)	8.1	13.4	14.5	16.0	17.0	17.2	17.4	17.6
50	38	30	16	0	21	30	36	41	50

of Street Lt.  
2+92 E R.R. No 2801 42' RT

Ely Prop Sec Sketch  
2+83.89 E 4x4" Stop Sign Post. 21 3/4 RT

<sup>36.1</sup> (-1.3)	<sup>29.2</sup> 5.6	<sup>23.8</sup> 11.0	<sup>23.4</sup> 11.4	<sup>22.5</sup> 12.3	13.0	<sup>21.8</sup> 14.4	<sup>20.4</sup> 14.1	<sup>20.7</sup> 13.0	<sup>21.8</sup> 12.8	<sup>22.0</sup> 12.1	<sup>22.7</sup> 12.1
37	30	20	18	17	0	14	20	21	25	30	

2+73 E Fire Hydrant 22' RT

<sup>40.5</sup> (-5.7)	0.5	0.7	6.9	27.9	28.0	24.5	24.2	23.1	23.5	24.4	24.5	30.1	29.4
41	35	30	28	23	17	0	15	21	22	24	30	37	

2+60 Top Bank Sec

<sup>41.2</sup> (-6.5)	11.7	14.0	17.8	16.8	15.8	16.2	16.7	16.9	16.8	
50	45	50	60	72	75	32	41	50	53	54

2+50

<sup>42.0</sup> (-6.2)	0.1	0.5	4.3	4.8	9.2	9.6	10.5	9.7	9.4	6.1	4.4
41	36	32	30	23	17	0	21	22	24	30	31

2+46 E 2' Conc Steps

30 5/8 CL

<sup>34.23</sup> 0.52	<sup>32.42</sup> 2.33	<sup>31.5</sup> 3.3	<sup>30.2</sup> 30.2	<sup>30.2</sup> 30.2	<sup>30.2</sup> 30.2	<sup>30.2</sup> 30.2	<sup>30.2</sup> 30.2	<sup>30.2</sup> 30.2	<sup>30.2</sup> 30.2
33.2	30.5	30.5	30.5	30.5	30.5	30.5	30.5	30.5	30.5

35.75

@ this Pt. Steps run Parallel to E Rd  
Sly. up Hill Approx 20' Long

9-30-53

6.5

35

X-SEC'S TEMECULA ST. CONT'D.

Lt.                      C                      Rt.

3+39 Toe Sec. Along W. Pt. Loma Blvd

	19.6	19.5	19.1	18.9	18.5	17.9	17.4	17.0	16.1
	4.9	5.0	5.4	5.6	6.0	6.6	7.1	7.5	8.4
	100	75	46.3	32	0	46.3	62	75	100

3+38 Top Cutbank Sec. Along W. Pt. Loma

	20.7	20.5	20.4	20.2	18.5	17.9	18.4	18.2	17.2
	3.8	4.0	4.1	4.3	6.0	6.6	6.1	6.3	7.3
	100	75	46.3	32	0	46.3	62	75	100

3+23 E Sewer Manhole

19.06  
5.22  
0  
M.Y.R.M.

3+23 E Sewer Manhole  
Sec. Along Line of W. Pt. Loma  
3+18.08 Sly Prop. W. Pt. Loma Blvd

	21.2	21.0	20.9	20.9	20.5	19.7	19.0	19.2	18.4	19.2	19.1	19.0	17.9	16.8
	3.3	3.5	3.6	3.6	4.0	4.8	5.5	5.3	6.1	5.3	5.4	5.5	6.6	7.7
	100	75	50	46.3	29	22	10	0	38	40	46.3	50	75	100

4  
25.48

T.B.M.                      -72.97                      28.78

Set P.K. Ely Side P.P. No 2801 & Sta 2+92 42' Rt.  
S.E. Cor W. Pt. Loma & Temecula

3+00 Sec. Along Line of W. Pt. Loma

	34.4	32.9	27.8	24.0	20.8	20.3	20.3	20.9	22.0	22.5	22.9
	0.4	1.2	7.0	10.8	14.0	14.5	14.5	13.9	12.8	12.3	5.1
	77	66	48	39	25	0	24	30	31	35	50

48

	1.0							5.0	7.0
	100							75	100

4  
35.75

4  
35.75

9-30-53

36

X-SECS TEMECULA ST. CONTD.

Lt.

E

Rt.

Sta	+	H.I.	-	Elev	
TBM #2			12.94	10.925	10.92 Pg. 20
	0.415	23.865			
TBM #1			10.47	23.45 ~	23.45 Pg. 20
	0.31	33.92			

B.M. 33.61

See Pg. 20 Check for Bust in Levels

B.M. 3.87 2~~7~~.08

24.06 Spike in P.P.S. W. Cor Mentone &amp; W. Pt. Loma

+6.56 2~~8~~.95T.P. -3.09 2~~2~~.39

3+78 1/2 E West Pt. Loma Blvd

20.93	20.74	20.54	20.33	20.12	19.93	19.68	19.37	18.98	18.49	17.92	17.25	16.51
3.56	3.14	3.24	4.15	4.36	4.55	4.80	5.11	5.50	5.99	6.56	7.23	7.97
150	125	100	75	50	25	0	25	50	75	100	125	150

3+40 Sly Edge Part W. Pt. Loma

19.52	19.40	19.21	18.71	18.58	18.21	17.74	17.10	16.20
4.96	5.08	5.27	5.77	5.90	6.27	6.74	7.38	8.28
100	75	50	25	0	25	50	75	100

4  
25.484  
25.48

9-30-53

37

## CHECK LEVELS TEMECULA ST.

Sta.	+	H.I.	-	Elev.
TBM#3			2.56	43.76
	7.71	46.32		
TP			6.11	38.61
	11.46	44.72		
TP			3.00	33.26
	6.46	36.26		
TP			0.90	29.80
	11.905	30.700		
TP			4.59	18.795
	12.46	23.385		
TBM#2				10.925

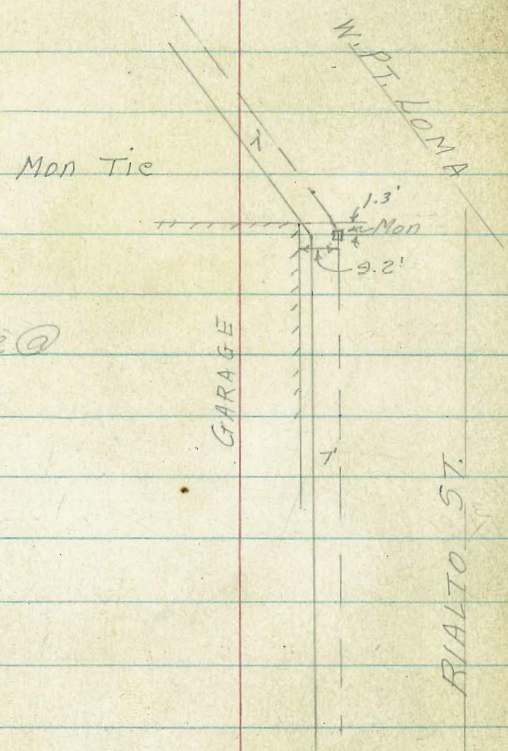
Pg. 31  
~~43.80~~ Checked 10-1-53 T.A.S.



CROSS SECTIONS OF RIALTO ST FROM  
FAMOSA TO W. PT. LOMA BLVD. W.O. 32159

Ref. Map No 1082

T.P. F.B.R. 1375  
7



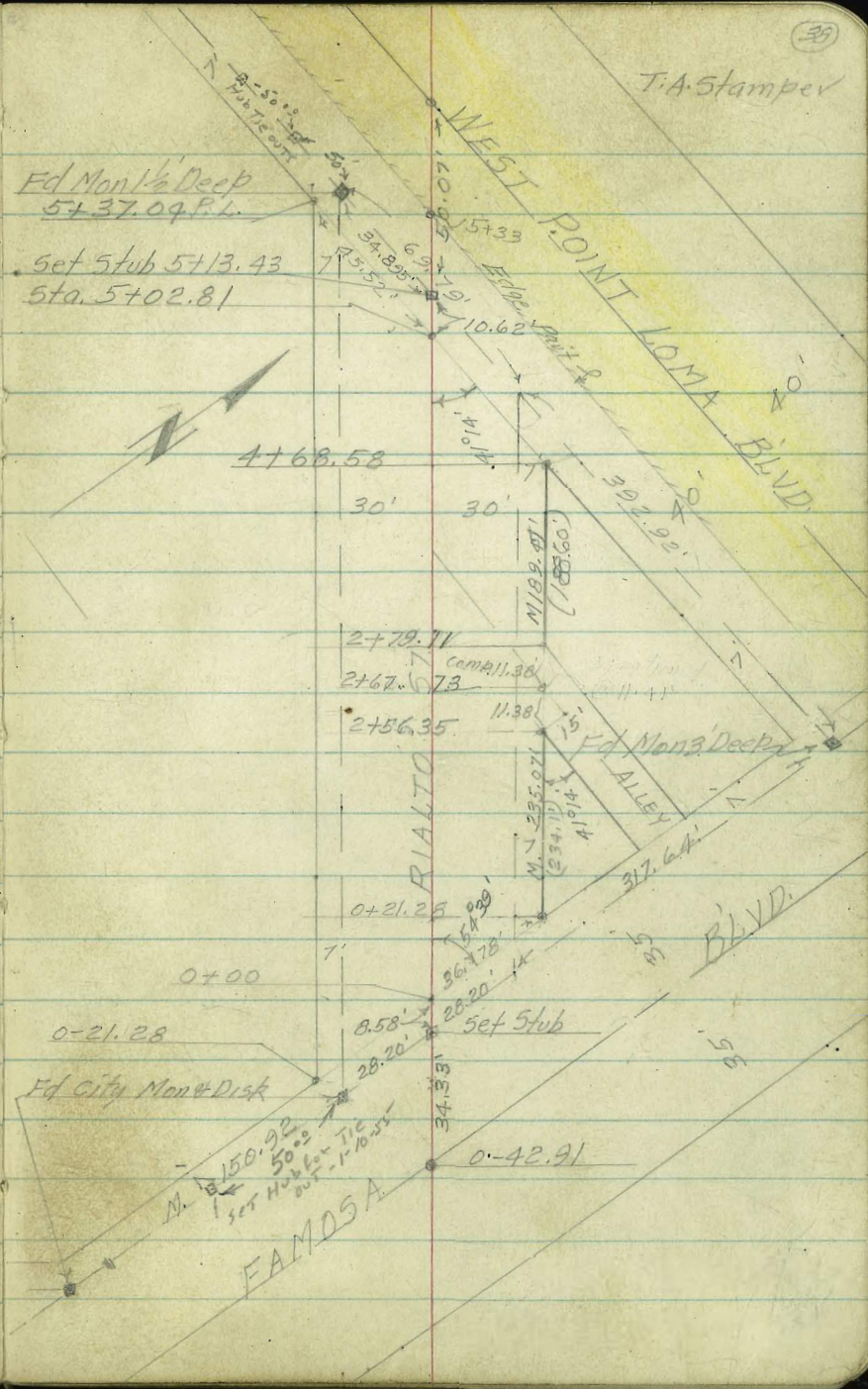
Soil Sample @  
Sta 2+50

Plotted  
11-3-53  
L.H.H.

To 7' Hole Disk M155.94  
Camulos & Temecula  
CAMULOS ST 60' 35° 21'

T.A. Stampel

Ed Man's Deep  
5+37.09 P.L.  
Set Stub 5+13.43  
Sta. 5+02.81



INDEXED

OCT 14 1953

CROSS SECTIONS OF RIAL TO ST FROM FAMOSA

TO W. PT. LOMA BLVD. W.O. 32159

0-33 Toe Cut Sec Along Famosa

10.7	10.0	9.2	8.8	7.0	6.1	5.4	4.5	3.8
6.6	7.3	8.1	8.5	10.3	11.2	11.9	12.8	13.5
100	75	50	40	0	25	50	75	100

0-34 Top Cut Sec Along Famosa

10.7	10.0	9.2	8.2	7.5	6.7	5.7	5.0	4.3
6.6	7.3	8.1	8.1	9.8	10.6	11.6	12.3	13.0
100	75	50	40	0	25	50	75	100

0-40 Top Bank Sec Along Famosa

11.0	10.2	9.8	9.2	7.6	7.0	6.5	5.2	4.6
6.3	7.1	7.5	8.1	9.7	10.3	10.8	12.1	12.7
100	75	50	25	0	25	50	75	100

0-42.91 & Sec. Along Famosa

11.0	10.9	9.4	8.9	6.6	6.4	5.6	4.6	3.9
6.2	6.4	7.9	8.4	10.7	10.9	11.7	12.7	13.4
100	75	50	25	0	25	50	75	100

17.31

TP

+6.39 17.31

B.M.

10.92

TRM. No 2 (See Pg. 20)

10-13-53

Lt.

Rt.

Stampel  
Huffman  
Nordahl  
Sherry  
Rt.

(39)

10-13-53

X- SEC'S RIALTO ST, CONT'D.

Lt.                      E                      Rt.

0+00 Sec. Along Famosa

10.0	9.7	9.2	8.9	7.9	5.9	5.5	4.7	3.8
7.3	7.6	8.1	8.4	9.4	11.4	11.8	12.6	13.5
100	75	50	368	0	368	50	75	100

@ 90° To Rialto                      Ret  
0-03 Lateral Conc & Rock Wall

14.63	11.69
2.68	5.62
338	238
Top Wall	Top Wall

@ 90° To Rialto  
0-03 Begin Ramp To Sing. Gov. on Lt.

12.19	10.43	9.99
5.12	6.88	7.32
338	238	228
on Ramp	Break on Ramp	

0-18 1/2 + M.H

7.56  
9.75

M.H. sig. Run

17.31

10-13-53

X-SEC'S RIALTO ST. CONT'D

Lt. E Rt.

0+13 1/2 & 2 1/2 Steps H of Top Sec R

	11.30	10.3
	9.39	10.4
	229	229
Top Bot		
Step		

+5.20 20.69

20.69

TP. -1.82 15.49

0+06 Lateral Cobblestone Ret Wall

	15.47	11.41
	1.84	5.90
	332	232
Top Wall		
Top Wall		

0+06 @ 90° to Rialto End Sing Garment

	12.21	10.43	9.99
	5.10	6.88	7.32
	332	232	228
on Ramp		Break	Toe Ramp

0+06 Top of Bank Sec Along Famosa

	14.2	13.7	13.3	13.3	9.2	8.1	7.4	10.6	11.9	12.3	12.5
	3.1	3.6	4.0	4.0	8.1	9.2	9.9	6.7	5.4	5.0	4.8
	100	75	50	368	30	0	14	20	328	368	50
								12.1	11.1		
								5.2	6.2		
								75	100		

0+03 Toe Sec Along Famosa

	10.0	9.8	9.4	9.2	9.1	9.8	7.0	6.0	5.5	4.7	3.8
	7.3	7.5	7.9	8.1	8.2	9.3	10.3	11.3	11.8	12.6	13.5
	100	75	50	368	32	0	16	368	50	75	100

17.31

17.31

10-13-53

X-SEC'S RIALTO ST. CONTP

Lt.          Rt.

1+00

19.3	17.9	17.4	14.2	13.9	14.0	14.9	15.0	14.9	13.2	12.6
1.4	2.8	3.3	6.5	6.8	6.7	5.8	5.7	5.8	7.5	8.1
49	30	22	15	0	13	24	30	32	37	50

@B/dn

0+95 + 3' High lateral Hedge 23<sup>5</sup> Lt.

0+85 ± 2<sup>5</sup> Conc Steps & Walk @ Top

16.8	13.93	13.5
3.9	6.76	7.2
43 <sup>5</sup> 23 <sup>5</sup>	16 <sup>5</sup>	16 <sup>5</sup>

Top Walk (Dirt)      Top Bot Step      Ground

0+69 ± 2<sup>5</sup> Wooden Steps <sup>Conc Walk @ Top</sup> Conc Slab @ Bottom

17.89	16.64	12.93	12.6
2.80	4.05	7.76	8.1
44 <sup>5</sup> 24 <sup>5</sup>	17 <sup>5</sup>	17 <sup>5</sup>	

Walk to peak walk      Top of Ground

0+50

17.3	16.6	16.5	11.6	10.8	10.8	13.6	12.8
3.4	4.1	4.2	9.1	9.9	9.9	7.1	7.9
50	30	27	19	0	10	30	50

0+19 ± End 2<sup>5</sup> Wide Steps on Lt.

15.49
5.20
30 <sup>5</sup>

Top of Top Step

20.69

10-13-53

(43)

X-SEC'S RIALTO ST. CONTD.

1+50

	Lt.	⊕	Rt.
	19.9	19.0	18.5
	0.8	1.7	2.2
	50	30	17
	16.3	16.0	16.2
	4.4	4.7	4.5
	13	0	25
			15.9
			4.8
			30
			14.9
			5.8
			50

1+46<sup>s</sup> ⊕ P.P.N<sup>o</sup> 4327 20' Lt.

Begin 3' Picket Fence 29' Lt.  
 1+44 ⊕ 2' Wide X 2.5' High Lat. Hedge 20' Lt.

1+40 End Back Steps on Rt.

15.04  
 5.65  
 38<sup>z</sup>  
 Top Steps

Begin Brick Walk on Rt.  
 1+33 ⊕ 3' Steps & Walk @ Top

	19.36	18.06	16.01	16.0	15.05
	1.33	2.63	4.68	4.7	5.64
	362	182	142	142	342
	Walk	Top Walk	Top Bot	Ground	Top Steps
			Step		

1+11 ⊕ 3' Conc Steps To Walk @ Top

	18.88	17.47	15.39	14.6
	1.81	3.22	5.30	6.1
	392	192	152	152
	Walk	Top Walk	Top Bot	Ground
			Step	

X 20.69

10-13-53

X-SEC'S RIALTO ST. CONTD.

Lt.

E

Rt.

2+95 E RR N° 4351 26' Lt.

	21.16	20.75	19.25	18.90	18.9
	0.86	1.27	2.77	3.22	3.7
	392	292	173	153	155
	Walk	Break	Top	Top	Ground
			Top	Bot	
			Step	Step	

2+19 E 2' Conc Walk on Lt.

2+00

	21.0	19.8	19.4	18.7	17.5	17.3	17.5	17.4	16.8	15.4
	1.0	2.2	2.6	3.3	4.5	4.7	4.5	4.6	5.2	6.6
	50	30	22	16	13	0	17	25	30	50

+1.42 22.02

22.02

T.B.M. N° 1

-0.09 20.60

Set. P.K. SE 1/4 Side P.P. N° 4351 Sta 2+45 26' Lt.

1+94 5/8 End Ramp Sing Cur on Lt.

	20.64	20.04	19.64	19.6
	0.05	0.65	1.05	1.1
	42°	32°	30°	30°
	Ramp	Break	Top	Ground

1+86 Begin Ramp Sing Cur on Lt.

	20.64	20.04	19.66	19.5
	0.05	0.65	1.03	1.2
	42°	32°	30°	30°
	Ramp	Break	Top	Ground
				Ramp

20.69

10-13-53

X-SEC'S RIALTO ST. CONT'D

Lt. & Rt.

2+89 & PRN# JP-4360 28'± Rt.

2+88 Cor 3' Conc Blk Wall on Rt.

16.1	17.67	15.1
5.9	4.35	6.9
29.2	29.2	29.8
Ground Top	Wall	Ground back of Wall

2+79.11 Nly Line Alley @ 90° To Famosa

21.0	20.0	18.0	17.6	16.8	16.5	16.0	15.6	12.52	14.7
1.0	2.0	4.0	4.4	5.2	5.5	6.0	6.4	4.50	7.3
50	30	14	13	0	19	30	35.1	35.1	36.5
								Ground Top wall	Ground back of wall
					14.4	7.6	50		

2+67.78 & Alley Sec. @ 90° To Famosa

21.0	20.0	18.2	17.6	17.0	16.8	16.1	15.4	12.39	14.5
1.0	2.0	3.8	4.4	5.0	5.2	5.9	6.6	4.63	7.5
50	30	14	13	0	22	30	45	45	45.8
								Ground Top @ wall	Ground behind wall
					14.4	7.6	50		

2+56.35 Sly Line Alley @ 90° To Rialto

21.2	20.2	19.2	18.2	17.7	17.2	16.7	14.7
0.8	1.8	2.8	3.8	4.3	4.8	5.3	7.3
50	30	20	14	13	0	30	50

22.02

22.02



10-13-53

X-SEC'S RIALTO ST. CONTD.

Lt.                      &                      Rt.

3+12 Beam Cyclone Fence 30' Rt.

Final Form

20.7	19.7	17.9	16.2	15.66	14.70
1.3	2.3	4.7	5.8	6.36	7.32
50	30	13	0	29.8	46.2
				Car Ramp	Flyline Ramp Edge

6' 10" Dirt Driveway on Lt.  
3+07 End Ramp Sing Car part NW 1/4 Cor.

3+00

20.7	19.7	17.6	17.2	16.3	16.0	16.1	15.89	14.8
1.3	2.3	4.4	4.8	5.7	6.0	5.9	6.13	7.2
50	30	14	13	0	14	16	30	49
							Op Ramp	@ wall

6" Acacia 255 Lt. Ends 3' Pickett. 304.  
2+96 6" Pepper Tree 6' H 1/4 20' Lt.

2+94 Beam Ramp Sing Car part on Lt.

16.14  
5.88  
29.8  
Car Ramp

22.02

22.02

10-13-53

X-SEC'S RIALTO ST. CONTD.

Lt. E Rt.

3+29 E 2<sup>5</sup> on Walk Beginning @ 3+21  
Conc. Walk along Walk

14.74  
7.28  
380  
on walk

3+24 E 2<sup>5</sup> conc walk on Lt

19.22	19.63	18.24	17.8
2.10	2.39	3.78	4.2
405	305	208	208
on walk	Top	Top	Bot
	Stop	Stop	Ground

3+21 E 2' Base x 10' High Shrub 21<sup>5</sup> Lt

3+21 E 2<sup>5</sup> Analges N 14  
Conc walk on Rt.

15.2  
6.8  
305  
Ground E walk

3+20 W 1/4 Line Ramp Sing Cartport

14.46  
7.56  
433  
Conc Ramp

3+15 E 1" Peach Tree 27' Lt

^ 22.02

10-13-53

Lt.                      E                      Rt.

X- SEC'S RIALTO ST. CONTD.

4+13 End 8" Conc. Ret Wall on Rt. 30' Rt.

	11.0	11.78
	8.5	7.73
	30 <sup>2</sup>	30 <sup>2</sup>
Ground		Top Wall

4+00

	18.8									
	0.7	2.6	3.8	5.4	6.7	7.6	6.7	7.3	7.27	8.6
	50	30	20	14	0	14	18	30	30	30.7
								Ground Top Wall	Ground	Back of Wall
						8.10.8				
						40				

Begin  
3+65 Cor Angle Pt. in 8" Conc Ret Wall 30' Rt.

+5.93            19.51

TP

-8.44            13.58

	12.6	13.58	11.4
	5.9	5.93	8.1
	30 <sup>2</sup>	30 <sup>2</sup>	30 <sup>2</sup>
Ground	Top Wall	Ground	Back of Wall

Σ 19.51

3+50

	20.0	18.5	16.3	15.7	15.1	14.5	14.8	14.1	13.62	11.4
	2.0	3.5	5.7	6.3	6.9	7.5	7.2	7.9	8.40	10.6
	50	30	16	15	0	14	16	30	41 <sup>3</sup>	42 <sup>2</sup>
									Top Ret Wall	Ground Back of Wall
						11.2				
						10.8				
						50				

3+45 E 10' Pepper Tree 24' Lt.  
15' High

22.02

Σ 22.02

10-13-53

49

X-SEC'S RIALTO ST. CONT'D.

Lt.      &      Rt.

4+73 "4x4" Post (stop sign) 23' Rt

Parallel To No Pto Loma Blvd  
4+69 End of 8" Conc Wall 29<sup>7</sup>' Rt.

4+69 End of 3' Woven Wire fence on Rialto 29<sup>6</sup>' Rt.

4+64 Fire Hydrant 21<sup>7</sup>' Rt.

4+50

17.2	14.7	13.5	9.7	8.8	7.9	8.7	10.1	10.2	9.8
23	4.8	6.0	9.8	10.7	11.6	10.8	9.4	9.3	9.7
50	30	24	16	0	15	19	25	30	40

5.9	9.7	9.2
13.6	10.34	10.3
29.7	29.7	30.4
Ground	Top Wall	Ground Back of wall

4+45 <sup>3'</sup> Begin Wrought Iron & Wooden fence 30' Lt.

19.51

19.51

X-SEC'S RIALTO ST. CONT'D.

5700

+1.92 11.08

TP

-10.35 9.16

4+97.2

End 3' Wrought Iron & Wooden fence 30' Lt.

4+95 ± 14' Conc. Ret. Wall 30' Lt.

4+94 Top of Bank Sec Lt.

10-13-53

(50)

Lt.

±

Rt.

	11	6.9	6.1	5.4	3.9	H. 16	H. 50
T	4.042	5.0	5.7	7.2	6.92	6.58	
	32	30	16	0	20	31	57
	@ BVA				EP	± Rd	W. Pt. Loma

± 11.08

	13.67	7.06	6.9
	5.84	12.45	12.6
	425	30°	30°
	Top of	Top Step	Ground
	Steps	(Bot)	

	14.25	7.1
	5.26	12.4
	30°	30°
	Top Wall	Ground

	15.9	14.0	6.5	6.5
	3.6	5.5	13.0	13.7
	50	30	17	0

± 19.51

10-13-53

X-SEC'S RIALTO ST. CONTD.

LT.                      ±                      RT

5+20 Top Sec Along W Ft. Loma

7.1	6.6	6.1	6.0	4.6	4.4	4.4	4.1	3.8	5.1	4.6	4.2
4.0	4.5	5.0	5.1	6.5	6.7	6.7	7.0	7.3	6.0	6.5	6.9
100	75	50	30	25	18	0	25	48	53	75	100

5+07 <sup>5</sup> ± Sewer M. H. 0.5' RT

5.06  
6.02  
0.5  
± M.H.  
N1/4 Rim

3' Woven wire fence on ± Top of Wall  
8" Conc. Ret. Wall 442' RT. Lat. Along W. Ft. Loma

5+02.81 Sec. Along Sly Prop. W. Ft. Loma

6" Conc. Ret Wall 635' Lt. Lat. along W. Ft. Loma

9.5	6.6	6.4	6.4	5.9	5.1	5.2	4.9	6.0	5.8	9.16	4.7
1.78	4.5	4.7	4.7	5.2	6.0	5.9	6.2	5.1	5.3	1.92	6.4
635	635	50	45	30	12	0	29	36	44	44	44
Top Wall Ground Car Gen						Ground Top Wall Bot Fly					
10.32	7.1	9.62	6.5	5.9	5.1	5.2	9.14	4.8	8.85	4.5	
0.76	4.0	1.46	4.6	4.6	4.6	5.2	1.34	6.3	2.23	6.6	
100	100	75	75	75	75	45	45	75	75	100	
Top Wall Ground						Ground Top Wall Ground Top Ground					

5+01.5 Begin 4-Car Garage 32' ± Lt

6.76  
4.32  
32 ±  
Top Floor

8.57  
2.51  
100 ± ←  
Top Wall

11.08

10-13-53

X-SEC'S RIALTO ST. CONTD.

Lt. & Rt

B.M. - 0.47 21.75 ~ 21.78 (See Pg. 35)

T.B.M. +11.44 22.22 - 5.11 5.97

(Side Shot)  
Set P.K. Fly Side P.P.N#2899

TP. P.P.N#2851 P.K. on Nly Side - 0.30 10.78

9.64	8.61	8.08	7.34	6.67	6.13	5.68	5.28	4.93	4.62	4.37	4.15	3.98
1.40	2.21	3.00	3.74	4.41	4.95	5.40	5.80	6.15	6.46	6.71	6.93	7.10
150	125	100	75	50	25	0	25	50	75	100	125	150

576350 Sec Along & W.Pt. Loma Blvd

@ 90° to

5748 & 3" Pipe (Street Sign) Rialto 24' Lt

57435 & P.P. N#2899 18' Lt. @ 90° To Rialto

5739 End 4-Gay Gay @ 90° To Rialto 32' Lt

6.78	6.6
4.30	4.5
32'	32'
Top floor Ground	

5733 S/4 E. Part Along W.Pt. Loma

6.52	5.94	5.43	5.03	4.71	4.34	4.11	3.81	3.56
4.56	5.14	5.63	6.05	6.37	6.70	6.97	7.27	7.52
100	75	50	25	0	25	50	75	100

5722 Toe Sec Along W.Pt. Loma

5.7	5.6	5.1	5.0	4.6	4.4	4.4	4.1	3.8	3.5	3.2	
5.7	5.5	6.0	6.1	6.5	6.7	6.7	7.0	7.3	7.3	7.6	7.9
100	75	50	30	25	18	0	25	48	55	75	100

11.08

11.08

Alley Bk. 29 Loma Alta #2

C.H.S.  
Boyg  
oltman  
Schelin

10-21-53  
W.O.# 32159

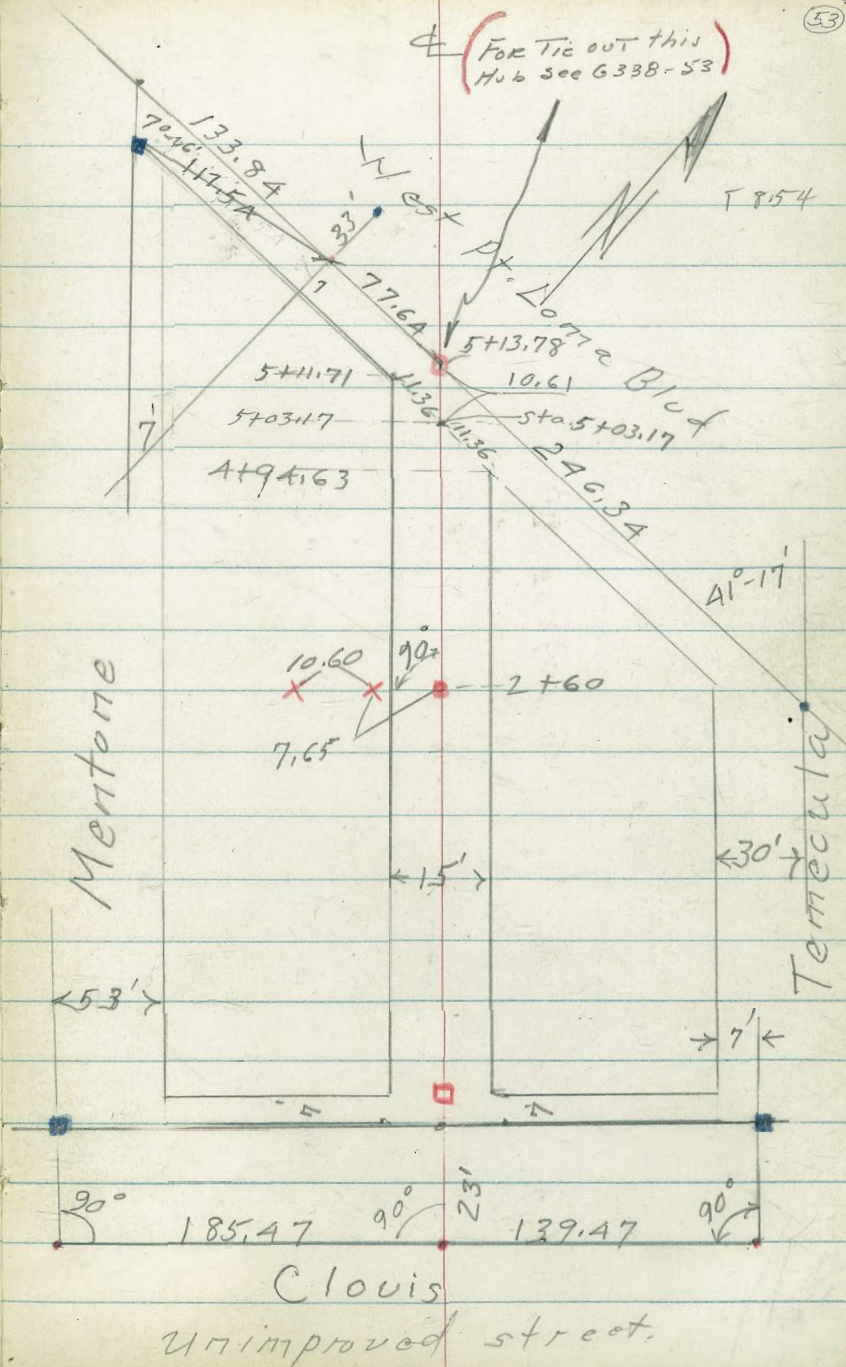
F.B. 2169-47  
2249-18

Ref. F.B. 2169-47  
" 1375-67  
" 2249-19  
Map # 1092

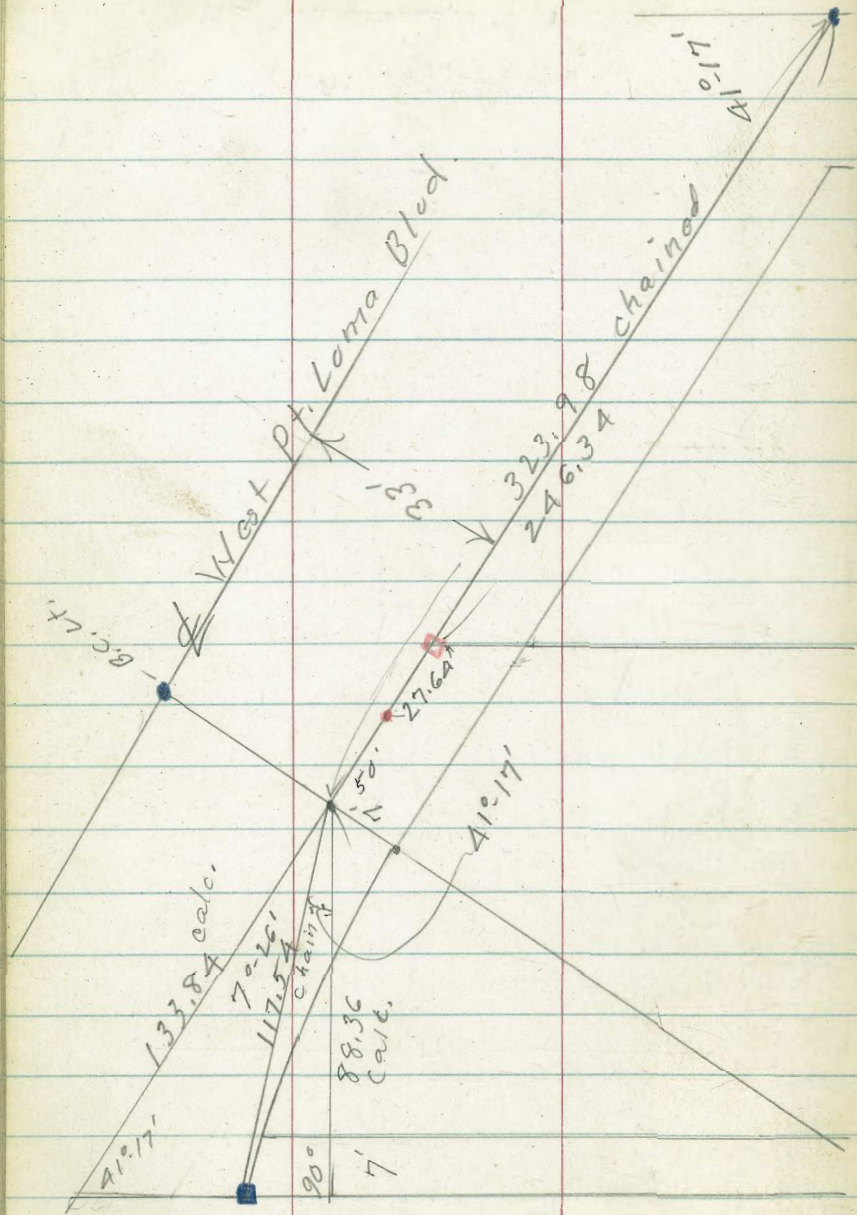
- Denotes - Pd Mem. tack
- " " Nail in Pauc.
- " set 1/2" disk
- " " Nail
- × " cut cross in conc.

Plotted  
11-2-53  
S.H.

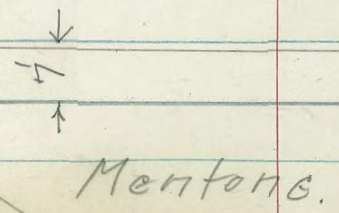
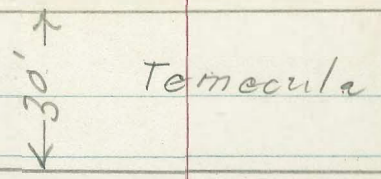
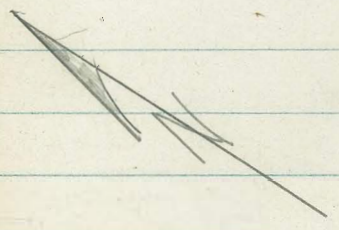
INDEXED  
OCT 26 1953







Calculations for  
location of N. wly. end  
Alley Blk 29.



Alley Blk 29  
Loma Alta # 2

E

0+50 7<sup>E</sup> Rt. = end fence.

~~87~~  
~~apron~~  
54.3  
5.4 6.1 53.6  
7E 6.1 53.6  
7E

0+28 - 14<sup>L</sup> Lt. = start double  
4 car. garage.

55.24  
53.08  
54.53  
4.45 5.16  
142 87  
Car. Floor Apron

0+25 8<sup>L</sup> Lt. = start corr. apron

54.53  
5.16  
87  
Apron

0+00 7<sup>E</sup> Rt. = start picket fence.  
(T.B.M. 0+00) on Hub. 5.78

54.6  
5.1 54.2 54.2  
75 5.5 5.5  
75

0-30 = ± Clovis

57.4  
2.3 53.8 49.7  
50 5.9 10.0  
50

4.65 59.69 8.06 55.04

0.80 63.10 — 62.30

59.69

+ Mentone = B.M. # 4 F.B. 2169  
48  
Spike in pole # P 2699 - S.W. Cor. Clovis

Alloy BIK 29

(T.P. Pole # P.A. 4412) Corra Alta #2

T.P. 3.34 58.15 4.88 54.81

0+98 8' Lt = 16" pole # P.A. 4412

To double Gar.

0+97 13' RK = start conc. apron

14' Lt = end Car. port.

0+92 8' Lt = end conc. apron

0+74 { conc. floor  
13' RK = 1 Sing Gar.  
8' RK = 2 Apron

0+72 14<sup>3</sup> Lt = end garage & start Car. port.

0+53 8<sup>5</sup> Lt = bottom of step down in apron

in apron.

0+53 = 8<sup>5</sup> Lt = 2 step down

52.88  
6.81 6.73  
13 16  
apron Car. floor

55.09 54.17  
4.60 5.52  
14 8  
car port apron

52.89 53.05  
6.80 6.64  
8 13  
apron Car. floor

54.94 54.16  
4.75 5.53  
143 82  
at Gar. Apron

54.89 54.24  
4.80 5.45  
145 85  
at Gar. apron

55.41 54.57  
4.28 5.12  
145 85  
at Gar. Apron

59.69

1+70 10' RT = end apron

LT

1+62 8' LT = end fence

1+50

53.4  
4.8  
75  
53.0  
512  
75  
53.0  
512  
75

52.78  
5137  
10L  
Apron  
52.85  
5130  
18  
Gar. floor

1+49 7' RT = end lath fence  
10' start conc. apron  
to double Gar.

52.89  
5126  
10R  
apron  
52.87  
5128  
18  
Gar. floor

1+46 - 8' LT = 3' conc. walk

54.25  
3.90  
185  
53.80  
4.35  
82

1+42 8' LT = start picket fence.  
lath fence.

1+32 7' RT = end wall + start

1+26 7' RT = start conc. wall

53.0  
512  
79  
B.W.  
52.5  
517  
79  
T.W.  
55.2  
310  
79

1+12 8' LT = 3' conc. walk  
13' RT = end apron

54.6  
3.6  
18  
walk  
54.33  
3.82  
85  
8  
54.0  
4.2  
8

52.90  
5125  
135  
apron  
53.05  
5110  
16  
Gar.

1+00

53.9  
4.3  
75  
53.3  
4.9  
52.9  
513  
75

58.15

Alley BIK. 29  
Loma Alta #2.

2+40 26' Rt. = 3' conc. walk

52.1  
1.8  
75

51.4  
2.5

51.1  
2.8  
75

49.96  
3.90  
26  
walk

49.76  
4.10  
30

2+39 - 7' Lt. = start apron to 3 car. bar.

53.29  
9.57  
198  
Bar floor

52.29  
1.57  
72  
apron

~~1.57~~  
~~72~~  
apron

~~9.57~~  
~~198~~  
Gar floor

2+36 8' Lt. = end slab + wall

53.0  
0.9  
8' Lt.  
top of slab

52.1  
1.8  
8' Lt.  
B.W.

~~1.8~~  
~~8' Lt.~~  
B.W.

~~1.9~~  
~~8' Lt.~~  
top of slab

2+26 { 1' high retaining wall,  
8' Lt. = start conc. slab +  
7' Lt. = end fence

53.0  
0.9  
8' Lt.  
top of slab

52.2  
1.7  
8' Lt.  
B.W.

52.4  
1.5  
8

~~1.5~~  
~~8~~

~~1.7~~  
~~8' Lt.~~  
B.W.

~~1.9~~  
~~8' Lt.~~  
top of slab

~~1.4~~  
~~8' Lt.~~  
top of wall

53.86

T.P. 2.05 53.86 6.34 51.81

T.P. on Cross 7' Lt. of Sta 2+60

2+00

52.9  
5.3  
75

51.3  
5.9

51.9  
6.3  
75

1+84 - 8' Lt. = start board fence

58.15

3+05 13<sup>6</sup> = £ 3<sup>rd</sup> door

3+00

2+75- 13<sup>5</sup> Lt. = £ 2<sup>nd</sup> door

2+85- 13<sup>6</sup> Lt. = £ 1<sup>st</sup> door.

{ under Apts.  
of six garages with

2+79 - 13<sup>6</sup> Lt. = start series

2+76- 6<sup>5</sup> Lt. = 16" pole # P.A. 4436

2+70 7<sup>7</sup> Lt. = end apron

conc. floor.

2+63- 30' Rt. = £ double Gar.

£

49.56  
4130  
13<sup>5</sup>  
Floor

49.4 45 7<sup>5</sup> 48.9 5.0 48.4 5.5 7<sup>5</sup> 45.9 8.0 40

50.18  
3.68  
13<sup>5</sup>  
Floor

50.84  
3.02  
13<sup>5</sup>  
Floor

53.28 51.64 51.3 50.6 50.1 49.2  
0.58 2.22 2.6 3.3 3.8 4.7  
19<sup>5</sup> 7<sup>7</sup> 7<sup>5</sup> 7<sup>5</sup> 30  
Gar. apron floor

49.70  
4116  
30  
Gar. floor

53.86

T.P. 0.56 42.17 12.25 41.61

3+60

46.3 44.8 44.0 42.6 39.4  
7.6 9.1 9.9 11.3 16.5  
20 75 75 40

3+50 7<sup>th</sup> Lt. = end wall.

49.5 44.8 46.2  
4.4 9.1 7.7  
72 72 75  
T.W. B.W.

3+40 - 7<sup>th</sup> Lt. = start conc. block wall  
13<sup>th</sup> Lt. = end garages.

49.5 45.5 47.4 47.2 47.1 49.9 43.8 38.7  
4.4 8.4 6.5 6.7 6.8 7.0 10.1 15.2  
72 72 75 75 10 12 40  
T.W. B.W.

3+35 - 13<sup>th</sup> Lt. = 6<sup>th</sup> door

47.62  
6.24  
13E  
Floor

3+25 - 13<sup>th</sup> Lt. = 5<sup>th</sup> door

48.24  
5.62  
13E  
Floor

3+15 - 13<sup>th</sup> Lt. = 4<sup>th</sup> door

48.90  
4.96  
13E  
Floor

53.86

54  
60

A+949 - 7<sup>5</sup> Rt. = <sup>Pt. Loma Blvd.</sup> 5 1/2 yds line west

8.1 <sup>23.0</sup>  
7<sup>5</sup>  
8.6 <sup>22.5</sup>  
9.3 <sup>21.8</sup>  
7<sup>5</sup>

A+88 - 10<sup>5</sup> Lt. = <sup>3 car Cor.</sup> conc. apron to

7.42 <sup>23.65</sup>  
23  
Cor.  
7.63 <sup>23.44</sup>  
10<sup>5</sup>  
apron

A+85 - 11' Lt. = ± 18" conc. walk

3.30 <sup>27.77</sup>  
21  
on walk  
5.41 <sup>25.66</sup>  
11

A+70

1.10 <sup>30.1</sup>  
20  
4.0 <sup>27.1</sup>  
7<sup>5</sup>  
4.2 <sup>26.9</sup>  
7<sup>5</sup>  
4.2 <sup>26.9</sup>  
7<sup>5</sup>  
4.5 <sup>26.6</sup>  
7<sup>5</sup>  
8.7 <sup>22.4</sup>  
22  
8.7 <sup>22.4</sup>  
30

31.07

A+50 - 6' Lt. = double deadman

T.P. 1.00 31.07 12.10 30.07

A+30

4.5 <sup>37.7</sup>  
30  
7.9 <sup>34.3</sup>  
7<sup>5</sup>  
8.0 <sup>34.2</sup>  
7<sup>5</sup>  
8.5 <sup>33.7</sup>  
7<sup>5</sup>  
11.1 <sup>31.1</sup>  
30

A+25 - 6' Lt. = 10" pole <sup>#</sup> UPA 4454

A+00

0.10 <sup>42.2</sup>  
30  
3.0 <sup>39.2</sup>  
7<sup>5</sup>  
3.4 <sup>38.8</sup>  
5  
3.6 <sup>38.6</sup>  
5  
5.0 <sup>37.2</sup>  
7<sup>5</sup>  
7.0 <sup>35.2</sup>  
15  
9.0 <sup>32.2</sup>  
40

42.17



Alloy BIK. 29 Loma Alta #2

= B.M. #3 FB 2169

Mentone + W. Pt. Loma Blvd. (2A106)

Spike in Palo # PL699 4.48 24.06

TIP. 7.68 28.54 10.21 20.86 (2 1/2  
5413.78)

5+63 = Sec. along Pavement.

22.17  
8.90 70  
21.62  
9.45 130  
20.65  
10.42

5+22 = Sec. along Pav. sly. edge

20.93  
10.14 100  
20.24  
10.83 50  
19.92  
11.15 100  
19.60  
11.47

of W. Pt. Loma Blvd

5+03<sup>17</sup> = Sec. along sly. line

23.1  
8.0 30  
21.6  
9.5 20  
21.5  
9.6 1136  
21.7  
9.4  
21.8  
9.3 1136  
21.7  
9.4 40

24' Lt. = end garage

5+15 = 11' Lt. = end conc. apron

23.67  
7.40 24  
22.56  
8.51 18  
21.62  
9.45 11  
Car floor apron

W. Pt. Loma Blvd.

5+11<sup>71</sup> = 7' Lt. = sly. line

21.5  
9.6  
75

W. Pt. Loma Blvd.

5+03<sup>17</sup> = Intersect sly. line

22.0  
9.1 75  
21.7  
9.4

31.07

INDEXED  
JER  
JUN 11 1954

D. Smith  
J. Rorer  
R. Taylor  
B. Fish

WO # 25020 63  
6/10/54  
Cross Sec. La Jolla Shores Dr  
up Nty of La Jolla Cliffs Sub.

Ref:

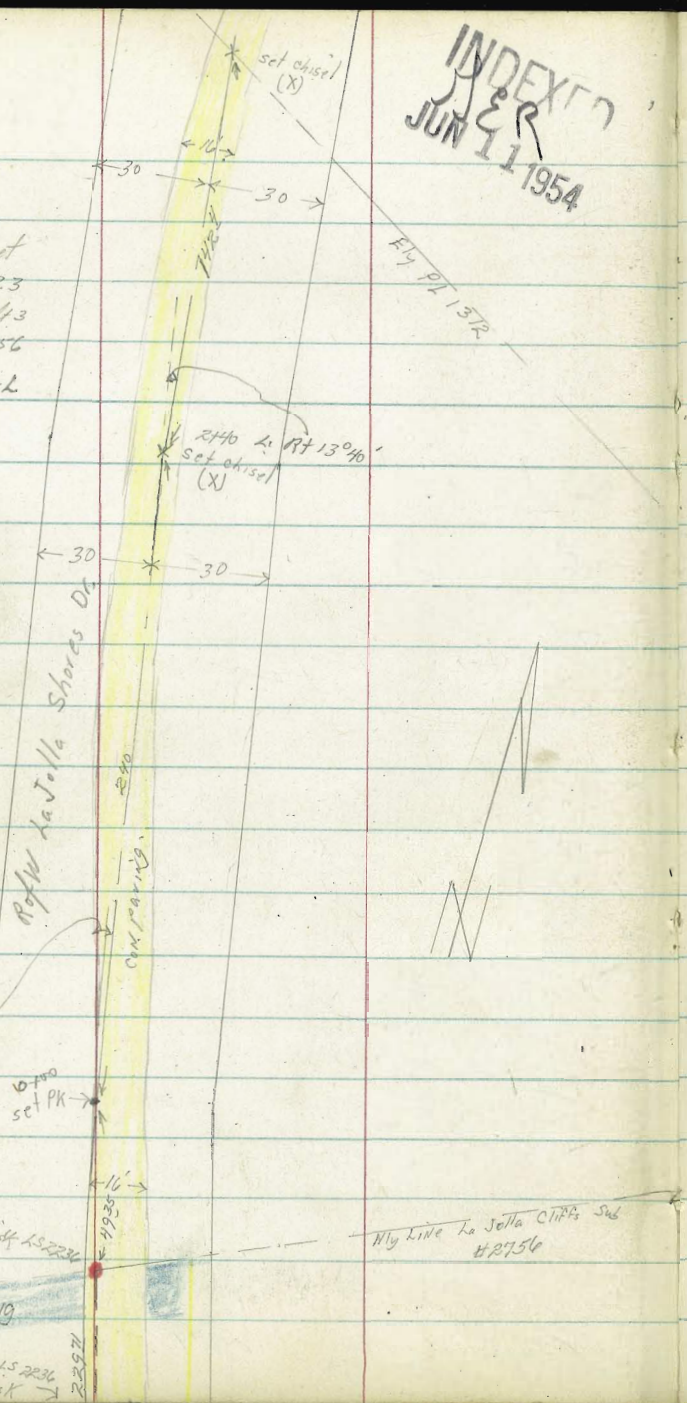
opening sheet

18-23

R/S 1352-413

File Map #2756

Plan 8746-L



L. RT 14% 20'

set PK

Fd L. D. K. 152234

AC PAVING

15 2234

Fd L. D. K.

Nty Line La Jolla Cliffs Sub  
#2756

1+25 - 35° LT= Barb wire	112	109	98	82	74	734	84	803	75	51	5	4	1
	50	37	30	20	13	112	42	23	8	23	3	5	1
		381.5	383.3	383.9	385.25	385.15	384.95	384.65	384.9	384.73	384.60	383.50	382.6
					edge	Wlyedge	elyedge	elyedge	elyedge	elyedge	elyedge	elyedge	elyedge
					Berm	Conc PVT	Conc PVT	Conc PVT	Conc PVT	Conc PVT	Conc PVT	Conc PVT	Conc PVT
1+00 - 37° LT= Barb	120	115	97	95	74	765	8	834	8	54	5	4	5
	50	40	30	25	12	108	5	5	8	30	5	5	0
		380.00	380.5	382.2	384.95	385.05	384.75	384.45	384.6	384.6	387.1	388.2	
					edge	Wlyedge	elyedge	elyedge	elyedge	elyedge	elyedge	elyedge	elyedge
					Berm	Conc PVT	Conc PVT	Conc PVT	Conc PVT	Conc PVT	Conc PVT	Conc PVT	Conc PVT
0+75 - 38° LT= Barb wire fence	130	125	108	80	79	794	824	854	84	52	4	8	
	50	40	30	16	10	9	70	70	10	30	50	50	
		380.00	380.5	382.2	384.95	385.05	384.75	384.45	384.6	384.6	387.1	388.2	
					edge	Wlyedge	elyedge	elyedge	elyedge	elyedge	elyedge	elyedge	elyedge
					Berm	Conc PVT	Conc PVT	Conc PVT	Conc PVT	Conc PVT	Conc PVT	Conc PVT	Conc PVT
0+50 36° LT= barb wire fence	128	120	83	82	847	890	86	64	5	1			
	40	30	80	66	93	14	30	50					
		379.6	380.8	382.00	384.40	383.45	383.34	383.77	385.7	387.3			
					edge	Wlyedge	elyedge	elyedge	elyedge	elyedge	elyedge	elyedge	elyedge
					Berm	Conc PVT	Conc PVT	Conc PVT	Conc PVT	Conc PVT	Conc PVT	Conc PVT	Conc PVT
0+25 - 31° LT= Barb wire fence	132	122	110	85	854	865	922	7	10	5	7		
	50	30	23	42	35	124	20	50					
		379.6	380.3	380.3	382.5	384.12	384.17	384.16	383.50	384.7	386.8		
					edge	Wlyedge	elyedge	elyedge	elyedge	elyedge	elyedge	elyedge	elyedge
					Berm	Conc PVT	Conc PVT	Conc PVT	Conc PVT	Conc PVT	Conc PVT	Conc PVT	Conc PVT
0+00 L14° 20' RT on split - 26° LT= barb wire fence	134	127	127	105	91.6	881	82	883	949	8	6	8	
	50	30	26	15	31	14	30	66	16	30	50		
		379.6	380.3	380.3	382.5	384.12	384.17	384.16	383.50	384.7	386.8		
					edge	Wlyedge	elyedge	elyedge	elyedge	elyedge	elyedge	elyedge	elyedge
					Berm	Conc PVT	Conc PVT	Conc PVT	Conc PVT	Conc PVT	Conc PVT	Conc PVT	Conc PVT
0-49 35 Nly Line sub. Nlyedge end A.C. Pavc	112	101	99	83	83	952	1005	980	96				
	50	30	25	22	22	15	21	21	21	21	21	21	21
		381.8	382.9	383.1	383.56	383.47	382.94	383.19	383.53				
					edge	Wlyedge	elyedge	elyedge	elyedge	elyedge	elyedge	elyedge	elyedge
					Berm	Conc PVT	Conc PVT	Conc PVT	Conc PVT	Conc PVT	Conc PVT	Conc PVT	Conc PVT

BM 9.16 392.99 38383

Obv'd at Nly P.L. sub. Phn 8746-L

392.99 T

3700 - 31° LT = barbwire fence

386.5	387.7	388.4	389.9	390.44	390.58	390.95	391.7	392.8	392.9
25	35	46	18	135	241	294	315	33	13
				25	125	390.95	391.7	392.8	392.9
				25	125	390.95	391.7	392.8	392.9
				25	125	390.95	391.7	392.8	392.9
				25	125	390.95	391.7	392.8	392.9
				25	125	390.95	391.7	392.8	392.9
				25	125	390.95	391.7	392.8	392.9
				25	125	390.95	391.7	392.8	392.9
				25	125	390.95	391.7	392.8	392.9

2475 - 29.5° LT = barbwire fence

386.4	387.4	388.2	389.2	389.76	389.80	389.7	389.11	389.2	390.6	391.0	393.00	393.2
64	56	40	30	30	323	319	36	30	24	20	30	34
50	40	30	17	102	100	36	53	80	20	30	34	50
				edge Berm	elyedge Conc		elyedge Conc					

2440 - 27.13% on split - 25.8° LT = Barbwire fence

386.5	387.5	388.5	388.75	388.79	388.41	388.02	388.0	389.4	390.00	390.8
65	54	45	424	420	440	497	50	36	30	21
28	25	132	80	60	92	11	20	30	40	8
			edge Berm	wlyedge Conc pvt		elyedge Conc pvt				

2425 - 27.3° LT = barbwire fence

384.9	386.5	386.9	388.39	388.34	387.97	387.59	387.9	389.6	390.4
60	30	26	460	465	502	540	51	30	16
			96	84	76	10	30	50	
			edge Berm	wlyedge Conc pvt		elyedge Conc			

2400 - 28.8° LT = Barb.wire fence

383.7	385.0	386.2	387.53	387.56	387.10	386.83	387.4	389.0	390.0
93	80	68	546	543	589	616	16	40	10
50	30	26	113	102	56	10	30	50	
			edge Berm	wlyedge Conc pvt		elyedge Conc pvt			

1475 - 31° LT = barb wire fence

384.0	385.3	386.52	386.79	386.30	386.06	387.5	388.5	389.6
90	77	62	620	69	693	55	45	33
34	30	132	115	46	16	30	50	
		edge Berm	elyedge Conc pvt		edge Conc pvt			

1450 33.3° LT = Barb wire fence

384.0	385.6	386.01	386.11	385.66	385.45	387.4	388.1	389.2
90	74	69	688	33	754	56	72	100
30	18	133	120	40	20	30	50	
		edge Berm	wlyedge Conc pvt		elyedge Conc pvt			

392.99

Lt=Wly

Base  
LINE  
= 552 OPENING SHEET Rt=Ely 66  
18-23

TP 12.80 Start BM- 383.83

4100 -

60	390.7						
50	38						
42	392.5						
32	393.42						
34	393.57						
36	393.04						
38	392.88						
40	392.9						
44	398.7						
46	395.1						
50	395.7						

3482<sup>4</sup> 32<sup>2</sup>LT= NELY cor Barb wire fence

68	48	46	37	33	393.04	367	42	392.50
50	30	22	14	13	edge Berom	wlyedge CONE PT	25 edge PT	43
								392.28
								392.2
								393.7
								394.4
								395.6

396.71 x

TP 5.47 396.71 1.75 391.24

3450 - 33<sup>2</sup>LT.

40	389.0							
50	390.6							
19	391.1							
18	391.2							
09	392.06							
09	392.07							
60	391.39							
17	391.28							
17	391.3							
03	392.71							
02	392.8							
17	394.1							
30	394.6							

3425 32<sup>4</sup>LT= barb wire fence

5-2  
50

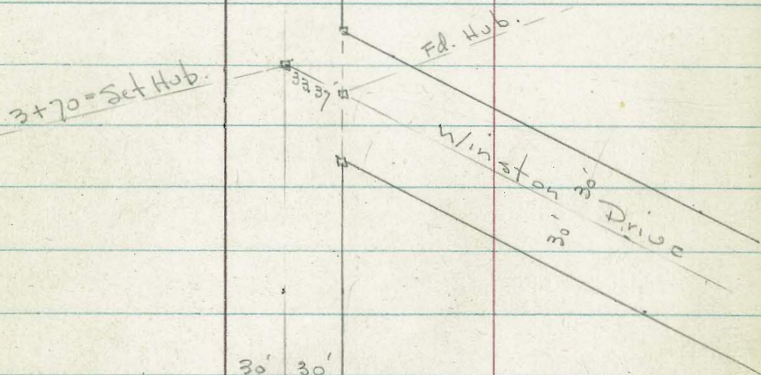
40	389.0							
29	390.1							
22	390.8							
17	391.28							
16	391.31							
2	390.68							
23	390.64							
20	392.5							
30	392.5							
50	392.8							

392.99 x

whose notes

INDEXED  
JER  
NOV 15 1954

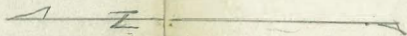
Drive



30' 30'

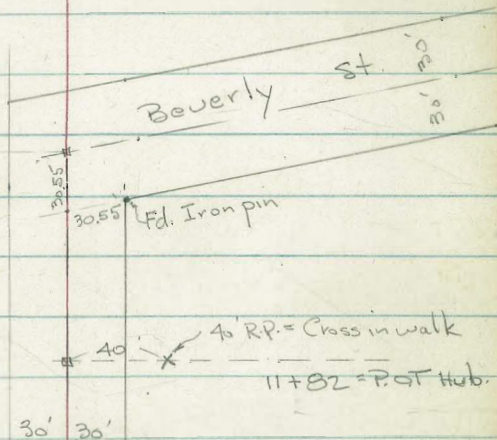
1+00 = Set Hub.

Lenox



See Book 2051 for Ties

# Both ways  
13+29.04 = Set Hub.  
Ang. 79° 03' 30" Rt.



30' 30'

Drive

Lenox

X-Sept. Lenox Drive - for Grade Est.  
 From stream - west of Winston to  
 Beverly -

W.O. 25020 - 11-12-54 - 7.0.

2+00

1+50

1+00

0+50

0+08 = Top of Bank

0+07 = edge

0+00 = mi ± of Creek - Rods in ± of Creek  
 to show profile

T.P. 1.27 156.68 12.54 155.41

T.P. 0.67 169.95 10.71 167.28 ± Hub 3470

B.M. = SW Mon. 1202 177.99 165.97

Geneva + Winston  
 See B. 2051 - P. 38

Lt. # Rt. 68

9.1	9.7	9.7	9.7	7.9
30	30	30	30	30
147.6	147.0	147.0	147.0	148.8
9.2	9.7	9.7	9.7	7.9
30	30	30	30	30
147.1	146.96	146.9	146.6	148.8
9.6	9.72	9.8	9.8	7.9
30	30	30	30	30
147.0	147.0	146.9	146.6	148.8
9.7	9.7	9.7	9.7	7.9
30	30	30	30	30
147.0	146.96	146.9	146.6	148.8
11.5	11.5	11.5	11.5	7.9
30	30	30	30	30
143.6	143.6	143.6	143.6	148.8
13.1	13.1	13.1	13.1	7.9
30	30	30	30	30
147.4	147.4	147.4	147.4	148.8
13.2	13.2	13.2	13.2	7.9
30	30	30	30	30
143.5	143.5	143.5	143.5	148.8
13.4	13.4	13.4	13.4	7.9
30	30	30	30	30
143.3	143.3	143.3	143.3	148.8
13.4	13.4	13.4	13.4	7.9
30	30	30	30	30
143.3	143.3	143.3	143.3	148.8
15.4	15.4	15.4	15.4	7.9
30	30	30	30	30
143.3	143.3	143.3	143.3	148.8

50 = Prop.  
 East?  
 site?

T.P. 13.07 193.49 0.14 180.42

4+80

4+40

3+95

T.P. 13.28 180.56 1.26 167.28

3+55

3+15

2+85

T.P. 13.13 168.54 1.27 155.41

2+40

7.1	10.1	9.5	3.2	+0.5	+1.7	+2.0
50	50	30	2	20	30	50
146.7	169.9	171.1	177.4	181.1	182.3	182.6
13.9	13.0	13.9	8.1	0.180	0.179	
50	30	25	5	4	5	
164.3	167.6	166.7	172.1	180.4	179.5	
9.9	16.3	13.9	170.9	0.2	0.1	
30	30	30	30	30	30	
173.5	178.3	178.3	178.3	178.3	178.3	

5.0	7.3	190.56		+0.8	+3.3
50	20	164.8		30	30
158.5	161.2	167.8		159.3	
9.6	14.9	0.168		3/71.5	+1.7
50	30	2		30	30
158.5	158.6	167.2		173.7	+6.0
13.0	9.9	5.0		30	50
50	30	30		30	50
160.5	161.2	167.8		173.7	173.7

7.2	7.4	6.4	5.2	0.4	+2.3	+3.3
50	30	15	2	20	30	40
149.5	149.3	150.3	151.5	157.1	159.0	160.0
151.68						

Lt

Rt

Rt

69



Lenox

T.P. 12.94 231.62 0.06 218.68

8+50

T.P. 12.65 218.74 0.12 206.09

8+00

7+50

7+00

6+50

T.P. 12.89 206.21 0.17 193.32

6+00

5+60

5+20

Lt.

#

Rt.

70

212.4	212.2	6.212.3	111.7	105.6
6.3	6.5	4	7.0	13.1
40	30		30	44
				+ wash
		218.74		
		205.0	204.6	205.7
		1.2	1.6	4.8
			20	0.5
			+ wash	+24
		205.9	200.7	203.2
		30	30	30
				40
		192.8	197.7	197.9
		13.4	10	33.3
				30
		193.5	194.1	
		7	30	
		189.3	189.8	
		189.2	185.8	
		7.6	30	
		183.2	183.6	
		10	30	
		193.49	9.9	
			30	

12+18.5-247 Rt.

Set B.M. = spike in Pole

1.68 271.59

T.P. 2.37 273.27 0.05 270.90

12+00

11+82 - 293 Rt. = E 3' Conc. walk

11+50

T.P. 13.36 270.95 0.06 257.59

11+00

10+50

T.P. 12.98 257.65 0.10 244.67

10+00

T.P. 13.17 244.77 0.02 231.60

9+50

9+00

Lt.

Rt.

71

0.270.13

0.7  
30

5.265.4

5.6

30

257.5

+0.2

30

11.5  
30

11.5

30

6.238.4

6.4

30

0.230.8

0.8

30

11.2  
30

11.2

30

270.0

1.0

5.265.3

5.7

30

270.95

-356.4

3

3

11.1

11.1

30

257.65

5.239.3

5.5

30

244.77

1.239.1

1.5

30

231.3

12.2

12.2

30

231.62

0.270.2

0.8

30

1.269.58

1.3

30

29.3

1.3

30

5.0

30

Dist

Dr

255.9

1.269.04

1.5

30

11.0

11.0

30

237.1

7.7

30

237.1

2.2

30

229.4

2.2

30

119.4

12.2

30

119.4

12.2

30

119.4

12.2

30

119.4

12.2

30

119.4

12.2

30

119.4

12.2

30

119.4

12.2

30

119.4

12.2

30

Lt.

+

Rt.

72

checked sections shown in Book 2051

Page 13 - Note New F.H. and Prop. House

Beverly + Geneva  
check B.M. = N.W. Mon.

12 10 261.17

See 2051 - P. 48

13 + 75 = end.

257.9

13 259.2

260.8

13.4  
3012.5  
30

Set B.M. = Spike in Pole 7 9.27 264.00

13 + 57 - 0.5 Rt. = E.P. pole # P 298555

13 + 55

10.2 63.0  
30

9.2 43.6

10.2 63.3  
30

266.1

265.9

265.9

13 + 20

7.2  
507.4  
307.4  
307.8  
30

13 + 00

(in Dirt Dr.)

269.1  
30268.3  
0267.9  
30

12 + 50

272.3  
30272.0  
30271.9  
30

12 + 18.5 - 242 Rt. = E.P. pole # 273221 = B.M.

273.27







70









2169

26

Mentore & W. P. Loma B.M. S.W.

29.06 5 p.m. in Pole N<sup>o</sup> P-2699

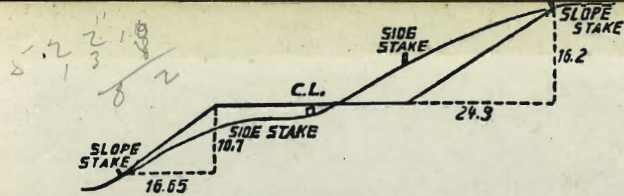
275  
43.30  
318.30

146.94  
171.32  
318.26

43.30  
80.00  
123.30

146.94  
123.30  
23.64

5713.43  
6202  
8463.50  
35  
20.50



**DISTANCES FROM SIDE STAKES FOR CROSS-SECTIONING.**  
SLOPE 1 1/2 TO 1. ROADWAY OF ANY WIDTH.

	0	.1	.2	.3	.4	.5	.6	.7	.8	.9	
0	0.00	0.15	0.30	0.45	0.60	0.75	0.90	1.05	1.20	1.35	0
1	1.50	1.65	1.80	1.95	2.10	2.25	2.40	2.55	2.70	2.85	1
2	3.00	3.15	3.30	3.45	3.60	3.75	3.90	4.05	4.20	4.35	2
3	4.50	4.65	4.80	4.95	5.10	5.25	5.40	5.55	5.70	5.85	3
4	6.00	6.15	6.30	6.45	6.60	6.75	6.90	7.05	7.20	7.35	4
5	7.50	7.65	7.80	7.95	8.10	8.25	8.40	8.55	8.70	8.85	5
6	9.00	9.15	9.30	9.45	9.60	9.75	9.90	10.05	10.20	10.35	6
7	10.50	10.65	10.80	10.95	11.10	11.25	11.40	11.55	11.70	11.85	7
8	12.00	12.15	12.30	12.45	12.60	12.75	12.90	13.05	13.20	13.35	8
9	13.50	13.65	13.80	13.95	14.10	14.25	14.40	14.55	14.70	14.85	9
10	15.00	15.15	15.30	15.45	15.60	15.75	15.90	16.05	16.20	16.35	10
11	16.50	16.65	16.80	16.95	17.10	17.25	17.40	17.55	17.70	17.85	11
12	18.00	18.15	18.30	18.45	18.60	18.75	18.90	19.05	19.20	19.35	12
13	19.50	19.65	19.80	19.95	20.10	20.25	20.40	20.55	20.70	20.85	13
14	21.00	21.15	21.30	21.45	21.60	21.75	21.90	22.05	22.20	22.35	14
15	22.50	22.65	22.80	22.95	23.10	23.25	23.40	23.55	23.70	23.85	15
16	24.00	24.15	24.30	24.45	24.60	24.75	24.90	25.05	25.20	25.35	16
17	25.50	25.65	25.80	25.95	26.10	26.25	26.40	26.55	26.70	26.85	17
18	27.00	27.15	27.30	27.45	27.60	27.75	27.90	28.05	28.20	28.35	18
19	28.50	28.65	28.80	28.95	29.10	29.25	29.40	29.55	29.70	29.85	19
20	30.00	30.15	30.30	30.45	30.60	30.75	30.90	31.05	31.20	31.35	20
21	31.50	31.65	31.80	31.95	32.10	32.25	32.40	32.55	32.70	32.85	21
22	33.00	33.15	33.30	33.45	33.60	33.75	33.90	34.05	34.20	34.35	22
23	34.50	34.65	34.80	34.95	35.10	35.25	35.40	35.55	35.70	35.85	23
24	36.00	36.15	36.30	36.45	36.60	36.75	36.90	37.05	37.20	37.35	24
25	37.50	37.65	37.80	37.95	38.10	38.25	38.40	38.55	38.70	38.85	25
26	39.00	39.15	39.30	39.45	39.60	39.75	39.90	40.05	40.20	40.35	26
27	40.50	40.65	40.80	40.95	41.10	41.25	41.40	41.55	41.70	41.85	27
28	42.00	42.15	42.30	42.45	42.60	42.75	42.90	43.05	43.20	43.35	28
29	43.50	43.65	43.80	43.95	44.10	44.25	44.40	44.55	44.70	44.85	29
30	45.00	45.15	45.30	45.45	45.60	45.75	45.90	46.05	46.20	46.35	30
31	46.50	46.65	46.80	46.95	47.10	47.25	47.40	47.55	47.70	47.85	31
32	48.00	48.15	48.30	48.45	48.60	48.75	48.90	49.05	49.20	49.35	32
33	49.50	49.65	49.80	49.95	50.10	50.25	50.40	50.55	50.70	50.85	33
34	51.00	51.15	51.30	51.45	51.60	51.75	51.90	52.05	52.20	52.35	34
35	52.50	52.65	52.80	52.95	53.10	53.25	53.40	53.55	53.70	53.85	35
36	54.00	54.15	54.30	54.45	54.60	54.75	54.90	55.05	55.20	55.35	36
37	55.50	55.65	55.80	55.95	56.10	56.25	56.40	56.55	56.70	56.85	37
38	57.00	57.15	57.30	57.45	57.60	57.75	57.90	58.05	58.20	58.35	38
39	58.50	58.65	58.80	58.95	59.10	59.25	59.40	59.55	59.70	59.85	39
40	60.00	60.15	60.30	60.45	60.60	60.75	60.90	61.05	61.20	61.35	40
41	61.50	61.65	61.80	61.95	62.10	62.25	62.40	62.55	62.70	62.85	41
42	63.00	63.15	63.30	63.45	63.60	63.75	63.90	64.05	64.20	64.35	42
43	64.50	64.65	64.80	64.95	65.10	65.25	65.40	65.55	65.70	65.85	43
44	66.00	66.15	66.30	66.45	66.60	66.75	66.90	67.05	67.20	67.35	44
45	67.50	67.65	67.80	67.95	68.10	68.25	68.40	68.55	68.70	68.85	45
46	69.00	69.15	69.30	69.45	69.60	69.75	69.90	70.05	70.20	70.35	46
47	70.50	70.65	70.80	70.95	71.10	71.25	71.40	71.55	71.70	71.85	47
48	72.00	72.15	72.30	72.45	72.60	72.75	72.90	73.05	73.20	73.35	48
49	73.50	73.65	73.80	73.95	74.10	74.25	74.40	74.55	74.70	74.85	49
50	75.00	75.15	75.30	75.45	75.60	75.75	75.90	76.05	76.20	76.35	50

THE NATIONAL BLANK BOOK COMPANY  
HOLYOKE MASSACHUSETTS  
NEW YORK CHICAGO BOSTON SAN FRANCISCO