

DISTANCES FROM SIDE STAKES FOR CROSS-SECTIONING
SLOPE 1 TO 1. ROADWAY OF ANY WIDTH

	0	.1	.2	.3	.4	.5	.6	.7	.8	.9	
0	0.00	0.10	0.20	0.30	0.40	0.50	0.60	0.70	0.80	0.90	0
1	1.00	1.10	1.20	1.30	1.40	1.50	1.60	1.70	1.80	1.90	1
2	2.00	2.10	2.20	2.30	2.40	2.50	2.60	2.70	2.80	2.90	2
3	3.00	3.10	3.20	3.30	3.40	3.50	3.60	3.70	3.80	3.90	3
4	4.00	4.10	4.20	4.30	4.40	4.50	4.60	4.70	4.80	4.90	4
5	5.00	5.10	5.20	5.30	5.40	5.50	5.60	5.70	5.80	5.90	5
6	6.00	6.10	6.20	6.30	6.40	6.50	6.60	6.70	6.80	6.90	6
7	7.00	7.10	7.20	7.30	7.40	7.50	7.60	7.70	7.80	7.90	7
8	8.00	8.10	8.20	8.30	8.40	8.50	8.60	8.70	8.80	8.90	8
9	9.00	9.10	9.20	9.30	9.40	9.50	9.60	9.70	9.80	9.90	9
10	10.00	10.10	10.20	10.30	10.40	10.50	10.60	10.70	10.80	10.90	10
11	11.00	11.10	11.20	11.30	11.40	11.50	11.60	11.70	11.80	11.90	11
12	12.00	12.10	12.20	12.30	12.40	12.50	12.60	12.70	12.80	12.90	12
13	13.00	13.10	13.20	13.30	13.40	13.50	13.60	13.70	13.80	13.90	13
14	14.00	14.10	14.20	14.30	14.40	14.50	14.60	14.70	14.80	14.90	14
15	15.00	15.10	15.20	15.30	15.40	15.50	15.60	15.70	15.80	15.90	15
16	16.00	16.10	16.20	16.30	16.40	16.50	16.60	16.70	16.80	16.90	16
17	17.00	17.10	17.20	17.30	17.40	17.50	17.60	17.70	17.80	17.90	17
18	18.00	18.10	18.20	18.30	18.40	18.50	18.60	18.70	18.80	18.90	18
19	19.00	19.10	19.20	19.30	19.40	19.50	19.60	19.70	19.80	19.90	19
20	20.00	20.10	20.20	20.30	20.40	20.50	20.60	20.70	20.80	20.90	20
21	21.00	21.10	21.20	21.30	21.40	21.50	21.60	21.70	21.80	21.90	21
22	22.00	22.10	22.20	22.30	22.40	22.50	22.60	22.70	22.80	22.90	22
23	23.00	23.10	23.20	23.30	23.40	23.50	23.60	23.70	23.80	23.90	23
24	24.00	24.10	24.20	24.30	24.40	24.50	24.60	24.70	24.80	24.90	24
25	25.00	25.10	25.20	25.30	25.40	25.50	25.60	25.70	25.80	25.90	25
26	26.00	26.10	26.20	26.30	26.40	26.50	26.60	26.70	26.80	26.90	26
27	27.00	27.10	27.20	27.30	27.40	27.50	27.60	27.70	27.80	27.90	27
28	28.00	28.10	28.20	28.30	28.40	28.50	28.60	28.70	28.80	28.90	28
29	29.00	29.10	29.20	29.30	29.40	29.50	29.60	29.70	29.80	29.90	29
30	30.00	30.10	30.20	30.30	30.40	30.50	30.60	30.70	30.80	30.90	30
31	31.00	31.10	31.20	31.30	31.40	31.50	31.60	31.70	31.80	31.90	31
32	32.00	32.10	32.20	32.30	32.40	32.50	32.60	32.70	32.80	32.90	32
33	33.00	33.10	33.20	33.30	33.40	33.50	33.60	33.70	33.80	33.90	33
34	34.00	34.10	34.20	34.30	34.40	34.50	34.60	34.70	34.80	34.90	34
35	35.00	35.10	35.20	35.30	35.40	35.50	35.60	35.70	35.80	35.90	35
36	36.00	36.10	36.20	36.30	36.40	36.50	36.60	36.70	36.80	36.90	36
37	37.00	37.10	37.20	37.30	37.40	37.50	37.60	37.70	37.80	37.90	37
38	38.00	38.10	38.20	38.30	38.40	38.50	38.60	38.70	38.80	38.90	38
39	39.00	39.10	39.20	39.30	39.40	39.50	39.60	39.70	39.80	39.90	39
40	40.00	40.10	40.20	40.30	40.40	40.50	40.60	40.70	40.80	40.90	40
41	41.00	41.10	41.20	41.30	41.40	41.50	41.60	41.70	41.80	41.90	41
42	42.00	42.10	42.20	42.30	42.40	42.50	42.60	42.70	42.80	42.90	42
43	43.00	43.10	43.20	43.30	43.40	43.50	43.60	43.70	43.80	43.90	43
44	44.00	44.10	44.20	44.30	44.40	44.50	44.60	44.70	44.80	44.90	44
45	45.00	45.10	45.20	45.30	45.40	45.50	45.60	45.70	45.80	45.90	45
46	46.00	46.10	46.20	46.30	46.40	46.50	46.60	46.70	46.80	46.90	46
47	47.00	47.10	47.20	47.30	47.40	47.50	47.60	47.70	47.80	47.90	47
48	48.00	48.10	48.20	48.30	48.40	48.50	48.60	48.70	48.80	48.90	48
49	49.00	49.10	49.20	49.30	49.40	49.50	49.60	49.70	49.80	49.90	49
50	50.00	50.10	50.20	50.30	50.40	50.50	50.60	50.70	50.80	50.90	50

Distance of slope stake from side or shoulder stake for any width roadway, slope 1 to 1. If ground is nearly level, the cut or fill at side stake is located by the double entry method in left column and top row. The number in body of table in same row and column gives distance from side stake to slope stake. If ground is not level estimate the difference in elevation between the side stake and slope stake, lower target by this amount if cut, elevate if fill. Add this amount to cut or fill and find distance in table. Set up rod at this point, and line of sight should cut target. If it does not make the slight adjustment necessary.

TABLE XIII—CORRECTIONS FOR TANGENTS AND EXTERNALS

These corrections are to be added to the approximate values, found by dividing the tangent, or external, for a 1° curve (Table VIII) by the degree of curve, in order to obtain the true tangents, or externals. Intermediate values may be obtained by interpolation.

FOR TANGENTS ADD

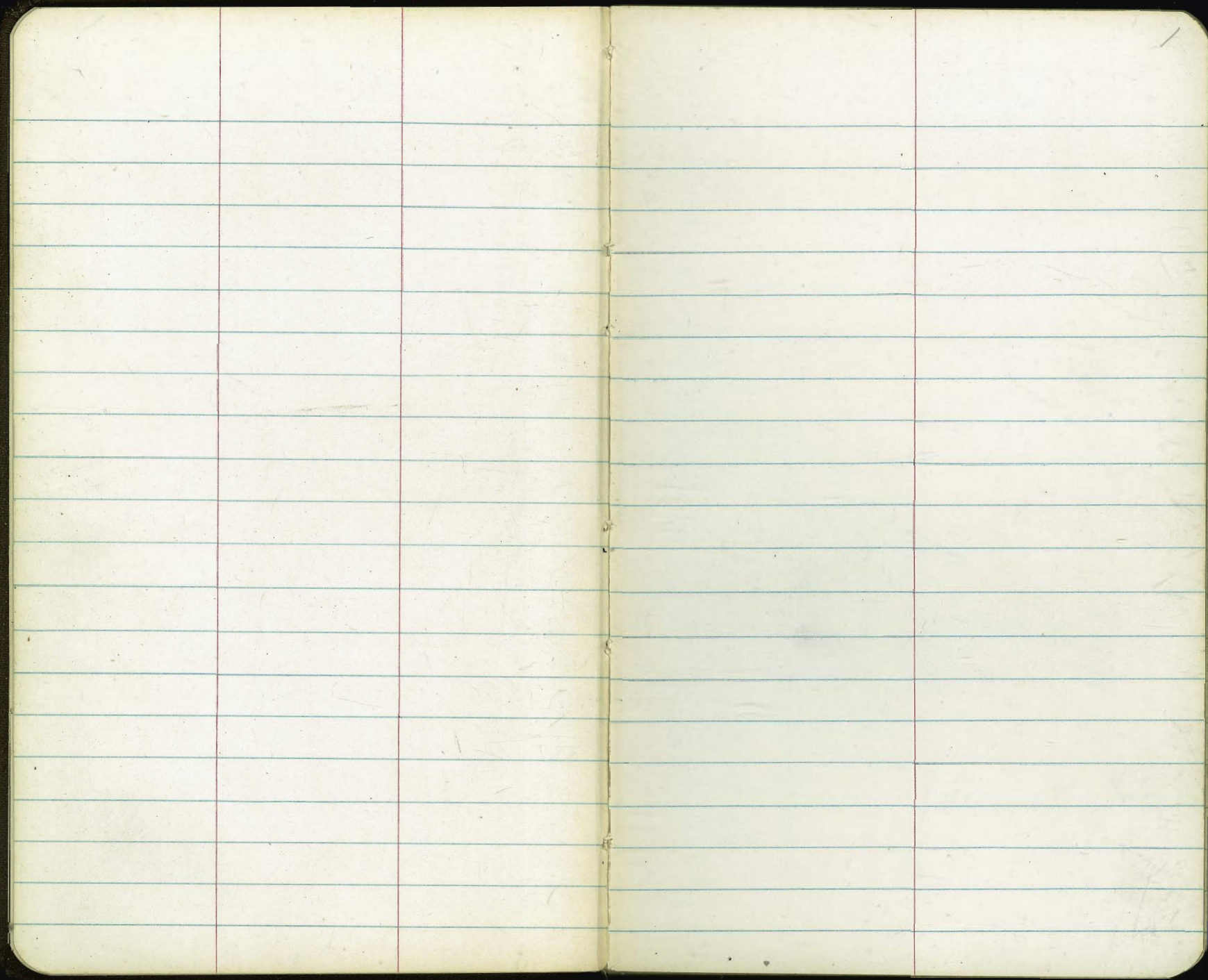
Central Angle	DEGREE OF CURVE													
	5°	10°	15°	20°	25°	30°	35°	40°	45°	50°	55°	60°	65°	70°
10°	.03	.06	.09	.13	.16	.19	.22	.25	.28	.31	.34	.38	.42	.46
15°	.04	.10	.14	.19	.24	.29	.34	.39	.45	.51	.55	.58	.63	.68
20°	.06	.13	.19	.26	.32	.39	.45	.51	.58	.65	.72	.79	.84	.90
25°	.08	.16	.24	.33	.40	.49	.58	.67	.75	.83	.90	.99	1.06	1.14
30°	.10	.19	.29	.39	.49	.59	.69	.79	.89	.99	1.09	1.20	1.29	1.39
35°	.11	.22	.34	.47	.58	.69	.79	.81	.92	1.04	1.29	1.42	1.54	1.66
40°	.13	.26	.40	.53	.67	.80	.93	1.06	1.20	1.34	1.49	1.64	1.79	1.94
45°	.15	.30	.44	.60	.76	.91	1.06	1.21	1.37	1.52	1.70	1.87	2.04	2.21
50°	.17	.34	.51	.68	.85	1.02	1.19	1.36	1.54	1.72	1.91	2.10	2.29	2.48
55°	.19	.38	.57	.76	.95	1.14	1.32	1.52	1.72	1.92	2.14	2.35	2.56	2.77
60°	.21	.42	.63	.84	1.05	1.27	1.49	1.71	1.94	2.17	2.38	2.60	2.83	3.07
65°	.23	.46	.69	.93	1.16	1.40	1.64	1.88	2.13	2.38	2.63	2.88	3.13	3.39
70°	.25	.51	.76	1.02	1.28	1.54	1.80	2.06	2.33	2.60	2.88	3.16	3.44	3.72
75°	.27	.56	.83	1.12	1.40	1.69	1.98	2.27	2.57	2.87	3.16	3.47	3.78	4.09
80°	.30	.61	.91	1.22	1.53	1.84	2.15	2.46	2.78	3.10	3.44	3.78	4.12	4.46
85°	.33	.66	1.00	1.33	1.68	2.02	2.36	2.70	3.05	3.40	3.77	4.14	4.55	4.89
90°	.36	.72	1.09	1.45	1.83	2.20	2.57	2.94	3.32	3.70	4.10	4.50	4.91	5.32
95°	.39	.79	1.19	1.55	2.00	2.40	2.80	3.20	3.61	4.02	4.40	4.85	5.38	5.83
100°	.43	.86	1.30	1.74	2.18	2.62	3.06	3.50	3.95	4.40	4.88	5.37	5.85	6.34
110°	.51	1.03	1.56	2.08	2.61	3.14	3.67	4.21	4.76	5.31	5.86	6.43	7.01	7.60
120°	.62	1.25	1.93	2.52	3.16	3.81	4.45	5.11	5.77	6.44	7.12	7.80	8.50	9.22

FOR EXTERNALS ADD

Central Angle	DEGREE OF CURVE													
	5°	10°	15°	20°	25°	30°	35°	40°	45°	50°	55°	60°	65°	70°
10°	.001	.003	.004	.006	.007	.008	.009	.011	.012	.014	.015	.017	.018	.020
15°	.003	.007	.010	.014	.018	.023	.027	.029	.032	.035	.039	.043	.047	.051
20°	.006	.011	.017	.022	.028	.034	.038	.045	.051	.057	.063	.070	.076	.083
25°	.009	.018	.027	.036	.046	.056	.065	.074	.083	.093	.106	.120	.127	.135
30°	.013	.025	.038	.051	.065	.078	.090	.103	.116	.129	.149	.170	.179	.188
35°	.018	.035	.054	.072	.086	.109	.131	.153	.175	.197	.213	.230	.247	.264
40°	.023	.046	.070	.093	.117	.141	.172	.203	.234	.265	.277	.290	.315	.341
45°	.030	.060	.093	.119	.153	.184	.216	.254	.289	.325	.351	.378	.411	.445
50°	.037	.075	.116	.151	.189	.227	.266	.305	.345	.384	.425	.467	.508	.550
55°	.046	.093	.142	.188	.236	.283	.332	.381	.420	.479	.530	.582	.641	.700
60°	.056	.112	.168	.225	.283	.340	.398	.457	.516	.575	.636	.697	.774	.851
65°	.067	.135	.204	.273	.343	.412	.483	.554	.625	.697	.771	.845	.922	1.01
70°	.080	.159	.240	.321	.403	.485	.568	.652	.735	.819	.906	.994	1.08	1.17
75°	.095	.182	.286	.383	.480	.578	.678	.777	.877	.977	1.07	1.18	1.29	1.39
80°	.110	.220	.332	.445	.558	.671	.787	.903	1.02	1.13	1.25	1.38	1.50	1.62
85°	.128	.259	.391	.524	.657	.790	.926	1.06	1.20	1.34	1.47	1.62	1.76	1.91
90°	.149	.299	.450	.603	.756	.910	1.07	1.22	1.38	1.54	1.70	1.87	2.03	2.20
95°	.174	.350	.522	.706	.885	1.06	1.25	1.43	1.62	1.80	1.99	2.18	2.38	2.58
100°	.200	.401	.604	.809	1.01	1.22	1.43	1.64	1.85	2.06	2.28	2.50	2.73	2.96
110°	.268	.536	.806	1.08	1.35	1.63	1.91	2.20	2.48	2.76	3.05	3.35	3.66	3.96
120°	.360	.721	1.08	1.45	1.82	2.19	2.57	2.95	3.33	3.72	4.11	4.50	4.91	5.32

Index.

Location Gas Pumps - Forward + La Jolla Blvd 2
 X-sec Alley BIK 190 Pacific Beach 3
 " " " 5 - Sun Harbor 10
 " Division ST - Lenard to 65th 17
 " 68th Tower ST to Amherst 22.51

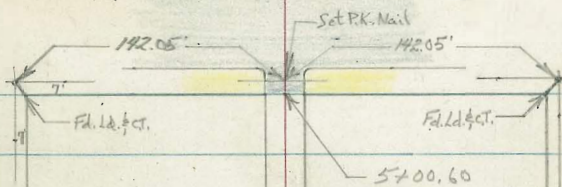


Roberts
Cota
Moore
Morales
2-26-54
W.D.# 25010

X-Section Alley Block 190, Pac. Beh.
Bayard to Cass
Between Emerald & Folspar

Cass Street

3



Cass: -
14' cb to Prop.
Solid walk
5' cb. Rad.
AC. Pave.

INDEXED
JER
MAR 2 1954

Notes in Red added 5/29/57

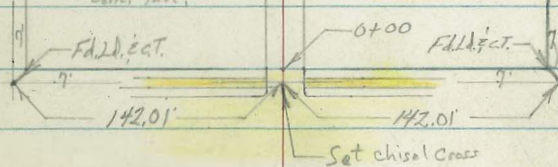
C. Allen

Emerald Street

E 20' Alley

Folspar Street

Bayard: -
14' cb to Prop.
5' cb to walk
5' walk
2' cb Rad.
Cons. Pave.



Bayard

street

WM: Water Meter

1+18-9⁵RT-2 W.M. ✓

1+05 10⁵ Rt begin conc Apron ✓

1+03-14²LT-2 3 Car Garage under const ✓

1+01-10¹RT-2 6' wide conc walk ✓

1+00 9³ Lt begin board fence

0+99.5 7⁹ Rt to center P Pole # PA 920 ✓

0+96 10 Rt End Conc Apron ✓

0+77 center of 4 Garages

0+67-9⁵RT: 2 W.M. ✓

0+50 10⁵ Rt begin conc Apron ✓

0+45.2 10³ Lt End Conc Apron ✓

0+44-11²RT: end Conc Apron ✓

3457π

3457π

30²
DIFT
FLOOR
148

30.27 ✓	80.07 ✓	29.77 ✓	29.97 ✓	29.87 ✓
4.3	4.5	4.8	4.6	4.7
20	10		10	20

50.28	50.72
4.29	3.85
10	15
conc	Floor

29.99	30.16
4.58	4.41
10	15
conc	Floor

80.15
4.42
13
conc
Floor

29.57 ✓	29.87 ✓	29.37 ✓	29.72 ✓	29.96 ✓
5.0	5.2	5.2	4.80	4.61
20	10		10	15
			conc	conc

29.42	29.20
5.15	5.37
353	183
Floor	conc

2978
112
Apron

Cont'd From Page 5

2+53 10⁶ Rt begin conc Apron ✓

~~2+51⁵ 10⁶ RT. 2⁵ conc walk ✓~~

2+50 { 90⁰ Lt End Fence ✓
96² Lt begin AC Parking - Theatre ✓
75⁰ Rt to center of Pole # PA954 ✓

2+00 8⁴ Lt begin board Fence ✓

T.P. 827 39.01 π 383 30.74

1+750

1+495 = 2 Sewer Man hole ✓

1+43-12² Lt = end New Garage under
in process of being removed

~~1+35.5 10⁸ Lt & Single Garage~~

1+35⁰ 10⁰ RT = 2 3' conc walk ✓

1+33.5 10⁰ RT End Conc Apron ✓

~~1+25 90⁰ Lt End fence~~

3457 π

Lt

Rt

Rt 6

6.3 20 AC	6.4 10 AC	6.5 96 AC	6.7 8	7.3	7.0 10	7.3 20
32.71 ✓	32.57 ✓	32.57 ✓	32.31 ✓	31.71 ✓	32.20 ✓	32.71 ✓
31.71 ✓	31.51 ✓	31.01 ✓	31.31 ✓	31.01 ✓		
73 20	75 10	80	77 10	80	77 10	80 20

34 20	38 10	41	41 10	41 20
31.17 ✓	30.77 ✓	30.47 ✓	30.47 ✓	30.47 ✓
30.78	30.70	31.71 RING		

3.79 10 ⁸ Floor	3.87 8 ⁴ conc Apron	3032 102 WALK	30.48 4.09 10 conc	30.72 3.85 15 Floor	5010 209 WALK
----------------------------------	---	---------------------	-----------------------------	------------------------------	---------------------

3457 π

Cont'd from Page 6

Walk P to E alley ✓

+ 10' RT = Nly edge Begin 2' Conc

3+86

10' RT End conc Apron ✓

3+85 = 9' RT = 2 Wm's ✓

This is actually a break in apron

3+57

10' RT begin conc Apron ✓

3+53 = 10' RT = Begin Conc Apron ✓

3+51 = 10' RT = 2' wide conc walk ✓

3+50

3+47

10' RT End conc Apron ✓

+ car garage

3+25 = 10' RT = Nly edge Conc Apron ✓

+ 10' RT = Nly edge end 2' conc walk P to E ✓

3+12

10' RT begin conc Apron ✓

8' RT = 2 Wm's ✓

3+00 = 10' RT = Nly edge of conc walk ✓

edge 2' conc walk P to E of Alley - (Begin)

2+888

10' RT End Conc Apron + 10' RT = Nly

2+75 = 10' RT = Nly of Conc Apron ✓

39.01

Lt

E

Rt

7

34.41

460

10' Conc
+ Walk

34.28

473

10' Conc

33.51

38.51

5.5

20

AC

34.51

450

15' Floor

34.79

452

15' Floor

33.52

33.52

10' Wlk

20' Wlk

AC

33.58

33.88

33.51

33.31

33.51

33.31

5.5

57

20

AC

33.72

5.29

10' Conc

33.58

10' Apron

33.47

33.47

33.47

10' Conc

32.61

32.61

6.4

6.4

10' Wlk

20

AC

33.82

5.19

13' Floor

33.84

13' Floor

33.81

33.81

5.20

13' Floor

32.71

32.71

6.3

6.3

10' Wlk

20

AC

32.51

32.51

6.53

6.53

10' Wlk

20

AC

32.64

32.64

6.27

6.27

10' Conc

32.45

10' Apron

32.75

13' Floor

32.75

13' Floor

39.01

39.01

4+72 9th Rt begin bldg ✓

38.51
34.91
35.51

4+71.5 10th Lt End conc wall & begin bldg ✓

+0.5 41 3.5
10th 10th 10th
Top Foot GRD

38.51
35.01
35.51

4+58 10th Lt begin conc block wall ✓

+0.5 40 3.5
10th 10th 10th
Top Foot GRD

4+50

35.71 ✓ 35.31 ✓ 34.81 ✓ 34.61 ✓ 34.71 ✓
3.3 3.7 4.2 4.4 4.3
20 10 10 10 20

4+37.5 10th Lt End conc block wall ✓

38.81 34.41 35.11
+0.2 46 3.9
10th 10th 10th
Top Foot GRD

4+00

17 to 2 alleys
{ 10th Lt = Nly edge end 2nd conc walk ✓
10th Lt End AC Parking ✓
10th Lt Begin conc block wall ✓

35.11 39.01 ✓ 34.01 ✓ 39.75 ✓ 32.51 ✓ 34.01 ✓
39 0 50 42.8 45 50 48 50 34.5 34.02
20 10th 10th 10th 10 10 20 10th 20th
AC Top Foot AC W/WK W/LK

3+99.5

8th Rt to center P. Pole #PA976 ✓

39.01 ✓

39.01 ✓

check

729 32.08 = 32.06

C.T.

3' tie back SW corner Cass & Falgar

5+40.60

Q Cass

36.60
35.86
35.14
277 351 423
50 50

5+14.60

West Curb Line Cass

35.77 35.34 35.27 34.83 34.66 34.48 34.31 33.90 34.26
3.60 4.03 4.10 4.37 4.71 4.89 4.50 5.47 5.11
50 50 13 13 13 13 50 50
cb Gut cb Gut Gut cb Gut cb

T.P.

467 39.37A 431 34.70

39.37A

5+00.60

{ 10 Rt End Bldg.
West Line of Cass
105 Rt End Bldg.

35.31 35.09 34.77 34.96 35.04
370 392 424 405 397
92 92 10 10
cb Gut Gut cb

4+80

35.51 35.51 36.01 35.11
35 35 40 39
102 10 92

39.01A

39.01A

INDEXED
SER
JUN 24 1954

X-Sec Alley Block 5, Sun Harbor
tract. Grade Ordinance

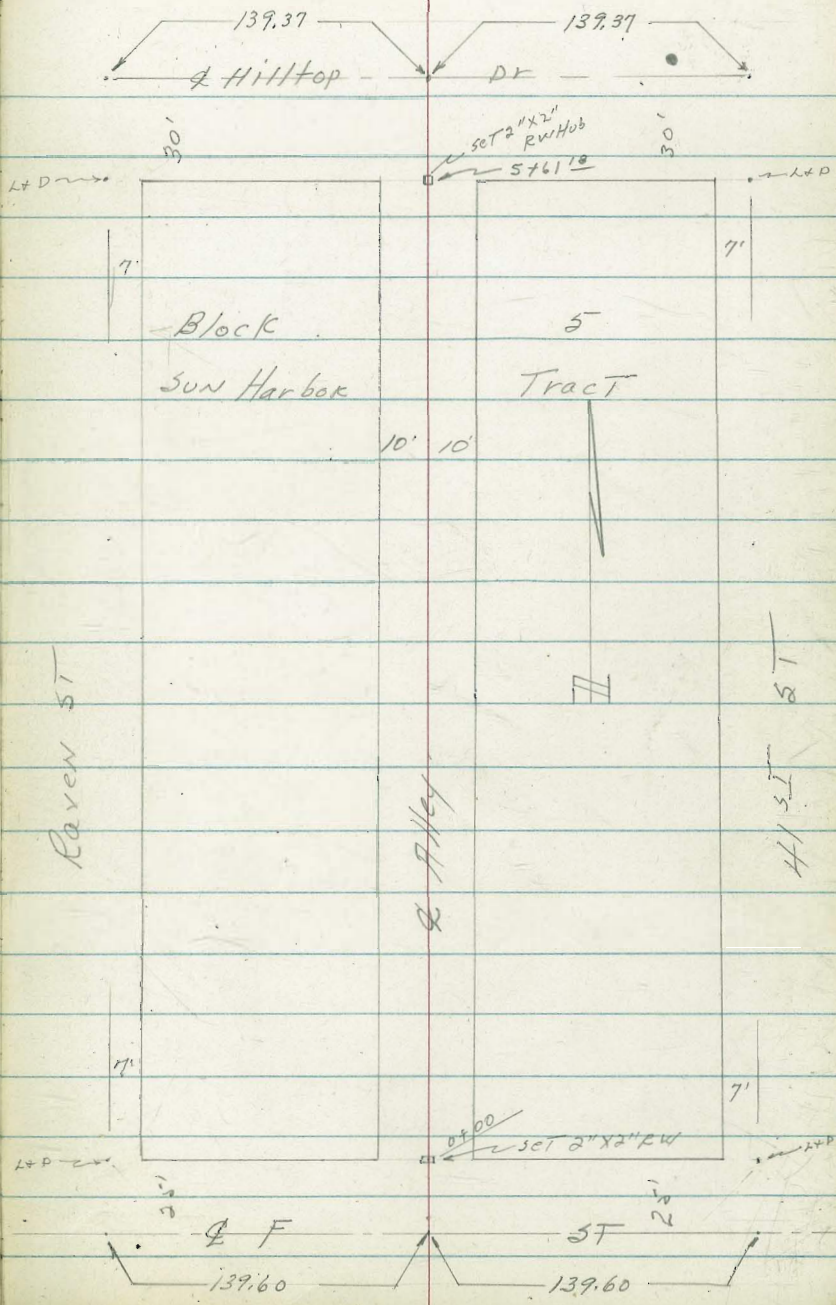
W.O.# 20-020-

C. Allen, D. Sisson, C. Powell-

May 28, 1954-

Ret. T.P. Sheet 3462, File Map # 1619-

FB 1836



X-sec Alley B/K 5, Sun Harbor
Tract - Grade ordinance

LT: W14

Alley
20' wide

RT: ELY -

11

0+75

139.7
74
10
139.0
81
10
137.0

0+50

144.5
210
25
140.4
67
10
139.8
713
10
139.8
91
25
138.0

0+25

145.1
20
25
144.9
22
20
142.9
92
10
141.5
516
7
140.9
62
10
140.5
66
10
138.5
816
25

0+00 = Nly Line F ST

146.5
06
50
142.4
47
10
141.7
54
10
141.3
518
10
138.1
90
50

0-25 = 2' F ST - Not paved - 2° RT = 2' SMH

144.8
213
50
141.9
52
10
141.5
58
10
141.26
583
20
F
SMH
140.6
65
10
133.8
913
50

TP, 5.00 147.09 1.43 142.09

BM- 10.64 143.52 132.88

147.09

NW 13P - 41ST + F ST

LT = W14

20'
Alley

RT = 1E14

12

151.34 X

TP2 11.68 151.34 7.43 139.66

2+25

139.1
80
10
138.6
80
10
138.6

2+00

141.7
54
50
138.5
86
10
138.2
89
10
138.1
90
10
137.0
10
50

1+75

138.3
80
10
137.9
90
10
137.6
90
10

1+50

140.6
65
40
138.4
87
10
137.7
90
10
137.1
10
135.0
12
40

1+25

138.6
80
10
138.1
90
10
137.2
90
10

1+08-9th LT = 2 14" Power pole # P76710

1+00

143.4
37
50
139.4
77
10
138.5
86
10
138.3
80
10
137.2
90
10
135.6
115
50

147.09

LT = W14

2

RT = E14

13

142.9
74
10142.9
74
10142.4
79
10

3+75

142.7
86
10142.3
90
10142.3
90
10140.6
107
50

3+50

75
50141.5
98
10141.6
92
10141.3
100
103+36° 8² RT = begin 4' high wire fence
baard + chicken

3+25

143.0
83
50140.9
104
10140.7
106
10140.4
109
10138.6
127
503+08- 9⁴ LT = 12" power pole # P.76711

3+00

139.9
114
10140.0
113
10139.7
116
10

2+75

141.2
101
50139.3
120
10139.2
121
10138.9
124
10137.9
134
502+62 10³ LT = begin 5' High cyclone fence

2+50

151347

X-sec Alley BIK 5, Sun Harbor Tract

LT = W14

RT = E14 - 14

163.09 π

TP₃ 12.70 163.09 0.95 150.39

149.8	149.6	149.5
15	12	18
10		10

4+75

9² RT = begin 5' high hog wire fence
 4+62. 9² RT = end 5' high board fence

4+61-9² LT = 12" Power pole # JPA76712-

4+50

148.2	147.6	147.6	146.5
15	37	37	48
50	10	10	50

4+25 - 11⁵ RT = NWly cor Prairie House

146.8	146.3	146.3	145.6	145.9
43	50	50	57	540
10		10	11 ⁵ ground	11 ⁵ Floor

4+10-10³ LT = end 5' high cyclone fence

4+06-11² RT = SWly cor Prairie House

147.0	145.2	144.9	144.8	144.2
4 ³	6 ¹	6 ⁴	6 ⁵	7 ¹
50	10		10	15
			11 ² ground	11 ² Floor

4+00

3+86-8³ + Begin 5' high board fence.
 RT = end chicken wire fence

151.34 π

TP₂

6.37

151.667^{sw}
151.67^{BP}
4.15⁺
Hilltop

LT=WHY

♀
Alley

RT=FLY

15

TP₅ 2.15 158.04 13.23 155.895+91¹⁸ = Hilltop Drive - unpaved

5+82-

TP₄ 7.58 169.12 1.55 161.54} 11⁵RT = end Hogwire fence5+61¹⁸ = Sky Line Hilltop Drive

5+40

5+20

5+00

168.1	164.9	161.0	157.3	156.1
10 ¹ 100	4 ² 20	8 ¹	11 ¹⁰ 50	13 ¹⁰ 100
151.9	164.8	160.4	156.9	154.8
10 ¹ 100	4 ³ 50	8 ²	12 ² 50	14 ³ 100
		169.12 π		
	159.3	157.8	156.9	153.4
+ 38 ⁰ 100	0 ⁰ 50	3 ⁸ 10	5 ³ 10	6 ² 10
	157.9	155.4	155.0	153.1
100 ⁰ 50	5 ² 25	6 ⁵ 10	7 ² 10	8 ¹ 10
	154.6	153.4	153.4	
	8 ⁵ 10	9 ²	9 ² 10	
150.3	152.2	151.6	151.6	150.1
12 ¹⁰⁰ 50	10 ⁹ 10	11 ⁵	11 ⁵ 10	13 ⁰ 50

163.09 π

X-Sect. Division St. - from Leonard
to 65th - For Grade est. - Sketch - P. 16

W.O. 25020 - 9-15-54. 7.0.

2+00 - 26' Rt = Beg. 6" Conc. block wall - House ^{is Back}

1+93.5 = 23' Lt = \pm P. pole #271523 B.M. = 274.52

1+60

1+20

0+80 - 15.2' Rt = \pm 3' Conc. walk

0+40.

\pm of Leonard
0+20 - outs on Lt. ^{are along}

0+00 - w.l. Leonard st.

0-30 = in Canyon

#271519

Set B.M. in Pole 65th + Division 273.28

Set B.M. - spike in Pole #519531 - H. 216.82 on 65th

B.M. - Disk - N.W. Cor. 65th + Detroit 343.44

Book 1607 - P. 2

INDEXED
HER
SEP 20 1954

\pm = \pm of Rt - 17
Prop. 50' st.

73.7
25 72.9 72.1
25 72.1
26 = at wall

74.9
25 73.9 73.0
25

76.0
25 75.0
20 74.8 73.4
25

76.6
25 75.0
20 74.8 74.45
15.2 73.97 73.21
walk 25 43.3
walk at porch

76.8
38 73.9
25 73.3 72.3
25

75.4
100 72.4
50 72.1
25 70.65
on pipe 69.9
25

66.0
25 66.0 66.5
25

57.8
25 57.3 58.0
25

200' Fig. Not Noted.

Actual Elev. Shown

5+35

5+00

4+60

4+15

3+75

3+40

3+37- 1' Lt. = \pm P. pole # 371773.

outs to Lt. are along \pm .

2+16.90 = \pm of st. to NE.

2+00

slp. of Graded Rd.

2+50

2+46- 26.9 Rt. = end wall

2+23- 29.7 Rt. = \pm 3' Conc. walk

2+20 = Thru Divt Dr. on Lt. = W. of House

Lt.

\pm

Rt.

18

73.5
25

71.3

71.5
25

62.6
40

62.3
25

62.2

62.2
25

62.2
40

49.7
40

49.3
25

49.6

50.1
25

50.0
40

42.0
40

40.7
25

37.7

35.5
25

35.2
40

50.0
40

50.0
25

48.5

46.6
25

45.4
40

61.2
35

60.8
25

60.7

58.8
25

58.0
35

59.7
100

62.7
50

64.5
25

64.24
on pipe

62.9
25 = 90' to \pm

66.7
25

67.1

65.7
25

71.5
25

70.6
20

70.7

69.8
25

70.2
26.9 = at Cor

71.47

71.21

29.7

35.9 = at
walk steps

72.7
50

72.3
25

on Dr.

7065 = Top Iron Post

LT # RT ←

7+75

70.4 66.7 63.1 58.9 56.9
40 25 25 40

7+49.93 = E. st. to N.E. outs along #

71.1 72.8 74.1 69.1
100 50 25
- Rd. - Rd.

7+45

74.8 75.2 70.3 67.4 65.6
25 10 25 40

7+18.5 - 0.8' lt. = # Pipe # 271521

BM = 277.78

7+15

79.3 75.7 77.8 74.0 73.0
35 25 - Rd. 25 40

6+80

81.7 81.3 78.4 79.4 77.7 76.8
35 25 22 25 40

6+50

81.8 80.6 79.2 80.1 79.7 78.5 77.1
35 25 20 - Rd. 20 25 35
Lawn

6+13 - 18' Rt. = # 3' Conc. Steps

81.0 78.4 79.3 79.02 78.06 77.12 77.00
30 25 18 = 25 27.5 40
Rd. Top Conc. Beg. walk
walk

5+82 = Thru Dirt Dr. on Rt.

77.2 76.8 76.6
25 50 78 =
opp.
front of
House

5+70

75.8 77.6 76.7
25 ed. 25

5+62 - 0.6' lt. = # Pipe # 271522

5+39.81 = # st. to N.W. - outs along #

65.5 70.8 73.1 72.3
100 50 25
w. edge of graded Rd.

11+20

10+80

10+45 - 1 Lt = ± P. pole #27520

10+40

10+00

9+60

9+34.25 = ± S to NW. out along ±

9+25

Set B.M. on Mon. 9+12.14

275.40

9+00

8+55

8+15

81.4
75.4

Lt

±

Rt

29

84.0 82.8 83.2 82.5 81.7
25 22 5 25

86.8 85.6 85.8 85.8 85.1
25 22 5 25

89.1 86.5 86.8 88.5 87.3
25 20 5 25

88.2 85.2 86.1 88.1 87.0
25 20 5 25

84.5 81.6 83.5 84.4 84.7
35 25 5 25

71.6 75.9 79.1 80.36
100 50 25
wly. edge of
Rdway

74.9 74.5 79.7
25 25

72.0 72.3 72.8 74.0
40 25 25

60.6 60.9 61.7 63.0 63.3
40 25 25 40

54.5 53.9 52.3 51.0 50.4
40 25 25 40

Lt.

±

Rt.

21

13+80

69.6
4068.9
25

64.0

58.0
2554.8
40

13+47.16 = ± 65th along ± to N. -outs to Lt. on Mon. 268.69 = B.M.
 B.M. = 273.28
 13+28.5 = 2' Lt. = ± Pipe #271519

74.8
15074.1
10073.4
5073.3
25

71.0

63.9
2559.5
40

90° to ±

13+20

76.2 = 71.5
35 - 25 Rd.72.7
5

71.7

65.8
2562.7
40

12+80

75.4
3572.7
2573.3
5

71.3

63.2
2559.2
40

12+40

74.4
2574.8
5

72.4

63.1
2563.7
45

12+00

76.7
2577.3
5

73.2

71.6
25

11+60

82.3
2579.8
2380.1
5

79.3

78.0
25

INDEXED
JER

OCT 26 1954

X-sec 6 1954 - Tower St to Amherst St

Wo # 25020 - 10/19/54.

C. Allen, D. Sisson, C. Powell-

only Tie points available are private

Survey pipe & disk as shown.

Ref: File maps Nos. 2608, 1789, 1724

FB 1617, 1623

TP sheet 4306-

C.L. = Cold Lay Pavc

F.P. = Edge Paving

WM = water meter

Judson Way

2" Pipe & Disk R.E. 4147

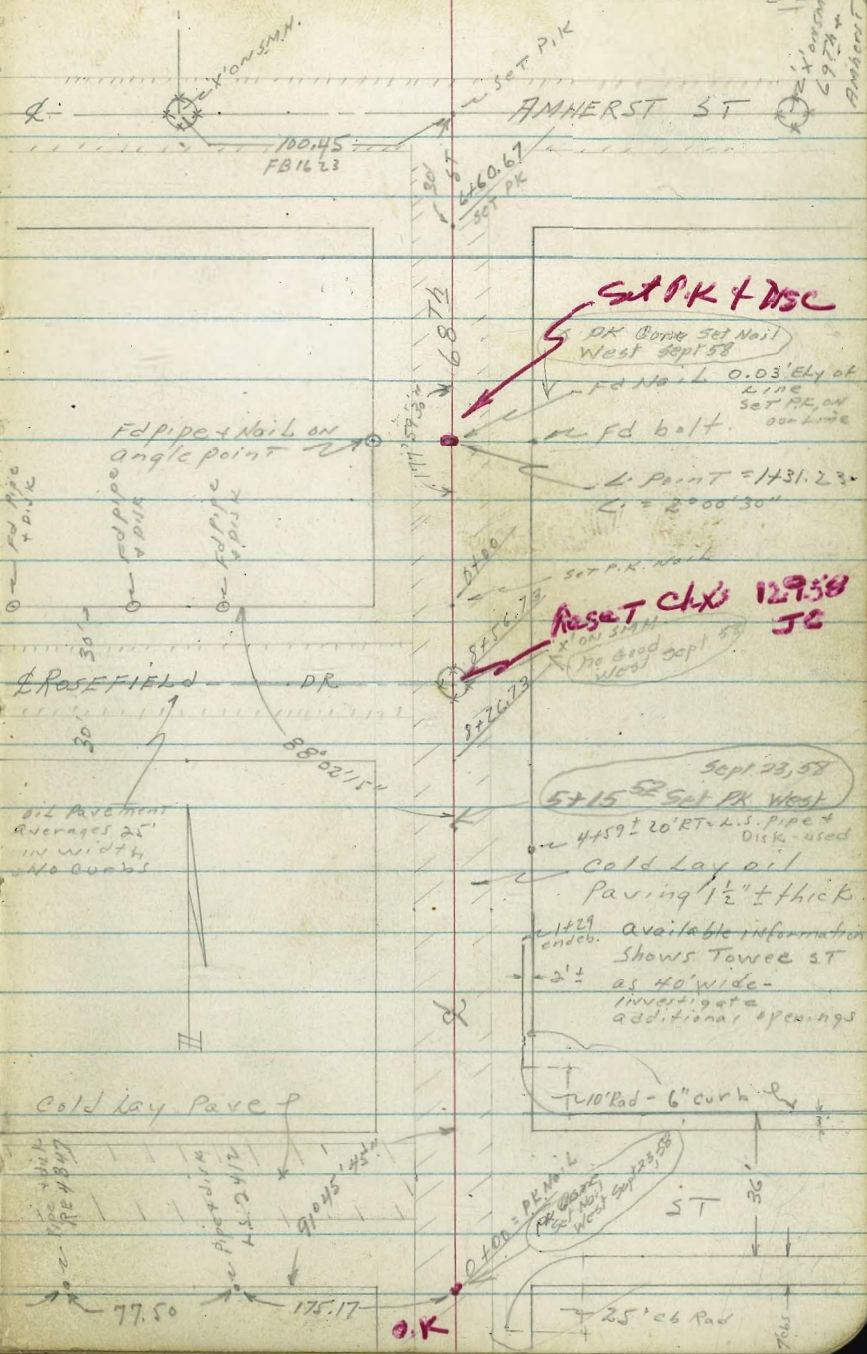
5/4" Cur. Judson Way & Tower St

Tower

77.53

77.50

175.17



22
X on map
69 74
Amherst

Reset Chk 129.58
JC

Sept 23, 58
5+15 Set P.K. West

available information
Shows Tower St
as 40' wide -
investigate
additional openings

O.K.

X-sec 68th ST - Tower ST to
Amberst -

C.L. = cold Lay
E.P. = edge pave
WM = water meter
T.C. = Top Cb

A.C.
9UTTer

Top Cb

IN Tower ST	449.26		449.97	
EC = Ely end Ret	5.83	448.93	5.12	449.57
3/4 Cb Ret	448.53	6.16	449.19	5.52
1/2 Cb Ret	6.56	448.14	5.90	448.74
1/4 Cb Ret	447.9	6.95	448.32	6.30
Return on 68 th				
RC = sly end	7.2		6.77	

L = 40' - R = 25' - 4 parts of 10' each

SW Return Tower + 68th ST
SE?

68th + Tower ST
O-39-18th RT = sly end of SEly curb Ret

TP5	5.09	455.09	7.35	450.00
TP4	0.51	457.35	6.06	456.84
TP3	8.33	462.90	1.31	454.57
TP2	5.14	455.88	7.55	450.74
TP1	0.93	458.29	3.57	457.36
B.M.	7.23	460.93		453.70

LT = W 14

Tower

RT = Ely - 23

455.09 X

447.9
7th 6th
18th 18th
9UT
Dirt T.C.
448.32

68th + Tower ST

ON Ret pin in curb Ely 13th, SEly curb Return

P.K. Nail & intersection 68th + Amberst ST

SW 13P - 67th + El Cajon

X-sec 68th cont.

LT = Wly

68th

RT = eLy 25

Width of houses are along front

0+70-49° LT = 3' wide Stucco house

0+65-19⁶ LT = 3' conc walk

0+57-26⁵ LT = 8" tree

0+55-24° RT = 3' wide conc walk behind curb

0+43-27' LT = 8" Elm tree

0+41-20° LT = begin 4' high Redwood board fence

454.44
 0.65
 492
 452.17
 2.92
 30
 328
 20
 19.6
 451.81
 328
 19.6
 451.81

450.53
 486
 240
 450.50
 450
 340
 450.50

0+40 = Nly line Tower to wly. *Check this*

450.5
 46
 100
 451.1
 25
 451.0
 20
 450.9
 17
 450.2
 15
 450.14
 9
 450.32
 C.L.
 450.11
 498
 9
 449.9
 18°
 5
 449.9
 18°
 498
 450.24
 450.3
 450.3
 450.3
 450.3

LT = Nly edge C.L. pave to wly.

0+32 RT = Ch EC, 6" std cb

449.85
 51
 100
 450.17
 492
 50
 450.10
 25
 450.14
 20
 450.11
 10
 450.2
 49
 5449.9
 9
 449.68
 18°
 5
 449.68
 18°
 493
 450.16
 50
 450.1
 20
 450.1
 25
 450.1
 50

6" std. curb - Not too good cb.

0+22 - Nly curb line Tower to eLy

450.01
 50
 25
 450.01
 20
 450.04
 10
 450.02
 50
 5449.9
 9
 449.17
 100
 450.73
 100
 449.5
 16
 449.5
 18°
 5
 449.5
 18°
 493
 449.81
 5
 449.81
 28
 28
 28
 28

455.09 π

X-sec 68th cont.

LT = wly

68th

LT = 1/4

27

458.84 T

Nail is on wly side of pole.

Nail in power pole # P176067 - 17² LT of 1434

TP₆ 5.26 458.84 1.51 453.58

1470 - 30° RT = ϕ 3" sycamore tree

1470 - 26² LT = ϕ 6" tree

1460 - 60 LT = ϕ 25' wide front house
garage is 80' RT.

1453 - 15° RT = ϕ 10' wide black top drive

1452 - 18° LT = ϕ W.M.

1450

1442 - 17⁸ RT = ϕ 4" Fire Hydrant

} 26² LT = ϕ umbrella tree (Low)

1440 - 20° RT = ϕ begin 2' wide eugenia hedge

garage is far back

} 10° RT = ϕ 8' conc drive

1434 - 17² LT = ϕ 10" power pole # P176067

453.1	452.9	452.5	451.5	452.0	452.2
2°	2 ²	2 ⁶	3 ⁶	3 ¹	2 ⁹
50	25	20	15	9 E.P.	9 E.P.

451.88	452.19	452.29	452.49
3 ²	2 ⁹⁰	2 ⁸⁰	2 ⁶⁰
15° A.C. Drive	20° A.C. Drive	25° A.C. Drive	50° A.C. Drive

451.8	452.1	452.2	452.4
3 ³	3 ⁰	2 ⁹	2 ⁷
9 E.P.	20	25	50

451.64	451.82	451.79	451.69	451.59
3 ⁴⁵	3 ²³	3 ³¹	3 ⁴⁰	3 ⁵⁰
10° Dr.	15° Dr.	20° Dr.	25° Dr.	50° Dr.

455.09 T

X-sec 68 \approx cont

LT = Wly

K
68th

RT = eLy - 2^o

2+21 - 17^o RT = 10" black acacia tree

2+18 - 68^o LT = ϕ 20' wide stucco house

2+08 - 31^o LT = ϕ 12" tree (Jacaranda)

2+00

5 ¹⁶	8 ¹⁹	6 ⁰	6 ⁵	6 ¹⁰	6 ⁰	6 ³⁰	6 ³⁰	6 ³⁰	6 ¹⁰
50	25	20	14	9	6	8	20	25	50
				E.P.		E.P.			
453.2	452.9	452.8	452.3	452.5	452.8	452.5	452.5	452.5	452.8

1+90 - 42^S RT = ϕ 48' frame house

1+89 - 23^o LT = ϕ 6" tree Rose

1+87 - 18^o LT = ϕ W.M.

1+83 - } 29^o RT = ϕ 4" Lemon tree
 1+83 - } 20^o LT = begin 4' high picket fence

1+75

6 ¹	6 ²	6 ⁷	6 ⁵	6 ¹⁴	6 ⁶	6 ⁵	6 ³⁰
25	20	14	9	6	9	20	25
			E.P.		E.P.		
452.7	452.6	452.1	452.3	452.4	452.2	452.3	452.5

458.84x

2+50-

3' high
1' high wall with corners built up to

21st LT = begin 6" concrete block wall.

20th RT = begin 4' picket fence

2+43- 17th RT = 2 8" tel pole # 174893-

2+41- 20th RT = 2 wly end + w eugenia hedge

garage is 100' ± wly of 2 st.

2+37- 21st LT = 2 9' conc drive

garage is 100' Ely of 2 street

2+35- 16th RT = 2 12' wide Black top drive

2+32- 20th LT = end 4' picket fence

2+30- 23rd LT = 2 10" tree.

2+25- 21st RT = 2 end 2' wide eugenia tree

4548	4544	4540	4540	4534	4534	4532	4529	4630	4532	4536
40	44	48	48	54	54	56	59	518	516	512
50	25	21 st 9' AT Wall	20	9 E.P.	8 E.P.	15	20	25	50	

4536
4543
21st Footing
21st 9' AT Wall

45465-

419	447	461
35 Dr	25 th Dr	21 st Dr

45324	45346	45349	45339
-------	-------	-------	-------

57 th	538	535	545
16 th A.C. Dr	20 th A.C. Dr	25 th A.C. Dr	50 th A.C. Dr

4539	4538	4529	4530
49	50	59	58
25	20	12	9 E.P.

4531
458.84

4528	45216	4530	4532
60	61	58	56
8 E.P.	12	20	25

X-sec 68th cont

48° LT = 32' wide stucco house

3+71- 17⁵ LT = 4 W.M.

3+58- 20° LT = begin Row of Rose bushes -
Parallel to 68th LT

3+57- 13⁵ RT = 10' wide Conc drive
garage is behind house.

24° RT = Wly end 2' high lateral Conc block wall
24° RT = end 1' high Conc block wall
3+53- 20° LT = eLy end 3⁵ high Edw Redwood fence

3+52- 25° LT = 16" acacia tree

3+50

3+30- 71° RT = d garage is behind house
30' stucco house

3+25

3+18- 24³ RT = begin 1' high 6" Conc block wall

LT = W 17

68th

RT = eLy

31

454.9	454.44	454.54	454.82
4 ²⁵	4 ⁴⁰	4 ³⁰	4 ⁰²
13 ⁵ Dr	20 ⁰ Dr	2 ⁵ Dr	5 ⁰ Dr
454.0	454.0	454.0	454.0
4 ⁸	6 ²		
24 ⁰ 9 ^r	24 ⁰ Foot		

455.3	454.6	454.6	454.2	454.3	454.0	454.0	453.9	453.8	453.7
3 ⁵	4 ²	4 ²	4 ⁶	4 ⁵	4 ⁸	4 ⁸	4 ²	5 ⁰	5 ¹
5 ⁰	2 ⁵	2 ⁰	9 E.P.	8 E.P.	2 ⁰	24 ³ 9 ^r at wall	2 ⁵	5 ⁰	5 ⁰

454.3	454.1	453.9	454.0	453.7	453.4	453.4	453.4	453.4
4 ⁵	4 ⁷	4 ²	4 ⁸	5 ¹	5 ⁴	5 ⁴	5 ⁴	5 ⁴
2 ⁵	2 ⁰	9 E.P.	8 E.P.	2 ⁰	24 ³ 9 ^r at wall	2 ⁵	2 ⁵	2 ⁵

453.4	452.8
5 ⁴	6 ⁰
24 ³ 9 ^r at wall	24 ³ Footing

458.84 T

X-sec 6 2nd Cont

LT = wly

68th

RT = eby - 32

4+17- 19° LT = ϕ W.M.

4+13- } 34° LT = ϕ Avocado Tree
garage is behind House
7° RT = ϕ 9' wide Conc drive

455.41	455.36	455.36	455.33	455.82
9 ¹⁴	9 ¹⁹	9 ¹⁸	9 ¹²	8 ⁷³
70	190	20	25	50
Dr	B.K.in Drive	Dr	Dr	Dr

TPC 7.72 464.55 2.01 456.83

464.55X

4+00

2.01

456.83

456.7	456.0	455.8	455.1	455.2	455.0	455.2	455.0	455.0
2 ¹	2 ⁸	3 ⁰	3 ⁷	3 ⁶	3 ⁸	3 ⁶	3 ⁸	3 ⁸
50	25	20	9	7	20	25	50	
			E.P.	E.P.				

3+98- 19° LT ϕ 8' Conc Drive
garage behind House

456.94	456.10	455.94	455.90
190	2 ¹⁴	2 ⁹⁰	
50	25	195	
Dr	Dr	Dr	

3+90- 33' RT = ϕ 3" Spruce tree

3+80- 54' RT = ϕ 34' wide Stucco House
garage is behind House

455.7	455.4	454.9	454.6	454.6	454.4	454.4	454.7
3 ¹	3 ⁴	3 ⁹	4 ²	4 ²	4 ⁴	4 ⁴	4 ¹
25	20	18	9	7	20	25	
			E.P.	E.P.			

3+75

458.84X

X-sec 68th con

LT=W14

RT=014

33

4+75

457.7	457.7	456.1	456.3	456.1	456.8	457.0
69	69	75	73	75	78	76
25	20	9	9	8	20	25
		E.P.		E.P.		

4+70-9² RT= 9' wide Conc drive

garage is behind House

456.93	456.70	456.70	456.77	457.08
762	785	785	778	747
90	198	200	25	50
DRIVE	DR	DR	DR	DR

4+59. 20² RT = Wly end 3' high E+W Lateral

Conc block wall.

457.8	457.3	457.1	456.6	456.4	456.6	456.3	456.0	456.2	456.3
68	73	75	80	82	80	83	86	84	83
50	25	21	20	9	7	20	25	50	
				E.P.	E.P.				

4+50-50 LT= 35' wide Stucco house

garage is behind house

4+39-18² RT= 18' W.M.

4+37-54. RT= 35' stucco house

garage behind house

4+28-100' ± LT= 577011 Frame House

4+25

456.6	456.5	456.0	455.9	455.7	455.5	455.6
80	81	86	87	89	92	90
25	20	9	7	20	25	
		E.P.	E.P.			

46455X

X-sec 68th cont

5+25 - 32° LT = ϕ 6" avocado tree

5+12 - 20° RT = begin 4' high wire fence

5+10 - 32° LT ϕ 6" avocado tree

5+00 - 28° RT = ϕ 3" tree

50 RT = ϕ 35' wide stucco House

4+94 - 18° RT = ϕ W.M.

465.45 λ

TP₇ 7.20 465.45 6.30 458.25

ON Elyside pole - Near ground.
Spike in power pole # P77596 - 16° LT sta 4+84

4+84 - 16° LT = ϕ 10" power pole # P77596

4+83 - 20° LT = begin 4' wide eugenia hedge

4+83 - 20° LT = elyend cyclone fence

garage 15 behind House

4+77 - 20° LT = ϕ 9' wide conc drive

LT = wly. RT = ely 34

	59.1	58.9	58.3	58.5	58.7	58.5	58.1	58.2
	64	66	72	70	68	70	74	73
	25	20	14	10	7	7	20	25
	458.5	458.7	458.2	457.8	457.8	458.0	457.4	457.5
	70	68	73	77	77	77	81	80
	50	25	20	14	10	7	20	25
				E.P.		E.P.		50

58.02

457.83

457.77

653 672 678
Dr Dr Dr

464.55 λ

X-sec 68^m
6402-20° LT= end 3' high picket fence

18⁵ LT= d w.m.
garage behind house
6400 85[±] RT= d Frame house

5495-34° LT= d 36" Palm tree

5490-20⁵ RT= begin 3' high picket fence

No garage -
42° LT= d 20' wide Frame House

5488-19⁷ LT= d 3' conc walk

23⁵ LT= d Oleander bush

5495-20° RT= end wire fence

5465-34° RT= d 8" Locust tree

5452-20[±] LT= begin 3' ^{Picket} wide fence

5450

5436-22⁵ LT= end 4' wide hedge

LT= W14
68^m RT= d14 35

460.5	460.2	460.2	459.8	460.1	460.4	460.3	460.3	460.3	460.3
50	5 ³	5 ³	5 ⁷	5 ⁴	5 ¹	5 ²	5 ²	5 ²	5 ²
50	25	20	16	10		7	20	21	50
			EP.			EP			

460.00	459.85	459.77	459.77						
54 ⁵	5 ⁶⁰	5 ⁶⁸	5 ⁶⁸						
35	25	20	19	2					
Walk	Walk	Walk	Walk						
459.8	459.5	459.3	459.6	459.9	459.9	459.7	459.9	459.9	459.9
57	60	62	59	56	56	58	56	56	56
25	20	14	10		7	20	25	25	25
			EP		EP				

459.7	459.2	458.9	459.1	459.3	459.2	458.7	458.7	458.7	458.7
5 ¹⁰⁰	6 ¹⁰⁰	6 ⁶	6 ⁴	6 ²	6 ³	6 ⁸	6 ¹⁰⁰	6 ¹⁰⁰	6 ¹⁰⁰
50	25	20	10	6	8	20	25	50	50
			EP		EP				

465.451

X-sec 68^{RT}

6+75

6+68-25° RT = ϕ 6" Euc Stump p.

6+63-38° LT = ϕ 2" tree (sapling)

6+50

6+42-54° LT = ϕ 25 wide frame house

6+38-26° RT = ϕ 4" Euc tree.

6+34 } 19° RT = ϕ Filler Cap - for fuel oil tank P.

6+34 } 37° LT = ϕ 1" Sapling tree.

6+32-18° LT = ϕ W.M.

6+25

6+20-18° RT = ϕ W.M.

6+15 = ϕ 8" Water gate valve (Sewer Dead end)

LT = W/4

460.5

20

460.4

20

460.2

10

E.P.

460.5

10

460.4

7

E.P.

460.2

10

E.P.

460.5

20

460.8

25

36

460.9

46

50

460.8

47

25

460.7

48

20

460.4

51

10

E.P.

460.7

48

8

460.4

51

8

E.P.

460.6

49

20

460.9

46

25

461.1

47

50

460.8

47

25

460.8

47

20

460.5

50

15

460.5

50

10

E.P.

460.6

49

7

E.P.

460.4

51

11

460.1

54

20

460.8

47

20

460.8

47

25

460.45

Cover

465.45

X-Sec 68th ST

LT=W14

68th
ST

RT=C14

27

7437- 80° RT = ϕ 38' Frame House

7425

7407- 20° LT = end Conc drive - 2 car gar
54th Floor

7406- 18° RT + 18° LT = ϕ W.M.'s

7400

6+85- } 19° LT = begin Conc drive 2 car garage.
54th LT = end 4' high Lateral Redwood fence

33 LT = ϕ Deadman

6+84- } 16° LT = ϕ 12" power pole #P 75918

6+83- 19° RT = ϕ Fire Hydrant

459.6	459.3	459.2	459.5	459.4	459.4	459.7	459.8
59	62	63	60	61	61	58	57
25	20	10	6	7	13	20	25
		E.P.		E.P.			
460.78	460.35	460.27	460.27	460.1	460.1	460.4	459.9
467	510	518	518	518	518	518	518
54 th Floor	25 th Dr	20 th Dr	20 th Dr				

460.74	460.39	460.39	460.39	460.1	460.2	460.1	460.1	460.4	459.9
471	506	506	506	54	53	54	54	51	56
54 th gar floor	25 th Dr	20 th Dr	19 th Dr	10 th E.P.	7 th E.P.	20	25	25	50
460.75	460.53	460.53	460.53	460.53	460.53				
470	493	492	492	492					
54 th Floor	25 th Dr	20 th Drive	19 th Drive	19 th Drive					

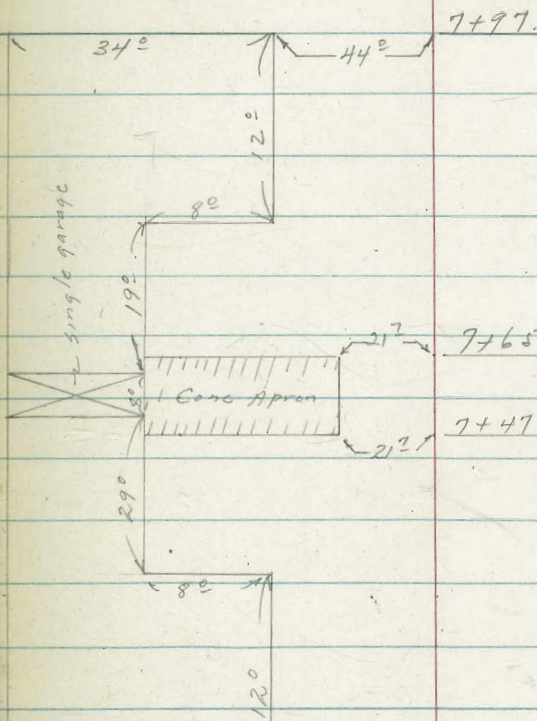
465.45th

X-sec 68th St

7+65

458.70	LT=	WT=
57 ⁸	703	715
52	25	217
gar		Dr.
floor		

2
68th
St
Rtaily. 38



Sketch of
Duplex at
4778+47780 68th

7+50

459.65	458.95	458.87	458.8	458.5	458.9	459.0	459.1	459.2
580	650	658	67	70	6	68	65	64
50	25	217	20	10	8	20	25	50
ON Dr.	ON Dr.	EL of Dr.		E.P.		E.P.		
459.65	458.99	458.97						
580	646	6						
50	25	217						
Dr.	Dr.	Dr.						
Howe street								

465.45 x

7+47 - 217 LT= begin Conc Apron

X-sec 6 8th st cont
 Flow goes to west
 Sewer lines from west, north & south
 8+86.73 = Sewer Man hole.

25⁴ LT. & gate valve cover (water)
 8+45 = Sly edge A.C. Paving Rosefield Dr to Wly

8+26.73 = Sly Line Rosefield Drive

TPg 4.09 461.37 8.17 457.28

8+00

7+75

7+73.20° RT = end picket fence

6 ¹⁰ 456.4	5 ⁶ 455.8	5 ¹ 456.3	4 ⁸ 456.6	4 ² 456.7	4 ¹⁰ 456.6	4 ⁴ 457.0	4 ⁰⁹ 457.28	120 ² 449.35	4 ¹ 456.9	4 ⁴ 457.0	4 ³ 457.1	3 ⁸ 457.6
100	50	25	20	16	10	Rim	SMH	INVT	6	20	25	50
		A.C.	A.C.	A.C.	A.C.				EP			
457.4	455.7	456.1	456.6	456.8	456.8	457.1	457.4	457.2	457.1	457.8	457.9	458.0
100	50	25	20	16	10	7	7	10	15	20	24	50
		A.C.	A.C.					EP				
458.0	455.8	456.7	457.0	457.1	457.3	457.7	457.5	457.7	458.2	458.1	458.3	457.8
150	100	50	25	20	10	3	7	14	20	25	50	100
					EP		F.P.					

461.37 X

+ 6873
 ON Sly most chisel X on Rim S.M.H. & Rosefield Dr

7 ⁴ 458.1	7 ⁶ 457.9	7 ⁹ 457.6	7 ² 457.6	7 ⁶ 457.9	7 ² 457.8	7 ³ 458.2	7 ³ 458.5
50	25	20	11	6	6	20	50
			EP		F.P.		
458.3	458.0	457.9	458.3	458.1	458.1	458.5	458.7
7 ² 458.1	7 ⁵ 458.0	7 ⁶ 457.9	7 ² 458.3	7 ⁴ 458.1	7 ⁴ 458.1	7 ⁰ 458.5	6 ¹⁰ 458.7
25	20	10	7	7	11	12	20
		EP		EP			

465.48

X-sec 68^m

0+50-40° RT = 2' 3' conc walk

0+37- 26° RT = 2' 35' wide stucco house
garage behind house

0+27- } 50° LT = Entrance of sly duplex-
 } 21° LT = 2' 3' conc walk

0+25-

0+17- 18° RT = 2' w.m.

0+02- 20° LT = 2' 16" power pole JP 78664

8+86⁷³ back = 0+00 Ahead
= Nly Line Rosefield Drive

8+72 = Nly edge A.C. Paving Rosefield to wly.

456.1	455.9	455.8	455.6	456.0	455.9	455.9	456.4	456.60	456.73
30	25	20	11	14	5	20	25	40	50
grat			EP		EP			walk	walk
Ely House									
456.95	456.04	456.10	456.12						
442	533	527	525						
58°	47°	25	21°						
Floor	Walk	Walk	Walk						
House									
	456.4	456.1	455.9	456.4	456.2	456.4	456.4		
	5	5	5	5	5	5	5		
	25	20	10	5	20	25			
			EP	EP					
454.9	454.9	455.6	456.5	456.2	456.5	456.7	456.6	456.5	456.8
65	65	58	52	52	49	47	48	49	48
150	100	50	25	20	15	10	50	20	25
					EP		EP		50
455.1	455.4	455.9	456.4	456.4	457.0	456.9	457.0	457.1	457.6
63	60	55	50	50	44	42	44	43	38
150	100	50	25	20	4	20	25	50	
Nly edge	AC	AC			EP				
AC									

441.37

X-sec 68th cont

1712 - 34⁵ RT = ϕ 3 conc walk

50⁰ LT = ϕ entrance way to Nly duplex

1710 - 20³ LT = ϕ 2⁵ conc walk

1700

0485 - 100⁺ RT = ϕ Frame house.

49⁵ LT = ϕ entrance way to Sly duplex

0484 - 20³ LT = ϕ 2⁵ conc walk

Marked Sewer dead end

0476 - Gate Valve Cover on Sewer Line

0475

0465 - 20⁰ LT = ϕ W.M.

No garage duplex.
50⁰ LT = ϕ entrance way Nly half of

0454 - 21³ LT = ϕ 3¹ conc walk

LT = W.M.

68th

RT = e1y

41

57	58	59	60	61	62	63	64	65	66	67	68	69	70	71	72
454	454	454	454	454	454	454	454	454	454	454	454	454	454	454	454
58	58	58	58	58	58	58	58	58	58	58	58	58	58	58	58
50	50	50	50	50	50	50	50	50	50	50	50	50	50	50	50
grat	25	20	11	5	7	9	20	25	30						
House			E.P.	E.P.											

19	24	24	15
455.19	455.54	455.24	455.15
518	583	613	622
495	45	25	20
Floor duplex		Walk	Walk

8⁵
405.68
5⁶

3	2	0	4	8	5	5	5	1
455.3	455.2	455.0	455.4	455.8	455.6	455.5	455.0	456.1
61	62	64	60	56	58	59	54	53
25	20	16	11	5	10	20	25	
			E.P.	E.P.				

86	87	89
455.86	455.87	455.89
551	560	548
47	25	21
Walk	Walk	Walk

461.37 X

X-sec 68th cont

LT= wly

2
68th

RT=ely 42

1446- 31⁵ RT= begin 6" curb for Retaining Purposes

453.3
8^L 7⁹⁰
31⁵ 31⁵
9^L Top of
Curb in

1438- 25⁰ LT= 4" Locust tree

20² LT= ely end Cyclone Fence

Section taken on split of angle
angle = 2°00'30" to left

1431.23 = angle point in street

453.3	454.1	454.4	454.4	454.6	454.4	454.8	454.3	453.9
8 ^L	7 ³	7 ⁰	7 ⁰	6 ⁸⁰	7 ⁰	6 ⁹	7 ^L	7 ⁵
50	25	20	11		5	20	25	50
			E.P.		E.P.			

garage is behind house

1425- 16⁰ LT= 10' Cold Lay drive

454.6	454.6	454.5
6 ⁸	6 ⁸	6 ¹⁹
25	20	16
C.L.	C.L.	C.L.

1424- 16⁰ RT= 4 W.M.

455.29

1418- 82⁰ RT= 2 car garage Conc floor

6⁰⁸
82⁰
conc floor

461.37 T

X-sec 68th cont

1475

1471- 20° RT- NWly corc conc flower box

1464- } 22° LT- 10" Oleander
 } 55° RT- 25' Stucco House
 1464- } 35° RT- 3' conc Walk

1459- 22° LT- Fly end EDW curb

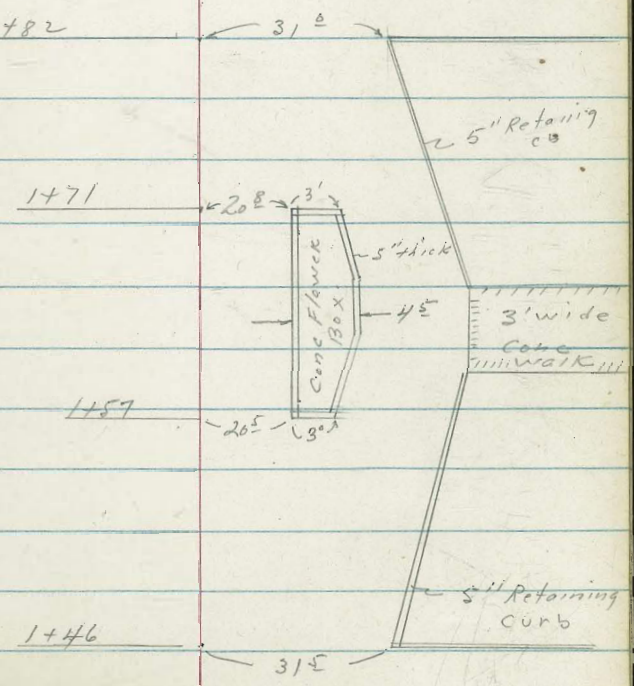
1457- 20° RT- 20° RT- SWly corc flower box

1446- 20° LT- Fly end low conc curb ^{e+w} 736
 20°

1446

25	20	14	12	10	8	8	8	8	8
852.6	452.6	852.6	852.6	852.9	852.9	852.9	852.9	852.9	852.9
852.6	452.6	852.6	852.6	852.9	852.9	852.9	852.9	852.9	852.9
25	20	14	12	10	8	8	8	8	8
852.6	452.6	852.6	852.6	852.9	852.9	852.9	852.9	852.9	852.9
852.6	452.6	852.6	852.6	852.9	852.9	852.9	852.9	852.9	852.9
25	20	14	12	10	8	8	8	8	8
852.6	452.6	852.6	852.6	852.9	852.9	852.9	852.9	852.9	852.9
852.6	452.6	852.6	852.6	852.9	852.9	852.9	852.9	852.9	852.9
25	20	14	12	10	8	8	8	8	8
852.6	452.6	852.6	852.6	852.9	852.9	852.9	852.9	852.9	852.9
852.6	452.6	852.6	852.6	852.9	852.9	852.9	852.9	852.9	852.9

1482



461.37.7

X-sec 68th cont

LT=wly

68th RT=ely

44

2407- 15⁵ LT= ely end home made curb

452.34	45	2.1	45	2.36	45	2.1	452.36	45	1.0
192	22	190	22	190	23				
15	25	20	20	15	15				
T.C	9 ^v	T.C	9 ^v	T.C	9 ^v				

19° LT = ♀ w.m.

2405- 20⁵ RT = ♀ 3" eugenia shrub

2401- 22⁵ RT = end Conc Retaining cb

452.50
176
224
T.C.

454.26 T

TPg 2.19 454.26 9.30 452.07

1491- 31° RT = begin Conc curb Retaining

gar behind House
7787- 31° RT = ♀ 8' wide Conc drive way

452.55
88^v
31°
0^v

452.48
88^v
50°
0^v

88^v
31°
T.C.

1482- 31° RT = end Retaining curb

1476 } 20° LT = ♀ 2' Conc walk
46° LT = ♀ 20' wide Frame House

86^v
12^v
35
walk

452.72

84^v
25°
walk

452.91

86^v
20°
walk

452.76

461.37 T

452.9

90
31°
9^v

82^v
31°
T.C.

453.16

X-sec 48th cont.

LT = wly

RT = ely

45

45

gar. in back
2+50 - 44⁵ LT = 4 50' wide front house

452.7	452.4	449.7	449.7	449.9	449.8	449.8	450.6	450.6	450.3
0 ²	0 ⁵	3 ²	3 ²	3 ⁰	3 ¹	3 ¹	2 ³	2 ³	2 ⁶
445 grat house	21 grat Wypwall	20 grat	10 grat EP		7 E.P.	13	20	25	50

2+37-18 LT = 4 12" power pole # JP78563
No gar. this hole here

2+35-50° RT = 4 20' wide stucco house

2+31-20° LT = begin 8" conc block wall

452.4	452.77	449.7	450.9
0 ⁵	0 ¹⁴	3 ²	2 ⁰
21 grat Wypwall	20° Top Wall	20° Foot	20° grat Wall

452.91 X

TP16 1.99 452.91 3.34 450.92

Nail in pp # JP78563. 19° LT Sta 2+37

garage is behind house
2+25-20° LT = 4 10' wide conc drive

452.51	452.48	452.88	451.58	451.16	450.9	451.1	450.8	451.1	451.5
17 ⁵	17 ⁸	2 ¹⁸	2 ⁶⁸	2 ⁷	3 ⁴	3 ²	3 ⁵	3 ²	2 ¹⁰
50 Dr	32 Dr	25 Dr	20° Drive	20° gr.	9 E.P.		7 E.P.	20	25

conc curb along sky of walk
2+23-20⁵ RT = 4 3' conc walk

451.58	451.38	451.36
2 ⁸⁸	2 ⁸⁸	2 ⁹⁰
20 ⁵ Walk	25 Walk	50 Walk

2+17-20⁹ RT = 4 3" eugenia Shrub.

454.26 X

X-sec 68th ST

LT = W 14

RT = e 14 46
68th

50° RT = ϕ 8" Euc. Tree

3+42-21⁵ LT = begin 5' high cyclone fence

gar 15 100[±] LT of ϕ 1
3+25-22° LT = ϕ 10' wide conc drive

gar is behind house
3+15-50° RT = ϕ 24" Euc tree

3+04-50° LT = ϕ 30' wide Stucco house

3+00-30³ LT = ϕ 3" saymore tree

2+97-50' RT = ϕ 24" euc tree

Lateral wall connect
2+82-20¹ LT = NE cor 8" block wall

2+75

2+54-30.5 LT = ϕ 8" tree.

449.01
447.69
447.11
446.9

3³¹
58
Dr
38
Dr
25
Dr
22
Dr
20

446.1
446.2
446.6

68
67
6
13
7
E.P.

446.5
446.9
446.6
446.4

3
64
7
E.P.
60
15
62
20
65
25
E.P.

450.5

449.5

448.3

447.2

447.2

447.6

447.4

448.3

448.1

448.0

447.5

24
58
grat
House

24
25

46
20

57
15

52
9
E.P.

5

55
7
E.P.

46
16

48
20

49
25

54
50

452.1

449.6

449.7

452.1

449.6

452.61

449.0

08
25
Top
Wall

4³
25
Foot

3²
25
Foot

08
20²
Foot

4³
20²
Foot

08
20¹
Top
Wall

3⁹
20¹
Foot

452.2

452.2

449.1

448.5

448.8

449.7

449.4

449.2

449.2

07
25

07
21

38
20

44
10

44
E.P.

44
E.P.

44
E.P.

44
E.P.

44
E.P.

44
E.P.

44
E.P.

44
E.P.

44
E.P.

44
E.P.

44
E.P.

44
E.P.

44
E.P.

452.91 T

X-sec 68B

LT = 14" power p.c. # P23113T
RT = ely. 47
68B

4+50 - 20' LT = 14" power p.c. # P23113T

4+25 - 9 approx East to West drainage

4+00

3+75

3+68 - 52' RT = 31" Euc Tree

3+58 - 51' RT = 12" Euc Tree

3+50 - 50' RT = 16" Euc tree

442.7	443.4	444.6	445.3	445.2	444.9	445.4	445.5	445.6	445.9	446.2	447.1
10 ² 9 ⁵ 8 ³	76	72	80	75	74	73	70	67	58		
40	25	20	17	10	9	7	7	15	20	25	50
443.6	442.1	442.2	443.1	443.4	444.6	444.8	445.6	445.9	447.0		
9 ³	10 ⁸	10 ²	9 ⁸	9 ⁵	8 ³	8 ¹	7 ⁶	7 ⁵	7 ³	7 ⁰	5 ⁹
100	75	50	25	20	13	9	7	7	20	25	50
440.8	441.5	441.7	442.2	443.3	445.2	445.2	445.0	445.6	446.0	446.6	448.9
12 ⁵	11 ⁴	11 ²	10 ²	9 ⁶	7 ²	7 ²	7 ²	6 ⁷	7 ³	6 ⁹	6 ³
100	50	35	25	20	16	13	9	7	20	25	50
440.3	442.4	443.7	444.1	444.7	445.6	445.2	445.6	445.6	445.4	445.4	446.1
12 ⁵	10 ²	9 ²	8 ⁰	8 ⁶	7 ³	7 ²	7 ³	7 ³	7 ⁵	7 ⁵	6 ⁸
100	50	25	21	20	15	9	7	7	15	20	25
444.5	445.3	445.4	445.9	445.6	445.9	445.9	446.1	445.7	445.8	446.1	448.5
8 ⁴	7 ⁶	7 ⁵	7 ⁰	7 ³	7 ⁰	7 ⁰	6 ⁰	7 ²	7 ¹	6 ⁸	4 ⁴
50	25	20	16	9	7	7	7	15	20	25	50

452.91

X-sec 68th cont

LT = W1Y

68th

RT = c1Y

48

456.44

TP₁₁ 5.68 456.44 2.15 450.76

ON RR rail & intersection 68th + Amherst st

5728-39° LT = 12" fig tree

449.1	446.5	446.1	446.4	445.7	446.1	445.7	445.6	446.8	448.0	448.0	447.0
300	64	68	65	72	68	70	73	66	59	51	59
50	25	20	16	9		8	13	16	20	25	29
				EP		EP					91 07 Dec

5725

5711-29° RT = begin (swly cor) frame house

446.9	449.4
60	35
29.0	29.0
91 at house	floor

5701-18° RT = begin 2⁵ high picket fence

448.1	445.7	445.6	446.0	445.4	445.7	445.5	445.9	446.25	446.57	447.06
408	72	73	69	75	72	74	69	66	63	58.5
50	25	20	15	9		9	15	20	25	31.2
				EP		EP	W1Y 6Dr	20 Dr	25 Dr	31.2 gar floor

5700

4791-42° LT = 14" Evo tree

31² RT = Garage
17' wide + Floor

4790-15° RT = Double garage - Conc Drive

448.4	446.7	446.2	444.4	445.0	445.6	445.1	445.5	445.93	446.05	446.37	446.91
45	82	87	85	72	73	70	74	69	68	65	59
100	50	45	25	20	12	9		15° W1Y edge Drive	20 Dr conc	25 Dr	31.2 gar floor
						EP		4	446.0	446.2	446.4
								4	69	61	61.5
								EP	20	25	30

4775

452.91

X-sec 68⁷² LT

25° RT = ϕ 18" Olive tree
No Floor or conc involved

6410- } 22° RT = ϕ 18' wide Lath house

6403- 39° LT = ϕ 6" Quince tree

6400- 30° RT = ϕ Single garage Conc Floor
Apron to Gar. 15 broken

5487- 39° LT = ϕ 8" Peach peach:

5478- 33° RT = ϕ 12" Fig tree. (clump)

5475

5472- 39° LT = ϕ 6" Peach tree

5465-47° RT = ϕ 7" pepper tree.

cyclone fence

5460- 19° RT = end Picket fence + begin 4' high

5459- 39° LT = ϕ 6" Quince

5450

5445- 39° LT = ϕ 3" Quince tree

5443- 39° RT = end (Nully cor) frame house

5435- 29° RT = Jog in frame house

LT = wly

68⁷²

RT = BL-1.

49

447.7
77

448.4
448.2
449.00
8° 8° 7° 6°
E.P. 10 20 30°
gar Floor

60.05.09
450.09

448.7
448.2
447.2
447.4
447.7
77 82 92 92 87
25 20 15 10
E.P.

447.6
448.2
448.4
82 82 80
8 20 25
E.P.

450.1
447.1
446.9
446.3
446.6
446.5
63 93 95 101 98 96
50 25 20 14 9
E.P.

446.5
446.7
447.4
447.6
447.7
448.2
99 97 90 88 87 82
9 14 16 20 25 50
E.P.

456.447

X-sec 68th cont

LT = wly

68th

RT = ely

50

	4 ⁵ RT = 6" gate Valve Cover	451.9	450.0	450.1	449.7	450.7	450.54	450.3	450.7	450.8	452.0
67	19° RT = end cyclone fence	451.9	450.4	450.1	449.7	450.7	450.54	450.3	450.7	450.8	452.0
6	6+60 ⁶⁷ - Sly Line Amherst ST	55	64	63	67	57	590	61	57	56	44
6	6+60-20 ² LT = end 5' high cyclone fence	100	25	20	15	E.P.	45	9	20	25	100
	39 ² LT = 6" Quince tree						Top Cover	E.P.			
5	6+48-19° LT = dead man						450.8			452.40	
5	6+45-30° RT = end (NWly cor) frame house						56		404		
5	6+34-18 ³ RT = 4" Jacaranda tree						30 = ground at House		30 = Floor		
5	39 ² LT = 6" Persimmon tree										
5	6+32-19° LT = 10" Powerpole J.P. 78626	449.9	448.7	448.7	449.5	449.2	449.6	449.7			
5	6+25	65	72	72	69	72	68	67			
		25	20	11	E.P.	7	20	25			
5	6+23-30° RT = begin (SWly cor) frame house										
5	6+18-39 ⁶ LT = 6" Quince tree										

456.44 R

X-sec 68th cont.

LT=only

68th

RT=only

51

TP ₁₄ Starting BM.	4.87	<453.70>	453.72
TP ₁₃	11.74	458.59	7.32 446.85
TP ₁₂	3.32	454.17	5.59 450.85

See F.B. 1617 + 1623 for X-sec Amherst

6+90[±] = ϕ Amherst ST

450.9	450.7	450.1	450.7	451.1	451.2	451.2	451.6
5 ⁵	5 ⁷	6 ³	5 ²	5 ³	5 ²	5 ²	4 ⁸
100	65	55	36	20	20	25	100

6+77[±] = sly edge A.C. Amherst ST

450.7	450.2	449.9	450.3	450.5	451.2	450.8	450.8	451.1
5 ²	6 ²	6 ²	6 ¹	5 ⁹	5 ²	5 ⁶	5 ⁶	5 ²
100	50	39	25	20	20	20	25	100

6+73- 26[±] LT = 6" gate valve cover wafer

907.11
Pave
2

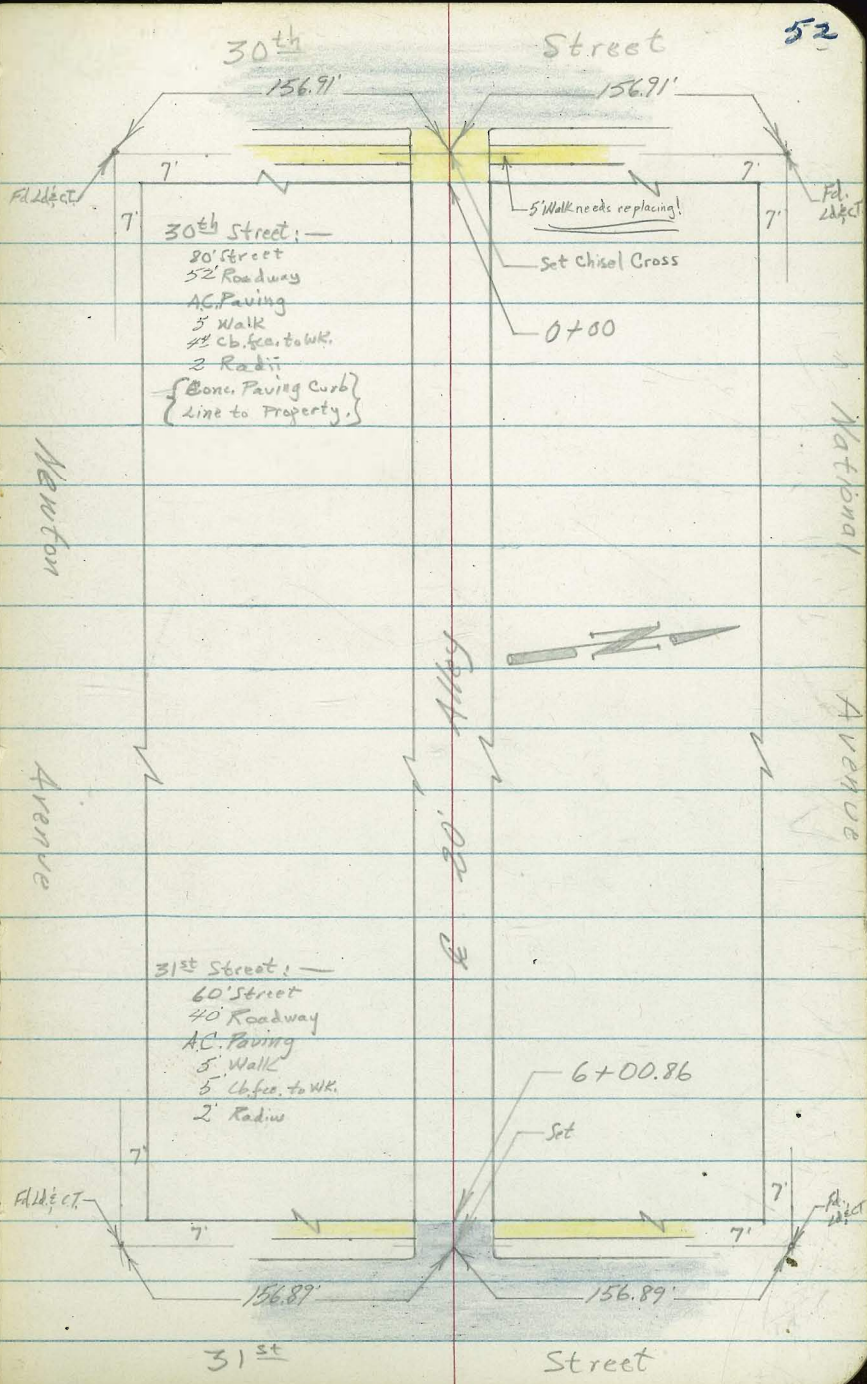
6+70- 26[±] LT = ϕ 12" power pole # P78861

456.44 ft.

Roberts X-Section Alley Block 4/
 Cota H.P. Whitney's Subd.
 Morales
 Kelly

12-27-54
 W.O.# 25020

INDEXED
 JGR
 DEC 30 1954



T.P. 6.55 66.74 π 4.31 60.19 on 0+00
chisel +

0+30 9^E RL to near edge P.Pole # A3004

0+10

0+01 8^E Lt to near edge T.Pole # D11804T

0+00 { 10' Lt begin conc. wall
East Line Thirtieth Street

60.9	60.0	60.88	60.55	60.20	60.43	60.40
3.6	4.5	3.62	3.95	4.30	4.07	4.10
10' Top	10' Foot	10' cb	10' Gut		10' Gut	10' cb

Last Foot Topped

61.71	60.86	60.63	60.06	59.72	59.48	60.09	58.64	59.18
3.09	3.64	3.87	4.44	4.78	5.02	4.41	5.86	5.32
50' cb	50' Gut	12' cb	12' Gut		12' Gut	12' cb	50' Gut	50' cb

East Curb Line 30th 0-14

Q 30th 0-40

T.P. 8.10 64.50 π 4.25 56.40 64.50 π

BM 6.73 60.65 53.92 NWBP
Newton E 29th

BM GONE 56.87 NWBP
Newton E 30th

BM GONE 64.91 NWBP
National E 30th

61.71	60.64	49.46
2.71	3.86	5.04
50		50

1+62 8⁷ Rt to near edge P.Pole #A3028

61.3

61.1

1+50

5.4
9³

5.6

61.1
5.6
10

60.9
5.8
20

1+21 15⁸ Rt & double Garage

60.4
6.3
15.2
Dirt Floor

1+12.5 8⁹ Lt to near edge P.Pole #589668H

59.4
7.3
9³

60.0

60.2
6.5
10

1+00

0+74 { 9⁴ Lt begin wood sheds.
9⁶ Lt end conc wall (Retaining)

62.0
47 47 73 69
GRD top Foot GRD

0+65 15³ Rt & Double garage

59.78

59.75

6.96 6.79
112 152
Apron Floor

0+50

64.5
6.9
10

59.8
6.9

59.5
7.2
10

59.1
7.6
20

66.74 π

66.74 π

Cont'd From Page 54

Lt

£

Rt 55

63.91
283
222
conc

63.86
2.88
12
conc

63.70
3.04
12
Floor

62.59
3.15
12
Floor

63.14
3.60
12
Floor

61.9
4.8
93
Dirt
Floor

63.56

3.18
11
conc
Apron

63.50
3.24
11
conc
Apron

63.2
3.5
10

63.02
3.72
8
conc

63.4
4.3

66.74

2+23 12^L Lt & 2 conc walk

2+16 12^L Lt & Single Garage

2+10 14^{Rt} Rt & Single garage

2+05 12^L Lt & Single Garage

2+00

1+93.5 8^{Lt} Lt & 8 conc. apron

1+86.5 9^{Lt} Lt End of Sheds

1+88 14^{Rt} Rt. & Single garage

1+70 9^{Lt} Lt. & Single garage

66.74

63.14
63.34
3.60
11
conc
Apron
3.40
14
Floor

62.8
3.9
10
63.0
3.7
20

62.73
4.01
14
conc

Cont'd From Page 55

Lt

R

R 56

3715 20 Rt & Single Garage

63.6

63.14
3.60
162
conc
Apron

63.44
3.30
20
Floor

3704 12 Lt & Single Garage

31

12
Dirt
Floor

63.6
3.1
10

63.0
3.7

63.1
3.6
10

63.1
3.6
20

2797 8² Rt to near edge P. Pole #A3048

2775 { 9¹ Lt End board fence
9² Rt & Single garage

63.5

3.2
95
Dirt
Floor

63.3

63.4

63.4
3.3

63.4

63.6

3.4
20

3.3
10

3.3
10

3.3
10

3.1
20

2750

2751^E 9¹ Lt begin board fence

2743.5 12² Lt & Single Garage

63.5
3.2
12²
Dirt
Floor

2724.8 7² Lt to near edge T. Pole #D11806T

66.747

66.747

Cont'd From Page 56

Lt

E

Rt

57

4+00

62.5
5.4
10

62.5
5.4

62.4
5.5
10

61.9
6.0
20

3+96

7³ Rt to near edge P. Pole #A3064

3+67

8 Lt to near edge T. Pole #D1180TT

3+66

9⁴ Rt End conc block wall

62.2
5.7
9L
GED

61.5
6.4
9L
Foot

67.2
0.7
9L
Top

3+50

62.0
5.3
20

62.5
5.4
10

62.4
5.4

62.4
5.5
9E

3+48.5

9² Lt end shed.

3+36

9³ Lt begin shed

T.P.

4.99

67.92 π

3.91

62.93

67.92 π

3+21

9⁸ Rt begin conc. block wall

62.9
3.8
9E
GED

61.8
4.9
9E
Foot

67.9
1.2
9E
Top

66.74 π

66.74 π

4+96 9° Lt & 6 conc walk

64.10
382 407
19 9
conc conc

4+92.5 9° Lt End conc apron

64.39 63.83
3.53 4.09
122 9
Floor conc

4+90 192 Rt & Single garage

62.85
5.07 5.11
182 192
conc Floor
Apron

4+62 { 9° Lt begin conc apron
9° Lt End sheds & fence

64.35 63.82
3.57 4.10
122 9
Floor conc

4+50

62.9 62.8
5.0 5.1 5.3 5.9
9 10 20

4+49 9° Rt End shed

4+33 9° Rt begin shed

4+25 9° Lt begin sheds & fence

62.7

4+15 132 Lt & Double garage

52
132
Dirt
Floor

67.92 X

67.92 X

T.P. 6.51 71.53A 2.90 65.02

6+00.86 WEST LINE THIRTY-FIRST ST.

5+75

5+68 11² Rt & door in house5+50 10¹ Lt end metal fence5+31 8² Lt to near edge T. Pole #590235H5+33 22¹ Rt & double garage5+30 9¹ Lt begin metal fence5+00 8⁴ Rt to near edge P. Pole #A3080

67.92A

Lt

Rt

Rt 59

65.82

2.12
10¹
cb

65.80

2.12
10¹
cb

65.02

2.90

65.02

2.90
10
cb

65.02

2.90
10
cb64.6
33
2064.6
33
1063.9
4.063.8
4.1
1064.3
3.6
2064.3
3.6
1063.7
4.263.3
4.6
1063.3
4.6
20W.C.
1/2
Floor

63.6

4.3
20

63.7

4.2
10

63.2

4.7
10

63.2

4.7
10

62.6

5.3
2063.1
4.8
22¹
Dirt
Floor

67.92A

Cont'd From Page 59

24

£

Rt

60

check

7.41 53.92 = 53.92

STARTING B.M.

T.P.

386

61.33

6.78

57.47

check

4.20

64.25

11.48

60.05 = ?

NEBP Newton $\frac{6}{11}$ 31st

6 + 30.86

£

31st St.

67.01

4.52

6.32

7.98

50

62.83

63.41

6 + 10.86

West Curb Line

31st St.

4.58
50
ob

5.16
50
gut

5.91
12
cb

6.47
12
gut

6.96
4.57

7.34
12
gut

6.419
12
cb

6.80
50
gut

8.12
50
cb

71.53A

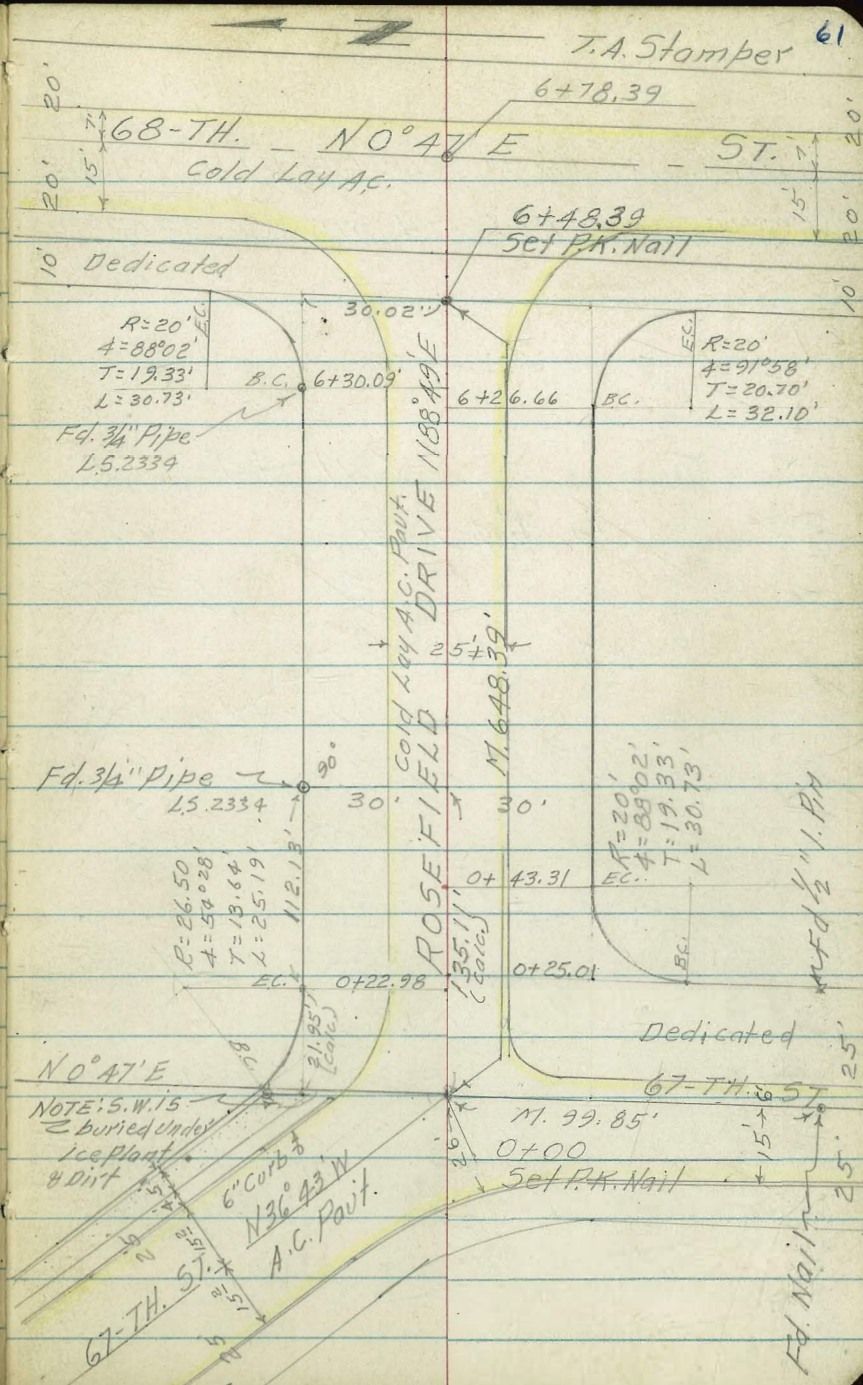
71.53A

CROSS SECTION ROSEFIELD DRIVE
 BETWEEN 67-TH & 68-TH STS. N.O. 32533

Ref Map 2651

Soil Sample @ Sta 3+00
 15' Rt. of \pm

INDEXED
 JUN 20 1956



6-15-55

Stamper 62
Huffman
Blunt
ElmoreCROSS SECTION ROSEFIELD DRIVE
BETWEEN 67-TH & 68-TH STS. W.O. 32533

T.B.M.	-6.11	443.08	Top of S.E. Pl. L. & Tr. 67-th & Shannon Ave
→ +3.49		449.19	
B.M.	-1.33	453.70	453.70
+13.25		455.03	
T.P.	-1.49	441.78	
+8.46		443.27	
T.P.	-11.53	434.81	
+0.64		446.34	
↓ T.B.M.	-0.73	445.70	Top P.K. Nail Sta 0+00 (see Pg. 61)
+11.62		446.43	
T.P.	-6.97	434.81	Top W. Car brick Wall on S. Side 67-th 4824 @ House No
+0.00		441.78	
T.P.	-13.08	441.78	PP No 377041 S. Side 67-th St. Opp House No 6695
+1.16		454.86	
B.M.		453.70	S.W. B.P. El Cajon Blvd & 67-th St.

X-SEC ROSEFIELD ST.

0+83^S - 29' Lt. & 8' Conc Drive

48.85 47.90
39L 29L

0+81-31^S Rt. End 5' High Hedge

0+74^B 28^L Lt. & 3^S Lateral board fence

0+50

49.2
50

491 46.0 46.08 46.34 46.92 47.05 46.7 46.7 49.9
30 20 14 12 0 15 17 20 23
EP. EP.

0+32^L - 30' Rt. = & 2' Hedge 5' High

50.0 50.3
30 50

0+31^L 50^S Lt = L Pt. in S.W. Proc) NWly

Along 67-H NWly

44.97 45.24
561 50.2
SW
bk.

0+29^S - 30^S Lt. & 8' Conc Drive

Produce NWly

49.07 46.35
45.2 30.2
break. CONC.
Apron

Lt - & Rt

64

X-SEC ROSEFIELD ST

1+72- 30' rt. & 3' conc walk

51.68 52.18
30° 40°
& Walk

Sta 1434⁵ 21² Lt.

TBM, Set P.P. N° P-375323 450.93

1+55- 30' rt. & 3' conc walk

51.43 51.90
30° 40°
& Walk on Walk

1+52- 23² rt. & 2' Diagonal hedge 4' High

1+50

51.1 51.0 50.2 49.50 49.87 49.75 49.8 50.8 51.3
50 30 19 12° 0 134 19 30 50
EP EP

1+49- 29¹ rt. & P.P. N° 589480-H

1+34⁵ 21² Lt. & P.P. N° 375323

1+31- 30' Lt. & 3' conc walk

51.05 50.90
40° 30°
on walk Walk

1+13- 22² Lt. & Deadman

1+00

50.8 50.3
50 36

47.4 47.55 47.89 48.25
17 13° 10° 0
EP

48.11 48.1 50.0 50.2
13 5 18 22 30
EP

50.6
50

X-SEC ROSEFIELD ST.

2+46⁵ 30° R. & 3' Conc Walk

5376 5378
30° 40°
& Walk on Walk

2+19⁵ 30° R. & 8' Conc Drive

5279 5296
30° 40°
& Drive on Drive

299 R. & Conc Drive 8' wide
2+00-297 L. & 3' Conc Walk 51.77 51.94 51.94
40° 30° 297
Conc
SW.

51.7 51.0 50.89 51.14 51.51 51.45 51.37 51.3 52.30
22 15 13° 11 3 0 12 1 13 17 299
EP. EP. Conc
Drive

5254
40
Conc

1+80-30° L. & 16' Conc Drive
2-Car Gar

50.88 50.76
50 30°
floor Conc
Apron

X- SEC ROSEFIELD ST,

L. E. Et. (67)

2+80⁵ 30° RT E 8' CONC DRIVE

5431 5465
30° 40°
E Drive on Drive

2+70-28⁴ Lt. E PPN# 58948-H

2+65-30° RT E 3' CONC WALK

5411 5420
30° 40°
E walk on walk

2+54-21² Lt. E PPN# P-374511

2+50

5226 5257 521 5239 5282 5274 528 529 540
50 30 18 12° 0 13° 21 30 50
CONC. CONC. EP EP

2+47-30⁴ Lt. E 8' CONC DRIVE

5234 5251
40° 30°
CONC CONC
DRIVE DRIVE

Lt. E et

X-SEC ROSEFIELD ST.

3+43⁰-30⁵ Lt. E Sewer M.H.
15' Conc Apron 2-Conc
G.W.

54.24 55.61 56.80
30⁵ 56⁰
Wly Conc floor
Rim Apron
M.H.

INVERT
447.31

3+19⁵-30¹ Lt. E 3' Conc Walk

55.14 55.11
40⁰ 30⁰
on walk E walk

3+15-28⁴ Lt. E Fire Hydrant

3+01-30¹ Lt. E 7' Conc Drive

53.63 53.46
50⁴ 30¹
floor Conc
Apron.

3+00

53.63 53.46 53.4 53.0 53.15 53.38 53.70 53.65 53.4 54.6 54.7
50 30 23 17 13 11 5 0 12 5 17 27 30
E.P. E.P.

55.2
50

X- SEC ROSEFIELD ST,

4+04-29² Rt & Guy Pk. N° 589482-H

4+00

54.7 54.6
50 30

54.6 54.0 54.1 54.2 54.76 54.95 54.70 54.8
23 16 12 11 0 12 13 18
EP. EP.

3+92-29³ Rt & 2" Acacia Tree

56.5 56.7 57.2
27 30 50

3+83-28² Lt & 3' Conc Walk

54.75 54.77
38 28
on walk & walk

3+79⁵-21⁶ Lt & PPN° P-374510

3+67-29³ Lt & 8' Conc Drive

54.73 54.64
39 29
on Drive Conc Drive

3+50

55.1 54.9
50 30

54.5 53.4 53.69 53.90 54.35 54.30 54.16 54.3 55.7
22 18 13 11 0 11 12 18 30
EP. EP.

56.5 56.7
40 50

X- SEC. ROSEFIELD ST.

4-94-22³ Lt. & PPN^o P-374509

4-88-29⁸ Lt. & 3' Conc Walk

5478 5492
398 298
on Walk & Walk

4-50

542 544 542 5450 5503 5499 546 548 572
50 30 17 12² 0 12⁵ 14 19 30
EP. EP.

576
50

4-44-30⁵ Lt. & 8' Conc Drive

5430 5446
40⁵ 30⁵
on Drive & Drive

4-27-30⁵ Lt. & 8' Conc Drive

5482 5485
40⁵ 30⁵
on Drive & Drive

Lt.

E

Rt

(70)

X-SEC. ROSEFIELD ST.

Lt.

E

Rt

(71)

5+40⁵-30° Lt. E 8' Conc Drive

5445 54.78
50' 30"
floor CONC
Apron

5+38-29² Rt. E 16' Conc Drive

5637 5748
29' 51"
CONC floor
Apron

5+09-29⁷ Rt. E 16' Conc Drive

5683 5890
29' 50"
CONC floor
Apron

5+00

544 548
50 30

551 548 5474 55.33 55.47 553 534 569
19 17 12 5 0 12 5 14 19 30
E.P. E.P.

586
50

Lt. E Rt

X-SEC. ROSEFIELD ST

6+48.39 = Wly Line 68-th St. ⁵⁵ 561 258 258 563 560 5609 5647 5647 57.0 578
 50 30 27 24 22 19° 0 17° 30 50
 EP. EP.

6+30 55.7 55.7 559 564 55.7 56.24 56.04 560 56.9 57.9
 6+26⁵ 22° Lt. & Deadman 50 30 24 20 15 0 12.5 17 30 50
 EP. EP.

6+08⁵ 22° Lt. & PPN = R 374.508

6+00 54.9 550 55.4 55.4 55.8 55.3 55.52 55.92 55.86 55.5 56.1 56.7
 50 32 30 20 18 15 13 0 12.5 18 26 30
 EP. EP.

5+84⁵ 28° Rt. & PPN = JP 471.440 576
 50

5+50 54.2 550 55.1 54.9 54.99 55.19 55.54 55.42 55.5 56.3 57.2
 50 30 18 15 12 11 0 12 17 30 50
 EP. EP.

LT

±

RT

(73)

6-17-55

X- SEC. ROSEFIELD ST.

B.M.

445.70 - 445.70 Starting Bench (see Pg. 63)

T.B.M.

450.93

6+78.39 = ± 68-th St. = ± Sewer M.H.

5638 5677 5724 5753 5780
50 25 0 25 50

W/4 Rim
M.H. 449.44

6+63⁴ = W.E.P. 68-th St = Gutterline

5592 5611 5650 5690 5744
50 25 0 25 50

6+58.39 - 32¹ Lt. ± P.P.N. JP-78564

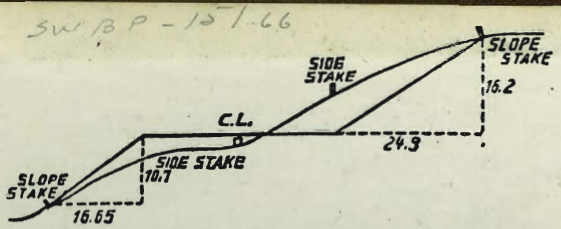
71.46 NWBP Util 1/2 31

17 61.02 NWBP
32nd & 1/2 stall

± 67+4 + Amherst.

Don Sayes Ld+ct. = ± 18' Conc. 18" Deep

1 say cross--56



DISTANCES FROM SIDE STAKES FOR CROSS-SECTIONING.
SLOPE 1 1/2 TO 1. ROADWAY OF ANY WIDTH.

	0	.1	.2	.3	.4	.5	.6	.7	.8	.9	
0	0.00	0.15	0.30	0.45	0.60	0.75	0.90	1.05	1.20	1.35	0
1	1.50	1.65	1.80	1.95	2.10	2.25	2.40	2.55	2.70	2.85	1
2	3.00	3.15	3.30	3.45	3.60	3.75	3.90	4.05	4.20	4.35	2
3	4.50	4.65	4.80	4.95	5.10	5.25	5.40	5.55	5.70	5.85	3
4	6.00	6.15	6.30	6.45	6.60	6.75	6.90	7.05	7.20	7.35	4
5	7.50	7.65	7.80	7.95	8.10	8.25	8.40	8.55	8.70	8.85	5
6	9.00	9.15	9.30	9.45	9.60	9.75	9.90	10.05	10.20	10.35	6
7	10.50	10.65	10.80	10.95	11.10	11.25	11.40	11.55	11.70	11.85	7
8	12.00	12.15	12.30	12.45	12.60	12.75	12.90	13.05	13.20	13.35	8
9	13.50	13.65	13.80	13.95	14.10	14.25	14.40	14.55	14.70	14.85	9
10	15.00	15.15	15.30	15.45	15.60	15.75	15.90	16.05	16.20	16.35	10
11	16.50	16.65	16.80	16.95	17.10	17.25	17.40	17.55	17.70	17.85	11
12	18.00	18.15	18.30	18.45	18.60	18.75	18.90	19.05	19.20	19.35	12
13	19.50	19.65	19.80	19.95	20.10	20.25	20.40	20.55	20.70	20.85	13
14	21.00	21.15	21.30	21.45	21.60	21.75	21.90	22.05	22.20	22.35	14
15	22.50	22.65	22.80	22.95	23.10	23.25	23.40	23.55	23.70	23.85	15
16	24.00	24.15	24.30	24.45	24.60	24.75	24.90	25.05	25.20	25.35	16
17	25.50	25.65	25.80	25.95	26.10	26.25	26.40	26.55	26.70	26.85	17
18	27.00	27.15	27.30	27.45	27.60	27.75	27.90	28.05	28.20	28.35	18
19	28.50	28.65	28.80	28.95	29.10	29.25	29.40	29.55	29.70	29.85	19
20	30.00	30.15	30.30	30.45	30.60	30.75	30.90	31.05	31.20	31.35	20
21	31.50	31.65	31.80	31.95	32.10	32.25	32.40	32.55	32.70	32.85	21
22	33.00	33.15	33.30	33.45	33.60	33.75	33.90	34.05	34.20	34.35	22
23	34.50	34.65	34.80	34.95	35.10	35.25	35.40	35.55	35.70	35.85	23
24	36.00	36.15	36.30	36.45	36.60	36.75	36.90	37.05	37.20	37.35	24
25	37.50	37.65	37.80	37.95	38.10	38.25	38.40	38.55	38.70	38.85	25
26	39.00	39.15	39.30	39.45	39.60	39.75	39.90	40.05	40.20	40.35	26
27	40.50	40.65	40.80	40.95	41.10	41.25	41.40	41.55	41.70	41.85	27
28	42.00	42.15	42.30	42.45	42.60	42.75	42.90	43.05	43.20	43.35	28
29	43.50	43.65	43.80	43.95	44.10	44.25	44.40	44.55	44.70	44.85	29
30	45.00	45.15	45.30	45.45	45.60	45.75	45.90	46.05	46.20	46.35	30
31	46.50	46.65	46.80	46.95	47.10	47.25	47.40	47.55	47.70	47.85	31
32	48.00	48.15	48.30	48.45	48.60	48.75	48.90	49.05	49.20	49.35	32
33	49.50	49.65	49.80	49.95	50.10	50.25	50.40	50.55	50.70	50.85	33
34	51.00	51.15	51.30	51.45	51.60	51.75	51.90	52.05	52.20	52.35	34
35	52.50	52.65	52.80	52.95	53.10	53.25	53.40	53.55	53.70	53.85	35
36	54.00	54.15	54.30	54.45	54.60	54.75	54.90	55.05	55.20	55.35	36
37	55.50	55.65	55.80	55.95	56.10	56.25	56.40	56.55	56.70	56.85	37
38	57.00	57.15	57.30	57.45	57.60	57.75	57.90	58.05	58.20	58.35	38
39	58.50	58.65	58.80	58.95	59.10	59.25	59.40	59.55	59.70	59.85	39
40	60.00	60.15	60.30	60.45	60.60	60.75	60.90	61.05	61.20	61.35	40
41	61.50	61.65	61.80	61.95	62.10	62.25	62.40	62.55	62.70	62.85	41
42	63.00	63.15	63.30	63.45	63.60	63.75	63.90	64.05	64.20	64.35	42
43	64.50	64.65	64.80	64.95	65.10	65.25	65.40	65.55	65.70	65.85	43
44	66.00	66.15	66.30	66.45	66.60	66.75	66.90	67.05	67.20	67.35	44
45	67.50	67.65	67.80	67.95	68.10	68.25	68.40	68.55	68.70	68.85	45
46	69.00	69.15	69.30	69.45	69.60	69.75	69.90	70.05	70.20	70.35	46
47	70.50	70.65	70.80	70.95	71.10	71.25	71.40	71.55	71.70	71.85	47
48	72.00	72.15	72.30	72.45	72.60	72.75	72.90	73.05	73.20	73.35	48
49	73.50	73.65	73.80	73.95	74.10	74.25	74.40	74.55	74.70	74.85	49
50	75.00	75.15	75.30	75.45	75.60	75.75	75.90	76.05	76.20	76.35	50

THE NATIONAL BLANK BOOK COMPANY
HOLYOKE MASSACHUSETTS
NEW YORK CHICAGO BOSTON SAN FRANCISCO