

DISTANCES FROM SIDE STAKES FOR CROSS-SECTIONING  
SLOPE 1 TO 1. ROADWAY OF ANY WIDTH

	0	.1	.2	.3	.4	.5	.6	.7	.8	.9	
0	0.00	0.10	0.20	0.30	0.40	0.50	0.60	0.70	0.80	0.90	0
1	1.00	1.10	1.20	1.30	1.40	1.50	1.60	1.70	1.80	1.90	1
2	2.00	2.10	2.20	2.30	2.40	2.50	2.60	2.70	2.80	2.90	2
3	3.00	3.10	3.20	3.30	3.40	3.50	3.60	3.70	3.80	3.90	3
4	4.00	4.10	4.20	4.30	4.40	4.50	4.60	4.70	4.80	4.90	4
5	5.00	5.10	5.20	5.30	5.40	5.50	5.60	5.70	5.80	5.90	5
6	6.00	6.10	6.20	6.30	6.40	6.50	6.60	6.70	6.80	6.90	6
7	7.00	7.10	7.20	7.30	7.40	7.50	7.60	7.70	7.80	7.90	7
8	8.00	8.10	8.20	8.30	8.40	8.50	8.60	8.70	8.80	8.90	8
9	9.00	9.10	9.20	9.30	9.40	9.50	9.60	9.70	9.80	9.90	9
10	10.00	10.10	10.20	10.30	10.40	10.50	10.60	10.70	10.80	10.90	10
11	11.00	11.10	11.20	11.30	11.40	11.50	11.60	11.70	11.80	11.90	11
12	12.00	12.10	12.20	12.30	12.40	12.50	12.60	12.70	12.80	12.90	12
13	13.00	13.10	13.20	13.30	13.40	13.50	13.60	13.70	13.80	13.90	13
14	14.00	14.10	14.20	14.30	14.40	14.50	14.60	14.70	14.80	14.90	14
15	15.00	15.10	15.20	15.30	15.40	15.50	15.60	15.70	15.80	15.90	15
16	16.00	16.10	16.20	16.30	16.40	16.50	16.60	16.70	16.80	16.90	16
17	17.00	17.10	17.20	17.30	17.40	17.50	17.60	17.70	17.80	17.90	17
18	18.00	18.10	18.20	18.30	18.40	18.50	18.60	18.70	18.80	18.90	18
19	19.00	19.10	19.20	19.30	19.40	19.50	19.60	19.70	19.80	19.90	19
20	20.00	20.10	20.20	20.30	20.40	20.50	20.60	20.70	20.80	20.90	20
21	21.00	21.10	21.20	21.30	21.40	21.50	21.60	21.70	21.80	21.90	21
22	22.00	22.10	22.20	22.30	22.40	22.50	22.60	22.70	22.80	22.90	22
23	23.00	23.10	23.20	23.30	23.40	23.50	23.60	23.70	23.80	23.90	23
24	24.00	24.10	24.20	24.30	24.40	24.50	24.60	24.70	24.80	24.90	24
25	25.00	25.10	25.20	25.30	25.40	25.50	25.60	25.70	25.80	25.90	25
26	26.00	26.10	26.20	26.30	26.40	26.50	26.60	26.70	26.80	26.90	26
27	27.00	27.10	27.20	27.30	27.40	27.50	27.60	27.70	27.80	27.90	27
28	28.00	28.10	28.20	28.30	28.40	28.50	28.60	28.70	28.80	28.90	28
29	29.00	29.10	29.20	29.30	29.40	29.50	29.60	29.70	29.80	29.90	29
30	30.00	30.10	30.20	30.30	30.40	30.50	30.60	30.70	30.80	30.90	30
31	31.00	31.10	31.20	31.30	31.40	31.50	31.60	31.70	31.80	31.90	31
32	32.00	32.10	32.20	32.30	32.40	32.50	32.60	32.70	32.80	32.90	32
33	33.00	33.10	33.20	33.30	33.40	33.50	33.60	33.70	33.80	33.90	33
34	34.00	34.10	34.20	34.30	34.40	34.50	34.60	34.70	34.80	34.90	34
35	35.00	35.10	35.20	35.30	35.40	35.50	35.60	35.70	35.80	35.90	35
36	36.00	36.10	36.20	36.30	36.40	36.50	36.60	36.70	36.80	36.90	36
37	37.00	37.10	37.20	37.30	37.40	37.50	37.60	37.70	37.80	37.90	37
38	38.00	38.10	38.20	38.30	38.40	38.50	38.60	38.70	38.80	38.90	38
39	39.00	39.10	39.20	39.30	39.40	39.50	39.60	39.70	39.80	39.90	39
40	40.00	40.10	40.20	40.30	40.40	40.50	40.60	40.70	40.80	40.90	40
41	41.00	41.10	41.20	41.30	41.40	41.50	41.60	41.70	41.80	41.90	41
42	42.00	42.10	42.20	42.30	42.40	42.50	42.60	42.70	42.80	42.90	42
43	43.00	43.10	43.20	43.30	43.40	43.50	43.60	43.70	43.80	43.90	43
44	44.00	44.10	44.20	44.30	44.40	44.50	44.60	44.70	44.80	44.90	44
45	45.00	45.10	45.20	45.30	45.40	45.50	45.60	45.70	45.80	45.90	45
46	46.00	46.10	46.20	46.30	46.40	46.50	46.60	46.70	46.80	46.90	46
47	47.00	47.10	47.20	47.30	47.40	47.50	47.60	47.70	47.80	47.90	47
48	48.00	48.10	48.20	48.30	48.40	48.50	48.60	48.70	48.80	48.90	48
49	49.00	49.10	49.20	49.30	49.40	49.50	49.60	49.70	49.80	49.90	49
50	50.00	50.10	50.20	50.30	50.40	50.50	50.60	50.70	50.80	50.90	50

Distance of slope stake from side or shoulder stake for any width roadway, slope 1 to 1. If ground is nearly level, the cut or fill at side stake is located by the double entry method in left column and top row. The number in body of table in same row and column gives distance from side stake to slope stake. If ground is not level estimate the difference in elevation between the side stake and slope stake, lower target by this amount if cut, elevate if fill. Add this amount to cut or fill and find distance in table. Set up rod at this point, and line of sight should cut target. If it does not make the slight adjustment necessary.

TABLE XIII—CORRECTIONS FOR TANGENTS AND EXTERNALS

These corrections are to be added to the approximate values, found by dividing the tangent, or external, for a 1° curve (Table VIII) by the degree of curve, in order to obtain the true tangents, or externals. Intermediate values may be obtained by interpolation.

FOR TANGENTS ADD

Central Angle	DEGREE OF CURVE													
	5°	10°	15°	20°	25°	30°	35°	40°	45°	50°	55°	60°	65°	70°
10°	.03	.06	.09	.13	.16	.19	.22	.25	.28	.31	.34	.38	.42	.46
15°	.04	.10	.14	.19	.24	.29	.34	.39	.45	.51	.53	.58	.63	.68
20°	.06	.13	.19	.26	.32	.39	.45	.51	.58	.65	.72	.79	.84	.90
25°	.08	.16	.24	.33	.40	.49	.58	.67	.75	.83	.90	.99	1.06	1.14
30°	.10	.19	.29	.39	.49	.59	.69	.79	.89	.99	1.09	1.20	1.29	1.39
35°	.11	.22	.34	.47	.58	.69	.79	.89	.99	1.04	1.29	1.42	1.54	1.66
40°	.13	.26	.40	.53	.67	.80	.93	1.06	1.20	1.34	1.49	1.64	1.79	1.94
45°	.15	.30	.44	.60	.76	.91	1.06	1.21	1.37	1.52	1.70	1.87	2.04	2.21
50°	.17	.34	.51	.68	.85	1.02	1.19	1.36	1.54	1.72	1.91	2.10	2.29	2.48
55°	.19	.38	.57	.76	.95	1.14	1.32	1.52	1.72	1.92	2.14	2.35	2.56	2.77
60°	.21	.42	.63	.84	1.05	1.27	1.49	1.71	1.94	2.17	2.38	2.60	2.83	3.07
65°	.23	.46	.69	.93	1.16	1.40	1.64	1.88	2.13	2.38	2.63	2.88	3.13	3.39
70°	.25	.51	.76	1.02	1.28	1.54	1.80	2.06	2.33	2.60	2.88	3.16	3.44	3.72
75°	.27	.56	.83	1.12	1.40	1.69	1.98	2.27	2.57	2.87	3.16	3.47	3.78	4.09
80°	.30	.61	.91	1.22	1.53	1.84	2.15	2.46	2.78	3.10	3.44	3.78	4.12	4.46
85°	.33	.66	1.00	1.33	1.68	2.02	2.36	2.70	3.05	3.40	3.77	4.14	4.55	4.89
90°	.36	.72	1.09	1.45	1.83	2.20	2.57	2.94	3.32	3.70	4.10	4.50	4.91	5.32
95°	.39	.79	1.19	1.55	2.00	2.40	2.80	3.20	3.61	4.02	4.40	4.85	5.38	5.83
100°	.43	.86	1.30	1.74	2.18	2.62	3.06	3.50	3.95	4.40	4.88	5.37	5.85	6.34
110°	.51	1.03	1.56	2.08	2.61	3.14	3.67	4.21	4.76	5.31	5.86	6.43	7.01	7.60
120°	.62	1.25	1.93	2.52	3.16	3.81	4.45	5.11	5.77	6.44	7.12	7.80	8.50	9.22

FOR EXTERNALS ADD

Central Angle	DEGREE OF CURVE													
	5°	10°	15°	20°	25°	30°	35°	40°	45°	50°	55°	60°	65°	70°
10°	.001	.003	.004	.006	.007	.008	.009	.011	.012	.014	.015	.017	.018	.020
15°	.003	.007	.010	.014	.018	.023	.027	.029	.032	.035	.039	.043	.047	.051
20°	.006	.011	.017	.022	.028	.034	.038	.045	.051	.057	.063	.070	.076	.083
25°	.009	.018	.027	.036	.046	.056	.065	.074	.083	.093	.106	.120	.127	.135
30°	.013	.025	.038	.051	.065	.078	.090	.103	.116	.129	.149	.170	.179	.188
35°	.018	.035	.054	.072	.086	.109	.131	.153	.175	.197	.213	.230	.247	.264
40°	.023	.046	.070	.093	.117	.141	.172	.203	.234	.265	.277	.290	.315	.341
45°	.030	.060	.093	.119	.153	.184	.216	.254	.289	.325	.351	.378	.411	.445
50°	.037	.075	.116	.151	.189	.227	.266	.305	.345	.384	.425	.467	.508	.550
55°	.046	.093	.142	.188	.236	.283	.332	.381	.420	.479	.530	.582	.641	.700
60°	.056	.112	.168	.225	.283	.340	.398	.457	.516	.575	.636	.697	.774	.851
65°	.067	.135	.204	.273	.343	.412	.483	.554	.625	.697	.771	.845	.922	1.01
70°	.080	.159	.240	.321	.403	.485	.568	.652	.735	.819	.906	.994	1.08	1.17
75°	.095	.182	.266	.353	.440	.528	.617	.707	.797	.877	1.07	1.18	1.29	1.39
80°	.110	.220	.332	.445	.558	.671	.787	.903	1.02	1.13	1.25	1.38	1.50	1.62
85°	.128	.259	.391	.524	.657	.790	.926	1.06	1.20	1.34	1.47	1.62	1.76	1.91
90°	.149	.299	.450	.603	.756	.910	1.07	1.22	1.38	1.54	1.70	1.87	2.03	2.20
95°	.174	.350	.522	.706	.885	1.06	1.25	1.43	1.62	1.80	1.99	2.18	2.38	2.58
100°	.200	.401	.604	.809	1.01	1.22	1.43	1.64	1.85	2.06	2.28	2.50	2.73	2.96
110°	.268	.536	.806	1.08	1.35	1.63	1.91	2.20	2.48	2.76	3.05	3.35	3.66	3.96
120°	.360	.721	1.08	1.45	1.82	2.19	2.57	2.95	3.33	3.72	4.11	4.50	4.91	5.32

INDEX

Pg

X-SECT. SEMINOLE DR. { ESTELLE ST to  
 EL CATON BLVD 15 5  
 Red. Ayling  
 8-26-53 39  
 X-Sect. Alley, Block 2, Swans Addition  
 - DETAILS: EXIST SW CB Ret. EL CATON Seminole 53



Z-SEC. BLACKTON DRIVE (CONT'D.)

LT.                      E.                      RT.

5700

79.1 81.1 82.0 83.0  
10.9 8.9 8.0 7.0  
30                      18 30

4400

81.6 83.1 84.4 85.7  
8.4 6.9 5.6 4.3  
30                      25 30

3400

286.8 287.4 287.6 288.8 290.0  
3.2 2.1 2.1 1.2 0.0  
30 22                      20 30

T.P.

0.20 290.04 4.1 12.77 289.64

290.04

92.6  
98  
30

2450

89.1 90.0 90.8 90.9 89.9 90.6 90.8 92.2  
1.3 1.1 1.6 1.5 1.2 1.8 1.6 1.2  
30 23                      7 9 12 17 25

2400

92.5 93.1 93.2 93.6 92.8 93.5 93.7 95.1  
9.9 9.3 9.2 8.8 9.6 8.9 8.7 7.3  
30 17                      7 8 11 18 30

1450

296.4 297.1 297.2 297.6 295.8 297.1 297.8 299.0  
6.0 5.3 5.2 4.8 6.6 5.3 4.6 3.4  
30 22                      5 7 8 25 30

302.41 4.1

302.41 4.1

X-SEC. BLACKTON DRIVE (CONT'D.)

LT.	Φ	RT.
90.4	90.3	90.3
78	79	79
30	12	13
		30

9+00

89.1	89.4	89.0	89.3	89.4
91	88	90	89	88
30	12	14	30	

8+00

T.P. 986 298.17 H.I. 1.73 288.31

298.17 H.I.

87.1	87.4	87.5	87.6	87.6
29	26	25	24	24
30	17		13	30

7+00

84.2	84.8	85.1	85.4	85.4
58	52	49	46	46
30	16		13	30

6+00

82.7	83.9	85.1
73	61	49
30		30

5+68

80.2	83.3
9.8	6.7
30	30

5+30.73 Φ LAUREL

290.04 H.I.

290.04 H.I.

4653  
326

7-SEC. BLACKTON DRIVE (CONT'D.)

LT.                      φ                      RT.

CHECK B.M.                      8.55 277.89 = 277.89 B.P. EAST EDGE PAVING 54TH ST., SO. LINE BILOXI

T.P.                      080 286.11                      1253 285.64

NO CHANGE FROM HERE TO OLIVE

12+52.82 F.C. BILOXI

298.6	298.6	298.3	298.9	299.8	300.2	300.5
+0.4	+1.4	+1.1	+0.7	+1.7	+2.0	+2.9
30	20	1		20	21	30

12+00

96.2	96.5	96.4	96.6	96.4	97.1	97.0
2.0	1.7	1.8	1.6	1.8	1.1	1.2
30	11		10	15	21	30

11+50

94.0	94.1	94.0	94.1	94.3	94.7
4.2	4.1	4.2	4.1	3.9	3.5
30	28	17		11	30

11+00

91.8	92.4	92.6	93.0	93.1	93.3	94.5
6.4	5.8	5.6	5.2	5.1	4.9	3.7
30	21	14		12	28	30

10+0.0

91.1	91.5	91.4	91.5	91.7
7.1	6.7	6.8	6.7	6.5
30	13		14	30

298.174.1.

298.17 H.1.

Roberts  
 Moore  
 Powell  
 Harolez  
 9-1-53  
 W.O. # 31973

X-Section Biloxi St.

54th to Blakton

←

→

Re 5

1700

80.4	80.7	81.5
7.9	7.6	6.8
30		30

0+75

32 Lt @ 14' Conc Drive

80.26	80.25
800.	801
40	32
conc	conc

0+67

29° Rt @ 15' Conc Drive

81.70	82.19
6.56	6.87
29	39
conc	conc

0+56

30° Lt @ 4' Conc. Walk

80.16	80.15
8.10	8.11
102	302
conc	conc

0+50

80.1	79.5	79.5	82.1
8.2	8.8	8.8	6.2
30		12	30

0+15.18

B.C.

79.0	79.0	78.8	81.9
9.3	9.3	9.5	6.4
30.		10	30

0+00

East line 54th St road

78.7	78.7	78.5	80.4
9.6	9.6	9.8	7.9
30		12	30

BM

10.31 288.26A

277.89

SP. in Paving  
 54th & Biloxi

288.26A



Cont'd From Page 5

Lt

C

Rt

6

4+68.69 EC = 12+52.82 Blackton See Page 4

4+00

95.6

95.4

95.4

47

49

49

30

30

3+50

92.7

93.8

93.1

93.3

7.6

6.5

7.2

7.0

30

28

30

3+00

88.8

90.7

90.5

91.6

11.5

9.6

9.8

8.7

30

28

30

2+60

End BREAK at 28.5' ahead

85.5

87.7

88.1

88.9

90.9

14.8

12.6

12.2

11.4

9.4

30

25

28

30

T.P.

1257

300.53  $\pi$ 

0.30

287.96

300.53  $\pi$ 

2+00

82.2

84.0

84.7

85.0

84.8

88.3

6.1

4.3

3.6

3.3

3.5

0.0

30

25

15

26

30

1+50

81.7

82.4

82.9

82.7

84.7

6.6

5.9

5.4

5.6

3.6

30

16

28

30

288.26  $\pi$ 288.26  $\pi$

Roberts  
Moore  
Powell  
Morales  
9-1-53  
W.G. 31973 -

X-Section Alley Block "H", Balboa Vista  
From Souline Subd to Laurel

Lt

E

Rt

7

1765

95.0 94.6 94.5  
10.5 109 11.0  
10 10

1700

95.7 94.8 93.8  
9.8 107 11.7  
10 10

0743

95.0 94.2 93.3  
10.5 113 12.2  
10 10

0728

94.8 94.1 92.0 91.8  
10.7 11.4 13.5 13.7  
10 7 10

T.P.

118 3055 A 1.4 293.7

3055 A

0700 opposite Property Corner of East Line Alley  
and Souline Laurel.

93.9 93.7 93.5  
1.2 1.4 1.6  
10 10  
Toe

TBM

13.2 295.1 A

Laurel E  
Blackton

295.1 A

5+00

306.7  
9.7  
10

306.1  
10.3  
10

305.1  
11.3  
10

4+50

307.7  
8.7  
10

305.9  
10.5  
6

305.1  
11.3  
10

304.9  
11.5  
10

4+00

310.9  
5.5  
10

306.2  
10.2  
3

305.3  
11.1  
3

304.8  
11.6  
10

3+50

312.6  
2.8  
10

307.4  
9.0  
6

305.1  
11.3  
6

304.8  
11.6  
10

3+00

310.2  
6.2  
10

305.5  
10.9  
4

302.2  
12.2  
4

303.5  
12.9  
10

T.P.

11.0 316.4 A 0.1 305.4

316.4 A

2+27

303.7  
1.8  
10

300A  
5.1  
10

299.5  
6.0  
10

305.5 A

305.5 A

check

11.6 312.9 = 312.9

Blackton  
♀ at 0400 see page 1

6+72.94 Sky Line Balboa Vista

323.4	322.9	322.1
0.9	1.6	2.4
10		10

6+50

320.7	320.3	319.6
3.8	4.2	4.9
10		10

T.P. 9.3 324.5  $\bar{\bar{\Delta}}$  1.2 315.2324.5  $\bar{\bar{\Delta}}$ 

6+00

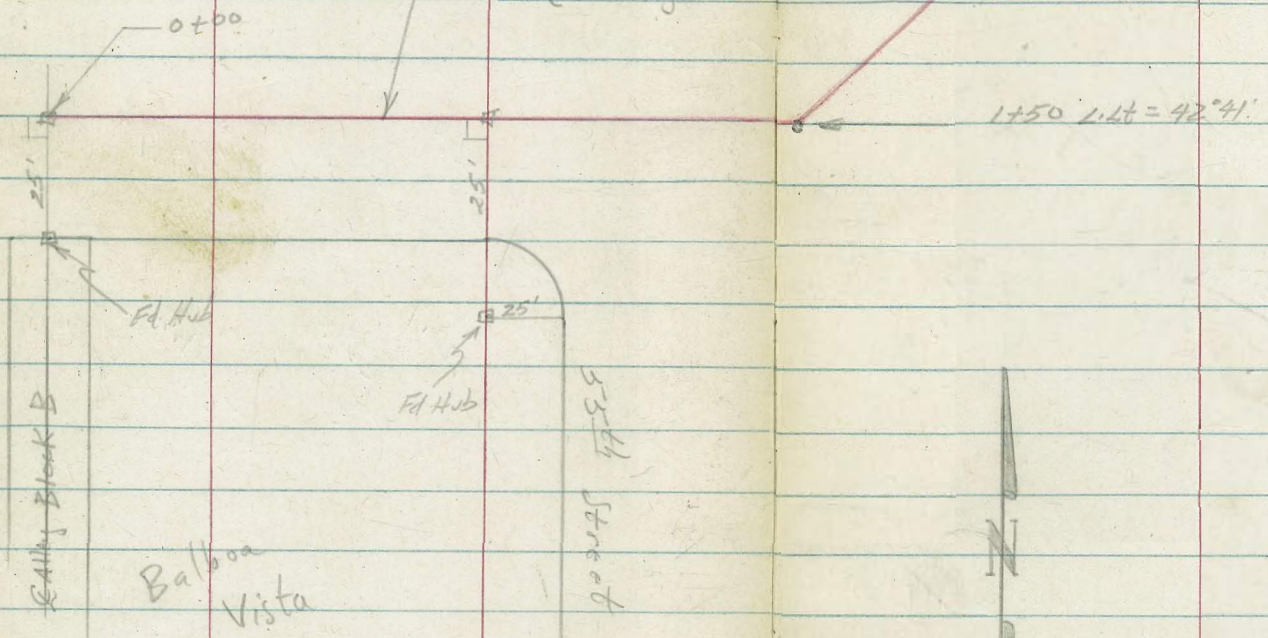
313.7	312.2	312.0
2.7	4.2	4.4
10		10

316.4  $\bar{\bar{\Delta}}$

Roberts X-Section Olive St. & Refuse Road  
 Cota From Alley Bk. E. Balboa Vista across canyon  
 Moore in Charles sanitary Fill  
 Morales 10-13-53 See FB 2165 pgs  
 W.O. # 21160

INDEXED  
 N.E.R.  
 OCT 19 1953

This is not  
 E of Street or  
 Roadway, BUT  
 Approximately  
 Northerly Edge  
 of the graded  
 roadway.



Contd From Page 10

LE

SE

RE 11

2+00

321 <sup>+</sup>	322 <sup>+</sup>	333 <sup>+</sup>	321 <sup>+</sup>	333 <sup>+</sup>	336 <sup>+</sup>	336 <sup>+</sup>	336 <sup>+</sup>
14.4	14.2	3.3	4.7	4.2	4.3	4.9	4.9
30	21	5	2 ER	23 ER	27	35	45

1+50 L.Lt Section on split

321 <sup>+</sup>	321 <sup>+</sup>	332 <sup>+</sup>	331 <sup>+</sup>	333 <sup>+</sup>	331 <sup>+</sup>
14.7	14.4	3.7	4.6	3.1	4.0
25	18	4	2 ER	21 ER	24

T.P. 6.83 336.54  $\nabla$  0.48 329.71

336.54  $\nabla$

1+00

321.1	321 <sup>+</sup>	328.4	327.1	327.5	330 <sup>+</sup>
9.1	8.8	1.8	3.1	2.7	0.1
25	10	4	ER	21 ER	25

T.P. 12.63 330.19  $\nabla$  0.38 317.56

330.19  $\nabla$

0+00 E Alley Block "B"

314.4	314.2	314.6	316 <sup>+</sup>	316 <sup>+</sup>
3.5	3.7	3.3	1.5	1.5
25	ER	17 ER	22	25

ER = Edge Roadway

-1-00

12.2  
on Roadway

BM 12.64 317.94  $\nabla$

SE Prop 110  
30530 olim. & Block  
See pg 50 FB 2165

317.94  $\nabla$

4450

300 <sup>2</sup>	299 <sup>2</sup>	303.4	302 <sup>3</sup>	302 <sup>5</sup>	300 <sup>1</sup>	299 <sup>1</sup>
11.7	12.0	8.5	9.6	9.4	11.5	12.2
25	11	4	ER	27 ER	31	35

4400

306.4	306.8	307.6	307 <sup>2</sup>	307 <sup>5</sup>	308 <sup>2</sup>	308 <sup>1</sup>
5.5	5.1	4.3	4.9	4.4	3.0	3.0
25	8	4	ER	27 ER	30	35

T.P.

150 311.87  $\nabla$  13.28 310.37311.87  $\nabla$ 3+50 L. R<sub>1</sub> (Section on split)

312.0	313.5	315.3	314.3	315.2	316.9	318.0
11.7	10.2	8.4	9.4	8.5	6.8	6.7
25	5	2	1 ER	27 ER	28	35

T.P.

0.24 328.65  $\nabla$  13.13 323.41323.65  $\nabla$ 

3+00

318.4	320.5	324.0	323.4	323.8	326.8	327.0
18.1	16.0	12.5	13.1	12.7	9.7	9.5
25	11	3	ER	23 ER	25	35

2+50

324.6	321 <sup>2</sup>	331.2	329.5	329.9	334.0	335.0
11.9	9.2	5.3	7.0	6.6	2.5	1.5
25	13	6	3 ER	21 ER	25	35

336.54  $\nabla$ 336.54  $\nabla$

T.P. 12.37 33.635  $\uparrow$  0.18 323.98

7+00

322. <sup>4</sup>	322. <sup>2</sup>	321. <sup>5</sup>	321. <sup>8</sup>	322. <sup>2</sup>	321. <sup>0</sup>
1.2	2.0	2.7	2.4	2.0	3.2
25	5	2 ER	24 ER	30	45

6+50

316. <sup>1</sup>	315. <sup>2</sup>	314. <sup>2</sup>	315. <sup>6</sup>	315. <sup>2</sup>	315. <sup>8</sup>
8.1	8.4	9.3	8.6	8.3	8.4
25	4	2 ER	25 ER	30	50

T.P. 12.53 324.16  $\uparrow$  0.24 311.63324.16  $\uparrow$ 

6+00

310. <sup>6</sup>	311. <sup>1</sup>	310. <sup>5</sup>	309. <sup>2</sup>	310. <sup>1</sup>	311. <sup>8</sup>	311. <sup>5</sup>
1.3	0.8	1.4	2.2	1.8	0.1	0.4
25	10	3	ER	26 ER	29	40

5+50

306. <sup>1</sup>	306. <sup>5</sup>	305. <sup>2</sup>	305. <sup>6</sup>	304. <sup>2</sup>	305. <sup>5</sup>	306. <sup>3</sup>	306. <sup>2</sup>
5.8	5.3	6.6	6.3	7.0	6.4	5.1	5.7
25	6	ER	22 ER	26	37	42	52

5+00

295.7	296. <sup>4</sup>	303. <sup>2</sup>	302. <sup>4</sup>	302. <sup>2</sup>	303. <sup>0</sup>	299. <sup>5</sup>	299. <sup>2</sup>
16.2	15.5	8.6	9.5	9.7	8.9	12.4	12.2
25	14	4	ER	22 ER	28	45	55

311.87  $\uparrow$ 311.87  $\uparrow$



check

13.29 311.23 = 311.26

shells Sanitary Fill TBM

T.P. 0.55 324.52 12.54 323.97

W. L. R. L. L. L.  
Oct 11, 1953  
P. L. L. L. L.

T.P. 0.37 336.51 12.95 336.14

346<sup>8</sup> 347<sup>4</sup> 346<sup>2</sup> 345<sup>2</sup> 345<sup>5</sup>

9+00 Junction with four other roads.  
End of survey.

2.3 1.7 2.4 3.5 3.6  
25 9 5 ER 36 50  
ER

343<sup>2</sup> 342<sup>6</sup> 340<sup>8</sup> 340<sup>6</sup> 340<sup>2</sup> 340<sup>6</sup>

8+50

5.9 6.5 8.3 8.5 8.2 8.5  
25 6 2 ER 26 30 50  
ER

T.P. 13.08 349.09  $\uparrow$  0.34 336.01

349.09  $\uparrow$

327<sup>2</sup> 336<sup>6</sup> 334<sup>6</sup> 334<sup>5</sup> 334<sup>2</sup> 333<sup>1</sup>

8+00

+0.8 0.0 1.8 1.9 1.5 2.3  
25 8 2 ER 25 33 45  
ER

329<sup>2</sup> 330<sup>2</sup> 328<sup>2</sup> 328<sup>2</sup> 328<sup>2</sup> 327<sup>6</sup>

7+50

6.7 6.4 8.2 8.0 8.2 8.8  
25 8 2 ER 23 30 45  
ER

336.35  $\uparrow$

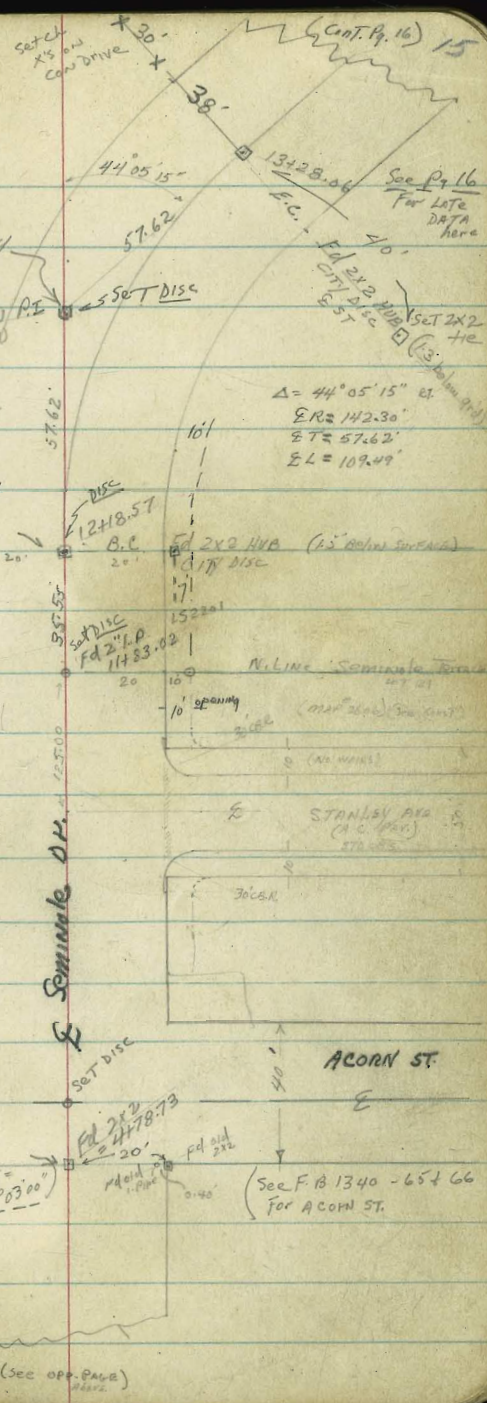
336.35  $\uparrow$

Clark  
Shepherd  
Bruner  
Owens  
4-14-54  
W.O. 31814

X-SECT. SEMINOLE DRIVE  
ESTELLE ST. N.W. 1/4  
TO EL CATON BLVD

INDEXED  
APR 21 1954

5-11-50 T.A.S.  
Map Destroyed by  
GAS CO.



Ref: T.K. #29  
F.B. = 1301-78  
T.S. = 1340-21-66  
3785  
3795  
3794  
4309  
MAP = 2710

(See also  
Pg 53  
for ties)

city P's Reset  
10-31-56

ACORN  
5758.21

(See F.B. 1340 - 65 + 66  
for ACORN ST.)

See TP29  
1938  
For Mast Sky Tr  
Seminole Dr.

Fd 2 1/2 P.  
R.S. 4847  
OK  
10-31-56

(See opp. page)



X-SECT. SEMINOLE DRIVE  
ESTELLE ST. to  
EL CANTON BKS

W/4 CT. E RT (Ely)

0+92 35.6 LTC Deadman ✓  
0+78 25.1 LT E Pole # 558468-H ✓  
0+60 29.8 RT E Pole # JP 374971 ✓

0+50  
0+47 30.3 RT F Deadman ✓

0+00 = RT 90° to Prop. B.C. RT (N.Ely Estelle & Seminole)  
(Seminole Partially Paved A.C.)  
TYPE-C cur. Ely

0+15 = Edge EXIST. Pav. - Estelle - W/4 E Seminole (sect 90° E)

0+26 = Nly CB LINE ESTELLE  
Sect. on arc

0+41 = E ESTELLE (A.C.PAV.)  
Sect. on arc

0+56 = S CB LINE ESTELLE (TYPE C CR'S)  
Sect. on arc

0+66 = SWINE ESTELLE (SECT. AROUND ARC)

T.P. 4.65 466.87 5.63 462.22

B.M. 2.17 467.85 465.68 = SPK S.E. Pole }  
PCORN 1 S. Seminole } set ch □ S.E. CORN CONN. PORCH }  
= 467.685

464.87 ✓  
463.3 ✓  
463.3 ✓  
461.8 ✓  
462.26 ✓  
461.57 ✓  
462.02 ✓  
462.4 ✓  
464.1 ✓  
463.9 ✓  
462.3 ✓  
461.8 ✓  
461.83 ✓  
461.32 ✓  
461.51 ✓  
462.1 ✓  
461.97 ✓  
461.95 ✓  
461.82 ✓  
461.52 ✓  
462.4 ✓  
462.17 ✓  
461.97 ✓  
461.56 ✓  
460.91 ✓  
461.39 ✓  
460.37 ✓  
462.84 ✓  
462.5 ✓  
462.21 ✓  
461.92 ✓  
461.61 ✓  
461.51 ✓  
461.25 ✓  
460.76 ✓  
462.2 ✓  
462.11 ✓  
461.62 ✓  
461.36 ✓  
461.89 ✓  
461.06 ✓  
460.56 ✓  
461.27 ✓  
460.34 ✓  
460.85 ✓  
462.2 ✓  
462.1 ✓  
461.8 ✓  
461.4 ✓

466.87

{ NWly CORN ACORN  
4570 Seminole DP



X-SECT Semivole (cont.)

2186 29.9 RTE 30' CON. WALK

T.P. 6.67 469.98 356.463.31

2160.60 = { N. Live DENNSTEDT HTS (MAP 2710)  
 END PLY-4 CB'S ON ELY  
 28.3 RTE Pole TP 374770 ✓

2157 23 RTE 2' shrub

2139 23 RTE 2' shrub + 26 RTE 2' shrub

2137 20 RTE END DRIVE ✓

2119 20 RTE Beg 18' CON. DRIVE ✓

2117 23 RTE 2' shrubs

1197 37.4 LTE DEADMAN ✓

1194.5 25.9 LTE Pole # 558467-H ✓

# 3 = CB EC (BRADFORD)

# 2

LT.

E.

RT  
 463.68  
 6.30  
 29.9  
 21P  
 463.46  
 6.52  
 40  
 ON  
 WALK

469.98

465.1	464.8	462.9	463.1	463.17	462.83	463.31	463.8
1.80	2.1	4.0	3.8	3.70	4.04	3.56	3.6
30	24	20	15	10 PLY	20	20	30
	10P		10P		0	0	0

462.67	463.12	463.27	463.33
4.20	3.75	3.60	3.54
23	23	25.7	30
0	TPCB	BYC	14/
	10P	10P	10P

462.57	463.02	463.18	463.22
4.80	3.85	3.69	3.65
25C	23	25.7	30
PCB	BYC	BYC	BYC
10P	10P	10P	10P
DRIVE	DRIVE	DRIVE	DRIVE

461.92

5.23	4.73
6	ON EC
4.95	462.42
607	CB

466.87

A-SECT SEMINOLE (CONT.)

LT.      E      RT.

4759.5      22.5 RT. E. FUR. HYD. ✓

4450

4449      17.7 RT. E. DEPT. HYD. ✓

4400

3790      30 RT. END DRIVE ✓

3773      30 RT. Bay Con Drive & 50 RT 2 car gar. ✓

3750

3731      27.9 RT E Pole # P 376173 ✓

3724      29.6 RT. END CON. DRIVE ✓

3708      30.0 RT Bay Con. Drive (2 car gar 53 RT) ✓

3700

465.6 ✓ 44 50	465.3 ✓ 47 20	465.3 ✓ 47 18	464.8 ✓ 5.2 17	465.0 ✓ 5.0	464.6 ✓ 5.4 15	465.0 ✓ 5.0 20	465.7 ✓ 4.3 50
465.5 ✓ 45 50	465.2 ✓ 4.8 20	465.2 ✓ 4.8 18	464.5 ✓ 5.5 17	464.6 ✓ 5.4	464.2 ✓ 5.8 15	464.6 ✓ 5.4 17	463.8 ✓ 6.2 50
					464.00 ✓ 5.98 30	464.00 ✓ 5.98 30	463.96 ✓ 6.02 50
465.3 ✓ 44 50	464.9 ✓ 5.1 20	464.8 ✓ 5.2 17	464.4 ✓ 5.6 16.5	464.4 ✓ 5.6	463.8 ✓ 6.2 16	464.2 ✓ 5.8 17	463.3 ✓ 6.7 30
						463.80 ✓ 6.18 29.6	463.24 ✓ 6.74 53
465.2 ✓ 48 50	464.4 ✓ 5.6 20	463.8 ✓ 6.2 17		464.0 ✓ 6.0	463.6 ✓ 6.4 17.8	464.0 ✓ 6.0 20	463.2 ✓ 6.8 30
				464.98 ✓			

X-SECT. SEMINOLE DR. (CONT.)

LT. E RT.

6492 22.5 RTE 10" Tree ✓

6464 208 RT END 2.5' Picket Fence ✓

6260 18.6 RTE DEADMAN ✓

6456 22.5 RTE 12" Palm ✓

6451.5 18.5 RTE 176262 ✓

6450-33<sup>5</sup> RT = L Frame House - 26<sup>2</sup> across FRONT

6438 30.8 RTE 10" Tree ✓

6426.5 30.2 RT Pk 2.5' Picket Fence ✓

6416.5 32.3 LTE 5.0' COLL MARK ✓

6400

5450

5718.73 N-Line ACORN - (OVI Grand Rdwy - FRONT) ✓

4478.73 { S-Line ACORN ✓  
19.2 LTE Pole # (Anchor) ✓  
27.7 LTE DEADMAN ✓  
18.4 RTE Pole # P 78008 ✓

T.P. 525 470.95 428 465.70

466.0 ✓  
50 50  
466.3 ✓  
49 53  
20 18  
465.7 ✓  
51  
465.9 ✓  
5.7 4.7 4.9 4.4  
12 14 20 30  
465.8 ✓  
466.3 ✓  
466.2 ✓  
466.6 ✓

466.51 ✓  
4.40 4.46  
15.3 38.3  
411K 4P  
466.49 ✓  
466.4 ✓  
466.2 ✓  
465.9 ✓  
465.8 ✓  
466.1 ✓  
466.2 ✓  
466.0 ✓  
465.7 ✓  
46 48 51 5.2 49 48 50  
50 20 18 12 4 20 59  
50

465.9 ✓  
5.1 5.1  
75 50  
465.9 ✓  
5.2  
20  
465.8 ✓  
5.4  
465.6 ✓  
5.4 5.4  
20 20  
465.6 ✓  
465.2 ✓  
5.8 5.8  
50

465.8 ✓  
5.2 5.3 5.3 5.4 5.7  
75 50 20 18 16  
465.7 ✓  
465.6 ✓  
465.5 ✓  
5.5 5.9  
20 20  
465.5 ✓  
465.1 ✓  
5.7 6.1 464.9  
20 30 100  
464.3 ✓

465.5 ✓  
5.5 5.2 6.1 5.9  
20 18 17 20  
465.8 ✓  
464.9 ✓  
465.1 ✓  
5.8 6.1 464.9  
20 30 100  
464.7 ✓

470.95



SEMINOLE DR (CONT)

8181 17.6 RTE 9'0 CON DRIVE ✓

8175 24.7 RT to E. END 10" CONC CAP ✓

8150

8137 30.1 RT to E. Bay 10" wide CON. Coping ✓

8125 29.5 L.T.E. Bay 4" wide CON. Coping ✓

T.P 4.73 470.41 5.27 465.68

8101 18.3 Rte Ale # P175667 ✓

8100

7+88 30.4 L.T.E.N.S CON. TILE - WALL ✓

7+79 27.0 RT to E CON. DRIVE & 61.6 RT. Single gate ✓

7+61 25.9 L.T.E 4' high Strub

7+50 Soil - Sample here

7+08 31.3 LT Bay 2.3' CON. TILE WALL ✓

7+00

LT. E

465.3 ✓  
5.1  
30

465.5 ✓  
4.9  
20

465.4 ✓  
5.0  
15

465.6 ✓  
4.8

465.54 RT ✓  
4.87  
17.6  
Lip

465.91 ✓  
4.58  
20  
M/L

466.20 ✓  
4.21  
30

466.65 ✓  
3.78  
30  
once

465.61 ✓  
4.58  
29.7  
FTG

465.99 ✓  
4.82  
TP

465.9 ✓  
4.5  
30

466.6 ✓  
3.8  
50

466.1 ✓  
4.71  
30.1  
TP

465.61 ✓  
4.80  
30.1  
FTG

470.41

465.8 ✓  
5.2  
30

465.7 ✓  
5.3  
20

465.6 ✓  
5.4  
11

465.7 ✓  
5.3

465.7 ✓  
5.3  
12

466.3 ✓  
4.7  
15

466.2 ✓  
4.8  
20

466.5 ✓  
4.5  
50

465.82 ✓  
5.13  
30.4  
FTG

466.22 ✓  
4.73  
27.0  
4P

466.99 ✓  
3.26  
8  
Flapp

466.5 ✓  
4.8  
40

465.9 ✓  
5.1  
20

465.7 ✓  
5.3  
17

465.8 ✓  
5.2

465.6 ✓  
5.4  
11

466.0 ✓  
5.0  
15

465.8 ✓  
5.2  
20

466.4 ✓  
4.6  
50

465.85 ✓  
5.18  
31.3  
FTG

466.1 ✓  
4.9  
50

466.0 ✓  
5.0  
20

465.6 ✓  
5.4  
17

465.8 ✓  
5.2

465.8 ✓  
5.2  
12

466.1 ✓  
4.9  
20

466.3 ✓  
4.7  
50

470.95

SEMINOLE DR. (CONT.)

10+00

9+99 19.5 RT E 3.0 CON. WALK ✓

9+50

9+48 24.2 RT E 8' CON. DRIVE : 285 RT Single gar ✓

9+325 29.8 RT E 7.0 CON. DRIVE ✓

9+29 29.8 RT END CON. COPES

9+28 17.6 RT E Pk P 273272 ✓

9+15 17.4 RT E Pk P 273273 ✓

9+00

8+88 29.7 LT END CON. COPES ✓

8+86 30.2 RT E. Bay 6" Wide CON. COPES ✓

464.6	LT ✓	Σ ✓	RT
5.8	464.7	465.1	464.8
50	5.7	5.3	464.6
	20		465.4
			466.0

			465.49	465.78
			4.92	4.63
			19.5	30
			4p	

464.7	465.0	465.4	465.4	465.8	466.09
5.7	5.4	5.0	5.0	4.6	4.32
50	20	50	12	20	24.2
					4p
					4p
					(20.210)

	466.09	466.42
4.32	3.77	
24.2	48.5	
4p	79.90r	

466.41	466.59
4.00	3.82
29.8	50
4p	011r
	466.38
	4.03
	4.36
	29.8
	TP
	466.25

465.1	465.4	465.6	465.3	465.6	465.9	466.7
5.3	5.0	4.8	5.1	4.8	4.5	3.7
50	20		12	14	20	50

	465.12	465.63
5.39	4.78	
29.9	29.7	
ETU	TR	

466.15	465.85
4.26	4.58
30.2	30.2
TP	ETU

470.41

SEMINOLE DR. (CONT.)

10+99 72 RT & RL = P 175666 ✓

10+82.93 = N-Line Stanley Ave (Ely) ✓

10+72.93 = NLY CB Line (Ely) ✓

10+57.93 = E Stanley (Ely) ✓

10+42.93 = SLY CB Line Stanley ✓

10+32.93 = S-Line Stanley (Ely) ✓

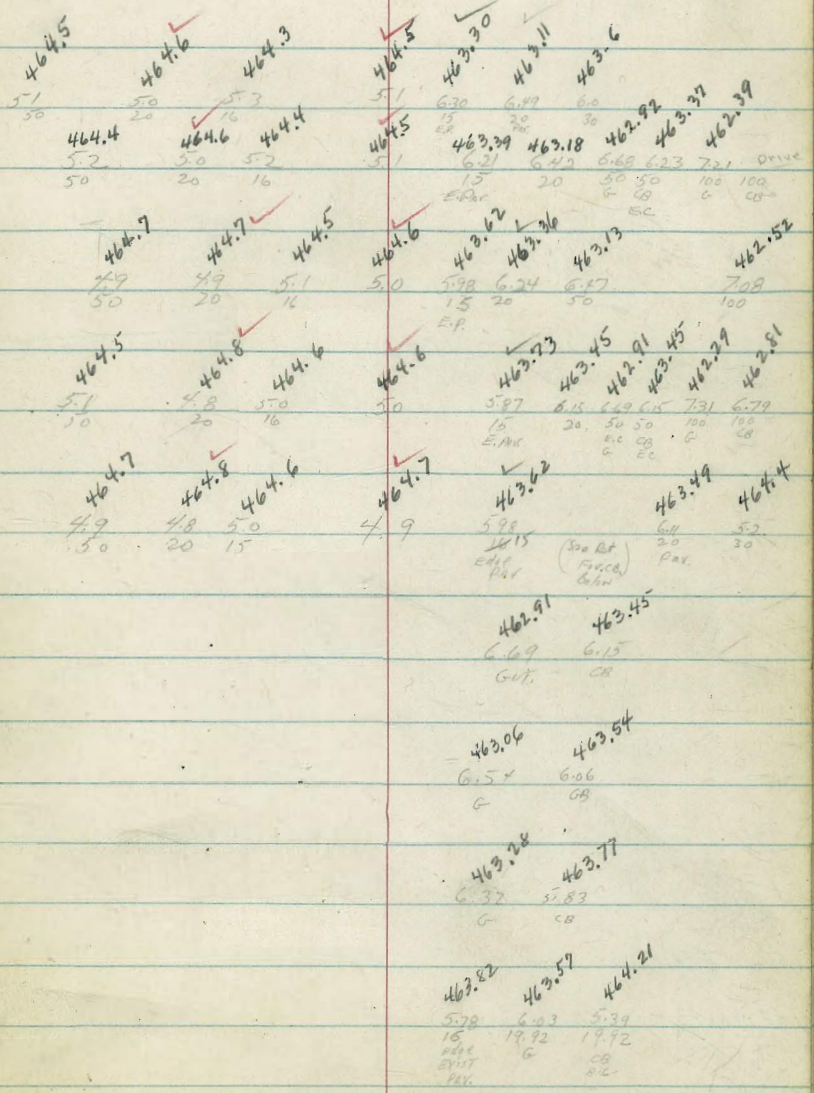
E.C. Stanley Ave

S.E. Ret.  
 Dist. CB.L. = 77.0  
 Div. 3 pts. = 1/3 H.

10+12.93 1972 RT CB-BC Stanley Ave

T.P. 334 46960 45 46626

note: EXIST edge Pav Stanley  
 ENDS approx on  
 NLY Line Stanley



Seminole No. (cont)

12+55.06 = Pos

12+40 213 LT Box 3' Acker Fence

12+21 222 LTE Pole #30715511 ✓

$\Delta = 44^{\circ} 05' 15''$  RT

12+18.57 = B.C. Seminole

( $E L = 109.47$  - divided 3' pts = 36.49' : All sections on Curve Radial

12+08.5 212 LT E Deadman ✓

11+73 219 RT E B' Con. Drive & 48.5 RT to gate ✓

11+50

E.C. Stanley #3

#2

NELY Pt #1

216 RT E Fin. Ays ✓

11+02.93 { CB B.C. RT  
CB L = 47  
On 3' pts = 1 1/2 etc

10+99 191 LTE anchor Pole ✓

463.6 ✓ LT  
6.0  
50  
462.7 ✓ LT  
6.9  
30  
462.2 ✓ RT  
7.4  
5  
462.2 ✓ RT  
8.0  
5  
461.6 ✓ RT  
7.3  
20  
462.3 ✓ RT  
7.6  
50  
462.0

462.6 ✓  
7.0  
50  
462.9 ✓  
6.7  
20  
462.6 ✓  
7.0  
15  
462.6 ✓  
7.0  
16  
462.1 ✓  
7.0  
20  
462.6 ✓  
7.5  
50  
462.1

464.4 ✓  
5.2  
50  
462.8 ✓  
5.9  
20  
463.6 ✓  
6.0  
16  
463.8 ✓  
5.8  
16  
463.4 ✓  
6.2  
16  
463.6 ✓  
6.0  
20  
463.7 ✓  
5.9  
50  
463.25  
6.35  
27.9  
219  
463.15  
6.45  
48.5  
71.57

462.92 ✓  
6.68  
6.07  
6.25  
463.01 ✓  
6.59  
6.11  
CB

463.09 ✓  
6.37  
6  
463.45 ✓  
6.15  
CB

463.1 ✓  
6.25  
20  
463.30 ✓  
6.25  
20  
6.02

469.60

SEMINOLE DR (CONT.)

LT. E RT.

14473 24.9 LT END 3' Picket Fence ✓

14450

14447 19.5 LHS 9' Con Drive 87.5 to gate ✓

14442 12.2 RT Gate # P271987 ✓

14400

13750

13443 16.2 RT E Deadman ✓

T.P. 4.21 465.47 834 461.76 = on Con. man = P.T.

13428.06 = E.C. Seminole (sect 9<sup>th</sup> Q)  
25/11/10 to 3' Picket Fence here fence continues ✓

13426.5 24.3 LT E Gate # JP 175665 ✓

13426 30.8 LT 9' 10' con Drive 690 LT to gate ✓

13411.5 21.3 LT = 8' Incher Gate ✓  
26.8 LT = E Deadman ✓

12491.56 P.O.C.

459.35 ✓  
459.4 ✓  
459.4 ✓  
459.0 ✓  
459.6 ✓  
459.8 ✓  
460.1 ✓

6.2 6.1 6.1 6.5 5.9 5.7 5.4  
19.5 18 18 18 12 20 50

drive  
Flush  
with  
grd.  
Drive

462.01 ✓  
461.06 ✓  
460.55 ✓  
459.46 ✓  
459.35 ✓

340 441 492 601 612  
50 25 20 19.5  
875 875  
6000 875

461.5 ✓  
461.0 ✓  
460.4 ✓  
460.1 ✓  
459.8 ✓  
460.6 ✓  
460.7 ✓  
460.8 ✓

4.0 4.5 5.1 5.4 5.7 4.9 4.8 4.7  
50 20 19 20 18 12 20 50

462.3 ✓  
461.8 ✓  
461.4 ✓  
461.0 ✓  
460.6 ✓  
461.2 ✓  
461.3 ✓  
461.1 ✓

3.2 3.7 4.1 4.5 4.9 4.3 4.2 4.1  
50 20 18 20 11 12 20 50

465.47 ✓

463.1 ✓  
462.73 ✓  
462.5 ✓  
462.0 ✓  
461.8 ✓  
461.6 ✓  
461.3 ✓  
460.9 ✓  
461.3 ✓  
461.3 ✓

6.5 6.87 7.1 7.6 8.0 8.3 8.7 8.3 8.3  
50 30 34 20 17 83 14 20 50

463.39 ✓  
462.73 ✓

6.21 6.87  
8.20 3.0  
Fl. 416 21P

462.8 ✓  
462.5 ✓  
462.1 ✓  
461.9 ✓  
461.2 ✓  
461.8 ✓  
461.8 ✓

6.8 7.1 7.5 7.7 8.4 7.8 7.8  
50 20 15 20 15 20 50

469.60

SEMINOLE DR (CONT.)

LT

E

RT

16+68.5

= E 7.5' CON DRIVE - 17.7 LT

458.40  
7.07  
50  
drive

8.20  
20  
17.7  
1/2

8.62  
17.7  
1/2

16+50

458.6  
6.9  
50

457.2  
8.3  
20

456.4  
9.1  
14

456.1  
9.4

455.7  
9.8  
20

453.9  
11.6  
50

16+25

29.4 LT END N/S CON. BK WALL

16+24

20.9 LT E Pole # 993394-H ✓

16+12

170 RT E FIRE - HYD ✓

16+00

20.2 LT E B.H. Step (4 steps) 26.3 to WALK ✓

458.72  
6.75  
50  
IN WALK  
9th Floor  
with walk

7.19  
4.0  
WALK

8.66  
20.2  
P.B. #  
Step

8.9  
20

456.6  
9.1  
15

456.4  
9.4

456.1  
10.2  
20

455.3  
11.3  
50

454.2

15+67

14.3 RT E Pole # P175664 ✓

15+50

459.7  
5.8  
50

458.5  
7.0  
20

457.3  
8.2  
18

456.9  
8.6

456.4  
9.1  
12

456.5  
9.0  
20

456.1  
9.4  
50

15+00

460.4  
5.1  
45

460.1  
5.4  
25

458.9  
6.6  
20

458.3  
7.2  
19

458.3  
7.2

457.9  
7.6  
10

458.4  
7.1  
12

458.5  
7.0  
20

458.7  
6.8  
50

14+94.5

20.4 LT 3' CON. WALK 4.7 steps: 23.7 to (walk) to step

460.7  
5.30  
30  
WALK

460.00  
5.47  
23.7  
WALK

458.29  
7.18  
20.4  
to 1st step

14+78

19.7 LT E 9' CON DRIVE ✓

460.51  
4.96  
50  
Bnk

460.19  
5.28  
29.3  
Bnk

459.13  
6.34  
20  
19.7  
4.1

459.08  
6.39  
19.7  
4.1

SEMINOLE DR. (CONT.)

LT.

E

RT.

18+62 18.9 RT E Deadman

459.94 ✓  
 457.82 ✓  
 457.54 ✓  
 456.91 ✓  
 457.02 ✓  
 457.2 ✓  
 456.9 ✓  
 458.8 ✓  
 458.7 ✓  
 458.6 ✓

4.20 6.62 6.76 7.53 7.42 7.2 7.5 5.6 5.7 5.8  
 3.5 3.0 2.0 2.0 18.5 15 18 20 5.0  
 BK CB G TIP

18+50.

18+09 36 LT Beg 5' Board Fence

459.54 ✓  
 457.59 ✓  
 457.29 ✓  
 456.67 ✓  
 456.77 ✓  
 456.9 ✓  
 456.6 ✓  
 459.5 ✓  
 459.4 ✓

4.70 5.85 7.5 7.77 7.67 7.5 7.8 7.9 5.0  
 3.5 3.0 2.0 2.0 18.5 14 16 5.0  
 BK CB G TIP

18+00

F.C. #3

457.11 ✓  
 456.48 ✓  
 456.52 ✓  
 7.33 7.96 7.92  
 CB CUT TIP  
 (240 CB)

#2

457.10 ✓  
 456.46 ✓  
 456.44 ✓  
 7.34 7.88 8.00  
 CB G TIP

Note: Drive (entrance to  
 SAFEWAY PRG Lot)  
 extends from 17+91  
 back 25' around return.  
 (to a point 13' BK of F.C. around  
 return)

#1

456.55 ✓  
 456.53 ✓  
 Drive 7.89 7.91  
 CB G TIP

457.10  
456.46

17+79.80 LT= CA A.C. (see 10+1) 10' Comp. WALK ATVA G CB

CB L = 115° 48' ±  
 CB L = 40.5' ±  
 Chk: Const. Plans

Drive 456.61 ✓  
 456.69 ✓  
 7.83 7.75  
 2.0 2.0 18.5  
 CB G TIP

17+50

457.4 ✓  
 456.4 ✓  
 456.55 ✓  
 456.4 ✓  
 458.8 ✓  
 458.8 ✓  
 458.9 ✓

7.0 8.0 7.9 8.0 5.6 5.6 5.5  
 5.0 2.0 13 18 20 5.0  
 BK CUT

17+00

458.2 ✓  
 457.4 ✓  
 456.4 ✓  
 456.3 ✓  
 455.9 ✓  
 456.6 ✓  
 456.9 ✓

6.2 7.0 7.8 8.1 8.5 7.8 7.5  
 5.0 2.0 17 12 20 5.0

T.P. 7.89 464.44 892 456.55 464.44

SEMINOLE DR. (Cont)

21+50 35' LT. endboard fence  
35' LT END WALK (BK WALK)

21+44.5± 20' LT END EXIST 10' Comb. Type G CB WALK  
(10' WALK along lot line)

21+37 21' LT SP/6 # 77468

21+20 20' LT E 25' Drive

21+00

20+50 (All Sects Radial)  
ON CURVE

T.P 5.37 463.49 6.32 458.12 = ch.D to

20+00.97 = B.C. SEMINOLE  
Δ = 43° 17' 30" LT.  
E.R. = 556'  
d = 3.1252  
(28.0' RT CONTIGUOUS EUCALYPTUS TREES (18 trees from B.C. to end of lot line)  
1/2 B.C. SEMINOLE - 12' width 2'

19+50

19+44 27.5 RT Bay Palm EUCALYPTUS TREES  
12 trees 1/2 B.C. SEMINOLE - 12' width 2'

19+00 44 RTE dead end  
18+80 19.2 RTE Pole = 175633

LT ✓  
458.2 458.6 458.1 457.9  
5.3 4.9 5.4 5.6 5.7  
35 35 20 15  
BK WALK (end walk)

E ✓  
458.45 457.84 457.96  
5.04 5.65 5.53  
19.65 19.63 18.25  
CB G. 4P

RT ✓  
458.19 457.86 457.95  
5.3 5.3 5.34  
35 20 18.5  
BK Drive

458.6 458.52 458.44 457.83 457.89 457.7 457.4 457.5 457.7  
7.9 4.97 5.05 5.66 5.60 5.8 6.1 6.0 5.8  
35 30 20 20 18.5 18 20 50  
BK W CB G 4P

458.9 458.56 458.30 457.65 457.77 457.8 457.0 457.2 456.9  
7.6 7.15 5.9 5.84 5.72 5.7 6.5 6.3 6.6  
35 30 20 20 18.5 17 20 50  
BK W CB G 4P

CA Approx 2' beyond CB AC LT 463.49

458.9 458.36 458.12 457.51 457.58 457.7 456.9 456.9 456.4  
5.5 6.08 6.32 6.93 6.86 6.7 7.3 7.5 9.0  
35 30 20 20 18.5 16 20 50  
BK W CB G 4P

459.1 458.20 457.90 457.27 457.36 457.4 457.0 457.3 458.0 457.1  
5.3 6.24 6.34 7.07 7.08 7.0 7.4 6.7 6.4 7.3  
35 30 20 20 18.5 16 20 25 50  
BK W CB G 4P

459.9 458.01 457.74 457.10 457.21 457.2 456.9 458.3 458.0  
4.5 6.43 6.20 7.84 7.23 7.2 7.5 6.1 6.4  
35 30 20 20 18.5 16 20 50  
BK CB G 4P

464.44



## SEMINOLE DR (CONT)

LT

E

RT

- 22+85  
23+85 199 RT E Dredman ✓
- 22+53  
23+53 151 LT E 8" Euc-Tree ✓
- 22+52  
23+52 252 RT Beg 3' choker wire fence
- 22+50  
23+50
- 22+46.5  
23+46.5 160 LT E Pole # 77467 ✓
- 22+44.5  
23+44.5 28.0 RT E Ribbons Drive 2' Ribbons - 7.0 wide overall ✓
- 22+39  
23+39 193 LT E 36" Euc-Tree ✓
- 22+27  
22+26 28.1 RT E Anchor Pole ✓  
33.5 RT End Row Eucalyptus Trees ✓
- 22+04  
23+04 222 RT E Fire-Hyd. ✓
- 22+00  
23+00 Soil Sample here (Soil Uniform Samples)
- 21+91  
23+91 15.0 LT E 30" Euc-Tree ✓
- 21+74  
23+74 16.0 LT E 14" Euc-Tree ✓
- 21+57  
23+57 16.0 LT E 36" Euc-Tree ✓

458.6  
49  
50

459.0  
4.5  
20

458.7  
4.8  
14

458.9  
4.6

458.8  
4.7  
18

458.6  
4.7  
20

459.1  
4.4  
30  
9rd

459.5  
4.0  
50  
9rd

459.19  
4.30  
28  
NBY  
54

459.05  
4.44  
28  
40  
40  
54

459.44  
4.05  
40  
54  
Ribbons

459.52  
3.97  
40  
NBY  
Ribbons

458.0  
5.5  
50

458.3  
5.2  
20

458.1  
5.4  
12

458.2  
5.3

458.3  
5.2  
18

458.3  
5.0  
20

458.4  
5.1  
50

463.49

P. SECT. SEMINOLE Dr - (Cont.)

LT

E

RT

31

234875 23.0 LT E 30" EAVG - Tree ✓  
 23481 19.6 RTE 3.0 CON WALK (not built radial) ✓  
 23472 6.2 RTE M.H - Sewer ✓  
 23471 22.5 LT E 24" EAVG - Tree ✓  
 23459.5 23.2 RT END <sup>WIN</sup> OF S Hedge ✓

23450  
 23438.5 23.5 LT E 30" EAVG - Tree ✓

23436.5 18.7 RTE 4.0 CON WALK (WALK NOT BUILT, radial) ✓  
 23421 24.3 LT E 24" EAVG - Tree ✓

23411.5 19.3 RT E Ribbon drive (lit. Ribbons) ✓  
 drive not radial To overall

23403 19.8 RT End Fence

23402 18.7 RT E Pole # 439958-H ✓

23400 30.2 LT E 5.0 CON WALK  
 not BUILT radial  
 (chk. subdiv map  
 for both lines)

T.P. 6.23 465.50 4.22 459.27

459.6  
5.9  
50

459.9  
5.6  
30

459.8 ✓  
5.7  
20

460.1 ✓  
5.4

460.3 ✓  
5.2  
20

460.5 ✓  
5.0  
30

460.3 ✓  
5.2  
45.0

460.33  
5.17  
6.2  
Rim  
MH

460.30  
5.20  
19.6  
4P

460.47  
5.03  
20"  
M.H. WALK

460.20  
5.30  
18.7  
4P

460.14  
5.36  
18" BK  
ON WALK

459.85  
5.65  
19.3  
4P NLY

459.82  
5.68  
19.3  
4P SLY

459.89  
5.61  
10" BK  
ON WALK

459.90  
5.60  
10" BK  
ON SLY

459.70  
5.8  
50  
9rd

459.84  
5.66  
20  
(Bk on  
walk)

459.2  
6.3  
30  
2nd

459.53  
5.97  
30.2  
2P

459.1 ✓  
6.4  
20  
4d

459.6 ✓  
5.9

459.6 ✓  
5.9  
20

459.7 ✓  
5.8  
30

459.8 ✓  
5.7  
50

465.50





X-SECT SEMINOLE DR. (CONT.)

LT

S

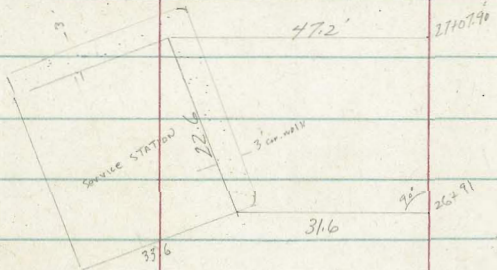
RT

27+08 - 22.4 RT E END MAN ✓

27+07.90 47.2 LT End gully

460.77  
 460.71  
 460.29

1.59	1.65	2.07
472	472	472
Fl	TP	PAV
	Wall	



SHOWN IN CASE there is proposal opening w/ly

27+08.2 45 RT E RT Bldg (church) ✓

26+91 31.0 LT Beg STATION

26+91.5 22.3 RT C file # 59408.78 ✓

460.78  
 460.79  
 460.43

1.58	1.57	1.93
316	316	316
Fl	TP	PAV
Edw	Wall	

T.P. 2.55 462.36 5.42 459.81 462.36

26+63 38.4 RT END 3.0 CONC. WALL (1/4 to Seminole)

459.47  
 460.09  
 460.14  
 460.28

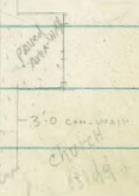
5.76	5.04	5.09	4.95
38	38.4	41.4	45
Fl	Wall	OK	PAV
(Flush with g/d)		PAV	PAV

26+53 38.3 RT END CONC. PAVED AREA Bldg

460.10  
 460.14  
 460.25

5.13	5.09	4.95
38.4	40	37
		PAV
		PAV

26+50



460.85 ✓  
 460.39 ✓  
 460.28  
 460.1

4.38	4.84	4.95	5.1
30	20	17.9	15
		EDGE	
		PAV	

460.1 ✓  
 459.5 ✓  
 459.5 ✓  
 459.5 ✓

5.7	5.7	5.7
20	30	38
		3rd

26+76 38.4 RT Beg Paved area - church

460.11  
 460.13  
 460.33

5.12	5.10	4.90
38.4	43	37.5
	PAV	CONC.
		AT Bldg

465.23

X-SECT SEMINOLE Dr. (CONT)

LT E RT

274 47

16.1 ETC dead man ✓

#3 = EC Filipo

455.74  
6.62 CB  
6.32 EC  
Filipo

456.04  
6.16 CB

455.91  
6.45 G

456.20  
6.16 CB

455.98  
6.38 G

456.28  
6.08 CB

274 37.63

EXIST CB RT = 47' divided 3 pts #1, 2 etc  
CB R = 30' All-TPCA  
30.0 RT - END CB, Ref (SELY Seminole & Filipo)  
(Filipo Pav'd AC .50' ST, 10' PAV)  
See sketch P 16

459.59  
2.77 5°  
on edge

458.87  
3.49 20

458.78  
3.58 18  
edge AC

458.57  
3.79 20  
A.C

457.96  
5.10 25  
A.C

456.79  
5.57 30  
AC

456.18  
6.18 30  
AC

456.18  
6.18 30  
AC

456.45  
5.91 30  
TPCA

274 30.5

19.5 LTR S.D.G.I.E PAVE ✓

459.04  
3.30  
KIM  
19.5

274 32

AC Bays 21.0 RT ✓

460.13  
2.23 20  
Paved area

459.08  
3.28 20

458.91  
3.45 20

458.64  
3.72 20

457.1  
5.3 20  
DWT

457.11  
5.25 21  
edge RT

457.0  
5.4 30  
DWT

456.9  
5.5 30  
DWT

274 29

By AC Pav & Seminole (Pav edge not regular & not 90° to Seminole)

274 28

AC Bays 17.17 (Dents, Paved area Station Flush)

458.94  
3.42 20  
edge AC

274 25

14.9 LTR & Pav #173020 ✓

460.19  
2.17 50  
on Pav Area

459.34  
3.02 20

459.07  
3.27 16

459.1  
3.2 15

459.0  
3.4 20

458.1  
4.3 20

457.9  
4.5 30

457.9  
4.5 50

274 15.03 =

Pav P.C RT (Filipo)

462.36

X-SECT SEMINOLE DR. (CONT.)

T.P. 522 460.90 6.68 455.68

E.C. EL CATON

MID-POINT

OK (500/11630-1)

TYPE-G CB (2.0 GUTTER) (NO WALKS)  
 EL CA ARC = 19.2  
 CB-R = 20% (CHK. CONST. PLANS)

27499.45

24.74 = END EXIST CB-RET. (S.W. 1/4 Seminole VEL CATON)

27496.5

{ 402 LTE # P70555 ✓  
 2.4 LTE WATER VALVE ✓

27494

26.4 LTE SDCHE VALVE ✓

27489

30.7 LTE 1x1 TANK SIGN

27484.88

20.4 LTE WAP LINE W/4 LINE SEMINOLE

27471.5

7.0 LTE S.M.H ✓

27450

460.90

457.61 456.98

4.75 5.38  
 CB G  
 EL G

457.59 456.95

4.77 5.41  
 CB G

457.92 457.29

4.44 5.07  
 2.47 2.47  
 1.74  
 END

458.10 458.15 458.10 457.76 457.83 457.64 456.69 456.54

4.26 4.21 4.26 4.26 4.52 4.72 5.67 5.82  
 35 30 28 27 20 20 20 25.4  
 4.54 4.2 4.2 4.2 4.2 4.2 4.2 4.2  
 4.2 4.2 4.2 4.2 4.2 4.2 4.2 4.2

458.26

459.24 458.55 458.47 458.38 457.20 456.54 455.94

4.12 3.78 3.87 3.98 5.16 5.82 6.40  
 30 20 19 12 20 30 50  
 4.2 4.2 4.2 4.2 4.2 4.2 4.2

X-SECT. SEMINOLE Dr. (CONT.)

LT E RT

CHK: 4.53 465.74 = 465.68 =

SPINE S.E. Pole  
ACORN & SEMINOLE

T.P. 4.55 470.27 1.67 465.72

T.P. 10.12 467.39 6.18 457.27

T.P. 3.79 463.45 1.24 459.66

Plotted by  
Hedrick 9/24/54

28+29 = SLY CA. LINE EL CATON 4 P 3.70' wide CONQUITTER  
ACROSS SEMINOLE

456.44 457.78 457.62 457.00 456.22  
2.46 3.12 3.28 3.90 4.68  
100 100 54.1 54.1 14  
CB C CB EC EC  
CON. CON. CON. CON.

455.95 455.56 454.84 454.71 455.35 453.87  
4.95 5.34 6.01 6.17 5.55 7.03  
20 50 28.2 58.2 150 160  
CON. CON. C CB C CB

#3 = E.C. EL CATON (P.C.C.)

454.71 455.35  
6.19 5.55  
C CB

#2

455.03 455.72  
5.87 5.18  
C CB

#1

455.39 456.06  
5.51 4.84  
C CB

28+24.3 35.2 RT (AT 90° SEMINOLE) = BC (P.C.C.) S'ELY CB. Post  
TYPE G CB. (20' GUTT) FLIP 0 & EL CATON  
NO WALLS

457.86 457.83 457.94 457.34  
3.04 3.07 2.96 3.56  
50 37.00 36.7 37.4  
2 1/2 70 70  
CON. CON. CON. CON.

456.46 456.95 455.29 455.97 456.0 455.8 455.7  
4.44 4.95 5.61 4.93 4.9 5.1 5.2  
20 46.6 46.6 45.1 50 65  
AC C CO CON. CON.

28+18.23 = S. LINE EL CATON (SECT. ALONG ARC - PROP.)

460 90







ALLEY/BIR B-SWAN'S

0160 E 10.4' LT = 4" drop hole in BRK WALL

294.08 (W/L) LT E (Ely) RT.

0157 13.7 RT = EC 1.5' CONG BRK WALL (Curves to house Ely)

291.40  
6.56  
13.7  
edge  
walk

0156 { 10.4 LT Beg CONG BRK WALL  
9.0 LT = E OF 30' wide Coll-Ly Drain-gut Terr. to Alley (temporary)  
13.6 LT END Stool-wire Fence

292.11 300.32 293.51 293.81  
5.65 + 2.36 4.45 4.15  
10.4 12.4 9.0 7.14  
FIG TO E.L. DRAIN GUT  
WALL

0155 9.3 LT = E 4" Pipe Drain (at 9.6' Ely)

293.54 293.3  
4.42  
9.3  
E.L.

0152 8.9 LITE Pole = PA2825

0150 11.5 WALK

295.9 295.8 293.7 293.7 292.9 292.6  
2.1 2.2 4.3 4.3 5.1 5.4  
25 13 10 10 15

0146 13.6 RT = D.C. OF 1.5' wide CON. WALL

Curves Ely toward House

292.80  
5.16  
13.6  
edge  
walk

0100 - N. L. W. Olive (at 0-01) 12.7 LT Beg 4.5' stool-wire Fence (school girls)  
(ON 2x2 HUB 5.08 292.88  
0100

294.9 293.6 293.3 293.01 289.81  
3.1 4.4 4.7 4.95 8.15  
50 10 2 10 50

0-30 - E OLIVE = 9 m.H.

296.0 294.6 293.0 292.86 289.8 285.6  
2.0 3.4 5.0 5.10 8.2 12.4  
100 50 7d m.H. 50 100 Drops off.

T.P. 1.53 297.96 6.10 296.43

297.96

B.M. 5.34 302.53 297.19 = S.E. B.P. QUINCE + FAIRMOUNT

DILEY BIK 2 (cont)

- 1453 10.5 LT = 6 wide ASPHALT DRAIN (gutter)  
ENTERS 3.0 wide cold-lay DRAIN AT approx 90°
- 1452 10.9 RT END CON Coping
- 1450 18 LT Beg 10' Steel-wire Fence
- 1437 10.6 RT Beg ASPH. PAVED Area IN yd. (Flush tp. Coping)
- 1430.5 10.1 RT Beg 6" wide CON Coping
- 1400 9.7 RT END Fence
- 0498 13.5 LT 6" GAS-meter (School)
- 0486 10.45 LT END CON BIK WALL
- 0482 9.1045 LT 4" Weep Hole
- 0475.5 9.95 RT Beg 3' Steel-wire Fence
- 0475 9.10.4 LT 4" Weep Hole
- 0468 31.8 RT 6" Single gax  
9.10.4 LT 4" Weep Hole

LT RT  
294.01 292.96  
3.75 5.00  
25 10.5  
6" DRAIN 6" Both DRAINS

294.0 293.1 293.01 293.24 293.2  
4.0 4.6 4.95 4.72 4.7  
18 15 10.5 7 9.4  
2 Edge  
DRAIN DRAIN

293.12 292.02  
10.2 5.94  
10.9 10.9  
TP Wall FT  
293.1 293.12 291.46  
4.9 4.24 6.50  
10 11.4 25  
Asp 4504  
Flush  
293.15 To coping  
4.81 5.71  
10.1 10.1  
TP FT  
289.0

294.0 293.9 293.7 293.1 293.7  
4.0 4.1 4.3 4.6 4.3  
20 12 10 9.6 8.1  
Edge  
DRAIN

294.06  
3.90  
10.45  
FL

294.06  
3.90  
10.45  
FL

294.07  
3.89  
10.4  
FL

291.84  
6.12  
31.8  
wood-Fl.

297.96

PAV/ BIK 2 (Cont)

2750

0.30' RTE M.H.

2749

2 Pole 9.0' LTs # PA 2905

2740

9.8 RT. End 6" Con. Coping

2705

4' Con Walk 10.6' RT (Meets Pav. area 11.9 RT)

(10.1 to edge 6" Coping)

[Pav area drains 1/4 into canyon]

TP

#58

293.92

8.62

289.34

2700

1791

(10.1 RT Bay 6" conc. Coping)

(10.7 RT End Apron 12 coping - 13.2 RT)

1777

10.7 RT Bay Conc. Apron - 2' cov gar. 13.2 RT

1776

11. RT End Asph. Pav. area

1775

1765

10.7 LTs End 3.0' Cold-Lay PAVIN-OUTER (TEMPORARY)

293.7  
0.2  
25

293.4  
0.5  
18

292.2  
1.7  
10

LT  
289.2  
4.7  
5

288.80  
5.12  
R.M.  
M.H.

RT  
action low  
289.0  
4.9  
10

287.9  
6.0  
20

286.7  
7.2  
25

drps OFF

289.34  
4.58  
78  
TP  
Coping

288.54  
5.38  
98  
PTC

290.25  
3.7  
10.4  
Coping

290.16  
3.76  
10.6  
Walk

289.57  
4.35  
14.9  
9K

289.34  
4.58  
25  
16.1  
area

293.92

294.4  
3.6  
20

293.8  
4.2  
14

291.4  
6.6  
10

291.2  
6.8

291.0  
7.0  
7

290.3  
7.7  
10

289.5  
8.5  
15  
Pav  
Apron

290.72  
7.24  
10.1  
TP  
M.H.

290.22  
7.74  
10.1  
PTC

290.82  
7.14  
10.7  
L.P.

290.87  
7.07  
13.2  
H

290.81  
7.15  
10.7  
L.P.

290.87  
7.09  
13.2  
Fl.

292.4  
5.6

292.3  
5.7  
10

292.47  
5.48  
11  
Edge  
Asph

292.48  
5.48  
25  
Asph

291.12  
6.84  
25  
Asph

292.97  
4.99  
8

294.3  
3.7  
20

294.0  
4.0  
14

292.4  
5.6  
11

292.4  
5.6  
10

297.96

ALLEY BRK 2 (CONT)

4450 - 9.5 RTE DEANMAN  
 4448 9.0 Ltg Pole PA-2995  
 T.P. 0.98 269.82 12.96 268.84 ✓

4440 - Brown, Evelyns T Canyon

4400

3765 BRK

3450

T.P. 0.85 281.80 12.97 280.95 ✓

3735 BRK

3100

Set T.B.M.  
 2486.43 = P.O.T

8.48 285.44

LT.

S

RT.

43

268.6 267.3 266.2 265.4 264.5  
 1.2 2.5 3.6 4.4 5.3  
 25 10 10 10 25

269.82

272.7 271.0 269.7 268.1 266.0  
 7.1 10.8 12.1 13.7 15.8  
 25 10 25 25 25

277.5 276.4 273.3 270.8 266.2  
 4.3 5.4 8.5 11.2 15.6  
 25 10 12 25 25

277.4 275.5 272.6 271.8 271.2  
 4.4 6.3 9.2 10.1 10.6  
 25 10 10 25 25

MISS

280.1 279.2 276.6 276.2 275.7  
 1.7 2.6 5.2 5.6 6.1  
 25 10 10 10 25

MISS

281.80

281.1 280.7 280.2 279.2 278.1  
 12.8 13.2 13.7 14.7 15.8  
 25 10 10 25 25

291.3 288.1 285.6 284.1 284.4 284.4 282.9 281.7 279.9  
 2.6 5.8 8.3 7.8 9.5 9.5 11.0 12.2 14.0  
 34 25 10 4 7 10 15 25 40

400 ft. 1  
 School V.d.  
 Approx. 200  
 ft. Water

295.92

uniform  
 slope

293.92

ALLEY BR 2 (CONT)

6+0.12 = 8 QUINCE (W. BOTS)

5+84 = Shoulder graded (DIRT) ROAD

T.B.M. (ON 2<sup>ND</sup> HUBB)

5+81.12 = Slave Quince 8.76 258.93

T.P. 10.57 267.69 0.09 257.12

5+95 = New Tee-Corner

5+27 = Tee-Corner (Sly tee)

~~5+00~~  
5+00 = Tee-Corner

T.P. 0.08 257.21 12.69 257.13

LT. E RT. 44

261.4  
6.3  
50

261.5  
6.2  
50

256.5  
11.2  
50

261.4  
6.3  
50

262.3  
5.4  
10

261.9  
5.8  
10

261.5  
6.2  
10

257.5  
10.2  
50

259.1  
8.6  
50

260.5  
7.2  
10

259.0  
8.7  
10

259.5  
8.2  
10

257.2  
10.5  
50

239.6  
17.6  
25

239.0  
17.3  
10

267.69  
7.1

239.1  
18.1  
10

238.6  
18.6  
10

236.4  
20.8  
25

240.2  
17.0  
25

238.7  
18.5  
10

238.7  
8.5  
10

238.0  
19.2  
10

235.9  
21.3  
25

245.8  
11.4  
25

247.1  
9.8  
10

248.2  
9.0  
10

248.2  
9.0  
10

247.3  
7.9  
25

257.21  
7.1

269.82  
7.1

ALLEY BIK 2 (Concl.)

chk: 4.94 297.26 - 297.19 (Sec. 8. m.)  
(Pg. 40)

T.P. 8.65 302.20 0.15 293.55

T.P. 13.09 293.70 0.14 280.61

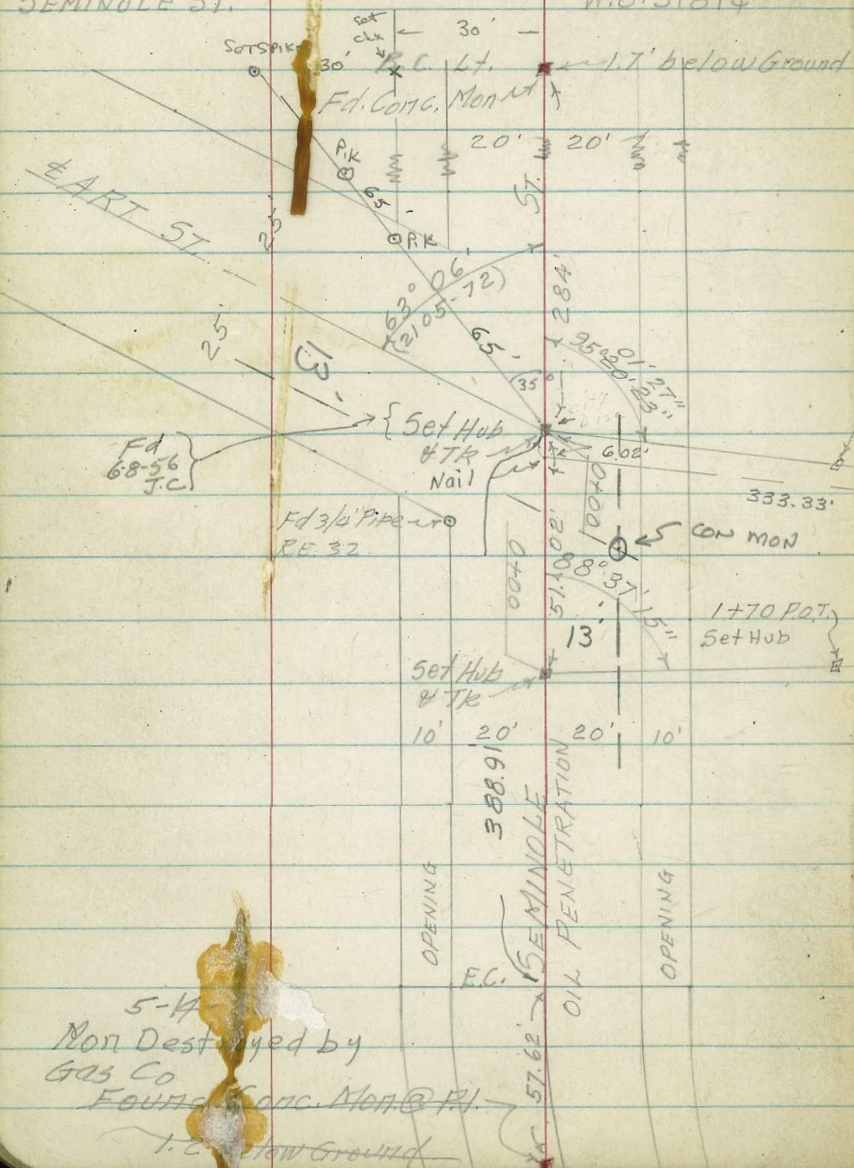
T.P. 13.30 280.75 0.24 267.45



INDEXED  
MER

PROFILE OF PROPOSED SEWER & STORM DRAIN ELY OF  
SEMINOLE ST.

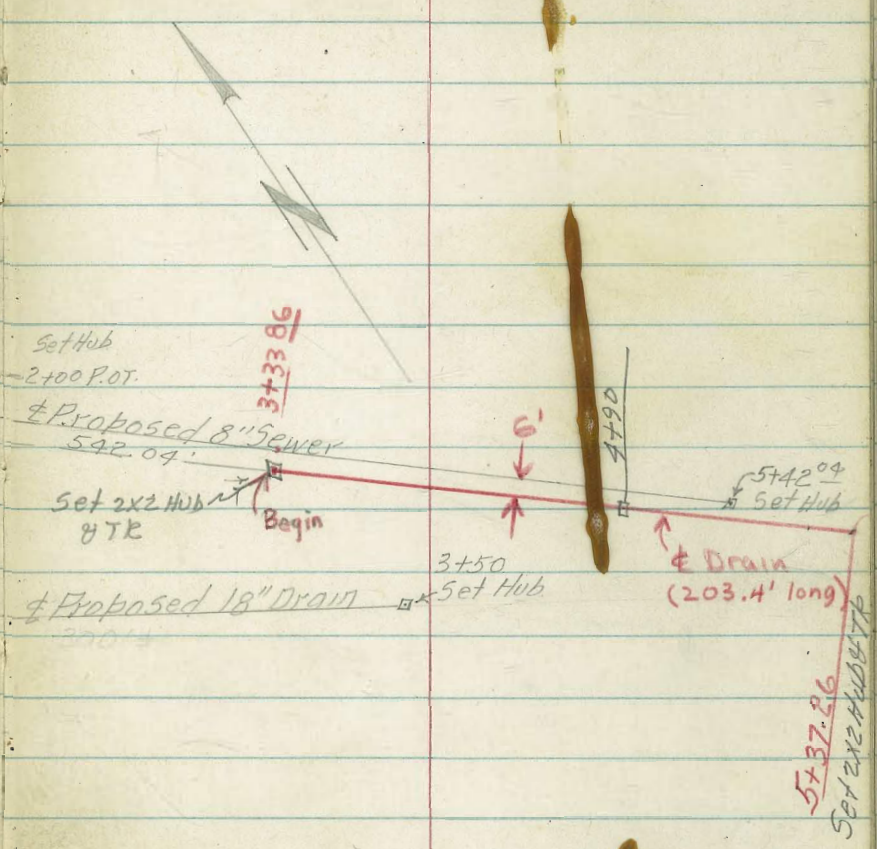
W.O. 31814



Ref FB 2105  
72

1-06-55

Stamp  
Huffman  
Sherwood  
Elmore



5-14  
Non Destroyed by  
GOS Co  
EARTH CONC. NOT @ PL.  
1.7' below Ground

5x37.26  
Set 2x2 Hub & TK

Note: Red-Line DATA = Profile 6-11-56  
 Showing New Fill this Area  
 (ACTUAL ELEV'S)  
 J.C.

PROFILE OF PROPOSED 8" SEWER FLY  
 FROM  $\pm$  SEMINOLE  $\&$  ART ST. W.O. 31814

lt.  $\pm$  rt. (47)  
 1-07-55

Stamper  
 Huffmann  
 Sherwood  
 Elmore

1+00

7 5.0 5.7 6.4  
 15 0 15

453.4 ✓  
 457.77 ✓  
 456.57

0+50

4.8 5.6 6.1  
 15 0 15

453.6 ✓  
 457.37 ✓  
 456.87

0+14 Top bank

6.1  
 0 456.87 ✓

0+20

6.1 456.07 ✓ 456.6  
 0 6.9

0+13 Toe

0+00 =  $\pm$  Seminole st.

6.47 6.58 6.64  
 15 0 15  
 456.39 ✓ ✓  
 456.33

+1.71 462.97

462.97

B.M.

461.26

Top Conc. Mort. @ P.I. (See Pg 26)

8" SEWER

3+50

+1.40 451.07

T.P.

-13.30

449.67

3+12

3+00

2+50

2+00 P.O.T.

1+50

44

45

46

47

447.77      450.7 ✓  
 3.3      6.1      7.9  
 15      0      15  
 444.97      443.17  
 Δ 451.07

44.97  
 49.7  
 1.10  
 9

50.27  
 47.07  
 2.60  
 1.50

450.17 ✓  
 12.8  
 0

451.47      451.3 ✓  
 11.5      12.9      15.5  
 15      0      15  
 449      447.47

453.67      451.5 ✓  
 9.3      10.5      11.6  
 15      0      15  
 452.47 ✓      451.37

456.27      452.1 ✓  
 6.7      7.11      8.5  
 15      0      15  
 on Hub      454.47

457.47      452.5 ✓  
 5.5      6.1      6.6  
 15      0      15  
 456.87 ✓      456.37

Δ 462.97

lt.      †      et

8" SEWER

B.M. +10.17 <sup>5.01</sup> 464.81 -3.75 461.26 ~ 461.26

T.P.                      -0.92 454.64 <sup>84</sup>

+12.07 455.76

T.P.                      -0.62 443.69

5+42 <sup>0.9</sup> END

5+00

+0.62 444.31

T.P.                      -7.38 443.69

4+50

4+16

4+00

435.71      436.5  
424.42      435.61  
8.6      9.89      8.7  
15      0      15  
on Hub

435.91      450.4  
436.3      438.1  
8.4      8.0      6.2  
15      0      15  
↑ 444.31

437.27      450.1  
438.17      440.07  
13.6      12.9      11.0  
15      0      15

438.37 ✓  
12.7  
0

441.87      450.3 ✓  
446.57      438.37      439.87      439.27  
9.2      10.5      12.7      11.2      11.8  
15      0      6      12      15

↑ 451.07

PROPOSED 18" STORM DRAIN PROFILE

2+00

NOTE: See Sketch Pg. 26

1+80

1+70 POT

1+00

0+50

0+00 =  $\phi$  Sample 5+

+1.71 462.97

B.M.

461.26

4.  $\phi$   $\phi$  (50)

1-07-55

453.57  
9.4  
15

452.47  
10.5  
0

451.17  
11.8  
15

455.07  
7.9  
0

456.07  
6.9  
15

456.40  
6.57  
0

455.57  
7.4  
4

451.17  
11.8  
15

on 4/6

456.17  
6.8  
15

455.27  
7.7  
0

453.37  
9.6  
15

456.27  
6.2  
15

455.37  
7.6  
0

453.97  
9.0  
15

456.27  
6.70  
15

456.18  
6.79  
0

456.06  
6.91  
15

$\nearrow$  462.97

PROPOSED 18" STORM DRAIN

B.M. -3.75 461.<sup>26</sup>~~06~~ 461.26

+10.17 464.<sup>01</sup>~~81~~

TP. -0.92 454.<sup>84</sup>~~64~~

+12.07 455.76

TP. -0.62 443.69

+0.62 444.31

TP. -7.38 443.69

Top Hub Sta 3+50

3+50

446.07  
5.00 7.38 10.00 9.5  
15 0 10 15  
on Hub

3+00

449.97  
1.1 4.0 4.8 5.7  
15 6 8 15

2+50

451.07  
0.0 1.3 2.8  
12 0 15

+1.40 451.07

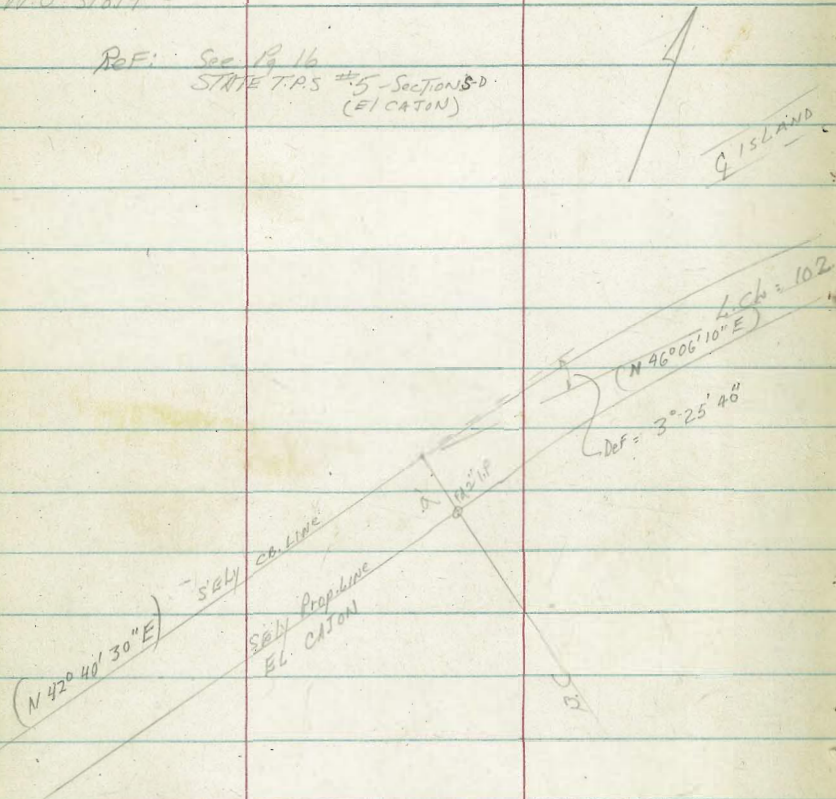
451.07

TP. -13.30 449.67

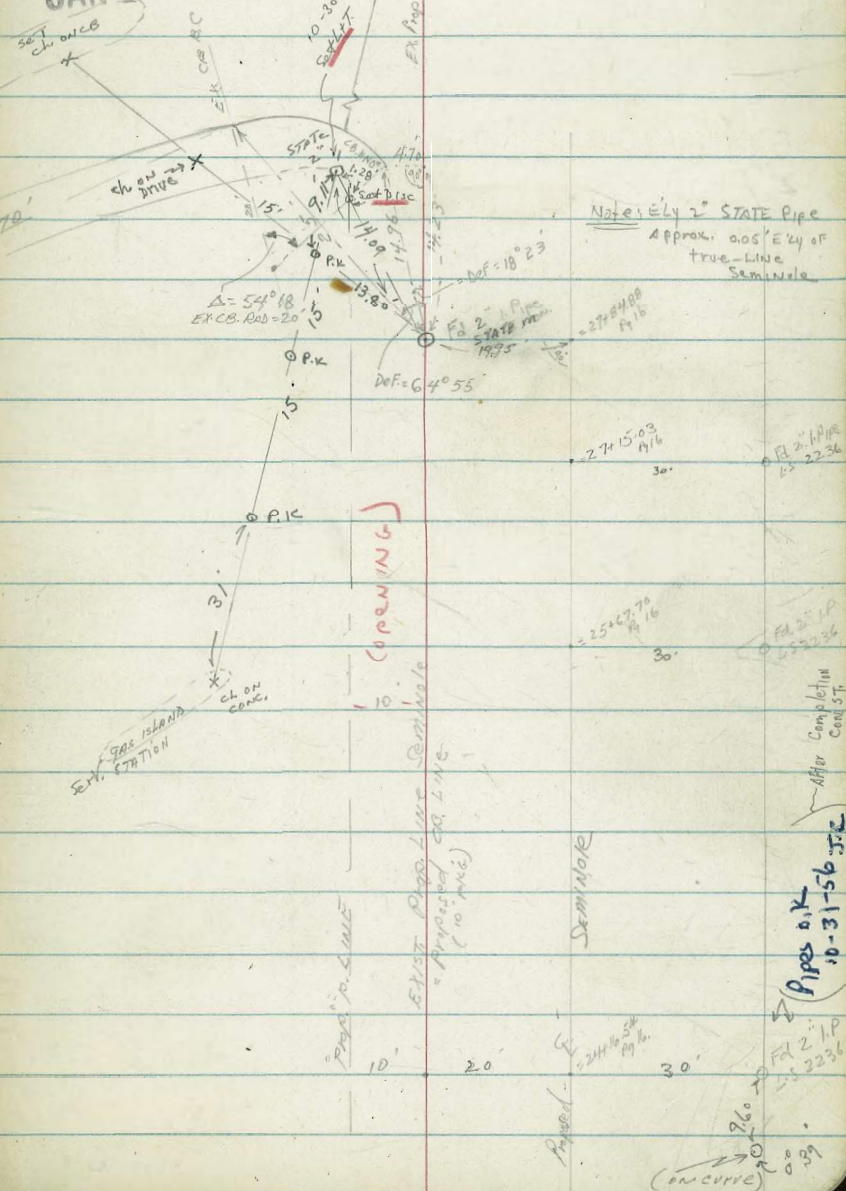
Clark  
Shepherd  
Brewer  
Kelley  
1-11-55  
W.O. 31814

DETAILS EXIST S.W. CURB RETURN  
EL CATON & SEMINOLE

REF: Sec 16  
STATE T.P.S #5 - Section 8-D  
(EL CATON)



INDEXED  
MER  
JAN 12 1955



see line Sec 16 For ADD. Detail  
this area

Sketch not to scale

Note: Ely 2" STATE Pipe  
Approx. 0.05' Ely of  
true-Line  
Seminole

Pipes OK  
10-31-56 J.E.

FA 2 1/P  
2236

FA 2 1/P  
2236

FA 2 1/P  
2236

INDEXED

JER

MAY 15 1956

SURVEY FOR PROPOSED STORM DRAIN

ELY. OF SEMINOLE DRIVE W.O. 20006

B.M. (see sketch Pg 46) 3.68 458.12

TP. +10.58 461.80 -1.39 451.22

5+37.26 Set Hub & TR

5+15 Toe of Slope

4+91 Top of Fill

4+90 Set Pot. Stub

4+50

4+00

3+50

3+33.86 Begin Storm Drain

+1.39 452.61

TP. -10.60 451.22

+3.70 461.82

B.M. 458.12

-458.12

Top Hub 3+33.86

(see Pg. 29)

5-14-56

(59)

4

Stamper  
Huffman  
Blunt  
Kelley

435.9  
17.1

138.4  
14.2

2.5 450.4

2.7 450.3

3.0 449.6

2.1 450.5

1.4 451.2

45



STORM DRAIN SURVEY CONTD

4.

6

17.

(53)

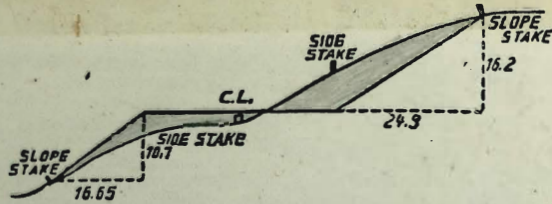












**DISTANCES FROM SIDE STAKES FOR CROSS-SECTIONING.**  
SLOPE  $1\frac{1}{2}$  TO 1. ROADWAY OF ANY WIDTH.

	0	.1	.2	.3	.4	.5	.6	.7	.8	.9	
0	0.00	0.15	0.30	0.45	0.60	0.75	0.90	1.05	1.20	1.35	0
1	1.50	1.65	1.80	1.95	2.10	2.25	2.40	2.55	2.70	2.85	1
2	3.00	3.15	3.30	3.45	3.60	3.75	3.90	4.05	4.20	4.35	2
3	4.50	4.65	4.80	4.95	5.10	5.25	5.40	5.55	5.70	5.85	3
4	6.00	6.15	6.30	6.45	6.60	6.75	6.90	7.05	7.20	7.35	4
5	7.50	7.65	7.80	7.95	8.10	8.25	8.40	8.55	8.70	8.85	5
6	9.00	9.15	9.30	9.45	9.60	9.75	9.90	10.05	10.20	10.35	6
7	10.50	10.65	10.80	10.95	11.10	11.25	11.40	11.55	11.70	11.85	7
8	12.00	12.15	12.30	12.45	12.60	12.75	12.90	13.05	13.20	13.35	8
9	13.50	13.65	13.80	13.95	14.10	14.25	14.40	14.55	14.70	14.85	9
10	15.00	15.15	15.30	15.45	15.60	15.75	15.90	16.05	16.20	16.35	10
11	16.50	16.65	16.80	16.95	17.10	17.25	17.40	17.55	17.70	17.85	11
12	18.00	18.15	18.30	18.45	18.60	18.75	18.90	19.05	19.20	19.35	12
13	19.50	19.65	19.80	19.95	20.10	20.25	20.40	20.55	20.70	20.85	13
14	21.00	21.15	21.30	21.45	21.60	21.75	21.90	22.05	22.20	22.35	14
15	22.50	22.65	22.80	22.95	23.10	23.25	23.40	23.55	23.70	23.85	15
16	24.00	24.15	24.30	24.45	24.60	24.75	24.90	25.05	25.20	25.35	16
17	25.50	25.65	25.80	25.95	26.10	26.25	26.40	26.55	26.70	26.85	17
18	27.00	27.15	27.30	27.45	27.60	27.75	27.90	28.05	28.20	28.35	18
19	28.50	28.65	28.80	28.95	29.10	29.25	29.40	29.55	29.70	29.85	19
20	30.00	30.15	30.30	30.45	30.60	30.75	30.90	31.05	31.20	31.35	20
21	31.50	31.65	31.80	31.95	32.10	32.25	32.40	32.55	32.70	32.85	21
22	33.00	33.15	33.30	33.45	33.60	33.75	33.90	34.05	34.20	34.35	22
23	34.50	34.65	34.80	34.95	35.10	35.25	35.40	35.55	35.70	35.85	23
24	36.00	36.15	36.30	36.45	36.60	36.75	36.90	37.05	37.20	37.35	24
25	37.50	37.65	37.80	37.95	38.10	38.25	38.40	38.55	38.70	38.85	25
26	39.00	39.15	39.30	39.45	39.60	39.75	39.90	40.05	40.20	40.35	26
27	40.50	40.65	40.80	40.95	41.10	41.25	41.40	41.55	41.70	41.85	27
28	42.00	42.15	42.30	42.45	42.60	42.75	42.90	43.05	43.20	43.35	28
29	43.50	43.65	43.80	43.95	44.10	44.25	44.40	44.55	44.70	44.85	29
30	45.00	45.15	45.30	45.45	45.60	45.75	45.90	46.05	46.20	46.35	30
31	46.50	46.65	46.80	46.95	47.10	47.25	47.40	47.55	47.70	47.85	31
32	48.00	48.15	48.30	48.45	48.60	48.75	48.90	49.05	49.20	49.35	32
33	49.50	49.65	49.80	49.95	50.10	50.25	50.40	50.55	50.70	50.85	33
34	51.00	51.15	51.30	51.45	51.60	51.75	51.90	52.05	52.20	52.35	34
35	52.50	52.65	52.80	52.95	53.10	53.25	53.40	53.55	53.70	53.85	35
36	54.00	54.15	54.30	54.45	54.60	54.75	54.90	55.05	55.20	55.35	36
37	55.50	55.65	55.80	55.95	56.10	56.25	56.40	56.55	56.70	56.85	37
38	57.00	57.15	57.30	57.45	57.60	57.75	57.90	58.05	58.20	58.35	38
39	58.50	58.65	58.80	58.95	59.10	59.25	59.40	59.55	59.70	59.85	39
40	60.00	60.15	60.30	60.45	60.60	60.75	60.90	61.05	61.20	61.35	40
41	61.50	61.65	61.80	61.95	62.10	62.25	62.40	62.55	62.70	62.85	41
42	63.00	63.15	63.30	63.45	63.60	63.75	63.90	64.05	64.20	64.35	42
43	64.50	64.65	64.80	64.95	65.10	65.25	65.40	65.55	65.70	65.85	43
44	66.00	66.15	66.30	66.45	66.60	66.75	66.90	67.05	67.20	67.35	44
45	67.50	67.65	67.80	67.95	68.10	68.25	68.40	68.55	68.70	68.85	45
46	69.00	69.15	69.30	69.45	69.60	69.75	69.90	70.05	70.20	70.35	46
47	70.50	70.65	70.80	70.95	71.10	71.25	71.40	71.55	71.70	71.85	47
48	72.00	72.15	72.30	72.45	72.60	72.75	72.90	73.05	73.20	73.35	48
49	73.50	73.65	73.80	73.95	74.10	74.25	74.40	74.55	74.70	74.85	49
50	75.00	75.15	75.30	75.45	75.60	75.75	75.90	76.05	76.20	76.35	50

THE NATIONAL BLANK BOOK COMPANY  
HOLYOKE MASSACHUSETTS  
NEW YORK CHICAGO BOSTON SAN FRANCISCO

498.73  
559.48  
558.21

558.21  
59.48  
498.73

290  
281  
291.9  
290