

DISTANCES FROM SIDE STAKES FOR CROSS-SECTIONING
SLOPE 1 TO 1. ROADWAY OF ANY WIDTH

	0	.1	.2	.3	.4	.5	.6	.7	.8	9	
0	0.00	0.10	0.20	0.30	0.40	0.50	0.60	0.70	0.80	0.90	0
1	1.00	1.10	1.20	1.30	1.40	1.50	1.60	1.70	1.80	1.90	1
2	2.00	2.10	2.20	2.30	2.40	2.50	2.60	2.70	2.80	2.90	2
3	3.00	3.10	3.20	3.30	3.40	3.50	3.60	3.70	3.80	3.90	3
4	4.00	4.10	4.20	4.30	4.40	4.50	4.60	4.70	4.80	4.90	4
5	5.00	5.10	5.20	5.30	5.40	5.50	5.60	5.70	5.80	5.90	5
6	6.00	6.10	6.20	6.30	6.40	6.50	6.60	6.70	6.80	6.90	6
7	7.00	7.10	7.20	7.30	7.40	7.50	7.60	7.70	7.80	7.90	7
8	8.00	8.10	8.20	8.30	8.40	8.50	8.60	8.70	8.80	8.90	8
9	9.00	9.10	9.20	9.30	9.40	9.50	9.60	9.70	9.80	9.90	9
10	10.00	10.10	10.20	10.30	10.40	10.50	10.60	10.70	10.80	10.90	10
11	11.00	11.10	11.20	11.30	11.40	11.50	11.60	11.70	11.80	11.90	11
12	12.00	12.10	12.20	12.30	12.40	12.50	12.60	12.70	12.80	12.90	12
13	13.00	13.10	13.20	13.30	13.40	13.50	13.60	13.70	13.80	13.90	13
14	14.00	14.10	14.20	14.30	14.40	14.50	14.60	14.70	14.80	14.90	14
15	15.00	15.10	15.20	15.30	15.40	15.50	15.60	15.70	15.80	15.90	15
16	16.00	16.10	16.20	16.30	16.40	16.50	16.60	16.70	16.80	16.90	16
17	17.00	17.10	17.20	17.30	17.40	17.50	17.60	17.70	17.80	17.90	17
18	18.00	18.10	18.20	18.30	18.40	18.50	18.60	18.70	18.80	18.90	18
19	19.00	19.10	19.20	19.30	19.40	19.50	19.60	19.70	19.80	19.90	19
20	20.00	20.10	20.20	20.30	20.40	20.50	20.60	20.70	20.80	20.90	20
21	21.00	21.10	21.20	21.30	21.40	21.50	21.60	21.70	21.80	21.90	21
22	22.00	22.10	22.20	22.30	22.40	22.50	22.60	22.70	22.80	22.90	22
23	23.00	23.10	23.20	23.30	23.40	23.50	23.60	23.70	23.80	23.90	23
24	24.00	24.10	24.20	24.30	24.40	24.50	24.60	24.70	24.80	24.90	24
25	25.00	25.10	25.20	25.30	25.40	25.50	25.60	25.70	25.80	25.90	25
26	26.00	26.10	26.20	26.30	26.40	26.50	26.60	26.70	26.80	26.90	26
27	27.00	27.10	27.20	27.30	27.40	27.50	27.60	27.70	27.80	27.90	27
28	28.00	28.10	28.20	28.30	28.40	28.50	28.60	28.70	28.80	28.90	28
29	29.00	29.10	29.20	29.30	29.40	29.50	29.60	29.70	29.80	29.90	29
30	30.00	30.10	30.20	30.30	30.40	30.50	30.60	30.70	30.80	30.90	30
31	31.00	31.10	31.20	31.30	31.40	31.50	31.60	31.70	31.80	31.90	31
32	32.00	32.10	32.20	32.30	32.40	32.50	32.60	32.70	32.80	32.90	32
33	33.00	33.10	33.20	33.30	33.40	33.50	33.60	33.70	33.80	33.90	33
34	34.00	34.10	34.20	34.30	34.40	34.50	34.60	34.70	34.80	34.90	34
35	35.00	35.10	35.20	35.30	35.40	35.50	35.60	35.70	35.80	35.90	35
36	36.00	36.10	36.20	36.30	36.40	36.50	36.60	36.70	36.80	36.90	36
37	37.00	37.10	37.20	37.30	37.40	37.50	37.60	37.70	37.80	37.90	37
38	38.00	38.10	38.20	38.30	38.40	38.50	38.60	38.70	38.80	38.90	38
39	39.00	39.10	39.20	39.30	39.40	39.50	39.60	39.70	39.80	39.90	39
40	40.00	40.10	40.20	40.30	40.40	40.50	40.60	40.70	40.80	40.90	40
41	41.00	41.10	41.20	41.30	41.40	41.50	41.60	41.70	41.80	41.90	41
42	42.00	42.10	42.20	42.30	42.40	42.50	42.60	42.70	42.80	42.90	42
43	43.00	43.10	43.20	43.30	43.40	43.50	43.60	43.70	43.80	43.90	43
44	44.00	44.10	44.20	44.30	44.40	44.50	44.60	44.70	44.80	44.90	44
45	45.00	45.10	45.20	45.30	45.40	45.50	45.60	45.70	45.80	45.90	45
46	46.00	46.10	46.20	46.30	46.40	46.50	46.60	46.70	46.80	46.90	46
47	47.00	47.10	47.20	47.30	47.40	47.50	47.60	47.70	47.80	47.90	47
48	48.00	48.10	48.20	48.30	48.40	48.50	48.60	48.70	48.80	48.90	48
49	49.00	49.10	49.20	49.30	49.40	49.50	49.60	49.70	49.80	49.90	49
50	50.00	50.10	50.20	50.30	50.40	50.50	50.60	50.70	50.80	50.90	50

Distance of slope stake from side or shoulder stake for any width roadway, slope 1 to 1. If ground is nearly level, the cut or fill at side stake is located by the double entry method in left column and top row. The number in body of table in same row and column gives distance from side stake to slope stake. If ground is not level estimate the difference in elevation between the side stake and slope stake, lower target by this amount if cut, elevate if fill. Add this amount to cut or fill and find distance in table. Set up rod at this point, and line of sight should cut target. If it does not make the slight adjustment necessary.

INDEX

- 2-11 Laurel St. 54th NELY
- 12-13 Alley Lots 4 to 12 Balboa Vista Hts
- 14-16 X-sec Fuerte Dr
W. Mainland Dr. to Ely termination
- 17-22 X-sec El Camino Del Cañon
- 24-32 X-sec Akron-bet.
- 33 Re-X-SEC GROVELAND - SAN JACINTO - CASTANA ^{(See also} _{FB 1676}
_{4 1379}
- 59 Prop. DRAIN SAN JACINTO & CASTANA

Cross Sec. Laurel St.

From 54th St. N. Ely.

8-28-53

C.H.S.

Begg

Altman

Scholin

W.C. #31973

F.B. 2165-1

Map # 2142

" # 3006

0+00 this book = 0+00

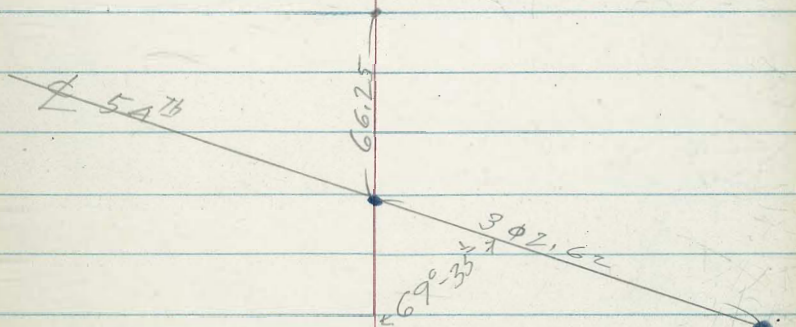
FB 2165
1

2+92.28 - B.C. Lt.

0+00 FB 2165 - P-1

4
Laurel

2



Laurel

3

$$11 + 30.58 = E.C.$$

P.I. Set. Tang. = 84.23

$$9 + 65.63 = B.C. Lt. \left. \begin{array}{l} \Delta 28^{\circ} - 38' - 20'' \\ R = 330. \\ T = 84.23 \\ L = 164.95 \end{array} \right\} \begin{array}{l} \text{Map.} \\ 2142 \end{array}$$

(Tang. of 160' as per map. #2142)

$$8 + 05.63 = E.C.$$

Set. P.I. T = 155.21

$$5 + 19.16 = P.R.C. \left. \begin{array}{l} \Delta 54^{\circ} - 42' - 40'' \\ R = 300. \\ L = 286.47 \end{array} \right\}$$

Set. P.I. - T = 120.62

$$2 + 92.78 = B.C. Lt. \left. \begin{array}{l} \Delta = 48^{\circ} - 08' - 40'' \\ R = 270. \\ L = 226.88 \end{array} \right\}$$

Blackton Dr.

4.42

15+98.04 30' RT = sub. line.

T = 59.65 - set. P.I.

14+68.50 = B.C.Lt. $\left. \begin{array}{l} \Delta 22^{\circ} - 29' - 30'' \\ R = 300 \\ L = 129.54 \end{array} \right\} \text{Map. } \#2142$

11+30.58 = E.C.

LAUREL ST.

±

5

2+00

77.0	76.5	75.7	76.5	76.5	76.8	77.9
10.5	11.0	11.8	11.0	11.0	10.7	9.6
30	28	16	9		27	30

287.50

T.P. 11.06 287.50 0.86 276.44

1+50

75.5	73.2	74.1	74.3	74.6	75.3
1.8	4.1	3.2	3.0	2.7	2.0
30	16	8		27	30

1+00

73.7	71.0	71.9	72.3	72.6	71.3
3.6	6.3	5.4	5.0	4.7	6.0
30	13	8		13	30

0+50

71.5	69.6	70.5	70.8	71.3	69.8	69.7
5.8	7.7	6.8	6.5	6.0	7.5	7.6
30	15	8		11	19	30

0+00

70.5	68.7	69.4	70.1	69.9	68.3	68.2
6.8	8.6	7.9	7.2	7.4	9.0	9.1
30	23	18		7	15	30

277.30

Set B.M.

9.08 268.22

Disk ± Laurel + ± 54th St.

7.15 270.15 ^{270.16} FB. 2180

1/2 S. line Laurel + ± Alley Bk J. Balboa Vista

8.21 277.30

269.09

Top. S.E. Fire Hydt. Laurel + 54th

FB2165

32

Laurel St.

±

6

290.2

4+50

90.6	90.6	
6.2	6.2	6.6
30		30

4+00

88.4	87.9	87.2
8.4	8.9	9.6
30		30

296.84

TIP. 10.19 296.84 0.85 286.65

3+50

85.8	85.1	84.4
1.7	2.4	3.1
30		30

2+92.28 B.C. Lt.

82.9	81.7	81.5
4.7	5.8	6.0
30		30

2+65

81.3	80.0	79.7
6.2	7.5	7.8
30		30

2+50

80.1	79.4	79.5	79.5	79.2	79.0
7.4	8.1	9.0	8.0	8.3	8.5
30	20	17	10		30

287.50

Laurel

4

7

T.P. 12.02 318.41 0.08 306.39

7+00

303.9 303.7 302.3
2.6 2.8 3.2
30 30

6+875 B.C. Rt.

2.5 in 7.6 cut 5.2 5.4

6+50 J

301.7 301.3 301.2
4.8 5.2 5.7
30 30

6+00

98.9 98.8 98.2
7.6 7.7 8.3
30 30

5+50

97.0 97.0 95.8 96.0 95.4
9.5 9.5 10.7 10.5 11.1
30 28 25 30

306.47

T.P. #1 10.55 306.47 0.92 295.92

5+19.16 = P.R.C.

95.3 94.3 94.3 93.7
1.5 2.5 2.5 3.1
30 28 28 30

294.4

4+95

92.9 92.9
3.9 3.9
30 30

292.5

296.84

Lawel

±

8

9+14

318.5	318.3	317.4	316.8	317.3
9.8	10.0	10.9	11.5	11
30	10		20	30
<u>328.31</u>				

T.P. 11108 328.31 1.18 317.23

8+82

316.3	315.4	317.4
2.1	3.0	1.0
30		30

8+43 18' pt. = S.W. Cor. Conc. Drive

312.9	313.0	314.3	316.01	317.1	317.2
5.5	5.4	4.1	2.40	1.3	1.2
30	15		18	27	30
drive					

8+14

311.4	310.8	310.9
7.0	7.6	7.5
30		30

8+00

310.3	309.7	309.6
8.1	8.7	8.8
30		30

7+50

306.8	306.1	306.9
11.6	12.3	11.5
30		30

318.41

Laurel

9

Stub.
T.P. 12.90 353.13 8.12 340.23

11+30⁵⁸ = E.C.

~~11+30⁵⁸ = E.C.~~

T.P. 8.12 348.35 0.31 340.23

10+75

40.8 39.3 41.7
7.6 7.1 6.7
30 30
348.35

10+20

32.5 32.8 34.6 35.2
8.0 7.7 5.9 5.3
30 20 30
26.9 27.6 28.0 29.5
13.6 12.9 12.5 11.0
30 15 30

340.54

T.P. 12.54 340.54 0.31 328.00

9+65.63 B.C. Lt.

22.7 23.0 23.5
5.6 5.3 4.8
30 30

9+50

321.5 321.9 321.4 322.1
6.8 6.4 6.9 6.2
30 5 30

328.31

Laurel

10

13+80

79.6	79.8	78.6	79.2	79.1	78.0	76.4
9.8	9.6	10.8	10.2	10.3	11.4	13.0
30	25	15	9		15	30

13+70

78.2	77.9	76.9	77.8	77.7	77.4	74.7
11.2	11.5	12.5	11.6	11.7	12.0	14.7
30	21	14	8		10	30

389.39

T.P. 12.73 - 389.39 0.50 376.66

13+30

71.9	72.0	71.0	69.9	70.5	70.4	71.2	72.9	72.3
5.3	5.2	6.2	7.3	6.7	6.8	6.0	4.3	4.9
30	23	17	14	7		10	20	30

13+00

65.4	65.6	64.1	64.6	64.9	66.2	67.5
11.8	11.6	13.1	12.6	12.3	11.0	9.7
30	22	13	6		20	30

377.16

T.P. 12.12 377.16 0.15 365.04

12+50

56.2	56.2	55.7	56.1	56.8	58.2	59.4
7.0	9.0	9.5	9.1	8.4	7.0	5.8
30	16	13		15	20	30

365.19

T.P. 12.90 365.19 0.84 352.29

12+00

49.1	48.1	48.1	47.6	50.3	52.0
4.0	5.0	5.0	5.5	2.8	1.1
30		6	10	20	30

353.13

Laurel

16+00

90.7 89.7 88.8 85.1 85.6 80.8 75.9
 4.4 5.4 6.3 10.0 9.5 14.3 19.2
 30 29 19 13 13 30

15+50

91.8 90.5 88.9 89.5 90.4 89.5 84.0
 3.3 4.6 6.3 5.6 4.7 5.6 11.1
 30 18 16 3 8 30

15+00

91.0 90.7 89.5 90.1 90.1 88.1
 4.1 4.4 5.5 5.0 5.0 7.0
 30 17 14 11 30

14+68.50 = B.C. Lt

90.1 90.1 88.8 89.1 88.9
 5.0 5.0 6.3 6.0 6.2
 30 25 14 30

395.05

T.P.

7.09 395.05 1.43 387.96

14+39

88.9 88.2 86.4 87.1 86.4 88.6 88.7
 0.5 1.2 3.0 2.3 3.0 0.8 0.7
 30 18 13 13 21 30

13+98

81.3 81.4 81.8 81.4 80.5 83.9 85.0
 8.1 8.0 7.6 8.0 8.9 5.5 4.4
 30 17 9 19 22 30

13+88

80.2 80.3 79.7 80.3 80.4 79.7 78.4 82.8
 9.2 9.1 9.7 9.1 9.0 9.7 11.0 6.6
 30 25 15 9 14 26 30

389.39

Alley Along Lots 4 to 12

Balboa Vista Hgts

Also Por. BIK "B" Balboa Vista

0+00 = 90° to E.C. at Laurel St.

C.H.S

Begg

Roberts

Moore

See Map #300C

8-31-53

Reduced
2 Sept. 53
K. J. ...

1+00

300.8	301.0	302.0
4.3	4.1	3.1
10		10
4.3	4.0	3.0

0+65

301.0	301.7	302.2
4.1	3.4	2.8
10		10

0+25

300.3	300.7	301.1
4.0	4.4	4.0
10		10

0+15

299.8	300.7	299.1	299.2
5.2	4.4	5.9	5.9
10		4	10

0+00 = 10' Lt @ 90° = E.C. on prop.

9.15 305.07 = 295.92

299.1	298.1	298.6	298.8
5.9	7.0	6.5	6.3
10	7		10

Tip #1 Page 7 (Nail) 305.07

4+36⁶¹

301.0	301.33	302.0
4.3	4.02	3.3
10	10/100	10

4+00

302.0	301.8	302.0
3.4	3.5	3.3
10		10

3+00

300.4	300.6	301.0	301.8
4.9	4.8	4.3	3.5
10		7	10

2+60

300.8	300.6	300.8	302.2
4.6	4.8	4.5	3.1
10		7	10

305.35

T.P. 5.70 305.35 5.42 299.85

2+00

299.3	299.5	300.0	300.9
5.8	5.6	5.1	4.2
10		7	10

1+70

299.4	299.6	299.9
5.7	5.5	5.2
10		10

305.07

56 ~~th~~
Fuerte Dr.

Ely. Subalmito Laurel

9-1-53

Sketch - FB 2165-PA05

C.H.S.
Boyer
Oltman
Schelin

1+50

392.5	393.2	392.5	392.3	392.1	392.7	395.4
4.7	4.0	4.7	4.9	5.1	4.5	4.8
25	17	13		15	20	25

T.R. 4.93 397.23 2.05 392.30

397.23

1+00

388.6	389.6	389.6	391.4
5.8	4.7	4.7	3.0
25		19	25

0+50

382.2	385.4	386.0	387.4
12.1	8.9	8.3	7.0
25		17	25

0+29⁸¹ B.C.

381.2	384.4	384.4
13.1	9.9	9.9
25		25

0+00 Ely line Balboa Vista Sub.

380.4	383.0	385.4
14.0	11.4	8.9
25		25

T.R. 9.93 394.35 11.28 384.42

394.35

6.65 395.70 - 389.05

B.C. ± 14+68⁵⁰ Page 11 - El. - 389.05

Fuerte Dr

±

15

4+50

370.1	369.5	370.5	371.2	372.3
7.7	8.3	7.3	6.6	5.5
25	22		17	25

4+00

371.5	370.6	371.5	372.1	372.6	373.4
6.3	7.2	6.3	5.7	5.2	4.4
25	21		15	16	25

377.84

T.P. 5.16 377.84 13.30 372.68

3+50

374.9	374.9	373.7	374.2	375.1	376.4	377.0
11.1	11.1	12.3	11.8	10.9	9.6	9.0
25	24	22		16	18	25

3+00

380.8	380.8	380.2	380.7	381.2	382.5	384.3	385.0
5.2	5.2	5.8	5.3	4.8	3.5	1.7	1.0
25	22	21		17	20	23	25

385.98

T.P. 1.67 385.98 12.92 384.31

2+51⁶⁶ = E.C.

387.1	387.6	387.1	387.1	387.2	392.6	393.4
10.1	9.6	10.1	10.1	10.0	4.6	3.8
25	20	17		18	23	25

2 ~

392.5	392.5	391.7	391.5	391.4	392.1	397.1
4.7	4.7	5.5	5.7	5.8	5.1	0.1
25	20	17		15	19	25

397.23

Fuerte Dr.

±

16

6+79⁰⁶ = 25' RT. = Prop. B.C. $\frac{F.B. 2165}{5}$

374.7
5.4 4.3 +1.7
20 25

6+50

370.6 374.0
9.5 6.1 8.2 7.1 0.3
25 21 1.8 25

5+86⁵² = 25' Lt. = Prop. B.C. $\frac{F.B. 2165}{5}$

368.5 369.4 369.8 370.5 378.2
11.6 10.7 10.3 9.6 1.9
25 23 16 25

5+50

369.6 369.3 369.7 370.8 377.1
10.5 10.8 10.4 9.3 3.0
25 23 16 25

T.P. 10.35 380.11 8.08 369.76

380.11

5+00

369.5 370.1 369.6 370.2 371.2 372.2 377.3
8.3 7.7 8.2 7.6 6.6 5.6 0.9
25 23 22 16 18 25

377.84

INDEXED
Law
APR 2 - 1954

17

X-sec for Grade estab. - Ely

Camino Del Cañon - Front

West Muirlands Dr to Ely

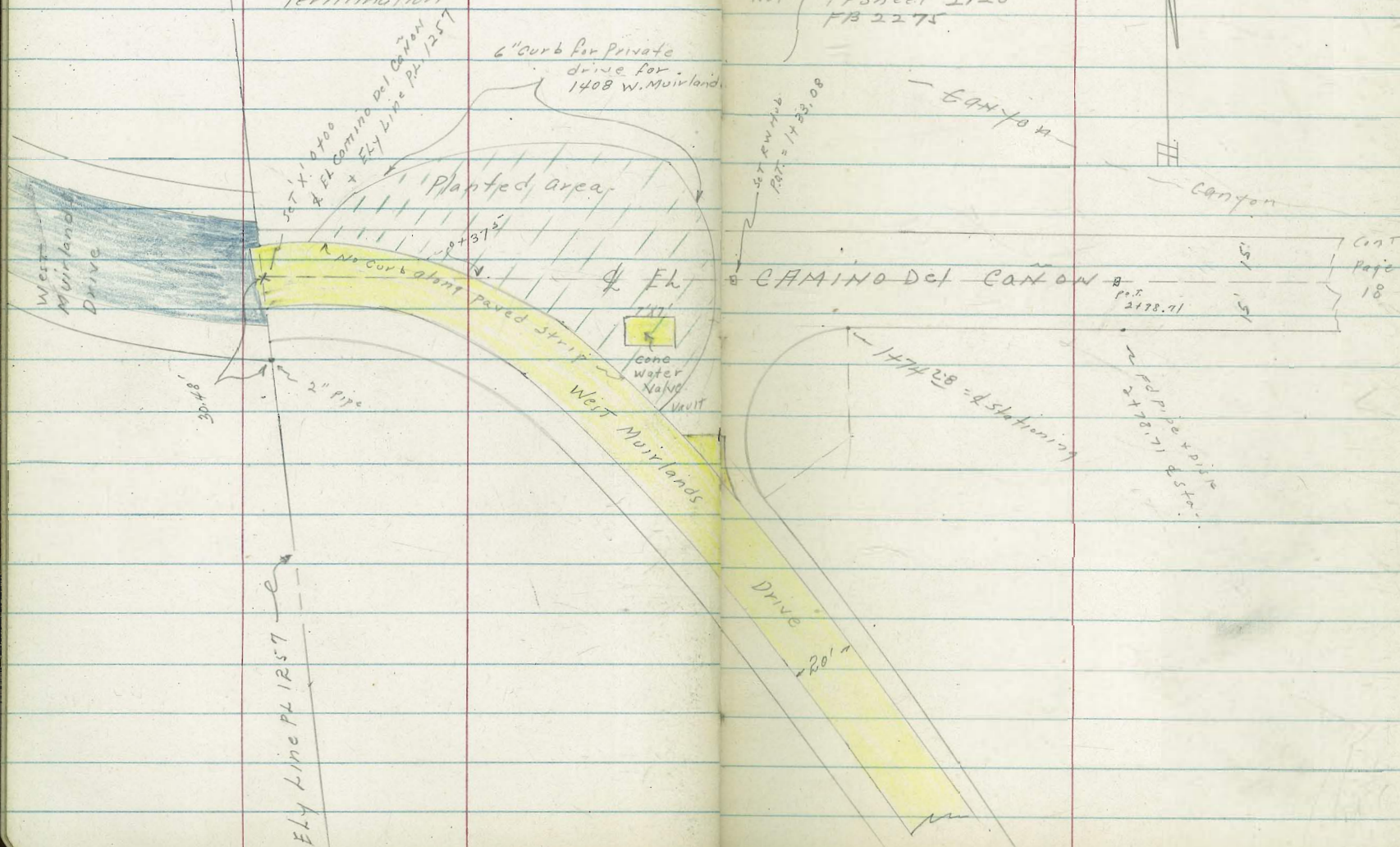
Termination

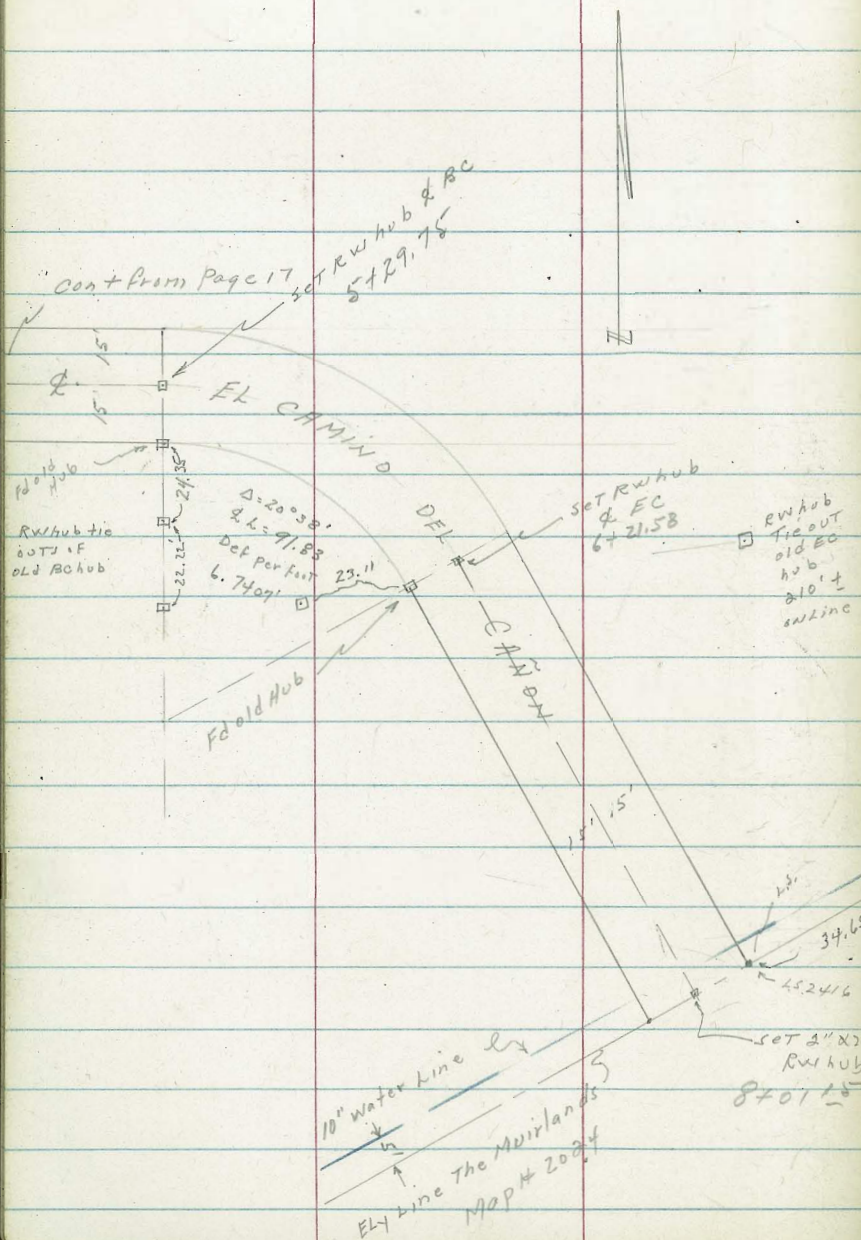
W/O #25020

3-31-54

C. Allen, D. Sisson, C. Powell.

Rel } Submap # 2024
 } TP Sheet 2120
 } PB 2275





$$BC = 5 + 29.75$$

$$2^\circ 48.52' - \text{chord} = 24.99$$

$$5 + 54.75'$$

$$5^\circ 37.04'$$

$$\text{Det per foot} = 6.7407'$$

$$5 + 79.75'$$

$$\text{Det for } 25' = 2^\circ 48.52'$$

$$8^\circ 25.56'$$

$$6 + 04.75'$$

$$10^\circ 19' - \text{chord} = 16.82$$

$$EC = 6 + 21.58$$

$$6.52834$$

$$45.2416$$

$$8 + 01.15'$$

X-sec EL Camino Del Cañon -
for grade estab.

0+92-10⁵ RT= 4' 7'x7' Conc Vault box
Water Valve

22⁵ LT= top 6" curb - Private Drive

0+50-3⁰ RT= Nly edge 20' conc strip w. Muvir lants

28 ⁵	29 ⁰⁰	28 ⁹	30 ²	30 ³¹	30 ³⁹	30 ²⁸
22 ⁵	22 ⁵	15		3 ⁰	13 ⁹	23 ⁰
gravel drive	Top cb			conc	2 conc	slly edge conc

} begin Planted area.

0+37⁵ } Nly edge conc pave
El Camino Del Cañon intersects

29³³

0+24-3⁵ LT= slly end 6" curb private drive

28³⁵
3⁵
Top cb

0+00 = begin EL Camino Del Cañon + Ely Line PL 1257

26 ⁶²	26 ⁷⁷	26 ⁸³	26 ⁶⁷
15	5 ⁰ edge conc		15 ⁰ edge conc

5⁰ LT = Nly edge conc

15 RT = slly edge conc

0-0⁶ = wly end conc & Ely edge A.C. Pave.

26 ⁰⁴	26 ⁶³	26 ⁷⁷	26 ⁸²	26 ⁶⁸
25	15 AC	5 ⁰ conc		15 ⁰ conc

Direct elev. Rod used. 300' NOT shown.

BM - Direct elevation Rod
all elevs. are true

332.82

Chisel 'X' top curb - 12+43.92, Page 7 - FB 2275

X-sec EL Camino Del Cañon

LT = N14

RT = S14

20

0+5

2400-

21¹ 23⁰ 26⁰ 28¹ 29⁶
25 15 15 25

0+5

1492- 14⁰ LT = ϕ 14" Evergreen tree

1475- 18⁰ RT = ϕ 24" Palm tree

1474²⁸ 15⁰ RT = Property Bc

0+3

1465-

25⁷ 27¹ 28⁰ 29² 30⁴
25 15 15 25

0+2

40⁶ RT = Nly edge 20' strip conc
W. Murlands Dr

1432 = ϕ 6" curb private drive

31⁵ 31⁹⁴ 32⁰ 32³⁵ 33¹⁷ 32⁷ 34⁰² 33⁷ 35³²
25 Dr Top 25 Dr Top 25 Top 25 Drive Top 25 Drive 40⁶ Nly edge conc

0+00

1417² ϕ intersects top wly curb at pvt. Dr

31⁵ 31⁷⁹ 32¹⁰ 32⁴ 33⁶⁴ 33³
15 Dr Top 15 Top 15 Dr Top 15 Dr

39⁰ LT = top 6" curb private drive

0-

1400- 26⁶ RT = Nly edge 20' conc strip

30² 30⁶⁴ 31⁷ 32¹ 33⁴ 34⁰¹
39⁰ gravel Drive Top 39⁰ 15 Top 15 26⁶ conc

0+96- 5⁰ LT = ϕ Water Meter Box

BM

300' NOT used

Direct elev Rod.

X-sec EL Carrizno Del Cañon

LT=N14

9

RT=514

21

4450

304 ⁷	309 ¹	144	20 ³	25 ⁴
30	15		15	30

4400

308 ²	12 ²	17 ³	23 ¹	28 ⁶
30	15		15	30

3450

11 ⁴	14 ⁷	20 ³	25 ⁵	30 ²
30	15		15	30

3425

14 ²	17 ⁷	23 ⁰	27 ⁰	30 ⁶
30	15		15	30

3400

14 ³	19 ⁴	24 ⁷	33 ²	36 ²	37 ¹
30	15		15	20	30

2478

14 ⁰	21 ²	28 ³	34 ⁰	36 ⁶	37 ⁵
30	15		15	20	25

2450

23 ⁷	27 ²	31 ⁰	24 ⁸	36 ⁶
25	15		15	25

Fall away to canyon this side

DIRECT Elev Rod. 300 Not Used

X-sec EL Camino del Cañon

LT=N14

RT=N11

23

6+88

305²
15

11¹

18⁴
15

6+50

299¹
30

305⁵
15

11²

18⁷
15

24⁷
30

6+2158 = EC

(Elev hub = 310.69)

10°19'

298⁵
30

305¹
15

10⁷

17⁹
15

25²
30

6+04.75 = EC

0°25.56'

Det per foot = 6.7407

5+79.75 (9° RT = N14 face)
cut-off wall

Sections taken Radial-

5°37.04'

299⁴
30

306¹
15

11⁰

17⁹
15

25⁰
30

301⁹
30

306⁹
15

11⁷

15⁰
9°
Top cut-off
Wall

17⁰
15

22⁹
30

5+54.75

2°48.52

302³
30

306⁶
15

11⁹

17⁹
15

23⁴
30

5+29.75 = BC

302⁸
30

307⁴
15

12⁰

18⁰
15

23⁴
30

5+00

302⁴
30

306⁷
15

12⁷

18⁷
15

24⁷
30

This side drops to Cañon

Direct elev. red

X-sec EL Camino Del Cohen

LT=NL4

RT=SL4

23

Small N+S Wash caused by water
Pipe installation ignored sh + base sections

Checked levels into Hub at 19409⁹² FA2275-21

50' ± LT = bottom canyon

Canon is Ely like The Muirlands

8401.15 = Ely termination El Camino Del

296 ³	306 ¹	309 ³⁰	317 ³	25 ^{MI}
30	15	on hub ground same	12	30

7496 - intersects 10" Water Main

304²⁶
Tap water
of Main

7450 - 50' ± LT = Bottom Canyon

293 ²	300 ⁷	308 ³	16 ³	324 ⁵
30	15		15	30

7400 - 70' ± LT = Bottom Canyon

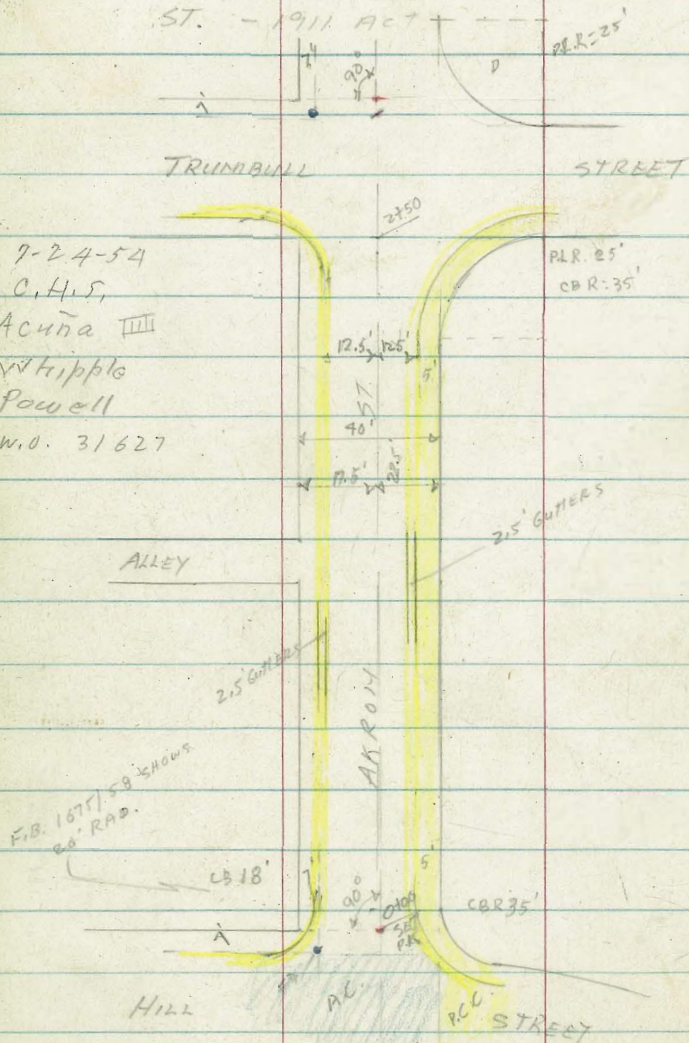
294 ¹	301.8	309 ⁵	17 ⁵	26 ¹
30	15		15	30

Falls constant grade to Canyon

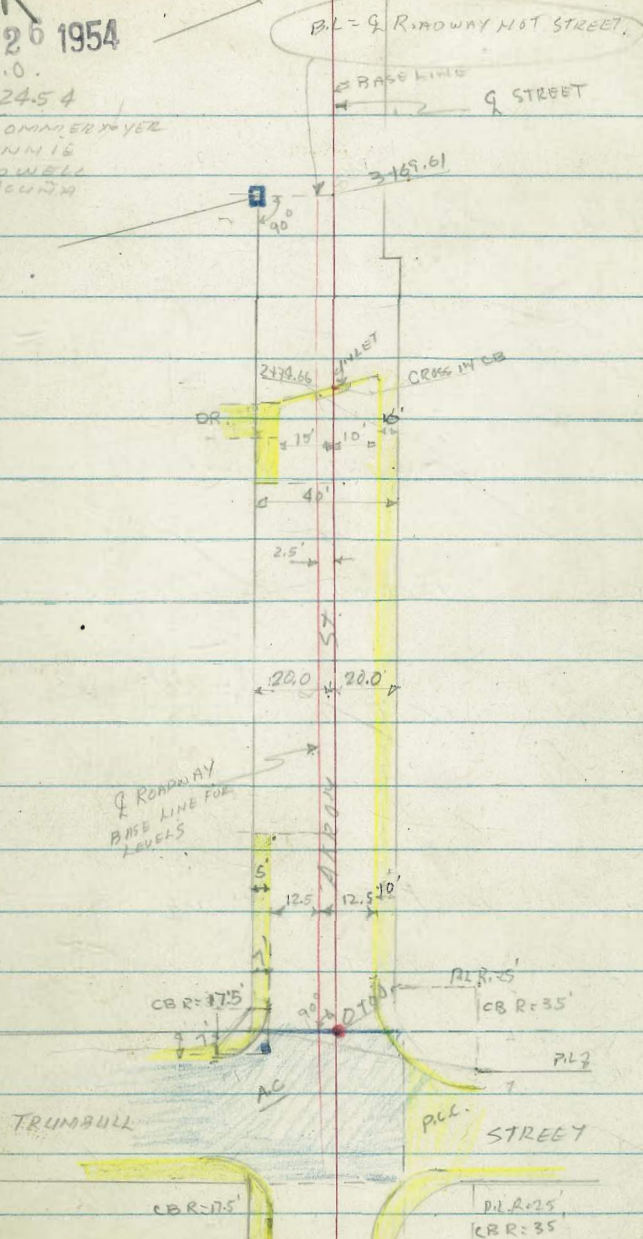
Direct elev Rod 300' omitted

X-SECT AKRON ST BETWEEN
HILL ST TO N'LY OF TRUMBULL
ST. - 1911 ACT

7-24-54
C.H.S.
Acuña III
Whipple
Powell
W.O. 31627



INDEXED
JER
JUL 26 1954
W.O.
7-24-54
C. SOMMERBYER
RONNIE
POWELL
ACUNA



X-SECT AKRON STREET

B.L. = ♀ ROADWAY.

1700

63.26 62.68 62.79 62.7' 62.18 61.86 62.75
 CB GUT 10' 10' 12.5' 12.5'
 LIP LIP GUT CB

0750

65.74 65.29 65.39 65.4 64.76 64.49 65.30
 CB GUT 10' LIP GUT CB
 10'

0711

10.0' RT VALVE CAP FOR F.H.

0710.5

12.5 RT = PHYSICAL E.C.

0700

END A.C. PAVE. - N'ly LINC HILL ST.
 15' LT, NW.B.C. RET. (REF FB 1675)

67.62 67.60 67.50 67.09 66.76 67.55
 10.0 10.0 10.0 11.2 13.7 13.7'
 GUT LIP GUT PAVE GUT CB

NOTE: ♀ DENOTES ♀ ROADWAY

N.W. RETURN AKRON & HILL

67.72 67.64 68.11 68.73 69.22 69.70
 1 1 2 3 4 5
 2 G G G G G

G = gutter

66.30 66.20 66.83 66.86 66.51
 1 2 3 4 5
 G G G G G
 B.C

N.E. CURB RET AKRON & HILL - SEE F.B. #

1675/57458 FOR CURB EL. & SKETCH.

NOTE 100 FT ELL NOT SHOWN - E SELF REMOVED ROD.

B.M #2

EL. 167.98

SET B.M. N.W. 7' LD 4' X AKRON & HILL

B.M #1 - PP S.E.B.P. - EL. 158.11 - DIRECT EL. USED
 TOWNSHIP & AKRON

X-SECT AKROM ST

	S.W. RET 0.5 CB FC. REF F.B 1075/	57458				
2468	30.5 LFT TO EC OF SW RET.	55.95 GUT	54.86 17.5	54.60 12.5 CB IN	54.31	
2465	47.5 RT EC. SE RET. W.L.K.				59.27	55.88 12.5 GUT INVE
						53.22 END A.C 57.5 CUM 22.5
2450	END 2' W.L.K. START 5.5' W.L.K. START AC. PAVE. -12.5	REF F.B 1075/57458				
1471						
2430	12.5 RT B.C. 35' RAD. RET. REF	F.B. 1075/57458	50.11 1 LIP GUT EG.	49.95 1	51.87 2 LIP	51.58 2 GUT
						53.42 3 LIP
						53.10 3 GUT
						54.28 4 LIP
2400			57.86 CB	57.38 10' GUT LIP	57.45	57.3 10' LIP
1467	START 2' W.L.K ON LFT / END 5' W.L.K.				56.95	56.75 10' GUT
1496	9 OF 16' DRIVE				57.00	57.10 17.0 BK of W.L.K
1475	3" DRAIN THRU LFT CB.				12.5' GUT	
1463	3" DRAIN THRU CB ON LFT.					
1450			59.85 DRIVE GUT	59.95 10' LIP	59.9	69.62 10' LIP
						59.37 GUT
						60.21 CB
1437	12.5' RT. 9 CONC. DR (10')				60.08 GUT	60.25 LIP OF DR.
						60.99 15.5 BK ON DE ON W.L.K

X-SECT AKRON ST

0+00

54.05	53.69	53.31	52.50	52.22	53.02
CB	12.5 GUT		15.7 LIP	18.6 GUT	CB

0-15

47.5 RT - B.C. 350' RAD.

53.89	53.33	52.67
	12.5	22.5 END A.C. START CONC.

0-18

30.0 LT. - B.C. 175 FT RAD.
CB LINE TO THE WEST.

54.25	53.92
12.5 CB LN	PAV

0+00
3+20

THE WEST-EDGE OF A.C.
NLY LINE OF TRUMBULL ST. TO

RETURN

N.W RET - TRUMBULL & AKRON ST.

55.80	55.05	54.38	53.87	53.67
5	4	3	2	1
GUT EC.	GUT.	GUT	GUT	GUT B.C.

REF 1675/57

N.E RET - TRUMBULL & AKRON

50.29	50.00	52.08	51.24	52.44	52.13	52.63	52.25
1	1	2	2	3	3	4	4
LIP	GUT	LIP	GUT	LIP	GUT	LIP	GUT
BC	BC						

52.53	52.31
5	5
LIP	GUT
EC.	EC.

X-SECT AKRON ST

0790	17.4 LF & 17' Concr DR	53.05	52.61
		FL	DR

0782	9' 14' DR. (COLD LAY) RT
------	--------------------------

0770	14' LT & 3.5 Concr WLK	53.64	53.13
		17.5 WLK	

NOTE -

0705 14' LT (W)
 0-02 23 RT (W)

0746 12' RT (W)
 0791 14' LFT (W)

0768	14.5 LFT START 13.0 LIN FT 4" CRB TO COME OUT	54.0	52.4	52.0
		17.5	12.0	

0767	12.5 LFT END CON WLK	52.00	52.2
		CB	12.5 GUT

0750		52.87	52.6	52.4	51.68	51.42	52.25
		CB	17.5		10' LIP	12.5 GUT	CB

0720	12.5 RT - EC 35' RAD	53.54	53.3	53.0	52.98	52.27	53.10
		CB	12.5		10' LIP	12.5 GUT	CB

X-SECT AKRON

2+23

52.2 51.5 50.4 48.1 47.6
22.5 17.5 12.0 6.0

2+20.5

END OF 5.5' W/K ON RT

47.11 46.86 47.70 47.8
10.5
LIP CUT CB 18
12.5 W/K BK

2+00

51.8 49.3 48.5 47.62 47.35 48.19
17.5 8.0 10. 12.5
P.C. LIP CUT CB

1750

53.3 51.0 50.2 48.98 48.66 49.50
17.5 10. 10. 12.5
P.C. LIP CUT CB

1735

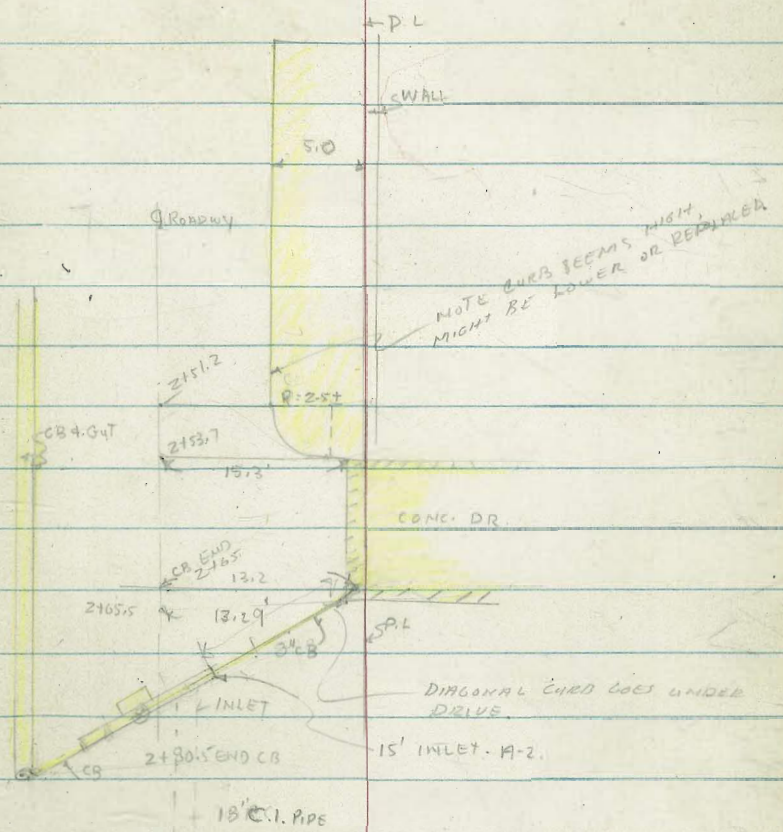
17.6 LT 16' CONC. DR

55.68 52.68
CONC. FL. 17.6
3+0 DR
7.5

1700

TO COME OUT
14' LT. STRT OF 8 LIM FT 4" CB52.6 52.0 51.4 50.17 49.90 50.72
11.5 12.0 10. 12.5
P.C. LIP CUT CB

X-SECT AKRON ST



2+40

14 RT
14 LT



2+25

17.5 LT START RET WALL
12.5 LT START OF 5' Wk.

51.57	48.31	48.24	42.5	46.91	46.71	47.55	47.5
TOP	17.5	12.5		LIP	12.5		
WLL	AK OF WLL	CB & GRND		10.	GUT	CB	PA
	BASE WLL						22.5
							P.L.

X-SECT ARBOM ST

Note. 2480.5 SHOULD BE 2479.92 TO AGREE WITH RECORD ON GRADE ORD. F. ALLEN 10-17-54 (?)

2480.5 LIP OF GUTTER DIPS TOWARD

INLET.

44.20 45.05
12.5 12.5
GUT CB

2474.4 2.5 RT EC OF CB & CB INLET.

45.01 45.96 46.77
CB GRATE INVERT
2.5 2.5 2.5

2465 CB END ON LFT

45.90 45.34 45.00 45.3 45.1 45.00 45.20 46.11
33 17.5 13.2 CB 13.2 10 11.5
FL DR DE 13.2 HIP GUT BACK WH.

2458 12.5 RT & 8' DR

45.17 46.26 46.66
DR 12.5 15.0 F.L.
DR 35.

2453.7 15' LT EC. SCREWY RET STIFF

47.45 47.36 46.05
17.5 CB 15.3
BX WLK AT WLL APRON

2451.2 12.5 LT SCREWY B.C. RET

47.41 46.2
CB 12.5
GROUND

X-SECT. AKIROM ST

CHECK INTL BM. # 1

EL 156.18

EL. 156.11

BM. # 3

X CROSS ON CURB & ST STREET

(2774.66 STATION) EL 245.01

2785

46.6 46.2 46.0
17.5 12.5
RIM OF CANYON

44.5 42.0
12.5 17.5
CB

Clark
Shepherd
Bruner
Orwell
1-28-55
W.D. 32231

RE-X-SECT. GROVELAND, EUCLID to 53rd
SAN JACINTO: GROVELAND to IMPERIAL
CASTANA: EUCLID to GROVELAND

Ref: F.B. #1696-34-35
" " " #1378-40
G.B. #262-32 et. al.
Map #2.52-1

GROVELAND - EUCLID to 53rd

0-09 25 RT. Bay Rail Fence - 3' high ✓

0-10 = Brown-cut n/y

0-16 Toe CUT BANK Along ^{ELY} Euclid n/y

0-25 0.6' LTE MITH

0-27 = Approx. Edge overlay w/ (American)

0-28.5 5.2' LTE WATER GATE

0-30 = Edge ^(LINE) Overlay CONC. (RE overlay)

0-40: 2 EUCLID (approx. 20' AC of CONC. Pav)

T.P. 5.12 137.89 10.07 132.97
132.77 LITE. & Groveland) Note: CHK this in master

T.P. 3.37 142.84 856 139.47
4 B. EUCLID
137.89

T.P. 3.50 148.03 7.16 144.53
T

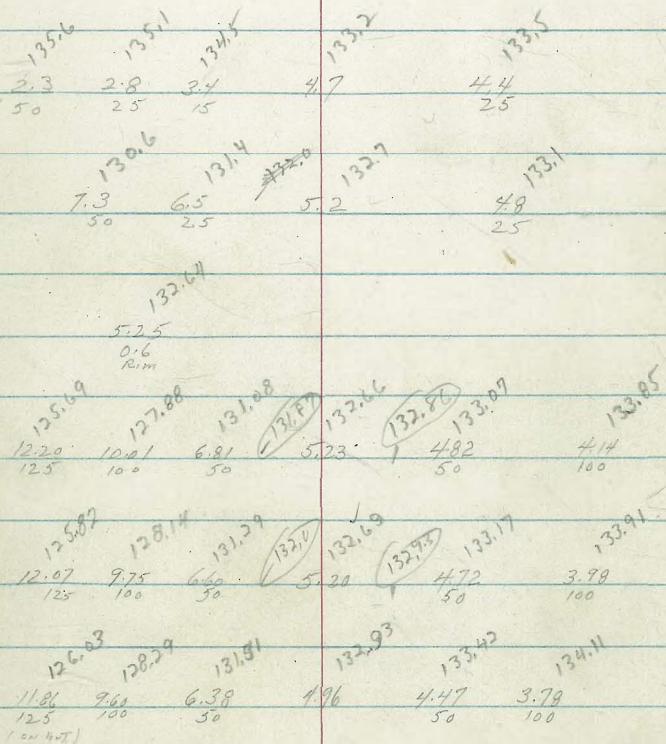
T.P. 6.75 151.69 0.12 144.94

B.M. 11.92 145.06 133.14 = 1/2" CORN MON. + NARANJA 53rd

Note: For ALIGNMENT - Sketch - Ties - see
F.B. 1696-34-35

33

(N34) RT. RT. FFR 7 10 5



INDEXED
FFR 7 10 5

GROVELAND (CONT)

1+19.5 0.2 RT & M.H. ✓
 1+08 23.5 LTF 4' MARK ✓
 1+07 38.2 RT & Single gnt - under Const. (No gnt)
 1+05 17' RT & Deadman ✓

T.P. 5.86 143.28 0.47 137.42

1+00

0+88 22.6 LT Beg 1' P. Kot Fence ✓

0+60 24.4 RT END RAIL Fence ✓

0+50

0+40 17.6 LTF Pole = P170 212 ✓

0+12 18.1 LTF Deadman ✓

0+03 17.1 RT = E Fire-Hyd ✓

(graded - dirt road)

0+00 = E. line FUCHS - SLY
 (chk for opening w/ly)

LT
 134.68
 6.60
 20
 WAIR
 6.50
 25
 6.49
 23.5
 LIP
 136.78
 136.79
 RT
 137.42
 5.36
 0.2
 R.M.
 137.38
 5.90
 38.2
 Approx. Elev Fl.

143.28
 134.6
 1.3
 40
 136.4
 1.1
 25
 136.9
 1.0
 136.5
 1.4
 12
 137.4
 0.5
 16
 137.0
 0.9
 25
 136.4
 1.5
 40

134.3
 2.6
 50
 135.4
 2.5
 25
 136.0
 1.9
 15
 135.5
 2.4
 135.1
 2.8
 13
 135.2
 2.7
 25
 135.0
 2.9
 50

135.7
 2.2
 50
 135.5
 2.4
 25
 135.3
 2.6
 14
 135.6
 4.3
 135.0
 4.9
 135.8
 4.1
 25
 135.7
 4.2
 50

137.89

GROVELAND (CONT.)

LT.

Σ

RT.

31

244.5 244 RTE 2.5' WALK ✓

138.58
4.80
24.4
4P
4.60
7.00
WALK

2440 236 LTE 9" ACACIA ✓

2434 247 LT E 1' ACACIA ✓

137.98
137.72
138.83
138.20
4.2 3.56 4.45 5.68
82 50 25 18
H. 4P

2426 18' 11.50' Cold-Lay Drive: 82 LT. 9P ✓

2408 82 LTE 9P.

2400 25.3 RT Bay 30" Pick. Fence ✓

139.28
4.00
82
Fl.
139.1
138.5
138.7
139.8
137.6
137.9
138.0
1.2 4.8 5.6 5.5 5.7 5.4 5.3
40 25 13 12 25. 40

1485 23.9 LTE 3' WALK ✓

139.08
4.20 4.22 4.26
40 25 23.9
WALK 4P

1478 17.2 LT E Deadman ✓

1466 17.4 LTE Pole # ✓

1452 24.4 RTE Pepper Tree - 6" ✓

137.3
137.8
137.8
137.6
137.3
137.9
137.7
6.0 5.5 5.5 5.7 6.0 5.4 5.6
40 25 16 10 25 40

1441 26.4 LTE Pole # P-30808T ✓

1429 23.3 LT. END 1' Pick. Fence ✓

1421 18.3 RT E Pole # 554806-H ✓

143 28

GROVELAND (cont.)

3+50

25.7 RT END Fence ✓

3+49

21.1 LT E 8' Drive ✓ 48 LT GAR ✓

3+40

21 LT END Pick-Fence ✓

3+26

21.2 LT Beg 4' Pick-Fence ✓

3+20

29.2 LT E Ribbon Drive (side) 59' LT GAR ✓

3+17

25.3 RT E 3' WALK ✓

3+15

22.3 LT END Pick-Fence ✓

3+00

16.8 LTE Pole # P 77916 ✓

2+96

{ 71 RTE GAR 60.5 RT to apron
22.0 LTE 3' WALK ✓

2+89

23.7 LTE 14" Pepper tree ✓

2+75.5

25.1 RT END 30' Pick-Fence 4 Beg 4' Lathe Fence 24.9 RT
22.7 LT Beg 4' Pick-Fence ✓

2+68

24.7 LTE 14" ACACIA ✓

2+50

23.4 LT E 3' WALK ✓

138.42 LT. E ✓ RT
4.86 4.72 138.56 4.7 5.0 4.7 4.2 3.7 139.9
40 25 12 22 25 40
(Flush with 2nd)
138.56 138.57 138.64
4.78 4.71 4.64
48 25 21.1
Fl. Drive-up

139.45 139.18 139.19
3.83 4.10 4.07
5.9 29.2 29.2
Fl. Drive-up

139.64 139.98
3.64 3.30
25.3 3.5
LIP WALK

139.3 139.3 139.5 138.3 ✓ 139.3
4.0 4.0 4.9 5.0 5.0
40 25 13 14 25 40
4.2 4.0
25 40

139.39 139.41 138.95 139.83 140.05
3.89 3.87 4.33 3.45 3.23
30 WALK 25 22 LIP 60.5 71

139.63 139.4 139.4 139.36 139.8 138.1 ✓ 137.7 138.4 ✓
3.65 3.9 3.9 3.92 5.5 5.2 5.6 4.9 4.6
40 WALK 25 23 23.4 LIP 4 11 25 40
138.7

143.28

GROVELAND (CONT.)

LT.

E

RT

37

4492 25.8 RT End 1' Conc. Brk Wall ✓

4490 = W. Line San Joaquin - SLY

4489 22.8 LT End Pk. Fence ✓

4457.5 22.5 LTE 4' Wall ✓

4450

4445 26.1 RT E 10' Drive: 77 RT par ✓

4421 25.7 RT Bay 1' Conc. Brk Wall ✓

4400

3496 21' LT Bay 3' Pk. Fence ✓

3489 16' LTE Pk # JP 275583 ✓

3485 24.5 RTE 3.7' Wall ✓

3458 24.3 RT E 10' Drive: 64' RT par ✓

140.1
140.2
140.1
140.4
139.8
140.5
141.7
141.0
140.98
141.78
140.29
138.98
140.0
139.16
139.77
140.20
140.42

3.2
4.0
3.1
2.5
3.2
3.5
2.8
1.2
2.5
4.0
1.6
141.7
3.28
2.30
26.1
LIP
34.5
Brk
77
1.50
2.99
4.30
25.4
TP
25.4
FTG
3.3
35
140.0
4.12
24.5
LIP
139.07
4.21
24.3
LIP
3.83
27
Brk
3.08
39
Brk
2.85
64
FTG

139.28
139.25
139.24
140.1
140.2
140.1
140.5
141.7
141.0
140.98
141.78
140.29
138.98
140.0
139.16
139.77
140.20
140.42

100
35
Wall
403
25
404
22.5
LIP
138.9
44
40
137.9
4.4
2.5
3.8
4.1
12
3.4
2.5
2.3
4.0
141.0
140.0
139.98
141.78
140.29
138.98
140.0
139.16
139.77
140.20
140.42

GROVELAND (CONT.)

6400
 5483.5 17.4 RT & Fire-Hydrant ✓
 5470 = E. Line SAN JACINTO ✓
 5466 24.3 LT & 2' WALK ✓
 5462.5 24.6 LT Beg Conc. wall - 7" wide ✓
 24.6 LT END PICK-FENCE ✓
 25.0' LT " CONC. WALL ✓
 5438 13.4 RT & WATER GATE ✓
 5430 = E SAN JACINTO ✓
 - & WALK ✓
 5419 24.7 LT Beg 3' PICK-FENCE ✓
 5416 25.1' LT Beg CONC. WALL 6" wide ✓
 5407 16.8 LT & Pole # P 77069 ✓
 4493 23.0 LT & 7' DRIVE ✓
 F.P.
 T.P. 6.92 146.47 3.73 139.55

Now Room-occupied
 ✓
 ✓

38

1411.5 ✓
 5.0
 40
 1422 ✓
 4.3
 25
 1423 ✓
 4.2
 15
 1417 ✓
 4.8
 10
 1416 ✓
 4.9
 10
 1411 ✓
 5.4
 10
 1428 ✓
 3.7
 25
 1431 ✓
 3.4
 40

1416 ✓
 4.9
 35
 1415 ✓
 5.0
 25
 1415 ✓
 5.0
 15
 1412 ✓
 5.3
 10
 1409 ✓
 5.6
 10
 1419 ✓
 4.6
 25

1415 ✓
 4.92
 35
 WALK
 1415 ✓
 4.90
 24.3
 15
 1407 ✓
 5.8
 25.0
 FTG
 WALL
 1409 ✓
 5.6
 24.6
 FTG
 TD
 1411 ✓
 5.06
 24.6
 TD

1409 ✓
 5.53
 35
 WALK
 1408 ✓
 5.62
 25
 WALK
 1405 ✓
 5.9
 25
 WALK
 1408 ✓
 5.7
 25
 WALK
 1406 ✓
 5.87
 25
 WALK
 1407 ✓
 5.7
 25

1405 ✓
 5.92
 25
 FTG
 1408 ✓
 5.63
 25
 TP

1407 ✓
 6.47
 5
 # Drive
 1406 ✓
 6.31
 25
 1407 ✓
 6.30
 23.0
 15
 WALK

146.47

GROVELAND (CONT.)

7419 - 25.7 RT & 2' WALK ✓

7409 24.9 LT & 2.5 WALK ✓

7400

6491 25.2 RT Beg 3' Pick Fence ✓

6455 24.9 LT & 7' Drive ✓ 9' LT gap. ✓

6450 (Soil-sample here)

T.P. 7.85 148.24 6.08 140.39 - 2x2 HUB & SAIL TAGS
 440 RT (S/L) & GROVELAND 148.24

6447 17.3 LT & 6" Tree ✓

6436 25.3 LT & 2.5' WALK ✓

6434 16.4 LT & 6" Tree ✓

6421 25.3 LT Beg Can. Wall
 16.5 LT & Pole A 170.495 ✓

6408 23.4 LT & 3' WALK ✓

6406 25.1 LT END WALL

LT

E

RT

39

143.9 144.07 143.90
 4.3 4.17 4.34
 40 35 WALK 24.9 LIP
 143.3 142.6 142.6
 4.9 5.6 5.6
 25 10 10
 144.20 144.37
 4.04 3.87
 25.7 30.7
 210 WALK

142.94
 5.55 5.30
 7.1 24.9
 143.4 143.0 142.2
 4.8 5.2 6.0 6.0
 40 25 10 10
 141.4 142.9 143.4
 6.4 5.3 4.8
 10 25 35

143.04 143.28
 3.83 3.07
 40 25.3
 WALK LIP

142.55 143.15
 3.92 3.32
 25.3 25.3
 FTG TP
 141.58 142.05 142.09
 4.89 4.17 4.38
 40 WALK 25 23.4
 LIP

4.5
 4.1 25.1
 FTG 146.47

GROVELAND (CONT)

8+95.44 = 9 Pl. COSTANA + GROVELAND (cut at 90° e curve)

8+73 16.1 LT & Pole # JP275584 ✓

T.P. 6.53 149.50 5.27 142.97 = 2x2 ♀

8+34.06 = Prop. B.C. RT
(Chained)
(8+33.4 = mae)

8+00

7+98 22.5 RT E 2.5 walk ✓

7+77 16.9 LT E 2" Tree ✓

7+74 7.2 RT E 99M

7+67 25.2 RT END PICK-FENCE ✓

6 7+66 25.5 LT E 2" WALK ✓

6 7+57 16.7 LT E 2" Peach Tree! ✓

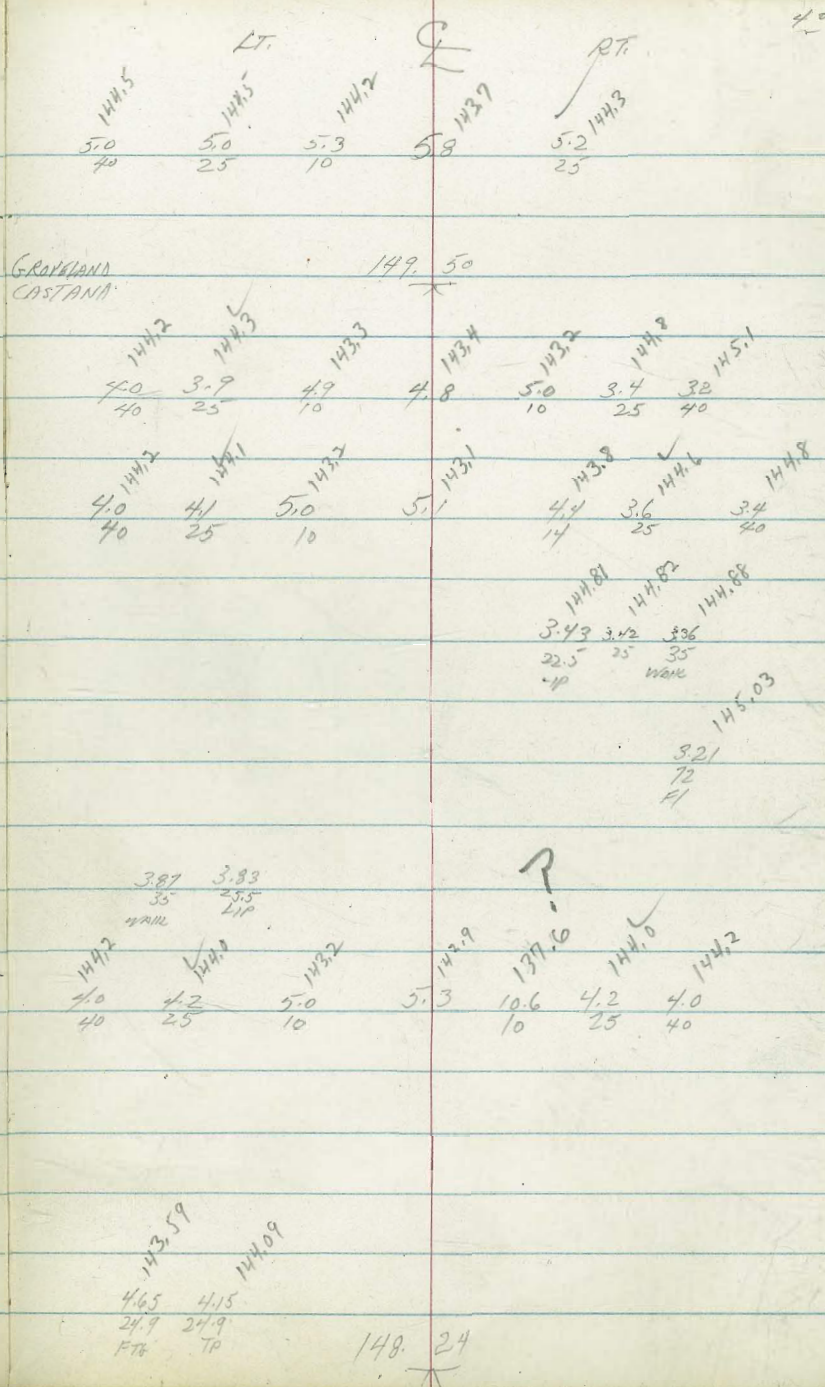
6 7+50

7+46 15.8 RT E Pole P77616 ✓

7+40 25.3 RT Bey Mallet Fence ✓

7+40 25.2 RT END PICK-FENCE ✓

7+36 24.9 LT END CONC WALL



GROVELAND (CONT)

10400 24.9 LT END Wall
16 " LTE 8" Tree JP 77615 ✓

9498 14.7 RT & 2" Tree ✓

9492 17.3 LT & 3" Tree

9491 23.8 RT & 2' WALL ✓

9490 14.6 RT & 3" Tree ✓

9489.10 - App BC RT

9483 17.5' LTE 8" Tree ✓

9477 58' RT & 9" Tree

9475 17.7 LTE 7" Tree ✓

9471.5 25.7 LTE 3' WALL

9465 17.6 LT & 1' Tree ✓

9455 17.7 LT & 8" Tree ✓

9450 25.1 LT 8" 6" Conc. Wall
11.5' LT & 2-Car gar.
8'± ON 2nd LANE LINE

9434 17.6 LT & 3" Tree ✓

9415.5 25.8 LT & 3' WALL

LT

E

RT

41

145.2
4.3
24.9
776

145.00
145.03
145.54
4.50 4.47 3.86
23.8 25 35
LIP WALL

145.3
4.2
40

145.2
4.3
25

144.5
5.0

144.2
5.3
10

144.9
4.6
25

145.4
4.1
40

145.20
4.30
35
WALL

145.17
4.33
25.7
LIP

145.92
3.58
58
71

144.65
4.85
115±
F.I.

144.9
4.6
40

144.9
4.6
25

145.40
4.10
25.1

144.4
5.1
10

144.1
5.4

144.0
5.5

144.4
5.1
20

144.8
4.7
25

145.2
4.3
40

144.93
4.67
35
WALL

144.79
4.71
25.8
LIP

149.50

GROVELAND (CONT.)

11+44.5 22.1 LT & 8" Palm ✓
 11+35 24.6 LT & Ribbon Drive ✓ 88' LT 94K ✓
 11+28 { 25.2 LT Bay 3' Steel-wire Fence
 16.5 LT & Pole J.P. 275 584 ✓
 23' LT & Bay 3' wide Hedge-3' tall ✓
 11+12.5 15.2 RT & 3" Tree ✓
 11+03 15' RT & 3" Tree ✓

T.P. 5.31 151.32 3.49 146.01

11+00
 10+94 15.2 RT & 2" Tree ✓
 10+85 15' RT & 2" Tree ✓
 10+75 15' RT & 6" Tree ✓

10+57 70' RT & 94K

10+50
 10+22 14.9 RT & 2" Tree ✓
 10+14.5 14.7 RT & 3" Tree ✓
 10+06 14.6 RT & 5" Tree ✓

LT. E RT.

143.53
 145.97
 146.01
 7.79 5.35 5.31
 88 2.86 24.6
 Ft. 1.0 5.0
 4.0

151.32

145.7
 145.9
 145.4
 145.5
 145.0
 145.9
 147.0
 147.2
 3.8 3.6 4.1 4.0 4.5 3.6 2.5 2.3
 40 25 10 10 20 25 35

145.9
 145.8
 145.1
 145.0
 144.8
 145.6
 146.6
 146.2
 3.6 3.7 4.4 4.5 4.7 3.9 3.3
 40 25 10 10 25 40
 2.9
 70
 DIRT Fd

149.50

GROVBLANDS (CONT.)

LT

E

RT

13

12+19 21.6 LT E 8' Palm ✓

12+18 16.2 LT E 16' # TR # 677614 ✓

12+00

11+99 21.8' LT E 6' Palm ✓

11+96 67' RT E 99'

11+82 22' LT E - END Hedge ✓

11+80 21.7 LT E 1' Palm ✓

11+73 25' RT E 10' D Vire 67' RT 99' ✓

11+69 21.7 LT E 1' Palm ✓

11+59 21.7 LT E 1' Palm ✓

11+51 24.9 LT E 2.5 WALK ✓

11+50

11+49 23.8 RT E 2.5 WALK ✓

146.1 146.4 146.2 146.3 146.1 147.4 147.7 148.4
5.2 4.9 5.1 5.0 5.2 3.9 3.6 2.9
40 25 11 50 10 21 25 40

149.00
2.32
F/

147.45 149.57 149.25
3.87 2.80 1.87
25 38 67
HP BK H

5.35 5.23 145.9 145.9 146.4 147.3 147.8
40 WALK 24.9 HP 145.8 146.4 147.3 147.8
5.30 5.2 5.1 J. 4 5.5 4.9 4.0 3.5
40 25 11 10 21 25 41 35
40 3rd 11 10 21 25 41 35
4.16 2.3.8 2.24 147.1 147.23 147.23
HP 35

151. 32

GROVELAND

LT.

♀

RT

14

chk: 8.55 133.17 = 133.14 =

SFLY 12 MON NARANJA
453rd

T.P. 2.32 141.72 11.92 139.40

14:00 East Ely of 53rd

13:05 E Line 53rd

12:80 E 53rd 5.5' H & m.H ✓

12:55 } 175 RTE F HYD
W Line 53rd

12:54 29.4 RT & Anch. - Pole # 472-79-H ✓

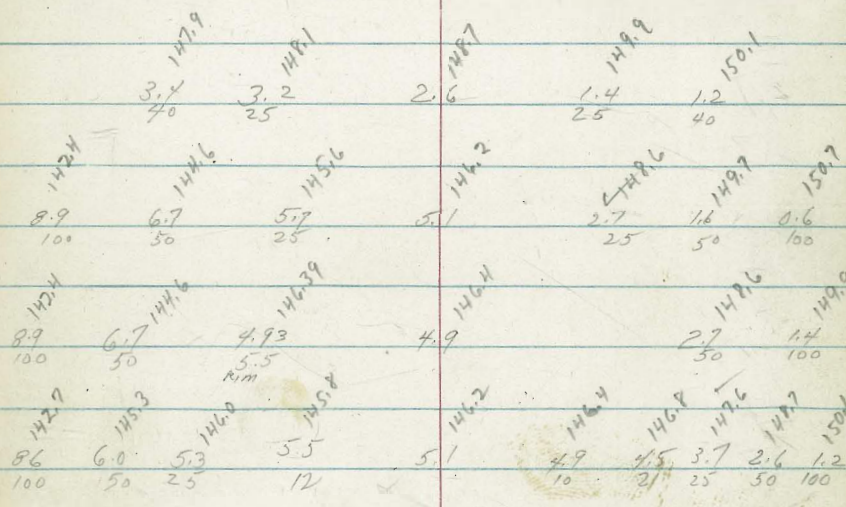
12:51 25.4 LT END Steel Fence

12:50 22.8 RT & 1' Cactus ✓

12:40 21.6 LT & 10" Palm ✓

12:36 16.4 LT & Deadman ✓

12:30 21.5 LT & 8" Palm ✓



Redwood &
Hutton
Kathko
2-10-55

SAN JACINTO: GROVELAND to IMPERIAL

(EH) LT.

♀

RT.

45

INDEXED
✓
FEB 7 1955

1+63 115' RT & 94' LT & P. 10 # 589660

1+53 31' LT (END TREES)

1+50

1+45 54' RT & MARK -4'

1+20 40.8 LT & 8' Drive ✓ 80' LT 94P-2CAR

1+00

0+74 30.1 LT & 4" Tree (Poplar Row 5 trees evenly spaced at 4' side)

0+71 27.0 RT & Pole # P271538 ✓

0+70 26.4 LT & Pole # 536287-H ✓

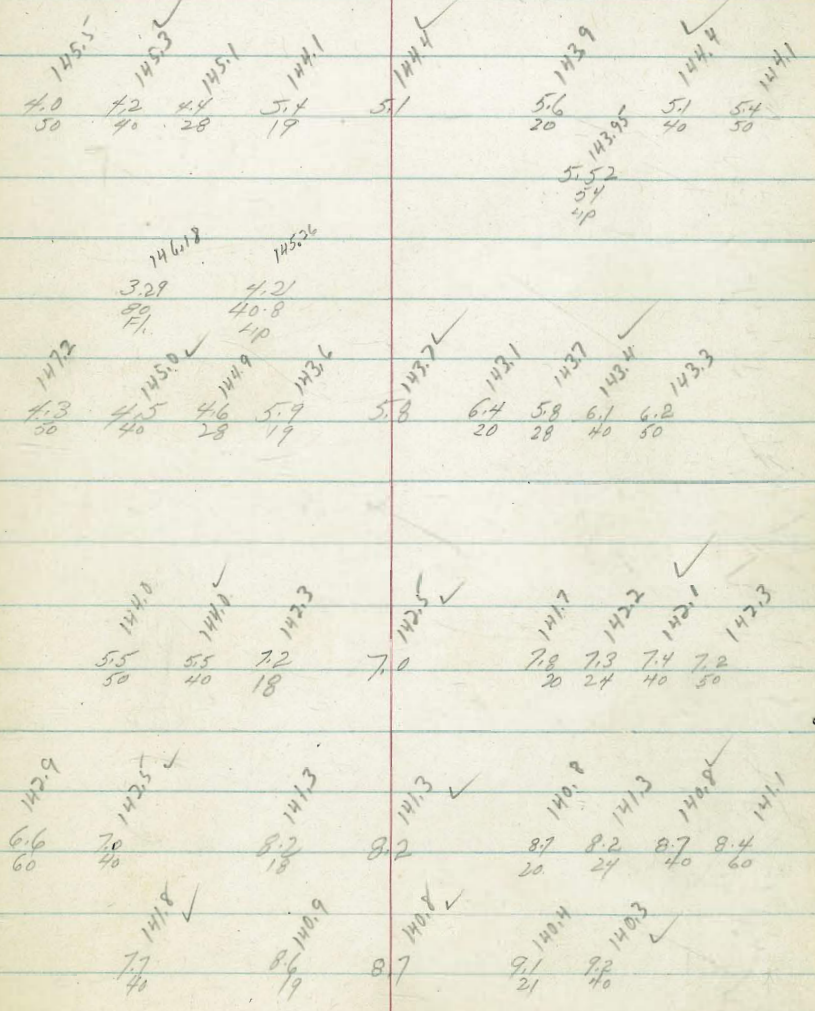
0+50

0+49 27.4 RT & DEADMAN ✓

0+15: Prop. B.C.'s - SAN JACINTO

SAN JACINTO - "old" - out graded -

0+00 = sly line GROVELAND
See Pg 37-38



B.M. 9.08 149.47

140.39: 2x2 & SAN JACINTO 440' sly & GROVELAND (Pg 39)

149.47

SAN JACINTO (CONT.)

3+67 85' RT & M.H. ✓
 3+62.35# APPROX. & SAN JACINTO & CASTANA
 Soil Sample here
 T.P. 11.12 155.80 4.79 144.68
 3+00 71.8 RT & 8' DRIVE ✓ 65.5 RT 99#
 2+91 29.3 RT & DEADMAN ✓
 2+70.5 28.5' RT & Bldg # P 277513 ✓ 36.5' RT & DEADMAN ✓
 ?
 2+63.58- B.C. RT SAN JACINTO (ALL SECTIONS 400'S Radial on Curve)
 2+08 4.5 LT & 2.5 WALK 1.5 tan/ly
 2+05.5 39.9 RT & 2.5 WALK ✓
 2+00
 1+96 41.8 LT & 2.5 WALK - on/ly to st - tan/ly
 1+84 40.1 RT & 8' DRIVE 115 RT 99#

LT. RT.
 147.6 146.3 145.3 144.8 143.9 143.7
 8.2 9.5 10.5 11.0 11.9 12.1
 60 40 30 40 60
 145.8 145.4 144.7 144.5 144.2 144.4 144.3 144.20
 3.7 4.1 4.4 5.0 5.3 5.35 5.2 5.27
 50 40 30 40 40 41.8 50 50
 146.5 146.2 145.1 144.8 144.7 144.8 144.4 144.4 144.2
 3.0 3.3 4.0 4.7 4.8 4.7 5.1 5.3
 60 40 30 28 23 40 60
 146.31 146.17 146.1 145.4 145.4 144.5 144.8 144.71 144.71 144.71
 3.4 3.7 4.1 5.0 5.2 4.7 5.2 4.76 4.76 4.76
 60 40 30 21 18 40 40 40 40 40
 3.59 3.61 4.84 4.84 5.06
 10' BK WALK 115.8 115.8 115
 149.47

SAN JACINTO (CONT)

LT.

£

RT.

47

T.P. 10.95 159.14 741 148.39

6200 39.4 RT & 3.5 WALK

1492
6.6
60
1483
7.5
40
1478
8.0
1476
8.2
30
1483
7.4
40
1483
7.5
50
1485
7.3
50
1485
7.1

5785 24.6 RT & Dead man ✓

5776 24. RT & Pole # 377510 ✓

5764 54.5 RT (Radial) ^{5th} 2" Can. drain - empties into creek ✓
(Drains from NW 1/4 in lot Imp. + San Jacinto)

5750

1477
8.1
60
1481
7.7
40
1476
8.2
27
1470
8.8
1457
10.1
40
1444
11.4
60
1435
12.3
62
BANK
Creek
12.84
54.5
Fl. line
142.96

5748 27.3 RT & Anchor - Pole # ✓

5730

150.7
5.1
60
149.5
6.3
40
1477
8.1
30
1470
8.8
1455
10.3
40

5737 29 RT & Dead man ✓

5700

151.3
4.5
60
149.9
5.9
40
1478
8.0
30
1471
8.7
1463
9.5
17
1453
10.5
50
139.9
15.9
50
Creek
BANK

4761.38 = Prop. B.C. RT ✓

151.1
4.7
60
151.0
4.8
50
1482
7.6
40
1472
8.6
24
1470
8.8
145.80
10.0
40
145.80
10.5
60
139.40
16.4
60
BANK
Creek

4759 27.5 RT & Pole # 573614-H : 35.4 RT & Dead man ✓

1489
6.9
60
1476
8.2
40
1459
9.9
25
145.7
10.1
1450
10.8
40
1441
11.7
60

4705.99 = Prop. B.C. LT

155.80

SAN JACINTO (CONT.)

7+52.7 = N. 1/2 Edge conc. Pav. (conc. covered with Black-Tf) (sect. along edge)

7+44 1/2 = Edge overlay Pav. (inner edge) Sect. along Edge

7+41 35' L = 3x3' conc. cur (Traffic Stand) ✓

7+28 (RANAL) 50' RT = N.W. 1/4 END (1.5' IN. T.)
Imperial SAN JACINTO TYPE B2

7+11.6 1/2 = N. line Imperial - Ely

6+98.24 = Prop. of RT

6+92.52 = Prop. of Rly. Lt.

6+68 45' RT & 3' walk

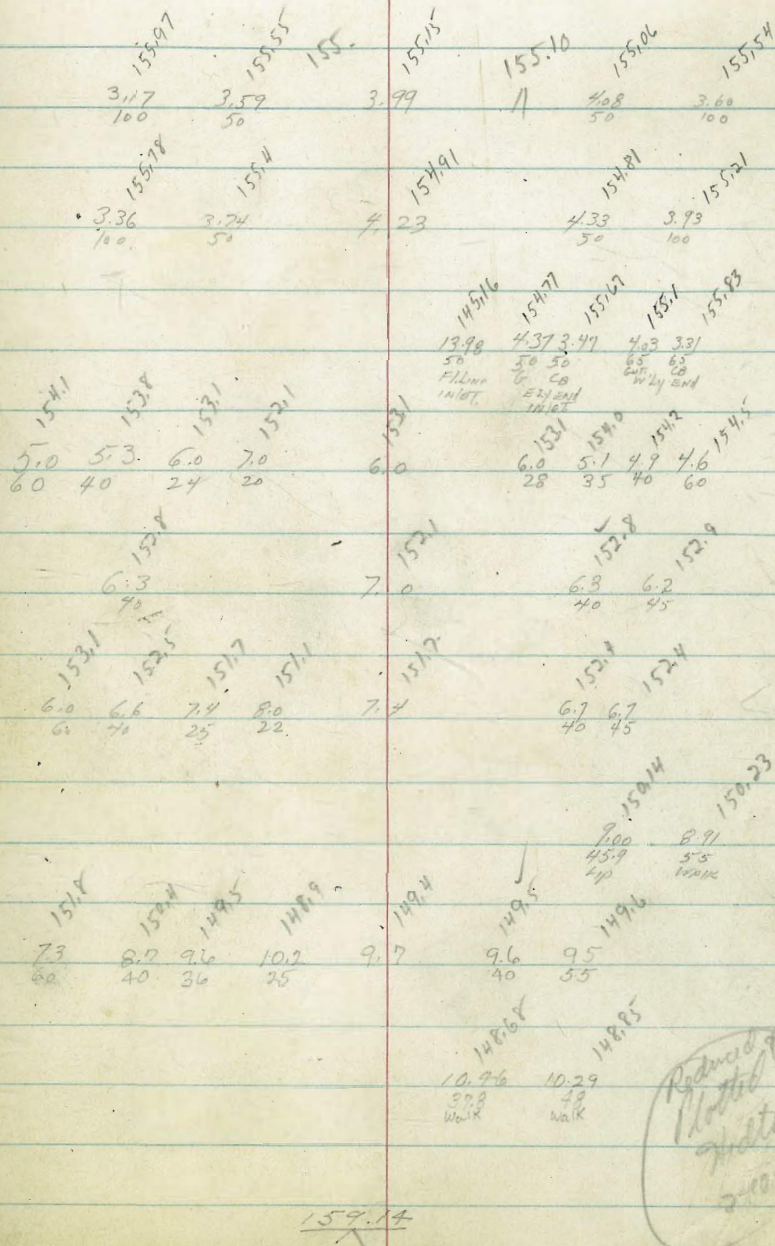
6+50

6+27 37.8' RT & 3' Conc. Walk

Lt. \$

RT.

48



SAN JACINTO

11

761.7
752.3
- 9.0

Chick

384 155.30 = 155.27 - Lt. Fr. & Imperial + B.A. Ely
E SAN JACINTO

7+61.7 = Imperial

156.13
3.01
100

155.65
3.49
30

155.29
3.85

155.29
3.85
50

155.27
3.27
100

159.14

CASTANA: EUCLID to GROVELAND

0+81.5 27.4 RT & 3' WALK - not radial - angles w/ly

0+50

T.P. 3.10 150.55 0.61 147.45

0+19 15' RT & Pole # 277529 ✓

0+15 = { = B.C. LT. CASTANA (All outst sections RADIAL ON CURVE
Prop. BCs

(atlet-DIRT - graded)

0+00 = E. LINE EUCLID

0-03 15.9 RT & Deadman

0-27 = VINEY Edge ^{Wick top} at shoulder

0-30 Line of E. side CONC. DW

0-40 = E. EUCLID (Wick top over Conc.)

T.P. 7.52 148.06 3.75 140.54 - 1/2 TC

B.M. 11.52 144.29

132.77 = L+TR & GROVELAND + EUCLID

(N4) LT

INDEXED

FEB 7 1955

6.2 144.4 6.1 144.5 6.2 144.4 7.0 143.6

E

RT

50

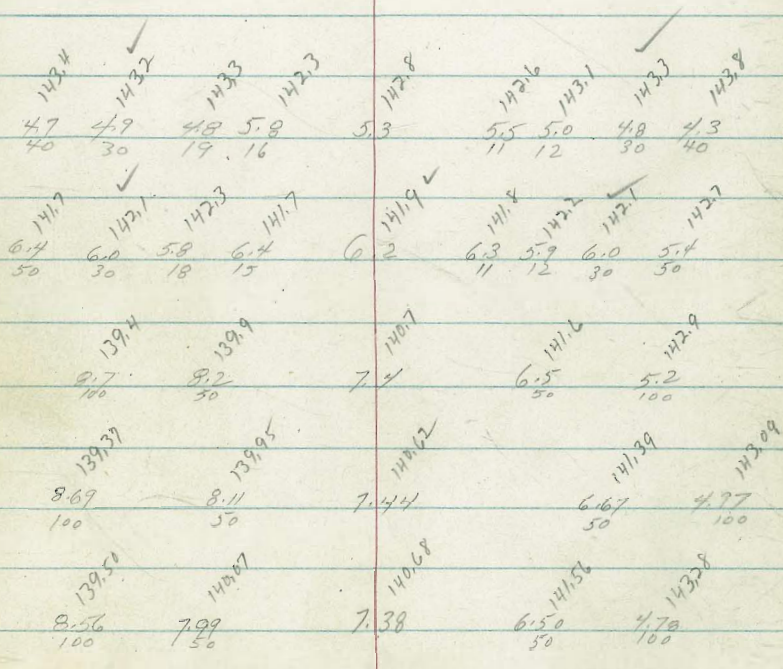
6.2 144.4

6.3 144.3

6.2 144.4

5.0 144.8

150.55



CASTANA + EUCLID

148.06

CASTANA (CONT.)

1485 30.8 LT 3' walk, 15 Ely ✓
 1459 30.1 RT 100g Cor. BK wall ✓ ✓
 1458 25.2 RT = ♀ Pole # 277530 ✓ ✓
 1450
 1441 27.3 LT end, Ely Cor. 8' drive ✓ ✓
 1432 = 29.7 LT Bay w/ly Cor. 8' Drive, 15 Ely ✓
 1427.5 30.8 ^{END-} LT = Sely Cor. 9' Drive ✓
 1424.5 7 RT ♀ M.H. Sower ✓
 1418.5 32 LT = ^{Bay} SWly Cor. 9' Drive ^{Corive} (Not radial to ST) ✓
 1417 22 RT ♀ Pole # D 308047 ✓
 1400

LT. 145.49 5.06 10 BK ON WALL 4.91 30.8 4P
 146.7 4.9 40
 146.1 4.5 30
 145.6 5.0 20
 145.63 4.92 25 BK Along dr. (No 90s)
 146.14 4.41 27.3 4P
 146.15 4.40 29.7 4P
 145.42 5.13 15 BK Along Drive = 810s CAR. PACT
 145.51 5.04 19 BK on drive = 101K
 146.50 4.05 12P
 146.50 4.05 32 4P
 146.25 4.3 40
 146.5 4.1 30
 146.5 4.1 20
 145.4 5.2 18
 146.1 4.5
 146.3 4.3 16
 146.8 3.8 22
 147.5 3.3 30
 147.6 3.0 50
 147.4 3.2 30.1 9id
 149.30 1.25 30.1 TP
 144.80 3.75 30.1 FTG
 146.3 4.3
 146.9 3.7 20
 147.8 2.8 22
 148.2 2.4 30
 148.6 2.0 40
 146.71 3.84 7 RIM

150.55

CASTANA (CONT.)

3441 29.9 RT & 8 Drive, 101 RT gas ✓

3408 26.5 RT END Pick-Fence, ✓

3406 26.5 RT & Pole # 2775 31 ✓

3400 30.1 RT & 9 Drive, 97 RT gas ✓

2495 30.1 RT END BIK WALL ✓

2450 30 RT END CON. WALL, Beg 6" Con BIK WALL ✓

2442 30.1 RT & 8.5 Drive, 80 RT gas ✓

2425 30.2 RT Beg 3' Picket-Fence ✓

1495.47° E.C. CASTANA

1495 30.2 RT Beg 6" wide Con. WALL ✓
29.8 RT END (4ly Con. Drive) 94 RT gas ✓

1485 29.5 RT Beg. Wly end 10' Drive ✓
29.8 RT END WALL ✓

LT. E RT. 52

1494	1493	1493	1491	1491	1492	1493	1494	1495
7.2	7.1	7.3	6.5	6.0	5.4	5.17	4.3	3.60
40	30	18		.22	30	30.1	40	97
					9rd	lip	44	FI

1443	1441	1441	1437	1446	1452	1457	14730	14530	14715	14465	1463
6.3	6.5	6.5	6.9	6.0	5.4	4.9	3.25	5.25	3.40	5.9	4.3
40	30	21	20		22	30	30	30	30	30	40
					9rd	3rd	TP	TP	TP	TP	
					CON. WALL	CON. WALL	CON. WALL	CON. WALL	CON. WALL	CON. WALL	

1453	1454	1454	1455	1463	1472	1478
5.3	5.2	5.2	5.1	4.3	3.4	2.8
40	30	21		20	30	40

150.55

CASTANA (CONT)

LT C RT

53

T.P 3.22 149.30 447 146.09

149.30

4403 34.3 RT & 10' Drive, 71 RT 90° ✓

145.14
53.36 38.0
34.3 71
LIP FI

3193 288' LT END RAIL FENCE ✓

3492 43' LT & 10' CURB/T SLAB

8.90
43
FI
1418
8.8
40
1426
8.0
30
1428
7.8
19
1426
8.0
17

1432
7 4

1440
6.6
22
1446
6.0
23
1451
5.5
30
1456
5.0
40

3187.43 = B.C.H. CASTANA (Callouts (Sec. Radial))

3460.5 30.3 RT END BIK WALL ✓

148.53
202
30.3
TP
6.9
30.3
FTG
5.6
30.3
145.0
144.3
145.0
145.0
145.0
144.3
145.0

3451 46.5 LT & 9.5 CON. SLAB, (Cur. Part)

7.17
46.5
FI
1433
7.3
40
1433
7.3
30
1434
7.2
19
1429
7.7
18

1436
7.0

1443
6.3
22
1447
5.9
23
145.0
5.6
30
145.1
5.5
40

3450

3451.5 30.3 RT Beg BIK WALL ✓

148.61
1.94
30.3
TP
6.4
30.3
FTG
1442

3412 30.1 LT Beg 3' RAIL FENCE ✓

CASTANA (CONT.)

5450
 5413.5 = ST. BARRICADE : 6.4 LT - NLY END; 25.8' RT to SLY END

5409 .99 = E.C. CASTANA

500
 4485 = Toe ELY BANK Creek &

4470 = Toe BANK Creek

4460 32.2 RT & Pole 277532; 43' RT & Deadman

4457 = ST. BARRICADE : 2' LT to NLY END - 29.8' RT to SLY END
 Shoulder Fill Ahead = WLY BANK Creek

4436 32.6 RT & 3' walk

4412

4410 28.5 RT & 2' walk

LT. RT.

1434	1438	1444	1453	1460
5.9	5.5	7.9	4.0	3.3
50	30		50	50

1430	1430	1432	1437	1419
6.3	6.3	6.1	5.6	7.4
50	30		30	50
1428	1426	1430	1401	1383
6.5	6.7	6.0	9.2	11.0
60	50	30	30	50
			70c	60

1421
 60
 60
 1421
 Mt. Creek
 Swamps wly

1394	1386	1370	1377	1383
9.9	10.7	12.3	11.6	11.0
50	30		30	50

1360	1361	1371	1380	1392
13.3	13.2	12.2	10.3	10.1
50	30		30	50

1359	1367	1367	1431	1433	1439	1444
13.4	12.6	12.6	6.2	6.0	5.4	4.9
60	30	22	2		30	50
		70c	TP			
			BANK			

1358	1414	1423	1424	1420	1445.6	1449.4
13.5	7.9	7.0	6.9	6.3	4.74	4.36
60	30	20	13		32.6	10 BK
Toe		TP			UP	WALK
step		BANK				

1447.3	1449.0	1452.9
4.57	4.46	4.1
28.5	30	40
LIP	WALK	

149.30

CASTANA (CONT.)

LT.

E

RT.

T.P 4.69 151.44 2.55 146.75

7+43 29.9 RT Beg 2' Picket Fence ✓
29.6 RT E End Hedge ✓

7+36.61 = Prop. B.C. LT.

7+00

146.8	146.9	146.6	146.1	146.5	146.4	147.0	147.8	147.3
2.5	2.4	2.7	3.2	2.8	2.9	2.3	1.5	1.0
50	30	20	10	14	18	30	40	
146.3	146.5	146.3	145.8	146.4	146.5	147.3	148.1	148.8
3.0	2.8	3.0	3.5	2.9	2.8	2.0	1.2	0.5
50	30	15	11	16	20	30	40	

6+99 29.5 RT & ^(high) Beg 5' Hedge - 3' wide ✓

6+92 29.5 RT & 10' Drive; 61' RT gar. ✓

148.04	149.15
1.26	0.15
29.5	61
1p	Fl.

6+84 26 RT & Pole # 376108 ✓

6+70 26.4 RT & Headman ✓

6+62.37 = Prop. B.C. RT.

144.8	145.0	145.8	145.9	146.3	147.2	148.0
4.5	4.3	3.5	3.4	3.0	2.1	1.3
30	14	16	18	30	50	

6+50

144.7	145.5	145.5	146.1	146.1	147.3
4.6	3.8	3.8	3.2	3.2	2.0
30	15	18	30	40	

Soil - Sample here - See pg 46

6+04.61 = E CASTANA & SAN JACINTO.

144.0	143.9	144.1	144.8	145.5	145.7	147.3
5.3	5.4	5.2	4.5	3.8	2.1	2.0
60	50	30	30	45	60	

5+95.4 .30 RT & M.H ✓

149.30
4.50
93
Rim

CASTANA (CONT.)

8+56 42.3 LT & 10.5' Drive ^(CAR-PORT) ^{CON. SLAB} ~~✓~~ E'S N'LY YELY
 8+53 30' RT & 5' high-Hedge -3' wide ^{Asy} ✓ From ST.

8+50

8+44 29.5' RT & 10' Drive, 50 RT' gap ✓

8+30 30' LT Beg 3' Pick-Fence

8+18 29.7' RT & 3' walk ✓

8+11 33' LT = 5' Ely Cord, 2' walk - PUNS W' N'LY
 AWAY FROM ST.

8+00

7+99 23.7 RT & Pile # 370789 ✓

7+89 29.9 RT END Fence ✓

7+83.5 30' RT & 3' WALK ✓

LT. E

RT.

146.94
 4.50
 10
 BK

146.96
 4.48
 LIP

146.9
 4.5
 4.5
 30

146.9
 5.2
 8

146.6
 4.9

146.6
 4.9
 18

146.0
 3.4
 30

148.1
 3.3
 40

148.01
 3.43
 29.5
 LIP

148.28
 3.16
 50
 F.I.

147.89
 3.55
 29.9
 LIP

147.99
 3.15
 40
 WALK

4.21
 108
 -8.44
 W/WALK

4.20
 33
 4P

147.5
 4.1
 40

147.1
 4.3
 30

147.1
 4.3
 20

146.6
 4.8
 10

146.8
 4.6

146.5
 4.9
 16

147.3
 4.1
 20

147.7
 3.7
 30

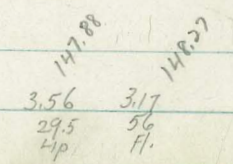
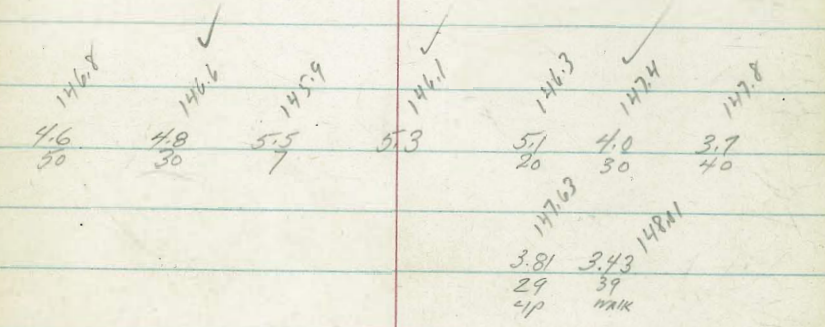
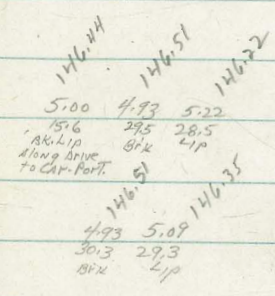
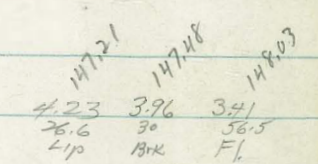
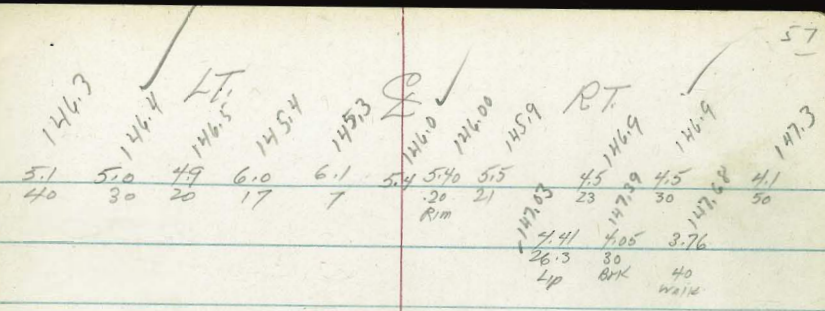
147.7
 3.7
 50

147.97
 3.47
 30
 LIP

147.65
 3.79
 40
 WALK

CASTANA (CONT.)

- 9466.09 = { 0.20' RT & M.H. ✓
B.C. LT CASTANA ✓
28.7' LT to Fence at B.C. ✓
- 9443 26.3' RT & 3 WALK ✓
- 9429 29.8' LT Beg 5' Pick-Fence ✓
- 9420.5 26.6' RT & 8' Drive, 56.5' RT gar ✓
- 9420 28.5' LT & Fly Ribbon ✓
- 9414 29.3' LT & 1.5' W/ly Ribbon Drive (rows // to int. lot line) ✓
- 9412 24' RT & Pole # 370790 ✓
- 9411 29.5' RT & End Hedge ✓
- 9400
- 8486 29' RT & 3' WALK ✓
- 8479.5 30' LT End Fence
- 8462.5 29.5' RT & 8' Drive, 56' RT. gar ✓



CASTANA (CONT.)

CHK: 7.23 = 142.94 = 142.97 2 x B E

11719 50.4 RT END Pick-Fence ✓

11717.36 S. Line GROVELAND (Section Along S. Line)
(For SECTIONS Groveland this area)
see pg 40

11400

10481 28.9 RT Dead man ✓

10458.5 23.8 RT to E Pdc # 27079 ✓

10457.12 E.C. CASTANA
30' RT to Fence at E.C. ✓

10449 28.9 RT Beg 2' Board Fence ✓

10443 31.7 RT to N'ly Corn. Drive ✓

10436 28' RT = S'ly Corn, 8' Drive (// to int. lot line)
Drive is

10411.6 = Mid PT

10408 30' LT END Fence

T.P. 4.59 150.17 5.86 145.58

GROVELAND
& CASTANA
Pg 40

1441.97 1441.8 1441.4 1441.8 1441.2 1441.07 1441.7 1441.6 1441.9
5.4 5.8 6.4 6.0 6.1 5.5 5.6 5.3
52.53 20 12 25 30 50 102.51
1441.97 1441.9 1441.4 1441.97 1441.6 1441.5 1441.9 1441.4 1441.4
5.2 5.3 5.8 6.2 5.6 5.7 5.3 5.1 4.8
50 30 10 8 20 22 30 60
not Pdc not R. Line

145.77 145.57 144.6 144.97 144.7 145.6 145.8 144.1
4.4 4.6 5.6 5.2 5.5 4.6 4.4 4.1
40 30 8 18 21 36 50

146.08 146.08 146.10 146.5 146.2 146.5
4.9 3.7 4.9 3.52
28 22 along drive
40 21 20 30 37
145.2 146.1 146.2 146.5
4.0 4.1 4.0 3.7
40 30 24 9 50
146.2 146.1 145.8 144.9 145.3 145.3
4.0 4.1 4.4 5.3 4.9 5.0 4.1 4.0 3.7
40 30 24 9 17 20 30 50

150.17

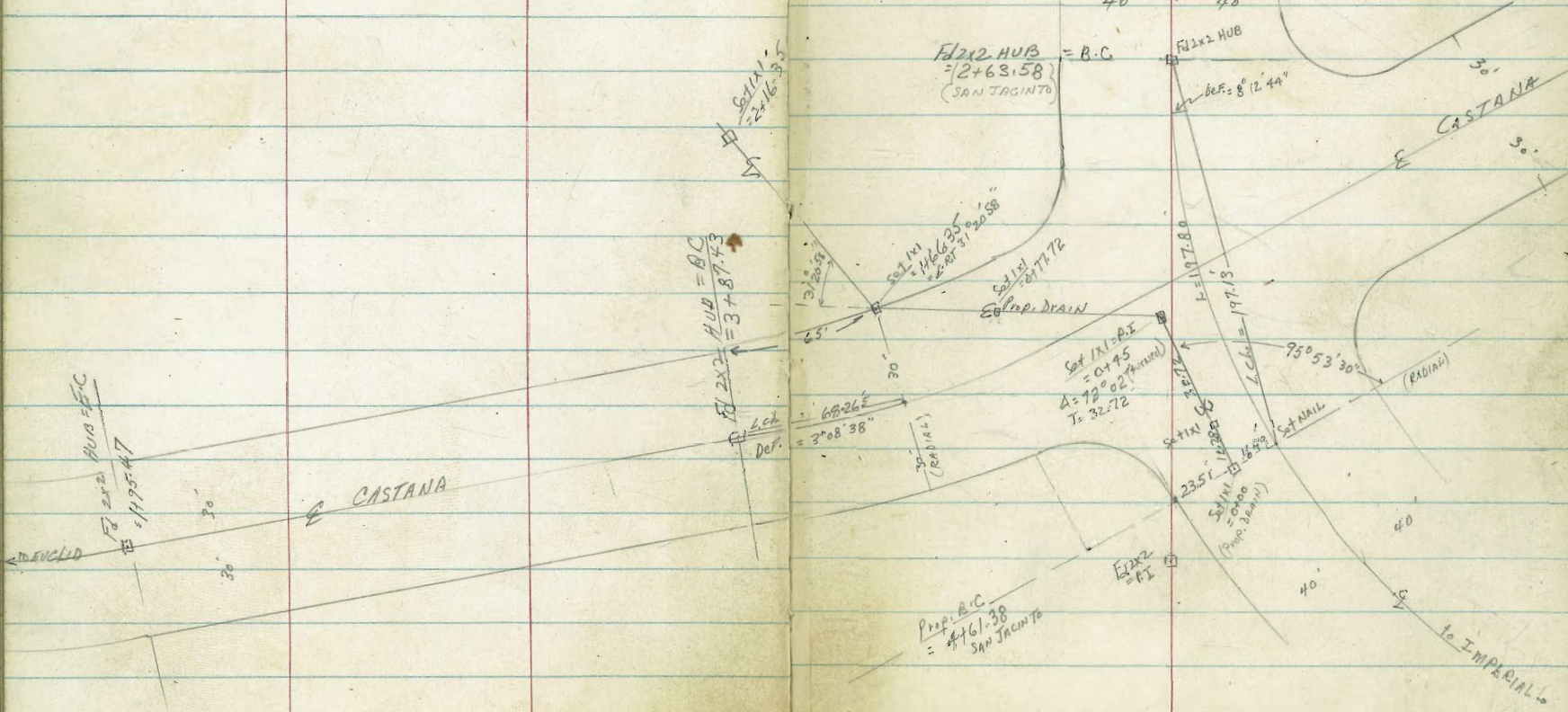
Revised
Map
2-10-55

Clark
Shepherd
O'Neil
3-17-55
W/O 32231

Proposed DRAIN:
SAN JACINTO
CASTANA

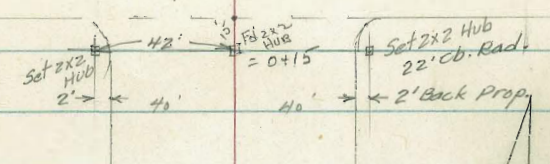
Ref: F.B. 1696-34-35
F.B. 2255
Dwg: Sketch - unnumbered
No-map issued

INDEXED
JAN 1955



GROVELAND

57



Set 2x2 HUB = B.C.
= 2+63.58
(SAN JACINTO)

Set Nail = 2+16.35

HUB = B.C.
= 3+87.73

Set Nail = P.I.
= 0+95
A = 78° 02' (approx)
I = 32.72

to IMPERIAL

Prop. Drain SAN JACINTO & CASTANA

LT

E

RT

60

1722 = Shoulder Ditch

137.1
11.9
12
7.0 Ditch
(Bottom)
with

140.1
6.9
142.2
6.8
10

1700

137.8
11.2
27
7.0
(Bottom)
Ditch
with

143.2
5.8
13
Shoulder
Ditch

143.7
5.3
10

143.7
5.3
10

143.5
5.5
10

0+75

145.0
4.0
10

144.6
4.3
10

144.5
4.5
10

L (outs 90° For Tang.)

145.1
3.1
10

145.7
3.3
10

145.5
3.5
10

0+45: P.I. = 1.47 72°02' (outs 1 @ Tang.)

145.3
3.7
10

145.7
3.3
10

145.5
3.5
10

0+03 E 10' LT Pole # 573614; 17.7 LT @ deadman

0+00

138.7
10.3
5.0
Approx E
Ditch

144.6
4.4
3.3
Shoulder
Ditch

146.4
2.6
10

146.5
2.5
10

146.5
2.5
10

0-25

145.8
3.2
10

146.5
2.5
10

146.4
2.2
10

B.M.

8.58 148.97

140.39: 2x2
440' S'ly E
(See pg 39)

HUB & SAN JACINTO
GROVELAND

148.97

LT. $\frac{E}{S}$ RT 61

chk: 8.58 140.39 = 140.39 = STG B.M.

3+00 Approx. bott. channel ahead (meanders)

~~17.0~~
132
171.0

2+50

136.6 136 135.5 134.5 134.5
12.2 12.8 13.5 14.5 14.5
10 5 6
Approx. toe

2+46 35.5 LT NW 1/4 Corn. House

2+26 22 LT NE 1/4 Corn. House

2+25

137.4 137.9 136.8 134.7 135
11.6 11.1 12.2 14.3 14.0
10 3 5
Approx. toe

2+00 Ditch 1/5 ft. RT. here

135.9 135.9 135.8
13.1 13.1 13.2
10 10

6' out 90° For Tang.

139.2 136.8 135.5 136.5 137.6
9.8 12.2 13.5 12.5 11.9
18 8 12
Approx. toe

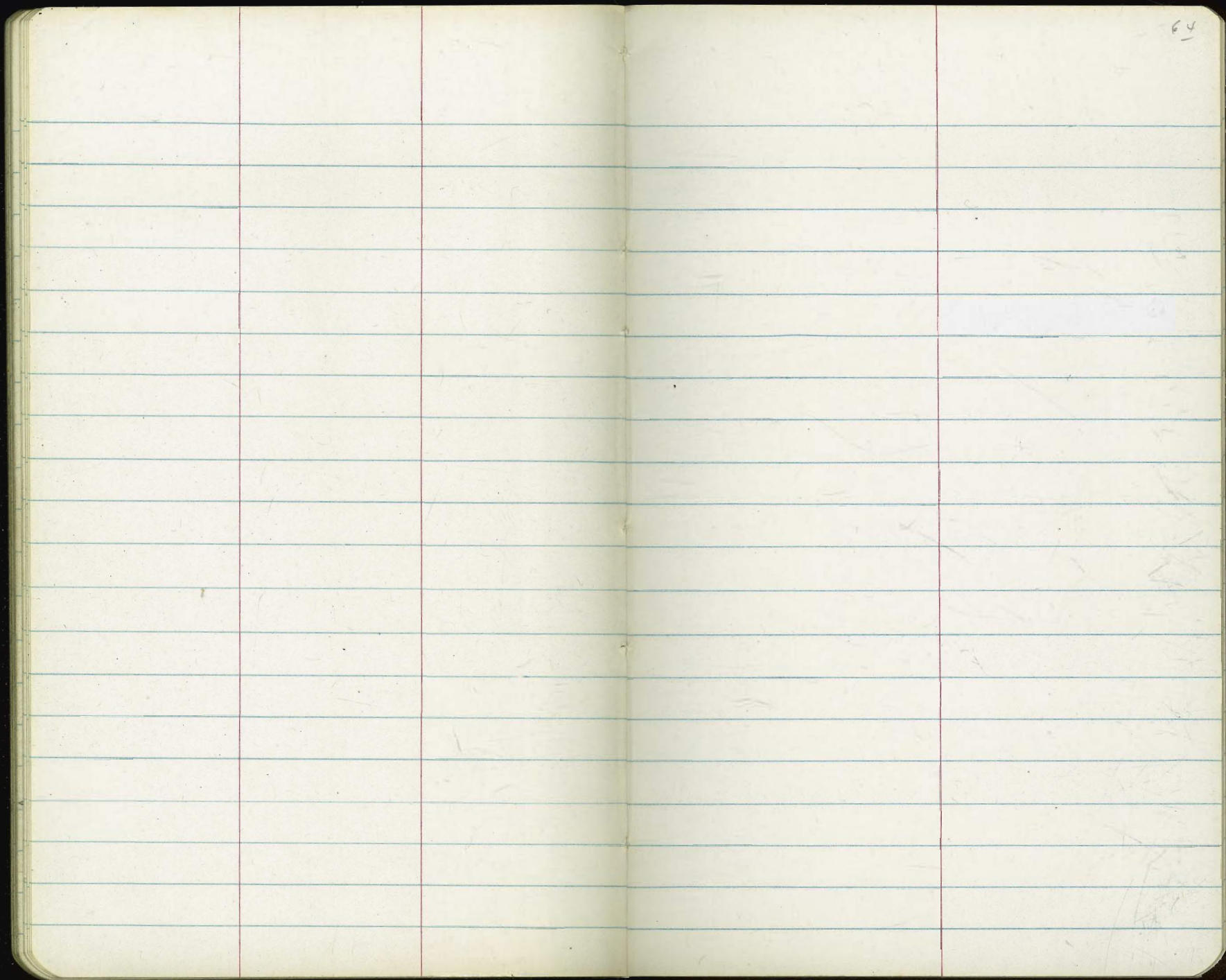
1466.35: \angle RT $31^\circ 20' 58''$ = Approx. $\frac{E}{S}$ Ditch
outs 90° BK Tang

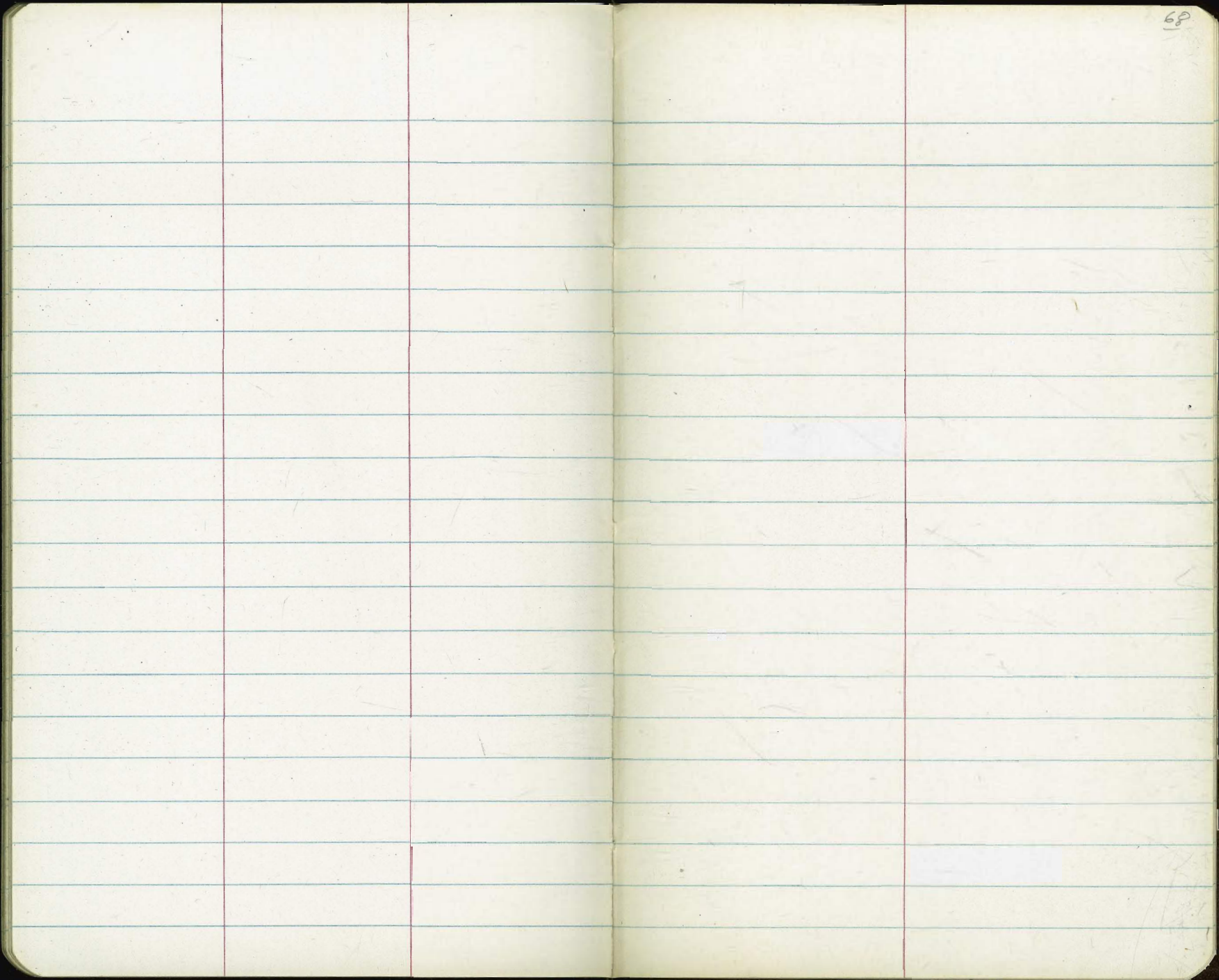
139.9 136.4 135.5 136.6 137.8
9.1 12.2 13.5 12.4 11.2
18 10 12
Approx. toe

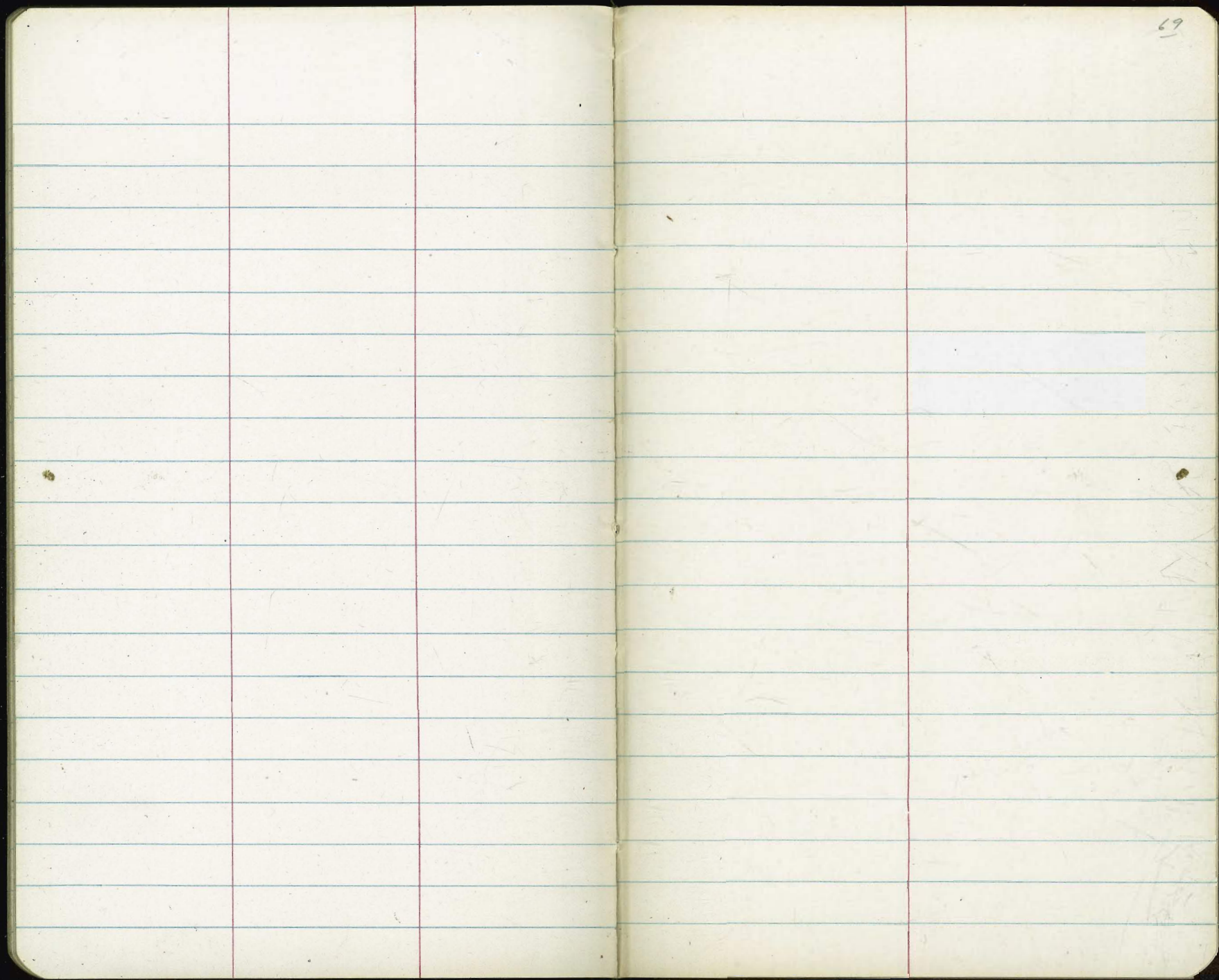
1437 = toe Ditch - Bottom

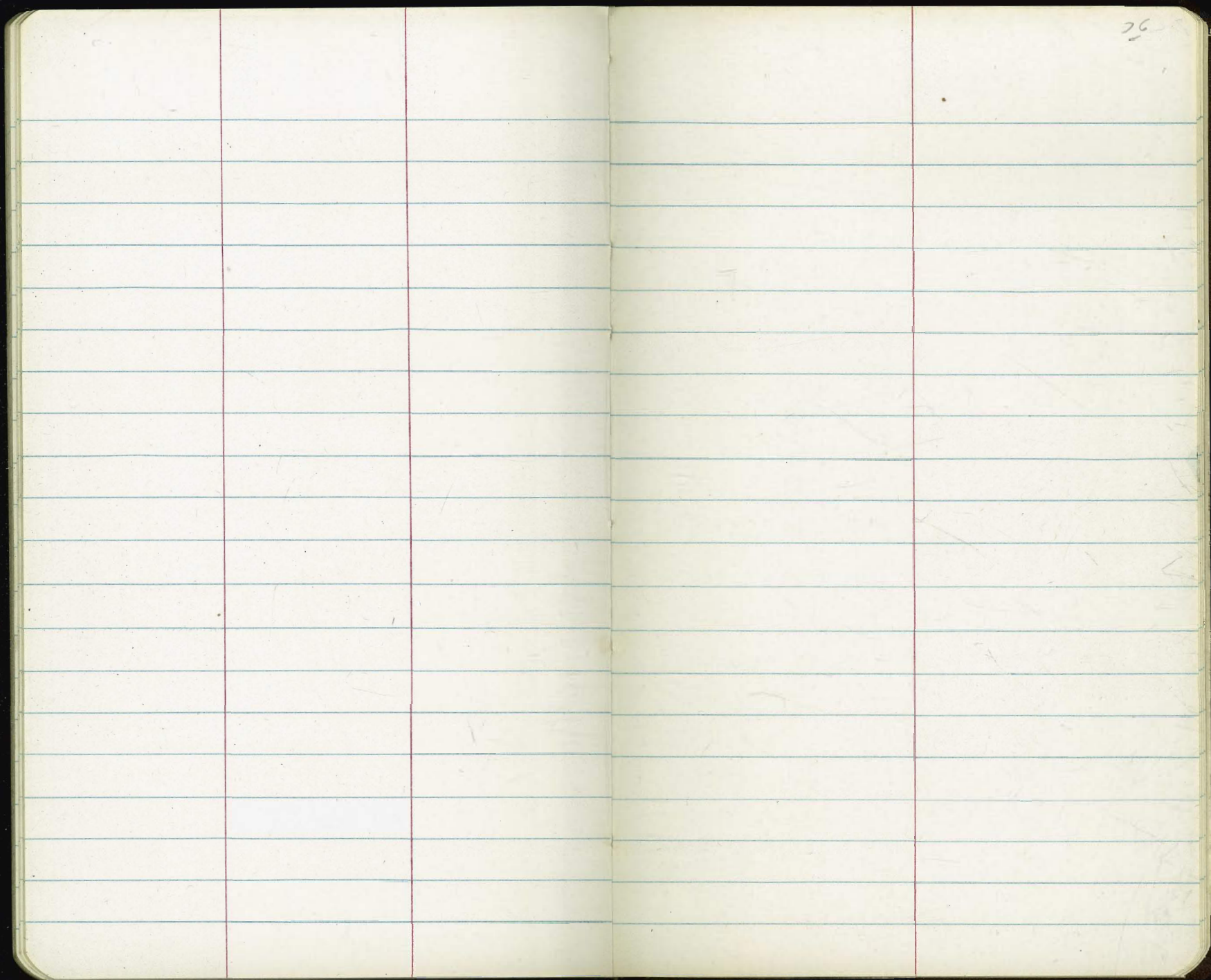
136.5 136.4 140.
12.5 12.2 9.0
8 10
Approx. 9
Ditch

148.97
↑









26

29434
 1079
 305 13

51
 92
 59

29592

915

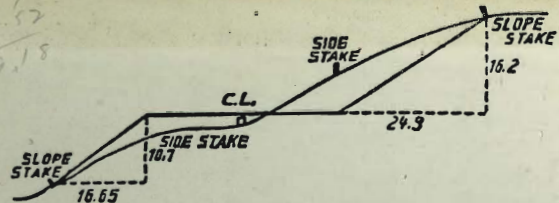
30507

94

46

40544

243
 6915



DISTANCES FROM SIDE STAKES FOR CROSS-SECTIONING.
 SLOPE 1 1/4 TO 1. ROADWAY OF ANY WIDTH.

	0	.1	.2	.3	.4	.5	.6	.7	.8	.9	
0	0.00	0.15	0.30	0.45	0.60	0.75	0.90	1.05	1.20	1.35	0
1	1.50	1.65	1.80	1.95	2.10	2.25	2.40	2.55	2.70	2.85	1
2	3.00	3.15	3.30	3.45	3.60	3.75	3.90	4.05	4.20	4.35	2
3	4.50	4.65	4.80	4.95	5.10	5.25	5.40	5.55	5.70	5.85	3
4	6.00	6.15	6.30	6.45	6.60	6.75	6.90	7.05	7.20	7.35	4
5	7.50	7.65	7.80	7.95	8.10	8.25	8.40	8.55	8.70	8.85	5
6	9.00	9.15	9.30	9.45	9.60	9.75	9.90	10.05	10.20	10.35	6
7	10.50	10.65	10.80	10.95	11.10	11.25	11.40	11.55	11.70	11.85	7
8	12.00	12.15	12.30	12.45	12.60	12.75	12.90	13.05	13.20	13.35	8
9	13.50	13.65	13.80	13.95	14.10	14.25	14.40	14.55	14.70	14.85	9
10	15.00	15.15	15.30	15.45	15.60	15.75	15.90	16.05	16.20	16.35	10
11	16.50	16.65	16.80	16.95	17.10	17.25	17.40	17.55	17.70	17.85	11
12	18.00	18.15	18.30	18.45	18.60	18.75	18.90	19.05	19.20	19.35	12
13	19.50	19.65	19.80	19.95	20.10	20.25	20.40	20.55	20.70	20.85	13
14	21.00	21.15	21.30	21.45	21.60	21.75	21.90	22.05	22.20	22.35	14
15	22.50	22.65	22.80	22.95	23.10	23.25	23.40	23.55	23.70	23.85	15
16	24.00	24.15	24.30	24.45	24.60	24.75	24.90	25.05	25.20	25.35	16
17	25.50	25.65	25.80	25.95	26.10	26.25	26.40	26.55	26.70	26.85	17
18	27.00	27.15	27.30	27.45	27.60	27.75	27.90	28.05	28.20	28.35	18
19	28.50	28.65	28.80	28.95	29.10	29.25	29.40	29.55	29.70	29.85	19
20	30.00	30.15	30.30	30.45	30.60	30.75	30.90	31.05	31.20	31.35	20
21	31.50	31.65	31.80	31.95	32.10	32.25	32.40	32.55	32.70	32.85	21
22	33.00	33.15	33.30	33.45	33.60	33.75	33.90	34.05	34.20	34.35	22
23	34.50	34.65	34.80	34.95	35.10	35.25	35.40	35.55	35.70	35.85	23
24	36.00	36.15	36.30	36.45	36.60	36.75	36.90	37.05	37.20	37.35	24
25	37.50	37.65	37.80	37.95	38.10	38.25	38.40	38.55	38.70	38.85	25
26	39.00	39.15	39.30	39.45	39.60	39.75	39.90	40.05	40.20	40.35	26
27	40.50	40.65	40.80	40.95	41.10	41.25	41.40	41.55	41.70	41.85	27
28	42.00	42.15	42.30	42.45	42.60	42.75	42.90	43.05	43.20	43.35	28
29	43.50	43.65	43.80	43.95	44.10	44.25	44.40	44.55	44.70	44.85	29
30	45.00	45.15	45.30	45.45	45.60	45.75	45.90	46.05	46.20	46.35	30
31	46.50	46.65	46.80	46.95	47.10	47.25	47.40	47.55	47.70	47.85	31
32	48.00	48.15	48.30	48.45	48.60	48.75	48.90	49.05	49.20	49.35	32
33	49.50	49.65	49.80	49.95	50.10	50.25	50.40	50.55	50.70	50.85	33
34	51.00	51.15	51.30	51.45	51.60	51.75	51.90	52.05	52.20	52.35	34
35	52.50	52.65	52.80	52.95	53.10	53.25	53.40	53.55	53.70	53.85	35
36	54.00	54.15	54.30	54.45	54.60	54.75	54.90	55.05	55.20	55.35	36
37	55.50	55.65	55.80	55.95	56.10	56.25	56.40	56.55	56.70	56.85	37
38	57.00	57.15	57.30	57.45	57.60	57.75	57.90	58.05	58.20	58.35	38
39	58.50	58.65	58.80	58.95	59.10	59.25	59.40	59.55	59.70	59.85	39
40	60.00	60.15	60.30	60.45	60.60	60.75	60.90	61.05	61.20	61.35	40
41	61.50	61.65	61.80	61.95	62.10	62.25	62.40	62.55	62.70	62.85	41
42	63.00	63.15	63.30	63.45	63.60	63.75	63.90	64.05	64.20	64.35	42
43	64.50	64.65	64.80	64.95	65.10	65.25	65.40	65.55	65.70	65.85	43
44	66.00	66.15	66.30	66.45	66.60	66.75	66.90	67.05	67.20	67.35	44
45	67.50	67.65	67.80	67.95	68.10	68.25	68.40	68.55	68.70	68.85	45
46	69.00	69.15	69.30	69.45	69.60	69.75	69.90	70.05	70.20	70.35	46
47	70.50	70.65	70.80	70.95	71.10	71.25	71.40	71.55	71.70	71.85	47
48	72.00	72.15	72.30	72.45	72.60	72.75	72.90	73.05	73.20	73.35	48
49	73.50	73.65	73.80	73.95	74.10	74.25	74.40	74.55	74.70	74.85	49
50	75.00	75.15	75.30	75.45	75.60	75.75	75.90	76.05	76.20	76.35	50

THE NATIONAL BLANK BOOK COMPANY
 HOLYOKE MASSACHUSETTS
 NEW YORK CHICAGO BOSTON SAN FRANCISCO