

DISTANCES FROM SIDE STAKES FOR CROSS-SECTIONING
SLOPE 1 TO 1. ROADWAY OF ANY WIDTH

	0	.1	.2	.3	.4	.5	.6	.7	.8	.9	
0	0.00	0.10	0.20	0.30	0.40	0.50	0.60	0.70	0.80	0.90	0
1	1.00	1.10	1.20	1.30	1.40	1.50	1.60	1.70	1.80	1.90	1
2	2.00	2.10	2.20	2.30	2.40	2.50	2.60	2.70	2.80	2.90	2
3	3.00	3.10	3.20	3.30	3.40	3.50	3.60	3.70	3.80	3.90	3
4	4.00	4.10	4.20	4.30	4.40	4.50	4.60	4.70	4.80	4.90	4
5	5.00	5.10	5.20	5.30	5.40	5.50	5.60	5.70	5.80	5.90	5
6	6.00	6.10	6.20	6.30	6.40	6.50	6.60	6.70	6.80	6.90	6
7	7.00	7.10	7.20	7.30	7.40	7.50	7.60	7.70	7.80	7.90	7
8	8.00	8.10	8.20	8.30	8.40	8.50	8.60	8.70	8.80	8.90	8
9	9.00	9.10	9.20	9.30	9.40	9.50	9.60	9.70	9.80	9.90	9
10	10.00	10.10	10.20	10.30	10.40	10.50	10.60	10.70	10.80	10.90	10
11	11.00	11.10	11.20	11.30	11.40	11.50	11.60	11.70	11.80	11.90	11
12	12.00	12.10	12.20	12.30	12.40	12.50	12.60	12.70	12.80	12.90	12
13	13.00	13.10	13.20	13.30	13.40	13.50	13.60	13.70	13.80	13.90	13
14	14.00	14.10	14.20	14.30	14.40	14.50	14.60	14.70	14.80	14.90	14
15	15.00	15.10	15.20	15.30	15.40	15.50	15.60	15.70	15.80	15.90	15
16	16.00	16.10	16.20	16.30	16.40	16.50	16.60	16.70	16.80	16.90	16
17	17.00	17.10	17.20	17.30	17.40	17.50	17.60	17.70	17.80	17.90	17
18	18.00	18.10	18.20	18.30	18.40	18.50	18.60	18.70	18.80	18.90	18
19	19.00	19.10	19.20	19.30	19.40	19.50	19.60	19.70	19.80	19.90	19
20	20.00	20.10	20.20	20.30	20.40	20.50	20.60	20.70	20.80	20.90	20
21	21.00	21.10	21.20	21.30	21.40	21.50	21.60	21.70	21.80	21.90	21
22	22.00	22.10	22.20	22.30	22.40	22.50	22.60	22.70	22.80	22.90	22
23	23.00	23.10	23.20	23.30	23.40	23.50	23.60	23.70	23.80	23.90	23
24	24.00	24.10	24.20	24.30	24.40	24.50	24.60	24.70	24.80	24.90	24
25	25.00	25.10	25.20	25.30	25.40	25.50	25.60	25.70	25.80	25.90	25
26	26.00	26.10	26.20	26.30	26.40	26.50	26.60	26.70	26.80	26.90	26
27	27.00	27.10	27.20	27.30	27.40	27.50	27.60	27.70	27.80	27.90	27
28	28.00	28.10	28.20	28.30	28.40	28.50	28.60	28.70	28.80	28.90	28
29	29.00	29.10	29.20	29.30	29.40	29.50	29.60	29.70	29.80	29.90	29
30	30.00	30.10	30.20	30.30	30.40	30.50	30.60	30.70	30.80	30.90	30
31	31.00	31.10	31.20	31.30	31.40	31.50	31.60	31.70	31.80	31.90	31
32	32.00	32.10	32.20	32.30	32.40	32.50	32.60	32.70	32.80	32.90	32
33	33.00	33.10	33.20	33.30	33.40	33.50	33.60	33.70	33.80	33.90	33
34	34.00	34.10	34.20	34.30	34.40	34.50	34.60	34.70	34.80	34.90	34
35	35.00	35.10	35.20	35.30	35.40	35.50	35.60	35.70	35.80	35.90	35
36	36.00	36.10	36.20	36.30	36.40	36.50	36.60	36.70	36.80	36.90	36
37	37.00	37.10	37.20	37.30	37.40	37.50	37.60	37.70	37.80	37.90	37
38	38.00	38.10	38.20	38.30	38.40	38.50	38.60	38.70	38.80	38.90	38
39	39.00	39.10	39.20	39.30	39.40	39.50	39.60	39.70	39.80	39.90	39
40	40.00	40.10	40.20	40.30	40.40	40.50	40.60	40.70	40.80	40.90	40
41	41.00	41.10	41.20	41.30	41.40	41.50	41.60	41.70	41.80	41.90	41
42	42.00	42.10	42.20	42.30	42.40	42.50	42.60	42.70	42.80	42.90	42
43	43.00	43.10	43.20	43.30	43.40	43.50	43.60	43.70	43.80	43.90	43
44	44.00	44.10	44.20	44.30	44.40	44.50	44.60	44.70	44.80	44.90	44
45	45.00	45.10	45.20	45.30	45.40	45.50	45.60	45.70	45.80	45.90	45
46	46.00	46.10	46.20	46.30	46.40	46.50	46.60	46.70	46.80	46.90	46
47	47.00	47.10	47.20	47.30	47.40	47.50	47.60	47.70	47.80	47.90	47
48	48.00	48.10	48.20	48.30	48.40	48.50	48.60	48.70	48.80	48.90	48
49	49.00	49.10	49.20	49.30	49.40	49.50	49.60	49.70	49.80	49.90	49
50	50.00	50.10	50.20	50.30	50.40	50.50	50.60	50.70	50.80	50.90	50

Distance of slope stake from side or shoulder stake for any width roadway, slope 1 to 1. If ground is nearly level, the cut or fill at side stake is located by the double entry method in left column and top row. The number in body of table in same row and column gives distance from side stake to slope stake. If ground is not level estimate the difference in elevation between the side stake and slope stake, lower target by this amount if cut, elevate if fill. Add this amount to cut or fill and find distance in table. Set up rod at this point, and line of sight should cut target. If it does not make the slight adjustment necessary.

TABLE XIII—CORRECTIONS FOR TANGENTS AND EXTERNALS

These corrections are to be added to the approximate values, found by dividing the tangent, or external, for a 1° curve (Table VIII) by the degree of curve, in order to obtain the true tangents, or externals. Intermediate values may be obtained by interpolation.

FOR TANGENTS ADD

Central Angle	DEGREE OF CURVE													
	5°	10°	15°	20°	25°	30°	35°	40°	45°	50°	55°	60°	65°	70°
10°	.03	.06	.09	.13	.16	.19	.22	.25	.28	.31	.34	.38	.42	.46
15°	.04	.10	.14	.19	.24	.29	.34	.39	.45	.51	.53	.58	.63	.68
20°	.06	.13	.19	.26	.32	.39	.45	.51	.58	.65	.72	.79	.84	.90
25°	.08	.16	.24	.33	.40	.49	.58	.67	.75	.83	.90	.99	1.06	1.14
30°	.10	.19	.29	.39	.49	.59	.69	.79	.89	.99	1.09	1.20	1.29	1.39
35°	.11	.22	.34	.47	.58	.69	.79	.81	.92	1.04	1.29	1.42	1.54	1.66
40°	.13	.26	.40	.53	.67	.80	.93	1.06	1.20	1.34	1.49	1.64	1.79	1.94
45°	.15	.30	.44	.60	.76	.91	1.06	1.21	1.37	1.52	1.70	1.87	2.04	2.21
50°	.17	.34	.51	.68	.85	1.02	1.19	1.36	1.54	1.72	1.91	2.10	2.29	2.48
55°	.19	.38	.57	.76	.95	1.14	1.32	1.52	1.72	1.92	2.14	2.35	2.56	2.77
60°	.21	.42	.63	.84	1.05	1.27	1.49	1.71	1.94	2.17	2.38	2.60	2.83	3.07
65°	.23	.46	.69	.93	1.16	1.40	1.64	1.88	2.13	2.38	2.63	2.88	3.13	3.39
70°	.25	.51	.76	1.02	1.28	1.54	1.80	2.06	2.33	2.60	2.88	3.16	3.44	3.72
75°	.27	.56	.83	1.12	1.40	1.69	1.98	2.27	2.57	2.87	3.16	3.47	3.78	4.09
80°	.30	.61	.91	1.22	1.53	1.84	2.15	2.46	2.78	3.10	3.44	3.78	4.12	4.46
85°	.33	.66	1.00	1.33	1.68	2.02	2.36	2.70	3.05	3.40	3.77	4.14	4.55	4.89
90°	.36	.72	1.09	1.45	1.83	2.20	2.57	2.94	3.32	3.70	4.10	4.50	4.91	5.32
95°	.39	.79	1.19	1.55	1.94	2.32	2.70	3.08	3.46	3.84	4.24	4.64	5.05	5.46
100°	.43	.86	1.30	1.74	2.18	2.62	3.06	3.50	3.95	4.40	4.88	5.37	5.85	6.34
110°	.51	1.03	1.56	2.08	2.61	3.14	3.67	4.21	4.76	5.31	5.86	6.43	7.01	7.60
120°	.62	1.25	1.93	2.52	3.16	3.81	4.45	5.11	5.77	6.44	7.12	7.80	8.50	9.22

FOR EXTERNALS ADD

Central Angle	DEGREE OF CURVE													
	5°	10°	15°	20°	25°	30°	35°	40°	45°	50°	55°	60°	65°	70°
10°	.001	.003	.004	.006	.007	.008	.009	.011	.012	.014	.015	.017	.018	.020
15°	.003	.007	.010	.014	.018	.023	.027	.029	.032	.035	.039	.043	.047	.051
20°	.006	.011	.017	.022	.028	.034	.038	.045	.051	.057	.063	.070	.076	.083
25°	.009	.018	.027	.036	.046	.056	.065	.074	.083	.093	.106	.120	.127	.135
30°	.013	.025	.038	.051	.065	.078	.090	.103	.116	.129	.149	.170	.179	.188
35°	.018	.035	.054	.072	.086	.109	.131	.153	.175	.197	.213	.230	.247	.264
40°	.023	.046	.070	.093	.117	.141	.172	.203	.234	.265	.277	.290	.315	.341
45°	.030	.060	.093	.119	.153	.184	.216	.254	.289	.325	.351	.378	.411	.445
50°	.037	.075	.116	.151	.189	.227	.266	.305	.345	.384	.425	.467	.508	.550
55°	.046	.093	.142	.188	.236	.283	.332	.381	.420	.479	.530	.582	.641	.700
60°	.056	.112	.168	.225	.283	.340	.398	.457	.516	.575	.636	.697	.774	.851
65°	.067	.135	.204	.273	.343	.412	.483	.554	.625	.697	.771	.845	.922	1.01
70°	.080	.159	.240	.321	.403	.485	.568	.652	.735	.819	.906	.994	1.08	1.17
75°	.095	.182	.266	.353	.440	.528	.617	.707	.797	.887	.977	1.07	1.18	1.39
80°	.110	.220	.332	.445	.558	.671	.787	.903	1.02	1.13	1.25	1.38	1.50	1.62
85°	.128	.259	.391	.524	.657	.790	.926	1.06	1.20	1.34	1.47	1.62	1.76	1.91
90°	.149	.299	.450	.603	.756	.910	1.07	1.22	1.38	1.54	1.70	1.87	2.03	2.20
95°	.174	.350	.522	.706	.885	1.06	1.25	1.43	1.62	1.80	1.99	2.18	2.38	2.58
100°	.200	.401	.604	.809	1.01	1.22	1.43	1.64	1.85	2.06	2.28	2.50	2.73	2.96
110°	.268	.536	.806	1.08	1.35	1.63	1.91	2.20	2.48	2.76	3.05	3.35	3.66	3.96
120°	.360	.721	1.08	1.45	1.82	2.19	2.57	2.95	3.33	3.72	4.11	4.50	4.91	5.32

INDEX

Pg. no.

Alley Blk 83 E.W. Morse's

1

Alley Blk. 79 O.B.

8

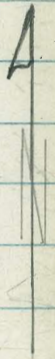
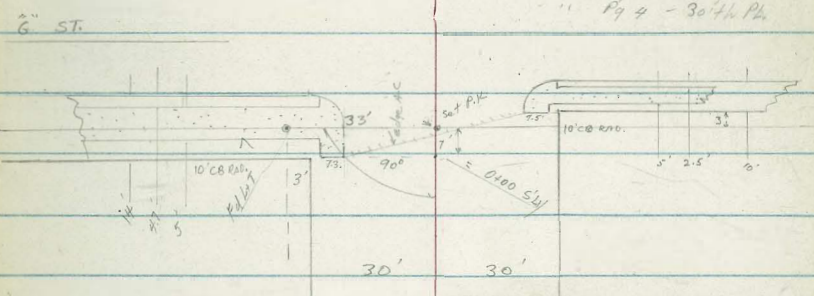
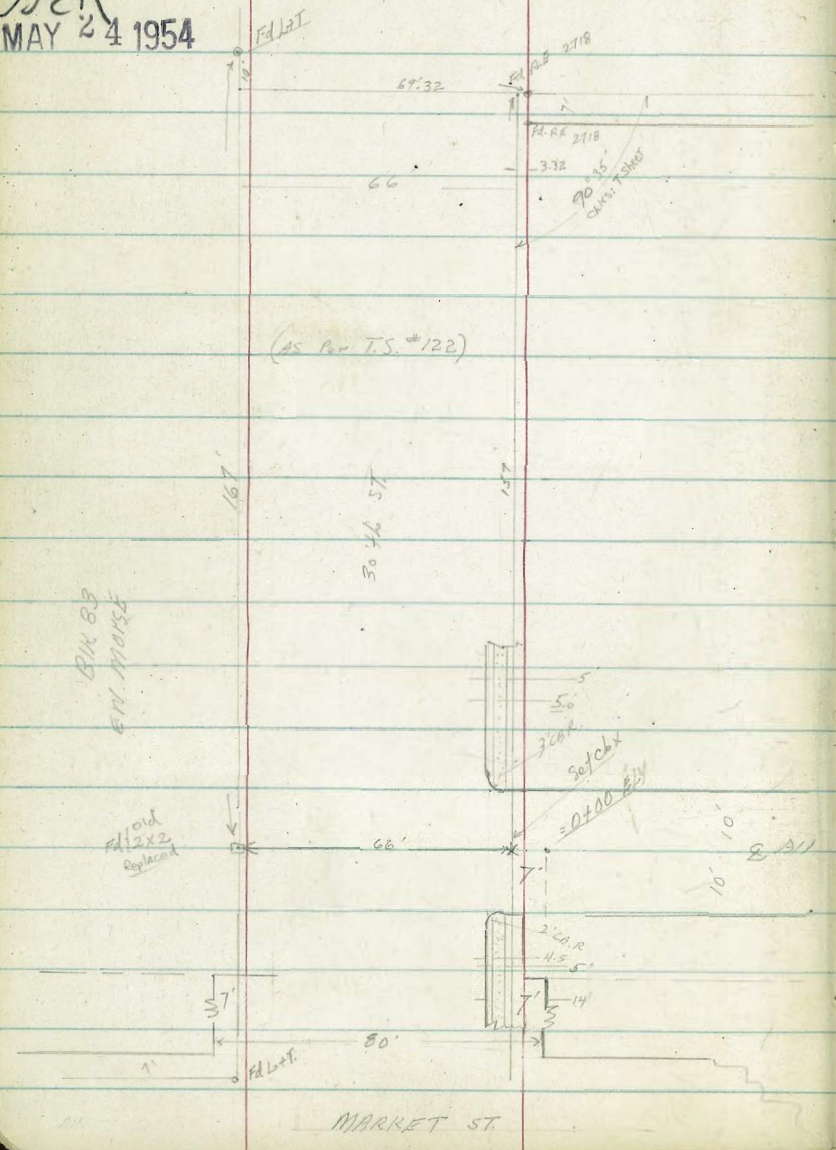
Clark
Shepherd
Bruner
ONeil
5-22-54
W.O. 25020

X SECT 30th PLACE: "G" ST. S/W
to ALLEY BLK 89 E.W. MARSE
X SECT ALLEY BLK 78 to 30th BLK
to 30th PLACE

INDEXED
MAY 24 1954

Ref. EB #1581-67
Tie-S #122
MAP: #29 + 547

Sketch by Nat. To Scale
Notes Pg 2 - Alley
Pg 4 - 30th Pl.



BLK 89
E.W. MARSE

old
4x2
replaced

old stub
set 222
5/28/47
BY

MARKET ST.

X-SECT. ALLEY BIK 83
30+L to 30+L PL.

(N4) LT-

RT. (S4) 2

0+32

149.3
10.4
25
149.4
10.3
20
151.4
8.3
19
151.7
8.0
10
152.2
7.5
10
152.7
6.9
11
149.4
10.3
14

T.P. 6.97 15971 0.4 152.94

0+31

0+08 Beg- 16.6 RT 1. FC. Conc BIK Ret. Wall, 8" wide
2.5' high (105-205)
ADUC Paved Area STA.

0+00 10.75 RT END CB.
EPL Market -5.24

0-02.6

9.25 LT = END CB.
2.64 Edge Conc Pav
26.0 LT Beg. Com garage - 2 doors open side - toward alley

0-04.5 17.7 RT Beg Paved area Service STAT.

0-14 E. CA. Line Market
CB ret's at alley

0-33 E Market A.C. Surface over Conc.

B.M. 8.14 152.88 144.77 S.E. Fire
Market + 30+L

H/A. TP. 152.88

149.2
3.7
25
149.3
3.6
12
150.0
2.9
10
150.1
2.8
150.0
2.9
150.1
2.8
148.4
4.5
10.75
9.4
148.5
5.03
148.4
4.5
148.18
4.70
147.62
5.06
148.14
4.74
148.21
4.85
17.7
17.7
169.35
5.34
5.51
5.50
4.98
6.29
147.54
147.37
147.38
147.30
147.30
146.59
149.21
4.67
147.30
5.58
50

K. SECT ALLEY BIK 83 (CONT)

CONT. - See Pg 4 For notes 30th Pl.

1477.77 16.85 AT END CONC. BR. WALL (ELY Fe)
Wall under AT 9'-5 1/2"

13.13 16.18
16.85 17.35
TO
WALL PER

1735.4 9.0 L T E END Hedge
7.5 L T E Pole # PA 6.51
10' 0 L T END Lattice Fence

1428.47 W. Line 30th Pl.

57 157.0
15 5.8 156.9
5.9 156.8
5.6 156.1
5 6 157.9
10 4.6 158.1
16 149.9
18.17 149.86
18.5 146.50
TO
WALL PER

1409 9.0 L T E 3.5' wide Hedge - 4.5' high

1405 10' L T Fence Steps down to 3' high - ENH Vines
on Fence

T.P. 6.45 162.73 3.43 156.28

162.73

1400

0+78

0+65.5

9.5 L T 1 1/2" Bush
9.9 L T Fence becomes 6.0 high + 1/2" Hedge + VINE
on Fence

9.9 L T Peg 5' Lattice Fence

0+48

26.5 L T END 9' 9"

155.2
155.4
155.7
156.2
156.8
156.9
157.1
149.8
149.4
149.21
146.83
7.5 15
7.3 10
3.8
3.5 5
2.9 7
2.8 10
2.6 11
2.6 14
9.9 14
10.3 14
10.2 14
12.88 14
19.3 14
12.88 14
19.3 14

149.60
149.4
149.8
152.2
153.1
153.4
153.8
153.9
149.4
148.6
148.51
147.10
10.4 103
26 20
26 19
7.9 6.6
7.5 10
6.3
5.9 10
5.8 11
10.3 14
11 16.6
10.3 16.6
10.2 16.6
12.61 17.3
12.61 17.3
12.61 17.3

159.71

1-SECT 30' thru P.I.
G to ALLEY

(ELY) LT

Q

RT (W/4)

4

0+13

148.9
12.8
30
150.2
11.5
35
155.5
6.2
30
156.0
5.7
30

155.7
6.0
30

0+09

20.9 LT E. Pole #307170-H

0+08

155.3
6.4
30
156.3
5.4
30
156.7
5.0
30

155.9
5.8
30

157.23
4.47
31.17
7.1

0+05

31.4 RT Prop House

0+04

39. LT Prop Foster-K. Leiser Sign Board (N.E. end)

0+00

= S.L. G - W/4

155.4
6.7
30
157.0
4.7
30
157.2
4.5
20
157.2
4.5
30

156.6
5.1
20
156.63
5.07
20
156.99
4.71
20
157.07
4.62
20
156.8
4.7
20
156.7
3.2
20
156.6
3.5
20
156.1
5.6
20
157.00
4.7
20
157.00
4.6
20

0-04

20 RT = F.C.

0-05: Edge Pav. at E. (Cont. with A.C. Surface)

0-10

20.1 LT = E.C. V. END CB.
S.L. G - R/4

155.7
6.0
30
157.9
3.8
30
158.2
3.5
30
158.58
3.09
27.6
BK
WALK
158.18
3.52
20
157.61
4.09
20.1
157.70
20.1
157.81
3.89
30
157.77
3.93
20

157.6
4.1
157.6
4.94
20
156.76
156.47
157.02
144.12
154.65
4.94
20
4.76
30
5.23
67
4.48
30
7.50
67
7.05
80
67

0-14

= SLY CB LINE G - W/4

0-20

= SLY CB LINE G - R/4

Note - Ret. LT (Sly marked backward)

150.85
10.85
80
150.24
11.46
80
158.26
3.44
80
157.44
4.26
80
157.65
4.05
20
157.74
4.91
30
156.79
4.76
30
156.90
4.80
30
156.46
5.24
50

0-40 = E "G"

A.C. SURFACE

T. P.

4.04

161.70

5.07

157.66

161.70
x

(see pg. 3)

X-SECT 304h PL (Cont.)

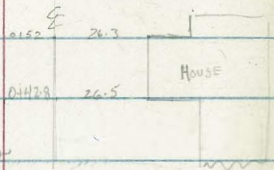
0+78 31.5 RT E Single oak

0+65 21.5' LT E 24" ENC. Tree

0+62 22.0' RT E Deadman

0+58 21.0 RT E 30" ENC. Alkyptus

0+50



0+45 21.5 RT E Pole, anchor

0+42.8 26.5 RT END Parcel & Beg. to house (31.7 to house)

0+36 26.2 RT Beg. Wooden Parcel & Steps - extends to house wly

T.P. 3.22 161.26 3.66 158.04

0+33 22.3 RT E 12" Pepper Tree

0+18.5 43.2 LT Beg. Conc. Tennis Courts
& 10' high steel-wire fence

0+16 21.9 LT END sign-board (S.W. END)

LT.

E

RT.

5

6.7
31.5
017. FL

147.9	150.3	156.1	156.2	155.5	156.2	155.8	154.8
13.4	11.0	5.2	5.1	5.8	6.1	6.5	6.5
36	33	30	20	13		20	26.5

161.26

85.1
15
13.72
43.2
on conc.

161.70

K-SECT 30th PL. (CONT.)

LT

\$

RT

6

1461.6	4" Modern Rail Barricade - Extends 28' LT + 19' RT &	146.7						
1460	8.4 LT & Pak # JP 3008 - 21.5 LT & Deadman	146.7						
	Line Alley	148.5						
1448.5	21.0' LT & Deadman	146	146	12.8	2.6	2.2	3	158.2
1442	23.0 RT & Pak # PA 651	50	36	32	30	20		158.7
1440	N. Line Alley	156.7						
	23. RT to ELY END of ENWEST LATTICE FENCE	157.1						
	43.6 LT END 10' STEEL WIRE FENCE	148.5						
1438	26.2 RT = 4" ITALY ONYX CROSS	158.0						
	43.75 LT END CONC. TENNIS COURT	158.1						
1428	20.9 LT & Pak # 447864-H	158.4						
1423	21.1 RT & Deadman	146.42	12.7	3.3	3.2	2.9	3	157.7
	20.9 LT & 30" EUC. TREE	50	36	32	30	29	20	157.8
1410.5	11.1 RT END GRV	14.48						
		43.75						
		ON CONC.						
1401	10.7 RT Bay Single GRV	147.08						
	(CONV. PART - LIGHT CONSTRUCTION NOT FLOOR)	147.3						
1400		150.5						
0496	20.9 LT & 18" EUC. Tree	156.8						
0488.5	23.5 RT & 18" Pepper Tree	157.0						
		155.9						
		14.8	14.0	11.8	4.5	4.3	5.4	155.3
		43.6	36	32	29	20		154.3
		ON CONC.						153.8
		ON CONC.						

161.26

X-SECT 30th PL. (cont.)

L.T.

S

R.T.

7

CHK:

5.54 144.72 = 144.74 = TP

S.E. FINED
MARKET 30th

T.P.

0.64 150.26 11.64 149.62

2+18 (Sect 50' ahead to show EXIST. pit this area)

1768 = { 11' RT to ELY FC OF CONC. B/LK WALL (N/S)
" " " " END (S 90°) OF EX' WEST WALL (SEE A104)
" " CUT AHEAD

1765 = TP. CUT BANK AHEAD - 544

149	156.4	147.9	146.2	147.6	147.6
50		15			
158.8	147.1	134	148.4	147.6	147.6
30					
2.5	159.0	215.7	148.1	147.6	147.6
30		26			
2.3		158.1	147.6	147.6	147.6
20		13			
		98.51	147.6	147.6	147.6
		27			
		13			
		98.7	147.6	147.6	147.6
		20			
		10.2	147.6	147.6	147.6
		30			

161.26

Alley BIK. 79 Ocean Beach

Abbott N.W. thence N.Ely to
Saratoga Ave

8-24-54

C.H.S.
Boqq
Schelin
Pullen

N.O.# 25020

Alley 20' wide

- = Fd L+T.
- = Set Disk
- ◻ = 1 1/2 hub.

B.M.#1 = N.W.B.P. Saratoga + Abbott. El. = 5.50

Ref. - T.P. sheet # 791

 " " " # 798

Map. # 279

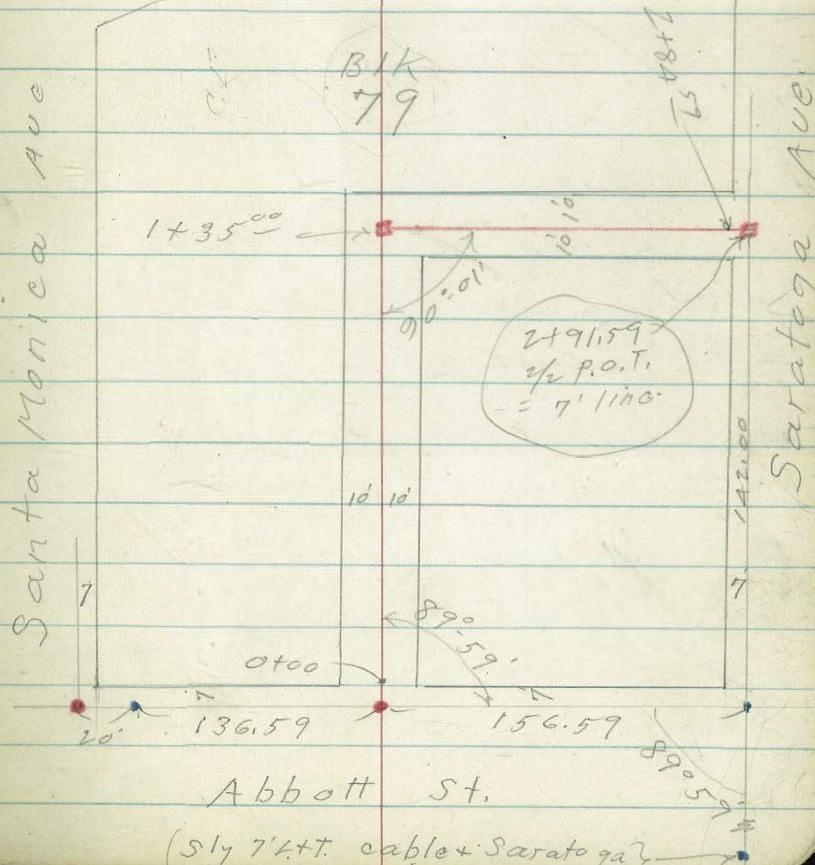
B.W. = base of wall

T.W. = Top of wall

Direct elevation rod used.

Santa Monica Ave

Saratoga Ave



INDEXED
PER
AUG 25 1954

Alley Blk 79 O.B.

walk also used as drain.
Also wly. edge N.Y.S. walk

0+38 10⁵ Lt. = end walk

0+35 13' Lt. = end house

0+09 13' Lt. = start house

0+00^L 10⁵ Lt. = start 2⁵ Conc. walk

9² Lt. }
9⁵ Rt. } = end of curb.

0+00 = wly. line Abbott. = end A.C. Pavc.

0-07 = P.K. = set B.M. #2 4.64

12' Rt. }
12' Lt. } = B.C. 2' Rad cl. Rot.

0-10 } = wly cl. line Abbott.

- 5.50

±

9

7.0	6.81	6.6	6.6	7.0	6.3
35	10 ⁵	10		10	50

5.55
10⁵
N.E. walk

5.35	5.22	4.76	5.19	5.41
99	99		95	95
cl	G		G	cl

4.92	4.38	4.82	5.35
100	100	100	100
cl	G	G	cl

5.07	4.57	4.61	4.64	4.67	4.67	5.16
12	12	10		10	12	12
cl	G			G	G	cl

B.M. = N.W. B.P. Saratoga + Abbott

2+40

3.6 3.3 3.8 4.6
10 10

2+00

3.4 3.4 4.7 4.6
10 10

1+83 11' RT. = start House

3.3 3.6 4.8 4.7 4.7
50 10 10 11

1+45 = Nly line E.+W. alley

3.2 3.3 4.8 4.8 5.0 4.9
50 22 17 10 10

(Sec. on split of Δ

1+35 = Both alleys = Δ 89° 59' RT

3.3 3.4 4.6 4.7 4.9
50 20 14.14 14.14 = prop. con.

1+25 = Ely line N.+S. Alley

3.4 5.0 4.8 4.8 4.9
50 20 10 10

court units

1+01 48' RT. = 12' walk between

5.2 5.0 4.9 4.9 5.19 5.20
50 10 10 48 58
walk

0+60

6.7 6.8 6.5 6.4 6.0
50 10 10 50

apron to Sing Gar.

0+44 10 5' Lt. = conc.

7.01 6.75
133 105
Gar. floor apron

3+24⁵⁹ = ϕ Saratoga

3.9 3.6 3.6 3.9
50 10 50

3+04⁵⁹ = 68' At 2 wly. end existing ch.
= sly. ob. line Saratoga.

4.90 5.37 4.92
68 135 135
w. G

2+89⁵ = 10' At 2 end of wall

4.9 4.4 6.2
10 10^L 10^L
B.W. T.W.

2+84⁵⁹ = Sly. line Saratoga.

3.2 3.7 4.6 5.1
50 10 10

2+75⁵ { 10⁸ At = end house wall
10^L At = start conc. block

3.2 3.5 4.5 5.0 4.2 7.9
50 10 10 10^L 10^L
B.W. T.W.

Roberts X-Section Alley Block 13, Bird
Cota Rock City by the Sea
Moralez
11-30-54
W.O.# 25820

INDEXED

NER

DEC 1954

(Between Electric & Beaumont
and north of Bird Rock Avenue.)

FOR GRADE ORDINANCE ONLY.

Not enough data sent to field to
tie point this alley.

Split Existing alley returns and
existing improvements in alley.

Cont'd From Page 12

Lt

Rt

Rt 13

0+26

8 Ft End conc. drive begin garage with opening to South.

95.72
2.91
8
conc.
Drive Floor

0+25

93.8
4.8
17.2
94.6
4.0
7.5

95.55
3.1
7.5

0+00

Edge Concrete Paving
No. Line Birdrock Avenue
71 Ft on line of Street begin conc. drive

92.45
5.78
71
cb
92.41
5.22
71
cut
93.31
5.32

93.70
4.93
71
cut
94.05
4.58
71
cut

0-15.6±

No Curb Line Birdrock Avenue

91.96
6.67
40
cb
91.42
7.21
40
cut
93.07
92.45
5.56
6.14
14
cut
93.07
5.56

93.57
5.06
12
cut
94.16
4.47
12
cb
94.80
3.83
40
cut
95.34
3.27
40
cb

T.P.

0.12 98.63 Δ 13.09 98.51

98.63 Δ

T.P.

0.55 111.60 13.02 111.05

T.P.

0.91 124.07 13.10 123.16

BM

1.14 136.26

SEBP
135.12 Birdrock
and Bellevue

2+50 79 Rt begin conc. block wall

91.3
4.6
17591.6
4.3
7591.8
4.191.8
4.1
75
48090.8
5.1
79
Foot

2+00

91.2
4.7
17591.7
4.2
7591.9
4.092.5
3.4
7593.0
3.9
175

1+50

91.9
4.0
17592.4
3.5
7592.8
3.193.2
2.7
7594.2
1.7
175T.P. 2.67 95.90 Δ 5.40 93.2395.90 Δ

1+00

92.2
6.4
17592.6
6.0
7593.3
5.393.6
5.0
7593.9
4.7
175

0+73 253 Lt Q Single garage

92.77
6.86
253
Foot92.6
5.0
17594.0
4.6
7594.3
4.394.6
4.0
75

0+50

98.63 Δ 98.63 Δ

Cont'd From Page 14

4+50

8³ Rt begin conc. block wall

Lt		89.4	89.5	89.6	89.7	89.8	89.9	90.0
		65	64	63	62	61	60	59
		175	175	175	175	175	175	175
		90.2	90.3	90.4	90.5	90.6	90.7	90.8
		57	56	55	54	53	52	51
		175	175	175	175	175	175	175
		90.5	90.6	90.7	90.8	90.9	91.0	91.1
		54	53	52	51	50	49	48
		175	175	175	175	175	175	175

4+00

		90.2	90.3	90.4	90.5	90.6	90.7	90.8
		57	56	55	54	53	52	51
		175	175	175	175	175	175	175

3+50

		90.5	90.6	90.7	90.8	90.9	91.0	91.1
		54	53	52	51	50	49	48
		175	175	175	175	175	175	175

3+11

7⁵ Lt. End conc. block wall

		91.0	91.1
		49	48
		175	175

3+00

		91.1	91.2	91.3	91.4	91.5	91.6	91.7
		48	47	46	45	44	43	42
		175	175	175	175	175	175	175

2+97

8 Rt End conc. block wall

		91.5	91.6
		44	43
		175	175

2+70

7⁵ Lt. begin conc. block wall

		90.9	91.0
		50	49
		175	175

95.90K

95.90K

Cont'd From Page 15

Lt

C

R

16

T.P. 6.56 98.14 3.07 91.58

6±00 End Alley
Section Parallel to Subd Line

5498.2 8° Rt End plaster wall

5450

5400

4498 8° Rt End conc blk wall begin plaster wall.

T.P. 335 94.65 ± 460 91.30

95.90 ±

88.4	88.7	88.9	89.2	
6.3	6.0	5.8	5.5	
18	8		8	
			89.2	88.3
			5.5	6.4
			8	8
			6FO	Foot
88.3	88.5	88.6	88.8	
6.4	6.2	6.1	5.9	
17 1/2	7 1/2		7 1/2	
88.5	88.7	88.8	89.1	
6.7	6.0	5.9	5.6	
17 1/2	7 1/2		7 1/2	
			89.1	88.1
			5.6	6.6
			8	8
			6FO	Foot
			89.1	88.1
			5.6	6.6
			8	8
			6FO	Foot
			89.1	88.1
			5.6	6.6
			8	8
			6FO	Foot
			89.1	88.1
			5.6	6.6
			8	8
			6FO	Foot
			89.1	88.1
			5.6	6.6
			8	8
			6FO	Foot

Nail in Pole

94.65 ±

SK.

Contd From Page 16

17

check 1.11 135.12 = 135.12

T.P. 13.26 136.23 0.56 122.97

T.P. 13.11 123.53 0.37 110.42

T.P. 12.68 110.79 0.03 98.11

98.14

X-sec for Grade establishment Alley
Block 124, Pacific Beach Map 948.

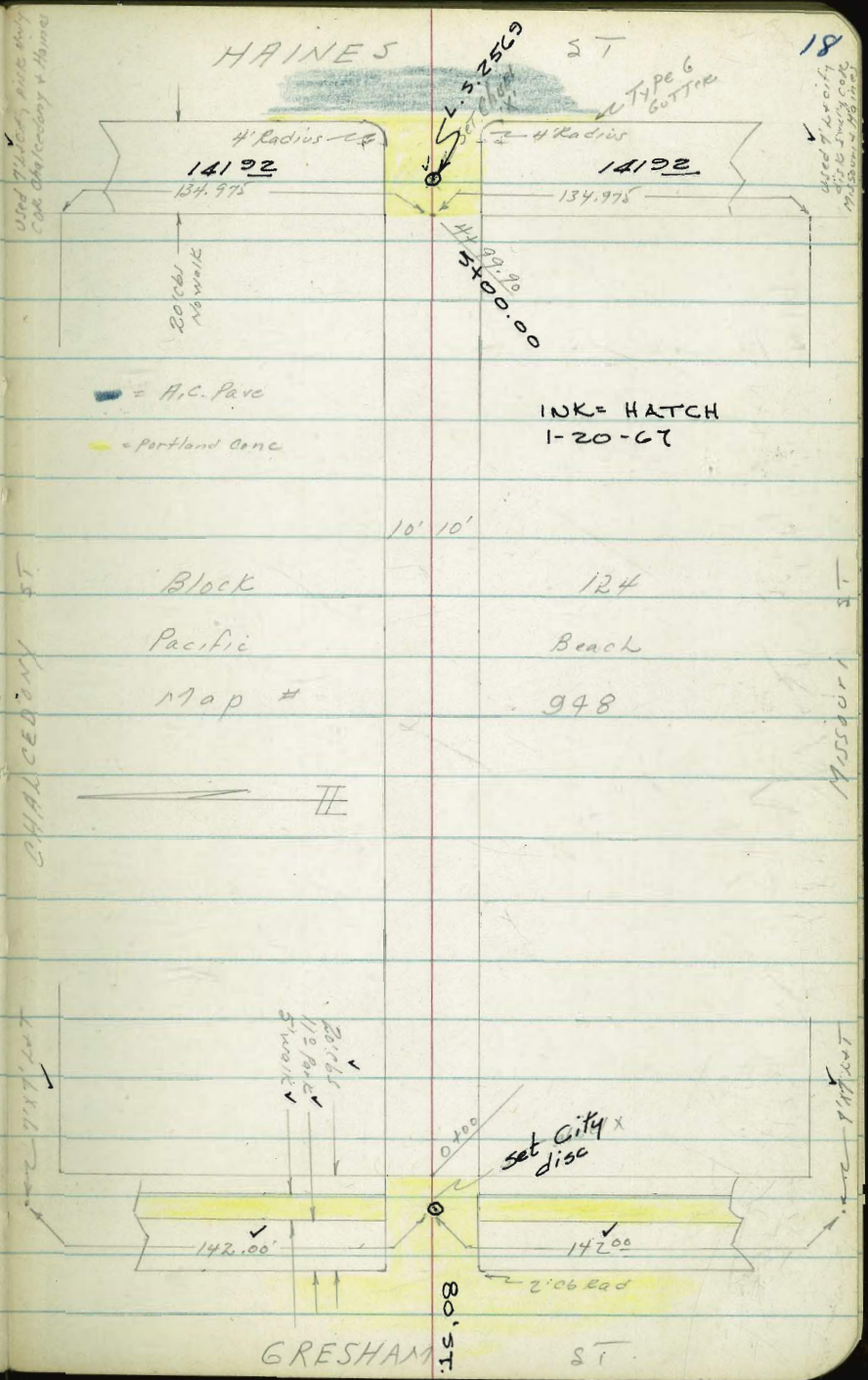
WO # 25020 - 12-23-54

C. Allen, D. Sisson, Dell Chipman

Ret File Map # 948.

T.P. Sheets 1760, 1629

INDEXED
DEC 27 1954



X-sec Alley BIR 124 cont

LT = N14

Alley

RT = S14

19

84.40

84.51

0+10 - 10° LT = end Conc Apron

6²⁸
13⁸
gar
Floor

6¹⁷
10⁸
Apron

- No garage -

10° RT = begin Conc drive

10° LT = begin conc Apron Single garage

10° LT = eLy end curb

10° RT = eLy end curb

83.94

83.41

82.98

83.15

83.21

83.28

83.53

0+00 = eLy Line Gresham

6⁴⁰
13⁸
gar
Floor

6⁶³
10⁸
Apron

6⁷⁴
10⁸
Topcb

7²⁷
10⁸
9UT

7⁷⁰
10⁸
9UT

7⁵³
10⁸
Topcb

7⁴⁷
10⁸
Topcb

7⁴⁰
10⁸
Drive

7¹⁵
20⁸
ON DRIVE

TP, 7.47 90.68 7.27 83.21

90.68

10 RT = 139 2' alley Return Radios

0-18- 10° LT = RC. 2' alley Return Radios

83.66

83.12

6⁸²
10⁸
Topcb

7³⁶
10⁸
9UT

85.06

84.47

83.72

83.12

83.02

82.62

82.32

82.20

82.84

80.83

81.53

Gresham is paved with portland conc

0-20 = Ely Curb Line Gresham

5⁴²
50⁸
Topcb

6⁰¹
50⁸
9UT

6⁷⁶
12⁸
Topcb

7³⁶
12⁸
9UT

7⁴⁶
10

7⁸⁶
10

8⁰⁶
12⁸
9UT

8²²
12⁸
Topcb

7⁵⁴
50

9⁶⁵
50

8⁹⁵
50
Topcb

90.48

BM 0.66 90.48

89.82

N Ely BP Chalcedony & Gresham STS

X-sec Alloy BIK 124 cont

11² LT= end 3' high cyclone fence
 1+00- 9⁵ LT= & 9" Power pole # A1415

LT= N14
 RT= S14
 20' Alley
 86.3
 4⁴
 50
 85.6
 5¹
 10
 85.3
 5⁴
 10
 84.8
 6¹
 10
 83.6
 7¹
 50

0+75

85.9
 4⁸
 25
 85.7
 5¹⁰
 10
 85.3
 5⁴
 10
 85.1
 5¹⁶
 25

11² LT= begin 3' high cyclone fence
 11⁵ RT= end 8" conc block wall (3 high)

0+50- 11² LT= end 6' high board fence

86.0
 4²
 10
 85.5
 5²
 10
 85.5
 5²
 10
 84.7
 6⁰
 11⁵ Footing
 11⁵ Footing

Single garage

0+40- 10⁵ RT= end Conc Apron

opening in wall for garage entrance

85.51
 5³⁷
 10⁵ Apron
 11⁵ Floor

single garage

0+30- 10⁵ RT= begin Conc Apron

85.7
 4⁹
 10
 85.2
 85.24
 5⁴⁴
 10
 10⁵ Apron
 11⁵ Garage block

3' high

0+14- 11⁴ RT= begin 8" conc block wall

84.2
 6⁵
 11⁴
 9¹
 83.7
 7⁰
 11⁴
 Footing
 84.35

0+13- 10⁶ RT= end Conc drive

0+12- 11⁰ LT= begin 6' high board fence

84.10
 6⁵⁸
 10⁶
 90.68 T
 6³³
 20⁶
 Dr. Dr.

Alley B/K 124 cont

2 car garage
2400-10² RT= begin Conc Apron

2 car garage
1495-99 LT= end Conc Apron

1489-12⁰ RT= & 2' wide Conc walk

2 car garage
1479-99 LT= begin Conc Apron

1475

1450

1425

LT= N14

4
20
Alley

RT= S14 21

85.3	86.1	85.5	85.1	85.02	85.08
44	46	52	56	56	56
25	10	10	10	10 ² Apron	16 ² gar floor

86.78	86.03				
390	465				
13 ⁰ Floor	99 Apron			84.98	84.87

85.81	86.05			570	591
				12 ⁰ walk	22 ⁰ walk

387	463
13 ⁰ Conc Floor	99 Apron

85.9	85.5	85.3
48	52	51
10	10	10

86.9	85.7	85.5	85.1	84.1
300	50	52	56	66
50	10	10	10	50

85.7	85.3	85.2
510	514	514
10		10

90.68 π

X-500 Alley BIK 124 cont

LT = N14

¢

RT = S14

22

2+59 - 12⁷ RT = 2 3 wide Conc walk

85.46

85.56

6⁵¹

6⁴¹

12⁷ walk

20⁰ walk

91.97 X

TP₂ 5.30 91.97 4.01 86.67

Spike in Power Pole # A1431 - 8⁵ LT sta 2+50

2+50 - 8⁵ LT = 4 10" power pole # A1431

86.7
4⁰
25

86.0
4⁷
10

85.5
5¹⁰

85.3
5⁴
10

85.1
5¹⁰
25

10⁸ LT = 2 25 wide Conc walk

86.27

86.08

85.9

85.5

85.1

85.0

85.08

2 car garage

2+25 - 10² RT = end Conc Apron

4⁴¹
20⁰
Walk

4⁶⁰
10⁰
Walk

4⁸
10

5²¹

5⁶
10

5⁷
10⁰
Apron

5⁶⁰
16⁰
Floor

2 car garage

2+22 - 10⁰ LT = end Conc Apron

86.64

4⁰⁴

13⁰
Floor

86.03

4⁶⁵

10⁰
Apron

86.68

4⁰⁰

13⁰
Conc
Floor

86.05

4⁶³

10⁰
Apron

2+05 - 10⁰ LT = begin Conc Apron

90.68 X

Alley 124 cont

LT = N14

Alley

RT = S14

23

3+50-10¹ LT = end 10" conc Retaining wall
 + begin 4' high cyclone fence

4 ¹⁵	5 ⁴	4 ⁵	4 ⁵	5 ²	5 ²⁵	5 ²²
10 ² Top wall	10 ² Foot	10 ² ground	10		9 ² N14 Apron	14 ⁸ gar Floor
87.2	86.6	87.5	87.5	86.8	86.2	86.75

3+25

3 ⁰	4 ⁰	5 ¹	5 ⁵	5 ⁴⁷	5 ²⁸
25	11 grat N14 wall	10 grat N14 wall		9 ⁹ N14 Apron	14 ⁸ gar Floor
87.2	88.0	86.9	86.5	86.50	86.4

3+00-10² LT = begin 10" wide Conc Retaining wall
 6 garages -
 9² RT = begin Conc Apron for

4 ²⁰	6 ²	5 ⁶	5 ⁶	5 ⁹⁵	5 ⁹²
10 ² Top wall	10 ² Footing	10 ² ground	10	9 ² Apron	14 ⁸ gar Floor
87.77	88.7	86.4	86.4	86.0	86.5

2+96-10³ RT = end conc Apron
 2 car gar.

6 ¹⁰	6 ¹²
10 ³ Apron	12 ² Floor
85.87	85.85

2+80-10⁴ RT = begin conc Apron
 2 car garage

6 ²⁶	6 ¹⁴
10 ⁴ Apron	12 ² gar Floor
85.71	85.83

2+75

4 ⁰	6 ⁰	6 ⁴	6 ⁵	6 ⁶
5 ⁰	10		10	25
87.2	86.0	85.8	85.8	85.4

91.97 π

Alley 124 cont

LT=N14-

Alley

RT= S14

24

4+75

87.9
4^L
10

87.4
4⁶

87.2
4¹⁰⁰
10

4+50

88.0
4⁰
10

87.4
4⁶

87.1
4⁹
10

4+47-8² LT= ϕ deadman

4+26-10⁸ LT= begin 3' high cyclone fence

10² LT= end cyclone fence

4+25-8⁰ LT= ϕ 8" power pole # A1481

88.2
3¹⁰
10

87.3
4⁷

87.2
4¹⁰
10

4+23-10² RT= ϕ 8" pepper tree

9⁹ RT= begin 5' high board fence

6 car garage

4+00-9⁹ RT= end conc Apron for

88.3
3⁷
25

88.0
4⁰
10

87.2
4⁸

87.12
4⁸⁵
99
Apron

87.13
4⁸⁴
148

3+75

87.5
4⁸¹
10

87.0
5⁰

86.91
5⁰⁶
97
N140
Apron

87.35
4⁶²
148
gar
floor

91.97 T

X-sec Alley 124 cont

LT=NY

2
Alley

RT=514

25

TP4

1.45

(92.58)
92.56

NEBP Chalcedony + Haines S + S

Paved with A.C. - Type G GUTTA

5+19.90 = Wly curb line Haines S T

84.88	88.00	87.57	87.04	86.99	86.77	86.60	87.48	86.97	85.34	85.82
555	601	644	697	702	724	741	753	704	867	819
50 Topob	50 90T	140 Top CB EC	140 90T EC	10		10	140 90T EC	140 Top CB EC	50 90T	50 Top CB

5+15.90 92 LT = bc. 4' Alley Return
10 RT = bc. 4' Alley Return

87.58	87.01	86.70	86.96
6.43	7.00	7.31	7.05
92 Top CB	97 90T 130	102 90T 130	102 Top CB

92 LT = Wly curb
10 RT = Wly curb
Wly edge conc Apron
Wly line Haines

4+99.90 =

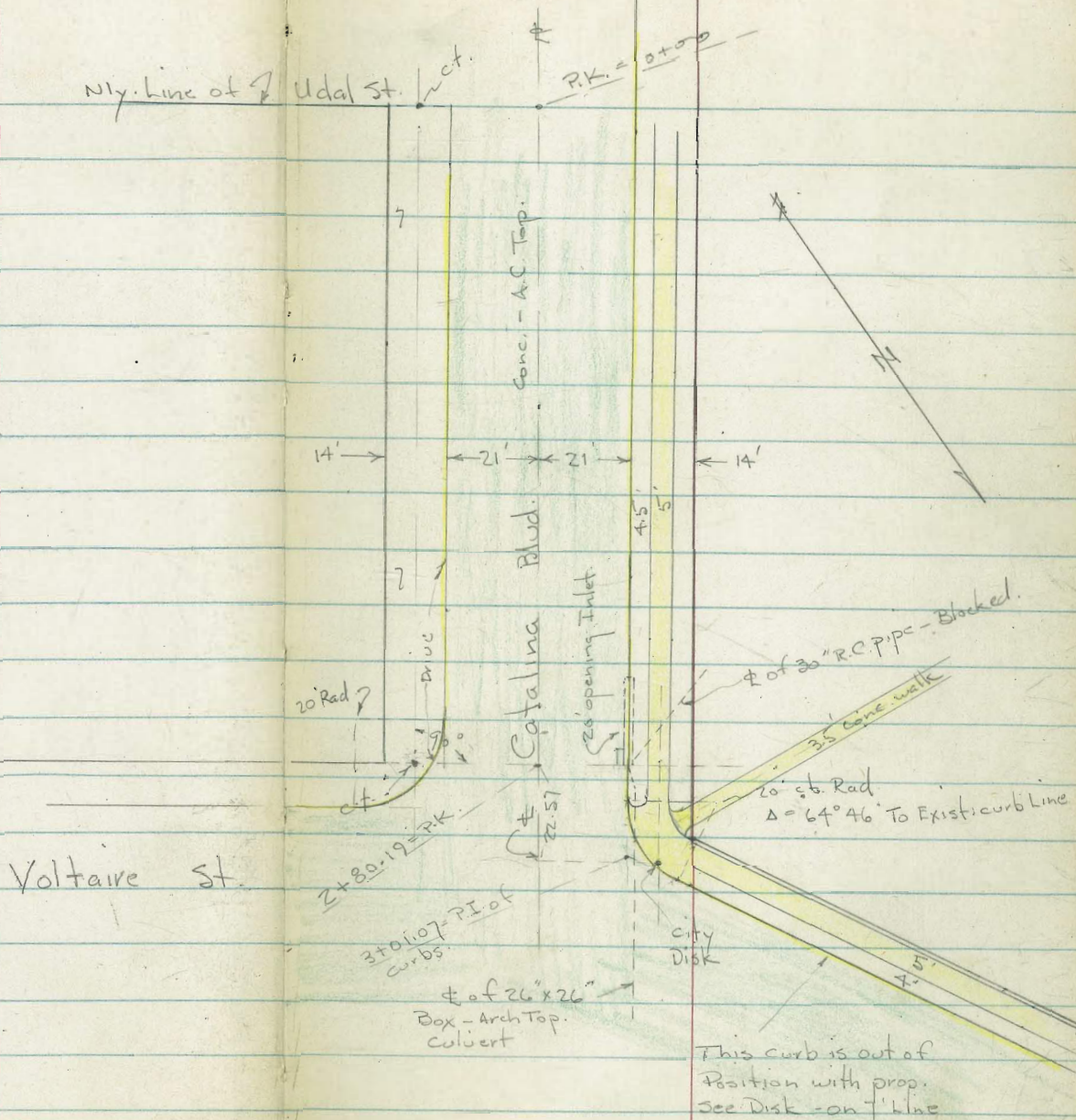
87.62	87.18	86.92	87.22	87.41
6.39	6.83	7.09	6.79	6.60
92 Top CB	97 90T	102 90T	102 Top CB	102 Top CB

94.01 X

TP3 6.38 94.01 4.34 87.63

91.97 X

INDEXED
 FEB 28 1955



X-Sept. Catalina Blvd. from Udal
 To Voltaire to Reestablish Inlet.
 W.O. 62420 - 2-25-55 70.

Sketch - P. 26

2+10

64.46 64.34 63.77 63.73 63.86
 30.5 Top 21 10.5
 walk gut

64.01 64.41
 21 Top
 gut

1+93 = Beg. Sta. Prop. on Lt.

65.06 64.95 64.39 64.34 64.46
 30.5 Top 21 10.5
 edge of walk gut

64.59 65.01
 21 Top
 gut

1+50 = P.C. - 2' Rad.

66.54 65.96 65.95
 Top 21 gut

65.99 66.57
 21 Top = P.C.
 gut

1+31 = P.C. of Alley Ret.

66.73 67.23
 21 Top = P.C.
 gut

1+00

68.30 67.76 67.52
 Top 21 gut

67.84 68.33
 21 Top
 gut

0+50

70.06 69.51 69.30
 Top 21 gut

69.61 70.14
 21 Top
 gut

0+10 - 21' Rt = P.C. of Ret.

70.96 71.57
 21 Top = P.C.
 gut

0+00 = Nly. Line of Udal Prod

71.83 71.25 71.11
 Top 21 gut
 Actual Elev. shown

71.36 71.86
 23.8 Top
 gut

B.M. = N.E. 7' ct. Udal
 + Catalina

72.13

Voltaire + Catalina
check B.M. SW. ct. on line

61.90

3+25 - opp. E.C. of Ref. on Lt.

3+07 =

2+90.2 = cb. Line on Rt.

2+88.5 = P.C. of Ref. on Lt.

2+80 = end of opening + edge of Box

2+76.5 = edge of Box + end of Dr. on Rt.

2+60.1 = Beg. opening of 20' inlet

2+55 - 24' Lt. = Tel. pole # 429344 - H

2+36 - 24' Lt. = Deadman

2+30 - Beg. Dr. on Rt. - Ser. Sta.

Lt.

Rt.

61.61	61.53	61.43	61.56	61.79
40	21		21	40

61.85	61.30	61.50	61.62	61.75	61.93
Top =	32.3	15	21	40	
PC	gut.				

61.68	61.25	61.45	61.43	61.55	61.59	61.73	62.13
Top	21.1	10.5		10.5	21	41	Top
	gut.					gut.	PC

61.77	61.72	61.20	61.41	61.44	61.57	61.62
30.5	Top =	21	10.5		10.5	21
walk	PC	gut.				

58.22
I.E. of
Box + pipe
to N.

61.94	61.95	61.09	61.18	61.35	61.48
30.5	Top	21	18.8	10.5	
walk			grate		

62.07	62.07	61.10	61.22	61.43	61.57	61.68	61.70	62.04
30.5	Top	21	18.9	10.5		10.5	22.3	25.7
walk		gut.	grate				gut in	walk
							Dr	

62.70	62.67	61.70	61.97	62.08	62.17	62.22	62.63
30.5	Top	21	10.5		10.5	21	25.7
walk		gut.				gut in	walk
						Dr	

63.79	63.63	62.95	63.01	63.13	63.34	63.73
30.5	Top	21	10.5		21	Top
walk		gut.			gut.	

Req. Levels along curb Line on S.W. Ret.
 (for Ser. Sta.) - Sly. P.C. = 0+00 - Dist. along cb.
 Line - cb Line = Φ

Φ = curb Line Rt

29

0+00

62.16 Top 61.75 gut. 62.17 10

0+80

61.99 Top 61.55 gut. 61.93 10

0+60

61.96 Top 61.42 gut. 61.75 10

= along SWly. cb. of Voltaire

0+40

61.87 Top 61.31 gut. 61.60 10

0+22.5 = F.C.

61.85 Top 61.30 gut. 61.52 10

0+15

61.84 Top 61.31 gut. 61.48 10 - Radial

0+07 - on Ret.

61.74 Top 61.30 gut. 61.52 10 - Radial

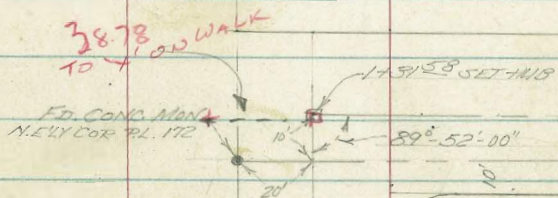
0+00 = P.C. = 2+88.5 on P. 28 - (Catalina Sta.)

61.72 Top 61.20 gut.

COTA
GABBER
KELLEY
N.G.# 25020
3-21-55

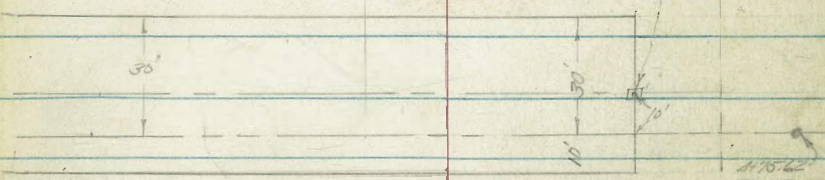
INDEXED
MAR 28 1955

78.74

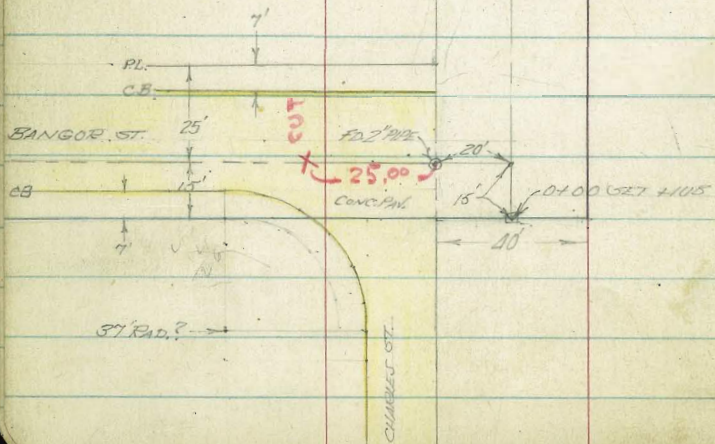


PL 173

173-13
SET + INS



PL 172



ADDITIONAL DETAIL ON DRAWING # 4788-B

0733

7 (048)

0405 f. BANGOR NORTH.

T.P. 1116 27197 272 26081

0400

0-90 CB. BC 3rd LT.

150 263.03 H.I. 6.91 261.09 CHIS. SQ. ON
 621 268.10 12.42 262.16
 510 272.58 269.28 10' TIE BK.

LT. (No.)	\$	Pt. (So.)
1185	261.01	1185
50	260.53	1186
08	260.86	1187
944	260.41	1188
08	261.1	1189
08	261.2	1190
944	264.2	1191
20	264.2	1192
944	266.7	1193
20	267.6	1194
944	268.7	1195
20	269.7	1196
944	270.4	1197
20	271.1	1198
944	271.2	1199
20	271.2	1200
944	271.2	1201
20	271.2	1202
944	271.2	1203
20	271.2	1204
944	271.2	1205
20	271.2	1206
944	271.2	1207
20	271.2	1208
944	271.2	1209
20	271.2	1210
944	271.2	1211
20	271.2	1212
944	271.2	1213
20	271.2	1214
944	271.2	1215
20	271.2	1216
944	271.2	1217
20	271.2	1218
944	271.2	1219
20	271.2	1220
944	271.2	1221
20	271.2	1222
944	271.2	1223
20	271.2	1224
944	271.2	1225
20	271.2	1226
944	271.2	1227
20	271.2	1228
944	271.2	1229
20	271.2	1230
944	271.2	1231
20	271.2	1232
944	271.2	1233
20	271.2	1234
944	271.2	1235
20	271.2	1236
944	271.2	1237
20	271.2	1238
944	271.2	1239
20	271.2	1240
944	271.2	1241
20	271.2	1242
944	271.2	1243
20	271.2	1244
944	271.2	1245
20	271.2	1246
944	271.2	1247
20	271.2	1248
944	271.2	1249
20	271.2	1250
944	271.2	1251
20	271.2	1252
944	271.2	1253
20	271.2	1254
944	271.2	1255
20	271.2	1256
944	271.2	1257
20	271.2	1258
944	271.2	1259
20	271.2	1260
944	271.2	1261
20	271.2	1262
944	271.2	1263
20	271.2	1264
944	271.2	1265
20	271.2	1266
944	271.2	1267
20	271.2	1268
944	271.2	1269
20	271.2	1270
944	271.2	1271
20	271.2	1272
944	271.2	1273
20	271.2	1274
944	271.2	1275
20	271.2	1276
944	271.2	1277
20	271.2	1278
944	271.2	1279
20	271.2	1280
944	271.2	1281
20	271.2	1282
944	271.2	1283
20	271.2	1284
944	271.2	1285
20	271.2	1286
944	271.2	1287
20	271.2	1288
944	271.2	1289
20	271.2	1290
944	271.2	1291
20	271.2	1292
944	271.2	1293
20	271.2	1294
944	271.2	1295
20	271.2	1296
944	271.2	1297
20	271.2	1298
944	271.2	1299
20	271.2	1300

1185 1186 1187 1188 1189 1190 1191 1192 1193 1194 1195 1196 1197 1198 1199 1200 1201 1202 1203 1204 1205 1206 1207 1208 1209 1210 1211 1212 1213 1214 1215 1216 1217 1218 1219 1220 1221 1222 1223 1224 1225 1226 1227 1228 1229 1230 1231 1232 1233 1234 1235 1236 1237 1238 1239 1240 1241 1242 1243 1244 1245 1246 1247 1248 1249 1250 1251 1252 1253 1254 1255 1256 1257 1258 1259 1260 1261 1262 1263 1264 1265 1266 1267 1268 1269 1270 1271 1272 1273 1274 1275 1276 1277 1278 1279 1280 1281 1282 1283 1284 1285 1286 1287 1288 1289 1290 1291 1292 1293 1294 1295 1296 1297 1298 1299 1300

271.97 H.I.

1185	252.4	1185
50	252.60	1186
08	252.07	1187
944	252.5	1188
08	250.7	1189
08	250.4	1190
944	250.6	1191
20	250.6	1192
944	254.6	1193
20	254.6	1194
944	254.6	1195
20	254.6	1196
944	254.6	1197
20	254.6	1198
944	254.6	1199
20	254.6	1200
944	254.6	1201
20	254.6	1202
944	254.6	1203
20	254.6	1204
944	254.6	1205
20	254.6	1206
944	254.6	1207
20	254.6	1208
944	254.6	1209
20	254.6	1210
944	254.6	1211
20	254.6	1212
944	254.6	1213
20	254.6	1214
944	254.6	1215
20	254.6	1216
944	254.6	1217
20	254.6	1218
944	254.6	1219
20	254.6	1220
944	254.6	1221
20	254.6	1222
944	254.6	1223
20	254.6	1224
944	254.6	1225
20	254.6	1226
944	254.6	1227
20	254.6	1228
944	254.6	1229
20	254.6	1230
944	254.6	1231
20	254.6	1232
944	254.6	1233
20	254.6	1234
944	254.6	1235
20	254.6	1236
944	254.6	1237
20	254.6	1238
944	254.6	1239
20	254.6	1240
944	254.6	1241
20	254.6	1242
944	254.6	1243
20	254.6	1244
944	254.6	1245
20	254.6	1246
944	254.6	1247
20	254.6	1248
944	254.6	1249
20	254.6	1250
944	254.6	1251
20	254.6	1252
944	254.6	1253
20	254.6	1254
944	254.6	1255
20	254.6	1256
944	254.6	1257
20	254.6	1258
944	254.6	1259
20	254.6	1260
944	254.6	1261
20	254.6	1262
944	254.6	1263
20	254.6	1264
944	254.6	1265
20	254.6	1266
944	254.6	1267
20	254.6	1268
944	254.6	1269
20	254.6	1270
944	254.6	1271
20	254.6	1272
944	254.6	1273
20	254.6	1274
944	254.6	1275
20	254.6	1276
944	254.6	1277
20	254.6	1278
944	254.6	1279
20	254.6	1280
944	254.6	1281
20	254.6	1282
944	254.6	1283
20	254.6	1284
944	254.6	1285
20	254.6	1286
944	254.6	1287
20	254.6	1288
944	254.6	1289
20	254.6	1290
944	254.6	1291
20	254.6	1292
944	254.6	1293
20	254.6	1294
944	254.6	1295
20	254.6	1296
944	254.6	1297
20	254.6	1298
944	254.6	1299
20	254.6	1300

263.03 H.I.

N.W. COR. BC. BANGOR & CHARLES
 LET. N 7' LINK LUCINDA NE COR. BANGOR & LUCINDA

LT(No.)

Rt.(So.)

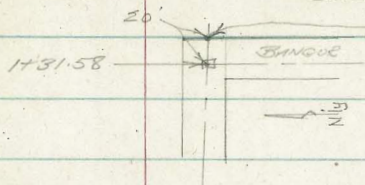
271.3	272.7	272.9	271.8	271.2	271.8
62	48	46	57	63	57
30	20	12	11		20

271.5	272.7	272.4	271.5	271.06	271.3
60	48	51	60	6.10	62
30	20	13	12	HUB	20

270.6	270.2	269.9	270.1	273.0	272.8
69	43	46	70	15	11
30	20		11	20	30

268.8	267.7	265.9	265.9	267.2	270.5	271.3
32	43	51	51	48	15	17
30	20	9		8	20	30

20 AHEAD OF LAST SECTION ON BACK TANGENT
SECTION TAKEN HERE



SECTION TAKEN RT. ANGLES TO BACK LINE (BANGOR TO WEST)
1431.58 BANGOR TO SO. & TO WEST = ANGLE PT
IN Q

SET B.M. (SIDE SHOT)

5.23 272.25 TOP MON. ON N.E. COR. PUEBLO LOT 172

1411.58 N.W. PK. BANGOR (TO SOUTH)

TP 8.67 277.48 H.I. 316 268.81

0478

271.97 H.I.

271.97 H.I.

1782

Nt. (EAST)

¢

Rt. (WEST)

3450

268.5	269.8	270.4	271.7	272.7	274.2	274.3	274.7
9.0	7.7	7.1	5.8	4.8	3.3	3.2	2.8
60	30	20	8	13	20	20	30

3400

268.2	269.5	270.8	271.0	272.3	272.8	274.6	274.2	275.0
8.3	6.7	6.5	5.2	4.7	2.9	3.3	2.5	
30	25	20	18	7	13	20	30	

2450

269.6	271.2	271.6	272.2	272.6	274.0	274.1	274.3
7.9	6.3	5.9	5.3	4.9	3.5	3.1	3.2
30	20	15	7	11	20	30	30

2436 - 19' Nt. TO 1/2 WIDE A.C. DRIVE LEADING TO LOWER LEVEL LOT.

268.58	271.1	271.08
8.90	6.4	6.10
15	36	19.7
A.C.	A.C.	LIP

2400

272.4	272.5	271.6	272.0	272.4	274.0	274.8	273.5
5.1	5.0	5.9	5.5	5.1	3.5	3.7	4.0
30	21	20	10	13	20	30	30

1451.58 (50' PL. BANGOR (BANGOR TO WEST))

272.9	272.9	271.8	271.3	271.4	273.0	272.8	272.7
1.6	1.6	5.7	6.2	6.1	1.5	1.1	4.8
30	21	20	5	13	20	30	30
		50' PL.			50' PL.		

277.18 + 1.

277.18 + 1.

LT. (EAST)

±

Rt. (WEST)

CHECK BM.

A77 269.49 = 269.49 SEE PG 31

T.P. 8.00 274.25 0.51 266.25

T.P. 284 266.78 1.87 263.92

T.P. 130 265.79 12.99 264.49

A461 20° LT. TO NORTH EDGE DIRT DRIVEWAY

267.7
270.8
272.7
273.2
274.9
275.9
9.8 6.7 4.8 4.3 2.6 1.6
40 20 11 20 36
ALONG DENE

A436.43 END OPENING - 20' RT. DRIVE UNDER CONSTRUCTION

270.1
271.8
272.46
274.4
275.3
4.4 5.7 3.12 3.1 2.2
50 20 HUB 20 30

A400

272.4
274.0
274.6
275.2
13.2 11.7 8.0 6.1 6.2 5.1 3.5 2.9 2.3
70 50 35 25 20 13 20 30

277.48 ± 1.

277.48 ± 1.

Approx grade of driveway under construction

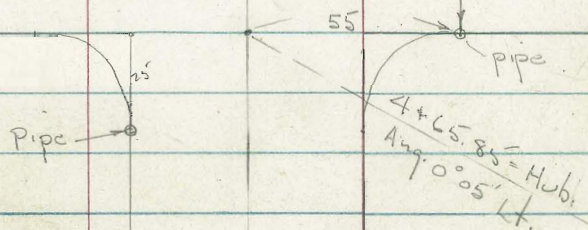
INDEXED

JER
MAY 10 1955

0° 05' Lt.

35

Calle Gaviota



30' 30'

Winchester

25' Prop Rad.
35' cb. Rad.
(to inside of gut.)

Sub. line P

± of Calle Serena

8+11.08 = ±
Fd. Hub. + city Disk

Rough 2"
AC Pav

1.5' Roll type cb.
See Notes for loc.

30' x 30'

Pipe

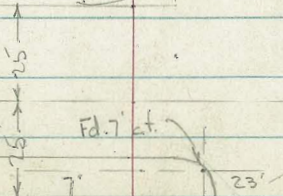
Winchester

Sea Breeze Drive

Fd. 7' at.

5+00 = Match Sta. shown
in Book 1692-P. 90

6+60.90 = P.O.T.
30.16 Lt. = 3/4" pipe
1.52201



X- Sect. Winchester St. - from Sea Breeze
to Calle Serena - sketch - P. 35
W.O. 250 20 - 5-6-55 - 70.

Lt. ± Rt

36

Note: All elevations shown
0.65 high

2+30 - 31.3 Rt. ± 10' Conc. Dr.

2+00

50.55
31.3 Dr. 50 51.54
49.0 48.8 48.9 48.9 49.8
30 15 15 30

1+86 - 30.9 Rt. ± 9' Conc. Dr.

1+50

49.46 49.77
30.9 Dr. 50

49.0 48.0 47.5 47.8 47.7 48.2
50 in Divt Dr. 30 15 20 30 31 = Conc. wall

1+00

46.0 46.2 ~~46.8~~ 47.0 49.6
30 15 46.1 20 30

0+86 - 30 Lt. ± 7.5' Conc. Dr.

45.49 45.68
40 30

0+83 - 30 Rt. ± 8' Conc. Dr.

49.22 50.18
30 Dr. 40

0+66 - 20.2 Lt. = end. cb. on Inlet.

45.52 44.51
Top = end. cb. 20.2 = gut

29.6 Rt. ± 3' Conc. walk

0+50 - 20.2 Lt. = W. end. of cb. for 15' opening inlet.

44.8 45.28 44.15 45.6 46.2 46.6 48.80 49.61
30 IE of Box Top of cb. 20.2 12 17 29.6 40
grate. walk

0+25

Deep - full of Rocks 44.6 46.0 46.5 48.3
30 16 30

0+00 = ± Sea Breeze - Match - old Sta.

44.1 45.8 47.2
30 30

= N.W. hd. plug. Sea Breeze r
Winchester - B. 1692 - P. 73 244.12

Actual Elev. Shown - 200' fig. Not Noted.

Winchester
53.47

5 + 25.85 = E.L.

4 + 95.85 = ϕ on Sewer M.H.

4 + 65.85 = w.L. Calle Gaviota (12/6/56)

4 + 43 ~ 31.8 Lt. = 7' Drive Way

4 + 40 - 20.9 ϕ = \pm P. Pole # 180084 = B.M.

4 + 35

Set B.M. on Pole # 180084

Actual Elev.

~~262.59~~
261.74

4 + 00

3 + 50

3 + 07 - 19.5 Rt = \pm 2.5 Conc. Walk + Steps.

3 + 00

2 + 85 - 20.9 Rt = E 11' Conc. Dr.

2 + 50

Lt.

ϕ

Rt.

37

Elevs. 0.65 High

64.6 63.7 64.2 64.3 64.2
30 15 15 30

63.6 63.0 62.8 63.49 63.5 62.9
80 30 15 Rim 30 80

63.1 62.3 62.6 62.4 62.1 66.4
30 15 15 30 45

63.20 62.18
55.3 31.8
Garage End Dr.
Floor

62.0 61.3 61.5 61.2 61.6
30 15 15 30 35

60.0 59.9 59.9 59.7 60.4 64.55
30 15 15 30 35

57.2 56.8 57.0 56.8 57.7 60.6
30 15 15 30 35

55.32 55.92
19.5 30.9 = Bot. of
walk Steps

53.7 53.6 54.1 54.0 55.3
30 20 15 30

53.80 55.30
20.9 50
Dr.

51.1 50.7 51.1 50.9 51.5
30 15 20 30

Winchester

Lt.

±

Rt.

38

Elevs. 0.65 High

7+61.08 = PC - = 35' Rad. to inside of Roll gut.

69.6	67.90	67.68	67.63	67.87	67.14	67.10	67.39	67.6
30	21.4	20.9	19.9		19.8	20.7	21.2	30
	Top	gut.	inside		inside	gut.	Top	

7+30

68.9	67.35	67.08	67.30	66.71	67.07	67.1
30	21.3	20.8		20.5	21.0	30
	Top	gut.		gut.	Top	

7+23 = ± of 8' Conc. Dr. Back of cb. on Rt.

66.99	66.94	66.70
21	30	45
Top	Dr.	Dr.
cb. + Dr.		

7+00 = Thru ± of 8' Conc. Dr. on Lt.

69.35	67.00	66.83	66.57	66.83	66.15	66.47	66.5
36.8	27.2	21.4	20.9 = gut.		20.4	20.9	30
Dr.	and Bik	Top	65.85		gut.	Top	By wall

1.5 - Roll type obs. = Sub. Line

6+60.90 = Beg. AC Pavc (Rough - 2" Thick) + Conc.

67.6	66.08	65.90	66.22	66.31	66.11	65.60	65.87	65.6
30	21.3	20.8	10	AC	10	20.5	21	30
	Top =	gut.	11.8 = inside			gut	edge =	
	edge		chaw				Top	

6+52 - 42.6 Lt. - ± Prop 9.5' Dr.

68.65
42.6 = Top form.

6+12 - 29.4 Rt. = ± 9' Conc. Dr.

65.44	65.26
29.4	45 = floor
Dr.	gar.

6+00

70.8	67.3	65.6	65.0	65.6	65.1	65.2
35	30	26	20		15	30

5+65

70.3	67.9	65.6	64.5	65.0	64.9	65.1
35	30	26	18		15	30

5+57 - 27.9 Lt. = ± Bottom of 3' Conc. Steps.

69.38	66.38
32.4 = Top +	27.9 = Bot. step.
Ben. walk	

Winchester

Lt

±

Rt

39

Elevs. 0.65 High

8+11.08 = ± = end. - 10.2' Lt. = ± Sewer, M.H.

71.34	70.32	69.05	68.94	69.23	69.26	68.90	68.6	68.4	68.4
75	55	30	22	102		18	30	55	82
			cross got	M.H. E-Rim		edge A.C.			

7+95.08 = ^{w.} got. line - Top Elev. is 0.5' offset.

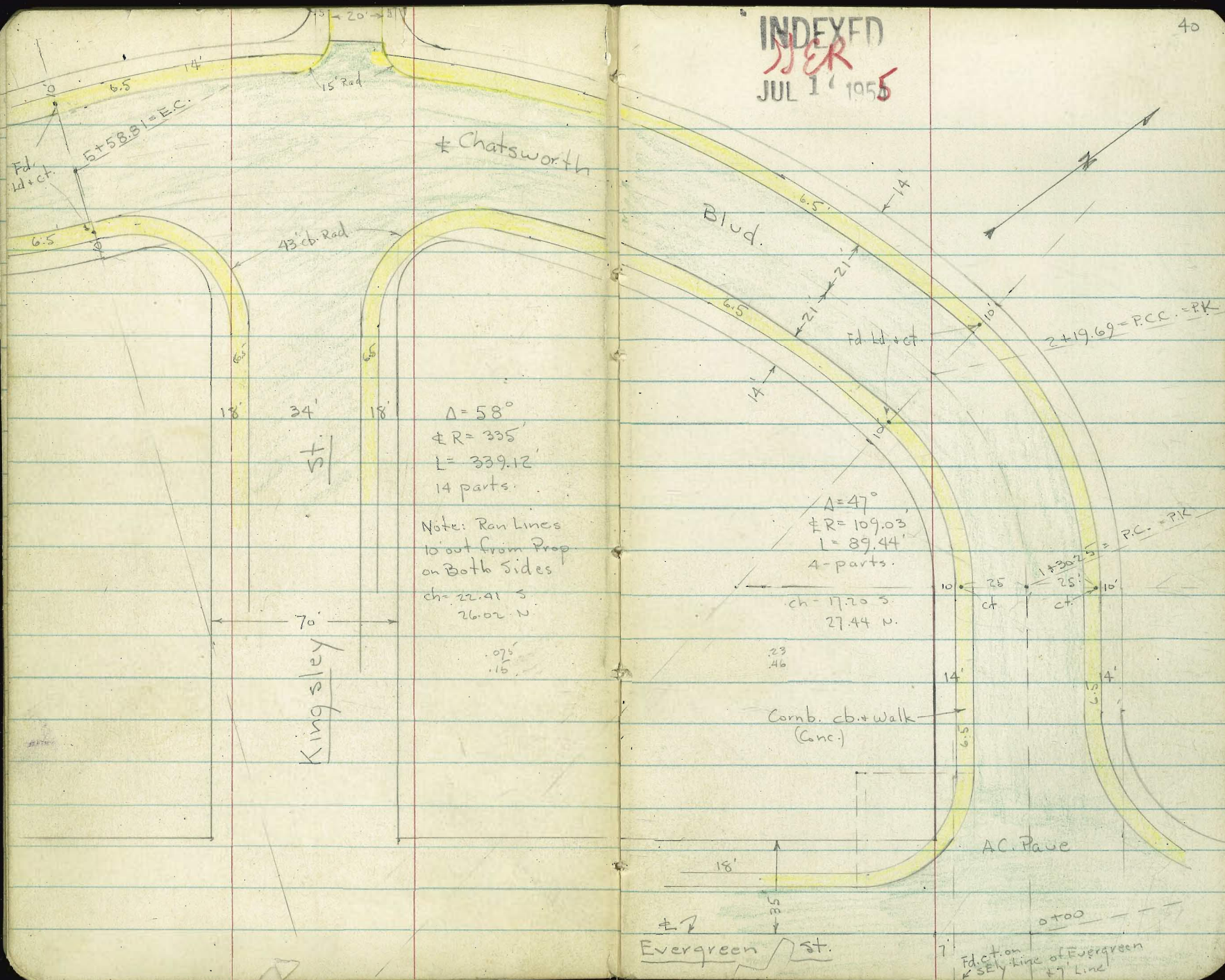
81.91
Top

81.61	80.29	80.00	68.63	68.55	68.74	68.46	68.0	67.94	68.26	68.53	68.86
75	Top = 55	30	15			18	30	55	Top	82	got - top
got	PC.	got.				edge A.C.		got.		end cb.	

7+86.08 = w.l. Calle Serena

68.77	68.42	68.29	68.47	68.26	67.48	67.80
32.4	31	15		16	30.8	31.8
Top	got			edge A.C.	got.	Top

INDEXED
 JER
 JUL 1 1955



$A = 58^\circ$
 $R = 335'$
 $L = 339.12$
 14 parts.

Note: Run Lines
 10' out from Prop
 on Both Sides
 ch = 22.41 S
 26.02 N

$A = 47^\circ$
 $R = 109.03$
 $L = 89.44$
 4 parts.

ch = 17.20 S
 27.44 N

Kingsley St

.075
 .16

.23
 .46

Comb. cb. + walk
 (Conc.)

AC. Pave

Evergreen St

Fd. ct. on
 S Ely. line of Evergreen
 17' Line

X-Section chats worth Blvd. from
Evergreen to Kingsley sketch - P. 40

W.O. 21366 7-14-55 7.0.

Lt. E Rt. 41

1+52.61

65.8 65.0 63.27 63.07 62.60 63.43 63.08 63.46 63.65 64.9 67.9
50 35 27.3 Top 20.7 21.1 Top 27.6 35 50
Planting walk got. got. Top walk

1+46.9 - 29.8 Rt. = E Lt. std.

1+30.25 = BC.

65.6 64.7 63.13 62.90 62.33 62.99 62.56 62.85 63.04 64.1 67.1
45 35 27.4 Top 20.9 21.1 Top 27.6 35 50
by Lawn walk got. got. Top walk
Wedge

1+00

65.0 64.3 62.56 62.42 61.78 62.50 62.01 62.36 62.57 63.9 67.2
40.5 35 27.5 Top 20.9 21 Top 27.5 35 50
By Lawn walk got. got. Top walk Lawn
House

0+85.8 = PC. on Rt. - check Plan for Rad.

61.75 62.11
got. Top

0+66 - 28.7 Lt. = E Lt. stand.

0+60 = opp. PC. on S.

64.45 63.6 61.79 61.66 61.13 61.91 61.09 61.03 61.58 61.62 62.1 65.4
36 35 27.5 Top 21 21 25.7 Top 31.8 35 50
By Conc. Planting walk got. got. Top walk Lawn
steps

0+49 - 39 Rt. = E Lt. Standard - 23' x 23' Conc. base

0+35 = W. Prop. Line of Evergreen

62.6 61.38 61.27 60.84 60.78 61.53 60.76 60.69 60.63 61.24 61.24
50 37.8 Top 28.5 21 21 35 41 Top 48.6
Lawn edge walk got. got. Top edge walk

0+17 = ch. line to S.

61.23 60.79 60.41 60.34 60.58 61.20 60.60 60.67 60.22 60.81
64 35 30 21 21 35 70 Top 64
Top = got. got. got. Top on Ret.
PC

0+15.5 - 19.8 Rt. = E 15" Gas Valve Cap

0+00 = E Evergreen to South.

60.99 60.30 60.24 60.84 60.25 60.39 60.40
64 35 21 21 35 64

Ran Base Lines 10' out from Prop. - Sta. is on E

B.M. - S.W. B.P. Evergreen
+ chatsworth

61.18

Actual Elev. Shown.

Chatsworth

Lt.

±

Rt.

3+16.58

68.6	67.5	66.9	66.12	65.54	66.70	66.58	67.25	67.42	68.68	68.8	69.7
50	35	27.4	23.3	20.9		21	Top	27.6	Top	35	50
Lawn	edge of walk	in Dr.	got.			got.		walk	wall	Lawn	

3+12.3 = ± of 17' Conc. Dr. at cb. + w. end of Dr.

2+92.36 = Thru 15.5' Conc. Dr. Thru wall - 3' from wly. edge

67.68	67.12	66.45	65.72	65.51	65.00	66.20	66.27	66.95	67.38	68.34
40.3	35	29.9	27.3	Top	20.8		21	27.6	35	50
Conc. Dr.		walk		got.			Dr.			

7+68.14

67.41	67.5	65.15	64.97	64.45	65.70	65.86	66.35	66.45	67.90	67.9	68.3
36.2	35	27.3	Top	20.8		21	Top	27.7	Top	35	50
edge Dr.	Planting	walk		got.		got.		walk	wall	Lawn	

2+50.3 - 29.7' Lt. = ± Lt. Std.

2+43.91

67.20	66.7	64.54	64.37	63.74	65.21	65.43	65.86	65.85	67.67	67.5	68.1
39.3	35	27.4	Top	20.9		21	Top	27.7	Top	35	50
edge Dr.	Planting	walk		got.		got.		walk + wall	Lawn		

Back of walk + Beg. 2' Rock walk back

2+19.69 = P.C.C. = Ely. of 15' Conc. Dr. at co. + 11' Dr.

66.96	66.35	66.1	64.02	63.84	63.44	64.75	64.87	65.34	65.52	67.49	66.8	67.9
55	37	35	27.3	Top	20.8		21	Top	27.7	Top	35	50
Dr.	edge Conc. Dr.	Planting	walk		got.		got.	walk	wall	Planting		

+ Beg. 1' Rock wall

1+97.33 = at 35' Lt. 11.5' W. + 4.5' E. along Prop. - edge of Dr.

66.71	65.22	63.75	63.70	63.13	64.37	64.36	64.79	64.95	65.17	65.27
50	35	27.3	23.4	20.9		21.1	Top	27.7	35	37.9
Dr.	walk	got. in Dr.				got.		Beg. walk		Bottom of steps

of 20' Conc. Dr. at cb. line

1+93.8 = ± 12.2' Conc. Dr. Back of walk + 8' from w. end

1+74.97

66.3	65.3	63.48	63.32	62.87	63.89	63.68	64.06	64.33	65.5	68.1
50	35	27.3	Top	20.8		21.1	Top	27.7	35	50
	Planting	walk		got.		got.		walk	Planting	

Back of walk

1+64.9 = ± of 15' Conc. Dr. on Rt. + 10.5' Conc. Dr.

63.40	63.88	64.05	65.31	66.58
21	23.7	27.7	35	45
got.	walk		Dr.	

Chatsworth

Lt.

E

Rt.

4 + 80.14 = P.C. of Ret. on Rt. - 31.5 Rt. = ± 30" Acacia

68.01 68.94 69.15 69.30 69.93 69.97 70.27 70.49 71.5 72.5
90 50 35 21 21.2 Top 27.8 35 50
gut. PC. walk Lawn

Line of Kingsley (not Radial)

4 + 67.9 = E.C. of 15' cb. Rad. Ret. on Rt. - outs along cb

69.84 70.20 70.22 69.09 70.09 69.6
21 34.5 Top 50 Top 75
gut. = E.C. Conc. Top
End A.C. E.C. gut. top
cb

4 + 58.4 = Thru E.C. of Ret. on Lt.

67.67 67.25 68.25 67.84 68.39 68.86 69.57 69.72 69.68 70.10 69.2
Top 90 63 35 21 21 28 34.5 75
gut. EC gut. edge AC Divt Rd

4 + 49.6 - 35.4 Rt = end of cb. on Ret on Rt.

70.04
35.4 = Top cb. + AC

4 + 37.30 approx P.C. of 15' Rad. Ret on Rt.

69.9 68.74 68.50 67.97 68.01 69.19 69.07 69.57 69.74 70.6 71.5
50 36.1 Top 27.6 23 21.4 Top 28 35 50
Lawn walk gut. gut. walk Lawn

4 + 17.7 = 28.4 Rt = ± 3.5 Conc. walk

4 + 14 = 28.5 Lt. = ± Lt. Std.

4 + 13.47 = approx P.C. of 43' Rad. Ret. on Lt.

70.2 69.5 68.31 68.09 67.52 68.70 68.55 69.13 69.38 70.2 71.4
50 35 27.3 Top 20.8 21.9 Top 28.4 35 50
Lawn walk gut. gut. Lawn

3 + 89.25 = Thru wly. of 19' Dr. of cb. + 16' Dr. back of walk

69.7 69.2 67.75 67.59 67.02 68.19 68.16 68.99 69.78 70.86
50 35 27.3 Top 20.8 21 27.7 35 50
Lawn walk gut. gut. walk Dr.

walk

3 + 65.03 = Thru ± of 18' Conc. Dr. at cb. - 10' Dr. back of

69.3 68.6 67.31 67.15 66.55 67.70 67.76 68.46 68.50 69.47 70.63
50 35 27.4 Top 20.9 20.7 25.3 27.3 35 50
Lawn walk gut. gut. walk Dr.

3 + 40.80 = Thru wly. of 4' Brick walk back of walk

69.1 68.3 66.81 66.61 66.05 67.22 67.20 67.85 68.05 68.83 70.09
50 Lawn 35 27.4 Top 20.8 21.1 Top 27.7 35 50
gut. walk Top gut. gut. walk + edge of
beginning of walk
4' Brick walk

Chatsworth

Lt.

€

Rt.

44

check B.M. = SE. B.P. - Jamies + Chatsworth 73.93

5+58.81 = P.R.C. - end - wly of Dr.

72.2	71.5	70.65	70.47	70.02	71.05	70.56	70.95	71.09	72.2	73.5
50	35	27.5	Top	20.9		21.1	Top	27.7	35	50
Lawn		walk		got.		got.				Planting

at cb. on Rt. = 8' Dr. back of walk

5+47.4 = P.C. of Ret. on Lt. + Ely. of 12' Conc. Dr.

70.30	69.83
Top =	20.5
P.C.	got.

5+36.2 - 32.9 Rt. = E 24" Acacia

5+34.59

71.62	70.8	70.34	70.13	69.64	70.75	70.36	70.74	70.96	72.1	73.7
50	35	29	Top	22.2		21.1	Top	27.7	35	50
walk				got.		got.		walk		Lawn

5+34 - 24.4 Lt. = E St. sign

5+19.0 - 28.7 Rt. = Beg. 6' Conc. walk

5+13.6 - 28.7 Rt. = Lt. Std.

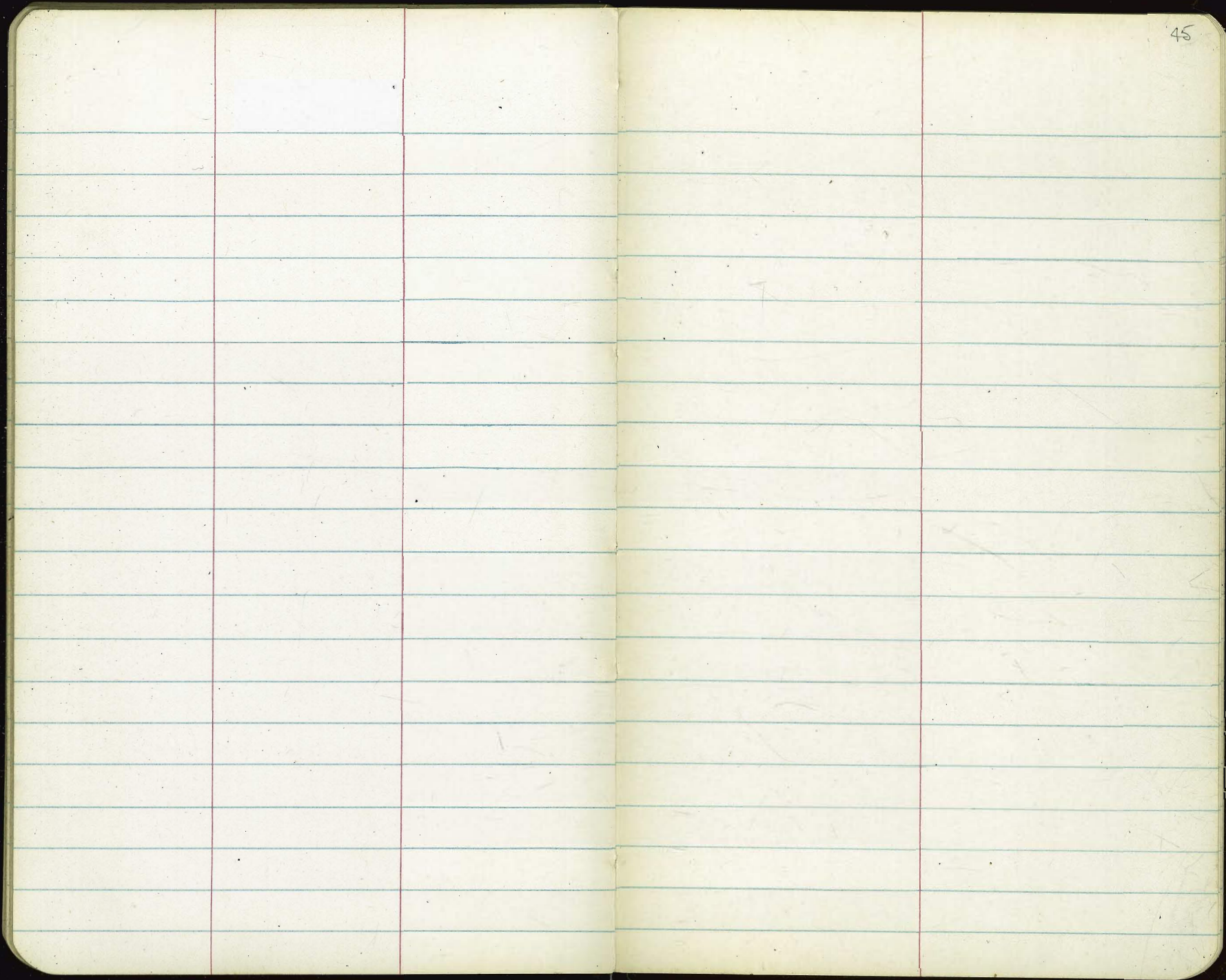
5+10.37

69.68	69.77	69.24	69.58	70.29	70.20	70.60	70.77	71.8	73.5	
49.7	Top	36.6	21		21.1	Top	27.7	35	50	
edge		got.			got.		walk		Lawn	
walk										

5+00.14 = E.C. of 43' Rad. Ret. on Lt.

68.46	68.07	69.16	68.78	69.32	69.56	70.24	70.10	70.49	70.64	71.8	73.2
Top	90	Top	65.1	35	21		21.1	Top	27.7	35	50
got.		= Ed.	got.				got.		walk		Lawn

Not Rad.



4.90
 5.37
 4.92

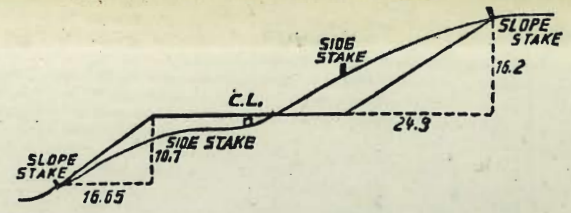
142
 74
 68

235
 378
 53

45

270.03
 .685

270.72
 1782
 45
 137



DISTANCES FROM SIDE STAKES FOR CROSS-SECTIONING.
 SLOPE 1 1/2 TO 1. ROADWAY OF ANY WIDTH.

	0	.1	.2	.3	.4	.5	.6	.7	.8	.9	
0	0.00	0.15	0.30	0.45	0.60	0.75	0.90	1.05	1.20	1.35	0
1	1.50	1.65	1.80	1.95	2.10	2.25	2.40	2.55	2.70	2.85	1
2	3.00	3.15	3.30	3.45	3.60	3.75	3.90	4.05	4.20	4.35	2
3	4.50	4.65	4.80	4.95	5.10	5.25	5.40	5.55	5.70	5.85	3
4	6.00	6.15	6.30	6.45	6.60	6.75	6.90	7.05	7.20	7.35	4
5	7.50	7.65	7.80	7.95	8.10	8.25	8.40	8.55	8.70	8.85	5
6	9.00	9.15	9.30	9.45	9.60	9.75	9.90	10.05	10.20	10.35	6
7	10.50	10.65	10.80	10.95	11.10	11.25	11.40	11.55	11.70	11.85	7
8	12.00	12.15	12.30	12.45	12.60	12.75	12.90	13.05	13.20	13.35	8
9	13.50	13.65	13.80	13.95	14.10	14.25	14.40	14.55	14.70	14.85	9
10	15.00	15.15	15.30	15.45	15.60	15.75	15.90	16.05	16.20	16.35	10
11	16.50	16.65	16.80	16.95	17.10	17.25	17.40	17.55	17.70	17.85	11
12	18.00	18.15	18.30	18.45	18.60	18.75	18.90	19.05	19.20	19.35	12
13	19.50	19.65	19.80	19.95	20.10	20.25	20.40	20.55	20.70	20.85	13
14	21.00	21.15	21.30	21.45	21.60	21.75	21.90	22.05	22.20	22.35	14
15	22.50	22.65	22.80	22.95	23.10	23.25	23.40	23.55	23.70	23.85	15
16	24.00	24.15	24.30	24.45	24.60	24.75	24.90	25.05	25.20	25.35	16
17	25.50	25.65	25.80	25.95	26.10	26.25	26.40	26.55	26.70	26.85	17
18	27.00	27.15	27.30	27.45	27.60	27.75	27.90	28.05	28.20	28.35	18
19	28.50	28.65	28.80	28.95	29.10	29.25	29.40	29.55	29.70	29.85	19
20	30.00	30.15	30.30	30.45	30.60	30.75	30.90	31.05	31.20	31.35	20
21	31.50	31.65	31.80	31.95	32.10	32.25	32.40	32.55	32.70	32.85	21
22	33.00	33.15	33.30	33.45	33.60	33.75	33.90	34.05	34.20	34.35	22
23	34.50	34.65	34.80	34.95	35.10	35.25	35.40	35.55	35.70	35.85	23
24	36.00	36.15	36.30	36.45	36.60	36.75	36.90	37.05	37.20	37.35	24
25	37.50	37.65	37.80	37.95	38.10	38.25	38.40	38.55	38.70	38.85	25
26	39.00	39.15	39.30	39.45	39.60	39.75	39.90	40.05	40.20	40.35	26
27	40.50	40.65	40.80	40.95	41.10	41.25	41.40	41.55	41.70	41.85	27
28	42.00	42.15	42.30	42.45	42.60	42.75	42.90	43.05	43.20	43.35	28
29	43.50	43.65	43.80	43.95	44.10	44.25	44.40	44.55	44.70	44.85	29
30	45.00	45.15	45.30	45.45	45.60	45.75	45.90	46.05	46.20	46.35	30
31	46.50	46.65	46.80	46.95	47.10	47.25	47.40	47.55	47.70	47.85	31
32	48.00	48.15	48.30	48.45	48.60	48.75	48.90	49.05	49.20	49.35	32
33	49.50	49.65	49.80	49.95	50.10	50.25	50.40	50.55	50.70	50.85	33
34	51.00	51.15	51.30	51.45	51.60	51.75	51.90	52.05	52.20	52.35	34
35	52.50	52.65	52.80	52.95	53.10	53.25	53.40	53.55	53.70	53.85	35
36	54.00	54.15	54.30	54.45	54.60	54.75	54.90	55.05	55.20	55.35	36
37	55.50	55.65	55.80	55.95	56.10	56.25	56.40	56.55	56.70	56.85	37
38	57.00	57.15	57.30	57.45	57.60	57.75	57.90	58.05	58.20	58.35	38
39	58.50	58.65	58.80	58.95	59.10	59.25	59.40	59.55	59.70	59.85	39
40	60.00	60.15	60.30	60.45	60.60	60.75	60.90	61.05	61.20	61.35	40
41	61.50	61.65	61.80	61.95	62.10	62.25	62.40	62.55	62.70	62.85	41
42	63.00	63.15	63.30	63.45	63.60	63.75	63.90	64.05	64.20	64.35	42
43	64.50	64.65	64.80	64.95	65.10	65.25	65.40	65.55	65.70	65.85	43
44	66.00	66.15	66.30	66.45	66.60	66.75	66.90	67.05	67.20	67.35	44
45	67.50	67.65	67.80	67.95	68.10	68.25	68.40	68.55	68.70	68.85	45
46	69.00	69.15	69.30	69.45	69.60	69.75	69.90	70.05	70.20	70.35	46
47	70.50	70.65	70.80	70.95	71.10	71.20	71.40	71.55	71.70	71.85	47
48	72.00	72.15	72.30	72.45	72.60	72.75	72.90	73.05	73.20	73.35	48
49	73.50	73.65	73.80	73.95	74.10	74.25	74.40	74.55	74.70	74.85	49
50	75.00	75.15	75.30	75.45	75.60	75.75	75.90	76.05	76.20	76.35	50

THE NATIONAL BLANK BOOK COMPANY
 HOLYOKE MASSACHUSETTS
 NEW YORK CHICAGO BOSTON SAN FRANCISCO