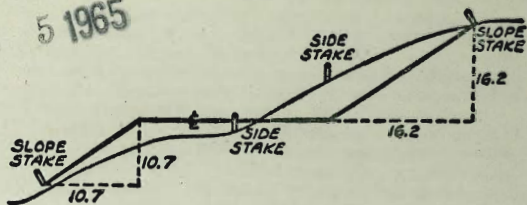




MICROFILMED

JAN 5 1965



DISTANCES FROM SIDE STAKES FOR CROSS-SECTIONING  
SLOPE 1 TO 1. ROADWAY OF ANY WIDTH

	0	.1	.2	.3	.4	.5	.6	.7	.8	.9	
0	0.00										0
1	1.00	0.10									1
2	2.00	2.10	0.20								2
3	3.00	3.10	3.20	0.30							3
4	4.00	4.10	4.20	4.30	0.40						4
5	5.00	5.10	5.20	5.30	5.40	0.50					5
6	6.00	6.10	6.20	6.30	6.40	6.50	0.60				6
7	7.00	7.10	7.20	7.30	7.40	7.50	7.60	0.70			7
8	8.00	8.10	8.20	8.30	8.40	8.50	8.60	8.70	0.80		8
9	9.00	9.10	9.20	9.30	9.40	9.50	9.60	9.70	9.80	0.90	9
10	10.00	10.10	10.20	10.30	10.40	10.50	10.60	10.70	10.80	10.90	10
11	11.00	11.10	11.20	11.30	11.40	11.50	11.60	11.70	11.80	11.90	11
12	12.00	12.10	12.20	12.30	12.40	12.50	12.60	12.70	12.80	12.90	12
13	13.00	13.10	13.20	13.30	13.40	13.50	13.60	13.70	13.80	13.90	13
14	14.00	14.10	14.20	14.30	14.40	14.50	14.60	14.70	14.80	14.90	14
15	15.00	15.10	15.20	15.30	15.40	15.50	15.60	15.70	15.80	15.90	15
16	16.00	16.10	16.20	16.30	16.40	16.50	16.60	16.70	16.80	16.90	16
17	17.00	17.10	17.20	17.30	17.40	17.50	17.60	17.70	17.80	17.90	17
18	18.00	18.10	18.20	18.30	18.40	18.50	18.60	18.70	18.80	18.90	18
19	19.00	19.10	19.20	19.30	19.40	19.50	19.60	19.70	19.80	19.90	19
20	20.00	20.10	20.20	20.30	20.40	20.50	20.60	20.70	20.80	20.90	20
21	21.00	21.10	21.20	21.30	21.40	21.50	21.60	21.70	21.80	21.90	21
22	22.00	22.10	22.20	22.30	22.40	22.50	22.60	22.70	22.80	22.90	22
23	23.00	23.10	23.20	23.30	23.40	23.50	23.60	23.70	23.80	23.90	23
24	24.00	24.10	24.20	24.30	24.40	24.50	24.60	24.70	24.80	24.90	24
25	25.00	25.10	25.20	25.30	25.40	25.50	25.60	25.70	25.80	25.90	25
26	26.00	26.10	26.20	26.30	26.40	26.50	26.60	26.70	26.80	26.90	26
27	27.00	27.10	27.20	27.30	27.40	27.50	27.60	27.70	27.80	27.90	27
28	28.00	28.10	28.20	28.30	28.40	28.50	28.60	28.70	28.80	28.90	28
29	29.00	29.10	29.20	29.30	29.40	29.50	29.60	29.70	29.80	29.90	29
30	30.00	30.10	30.20	30.30	30.40	30.50	30.60	30.70	30.80	30.90	30
31	31.00	31.10	31.20	31.30	31.40	31.50	31.60	31.70	31.80	31.90	31
32	32.00	32.10	32.20	32.30	32.40	32.50	32.60	32.70	32.80	32.90	32
33	33.00	33.10	33.20	33.30	33.40	33.50	33.60	33.70	33.80	33.90	33
34	34.00	34.10	34.20	34.30	34.40	34.50	34.60	34.70	34.80	34.90	34
35	35.00	35.10	35.20	35.30	35.40	35.50	35.60	35.70	35.80	35.90	35
36	36.00	36.10	36.20	36.30	36.40	36.50	36.60	36.70	36.80	36.90	36
37	37.00	37.10	37.20	37.30	37.40	37.50	37.60	37.70	37.80	37.90	37
38	38.00	38.10	38.20	38.30	38.40	38.50	38.60	38.70	38.80	38.90	38
39	39.00	39.10	39.20	39.30	39.40	39.50	39.60	39.70	39.80	39.90	39
40	40.00	40.10	40.20	40.30	40.40	40.50	40.60	40.70	40.80	40.90	40
41	41.00	41.10	41.20	41.30	41.40	41.50	41.60	41.70	41.80	41.90	41
42	42.00	42.10	42.20	42.30	42.40	42.50	42.60	42.70	42.80	42.90	42
43	43.00	43.10	43.20	43.30	43.40	43.50	43.60	43.70	43.80	43.90	43
44	44.00	44.10	44.20	44.30	44.40	44.50	44.60	44.70	44.80	44.90	44
45	45.00	45.10	45.20	45.30	45.40	45.50	45.60	45.70	45.80	45.90	45
46	46.00	46.10	46.20	46.30	46.40	46.50	46.60	46.70	46.80	46.90	46
47	47.00	47.10	47.20	47.30	47.40	47.50	47.60	47.70	47.80	47.90	47
48	48.00	48.10	48.20	48.30	48.40	48.50	48.60	48.70	48.80	48.90	48
49	49.00	49.10	49.20	49.30	49.40	49.50	49.60	49.70	49.80	49.90	49
50	50.00	50.10	50.20	50.30	50.40	50.50	50.60	50.70	50.80	50.90	50

Distance of slope stake from side or shoulder stake for any width roadway, slope 1 to 1. If ground is nearly level, the cut or fill at side stake is located by the double entry method in left column and top row. The number in body of table in same row and column gives distance from side stake to slope stake. If ground is not level estimate the difference in elevation between the side stake and slope stake, lower target by this amount if cut, elevate if fill. Add this amount to cut or fill and find distance in table. Set up rod at this point, and line of sight should cut target. If it does not make the slight adjustment necessary.

TABLE XIII—CORRECTIONS FOR TANGENTS AND EXTERNALS

These corrections are to be added to the approximate values, found by dividing the tangent, or external, for a 1° curve (Table VIII) by the degree of curve, in order to obtain the true tangents, or externals. Intermediate values may be obtained by interpolation.

FOR TANGENTS ADD

Central Angle	DEGREE OF CURVE													
	5°	10°	15°	20°	25°	30°	35°	40°	45°	50°	55°	60°	65°	70°
10°	.03	.06	.09	.13	.16	.19	.22	.25	.28	.31	.34	.38	.42	.46
15°	.04	.10	.14	.19	.24	.29	.34	.39	.45	.51	.53	.58	.63	.68
20°	.06	.13	.19	.26	.32	.39	.45	.51	.58	.65	.72	.79	.84	.90
25°	.08	.16	.24	.33	.40	.49	.58	.67	.75	.83	.90	.99	1.06	1.14
30°	10	19	29	39	49	59	69	79	89	99	1.09	1.20	1.29	1.39
35°	11	22	34	47	58	69	79	81	92	1.04	1.29	1.42	1.54	1.66
40°	13	26	40	53	67	80	93	1.06	1.20	1.34	1.49	1.64	1.79	1.94
45°	15	30	44	60	76	91	1.06	1.21	1.37	1.52	1.70	1.87	2.04	2.21
50°	17	34	51	68	85	1.02	1.19	1.36	1.54	1.72	1.91	2.10	2.29	2.48
55°	19	38	57	76	95	1.14	1.32	1.52	1.72	1.92	2.14	2.35	2.56	2.77
60°	21	42	63	84	1.05	1.27	1.49	1.71	1.94	2.17	2.38	2.60	2.83	3.07
65°	23	46	69	93	1.16	1.40	1.64	1.88	2.13	2.38	2.63	2.88	3.13	3.39
70°	25	51	76	1.02	1.28	1.54	1.80	2.06	2.33	2.60	2.88	3.16	3.44	3.72
75°	27	56	83	1.12	1.40	1.69	1.98	2.27	2.57	2.87	3.16	3.47	3.78	4.09
80°	30	61	91	1.22	1.53	1.84	2.15	2.46	2.78	3.10	3.44	3.78	4.12	4.46
85°	33	66	1.00	1.33	1.68	2.02	2.36	2.70	3.05	3.40	3.77	4.14	4.55	4.89
90°	36	72	1.09	1.45	1.83	2.20	2.57	2.94	3.32	3.70	4.10	4.50	4.91	5.32
95°	39	79	1.19	1.55	2.00	2.40	2.80	3.20	3.61	4.02	4.40	4.98	5.38	5.83
100°	43	86	1.30	1.74	2.18	2.62	3.06	3.50	3.95	4.40	4.88	5.37	5.85	6.34
110°	51	1.03	1.56	2.08	2.61	3.14	3.67	4.21	4.76	5.31	5.86	6.43	7.01	7.60
120°	62	1.25	1.93	2.52	3.16	3.81	4.45	5.11	5.77	6.44	7.12	7.80	8.50	9.22

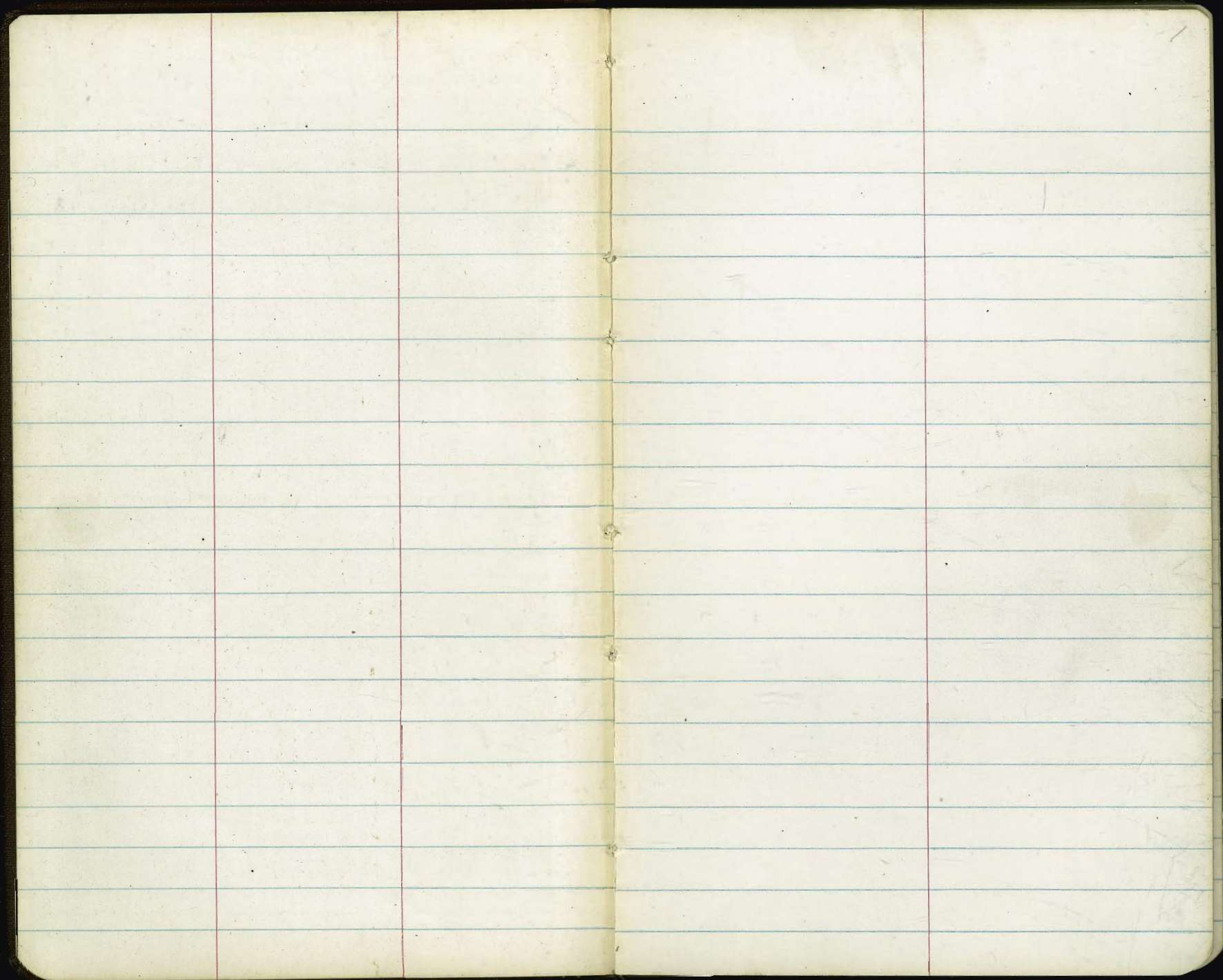
FOR EXTERNALS ADD

Central Angle	DEGREE OF CURVE													
	5°	10°	15°	20°	25°	30°	35°	40°	45°	50°	55°	60°	65°	70°
10°	.001	.003	.004	.006	.007	.008	.009	.011	.012	.014	.015	.017	.018	.020
15°	.003	.007	.010	.014	.018	.023	.027	.029	.032	.035	.039	.043	.047	.051
20°	.006	.011	.017	.022	.028	.034	.038	.045	.051	.057	.063	.070	.076	.083
25°	.009	.018	.027	.036	.046	.056	.065	.074	.083	.093	.106	.120	.127	.135
30°	.013	.025	.038	.051	.065	.078	.090	.103	.116	.129	.149	.170	.179	.188
35°	.018	.035	.054	.072	.086	.109	.131	.153	.175	.197	.213	.230	.247	.264
40°	.023	.046	.070	.093	.117	.141	.172	.203	.234	.265	.277	.290	.315	.341
45°	.030	.060	.093	.119	.153	.184	.216	.254	.289	.325	.351	.378	.411	.445
50°	.037	.075	.116	.151	.189	.227	.266	.305	.345	.384	.425	.467	.508	.550
55°	.046	.093	.142	.188	.236	.283	.332	.381	.420	.479	.530	.582	.641	.700
60°	.056	.112	.168	.225	.283	.340	.398	.457	.516	.575	.636	.697	.774	.851
65°	.067	.135	.204	.273	.343	.412	.483	.554	.625	.697	.711	.845	.922	1.01
70°	.080	.159	.240	.321	.403	.485	.568	.652	.735	.819	.906	.994	1.08	1.17
75°	.095	.182	.286	.383	.480	.578	.678	.777	.877	.977	1.07	1.18	1.29	1.39
80°	.110	.220	.332	.445	.558	.671	.787	.903	1.02	1.13	1.25	1.38	1.50	1.62
85°	.128	.259	.391	.524	.657	.790	.926	1.06	1.20	1.34	1.47	1.62	1.76	1.91
90°	.149	.299	.450	.603	.756	.910	1.07	1.22	1.38	1.54	1.70	1.87	2.03	2.20
95°	.174	.350	.522	.706	.885	1.06	1.25	1.43	1.62	1.80	1.99	2.18	2.38	2.58
100°	.200	.401	.604	.809	1.01	1.22	1.43	1.64	1.85	2.06	2.28	2.50	2.73	2.96
110°	.268	.536	.806	1.08	1.35	1.63	1.91	2.20	2.48	2.76	3.05	3.35	3.66	3.96
120°	.360	.721	1.08	1.45	1.82	2.19	2.57	2.95	3.33	3.72	4.11	4.50	4.91	5.32

INDEX

Pgs

X-sec Milton St. 1-11  
 X-sec Alley 15-Blk 43 Normal Hts 12  
 " Chamourne - Redwood - Myrtle 18  
 X-SECT. ELLISON - N'ly of N. MT. VIEW DRIVE - 30  
 PROFILE Prop DRAW ELLISON - 36  
 X-sec Electric Ave Collins 500' Stg 61-65



Cross Section - MILTON ST.

See T.P. Sheets for Sketch

W.O. 21053

0+35

10-23-52 - Walker  
+ Osborne

0+35

0+16

0+12

0+00 = E. line Morena.

0-15 = East Edge Existing

fd. Ld + Tack in Pav.

0-25 = Existing Paving Morena Blvd.

Direct Elev. Rod-used 12.71

LT

INDEXED  
REV  
OCT 27 1952

2

16.57  
43  
Floor Elev.

141	141	142	124	125	123	152	154	154
50	40	28	25		15	19	40	43
								at B.M.

116	115	137	1452
	22	27	38 8"
			Top Cons. Wall
			Parallel with
			Morena

135	135	131	117	115	122	123
50	40	29	28		40	50

130	132	109	109	111	114	116
65	55	45	40		40	55

1050	1098	1112	1134	1169
100	40	40	40	100
Pav	Pav	Pav	Pav	Pav

1109

1093	1115	1128	1147	1168
100	40	40	40	100
Pav	Pav	Pav	Pav	Pav

B.M. Chisled Cross

Rim Mt. Interceptor Sewer  
Approx. 200' South  
of Milton FB 2067-78  
on Morena Blvd.

Milton Street

Lt.

L

Rt.

3

TR Nail in Pole 22.41

2+00

192	192	194	183	185	185	193	196	196
50	40	28	25		17	22	40	45

Back  
End 5/16

1+50

2+92=End Picket 38' Lt  
1+47 Bag 4' Panel Fence 38.5' Lt

5+52=End  
1+04=Bag 4' Lath Fences 30' Rt  
\*JP 3949

178	178	179	173	171	186	176	178	182	186
50	40	28	25		16	19	25	30	40

1+50=185  
50

1+25 = Pole 29' Rt 38' Rt Pole Anchor

1+00

159	159	160	154	156	157	186	175	177
50	40	27	24		14	16	40	50

0+74 = Pole Anchor 29' Rt

0+79 L 3' Conc. Walk.

16.20  
39  
walk

0+73 L Garage Conc. Floor

16.40  
42  
Floor

0+65 L Garage Conc.

150	150	149	133	141	145	158	1640
50	40	28	26		13	21	42

Conc.  
Floor

TR on Rock 14.55

Milton Street

Lt.

Rt.

Rt

4

4+00 - Reg. Eugene Hedge 40 Lt

252 252 243 247 247 252 254 254  
40 29 27 20 23 40 50  
at Hedge

3+91 28' Rt = Pole #JP 4021

3+4976 = El. Chicago

234 234 234 228 231 228 237 236 235  
50 40 28 26 18 28 40 50  
Lawn Lawn Lawn

3+0976 = El. Chicago

215 216 217 220 219 223 226 226  
50 40 26 18 28 40 45  
at Rear Garage

2+6276 = W.L. Chicago 28' Rt = Pole #3999

209 209 209 204 208 207 215 217 217  
50 40 28 26 17 30 40 45  
Lawn Lawn

2+50

205 205 206 197 201 202 206 2143 214  
50 40 28 26 17 27 30 40  
walk

2+19 E side Ribbon Dr.

1944 1940  
40 31  
DRIVE DRIVE

2+14 W side Ribbon Drive

1946 1942  
40 31  
Ribbon Ribbon  
Dr Dr

Milton Street

Lt.

R

R

5

6+99.52 = E.H. Denver

8+24 = End → 36.7' Lt.

6+90 = Beg 3' Fence 37.5' Lt.

6+73 28' Rt Pole #4103

6+59.52 = J. Denver.

TR on Rock

3222

~~3122~~

34.8 34.8 34.6 34.0 34.3 33.7 34.3 34.6 34.2  
50 40 27 26 25 30 40 50

33.4 33.4 33.2 33.2 32.5 33.8 33.8  
50 40 46 25 40 50

6+19.52 = W.H. Denver

32.2 32.2 32.0 31.6 31.8 31.4 32.2 31.6  
50 40 28 25 24 40 50

6+00

6+42 = End → 37.8' Lt.

4+27 = Beg 3.5' Panel Fence 40' Lt.  
33' Rt = End Luth Fence

5+52 28' Rt Pole Anchor

5+50

5+33 28' Rt Pole #4075

31.4 31.4 31.5 30.5 31.1 30.4 31.3 31.0  
50 40 28 26 24 40 50

29.6 29.6 29.8 28.8 29.5 29.2 30.2 30.4 30.4  
50 40 29 27 25 33 40 50

Does Not Drain

4+85 Approx A Alley

~~---~~

27.0 26.4 25.5 26.1 27.0 26.9 27.7 27.1 27.8 28.3 28.3  
40 34 24 14 40 26 22 31 40 50

TR on Rock

27.47

in Alley Alley in Alley

28.0  
50

4+50

26.0 26.2 27.0 26.0 26.7 26.2 26.6 28.0 28.0  
50 40 29 27 20 29 31 40



Milton Street

Lt.

L.

Rt.

6

417

407

9+69.78 W. ERIE ST.

40.76

T.P. Top of Ret. SW. End on Milton & Erie Tel

3776

9+54 30' Lt. = Pole 488068-H

9+40

417	415	400	408	402	412	413	412
407	405	390	398	392	402	403	402
50	40	25		26	31	40	50

9+00

399	398	388	399	392	406	407	403
389	388	378	389	382	396	397	393
50	40	25		27	32	40	50

8+51 1/2 Garage on Lt. under Consty. No Drive.

395

385

59

Conc. Floor

T.P. Rim MH

3783

3683

8+34.5 1 MH

Alley does not drain

390	376	382	379	3783	374	384	388	382
380	366	372	367	3683	364	374	378	372
340	340	140	40	Rim MH	23	32	40	50
in alley	in alley	in alley						

8+23 28' Lt. = Pole #415

8+16 29.5' Lt. = Tel Pole #488067-H

8+00

376	376	375	367	367	364	373	377	372
366	366	365	352	357	354	363	367	362
50	40	29	27		25	30	40	50

7+97 27.5' Lt. Pole Anderson

7+50

358	358	358	346	356	350	357	360	354
348	348	348	346	345	340	347	350	344
50	40	29	26		25	30	40	50

Milton Street

Lt.

Rt.

Rt.

7

11+12 = Beg. Drive on Lt.

4690 4616  
40 30  
on Drive on Drive

11+00

10+64-25.8 Rt. = end cb.

10+63 29.5' Lt. = Pole 90 844-H

457 455 448 453 450 458 459 459  
40 27 24 24 27 40 50  
Lawn  
43.05 43.44  
25.8  
gut Top = end cb.

10+44 30' Lt. = Pole Anchor.

10+59-22' Rt. = ± F.H.

10+27.3 = Ecb Line Erie on Rt. Section on curb line on Rt.

427 428 433 4227 4211 4240 4236  
40 25 26 40 60 60  
Pov. Gut. cb  
F.H. F.H.  
Rt. Rt.

Mid point of S.E. Ret. 53' around

10+09.28

42.24 42.65  
gut Top

423 422 429 4186 4174 4179  
40 26 27 40 50  
Paving Pov. Pov.

Wcb. Line on Rt.

9+91.3 Apprx Section on Curb Line on Rt.

429 425 414 423 4128 4139 4164 4201  
40 30 26 26 40 52 60  
Paving Pov. Gut. 52

Mid point of S.W. Ret 49' around

9+69.28 = W.L. ERIE ST.

422 422 406 417 407 418 422  
40 27 25 26 27 40

41.19 41.57  
gut Top

9+64-25.9 Rt. = end cb.

42.03

817

40.5 40.75  
25.9 Top  
gut end cb.

BM SW  
Chk. B.R. Milton + Erie

42.03  
42.06

Field  
Book 2067  
78

13+04 = Ely. of cb. on Inlet.

51.47 50.60  
Top 20  
= end cb. gut.

50.40 51.19  
20 Top = end. cb.  
gut.

12+99.7-26' Rt = Beg. cb. on Ret. (note Behind Inlet.)

51.18  
26 = Top  
end.

12+99-28' Rt. =  $\pm$  P. pole #4249

12+88 = wly. end of cb. on 15' opening Inlets

53.5  
40 52.4 51.2 51.2 50.17 50.35 51.1 51.1 50.10 49.98 50.73 50.7  
32 29 Top 19.9 17.6 8 17.8 20.2 Top 40  
cb. gut. cor. Box cor. Box gut. cb.

12+50

52.7 52.6 52.0 49.0 49.6 50.1 50.3 50.3 50.2  
50 40 30 26 13 20 40 50

12+00

49.7 49.5 49.2 48.0 49.0 48.7 48.8 48.9  
50 40 28 24 20 40 50

11+81.5-29.7 Lt =  $\pm$  Tel. pole #90845H

11+80-28.2 Rt =  $\pm$  P. pole #4225

11+50

48.0 47.3 47.4 46.0 46.9 47.1 47.2 47.2  
50 40 30 25 20 40 50

TP Nail in Pole on Rt

49.44

11+27 = End Drives on Both Sides

46.34 46.12  
40 30  
Conc. Dr. Conc. Dr.

46.94  
43  
Conc. Apron

11+16

TP SW Cor Drive

46.17

46.84  
43  
Garage Apron

14+65-25.5 Rt. = ± 10" Pepper + 29.5 Lt. = ± 24" Euc.

14+56-28 Lt. = ± 36" Euc.

14+54-27.5 Lt. = ± 24" Euc.

14+50

56.8 56.5 56.4 55.6 56.5 56.4 56.3 57.0 57.1  
50 40 30 20 20 30 40 50

14+47-28.5 Rt. = ± 12" Pepper

14+19-31.5 Lt. = ± 50" Euc. clump.

14+14-32 Lt. = ± 40" Euc.

14+11-30 Rt. = ± 30" Palm

13+99.51 = E.L. Frankfort 27.5 Rt. = ± 18" Pepper

56.0 55.8 55.2 54.5 54.8 54.2 54.3 51.5  
50 40 30 20 20 40 50

13+87-24.5 Rt. = ± Guy Pole

13+86-29.5 Rt. = ± 30" Palm

13+81-29.5 Lt. = ± Tel. pole # 90846H

13+70

51.4 52.0 52.6 53.9 53.9 53.3 52.9 52.6  
50 40 30 15 20 40 60

13+51 = Ely. of A.C. pave

52.0 52.9 53.1 52.9 52.51 52.45 52.37  
50 40 20 15 27.8 40 60  
Cor. AC.

check B.M. = S.W. B.P.

52.46

13+33.5 = line of Exist cb.

54.4 54.0 51.7 52.1 52.5 52.3 51.90 51.80 52.42 51.98 52.69  
50 40 35 20 20 40 60 100 100  
27.5 = edge AC. gut. = P.L. gut. Top Top  
52.6

A.C. pave broken out by Drain

13+19.51 = W.L. of Frankfort.

54.3 54.1 54.1 51.3 51.5 52.1 51.6 51.83 51.10 51.9 52.0  
50 40 34 27 13 20 32.3 40 50  
Top cb; gut. on Ret.

16+27-31.5' Lt. = ± 20" Euc.

16+20-31.7' Lt. = ± 20" Euc.

16+16-26.5' Rt. = ± 18" Pepper + 27.5' Lt. = ± 20" Euc

16+11-25.5' Rt. = ± 8" Pepper

16+07-31' Lt. = ± 30" Euc

16+03-29' Rt. = ± 24" Palm

16+00

15+96-31.5' Lt. = ± 16" Euc.

15+80-29' Lt. = ± 30" Euc.

15+72-24.7' Rt. = ± 12" Pepper

15+67-25' Rt. = ± 12" Pepper

15+54-29.5' Rt. = ± 18" Palm

15+50-32' Lt. = ± 30" Euc.

15+44-27.3' Rt. = ± P. pole # 4349 = B.M. 62.72

15+07-29.5' Rt. = ± 18" Palm

15+03-31.5' Lt. = ± 40" Euc.

15+00

14+97-32.5' Lt. = ± 18" Euc.

14+82-30' Rt. = ± 30" Palm

14+76-32.5' Lt. = ± 36" Euc.

Lt.      ±      Rt.      10

63.8	63.8	64.3	64.8	64.9	64.7	66.7	66.6
50	40	20		15	30	40	50

59.0	59.2	60.1	61.5	62.0	61.9	61.9	62.2
50	40	26	10		20	40	50

57.2	57.4	57.4	58.2	58.9	59.3	58.7	58.6	58.7
50	40	20	10		10	25	40	50

ahead in Book 2203-P.6

17+49.51 = E.L. of Galveston = 0+00 on Sections

17+39.5 = along Toe of cut on Rt.

17+31.5 = ± Sewer M.H. Sly. Rim = 77.32

16+95

16+86-273 Rt. = ± Pipe # 4397

16+81-294 Rt. = ± 24" Palm

16+79-255 Rt. = 8" Pepper.

16+76-32 Lt. = ± 24" Euc

16+72-31 Lt. = ± 30" Euc.

16+69.51 = W.L. Galveston - 315 Lt. = ± 30" Euc <sup>stamp</sup>

16+64-26 Rt. = ± 12" Pepper

16+55-30 Rt. = ± 36" Palm

16+54-27.5 Lt. = ± 40" Euc.

16+46-31 Lt. = ± 30" Euc.

16+42-24 Rt. = ± 10" Pepper

16+39-28 Lt. = ± 36" Euc.

16+35

Lt. ± Rt. //

76.0	77.2	77.5	77.0	77.9	77.7	77.2	77.5	78.2
60	40	30	20		20	30	40	60

72.6	72.7	73.6	72.9	74.0	74.0	75.3	76.6
60	40	30	20		20	40	60

68.8	69.4	69.6	71.0	71.0	71.6	73.7	74.8	76.2
50	40	30	13		15	20	40	60

66.2	66.3	66.9	67.6	69.2	70.0	71.3	71.7
50	40	20		17	25	40	50

Lt.      E      Rt.

X-Sect. 15-Alley in Block 43 - Normal Hts.  
N. & S. Alley. - See sketch - Book 1369 - P. 72  
+ Orig. Notes.

INDEXED  
DLW  
DEC 18 1952

0+58 11.5 Lt. = E SINGLE DOOR GARAGE  
(5TH ENT.)

90.1  
11.5  
Dirt

0+47 9.0 Rt. = SOUTH WESTLY COR GARAGE  
(SOUTH ENT.)

89.9 90.2 89.9 90.0 89.7  
15 7.5 7.5 15  
E GARAGE DOOR

0+25

89.7 89.5 89.8  
7.5 7.5

0+15 = E 2 door car garage 32.5 R.T. (15' AC  
APRON)

89.67 89.0  
5.0 32.5 dirt  
edge AC. floor garage  
apron

0+08

89.6 89.5 88.3 88.2 88.1 89.4 89.7  
15 7.5 4 3 7.5 15

0+00 = North line MADISON AVE

87.67 87.53 87.13. 87.17 87.25  
7.3 7.3 edge pav. 7.5 7.5  
Top Cb Gut. Gut. Top Cb.  
End return

0-10 = North curb line MADISON

88.26 87.69 87.51 86.95 86.74 86.48 86.96 85.51 86.05  
50 50 Top Cb 7.5 7.5 Top Cb 50 50  
Top Cb. Gut. 2' End. Gut. 2' End. Gut. Top Cb

386.85

SET B.M. L&T <sup>North</sup> Alley 7' LINE MADISON 36<sup>TH</sup> to Cherokee

B.M. = N.E. 7' L&T WILSON T MADISON 393.82

Actual Elev. Shown.

389.62 T.P.

Lt

E

Rt

13

2168 8.4 Rt = NTHLY EDGE CONC. SLAB

89.70 89.78  
8.4 15  
edge conc. CONC  
SLAB2156.5 8.6 Lt. STHLY COR GARAGE  
(SOUTH ENT)89.7 89.5  
14 8.6  
DIRT FLOOR  
GARAGE

2152 8.6 Rt. STHLY COR CONC SLAB

89.76  
8.6

2150

89.7 89.4 89.2 89.4 89.6  
15 7.5 7.5 152127.4 = 8.6 Rt = SOUTH WESTLY COR GARAGE  
(Sth. ENT)89.4 89.29  
8.6 12.0  
CONC. FLOOR

2108 = 23.0 Lt = E SINGLE CAR GARAGE

89.75

2104 8.0 Rt = E 2 1.5 concrete strip drive

23.0  
conc. garage floor  
89.62 88.83  
8.0 4.0  
edge drive

2100 = 6.6 Lt = E POWER Pole # P.A 4645

89.5 89.3 89.2 89.4 89.4  
15 7.5 7.5 15

0150

89.5 89.6 89.4 89.5 89.2  
15 7.5 7.5 15

1100

89.6 89.4 89.7  
7.5 7.5

0192 4.0 Rt = E ONE CAR GARAGE

89.25  
4.0 floor GARAGE

0175 7.5 Lt = E POWER Pole # P.A 4609

89.8 89.7 89.9  
7.5 7.5

Actual Elevations shown



391.19 T.B.M.

Lt.

E

Rt.

14

4457 8.2 Lt = E 3' brick &amp; mortar walk

89.02

4451 6.8 Lt = E Power Pole No Number

8.2  
cast edge brick walk

4450 7.6 Lt end board fence

88.9 88.8 88.9

4417 9 SEWER MANHOLE

7.5 7.5

88.36  
rim manhole

4400

89.3 89.0 89.4

7.5 7.5

3450 7.1 Lt. end WIRE FENCE & Begin  
5' BOARD FENCE

89.6 89.2 89.5

7.5 7.5

3449 5.7 Lt = E Power Pole # PA 0655  
SET B.M. SPIKE IN POLE 390.12

3433.2 10.2 Rt. Angle in concrete apron

89.96 90.04

10.2 15.8  
edge slab along house  
on slab

3416.5 10.2 Rt Begin concrete slab

90.01 90.03

10.2 15.9  
edge concrete on slab  
apron along side  
house3400 7.5 Lt. End Picket FENCE & Begin  
4x4" chicken wire fence

90.0 89.5 89.5 89.4 89.5

15 7.5 7.5 15

2484 22.5 Lt. = E SINGLE CAR GARAGE

389.79

22.5

2475 7.3 Lt Begin 5' Picket FENCE

Lt

E

Rt

15

6+50.68 5TH. LINE OF T ALLEY

87.7	87.5	87.4
7.5		7.5

6+48 6.7 Lt = E Power Pole P.A. 3621

6+16 11' Rt. = E OF EUC. ? TREE 20"

6+00

88.4	88.0	87.5	87.4	86.5
15	7.5		7.5	50

5+50 7.6 Lt. = E Power pole # PA 1667 & end  
8" wall. 8.6 Lt.

90.71	88.6	88.5	88.0	87.9	87.7
8.6	8.6	7.5		7.5	15
Top wall	gd. at wall				

5+00 7.5 Lt. end lathe house & begin  
8" concrete retaining wall

90.57	88.8	88.6	88.2	88.5
Top wall	gd. 7.5		7.5	
8.6	8.6			

4+80 7.5 Lt. Begin lathe house

X-SECT EAST AND WEST 15' ALLEY  
BLOCK 43 NORMAL HEIGHTS

Lt. E Et. 16

INDEXED  
DEC 13 1952

1+40.17 EASTLY OF NORTH & SOUTH ALLEY

87.4 87.4 87.4  
7.5 7.5

1+33 E OF SEWER MANHOLE

87.15  
Rim Manhole

1+25.17 WESTLY OF NORTH & SOUTH ALLEY

87.7 87.6 87.7  
7.5 7.5

7.0 LT = E GUIDE POLE SET B.M. 388.06  
SAKE IN POLE

1+00

88.4 88.2 88.2  
7.5 7.5

0+66 = 15' Lt = E 2 door car garage

89.04 89.1 3888 88.8 88.9  
15.0 7.5 7.5 15  
CONC. FLOOR

0+50

89.1 89.0 89.0  
7.5 7.5

0+15

88.9 89.1 88.9 89.0 89.5  
20 7.5 7.5 20

0+00 = EAST PROP LINE 36TH ST.

88.37 88.24 88.13 88.31 88.54  
7.6 7.6 7.0 Top Cb  
Top Cb Gut Gut End RETURN

0-12 = EASTERLY CURB LINE OF  
36TH ST.

88.22 87.73 88.37 87.92 87.78 87.78 88.17 87.96 88.50  
50 50 Top Cb 7.5 Gut Top Cb 50 50  
Top Cb Gut 2' Rad. Gut 7.5 2' Rad Gut Top Cb

ACTUAL ELEVATIONS SHOWN

ALL LEVELS SEEM TO BE 0.10 HIGHER  
THAN LAST X-SECTION

Lt.

±

Rt.

17

2+77.39 - WESTLY CURB LINE CHEROKEE

8599 85.38 8580 85.30 8519  
50 50 TopCb 7.0  
Top Gut. 2'END Gut.  
Curb

8555  
50 Top  
cb.  
8519 85.41 8514  
7.8 TopCb 50  
Gut. 2'END Gut.

2+65.39 - WESTLY PROP LINE CHEROKEE

8585 85.67  
6.9  
end returns +  
Gut. SAME

8588 BOTH RETS.  
7.8 BROKEN  
TOP Cb. BADLY  
Gut SAME

2+35

86.5 86.4 86.4  
9.5 7.5

86.5 86.4  
7.5 15

along house

2+34 7.2 Lt. End PICKET FENCE

2+21 9.4 Rt. End 12' Hedge

2+12.5 7.2 Lt. BEGIN 3' PICKET FENCE

2+05.4 = EASTLY EDGE CONC APRON &  
GARAGES

86.56 86.44 86.7 86.7  
16.5 7.7 7.5  
garage floor edge conc  
apron

1+95 9.4 Rt ± 12' Hedge

1+77 7.7 Lt. = WESTLY EDGE CONC. APRON  
TO 3 door car GARAGE

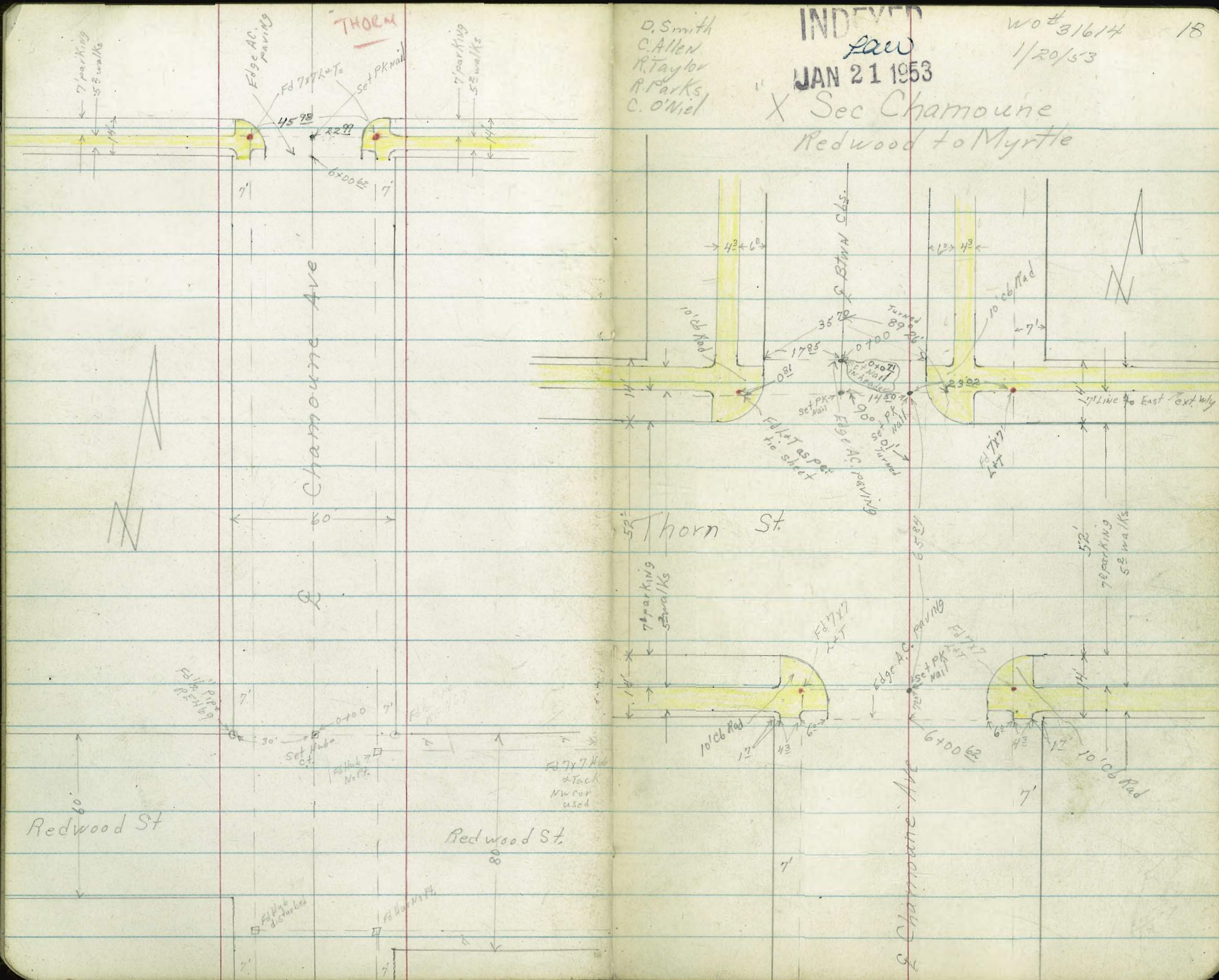
86.58 86.62 87.0 86.8  
16.6 7.7 7.5  
conc. floor gar. edge apron.

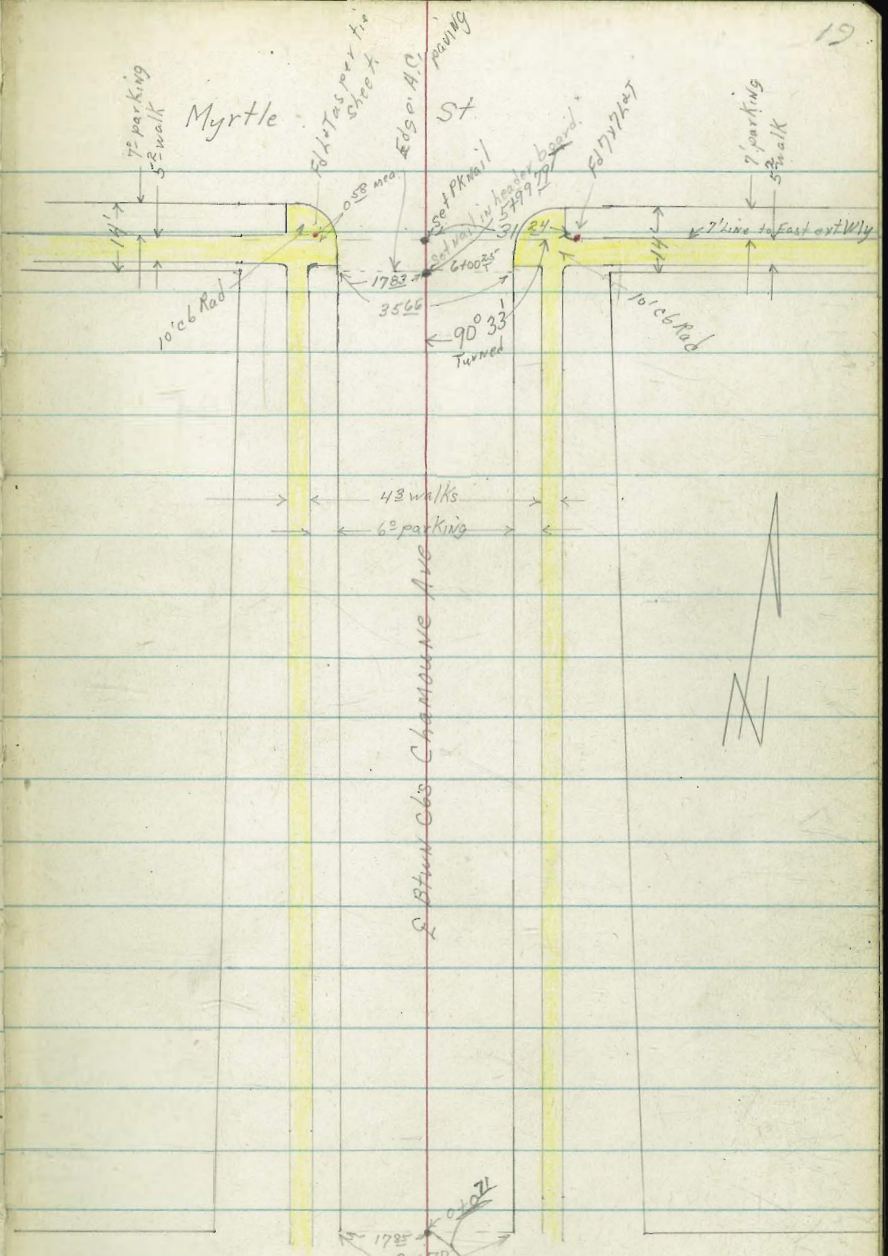
D. Smith  
C. Allen  
R. Taylor  
R. Parks  
C. O'Neil

INDEXED  
Law  
JAN 21 1953

wo # 31614 18  
1/20/53

X Sec Chamourne  
Redwood to Myrtle





see page 18 for int @ Thorn St.

Cross Sec. Chamoune Ave.  
Redwood to Myrtle

0+00 Nly Redwood

0-10

0-30 E Redwood to West

0-40 E Redwood to East

0-48 32<sup>5</sup> Lt E 12" Power Pole #4549

0-60 Sly Redwood to West

0-80 Sly Redwood to East

TP 303 325<sup>86</sup> 10<sup>46</sup> 322<sup>83</sup>

BM. 0<sup>33</sup> 333<sup>29</sup> 332<sup>26</sup> NWBP Thorn + Chamoune

Lt West E RT East 20

18.8 20.4 20.8 20.4 20.8 20.5 20.4 20.2 19.4  
7<sup>1</sup> 5<sup>5</sup> 5<sup>1</sup> 5<sup>5</sup> 5<sup>1</sup> 5<sup>4</sup> 5<sup>5</sup> 5<sup>2</sup> 6<sup>5</sup>  
100 50 30 10 20 30 50 100

17.9 19.7 20.2 20.3 20.6 20.3 20.2 19.9 19.1  
8<sup>0</sup> 6<sup>2</sup> 5<sup>2</sup> 5<sup>6</sup> 5<sup>3</sup> 5<sup>6</sup> 5<sup>2</sup> 6<sup>0</sup> 6<sup>2</sup>  
100 50 30 8 20 30 50 100

17.1 19.2 19.8 19.9 20.0 19.8 19.8  
8<sup>2</sup> 6<sup>1</sup> 6<sup>1</sup> 6<sup>0</sup> 5<sup>2</sup> 6<sup>1</sup> 6<sup>1</sup>  
100 50 30 8 20 30

19.4 19.6 19.7 19.6 19.6 19.3 18.0  
6<sup>5</sup> 6<sup>3</sup> 6<sup>2</sup> 6<sup>3</sup> 6<sup>3</sup> 6<sup>6</sup> 7<sup>2</sup>  
30 8 20 30 50 100

16.5 18.6 19.1 19.3 18.8 19.1 19.0 19.0 18.8 18.0  
9<sup>1</sup> 7<sup>2</sup> 6<sup>2</sup> 6<sup>6</sup> 7<sup>1</sup> 6<sup>8</sup> 6<sup>2</sup> 6<sup>2</sup> 7<sup>1</sup> 7<sup>2</sup>  
100 50 30 10 7 20 30 50 100

18.6 18.7 18.2 18.5 18.4 19.0 18.8 18.5 17.1  
7<sup>2</sup> 7<sup>2</sup> 7<sup>2</sup> 7<sup>4</sup> 7<sup>5</sup> 6<sup>2</sup> 7<sup>1</sup> 7<sup>4</sup> 8<sup>2</sup>  
30 9 7 21 24 30 50 100

325<sup>86</sup>

1455 33° Lt & 6' con ribbon drive 2° ea

1450

1433 29° Rt & 3' con walk

TP<sub>2</sub> 10<sup>19</sup> 330<sup>99</sup> 5<sup>06</sup> 320<sup>80</sup> on prop pipe NW con Champus Redwood

1408 29° Rt & 7' ribbon 2° ea

1400

0493 30° Lt & 9' dow drive

0469 30° Rt & 2' con walk

0450

0440 29° Lt & 2' con walk

Lt = West

Rt = East

21

24.88

24.98

6<sup>11</sup>

6<sup>01</sup>

43°  
drive

33°  
drive

24.8 24.7 24.4 24.3 24.4 24.5 24.9 25.3 25.0

6<sup>2</sup> 6<sup>3</sup> 6<sup>6</sup> 7<sup>1</sup> 6<sup>6</sup> 6<sup>5</sup> 6<sup>1</sup> 5<sup>7</sup> 6<sup>0</sup>  
50 30 16 14 16 22 30 50

24.62

24.54

6<sup>37</sup>

6<sup>45</sup>

298

398

w/k

w/k

T 330<sup>99</sup>

24.02

23.79

1<sup>84</sup>

2<sup>07</sup>

298

498

drive

drive

23.2 23.5 23.3 22.8 23.3 23.2 23.7 23.1 23.4

27 24 26 31 26 22 22 22 25  
50 30 15 12 16 23 30 50

23.04

23.14

2<sup>82</sup>

2<sup>72</sup>

402

302

drive

drive

22.71

22.69

315

317

303

403

w/k

w/k

22.3 22.3 22.0 22.0 22.0 21.7 22.4 22.3 22.0

36 36 39 43 32 42 35 36 39  
50 30 13 11 18 23 30 50

22.06

22.15

380

371

392

292

walk

walk

T 325<sup>86</sup>



3450 22<sup>1</sup> RT & 8" Pepper tree

Lt = West      Rt = East      22

28.3	28.1	27.9	27.8	27.9	27.8	28.0	28.1	28.3
27	22	3 <sup>1</sup>	3 <sup>2</sup>	3 <sup>1</sup>	3 <sup>2</sup>	3 <sup>2</sup>	22	22
50	30	22	16		14	17	30	50

3443 30° RT & 3' con walk

3437 22<sup>4</sup> RT & 6" Pepper tree

3419 30° Lt & 2' con walk

3400

2467 33° RT & 2<sup>3</sup> con walk

2450

2423 29° RT & 3' con walk

2400

1475 27° Lt & 3' con + brick walk

1459 30° RT & 2' con walk

28.05      28.10

27.92      27.89

3<sup>02</sup> 3<sup>04</sup>  
4<sup>05</sup> 3<sup>0</sup>  
w/k w/k

27.9	27.8	27.5	26.8	27.1	27.0	27.4	27.3	27.1
3 <sup>1</sup>	3 <sup>2</sup>	3 <sup>1</sup>	4 <sup>2</sup>	3 <sup>2</sup>	4 <sup>2</sup>	3 <sup>6</sup>	3 <sup>2</sup>	3 <sup>2</sup>
50	30	20	16		14	18	30	50

26.81      26.71

4<sup>18</sup>      4<sup>28</sup>  
5<sup>30</sup>      5<sup>30</sup>  
w/k w/k

26.2	26.3	26.0	26.4	26.4	26.6	26.8	26.6	
4 <sup>8</sup>	4 <sup>7</sup>	4 <sup>8</sup>	5 <sup>0</sup>	4 <sup>6</sup>	4 <sup>6</sup>	4 <sup>4</sup>	4 <sup>2</sup>	4 <sup>4</sup>
50	30	16	14		14	16	30	50

26.40      26.42

4<sup>59</sup>      4<sup>57</sup>  
2<sup>90</sup>      3<sup>92</sup>  
w/k w/k

25.6	25.7	25.4	25.0	25.6	25.6	25.8	25.9	25.7
5 <sup>1</sup>	5 <sup>3</sup>	5 <sup>6</sup>	6 <sup>0</sup>	5 <sup>4</sup>	5 <sup>4</sup>	5 <sup>2</sup>	5 <sup>1</sup>	5 <sup>3</sup>
50	30	16	14		14	18	30	50

25.48      25.36      25.32

5<sup>51</sup> 5<sup>3</sup> 5<sup>67</sup>  
4<sup>04</sup> 3<sup>02</sup> 2<sup>78</sup>  
w/k w/k w/k

25.26      25.24

5<sup>73</sup>      5<sup>75</sup>  
3<sup>0</sup>      4<sup>0</sup>  
w/k w/k

π 330<sup>99</sup>

4155 30° - Lt begin cow drive

4150

4140 30<sup>4</sup> Lt & R° cow walk

4122 30<sup>3</sup> Lt & R° cow walk

TP3 8<sup>30</sup> 336<sup>97</sup> 2<sup>32</sup> 328<sup>67</sup>

4100

3192 R2<sup>3</sup>/Rt & 8" Pepper tree

3177 R2<sup>5</sup> Rt & 5" pepper tree

3177 30<sup>4</sup> Lt & 8' cow drive

3172 28<sup>4</sup> Lt & Rtl 2° cow walk // to live

3162 R2<sup>3</sup>/Rt & 8" Pepper tree

3151 28<sup>5</sup> Lt begin 2° cow walk // to live

Lt - West

Rt - East

23

30.24 30.20 29.86  
6<sup>23</sup> 6<sup>27</sup> 7<sup>1</sup>  
4<sup>22</sup> 3<sup>25</sup> 3<sup>02</sup>  
drive

29.9 29.9 29.6 29.2 29.5 29.5 30.1 29.5 29.5  
7<sup>4</sup> 7<sup>1</sup> 7<sup>2</sup> 7<sup>8</sup> 7<sup>5</sup> 7<sup>5</sup> 6<sup>2</sup> 7<sup>6</sup> 7<sup>5</sup>  
50 30 22 17 14 17 30 50

29.66 29.62

7<sup>31</sup> 7<sup>35</sup>  
50<sup>3</sup> 30<sup>2</sup>  
wk wk

29.48 29.24

7<sup>49</sup> 7<sup>23</sup>  
40<sup>3</sup> 30<sup>2</sup>  
wk wk

↑ 336<sup>97</sup>

29.3 29.1 28.9 28.5 28.7 28.5 29.0 28.9 28.9  
17 19 21 25 23 25 20 21 21  
50 30 23 18 14 17 30 50

28.66 28.73

2<sup>33</sup> 2<sup>26</sup>  
40<sup>4</sup> 30<sup>4</sup>  
drive drive

28.64

2<sup>35</sup>  
28<sup>4</sup>  
wk

28.43

2<sup>56</sup>  
28<sup>5</sup>  
wk

↑ 330<sup>99</sup>

Lt = West

Q

Rt = East 24

79 BM starting 497 337<sup>92</sup> 492 332<sup>85</sup>

-001  
NWBR Thorn  
Chamoune

31.2<sup>3</sup> 32.1<sup>7</sup> 32.3<sup>2</sup> 32.3<sup>3</sup> 32.3<sup>3</sup> 32.2<sup>7</sup> 32.2<sup>4</sup> 32.1<sup>1</sup> 31.9<sup>2</sup> 31.5<sup>1</sup> 30.7<sup>7</sup>

6440<sup>62</sup> 2 Thorn St

574 480 465 464 464 465 470 473 485 505 540 620  
100 50 325 30 18 145 35 18 30 50 100

6414<sup>62</sup> Sly c6 line Thorn St

30.84 30.18 31.85 31.26 31.63 31.97 31.55 31.25 31.82 31.91 31.59 31.85  
613 622 542 571 420 534 510 500 542 522 515 606 538 622 650  
100 100 50 50 30 30 18 18 30 30 50 50 100 100  
26 out 26 out 26 out 26 out 26 out 26 out 26 out 26 out 26 out 26 out 26 out 26 out

6400<sup>62</sup> Sly Thorn begin AC, c6s end

32.3 32.48 32.42 32.29 31.82 31.86 31.86 31.64 31.37 31.79 31.98 31.52  
47 47 45 45 55 51 51 533 560 518 479 422 48  
30 283 242 172 172 9 9 180 180 242 283 30  
w/k w/k 26 out 9 9 out 26 out w/k w/k

5462 29<sup>2</sup> Rt E 3<sup>o</sup> con walk

31.57 31.67  
540 530  
292 392  
w/k w/k

5450

31.6 31.6 31.4 31.1 31.3 31.1 31.4 31.6 31.6  
54 54 56 52 57 52 56 54 54  
50 30 19 16 14 17 30 50

5400

30.1 30.8 30.5 30.2 30.3 30.2 30.4 30.3 30.2  
63 63 65 68 67 68 66 67 68  
50 30 19 16 14 17 30 50  
30.40 30.39 30.33

4473 29<sup>2</sup> Lt E w con drive

657 658 664  
425 325 292  
drive

+ 336<sup>97</sup>

Lt=West Rt=East 25

1760 18° Lt & 9' drive

33.59 33.03  
 433 489  
 24 18  
 w/k l/w  
 32.64 33.37 33.0 32.8 32.4 32.71 33.05  
 428 455 42 51 56 521 487  
 282 172 172 18 18 283  
 w/k cb gut cb w/k

1750

33.47 32.71  
 425 521  
 24 172  
 w/k l/w

1712 17° Lt & 8' drive

31.94 32.90  
 598 502  
 172 242  
 drive w/k  
 l/w

1707 17° Rt & 8' drive

3.51 33.21 32.6 32.2 32.60 32.86  
 441 421 53 53 51 532 506  
 283 18 18 172 172 282  
 w/k cb gut gut cb w/k

1700

33.29 33.01 32.72 32.6 31.9 32.44 32.59  
 463 421 52 53 60 518 533  
 283 18 18 18 18 283  
 cb gut gut cb w/k

0750

33.21 32.93 32.43 32.55 31.95 32.41 32.57  
 421 429 519 537 527 551 535  
 282 172 172 172 172 282  
 w/k cb gut gut cb w/k

0700 Nly Thorn St. Edge AC. ends

31.84 31.06 32.70 31.81 32.81 32.18 32.29 32.35 32.07 31.82 32.42 31.57 32.25 30.71  
 608 686 522 64 511 524 563 557 525 616 550 635 567 721  
 90 90 30 50 30 30 18 18 30 30 50 50 100  
 cb gut cb gut cb gut 9ut cb gut cb drive

0-14 Nly Cb Line Thorn St.

7337 96

3750

Lt West 34.33 34.05  
 455 483 33.6 33.7  
 283 18 53 62 32.9 33.18 33.44 26  
 w/k 06 9ut 18 18 520 544  
 18 18 283  
 9ut 06 w/k

3700

34.16 32.85 33.4 33.4 32.6 33.11 33.31  
 472 503 55 55 63 577 557  
 283 18 18 18 18 283  
 w/k 06 9ut 06 w/k

2793 18° Lt E 8' dirt drive cb made for it

34.05 33.06  
 485 582  
 24 183  
 w/k 110

2785 17° Rt E 10' drive

32.62 33.29  
 626 559  
 178 24  
 110 w/k

2772 18° Lt E 8' dirt drive cb made for it

33.92 33.02  
 496 586  
 w/k 24 18  
 110

2750

33.96 33.74 33.7 33.3 32.7 33.00 33.34  
 492 514 57 56 62 588 554  
 283 18 18 18 18 283  
 w/k 06 9ut 06 w/k

TP

558 338<sup>8</sup> 462 333<sup>2</sup>

π 338<sup>8</sup>

2734 17° Rt E 9' drive

32.54 33.16  
 538 476  
 172 24  
 110 w/k  
 33.84 33.59 33.1 33.1 32.4 32.89 33.24  
 408 433 48 48 55 503 468  
 283 18 18 172 172 282  
 w/k 06 9ut 06 w/k

2700

1793 17° Rt E 9' drive

32.41 33.04  
 551 483  
 178 24  
 110 w/k

π 337<sup>2</sup>

Lt = West

E

Rt = East

27

5155 17<sup>8</sup> Rt E 8<sup>5</sup> drive

5150

796

495

339

a

474

334

R

5400

4464 18° Rt E 14' drive

4450

4408 18° Lt E 14' drive

4408 18° Rt E 9' drive

4400

3470 17<sup>2</sup> Rt E 7' drive

33.10 33.91

529 518

178 24

lip wlk

34.93 34.64

34.1 34.0 33.1 33.3 33.68

416 475 50 51 58 54 512

283 18 182 172 172 283

w/k 06 9ut 9ut 06 wlk

09

π 339<sup>0</sup>

34.65 34.47 34.1 33.9 33.2 33.56 33.77

423 441 48 50 52 532 511

283 18 18 18 18 283

w/k 06 9ut 9ut 06 wlk

32.98 33.62

520 526

18 24

lip wlk

34.58 34.28 33.8 33.93 33.08 33.47 33.68

430 460 51 425 58 54 520

283 18 18 18 18 283

w/k 06 9ut 9ut 06 wlk

34.48 33.71

420 517

24 18

w/k lip

33.00 33.57

588 531

18 24

lip wlk

34.49 34.12 33.8 33.8 33.08 33.35 33.56

439 470 51 51 58 553 532

283 18 18 18 18 283

w/k 06 9ut 9ut 06 wlk

32.7 33.47

8 616 54

π 338

172 24

lip wlk

Lt=West ♀

Rt=East 28

-0.08 335.89

NWBP Myrtle + Chamoune

BM

329 335.81

35.17 35.21 34.80 34.22  
 334 388 429 487  
 c6 gut c6 gut  
 NWRet SWRet

34.84 34.45 33.82 33.33  
 425 464 527 576  
 c6 gut c6 gut  
 NERet SERet

Mid Pt Returns Myrtle + Chamoune

6480<sup>25</sup> Nly Myrtle

36.01 35.81 35.06 34.97  
 302 328 403 412  
 283 172 172  
 w/k c6 gut gut c6 283 w/k

6466<sup>25</sup> Nly c6 Myrtle

36.65 36.22 35.96 35.58 35.71 35.35 34.97 34.44 34.20 34.80 34.04 34.75 33.66  
 244 287 313 351 338 374 391 412 465 489 427 505 434 55 483 376  
 100 100 50 50 30 30 18 18 30 30 372 372 50 50 100 100  
 c6 gut c6 gut c6 gut 18 gut c6 edge c6 gut c6 gut c6

6440<sup>25</sup> 2 Myrtle

36.41 35.70 35.39 35.11 34.78 34.40 34.17 33.97 33.4 31.9  
 268 339 320 328 431 469 422 512 57 72  
 100 50 30 18 18 30 383 50 100  
 edge AC

6414<sup>25</sup> Sly c6 Myrtle

35.88 35.43 35.02 34.66 34.76 34.34 34.22 33.82 33.47 33.23 33.74 33.09 32.72  
 321 366 402 443 433 425 487 527 562 586 535 600 537  
 100 100 50 50 30 30 18 18 30 30 383 383  
 c6 gut c6 gut c6 gut c6 gut c6 edge c6 0rk AC

6400<sup>25</sup> Sly Myrtle Ave

35.12 34.84 34.24 33.85 33.30 33.84 34.11  
 399 425 485 524 529 525 428  
 283 172 172 172 172 172 283  
 w/k c6 gut gut c6 w/k

T 339<sup>09</sup>

Soil Sample taken 100' south of South Prop Thornd 5' Lt of <sup>west</sup> Chamoune

33.33	32.72	32.17	32.26	32.84	32.26	32.26	31.80
526 637	632 683	625 683	683 729	683 729	683 729	683 729	683 729
ob gut	ob gut	ob gut	ob gut	ob gut	ob gut	ob gut	ob gut
NWR.t	SWR.t	NE R.t	SE R.t				

Mid Pt Returns Thornd + Chamoune

NW B.P. 700' ✓  
 BM starting Thornd + Chamoune 5<sup>TR</sup> 332<sup>96</sup> 332<sup>97</sup>

338.69

TP7 5<sup>15</sup> 338.69 5<sup>56</sup> 333.54



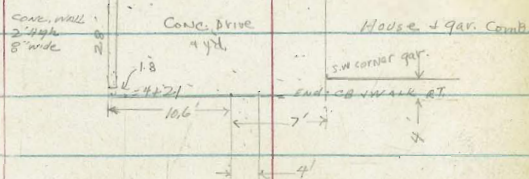
Clark  
Shepherd  
Bruner  
ONEIL  
7-3-53  
W.O. 31979

X-SECT. ELLISON PL. NLY OF N.  
MT. VIEW DRIVE

Sketch, not to scale.

REF. MAP # 1353  
SWG # 3976-L  
F.B. # 1299-58

Notes: Pg. 31

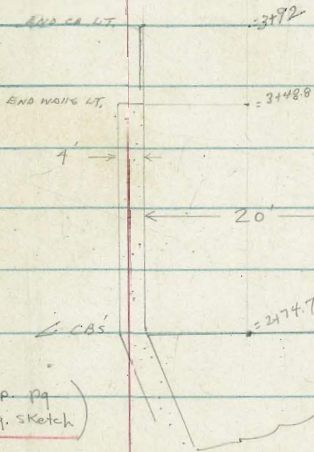


Note: For angles at L's  
IN CB'S - See FB. 1299-58

INDEXED

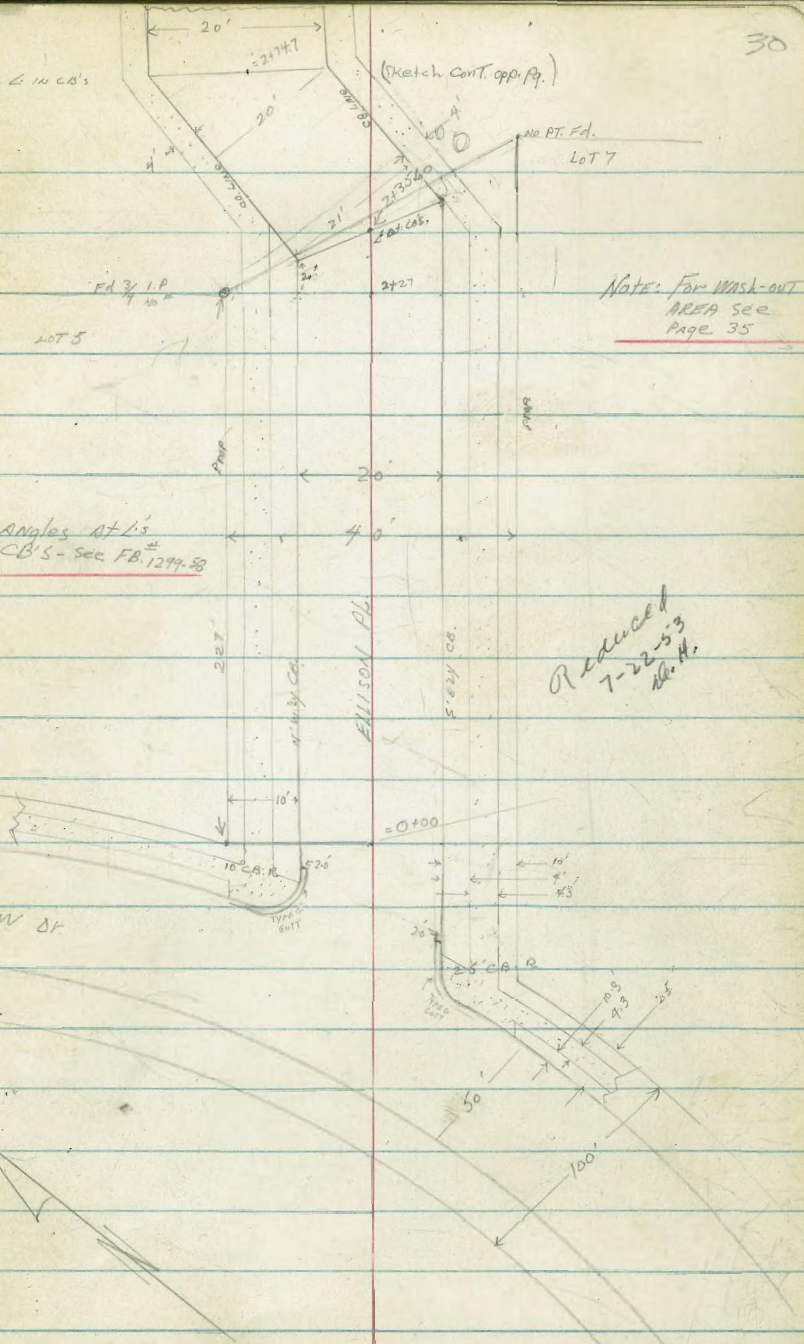
JUL 6 1953

(See opp. pg.  
Req. sketch)



Note: NO TIE-PTS. AVAILABLE  
USED CBS FOR ALIGNMENT.

Note: Both NLY & SLY CBS HAVE BEEN OFF  
ALIGNMENT up to 0.40' FROM CB. EC'S TO 4' NLY



X-SECT. ELLISON PL.

LT.

RT.

31

0+20

End of 9' Dirt Dr. on Rt.  
Note (CO'S MARKS ARE IN bad condition)

0+00 = Pt. on ELLISON 90° to Prop. Pt. on LT. (see sketch)

0-11.8± = N.W. Line Mt. View Drive = END AC. PAV. & GR. CUTS  
(SECT. ON N. LINE)

(PAVING Broken)  
Should be replaced

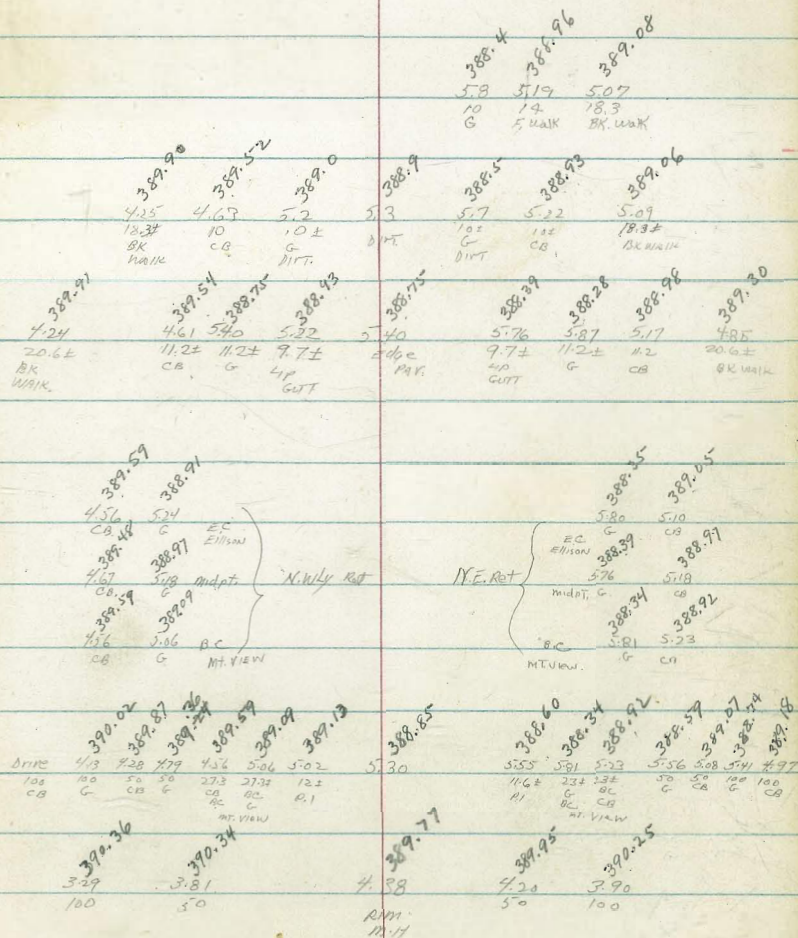
0-395± = N.E. Line N. Mt. View Dr.  
(SECT. ALONG ON LINE)

0-69± = E. N. Mt. View Dr. (AC. PAV.)  
(SECT. ALONG E.)

B.M. 456 394.15

389.59 N.W. B.P.  
ELLISON PL. & N. MT. VIEW DR.

394.15



X-SECT ELLISONA (CONT.)

2700

388.70  
5.13  
18.3  
DK  
WALK

388.43  
5.72  
10  
CB  
DK  
WALK

387.9  
6.3  
10  
C  
DK  
WALK

387.8  
6.7

387.3  
6.9  
10  
C  
DK  
WALK

388.15  
6.0  
10  
CB  
DK  
WALK

388.40  
5.75  
18.3  
DK  
WALK

388.46  
5.69  
18.3  
DK  
WALK

1184

2 12' Drive RT

1469

10' Lt & 14' Conc. Dr.

388.79  
5.36  
18.3  
BK WALK

388.81  
5.24  
14  
L WALK

388.19  
5.96  
10  
LIP

1450

388.96  
5.19  
18.3  
BK WALK

388.11  
5.29  
10  
CB

388.4  
5.8  
10  
C  
DK  
WALK

388.2  
6.0

387.9  
6.3  
10  
C

388.37  
5.78  
10  
CB

388.78  
5.37  
18.3  
BK WALK

1435

10' RL & 11' Conc. Dr.

388.15  
6.00  
10  
LIP

388.55  
5.60  
14  
F WALK

388.71  
5.44  
18.3  
BK WALK

1428

0.2 Lt & M.H.

388.43  
5.72  
0.2  
Rim

1400

389.39  
4.76  
18.3  
BK WALK

389.01  
5.14  
10  
CB

388.5  
5.7  
10  
C

388.5  
5.7

388.0  
6.2  
10  
C

388.58  
5.57  
10  
CB

388.79  
5.36  
18.3  
BK WALK

0479

10' RT & 18' Conc. Dr.

388.33  
5.82  
10  
LIP

388.74  
5.41  
14  
F WALK

388.85  
5.30  
18.3  
BK WALK

0450

389.55  
4.60  
18.3  
BK WALK

389.22  
4.83  
10  
CB

388.8  
5.4  
10  
C

388.7  
5.5

388.3  
5.9  
10  
C

388.65  
5.50  
10  
CB

388.94  
5.21  
18.3  
BK WALK

394.15  
1

ELLISON P.L. (Cont.)

LT

Q

RT

33

3+00

387.74  
5.63  
14±  
BK WALK

387.67  
5.70  
CB  
C  
10±

387.3  
6.1  
C  
10±

387.6  
5.8

387.6  
5.8  
10±  
C

388.07  
5.9  
CB

388.13  
5.21  
14±  
BK WALK

(approx 8' DRIVE ON LT)

2+74.7 = Δ RT IN CA'S. (SECTION ON DIAG.)

388.34  
5.03  
BK WALK

387.67  
5.70  
1/2" DRIVE

387.8  
5.6

387.9  
5.5  
G

388.44  
4.93  
G

388.45  
4.92±  
BK WALK (Broken)

2+51

8 1/2' DRIVE RT (Broken)

388.0  
5.4±  
1/2" DRIVE

388.32  
5.05±  
1.5"  
BK WALK

2+50

CB + WALK Broken From here to NEXT Δ IN CB ON RT.

388.61  
4.76  
14.5  
BK WALK

388.40  
4.97  
CB

387.9  
5.5  
10.5±  
G

388.1  
5.3

388.0  
5.4  
10.5  
G

388.32  
5.05  
14.5  
BK WALK

T.P. 5.23 393.37 6.01 388.14

(2+3560 Section on DIAGONAL at Δ CA'S)

388.40  
5.25  
CB

387.4  
6.7  
G

393.37  
6.9

387.12  
7.03  
CB

388.12  
6.03  
CB

2+427 = Δ SELF CA 4 END 15.5 INLET

2+41 = Δ 3.5 x 2.2 INLET BOX

375.4  
18.67  
10  
FLINE

387.12  
7.03  
GUTT  
WALK

388.12  
5.03  
10  
TRCB

388.11  
7.03  
10  
GATE  
GUTT

6.04  
10  
CB

2+29

10 LT = Δ NW 4 CA.  
9 M.H.

388.40  
5.75  
10  
TP  
CB

387.5  
6.7  
10  
G

388.15  
6.00  
RIM  
M.H.

2+27 10 RT Box 15.5' CA INLET

388.39  
5.76  
10  
TP  
CB

387.37  
6.78  
9  
RIM  
M.H.

387.86  
11.29  
9  
FL  
GUTT

387.12  
7.03  
10  
G  
INLET

388.12  
6.03  
10  
TP  
CB

2+26

9 1/2' 4 x 2.2 CA INLET BOX

388.63  
5.52  
18.3  
BK WALK

388.48  
5.67  
14

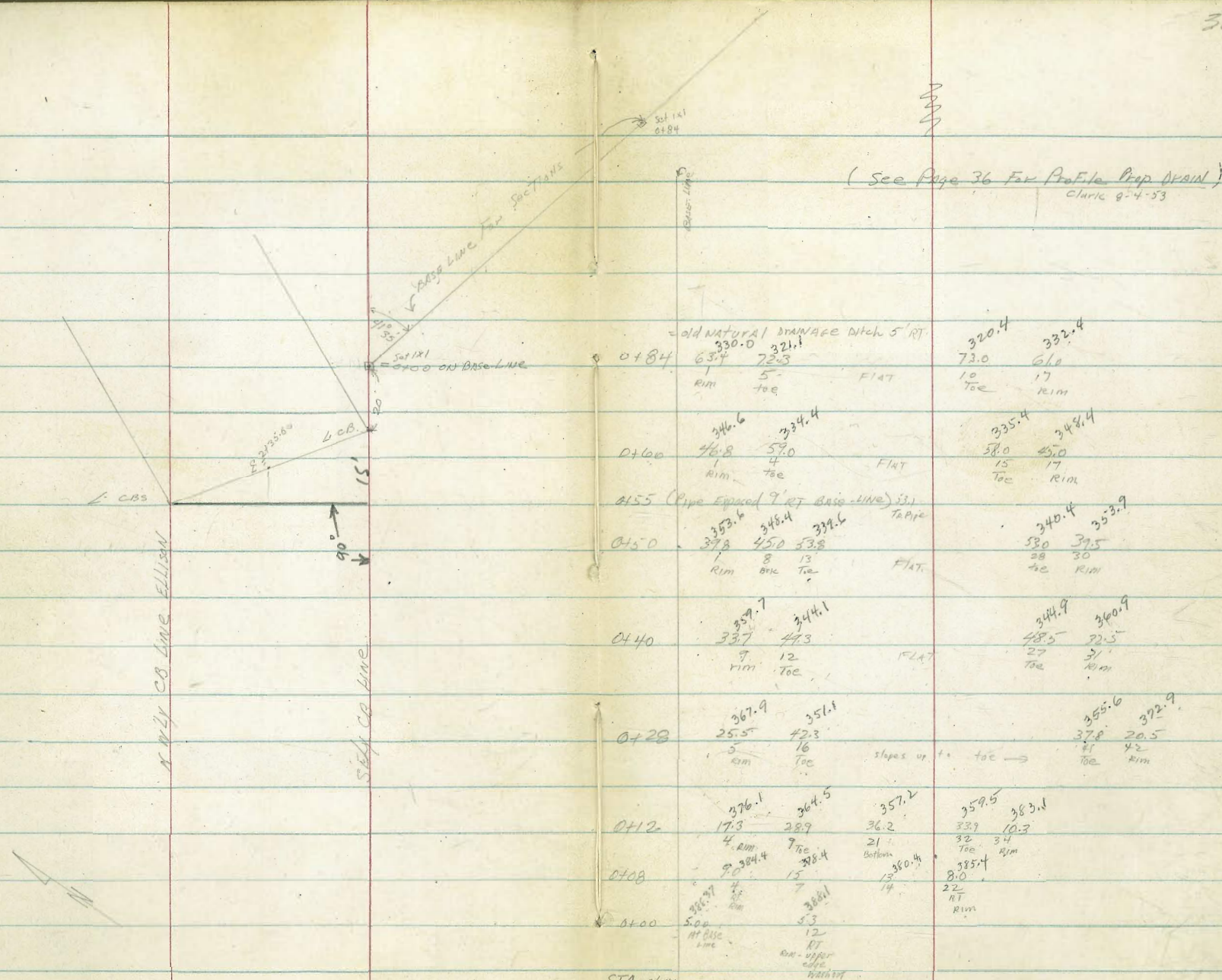
387.79  
6.36  
16" LIP

2+19

8 1/2' DRIVE LT

394.15





( See Page 36 For Profile Prop Drain )  
Clarke 9-4-53

old natural drainage ditch 5' RT.

Station	Rim	Toe	Notes	Rim	Toe	Notes
0+84	330.0	321.1	5' toe	320.4	332.4	FLAT
0+60	346.6	334.4	4' toe	335.4	348.4	FLAT
0+50	353.6	345.4	8' toe	340.4	353.9	FLAT
0+40	339.7	344.1	9' toe	344.9	340.9	FLAT
0+28	367.9	351.1	5' toe	355.6	322.9	Flats up to toe
0+12	376.1	364.5	4' toe	359.5	363.1	Bottom
0+08	384.4	378.4	4' toe	385.4		RT
0+00	5.0	388.1	5.3 RT			RT

STA. along BASE-LINE

(All cuts to RT)  
(All shots are rods from H.I. shown)

393.37 see pg 37

Clark  
Shepherd  
Stoner  
O'Neil  
8-4-53  
W.O. 31979

PROFILE - Proposed DRAIN  
ELLISON PL.

LT

RT

NOTE: - See Sketches Pgs 30 & 35 For alignment.  
(BASE-LINE as shown by 35 used For alignment)  
here:

0+25

T.P. 1.02 377.88 12.15 376.86

0+06 = BROWN CANYON

0+00 = RT 41°35' out at 90° to F.C. tang  
(1X1 ON BASE-LINE)

0-09 9.7' RT & Deadman

0-11.3 4.6' RT & Deadman

0-14.3 0.45 LT & Pole # 594173-H (Anchor-Pole)

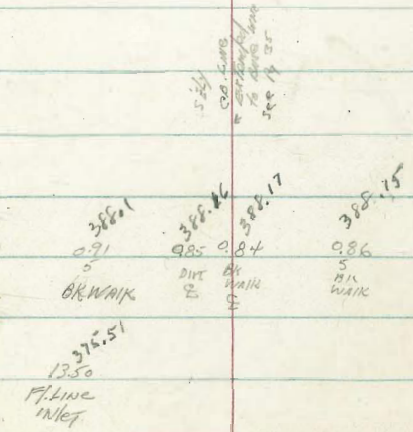
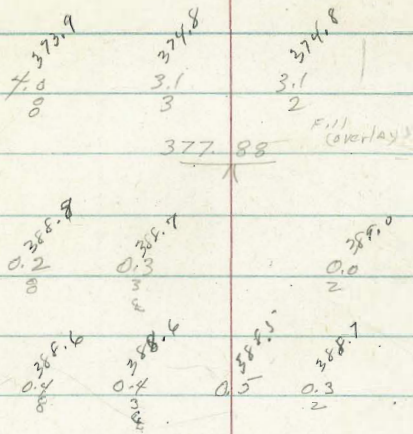
0-15.2 3.5' RT & Anchor Pole  
BK 4' CONC. WALK - 8 OUTS along DRAIN about (1/2" off)

0-20 = 1.5' CONC  
(2+42 P. 30)

B.M. 0.89 389.01

388.12 = T.P. CB (2+42 P. 30)

389.01



Proposed DRAIN (CONT.)

T.P. 15.60 351.58 0.40 335.98  
 1+20+ - Cut Brk into main Canyon into MISSION Valley  
 Foot drop approx 20' From this PT. to Floor Corry cut

0+87 Brk 5 into small ravine

0+84 Set 121 on BASE LINE

T.P. 0.40 336.38 16.40 335.98

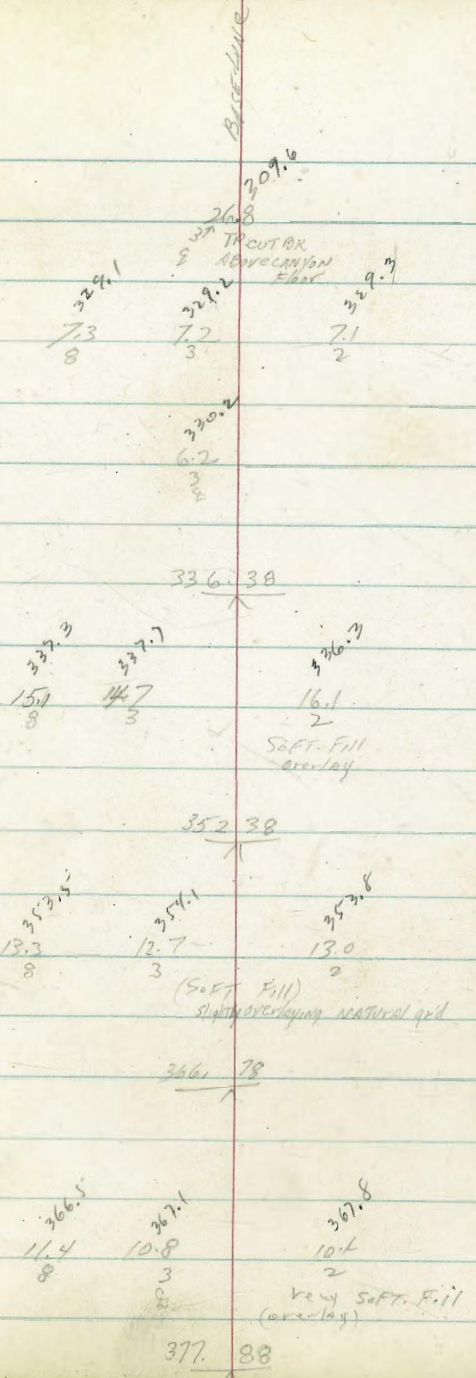
0+70

T.P. 0.50 352.38 14.90 351.88

0+50

T.P. 0.00 366.78 11.10 366.78

0+35 Brk



377.88



Prop. DRAIN (CONT.)

CHK.		1.23	388.20 = 388.12	(see RM Pg 36)
------	--	------	-----------------	-------------------

T.P.	11.73	389.43	0.33	377.70
------	-------	--------	------	--------

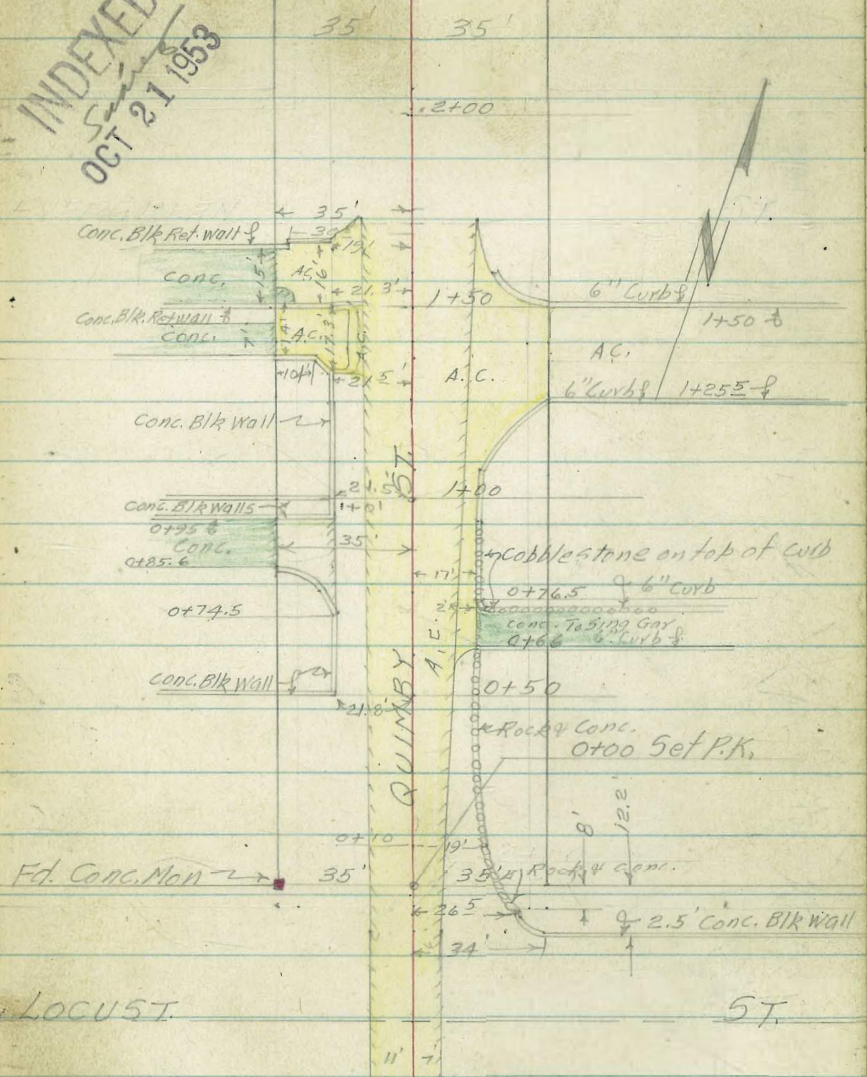
T.P.	11.73	378.03	0.88	366.30
------	-------	--------	------	--------

T.P.	15.70	367.18	0.10	357.48
------	-------	--------	------	--------

CROSS SECTIONS QUIMBY ST; LOCUST  
TO EVERGREEN W.O. 31302

T. A. Stamper

INDEXED  
OCT 21 1953



LOCUST.

ST.

CROSS-SECS QUIMBY ST. CONT'D.

T.A. Stampel

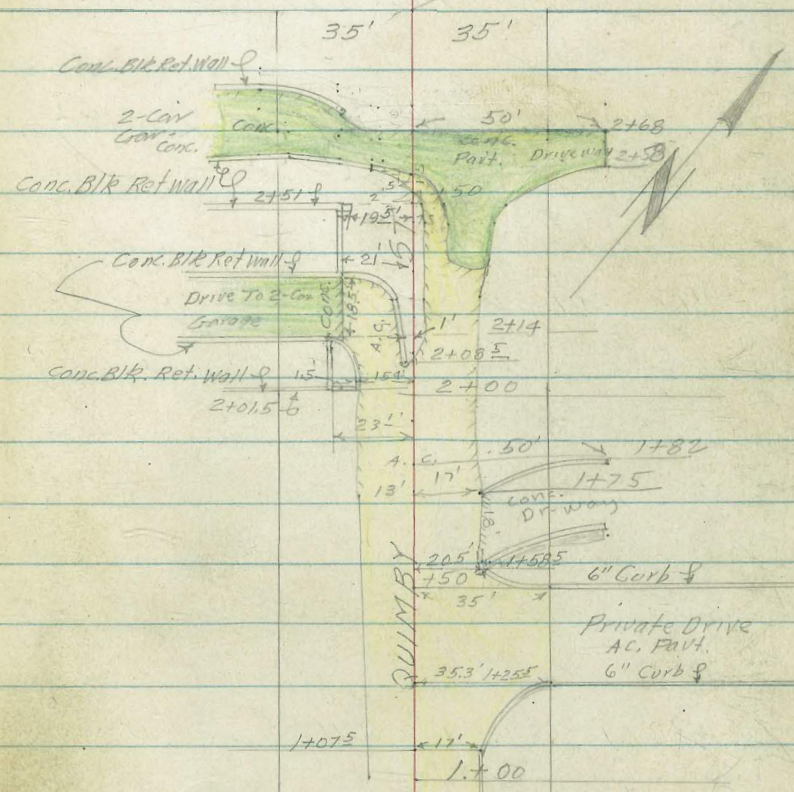
Fd. 6" Conc. Man 7

35' 35'

EVERGREEN

3+35.34  
Set Chislo on 5 Ely Flange N.H.  
ST.

3+00.34



CROSS SECTIONS QUIMBY ST. LOCUST TO

EVERGREEN W.O. 31302

0+00 NLY Line Locust

(Sign)  
0-04  $\frac{1}{2}$ " 4x4" Post 17' Rt.  
0-04  $\frac{1}{2}$ " P.P. No 1948 31' Lt

0-08 End Conc Blk Ret Wall 26<sup>3</sup> Rt

0-10 3" Pipe (Street Sign) 21' Lt.

TP. +11.60 46.07 - - 0.07 34.47

0-12<sup>3</sup> E.C. 8" Conc Blk Ret Wall 34' Rt

0-35  $\frac{1}{2}$ " Locust St.

TP. +12.64 34.54 - 2.11 21.90

+9.30 24.01

B.M. 14.71

10-16-53

Stampers 41  
Huffman  
Nordahl  
Sherry

NOTE: Rods Shown Thus (-0.0) are Plus and are to be added to H.I.

22.71	30.17	31.27	31.27	31.99	32.35	32.71	33.17	35.17	36.57	41.47	41.57
168	159	146	14.8	14.08	13.72	13.36	12.9	10.9	9.55	4.6	4.7
50	35	20	14	7	0	8	14	25	21	33	35
				EP.			EP.			TOP WALL	

46.07

40  
50

flush

22.54	22.14	25.28
12.0	12.40	9.26
263	263	263
Ground	Butt	TOP WALL

PK. 0120 8' Lt. &

28.2	29.4	30.54	30.72	31.2	31.67	32.54	33.2	33.64	36.87
65	49	4.0	3.82	3.20	2.87	1.6	0.6	0.90	(-2.33)
50	30	25	11	0	7	17.5	34	34	34
			EP.		EP.		Ground	Butt	TOP WALL

(-0.3)	(-3.00)
50	50
Ground	TOP WALL

23.04	24.2	25.2	27.44	28.61	29.6	30.19	31.04	33.54	35.5	37.5
11.5	10.2	8.6	6.6	5.93	4.68	4.35	3.5	1.0	(-1.0)	(-3.0)
100	75	50	22	12	0	7	25	50	75	100
				EP.	TOP	EP.				

34.54

2135 Top of P.K. & Post N.W. Line Locust

49



10-19-53

43

X-SEC'S QUIMBY ST. CONT'D

Lt.                      E                      Rt.

0+95 Begin 6" Conc Blk Ret Wall 21<sup>5</sup> Lt.

	36.47					
	38.40					
	37.09					
	38.37					
	39.43					
	38.18					
1264	1066	1197	1074	963	1088	
45	35	35	24 <sup>5</sup>	21 <sup>5</sup>	21 <sup>5</sup>	
Ramp	Top Wall	Ramp	Break	Top Wall	Ramp	

0+85<sup>5</sup> End 6" Conc Blk Ret Wall 35' Lt.

	36.34				
	37.64				
	36.93				
	37.84				
	37.69				
1272	1142	1213	1122	1137	
45	35	35	24 <sup>5</sup>	21 <sup>5</sup>	
Ramp	Top End of Wall	Ramp	Break	Ramp	

0+81 E 6" Dia X 6' Spread X 10' High Acacia 35<sup>5</sup> Lt.

0+75<sup>5</sup> Begin 3' High Board fence 28<sup>5</sup> Rt.

0+74<sup>5</sup> Begin Cobblestone Ret Walls 22' Rt + 28' Rt.

	42.74				
	44.58				
	6.82				
	4.98				
	22				
	28				
Top Cobblestone Ret Wall					

0+74<sup>5</sup> Begin Ramp Sing Car 21<sup>5</sup> Lt.

0+74<sup>5</sup> End Ramp Sing Drive 17' Rt.

	36.66				
	37.70				
	37.11				
124	1136	1195			
22	21 <sup>5</sup>	21 <sup>5</sup>			
Ground Back of Wall	Top 6" Conc Blk Wall	Ramp			

	39.04					
	40.09					
	42.34					
	42.34					
	43.12					
	44.54					
	44.84					
10.02	8.97	6.72	6.72	5.64	4.67	4.22
17	19	29	29	35	45	45
Ramp	Top of Ramp	Top of Ramp	Top of Ramp	Top of Ramp	Top of Ramp	Top of Ramp

749.06

10-19-53

X- SEC 13 QUIMBY ST. CONTD.

Lt. E

1+21 & 3' Walk @ Curb Line 25' Rt.

43.64	RT
522	460
25'	25'
Gut.	Top of 8' Walk

1+16 Angle Pt. in 3' High Rail fence 27' Rt.

1+07<sup>5</sup> B.C. Curb Ret 47' Rt

41.78	42.60	44.85	45.06
728	646	4.21	4.00
17	17	31	34
Gut.	cb	Edge Walk	Back of Wall

1+06 & 3' Walk @ 31<sup>5</sup>' Rt.

44.83	45.04	45.76
4.23	4.02	3.80
31 <sup>5</sup>	35	40
Edge Walk	4' Walk	Back of Wall

1+03 End Cobble Stone Walls 17'-22' & 28' Rt.

42.70	43.03	43.76	43.66	43.40	43.66	44.53
686	603	63	64	566	54	453
17 <sup>2</sup>	17	18	22	22	28	28
Top of Stone	Top of Cobble	Ground	Top of Wall	Ground	Top of Wall	Top of Wall
cb	cb	cb	cb	cb	cb	cb

1+01 End 6" Conc. Blk Wall & Begin 8' Conc. Blk Ret wall 21<sup>5</sup>'

1+01 & P.P. N-P-3135 18<sup>5</sup>' Lt.

41.06	41.44	37.86	41.76	41.94	40.81	39.16
8.00	7.42	11.2	7.3	7.2	8.25	9.9
35	35	35	213	213	215	215
Ground Top of	Ground Top of	Ground Top of	Ground Top of	Ground Top of	Ground Top of	Ground Top of
Wall	Wall	Wall	Wall	Wall	Wall	Wall

1+00

37.76	38.76	40.81	38.76	39.46	39.86	46.35	40.96	41.90	42.56	42.46	43.76
11.3	10.5	8.25	10.3	9.2	9.20	8.71	8.10	7.16	6.5	6.6	5.8
35	22	21	21	17	10	0	17	17	17.5	21	22
Top of Wall	Top of Wall	Top of Wall	Top of Wall	Top of Wall	Top of Wall	Top of Wall	Top of Wall	Top of Wall	Top of Wall	Top of Wall	Top of Wall
cb	cb	cb	cb	cb	cb	cb	cb	cb	cb	cb	cb

0+97 & 4' Spruce X 5' High Shrub 25' Rt.

120  
45

43.66	44.46	44.96	45.36
54	46	41	37
27	28	35	45
Gut	cb		

49.06

10-19-53

X-SEC'S QUIMBY ST. CONT'D.

Lt. Rt.

1+43 End Conc Ramp Sing Gar on Lt.

42.51	43.11	44.16	43.96	45.78	45.71
655	595	490	510	378	335
43	35	19	17	6	0
Ramp	Conc Ramp	A.C.	A.C.	EP.	

End 8" Conc Blk Ret Wall 29.5' Lt.  
1+36 Begm Ramp Sing Gar on Lt.

44.08	43.74	43.47	43.17	44.16	44.11
498	377	364	589	490	465
243	242	19	17	7	0
Top Wall	A.C.			EP	
	42.74	43.86	42.96		
	682	520	610		
	45	35	35		
	Ramp	End of Wall (top)	Conc. Ramp		

1+32<sup>2</sup> Angle Pt. in Conc Blk Ret Wall 21<sup>3</sup>-Lt.

41.86	44.06	42.96
7.2	500	61
223	215	215
Ground	Top wall	Ground

1+25<sup>5</sup> E.C. Carb Ret. 35<sup>3</sup> Rt.

41.96	43.59	47.46	47.56	47.78	43.06	43.49	45.30	45.85	46.97	47.57
71	597	66	65	628	600	557	376	321	209	149
22	215	215	9	7	0	16	353	353	50	50
Top wall				EP.			Gut.	cb	Gut	cb
		41.46	41.76							
		76	73							
		50	35							

1+24 End 3' High Board Fence 35' Rt.

49.06



10-19-53.

X-SEC'S QUIMBY ST. CONT'D

Lt.                      E                      Rt.

+8.25    56.82

TP                      -0.49    48.57

+58<sup>E</sup> E.C. Curb Ret. 20<sup>E</sup> Rt.

48.71	48.07	49.46
0.35	0.99	-0.40
19	20 <sup>E</sup>	20 <sup>E</sup>
Ac.	Outlet	Top
	4" Drain	CB

+55<sup>E</sup> Begin Conc Ramp Sing Con Gr 35' Lt.

44.74	44.84	44.78	45.06	46.53	46.49	47.08	47.15	47.78	47.94	48.51	
132	448	428	320	253	257	138	191	128	122	055	
45	35	29	17	13	10	0	19	27	35	35	
Ramp Conc. A.C.							EP	Gut CB			
							Grt				

B.C. 6" Curb Ret 35' Rt.

+50 Lateral Conc. Blk Ret Wall 21 3' Lt.

44.57	44.60	45.65	44.95	45.89	45.87	46.31	47.81	48.50	
455	446	341	411	317	324	275	1.25	0.56	
35	308	212	212	13	10	0	45	45	
Ramp Cox Top Wall							Gut	CB	

+48 Detail Seca To Lt.

43.30	44.71	44.66	45.23	45.60	46.00
576	485	440	383	346	302
35	22	18	11	7	0
End A.C.				EP	

49.06

44.56  
6.5  
45  
Groad  
49.06

10-19-53

X-SEC'S QUIMBY ST. CONTD.

Lt.      €      Rt.

1+67

4844	4852	4857	4877	4867	4840	4878	5255	5020	5238	5270	5295
8.4	8.3	8.00	8.55	8.15	7.42	7.09	4.27	3.62	3.44	3.12	2.87
44	35	15	9	9	17	35	40	40	45	45	

Edge Conc.      Gut cb      Gut cb

1+65 2 6" Lateral Conc. Blk Ret Wall 19' Lt.

4907	4802
7.75	8.8
19°	19°
Top Wall	Ground

1+65 Lat 8" Conc. Blk Ret Wall 30' Lt.

4854	4509	4857	4517
8.28	11.73	8.25	11.65
35°	35°	30°	30°
Top Wall	Conc.	Top Wall	Conc. on side wall

1+64 End Ramp Sing Gar on Lt.

4490	4504	4516	4626	4787	4777	4830
11.92	11.78	11.66	10.36	2.00	9.10	8.52
45	35	30	19	12	9	8
Ramp Conc. A.C.			AC	EP		
W.A.			Berm			

Lateral Parallel To Curb  
1+61 Begin 1' High x 1.5' Wide Hedge 25' Rt.

1+59 Begin Ramp 2-Car Gar 19' 8" Rt.

4898	4948
7.84	7.34
19°	20°
Ramp	Topch

1+59 € 10' 5" Spread x 2' High Evergreen 26' Rt.

56.82

10-19-53

## X-SEC'S QUIMBY ST. CONT'D

Lt.      C      Rt.

1+85 Sec.

50.87	50.92	51.00	51.76	51.36	51.61	51.07	51.77	51.06	51.02	51.12
6.0	5.9	5.22	5.56	5.46	5.21	4.75	4.05	3.76	0.8	(-0.3)
39	35	155	13	10	8	6	11	17	35	50
Grd	Top	Top			EP		Conc.	EP		
	AC	Berm								

1+80 &amp; Sewer Manhole

1+82 End Ramp 2 - Car Garage RT.

55.67	55.90	53.48	51.57	54.20
1.2	0.92	3.34	(-0.75)	2.62
35	35	35	45	45
Ground	Topwall	Ramp	Top	Ramp
	Wall		Wall	

1+80 &amp; Sewer Manhole

1+85 &amp; 2" X 8' High X 4' Spread Magnolia Tree 26' Lt.

1+82 &amp; 3' Spread X 1' High Evergreen Shrub 20' Rt.

1+78 &amp; 1' Wide X 2' High Lateral Hedge Parallel To curb 21' Rt.

1+75 End Conc Ramp 2 - Car Garage RT 17'

49.77	49.47	50.10	49.67	49.67	49.99	50.64	51.07	51.31	51.11	51.77
7.1	7.4	6.72	7.15	7.20	6.83	6.18	5.75	5.51	3.71	2.55
44	35	16	13.5	8.5	0	9	17	1.7	35	50
Grd	Top	Grd	EP			Grd	Grd	Grd	Grd	Ramp
	AC	Berm								of
										Floor

N 56.82

10-19-53

X- SEC'S. QUIMBY ST. CONT'D

2+12 End 8" Conc. Blk Ret Wall 23' Lt.

Sec. 2+08<sup>5</sup> Begin 6" Conc Blk Ret Wall 1' Lt.

Sec. 2+03 Begin 6" Curb To Driveway 15±' Lt.

2+01<sup>5</sup> Begin 8" Conc Ret Wall 23' Lt.

2+00

T.P +11.34 67.15 -1.01 55.81

1+90 ± M.H.

56.82

Lt. ± Rt.

57.45	57.10	57.37
9.7	9.45	9.83
23L	23L	23L
Ground Top	Top Wall	A.C.
Barbet wall		

56.30	56.60	56.65	57.10	57.46
10.85	10.55	10.5	10.05	9.69
12	12	0	2	3
A.C. Top wall			EP	

55.84	55.10
11.33	11.75
15±	15±
Top Cb.	A.C.

57.47	55.85	53.45	55.81	57.75
9.68	11.30	13.7	11.34	12.9
23L	23L	23L	15±	15±
Top Wall	Top Lower Wall (End)	Ground Top Wall	Ground Top Wall	Ground

57.55	57.75	59.85	59.58	57.10	55.13	55.90	56.15	57.45	58.95
14.6	14.4	13.3	12.57	12.75	12.02	11.25	11.00	9.7	8.2
39	35	18	15	14	0	12	17	35	56
@ 81.04			Top G.H.	Top G.H.	67.15	Edge Low EP			
			Form			3.52 Upper Rim - 53.30			
						3.08 Lower Rim			

± 56.82

X-SEC'S QUIMBY ST. CONT'D

Lt.      €      Rt.

10' Deep X 8' High X 20' Long  
2+38 Beginning Thicket of Rosebushes 26' Rt.

2+37 € 2" Pine 26' Rt.

2+33 € 2" Pine 33' Rt.

2+32 <sup>5</sup>/<sub>5</sub> Begin 6" Conc ret wall 19 <sup>5</sup>/<sub>5</sub> Lt.  
Angle Pt. in Conc Ret Wall 19 <sup>5</sup>/<sub>5</sub> Lt.

61.69	57.60	57.68	61.65	61.35
546	955	947	550	5.8
35	202	195	195	195
Top Wall Flush	Conc Ramp	Top AC.	Top Wall Flush	Gr Ramp
	57.77	57.77	57.77	57.69
	9.43	5.23		9.46
	403	403		35
	Conc Ramp	End Top Wall Flush		Conc Ramp

2+25 B.C. Conc Pavt on Rt.

2+25 B.C. Conc Pavt on Rt.

57.71	57.67	57.50	57.67	61.55	60.55	61.45	61.65	62.00	61.80	62.35	62.70	62.45
921	953	965	953	560	6.6	5.7	5.5	5.15	5.35	9.80	4.45	3.7
43	35	205	60	53	53	0	2	3	4.5	13	175	35
Floor Level	Conc Ramp	Edge AC.	Top Wall	Top Wall	Ground			Top Berm	Gut.	Edge Conc D.A.S.	EP.	
							62.55					
							3.6					
							4.0					

2+17 € 4" Palm Tree 26 <sup>5</sup>/<sub>5</sub> Rt.

2+14 Begin Drive 2-Cay Gray Lt.  
Sec.

57.95	57.77	57.37	56.97	57.26	57.85	59.15	59.05	59.68	60.05	61.15	61.15
920	978	978	1028	989	93	8.00	8.10	7.47	7.10	6.0	6.0
245	245	210	18	18	0	3	5	12	175	35	50
Top Curb	Conc Ramp	Conc AC.	Top Wall Flush	Top Wall Flush		Top Berm	Gut.	Edge Conc D.A.S.	EP.		
	57.73	57.73	57.73	57.55							
	9.42	9.42	9.42	9.60							
	45	45	45	35							
	Gray Floor	Top Wall	Top Wall	Top Wall							
				35							
				67.15							

10-19-53

X-SEC'S QUIMBY ST. CONT'D.

Lt.      C      Rt.

2+57

70.80  
5.91  
Edge Conc.  
A.C.

2+56 Deadman 19 3/4 Lt.

2+54 Toe Sec

66.41	66.51	66.91	68.01	70.78	69.78	69.61	70.16	71.17	71.71	75.21
10.3	10.2	9.8	8.7	6.43	6.93	7.10	6.56	5.54	4.5	1.5
50	35	30	20	8	5.5	10	17	25	35	50
				EDGE A.C.	EDGE CONC.					

2+51 End 6" Conc Blk Ret Wall 19 5/8 Lt.  
35' High R/W. fence Along N/W Side

66.12	66.21	66.21
10.59	10.49	10.50
40	35	19 5/8
Top Wall	Top Wall	Top Wall
	flush	flush

2+50

67.46	67.91	65.11	66.20?	67.41	69.01	69.51	69.24	69.08	69.09	70.24	70.51
11.75	11.8	11.6	12.50	9.3	7.7	7.20	7.47	7.63	7.62	6.27	6.2
40	35	20	19.5	9	0	2	3	7	13	23 3/4	35
Part.			Top Wall			70.	Edge Conc			EP.	
				76.71							
									67.31		
									45		

TP. +10.46 76.71 -0.90 66.25

67.15

67.15

10-19-53

X-5FC'S QUIMBY ST. CONT'D

Lt.                      E                      Rt.

Lat  
Toe Sec Begin 6" Conc Ret Wall 35' Rt.  
2+68 Edge Pavt Sec Fly Begin Rock Conc Ret wall 18 ft  
Lat

71.96	71.81	71.53	71.78	71.01	71.82	76.04	74.88	76.87
475	490	518	493	470	389	267	183	(0.16)
450	350	90	0	8	18	18	35	35
Conc.	Conc.	Break # Pt.			EP	Top Conc @ Rock Ret Wall	EP	TOP Rock Wall END
					72.26	71.9		
					0.85	(-0.48)		
					43	43		
					EP	End Conc Wall (TOP)		

Top Sec,  
2+63 Angle Pt. on Ramp                      32' Lt.

71.07	71.89	71.04	71.86	71.36	71.41	71.65	71.21	74.65	75.89
464	482	467	485	545	530	506	450	206	0.82
35	35	322	322	9	0	9	17	35	45
cb	Ramp	cb	Gut						

Flesh  
71.15  
4.56  
45  
KIND

Begin 6" Curb  
2+60 Break on Ramp To 2-Car Gain On Lt.

71.39	71.28	71.16	71.11
532	548	555	560
100	100	90	0
cb	Gut		

2+58 Edge Conc Pavt Fly

70.89	70.76	71.32	74.23	75.38	76.29
580	595	539	248	133	0.42
0	9	17	35	42	50

76.71

76.71

CROSS SECS QUIMBY ST. CONT'D

Lt. C Rt

+10.65 93.88

TP 30 16.0 -0.92 83.23

84.15

End 8" Conc Blk Ret Wall 50' Lt.  
2+80 End Ramp 2-Cor Gwy on Lt. 53' Lt.

72.14	73.93	73.55	73.85	76.85	77.95	79.15	80.95	82.65	84.65
12.01	10.22	10.61	10.35	7.3	6.2	5.0	3.2	1.5	(-0.5)
53	50	50	35	20	8	0	28	35	46.5
Conc Floor	Conc Floor	Gravel	Gravel						@ Bldg

2+75 End 6" Rock Wall 19' Rt.

71.97	71.89	73.67	74.95	75.75	74.75	76.05	76.40	76.65	79.85
12.23	12.26	10.48	9.2	8.4	9.4	8.1	7.75	5.5	4.3
35.2	26.2	26.2	19	8	0	19.2	19.2	35	42.5
Ramp	Ramp	Top Wall				Ground	To Well		@ Bldg
		Flush					Flush		

+8.50 84 15

2+74 5' C P.P. No P-3199 19.5' Lt

TBM. Set. P.K. NEW Side P.P. -1.06 75.65

2+72 Beam 8" Conc Blk Ret Wall 19' Lt.

73.64	71.75
3.07	4.96
19.2	19.2
Top Wall	Conc

76.71

76.71



10-19-53

CROSS SECS QUIMBY ST. CONT'D.

L. E. R.

NOTE:

INDEXED  
Sains  
OCT 21 1953

Soil Sample Taken 100' Nly of  
Nly Line Locust Street & 15'  
Wly of E of Quimby St.

T.B.M. -2.68 96.78 ~ 96.71 Top Chisel @ 5ly Rim M.H. & Evergreen &  
Poe Streets

3+35.34 E Evergreen St.

94.46	96.76	96.66	98.36	98.56	97.46	97.44	98.76	98.96	100.46	107.76	106.7
5.0	3.2	2.8	1.1	0.9	2.0	2.02	1.2	0.5	(-1.0)	(-3.3)	(-6.8)
50	35	30	20	13	7	8	8	28	35	50	75

M.H.

3+28 E 14" Eucalyptus Tree 15' RT

TP +6.02 99.46 -0.44 93.44

3+00.39 SELY Line Evergreen St.

82.18	83.18	84.18	83.08	83.78	82.78	84.98	87.18	89.78	90.38
11.7	10.7	9.7	9.9	10.6	10.6	8.9	6.7	4.6	3.5
35	23	20	17	15	8	26	35	50	75

7.1  
75

80.38  
13.5  
75

81.08  
12.8  
50

E 6" Acacia 18' RT.  
2+90 E 6" Acacia 11' RT. & 6" Acacia 3 1/2 RT.

93.88

93.88

INDEXED

Law

MAR 18 1954

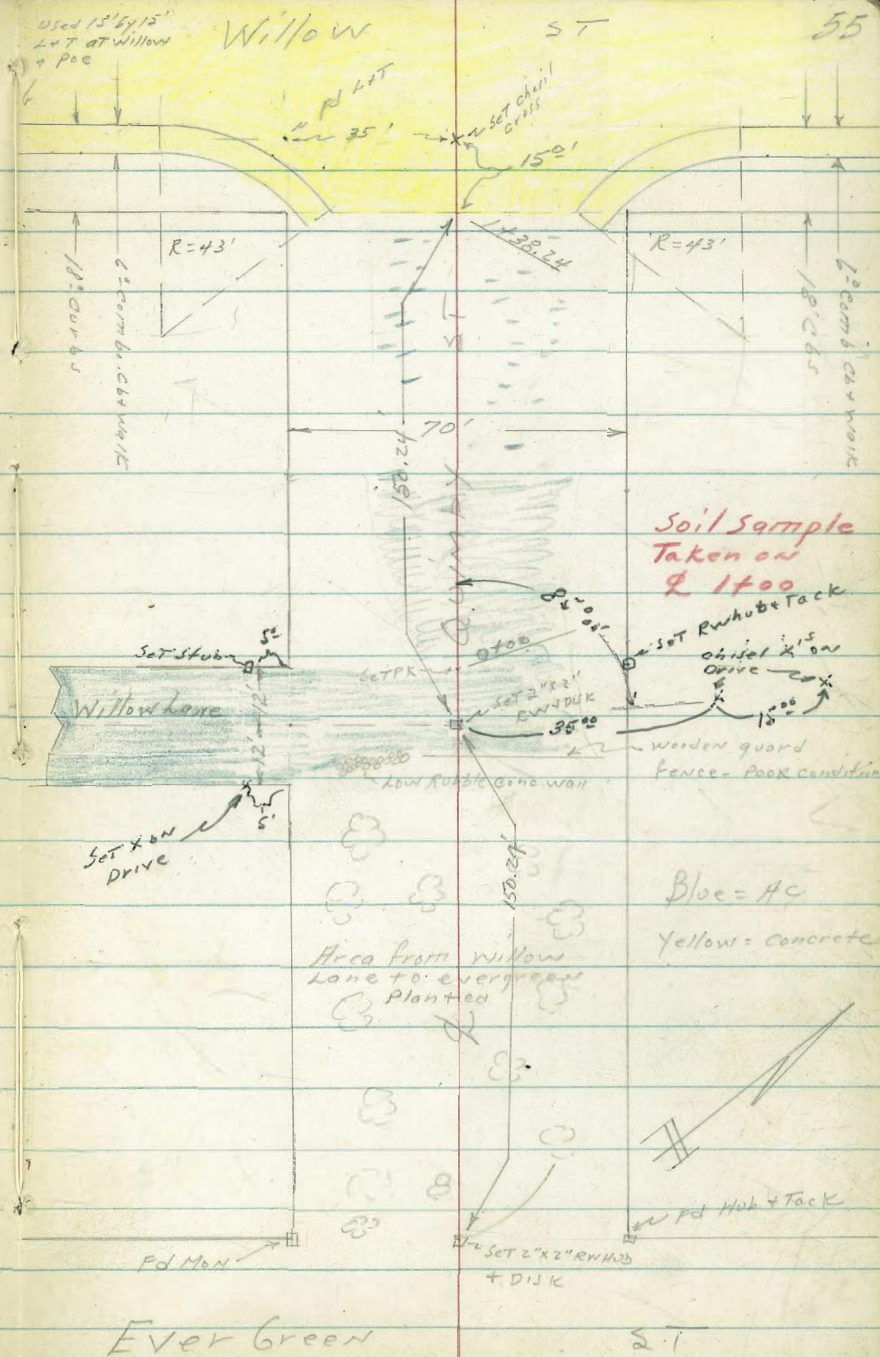
X-sec Quarry by ST from SFLY line  
Willow lane to SFLY Willow ST  
WO # 31349

March 17, 1954

G. Allen, D. Sisson, C. Pawell.

Re P. Filed Map # 165, FB1793, TP Sheet 701,

+ 3406-B



Used 15' by 15' L x T at Willow + POC

Willow

ST

55

150.24

150.24

$R=43'$

$R=43'$

150.24

150.24

70'

150.24

Soil Sample Taken on 2 1700

Willow Lane

Set x on Drive

Blue = AC

Yellow = concrete

Area from Willow Lane to evergreen Planted

Fd Man

SET 2"x2" RWHUB + DISK

SET 2"x2" RWHUB + TACK

Ever Green

ST

X-sec Quimby ST - SELy Line  
 Willow Lane to Willow ST  
 See sketch Page 55

LT

Notes Recd 3/22/54

RT

56

0-14<sup>5</sup> - 30° RT = Wly end lateral conc wall

35° LT =  $\phi$  water meter

0-20 - 27° LT = SELy edge conc drive to garage opening to Willow Lane

28° LT =  $\phi$  Iron Post Lamp Standard

0-23<sup>5</sup> / 19<sup>5</sup> LT =  $\phi$  Powder pole (12") #

25° RT = edge A.C. Pavc + sely cor conc drive  
 begin 2 1/2"  $\pm$  A.C. Pavng - fair condition

0-24<sup>0</sup> = SELy Line Willow Lane

25° RT = end guard rail fence

0-25 - 6° LT = end guard rail fence } Wooden

0-35<sup>5</sup> - 44<sup>5</sup> LT =  $\phi$  2 car garage

opens to Willow Lane

(Much Lower than surrounding ground)

Note: Quimby ST between SELy Line

Willow Lane + Evergreen planted with trees + shrubs

TP 1.79 164.65 13.11 162.86

BM 2.77 175.97 173.20

Note: There is also a Brass plug on what I would call the SELy cor - This plug is 3.52 Lower than plug used

	157.74	159.72	157.4	159.75				
	7 <sup>2</sup>	4 <sup>9</sup>	7 <sup>2</sup>	4 <sup>2</sup>				
	30	30	35	35				
	9 <sup>2</sup>	TOP WALL	9 <sup>2</sup>	TOP WALL				
	157.70	157.76	157.20	158.06				
	79.5	78.9	74.5	6.59				
	50	37 <sup>0</sup>	35	12				
		ANCHOR DRIVE						
	157.80	158.05	157.54	158.01				
	85	66 <sup>0</sup>	7 <sup>2</sup>	7 <sup>2</sup>				
	18	27	35	4 <sup>2</sup>				
		edge Drive opening to Quimby	ON DRIVE	ON DR				

	156.5	156.1	157.9	157.7				
	8 <sup>2</sup>	7 <sup>2</sup>	6 <sup>2</sup>	6 <sup>2</sup>				
	50	35	15					
	157.30	156.8	157.0					
	7 <sup>3</sup>	7 <sup>8</sup>	4 <sup>6</sup>					
	25 <sup>2</sup>	35	45					
		ANCHOR						
	152.28	152.16	152.8	155.4	156.5	155.0		
	11 <sup>3</sup>	12 <sup>0</sup>	10 <sup>8</sup>	9 <sup>2</sup>	8 <sup>2</sup>	9 <sup>6</sup>		
	44 <sup>5</sup>	35		8	10	35		
	FLOOR							

164.65  $\pi$

(could be Wly cor)  
 SWBP Quimby + Willow

Quincy ST X-sec Cont

LT

X

RT

57

{ 35° RT = begin 8" high 8" Conc Wall -  
0+00 = NWly line Willow Lane -

0-01<sup>5</sup> Top terracing -

Terracing is held up by Loose Rock  
Wall along edge of Drive -

0-02<sup>0</sup> To show terracing on RT.

0-04<sup>5</sup> 30° RT = end Conc drive to Single

{ Willow Lane is pave with 3" ± A.C.

0-12<sup>0</sup> = 2 Willow Lane to Left

Single garage, garage = 125° ± RT

0-14<sup>1</sup> - 28<sup>5</sup> RT = begin Conc Drive to

157.7	157.9	158.3	159.35	159.33	160.1	160.4	162.3	162.5	163.4
6 <sup>9</sup>	6 <sup>2</sup>	6 <sup>0</sup>	5 <sup>2</sup>	5 <sup>32</sup>	4 <sup>5</sup>	4 <sup>2</sup>	2 <sup>3</sup>	2 <sup>1</sup>	1 <sup>11</sup>
50 A.C.	35 Foot	35 9"	20 A.C.	10	27 edge A.C.	30	31	35	50

159.9	162.3	162.1	163.2
4 <sup>7</sup>	2 <sup>3</sup>	2 <sup>1</sup>	1 <sup>4</sup>
30	31	35	50

158.25	159.9	159.9	160.4
6 <sup>4</sup>	4 <sup>2</sup>	4 <sup>2</sup>	4 <sup>5</sup>
	30	35	45

159.00	159.92	160.40
4 <sup>15</sup>	4 <sup>13</sup>	4 <sup>25</sup>
30 ON DRIVE	35 ON DRIVE	45 ON DRIVE

157.8	157.2	157.35	158.28	158.75	158.3	159.43	159.67	160.5
7 <sup>1</sup>	7 <sup>4</sup>	9 <sup>30</sup>	6 <sup>37</sup>	6 <sup>50</sup>	6 <sup>3</sup>	5 <sup>22</sup>	4 <sup>98</sup>	4 <sup>10</sup>
100	50	35	16		25	285 ON DRIVE	35 ON DRIVE	50

159.43	159.67	160.55
5 <sup>22</sup>	4 <sup>98</sup>	4 <sup>10</sup>
285 Drive	35 ON DRIVE	50 ON DRIVE

164.65

Quincy ST x-500 Cont.

LT

x

RT

58

0+60- 35° LT= end 2 car garage - Conc Apron

164.25  
11 19  
41° Floor  
164.46  
11 28  
35° Apron

0+44- 35° LT= begin 2 car garage - Conc Floor

164.28  
11 16  
41° Floor  
164.51  
11 23  
35° Apron

16° LT= end Floral Planting

35° LT= end high Conc Wall

to poor condition

0+40- A.C. Pavement changes from fair condition

164.7  
11 9  
35  
164.2  
11 5  
18  
163.4  
12 3  
16  
edge AC  
163.5  
12 2  
10  
163.8  
11 9  
26  
edge AC  
163.9  
11 10  
35  
163.9  
11 10  
50  
164.3  
11 4  
50

TP2 11.57 175.74 0.48 164.17

175.74 x

0+30- 28° RT= 2 water meter

0+20

162.8  
18  
35  
Nty of wall  
162.9  
17  
18  
161.8  
2 8  
16  
161.7  
2 9  
14  
edge AC  
161.9  
2 7  
27  
edge AC  
162.3  
2 3  
33  
162.5  
2 1  
33  
162.7  
1 9  
35  
163.7  
0 9  
50

Planted to Conc wall.

0+02- 23° LT= begin Floral planting

164.65 x

1+00 - 19° LT = edge Lawn -

0+91 - 18° LT =  $\frac{1}{2}$  Water Meter -

0+82 - 34° LT =  $\frac{1}{2}$  8" Palm tree -

} 20° LT = edge Lawn

0+70 } House on left is out 41° from  $\frac{1}{2}$

31° LT = Line Lawn sprinklers parallel to  $\frac{1}{2}$

23° LT = Line sprinklers parallel to  $\frac{1}{2}$

20° LT =  $\frac{1}{2}$  6" Palm tree -

0+69 - 19° LT = begin Lawn with floral border

ground to N by same elev -

Section taken along top Rubble Conc wall

0+65 -

Section taken along  $\frac{1}{2}$  of Rubble conc wall

0+64 - 11° LT = Lateral Rubble conc Wall -

171.4	171.4	169.9	168.4	168.5	168.2	169.0	168.9	168.9
4 <sup>3</sup>	4 <sup>3</sup>	5 <sup>8</sup>	7 <sup>3</sup>	7 <sup>2</sup>	7 <sup>5</sup>	6 <sup>7</sup>	6 <sup>00</sup>	6 <sup>00</sup>
43°	35	19	14°		20	28	35	50
frat house			LT					

168.7	168.7	167.7	166.2	166.3	166.0	167.8	167.3	166.1
7°	7°	8°	9 <sup>5</sup>	9 <sup>4</sup>	9 <sup>7</sup>	7 <sup>9</sup>	8 <sup>4</sup>	9 <sup>6</sup>
41	35	20	13		19	30	35	50
frat house		edge lawn						

168.2	167.3	166.7	165.9	165.9	165.8	166.3
7 <sup>5</sup>	8 <sup>4</sup>	9°	9 <sup>00</sup>	9 <sup>8</sup>	9 <sup>2</sup>	9 <sup>4</sup>
35	18	17	14		22	35

164.6	164.7	165.6	165.9	165.8	166.3
11 <sup>5</sup>	11°	10 <sup>2</sup>	9 <sup>8</sup>	9 <sup>2</sup>	9 <sup>4</sup>
35	22	17°		22	35

175.74

X-sec Quincy St curv

LT

RT

60

TP<sub>3</sub> 2.55 173.19

starting BM.

174.71	173.90	167.94	168.73
163	184	780	701
160	100	80	80
TOP	90T	90T	TOPcb
cb			

1+56<sup>24</sup> = SELY curb line Willow St

173.16	172.37	171.97	171.52	171.31	170.89	170.31	169.91	169.69
258	337	277	422	448	485	543	683	685
60	60	35	170	170	35	60	60	
TIP	90T					90T	TOPcb	BC
cb	BC					BC	BC	
BC								

Length of existing Returns = LT: 420 RT: 420

Mid point Curb Returns - 43' Radius

172.47	171.72	169.79	170.56
327	403	595	518
TOPcb	90T	90T	TOPcb

end Rough A.C. very poor cond.  
24° LT = begin curb  
26° RT = begin curb

begin portland conc

1+38<sup>24</sup> = SELY Line Willow

173.0	172.40						170.4
27	334						510
50	320						50
	Back						
	edge						
	walk						
172.16	171.39	171.48	171.41	171.09	170.35	171.17	171.02
358	435	426	433	405	539	457	472
240	240	13	13	260	260	340	
TOP	90T			90T	TOP	Back	edge
					cb	walk	

175.74 x

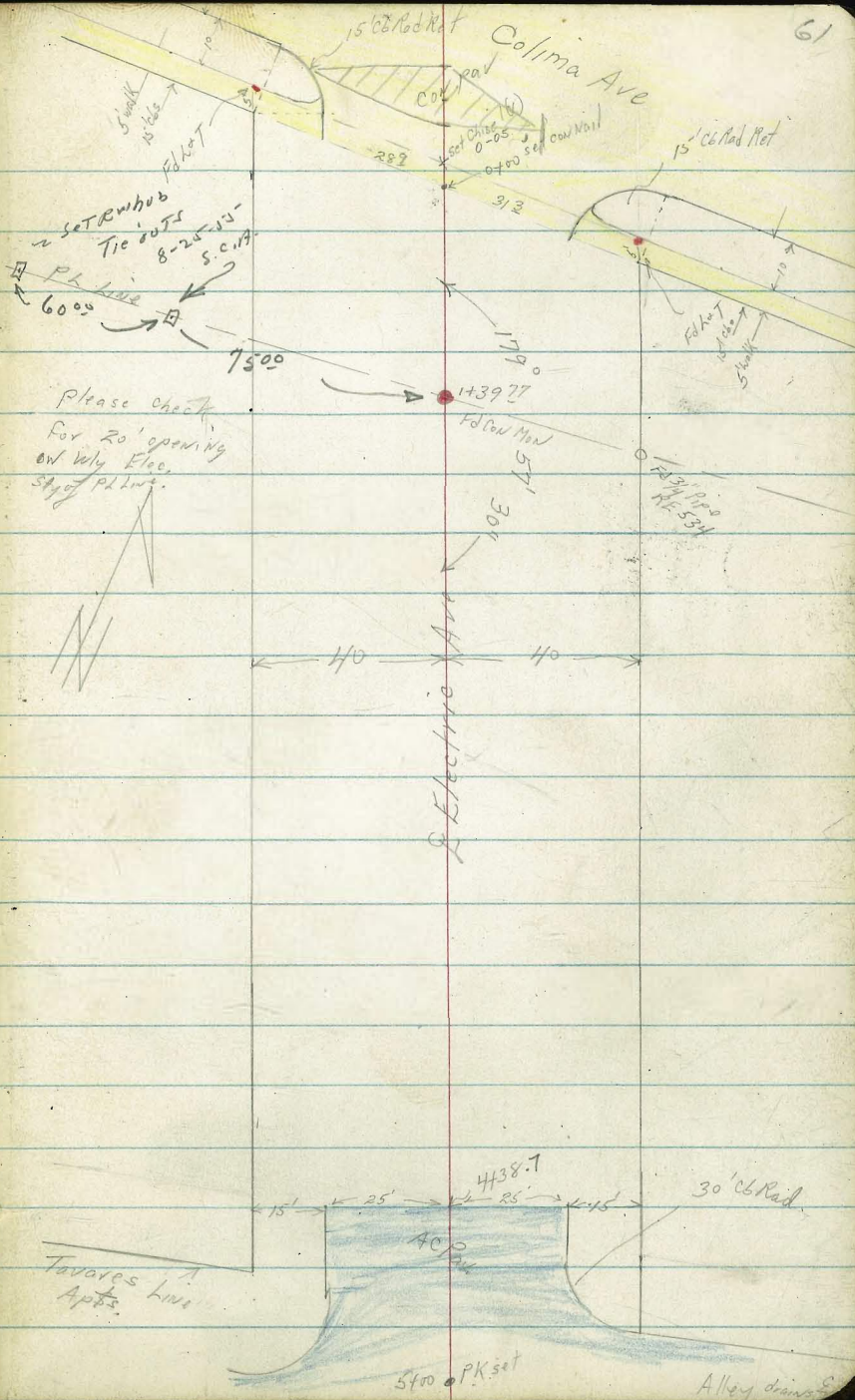
D. Smith  
C. Hatch  
J. Rorer  
R. Whipple  
W. Presley

WO# 32400  
8-24-54  
"X" Sec Electric Ave  
Colima Ave 500' Sly

Ref FB 1819-30

tie sheet #1706

INDEXED  
JER  
NOV 4 1954





Lt = Ely

♀

Rt = Why

62

1442 31<sup>4</sup> Lt ♀ 12" PPo/2 #5355

1400

84 <sup>2</sup>	83 <sup>2</sup>	83 <sup>3</sup>	81 <sup>6</sup>	81 <sup>2</sup>	81 <sup>6</sup>	81 <sup>2</sup>	80 <sup>2</sup>	81 <sup>2</sup>	79 <sup>2</sup>	79 <sup>5</sup>	78 <sup>2</sup>
60	40	30	25	125		125	19	21	30	40	60

0453 31<sup>5</sup> Lt ♀ deadman

0450

84 <sup>2</sup>	83 <sup>5</sup>	83 <sup>2</sup>	81 <sup>5</sup>	81 <sup>7</sup>	81 <sup>5</sup>	81 <sup>2</sup>	80 <sup>2</sup>	81 <sup>2</sup>	80 <sup>2</sup>	80 <sup>2</sup>	79 <sup>5</sup>
60	40	30	25	125		125	19	21	25	40	60

0420 30<sup>3</sup> Lt ♀ 12" PPo/2 #5375

0400 Sly Colima edge con pad & obs walks

taken along line of

82 <sup>24</sup>	82 <sup>54</sup>	81 <sup>27</sup>	81 <sup>24</sup>	81 <sup>22</sup>	81 <sup>50</sup>	80 <sup>26</sup>	81 <sup>27</sup>	81 <sup>25</sup>
16 <sup>30</sup> wk	31 <sup>3</sup> cl	31 <sup>3</sup> out	15 <sup>2</sup>		14 <sup>2</sup>	28 <sup>2</sup> out	28 <sup>2</sup> out	16 <sup>30</sup> wk

Mid Pt. Returns

81 <sup>22</sup>	82 <sup>27</sup>	81 <sup>27</sup>	82 <sup>59</sup>		81 <sup>27</sup>	80 <sup>78</sup>	80 <sup>26</sup>	81 <sup>40</sup>
out	cl	out	cl		cl	out	EC	EC
15' pad 23' long 3' x 1 1/2					15' pad 15' long 2' x 1 1/2			

0-17<sup>36</sup> Sly of line Colima taken along line of

84 <sup>26</sup>	83 <sup>65</sup>	82 <sup>25</sup>	82 <sup>22</sup>	81 <sup>25</sup>	81 <sup>77</sup>	81 <sup>77</sup>	81 <sup>27</sup>	81 <sup>49</sup>	80 <sup>22</sup>	80 <sup>26</sup>	81 <sup>27</sup>	80 <sup>24</sup>	81 <sup>24</sup>	79 <sup>27</sup>	79 <sup>23</sup>
103 <sup>2</sup> cl	103 <sup>2</sup> out	53 <sup>2</sup> out	53 <sup>2</sup> out	43	31 <sup>2</sup>	15 <sup>2</sup>	14 <sup>2</sup>	28 <sup>2</sup>	37 <sup>2</sup> out	37 <sup>2</sup> out	46 <sup>2</sup> out	46 <sup>2</sup> out	76 <sup>2</sup> out	76 <sup>2</sup> out	

TP

33 81 84

on chisel (x)  
0-05 sec scale

BM 91 85 15

75<sup>26</sup> SFBP Colima  
No 5011 11/2

Note used tape or Direct  
reading rod etc as shown

2<sup>nd</sup> Fly

2

Rt = Wly

63

3736 40° Lt 2 18' cov walk 2 steps

86<sup>18</sup> 84<sup>22</sup> 84<sup>14</sup>  
57<sup>2</sup> 48<sup>0</sup> 40<sup>0</sup>  
top bot wlk  
step step

3719 32<sup>3</sup> Lt 2 12" P/O # 5345

3710 38<sup>2</sup> Lt 2 outlet 6" cov pipe drain

83<sup>21</sup>  
38<sup>1</sup>  
18

3700

86<sup>4</sup> 86<sup>3</sup> 84<sup>2</sup> 83<sup>7</sup> 83<sup>1</sup> 82<sup>8</sup> 83<sup>1</sup> 83<sup>0</sup> 82<sup>5</sup> 81<sup>7</sup> 81<sup>2</sup> 80<sup>5</sup>  
60 45 40 37 26 25 12<sup>5</sup> 12<sup>5</sup> 25 40 60

2750

84<sup>6</sup> 84<sup>7</sup> 84<sup>4</sup> 83<sup>3</sup> 82<sup>2</sup> 82<sup>6</sup> 82<sup>6</sup> 82<sup>1</sup> 81<sup>8</sup> 81<sup>0</sup> 80<sup>4</sup>  
60 45 40 37 25 12<sup>5</sup> 12<sup>5</sup> 25 40 60

2730 40° Lt 2 16' cov walk 2 steps

86<sup>29</sup> 83<sup>25</sup> 83<sup>54</sup>  
54<sup>3</sup> 50<sup>0</sup> 40<sup>0</sup>  
top bot wlk  
step step

TP<sub>2</sub>

84<sup>14</sup>

2700

86<sup>2</sup> 85<sup>7</sup> 83<sup>7</sup> 83<sup>1</sup> 82<sup>5</sup> 82<sup>3</sup> 82<sup>2</sup> 81<sup>8</sup> 81<sup>4</sup> 80<sup>8</sup> 79<sup>2</sup>  
60 50 40 30 25 12<sup>5</sup> 12<sup>5</sup> 25 40 60

1750

84<sup>4</sup> 83<sup>3</sup> 83<sup>1</sup> 82<sup>2</sup> 82<sup>1</sup> 81<sup>9</sup> 81<sup>7</sup> 81<sup>1</sup> 81<sup>3</sup> 80<sup>2</sup> 80<sup>1</sup> 79<sup>2</sup>  
60 40 30 25 12<sup>5</sup> 12<sup>5</sup> 18 20 25 40 60

el. as shown

Lt = Ely

2

Rt = Wly

CA

end	82 <sup>27</sup>	81 <sup>58</sup>
Alley	cl	cut
3/4	82 <sup>09</sup>	81 <sup>50</sup>
	cl	cut
1/2	82 <sup>13</sup>	81 <sup>53</sup>
	cl	cut
1/4	82 <sup>14</sup>	81 <sup>54</sup>
	cl	cut

NE Return Alley 30' Rad 37' Long 4 ports 9<sup>25</sup> on

4438<sup>2</sup> E crosses begin A.C. paving 2 chs end Nly

87 <sup>0</sup>	86 <sup>2</sup>	83 <sup>2</sup>	82 <sup>18</sup>	81 <sup>50</sup>	81 <sup>28</sup>	81 <sup>15</sup>	81 <sup>20</sup>	80 <sup>59</sup>	81 <sup>18</sup>	80 <sup>8</sup>	80 <sup>4</sup>
60	48	40	25	25	125		125	25	25	40	60
			cl	cut				cut	cl		

4437 32<sup>2</sup> Lt E deadman

4425

86 <sup>2</sup>	86 <sup>6</sup>	84 <sup>2</sup>	82 <sup>8</sup>	82 <sup>5</sup>	81 <sup>5</sup>	81 <sup>8</sup>	81 <sup>2</sup>	81 <sup>2</sup>	81 <sup>2</sup>	79 <sup>4</sup>	79 <sup>2</sup>
60	47	40	37	30	25	125		125	25	40	60

4400

86 <sup>8</sup>	86 <sup>6</sup>	83 <sup>2</sup>	83 <sup>4</sup>	81 <sup>2</sup>	82 <sup>3</sup>	82 <sup>6</sup>	82 <sup>6</sup>	82 <sup>3</sup>	81 <sup>2</sup>	80 <sup>6</sup>
60	46	40	30	25	125		125	25	40	60

3450

86 <sup>4</sup>	86 <sup>2</sup>	84 <sup>2</sup>	83 <sup>2</sup>	82 <sup>2</sup>	83 <sup>0</sup>	83 <sup>3</sup>	82 <sup>8</sup>	81 <sup>2</sup>	81 <sup>1</sup>	80 <sup>4</sup>
60	46	40	32	25	125		125	25	40	60

3448 40<sup>8</sup> Lt S on 4 1/2 + 12" cov pipe drain

83<sup>18</sup>  
40<sup>8</sup>  
10

ch. as shown

Lt. Ely

E

At. Wly

65

BM starting

75<sup>23</sup> -001  
pg 62

TP<sub>3</sub>

77<sup>36</sup>

5425

81 <sup>22</sup>	81 <sup>26</sup>	81 <sup>31</sup>	81 <sup>20</sup>	80 <sup>26</sup>	80 <sup>18</sup>	80 <sup>22</sup>
25 26	25 24	125		125	25 24	25 26

5400

81 <sup>22</sup>	81 <sup>29</sup>	81 <sup>26</sup>	81 <sup>31</sup>	81 <sup>30</sup>	80 <sup>23</sup>	80 <sup>28</sup>	80 <sup>28</sup>
25 26	25 24	25	125		125	25 24	25 26

44525

E Alley Ely drain area produced

83 <sup>35</sup>	81 <sup>52</sup>	81 <sup>42</sup>	81 <sup>35</sup>
100	50	30	

elv as shown

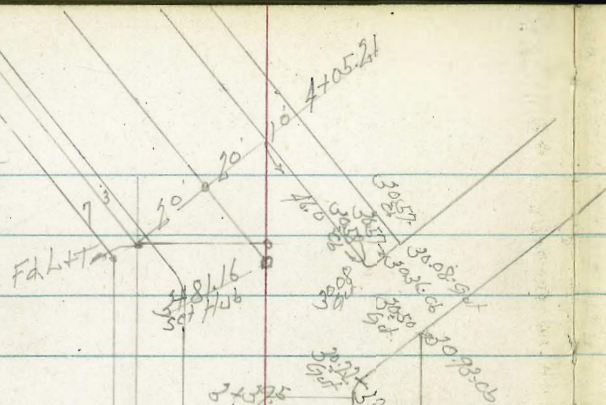
Cross Section Birch St.  
Noden St. to 40th St.

Feb. 16-55  
H. S. Jones  
Garber  
Chipman  
Keller  
Earl St.

N.O. 32486

8+06.69

F.N.C.



Gar + Elec  
Man Hole  
Metokara

2+375

2+323

2+915

2+800

39th St. H.C. Pav

2+30

2+197

Birch St.

Oil Paving

7+11-22 x 22 x 11-7

COFO

Noden St

H.C. Paving

F.d. L.H.T.M.

6+835

6+635

180-420

5+40

5+30

282

60

Arbony

Birch St.

Oil Paving

192-200

1180

185

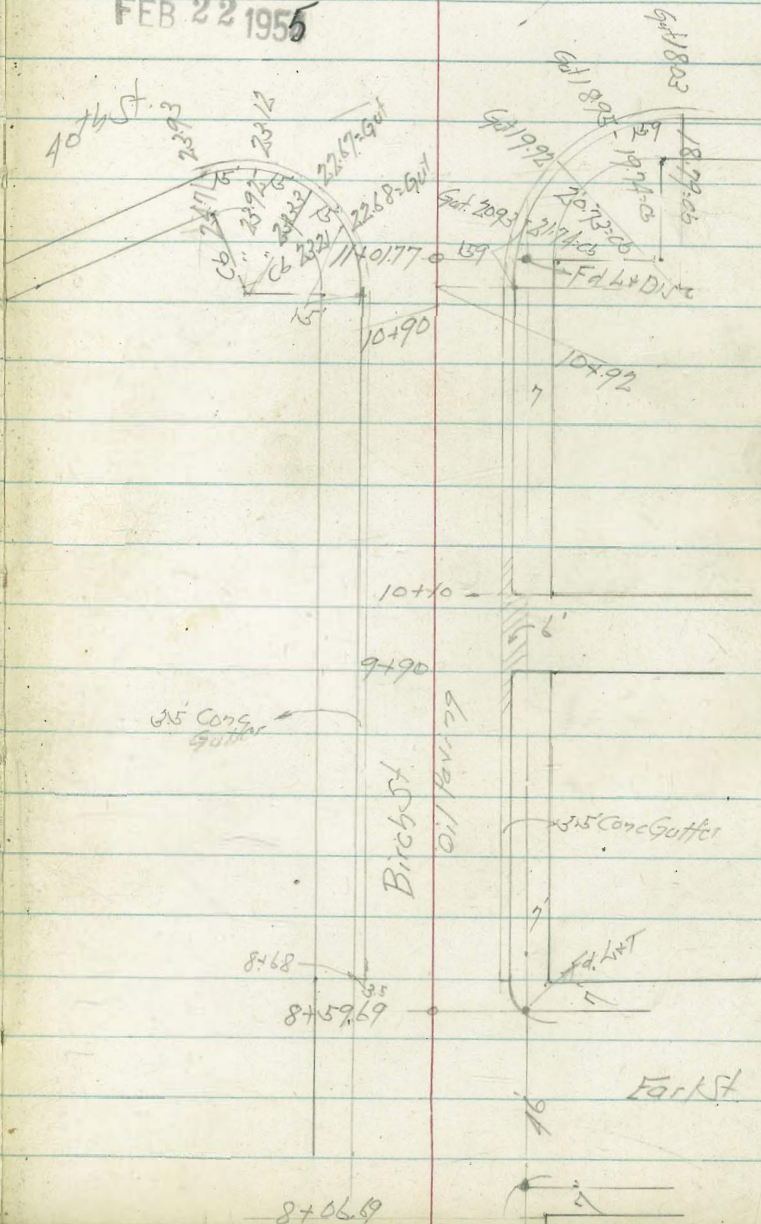
200

COFO Ref.

7+20 x 20 x 15

4+05.21

INDEXED  
MER  
FEB 22 1955



Levels Birch St. Woden to 40<sup>th</sup> St.

H=11

2

Rt. 5

68

+70

32.00 32.22 32.26 32.21 31.91 31.57 32.04  
22-cb 21.9 Gut 11 11 22.1 Gut 22.2 cb

+60

297 3251  
3235.5X 22.214 Dine  
307X Conc.

+50

32.26 32.51 32.57 32.47 32.18 31.82 32.37  
22-cb 21.9 Gut 11 11 22.1 Gut 22.1 cb

0+0 = East line Woden St.

32.70 32.76 32.68 32.60 32.36 32.03 32.61  
22-cb 21.8 Gut 11 22.1 Gut 22.1 cb

0-10 = E Curb Woden St.

32.72 32.83 32.65 32.71 32.71 32.56 32.00 31.72 32.81 31.47 32.57  
10-cb 10.9 Gut 32.2 cb 22 32.1 Gut 32.2 cb 10.9 Gut 10-cb

0-30 = E Woden St.

32.00 32.19 32.22 31.62 31.24  
10 12 10

B.M

S.M.B.P.  
20.65 Cottonwood  
& Woden St

BM

Nov. 24  
774  
3251 Birch 3974

Lt      S      pt

+45

3302 3210 3221 3198 3168 3132 3087 3125  
22:nc 40 23 11 11 22:2-gut 22:cb

+30

= 1/2 cb 3974 St. on Lt.

3211 3222 3245 3225 3214 3200 3174 3141 3097 3140  
40:cb 40 32:cb 32-gut 23 11 11 21-gut 22:cb

+19.7

= cb BC on Lt.

3237 3208 3198 3180 3148 3101 3149  
219:cb 218-gut 11 11 22-gut 22:cb

2+0

3243 3201 3200 3188 3165 3108 3153  
219:cb 218-gut 11 11 22-gut 22:cb

+78

3263 3198  
219-sh 219-t 219-c  
11 11 11

+50

3276 3213 3219 3213 3188 3134 3176  
22:cb 21-gut 11 11 21-gut 22:cb

1+12.5

3161 3208  
22:2 30.1  
6075 11 11  
6075 11 11



Birob St.

+39.5 = B.C. Fly Rod on Pt

+26.5

3+23

+94.5

+87.5

+80

2+60

Lt.

L

Rt.

70

31.65 30.80 31.56 31.07 30.90 30.41 30.85  
218.00 217.94 11 222.50 gut 222.00 B.C.

30.23 30.98  
221.7 201.5 11 110.00  
D. No. 9 Conc. Milk

31.7  
10.5 22.1  
11 11  
Milk Conc

32.41 31.55 31.56 31.41 31.19 30.59 31.08  
217.00 216 11 222.50 gut 222.00 B.C.

30.82 31.26  
222.00 202.00  
D. No. 9 Conc. Milk

32.70 31.90 31.74 31.52 31.24 30.69 31.13  
218.00 B.C. 217.00 gut 11 222.00 gut 222.00 B.C.

32.25 32.73 223.00 32.09 31.93 31.41 31.27 30.81 31.23  
6A.00 6A.00 gut 40 22 11 222.00 gut 222.00 B.C.

+90 H.Cb

3083 3008 3016 3011 2978 2901 2843 2952  
20-cb 19.9.9ut 10 10 20 30.3 30.5.12cb

+80 = 1/2 Osborn

3084 3012 3014 30.04 2971 2922 2991  
20-cb 19.9.9ut 10 10 19.9 20

+69

3091 3025  
20-cb 10.29.9ut  
walk

+50

3090 3013 3025 3010 2985 2933 2977  
20.1 20 10 10 19.9 20-cb  
19.9.9ut

+40521

3109 3035 3060 3050 3018 2967 3023  
20.2cb 20.5.9ut 10 10 19.9 20-cb  
19.9.9ut

+72

3120 3037 3081 3077 3011 2925 3040 3010  
21.7cb 21.5.9ut 11 11 21 33 40

3465

3145 3066 3088 3087 3076 3018 3060 3043  
21.7cb 21.5.9ut 11 11 22 33 40  
20.5.9ut

Bird St.

Lt. N

Z

Rt. S

72

+17

33.08 33.70  
17.8-2 21-N  
12.5-Gone Walk  
Drive

670

33.07 33.34 33.30 33.23 31.86 31.33 32.01  
20-cb 19.9-out 10 10 19.9-out 20-cb

+70

31.93 31.26 31.24 31.29 30.97 30.30 30.84  
20-cb 20.1-out 10 10 19.9-out 20-cb

+30.5

31.26 30.71  
12.5-H Cone Walk  
20.1-H Cone Drive

+10 = E.L. Osborn

30.93 30.53 30.68 30.61 30.24 29.64 30.05  
20-cb 20 10 10 19.8-out 19.9-cb

+50 F.Cb.

30.80 30.27 30.52 30.18 30.25 29.57 28.63 29.33  
20-cb 20-out 10 10 10 29.7-out 29.7-cb

5710 - 2 Osborn St

30.76 30.12 30.28 30.27 30.00 29.54 28.81 27.50  
20.1 20 10 10 10 20 23.0-0.1 23.0-0.1

Lt. No.

L

Rt. No.

73

+41

3830 3742 3741 3738 3707 3652 3736  
20-cb 199-Gul 10 80-Gul 20-cb

+26

3966 3671 3682 3683 3648 3584 3677  
20-cb 199-Gul 10 199 20

+85

3517 3577  
199-Dirt 225-HH  
Construction

+835 = F.L. Hilcy

3415 3471 3429 3357 3530 3529 3531 3502 3455 3418 3377 3567  
30-cb 30-Dirt 225-cb 20 10 10 10 20 20 217 217-cb 30  
3542-cb

+735 = J Hilcy

361 337 3496 3498 3467 3417 347  
30 20-Dirt 10 10 20-cb 30

+65 = H.L. Hilcy

3581 349 3541 349 3477 3456 3460 3422 3382 3391 3441 3413 3401  
30-cb 30-cb 217-cb 217 20 20 218-cb 20 218-cb 30 30-cb  
30-Dirt

+40

3465 3375 3372 3372 3335 3289 3250  
20-cb 20-cb 10 198-Gul 199-cb

Birch St.

74

+56.49 = F'Cb

37.41 36.58 36.72 36.71 36.40 36.04 36.1 35.62  
19.9:cb 198 10 29.7 29.7  
20 20 = Dr

+36.69 = Earl St.

38.11 37.38 37.38 37.42 37.23 37.12 36.9  
20:cb 19.9 10 10 20 30

+24

38.62 37.89  
22.5:cb 20.4:9  
19.9:cb 20.0:Dr

+16.69

38.60 37.78 37.82 37.84 37.65 37.20 37.5 37.28  
20.1 20 10 10 20 30:Dr 30:cb

8+06.69 = 14.6 Earl St.

38.72 37.88 37.91 37.93 37.69 37.28 37.77  
20:cb 19.9 10 10 20 20.1

+86

38.80 38.04 38.05 37.96 37.64 37.23 37.89  
20:cb 19.9:gut 10 10 20:gut 20:cb

7+66

38.63 37.87 37.85 37.78 37.43 37.02 37.71  
19.9:cb 19.8:gut 10 10 19.9:gut 20:cb

Lt. Lt. Rt.

+90 = 111 Alley to South

29.76 28.96 29.15 29.22 29.20 28.71 28.15 28.00 28.16 28.70  
20-cb 20-Gut 16.5 Conc 16.5 Conc 20-Gut 28.8 29.08  
30-Gut 30-cb

+79.5

28.65 28.80 29.29  
20-cb 20-Gut 20-Gut  
16.5 Conc 16.5 Conc

+50

32.17 31.37 31.56 31.70 31.67 31.21 30.57 30.37 31.18  
20-cb 19.9 16.5 Conc 16.5 Conc 20-Gut 20-cb

9+0

35.16 34.34 34.56 34.62 34.50 34.66 33.60 33.34 34.15  
20-cb 19.9 16.5 Conc 16.5 Conc 16.5 Conc 20-Gut 20-cb

+83

36.76 35.58 35.44  
20-cb 19.9 19.9  
16.5 Conc 16.5 Conc

+68 = 309 315 Conc-Gutter Rt+Lt

36.70 36.20 36.39 36.26 36.20 35.84 35.38 35.15 35.98  
19.9-cb 19.8-Gut 16.5 Conc 16.5 Conc 20-Gut 20-cb

876689 = 52 East St.

37.08 36.38 36.23 36.27 35.95 35.32 36.05  
20-cb 19.9-Gut 16.5 Conc 20-Gut 20-cb

Birch St.

B.M.

53.08 NW BP  
Epsilon St  
40th St.  
53.06

Lt.

L

Rt.

76

+30 = NW cb. 40th St to South

237 231 224 216 205 1939 1883 1963  
25 30 15 15 15 38.9 NY Con 4.5 Gut 16.1 cb.

11+10

B.M.

22.66 Box D  
Birch St dots  
NE rd Refer 2

2318 2263 2265 2238 2212 2157 2108 2072 2150  
28 21 Gut 235 NY Con 20.1 NY Con 21.9 Gut 24.1 cb

+92 = cb BC Rt

2291 2254 2214 2191 2266  
10 16.5 NY Con 20 Gut 20.1 cb

+90 = cb BC 02 Lt

2385 2306 2332 2326 2306  
20 cb 19.9 Gut 16.5 NY Con 10

+50

2611 2528 2552 2562 2557 2509 2457 2430 2529  
20 19.9 Gut 16.5 NY Con 10 16.5 NY Con 19.9 Gut 20 cb

10+10 = EL Hill to South

2851 2775 2788 2813 2809 2766 2682 2666 2687 2746  
20 cb 19.9 Gut 16.5 NY Con 10 16.5 NY Con 20 26.5 27.5 27.5 27.5

10+0

2917 2836 2851 2875 2869 2814 2740 2720 2829 2938  
20 cb 19.9 Gut 16.5 NY Con 10 16.5 NY Con 20 27.5 27.5 27.5 27.5









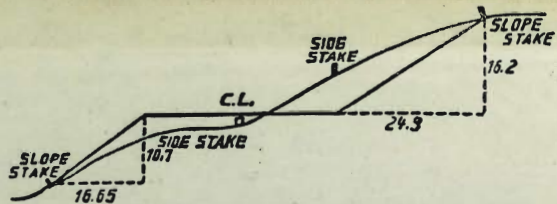
14  
23  
1459  
3241  
49

7284  
7/84  
65

410521

582079  
Lip

335-89 NWPP  
Myrtle-Schmitt



**DISTANCES FROM SIDE STAKES FOR CROSS-SECTIONING.**

**SLOPE 1 1/2 TO 1. ROADWAY OF ANY WIDTH.**

	0	.1	.2	.3	.4	.5	.6	.7	.8	.9	
0	0.00	0.15	0.30	0.45	0.60	0.75	0.90	1.05	1.20	1.35	0
1	1.50	1.65	1.80	1.95	2.10	2.25	2.40	2.55	2.70	2.85	1
2	3.00	3.15	3.30	3.45	3.60	3.75	3.90	4.05	4.20	4.35	2
3	4.50	4.65	4.80	4.95	5.10	5.25	5.40	5.55	5.70	5.85	3
4	6.00	6.15	6.30	6.45	6.60	6.75	6.90	7.05	7.20	7.35	4
5	7.50	7.65	7.80	7.95	8.10	8.25	8.40	8.55	8.70	8.85	5
6	9.00	9.15	9.30	9.45	9.60	9.75	9.90	10.05	10.20	10.35	6
7	10.50	10.65	10.80	10.95	11.10	11.25	11.40	11.55	11.70	11.85	7
8	12.00	12.15	12.30	12.45	12.60	12.75	12.90	13.05	13.20	13.35	8
9	13.50	13.65	13.80	13.95	14.10	14.25	14.40	14.55	14.70	14.85	9
10	15.00	15.15	15.30	15.45	15.60	15.75	15.90	16.05	16.20	16.35	10
11	16.50	16.65	16.80	16.95	17.10	17.25	17.40	17.55	17.70	17.85	11
12	18.00	18.15	18.30	18.45	18.60	18.75	18.90	19.05	19.20	19.35	12
13	19.50	19.65	19.80	19.95	20.10	20.25	20.40	20.55	20.70	20.85	13
14	21.00	21.15	21.30	21.45	21.60	21.75	21.90	22.05	22.20	22.35	14
15	22.50	22.65	22.80	22.95	23.10	23.25	23.40	23.55	23.70	23.85	15
16	24.00	24.15	24.30	24.45	24.60	24.75	24.90	25.05	25.20	25.35	16
17	25.50	25.65	25.80	25.95	26.10	26.25	26.40	26.55	26.70	26.85	17
18	27.00	27.15	27.30	27.45	27.60	27.75	27.90	28.05	28.20	28.35	18
19	28.50	28.65	28.80	28.95	29.10	29.25	29.40	29.55	29.70	29.85	19
20	30.00	30.15	30.30	30.45	30.60	30.75	30.90	31.05	31.20	31.35	20
21	31.50	31.65	31.80	31.95	32.10	32.25	32.40	32.55	32.70	32.85	21
22	33.00	33.15	33.30	33.45	33.60	33.75	33.90	34.05	34.20	34.35	22
23	34.50	34.65	34.80	34.95	35.10	35.25	35.40	35.55	35.70	35.85	23
24	36.00	36.15	36.30	36.45	36.60	36.75	36.90	37.05	37.20	37.35	24
25	37.50	37.65	37.80	37.95	38.10	38.25	38.40	38.55	38.70	38.85	25
26	39.00	39.15	39.30	39.45	39.60	39.75	39.90	40.05	40.20	40.35	26
27	40.50	40.65	40.80	40.95	41.10	41.25	41.40	41.55	41.70	41.85	27
28	42.00	42.15	42.30	42.45	42.60	42.75	42.90	43.05	43.20	43.35	28
29	43.50	43.65	43.80	43.95	44.10	44.25	44.40	44.55	44.70	44.85	29
30	45.00	45.15	45.30	45.45	45.60	45.75	45.90	46.05	46.20	46.35	30
31	46.50	46.65	46.80	46.95	47.10	47.25	47.40	47.55	47.70	47.85	31
32	48.00	48.15	48.30	48.45	48.60	48.75	48.90	49.05	49.20	49.35	32
33	49.50	49.65	49.80	49.95	50.10	50.25	50.40	50.55	50.70	50.85	33
34	51.00	51.15	51.30	51.45	51.60	51.75	51.90	52.05	52.20	52.35	34
35	52.50	52.65	52.80	52.95	53.10	53.25	53.40	53.55	53.70	53.85	35
36	54.00	54.15	54.30	54.45	54.60	54.75	54.90	55.05	55.20	55.35	36
37	55.50	55.65	55.80	55.95	56.10	56.25	56.40	56.55	56.70	56.85	37
38	57.00	57.15	57.30	57.45	57.60	57.75	57.90	58.05	58.20	58.35	38
39	58.50	58.65	58.80	58.95	59.10	59.25	59.40	59.55	59.70	59.85	39
40	60.00	60.15	60.30	60.45	60.60	60.75	60.90	61.05	61.20	61.35	40
41	61.50	61.65	61.80	61.95	62.10	62.25	62.40	62.55	62.70	62.85	41
42	63.00	63.15	63.30	63.45	63.60	63.75	63.90	64.05	64.20	64.35	42
43	64.50	64.65	64.80	64.95	65.10	65.25	65.40	65.55	65.70	65.85	43
44	66.00	66.15	66.30	66.45	66.60	66.75	66.90	67.05	67.20	67.35	44
45	67.50	67.65	67.80	67.95	68.10	68.25	68.40	68.55	68.70	68.85	45
46	69.00	69.15	69.30	69.45	69.60	69.75	69.90	70.05	70.20	70.35	46
47	70.50	70.65	70.80	70.95	71.10	71.20	71.40	71.55	71.70	71.85	47
48	72.00	72.15	72.30	72.45	72.60	72.75	72.90	73.05	73.20	73.35	48
49	73.50	73.65	73.80	73.95	74.10	74.25	74.40	74.55	74.70	74.85	49
50	75.00	75.15	75.30	75.45	75.60	75.75	75.90	76.05	76.20	76.35	50

THE NATIONAL BLANK BOOK COMPANY  
 HOLYOKE MASSACHUSETTS  
 NEW YORK CHICAGO BOSTON SAN FRANCISCO