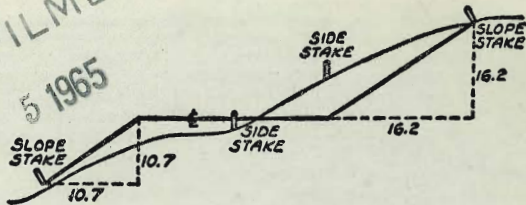


MICROFILMED
 JAN 5 1965



DISTANCES FROM SIDE STAKES FOR CROSS-SECTIONING
 SLOPE 1 TO 1. ROADWAY OF ANY WIDTH

	0	.1	.2	.3	.4	.5	.6	.7	.8	.9	
0	0.00	0.10	0.20	0.30	0.40	0.50	0.60	0.70	0.80	0.90	0
1	1.00	1.10	1.20	1.30	1.40	1.50	1.60	1.70	1.80	1.90	1
2	2.00	2.10	2.20	2.30	2.40	2.50	2.60	2.70	2.80	2.90	2
3	3.00	3.10	3.20	3.30	3.40	3.50	3.60	3.70	3.80	3.90	3
4	4.00	4.10	4.20	4.30	4.40	4.50	4.60	4.70	4.80	4.90	4
5	5.00	5.10	5.20	5.30	5.40	5.50	5.60	5.70	5.80	5.90	5
6	6.00	6.10	6.20	6.30	6.40	6.50	6.60	6.70	6.80	6.90	6
7	7.00	7.10	7.20	7.30	7.40	7.50	7.60	7.70	7.80	7.90	7
8	8.00	8.10	8.20	8.30	8.40	8.50	8.60	8.70	8.80	8.90	8
9	9.00	9.10	9.20	9.30	9.40	9.50	9.60	9.70	9.80	9.90	9
10	10.00	10.10	10.20	10.30	10.40	10.50	10.60	10.70	10.80	10.90	10
11	11.00	11.10	11.20	11.30	11.40	11.50	11.60	11.70	11.80	11.90	11
12	12.00	12.10	12.20	12.30	12.40	12.50	12.60	12.70	12.80	12.90	12
13	13.00	13.10	13.20	13.30	13.40	13.50	13.60	13.70	13.80	13.90	13
14	14.00	14.10	14.20	14.30	14.40	14.50	14.60	14.70	14.80	14.90	14
15	15.00	15.10	15.20	15.30	15.40	15.50	15.60	15.70	15.80	15.90	15
16	16.00	16.10	16.20	16.30	16.40	16.50	16.60	16.70	16.80	16.90	16
17	17.00	17.10	17.20	17.30	17.40	17.50	17.60	17.70	17.80	17.90	17
18	18.00	18.10	18.20	18.30	18.40	18.50	18.60	18.70	18.80	18.90	18
19	19.00	19.10	19.20	19.30	19.40	19.50	19.60	19.70	19.80	19.90	19
20	20.00	20.10	20.20	20.30	20.40	20.50	20.60	20.70	20.80	20.90	20
21	21.00	21.10	21.20	21.30	21.40	21.50	21.60	21.70	21.80	21.90	21
22	22.00	22.10	22.20	22.30	22.40	22.50	22.60	22.70	22.80	22.90	22
23	23.00	23.10	23.20	23.30	23.40	23.50	23.60	23.70	23.80	23.90	23
24	24.00	24.10	24.20	24.30	24.40	24.50	24.60	24.70	24.80	24.90	24
25	25.00	25.10	25.20	25.30	25.40	25.50	25.60	25.70	25.80	25.90	25
26	26.00	26.10	26.20	26.30	26.40	26.50	26.60	26.70	26.80	26.90	26
27	27.00	27.10	27.20	27.30	27.40	27.50	27.60	27.70	27.80	27.90	27
28	28.00	28.10	28.20	28.30	28.40	28.50	28.60	28.70	28.80	28.90	28
29	29.00	29.10	29.20	29.30	29.40	29.50	29.60	29.70	29.80	29.90	29
30	30.00	30.10	30.20	30.30	30.40	30.50	30.60	30.70	30.80	30.90	30
31	31.00	31.10	31.20	31.30	31.40	31.50	31.60	31.70	31.80	31.90	31
32	32.00	32.10	32.20	32.30	32.40	32.50	32.60	32.70	32.80	32.90	32
33	33.00	33.10	33.20	33.30	33.40	33.50	33.60	33.70	33.80	33.90	33
34	34.00	34.10	34.20	34.30	34.40	34.50	34.60	34.70	34.80	34.90	34
35	35.00	35.10	35.20	35.30	35.40	35.50	35.60	35.70	35.80	35.90	35
36	36.00	36.10	36.20	36.30	36.40	36.50	36.60	36.70	36.80	36.90	36
37	37.00	37.10	37.20	37.30	37.40	37.50	37.60	37.70	37.80	37.90	37
38	38.00	38.10	38.20	38.30	38.40	38.50	38.60	38.70	38.80	38.90	38
39	39.00	39.10	39.20	39.30	39.40	39.50	39.60	39.70	39.80	39.90	39
40	40.00	40.10	40.20	40.30	40.40	40.50	40.60	40.70	40.80	40.90	40
41	41.00	41.10	41.20	41.30	41.40	41.50	41.60	41.70	41.80	41.90	41
42	42.00	42.10	42.20	42.30	42.40	42.50	42.60	42.70	42.80	42.90	42
43	43.00	43.10	43.20	43.30	43.40	43.50	43.60	43.70	43.80	43.90	43
44	44.00	44.10	44.20	44.30	44.40	44.50	44.60	44.70	44.80	44.90	44
45	45.00	45.10	45.20	45.30	45.40	45.50	45.60	45.70	45.80	45.90	45
46	46.00	46.10	46.20	46.30	46.40	46.50	46.60	46.70	46.80	46.90	46
47	47.00	47.10	47.20	47.30	47.40	47.50	47.60	47.70	47.80	47.90	47
48	48.00	48.10	48.20	48.30	48.40	48.50	48.60	48.70	48.80	48.90	48
49	49.00	49.10	49.20	49.30	49.40	49.50	49.60	49.70	49.80	49.90	49
50	50.00	50.10	50.20	50.30	50.40	50.50	50.60	50.70	50.80	50.90	50

Distance of slope stake from side or shoulder stake for any width roadway, slope 1 to 1. If ground is nearly level, the cut or fill at side stake is located by the double entry method in left column and top row. The number in body of table in same row and column gives distance from side stake to slope stake. If ground is not level estimate the difference in elevation between the side stake and slope stake, lower target by this amount if cut, elevate if fill. Add this amount to cut or fill and find distance in table. Set up rod at this point, and line of sight should cut target. If it does not make the slight adjustment necessary.

TABLE XIII—CORRECTIONS FOR TANGENTS AND EXTERNALS

These corrections are to be added to the approximate values, found by dividing the tangent, or external, for a 1° curve (Table VIII) by the degree of curve, in order to obtain the true tangents, or externals. Intermediate values may be obtained by interpolation.

FOR TANGENTS ADD

Central Angle	DEGREE OF CURVE													
	5°	10°	15°	20°	25°	30°	35°	40°	45°	50°	55°	60°	65°	70°
10°	.03	.06	.09	.13	.16	.19	.22	.25	.28	.31	.34	.38	.42	.46
15°	.04	.10	.14	.19	.24	.29	.34	.39	.45	.51	.53	.58	.63	.68
20°	.06	.13	.19	.26	.32	.39	.45	.51	.58	.65	.72	.79	.84	.90
25°	.08	.16	.24	.33	.40	.49	.58	.67	.75	.83	.90	.99	1.06	1.14
30°	.10	.19	.29	.39	.49	.59	.69	.79	.89	.99	1.09	1.20	1.29	1.39
35°	.11	.22	.34	.47	.58	.69	.79	.81	.92	1.04	1.29	1.42	1.54	1.66
40°	.13	.26	.40	.53	.67	.80	.93	1.06	1.20	1.34	1.49	1.64	1.79	1.94
45°	.15	.30	.44	.60	.76	.91	1.06	1.21	1.37	1.52	1.70	1.87	2.04	2.21
50°	.17	.34	.51	.68	.85	1.02	1.19	1.36	1.54	1.72	1.91	2.10	2.29	2.48
55°	.19	.38	.57	.76	.95	1.14	1.32	1.52	1.72	1.92	2.14	2.35	2.56	2.77
60°	.21	.42	.63	.84	1.05	1.27	1.49	1.71	1.94	2.17	2.38	2.60	2.83	3.07
65°	.23	.46	.69	.93	1.16	1.40	1.64	1.88	2.13	2.38	2.63	2.88	3.13	3.39
70°	.25	.51	.76	1.02	1.28	1.54	1.80	2.06	2.33	2.60	2.88	3.16	3.44	3.72
75°	.27	.56	.83	1.12	1.40	1.69	1.98	2.27	2.57	2.87	3.16	3.47	3.78	4.09
80°	.30	.61	.91	1.22	1.53	1.84	2.15	2.46	2.78	3.10	3.44	3.78	4.12	4.46
85°	.33	.66	1.00	1.33	1.68	2.02	2.36	2.70	3.05	3.40	3.77	4.14	4.55	4.89
90°	.36	.72	1.09	1.45	1.83	2.20	2.57	2.94	3.32	3.70	4.10	4.50	4.91	5.32
95°	.39	.79	1.19	1.55	2.00	2.40	2.80	3.20	3.61	4.02	4.40	4.98	5.38	5.83
100°	.43	.86	1.30	1.74	2.18	2.62	3.06	3.50	3.95	4.40	4.88	5.37	5.85	6.34
110°	.51	1.03	1.56	2.08	2.61	3.14	3.67	4.21	4.76	5.31	5.86	6.43	7.01	7.60
120°	.62	1.25	1.93	2.52	3.16	3.81	4.45	5.11	5.77	6.44	7.12	7.80	8.50	9.22

FOR EXTERNALS ADD

Central Angle	DEGREE OF CURVE													
	5°	10°	15°	20°	25°	30°	35°	40°	45°	50°	55°	60°	65°	70°
10°	.001	.003	.004	.006	.007	.008	.009	.011	.012	.014	.015	.017	.018	.020
15°	.003	.007	.010	.014	.018	.023	.027	.032	.035	.039	.043	.047	.051	.055
20°	.006	.011	.017	.022	.028	.034	.038	.045	.051	.057	.063	.070	.076	.083
25°	.009	.018	.027	.036	.046	.056	.065	.074	.083	.093	.106	.120	.127	.135
30°	.013	.025	.038	.051	.065	.078	.090	.103	.116	.129	.149	.170	.179	.188
35°	.018	.035	.054	.072	.086	.109	.131	.153	.175	.197	.213	.230	.247	.264
40°	.023	.046	.070	.093	.117	.141	.172	.203	.234	.265	.277	.290	.315	.341
45°	.030	.060	.093	.119	.153	.184	.216	.254	.289	.325	.351	.378	.411	.445
50°	.037	.075	.116	.151	.189	.227	.266	.305	.345	.384	.425	.467	.508	.550
55°	.048	.093	.142	.188	.236	.283	.332	.381	.420	.479	.530	.582	.641	.700
60°	.056	.112	.168	.225	.283	.340	.398	.457	.516	.575	.636	.697	.774	.851
65°	.067	.135	.204	.273	.343	.412	.483	.554	.625	.697	.771	.845	.922	1.01
70°	.080	.159	.240	.321	.403	.485	.568	.652	.735	.819	.906	.994	1.08	1.17
75°	.095	.182	.266	.353	.440	.528	.617	.707	.797	.887	.977	1.07	1.18	1.29
80°	.110	.220	.332	.445	.558	.671	.787	.903	1.02	1.13	1.25	1.38	1.50	1.62
85°	.128	.259	.391	.524	.657	.790	.926	1.06	1.20	1.34	1.47	1.62	1.76	1.91
90°	.149	.299	.450	.603	.756	.910	1.07	1.22	1.38	1.54	1.70	1.87	2.03	2.20
95°	.174	.350	.522	.706	.885	1.06	1.25	1.43	1.62	1.80	1.99	2.18	2.38	2.58
100°	.200	.401	.604	.809	1.01	1.22	1.43	1.64	1.85	2.06	2.28	2.50	2.73	2.96
110°	.268	.536	.806	1.08	1.35	1.63	1.91	2.20	2.48	2.76	3.05	3.35	3.66	3.96
120°	.360	.721	1.08	1.45	1.82	2.19	2.57	2.95	3.33	3.72	4.11	4.50	4.91	5.32

X-Sec Aly. Blk. 58 Higgins Sub.

X-Sect. Alley Blk 43 - Hensleys Sub.

Re. X-SECT. ALLEY BLK 100 UNIK. HTS. (Cm. Fd. 177-27 also)

X-Sec Jellett. Erie to Frankfort

" Lister at Erie Intersac

X-Sec. Alley 44 Pacific Beach

CROSS SEC. JELLETT ST. DENVER TO ERIE

Pg

1-9

10-

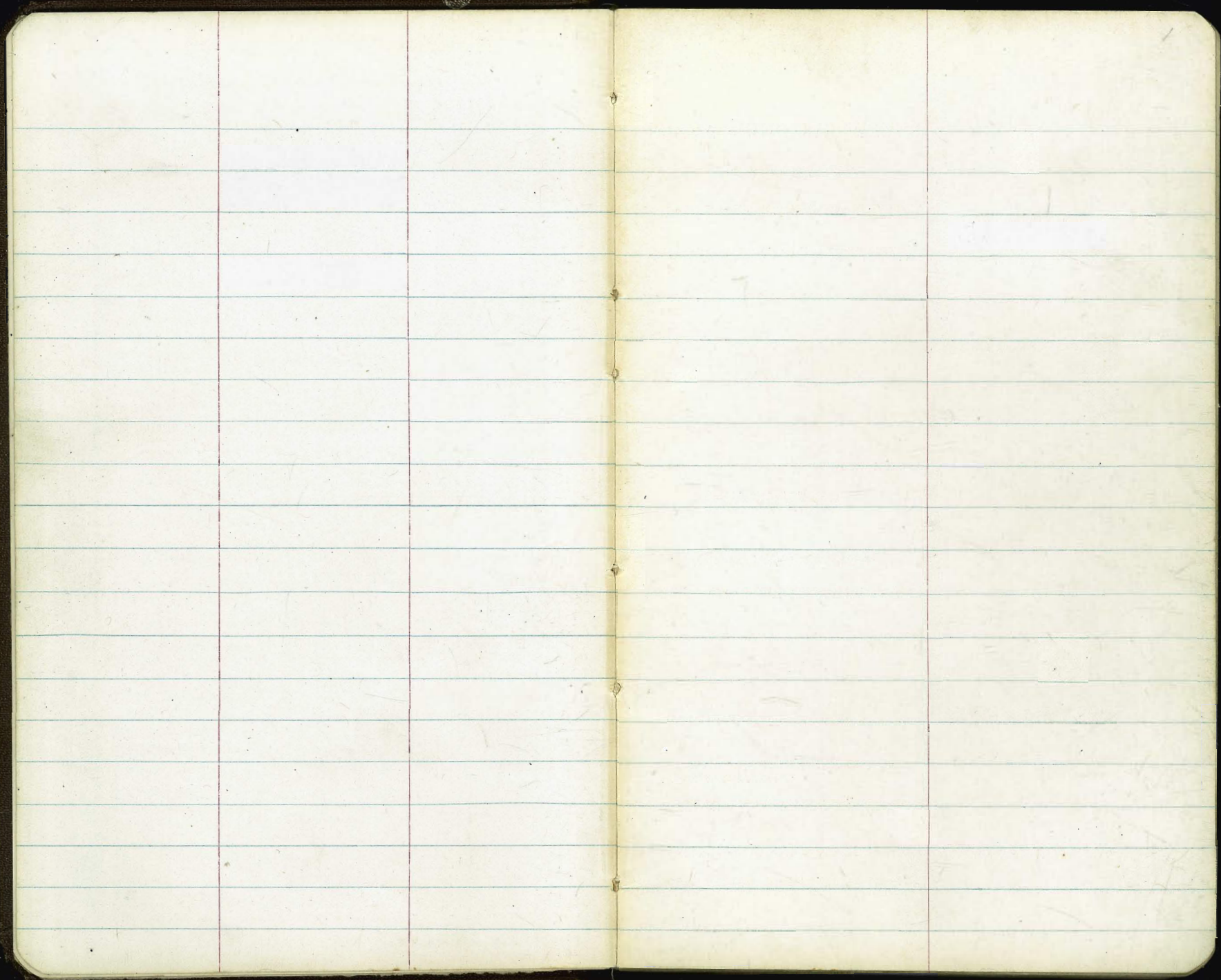
15

27

37

55

63



X Sect. Alley Bk. 58 Higgins Sub.

INDEXED

2

12-17-52
POPE
Huttman
Presley

N.O. 31797

Low
DEC 19 1952

T.P. 11.17 213.70 -0.17 202.53

0+02

LT. RT.
204.1 203.7 200.2 198.47 198.32 198.38 199.4 203.6 204.2
+20 +10 2.5 4.23 4.38 4.32 3.3 +0.9 +1.5
15 10 9 5 5 5 8 10 15

0+00

202.28 197.28 196.4 197.98 197.96 198.08 198.4 197.5 202.56
0.42 5.42 4.3 4.72 4.74 4.62 4.3 5.20 0.14
10 10 9 5 5 9 10 10
T.C. T.C. T.C. T.C.
9' Ret. Wall Endercb. Endercb. Endercb. 9' Ret. Wall

0-01

197.24 197.08 197.8 197.70 197.81 197.88
5.46 5.62 4.9 5.00 4.89 4.82
10 10 9 5 5 5
T.C. Gutter

Reduced
P. Points
12-31-52

0-04 Begin Cold Lay Paving 10'

197.32 197.51 197.52 198.2 197.29 197.5
5.38 5.19 5.18 4.5 5.41 5.20
5 5 9 10 10
Gutter T.C. Gutter T.C.

0-12

197.09 196.54 196.80 197.24
5.66 6.16 5.90 5.46
10 10 10 10
T.C. Gutter Gutter T.C.
196.69 196.01 197.01 196.41 196.43 196.56 196.65 196.65 197.23 196.90 197.64
6.01 6.69 5.69 6.29 6.27 6.14 6.05 6.05 5.47 5.80 5.16
50 50 12 12 10 10 10 12 12 50 50
T.C. Gutter T.C. Gutter P.F. Gutter T.C. Gutter T.C.
Curb, Ret. Curb, Ret.

0-14 = East Curb Line 27th

B.M. 5.73 202.70 196.97

N.W. B.P. 27th & B^r St.

202.70

X- Sect. Alley Blk. 58 Higgins Sub.

1+19.5 Begin 2 car Garage 14.9 Rt

209.25

4.5
14.9
Garage Floor

1+00.4 End shed 9.7 Lt. (Begin Asphalt Parking lot 10' Lt.)

208.77 209.07 209.0 208.8 208.7
4.93 4.65 4.7 4.9 5.0
30 10 10 15
Edge paving

0+90 End Board Fence 9.5 Lt. Begin Shed 9.8 Lt.

208.7 209.0 209.0 208.85 208.66 208.6 208.54
5.0 4.7 4.7 5.04 5.1 5.16
15 10 5.5 7.5 10 13.5
Garage floor

0+89 End of 2 car Garage 13.5 Rt. (End Cold Lay)

208.2 208.4 208.34 208.21 208.05 208.0 208.59
5.5 5.3 5.36 5.49 5.65 5.7 5.71
15 10 5 7 10 13.5
Garage Floor

0+73 Begin 2 car Garage 13.5 Rt.

0+65.5 Guy Cable 8.8 Rt.

0+52.5 Power Pole 8.7 Rt. # PA 2710

0+50 Begin 4' Board Fence 9.5 Lt.

207.2 207.3 206.45 206.41 206.41 206.1
6.5 6.4 7.25 7.29 7.29 7.0
15 10 4.5 6 10

0+44 & Single car Garage 10.7 Rt.

205.58 206.4
8.12 7.3
10.7
Dirt floor

0+25

205.9 206.1 206.0 207.8 202.69 202.58 202.42 203.8 206.2 206.2
7.8 7.6 7.7 10.9 11.01 11.12 11.28 9.9 7.5 7.5
15 10 7.5 4.5 5.5 6 10 15
213.70

X- Sect. Alley Blk. S Higgins Sub.

4

Lt.

£

Rt.

2+21 End 2 car Garage 13.3 Lt.

205.24
206.17
7.64 6.71
9.6 13.3
Edge Conc. Apron Garage Floor

2+05

199.3 199.8 207.0 206.7 206.3 605.99
13.6 13.1 5.9 6.2 6.6 6.89
30 18 13 10
9.6
Conc. Apron

2+00 Begin 2 car Garage 13.1 Rt.

207.3 207.2 206.3 206.04 206.23
5.6 5.7 6.6 6.84 6.65
20 10
9.6
Edge Conc. Apron Garage Floor

1+93 £ 1 Car Garage 13.3 Rt.

207.18 207.24
5.70 5.64
12 13.3
Edge Conc. Apron Garage Floor

1+77 (End Asphalt Parking Lot) West Edge 1 car Garage

208.43 208.76 208.41
4.45 4.12 4.47
10 19.5 30
Edge Paving Garage Floor

1+54 24" Pepper Tree 10.3 Rt.

1+50 Power Pole 9' Rt. # A2724

212.88

T.P. 2.50 212.88 3.32 210.38

208.59 208.81 209.07 209.1 209.0 209.33
5.11 4.89 4.63 4.6 4.7 4.37
30 20 10
Edge Paving 213.70 10 14.9
Garage Floor

1+37.5 End 2 car Garage 14.9 Rt.

x-sect. Alley Bk. 58 Higgins Sub.

	Lt.	£	195.82	195.82
3+10.5 End Conc. Slab 10.7 Rt.	195.6		4.70	4.70
3+07 & 1 car garage 465 Lt. Has st. outlet	4.89 465 Garage Floor		10.7	20
3+03 Begin Conc. Slab 10.7 Rt.			195.82	195.86
			4.70	4.66
			10.7	20
3+01 & sewer M.H. 0.4 Rt. (Begin 4" conc Ret. wall with 4' Picket Fence)	196.3 197.1 198.7 199.25	4.2 3.4 1.8 127.24	2.27	3.5 3.7
		20 16 10	105" Top 4" Wall	11 20 Grand Elev.
3+00 8' Conc. Ret. Wall	197.7 198.1 198.7	2.8 2.4 1.8	127 14	0.52 3.5 0.62 3.7
		30 18 10	103 Top 8" Conc Ret. wall	10.3 Bottom Top Wall
TP	0.59	200.52	12.95	199.93
				200.52
2+99 End 2 Car Garage 14' Rt.			199.48	199.76
			13.40	13.12
			10" Edge Conc. Apron	14" Garage Floor
2+90	197.9 197.9	200.58 200.48	200.08	
	150 30	150 18	133 12	124 10
2+82 Begin 2 Car Garage 14.3' Rt.			199.99	200.01
			12.90 11.1	12.51 14.3
			Edge Conc. Apron	Garage Floor
2+50 Power Pole 9.1 Rt. # A2742	197.5 198.0 205.2 204.7 203.7 203.3	154 30	149 18	7.7 13
			8.2 10	8 8
			9.6	9.6
			203.5	203.3
			7.4 10	9.6 14
			212.88	

3499 North End of 8" conc. Ret. wall

176.5 179.1 179.3 178.49 183.2 RT
 11.4 8.8 8.6 9.4 4.7 5.92 5.82
 20 13 10 MH 9 10 20
 Wash Edge Top Wall

4400
 3499

176.54 178.0 178.5 178.49 179.9 177.9
 11.4 9.9 9.4 9.45 8.0 10.01 9.48
 20 10 8 MH 8' 10 30
 Conc Storm Gutter

3480 = East Edge Stucco House 11.4 Rt.

TP 0.40 187.94 12.98 187.54

187.94
 186.4 187.2 187.7 187.9 188.7
 14.1 13.3 12.8 12.6 11.8
 20 10 6 10

3460

3454 = West Edge Stucco House 11.5 Rt.

189.12
 11.40
 Floor Elev.
 188.65 188.77
 11.87 11.75
 7.6 18

3453 & 2' walk 7.6 Rt.

Also = North End of 8" conc. block wall Thus
 3449 End 4" Ret. wall & Picket Fence 10.5 Rt.

189.8 190.0 190.6 190.3 190.0 190.0 192.97
 10.7 10.5 9.9 10.2 10.5 10.5 7.55
 20 12 10 5 10 105
 Ground Elev. Top Wall

3447 Power Pole 7.5' Rt. #A 2758

200.52

X-sect. Alley 814.58 Higgins Sub.

5410

160.9 158.7 157.6 156.5 156.2 156.0 Rt. 157.6 156.9 156.3
 20 4.2 5.3 6.4 6.7 6.9 5.3 6.0 6.6
 15 10 5 2 4 6
 Bot. Ditch Bot. Ditch Top Bank

5400

157.9 157.4 156.2 156.3 157.3 158.3 157.4 156.2 155.9
 50 55 6.7 6.6 5.6 4.6 5.5 6.7 7.0
 20 12 10 3 Top Bank 8 10 13 20

4492 East Edge old Frame House 13.7 Rt.

157.9 157.5 156.3 156.2 157.8 157.7 157.3 158.2 158.5 158.2 156.1
 50 54 6.6 6.7 5.1 5.2 5.6 4.7 4.4 4.7 6.8
 30 25 23 16 15 10 5 10 12 13.7
 Top Bank Bot. Ditch Bot. Ditch Bot. Ditch

4468 Guy Cable 9' Rt.

4450.4 ϕ Man Hole 0.4 Rt. (also West Edge old Frame House 16.1 Rt)

158.2 158.9 159.02 160.0 160.0
 4.7 4.0 3.90 2.9 2.9
 20 10 M.H. Rim 10 16

T.P. 004 162.92 12.71 162.88

4444 Power Pole 8.3' Rt. # A 2774

4435 ϕ 3' Euc. Tree 11.0 Lt.

4430

168.3 167.7 167.6 168.1 172.0 172.4 172.8
 7.3 7.9 8.0 7.5 3.6 3.2 2.8
 20 10 3 10 15 20

T.P. 0.65 175.59 13.00 174.94

4415

4409 ϕ 12" Euc. Tree 10.2 Lt.

173.7 173.9 175.59 174.8 176.3 176.4 177.9
 14.2 14.0 13.1 11.6 11.5 11.0
 20 10 5 10 20

187.94

T.P. 7.44 192.18 2.21 184.74

6+00

187.4
+0.4
20

186.0
1.0
14

185.4
1.6
10

185.0
2.0

184.3
2.7
10

184.18
2.77
14
N Edge of conc. Dr.

5+6.7 East Edge conc. slab 7.5 Rt.

184.05
2.70
7.5

184.15
2.80
20

N. End Ret. Wall West Edge conc. slab 9.4 Rt.
5+57 Tel. Pole 7.4 Rt. 469089H

185.55
1.4
20

184.0
3.0
10

184.1
2.9

184.02
2.93
2.4
Top Wall

183.85
3.10
2.0
Top Wall

182.15
4.8
2.0
Ground Shot

T.P. 12.67 186.95 0.53 174.28

T.P. 12.65 174.81 0.76 162.16

5+21 End Headwall 7' R

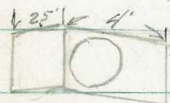
186.95

156.9
7.0
4.6
Bottom

158.64
4.28
4.6
Top Wingwall

155.5
7.4
7
Bottom

154.62
4.30
7
Top Hd. wall



5+18.5 30" Conc. Storm Drain 7.1 Rt
(Also Toe of Slope to East)

161.8
7.1
15

160.9
2.0
10

158.9
4.0

155.36
7.56
7.1
Flow Line

158.62
4.30
4.1
Top Hd. wall

160.1
2.8
10

159.1
3.8
15

5+16 West Edge conc. Head wall 7.5 Rt

161.0
1.9
15

160.0
2.9
10

158.0
4.9
3
Top Bank

156.0
6.9
7
Bottom ditch

155.6
7.3

158.62
4.30
7
Top H. Wall

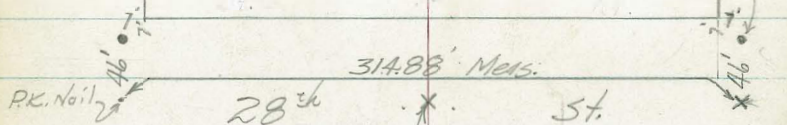
162.92

X-sect. Alley BIK. 58 Higgins Sub.

• = Fd Ld & TR.
 x = Set Chisel cross

P.O.T.

9



N.W. B.P. 27 th St				0.01
CHK. starting BM.	435		196.96	

TP	5.27	201.31	0.69	196.04
----	------	--------	------	--------

T.P.	11.99	196.73	3.90	184.74
------	-------	--------	------	--------

TP	7.00	188.64	0.04	181.64
----	------	--------	------	--------

				2.23
			176.05	
BM. NE. B.P. 28 th St	586		175.82	

TP	0.04	181.68	10.54	181.64
----	------	--------	-------	--------

6+40.93 West Curbkline 28th St.

186.68	187.24	185.60	27 th Meas.	45.51	51	194.89	41.72	84.16	83.59	83.03
5.50	4.94	6.58	6.00	6.67	7.29	7.46	8.02	8.59	9.15	
25	25	10	10	4	2	10	10	25	25	
Gutter	T.C.	Gut.	T.C.	Top	Gutter	T.C.	Gut.	T.C.	Gut.	

192.18

X-Sect: 20' Alley in Block 43 - Hensleys sub.

6781

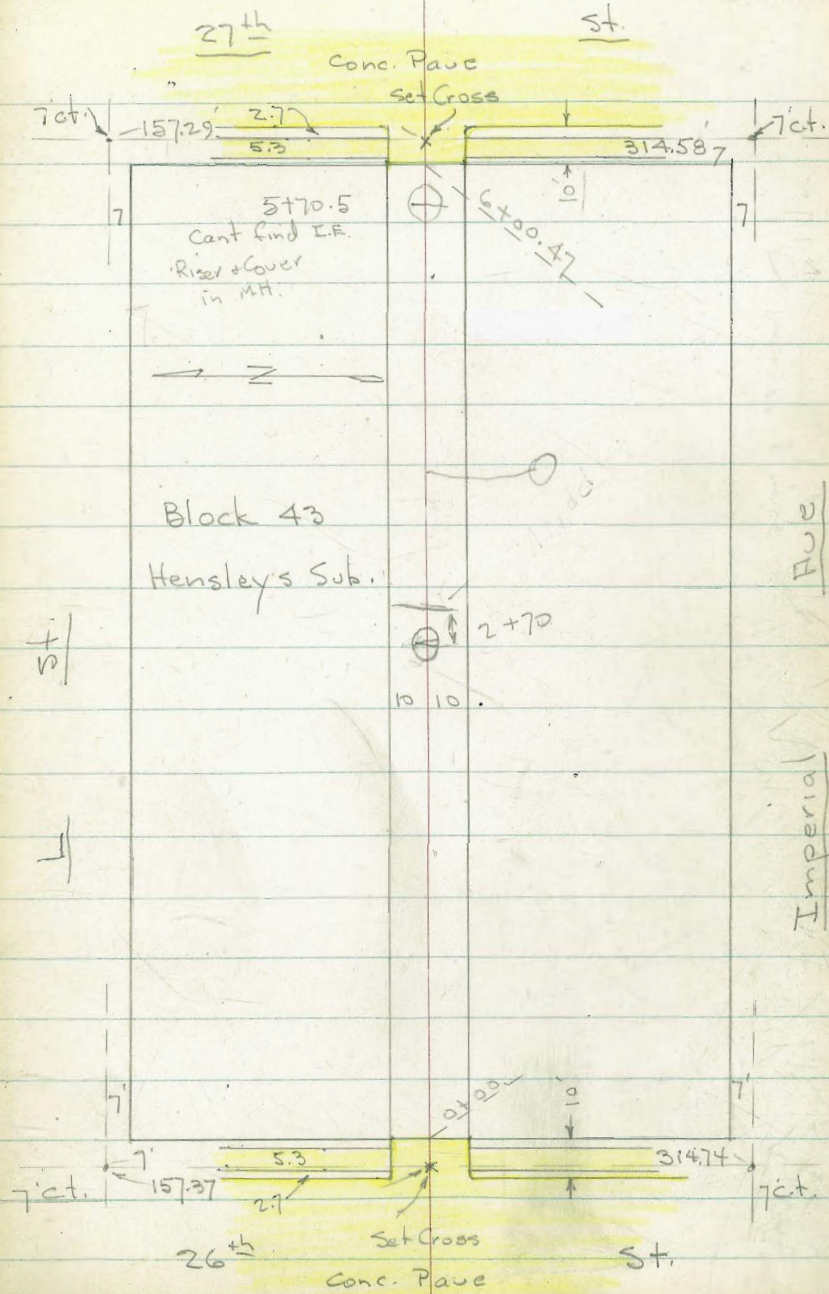
2-6-53 7:0.

w.o. 31862

INDEXED
Law
FEB 10 1953

0-30 = Sewer M.H.

59.47 - I.E.



Lt. ± Rt.

X-Sect. 20' Alley in Block 43 - See Sketch-P 10

1+77 - 9.2' Rt. = Beg. Nly. of Conc. Base for Door Rail

1+50

1+36 - 9.6' Lt. = ± 12' Conc. apron to Sing Gar. fence

1+25.4 - 9.2' Lt. = end Board + 9.6' Lt. = Beg. cyclone

9.9' Rt. = Beg. Conc. Bldg.

1+00 - 9.1' Lt. = Beg. board fence

0+94 - 14.3' Lt. = ± Conc. apron to Sing gar.

0+87.5 - 9.1' Lt. = end Board fence

0+80 - 8.5' Rt. = ± P. pole # A2612

0+60

0+50 - 11.2' Rt. = end ± of Hedge

0+49 - 8.6' Lt. = ± Tel. pole # 307288-H

0+20 - 9' Lt. = Beg. Board fence

11.4' Rt. = Beg. ± of 3' Hedge - 5' High

0+00 = edge of Pavc & curbs

0-10 = F. cb. of 26th

B.M. = N.W. B.P. - 26th + Imperial 63.92

	66.0 10	66.3	66.9 10	66.36 9.2 = Top Conc. at Bldg.
	66.55 17.4 floor gar.	66.01 9.6 = apron		
	66.2 10	66.4	66.7 9.9 = at Cor.	65.9 footing at least
	66.62 17.1 floor	66.35 14.3 apron		
	67.2 10	67.1	66.8 10	66.6 20
	67.9 15	67.8 10	67.4	67.1 10
				67.0 14.6 By House
	67.42 Top = ent.	67.07 10.2 gut.	66.67	67.01 10 gut.
				67.07 Top = end cb
	67.97 Top 50 gut.	67.35 Top 10 Rad. gut	67.21	66.51
			66.32	66.13
			66.77 Top 10 Rad. gut.	65.49 Top 40 gut.
				66.22 Top

Actual Elev. Shown.

9.6' Lt. = Beg. old wooden shed.
 3+40 - 9.5' Lt. = end fence
 3+22 - 10.4' Rt. = P. pole # A2660
 3+11 - 8.4' Lt. = Tel. pole # 487721-H
 3+00 - 9.4' Lt. = fence
 2+94.5 - 13.8' Rt. = Sing. Gar - Dirt floor
 2+82 - 13.7' Rt. = Sing. Gar - Dirt floor
 2+75.3 - 10.8' Rt. = end fence at old conc. wall to S.
 2+74.5 - 11.1' Lt. = end Conc. slab.
 2+50.5 - 11.1' Lt. = Beg. New Conc. Slab for Gar.
 10.1' Lt. = fence
 2+50.5 - 10.5' Rt. = Beg. board fence
 2+50
 Conc. wall
 2+49 - 10.3' Rt. = end fence & Beg. Nly. of 18"
 2+25 - 10' Rt. = end Bldg. + Beg. old board fence
 Set T.P. = spike in pole below 67.00
 2+18 - 8.5' Rt. = P. pole # A2638
 2+09 - 9.1' Rt. = end Conc. base
 2+00 - 10.2' Lt. = end cyclone + Beg. board fence
 1+90.3 - 8.5' Rt. = Conc. floor in E of 12' Door
 1+81 - 8.7' Lt. = Tel. pole # 307289-H

2+70 = P.
 Sewer
 MH.
 (Raised)

Lt. = Rt.

60.95 = T.E 66.79 = Top
 66.6 66.6 66.1 65.6
 10 10 10 20
 65.9
 13.8
 66.0
 13.7 = floor.
 67.29 66.98
 30 11.1 = Cor.
 Conc. 67.00
 67.21 11.1 = Cor.
 25
 on Conc.
 66.6 66.7 66.6
 10 10
 66.6
 10.3
 at
 wall 66.5
 10 at
 Bldg.
 66.34 = conc.
 9.1
 66.2 66.5 66.32 66.32
 10 9 10 = at
 edge Conc. Bldg.
 66.31 66.31
 8.5 = edge 9.3 = at
 Conc. Door

Lt. ♀ Rt.

5+19- 13.2' Lt. = ± Sing. Gar - Dirt floor
 5+17- 10' Rt. = end House + Beg. board fence
 5+08.5- 10.3' Lt. = end House
 5+00- 9.8' Rt. = Beg. House
 4+83- 10.4' Rt. = end Stucco wall
 4+76.3- 10.3' Lt. = Beg. House
 4+72- 9' Rt. = ± R. pole # A2676
 4+63- 10.2' Lt. = ± Sing. gar - Dirt floor
 4+62- 10.9' Rt. = ± 4' opening to Conc. slab
 4+51- 10.3' Rt. = end shed + Beg. Stucco wall
 4+50
 4+49- 9' Lt. = ± Tel. pole # 472526 - H
 4+24.5- 10.4' Rt. = Beg. wooden shed.
 4+08- 9.8' Lt. = end shed
 4+00-
 3+82.2- 9.8' Lt. = Beg. Wooden Shed
 3+56- 8.8' Lt. = ± 8' Conc. apron to Sing. gar.
 3+50
 3+49- 9.9' Lt. = End shed

67.7
 13.2 = floor
 67.9
 10.3
 at Cor.
 67.7 68.0 67.7 68.43
 10.3 at House 9.8 at floor
 Cor.
 69.92 67.7
 floor 10.3 at
 Cor.
 67.8
 10.2 = floor
 67.15
 10.9 = on Conc.
 67.7 67.7 67.0
 10 10
 by shed.
 67.0
 10.4 at
 Cor.
 67.6
 9.8 = at
 Cor.
 67.7 67.3 66.8
 10 = 10
 along shed.
 67.8
 9.8
 at 68.19 67.7
 Cor. floor 8.8 = apron
 gar.
 67.3 66.6 66.5 66.1
 10 10 20

Lt.

☐

Rt.

Imperial + 27th
check B.M. - s.w. 7' ct.

65.03 ✓

6+10.5 = w. cb.

71.71 71.11 70.83 70.13 69.82 69.53 70.00 68.19 68.75
Top 40 Top 10 10 Top 50 Top
gut 1.5 Rad gut gut 1' Rad. gut Top

6+00.9 = edge of Conc. + cbs. - Poor Cond.

70.77 70.54 70.03 70.16 70.24

6+00.47 = w.l. 27th

Top 10
end cb. gut. gut. Top
end cb.

5+94.6 - 12' Lt. = ☐ Sing. Gar - Conc. Floor

69.94
12 = floor

5+75

old style Riser in ☐ couldn't get True Bottom
60.57 = I.E.

69.0 68.8 68.7 68.9 68.9
11.4 10 = 10 11.8 = at
at House House

5+70.5 - 0.6 Lt. = ☐ Sewer M.H.

68.67 = w.l. - Rim

5+58 - 8.6 Lt. = ☐ Tel. pole # 472 527-11

5+50

68.1 68.0 68.0
10 10

5+49.5 - 10.3 Rt. = end House

5+48.8 - 10.1 Lt. = end apron

68.18
10.1

5+31 - 10.1 Rt. = end fence + Beg. House

67.6 68.75

5+27.5 - 10.6 Lt. = Beg. Conc. apron

68.55 68.09
14.6 10.6 = apron
floor

10.1
at Cor. floor

Clark
Shepherd
Briner
O'Neil
W.O. 32032
4-10-53

R.E. X-SECT. ALLEY BIK 100
UNIVERSITY HTS.
CITY

INDEXED
APR 10 1953

See also
FB 1777-37
S. of Dwight, E. of 434

NOTE: See F.B. 1777-37 For Sketch

also - 2x2 Hubs AT 0-07 & 670839 replaced with
PAV. MANILAS

1427

1572 RT END Bldg

Fence in F.B. 1777-39 Beg. at 1121 & ending H32 has been
removed

H.O.O

0499

Beg. 15' RT Floor Elev. New Structure, APT.

0490

10' RT END Fence, Beg. at STA 0+00 IN 1777-39

0469

80' RT END slab

0455

80' RT Beg 18' wide Cur Slab to Alley

0454

10.0' LT & 3' conc. PAIK

0430

same as shown in F.B. 1777-38

T.P

7.46 335.90 1.06 328.44

0405

0+00 = N/Wy Line MYRTLE
ledge AC PAV.

0-4 = N/Wy CP Line MYRTLE
Myrtle PAVED AC

B.M.

3.41 329.50

326.09 N.W. B.P.
MYRTLE & VAN DYKE

329.50

331.2
4.7
10

331.0
4.9
10

330.6
5.3
10

331.88
4.02
15.4
Floor

330.41
2.44
330.23
3.67
8.0

330.49
5.41
15
PAIK

330.49
5.41
10
PAIK

329.3
6.6

324.0
0.5
15
325.7
7.23
TP
CB

328.8
0.7
7.0
325.08
324.2
7.0
TP
PAV

335.90
3.6
325.9
324.83
4.7
TP
PAV

326.0
3.5
7.0
324.82
4.68
10.6
Nov
TP
CB

327.9
1.6
10.0
324.91
4.59
15.0
TP
CB

325.3
4.19
TP
CB

324.76
4.24
30
GUTT

325.02
4.43
7.8
TP
GUTT

324.32
5.14
12
GUTT
AC

324.06
5.44
AC
PAV

323.86
5.64
12
ac
GUTT

324.52
7.86
TP
CB

322.70
0.80
50
TP
GUTT

324.33
5.17
20
CB

ALLEY BIK 100 (CONT.)

3102 9.7 RT. Req. Conc. apron & Drive - No garage
 3101 10.0 LT Req. Conc. Apron - 2 car gar & apt. Bldg.
 3100
 T.P. 7.53 339.55 3.88 332.02

2153 Band Fence, ^{Req.} 117 2153 on RT. Removed
 Picket Fence at 2153 on LEFT moved BIK, to 167
 770 LT. END CONC. COMB. WALK & DRIVE, etc.

2148 36.2 LT & Single gar. - 9.75 LT Edge Conc. Apron
 described below

2125

2101 7.85 LT Req. Conc. Slab - Extends West to old 3 Conc. Wall
 & continues North // to Alley as 3' walk, meets
 apron to garage etc. ahead

2100

1497 10.4 RT. Req 6" Conc. coping // walling

1485 13.8 RT Req 2.5' Conc. Walk // to Alley

332.11
 7.40
 10
 470
 470
 470
 332.00
 7.5
 15
 331.14
 7.6
 10
 331.6
 7.9
 331.7
 7.8
 10
 331.53
 7.02
 16
 Elev. Floor Future gar.
 331.57
 4.33
 7.75
 332.59
 3.31
 36.2
 Conc. Floor
 gar.
 331.59
 4.31
 6.0
 apron
 331.55
 7.37
 7.85
 edge
 walk
 330.10
 3.80
 15.2
 Conc.
 331.64
 4.06
 9.8
 edge
 conc.
 331.3
 7.8
 331.40
 4.50
 10.4
 7.
 330.95
 4.95
 10.4
 7.
 331.00
 4.90
 13.8
 17.8

335.90

ALLEY BIK 100 (CONT.)

£

4+52 - 9.6 LT END paved area
 4+50
 4+25
 4+18 9.6 LT Beg Conc. Pav. area in yard // to Alley
 4+01 9.6 LT Beg 4' picket fence
 4+00
 3+53 9.8 LT ♀ Pole " JPA 3553
 3+28 10 LT END Apron
 3+25 20' LT END gar. Cont. Bldg
 3+21 2nd gar. LT
 980 RT. END Conc. apron 20' wide
 3+14 10 LT DRK. in apron
 3+10 20' LT ♀ 1st gar
 3+04 20.0' LT Beg garages

335.50
 405
 9.6
 edge
 Conc.
 335.2
 4/3'
 4/9'
 334.5
 4/7'
 334.5
 4.0
 10.
 335.1
 4.39
 15
 334.13
 4.42
 9.6
 edge
 Conc.
 334.1
 5.4
 333.06
 6.49
 10
 2.1P
 334.14
 5.41
 20
 Floor
 332.29
 7.28
 10
 2.1P
 332.84
 6.71
 10
 2.1P
 334.01
 5.54
 20
 334.01
 5.54
 20
 Floor
 339.55

ALLEY BIK 100 (cont.)

E

CH.N. 3.10 339.77 = 339.77 N.W. B.P.
Dwight + 43.4

6+15.34 = 5 1/4 CB Line Dwight

6+101.34 = 5 1/4 Line Dwight
Beg. A.C. Pav.

T.P. 5.02 342.87 1.70 337.85

6+100

{ 9.5 RT. END CONC. BRICK WALL
9.1 LT. END APRON (see below)

5+77.5

5+54

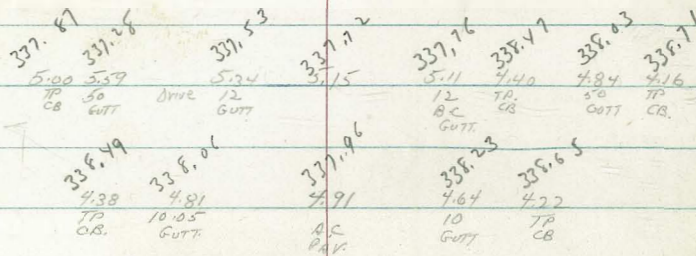
{ into CONC. WALK REMAINS AS SHOWN 1777-42
MEETS APRON AT 5+73 AT ELEV. SHOWN.
10.3 RT Beg 3' wide CONC BRICK COPING, 8" high

5+50

Fence on RT at 5+26 moved BK to 10.5 FT.
FB 1777-41

5+100

9.9 LT End Outlet Fence, Beg old Fence 9.7 RT.



339.50
1.05
9.1
EDGE
APRON

339.19
1.30
9.5
FTC
WALL

339.6
0.7

339.15
0.40
10.3
FTC

339.50
1.05
9.75
EDGE SLOPE
See 1777-41

338.2
1.3
8.0

339.3
1.2

339.5
1.0
10

339.7
2.8

339.55

6-9-53

T.A. Stamper

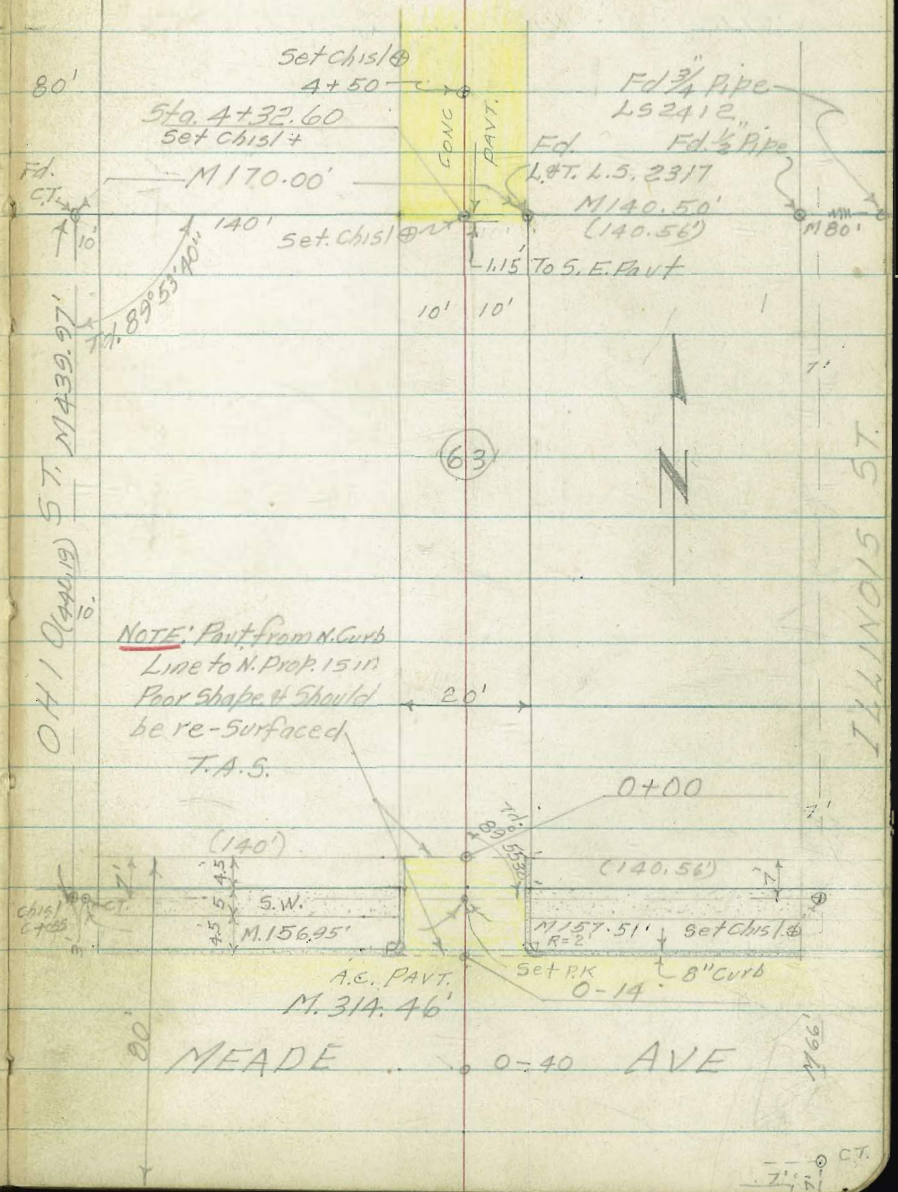
CROSS SECTION ALLEY BLOCK 63
UNIVERSITY HEIGHTS W.O. 32171

Ref Map No 2792

Ely Ohio
Nly Meade

Reduced & Plotted
Pearson 9/17/53

INDEXED
JUN 11 1953



NOTE: Part from N. Curb
Line to N. Prop. 15.11
Poor shape & should
be re-surfaced
T.A.S.

ILLINOIS ST

M66

CT.

CROSS SECTIONS OF ALLEY BLOCK N° 63 OF
UNIVERSITY HEIGHTS W.O. 32171

0+00 N. Prop. Line Meade Ave

T.B.M. +2.62 384.32 -1.12 381.63

0-12 E.C. Curb Line Meade

0-14 N. Curb Line Meade Ave

0-40 & Meade Ave

B.M. +9.23 382.75 -3.45 373.52 ✓

B.M. +11.17 376.97 365.80

6-9-53

West Lt. &

Ref Map N° 2792

Illinois Manor

5 Stamper 20
Huffman
Shorey
Sherry
Rt East

INDEXED

JUN 11 1953

377.66	377.69	377.60	377.54	377.91	378.75	379.3
6.7	6.63	6.72	6.78	6.35	6.07	5.0
25	27	27	0	10.1	10.1	25
	cb	Gut		Gut	cb	

384.32

N.W. Cor Ramp 5-Car Garage
(Stg 1+51)

377.61	377.28	377.31	377.76	378.08
5.14	5.49	5.44	5.05	4.67
9.7	9.7	0	10.1	10.1
cb	Gut		Gut	cb

377.28	376.80	377.54	377.12	377.37	377.68	378.10	377.92	378.34
5.47	5.95	5.24	5.63	5.38	5.07	4.65	4.83	4.41
25	25	11.1	11.1	0	12.1	12.1	24	24
cb	Gut	cb	Gut		Gut	cb	Gut	cb

375.77	376.36	377.98	378.56	379.72
7.48	6.39	5.27	4.19	3.03
100	50	0	50	100

S.E.B.P. Meade & Ohio

S.E.B.P. 30th & Meade

382.75

6-11-53

X-SEC'S OF ALLEY BLOCK #63 CONTD

West Lt. & Rt. East

Sta.

Elev

1+00

0+77 ± & 3.7' Conc Walk on Lt.

0+75 ± End Conc Block Wall on Lt.

4'-High

0+75 ± End Conc Block Wall on Lt.

0+65 1/2" Power Pole on Lt. N° PA-4409

0+50 ± 4.5' Conc. Walk on Rt.

0+00 Begin Conc. Block Wall on Lt. 2'-High

384.32

380.7

3.6
92

4.4
0

3.8
8

3.4
10

3.0
17

3.0
25

379.9

380.5

380.9

381.3

381.3

@ Blk Wall

379.78

4.54
99

& Walk

379.46

4.86
99

Top ftg.

0.5' Above Base

88

P. Pole

379.0

5.3
25

379.7

5.1
98

@ Conc. Wall

5.7
0

378.6

5.2
9

Toe Top

380.4

3.9
10

3.65
226

& Walk

380.67

378.05

6.27
97

Top ftg.

0.5' Above Base

↑ 384.32

6-11-53

X-SEC'S ALLEY BLOCK NO 63 CONTD.

West Lt. & Rt. East

Sta. Elev.

T.P. +6.07 38770 - 2.69 381.63

Begin End of fence
1+61 & Sing Car Gar on Lt. (Dirt floor)

1+55 & 4.2' Conc. Walk on Lt.

1+51 N. End Ramp To 5-Car Gar on Lt.

1+50

1+04 Begin Ramp To 5-Car Garage

384.32

381.9
2.4
11.3
& Gar Dirt
Floor
381.62
2.70
9.8
& Conc Walk

381.67
2.65
13.2
Conc Floor
Level
381.59
2.74
9.8
Conc Ramp

381.66
2.66
13.2
Co
381.54
2.78
9.8
on Conc.
Ramp
381.9
2.7
4
381.1
3.2
0
381.6
2.7
10
382.6
1.7
14
382.4
1.9
2.5

380.56
3.76
13.8
Conc Foot
Level
381.05
3.26
9.1
Conc Ramp

384.32

6-11-53

X-5EC'S ALLEY BLK N° 63 CONTD.

Sta.

Elev.

2+49 End Board fence on Rt.

105
fence cor

2+38 Cor & Begin Board fence on Lt.

100
fence cor

2+00

381.5	382.3	382.6	382.0	382.4	382.7	382.0
6.2	5.4	5.1	5.7	5.3	5.5	4.7
25	10	7	0	4	10.1	25

@fence

Fence cor Bd. fences Lt. & Rt.
2+00 14" Power Pole N° 4439 on Lt.

100 . 85
fence cor. P. Pole

107
fence cor

Begin Board fence on Lt
1+86 N. End Ramp to Sing Car Gar on Lt.

382.00	381.96
5.70	5.74
11.4	9.8

fence level Conc Ramp fence cor

End Board fence on Lt
1+76 Begin Conc Ramp to Sing Car Gar on Lt

381.97	381.94
5.73	5.76
11.2	9.2

fence level Conc Ramp fence cor

1+66 Begin Board fence on Lt

387.70

387.70
9.2
fence cor

6-11-53

X-SEC'S ALLEY BLK 63 CONTD.

Lt C RT.

Sta

Elev.

3+12 Begin Board Fence on Lt

105
fence cor

3+08 End Conc floor To 3-Car Gar on Lt.

383.66
4.10
125

3+00 Begin Board Fence on Rt.

383.59
4.11
125
Conc floor
Level
383.6
4.1
3
383.7
4.5
0
383.9
3.8
102
fence cor
383.7
4.0
25

2+80 Begin 3-Car Garage on Lt
(conc floor) (No Ramp)

383.50
4.20
122
Conc floor
Level

2+74 End Board fence on Lt.

103
Fence cor

2+50

383.7
5.0
25
383.1
4.6
10
383.1
4.6
3
383.7
5.0
0
383.5
4.2
10.5
fence
cor.
383.5
4.2
25

387.70

387.70

X-SEC'S ALLEY BLK 63, CONTD:

6-11-53

Sta

Elev.

Lt.

E

Rt.

4+26 16" P. Pole on Lt. N^o PA-4469

86
P. Pole

4+25 End Board (Picket) fence on Rt.

105
fence Cor

4+00

384.0	384.2	384.9	384.4	385.0	384.8	385.0
3.7	3.5	2.9	3.3	2.7	2.9	2.7
25	12	4	0	9	10.5	25
				@fence		

3+50

384.1	384.1	384.1	383.9	384.2	384.7
3.6	3.6	3.6	3.8	3.5	3.0
25	9.5	3	0	10.5	25
	@fence (Board)			@fence (Board)	

3+48 5 End Board fence on Lt

96
fence Cor

105
fence Cor

3+12 5 14" P. Pole on Lt. N^o PA-4459

387.70

78
P.P.

387.70

6-11-53

X-SEC'S ALLEY BLK 63 CONTD.

11. ⅈ RT.

B. M. -9.20 373.52-373.52 S. E. B. P. Meade & Ohio

+1.09 382.72

T.P. -6.07 381.63

4+50 Sec. on Conc. Pavt. (set chis. @)

385.28 2.42 10' E.P.	385.29 2.46 0 E.P.	385.33 2.37 10' E.P.
-------------------------------	-----------------------------	-------------------------------

4+32⁶⁰ Chis. Cross in Pavt.

4+31⁴⁵ South Edge Conc. Pavt

385.29 2.16 18 Conc Apron	385.39 2.36 14 Conc Apron	385.73 2.47 99 E.P.	385.17 2.53 0 E.P.	385.21 2.49 10' E.P.	385.1 2.6 25 E.P.
---------------------------------------	---------------------------------------	------------------------------	-----------------------------	-------------------------------	----------------------------

387.70

387.70

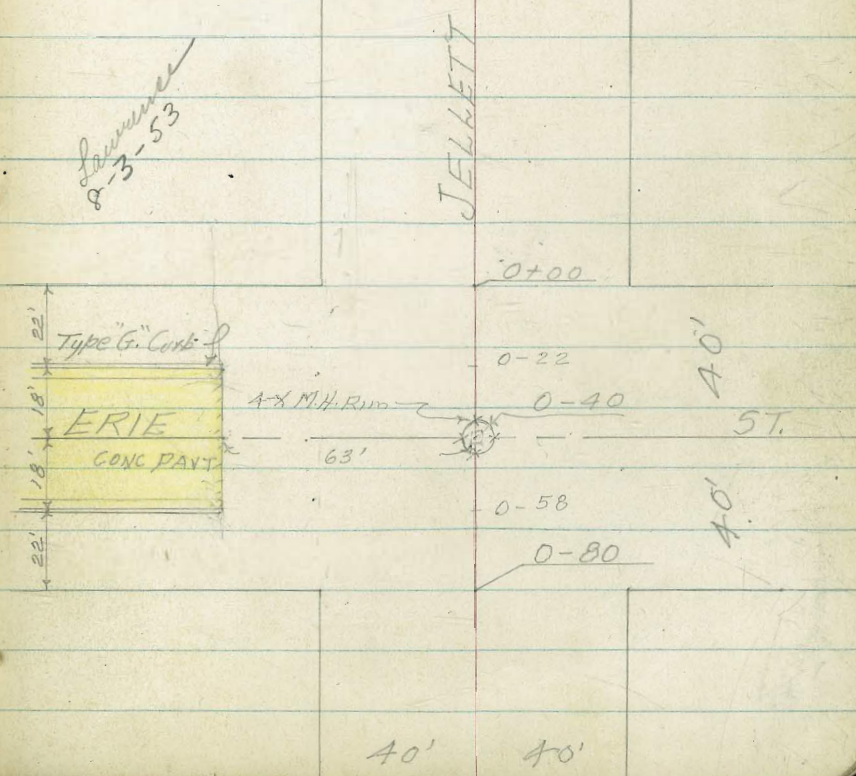
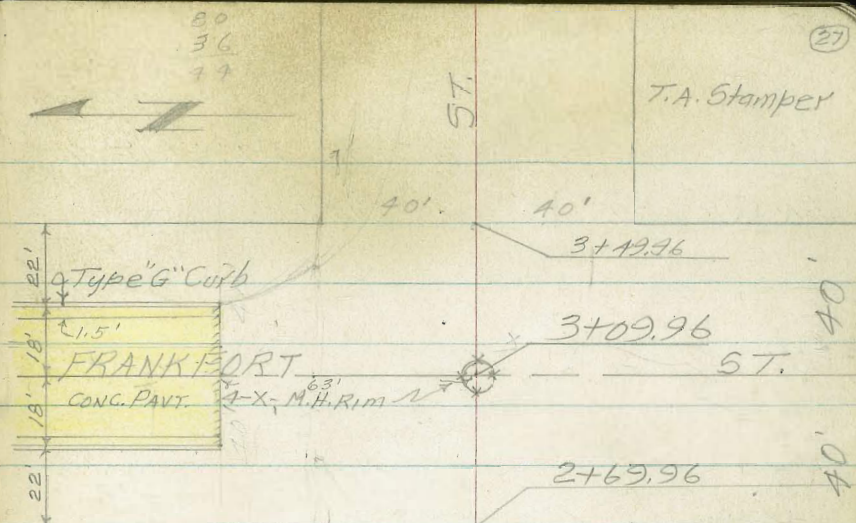
CROSS SECTIONS JELLETT ST FROM W.
LINE ERIE TO E. LINE FRANKFORT ST.

W.O. 32127

Ref. FB 2221-2223-150e

2224
47'

INDEXED
JUL 30 1958



CROSS SECTIONS JELLETT ST; ERIE TO
FRANKFORT ST. W.O. 32127

0-60 Top Bank Sec

0-68 \pm 12" Guy Pole on Lt.

0-76 14" R.R. No. 4149 on Rt.

0-79 Lateral 8" Corc BIR Wall on Lt.

0-80 Wly Prop Line Erie St.

~~64~~ ~~38~~
11.74 76.78

B.M.

64.74

7-28-53

Stampers
Huffman
& Schelin

lt. \pm ϕ Less Rt.

NOTE: Rods shown (-p.o.) are Plus Rods and
 should be added to H.I.

63.9	64.3	64.9	64.2	63.9	64.4	64.3
12.5	12.1	11.6	12.3	12.5	12.0	12.1
50	25	0	20	38	43	50

413
 \pm R.R.

299
 \pm R.R.

63.56 63.3

12.52 13.1
325 325

Top Wall Ground

63.6	63.3	63.4	62.9	63.5	62.9	63.4	63.4	62.9
12.9	13.1	13.0	13.7	12.9	13.5	13.0	13.0	13.5
50	33	25	18	0	38	19	22	37
				0	76.78			

Strike Marked
R.R. No. 4149 S.W. Cor Erie & Jellott.

7-28-53

X-SECS JELLETT ST, CONTD

0+00 Ely Line Erie St.

Lt		C		Rt.			
68.4	68.4	68.2	68.8	68.6	69.0	70.0	69.7
8.0	8.0	8.2	7.6	7.8	7.4	6.4	6.6
50	33	17	0	20	22	38	50

Top Sec. S14
0-22 Ely Ch Line Erie St N14

(-0.4)

66.36	65.86	65.96	65.4	65.4	67.3	66.8	67.3	67.4
10.2	10.52	10.42	11.0	9.9	9.1	9.6	9.1	9.0
63°	63°	63°	50	21	0	20	23	50

CB. Gut LIP

0-28 Top Sec S14

65.2	66.4	66.8	66.4	65.4
11.2	10.0	9.5	10.0	11.0
50	17	0	19	50

0-40 C Erie St.

(+0.9)

65.64	65.0	64.9	65.3	66.2	65.1	64.8
10.74	11.4	11.5	11.1	10.2-Ground	10.7	11.6
63°	58	50	25	0	20	50

E.B. E.Rim

0-58 W1/4 Ch. Line Erie St. N14

(-0.2)

64.62	64.48	64.63	64.0	64.3	65.0	64.4	64.0
11.26	11.90	11.75	12.4	12.1	11.4	12.0	12.7
63°	63°	63°	50	25	0	25	50

Dr-way Gut W1/4

76.38

30
76.78

7-28-53

X-SEC'S JELLETT ST. CONTD.

Lt. C Rt

0+96 L Pl. in Picket fence on Rt

40°
fence

0+85 Begin 3' Picket fence on Rt

T.B.M. 10.70 05 35 87.75 0.03 76.45
+ Lateral Conc Bk Wall - 2' Conc. Base Tow.

Set P.K. 5. End Conc Bk Wall Sta 0+85 Lt. fence
71.68 73.63 74.65 75.71 75.4 75.11 75.7 75.8 75.8
- 1.30 2.73 2.91 2.61 1.0 1.3 0.7 0.6 0.6
397 391 393 352 16 0 19 22 46 50
Top Wall Conc Base Ground

0+85 Toe Sec on Lt.

74.20 74.08
2.18 2.30
242 457
A.C. Ramp Conc Floor
+ Gravel

0+76

72.92 72.78
3.46 3.60
523 423
on patio Conc patio

73.63
2.75
260
A.C. Ramp 72.5
72.3 72.7
7.1 3.7 3.9
18 22 45
House

0+60 4 11' Conc Patio on Lt.

0+58 Begin AC Ramp Rt.

0+50

72.8 72.6 72.9 72.0 72.6 72.5
3.6 3.8 3.5 4.4 3.8 4.1 3.7 3.9
50 43 23 16 0 18 22 45

0+25 4 30" Eucalyptus Tree Lt.

38
76.48

270
4 Tree 38
76.48

7-28-53

X-SEL'S JELLET ST. CONTD.

1+74 & Deadman on RT
Toe Sec

84.6	83.9	83.1	83.5	82.7	83.1	RT	82.1	81.7	81.4	
2.5	3.4	4.0	3.6	4.4	4.0		4.4	5.4	5.7	
50	21	18	0	20	22	29	0	38	38	50

Deadman

1+50

82.3	81.7	81.1	81.3	80.9	81.5	80.6	80.7
4.8	5.4	6.0	5.8	6.2	5.6	6.5	6.4
50	23	18	0	20	22	39	50

1+48 & 12" R.P. N^o P4251 on RT

28^o
& R.P.

1+35 & Alley

80.8	80.2	79.8	80.00	79.5	79.8	79.2
6.3	6.9	7.3	7.25	7.6	7.3	7.9
50	23	17	0	20	22	30

M.H.
E.Rim

END 3' Picket fence on RT
1+25 & 30" Eucalyptus on RT

29^o 40^o
& Tree fence Coy

1+00

79.5	79.3	76.1	76.8	76.5	77.0	77.1	77.1
7.6	7.8	11.0	10.3	10.6	10.1	10.0	10.0
50	28	17	0	19	22	41	50

05
87.75

05
87.75

X-SEC'S JELLETT ST. CONTD

2+25 & 3" Tree (cedar)

Begin 2' Hedge on RT
2+10 Top Cobble Stone Wall (Loose) on RT

Begin Loose Cobble Stone Wall on RT
2+07 End 6' Hedge on RT Toe

11.81 98.82

TP. 0.04 87.14

2+00

1+79 Top Sec. Begin 6' Hedge on RT

05
87.15

7-28-53

Lt. ← RT.

29°
← Tree

89.3	88.5	86.8	87.2	86.5	86.9	86.3	87.8	87.9
9.5	10.3	12.0	11.6	12.3	11.9	12.5	11.0	11.9
50	25	20.	0	20	22	33	36	47

← Hedge

88.1	87.7	86.1	86.7	85.8	86.3	86.0	85.5
10.1	11.1	12.7	12.1	13.0	12.5	12.8	13.3
50	24	18	0	20	22	32°	37°

← Tree Wall & Hedge

87.3	87.3	85.6	86.1	85.2	85.8	85.4	85.6
-0.3	-0.3	1.5	1.0	1.9	1.3	1.7	1.5
50	26	18	0	20	22	33	50

85.0	84.6	83.9	84.0	83.4	83.2	83.9	83.8
2.1	2.5	3.2	3.1	4.0	3.7	3.9	3.1
50	24	18	0	20	22	34	36

← Hedge

05
← 87.15

7-28-53

X-SEUS SELLETT ST. CONTD

L. E RT

2+50

92.7	92.9	92.6	92.1	91.9	91.6	91.2	91.3	90.8	88.9	88.9
6.1	5.9	6.3	6.7	7.8	7.2	7.6	7.5	8.0	9.9	9.9
50	34	38	23	15	0	21	23	33	36	43

2+46 E A' High Euc. Stump 2' Dia on RT

290

2+36 E 3' Buck Walk on RT

89.57	88.92
9.25	9.90
229	324
E Walk on Walk	

2+30 Top

90.9	90.1	88.7	89.3	88.9	89.7	89.0	88.4
8.1	8.7	10.1	9.5	9.9	9.1	9.8	10.4
50	23	18	0	20	22	23	43

2+28 Toe

90.5	89.4	88.2	89.1	88.4	89.2	87.8	87.6	87.4	88.4
8.3	9.4	10.6	9.7	10.4	9.6	11.0	11.2	10.4	10.4
50	23	18	0	20	23	25	30	31	43

82
98.92

82
98.92

7-20-53

X-SEC'S SELLETT ST. CONTD

Lt. † Rt.

2+91.96 Wly Ch Line Frankfort St ^{NY.}

98.51	99.06	98.12	97.3	96.6	96.0	96.4	95.8	95.4	94.7	93.4
0.31	0.76	0.70	1.5	2.2	2.8	2.4	3.0	3.4	4.1	5.4
63	63	63	50	38	17	0	22	38	50	75

Ch. Sit Lip

2+81 † 10" Guy Pole on Lt

410
† Pole

† 18" Eucalyptus Tree on Rt
2+69.96 Wly Line Frankfort St

96.1	95.7	94.3	93.7	93.8	93.3	92.7	92.4	92.4	92.1
2.7	3.1	4.5	5.1	5.0	5.5	6.1	6.4	6.4	6.7
50	36	24	14	0	21	23	29	34	44

† Tree

2+68 Toe Sec on Rt

95.3	95.0	94.2	93.0	93.6	93.1	93.2	92.5	89.5	89.5
3.5	3.8	4.6	5.8	5.2	5.7	5.6	6.3	9.3	9.3
50	34	25	16	0	20	23	33	36	50

2+68 † 12" P.P. No 4299 on Rt

290
† P.P.

82
98.93

82
A 98.70

7-29-53

X-SEC'S SELLETT ST. CONTD,

3+35 Top Sec Nly

LI.		RT.
103.1		
3.0	102.6	99.2
63	45	42
	6.9	6.7
	35	17
	5.8	5.1
	13	8
	101.0	101.4
	5.4	5.4
	22	24
	100.7	100.7
	5.4	5.4
	22	24
	100.1	100.7
	5.4	5.4
	22	24

3+33 Toe Sec Nly Tap Sec Sly

100.9	100.6	99.9	100.0	100.6	99.6	99.8	98.9	98.0
5.2	5.5	7.2	6.1	5.5	6.5	6.3	7.2	8.1
63	55	50	18	0	21	24	50	75

3+27.96 Ely Cb Line Frankfort St

100.07	99.6 ²	99.77	98.9	99.4	100.4	99.1	97.9	97.0
5.99	6.42	6.29	7.2	6.7	5.7	7.0	8.2	9.1
63	63	63	50	27	0	22	50	75

cb cut lip

3+09.96 E Frankfort St

99.37	99.0	98.6	98.3	98.5 ²	97.5	96.7	96.0
6.49	7.0	7.4	7.7	7.54	8.5	9.3	10.0
63	63	53	23	0	26	50	75

Part. Ground

T.B.M.

0.30 52
98.68

E. Run Chris x Sta 3+09.96 E Frankfort & Sellett St.

97.9	97.7	97.0	97.5	96.7	95.7
0.9	1.1	1.8	1.3	2.1	3.1
50	32	20	0	22	50

82
~~98.72~~

82
~~98.72~~

7-29-53

X-SECS JELLETT ST. CONTR.

C-1. 4 R-1.

NOTE: Checked 1-st. Turn & Found
~~3~~ Bust of 0.10 T.A.S.

T.B.M. 0.05 76.3⁴~~5~~

³⁵
~~76.45~~ See Pg 30

11.66 76.3³⁰~~9~~

B.M. 7.06 64.7⁷³~~3~~

64.74 (see Pg. 28)

1.76 71.7⁷⁹~~9~~

T.P. 12.83 70.7⁰³~~3~~

0.16 82.7⁸⁶~~6~~

T.B.M. 11.01 82.7⁷⁰~~0~~

Sta 1+48 Fly line Jellett.
N. Side P.P. No P-4251 Top lower Ladder lug

0.33 93.7⁷¹~~1~~

B.M. -12.68 93.7³⁸~~8~~

93.35 Spike in P.P. SW. Cor Frankfort & Jellett

3+49.96 Fly line Frankfort St

06
106.76

103.6	103.3	104.1	101.6	101.7	102.7	101.8	102.0	102.6	102.3
2.5	2.8	2.0	4.5	4.4	3.4	4.3	4.1	3.5	3.8
63	50	31	25	18	0	20	23	36	50

CROSS SECTIONS INTERSECTION AT
LISTER & ERIE STREETS W.D. 32127

Ref FB 1502
48

T.A. Stamper

INDEXED
Law
JUL 30 1953

LISTER

4" x 5" S.M.H. Rim 2

40'

40

ST.

0+80

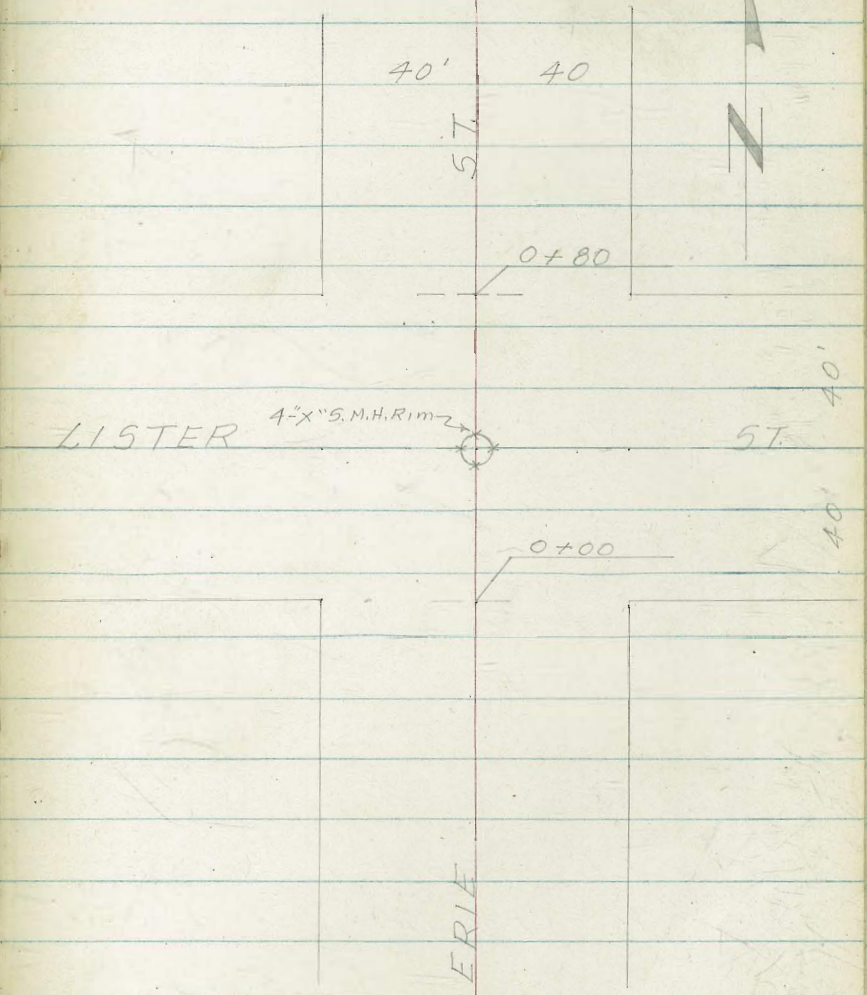
ST.

40'

40'

0+00

ERIE



CROSS SECTIONS-INTERSECTION AT ERIE

4 LISTER STREETS W.O. 32127

0+00 = SLY LINE LISTER ST.

0+26 Top Sec Ely

0+23 Top Sec Wly

0+20 Top Sec Wly

0+00 P.P. N^o 3098 on Lt. (12")

0+00 6.12 57.35

B.M. 10.93 52.96 1.73 51.23

B.M. 42.03

7-29-53

Stampel (38)
 Huffman
 Schelin
 Less

Lt. Rt.

46.5	49.0	50.6	52.0	52.9	54.3	55.3
10.8	8.3	6.7	5.3	4.4	3.0	2.0
50	18	0	26	40	42	50

46.4	48.5	49.5	50.5	51.7	52.4	53.6	55.3
10.9	8.8	7.8	6.8	5.6	4.9	3.7	2.0
50	21	12	0	24	31	35	50

46.9	48.6	48.3	49.4	50.5	51.8	53.6	55.2
10.4	8.7	9.0	7.9	6.8	5.5	3.7	2.1
50	28	23	13	0	24	30	50

46.6	48.5	50.1	50.0	49.6	50.2	50.9	52.0	52.5	53.7	54.7
10.7	8.8	7.2	7.3	7.7	7.1	6.4	5.3	4.8	3.6	2.6
50	28	26	15	11	0	17	18	25	30	50

(P.P. Huffman 57.35)

51.25
 Spikein P.P. N^o 3098 S.W. Cor Lister & Erie
 S.W. B.P. Erie & Milton

7-29-53

X- SEC'S INTERSECTION LISTER & ERIE
CONT'D.

Lt. Ct. Rt.

0+54 Top Sec Ely & Wly

47.0	47.9	47.8	48.0	50.2	50.7	51.7	53.1	53.6	54.1	55.1
10.3	9.4	9.5	8.3	7.1	6.6	5.6	4.2	3.7	3.2	2.2
50	34	28	16	7	8	13	30	33	40	50

0+50 Top Sec Ely & Wly

46.1	46.8	48.3	49.8	50.7	52.2	53.4	54.3
11.2	10.5	9.0	7.5	6.6	5.1	3.9	3.0
50	40	20	10	0	20	40	50

0+40 E Lister St.

46.6	47.3	48.9	50.9 ²	52.2	53.6	54.4
10.7	10.0	8.4	6.43	5.1	3.7	2.9
50	40	20	0	20	40	50

NH
Obs'd Ely RIM

0+30 Top Sec Ely

46.7	49.4	50.6	51.9	54.0
10.6	7.9	6.7	5.4	3.3
50	14	0	22	50

57.35

57.35

7-29-53

X-SEC'S INTERSECTION LISTER & ERIE STS

Lt. C Rt.

B.M.

6.12 51.23 51.23 (see pg. 38)

0+80 N/4 line Lister St

47.3	49.1	50.0	49.9	50.8	51.3	52.3	54.3	56.5
10.0	8.2	7.3	7.4	6.5	6.0	5.0	3.0	0.8
50	30	17	15	6	0	15	30	50

0+67

46.9	49.3	48.8	50.0	51.0	51.9	53.8	55.1	56.1
10.4	8.0	8.5	7.3	6.3	5.4	3.5	2.2	1.2
50	19	18	9	0	16	23	40	50

57.35

57.35

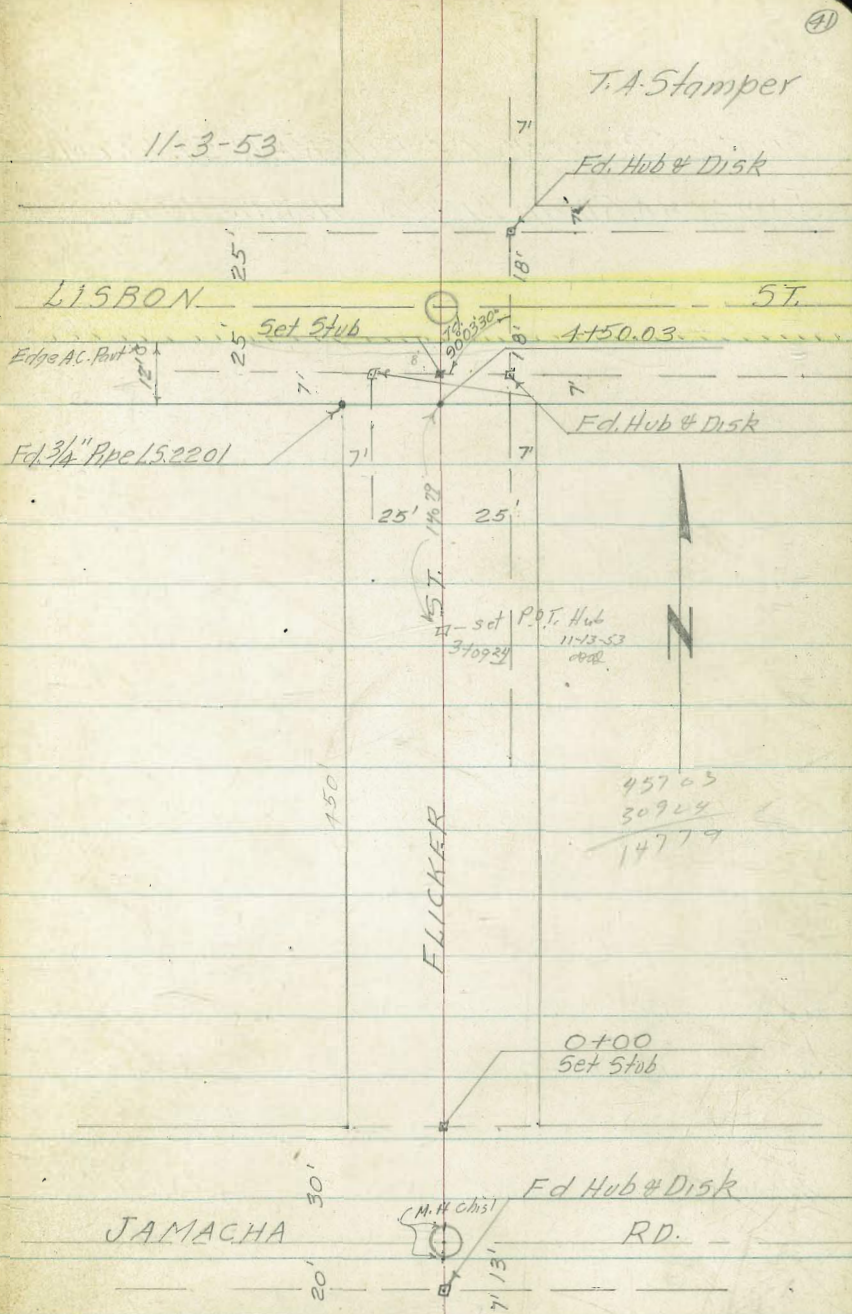
CROSS SECTION 5 FLICKER ST. FROM
JAMACHA RD TO LISBON ST. W.O. 31770

Ref. T.P.L. Dwg. 3240

F.B. 168.1

11-3-53

(4)



CROSS SECTIONS OF FLICKER ST. FROM
JAMACHA RD. TO LISBON ST. NO. 31770

0-05 Top of Bank Sec.

0-08 Toe Sec.

0-16 Nly Edge Oiled Road of Jamacha St.

0-30 \pm Jamacha Rd. (Oiled Rd.)

TP +0.36 262.04 - 9.91 261.68
TP +0.95 271.59 - 2.08 270.64
B.M. +2.28 272.72 270.44

11-3-53

Lt

\pm

Rt

NOTE: Rods Shown (-0.0) are Plus \pm add. To Ht

254.0	254.1	254.7	254.7	256.1	256.4	257.5	257.5	257.7
6.0	5.4	5.3	6.3	6.0	5.6	4.5	4.5	4.3
50	25	10	6	0	17	20	25	50

254.6	254.1	255.4	256.1	256.5
7.4	7.1	6.2	5.9	5.5
50	25	0	25	50

254.0	254.4	254.8	254.3	255.4	256.2	256.6	257.1	257.5
8.0	7.6	7.2	6.7	6.2	5.8	5.4	4.9	4.5
100	75	50	25	0	25	50	75	100

254.2	254.6	255.1	255.5	256.0	256.2	256.6	257.0	257.3
7.8	7.4	6.9	6.5	5.25	5.8	5.4	5.0	4.7
100	75	50	25	0	25	50	75	100

\pm 262.04

Opposite House No 6988

Set P.K. 5/4 Side P.P. N° 75662-H Nly side Jamacha Rd

Opp. House No 7108

Set P.K. 5/4 Side P.P. N° 92449-H Nly side Jamacha Rd

B.P. Nly Cb. Jamacha Rd @ 215' Wly of Porter St.

Stamp

Huffman

& Nordahl

& Sherry

(42)

11-3-53

X-5EG'S FLICKER ST. CONTD)

Lt. ± Rt.

0+98⁵ Begin Conc Ramp 8' Sin Gav 25° Rt.

259.26
2.78
25°
Ramp
259.81
2.23
35°
Ramp

0+47⁰ ± 3' Conc Walk 25' Rt.

259.22
2.82
25°
Walk
259.78
2.26
35°
Walk

0+22 ± P.P.N. P-274218 24⁵ Rt.

0+04 ± Deadman 24² Rt.

0+00 Nly Line Samacha St.

256.6	257.0	257.0	256.0	256.0	256.5	257.7	257.2	258.0
5.4	5.0	5.0	6.0	6.0	5.5	4.3	4.2	4.0
50	25	7	4	0	16	20	25	50

262.04

11-3-53

X- 5EG'S FLICKER ST. CONT'D

1+00 Begin 33' Board fence 25 3'
Toe Sec.

Lt.	±	Rt.
259.6	260.8	261.5
2.4	1.2	0.5
40	0	25
259.7		262.0
2.3		0.0
31		50
259.8		
2.2		
25		

0+69 ± 3' Conc Walk 11° Lt.

258.96	258.91	259.17
308	308	287
29°	25°	11°
Walk @ Stoop	on Walk	± Walk

0+66 5 End Conc Slab (car port) 25° Rt

259.86	260.23
2.18	1.81
25°	35°
Conc	Conc

Begin Conc Slab for Car Port (flush)
0+56 5 End Conc Ramp Sing Gar 25° Rt.

259.57	259.95
2.47	2.09
25°	35°
Ramp	on Ramp

0+50

257.6	258.0	258.1	258.4	258.6	258.8	258.8	259.37	259.99	260.72
4.4	4.0	3.4	3.6	3.7	3.2	3.2	2.67	2.05	1.82
50	25	5	2	0	8	15	25	37	46
							on Ramp	Ramp	Gar. floor

262.09

INDEXED
JCR
NOV 4 1953

11-3-53

X- SEC. 47 1953
X- SEC. 47 1953

Lt. E Rt.

1+97⁵ E P.R. P-274219 256' Rt

1+95 End 3' Picket fence 26' Rt

1+85 E 3' Conc. Walk 26⁵ Rt

1+60 Begin 3⁵ Picket fence 26° Rt

1+55 E Dirt Drive ^{Single} Car Port. on Rt.

1+5.0 End 3⁵ Board fence 26° Rt.

1+01 Top Sec. on Rt.

+ 11.72 273.37

T.P. - 0.39 261.65

262.04

273.37

267.84
5.53 529
263 363
E Walk on Walk

264.4 264.1 255.3 266.1 266.5
90 93 8.1 7.3 6.6
0 11 25 32 45

262.6 262.4 262.4 264.1 263.9 264.6 265.4
108 100 100 93 95 8.8 8.0
50 25 16 0 13 25 50

257.2 259.9 260.9 262.2 262.3 263.6
142 13.5 12.5 11.2 10.1 9.8
50 25 0 25 26 50

11-3-53

X-SEC'S FLICKER ST. CONT'D

Lt. & Rt.

2+32 ± 6" Conc Lateral Ret Wall 23' Lt.

270.43	270.27	269.04	269.7
10.87	11.03	12.22	11.6
25°	23°	23°	23°
Top Wall	Top Wall	Bot Flg	Ground

TP. +8.58 281.30 -0.65 272.72

Σ 281.30

2+20 ± 3' Conc Walk 27⁵' Rt.

272.78	273.51
0.59	-0.18
27°	37°
± Walk	on Walk

2+14 ± Deadmans 26⁰' Rt

2+14 Begin 3' Ricket fence 23⁴' Lt

2+12⁵' ± 3' Conc Walk 25' Lt.

264.31	264.28
5.06	5.09
34°	23°
± Walk @ Bot 5' ±	± Walk

2+00 Begin 8" Conc Block Ret Wall 26³' Rt.

264.4	266.1	266.9	268.1	268.1	268.6	269.7	270.0	272.44
7.0	6.6	6.5	5.3	4.9	4.8	3.7	3.4	0.93
50	25	19	7	0	13	25	265'	263'
					272.2	270.7	Ground	Top Wall
					1.2	2.7	0.95	272.82
					27°	42	42	
					Ground	Ground	Top Wall	
					Brick wall		Flush to North	

273.37

Σ 273.37

11-3-53

X- SEC'S FLICKER ST. CONTD.

Lt. E Rt.

2+43 End Conc Ramp Sing Grw 25° Lt.

271.45
9.85 10.10
35° 25°
Ramp Ramp

2+37 Begins Conc Ramp Sing Grw 27° Rt.

274.39
6.91 5.82
272 372
Ramp Ramp

2+37 End 8" Conc Blk Ret Wall 26° Rt

273.9
7.4 7.12
262 262
Gravel Top Wall

2+35 Begins 8" Conc Ramp Sing Grw 25° Lt.

271.36
9.94 10.43
35° 25°
on Ramp Ramp

281.30

11-3-53

X-SECS FLICKER ST. CONTD.

Lt. & Rt.

2+71 & Deadman 20²' Lt.

2+63 & 3' Conc Walk 25²' Lt.

272.94	272.60
832	870
352	252
on Walk	on Walk

Begin 8" Conc Block Ret Wall 27' Rt,
2+50 End 3 Picket fence 23' Lt.

271.0	271.7	271.6	271.4	272.4	272.2	272.3	274.0	274.9	275.4	278.95	279.6			
103	9.6	9.7	9.9	8.9	8.1	8.0	7.3	6.4	5.9	1.35	1.7			
50	42	25	20	10	6	0	15	25	27	27	28			
										Ground	Top Wall	Ground		
										5.8	1.36	5.5	0.63	0.3
										37	37	42	42	42
										Ground	Top Wall	Ground	Top Wall	Ground
										Lower side of Wall	Top Wall (flush to North)	Ground	Top Wall	Ground
										274.0	274.9	275.4	278.95	279.6
										0.80	5.81			
										270	370			
										Ramp	on Ramp			

2+45 End Conc Ramp Sing Cor. 27' Lt

2+45² & 4⁵' Conc Slab 25' Lt

271.45	271.20
9.85	10.10
35	25
on Slab	Conc Slab

281.30

11-3-53

X-SEC'S FLICKER ST. CONTD.

Lt. Rt.

2+94 End Conc Ramp Sing Gay 25° Lt

273.26
804 7.01
35° 25°
Ramp Ramp

2+86⁵ Begin Conc Ramp Sing Gay 24° Rt.

279.07
2.23 0.31
24° 34°
Ramp Ramp

2+86⁵ End 8" Conc BR Ret. Wall 26° Rt.

279.4
1.9 1.06 1.3
26° 26° 27°
Ground Top wall Ground
 Back wall

2+86 Begin Conc Ramp Sing Gay 25° Lt

273.22
808 7.16
35° 25°
Ramp Ramp

281.30

11-3-53

X-SEC'S FLICKER ST. CONT'D.

Lt. ± Rt.

3+34^E Begin Conc Ramp Sing Gav 25° Lt.

274.0
7.82 6.94
35° 25°
on Ramp Ramp

Δ 281.82

T.P. +1.52 281.82 -1.00 280.30

3+12^E ± 3' Conc Walk 25° Lt.

273.74
7.52 7.20
35° 25°
on Walk ± Walk

T.P. -1.00 280.30

3+00 ± P.P. N° 373784 198° Lt.

272.8
85 7.0 6.5 6.2 4.4 4.2 2.3 1.6 1.3 282.7
40 25 20 15 3 0 22 23 25 45

2+95 End Conc Ramp Sing Gav 20° Rt.

279.52
1.78 0.20
24° 31°
Ramp Ramp

281.30

Δ 281.30

11-3-53

X-SEC'S FLICKER ST. CONT'D

Lt. ⊕ Rt.

3+55 Begin 2-Car Garage 40' Lt.

274.8
7.05 6.8
40° 25°
Top Conc Floor

3+50 Begin 8" Conc Block 25' Lt.

274.43 274.9 275.7 277.1 277.3 277.7 279.6 280.0 281.8 285.4
6.39 6.9 6.1 4.7 4.5 3.1 2.2 1.8 0.0 (-3.6)
25 25 15 5 0 22 23 25 33 50
TOP Wall Ground

3+43 End Conc Ramp Sing Gar 25' Lt.

274.14 275.101 277.1
7.68 6.81
35° 25°
on Ramp Ramp

3+41 ⊕ 8' Dirt Drive Sing Gar. 67' Rt.

277.4 279.0 279.7 281.3 281.8
4.4 2.8 2.1 1.5 (-3.7)
0 22 23 25 60

281.02 281.64
(-4.2) (-4.82)
672 672
Ground Top Conc Floor

▲ 281.82

11-3-53

X-SEC'S FLICKER ST. CONT'D.

Lt. C Rt.

3+83 End 2⁵' Conc Walk With Steps 23⁵' Lt.

273.97		
785	7.77	6.83
365	265	235
on Walk	Top Walk	Top Step

3+71 End 2-Car Gar 39 I' Lt.

274.05		
6.97		6.8
397		250
Top	Plank floor	Ground

3+68 Beg 8" Conc Block Ret Wall 25° Lt.

275.59		
6.23		6.8
250		250
Top Wall		Ground

3+57 End 8" Conc Blk Wall 25° Lt.

276.77		
505		6.8
250		250
Top Wall		Ground

281.82

11-3-53

X-SEC'S FLICKER ST. CONT'D

Lt. E Rt.

4+62 5/4 Edge Pavt. Lisbon St.
Toe Sec. Gutterline

	271.97	273.27	274.57	275.92	276.97
	9.85	8.55	7.23	5.90	4.85
	50	25	0	25	50

4+59⁵ ± P.P. N° P 70931 24' Lt.

4+58 Top Bank Sec.

273.1	274.0	275.2	275.2	275.5	274.1	274.5	276.0	276.4	277.0	278.1
8.7	7.8	6.6	6.6	6.3	7.7	7.0	5.8	5.0	4.8	3.7
50	27	26	25	15	12	0	18	20	25	50

4+50,03 5/4 Prop. Lisbon St.
End 8" Conc Block Wall 25' Lt.

275.47	275.1	275.6	274.4	275.3	276.0	277.0	277.2	278.3	
6.35	6.7	6.2	7.4	6.5	5.8	4.8	4.6	3.5	
25	25	13	10	0	18	20	25	50	
Top Wall		Ground							
		275.8	274.0						
		8.0	7.8						
		50	26						

4+38 ± Deadman 20' Lt.

4+00

273.8	273.9	274.5	275.6	276.1	276.3	276.5	277.7	278.3
8.0	7.9	7.0	6.2	5.3	5.5	5.3	4.1	2.5
39	26	25	11	5	4	0	25	50

281.82

11-3-53

X-SEC'S FLICKER ST. CONT'D

Lt. & Rt.

T.B.M. -1.45 290.52 ~ -290.55 & Top Conc. Walk 0+26 25' Lt. $\frac{168.1}{50}$
 +11.97 291.97 26' 5/4 of 5/4 Line Pidgeon & Lisbon on Ely side Pidgeon
 T.P. -1.82 280.00-

T.B.M. -6.27 275.55 Set P.K. Ely Side P.R.N. P-70931 24' Lt
 & Sta. 4+59 \leq S.W. Cor. Lisbon & Flicker St.

4+75.03 & Lisbon St.

1223	1085	927	786	6.55	5.30	4.14	2.95	1.60
100	75	50	25	0	25	50	75	100

Top & Mill.

281.82

281.82

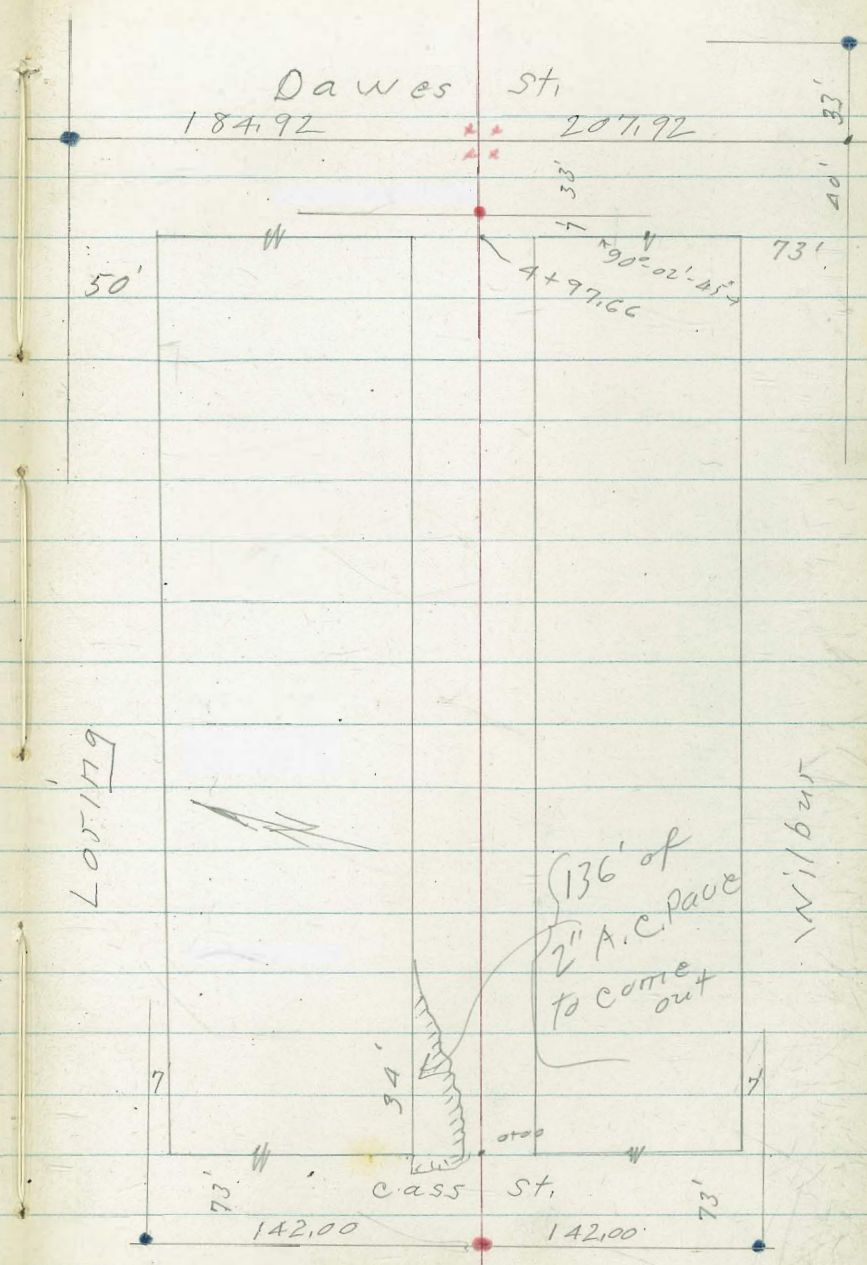
Alley Bk. 44 Pacific Beach
 Cross section for Improvement

2-9-54
 W.D. # 32334

C.H.S.
 Bogg
 Schelin
 Pullon

Ref. - TIP sheets # 1773
 # 1783
 TIP book # 20 page 49

- denotes Fd. L+T.
- B.W. " Base of wall footing
- T.W. " Top of wall,
- ✱ " cut crosses in M.H. Rim
- " Set P.K. - conc. nail



Alley BIK 4A Pac. Beach,

Pole # JPA 1016

T.P. 4.99 93.71 3.41 88.72

11² Lt. = start stucco Bldg
 0+28 } 10' Lt. = end A.C. Pavc.

12² Rt. = start ^{5' High} Conc. block wall
 10 Rt. } = end alley curbs.
 10 Lt. }
 0+00 = } End A.C. Pavc
 10' Lt. = start A.C. paved yard

0-06 } 2' Lt. = start A.C. to come out
 see sketch.

13' Rt. } = B.C. 3' Rad. cb. Ret. x
 13' Lt. }
 0-14 } = Ely cb. line Cass.

0-40 = † Cass

1.86 92.13^v - 90.27

LT: N14

RT: S14 56

INDEXED
 FEB 10 1954

88.88
 3.63 3.90 4.30
 25 12 10
 87.83

87.08
 5.05 5.37 5.70
 10 10 10
 pave. cl G G cl
 5.6 6.6
 10 12
 86.52 86.58
 5.61 5.55

89.32 88.78 88.05 84.58 85.21 85.27 83.93
 2.81 3.35 4.08 7.55 6.92 8.86 8.20
 100 100 50 50 50 100 100
 cl G cl G cl G cl

87.43 87.07 86.43 86.33 85.97 85.70 85.63 86.25
 4.70 5.06 5.70 5.80 6.16 6.43 6.50 5.88
 50 13 13 10 10 13 13
 G G G G G G cl

87.35 87.99 86.62 85.18 83.80
 2.78 4.14 5.51 6.95 8.33
 100 50 50 100

92.13

S.E.B.P. Loring + Cass

BIK 44 RB.

LT=114

RT=514

57

double Gar.
 1+41 - 9⁸ RT = start Conc. apron to
 1+24 - 10⁵ RT = end same
 1+01 - 10⁴ RT = start picket fence.

10¹ Lt. = start Conc. block wall
 1+00 - 10¹ RT = end apron

91.2	88.5	89.1	88.6	88.6	88.37	88.45
2.5	5.2	4.6	5.1	5.1	5.32	5.26
10L	10L	10		10	10L	14
T.W.	B.W.				apron	Gar. floor

apron to double Gar.
 0+81 - 10¹ RT = start Conc.

88.35	88.45
5.36	5.26
10 ¹	14
apron	Gar. floor

apron to double Gar.
 0+62 - 17' RT = 16' level Conc.
 0+54 - 9' RT = Pole # J.P.A. 1016
 0+51 - 11² Lt. = end Bldg.

87.81	87.85
5.90	5.86
17	21
apron	Gar. floor

0+30 - RT = end 5' Conc. wall

88.3	87.7	87.6	87.6	86.7
5.4	6.0	6.1	6.1	7.0
10		10	12 ²	12 ²
				B.W.

Clean out
 0+49 - 10⁵ Lt. = top of 4" sewer

88.5
 512
 10⁵
 Top of C.A. 93.71

Alley BIK. 44
R.B.

block wall. 7' High.

1+96 10^L Lt = 2 Φ 5' long E. + W. Conc.

Nail in Pole P.A. 1040

T.P. 6.30 97.81 2.20 91.51

1+94 9³ RX = 10" pole # P.A. 1040

1+72 13⁵ RX = Φ 2' wide Conc. walk

1+60 9⁸ RX = end conc. apron

1+50

1+47 10^L Lt = end conc. wall.

LT = N/4

RT = J/4

58

90.6
7.2 6.7
10^L 10
B.W.

97.81

90.03
3.68 3.90
13^E 23^E
walk

89.69
4.02 3.88
98 14
apron Cor. floor

90.1
3.6 4.12
10 99
apron 14
Cor. floor

92.1 89.5 90.1
1.6 4.2 3.6
10^L 10^L 10
T.W. B.W.

93.71

Alloy BIK 44 P.B,

Nail in pole #

T.P. 7.05 103.18 1.68 96.13 ✓

3+50 10⁴ RT = line of fence.

3+16- 9' RT = deadman

3+00

2+99 9⁵ RT = 10" pole # P.A. 1060

2+73- 10⁴ RT = start 6' high board fence.

2+50

2+18 9² RT = end conc. apron

2+00

1+98 9⁸ RT = double Con. start Conc. apron to

LT=214

RT=214

59

94.5
313
10

93.3
415
10

92.6
512
10

91.3
65
10

94.3
315
10

93.0
418
10

91.8
610

90.6
72

94.4
314
10

93.1
417
10

91.8
~~611~~
10

90.91
690
99
apron

90.9
69

90.81

695
98
apron

90.97
684
14
Gar floor

91.01

680
14
Gar floor

97.81

Alley BIK. 44- P.B.

10⁵ RT = start frame house

A+62 9⁵ RT = end wire fence.

98.7	98.6	98.2	98.0	98.2	98.2
4.5	4.6	5.0	5.2	5.0	5.0
15	10	7		5	10

A+50

98.4	98.3	97.8	97.6	97.6	97.2	97.0
4.8	4.9	5.4	5.6	5.6	6.0	6.2
15	10	6		10	11	15

A+47 10⁵ Lt = start 6' high board fence.

A+31 10³ Lt = end conc. apron.

97.13
6.05
10.3
apron

A+22 10⁰ RT = start 6' high wire fence.
10² RT = end board fence.

A+20 Lt = Garage floor Conc.

97.43	96.93	96.9	96.2	96.3	95.9
5.75	6.25	6.3	6.7	6.9	7.3
16	10.3	10		10	15
Car. floor	apron				

to double Car.

A+07 10¹ Lt = start Conc. apron

96.12
6.56
10.2
apron

A+00

96.2	95.9	95.9	95.6	95.2
7.0	7.3	7.3	7.6	8.0
10		9	10	15

3+93 9² RT = 16" pole # P.A. 1080

103.18 ✓

Alley Bk 44 P.B.

OK
 5 12' RT } = E.C. 2' Rad. ob. Ret.
 12' Lt }
 A+17 Z = wly ob. line

3.00	3.15		7.40	6.92	
50	50		50	50	
CL	G		G	CL	
976.73	9823	9814	9775	9746	9737
4.45	4.95	5.04	5.33	5.72	5.81
12	12	10		10	12
CL	G				G
					CL

CA
 5 A+15 Z 10' Lt } = B.C. 2' Rad. ob. Ret.
 10' RT }

4.42	5.04	5.22	5.75	5.37
10	10		10	10
CL	G		G	CL
9876	9814	9796	9743	9781

(99 Lt } = start alley curbs
 10 Rt }
 A+97 60 = wly line Daves
 = 9 feet A.C. Pavc.

4.31	4.88	5.04	5.20	5.16
99	99		10	10
CL	G+		G	CL
	and		+Bnd	
9887	9830	9778	9798	9802

A+97 - 10⁴ Rt. = end house

A+90

4.1	4.4	4.9	5.0	5.1	4.7
15	10	6		7	10
99.1	98.8	98.3	98.2	98.1	98.5

A+87 10⁵ Lt. = end fence.

15' brick chimney.
 A+83- 9' RT = E Nly. face 15' X

4.9	5.3
9	9.2
	Base of chimney
98.3	99.9

103.18

Alloy B/K 44 Pacific Beach

£

8.75 90.28 (9027) ✓

Orig. B.M. page 56

T.P. 2.20 99.03 ✓ 8.99 96.83 ✓

2.18 105.82 ✓ 4.44 103.64 ✓ (103.70) B. Bode

□ Ctr. S.W. of Rat. Loring + Dawes

T.P. 6.24 108.08 ✓ 1.34 101.84 ✓

5 + 37 ⁶⁶ = £ Dawes

100.53	98.76	98.55	98.13	96.58
2.65	4.42	4.63	5.05	6.60
50	10		10	50

103.18

CROSS SECTIONS JELLET ST FROM WLY
LINE DENVER TO ELY LINE ERIE ST.

W.O. 32127

Sta. Top Curb Gutter Lip
CURB RETURNS @ ERIE & JELLET STS.

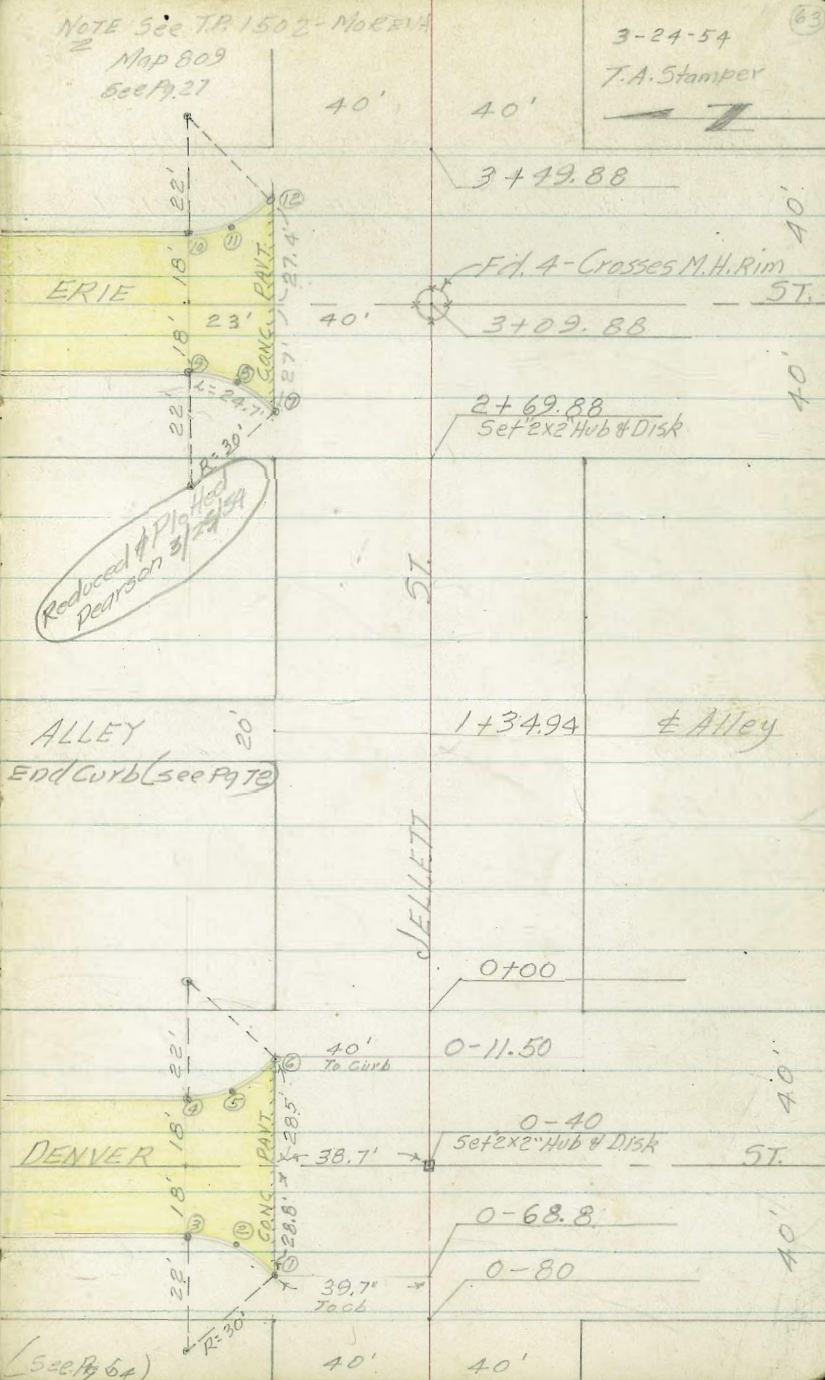
12	67.39	66.89	67.00
11	Dr-way 66.44	66.35	66.43
10	66.44	65.95	66.07
9	Dr-way 64.70	64.56	64.71
8	64.59	64.10	64.22
7	63.94	63.45	63.59

B.M. CURB RETURNS @ DENVER & JELLET STS.

6	46.10	45.62	45.76
5	45.63	45.08	45.15
4	45.43	44.90	45.06
3	44.38	43.86	44.00
2	43.76	43.28	43.45
1	43.26	42.80	42.89

B.M.

45.24



CROSS SECTION JELLETT ST. FROM WLY LINE

DENVER ST. TO ELY LINE ERIE ST. W.O. 32127

0-40 & Denver St.

45.71	44.92	44.59	44.0	44.8	44.4	44.4	45.6	45.4	46.2	46.8
9.36	10.21	10.54	11.10.7	10.7	10.7	10.0	9.7	8.9	8.3	
100	63	38.7	18 11	0	18	40	50	75	100	
E.P.										

0-58 Wly Curb Line Denver St.

44.31	43.84	43.99	42.9	43.6	43.3	43.6	43.9
10.76	11.29	11.64	12.2	11.5	11.8	11.5	11.2
63°	63°	38.7	18	0	18	40	50
EC.	EC.	EP.					
CB	G						

+ 9.89 55.13

J.P. Rains

- 5.03 45.24

0-68.80 P.O.C. Wly Curb & Nly Pl. Jellet St.

45.02	44.95	43.29	42.81	42.5	43.2	42.7	42.7	43.5	44.2	44.1
9.71	10.18	6.98	7.46	7.8	7.1	7.6	7.6	6.8	6.1	6.2
100	100	39.2	39.2	18	0	20	24	26	40	50
CB	G									

0-75-29° Lt. & Pt. Edge 3' Wide x 5' High Hedge

0-75⁵ 27⁷ Rt & PP N° 4099

0-80 Wly Line Denver St.

43.5	43.5	42.8	41.7	42.7	42.5	41.9	42.7	43.7	43.6	43.1
6.8	6.8	7.5	8.6	7.6	7.6	8.4	7.6	6.6	6.7	6.6
50	40	21	19	0	13	19	21	30	40	50
E.P.										

0-80-28° Rt & 2' Dia Euc. Tree

0-80-29° Lt. Edge 3' Wide x 5' High Hedge

+ 5.03 50.27

B.M.

45.24

NOTE: This Bench was one used by F.O. For paving & is O.K. Acc. to him. Nail in PP. N° 4099 S.W. Cor Denver & Jellet

Lt

E

Rt

(65)

3-24-54

X- SEC'S JELLETT ST.

- 19° Rt. Outlet 6" V.C.P. from Bldg Surf. Drain

0+54-46³ Pl. Begin 3⁵ Conc. Walk0+49-38⁵ Pl. & 10' Conc. Walk @ Wly Ent. bldg0+43-28⁵ Pl. & 1" Dia Exc. Tree

0+26-27° Lt. & 2.5' Dia Exc. Tree

0+00-34° Lt. & Guy Pole N° 412281-H

0+00-Ely Line Denver St.

5061	5315	5332
452	1.98	1.81
19°	463	502
Pl. Front	5270	5344
walk	bulk	
	walk	
	2.43	1.69
	385	562
	± Walk	Floor Wly
		Ent.

48.5	48.7	48.6	47.5	46.5	46.9	46.7	47.0	48.9	49.6	49.0
6.6	6.4	6.5	7.6	8.6	8.2	8.4	7.3	6.2	5.5	5.2
50	40	30	18	15	0	18	20	27	40	50

0-11.26 P.O.C. Ely Curb & Pl. Nly Pl. Jellett St

46.11	45.60	45.8	45.8	46.1	46.1	46.9	48.1	48.8	48.7
9.02	9.53	9.3	9.3	9.0	9.0	8.2	7.0	6.3	6.4
40	40	30	18	0	18	20	28	40	50
cb	G								

0-22 Ely Curb Line Denver St.

45.43	44.91	45.33	44.8	45.3	45.5	45.4	46.3	47.5	47.6
9.70	10.22	9.80	10.3	9.8	9.6	9.7	8.8	7.6	7.5
63°	63°	38°	18	11	0	18	20	40	50
EC.	EC.	EP							
cb	G	EP							

46.18	45.70
8.75	9.43
100	100
cb	0
	55.13

X-SEC'S JELLETT ST.

TP Rain

- 0.50

64.66 ~

64.74 (see Pg. 28)

1+00

+10.20

65.16

55.2 54.9 54.9 53.8 54.2 53.6 54.5 55.4 55.5 54.3

10.0 10.3 10.3 11.4 11.0 11.6 10.7 9.8 9.7 10.9

30 40 22 16 0 18 19 28 40 53

∇ 65.16

TP

- 0.17

54.96

0+78 - 55° Rt. Fly End 3⁵ Conc. Walk.

0+78-29° Rt. & PRN° 4119

0+53⁵ - 24° Lt. & 2' Conc Ribbon To Sing Gar

52.46 51.96 51.64 51.15

2.67 3.17 3.49 3.28

55.5 40.2 26.5 24.0

Conc. floor on Drive break Conc. Ribbon

0+50-24° Lt. & 2' Conc Ribbon Sing Gar on Lt.

52.43 61.85 51.55 51.07 50.40 50.7 50.1 51.3 52.4 52.70 52.78

2.70 3.28 3.58 4.06 4.42 4.4 5.0 3.8 2.7 2.43 2.35

55.5 40.2 26.5 24.2 18 16 0 18 19 27 38.5 40

floor on Dr. Break on Drive & Conc. Ribbon Top Walk

∇ 55.13

1.69
56
Walk on Bldg

Lt. & Rt. (66)

3-24-54

NOTE: There is evidently a difference of

3-24-54

X- SEC'S. JELLETT ST.

1+44.94 Fly Line Alley To N.

1+44-31⁵ Lt. Begin 3' high Picket fence.

1+36-37⁵ Rt. & 1' wide x 1' high Parallel Hedge

1+34.94 & Alley

58.6	58.4	58.2	57.2	56.8	57.1	56.4	57.3	57.9	57.3	54.5
9.4	9.6	9.8	10.8	11.2	10.9	11.6	10.7	10.1	10.7	13.5
50	40	32	18	15	0	18	20	28	40	53

57.7	57.4	57.3	57.1	56.2	56.1	56.6	55.9	56.7	57.2	56.75	56.54
10.3	10.6	10.7	10.9	11.8	11.9	11.4	12.1	11.3	10.8	11.25	11.4
100	75	50	40	22	15	0	18	19	27	38.5	40
										on walk	walk

55.02
12.98
53
walk
56.73
55.02
55.02
11.27 12.98 12.98
38.5 53.0 62.0
& walk break bldg
on walk on walk floor

1+32-38⁵ Rt. & 7' Walk @ Fly Entry to bldg
- 38⁵ Rt. & Deadman

1+26-28⁰ Rt. & PP No 4175

1+26-47⁵ Lt. & 2⁰ Dia. Evk. Tree

1+24.94 Wly Line Alley To N.

57.0	57.0	56.7	55.3	56.0	55.2	56.3	56.7	56.6	56.3	54.0
11.0	11.0	11.3	12.7	12.0	12.8	11.7	11.3	11.4	11.7	13.6
50	40	26	15	0	18	19	28	38	40	53

+13.04 68.00

TP.

54.96

68.00

X-SEC 5 JELLETT ST.

1+98⁵ 32° Lt. Also goes back Lateral
Begin 8" Conc. Curb Parallel

1+98⁵ 32° Lt. End 3' Picket fence

1+90-37⁵ Rt. End 1' Wide x 1' High Hedge

1+80-44° Lt. Begin 2' Parallel Conc. Walk

1+79-44° Lt. & 2' Conc. Walk

1+50

61.08	61.12	61.09
6.92	6.88	6.91
50°	40°	32°
Top 8" Curb	Top 8" Curb	Top 8" Curb

60.10
7.90
44°
Top Walk

60.08	60.10
7.92	7.90
54°	44°
on Walk	on Walk

59.10	58.7	58.5	57.6	57.1	57.4	56.9	57.4	58.0	57.4	54.5
9.0	9.3	9.5	10.4	10.9	10.6	11.1	10.6	10.0	10.6	13.5
50	40	32	18	15	0	18	20	28	40	53

68.00

X-SEC'S JELLETT ST.

Lt.

±

Rt

(69)

3-24-54

2+50

63.3	63.2	63.0	62.9	62.0	62.4	61.6	62.0	62.6	61.0	58.4
4.7	4.8	5.0	5.1	6.0	5.6	6.4	6.0	5.5	7.0	9.6
60	50	40	20	16	0	18	20	36	40	47

58.4	58.4
9.6	9.6
50	60

32° - Lt. Walk Widens to 5.5' with brick + Conc.
2+16 - 23° Lt. ± 3' Conc Walk

63.95	61.72	61.66	61.57	61.45
4.05	6.28	6.34	6.43	6.55
50°	47°	40°	33°	23°
Top	Walk	Walk	Walk	± Walk
conc.	@ bot conc.			
Forth.	Steps 4 wide			

2+14⁵ - 43⁵ Lt. End 2' Wide Parallel Conc Walk

61.69
6.31
43⁵
Top walk

2+00 - 39° Rt. ± 6' Wide Conc Walk

61.1	61.3	60.6	60.0	60.0	59.2	59.7	60.2	59.06	59.02	58.41
6.9	6.7	7.4	8.0	8.0	8.8	8.3	7.8	8.94	8.98	9.59
50	40	18	14	0	18	20	31	39°	40°	50°
								Top walk	walk	walk

↗ 68.00

X-SEC'S SELLETT ST.

2+74-29⁵ Rt. & P.P. N^o 4149

2+71⁵ - 32⁵ Lt. Lateral To N. @ This Pt.
End 8' Conc. Curb Parallel

63.77	63.66	63.25	63.63
4.23	4.34	4.75	4.37
50°	40°	32 ⁵	32 ⁵
Top 8" Curb	Top 8' Curb	ftg	Top 8" Parallel Curb

2+71⁵ - 32° Lt. End 2' High Picket fence

2+69.88 Wⁱ Line Erie St.

63.6	63.14	63.9	63.0	63.6	63.1	63.6	63.5	63.0	64.6
4.4	4.6	4.6	5.0	4.8	4.9	4.4	4.5	5.0	5.4
50	40	24	21	0	20	22	40	50	75

2+68 - 33° Lt. & 3" Lateral Conc. Curb for Planter

63.75	63.60	63.57
4.25	4.40	4.43
50°	40°	33°
Top Curb	Top Curb	Top 3" Conc. Curb

2+66 - Toe Sec On Rt.

63.6	63.5	63.3	62.6	63.4	62.7	63.1	63.4	63.4	62.2
4.4	4.5	4.7	5.4	4.6	5.3	4.9	4.6	4.6	5.8
50	40	20	18	0	19	22	32	37	40

59.3
8.7
48

58.7
9.3
70

68.00

X- SEC'S JELLETT ST.

3+27.88 Aly Curbline Erie St.

66.19	65.71	66.43	65.94	66.60	66.6	67.1A	66.9	67.1A	67.7	67.3
181	229	157	206	140	14	0.6	11	0.6	0.3	0.7
100	100	63	63	39.8	18	0	19	23	40	50
cb	G	EC	G	EP						
		cb	EC							

3+09.88 & Erie St.

65.6A	65.73	65.51	65.5	65.95	66.3	65.6	65.3	64.0	64.5	64.1
236	2.27	2.09	2.5	2.05	1.7	24	27	3.1	35	39
100	63	40	18	0	0	22	33	50	75	100
				ELY	Ground					
				ELM						
				M.H.						

2+91.88 Wly Curbline Erie St.

65.16	64.70	64.69	64.55	64.20	64.4	65.0	64.5	64.3	64.3
284	330	331	345	3.80	3.6	3.0	3.5	3.7	3.7
100	100	63	63	40	18	0	20	40	50
cb	G	cb	EC	EP					
		Dr-Way							

2+83- 41° Ld. & Guy Pole

2+82.88 P.O.C. @ Wly End Curb

63.94	63.94
406	456
41°	41°
cb	G

68.00

X-SEC'S SELLETT ST.

T.B.M. -13.98 45.26 ~ 45.24 See Pg. 64

+ 0.14 59.24

TP. -12.86 59.10

3+49.88 Ely Line Erie St.

+4.57 71.96

TP. @ N.E. End. -0.61 67.39

3+36.28 P.O.C. Ely line Erie @ End Curb

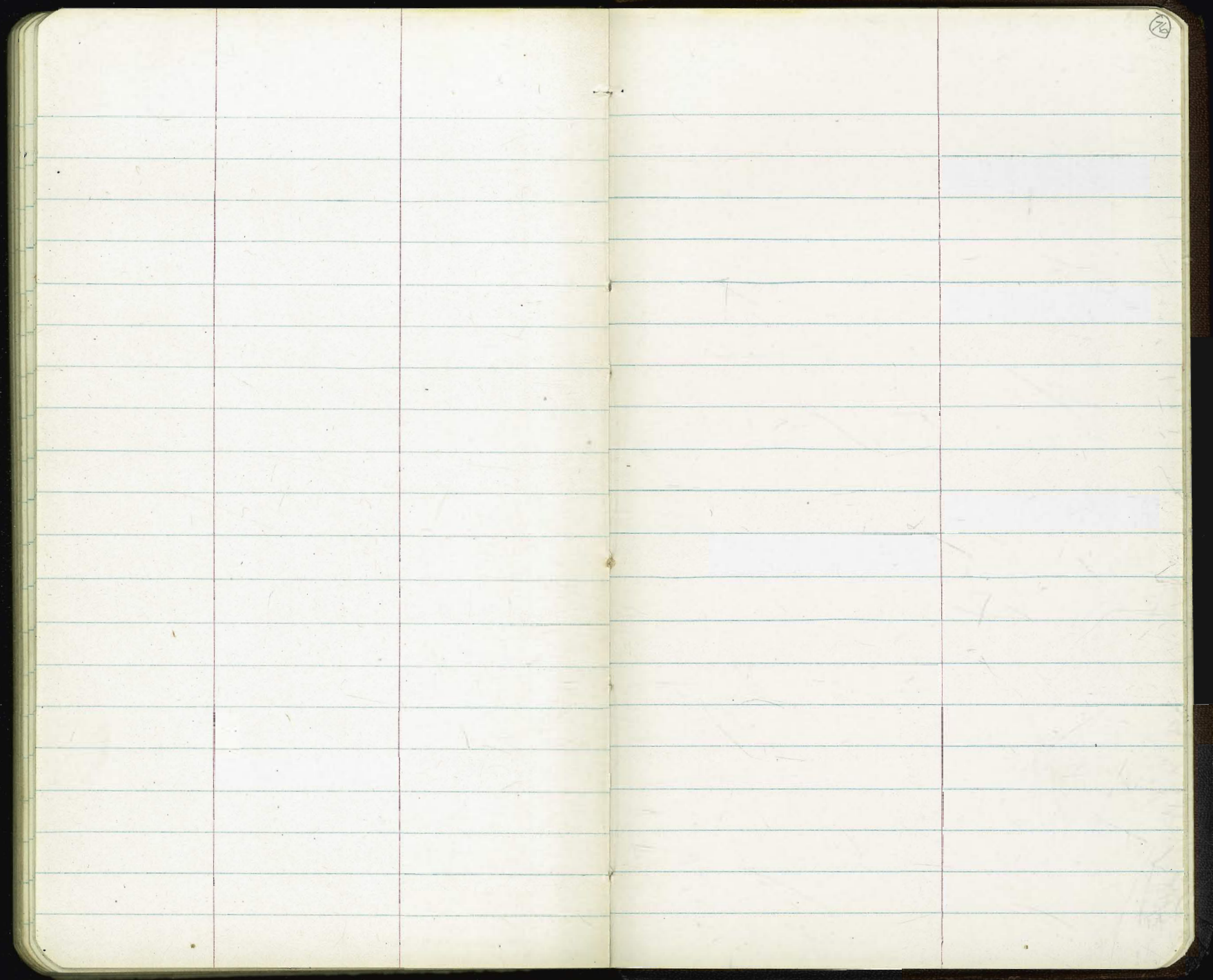
68.54
68.68
68.7
68.5
68.0
68.0
68.8
68.7
69.1
69.8
69.7
34.2 3.22 3.3 3.5 4.0 4.0 3.2 3.3 2.9 2.1 2.3
52.5 42.5 40 29 28 19 0 19 21 46 50
CON CURB
DRIVE DRIVE

67.39
0.61 1.14
40.1 40.1
Curb 4

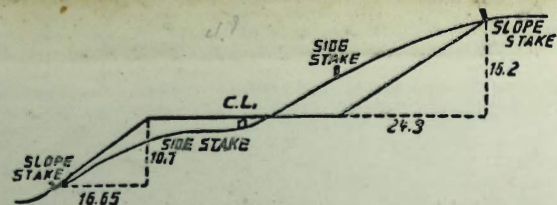
71.96
68.00

The image shows an open notebook with two facing pages. Both pages are cream-colored and feature light blue horizontal ruling. The notebook is bound in the center, and the pages are otherwise blank. A small, handwritten number '73' is visible in the top right corner of the right-hand page. The notebook is set against a dark, possibly black, background.

The image shows an open notebook with two facing pages. Both pages are cream-colored and feature light blue horizontal ruling. The notebook is bound in the center, with the stitching visible. The pages are blank, with no writing or markings. The notebook is set against a dark background.



26



DISTANCES FROM SIDE STAKES FOR CROSS-SECTIONING.

SLORE 1 1/2 TO 1. ROADWAY OF ANY WIDTH.

	0	.1	.2	.3	.4	.5	.6	.7	.8	.9	
0	0.00	0.15	0.30	0.45	0.60	0.75	0.90	1.05	1.20	1.35	0
1	1.50	1.65	1.80	1.95	2.10	2.25	2.40	2.55	2.70	2.85	1
2	3.00	3.15	3.30	3.45	3.60	3.75	3.90	4.05	4.20	4.35	2
3	4.50	4.65	4.80	4.95	5.10	5.25	5.40	5.55	5.70	5.85	3
4	6.00	6.15	6.30	6.45	6.60	6.75	6.90	7.05	7.20	7.35	4
5	7.50	7.65	7.80	7.95	8.10	8.25	8.40	8.55	8.70	8.85	5
6	9.00	9.15	9.30	9.45	9.60	9.75	9.90	10.05	10.20	10.35	6
7	10.50	10.65	10.80	10.95	11.10	11.25	11.40	11.55	11.70	11.85	7
8	12.00	12.15	12.30	12.45	12.60	12.75	12.90	13.05	13.20	13.35	8
9	13.50	13.65	13.80	13.95	14.10	14.25	14.40	14.55	14.70	14.85	9
10	15.00	15.15	15.30	15.45	15.60	15.75	15.90	16.05	16.20	16.35	10
11	16.50	16.65	16.80	16.95	17.10	17.25	17.40	17.55	17.70	17.85	11
12	18.00	18.15	18.30	18.45	18.60	18.75	18.90	19.05	19.20	19.35	12
13	19.50	19.65	19.80	19.95	20.10	20.25	20.40	20.55	20.70	20.85	13
14	21.00	21.15	21.30	21.45	21.60	21.75	21.90	22.05	22.20	22.35	14
15	22.50	22.65	22.80	22.95	23.10	23.25	23.40	23.55	23.70	23.85	15
16	24.00	24.15	24.30	24.45	24.60	24.75	24.90	25.05	25.20	25.35	16
17	25.50	25.65	25.80	25.95	26.10	26.25	26.40	26.55	26.70	26.85	17
18	27.00	27.15	27.30	27.45	27.60	27.75	27.90	28.05	28.20	28.35	18
19	28.50	28.65	28.80	28.95	29.10	29.25	29.40	29.55	29.70	29.85	19
20	30.00	30.15	30.30	30.45	30.60	30.75	30.90	31.05	31.20	31.35	20
21	31.50	31.65	31.80	31.95	32.10	32.25	32.40	32.55	32.70	32.85	21
22	33.00	33.15	33.30	33.45	33.60	33.75	33.90	34.05	34.20	34.35	22
23	34.50	34.65	34.80	34.95	35.10	35.25	35.40	35.55	35.70	35.85	23
24	36.00	36.15	36.30	36.45	36.60	36.75	36.90	37.05	37.20	37.35	24
25	37.50	37.65	37.80	37.95	38.10	38.25	38.40	38.55	38.70	38.85	25
26	39.00	39.15	39.30	39.45	39.60	39.75	39.90	40.05	40.20	40.35	26
27	40.50	40.65	40.80	40.95	41.10	41.25	41.40	41.55	41.70	41.85	27
28	42.00	42.15	42.30	42.45	42.60	42.75	42.90	43.05	43.20	43.35	28
29	43.50	43.65	43.80	43.95	44.10	44.25	44.40	44.55	44.70	44.85	29
30	45.00	45.15	45.30	45.45	45.60	45.75	45.90	46.05	46.20	46.35	30
31	46.50	46.65	46.80	46.95	47.10	47.25	47.40	47.55	47.70	47.85	31
32	48.00	48.15	48.30	48.45	48.60	48.75	48.90	49.05	49.20	49.35	32
33	49.50	49.65	49.80	49.95	50.10	50.25	50.40	50.55	50.70	50.85	33
34	51.00	51.15	51.30	51.45	51.60	51.75	51.90	52.05	52.20	52.35	34
35	52.50	52.65	52.80	52.95	53.10	53.25	53.40	53.55	53.70	53.85	35
36	54.00	54.15	54.30	54.45	54.60	54.75	54.90	55.05	55.20	55.35	36
37	55.50	55.65	55.80	55.95	56.10	56.25	56.40	56.55	56.70	56.85	37
38	57.00	57.15	57.30	57.45	57.60	57.75	57.90	58.05	58.20	58.35	38
39	58.50	58.65	58.80	58.95	59.10	59.25	59.40	59.55	59.70	59.85	39
40	60.00	60.15	60.30	60.45	60.60	60.75	60.90	61.05	61.20	61.35	40
41	61.50	61.65	61.80	61.95	62.10	62.25	62.40	62.55	62.70	62.85	41
42	63.00	63.15	63.30	63.45	63.60	63.75	63.90	64.05	64.20	64.35	42
43	64.50	64.65	64.80	64.95	65.10	65.25	65.40	65.55	65.70	65.85	43
44	66.00	66.15	66.30	66.45	66.60	66.75	66.90	67.05	67.20	67.35	44
45	67.50	67.65	67.80	67.95	68.10	68.25	68.40	68.55	68.70	68.85	45
46	69.00	69.15	69.30	69.45	69.60	69.75	69.90	70.05	70.20	70.35	46
47	70.50	70.65	70.80	70.95	71.10	71.25	71.40	71.55	71.70	71.85	47
48	72.00	72.15	72.30	72.45	72.60	72.75	72.90	73.05	73.20	73.35	48
49	73.50	73.65	73.80	73.95	74.10	74.25	74.40	74.55	74.70	74.85	49
50	75.00	75.15	75.30	75.45	75.60	75.75	75.90	76.05	76.20	76.35	50

THE NATIONAL BLANK BOOK COMPANY
 HOLYOKE MASSACHUSETTS
 NEW YORK CHICAGO BOSTON SAN FRANCISCO