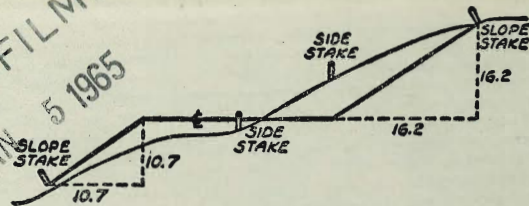


MICROFILMED
JAN 5 1965



DISTANCES FROM SIDE STAKES FOR CROSS-SECTIONING
SLOPE 1 TO 1. ROADWAY OF ANY WIDTH

	0	.1	.2	.3	.4	.5	.6	.7	.8	9	
0	0.00	0.10	0.20	0.30	0.40	0.50	0.60	0.70	0.80	0.90	0
1	1.00	1.10	1.20	1.30	1.40	1.50	1.60	1.70	1.80	1.90	1
2	2.00	2.10	2.20	2.30	2.40	2.50	2.60	2.70	2.80	2.90	2
3	3.00	3.10	3.20	3.30	3.40	3.50	3.60	3.70	3.80	3.90	3
4	4.00	4.10	4.20	4.30	4.40	4.50	4.60	4.70	4.80	4.90	4
5	5.00	5.10	5.20	5.30	5.40	5.50	5.60	5.70	5.80	5.90	5
6	6.00	6.10	6.20	6.30	6.40	6.50	6.60	6.70	6.80	6.90	6
7	7.00	7.10	7.20	7.30	7.40	7.50	7.60	7.70	7.80	7.90	7
8	8.00	8.10	8.20	8.30	8.40	8.50	8.60	8.70	8.80	8.90	8
9	9.00	9.10	9.20	9.30	9.40	9.50	9.60	9.70	9.80	9.90	9
10	10.00	10.10	10.20	10.30	10.40	10.50	10.60	10.70	10.80	10.90	10
11	11.00	11.10	11.20	11.30	11.40	11.50	11.60	11.70	11.80	11.90	11
12	12.00	12.10	12.20	12.30	12.40	12.50	12.60	12.70	12.80	12.90	12
13	13.00	13.10	13.20	13.30	13.40	13.50	13.60	13.70	13.80	13.90	13
14	14.00	14.10	14.20	14.30	14.40	14.50	14.60	14.70	14.80	14.90	14
15	15.00	15.10	15.20	15.30	15.40	15.50	15.60	15.70	15.80	15.90	15
16	16.00	16.10	16.20	16.30	16.40	16.50	16.60	16.70	16.80	16.90	16
17	17.00	17.10	17.20	17.30	17.40	17.50	17.60	17.70	17.80	17.90	17
18	18.00	18.10	18.20	18.30	18.40	18.50	18.60	18.70	18.80	18.90	18
19	19.00	19.10	19.20	19.30	19.40	19.50	19.60	19.70	19.80	19.90	19
20	20.00	20.10	20.20	20.30	20.40	20.50	20.60	20.70	20.80	20.90	20
21	21.00	21.10	21.20	21.30	21.40	21.50	21.60	21.70	21.80	21.90	21
22	22.00	22.10	22.20	22.30	22.40	22.50	22.60	22.70	22.80	22.90	22
23	23.00	23.10	23.20	23.30	23.40	23.50	23.60	23.70	23.80	23.90	23
24	24.00	24.10	24.20	24.30	24.40	24.50	24.60	24.70	24.80	24.90	24
25	25.00	25.10	25.20	25.30	25.40	25.50	25.60	25.70	25.80	25.90	25
26	26.00	26.10	26.20	26.30	26.40	26.50	26.60	26.70	26.80	26.90	26
27	27.00	27.10	27.20	27.30	27.40	27.50	27.60	27.70	27.80	27.90	27
28	28.00	28.10	28.20	28.30	28.40	28.50	28.60	28.70	28.80	28.90	28
29	29.00	29.10	29.20	29.30	29.40	29.50	29.60	29.70	29.80	29.90	29
30	30.00	30.10	30.20	30.30	30.40	30.50	30.60	30.70	30.80	30.90	30
31	31.00	31.10	31.20	31.30	31.40	31.50	31.60	31.70	31.80	31.90	31
32	32.00	32.10	32.20	32.30	32.40	32.50	32.60	32.70	32.80	32.90	32
33	33.00	33.10	33.20	33.30	33.40	33.50	33.60	33.70	33.80	33.90	33
34	34.00	34.10	34.20	34.30	34.40	34.50	34.60	34.70	34.80	34.90	34
35	35.00	35.10	35.20	35.30	35.40	35.50	35.60	35.70	35.80	35.90	35
36	36.00	36.10	36.20	36.30	36.40	36.50	36.60	36.70	36.80	36.90	36
37	37.00	37.10	37.20	37.30	37.40	37.50	37.60	37.70	37.80	37.90	37
38	38.00	38.10	38.20	38.30	38.40	38.50	38.60	38.70	38.80	38.90	38
39	39.00	39.10	39.20	39.30	39.40	39.50	39.60	39.70	39.80	39.90	39
40	40.00	40.10	40.20	40.30	40.40	40.50	40.60	40.70	40.80	40.90	40
41	41.00	41.10	41.20	41.30	41.40	41.50	41.60	41.70	41.80	41.90	41
42	42.00	42.10	42.20	42.30	42.40	42.50	42.60	42.70	42.80	42.90	42
43	43.00	43.10	43.20	43.30	43.40	43.50	43.60	43.70	43.80	43.90	43
44	44.00	44.10	44.20	44.30	44.40	44.50	44.60	44.70	44.80	44.90	44
45	45.00	45.10	45.20	45.30	45.40	45.50	45.60	45.70	45.80	45.90	45
46	46.00	46.10	46.20	46.30	46.40	46.50	46.60	46.70	46.80	46.90	46
47	47.00	47.10	47.20	47.30	47.40	47.50	47.60	47.70	47.80	47.90	47
48	48.00	48.10	48.20	48.30	48.40	48.50	48.60	48.70	48.80	48.90	48
49	49.00	49.10	49.20	49.30	49.40	49.50	49.60	49.70	49.80	49.90	49
50	50.00	50.10	50.20	50.30	50.40	50.50	50.60	50.70	50.80	50.90	50

Distance of slope stake from side or shoulder stake for any width roadway, slope 1 to 1. If ground is nearly level, the cut or fill at side stake is located by the double entry method in left column and top row. The number in body of table in same row and column gives distance from side stake to slope stake. If ground is not level estimate the difference in elevation between the side stake and slope stake, lower target by this amount if cut, elevate if fill. Add this amount to cut or fill and find distance in table. Set up rod at this point, and line of sight should cut target. If it does not make the slight adjustment necessary.

TABLE XIII—CORRECTIONS FOR TANGENTS AND EXTERNALS

These corrections are to be added to the approximate values, found by dividing the tangent, or external, for a 1° curve (Table VIII) by the degree of curve, in order to obtain the true tangents, or externals. Intermediate values may be obtained by interpolation.

FOR TANGENTS ADD

Central Angle	DEGREE OF CURVE													
	5°	10°	15°	20°	25°	30°	35°	40°	45°	50°	55°	60°	65°	70°
10°	.03	.06	.09	.13	.16	.19	.22	.25	.28	.31	.34	.38	.42	.46
15°	.04	.10	.14	.19	.24	.29	.34	.39	.45	.51	.53	.58	.63	.68
20°	.06	.13	.19	.26	.32	.39	.45	.51	.58	.65	.72	.79	.84	.90
25°	.08	.16	.24	.33	.40	.49	.58	.67	.75	.83	.90	.99	1.06	1.14
30°	.10	.19	.29	.39	.49	.59	.69	.79	.89	.99	1.09	1.20	1.29	1.39
35°	.11	.22	.34	.47	.58	.69	.79	.89	.99	1.04	1.29	1.42	1.54	1.66
40°	.13	.26	.40	.53	.67	.80	.93	1.06	1.20	1.34	1.49	1.64	1.79	1.94
45°	.15	.30	.44	.60	.76	.91	1.06	1.21	1.37	1.52	1.70	1.87	2.04	2.21
50°	.17	.34	.51	.68	.85	1.02	1.19	1.36	1.54	1.72	1.91	2.10	2.29	2.48
55°	.19	.38	.57	.76	.95	1.14	1.32	1.52	1.72	1.92	2.14	2.35	2.56	2.77
60°	.21	.42	.63	.84	1.05	1.27	1.49	1.71	1.94	2.17	2.38	2.60	2.83	3.07
65°	.23	.46	.69	.93	1.16	1.40	1.64	1.88	2.13	2.38	2.63	2.88	3.13	3.39
70°	.25	.51	.76	1.02	1.28	1.54	1.80	2.06	2.33	2.60	2.88	3.16	3.44	3.72
75°	.27	.56	.83	1.12	1.40	1.69	1.98	2.27	2.57	2.87	3.16	3.47	3.78	4.09
80°	.30	.61	.91	1.22	1.53	1.84	2.15	2.46	2.78	3.10	3.44	3.78	4.12	4.46
85°	.33	.66	1.00	1.33	1.68	2.02	2.36	2.70	3.05	3.40	3.77	4.14	4.55	4.89
90°	.36	.72	1.09	1.45	1.83	2.20	2.57	2.94	3.32	3.70	4.10	4.50	4.91	5.32
95°	.39	.79	1.19	1.55	2.00	2.40	2.80	3.20	3.61	4.02	4.40	4.98	5.38	5.83
100°	.43	.86	1.30	1.74	2.18	2.62	3.06	3.50	3.95	4.40	4.88	5.37	5.85	6.34
110°	.51	1.03	1.56	2.08	2.61	3.14	3.67	4.21	4.76	5.31	5.86	6.43	7.01	7.60
120°	.62	1.25	1.93	2.52	3.16	3.81	4.45	5.11	5.77	6.44	7.12	7.80	8.50	9.22

FOR EXTERNALS ADD

Central Angle	DEGREE OF CURVE													
	5°	10°	15°	20°	25°	30°	35°	40°	45°	50°	55°	60°	65°	70°
10°	.001	.003	.004	.006	.007	.008	.009	.011	.012	.014	.015	.017	.018	.020
15°	.003	.007	.010	.014	.018	.023	.027	.029	.032	.035	.039	.043	.047	.051
20°	.006	.011	.017	.022	.028	.034	.038	.045	.051	.057	.063	.070	.076	.083
25°	.009	.018	.027	.036	.046	.056	.065	.074	.083	.093	.106	.120	.127	.135
30°	.013	.025	.038	.051	.065	.078	.090	.103	.116	.129	.149	.170	.179	.188
35°	.018	.035	.054	.072	.086	.109	.131	.153	.175	.197	.213	.230	.247	.264
40°	.023	.046	.070	.093	.117	.141	.172	.203	.234	.265	.277	.290	.315	.341
45°	.030	.060	.093	.119	.153	.184	.216	.254	.289	.325	.351	.378	.411	.445
50°	.037	.075	.116	.151	.189	.227	.266	.305	.345	.384	.425	.467	.508	.550
55°	.046	.093	.142	.188	.236	.283	.332	.381	.420	.479	.530	.582	.641	.700
60°	.056	.112	.168	.225	.283	.340	.398	.457	.516	.575	.636	.697	.774	.851
65°	.067	.135	.204	.273	.343	.412	.483	.554	.625	.697	.771	.845	.922	1.01
70°	.080	.159	.240	.321	.403	.485	.568	.652	.735	.819	.906	.994	1.08	1.17
75°	.095	.182	.266	.353	.440	.528	.617	.707	.797	.877	.977	1.07	1.18	1.29
80°	.110	.220	.332	.445	.558	.671	.787	.903	1.02	1.13	1.25	1.38	1.50	1.62
85°	.128	.259	.391	.524	.657	.790	.926	1.06	1.20	1.34	1.47	1.62	1.76	1.91
90°	.149	.299	.450	.603	.756	.910	1.07	1.22	1.38	1.54	1.70	1.87	2.03	2.20
95°	.174	.350	.522	.706	.885	1.06	1.25	1.43	1.62	1.80	1.99	2.18	2.38	2.58
100°	.200	.401	.604	.809	1.01	1.22	1.43	1.64	1.85	2.06	2.28	2.50	2.73	2.96
110°	.268	.536	.806	1.08	1.35	1.63	1.91	2.20	2.48	2.76	3.05	3.35	3.66	3.96
120°	.360	.721	1.08	1.45	1.82	2.19	2.57	2.95	3.33	3.72	4.11	4.50	4.91	5.32

X-sec - Island Ave

Pg
1-19

X-sec - Roslyn Lane

20-27

WRELTON Drive

28-37

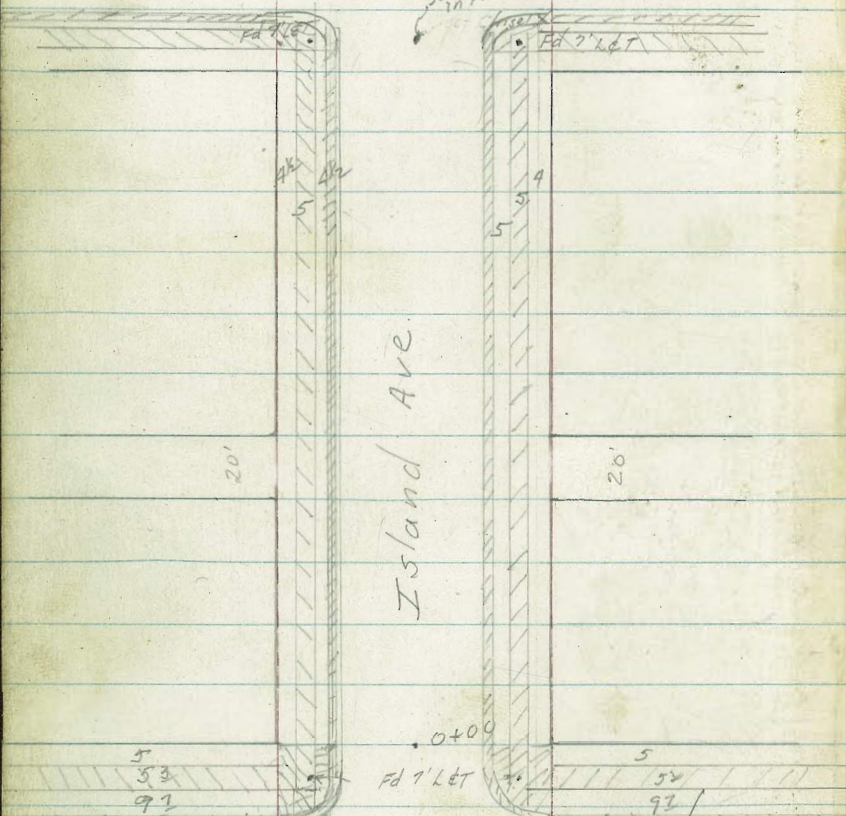
X-sec Nogals - 47th to 49th

49-

26th

St.

set chisel in paving



25th

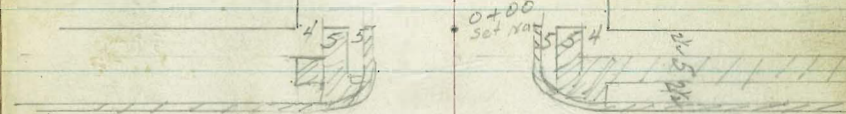
St.

28th

41723
Set PK. Nail

Langley St.

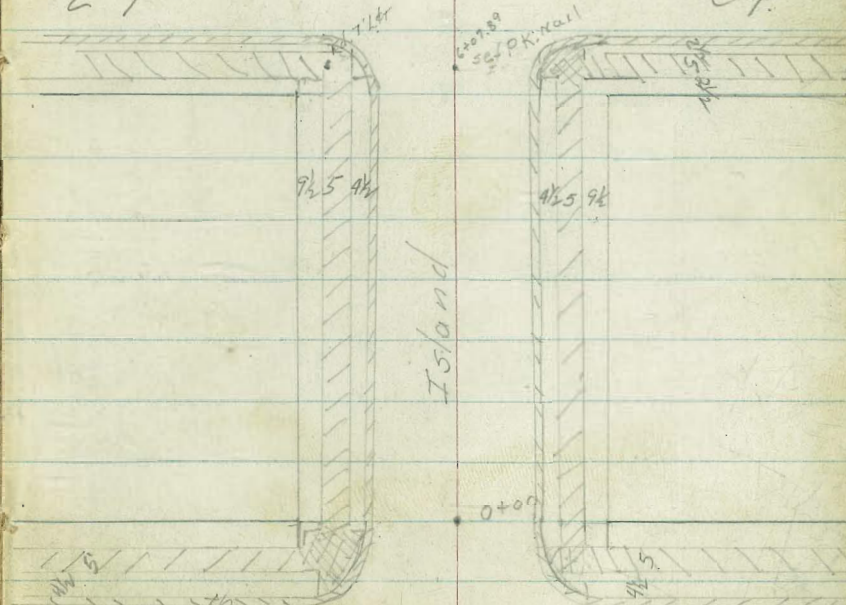
Ave.



27th

St.

41723
Set PK. Nail



26th

St.

12-31-52

Pope
Huffman
Presley

X-sect. Island Ave.
25th To 28th St.
W.O. 32019

0+62

INDEXED
LW
JAN 5 1953

0+58

0+54

0+25

0+00 East Edge AC

0-20 fly. crk line 25th

BM. 3.48

134.15

130.67

BM. = NE B.P. 25th & Island 134.15

	126.83	126.95	126.8	126.3	125.4	125.07	124.95	125.56
Driveaway	7.32	7.20	7.4	7.9	8.8	9.08	9.20	8.59
TC	26	23	13		13	23	26	26
	G.	L.G.				L.G.	G.	TC.

	128.07	127.30	127.40	127.1	126.7	125.8	125.52	125.39	125.99
	6.08	6.85	6.75	7.1	7.5	8.4	8.63	8.76	8.16
TC	26	26	23	13		13	23	26	26
	TC.	G.	L.G.				L.G.	G.	TC.

	128.25	127.45	127.50	127.4	127.0	126.2	125.71	125.58	126.20
	5.90	6.70	6.65	6.8	7.2	8.0	8.44	8.57	7.95
TC	26	26	23	12		13	23	26	26
	TC.	G.	L.G.				L.G.	G.	TC.

	129.65	128.88	128.93	129.1	128.9	128.1	127.15	126.96	127.54
	4.50	5.27	5.22	5.1	5.3	6.1	7.00	7.19	6.61
TC	26	26	23	13		13	23	26	26
	TC.	G.	L.G.				L.G.	G.	TC.

	130.62	129.88	129.88	129.84	129.60	128.92	128.38	128.36	128.60
	3.53	4.27	4.27	4.31	4.55	5.23	5.77	5.79	5.55
TC	26	26	23	13		13	23	26	26
	TC.	G.	L.G.				L.G.	G.	TC.

	131.44	130.64	130.62	129.86	129.77	129.55	129.19	128.79	128.27	127.91	127.57	127.06	128.46
	2.71	3.51	3.53	4.29	4.38	4.60	4.96	5.36	5.88	6.24	5.58	6.45	5.59
TC	50	50	36	36	26	13		13	26	36	36	40	40
	TC.	G.	TC.	G.									

7.2
G.
50
TC.

X-sect. Island Ave

T.P. 1.60 110.84 12.63 109.24

1+90

1+62.4 E.C. Ely Alley Return

1+60.4 Ely. Crb. Line Alley

1+40.2 Wly. Crb. Line Alley

1+38.2 E.C. Alley Return

TR 0.31 121.87 12.59 121.56

1+00

134.15
A

L. R.

111.18	110.35	110.42	110.7	110.6	109.7	108.91	108.62	109.28
1069	1152	1145	112	113	12.2	12.96	13.25	12.59
26	26 G	23 L	13		13	23 L	26 G	26 T.C.
114.78	114.02	114.03	114.1	113.9	113.0	112.32	112.15	112.16
709	7.85	7.84	7.8	8.0	8.9	9.55	9.72	9.11
26 T.C.	26 G	23 L	13		13	23 L	26 G	26 T.C.
115.41	115.9	115.11	114.41	114.24	114.36	114.3	112.59	112.41
6.46	6.0	6.76	7.46	7.63	7.51	7.6	9.28	9.46
40 T.C.	40	28 T.C.	28 EP	26 G	23 L		23 L	26 G
117.9	118.03	117.15	116.88	116.79	116.95	116.9	115.19	114.94
4.0	3.84	4.12	4.99	5.08	4.92	5.0	6.73	6.93
40 T.C.	40 T.C.	28 T.C.	28 EP	26 G	23 L		23 L	26 G
117.92	117.19	117.25	117.3	117.2	116.2	115.39	115.20	115.46
3.95	4.68	4.62	4.6	4.7	5.7	6.48	6.67	6.91
26 T.C.	26 G	23 L	13		13	23 L	26 G	26 T.C.
122.81	122.17	122.10	122.3	122.2	121.2	120.32	120.18	120.84
1134	1198	1205	119	120	130	138.5	13.97	13.31
26 T.C.	26 G	23 L	13		13	23 L	26 G	26 T.C.
				134.75				

X-sect. Island Ave.

2+91 25' Lt. = Ctr. 1'8" X 1'8" Grate
26' R = start Curb Inlet

	Lt.	€	Rt.
	104.98	104.29	104.39
	5.86	6.55	6.45
	26	26	23
			13
			6.2
			6.5
			7.0
			7.66
			8.03
			7.01
			26

2+80

	Lt.	€	Rt.
	105.14	104.37	104.42
	5.70	6.47	6.42
	26	26	23
	TC		13
			6.1
			6.4
			6.9
			7.35
			7.58
			26
			26

2+60

	Lt.	€	Rt.
	103.85	105.10	105.15
	4.99	5.74	5.69
	26	26	23
	TC		13
			5.5
			5.7
			6.2
			6.84
			7.05
			26
			26

2+40

	Lt.	€	Rt.
	106.58	105.83	105.88
	4.26	5.01	4.96
	26	26	23
	TC		13
			4.5
			4.7
			5.4
			6.17
			6.39
			26
			26

2+10

	Lt.	€	Rt.
	109.12	108.36	108.44
	1.72	2.48	2.40
	26	26	23
	TC		13
			2.2
			2.4
			3.2
			3.99
			4.20
			3.55
			26
			26

2+00

	Lt.	€	Rt.
	110.08	109.30	109.42
	0.79	1.54	1.42
	26	26	23
	TC		13
			1.2
			1.4
			2.2
			3.17
			3.40
			2.74
			26
			26

110.84

X-sect. Island Ave

3+60

Lt.	£	Rt.
106.58 8.93 26	105.86 9.65 26	105.94 9.57 23
107.2 8.3 13	107.1 8.4	106.3 9.2 13
		105.05 10.46 23
		104.79 10.72 26
		105.43 10.08 26

3+55

106.30 9.21 26	105.57 9.94 26	105.66 9.85 23
106.8 8.7 13	106.7 8.8	107.0 8.5 13
		104.77 10.74 23
		104.54 10.97 26
		105.18 10.33 26

3+40

105.79 9.79 26	104.95 10.56 26	104.99 10.52 23
105.9 9.6 13	105.8 9.7	105.1 10.4 13
		104.15 11.36 23
		103.98 11.53 26
		104.64 10.87 26

3+20

T.P. 936 115.51 4.69 106.15

115.51	
105.19 5.65 26	104.34 6.50 26
104.43 6.41 23	105.0 5.8 13
	104.9 5.9
	104.3 6.5 13
	103.55 7.29 23
	103.26 7.58 26

3+08

104.98 5.86 26	104.19 6.65 26	104.29 6.55 23
104.7 6.1 13	104.5 6.3	103.9 6.9 13
		103.39 7.45 23
		103.23 7.61 26
		102.85 6.99 26

3+02.7 £ 3.5'x 2.2' Grate 25' Rt.

104.92 5.92 26	104.18 6.66 26	104.24 6.60 23
104.6 6.2 13	104.4 6.4	103.8 7.0 13
		102.76 8.08 23
		102.84 8.00 23
		97.46 13.38 23
		102.88 7.96 26
		103.84 7.00 26

110.84

110.84

Grate Fl. Box

X-sect. Island Ave.

Lt. ♀ Rt.

T.P. 1229 137.12 049 12483
4+50

121.24 120.36 120.47 119.9 119.6 119.2 118.70 118.62 119.28

4.18 4.96 4.85 5.4 5.7 6.1 6.62 6.70 6.04

26 26 23 13 13 13 23 26 26

116.35 115.54 115.47 115.3 114.9 114.2 113.42 113.31 114.02

8.97 9.78 9.85 10.0 10.4 11.1 11.90 12.01 11.30

26 26 23 13 13 13 23 26 26

T.P. 1025 125.32 044 115.07
4+11

113.66 112.93 112.90 113.1 125.32 112.4 111.8 110.77 110.61 111.24

1.85 2.58 2.61 2.4 2.7 3.7 4.74 4.90 4.27

26 26 23 13 13 13 23 26 26

4700

111.73 110.99 110.95 111.5 111.3 110.2 109.98 108.53 109.47

3.78 4.52 4.56 4.0 4.2 5.3 6.53 6.98 6.04

26 26 23 13 13 13 23 26 26

3490

110.30 109.52 109.61 110.1 110.0 108.9 107.89 107.70 108.36

5.21 5.99 5.90 5.4 5.5 6.6 7.62 7.81 7.15

26 26 23 13 13 13 23 26 26

3480

108.94 108.19 108.26 109.0 108.9 107.9 106.92 106.65 107.30

6.57 7.32 7.25 6.5 6.6 7.6 8.59 8.86 8.21

26 26 23 13 13 13 23 26 26

115.51
↑

115.51
↑

5+71.2 Wly curb line 26th st

Section added 11/24/53 SCA

X-sect. Island Ave.

142.94

0-20 = 10' East of d 26th

see Book 1771 For Wly curb line of d of 26th

5+61.7 ± Wly. line 26th st

5+50

T.P. 1283

148.95

100

136.12

5+25

5+00

4+75

137.12

143.88
36
Topcb
BC

143.37
36
Topcb
BC

143.02
17.33
E

142.76
17.33

142.47
36
Topcb
BC

142.97
36
Topcb
BC

Lt.

E

Rt.

145.85

145.61

145.55

145.35

145.19

3.10
26

3.34
13

3.40

3.60
13

3.76
26

143.69

143.00

142.99
143.27

143.25

143.26

142.82
143.00

142.35

142.26

142.87

5.26
26

5.95
26

5.96
23

5.70
13

5.69

6.13
13

6.60
17.33

6.69
23

6.08
26

141.42

140.70

140.71

141.9

142.0

141.4

139.80

139.70

140.36

7.53
26

8.25
26

8.24
23

7.1
13

7.0

7.6
13

9.15
23

9.25
26

8.57
26

137.52

136.42

136.78

135.68

136.8

136.9

136.0

134.49

134.47

135.13

0.70
26

1.44
26

1.37
23

0.3
13

0.2

1.1
13

2.63
23

2.65
26

1.99
26

131.30

130.52

130.55

131.0

130.9

130.3

129.32

129.14

129.80

5.82
26

6.60
26

6.57
23

6.1
13

6.2

6.8
13

7.80
23

7.98
26

7.32
26

126.24

125.52

125.56

125.32

124.9

124.4

124.03

123.79

124.46

10.88
26

11.60
26

11.56
23

11.8
13

12.2

12.7
13

13.09
23

13.33
26

12.66
26

137.12

X-sect. Island Ave.

1+25

T.P. 1331 174.51 037 161.20

0+95

0+65

0+35

TP 1267 161.57 005 148.90

Set BM S.W. 7th Lt 26th st. 596 142.99

0+00 = Ely. Line 26th

0-10 = Ely. curb line 26th

148.95

⌘

162.50 Lt. 162.0 162.4 162.4 162.3 162.1 162.96
 12.01 12.5 12.1 12.1 12.2 12.4 11.55
 26 26 13 13 13 26 26

158.81 158.2 158.5 174.57 158.4 158.5 154.2 158.88
 2.76 3.4 3.1 3.2 3.1 3.4 2.69
 26 26 13 13 13 26 26

155.14 154.3 154.3 154.5 154.5 154.1 154.89
 6.43 7.3 7.3 7.1 7.1 7.5 6.68
 26 26 13 13 13 26 26

151.49 150.37 150.2 150.4 150.3 149.9 150.71
 10.08 11.2 11.4 11.2 11.3 11.7 10.80
 26 26 13 13 13 26 26

147.20 146.45 146.48 146.57 146.27 145.96 145.48 146.09
 1.75 2.50 2.47 2.48 2.99 3.47 2.86
 26 26 13 13 13 26 26

146.03 145.75 145.60 145.38 145.22
 2.92 3.20 3.30 3.57 3.73
 26 13 13 26

148.95

⌘

x-sect. Island Ave.

Lt. \$ Rt

2+35

169.71	169.2	169.5	169.8	169.9	169.9	170.53
4.80	5.3	5.0	4.7	4.6	4.6	3.98
26	26	13		13	26	26

2+15

169.70	169.2	169.5	169.9	169.9	169.9	170.56
4.81	5.3	5.0	4.6	4.6	4.6	3.95
26	26	13		13	26	26

1+95

169.17	168.71	169.0	169.3	169.3	169.3	169.34
5.34	5.8	5.5	5.2	5.2	5.2	5.12
26	26	13		13	26	26

168.51

6.00
26

1+80 Brk. in curb line 26

1+75

168.07	167.6	167.8	167.9	168.1	168.1	169.08
6.44	5.9	6.7	6.6	6.4	6.4	5.43
26	26	13		13	26	26

166.08

165.5

166.0

166.1

166.0

166.1

167.06

1+55

8.43	9.0	8.5	8.4	8.5	8.4	7.45
26	26	13		13	26	26

174.51
π

174.51
π

X-sect. Island Ave.

Lf. ♀ Rt.

5+65

144.13 143.3 144.1 144.7 145.1 144.8 145.00
 7.79 8.6 7.8 7.2 6.8 7.1 6.02
 26 26 13 13 26 26

5+35

146.73 146.1 146.8 147.4 147.8 147.6 148.44
 5.19 5.8 5.7 4.5 4.1 4.3 3.48
 26 26 13 13 26 26

5+65

149.43 148.7 149.7 150.2 150.4 150.2 150.98
 2.49 3.2 2.2 1.7 1.5 1.7 0.94
 26 26 13 13 26 26

T.P.

0.84

151.92

1247

151.08

4+75

152.05 151.3 152.3 152.9 153.1 152.7 153.51
 11.50 12.3 11.3 10.7 10.5 10.9 10.04
 26 26 13 13 26 26

4+45

154.72 153.9 154.9 155.5 155.9 155.9 156.06
 8.83 9.7 8.7 8.1 7.9 8.1 7.49
 26 26 13 13 26 26

4+15

157.32 156.6 157.3 157.9 158.2 157.9 158.52
 6.23 7.0 6.2 5.7 5.4 5.7 5.03
 26 26 13 13 26 26

163.55
 π

163.55
 π

X-sect. Island Ave

1+61 = Power Pole 27.8 Rt. #2725
 1+53.3 = & Man Hole
 Guy Pole 27.1 Lt.
 1+50 = Begin chain wire fence on 4" con. wall 36.2 Rt.

1+45 = & 1 car garage 48.7 Rt. dirt floor 10' wide
 1+39 = End cobble stone wall 36' Rt.

1+35

T.P. 0.29 127.49 13.05 127.20
 1+00 = Start 4"x18" Cobble stone Rubble wall 36' Rt.

0+75

0+64 = Power Pole 27.4 Rt. #2711

0+50

0+36

140.25

	Lt.				E		Rt.				
	111.1	113.8	118.7	120.5	121.2	119.8	120.81	120.6	122.6	122.9	123.22
	16.4	13.7	8.8	7.0	6.3	7.7	6.68	6.9	4.9	4.5	4.27
	80	54	40	36	28	22	M.M. Rim	15	29	36.2	TOP wall
	110.0	111.0	119.6	122.8	122.9	122.0	122.9	122.9	124.7	125.2	126.4
	17.5	16.5	7.9	4.7	4.6	5.5	4.6	4.6	2.8	2.3	1.1
	70	50	40	37	28	23	17	27	36	37	40
	110.3	110.9	126.7	127.6	127.4	126.0	127.5	127.7	127.7	129.1	129.5
	30.9	29.4	13.6	12.7	12.9	14.3	12.8	12.6	11.6	11.2	10.8
	70	15	40	26	27	25	24	24	26	36	40
	114.7	114.8	130.7	131.2	129.6	130.7	130.8	132.6	133.0	132.7	
	25.6	25.5	9.6	9.1	10.7	9.6	9.5	7.7	7.3	7.6	
	75	27	40	29	23		24	27	37	40	
	118.3	119.0	134.7	134.0	132.7	133.9	134.3	135.4	136.0		
	22.0	21.3	6.6	6.3	7.6	6.4	6.0	4.9	4.3		
	70	65	40	29	24		24	26	40		
	122.4	135.7	135.9	134.3	135.7	135.9	136.9	137.7			
	19.0	4.6	4.4	6.0	4.6	4.4	3.4	2.6			
	67	62	40	29	25		24	26	40		
						140.25					

X-sect. Island Ave.

Lf.

Φ

Rt.

2+77 = Power Pole 27.7 Rt. # 2749

2+44 = Cntr. single car Garage 45.4 Rt.

center single car Garage 59.2 Lt.
2+20 = Center single car Garage 42.4 Rt.

2+16 = End chain Wire Fence on 4" conc. wall

T.P. 0.29 114.85 12.93 114.56

2+00

1+75

1+73 = 2" conc. slab 36.1 Rt.

127.49

↑

111.2	2	110.2	109.9	109.9	109.5	109.8	109.5	110.2	111.1	111.7
363	46	49	50	54	51	54	46	38	32	
59.2	58	40	25	23		18	30	40	45.4	
Proposed Floor under Const.										
Dirt Floor										

111.1	111.2	113.0	113.1	112.2	112.8	113.81	114.13	114.1	114.1
3.8	3.7	1.9	1.8	2.7	2.1	0.98	0.72	39.2	42.4
50	40	33	24	23		12	27	40.45	0.8
Prop. Floor									
TOP wall									

111.1	112.7	113.7	114.8	114.0	114.6	114.8	116.3	116.4	116.99	116.2
164	148	138	127	135	129	12.7	11.2	11.1	10.50	11.3
60	40	36	23	22		17	27	36	36.2	40
TOP wall										

113.2	117.1	117.1	117.1	117.9	118.1	119.6	119.7	120.19	
143	98	98	104	9.6	9.4	7.9	7.8	7.30	
63	40	23	21		17	29	36	36.2	
TOP wall									

120.04	120.08
74.5	74.1
36.1	40

127.49

↑

X-sect. Island Ave.

Lt.

£

Rt.

2+935 = LIP of Gutter Line

Water does Not
Drain out on this
Side of Paving

104.80
10.05 10.19 10.05
393 46 57
Edge Paving

2+92 Cont.

105.69 105.21
916 964
77 77
Curb Gutter

2+92 Wly. Curb

106.3 105.7 105.8
8.6 9.2 9.1 10.03 10.29 9.78 10.17 9.71
40 24 393 46 46 57 57
Edge Paving Gutter Curb

2+91 = Wly. End. Curb

105.29 104.69
956 10.16
Gutter Top Curb
40 40

2+86 = Wly. End Conc. Walk

9.50
40

2+80 = Wly. Line Langley St.

107.1 106.5 106.6 106.1 106.7 107.3
7.8 8.4 8.3 8.8 8.1 7.6
40 24 23 26 40
11485
2

X-sect. Island Ave.

3465 = 12" Palm 28.3 Rt.

T.P. 266 105.66 11.85 103.00

3460 = 12" Palm 28.8 Rt.

3434 = Ely. End Walk 40 Rt.

3429 Ely. End curb 40 Rt.

3428 cont.

3428 = Ely. curbline Langley St.

3410 = & Langley St.

114.85
T

ht. E Rt.

104.7	103.5	102.8	102.6	102.3	102.1	102.9	103.0
1.0	2.2	2.9	3.1	3.4	3.6	2.8	2.7
40	28	24		12	26	28	40

10566

103.86

10.99

40
Back Edge

103.34

103.84

11.51
Gutter

11.21
Edge

104.89

104.45

103.82

104.28

9.96

10.40

11.03

10.57

27

27

57

57

105.2

104.6

103.9

103.8

103.15

103.44

103.55

104.05

9.7

10.3

11.0

11.1

11.7

11.41

11.30

10.80

40

28

24

21

39.5

46

46

Edge
Painting

105.0

104.9

104.6

104.67

104.3

114.23

104.71

105.29

9.9

10.0

10.3

10.18

10.6

10.62

10.14

9.56

40

27

24

R.M.H.

24

39.5

57

57

77

Edge
Painting

114.85
T

x-sect. Island Ave.

Lf.

€

Rt.

4+26

End Bad Walk.

101.86	101.75	101.75	101.79
3.80	3.91	3.91	3.87
30.5	30.5	35.5	35.5

4+20

This walk should be Replaced

101.98	102.05	102.00	101.92
3.68	3.61	3.66	3.74
30.5	30.5	35.5	35.5

4+15.7

101.99	101.99
3.67	3.67
30.5	35.5

4+11.7

upheaval in walk

102.01	102.16	102.18	102.10
3.65	3.50	3.48	3.56
30.5	30.5	35.5	35.5

4+00

104.6	103.3	103.3	101.9	101.8	101.3	101.98	102.12	102.26	102.7
1.1	2.4	2.4	3.8	3.9	4.4	3.68	3.54	3.40	3.4
40	35	27	25		26	26	30.5	35.5	40

3+90

Begin curb & walk on Rt.

105.66

105.66

102.18	102.53	102.68
3.48	3.13	2.98
2.6	30.5	35.5
Crk	Edge	Brk. Walk
	Walk	

X-sect. Island Ave.

5459 Begin House 41.4 Rt.

5450 Begin Curb & walk on Lt.

5400 End curb & walk on Lt.

4472.5 = Man Hole

4462 = Power Pole 27.9 Rt #2775

4457

4455 Begin 4' Loth Fence 34' Rt.
End Curb & walk on Rt.

4450 cont.

4450 Begin Curb & walk on Lt.

105.66
*

100.1	99.91	99.98	99.16	98.8	99.0	98.6	98.5	98.8	97.5	96.2				
56	575	568	390	69	67	71	72	69	69	82	95			
40	38	33	26	26		15	25	47	36	40	50			

100.8	100.87	100.73	100.60	99.7	99.8	99.3	99.4	100.1	100.0	97.2	99.4			
4.9	4.79	4.93	5.06	6.0	5.9	6.4	6.3	5.6	5.7	8.5	11.3			
40	38	33	26	26		14	26	28	36	40	50			

101.29

537
Rim M.H.

100.6	100.1	100.7	101.0	98.6	98.5									
5.1	5.5	5.0	4.7	7.1	10.2									
	26	27	36	40	50									

101.07	101.01	101.18	101.5	99.1										
4.59	4.65	4.48	5.1	6.6										
26	30.5	35.5	40	50										

99.1
6.0
50

102.2	101.77	101.72	101.54	100.7	100.8	100.2	100.61	101.20	101.33	100.6				
35	38.9	39.4	41.2	50	4.9	5.5	5.05	4.46	4.33	5.2				
40	38	33.1	26	26		26	26	30.5	35.5	40				

105.66
*
BK.W.K. Edgework

105.66
*
DRIVEWAY

X-sect, Island Ave.

6+35

99.72	99.53	99.29	98.84	98.30	97.99	97.13
410	429	453	498	552	583	609
50	40	26		26	40	50

103.82

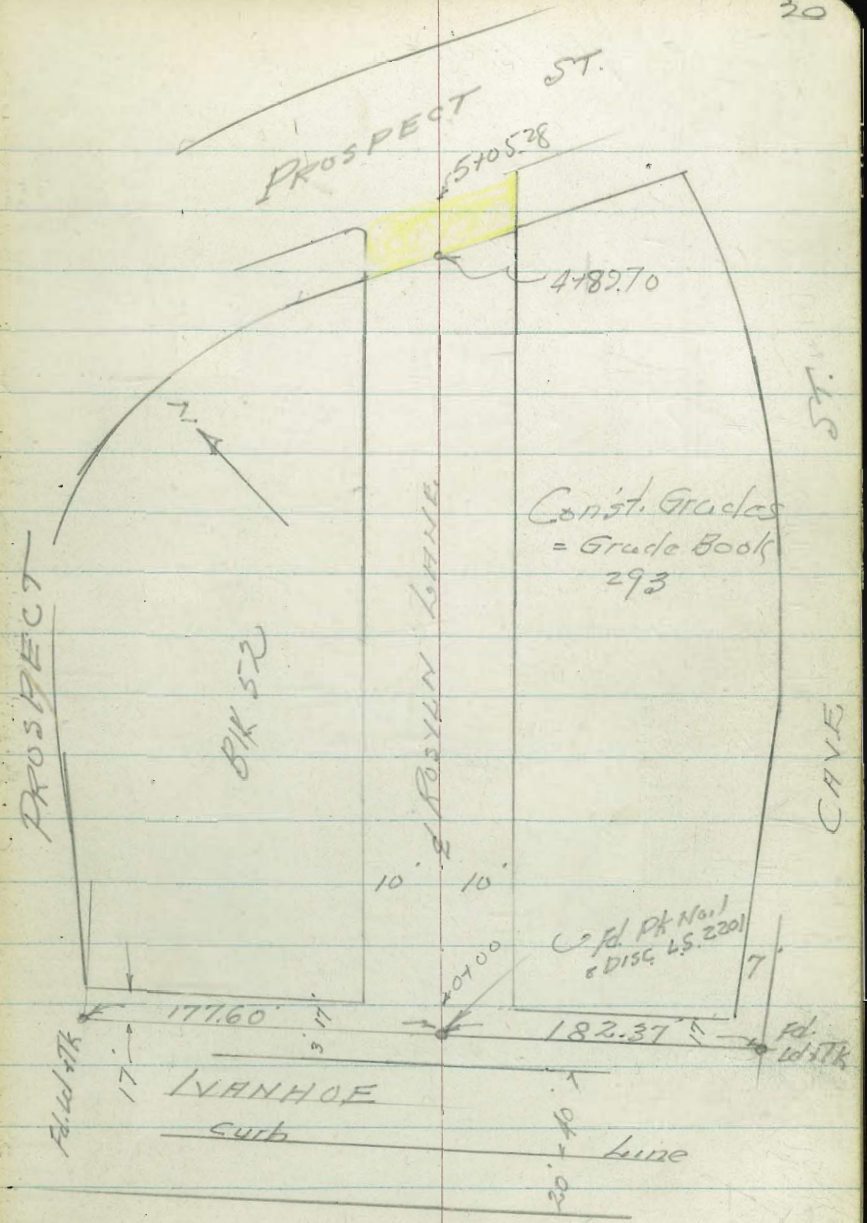
CROSS SECTION Alley Bk 52
= ROSLYN LANE
IN LA JOLLA PARK

Walker
Pope
Grayton
March 3
3-31-58

NO 31850

INDEXED
JCR
NOV 6 1958

Note: Property Owner at
1238-Roslyn Lane
says; "Water Main in Bad
condition & should be renewed
before Paving."



Royle Lane

Lt Lt Rt 21

0+28.5 = $\frac{1}{2}$ 2.5' Conc Walk 9.8 28' Rt

1091 1089 1087 1086 1091 10951
15 10 6 2.5 10
07 Walk

0+107 = $\frac{1}{2}$ Pole #JP 1205 2' Rt

0+00 = $\frac{1}{2}$ ^E Line KRNHDE

1080 1084 1071 10700 1074 1084 1086
15 12 10 9 10 15

0-143 = Back Edge Walk
shattered,
Walk Across Alley, should be Repaired.

10676 10665 10688
10.5 Walk Walk

0-20 = ^{NELY} cb

10517 10557 10660 10601 10606 10617 10683 10648 10708
50 50 10 10.7 10 10 40 40
cb. Gut. cb. Gut. Gut. cb. Gut. cb.

0-40 = $\frac{1}{2}$ KRNHDE

10609 10645 10655 10670 10702
50 10 10 50

Direct File - Rod used

TR on Rock

109.92
113.11

CAVE
S.M. N.V. B.P. Prospect & KRNHDE

Roxley Lane

1+31 = 2 4' Conc. Walk

1+25

107.58
10.3
Toe Apron

109.29
10.5
Walk

1+09 = 2 4x10 Car Garage

107.8
13.3
Gravel Floor

1+05 = 2 4 Car Garage

109.68 109.51
19.9 10.2
Conc. Floor Toe Apron

1+00 = 2 Pole 10' Lt. #P-1216

109.4 109.1 109.7 109.8
10 10 13

0+98 = 2 Pole 10' Rd. #P-1217

0+78 = 2 30' Pepper Tree 10' Lt

0+67 = 2 3 Bricks Walk

109.7
10

0+57.5 = 2 7' Rough Conc. Walk

110.17
9.9

0+50

109.4 109.2 108.9 109.5 110.1
15 10 10 10.6

Roslyn Lane

Lt.

Rt.

St.

23

2+48 = 1/2 15' Conc. Walk

110.45

10

2+45 = End Cypress Hedge 10' Rt

2+25 = 1/2 5.5' Conc. Walk

109.7 109.95 109.8 109.7

110.28

21

10.8

10

2.75

Walk

2+01 = Beg. Cypress Hedge 10' Rt

2+00 = Pole # P-1229 9' Rt

109.5 109.8 109.7

110.2

110.05 110.14

1+99 = Pole # P1228 10' Lt

20

10

10

15 22

Walk Walk

1+94 = 1/2 Garage Con Floor

109.74

20.3

1+85 = 1/2 Garage Conc. Floor

109.74

20.3

1+77 = 1/2 2' Conc. Walk

109.94

10

1+75 = 1/2 3.5' Conc. Walk

109.4 109.51

40

20

Walk

Walk

1+50

109.4 109.5 109.4

109.6

110.0

110.3

15

10

5

10

15

Lower

1+45 = End 4 Car Garage

109.66 109.60

19.9

10.4

Conc. Floor. Top Apron

Roslyn Lane

2+02 = 1/2 Conc. Ribbon

110.68 111.00
9.65 19.65
Conc. Conc.

2+00

110.24 110.54 110.3 110.0 110.6 110.8
35 107 10 10 15
Patio Patio

2+97 = 1/2 ^{50' with} Ribbon

110.70 111.03
97 18.5
1/2 Ribbon Conc. Midway

2+83 = Bag Conc. Patio

110.94
10.7

2+83 = End 6" Conc. Wall

109.4 111.79
10.5 10.5
Footing Top Wall

~~T.P. Rim Wall~~

110.08

2+55 = Bag 6" Conc. Wall

109.4 111.80
10.5 10.5
Footing Top

2+52 = 1/2 4' Conc. Walk

110.2 110.26
50 11
Walk Walk

2+50

109.3 110.1 109.7 110.4 110.6
50 10 10 15

Roslyn Lane

3+73 = 3' Conc. Walk

3+59.5

3+55.5 = End Conc. Apron

3+54.5 = Conc. Ribbon

3+50

3+40

3+30

3+12 = Sewer M.H.

3+04 = Pole #1241 918

Lt.

Rt

Rt

25

111.12 112.33
10.1 20.7
Walks Walk

111.01 112.16
10 21.6
Ribbon Ribbon
Dr. Dr.

110.92 110.68
21.4 10.2
Conc. Toe Apron

111.01 112.24
10 21.8
Toe Ribbon

110.96 110.57 110.3 110.9 111.7
21.4 10.2 10 15
Flood. Toe Apron

110.50
10.2
T

110.96 110.46
21.7 10.4
Flood. Toe Conc. Apron

110.08

1
Rim M.H.

Roxlyn Lane

Lt.

±

Rt.

26

4+26 = 2' 3' Wide
Conc. Walk

111.63	111.03	110.7	111.3	111.65
19.6	10		2.7	10
Floor	Toe Apron			Walk

4+51 = 2' Pole #P-1257 9.6' Rt.

4+00 = Bag 6" Conc. Wall

Conc. Floors

4+00 = Bag 5' Cut Garage & Apron

TR

110.83

111.65	110.93	110.6	111.3	113.84	110.8
19.8	10.1		10.2	10.2	10.2
Floor	Toe Apron		Cut Wall	Top Wall	Footings

3+96

111.31	113.16
9.9	28.1
Toe Ribbon	Conc.

3+91 = 2' Conc. Ribbon

111.21	112.83
9.9	25.5
Toe Ribbon	Conc.

3+95 = End 11' Lt.
3+77 Bag 8' Cypress Hedge 10.9' Lt.

3+75.5 = 25' Conc. Walk

110.82	110.91
25	10.7
Walk	Walk

Roslyn Lane

INDEXED
Law
APR 2 1953

0.01
113.11
113.12

chk starting BM

5+32.9 = Dig Sec 2 Prospect

11059 11065 11123 11140 11187
40 11 11 40

Dig Sec

5+05.28 = sly curb Prospect

11055 10981 11026 11021 11026 11042 11064 11138 11135 11203
40 40 137 137 11 10.7 107 40 40
cb Gut cb Gut Gut Gut cb Gut cb
bc
Ret.

5+00 = Bk in Pav

11107 11093 11070 11139 11183
109 109 109 109
cb Gut Gut cb

Dig Sec

4+89.7 = Sec on sly line Prospect

11123 11125 11119 11160 11160 11370 1113
curb 11.0 10.9 10.9 10.9 10.9
(Belum) Gut Gut cb wall Footing
Pav.

TR 11119

4+53.5 = End Conc Apron

11118
10

4+50

11166 11118 1108 1113 11330
19.8 10 9.8 9.8
Floor Top Apron at wall Top wall

WRELTON Drive
PLACE

C.H.S.
Begg
oltman
Schelin

5-28-53
W.O. 32162

sheet 6245-L

15' LT } = edge of roll ch. gutter
15' RT }

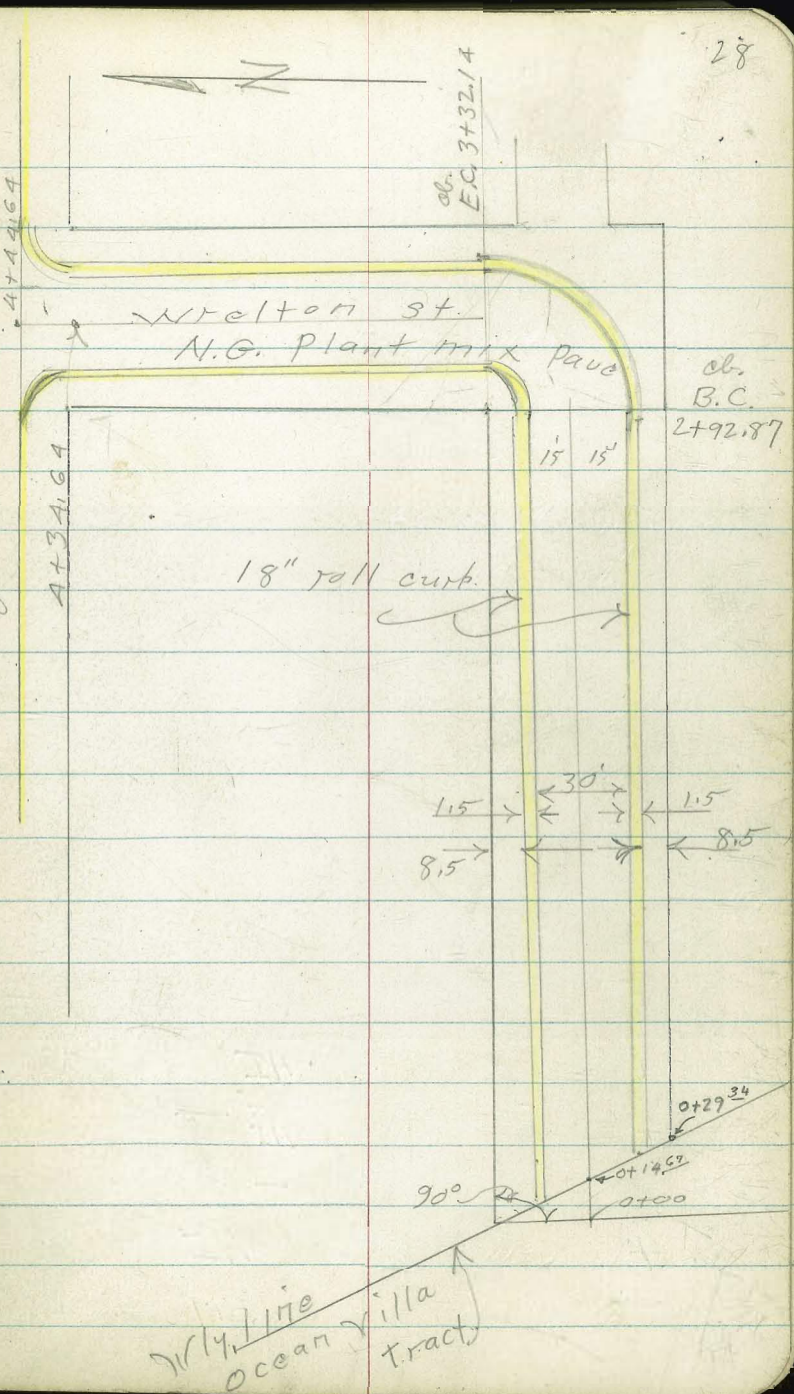
16' LT } = top (or back) of roll ch.
16' RT }

⊙ denotes ctr. water meter box

soil sample from $\frac{1}{4}$ of
Wrelton Drive 110' south of
gley line Turquoise.

INDEXED
Law
JUN 1 1953

Turquoise - A.C. Pave
4+34.64



Wrelton
Ocean Villa
tract

Winton Drive

+ HI - E/

0 + 29.34 Prop on South

0 + 28 24 ft Cypress 3"

0 + 25 beg rolled curb 15 ft Palm 22 ft

0 + 25 Lt end of hedge left

0 + 23 215 ft Pk AP 702

0 + 18 15 ft Beg Curb

0 + 19 165 ft Shrub lot hedge to Prop

0 + 17 16 ft end wall

0 + 13 21 ft Dead Man

0 + 00 Prop on North 16 ft Wall beg

+ 0.10 91.82 HI

TP + 2.22 99.77 HI -8.05 91.72 TP

TP -8.94 97.55 TP

+ 7.95 106.49 HI

BM 98.54

87.5 85.90 85.64
 4.3 5.92 6.18
 2.5 16.5 14.9
 85.69 85.53 85.72
 6.13 6.29
 16.5 15.9
 Top 5.3
 16

86.1 85.63 85.95 86.3
 5.7 6.19 5.87 5.5
 13 16.1 2.1
 9 8.5

85.5 86.1 85.2 85.4 85.1 85.4
 6.3 5.7 6.6 6.4 6.7 6.4
 8.5 16 15 15 2.5

Top Wall

91.82 HI

N.W.B.P. Sapphire & Mission Blvd.

Wreilton Drive

4

30

0+77 17 1/2 Lat Shrub

L

R

0.66 22R WM

0+60 2 Rib Drive 8' wide 3.47
4.27
Jar

87.98
3.84 4.23 4.81
25 195 16 ✓
beg rib

0+54 7 1/2 Eugenia

0+51 235 Lt Cypress 3'

0+50 0A

88.1 86.66 86.40 86.7 86.31 86.64 87.0
3.7 5.16 5.42 5.1 5.57 5.18 4.8
25 165 15 15 17.5 25

0+46 215 Palm 10'

0+40 25.5 Lt 10' Pine

0+33 16.5 3' 5 Wall

87.41 86.15
4.41 5.67
25 16.5

0+30 17 Lt Eugenia bush

91.82

91.82

Wreilton Dr. c.

4

31

1+06- 16⁵ RT = 3⁵ Conc walk ✓

TP + 619 95.85 ^{HI.} - 216 89.66 ✓ T.P.

1+00

165 ft sidewalk 3' wide ✓

0+97 { 16.5 ft Beg Picket fence with eucalyptus hedge
also lateral hedge behind

0+94 21.5 Pok 710 Palms 5" + oleander
clumped together

0+85 16.5 R^d drive 8' wide ✓

0+78 ² Rib Drive 8' wide ✓

0+74 30 R. Oleander

0+69 22.5 ft Palm 10'

91.82

88.35 88.31

7.50 7.54

16⁵ 25

95: 85 HI

walk.

88.9	88.19	89.80	88.4	88.19	88.54	88.1
2.9	3.65	4.02	3.4	3.67	3.88	3.7
2.5	16.5	15		15	16.5	2.5
	88.86	88.10		9		
	2.96	3.72				
	2.5	16.5				

87.60 87.56 87.63

4.22 4.26 4.19
16.5 25 37
for

89.81	88.71	88.08	87.51
201	3.11	3.74	4.31
60	25	30	16.5
for		beg rib	

91.82

1+68 19' Lt. = ϕ N. + S. board fence

1+67 16⁵ Rt. = end conc. Dr. ✓

1+66- 22⁵ Rt. = (W)

1+58 16⁵ Lt. = start conc. Dr. ✓

18' Lt. = end Board fence

1+57 16⁵ Rt. = ϕ 3' conc. walk ✓

1+50 17' Rt. = 4" diam shrub.

1+45 16⁵ Rt. = end picket fence ✓

1+38 - ϕ = Sewer M.H.

1+19 18' Lt. = start board fence

1+18- 22⁵ Lt. (W)

1+10 22⁵ Lt. = 2" diam tree

90.54
5.31 90.18
25 5.67
16⁵

90.54
5.31 89.89
25 5.96
16⁵

INDEXED

JUN 1 1953

90.6
5.3 6.18 6.43 90.0 6.53 6.23 6.3
25 16⁵ 15 5.9 15 16⁵ 25

89.67 89.42 89.32 89.62 89.6
6.01 6.09
16⁵ 25
walk

89.60
6.25 81.43
Rim IE

95.85

Wroelton Dr. Co

2+00

1+87 16^E Rt. = end drive ✓

1+84- 16^E Lt. = ± 3' conc. walk ✓

1+79- 16^E Rt. = start drive (Detail "A") ✓

Detail "A" for conc. drives

91.9	91.12	90.85	91.35	90.82'	91.13	91.3
4.0	4.73	5.00	4.5	5.03	4.72	4.6
25	16 ^E	15		15	16 ^E	25

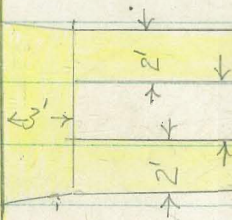
90.75	90.75
5.10	5.10
16 ^E	25

91.09	90.70
4.76	5.15
25	16 ^E

90.63 @ 2
1+83

90.52	90.65
5.33	5.20
16 ^E	25

Back of roll curb.



95.85 ✓

T.P. + G.68 ^{HI.} 99.18 3.35 92.50 T.P.

2+48 - 21' Lt. = (W)

2+43 - 21^E Rt. = Pole # 732 (10" diam)

2+37 16^E Rt. = end drive (✓)

92.23 92.17
3.62 3.68
16^E 25

2+33 16^E Lt. = end drive (✓)

92.54 92.22
3.28 3.63
25 16^E

2+29 ✓ 16^E Rt. = start drive (Detail A)

91.97 92.13
3.88 3.72
16^E 25

2+25 16^E Lt. = start drive (Detail A) 23^E Rt. = (W)

92.95 91.88
3.40 3.77
25 16^E

2+16 22^E Rt. = 14" diam palm

92.05 91.67
3.80 4.18
25 16^E

2+15 16^E Lt. = end drive (✓)

91.90 91.40 91.32 91.30
3.95 4.45 4.53 4.55
25 16^E 16^E 25

16^E Rt. = 3' conc. walk (✓)

2+07 16^E Lt. = start drive (Detail A)

95.85

Wreton Drive

2+87 16^E Rt. end drive ✓

2+82 16^E Lt. = ~~ϕ~~ 3' walk

2+79 16^E Rt. = start drive (Detail "A") ✓

2+72 20^E Lt. = (W)

2+70- 23^E Lt. = 5' high bush

2+56 16^E Rt. = ~~ϕ~~ 3' conc. walk ✓

2+50

2+49 22^E Rt. = (W) ✓
16^E Lt. = ~~ϕ~~ 3' conc. walk

93.74 93.93
57.44 57.25
16^E 25

94.46 94.38 93.58
4.72 4.80 5.60
25 21^E 16^E
on walk

93.45 93.72
57.73 57.46
16^E 25

92.81 93.23
6.37 5.95
16^E 25

93.3 92.70 93.03 92.8 92.36 92.62 93.0
57.9 6.48 6.15 6.4 6.82 6.56 6.2
25 16^E 15 15 16^E 25
CURB C

93.28 92.68
57.90 6.50
25 16^E

99.18

Wretton Drive

4+08 - 16^E = end drive

4+00 16^E Lt. = start solid conc. drive

T.P. +5.92 ^{HL} 102.16 - 2.94 96.24 TP

3+89 25^I Lt. = N.E. Cor. House

3+60 17^g Lt. = 10" pole # 51.80

3+50 25^E Lt. = El. line House

25^E Lt. = S.E. Cor. house

3+45 - 21' Lt. = start shrub bed

(20' Rt. = deadman)

3+32¹⁴ = } cb. E.C. = Nly. 1170 Wretton to west. ✓

3+18^E 50' Rt. = 12" pole # J.P. 740 ✓

3+12^E = Mid. curve

3+02 - 19' Rt. = end fence

2+95 - 17' Rt. = start board fence

2+92⁸⁷ = Wretton to North. ✓
cb. B.C. = wly line

	96.36	96.30	96.39				
07	51.80	5.86	5.79				
	25	16 ^E	16 ^E				
	drive		ce				
	96.49	96.06	96.12	95.84	96.4	96.34	96.66
	51.69	6.10	6.04	6.32	5.8	5.82	5.50
	25	16 ^E	16 ^E	15		15	16 ^E
	drive		ce				25
				102.16	16		
				Grd.			
	95.1	94.64	94.40	95.2	94.93	95.18	95.8
	4.1	4.49	4.78	4.0	4.25	4.00	3.4
	25	16 ^E	15		15	16 ^E	25
	94.8	94.23	93.92	94.8	94.42	94.70	95.5
	4.4	4.95	5.26	4.4	4.76	4.48	3.7
	25	16 ^E	15		15	16 ^E	25
	94.8	94.12	93.83	94.4	93.93	94.26	94.3
	4.4	5.06	5.35	4.8	5.25	4.92	4.9
	25	16 ^E	15		15	16 ^E	25
	94.8	93.89	93.68	93.9	93.61	93.92	94.0
	4.4	5.29	5.50	5.3	5.57	5.26	5.2
	25	16 ^E	15		15	16 ^E	25

99.18

Wreilton Drive

\$

REDUCED 6-3-53

J. D. ELLIS

Orig. B.M. - 8.02 98.55 (98.54)
 T.P. + 8.55 106.57 - 4.14 98.02 TP

Turquoise Pauc.

A+78 Along ctr. stripe on

95.03 96.54 97.23 98.01 99.01
 7.13 5.62 4.93 4.15 3.15
 75 25 25 75

= K.C. cl.

cl. to std. cl.

25' RT }
 25' LT } = Transition of roll

95.06 94.41 96.56 97.92 98.44 98.93
 7.10 7.75 5.60 4.24 3.72 3.23
 75 75 26 26 75 75
 cl G cl cl cl

= start Good A.C. Pauc

A+44 SA = sly cl Turquoise

18^E RT = Ctr. Fire Hydt.

A+34 - 17^J Lt. = 12" pole # 5198

A+34.64 15' Lt }
 15' RT } cl. B.C. 10' Rad

6 95.92 96.11 96.27 96.80 97.16 97.36 97.39
 6.24 6.05 5.89 5.36 5.00 4.80 4.77
 26 25 15 15 25 26 26
 G G C G

96.4 96.60 96.31 96.9 97.28 97.61 98.0
 5.8 5.56 5.85 5.3 4.88 4.55 4.2
 25 165 15 15 165 25

96.5 96.53 96.24 96.86 96.91 97.26 97.6
 5.7 5.63 5.92 5.3 5.25 4.90 4.6
 25 165 15 15 165 25

102.16

X Sect. Alley BIK. 1 Ocean Villa Tract

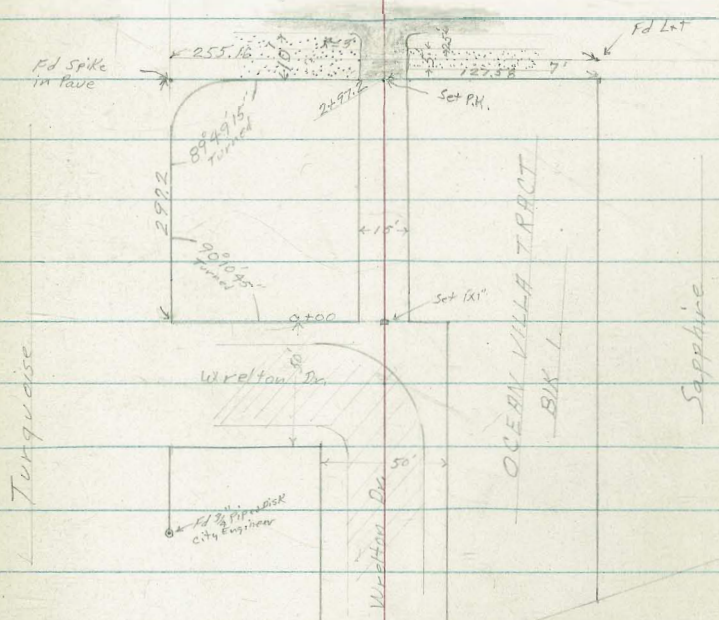
Shepard
Bruner
O'Neil
W.D. 25020
1-8-54

INDEXED

JAN 11 1954

FB 2191 p. 13
FB 2265 p. 23
Opening Map 16-82

Mission Blvd.



K. Sect. Alley BIK 1

Ocean Villa

2400 06 H. & MH.

1400

0450

0400

0-74 0.1 H. & Power Pole # JP740

0-165

0-25 & Wrexton Dr. to North

B.M.

8.09 10663

98.54

N.W. BR.
Sapphire +
Mission Blvd.

97.9

8.7
15

96.1

10.5
25

95.2

11.3
25

95.3

11.3
50

98.4

8.2
15

96.5

10.1
15

94.8

11.7
25

94.6

12.0
25

98.81

7.72
1.11

97.1

9.5

95.0

11.6

94.2

12.4

106.63

98.6

8.0

97.1

9.5

95.2

11.4

94.24

12.39

93.97

12.66

98.4

8.2
15

97.1

9.5
15

95.2

11.4
25

94.21

12.40

98.4

8.2
15

96.9

9.7
25

95.7

10.9
25

94.8

11.8

3+09.2 7.55 Lt. 7.5 Rt. Cb. RC
7.55 Lt. 7.5 Rt. Begin Cbs.
2+97.2 7.7 End Asphalt

2475

2468.5 7.5 Rt. @ 3.5 Conc. Walk

2450

2400 29.8 Lt. Begin Asphalt

1499 6.7 Rt. End 4' Lath fence

1497 6.7 Rt. @ Power Pole # P4789

1450

1445 7.8 Rt. Begin 4' Lath fence

512
255
Cb
101.36
329
7.55
Cb
5.93
225
Rt
100.70
6.10
100.34
6.29
7.5
Cb
100.43
100.55
5.75
7.5
Cb
100.88
101.01

101.1
5.5
7.5
101.0
5.6
7.5
101.6
5.0
7.5

9.64
7.5
101.99
9.59
12
102.04

499
18.5
Asphalt
101.64
5.4
7.5
101.2
5.4
7.5
101.8
4.8
7.5
4.8
7.5
101.8

101.78
4.65
4.5
Asphalt
101.29
5.34
29.8
Asphalt
100.6
6.0
15
100.3
6.3
7.5
100.1
6.5
100.1
6.5
7.0
100.7
5.9
7.5
100.8
5.8
7.5

98.3
8.3
15
98.5
8.1
7.5
99.1
7.5
99.1
7.5
99.0
7.6
15

106.63

CROSS SECTIONS OF ALLEY BLK 1
OF WALKERS ADDITION W.O. 32493

0+14 5/4 line Stucco bldg @ 13° Rt.

0+00¹⁰ = End Conc Part 5/4 line Market St.

0-18 E.C.

0-20 5/4 curb line Market

0-40 @ Market St. A.C. Part Over Conc.

+0.22 140.14

B.M.

139.92

43

11-22-54

Stampel
Huffman
Nordahl
Elmore

REDUCED
BY Olson 12/9/54

134.6	134.0	133.6	132.1	132.1	128.1	128.3	133.86
5.5	6.1	7.5	8.0	8.0	12.0	11.8	6.28
142	75	0	75	9	10	132	132
@ bldg						@ bldg	floor
135.4	133.87	133.36	133.51	132.29	132.34	130.54	
4.7	6.27	6.78	7.63	7.85	7.80	9.6	
2.5	7.5	7.5	0	7.5	7.5	2.5	
cb	G			G	cb		

133.10	133.12	132.45	131.84	132.24
6.44	7.02	7.69	8.30	7.90
7.5	7.5	0	7.5	7.5
cb	G		G	cb
E.C.	E.C.		E.C.	E.C.

135.36	134.84	133.91	133.29	132.17	132.51	131.75	131.59	132.13	129.98	130.4
4.78	5.30	6.23	6.75	6.97	7.63	8.39	8.55	8.03	10.16	9.65
2.5	2.5	9.5	9.5	7.5	0	7.5	9.5	9.5	2.5	2.5
cb	G	cb	G			G	cb	G	G	cb
		B.C.	B.C.			B.C.	B.C.			

137.83	135.45	133.13	130.64	127.93
2.31	4.69	7.01	9.50	12.21
50	25	0	25	50

W/4 Rim
M. H.

140.14

B.P. S. cb @ Market & Boundary Sts

Lt. E. et.
11-22-54

(44)

X-SEC'S ALLEY 1

1+41-16⁷ Rt. E 24" R.C.P. Storm Drain
FLOWS S.E.

120.96 123.19
9.56 7.33
162 162
F.L. Inlet Elev Top Pipe
24" R.C.P.

1+00-42³ Rt. E Top 24" R.C.P. Storm Drain

129.3 128.8 127.6 125.2 124.6 123.6 121.7 121.85
1.2 1.7 2.9 5.3 5.9 6.9 8.8 8.67
25 122 75 3 0 75 25 422
Top 24"
R.C.P.

0+87 - 5⁵ Lt. P.P. No PA-37199

130.2 128.5 127.7 127.1 123.5
0.3 2.0 2.8 3.4 7.0
25 75 0 75 25

0+50

0+39 - 8⁰ Lt. E 6" Peppert Tree

130.52

+340 130.52

T.P. -13.02 127.12

134.6 133.7 132.3 131.8 130.1 129.5 129.4
55 64 7.8 8.3 100 126 127
15 75 0 5 75 10 126
@ bldg

0+30

140.14

140.14

X-SEC'S ALLEY 1

2+50

2+41 - 7° Rt. End Conc. Footing

+ 10.85 137.43

TP. Set Spike P.P. No 371992 - 3.94 126.58

2+39 - 7° Lt. P.P. No 371992

2+00

1+92 - 7° Rt. Begin 6' R.W. fence Conc. Ftg. (8" on top) With Wedge shape

1+50

130.52

Lt. E Rt

45

127.5	126.0	125.5	125.8	125.7	125.8	127.1
9.9	11.4	11.9	11.6	11.7	11.6	10.3
25	15	7.5	0	7.5	8.0	25

126.40	125.69
11.03	11.74
7.2	7.6
bot. Ftg	Top

137.43

↗ ↖

128.9	127.4	125.3	124.5	124.3	124.0	124.95	124.9	126.2
1.6	3.1	5.2	6.0	6.2	6.5	5.57	5.6	4.3
25	15	7.5	4	0	7.0	7.5	8.0	25
						Top	Ground	
						Conc.		
						Ftg		

123.60	124.92
6.92	5.60
7.0	7.6

bot. Ftg Top Ftg

(Ground Level)

128.6	127.9	125.3	124.3	123.2	122.7
11.9	2.6	5.2	6.2	7.3	7.8
25	15	7.5	0	7.5	25

130.52

X-SEC'S ALLEY - 1

4+50

131.2 130.6 130.8 131.1 133.7 134.4
 6.2 6.8 6.6 6.3 3.7 3.0
 25 75 0 75 17 25

⁴⁰
~~4+90~~ - 7° Rt. End 5⁵ Board fence

4+00

129.7 128.7 129.0 129.8 130.2 131.2
 7.7 8.7 8.4 7.6 7.2 6.2
 30 20 75 0 75 25

End 5' Wire fence
 3+91 - 8° Rt. Begin 5⁵ Board fence

3+89 7⁵ Lt. & PPN# 372295

3+80 - 7² Rt. Begin 5' Hogwire fence

3+50

128.4 127.9 127.7 128.0 129.1 130.4
 9.0 9.5 9.7 9.4 8.3 7.0
 25 20 75 0 75 25

3+00

127.6 126.4 126.0 127.9 127.9 129.1
 9.8 11.0 10.4 9.5 9.5 8.3
 25 12 75 0 75 25

2+90 - 8⁵ Rt. End 6' R.W. fence

137.43

137.43

X-SEC'S ALLEY - 1

- 7^o Rt. Begin 3' Cyclone Wire fence
 5+90 - 7^o Rt. End 4' Wire fence
 - 7^o Lt. Begin 4' Eugenia Hedge
 5+77 - 6^o Lt. Begin 2' Chicken Wire fence
 5+50

+ 9.74 145.98
 Set P.K.P.P.
 T.P. No 372296 - 1.19 136.24
 5+41 - 6^o Rt. & 6" Lateral Conc. wall

5+41 - 7^o Rt. End 4"
 5+38 - 8^o Lt. & P.P. No 372296
 5+00

4+90 - 7^o Rt. Begin 4" Conc & Rock Wall & Wire fence
 on top.

137.43

NOTE:

⌊ Rods Indicated (-0.0) are Plus Rods
 and are to be added to H.I.

136.9 136.8 136.5 136.4 138.4 138.7
 9.1 9.2 9.5 9.6 7.6 7.3
 25 75 0 3 75 25

⌊ 145.98

137.56 135.99 138.13
 (-0.7) 1.44 (-0.70)
 63 63 63
 Ground ftg TopWall

136.1 135.94 137.05
 1.3 1.44 0.38
 70 70 70
 Ground ftg TopWall

134.6 133.8 133.5 135.1 133.4 135.1 136.86 137.2
 2.8 3.6 3.9 4.3 4.0 2.3 0.57 0.2
 30 20 75 0 4 74 75 25
 Ground TopWall
 (flush)

134.7 133.8 136.96
 2.7 3.60 0.47
 74 74 74
 Ground ftg TopWall

⌊ 137.43

X-SECS ALLEY - 1

B.M.

-3.07 142.91 ~ 142.95 NWBP "F" & Quail St.

142.95

6+65⁷³ E "F" St.

142.0	141.4	141	140.6	141.1	141.6	141.7
3.0	4.6	5.0	5.2	4.9	4.4	4.3
75	50	25	0	25	50	75

6+49 - 82 HAPP N^o P 372297

140.5
5.5
0
Ground

6+40⁷³

141.9	141.2	139.76	140.2	140.7
4.1	4.8	6.22	5.8	5.3
25	75	0 on kib	75	25

{ 7^o Lt End Hedge
 { 6^o Lt. - End 2' Chicken wire fence
 6+40⁷³ } 7^o Rt End 3' Cyclone fence

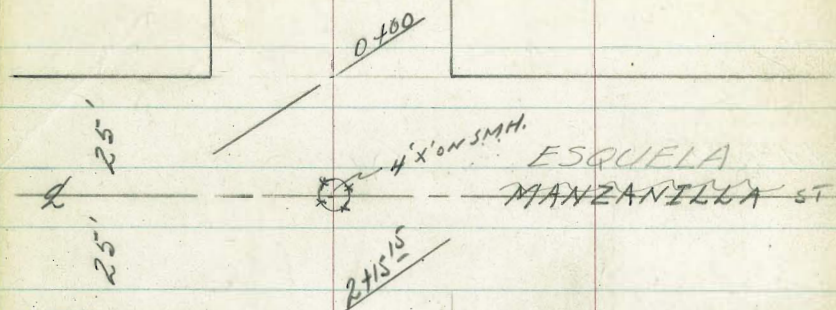
6+00

141.3	140.4	138.3	139.5	139.7
4.7	5.6	7.7	6.5	6.3
15 ^o	75	0	75	25

@ Bldg

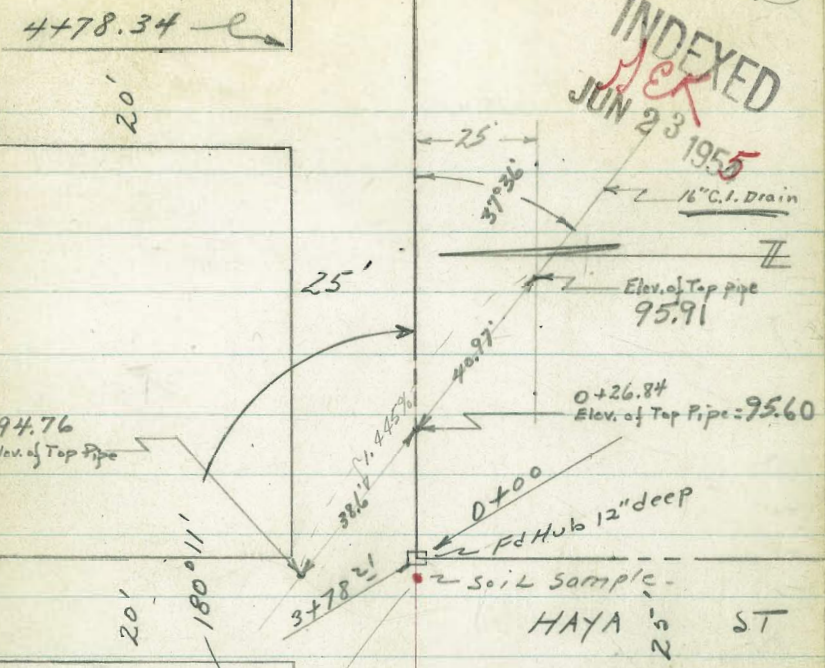
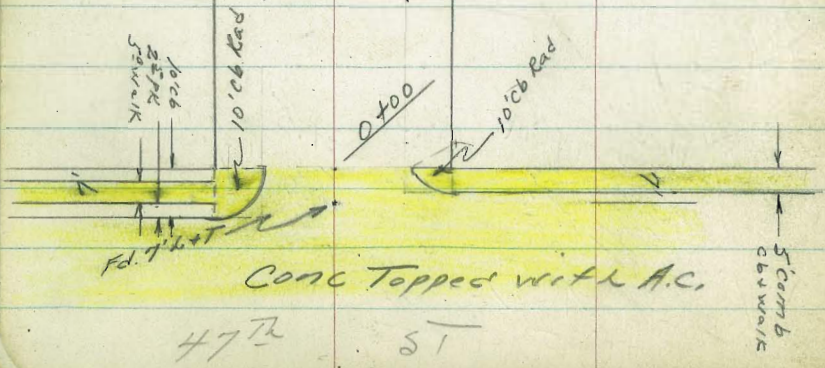
145.98

145.98



25' 25'
 X-sec Nogal St
 47th to 49th
 WO # 32439
 6/21/55

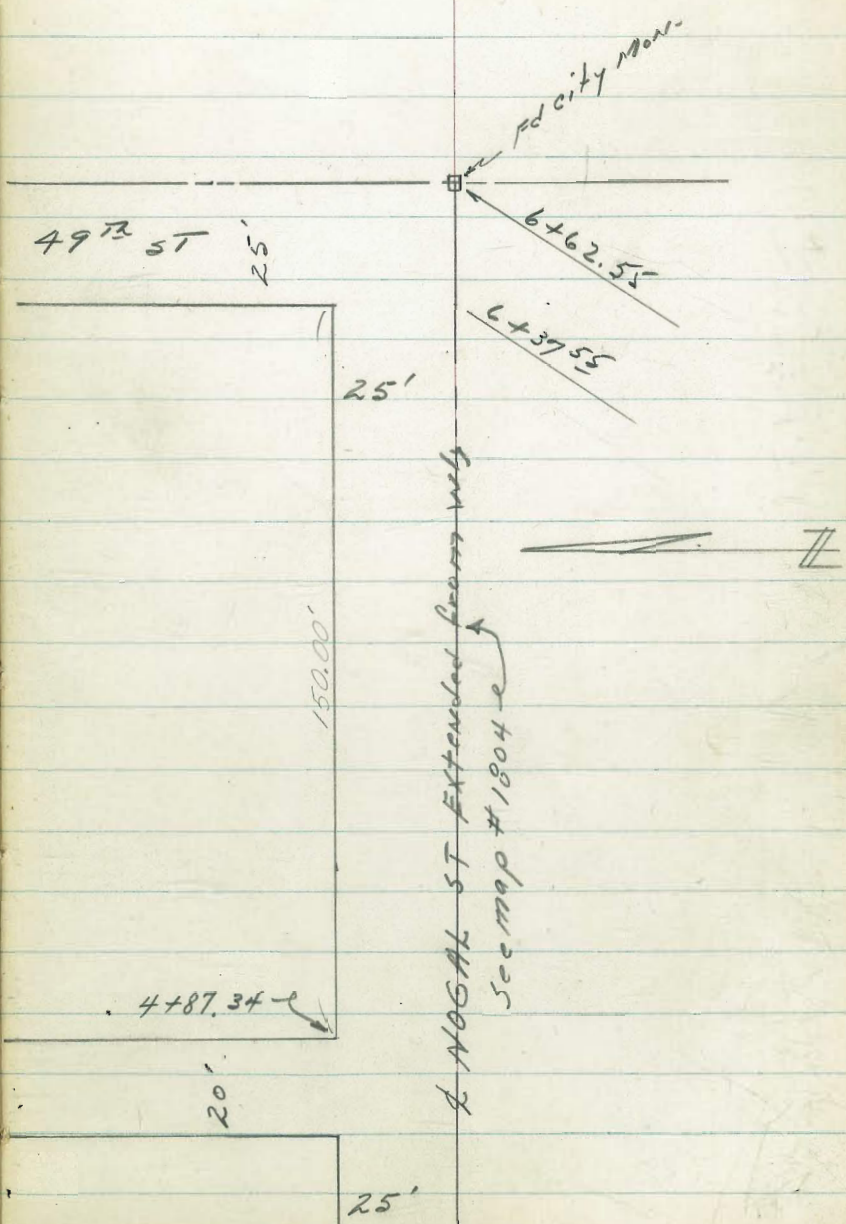
Ret Map # 1804
 TP Sheet # 3338
 C. Allen, D. Sisson,
 C. Powell, R. Parks



INDEXED
 JUN 23 1955

Soil Sample
 Taken Near
 Ely Line Haya
 St & Nogal St

X-sec Nogal Cont



14/4
35.3

25

Cont from page 49

Levels X-sec Noga 15 T.
 47th to 49th
 See sketches Page 49+50

Mid point of NELY Return - 10' Rad. $L = 16^\circ$

0-05 = Fly curb line 47th ST to Sly ✓

Reduced by
 Benson
 7/19/55

0-10 = Fly curb line 47th to Nly ✓

B.M. 5.55 80.92 75.37

LT = Nly ♀ RT = Sly 51

75.46 75.15
~~546~~ 577
 T.C. 90T

17.39 17.82 80.32 80.83
 353 310 060 009
 50 = 50° 90 = 90°
 90T T.C. 90T T.C.
 75.50 ✓ 75.48 75.48 ✓ 75.79
 542 544 544 513
 15 25 25
 90T T.C.
 BC BC

75.22 74.82 75.35 74.91
 570 610 557 601
 100 100 50 50
 T.C. 90T T.C. 90T

75.50 75.14 ✓ 75.31 75.50 ✓ 75.64 75.84 ✓
 542 578 561 542 528 508
 25 = 25° 15 15 25
 T.C. 90T
 BC BC

80.92 X

L+T ♀ Noga 15 T + Fly 7' Line 47th

X-sec Nogal cont

0+47- 19⁴ LT= 3' conc walk ✓

0+36- 25³ LT= begin 2⁵ picket fence ✓ *omitted*

0+25

0+17- 15' RT= clump of ^{Wild Rose Bushes} floral hedges ✓

0+15- 24⁰ LT= Fire Hyd. ✓

0+13- 39⁰ RT= entrance way ^{House} California ✓ *omitted*

0+10

0+00 = ELY 47^{TR} ST= 16' LT= edge end curb Ret ✓

Mid point S Ely Return - 10' Rad. L = 11⁰

LT = Nly
 74.82
 6¹⁰ 74.80 74.97
 3⁵ 2⁵ 19⁴
 Walk Walk Walk

RT = Sly, 52

74.87 ✓ 75.32 ✓ 75.22 ✓ 74.72 ✓ 74.32 ✓ 74.22 ✓
 6⁰ 5⁶ 5⁷ 6² 6⁶ 6⁷
 2⁵ 1⁵ 1⁵ 2⁵ 3⁵

71.92 73.42 73.22 75.52 75.52 75.62 74.42 76.17
 9⁰ 7⁵ 7² 5⁴ 5⁴ 5³ 6⁵ 4^{7⁵}
 6⁵ 5⁰ 4⁰ 2⁵ 1⁵ 1⁵ 39⁰ 39⁰
 9⁰ at House Floor ✓

75.52 75.92 ✓ 75.62 ✓ 75.29 ✓ 75.36 ✓ 75.57 ✓ 75.49 ✓ 75.41 ✓ 75.62 ✓ 75.97 ✓ 77.88 ✓
 5⁴ 5⁰⁰ 5³⁰ 5⁶³ 5⁵⁶ 5³⁵ 5⁴³ 5⁵¹ 5³⁰ 4⁹⁵ 3⁰⁴
 5⁰ 26⁵ 16⁵ 16⁵ 8⁰ 7⁵ 15⁵ 15⁵ 2⁵ 5⁰
 NELCOR T.C. 90T Conc curv 90T T.C. edge Walk Edge Walk ✓

75.48 75.70
 5⁴⁴ 5²²
 90T T.C.

80.92 T

X-sec No 91 ST cont 1414-

Nail in P.P. # JP474229

TBM. 9.57 85.40 5.09 75.83

LT = N14

RT = S14 53

85.40 T

1414-20³ RT = 4 10" power pole # JP474229.

1400

0+94-24⁸ LT = Sly end of N+S Wall ✓
Conc Block

0+88-25⁰ LT = 4 9' Conc Drive ^{omitted}

0+82-25⁰ LT = end picket fence ^{omitted}

0+75

0+61-23⁰ LT = 2 water Meter ✓

0+56-10⁰ RT = 4 10" pepper Tree ✓
Surrounded by wild Rose bushes

0+50

73.62 ✓	74.12 ✓	74.82 ✓	74.92 ✓	74.62 ✓	74.82 ✓	75.32 ✓
7 ³	6 ⁸	6 ¹	6 ⁰	6 ³	6 ¹	5 ⁵
50	25	15	6	15	25	50

76.91	73.72	74.12
4 ⁰	7 ²	6 ⁸
24 ⁸	24 ⁸	24 ⁸
Top	Foot	9 ²

74.28	74.60
6 ⁴	6 ³
35 ⁰	25 ⁰
Drive	Drive

74.62 ✓	75.22 ✓	74.92 ✓	74.72	74.52 ✓
6 ³	5 ⁷	6 ⁰	6 ²	6 ⁴
25	15	6	15	25

74.62	74.82 ✓	75.22 ✓	74.92 ✓	74.32 ✓	74.12 ✓	74.62 ✓
6 ³	6 ¹	5 ⁷	6 ⁰	6 ⁶	6 ⁸	6 ³
50	25	15	6	15	25	50

80.92 T

X-sec Nogal ST cont

LT=Nly

2

RT=Sly 54

2+40¹⁵ = Esquela Manzanilla ST + Sewer MH

74.7	75.6	76.0	76.7	77.35	77.7	78.0	79.1	82.8
10 ²	9 ⁸	9 ²	8 ⁷	8 ^{0.5}	7 ³	7 ⁴	6 ³	2 ⁶
100	50	25	15	Bin SMH	15	25	50	100

2+24-26⁹ RT=14" Power pole # P76425

2+15¹⁵

Esquela Wly Line Manzanilla ST

74.0	75.1	75.8	76.3	76.5	77.0	77.6	78.7	82.0
11 ²	10 ³	9 ⁶	9 ¹	8 ²	8 ⁴	7 ⁸	6 ⁷	3 ⁴
100	50	25	15		15	25	50	100

2400

74.7	75.4	75.8	76.2	76.5	76.9	78.2
10 ²	10 ²	9 ⁶	9 ²	8 ⁹	8 ⁵	7 ²
50	25	15		15	25	50

1475

75.2	75.3	75.7	75.6	76.0
10 ²	10 ¹	9 ²	9 ⁸	9 ⁴
25	15		15	25

1450

74.2	74.7	75.3	75.2	75.0	75.3	76.2
11 ²	10 ²	10 ¹	10 ²	10 ⁴	10 ¹	9 ²
50	25	15		15	25	50

1441-26⁹ LT=Water Meter

74.3	75.0	74.9	74.9	75.2
11 ¹	10 ⁴	10 ⁵	10 ⁵	10 ²
25	15		15	25

1425

85.40 T

X-sec Nogal ST CONT

LT = Nly

RT = Sly

55

0+29-23¹ LT = ϕ 3' Conc Walk ✓

78.65	78.67	78.68
67 ⁵	67 ³	67 ²
35 ⁰	25 ⁰	23 ¹
Walk	Walk	Walk

0+25

78.5 ¹	79.18 ¹	78.5 ¹	78.8 ¹	78.0 ¹	78.7 ¹	78.6 ¹	79.1 ¹	79.9 ¹	80.8 ¹	80.8 ¹
69	62 ²	69	66	74	67	68	63	55	46	46
25	23 ³	23 ³	15	11		12	13	15	24 ⁸	25
grat	Top	grat							grat	Wall
Nly	Wall									

0+18-23² RT = ϕ dead man ✓

0+01-23² RT = ϕ 10" Power pole # 415856 H. ✓

guy pole

My information shows No opening on Sly at

Nogal ST

75.2	77.3	80.0	80.0	80.5	83.1
10 ²	8 ¹	54 ⁰	54	49	23
100	50	24 ⁸	25	50	100
		Top wall			

Oiled strip is \pm 20' wide

Note - Nogal ST from Here to Ely is lightly oiled ✓

24⁸ RT = begin 8" Conc Retaining Wall ✓

2+65¹⁵ back = 0+00 ahead = Ely P.L. ✓

78.3 ¹	79.02 ¹	77.3 ¹	77.6 ¹	76.9 ¹	78.0 ¹	78.4 ¹	79.2 ¹	79.0 ¹
7 ¹	63 ⁸	8 ¹	7 ⁰	8 ⁵	7 ⁴	7 ⁰	6 ²	6 ⁴
25	23 ³	23 ³	17	15	15	24 ⁸	24 ⁸	24 ⁸
	Top	grat				grat	Foot	Foot
	Wall	Wall				Wall	Wall	Wall

2+64⁵ 23³ LT = begin 6" wide Conc Retaining Wall - 3' picket fence on top ✓

78.4	76.6	77.3
7 ⁰	8 ⁸	8 ¹
23 ³	23 ³	23 ³
Top wall	Foot	grat

85.40 x

X-sec Nogal ST CONT

LT = N14

93.83T

RT = S14 30

TP 11.96 93.83 3.53 81.87

1+05-24° RT = ^{Eugenia Hedge} 2' wide 4.5 high ✓

0+97-24° LT = 4 Water Meter ✓

0+75

0+69-23° RT = 4 Water Meter ✓

0+60-23° LT = end 6" Conc Retaining Wall ✓
24° RT = 2 8" Conc Drive

0+50

0+39-24° RT = 2 Ribbons 2' wide
4 Ribbon Conc Drive ✓

0+35-24° RT = end 8" Conc Retaining Wall ✓

81.4	81.7	81.4	80.7	81.4	81.1	81.8	82.0	82.9
4°	3°	4°	4°	4°	4°	3°	3°	2°
35	25	15	11	11	15	25	4°	

80.6	80.6	79.9	80.6	80.3	80.9	81.4	
4°	4°	5°	4°	5°	4°	4°	✓
25	15	9	12	15	25		

80.12	79.1	79.9	81.4	81.4	81.7
5°	6°	5°	4°	4°	3°
23°	23°	23°	24°	25°	35°
Top Wall	Foot	7"	Drive	Drive	Drive

79.2	79.2	80.25	79.4	79.6	79.1	79.7	79.5	80.2	81.1	82.0
6°	6°	5°	6°	5°	6°	5°	5°	5°	4°	3°
50	25	23°	23°	15	10	13	15	25	50	
	9"	T.W.	9"							

81.08	81.09	81.38
4°	4°	4°
24°	25°	35°
Drive	Drive	Drive

80.6	80.5	80.9
4°	4°	4°
24°	24°	24°
9" at Wall	Foot	Top Wall

85.40 T

X-sec Nogal ST CONT

Iron Posts

1763⁵ 24⁶ LT = begin 3' hog wire fence ✓

1762 - 24⁶ LT = 2 3' conc walk ✓

1761 - 25² RT = 2 - 2' conc Ribbons
Conc Ribbon Drive omitted

1750

1740 - 25² RT = 2 - 2' conc Ribbons
Conc. Ribbon Drive omitted

1725

1722 - 25⁰ RT = 2 3' conc walk omitted

1713 - 24⁰ RT = 2 end 2' wide + 4' high ✓
Eugenia Hedge

LT = N14

2

RT = S14

57

84.22
84.24
84.25

96' 95' 95'
35° 25° 24°
Walk Walk Walk

83.83 ✓
83.83 ✓
83.73 ✓
83.13 ✓
83.53 ✓
84.93
890
25' RT
35' RT
83.03 ✓
83.83 ✓
84.23 ✓
85.13 ✓
10° 10° 10° 10° 10°
40 25 15 12 10

82.53 ✓
82.43 ✓
81.63 ✓
82.43 ✓
82.13 ✓
82.13 ✓
83.3 ✓
84.03
84.33
980
25' RT
35' RT
11° 11° 10°
25 15 25
83.43
83.73
1040
25°
Walk
1010
35°
Walk

93.83

X

10/29/1

T.B.M 9.54 101.29 2.08 91.75

chuck II on NWly cor conc. Drive at 4785 Nogal St

2+12-25° LT=⊘ 3' Conc Walk ^{omitted}

86.83
 70 74 72 78 80
 50 25 15 10 9
 86.92
 69' 35" W.
 86.93
 25° Walk
 86.13
 86.03
 85.63

2+00-25° RT=⊘ end 3'x5' eugenia Hedge ✓

86.23
 84 78 74 70
 10 15 25 50
 85.43
 86.03
 86.43
 84.83

86.21
 762 82 81
 25° 25° 25°
 Top Wall Foot 9"

1491-25° LT= begin Conc. Retaining Wall ✓
 3' picket on top 4" wide omitted

85.68
 815 815 800
 24° Walk 25° W. 35° W.

1+79-25° LT= end 3' Hog wire Fence ✓
 24° RT=⊘ 3' Conc Walk ✓

84.83
 90 90 95 90
 25 15 11
 84.83
 84.33
 84.83
 84.23
 84.83
 84.83
 85.23

1+69-23° RT=⊘ Water Meter ✓

1+66-25° RT=⊘ begin 3' wide + 5" high eugenia Hedge ✓

X-sec Nogal st

LT = N/4

£

RT = S/4

59

2+84-24° LT = 3' conc walk ✓

89.65
 116⁴ 115⁵ 115⁴
 35° 25° 24°
 Walk Walk Walk

91.69
 96° 95⁸ 95⁸ 93⁸
 242 249 25° 35°
 TopWall Drive Dr Dr

24² RT = begin Conc Drive way ✓
 2+75+24² RT = end Conc Block wall ✓

89.59 89.89 89.49 89.89 89.69 90.59 91.59 91.09 ✓
 117 114 118 114 116 102 97 102
 25 15 10 10 15 242 242
 Foot Foot
 9at wall 9at Foot

89.82 91.14 91.59
 114 101⁵ 97
 25° 25° 40
 Foot TopWall

2+50-25° RT = begin Conc Block wall ✓

88.69 88.49 88.49 88.09 88.79 88.29 88.89 89.19 90.69 ✓
 126 128 128 132 125 130 124 121 106
 50 25 15 9 11 12 15 25°
 9at wall 9at wall

2+40-25° LT = end 4" Conc Retaining Wall ✓
 3' picket fence on top omitted

88.39 87.49 88.09 101.29 X
 129 138 132
 254 254 254
 TopWall Foot 9at Wall

X-sec No 991 ST

LT = N14

RT = S14 160

3719 } 25⁹ LT = 2 3' conc walk omitted
24² RT = 2 8' Conc Drive ✓

91.48 91.55
980 974
359 259
Walk Walk

93.35 93.36 93.46
794 793 783
242 250 350
Dr. Dr. Dr.

3716-24⁸ RT = end conc Block Wall ✓

93.19 92.59 95.38
85 87 591
248 248 248
gr Foot Topwall

3702-25⁹ LT = begin low conc Retaining wall omitted ✓

91.17 90.29 91.09
1012 110 102
259 259 259
Topwall Foot grat wall

3700-23³ RT = Water Meter ✓

89.89 90.79 90.79 90.59 91.19 ✓ 90.89 ✓ 91.39 ✓ 92.29 ✓ 92.99 ✓
114 105 105 107 101 104 99 90 83
50 25 15 10 10 10 15 248 50
grat wall

2788-24⁸ RT = begin Conc Block Wall ✓

91.99 91.49 95.44
93 90 585
248 248 248
grat Foot Topwall

2786-24⁶ RT = end Conc drive ✓

91.82 91.85 92.0
947 946 929
246 250 350
Dr. Dr. Dr.
101.29T

X-sec Nogal st

3+53²¹ = Wly Line HAYA ST to sly ✓

6" conc
Retaining Wall

3+50³ = 14³ LT = sly end of NWS conc ✓

3+50-23² LT = end driveway ✓

3+40- } 23² LT = begin conc drive ✓
25⁶ LT = end low conc Retaining wall ✓

3+38-24⁸ RT = 2 3' Conc walk ✓

3+32-24⁶ LT = 4 Water Meter ✓

3+25

LT = N14

93.49 ✓
7⁸
25
93.99 ✓
7³
15
94.49 ✓
6⁸
11
94.09 ✓
7²
15
94.59 ✓
6²
25
95.29 ✓
4¹
50
97.19 ✓
4¹
100
102.59 ✓

93.80
74⁹
25⁰
Topw. Foot 9 ✓
92.69
86
25⁰
Topw. Foot 9 ✓
92.99
83
25⁰
Topw. Foot 9 ✓
93.81
74⁸
14³
Topw. Foot 9 ✓
93.09
82
14³
Topw. Foot 9 ✓
93.59
72
14³
Topw. Foot 9 ✓

92.83
84⁶
35⁰
Dr.
92.78
85¹
25⁰
Dr.
92.86
84³
23²
Dr.

92.69
86⁰
23²
Dr.
92.53
87⁶
23²
Dr.
92.9
83⁹
25⁶
Topw. Foot 9 ✓
92.19
9¹
25⁶
Topw. Foot 9 ✓
92.69
86
25⁶
Topw. Foot 9 ✓

95.36
5⁹³
24⁸
WALK
95.36
5⁹³
25⁰
WALK
95.62
5⁶⁷
35⁰
WALK

91.89 ✓
9⁴
25
91.89 ✓
9⁴
15
91.79 ✓
9⁵
12
92.69 ✓
8⁶
10
92.29 ✓
9⁰
15
93.09 ✓
8²
25
93.29 ✓
8⁰

101.29 π

X-sec Nogal ST cont

LT = Nly

Q

RT = Sly

62

98.8
14³

80
Bottom of Canyon

111.4	110.1	107.1	101.6	102.0	101.9	102.4	102.3	99.8	98.8
1 ²	3 ⁰	6 ⁰	11 ⁵	11 ²	10 ²	10 ⁸	10 ⁸	13 ³	14 ¹⁰
75	50	25	15	6	15	25	39	50	57

0+50 - 80° RT = Bottom of Canyon

109.5	109.6	106.7	103.6	98.8	99.5	99.4	99.8	100.2
3 ⁶	3 ⁵	6 ⁴	9 ⁵	14 ³	13 ⁶	13 ⁷	13 ³	12 ⁹
50	37	25	19	15	9	15	25	

0+25

TP 11.94 113.10 0¹³ 101.16

(Begin sheet 2)

= Ely line 20' alley to Nly ✓

3+78²¹ = 0+00 Ahead = Ely line Haya ✓
To Sly.

98.99	98.59	97.39	96.79	96.09	96.59	96.49	96.69	96.99	97.59	102.19
2 ³	2 ⁷	3 ²	4 ⁵	5 ²	4 ²	4 ⁶	4 ³	3 ⁷	+0 ⁹	
100	50	25	15	13	9	15	25	50	100	

93.29

94.29	94.09	94.39	94.29	94.89	94.49	94.79	95.49
7 ⁰	7 ²	6 ²	7 ⁰	6 ⁴	6 ⁸	6 ⁵	5 ⁸
50	25	15	12	8	15		25

3+58²¹ = wly line of 20' Alley to Nly ✓
8°
100

3+56 - 24⁶ LT = Q Fire Hyd. ✓

101.29 T

X-sec No 991, cont

LT=N/4

2

RT=J/4

63

1475 - 24⁴ LT = ♀ Water Meter ✓

1471 - 23³ LT = ♀ 4" Palm tree - (Small) ✓

1462 - 23² LT = ♀ clump of shrub ✓
omitted

Canyon turns to S Ely.
1450 - 95' LT = ♀ Bottom Canyon

1425

1400 - 60° RT = bottom of canyon

0+75

111.9	110.7	110.0	110.5	110.1	109.2	108.8
1 ²	2 ⁴	3 ¹	2 ⁶	3 ⁰	3 ⁹	4 ³
25	18	13	13	15	25	

112.8	111.5	108.8	109.1	108.3	106.6	105.5	102.7	99.5
0 ³	1 ⁶	4 ³	4 ⁰	4 ⁸	6 ⁵	7 ⁶	10 ⁴	13 ⁶
50	25	15	4	15	18	25	85	95 ⁰
							Bottom	

113.8	113.6	110.3	109.5	107.6	107.7	107.1	106.9	106.0
+0 ²	+0 ⁵	2 ⁸	3 ⁶	5 ⁵	5 ⁴	6 ⁰	6 ²	7 ¹
50	30	25	18	15	15	20	25	

112.1	111.5	110.0	108.8	106.0	106.1	105.8	105.4	103.9	99.6
1 ⁰	1 ⁶	3 ¹	4 ³	7 ¹	7 ⁰	7 ³	7 ⁷	9 ²	13 ⁵
50	35	25	18	15	7	15	25	28	60
								Bottom of canyon	

111.3	109.2	107.3	104.0	104.4	104.4	104.3	100.7
1 ⁸	3 ⁹	5 ⁸	9 ¹	8 ⁷	8 ⁷	8 ⁰	12 ⁴
50	25	18	15	15	25	50	

113.10 T

X-sec Nogal Cont

2+50

2+44 - 18² LT = ϕ 3' walk (concl)

2+33 - 24⁵ LT = ϕ water Meter \checkmark

2+25

Note this tree is well worth saving

2+16 - 23⁵ LT = ϕ 14" pine Tree \checkmark

2+03 - 19⁰ LT = ϕ Conc Ribbon Drive \checkmark
2 - 2' Ribbons

TP 10.72 123.76 0.06 113.04

2+00

LT = N1y

113.56 \checkmark
10² 9² 9⁸ 10⁰ 9³
35 25 15 13 15

113.39 \checkmark 113.45 \checkmark 113.56 \checkmark
10³⁷ 10³¹ 10²⁰
35 25 18²
Walk Walk Walk

113.06 \checkmark 113.06 \checkmark 112.76 \checkmark 113.26 \checkmark 113.16 \checkmark 113.16 \checkmark
10⁷ 10⁷ 11⁰ 10⁵ 10⁶ 10⁶
25 15 12 15 25

112.32 \checkmark 112.22 \checkmark 112.16 \checkmark
11⁴⁴ 11⁵⁴ 11⁶⁰
35⁰ 25⁰ 19⁰
Dr Dr Dr

112.3 \checkmark 112.1 \checkmark 112.0 \checkmark 111.4 \checkmark 111.9 \checkmark 111.6 \checkmark 111.6 \checkmark 109.8 \checkmark
0⁸ 1⁰ 1¹ 1⁷ 2 1⁵ 1⁵ 3³
50 25 15 12 15 25 50

113.10 π

RT = N1y 64

113.76 \checkmark 114.46 \checkmark 114.96 \checkmark 114.16 \checkmark 114.06 \checkmark
9³ 9³ 9⁶ 9⁷
15 25 50

123.76 π

X-sec Nagal ST cont

3+40-21² LT = 8 Conc Drive ✓

3+25

3+18-19⁸ LT = 2-2' Ribbons
Conc Ribbon drive ✓

3+13-17⁸ LT = end floral planting ✓ omitted

3+04-25⁸ LT = Water Meter ✓

3+00-

2+80-17⁸ LT = ^{4' wide} Begin floral plantings ✓ omitted

2+75

Garage has been converted to Bedroom

2+63-17⁴ LT = 7 Conc Driveway ✓

LT = Nly

£

RT = Sly

65

117.09
6 67
35⁰
Dr

117.33
6 43
25⁰
Dr

117.21
6 55
21²
Dr

116.46 ✓
7³
25

116.76 ✓
7⁰
16

116.56 ✓
7³
15

116.76 ✓
7⁰

116.76 ✓
7⁰
8

117.06 ✓
6²
9

117.56 ✓
6²
15

118.26 ✓
5⁵
25

116.28
7 40
35⁰
Dr

116.43
7 33
25⁰
Dr

116.54
7 23
19⁸
Dr

115.86 ✓
7⁹
40

116.06 ✓
7²
25

116.06 ✓
7²
15

115.66 ✓
8²
12

116.06 ✓
7²

116.16 ✓
7⁵
10

116.56 ✓
7²
15

117.56 ✓
6²
25

116.76 ✓
7⁰
50

114.46 ✓
9³
25

114.86 ✓
8²
15

115.16 ✓
8⁵
15

115.36 ✓
8⁴
15

116.06 ✓
7²
25

114.07
9 69
35⁰
Dr

114.26
9 50
25⁰
Dr

114.32
9 44
17⁴
Dr

123.76 T

X-sec No 9a1 cont

4+25

4+00 - 25° LT = end 3' picket fence ✓

3+75

3+65-21° LT = 2 (1) conc walk ✓

3+50

3+45 - 23° LT = begin 3' picket fence ✓

LT = Nly

Base
line

RT = Sly 66

118.16 ✓	118.36 ✓	118.26 ✓	118.86 ✓	118.66 ✓	119.66 ✓	120.76 ✓
5 ⁶	5 ⁴	5 ⁵	4 ⁹	5 ¹	4 ¹	3 ⁰
25	17	15		15	20	25

117.16 ✓	117.56 ✓	117.86 ✓	118.36 ✓	118.36 ✓	118.76 ✓	120.66 ✓
6 ⁶	6 ²	5 ⁹	5 ⁴	5 ⁴	5 ⁰	3 ¹
50	25	15	15	25	50	

117.36 ✓	117.66 ✓	117.56 ✓	117.96 ✓	118.16 ✓	118.76 ✓
6 ⁴	6 ¹	6 ²	5 ⁸	5 ⁶	5 ⁰
25	16	15	15	25	

117.45	117.91	117.90
6 ³¹	6 ³⁵	6 ³⁶
38°	25°	21°
Walk	Walk	Walk

117.06 ✓	117.36 ✓	117.36 ✓	117.16 ✓	117.56 ✓	117.46 ✓	118.16 ✓	118.86 ✓	119.76 ✓	119.16 ✓
6 ⁷	6 ⁴	6 ⁴	6 ⁵	6 ²	6 ³	5 ⁵	4 ²	4 ⁰	4 ⁶
35	25	15	13	6	7	9	15	25	50

123.76 T

X-sec Nogal cont

LT = Nly

B.L.

BT = Sly

67

133.23 π

TP 11.71 133.23 2.24 121.52

Top Fire Hydrant 19⁶ LT of station 5400

4487.34 = } 24⁸ LT = begin 5' chain link fence
ely line 20' alley to Nly ✓

116.96	117.76	119.56	119.76	120.16	121.06	122.26	123.56
6 ⁸	6 ⁰	4 ²	4 ⁰	3 ⁶	2 ⁷	1 ⁵	0 ²
75	50	25	15	15	25	40	

4467.34 = wly line 20' alley to Nly ✓

116.46	118.36	118.96	119.36	119.76	120.46	121.56
7 ³	5 ⁴	4 ⁸	4 ⁴	4 ⁰	3 ³	2 ³
120	50	25	15	15	25	

4450

118.46	118.66	118.96	119.36	119.66	121.26	123.16
5 ³	5 ¹	4 ⁸	4 ⁴	4 ¹	2 ⁵	0 ⁶
50	25	15	15	25	50	

4448 - 23² LT = ϕ water meter ✓

4435 - 23⁰ LT = ϕ 2⁵ conc walk ✓

118.55	118.68	118.73
5 ²	5 ⁰	5 ⁰
35	25	23
W.	Walk	Walk

123.76 π

X-sec Nogal ST cont

6+00

5+87- 21⁵ LT = ϕ 2' Conc Walk \checkmark

5+75

5+50

5+25

also end lightly oiled strip \pm 20' wide \checkmark

5+00- 19⁶ LT = ϕ Fire Hydrant \checkmark

122.63 \checkmark	123.03 \checkmark	122.93 \checkmark	123.33 \checkmark	123.83 \checkmark	125.23 \checkmark	126.83 \checkmark	128.63 \checkmark
10 ⁶	10 ²	10 ³	9 ⁹	9 ⁴	8 ⁰	6 ⁴	4 ⁶
35	25	15		8	15	25	50

Locked gate
11³⁵
25⁰ Walk

121.88
121.88
11³⁵
21⁵ Walk

120.83 \checkmark	121.33 \checkmark	121.63 \checkmark	122.73 \checkmark	123.43 \checkmark
12 ⁴	11 ⁹	11 ⁶	10 ⁵	9 ⁰
25	15		15	25

118.53 \checkmark	119.03 \checkmark	119.43 \checkmark	120.23 \checkmark	120.53 \checkmark	120.83 \checkmark	120.83 \checkmark	121.83 \checkmark	122.73 \checkmark	124.43 \checkmark
14 ⁷	14 ²	13 ⁸	13 ⁰	12 ⁷	12 ⁴	12 ⁴	11 ⁴	10 ⁵	8 ⁰
35	25	18	17	15		8	15	25	50

118.63 \checkmark	120.03 \checkmark	120.73 \checkmark	120.93 \checkmark	122.03 \checkmark	122.43 \checkmark
14 ⁶	13 ²	12 ⁵	12 ³	11 ³	10 ⁰
25	15		8	15	25

118.73 \checkmark	119.73 \checkmark	119.93 \checkmark	120.43 \checkmark	120.63 \checkmark	121.33 \checkmark	122.03 \checkmark	123.13 \checkmark	124.43 \checkmark
14 ⁵	13 ⁵	13 ³	12 ⁸	12 ⁶	11 ⁹	11 ²	10 ¹	8 ⁰
35	25	15		8	10	15	25	50

133.25 \uparrow

X-sec Nogal count

TP	Starting B.M.	7.30	75.38	(75.37)
TP	0.40	82.68	12.06	82.28
TP	0.20	94.34	13.19	94.14
TP	0.08	107.33	13.16	107.25
TP	0.27	120.41	13.09	120.14
6+87.55				

elev = 128.08

TBM - Mon @ intersection 49th + Nogal

My information shows no opening on Ely of 49th

6+62.55 = Ely of 49th ST ✓

25' LT = end Chain Link fence ✓

6+37.55 = Wly Line 49th ST ✓

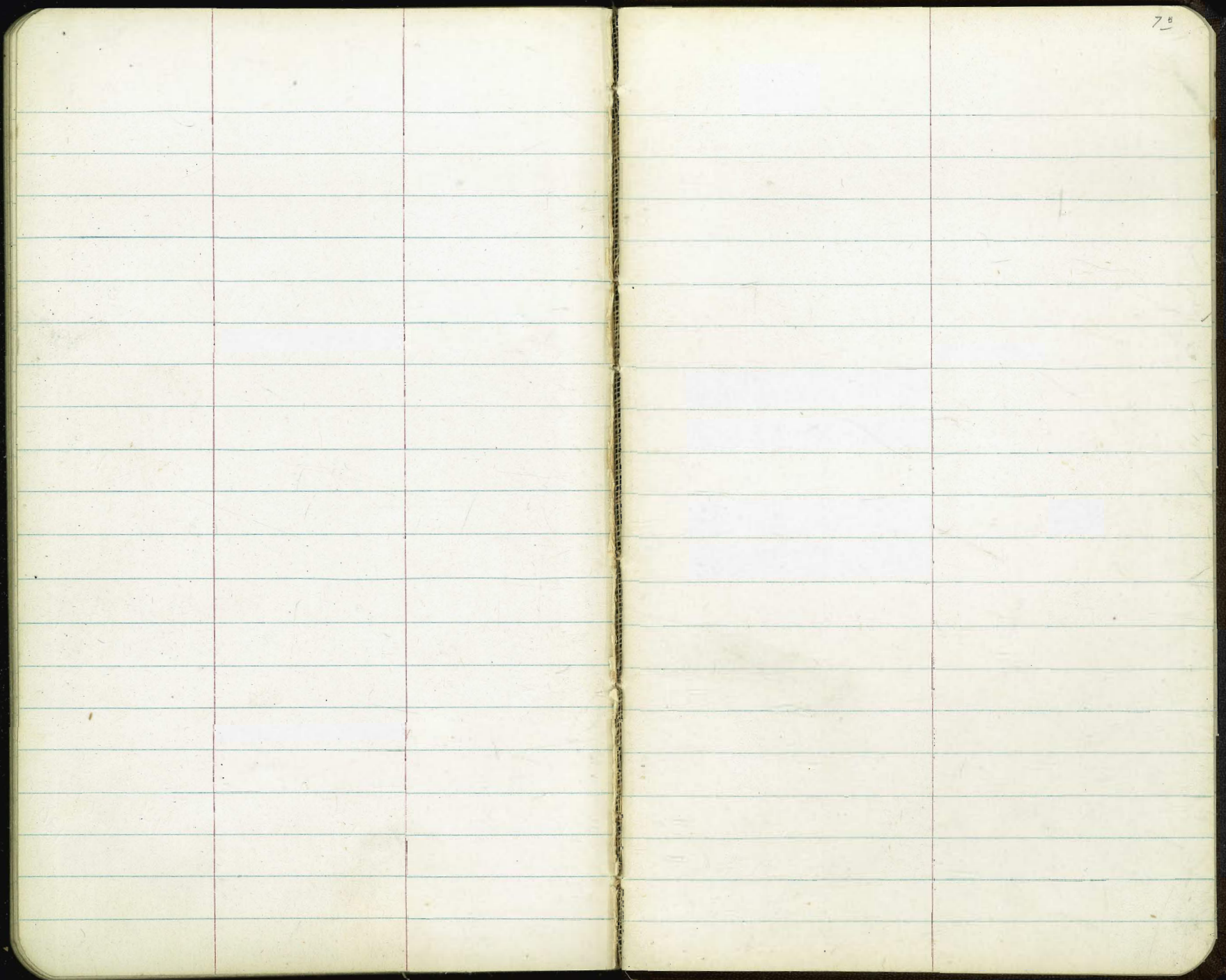
LT = Nly B.L. RT = Sly 69

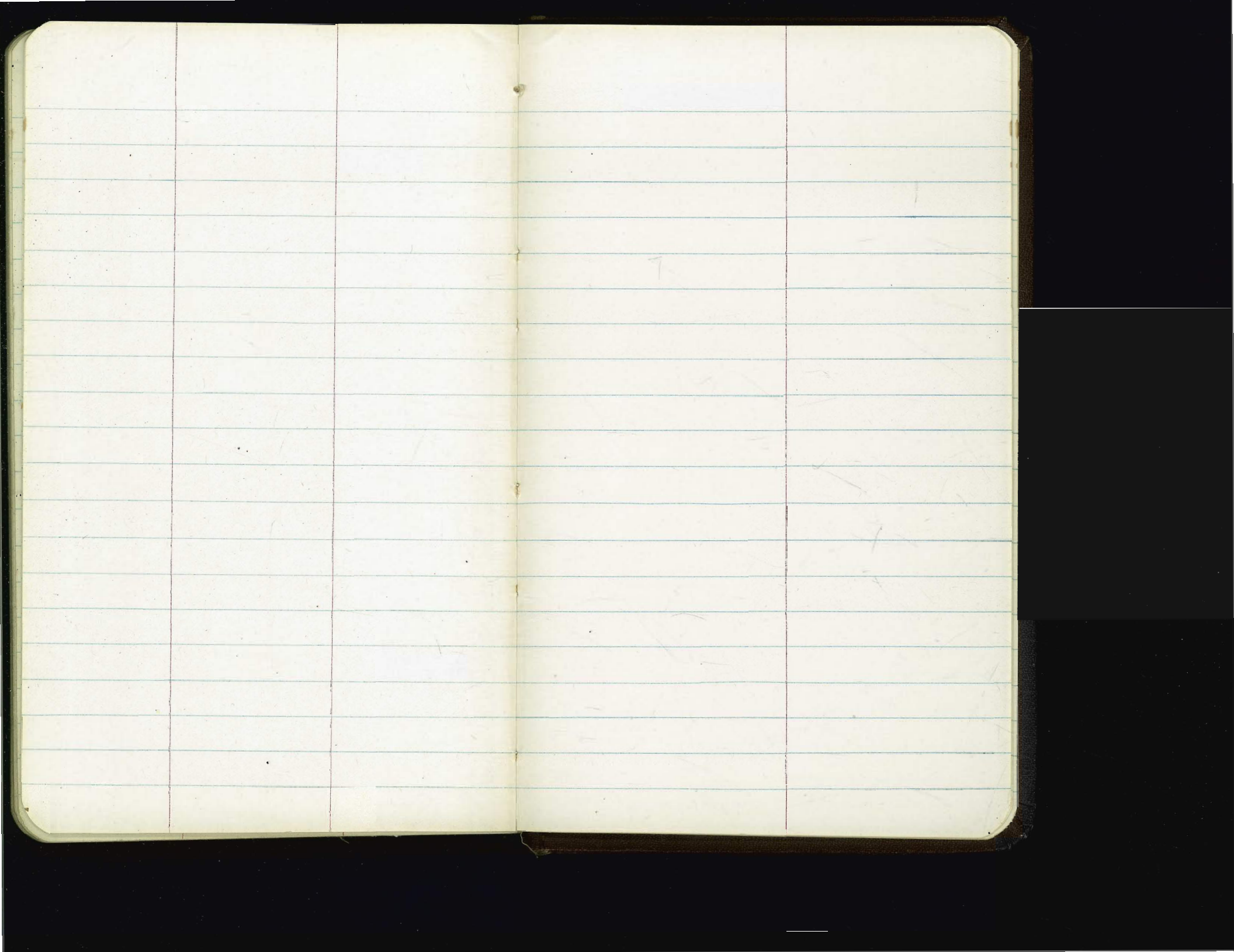
128.03	128.93	129.93	130.13	131.43	131.23	134.63	137.73
5 ²	4 ³	3 ³	3 ¹	1 ⁸	2 ⁰	+1 ⁴	+4 ⁵
50	25	15	5		15	25	50
							+ 0
							100
							100

125.43	126.93	127.23	127.73	128.08	128.73	129.53	130.03	131.63
7 ⁸	6 ³	6 ⁰	5 ⁵	5 ¹⁵	4 ⁵	3 ⁷	3 ³	1 ⁵
100	50	25	15	ON MAN 9"	15	25	50	

125.53	126.13	126.73	126.43	126.25	126.33	126.53	127.73	130.43
7 ⁷	7 ¹	6 ⁵	6 ⁸	7 ⁰	6 ⁹	6 ⁷	5 ⁵	2 ¹⁰
100	50	25	15		15	25	50	100

133.23 T





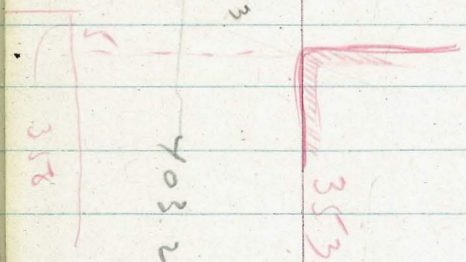
552.17

12.53

403.21

358

353



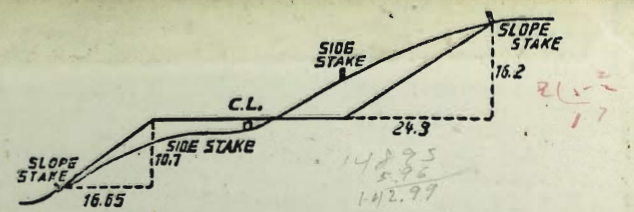
174
12

53

13454
12.44
122.13
0.66
122.79
12.85
109.94
0.70
110.64
7.24
103.00
3.50
106.50
7.22
97.09

16120
1331
174.51
12.79
161.72
1.83
143.55
12.47
151.08
0.84
151.92
12.51
137.41
1.84
140.25
13.05
127.20
0.29
127.49
12.93
114.51
0.29
114.85
11.80
103.05
2.60
105.71
7.58
98.13
5.74
103.87

11092
469
161.15
2.36
115.51
0.44
115.07
10.25
125.32
0.49
124.83
12.29
137.12
1.00
136.12
12.07
148.95
148.98
2.67
161.57
0.37
161.20



DISTANCES FROM SIDE STAKES FOR CROSS-SECTIONING.
SLOPE 1 1/2 TO 1. ROADWAY OF ANY WIDTH.

	0	.1	.2	.3	.4	.5	.6	.7	.8	.9	
0	0.00	0.15	0.30	0.45	0.60	0.75	0.90	1.05	1.20	1.35	0
1	1.50	1.65	1.80	1.95	2.10	2.25	2.40	2.55	2.70	2.85	1
2	3.00	3.15	3.30	3.45	3.60	3.75	3.90	4.05	4.20	4.35	2
3	4.50	4.65	4.80	4.95	5.10	5.25	5.40	5.55	5.70	5.85	3
4	6.00	6.15	6.30	6.45	6.60	6.75	6.90	7.05	7.20	7.35	4
5	7.50	7.65	7.80	7.95	8.10	8.25	8.40	8.55	8.70	8.85	5
6	9.00	9.15	9.30	9.45	9.60	9.75	9.90	10.05	10.20	10.35	6
7	10.50	10.65	10.80	10.95	11.10	11.25	11.40	11.55	11.70	11.85	7
8	12.00	12.15	12.30	12.45	12.60	12.75	12.90	13.05	13.20	13.35	8
9	13.50	13.65	13.80	13.95	14.10	14.25	14.40	14.55	14.70	14.85	9
10	15.00	15.15	15.30	15.45	15.60	15.75	15.90	16.05	16.20	16.35	10
11	16.50	16.65	16.80	16.95	17.10	17.25	17.40	17.55	17.70	17.85	11
12	18.00	18.15	18.30	18.45	18.60	18.75	18.90	19.05	19.20	19.35	12
13	19.50	19.65	19.80	19.95	20.10	20.25	20.40	20.55	20.70	20.85	13
14	21.00	21.15	21.30	21.45	21.60	21.75	21.90	22.05	22.20	22.35	14
15	22.50	22.65	22.80	22.95	23.10	23.25	23.40	23.55	23.70	23.85	15
16	24.00	24.15	24.30	24.45	24.60	24.75	24.90	25.05	25.20	25.35	16
17	25.50	25.65	25.80	25.95	26.10	26.25	26.40	26.55	26.70	26.85	17
18	27.00	27.15	27.30	27.45	27.60	27.75	27.90	28.05	28.20	28.35	18
19	28.50	28.65	28.80	28.95	29.10	29.25	29.40	29.55	29.70	29.85	19
20	30.00	30.15	30.30	30.45	30.60	30.75	30.90	31.05	31.20	31.35	20
21	31.50	31.65	31.80	31.95	32.10	32.25	32.40	32.55	32.70	32.85	21
22	33.00	33.15	33.30	33.45	33.60	33.75	33.90	34.05	34.20	34.35	22
23	34.50	34.65	34.80	34.95	35.10	35.25	35.40	35.55	35.70	35.85	23
24	36.00	36.15	36.30	36.45	36.60	36.75	36.90	37.05	37.20	37.35	24
25	37.50	37.65	37.80	37.95	38.10	38.25	38.40	38.55	38.70	38.85	25
26	39.00	39.15	39.30	39.45	39.60	39.75	39.90	40.05	40.20	40.35	26
27	40.50	40.65	40.80	40.95	41.10	41.25	41.40	41.55	41.70	41.85	27
28	42.00	42.15	42.30	42.45	42.60	42.75	42.90	43.05	43.20	43.35	28
29	43.50	43.65	43.80	43.95	44.10	44.25	44.40	44.55	44.70	44.85	29
30	45.00	45.15	45.30	45.45	45.60	45.75	45.90	46.05	46.20	46.35	30
31	46.50	46.65	46.80	46.95	47.10	47.25	47.40	47.55	47.70	47.85	31
32	48.00	48.15	48.30	48.45	48.60	48.75	48.90	49.05	49.20	49.35	32
33	49.50	49.65	49.80	49.95	50.10	50.25	50.40	50.55	50.70	50.85	33
34	51.00	51.15	51.30	51.45	51.60	51.75	51.90	52.05	52.20	52.35	34
35	52.50	52.65	52.80	52.95	53.10	53.25	53.40	53.55	53.70	53.85	35
36	54.00	54.15	54.30	54.45	54.60	54.75	54.90	55.05	55.20	55.35	36
37	55.50	55.65	55.80	55.95	56.10	56.25	56.40	56.55	56.70	56.85	37
38	57.00	57.15	57.30	57.45	57.60	57.75	57.90	58.05	58.20	58.35	38
39	58.50	58.65	58.80	58.95	59.10	59.25	59.40	59.55	59.70	59.85	39
40	60.00	60.15	60.30	60.45	60.60	60.75	60.90	61.05	61.20	61.35	40
41	61.50	61.65	61.80	61.95	62.10	62.25	62.40	62.55	62.70	62.85	41
42	63.00	63.15	63.30	63.45	63.60	63.75	63.90	64.05	64.20	64.35	42
43	64.50	64.65	64.80	64.95	65.10	65.25	65.40	65.55	65.70	65.85	43
44	66.00	66.15	66.30	66.45	66.60	66.75	66.90	67.05	67.20	67.35	44
45	67.50	67.65	67.80	67.95	68.10	68.25	68.40	68.55	68.70	68.85	45
46	69.00	69.15	69.30	69.45	69.60	69.75	69.90	70.05	70.20	70.35	46
47	70.50	70.65	70.80	70.95	71.10	71.25	71.40	71.55	71.70	71.85	47
48	72.00	72.15	72.30	72.45	72.60	72.75	72.90	73.05	73.20	73.35	48
49	73.50	73.65	73.80	73.95	74.10	74.25	74.40	74.55	74.70	74.85	49
50	75.00	75.15	75.30	75.45	75.60	75.75	75.90	76.05	76.20	76.35	50

THE NATIONAL BLANK BOOK COMPANY
HOLYOKE MASSACHUSETTS
NEW YORK CHICAGO BOSTON SAN FRANCISCO