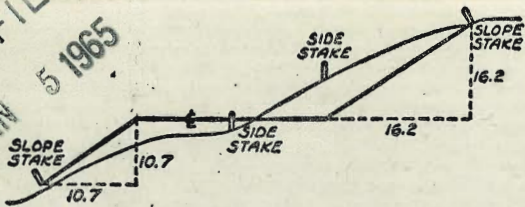




MICROFILMED  
JAN 5 1965



DISTANCES FROM SIDE STAKES FOR CROSS-SECTIONING  
SLOPE 1 TO 1. ROADWAY OF ANY WIDTH

	0	.1	.2	.3	.4	.5	.6	.7	.8	.9	
0	0.00	0.10	0.20	0.30	0.40	0.50	0.60	0.70	0.80	0.90	0
1	1.00	1.10	1.20	1.30	1.40	1.50	1.60	1.70	1.80	1.90	1
2	2.00	2.10	2.20	2.30	2.40	2.50	2.60	2.70	2.80	2.90	2
3	3.00	3.10	3.20	3.30	3.40	3.50	3.60	3.70	3.80	3.90	3
4	4.00	4.10	4.20	4.30	4.40	4.50	4.60	4.70	4.80	4.90	4
5	5.00	5.10	5.20	5.30	5.40	5.50	5.60	5.70	5.80	5.90	5
6	6.00	6.10	6.20	6.30	6.40	6.50	6.60	6.70	6.80	6.90	6
7	7.00	7.10	7.20	7.30	7.40	7.50	7.60	7.70	7.80	7.90	7
8	8.00	8.10	8.20	8.30	8.40	8.50	8.60	8.70	8.80	8.90	8
9	9.00	9.10	9.20	9.30	9.40	9.50	9.60	9.70	9.80	9.90	9
10	10.00	10.10	10.20	10.30	10.40	10.50	10.60	10.70	10.80	10.90	10
11	11.00	11.10	11.20	11.30	11.40	11.50	11.60	11.70	11.80	11.90	11
12	12.00	12.10	12.20	12.30	12.40	12.50	12.60	12.70	12.80	12.90	12
13	13.00	13.10	13.20	13.30	13.40	13.50	13.60	13.70	13.80	13.90	13
14	14.00	14.10	14.20	14.30	14.40	14.50	14.60	14.70	14.80	14.90	14
15	15.00	15.10	15.20	15.30	15.40	15.50	15.60	15.70	15.80	15.90	15
16	16.00	16.10	16.20	16.30	16.40	16.50	16.60	16.70	16.80	16.90	16
17	17.00	17.10	17.20	17.30	17.40	17.50	17.60	17.70	17.80	17.90	17
18	18.00	18.10	18.20	18.30	18.40	18.50	18.60	18.70	18.80	18.90	18
19	19.00	19.10	19.20	19.30	19.40	19.50	19.60	19.70	19.80	19.90	19
20	20.00	20.10	20.20	20.30	20.40	20.50	20.60	20.70	20.80	20.90	20
21	21.00	21.10	21.20	21.30	21.40	21.50	21.60	21.70	21.80	21.90	21
22	22.00	22.10	22.20	22.30	22.40	22.50	22.60	22.70	22.80	22.90	22
23	23.00	23.10	23.20	23.30	23.40	23.50	23.60	23.70	23.80	23.90	23
24	24.00	24.10	24.20	24.30	24.40	24.50	24.60	24.70	24.80	24.90	24
25	25.00	25.10	25.20	25.30	25.40	25.50	25.60	25.70	25.80	25.90	25
26	26.00	26.10	26.20	26.30	26.40	26.50	26.60	26.70	26.80	26.90	26
27	27.00	27.10	27.20	27.30	27.40	27.50	27.60	27.70	27.80	27.90	27
28	28.00	28.10	28.20	28.30	28.40	28.50	28.60	28.70	28.80	28.90	28
29	29.00	29.10	29.20	29.30	29.40	29.50	29.60	29.70	29.80	29.90	29
30	30.00	30.10	30.20	30.30	30.40	30.50	30.60	30.70	30.80	30.90	30
31	31.00	31.10	31.20	31.30	31.40	31.50	31.60	31.70	31.80	31.90	31
32	32.00	32.10	32.20	32.30	32.40	32.50	32.60	32.70	32.80	32.90	32
33	33.00	33.10	33.20	33.30	33.40	33.50	33.60	33.70	33.80	33.90	33
34	34.00	34.10	34.20	34.30	34.40	34.50	34.60	34.70	34.80	34.90	34
35	35.00	35.10	35.20	35.30	35.40	35.50	35.60	35.70	35.80	35.90	35
36	36.00	36.10	36.20	36.30	36.40	36.50	36.60	36.70	36.80	36.90	36
37	37.00	37.10	37.20	37.30	37.40	37.50	37.60	37.70	37.80	37.90	37
38	38.00	38.10	38.20	38.30	38.40	38.50	38.60	38.70	38.80	38.90	38
39	39.00	39.10	39.20	39.30	39.40	39.50	39.60	39.70	39.80	39.90	39
40	40.00	40.10	40.20	40.30	40.40	40.50	40.60	40.70	40.80	40.90	40
41	41.00	41.10	41.20	41.30	41.40	41.50	41.60	41.70	41.80	41.90	41
42	42.00	42.10	42.20	42.30	42.40	42.50	42.60	42.70	42.80	42.90	42
43	43.00	43.10	43.20	43.30	43.40	43.50	43.60	43.70	43.80	43.90	43
44	44.00	44.10	44.20	44.30	44.40	44.50	44.60	44.70	44.80	44.90	44
45	45.00	45.10	45.20	45.30	45.40	45.50	45.60	45.70	45.80	45.90	45
46	46.00	46.10	46.20	46.30	46.40	46.50	46.60	46.70	46.80	46.90	46
47	47.00	47.10	47.20	47.30	47.40	47.50	47.60	47.70	47.80	47.90	47
48	48.00	48.10	48.20	48.30	48.40	48.50	48.60	48.70	48.80	48.90	48
49	49.00	49.10	49.20	49.30	49.40	49.50	49.60	49.70	49.80	49.90	49
50	50.00	50.10	50.20	50.30	50.40	50.50	50.60	50.70	50.80	50.90	50

Distance of slope stake from side or shoulder stake for any width roadway, slope 1 to 1. If ground is nearly level, the cut or fill at side stake is located by the double entry method in left column and top row. The number in body of table in same row and column gives distance from side stake to slope stake. If ground is not level estimate the difference in elevation between the side stake and slope stake, lower target by this amount if cut, elevate if fill. Add this amount to cut or fill and find distance in table. Set up rod at this point, and line of sight should cut target. If it does not make the slight adjustment necessary.

INDEX

2- Alley Blk 54 Ocean Beach

12 X-sec maple - 44th to 45th

37- Alley Blk. 50 Ocean Beach

48 - Alley Blk 14, F.T. Scripps Add & Alley

Wly Blk 2, Corcorans Subdivision

56-63 X-sec 40th St "T" to Ocean View Blvd.

64 X-sec. Alley Blk 2. F.T. Scripps Add.

ALLEY BLK. 5A OCEAN BEACH.  
20' wide

C.H. Sommermaier  
Beqq  
Ottman  
Schelin

4-14-53  
W.O. 32190

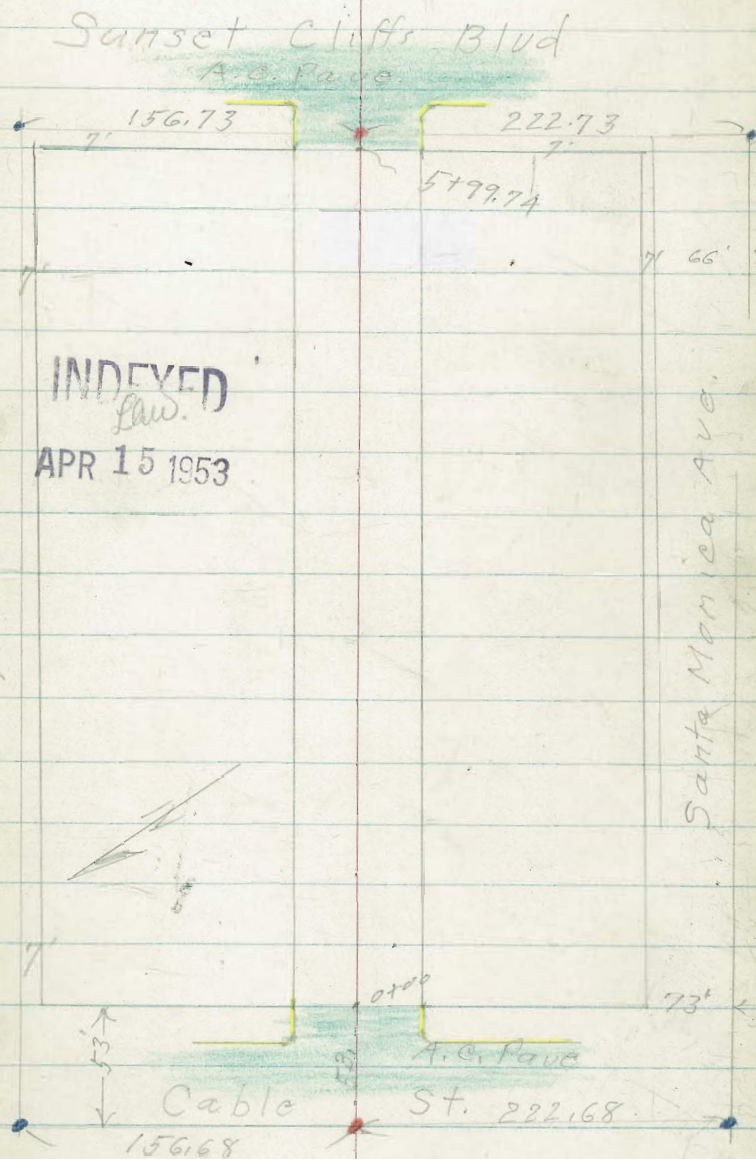
- denotes Fd. L+T. or disk
- " set nail in Pavc.

Ref. T.P. sheet # 781

Saratoga Ave.

INDEXED  
Law.

APR 15 1953



Alley BIK 5A O.B.

= end A.C. Pauc.

0-00<sup>6</sup> 10<sup>3</sup> RT. = end cb.

16.25	16.03	15.71	16.08	16.29
4.06	4.28	4.60	4.23	4.02
98	98		10	10 <sup>3</sup>
cb	G.		G	cb

0-09<sup>5</sup> 10<sup>3</sup> RT } = E.C. cb. Rot.  
 98 RT } = end cb.

16.01	15.57	15.36	15.60	16.18
4.30	4.74	4.95	4.71	4.23
98	98		10 <sup>2</sup>	10 <sup>3</sup>
cb	G		G	cb

15.63	15.11	15.83	16.13	15.71	16.31
4.68	5.20	4.48	4.18	4.60	4.00
100	100	50	50	100	100
cb	G.	cb	cb	G	cb

12<sup>2</sup> RT } = B.C. cb. Rot.  
 12<sup>2</sup> LT }

0-12 = Ely. cb. line Cable

15.29	15.98	15.38	15.30	15.45	16.11	15.51
5.02	4.33	4.93	5.01	4.86	4.20	4.80
50	12 <sup>2</sup>	12 <sup>2</sup>		12 <sup>2</sup>	12 <sup>2</sup>	50
G	cb	G		G	cb	G

0-30 = Cable

15.72	15.58	15.68	15.68	15.88	15.71	15.72	15.88	16.09
4.97	4.73	4.63	4.63	4.48	4.60	4.59	4.43	4.22
100	50	10	2	M.H.	2	10	50	100
				20.31				

B.M.#2 3.33 20.31 4.31 16.98

S.E.B.P. Santa Monica + Cable

B.M.#1 5.28 21.29 - 16.01

N.E.B.P. Newport + Cable

Alley BIK54

O.B.

1+49 = 10<sup>2</sup> RT. = 10" pole P.A. 4874

1+46 = 11<sup>2</sup> RT. = end fence

1+45 = 10<sup>2</sup> Lt. = end dwelling  
dwelling.

1+27 = 11<sup>3</sup> Lt. = start small frame

1+25 = 11<sup>3</sup> RT. = start board fence.

1+15

1+00 = 10' Lt. = end conc. wall

apron to double car

0+87 = 27' RT. = 20' wide. Conk

T.P. 4.26 22.49 2.08 18.23

0+50 = 10' Lt. = face of wall

9<sup>2</sup> Lt. = start conc. wall

9<sup>3</sup> Lt. = end ch.

0+00 = Ely. Wire Cable.

172	175	172	172	175
5.3	5.0	5.2	5.3	5.0
40	10		6	10

182	164	175	172	174
4.3	6.1	5.0	5.3	5.1
10	10	10	6	10
T.W.	B.W.			

17.77	18.05
4.72	4.44
27	31
Apron	Car
	floor

17.2	16.8	16.2	17.0
3.3	3.5	3.6	3.3
10		6	10

16.27	17.7	15.5	14.0	15.7	16.1
4.04	2.6	4.8	4.3	4.6	4.2
98	98	96	96		10
Ch.	T.W.	B.W.			

20.31

Alley BIK 54

O.B.

2+36- 10<sup>1</sup>/<sub>2</sub> Rt. = end fence.  
dirt floor

2+30 13 Lt. = Sing Car. ~~conc.~~

18.5

5.8  
13

2+14- 14<sup>1</sup>/<sub>2</sub> Lt. = ~~conc.~~ apron to 2 cars

2+05- 9<sup>2</sup>/<sub>2</sub> Lt. = end fence.

#PAA860

T.P. pole 4.52 24.38 2.63 19.86

18.23  
5.45 5.72  
15.4 14  
Car. apron  
Floor

24.38

2+00

1+85- 10<sup>1</sup>/<sub>2</sub> Rt. = start board fence  
9<sup>1</sup>/<sub>2</sub> Lt. = start board fence.

1+75- 8<sup>3</sup>/<sub>2</sub> Lt. = sly face. 13x14' Conc.  
Pier for fence corner

18.4  
4.1 4.2 4.0  
10 10 10

1+56 14<sup>3</sup>/<sub>2</sub> Rt. = Sing Car. Conc. floor

18.33  
4.16  
14.3  
Floor

1+50

17.6  
4.9 4.8 4.9 4.7  
30 10 10 10

22.49

Alley BIK 54

O.B.

± fence.

9<sup>I</sup> Rt. = end conc. paved yard

3+49- 9<sup>3</sup> Rt. = 14" pole # P.A. 4840

3+47 9<sup>3</sup> Lt. = start board fence.

3+34 14<sup>1</sup> Lt. = ± sing Bar. Conc.  
Floor

3+24 10' Rt. = start conc. paved yard

3+00 10<sup>1</sup> Lt. = start board fence

2+81 16' Rt. = ± double Bar.  
Conc. floor

2+75 9' Lt. = end fence

2+50 - 9<sup>E</sup> Lt. = start picket fence

2+49- 9<sup>2</sup> Rt. = 14" pole # P.A. 4860

2+47- 13' Lt. = ± 2' conc. walk

2+40 10<sup>E</sup> Lt. = ± conc. apron to Sing  
Bar

±  
20.16  
4.23  
9<sup>I</sup>  
on conc.  
20.19 6  
4.19  
30  
This drains into  
Alley

29.36  
4.02  
14L  
Floor

20.3  
4.1  
10

19.2  
4.7  
10

19.94  
4.44  
10  
4.30  
20

19.98  
4.40  
16  
Floor

19.0  
5.4  
10  
5.8  
5.4  
6  
5.0  
10

18.22  
5.46  
23  
walk.  
18.89  
5.49  
13

18.76  
5.62  
13L  
Bar  
Floor  
18.75  
5.63  
10E  
Apr 17

24.38



Alley Bk. 54

O.B.

4+55 14' Lt =  $\pm$  31179. Car. dirt floor

4+50

4+49<sup>5</sup> 10<sup>2</sup> Lt. = end dwelling.

4+48 - 9<sup>2</sup> Lt. =  $\frac{3}{4}$ " gas co stand pipe to gas meters

4+35<sup>5</sup> 11<sup>1</sup> Lt. =  $\pm$  doorway

4+34<sup>1</sup> - 10<sup>1</sup> Lt. = end jog in dwelling

4+34 10<sup>6</sup> Lt. = jog in dwelling  
Now - dwelling

4+24 - 10<sup>8</sup> Lt. = start Ex. Car.

4+00 10<sup>3</sup> Lt. = line of fence.

car. part.

3+87 - 14'  $\pm$  Lt. =  $\pm$  20' wide conc.

3+80 - 10<sup>1</sup> Lt. = line of fence.

3+75 9<sup>8</sup> Lt. = angle in fence.

3+71 - 10<sup>1</sup> Lt. = end shed

3+53 - 9<sup>8</sup> Lt. = start board shed

3+50

Pole # AA. 4840

T.P. 51.48 26.23 3.63 20.75

#

7

21.8

4.4

14

Floor.

21.5

4.7

10

21.5

4.7

21.8

4.4

10

21.8

4.54

11L

conc.

$\pm$  doorway

21.1

5.1

10

20.9

5.3

21.1

5.1

10

21.0

512 = Approx Rad.

14

20.3

5.9

10

20.5

5.7

8

20.2

6.0

20.1

6.1

10

26.23

Alley Blk 54

O.B.

4

8

5+26 Lt. end black topped yard.

23.02	23.05	23.1	22.9	22.7	23.2	23.2
4.75	4.72	4.7	4.9	5.1	4.6	4.4
30	12	10	5		10	20
pave.						

5+22 Lt. low spot in black top for drain.

22.89	22.87
4.88	4.90
30	12
pave.	

5+03 12' Rt. = end dwelling

5+02 Lt. dip in black top for drain

22.97	22.75
4.80	5.02
30	12

5+00 12' Lt. = start black top paved yard

22.97	22.84	22.5	22.3	22.3	22.6
4.80	4.93	5.3	5.5	5.5	5.2
30	12	10	5		10
pave.					

TIP. 4.60 27.77 3.06 23.17

27.77

4+81 9' Lt. = start fence chain link

4+77 12' Rt. = start frame dwelling

4+76 9' Rt. = 14" pole # PA. 4820

4+75 { 10' Lt. = end board fence  
 9' Rt. = 2' conc. walk

22.17	22.18
4.06	4.05
92	15

26.23

Alley BIK 54

O.B.

TIP 5.82 30.07 3.52 24.25

5489 11' RT = end dwelling

5486- 9' RT = end steps

stairs into church.

5474- 9' RT = start E+W. Conc.

(on blocks)

5463- 11' RT = start dwelling

5456- 10' RT =  $\pm$  Sing Bar. Conc. floor

5450

5435

5429 10' RT = end chain link fence.

	30.8		
+	3.0	4.2	2.9
	95	95	95
top of		Base	
steps			

	25.43	23.6	24.7
	2.34	4.2	3.1
	95	95	95
top of		Base	end
bottom		steps	
step			

23.47  
4.30  
10'  
Floor

	25.2	25.2	23.2	23.1	23.4
	2.7	2.7	4.6	4.7	4.4
	12	10	6		10

	24.8	24.8	23.9	22.8	22.9	23.3
	3.0	3.0	4.8	5.0	4.9	4.5
	12	10	5		5	10

27.77

Alloy Blk 54

±

10

B.M.#3

3.67

↓ O.B.  
27.82 5.92

↓  
24.15

S.W. 7' Lt. Santa Monica + Sunset Cliffs Blvd.

6+29<sup>74</sup> = ± Sunset Cliffs Blvd.

25.07	24.82	24.73	24.74	24.66	24.57	24.40
5.00	5.25	5.34	5.33	5.41	5.50	5.67
100	50	10		10	50	100

24.92	24.42	24.71	24.56	23.82	24.25
5.15	5.65	5.35	5.51	6.25	5.82
100	100	50	50	100	100
cl	G	cl	cl	G	cl

6+11<sup>74</sup> } 12' Rt.  
          } 12' Lt. } = E.C. cl. Rot.

24.17	24.65	24.20	24.11	24.14	24.67	24.07
5.70	5.39	5.87	5.96	5.93	5.20	6.00
50	12	12	12	12	12	50
G	cl	G	G	G	cl	G

5+99<sup>74</sup> } 9' Rt.  
          } 9' Lt. } B.C. cl. Rot.

24.67	24.34	24.12	24.32	24.65
5.40	5.73	5.95	5.75	5.42
99	99		99	99
cl	G		G	cl

{ = wly line Sunset Cliffs Blvd.

9' Lt. } = start curbs  
9' Rt. }

5+99<sup>74</sup> } = 9' Rt. = end wall  
          } = start A.C. Pava.

24.50	24.55	24.22	24.39	24.11	24.59
5.27	5.42	5.85	5.68	6.10	5.48
99	99		99	99	99
cl	G		G	B.W.	T.W. + Curb

Rot. wall,

5+89<sup>74</sup> 9' Rt. = start conc.

24.01	24.2	24.2
5.5	6.0	5.7
92	99	99
T.W.	B.W.	End

30.07

Alley BIK. 54-01B

B.M.#1		1630	1602	
B.M.#2	4.32	21.32	7.56	17.00 (16.99)
T.P.	3.06	24.56	6.32	21.50
		27.82		

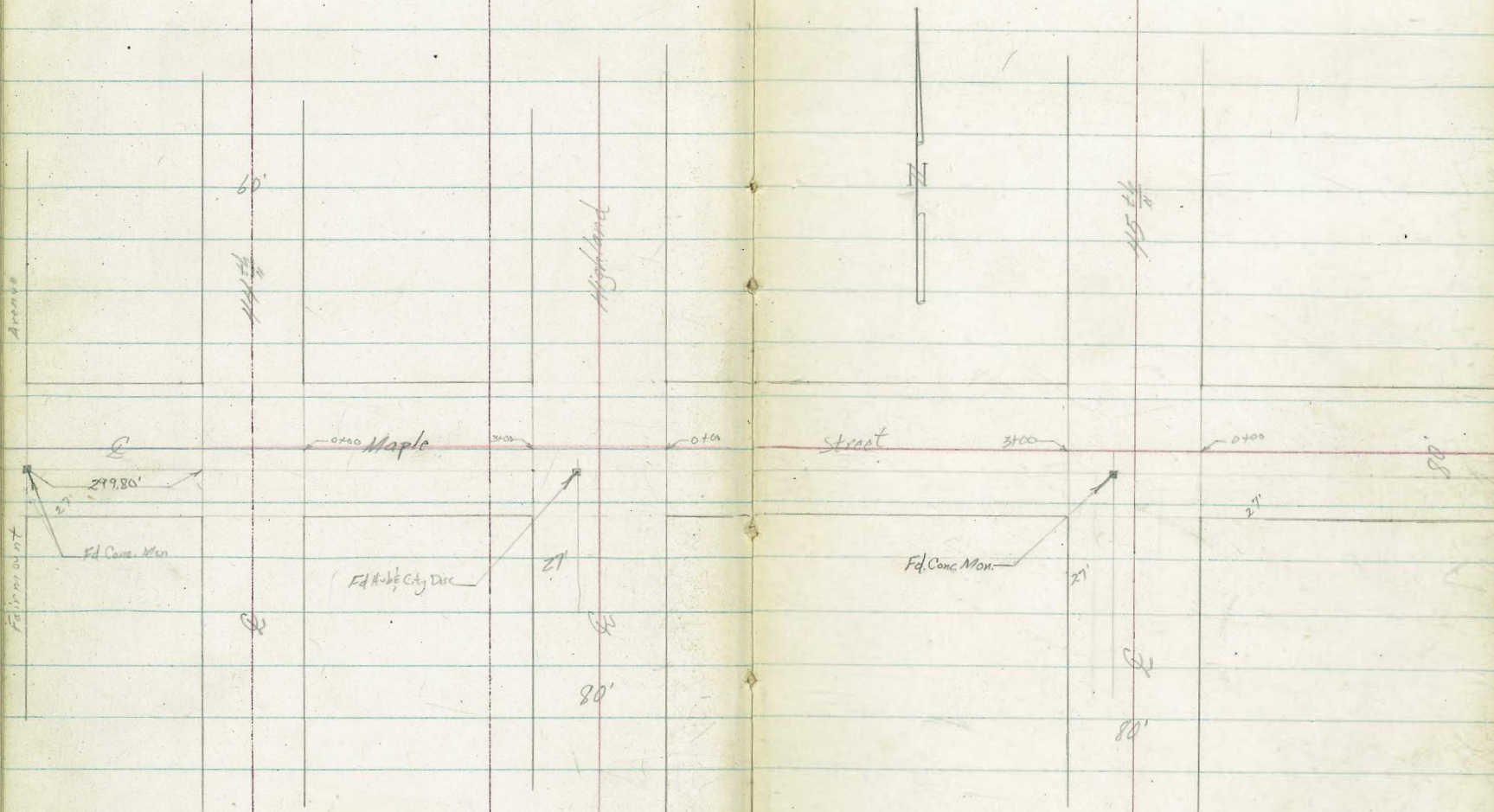
Orig B.M. (16.01)

B.M.#2 - Page 3

Roberts  
Cota  
Moore  
Morales  
6-22-53  
W.O.# 32292

# X-Section Maple Street

From 4<sup>th</sup> to 1/2 Block East of 45<sup>th</sup> St.  
For Grade Establishment



**INDEXED**  
JUL 20 1953

Note:-  
Use tiepoint distances!

1415  
T.P. 0.59 255.08  $\nabla$  12.66 254.49

D+62

T.P. 0.44 267.15  $\nabla$  12.97 266.71

0+00 East Line of 44th Street

T.P. 0.29 279.68  $\nabla$  12.22 279.39

R. 44th

West Line of 44th Street

BM 11.44 291.61  $\nabla$

NWBD  
280.17 Fairmount &  
Maple

35  
Lt. 236.3  
18.8  
50  
197  
40  
235.4  
222  
229.4  
25.7  
40  
229.3  
25.8  
50

255.08  $\nabla$

251.8  
15.4  
50  
252.6  
14.6  
40  
257.0  
10.2  
25  
255.2  
12.0  
8  
259.0  
8.2  
259.3  
7.9  
40  
259.2  
5.0  
50

267.15  $\nabla$

273.4  
6.3  
50  
273.4  
6.3  
40  
273.0  
6.7  
273.1  
6.6  
40  
273.2  
6.5  
50

279.68  $\nabla$

279.1  
12.5  
50  
279.0  
12.6  
40  
279.1  
12.5  
30  
278.6  
13.0  
278.8  
12.8  
20  
278.8  
12.8  
40  
280.0  
11.6  
50  
283.0  
8.6  
50  
283.7  
7.9  
40  
284.3  
7.3  
25  
283.6  
8.0  
282.2  
9.4  
22  
283.1  
8.5  
24  
283.4  
8.2  
40  
283.7  
7.9  
50

291.61  $\nabla$

Cont'd From Page 13

Lt.

Rt. 14

TBM 12.53 274.64  $\bar{\Delta}$  6.62 272.11

Hub at  
Highland  
Maple

Highland

3+00 West Line of Highland Ave.

T.P. 12.20 278.73  $\bar{\Delta}$  0.17 266.53

2+50

1+80

T.P. 12.46 266.70  $\bar{\Delta}$  0.84 254.24

1+50

255.08  $\bar{\Delta}$

$\frac{27.5}{410.2}$  20  
 $\frac{8}{2}$  244

278.0  
0.7  
50  
273.7  
5.0  
50  
270.3  
0.4  
40  
271.2  
3.3  
7.5  
267.5  
6.0  
40  
272.3  
6.4  
50  
266.9  
11.2  
40  
11.8  
50

266.0  
0.7  
50  
265.5  
1.2  
40  
265.4  
1.3  
261.7  
5.0  
40  
261.2  
5.5  
50

263.3  
3.4  
50  
262.7  
4.0  
40  
257.7  
9.0  
249.2  
17.5  
30  
243.3  
23.4  
28  
247.7  
22.0  
40  
247.3  
19.4  
50

259.8  
4.7  
50  
258.8  
3.7  
40  
253.4  
1.7  
13  
248.8  
6.3  
16.3  
40  
231.9  
23.2  
50

255.08  $\bar{\Delta}$

27

37  
27.2

13.7

8.5



T.P. 0.45 276.20  $\bar{\pi}$  12.25 275.75

2+50

276.5  
11.5  
50

276.3  
11.7  
40

275.6  
12.4  
50

273.8  
14.2  
40

272.00  
16.0  
50

2+00

274.3  
13.7  
50

274.6  
13.4  
40

275.8  
12.2  
50

276.4  
11.6  
40

276.3  
11.7  
50

1+50

275.2  
12.8  
50

275.8  
12.2  
40

277.4  
10.6  
50

278.1  
9.9  
40

278.3  
9.7  
50

1+00

278.2  
9.8  
50

278.4  
9.6  
40

279.6  
8.4  
50

280.5  
7.5  
40

280.5  
7.5  
50

T.P. 5.44 288.00  $\bar{\pi}$  2.08 286.56

288.00  $\bar{\pi}$

0+50

281.9  
2.7  
50

282.3  
2.3  
40

283.0  
1.6  
50

282.7  
1.9  
40

282.4  
2.2  
50

0+00 East Line of Highland

280.7  
3.9  
50

280.7  
3.9  
40

280.0  
4.6  
50

278.5  
6.1  
40

278.2  
6.4  
50

284.64  $\bar{\pi}$

284.64  $\bar{\pi}$

T.P. 0.20 226.85 A 12.92 226.65

T.P. 0.61 239.57 13.04 238.96

0+45

235.8  
16.2 14.7 10.2 10.1 10.3  
50 40 40 50

T.P. 0.56 252.00 A 12.77 251.44

252.00 A

0+00 East line of 45<sup>th</sup> St.

254.1 254.4 256.6 256.0 254.5 253.9  
10.1 9.8 7.6 8.2 9.7 10.3  
50 40 18 40 50

T.P. 0.46 264.21 A 12.45 263.75

264.21 A

E 45<sup>th</sup> Street

266.2 266.8 267.6 266.5 264.2 262.8 261.7  
10.0 9.4 8.6 9.7 12.0 13.4 14.5  
50 40 23 30 40 50

T.B.M. 750 268.70 <sup>conc. Man</sup> Mark E 45<sup>th</sup>

3+00 West Line of 45<sup>th</sup> Street

276.1 276.2 274.5 270.2 267.8 265.6  
0.1 0 1.7 6.0 8.4 10.6  
50 40 30 40 50

276.20 A

276.20 A

T.P. 9.42 286.19 0.62 276.77

T.P. 12.51 277.39 0.18 264.88

T.P. 13.04 265.06 0.23 252.02

T.P. 12.84 252.25 0.30 239.41

T.P. 13.16 239.71 0.27 226.55

T.P. 12.65 226.82 0.20 214.17

1450

T.P. 0.42 214.37  $\bar{\pi}$  12.90 213.95

1400

226.85  $\bar{\pi}$

check

10.79 280.15 = 280.17

T.P. 5.62 290.94

0.87 285.32

195.0

194.5

195.2

195.0

194.9

19.4  
50

19.9  
40

19.2

19.4  
40

19.5  
50

214.37  $\bar{\pi}$

213.7

213.9

217.5

216.1

216.6

13.2  
50

13.0  
40

9.4

10.8  
40

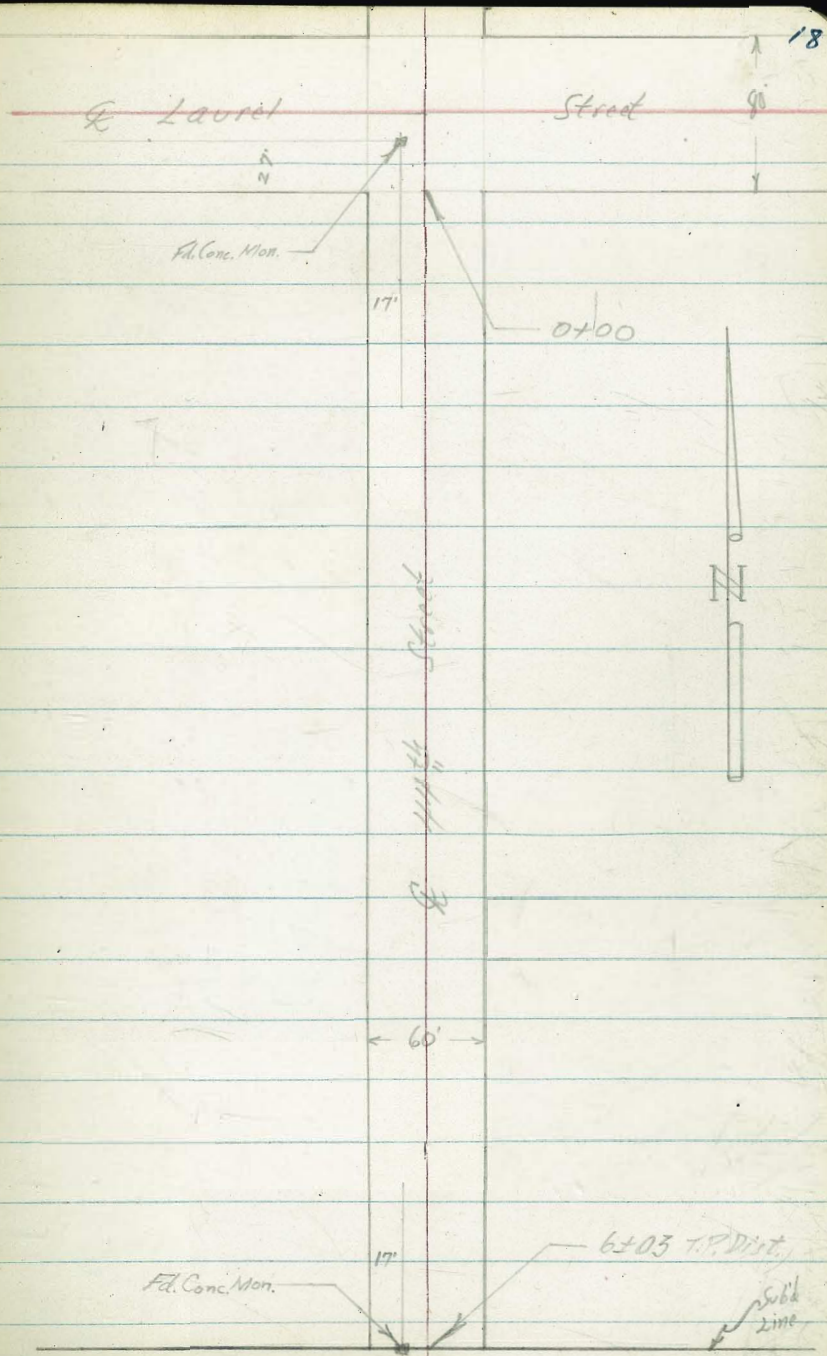
10.3  
50

226.85  $\bar{\pi}$

Roberts  
Cota  
Moore  
Mocales  
6-25-53  
W.D.# 32292

X-Section 44<sup>th</sup> Street  
Aunt. to Sa. 2<sup>nd</sup> Subd.

INDEXED  
Law  
JUL 20 1953



Cont'd From Page 18

18

19

T.P. 0.09 236.29  $\bar{\Delta}$  12.74 236.20

236.9	238.6	235.1	237.8	242.0	236.6	232.1
12.2	10.5	14.0	11.3	7.1	12.5	17.0
40	30	10		15	30	40

0+00 South Line of Laurel

TBM 0.18 249.14  $\bar{\Delta}$  10.05

248.96 Conc. Man  
Laurel  $\bar{\Delta}$   
44.4

249.14  $\bar{\Delta}$

T.P. 0.54 257.01 12.66 258.47

256.5	257.1	254.4	256.7	247.4	244.4
14.6	14.0	16.7	14.4	23.7	26.7
40	30	15		30	40

Laurel

North line Laurel Street

266.8	266.6	263.6	255.8	250.7
4.3	4.5	7.5	15.3	20.4
40	30		30	40

T.P. 0.60 271.13  $\bar{\Delta}$  12.53 270.53

271.13  $\bar{\Delta}$

T.P. 1.78 283.06 9.87 281.28

BN 10.98 291.15

NWBP  
280.17 Fairmount  $\bar{\Delta}$   
Maple

Cont'd From Page 20

5+00

TP 6.94 188.31.7 6.48 181.37

TP 0.84 187.85 12.55 187.01

4+50

4+00

3+50

3+00

2+50

199.567

8.5	14.7	18.7	22.4	18.4	10.6	1.4	+1.4	+1.9	+2.0
40	30	21	16	13		15	22	30	40

Cont. Vol

44th e. s.

bd line

188.31.7

179.8	173.6	169.6	165.9	169.9	177.7	186.9	189.7	190.2	190.3
181.6	175.6	170.3	184.8	188.9	197.6	200.9	199.2		
18.0	24.0	29.3	44.8	10.7	2.0	+1.3	0.4		
40	30	21		10	30	35	43		
185.6	178.8	175.5	188.9	201.9	206.5	207.5			
14.0	20.1	24.1	10.7	+2.3	+6.9				
40	30	25	30	40	40	70			
189.8	187.3	178.1	188.0	202.3	207.5				
9.8	12.3	21.5	11.6	+2.7	+7.9				
40	30	14		30	40				
197.8	193	181.7	188.4	205.1	209.8				
1.8	6.6	17.9	11.2	+5.5	+10.2				
40	30	11		30	40				
196.8	191.9	189.9	193.6	204.5	208.7				
2.8	7.7	9.7	6.0	+4.9	+9.1				
40	30	27	16	30	40				

199.567

check

5.43 148.12 = 148.05

BP. Ely Co. Box Culvert Home Ave. & Fairmount

T.P. 2.26 153.55 12.06 151.29

T.P. 0.31 163.35 12.80 163.04

T.P. 0.46 175.84 12.93 175.38

6±03 sly lime sub'd

5±50

169.8	164.5	164.3	159.5	164.4	176.4	180.9	181.6	181.4
14.5	23.8	24.0	28.8	23.9	11.9	7.4	6.7	6.9
40	30	28	24	20		6	30	40
175.3	169.6	166.5	162.9	166.6	178.8	184.5	185.6	186.1
13.0	18.1	21.8	25.4	21.7	9.5	3.8	2.7	2.2
40	30	25	22	19		10	30	40

Roberts  
Cota  
Moore

6-29-53

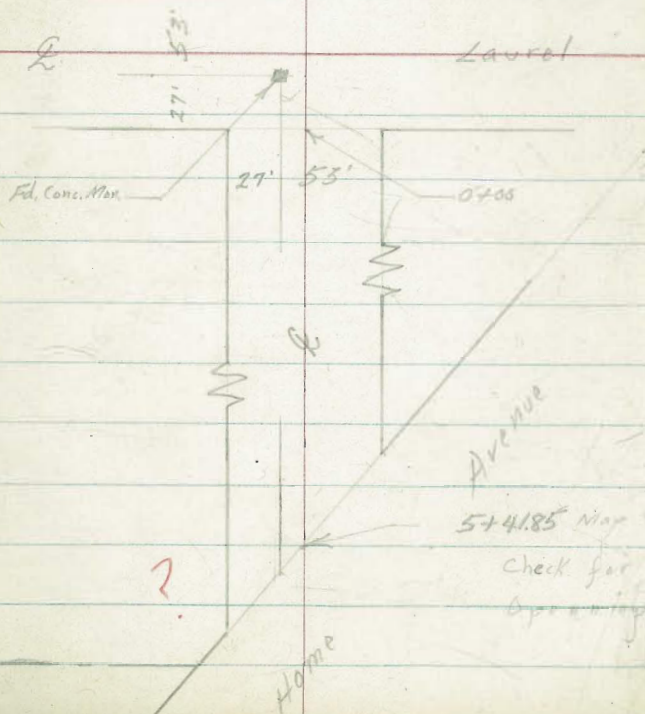
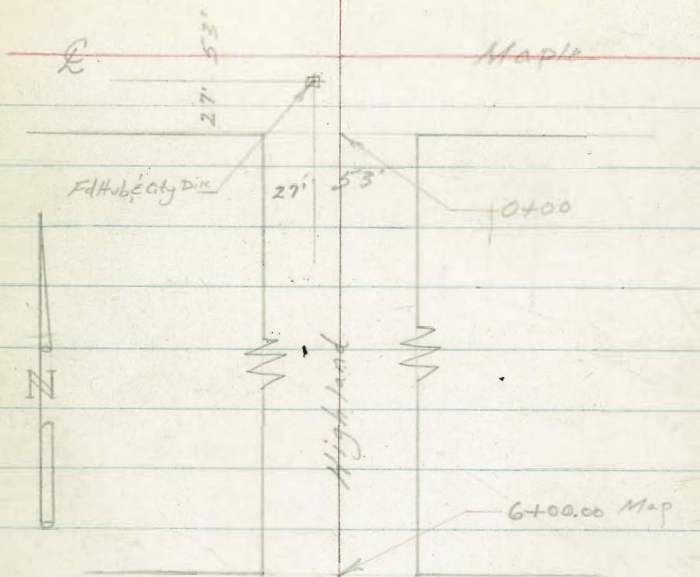
N.D. # 32272

X-Section Highland Avenue

Maple to Home

INDEXED  
JUL 20 1953

23





Contd. From Page 23

1+50

1+00

T.P.

0.53 268.06  $\times$  12.81 26753

0+50

0+00 So. Line Maple

Q Maple

North Line Maple

TBM

8.23 280.34  $\times$

272.11 Hub at

24

270.0  
+1.9  
50

268.5  
+0.4  
40

266.2  
6.9

258.0  
10.1  
25

254.2  
13.9  
40

24

274.3  
+6.2  
50

273.0  
+4.9  
40

265.4  
2.7

259.7  
8.4  
40

258.9  
9.2  
50

268.06  $\times$

277.3  
+3.0  
50

276.1  
+4.2  
40

269.8  
10.5

264.6  
15.7  
40

263.9  
16.4  
50

279.5  
+0.8  
50

270.3  
+2.0  
40

272.6  
7.7

267.5  
12.8  
40

266.8  
13.5  
50

281.2  
+0.9  
50

280.5  
+0.2  
40

275.4  
4.9

271.3  
9.0  
40

270.0  
10.3  
50

282.6  
+2.3  
50

281.7  
+1.4  
40

277.5  
2.8

273.3  
7.0  
40

272.4  
7.9  
50

280.34  $\times$

Highland Maple Survey 14

3+50

237.5  
+19.4  
50

234.6  
+16.5  
40

218.1  
0

203.3  
+14.8  
40

198.1  
20.0  
52  
Bottom

T.P. 0.20 218.10  $\Delta$  12.84 217.90

218.10  $\Delta$

3+00

251.5  
+20.8  
50

249.6  
+18.9  
40

242.7  
+12.0  
20

234.4  
+3.7

213.0  
+17.7  
40

208.9  
21.8  
50

T.P. 0.17 230.74  $\Delta$  12.54 230.57

230.74  $\Delta$

2+50

252.9  
+19.8  
50

250.5  
+17.4  
40

238.7  
+4

229.3  
+13.8  
40

225.7  
+17.4  
50

T.P. 0.21 243.11  $\Delta$  12.07 242.90

243.11  $\Delta$

T.P. 0.14 255.97 12.23 255.83

1+85

264.6  
+3.5  
50

262.9  
+5.2  
40

257.7  
+10.4

248.8  
+19.3  
40

246.3  
+21.8  
50

268.06  $\Delta$

268.06  $\Delta$

6+00 North line of Laurel

209.7	214.7	231.0	241.8	244.9
30.6	25.6	9.3	+1.5	+4.6
50	40		40	50

T.P. 1167 240.30  $\pi$  0.47 228.61

240.30  $\pi$

5+65

199.1	203.4	221.2	236.1	239.5
30.0	25.7	7.9	+7.0	+10.4
50	40		40	50

T.P. 1106 229.08  $\pi$  0.08 218.02

229.08  $\pi$

5+00

188.6	191.8	207.8	221.9	224.9
29.5	26.3	10.3	+3.8	+6.8
49 Bottom	40		40	50

4+40  $\pi$  Cross Bottom

213.3	211.5	192.8	206.3	209.4	213.2
4.8	6.6	25.3	11.8	8.7	4.9
50	40		31	40	50

4+15

225.3	220.8	215.5	205.1	193.9	202.6	208.3
+7.2	+2.7	2.6	13.0	24.2	15.5	9.8
50	40	26		24 Bottom	40	50

218.10  $\pi$

218.10  $\pi$

T.P. 0.34 236.01 T 12.54 235.67

1+50

222.8	225.2	234.6	241.4	242.3
25.4	230	13.6	6.8	5.9
50	40		40	50

1+00

232.3	234.2	240.1	245.4	247.0
15.9	140	8.1	2.8	1.2
50	40		40	50

0+50

232.6	234.9	241.8	248.0	249.6
15.6	133	64	0.2	11.4
50	40		40	50

0+00 So. line of Laurel

220.4	230.3	240.3	247.8	249.6
19.4	17.9	7.9	0.4	1.4
50	40		40	50

T.P. 8.50 248.21 T 0.59 239.71

248.21 T

L Laurel

219.3	223.1	236.5	245.5	247.5
210	172	3.8	+5.2	+7.2
50	40		40	50

240.30 T

240.30 T

3+35

160.5	162.1	170.3	181.3	186.3	191.3
128	112	3.0	+8.0	+13.0	+18.0
50	40		30	40	50

T.P. 0.36 173.27  $\bar{\Delta}$  13.06 172.91

173.27  $\bar{\Delta}$

T.P. 0.87 185.97 12.95 185.10

T.P. 0.19 198.05 13.06 197.86

T.P. 0.56 210.92 13.05 210.36

2+60

190.9	192.9	205.9	217.1	219.3
32.5	30.5	11.5	6.3	4.1
50	40		40	50

T.P. 0.23 223.41  $\bar{\Delta}$  12.83 223.18

223.41  $\bar{\Delta}$

2+00

212.1	215.6	226.2	233.7	235.4
23.9	20.4	9.8	2.3	0.6
50	40		40	50

236.01  $\bar{\Delta}$

236.01  $\bar{\Delta}$

5+23

7.3	153.2
50	
7.0	153.5
40	
7.9	152.6
15	
8.6	151.9
5	149.6
10.9	146.9
5	
13.6	147.5
28	
13.0	146.9
40	
13.6	146.9
50	

5+18

7.2	153.3
50	
7.0	153.5
40	
7.7	152.8
22	
8.5	152.0
5	
10.4	150.1
21	147.2
13.3	147.6
40	
13.3	147.2
50	

5+00

6.8	153.7
50	
7.4	153.1
40	
7.4	153.1
38	
8.5	152.0
21	
10.6	149.9
15	
11.9	148.6
40	147.8
12.7	147.0
40	
13.5	147.0
50	

4+34

11.0	149.5
50	
11.4	149.1
40	
12.2	148.3
29	
11.6	148.9
2	153.9
6.6	158.7
2	
1.8	161.5
40	
+1.0	161.5
50	

4+32

11.2	149.3
50	
11.4	149.1
40	
12.1	148.4
31	
11.6	148.9
2	
6.8	153.7
40	158.8
1.7	161.5
40	
+1.0	161.5
50	

4+00

7.6	152.9
50	
8.8	151.7
40	
5.7	154.8
32	
1.8	158.7
25	162.5
+2.0	168.5
25	
+8.0	174.0
40	
+13.5	174.0
50	

T.P.

0.25 160.49  $\bar{\Delta}$  13.03 160.24

160.49  $\bar{\Delta}$

173.27  $\bar{\Delta}$

check

5.74 148.01 = 148.05

See page 22

T.P.

360

153.75

10.34

150.15

ON  
NEM.

5+41.85 (Mag.) No. Lim of Home

160.49 K

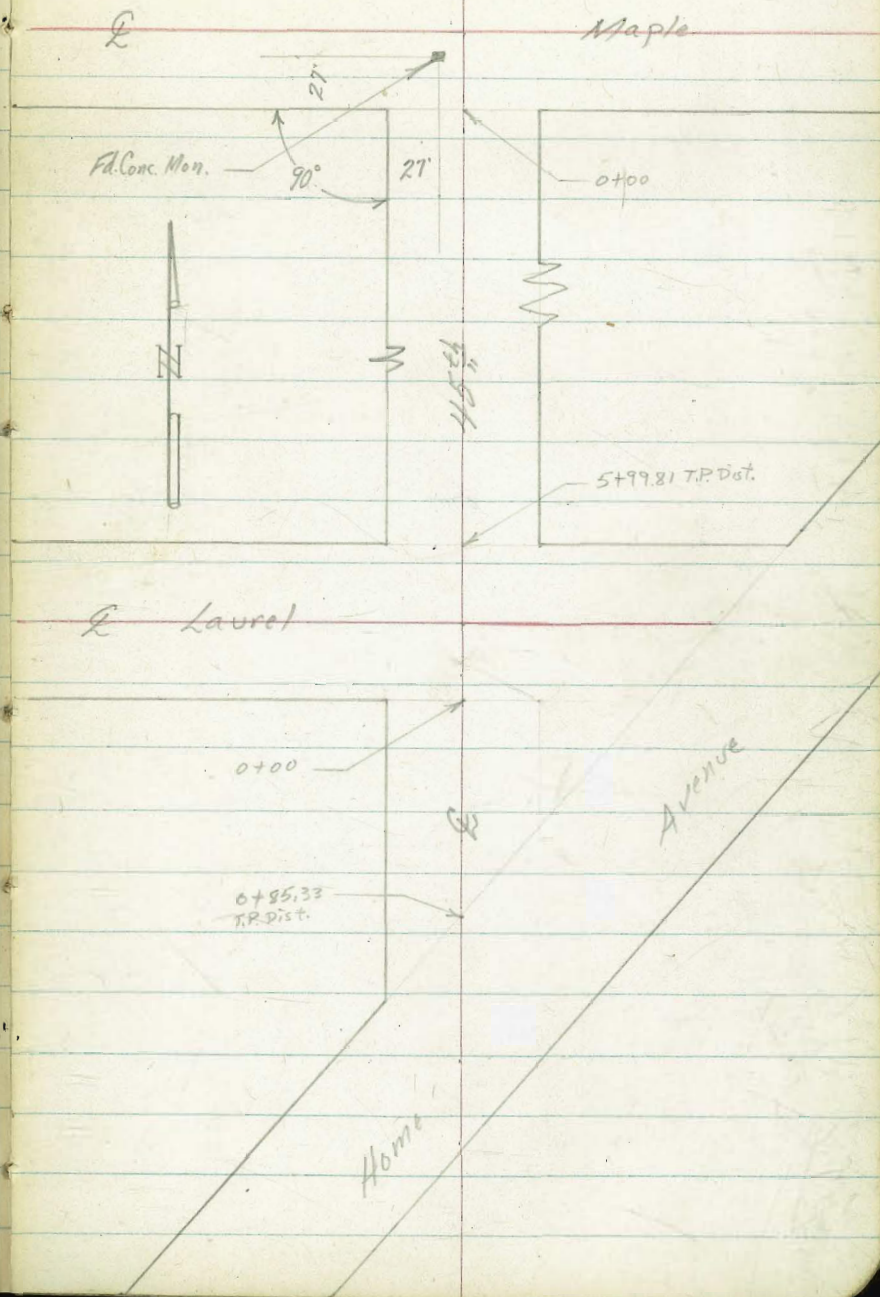
152.6	152.6	152.6	151.4	148.7	148.7	147.2
79	79	79	9.1	11.8	11.8	13.3
50	40		28	35	40	50

160.49 K

Roberts  
Cota  
Moore  
Moralez  
7-2-53  
W.O. # 32292

X-Section 45<sup>th</sup> Street  
Maple to Home

INDEXED  
JUL 20 1953





0+96

47.0  
50  
224.9

40.0  
40  
220.9

24.0  
24.0  
244.9

12.1  
40  
256.8

11.2  
50  
257.7

0+75

29.4  
50  
239.5

28.7  
40  
240.2

16.4  
16.4  
252.5

11.8  
40  
257.9

9.7  
50  
259.2

0+50

21.8  
50  
247.1

21.2  
40  
247.7

14.7  
14.7  
254.2

9.1  
40  
259.8

8.0  
50  
260.9

0+00 So. line of Maple

15.7  
50  
253.2

14.1  
40  
254.8

6.6  
6.6  
262.3

1.0  
40  
267.9

10.6  
50  
269.5

Q Maple

16.2  
50  
252.7

13.0  
40  
255.9

2.6  
2.6  
266.3

15.7  
40  
274.6

16.4  
50  
275.3

North line of Maple

21.2  
50  
247.7

16.8  
40  
252.1

8.7  
23  
260.2

1.1  
1.1  
267.7

16.5  
33  
275.4

17.3  
40  
276.2

18.2  
50  
277.1

TBM

0.23 268.93A

268.70 Conc. Men. Maple = 45th

See page 16

268.93A

3+50

224.5	226.2	236.6	243.8	245.3
195	178	74	0.2	+1.3
50	40		40	50

T.P. 0.49 243.97A 12.95 24348

24397A

2+75

237.3	239.8	245.8	251.4	253.1
19.1	16.6	10.6	5.0	3.3
50	40		40	50

2+25

239.7	241.8	246.2	248.4	256.1	257.5
16.7	14.6	10.2	8.0	0.3	+1.1
50	40	18		40	50

T.P. 0.52 256.43A 13.02 255.91

256.43A

1+75

238.6	240.9	245.9	248.3	256.7	258.7
20.3	28.0	23.0	19.6	12.2	18.2
50	40	23		40	50

1+25

223.3	229.9	248.6	256.7	258.5
40.6	39.0	20.3	12.2	10.4
50	40		40	50

268.93A

268.93A

Contid From Page 33

5+60

T.P. 0.31 194.34  $\pi$  12.23 194.03

T.P. 0.45 206.86 12.63 206.41

5+00

T.P. 0.40 219.04  $\pi$  13.00 219.64

4+50

T.P. 0.23 231.64  $\pi$  12.56 231.41

4+00

243.97  $\pi$

44

170.8  
23.5  
50

173.1  
21.2  
40

183.8  
10.5

195.4  
7.1  
40

198.5  
14.2  
50

194.34  $\pi$

191.5  
21.5  
50

194.0  
25.0  
40

209.6  
14.4

218.6  
0.4  
40

221.4  
12.4  
50

219.04  $\pi$

206.6  
25.0  
50

209.1  
22.5  
40

218.1  
13.5  
13

220.2  
11.4

224.4  
7.2  
15

230.0  
1.6  
35

231.3  
0.3  
40

233.5  
1.9  
50

231.64  $\pi$

218.0  
26.0  
50

220.7  
23.3  
40

224.8  
19.2  
12

220.3  
15.7

238.1  
5.9  
40

240.5  
3.5  
50

243.97  $\pi$

R 34

0+85.33 North Line of Home Avenue

9.2	9.6	8.5	9.0	5.3	5.0
41	31	27		40	50
161.9	161.5	162.6	162.1	165.8	166.1

0+50

100	114	7.0	4.1	4.4
50	40		40	50
161.1	159.7	164.1	167.0	166.7

0+00 So. line of Laurel

10.9	8.8	6.8	6.7	5.3
50	40		40	50
160.2	162.3	164.3	164.4	165.8

Q Laurel

10.8	9.4	8.6	4.0	1.3	+1.0	+3.2
50	40		13	30	40	50
160.3	161.7	162.5	167.1	169.8	172.1	174.3

T.P. 145 171.05  $\nabla$  12.72 169.60

171.05  $\nabla$

5+99.81 North Line of Laurel

19.2	18.0	17.4	15.3	9.9	0	+2.4
50	40	29	25		40	50
163.1	164.3	164.9	167.0	172.4	182.3	184.7

T.P. 001 182.32  $\nabla$  12.03 182.31

182.32  $\nabla$

194.34  $\nabla$

Contd From Page 35

Lt

£

R 36

Check

10.55 150.17 = 150.15

Cont  
Mon See page 30

T.P.

0.83 160.72 Nil 159.89

171.05 X

Cross Sec. Alley BIK. 50-0.B.

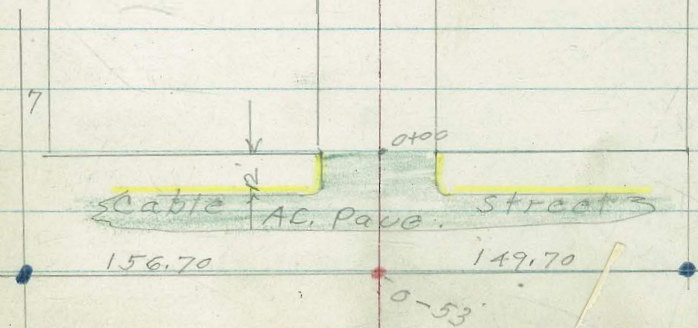
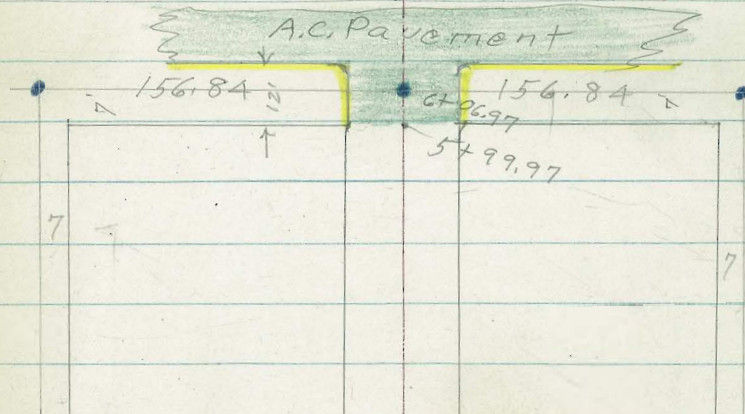
Cable to Sunset Cliffs Blvd.  
between Narragansett + Del Monte

C.H.S.  
Begg  
Altman  
Scholin

8-5-53  
N.O.# 31954

(?) denotes Fd. disk or L+T. (City)  
" Set. Pav. mail

Sunset Cliffs Blvd.



Alley BIK 50.0.B

38

0+00<sup>5</sup> 10' Rt = 6" Conc. wall.  
 10' Rt } = end curbs  
 10' Lt }  
 0+00. Ely. line Cable = Fhd A.C. Pavc.  
 T.P. or Nail 0-53'  
 8.30 31.59 6.04 23.29  
 0-09 10' Rt } = E.C. 3' Rad. cb. Ret.  
 10' Lt }  
 13' Lt } = B.C. 3' cb. Rad. cb. Ret  
 13' Rt }  
 0-12 = Ely. cb. line Cable  
 0-30 = Cable  
 4.22 29.33 - 25.11

24.2  
 7.4 7.7 5.6  
 10 10 10  
 B.W. T.W.  
 24.07 23.83 23.63  
 7.52 7.76 7.96 7.72 7.43  
 10 10 10  
 cc c c c c  
 31.59  
 23.81 23.45 23.30 23.57 23.96  
 5.52 5.88 6.03 5.76 5.37  
 10 10 10 10  
 cc c c c c  
 23.49 23.25 23.68 23.16 23.19 23.28 23.86 23.45 24.06  
 5.84 6.38 5.65 6.17 6.14 6.05 5.47 5.88 5.27  
 60 60 3 3 3 3 3 60 60  
 cc c cc c c c cc c c  
 23.43 23.70 23.79 23.81 23.97  
 5.90 5.63 5.54 5.52 5.36  
 60 10 10 60  
 29.33  
 S.E.B.P. Del Monte + Cable

Alley BIK 50. O.B.

0+72 15' Lt = start 3 car. Car. <sup>Conc. Floor</sup>

28.37

5104  
15'  
Floor

33.41

T.P. 4.17 33.41 2.35 29.24

0+86 8' Rt = 9" Pole # A 4880

28.3

3.3  
11'  
Floor

0+67 11' Lt = & Sing Car. dirt

0+62 - 10' Lt = end fence

0+50

28.2

28.3

28.0

28.0

28.1

28.5

28.64

28.92

3.4  
10

3.3  
7

3.6  
6

3.6  
6

3.5  
6

3.1  
10

2.95  
12

2.67  
15

apron

Car

Floor

0+46 10' Lt = end pickett fence. <sup>+ start board fence.</sup>

27.4

27.6

26.5

26.2

26.4

28.2

28.44

28.87

4.0  
10

4.0  
8

5.1  
7

5.4  
7

5.2  
7

3.4  
10

3.13  
12

2.72  
15

apron

Car

Floor

0+27 - 12' Rt = start Conc. apron <sup>to 7 car. Car.</sup>

0+04 15' Rt = start dwelling <sup>+ Car.</sup>

27.8

3.8

15.

ord. at house

25.8

25.7

25.8

23.8

24.0

24.9

27.8

27.8

5.8  
10

5.9  
8

7.8  
6

7.8  
8

7.6  
8

6.7  
10

3.8  
15

3.8  
20

0+01 10' Lt = start picket fence

31.59



Alley Bk. 50 O.B.

Floor. (below <sup>level</sup> general ground)

1+33 - 11' Lt. =  $\pm$  Sing Car. dirt

1+17 11' Lt. = end apron

1+05 11' Lt. = start conc. apron.

10<sup>3</sup> Rt. = line of fence

1+00 15' Lt. = end 3 car Gar.

0+92 - 10<sup>5</sup> Rt. = start board fence

0+87<sup>5</sup> 12' Rt. =  $\pm$  3' conc. walk

0+87 8<sup>6</sup> Rt. = 9" pole A 4880

0+86 15' Rt. = end Gar.  
12' Rt. = end apron

28.0

5.4  
11'  
Floor

28.61

4.80  
16  
Floor

28.26

5.15  
11'  
apron

28.61

4.80  
16  
Gar. floor

28.31

5.10  
11  
apron

28.31

5.10  
15'  
Gar. floor

28.4

5.0  
15

28.7

4.7  
10

28.5

4.9

28.9

4.5  
10

28.90

4.51  
12  
walk

29.15

4.26  
22  
walk

28.89

4.52  
12  
Apron

29.01

4.40  
15  
Gar. Floor

33.41

Alley BIK. 50 O.B.

2400 11<sup>3</sup> Lt = end board fence  
11<sup>2</sup> Lt = start board fence.

1+90 18<sup>1</sup> Rt = Ely. cor. Gar.

1+85- 14<sup>4</sup> Rt. =  $\pm$  Gar.

10<sup>2</sup> Rt. = Nly. Cor Gar. Conc. <sup>Floor</sup>  
1+80- 10<sup>3</sup> Rt = end wire fence.

1+75 9<sup>5</sup> Rt = end hedge to come <sup>out.</sup>

1+62- 11<sup>6</sup> Lt = start board fence.

1+52 9<sup>1</sup> Rt. { start 6' high hedge  
to come out.

T.P. 4.67 33.69 4.39 29.02

{ start wire fence.

1+51 - 10<sup>2</sup> Rt = end board fence.

dirt floor.

1+50 - 11<sup>4</sup> Lt. =  $\pm$  double Gar.

28.8 28.6 28.5 28.7 29.5 29.8  
4.9 5.1 5.2 5.0 4.2 3.9  
10 7 6 7 10

29.25  
4.41  
18L  
Floor

29.25  
4.41  
144  
Floor

28.7 28.7 28.4 28.5 28.5 29.5 29.30  
5.0 5.0 5.3 5.2 5.2 4.3 4.39  
10 7 6 7 10 10  
Gar. floor

33.69

28.7 28.7 28.9 28.4 28.5 28.8 29.2 29.2  
5.2 5.2 4.5 5.0 4.9 4.6 4.2 4.2  
11.4 10 7 6 5 7 10  
Floor

33.41

Alley BIK.50 0.13.  
 Nail in pole  
 # P.A. 4854  
 T.P. 4.85 34.83 3.71 29.98

8<sup>5</sup> RT = end fence.  
 2+75 8<sup>1</sup> RT = 10" pole # P.A. 4854

conc. to come out.

2+61 - 7<sup>5</sup> RT = ctr. 8 sq. feet of 3"  
 fence corner  
 { 6' wide shed built into  
 2+53 { 8<sup>5</sup> RT = start 8' long &  
 { 8<sup>5</sup> RT = start board fence.

10' Ltr = start fence.  
 2+51 10<sup>2</sup> Ltr = end shed

2+50

2+42 10<sup>5</sup> Ltr = start shed

2+40 11' RT = start shed

2+38 19' Ltr = <sup>floor</sup> Sing Gar. dirt

conc. apron to Sing. Gar.

2+28 4<sup>5</sup> RT = 10' wide level

2+20 10<sup>8</sup> Ltr end fence.

2+01 8<sup>3</sup> RT = 10" pole # J.P.A. 4860

29.7 28.9 28.9 29.0 29.6  
 4.0 4.8 4.8 4.7 4.1  
 10 6 6 10

29.0 28.7 28.7 28.8 29.3 29.5  
 4.7 5.0 5.0 4.9 4.4 4.2  
 10 6 5 6 10

29.1  
 4.6  
 10.5  
 End

29.6  
 4.1  
 11  
 End.

28.5  
 5.2  
 19  
 Floor

28.76 29.47 29.69  
 4.93 4.22 4.00  
 4.5 10 12  
 Apron Gar. Floor

33.69

Alley BIK 50. O.B.

±

23

3+80 - 9<sup>5</sup> Lt = end fence.

3+73 - 8<sup>3</sup> Rt = 10" pole # P.A. 4840

3+66 15' Rt = ± Sing. Gav. Conc. floor

3+59 13' Rt = end fence.

3+54 9<sup>8</sup> Rt = Δ in fence

3+44 9<sup>8</sup> Rt = start board fence

10' Lt = ± 3' conc. walk  
3+31 9<sup>8</sup> Lt = line of fence

3+17 - 10<sup>5</sup> Rt = end <sup>House</sup> dwelling

3+13 - 9<sup>9</sup> Lt = start board fence.  
end shed +

10<sup>0</sup> Lt = start shed  
3+00 } 9<sup>2</sup> Lt = end shed

2+92 - 10<sup>8</sup> Rt = start frame house  
on conc. blocks

2+87 - 9<sup>7</sup> Lt = { start shed,  
end fence.

29.7	29.5	29.5	29.6	30.1	30.13
5.1	5.3	5.3	5.2	4.7	4.70
10	6		5	10	15
					Gen. floor.

29.88	29.78	29.5	29.3	29.3	29.6	29.7
4.95	5.05	5.3	5.5	5.5	5.2	5.1
20	10	10	6		6	10
walk	walk	end				
					29.7	
					5.1	
					10E	
					end	

29.4	29.1	29.1	29.1	29.7
5.4	5.7	5.7	5.7	5.1
10	5		6	10

29.4  
5.2  
10E  
end.

34.83

Alley BIK. 50-0.B.

4+47- 9<sup>4</sup> Lt = end apron.

4+26 9<sup>4</sup> Lt = end fence.

4+16 { To 3 Car. Gar. - conc. floors  
10<sup>6</sup> Rt = start conc. apron

T.P. 5.33 36.54 3.62 31.21

4+14- 11<sup>6</sup> Rt = end lath fence.

4+05- 9<sup>2</sup> Lt = start board fence.

4+00

3+98- 11<sup>6</sup> Rt = start lath fence.

3+94 11<sup>6</sup> Rt = 8' wide shed

3+91 17<sup>8</sup> Lt = 8' Sing. Gar. Conc. floor.

3+83 - 11<sup>4</sup> Rt = 8' Sing. Gar. plank floor.

31.78

4.76

10.6

Apron

31.93

4.61

16

Floor

30.4

6.1

10

30.2

6.3

5

30.2

6.3

10

31.2

5.3

10

31.42

5.12

10.6

Apron

31.92

4.62

16

Gar. floor

36.54

30.4

4.4

10

29.9

4.9

30.0

4.8

5

30.3

4.5

10

30.27

4.56

17.8

Floor

30.1

4.7

17.8

End.

30.0

4.8

11.4

Floor

34.83

Alley Bk 50. 0.1B.

#

45

Sing. Gar  
5+08 13' RT =  $\pm$  conc. apron to

32.1 31.8 32.3 32.44 32.67

4.4  
1.0  
4.7  
4.2  
1.0  
4.10  
1.3  
3.87  
1.6  
apron  
Floor

15' Lt. = start house  
5+03 - 12' Lt. = start 2' wide conc. walk

32.12

4.42  
1.25  
walk

31.0 31.7 32.2 32.1

5+00 10' Lt. = end fence

4.7  
1.0  
4.8  
4.3  
1.0  
4.4  
1.3

Sing. Gar.

4+96 13' RT =  $\pm$  conc. apron to

32.05 32.33

4.49  
1.3  
apron  
4.21  
1.6  
Gar.  
Floor

4+77 8' RT = 9" pole # A 4820

31.86 32.20

to Sing. Gar. conc. floor.

4+66 12' RT =  $\pm$  conc. apron

4.68  
1.25  
apron  
4.34  
1.55  
Floor

(should come out)  
trash burner should  
with 2' high 3' x 3' conc. block

4+55 - 11' RT =  $\pm$  5' x 5' conc. slab

31.1 30.8 30.9 31.6 31.82 31.96

5.4  
1.0  
5.7  
5  
5.6  
4.9  
1.0  
4.72  
1.05  
4.58  
1.6  
walk

10' RT =  $\pm$  2' wide conc. walk  
4+50 10' Lt. = start board fence

36.54

Alley BIK. 50' O.B.

5+99 <sup>97</sup> = 10' Lt. } = start curbs  
10' Rt }  
= start A.C. Pav.  
10' Lt. = end store Bldg.

5+99 - 10' Rt = end fence.

5+80

5+79 - 12' Rt = end house  
10' Rt = start picket fence.

5+65 - 10' Lt. = end 4" slab +  
start stucco store Bldg.

5+55 - 12' Rt = start house on  
conc. blocks

5+50 { 12' Lt. = end conc. walk  
10' Lt. = start 4" Conc. slab

5+48 - 15' Lt. = end house

5+47 - 9' Rt = end fence

5+30 - 12' Lt. = break in walk grade

T.P. 4.98 3.39 33.15

5+20 - 10' Rt = start picket fence.

36.54

33.03 32.93 32.81 33.00 33.39  
5.10 5.20 5.32 5.13 4.74  
10 10 10 10  
cl c c c

33.5 33.1 33.5 33.5  
4.6 5.0 4.6 4.6  
10 10 12

33.41 33.36 33.2  
4.72 4.77 4.9  
15 10 10  
slab slab Grd

33.38  
4.75  
15  
slab

32.93 33.41 32.9 32.8 32.9  
5.20 4.72 5.2 5.3 5.2  
12' 10' 10 10  
walk slab

32.41

5.72  
12'  
walk

38.13

36.54

Alley BIK. 50 O.B.

8.44 25.10 (25.11)  
 T.P. 2.01 33.54 8.10 31.53  
 T.P. 2.62 39.63 1.24 37.01  
 S.S. 6.22 32.93

G+29 27 =  $\pm$  Sunset Cliffs Blud.

12' RT } = E.C. 2' Rad. Cl. Ret.  
 12' LT } Cliffs.  
 G+11 27 = } why. cl. time Sunset

disk G+06.97

T.P. 5.51 38.25 5.39 32.74

10' RT }  
 10' LT } B.C. - 2' Rad. cl. Ret.

INDEXED

J.E.R.  
 AUG 6 1952

S.E.B.P. Del Monte + Cable. (Orig. B.M.)

(Bench Book = 37.09)

S.E. ~~Land~~ Del Monte + Sunset Cliffs Blud  
 B.P.

(Bench Book = 32.10)

S.E.B.P. Narragansett + Sunset Cliffs Blud

32.80 33.61 33.15 33.89 34.60  
 5.45 4.64 4.50 4.36 3.65  
 70 10 10 10 60

32.07 33.81  
 6.18 4.44  
 70 60  
 cl cl

31.65 32.85 32.50 32.77 32.85 33.22 33.42  
 6.60 5.40 5.75 5.48 5.40 5.03 4.83  
 70 12 12 12 12 60  
 G cl G G cl G

38.25

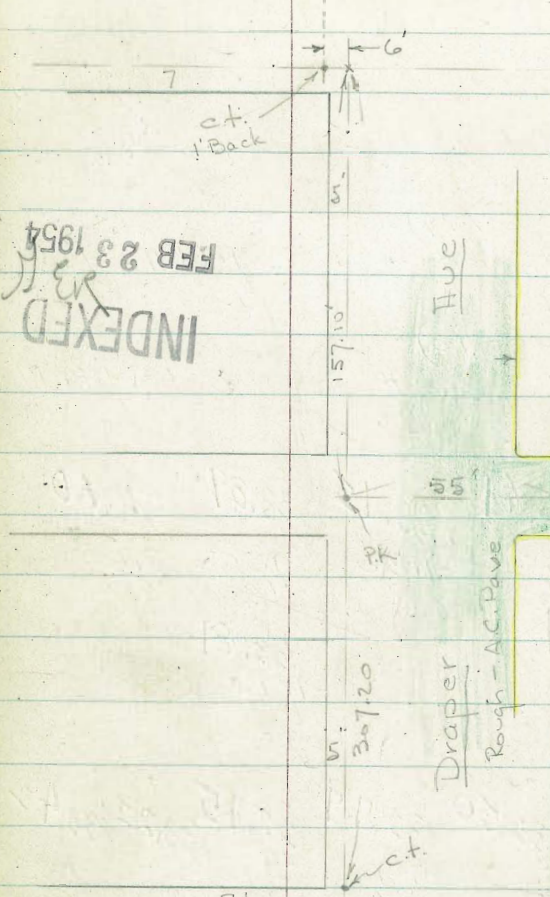
32.93 32.73 32.71 32.96 33.23  
 5.20 5.40 5.42 5.17 4.90  
 10 10 15 10  
 cl G G cl

38.13



# Genter St.

INDEXED  
FEB 23 1954

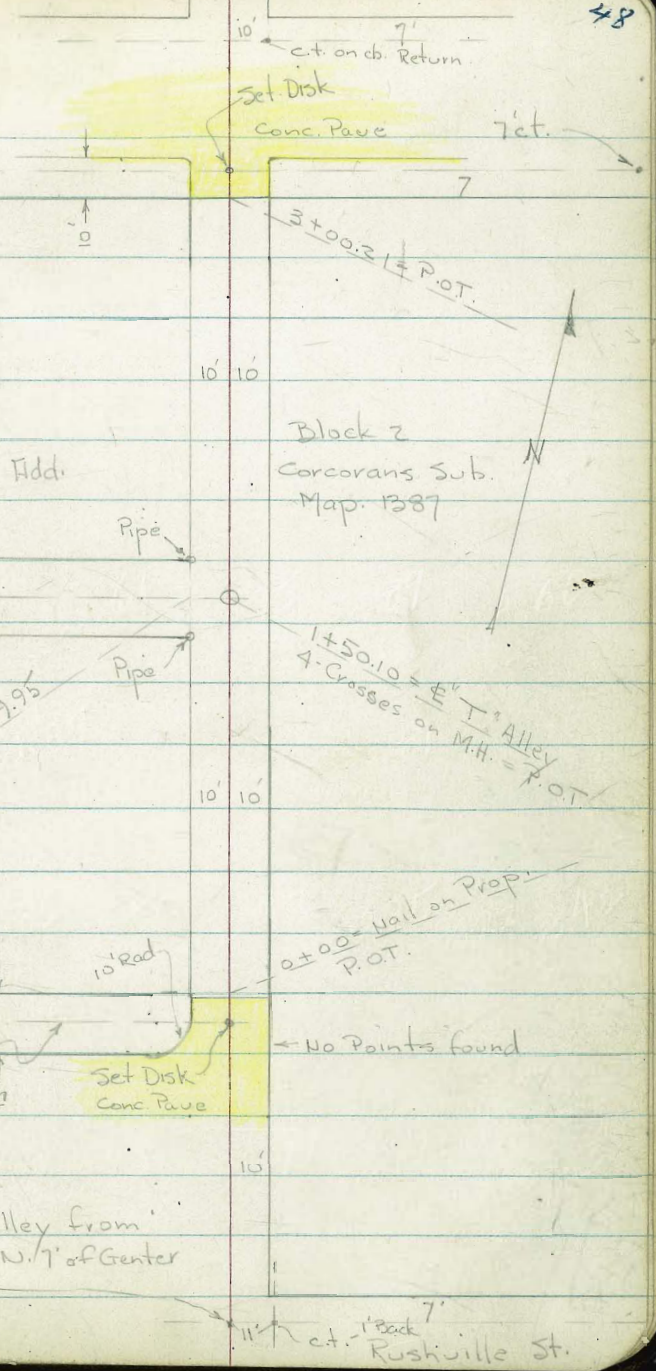


Block 14  
F.T. Scripps Add.  
Map. 897

Block 2  
Corcorans Sub.  
Map. 1387

Line Prod. from  
Arenas  
La Jolla Blvd  
St.

Prod. & Alley from  
Here to N. 7' of Genter



X-Sect. 20' Alleys - Block 14 + wly. of  
Block 2 - See sketch - P. 48

W.O. 32115 - 2-18-54 - 7.0.

Begin Sections of N+S. Alley at Arenas.

0+49 - 10.2' Rt. = end of Rock + flowers

24.1    25.0  
10.2    Top Rock  
gr.

0+20 - 10.5' Lt. = Board fence

23.7    23.7    24.0    25.5  
10    10    10.2 = Top  
Rock

= edge of Geranium Hedge

0+04 - 10.2' Rt. = Beg. wly. of Row of Conc. + Boulders

24.2    25.4  
10.2    Top Rock  
gr.

0+02 - 10.2' Rt. = ± 3.5' Rough Conc. Step

24.2    24.87    25.16  
10.2    10.2 = top 15  
gr    step + walk

0+00 - 10' Rt. = ± P. pole # I.P. A 7252

0+00 = N.L. Arenas

0-00.4 = edge of Conc. Pav. + cb. on Lt.

23.53    23.55    23.90  
10 =    10.3 = Conc. at end of  
cb + gut.    wall

0-15 = N. cb. Line Arenas

23.01    22.62    23.33    23.65    24.02  
Top =    20    10    10.3 = edge at wall  
PC. of    gut

Set B.M. on 7" Disk at Alley at Arenas    123.58

10' Rad.  
Ret.

check B.M. - SE. B.P. Arenas + Draper    110.39 - 110.28

Shown in  
Book

B.M. - S.W. B.P. Gunter + Draper    106.32 - Use this  
B.M.

100' fig. Not noted

Actual Elev. Shown.

Lt.

±

Rt.

49

N-S  
Alley

1+60.10 North line of "T" alley

1+59 - 13.4 Rt = beg conc. apron 3 car, gar.

1+59 - 6.9 Rt end apron

1+50 - 1' Rt = Sewer Manhole

1+48 7.2 Rt. Ang. in Conc apron

1+44 9.6 Rt. End 6' wall begin Conc. apron

1+41.3 - 9.9 left end picket fence (goes west)

1+40.10 = 5th line of "T" alley

1+11.5 - 9.2 Rt = Tel. pole # 3059464  
B.M. = 12479

1+09.5 - 9.9 Rt. Beg. 8" Conc. block wall

1+00 - 10.2 Lt. = fence

0+84 - 10.4 Lt. = 4' Conc. walk

0+82 - 10.3 Lt. = Beg. Picket fence

0+77 - 14' Lt. = Conc. apron to Sing Gar.

0+71.5 - 10.3 Lt. = end Board fence

0+70.5 = 9.5' Lt. = P. pole # A 7265

0+60

Lt.

N-S

±

Rt.

50

23.1 23.1 23.6 23.71  
10 10 13.4  
edge apron

23.71 23.78  
13.4 30  
conc. conc. apron  
23.30 23.54 24.01  
6.9 9.5 12.9  
23.26 req. apron floor  
west rim gar.  
manhole

23.43  
7.2  
apron  
23.59 23.99  
9.5 12.9  
conc. apron at  
apron gar.

23.1 23.3 23.4 23.0  
10 9.6  
along footing  
wall

23.9 23.5  
9.9 9.6  
gd. footing  
23.8  
10

22.9 23.4 23.5  
16.6 10  
By House

23.13 23.29  
15 10.4 = walk  
walk

23.36 23.23  
16 14  
floor apron

23.7 23.8 24.0  
10 10

Lt

N 5

E

Rt

51

3+00.21 - 10'3 Rt end wall begin return  
conc. pare & curbs

3+00.21 - 5th line Center 3ft. and edge

2+80

21.70	21.64	22.07	22.51
9.7		10.3	10.3
Gut + top cb.		Gut.	top cb.
22.0	22.0	22.2	
10		10	

2+79 - 10.3 Rt. = 4' Walk in 6" conc. wall  
also 3" drain pipe in step

2+52.5 - 10.4 Rt beg. 6" conc. wall

2+52 - 10' Rt. = 8" Tree

2+51 - 8.5 Rt end conc. drive

2+40

22.72	22.39	23.96
10.3	Flow 3"	11.9
Step	pipe	top step
2.28	22.3	23.60
grad. along wall	footing of wall	top of wall
10.4	10.4	10.4

23.15	24.05
8.5	12.8
cox. drive	floor gar.
22.3	22.6
10	23.19
	23.42
	8.8
	10
	apron conc. drive

2+36 15' Lt end conc. apron

2+33.5 - 9.5 Rt = 4' Tel. pole #89769H

2+33 - 8.8 Rt. Beg. conc apron

2+32.5 - 10.5 Rt. End fence.

2+19.5 - 15' Lt. Beg conc apron.

2+08 - 10.6 Rt. Begin board fence

2+04.3 - 13.2 Rt. end conc driveway

2+00 - 10' Lt = 4' Power Pole #A7285

1+98.5 - 13.2 Rt. = Break in apron

Lt

22.7	22.8	23.5
10		10

22.41	22.51
15	23.2
edge apron	back apron

23.25	23.98
8.8	12.8
edge apron	floor gar.

22.44	22.62
15	23.2
edge apron	floor gar.

23.42
13.2

23.70	23.87
13.2	29.6
edge apron	floor gar.



Begin X-Sept. East and West

"T" alley Blk. 1A

0+78 - 12.1 Rt = 4 5' conc porch

0+70

INDEXED  
M & R  
FEB 23 1954

0+65 - 10.9 Lt. end house beg conc slab

0+59.5 - 9.9 Rt. end picket fence wing of house. Conc. foundation

0+56 - 10.9 Lt. end picket fence beg.

0+52 - 10.9 Lt = 4 7' conc porch

0+37 - 9.6 Rt. beg. picket fence

0+35

0+05

and 10' Lt begin 4' picket fence

0+01 - 9.9 Lt. end portion conc. ret. wall

Entire alley has thin coat coldlay in alley thin and poor condition.

0+00 - East line Draper St. A.C. east of cb. line

0-10 = East cb. line - Draper St.

B.M. P.K. E alley 0+00 at prop line 139.16

Lt.

E-W

Rt.

53

15.3 15.91 16.50  
grd. Top slab 16  
12. 12.1 on porch

14.00 13.8 14.0 13.8 14.8 14.9  
10.9 10 7 10 16  
conc. slab along house

13.98 13.90  
15 10.9  
on slab conc. slab

14.16 13.7  
10.9 9rd.  
Top fd.  
14.19 14.17 13.6  
13.6 10.9 10.9  
along house top conc. 9rd

13.3 13.0 12.1 12.1 12.1 13.0 13.1  
15 10 7 7 10 15

12.0 11.4 09.6 09.6 09.7 11.6 11.9  
15 10 16 7 10 15  
along fence

09.2 11.52  
9.9 9.9  
footing top wall

09.21 08.91 09.16 09.06 09.21  
top cb. 10 9.9 top cb.  
end ret. gut gut end ret.

08.60 08.20 08.93 08.45 08.69 08.60 09.08 08.80 09.40  
15 45 10 45 45  
Top cb. gut top cb. gut gut top cb.

100' Figure not noted  
Actual Elev Shown

Lt.

E  
E

Rt.

54

2+38 - 7.2 Rt. = E 2.5 conc. walk

21.35 21.48 21.55 21.84  
7.2 8.5 10 15  
on walk walk walk on walk

2+35

22.30 21.2 21.1 21.1 20.9 21.8 21.9  
Top wall 13 along 6" wall 10 6 10 15

2+00 - 9.6 Rt. end cyclone beg. picket

19.6 19.6 19.6 19.2 20.4 20.7  
15 10 6 10 15

1+59.5 10.1 Lt. = E 8' conc. drive

18.68 18.17  
20.1 10.1  
floor edge  
gar. drive

1+53 - 10' Rt. beg. cyclone fence

1+50

17.8 17.8 17.7 17.3 17.9  
15 10 7 10

1+38 - 14.8 Rt. end conc. drive

16.75 16.91  
14.8 16.0  
edge drive floor garage

1+00.5 14' Rt. beg. conc. drive to 3 car gar.

1+00 - 11.1 Lt. end house

16.93 17.50  
14 20  
edge Conc. on Conc. car port  
15.6 15.4 15.5 15.2 15.9  
11.1 10 7 10  
along house

0+90 - 9.9 Lt. = E 4' conc. step to house

15.34 15.32 14.9  
11.1 9.9 10  
along house top step grd.

and 11.1 Lt. begin wing of house

15.64  
11.1  
house fd. 14.34  
10.7  
conc. slab

0+81 - 10.7 Lt. end conc. slab

check  
B.M. spike in pole (see page 50) 124.79

2+70 8.8 Rt. end picket fence  
and end rough cold lay

2+69.95 - West line of Nth & Sth "T" alley

23.1	23.1	23.1
10		10

2+59 32.1 Lt = 10' conc. drive

22.60	22.48
36.3	32.1
floor	edge
gar.	drive



D. Smith  
J. Rorer  
P. Taylor  
S. Fish

INDEXED  
JUN 21 1954

X" Sec. 40th St

T" to Ocean View

cont pg 57.

w<sup>o</sup> 32442 56  
6/18/54

Hemlock St

staked for  
Const 6/20/54  
Draw 2574-D

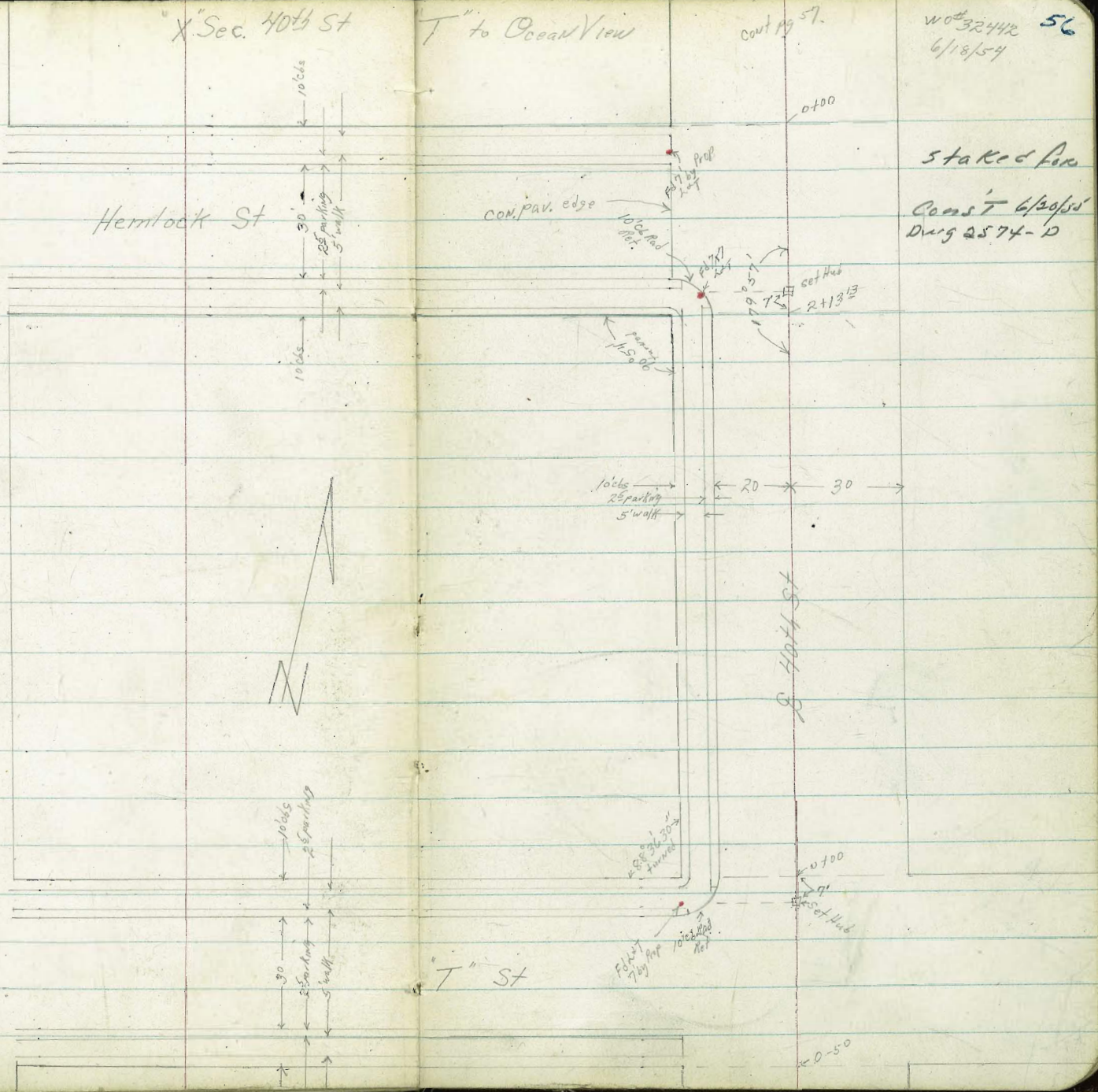
Reduced  
Key 10/25  
8/2/54

39th St



T" St

S. 40th St



Ocean View Blvd.

100' Rad Ret.

100' Rad Ret.

AC, par. ledge

100' Rad Ret.

14' 6" 45' parking 5' walk

11' 06"

set closer(x)

AC, turn ground

39th St

30' 30'

40th St

10' 6"

10' 6" 25' parking 5' walk

2' cov gutter 5' stop ABC's added to old type

AC, par. Edge

20' 06" Rad Ret.

Blower 20' 06" 19'

20' 06" Rad Ret.

Teak St.

430' 00" tie distance

0' 00"

65'

set Hub

2' 11" 25"

cont from pg 56.

10' 6" 25' parking 5' walk

Blower used



Lt = Wly

L

Rt = Ely

58

0+00 Nly "T" St

52.0	51.5	50.8	51.0	50.4	50.9	50.9	50.7	50.3	49.3	51.1	51.5
55	60	65	68	71	66	66	68	72	62	64	60
50	30	27.5	20	20	10		10	20	25	30	30
		41	26	24							
		41	26	24							

Mid Pt NW Return

50.8	50.3
66	72
26	24

0-10 Nly cb line "T" St

50.0	50.4	50.5	50.0	50.7	50.6	50.2	50.0	49.7	49.6
63	71	62	75	73	69	72	75	78	72
50	50	30	30	20		15	30	40	50
26	24	26	24						

0-25 E.T. St.

50.8	50.4	50.7	49.9	49.8	49.5	49.4
62	71	73	76	72	80	81
50	30	15	15	30	50	

0-40 Sly ob line "T" St.

50.1	49.7	49.5	49.4	49.4	49.0	48.9	48.7	
73	78	72	81	81	81	85	86	88
50	50	30	30	15	15	30	50	
26	24	26	24					

0-50 22° Lt &amp; 14° PR 16# 702 Sly "T" St.

50.4	50.0	50.6	50.9	50.1	50.0	49.6	
62	75	62	65	66	71	75	72
50	30	15	10	12	30	50	

TP<sub>2</sub> 057 57<sup>48</sup> 1308 56<sup>21</sup>TP<sub>1</sub> 066 69<sup>29</sup> 1308 69<sup>33</sup>

BM

023 82<sup>41</sup>82<sup>18</sup>NW 7x7 Lot  
Ocean View  
4/10/14T 57<sup>48</sup>

Lt = Wly

2

RT = Fly

59

2+00

61.22	63.86	65.2	65.2	67.1	67.9	67.4	68.0	68.0	68.3
15	15	23	23	27	35	42	24	24	31
275	20	20	10		10	18	20	30	50
w/k	08								

1468 20° Lt &amp; 10° con drive

62.00	61.93	61.39
337	344	398
275	225	20
w/k	w/k	210

1450

60.87	60.70	59.9	60.1	59.8	59.1	58.4	60.2	60.5	60.0
450	427	55	53	56	63	68	52	51	54
275	20	20	10		10	17	20	30	50
w/k	08								

1428 22° RT &amp; 6" Acacia tree

59.57	59.33	58.55
600	604	688
275	225	20
w/k	w/k	210

1427 20° Lt &amp; 8° con drive

1410 21° RT &amp; 14" Anchor Pole # 6065064

1405 20° Lt &amp; 9' con drive

57.97	57.84	57.78
738	753	809
275	225	20
w/k	w/k	210

TR<sub>3</sub>11<sup>09</sup>55<sup>37</sup>3<sup>80</sup>53<sup>68</sup>

#  
P.P. 702  
val in P.P.  
Swcor T 2 403

T 65<sup>37</sup>

1400

57.41	57.43	56.9	57.0	56.6	56.1	55.4	57.1	57.3	57.3
702	085	06	05	02	14	21	04	02	02
275	20	20	10		10	18	20	30	50
w/k	08								

0488 21° RT &amp; 4" Acacia tree

0450

54.35	54.23	53.5	53.6	53.5	53.0	52.6	54.0	54.4	54.7
323	325	40	32	40	45	42	35	34	28
275	20	20	10		10	18	20	30	50
w/k	08								

0448 22° RT &amp; 8" Acacia tree

0425

52.69	52.60	52.0	51.8	51.7	51.0	51.3	51.3	53.0	53.5
480	488	55	53	53	55	62	52	45	40
275	20	20	10		10	17	20	30	50
w/k	08	21							

T 57<sup>48</sup>

TR 10<sup>49</sup> 81<sup>04</sup> 1<sup>37</sup> 70<sup>55</sup>

0150

0139 22<sup>3</sup> RT 8" Acacia tree  
0103 22<sup>3</sup> RT 8" Acacia tree

0100 M4  
S  
2+63<sup>3</sup> sly

1 2+53<sup>13</sup> Nly cb live Hemlock st

1 2+45 20<sup>5</sup> RT 4"x4" con post

2+38<sup>13</sup> 2 Hemlock st

1 2+31 20<sup>5</sup> RT 4"x4" con post

1 2+23<sup>13</sup> sly cb live Hemlock st

0 Mid Pt SW Ret

0 TR 6<sup>37</sup> 71<sup>92</sup> 022 65<sup>15</sup>

2+14 22<sup>5</sup> RT 6" Acacia

0 2+13<sup>13</sup> sly live Hemlock st

0

Lt = Wly 2 Rt = Ely 60

71.5 70.9 69.9 68.6 68.5 68.0 67.7 66.9 67.7 67.3 66.9 63.7  
04 10 20 33 34 32 42 50 42 46 50 82  
40 30 22 18 10 10 15 20 30 40 50

67.1 66.4 66.3 65.7  
48 55 56 62 70 71 62 62 62 81  
30 20 10 10 14 20 30 40 50

62.0 61.7 61.7 61.2 61.1 60.9 65.4 65.4  
49 52 58 56 58 60 65  
30 50 30 30 20 10  
cut cut cut cut

60.50 60.04 65.6 65.7 64.6 63.7 63.1 65.0 64.9 64.0  
53.6 5.88 63 63 73 82 85 62 70 72  
50 30 20 10 10 16 20 30 50  
cut cut cut cut

66.78 65.1 65.3 65.7 65.6 65.5 63.9 62.9 62.4 64.3 64.7 63.3  
56.4 64 61.9 66.6 73 71 80 90 95 75 72 86  
50 50 30 30 20 10 10 16 20 30 50  
cut cut cut cut

65.25 64.6  
65.7 73  
cut dirt

65.35 64.74 64.7 64.0 63.4 62.4 62.0 64.0 63.9 63.7  
002 063 13 14 20 30 34 14 15 22  
275 20 20 10 10 17 20 30 50  
cut cut

7 65<sup>37</sup>

photo  
rail  
street  
Hemlock #103

2420 47 30' Lt End c62 AC per

(20' RT Begin 3' Cold Lay walk // to line  
223 RT & 4" Acacia tree

2412 25 Sly Teak St

2410 22° Lt & 16" PPole #600

2400 18° RT & 12' Cold Lay walk - removed?

1477 22° RT & 14" Acacia tree

1475 30' Lt & 4' con

1450

1425 30' Lt & 4' con walk

1448 31° Lt & 8" con drive

1445 27° RT & 10" Acacia tree

1407 22° RT & 12" Acacia tree

1407 21° Lt & 12" PPole #624

1404 25° RT & 12" Anchor Pole #626504H

1400

0498 29° Lt & 8" con drive

0475 22° RT & 10" Acacia tree

Lt-Wly

RT-Flg

61

76.28 75.75  
426 529  
302 302  
25 247  
end 40

164 76.0 75.3 75.4 75.0 74.3 74.0 74.6 74.55 74.1 69.0  
46 50 52 58 60 62 70 64 64 62 140  
30 20 18 10 10 17 17 22 34 50

74.9 73.7 72.65  
655 726 839  
182 30 40  
wly

79.3 77.2 76.5 74.6 74.5 74.1 73.7 72.4 72.3 73.3 72.0 70.6  
181 33 45 64 65 62 78 86 72 72 90 104  
34 30 22 18 10 10 17 18 30 40 50  
top wly  
river

71.4 71.1 74.9 73.5 73.6 73.0 72.2 71.5 72.1 72.4 70.7  
36 32 61 75 75 80 88 95 83 85 103  
40 16 30 22 18 10 10 18 19 30 50

428 48 76.4 71.84 71.07  
162 wly 302  
320 399  
41 31  
drive

73.4 72.8 72.0 71.0 71.0 70.5 72.7 69.7 70.2 70.2 69.7  
72 82 90 100 100 105 73 118 108 108 113  
40 30 20 17 10 10 16 18 30 50

73.91 73.08  
713 726  
40 298  
drive

81.04

1443 0548544  
 1436 22<sup>e</sup> RT 2 14" Acacia pole 606502H  
 1430 215 LTR 18" PPole #550  
 1718 22<sup>e</sup> RT 8" Acacia tree  
 1400

0475 22<sup>e</sup> RT 8" Acacia tree  
 0450  
 0435 22<sup>e</sup> RT 5" Acacia tree  
 0403 22<sup>e</sup> RT 6" Acacia tree

0700 =  
 2472<sup>25</sup> Nly Teak St

2468<sup>32</sup> Obend + Ac gutter

2465<sup>0</sup> Nly Ob live Teak St

2454 243 RT 2 4'x4" con post

2447 22<sup>e</sup> RT 4" Acacia tree

2444<sup>25</sup> 2 Teak St

2437 22<sup>e</sup> RT 2 4'x4" con post

2422<sup>25</sup> Sly Ob live Teak St

lt=Wly L RT=Kly 62  
 421  
 114

772 710 769 760 160 760 762 764 767 761 761 761 767  
 38 42 51 52 50 50 48 46 43 43 43 43  
 30 22 15 10 10 17 20 265 295 33 50  
 "14

775 774 764 760 768 769 768 761 769 769 769  
 35 36 46 50 52 51 52 42 53 50 51 34  
 30 24 20 10 10 17 20 265 295 33 50  
 "14

773 767 762 769 767 766 763 769 764 767 766 766  
 32 43 48 51 53 55 52 51 52 53 54 184  
 30 22 20 10 10 16 19 265 295 33 50  
 "14

772 764  
 382 443  
 30 30  
 24 AC  
 763 762 778 774 767 764 760 766 763 762 761 766 764 761 765 761  
 32 34 36 39 43 46 50 54 57 58 53 54 53 55 182  
 30 30 40 30 20 10 10 17 20 265 295 33 50  
 Ob gut AC con AC  
 24 24

778 762 762 768 763 760 766 766 760 760 760 760 760 760 760 760  
 336 443 48 52 52 60 64 54 52 60 60 143  
 30 30 20 10 10 16 20 265 295 33 50  
 AC 24

772 771 769 762 762 766 762 761 766 762 760 766 767 765 765  
 32 43 45 48 51 54 56 52 64 68 60 63 63 65 144  
 30 30 40 40 30 20 10 10 16 19 265 295 33 50  
 Ob gut AC con AC  
 24 24

8104

BM, starting 1958

447

8220

8225

2499 Sly c6 Lino Ocean View

Mid Pt Naturals Sly

2489 c6 BC

2485<sup>00</sup> Sly Ocean View begin compact end cbs

2481 22<sup>5</sup> RT 16" PP 1/2 #500

2450

2442 20<sup>2</sup> RT Begin AC. Bus turn around

2442 26<sup>5</sup> RT end AC Cold Lay walk

2437 22<sup>6</sup> RT 4" x 4" cov post

2435 22<sup>4</sup> RT 5" Acacia tree

2400

1499 23<sup>2</sup> RT 6" Acacia tree

TP 10<sup>4</sup> 86<sup>67</sup> 428 76<sup>26</sup>

1460 22<sup>4</sup> RT 14" Acacia tree

1450

1 Lt-Wly ♀ RT = Ely 63

8044 8173 8127 8064 8024 7987 7948 7887 7857 7807 7844 7753

4723 4774 545 643 643 655 719 780 820 865 823 914

50 50 30 30 20 10 10 20 30 30 50

8 9ut 4c 9ut 20 10 10 20 30 30 50

8088 8015 7806 7845

579 652 861 822

c6 9ut 9ut c6

8032 7948 7804 7847

635 719 863 825

c6 9ut 9ut c6

8112 8055 8003 7979 7918 7895 7849 779 7817

545 612 644 738 779 772 818 848 826 850

293 242 20 20 10 10 20 20 30

414 414 c6 9ut 10 20 20 30

248 248 c6 9ut 10 20 30 36

777 716 781 768 777 715 779 7287 7787 777

90 91 85 92 95 92 88 850 850 90

50 30 22 17 10 10 20 30 36

885 7800 7799

20 867 868

265 295

114

762 760 769 756 761 765 767 769 775 774 7759 777 698

105 107 108 114 108 103 100 98 92 903 908 9 162

50 30 19 17 10 10 16 20 20 295 33 50

759 767 753 756 760 763 761 767 769 7708 770 682

54 53 52 54 50 42 42 43 45 326 40 128

50 30 17 10 10 17 19 265 295 33 50

44

8104



Clark  
Shepherd  
Bruner  
O'Neil  
7-1-55  
W.O. 31926

X-SECT. ALLEY BK 2 - F.T. SCHIPPS  
ADD - LA JOLLA

Ref: T.P.S. 2149  
MAP. 897 (this map unrecordable!)  
Dwg. 2112-L  
No Field Book

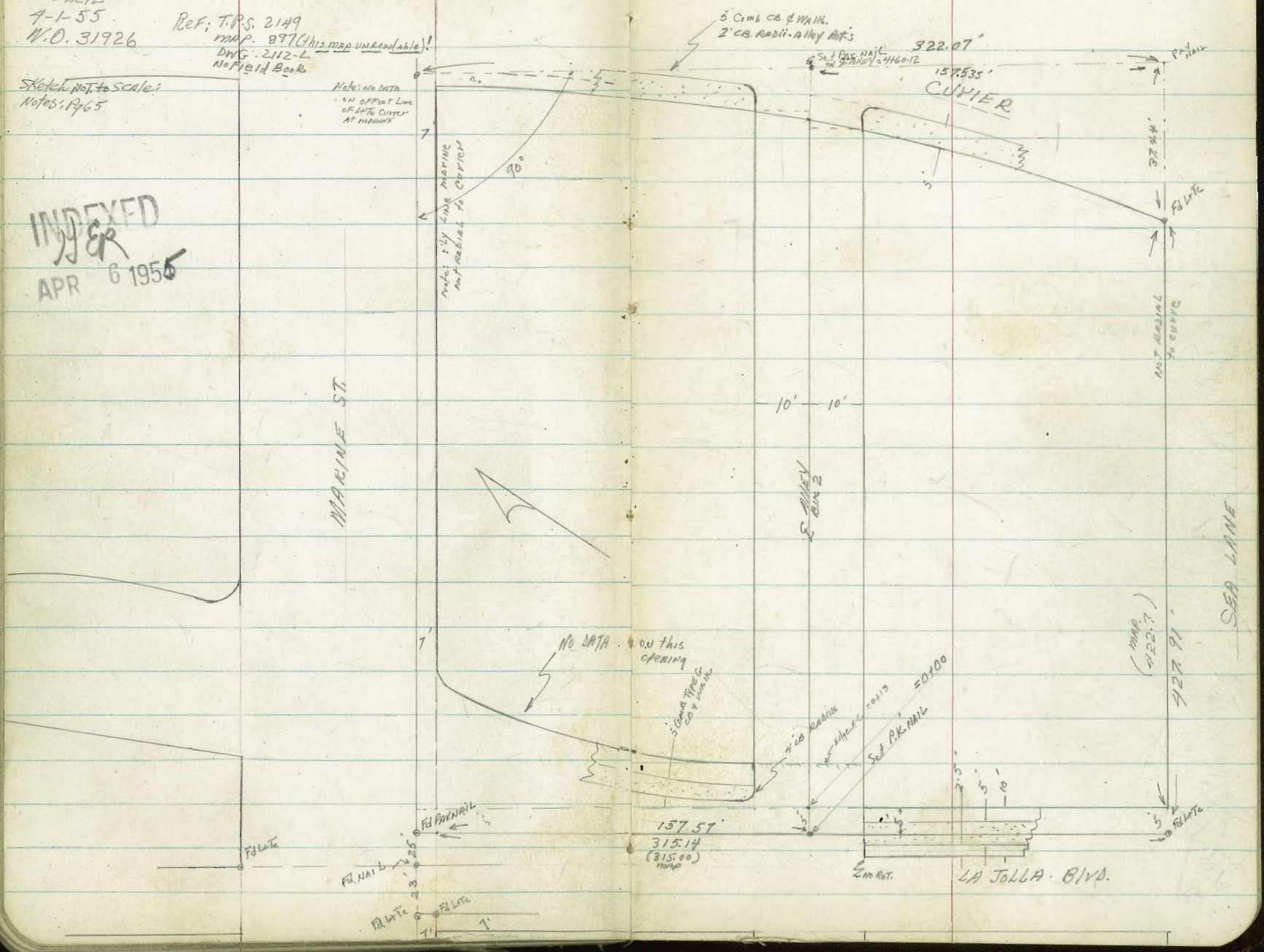
Sketch not to scale!  
Notes: P. 65

INDEXED  
APR 6 1955

Note: no data on offset line of LRTC CUIVER at means

Note: city line marking not radial to CURVER

No DATA on this opening



0+35.5 10.7 RT end steps & Arch + Proj 2' Conc. walk 115  
RT to Nly edge  
(// to alley)

70.26  
4.47  
25  
on Clay

70.38  
4.35  
9.90  
edge Pav. Clay

7.02  
4.5  
9.9  
FTL WALL

72.68  
2.05  
9.9  
TP WALL

73.5  
1.2  
10.7  
9rd

72.8  
1.9  
10.7  
FTL

74.27  
0.46  
10.7  
TP

73.79  
0.94  
11.5  
edge walk

Step

0+31 9.90 W. Proj 8" Conc. Blk wall (3' Steel-wire Fence top wall)  
(Note)  
Note: Step wall - Top wall rises vertically 8" approx.  
every 10.5' Linear FT. along length wall

0+28 10.7 RT = N'Wly Corn. Pav. (Conc.)  
& Steps (// to alley)

0+13 = Edge conc.  
9.75 LT - END CB & UNOPEN Edge Cold-Lay Pav. Service Station

0+06 = Fly CB Line - N'ly (Type-G)  
Note: Pav. edge on South from end CB to Prop. N'ly unopen

0+00 10.15 RT - END CB

Note: (d walk)  
CB on RT Broken from 0+10 to 0+00

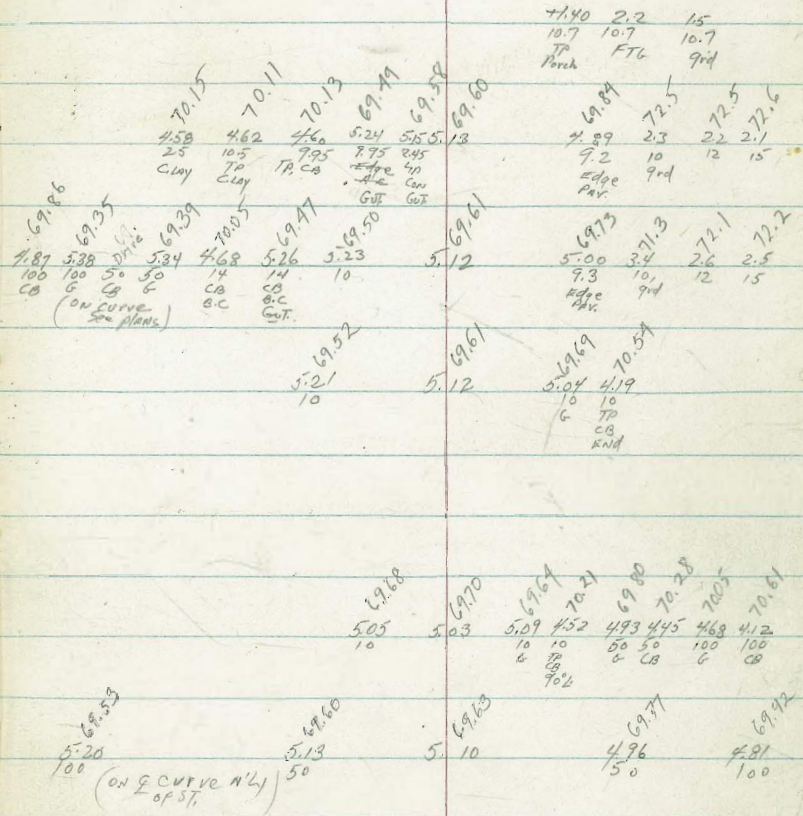
0+10 = Fly CB Line - S'ly  
(570 CBs)

0+30 = E LA JOLLA Blvd - S'ly

B.M. 4.55 74.73

70.18 = N.E. B.P. Center  
& LA JOLLA Blvd.

74.73



ALLEY BIK 2 (Cont.)

LT.      E  
RT.      66

1+26      9.9 LT & 10' Conc. apron ; 22.5' Fl. gar

71.88  
2.72      3.52  
22.5      9.9  
Fl. gar      2'p

1+10.      17.4' RT & Single gar

16.0  
4.6  
0.15  
Fl.

1+00      } 110 LT. Fe. END CONC. BIK WALL (wall 25. N' W'ly approx. 90° to alley)  
                  } 9' RT & Pole # PA514

15.9      70.82      71.06      75.47      75.7  
4.7      9.78      9.54      5.73      4.9  
2.5      2.5      11      10      10  
2nd.      C. LAY      CLAY      TP      9rd  
edge      OF CRASS-      BK WALL      WALL

75.5  
75.6      75.8  
5.0      4.8  
10      2.5

0+98      8' RT END CLAY PAR.

15.12  
5.8      4.97  
8      10  
edge      CLAY  
CLAY

0+94      82' RT - APPROX E GAR - COLL-LAY extends Sly to gar.

15.2      15.65      75.84  
5.4      4.95      4.76  
8      13      82  
edge      BK CL      Fl. gar  
CLAY

0+89      13.7 RT END GAR.

75.1  
5.5      4.74  
8      13.7  
edge      Fl. gar.  
CLAY

0+69      } 11.3 RT END 2' WALK  
                  } 8.2 RT BEY CLAY APRON  
                  } 13.5 RT BEY 2-CAR GAR.

7A3      75.01      75.85  
6.3      5.59      4.75  
8.2      11.3      Fl.  
edge      edge      gar  
CL      WALK

T.P.      700      80.60      113      73.60

80.60

0+50

70.55      73.37      73.2  
4.8      1.86      1.5  
8      10  
CLAY      TP  
BK WALL      WALL

74.73  
74.73  
13.2      17.3      74.20  
1.5      1.4      0.8      0.53      74.1  
8      10      11.5      15

Alley BIK 2 (CONT.)

2+50

81.9	81.8	81.8	81.9	81.8
$\frac{27}{20}$	$\frac{7.8}{10}$	7.8	$\frac{3.7}{10}$	$\frac{7.8}{20}$

2+44

18.9 LT ENDGATE

81.62  
8.00  
18.9  
17.94

2+39

11.4 LT END APRON

81.66  
7.96  
11.4  
4.0

2+16.5

11.4 LT Beg Conc. Apron  
11.4 LT end Brick Wall  
19.2 LT Beg gate (2-car)

81.60	81.04	80.2
8.02	8.58	9.4
11.2	11.4	11.4
F.1	2.0	F.6
9.4		

2+02

9.3 RT & Pole # PA 530

2+00

11.7 LT FC, Beg 6" Brick Wall - 3' high  
10.9 LT end LATH FENCE

80.0	80.0	79.52	80.0	80.0	79.6	79.6	79.6	80.0	80.1
9.6	9.6	10.1	9.6	9.6	10.0	10.0	10.0	9.6	9.5
20	11.7	11.7	10	7.6				8	20
	9.4	17.6							

T.P.

11.26 89.62 2.24 78.36

89.62

1+50

78.2	77.8	77.6	77.5	77.4	77.8	77.9
$\frac{2.4}{20}$	$\frac{2.8}{10}$	$\frac{3.0}{5}$	3.1		$\frac{3.2}{10}$	$\frac{2.8}{11}$
						$\frac{2.7}{20}$

1+45

9.5 LT Beg 6' LATH FENCE (SAGGING & BROKEN)

80.60

Alley BIK 2 (Cont.)

4+00 9.5 RT to Lath Fence here

3+80 9.4 RT END 5' Board Fence - Beg 4' LATH FENCE (UNEPAN + SAGGINS)

3+50 9.75 RT to Board Fence here

3+49 13.1 LT END GAR

3+28.5 13.2 LT Beg 2-Car GAR (DIRT-FI)

3+01 9' RT & Pole # PA 570

3+00 10' RT Beg 5' Board-Fence

2+96 11.3 LT END APRON - 15.3 LT END GAR

2+92 9.4 RT & 8' CON. APRON - 14.7 & SINGLE GAR

2+76 11.5 LT Beg CON. APRON - 15.5 LT Beg 2-Car GAR

LT. \$ RT  
 88.1 87.8 87.7 87.8 88.1  
 1.5 1.8 1.9 1.8 1.5  
 20 10 20 20 20

85.9 85.6 85.8 86.0 86.2  
 3.7 4.0 3.8 3.6 3.4  
 20 10 10 10 20

86.5  
 4.1  
 13.1  
 LIT

84.9  
 4.7  
 13.2  
 LIT

83.9 84.1 83.9 84.0 83.9  
 5.7 5.5 5.7 5.6 5.7  
 20 10 10 10 20

(Floor ran not level)  
 83.58 83.58  
 6.04 6.04  
 15.3 11.3  
 FI. LIP  
 9.4

83.94 84.17  
 5.68 5.45  
 9.4 14.7  
 LIP FI. GAR

83.11 82.85  
 6.51 6.77  
 13.5 11.5  
 FI. GAR LIP

89.62

ALLEY BIK 2 (CONT)

4+47.7 9.5 LT = CA BC

4+45.6 10.2 RT = CB BC

4+44.7 9.5 LT = CA END = Edge Pav. LT

4+43.5 ± = Approx Prop. Line (sect along Prop. RT.)

4+43 10 LT end 5' LATH FENCE

4+42.6 10.2 RT = CB end 4 Edge Pav. RT

4+42 7.6 RT end LATH FENCE (sect at 90° alley)  
= approx. edge ASPHALT Pav & (irregular)

4+14 10 LT Beg 5' LATH FENCE

4+08.5 14 LT & Single-99%

T.P. 5.66 93.71 157 88.05

4+02 9 RT & Pole # P.A. 580

LT  
88.09  
5.62 5.87  
9.5 9.5  
CB 60T

RT  
88.24  
5.49 5.30  
10.2 10.2  
G CB

88.19  
5.52 5.61  
9.5 9.5  
TP CB

88.19 88.10 88.1  
5.52 5.61 5.66  
9.5 9.5 9.5  
TP G Pav  
CB  
Flush BK  
WALK

88.2 88.14 88.11  
5.5 5.57 5.30  
10.2 10.2 TP  
9rd G CB  
(Flush  
with  
BK WALK)

89.3  
4.4 4.5 5.7  
20 10 7  
5.66  
Edge Pav  
E

88.14 88.11  
5.57 5.30  
10.2 10.2  
G TP  
CB  
88.15  
5.56  
10  
Pav.

88.41  
5.30  
14  
Fl. 99%

93.71  
X

Alley BK 2 (cont.)

LT.

Σ

RT

70

CLK: 6.58 70.17 = 70.18 = Sta B.M.

T.P. 0.28 76.75 13.02 76.47

T.P. 0.07 89.49 4.29 89.42

4463.85 ± = 5 Curves (sect along E arc)

4448.7 ± = SWly CB Line Currier (sect along Arc CB)

87.29	87.45	87.86	88.34	88.95	89.51
6.42	6.26	5.85	5.37	4.76	4.20
100	100	50	50	50	100
CB	CB	EC	CB	CB	CB
599	599	599	581	578	574
642	642	642	642	642	642
100	100	100	100	100	100
CB	CB	CB	CB	CB	CB
1165	1165	1165	1165	1165	1165
EC	EC	EC	EC	EC	EC
CB	CB	CB	CB	CB	CB
87.29	87.45	87.86	88.34	88.95	89.51
5.78	5.74	5.74	5.74	5.74	5.74
10.4	12.5	12.5	12.5	12.5	12.5
CB	CB	CB	CB	CB	CB
87.97	88.10	88.33	88.76	89.18	89.51
5.78	5.74	5.74	5.74	5.74	5.74
10.4	12.5	12.5	12.5	12.5	12.5
CB	CB	CB	CB	CB	CB

93.71











This image shows a blank ledger page from an old notebook. The page is cream-colored and features a grid of columns and rows. There are four vertical red lines that divide the page into five columns of varying widths. The columns from left to right are approximately: 25% wide, 20% wide, 25% wide, 15% wide, and 15% wide. The page is ruled with horizontal blue lines, creating approximately 25 rows. A central vertical strip, likely the binding, runs down the middle of the page, with three visible points where the page is stitched or sewn together. The page number '75' is written in the top right corner. The page is otherwise blank, with no text or markings.









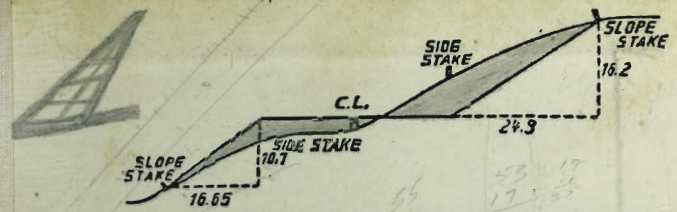




144  
191

17.9  
17.90  
23  
37

14315 10<sup>2</sup> LT = and fence  
14312 10<sup>2</sup> LT = 2 pipe



**DISTANCES FROM SIDE STAKES FOR CROSS-SECTIONING.**  
SLOPE 1 1/2 TO 1. ROADWAY OF ANY WIDTH.

	0	.1	.2	.3	.4	.5	.6	.7	.8	.9	
0	0.00	0.15	0.30	0.45	0.60	0.75	0.90	1.05	1.20	1.35	0
1	1.50	1.65	1.80	1.95	2.10	2.25	2.40	2.55	2.70	2.85	1
2	3.00	3.15	3.30	3.45	3.60	3.75	3.90	4.05	4.20	4.35	2
3	4.50	4.65	4.80	4.95	5.10	5.25	5.40	5.55	5.70	5.85	3
4	6.00	6.15	6.30	6.45	6.60	6.75	6.90	7.05	7.20	7.35	4
5	7.50	7.65	7.80	7.95	8.10	8.25	8.40	8.55	8.70	8.85	5
6	9.00	9.15	9.30	9.45	9.60	9.75	9.90	10.05	10.20	10.35	6
7	10.50	10.65	10.80	10.95	11.10	11.25	11.40	11.55	11.70	11.85	7
8	12.00	12.15	12.30	12.45	12.60	12.75	12.90	13.05	13.20	13.35	8
9	13.50	13.65	13.80	13.95	14.10	14.25	14.40	14.55	14.70	14.85	9
10	15.00	15.15	15.30	15.45	15.60	15.75	15.90	16.05	16.20	16.35	10
11	16.50	16.65	16.80	16.95	17.10	17.25	17.40	17.55	17.70	17.85	11
12	18.00	18.15	18.30	18.45	18.60	18.75	18.90	19.05	19.20	19.35	12
13	19.50	19.65	19.80	19.95	20.10	20.25	20.40	20.55	20.70	20.85	13
14	21.00	21.15	21.30	21.45	21.60	21.75	21.90	22.05	22.20	22.35	14
15	22.50	22.65	22.80	22.95	23.10	23.25	23.40	23.55	23.70	23.85	15
16	24.00	24.15	24.30	24.45	24.60	24.75	24.90	25.05	25.20	25.35	16
17	25.50	25.65	25.80	25.95	26.10	26.25	26.40	26.55	26.70	26.85	17
18	27.00	27.15	27.30	27.45	27.60	27.75	27.90	28.05	28.20	28.35	18
19	28.50	28.65	28.80	28.95	29.10	29.25	29.40	29.55	29.70	29.85	19
20	30.00	30.15	30.30	30.45	30.60	30.75	30.90	31.05	31.20	31.35	20
21	31.50	31.65	31.80	31.95	32.10	32.25	32.40	32.55	32.70	32.85	21
22	33.00	33.15	33.30	33.45	33.60	33.75	33.90	34.05	34.20	34.35	22
23	34.50	34.65	34.80	34.95	35.10	35.25	35.40	35.55	35.70	35.85	23
24	36.00	36.15	36.30	36.45	36.60	36.75	36.90	37.05	37.20	37.35	24
25	37.50	37.65	37.80	37.95	38.10	38.25	38.40	38.55	38.70	38.85	25
26	39.00	39.15	39.30	39.45	39.60	39.75	39.90	40.05	40.20	40.35	26
27	40.50	40.65	40.80	40.95	41.10	41.25	41.40	41.55	41.70	41.85	27
28	42.00	42.15	42.30	42.45	42.60	42.75	42.90	43.05	43.20	43.35	28
29	43.50	43.65	43.80	43.95	44.10	44.25	44.40	44.55	44.70	44.85	29
30	45.00	45.15	45.30	45.45	45.60	45.75	45.90	46.05	46.20	46.35	30
31	46.50	46.65	46.80	46.95	47.10	47.25	47.40	47.55	47.70	47.85	31
32	48.00	48.15	48.30	48.45	48.60	48.75	48.90	49.05	49.20	49.35	32
33	49.50	49.65	49.80	49.95	50.10	50.25	50.40	50.55	50.70	50.85	33
34	51.00	51.15	51.30	51.45	51.60	51.75	51.90	52.05	52.20	52.35	34
35	52.50	52.65	52.80	52.95	53.10	53.25	53.40	53.55	53.70	53.85	35
36	54.00	54.15	54.30	54.45	54.60	54.75	54.90	55.05	55.20	55.35	36
37	55.50	55.65	55.80	55.95	56.10	56.25	56.40	56.55	56.70	56.85	37
38	57.00	57.15	57.30	57.45	57.60	57.75	57.90	58.05	58.20	58.35	38
39	58.50	58.65	58.80	58.95	59.10	59.25	59.40	59.55	59.70	59.85	39
40	60.00	60.15	60.30	60.45	60.60	60.75	60.90	61.05	61.20	61.35	40
41	61.50	61.65	61.80	61.95	62.10	62.25	62.40	62.55	62.70	62.85	41
42	63.00	63.15	63.30	63.45	63.60	63.75	63.90	64.05	64.20	64.35	42
43	64.50	64.65	64.80	64.95	65.10	65.25	65.40	65.55	65.70	65.85	43
44	66.00	66.15	66.30	66.45	66.60	66.75	66.90	67.05	67.20	67.35	44
45	67.50	67.65	67.80	67.95	68.10	68.25	68.40	68.55	68.70	68.85	45
46	69.00	69.15	69.30	69.45	69.60	69.75	69.90	70.05	70.20	70.35	46
47	70.50	70.65	70.80	70.95	71.10	71.25	71.40	71.55	71.70	71.85	47
48	72.00	72.15	72.30	72.45	72.60	72.75	72.90	73.05	73.20	73.35	48
49	73.50	73.65	73.80	73.95	74.10	74.25	74.40	74.55	74.70	74.85	49
50	75.00	75.15	75.30	75.45	75.60	75.75	75.90	76.05	76.20	76.35	50

THE NATIONAL BLANK BOOK COMPANY  
 HOLYOKE MASSACHUSETTS  
 NEW YORK CHICAGO BOSTON SAN FRANCISCO