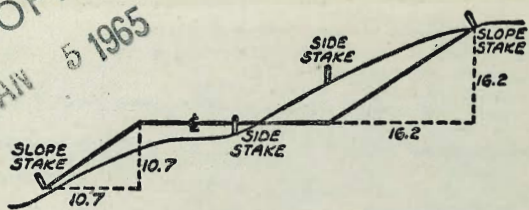




MICROFILMED  
 JAN 5 1965



DISTANCES FROM SIDE STAKES FOR CROSS-SECTIONING  
 SLOPE 1 TO 1. ROADWAY OF ANY WIDTH

	0	.1	.2	.3	.4	.5	.6	.7	.8	9	
0	0.00	0.10	0.20	0.30	0.40	0.50	0.60	0.70	0.80	0.90	0
1	1.00	1.10	1.20	1.30	1.40	1.50	1.60	1.70	1.80	1.90	1
2	2.00	2.10	2.20	2.30	2.40	2.50	2.60	2.70	2.80	2.90	2
3	3.00	3.10	3.20	3.30	3.40	3.50	3.60	3.70	3.80	3.90	3
4	4.00	4.10	4.20	4.30	4.40	4.50	4.60	4.70	4.80	4.90	4
5	5.00	5.10	5.20	5.30	5.40	5.50	5.60	5.70	5.80	5.90	5
6	6.00	6.10	6.20	6.30	6.40	6.50	6.60	6.70	6.80	6.90	6
7	7.00	7.10	7.20	7.30	7.40	7.50	7.60	7.70	7.80	7.90	7
8	8.00	8.10	8.20	8.30	8.40	8.50	8.60	8.70	8.80	8.90	8
9	9.00	9.10	9.20	9.30	9.40	9.50	9.60	9.70	9.80	9.90	9
10	10.00	10.10	10.20	10.30	10.40	10.50	10.60	10.70	10.80	10.90	10
11	11.00	11.10	11.20	11.30	11.40	11.50	11.60	11.70	11.80	11.90	11
12	12.00	12.10	12.20	12.30	12.40	12.50	12.60	12.70	12.80	12.90	12
13	13.00	13.10	13.20	13.30	13.40	13.50	13.60	13.70	13.80	13.90	13
14	14.00	14.10	14.20	14.30	14.40	14.50	14.60	14.70	14.80	14.90	14
15	15.00	15.10	15.20	15.30	15.40	15.50	15.60	15.70	15.80	15.90	15
16	16.00	16.10	16.20	16.30	16.40	16.50	16.60	16.70	16.80	16.90	16
17	17.00	17.10	17.20	17.30	17.40	17.50	17.60	17.70	17.80	17.90	17
18	18.00	18.10	18.20	18.30	18.40	18.50	18.60	18.70	18.80	18.90	18
19	19.00	19.10	19.20	19.30	19.40	19.50	19.60	19.70	19.80	19.90	19
20	20.00	20.10	20.20	20.30	20.40	20.50	20.60	20.70	20.80	20.90	20
21	21.00	21.10	21.20	21.30	21.40	21.50	21.60	21.70	21.80	21.90	21
22	22.00	22.10	22.20	22.30	22.40	22.50	22.60	22.70	22.80	22.90	22
23	23.00	23.10	23.20	23.30	23.40	23.50	23.60	23.70	23.80	23.90	23
24	24.00	24.10	24.20	24.30	24.40	24.50	24.60	24.70	24.80	24.90	24
25	25.00	25.10	25.20	25.30	25.40	25.50	25.60	25.70	25.80	25.90	25
26	26.00	26.10	26.20	26.30	26.40	26.50	26.60	26.70	26.80	26.90	26
27	27.00	27.10	27.20	27.30	27.40	27.50	27.60	27.70	27.80	27.90	27
28	28.00	28.10	28.20	28.30	28.40	28.50	28.60	28.70	28.80	28.90	28
29	29.00	29.10	29.20	29.30	29.40	29.50	29.60	29.70	29.80	29.90	29
30	30.00	30.10	30.20	30.30	30.40	30.50	30.60	30.70	30.80	30.90	30
31	31.00	31.10	31.20	31.30	31.40	31.50	31.60	31.70	31.80	31.90	31
32	32.00	32.10	32.20	32.30	32.40	32.50	32.60	32.70	32.80	32.90	32
33	33.00	33.10	33.20	33.30	33.40	33.50	33.60	33.70	33.80	33.90	33
34	34.00	34.10	34.20	34.30	34.40	34.50	34.60	34.70	34.80	34.90	34
35	35.00	35.10	35.20	35.30	35.40	35.50	35.60	35.70	35.80	35.90	35
36	36.00	36.10	36.20	36.30	36.40	36.50	36.60	36.70	36.80	36.90	36
37	37.00	37.10	37.20	37.30	37.40	37.50	37.60	37.70	37.80	37.90	37
38	38.00	38.10	38.20	38.30	38.40	38.50	38.60	38.70	38.80	38.90	38
39	39.00	39.10	39.20	39.30	39.40	39.50	39.60	39.70	39.80	39.90	39
40	40.00	40.10	40.20	40.30	40.40	40.50	40.60	40.70	40.80	40.90	40
41	41.00	41.10	41.20	41.30	41.40	41.50	41.60	41.70	41.80	41.90	41
42	42.00	42.10	42.20	42.30	42.40	42.50	42.60	42.70	42.80	42.90	42
43	43.00	43.10	43.20	43.30	43.40	43.50	43.60	43.70	43.80	43.90	43
44	44.00	44.10	44.20	44.30	44.40	44.50	44.60	44.70	44.80	44.90	44
45	45.00	45.10	45.20	45.30	45.40	45.50	45.60	45.70	45.80	45.90	45
46	46.00	46.10	46.20	46.30	46.40	46.50	46.60	46.70	46.80	46.90	46
47	47.00	47.10	47.20	47.30	47.40	47.50	47.60	47.70	47.80	47.90	47
48	48.00	48.10	48.20	48.30	48.40	48.50	48.60	48.70	48.80	48.90	48
49	49.00	49.10	49.20	49.30	49.40	49.50	49.60	49.70	49.80	49.90	49
50	50.00	50.10	50.20	50.30	50.40	50.50	50.60	50.70	50.80	50.90	50

Distance of slope stake from side or shoulder stake for any width roadway, slope 1 to 1. If ground is nearly level, the cut or fill at side stake is located by the double entry method in left column and top row. The number in body of table in same row and column gives distance from side stake to slope stake. If ground is not level estimate the difference in elevation between the side stake and slope stake, lower target by this amount if cut, elevate if fill. Add this amount to cut or fill and find distance in table. Set up rod at this point, and line of sight should cut target. If it does not make the slight adjustment necessary.

TABLE XIII—CORRECTIONS FOR TANGENTS AND EXTERNALS

These corrections are to be added to the approximate values, found by dividing the tangent, or external, for a 1° curve (Table VIII) by the degree of curve, in order to obtain the true tangents, or externals. Intermediate values may be obtained by interpolation.

FOR TANGENTS ADD

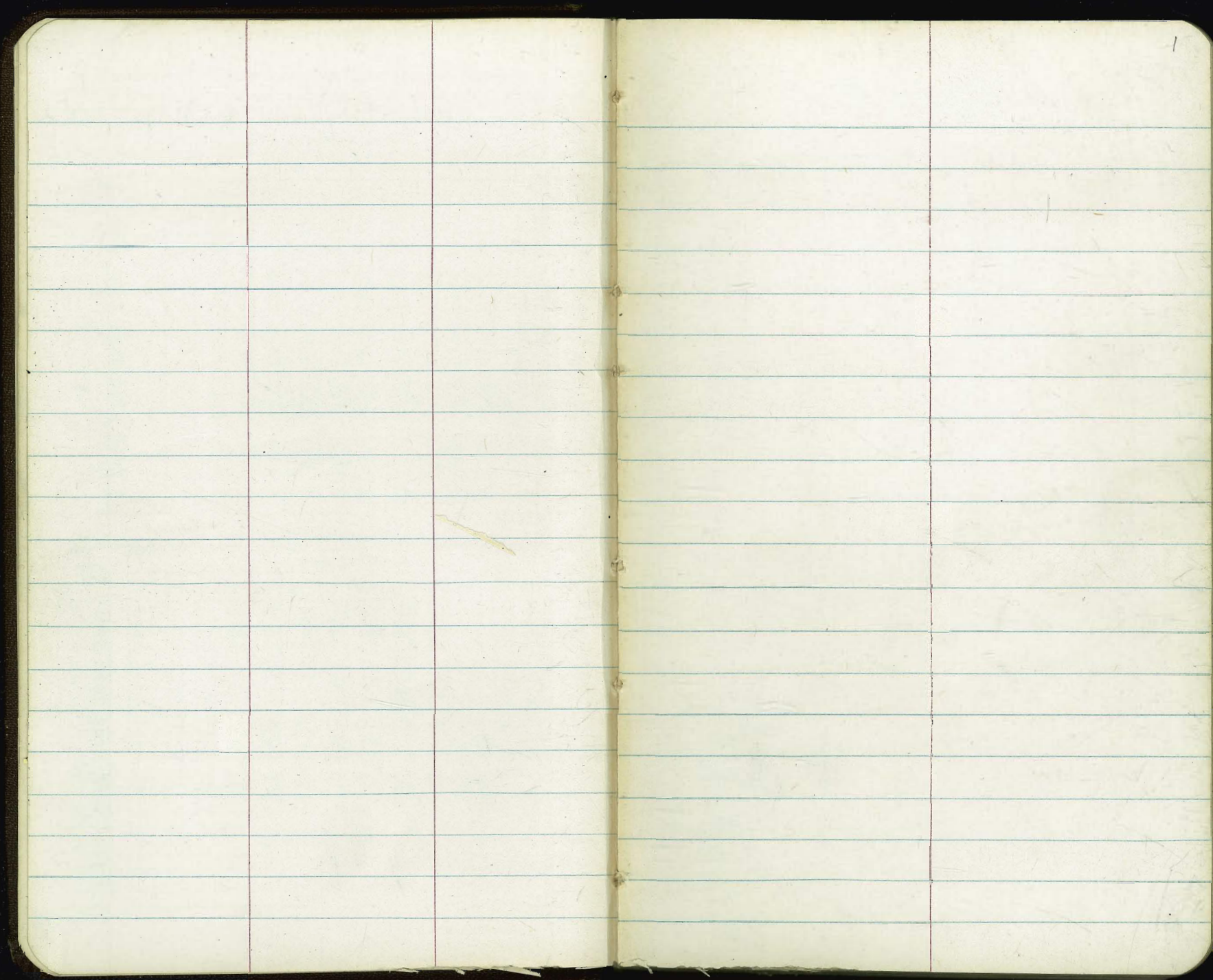
Central Angle	DEGREE OF CURVE													
	5°	10°	15°	20°	25°	30°	35°	40°	45°	50°	55°	60°	65°	70°
10°	.03	.06	.09	.13	.16	.19	.22	.25	.28	.31	.34	.38	.42	.46
15°	.04	.10	.14	.19	.24	.29	.34	.39	.45	.51	.53	.58	.63	.68
20°	.06	.13	.19	.26	.32	.39	.45	.51	.58	.65	.72	.79	.84	.90
25°	.08	.16	.24	.33	.40	.49	.58	.67	.75	.83	.90	.99	1.06	1.14
30°	.10	.19	.29	.39	.49	.59	.69	.79	.89	.99	1.09	1.20	1.29	1.39
35°	.11	.22	.34	.47	.58	.69	.79	.81	.92	1.04	1.29	1.42	1.54	1.66
40°	.13	.26	.40	.53	.67	.80	.93	1.06	1.20	1.34	1.49	1.64	1.79	1.94
45°	.15	.30	.44	.60	.76	.91	1.06	1.21	1.37	1.52	1.70	1.87	2.04	2.21
50°	.17	.34	.51	.68	.85	1.02	1.19	1.36	1.54	1.72	1.91	2.10	2.29	2.48
55°	.19	.38	.57	.76	.95	1.14	1.32	1.52	1.72	1.92	2.14	2.35	2.56	2.77
60°	.21	.42	.63	.84	1.05	1.27	1.49	1.71	1.94	2.17	2.38	2.60	2.83	3.07
65°	.23	.46	.69	.93	1.16	1.40	1.64	1.88	2.13	2.38	2.63	2.88	3.13	3.39
70°	.25	.51	.76	1.02	1.28	1.54	1.80	2.06	2.33	2.60	2.88	3.16	3.44	3.72
75°	.27	.56	.83	1.12	1.40	1.69	1.98	2.27	2.57	2.87	3.16	3.47	3.78	4.09
80°	.30	.61	.91	1.22	1.53	1.84	2.15	2.46	2.78	3.10	3.44	3.78	4.12	4.46
85°	.33	.66	1.00	1.33	1.68	2.02	2.36	2.70	3.05	3.40	3.77	4.14	4.55	4.89
90°	.36	.72	1.09	1.45	1.83	2.20	2.57	2.94	3.32	3.70	4.10	4.50	4.91	5.32
95°	.39	.79	1.19	1.55	2.00	2.40	2.80	3.20	3.61	4.02	4.40	4.98	5.38	5.83
100°	.43	.86	1.30	1.74	2.18	2.62	3.06	3.50	3.95	4.40	4.88	5.37	5.85	6.34
110°	.51	1.03	1.56	2.08	2.61	3.14	3.67	4.21	4.76	5.31	5.86	6.43	7.01	7.60
120°	.62	1.25	1.93	2.52	3.16	3.81	4.45	5.11	5.77	6.44	7.12	7.80	8.50	9.22

FOR EXTERNALS ADD

Central Angle	DEGREE OF CURVE													
	5°	10°	15°	20°	25°	30°	35°	40°	45°	50°	55°	60°	65°	70°
10°	.001	.003	.004	.006	.007	.008	.009	.011	.012	.014	.015	.017	.018	.020
15°	.003	.007	.010	.014	.018	.023	.027	.029	.032	.035	.039	.043	.047	.051
20°	.006	.011	.017	.022	.028	.034	.038	.045	.051	.057	.063	.070	.076	.083
25°	.009	.018	.027	.036	.046	.056	.065	.074	.083	.093	.106	.120	.127	.135
30°	.013	.025	.038	.051	.065	.078	.090	.103	.116	.129	.149	.170	.179	.188
35°	.018	.035	.054	.072	.086	.109	.131	.153	.175	.197	.213	.230	.247	.264
40°	.023	.046	.070	.093	.117	.141	.172	.203	.234	.265	.277	.290	.315	.341
45°	.030	.060	.093	.119	.153	.184	.216	.254	.289	.325	.351	.378	.411	.445
50°	.037	.075	.116	.151	.189	.227	.266	.305	.345	.384	.425	.467	.508	.550
55°	.046	.093	.142	.188	.236	.283	.332	.381	.420	.479	.530	.582	.641	.700
60°	.056	.112	.168	.225	.283	.340	.398	.457	.516	.575	.636	.697	.774	.851
65°	.067	.135	.204	.273	.343	.412	.483	.554	.625	.697	.711	.845	.922	1.01
70°	.080	.159	.240	.321	.403	.485	.568	.652	.735	.819	.906	.994	1.08	1.17
75°	.095	.182	.286	.383	.480	.578	.678	.777	.877	.977	1.07	1.18	1.29	1.39
80°	.110	.220	.332	.445	.558	.671	.787	.903	1.02	1.13	1.25	1.38	1.50	1.62
85°	.128	.259	.391	.524	.657	.790	.926	1.06	1.20	1.34	1.47	1.62	1.76	1.91
90°	.149	.299	.450	.603	.756	.910	1.07	1.22	1.38	1.54	1.70	1.87	2.03	2.20
95°	.174	.350	.522	.706	.885	1.06	1.25	1.43	1.62	1.80	1.99	2.18	2.38	2.58
100°	.200	.401	.604	.809	1.01	1.22	1.43	1.64	1.85	2.06	2.28	2.50	2.73	2.96
110°	.268	.536	.806	1.08	1.35	1.63	1.91	2.20	2.48	2.76	3.05	3.35	3.66	3.96
120°	.360	.721	1.08	1.45	1.82	2.19	2.57	2.95	3.33	3.72	4.11	4.50	4.91	5.32

x - Sec Cass, Turquoise - Van Nuys Pg 2  
 x - Sec Mason - Congress to Jefferson 10  
 x - Sec Long Branch - ABBOTT to SPRAY } 27  
 " " SPRAY - ABBOTT to N.P. Loma Blvd

culvert Road For Hills 72



Cass St.

Turquoise to Agate

Sommernoyor  
Begg  
oltman  
Pewell

1-21-53  
W.O. #31694

N.W. 7' Mon.

Agate

4  
St  
5  
6  
7  
8  
9  
10  
11  
12

INDEXED  
Law  
JAN 26 1953

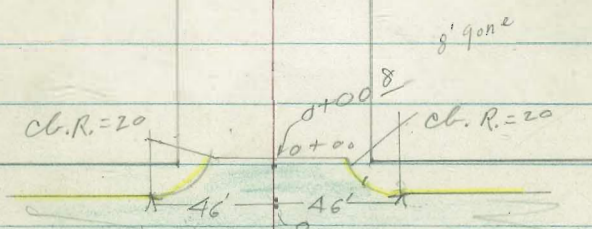
See Also See F.B. 1662-60 & 87  
2020-P54  
1725-P36

3405.90

(W) denotes ctr. water meter box

Notes Reduced  
R. Garrett  
2-6-53

← 80' →



Turquoise A.C. Pauc.

7.33

Cass St.

±

3

Gasoline station

40' Lt. = start conc. slab in Cas  
= end A.C. Pavc.

28.7 Lt. }  
27.3 Rt. } = end of curb.

136.19	136.29	135.66	136.78	136.69	136.79	136.69	137.28	137.4
5.81	5.71	6.34	5.72	5.31	5.21	5.31	4.72	4.6
40	28.7	28.7	13		13	27.3	27.3	40
	cc	G				G	cc	

0+00 = Nly. turquoise

Arc. L. on Rt. = 23.4'

Arc. L. on Lt. = 22.0'

Mid point on return.

6.27	6.81			5.74	5.20
cc	G			G	cc

0-10± Cont.

133.45	132.73	133.80	133.77	137.25	137.83	138.38	138.93
8.55	7.27	8.20	8.23	4.75	4.17	3.62	3.07
140	140	90	90	90	90	140	140
cc	G	G	G	G	cc	G	cc

17 drive

0-10± Nly. cc. Turquoise

135.47	134.77	135.57	136.28	136.35	136.35	136.41
6.58	7.28	6.43	5.72	5.65	5.65	5.09
46	46	26		26	46	46
cc. B.C.	G				G	cc. B.C.

0-30 = ± Turquoise St.

137.80	137.84	134.90	135.60	145.99	137.14	138.35
7.20	8.16	7.10	6.40	6.01	4.86	3.75
140	90	40	142.00	40	90	140

4.24 142.00 — 137.76

+ Turquoise  
BM #1 Nail in pole #517431 H.N.E. cor. Cass

This B.M. set from Agate St. Construction  
origin N.W. 7' Mon Agate + Cass.

Cass St.

E

4

1+47- 29' Lt. = 12" diam pole # P5244

1+00

3.5  
60

142.8	142.4	141.5	141.3	140.4	141.8	141.9	142.4	142.6
3.5	4.9	5.8	6.0	6.9	6.3	6.3	4.9	4.7
46	40	36	22	18		15	20	40

0+90

T.P. 7.25 147.33 1.92 140.08

143.5	139.8	140.8	139.9	140.6	140.6	142.1	142.4
3.8	7.5	6.5	7.4	6.7	6.7	5.2	4.9
46	40	22	18		16	20	40

147.33

0+88- 40' Lt. = N.E. Cor. Stop + Cor.

Front,

S.E. Cor. Auto. Stop + Car. South

0+60 Lt. = End conc. Slab also =

137.33	137.4	137.8	138.7	138.4	139.6	139.1	140.7	141.00
4.69	4.60	4.12	3.3	3.6	2.4	2.9	1.3	1.0
80	40	40	21	18		17	20	40

west end  
E. end  
door

0+43 40' Lt. = start conc. slab.

137.11	137.17
4.89	4.83
80	40
S.W. Cor.	S.E. Cor.

0+24. 40' Lt. = end conc. slab

136.44	136.46
5.56	5.54
50	40
on slab.	

0+10

136.21	136.24	136.6	136.7	137.00	137.3	138.6	138.9
5.79	5.76	5.4	5.8	5.0	4.7	3.4	3.1
50	40	25	20		24	27	40

on conc.  
slab

142.00

Cass

40<sup>2</sup> RT = start 3' high conc. block wall.  
2+13-16<sup>2</sup> Lt = start conc. drive  
RT??- 26

145.9 146.8 146.43 147.55 148.15 148.31  
7.0 6.1 6.45 5.33 4.73 4.5.7  
40<sup>2</sup> 40<sup>2</sup> 16<sup>2</sup> 25 40 50  
B.W. on drive

Approx. Level. N. 45.  
2+07-40<sup>3</sup> Lt = 8 wide conc. drive

146.50 146.73  
6.38 6.15  
50 403

2+00

146.3 146.2 145<sup>2</sup> 145.4 145.7 147.3 147.6  
6.6 6.7 7.9 7.5 7.2 5.5 5.2  
40 23 18 13 25 40

1+92 16<sup>2</sup> RT = 3' wide conc. walk

145.64 147.03 147.48 147.48  
7.24 5.85 5.40 5.40  
164 242 40 43  
base of steps

T.P. 8.60 152.88 3.05 144.28

Nail in pole #P.5224

1+65-29' Lt = (W)

2.9  
29 top of box.

1+61-40<sup>2</sup> Lt = E+W. conc. wall

146.7 143.6 144.7  
1.1 3.7 3.1  
40<sup>2</sup> 40<sup>2</sup> 40  
top, Base

1+50

143.7 143.8 143<sup>2</sup> 143<sup>5</sup> 143.3 144.6 145<sup>2</sup>  
3.6 3.5 4.3 3.8 4.0 2.7 2.3  
40 24 17 15 20 40

147.33



Cass St

T.P. 5.15 156.95  
~~4.15~~ 155.95 1.08 151.80

2+78- 16' Rt. =  $\Phi$  wide conc. walk

2+66 28' Lt. =  $\textcircled{W}$

2+64- 40' Lt. = end conc. block wall

2+50

2+40- 16' Rt. =  $\Phi$  3' wide conc. walk

2+23 16' Rt. = end conc. drive

Nail in pole # 5248

Agate  
 S.W. Cor. Cass St

150.5 151.26 151.55 151.68  
 2.4 162 133 130  
 164 26 40 43  
 on walk at  
 stops

150'  
 2.9  
 28' on box.

148.9 149.6  
 4.0 3.3  
 40' 40'  
 B.W.

149.5 149.1 149.5 147.9 147.9 149.8 150.2  
 3.4 3.8 5.4 5.0 5.0 3.1 2.7  
 40 21 16 15 25 40

147.84 149.42 149.63 149.64  
 5.04 3.46 3.25 3.24  
 16.6 25 40 42.3  
 on walk at  
 stops

146.83 147.67 148.22 148.38  
 6.03 5.21 4.65 4.50  
 165 25 40 50  
 on drive

152.88

Cass St.

#

7

see plans for information  
under construction

Archer + Cass intersection now

9.30 172.05 — 162.75

(Const. Notes)

S.W. 30' cb. Rad. Archer + Cass

150.80

Agate St Imp. Levels

6.14 150.81

S.W. 30' cb. Rad. Agate + Cass

Imp. plans.

Construction - See Agate St.

Intersection now under

3+05<sup>90</sup> = Sly. line Agate.

151.7	151.7	150.5	150.8	151.2	152.4	152.9
5.7	5.3	6.5	6.2	5.8	4.6	4.1
40	23	19		18	23	40

3+04 - 29' Lt. = Pole # 5248.

150.4	150.5	149.3	149.5	149.5	151.1	151.7
6.6	6.5	7.7	7.5	7.5	5.9	5.3
40	22	18		15	24	40

2+80

156.95

Cass St.

Additional Notes

Archer to Van Nuys

C.H.S.  
1-22-53

See F.B. 1662  
P. 63

1+12

160 <sup>0</sup>	159.6	169.7	170.3	170.7	171.8
14.4	14.8	4.7	4.1	3.7	2.6
60	40	22		20	40

1+00

162.9	162.8	169.1	170 <sup>0</sup>	170.4	171.6
11.5	11.6	5.3	4.4	4.0	2.8
60	40	20		20	40

520

174.44 2.81 169.24

174.44 P6

0+50

168.00	168.5	168.4	168.8	169.5	171.3
4.1	3.6	3.7	3.3	2.6	0.8
40	17	13		19	40

0+25

166.1	167.2	166.2	166.7	167.1	167.6	168.2	170.6
6.0	4.9	5.8	5.4	5.0	4.5	3.9	1.5
40	29	19	17		16	18	40

0+00 = Nly line Archer

165.5	166.2	164.8	165	165.1	167.2	167.5
6.6	5.9	7.3	7.1	7.0	4.7	4.6
40	24	23		20	23	40

A from P7 172.05

172.05

under construction. - See plans,  
Van Nuys + Cass intersection

2+64.9

5 line Van Nuys

2+50

2+~~24~~<sup>45R</sup> conc apron 12' wide

2+15

2+00

1+50

1+30

174 44

(9)

168.4	168.7	169.4	169.4	169.8
$\frac{6.0}{40}$	$\frac{5.7}{20}$	5.0	$\frac{5.0}{20}$	$\frac{4.6}{40}$
167.8	168.2	169.4	169.2	168.8
$\frac{6.6}{40}$	$\frac{6.2}{20}$	5.0	$\frac{5.4}{27}$	$\frac{5.6}{20}$

IMPROVED

MAY 15 1953

170.34	170.87
$\frac{4.10}{40}$	$\frac{3.57}{52}$
apron	gar

167.9	167.6	168.7	169.5	170.5
$\frac{6.5}{40}$	$\frac{6.8}{20}$	5.7	4.9	3.9
			31	40

167.9	168.1	168.9	169.0	168.5
$\frac{6.6}{40}$	$\frac{6.3}{20}$	5.5	$\frac{5.4}{30}$	$\frac{5.9}{40}$

169.5	168.6	170.1	170.9	172.8	172.9
$\frac{6.9}{40}$	$\frac{5.8}{15}$	4.3	$\frac{3.5}{28}$	1.6	1.5
			38	40	

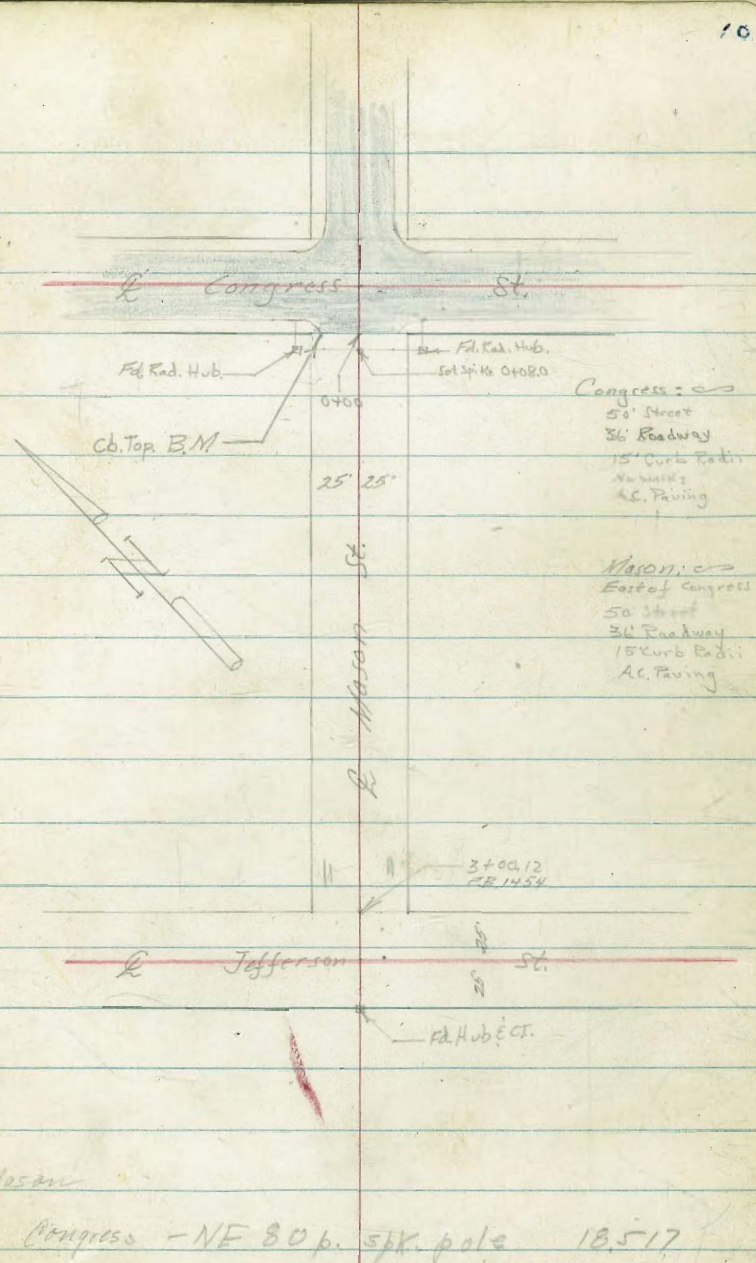
169.9	166.1	167.2	169.8	170.7	171.1	172.7
$\frac{9.5}{60}$	$\frac{8.3}{40}$	$\frac{7.2}{25}$	$\frac{4.6}{13}$	3.7	$\frac{3.7}{29}$	2.2
				174.44		40

Roberts  
Cota  
Mordor  
7-14-53.  
W.O.#32203

X-Section Mason Street  
Congress to Jefferson

F.B. 1454 pg 2

INDEXED  
JUL 15 1953



0+45 30' Lt End garage opening

0+25 30' Lt begin garage opening

T.P. 7.15 25.65 6.57

0+02 176' Lt to center P.P. # P3949 ✓

0+00 wily Line Congress

0-07 Curb Line Congress

CONGRESS

BM 557 CB. EL. 18.50

BM

Could. Find no Bench in Area

Check Plans for  
END CURB WEST  
S.F. T. 170ck  
23.07 S. Duane Ave. E  
Mason

20.99  
116  
30  
Floor

20.97  
168  
100  
Floor

25.65

19.07 5.0 25  
18.97 5.10 25 CB  
18.43 5.64 20.7 Gut  
18.42 5.65  
18.00 6.07 20 Gut  
18.50 5.57 20 CB  
19.07 5.0 25

19.51 4.56 10 CB  
19.02 5.05 100 Gut  
18.89 5.88 33 CB  
18.47 5.60 33 Gut  
18.29 5.74  
17.85 6.22 33 Gut  
18.34 5.73 33 CB  
17.05 7.02 100 Gut  
17.53 6.57 25

19.53 4.54 100  
19.12 4.96 50  
18.48 5.39  
18.13 5.94 50  
17.48 6.59 100

Elevation  
CORNER CONGRESS & MASON H.I. 24.07

1751 16<sup>3</sup> Lt to center P. Pole # P3925

1750

1749 16<sup>2</sup> Lt to center P. Pole # P39251735 22<sup>0</sup> Lt to center 24" Palm Tree1726 25<sup>2</sup> Lt to 4' Conc Walk1718 22<sup>1</sup> Lt to center 30" Palm Tree

1700

0798 21<sup>5</sup> Lt to center 30" Palm Tree0776 19<sup>3</sup> Rt to center T. Pole # 582302H0751 26<sup>3</sup> Lt to Conc Apron Single Garage

20.95	20.85	20.85	20.55	20.35	20.05	20.55	20.85
4.7	4.8	4.8	5.1	5.3	5.6	5.1	4.8
35	25	15	12		16	25	35

21.12	20.99
4.58	4.6
31	25 <sup>2</sup>
conc	conc

20.05	20.15	20.45	20.15	20.05	19.75	20.05	20.05	20.05
5.6	5.5	5.2	5.5	5.6	5.9	5.6	5.6	5.6
35	25	15	11		14	19	25	35

20.27	20.24	20.15	19.55	19.15	19.65	20.05	20.35
5.38	5.41	5.5	6.1	6.5	6.0	5.6	5.3
30	26 <sup>3</sup>	25		13	16	25	35
Floor	conc						

25.65

Cont'd From Page 12

Lt

C

Rt

13

2+88 218° Rt End 6" Curb  
 2+92 175° Lt to center T. Pole # P3905  
 2+75 25° Rt @ 10' Garage Opening

20.94  
 4.71  
 2.13  
 Apron  
 21.23  
 4.42  
 25  
 Floor

21.06  
 4.59  
 21.8  
 conc

2+51 195° Rt to center T. Pole # 382303H

2+50 22° Rt begin 6" conc curb

21.05  
 4.6  
 35  
 20.95  
 4.7  
 25  
 20.75  
 4.9  
 20.65  
 5.0  
 17  
 21.14  
 4.51  
 22  
 conc  
 5b  
 top  
 20.95  
 4.7  
 25

2+49 25° Rt End garage

21.21  
 4.44  
 25  
 Floor

2+30 25° Rt begin double garage

21.21  
 4.44  
 25  
 Floor

2+15 Rt Center of two 36' Doors

21.21  
 4.44  
 25  
 Floor

2+00

20.95  
 4.7  
 35  
 20.85  
 4.8  
 25  
 20.95  
 4.7  
 15  
 20.65  
 5.0  
 13  
 20.75  
 4.9  
 20.55  
 5.1  
 25  
 20.65  
 5.0  
 35

25.65



Contd From Page 13

Lt

£

Rt 1\*

Check

18.52

6.68

~~18.52~~

END CURB USED AS A BENCH TO START

£

Jefferson

19.30  
5.9  
50

19.30  
5.9

19.10  
6.1  
25

17.50  
7.7  
50

3400.12 Ely Line Jefferson

20.10  
5.1  
50

20.40  
4.8  
25

20.30  
4.9  
16

19.70  
5.5  
13

19.90  
5.3

19.70  
5.5  
17

20.00  
5.2  
25

19.50  
5.7  
45

T.P.

534

25.20

5.77

25.30

2777

17° Lt to center P.Pole # 73905

2792

21° Rt £ 6' Conc Landing

21.11  
4.54  
21<sup>c</sup>  
conc

21.21  
4.44  
25  
floor

25.65

Stamper  
Huffman  
Nordahl  
Sherry

9-18-53

SET BENCH ON WEST CURB AT  
CONGRESS & MASON STREETS W.O. 32203

Sta	+	H.I.	-	Elev.		
B.M.			1.505	28.800	28.80	Swly 7' C.T. San Diego Ave & Twiggs Street
	7.960	30.305				
TP			2.000	22.345	22.345	Top City Engr. & Disk Swly Cor S.D. Ave & Mason St
	5.900	24.345				
Side Shot			5.99	18.455		Top of Curb Swly End Congress & Mason (See Pg. 10)
B.M.			6.000	18.445		Set Brass Plug in Top of Swly Curb Ref. Congress Sts.
	2.100	24.445				
TP			8.270	22.345		Top Swly. - <sup>City Engr</sup> L. & Disk Mason & S.D. Ave
	1.815	30.615				
B.M.				28.80		S.W.L.Y. 7' C.T. San Diego Ave & Twiggs St.

CROSS SECTION - LA JOLLA HERMOSA AVE.  
 FROM LA CANADA TO MIRA MONTE PLAZA

Walker  
 Pope  
 Pellan  
 Olney  
 11-5-53

140 32390

2100

Roadway  
 Cont-P.21

Soil Sample 15'4" & st 2100

1750

LA JOLLA HERMOSA AVE

INDEXED  
 JER  
 NOV 6 1953

See page <sup>24</sup>~~25~~ for  
 location of wall  
 on westly side  
 La J. Hermosa Ave.

0775

6 21

21 x 12

31.1 x 12

07093

07081

07068

0-07

07020

11

cb 0-15.2

fd ct.  
 10

LA CANADA

LA JOLLA HERMOSA AVE.

Roadway

17

0+75 = Beg. Full width Pav

8377	8380	8382	8408	8425	8406	8436
21	21	10.5		10.5	21	21
cb	Gut					cb

0+50

8380	8383	8387	8418	8434	8415	8468
21	21	10.5		10.5	21	21
cb		Ground			Gut	cb

0+081

8393	8349	8396	8430	8443	8437	8483
21	21	10.5		10.5	21	21
cb	Gut	Pav. - Ground same			Gut	cb

0+00 = N. side La Canada

8398	8351	8388	8430	8433	8437	8488
21	21	10.5		10.5	21	21
cb	Gut				Gut	cb

0-07

8349	8375	8406	8426	8437
21	10.5		10.5	21
				Gut

0-15.2 = N curb La Canada

8323	8361	8393	8415	8428
21	10.5		10.5	21

8546

11' West E. line La Jolla Hermosa  
and E. line La Canada  
F.B. 1847-1

LA TOLLA HERMOSA AVE.

Roadway

18

2+00

8310	826	828	8339	8362	8345	8384
8283	825	825	8312	8325	8318	8357
cb.	21	105		105	21	21
	Ground	Ground			Gut	cb.

2+50

8322	826	829	8357	8380	8358	
8225	823	826	8330	8353	8331	
21	21	105	105	105	21	21
cb	Gut	Ground	105		Gut	cb
					105	Drive

2+40 = 1/2 18' Long DRIVE on Lt

8242	8301	8303	8276
8215	8274	8276	8249
37	27	24	21
Drive	Drk.	Drk.	Drive

TR

8274  
8247

2+00

8342	825	829	8370	8394	8374	8415
21	21	105	105	105	21	21
cb	Ground	Ground	105			cb

1+50 = Find Full Width Pav

8356	8213	8365	8388	8408	8388	8434
21	21	105		105	21	21
cb	Gut					cb.

1+00

8368	8325	8381	8400	8419	8395	
21	21	105		105	21	
cb					Pav.	
					105	DRIVE

5+06.2 - 8rk

8237	8198	8243	8273	8278	8265	8318
8210	8171	8216	8246	8251	8238	8291
21	21	105		105	21	21
cb.	Gut.					cb.

5+00

8239	8195	8254	8272	8287	8266	8316
8212	8168	8227	8245	8260	8239	8289
21	21	105		105	21	21
cb.					Gut.	cb

4+50 - Bag. Full width Parking

8259	8204	8267	8299	8319	8300	8336
8232	8177	8240	8272	8292	8273	8309
21	21	105		105	21	21
cb	Gut					cb

4+00

8271	822	824	8312	8328	8311
8244	819	821	8285	8201	8284
21	21	105		105	21
cb.	Ground Gut.	Ground			Gut. Drive

3+50

8295	823	825	8325	8347	8328	8371
8268	820	822	8298	8320	8291	8344
21	21	105		105	21	21
	Ground	Ground				cb.

3+14.4 = <sup>15'</sup> Conc. Drive

8256	8307	8255
8223	8280	8228
365	265	21
Drive	Sik.	Drive

LA JALLO HERMOZA AVE

Roadway

20

$$\begin{array}{r} 0.03 \\ 83.21 \\ \hline 83.18 \end{array}$$
 FB1847  
 11

La Jallo Hermosa

chk B.M. NE. 11' track on N.W. Mira Monte

5+39.6 s/cb Mira Monte Lt.

8133 8164 8174  
 21 105  
 Gut.

5+37 - E.C. Ret on Rt. = s/cb Mira Monte

8175 8187 8208  
 105 21

TR.

8215

5+25

8152 8190 8207 8215 8225 8224  
 21 105 105 21 21  
 Gut. Gut. Cb.

LA TOLLA HERMOSA AVE

4750

Roadway  
For X-Section 1073

21

30' 18' 12'

4700

LA TOLLA HERMOSA AVE

3700

6 21 21 12'

2700

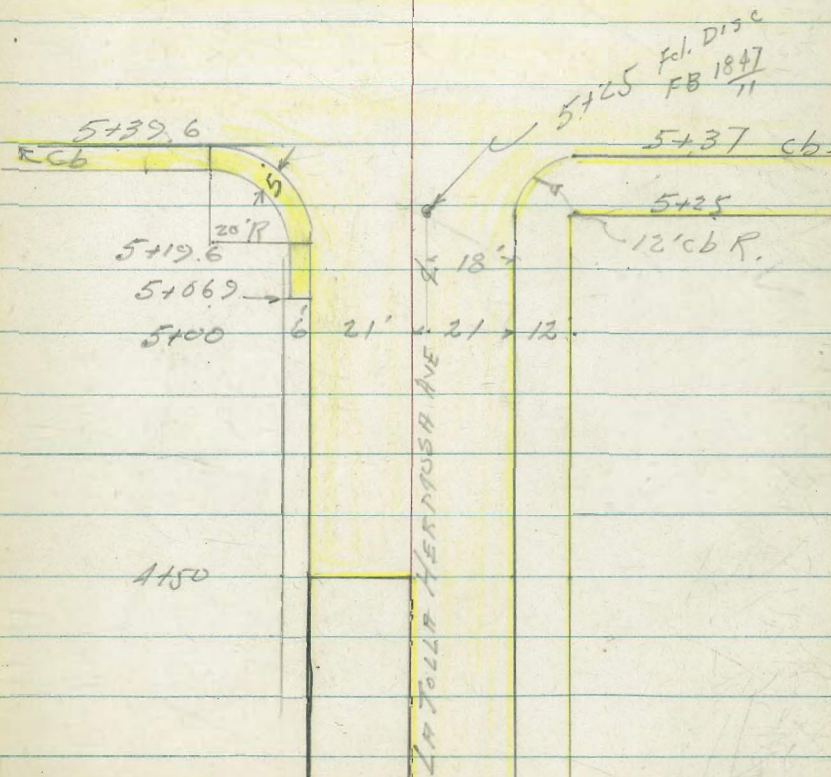
Cont from  
p. 16



LA JOLLA HERMOSA AVE

Roadway

MIRA MONTE PLAZA



La Jolla Hermosa Ave. 2/3/54

C.H.S.  
Boyer  
Pullen  
Scholin

W.O.S. 32390  
3222

ctr. P. = center of eastly face  
of pillar.

Stationing is from FB-2267 and

F1867 as shown but base line  
16 curb line is 21' Lt. of base line

2+09 - 23<sup>4</sup> Lt. = ctr. P.

1+13 - 23<sup>4</sup> Lt. = Ctr. P.

0+17 - 23<sup>4</sup> Lt. = Ctr. P.

= 0+00

2+10<sup>8</sup> - Nly line Mira Monte

See FB 1847 - page 11

5+25 } - Sly line Mira Monte Plaza  
Page 22 of this book.

5+07 - 23<sup>4</sup> Lt. = Ctr. P.

4+05 - 23<sup>4</sup> Lt. = Ctr. P.

3+04 - 23<sup>4</sup> Lt. = Ctr. P.

2+02<sup>5</sup> - 23<sup>4</sup> Lt. = Ctr. P.

1+01 - 23<sup>4</sup> Lt. = Ctr. P.

0-00<sup>1</sup> - 23<sup>3</sup> Lt. = Ctr. P.

0-01 - 23<sup>3</sup> Lt. 2 start wall.

Stations from FB 1867 / 16

Stations from FB 2267 / 16

Note FB 1847 shows

BL = 60' street - use it as

shown on next page

is from 2267 which is 6' road way

line is as in 1847 p 2

= End of wall. base line

1+80 - 23<sup>4</sup> Lt. = Ctr. P.

0+00 - 23<sup>4</sup> Lt. = Ctr. P.

5+00 } = Nly. line Via del Norte

5+57.8 } (FB 1847 - page 16)

4+97<sup>2</sup> = Sly line Via del Norte

4+96 - 23<sup>4</sup> Lt. = Ctr. P.

4+00 - 23<sup>4</sup> Lt. = Ctr. P.

3+05 - 23<sup>4</sup> Lt. = Ctr. P.

Locate wall

La Jolla Hermosa Ave.  
La Cañada North.

Also see FB. 1847-P 1-19 & 75

2-3-54

CHS  
B899  
Pulley  
Scholin

INDEXED

MER  
FEB 4 1954  
Mira Monte Plaza

B.L.

24

= 0+00  
2+10.8

= 0+00  
5+25

5+07

4+05

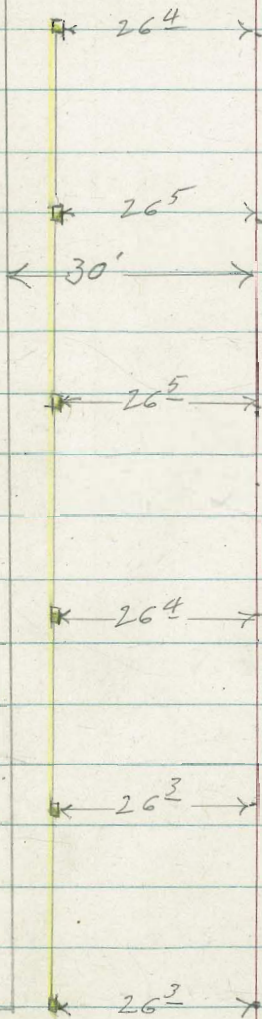
3+04

2+02

1+01

Note

Station to 2 pillars  
outs. to Ely. face  
Pillars 15' x 15' square



B.L. = 60' street see FB 1847-P 1.

0+00 = Nly line La Cañada

La Cañada

La Jolla Hermosa Ave

4+97<sup>±</sup> = sly Via del Norte.

4+96

4+00

3+05

2+09

1+13

0+17

0+00 } Nly line Mira Monte  
2+10.8 }

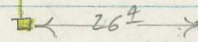
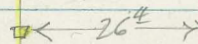
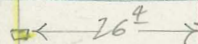
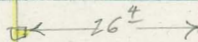
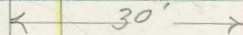
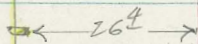
Via del Norte.

B.L. 0+00

25

5+57<sup>±</sup> = Nly. line

4+97<sup>±</sup> = sly. line.



Mira Monte Plaza.

## La Jolla Hermosa Ave.

1+80 = end wall. 26<sup>4</sup> ft. of B.L.

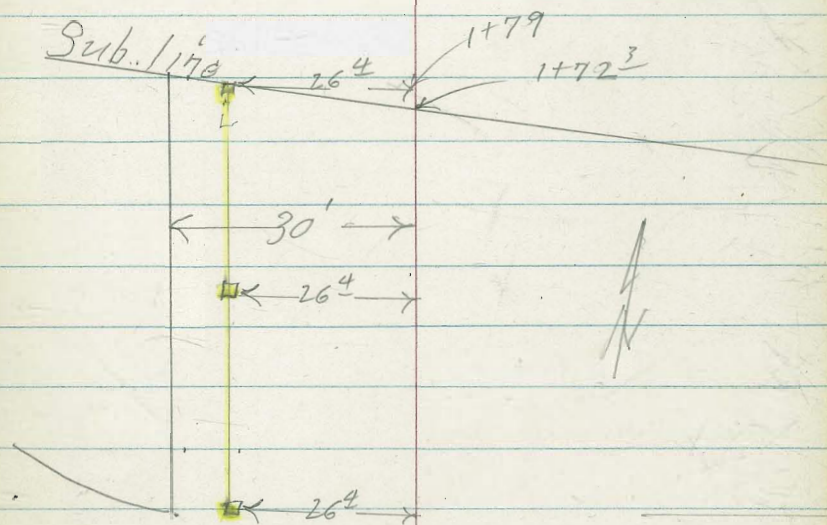
1+79

1+72<sup>3</sup> = End La Jolla Hermosa Ave &  
station

0+90

0+00 = Nly. line Via del Norte.

5+57<sup>8</sup> =



Via del Norte.

Clark  
Shepherd  
Gruber  
Owens  
2-17-54  
W.O. 32191

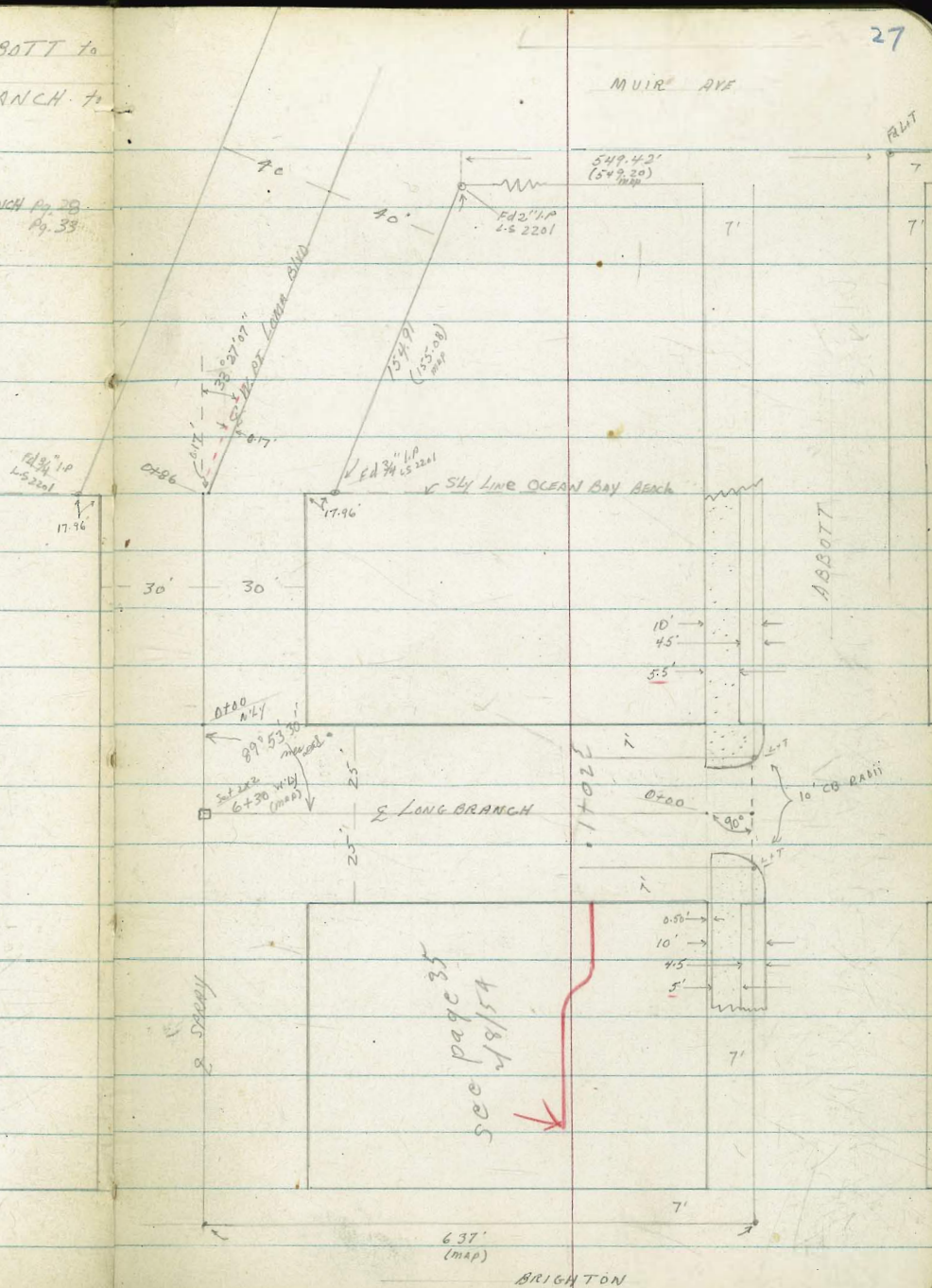
X-SECT LONG BRANCH - ABBOTT to  
SPRAY.  
X-SECT SPRAY - LONG BRANCH to  
W. PT. LOMA BIV.

27

REF: TLO Sheets: # 796, 790  
TLO Pt. Book # 13  
F.B # 2147  
MAPS: # 1189, # 1080

Notes: LONG BRANCH pg. 28  
SPRAY pg. 33

INDEXED  
MER  
FEB 17 1954



X-SECT LONG BRANCH

LT E RT

0+79 25.2 LT BY 4' Picket Fence  
44' RT END 3-CAR GAR

3.05  
4.90  
35'  
WALK

2.85  
5.10  
25.2  
4.1

7.15  
5.8  
24  
FL  
DIRT

0+77.5 25' LT & 3.0' CON. WALK

0+76 25.2 LT END CURVING

7.91  
5.04  
25.2  
TP  
CURVING

7.93  
5.02  
TP 25  
CURVING

0+60 25' LT Bay 0.40 wide Cap. Curving

0+56 44' RT Bay 3-CAR GAR - DIRT FLOW

3.47  
4.88  
35'  
WALK

7.93  
5.02  
25  
4.1

7.75  
5.7  
DIRT

0+53 25' LT & 3.5' CON. WALK

0+50

3.45  
4.5  
35'

3.95  
5.0  
25'

6.195  
6.2  
15.0

6.175  
6.2

6.175  
15

7.245  
5.5  
17

7.45  
5.5  
25

7.75  
5.7  
30

0+00 = N.W. Line ABBOTT

3.75  
4.2  
25  
RL  
DIRT

3.35  
4.6  
15  
DIRT

7.95  
5.0  
DIRT

3.45  
5.5  
14.6  
DIRT

7.57  
5.38  
14.6  
CB  
EC

7.95  
5.00  
25  
RL  
DIRT

2.85  
5.1  
25  
DIRT

0-00.50 = edge EXIST. Pav.

Note: curvy part. Badly broken - should be replaced

3.84  
4.11  
25  
RL  
DIRT

3.61  
4.34  
15  
CB  
EC

3.70  
4.75  
15  
G

3.06  
4.89  
2.91

7.33  
5.67  
14.6  
G

0-10 = N.W. CB Line ABBOTT

5.94  
2.01  
100  
CB

5.79  
2.66  
100  
G

4.44  
3.51  
30  
CB

3.87  
3.88  
50  
G

3.77  
4.33  
20  
CB  
EC

3.71  
4.77  
25  
G

3.07  
4.93  
15  
PI

7.65  
5.30  
15  
DIRT

7.33  
5.62  
15  
DIRT

2.19  
5.76  
25  
CB  
AC

7.68  
5.77  
25  
CB  
AC

2.09  
5.86  
50  
G

2.69  
5.26  
50  
CB

1.90  
6.05  
100  
CB

2.43  
5.52  
100  
CB

0-30 = G ABBOTT (AC. Pav.)

6.08  
1.87  
100

4.67  
3.33  
50

3.67  
4.33

7.95  
5.00  
50

7.71  
5.24  
100

D.M. 4.64 7.95

3.31 N.E.B.P LONG BRANCH + ABBOTT

7.95

LONG BRANCH (CONT.)

LT.

E

RT.

1489 { 24.9 RT Bay 3.5' Picket Fence  
24.9 RT END House (1 IN house)

1477 24.5 RT E 8" Tree

1471 24.7 RT Bay House - No CON. EATN. Sets on 4.4 Red wood Posts (approx 2' apart)

1466 24.9 RT END Fence

1460 { 24.9 RT Bay 3.5' Picket Fence  
24.9 RT END 3' Picket Fence

1450

7.04  
5.0  
35  
7.04  
5.0  
25  
1.74  
5.3  
15  
5.3  
1.74  
5.1  
15  
1.94  
5.1  
25  
1.94  
5.1  
25  
1.74  
5.3  
15

1439 24.9 RT E 5.7' CON. WALK

1420

25.1 RT Bay 3' Picket Fence  
24.9 LT END Picket Fence

7.22  
4.82  
24.8  
41  
2.76  
4.78  
35  
WALK

TP 4.90 7.04 5.81 2.1 4

7.04

1400

17.1' LT E Pole # 5121

7.14  
5.2  
35  
7.14  
5.5  
25  
AC  
6.1  
15  
1.85  
6.1  
15  
2.05  
5.9  
15  
7.35  
5.6  
25  
AC  
2.45  
5.5  
35

0+96

25' LT E 4' CON. WALK

2.97  
5.03  
35  
WALK  
2.97  
5.18  
25  
41

7.95



LONG BRANCH (CONT.)

LT.

E

RT

2450

4.94  
2.1  
35

4.84  
2.2  
25

2.74  
1.3  
15

2.64  
1.4

3.74  
3.8  
15

4.44  
2.6  
25

5.34  
1.7  
35

3.77  
3.27  
24  
17  
Lower  
step

3.53  
3.51  
24.7  
LIP

3.66  
3.38  
35  
WALK

2445

24.0' RT E 2' wide Conl. Steps

2436

24.7 RT E 2.5' CON. WALK

2434

24.9 RT E 3.5' wide wooden stairway (Lower step 10' deep)

2432

31.7 RT END 3-Car gar

3.39  
3.65  
31.7  
FL.

2408

31.7 RT Beg 3-Car gar - Con. FL.

3.38  
3.66  
31.7  
FL.

2405

23.8 RT E 3.5' wide wooden stairway (Lower step 1.9' deep from lip to ok.)

2404

25 LT E 3' CON. WALK

2.58  
4.46  
35  
WALK

2.63  
4.41  
25  
LIP

2402E - See page 35

2402

24.4 RT E 4' CON WALK

7.89  
4.15  
24.4  
LIP

3.01  
4.03  
35  
WALK

2401

17.6 LT E Pole # 5145

2400

(Soil Sample here)

7.44  
4.6  
35

2.54  
4.5  
25  
R.L.

7.14  
4.9  
15

7.04  
5.0

2.14  
4.9  
15

2.74  
4.3  
25  
R.L.

1.94  
5.1  
35

1499

24.8 RT END Fence

7.04

LONG BRANCH (cont.)

LT.

E

RT.

31

3+90

8.04	7.04	6.54	4.14	2.74	2.74	3.14	4.14	5.74	6.54
1.0	1.05	0.5	2.9	4.3	4.3	3.9	2.9	1.3	0.5
35	25	20	15	10		8	15	25	35

3+50

6.64	5.54	6.14	4.14	3.34	3.14	3.14	4.14	5.04	5.54	5.74
0.4	1.5	0.9	2.9	3.7	3.9	3.9	2.9	2.0	1.5	1.3
35	23	20	15	9		9	15	20	25	35

3+40

17.5 LT E Deckman

3+23

17.9 LT E Pole # P 57.65

5.94	5.44	4.74	3.74	3.14	2.94	3.04	5.44	6.04	6.54
1.1	1.6	2.3	3.3	3.9	4.1	4.0	1.6	1.0	0.5
35	25	20	15	10		15	20	25	35

3+20

25.128 LT END 6" RD WALLS // to E

5.76	3.64	7.84
1.78	3.40	4.2
2.8	2.5	25
TP	TP	FTG
Wall	Wall	Wall

3+17.50

18.5 LT E 6" Step-wall (approx 75° to E) NW/SE

4.64	3.76	7.74
2.40	3.69	4.30
25	18.5	18.5
TP	TP	FTG
Wall	Wall	Wall

3+11

24.9 LT E 3.0' Conc. Steps (5 steps .45' each) 1/2" slope from lip to BK on step

3.39
3.65
TP
1/2" Step

3+00

5.34	5.34	3.66	3.74	3.04	2.94	3.44	5.94	6.64
1.7	1.72	3.38	3.7	4.0	4.1	3.6	1.1	0.4
30	28	25	25	15		15	25	35
TP	TP	TP	TP	TP		TP	TP	TP
Wall	Wall	Wall	Wall	Wall		Wall	Wall	Wall

2+80.25

25 LT Bay 6" Concrete Wall // to ST.

3.66	2.64
3.38	4.40
25	25
TP	TP
Wall	Wall

2+80

28.0 LT Bay End rd wall (higher) 17.5 LT E 6" Conc. Rd. Wall (90° to E ST) Step-wall

5.78	4.18	3.69	3.75	2.69
1.76	2.86	3.45	3.79	4.35
28	25	19	17.5	17.5
TP	TP	TP	TP	TP
2nd Wall	Wall	Wall	Wall	Wall
at Prop.		2nd Rise		

704

LONG BRANCH (Cont)

LT.

♀

RT.

See 19 33 - X-SECT SPRAY

6700 = 5'LY Line SPRAY

5456

4487

4480

4450

T.P.

486

7.30

460

2.44

4410

	-0.60	-0.60	-0.60	-0.70	-0.60	-0.60	-0.60
	7.9	7.9	7.9	8.0	7.9	7.9	7.9
	35	25	15		15	25	35

	-0.70	-0.70	-0.30	-0.70	-0.30	-0.30	-0.30
	7.5	7.5	7.6	7.5	7.6	7.6	7.6
	35	25	15		15	25	35

	1.90	1.70	1.30	1.00	1.10	0.90	0.80	0.50
FLY	5.4	5.6	6.0	6.3	6.2	6.4	6.5	6.8
	35	25	20	15		15	25	35

	5.40	4.30	1.50	1.70	6.130	1.40	1.40	0.90
FLY	4.7	5.0	5.8	6.1	6.0	5.9	5.9	6.4
	35	25	20	15		15	25	35

	5.30	3.70	2.90	2.60	2.50	2.30	2.30
FLY	2.0	4.1	4.4	4.7	4.8	5.0	5.0
	35	25	15		15	25	35

7.30

3.44	3.04	2.74	2.54	2.64	2.84	3.74	5.94	6.24
3.6	4.0	4.3	4.5	4.4	4.2	3.3	1.1	0.8
35	25	15	11		10	15	25	35
	RL						RL	

7.04

# X-SECT. SPRAY

ABANDON TO W.P.T. LOMA BLVD.

(SECT. AT 90° TO SPRAY)

0+86 = SWLY LINE OCEAN BAY BEACH - MAP # 127  
 (← AT 33° 27' 07") END SPRAY - Beg. N.P. LOMA BLVD.  
 Beg. TYPE 6 CB'S + GUTTERS 31.20' RT. + LT.

0+50

0+30

0+25 = Toe NEW FILL (SECTION APPROX 90° E)

0+20 Note: (Soil sample here)

Soil sample this area also good for AREA OF LONG BRANCH NWLY STA. 3+00

0+00 = N'ELY LINE LONG BRANCH

0-25 = E LONG BRANCH

0-50 = S'ELY LINE LONG BRANCH

0-150

LT.

E

RT

33

1.70	1.55	1.66	0.80	1.00	1.44	1.40	1.26	1.30	1.70
5.6	5.75	5.61	6.5	6.3	5.86	5.94	5.50	5.6	4.75
47.95	31.10	30	30	30	28.95	31.15	31.20	31.20	47.85
N'ELY LINE	W.P.T. LOMA BLVD	W.P.T. LOMA BLVD	W.P.T. LOMA BLVD	W.P.T. LOMA BLVD	W.P.T. LOMA BLVD	W.P.T. LOMA BLVD	W.P.T. LOMA BLVD	W.P.T. LOMA BLVD	W.P.T. LOMA BLVD

1.00	0.90	1.10	1.30	1.20
6.3	6.4	6.2	6.0	6.1
50	30	50	30	50

0.60	0.80	0.80	0.30	0.30
6.7	6.5	6.5	7.0	7.0
50	30	30	50	50

0.30	0.40	0.40	0.50	0.70
7.6	7.7	7.7	7.8	8.0
50	30	50	30	50

0.30	0.20	0.40	0.60	0.70
7.6	7.5	7.7	7.9	8.0
50	30	50	30	50

0.20	0.50	0.60
7.5	7.8	7.8
30	50	30

0.10	0.30	0.40	0.50	0.50
7.2	7.6	7.7	7.7	7.8
50	30	50	30	50

0.20	0.40	0.70
7.5	7.7	7.8
30	50	30

7.30 (See p 32)

SPRAY (CONT.)

CAK

3.44 3.35 = 3.31  
See O.M. p. 28

T.P.

3.50 6.80 4.00 3.30

1+86

1.38 1.00 1.04 0.10  
5.92 6.30 6.28 6.6  
26 CB CUT 24.5 21P

1.07 0.98  
6.28 6.32 arrive  
24.5 24.5

1+36 No. Sect's ahead to show exist. CB's Elev's

1.64 1.71 1.79 0.10  
5.66 6.09 6.01 6.4  
26 TP CUT 24.5 21P

1.77 1.19 1.60  
6.08 6.11 5.70  
24.5 26 26  
21P CUT 21P

(West Pt Loma Blvd under const. CB's elev. in AT)

THIS DATE 4 ST. IS GRADED - NOT PAVED

7.30

Cross Sec. Long Branch  
Additional notes to those  
on pages 27 & 30

B.L.

C.H.S.

3-8-54

Beqq

W.O.# 32191

Schellin

Pullen

0+00 = 25' Lt. of Sta. 1102<sup>s</sup> page 27.

0+90

Lenker direct elevation rod used.

w- denotes on walk

0+53

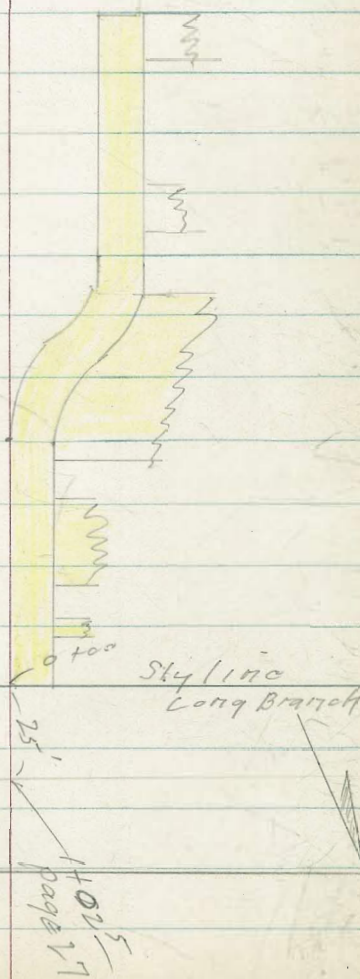
0+42

Abbott St.

of Long Branch

0+00  
page 27

1102<sup>s</sup>  
page 27



Sketch - Page 35

B.L.

36

1+17<sup>5</sup>  $\pm$  Alley  $\pm$

4.2 4.1 4.5  
4 10

0+98 11<sup>5</sup> RT = end house

3.3 3.0 2.7  
4 11  
End at house

0+90 7' RT = end walk

2.9 2.8 2.6 2.72  
4 4 5  
w

0+52 = E.C. 5' t Rad <sup>walk</sup> in walk

2.8 2.7 2.5 2.66  
4 4 5  
w

0+50 11<sup>5</sup> RT = N. Ely. Cor. house.

2.66  
11<sup>5</sup>  
on conc.  
slab.

0+47<sup>5</sup> 2<sup>5</sup> RT = P.R.C. in walk

2.60  
2<sup>5</sup>  
w

0+44 7' RT = end house

2.62  
7  
on conc.  
slab.

0+42 = B.C. RT. 5' t Rad <sup>walk</sup> in

2.7 2.5 2.54  
4 1 w

0+10 7' RT = start house

2.4  
7  
End at house

0+00 = N. Ely. Cor. 3' wide conc. <sup>walk</sup>

2.5 2.5 2.66  
4 1 w

INDEXED

JER  
JUN 24 1954

CROSS SECTION LA DORNA ST. FROM  
MONTEZUMA TO NLY LINE OF LAMESA  
COLONY W.O. 31525  
N.W. Curb Return La Dorna & Montezuma

Sta.	Top of Gutter	LIP
B.M.		6 sec P. 4D 445.62
①	447.26	446.65 446.74
②	447.35	446.75 446.79
③	447.41	446.84 446.86
④	447.35	446.76 446.92
N.E. Curb Return La Dorna & Montezuma		
⑤	447.73	447.12 447.23
⑥	447.88	447.28 447.31
⑦	447.93	447.29 447.38
⑧	448.04	447.39 447.46

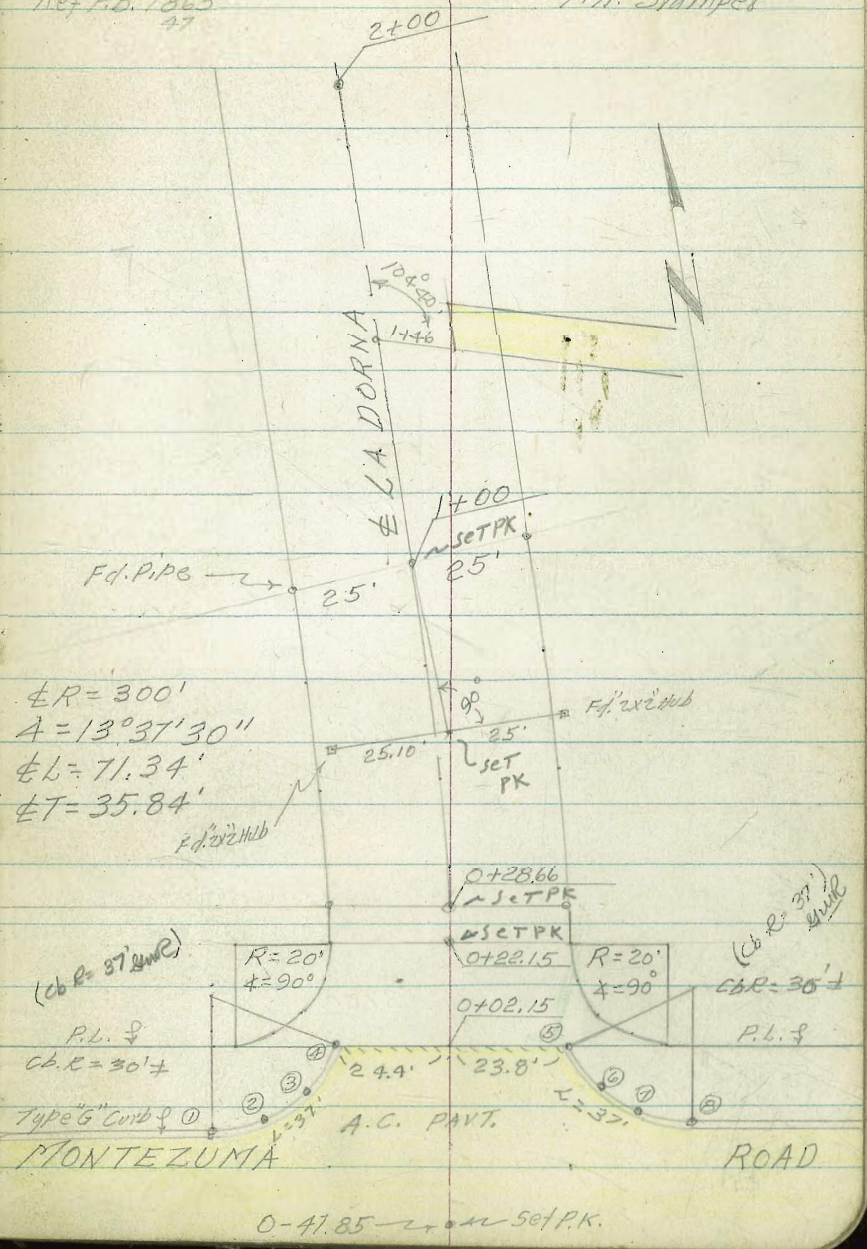
NOTE: Direct Elev. Rod Used  
2

6-23-54

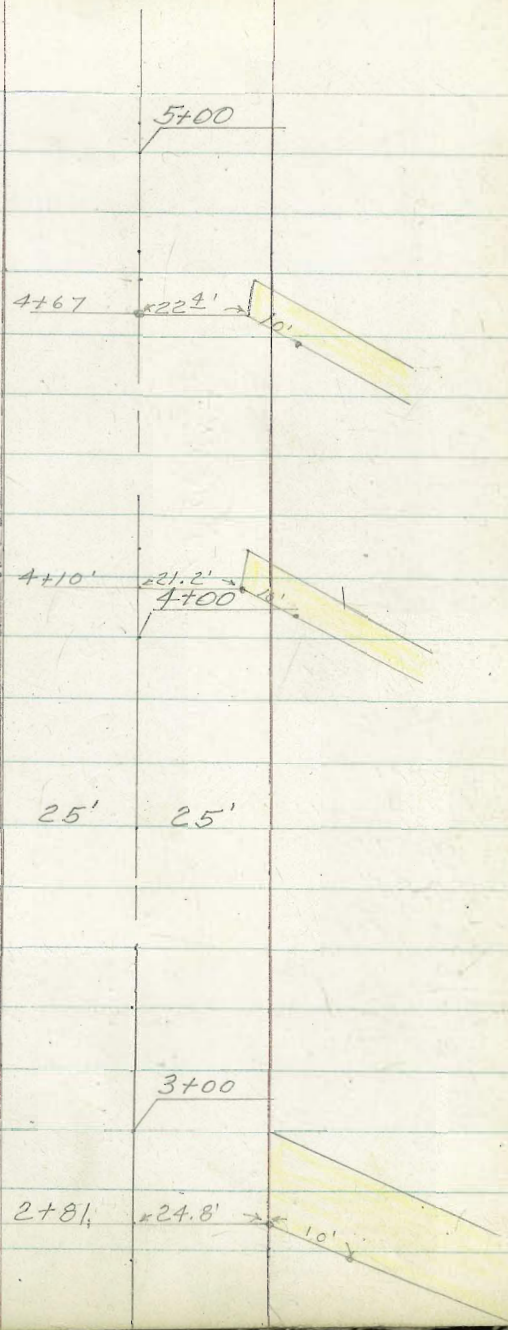
37

T.S. 4319  
DWG 2473-B  
Ref F.B. 1865  
27

T.A. Stamber







LAMESA

Sly. Line La Mesa

7+63

7+00

25' 20' COLONY

LA DORNA

6+12.46

25' PIPE REE861

6+00

Colony

25' 25'

5+30 26'

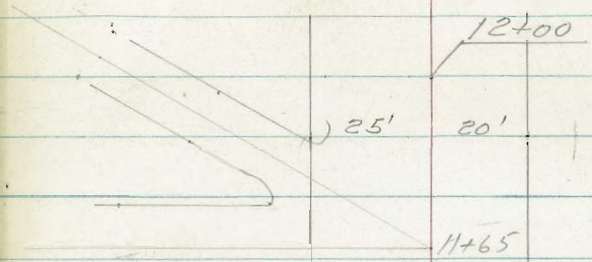


10+00  
25' 20'

9+63  
20'

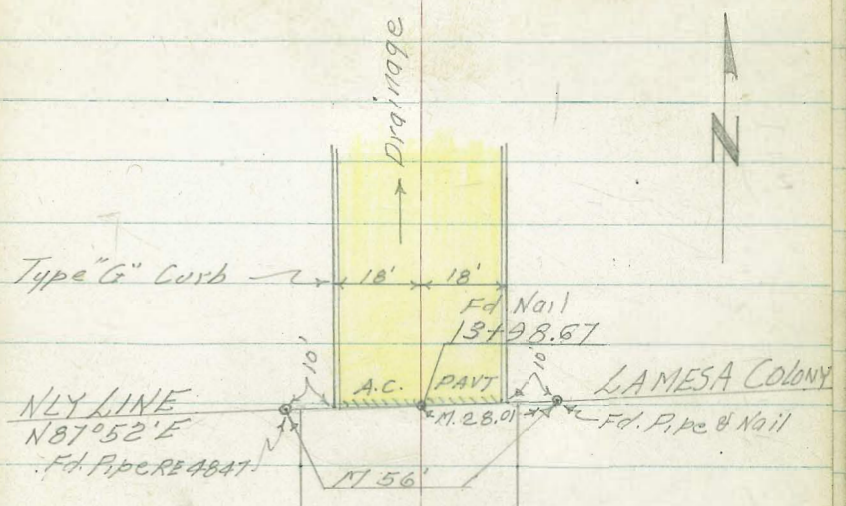
9+00  
20'  
8+63

25' 20'  
8+00



11+00  
LA DORNA

10+00  
25' 20'



25' 20'

13+ 00

LADORNA

CROSS SECTIONS LA DORNA ST.  
MONTEZUMA TO NLY BDY LAMESA COLONY

W.O. 31525

0+28.66 = B.C.Lt.

448.0	447.5	447.1	446.2	446.8	446.7	447.7	448.5
36	41	45	54	48	49	39	31
50	25	20	19	0	21	25	44
			E.Oil		F.Oil		@ B.M.

Edge A.C. Pavt.  
0+02.15 North Line Montezuma

448.5	448.2	447.2	447.35	446.76	447.18	447.12	447.73	447.7	448.6	448.7
31	33	43	42	47	43	43	38	39	30	29
50	36	25	24	24	0	23	23	25	34	50
		cb	cb	cb		cb	cb			

0-15 Nly Curb Line Montezuma

447.17	446.51	447.26	446.65	447.06	447.30	447.57	447.39	448.03	447.37	448.02
438	504	429	490	449	425	398	416	352	418	353
66	66	55	55	25	0	25	55	55	75	75
cb.	Gut.	cb	Gut				Gut.	cb	o.	cb
							B.C.	B.C.		

0-47.85 E Montezuma

446.92	447.16	447.44	447.65	447.85	448.02	448.04	448.10	448.05
463	439	411	390	370	353	351	345	350
100	75	50	25	0	25	50	75	100
								+ Back ->

7 451.55

B.M. +5.93    451.55    445.62

Top Pipe Sta 1+00 25' Lt - 1865  
79

6-23-54

Stamper  
Huffman  
Nordahl

X- SEC'S LA DORNA.

1+01-25° Lt. & P.N. R278507

1+00 E.C.

0+83-45° Lt. & 15' Garage Under Constr

0+79-29° Lt. Deadman

0+64-33° P.D.C.

0+48-26° Rt. & 3' Conc Walk

Lt. E. et. 6-23-54 (23)

446.1	446.2	446.4	445.6	446.0	445.9	446.7	447.3	448.1
5.5	5.4	5.2	6.0	5.6	5.7	4.9	4.3	3.5
50	25	22	21	0	17	20	25	50
			E.Oil		E.Oil			

447.75  
3.80  
45°  
Top floor  
(future)

447.2	447.1	446.6	446.4	446.8	446.4	446.3	446.9	447.5	448.5
4.4	4.5	5.0	5.2	5.8	5.2	5.3	4.7	4.1	3.1
50	28	25	23	20	0	17	19	25	50
				E.Oil		E.Oil			

447.86  
3.69  
26.3  
Top Walk

448.38  
3.17  
36.3  
on Walk

45/55

X-SEC'S LA DORNA

2100-24<sup>3</sup> RT & Fire Hydrant

1470-25<sup>2</sup> RT & 4" Pine Tree

back along lot line  
1455 End Conc. Drive (Diagonal) RT.

1450 End Conc. Drive

4 RT 104°40  
1446- RT Begin Conc Drive (Diag)

4434	4444	4457	4460	4454	4455	4462	4468	4464
8.2	7.2	6.9	6.6	6.2	6.1	5.4	4.8	5.2
50	25	18	17	0	16	18	25	45
		E.O.I.			E.O.I.			

44785	44703	44764
5.70	4.52	3.93
16°	24°	31°
Conc	Break	on Drive

4435	4449	4459	4451	4456	44579	4471	4476
8.1	6.7	5.7	6.5	6.0	5.76	4.5	4.0
50	25	21	19	0	16	25	50
		E.O.I.			E.O.I.		

44588	44687	44760
5.67	4.68	3.95
16°	23°	33°
Conc.	Break	on Conc.

45/55

X-SEC'S LA DORNA

2+73-27<sup>3</sup> Lt. Begin Conc. Drive

440.15  
11.40 9.95  
37<sup>2</sup> 27<sup>2</sup>  
CONC. CONC.

2+65-22<sup>8</sup> Lt. & P.P.N. P-273506

2+51-24<sup>8</sup> Rt. Begin 8" Parallel Conc Bk Wall

441.60  
6.40  
248  
TOP 8"  
Wall  
441.5  
7.1 6.5 6.3  
17 25 50  
E Oil

2+50

442.8  
8.8  
35  
442.2  
8.4  
25  
444.4  
7.2  
22  
444.6  
7.0  
18  
442.9  
7.7  
17  
E Oil

2+15<sup>5</sup> 25<sup>7</sup> Lt. & 8' Conc. Drive Sing Gar

442.75  
7.80  
352  
ON Drive  
444.30  
7.25  
252  
CONC.

(Dirt Drive)  
2+10 = Possible future Drive to Gar. in Rear

2+04-25<sup>2</sup> Lt. & 8' Wide Conc Drive Sing Gar

443.77  
7.76  
352  
ON Drive  
444.73  
7.32  
252  
CONC.

451.55

6-23-54

X- SEC'S LA DORNA

TP. +2.41 446.16 - 7.80 443.75

3+05-24<sup>8</sup> Rt. & 14" Conc. Gutter Drain

Chris/ Top Conc. Blk Wall - 25' Pt. + Sta. 3+06

443.23  
8.30 7.87  
24.8 34.8  
& Conc. on Drain  
Drain

(Parallel to Lot Line)  
3+00-24<sup>8</sup> Rt. End Conc. Drive on Skew  
- 24<sup>8</sup> Rt. Begin 8" Conc. Blk Ret Wall

437.8	438.6	441.8	441.5	442.1	442.4	443.48	443.28	444.05	444.4
13.8	13.0	9.8	10.1	9.5	9.2	8.07	8.27	7.50	7.2
35	25	17	15	0	28	24.8	24.8	34.8	50

EOil Top Conc. Drive on Drive  
8" Wall (skew)

2+88-27'-Lt. Begin 8" Conc. Blk Ret Wall

441.14  
104.3  
27'-  
Top 8"  
Wall

2+88-27'-Lt. End Conc. Drive on Lt.

439.71 441.00  
118.4 105.5  
37'- 27'-  
on Drive Conc.  
Drive

Rt. 24<sup>8</sup> Begin Conc. Drive  
2+81-25'<sup>9</sup> Rt. End 8" Conc. Blk Wall

443.75 445.10 444.55  
7.80 6.45 7.10  
24.8 25.1 34.8  
Conc. Ramp Top Conc.  
8" Wall Drive

451.55



X-SEC'S LADORNA

24<sup>8</sup> Ft. Begin 6" Conc. Blk Wall  
 3+54-21<sup>8</sup> Ft. End Conc. Drive Parallel to bot line

441.64	443.08	442.97
4.52	3.08	3.19
24 <sup>8</sup>	24 <sup>8</sup>	34 <sup>8</sup>
Conc. Drive	Top 6" Wall	on Drive

3+50

434.5	435.1	437.0	440.9	440.0	440.5	441.2	441.76	443.07
11.7	11.1	9.2	5.3	6.2	5.7	5.0	4.40	3.14
40	31	25	14	13	0	20	24 <sup>8</sup>	35
			E.Oil			E.Oil. Dr. Way		Dr.

Back Parallel to Prop Line  
 3+40-24<sup>8</sup> Ft. Begin Conc. Drive To Gar

442.10	443.46
9.06	2.70
24 <sup>8</sup>	34 <sup>8</sup>
Conc.	on Drive

3+33-24<sup>8</sup> Ft. B.C. 8" Conc. Blk Wall

442.4	443.74
3.8	2.42
24 <sup>8</sup>	20 <sup>8</sup>
Ground	Top 8" Wall

3+28-26<sup>1</sup> Ft. End 8" Conc. Blk Wall

440.2	436.7
6.00	10.0
26 <sup>2</sup>	26 <sup>2</sup>
Top 8" Wall	Ground

X 446.16

# X-SEC'S LADORNA

4+18-22<sup>6</sup> Rt. End Conc. Drive

Drive goes back-Parallel to Prop Line  
4+10-21<sup>2</sup> Rt. Begin Conc Drive

4+08-32<sup>0</sup> Rt. End 6" Conc. Block Wall

4+00

3+56-14<sup>3</sup> 11<sup>12"</sup> Corrugated Open Drain  
Critical Drainage Area

Slope Continues  
W/ty

Lt-

±

Rt

6-23-59

(47)

442.70  
3.46 2.63  
22.5 32.5  
Conc. on Drive  
Drive

442.24  
3.92 2.62  
21.5 31.5  
Conc. on Drive  
Drive

443.26  
2.6 2.32  
32.0 32.0  
Ground Top of  
Drive Wall

437.2	435.6	436.6	441.2	440.3	440.8	441.7	442.3	442.9
12.0	10.6	9.6	5.0	5.9	5.4	4.5	3.9	3.3
45	30	25	14	12	0	21	25	31
			E.oil			E.oil		

431.6	433.7	434.0	436.24	439.54	440.0	440.7	441.1	441.7
14.6	12.5	12.2	2.92	6.62	6.2	5.8	5.1	4.5
75	50	40	25	14.5	13	0	20	25
			End Drain	Outlet 12" Drain	E.oil.		E.oil	

446.16

X-SEC'S LA DORNA

23° Lt. Begin 8" Lateral Conc Ret wall  
4+58-23° Lt. End Conc Drive

4+50

4+38-23° Lt. Begin Concl Drive 2' Cur Gal

4+27-20° Rt. & 4' Wide Conc. Steps

4+23-27° Lt. & P.P. No 274586

4+21-22° Rt. & 2' Wide Conc. Planter Box  
With 6" High Eugenia Hedge Inside  
goes back Lateral

6-23-57

43903 44201 44119  
7.13 4.15 4.97  
33° 23° 23°  
on Ramp Top 8" Concl  
Wall Ramp

43839 44056 44114 44112 44223 44327 44422 4459  
7.67 5.60 4.8 5.0 3.9 2.5 1.0 0.3  
35 25 18 16 0 18 25 30  
on Drive on Drive E.Oil E.Oil

43670 44036  
7.96 5.80  
33° 23°  
on Drive Concl.

44327 44502  
2.89 1.14  
20 27 6  
Bot. Step Top Step

44326  
2.80  
225  
Top 6" Wall

446.16

check if  
6" x 6" x 6" give  
opening

X-SEC'S LA DORNA

5400

4+97<sup>3</sup> - 22<sup>9</sup> Lt. & 4<sup>5</sup> Conc. Walk

4+74 - 23<sup>8</sup> Rt. End Conc. Ribbon Drive

4+73 - 22<sup>4</sup> Lt. & 2<sup>5</sup> Conc. Walk

4+67 - 22<sup>4</sup> Rt. S. Edge Conc. Ribbon

T.P. + 9.12 451.68 - 360 442.56

446.16

442.7	4430	442.6 - 23 - 59	4454	4460	4465
90	87	89	7.6	6.3	5.7
35	25	18	0	18	25
				EOil	35

447.97	442.90
8.71	8.78
322	222
on walk	to walk

445.30	445.90
6.38	5.78
23 B	33 B
Conc.	on Conc.

442.97	442.51
8.76	9.17
324	224
walk	on walk

445.78	445.91
6.40	5.77
224	324
Conc.	on Conc.

Top. Nly Cor Conc.  $\Delta$  451.68  
 Walk Sta. 4+75+  
 22<sup>4</sup> Lt.

X-SEC'S LA DORNA

5+38-26° RT End/Conc Drive

5+30-26° RT Begin Conc Drive

5+25-25° Lt Begin 6" Conc Blk Wall

~~57~~ 5723-19° Lt. Begin 6" Conc Planter Box

5+20-25° Lt. 4' Conc Walk

Lt

Rt

Et.

(50)

447.58	448.06
4.10	3.62
26°	36°
Conc Drive	on Drive

447.98	448.03
4.20	3.65
26°	36°
Conc Drive	on Drive

447.13	448.39
4.55	7.8
25°	25°
Top wall	Ground

444.32
7.36
19°
Top 6"
Conc. Wall

448.38	448.87
8.30	7.81
35°	25°
on Walk	on Walk

451.68

X-SEC'S LA DORNA

5476-25<sup>3</sup> Lt Beam 6" Conc Ret Wall

44615  
4457  
5.53 6.0  
25<sup>3</sup> 25<sup>3</sup>  
Top 6" Wall Ground

5473-21' Lt. LPPN<sup>o</sup> 170562

5471-228 Lt End Conc Drive

74409 44497  
7.59 6.71  
328 228  
On Drive Conc. Drive

2524 End 6' Conc Blk Wall  
5460-20<sup>o</sup> Lt. End 6" Planter Conc Wall

44728 4450 44501 44535  
4.20 6.7 6.67 6.33  
251 252 232 20<sup>o</sup>  
Top 6" Wall Ground Ramp 6" Planter Wall

5450

7.57  
332  
Ramp  
4439 4445 4448 4444 4456 4467 4473 4478 4484  
7.8 7.2 6.9 7.3 6.1 5.0 4.4 3.9 3.3  
35 25 20 19 0 17 19 25 35  
E 0.1

451.68

X-SEC'S LA DORNA

6+70 - Dirt Drive Wly to Multiple Dwellings

6-23-54

446.3	447.9	447.6	448.5	448.8	449.3	449.5	450.1
5.4	3.8	4.1	3.2	2.9	2.4	2.2	1.6
40	25	19	0	15	20	25	35

E.O.I.

6+51-25<sup>E</sup> Lt. End 6" Conc. Ret Wall

446.4	447.38
5.3	4.30
26°	25°
Gravel	Top Wall
Br. Wall	Flush

6+50

446.0	446.4	447.39	447.4	447.3	448.2	448.5	449.2	449.4	449.8
5.7	5.3	4.29	4.3	4.4	3.5	3.2	2.5	2.3	1.9
35	27	26	26	19	0	15	16	20	25

Top Wall E.O.I. E.O.I.

6+25-25<sup>E</sup> Lt. & 3' Conc. Walk

446.19	446.11	446.46
5.49	5.57	5.22
38°	28°	25°
original	Walk	& Walk
	Break	

6+00

445.7	446.7	446.0	445.7	446.9	447.7	448.5	449.4
6.0	5.5	5.7	6.0	4.8	4.0	3.2	2.3
35	25	20	19	0	15	25	35

E.O.I. E.O.I.

Σ 451.68

X-SEC'S LA DORNA  
 7+11-19<sup>6</sup> Rt. & 3' conc. walk

7+20

6+96<sup>5</sup> 15<sup>0</sup> (Poor Condition) conc  
 Rt. Begin 4 Wide Parallel Walk

6+90 - & Dirt Drive Sing Garon Rt.

6+69 - 20<sup>5</sup> Lt + PP. NO. JP 371192

6+75 - & Dirt Drive to Sing Garon Rt

446.7	448.4	448.2	448.1	447.8	448.7	449.3	449.80	450.1	450.3
50.33	3.5	3.6	3.9	3.0	2.4	1.88	1.6	1.4	
43.35	25	20	19	0	15	15.5	20	25	
			E.0.1		E.0.1	TopWalk			

0.8  
 100.9  
 3.5

449.86	449.98
1.82	1.70
15 <sup>0</sup>	19 <sup>0</sup>
Echewalk	Bkwalk

448.7	449.7	449.7	450.0	450.5
3.0	2.5	2.0	1.7	1.2
0.15	20 <sup>0</sup>	25	35	
E.0.1	Dirt			

446.3	447.9	447.6	448.3	448.8	449.3	449.5	450.1
5.4	3.8	4.1	3.2	2.9	2.4	2.2	1.6
40	25	19	0	15	20 <sup>0</sup>	25	35
	E.0.1			Dirt			

451.68



X-SEC'S LA DORNA

7+73-20<sup>3</sup> Lt. N. Edge Conc Drive  
G.L.

448.48 448.55 448.53 448.00  
3.20 3.13 3.15 3.68  
34° 24.7 22.8 20.3  
on Drive Bk. SW. Break Drive

7+65-20<sup>3</sup> Lt. S. Edge Conc. Drive  
G.L.

448.48 448.54 448.50 448.00  
3.22 3.14 3.18 3.68  
34° 24.7 22.8 20.3  
on Drive Bk. SW. Break Drive

7+63 - Begm Comb Curb @ S.W.

448.54 448.46  
3.14 3.22  
24.7 20.3  
Bk. Walk face Cb

7+50

447.3 448.5 448.4 448.4 448.1 448.9 449.3 449.8 449.9 448.1 448.5  
4.4 3.2 3.3 3.3 3.6 2.8 2.4 1.9 1.8 1.6 1.2  
45 35 25 21 20 0 15 16 20 25 35  
E.Oil E.Oil

(Poor Condition)  
7+35-15<sup>0</sup> Bk End 4 Conc Walk

449.2 450.08  
1.76 1.60  
15° 19°  
on walk on walk

A 75/68

X-SEC'S LA DORNA

8+04-21<sup>2</sup> Lt. & PRN<sup>o</sup> SP 7789A

152 Rt. & 25' Wide Lateral Hedge  
8+03 Nly Line Alley on Rt. Begin 6" Conc Curb

448.7	448.43	448.39	448.0	448.8	449.1	449.73	449.3	449.4	449.9
3.2	3.25	3.29	3.7	2.9	2.6	195.4	2.3	1.8	
30	25	20	20	0	14.6	14.6	25.50		
	Bk. SW	Top	G		Ground	Top	Curb	20	

7+93-6 Alley on Rt.

448.9	449.3	449.5	449.6	450.2
2.8	2.4	2.3	2.1	1.5
0	15	20	25	50

7+89-24<sup>2</sup> Lt & 3' Conc walk

448.46	448.55
3.22	3.13
34.7	24.7
on walk	& walk

7+84-19<sup>6</sup> Rt. & F. Hyd.

449.0	449.3	449.5	449.7	450.0
2.7	2.4	2.2	2.0	1.7
0	15	20	25	50
	Dirt			

7+83 = S. Line Alley Dirt Drive on Rt.

451.68

X-SEC'S LA DORNA

B+63-20' Lt Encl 6" Comb

B+50

B+27° End Conc Drive on Lt

B+22-14' Rt. & 3<sup>5</sup> Conc Walk

B+09- Bayin Conc. Drive on Lt.

Lt.

&

Rt.

(58)

44830

6-23-54

338

201

TopCb.

4484

3.3

35

44832

3.36

25

S.W.

44831

3.37

203

cb

4478

3.9

203

G

4475

3.2

0

4470

2.7

148

G

44953

2.15

148

cb

4499

1.8

20.25

4501

1.6

25

4503

1.2

35

44833

3.35

34

on Drive

44836

3.32

246

Back SW

44838

3.30

226

Break

44786

3.83

202

Drive

44962

2.06

141

& Walk

44964

2.04

20.7

on walk

44833

3.35

34

on Drive

44838

3.30

227

Walk

44839

3.29

226

Back

44786

3.82

203

in Drive

451.68

X-SEC'S LA DORNA

9+00

447.4	447.6	447.5	448.3	448.6	449.7	449.3	449.6
4.2	4.0	4.1	3.3	3.0	2.4	2.3	2.0
35	25	18	0	15	20	25	30
		E.O.I		E.O.I			

8+95-32<sup>2</sup> Rt. & 9' Conc. Drive

449.7  
1.82  
32.7  
& Conc. Drive

8+94-30<sup>2</sup> Lt. & P.P. 173691

8+90-14<sup>2</sup> Rt. End 6' Conc. Curb.

449.41  
2.14  
14.2  
Top Curb.

8+84-25<sup>3</sup> Lt. Beginning 6" Conc. Wall &  
2' E.W. fence on Top.

448.40      447.9  
3.15      3.7  
25.3      25.2  
Top 6" Wall / Ground

8+80-24<sup>2</sup> Lt. & 6" Ching Tree

451.55

T.B.M. +3.10 451.55      -3.23 448.45

Set RR PR      451.63  
N<sup>o</sup> P-173691  
Sta 8+94-20<sup>2</sup> Lt.

X-SEC'S LA DORNA

9+73-19<sup>5</sup> 4 Pt. 4<sup>5</sup> High Hogwire fence

9+60 = Drives (Dirt) Rt + Lt.

9+53-24<sup>2</sup> Lt. End 6" Conc. Blk Wall + Fence

9+50

9+49-30<sup>2</sup> Lt. 4 12" Palm Tree

9+45-19<sup>2</sup> Rt. 4 Pt. in Hogwire fence

9+25-20<sup>5</sup> Lt. 4 18" Palm Tree

9+18-25<sup>2</sup> Lt. 4 3<sup>5</sup> Conc Walk (Flagstone)

9+04-19<sup>2</sup> Rt. Begin 4<sup>5</sup> Hogwire fence

Lt. E Rt.

(58)

446.6	446.9	446.9	447.3	447.4	447.7	447.9	448.7
5.0	4.7	4.7	4.3	4.2	3.9	3.7	3.4
35	25	17	0	16	20	25	35
		E.O.I.		E.O.I.			

448.28	447.3
3.27	4.3
242	242
Top Wall	Ground

447.4	447.3	447.0	447.5	447.7	448.0	448.2	448.6
4.2	4.3	4.6	4.1	3.9	3.6	3.4	3.0
35	25	18	0	16	20	25	35
		E.O.I.		E.O.I.			

447.37	447.41
4.23	4.14
35	25
on Walk	4 Walk

451.55

X-SEC'S LA DORNA

10+26 - 20<sup>2</sup> Rt. Begin 8' Conc Blk Wall  
 10+26 - 20<sup>2</sup> Rt. End Conc Drive

10+09. 20<sup>1</sup> Rt. Begin Conc Drive

10+04 - 20<sup>5</sup> Rt. Lat. Conc. Blk Wall (8")

10+03 - 19<sup>4</sup> Rt. End 4<sup>5</sup> Hoop wire fence

10+00

Lt. E Rt.

6-23-54

(53)

446.37  
 446.77  
 447.01  
 523 478 459  
 20<sup>2</sup> 20<sup>2</sup> 30<sup>2</sup>  
 Conc. TOP ON Drive  
 8" Wall

446.87  
 447.51  
 473 4.04  
 20<sup>1</sup> 20<sup>1</sup>  
 on Drive on Drive

447.1  
 448.16  
 4.5 3.39  
 20.5 20.5  
 Ground Top Wall

443.8	444.8	445.4	446.3	446.0	446.3	446.7	447.3	447.5	447.8
7.8	6.8	6.2	6.3	5.6	5.3	4.9	4.3	4.1	3.8
35	25	20	16	0	14	15	20	25	35
			E.Oil			E.Oil			

↑ 451.55

X-SEC'S. LA DORNA

11+00

10+77-20<sup>2</sup> Rt. End Concl. Drive

-20<sup>8</sup> Rt. Begm Concl Drive  
10+60-20<sup>21</sup> N<sup>o</sup> P-37791 Z  
6.P.P.

10+5A-30<sup>5</sup> Rt. End 8" Concl. Blk Wall

10+50

H. E. RT. (60)  
6-23-54

434.95	437.6	439.9	440.6	440.7	441.7	442.4	443.6	445.1
16.6	14.0	11.7	11.0	11.4	10.9	9.2	8.0	6.5
31	25	20	16	15	0	20	25	35
				EOI		EOI		

443.15  
16.9  
40

443.70  
7.85  
20.9  
Concl

444.95  
6.60  
30.9  
on Drive

444.31  
7.24  
20.8  
Concl

445.47  
6.13  
30.8  
on Drive

444.6  
7.0  
20.5  
Concl

447.0  
4.60  
20.5  
Top Wall

438.6	439.8	442.3	441.6	442.9	443.6	444.7	444.8	446.3	446.4	446.6
13.0	11.8	9.3	10.0	8.7	8.0	6.9	6.8	5.3	5.2	5.0
35	25	20	17	0	10	20	21	22	25	35
				EOI		EOI				

451.55

X-SEC'S LA DORNA  
 11+60- E Sewer Manhole

11+50

11+48-20<sup>1</sup> RT End Conc Drive

11+32<sup>5</sup>-20<sup>3</sup> RT Begn Conc Drive

11+25 Critical Dramage Section

Lt. E Rt. (61)

6-23-59

9.48

Top M.H.  
 51y Rim

439.8	440.9	441.0	441.3	440.9	441.7	442.2	443.0	444.2
11.8	10.7	10.6	10.3	10.7	9.9	9.4	8.6	7.4
35	25	20	15	14	0	20	25	35
				E.O.I		E.O.I		

442.39	443.89
9.16	7.66
20.1	30.1
Conc.	on Drive

442.20	443.82
9.35	7.73
20.3	30.3
Conc.	On Drive

436.6	437.6	440.4	441.1	441.8	443.1	444.5
15.0	14.0	11.2	10.5	9.8	8.5	7.1
35	25	15	0	20	25	35
				E.O.I		

951.55



X-SEC'S LA DORNA

12+48-21<sup>3</sup> Lt & RR No R. 271119

12+44-25' Lt. Begm 4' Hogwire fence

12+40- $\frac{1}{2}$  Dirt Drive on Lt.

4472	4473	4473	4479
4.9	4.3	4.3	3.7
40	25	14	0
	Dirt.		

12-25-21<sup>8</sup> Rt. End Conc Drive

4474.8	4477.7
4.07	3.78
218	318
conc	on Drive

12+09-21<sup>6</sup> Rt. Begm Conc Drive

4466.3	4471.9
4.92	4.36
216	316
conc	on Drive

12+00

4441.0	4447	4444	4448	4457	4462	4466
7.6	6.9	7.2	6.8	5.9	5.4	5.0
35	25	14	0	20	25	35
	E.O.1			E.O.1		

451.55

Lt-  $\frac{1}{2}$  Rt.

6-23-59

(62)

X-SECS LA DORNA

13+03-23<sup>3</sup> Rt. & 8" Brick Wall

13+03-23<sup>3</sup> Rt. End Conc Drive

13+00

12+90-22<sup>8</sup> Rt. Begm Conc Drive

+ 7.23 455.87

12+69-21<sup>6</sup> Lt. & Dead man

Set PK, PRN<sup>2</sup>  
T.B.M. P. 271119 Sta. 12+48-2.91 448.64  
21.3' H.

12+50

451.55

41. 4 452.92

2.95  
23 3  
Top Brick  
Wall

451.00 451.20  
4.87 4.67  
23 3 33 3  
CONC. on Drive

451.6 451.5 451.1 449.9 450.3 450.6 450.94 451.00 451.12  
4.3 4.4 4.8 6.0 5.6 5.3 4.93 4.87 4.75  
35 25 20 15 0 20 23 25 35  
E.O.I. E.O.I. on Drive Drive Drive

450.81 450.99  
5.06 4.88  
22 8 32 8  
CONC. on Drive

455.87  
447.6 448.2 448.5 448.1 448.5 448.6 449.1 449.5  
4.0 3.4 3.1 3.5 3.1 3.0 2.5 2.1  
50 25 16 14 0 20 25 35  
E.O.I. E.O.I.

451.55

X-SEC'S LA DORNA

B.M. - 5.35 350.52 ~

14+50

14+00 Toe Sec.

13+98<sup>67</sup> Top Sec. 5/4 Along Sub. Bdy Line  
N1/4 Line Lamesa Colony

13+98<sup>6</sup> - 25<sup>6</sup> Lt. End 4' Hogwire fence

13+97-21<sup>6</sup> H. EPP N<sup>o</sup> 584612-H.

13+50

LT E Rt. (69)

350.49 Top W/4 Cb. 13+98.67 = 24+37<sup>55</sup> 1865

450.15	449.68	450.37	450.23	450.71	69
5.72	6.19	5.50	5.64	5.16	
18°	18°	0	18°	18°	
cb	G		G	cb	

450.2	450.2	450.52	450.03	450.77	450.56	450.2	451.2	451.3
5.7	5.7	5.35	5.84	5.10	5.31	4.85	4.7	4.6
30	25	18°	18°	0	18°	18°	20	25
		cb	G		G	cb		

453.6	453.7	450.52	450.03	450.78	450.56	451.02	452.0	453.2
2.3	2.2	5.35	5.84	5.09	5.31	4.85	3.9	2.7
30	22	18°	18°	0	18°	18°	20	25
		cb	G	A.C. Part	G	cb		

454.3  
1.6  
28

453.1	453.1	452.9	450.2	450.8	451.0	451.4	452.9	453.0	453.3
2.8	2.8	3.0	5.7	5.1	4.9	4.5	3.0	2.9	2.6
35	25	22	16	0	19	20	23	25	35
			E.Oil		E.Oil				

455.87

INDEXED

AUG 31 1954

## PROFILE FOR PROPOSED CULVERTS

LA DORNA. ST. W.O. 31525

1+28-3<sup>5</sup> Rt. & 2" Plum Tree1+12-2<sup>0</sup> Rt. & 2" Apricot Tree

1+00

+ 0.16 432.89

TP.

- 12.20

432.73

0+97-2<sup>0</sup> Rt. & 1" Pear Tree

0+50

0+49-0<sup>5</sup> Lt. & 2" Avocado Tree0+33-1<sup>0</sup> Lt. & 2" Orange Tree

0+25 Toe

0+14

0+12

+ 1.18 444.93

Set Nail &amp; Offset Road

0+00 = &amp; La Dorna Sta 3+63

&amp; North to Wly 85° 50'

B.M.

443.75

(See Pg 45)

8-30-54

Lt.

NOTE: Recommend that  
Culv. Location be moved6± 5/4 in Order to Clear Line of Citrus  
Trees429.7  
3.2  
10429.4  
3.5Top N.E. Cor. of  
bot. Conc. 5' step  
to Patio @  
House 5/4.

432.89

434.2  
10.7  
10433.6  
11.3436.3  
8.6  
10435.8  
9.1440.7  
4.2439.9  
5.0  
7439.9  
5.0440.4  
4.5  
7440.33  
4.60

444.93

Stampen  
Huffman  
Nordahl  
Sherry

(65)

T.B.M.

- 130 443.76 - 443.75 Lt -  $\phi$  rt. (66)

+ 12.33 445.06

- 0.16 432.73

3+24

4224  
10.5

3+05

4223  
10.6  
25

4206  
12.3

4190  
13.9  
2.5

3+00 Set stub & Tk

4219  
11.0  
10

4215  
11.8  
0

2+80

4225  
10.4  
10

4217  
11.2

2+50

4254  
7.5  
10

425  
8.4

2+25

4270  
5.9  
10

4261  
6.8  
0

2+21° - 1° Lt.  $\phi$  1'-Dia Olive Tree

2+00 - 10° Lt.  $\phi$  1'-Dia Olive Tree

4282  
4.7  
10

4267  
6.2  
0

1+60 - 5° Lt.  $\phi$  2" Peach Tree

1+50

4278  
5.1  
10

4268  
6.1  
0

1+44 - 4° Rt.  $\phi$  2" Apple Tree

$\Sigma$  432.89

PROFILE FOR PROPOSED CULVERT  
@ € STA. 11+23 THENCE WLY. @ 90°

2+00		
1+50		
1+00		
+0.34	432.37	
TP.	-13.02	432.03
0+50		
0+32	Tree	
0+13		
0+14		
0+00		
B.M. +2.98	445.05	442.07

REVISED

SEE PG. 10

422.0	423.6	444.7
10.4	8.8	7.7
10	0	10
424.3	425.8	427.4
8.1	6.6	5.0
10	0	10
429.9	430.9	432.2
2.5	1.5	0.2
10	0	10
	432.37	
434.6	435.6	436.3
10.5	9.5	8.8
10	0	10
	436.7	
	8.4	
	440.7	
	7	
	440.4	
	7	
	441.1	
	4.00	
	445.05	

Top 5/4 Rim Sewer N.H. Sta 11+60 (see Pg. 61)

CULV PROFILE CONTD.

EDD Approx to Sewer Easement  
4+23<sup>69</sup> Set 2x2" Hub & Jack.

4+19

4+00

+3.85 397.88

T.P. -12.87 394.03

3+50

+0.27 406.90

T.P. -12.86 406.63

P.O.T.  
3+16<sup>07</sup> Set 5 Stub.

3+00

T.P. +0.23 419.49 -13.11 419.26

2+50

432.37

8-30 54

(60)

8  
3926

9.3  
10

3996

7.3  
10

4040

2.9  
10

406.90

8  
39748 ?

9.42  
0  
TOP HUB

3981.5  
10.4  
0

3996

7.3  
0

4048

2.1  
0

397.88

406.90

8  
3992

9.7  
10

3991

9.8  
10

4055

1.4  
10

413.69  
5.80  
0 Stub

4150

4.5

419.49

4189

13.5  
10

4160

3.5

420.1  
12.3  
0

4168

2.7

421.1

11.3  
10

432.37

8-30-54

(69)

CULV. PROFILE CONTD.

T.B.M.            -2.93    442.07    -442.07

+12.97    445.00

T.P.            -0.45    432.03

+13.22    432.48

T.P.            -0.49    419.26

+13.22    419.75

T.P.            -0.08    406.53

+12.58    406.61

T.P.            -3.85    394.03

397.88



PROFILE OF PROPOSED CULVERT @

± STA 10+68<sup>90</sup> THENCE WLY @ 90° TO ±

LA DORNA W.O. 31525

1+50

+0.18 420.07

TP -13.19 419.89

1+00 +0.21 433.08

TP -12.68 432.87

0+50

0+25 -6" Lt. Begin 4' Wire fence

0+20

0+15 Edge Oil

0+00

+ 3.48 445.55

B.M

442.07

Lt. ± Rt. (70)  
 9-13-54  
 Stamper  
 Huffman  
 Nordahl  
 Sherry

417.6 417.6 419.1  
 2.5 2.5 0.6  
 6 10

± 420.07

427.1 426.5 425.2  
 6.0 6.6 7.9  
 6 10

± 433.08

431.6 433.7 432.8  
 11.0 11.9 11.8  
 6 10

@ fence

431.6  
 8.0

441.3  
 7.3

440.93  
 7.62

442.37 441.97 441.67  
 3.18 3.58 3.88  
 10 10 10

± 445.55

Top Sly Rm Sewer M.H. (See Pg. 61.)

CULVERT PROFILE

Lt                    €                    Rt                    (7)

9-13-57

T.B.M.                    - 11.28    388.48

4+06 Top

4+05 Toe

4+00 Toe 5' Wash

3+99 Top

3+90.42 Set. 2x2" Hub      Approx. € of Sewer Easement

3+72 - Break

3+70 - 6" Lt. End 4' Wire fence

+ 3.72    399.76

TP                    - 12.51    396.04

3+50

+ 0.40    408.55

TP                    - 11.99    408.15

3+00 P.O.T. Set. 2x2" Hub      11.99

2+50

2+00

398.48 (see Pg. 68)

389.00

10.8 387.5

12.5 387.6

12.2 388.8

11.0 390.82

10.0 8.94    9.9

10      on Hub    10

395.8

4.0

∩ 399.76

400.5

8.1 7.9    7.5

6      8      10

∩ 408.55

407.5

12.8 11.9    9.9

6      0      10

410.6

9.5 8.5    7.0

6      0      10

∩ fence

410.7

9.4 5.6    3.4

6      0      10

∩ 420.07

416.7

Check culvert

Rodefer Hills

Lots # 9 + # 11

12/1/54

C.H.S.

Boggs

Scholin

Pullen

W.O. 21216

Map # 2993

INDEXED

MEER

DEC 7 1954

72

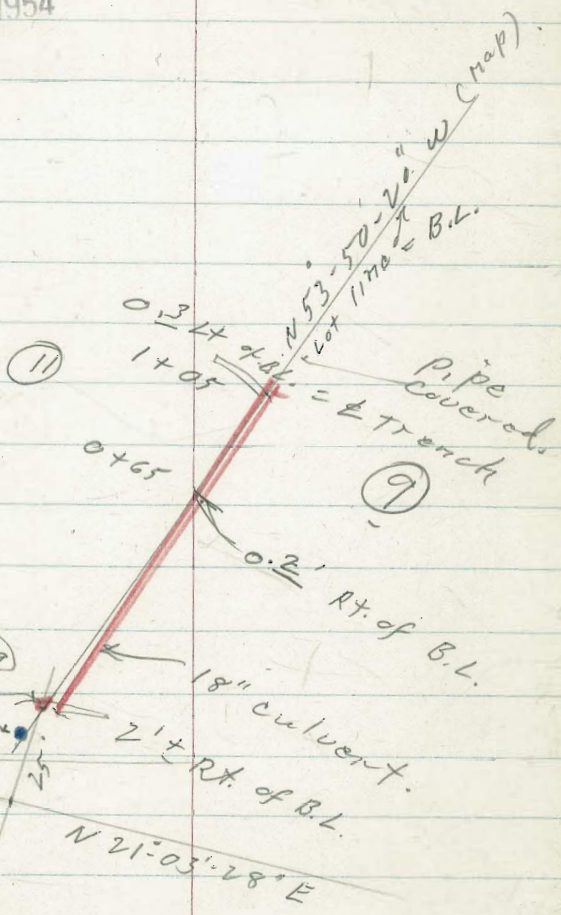
Fd. disk in ab.  
17' N.W. by. from cor.  
along Bearing  $N53^{\circ}50'20''$

$\pm$   $N18^{\circ}42'W$   
173.04

$\pm$   $39^{\circ}45'28''$   
st. 45.20

Radial  
 $S68^{\circ}56'32''E$

Cor. Lot # 11 + # 9  
= 0+00

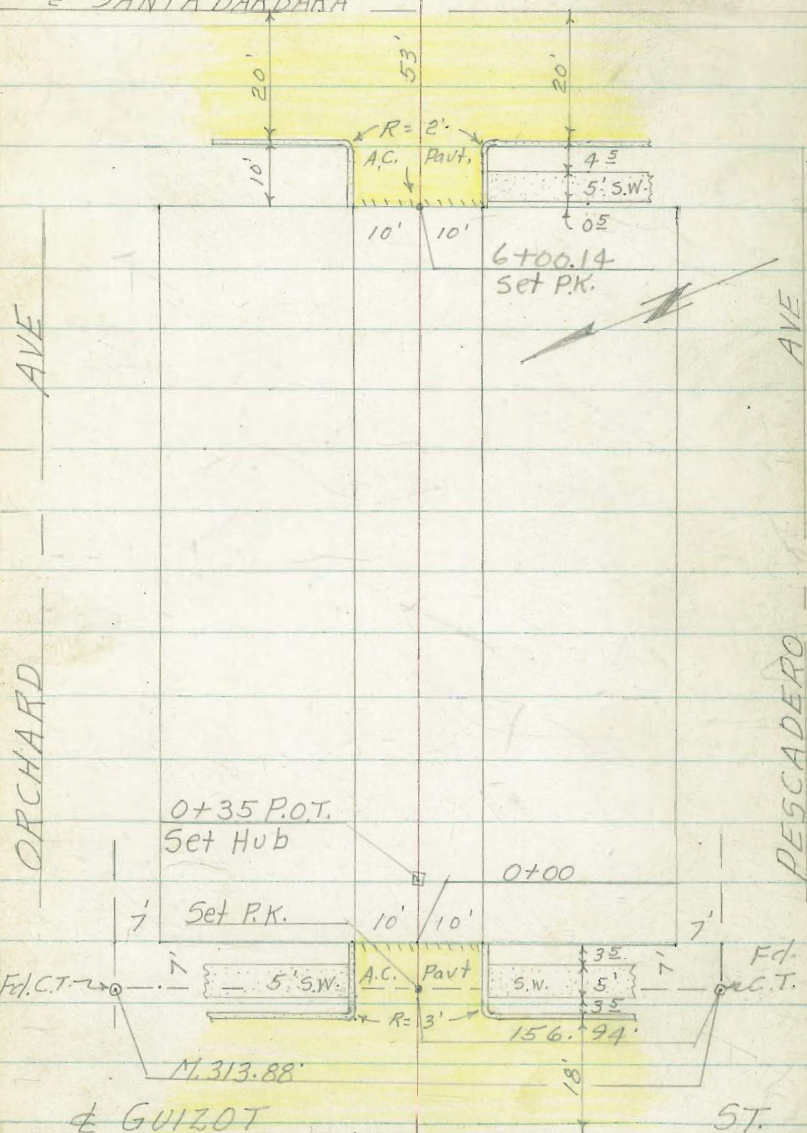


CROSS SECTION ALLEY BLK 80 OF  
PT. LOMA HTS. W.O. 32187

Fd 7' City Disk  
Alley

T.A. Stamped 73

SANTA BARBARA



MAR 3 1953

INDEXED

CROSS SECTIONS OF ALLEY BLK 80 OF  
PT. LOMA HTS. W.O. 32187

3-02-55

Stampfer  
Huffman  
Moore  
Elmore  
Blunt

(79)

← E Rt.

0-12 = Ely Cb. Line Guizot St.

168.21	167.74	167.71	167.23	167.12	166.61	166.17	166.00	166.42	165.25	165.69
536	583	586	634	645	6.96	7.40	7.57	7.15	8.31	7.88
25°	25°	10°	10°	10°	0	10	10°	10°	25	25
cb	g	cb	g	cb	cb	g	cb	g	cb	cb

± Sewer M.H.  
0-30 = E Guizot St.

168.56	167.65	166.43	165.09	163.52
5.01	5.92	7.14	8.98	10.05
50	25	0	25	50

173.57

T.B.M. + 0.15 173.57 - 8.32 173.42

Top SE. T.C.T. Orchard & Guizot

+ 1.86 181.74

TP. -13.02 179.88

TP. + 0.29 192.90 - 12.96 192.61 Set PK PPN<sup>o</sup> SPA 4452

TP. + 0.11 205.57 - 12.81 205.46 Set PK PPN<sup>o</sup> PA - 4440

TP. + 0.02 218.27 - 13.16 218.25 Set PK PPN<sup>o</sup> SPA - 4416

TP. + 0.59 231.41 - 13.05 230.82

TP. + 0.09 243.87 - 13.13 243.78

B.M. + 6.55 256.91 250.36

SWBP Del Mar & Santa Barbara

ALLEY BLK. 80

0+50 - 8<sup>th</sup> Rt. Begin 6<sup>5</sup> Board fence

←	177.8	178.0	177.1	175.9	175.3
	5.3	5.1	6.0	7.2	7.8
	20	10	0	10	20

0+28 = Top of bank Sec.

	177.0	176.8	177.2	177.1	175.8	177.9	171.6
	6.1	6.3	5.9	6.0	9.3	11.2	11.5
	20	10	0	3	10	17	20

Toe

0+10 = Break Nly. Top bank Sec.

	176.0	175.3	179.1	172.9	170.1	171.2
	7.1	7.8	10.0	10.2	12.7	11.9
	20	10	8	0	10	20

↑ 183.07

+9.65 183.07

TR -0.15 173.42

0+00 = Ely Line Guizot St

	169.7	167.76	167.43	169.3	168.5	166.71	168.1	166.63	166.72	167.7
	3.9	5.81	6.4	4.3	5.1	6.80	5.5	6.94	6.85	5.9
	25	10°	10°	10	0	10	10	10°	10	25

Cb G Dirt A.C. Dirt Cb

0-04 = Sec. on Toe of Slope

	168.7	168.0	166.69	167.2	166.1
	4.9	5.6	6.88	6.4	7.5
	25	10	0	10	25

0-09 = F.C. Cb Ret's.

	167.59	167.24	166.68	166.35	166.57
	5.98	6.33	6.89	7.22	7.00
	10°	10°	0	10°	10°

Cb G ↑ 173.57

ALLEY BLK 80

2+50

- 128 ft. face Lateral Conc blk wall  
 2+00-9<sup>1</sup> Rt. & PPN<sup>o</sup> JPA-4470 55  
 20  
 1+91-9<sup>3</sup> Rt. & 3" Lemon Tree  
 1+83-9<sup>3</sup> Rt. & 3" Lemon Tree

1+50-11° Rt. End 5' Board Fence

1+49<sup>5</sup>-10<sup>5</sup> Lt. face Lateral Conc blk wall<sup>8"</sup>

TP. +11.76 / 93.57 - 1.26 181.81

1+00-9<sup>2</sup> Rt. & PPN<sup>o</sup> JPA-4486

1+00-9<sup>2</sup> Rt. Begin 5' Board Fence

400-10<sup>1</sup> Rt. End 6<sup>5</sup> Board Fence

0+92-9<sup>2</sup> Rt. & 4" Tree

0+69-6<sup>6</sup> Rt. & 4" Tree

Lt.

←

Rt.

(76)

191.8  
1.8 36 5.8 64 68  
20 10 0 10 20

192.10 184.57 182.3 185.0  
1.47 9.00 8.3 8.6 10.0 102 119 13.0  
128 128 128 10 0 7 10 20  
Top ftg Ground  
Wall

184.3 182.7 183.4 183.9 180.9 181.3 180.3  
9.3 9.9 10.2 9.7 12.7 12.3 13.3  
20 10 0 2 5 10 20

181.95 182.10 183.8  
5.62 10.47 9.8  
10.5 10.5 10.5  
Top ftg G  
Wall

180.8 180.5 193.57 180.4 179.9 179.5  
2.3 2.6 2.7 3.2 3.6  
20 10 0 10 20

183.07

ALLEY BLK 80

3+47-9<sup>6</sup> Rt End 6" Conc blk wall

3+02-9<sup>5</sup> Rt Begin 6" Conc blk wall

3+01-9<sup>5</sup> Rt face 2<sup>1/2</sup>" Cobblestone Post 4'-High

+13.08 205.70

TP

-0.95 192.62

3+00

2+99-9<sup>1</sup> Rt & PPN<sup>o</sup> JPA - 4452

2+97 = & Sewer M.H.

Lt.

E

Rt

(77)

198.2  
7.5 788 4.06  
9.5 9.6 9.6  
Ground Fly Top  
Wall

192.8  
129 133 9.52  
9.5 9.5 9.5  
Ground Fly Top  
Wall

192.8  
129 134.3 9.32  
9.5 9.5 9.5  
Ground Fly Top  
Post

205.70

194.9  
-1.3 10  
193.9  
-0.6 10  
193.3  
0.3 0  
191.8  
1.8 10  
189.3  
4.3 20

193.02  
0.55  
0  
W4rim

193.57



ALLEY BLK 80

4+25-10<sup>5</sup> RT Begin 8" Conc Ret Wall

4+21-10<sup>5</sup> RT End Conc Slab

209.1	209.69	208.77
9.2	8.63	9.55
10.5	10.5	10.5
Ground	Top Wall	Flg
207.6	206.3	208.13
10.7	12.00	10.19
10.5	10.5	10.5
Ground	Flg	Top

4+00<sup>5</sup> 10<sup>3</sup> RT Begin Conc Slab (Dog Kennel)

2093	203.48	207.99
14.0	14.84	10.33
10.3	10.3	10.3
Ground	Flg	Top
		Conc Slab

4+00<sup>5</sup> 9<sup>4</sup> RT APPN = PAAAAO

4+00-10<sup>4</sup> RT End 4' Picket Fence

2067	2047	2041	2041	203.6
11.6	13.6	14.2	14.2	14.7
20	10	0	10	20

+12.85 218.32

∧ 218.32

TP. -0.23 205.47

3+50-9<sup>8</sup> RT Begin 4' Picket Fence

2017	1997	1983	198.7	197.7
4.0	6.0	7.4	7.3	8.0
20	10	0	10	20

3+48-9<sup>7</sup> RT = face 2' Cobblestone Post.

1982	197.82	201.85
7.5	7.88	3.85
9.7	9.7	9.1
Ground	Flg	Top
Post		

∧ 205.70

ALLEY BLK 80

= Edge A.C. Pavt. & Begin Cbs.  
6+00.14 = Wly Line Santa Barbara St

5+75

+13.02 243.85

TP -0.35 230.83

5+50

5+00

TP +1292 231.18 -0.06 218.26

4+88-8<sup>9</sup> R/ & PPN = SPA 4416

4+50-10<sup>4</sup> R/ End 8" Conc Ret Wall

218.32

Lt.

±

Rt.

(79)

238.5	238.09	237.56	236.89	236.51	236.57	236.0
5.4	5.76	6.29	6.96	7.34	7.28	7.9
20	92	93	0	100	100	20
	cb	G		G	cb	

237.0	232.8	234.0	234.1	234.2	233.1
10.9	11.1	9.9	9.8	9.7	10.8
17	13	10	0	10	20

243.85

229.3	228.6	227.1	227.1	227.0
1.9	2.6	4.1	4.1	4.2
20	10	0	10	20

220.2	219.0	218.3	218.2	215.3	215.2
11.0	12.2	12.9	13.0	15.8	16.0
20	10	0	6	10	20

231.18

214.5	214.3	210.1	210.2	208.79	210.37	209.1
6.8	7.0	8.2	8.1	9.53	7.95	9.2
20	10	0	10	10 <sup>4</sup>	10 <sup>4</sup>	20
				ft	Top	
					Wall	

218.32

ALLEY BLK 80

B.M. - 6.70 250.37

250.36 (see pg 74) Starting Bench

+13.28 257.07

TP. - 0.06 243.79

6+30.14 = E Santa Barbara St.

6+10.14 = Wly Cb Line Santa Barbara St.

6+08.14 = BC. Cb Ref's

ft.      ft.      ft.

	240.41	239.40	237.41	252.08	250.19
3.44	4.45	6.44	8.23	10.12	
50	25	0	25	50	

239.38	238.66	238.41	237.60	237.43	236.69	235.92	235.76	236.35	235.15	235.77
4.47	5.19	5.44	6.25	6.92	7.16	7.93	8.09	7.50	8.10	8.14
25°	25°	12°	12°	10°	0	10	12°	12°	20	20
cb	g					g	cb	cb	g	cb

238.08	237.42	236.85	236.05	236.43
5.77	6.43	7.00	7.80	7.42
9°	9°	0	10°	10°
cb	g		g	cb

∇ 243.85

A  
B.1

68  
93  
16.2  
81  
50' 40' over left (100) ft.  
width in vac.

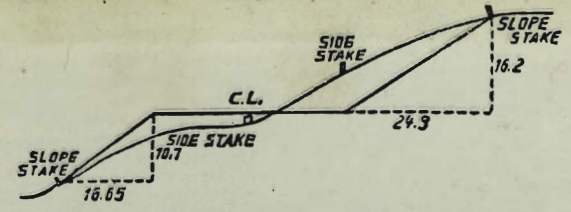
5075 - <sup>50'</sup> At N. vac - 5085

5092 - 10' du + 20' over

5081 - N - vac.

5106 - formerly 5100

0-47.85  
22.15  
-----  
70.00



DISTANCES FROM SIDE STAKES FOR CROSS-SECTIONING.  
SLOPE 1 1/2 TO 1. ROADWAY OF ANY WIDTH.

	0	.1	.2	.3	.4	.5	.6	.7	.8	.9	
0	0.00	0.15	0.30	0.45	0.60	0.75	0.90	1.05	1.20	1.35	0
1	1.50	1.65	1.80	1.95	2.10	2.25	2.40	2.55	2.70	2.85	1
2	3.00	3.15	3.30	3.45	3.60	3.75	3.90	4.05	4.20	4.35	2
3	4.50	4.65	4.80	4.95	5.10	5.25	5.40	5.55	5.70	5.85	3
4	6.00	6.15	6.30	6.45	6.60	6.75	6.90	7.05	7.20	7.35	4
5	7.50	7.65	7.80	7.95	8.10	8.25	8.40	8.55	8.70	8.85	5
6	9.00	9.15	9.30	9.45	9.60	9.75	9.90	10.05	10.20	10.35	6
7	10.50	10.65	10.80	10.95	11.10	11.25	11.40	11.55	11.70	11.85	7
8	12.00	12.15	12.30	12.45	12.60	12.75	12.90	13.05	13.20	13.35	8
9	13.50	13.65	13.80	13.95	14.10	14.25	14.40	14.55	14.70	14.85	9
10	15.00	15.15	15.30	15.45	15.60	15.75	15.90	16.05	16.20	16.35	10
11	16.50	16.65	16.80	16.95	17.10	17.25	17.40	17.55	17.70	17.85	11
12	18.00	18.15	18.30	18.45	18.60	18.75	18.90	19.05	19.20	19.35	12
13	19.50	19.65	19.80	19.95	20.10	20.25	20.40	20.55	20.70	20.85	13
14	21.00	21.15	21.30	21.45	21.60	21.75	21.90	22.05	22.20	22.35	14
15	22.50	22.65	22.80	22.95	23.10	23.25	23.40	23.55	23.70	23.85	15
16	24.00	24.15	24.30	24.45	24.60	24.75	24.90	25.05	25.20	25.35	16
17	25.50	25.65	25.80	25.95	26.10	26.25	26.40	26.55	26.70	26.85	17
18	27.00	27.15	27.30	27.45	27.60	27.75	27.90	28.05	28.20	28.35	18
19	28.50	28.65	28.80	28.95	29.10	29.25	29.40	29.55	29.70	29.85	19
20	30.00	30.15	30.30	30.45	30.60	30.75	30.90	31.05	31.20	31.35	20
21	31.50	31.65	31.80	31.95	32.10	32.25	32.40	32.55	32.70	32.85	21
22	33.00	33.15	33.30	33.45	33.60	33.75	33.90	34.05	34.20	34.35	22
23	34.50	34.65	34.80	34.95	35.10	35.25	35.40	35.55	35.70	35.85	23
24	36.00	36.15	36.30	36.45	36.60	36.75	36.90	37.05	37.20	37.35	24
25	37.50	37.65	37.80	37.95	38.10	38.25	38.40	38.55	38.70	38.85	25
26	39.00	39.15	39.30	39.45	39.60	39.75	39.90	40.05	40.20	40.35	26
27	40.50	40.65	40.80	40.95	41.10	41.25	41.40	41.55	41.70	41.85	27
28	42.00	42.15	42.30	42.45	42.60	42.75	42.90	43.05	43.20	43.35	28
29	43.50	43.65	43.80	43.95	44.10	44.25	44.40	44.55	44.70	44.85	29
30	45.00	45.15	45.30	45.45	45.60	45.75	45.90	46.05	46.20	46.35	30
31	46.50	46.65	46.80	46.95	47.10	47.25	47.40	47.55	47.70	47.85	31
32	48.00	48.15	48.30	48.45	48.60	48.75	48.90	49.05	49.20	49.35	32
33	49.50	49.65	49.80	49.95	50.10	50.25	50.40	50.55	50.70	50.85	33
34	51.00	51.15	51.30	51.45	51.60	51.75	51.90	52.05	52.20	52.35	34
35	52.50	52.65	52.80	52.95	53.10	53.25	53.40	53.55	53.70	53.85	35
36	54.00	54.15	54.30	54.45	54.60	54.75	54.90	55.05	55.20	55.35	36
37	55.50	55.65	55.80	55.95	56.10	56.25	56.40	56.55	56.70	56.85	37
38	57.00	57.15	57.30	57.45	57.60	57.75	57.90	58.05	58.20	58.35	38
39	58.50	58.65	58.80	58.95	59.10	59.25	59.40	59.55	59.70	59.85	39
40	60.00	60.15	60.30	60.45	60.60	60.75	60.90	61.05	61.20	61.35	40
41	61.50	61.65	61.80	61.95	62.10	62.25	62.40	62.55	62.70	62.85	41
42	63.00	63.15	63.30	63.45	63.60	63.75	63.90	64.05	64.20	64.35	42
43	64.50	64.65	64.80	64.95	65.10	65.25	65.40	65.55	65.70	65.85	43
44	66.00	66.15	66.30	66.45	66.60	66.75	66.90	67.05	67.20	67.35	44
45	67.50	67.65	67.80	67.95	68.10	68.25	68.40	68.55	68.70	68.85	45
46	69.00	69.15	69.30	69.45	69.60	69.75	69.90	70.05	70.20	70.35	46
47	70.50	70.65	70.80	70.95	71.10	71.25	71.40	71.55	71.70	71.85	47
48	72.00	72.15	72.30	72.45	72.60	72.75	72.90	73.05	73.20	73.35	48
49	73.50	73.65	73.80	73.95	74.10	74.25	74.40	74.55	74.70	74.85	49
50	75.00	75.15	75.30	75.45	75.60	75.75	75.90	76.05	76.20	76.35	50

THE NATIONAL BLANK BOOK COMPANY  
 HOLYOKE MASSACHUSETTS  
 NEW YORK CHICAGO BOSTON SAN FRANCISCO