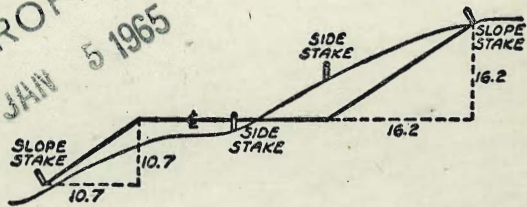


MICROFILMED
 JAN 5 1965



DISTANCES FROM SIDE STAKES FOR CROSS-SECTIONING
 SLOPE 1 TO 1. ROADWAY OF ANY WIDTH

	0	.1	.2	.3	.4	.5	.6	.7	.8	.9	
0	0.00	0.10	0.20	0.30	0.40	0.50	0.60	0.70	0.80	0.90	0
1	1.00	1.10	1.20	1.30	1.40	1.50	1.60	1.70	1.80	1.90	1
2	2.00	2.10	2.20	2.30	2.40	2.50	2.60	2.70	2.80	2.90	2
3	3.00	3.10	3.20	3.30	3.40	3.50	3.60	3.70	3.80	3.90	3
4	4.00	4.10	4.20	4.30	4.40	4.50	4.60	4.70	4.80	4.90	4
5	5.00	5.10	5.20	5.30	5.40	5.50	5.60	5.70	5.80	5.90	5
6	6.00	6.10	6.20	6.30	6.40	6.50	6.60	6.70	6.80	6.90	6
7	7.00	7.10	7.20	7.30	7.40	7.50	7.60	7.70	7.80	7.90	7
8	8.00	8.10	8.20	8.30	8.40	8.50	8.60	8.70	8.80	8.90	8
9	9.00	9.10	9.20	9.30	9.40	9.50	9.60	9.70	9.80	9.90	9
10	10.00	10.10	10.20	10.30	10.40	10.50	10.60	10.70	10.80	10.90	10
11	11.00	11.10	11.20	11.30	11.40	11.50	11.60	11.70	11.80	11.90	11
12	12.00	12.10	12.20	12.30	12.40	12.50	12.60	12.70	12.80	12.90	12
13	13.00	13.10	13.20	13.30	13.40	13.50	13.60	13.70	13.80	13.90	13
14	14.00	14.10	14.20	14.30	14.40	14.50	14.60	14.70	14.80	14.90	14
15	15.00	15.10	15.20	15.30	15.40	15.50	15.60	15.70	15.80	15.90	15
16	16.00	16.10	16.20	16.30	16.40	16.50	16.60	16.70	16.80	16.90	16
17	17.00	17.10	17.20	17.30	17.40	17.50	17.60	17.70	17.80	17.90	17
18	18.00	18.10	18.20	18.30	18.40	18.50	18.60	18.70	18.80	18.90	18
19	19.00	19.10	19.20	19.30	19.40	19.50	19.60	19.70	19.80	19.90	19
20	20.00	20.10	20.20	20.30	20.40	20.50	20.60	20.70	20.80	20.90	20
21	21.00	21.10	21.20	21.30	21.40	21.50	21.60	21.70	21.80	21.90	21
22	22.00	22.10	22.20	22.30	22.40	22.50	22.60	22.70	22.80	22.90	22
23	23.00	23.10	23.20	23.30	23.40	23.50	23.60	23.70	23.80	23.90	23
24	24.00	24.10	24.20	24.30	24.40	24.50	24.60	24.70	24.80	24.90	24
25	25.00	25.10	25.20	25.30	25.40	25.50	25.60	25.70	25.80	25.90	25
26	26.00	26.10	26.20	26.30	26.40	26.50	26.60	26.70	26.80	26.90	26
27	27.00	27.10	27.20	27.30	27.40	27.50	27.60	27.70	27.80	27.90	27
28	28.00	28.10	28.20	28.30	28.40	28.50	28.60	28.70	28.80	28.90	28
29	29.00	29.10	29.20	29.30	29.40	29.50	29.60	29.70	29.80	29.90	29
30	30.00	30.10	30.20	30.30	30.40	30.50	30.60	30.70	30.80	30.90	30
31	31.00	31.10	31.20	31.30	31.40	31.50	31.60	31.70	31.80	31.90	31
32	32.00	32.10	32.20	32.30	32.40	32.50	32.60	32.70	32.80	32.90	32
33	33.00	33.10	33.20	33.30	33.40	33.50	33.60	33.70	33.80	33.90	33
34	34.00	34.10	34.20	34.30	34.40	34.50	34.60	34.70	34.80	34.90	34
35	35.00	35.10	35.20	35.30	35.40	35.50	35.60	35.70	35.80	35.90	35
36	36.00	36.10	36.20	36.30	36.40	36.50	36.60	36.70	36.80	36.90	36
37	37.00	37.10	37.20	37.30	37.40	37.50	37.60	37.70	37.80	37.90	37
38	38.00	38.10	38.20	38.30	38.40	38.50	38.60	38.70	38.80	38.90	38
39	39.00	39.10	39.20	39.30	39.40	39.50	39.60	39.70	39.80	39.90	39
40	40.00	40.10	40.20	40.30	40.40	40.50	40.60	40.70	40.80	40.90	40
41	41.00	41.10	41.20	41.30	41.40	41.50	41.60	41.70	41.80	41.90	41
42	42.00	42.10	42.20	42.30	42.40	42.50	42.60	42.70	42.80	42.90	42
43	43.00	43.10	43.20	43.30	43.40	43.50	43.60	43.70	43.80	43.90	43
44	44.00	44.10	44.20	44.30	44.40	44.50	44.60	44.70	44.80	44.90	44
45	45.00	45.10	45.20	45.30	45.40	45.50	45.60	45.70	45.80	45.90	45
46	46.00	46.10	46.20	46.30	46.40	46.50	46.60	46.70	46.80	46.90	46
47	47.00	47.10	47.20	47.30	47.40	47.50	47.60	47.70	47.80	47.90	47
48	48.00	48.10	48.20	48.30	48.40	48.50	48.60	48.70	48.80	48.90	48
49	49.00	49.10	49.20	49.30	49.40	49.50	49.60	49.70	49.80	49.90	49
50	50.00	50.10	50.20	50.30	50.40	50.50	50.60	50.70	50.80	50.90	50

Distance of slope stake from side or shoulder stake for any width roadway, slope 1 to 1. If ground is nearly level, the cut or fill at side stake is located by the double entry method in left column and top row. The number in body of table in same row and column gives distance from side stake to slope stake. If ground is not level estimate the difference in elevation between the side stake and slope stake, lower target by this amount if cut, elevate if fill. Add this amount to cut or fill and find distance in table. Set up rod at this point, and line of sight should cut target. If it does not make the slight adjustment necessary.

TABLE XIII—CORRECTIONS FOR TANGENTS AND EXTERNALS

These corrections are to be added to the approximate values, found by dividing the tangent, or external, for a 1° curve (Table VIII) by the degree of curve, in order to obtain the true tangents, or externals. Intermediate values may be obtained by interpolation.

FOR TANGENTS ADD

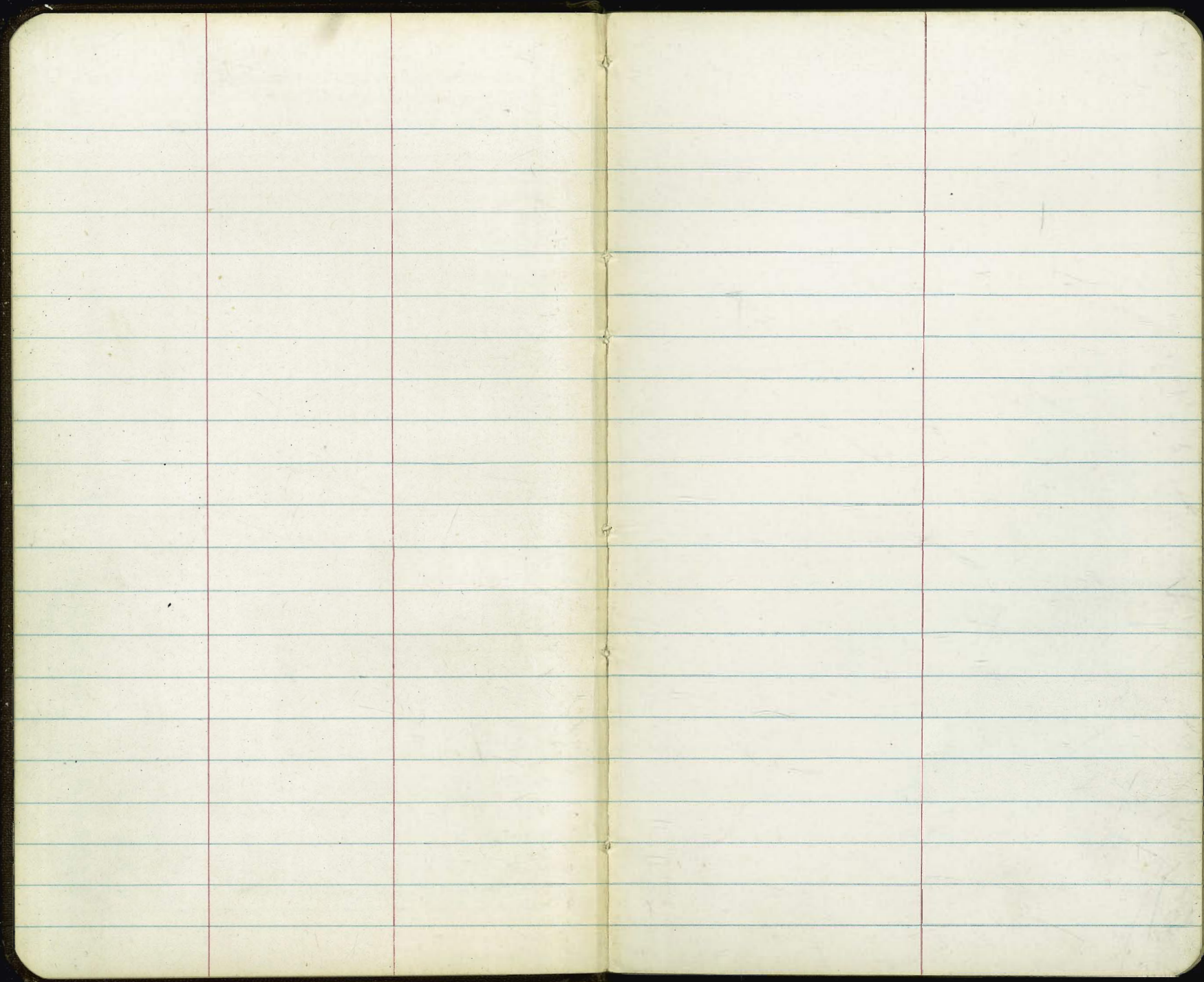
Central Angle	DEGREE OF CURVE													
	5°	10°	15°	20°	25°	30°	35°	40°	45°	50°	55°	60°	65°	70°
10°	.03	.06	.09	.13	.16	.19	.22	.25	.28	.31	.34	.38	.42	.46
15°	.04	.10	.14	.19	.24	.29	.34	.39	.45	.51	.53	.58	.63	.68
20°	.06	.13	.19	.26	.32	.39	.45	.51	.58	.65	.72	.79	.84	.90
25°	.08	.16	.24	.33	.40	.49	.58	.67	.75	.83	.90	.99	1.06	1.14
30°	.10	.19	.29	.39	.49	.59	.69	.79	.89	.99	1.09	1.20	1.29	1.39
35°	.11	.22	.34	.47	.58	.69	.79	.81	.92	1.04	1.29	1.42	1.54	1.66
40°	.13	.26	.40	.53	.67	.80	.93	1.06	1.20	1.34	1.49	1.64	1.79	1.94
45°	.15	.30	.44	.60	.76	.91	1.06	1.21	1.37	1.52	1.70	1.87	2.04	2.21
50°	.17	.34	.51	.68	.85	1.02	1.19	1.36	1.54	1.72	1.91	2.10	2.29	2.48
55°	.19	.38	.57	.76	.95	1.14	1.32	1.52	1.72	1.92	2.14	2.35	2.56	2.77
60°	.21	.42	.63	.84	1.05	1.27	1.49	1.71	1.94	2.17	2.38	2.60	2.83	3.07
65°	.23	.46	.69	.93	1.16	1.40	1.64	1.88	2.13	2.38	2.63	2.88	3.13	3.39
70°	.25	.51	.76	1.02	1.28	1.54	1.80	2.06	2.33	2.60	2.88	3.16	3.44	3.72
75°	.27	.56	.83	1.12	1.40	1.69	1.98	2.27	2.57	2.87	3.16	3.47	3.78	4.09
80°	.30	.61	.91	1.22	1.53	1.84	2.15	2.46	2.78	3.10	3.44	3.78	4.12	4.46
85°	.33	.66	1.00	1.33	1.68	2.02	2.36	2.70	3.05	3.40	3.77	4.14	4.55	4.89
90°	.36	.72	1.09	1.45	1.83	2.20	2.57	2.94	3.32	3.70	4.10	4.50	4.91	5.32
95°	.39	.79	1.19	1.55	2.00	2.40	2.80	3.20	3.61	4.02	4.40	4.98	5.38	5.83
100°	.43	.86	1.30	1.74	2.18	2.62	3.06	3.50	3.95	4.40	4.88	5.37	5.85	6.34
110°	.51	1.03	1.56	2.08	2.61	3.14	3.67	4.21	4.76	5.31	5.86	6.43	7.01	7.60
120°	.62	1.25	1.93	2.52	3.16	3.81	4.45	5.11	5.77	6.44	7.12	7.80	8.50	9.22

FOR EXTERNALS ADD

Central Angle	DEGREE OF CURVE													
	5°	10°	15°	20°	25°	30°	35°	40°	45°	50°	55°	60°	65°	70°
10°	.001	.003	.004	.006	.007	.008	.009	.011	.012	.014	.015	.017	.018	.020
15°	.003	.007	.010	.014	.018	.023	.027	.029	.032	.035	.039	.043	.047	.051
20°	.006	.011	.017	.022	.028	.034	.038	.045	.051	.057	.063	.070	.076	.083
25°	.009	.018	.027	.036	.046	.056	.065	.074	.083	.093	.106	.120	.127	.135
30°	.013	.025	.038	.051	.065	.078	.090	.103	.116	.129	.149	.170	.179	.188
35°	.018	.035	.054	.072	.086	.109	.131	.153	.175	.197	.213	.230	.247	.264
40°	.023	.046	.070	.093	.117	.141	.172	.203	.234	.265	.277	.290	.315	.341
45°	.030	.060	.093	.119	.153	.184	.216	.254	.289	.325	.351	.378	.411	.445
50°	.037	.075	.116	.151	.189	.227	.266	.305	.345	.384	.425	.467	.508	.550
55°	.046	.093	.142	.188	.236	.283	.332	.381	.420	.479	.530	.582	.641	.700
60°	.056	.112	.168	.225	.283	.340	.398	.457	.516	.575	.636	.697	.774	.851
65°	.067	.135	.204	.273	.343	.412	.483	.554	.625	.697	.771	.845	.922	1.01
70°	.080	.159	.240	.321	.403	.485	.568	.652	.735	.819	.906	.994	1.08	1.17
75°	.095	.182	.286	.383	.480	.578	.678	.777	.877	.977	1.07	1.18	1.29	1.39
80°	.110	.220	.332	.445	.558	.671	.787	.903	1.02	1.13	1.25	1.38	1.50	1.62
85°	.128	.259	.391	.524	.657	.790	.926	1.06	1.20	1.34	1.47	1.62	1.76	1.91
90°	.149	.299	.450	.603	.756	.910	1.07	1.22	1.38	1.54	1.70	1.87	2.03	2.20
95°	.174	.350	.522	.706	.985	1.06	1.25	1.43	1.62	1.80	1.99	2.18	2.38	2.58
100°	.200	.401	.604	.809	1.01	1.22	1.43	1.64	1.85	2.06	2.28	2.50	2.73	2.96
110°	.268	.536	.806	1.08	1.35	1.63	1.91	2.20	2.48	2.76	3.05	3.35	3.66	3.96
120°	.360	.721	1.08	1.45	1.82	2.19	2.57	2.95	3.33	3.72	4.11	4.50	4.91	5.32

INDEX

Re-X-SEC ALLEY BIK 80 - CITY HTS 1
 See 19/50 BOOK 1764 - 246-
 Re-X-sec ALLEY BIK 78 - Pac. Beach 9-11
 Cross-sec ELM ST - 31ST ST + Grove ST 12-13
 X-sec 33rd ST - F ST to C ST 14-26
 X-sec E ST - 33rd to F ST connection 27-30
 X-sec Pickwick ST - 33rd to F ST CONN 31-35



Clark
 Shephard
 Bruner
 HUFFMAN
 Ribrenillo
 W.O. 32235
 1-14-52

X-SEC ALLEY BIK 30, CITY HTS

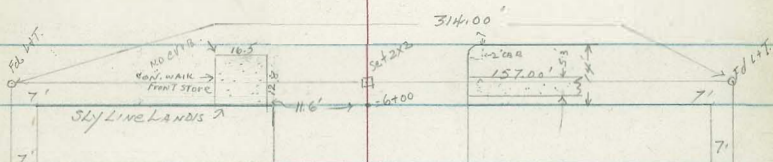
DWIGHT TO LANDIS

DATA: FA 1236-12
 Tie SHEET: 3542

Sketch Not to scale:

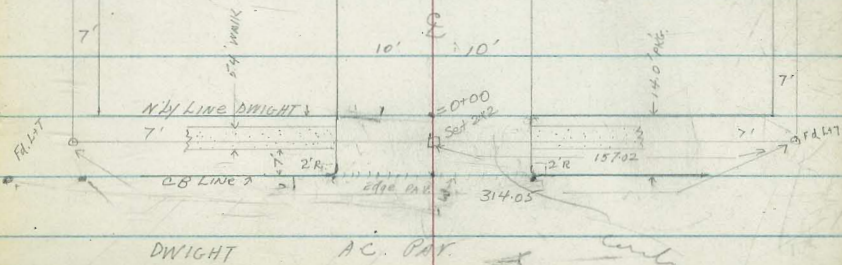
Notes: Pg 2

INDEXED
 Jan
 JAN 15 1953
 (UNPROVED)



CENTRAL

41.51



X-SECT ALLEY BIK 80 CITY HTS
DWIGHT TO LANDIS

LT

⊙
L

RT

0+91 25.2 LT & 1-Cor gar CONC Floor 9.7 LT Aprad, T wide

T.P. 463 338.85 0.96 334.22

0+74 9.0' LT & PP # PA 3609

0+50

0+40 11 RT END Bldg

0+45 10.7 RT & Single gar

0+09 11 RT Beg Bldg

0+02 7.1 LT & 1' x 1' FATN Fence Post

0+00 NLY LNE DWIGHT

0-14 NLY CB LNE

0-40 E DWIGHT (AC PAT.)

B.M. 4.63 335.18

330.55 N.W.B.P

DWIGHT & 41ST.

332.72
6.12
25.2
Floor

332.72
6.07
9.7
Aprad

338.85

332.5
2.7
20

332.5
2.7
10

332.2
3.0

332.0
3.2
10

332.4
2.8
20

331.08
4.10
FTG FATN
331.57
3.1
10.7
DWT
4.61
FTG FATN
330.37
4.8
DWT
330.4
4.8
DWT

330.5
4.7
DWT
330.51
4.67
9.9
CB

330.4
4.8

329.57
5.61
100
330.03
5.0
100
330.55
5.22
30
330.23
4.95
30
330.49
5.10
20
330.37
4.81
30
330.03
5.13
20
edge

330.06
5.12
100

330.06
5.12
100
330.34
5.03
30
330.21
4.76
100

330.42
5.04
100
330.14
4.75
100
330.43
4.75
100

335.18

ALLEY BIK 80 (CONT.)

2+20 11.8 RT E Single gar Con Floor 9.7 trapdoor

2+00

1+91 14.2 RT E Single gar Con Floor

1+74 7.9 LT E RR ble PA 364

1+58 25.5 LT E Single gar Con, 21.8 trapdoor

1+56 13.8 RT E Single gar Con Floor

1+50

1+20 24 LT END GAR

1+03 24 LT Beg 2 car gar Con Floor

1+00

LT S RT

334.1
4.8
20

334.1
4.8
10

334.0
4.9

333.91
5.04
9.7
Apron

333.93
4.92
11.8
Floor

333.9
5.0
20
333.9
5.0
14.2
Con.

333.75
5.10
25.5
Floor

333.60
5.25
21.8
Apron

333.7
5.2
20

333.7
5.2
10

333.7
5.2

333.78
5.07
13.8
Floor

333.6
5.3
10

333.6
5.3
20

332.79
6.06
24
Con.

332.9
6.0
20

332.0
5.9
10

333.1
5.8

333.1
5.8
10

332.9
6.0
20

338.85

ALLEY BIK 80 (CONT)

LT.

E

RT.

3+50

33503
5.0
20

33514
4.9
10

33511
5.2

33511
5.2
10

33510
5.3
20

3+41

16.35 RT & Single gar
con. 10.2 Apron 11.9 wide

33415

33416
5.7
10

33417
5.6

335101
5.22
10.2
Apron

335114
5.15
16.35
Floor

3+00

5.8
20

33416
5.7
10

33417
5.6
15

T.P. 4.25 340.29 2.81 336.04

340.29
↑

2+90

10 LT 4' Pocket Fence

33417
4.2
17.1
Dirt

2+80

17.1 LT Single gar - DIRT

2+77

14.4 RT & Single gar - con.

334137
4.48
14.4
Floor

2+75

8.8 4 & P.P. PA 3645

2+57

14.4 RT & Single gar no apron

33413
4.6
12

33410
4.9
10

33412
4.7

33413
4.6
10

334147
4.38
14.4
Floor

2+50

14.3 RT & Single gar - con

334143
4.6
13
Apron

334121
4.56
14.3
Floor

2+46

13 RT APRON

338.85
↑

AMEY BIK 80 (CONT.)

4448 10.8 LT END Bldg
 4430 15.6 RT Beg 2-car gar - CONC 12.6 to apron

T.P. 3.50 341.23 2.56 337.73

4425 { 10.25 LT Beg House
 10.55 RT END 2-car gar
 10.6 LT END Fence

4411 10' LT END Slab

4407 9.9 RT Beg 2-car gar CONC floor

4400 { 9.95 LT Beg CONC Slab
 9.9 LT END Picket Fence
 10 LT Beg 4' LATHE Fence

3476 8.7 LT C.P.P. # PA 3661

3467 10.1 RT Beg 6' Board Fence

3459 10.1 RT C Single gar - DIRT

LT
 336.46
 4.83 5.20 5.0
 TP FT DIRT
 FDN FDN

RT
 336.19
 5.32 5.04
 12.6 15.6
 APRN Floor

336.4
 335.19
 335.79
 335.9
 3.89 4.0 4.50 4.4
 Floor TP 10.25 10.25
 Elev FDN FT, FDN DIRT

335.9
 4.40
 10.55
 Floor

335.79
 4.54
 10
 CONC
 Slab

335.18
 335.17
 335.76
 4.5 4.6 4.53
 20 10 7.95
 CONC
 200

335.15
 335.17
 335.17
 7.8 4.5 4.6
 10 20

335.0
 5.3
 10.1
 DIRT

340.29

ALLEY BIK 80 (CONT.)

5722 - 21.8 LT END GAR

5702 - 21.9 LT Bay 2-Car gar Con Floor

5700 - 97 RT Bay 45 chicken wire Fence

4794 - 15.8 LT & Single gar conc. 13.3 to top apron

4784 - 18.2 RT & Single gar - DNT

4780 - 9.5 LT & Pole # PA 36.81

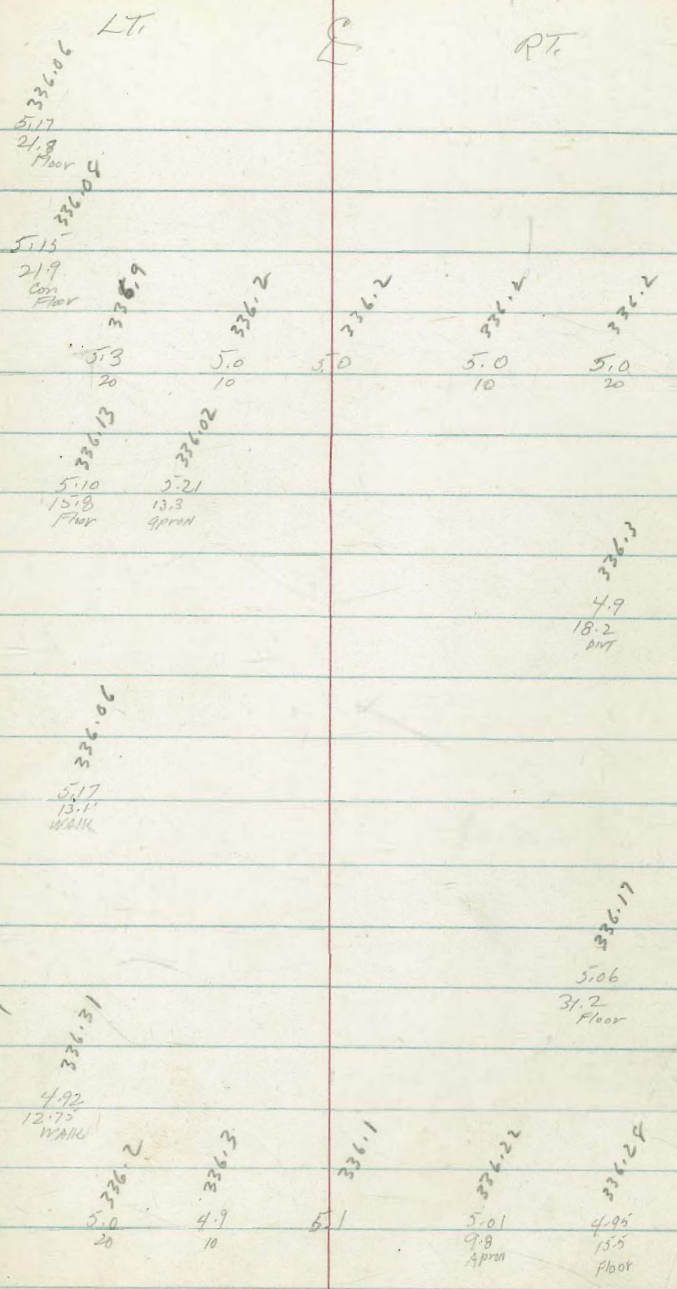
4774 - 13.1 LT END WALK

4772 - 16.0 LT end Bldg

4757 - 31.2 RT & Single gar - Conc.

4753 - 16.05 LT Bay house
12.75 LT Bay WALKS along Bldg II to Alley

4750 - 15.5 RT END 2-car gar. 9.8 to Apron



341.23

ALLEY BIK 80 (CONT.)

LT.

§

RT.

5497 9.9 RT § 10" STUMP 5' high

5489 10.4 RT § 12" Tree STUMP 16' high

5482 10.8 RT § 16" Tree STUMP 10' high

5480 § M.H.

5475 { 12.0 LT Bay Store Bldg.
12.0 LT no slab

5474 10.0 RT § 12" STUMP

5469 12.0 LT Bay CONC. Slab across Back Store

5465 10.3 RT § 14" Eucalypt STUMP 12' high

5451 10.35 RT Bay 6' chicken wire Fence

5450 10.1 RT § 18" Eucalypt Tree (8' STUMP)

5441 9.6 RT END Wire Fence

334.46
10.77 Elev Floor Inside TP FATV
6.3 10 334.9
6.8 5 334.4
7.07 R.M. M.H.
334.16
7.1 5.3 5.3 5.1
3 8 10 20

335.94
5.13 12 slab
336.10

335.9
5.3 20 336.1
5.1 10 336.1
335.9
5.3 336.0
5.2 10 336.1
5.1 20

341.23

Check 3.00 343.10 = 343.08 = N.W. B.P. MARLBOROUGH & LANDIS ✓

T.P. 8.39 346.10 126 337.71

6+40 S LANDIS (UNPAID)

6+14

6+12.8 11.6 LT END CONC WALK

6+12 10 RT

6+00 S LINE LANDIS

5+99 10' RT & 1' WIDE ^{Retaining} Rock Wall to Alley

T.P. 8.84 338.97 11.10 330.13

329.67
9.35
28.1
WALK

329.94
9.03
11.6
edge
WALK

330.07
8.91
28.1
WALK

330.45
8.52
11.6
CONC
WALK

330.7
8.3
10

330.17
8.3

330.9
8.1
10
DNT

330.22
8.75
12
BC
TP
CB

330.12
8.8
12
DNT

331.92
10.5
5.0
TP

331.1
7.9
5.0
BT

334.3
4.7
100

334.34
4.61
100
DNT

333.2
3.38
100
DNT

330.24
8.33
11
TP CB
B.C

330.24
8.61
10
TP
CB end

338.6
2.4
10
TP
WALK

level with
LOT

Lt. = Rt.

Re-X-Section Alley - Block 178 - P.D.

Sketch + Orig. Notes - Book 1764 - P.46

w.o. 31786 - 4-15-53 - 7.0.

INDEXED
law
APR 17 1953

0+76 - 13 Rt = Cor. Gar.
gar = opens to East.

70.12
13 = floor

0+73 - 14 Rt = SEly. of Conc. apron to

69.57
14
Cor.
apron

0+67 - Beg. Rough Conc. in alley

68.1
8 = edge

Rough Conc. apron in front.
0+56 - 15.9 Lt. = Beg. 3 Car gar - Conc. floor

68.47 68.17
15.9 14.3 = edge
apron

0+50 - Lt.

68.36 68.37 67.7 68.1 68.5 68.9
15 10.1 10 10 15
Top wall To S. Top end wall

end walk + House
0+39.5 - 10.1 Lt. = Rise in top of wall

63.24 68.37 67.36 67.2
on walk - Top - ahead Top-back 10.1 10 = ground.

0+25

64.38 67.35 67.1 67.5 68.2 68.7
13.3 10.1 10 10 15
Floor Top wall House

32.5 Conc. walk along wall + House

0+00 = w.L. Olney - 10.1 Lt. = Beg. 8" Blockwall

63.01 67.35 68.9 66.8 67.6 68.1
11 10.1 10 10 15
on Conc. wall Top

0-14

63.4 63.4 65.1 68.9 66.9 67.9
20 11 10 10 30

B.M. = Sly. Rim of M.H. - Noyes 70.25
B-1764

Actual Elev. Shown

2+54-12.2 Rt. = £ 20" Euc. Tree

2+49.5 = £ Sewer M.H. 69.04 = wly. Rim

2+44- 9' Rt. = £ 12" Euc. stump.

2+39- 10.1 Lt. = Ely of 5' Conc. walk at end of apron

68.70 68.55 68.40 69.1 69.5 70.6 - Piled dirt
19.7 13.7 10.1 10 15
floor. apron
ent

2+32- 7' Rt. = £ 18" Euc. stump.

2+05- 13.7 Lt. = Beg. Conc. apron to 4 Car. Gar.

68.76 68.56
19.7 13.7 = apron
floor.

2+00

69.2 69.6 70.1 71.2 71.9
15 10 10 15

1+99.5- 8.2 Lt. = £ P. pole # P.A. 2150

1+75

69.7 69.9 70.5 71.6 71.8
15 10 10 15

1+50

69.6 70.3 70.6 71.0 71.2
15 10 10 15

1+44- 15.8' Lt. = end Gar.

68.58

1+26- 15.8' Lt. = Beg. Conc floor for prop. Gar.

15.8
floor

68.58
15.8 = floor

1+11- 12.9' Rt. = £ Doub. Gar. Conc. floor

69.09
12.9 = floor

1+04.5- 10.8' Lt. = £ P. pole # J.P. 2186 = BM = spike 69.78

1+00- on 6' Conc walk bet. Bldgs.

68.42 69.0 69.0 69.3
15.8 10 10
on walk

0+89- 15.8' Lt. = end Gar.

68.42 68.5
15.8 8 = edge
Rough Conc.

11
 Rt.
 INDIANA
 Law
 APR 17 1953

check sly. Rim of M.H. - ± Noyes 70.25

5+13.70

69.3 69.6 70.0 70.2 71.2
 30 10 10 30

4+99.70 = EL. of Noyes st.

69.5 69.8 70.0 70.3 71.4
 20 10 10 20

4+97- 10.3' It. = end wall

70.05 69.7
 Top wall 10.3 = q.

4+60

70.9 70.01 69.7 68.9 69.6 70.5
 15 15 10 10 15

4+50 - 10.3' It. = Req. 6" Conc. wall

69.82 67.6
 10.3 10.3
 Top wall
 Bot. wall

4+20

67.1 67.5 67.8 68.4 69.4
 15 10 10 15

4+00 94' It. = ± P. pole # P.A. 2118

3+80

66.4 67.1 67.5 68.4 69.1
 20 10 10 15

3+40

66.9 66.4 66.6 67.4 68.0
 15 10 10 15

3+10

67.3 66.7 66.8 67.2 67.9
 17.1 10 10 15
 by House

2+99- 99' It. = ± P. pole #

BM = spike 68.36
 P.A. 2130

2+75

67.7 67.9 68.0 68.3 68.3
 15 10 10 15

6-29-53

Stamper
Sherry
Shorey

0.50' → ←

CROSS SECTIONS OF S. ELY PORTION OF ELM

ST BETWEEN 31-ST. & GROVE ST. N.O. 21013

Batter ↗

Base on
Rock ↗
2.00' → ←

10.4'

CONC. WALK

Varies

SEC. A - A

ST

30'

30'

ELM

Toe Sec. 0+70

CONC. WALK

BLDG

0+49.3

0+47.3

0+42.2

26.5'

35.6'

0+00

31-ST.

STREET

Stamper
 + Shorey
 + Sherry

(13)

6-29-53

CROSS SECTIONS OF SELV PORTION OF
 ELM ST. BETWEEN 31-ST. & GROVE ST'S.

South Lt. \neq

Sta. Elev.
 B.M. -5.96 224.54

0+70 Sec. on Toe of Slope

207.3	209.3	207.4	207.7	217.3	218.7
26.2	26.2	22.9	22.8	13.2	11.8
82	58	52	28	14	0
	Toe Slope on fill	Top	Toe		

0+49 Sec. @ Wly Edge Conc. Walk

219.26	219.82	220.15	227.6	226.9	226.53	226.22
10.74	10.68	0.35	2.9	3.6	3.97	3.78
40	28	26.5	26.5	16	10.2	0
	Top Conc. Walk	Top Conc. Ret. Wall	Top Conc. Conc. Walk	Top N. Edge Conc. Walk	E.P.	
	1.5' To Fly Base		0.3' To Base			

0+47.3 W. End Ret. Wall Sec.

219.26	219.82	220.15	227.6	226.9	226.53	226.22
10.74	10.68	0.35	2.9	3.6	3.97	3.78
40	28	26.5	26.5	16	10.2	0
	Top Conc. Walk	Top Conc. Walk	Top Conc. Ret. Wall	Ground	E.P.	

0+42

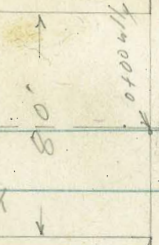
219.26	220.15	227.9	227.9	227.2	226.7	226.81	226.21
10.55	0.35	2.6	2.6	3.3	3.8	4.03	3.79
36.5	35.5	35.5	28	27	15	10.8	0
	Top Conc. Walk	Top Conc. Ret. Wall	Ground			E.P.	

B.M. +5.96 230.50 224.54 $\frac{G-307}{32}$

S.E.C.T. Elm & 31-st.

230.50

E ST



3+80.81

3+40.81

3+00.81

2+35.10

2+00.10

1+65.10

1+50

17' x 13' 43'

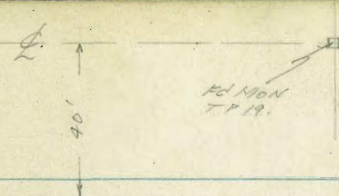
0+00

0+15

X-sec 33rd St.
F. ST to C ST
WOM 32199
7-15-53
C. Allan
D. Sisson
C. Powell

Ref. T.P. Book 19
TPS 124
112

E ST



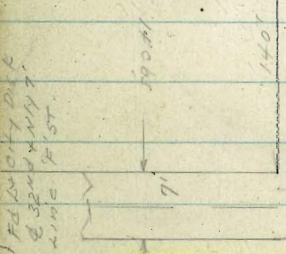
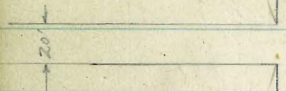
7+21.72

Broadway

6+81.72

INDEXED

JUL 20 1953



Fd Mon TP 19

Fd Mon TP 19

Fd Mon TP 19

US 94 Hwy
Sly Road
Fence Line

6" Gas Main
Knocked out Mon
2-2-6

soil sample
180' to 10'
Sta 5+50

5+31.26
Alley

4+78.76

4+73.50

4+46.72

4+34.72

Pickwick St

F

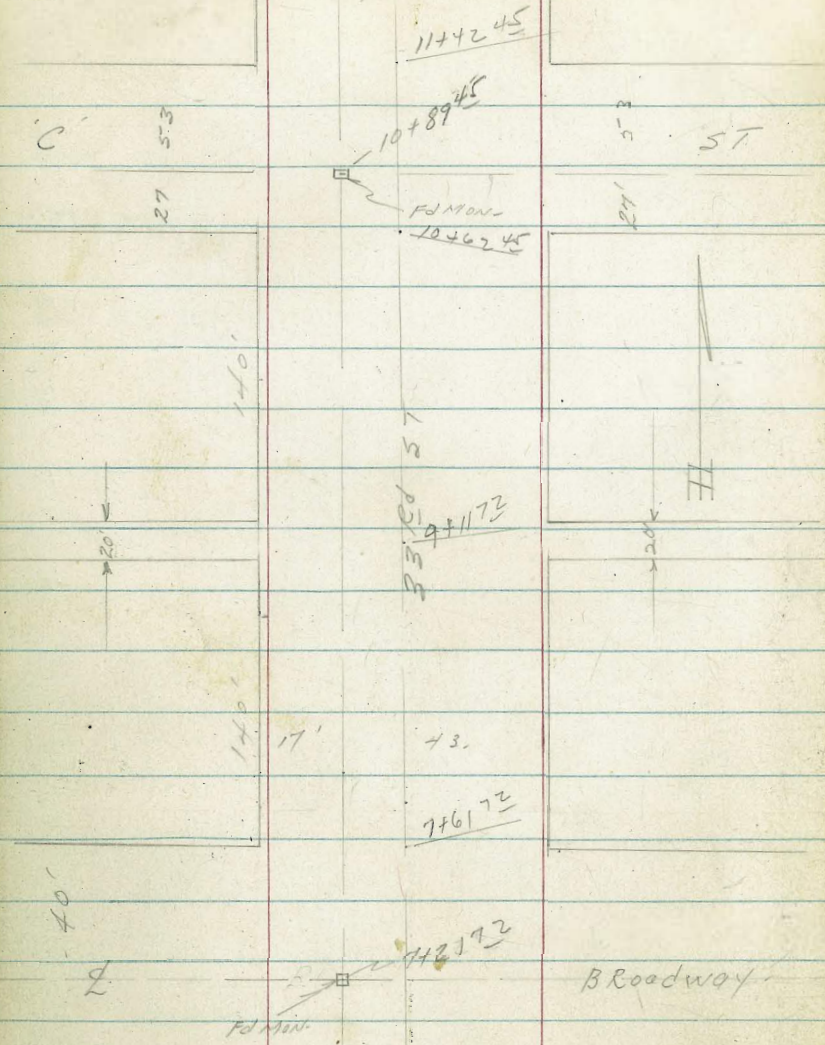
Fd Locity Disk
TP 19

ST

E ST

X-sec 33rd ST - 'F' ST + 0' ST
 See sketch Page 14.

LT=414 8 15
 10+014



See Page 16 for Levels

TP ₃	2.16	<u>93.00</u>	6.81	90.84
TP ₂	11.53	97.65	0.34	86.12
TP ₁	13.20	86.46	0.06	73.26
BM	11.72	<u>73.32</u>		61.60

93.00 x

NE BP - Federal + 34^{TR} (F ST)

X-sec. 33rd F' ST to 'c' ST

LT = wly

RT = Ely

0+31 - 25⁵ LT = 12" P. Pole # JP 810.

87.4	87.3	86.6	87.3	87.5	89.2	89.5	89.7
5 ⁶	5 ⁷	6 ⁴	5 ⁷	5 ⁵	3 ⁸	3 ⁵	2 ³
40	30	15		19	23	30	40

0+25

Nly edge Portland Concrete
D+00 = Prop F' ST to West

86.30	86.49	86.03	86.17	86.30	86.23	86.04	86.70	87.40
6 ⁷	6 ⁵	6 ⁹	6 ⁸	6 ²⁰	6 ⁷	6 ⁹	6 ³⁰	5 ⁶
30°	20° cb	20° PUT	10	10		20° PUT	20° cb	30

PUTTER
IS BROKEN

0-04 = FC Curb Return on wly.

86.43	85.95
6 ⁵	7 ⁰
20° cb	20° PUT
FC	BC

0-12 = FC Curb Return on Ely.

85.77	86.40
7 ²	6 ⁶
20° PUT	20° cb
BC	BC

0-14 = Nly Curb line F' ST to wly

84.67	84.07	86.10	85.33	85.60	85.97	85.76	86.39
8 ³³	8 ⁹	6 ⁹	7 ⁶	7 ⁴	7 ⁰	7 ²	6 ⁶
80° cb	70° PUT	30° cb	30° PUT	20		20° PUT	20° cb

0-15 = Prop to Ely

80° RT = Curb BC to F' ST conn. to Wobash

0-22 = Nly Curb Line F' ST to Ely.

85.50	85.66	85.90	85.70	85.57	85.95	83.77	84.38
7 ⁵	7 ³	7 ⁰	7 ³	7 ⁴	7 ⁰	9 ⁵	1 ²
30°	20		20	30°	30°	80° cb	80° cb
				PUT	BC	PUT	BC

REDUCED & CHECKED 8/11/53 Ekedahl.

93.00 x

LT=WH

4. pt. Ely

17

1+17-20⁵ LT= L Deadman ✓

1+11-34⁰ Rt= 67" olive tree ✓

1+07-35² LT= L single gar Conc Floor ✓

89.25
375
35²
CNC FLOOR

1+00-

89.0 88.5 89.3 89.7 91.3 91.9 92.2
4⁰ 4⁵ 37 33 17 1 08
30 13 19 24 30 40

0+97-35² LT= L Single gar Conc Floor ✓

89.23
377
35²
CNC FLOOR

0+89-34⁰ Rt= 8" olive tree ✓

gar. way back
0+73-30⁰ Rt= 8" wide Conc Drive ✓

91.0 91.3 91.4
204 72 158
39.8 33.0 43.2
DR BRK DR

0+50

88.2 88.1 87.5 88.5 88.7 90.3 90.5 90.7
4⁸ 4⁹ 5⁵ 4⁵ 4³ 27 25 23
40 30 13 19 23 30 40

(gn) 3-2-61
0+38-20⁵ LT= 12" clump peppce tree ✓

93.00 x

gone 3-2-61

2+48-22° LT = 1/2" Anchor Pole No Number
2+40-22° LT = 1/2" pole # 875

2+35° = Nly Line E ST to East

2+26-19° LT = 1/2" Olive Tree

2+05-19° LT = 1/2" Olive Tree

TP4 5.75 96.59 2.16 90 84

2+00° = 1/2" E ST to Ely

PM 1+87° 20' E Con Mon @ 13° LT top ch 8916

1+84-19° LT = 1/2" Olive Tree

1+80 30° LT to 4° on walk 1/2"
See sections on E ST this book

1+65° = Sly Line E ST to Ely

1+50 = 1/2" Alley to west SMH on 1/2" 33rd

1+37-20° LT = 1/2" Power Pole # 1822

1+30-34° LT = 1/2" Olive tree gone 3-2-61

LT = Wly 18

90.7 90.6 91.0 91.5 92.1
59 60 56 51 45
30 13 20 30

96.59 T
89.9 90.1 90.3 90.8 91.3 91.5 91.7
31 29 27 23 17 15 13
40 30 13 10 20 30

89.7 89.9 89.8 90.5 90.6 91.6 92.1
33 31 32 25 24 14 09
40 30 13 19 24 30

88.8 90.0 90.5 90.30 90.4 91.7 92.2 92.7
42 30 25 270 26 13 08 0
80 30 13 Rim 19 24 30 40

93.00 T

For additional
info see sections
on E ST this book

LT = wly

RT = eLy

19

9388

323

wly

4412 32³ LT to E 3° con walk ⊥ E4408 30⁸ RT to E 20° Bldg 11 E

4400

3483 30⁸ RT to E 20° Bldg 11 E

3480, 81 - Nly Line E ST to West

3467 30⁸ RT to E 3° con walk ⊥ E3457 30⁸ RT to E 20° Bldg 11 E

3440, 81 -

Street to West open but NOT Graded or used.

3410 - 19° LT = ⊥ 10" Olive Tree

3400, 81 - Sly Line E ST to West

2497 - 22° LT = ⊥ 14" P. Pale # 898.

2489 - 19° LT = ⊥ 12" ^{Olive} Pepper Tree

2470

2468 - 20° LT = ⊥ 18" ^{Olive} Pepper Tree2460 30⁸ RT to E 35° con walk ⊥ E

2458 - 22° RT = ⊥ Dead man.

2446 - 19° LT = ⊥ 14" Pepper Tree

92.1	92.1	92.6	92.6	92.5	93.7	93.9
4 ⁵	4 ⁵	4 ⁰	4 ⁰	4 ¹	2 ⁹	2 ⁷
50	30	11		25	30	50

92.0	91.8	92.2	92.3	92.2	93.0	93.3
4 ⁶	4 ⁸	4 ⁴	4 ³	4 ⁴	3 ⁶	3 ³
50	30	10		25		50

94.0	95.2	93.8	91.4	91.6	91.7	91.8	91.8	92.1
2 ⁶	1 ⁴	2 ⁸	5 ²	5 ⁰	4 ⁹	4 ⁸	4 ⁸	4 ⁵
160	135	100	30	10	15	30	50	

Drains
from
here to
canyon
to west

91.3	91.2	91.0	91.3	91.4	91.5	91.9
5 ³	5 ⁴	5 ⁶	5 ³	5 ²	5 ¹	4 ⁷
50	30	11		15	30	50

90.9	90.8	90.8	91.1	91.3	91.5	92.3
5 ⁷	5 ⁸	5 ⁸	5 ⁵	5 ³	5 ¹	4 ³
40	30	12		18	30	50

9072

305

wly

96.59 T

5+25

5+18-21° LT = 2 1/2" Power Pole JP948-

High Tension Line

5+13-22° RT = 2 1/4" P. Pole # 949-

5+04. 30" LT = 2 3' conc Walk

5+00

TP5 13.27 107.18 2.68

4+81.72 = Nly Line Pickwick to East

4+78.76 & crosses New State Row Fence. see sketch pg 14. 2007

4+58.22 = 2 Pickwick to East

See also sections Pickwick ST this Book

4+34.72 = Sly line Pickwick to East

4+305 2954 to E deadman

4+29 = 2084 to 2 1/2" dia P. 920

LT: WLY

98.1	98.5	97.6	97.4	97.7	98.8	99.1
9 ^L	8 ^Z	7 ⁶	9 ⁸	9 ⁵	8 ⁴	8 ^L
30	18	15		7	13	30

97.4 97.4

977	982
40Z	30Z
WIK	WALK

97.1	96.5	95.9	95.5	95.7	96.8	97.5
10 ^L	10 ^Z	11 ³	11 ^Z	11 ⁵	10 ⁴	9 ^Z
30	18	15		7	18	30

96.2	96.1	95.0	94.9	95.3	96.4
0 ⁴	0 ⁵	1 ⁶	1 ^Z	1 ³	0 ^Z
50	30	14		14	30

95.0	94.6	94.5	94.1	94.1	94.0	94.4
1 ⁶	2 ⁰	2 ^L	2 ⁵	2 ⁵	2 ⁶	2 ^Z
50	30	15	13		12	30

94.0	93.4	93.8	93.1	93.3	93.3	94.5
2 ⁶	3 ^Z	2 ⁸	3 ⁵	3 ³	3 ³	2 ^L
50	30	15	12		12	30

96.59

15 11 15 94
US 94
freeway
now

NOIL IN POLE 3 1/2" LT
Sta 4+33 - JP920
SWYCOE PICKWICK
93.91

107.18

LT=WHY

et=ely

21

5495-20⁵ LT=4 10" Power Pole # 5P974

81° LT= 2 double gar-

5491-4 Graveled drive - opening thru wall.

98.3

8⁹¹

81°
CIRC
Floor gar

101.8

5477-31° et=4 Rear gar - DIRT Floor

5⁴

31°
DIRT Floor

100.5	101.4	100.9	101.6	102.0	101.8
6 ⁷	5 ⁸	6 ³	5 ⁶	5 ²	5 ⁴
30	18	15		11	30

5475

99.7

7⁵⁰

42°
Floor

5457-42° LT=ELY Stucco House

99.4	99.5	99.1	99.6	99.8	100.9	100.9	100.2
7 ⁸	7 ⁷	8 ¹	7 ⁶	7 ⁴	6 ³	6 ³	7 ⁰
40	30	15		7	14	30	20

5450

99.6

98.7

7⁶⁰

8⁵

30⁺
Top Low
Wall

30⁺
Ground

5438-30⁺ LT=begin^{Low} Conc Block Wall

107.18 T

7+76 29.4 LT to SE cor con div 1 & E

7+54 19.5 LT to E 12" p.pole # JP1002

7+37 E crosses N 1/2 State Row Ave

7+21 7.2 E Broadway

elu top cast iron main 28" water

102.24

6+82 - 19.0 LT = 10" p.pole # p998

Freeway

Travel west
street traveled to east impossible to

6+81 7.2 = Sly Line Broadway

TP 7.13 112.47 1.84 105.34

6+50

6+00 5 3.0 LT = end low cond block wall

6+00 - 27.0 LT = 30" Euc Tree

LT = wly & ret = ehy

23

106.35 106.82
39.4 29.4
drill

93.7 105.8 106.2 106.3 105.9 106.1 106.7 107.1 105.6

18.8 6.7 6.3 6.2 6.6 6.4 5.8 5.4 6.9

80 40 30 16 14 30 60 100
Battery Canyon
Canyon

104.2 106.2 106.4 106.0 105.3 105.2 105.2 105.6 105.9

8.3 6.3 6.1 6.5 7.2 7.3 7.3 6.9 6.6

50 40 30 18 14 15 30 50
Rim
N. Canyon

103.7 105.7 106.1 104.7 104.6 104.6 104.3 104.1

3.5 1.5 1.1 2.5 2.6 2.6 2.9 3.1

40 30 18 15 15 30 50

102.01 102.08

5.7 5.1

3.0 3.0
Top Wall

102.2 102.8 103.1 102.4 102.8 102.5 102.4

5.0 4.4 4.1 4.8 4.4 4.7 4.8

50 30 18 15 15 30

107.18

9+11 7² = E Alley

LT = W 14 2 et-ely. 23

106.6	110.4	111.1	111.1	110.9	111.0	110.6	111.1	110.9	110.1
13 ¹	9 ²	9 ²	9 ²	9 ⁴	9 ³	9 ²	9 ²	9 ⁴	10 ²
70	50	30	14	12		15	18	30	50

Rim Canyon

TP 9.30 120.26 151 110.96

120.26

9+00 190

8788-20' LT = 12" P. pole P 1048 - view

110.9	110.9
154	154
42 ²	32 ²
WALK	WALK

8+87-32³ LT = 2' Conc walk

8+75 18² Lt 1/2 E dead man

1/4 of

8+70-44² LT = Frame house

110.4	110.4	110.3	109.8	109.9	109.7	110.2	109.8	109.3
2 ¹	2 ¹	2 ²	2 ²	2 ⁶	2 ⁸	2 ³	2 ⁷	3 ²
50	30	13	12		12	14	30	50

8+49 30² Lt 1/2 E 3' conc walk LE

103.7	109.1	109.3	109.0	108.7	108.8	109.0	109.7	109.8	109.4
88	3 ⁴	3 ²	3 ⁵	3 ⁸	3 ⁷	3 ⁵	2 ⁸	2 ⁷	3 ¹
60	40	30	14	12		12	15	30	50

Rim Canyon

8+35

105.0	107.1	108.1	107.5	107.8	109.0	108.7	108.9	109.0
75	5 ⁴	4 ⁴	5 ⁰	4 ²	4 ⁵	3 ⁸	3 ⁶	3 ⁵
50	30	15	12		13	15	30	50

8+00 - of duct

7+96 29' Lt NE cor cond. line High Tension line

7+85-23² Et- 18" Power Pole 1002

103.7	106.5	107.1	106.7	106.9	106.9	107.5	107.8	108.5
88	6 ⁰	5 ⁴	5 ⁸	5 ⁶	5 ⁶	5 ⁰	4 ⁷	4 ⁰
50	Rim Canyon	14	12		12	14	30	50

Rim Canyon 30.0

7+61 7² = Nly Line Broadway

112.47 x

2T = W 14 & Rt = E 4 - 24

114.0	113.8	114.9	114.3	114.7	114.7	115.8	117.3	118.4
13 ⁹	14 ¹	13 ⁰	13 ⁶	13 ²	13 ²	12 ¹	10 ⁶	9 ⁵
50	30	7	6	1		15	30	40

Edge Rough cold lay

10+00 ok checked
↓

TPs 9.32 127.93 1.65 118.61

Mark in Pole # P1098 SW 1/4 COR 33RD & C ST

127.93 T

9+96 - 30° Rt - end Conc Drive for 2 car gar -

118.0	117.9	116.4
2 ²⁵	2 ³⁹	3 ⁸²
57 ²	46	30 ⁰
Conc Floor	Brk	Dr

Opening in Picket fence for drive value

9+80 - Begin Rough Cold lay pave - of little

118.01	117.77	115.0
2 ²⁵	2 ⁴⁹	5 ²⁶
57 ²	46 ²	30 ⁰
Conc Floor	Brk	Dr

9+79 - 30° Rt - begin Conc Drive Way for 2 car gar -

9+75

112.6	113.4	112.9	113.1	113.7	114.6
7 ²	6 ²	7 ¹	7 ²	6 ⁶	5 ²
30	9	7		15	30

9+50

111.5	112.0	112.4	112.0	112.1	112.3	112.3	113.1
8 ⁸	8 ³	7 ²	8 ³	8 ²	8 ⁰	8 ⁰	7 ²
50	30	12	10		16	30 ⁰	50

9+23 - 30° Rt - begin 3⁵ high picket fence

9+14 - 20° LT - Dead Man -

120.26 T

10482 45 Sly C6 line C' st.

11702 45 = 2' C' ST

Mid pt 20° Red Returns

10463 20° LT = 18" power Pole # P1098-

High tension line
10463 - 22° rt = 20" power pole # 1099

10462 45 3-2-61 Begin A.C. paving 2 C6s
See recent X-secs 'C' st

10462 45 } = Sly Line 'C' st used to west street not
30° rt = end 3' high picket fence
Rim Canyon

10455 - 20° gone LT = 16" Tel Pole # None

10430 changed

10417 - 30° rt = 4' conc walk

10407 - 32° rt = 18" oak Tree

LT = wly rt = cly

120 ⁶⁸ 63 c6	120 ¹⁸ 63 gut	121 ⁶⁶ 38 c6	121 ¹⁷ 38 gut	121 ⁵³ 18	122 ¹³	122 ⁴⁷ 18	123 ²³ 38 gut	123 ⁷² 39 c6	125 ⁰ 63 gut	125 ⁵⁸ 63 c6
118.1	119.0	122.0	121.6	121.6	122.5	123.7				
9 ⁸	8 ⁹	5 ⁹	6 ³	6 ³	5 ⁴	4 ²				
50	30	5			Wedge Cold lay	16 E Wedge Cold lay			30	

120²⁶ 121⁴⁶
gut c6

122⁷² 122²⁴
c6 gut

118 ⁶ 30	120 ⁶⁸ 18 c6	120 ²⁰ 18 gut	121 ⁰³ 18 gut	121 ¹⁰ 18 c6	121 ⁵⁹ 18 c6	121 ⁵ 30
------------------------	-------------------------------	--------------------------------	--------------------------------	-------------------------------	-------------------------------	------------------------

112.9	116.4	117.4	119.4	119.1	118.9	120.0	121.8
15 ⁰	11 ⁵	10 ⁵	8 ⁵	8 ⁸	9 ⁰	7 ⁹	6 ¹
88	50	30	6	3	Wedge Cold lay	15 E Wedge Cold lay	30

115 ⁹ 30	117 ² 15	117 ⁷	117 ⁹ 15	119 ⁴ 30
114.8	115.7	117.0	116.4	116.7
13 ¹	12 ²	10 ⁹	11 ⁵	11 ²
58	30	7	3	Wedge Rough Cold lay
				17 E Wedge Cold lay

119.0	119.4
8 ⁹⁵	8 ⁵⁷
30 ⁵	37 ⁹
Walk	Wly Porch

127.93

LT=WH

Φ

ct=ely.

26

TP ₁₁		9.26	93.92
TP ₁₀	0.91	102.18	12.88
TP ₉	0.44	115.15	13.22

Nail in pole TP₅ page 20

11492

126.2

127.3

127.4

128.2

130.2

17

06

05

+0³

+2³

30

6

20

30

wy
edge
cold lay

edge
cold lay

118.7	121.2	121.1	121.1	124.5	124.4	124.0	124.7	126.4
9 ²	6 ⁷	6 ⁸	6 ⁸	3 ⁴	3 ⁵	3 ⁹	3 ²	1 ⁵
110	50	30	25	3				
conv						2	20	30
rim						edge cold lay	edge cold lay	

1142.45 = Nly line c ST

11437-23⁵ pt = Φ Anchor pole

127.93 X

See also page 14.

FST Connection to Wabash

Levels page 28.

X-sec 'E' ST-

33rd ST to

F ST Connection

To Wabash Free-

way.

C. Allen

D. Sisson

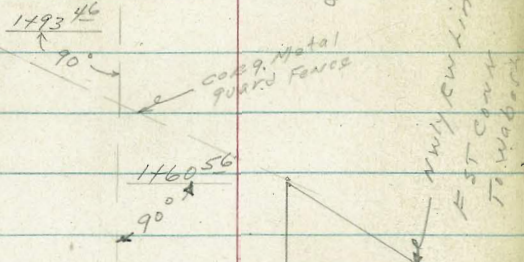
C. Powell

7-17-53

WO# 32199

TP 19

TPS 124
112



E ST

← 98' → × 22' →

Soil sample
180 FT 0+50

0+00

TP 19

43'

33rd

ST

EDMON
TP 19

17'

FST Connection to Wabash Freeway.

400.94 EWE
10-2-53

440.86
70'

3+51.47

90°

← 412' → 12' ←

X-sec

Pickwick ST

33rd to F ST

Connection

To Wabash

WO# 32199

7-17-53

C. Allen, D. Sisson

C. Powell

REF-TP 19

TPS 124
112
74952

Pickwick ST

see 7495 L
sheet 2
for ties to

Connection

Levels page 31

soil sample
150 FT sta 2+75

Nly line

Pickwick Not

Parallel to 5" 12'

Line

& Made Parallel

to Sky Line

← 35' → 12' ←

33rd

ST

EDMON
TP 19

17'

90° 30' 00"
84° 30' 00"

30° 30' 00"
40° 30' 00"

Levels - X-sec 'E' ST. 33rd to
F ST connection to Wabash Freeway.

0+90 - 36° Rt = ϕ 3' cone walk

0+84 212 Rt to & deadman

0+82 - 34° Rt = ϕ 12" Pepper tree

0+76 35⁹ LT = ϕ 3' cone walk

0+50

0+46 - 34° Rt = 12" Pepper tree

0+35 342 Rt to NE cor. con drive + E

0+33 - 21⁶ Rt = ϕ deadman

0+19 342 Rt to NW cor. con drive + E

0+11 - 27³ Rt = ϕ Fire Hyd.

0+05 - 22⁵ Rt = ϕ 12" P. Pole + P 3301

0+00 = Fly line 33rd ST. see 33rd ST Levels 18 et al.

BM 4.13 98.04

TP5 - PP20
93.91

LT = NY ϕ Rt = 51.4 28

93.08	93.12
49 ⁶	49 ²
36 ⁹	46 ⁹
WIK	WIK

94.5 94.6⁵⁷
25⁹ 34⁷
45² walk 35⁷ walk

94.5 93.6 92.2 92.0 91.7 92.4 92.9 93.0
35 4⁴ 5⁸ 6⁰ 6³ 5⁶ 5¹ 5⁰
50 35 13 18 26 30 45

93⁰² 92²³
442 drive 342

92⁷⁵ 92⁸⁸
442 drive 342

92.2 92.5 91.6 91.6 90.9 92.0 92.0
5⁸ 5⁵ 6⁴ 6⁴ 7¹ 6⁰ 6⁰
35 22 13 21 27 35

98.04

Eclah. 8/11/53 REDUCED & CHECKED

X-sec E ST. 33rd to F
 st connections to Wabash Free.

LT=Nly

2 Rt = Sly.

29

93.54 88.14 88.33
 45 99 97
 55 65 69

Wedge
 H.C. FST CONN

See 7495-L-

Wly line F ST Connection

1760⁵⁶ = 90° to intersection Sly Line E and

97.5 96.0 93.6 92.6 92.3 92.1 92.2 92.6 93.6
 0⁵ 2⁰ 4⁴ 5⁴ 5⁷ 5⁹ 5⁸ 5⁴ 4⁴
 45 35 14 8 15 30 35 50

Sly end
 City
 Guard
 Fence

97.5 96.9⁸⁹

05.3 13⁵
 46.0 36.0
 WIK WIK

1747- 36° LT = 3' CONC WALK

97.1 96.1 94.1 93.0 92.8 92.4 92.9 93.1
 09 19 39 50 52 56 51 49
 45 35 13 10 15 35 50
 Inyard

96⁸⁴ 95⁸⁴
 446 346
 drive

1713 34° LT to E 10° conc drive LE

1701 - 21° RT = 8" P. Pole # P3321-

95.8 94.8 93.6 92.9 92.8 92.3 93.0 93.1
 22 32 44 51 52 57 50 49
 45 35 15 10 18 35 45

1700

95.6 94.81

249 323
 458 358
 WIK WIK

1798-358 LT = 3' CONC WALK

98.04

TP,

4.13

TPs Page 20

93.91

and not 90° to E
F ST connection. shots on edge A.C.

2401⁵ E ST extended intersects A.C. Pavé

90.57	90.03	89.12	87.97
74 ⁷	8 ⁰¹	89 ²	10 ⁰⁷
40	Ac	50	100
Ac		Ac	Ac

and why R/W line F ST cross

1493⁴⁶ = 90° to intersection Nly line E ST.

95.9	95.7	91.1	91.0	90.6	89.7	89.8
2 ¹	2 ³	6 ⁹	7 ⁰	7 ⁴	8 ³	8 ²¹
37	35	4		4	8	140
Nly end						wedge
Coag						Ac. F ST con
Metal						
guard						
fence						

1477 E ST intersects Coag Metal guard fence

98.04 *

X-sec Pickwick ST - 33rd ST 4.
 F St. Conn to Wabash

LT = N14 2 Lt = S14 - 31

INDEXED

96.85 96.98
 26.8 drive 36.8

0+91 26.84 to E 8° con drive to E

0+83-24³ LT = begin 4' high hog wire fence *gone*

97.8 97.1 JUL 20 1953
 5⁹² 6^E 6⁺
 24⁴ 24⁴ 24⁴
 Top FOOT ground
 06

0+83-24⁴ LT = end 6" wide home made conc curb *gone*

0+79-18³ RT = E Deadman *gone*

97.9 97.8 97.3
 5⁸⁴ 5⁹⁴ 6⁴
 34⁴ 24⁴ 24⁴
 Walk Walk ground

0+64-24⁴ LT = 4 3' conc walk - sly top walk flush with top curb *gone*

97.7 97.7 96.9 97.1 97.1 96.0 95.6 95.1 95.9 95.2 94.3
 6⁰ 5⁹⁹ 6⁶ 6⁶ 7¹ 8⁺ 8⁶ 7⁸ 8⁵ 9⁴
 40 24⁴ 24⁴ 24⁴ 24⁴ 13
 Top Foot
 curb Foot 9⁺ 12 15 23⁵ 50

0+29° 28.5 RT to E 3° con walk to E

97.3 97.1
 6⁴² 6⁶³
 34⁰ 24⁰
 WIK WIK

0+28-24° LT = 4 3' conc walk *gone, removed for Hwy*

0+22-15⁴ LT = 4 10" Anchor pole *gone, removed for Hwy*

REDUCED & CHECKED 8/11/53 Ckdahl

0+105² RT to E 3° con walk to E

0+10-21° RT = 4 Fire Hyd.

96.3 95.7 94.6 94.3 93.2 93.4 94.5
 7⁴ 8⁰ 9¹ 9⁴ 10⁵ 10³ 9²
 23⁵ 17 12 15 23⁵ 29

0+00 = Fly Line 33rd ST - See X-sec 33rd page 20

0-08 27⁴ LT to E 18" dia P/B 1/4 mile

B.M. 9.81 103.72 x

T.P. 5 Page 20
 93.91

103.72 x

1787-25' LT = 25' conc walk gone Freeway

101.5 101.3

22³ 24⁵

35' L Walk 25' L Walk

101.2	100.6	100.6	99.9	99.8	99.3	98.9	99.4
3'	3'	3 ⁸	3 ⁹	4 ⁴	4 ⁸	4 ³	4 ³
40	25	15		11	23 ⁵	40	

1756-23⁶ Rt = 6⁵ wide gone Ribbon drive - 2-2⁵ Ribbons

98.7 99.0
49⁸ 47³
23⁶ Dr- 23⁶ Dr-

1750 gone { 23⁶ Rt = begin 4' high hog wire fence
24³ Lt = begin 1/2' high picket fence
1450 } 24³ Lt = end 4' high hog wire fence

100.6	99.8	99.3	99.2	98.9	98.8	98.5	98.6	98.3
4 ⁴	4 ⁵	4 ⁸	4 ⁹	5 ²	5 ¹	5 ⁴		
40	25 ⁰	15		12	23 ⁵	50		

1433-24⁹ LT = 25' conc walk gone Freeway removed

99.1 99.0 98.7
46⁷ 47⁶ 5⁰
34⁹ Walk 24⁹ Walk 24⁹ 9"

99.3	98.2	98.0	97.2	97.1	96.9	97.0	96.8
5 ⁵	5 ⁷	6 ⁵	6 ⁶	6 ⁸	6 ⁷	6 ⁹	6 ⁹
40	24 ⁵	12		13	23 ⁵	50	

1400 15⁵ Rt = 12" P.P. 12" P3317

103.72

x-sec Pickwick

With 4" conc base

3400 - 23⁷ LT = begin 4⁵ hog wire fence

100.4	99.9	99.6	100.0	98.9	98.0	98.2	97.5	97.0	97.0
15	2 ⁰	2 ³	2 ²	3 ⁰	3 ⁹	3 ⁷	4 ⁴	4 ⁷	4 ⁹
50	26 ⁵	24 ²³	17	14			12	21 ⁶	24 ⁶
		TOP						Apron	Floor
		Base							

23⁵ RT = end hog wire fence
 2498 - 20⁰ RT = begin 4 cor gar. Conc Apron
 2495 - 14⁵ RT = 12" Power pole # P3351

97.21	97.30
97.0	97.0
4 ⁹	4 ⁹
Apron 200	SILT Floor 24 ⁶

TP, 6.04 101.93 7.83 95.89

2476 23⁸ LT to E 2⁰ can walk + E
 2475

100.67	101.93			
238				
W/K				
100.3	99.1	99.1	98.8	98.9
2 ⁴	4 ⁶	4 ⁶	4 ⁹	4 ⁸
2 ⁵	13		10	23 ⁵

23⁶ RT = begin hog wire
 2450 24⁸ LT = end hog wire fence (both ok)

100.9	100.4	99.8	99.8	99.4	99.1	98.7
2 ⁸	3 ³	3 ⁹	3 ⁹	4 ³	4 ⁶	5 ⁰
40	26 ²	15		12	23 ⁵	50

2425

101.1	100.9	100.5	100.3	99.6	99.3	99.1
2 ⁶	2 ⁸	3 ²	3 ⁴	4 ¹	4 ⁴	4 ⁶
40	25	12		12	23 ⁵	50

2410-23⁶ RT = end hog wire fence

24⁸ LT = begin hog wire fence
 2400 - 25⁰ LT = end Picket fence

101.2	101.0	100.6	100.4	99.7	99.2	99.4
2 ⁵	2 ⁷	3 ¹	3 ³	4 ⁰	4 ⁵	4 ³
40	25 ⁵	12		12	23 ⁵	40

103.72

X-see Pickwick

LT=NH
 98.4 98.2 97.2 96.7 96.2 96.0 95.4 95.9 96.2 95.6 91.2
 3⁵ 3⁷ 4² 5² 5⁷ 5⁹ 6⁵ 6⁰ 5⁷ 6³ 9¹⁰
 50 27° 24 16 14 12 14 23⁵ 50 58

+R/W F ST connection
3+51.47-90° to intersection Sly Line Pickwick

3+50-23⁷ 4" Conc base
Rt= end hog wire Fence with

3+50-21⁷ Rt= NE cor 2' conc Walk Parallel to d

3+49-14⁸ Rt= & Dead man

3+36-14⁵ Rt= & 10" Anchor Pole #493495 H

√23⁵ Rt= begin hog wire fence with 4" conc base

√21⁴ Rt= NW cor 2' conc Walk Parallel to d

3+34-20² Rt= end 4' cor gar CONC APRON

3+25

98.5 98.4 97.5 97.2 96.8 96.8 96.9
 3⁵ 3⁵ 4⁴ 4⁷ 5¹ 5⁴ 5⁰
 25 17 15 11 20² 24⁰
 Walk APRON Flock COITD

99.2 99.2
 269 277
 278 228
 Walk Walk

101.93 T

3+22-22⁸ LT= & 4' conc walk **gone**

96.2 96.8
 5⁷ 5⁰⁹
 23⁷ 23⁷
 9rat Top
 Base Walk
 Base
 96.0 96.2
 5⁹⁴ 5⁷⁷
 21⁷ 23⁷
 NECOR SECOR
 Walk Walk

96.7 96.6 97.1
 5²⁵ 5³ 4⁸⁴
 23⁰ 23⁵ 23⁵
 SWCOR 9rat TOP
 Walk concbase CONC Base
 96.84 97.30
 96.6 96.6 96.8
 5³⁵ 5³⁵ 5¹
 20² 21⁴ 24⁰
 APRON Walk 2' cont/cor
 NW CON 96.96 97.20

TP ₅	10.06	261.60	61.62
TP ₄	2.35	71.68	9.46
TP ₃	2 ³⁰	78.79	13.20
TP ₂	0 ⁹⁵	89.69	13.19

4+12-23⁶ LT = Nly end Corg Metal Fence
 Shots taken along edge AC CONNECTION
 4+07- E Pickwick intersects A.C. Pave FST

4+00⁴⁴ 90° to intersection Nly Line Pickwick
 + wly E/w Linet ST Connection

13+88⁵ = E Pickwick intersects Corg Metal
 Guard Rail

13+86 24° LT to E 2° con walk + E

3+83⁵ V = E S.M.H. raised

3+68- 23⁵ et = Sly end Corg Metal guard Rail

3+64- 23² LT = end hog wire fence with
 4" conc base

Starting BM Page 15 NEBP- 34th Federal-

91.00	91.19	91.27	91.40	91.63
10 ⁹³	10 ⁷⁴	10 ⁶⁶	10 ⁵³	10 ³⁰
50	25		25	50

95.2	94.7	93.1	92.3	91.5	91.3
6 ⁷	7 ²	8 ⁸	9 ⁶	10 ⁴	10 ⁶¹
27 ⁵	15	12	4		8 ² Wly edge AC Pave

96.8	96.5	96.0	94.4	93.7	93.0	91.3	91.5
5 ¹	5 ⁴	5 ⁹	7 ⁵	8 ²	8 ⁹	10 ⁶	10 ⁴⁵
40	25	24	14		8	20	25 Wly edge AC Pave FST conn

94.34
 95.06
 75.9
 R.I.T.

96.4	97.0	96.6
5 ⁵	49 ⁷	5 ³
23 ⁷	23 ⁷	23 ⁷
Foot of Base	Top Base	Top

101.93

X-Sept. Alley BIK. 10 Normal Hts.

36

Shepard
Bruner
O'Neil
11-19-54
w.o. 32 454

Ref. 1438

INDEXED
JER
NOV. 29



Alley BIK 10
Normal Hts.

34 20 54

Hawley Blvd

2.5 2.5



Copley Ave

0+30 R.D. Lt. Begin Garage with Entrance at S. End

394.98
2.92
8.7
Comp.
Floor

0+29 22 Lt. 10" Palm

0+26 6.0 Lt. End Carport

0+20

394.6
3.7
7.5
394.7
3.2
7.5
394.9
3.0
7.5
395.0
2.9
7.5

0+13 6.0 Lt. Begin Carport dirt Floor

394.6
5.3
6
FL. DR. T
393.46
393.74
393.09
393.84
393.60

0+00 Nly. Line Copley

0-05 1.5 Rt. & Water Gate Valve

0-12 Nly. Ch Line Copley

392.85
392.58
392.76
392.51
392.87
392.63
392.63
392.67
393.09
4.44 4.56 4.81 4.46 4.30
7.5 7.5 7.1 7.1
Cb. GUT Cb. GUT Cb. GUT Cb. GUT
5.08 5.32 5.24 5.39 5.03 5.20 5.20 5.23
100 100 50 50 75 7.5 7.5
Cb. GUT Cb. GUT Cb. GUT Cb. GUT
5.72 4.74 5.13 4.66 4.88 4.32 4.61
7.5 7.5 7.5 7.5 7.5 100 100
Cb. GUT Cb. GUT Cb. GUT Cb. GUT Cb. GUT Cb. GUT

0-30 & Copley

392.85
5.05
100
392.97
4.93
50
393.04
4.86
393.27
4.63
50
393.56
4.44
100

392.90

B.M. 5.77 397.90

S.E.P. 34th
392.13 Copley

2+00

1+99 7.6 Rt. & Power Pole # JPA4930

1+50 9.7 Rt. End 6' Board fence

1+99 6.9 Lt. & Power Pole # A4921

1+13 (7.6 Rt. Begin 6' Board fence
7.9 Rt. End Garage

1+01 (7.9 Rt. Begin Garage Entrance from Hawley
7.8 Rt. End 6' Board fence

TP 5.73 400.48 3.15 394.75

1+00

0+50

0+99.5 7.1 Rt. Begin 6' Board fence

0+48.5 (6.6 Rt. & Power Pole # JPA4908
2.1 Lt. & Power Pole # A4905

0+48 8.6 Lt. End Garage

395.0
5.5
15

394.7
5.8
2.5

394.6
5.9
15

394.6
5.9
2.0

394.3
6.2
2.5

394.5
6.0
15

395.1
5.4
15

394.9
5.6
2.5

394.9
6.1
15

394.4
6.1
2.5

394.9
5.7
9

394.5
6.0
15

395.38

5.10
1.9
Flow
Cont.

395.4
2.5
15

394.9
3.0
2.5

400.98
2.8
15

395.1
2.9
2.5

395.0
2.9
2.5

395.1
2.8
10

395.0
2.8
2.5

395.2
2.7
15

395.1
2.8
2.5

395.3
2.6
15

4+76 68 Rt. & Power Pole # JPA 4980

4+83 59' Lt. & Power Pole # A4999

4+50

4+00 69 Lt. End 4' Picket Fence

3+58 65 Lt. & Power Pole # A4959

174' Lt. Begin 4' Picket fence
3+51 74 Lt. End 4' wire fence

3+50

3+22 20' Rt. & Power Pole # JPA 4952

184' Lt. Begin 4' Wire fence
3+00 72' Lt. End 6' Board fence

2+50 76 Lt. Begin 6' Board fence

2+48 71' Lt. & Power Pole # A4939

2+02 98' Rt. & 3' Conc. Walk

395.6 395.6 395.7 395.9 396.0
4.9 4.9 4.8 4.6 2.5
15 2.5 15 2.5 15

395.6 395.7 395.3 394.7 395.5 395.8
4.9 4.8 5.0 5.8 5.0 4.9
15 2.5 6.0 2.5 15

395.4 395.2 394.9 395.3 395.6 395.7
5.1 5.3 5.6 5.9 4.9 4.8
15 2.5 6.0 2.5 15

395.2 394.9 394.7 394.8 394.9 395.2
5.3 5.6 5.8 5.9 5.6 5.3
15 2.5 6.0 2.5 15

394.9 394.7 394.5 394.7 394.7 395.0
5.6 5.8 6.0 5.8 5.8 5.5
20 2.5 6.0 2.5 20

394.8
395.18

5.20 5.30
2.8 12
walk 2.5
walk

400.48
71

Cont. from Pg. 39

Ch B.M.

6.84 392.14 = 392.13 Starting B.M.

T.P. 4.85 399.00

5.82 394.15

6+30.7 S Arthur

6+12.7 Sly Cb. Line Arthur

6+02.4 (Begin Cbs. No Rt. 7.944. Begin Pavement)

6+00.20 (7.11' Rt. End 3' Picket fence Sly. Arthur)

T.P. 5.10 399.94

5.68 394.80

5+80

5+62 6.6 Lt. & Telephone Pole # 4335114

5+50 7.5 Rt. Begin 3' Picket fence

5+00

394.25
393.89
394.40
394.01
394.36
394.08
394.5
394.12
394.21
394.20
394.53
394.33
394.70
394.38
394.71

5.32
5.71
5.32
5.00
2.80
100
50
100

5.22 6.08 5.57 5.96 5.61 5.89 5.82 5.85 5.22 5.44 5.61 5.27 5.59 5.26
100 100 50 50 9.5 9.5 9.5 7.5 9.5 9.5 50 50 100 100
Cb. But But Cb But Cb But 7.5 9.5 9.5 50 50 100 100
Cb. But But Cb But Cb. But Cb. But Cb.

394.61
394.61
394.39
394.63
394.81

5.36 5.36 5.58 5.34 5.16
7.7 7.7 7.0 7.0
Cb. But Cb. But Cb Cb

394.8
394.7
394.7
394.8
395.1

5.2 5.3 5.3 5.2 4.9
15 7.5 7.5 7.5 15

396.6
396.4
399.90
396.0
395.9
396.4

3.9 7.1 4.5 7.6 4.1
15 7.5 7.5 7.5 15

396.6
396.5
396.6
396.5
396.7

3.9 7.0 3.9 7.0 3.8
15 7.5 7.5 7.5 10

396.2
396.0
396.2
396.2
396.4
396.5

4.3 7.5 7.3 4.3 4.1 4.0
15 7.5 7.5 7.5 10 20

4.00 78

Roberts
Cota
Moralez
Kelley
1-3-55
W.O.#32453

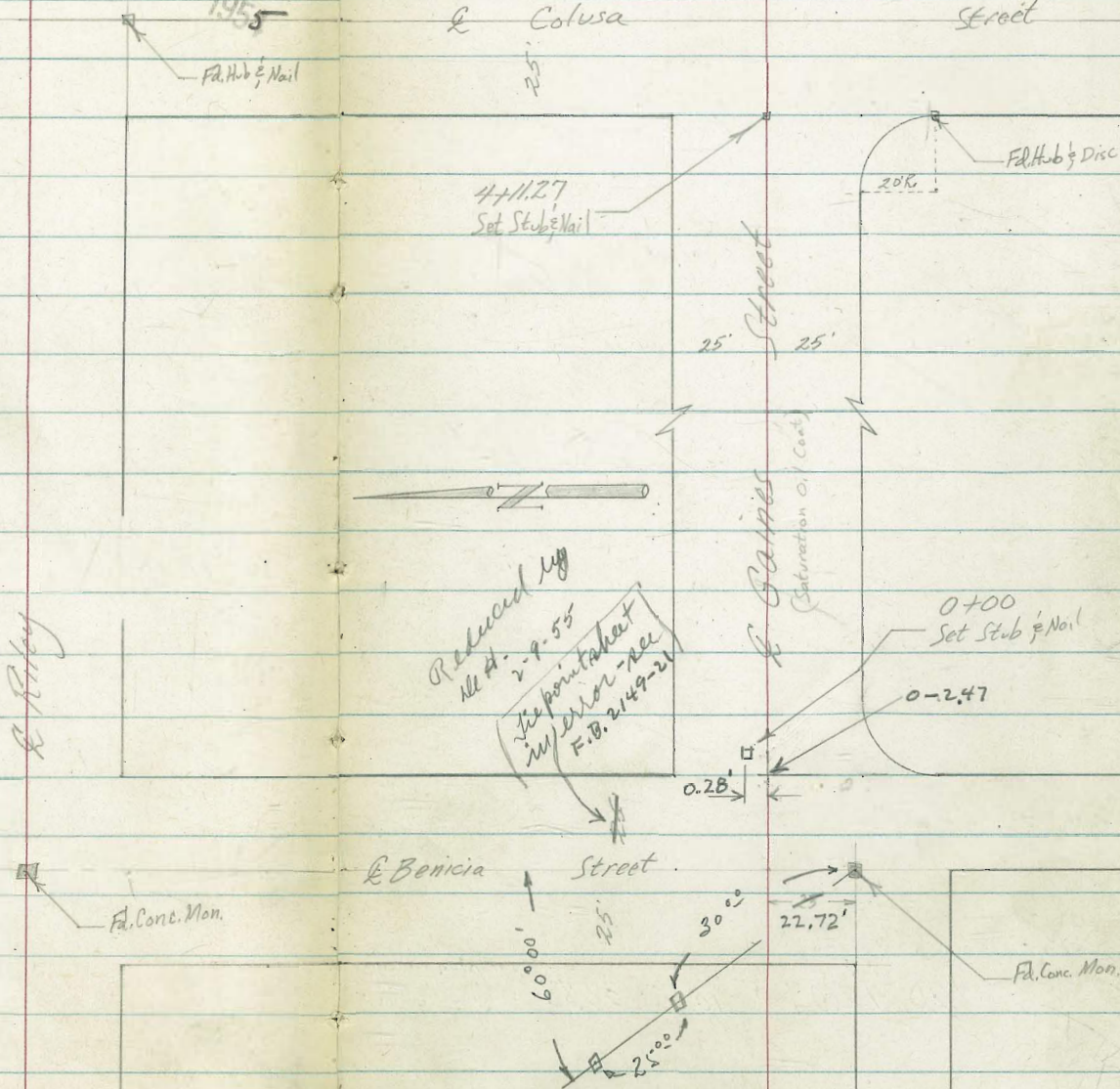
X-Section Gaines Street

Benicia to Colusa

See F.B. 1471 pg. 46

INDEXED
JER
FEB 8 1955

41



0+35 15^s Rt Q3 Conc walk

36.62
5.45 5.35 5.21
153 25 35
conc conc conc

0+30 17^s Rt to N.E. Oleander

0+20

36.3 36.1 36.0 36.1 36.4 36.1 35.6 36.2 36.4 36.9
5.8 6.0 6.1 6.0 5.7 6.0 6.5 5.9 5.7 6.2
35 25 18 11 16 16 17 25 40

0+18 21 Rt to N.E. oleander bush

0+08 23^s Rt to near edge fire hydrant
(N.E.)

0+00 { 17^l Lt begin chainlink fence
East Line Benicia Street

31.0 31.0 32.1 32.6 35.2 35.4 35.3
11.1 11.1 10.0 8.5 6.9 6.7 6.8
50 44 43 25 25 50

Q Benicia to North (0-25)

25.1 25.4 27.4 33.0 34.3 34.4 33.3
17.0 16.7 14.7 9.1 7.8 7.7 8.8
75 50 29 20 50 75

T.P. 8.20 42.07 $\bar{\Delta}$ 10.25 33.87

on Mon. intersection
Benicia & Gaines

42.07 $\bar{\Delta}$

BM 0.83 44.12

43.29 spike in file
SW corner
Riley & Benicia

0+73 91 Lt E Single Garage

32.37
2.70
71
conc
Floor0+72 38^E Rt E 12 conc drive37.09
5.00
383
conc.0+67 16^L Rt to NE Oleander0+58 17^L Rt to End Hedge (Do I need to repeat?)0+56 24^E Lt to End Hedge perpendicular to St.

0+50

29.5	37.5	34.7	37.2	37.2	37.0	36.5	36.8	36.9	36.8
46	46	54	49	49	51	56	53	52	53
35	25	16	8		8	15	16	25	35

0+48 17^L Rt to NE Oleander0+46 66^E Lt E Garage37.68
4.39
63
conc
Floor0+41 19^E Lt End fence0+39 17^E Rt to NE Oleander

1+37 17 Rt to N.E. Oleander

1+33 61 Lt ♀ Single garage

40.6
4.7
61
Floor

1+30 62 Rt ♀ Single Garage

39.0
6.3
62
Floor

1+23 17 Rt to N.E. Oleander

1+16 16⁸ Rt to N.E. Pole* 1799661+15 21⁰ Lt to End Hedge ---
16⁰ Rt to End Hedge ---T.P. 3.58 45.33 π 0.32 41.7545.33 π 1+00 16³ Rt to N.E. Oleander

38.9	38.8	38.5	37.8	38.1	38.1	37.9	37.3	37.7	37.6	37.5
32	33	36	43	40	40	42	48	44	45	46
35	25	18	17	10		6	11	16	25	35

0+91 17 Rt to N.E. Oleander

42.07 π 42.07 π

Cont'd From Page #4

Lt

♀

Rt

75

2+00

41.4

3.9

35

41.1

4.2

25

40.9

4.4

20

40.2

5.1

19³

39.7

5.6

16

40.0

5.3

9

39.9

5.4

5

39.7

5.6

5

39.3

6.0

10

39.6

5.7

14

39.6

5.7

25

39.4

5.9

35

1+99

17 Rt to NE Oleander

1+93

62 Lt ♀ Single Garage
Rt ♂ Single Garage

41.58

3.75

62

Floor

41.37

3.96

37

conc

40.90

4.43

24

conc

39.79

5.54

18

conc

Apron

Nobody home - Mad dog!
Garage No Problem!

1+85

17 Rt to NE Oleander

1+74

17 Rt to NE Oleander
19³ Lt begin conc block wall (Retain)

41.8

3.9

19³

Top

39.5

5.8

19³

Foot

39.9

5.4

19³

SRD

1+62

16³ Rt to NE Oleander

1+54

20 Lt ♀ 3 Conc. Walk

40.17

5.76

30

conc

39.92

5.41

21

conc

1+50

40.1

5.2

35

39.9

5.4

25

39.6

5.7

20

38.7

6.6

16

39.0

6.3

8

39.0

6.3

5

38.7

6.6

5

38.2

7.1

11

38.5

6.8

17

38.4

6.9

25

38.2

7.1

35

1+49

17 Rt to NE Oleander

45.33A

45.33A

Cont'd from Page 75

Lt

♀

Rt #6

2+54 20 Lt ♀ 3 Conc. walk

41.99
334
30
conc

41.69
364
20
conc

2+50

42.0 41.9 41.7 40.6 40.9 40.8 40.4 40.2 40.4 40.2 40.0
3.3 3.4 3.6 4.7 4.4 4.5 4.9 5.1 4.9 5.1 5.3
35 25 19 17 10 7 10 12 25 35

2+44 17 Rt to N.E. Oleander

2+34 16^{1/2} Rt to N.E. P. Pale # 5559

2+33 20^{1/2} Lt to End Hedge
19^{1/2} Lt End conc block wall

41.5 40.2 41.2
3.8 5.1 4.1
196 196 196
Top Foot GRD

2+30 17 Rt to N.E. Oleander

2+18 17 Rt to N.E. Oleander

2+13 15^{1/2} Rt ♀ 3 Conc walk

39.79
5.54
15E
conc

39.75
5.58
25
conc

2+09 17 Rt to N.E. Oleander

45.33A

45.33A

3+28 { 23 Lt to NE. Oleander
17 Rt to NE. Oleander

3+17. 17 Rt to NE. Oleander

3+03 17 Rt to NE. Oleander

3+00 24 Rt to Small Magnolia

^{42.9}	^{42.5}	^{42.3}	^{41.6}	^{41.7}	^{41.7}	^{41.3}	^{40.9}	^{41.2}	^{40.9}	^{40.7}
2.4	28	3.0	3.7	3.6	3.6	4.0	4.4	4.1	4.4	4.6
35	25	18	15	7		6	11	13	25	35

2+94 22 Lt to End Hedge — —

2+82 17 Rt to NE. Oleander

2+79 62 Lt Q Double garage

^{43.79}
62
Floor

2+75 70 Rt Q Double garage

^{40.67}
4.6
17
7 conc
Apron

^{40.54}
4.7
25
conc

^{39.15}
6.8
70
Floor

2+70 17 Rt to N.E. Oleander

2+58 17 Rt to N.E. Oleander

3+98 18 Rt & in fence

3+72 { 15⁸ Rt & 3 conc walk
 { 20 Lt & 3 conc ~~walk~~ walk

3+52 { 24⁴ Lt begin conc block wall upward fence
 { 20⁸ Lt to N.E. Pole
 { 17⁸ Rt begin picket Fence

3+51 16 Rt to N.E. P. Pole # 179965

3+50

3+42 23 Lt to N.E. Oleander

T.P. 5.82 48.14 ∇ 3.01 42.32

3+35 62 Lt & Single Garage
 62 Rt & Single Garage

45.33 ∇

Lt

R

Rt #8

43.71 43.47
 443 467
 30 20
 Conc Conc

42.23 42.18
 591 596
 15⁸ 25⁸
 Conc Conc

45.0 42.6 42.3
 3.1 5.3 4.8
 24⁴ 24⁴ 24⁴
 Top Foot GRD

43.7	42.4	42.2	42.2	42.5	42.3	42.0	41.6	41.8	41.3	41.0
44	47	49	57	56	58	6.1	6.5	6.3	6.8	7.1
35	25	21	16	5		6	12	15	25	35

48.14 ∇

45.0
 0.3
 62
 Floor

40.1
 5.2
 62
 Floor

45.33 ∇

check

3.58 + 329 = 4329

T.P. 7.68 46.87 131 39.19

T.P. 1.16 40.50 8.80 39.34

Q Colusa Street (4436.27)

4416.27 { 26^s Rt End picket fence
 West Property Line Colusa
 24 Lt End conc block wall w fence atop

4405 20 Rt L Fence

4400

48.14 X

Lt

Q

Rt 49

	^{46.9}	^{44.5}	^{42.22}	^{41.7}	^{37.6}
	1.2	3.6	5.42	6.4	10.5
	100	50	NA	50	100

^{45.0}	^{45.3}	^{43.6}	^{44.0}	^{43.8}	^{43.1}	^{43.0}	^{42.2}	^{41.3}
31	2.8	4.6	4.1	4.3	5.0	5.1	5.9	6.8
50	24	24	24	20	17		25	50
	Top	Foot	GRD					

^{43.9}	^{43.7}	^{43.7}	^{43.6}	^{43.9}	^{43.0}	^{42.9}	^{42.6}	^{42.3}	^{42.4}	^{42.4}	^{42.3}
4.2	4.4	4.4	4.5	5.2	5.1	5.2	5.5	5.8	5.7	5.7	5.8
35	25	24	20	16	10		5	13	17	25	35

48.14 X

CROSS SECTION ROCK GROIN
 CAPE MAY AVE OCEAN BEACH

W.O. 21341

2+00

1+00

0+50

0+00

+0.75 10.62

B.M.

9.87

Lt
 Ref G-348 5-09-55

Et 50
 Stampel
 Hoffman
 Elmore
 Blunt

^{1.3}
 8.8 8.5 8.4

^{5.2}
 5.4 5.4 5.3
 50 0 50

^{8.0}
 2.6 2.7 2.1
 50 0 50

^{9.8}
 0.8 0.9 0.9
 50 0 50

10.62

30' RP Hub Lt. Sta 0+00 G-348

X-SEC'S ROCK GROIN

4+50

$\begin{array}{r} 1.5 \\ -1.4 \\ \hline 12.1 \\ 50 \end{array}$
 $\begin{array}{r} 1.4 \\ -1.4 \\ \hline 12.0 \\ 50 \end{array}$
 $\begin{array}{r} 1.3 \\ -1.3 \\ \hline 11.9 \\ 50 \end{array}$

4+00

$\begin{array}{r} 0.4 \\ -0.4 \\ \hline 11.0 \\ 50 \end{array}$
 $\begin{array}{r} 0.3 \\ -0.3 \\ \hline 10.9 \\ 50 \end{array}$
 $\begin{array}{r} 0.2 \\ -0.2 \\ \hline 10.8 \\ 50 \end{array}$

3+50

$\begin{array}{r} 0.1 \\ -0.1 \\ \hline 10.5 \\ 50 \end{array}$
 $\begin{array}{r} 0.2 \\ -0.2 \\ \hline 10.4 \\ 50 \end{array}$
 $\begin{array}{r} 0.3 \\ -0.3 \\ \hline 10.3 \\ 50 \end{array}$

3+00

$\begin{array}{r} 0.1 \\ -0.1 \\ \hline 9.9 \\ 50 \end{array}$
 $\begin{array}{r} 0.1 \\ -0.1 \\ \hline 9.9 \\ 50 \end{array}$
 $\begin{array}{r} 0.1 \\ -0.1 \\ \hline 9.8 \\ 50 \end{array}$

2+50

$\begin{array}{r} 0.13 \\ -0.13 \\ \hline 9.3 \\ 50 \end{array}$
 $\begin{array}{r} 0.14 \\ -0.14 \\ \hline 9.2 \\ 50 \end{array}$
 $\begin{array}{r} 0.1 \\ -0.1 \\ \hline 9.1 \\ 50 \end{array}$

10.62

Lt. 5-09-55 Et 51

Lt.

E

Rt.

52

5-09-55

X-SEC'S ROCK GRAIN

B.M.

-0.75

9.87

5730.

12.5
50

12.4
0

12.4
50

5700

12.1
50

12.3
0

12.2
50

10.62

Roberts
Rorer
Moore
Morales
5-22-55
N.O.# 32545

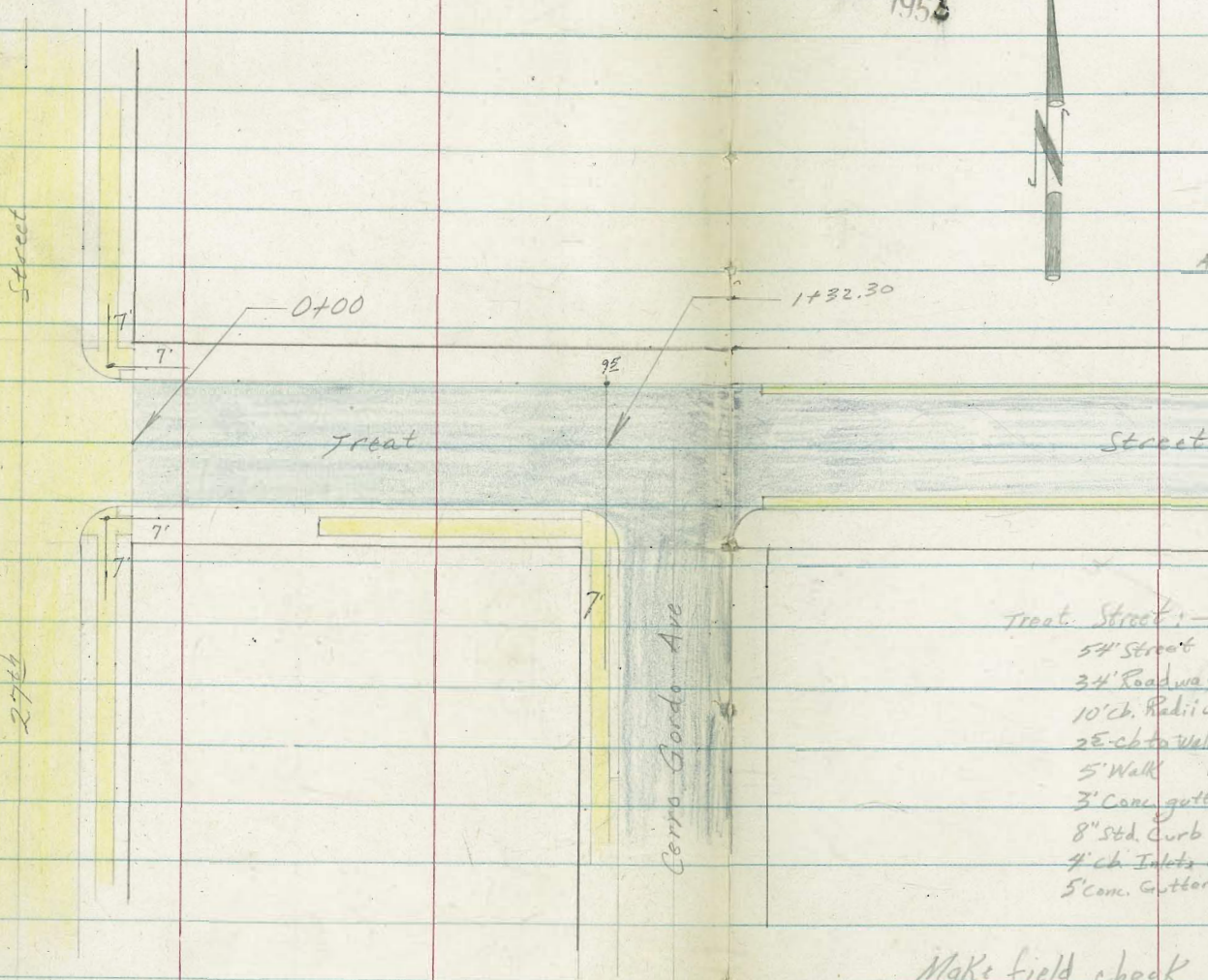
X-Section Treat Street

27th to 28th

T.P. Sheet 118

INDEXED
HER
MAY 26 1956

53

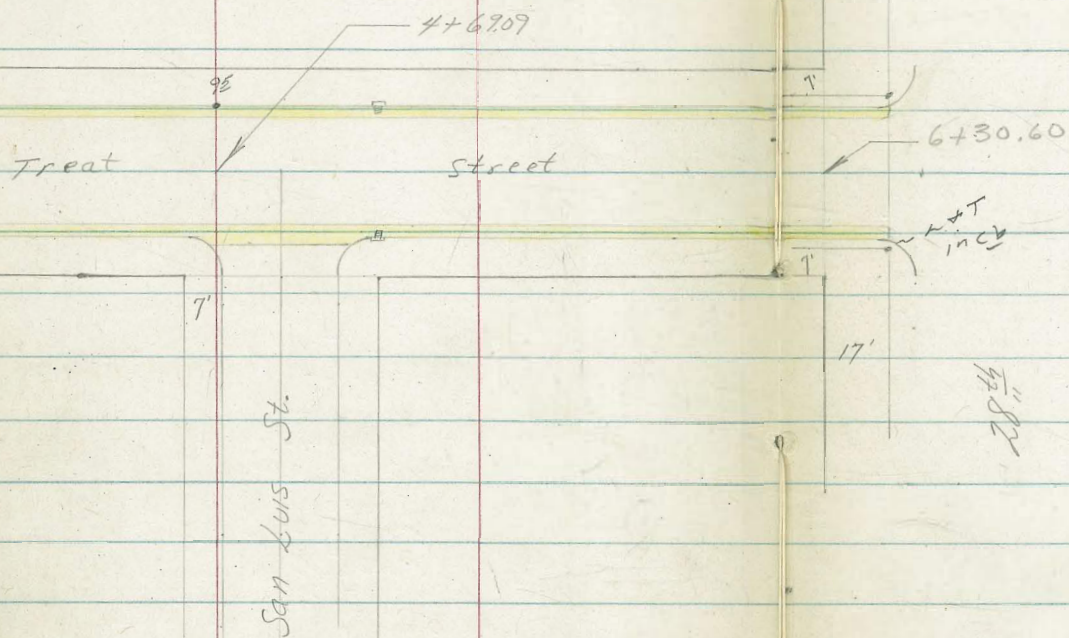


All pts. fd. were ld. & cr.

Treat Street:

- 54' Street
- 34' Roadway
- 10' ch. Radii
- 25' ch to Walk
- 5' Walk
- 3' Conc. gutter as shown
- 8" Std. Curb
- 4' ch. Inlets at San Luis
- 5' Conc. Gutter across San Luis.

Make field check on curb replacements.



0+26.5 19° Rt to Near Edge 14" Palm

0+25

0+08.5 19° Rt to Near Edge 10" Palm

+1.0	4.2	6.1	6.34	7.24	7.59	8.40	7.42	7.4	6.9
35	27	22	17	17		17	17	22	27
			cb	Gut		Gut	cb		Gut
									gt
									Wall

0+07 18° Rt to Leadman

0+00 { East Line of 27th Street
 End of Conc. Paving
 Begin AC paving - 1" thick at beginning.

6.6	7.81	7.96	8.00	8.73	9.29	10.21	9.77	9.64	9.50
27	24	19	17	17		17	17	19	24
	walk	walk	cb	Gut		Gut	cb	walk	walk

Mid-point Curb Returns

7.97	8.76	10.35	9.78
cb	Gut	Gut	cb

0-14 Fly Curb Line 27th

7.37	8.07	7.96	8.71	9.60	10.50	9.77	11.35	10.60
50	50	27	27		27	27	50	50
cb	Gut	cb	Gut		Gut	cb	Gut	cb

0-30 Q Twenty-Seventh Street

8.18	9.83	11.47
50		50

BM 5.66 185.67 A

SWBP
 180.01 E E 27th

185.67 A

Cont'd From Page 55

Lt

£

Rt

St

0+51 Begin walk on right

5.58 5.51
192 243
walk

0+50.5 18³Rt to Near Edge P Pole # P2713

0+50

+25 32 50 482 576 585 659 5.66 5.6
30 27 21 17 17 17 17 27
Gut Gut Gut GPO
50
2713

0+49.1 Rt begin curb

6.65 5.68
17 17
Gut cb

0+39 27³Rt £ Double garage (Apron flat)

6.36 6.28
272 322
Apron Floor

0+28.7 Rt End Curb. (Removed for driveway)

8.62 7.7
17 17
Gut cb

0+27.5 18³Rt to Near Edge Guy Pole # 592064H

185.67A

185.67A

Mid point of Return

3.22 2.53
Gut cb

1+23 BC of Cb Return on Right

40.4	1.8	27	3.25	3.78	3.10	3.43	2.63
34	27	23	17	17		17	17
			cb	Gut		Gut	cb

T.P. 3.20 185.26 π 3.61 182.06185.26 π

1+00 AC paving is 2" thick in center.

1.1	30	3.78	4.10	3.73	4.33	3.48
27	22	17	17		17	17
		cb	Gut		Gut	cb

0+92.5 Lt ♀ 15' Curb opening

2.83	3.29	3.44	4.11	4.26
27	24.5	19.5	17	17
Drive	Drive	Drive	Lip	Gut
		new		
		inside		

0+75

+1.8	3.2	3.94	4.67	4.56	5.20	4.29
30	27	17	17		17	17
		cb	Gut		Gut	cb

0+60.8 17' Lt ♀ 3' conc. walk

4.32	4.41
27	17.3
walk	walk

Not locating Poles & Trees where walk is in.

185.67 π 185.67 π

1+75.0

Lt begin walk

459	471
243	192
walk	

1+72.5 { 3' Conc gutters begin Right & left
EC of cb. Return on Right

33	44	468	5.55	5.39	4.80	4.47	4.64	3.75	3.5	2.7
30	27	17	17	14		14	17	17	27	35
		cb	gut				gut	cb		

Midpoint of Return

4.00	3.60
gut	cb

1+62.5 Line Easterly Curb of Cerro Gordo

458	486	4.06	3.82	3.81	3.50	2.90	2.22
17	17		17	27	27	50	50
lip	gut			gut	cb	gut	cb

1+60.5

Lt & 10' curb opening

3.25	3.99	4.55	4.72
24E	192	17	17
Drive	Drive	Lip	gut
	how		
	wide		

1+48

0.6	2.2	3.4	3.72	4.27	3.49	3.23	2.97	2.11
34	27	22	17	17		17	27	50
			cb	gut				

1+33 Line Westerly curb of Cerro Gordo

0	1.8	3.0	3.42	3.90	3.19	3.25	3.10	2.53	2.19	1.58
33	27	23	17	17		17	27	27	50	50
			cb	gut			gut	cb	gut	cb

185.26 T

185.26 T

2+75

185^E Rt to Near Edge P. Pale #JP2735

7.95	8.82	8.53	7.67	8.29	8.47	7.56	6.0	1.0
17	17	14		14	17	17	27	32
cb	gut				gut	cb		

2+50

3.79	4.59	4.42	3.45	4.04	4.25	3.40	2.8	+3.0
17	17	14		14	17	17	25	27
cb	gut				gut	cb		

T.P.

0.44

172.56 π 13.14 172.12172.56 π

2+25

12.44	13.32	13.10	11.99	12.44	12.67	11.78	11.5	8.7
17	17	14		14	17	17	22	27
cb	gut				gut	cb		

2+17

Lt 10' opening in curb

11.82	12.02	11.86
17	17	14
lip	gut	

2+08

17^E Rt 6 conc walk

8.95	8.93	8.18
17.67	22	27
walk	walk	walk
		walk level

↑ walk same grade as cb.

2+00

AC paving 2" thick in center.

8.40	9.30	9.05	8.15	8.45	8.18	7.80	7.4	7.8
17	17	14		14	17	17	24	27
cb	gut				gut	cb		

1+94

Lt 10' curb opening

conc. spilled in this opening - make check.

185.26 π 185.26 π

3+50 End AC, paving - 1 1/2" thick.

3+44 Rt 12' opening in curb (Not used. Make check)

3+25 End Walk on Left
Begin walk on right

3+07 Lt & 34' curb opening

T.P. 0.25 159.48 π 13.33 159.23

3+00 AC, paving 1 1/2" thick in center

2+79 0.7 Rt to Near Edge 20" Pepper Trees

172.56 π

153.5 152.5 152.28 151.45 151.65 152.31 151.48 151.16 151.98
6.0 7.0 7.20 8.03 7.83 7.17 8.06 8.32 7.50
35 27 17 17 14 14 17 17
cb gut gut cb

152.46 152.17 152.37
7.02 7.31 7.11
14 17 17
gut tip

156.94 156.67 156.47 155.58 155.82 156.32 155.74 155.52 156.35 156.42 156.58
2.54 2.81 3.01 3.70 3.66 3.16 3.74 3.96 3.13 3.06 2.90
24E 19E 17 17 14 14 17 17 19E 24E
walk cb gut gut cb walk

0.88 4.01 0.77
17 17 14
tip gut

159.48 π

160.59
12.81 12.91 12.69 11.96 12.55 12.34 11.77 11.0 10.1 6.3
17 17 14 14 17 17 25 27 32
tip gut gut cb

172.56 π

Cont'd from Page 60

4+25 Lt 3sq.ft. of gutter to be replaced.

4+18 18" R4 to Near Edge P. Pole # JP 2785

4+01 20" Lt & 2' Conc. walk (will have to be removed)

4+00 Note that curb on left has sunken. Make check.

T.P. 0.15 146.31 π 1332 146.16

3+75

3+62 Rt End walk

3+57 Rt & 13" opening in curb

159.48 π

Lt		E		Rt		61				
139.3	139.7	(139.56)	139.86	139.36	139.1	138.75	138.52	139.35	139.8	141.3
7.0	6.6	6.45	6.95	7.2	7.56	7.79	6.96	6.5	5.0	
35	27	17	17	14	14	17	17	27	35	
		cb	gut			gut	cb			

↑ cb from west 0.3 Lower

144.9	144.6	144.2	143.09	143.13	143.47	143.1	142.89	142.72	143.61	144.4	148.8
1.4	1.7	2.1	3.22	3.18	2.84	3.2	3.42	3.59	2.70	1.9	+2.5
35	27	21	17	17	14	14	14	17	17	27	35
			cb	gut				gut	cb		

146.31 π

151.3	150.0	148.03	147.30	147.53	147.4	147.13	146.86	147.74	149.2	152.9
8.2	9.5	11.45	12.18	11.95	12.1	12.35	12.62	11.74	10.3	6.6
35	27	17	17	14		14	17	17	27	35
		cb	gut				gut	cb		

150.05	150.44
9.43	9.04
19E	24E
walk	

150.24	150.02	150.19
9.24	9.46	9.29
14	17	17
	gut	cb

159.48 π

5+00 Fly Curb Line of San Luis

133.0	133.1	133.21	132.32	132.54	132.8	132.2	131.65	131.45	131.57	131.3	131.94	131.3	131.95
6.8	6.7	6.61	7.50	7.28	7.0	7.6	8.17	8.37	8.25	8.5	7.88	8.5	7.27
35	27	17	17	14		8	14	17	19	27	27	50	50
		cb	gut							gut	cb	gut	cb

4+85

133.3	133.4	133.53	132.66	132.89	133.2	133.16	132.6	132.05	131.86	132.04	132.1	132.1
6.5	6.4	6.29	7.16	6.93	6.7	6.66	7.2	7.77	7.96	7.78	7.7	7.7
35	27	17	17	14	7	14	10	14	17	19	27	50
		cb	gut			mt						

4+70 Wly Curb Line of San Luis

134.2	133.97	133.09	133.30	133.9	134.0	133.6	132.45	132.25	43	132.3	93	132.0	133.02
5.6	5.85	6.73	6.52	5.9	5.8	6.2	7.37	7.57	7.39	7.5	6.89	7.8	6.80
27	17	17	14	7		7	14	17	19	27	27	50	50
	cb	gut								gut	cb	gut	cb

Midpoint of Return

132.4	133.10
7.4	6.72
gut	cb

4+60 Curb BC on Right

135.1	134.80	133.93	134.17	134.8	134.8	134.4	132.78	132.53	133.37	134.0	134.8
4.7	5.02	5.87	5.65	5.0	5.0	5.4	7.04	7.29	6.45	5.8	5.0
27	17	17	14	7		7	14	17	17	27	35
GRD	cb	gut							gut	cb	

T.P. 5.76 139.82 ∇ 12.25 134.06

139.82 ∇

4+32

Lt & 14 opening in curb

139.11	138.85	138.12	137.97	138.19
7.20	7.46	8.19	8.34	8.12
24.3	20	17	17	14
Drive	Drive	Lip	gut	
Now	Now			
9' wide	12' wide			

146.31 ∇

146.31 ∇

T.P. 12.70 152.42 $\bar{\Delta}$ 0.10 139.72

5+50

132.8	135.1	135.27	134.4 \checkmark	134.73	134.5	133.57	133.30	134.16	134.1	133.9
7.0	4.7	4.55	5.40	5.09	5.3	6.25	6.52	5.66	5.7	5.9
35	27	17	17	14		14	17	17	27	35
		cb	Gut				Gut	cb		

5+33 18 $^{\circ}$ Rt to dead man

133.0	133.3	133.07	132.25	132.50	132.7	132.4	131.32	131.1 \checkmark	132.01	132.2	132.5
6.8	6.5	6.75	7.57	7.32	7.1	7.4	8.50	8.70	7.81	7.6	7.3
35	27	17	17	14		7	14	17	17	27	35
\downarrow	\downarrow	cb	Gut					Gut	cb		

5+25

5+17 18 $^{\circ}$ Rt to Near Edge fire hydrant

5+14.5 18 $^{\circ}$ Rt to Near Edge P. Pole #JP2805

5+12.5 Rt 4' curb Inlet

131.18	131.03	131.93	129.18
8.64	8.79	7.89	10.64
14	17	17	17
	GATE	cb	IN

5+09.5 Lt 4' Curb inlet (Grate needs repairing)
EC Curb Return

133.0	133.0	129.4 \checkmark	132.94	132.08	132.29	132.5	132.2	131.31	131.08	131.88	132.2	132.0
6.8	6.8	10.40	6.88	7.74	7.53	7.3	7.6	8.51	8.74	7.94	7.6	7.8
35	27	17	17	17	14		5	14	17	17	27	35
		IN	cb	Grate					Gut	cb		

131.3	131.91
8.5	7.91
Gut	cb

Midpoint of Return

139.82 $\bar{\Delta}$

139.82 $\bar{\Delta}$

6+52

6+49

Edge AC paving in 28th

149.69	148.54	148.06	147.39	146.27	145.50	143.67
2.73	3.88	4.36	5.03	6.15	6.92	8.75
50	27	17		17	27	50

6+50.6

6+47.60

opposite End curbs

149.20	148.8			145.7	146.96
3.22	3.6			6.7	5.46
27	27			27	27
cb	Gut			Gut	cb

6+48.5

6+45.5

26th Rd to Near Edge P. Pole # 848

Mid point of Returns

148.90	148.2			146.2	147.01
3.52	4.2			6.2	5.41
cb	Gut			Gut	cb

6+40.6

EC of Curb Returns
End of 3' conc Gutters Lt. & Rt.

148.6	148.4	148.50	147.55	147.72	146.5	146.06	145.91	146.87	146.2	145.0	144.3
3.8	4.0	3.92	4.87	4.70	5.9	6.36	6.51	5.55	6.2	7.4	8.1
35	27	17	17	14		14	17	17	24	27	35
		cb	Gut			Gut	cb				

6+30.60 West Line 28th Street

145.2	145.7	147.3	147.19	146.32	146.50	145.6	144.84	144.69	145.51	145.4	144.2	143.8
7.2	6.7	5.1	5.23	6.10	5.92	6.8	7.58	7.73	6.91	7.0	8.2	8.6
35	27	23	17	17	14		14	17	17	18	23	27
			cb	Gut			Gut	cb				

6+05

20th & 27th conc walk (have to be removed)

6+00

141.9	142.2	142.51	141.65	142.00	141.3	140.24	139.92	140.70	140.2	139.9
10.5	10.2	9.91	10.77	10.42	11.1	12.18	12.50	11.72	12.2	12.5
34	27	17	17	14		14	17	17	27	35
			cb	Gut			Gut	cb		

All water meters are placed next to
back edge of curb.

check 5.61 180.03 = 180.01

T.P. 7.77 185.64 0.12 177.87

T.P. 12.87 177.99 0.03 165.12

T.P. 12.77 165.15 0.04 152.38

6770.6

o.k.

AC Paving

152.42

157.02

440
50

147.59

483

144.32

810
50

152.42

X-sec "E" st 33rd St Wly
to Canyon and U.S. 94 Hwy

65

1780 toe slope

Lt. Sly $\frac{80.7}{40}$ / $\frac{80.3}{20}$ 812 $\frac{83.2}{20}$ Rt. Nly $\frac{83.8}{29.5}$
State Hwy
Fence

1754 40° Lt to top of fill end

914 912 901 897 868 861
50 40 20 20 39°
to State Hwy
Fence here

1740 E crosses top of fill end

944

1726 40° Rt to top fill end

920 928 936 948 953 954
50 40 20 20 40

1700

921 925 942 950 953 948 944 944
50 40 20 20 40 50 76.5
to State Hwy
Fence here

0798 43.5° Lt to E 3° con walk L E

920 923.4
53.3 43.5
Wly

0771 32° Lt to E 20" dia Jackaranda tree

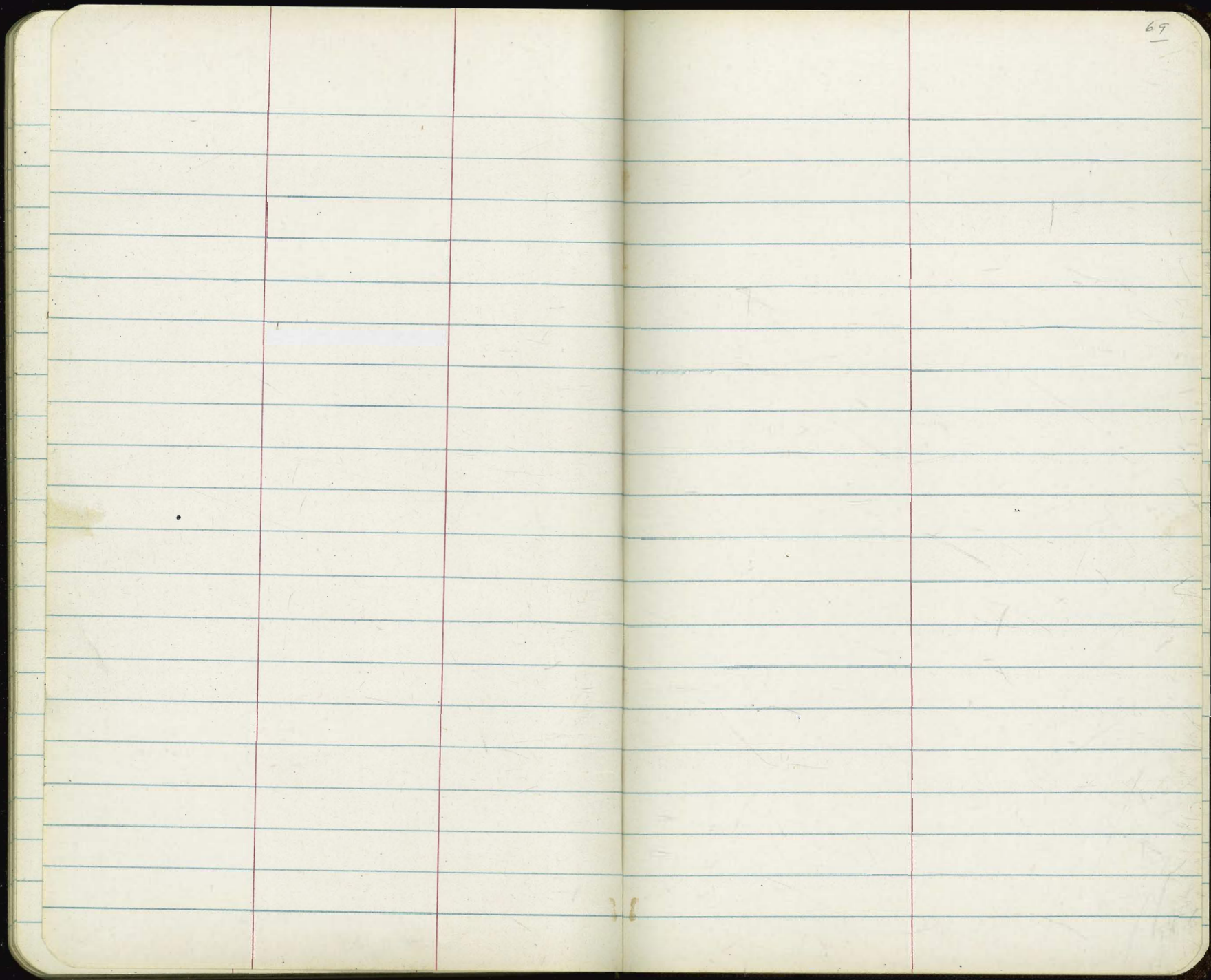
0750

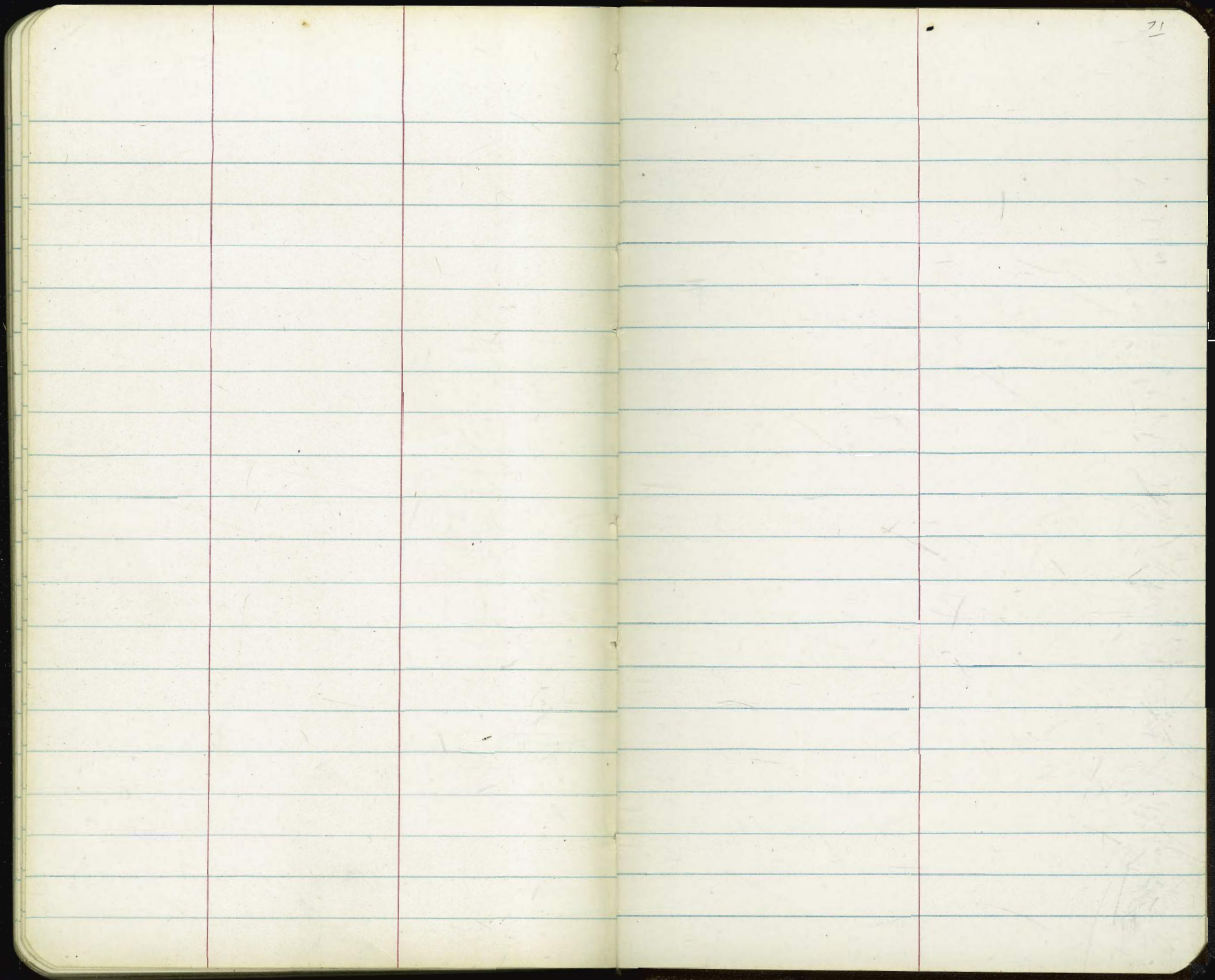
912 913 920 924 931 930 936 936
50 43 40 20 20 40 50

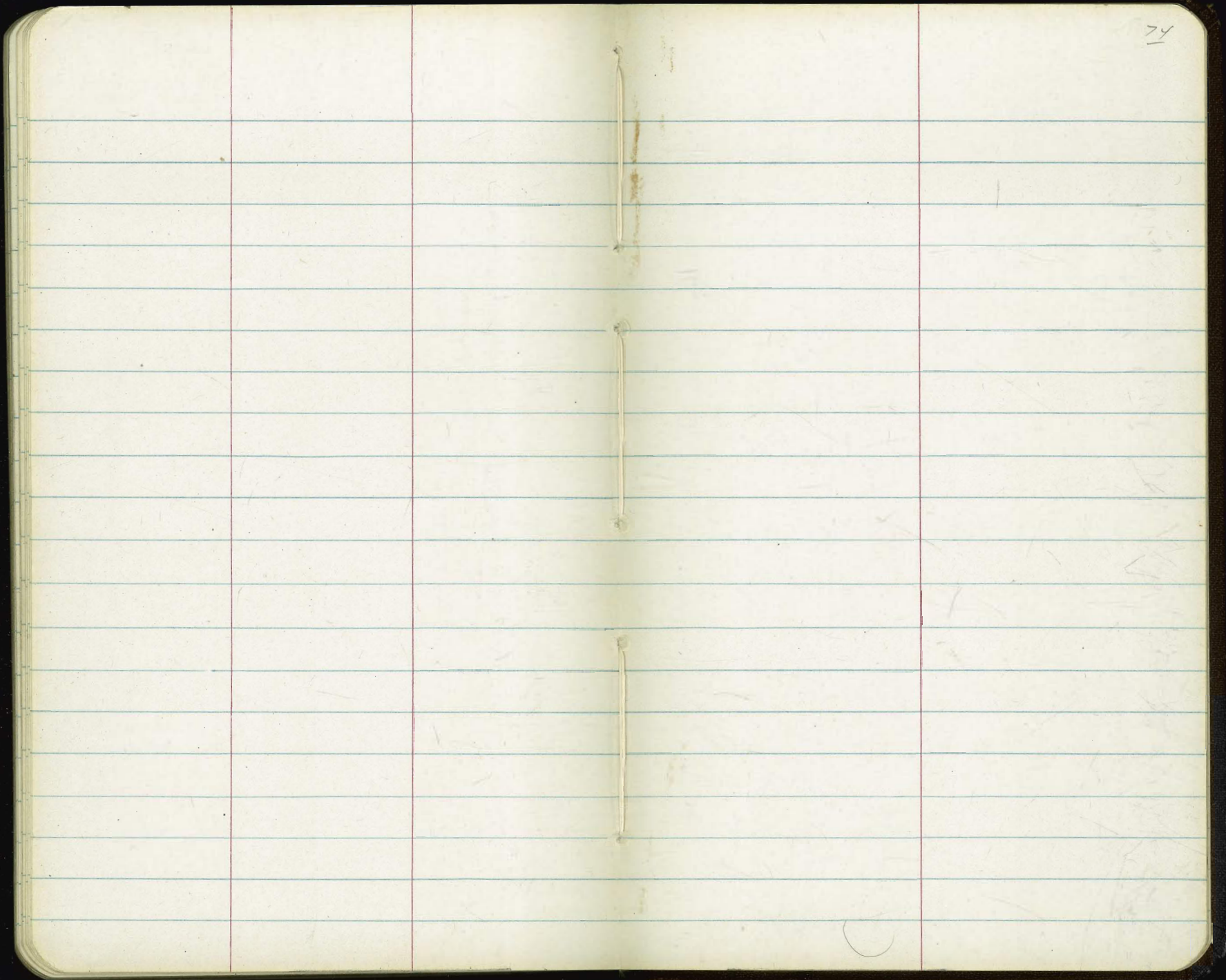
0709 31° Lt to E 14" dia Olive tree

0700 = W line 33rd St

913 915 917 918 928
40 20 20 40







98

12 -

3480 to 4225

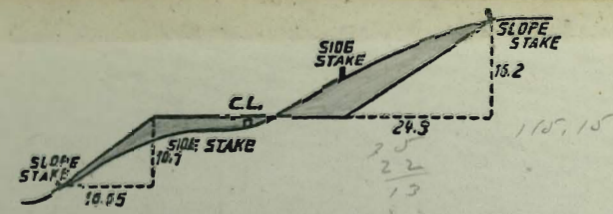
44672
18710

25962

879
185

1064

644
633



DISTANCES FROM SIDE STAKES FOR CROSS-SECTIONING.
SLOPE 1 1/2 TO 1. ROADWAY OF ANY WIDTH.

	0	.1	.2	.3	.4	.5	.6	.7	.8	.9	
0	0.00	0.15	0.30	0.45	0.60	0.75	0.90	1.05	1.20	1.35	0
1	1.50	1.65	1.80	1.95	2.10	2.25	2.40	2.55	2.70	2.85	1
2	3.00	3.15	3.30	3.45	3.60	3.75	3.90	4.05	4.20	4.35	2
3	4.50	4.65	4.80	4.95	5.10	5.25	5.40	5.55	5.70	5.85	3
4	6.00	6.15	6.30	6.45	6.60	6.75	6.90	7.05	7.20	7.35	4
5	7.50	7.65	7.80	7.95	8.10	8.25	8.40	8.55	8.70	8.85	5
6	9.00	9.15	9.30	9.45	9.60	9.75	9.90	10.05	10.20	10.35	6
7	10.50	10.65	10.80	10.95	11.10	11.25	11.40	11.55	11.70	11.85	7
8	12.00	12.15	12.30	12.45	12.60	12.75	12.90	13.05	13.20	13.35	8
9	13.50	13.65	13.80	13.95	14.10	14.25	14.40	14.55	14.70	14.85	9
10	15.00	15.15	15.30	15.45	15.60	15.75	15.90	16.05	16.20	16.35	10
11	16.50	16.65	16.80	16.95	17.10	17.25	17.40	17.55	17.70	17.85	11
12	18.00	18.15	18.30	18.45	18.60	18.75	18.90	19.05	19.20	19.35	12
13	19.50	19.65	19.80	19.95	20.10	20.25	20.40	20.55	20.70	20.85	13
14	21.00	21.15	21.30	21.45	21.60	21.75	21.90	22.05	22.20	22.35	14
15	22.50	22.65	22.80	22.95	23.10	23.25	23.40	23.55	23.70	23.85	15
16	24.00	24.15	24.30	24.45	24.60	24.75	24.90	25.05	25.20	25.35	16
17	25.50	25.65	25.80	25.95	26.10	26.25	26.40	26.55	26.70	26.85	17
18	27.00	27.15	27.30	27.45	27.60	27.75	27.90	28.05	28.20	28.35	18
19	28.50	28.65	28.80	28.95	29.10	29.25	29.40	29.55	29.70	29.85	19
20	30.00	30.15	30.30	30.45	30.60	30.75	30.90	31.05	31.20	31.35	20
21	31.50	31.65	31.80	31.95	32.10	32.25	32.40	32.55	32.70	32.85	21
22	33.00	33.15	33.30	33.45	33.60	33.75	33.90	34.05	34.20	34.35	22
23	34.50	34.65	34.80	34.95	35.10	35.25	35.40	35.55	35.70	35.85	23
24	36.00	36.15	36.30	36.45	36.60	36.75	36.90	37.05	37.20	37.35	24
25	37.50	37.65	37.80	37.95	38.10	38.25	38.40	38.55	38.70	38.85	25
26	39.00	39.15	39.30	39.45	39.60	39.75	39.90	40.05	40.20	40.35	26
27	40.50	40.65	40.80	40.95	41.10	41.25	41.40	41.55	41.70	41.85	27
28	42.00	42.15	42.30	42.45	42.60	42.75	42.90	43.05	43.20	43.35	28
29	43.50	43.65	43.80	43.95	44.10	44.25	44.40	44.55	44.70	44.85	29
30	45.00	45.15	45.30	45.45	45.60	45.75	45.90	46.05	46.20	46.35	30
31	46.50	46.65	46.80	46.95	47.10	47.25	47.40	47.55	47.70	47.85	31
32	48.00	48.15	48.30	48.45	48.60	48.75	48.90	49.05	49.20	49.35	32
33	49.50	49.65	49.80	49.95	50.10	50.25	50.40	50.55	50.70	50.85	33
34	51.00	51.15	51.30	51.45	51.60	51.75	51.90	52.05	52.20	52.35	34
35	52.50	52.65	52.80	52.95	53.10	53.25	53.40	53.55	53.70	53.85	35
36	54.00	54.15	54.30	54.45	54.60	54.75	54.90	55.05	55.20	55.35	36
37	55.50	55.65	55.80	55.95	56.10	56.25	56.40	56.55	56.70	56.85	37
38	57.00	57.15	57.30	57.45	57.60	57.75	57.90	58.05	58.20	58.35	38
39	58.50	58.65	58.80	58.95	59.10	59.25	59.40	59.55	59.70	59.85	39
40	60.00	60.15	60.30	60.45	60.60	60.75	60.90	61.05	61.20	61.35	40
41	61.50	61.65	61.80	61.95	62.10	62.25	62.40	62.55	62.70	62.85	41
42	63.00	63.15	63.30	63.45	63.60	63.75	63.90	64.05	64.20	64.35	42
43	64.50	64.65	64.80	64.95	65.10	65.25	65.40	65.55	65.70	65.85	43
44	66.00	66.15	66.30	66.45	66.60	66.75	66.90	67.05	67.20	67.35	44
45	67.50	67.65	67.80	67.95	68.10	68.25	68.40	68.55	68.70	68.85	45
46	69.00	69.15	69.30	69.45	69.60	69.75	69.90	70.05	70.20	70.35	46
47	70.50	70.65	70.80	70.95	71.10	71.25	71.40	71.55	71.70	71.85	47
48	72.00	72.15	72.30	72.45	72.60	72.75	72.90	73.05	73.20	73.35	48
49	73.50	73.65	73.80	73.95	74.10	74.25	74.40	74.55	74.70	74.85	49
50	75.00	75.15	75.30	75.45	75.60	75.75	75.90	76.05	76.20	76.35	50

THE NATIONAL BLANK BOOK COMPANY
HOLYOKE MASSACHUSETTS
NEW YORK CHICAGO BOSTON SAN FRANCISCO