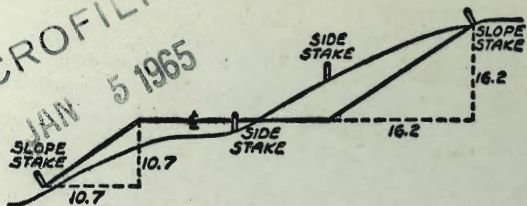


MICROFILMED
JAN 5 1965



DISTANCES FROM SIDE STAKES FOR CROSS-SECTIONING
SLOPE 1 TO 1. ROADWAY OF ANY WIDTH

	0	.1	.2	.3	.4	.5	.6	.7	.8	9	
0	0.00	0.10	0.20	0.30	0.40	0.50	0.60	0.70	0.80	0.90	0
1	1.00	1.10	1.20	1.30	1.40	1.50	1.60	1.70	1.80	1.90	1
2	2.00	2.10	2.20	2.30	2.40	2.50	2.60	2.70	2.80	2.90	2
3	3.00	3.10	3.20	3.30	3.40	3.50	3.60	3.70	3.80	3.90	3
4	4.00	4.10	4.20	4.30	4.40	4.50	4.60	4.70	4.80	4.90	4
5	5.00	5.10	5.20	5.30	5.40	5.50	5.60	5.70	5.80	5.90	5
6	6.00	6.10	6.20	6.30	6.40	6.50	6.60	6.70	6.80	6.90	6
7	7.00	7.10	7.20	7.30	7.40	7.50	7.60	7.70	7.80	7.90	7
8	8.00	8.10	8.20	8.30	8.40	8.50	8.60	8.70	8.80	8.90	8
9	9.00	9.10	9.20	9.30	9.40	9.50	9.60	9.70	9.80	9.90	9
10	10.00	10.10	10.20	10.30	10.40	10.50	10.60	10.70	10.80	10.90	10
11	11.00	11.10	11.20	11.30	11.40	11.50	11.60	11.70	11.80	11.90	11
12	12.00	12.10	12.20	12.30	12.40	12.50	12.60	12.70	12.80	12.90	12
13	13.00	13.10	13.20	13.30	13.40	13.50	13.60	13.70	13.80	13.90	13
14	14.00	14.10	14.20	14.30	14.40	14.50	14.60	14.70	14.80	14.90	14
15	15.00	15.10	15.20	15.30	15.40	15.50	15.60	15.70	15.80	15.90	15
16	16.00	16.10	16.20	16.30	16.40	16.50	16.60	16.70	16.80	16.90	16
17	17.00	17.10	17.20	17.30	17.40	17.50	17.60	17.70	17.80	17.90	17
18	18.00	18.10	18.20	18.30	18.40	18.50	18.60	18.70	18.80	18.90	18
19	19.00	19.10	19.20	19.30	19.40	19.50	19.60	19.70	19.80	19.90	19
20	20.00	20.10	20.20	20.30	20.40	20.50	20.60	20.70	20.80	20.90	20
21	21.00	21.10	21.20	21.30	21.40	21.50	21.60	21.70	21.80	21.90	21
22	22.00	22.10	22.20	22.30	22.40	22.50	22.60	22.70	22.80	22.90	22
23	23.00	23.10	23.20	23.30	23.40	23.50	23.60	23.70	23.80	23.90	23
24	24.00	24.10	24.20	24.30	24.40	24.50	24.60	24.70	24.80	24.90	24
25	25.00	25.10	25.20	25.30	25.40	25.50	25.60	25.70	25.80	25.90	25
26	26.00	26.10	26.20	26.30	26.40	26.50	26.60	26.70	26.80	26.90	26
27	27.00	27.10	27.20	27.30	27.40	27.50	27.60	27.70	27.80	27.90	27
28	28.00	28.10	28.20	28.30	28.40	28.50	28.60	28.70	28.80	28.90	28
29	29.00	29.10	29.20	29.30	29.40	29.50	29.60	29.70	29.80	29.90	29
30	30.00	30.10	30.20	30.30	30.40	30.50	30.60	30.70	30.80	30.90	30
31	31.00	31.10	31.20	31.30	31.40	31.50	31.60	31.70	31.80	31.90	31
32	32.00	32.10	32.20	32.30	32.40	32.50	32.60	32.70	32.80	32.90	32
33	33.00	33.10	33.20	33.30	33.40	33.50	33.60	33.70	33.80	33.90	33
34	34.00	34.10	34.20	34.30	34.40	34.50	34.60	34.70	34.80	34.90	34
35	35.00	35.10	35.20	35.30	35.40	35.50	35.60	35.70	35.80	35.90	35
36	36.00	36.10	36.20	36.30	36.40	36.50	36.60	36.70	36.80	36.90	36
37	37.00	37.10	37.20	37.30	37.40	37.50	37.60	37.70	37.80	37.90	37
38	38.00	38.10	38.20	38.30	38.40	38.50	38.60	38.70	38.80	38.90	38
39	39.00	39.10	39.20	39.30	39.40	39.50	39.60	39.70	39.80	39.90	39
40	40.00	40.10	40.20	40.30	40.40	40.50	40.60	40.70	40.80	40.90	40
41	41.00	41.10	41.20	41.30	41.40	41.50	41.60	41.70	41.80	41.90	41
42	42.00	42.10	42.20	42.30	42.40	42.50	42.60	42.70	42.80	42.90	42
43	43.00	43.10	43.20	43.30	43.40	43.50	43.60	43.70	43.80	43.90	43
44	44.00	44.10	44.20	44.30	44.40	44.50	44.60	44.70	44.80	44.90	44
45	45.00	45.10	45.20	45.30	45.40	45.50	45.60	45.70	45.80	45.90	45
46	46.00	46.10	46.20	46.30	46.40	46.50	46.60	46.70	46.80	46.90	46
47	47.00	47.10	47.20	47.30	47.40	47.50	47.60	47.70	47.80	47.90	47
48	48.00	48.10	48.20	48.30	48.40	48.50	48.60	48.70	48.80	48.90	48
49	49.00	49.10	49.20	49.30	49.40	49.50	49.60	49.70	49.80	49.90	49
50	50.00	50.10	50.20	50.30	50.40	50.50	50.60	50.70	50.80	50.90	50

Distance of slope stake from side or shoulder stake for any width roadway, slope 1 to 1. If ground is nearly level, the out or fill at side stake is located by the double entry method in left column and top row. The number in body of table in same row and column gives distance from side stake to slope stake. If ground is not level estimate the difference in elevation between the side stake and slope stake, lower target by this amount if out, elevate if fill. Add this amount to cut or fill and find distance in table. Set up rod at this point, and line of sight should cut target. If it does not make the slight adjustment necessary.

TABLE XIII—CORRECTIONS FOR TANGENTS AND EXTERNALS

These corrections are to be added to the approximate values, found by dividing the tangent, or external, for a 1° curve (Table VIII) by the degree of curve, in order to obtain the true tangents, or externals. Intermediate values may be obtained by interpolation.

FOR TANGENTS ADD

Central Angle	DEGREE OF CURVE													
	5°	10°	15°	20°	25°	30°	35°	40°	45°	50°	55°	60°	65°	70°
10°	.03	.06	.09	.13	.16	.19	.22	.25	.28	.31	.34	.38	.42	.46
15°	.04	.10	.14	.19	.24	.29	.34	.39	.45	.51	.53	.58	.63	.68
20°	.06	.13	.19	.26	.32	.39	.45	.51	.58	.65	.72	.79	.84	.90
25°	.08	.16	.24	.33	.40	.49	.58	.67	.75	.83	.90	.99	1.06	1.14
30°	.10	.19	.29	.39	.49	.59	.69	.79	.89	.99	1.09	1.20	1.29	1.39
35°	.11	.22	.34	.47	.58	.69	.79	.81	.92	1.04	1.29	1.42	1.54	1.66
40°	.13	.26	.40	.53	.67	.80	.93	1.06	1.20	1.34	1.49	1.64	1.79	1.94
45°	.15	.30	.44	.60	.76	.91	1.06	1.21	1.37	1.52	1.70	1.87	2.04	2.21
50°	.17	.34	.51	.68	.85	1.02	1.19	1.36	1.54	1.72	1.91	2.10	2.29	2.48
55°	.19	.38	.57	.76	.95	1.14	1.32	1.52	1.72	1.92	2.14	2.35	2.56	2.77
60°	.21	.42	.63	.84	1.05	1.27	1.49	1.71	1.94	2.17	2.38	2.60	2.83	3.07
65°	.23	.46	.69	.93	1.16	1.40	1.64	1.88	2.13	2.38	2.63	2.88	3.13	3.39
70°	.25	.51	.76	1.02	1.28	1.54	1.80	2.06	2.33	2.60	2.88	3.16	3.44	3.72
75°	.27	.56	.83	1.12	1.40	1.69	1.98	2.27	2.57	2.87	3.16	3.47	3.78	4.09
80°	.30	.61	.91	1.22	1.53	1.84	2.15	2.46	2.78	3.10	3.44	3.78	4.12	4.46
85°	.33	.66	1.00	1.33	1.68	2.02	2.36	2.70	3.05	3.40	3.77	4.14	4.55	4.89
90°	.36	.72	1.09	1.45	1.83	2.20	2.57	2.94	3.32	3.70	4.10	4.50	4.91	5.32
95°	.39	.79	1.19	1.55	2.00	2.40	2.80	3.20	3.61	4.02	4.40	4.98	5.38	5.83
100°	.43	.86	1.30	1.74	2.18	2.62	3.06	3.50	3.95	4.40	4.88	5.37	5.85	6.34
110°	.51	1.03	1.56	2.08	2.61	3.14	3.67	4.21	4.76	5.31	5.86	6.43	7.01	7.60
120°	.62	1.25	1.93	2.52	3.16	3.81	4.45	5.11	5.77	6.44	7.12	7.80	8.50	9.22

FOR EXTERNALS ADD

Central Angle	DEGREE OF CURVE													
	5°	10°	15°	20°	25°	30°	35°	40°	45°	50°	55°	60°	65°	70°
10°	.001	.003	.004	.006	.007	.008	.009	.011	.012	.014	.015	.017	.018	.020
15°	.003	.007	.010	.014	.018	.023	.027	.029	.032	.035	.039	.043	.047	.051
20°	.006	.011	.017	.022	.028	.034	.038	.045	.051	.057	.063	.070	.076	.083
25°	.009	.018	.027	.036	.046	.056	.065	.074	.083	.093	.106	.120	.127	.135
30°	.013	.025	.038	.051	.065	.078	.090	.103	.116	.129	.149	.170	.179	.188
35°	.018	.035	.054	.072	.086	.109	.131	.153	.175	.197	.213	.230	.247	.264
40°	.023	.046	.070	.093	.117	.141	.172	.203	.234	.265	.277	.290	.315	.341
45°	.030	.060	.093	.119	.153	.184	.216	.254	.289	.325	.351	.378	.411	.445
50°	.037	.075	.116	.151	.189	.227	.266	.305	.345	.384	.425	.467	.508	.550
55°	.046	.093	.142	.188	.236	.283	.332	.381	.420	.479	.530	.582	.641	.700
60°	.056	.112	.168	.225	.283	.340	.398	.457	.516	.575	.636	.697	.774	.851
65°	.067	.135	.204	.273	.343	.412	.483	.554	.625	.697	.711	.845	.922	1.01
70°	.080	.159	.240	.321	.403	.485	.568	.652	.735	.819	.906	.994	1.08	1.17
75°	.095	.182	.286	.383	.480	.578	.678	.777	.877	.977	1.07	1.18	1.29	1.39
80°	.110	.220	.332	.445	.558	.671	.787	.903	1.02	1.13	1.25	1.38	1.50	1.62
85°	.128	.259	.391	.524	.657	.790	.926	1.06	1.20	1.34	1.47	1.62	1.76	1.91
90°	.149	.299	.450	.603	.756	.910	1.07	1.22	1.38	1.54	1.70	1.87	2.03	2.20
95°	.174	.350	.522	.706	.985	1.06	1.25	1.43	1.62	1.80	1.99	2.18	2.38	2.58
100°	.200	.401	.604	.809	1.01	1.22	1.43	1.64	1.85	2.06	2.28	2.50	2.73	2.96
110°	.268	.536	.806	1.08	1.35	1.63	1.91	2.20	2.48	2.76	3.05	3.35	3.66	3.96
120°	.360	.721	1.08	1.45	1.82	2.19	2.57	2.95	3.33	3.72	4.11	4.50	4.91	5.32

INDEX

Pg

Belk R
Sewer survey - Lots 3 - Riviera Villas

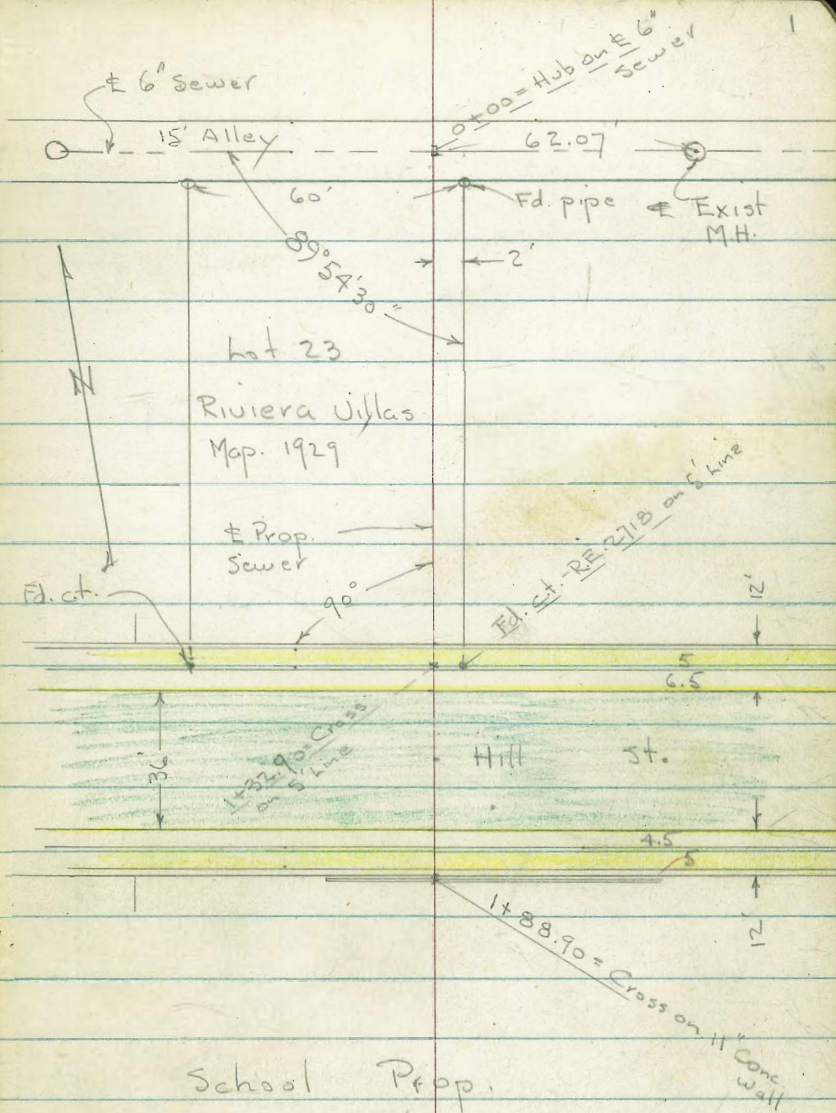
Survey for Prop. Sewer in 5'
Easement along Ely. Line of lot 23

7062

6-17-53

7.0.

W.O. 62283



INDEXED

JUN 18 1953

Levels along \pm of Prop. Sewer
in Lot 23 - See sketch - P. 1.

3.4' Rt. = Conc. Tile Patio - Cor.
0+70-2.3 Lt. = Beg. 8" Conc. Block wall

0+65 - planting

0+60 = \pm Geranium

0+52 - 27 Rt = \pm Oleander

0+35

0+15

0+07.5 = Sk. of Alley

0+00 = Beg. Prop. Sewer at \pm of Exist. Sewer

62.07 E. of 0+00 along Sewer Line - M.H.

Sty. of Hill - 50' E. of Sub. Line

B.M. = Nail in Pole on

219.85

Lt.

\pm

Rt.

16.5

2.3 =
ground

15.78

3.4 = Cor.
Patio

15.8

16.2

5

14.4

14.0

12.1

05.5

204.59
on Hub.

DIRECT READING ROD

207.72

I.E.

212.64

Top = Rim

			Lt.		Rt.	
1+80.4 = edge of 5' walk				213.16		
				16.39		
1+75.9 = sly. cb.			16.37	16.95	16.32	15.83
			9-t.	5 TOP	TOP	9-t.
				16.50	15.97	15.45
1+57.90 = Φ						
1+39.9 = Nly. cb. of Hill			15.88	16.49	16.28	15.69
2 Lt. - 1+32.90			9-t.	2 TOP cb.	TOP	9-t.
Set. B.M. on Ld. + ct.	216.63					2 TOP cb. Beg. Dr Sect.
1+32.4 = Sly. of Walk					16.42	
1+28.4 = Nly. of 5' walk + 2' Lt. = end wall			17.75	16.66	16.47	16.15
			TOP wall	2	edge walk	3
1+14 - 1' Rt. = Φ Prized Shrub.						
1+13.5 - 3.1' Rt. = end Gar			16.8		16.5	16.3
			2			3.1 = Cor. gar.
Grav. + wall						
Beg. Row of shrubs and flower planting between						
2.1' Lt. = wall						
0+91.4 - 3.2' Rt. = Cor. of Grav.			16.4		16.2	16.0
			2.1 at wall			3.2 = ground
0+84 - 3.4' Rt. = end Patio - Geranium on Lt.						16.13
0+80 - shrub on line						3.4 = Cor.

Lt. ± Rt.

End

1+88.9 = Cross on Top of wall 218.64

± at wall

Note: ± Ditch to S. as dug is 1' West of our

1+88.4 = face of 11" wall

16.6 - ground 18.62
Top of wall

1+87.9 = S.L. of Hill

16.6

1+85.4 = edge of walk

16.95

16.45

15.90

5

5

edge of walk

Stampen
Huffman
Sherry

8-20-53

PROFILE OF PROPOSED SEWER FOR
SERVICE TO PROPOSED REC. BLDGS

LINDA VISTA W.O. 20637

NOTE: Direct Reading Rod Used

Sta. + H.I. - Elev.

+32.25		347.1
+32.25		346.33
+25		347.2
+15		349.5
1+00		350.3
+75		350.2
+50		349.3
+25		348.4
0+00		347.3
0+00		344.27
B.M.		351.77

Ground

F.L. Existing 4" C.I.P.

Ground

F.L. 6" V.C.P. (Existing)

Top Hub & Disk B/L Sta. 3+58.80-2172

33

INDEXED
MER
AUG 24 1953

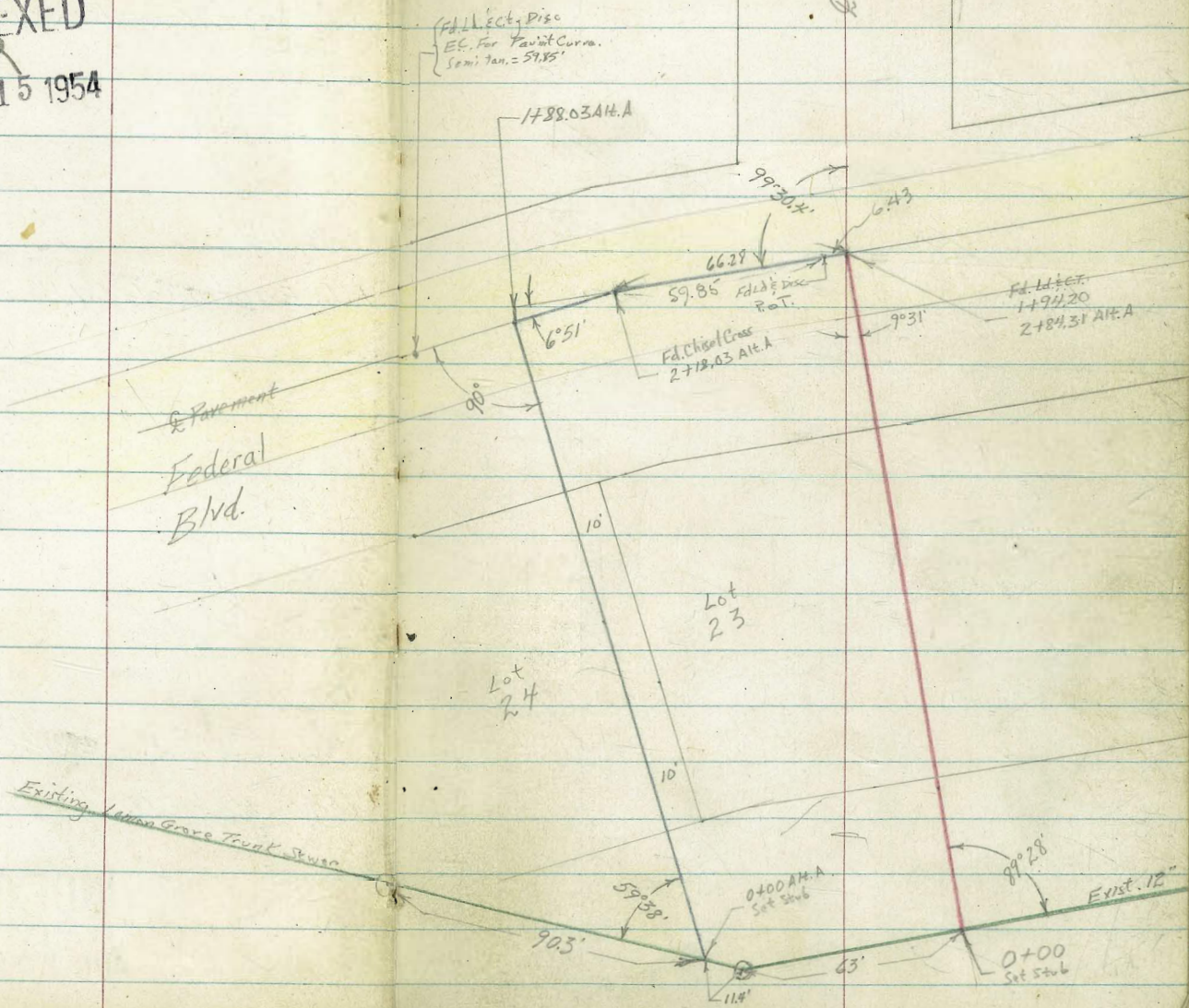
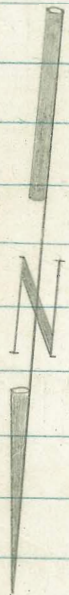
Roberts
Cota
Moore
Moralez
12-31-53
W.O.# 32387

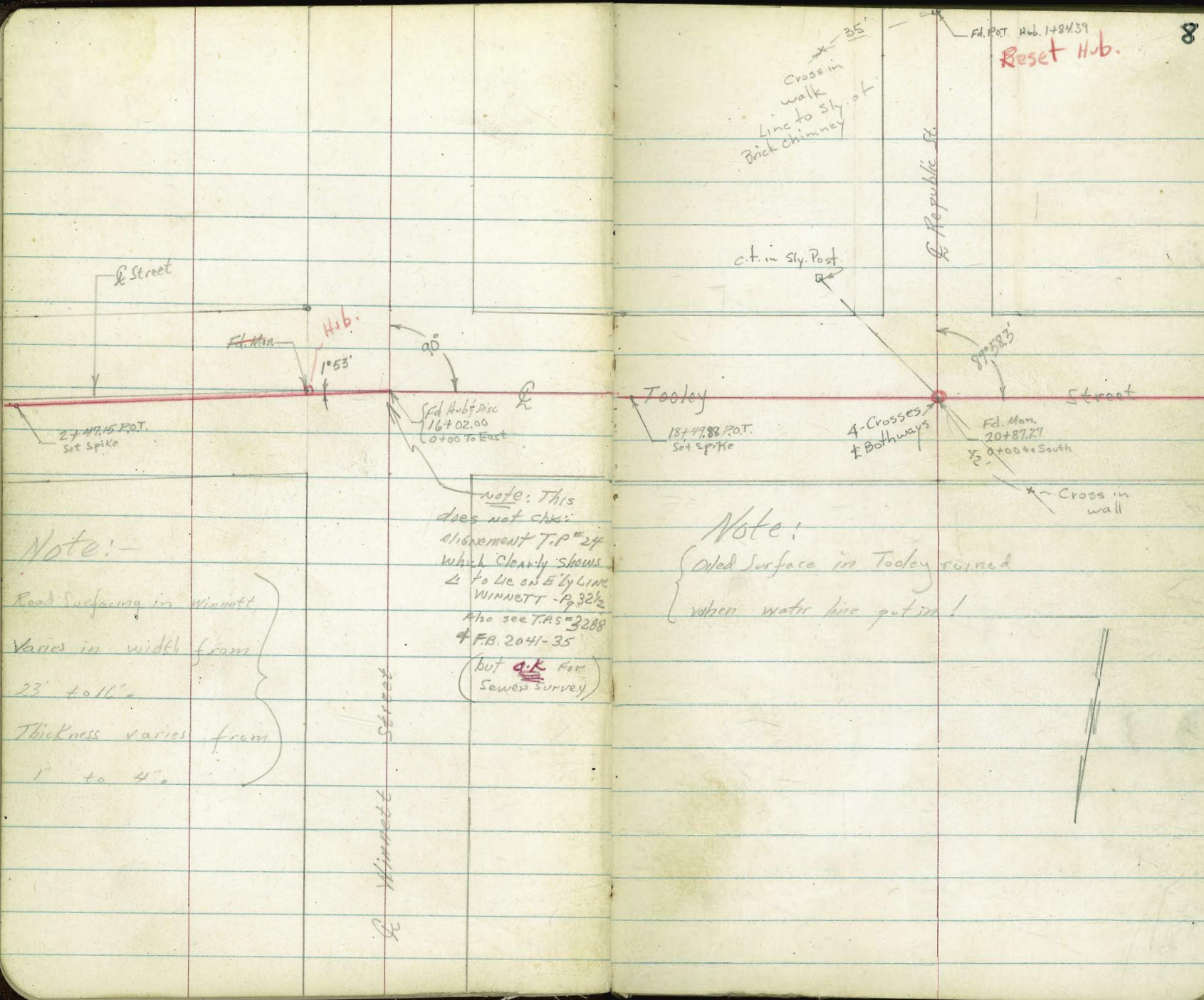
Survey For Proposed Sewer In
Empire Add. & Del Norte Add.

Maps #1193, #1254 & #2121 T.P.24

INDEXED
JAN 15 1954

Replaced Ties
Shown in Red.
7.0.





Note:-

Road Surfacing in Winnett

Varies in width from

23' to 16'

Thickness varies from

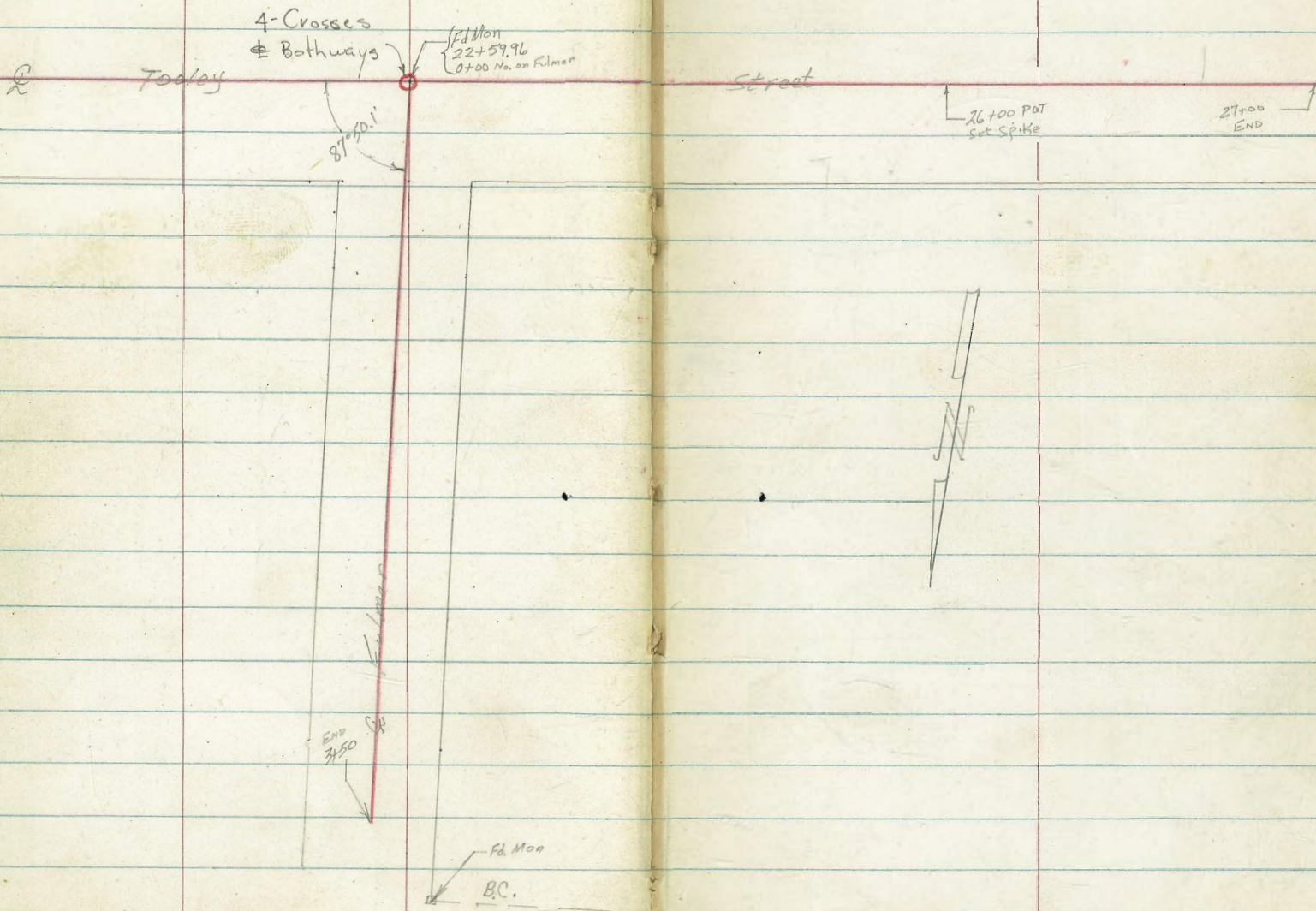
1" to 4"

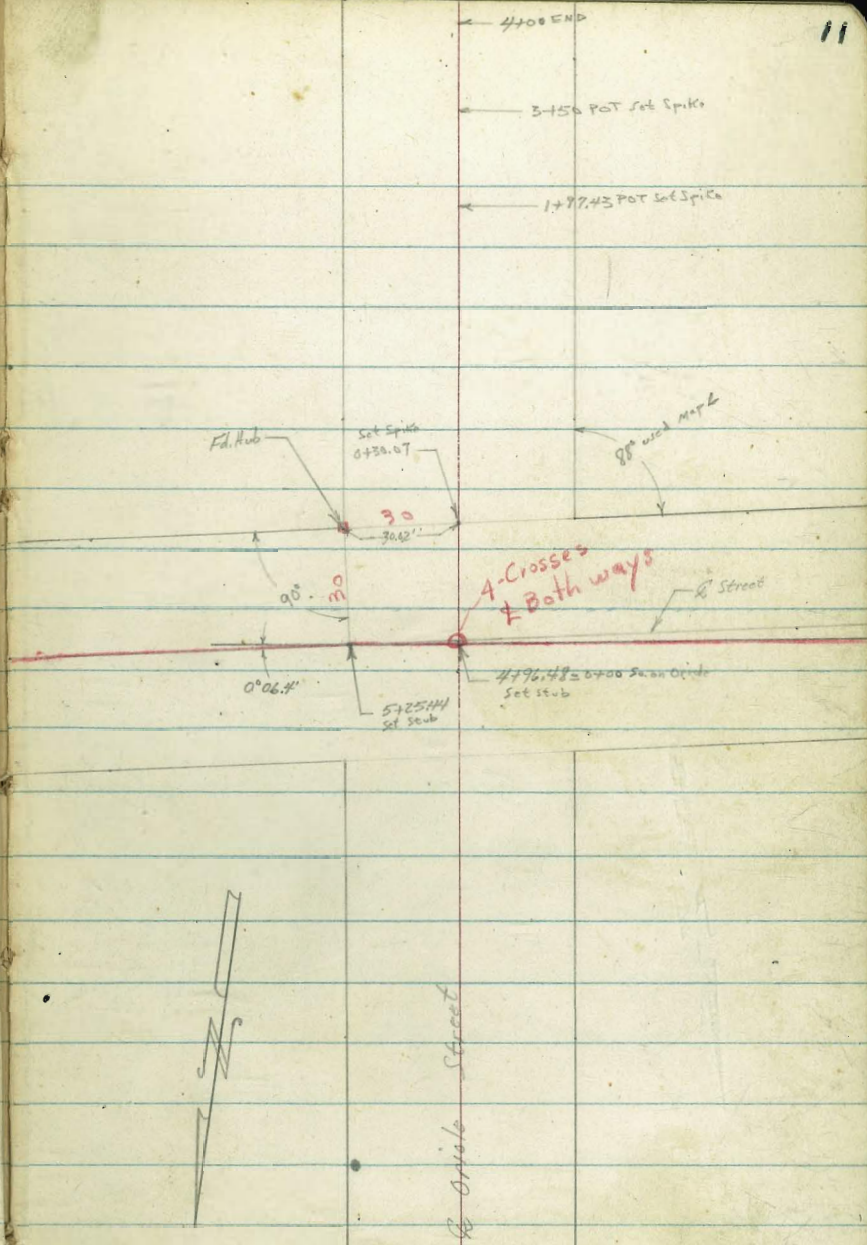
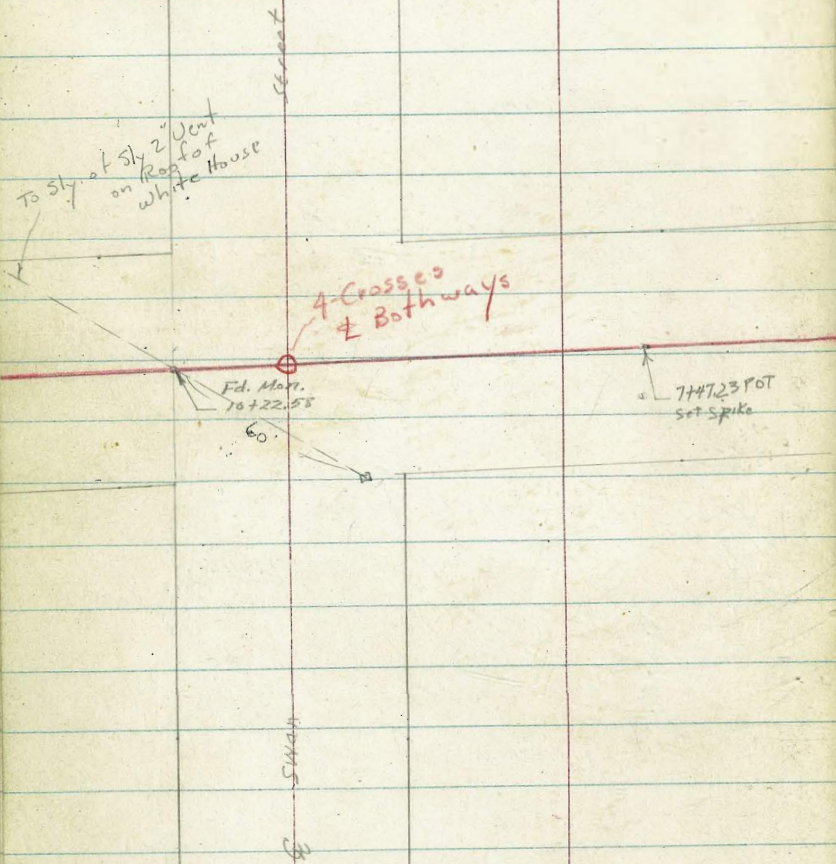
Note: This does not check alignment T.P. #24 which clearly shows to lie on Ely Line WINNETT - P. 32 1/2 Also see T.A.S. #3288 # F.B. 2041-35

(but o.k. for Sewer survey)

Note:

{ Old Surface in Tooley ruined when water line put in!





Fd. Hub on }
E Paradise }
E Springfield }

Fd Hub & ct

Fd. Hub & Disc

Set Hub & ct
16+23.37

E Mulberry

E Paradise
222

(Set Hub & Disc
14+01.20

Set Stub
13+47.55
0700 ea North

Hub

E Today

Disk in Pole

Pipe Pat
65.09

Fd Pipe

35.40'

67.5'

92°

Pipe in
Fd. Hub

Hub

Lot 128

Lot 127

E Paradise
200

117°27'1"

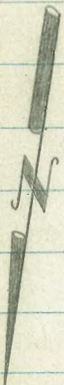
2+22.12
Set Stub

Lot 110

3+66.88
Set Stub

3+90.88
Set Stub

6+00 Pat
Set Stub



Cont'd From Page 12
Alternate "A" See page 7

Lt

Rt

Rt

13

1+34 8³ Rt to (E. Cur. Proposed building.

272.29
3.7

1+00

NE Corner

0+93 4' Rt to a future building (Foundation being dug)

272.29
3.7

0+50

271.9
4.0

0+36

Notice posted 1-25-54
Closed

271.9
4.8

0+32

0+00 Alternate A

USING CITY DATA

NOTE: See Page 60

265.68
10.31
90³ on line exist
INVERT

270.59
5.4

264.22
262.85
12.17
112 on line existing sewer
INVERT

BM

275.99
12.17 276.39

Corrected Invert
263.82 INVERT
264.22 Existing MH
Lemon Grove Trunk Sewer

276.39
275.99

Cont'd from Page 13

Lt.

£

Rt

14

2+84.31 = 1+94.20 END ALTERNATE "A"

2+18.03 L.

213.77
2.22

1+88.03 L.

214.09
1.90

1+69.2 Edge Conc. Pave.

213.57
2.42

1+50

212.99
3.0

276.39 A

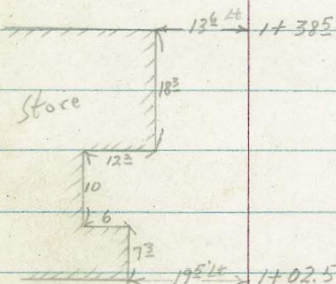
225.99
276.39 A

Cont'd From Page 14
 Winnetka and Tooley to West

Lt

£

Rt 15



1700

T.P. 5.75 277.52 277.92 ~~X~~ 4.22 271.77 272.17

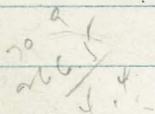
271.62
 59
 277.52
 277.92 ~~X~~

0+45 8" Rt begin 24" RCP Drain (Brand New)

271.49
 7.5

266.46
 9.53
 8.4
 INVERT

0+43



269.77
 6.2

0+00 Main Line Exit Line No. of Federal

269.89
 6.1

257.25
 18.74
 INVERT
 1st Mt on Right

276.39 ~~X~~

276.39

275.92
 276.39 ~~X~~

1+94.20 \triangle Rt.
$$\begin{array}{r} 77.52 \\ 4.35 \\ \hline 73.17 \end{array}$$

$$\begin{array}{r} 273.17 \\ \hline 4.35 \end{array}$$

1+76.2 Edge Conc. Pavement

$$\begin{array}{r} 272.68 \\ \hline 4.84 \end{array}$$

1+64

$$\begin{array}{r} 272.82 \\ \hline 4.7 \end{array}$$

1+37 Begin ailed Parking Service

$$\begin{array}{r} 272.02 \\ \hline 5.3 \end{array}$$
1+30.5 10^ERt to steel light pole1+29 7^ERt to center P.Pole # P1763021+25 11^ERt End 24" RCP begin 24" C.I.P.
$$\begin{array}{r} 269.44 \\ 8.08 \\ \hline 11.5 \\ \hline \text{TOP} \\ \hline \text{RCP} \end{array}$$

1+11 3 Rt to Deadman

277.92X

$$\begin{array}{r} 277.52 \\ 277.92 \end{array}$$

T.P. ✓ 300.99 ✓ 288.74
 12.25 301.39T 0.24 289.14

3+00 Road
 (20' wide Surface)

284.78
 #2

2+57.5 22.6 Lt to inlet 24" Iron Pipe

277.48
 11.50
 22.6
 INVERT

2+50

278.08
 10.9

2+41 28.8 Rt to center P.Pole # 374977

2+20 8.3 Rt to center 25.65' / least (can not open)
 Road
 (23' wide Surface)

272.28
 16.7
 18
 INVERT

2+15 18' Lt Inlet of 12" corr. I. Pipe

T.P. ✓ 288.98 ✓ 277.10
 11.88 289.38T 0.42 277.50

288.98 X
~~289.38T~~

2+12.2 Edge Pav.

272.91
 4.61

277.92T

277.52
 277.92T

Cont'd From Page 17

Lt

℄

Rt

18

5+50

310.23
2.81

5+34 27² Rt to center P. Pole # P176300

5+24.5 20³ Lt to center Gray Pole

5+00

305.94
7.1

4+50

301.54
11.5

T.P. ✓ 313.04 ✓ 300.78
12.26 ~~313.44~~ 0.21 ~~301.18~~

313.04 X
~~313.44~~ X

4+00

296.89
4.1

3+50

(18' wide Road Surface)

291.09
9.9

3+05 27⁵ Rt to center P. Pole # P176301

301.39 X

300.79
301.39 X

8+00

326.37
11.2

T.P.

12.63

337.57

~~337.97~~ 0.09

324.94

~~325.34~~

337.57

~~337.97~~

7+50

(0.8 Rt to Edge of Road surface)

322.93
2.1

7+27.5

27.5 Rt to center P.Pole #176299

7+00

1/2 to Edge of Surfaced Road
(16' wide Road surface)

319.63
5.4

6+50

316.53
8.5

6+00

313.83
11.2

T.P.

12.03

325.03

~~325.43~~ 0.04

313.00

~~313.40~~

325.03

~~325.43~~

~~313.40~~

~~313.40~~

10+50

352.69
10.0

T.P.	12.63	362.69	0.17	350.06	350.46
		363.09			

	362.69
	363.09

10+00

346.43
3.5

9+82.5 28° Rt to center P.Pole # P176298

9+50

340.93
9.3

T.P.	12.75	350.23	0.09	337.48	337.88
		350.63			

	350.23
	350.63

9+00 (3' Rt to edge Road Surfacing)

335.77
1.8

8+72 28° Rt to center P.Pole # P470769

8+50

330.77
6.8

	337.57
	337.97

	337.57
	337.97

13+00 (18' wide)
(3 Rt to Edge Road Surfacing)

5.4 382.40

12+81 26.6 Rt to center P.Pole # JP175811

12+50

376.30
11.5

T.P. 12.45 387.80 375.35
~~388.20~~ 0.29 ~~375.75~~

387.80 K
~~388.20~~

12+00

370.42
5.2

11+50

364.52
11.1

T.P. 13.20 375.62 362.42
~~376.02~~ 0.27 ~~362.82~~

375.62
~~376.02~~

11+31 28.0 Rt to center P.Pole # P471512

11+00

358.79
3.9

362.69 K
~~363.09~~

362.69 K
~~363.09~~

T.P. 7.06 ^{420.44}
~~420.84~~ π ^v 0.19 ^{413.38}
~~413.78~~

15+62 242 Rt to center P. Pole # P175810
 15+50 (44 to Pav. Edge) (28 wide)

15+00 (on Pav. Edge - 18' wide)

T.P. 13.02 ^{413.57}
~~413.97~~ π ^v 0.09 ^{400.49}
~~400.89~~

14+50

14+00 (3' Rt to Pav - 18' wide)

13+50

T.P. 12.80 ^v ^{400.58}
~~400.98~~ π ^v 0.02 ^{387.78}
~~388.18~~

388.20 π

^{411.87}
~~412.47~~
 1.7 6.1
 15
 Top

105.81

12 7.7 7.7
 13 10

^{413.57}
~~413.97~~ π

^{402.08} ^{399.38} ^{399.78}
~~415~~ 1.2 0.8
 11 8

^{394.08}
 6.5

^{388.58}
 12.0

^{400.58} π
~~400.98~~ π

388.20 π

17+50

423.75	427.45	427.95
13.5	9.8	9.3
75	15	

T.P.

12.42 \checkmark 437.25 X \checkmark 424.83
~~437.65 X~~ 0.14 ~~425.23~~

437.25 X

~~437.65 X~~

17+27

176-24 to center P.Pole # D 378017

17+00

412.17	420.87	421.57
12.8	4.1	3.4
75	16	

16+50

403.77	415.77	416.37
21.2	9.2	8.6
75	15	

T.P.

10.39 \checkmark 424.91 \checkmark 414.58 \checkmark
 \checkmark 425.37 X 5.86 \checkmark 414.98 = 414.58

See FB2044 pg 46 Mon. £ Tooley and East Line Winnett.

16+24

153-26 to center P.Pole # P 170386

16+02.00

£ Tooley

414.64
5.8

15+80

415.54
4.9

420.84 X

420.44 X

420.84 X

20+50

444.42	440.02	416.62
44	4.8	32.2
	8	75

20+00

445.12	444.82	432.52
3.7	4.0	16.3
	14	75

19+50

446.12	446.02	447.12	448.22	441.32
2.7	2.8	1.7	0.6	7.5
	11	16	50	75

19+00

445.02
3.8

18+81.5 21³ Lt to center P. Pole # P170387

18+47 { No plumbing as yet but plan to have some!
(69^E Rt to SE Corner House w/ basement

440.12	443.82
8.7	5.0
	69 ^E
	Floor
	basement

T.P.	11.72	448.82 x	437.10
		449.22 x	437.50
		0.15	

448.82 x
448.22 x

18+00

430.75	434.15	434.55
6.5	3.1	2.7
75	15	

25 x
437.65 x

437.25 x
437.65 x

22+50

449.3
4.0

22+08

22^L Lt to center P. Pole #P170468

22+00

447.8 447.4 444.6
6.3 6.7 9.5
13 75

21+50

445.93
8.2

21+18

45^{SE} Rt to SE Corner House w/ basement

445.03 438.53
9.1 15.6
4.55
Floor
basement

21+10

4^E Rt to center Guy Pole #562953H

21+09

22³ Lt to center P. Pole #P170388

21+00

444.53
9.6

T.P.

454.13 T ✓
11.23 - 454.53 T 5.92 ✓
442.90
443.70

448.82
~~449.82 T~~

454.13 T
~~454.53 T~~
Mon 20+87.27 Q Tooley & Q Republic

T.P. ✓ 451.30 π ✓ 44733
 197 ~~451.70 π~~ 480 ~~44993~~

24+50

449.6
45

24+08.5 21² Lt to center P.P. 6 *P170389

24+06 21 Rt to center guy pole

24+00

449.4
4.7

23+44 100 Lt to NW Corner House

445.83
8.3
100
Floor
Garage
(Tub)

449.7
7.4

23+00

448.8
4.3

22+59.96 Q Fulmar (on Mon.)

448.7 (OK)
5.06
Mon.

454.53 π

454.13 π
454.53 π

27+00

(Not nearly bottom of Hill) END

426.1
13.1

26+50

437.12
5.1
75

436.2
3.0

429.1
10.1
75

T.P.

0.34 ✓ 439.22 π
~~439.62 π~~ 12.42

458.88
439.28

439.22
~~439.62 π~~

26+00

441.7
9.6
75

442.8
8.5

438.6
12.7
75

25+50

445.4
5.9
75

446.5
4.8

445.1
6.2
75

25+08

22 14 to center P.P. # 170467

25+00

449.0
2.3

24+76

52^E H to NE Corner House

448.3
3.0
52^S
Floor

449.5
1.8

451.30
451.70 π

451.30 π
451.70 π

Cont'd From Page 27

Fulmar

L

R

R 28

2+00 (5R Edge 8L Edge oil surface)

442.9
8.7

432.7
18.9
50

1+50

444.6
7.0

1+00 (2Rt Edge 124 Edge oil surface)

447.0
7.6

439.8
11.8
75

0+65 10 Rt to center P. Pole # P272216

0+50 (2 on Rt Edge, 12 Lt to Edge oiled surface)

448.6
3.0

0+00 = 22+59.96 & Toolay

449.4
22

T.P. 2.57 ^{451.63} ~~452.04~~ 2.60 ^{449.06} ~~449.46~~ = ^{449.47} ~~449.47~~ Mon. Not cut DATA

451.63
~~452.04~~

T.P. 12.78 ^{451.66} ~~452.06~~ 0.34 ^{438.88} ~~439.28~~

²²
439.62

439 22

T.P. 1931 456.18π 442.87
 456.01π 8.16 $443.28 = 443.30$ Mon

3+50 END

3+35 70° Lt to SE Corner House

3+05 11° Rt to center P. Pole # P272217

3+00 (6Rt Edge & Lt Edge oil Surface)

2+50

451.63
 452.04π

431.0
 17.6 S.S. at 3+00

443.7
 7.9
 70°
 Floor

437.5
 14.1 424.7
 26.9
 50

440.8
 10.8
 18.8

451.63π
 452.04π

Cont'd From Page 29
Republic

H

♀

Rt 30

2100

(8th Edge 9th Edge oil Surface)

2.6

453.6

1780

125 ft to NE Corner House

3.0

453.2

450.4

5.8

125
Floor

1771

16^{1/2} ft to center Guy Pole #562754H

1750

4.0

452.2

1721.5

18^{1/2} ft to center P. Pole #P170469

1700

6.3

449.9

0750

(8th Edge 9th Edge oil Surface)

9.7

446.5

0700 = 20 + 87.27 ♀ Tooley

11.8

444.4

118
456.51 T

456.18 T

456.51 T

4450

455.7
4.8

4400

(10th Edge & Rt Edge oil Surface)455.7
4.8

3+50

455.21
5.3

3+455.

17th R to center P. Pole P170470

T.P.

460.51
5.87 460.94 A 1.54 455.07460.51 X
460.94 A

3+00

(9th Edge & Rt Edge oil Surface)454.7
1.5

2+50

454.3
1.9.18
456.61 A.18
456.61 A

7773 18° Rt to center P. Pole # P170472

7750

456.4
4.1

7700 (8th Edge 8th Edge oil Surface)

456.1
4.4

6750

455.6
4.9

6700 (10th Edge 6th Edge oil Surface)

455.6
4.9

5750

455.5
5.0

5747 18° Rt to center P. Pole # P170471

5700 (9th Edge 7th Edge oil Surface)

455.6
4.9

460.947

.51
460.947

9+25 {9 Lt to Fence on top conc. wall

9+17 14 1/2 Rt to center 18" Pepper Tree

9+00 7 1/2 Lt Edge 5 Rt Edge Oil Surface

453.7

#7

8+83 17 1/2 Lt to center P Pole # P170473

8+50

455.87

2.6

8+06 15 Lt to center Siren # C1

T.P. 2.29 458.47 456.18 458.47
~~458.90~~ ~~433~~ ~~456.61~~ ~~458.70~~

8+05.17 BC

456.4

#1

8+00 (3 Lt Edge 11 Rt Edge Oil Surface)

456.5

40

460.51
~~460.94~~

460.51
~~460.94~~

10+85 17 Lt to center 12" Pepper Tree

10+77 11 Rt to center 14" Pepper Tree

10+74 18 Lt to center 8" Pepper Tree

10+63 18¹ Lt to center 12" Pepper

10+50

T.P. 3.07 \checkmark 449.76 π \checkmark 446.69 (EC Hub) \checkmark 11.78 ~~447.12~~ (9+98.81)

446.2
36 3.6
8

449.76 π
~~450.19 π~~

9+98.81 EC.

432.7 446.9 447.2
258 116 11.3
50 6

9+76 12² Lt to center P.Pole # 37117

9+50 { 83 Lt to fence along wall (forget to build fence on curve)
(21st Edge 9 Rt Edge Oil Surface Bad shape in curve)

^{.47}
~~458.70 π~~

450.7
7.8

^{.47}
~~458.70 π~~

13+00 (5 Lt Edge 5 Rt Edge oil Surface)

428.8
21.0
50443.4
6.4
9443.7
6.1

(Trees & Pole Located on Alt)

12+50

444.2
5.6
13444.9
4.9

12+10.78 BC (10 Lt Edge 3 Rt Edge oil Surface)

431.9
17.9
50445.3
4.5
11445.7
4.1

11+66 19 Rt to center 36" Pepper Tree

11+50

445.5
4.3
9445.76
4.0

11+13 18 Lt to center 9" Pepper Tree

11+10 16 Rt to center 25" Pepper Tree

11+00 18 Lt to center 12" Pepper Tree

430.0
19.7
50445.3
4.5
11445.4
4.4449.76 X
450.19 X449.76 X
450.19 X

16+16 93 Rt to NE Corner House w/base orient

438.4
11.4

437.3
12.5
93
Floor
basement

15+93.71 EC. END

425.3 438.4 438.96
24.0 11.4 10.8
50 10

15+50

440.2 440.6
9.6 9.2
7

15+00

426.8 437.9 440.3
23.0 9.9 9.5
50 8 439.7

14+85 108 Rt to SW Corner House - Future basement

448.2
1.6
108
Main
Floor

14+90 19E Rt to center P. Pole # P371119

438.7 438.1
11.3 11.1
6

{ Figure 8' Lower
For Future basement.

14+50

14+11.55 P.C.C.

(End of oiled surface
5 ft. Edge SRt Edge oil surface)

427.8 439.6 439.5
22.0 10.5 10.3
50 9

13+50

442.1 442.5
7.7 7.3
8

449.76
450.19 X

449.76 X
450.19 X

Cont'd From Page 36
Republic
Alternate "C"

Lt

Q

R 37

0+74 - 17⁵ Rt to center 10" Orange Tree

TP 3.47 ✓ 459.01 π 459.44 π 3.53 ✓ 455.57
~~456.00~~

459.01 π
~~459.44 π~~

0+63 7^E Rt to 5" Tree

0+53 8^H Lt to NE Corner House

0+50 (Did not show all shrubs)

455.7
3.4

0+25 11 Lt to center 10" Orange Tree

0+24 15^E Rt to center 10" Avocado Tree

0+00 = 673200 Q Republic

455.57
3.53

T.P. 4.14 ✓ 459.10 459.53 π 2.21 ✓ 454.96
~~455.39~~

459.10 π
~~459.53 π~~

T.P. 8.67 457.17 457.60 1.26 ✓ 448.50
448.93

449.76
~~450.19 π~~

1753 { 26⁰ Rt to SE Corner House
15² Rt to conc slab (SE Corner)

1750

4515
75

1742 6⁵ Lt to center 12" Avocado Tree (Fruit)

1737 { 14⁵ Lt to center 18" Avocado Tree
16⁵ Rt to center 18" Avocado Tree
1⁵ Rt to center 18" Avocado Tree

Bearing Fruit!

Imagine one would meet resistance to
destroy these trees.

1722 { 15³ Lt to center 12" Avocado Tree
15³ Rt to center 12" Avocado Tree
1⁵ Rt to center 18" Avocado Tree

All bearing Fruit!

1706 3⁵ Rt to center 5" Apricot Tree

1700 7⁵ Lt to NW Corner House

4536
54

0786 { 7⁵ Lt to Jog in house
8⁵ Lt to Jog in house

0778 5⁵ Rt to center 18" Locust Tree

.01 T
~~459.44 T~~.01 T
~~459.44 T~~

T.P. ✓ 459.91 T ✓ 455.57
~~434 460.34 T 344 456.00~~

2+13.20 END (0.63' Ahead of P.S. 12+10.78)

2+08

2+00

1+99 4° Lt to center 12" Live Stump of Tree

1+90

1+86 17° Rt to SW Corner House

1+66 { 17° & 25° Rt to Jog in House
 14° Rt to SW Corner slab

.01 T
 459.44 T

445.6
 13.4

445.9
 13.1

447.9
 11.1

449.2
 9.8

.01 T
 459.44 T

Cont'd From Page 39
Republic
Alternate "B"

Lt

Q

Rt 40

1+36 5^E Lt begin 4 conc block wall fence

1+09 8^L Lt End conc block wall.

1+00

451.9
8.0

0+83^E { 8^L Lt begin conc block wall
7^L Lt to NW corner House

0+69 5^E Lt to center of ^{2^E x 2^E} Hoop for water Arise

0+50

454.4
5.5

0+42^E 7^L Lt to NE corner House

0+17^E 2^E Lt to center P. Pole # P170470

0+00 = 3+42.87 Q Republic

455.15
#.76

459.91 X
~~460.34 X~~

459.91 X
~~460.34 X~~

2+77 2⁹ Rt to SE corner of Pens

2+50

446.5

6.2

2+44.8 { 2⁹ Rt to NE corner of Pens for Bantams, pheasants, Doves and peacocks!
1² Lt to conc. block wall fenceT.P. 6.64 $\begin{matrix} 452.70 \times \\ 453.13 \times \end{matrix}$ 13.85 $\begin{matrix} 446.06 \\ 446.49 \end{matrix}$ 452.70 \times ~~453.13 \times~~

2+38.80 L Lt

446.06

13.85
on stub2+37.4 5² Lt to corner conc. block wall fence

2+00

448.2

11.7

1+50

450.1

9.8

459.91 \times ~~460.34 \times~~ 459.91 \times ~~460.34 \times~~

Cont'd From Page 41

Lt

Rt

Rt

42

4400

447.6

5.1

3780

447.6

5.1

3788 5° Rt to SE Corner garage

{ Avocado grove starts here to East of Fence

3752.3 { 2° Rt to NE Corner Double Garage

3752

447.6

5.1

3751 1° Lt to SE Corner Pens

3750

448.3

4.4

3710E 10° Lt
82° Rt { Jog in Pens

3700 8° Rt to NE Corner Pens (More birds)

448.1

4.6

452.70 T

453.13 T

452.70 T

453.13 T

4+85.15 = -12+62.38 END } 14^E Lt to 16' Fence

444.6
8.1

4+77.9 8^I Lt to center 14" Acacia Tree

4+69.5 12" Acacia Tree on line

4+66.5 14" Acacia Tree on line

4+55.3 0.5 Lt L Lt in 16' Fence

4+50 4 Rt to center 12" Tree

446.6
6.1

4+45.7 0.1 Rt to Deadman

4+43.5 { 12^o Rt to center P Pole # P371118
22 Lt. End Conc block wall fence.

4+42 2^o Lt begin 16' ~~16'~~ Lath Fence

4+27 0.5 Rt to Deadman

452.70 X
453.13 X

452.70 X
453.13 X

Cont'd From Page 43

Tooley, Ely from Winnett

Lt

£

Rd

44

1+00

421.3	420.6	424.0	420.2
5.5	6.2	2.8	6.6
	15	17	75

0+50

416.6	409.8
10.2	17.0
	75

0+39 148 Rt to center P.Pole # 5627524

0+00 = 16+02.00 & Winnett

414.5
12.3

T.P. 12.26 ^{426.81} ~~427.24~~ ^{7.48} ~~414.99~~ = 414.78

My only map

Mon & Tooley & East Line Winnett

426.815
427.24

T.P. 0.33 ^{422.03} ~~422.46~~ ^{12.86} ~~421.70~~ ~~422.13~~

T.P. 0.28 ^{434.56} ~~434.79~~ ^{13.20} ~~431.28~~ ~~434.71~~

T.P. 4.61 ^{447.48} ~~447.91~~ ^{15.11} ~~442.87~~ ~~443.30~~ = 443.30

Mon & Tooley & Republic

T.P. 8.91 ^{457.98} ~~458.41~~ ^{3.63} ~~449.07~~ ~~449.50~~

.70 ~~452.13~~

T.P. \checkmark 450.34 \checkmark 438.82
 11.52 ~~450.77~~ 0.21 ~~439.25~~

2+82 61² Lt. to SW Corner House

435.5
 3.5
 61²
 Floor

438.8

0.2

2+72.5 18² R₂ to center P.Pole # JP178814

2+50

435.8
 3.2

2+00

430.7
 8.3

1+77

{ Owner says he intends to connect to Minnetonka Sewer
 Has partial basement, no plans for plumbing in basement
 73² Lt to SW Corner House Under construction

429.9
 9.1
 73²
 Floor

428.6
 10.4

T.P.

\checkmark 437.03 π \checkmark 426.41
 12.62 ~~437.46~~ 0.40 ~~426.84~~

437.03 π
~~437.46~~

1+50

426.2
 0.6

426.81
~~427.24~~

426.81 π
~~427.24~~

5+22 - 24th RR to center P.P. 1/6 # JP17815

5+00

T.P.

10.48

460.55 \bar{K} 460.98 \bar{K} 0.27

450.07

450.50

4+50

4+00

3+75

3+50

3+00

.34
450.77 \bar{K}

437.75	439.53	446.15	446.62
25.8	21.0	14.4	13.9
50	17		4

460.55
460.98 \bar{K}

427.9	434.4	436.5	440.1	444.1
22.4	15.9	13.8	10.2	6.2
50	23	10		7

424.3	428.3	432.5	442.0
26.0	22.0	12.8	8.3
50	30		10

440.8	440.6
9.5	9.7
11	

432.6	440.0	440.4
17.7	10.3	9.9
50	17	

439.7
10.6450.34 \bar{K}
450.77 \bar{K}

T.P. 3.03 ✓ 462.05 T ✓
~~462.48 T~~ 1.53 ✓

459.02
~~459.45~~

7+50

458.95
 1.6

7+00

457.9 457.35 452.15
 2.6 3.2 7.4
 50 100
 R₁₀₀ Really
 Drop 46

6+50

451.55 455.85 456.25
 9.0 4.7 7.3
 50 15

6+00

446.5 452.85 452.3
 14.0 7.7 7.2
 50 15

5+50

447.3
 11.3

5+25.44 < Lt.

445.5 447.7
 13.0 12.8
 15.

.55 T
~~460.98 T~~

460.55 T
~~460.98 T~~

Cont'd. From Page 47

Lt

Q

Rt 48

10+00

457.5	459.5	459.5
4.5	18.1	18.1
	44	75
	Rim	

9+69 26° Rt to center P.Pole # 375463

9+50

457.9
4.2

9+00

458.9	454.8	
3.2	7.3	
	61	Down and Down
	Rim	if goes. 100

8+50

460.3
1.8

8+33 29° Lt to center P.Pole # 270242

8+10 28° Rt to center P.Pole # JP178816

8+00

460.15	458.8	456.2
1.9	3.3	5.6
	50	84
		Rim

.05
462.48

.05
462.48

T.P. 10.11 $\begin{matrix} 466.94 \times \\ 467.37 \times \end{matrix}$ $\begin{matrix} \vee \\ 5.22 \end{matrix}$ $\begin{matrix} 456.83 \\ 457.26 \end{matrix}$

12+50

12+06

11+46 48 Lt to SW Corner House

11+04 24⁸ Rt to center P Pole # JP174040

11+00

10+97 26² Lt to center T Pole # 562750H

10+50

1 .05
462.48 \times

456.85
5.2

$\begin{matrix} 449.95 \\ 12.1 \\ 75 \end{matrix}$ $\begin{matrix} 454.4 \\ 7.7 \\ 27 \end{matrix}$ $\begin{matrix} 454.65 \\ 7.4 \\ 30 \end{matrix}$ $\begin{matrix} 452.6 \\ 9.5 \\ 75 \end{matrix}$ $\begin{matrix} 447.15 \\ 44.9 \\ 75 \end{matrix}$

454.6
7.5
4.8
Floor

455.85
6.2

457.7
4.4
454.65
7.4
5.0
Rim

457.9
4.2

1.05 \times
462.48 \times

Contd. From Page 49
Paradise to South

Lt

R

Rt 50

14+50 98 Lt to House

460.2
6.7
98
Floor

462.2
4.7

Set TBM,

461.92
502 462.35

2" pipe L ft. in prop. line on North Tooley street.

14+01.20 L. Rt Intersection with Paradise from South.

463.1
3.8

13+68. 16² Lt to center Guy Pole # 5481914

13+54 23⁰ Rt to center RPole # 5P174039

13+50

463.1
3.8

13+06

458.8
8.1
90
Rim

460.4
6.5

12+71 54⁰ Rt to NW Corner House

466.94 T
467.37 T

458.3
8.6
466.94 T
467.37 T

453.7
13.0
54
Floor

Cont'd From Page 50

Lt

Q

Rt

51

17+00

450.5	456.7	457.8
84	2.2	1.1
75	40	

T.P.	1.0	458.92 T	9.06	457.88
		459.35 T		458.31

458.92 T
459.35 T

16+50

458.9
80

16+19 21² Rt to center P. Pole #JP174037

16+00

459.6
7.3

15+47 50 Lt to NW Corner house

459.7	460.4
7.0	6.5
50	
Flow	

15+00

461.2
5.7

14+55 22³ Rt to center P. Pole * JP174038

466.94 T
467.37 T

466.94 T
467.37 T

T.P. \checkmark 8.65 \checkmark 467.01 \checkmark 458.36
~~467.44~~ 0.56 ~~458.79~~

19400 END

447.2
11.7

18774 49^E 26 to NW Corner House

445.6 448.7
13.3 10.2
49^E
Floor

18769 80 R⁶ to NE Corner House

449.0 459.0
9.9 40.1
80
Floor

18751^E 22 R to center P. Pole # JP174036

18750

450.2
8.7

18700

445.9 452.2 453.3
13.0 6.7 5.6
50 15

17750

455.8
3.1

458.92
~~459.35~~

458.92 \checkmark
~~459.35~~

Cont'd From Page 52
From Tooley between Lots 127 & 128
to Paradise to North

Lt

Rt

Rt 53

3+00

459.4
7.6

2+50

460.0
7.0

2+22.12 Lt Rt

458.3
8.7

1+50

460.1
6.9

1+00

462.3
4.7

0+50

463.0
4.0

0+00 = 13+49.53 & Tooley

463.1
3.9

101 T
467.44 T

467.01 T
467.44 T

5+00

^{450.98}
~~steep~~ 10.6 ^{455.98} 5.6 House on same level
 95
 Rim

4+50

^{456.5}
 5.1

4+35 45² Rt to SW Corner House under construction w/ basement

^{456.5} ^{448.2}
 5.1 13.4
 Floor
 Basement

3+90.88 Lt

^{456.8}
 4.7

3+65

^{457.1}
 4.5

3+60

^{457.7}
 3.9

T.P. 3.10 ^{461.58} ~~462.01~~ ^{458.48} 8.53 ~~458.91~~

^{461.58} ~~462.01~~

.01
~~467.41~~

~~467.41~~

T.P. \checkmark 465.65 \checkmark 458.82
~~6.83~~ 466.08 ~~T~~ 2.76 459.25

7+30 125 Rt to SW corner House w/ basement or maybe called a 2-story?

448.4
 13.2
 123
 Floor
 Basement

7+00 END

~~600~~ ~~Wid!~~

432.2
 29.4

6+50

441.3 446.9 447.1
~~Wid!~~ 20.3 14.7 14.5
 12 26

6+15

443.2 450.1
 Still Going 18.4 11.2
 Down 30

6+00

451.1
 10.5

5+80 23² Rt to center P. Pole # P276901

5+50

454.2

7.4

461.58 T
 462.01 T

461.58 T
 462.01 T

Cont'd From Page 55

Oride, Tooley to South

L

R

Rt 56

0+50

^{447.5}
6.5

0+30.07 South Line Tooley

^{447.2}
8.8

0+24

^{446.5}
9.5

0+05

^{446.0}
10.0

0+0.0 = 4496.48 Tooley (Not & Street) R Oride

^{444.4}
11.6

T.P.	4.89	^{456.01} 456.22	✓ 13.31	^{451.12} 451.53
------	------	--	---------	-----------------------------

^{456.01} ↑
~~456.52~~ ↑

T.P.	✓ 6.93	^{464.43} 464.84	✓ 7.30	^{457.50} 457.91
------	--------	-----------------------------	--------	-----------------------------

T.P.	✓ 2.96	^{464.80} 465.21	✓ 3.71	^{461.94} 462.34
------	--------	-----------------------------	--------	-----------------------------

462.35 2 pip

^{465.65} ↑
~~466.08~~ ↑

Cont'd From Page 56

Lt

R

R# 57

3+00

462.6
5.0

2+50

462.6
4.9

2+00

462.4
5.2

1+50

461.0
6.6

1+29 25' Lt to center T. Pole # 592072H

1+28 22' R# to center P. Pole # 270743

1+00

456.86
10.7

T.P. 11.57 467.56 455.99
467.97 0.02 456.40

467.56 7
467.97 7

456.01 7
456.12 7

T.P. 0.40 ✓ 431.43 ✓ 431.03
 431.84 \mp 12.97 431.44

T.P. 1.10 ✓ 444.00 ✓ 442.90
 446.41 12.18 443.31

T.P. 0.78 ✓ 455.08 ✓ 454.30
 455.49 13.26 454.71

4+00 END

3+71.56⁶ Lt to SW Corner House w/ basement
 Plumbing in.

452.6
 14.8
 566
 Floor
 Basement

454.5
 13.1
 459.1
 8.5

3+53 52² Rt to NE Corner House

461.0
 6.6

464.1
 3.5
 522
 Floor

3+42.5 22⁵ Rt to center P.Pole # 270744

3+09 { 28² Lt to center P.Pole # JP270747
 25⁹ Lt to center T.Pole # 592071H

.56 π
 467.97 \mp

.56 π
 467.97 \mp

T.P.	0.19	302.61 303.02	✓ 13.04	302.42 302.83
------	------	-----------------------------	------------	-----------------------------

T.P.	0.20	315.46 315.87	✓ 13.12	315.10 315.51
------	------	-----------------------------	------------	-----------------------------

T.P.	0.10	328.22 328.63	✓ 12.93	328.12 328.53
------	------	-----------------------------	------------	-----------------------------

T.P.	0.76	341.05 341.46	✓ 13.00	340.29 340.70
------	------	-----------------------------	------------	-----------------------------

T.P.	0.50	353.29 353.70	✓ 13.31	352.79 353.20
------	------	-----------------------------	------------	-----------------------------

T.P.	0.38	366.10 366.51	✓ 13.31	365.72 366.13
------	------	-----------------------------	------------	-----------------------------

T.P.	0.59	379.03 379.44	✓ 12.88	378.44 378.85
------	------	-----------------------------	------------	-----------------------------

T.P.	0.24	391.32 391.73	✓ 12.88	391.08 391.49
------	------	-----------------------------	------------	-----------------------------

T.P.	0.73	403.76 404.17	✓ 13.21	403.23 403.64
------	------	-----------------------------	------------	-----------------------------

T.P.	1.87	416.44 416.85	✓ 16.86	414.57 414.98 = 414.98
------	------	-----------------------------	------------	--------------------------------------

NET CITY DATA

Man Tooley & Winnett

431.84

IF IT IS DESIRED TO HAVE THIS SURVEY ON SAME
 BENCH AS THE X-SECTIONS OF THE STREETS
 THEN ALL ELEVATIONS OF THE INSTRUMENT
 WILL HAVE TO BE LOWERED 0.40 SEE
 PAGE TWENTY-THREE.

Check

VERY GOOD LEVELS -
 263.78 - 263.82 - ^{chess (See Pg 13)}
 13.39 264.19 = 264.22 INVERT EXISTING MH FROM PLANS

T.P. ✓ 277.17 ✓ 276.63
 0.54 277.58 13.17 277.04


T.P. ✓ 289.80 ✓ 289.67
 0.13 290.21 12.94 290.08

302.61 J
 -303.02 A


Ref Map N^o 2121

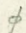
" N^o 5241-B

6-24-54

Stamper 

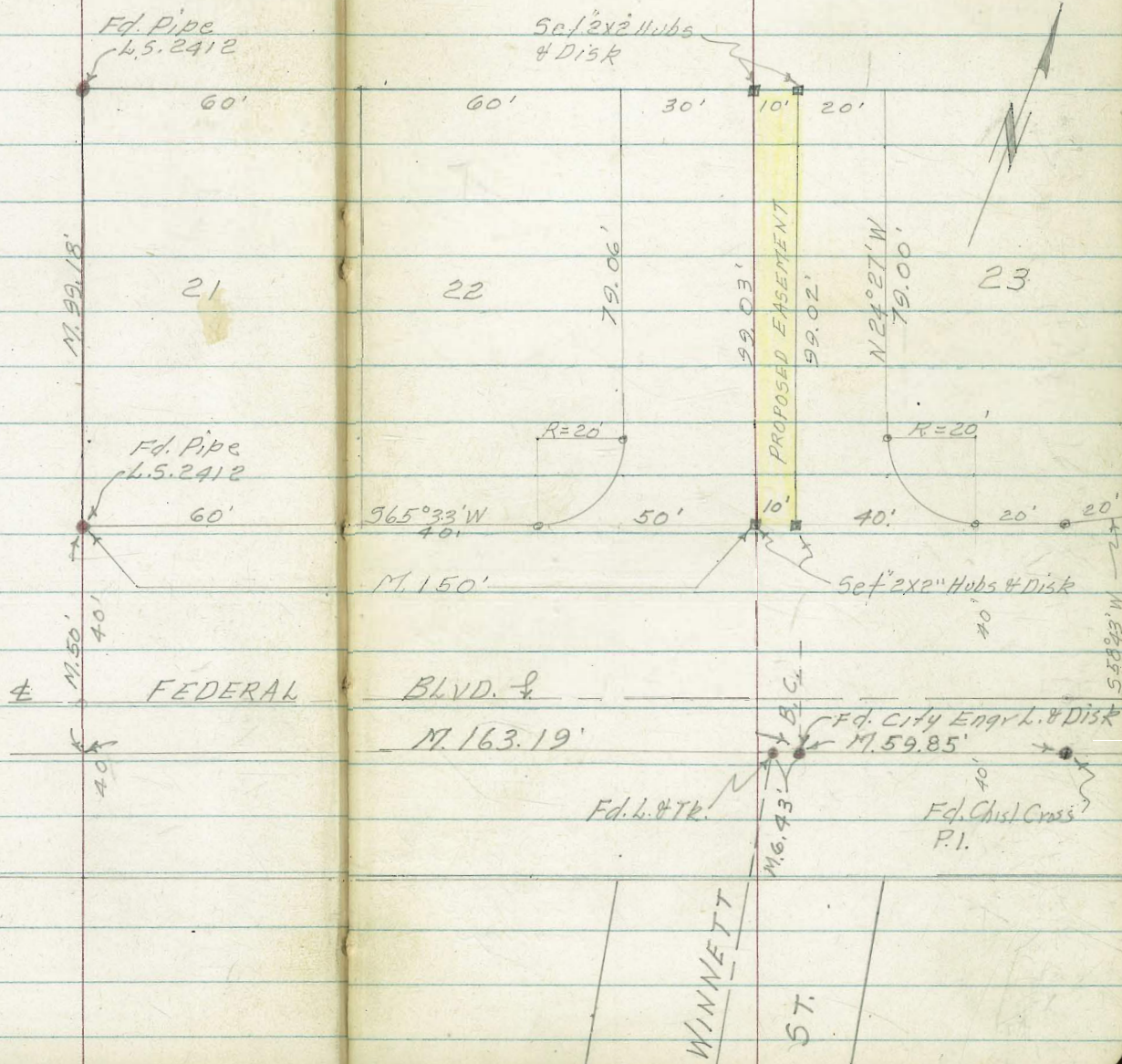
61

Huffman 

Nordahl 

EASEMENT SURVEY JOFAINA VISTA

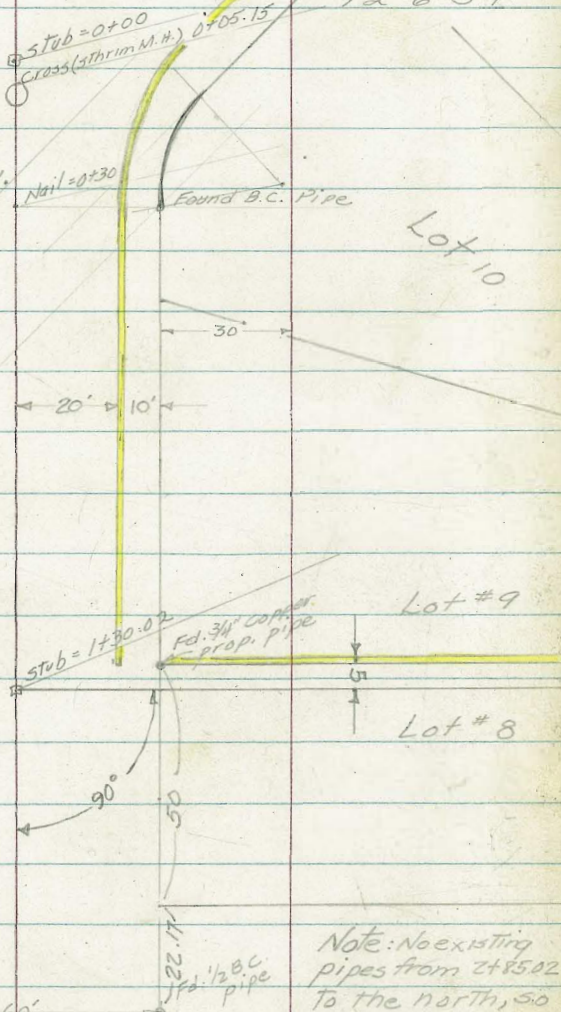
INDEXED
JUN 25 1954



Sewer Prelim. Calle Tres Lomas
 Beginning at Cumberland St.
 Tres Lomas Map # 2160 Sheet # 2
 W.O. 62405 12-6-54

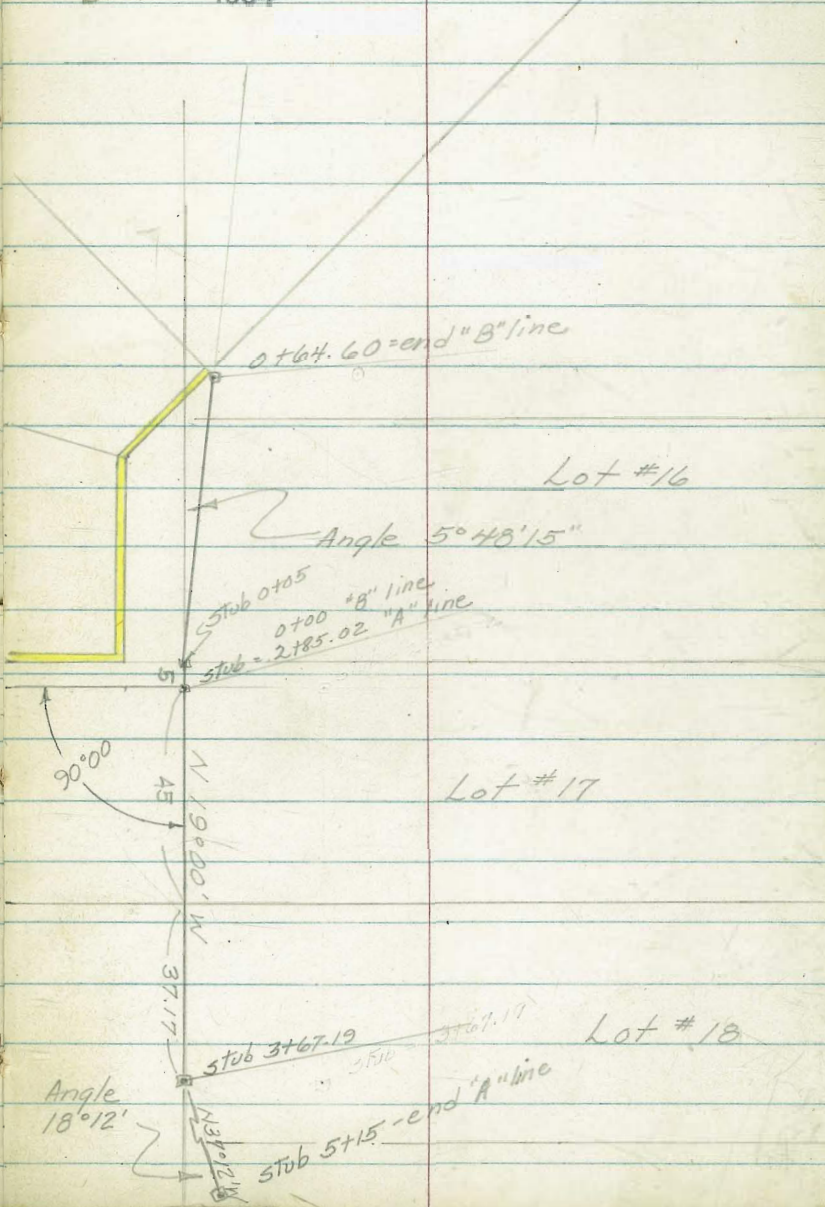
Hatch
 Whipple
 Presley

Cumberland
 St.
 Calle Tres Lomas



Note: No existing
 pipes from 2+85.02
 to the north, so
 used map
 bearings.

INDEXED
 JEP
 DEC. 7 1954



Angle
 18°12'

X-sect. Sewer Prelim

Lt.

E

Rt.

63

Tres Lomas

From existing E Sewer Cumberland & Tres
To Lots 2 & 12 Bk. 11
1+49.6 ~ 5.2 Lt Nthly of 18" conc. gutter

Lomas

0854.09.0

1.0
9.0
5.2

1+30.02 = 90° 4' stub 5' North of Lot 9

09.76
Stub

09.8
30

1+00

07.8

0+60

05.8

0+30 = Nail E St. 30' To B.C. Prop. pipe

04.7

0+06.2 ~ .4 Lt. = E Sewer M.H. #14
9672-L sheet 2

287.40
I.E.

04.68
rim
on
South

0+00 = stub (see sketch)

04.65

300' not noted

Actual elevations shown

2.81 304.157 = n.w. B.P. Cumberland & Calle Tres Lomas

13.00 306.96 0.39 293.96

13.07 294.35 12.80 281.28
S.W. spike in pole Calle Serena & Cumberland
other city datum

11.60 294.18 0.64 282.48

13.28 283.12 269.84 n.w. B.P.

Starting B.M. Winchester & Calle Serena

Lt. E Rt.

3+00

06.5 0.6.6 06.7
5 5

2+85.02 = 90° To North (stub) also

05.16
Stub

0+00 90° To south (see sketch)

2+73.5 ~ 5.1 Lt. end conc. brick wall

08.09 05.1
5.1 5.1
Top grd
Wall

2+67. ~ 9.1 Lt. end conc. slab

06.65
9.1
conc.
slab2+40 ~ 9.1 Lt. end garage & begin 10' wide
conc. slab for clothes line06.65 08.06 07.1 07.1 07.5
9.1 5.1 5.1
conc. Top grd
slab Wall2+20 ~ 5.1 Lt. end 4' high wall & begin 1' high
wall with 4' redwood fence. 9.3 Lt. begin
2 car garage & end 8' conc. drive07.51 08.39 11.65 7.7
floor 5.2 5.2 5.2
gar. Top Top grd
1' wall 4' wall

2+00

07.76 11.67 08.2 08.6 08.9
10.7 5.2 5.2
edge conc. Top
drive 8' Wall

1+60R = West prop line Calle Tres Lomas

10.67 08.9 09.7 09.7
5.3 5.3
Top Top
8' wall grd.

1+56 ~ 10.8 Lt. edge 8' conc. drive

08.69 10.13 09.0 09.4
10.8 5.3 5.3
edge dr. Top Top
Wall grd.1+51 ~ 5.2 Lt. back edge conc. gut.
& begin 8" conc. brick wall08.65 08.83
8.6 5.2 Top
edge conc. open gut.

See P966 for cuts on
Low Side

Lt. E. Rt.

0+64.60 = 1/2 prop pipe		01.6 1.5 bottom wall	01.44 pipe	01.1 5
0+46.5 ~ 16' Lt. Angle in 3' brick wall				
0+35		05.58 15.1 Top Wall	03.3 15.1 9rd.	02.8 5 02.6
0+05 = stub A 5° 48' 15" deflection Rt.			04.71	
0+00 = stub "B" line to south (see sketch)			05.16	
5+15 = stub at end ~ 6.06 into Lots # 2 and 21 along lot line		19.2 5	19.63 stub T.P.	20.0 5
5+00		18.5 5	18.9	19.3 5
4+50		15.7 5	16.0	16.4 5
4+00		13.0 5	13.3	13.7 5
3+67.19 = A 18° 12' deflection left (stub) Sections 90° to back Tamp.		11.3 5	11.40 stub T.P.	11.7 5
3+30			08.9	

Actual Elevations
300' not noted

Elas + HI - Reading

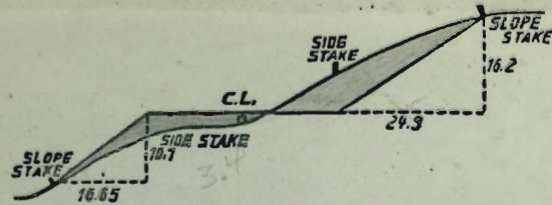
305.14	301.14	311.40	90	316.0
5.6	5.6	5.6	25	0
310.76	307.04	317.0	65	319.63
				5.6
				325.23
				321.6

HI = + 5.6

076460	HI 307.04	298.8 8.2 6.0 5.6	299.2 9.8 11.6
0400	310.76	302.8 7.4 6.0	301.9 9.0
316719	317.00	309.4 7.6 6.0	307.7 9.3 9.0
4150	321.6	311 8.1 6.5	310.7 10.7 6.0
5415	325.2	316.3 8.9 4.7	

Handwritten notes and calculations on the left page:

- 2.83
- 2.4
- 1942
- 18
- 170
- 12.4
- 0.7
- 8.85
- 2.12
- 12.61
- 2.50
- 15.11
- 100
- 4546
- 531
- 11.53
- 10.96
- 4247
- 4546
- 3700
- 2700-4230



DISTANCES FROM SIDE STAKES FOR CROSS-SECTIONING.
SLOPE 1 1/2 TO 1. ROADWAY OF ANY WIDTH.

	0	.1	.2	.3	.4	.5	.6	.7	.8	.9	
0	0.00	0.15	0.30	0.45	0.60	0.75	0.90	1.05	1.20	1.35	0
1	1.50	1.65	1.80	1.95	2.10	2.25	2.40	2.55	2.70	2.85	1
2	3.00	3.15	3.30	3.45	3.60	3.75	3.90	4.05	4.20	4.35	2
3	4.50	4.65	4.80	4.95	5.10	5.25	5.40	5.55	5.70	5.85	3
4	6.00	6.15	6.30	6.45	6.60	6.75	6.90	7.05	7.20	7.35	4
5	7.50	7.65	7.80	7.95	8.10	8.25	8.40	8.55	8.70	8.85	5
6	9.00	9.15	9.30	9.45	9.60	9.75	9.90	10.05	10.20	10.35	6
7	10.50	10.65	10.80	10.95	11.10	11.25	11.40	11.55	11.70	11.85	7
8	12.00	12.15	12.30	12.45	12.60	12.75	12.90	13.05	13.20	13.35	8
9	13.50	13.65	13.80	13.95	14.10	14.25	14.40	14.55	14.70	14.85	9
10	15.00	15.15	15.30	15.45	15.60	15.75	15.90	16.05	16.20	16.35	10
11	16.50	16.65	16.80	16.95	17.10	17.25	17.40	17.55	17.70	17.85	11
12	18.00	18.15	18.30	18.45	18.60	18.75	18.90	19.05	19.20	19.35	12
13	19.50	19.65	19.80	19.95	20.10	20.25	20.40	20.55	20.70	20.85	13
14	21.00	21.15	21.30	21.45	21.60	21.75	21.90	22.05	22.20	22.35	14
15	22.50	22.65	22.80	22.95	23.10	23.25	23.40	23.55	23.70	23.85	15
16	24.00	24.15	24.30	24.45	24.60	24.75	24.90	25.05	25.20	25.35	16
17	25.50	25.65	25.80	25.95	26.10	26.25	26.40	26.55	26.70	26.85	17
18	27.00	27.15	27.30	27.45	27.60	27.75	27.90	28.05	28.20	28.35	18
19	28.50	28.65	28.80	28.95	29.10	29.25	29.40	29.55	29.70	29.85	19
20	30.00	30.15	30.30	30.45	30.60	30.75	30.90	31.05	31.20	31.35	20
21	31.50	31.65	31.80	31.95	32.10	32.25	32.40	32.55	32.70	32.85	21
22	33.00	33.15	33.30	33.45	33.60	33.75	33.90	34.05	34.20	34.35	22
23	34.50	34.65	34.80	34.95	35.10	35.25	35.40	35.55	35.70	35.85	23
24	36.00	36.15	36.30	36.45	36.60	36.75	36.90	37.05	37.20	37.35	24
25	37.50	37.65	37.80	37.95	38.10	38.25	38.40	38.55	38.70	38.85	25
26	39.00	39.15	39.30	39.45	39.60	39.75	39.90	40.05	40.20	40.35	26
27	40.50	40.65	40.80	40.95	41.10	41.25	41.40	41.55	41.70	41.85	27
28	42.00	42.15	42.30	42.45	42.60	42.75	42.90	43.05	43.20	43.35	28
29	43.50	43.65	43.80	43.95	44.10	44.25	44.40	44.55	44.70	44.85	29
30	45.00	45.15	45.30	45.45	45.60	45.75	45.90	46.05	46.20	46.35	30
31	46.50	46.65	46.80	46.95	47.10	47.25	47.40	47.55	47.70	47.85	31
32	48.00	48.15	48.30	48.45	48.60	48.75	48.90	49.05	49.20	49.35	32
33	49.50	49.65	49.80	49.95	50.10	50.25	50.40	50.55	50.70	50.85	33
34	51.00	51.15	51.30	51.45	51.60	51.75	51.90	52.05	52.20	52.35	34
35	52.50	52.65	52.80	52.95	53.10	53.25	53.40	53.55	53.70	53.85	35
36	54.00	54.15	54.30	54.45	54.60	54.75	54.90	55.05	55.20	55.35	36
37	55.50	55.65	55.80	55.95	56.10	56.25	56.40	56.55	56.70	56.85	37
38	57.00	57.15	57.30	57.45	57.60	57.75	57.90	58.05	58.20	58.35	38
39	58.50	58.65	58.80	58.95	59.10	59.25	59.40	59.55	59.70	59.85	39
40	60.00	60.15	60.30	60.45	60.60	60.75	60.90	61.05	61.20	61.35	40
41	61.50	61.65	61.80	61.95	62.10	62.25	62.40	62.55	62.70	62.85	41
42	63.00	63.15	63.30	63.45	63.60	63.75	63.90	64.05	64.20	64.35	42
43	64.50	64.65	64.80	64.95	65.10	65.25	65.40	65.55	65.70	65.85	43
44	66.00	66.15	66.30	66.45	66.60	66.75	66.90	67.05	67.20	67.35	44
45	67.50	67.65	67.80	67.95	68.10	68.25	68.40	68.55	68.70	68.85	45
46	69.00	69.15	69.30	69.45	69.60	69.75	69.90	70.05	70.20	70.35	46
47	70.50	70.65	70.80	70.95	71.10	71.25	71.40	71.55	71.70	71.85	47
48	72.00	72.15	72.30	72.45	72.60	72.75	72.90	73.05	73.20	73.35	48
49	73.50	73.65	73.80	73.95	74.10	74.25	74.40	74.55	74.70	74.85	49
50	75.00	75.15	75.30	75.45	75.60	75.75	75.90	76.05	76.20	76.35	50

THE NATIONAL BLANK BOOK COMPANY
HOLYOKE MASSACHUSETTS
NEW YORK CHICAGO BOSTON SAN FRANCISCO