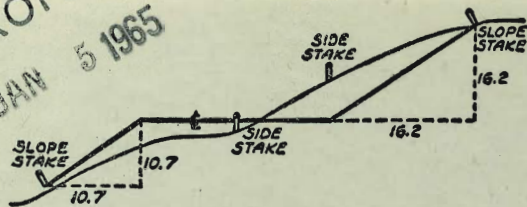


MICROFILMED
 JAN 5 1965



DISTANCES FROM SIDE STAKES FOR CROSS-SECTIONING
 SLOPE 1 TO 1. ROADWAY OF ANY WIDTH

| | 0 | .1 | .2 | .3 | .4 | .5 | .6 | .7 | .8 | .9 | |
|----|-------|-------|-------|-------|-------|-------|-------|-------|-------|-------|----|
| 0 | 0.00 | 0.10 | 0.20 | 0.30 | 0.40 | 0.50 | 0.60 | 0.70 | 0.80 | 0.90 | 0 |
| 1 | 1.00 | 1.10 | 1.20 | 1.30 | 1.40 | 1.50 | 1.60 | 1.70 | 1.80 | 1.90 | 1 |
| 2 | 2.00 | 2.10 | 2.20 | 2.30 | 2.40 | 2.50 | 2.60 | 2.70 | 2.80 | 2.90 | 2 |
| 3 | 3.00 | 3.10 | 3.20 | 3.30 | 3.40 | 3.50 | 3.60 | 3.70 | 3.80 | 3.90 | 3 |
| 4 | 4.00 | 4.10 | 4.20 | 4.30 | 4.40 | 4.50 | 4.60 | 4.70 | 4.80 | 4.90 | 4 |
| 5 | 5.00 | 5.10 | 5.20 | 5.30 | 5.40 | 5.50 | 5.60 | 5.70 | 5.80 | 5.90 | 5 |
| 6 | 6.00 | 6.10 | 6.20 | 6.30 | 6.40 | 6.50 | 6.60 | 6.70 | 6.80 | 6.90 | 6 |
| 7 | 7.00 | 7.10 | 7.20 | 7.30 | 7.40 | 7.50 | 7.60 | 7.70 | 7.80 | 7.90 | 7 |
| 8 | 8.00 | 8.10 | 8.20 | 8.30 | 8.40 | 8.50 | 8.60 | 8.70 | 8.80 | 8.90 | 8 |
| 9 | 9.00 | 9.10 | 9.20 | 9.30 | 9.40 | 9.50 | 9.60 | 9.70 | 9.80 | 9.90 | 9 |
| 10 | 10.00 | 10.10 | 10.20 | 10.30 | 10.40 | 10.50 | 10.60 | 10.70 | 10.80 | 10.90 | 10 |
| 11 | 11.00 | 11.10 | 11.20 | 11.30 | 11.40 | 11.50 | 11.60 | 11.70 | 11.80 | 11.90 | 11 |
| 12 | 12.00 | 12.10 | 12.20 | 12.30 | 12.40 | 12.50 | 12.60 | 12.70 | 12.80 | 12.90 | 12 |
| 13 | 13.00 | 13.10 | 13.20 | 13.30 | 13.40 | 13.50 | 13.60 | 13.70 | 13.80 | 13.90 | 13 |
| 14 | 14.00 | 14.10 | 14.20 | 14.30 | 14.40 | 14.50 | 14.60 | 14.70 | 14.80 | 14.90 | 14 |
| 15 | 15.00 | 15.10 | 15.20 | 15.30 | 15.40 | 15.50 | 15.60 | 15.70 | 15.80 | 15.90 | 15 |
| 16 | 16.00 | 16.10 | 16.20 | 16.30 | 16.40 | 16.50 | 16.60 | 16.70 | 16.80 | 16.90 | 16 |
| 17 | 17.00 | 17.10 | 17.20 | 17.30 | 17.40 | 17.50 | 17.60 | 17.70 | 17.80 | 17.90 | 17 |
| 18 | 18.00 | 18.10 | 18.20 | 18.30 | 18.40 | 18.50 | 18.60 | 18.70 | 18.80 | 18.90 | 18 |
| 19 | 19.00 | 19.10 | 19.20 | 19.30 | 19.40 | 19.50 | 19.60 | 19.70 | 19.80 | 19.90 | 19 |
| 20 | 20.00 | 20.10 | 20.20 | 20.30 | 20.40 | 20.50 | 20.60 | 20.70 | 20.80 | 20.90 | 20 |
| 21 | 21.00 | 21.10 | 21.20 | 21.30 | 21.40 | 21.50 | 21.60 | 21.70 | 21.80 | 21.90 | 21 |
| 22 | 22.00 | 22.10 | 22.20 | 22.30 | 22.40 | 22.50 | 22.60 | 22.70 | 22.80 | 22.90 | 22 |
| 23 | 23.00 | 23.10 | 23.20 | 23.30 | 23.40 | 23.50 | 23.60 | 23.70 | 23.80 | 23.90 | 23 |
| 24 | 24.00 | 24.10 | 24.20 | 24.30 | 24.40 | 24.50 | 24.60 | 24.70 | 24.80 | 24.90 | 24 |
| 25 | 25.00 | 25.10 | 25.20 | 25.30 | 25.40 | 25.50 | 25.60 | 25.70 | 25.80 | 25.90 | 25 |
| 26 | 26.00 | 26.10 | 26.20 | 26.30 | 26.40 | 26.50 | 26.60 | 26.70 | 26.80 | 26.90 | 26 |
| 27 | 27.00 | 27.10 | 27.20 | 27.30 | 27.40 | 27.50 | 27.60 | 27.70 | 27.80 | 27.90 | 27 |
| 28 | 28.00 | 28.10 | 28.20 | 28.30 | 28.40 | 28.50 | 28.60 | 28.70 | 28.80 | 28.90 | 28 |
| 29 | 29.00 | 29.10 | 29.20 | 29.30 | 29.40 | 29.50 | 29.60 | 29.70 | 29.80 | 29.90 | 29 |
| 30 | 30.00 | 30.10 | 30.20 | 30.30 | 30.40 | 30.50 | 30.60 | 30.70 | 30.80 | 30.90 | 30 |
| 31 | 31.00 | 31.10 | 31.20 | 31.30 | 31.40 | 31.50 | 31.60 | 31.70 | 31.80 | 31.90 | 31 |
| 32 | 32.00 | 32.10 | 32.20 | 32.30 | 32.40 | 32.50 | 32.60 | 32.70 | 32.80 | 32.90 | 32 |
| 33 | 33.00 | 33.10 | 33.20 | 33.30 | 33.40 | 33.50 | 33.60 | 33.70 | 33.80 | 33.90 | 33 |
| 34 | 34.00 | 34.10 | 34.20 | 34.30 | 34.40 | 34.50 | 34.60 | 34.70 | 34.80 | 34.90 | 34 |
| 35 | 35.00 | 35.10 | 35.20 | 35.30 | 35.40 | 35.50 | 35.60 | 35.70 | 35.80 | 35.90 | 35 |
| 36 | 36.00 | 36.10 | 36.20 | 36.30 | 36.40 | 36.50 | 36.60 | 36.70 | 36.80 | 36.90 | 36 |
| 37 | 37.00 | 37.10 | 37.20 | 37.30 | 37.40 | 37.50 | 37.60 | 37.70 | 37.80 | 37.90 | 37 |
| 38 | 38.00 | 38.10 | 38.20 | 38.30 | 38.40 | 38.50 | 38.60 | 38.70 | 38.80 | 38.90 | 38 |
| 39 | 39.00 | 39.10 | 39.20 | 39.30 | 39.40 | 39.50 | 39.60 | 39.70 | 39.80 | 39.90 | 39 |
| 40 | 40.00 | 40.10 | 40.20 | 40.30 | 40.40 | 40.50 | 40.60 | 40.70 | 40.80 | 40.90 | 40 |
| 41 | 41.00 | 41.10 | 41.20 | 41.30 | 41.40 | 41.50 | 41.60 | 41.70 | 41.80 | 41.90 | 41 |
| 42 | 42.00 | 42.10 | 42.20 | 42.30 | 42.40 | 42.50 | 42.60 | 42.70 | 42.80 | 42.90 | 42 |
| 43 | 43.00 | 43.10 | 43.20 | 43.30 | 43.40 | 43.50 | 43.60 | 43.70 | 43.80 | 43.90 | 43 |
| 44 | 44.00 | 44.10 | 44.20 | 44.30 | 44.40 | 44.50 | 44.60 | 44.70 | 44.80 | 44.90 | 44 |
| 45 | 45.00 | 45.10 | 45.20 | 45.30 | 45.40 | 45.50 | 45.60 | 45.70 | 45.80 | 45.90 | 45 |
| 46 | 46.00 | 46.10 | 46.20 | 46.30 | 46.40 | 46.50 | 46.60 | 46.70 | 46.80 | 46.90 | 46 |
| 47 | 47.00 | 47.10 | 47.20 | 47.30 | 47.40 | 47.50 | 47.60 | 47.70 | 47.80 | 47.90 | 47 |
| 48 | 48.00 | 48.10 | 48.20 | 48.30 | 48.40 | 48.50 | 48.60 | 48.70 | 48.80 | 48.90 | 48 |
| 49 | 49.00 | 49.10 | 49.20 | 49.30 | 49.40 | 49.50 | 49.60 | 49.70 | 49.80 | 49.90 | 49 |
| 50 | 50.00 | 50.10 | 50.20 | 50.30 | 50.40 | 50.50 | 50.60 | 50.70 | 50.80 | 50.90 | 50 |

Distance of slope stake from side or shoulder stake for any width roadway, slope 1 to 1. If ground is nearly level, the out or fill at side stake is located by the double entry method in left column and top row. The number in body of table in same row and column gives distance from side stake to slope stake. If ground is not level estimate the difference in elevation between the side stake and slope stake, lower target by this amount if out, elevate if fill. Add this amount to cut or fill and find distance in table. Set up rod at this point, and line of sight should cut target. If it does not make the slight adjustment necessary.

TABLE XIII—CORRECTIONS FOR TANGENTS AND EXTERNALS

These corrections are to be added to the approximate values, found by dividing the tangent, or external, for a 1° curve (Table VIII) by the degree of curve, in order to obtain the true tangents, or externals. Intermediate values may be obtained by interpolation.

FOR TANGENTS ADD

| Central Angle | DEGREE OF CURVE | | | | | | | | | | | | | |
|---------------|-----------------|------|------|------|------|------|------|------|------|------|------|------|------|------|
| | 5° | 10° | 15° | 20° | 25° | 30° | 35° | 40° | 45° | 50° | 55° | 60° | 65° | 70° |
| 10° | .03 | .06 | .09 | .13 | .16 | .19 | .22 | .25 | .28 | .31 | .34 | .38 | .42 | .46 |
| 15° | .04 | .10 | .14 | .19 | .24 | .29 | .34 | .39 | .45 | .51 | .53 | .58 | .63 | .68 |
| 20° | .06 | .13 | .19 | .26 | .32 | .39 | .45 | .51 | .58 | .65 | .72 | .79 | .84 | .90 |
| 25° | .08 | .16 | .24 | .33 | .40 | .49 | .58 | .67 | .75 | .83 | .90 | .99 | 1.06 | 1.14 |
| 30° | .10 | .19 | .29 | .39 | .49 | .59 | .69 | .79 | .89 | .99 | 1.09 | 1.20 | 1.29 | 1.39 |
| 35° | .11 | .22 | .34 | .47 | .58 | .69 | .79 | .81 | .92 | 1.04 | 1.29 | 1.42 | 1.54 | 1.66 |
| 40° | .13 | .26 | .40 | .53 | .67 | .80 | .93 | 1.06 | 1.20 | 1.34 | 1.49 | 1.64 | 1.79 | 1.94 |
| 45° | .15 | .30 | .44 | .60 | .76 | .91 | 1.06 | 1.21 | 1.37 | 1.52 | 1.70 | 1.87 | 2.04 | 2.21 |
| 50° | .17 | .34 | .51 | .68 | .85 | 1.02 | 1.19 | 1.36 | 1.54 | 1.72 | 1.91 | 2.10 | 2.29 | 2.48 |
| 55° | .19 | .38 | .57 | .76 | .95 | 1.14 | 1.32 | 1.52 | 1.72 | 1.92 | 2.14 | 2.35 | 2.56 | 2.77 |
| 60° | .21 | .42 | .63 | .84 | 1.05 | 1.27 | 1.49 | 1.71 | 1.94 | 2.17 | 2.38 | 2.60 | 2.83 | 3.07 |
| 65° | .23 | .46 | .69 | .93 | 1.16 | 1.40 | 1.64 | 1.88 | 2.13 | 2.38 | 2.63 | 2.88 | 3.13 | 3.39 |
| 70° | .25 | .51 | .76 | 1.02 | 1.28 | 1.54 | 1.80 | 2.06 | 2.33 | 2.60 | 2.88 | 3.16 | 3.44 | 3.72 |
| 75° | .27 | .56 | .83 | 1.12 | 1.40 | 1.69 | 1.98 | 2.27 | 2.57 | 2.87 | 3.16 | 3.47 | 3.78 | 4.09 |
| 80° | .30 | .61 | .91 | 1.22 | 1.53 | 1.84 | 2.15 | 2.46 | 2.78 | 3.10 | 3.44 | 3.78 | 4.12 | 4.46 |
| 85° | .33 | .66 | 1.00 | 1.33 | 1.68 | 2.02 | 2.36 | 2.70 | 3.05 | 3.40 | 3.77 | 4.14 | 4.55 | 4.89 |
| 90° | .36 | .72 | 1.09 | 1.45 | 1.83 | 2.20 | 2.57 | 2.94 | 3.32 | 3.70 | 4.10 | 4.50 | 4.91 | 5.32 |
| 95° | .39 | .79 | 1.19 | 1.55 | 2.00 | 2.40 | 2.80 | 3.20 | 3.61 | 4.02 | 4.40 | 4.98 | 5.38 | 5.83 |
| 100° | .43 | .88 | 1.30 | 1.74 | 2.18 | 2.62 | 3.06 | 3.50 | 3.95 | 4.40 | 4.88 | 5.37 | 5.85 | 6.34 |
| 110° | .51 | 1.03 | 1.56 | 2.08 | 2.61 | 3.14 | 3.67 | 4.21 | 4.76 | 5.31 | 5.86 | 6.43 | 7.01 | 7.60 |
| 120° | .62 | 1.25 | 1.93 | 2.52 | 3.16 | 3.81 | 4.45 | 5.11 | 5.77 | 6.44 | 7.12 | 7.80 | 8.50 | 9.22 |

FOR EXTERNALS ADD

| Central Angle | DEGREE OF CURVE | | | | | | | | | | | | | |
|---------------|-----------------|------|------|------|------|------|------|------|------|------|------|------|------|------|
| | 5° | 10° | 15° | 20° | 25° | 30° | 35° | 40° | 45° | 50° | 55° | 60° | 65° | 70° |
| 10° | .001 | .003 | .004 | .006 | .007 | .008 | .009 | .011 | .012 | .014 | .015 | .017 | .018 | .020 |
| 15° | .003 | .007 | .010 | .014 | .018 | .023 | .027 | .029 | .032 | .035 | .039 | .043 | .047 | .051 |
| 20° | .006 | .011 | .017 | .022 | .028 | .034 | .038 | .045 | .051 | .057 | .063 | .070 | .078 | .083 |
| 25° | .009 | .018 | .027 | .036 | .046 | .056 | .065 | .074 | .083 | .093 | .106 | .120 | .127 | .135 |
| 30° | .013 | .025 | .038 | .051 | .065 | .078 | .090 | .103 | .116 | .129 | .149 | .170 | .179 | .188 |
| 35° | .018 | .035 | .054 | .072 | .086 | .109 | .131 | .153 | .175 | .197 | .213 | .230 | .247 | .264 |
| 40° | .023 | .046 | .070 | .093 | .117 | .141 | .172 | .203 | .234 | .265 | .277 | .290 | .315 | .341 |
| 45° | .030 | .060 | .093 | .119 | .153 | .184 | .216 | .254 | .289 | .325 | .351 | .378 | .411 | .445 |
| 50° | .037 | .075 | .116 | .151 | .189 | .227 | .266 | .305 | .345 | .384 | .425 | .467 | .508 | .550 |
| 55° | .046 | .093 | .142 | .188 | .236 | .283 | .332 | .381 | .420 | .479 | .530 | .582 | .641 | .700 |
| 60° | .056 | .112 | .168 | .225 | .283 | .340 | .398 | .457 | .516 | .575 | .636 | .697 | .774 | .851 |
| 65° | .067 | .135 | .204 | .273 | .343 | .412 | .483 | .554 | .625 | .697 | .771 | .845 | .922 | 1.01 |
| 70° | .080 | .159 | .240 | .321 | .403 | .485 | .568 | .652 | .735 | .819 | .906 | .994 | 1.08 | 1.17 |
| 75° | .095 | .182 | .266 | .353 | .440 | .528 | .617 | .707 | .797 | .877 | .977 | 1.07 | 1.18 | 1.29 |
| 80° | .110 | .220 | .332 | .445 | .558 | .671 | .787 | .903 | 1.02 | 1.13 | 1.25 | 1.38 | 1.50 | 1.62 |
| 85° | .128 | .259 | .391 | .524 | .657 | .790 | .926 | 1.06 | 1.20 | 1.34 | 1.47 | 1.62 | 1.76 | 1.91 |
| 90° | .149 | .299 | .450 | .603 | .756 | .910 | 1.07 | 1.22 | 1.38 | 1.54 | 1.70 | 1.87 | 2.03 | 2.20 |
| 95° | .174 | .350 | .522 | .706 | .885 | 1.06 | 1.25 | 1.43 | 1.62 | 1.80 | 1.99 | 2.18 | 2.38 | 2.58 |
| 100° | .200 | .401 | .604 | .809 | 1.01 | 1.22 | 1.43 | 1.64 | 1.85 | 2.06 | 2.28 | 2.50 | 2.73 | 2.96 |
| 110° | .268 | .536 | .806 | 1.08 | 1.35 | 1.63 | 1.91 | 2.20 | 2.48 | 2.76 | 3.05 | 3.35 | 3.66 | 3.96 |
| 120° | .360 | .721 | 1.08 | 1.45 | 1.82 | 2.19 | 2.57 | 2.95 | 3.33 | 3.72 | 4.11 | 4.50 | 4.91 | 5.32 |

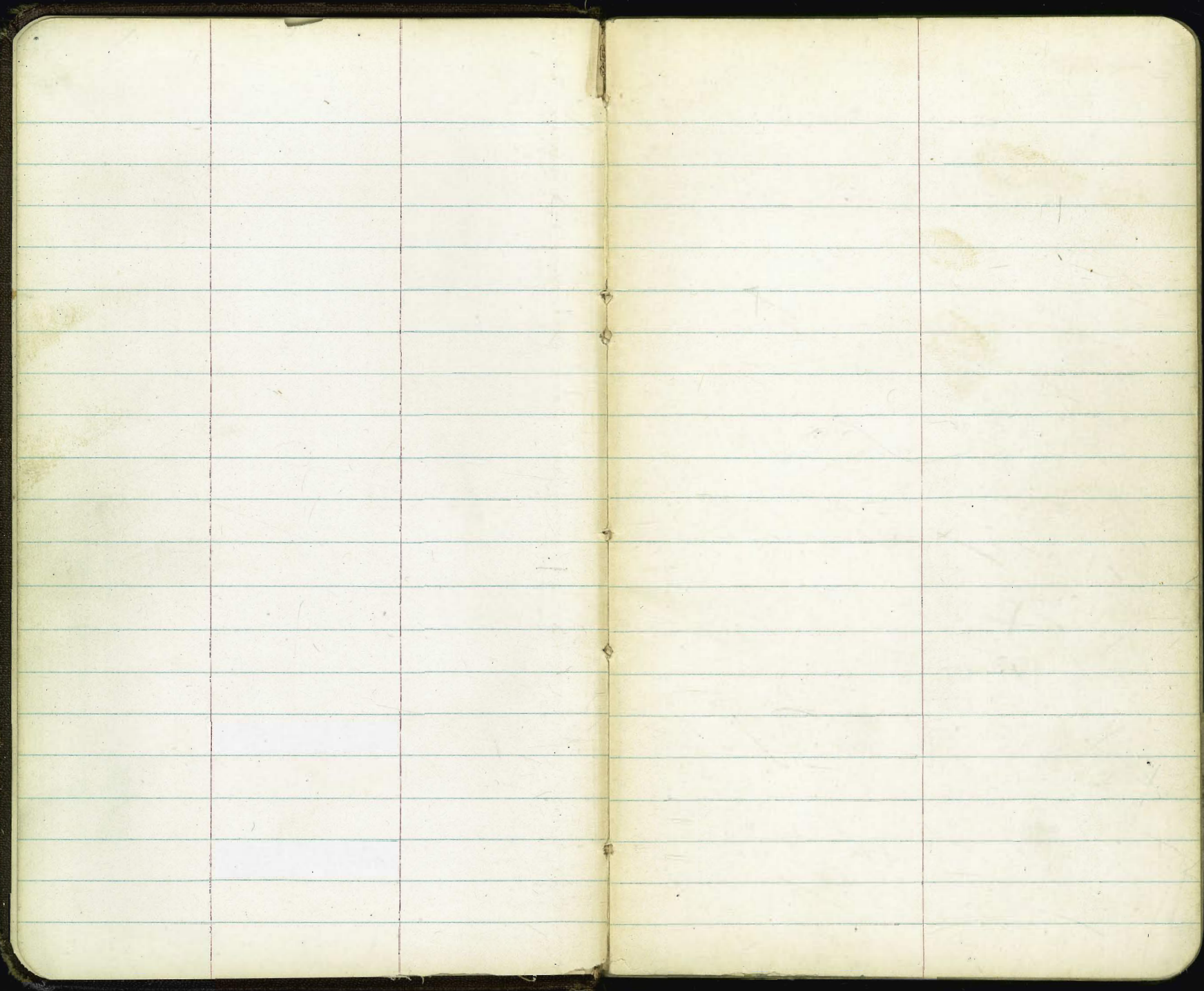
Alignment Sewer Marina Blvd — 1

Sewer alignment 28th Commercial 4-

At fall Sewer Pump Station to Grand Ave 10-19

X-sec Figueroa - Grand to Pico 41-44
57-

X-sec Magnolia Pico to Pacific Highway 67-



Service extension - Exit MH & Morena
and Cushman Ave to Conc Block Bldg
Under Coast in Lot B PL 285

WO # 62335

6-8-53

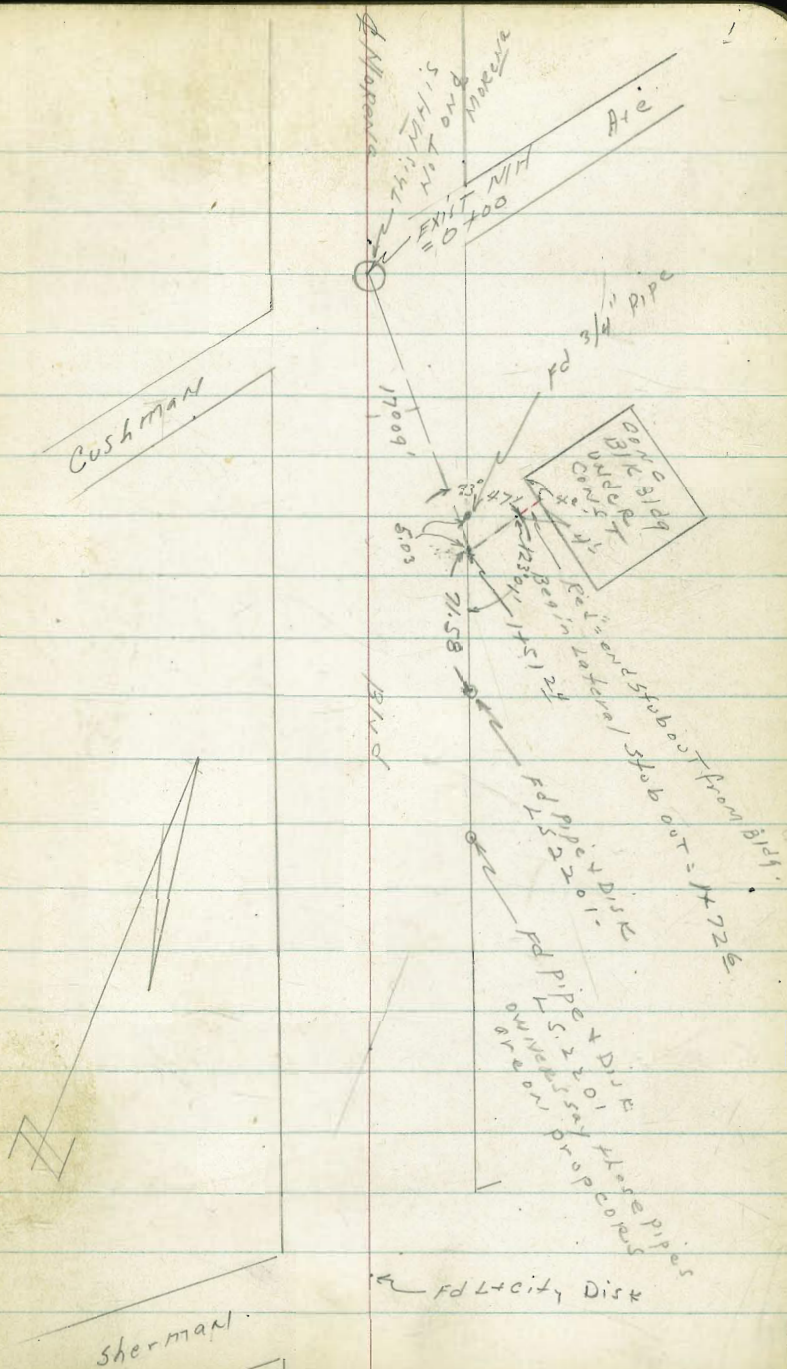
Allen

C Powell

See page 2 for Levels

Ref. 8842-L - Sheet 2.

INDEXED
JUN 8 1953
law



1451²⁴ - L. LT = 106°13' of Prop. Sewer intersects

Prop Line ?

1425

1400

0450

0439 = edge exist A.C. Pave

0400 = EXIST MH & MORENA + Cushman ave

BM. 10.78 24.43 13.65

LT = 114

ct = w. 1/4 - 2

19.1
5
(3)

19.3

19.3

19.8

19.90

19.65

10.78
I.E

382
E.M

2061

24.43 *

Used I.E. EXIST MH & MORENA + Cushman
DWG # 13470.

Sewer extension cont

2

3

1472⁶ end lateral stubout at Bldg.
Stubout is 4" C.I.

19.2
52
Ground

744
IE
4" C.I.
Stubout
2

Profile levels for Re-alignment of
6" sanitary sewer in Commercial St
See sketch Page #

LT=N14

Rt=S14

1+00 - 3³ Rt = 999 N14 Rail

66⁶

66⁶⁰

3³
N14 Rail

0+50 - 3² Rt = 999 N14 Rail

66⁴

66⁵⁰

3²
N14 Rail

along Ely 7' line Hensley extended

0+23⁴⁰ = L. 8°16' LT. 3¹⁸ Rt = 999 North Rail

66³

66⁴⁰

3¹⁸
TOP
North Rail

This pipe will NOT interfere

0+05-6⁸ LT = Manhole in 48" RCP Storm Drain

66⁵⁴

6⁸
RIM
MH

6³ South to 999 North Rail

L. = 8°20' Rt from sewer to West to 1 1/8" stub
and 1 1/2" sewer entering from North.

0+00 = EXIST Manhole & Hensley St - 6" EFW sewer

60¹⁷

66³³

15
MH

RIM
MH

= 67.10

Elev. L&T 3' tie back N14 Line Comm. & Ely 7' Hensley

SW BP 29th
1st partial
72.05

B.M. Direct elev Reduced

Direct Rod. all shots are true elevations

LT=Nly

et=slly

1496-16⁵ LT = 4³ x 3⁰ gas co manhole

67²¹
16⁵
Rim

1491 = Wly edge good AC. Pave 28th ST

67⁰⁷

18" pipe is deeper than shots indicate - due
to Drop in bottom of inlets

18" pipe cover + N/S

32⁸ Rt = 4 grate for cb inlet SW cor

65⁴⁹
32⁸
grate

61⁸⁹
32⁸
1E

1489 } 24⁰ LT = 4 grate for cb inlet NW cor

63³³ 66⁴³
24⁰ 24⁰
1E pipe grate
Tosly

Wly edge AC. Pave - edge very rough here

1480⁶⁸ = Wly Prop line 28th ST.

66⁹

66⁹⁹

33¹
Nly rail

24" water pipe

1467-10⁵ LT = 4 Manhole for riser on

66⁸³
10⁵
Rim

1450-3² Rt = gage north Rail

66⁷

66⁸³

3²
Nly rail

Manhole in this area is
covered - unable to find

To North

3+88-3⁶ Rt = switch point for spur track

3+50-3⁴ Rt = gage Nly Rail

3+00-3⁴ Rt = gage Nly Rail

2+66-19² LT = ϕ Curb inlet - Pipe Runs N+S

2+50-3³ Rt = gage Nly Rail

Note: This 18" pipe is deeper than shots
indicate - Drop inlets to pipe

2+32⁷ } 34² Rt = ϕ Curb inlet } 18" N+S

2+30⁸ } 45⁸ LT = ϕ Curb inlet } drain

LT = Nly

ϕ

Rt = Sly

7

67⁸⁷

3⁶
Top Rail
Nly

67⁶

67⁷²

3⁴
Nly Rail

67⁴

67⁵²

3⁴
Nly Rail

63⁵²

66⁶¹

19²
1E

19²
grate

67¹⁰

67²⁸

3³
Nly Rail

63⁵⁴

66⁷⁴

45⁸
1E

45⁸
Top grate

65⁷⁷

62⁷⁶

34²
Grate

34²
1E

LT = Nly - $\frac{1}{2}$ et = Sly 8

5450 - 3^2 RT = gage Nly Rail

68³ 68⁵⁴
 3^2
Nly Rail

5400 - 3^6 RT = gage Nly Rail Main track
} 7^3 LT = gage Sly Rail Spur track

68⁰¹ 68² 68³⁵
TOP Sly Rail Spur - 3^6 Nly Rail

4471 $\frac{1}{2}$ intersects S. Fly Rail Spur track

68¹²
TOP Rail

4450 - 3^6 RT = Heel of Switch Frog Main Track
} 1^3 LT = gage Nly Rail Spur track

68¹¹ 68⁰ 68¹⁵
 1^3 TOP Nly Rail Spur Track 3^6 Heel of Frog

4440 - $\frac{1}{2}$ intersects Nwly Rail Spur track

68¹⁰
TOP Rail

4400 - 3^6 RT = gage Nly Rail Main track
} 3^2 RT = gage Spur track

67⁸ 67⁹⁴ 67⁹⁴
 3^2 TOP Nly Rail Spur 3^6 TOP Nly Rail

Elevation Check - L & T WL 29th Neb Comm 69.06

<69.07

Sheet 12 - L sheet file # 3593-24" Water Main

construction plans.

6" sewer in front North 8" in from east
7465²⁹ = $\frac{1}{2}$ EXIST Manhole $\frac{1}{2}$ 29th ST

63²² 69²¹
 $\frac{1}{2}$ E R¹⁷
1 1/4 W 1 1/4 W

Pipe in Bottom
of Box Drops

34^{1/2} ft = $\frac{1}{2}$ cb in let
7442.23³ = $\frac{1}{2}$ curb in let 18" N/S Drain

64²³ 68⁰⁷
23³ 23³
1E grate

67⁴² 64²⁸
34^{1/2} 34^{1/2}
grate 1E

1. 8°/10' LT. w/ edge AC Pav
Rail
7434⁸⁹ = Wly Line 29th ST. 4° pt = gage Nly

69⁰¹ 69²⁶
40
Nly Rail

7400. 4° pt = gage Nly Rail

68⁹ 69¹⁴
40
Nly Rail

6497⁵ 9^{1/2} LT = $\frac{1}{2}$ Manhole for 24" Main

68⁹³
9^{1/2}
Rim

6450. 3⁹ RT = gage Nly Rail

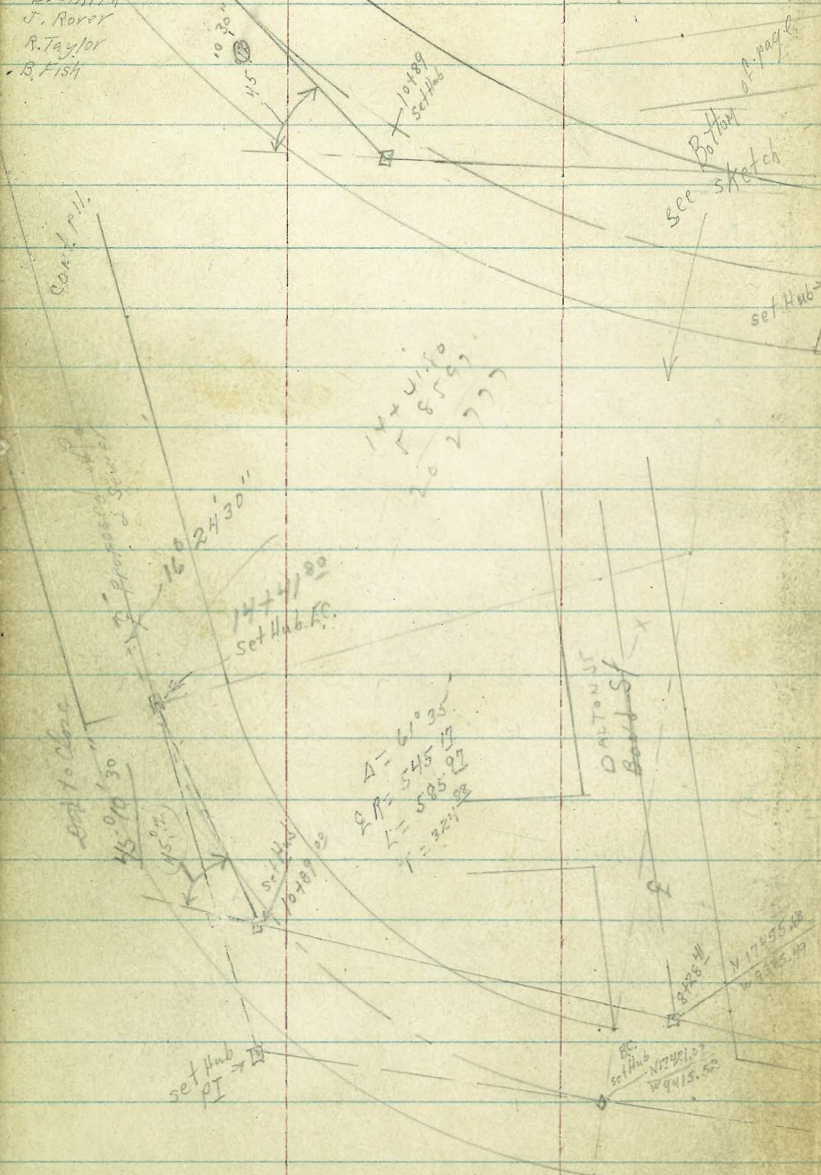
68⁸ 68⁹⁷
37
Nly Rail

6400. 3⁸ RT = gage Nly Rail

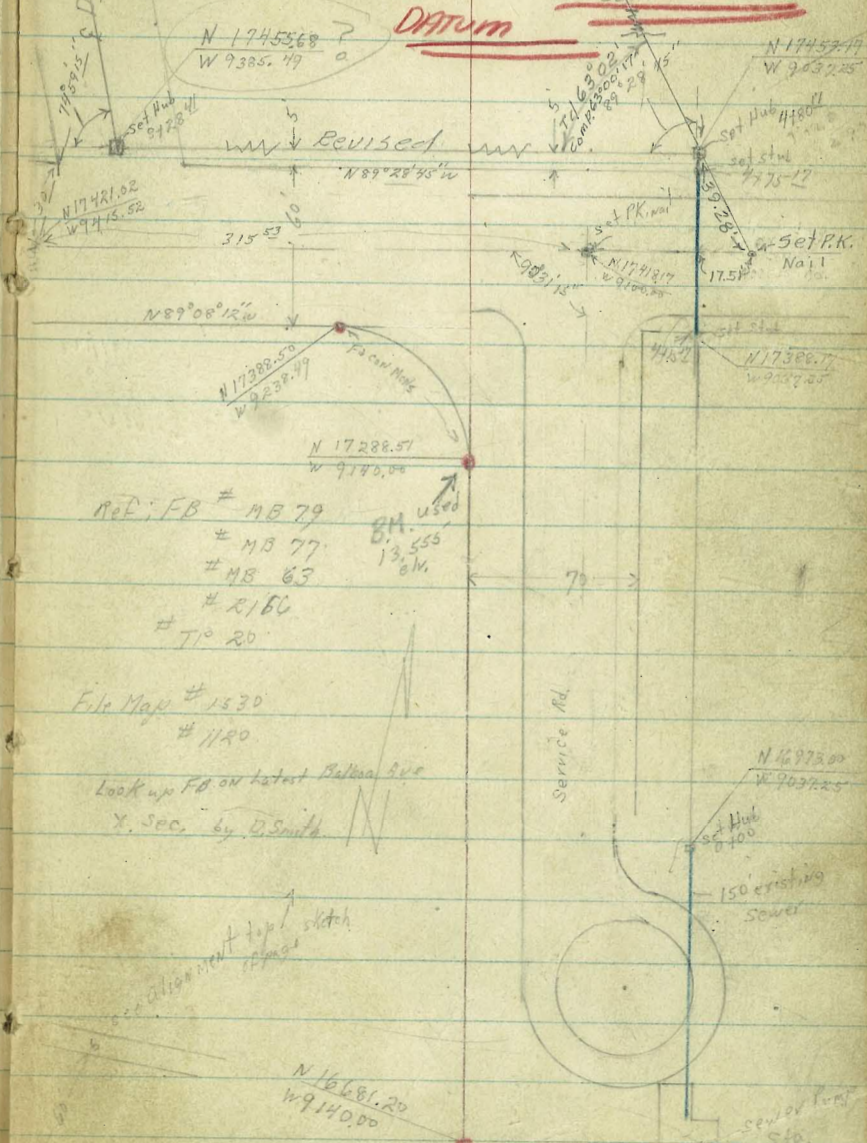
68⁷ 68⁷⁸
38
Nly Rail

Sewer Mission Bay Park Tract
alignment & 'X' sec.

D. Smith
J. Rorer
R. Taylor
B. Fish



cont'd
NOTE:
Proposed New Sewer Alignment
Note Red figures = city
Datum



Ref: FB # 4879
4877
4863
2160
71020
File Map # 1530
1190
Look up FB on latest Bellini Ave
'X' Sec. by D. Smith

Sewer Pump
Sta
Dwg = 1967-D
2015 rev'd

EL 10" HP Gas in
Intersection
Grand + Bond
ST = -1.64 City

cont p14

Return
R8

315.01 P.42

GAS MAIN

P.42

BIK

File Map 1530

Grand

$d = 89.99$
 $R = 1719.76$
 $d = 20' 45.10"$
 $C = 671.87$
Grand Line

$\Delta = 13.21'$
 $R = 600$
 $L = 140.32$
 $C = 140.32$
 $T = 70.16$

New Proposed
Rdwy

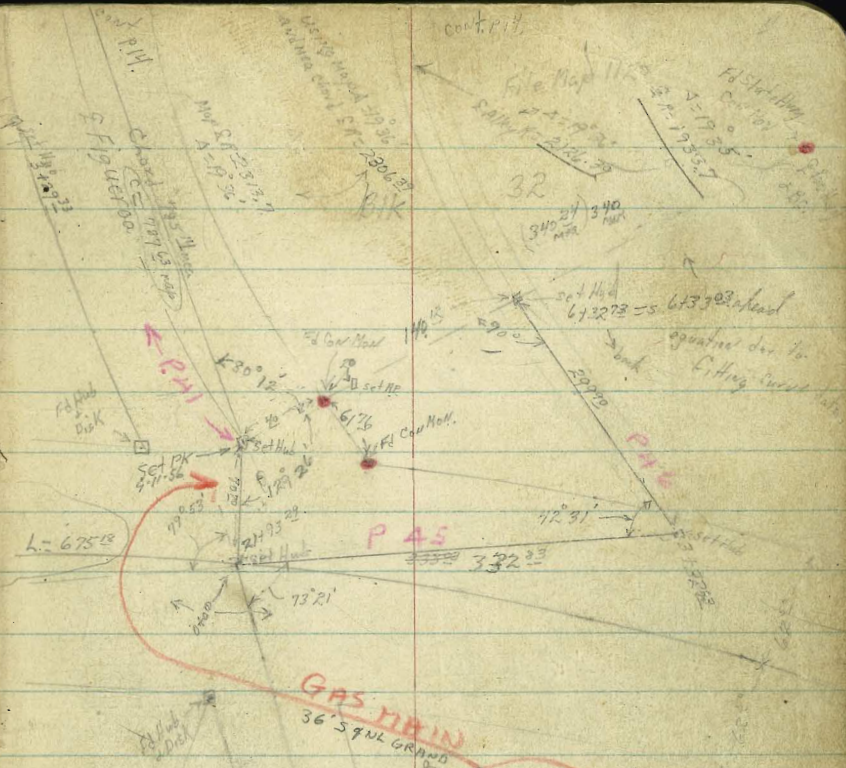
75° 30' 30E
40° 30' 30E
105° 29' 30E

Bond St

New Proposed
Rdwy

cont p10

cont p17



EL Top 10" HP Gas
slly 25' Line Grand
+ Ely line Dalton
extendeds -2.98
City Datum

N 18715.75
W 97742.11

759.25
01.78

Dalton St

9.01
2.98
05466.03

cont p10

FD Can Man
33000
Ref. FB 1052
Balboa Ave
Hand of Survey
10/10

Pco St

Radial Line
Survey BC.

132

Balboa Ave

FD Can Man
13000

P36

BIK

F. Figueroa Ave

BIK 17

Magnolia Ave

BIK 18

set Hub
6-14-79

126 1/4 1/4
126 1/4 1/4
set Hub
5-15-78

130 2 1/4
130 2 1/4
set Hub
5-15-78

275 2 1/4
119 2 1/4 20

FD Can Man
13000
set Hub
6-14-79
69 7/8
89 7/8
50' x 30'

P 34

Adjusted
Lump Dis
11/1/63

set Hub
1-14-63

130 map
used
FD Can Man
15 0 1/2 Ely
corrected
down

Cont p 12

Mail
1205
Men.

Cont p 14

30' x 30'

INDEXED
 NOV 2 - 1953

Base
 Line
 Sewer

3750

14 2
 43 5.12

3700

13 8
 42 4.8

3650

13 8
 50 4.49

2700

13 3
 52 4.29

1750

13 0
 55 3.99

1400

12 5
 60 3.49

0750

11 8
 62 2.79

11 1
 68 2.169

0700 End existing sewer 150' Nly of pump sta

BM

428 π 18535

13.555

BM #3
 MB 771
 P16
 top nail

please note datum 90' higher than City

Base
 Line
 Sewer
 10 0
 8 5

5700

59 0.58

4780 ∇ 1. $1+89^{\circ}28'40''$

82
 46

4775 ∇ Nly end existing pipe

11 11
 677 2.76

4754 edge par

12 4
 593 3.60

4750

12 8
 574 3.8

4725 edge par

12 4
 613 3.41

4717

11 6
 62 2.6

4715 ∇ Begin existing pipe

11 9
 66 2.9

4711

13 9
 46 4.9

4700

14 1
 47 5.1

π 18535

Base Line Sewer

8750 13⁹ 4.7

8728 1/2 Dalton int 13⁹ 4.9

8700 13⁸ 4.8

7750 13⁵ 4.5

TP, 5¹⁶ π 18 295 470 13 635

7710 13³ 4.3

6750 13¹ 4.4

6700 13⁵ 4.5

5788 end ditch N of Hwy 10⁶ 7.2 1.6

5750 9⁹ 8.6 0.9

π 18 535

Base Line Sewer

13100 13⁵ 4.8

12750 13⁹ 4.9

12700 14¹ 4.2 5.1

11750 14² 4.6 5.2

11700 14² 4.6 5.2

10789 L. RT 45° 12' 41° 12' 35" 14^{2 3} 4.55 5.24

10750 14² 4.6 5.2

10700 13⁹ 4.2 4.9

9750 13⁹ 4.2 4.9

9700 14⁰ 4.8 4.0

π 18 795

Base
Line
Sewer

17700 14² 5.2
53

16700 14¹ 5.1
54

16400 14³ 5.3
52

15750 14³ 5.3
52

15700 14¹ 5.1
52

14750 14² 5.2
53

TP2 522 * 19 545 447 5.315
14 325

Line int @ 20. Proposed Along
L.Rt 16° 24' 30"

14741⁸⁰ 14³ 5.32
47
46

14700 14³ 5.3
45

13750 14² 5.2
46 5.6

22700 14¹ 5.7
48

21750 14⁹ 5.9
46

21700 14⁹ 5.9
46

20750 15⁰ 6.0
45

20700 15⁰ 6.0
45

19750 15¹ 6.1
44

19700 15¹ 6.1
44

18750 14⁸ 5.8
42

18700 14⁵ 5.5
50

17750 14⁴ 5.4
51

T 18 795

T 19 545

6473²⁸ Grand Ave.

25478²⁸ E int Grand & Bond

End

Line

Dist
4150
731
Hub 90
29
12
3.2

Grand Ave
Dalton St int Wly

4150 6°44.95'

25472

13 2/0 4.2

4100 5°59.96'

14 3/49 5.3

25450

13 8/54 4.8

3750 5°14.96'

14 3/42 5.3

25400

14 1/51 5.1

3700 4°29.97'

14 3/42 5.3

24450

14 5/42 5.5

2750 3°44.97'

14 3/42 5.3

24445⁴⁰ L. RT 13°24'

RT Hwy

14 6/454 5.67

2700 2°59.98'

13 9/53 4.9

24400

14 6/42 5.5

1750 2°14.98'

14 1/51 5.1

23450

14 9/43 5.9

1700 1°29.99'

14 3/42 5.3

23400

14 9/43 5.9

0750 0°44.99'

14 2/50 5.2

22450

14 9/43 5.9

c=50°
0700 E int Grand Ave
Dalton St
0°00'

15°00' int Grand Ave
13 6/75 4.7
13 7/41 4.7
5 5/13 5.5
Hub 90

TP3

411 T19 225 443 15 115

TP4

438 T19 155

415 14 775

10778 13° Lt SE cor House

10773 10° Lt & 10° apron con floor single garage

10751⁵ Nly T Alley

10750 8° RT & 10° Tel Pole # 464076H

BM) TP71 5²¹ 18⁴¹ 496 12⁴⁴

10741⁵⁰ E Alleys Mt.

10731⁵ Sly T Alley

10731 8° RT & dead man

10729 8° Lt & 14° Pole A 4426

10728 8° RT & dead man

10700

9751 10° RT NW cor Garage

Lt-Wly

E Alley
2/19

RT-Ely

4.23

13
5¹⁷
13²
Floor

4.18

19
13
5²²
23⁰
Floor

7.04 3.75

0.5 7.6
13
5⁵⁶
13
6⁴
10⁰
apron

3.8

3.8

4.0

8 8 0
12 12 13
5⁸ 5⁶ 5⁴
10 10 10

17 18 41

3.6

3.8

3.43

3.8

6 44 12 12
12 12 496 46
48 46 46 46
10 28 4.6 10

3.5

3.6

3.8

12 12 12
42 48 46
10 10 10

3.3

3.3

3.4

12 12 12
5¹ 5¹ 5¹
10 10 10

17 40

12+41

12+32

12+05

11786 ^{approx} Sly Hornblend

11771 9⁴ LT End 4' Lath Fence

11750

11730 9⁴ AT E 6" tal P. 1/2 #464077H

11717 9² LT Begin 4' Lath Fence

11713 13⁴ NE cor house

11700

LT=Wly

AT=Fly

AT=Fly

| | | | | | |
|-----|-----|-----|-----|-----|-----|
| 5.3 | 5.3 | 4.4 | 4.3 | 4.6 | 4.8 |
| 14 | 14 | 13 | 13 | 13 | 13 |
| 4 | 4 | 5 | 4 | 4 | 4 |
| 20 | 10 | 6 | 10 | 10 | 20 |

| | | | | |
|-----|-----|-----|-----|-----|
| 3.9 | 3.7 | 3.9 | 3.7 | 3.8 |
| 12 | 12 | 12 | 12 | 12 |
| 5 | 5 | 5 | 5 | 5 |
| 20 | 10 | 10 | 10 | 20 |

| | | | | |
|-----|-----|-----|-----|-----|
| 3.7 | 3.5 | 3.6 | 3.4 | 3.4 |
| 12 | 12 | 12 | 12 | 12 |
| 5 | 5 | 5 | 6 | 6 |
| 20 | 10 | 10 | 10 | 20 |

| | | | | | |
|-----|-----|-----|-----|-----|-----|
| 4.4 | 4.1 | 4.0 | 4.0 | 4.5 | 4.5 |
| 13 | 13 | 13 | 13 | 13 | 13 |
| 5 | 5 | 5 | 5 | 4 | 4 |
| 20 | 10 | 8 | 10 | 20 | 20 |

| | | | | |
|-----|-----|-----|-----|-----|
| 4.2 | 4.0 | 3.9 | 4.2 | 4.1 |
| 13 | 13 | 12 | 13 | 13 |
| 5 | 5 | 5 | 5 | 5 |
| 15 | 10 | 10 | 10 | 20 |

| | | |
|-----|-----|-----|
| 3.7 | 3.8 | 3.9 |
| 12 | 12 | 12 |
| 5 | 5 | 5 |
| 10 | 10 | 10 |

1841

Lt. Wly

Ally BK 18

Rt. Ely

24

15414

| | | | | |
|-----|-----|-----|-----|-----|
| 5.7 | 5.4 | 5.6 | 5.5 | 5.4 |
| 14 | 14 | 14 | 14 | 14 |
| 5.2 | 5.8 | 5.8 | 5.9 | 6.0 |
| 20 | 10 | 10 | 10 | 20 |

end line

14496⁶³ Sly Magnolia

| | | | | | | |
|-----|-----|-----|------|-----|-----|-----|
| 6.0 | 6.5 | 6.4 | 6.13 | 6.3 | 7.1 | 7.2 |
| 15 | 15 | 15 | 15 | 15 | 16 | 16 |
| 4.8 | 4.9 | 5.0 | 5.25 | 5.2 | 4.3 | 4.2 |
| 20 | 10 | 10 | 10 | 10 | 14 | 20 |

14491 8² Lt E dead man

14485 9² Lt E dead man

14465 9² Lt R 8" tel Pole # 522270H

14465 8² Lt R 14" pole # A4496

14450

| | | |
|-----|-----|-----|
| 6.4 | 6.5 | 6.3 |
| 15 | 15 | 15 |
| 5.0 | 4.2 | 5.1 |
| 10 | 10 | 10 |

14442 20² HSE cor 3' walk 11 to line

6.74
15.75
4.64
20.3
4.14

14400

| | | |
|-----|-----|-----|
| 6.2 | 6.3 | 6.1 |
| 15 | 15 | 15 |
| 5.2 | 5.1 | 5.3 |
| 10 | 10 | 10 |

13781⁵⁷ Wly/Daily

| | | |
|-----|-----|-----|
| 6.1 | 5.9 | 5.9 |
| 15 | 14 | 14 |
| 5.3 | 5.5 | 5.5 |
| 10 | 10 | 10 |

T 20 39

2450

2700

10750

1410 95' H & 16' Power Pole # A2652

1400

0789 95' H & deadman

6750

0710 Wly line

0700 T Alley int B/K18

Lt=Sty

5.4
14
60
10
Alley

2

5.3
14
61
10

5.4
14
60
10
Wly B/K18

Xt=Wly

5.4
14
60
10

5.2
14
62
10

5.8
14
56
10

5.3
14
61
10

5.2
14
62
10

5.6
14
58
10

5.5
14
52
10

5.3
14
61
10

5.7
14
52
10

5.7
14
52
10

5.8
14
56
10

6.1
15
52
10

5.7
14
52
10

5.8
14
56
10

6.1
15
53
10

5.8
14
56
10

5.8
14
56
10

5.9
14
55
10

T 20.39

5435

5428

4455

4436 Top Berk Channel

(78218 dead man)

4429 (7' Lt & dead man)

4408 72 Lt & 10" P/pole # A2610

4400

3460 103 Lt EN/50 board fence

3450

(98217 begin 50 Board fence)

3410 (98217 end 6' Board rail fence)

TR9

421

1929

421

1558

3400

2461 10' Lt 6' Board rail fence begins

2461 95 Lt & 10" P/pole # A2630

Lt-Sly

Alley 148
discarded
at-Nly

26

110
10
98
10

177
10
91
10

17
10
91
10

216
11
82
10

215
12
73
7

214
12
76
5

212
11
82
5

218
11
82
10

59
14
42
10

60
15
48
6

50
14
58
4

66
14
52
10

5.8
14
50
10

5.9
14
42
8

5.1
14
52
6

5.6
14
52
2

5.7
14
52
5

5.8
14
50
10

5.6
14
52
10

5.2
14
52
6

5.6
14
52
4

5.6
14
52
5

5.8
14
50
10

TR 1979

52
14
62
10

53
14
62
10

53
14
62
10

TR 2039

(T) Alley BIK 19 Wly
Lt. Sly RT=Nly

1750

3.1 3.1 3.3
12 12 12
5.5 5.6 5.2
10 10

1710 8² LT&E 10" Pole # AR652

3.5 3.7 3.8
12 12 12
5.2 5.0 4.2
10 10

1700

0789 8² LT&E deadman

3.5 3.6 3.8
12 12 12
5.2 5.1 4.2
10 10

0750

0740 8² RT 6" Pole # 4642 75M

0720 8² RT&E deadman

3.6 3.7 3.8
12 12 12
5.1 5.1 4.9
10 10

0718 8² RT&E deadman

0710 Wly N+S Alley

0700

BM p21 TP7 5²⁵ 1769

1244

Hub Int. Alloys
BIK 19

BM,

TP₁₁

check p. 29

266

1519

Hub Int. Alloys (T)
BIK 29

TP₁₀

3²⁵

17⁸⁵

520

1459

Hub Int. Alloys (T)
BIK 12

1929

27

(T) Alley BIK 19 Wly
Lt. Sly RT=Nly

TP BM p21

4463 water

4.4 5.8 10.0 1.3 1.2 2.1 5.0
4 5 8 7 8 6 4
13 12 9 10 9 11 13
15 10 4 10 17 21

522 1244

4456

0.7 1.5 1.0 0.9 1.6
8 5 0 1 4
9 10 9 9 10
20 10 20

4424 Top channel

4.2 4.9 1.8 1.8 3.7 3.7
12 12 12 12 12 12
4.5 10 6 6 5 5
20 10 8 10 20

4408 10² RT&E 10" Pole # 4640 75M

4400

3.8 3.6 3.7
12 12 12
4.2 5.1 5.0
10 10

3750

3.8 3.5 3.4
12 12 12
4.2 5.2 5.3
10 10

3700

3.5 3.5 3.7
12 12 12
5.2 5.2 5.0
10 10

2781 8³ RT&E deadman

2760 8² LT&E 10" Pole # AR632

2750

3.6 3.7 3.8
12 12 12
5.1 5.0 4.2
10 10

2717 9³ RT&E 10" Pole # 4640 75M

2700

3.4 3.5 3.5
12 12 12
5.2 5.2 5.2
10 10

1769

| | Lt-Wly | Alley | BM 28 | RT-Ely |
|----------------|--------|-------|-------|--------|
| 1750 | 3.6 | 6 | 5.4 | 3.3 |
| | 12 | 12 | 12 | 12 |
| | 60 | 60 | 60 | 60 |
| | 10 | 10 | 10 | 10 |
| 1700 | 3.8 | 5 | 3.7 | 3.1 |
| | 12 | 12 | 12 | 12 |
| | 50 | 50 | 50 | 50 |
| | 10 | 10 | 10 | 10 |
| 0767 | 3.7 | 7 | 3.6 | 3.0 |
| | 12 | 12 | 12 | 12 |
| | 59 | 60 | 60 | 60 |
| | 10 | 10 | 10 | 10 |
| 0755 | 2.8 | 8 | 2.7 | 2.2 |
| | 11 | 11 | 11 | 11 |
| | 60 | 60 | 74 | 74 |
| | 10 | 10 | 10 | 10 |
| 0744 | 2.0 | 0 | 2.2 | 2.2 |
| | 11 | 11 | 11 | 11 |
| | 76 | 74 | 74 | 74 |
| | 10 | 10 | 10 | 10 |
| 0738 | 0.6 | 6 | 1.0 | 1.1 |
| | 9 | 10 | 10 | 10 |
| | 90 | 86 | 85 | 85 |
| | 10 | 10 | 10 | 10 |
| 0730 | 2.2 | 2 | 2.7 | 2.2 |
| | 11 | 11 | 11 | 11 |
| | 74 | 62 | 74 | 74 |
| | 10 | 10 | 10 | 10 |
| 0720 | 2.9 | 9 | 3.1 | 3.3 |
| | 11 | 12 | 12 | 12 |
| | 62 | 65 | 63 | 63 |
| | 10 | 10 | 10 | 10 |
| 0708 | 5.1 | 1 | 5.0 | 5.0 |
| | 14 | 14 | 14 | 14 |
| | 45 | 48 | 46 | 46 |
| | 10 | 10 | 10 | 10 |
| 5403 7/1 Grand | 5.3 | 3 | 5.3 | 5.1 |
| | 14 | 14 | 14 | 14 |
| 0700 Nly | 4.3 | 4.3 | 4.5 | 4.5 |
| | 10 | 10 | 10 | 10 |

BM TP 5 p 20 462 T 18 59

1392

E INT Hub
Grand
Ally 0728

| | Lt-Wly | Alley | BM 28 | RT-Ely |
|---------------------------------|--------|-------|-------|--------|
| 4700 | 3.9 | 9 | 4.1 | 4.1 |
| | 12 | 12 | 13 | 13 |
| | 52 | 56 | 54 | 55 |
| | 20 | 10 | 10 | 20 |
| 3773 | 3.8 | 8 | 3.9 | 4.0 |
| | 12 | 12 | 13 | 13 |
| | 58 | 57 | 56 | 55 |
| | 20 | 10 | 10 | 20 |
| 3758 9° LT 15° PR 16° P 2727 | 4.7 | 4.8 | 4.6 | 4.7 |
| | 13 | 13 | 13 | 13 |
| 10° RT end 5° wind force | 42 | 48 | 50 | 48 |
| 3750 37 Sly Horn Island | 20 | 10 | 10 | 20 |
| 3700 | 4.4 | 4.3 | 4.1 | 4.1 |
| | 13 | 13 | 13 | 13 |
| | 52 | 53 | 52 | 52 |
| | 10 | 10 | 10 | 10 |
| 2750 | 4.5 | 4.3 | 4.1 | 4.1 |
| | 13 | 13 | 13 | 13 |
| | 52 | 53 | 55 | 55 |
| | 10 | 10 | 10 | 10 |
| 2715 37 Sly Ely Alley | 4.2 | 4.1 | 3.7 | 3.7 |
| | 13 | 13 | 12 | 12 |
| 10° RT begin 5° high wind force | 54 | 55 | 59 | 59 |
| | 10 | 10 | 10 | 10 |
| 2705 37 E Alley (T) int | 4.2 | 3.9 | 3.6 | 4.0 |
| | 13 | 12 | 12 | 13 |
| | 54 | 57 | 60 | 56 |
| | 10 | 91 | Hub | 10 |
| 1798 9° LT (16°) P 4425 | 4.1 | 3.9 | 3.8 | 3.8 |
| | 13 | 12 | 12 | 12 |
| 1795 37 Sly Ely Alley | 52 | 57 | 58 | 58 |
| | 10 | 10 | 10 | 10 |
| 1772 9° 42 deadman | | | | |

T 18 59

5775

5753 10² RT SW cor comb house + garage con floor

5745³⁶ Nly Ely Alley

5735³⁶ E T Alleys int.

5728 40² L & 12" Mulberry tree

5725³⁶ Sly Ely Alley BM 29

TP = BM 27

549

20⁶⁷

341

15¹⁸

15¹⁸
HUB INT
T ALWAYS OIK
29

5724 10² LT & 12" PPole & PA4476

5709 10² LT & deadman

5700

4794 10² LT Evb 3 garages con floor + apron

4765 10² LT Begin 3 garages con floor + apron

4750

4710³⁹ Nly Hornblend

Lt-Wly

Alley

Nly

BM 29

6.9

RT-Ely

6.5
15
53
10

6.4
15
53
10

6.4
15
53
10

6.4
15
53
10

6.4
15
53
10

6.4
15
53
10

6.4
15
53
10

6.4
15
53
10

6.4
15
53
10

6.4
15
53
10

6.4
15
53
10

6.4
15
53
10

6.4
15
53
10

6.4
15
53
10

6.4
15
53
10

6.4
15
53
10

6.4
15
53
10

6.4
15
53
10

6.4
15
53
10

6.4
15
53
10

6.4
15
53
10

6.4
15
53
10

6.4
15
53
10

6.4
15
53
10

6.4
15
53
10

6.4
15
53
10

6.4
15
53
10

6.4
15
53
10

6.4
15
53
10

6.4
15
53
10

6.4
15
53
10

6.4
15
53
10

6.4
15
53
10

6.4
15
53
10

6.4
15
53
10

6.4
15
53
10

6.4
15
53
10

6.4
15
53
10

6.4
15
53
10

316 317

132 Floor

312 314

132 Floor

100 apron

5.9
14
37
10

6.1
16
35
10

6.1
15
35
10

5.1
14
45
20

5.1
14
45
10

5.0
14
46
20

4.7
13
48
Hub

5.3
14
43
10

5.6
14
40
20

T 18.59

7+58 95^{LT} Begin 6^o Picket fence

7+58 10^o 2^{LT} NE cor garage

7+40 9^o RT Begin 2^o car walk 11 to line

7+37 9^o LT SE cor garage opens Sly

103^{LT} drive into garage opens Sly

7+22 20^o Nly Magnolia L. 140430' RT

6+73 taken along Magnolia

6+77 taken along Magnolia

113^{RT} end car drive

6+60 33^o Sly Magnolia L. 14002' LT

6+20

113^{RT} Begin car drive 11 to line

5+88 10^o RT NW cor garage end floor opens Nly

Lt = Why
Ally 131K 29
NLS

RT = Ely
7.9
16
3 20
93
w/K

7.6 7.4
63 63
16 16
404 404
103 93
drive floor

7.3 7.3 7.1 7.3 7.5 7.7
16 16 16 16 16 16
438 438 46 44 42 40
193 103 10 10 20
drive drive

5.7 5.8 6.0 6.2 6.3
17 14 15 15 15
60 52 52 55 54
20 10 10 20

5.8 6.0 6.2 6.5 6.8
14 15 15 15 15
52 52 52 52 42
23 10 15 20

7.1 7.0 6.9 7.3 7.6 7.7
16 16 15 16 16 16
46 42 48 44 40 52
20 10 10 11 20
drive

1.8 6.8 7.3 7.4
15 15 16 16
42 42 44 43
10 10 11
drive

16 46
431
113
car
drive

16 52
415
103
floor

T 20 67

9400

8475 approx Sly Figueroa

TP 6³³ 2393 307 17⁶⁰

8450

8421 9² 148 8" PP 1/2 # PA 45 35

8410 10¹ Lt & single garage con floor & apron

8402 9¹ Rt & single garage con floor & apron

8402 10¹ Lt end 6⁰ Picket Fence

8400

7486 9¹ Rt & single garage con floor & apron

7479 9¹ Rt end 5⁰ con block 4" wall

7460 9² Rt Begin 5⁰ con block 4" wall

Lt = Wly

Alley 61K30

Rt = Ely

31

| | | | | |
|-----|-----|-----|-----|-----|
| 6.7 | 6.8 | 6.8 | 6.8 | 6.8 |
| 7 | 8 | 8 | 8 | 8 |
| 15 | 15 | 15 | 15 | 15 |
| 82 | 81 | 81 | 81 | 81 |
| 20 | 10 | 10 | 20 | |

| | | | | |
|-----|-----|-----|-----|-----|
| 7.4 | 7.6 | 7.6 | 7.6 | 7.5 |
| 4 | 6 | 6 | 6 | 5 |
| 16 | 16 | 16 | 16 | 16 |
| 75 | 73 | 73 | 73 | 72 |
| 20 | 10 | 10 | 20 | |

Nail in PP 1/2
P2749
Sly Figueroa
Wly Alley BIK
30

2393

| | | |
|-----|-----|-----|
| 7.7 | 8.0 | 8.1 |
| 7 | 8 | 8 |
| 16 | 17 | 17 |
| 42 | 32 | 36 |
| 10 | | 10 |

| | |
|-------|---------|
| 8.3 | 8.0 |
| 3 | 2 |
| 17 | 17 |
| 335 | 365 |
| 132 | 102 |
| Floor | 9 apron |

| | |
|-------|-------|
| 8.1 | 8.4 |
| 1 | 4 |
| 17 | 17 |
| 355 | 338 |
| 92 | 79 |
| apron | floor |

| | | |
|-----|-----|-----|
| 7.7 | 7.8 | 7.8 |
| 7 | 8 | 8 |
| 16 | 16 | 16 |
| 42 | 32 | 32 |
| 10 | | 10 |

| | |
|-------|-------|
| 8.2 | 8.5 |
| 2 | 5 |
| 17 | 17 |
| 345 | 325 |
| 92 | 132 |
| apron | floor |

| | | | |
|-----|-----|-----|---------|
| 7.8 | 7.7 | 7.8 | 7.9 |
| 8 | 6 | 8 | 9 |
| 16 | 16 | 16 | 16 |
| 32 | 42 | 32 | 40 |
| 10 | | 93 | 93 |
| | | wk | footing |

2067

10+77²⁰ Int Talley Ely

10² At end 3 Picket Fence

10+67²⁰ Sly. alley to East

10+61²⁰ Lt 28" P.P. # PA 4575

10+35

10+00

9+88 7² Lt 2 deadman

9+70 8² Lt 2 10" P.P. # PA 4555

9+55 approx Nly Figueroa

9+50 9² At Begin 3' Picket Fence Now starts at

9+38

See Page 78 - 11-1-57

= 5 0+00 Ely Figueroa

9+15⁰⁰ Int semi tan Figueroa + E Alley

Lt. Vly

Alley BIX 31

Rt. Ely

32

| | | | |
|----------------|----------------|----------------|----------------|
| 10.1 | 9.5 | 9.9 | 9.9 |
| 10 | 15 | 18 | 18 |
| 4 ² | 5 ⁴ | 5 ² | 5 ² |
| 10 | 8 | 9d | Hub 10 |

| | | | | |
|----------------|----------------|----------------|----------------|----------------|
| 9.9 | 9.4 | 9.7 | 10.0 | 10.5 |
| 18 | 18 | 18 | 19 | 19 |
| 5 ² | 5 ² | 5 ² | 4 ² | 4 ² |
| 10 | 7 | 9 | 10 | 10 |

| | | | | | | | |
|----------------|----------------|----------------|----------------|----------------|----------------|----------------|----------------|
| 8.8 | 9.4 | 8.9 | 9.1 | 9.2 | 9.7 | 9.7 | 9.5 |
| 18 | 17 | 18 | 18 | 18 | 18 | 18 | 18 |
| 5 ² | 6 ⁰ | 5 ⁸ | 5 ² | 5 ² | 5 ² | 5 ² | 5 ² |
| 10 | 8 | 7 | 8 | 10 | | | |
| 40 | | | | | | | 95 30 |

| | | | | | | |
|----------------|----------------|----------------|----------------|----------------|----------------|----------------|
| 9.0 | 9.1 | 8.6 | 8.8 | 8.7 | 9.6 | 9.7 |
| 18 | 18 | 17 | 17 | 17 | 18 | 18 |
| 5 ² | 5 ⁸ | 6 ³ | 6 ² | 6 ² | 5 ² | 5 ² |
| 10 | 8 | 6 | 7 | 8 | 10 | 10 |

| | | | | | | | | |
|----------------|----------------|----------------|----------------|----------------|----------------|----------------|----------------|----------------|
| 8.4 | 9.0 | 9.0 | 7.9 | 7.9 | 7.9 | 8.6 | 8.8 | 8.8 |
| 17 | 18 | 18 | 16 | 16 | 16 | 11 | 11 | 11 |
| 6 ⁵ | 5 ² | 5 ² | 7 ² | 7 ² | 7 ² | 6 ³ | 6 ⁴ | 6 ² |
| 20 | 10 | 9 | 7 | 7 | 7 | 8 | 10 | 20 |

| | | |
|----------------|----------------|----------------|
| 7.2 | 7.3 | 7.6 |
| 16 | 16 | 16 |
| 7 ² | 7 ⁶ | 7 ³ |
| 10 | | 10 |

| | | |
|----------------|----------------|----------------|
| 6.9 | 7.9 | 6.7 |
| 15 | 15 | 15 |
| 8 ² | 7 ⁸ | 8 ⁸ |
| 10 | 20 | Hub 10 |
| T 23 | 23 | |

B.M.

TP₃

8¹⁸

15⁷⁵

Has E Alley
& semi-tan
Figueras

12+22⁶⁸ Sly Balboa Ave ✓

12+07 8³ L+E dead man

12+04 8⁴ RT end con slab

11+96 8³ L+E 8" P.P. # 484061H

11+82 2 Begins cold lay ✓

11+80

but Bldgs are gone. ^{CR}
conci still in place

11+65 8⁵ RT begin con deck around Service Sta

11+30

10+87³ Nly alley to E

L+Vly

Alley 10/14/31
N+S

RT=Ely

33

| | | | | |
|------|-------|-------|-------|-------|
| 12.9 | 13.05 | 13.12 | 13.14 | 13.13 |
| 21 9 | 22 06 | 21 13 | 22 15 | 21 14 |
| 20 | 187 | 180 | 178 | 179 |
| 20 | 10 | 10 | 10 | 14 |

13.14
21 15
178
84
con

| | | |
|------|------|-----------|
| 12.7 | 12.9 | 13.07 |
| 21 7 | 21 9 | 22 08 |
| 23 | 20 | 185 |
| 10 | | 83 con |

12.95
21 9
127
82
con

9.0
40

11.0

11.3

11.3 11.5

120
30

10.7

9.6

10.6

10.0

10.5

14

15

14

14

14

42

53

42

49

44

10

2

8

10

23 23

3465²² Nly Figueroa

3439

3423²² E Alley BIK 16 L. RT 91' 25' 30"

3400

2750

2700

1460

1400

0

0450

9415²⁰

0400 E Int Allys Bks 30+31 Figueroa

BM

485 π 2060

Figueroa
Wly Alley int BK 30+31
L. S. 69 70 69 RT = Nly

63 64 65
15 15 15
42 42 42

67 67 64 66
15 15 15 15
49 42 54 50

66 66 66
15 15 15
52 50 50

65 65 64
15 15 15
52 52 52

61 61 61
15 15 15
54 55 55

63 65 66
15 15 15
53 51 50

63 64 64
15 15 15
52 52 52

66 69 69
15 15 15
50 42 42

68 74 73
15 15 15
48 45 43

Hub 9415²⁰ Allys
0400 Figueroa
p 33

Lt. Wly

5103²² E Allys int

4495²² sty Alley to W

4494 20' double garage under const dirt floor at present

TP, BM

4493 82' 112' dead end

4480 82' 112' pole A4550

4450

4433 23' 212' double garage con floor 2 a prou

4400

3477 92' 212' 25' cor walk

Allys N/S
76 77 79 81
16 16 16
62 62 62

76 77 78
16 16 16
62 62 62

8.6
17
52
202
dirt

6 π 23⁵⁴

3 27 16⁶³

Hub 2 int
Allys (S)
Bk 16

8.1 7.4 7.5 7.4
17 16 16
25 42 42 42

8.2 8.06
17 17
23 23
Four spin

7.5 7.0 7.3 7.3
16 16 16 16
41 40 43 43

7.4
16
48
92
24

π 2060

TR 622 + 22⁸⁵ 691 16⁶³

9° Lt end 4' Pocket fence
6741²⁹ Sly Palosa Ave end

6718

6700

5768 10² Lt & 2⁵ con walk

5750

5732 9² Lt, Begin 4' Lt H. Fence

5724 11² Lt & single garage dirt floor

5719 20² Rt & double garage under cov st
dirt floor

5715²² Nly of Wly Alley

LT-Wly Was Alley RT-Ely 35
6/14

11.0 11.0 11.5 11.9 12.0 11.9 12.0 12.1 11.0 10.6
20 20 20 20 20 20 20 20 20 20
35 35 30 26 25 26 25 24 35 32
20 15 10 9 Hub 10 10 17 20

10.0 9.9 10.0
14 15 19
45 46 45
10 10

9.6 9.7 9.3 9.8
18 19 18 18
42 51 52 42
10 8 10

9.4
46
18
508
102
walk

9.1 8.7 8.8 8.7 9.3
18 17 18 17 18
52 52 52 52
10 8 10

8.4
17
6L
110
dirt
floor

8.0 8.0 8.2
17 17 17
65 65 63
10 10
8.1
17
64
205
floor
dirt

π 23 54

2480 9⁶ Lt end 4' Board Fence

2450

2445 7² Rt end 6' wire Fence

2421 10³ Lt Begin 4' Board Fence

2400

1450

1710 10⁴ Rt Begin 6' wire Fence

1400

0750

0710 wly N+S Alley

0700 E Alleys int BIK 16

Lt-Sly

Alley E+W
B/K 16

Rt-Nly

36

| | | |
|-----|-----|-----|
| 8.7 | 8.9 | 9.0 |
| 17 | 17 | 18 |
| 5.2 | 5.0 | 4.9 |
| 10 | | 10 |

| | | | |
|-----|-----|-----|-----|
| 8.7 | 8.5 | 8.7 | |
| 17 | 17 | 17 | |
| 5.2 | 5.4 | 5.2 | |
| 10 | | 10 | |
| 8.6 | 8.4 | 8.7 | 9.0 |
| 17 | 17 | 17 | 18 |
| 5.3 | 5.5 | 5.2 | 4.9 |
| 10 | | 5 | 10 |

| | | | |
|-----|-----|-----|-----|
| 8.3 | 8.1 | 8.2 | 8.6 |
| 17 | 17 | 17 | 17 |
| 5.6 | 5.8 | 5.2 | 5.3 |
| 10 | | 5 | 10 |

| | | |
|-----|-----|-----|
| 7.9 | 7.8 | 8.2 |
| 16 | 16 | 17 |
| 6.0 | 6.1 | 5.2 |
| 10 | | 10 |

| | | |
|-----|-----|-----|
| 7.7 | 7.7 | 8.1 |
| 16 | 16 | 17 |
| 6.2 | 6.2 | 5.8 |
| 10 | | 10 |

| | | |
|-----|-----|-----|
| 7.8 | 7.9 | 8.1 |
| 16 | 16 | 17 |
| 6.1 | 6.0 | 5.8 |
| 10 | | 10 |

T 22

4-Nly Alley E+W BK 16 Rt-Nly

BM start p 34

7^{hr} 15⁷² ✓ 15⁷⁵ ✓

TP₄ BM 449 23¹⁴ 8⁷⁰ 18⁶⁵ Hab int E Alleys BK 31

TP₃ BM 461 27³⁵ 0⁴ 22²⁴ BP SE end Ballou Bridge

1367 city datum
1901
2248
182166
12

4+16⁸⁴

3+90

3+50

3+00

0.5
9
13²
10

0.9
9
13⁰
10

1.0
10
12⁹
10

9.4
18
4⁵
10

9.4
18
4⁵
10

9.4
18
4⁵
10

9.1
18
4⁸
10

9.3
18
4⁶
10

9.6
18
4³
10

9.1
18
4⁸
10

9.1
18
4⁸
10

9.2
18
4²
10

22⁸⁵

Note: Septic tanks are in rear of houses facing Figueroa
 Alley closed after 100' Ely of N+S Alley

1710 end open Alley

1700

0486 8⁰ RT 26" Pepper tree

0478 RT NE cor garage opens Ely wood floor

0477 6⁰ RT 2 12" PPole R2730

0468 7⁰ RT 2 dead man

0461 9⁰ RT NW cor garage opens Ely

0450

0449 7⁴ LT 2 2" pipe clothes post

0424 14⁴ LT end 2² cor walk

0410^E 14⁴ LT begin 2² cor walk // to line

0410

0400 E Alleys INT B/K 29

BM p27
 p29

6⁰ RT 2

15 19

#462 N104
 INT B/K 29

Lt-Nly

E+W Alley B/K RT-Std

| | | |
|-----------------|-----------------|-----------------|
| 16 ⁸ | 11 ¹ | 16 ⁸ |
| 45 | 42 | 45 |
| 10 | | 10 |

| | | |
|-----------------|-----------------|-----------------|
| 16 ⁵ | 16 ⁶ | 16 ⁵ |
| 48 | 48 | 48 |
| 10 | | 10 |

26
 16
 500
 92
 1100V

| | | |
|-----------------|-----------------|-----------------|
| 15 ⁹ | 15 ⁸ | 15 ⁸ |
| 54 | 52 | 55 |
| 10 | | 10 |

32
 16
 494
 144
 con

32
 16
 494
 144
 con

| | | |
|-----------------|-----------------|-----------------|
| 15 ⁵ | 15 ⁶ | 15 ⁷ |
| 58 | 52 | 56 |
| 10 | | 10 |

| | | |
|-----------------|-----------------|-----------------|
| 15 ⁴ | 15 ⁵ | 15 ⁷ |
| 59 | 55 | 56 |
| 10 | | 10 |

11 21 26

BM start P38

580 1519 ✓ 1819 ✓

TP2 152 2092

533 1977

end line

Base
Line
E-W
BK 29

39

| | | |
|----|----|------|
| 8 | 8 | 58 |
| 19 | 18 | 19 |
| 5 | 5 | 492 |
| | | 92 |
| | | walk |

2100

14915 0² Lt end 4⁵ Board fence

14915 2 crosses 4⁵ Board fence

1488 9² RT ^{begin} 3 cor walk 11 to line

| |
|-----|
| 74 |
| 19 |
| 506 |
| 93 |

1483 2⁸ Lt 4' Long water softener cover shed

1479 5³ Lt SW cor House

1476 5³ Lt 3² cor walk

1476 10³ RT Nly edge cor brick Barbecue Pit

| |
|----------|
| 85 |
| 19 |
| 495 |
| 53 |
| cor walk |

1460 0² Lt Begin 4⁵ Board fence 11 to line

1460 2 crosses 4⁵ Board fence

1450

| | | | |
|-----|-----|-----|-----|
| 193 | 197 | 191 | 190 |
| 55 | 51 | 52 | 58 |
| 10 | 8 | | 10 |

TP1 529 2480 125 1951

2480

1417 2 cross 4' picket fence

| | | |
|-----|-----|-----|
| 181 | 183 | 183 |
| 26 | 30 | 30 |
| 10 | | 10 |

2126

Lt=Nly E-W Alley RT=Sly
BIK 28

Lt=Nly E-W Alley RT=Sly
BIK 28

2150

6 31.5 4
12 12 12
5 5 5
10 10 10

2150

6 31.4 4
12 12 12
5 5 5
10 10 10

1460 10° Lt end 5 wire fence

0 31.0 2
13 12 12
42 51 52
10 10 10

1450

1400

8 31.7 8
12 12 12
5 5 5
10 10 10

0460 9 1/2 RT & 14' P.P. # A2730

3 41.4 9
13 12 12
46 45 50
10 10 10

0450

0432 9° RT & 21 deadman

5 9 41.0 3.8
12 12 12
50 42 51
10 10 10

0410 10° Lt Begin 5 wire fence

4 13 39 41.0
12 12 12
48 50 49
10 10 10

0400 EINT Talley BIK 28

BM

526 X 1785

1259

Hub & int
Alley's BIK
28 notes
p28

BM p 20

3441

3434 10° RT end shed garage opens Ely dirt floor

3431 8° RT & deadman

3429 33 Wly Figueroa

3415 10° RT end fence begin shed

3410 10° RT begin 5 Board fence

3410 9° RT & 16' P.P. # gone

3400

2493 10° RT & deadman

389 1396

9 4.0 8
12 12 12
42 48 50
10 10 10

1375
Hub & int
Alley's BIK 28
E. Grant

13 3 4.4 2
41 13 44 13
10 44 46 10

X 1785

Blue figures are true elev.

X Sec Elev Grand to Magnolia

Blue pencil added to update X-sec
7/1/55. C. Allen City Datum

1470 41° Lt. E single garage ✓ dirt floor
 $\Delta = 19^{\circ} 36'$
 $2R = 2306.39$
 $L = 788.98$
 $T = 398.38$
 $C = 785.14$ near to auto.
 $S = 34.15$
 $d = 745.26'$

1474 38° Lt. E 24" Pepper tree

1400 1° 14.526' ✓
0498-38° Lt. E 3" Conc steps BITTUM RINK = EL 2.44

0474 33° Lt. E 12" Tel Pole #578866 H

0457 33° Lt. E dead man

0450 0° 37.263' - 37° RT = E dead man

0427
0° 50' 52" RT = E 24" RCP outlet
0444-29° RT = E 12" Anchor Pole - No Number

0440 41° Lt. E Begin 3" picket fence

0400 BC curve Figueroa 0° 00' taken radial

0-38 = Toe slope Grand ave

0-19-20° RT = E Fire Hyd
0-93 26° RT = E Fire Hyd

0-45 = Nly edge fill Grand Ave

Grand Ave under CONST 7/1/55

0400 Grand Ave Wly + Fly
91.75 E Grand Ave
0-70° E int Dalton + Grand Ave

0-27-15° RT = E Sewer MH - RIM = 155

BM p 19 404 17 21 1367 Has dirt Dalton + Grand

INDEXED

JUL 1 1955

Figueroa H-174

11
62
715
Floor
4/3 2.8 1.8 2.1 2.8 3.3 2.4 3.3 6.4
13 5 8 11 8 12 11 12 15
42 52 62 66 52 54 62 54 22
44 40 30 20 20 34 40 46

4/0 3/1 1/7 1/9 2/5 3/2 2/0 2/3 3/4 6/5
13 12 5 9 5 2 0 3 5
42 56 72 68 62 52 62 62 55 22
44 40 36 28 14 33 39 40 49

3/3 3/1 1/7 2/0 2/4 2/8 1/8 2/2 3/1 6/5
12 12 10 11 11 8 10 11 12 15
52 56 70 62 62 52 62 62 56 22
42 40 35 20 18 27 38 40 30

1.9 1.9 2.1 2.6 1.9 1.4 2.6 6.1 2.18
10 9 11 11 10 10 11 15 52
68 68 66 61 68 72 62 22
40 20 15 20 32 40 10 15

14
70
Toe

27
70
65 62 68 62 72 20 32
14 4 48 20 17 15
10 10 11 10 10

73 62 62 72 72
40 20 20 40

65 65 66 66 62 72 72
50 48 48 50 54 53 57
14 13 13 14 14 14 14

32 32 32 33 33 32 32
40 20 10 20 30 40

17 21

SM

TP

90

23²²

259

14¹²S.W. Mod
Horseshoe
Figueroa4756 29² LT & 12" P Pol. #4450

4750 5° 35.367' ✓

4737 2¹ RT & 8" Anchor Pol. #604685H

(282 LT & deadman)

4729 36² RT & deadman ✓4720 21¹ RT & Fire Hydr. ✓~~4726 - - - - -~~

4700 4° 58.104' ✓

3793-38² LT = 3' conc walk

3750 4° 20.841' ✓

3743-39¹ LT = 11' conc drive way.3703 3¹ LT & 4" tel Pol. #604686H ✓

3700 3° 43.578' ✓

See Page 40 for x-sec of Alley on Wly.
Garage Torn down.2778 4² LT & single garage dirt floor

2774 41° LT End 3' picket fence

2750 3° 06.415' ✓

2700 2° 29.052' ✓

L¹ Wly.

Figueroa

Rt. Wly.

45

| | | | | | | | | |
|-----|-----|-----|-----|-----|-----|-----|-----|-----|
| 6.1 | 5.6 | 5.9 | 5.5 | 5.8 | 6.0 | 6.1 | 6.8 | 6.8 |
| 15 | 14 | 14 | 14 | 14 | 15 | 15 | 15 | 15 |
| 25 | 31 | 28 | 33 | 29 | 27 | 23 | 26 | 19 |
| 50 | 40 | 36 | 20 | | 10 | 12 | 20 | 40 |

| | | | | | | | | | | | |
|-----|-----|-----|-----|-----|-----|-----|-----|-----|-----|-----|-----|
| 5.6 | 5.2 | 5.1 | 4.7 | 5.1 | 4.6 | 5.0 | 5.3 | 5.5 | 5.2 | 5.6 | 5.8 |
| 14 | 14 | 14 | 13 | 14 | 13 | 14 | 14 | 14 | 14 | 14 | 14 |
| 31 | 35 | 36 | 40 | 36 | 41 | 32 | 34 | 32 | 33 | 35 | 34 |
| 50 | 40 | 30 | 26 | 24 | 22 | | 12 | 14 | 18 | 20 | 30 |

585
488
Walk

| | | | | | | | | | | |
|-----|-----|-----|-----|-----|-----|-----|-----|-----|-----|-----|
| 5.1 | 4.7 | 5.1 | 4.6 | 5.0 | 5.3 | 5.3 | 4.7 | 6.0 | 5.4 | 5.6 |
| 13 | 13 | 13 | 12 | 13 | 14 | 14 | 14 | 13 | 14 | 14 |
| 40 | 42 | 42 | 51 | 42 | 32 | 32 | 32 | 40 | 22 | 33 |
| 50 | 40 | 26 | 20 | | 10 | 12 | 18 | 20 | 30 | 40 |

513
552
94
Flur

| | | | | | | | | | | |
|-----|-----|-----|-----|-----|-----|-----|-----|-----|-----|-----|
| 4.3 | 3.4 | 4.1 | 4.1 | 3.0 | 4.2 | 4.1 | 4.5 | 4.8 | 6.1 | 6.2 |
| 13 | 13 | 13 | 13 | 13 | 13 | 13 | 13 | 13 | 14 | 15 |
| 42 | 46 | 46 | 52 | 45 | 46 | 42 | 42 | 32 | 30 | 25 |
| 50 | 40 | 30 | 23 | | 12 | 13 | 20 | 26 | 40 | 44 |

| | | | | | | | | | | |
|-----|-----|-----|-----|-----|-----|-----|-----|-----|-----|-----|
| 4.2 | 5.0 | 3.5 | 3.5 | 2.6 | 2.6 | 3.5 | 3.7 | 4.3 | 4.8 | 6.1 |
| 12 | 8 | 5 | 2 | 6 | 6 | 5 | 1 | 3 | 8 | 1 |
| 42 | 52 | 55 | 61 | 61 | 52 | 50 | 41 | 32 | 20 | |
| 42 | 40 | 30 | 29 | 22 | | 19 | 37 | 40 | 45 | |

| | | | | | | | | |
|-----|-----|-----|-----|-----|-----|-----|-----|-----|
| 3.8 | 2.9 | 2.4 | 2.9 | 3.5 | 2.8 | 3.4 | 4.2 | 6.2 |
| 12 | 11 | 11 | 11 | 12 | 11 | 12 | 13 | 15 |
| 42 | 53 | 63 | 58 | 52 | 53 | 45 | 25 | |
| 42 | 40 | 20 | | 14 | 20 | 35 | 40 | 48 |

X 17 71

3732⁸³ L. Lt 137° 29' int & Alley

3700

2750

2400

1750

1700

0750

0433

0426

2179329 Dalton St

0400 E int Dalton & Grand Ely rd on Grand E

BM p19

7⁹⁰

21⁵⁷

13⁶⁷

Now 13⁷⁰
replaced
Hub
Hub & int
Dalton &
Grand

Lt. Nly

Base Line
From Grand Dalton Int &
to Sly 17 11 BIK 32 At Sly
10 10 10 10 10 10
11 10 11 11 11 11
10 10 10 10 10 10
10 10 10 10 10 10

14 10 10 10 10 10
10 10 10 10 10 10
10 10 10 10 10 10
10 10 10 10 10 10

213 3 17 4
10 10 10 10 10 10
10 10 10 10 10 10
10 10 10 10 10 10

117 7 11 1.4
10 10 10 10 10 10
10 10 10 10 10 10
10 10 10 10 10 10

2400

112 11 212
10 10 10 10 10 10
10 10 10 10 10 10
10 10 10 10 10 10

1750

115 5 0.8 1.8 4.2 7.0 7.3
10 10 10 10 10 10
10 10 10 10 10 10
10 10 10 10 10 10

18 1.8 2.0 3.4 6.2 6.6
10 10 10 10 10 10
10 10 10 10 10 10
10 10 10 10 10 10

26

2.4 4 4.6 7.5 7 6.0
10 10 10 10 10 10
10 10 10 10 10 10
10 10 10 10 10 10

2.6 6 5.6 5.8
10 10 10 10 10 10
10 10 10 10 10 10
10 10 10 10 10 10

114 4 5.5 5.8
10 10 10 10 10 10
10 10 10 10 10 10
10 10 10 10 10 10

317 7 4.7 5.4
10 10 10 10 10 10
10 10 10 10 10 10
10 10 10 10 10 10

82 7 7.2
10 10 10 10 10 10
10 10 10 10 10 10
10 10 10 10 10 10

21⁵⁷

5762 1st RT cut planting

5750

5746 2 is Wly edge of stop & run walk 4' wide

5727 1st RT Reg'd planting hedge lawn etc.

5700

4760

4762 20th RT SW cor Fox & Hounds Motel

4750

4700

3750

LT = Wly Alley 1/4 32 RT = Ely

| | | | | | |
|------|------|-----|-----|-----|-----|
| 11.9 | 2.5 | 3.0 | 9.4 | 7.5 | 7.8 |
| 10 | 11 | 12 | 16 | 16 | 16 |
| 10.2 | 10.1 | 9.6 | 5.3 | 5.1 | 4.8 |
| 20 | 10 | 8 | 5 | 10 | 20 |

| | | |
|-----|-----|-----|
| 6.0 | 7.2 | 7.6 |
| 16 | 16 | 16 |
| 5.5 | 5.5 | 5.5 |
| 20 | 10 | 20 |

| | | | | | |
|------|------|-----|-----|-----|-----|
| 2.0 | 1.9 | 2.7 | 5.3 | 7.6 | 8.0 |
| 11 | 10 | 9 | 11 | 16 | 17 |
| 10.6 | 10.2 | 9.2 | 7.3 | 5.3 | 5.0 |
| 20 | 10 | 6 | 5 | 10 | 20 |

| | | | | | |
|------|------|------|-----|-----|-----|
| 1.9 | 1.7 | 2.2 | 3.6 | 7.5 | 7.8 |
| 10 | 10 | 11 | 6 | 16 | 16 |
| 10.2 | 10.2 | 10.5 | 9.0 | 5.1 | 4.8 |
| 20 | 10 | 5 | 10 | 20 | |

| | | | | |
|------|------|-----|-----|-----|
| 1.9 | 1.8 | 2.8 | 5.2 | 2.9 |
| 10 | 10 | 11 | 12 | 11 |
| 10.2 | 10.2 | 9.8 | 9.2 | 9.2 |
| 20 | 10 | | 10 | 20 |

| | | | |
|------|------|------|------|
| 2.3 | 2.4 | 2.3 | 2.4 |
| 11 | 11 | 11 | 11 |
| 10.3 | 10.4 | 10.3 | 10.3 |
| 20 | 10 | 10 | 20 |

| | | | | |
|------|------|------|------|------|
| 1.8 | 1.9 | 1.1 | 2.4 | 2.4 |
| 10 | 10 | 10 | 11 | 11 |
| 10.8 | 10.2 | 10.5 | 10.3 | 10.3 |
| 20 | 10 | 10 | 10 | 20 |

21.57

7467 82R end back porch

7453 96R begin con back porch 35 mid

$s = 19^{\circ} 44' 12''$
 $R = 2126.39$
 $L = 727.4'$
 $d = 8083$

7450 $1^{\circ} 34.571'$

7400 $0^{\circ} 54.156'$

$c = 502$

6450 $0^{\circ} 13.741'$

$c = 1692$

6439 165 RT Begin La Jolla Motel

6433⁹³ Ahead

6432⁷⁸ Back BC RT $0^{\circ} 00'$

6429 205 RT end Fox Hounds Motel

6400

LT-Wly

Alley OK 32 RT-ELY

43

| | | | | |
|-----|-----|-----|-----|-----|
| 8.9 | 8.9 | 9.0 | 9.1 | 9.3 |
| 17 | 17 | 16 | 16 | 15 |
| 32 | 32 | 35 | 34 | 33 |
| 20 | 10 | 10 | 16 | |

| | | | | |
|-----|-----|-----|-----|-----|
| 8.6 | 9.0 | 9.1 | 9.1 | 9.1 |
| 17 | 16 | 16 | 15 | 15 |
| 40 | 35 | 32 | 32 | 32 |
| 16 | 10 | 10 | 16 | |

| | | | | |
|-----|-----|-----|-----|-----|
| 7.7 | 7.9 | 7.9 | 8.5 | 8.8 |
| 16 | 16 | 16 | 17 | 17 |
| 50 | 42 | 43 | 42 | 39 |
| 20 | 10 | 10 | 16 | |

| | | | | |
|-----|-----|-----|-----|-----|
| 7.6 | 7.4 | 8.0 | 7.8 | 8.0 |
| 16 | 16 | 17 | 16 | 17 |
| 50 | 42 | 46 | 48 | 46 |
| 20 | 10 | 10 | 20 | |

0.96
16.5
Floor

| | | | | | | |
|-----|-----|-----|-----|-----|-----|-----|
| 2.3 | 2.6 | 4.1 | 5.8 | 7.2 | 7.6 | 7.7 |
| 11 | 11 | 13 | 14 | 16 | 16 | 16 |
| 103 | 100 | 85 | 68 | 54 | 50 | 42 |
| 20 | 15 | 10 | 7 | 10 | 20 | |

21.57

9157 E Crosses 3¹/₂ Board Fence

TP, 6⁹⁸ 22⁶⁰ 5²⁵ 15⁶²

9450 4° 16.231 POC, stub

9446 9° N+E 6" P Pole #434687H

9410

9400 3° 35.816

8474 7° N+E old wood bldg

8450 2° 55.401

8427

8423 9° N+E wooden shed dirt floor

8416 8° N+E 6" Pole 333689H

8400 2° 14.986

8472 11° N+E end La Jolla Motel

Lt. Wly

Alley BIK 32

N. Ely

48

| | | | | |
|-----|-----|-----|-----|-----|
| 7.2 | 7.4 | 7.5 | 7.8 | 8.1 |
| 16 | 16 | 16 | 16 | 17 |
| 5.4 | 5.3 | 5.1 | 4.8 | 4.5 |
| 20 | 10 | 5 | 10 | 20 |

| | | | | |
|-----|-----|-----|-----|-----|
| 6.9 | 6.8 | 7.1 | 7.0 | 7.1 |
| 15 | 15 | 16 | 16 | 16 |
| 5.2 | 5.8 | 5.3 | 5.6 | 5.5 |
| 20 | 10 | 10 | 10 | 20 |

| | | | | | |
|-----|------|-----|-----|-----|-----|
| 9.8 | 10.0 | 7.3 | 7.0 | 7.0 | 6.9 |
| 14 | 19 | 16 | 16 | 16 | 14 |
| 2.8 | 2.6 | 5.3 | 5.6 | 5.4 | 5.2 |
| 20 | 10 | 5 | 10 | 15 | 10 |

| | | | | | |
|-----|-----|-----|-----|-----|-----|
| 9.6 | 9.1 | 6.7 | 6.0 | 6.2 | 6.4 |
| 15 | 15 | 15 | 15 | 15 | 15 |
| 3.0 | 3.5 | 5.2 | 6.6 | 6.4 | 6.4 |
| 15 | 10 | 5 | 10 | 10 | 15 |

| | | | | | |
|-----|-----|-----|-----|-----|-----|
| 9.5 | 9.4 | 8.9 | 8.3 | 6.3 | 6.4 |
| 15 | 15 | 17 | 17 | 15 | 15 |
| 3.4 | 3.2 | 3.2 | 4.3 | 6.3 | 6.2 |
| 20 | 10 | 5 | 5 | 10 | 15 |

| | | | | |
|-----|-----|-----|-----|-----|
| 9.0 | 9.2 | 9.4 | 9.6 | 9.7 |
| 18 | 18 | 18 | 18 | 18 |
| 3.6 | 3.8 | 3.2 | 3.0 | 2.9 |
| 15 | 10 | 10 | 10 | 20 |

2157

Lt. Wly

Alley BK 32

RT = Ely

16 48
6 12
10

16 59
6 27
10 34
6 26

16 83
5 27
10

19

70+38 E Crosses Nly AC drive

10+23 E Crosses AC drive

10+17 10^o Lt E Geranium

10+17 5^o Rt E 6" Palm

10+14 3^o Lt E Geranium

10+14 9^o Rt E 6" Bush

10+11 4^o Lt E Geranium

10+10 6^o Rt E 4" Bush

10+09 5^o Lt E Geranium

10+06 3^o Rt E 4" Bush

10+05 2^o Lt E 4" Holly

10+03 2^o Lt E 3" Bush

10+00 4^o Lt E 6" Bush

10+00 4^o 56.646' 12^o Lt edge AC drive Hotel 101

9+96 1^o Lt E 2" Bush

(4^o Rt E 3" Bush)

9+90 2^o Lt E 3" Bush

9+86 3^o Rt E 3" Bush

9+86 2^o Lt E 2" Leguat tree

9+77 0^o Rt 1" Bush

9+70 1^o Lt E 2" Bush

9+61 3^o Rt E 6" Pepper tree

| | | | | |
|-----|----|----|----|----|
| 15 | 16 | 3 | 8 | 9 |
| 694 | 66 | 63 | 58 | 52 |
| 12 | 10 | 10 | 20 | |

7-2060

12761 5³ RT & 6" Bush

12757 7⁶ LT & 2" Lemon tree

12750 POC, 8° 18.721'

T₁₂ 5⁴³ 26³⁸ /⁶⁵ 20⁹⁵

12716 3² LT & 3" Apricot tree

12701 3⁵ RT & 8" Bush

12700 7° 38.300'

11781 & crosses 8" con of end AC drive begin plant bed

11750 6° 57.891'

begin AC drive S by

11727 & crosses con of 8" ends planting bed.

11420 10° RT & 6" Ad Pole # 4346 86 H

11407 & crosses plant bed begins

11400 6° 17.476'

10750 5° 37.061'

Lt-Wly

Alley 01K32 RT-Flg

140

| | | |
|----|----|----|
| 1 | 5 | |
| 21 | 21 | 21 |
| 47 | 42 | 51 |
| 10 | | 10 |

T 26³⁸

| | | |
|----|----|----|
| 4 | 3 | 5 |
| 20 | 20 | 20 |
| 22 | 23 | 21 |
| 10 | | 10 |

| | | |
|----|----|----|
| 59 | 66 | 74 |
| 15 | 15 | 14 |
| 32 | 32 | 44 |
| 10 | AC | 10 |
| AC | | AC |

| | | |
|-----|-----|-----|
| 17 | 17 | 17 |
| 518 | 509 | 489 |
| 10 | | 10 |
| AC | | AC |

| | | | |
|-----|-----|-----|----|
| 16 | 16 | 16 | 17 |
| 589 | 578 | 565 | 55 |
| 10 | | 10 | |
| AC | | AC | |

T 2260

Lt 10° 12' 30"

13452⁵⁵ Taken along Magnolia

13437

13410 11 to Magnolia

13400 taken along Magnolia

12792⁸ E crosses 12" Rocker wall along Magnolia

BM p 44
TP3 593 2700 531 2107
Hub 2 int Alley B/K 31 Wly Magnolia

taken along Magnolia

12791³⁴ 8° 52' 10" Hub E Alley B/K 32 int Sly Line Magnolia St.

12789 4° Lt E 6" Bush

12789 0° Lt E 6" Bush

127 62 3° Lt E 6" Bush

Lt 2 12.2 21 58 20
12.7 21 53 10
12.1 21 52 8
A/K 32 21 52 5
B/K 21 52 10
Magnolia 21 52 10
12.4 21 52 10
12.1 21 52 10
12.6 21 52 10

11.2 21 68 20
11.3 21 67 10
11.4 21 65 10
11.5 21 65 10
11.6 21 65 20

11.5 21 65 20
11.5 21 65 10
11.5 21 65 10
11.5 21 65 10
11.5 21 65 20

12.5 21 53 20
12.3 21 57 10
11.3 21 55 10
12.6 21 54 10
12.6 21 54 20

13.8 21 49 20
12.7 21 53 10
12.1 21 59 10
Top wall 34 Footing

13.5 21 39 20
13.3 21 41 10
13.1 21 43 10
14.8 21 45 10
12.6 21 48 20

2638

TP4 5⁰⁵ 25¹⁸ 6⁸⁷ 20¹³

16700 6^E RT. Begin con walk 7^o wide 11 to live

15789 10^o Lt Begin 2 high 4" wide con block wall

15750

15700

14776

14746 9^o RT & 6" PB 16 48 4206 H

14747

14700

0757 9^o Lt & con Pole Anchor dead man.

Lt. SWly

Alley B/K 31

RT = NEly

52

12.7
21.7
5.3
100
49
will

10.4
19.4
7.4
100
74
71

10.9
19.9
7.4
700
74
71

10.7
19.7
7.3
20
10

10.8
19.8
7.3
20
10

11.1
20.1
6.8
6.5
walk

11.5
20.5
6.4
6.5
walk

11.5
20.5
6.4
10
15

11.5
20.5
6.4
20
15

10.8
19.8
7.2
20
10

10.8
19.8
7.2
10
10

10.7
19.7
7.1
19
10

10.4
19.4
7.0
19
10

11.1
20.1
6.9
20
15

10.6
19.6
7.4
20
10

10.6
19.6
7.4
10
10

10.9
19.9
7.4
10
10

11.0
20.0
6.8
10
11

10.2
19.2
6.8
10
15

11.3
20.3
6.7
10
15

10.7
19.7
7.3
20
10

10.8
19.8
7.2
10
10

11.3
20.3
6.2
10
10

11.4
20.4
6.6
10
17

11.6
20.6
6.4
20
17

12.2
21.2
5.8
20

12.3
21.3
5.7
10

12.6
21.6
5.4
9

12.9
21.9
5.1
10

12.4
21.4
5.6
10

12.6
21.6
5.4
15

12.7
21.7
5.3
20

12.8
21.8
5.2
10

12.9
21.9
5.1
10

13.0
22.0
5.0
10

13.3
22.3
4.7
20

7 27⁰⁰

17+50

17+47 10 1/2 RT @ 12" Pepper tree

17+40 11 1/2 Lt. Begin 3 garages con floor apron

17+10

16+95³³ L. 61'47'30" Lt taken on split

16+779³ Lt @ pp clothes pole

16+579² RT @ 3³ con walk

16+52 10² Lt end 2' con block wall

16+50

16+429² Lt @ 6" pp. #577768H

16+40 9² RT Begin 5³ con block wall 6" wide

16+26 4² RT end con walk 11 to line

11-NWly

Alley B/M 31

RT-NWly

53

| | | | |
|-----------------|-----------------|-----------------|-----------------|
| 19 ⁹ | 19 ⁸ | 20 ¹ | 20 ¹ |
| 5 ³ | 5 ⁴ | 5 ¹ | 5 ⁰ |
| 10 | | 10 | 15 |

| | |
|-----------------|-----------------|
| 13 | 19 |
| 20 | 19 |
| 5 ⁰⁵ | 5 ²³ |
| 14 ⁴ | 11 ⁴ |
| Floor | apron |

| | | | | |
|----------------|----------------|----------------|----------------|----------------|
| 4 | 1 | 0 | 2 | 2 |
| 20 | 20 | 20 | 20 | 20 |
| 4 ⁸ | 5 ² | 5 ² | 5 ⁰ | 5 ⁰ |
| 15 | 10 | | 10 | 15 |

| | | | |
|----------------|----------------|----------------|----------------|
| 2 | 0 | 2 | 7 |
| 20 | 20 | 20 | 20 |
| 5 ⁰ | 5 ² | 5 ⁰ | 4 ² |
| 15 | 10 | | 10 |

| | | |
|-----------------|-----------------|-----------------|
| 19 | 6 ³ | 8 |
| 6 ⁰ | 21 | 19 |
| 10 ² | 5 ¹⁵ | 5 ¹⁷ |
| Footng | Top | 21 |

| |
|-----------------|
| 20 |
| 4 ²⁶ |
| 9 ² |
| w/k |

| | | | |
|----------------|----------------|----------------|----------------|
| 8 | 0 | 9 | 2 |
| 19 | 20 | 19 | 20 |
| 5 ¹ | 5 ² | 5 ³ | 5 ⁰ |
| 14 | 10 | | 10 |

| | |
|----------------|----------------|
| 0 | 1 |
| 20 | 19 |
| 5 ³ | 6 ¹ |
| 9 ² | 9 ² |
| 9 ² | Footng |

| | |
|----------------|-----------------|
| 20 | 20 |
| 4 ⁸ | 4 ²¹ |
| 4 ² | 10 |
| w/k | w/k |

T 2518

BM. p37
TP.

10477²⁰

19-186²³

2 INT N+S + E+W alleys BIK 31

525

1868

Hub 8INT
BIK 31
1865
Alleys

Lt 254

Alley BIK 31
181
52
10

R=Vly.

54

19176 Ely Nas Alley

4 9 9 1 4
19 15 15 19 19
45 50 50 48 45
10 8 7 10

19135

6 1 6 4 5 6
18 14 15 15 20 20
53 48 51 51 34 33
15 10 8 10 20

19129 14⁰ RT & 4⁵ AC. drain ditch flows to Alley

1884
509 1869
140 242
ditch

19100 10² Lt end 5' Board fence

1 1 2 0
19 19 19 20
45 45 42 33
10 10 15

TP 438 23⁹³ 563 1955

23⁹³

18160 9⁰ Lt & 12" Pepper tree

18150 10² Lt Begin 5' Board fence

18150 9² RT & 18" Pepper tree

4 4 1 2
14 14 20 20
58 58 54 50
10 10 15

18100

17197 9⁴ RT & 16" Pepper

17183 9² RT & 24" (2) peppers twin

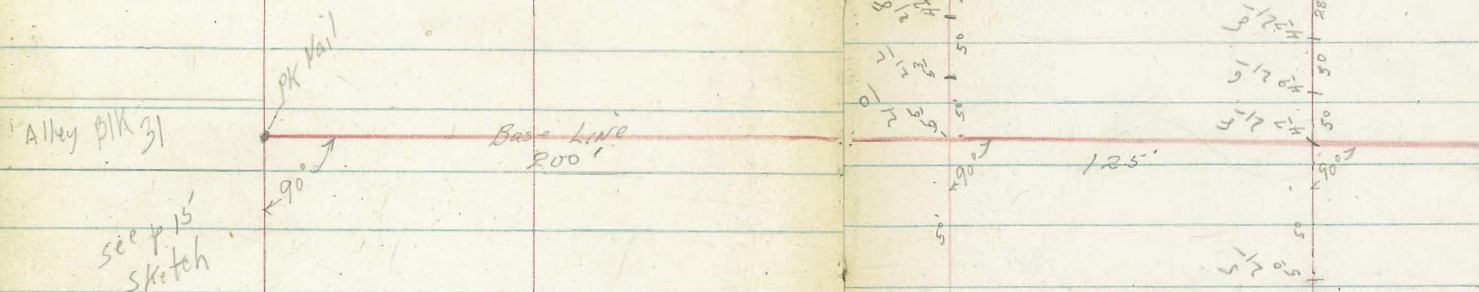
17168 11² Lt end 3 garages

19 7 5 1 2
60 55 57 20 20
20 10 10 10

20 14 85
564 193
143 113
floor approx

25¹⁸

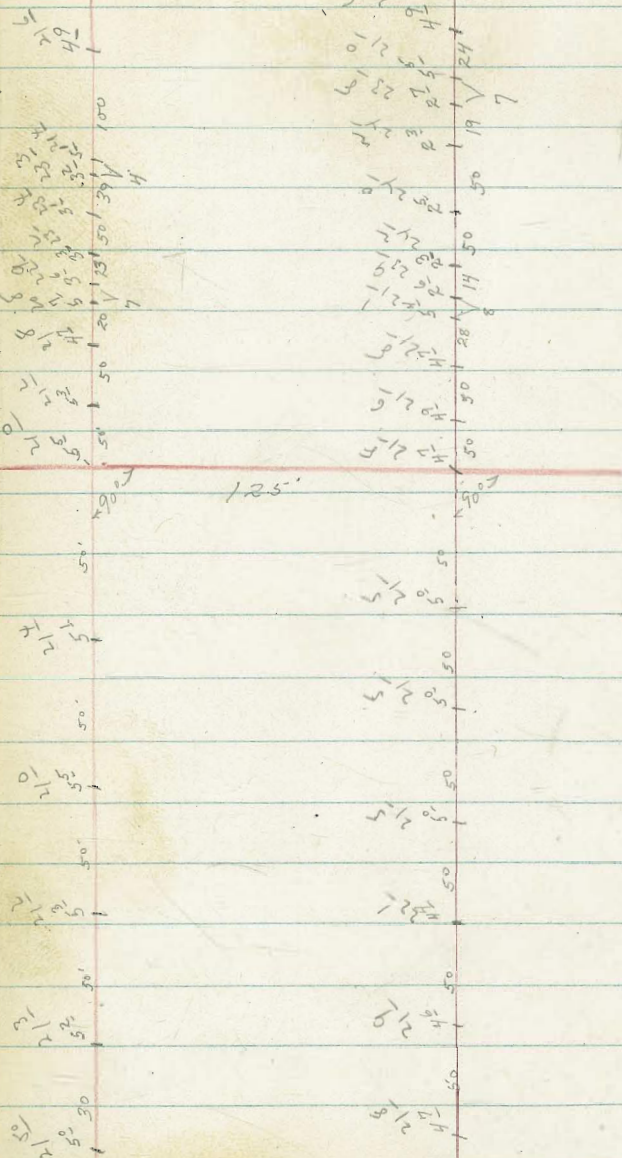
Elev. of Area Nly of Balboa Ave
& Sly Creek



BM 7⁵² 26⁵⁰

1868

Hub 154
Int Alleys
PK 31



TPs back across Sands
to starting BM

53

subtract 90' to get City Datum

Please again note these are Coast Geod. elev.

TP₃ BM start pt

536

✓ 1355
1356

TP₂

438

1892

518

1454

TP₁

385

1972

537

1587

BM TP

757

2124

1367

Hub & Int
Dalton
Grand

1945

X-sec Figueroa - Cont from page 44

8+71- 28² drive is NOT Radial to L.
LT = \angle 8^o Conc driveway

LT \angle RT 58
96² 93⁴
40^e 28²
Drive Drive

8+56- 35^E LT = \angle 3⁵ WALK IS NOT Radial to L.
Conc WALK

95⁷ 95⁹
40^{walk} 35^E
WALK WALK

Stations are Radial to \angle of leading edges
of drives & walks

8+50

9⁵ 9⁵ 9⁴ 9⁰ 9⁵ 9⁷ 10³ 10⁵
50 40 10 16 20 40 50

6^o 26.74' - ch = 24.99

8+25

9⁹ 9⁶ 9² 9⁷ 9⁷ 10⁹
40 17 16 18 40

3^o 48.29' - Chord = 24.99'

8+18- 42⁸ LT = \angle 12" Power pole # 2798

8+00

9⁵ 9⁷ 10⁰ 9⁷ 10²
40 20 20 40

1^o 09.84' Chord = 11.02

Sections taken Radial-

7+88⁹⁸ = P.R.C. - for section see page 44

B.M.

M.H. NELY
Figueroa + Magnolia
10.67

Direct elev Rod - True elev.

1' wide + 2' high - New

8 9+56-22' LT = d begin eugenia Hedge

9+55-41⁵ RT = d 10" Evergreen Tree9+54-23⁰ LT = end board fence

9+50

17°00.54'

| | | | | | | | |
|----|----|----|----|----|----|----|----|
| 87 | 84 | 85 | 80 | 86 | 88 | 97 | 92 |
| 50 | 40 | 18 | 16 | | 20 | 40 | 50 |

6 9+36-40⁶ RT = d 16" Evergreen tree

| | | | | | | | | | | |
|---|-------|-------------------------------|---------------------------------------|------------|----|----|----|----|----|----|
| 8 | 9+25- | 42° RT = d 16" Evergreen Tree | 23 ⁷ RT = d 8" Anchor Pole | No Numbers | 85 | 88 | 83 | 88 | 88 | 96 |
| | | | | | 40 | 20 | 19 | | 20 | 40 |

8 14° 22.09'

9+19-27⁶ RT = d dead man

9+00

11° 43.64'

| | | | | | | | |
|----|----|----|----|----|----|----|-----|
| 88 | 89 | 88 | 83 | 90 | 92 | 97 | 102 |
| 50 | 40 | 21 | 20 | | 20 | 40 | 50 |

Fence is New but Not Valuable

8+75-20° LT = begin Board fence

9° 05.19'

| | | | | | |
|----|----|----|----|----|-----|
| 95 | 91 | 88 | 92 | 95 | 102 |
| 40 | 18 | 17 | | 20 | 40 |

X-sec Figueroa ST. cont

Walk is Not Radial to ϕ
10+38-46° LT = ϕ 3' conc walk

10+27-42° RT = ϕ 24" Pepper Tree

10+25

24° 55.89'

Drive is Not Radial to ϕ
10+19-38° LT = ϕ 8" conc drive

10+15-23° LT = ϕ 10" Power pole # P2739

Drive is Not Radial to ϕ
10+10-40° LT = ϕ 10" conc drive

22° 17.44'

9+98-20° LT = end eugenia Hedge

9+96-36° RT = ϕ 6" Mulberry Tree

9+75

19° 38.99'

9+67-41° RT = ϕ 18" Evergreen Tree

LT ϕ RT

874

46°
Walk

8⁵ 8¹ 78 7⁵ 79 8³ 9⁴ 9⁵
40 30 13 10 26 32 40

8²⁰ 8⁶⁷ 8⁶⁴
48 Drive 40° Drive 38° Drive

8⁷⁰ 8⁶⁰ 8⁶ 8¹ 77 8¹ 8⁴ 9⁴ 9⁵
50 drive 40° Drive 40° Drive 13 9 20 40 50

8⁵ 8² 79 8³ 8⁷ 9¹
40 16 15 20 40

Direct Rod

X-sec Figueroa court

11+25

35° 29.59'

See Page 32 for X-sec of N+S Alleys

11+00

32° 51.14'

10+95-38° LT = 3' conc walk

10+75

30° 12.79'

10+50

27° 34.34'

LT

K

RT

65

| | | | | | | |
|----------------|----------------|----------------|----------------|----------------|----------------|----------------|
| 7 ² | 7 ² | 6 ⁶ | 7 ⁰ | 7 ³ | 8 ³ | 8 ³ |
| 40 | 20 | 17 | | 20 | 36 | 40 |

8¹
50

| | | | | | | | | |
|----------------|----------------|----------------|----------------|----------------|----------------|----------------|----------------|----------------|
| 8 ⁰ | 7 ⁵ | 7 ³ | 6 ⁸ | 7 ⁴ | 7 ⁸ | 8 ³ | 8 ⁶ | 9 ⁰ |
| 40 | 30 | 18 | 15 | | 20 | 25 | 40 | 50 |

| | | |
|-----------------|-----------------|-----------------|
| 8 ³⁹ | 8 ²⁶ | 8 ²⁴ |
| 48 | 40 | 38 |
| Walk | Walk | Walk |

| | | | | | |
|----------------|----------------|----------------|----------------|----------------|----------------|
| 8 ⁴ | 7 ⁶ | 6 ⁹ | 7 ⁵ | 8 ⁰ | 8 ⁸ |
| 40 | 16 | 12 | | 20 | 40 |

8³
57

| | | | | | | | |
|----------------|----------------|----------------|----------------|----------------|----------------|----------------|----------------|
| 8 ¹ | 7 ⁹ | 7 ⁸ | 7 ² | 7 ¹ | 8 ² | 9 ⁰ | 9 ² |
| 40 | 30 | 14 | 10 | | 20 | 40 | 50 |

Direct Rod

X-sec. Figueroa c. 18

LT

2

RT

62

12+00

| | | | | | | | | |
|----------------|----------------|----------------|----------------|----------------|----------------|----------------|----------------|----------------|
| 7 ² | 7 ² | 6 ⁰ | 6 ² | 6 ⁵ | 6 ² | 7 ⁰ | 7 ⁹ | 8 ² |
| 50 | 40 | 30 | 25 | | 23 | 29 | 40 | 50 |

TBM-

6.89

ON 1140N 40' shy of 11468.52 - Slightly P.L. B.C.

11468.52 F.C.

| | | | | | | | | |
|----------------|----------------|----------------|----------------|----------------|----------------|----------------|----------------|----------------|
| 7 ⁵ | 7 ⁴ | 7 ⁹ | 6 ⁴ | 6 ⁰ | 6 ⁵ | 7 ³ | 8 ⁴ | 9 ⁴ |
| 50 | 40 | 30 | 20 | | 23 | 30 | 40 | 50 |

40° 05' 30"

11452- 39⁶ RT = 2 8 Conc Drive

| | |
|-----------------|-----------------|
| 0 ⁵⁰ | 9 ¹⁶ |
| 39 ⁶ | 49 ⁶ |
| DRIVE | DRIVE |

11450

| | | | | | | | |
|----------------|----------------|----------------|----------------|----------------|----------------|----------------|----------------|
| 7 ⁴ | 7 ⁴ | 7 ⁵ | 6 ⁴ | 6 ⁰ | 7 ⁰ | 8 ⁴ | 9 ⁰ |
| 50 | 40 | 30 | 19 | | 20 | 40 | 50 |

38° 08.04'

11443- 30² LT = 2 10" Power poles #12749

DIRECT ROD

X-sec Figueroa cont

LT

RT

63

0+50

| | | | | | | | | | |
|----|----|----|----|----|----|----|----|----|----|
| 72 | 70 | 66 | 62 | 58 | 62 | 59 | 63 | 73 | 76 |
| 50 | 40 | 33 | 21 | 19 | | 17 | 18 | 40 | 50 |

0+25

| | | | | | | | |
|----|----|----|----|----|----|----|----|
| 60 | 58 | 55 | 59 | 58 | 61 | 65 | 72 |
| 40 | 21 | 20 | | 18 | 20 | 26 | 40 |

0+02.31² LT = 1/2 10" paving pole # A2699

angle Point - Def angle 0°04'00" Right

28° RT = Wly end Nwly Return

= Wly Bond ST

13+15³⁶ Back = 0+00 ahead

| | | | | | | |
|----|----|----|----|-----------------|-----------------|----|
| 62 | 57 | 59 | 58 | 62 | 60 | 68 |
| 40 | 20 | | 18 | 28 ⁵ | 28 ⁵ | 40 |
| | | | | DIRT | T.C. | |

12+85³⁴ = 1/2 Bond ST

| | | | | |
|----|----|----|----|----|
| 60 | 60 | 63 | 66 | 67 |
| 40 | 20 | | 30 | 40 |

27⁵ LT = end Curb SEly Return

10' Rad

28⁵ RT = end Curb NEly Ret

12+55³⁴ = City Line Bond ST

See X-sec Bond ST

| | | | | | | |
|----|-----------------|-----------------|----|-----------------|-----------------|----|
| 66 | 60 ² | 56 | 62 | 64 | 657 | 71 |
| 40 | 27 ⁵ | 27 ⁵ | | 20 ⁵ | 28 ⁵ | 40 |
| | T.C. | DIRT | | DIRT | T.C. | |

12+25-

| | | | | | | | |
|----|----|----|----|----|----|----|-----------------|
| 72 | 65 | 60 | 62 | 63 | 71 | 75 | 76 |
| 40 | 28 | 25 | | 22 | 30 | 40 | 41 ⁵ |
| | | | | | | | gr. at |
| | | | | | | | sl. of |
| | | | | | | | House |

Direct Rod -

X-sec Figueroa con

LT=517

RT=N/S 64

144B-45^S LT=2 3' conc walk

8⁰ 8⁰⁵
53⁵ 45⁵
W walk

1430⁰⁴ = Fly Line of 20' Alley to Nky
See pages 13+36

7⁺ 6⁵ 6⁰ 6⁸ 6⁵ 6⁶
40 20 18 16 40

1425-24² RT=2 10" Power pole # 604719H
Tele.

1423-31⁰ LT=2 10" Power pole # IP2677

1420-44² RT=2 10' conc drive

7⁸³ 7⁸⁸
44² 54²
drive drive

1400

7⁶ 7² 6⁵ 6¹ 6⁷ 6² 6⁶ 7² 7²
50 40 22 20 18 20 40 50

0+80-40⁰ LT=2 3' conc walk

7⁶³ 7⁵⁵
50⁰ 40⁰
walk walk

0+75

7² 6⁷ 6³ 6¹ 6⁵ 6¹ 6⁴ 7²
40 38 21 19 17 18 40

0+52-43² RT=2 9' conc driveway

7⁷⁰ 7⁸⁴
43² 53²
drive dr.

Direct Rod

X-sec Figueroa Court

2+26- 36³ LT = ϕ 3' conc walk w/step

2+25

2+15- 39⁸ RT = ϕ 3' conc walk

2+05- 39⁵ RT = ϕ 8' conc drive

1+94- 36⁵ LT = ϕ 3' conc walk

1+75

1+73- 41⁵ RT = ϕ 3' conc walk

1+61- 45⁰ LT = ϕ 3' conc walk

1+50⁰⁴ = wly line of Alley to Nly-

LT = 517

ϕ

RT = Nly 65

819 818 757 736
503 403 403 363
walk walk walk walk
step

74 66 63 62 69 74
40 18 17 19 40

741 741 759
398 402 502
walk walk walk

746 746 754
395 402 50
drive drive drive

820 812 760 739
505 405 405 365
walk walk walk
stop

76 66 63 68 68 74
40 20 18 16 40

754 785
415 515
walk walk

802 792
550 450
w. walk

67 67 67 62 68 66 68
40 30 20 18 20 40

- Direct elev. Rod-

X-Sec Figueroa cont

TBM.

905

3+00

2+96-43² LT = ϕ 3 Conc Walk

2+83-38⁰ RT = ϕ 4' Conc Walk

2+75

2+65-42⁴ LT = ϕ 3' Conc Walk

2+50-26⁰ RT = ϕ 10" ^{Power} Tele Pole # JP2648

2+40-30.5 LT = ϕ 10" Power Pole # 2689

2+39-34¹ LT = ϕ 6" ^{15' high} Eugenia Tree

LT = 517

ϕ RT = N/4 - 6'

Top Fire Hyd - 22⁵ LT of Sta 3+15

| | | | | | | | |
|----------------|----------------|----------------|----------------|----------------|----------------|----------------|----------------|
| 7 ⁶ | 7 ⁴ | 6 ⁹ | 6 ⁶ | 7 ³ | 7 ¹ | 7 ² | 7 ⁹ |
| 50 | 40 | 18 | 17 | | 20 | 40 | 50 |

| | |
|-----------------|-----------------|
| 77 ⁰ | 75 ⁴ |
| 53 ² | 43 ² |
| W- | WALK |

| | | |
|-----------------|-----------------|-----------------|
| 76 ⁶ | 77 ¹ | 8 ⁰ |
| 38 ⁰ | 40 ⁰ | 50 ⁰ |
| WALK | W | W |

| | | | | | |
|----------------|----------------|----------------|----------------|----------------|----------------|
| 7 ⁵ | 6 ⁹ | 6 ⁶ | 7 ³ | 7 ¹ | 7 ⁸ |
| 40 | 18 | 17 | | 18 | 40 |

| | |
|-----------------|-----------------|
| 77 ² | 75 ⁵ |
| 52 ⁴ | 42 ⁴ |
| WALK | WALK |

| | | | | | | | |
|----------------|----------------|----------------|----------------|----------------|----------------|----------------|----------------|
| 7 ⁶ | 7 ⁵ | 6 ⁹ | 6 ⁵ | 7 ² | 7 ² | 7 ⁵ | 7 ² |
| 50 | 40 | 18 | 17 | | 18 | 40 | 50 |

Direct Rod

X-sec Figueroa st

4+50

4+25

4+18-41° LT=2 8' Conc driveway

4+00

3+75-40° RT=2 9° Conc drive

3+72-30° LT=2 10" Power Pole # P2639

3+60-42° LT=2 8.5' Conc drive

3+50

3+43-42° LT=2 4' Conc walk

3+25-41° RT=2 4' Conc walk

3+18-22.5° LT=2 Fire Hyd

3+14-41° RT=2 8' Conc driveway

LT=514

2

RT=1/4

62

7³ 7³ 7² 6⁰ 7⁴ 7⁵ 7⁶ 7⁸
50 40 28 18 20 40 50

7¹ 7⁰ 6⁶ 7³ 7³ 7⁵
40 20 18 20 40

7¹ 7²
51° Dr. 41° Dr.

7³ 7¹ 6⁹ 6⁶ 7² 7² 7⁵ 7⁷
50 40 20 18 22 40 50

7⁰ 6⁹ 6⁶ 7² 6⁹ 7⁶ 7^{6.5} 7⁸
40 20 18 18 40° Dr. 40° Dr. 50° Dr.

7⁵ 7³
52° Dr. 42° Dr.

7⁴ 7¹ 7⁰ 6⁷ 7² 7⁰ 7⁵ 7⁸
50 40 20 18 20 40 50

7² 7²
52° Walk 42° Walk

7¹ 7⁰ 6⁶ 7² 6⁹ 7⁶ 7⁸ 8^{0.7}
40 20 18 17 40 41° Walk 51° Walk

7⁸⁸ 8^{0.1}
41° Dr. 51° Dr.

Direct elev Rod

X-Sec Figueroa cont.
- 30° LT = d Deadman
ELY BANK. Rose canyon creek

6+15- d Figueroa from Ely extended intervals

5+94- 30° LT = d 12" Power pole # 578852H
Rose canyon

5+75- RT- Elytop N creek

TBM-

7.0" x 2" x 2" Hub
5+52-43
7.40

5+69- 34° LT = d 3' conc walk

5+52⁴³ = B.C. LT

5+50- 35° LT = d 10' conc driveway

5+25

5+00

27° RT = d 8" Power pole # JP 2620

4+82 30° LT = d 12" Power pole # 12621

4+75

4+72-44² LT = d 8' conc drive

4+53-44² LT = d 4' conc walk

LT = 5ly

RT = 4ly 68

| | | | | | |
|----|----|----|----|----|-----|
| 76 | 78 | 75 | 70 | 05 | -05 |
| 40 | 30 | 15 | | 30 | 40 |

| | | | | | | |
|----|----|----|----|----|----|-------------------|
| 72 | 75 | 72 | 72 | 83 | 85 | 88 |
| 40 | 20 | | 20 | 40 | 50 | 85 |
| | | | | | | Ely Top Cholla |

| | |
|------|------|
| 803 | 800 |
| 40 | 346 |
| Walk | Walk |

| | | | | | | | |
|----|----|----|----|----|----|----|----|
| 69 | 78 | 78 | 73 | 72 | 72 | 80 | 80 |
| 50 | 40 | 30 | 15 | | 20 | 40 | 50 |

| | | |
|-----|-----|-----|
| 803 | 784 | 781 |
| 50 | 40 | 35 |
| dr | dr | dr |

| | | | | | |
|----|----|----|----|----|----|
| 75 | 76 | 72 | 75 | 72 | 78 |
| 40 | 20 | 18 | | 20 | 40 |

| | | | | | | | |
|----|----|----|----|----|----|----|----|
| 75 | 73 | 75 | 72 | 75 | 74 | 75 | 72 |
| 50 | 40 | 22 | 18 | | 20 | 40 | 50 |

| | | | | |
|----|----|----|----|----|
| 76 | 70 | 75 | 72 | 78 |
| 40 | 16 | | 20 | 40 |

| | |
|-----|-----|
| 770 | 768 |
| 542 | 442 |
| dr | dr |

| | |
|-----|------|
| 742 | 738 |
| 542 | 442 |
| | Walk |

direct elev rod

X-sec Magnolia ST. Pico to Pacific
Sketch Page 57.

INDEXED
JOK
JUL 11 1955

0+93-29 LT = 2 1/2" Conc Walk

0+74 44° LT = 2 No Drive
2 car garage

0+50-28 1/2 LT = 2 9' Conc Drive

0+20-22° RT = 2 12" Power Pole #2605

0+15

0+10-19° LT = 2 10" Power pole #578798H

0+04-22° RT = 2 Dead man

0+00 = Fly Prop Line Pico ST

0-12-18° LT = 2 Dead man

0-19

0-33

0-55 = Fly Top Rose Cree K.

TBM - 7.00

BM - 4.02

LT = Nly. 4 RT = Sly 69

737 720 720
400 300 291
walk walk walk

751
440
conc floor

737 710 706 62 64 60 74 67 66
40 300 282 16 9 17 30 50
24 24 24

68 68 63 56 60 53 60 70 68
50 30 18 14 13 25 30 50

66 60 59 54 57 47 40
50 30 17 15 30 50

56

32

12 41 37 42
30 18 30

Nail in Pole #578798H - 19° LT Sta 0+10
FB 2/66 - 57
Swly 7' Mon. Bond ST + Magnolia ST

Direct elev Rid. all elev are True

X-100 Magnolia cont.

2+50

2+50-30° RT = end 8' myrtle hedge

2+31-30° RT = end 2⁵ conc walk

2+21 31⁵ LT = end 9° conc drive

31⁴ LT = end 4 conc walk
overhangs street

2+00 - 30° RT = end 8' high myrtle hedge

1+81-30° RT = end 3' conc walk

TBM-

7.39

1+66-31⁵ LT = end 9 conc drive

1+50-21° RT = end 10" power pole #2635

31² LT = end 4' conc walk

1+47-27¹ LT = end 6' flag stone walk

1+32-21² RT = end dead man

1+30-29⁵ RT = end 2⁵ conc walk

1+20-19° LT = end 10" power pole #JP2630

1+00

LT = N/4

RT = S/4 10

7° 6⁹ 6² 6⁶ 6² 6⁶ 6⁶ 6⁶
50 30 11 12 14 30 50

7³⁷ 7¹³
4¹⁵ 3¹⁵
Dr. Dr.

6⁶ 6⁷⁰
30° 40°
walk walk

7²³ 7⁰³ 7° 6° 6⁴ 6² 6⁶ 6⁵
4¹⁴ 3¹⁴ 30 12 12 13 30
walk walk

6³⁹ 6⁴⁵
30° 40°
walk walk

Nail in Pole #JP2642 19° LT of Sta 2+85

7²² 6⁸⁴
4¹⁵ 3¹⁵
Dr. Dr.

6⁹ 6⁷ 6¹ 6³ 6° 6⁷ 6⁷
50 30 12 12 30 50

7¹⁴ 6⁸⁷ 6⁷³
4¹² 3¹² 2^{9L}
conc Begin 4
walk conc walk
walk walk flag

6⁵⁰ 6⁵⁰ 6⁵⁴
29⁵ 30 40°
walk walk

7⁴ 7¹ 6² 6⁴ 5⁸ 6² 6²
50 30 13 11 30 50

Direct elev Rod.

X-sec Magnolia cont

4403-30⁸ RT = ϕ 2⁵ Conc Walk

4400

3490-30⁸ RT = ϕ 8⁵ Conc Drive

3475-27⁶ LT = ϕ 3' Conc Walk

3450

3441-30² LT = ϕ 2⁵ Conc Walk

3408-30⁵ RT = ϕ 9⁰ Conc Drive way

3405-31⁵ LT = ϕ 2⁵ Conc Walk

29⁵ RT = ϕ deadman

3400-19⁹ RT = ϕ 10" power pole #2643

2485-19² LT = ϕ 10" Power pole #JP2642

2477-31⁴ LT = ϕ 8⁵ Conc drive

2458-31⁴ LT = ϕ 4⁰ Conc Walk

LT = Nly

ϕ

RT = Sly

71

6⁷⁶ 6⁶⁷
30² 40⁸
Walk Walk

7³ 6⁵ 5⁶ 6¹ 5⁷ 6⁴ 6⁶ 6⁴
50 30 15 16 17 30 50

6⁷⁴ 6⁷⁹
30⁸ 40⁸
Dr. Dr.

7¹² 6⁸⁰ 6⁵⁶
40⁰ 30⁰ 27⁶
Walk Walk Walk

7¹ 7⁰ 6⁵ 5⁹ 6⁴ 5⁸ 6² 6⁶ 6⁴
50 30 16 12 13 15 30 50

7²⁹ 7⁰⁶
40² 30²
Walk Walk

6⁵⁷ 6⁷¹
30⁵ 40⁵
Dr. Dr.

7¹⁴ 6⁹⁰
41⁵ 31⁵
Walk Walk

7⁰ 6⁹ 6⁶ 6¹ 6⁵ 6⁰ 6⁷ 6⁶ 6⁴
40 30 16 13 12 16 30 50

7¹² 6⁹⁵
41⁴ 31⁴
Dr. Dr.

7²³ 7¹¹
41⁴ 31⁴
Walk Walk

Direct Elev Rod

X-sec Magnolia cont

LT=Nly

4

RT=Sly

72

} 29⁸ RT = 4 16' conc drive
 5+33- } 28⁰ LT = 4 4" acacia tree -
 5+28 31² LT = 4 2 conc walk

650 650 669
 298 300 400
 Dr Dr Dr

682 652
 400 312
 WIK WIK

5+11- 17⁰ LT = 4 3' conc walk

698 672 596
 400 300 170
 WIK WIK WIK

5+00

69 66 59 50 55 53 64 64
 50 30 18 11 14 30 50

4+88- 29⁸ LT = 4 9' conc driveway

706 674 674
 40 300 298
 Dr Dr Dr

} 29⁰ LT = 4 deadman
 4+80 19² LT = 4 12" power pole # 2678

4+70⁺ = cly line 20' alley to sly - See p 24

70 66 62 50 55 56 62 66
 50 30 20 11 16 30 50

4+54- 20⁰ LT = 4 deadman

4+51- 35² RT = 4 deadman

See page 24
 4+50⁺ = wly line 20' alley to sly

71 67 62 52 57 55 67 67
 50 30 20 11 14 30 50

4+38- 30⁶ RT = 4 3' conc walk

690 696
 300 400
 WIK WIK

4+34- 29³ LT = 4 15' conc drive

711 704 702
 400 300 293
 Dr Dr Dr

4+18- 30⁷ RT = 4 4' conc walk

675 681
 302 402
 WIK WIK

4+08- 29⁰ LT = 4 3' conc walk

723 690 683
 40 30 290
 W W W

Direct elev Rod

X-sec Magnolia cont

LT = wly

RT = sly

73

0+78-28° RT = 2 2' Conc Walk
Wood Frame

0+64-29° LT = begin 3' chicken wire fence

0+50

0+45-28° LT = 2 2' Conc Walk

0+33-28° RT = 2 entrance way to ^{House} Frame
House

0+20-20° LT = 2 deadman

0+01-20° LT = 2 12" Power pole # 578351H-

18° LT = Flyend curb Return

17° RT = Flyend curb Return
= Fly Line Bond ST

6+60) Back = 0+00 ahead

See X-sec Bond 2166

6+30 = 2 Bond ST

16° RT = Wly end curb Return
10' Rad-

6+00) = Wly Bond ST

5+99-20° LT = 2 10" Power pole # 2698

5+97-21° RT = 2 8" Anchor Pole 361044H

5+78-21° RT = 2 deadman

5+50

672 674 680

280 300 340
W. W WIK at
House

71 67 64 51 51 50 58 61 61
50 30 22 12 16 18 30 50

70 694 692

400 300 280
W W WIK

639 645 655

280 300 330
WIK WIK WIK
at house

69 64 526 48 46 43 463 52 58
30 24 184 184 178 178 30 40
T.C. dirt DIRT T.C.

49 48 46
30 30

55 54 44 43 44 499 52 60
30 16 11 165 165 28 30
90T DIRT T.C.

68 63 52 47 52 42 55 60 64
50 30 13 11 15 17 30 50

Direct to Road

1488- 30° LT= 8° conc walk
 1481- 30° LT= begin 3' hog wire fence
 1477- 28° LT= end 2 1/2' picket fence
 1470
 1468- 30° RT= 3 conc walk
 1461- 29° LT= 3 1/2' conc walk
 1455- 30° RT= 9° conc drive
 1451- 30° RT= begin 4' picket fence
 1440⁰⁹ = 20' alley to sly - see page 30
 1435- 28° LT= begin 2 1/2' picket fence
 1428- 21 1/2° RT= 12" power pole #2727
 1425⁰⁹ = 20' alley to Nly see page 30
 1415- 29° LT= 12" power pole #2748
 1414- 28° RT= 4' conc walk
 1410- 27° LT= 9 conc drive
 1406- 30° LT= end 3' chicken wire fence
 1400
 0494- 29° LT= 3' conc walk

8³¹ 8²⁰
 4⁰² 3⁰²
 Dr Dr
 8⁰ 7⁹ 7³ 6⁸ 6⁹ 6⁸ 7³ 7⁷ 7⁹
 4⁰ 3⁰ 1⁸ 1² 1⁶ 1⁸ 3⁰ 4⁰
 7⁸³ 7⁸⁶
 3⁰² 4⁰²
 WIK WIK
 8⁰⁵ 7⁹⁵ 7⁹⁵
 4⁰⁰ 3⁰⁰ 2⁹⁶
 WIK WIK WIK
 7⁷⁰ 7⁷⁰
 3⁰⁰ 4⁰⁰
 Dr Dr
 7⁶ 6⁷ 6² 6⁵ 6² 6⁸ 7¹
 3⁰ 1⁶ 1⁴ 1⁶ 3⁰ 5⁰
 6⁶ 7¹ 6⁶ 5⁹ 6³ 6⁰ 6⁰ 7⁰
 5⁰ 3⁰ 2¹ 1² 1⁷ 1⁹ 3⁰
 7²⁹ 7³² 7³¹
 2⁸⁰ 3⁰⁰ 3⁴⁰
 WIK WIK WIK
 7⁵¹ 7²¹ 7²²
 4⁰² 3⁰² 2⁷⁰
 Dr Dr Drive
 7⁵ 7² 6⁴ 5⁷ 5⁸ 5⁴ 6² 6⁸ 6⁶
 5⁰ 3⁰ 1⁷ 1² 1⁸ 1⁹ 3⁰ 5⁰
 7⁴³ 7¹⁴ 7¹⁴
 4⁰⁰ 3⁰⁰ 2⁹²
 WIK WIK WIK
 direct dev road

X-sec Magnolia ST
 Magnolia - sec sketch
 = 90° to the NELY COK Figueroa +
 3+94.08 Back = 0+00 ahead-

See page 43+44 and page 58 for X-sec Figueroa
 } 205° LT = 12" power pole # 2798
 } 28° RT = 4' conc walk

3+10²⁷ } 30° LT = Magnolia - 90° to COK
 } 30° LT = NWly COK Figueroa +

2+89-20° RT = 8" Tele pole # 604682H

2+80

2+76-205° RT = 10" power pole # 305775H

2+72-37° RT = 4' conc drive

2+57-308° LT = 8' conc drive

2+50

2+41-30° LT = 3' conc walk

2+22-30° LT = end 3' hog wire fence

2+18-307° RT = 3' conc walk

2+05-305° RT = 9° conc driveway

2+04-30° LT = 3' conc walk

2+00-30° RT = end 4' picket fence

LT = Nly RT = Sly 75

112° 110° 102° 105° 10° 107° 105°
 30 25 22 22 23 30

96° 100° 99° 95° 95° 95° 92° 1103° 1102° 1102°
 40 30 13 12 16 18 20° 30° 40°
 WALK WALK WALK

92° 94° 90° 90° 88° 94° 92° 101°
 30 14 12 16 18 30 50

1032° 1037°
 376° 402°
 WIK WIK

891° 895°
 408° 308°
 Dr. Dr.

88° 82° 82° 84° 84° 82° 89° 86° 91°
 40 30 14 12 16 20 30 50

880° 875°
 404° 304°
 WIK WALK

855° 878°
 307° 402°
 WIK WIK

842° 844°
 305° 405°
 DRIVE DRIVE

838° 840°
 400° 300°
 WIK WIK

82° 82° 82° 73° 77° 74° 79° 82° 83°
 50 30 22 12 16 20 30 50

Direct elev Rod.

X-sec Magnolia ST

38° LT = end A.C. Drive For Service Sta

20° LT = Wly end of 15' curb Radius

Magnolia + Pacific Highway

2+86.38 - 90° 00' to NWly CoK

2+50

Service station - edge is Vexy Rough

2+00 - 22° LT = begin A.C. drive For

1+95 - 20° RT = 2 dead man

1+75

1+70 - 20° RT = 2 8" Tele Pole 434685 H

1+55 = 2 Sewer Man hole

1+44.61 90° 00' to Left = 2 Alley Seepage

1+34 - } 30° LT = 2 dead man
20° LT = 2 12" Power Pole # 28.48
opening thru wall to Motel

1+30 - 18° RT = 2 12" A.C. driveway

1+00

0+50 - 27° RT = Nly of Rubble conc wall

0+35 - 20° RT = 2 8" Tele pole # 434684 - H -
25' high

0+06 - 27° RT = begin Rubble Conc Wall
Rubble conc wall above extends all along
Sly side of street

LT = Nly

RT = Sly

15³ 15² 14⁹ 13⁶ 12⁷ 12² 13¹ 13⁵ 12⁶ 12³
38° 30 20° 20° 18 19 28 30 50
A.C. Tr. DIRT grat grat wall wall

14² 13⁴ 12¹ 12² 11⁹ 12⁸ 13² 12¹ 12⁵
40 30 13 19 20 28 30 50
ON A.C. edge A.C. grat grat wall wall

13⁵ 13² 12⁷ 12⁰ 11⁶ 12² 12⁸ 12⁴ 12⁰
50 30 22 16 18 28 30 50
ON A.C. ON A.C. edge A.C. grat grat wall wall

13¹ 12³ 12⁰ 11⁹ 11⁵ 12² 13⁰ 13² 13²
50 30 20 15 17 28 30 50
grat grat wall wall Nly Sly

11⁷

RUBB
SMTH

13⁰ 12⁵ 12⁰ 11⁷ 11⁸ 11⁷ 12⁴ 12⁵ 13⁴ 14⁴
50 30 16 15 14 16 28 30 50
Alley grat grat wall wall

11⁶ 12⁶ 13⁶
15° 30° 50°
A.C. A.C. A.C.Dr
Dr Drive

12⁵ 12³ 11⁹ 11² 11³ 11² 11⁵ 12⁴ 13⁷ 13⁷ 13⁷
50 30 18 16 14 15 28 29 30 40
grat grat wall wall Nly Sly

12⁰ 11⁵ 11² 10⁸ 10⁸ 10³ 11⁰ 12⁰ 13⁵ 13⁵
50 30 18 17 14 15 27 28 30
grat grat wall slyet wall

11⁰ 10⁷
27⁵ 27⁵
gr Foot

Direct elev Rod -

X-sec Magnolia cont

LT = NWly

RT = SWly

11

Levels checked back to
Mon NWly cor Figueroa + Magnolia -10.67

Section taken on arc
Pacific Highway

3+27⁵ ± = Wly edge conc strip

| | | | | | | |
|------------------|------------------|------------------|------------------|------------------|------------------|------------------|
| 15 ¹⁶ | 14 ⁸⁴ | 14 ⁷⁰ | 14 ⁵² | 14 ³² | 14 ¹⁰ | 13 ⁷³ |
| 100 | 50 | 36 | 100 NWly | 30 | 50 | 100 |
| Wly edge conc | Wly edge conc | Wly edge conc | edge conc | Wly edge conc | edge conc | conc |

3+05-31° RT = ϕ 12" Power pole #6598

2+90⁴ ± 36° LT = cb Bc on Pacific Highway

| | | | |
|------------------|------------------|------------------|------------------|
| 15 ³⁵ | 14 ⁵⁸ | 15 ¹⁴ | 14 ⁵² |
| 86° | 86° | 36° | 36° |
| Tic. 90T. | T.C. | T.C. | A.C. 90T |
| DR CURVE | B.C. | B.C. | B.C. |

Mid point of Return on NWly cor

| | |
|------------------|-----------------|
| 15 ⁰⁹ | 13 ⁷ |
| Topcb | DIRT GUTTER |

2+92-28° RT = end Rubble conc wall

| | | |
|-----------------|-----------------|-----------------|
| 12 ⁷ | 12 ⁴ | 14 ³ |
| 28° | 28° | 28° |
| 95 | Foot. | Top wall |

Direct New Road

C.H.S.
Huffman
Puller
Wentworth

W.O. 20020
11-1-57

Additional notes

Alley BIK. 31 - Mission Bay Park.
direct elevation rod used.

B.M. = B.C. Mon. sly. side Figueroa

Page 15 - Elev = 6.85 (FB. VICE)
page 2

INDEXED

NOV 4 1957

Replace 9' curb so as }
To bring Nly end back to Prop. }
on wly. line }
alley }

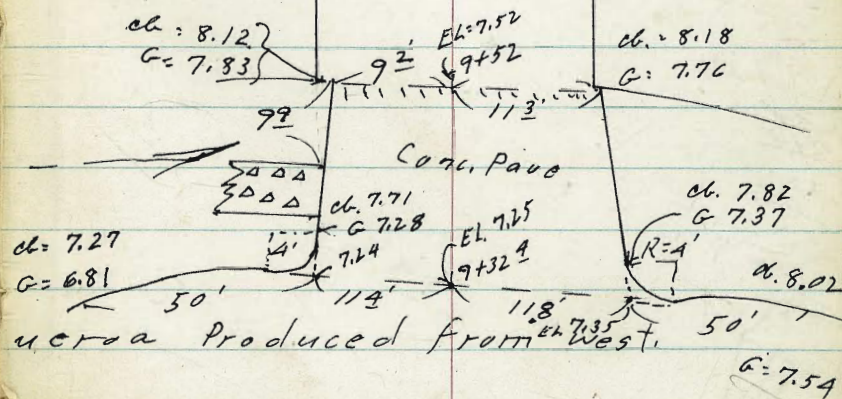
9+15 = \perp Alley and Tangent of Figueroa

See page 32.



10' 10'

From here on notes on
page 32 are o.k.



C.H.S
Hutm
Pulla
Wentv

dir

B.M.

Pag

INDEX

NOV 4

R

To b.

9+15=

79

22/60

C
H
P
12/6

19 486 22
16 + 95 33

249089

38
38

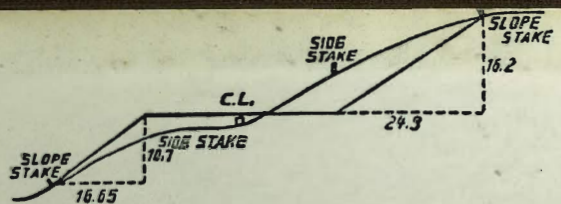
7 + 88 98
3 + 79 54

117 68 52

4038

16 95 33
16 + 40

55 33



DISTANCES FROM SIDE STAKES FOR CROSS-SECTIONING.
SLOPE 1 1/2 TO 1. ROADWAY OF ANY WIDTH.

| | 0 | .1 | .2 | .3 | .4 | .5 | .6 | .7 | .8 | .9 | |
|----|-------|-------|-------|-------|-------|-------|-------|-------|-------|-------|----|
| 0 | 0.00 | 0.15 | 0.30 | 0.45 | 0.60 | 0.75 | 0.90 | 1.05 | 1.20 | 1.35 | 0 |
| 1 | 1.50 | 1.65 | 1.80 | 1.95 | 2.10 | 2.25 | 2.40 | 2.55 | 2.70 | 2.85 | 1 |
| 2 | 3.00 | 3.15 | 3.30 | 3.45 | 3.60 | 3.75 | 3.90 | 4.05 | 4.20 | 4.35 | 2 |
| 3 | 4.50 | 4.65 | 4.80 | 4.95 | 5.10 | 5.25 | 5.40 | 5.55 | 5.70 | 5.85 | 3 |
| 4 | 6.00 | 6.15 | 6.30 | 6.45 | 6.60 | 6.75 | 6.90 | 7.05 | 7.20 | 7.35 | 4 |
| 5 | 7.50 | 7.65 | 7.80 | 7.95 | 8.10 | 8.25 | 8.40 | 8.55 | 8.70 | 8.85 | 5 |
| 6 | 9.00 | 9.15 | 9.30 | 9.45 | 9.60 | 9.75 | 9.90 | 10.05 | 10.20 | 10.35 | 6 |
| 7 | 10.50 | 10.65 | 10.80 | 10.95 | 11.10 | 11.25 | 11.40 | 11.55 | 11.70 | 11.85 | 7 |
| 8 | 12.00 | 12.15 | 12.30 | 12.45 | 12.60 | 12.75 | 12.90 | 13.05 | 13.20 | 13.35 | 8 |
| 9 | 13.50 | 13.65 | 13.80 | 13.95 | 14.10 | 14.25 | 14.40 | 14.55 | 14.70 | 14.85 | 9 |
| 10 | 15.00 | 15.15 | 15.30 | 15.45 | 15.60 | 15.75 | 15.90 | 16.05 | 16.20 | 16.35 | 10 |
| 11 | 16.50 | 16.65 | 16.80 | 16.95 | 17.10 | 17.25 | 17.40 | 17.55 | 17.70 | 17.85 | 11 |
| 12 | 18.00 | 18.15 | 18.30 | 18.45 | 18.60 | 18.75 | 18.90 | 19.05 | 19.20 | 19.35 | 12 |
| 13 | 19.50 | 19.65 | 19.80 | 19.95 | 20.10 | 20.25 | 20.40 | 20.55 | 20.70 | 20.85 | 13 |
| 14 | 21.00 | 21.15 | 21.30 | 21.45 | 21.60 | 21.75 | 21.90 | 22.05 | 22.20 | 22.35 | 14 |
| 15 | 22.50 | 22.65 | 22.80 | 22.95 | 23.10 | 23.25 | 23.40 | 23.55 | 23.70 | 23.85 | 15 |
| 16 | 24.00 | 24.15 | 24.30 | 24.45 | 24.60 | 24.75 | 24.90 | 25.05 | 25.20 | 25.35 | 16 |
| 17 | 25.50 | 25.65 | 25.80 | 25.95 | 26.10 | 26.25 | 26.40 | 26.55 | 26.70 | 26.85 | 17 |
| 18 | 27.00 | 27.15 | 27.30 | 27.45 | 27.60 | 27.75 | 27.90 | 28.05 | 28.20 | 28.35 | 18 |
| 19 | 28.50 | 28.65 | 28.80 | 28.95 | 29.10 | 29.25 | 29.40 | 29.55 | 29.70 | 29.85 | 19 |
| 20 | 30.00 | 30.15 | 30.30 | 30.45 | 30.60 | 30.75 | 30.90 | 31.05 | 31.20 | 31.35 | 20 |
| 21 | 31.50 | 31.65 | 31.80 | 31.95 | 32.10 | 32.25 | 32.40 | 32.55 | 32.70 | 32.85 | 21 |
| 22 | 33.00 | 33.15 | 33.30 | 33.45 | 33.60 | 33.75 | 33.90 | 34.05 | 34.20 | 34.35 | 22 |
| 23 | 34.50 | 34.65 | 34.80 | 34.95 | 35.10 | 35.25 | 35.40 | 35.55 | 35.70 | 35.85 | 23 |
| 24 | 36.00 | 36.15 | 36.30 | 36.45 | 36.60 | 36.75 | 36.90 | 37.05 | 37.20 | 37.35 | 24 |
| 25 | 37.50 | 37.65 | 37.80 | 37.95 | 38.10 | 38.25 | 38.40 | 38.55 | 38.70 | 38.85 | 25 |
| 26 | 39.00 | 39.15 | 39.30 | 39.45 | 39.60 | 39.75 | 39.90 | 40.05 | 40.20 | 40.35 | 26 |
| 27 | 40.50 | 40.65 | 40.80 | 40.95 | 41.10 | 41.25 | 41.40 | 41.55 | 41.70 | 41.85 | 27 |
| 28 | 42.00 | 42.15 | 42.30 | 42.45 | 42.60 | 42.75 | 42.90 | 43.05 | 43.20 | 43.35 | 28 |
| 29 | 43.50 | 43.65 | 43.80 | 43.95 | 44.10 | 44.25 | 44.40 | 44.55 | 44.70 | 44.85 | 29 |
| 30 | 45.00 | 45.15 | 45.30 | 45.45 | 45.60 | 45.75 | 45.90 | 46.05 | 46.20 | 46.35 | 30 |
| 31 | 46.50 | 46.65 | 46.80 | 46.95 | 47.10 | 47.25 | 47.40 | 47.55 | 47.70 | 47.85 | 31 |
| 32 | 48.00 | 48.15 | 48.30 | 48.45 | 48.60 | 48.75 | 48.90 | 49.05 | 49.20 | 49.35 | 32 |
| 33 | 49.50 | 49.65 | 49.80 | 49.95 | 50.10 | 50.25 | 50.40 | 50.55 | 50.70 | 50.85 | 33 |
| 34 | 51.00 | 51.15 | 51.30 | 51.45 | 51.60 | 51.75 | 51.90 | 52.05 | 52.20 | 52.35 | 34 |
| 35 | 52.50 | 52.65 | 52.80 | 52.95 | 53.10 | 53.25 | 53.40 | 53.55 | 53.70 | 53.85 | 35 |
| 36 | 54.00 | 54.15 | 54.30 | 54.45 | 54.60 | 54.75 | 54.90 | 55.05 | 55.20 | 55.35 | 36 |
| 37 | 55.50 | 55.65 | 55.80 | 55.95 | 56.10 | 56.25 | 56.40 | 56.55 | 56.70 | 56.85 | 37 |
| 38 | 57.00 | 57.15 | 57.30 | 57.45 | 57.60 | 57.75 | 57.90 | 58.05 | 58.20 | 58.35 | 38 |
| 39 | 58.50 | 58.65 | 58.80 | 58.95 | 59.10 | 59.25 | 59.40 | 59.55 | 59.70 | 59.85 | 39 |
| 40 | 60.00 | 60.15 | 60.30 | 60.45 | 60.60 | 60.75 | 60.90 | 61.05 | 61.20 | 61.35 | 40 |
| 41 | 61.50 | 61.65 | 61.80 | 61.95 | 62.10 | 62.25 | 62.40 | 62.55 | 62.70 | 62.85 | 41 |
| 42 | 63.00 | 63.15 | 63.30 | 63.45 | 63.60 | 63.75 | 63.90 | 64.05 | 64.20 | 64.35 | 42 |
| 43 | 64.50 | 64.65 | 64.80 | 64.95 | 65.10 | 65.25 | 65.40 | 65.55 | 65.70 | 65.85 | 43 |
| 44 | 66.00 | 66.15 | 66.30 | 66.45 | 66.60 | 66.75 | 66.90 | 67.05 | 67.20 | 67.35 | 44 |
| 45 | 67.50 | 67.65 | 67.80 | 67.95 | 68.10 | 68.25 | 68.40 | 68.55 | 68.70 | 68.85 | 45 |
| 46 | 69.00 | 69.15 | 69.30 | 69.45 | 69.60 | 69.75 | 69.90 | 70.05 | 70.20 | 70.35 | 46 |
| 47 | 70.50 | 70.65 | 70.80 | 70.95 | 71.10 | 71.20 | 71.40 | 71.55 | 71.70 | 71.85 | 47 |
| 48 | 72.00 | 72.15 | 72.30 | 72.45 | 72.60 | 72.75 | 72.90 | 73.05 | 73.20 | 73.35 | 48 |
| 49 | 73.50 | 73.65 | 73.80 | 73.95 | 74.10 | 74.25 | 74.40 | 74.55 | 74.70 | 74.85 | 49 |
| 50 | 75.00 | 75.15 | 75.30 | 75.45 | 75.60 | 75.75 | 75.90 | 76.05 | 76.20 | 76.35 | 50 |

THE NATIONAL BLANK BOOK COMPANY
HOLYOKE MASSACHUSETTS
NEW YORK CHICAGO BOSTON SAN FRANCISCO