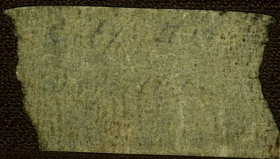
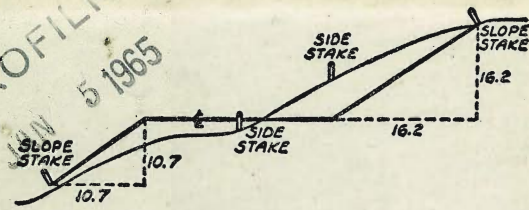


2278

SEWER



MICROFILMED
5 1965



DISTANCES FROM SIDE STAKES FOR CROSS-SECTIONING
SLOPE 1 TO 1. ROADWAY OF ANY WIDTH

	0	.1	.2	.3	.4	.5	.6	.7	.8	.9	
0	0.00	0.10	0.20	0.30	0.40	0.50	0.60	0.70	0.80	0.90	0
1	1.00	1.10	1.20	1.30	1.40	1.50	1.60	1.70	1.80	1.90	1
2	2.00	2.10	2.20	2.30	2.40	2.50	2.60	2.70	2.80	2.90	2
3	3.00	3.10	3.20	3.30	3.40	3.50	3.60	3.70	3.80	3.90	3
4	4.00	4.10	4.20	4.30	4.40	4.50	4.60	4.70	4.80	4.90	4
5	5.00	5.10	5.20	5.30	5.40	5.50	5.60	5.70	5.80	5.90	5
6	6.00	6.10	6.20	6.30	6.40	6.50	6.60	6.70	6.80	6.90	6
7	7.00	7.10	7.20	7.30	7.40	7.50	7.60	7.70	7.80	7.90	7
8	8.00	8.10	8.20	8.30	8.40	8.50	8.60	8.70	8.80	8.90	8
9	9.00	9.10	9.20	9.30	9.40	9.50	9.60	9.70	9.80	9.90	9
10	10.00	10.10	10.20	10.30	10.40	10.50	10.60	10.70	10.80	10.90	10
11	11.00	11.10	11.20	11.30	11.40	11.50	11.60	11.70	11.80	11.90	11
12	12.00	12.10	12.20	12.30	12.40	12.50	12.60	12.70	12.80	12.90	12
13	13.00	13.10	13.20	13.30	13.40	13.50	13.60	13.70	13.80	13.90	13
14	14.00	14.10	14.20	14.30	14.40	14.50	14.60	14.70	14.80	14.90	14
15	15.00	15.10	15.20	15.30	15.40	15.50	15.60	15.70	15.80	15.90	15
16	16.00	16.10	16.20	16.30	16.40	16.50	16.60	16.70	16.80	16.90	16
17	17.00	17.10	17.20	17.30	17.40	17.50	17.60	17.70	17.80	17.90	17
18	18.00	18.10	18.20	18.30	18.40	18.50	18.60	18.70	18.80	18.90	18
19	19.00	19.10	19.20	19.30	19.40	19.50	19.60	19.70	19.80	19.90	19
20	20.00	20.10	20.20	20.30	20.40	20.50	20.60	20.70	20.80	20.90	20
21	21.00	21.10	21.20	21.30	21.40	21.50	21.60	21.70	21.80	21.90	21
22	22.00	22.10	22.20	22.30	22.40	22.50	22.60	22.70	22.80	22.90	22
23	23.00	23.10	23.20	23.30	23.40	23.50	23.60	23.70	23.80	23.90	23
24	24.00	24.10	24.20	24.30	24.40	24.50	24.60	24.70	24.80	24.90	24
25	25.00	25.10	25.20	25.30	25.40	25.50	25.60	25.70	25.80	25.90	25
26	26.00	26.10	26.20	26.30	26.40	26.50	26.60	26.70	26.80	26.90	26
27	27.00	27.10	27.20	27.30	27.40	27.50	27.60	27.70	27.80	27.90	27
28	28.00	28.10	28.20	28.30	28.40	28.50	28.60	28.70	28.80	28.90	28
29	29.00	29.10	29.20	29.30	29.40	29.50	29.60	29.70	29.80	29.90	29
30	30.00	30.10	30.20	30.30	30.40	30.50	30.60	30.70	30.80	30.90	30
31	31.00	31.10	31.20	31.30	31.40	31.50	31.60	31.70	31.80	31.90	31
32	32.00	32.10	32.20	32.30	32.40	32.50	32.60	32.70	32.80	32.90	32
33	33.00	33.10	33.20	33.30	33.40	33.50	33.60	33.70	33.80	33.90	33
34	34.00	34.10	34.20	34.30	34.40	34.50	34.60	34.70	34.80	34.90	34
35	35.00	35.10	35.20	35.30	35.40	35.50	35.60	35.70	35.80	35.90	35
36	36.00	36.10	36.20	36.30	36.40	36.50	36.60	36.70	36.80	36.90	36
37	37.00	37.10	37.20	37.30	37.40	37.50	37.60	37.70	37.80	37.90	37
38	38.00	38.10	38.20	38.30	38.40	38.50	38.60	38.70	38.80	38.90	38
39	39.00	39.10	39.20	39.30	39.40	39.50	39.60	39.70	39.80	39.90	39
40	40.00	40.10	40.20	40.30	40.40	40.50	40.60	40.70	40.80	40.90	40
41	41.00	41.10	41.20	41.30	41.40	41.50	41.60	41.70	41.80	41.90	41
42	42.00	42.10	42.20	42.30	42.40	42.50	42.60	42.70	42.80	42.90	42
43	43.00	43.10	43.20	43.30	43.40	43.50	43.60	43.70	43.80	43.90	43
44	44.00	44.10	44.20	44.30	44.40	44.50	44.60	44.70	44.80	44.90	44
45	45.00	45.10	45.20	45.30	45.40	45.50	45.60	45.70	45.80	45.90	45
46	46.00	46.10	46.20	46.30	46.40	46.50	46.60	46.70	46.80	46.90	46
47	47.00	47.10	47.20	47.30	47.40	47.50	47.60	47.70	47.80	47.90	47
48	48.00	48.10	48.20	48.30	48.40	48.50	48.60	48.70	48.80	48.90	48
49	49.00	49.10	49.20	49.30	49.40	49.50	49.60	49.70	49.80	49.90	49
50	50.00	50.10	50.20	50.30	50.40	50.50	50.60	50.70	50.80	50.90	50

Distance of slope stake from side or shoulder stake for any width roadway, slope 1 to 1. If ground is nearly level, the cut or fill at side stake is located by the double entry method in left column and top row. The number in body of table in same row and column gives distance from side stake to slope stake. If ground is not level estimate the difference in elevation between the side stake and slope stake, lower target by this amount if cut, elevate if fill. Add this amount to cut or fill and find distance in table. Set up rod at this point, and line of sight should cut target. If it does not make the slight adjustment necessary.

83

38° 07'

25.13
41.78
95.01

161.96

47° 27'

D. Smith
J. Rorer
H. Taylor
R. Parks

Cross Sec City Hts For and Grade Ordinance Sewers

wo # 31119

H = Fd Hub

M = Set Hub or stub

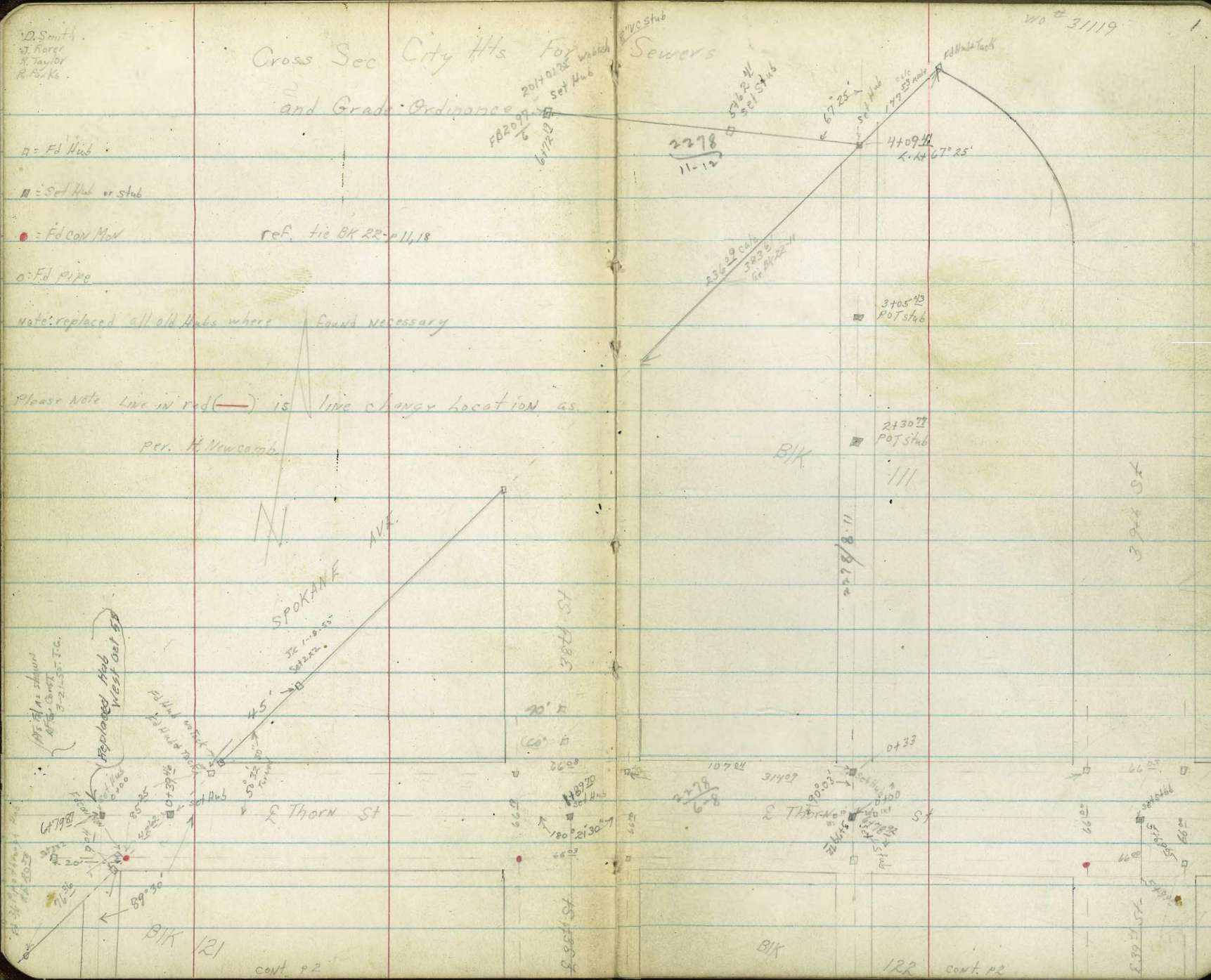
• = Fd cov Man

o = Fd pipe

note: replaced all old Hubs where found necessary

Please Note Line in red (—) is line change location as per H. Newcomb

ref. tie BK 22-11, 18



Placed as shown
at the
3-21-51 J.C.

Replaced Hub
with out 58

Replaced Hub
with out 58

BIK 121

cont. p. 2

BIK 121

BIK

BIK 122 cont. p. 2

BIK 122

375
37
292

2

cont. p1

cont. p1

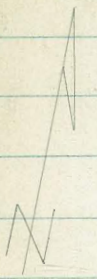
Spokane St

BIK

pot stub
3+25
12° 10'

2278
23:24

Spokane St

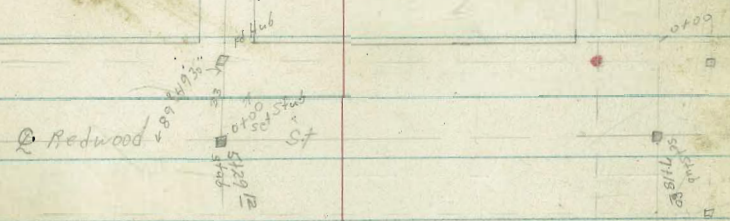


BIK

2278
20:21

TRR

Spokane St



BIK

139

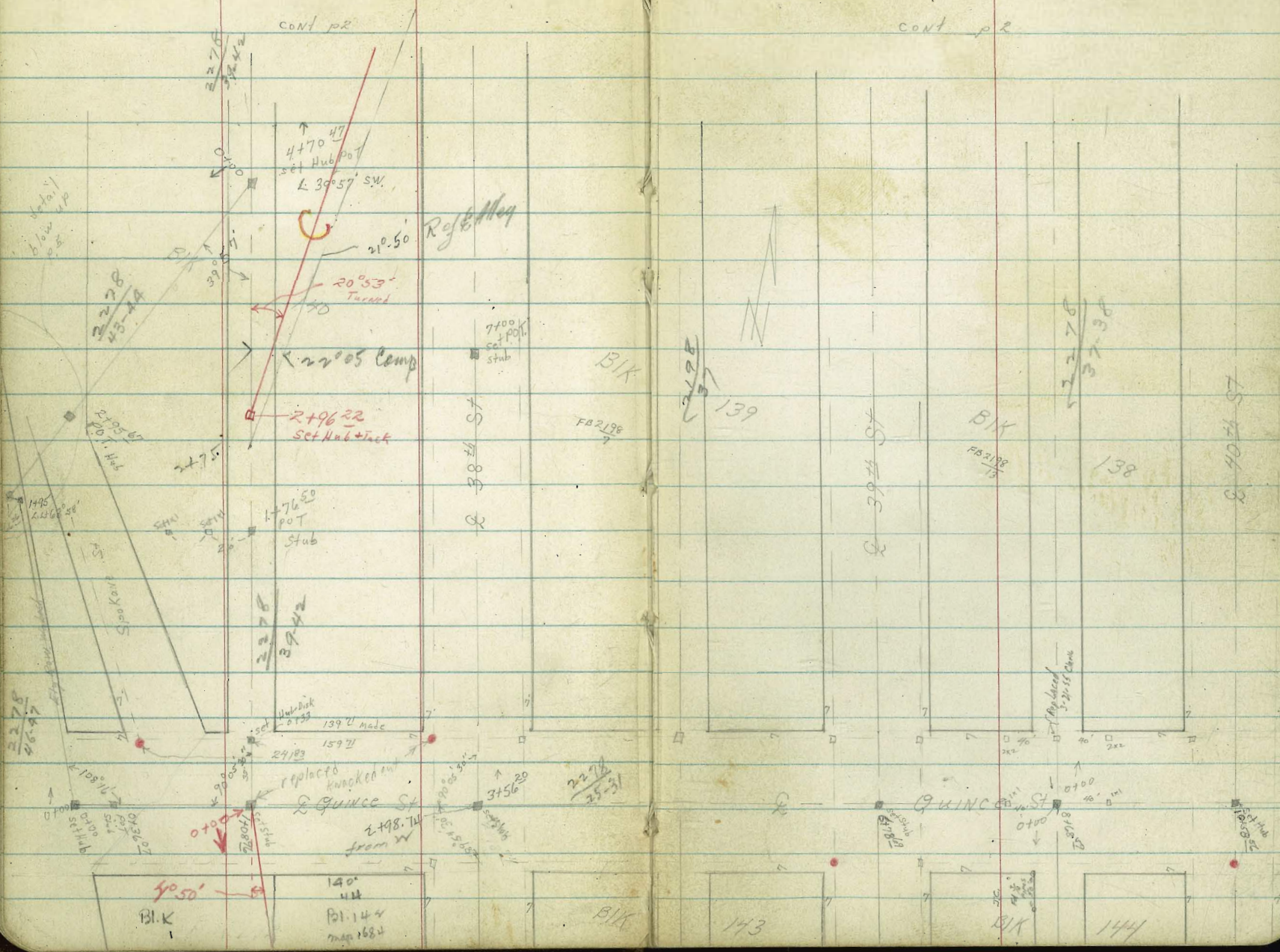
cont. p3

cont. p3

at 6+45
68 21 30
Comp

cont p2

cont p2

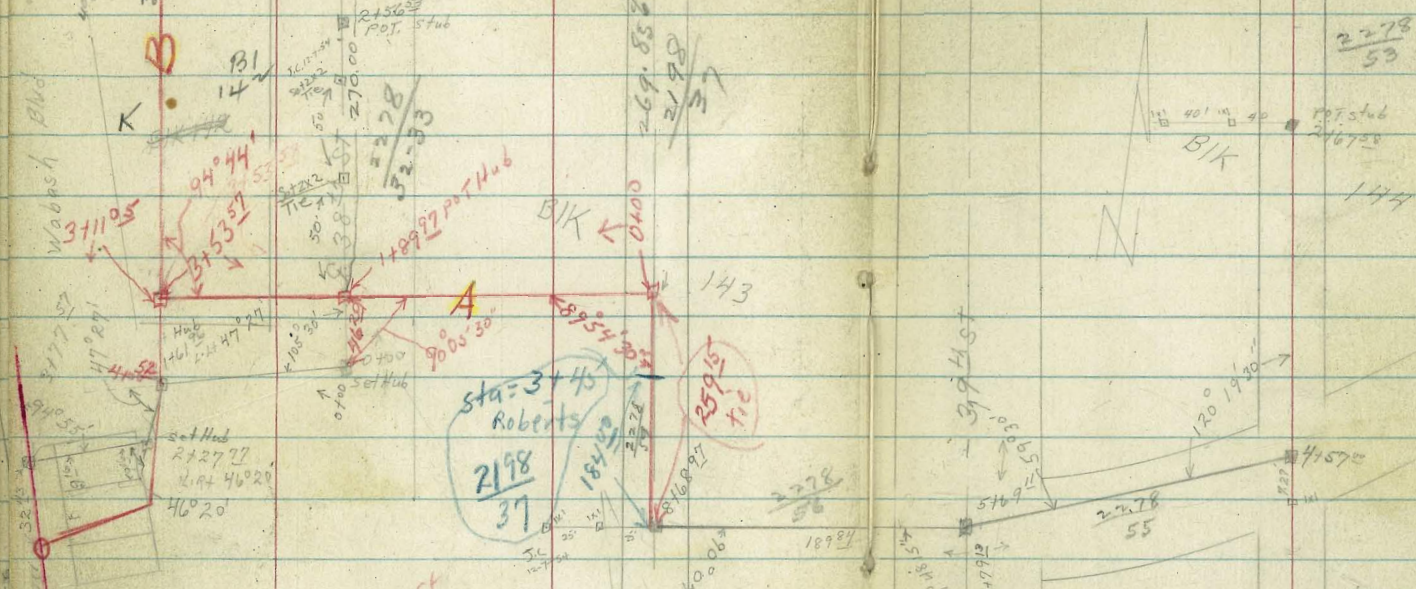


3411.27
311.05
311.05
Wabash
K

CONT p3
31620 Sly Quince

Quince
269.85
2198
37

cont. p3



Notes: Sketch Mile St
Bridge - Wabash
on p. 5
See 145-1105

Wabash
K
Mile St
Wabash Freeway
existing sewer
31105
47° 24'
46° 20'

Sta=3145
Roberts
2198
37

BIK
0100

143

1895432

18921

13723

Seattle St

13763

64° 08'

16157

1776

154325

6929

Lexington
existing sewer

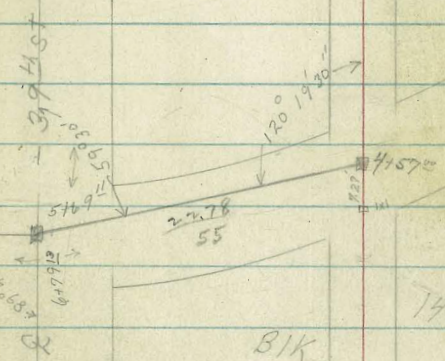
BIK
2198
53

144

BIK

745

St



BIK
2198
53

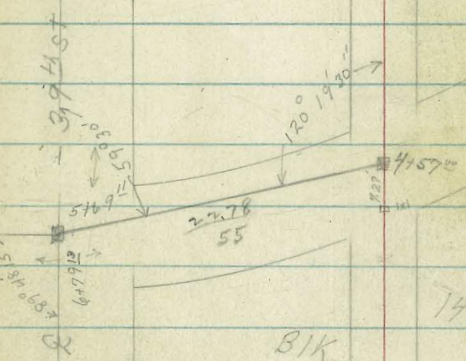
144

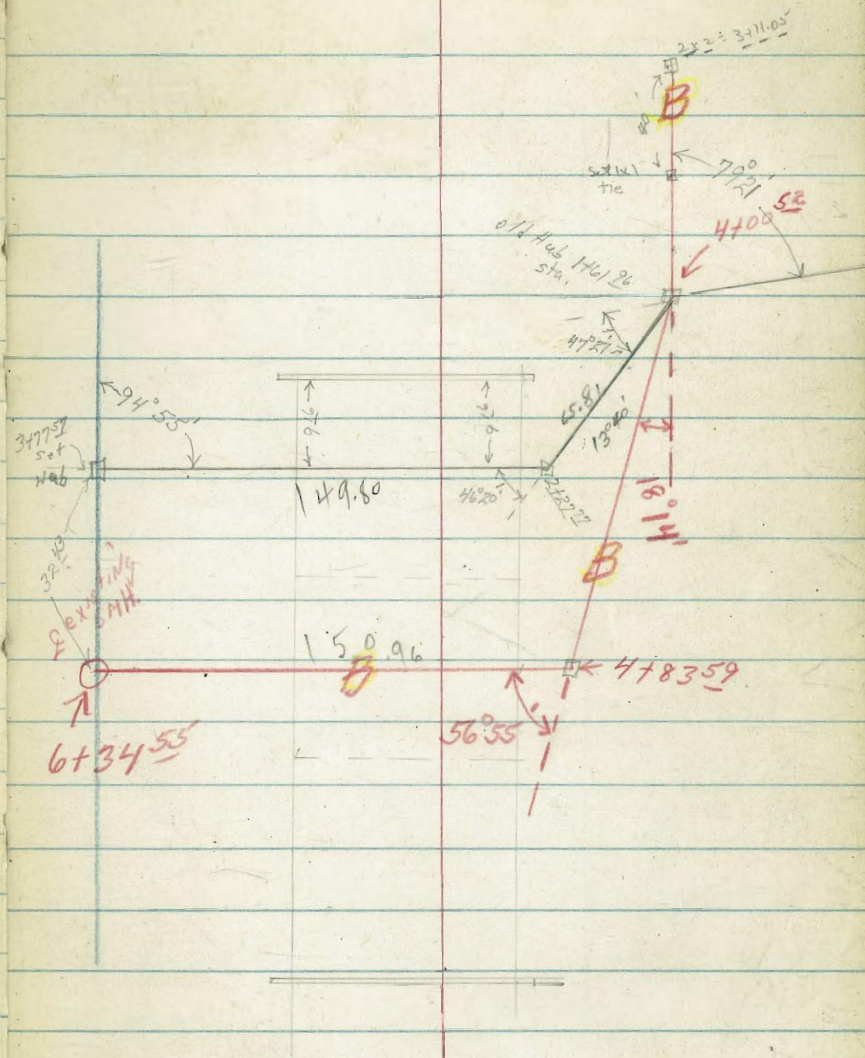
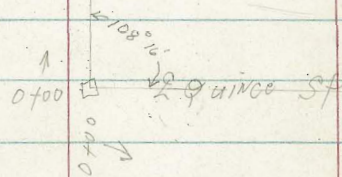
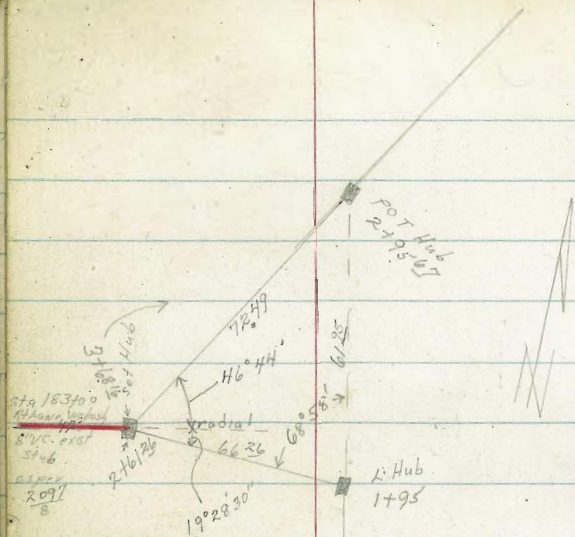
BIK

745

St

240th St





Thorn St.

1+49²⁰ wly 38th St

1+25 52⁰ L+R House

1+00

0+75

0+39⁴⁶

0+00 wly Thorn St into Alley BIRK1

TP₂ BM 374

309⁴⁶

5²⁶

305⁷²

TP 899

310²⁸

5⁴⁹

301⁹⁹

BM 451

307⁴⁸

302²⁷

SW COR. MOH
394 - Thorn St

Nail (Spike) in pole
SW 394 + Redwood
#P. 3899

N.W. B.P. 404
Redwood

2198
8

309⁴⁶

Lt=North

Rt=South

6

2946.1	2946.4	2955.9	2970	2968	2979	2986.6	2999.9	3010
13 ²	12 ⁶	11 ²	11 ³	10 ³	10 ⁸	9 ²	8 ⁵	8 ⁵
14 ⁸⁵	15 ¹	13 ⁶	13 ⁵	12 ³	11 ⁶	10 ²	9 ⁶	9 ⁶
52	40	20	10	11	20	40	40	40
297.9	294.6	295.7	296.0	295.8	296.7	297.5	298.5	298.5
16 ⁶	14 ²	13 ⁸	13 ⁵	13 ⁷	12 ⁸	12 ⁰	10 ⁶	10 ⁶
40	20	8	10	12	20	40	40	40
291.9	292.5	295.1	295.1	295.1	296.2	296.9	298.1	298.1
17 ⁶	16 ⁰	14 ⁴	14 ⁴	13 ³	12 ⁶	11 ⁴	11 ⁴	11 ⁴
40	20	11	13	20	40	40	40	40
292.9	292.8	294.4	295.8	296.6	296.6	296.6	296.6	296.6
18 ⁶	16 ²	15 ¹	13 ²	12 ²	12 ²	12 ²	12 ²	12 ²
40	20	25	40	40	40	40	40	40
288.6	291.7	293.4	294.8	296.6	296.6	296.6	296.6	296.6
19 ⁸	17 ⁸	16 ¹	14 ²	12 ⁹	12 ⁹	12 ⁹	12 ⁹	12 ⁹
40	25	25	40	40	40	40	40	40

Reduced
by
H. Mills
4-27-53

Lt=North

Lt=South

7

4120

306.1	306.5	306.8	306.7	307.1
34	30	27	28	21
40	20		20	40

3479²³ E Alleys BKs 111 422

305.8	306.2	306.7	306.7	306.9
37	33	21	20	26
40	20	10	20	40

3440

305.5	306.0	306.1	306.5
40	32	34	30
40	20	20	40

3700

304.5	304.9	305.4	305.3	305.7
50	46	41	43	38
40	20		20	40

2460

303.7	304.0	304.6	304.7	304.8
50	55	42	48	42
40	20		20	40

2429²⁰ Ely 38⁴⁵

302.3	302.9	303.5	303.5	304.1
72	66	60	60	54
40	20		20	40

1489²⁹ E 3814 St

300.5	301.1	301.8	301.7	302.5
110	94	87	76	70
40	20		20	40

30946

0+40 Nly Thorn St

0+00 E Alley Blk. III int E Thorn St

6+09⁶⁰ Fly 39th St

5+69⁶⁰ E 39th St

5+29⁶⁰ Wly 39th St

4+90

4+60

North

South

8

305.8
32
6

306.6
32
10

306.2
33
10

306.7
32

30946

✓ 298.8
102
40

✓ 301.2
83
20

✓ 303.0
65
11

✓ 303.9
56
6

✓ 303.9
56
6

✓ 304.3
52
20

✓ 304.6
42
40

✓ 303.9
56
40

✓ 304.5
50
20

✓ 304.9
46
20

✓ 305.3
42
20

✓ 305.8
32
40

✓ 304.2
53
40

✓ 305.4
46
20

✓ 305.9
36
10

✓ 305.4
42
8

✓ 305.7
38
8

✓ 305.9
36
20

✓ 305.9
36
25

✓ 306.7
25
27

✓ 306.6
23
20

✓ 305.6
39
40

✓ 306.0
35
20

✓ 306.4
31
20

✓ 306.4
31
20

✓ 307.0
25
40

✓ 305.9
36
40

✓ 306.2
33
20

✓ 306.7
29
20

✓ 306.5
30
20

✓ 307.1
24
40

30946

Alley Bk. 111

2736

2720 50° Lt & House

2720 14° Lt & House

2711 13° Lt & House

2700

1790 79° Lt & 10" Power Pole # PA3325

1760 72° Lt & House

TP₃

5²²

308²³

6⁹⁵

302⁵⁷

1720

0791 95° Lt & 6" Tel. Pole # 51950/H

0780

309.46

Lt = West

299.2

9°

15

299.2

9°

10

299.2

9°

10

Lt = East

298.5

10°

16

298.2

10°

15

9

300.03
8²⁰
50°
Floor

300.26
7²²
14³
Floor

299.54
8⁶⁹
13°
Floor

300.0
8²
25

300.7
7⁸
10

300.4
7¹⁰
10

300.4
7⁸
10

299.5
8¹⁴
30

301.6
6⁶
35

301.8
6⁴
10

301.9
6³
10

302.1
6¹
10

301.6
6⁶
35

300.83
7⁴⁰
7²³
Floor

308²³

303.3
6³
30

303.4
6⁶
10

303.5
6⁰
10

303.7
5⁸
10

303.7
5⁸
35

304.6
4²
35

304.9
4⁶
10

304.9
4⁶
10

305.4
4⁴
10

305.3
4²
35

309.46

ALLEY BLK. 111

TP₇ 0⁴ $\left\langle 260^{19} \right\rangle$ 12¹² $\left\langle 260^{28} \right\rangle$

3750

TP₆ 0⁰⁰ $\left\langle 272^{20} \right\rangle$ 12⁵⁰ $\left\langle 272^{20} \right\rangle$

3725

TP₅ 0¹³ $\left\langle 284^{70} \right\rangle$ 12⁴⁴ $\left\langle 284^{57} \right\rangle$

3700

2790 5⁵ Lt & 10¹⁰ P. Pole # 43341

2775

2772 5⁵ Lt & dead man

TP₄ 0¹³ $\left\langle 297^{05} \right\rangle$ 11²⁵ $\left\langle 296^{28} \right\rangle$

2750

Lt = West

S

Rt = East

10

2650
72
10
2642
8°
10
2631
9
10

272.7
8°
10
272.7
8°
10
272.0
8
10

2880
9°
30
2881
8
10
2881
8
10
2876
9
10
2846
12
30

292.5
45
35
292.9
4
10
292.9
4
10
292.5
45
10
2909
6
35

296.4
118
15
296.2
12°
10
292.3
10
10
296.2
12°
10
2946
13
15

π 308²³

Alley Bkt. 111

5465

5433

5400

4450

TR₈

4409⁴¹ L.Lt 67° 25' on split

3480

3475

260.19

Lt. SWy

RT. NEy

11

✓ 241.3
8⁵
10

✓ 242.2
7⁶
10

✓ 244.6
5¹²
10

✓ 245.3
4⁵
10

✓ 248.1
12¹
10

✓ 249.9
10³
10

✓ 252.6
7⁶

✓ 244.5
5³
10

✓ 244.9
7⁹
10

✓ 244.1
5²
10

✓ 246.5
3³
10

✓ 249.8
12⁰⁶
Hub

✓ 250.0
10¹²
10

✓ 245.6
4²
10

✓ 246.9
2⁹
10

✓ 246.5
3³
10

✓ 249.3
10⁹
10

✓ 248.2
12⁰
5

✓ 250.2
10⁰
10

✓ 244.2
11⁰
10

260.19

Alloy Blk. 111

Lt = SWly

9

R = NEly.

12

95R

244⁶⁰

Wabash
BM
244 52
FB
2097.4

TP₉

73⁴⁶

254¹²

94

240⁶⁶

202.57

1729

Hub

6+72¹⁹

20170128 Wabash 8" stub 552 Blk of R
Hub

235.8

234.9

233.3

14⁰

14²

16⁵

10

10

6+35

236.7

236.9

236.9

13¹

12⁹

12⁹

10

10

6+00

249.80

249.80

"X" Sec Redwood St
Spokane to Ely 39th St

Lt = North

Rt = South

1765

1449⁶⁶ & Alley

1735 (25" N & 12" Power Pole #3775)
1° N & dead end

1730

0780

0470

0700 Ely Spokane St

TP₂ BM 5⁶⁴ <282²³> 12²⁰ <276⁵⁹> N.E. 7x7 Con. How
Spokane + Redwood

TP 0⁵⁶ <289⁴⁹> 13⁰⁹ <288²³>

BM TP 0⁰³ <302⁰³> 301²² Nail in Pole
#P3899 9x4
SW cor 39th & Redwood

270.4	268.7	267.2	269.4	266.9
11 ⁸	13 ²⁵	15 ⁹	13 ⁸	15 ³
40	20		20	40
273.9	270.7	267.9	267.9	266.9
8 ³	11 ⁵	12 ⁸³	14 ³	15 ³
40	20	on Hub	20	40
278.8	277.0	274.6	271.9	269.7
3 ⁴	5 ²	7 ⁶	10 ³	12 ⁵
60	40	20	20	40
280.0	278.2	276.4	275.8	274.3
2 ²	4 ³	5 ⁸	6 ⁴	7 ⁹
60	40	20	20	40
280.8	279.6	278.5	277.5	276.6
1 ⁴	2 ⁶	3 ²	4 ⁷	5 ⁶
60	40	20	20	40
279.6	277.7	277.4	276.8	276.5
2 ⁶	4 ⁵	4 ⁸	5 ⁴	5 ⁷
60	40	20	20	40
279.6	277.7	277.4	276.8	276.5
2 ⁶	4 ⁵	4 ⁸	5 ⁴	5 ⁷
60	40	20	20	40

<282²³>

Lt North

Rt South

14

3455

287.3	282.2	274.4	272.6
0 ¹³	5 ⁴	13 ²	14 ⁰
40	20	20	40

3439⁴² E int 38th St.

283.0	277.7	274.3	272.7
4 ⁶	7 ²	13 ³	13 ²
40	20	20	40

3425

285.0	283.2	274.7	274.9
2 ⁶	4 ⁴	12 ²	12 ²
40	20	20	40

2499⁴² Wly 38th St.

286.3	284.3	274.4	268.2
1 ³	3 ³	13 ²	19 ⁴
40	20	20	40

2495 25° Rt E 12 Power Poles # 3799

285.4	283.2	279.8	270.2
2 ²	4 ²	7 ⁰	17 ²
40	20	20	40

2470

T₃ BM

11⁵⁵

287⁶⁰

618

276^{0.5}

Hub E int 38th + Redwood

2435

282.8	282.0	281.4	287 ⁶⁰	279.1	272.9	272.4	264.0
10 ⁶	0 ²	0 ⁸	2 ¹	3 ¹	4 ³	9 ⁸	18 ²
60	40	20	20	20	30	40	60

2400

282.2	280.9	279.1	277.9	277.0	271.7	269.5
0 ⁰	1 ⁰	5 ¹	4 ¹³	5 ¹²	10 ⁵	12 ²
60	40	20	20	20	40	60

282²³

6400

5465

TPs

11²⁵

(307.54)

152

(295.79)

5429¹³ & Alley

5421 27° Nt & 12" Power Poles #p 3849

5404 27° Nt & dead man

5400

4450

TP4

9²⁰

(297.31)

0¹⁹

(287.41)

4400

3479⁴² Ely 38th St

Lt-North

Rt-South

15

3013	2849	3000	2987	2977	2974
6 ²⁰	6 ⁶	7 ⁵	8 ⁸	9 ⁸	10 ⁶
300.2	2992	2992	298.9	295.7	294.4
7 ³	8 ³	9 ²	10 ⁶	11 ⁸	13 ^L
60	40	20	20	40	60

296.6	295.7	293.5	289.2	291.2
0 ⁷	1 ⁶	2 ¹⁰	3 ⁸	8 ^L
40	20	20	20	40

on Stubs

296.5	294.7	294.0	288.1	283.3	287.5
0 ⁸	2 ⁶	3 ³	4 ²	9 ²	14 ⁰
60	40	20	20	20	40

291.8	290.7	289.7	284.2	279.6	278.8	280.4	285.7
5 ⁵	6 ⁶	7 ⁶	13 ^L	17 ²	18 ⁵	16 ⁹	11 ⁶
60	40	20	20	20	32	40	60

287.2	288.6	288.5	281.5	276.4	274.6	275.8	272.7
1 ⁶	1 ¹²	1 ^L	6 ^L	11 ²	13 ⁰	11 ⁸	7 ²
60	40	20	20	20	30	40	60

288.4	284.4	278.9	274.0	272.7
10 ⁸	3 ²	8 ²	13 ⁶	14 ²
40	20	20	20	40

(287.60)

Lt = North

RT = South

16

7+58³⁰ Fly 39th St

302.6	302.9	302.6	303.0	302.4
32	46	42	45	51
40	20	20	20	40

7+18³⁰ E int 39th St

302.7	302.3	301.9	301.7	301.5
48	52	56	58	61
40	20	16	20	40

6+78³⁰ Wly 39th St

302.7	301.8	301.2	301.6	301.2
42	57	63	69	63
40	20	13	20	40

6+76 25° RT E 12" Power Pole # P 3899

302.1	302.0	301.0	300.6	300.0	299.3	299.3
54	55	65	62	75	82	82
60	40	20	20	20	40	60

6+40

307.54

"X" Sec 3.9th St (Grade Ord)
Redwood to Thorn

2+07 40° Lt E 4° cor walk

T.P.

6²⁶ ↙ (311.82) ↘

198

↙ (305.56) ↘

2+00

1+50

1+36 32° Lt E 3° cor walk

1+00

0+50

0+00 Nly Redwood

↙ (307.54) ↘

Lt=West

305.77

6¹⁰
100
w/k

Rt=East

17

305.74
21
60

305.56
19
40

305.5
20
20

305.5
20
20

305.8
17
20

305.8
17
40

305.9
16
60

305.8
21
60

305.0
20
40

305.3
20
20

305.2
20
20

305.6
19
20

305.6
19
40

305.8
19
60

305.07
20
40
w/k

305.22
20
40
walk

303.9
36
60

304.6
29
40

304.8
27
20

304.6
29
20

305.4
21
20

305.5
20
40

305.6
19
60

303.2
43
60

303.5
40
40

303.7
38
20

303.5
40
40

304.8
21
20

304.3
32
40

304.3
32
60

302.7
48
40

302.6
49
20

302.6
49
40

303.1
44
20

303.6
39
40

↙ (307.54) ↘

5700
 4750
 4700
 3750
 3700
 2768 40° at E 3° cov walk
 2764 55° LT E single garage cov floor
 2754 39° LT E 4° cov walk
 2750

307.8 LT = West
 42
 60
 307.1
 42
 40
 306.9
 42
 20
 306.2
 5.9
 306.3
 5.1
 20
 306.4
 5.2
 40
 306.3
 5.5
 40
 306.3
 5.5
 40
 306.3
 5.5
 60
 306.3
 5.5
 60

306.7
 5.1
 60
 306.3
 5.5
 40
 306.2
 5.6
 20
 306.0
 5.7
 40
 305.9
 5.2
 20
 305.8
 6.0
 40
 306.0
 5.1
 60

306.2
 5.6
 60
 306.1
 5.7
 40
 306.2
 5.6
 20
 305.8
 6.0
 40
 305.9
 5.2
 20
 305.7
 6.1
 40
 305.9
 5.2
 40
 305.9
 5.2
 60

306.46
 5.36
 55.3
 floor

398
 41K
 306.3
 5.5
 60
 306.1
 5.7
 40
 305.9
 5.2
 20
 305.7
 6.1
 40
 305.8
 6.0
 20
 305.9
 5.2
 40
 305.9
 5.2
 60

311

At = West

2

At = East

19

3 TP₈

.13¹³ $\left\langle \begin{array}{l} 298 \\ 36 \end{array} \right\rangle$

TP₇ BM

5⁷⁵

$\left\langle \begin{array}{l} 311 \\ 49 \end{array} \right\rangle$

6⁰⁸

$\left\langle \begin{array}{l} 305 \\ 74 \end{array} \right\rangle$

+002
SW 7' 00" NW
Thorn
3974
p. 6

5499 sly Thorn St

306.5

5³
40

306.3

5⁵
20

305.8

6⁰
20

304.8

7⁰
20

304.5

7¹³
40

2

5454 19° N E 1" Tree

307.1

4²
60

306.7

5¹
40

306.8

6⁰
20

305.9

5⁹
20

306.5

5¹⁰
20

306.1

5⁷
40

305.9

5²
60

2

5450

5429 19° N E 3" Tree

2

5420 18° N E 3" Tree

2

5408 18° N E 4" Tree

$\left\langle \begin{array}{l} 311.8 \\ 2 \end{array} \right\rangle$

$\left\langle \begin{array}{l} 311 \\ 82 \end{array} \right\rangle$

"X" Sec Alley BK 122

2750 96° Lt & House

2742 8° Lt & 10" Power Pole # A 3133

2700

1775 104° Lt & House

1757 75° Lt & deadman

1750

1738 8° Lt & 10" Power Pole # PA 3121

1700

0770

0740 Nly Redwood

0700 East Alley & Redwood

BM T₁ p6

57

307 70

301 99

Nail in pole
SW corner
Redwood - 3944

page 6

307 20

	Lt. West			Lt. East		
303.29	303.9	304.1	303.9	304.1	304.3	
4 1/2	3 8	3 6	3 8	3 6	3 7	
96° Floor	20	10	30	10	20	
	299.85	302.4	302.8	302.3	303.5	
	7 8 1/2	4 5 3	4 9	4 7	4 12	
	10 4 Floor	10	10	10	20	
		301.5	301.8	302.3		
		6 2	5 9	5 7		
		10	10	10		
	299.0	299.5	299.9	300.7	300.9	
	8 7	8 2	7 10	7 0	6 8	
	20	10	10	10	20	
	297.2	297.5	298.5	299.7	300.0	
	10 5	10 2	9 2	8 0	7 7	
	20	10	10	10	20	
	295.3	295.8	296.8	298.4	298.9	
	12 4	11 9	10 9	9 3	8 0	
	20	10	10	10	20	
			295.2			
			12 5			

TRMPL

669

30572

SW 9th Mon
Thorn # 3914

613822 Sly Thorn

6100

5469 8th Lt E Deadman

5150 6th Lt E 12" Power Pole # 3267

5100

4470 15th Lt E House

4150

4443 10th Lt E 6" Acacia Tree

4100

TRP,

657

<312 #>

186

<305 #>

3190 9th Lt E 8" Tel Pole # 516135 H

3150

3100

<309.70>

Lt-West

307.0

307.2
307.1

307.3
307.3

307.0
307.0

306.2
306.5

305.7
305.9

305.3
305.4

304.1
304.1

<312 #>

305.3
305.3

304.1
304.1

<307.20>

306.9

307.3
307.3

307.1
307.1

307.6
307.6

306.8
306.8

306.3
306.3

305.5
305.5

304.3
304.3

307.1

307.4
307.4

307.6
307.6

307.8
307.8

306.9
306.9

306.4
306.4

305.6
305.6

304.5
304.5

RT-East

307.1

307.0

307.1

306.8

306.4

305.6

304.5

21

"X" Sec Alley B/K-121
next page wind blow

Lt = West

2

Rt = East

22

TP₂

2750

7²⁶ $\langle 30423 \rangle$

04

 $\langle 29647 \rangle$

2700

2750

TP

12⁸⁹ $\langle 29688 \rangle$

04

 $\langle 28327 \rangle$

2700

0780

0740 Nly Redwood

0700 E Redwood

BM

7⁸⁷ $\langle 28446 \rangle$ $\langle 27657 \rangle$ NE 700 N 140 W
SPK Kane
R13 Redwood $\langle 28446 \rangle$

Lt=West

Rt=East

23

2911

 $\frac{5.88}{100}$

2927

 $\frac{7.2}{100}$

2944

 $\frac{2.6}{20}$

2920

 $\frac{4.9}{20}$

2946

 $\frac{2.3}{20}$

2921

 $\frac{4.8}{10}$

2950

 $\frac{1.9}{20}$

2927

 $\frac{5.9}{20}$

2953

 $\frac{1.6}{20}$

2922

 $\frac{4.7}{20}$

2957

 $\frac{1.2}{20}$

2924

 $\frac{4.5}{20}$

2876

 $\frac{9.3}{20}$

2874

 $\frac{9.5}{10}$

2873

 $\frac{9.6}{20}$

2875

 $\frac{9.4}{20}$

2880

 $\frac{8.9}{20}$

2831

 $\frac{7.1}{20}$ $\langle 29688 \rangle$

2833

 $\frac{1.2}{20}$

2836

 $\frac{0.9}{20}$

2837

 $\frac{0.6}{20}$

2840

 $\frac{0.5}{20}$

2816

 $\frac{2.9}{20}$

2819

 $\frac{2.6}{20}$

2818

 $\frac{2.7}{20}$

2823

 $\frac{2.2}{20}$

2815

 $\frac{3.0}{20}$

2758

 $\frac{8.7}{20}$

2716

 $\frac{9.9}{20}$

2724

 $\frac{12.1}{20}$

2674

154

VTP₈ P19

5-87

298.36

100

lt-West

rt-East

6+39⁸⁷ Sly Thorid

6+00

5+50

5+00

4+50

4+00

3+50

3+00

294.5
100

295.1
100

295.5
100

295.6
100

295.8
100

296.4
100

297.2
100

297.6
100

298.1
100

298.6
100

298.7
100

298.9
100

299.6
100

299.9
100

300.3
100

300.6
100

299.0
100

299.6
100

299.9
100

300.3
100

300.6
100

301.0
100

299.6
100

299.9
100

300.3
100

300.6
100

301.0
100

301.3
100

299.9
100

300.3
100

300.6
100

301.0
100

301.3
100

301.6
100

299.9
100

300.3
100

300.6
100

301.0
100

301.3
100

301.6
100

299.9
100

300.3
100

300.6
100

301.0
100

301.3
100

301.6
100

299.9
100

300.3
100

300.6
100

301.0
100

301.3
100

301.6
100

304.23

304.23

"X" Sec Quince St
Wabash to 1/2 Ely of 40th

Lt=North

Rt=South

25

1+00

2571.1	2571.5	2572.2	2561.0	2555.3	2544.2	2535.5
7 1/2	8°	9°	10 1/2	11 1/2	12 3/4	13°
60	40	20	10 1/2	20	40	60

0+70

2566.9	2562.2	2546	2541.2	2531.2	2530.0	2525.5	2523.3
9 1/2	10°	11°	12°	13°	13 1/2	14°	14 1/2
60	40	32	20	13 3/4	20	40	60

TP6

13° 05' <266 54> 0 24' <253 46>

π <266 54>

0+35

247.5	246.5	247.8	249.2	248.6	249.0	247.1	247.8
6 1/2	7°	5 1/2	4 1/2	4 1/2	4 1/2	4 1/2	5 1/2
60	40	20	8	4 1/2	20	40	60

TP5

11° 28' <253 20> 0 10' <242 62>

π <253 20>

0+10

232.4	233.0	234.0	234.1	233.3	233.2	233.7
9 1/2	9 1/2	8 1/2	8 1/2	9 1/2	9 1/2	9°
60	40	20	8 1/2	20	40	60

0+00 in approx E old railroad cut

232.4	232.7	234.0	234.1	233.2	233.2	233.7
9 1/2	9 1/2	8 1/2	8 1/2	9 1/2	9 1/2	9°
60	40	20	ON Hub	20	40	60

0-10 Top of Wabash cut bank

TP4 0 65' <242 72> 12 29' <242 07>

π <242 72>

TP3 0 12' <254 96> 12 23' <254 84>

TP2 BM 1 20' <267 07> 11 04' <265 87> NW 7' MoN Quince 38 24 51

TP1 0 22' <276 24> 9 36' <276 69>

BM 10 50' <286 55> <276 05> Hub & Int 38 24 51 P17 reduced.

3447 25° RT & 4" Cree

3438²⁴ Fly 38th St

2498²⁴ Int 38th St

2458²⁴ Wly 38th St

2453 26.5° RT & 10" Power Pole #3799

TP 813 <27366>

101

<26553> ON 2 Stab 384 + QUINCY

2430 26° RT & dead men (R)

2400 36° RT & 4" Oleander

1469 36° RT & 6" Oleander Bush

1450

1443 31° RT & 6" Pepper tree

1408²⁶ & Alley Int

<26654>

266.7 266.0 264.9 263.3 261.3
7° 72 8 10 12
40 20 20 40

267.1 266.3 265.7 265.0 264.2
6 7 8 8 9
40 20 20 40

2676 266.5 265.6 265.0 264.5 264.0
6 7 8 8 9 9
40 25 18 20 40

266.7 266.0 265.2 264.3 263.6 263.0 261.7 261.6
40 05 13 20 22 35 46 49
60 40 23 17 20 40 60

265.5 264.3 263.3 262.0 261.1 260.8 259.8
10 22 32 45 54 52 67
60 40 20 20 40 60

262.9 261.3 260.1 259.1 258.1 257.0 256.1
36 52 62 74 84 95 102
60 40 20 20 40 60

259.0 257.6 257.0 254.6
75 82 92 102 112
40 20 20 40

<26654>

5720

5712 8° RT & dead man

5706 17° RT & 12" Pepper Tree

5704 9° RT & 8" Jc/Pl # 4430 73H

4494 8° RT & 6" Pepper tree

TP 8 11²³ <280²¹> 5²⁸ <268³⁸>

8° RT & 14" Pepper tree

4789 approx & Alley

4780 11° RT & 12" Pwd/Pl # P 3849

4765

4760 12° RT & 18" Pepper tree

4740

4700

3770 36° RT & 4" Peach tree

3753 36° RT & 6" Tree

<273.66>

80²¹¹⁷
60 15

84²⁷¹⁸
40 10

98²⁷⁰⁴
20 10

11³
20 10

12²⁶⁷²
20 10

11²⁶⁸³
40 10

13²⁶⁷²
60 10

55²⁶⁸²
60 10

10²⁶³⁶
40 10

9³
20 10

8⁴
20 10

9⁴
20 10

10⁶
40 10

11⁷
60 10

5¹⁰
60 10

7²
40 10

13²
20 10

13¹
20 10

11³
20 10

13¹
40 10

14⁸
60 10

6¹
60 10

7⁸
40 10

9³
20 10

13⁵
13 10

15³
15 10

14²
20 10

15²
40 10

15²
60 10

7⁵
60 10

9¹
40 10

10⁵
20 10

12¹
12 10

14⁸
20 10

15²
32 10

20⁶
40 10

7⁹
60 10

8²
40 10

10²
20 10

11⁹
11 10

11²
21 10

18⁴
40 10

<280²¹>

<273.66>

7+18⁶⁹ Ely 394

7+12

6+82

6+78⁶⁹ E 394

6+41 22° RT & 8" Power Pole # 3899

6+38⁶⁹ Wly 394 St

7+3

1231

<291 29>

053

<279 63>

6+00

5+65

<280.21>

Lt = North

282.7
43
40

282.7
50
28

282.7
8
20

282.7
16
20

282.7
20
20

RT = South
282.2
98
40

28

283.2
88
40

282.5
95
20

282.3
92
20

280.7
113
20

280.1
112
40

282.7
91
40

282.3
92
20

281.8
103
20

280.9
111
20

280.3
112
40

282.3
91
40

281.5
105
20

280.8
112
20

280.2
118
20

279.0
130
40

282.1
92
40

281.4
106
20

281.5
105
20

281.6
104
20

280.7
113
40

278.2
20
60

277.2
10
40

276.5
12
20

276.2
20
20

276.0
20
20

277.6
26
40

276.5
37
60

276.6
36
60

276.7
35
40

275.4
48
20

274.4
58
20

273.8
64
20

273.1
71
40

272.2
80
60

<280.21>

Lt = North

Rt = South

29

7 TP₁₁

374

 $\langle 297^{38} \rangle$ 3⁸⁷ $\langle 293^{64} \rangle$ 10758.56
Hub & Int 7074
Quince

7 9750

294.7

20⁸

60

294.5

30

70

294.1

34

20

293.5

32

20

292.6

42

20

292.1

54

40

291.2

63

60

6 9700

293.2

37

60

293.2

43

40

293.0

45

20

292.6

42

20

291.4

64

20

290.9

66

40

290.1

74

60

6 8768⁵⁹ & Alley

292.7

48

40

292.3

52

20

291.4

60

on Hub

290.9

66

20

290.4

74

40

6 8757 21⁵ Rt & 8⁰ Power Pole # 3949

292.4

51

60

292.2

53

40

291.7

58

20

291.4

61

60

290.7

68

20

290.4

74

40

289.4

72

60

6 8735

290.6

62

60

290.5

70

40

290.1

74

20

289.6

72

20

289.1

84

20

288.7

86

40

288.7

88

60

7 8700

5 TP₁₀

1025

 $\langle 297^{51} \rangle$

543

 $\langle 286^{56} \rangle$

289.9

81

60

288.9

31

70

287.6

44

20

286.8

52

20

285.7

63

20

285.1

62

40

284.8

72

60

5 7760

 $\langle 291.99 \rangle$ $\langle 291.99 \rangle$

Lt = North

♀

Rt = South

30

11742 32° Rt & 18° Pepper Tree

TP₁₂ 0²⁰ {284³⁴} 13²⁴ {284¹⁴}

11725 60° Lt & House

11725 39° Rt NE cor House

315 Rt & 12° Pepper tree

10498⁵⁶ Ely 40th St

10498 39° Rt NW cor House

10480

10458⁵⁶ ♀ 40th St

10434 20° Rt & Deadman

10421 21° Rt & 8" Power Pole #3999

10418⁵⁶ Wly 40th St

9790

{297.38} ✓

282.34	282.9	284.1	285.6	286.8	287.4	287.2
15 ⁰⁴	14 ⁵	13 ³	11 ⁰	10 ⁶	10 ⁰	10 ²
60	40	20		20	40	60
Floor						
	285.5	287.2	288.1	289.3	290.1	291.4
	11 ⁹	10 ²	9 ³	8 ⁴	7 ³	6 ²
	60	40	20		20	40
	287.1	287.7	288.5	289.6	290.7	292.2
	8 ³	7 ⁷	6 ²	5 ⁰	4 ²	4 ²
	60	40	20		20	40
	292.1	291.8	292.7	292.0	293.6	294.2
	7 ³	5 ⁶	4 ⁷	5 ⁴	3 ⁸	3 ²
	60	40	20		20	40
	294.4	295.1	295.4	295.4	295.2	294.5
	3 ⁰	2 ³	2 ⁰	2 ⁰	2 ²	2 ²
	60	40	20		20	40
	295.6	295.4	295.2	294.7	294.2	293.7
	1 ⁸	2 ⁰	0 ²	0 ²	3 ⁰	3 ⁵
	60	40	20		20	40

{297.38} ✓

LT = North

RT = South

31

BM

252.49
NE 9' Hub
Quince 3914 31
FB 2198 P 8
10⁸⁴ (282.42)

TP14

1²⁹ (293.26) 4⁰⁶ (291.97)

TP13

11²⁰ (296.03) 0⁰¹ (284.33)

12735 23° RT 210" Pole 434301 H

254.2	258.6	264.1	265.8	268.9	270.6	273.5
30 ^L	25 ^Z	20 ^Z	18 ^S	15 ^L	13 ^Z	10 ^S
60	40	20		20	30	40

12700

265.2	268.5	272.2	274.7	275.8	276.8	277.3
19 ^L	15 ^S	12 ^L	9 ^S	8 ^S	7 ^S	7 ^S
60	40	20		20	40	60

11796 32° RT E 12" Pepper tree

271.5	273.7	276.2	278.7	279.0	279.8	281.0
12 ^S	10 ^S	8 ^L	5 ^S	5 ^S	4 ^S	3 ^S
60	40	20		20	40	60

11775

11770 32° RT E 12" Pepper Tree

(284.34)

(284.34)

"X" 38th St
 Canyon or Mile inter change to Nly Red

Lt-West

Rt-East

1750 35th Lt E dead man

244.5	249.1	248.3	246.7	246.0	246.1	245.3	244.5	245.2	243.0	242.5	242.8
32	43	51	67	72	73	81	80	82	102	106	106
60	40	35	28	20	7	20	20	25	30	40	60

TP₃ 12⁵⁵ <253 37> 0³² <240 82>

242.7	241.9	241.1	240.1	239.8	239.4	239.3	240.4	241.1	241.4
71 ⁶	70 ⁸	0 ⁰	1 ⁰	13	12	18	02	0 ⁰	10 ³
60	40	32	29	20	15	20	40	60	

1700

0+82 37th Lt E 10" Power Pole #P2946

241.2	240.3	239.0	237.5	236.6	234.8	235.0	235.0	232.1	232.1
70 ¹	0 ⁸	3 ¹	3 ⁶	4 ⁵	6 ³	2 ¹	2 ⁰	2 ⁰	2 ⁰
60	40	31	20	20	20	40	60		

0+60

238.8	236.6	235.6	235.0	232.1	232.1
23	45	55	6	8 ⁰	9 ⁰
60	40	20	20	40	60

0+30

235.8	234.1	232.7	231.6	230.9	231.6	231.2
5 ³	7 ⁰	8 ¹	9 ⁵	10 ²	9 ⁵	9 ²
60	40	20	20	20	40	60

0+00

230.7	229.1	228.2	226.3	222.5	223.9	222.9
10 ⁴	12 ⁰	12 ⁹	14 ⁸	18 ⁶	17 ²	18 ²
60	40	20	20	20	40	60

TP₂ 0¹² <241 14> 13²⁶ <241 02> Nail w/ pole # 0182 P2946

TP₁ 0⁰⁴ <254 28> 13²⁸ <254 24>

BM TP₂ 16⁵ <267 52> <265 87> NW 71 Mon 38th + Quince 25

<241 14>

TPV

11²⁶ (275.61)

15 (263.85)

3400 4⁵ RT & House

2773 102² RT & House

2450

2725 41² RT & House

2700

TPV

12³⁷ (265.00)

0⁷⁴ (252.63)

1775 35⁸ Lt & R Power Pole PR966

(253.77)

Lt = West

Rt = East

33

	262.7	263.1	263.5	263.3	262.6	261.8	261.5	261.70	253.07
	23	12	15	17	24	32	35	320	1123
	60	40	20		20	25	40	420	62
								Floor	Basement Floor
540 102 Floor	260.8	261.0	261.2	260.9	261.0	259.0	258.4	253.8	250.8
	42	40	38	44	40	60	66	86	142
	60	40	20	7	3	20	25	40	60
	258.4	259.7	258.5	258.9	256.8	256.3	255.0	253.5	252.9
	66	53	55	64	82	82	100	115	121
	60	40	30	7	8	3	20	30	40
									Floor
	256.4	257.4	255.9	255.5	259.1	252.3	251.9	247.3	247.6
	86	76	91	95	109	122	131	172	174
	60	40	28	7	10	3	22	40	60
	257.5	253.2	252.8	251.1	252.5	248.0	247.4	243.8	243.8
	02	02	06	23	22	54	60	96	96
	60	40	35	28	7	3	25	35	40
									60
									244.1

(253.37)

Lt = West

Rt = East

5775

TP6

10.78

$\langle 285.94 \rangle$

04.5

$\langle 275.16 \rangle$

276.2	276.8	277.0	276.9	277.9	278.3	278.3	278.5	34
92	94	89	90	80	75	76	74	
60	40	20	10	10	30	40	60	

5425

274.3	274.7	274.9	274.6	274.4	275.5	275.3	274.4
13	02	07	10	12	01	03	12
60	30	20	10	10	20	40	60

4475

271.5	271.7	271.7	271.3	271.6	272.1	272.0
44	32	32	43	40	35	35
60	40	20	10	20	40	60

4425

267.9	269.3	267.0	268.5	268.7	268.8	269.0	268.5	267.9
72	63	66	71	62	68	66	71	72
60	40	20	10	4	10	20	40	60

4410 36° Lt & deadman

4405 36° Lt & Anchor Pole 12" No. #

3496²⁰ Nly Quince

267.5	267.2	267.1	266.9	266.4
81	84	85	87	92
40	20	10	20	40

3456²⁰ S Quince

264.8	265.2	265.5	265.2	265.2
158	102	104	102	102
40	20	10	20	40

3416²⁰ Sly Quince

264.0	264.0	264.1	263.6	261.3
116	116	115	120	141
40	20	10	20	40

$\langle 275.61 \rangle$

$\langle 275.61 \rangle$

8+25

TP7

7+75

7+55 64° Lt & House

7+25

7+05 66° Lt & House

6+75

6+25

285.94

lt=West

rt=East

35

276.4	278.6	280.2	282.1	282.0	282.0	287.4	287.7	290.1
12 ⁴	10 ³	8 ⁶	6 ²	6 ⁸	6 ⁸	1 ⁴	1 ²	+1 ³
60	40	20	6	6	18	30	40	60

276.0	278.3	279.0	281.5	281.7	282.1	285.3	286.6	288.1
9 ²	7 ⁶	6 ²	4 ⁴	4 ²	3 ⁸	0 ⁶	10 ⁷	+2 ²
60	40	20	6	6	20	28	40	60

276.74
9²⁰

64°
Floor

275.7	277.1	278.7	280.4	280.4	281.0	284.1	285.5	286.2
10 ²	8 ⁸	7 ²	5 ⁵	5 ⁵	4 ²	1 ⁸	0 ⁴	+0 ³
60	40	20	6	6	21	28	40	60

275.1
10²⁴

66°
Floor

274.6	276.9	277.3	279.1	279.5	280.4	282.1	283.0	283.5
11 ³	9 ⁰	8 ⁶	6 ⁸	6 ⁴	5 ⁵	3 ⁸	2 ²	2 ⁴
60	40	20	8	6	22	30	40	60

276.6	277.4	277.7	278.4	279.5	280.7	281.3
9 ³	8 ⁵	8 ²	7 ⁵	6 ⁴	5 ²	4 ⁶
60	40	20	20	40	40	60

285.24

2 Hubs INT
P25
38+41 Medwood

BM. TP₃ p14

554 276⁰⁷ 276²⁵ 2 INT
384 Redwood
Hub

9196³⁵ S/4 Redwood

9175

9150

TP₈

595 <281.61> 1315 <275.66>

9125

9100

8175

8158 28⁵ L+E 8" Power Pole No Number

8150

<288.81>

Lt=West

Rt=East

36

2687.2	273.1	274.7	273.5	273.9	273.5	276.2	270.6	271.7
13 ⁴	8 ⁵	6 ²	8 ¹	8 ²	8 ¹	5 ⁴	11 ²	9 ²
40	20	9	5	8	10	19	35	40
2630	263.8	271.8	273.4	272.8	273.2	273.9	273.9	279.2
18 ⁵	17 ⁸	9 ⁸	8 ²	8 ¹⁰	8 ⁴	7 ²	7 ²	6 ³
60	40	22	15	8	12	18	28	40
2634	266.2	274.4	273.0	273.1	273.8	275.0	277.3	282.2
18 ²	15 ⁴	7 ²	8 ⁶	8 ⁵	7 ⁸	2 ⁶	2 ³	10 ⁶
40	30	15	5	8	18	38	40	60
266.3	268.0	275.0	275.1	274.8	274.8	276.7	283.0	285.6
22 ⁵	20 ⁸	13 ⁹	13 ²	14 ²	14 ²	12 ¹	5 ⁸	3 ²
40	33	20	8	15	15	23	40	60
272.0	274.8	276.9	277.8	277.5	277.6	284.5	285.6	288.6
16 ⁸	14 ²	11 ²	11 ²	11 ³	11 ²	4 ³	3 ²	0 ²
60	40	21	8	15	15	32	40	60
272.7	276.2	279.1	280.2	280.2	279.6	284.9	286.5	289.1
16 ¹	12 ⁵	9 ²	8 ⁵	8 ⁶	9 ²	3 ²	2 ³	10 ³
60	40	20	10	8	16	28	40	60
274.2	276.3	280.1	282.1	282.0	281.7	284.7	286.1	289.1
14 ⁶	12 ⁵	8 ²	6 ²	6 ²	7 ¹	3 ²	2 ²	10 ¹⁰
60	40	20	8	6	15	25	40	60

<288.81>

"X" Sec Alley BIK 138

Lt = West

Rt = East

37

2150

296.6	296.6	297.1	297.3	297.3
6 ⁵	6 ⁵	6 ¹⁰	5 ¹⁰	5 ¹⁰
20	10	10	20	20

2400

295.5	296.1	296.1	296.2	296.5
7 ⁶	7 ⁰	7 ⁰	6 ⁹	6 ⁶
20	10	10	20	20

1750

294.8	294.4	295.1	295.4	295.9
8 ³	8 ²	8 ⁰	7 ⁷	7 ²
20	10	10	20	20

1400

293.6	293.9	294.0	294.2	294.5
9 ⁵	9 ²	9 ¹	8 ²	8 ⁶
20	10	10	20	20

070

293.0	292.4	293.4	294.1	294.8
10 ¹	9 ²	9 ²	9 ⁰	8 ³
20	10	10	20	20

040 N/4 Quince

292.2	292.5	292.6	292.8	292.8
10 ⁹	10 ⁶	10 ⁵	10 ³	10 ³
20	10	10	20	20

0700

291.3	291.6	292.0
11 ³	11 ⁵	11 ¹
10	10	10

BM

1166 (203¹¹)

(291⁴⁵)

Hub. 876859
Quince, W
Alley

Page 29

(303¹¹)

TP, BM pl

5³¹

301²⁸

Nad in Pole
39² Redwood
Sucor,
301.90

6700

5761 88³ Lt & House

5750

TP,

756

{307²⁹}

338

{299⁷³}

5740 50¹ Lt & 8¹ Power Pole 490V

5700

4770 11² Lt & House

4750

4700

3750

3700

{303.11}

Lt = West

Rt = East

38

204.5

228
88³
Floor

301.37

174

112
Floor

50

20

302.2

5¹
20

300.0

3¹
20

277.9

3²
20

299.5

3⁵
20

278.6

4⁵
20

277.8

5¹⁰
20

5¹

10

302.2

6¹
10

299.7

3²
10

300.0

3¹
10

277.6

3⁵
10

278.8

4³
10

292.8

5³
10

5⁴

7

301.2

6¹
10

299.7

3²
10

277.6

3⁵
10

277.4

3⁷
10

277.0

4¹
10

298.1

5⁰
10

9

12

298.1

6⁵
10

299.5

3⁶
10

277.6

3⁵
10

277.4

3⁷
10

278.6

4⁵
10

298.4

4⁷
10

12

10

298.3

9⁰
10

299.0

4¹
10

277.1

4⁰
10

277.0

4²
10

278.6

4⁵
10

298.4

4⁷
10

13⁶

20

292.7

9⁰
20

299.0

4¹
20

277.1

4⁰
20

277.0

4²
20

278.6

4⁵
20

298.4

5⁰
20

13⁶

20

294.7

12⁶
20

298.5

4⁸
20

277.5

4⁶
20

278.4

4²
20

278.5

4⁶
20

298.1

5⁰
20

20⁵

20

286.8

20⁵
20

298.5

4⁸
20

277.5

4⁶
20

278.4

4²
20

278.5

4⁶
20

298.1

5⁰
20

{303.11}

"X" Sec Alley BIK 140

1775

Lt=West
 258.4
 10⁸
 40
 262.2
 20
 264.3
 5²
 10
 265.2
 5⁰
 8
 265.8
 1¹
 Lt=East
 266.7
 10
 267.9
 12
 268.3
 20

1766^E 8^E LtE 10" Power 10/12 A3021

257.6
 10⁶
 40
 263.2
 7⁰
 15
 264.2
 6¹⁰
 10
 264.9
 5³
 10
 266.0
 4²
 10
 267.2
 3⁰
 12
 267.8
 20

1750

1745^E LtE deadman

258.6
 11⁶
 40
 261.5
 8²
 20
 262.5
 7²
 10
 263.1
 6⁴
 10
 265.0
 5²
 10
 265.3
 4²
 20

1725

1700

261.0
 9²
 20
 262.0
 8²
 10
 262.3
 7²
 10
 263.0
 7²
 10
 263.9
 6³
 11
 264.6
 5⁶
 20

0770 9³ LtE House

260.0
 10²
 93
 9d
 260.22
 9³
 93
 floor
 260.8
 9⁴
 10
 261.6
 8⁶
 10
 262.6
 7⁶
 20

0740 Nly Quince

258.8
 11²
 10
 259.1
 11¹
 10
 259.7
 10⁵
 10
 260.5
 9²
 20

0700 E Quince

256.0
 14²
 10
 256.9
 13³
 10
 257.5
 12²
 10
 258.0
 12²
 20

256.45
 (N9) repositioned
 knocked out NW
 256.54
 14.6
 Quince Alley

Page 26

BM

13³³

270¹²

270¹²

3450

3425

TP, 059 $\langle 258.15 \rangle$ 1261 $\langle 257.54 \rangle$
3420 9544 E 10" tall Pole #D 29201

3400

2775

2750 8E. L+E House

2725

2700

$\langle 270.17 \rangle$

Lt = West Rt = East 40

0342 132 20
2455 127 15
246.5 117 10
248.7 9 10

250.4 20
252.3 5 10
254.5 9 10
256.8 14 10
258.0 20 20

246.6 23^e 10
252.8 18^e 30
257.3 15^e 10
262.8 13^e 8
268.5 11 7
274.7 10³ 8
280.5 9^e 10
286.5 7³ 20

250.0 20³ 40
252.5 17 2 30
254.8 15^e 24
257.6 11 6 10
259.8 10^e 9
261.7 8 5
264.1 6 10
267.9 2 12
269.0 1 20

260.99 9 10
261.2 9 10
262.1 7 10
265.2 5 10
267.5 0 12
269.7 0 20

257.1 13 40
259.2 11 35
261.7 8 15
262.7 7 10
263.6 6 8
264.7 5 10
266.9 3 10
269.2 1 12
269.3 0 20

258.2 12 40
259.9 10 35
261.9 8 20
263.5 6 10
264.4 5 8
265.8 4 10
266.8 3 10
268.6 1 12
268.7 1 20

$\langle 270.17 \rangle$

5100

4770 ⁴⁷ L.P. Hub

4755

4730

4714 8² Lt 510¹⁰ Power P6/6 H. 3061

TP₂

0⁵ < 245³⁷ > 12²³ < 245²² >

4700

3770

< 258.15 >

Lt - West

Rt - East 41

224.7
16²
20

230.0
15⁴
10

234.1
11³

238.3
7¹
10

242.2
3²
20

246.7
18²
20

248.8
16⁶
10

233.9
11⁴⁷
Hub

239.0
6⁴
10

242.5
2²
20

244.9
20⁵
20

227.1
18³
10

232.1
13³
10

239.8
5⁶
10

244.2
1²
20

228.1
17³
20

232.1
13³
10

237.9
7⁵
10

244.9
0⁵
10

249.5
+4¹
20

236.3
21²
20

244.8
17²
10

245.3
12²

247.0
9²
10

252.8
5⁴
20

231.6
26⁶
20

236.7
21³
10

240.2
19⁰
10

244.0
14²
10

248.2
10⁰
20

< 258.15 >

BM p13
 2nd int. Allys Redwood

547 269 ⁴⁵

Hub 2 int
 Redwood, Allys
 144966
 26920

LT = West

RT = East

42

TP₃

7⁵⁷

274⁹²

1³¹

267³³

6441²² Sly Redwood

6400

2580	2585	2576	2671	2676	2684
10 ⁷	14 ²	11 ¹	13	5 ⁰	3 ⁹
40	20	10	10	10	20
22	20	20	16	10	20
22	20	20	16	10	20
22	20	20	16	10	20

TP₄

12³⁶

268⁶⁶

0²³

256³¹

5475

2527	248.3	2580	2686	2534	256.3
2 ⁴	8 ⁰	6 ³	0 ⁶	2 ²	0 ¹⁰
40	20	10	10	10	15

TP₃

11⁹¹

256³⁴

1⁰⁰

244³⁷

5450

245.7	243.9	2410	245.3	2481
10 ¹³	15 ⁵	4 ⁴	0 ¹	4 ²⁹
20	10	10	10	20

5425

2370	235.9	233.4	237.4	239.6
8 ⁴	9 ⁶	12 ⁰	8 ⁰	5 ⁸
20	10	10	10	20

5412

231.7	230.8	231.9	2341	235.7
13 ⁵	14 ⁶	13 ⁵	11 ³	9 ⁷
20	10	10	10	20

245³⁷

245³⁷

"X" Sec L. Alley B/K 140 to
4470⁴² = 000 wly

Wabash Connection Stub 183+00

43

Lt. South

At = North

1765

212.3
12⁹
10
214.2
102
214.1
10
214.4
10
215.6
10

1750

215.0
10²
10
214.1
11
214.4
10⁸
7
215.6
10

1720

220.7
4⁵
10
216.9
8³
217.2
8⁰
10

0780

223.5
12
10
220.8
4⁴
220.2
5⁰
10

TP

169 $\langle 225^{20} \rangle$ 10⁴⁶ $\langle 223^{51} \rangle$

$\langle 225^{20} \rangle$

0740

226.9
7^L
10
223.7
10³
223.2
10⁸
228.6
5⁴
20

0715

227.4
4⁶
10
226.8
7²
226.5
7⁵
10

0700 L. Alley B/K 140 st. 4470⁴² = 00 wly Page A1

223.9

BM p 41

007

$\langle 233^{92} \rangle$

$\langle 233^{20} \rangle$

H₄₆
4470⁴²
p 41

$\langle 233^{92} \rangle$

0M

18934 991

179 92 179 92 181450 v on 544
182027
17933

Ltc South

1516
1457 Pt. North

44

TP3

078 18990 1303

18912

93
0v Hus 9d

3768¹⁶ Hub 183700 Wabash Stab

TP4

141 202⁰⁹ 11²³

200⁶⁸ 200⁷⁴

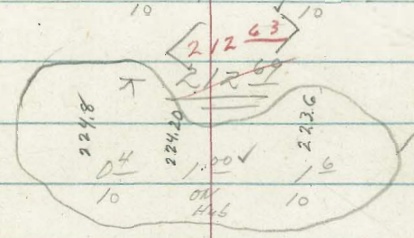
202⁰⁷
208¹⁵
210.7
225
209
2
205.5
7

3732

TP3

043 212⁶³ 13⁰⁰

212²⁰ 212²⁶



2795⁶⁷ POT Hub

TP2

106 225²⁶ 100

224²⁰

210.7
145
16
10
208.4
16.2
10
202.5
17.7
10

2755

2740

2720

1785

225.20

225.20

"X" Sec Sly 38th St to and under
 outfall line.
 cont. p 48

Nile St Bridge Wabash Lt-South & Rt-North

115

cont. p 48

TP₂ 014 (216¹⁴) 13³⁴ (216⁰⁰)

TP₁ 035 (229³⁴) 13¹⁹ (228²²)

1461⁹⁶ L 47° 27' Lt on split

1730

1400

0465

0730

0400 wly

BM

116 (242¹⁸)

(241⁰²) TP₂ No. 1 in P. 11, p 32

(242¹⁸)

This location not used

153
232
11° 965 82
10 on 1.6 10

9L 233.8
10 84 72
10

94 253.8
10 84 72
10

11° 232.5
10 92 85
10

145 227.3
10 122 118
10

21° 226.1
10 16 125
10

"X" Sec 0700 Quince to 183700
 (2122) 68
 212 68
 1300
 (21228)
 21226

Wagash stub Lt=West

Rt=East 46

7P2

043

279559 ally called line
 TP on Pot Hub 106 22525 1328 (22422) 22420

1495 68°58' light taken on split

1760

1720

0780

0740

0700 Hub Quince Fly + tick line fly

BM p25

335 (23750)

(23415)

0700 Quince St PRS

225.3	226.9	227.80	228.1
122	106	920	94
18	8	on Hub	10
232.3	228.5	227.4	235.0
52	90	82	215
15	7		10
239.1	233.5	231.3	235.3
7/6	40	12	12
15	10		10
238.1	233.1	232.7	232.5
706	44	46	09
15	11		10
234.8	233.4	233.2	235.8
27	146	43	12
10	9		10
235.4	234.0	234.1	
21	305	34	
10	8		

This location not used.

BM

9² $\left\langle \begin{matrix} 179^{99} \\ 180^{21} \\ 179^{99} \end{matrix} \right\rangle$ ✓
w. Wash
MH 18170
K02097

TP 4

0⁷⁸ $\left\langle \begin{matrix} 189^{90} \\ 189^{90} \end{matrix} \right\rangle$ 13⁰³ $\left\langle \begin{matrix} 189^{12} \\ 189^{14} \end{matrix} \right\rangle$

2461²⁶ Hub at stub end 183400 w. Wash

TP 3

1⁴¹ $\left\langle \begin{matrix} 202^{17} \\ 202^{15} \end{matrix} \right\rangle$ 11⁹⁵ $\left\langle \begin{matrix} 200^{76} \\ 200^{27} \end{matrix} \right\rangle$ ✓

2430

$\left\langle \begin{matrix} 212.71 \end{matrix} \right\rangle$ ✓

NOT USED

19^{2.9} ✓ 19^{2.24}
6² 6²³
24 on Hub
 $\left\langle \begin{matrix} 202^{76} \\ 202^{76} \end{matrix} \right\rangle$ ✓
212.1 ↑
06 241
7 2 16 26
208.9
5 10 20 100
212.71 ✓
212.69

Sly End 384 to Sewer Line Wabash
cont from 1245

under Mile S^t Bridge

Lt-Sout

172.7
45
10

172.8
44

170.0
52
10

RT=North

48

3746

TP₄

422

175°20'

1255

170°25'

3730

3710

2775

2750

2727²⁷ Lt. Rt 46°20' on split

2702

TP₅

326

183°53'

1132

180°27'

2727²⁷
Hub

TP₄

185

191°59'

1327

189°74'

TP₃

021

203°07'

1334

202°80'

216°13'

cont. from 1045

172.3

112

25

10

25

9

13

25

174.8

82

25

172.5

10

17

92

13

1

82

13

82

13

174.9

86

13

175°20'

172.8

10

25

10

182.3

2

182.0

5

10

176.7

186.3

72

10

180.2

33

10

176.0

75

20

176.3

72

8

182.3

12

10

182.6

41

10

172.1

38

10

183°53'

10

Lt = South

rt = North

49

Locate m. 2. with
reference to 3+57.57

BM

553

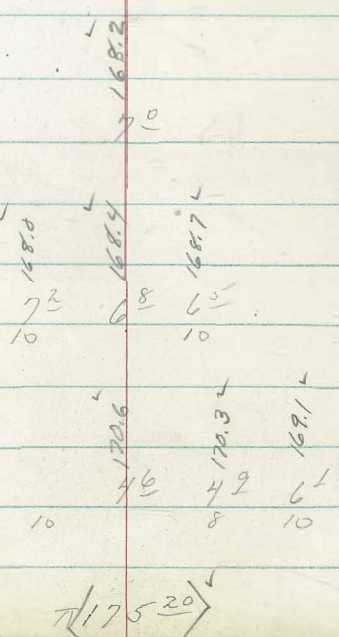
169-67
X on SMHV
176+00 W. 6034
16964

3+77⁵⁷ end make connection

3+68

3+65

Not used



X" Sec 39th St Quince

TR 2²⁵' (273¹⁵) 13²¹ (270²⁰)

2400

1192 37° RT E Pole # P 39203 T

1760

1457 42° RT E House

1720

0780

0740 Sly Quince St

0700 Sly

BM

169

(284¹¹)

(282⁴²)

EB 2128 94.31
N 2 7' Hub
Quince 39th St

Sly to Old Rail Road Cut

Lt East

RT = West

50

2753	2741	2732	2723	2724	2708	2713	2704
8 ⁸	10 ⁰	10 ⁹	10 ⁸	11 ²	13 ³	12 ⁸	13 ⁷
40	20	15	5		23	25	40

2780	2774	2753	2742	2713	2721	2722
6 ¹	6 ²	8 ⁸	9 ²	11 ⁸	11 ³	11 ⁷
40	32	4		22	25	40

27231
10⁸⁰
Floor
425

2780	2778	2759	2745	2737	2734	2719
5 ²	6 ³	8 ²	9 ⁶	10 ²	10 ²	12 ³
40	25	4		25	40	15

2827	2801	2790	2778	2766	2762	2764	2761	2744
14	40	5 ¹	6 ³	7 ⁵	7 ⁹	7 ²	8 ⁰	9 ⁷
60	40	20	4		1	25	40	25

2818	2806	2805	2778	2771	2775	2800
2 ³	3 ⁵	3 ⁶	4 ³	5 ⁰	4 ⁶	4 ¹
40	37	20		2	20	40

2846	2822	2814	2814	2819	2814
10 ⁵	1 ⁹	2 ⁷	2 ²	2 ²	2 ²
40	32	20		20	40

(284¹¹)

Lt East

At West

51

TP₂

247

262.47

13.15

260.00

257.2

16° 70

258.8

14° 40

260.2

13° 25

261.1

12° 0

261.2

12° 0

261.7

11.5 12

261.5

11.2 40

261.7

11.5 75

5400

263.1

10° 60

264.2

9° 40

265.1

8° 20

264.9

8° 3

264.3

8° 20

263.7

9.5 40

263.4

9.8 75

4450

267.9

5.3 40

267.3

5.2 20

266.4

6.8 60

265.5

7.2 20

264.5

8.2 40

264.0

9.2 75

4400

264.09

9.06

7.62

5.00

3470 76^s At E House

268.3

3.2 40

268.3

4.2 20

267.0

6.8 60

266.0

7.2 23

266.6

6.6 25

266.7

6.5 40

264.4

8.0 75

3450

270.3

2.2 40

267.8

3.4 21

269.0

4.3 8

268.0

5.2 5

267.7

5.5 25

266.7

6.3 40

264.7

8.5 75

3400

272.7

0.5 40

271.0

2.2 28

270.8

2.4 7

269.4

3.8 5

268.7

4.5 24

267.2

4.0 25

268.7

4.3 40

2450

2437 51^L At E Bldg garage wood floor

273.15

273.15

267.06
4.09
5.17
Floor

Lt = East

2

Rt = West

52

6125

245.7	246.0	252.2	253.8	254.5	246.6	249.0
16 ⁸	16 ⁵	10 ³	8 ²	8 ⁰	15 ⁹	13 ⁵
40	34	19	8	8	20	40

6100

245.7	246.0	252.2	253.8	254.5	255.9	254.8	254.5
16 ⁸	16 ⁵	10 ³	8 ²	8 ⁰	6 ⁶	7 ²	8 ⁰
40	34	19	8	8	14	36	40

5469^U Hub int. K&W hwy = 5 6179¹³

250.8	246.2	248.8	252.4 ⁴⁸	252.4	255.1	254.7
11 ²	14 ³	13 ²	10 ⁰⁴	10 ⁶	7 ⁴	7 ⁸
40	36	10	on Hub	6	11	40

5443

248.7	249.2	254.5	254.6	256.2	256.4	257.7	258.2	259.1	258.8
13 ⁸	11 ³	8 ⁰	7 ²	6 ³	6 ¹	4 ⁸	4 ³	3 ⁴	3 ²
40	28	18	10	6	11	15	40	45	20

5728 66° RT E House under const.

<262.47>

<262.47>

26179
0.68
66e
2100

" X " Sec Alley BIK 144 Quince to Old RR Cut Lt. East RT. West 53
 and Sly Alley BIK 143

2150

271.5
 9⁸ 15⁴ 22⁸ 27² 213.4
 70 60 35 9

274.7
 6⁶ 274.7
 10 20

2100

278.7
 2⁶ 278.6
 40 20 10 7

277.8
 3⁵ 277.8
 10 20

TP

029 < 281.32 > 1268 < 281.03 >

282.3
 11⁴ 282.2
 50 10 15 18

282.6
 11² 282.7
 10 20

1760

286.9
 6⁸ 286.8
 40 10 6² 7¹

286.4
 7³ 286.3
 10 20

1720

288.4
 4² 288.6
 10 5¹

288.7
 5¹⁰

0780

292.5
 3² 290.4
 10 3³

290.4
 3³

0740 Sly Quince

292.1
 1⁶ 291.6
 10 2²

291.7
 2²

0700 Sly E Quince

226 < 293.21 >

< 291.45 > 2 Int. H. 229
 Quince + Allys
 144-138

< 293.21 >

7425

7400

7414

6479¹³ L. RT

6465

6440

6400

5450

622

<258.68>

452

<252.42>

on split

<256.99>

Lt - South

RT = North

55

254.4
4
20

255.2
35
10

254.68
4
10

257.7
10
10

256.0
27
20

253.4
33
10

254.7
30
10

257.4
33
10

255.0
20
12

252.4
46
2

252.4
46
10

253.0
40
10

255.5
15
20

253.4
36
11

250.1
62
6

248.0
90
9

252.9
60
10

252.5
45
18

247.7
93
6

247.8
9
12

248.5
80
5

254.8
20
10

252.7
43
15

248.0
90
7

247.8
9
2

249.0
80
5

254.6
20
15

257.8
6
20

252.0
50
13

249.2
70
6

248.2
8
10

248.8
80
8

249.7
73
10

<256.99>

10400

9450

9400

8468⁹⁷

TP₅

8435

8400

7450

tie to Quince St.

Please Note: if you care to go further North in Alley B/143 please use notes in PR-2198

L.Lt 89°56' on split Alley B/143

270 <248⁵⁷> 1282 <245⁸⁷> on Hub L-8468⁹⁷

<258.69>

No Survey Control here
South Alley B/143

West in B/143

Lt = South

Rt = North

56

2394
92
10

2434
52
10

2486
00
10

2492
106
10

2525
62
10

2567
20
18

2486
101
10

2392

2430

2460

2487

2454

2471

2490

2386
100

2425
61
10

2440
46
10

2448
38
10

2477
100

2587
00
18

2577
70
10

<258.69>

Lt = East

Rt = West

13700

1997
12°
10

1993
11.2

1996
11.4
10

12170

2096
6.1
10

2097
6.0
10

2055
5.2
10

TP8

0.2

(210.69)

12.21

(210.27)

2114
11.8
10

2127
10.3
10

212.2
11.0
10

(210.69)

12125

2176
5.6
10

216.5
6.2
10

216.1
7.1
10

12100

check turn to 40
for 2158
21734

5.88

217.30

2223
0.2
10

222.0
1.2
10

221.4
1.4
10

11750

TP7

0.0

(223.18)

12.85

(223.17)

(223.18)

2281
7.9
10

2278
8.2
10

2274
8.6
10

11700

2/6

10750

TP6

0.50

(236.02)

13.05

(235.52)

2329
2.1
10

232.3
2.7
10

2330
3.0
10

(248.57)

236.02

See on Const. Here

BM

806

16963

"X" on SMH 111
179-100 water
16963

TP2

941 17769

432

16828

15413⁹⁶ end make connection

14170

14135

14120

TP11

010 <172.60> 1291 <172.50>

13190

TP10

002 <185.41> 1282 <185.39>

13163⁵³ L.L. 80°49' on split in street.

13123⁵³ Nly Seattle

TP9

049 <198.21> 1297 <197.72>

Lt.

1624

16317

16311

58

9

92

943

95

10

10

10

145.6

145.5

144.6

7°

72

78

10

10

10

145.6

166.2

145.9

7°

64

67

10

10

10

165.2

144.3

163.8

7.4

83

80

10

10

10

182.7

172.60

17

186.4

176.5

10

10

10

181

185.41

180.2

8.1

7.6

80

10

10

10

191

198.21

190.2

8.1

7.6

80

10

10

10

195.3

198.21

196.2

2.2

2.3

2.0

10

10

10

<198.21>

Levels Alley Blk 143
 tie line Nly Blun
 8468²⁷ L.Lt and New Line Wly **A**

"X" Sec **A** Linc. **A**
 Lt. Sly
 Rt. Nly

See Sketch Pg. 4

	Lt-Wly	S	Rt-Wly
2400 Nly	249.8 6.6 10	252.0 4.8 10	253.4 3.0 10
1784 Nly = 3745 Sly Roberts		252.0 3.4 10	
1790.44 Lt & House	246.19 10.23 445 Floor		
1750 Nly	251.8 4.6 10	253.2 3.2 10	255.0 1.4 10
1746 26 ⁶ Lt & House	249.36 7.06 206 Floor		
100 Nly	250.1 6.3 10	251.1 5.3 10	252.1 3.7 10
755 Nly	248.3 8.1 10	249.5 6.2 10	251.1 5.3 10
730 Nly	246.2 10.2 10	247.9 9.5 10	250.0 6.1 10
710 Nly	244.5 11.2 10	244.8 11.6 10	244.8 11.6 10
8468 ²⁷ Hub Adj 56	246.1 10.3 10	245.87 10.55 Hub	248.2 8.2 10

1700	234.1 11.2 10	231.1 12.1 10	232.3 11.5 10
0765	233.1 10.6 10	232.5 11.3 10	232.4 11.2 10
0740	228.7 15.1 10	228.8 15.0 10	232.4 11.2 10
0710	239.1 4.3 10	238.2 10.6 10	236.1 7.7 10
0700 Wly A			236.18 7.67 at Hub
2759 ¹⁵ Nly			

↑
 West in Bl. 143

TP₁ 0.18 $\langle 243.82 \rangle$ 12.28 $\langle 243.64 \rangle$

2740 Nly

246.1 10.3 10	245.7 7.2 10	250.3 6.1 10
---------------------	--------------------	--------------------

2728 25¹⁵ 15° Pole PA 29 55

2715 3¹⁴ deadman

BM **TP 56** 10⁵⁵ $\langle 256.42 \rangle$ $\langle 245.87 \rangle$

$\langle 256.42 \rangle$

Lt-Sky 8 Mt-Nly

341103 B
345351 A

2 4032
3 45
out Hub

3438

241.3
25
10
241.9
12
242.2
16
10

3433 12 Mt S shed 10' 14'

3400

237.1
63
50
239.4
42
25
239.8
42
10
240.6
33
241.1
22
10

2465

234.4
94
30
236.2
76
25
238.3
55
10
239.3
45
240.3
35
10

2430

233.1
62
30
235.1
82
15
236.1
72
237.0
68
10

2400

232.7
11
10
233.9
9
235.1
82
10

148927 int A 19 38451

232.69
13
out Hub

1750

231.0
128
10
231.6
122
10
232.0
118
10

West in Bl. 14 3 Cross 38 St + N. in

(243 82) Montclair

X Sec C change BK 140

60

Cal. Cont.
on Rd. had
need angles
262.3

6433⁰⁰ L.H. over split 1

258.6
72
10
259.98
642
out Hub
261.8
11.16R
2
10

6405

248.8
172
10
251.2
15-3
10
255.2
15
259.7
15
261.7
15
255.3

+93
+75

5450

255.3
112
10
258.6
72
262.3
42
10
261.8
15
261.7

+25

5400

258.8
72
10
261.7
48
10
263.5
30
10
262.8
15
265.2
15
262.6
15
262.9

A + 75

4450

257.1
92
10
259.0
75
10
261.7
48
10
260.3
15
260.4

+25

4700

254.5
120
10
257.2
93
10
258.9
76
10
259.4
15
259.6
15
259.6

+75

3470

251.6
142
10
254.7
118
10
257.8
82
10
258.6
15
255.4

+60

3140

255.3
112
10
257.1
102
10
257.6
82
10
256.9
15
259.1
15
256.4

+25

3400

258.6
72
10
259.9
57
258.90
out Hub
261.3
15
262.6
15
258.8

2496²² Hub L.H. Page 40

NELY in Bl. 140

BM TR p40

87 (266 47)

(257 56)

8
C
3 } 5
1.67

"X" sec B
Lt. Ely
242.2
12.5
11.6
243.1
11.0
243.7
10.7

2762
2732
2700

242.5
12.2
10
238.2
16.5
Trash
243.1
11.0
10
244.0
10.2
16

Elev 10ft
used on
Profile N

247.1
7.6
10
245.2
8.2
19.3
235.4
17
249.4
5.3
10
248.8
5.2
10
248.1
6.6
10
248.4
6.3
10
235.6
19.4
20

251.3
3.4
10
251.7
3.0
10
250.6
4.1
10

Please Note 6733 Hub to 7753 H. h. = 6711

15' ^{on top} in an average of 8' deep trash

BM P 13 377 $\langle 269.43 \rangle$ 4.5 2.1 ft Redwood 11 ft 269.4

1750
1400
T.P. 034 $\langle 254.68 \rangle$ 1303 $\langle 257.34 \rangle$

6711 ²² old
7753 Hub ²³ oil hub

265.1
8.1
10
266.4
6.8
10
267.9
5.3
10

7730
7700
T.P. 926 $\langle 273.12 \rangle$ 324 $\langle 263.23 \rangle$

263.8
9.4
10
266.7
6.5
10
267.7
5.5
10

0785
0782 Ent shed
0772 Begun shed
252.1
15.3
10
252.7
14.2
10
251.4
16.0
10

6783
West in the 140
266.47
265.0
5.0
10
263.5
3.0
10
268.0
+1.5
10

0740 Line Crosser Lince
2 Quinces Alley
0700 = Hub
254.4
13.0
256.45
10.92
on Hub New

BM T.P. 40 921 $\langle 267.37 \rangle$ $\langle 257.56 \rangle$ rock

M.P. No 6

Lt. Ely 2 Rt. Wily

B

2

B

E. of Bridge
4483⁵⁹ L. RT on split
175.5
6⁰/₁₀
175.37
6¹⁶/₁₀ on hub
175.3
6²/₁₀

END.
613455 E existing SMH
169.69
11⁸⁴/₁₀ rim
162.14
19³⁹/₁₀

4440
179.8
17
10
179.8
12
6.4
181.5
0⁰/₁₀

6127
165.8
15²/₁₀
165.1
15²/₁₀
165.9
15⁶/₁₀

TP5 P 48
136
181⁵³
180²⁷
24272
2. Hub
all line

6121
169.2
12³/₁₀
169.6
11²/₁₀
170.3
11²/₁₀

4413
228.2
17⁰/₁₀
233.3
11²/₁₀
232.54
12⁶³/₁₀ on Hub
231.8
13⁴/₉

6100
170.1
11²/₁₀
171.0
10⁵/₁₀
171.1
10⁴/₁₀

4400⁵² Top cut
Hub L. RT
237.1
8⁰/₁₀
237.4
7⁸/₁₀
236.2
9⁰/₁₀
235.3
9²/₁₉

5182
174.2
7³/₁₀
173.3
8²/₁₀
173.3
8²/₁₀

3450
240.38
47²/₁₀
240.38
47²/₁₀
240.38
47²/₁₀

5167 7⁰ Lt Wily
on 414 BWT

353⁵⁷
311⁰⁵ H. H. 7
240.38
47²/₁₀
on Hub

5150
174.5
7⁰/₁₀
174.6
6²/₁₀
174.0
7⁵/₁₀

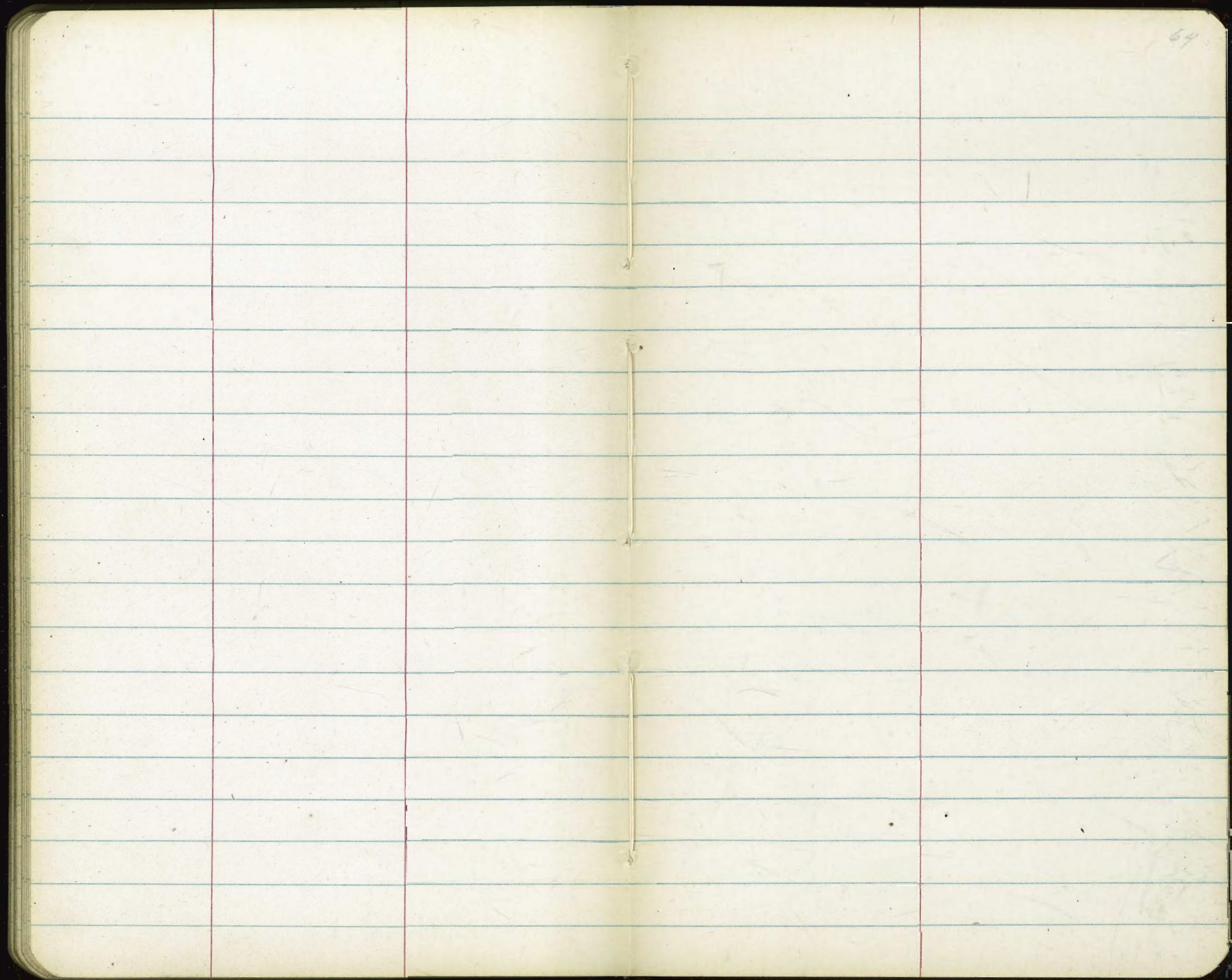
TP2 3¹²
245¹⁷
12⁶³
242⁰⁵

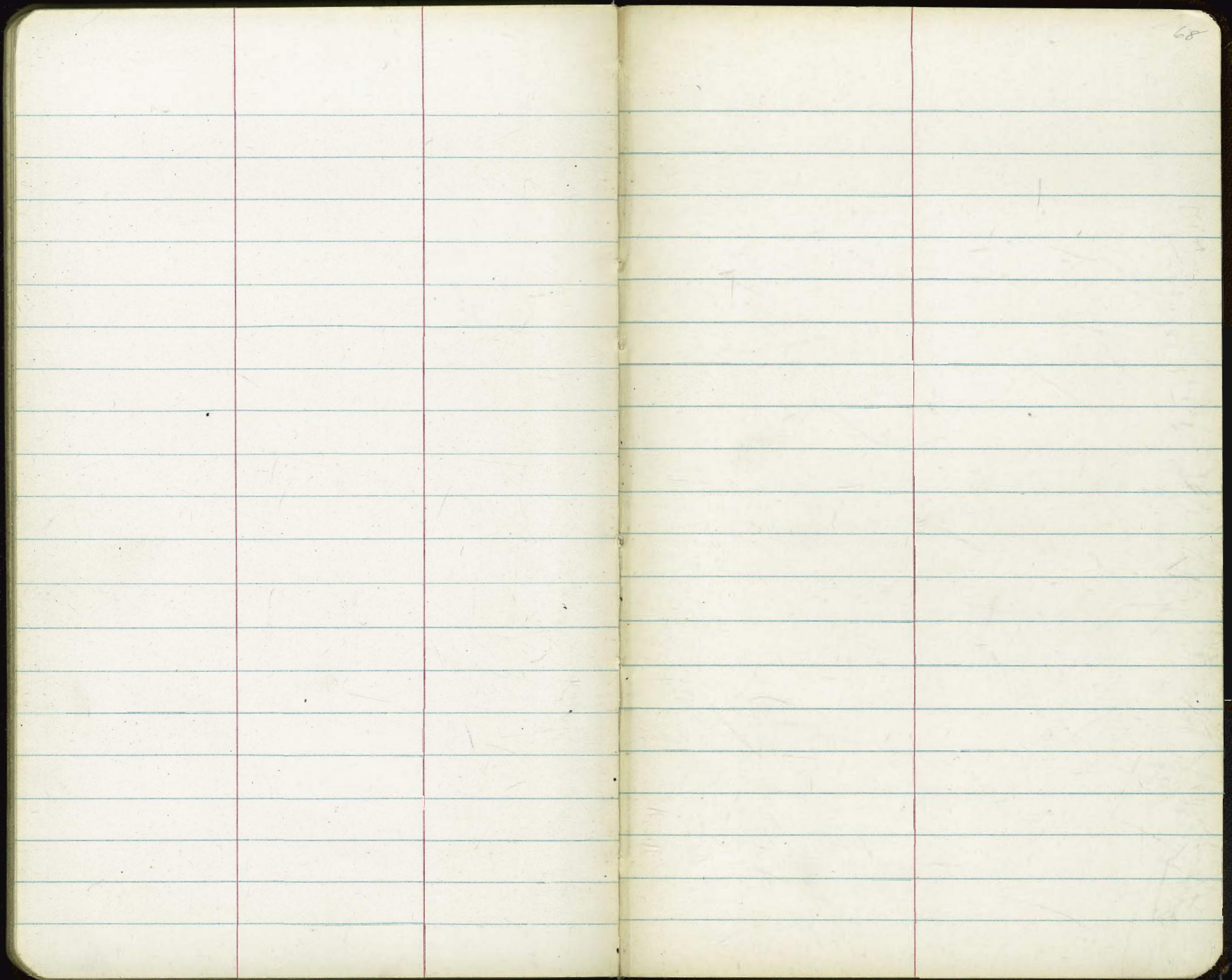
5100
174.9
6⁶/₁₀
174.8
6²/₁₀
174.8
6²/₁₀

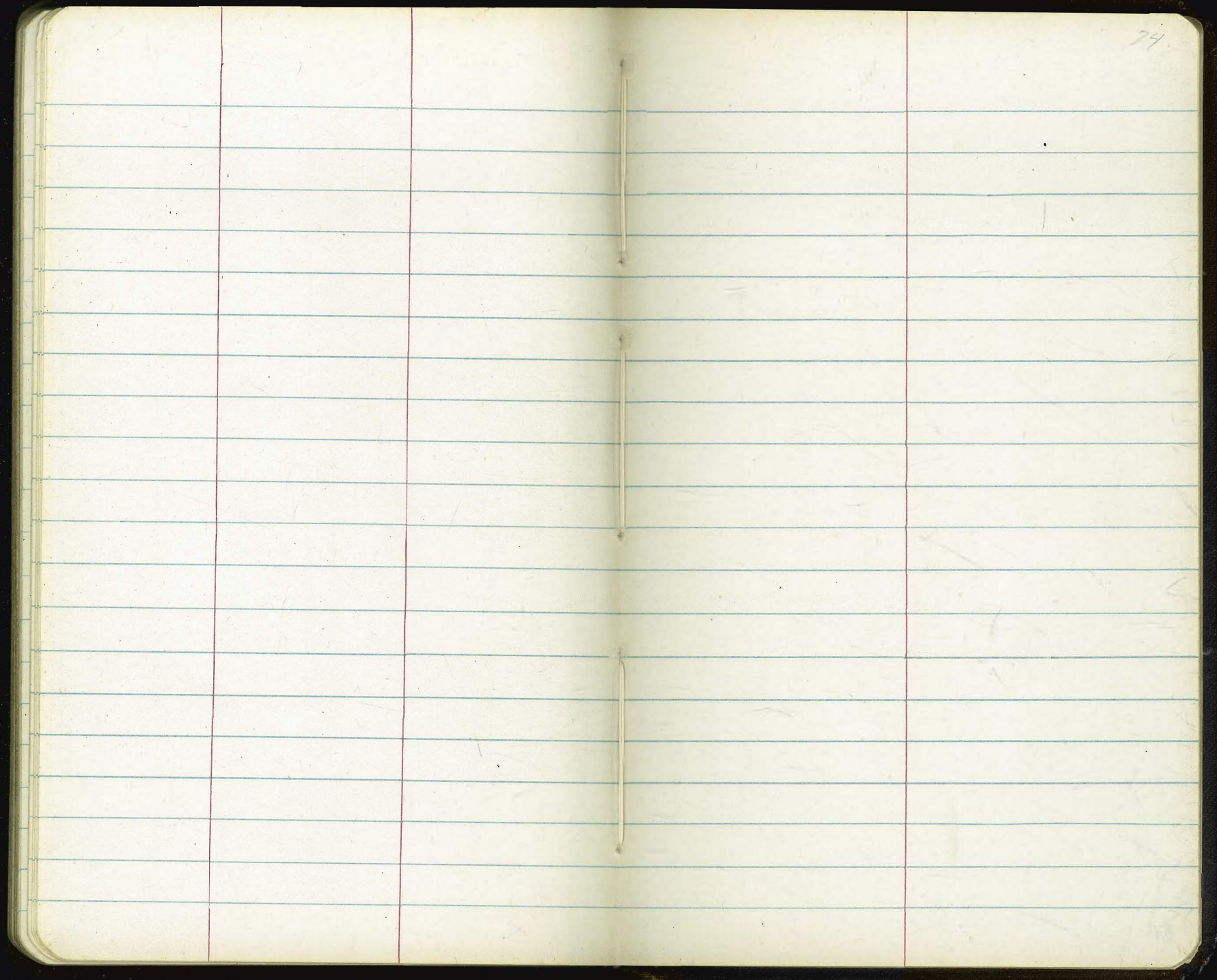
2490
242.7
12⁰/₁₀
243.6
NL
243.1
11⁶/₁₀
254⁶⁸

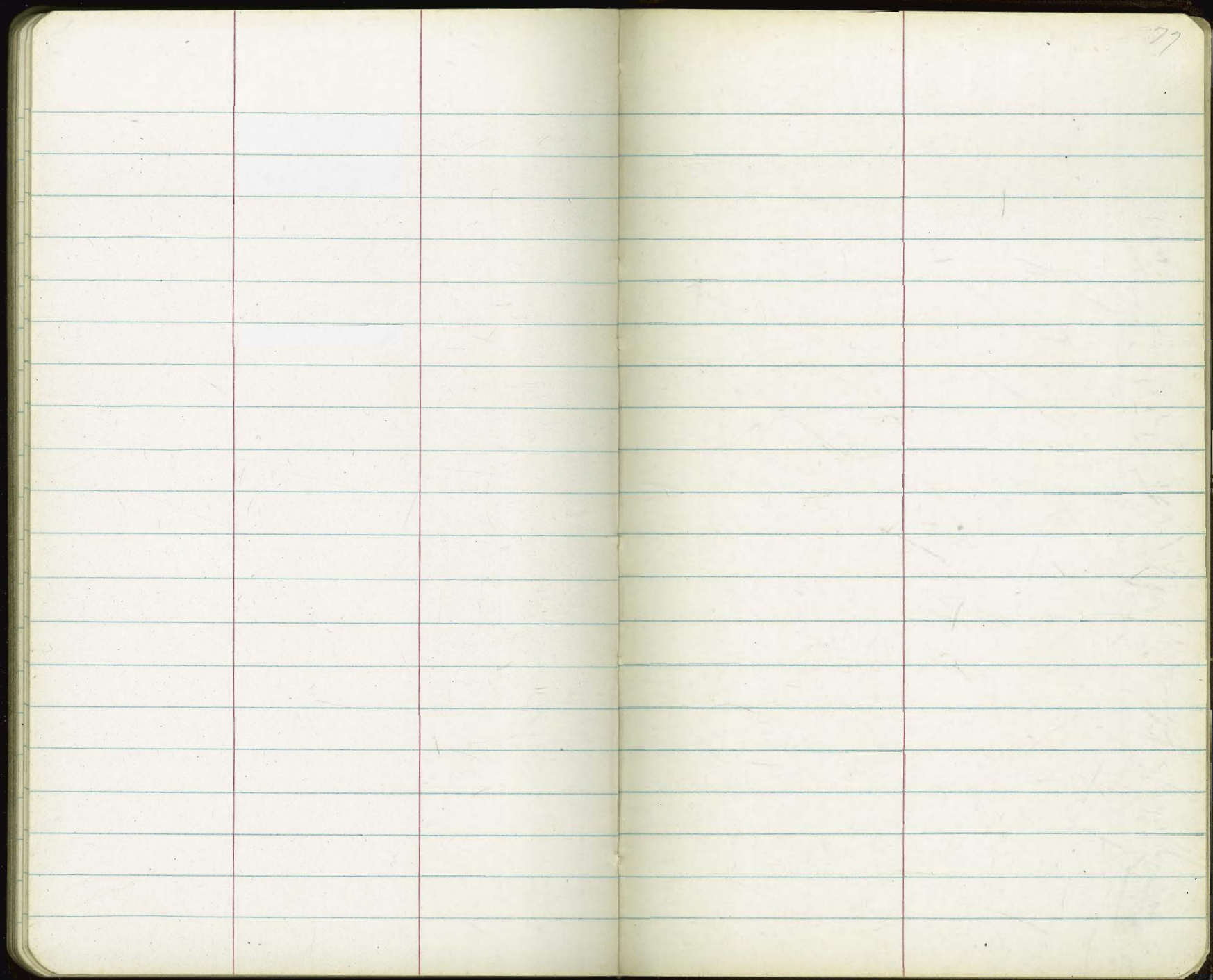
4489⁵ 10⁵ Lt Ely
1st Beat

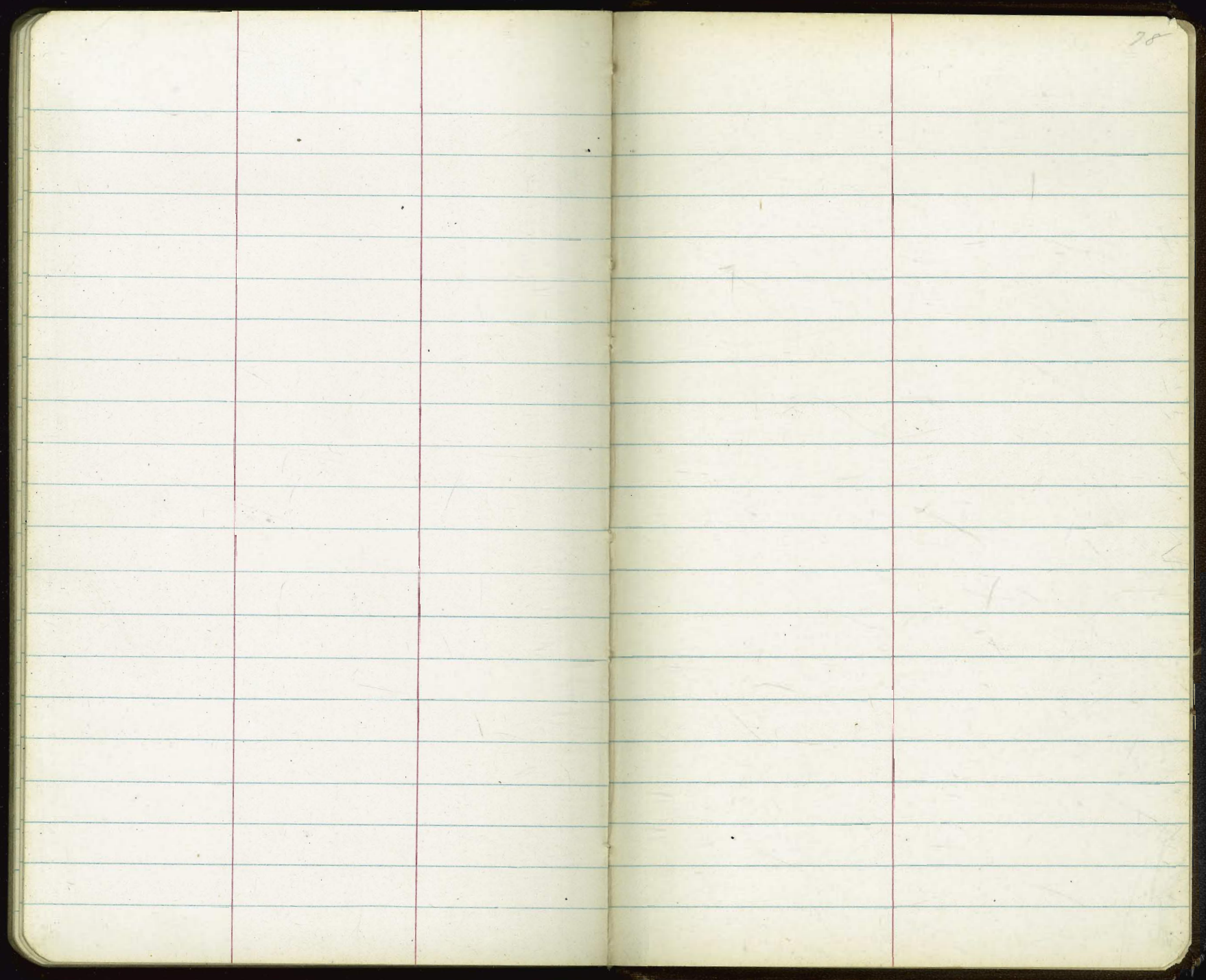
West under Nile St Bridge
181⁵³











29567
36816
 66383
 332

2816
422
 134

30642
23
 191
261
 1454
222
 2682
154
 2836

37982
29874

47854

8147
227177
 30924

6672 @ 1237

6311
 347436

347435
322

9758533
6672

347757

19517066
 68209731
 58551198
58551198
 65101932776

2
3
4
5
6
7
8
9
0
1
2
3
4
5
6
7
8
9
10
11
12
13
14
15
16
17
18
19
20
21
22
23
24
25
26
27
28
29
30
31
32
33
34
35
36
37
38
39
40
41
42
43
44
45
46
47
48
49
50

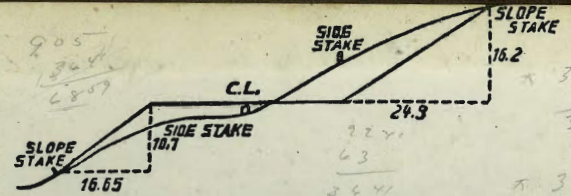
291.99
7.83
284.16

6 + 79.87
3 25

3 + 54.87
3 + 65

7 + 19.87
40

282.48 NE 7 1/2" Gauge = 87.3
P.F. 2198 ✓



DISTANCES FROM SIDE STAKES FOR CROSS-SECTIONING.
SLOPE 1 1/2 TO 1. ROADWAY OF ANY WIDTH.

	0	.1	.2	.3	.4	.5	.6	.7	.8	.9	
0	0.00	0.15	0.30	0.45	0.60	0.75	0.90	1.05	1.20	1.35	0
1	1.50	1.65	1.80	1.95	2.10	2.25	2.40	2.55	2.70	2.85	1
2	3.00	3.15	3.30	3.45	3.60	3.75	3.90	4.05	4.20	4.35	2
3	4.50	4.65	4.80	4.95	5.10	5.25	5.40	5.55	5.70	5.85	3
4	6.00	6.15	6.30	6.45	6.60	6.75	6.90	7.05	7.20	7.35	4
5	7.50	7.65	7.80	7.95	8.10	8.25	8.40	8.55	8.70	8.85	5
6	9.00	9.15	9.30	9.45	9.60	9.75	9.90	10.05	10.20	10.35	6
7	10.50	10.65	10.80	10.95	11.10	11.25	11.40	11.55	11.70	11.85	7
8	12.00	12.15	12.30	12.45	12.60	12.75	12.90	13.05	13.20	13.35	8
9	13.50	13.65	13.80	13.95	14.10	14.25	14.40	14.55	14.70	14.85	9
10	15.00	15.15	15.30	15.45	15.60	15.75	15.90	16.05	16.20	16.35	10
11	16.50	16.65	16.80	16.95	17.10	17.25	17.40	17.55	17.70	17.85	11
12	18.00	18.15	18.30	18.45	18.60	18.75	18.90	19.05	19.20	19.35	12
13	19.50	19.65	19.80	19.95	20.10	20.25	20.40	20.55	20.70	20.85	13
14	21.00	21.15	21.30	21.45	21.60	21.75	21.90	22.05	22.20	22.35	14
15	22.50	22.65	22.80	22.95	23.10	23.25	23.40	23.55	23.70	23.85	15
16	24.00	24.15	24.30	24.45	24.60	24.75	24.90	25.05	25.20	25.35	16
17	25.50	25.65	25.80	25.95	26.10	26.25	26.40	26.55	26.70	26.85	17
18	27.00	27.15	27.30	27.45	27.60	27.75	27.90	28.05	28.20	28.35	18
19	28.50	28.65	28.80	28.95	29.10	29.25	29.40	29.55	29.70	29.85	19
20	30.00	30.15	30.30	30.45	30.60	30.75	30.90	31.05	31.20	31.35	20
21	31.50	31.65	31.80	31.95	32.10	32.25	32.40	32.55	32.70	32.85	21
22	33.00	33.15	33.30	33.45	33.60	33.75	33.90	34.05	34.20	34.35	22
23	34.50	34.65	34.80	34.95	35.10	35.25	35.40	35.55	35.70	35.85	23
24	36.00	36.15	36.30	36.45	36.60	36.75	36.90	37.05	37.20	37.35	24
25	37.50	37.65	37.80	37.95	38.10	38.25	38.40	38.55	38.70	38.85	25
26	39.00	39.15	39.30	39.45	39.60	39.75	39.90	40.05	40.20	40.35	26
27	40.50	40.65	40.80	40.95	41.10	41.25	41.40	41.55	41.70	41.85	27
28	42.00	42.15	42.30	42.45	42.60	42.75	42.90	43.05	43.20	43.35	28
29	43.50	43.65	43.80	43.95	44.10	44.25	44.40	44.55	44.70	44.85	29
30	45.00	45.15	45.30	45.45	45.60	45.75	45.90	46.05	46.20	46.35	30
31	46.50	46.65	46.80	46.95	47.10	47.25	47.40	47.55	47.70	47.85	31
32	48.00	48.15	48.30	48.45	48.60	48.75	48.90	49.05	49.20	49.35	32
33	49.50	49.65	49.80	49.95	50.10	50.25	50.40	50.55	50.70	50.85	33
34	51.00	51.15	51.30	51.45	51.60	51.75	51.90	52.05	52.20	52.35	34
35	52.50	52.65	52.80	52.95	53.10	53.25	53.40	53.55	53.70	53.85	35
36	54.00	54.15	54.30	54.45	54.60	54.75	54.90	55.05	55.20	55.35	36
37	55.50	55.65	55.80	55.95	56.10	56.25	56.40	56.55	56.70	56.85	37
38	57.00	57.15	57.30	57.45	57.60	57.75	57.90	58.05	58.20	58.35	38
39	58.50	58.65	58.80	58.95	59.10	59.25	59.40	59.55	59.70	59.85	39
40	60.00	60.15	60.30	60.45	60.60	60.75	60.90	61.05	61.20	61.35	40
41	61.50	61.65	61.80	61.95	62.10	62.25	62.40	62.55	62.70	62.85	41
42	63.00	63.15	63.30	63.45	63.60	63.75	63.90	64.05	64.20	64.35	42
43	64.50	64.65	64.80	64.95	65.10	65.25	65.40	65.55	65.70	65.85	43
44	66.00	66.15	66.30	66.45	66.60	66.75	66.90	67.05	67.20	67.35	44
45	67.50	67.65	67.80	67.95	68.10	68.25	68.40	68.55	68.70	68.85	45
46	69.00	69.15	69.30	69.45	69.60	69.75	69.90	70.05	70.20	70.35	46
47	70.50	70.65	70.80	70.95	71.10	71.20	71.40	71.55	71.70	71.85	47
48	72.00	72.15	72.30	72.45	72.60	72.75	72.90	73.05	73.20	73.35	48
49	73.50	73.65	73.80	73.95	74.10	74.25	74.40	74.55	74.70	74.85	49
50	75.00	75.15	75.30	75.45	75.60	75.75	75.90	76.05	76.20	76.35	50

THE NATIONAL BLANK BOOK COMPANY
HOLYOKE MASSACHUSETTS
NEW YORK CHICAGO BOSTON SAN FRANCISCO