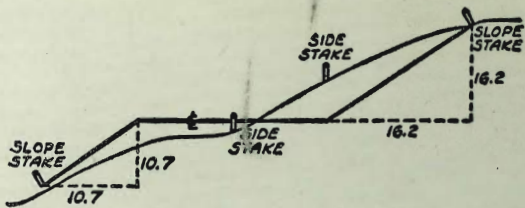


2288

SEWER

SANITARY FILLS
at
Arizona Canyon, Mission Bay and
Chollos Reservoir



DISTANCES FROM SIDE STAKES FOR CROSS-SECTIONING
SLOPE 1 TO 1, ROADWAY OF ANY WIDTH

	0	.1	.2	.3	.4	.5	.6	.7	.8	9	
0	0.00	0.10	0.20	0.30	0.40	0.50	0.60	0.70	0.80	0.90	0
1	1.00	1.10	1.20	1.30	1.40	1.50	1.60	1.70	1.80	1.90	1
2	2.00	2.10	2.20	2.30	2.40	2.50	2.60	2.70	2.80	2.90	2
3	3.00	3.10	3.20	3.30	3.40	3.50	3.60	3.70	3.80	3.90	3
4	4.00	4.10	4.20	4.30	4.40	4.50	4.60	4.70	4.80	4.90	4
5	5.00	5.10	5.20	5.30	5.40	5.50	5.60	5.70	5.80	5.90	5
6	6.00	6.10	6.20	6.30	6.40	6.50	6.60	6.70	6.80	6.90	6
7	7.00	7.10	7.20	7.30	7.40	7.50	7.60	7.70	7.80	7.90	7
8	8.00	8.10	8.20	8.30	8.40	8.50	8.60	8.70	8.80	8.90	8
9	9.00	9.10	9.20	9.30	9.40	9.50	9.60	9.70	9.80	9.90	9
10	10.00	10.10	10.20	10.30	10.40	10.50	10.60	10.70	10.80	10.90	10
11	11.00	11.10	11.20	11.30	11.40	11.50	11.60	11.70	11.80	11.90	11
12	12.00	12.10	12.20	12.30	12.40	12.50	12.60	12.70	12.80	12.90	12
13	13.00	13.10	13.20	13.30	13.40	13.50	13.60	13.70	13.80	13.90	13
14	14.00	14.10	14.20	14.30	14.40	14.50	14.60	14.70	14.80	14.90	14
15	15.00	15.10	15.20	15.30	15.40	15.50	15.60	15.70	15.80	15.90	15
16	16.00	16.10	16.20	16.30	16.40	16.50	16.60	16.70	16.80	16.90	16
17	17.00	17.10	17.20	17.30	17.40	17.50	17.60	17.70	17.80	17.90	17
18	18.00	18.10	18.20	18.30	18.40	18.50	18.60	18.70	18.80	18.90	18
19	19.00	19.10	19.20	19.30	19.40	19.50	19.60	19.70	19.80	19.90	19
20	20.00	20.10	20.20	20.30	20.40	20.50	20.60	20.70	20.80	20.90	20
21	21.00	21.10	21.20	21.30	21.40	21.50	21.60	21.70	21.80	21.90	21
22	22.00	22.10	22.20	22.30	22.40	22.50	22.60	22.70	22.80	22.90	22
23	23.00	23.10	23.20	23.30	23.40	23.50	23.60	23.70	23.80	23.90	23
24	24.00	24.10	24.20	24.30	24.40	24.50	24.60	24.70	24.80	24.90	24
25	25.00	25.10	25.20	25.30	25.40	25.50	25.60	25.70	25.80	25.90	25
26	26.00	26.10	26.20	26.30	26.40	26.50	26.60	26.70	26.80	26.90	26
27	27.00	27.10	27.20	27.30	27.40	27.50	27.60	27.70	27.80	27.90	27
28	28.00	28.10	28.20	28.30	28.40	28.50	28.60	28.70	28.80	28.90	28
29	29.00	29.10	29.20	29.30	29.40	29.50	29.60	29.70	29.80	29.90	29
30	30.00	30.10	30.20	30.30	30.40	30.50	30.60	30.70	30.80	30.90	30
31	31.00	31.10	31.20	31.30	31.40	31.50	31.60	31.70	31.80	31.90	31
32	32.00	32.10	32.20	32.30	32.40	32.50	32.60	32.70	32.80	32.90	32
33	33.00	33.10	33.20	33.30	33.40	33.50	33.60	33.70	33.80	33.90	33
34	34.00	34.10	34.20	34.30	34.40	34.50	34.60	34.70	34.80	34.90	34
35	35.00	35.10	35.20	35.30	35.40	35.50	35.60	35.70	35.80	35.90	35
36	36.00	36.10	36.20	36.30	36.40	36.50	36.60	36.70	36.80	36.90	36
37	37.00	37.10	37.20	37.30	37.40	37.50	37.60	37.70	37.80	37.90	37
38	38.00	38.10	38.20	38.30	38.40	38.50	38.60	38.70	38.80	38.90	38
39	39.00	39.10	39.20	39.30	39.40	39.50	39.60	39.70	39.80	39.90	39
40	40.00	40.10	40.20	40.30	40.40	40.50	40.60	40.70	40.80	40.90	40
41	41.00	41.10	41.20	41.30	41.40	41.50	41.60	41.70	41.80	41.90	41
42	42.00	42.10	42.20	42.30	42.40	42.50	42.60	42.70	42.80	42.90	42
43	43.00	43.10	43.20	43.30	43.40	43.50	43.60	43.70	43.80	43.90	43
44	44.00	44.10	44.20	44.30	44.40	44.50	44.60	44.70	44.80	44.90	44
45	45.00	45.10	45.20	45.30	45.40	45.50	45.60	45.70	45.80	45.90	45
46	46.00	46.10	46.20	46.30	46.40	46.50	46.60	46.70	46.80	46.90	46
47	47.00	47.10	47.20	47.30	47.40	47.50	47.60	47.70	47.80	47.90	47
48	48.00	48.10	48.20	48.30	48.40	48.50	48.60	48.70	48.80	48.90	48
49	49.00	49.10	49.20	49.30	49.40	49.50	49.60	49.70	49.80	49.90	49
50	50.00	50.10	50.20	50.30	50.40	50.50	50.60	50.70	50.80	50.90	50

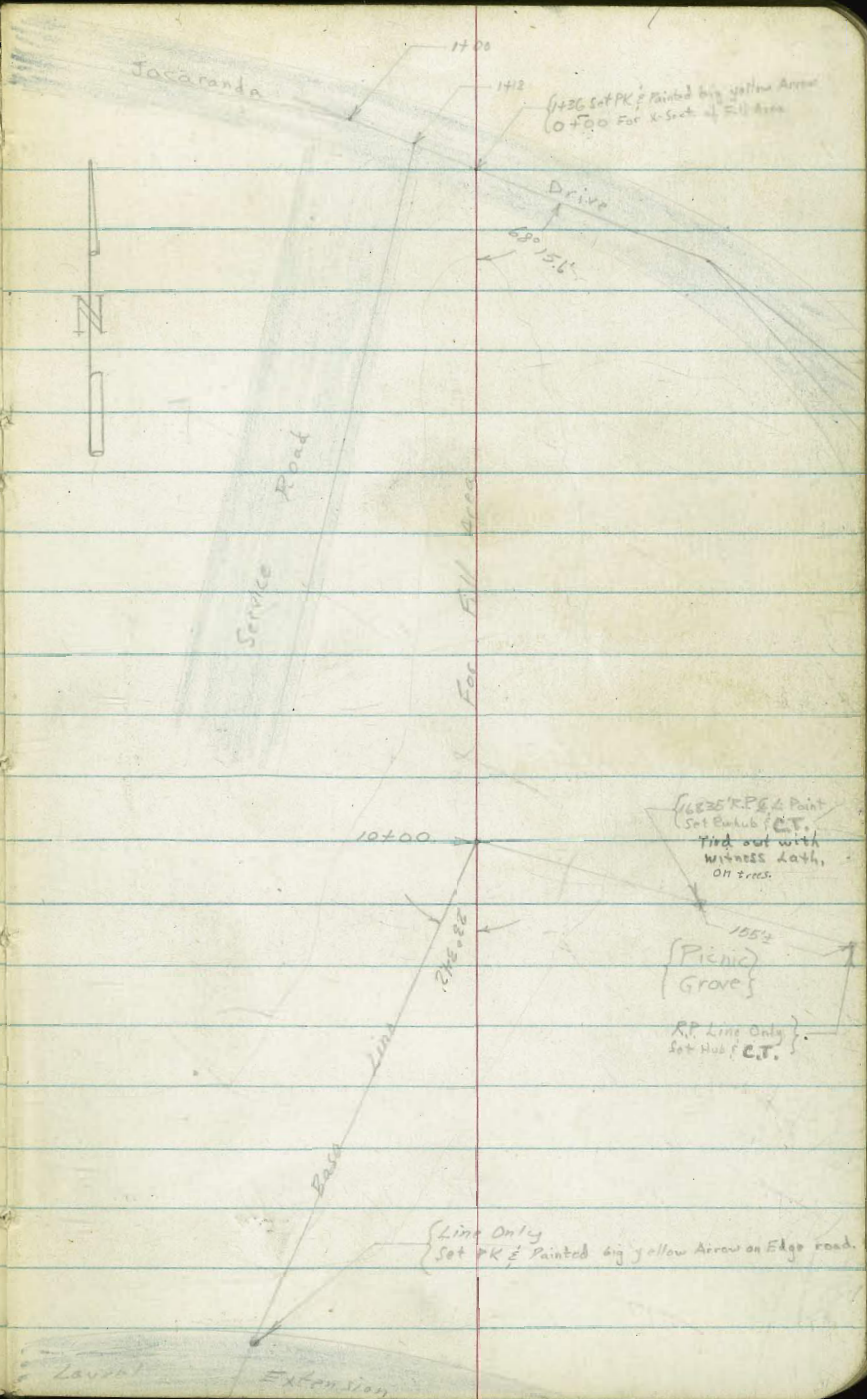
Distance of slope stake from side or shoulder stake for any width roadway, slope 1 to 1. If ground is nearly level, the cut or fill at side stake is located by the double entry method in left column and top row. The number in body of table in same row and column gives distance from side stake to slope stake. If ground is not level estimate the difference in elevation between the side stake and slope stake, lower target by this amount if cut, elevate if fill. Add this amount to cut or fill and find distance in table. Set up rod at this point, and line of sight should cut target. If it does not make the slight adjustment necessary.

Roberts
Cota
Marr
P. New
WA # 20911
4-17-53

Arizona Canyon Sanitary Fill
X-Section For Fill Estimator
(Balboa Park)
FB2208 pg 38 & 55

INDEVEN

Wed. sunset day.



Contd from Page 1

4+00

TR 2.43 247.55 π 11.72 248.12

3+40

3+20

2+00

0+70

0+00 ϕ Jacaranda Drive

T.B.M. 3.17 256.84 π 7.54 ~~253.65~~ 0+00 ϕ Jacaranda Drive 256.84 π

TR 1.11 261.19 13.04 260.08

BN 3.17 273.12 269.95 NWBP V. of Arizona

4

242.0	245.2	244.6	245.5	247.3	249.0	255.4	255.5
56	2.4	3.0	2.1	0.3	1.4	1.8	1.7
5.1	47		15	20	80	106	115

247.55 π

242.2	245.34	248.4	254.2
146	115	8.4	26
48	45		101

241.6	245.2	246.3	253.8
152	116	10.7	3.0
48	40		95

242.7	243.8	246.54	252.7
141	13.0	10.3	4.1
48	45		65

242.9	247.7	251.0	253.2
139	9.1	5.8	3.6
47	42		33

Cont'd From Page 2

21

22

23

9+00

243.8	243.4	230.2	231.4	232.4	240.9	240.5
+6.3	+5.9	7.3	6.1	5.1	+3.4	+3.0
100	79	60		38	54	87

8+00

247.5	248.1	231.7	233.0	234.3	240.0	240.5	243.6	250.5
+70.0	+10.6	5.8	4.5	3.2	+2.5	+3.0	+6.1	+13.0
100	73	40		47	55	70	80	90

T.P.

0.87 237.47 A 10.95 236.60

237.47 A

7+00

247.2	244.9	230.35	233.4	233.9	236.1	247.6	247.6
0.4	2.7	17.2	14.2	13.7	11.5	0	0
125	50	23	20		42	91	102

6+00

241.9	241.5	233.4	234.3	239.5	249.1	251.2
5.7	6.1	14.2	13.3	8.1	+1.5	+3.6
90	86	54		76	78	133

5+40

243.8	241.3	234.2	234.3	235.1	238.9	228.9	250.1	251.1
38	63	134	133	12.5	18.7	18.7	+2.5	+3.5
100	56	28		38	44	62	75	105

4+90

241.6	242.9	242.6	241.8	252.8	252.6
6.0	4.7	5.0	5.8	+5.2	+5.0
65	60		65	85	100

247.55 A

247.55 A

Cont'd From Page 3

15+00

231.2	217.2	222.0	225.9	229.2
11.0	13.0	8.2	4.3	0.6
123	119	90		70

14+00

224.2	223.6	227.2	229.7
6.0	6.6	3.0	0.5
114	97		60

TR

1.79 230.18 π 9.08 228.39

230.18 π

13+00

224.2	225.1	229.7
13.3	9.4	7.8
97		46

12+00

227.4	228.5	229.9
10.1	9.0	7.6
120		52

11+00

228.5	228.6	230.1	238.7
9.0	8.9	7.4	4.2
80		65	105

10+00 \angle Right

Section taken on split

229.3	229.4	231.2	249.0
8.2	8.1	6.3	4.5
66		88	128

237.47 π

237.47 π

18+90 Ditch on left has not been used for borrow, from here on.

222.0	214.0	214.0	217.2	208.1	207.1	207.7	217.6	217.6
+22.58	5.8	5.8	2.6	1.7	1.7	1.1	2.2	2.2
90	87	75	60	50		60	80	104

T.P. 12.61 219.80K 11.07 207.19

219.80K

18+65

226.3	214.3	214.3	220.6	211.6	210.2	201.9	203.5	218.0
+80.40	40	+23.67	81	16.4	14.8	0.3		
83	80	71	55	45	10	65	80	

T.P. 0.22 218.26K 12.14 218.04

218.26K

17+45

231.2	245.5	245.5	23.2	216.0	216.5	209.4	200.8	201.48	219.5	219.2
-10.153	-153	7.0	142	127	20.8	29.4	287	10.7	11.0	
92	87	80	54	52	10	15	43	67	95	

17+00

232.3	215.0	215.0	219.3	214.2	217.3	222.2
+21.152	152	10.9	16.0	12.9	8.0	
108	103	96	88	85		90

16+25

233.7	215.9	215.9	218.5	214.5	227.7	221.1
+3.5	143	143	11.7	15.7	12.5	9.1
128	123	110	107	125		79

15+80

232.2	216.2	220.6	224.5	226.9
+20	140	9.6	5.7	3.3
125	121	105		76

Cont'd. From Page 5

Lt

R

Rt

6

T.P. 0.83 203.72 6.27 202.89

24+70

192.4 179.4 183.2 181.4 177.2 178.2 197.6 196.7
 16.8 29.8 26.0 27.8 32.0 31.0 11.6 12.5
 73 68 40 78 10 35 62 87

24+35

193.9 190.9 192.4 192.5 198.8 197.8
 153 18.3 16.8 16.7 10.4 11.4
 74 71 53 61 84

23+00

194.9 198.9 200.8 202.2
 14.3 10.3 8.4 7.0
 98 52 87

22+00

200.0 197.4 200.6 203.0 208.5 206.5
 8.2 11.8 8.6 6.2 0.7 2.7
 83 81 46 54 81

T.P. 2.06 209.16 $\bar{\pi}$ 12.70 207.10

209.16 $\bar{\pi}$

21+00

208.8 199.8 204.1 205.3 213.2 211.2
 11.0 20.0 15.7 14.5 6.6 8.6
 86 83 50 60 89

20+00

210.50 201.5 204.3 207.2 214.1 213.8
 9.3 19.3 15.5 12.6 5.7 6.0
 66 63 65 75 98

219.80 $\bar{\pi}$

219.80 $\bar{\pi}$

Contd From Page 6

7

Check

11.86

167.20 = 167.25

Kim Existing RH See page 68 Field Book 2208

T.P

0.58

179.06

12.93

178.48

T.P

0.20

191.41

12.51

191.21

203.72X

Roberts
Cota
Moore
Tuller
WD#20988
4-21-53

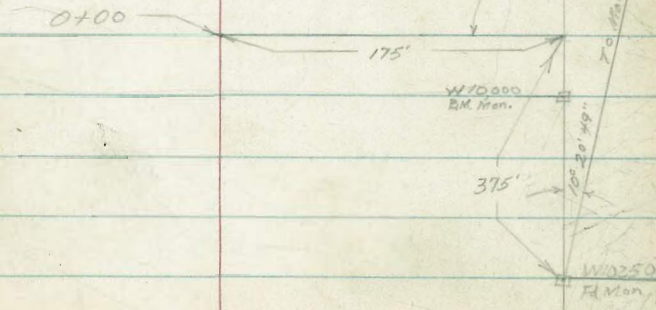
Mission Bay Sanitary Fill
X-Section For Fill Estimates
(Mission Bay Park)
Mission Bay FB. 69 P. 13

Reduced
6-3-53
D. Roberts



Base line for X-Section Fill Area

14100 ← 175' → LEVEL



Cont'd From Page 8

Lt

C

R-9

8+00

16.3
3.9
157

16.7
3.5

18.2
2.0
145

6+00

16.0
4.2
183

15.4
4.8

16.9
3.3
145

4+00

14.7
5.5
150

15.6
4.6

16.7
3.5
145

T.P. 3.93 20.16 $\bar{\Delta}$ 476 16.23

20.16 $\bar{\Delta}$

2+00

15.4
5.4
133

15.1
5.9

16.2
4.8
145

0+00

15.6
5.4
135

13.3
7.7
55

14.3
6.7

17.0
4.0
145

0-25 Begin Fill

15.6
5.4
135

13.3
7.7
55

14.3
6.7

17.0
4.0
145

BM 150 20.99 $\bar{\Delta}$

W 10,000 Mon.

19.49 USCGS DATUM

20.99 $\bar{\Delta}$

Cont'd From Page 9

Lt

Q

R 10

check

3.73

19.48 = 19.49

T.P.

2.94

23.21

2.69

20.27

15+00

End of Fill

18.0
5.0
145
Eggs
Fill

14+00

17.6

5.4
Eggs
Fill

18.00

5.0
145

12+00

17.5

5.3
45

18.1

4.9

18.8

4.2
145

10+00

17.2

5.8
75

17.1

5.9

18.2

4.8
145

T.P.

5.74

22.96 T

2.94

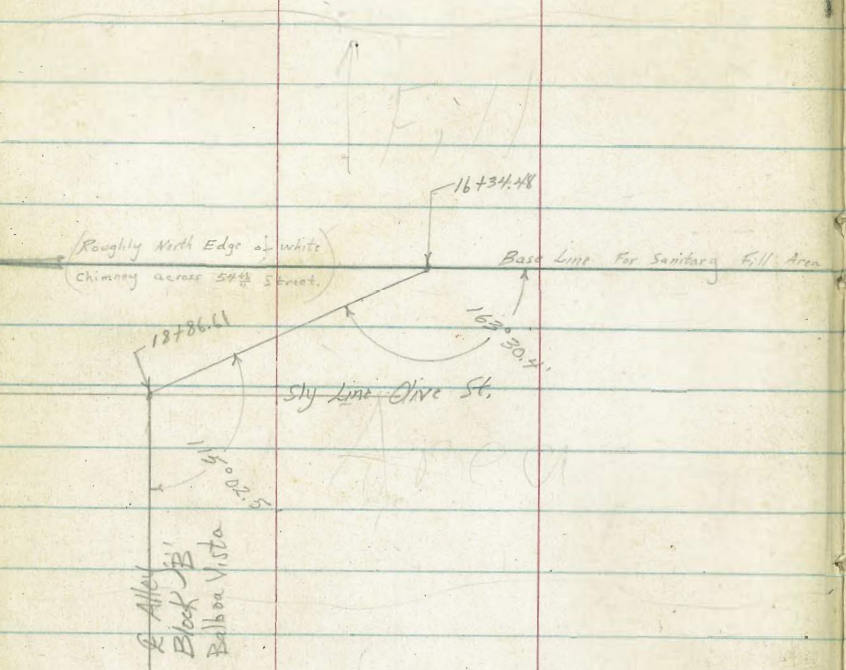
17.22

22.96 T

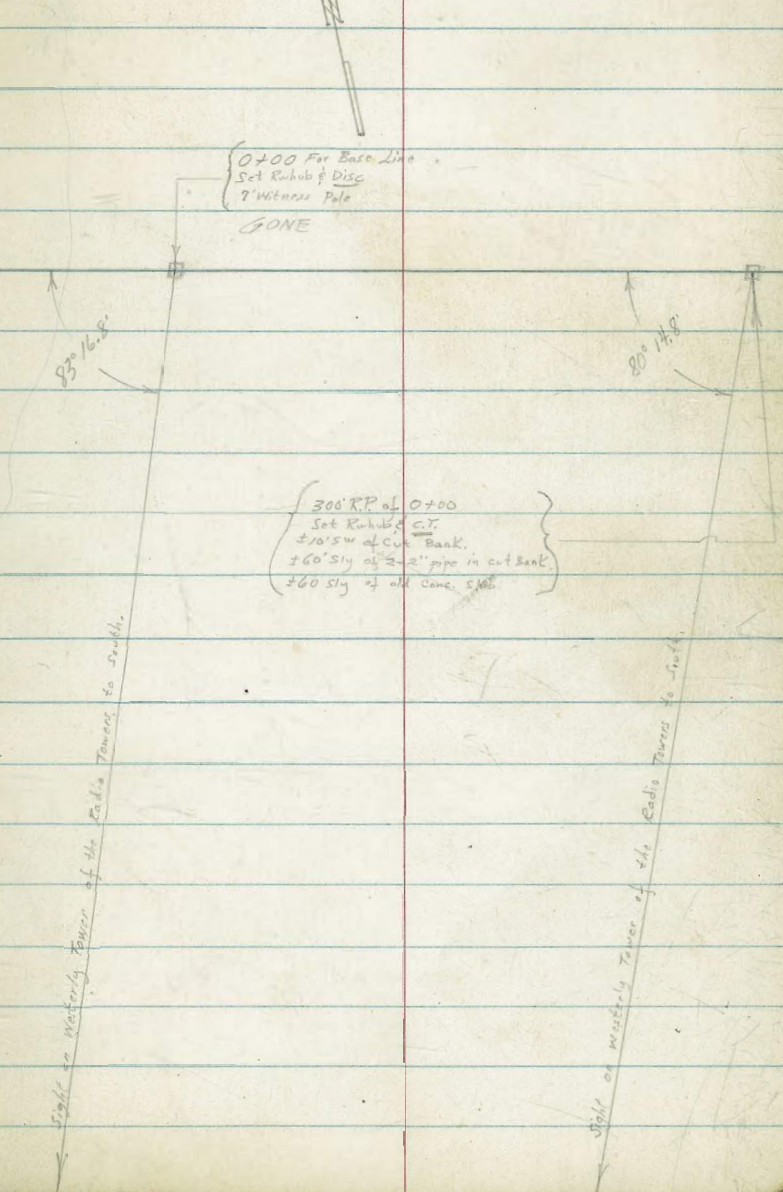
20.16 T

Roberts
 Cota
 Moore
 Rollen
 W/O #20988
 4-22-53

Chollas Sanitary Fill
 X-Section For Fill Estimates
 (Chollas Reservoir & Pipe Yard)
 FB2131 r3 34 1/2 #4



Mon & Tues busy days



Right on westerly tower of the Radio Tower to South.

Stake on westerly tower of the Radio Tower to South.

0+00 For Base Line
 Set Rehub & Disc
 7' Witness Pole
 GONE

300' RP of 0+00
 Set Rehub & Disc
 +/- 10' SW of cut Bank
 +/- 60' sly of 2' 2' pipe in cut Bank
 +/- 60' sly of all cone 5' dia.

0+50. Appears to be Edge of Fill

Reduced
Elevation
5-3-53410.8
80
45410.6
8.2409.7
9.1
45

T.B.M.	0.63	418.79 A	12.92	418.16	⇒ 0+00	on hub.	418.79 A
T.B.M.	4.06	431.08	4.06	427.02	⇒ 300' R.P.	of 0+00 on Hub	
T.P.	6.67	431.08	0.42	424.41			
T.P.	12.36	424.83	0.99	412.47			
T.P.	12.48	413.46	0.3	400.98			
T.P.	12.90	401.29.	0.24	388.39			
T.P.	12.58	388.63	0.26	376.05			
T.P.	12.54	376.31	0.28	368.77			
T.P.	12.15	364.05	0.42	351.70			
T.P.	11.94	352.32	0.12	340.38			
T.P.	11.87	340.50	0.51	328.63			
T.P.	11.43	329.14	0.29	317.71			
T.P.	12.46	318.00	0.51	305.54			
T.P.	12.95	306.05	0.91	293.10			
T.P.	4.85	274.01	0.57	259.16			
B.M.	6.38	289.73		283.35	NE 8P Redwood 554 th		

4100

T.P. 0.57 394.37A 12.05 393.80

3450

3100

2400

1450

T.P. 0.07 405.85A 13.01 405.78

1400

418.79A

409.9
+10 16.6 18.4 19
158 153 132 107

377.8
18.4 19

376.0
18.4 19

389.5
19

387.3
21

383.1
113 98

383.4
110 360

394.37A

411.9
+6.0 17.7 18.6 8.9
201 196 178 167

388.2
17.7 18.6

387.3
18.6 8.9

397.0
8.9

393.2
10.7

386.1
19.8 10.5

383.9
22.0 335

412.4
+6.5 18.5 14.0
240 235 215

392.4
18.5 14.0

391.9
14.0

404.2
17

394.0
11.9

390.4
15.5 110

385.6
20.3 300

Eye
Fill
Bottom
AT

413.9
+8.0 7.0 9.1 4.7 7.7 3.3 7.7
301 276 245 240 230 150

398.9
7.0 9.1

396.8
9.1 4.7

407.6
4.7 7.7

407.6
7.7 3.3

402.6
3.3 7.7

398.2
7.7

396.5
9.4 235

417.3
+11.4 12.4 +1.6 4.89 +5.7 1.4 4.6
398 393 305 300 180 102

409.3
12.4 +1.6

407.5
+1.6 4.89

414.8
4.89 +5.7

411.6
+5.7 1.4

404.5
1.4 4.6

406.3
4.6

399.9
6.0 8.1

392.8
135 210

412.2
6.0 135

407.7
11.1 75

406.1
12.7

399.8
19.0 195

418.79A

Cont'd From Page 13

16

17

18

14

8+00

360.7	346.7	347.0	363.1	364.1	364.6
10.0	243	240	7.9	6.9	6.4
100	98	80			140

FD
Ely
FH
and
Borrow
at

TR 0.57 370.96A 11.10 370.42

370.96A

7+00

366.9	368.4	369.5	368.1	366.9	364.5
14.6	13.1	12.0	13.4	19.6	17.0
77	30		163	210	255

6+00

375.3	376.5	374.2	369.1	369.2	382.5
6.2	3.0	7.3	12.1	12.3	11.0
77		175	195	265	270

TR 0.09 381.52A 12.94 381.43

381.52A

5+00

378.5	380.8	379.7	379.5	371.8	372.9	380.9
13.9	13.6	14.7	14.9	22.6	21.5	13.5
78		85	180	215	265	270

FD
Ely
FH
and
Borrow
at

4+50 ✓

394.4	373.3	372.5	382.1	384.3	383.5	381.4	383.3
0	21.1	21.9	11.3	20.1	10.9	13.0	11.1
138	131	107	90	45		130	275

394.37A

394.37A

11+00

End of Fill at Present

325.7
12.0
224

324.4
13.3

323.1
14.6
103

T.P.

1.03 337.66 12.54 336.63

10+05

335.2
14.0
201
322.0
272
198
321.9
273
174
332.4
16.9
171
336.4
12.8
85

337.8
11.4

339.8
9.4
119

9+85

342.9
6.3
193

322.9
26.3
188
323.4
25.8
165
333.6
15.6
160
331.5
12.7
152
342.7
6.5
127

343.9
5.3

346.3
2.9
119

T.P.

0.74 349.17A 12.53 348.43

349.17A

9+50

349.5
11.5
175

324.5
345
170
325.0
350
149
331.8
342
144
342.6
18.4
131
344.8
14.2
112

349.6
11.4

349.7
11.3
121

T.P.

0.90 360.96A 10.90 360.06

360.96A

8+65

354.0
17.0
130
351.2
31.8
125
339.0
32.0
110
352.7
18.3
90
360.2
10.8
65

360.1
10.9

358.4
12.6
128

370.96A

370.96A

check			331	283.34 = 283.35
-------	--	--	-----	-----------------

T.P.	3.73	296.65	11.27	282.92
------	------	--------	-------	--------

T.P.	1.98	294.19	12.65	292.21
------	------	--------	-------	--------

T.P.	3.47	304.86	12.73	301.39
------	------	--------	-------	--------

TBY	2.86	314.12	13.86	<u>311.26</u> ON CONC.
-----	------	--------	-------	------------------------

PIER FOR 30" WATER MAIN, EXPOSED WEST OF FILL. (PAINTED YELLOW.)

T.P.	0.54	325.12	13.09	324.59
------	------	--------	-------	--------

Roberts
Data
Moore
Moulton
WB, #20988
5-25-53

Arizona Canyon Sanitary Fill
X- Sect. #2

See Page 1

T.P. 1.61 247.58 π 8.60 245.97

4400

3435

2460

2435

2400

1400

TBM 0.92 254.57 π

253.65 π ⁰⁺⁰⁰ & Talamanta

Lt

R

Rt 17

246.6

245.2

249.6

255.0

8.0

9.4

5.0

10.4

31

78

108

245.2

248.1

250.9

254.1

9.4

6.5

3.7

0.5

38

75

78

244.4

247.1

251.5

253.0

10.2

7.5

3.1

1.6

40

68

82

244.6

246.0

248.0

252.7

10.0

8.6

6.6

1.7

39

59

73

245.6

247.2

252.5

9.0

7.4

2.1

39

63

247.4

250.5

253.0

7.2

4.1

1.6

40

39

254.57 π

6+50

244.3	242.8	239.9	238.6	233.5	239.4	238.4	238.9
4.9	10.4	2.5	3.9	8.7	8.0	4.0	3.5
98	77	65	20		30	42	70

T.P. 212 242.37A 733 240.25

242.37A

6+00

243.7	242.8	240.8	239.9	245.8	244.8	241.1	240.6
3.9	4.8	6.9	7.7	1.8	2.8	6.5	7.0
83	65	60	32	25		52	71

5+65

243.6	243.6	240.8	241.3	242.7
4.0	4.0	6.8	6.3	4.9
74	63	56		71

5+08

243.8	243.6	241.7	243.3	245.5	252.1	251.1
3.9	4.0	5.9	4.3	2.1	4.5	4.5
62	54	50		44	55	90

4+80

244.1	240.9	234.0	246.9	245.5	250.8	253.2
3.5	6.7	13.6	20.8	2.1	4.2	4.6
55	21		25	68	84	92

4+50

242.3	243.3	244.4	247.6	247.2	253.4	255.2
5.3	4.8	3.2	0	0.4	5.8	4.6
50		20	24	70	85	103

247.58A

247.58A

11+40 END OF CHANGE

244.0	225.0	221.4	228.5	235.8
+3.0	16.0	13.6	13.5	5.2
125	70		30	20

T.P. 2.20 241.04A 3.53 238.84

241.04A

10+45

240.0	238.3	238.3	231.6	234.6	238.3	241.9
24 41	41	10.8	78	41		0.5
125	115	98	85	38		115

10+00 L. Rt. Section on split.

239.5	239.4	236.4	235.6	229.4	229.0	233.9
29	20	60	68	130	134	8.5
128	112	102	45	20		115

8+50

242.2	241.7	238.9	236.4	232.4	230.8	234.2
0.2	0.7	3.5	6.0	10.0	11.6	8.2
118	86	69	22	15		78

7+70

244.9	247.4	240.8	239.2	233.5	234.6	230.8	231.6
+2.5	+5.0	1.6	3.2	8.9	7.8	11.6	10.8
97	68	60	23		45	59	75

6+90

244.6	243.5	240.8	239.9	234.5	234.3	226.7	228.0
+2.2	+1.1	1.6	2.5	7.9	8.1	15.7	14.4
91	64	58	18		41	58	71

242.37A

242.37A

Cont'd From Page 19

30

check

2.47 253.62 = 253.65

T.P.

8.72

256.09

4.10

247.37

T.P.

11.83

251.37

1.50

239.54

241.04 π

Roberts
Cota
Moore
Morales
W.O. # 20788
5-25-59

Mission Bay Sanitary Fill

X-Section #2

See page 8

14+05

Reduced
Inflation
6-3-53

12+85

T.P. 5.16 23.95 \bar{x} 2.61 18.79

12+00

10+00

8+00

T.P. 7.64 21.40 \bar{x} 3.98 19.76

B.M. 4.25 23.74 19.49 USCGS Datum
W 1904 Mon

22

2

R+ 21

17.9

6.1

4.7

5.11

18.00

6.0

112

14.3

4.7

23.95 \bar{x}

18.5

2.9

103

19.1

2.3

1

17.2

4.2

145

17.3

4.1

16.2

5.2

186

5

4.9

21.40 \bar{x}

Change

No

Cont'd. From Page 21

Lt

Σ

R 22

check

436 17.44 = 1949

T.P. 2.93 23.80 3.08 20.87

15 + 70

END OF FILL

23.957

5.4
145
Edge
Fill

23.957

Roberts
Cuba
Harris
Marquez
5-27-53
W.D. # 20188
4465

Chollas Sanitary Fill

X- Sect. #2

See Page 11

4425 ✓

Reduced
6-4-53

3780 ✓

3740

T.P.

0.44 374.53 T 12.46 37409

2750 ✓

T.P.

0.49 406.55 T 12.93 406.06

T.B.V.

0.83 418.99

418.16 5+00

LT

R

Rt - 23

382.9
11.6
380.8
137
60
380.4
141
175
372.2
223
212
372.6
21.9
259

384.8
9.7
382.1
12.4
75
383.4
11.1
275

389.5
7.0
382.8
11.7
160
383.4
11.1
335

395.5
71.0
384.6
9.9
150
384.7
2.8
180
370.6
3.9
285
382.0
7.5
305

394.53 T

395.6
10.6
394.8
11.8
70
396.1
10.5
120
393.5
13.1
250

406.55 T

Cont'd From Page 23

7+50

Entire the borrow on left - Two ledges.

35.22
5.0
230

24
347.7
325.0
325.0
336.0
342.7
346.6
349.1
9.5 32.2 32.2 21.2 44.5 10.6 8.1
185 170 149 144 130 109

24
347.9
342.6
9.3 14.6
108 132

T.P.

0.33

357.20 T 12.76 356.87

357.20 T

8+40

Same as before from here except for ledges.

364.1
368.8
361.2
363.5
354.3
363.0
2.5 0.9 2.4 6.1 15.3 6.6 7.9
172 155 142 127 109 55

8+00

372.4
372.0
364.6
364.8
358.6
364.0
364.5
354.1
5.0
7.6
7.1
7.5
2.8 2.4 5.0 4.8 11.0 5.6 5.1 15.5 14.6 13.0
161 146 133 118 103 140 167 215 265

T.P.

0.08

369.63 T 12.37 369.55

369.63 T

7+00

379.7
379.7
371.9
372.2
366.3
367.7
369.3
367.9
360.4
357.9
359.9
2.2 2.2 10.0 9.7 15.6 14.2 12.6 14.0 21.5 24.0 22.0
136 126 113 97 85 55 163 180 206 272

5+50

393.9
393.1
389.6
378.0
378.2
372.7
376.0
369.1
368.4
+120 +112 +77 3.9 3.7 4.2 5.9 12.8 13.5
140 128 120 75 100 170 205 262

T.P.

0.35

381.92 T 12.96 381.57

381.92 T

14
367.9

394.53 T

check

9.60 311.26 = 311.26

T.P.

0.53 320.86 12.31 320.33

11450

TOE OF FILL

324.6

8.0
180

321.9

10.7

326.5

6.1
90

11420

329.4

3.2
180

329.3

3.3

328.6

4.0
90

T.P.

0.18 332.64 ~~T~~ 12.94 332.46332.64 ~~T~~

10450

336.1

9.3
162

336.1

9.3

336.9

8.5
97

10400

ON LEFT DEEP PEBBLES BY UNCHANGED (NOT SHOWING IT)

341.8

3.6
133

342.9

2.5

341.7

3.7
105

T.P.

0.54 345.40 ~~T~~ 12.34 344.86345.40 ~~T~~357.20 ~~T~~

Roberts
Cota
Moore
Morales
9-3-53
W.O.#20788

X-Section Mission Bay Sanitary Fill

#3

Lt

Base
Line

Rt

26

T.P. 5.65 21.88 π 4.43 16.23

6+00

16.8

3.9

175

15.5

5.2

16.6

4.1

120

5+00

15.9

4.8

115

16.3

4.4

16.5

4.2

105

4+00

15.5

5.2

75

16.5

4.2

16.5

4.2

108

2+00

15.5

5.2

82

15.9

4.8

16.0

4.7

115

0+65 Begin of new top fill dirt.

14.8

5.9

80

15.2

5.5

15.9

4.8

105

More dirt has been placed on top of fill and will be shown.

BM

1.17

20.66 π

W 10,000 Map

1949

USCGS Datum

20.66 π

T.P. 461 23.96 $\bar{\Delta}$ 2.53 17.35

13+00

18.0	18.4	18.6	18.6
3.9	3.5	3.3	3.3
265	120		135

12+00

16.3	18.3	19.1	18.4	18.4
5.6	3.6	2.8	3.5	3.5
340	165		70	140

11+00

15.1	17.1	17.6	18.0	18.8
6.8	4.1	4.3	3.9	3.1
400	230		75	140

9+00

15.0	16.5	16.7	17.6	18.5
6.9	5.4	5.2	4.3	3.4
385	215		60	145

7+70

17.5	16.1	15.7	17.5	18.1
4.4	5.8	6.2	4.3	3.8
325	150		60	140

7+30

16.0	16.0	16.1	17.5
5.9	5.9	5.8	4.4
190	80		115

21.88 $\bar{\Delta}$

21.88 $\bar{\Delta}$

Contd From Page 27

lt

2000

rt

28

check 3.60 19.46 = 19.49

T.P. 2.13 23.06 303 20.93

16+05 Fill Ends at Levee

18.1
5.9
150

15+55 E hits edge of fill

18.2
5.8
150

14+00

17.5
6.5
175

18.9
5.1
150

17.8
6.2
150

23.96π

23.96π

Roberts
Cota
Moore
Morales
9-3-53
WA#20988

X-Section Arizona Canyon Sanitary Fill

#3

Lt

E

Rt

29

T.P. 113 266.00 \bar{X} 0.17 264.87

4+35

252.5
12.5
35
263.7
1.3
266.0
11.0
78
259.0
6.0
101
258.5
6.5
123
254.0
9.0
131
259.3
5.7
205
265.5
212

4+18

254.9
10.1
25
260.1
4.9
263.0
2.0
15
264.1
0.9
60
263.2
1.8
116
265.0
0
267

4+00

253.6
11.4
25
258.1
6.9
261.1
3.8
25
262.8
2.2
75
264.3
0.7
194

3+00

247.3
17.7
30
252.0
13.0
253.4
11.6
10
259.0
6.0
142

2+00

246.3
18.7
17
250.1
14.6
253.3
11.7
70

1+50

246.4
18.6
35
249.6
13.4
252.8
12.2
55

TBM

1137

265.04 \bar{X}

253.65

0.700

265.04 \bar{X}

8400

244.7	244.1	246.3	249.9	261.5	261.6
14.2	14.8	12.6	9.0	+2.6	+2.7
114		100	134	152	202

7400

246.5	245.5	249.4	258.7	261.8
12.4	13.4	9.5	0.2	+2.9
95		135	150	220

6400

246.8	248.4	250.1	253.6	260.9
12.1	10.5	8.8	5.3	+2.0
70		120	245	265

T.P.

0.43

258.91 ∇

752

258.48

258.91 ∇

5465

248.2	247.6	257.7	259.4	257.3	251.7	252.8	246.6	247.4	261.9
17.2	18.4	8.3	6.6	8.7	14.6	13.2	19.4	18.6	2.1
65	50	18		13	42	148	193	238	264

5430

249.3	249.7	259.3	260.5	259.9	251.4	252.8	243.7	246.5	246.5	248.8
16.7	16.3	6.7	5.5	6.1	14.6	13.2	22.3	19.5	19.5	2.2
55	48	10		47	75	132	150	175	230	256

5400

249.8	252.6	263.8	265.3	261.4	253.0	253.7	242.9	246.4	247.9
16.2	13.4	2.2	0.7	4.6	13.0	12.3	23.1	20.6	2.1
50	30		35	55	70	125	141	215	227

266.00 ∇

266.00 ∇

Chc H

2.76 253.68 = 253.65

T.P. 10.96 256.44 0.99 245.48

T.P. 8.68 246.47 0.96 237.79

11+65

232.0

6.8

91

13.5

73

227.0

11.8

228.7

10.1

57

237.7

1.1

80

11+40

232.0

6.8

91

233.2

5.6

227.7

1.1

88

9+73

235.6

3.2

103

235.1

3.7

232.5

1.0

141

253.8

+15.0

145

T.P. 3.98 238.75 X 12.97 234.87

238.75 X

9+55

240.5

7.3

114

241.2

6.6

242.6

5.2

136

252.8

+9.0

140

9+00

242.2

5.6

120

242.6

5.2

83

244.1

3.7

120

245.7

2.1

124

252.7

+4.9

146

252.7

149

175

262.6

+14.8

T.P. 1.65 247.84 X 12.72 246.19

247.84 X

258.91 X

Roberts

X-Section Charles Sanitary Fill

Lt

E

R

32

Cata
Moore
Morales
7-4-53
MIO #20988

#3

1725

418.1	410.7	409.8
6.6	18.0	12.9
455	450	365

416.5	418.7	418.2	416.9	417.4	421.3	399.8
8.2	6.0	6.5	2.8	7.3	22.4	24.9
350	210	140	100	65		200

T.P. 749 424.66A 12.56 417.17

424.66A

0785

417.6	413.3
12.1	16.4
485	430

413.1	412.3	417.4	418.5	418.3	416.2	410.4	406.0	404.7
16.6	12.4	12.3	11.2	11.4	13.5	19.3	23.7	25.0
400	390	300	150	40		75	100	173

0760

417.6	418.1	417.8	419.2	419.6	418.1	410.9	408.2	409.1
12.1	11.6	11.9	10.5	10.1	11.6	18.8	21.5	20.6
470	435	300	150		55	70	150	160

0700 Hub Gone

418.6	419.3	420.3	419.3	418.1	415.0	412.2	416.5
11.1	10.4	9.4	10.4	11.6	4.7	17.5	13.2
425	300	150		62	80	115	135

0-40

419.9	421.5	420.7	420.7
9.2	8.2	9.4	
300	140		120

TBM 271 429.73A 427.02

300' RP of 0760

429.73A

T.P. 0.39 387.86 Δ 12.79 387.47

4+75

417.8	410.7	409.5	398.4	385.6	382.3	380.9	384.1	389.8
+17.5	+10.4	+8.7	1.9	4.7	18.0	19.4	11.2	10.5
288	280	190	145	120		202	230	365

3+80

408.8	408.5	408.26	393.8	391.6	388.9	385.9	384.1	390.6	390.1
+18.5	+8.2	+8.0	6.5	5.7	11.4	14.4	16.2	9.7	10.2
336	328	205	135	65		65	165	210	340

3+50

420.3	408.7	408.7	419.3	394.4	395.3	389.0	384.8	391.3	390.7
+20.0	+8.4	+8.4	+19.0	5.9	5.0	11.3	15.5	9.0	9.6
348	340	280	220	130		60	152	195	330

T.P. 1.12 400.26 Δ 12.69 399.14

400.26 Δ

T.P. 0.18 411.83 13.01 411.65

2+90

417.9	407.9	409.0	419.1	420.3	395.4	393.8	393.1	387.5	392.2	392.4
6.8	16.8	15.7	5.6	4.4	29.3	30.9	31.6	37.2	31.5	32.3
368	360	290	245	210	110		70	190	165	300

2+50

418.2	407.3	408.0	417.5	419.2	397.7	396.0	394.3	385.5	393.9
6.5	17.4	16.7	7.2	5.5	27.0	28.7	30.4	29.7	30.8
392	375	303	272	182	95		100	125	258

424.66 Δ

424.66 Δ

11420

Edge Fill

329.0	329.4	330.1	329.4	328.5
9.9	9.5	8.8	9.5	10.4
280	180	120		90

T.P. 0.96 338.85 ∇ 12.78 337.89338.85 ∇ ✓

T.P. 0.22 350.67 12.61 350.45

T.P. 0.33 363.06 12.99 362.73

UNCHANGED

only borrow pit on left filled.

8460

364.5	359.5	358.2	355.7	354.9	360.2	359.3	359.1
11.2	16.2	17.5	20.0	15.8	15.5	16.4	16.6
184	180	136	128	40		65	130

7450

377.7	370.8	370.0	363.1	365.9	367.1
7.0	4.9	5.7	12.6	9.8	8.6
157	150	115	97		148

T.P. 0.75 375.72 ∇ 12.89 374.97375.72 ∇ ✓

6400

384.9	382.9	385.4	375.7	376.4	375.6	374.3
7.0	0	2.5	12.2	11.3	12.3	13.6
150	145	98	80		80	178

5450

399.1	392.1	397.5	378.2	378.1	377.8	376.4
11.2	7.2	6.4	9.7	9.8	10.1	11.5
159	155	110	80		95	180

Borrow
Pit
unchanged387.86 ∇ 387.86 ∇

Cont'd From Page 34

26

£

35

311.26

check

14.91 311.07 = 311.26

T.P.

0.18 325.98 13.05 325.80

338.85

Roberto
Cota
Moore
Morales
10-5-53
WGT-20988

X-Section Arizona Cancer Sanitary Fill

#4

LT

R

R 36

T.P. 1.94 267.15 π 1.25 265.21

4+35

253.0	262.9	264.2	265.8	265.8	266.0	266.3	266.8	266.5
13.5	3.6	2.3	0.7	0.7	5.5	7.2	1.7	0.9
34	5		60	91	105	210	220	275

4+20

Reduced level
10-9-53

251.6	251.9	260.5	263.1	264.6	264.9	265.7	266.2
14.9	9.6	6.0	3.4	1.9	1.6	0.8	0.3
36	17		15	97	205	225	250

3+70

250.1	253.6	258.5	260.1	262.5
16.4	12.9	8.0	6.4	4.0
30		15	80	180

T.P. 12.08 266.46 π 4.93 254.38

266.46 π

3+00

247.5	248.4	252.2	253.6	255.3	257.2	257.4
11.8	10.9	7.1	5.7	4.0	2.1	1.9
31	20		9	48	100	130

2+00

245.7	246.0	249.4	250.2	251.6	253.2
13.6	13.3	9.9	9.1	7.7	6.1
41	13	9		35	80

TBM 5.66 259.31 π 259.65

2+00

edge
creek

259.31 π

8+49

243.5	242.9	243.5	244.3	246.3	242.4	243.2	262.9	262.5	264.0
11.4	12.0	11.4	10.6	8.6	12.5	11.7	+8.0	+7.6	+9.1
121	75		70	109	113	135	147	160	260
								224	

7+00

245.6	254.6	245.3	246.5	247.9	242.2	244.8	256.9	256.3	261.2	263.4
9.3	10.3	9.6	8.4	7.0	12.7	13.1	+2.0	+4	+7.3	+8.5
99	50		42	110	113	133	152	216	246	276

T.P.

0.90 254.89 \uparrow 13.16 253.99254.89 \uparrow

6+40

244.2	244.2	241.5	262.6	261.8	242.5	242.4	253.0	253.1	252.5	261.5	264.4
23.0	23.0	5.7	4.6	5.4	24.7	24.8	14.2	14.1	9.7	5.7	2.8
90	77	30		59	105	128	158	210	246	260	291

6+00

247.6	249.2	264.1	263.8	264.0	246.6	251.2	246.7	249.8	261.3	264.5
19.6	18.0	3.1	3.4	3.2	20.7	16.0	20.5	17.4	5.9	2.7
78	57	28		64	108	164	190	234	263	301

5+45

248.9	250.0	262.1	264.7	266.2	247.4	252.1	261.6	243.6	244.1	262.2	265.2
18.3	17.2	4.1	2.5	1.0	2.8	15.1	15.6	23.1	23.1	4.0	2.0
62	43	17		45	84	105	140	156	230	270	303

4+85

251.4	239.6	263.0	264.3	265.3	265.9	254.0	254.0	244.0	242.4	264.5	266.1
15.8	12.6	4.2	2.9	1.9	1.3	13.2	13.2	23.2	24.8	2.7	1.1
48	22	8		40	80	103	120	140	206	238	270

267.15 \uparrow

267.15 \uparrow

10+85

243.9	236.4	232.8	233.4	232.2	243.6	237.6	238.4	244.7	246.9
2.5	10.0	13.6	13.0	11.2	2.8	8.8	8.0	11.7	12.1
127	117	70		56	82	97	108	110	124

+0.5
176

10+70

243.8	235.4	233.0	232.7	242.5	243.6
2.6	11.0	13.4	13.7	2.9	2.8
123	113	68		54	84

10+51

243.6	236.3	233.3	240.7	242.8	244.3
2.8	10.1	13.1	3.7	3.6	2.1
116	99	51		52	95

This too will cross

10+31

Crosses other section so we stop wts right.

240.4	240.4	241.6	241.9	244.4
6.0	6.0	4.8	4.5	2.0
108	47		45	97

10+00 L

Sect. Rt. L. to back tangent

241.4	240.9	241.5	242.0	244.4	238.5	228.1	227.6	248.7	247.4	247.4
5.0	5.5	4.9	4.4	2.0	7.7	18.3	18.8	12.3	11.0	11.0
113	53		16	108	123	125	144	154	174	203

T.P.

3.26 246.43 T 1172 243.17

246.43 T

9+00

244.8	244.6	242.4	244.0	244.8	242.5	250.8	259.6	262.6	263.4
13.1	13.3	12.5	13.9	10.1	4.4	4.1	14.8	17.7	18.5
119	62		80	125	134	152	161	182	215

254.89 T

Contd From Page 38

L

E

Ri

39

Set TBM

5.42 249.77 RPH 16838 of 10100 L

T.P.

8.68 254.19 0.92 245.51

10795

2440	2330	2337	2341	2391	2434
2.4	13.4	12.7	10.3	7.3	3.0
128	73		62	118	154

246.43A

246.43A

Roberts

Cota

Moore

Morales

10-6-53 Wb. 20988

Ground Elevations on N4750 Line
At Mission Bay Sanitary Fill

40

ELEVATIONS

N4750
W 8250

11.7

N4750
W 8500

10.5

N4750
W 8750

10.4

N4750
W 9000

10.1

N4750
W 9250

4.8

N4750
W 9500

7.6

N4750
W 9750

8.4

N4750
W 10,000

9.2

B.M.

19.49 USCOS Datum

X-SEC. MISSION BAY SANITARY
FILL (#4)

10-7-53
W.O.# 20008

41

LT.

\$

RT.

11+00

Redwood Hill
10-9-53

17.6	16.1	16.8	17.6	17.5	18.8
5.8	7.3	6.6	5.8	5.9	4.6
425	360	155		90	145

10+00

16.6	17.0	16.4	18.1	17.4	18.5
6.8	6.4	7.0	5.3	6.0	4.9
455	300	200		80	145

T.P.

559 23.44 H.L. 3.32 17.85

23.44 H.L.

8+50

15.5	16.3	16.0	16.5	17.8	18.5
5.7	4.9	5.2	4.7	3.4	2.7
530	300	175		85	145

7+70

14.6	17.1	16.6	15.7	17.7	18.3
6.6	4.1	4.6	5.5	3.5	2.9
525	300	192		80	145

NO CHANGE FROM 0+00 TO 7+30

21.17 H.L.

T.P.

1.57 21.17 H.L. 1.01 19.60

W. 10,000 MON.

B.M.

1.15 20.64

19.49 U.S.C.B.S. DATUM

2-SEC. MISSION BAY SANITARY FILL
 (#4) CONT'D.

42

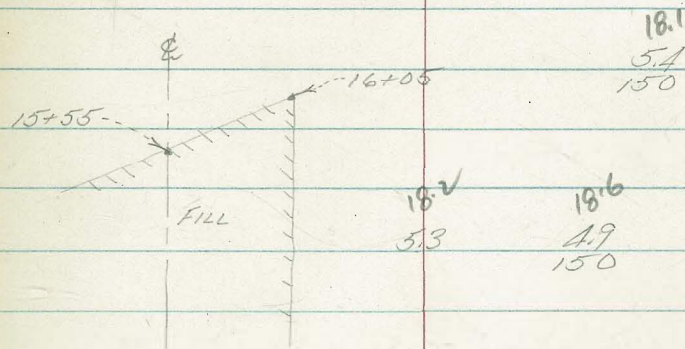
LT.

±

RT.

3.19 20.32 = 20.33 SP, 1KE INI POLE +140' RT, 14+18 (SET 10-7-53)

16+05 150' RT - END FILL ON RT.



15+55

14+00

13+00

12+00

T.P.

3.19 23.51 H.I. 312 20.32

23.51 H.I.

Roberts
Cota
Moore
Morales
10-8-53

X-Section Cholles Sanitary Fill

4

NO# 20988

Lt

E

Rt

43

0-30 Borrow Pit on Right

421.3	421.8	419.7	419.4
1.0	3.5	1.6	5.9
	27	99	116

0-40

Reduced
10-55

421.4	420.8
3.9	4.5
NG	95
	NG

T.P. 3.92 425.30 X 7.52 421.38

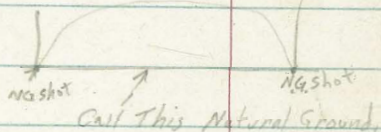
425.30 X

0-75

(Unless sections show, fill unchanged to best of our belief and knowledge.)

421.7	421.6	421.5	421.7	421.2
7.0	2.1	1.2	2.0	5.5
NG	10	32	78	86
				NG

-1-00



423.3	423.6	420.9	429.7	423.7
5.4	5.7	+2.2	+1.0	5.0
NG	15	30	57	72
	NG			NG

-1-20 To show dirt stack pile on right.

423.5	423.9
5.2	4.8
Natural G.P.	80
	NG

TBM

1.68 428.70 X

427.02

300' P of 0-400

428.70 X

change

NO

3+65

418.4	407.9	408.1	416.1	395.8	← No change →
5.8	16.3	16.1	8.1	28.4	
331	321	227	212	151	

2+25

(Another 100 cu. yds. dirt stockpile on Sls and lift not shown in sections.)

419.0

406.5	407.9	416.9	419.3	417.6	420.1	396.3	← No change →
17.7	16.3	7.3	4.9	6.6	4.1	27.9	
411	323	308	270	200	118		

1+45

417.2	402.2	405.8	414.2	417.8	420.7	418.9	400.2	397.8
7.0	18.0	18.4	8.0	6.4	3.5	5.3	24.0	26.4
475	460	380	360	150	62		95	210

T.P.

117 424.24 ⌈ 2.23 423.07

(Work done only on extending the one lift and in two borrow pits.)

424.24 ⌈

1+10

(Approx. 200 cu. yds. dirt stockpile on top at edge of lift not shown in X-sects.)

416.6	408.0	407.2	417.2	418.1	419.4	420.0	420.4	407.3	407.7
8.7	16.5	18.1	8.1	7.2	5.9	5.3	4.9	22.0	21.6
503	473	406	391	300	150		71	97	190

0+50

Begin borrow pit on left extremities hill

416.4	417.7	418.5	419.3	418.6	419.4	407.0	405.0	405.6
8.9	7.6	6.8	6.0	6.7	5.4	18.3	20.3	19.7
528	436	300	150		65	87	161	165

0+00

← No change →

420.5	419.2	412.0	408.8	415.5
4.8	6.1	18.3	16.5	9.8
41	50	124	141	

425.38 ⌈

425.30 ⌈

take it away!



check

454 427.01 = 427.02

T.P.

8.48 431.55 117 423.07

No change

6+00

4091	40412	4031
15.1	20.0	21.0
226	215	163

← No Change →

5+00

4165	4055	40412
7.7	18.7	20.0
258	250	155

← No Change →

4+00

4188	4078	4092	3935-
5.4	16.4	15.0	30.7
313	305	208	174

← No Change →

42424A

42424A

Roberts
Cota
Moore
Morris
3-5-54

X-Section Arizona Canyon Sanitary Fill #5

NO#20988

Lt

R

Rt

46

5+50

241.7 261.7 269.3 265.2 265.5 265.9 266.5 267.0 266.0 266.9 268.7
28.3 8.3 5.7 4.8 4.5 4.1 3.5 3.0 2.0 3.1 1.3
76 43 28 50 100 150 200 250 300 355
Bottom Ditch

5+00

242.4 263.5 269.9 265.5 266.2 266.8 267.1 267.4 266.0 268.0
27.6 6.5 5.7 4.5 3.8 3.2 2.9 2.6 4.0 2.0
68 32 50 100 150 200 250 274 333
Bottom Ditch

Has shrinkage or settlement of fill been thought of in connection with the yardage? It must be appreciated.

4+50

242.6 263.8 269.3 265.1 265.9 266.4 266.9 266.3 267.4
27.4 6.2 5.7 4.9 4.1 3.6 3.1 3.7 2.6
57 20 50 100 150 200 250 280
Bottom Ditch

T.P.

6.49

269.95 \uparrow 2.29 263.46

269.95 \uparrow

4+00

241.3 259.3 258.3 260.9 261.9 263.3 264.7 265.8 266.8
24.5 11.5 7.5 4.9 3.9 2.5 1.1 0 +1.0
53 26 25 50 100 150 200 265
Bottom Ditch

3+50

242.5 246.7 252.9 255.1 257.8 259.5 261.0 262.4 263.8 264.8 266.8
23.5 17.1 12.9 10.7 8.0 6.3 4.8 3.4 2.0 1.0 +1.0
48 40 20 50 100 150 173 187 221 270
Bottom Ditch

TBM

12.10

265.75 \uparrow

253.65 ⁰⁺⁰ *Estimada Dr.*

265.75 \uparrow

T.P. - 0.89 257.85 A 13.01 256.96

7+50

21.0 20.0 1.0 0.1 +40
 228 271 293 320 329
 2490 2500 2690 2690 310.0 47
 28.5 20.2 9.1 84 10.8 15.6 16.9 19.8 17.5 240 210 16.0
 118 101 62 35 27 48 76 92 144 174 209 219
 292 259.2 254A 254.0 250.2 250.5 246.0 249.0 251.0
 Bottom Ditch

2687 2699 273.0
 13 0.1 +3.0
 296 327 335

7+00

284 17.2 7.0 53 7.8 8.5 14.1 12.0 11.3 12.9 8.7 10.2 15.6 15.6
 107 91 55 18 50 93 117 150 188 233 263 264.284
 241.6 252.8 263.0 264.7 262.2 261.5 259.0 258.0 258.7 257.1 250.3 25.0
 Bottom Ditch

T.P. 6.58 269.97 A 6.56 263.39

269.97 A

6+75

290 17.3 6.3 6.7 7.3 8.1 8.8 8.0 7.4 5.6 5.4 1.9 0.1
 102 84 34 50 100 120 150 200 246 270 275 337
 241.0 252.7 263.7 263.3 262.7 261.9 261.2 262.0 262.6 264.4 264.6 268.1 269.9
 Bottom Ditch

6+50

28.8 11.5 5.2 6.3 6.3 6.3 3.5 3.5 3.6 4.6 3.5 2.1 0.4
 97 68 49 50 80 87 150 200 247 293 297 340
 241.2 258.5 264.8 263.7 263.7 263.1 266.5 266.5 266.4 265.9 265.9 261.9 260.9
 Bottom Ditch

6+00

28.4 9.5 5.1 5.3 4.5 3.6 3.1 3.3 4.5 3.5 2.6 0.5
 88 57 40 50 100 150 200 257 310 303 355
 241.6 260.5 264.9 264.7 265.5 266.4 266.9 266.7 265.5 266.0 269.4 269.5
 Bottom Ditch

269.95 A

269.95 A

T.P. 11.74 252.95 π 6.00 241.21 ¹⁰⁰⁰ sub

262.8 269.6 270.8 273.0
+18.6 +22.4 +23.6 +25.8
258 287 355 367

8+50

240.7 242.2 243.2 242.2 242.6 243.4 245.8 240.8 246.3 246.1 247.0
6.5 0 4.0 5.0 7.6 3.8 1.4 6.6 0.9 1.1 0.2
130 108 107 50 76 50 111 120 135 183 231
Bottom Ditch

246.5 269.6 270.2 273.1
0.7 +22.4 +23.0 +25.9
243 280 335 345

8+25

240.4
5.8
129
Bottom
Ditch

248.2 245.2 252.6 252.8 244.3 242.7 243.6 245.5 246.3 240.3 240.5 243.7 243.2 244.8
+1.0 2.0 +5.4 +8.6 2.9 #5 2.6 1.7 0.9 6.7 6.7 3.5 4.0 0.4
109 108 74 49 23 50 88 110 115 122 124 164 193

T.P. 1.44 247.21 π 12.08 245.77

247.21 π

269.4 270.3 273.4
+11.5 +12.4 +15.5
270 317 330

7+75

240.9 248.9 251.7 259.8 260.6 257.6 259.7 257.7 246.5 246.1 243.5 244.2 249.3 247.3 248.3
170 90 62 +1.9 +2.7 0.3 3.2 5.2 11.4 11.8 14.4 13.7 8.6 10.6 7.6
121 106 96 70 45 31 32 48 105 170 204 214 220 265
Bottom Ditch

257.85 π

257.85 π

9+80

240.3	242.1	241.9	240.5	241.1	241.3	243.8	242.3	251.5	251.0	258.0	267.5	267.0	267.9	268.0
12.7	10.9	11.6	12.5	11.9	11.7	9.2	10.7	1.5	2.0	+2.0	+14.5	+14.0	+14.9	+15.0
121	116	160	50	50	100	146	149	175	237	279	324	406	500	550
Bottom Ditch														

9+50

240.3	241.9	241.0	241.1	241.9	242.0	243.3	244.2	251.9	251.2	257.0	261.3	261.1	261.8	265.9	268.4
12.7	11.1	12.0	11.9	11.1	11.0	9.7	8.9	1.1	1.8	+4.0	+11.7	+13.1	+14.8	+12.9	+15.4
124	117	100	50	50	100	138	143	186	203	224	258	318	343	374	512
Bottom Ditch															

9+00

240.7	243.1	241.8	241.6	242.2	243.2	244.2	245.0	247.9	246.5	241.2	256.1	261.9	263.9	264.6	269.5	269.6
12.3	9.9	11.2	11.4	10.8	9.8	8.8	8.0	5.1	6.5	5.8	+3.1	+8.9	+10.9	+11.6	+16.5	+16.6
128	120	100	50	50	100	122	142	175	206	218	232	267	299	307	380	
Bottom Ditch																

252.95 ∇

252.95 ∇

11740

239.8
6.7
153
Bottom
Ditch

243.3	243.7	240.9	232.4	231.5	233.0	235.7	237.5	241.7	237.0	241.1	240.0
3.2	2.8	5.6	14.1	15.0	13.5	10.8	9.0	9.8	9.5	10.6	17.5
44	135	119	89	50		50	100	150	182	219	265

11700

239.9	243.7	243.9	233.4	232.7	263.1	235.0	238.2	238.4	242.5	242.7	244.1
6.6	2.8	2.6	13.1	13.8	13.4	11.5	8.3	8.1	4.0	3.8	2.4
143	135	126	104	50		50	108	122	129	173	210

9

10+70

240.0	243.5	243.8	245.7	239.1	235.0	233.2	241.7	243.5	237.9	248.0
6.5	3.0	2.7	10.8	12.4	11.5	13.3	4.8	3.0	8.6	11.5
133	127	120	103	80	65		39	90	135	140

10+50

240.1	244.2	240.2	237.0	236.5	240.5	242.7	244.1
6.4	2.3	6.3	7.5	10.0	6.0	3.8	2.4
127	118	110	80	40		50	100

9

TR

530

246.51 π

11.74

241.21

246.51 π

263.7	267.1	267.3	267.1	267.1
+10.7	+14.4	+14.1	+14.3	+14.4
294	337	400	500	550

10+00

\angle Right (Right angles to back tangent.)

239.6	241.6	240.9	240.9	241.2	241.6	243.9	239.3	248.2	250.8	259.3
13.4	11.4	12.1	12.1	11.8	11.4	9.1	13.7	4.8	2.2	+2.3
116	111	100	50		50	100	145	151	216	258

252.95 π

252.95 π

T.P. 5.25 232.73 π 6.35 227.48

13+00

Within 10' of \rightarrow
End of Ditch built
to Plans.

238.5	242.5	241.3	223.7	225.5	228.0	229.2
+4.7	+8.7	+7.5	10.1	8.3	5.8	4.6
167	157	126	99	50		50

Bottom Ditch

Fast filled Gully.

12+50

239.3	242.1	241.6	229.0	226.1	227.8	259.6	259.8	269.3	266.4
+5.5	+8.3	+7.8	8.9	7.7	6.0	+20.8	+26.0	+30.5	+32.6
172	162	120	92	50	6.0	190	240	300	325

Bottom Ditch

Fast filled Gully.

266.3	266.9
+32.5	+33.1
400	500

12+00

239.7	242.8	241.7	234.8	225.2	227.7	230.9	237.0	246.4	241.3	243.5	264.4
+5.9	+9.0	+7.9	+1.0	8.6	6.1	+2.9	+4.0	+12.6	+7.5	+28.7	+31.6
170	162	119	108	71	6.1	53	73	164	191	267	300

Bottom Ditch

T.P. 0.24 233.83 π 12.92 233.59

233.83 π

11+65

240.4	242.8	243.5	235.2	229.0	225.7	227.1	229.0	236.9	238.1	238.0	256.6	265.5	266.5
6.1	3.7	3.0	11.3	17.5	20.8	19.4	17.5	9.6	8.4	7.7	+10.1	+19.0	+20.0
158	150	124	95	82	57		40	80	132	185	240	288	400

Bottom Ditch

246.51 π

246.51 π

17+20

232.1	25.0	25.3	22.6	22.9	26.4	217.2	218.6	212.0	212.0	226.9
+76	9.5	9.2	2.9	36	81	73	59	12.5	12.5	+2.4
102	97	71	79	63	43		64	75	90	77
N.G.					E					N.G.

16+90

207.6	226.0	25.2	220.2	220.1	25.4	217.3	220.4	221.3	229.4
+8.1	8.5	9.3	4.3	4.4	9.1	7.1	4.1	3.2	+4.9
113	110	104	74	85	65		50	91	93
N.G.					E				N.G.

16+25

E. = Edge of additional fill.

239.1	216.4	216.1	220.3	219.8	25.5	217.5	219.2	219.1
+8.6	8.1	8.4	4.2	4.7	9.0	7.0	5.3	5.1
125	121	113	104	89	67		50	81
N.G.					E			

T.P.

4.50 224.48 ~~X~~ 12.75 219.78


224.48 ~~X~~

15+85

Beginning of new fill on left to reinforce temporary ditch.

232.5	216.4	216.5	220.3	220.6	221.4	224.0	225.3	225.5
0.2	16.3	16.2	12.4	12.1	11.3	8.7	7.4	7.2
124	121	112	105	100	50		50	77
N.G.								

15+00

N.G. = Natural Ground
 check contour

231.7	217.5	217.5	221.9	223.7	225.5	227.1	229.2
1.0	15.2	15.2	10.8	9.5	7.2	5.6	3.5
123	112	109	90	50		30	72
N.G.							

14+00

{ A temporary ditch has been dug from here on, approx. E of Gully on left. Should give a check of your contour map. Fill has not been changed in here - this should show shrinkage of temporary Sanitary Fill dump.

226.3	219.8	221.3	219.3	220.1	223.1	224.5	226.8	229.5
6.4	12.7	11.4	13.4	12.0	9.6	8.2	5.9	3.2
201	173	178	101	100	90	50		57
N.G.								

232.73 ~~X~~

232.73 ~~X~~

22+00

213.1 207.3 217.0 206.6 198.9 200.5 203.0 204.1 214.1
 1.0 6.8 2.1 7.5 15.2 13.6 11.1 10.0 0.0
 120 119 105 75 50 50 77 87
 N.G. E. N.G.

21+00

217.1 210.1 212.6 214.1 208.6 201.5 207.3 205.1 207.3 222.6
 +3.0 4.0 +1.5 0 5.5 12.6 10.8 9.0 6.8 +8.5
 108 105 92 74 53 35 50 87 91
 N.G. E. N.G.

T.P.

196 214.07π 12.37 212.11

214.07π

20+00

202.1 203.5 203.6 218.5 205.7 203.3 203.4 206.4 210.9 212.0 224.8
 2.3 11.0 10.9 6.0 8.8 21.2 21.1 18.1 13.6 12.5 +0.3
 94 72 96 78 62 26 67 74 98 102
 N.G. E. N.G.

18+90

223.8 214.4 214.5 221.0 219.8 207.4 205.8 206.5 214.1 214.2 220.7 221.7 228.9
 0.7 10.1 10.0 3.5 4.7 17.1 18.7 18.2 10.4 10.3 3.8 2.8 +4.4
 87 85 74 61 36 64 77 74 99 112 113
 N.G. E. N.G.

18+60

226.8 214.6 219.5 221.1 221.5 212.8 202.1 215.9 221.5
 +2.3 9.9 10.0 3.4 3.0 11.7 11.4 8.6 3.0
 82 80 71 57 39 E. 50 98 103
 N.G. N.G.

18+30

228.2 214.5 214.5 222.8 221.5 213.8 213.8 215.2 216.4 209.7 222.0
 +3.7 10.0 10.2 1.7 3.0 10.7 10.7 9.3 14.1 14.8 1.5
 94 78 73 57 35 10 76 83 103 105
 N.G. E. N.G.

224.48π

224.48π

one down and two to go!

check

950 167.07 = 167.25

MH has been tampered but good enough check for Sanitary Fill.

T.P.

101 176.57 13.32 175.56

T.P.

0.47 189.89 13.35 188.41

24+00

194.8	197.4	194.6	196.2	200.0	199.1	204.1
7.0	9.4	7.5	5.6	1.8	2.7	+2.3
75	73		56	61	86	87
N.G.						N.G.

23+80

End of additional fill.

205.9

199.2	199.2	200.8	201.4	192.7	194.7	195.2	198.0	200.6	199.8	204.6	
14.1	26	26	+1.0	0.4	9.1	7.1	6.6	3.8	12	2.0	+2.8
115	114	112	108	82	63	31		56	61	86	87
N.G.					E.						N.G.

T.P.

0.42 201.76 ∇ 12.73 201.34201.76 ∇

23+00

Just beyond gully on right (contour check)

208.0	201.0	200.5	206.4	195.4	198.9	201.2	202.8	204.1
6.1	13.1	13.6	7.7	18.7	15.7	12.9	11.3	8.0
126	124	121	106	67		50	91	93
N.G.				E.				N.G.

214.07 ∇ 214.07 ∇

Roberts X- Sect. Chollas Sanitary Fill
 Moore # 5
 Morales
 3-10-54
 WO # 20988

Lt

R

Rt

55

By now you know NG = Natural Ground.

1+55

Average

419.4 417.0 415.8 394.0
 5.1 7.5 8.7 30.5
 100 205 239
 NG

1+25

418.0 407.3 403.7 417.0 418.3 417.8 420.1 420.2 418.5 415.9 397.8
 6.5 17.2 20.8 7.5 6.2 5.7 4.4 4.3 6.0 8.6 26.7
 488 468 410 378 300 200 100 100 195 233
 NG NG

0+50

Begin of borrow pit on left

417.8 418.2 418.0 418.1 419.3 419.7 420.5 420.4 419.9 419.1 404.3
 6.7 6.3 6.5 5.8 5.2 4.8 4.0 4.1 4.6 5.4 20.2
 525 445 400 300 200 100 50 100 162 185
 NG NG

T.P.

3.85 424.49 T 7.78 420.64

424.49 T

0+00

Top has been graded.

420.0 420.1 420.0 420.5 420.4 420.3 420.8 420.7 420.9 420.7 419.7 419.7
 8.5 8.4 8.4 7.9 8.0 8.1 7.6 7.7 7.5 7.7 8.7 13.7
 400 350 300 250 200 150 100 50 50 100 140 150

-1-00

423.6 423.0 422.7 423.0 422.0
 4.8 5.4 5.7 5.4 6.4
 100 50 60 120

TBM

1.40 428.42 T 427.02

428.42 T

TP 0.08 409.18 π 12.79 409.10

2+45
420.5 400.4 399.8
1.4 21.5 22.1
408 381 321
NG

417.9 419.0 418.7 418.9 419.5 417.4 413.2 395.6 392.9 398.0 379.6
40. 2.9 3.2 2.0 2.4 4.5 8.7 26.3 28.0 23.9 42.3
290 200 105 100 48 43 196 245 253 284
NG

2+15 to show stock pile

Ave

417.5

4.4

Ave

2+10

419.9 410.9 400.7
2.0 21.0 21.2
438 411 347
NG

415.9 418.5 418.3 419.6 419.2 420.5 419.4 417.4 413.9 410.9 405.2 395.9 392.6 385.5
60 3.4 3.6 2.3 2.7 1.4 2.5 4.5 8.0 11.0 16.7 26.0 26.3 22.0 36.4
320 300 250 150 33 47 10 36 76 180 225 245 250
NG

TP 2.04 421.89 π 9.64 419.85 2460

421.89 π

1+83

Ave

420.1

4.4

Ave

Stockpile from ♀ to left.

1+80

Ave

418.8

5.7

Ave

424.49 π

424.49 π

T.P. 0.38 390.44 T 7.33

5+50

390.06	399.4	398.7	388.9	387.1	378.9	378.1	390.6	389.8	375.2	368.4	370.4	384.2	386.1	397.1
+17.0	+2.0	+0.8	8.5	9.7	18.5	19.3	6.8	7.6	22.2	29.0	27.0	13.2	12.3	0.3
255	236	198	170	97	82	69	54		178	216	264	278	312	327

415.2	399.4	399.2	390.0	390.7	381.8	381.5	372.1	391.5	390.7	297.2	381.4	385.2	385.8	391.6
+17.8	+2.0	+1.8	6.6	7.2	15.6	15.9	5.3	5.9	7.3	20.2	16.0	12.2	11.6	+0.2
255	240	207	191	105	89	76	60		75	158	275	287	310	330
NG														

5+10

4+70

417.4	400.4	398.6	397.7	392.0	393.4	384.7	385.4	393.4	391.8	391.0	388.9	382.4	382.4	396.6	397.7
+20.0	+3.0	+1.2	3.7	5.4	4.0	12.7	12.0	4.0	5.6	6.4	8.5	9.0	9.0	0.8	+1.3
278	247	215	205	178	120	101	95	80		65	145	240	300	330	395
NG															

4+30

417.9	398.7	396.4	398.7	392.9	392.4	391.1	389.8	390.2	393.8	395.3	388.6
+20.5	+1.3	1.0	+1.3	2.5	5.0	7.2	7.6	7.2	3.6	2.1	8.8
278	267	213	174	104		100	200	288	316	364	379
NG											46

T.P. 1.31 397.89 T 12.10 396.08

397.39 T

3+70

419.6	397.4	396.8	402.2	402.9	401.7	395.8	392.8	391.2	390.1	392.5	391.2	391.2
+10.4	11.8	12.4	+7.0	+6.3	1.5	13.4	16.4	18.0	18.6	16.7	15.0	38.0
340	310	249	205	172	133	76		100	200	334	339	382
NG												NG

3+20

418.6	400.4	398.2	401.0	400.4	398.4	400.6	407.2	406.9	395.8	392.4	392.5	392.0	395.8	366.2
+9.4	8.8	11.0	+8.2	+8.8	+10.8	+9.2	+6.0	2.3	13.4	16.8	16.7	16.4	13.4	43.0
312	282	270	230	178	193	128	123	60		100	200	308	313	363
NG														NG

407.18 T

409.18 T

386.6

+90
234
N.G.

379.8

+22
308
N.G.

372.6

5.0
301

371.5

5.1
275

381.4	378.8	378.6	368.2	365.9	362.3	366.0	367.5	368.1	356.4	356.2	357.5	351.9	351.8
+38	+12	+1.0	9.1	11.7	15.3	11.6	10.1	9.5	21.2	21.1	24.1	25.7	17.8
226	183	156	156	104	96		100	140	179	217	224	253	229

7+46

387.1 373.6

+9.5 +16.0
217 221
N.G.

384.1

576.2 377.0 362.4
+6.5 11 0.6 24.1
317 304 275 265
N.G.

385.4	381.5	380.4	371.2	374.1	366.9	361.4	368.6	361.2	362.8	362.4	359.0	358.9	352.9
+7.8	+3.9	+2.8	3.4	3.5	10.7	8.2	9.0	10.4	14.8	15.1	18.5	18.7	23.7
179	173	132	120	107	84		100	162	179	198	208	226	239

7+00

T.P.

0.15 377.57 13.02 377.42

377.57 H.I.

381.1 390.0
9.3 9.4
313 323
N.G.

6+75

402.4

+12.0
236
N.G.

394.9	392.6	388.6	381.6	381.8	371.9	372.6	372.2	369.4	363.9	362.9	360.4	360.4	380.4
+4.5	+2.2	6.8	8.8	8.6	18.5	17.8	15.2	21.0	26.5	27.5	34.0	30.0	10.0
226	185	164	115	101	73		100	188	209	236	238	270	275

5+90

412.4	398.4	396.2	386.2	386.4	374.8	376.8	375.5	374.3	361.1	367.4	383.4	384.6	594.4
+2.0	+4.0	+5.8	4.2	4.0	15.6	13.6	4.9	16.1	23.3	23.0	7.0	5.8	+4.0
255	233	191	163	95	72		100	175	200	263	276	315	325

390.44

390.44

LT.

2

RT.

59

T.P. 0.31 354.04 \uparrow 13.18 353.73

361.1 363.5
5.8 3.4
270 297
NG

9+00

357.9 356.6 366.9
9.0 10.3 10.0
290 249 220
NG

357.3 349.3 350.3 341.2 354.1 355.7 354.9 355.3 346.9 347.9 349.1 351.3
13.6 17.6 16.6 17.7 12.0 11.2 12.0 11.6 20.0 19.0 17.0 2.6
200 196 172 162 52 59 122 147 181 188 244
NG

365.1 365.1 364.9
1.8 1.8 +2.0
266 293 299
NG

8+50

365.9 367.1
1.0 +0.8
273 206
NG

358.4 354.7 350.4 353.4 359.1 360.9 360.1 361.5 351.9 357.1 351.1 356.7
8.5 12.2 10.5 13.5 7.2 6.0 6.8 5.4 15.0 14.8 11.8 10.2
178 176 139 134 48 55 130 167 194 204 250

378.9

+12.0
248
NG

372.9 368.1 367.9
16.0 11.8 11.0
305 299 267
NG

8+00

377.9 375.1 360.9 363.4 358.1 361.8 363.8 364.6 354.1 354.9 351.0 350.9 356.4
+8.0 +8.8 6.0 3.5 8.8 5.1 3.1 2.9 12.8 12.0 15.9 16.0 10.5
244 180 154 123 109 52 147 172 207 214 253 266

T.P. 244 366.91 H.I. 13.10 364.47

366.91 H.I.

377.57 \uparrow

Cont'd from Page 59

Lt

♀

Rt

60

311.66

check

17.88 311.22 = 311.26

T.P.

0.60 329.10 13.07 328.50

10+50

Just on edge limits of borrow pit on left.

335.3	332.6	335.3	335.2	336.6	338.0	334.8	335.8	338.8
6.3	9.0	6.3	6.4	5.0	3.6	6.8	5.8	2.8
335	230	212	104		98	113	145	150
NG								NG

T.P.

0.47 341.57 π 12.94 341.10

341.57 π

10+00

Just beyond limits of borrow pit on right.

341.1	339.8	338.7	339.0	341.6	342.7	343.0	343.9	339.7	339.1	342.5
12.9	14.2	15.3	17.0	12.4	11.3	11.0	10.1	14.3	14.2	11.5
320	316	242	205	81		54	108	120	156	158
NG										NG

354.04 π

354.04 π

Roberts
Cota
Moore
Morales
3-16-54 W.D.#20988

X-Section Mission Bay Sanitary Fill #5

Lt C Rt 61

R = Road Edge
L = Levee Edge (Man. Line)

Do you correct for loose yards in stockpiles against compacted yards in ditches?

0+50

11.5	1.3	1.3	15.2	21.1
166	268	268	129	7.0
218	211	185	174	163
NG				

18.5	25.9	24.7	15.5	15.4	15.7	15.1	15.9
9.6	2.2	3.4	12.6	12.7	12.9	13.0	12.2
150	140	135	120	63		62	127

0+12

11.0	1.3	1.3	14.0
171	26.8	26.8	141
217	209	184	174
NG			

14.3	24.1	19.2	23.7	16.3	14.9	14.8	15.7	16.3	16.6
13.8	4.1	8.9	4.4	12.8	13.2	13.3	12.9	11.8	11.5
152	134	124	116	105	67		60	117	135

0+00

Estimating water to be 2 ft. deep.

11.1	10.9	13.8	14.8	23.4	15.5	14.9	14.8	15.7	16.7	17.8	19.0	19.6
17.0	17.2	14.3	13.3	4.7	12.6	12.2	13.3	12.9	11.4	10.3	9.1	8.5
217	178	172	130	112	102	53		55	135	146	R	175
14.1	NG										154	L

0-25 Edge 891

11.6	24.4	15.1	14.6	15.0	15.5	16.6	16.9
16.5	3.7	13.0	12.5	13.1	12.6	11.5	11.2
129	112	98	54		71	112	135
NG							

0-43

10.9	11.1	11.6	8.5	7.2	6.7	7.6	8.7	8.9
17.2	17.0	16.6	12.6	20.9	21.9	22.5	19.4	19.2
211	180	100	41	NG	25	70	85	110
NG	NG	NG	NG	NG	NG	NG	NG	NG

BM 8.65 28.14 T 19.49 USCGS Datum

28.14 T

Top Levee

2+20

11.1 14.6
16.5 13.6
436 41514.8 14.2 14.7 15.0 15.6 15.6 15.7 16.2
13.4 14.0 13.5 13.2 12.6 12.6 12.5 12.0
359 260 174 101 53 71 130

2+15

12.0 14.3 13.1 12.5
16.2 13.9 15.1 15.7
442 417 355 28813.0 10.7 9.2 15.1 15.0 15.6 15.5 15.7 15.9
15.2 17.5 19.0 12.5 13.2 12.6 12.7 12.5 12.3
215 211 187 168 162 50 74 125

2+05

12.4 1.5 1.5 15.3 15.0
15.8 26.7 26.7 12.9 13.2
216 214 185 171 15624.9 15.5 26.8 15.7 15.6 15.5 15.8 16.2
3.3 12.7 14 12.5 13.6 12.7 12.4 12.0
129 118 98 87 45 75 131

T.P.

4.13 28.16 $\bar{\Delta}$ 411 24.0328.16 $\bar{\Delta}$

1+55

12.0 1.3 1.3 18.0
16.1 26.8 26.8 10.1
215 211 178 168
NG25.4 25.8 15.5 21.2 24.9 15.1 15.0 15.4 16.3
2.7 2.3 12.6 6.9 3.2 13.6 13.1 12.7 11.8
153 135 117 112 96 85 63 130

1+45

15.7 26.8
214 20
NG1.3 16.1 25.3 25.8 15.1 15.2 14.9 15.4 16.5
26.8 12.0 2.8 2.3 13.0 12.9 13.2 12.7 11.6
180 108 152 135 116 57 75 131

1+00

12.3 1.3 1.3
15.8 26.8 26.8
217 210 184
NG15.9 24.1 25.3 15.2 15.4 15.4 15.8 16.0
12.2 4.1 2.8 12.9 12.7 12.7 12.3 11.3
172 158 131 114 59 56 12828.14 $\bar{\Delta}$ 28.14 $\bar{\Delta}$

3+50

11.4	11.6	16.1	15.6	25.2	25.0
16.0	17.8	133	13.8	42	44
490	444	434	383	370	276
NG					

18.9	23.7	16.8	16.7	16.2	16.0	15.8	16.7
10.5	57	12.6	12.7	13.2	13.4	13.6	12.7
215	210	185	133	67		78	134

3+25

11.2	12.0	15.1	14.6	27.2
18.2	17.4	14.3	14.8	42.2
485	435	427	391	371
NG	NG			

26.4	17.9	19.4	28.1	16.3	15.8	16.1	15.7	16.8
44.0	11.5	10.0	0.7	13.1	13.6	13.3	12.7	12.6
245	225	173	150	126	56		58	127

3+00

11.4	11.6	15.4	14.7	18.4	20.4	14.9
18.0	17.8	14.0	14.7	11.0	9.0	14.5
483	487	434	371	335	299	283
NG	NG	E.E.				

17.3	17.2	28.6	28.5	17.0	15.6	15.8	15.8	16.5	17.5	18.1	18.7
12.1	12.2	0.8	0.9	12.4	13.8	13.6	13.6	12.9	11.9	11.3	10.7
232	175	155	148	129	59		68	120	146	155	175
										R	L

2+85

11.4	12.4	15.4	15.0	25.9	25.8	15.4	17.8
18.0	17.0	14.0	14.4	3.5	3.6	14.0	11.6
481	433	426	367	357	299	282	238
NG	NG	E.E.					

16.8	16.9	27.1	27.5	16.4	15.7	15.8	15.5	16.3
12.6	12.5	2.3	1.9	13.0	13.7	13.6	13.9	13.1
211	174	159	146	127	59		61	126

T.P.

12.07 29.37 π 10.86 17.3029.87 π

2+50

15.1	25.8	25.9	15.5
13.1	2.4	2.3	12.7
170	144	135	126

← Same →

↑ Avg. ↓

2+40

12.2	14.8	14.7	14.1	14.6	15.2	15.7	15.7	16.3
16.0	13.4	13.5	14.1	13.6	13.0	12.5	12.5	11.9
435	417	372	303	195	90		70	119

28.16 π 28.16 π

T.P. 486 21.96 \bar{x} 11.37 17.10

T.P.
6+00

9.5	13.6	13.7	16.0	24.4
21.0	14.7	14.8	12.5	4.1
485	476	432	418	405

26.4	25.9	17.1	18.0	17.1	10.8	16.7	16.9	18.4	19.2
2.1	2.6	10.8	10.5	11.4	11.7	12.2	11.6	10.1	9.3
391	362	346	276	138		86	138	157	175
								\bar{x}	L

5+50

8.5	13.0	11.6	16.7	24.4	20.5	20.1
20.0	15.5	16.7	11.8	4.1	8.0	8.4
485	476	438	430	404	390	375

27.3	17.7	18.4	16.5	19.0	16.5	16.2	16.7
1.2	10.8	10.1	11.0	11.5	12.0	12.3	11.8
365	343	280	181	98		64	135

5+00

10.1	11.5	16.5	24.4
18.4	17.0	12.0	3.8
482	440	432	406
55	55		

21.1	20.1	27.6	17.3	17.8	17.0	16.4	16.3	16.6
7.4	8.4	0.9	11.2	10.7	11.5	12.1	12.2	11.9
370	375	365	340	216	104		61	128

T.P. 905 28.47 \bar{x} 9.95 19.4228.47 \bar{x}

4+50

10.6	14.4	10.6	1.4	1.4	13.7	25.0	16.2
18.8	15.0	18.8	28.0	28.0	15.7	4.4	11.2
503	495	487	485	438	435	405	381

18.2	25.1	25.3	18.9	18.2	17.0	16.6	16.5	16.6
11.2	4.3	6.1	10.5	11.2	12.4	12.8	12.9	12.8
275	368	274	238	179	92		53	106

4+00

10.9	13.9	10.9	1.4	1.4	15.8	25.9	17.4	11.4	26.1
18.5	15.5	18.5	28.0	28.0	13.6	3.5	12.0	12.0	3.3
503	495	487	485	438	433	406	326	376	359

20.2	26.2	21.7	21.2	19.7	19.4	17.0	16.5	16.1	17.6	17.6	16.6	16.9
6.2	3.2	8.3	8.2	11.7	10.0	12.4	12.9	13.3	11.8	11.8	12.8	12.5
310	265	238	178	144	70	64		29	39	88	93	141

3+75

10.9	13.7	10.9	1.4	1.4	16.9	16.3	24.4	24.4	21.6	24.6	26.4
18.5	15.7	18.5	28.0	28.0	12.5	13.1	5.0	5.0	7.8	4.8	3.0
503	495	487	485	439	427	375	367	350	338	333	272

22.5	19.8	25.7	24.5	17.8	16.6	16.4	15.8	17.6	17.8	16.4	16.6	18.2	17.9
6.7	9.6	5.7	4.9	11.6	12.8	13.0	13.6	11.8	11.6	13.0	12.8	11.2	11.5
244	224	203	177	159	65		32	38	87	91	113	118	145

2937 \bar{x} 2937 \bar{x}

9+05

8.9	6.3	17.0
13.1	15.7	5.0
688	618	570

18.6	18.6	18.5	18.1	18.2	19.2
34	34	35	39	38	28
438	313	200	100		100

9+00

8.9	6.3	11.0
13.1	15.7	5.0
688	618	570

18.0	17.4	17.4	17.2	17.3	17.7	19.6	20.0
40	46	46	48	47	43	24	2.0
438	313	200	100		100	160	175
						R	L

8+00

6.5	8.9	9.6	16.3
15.5	13.1	12.4	5.7
696	688	616	544
NG			

17.5	18.4	17.1	16.3	15.8	16.3	17.8	18.2
45	36	49	57	62	57	42	3.8
440	319	200	100		15	63	136

7+00

7.6	10.0	8.7	17.3
14.4	12.0	13.3	4.7
680	675	625	564
NG			

17.7	18.6	17.4	16.3	15.8	16.3	17.1
43	34	46	57	62	57	43
430	315	200	160		36	133

6+60

7.5	14.9
14.5	7.1
625	595

15.1	17.8	17.5	16.3	15.8	16.3	17.2
69	42	45	57	62	57	48
420	285	200	95		75	135

6+50

7.5	7.2	14.7
14.5	14.8	7.3
625	495	485

15.1	16.7	17.8	17.5	16.3	15.8	16.3	17.2
69	53	42	45	57	62	57	48
424	413	284	200	95		75	134

Estimating water 0.5' D.P.

21.96 T

21.96 T

13+00

10.2	8.1
13.1	15.2
400	370
NG	

16.9	18.6	18.1	18.2	18.3	18.9
64	47	52	51	50	44
340	240	111		75	150

12+00

10.2	11.3	17.2	17.9	18.8	18.3	18.8	19.7	20.1
13.1	12.0	61	54	45	50	45	36	32
435	410	340	180		77	155	160	175
NG						R	L	

11+00

18.0	2.7	2.7	17.6	17.7	16.8	16.4	17.3	18.4
15.3	20.6	20.6	5.7	5.6	6.5	6.7	6.0	4.9
495	490	450	426	363	253	140		130
NG								

10+00

8.1	2.7	2.7	18.7	18.0	16.4	16.4	17.1	18.0
15.3	20.6	20.6	4.6	5.3	6.9	6.9	6.2	5.3
575	570	530	503	415	269	36		126
NG								

T.P.

5.19

23.32 ∇

383

18.13

23.32 ∇

9+45

8.1	7.7	16.6	17.9
13.9	14.3	54	41
625	575	545	410
NG			
Bagfill			

17.4	16.9	16.5	16.8	17.5	18.4
46	52	55	52	45	36
304	200	99		100	140

9+40

8.1	7.7	16.6	18.7
13.9	14.3	54	33
625	575	545	410
NG			
Bagfill			

18.5	17.6	17.8	18.4	18.8	19.7
3.5	44	42	36	32	23
304	200	89		100	140

21.96 ∇ 21.96 ∇

check

4.50 19.51 = 19.49

T.P.

379

24.01

310

20.22

16+30

The End

16+10

15+00

14+00

23.32 \uparrow

24

C

R

67

18.0
53
150

8.1	17.9	18.6	18.8
152	54	47	45
30		50	150

8.1	18.5	19.2	19.5	18.7	19.3	19.6
152	48	41	38	46	40	37
152	122		82	151	160	175
				R		L

8.1	16.9	19.0	18.9	18.6	18.4
152	64	43	44	47	49
270	240	83		72	151

23.32 \uparrow

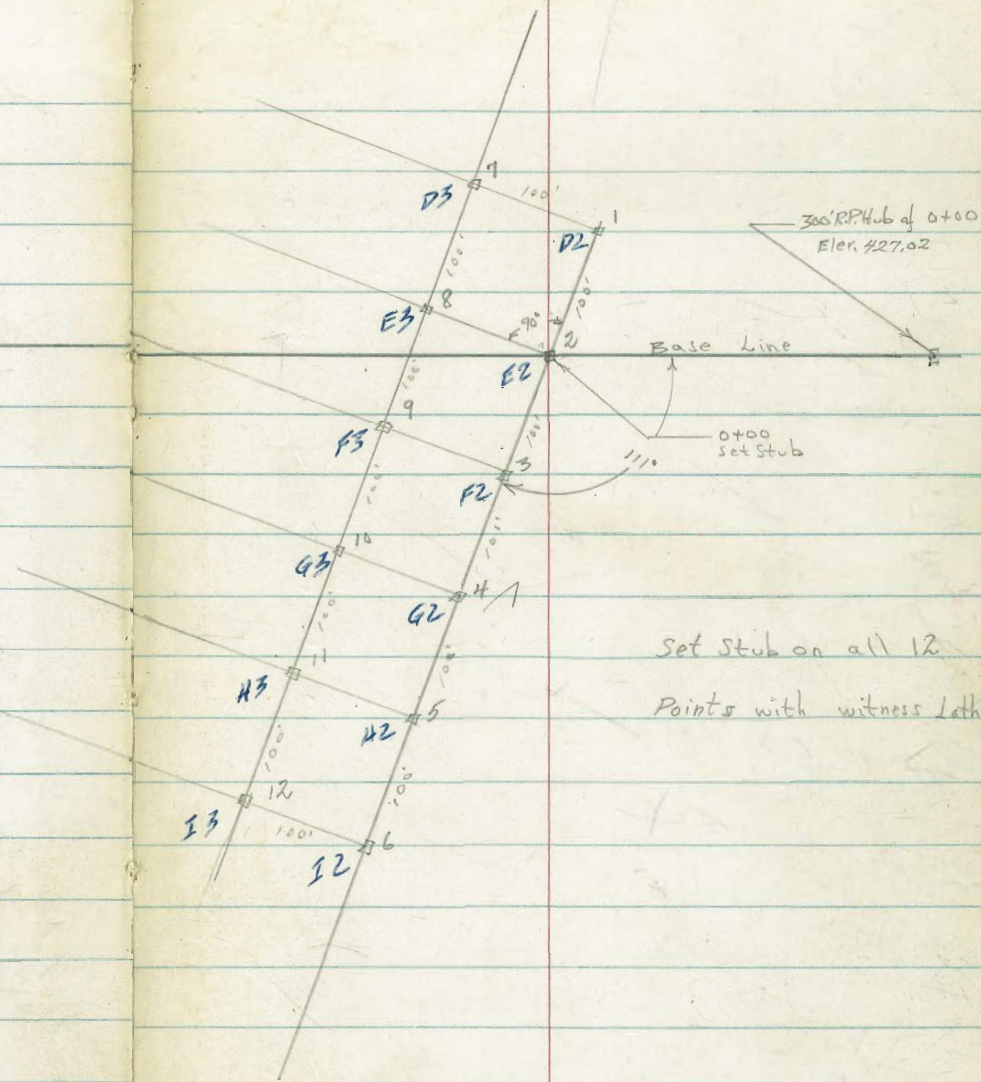
Roberts
Cota
Morales
11-5-54
W.D. # 20988

Survey of Chollas Sanitary For a
Study of Settlement of Fill

See Page 11

INDEXED
HER
NOV 12 1954

68



Elevations on Fill

	11-5-54	2-21-55
Station #1 D2	421.4	421.4
" #2 E2	420.8	420.8
" #3 F2	420.0	420.0
" #4 G2	419.1	419.1
" #5 H2	418.2	418.2
" #6 I2	Borrow Pit	
" #7 D3	419.1 Replaced.	418.9
" #8 E3	420.1	420.1
" #9 F3	420.3	420.2
" #10 G3	419.4	419.3
" #11 H3	418.5	418.4
" #12 I3	Borrow Pit	

	2-21-55		69
D2	421.4	F6	408.3
E2	420.8	G6	410.1
F2	420.0	D7	402.8
G2	419.1	E7	402.7
H2	418.2	F7	402.8
D3	418.9	G7	403.9
E3	420.1		
F3	420.2		
G3	419.3		
H3	418.4		
D4	415.6		
E4	416.3		
F4	417.1		
G4	418.2		
H4	418.3		
D5	411.3		
E5	412.0		
F5	412.7		
G5	414.6		
D6	407.3		
E6	407.6		

Roberts
Roser
Moore
Moralez
8-1-55
S.W.D. #20411

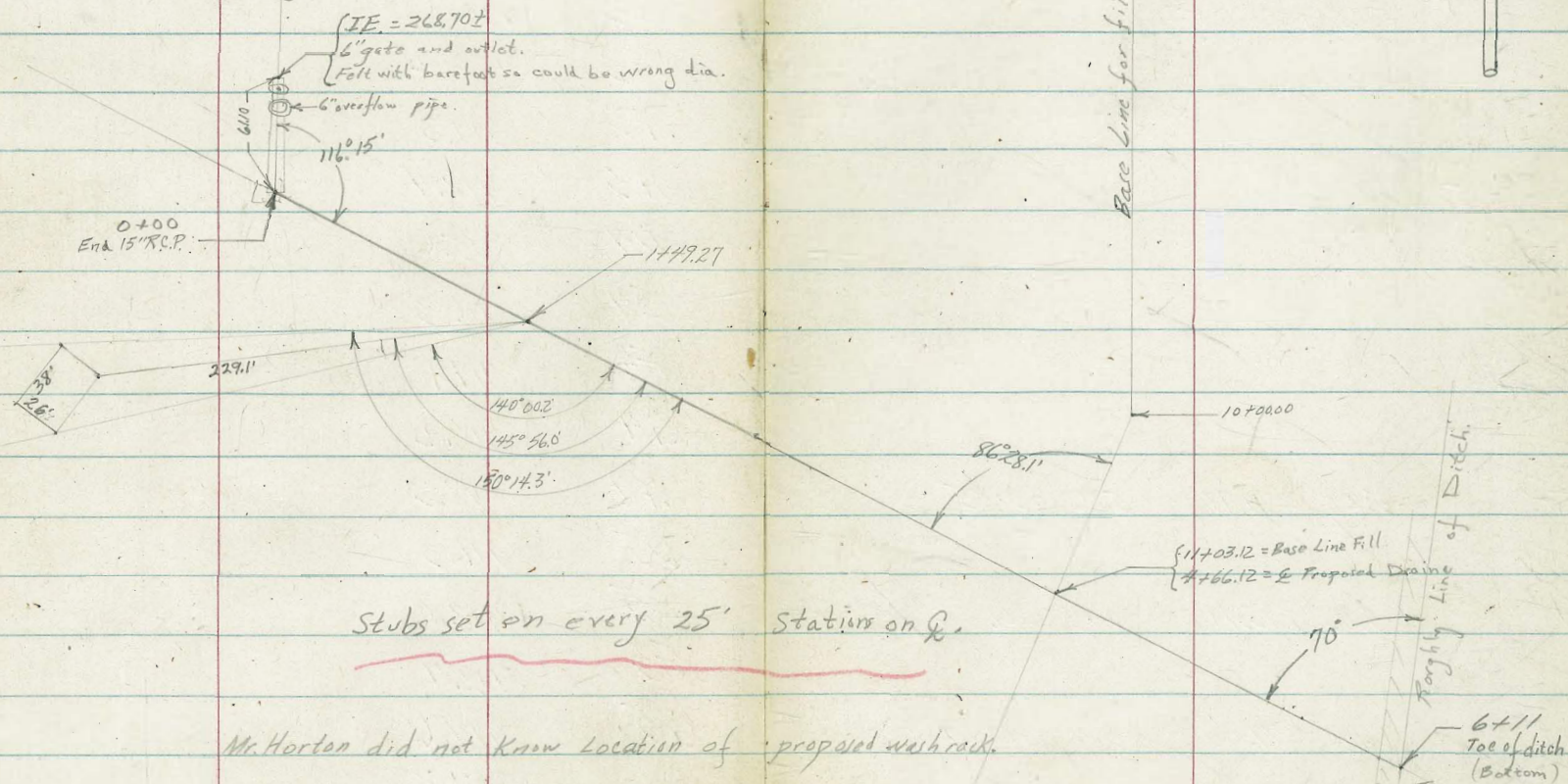
Survey for Drain for Casting
Pool; Balboa Park

INDEXED

MER
AUG 3 1954

70

Casting Pool



Stubs set on every 25' stations on Q.

Mr. Horton did not know location of proposed wash rack.

0+25 Center Line Elevations are on stubs.

0+00 End 15" R.C.P. } Washrack will fall
 } Some where south of
 } End of pipe on graded
 } area. Contact Mr. Horton - maybe
 } you could locate and give
 } elevations better than him.

0-25

0-50

T.P. 5.23 274.78[↓] 5.86 269.55[✓]

T.P. 5.86 275.41[↓] 4.45 269.55[✓]

T.P. 7.40 274.00[↓] 0.18 266.60[✓]

TBM 13.13 266.78[↓] 35365 on PK Nail

Jacaranda Deepage 2

269.48	269.4	269.2	268.9	268.9
533	5.4	5.5	6.0	6.0
ON GRADED AREA	25	50	75	100
268.83	269.2	269.2	268.2	269.0
7.95	5.6	5.6	5.6	5.8
INVERT	100	25	50	75
269.53	268.5	269.5	269.5	268.9
53	6.7	5.7	5.7	5.7
	14	24	50	75
		E.G.P.		100
269.8	268.2	269.5	269.2	269.2
5.0	6.1	6.2	5.7	5.5
	5	25	32	50
			75	100
			ELT	
			274.78 [↓]	

T.P. 0.56 262.25 ∇ 13.09 261.69 \checkmark

1+75

10.17

1+50

5.15

1+25

5.16

1+00

4.75

5.2	5.4	5.6	5.5
25	50	75	100

0+75

4.94

2.692	2.692	2.692	2.692
5.1	5.4	5.6	5.7
25	50	75	100

0+50

5.12

2.692	2.692	2.692	2.692
5.4	5.4	5.8	5.6
25	50	75	100

*outs on right in graded area
Should cover any proposed
washrock. (see map)*

274.78 ∇

274.78 ∇

3+25

745.28

3.74

3+00

745.81

3.71

2+75

247.59

1.83

T.P.

0.28

249.22

13.31

248.94

249.22

2+50

248.84

13.31

2+25

251.95

10.30

2+00

258.69

3.56

262.25

262.25

5+00

242.52
6.70

4+75

243.23
5.99

4+50

243.67
5.55

4+25

243.90
5.32

4+00

244.14
5.06

3+75

244.65
4.57

3+50

245.25
3.97

249.22

249.22

TP -7.31 247.71 8.82 240.40

6+11 Bottom ditch

240.0

9.2

No stub

244.0

6+02 Edge bank

5.2

No stub

244.0

6+00

5.17

248.00

5+75

6.22

242.86

5+50

6.36

242.54

5+25

6.88

24922X

24922X

Imagine Mr. Horton, Sanitation Department, has discussed what he wants. If not, he wants fill to top of rubbish, how much solid dirt fill on top of rubbish to bottom of pipe, how wide this dirt fill, and how much dirt fill on top of pipe.

check

0.47 253.66 = 253.65

T.P.

11.63 254.13 5.21 242.50

247.71 X

W 7000

~~N 4500~~

269.69

257.85

118.4

247.21

224.9

22.5

16.7

225
48

229

269.95
926
267.69

31.33
44

Look!
M hands!

268.70

1942
1710

238

250

436

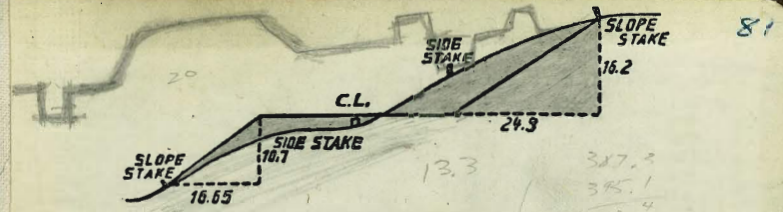
1949

871

2820

403

417



DISTANCES FROM SIDE STAKES FOR CROSS-SECTIONING.

SLOPE 1 1/4 TO 1. ROADWAY OF ANY WIDTH.

	0	.1	.2	.3	.4	.5	.6	.7	.8	.9	
0	0.00	0.15	0.30	0.45	0.60	0.75	0.90	1.05	1.20	1.35	0
1	1.50	1.65	1.80	1.95	2.10	2.25	2.40	2.55	2.70	2.85	1
2	3.00	3.15	3.30	3.45	3.60	3.75	3.90	4.05	4.20	4.35	2
3	4.50	4.65	4.80	4.95	5.10	5.25	5.40	5.55	5.70	5.85	3
4	6.00	6.15	6.30	6.45	6.60	6.75	6.90	7.05	7.20	7.35	4
5	7.50	7.65	7.80	7.95	8.10	8.25	8.40	8.55	8.70	8.85	5
6	9.00	9.15	9.30	9.45	9.60	9.75	9.90	10.05	10.20	10.35	6
7	10.50	10.65	10.80	10.95	11.10	11.25	11.40	11.55	11.70	11.85	7
8	12.00	12.15	12.30	12.45	12.60	12.75	12.90	13.05	13.20	13.35	8
9	13.50	13.65	13.80	13.95	14.10	14.25	14.40	14.55	14.70	14.85	9
10	15.00	15.15	15.30	15.45	15.60	15.75	15.90	16.05	16.20	16.35	10
11	16.50	16.65	16.80	16.95	17.10	17.25	17.40	17.55	17.70	17.85	11
12	18.00	18.15	18.30	18.45	18.60	18.75	18.90	19.05	19.20	19.35	12
13	19.50	19.65	19.80	19.95	20.10	20.25	20.40	20.55	20.70	20.85	13
14	21.00	21.15	21.30	21.45	21.60	21.75	21.90	22.05	22.20	22.35	14
15	22.50	22.65	22.80	22.95	23.10	23.25	23.40	23.55	23.70	23.85	15
16	24.00	24.15	24.30	24.45	24.60	24.75	24.90	25.05	25.20	25.35	16
17	25.50	25.65	25.80	25.95	26.10	26.25	26.40	26.55	26.70	26.85	17
18	27.00	27.15	27.30	27.45	27.60	27.75	27.90	28.05	28.20	28.35	18
19	28.50	28.65	28.80	28.95	29.10	29.25	29.40	29.55	29.70	29.85	19
20	30.00	30.15	30.30	30.45	30.60	30.75	30.90	31.05	31.20	31.35	20
21	31.50	31.65	31.80	31.95	32.10	32.25	32.40	32.55	32.70	32.85	21
22	33.00	33.15	33.30	33.45	33.60	33.75	33.90	34.05	34.20	34.35	22
23	34.50	34.65	34.80	34.95	35.10	35.25	35.40	35.55	35.70	35.85	23
24	36.00	36.15	36.30	36.45	36.60	36.75	36.90	37.05	37.20	37.35	24
25	37.50	37.65	37.80	37.95	38.10	38.25	38.40	38.55	38.70	38.85	25
26	39.00	39.15	39.30	39.45	39.60	39.75	39.90	40.05	40.20	40.35	26
27	40.50	40.65	40.80	40.95	41.10	41.25	41.40	41.55	41.70	41.85	27
28	42.00	42.15	42.30	42.45	42.60	42.75	42.90	43.05	43.20	43.35	28
29	43.50	43.65	43.80	43.95	44.10	44.25	44.40	44.55	44.70	44.85	29
30	45.00	45.15	45.30	45.45	45.60	45.75	45.90	46.05	46.20	46.35	30
31	46.50	46.65	46.80	46.95	47.10	47.25	47.40	47.55	47.70	47.85	31
32	48.00	48.15	48.30	48.45	48.60	48.75	48.90	49.05	49.20	49.35	32
33	49.50	49.65	49.80	49.95	50.10	50.25	50.40	50.55	50.70	50.85	33
34	51.00	51.15	51.30	51.45	51.60	51.75	51.90	52.05	52.20	52.35	34
35	52.50	52.65	52.80	52.95	53.10	53.25	53.40	53.55	53.70	53.85	35
36	54.00	54.15	54.30	54.45	54.60	54.75	54.90	55.05	55.20	55.35	36
37	55.50	55.65	55.80	55.95	56.10	56.25	56.40	56.55	56.70	56.85	37
38	57.00	57.15	57.30	57.45	57.60	57.75	57.90	58.05	58.20	58.35	38
39	58.50	58.65	58.80	58.95	59.10	59.25	59.40	59.55	59.70	59.85	39
40	60.00	60.15	60.30	60.45	60.60	60.75	60.90	61.05	61.20	61.35	40
41	61.50	61.65	61.80	61.95	62.10	62.25	62.40	62.55	62.70	62.85	41
42	63.00	63.15	63.30	63.45	63.60	63.75	63.90	64.05	64.20	64.35	42
43	64.50	64.65	64.80	64.95	65.10	65.25	65.40	65.55	65.70	65.85	43
44	66.00	66.15	66.30	66.45	66.60	66.75	66.90	67.05	67.20	67.35	44
45	67.50	67.65	67.80	67.95	68.10	68.25	68.40	68.55	68.70	68.85	45
46	69.00	69.15	69.30	69.45	69.60	69.75	69.90	70.05	70.20	70.35	46
47	70.50	70.65	70.80	70.95	71.10	71.25	71.40	71.55	71.70	71.85	47
48	72.00	72.15	72.30	72.45	72.60	72.75	72.90	73.05	73.20	73.35	48
49	73.50	73.65	73.80	73.95	74.10	74.25	74.40	74.55	74.70	74.85	49
50	75.00	75.15	75.30	75.45	75.60	75.75	75.90	76.05	76.20	76.35	50

THE NATIONAL BLANK BOOK COMPANY
 HOLYOKE MASSACHUSETTS
 NEW YORK CHICAGO BOSTON SAN FRANCISCO