

DISTANCES FROM SIDE STAKES FOR CROSS-SECTIONING
SLOPE 1 TO 1, ROADWAY OF ANY WIDTH

	0	.1	.2	.3	.4	.5	.6	.7	.8	.9	
0	0.00	0.10	0.20	0.30	0.40	0.50	0.60	0.70	0.80	0.90	0
1	1.00	1.10	1.20	1.30	1.40	1.50	1.60	1.70	1.80	1.90	1
2	2.00	2.10	2.20	2.30	2.40	2.50	2.60	2.70	2.80	2.90	2
3	3.00	3.10	3.20	3.30	3.40	3.50	3.60	3.70	3.80	3.90	3
4	4.00	4.10	4.20	4.30	4.40	4.50	4.60	4.70	4.80	4.90	4
5	5.00	5.10	5.20	5.30	5.40	5.50	5.60	5.70	5.80	5.90	5
6	6.00	6.10	6.20	6.30	6.40	6.50	6.60	6.70	6.80	6.90	6
7	7.00	7.10	7.20	7.30	7.40	7.50	7.60	7.70	7.80	7.90	7
8	8.00	8.10	8.20	8.30	8.40	8.50	8.60	8.70	8.80	8.90	8
9	9.00	9.10	9.20	9.30	9.40	9.50	9.60	9.70	9.80	9.90	9
10	10.00	10.10	10.20	10.30	10.40	10.50	10.60	10.70	10.80	10.90	10
11	11.00	11.10	11.20	11.30	11.40	11.50	11.60	11.70	11.80	11.90	11
12	12.00	12.10	12.20	12.30	12.40	12.50	12.60	12.70	12.80	12.90	12
13	13.00	13.10	13.20	13.30	13.40	13.50	13.60	13.70	13.80	13.90	13
14	14.00	14.10	14.20	14.30	14.40	14.50	14.60	14.70	14.80	14.90	14
15	15.00	15.10	15.20	15.30	15.40	15.50	15.60	15.70	15.80	15.90	15
16	16.00	16.10	16.20	16.30	16.40	16.50	16.60	16.70	16.80	16.90	16
17	17.00	17.10	17.20	17.30	17.40	17.50	17.60	17.70	17.80	17.90	17
18	18.00	18.10	18.20	18.30	18.40	18.50	18.60	18.70	18.80	18.90	18
19	19.00	19.10	19.20	19.30	19.40	19.50	19.60	19.70	19.80	19.90	19
20	20.00	20.10	20.20	20.30	20.40	20.50	20.60	20.70	20.80	20.90	20
21	21.00	21.10	21.20	21.30	21.40	21.50	21.60	21.70	21.80	21.90	21
22	22.00	22.10	22.20	22.30	22.40	22.50	22.60	22.70	22.80	22.90	22
23	23.00	23.10	23.20	23.30	23.40	23.50	23.60	23.70	23.80	23.90	23
24	24.00	24.10	24.20	24.30	24.40	24.50	24.60	24.70	24.80	24.90	24
25	25.00	25.10	25.20	25.30	25.40	25.50	25.60	25.70	25.80	25.90	25
26	26.00	26.10	26.20	26.30	26.40	26.50	26.60	26.70	26.80	26.90	26
27	27.00	27.10	27.20	27.30	27.40	27.50	27.60	27.70	27.80	27.90	27
28	28.00	28.10	28.20	28.30	28.40	28.50	28.60	28.70	28.80	28.90	28
29	29.00	29.10	29.20	29.30	29.40	29.50	29.60	29.70	29.80	29.90	29
30	30.00	30.10	30.20	30.30	30.40	30.50	30.60	30.70	30.80	30.90	30
31	31.00	31.10	31.20	31.30	31.40	31.50	31.60	31.70	31.80	31.90	31
32	32.00	32.10	32.20	32.30	32.40	32.50	32.60	32.70	32.80	32.90	32
33	33.00	33.10	33.20	33.30	33.40	33.50	33.60	33.70	33.80	33.90	33
34	34.00	34.10	34.20	34.30	34.40	34.50	34.60	34.70	34.80	34.90	34
35	35.00	35.10	35.20	35.30	35.40	35.50	35.60	35.70	35.80	35.90	35
36	36.00	36.10	36.20	36.30	36.40	36.50	36.60	36.70	36.80	36.90	36
37	37.00	37.10	37.20	37.30	37.40	37.50	37.60	37.70	37.80	37.90	37
38	38.00	38.10	38.20	38.30	38.40	38.50	38.60	38.70	38.80	38.90	38
39	39.00	39.10	39.20	39.30	39.40	39.50	39.60	39.70	39.80	39.90	39
40	40.00	40.10	40.20	40.30	40.40	40.50	40.60	40.70	40.80	40.90	40
41	41.00	41.10	41.20	41.30	41.40	41.50	41.60	41.70	41.80	41.90	41
42	42.00	42.10	42.20	42.30	42.40	42.50	42.60	42.70	42.80	42.90	42
43	43.00	43.10	43.20	43.30	43.40	43.50	43.60	43.70	43.80	43.90	43
44	44.00	44.10	44.20	44.30	44.40	44.50	44.60	44.70	44.80	44.90	44
45	45.00	45.10	45.20	45.30	45.40	45.50	45.60	45.70	45.80	45.90	45
46	46.00	46.10	46.20	46.30	46.40	46.50	46.60	46.70	46.80	46.90	46
47	47.00	47.10	47.20	47.30	47.40	47.50	47.60	47.70	47.80	47.90	47
48	48.00	48.10	48.20	48.30	48.40	48.50	48.60	48.70	48.80	48.90	48
49	49.00	49.10	49.20	49.30	49.40	49.50	49.60	49.70	49.80	49.90	49
50	50.00	50.10	50.20	50.30	50.40	50.50	50.60	50.70	50.80	50.90	50

Distance of slope stake from side or shoulder stake for any width roadway, slope 1 to 1. If ground is nearly level, the cut or fill at side stake is located by the double entry method in left column and top row. The number in body of table in same row and column gives distance from side stake to slope stake. If ground is not level estimate the difference in elevation between the side stake and slope stake, lower target by this amount if cut, elevate if fill. Add this amount to cut or fill and find distance in table. Set up rod at this point, and line of sight should cut target. If it does not make the slight adjustment necessary.

TABLE XIII—CORRECTIONS FOR TANGENTS AND EXTERNALS

These corrections are to be added to the approximate values, found by dividing the tangent, or external, for a 1° curve (Table VIII) by the degree of curve, in order to obtain the true tangents, or externals. Intermediate values may be obtained by interpolation.

FOR TANGENTS ADD

Central Angle	DEGREE OF CURVE													
	5°	10°	15°	20°	25°	30°	35°	40°	45°	50°	55°	60°	65°	70°
10°	.03	.06	.09	.13	.16	.19	.22	.25	.28	.31	.34	.38	.42	.46
15°	.04	.10	.14	.19	.24	.29	.34	.39	.45	.51	.53	.58	.63	.68
20°	.06	.13	.19	.26	.32	.39	.45	.51	.58	.65	.72	.79	.84	.90
25°	.08	.16	.24	.33	.40	.49	.58	.67	.75	.83	.90	.99	1.06	1.14
30°	.10	.19	.29	.39	.49	.59	.69	.79	.89	.99	1.09	1.20	1.29	1.39
35°	.11	.22	.34	.47	.58	.69	.79	.89	.99	1.04	1.20	1.42	1.54	1.66
40°	.13	.26	.40	.53	.67	.80	.93	1.06	1.20	1.34	1.49	1.64	1.79	1.94
45°	.15	.30	.44	.60	.76	.91	1.06	1.21	1.37	1.52	1.70	1.87	2.04	2.21
50°	.17	.34	.51	.68	.85	1.02	1.19	1.36	1.54	1.72	1.91	2.10	2.29	2.48
55°	.19	.38	.57	.76	.95	1.14	1.32	1.52	1.72	1.92	2.14	2.35	2.56	2.77
60°	.21	.42	.63	.84	1.05	1.27	1.49	1.71	1.94	2.17	2.38	2.60	2.83	3.07
65°	.23	.46	.69	.93	1.16	1.40	1.64	1.88	2.13	2.38	2.63	2.88	3.13	3.39
70°	.25	.51	.76	1.02	1.28	1.54	1.80	2.06	2.33	2.60	2.88	3.16	3.44	3.72
75°	.27	.56	.83	1.12	1.40	1.69	1.98	2.27	2.57	2.87	3.16	3.47	3.78	4.09
80°	.30	.61	.91	1.22	1.53	1.84	2.15	2.46	2.78	3.10	3.44	3.78	4.12	4.46
85°	.33	.66	1.00	1.33	1.68	2.02	2.36	2.70	3.05	3.40	3.77	4.14	4.55	4.89
90°	.36	.72	1.09	1.45	1.83	2.20	2.57	2.94	3.32	3.70	4.10	4.50	4.91	5.32
95°	.39	.79	1.19	1.55	2.00	2.40	2.80	3.20	3.61	4.02	4.40	4.98	5.38	5.83
100°	.43	.86	1.30	1.74	2.18	2.62	3.06	3.50	3.95	4.40	4.88	5.37	5.85	6.34
110°	.51	1.03	1.56	2.08	2.61	3.14	3.67	4.21	4.76	5.31	5.86	6.43	7.01	7.60
120°	.62	1.25	1.93	2.52	3.16	3.81	4.45	5.11	5.77	6.44	7.12	7.80	8.50	9.22

FOR EXTERNALS ADD

Central Angle	DEGREE OF CURVE													
	5°	10°	15°	20°	25°	30°	35°	40°	45°	50°	55°	60°	65°	70°
10°	.001	.003	.004	.006	.007	.008	.009	.011	.012	.014	.015	.017	.018	.020
15°	.003	.007	.010	.014	.018	.023	.027	.029	.032	.035	.039	.043	.047	.051
20°	.006	.011	.017	.022	.028	.034	.038	.045	.051	.057	.063	.070	.076	.083
25°	.009	.018	.027	.036	.046	.056	.065	.074	.083	.093	.103	.120	.127	.135
30°	.013	.025	.038	.051	.065	.078	.090	.103	.116	.129	.149	.170	.179	.188
35°	.018	.035	.054	.072	.086	.109	.131	.153	.175	.197	.213	.230	.247	.264
40°	.023	.046	.070	.093	.117	.141	.172	.203	.234	.265	.277	.290	.315	.341
45°	.030	.060	.093	.119	.153	.184	.216	.254	.289	.325	.351	.378	.411	.445
50°	.037	.075	.116	.151	.189	.227	.266	.305	.345	.384	.425	.467	.508	.550
55°	.046	.093	.142	.188	.236	.283	.332	.381	.420	.479	.530	.582	.641	.700
60°	.056	.112	.168	.225	.283	.340	.398	.457	.516	.575	.636	.697	.774	.851
65°	.067	.135	.204	.273	.343	.412	.483	.554	.625	.697	.771	.845	.922	1.01
70°	.080	.159	.240	.321	.403	.485	.568	.652	.735	.819	.906	.994	1.08	1.17
75°	.095	.182	.286	.383	.480	.578	.678	.777	.877	.977	1.07	1.18	1.29	1.39
80°	.110	.220	.332	.445	.558	.671	.787	.903	1.02	1.13	1.25	1.38	1.50	1.62
85°	.128	.259	.391	.524	.657	.790	.926	1.06	1.20	1.34	1.47	1.62	1.76	1.91
90°	.149	.299	.450	.603	.756	.910	1.07	1.22	1.38	1.54	1.70	1.87	2.03	2.20
95°	.174	.350	.522	.706	.885	1.06	1.25	1.43	1.62	1.80	1.99	2.18	2.38	2.58
100°	.200	.401	.604	.809	1.01	1.22	1.43	1.64	1.85	2.06	2.28	2.50	2.73	2.96
110°	.268	.536	.806	1.08	1.35	1.63	1.91	2.20	2.48	2.76	3.05	3.35	3.66	3.96
120°	.360	.721	1.08	1.45	1.82	2.19	2.57	2.95	3.33	3.72	4.11	4.50	4.91	5.32

- ✓ Juniper - 39th to tulip 2
- ✓ Sycamore - 39th to Marigold 7
- ✓ 39th - Juniper to Pepper 10
- ✓ Pepper - 39th to Violet 13
- ✓ Violet - Sycamore to end 21
- ✓ Violet - Sycamore to Poplar 24
- ✓ Poppy Place 29
- ✓ Sycamore - Tulip to Violet 32
- ✓ Shamrock - Sycamore to end 38
- ✓ Marigold - Juniper to Azalea Park 43
- ✓ Tuberoses - Poplar to end 46
- 65 to 68
- 52
- ✓ Sycamore - Snowdrop to Hollywood Pk. 55
- Bench Levels in Murklands Drive 72

INDEXED
 SEP 16 1953

$\Delta = 87^{\circ} 21' 45''$
 $\pm R = 65'$
 $T = 62.07$
 $ch = 24.63$
 $L = 99.11$

$5 + 18.27 = BC$
 $= PK$

Set Hub - P.I.

old Hub.
 $6 + 17.38 = EC$
 $= PK$

Pepper Dr.

$8 + 32.18 = BC$

Pipe LS. 2201

Pat.
 $2 + 94.57 =$ Cross on M.H. Rim
 Hub.
 Ang. $0^{\circ} 02' Lt.$

old Hub.

Set Hub on W.L.

EL. of $\frac{1}{2} = 242.02$
 $(see P-76)$

25.43

25 36' Advng.

25.43

100° 38' 30"

at 100 to E.
 = Nail

39.77

at 100 to N.
 = Nail

55.43

30.52

Juniper St.

Fd. Mon.

PK

Azalea Park

Fd. Hub. = Pat.

$\Delta = 17^{\circ} 50'$ $ch = 33.06$
 $\pm R = 425'$ $L = 132.28$
 $T = 66.68$

old Hub.

Cross in walk

Hub

P.J. spike

Cross in Dr.

Sec. R.P. ties
 page 74

$5 + 65.25 = BC$
 Hub.

$6 + 65.34 = EC$
 Fd. Hub.

$\Delta = 76^{\circ} 28'$
 $\pm R = 75'$
 $L = 100.27$
 $ch = 24.71$

$5 + 58.88 =$ Pat.
 Cross on M.H. Rim

$90^{\circ} 02'$

25 25

25 25

25 25

25 25

25 25

25 25

25 25

25 25

25 25

25 25

25 25

25 25

25 25

25 25

25 25

25 25

25 25

25 25

25 25

25 25

25 25

Sycamore Dr.

$\Delta = 49^{\circ} 47'$ $\pm R = 111.21$
 $T = 51.60$ $L = 96.63$
 $ch = 32.10$
 $2 + 78.63 = BC$
 Set Hub.

old Hub.

$3 + 75.26 = EC$ Pat.
 $23.76 =$ Cross on M.H. Rim to P.I.
 Nail

49.60 RP.
 Cross on wall

$2 + 06.86 =$ Cross on
 M.H. = Pat.

at 100 to N.
 = Nail

at 100 to E.
 = Nail

21.85

21.85

21.85

21.85

21.85

21.85

21.85

21.85

21.85

21.85

21.85

21.85

21.85

21.85

21.85

21.85

21.85

21.85

101 P St.

25.27

30.33

$10 + 61.85 =$ Ppc

F. Edge
 Top pole

Set 21.85 R.P. To PK.
 City Disk in C.B.
 28 R.P.

Lt.

+

Rt.

2

X-Sect. Juniper St - from 39th

To Tulip - See sketch - P. 1

6972

7-28-53 - 7.0.

W.O. 32062

1+73 = P.C. of cb. on Rt.

32.3	31.9	31.89	31.25	31.72
30	19	edge	18	Top = P.C.
	edge	A.C.	gut.	

1+00

33.0	31.8	31.63	31.44	31.00	31.50
30	20		15	29.7	Top
	edge of			gut.	
	oil				

0+80

32.6	31.7	31.59	31.46	31.37
30	15		15	30

0+58. 14.6 ft = Sewer M.H. 231.72 = S. Rim

0+50

33.1	31.4	31.56	31.85	31.25	32.12
30	14		15	31.1	Top
				gut.	

0+35 = Beg. oil on Dirt to Lt.

33.6	33.9	31.4	31.43	31.56	32.07
30	5	3		22	Top
				gut.	

0+32 - 5.3 ft = P. pole # 3899 = B.M.

0+17 = P.C. of cb. on Rt.

29.7	32.6	32.4	30.92	30.88	31.41
30	23	2	edge	19	Top = P.C.
edge of				gut.	
Dr.					

± is Nly of A.C. all the way

0+11 = Beg. A.C. Pave + cb. on Rt.

27.8	28.0	31.3	30.9	30.15	29.86	30.37
30	20	11	1	edge	18	Top = end cb.
	edge of				gut.	
	Dr.					

0+00 = Conc. Mon.

230.75

on
cl
edge of
cl
Dr
To Gas Co.
Sta.

B.M. = Spike in N.W. P. pole 234.44

200' fig Not Noted.

Juniper + 39th

Actual Elev. Shown.

Lt.

±

Rt.

4+30- 26.4' Rt. = cb. on Rt.

37.20
26.4
gut. 37.70
Top

4+20

38.2 37.4 37.32 37.15 36.91
30 18
edge 15 30

4+06- 15' Lt. = ± Sewer M.H. 236.84 S. Rim

3+85'

38.0 36.4 35.6 35.47 35.23 34.73 35.26
40 30 18
edge 15 29.3
gut. Top

3+77- 15.1' Lt. = ± Sewer M.H. 235.35 = S. Rim

3+63- = P.C. of cb. on Rt.

34.06 34.53
18
gut. Top

3+43- 30' Lt. = ± 5' Conc. walk

36.42 36.53 36.3 34.0 34.09 33.49 33.99
40.7 30 25 18
at porch edge 18
gut. Top

3+13- 43.7' Lt. = ± Sing. Gar. Conc. Floor

33.08
43.7 = Conc.
Floor

3+00

33.4 33.1 33.15 32.49 32.95
30 18
edge gut. Top

2+50

32.9 32.7 32.5 32.66 32.08 32.55
40 30 18
edge gut. Top

2+00

32.1 32.2 32.2 32.43 31.71 32.19
40 30 edge
oil gut. Top

1+60

32.3 32.3 32.1 32.11 31.50 31.95
40 30 19
edge gut. Top

Lt. ± Rt.

4

7+20

47.8 44.7 42.4 42.53 42.27 41.53
 40 30 20 15 30
 edge

7+10 = for cb. on Rt.

41.48 42.00
 29.5 Top
 9+.

6+89 = P.C. of cb. on Rt.

42.85 43.36
 18 Top = P.C.
 9+.

6+80

48.7 47.0 43.6 43.76 43.13 43.63
 40 30 20 18 18
 edge Top
 9+.

6+40

49.6 49.0 44.8 44.99 44.24 44.74
 40 30 19 18 18
 edge Top
 9+.

6+00

50.6 50.0 45.1 45.41 44.60 45.07
 40 30 19 18 18
 edge Top
 9+.

5+60 = 40.3 Lt. ± 10' Conc. Dr.

50.72 48.74 47.3 44.6 44.22 44.15
 70 40.3 30 20 18 = 9+ in Dr.
 Dr. Dr. edge

5+20

45.7 45.4 43.0 43.27 42.51 42.98
 40 30 20 18 18
 edge of Top
 oil 9+.

4+80

43.1 42.4 40.9 41.10 40.19 40.68
 40 30 19 18 18
 edge Top
 9+.

4+50 = P.C. of cb. on Rt.

40.8 39.1 39.26 38.49 38.99
 30 19 = edge 18 18
 9+ Top = P.C.

Lt.

±

Rt.

5

9+60

51.1	50.7	50.5	48.8	49.05	48.35	48.83
40	30	25	22		18	Top
			edge	oil	gut.	

9+20

48.5	48.0	46.5	46.90	46.45	46.93
40	30	20		18	Top
		edge		gut.	

8+86 - 30.3' Lt. = ± Tel. pole # 609.15' - H

8+80

44.9	44.6	44.6	44.86	44.35	44.83
40	30	20		18	Top
		edge		gut.	

9+65.5' - 30.2' Lt. = end wall

44.39	44.0
30.2	30.2 = gr.
Top wall	

8+40

43.88	43.4	43.1	43.15	42.52	43.01
30.3	30	19		18	Top
Top wall		edge		gut.	

8+00

43.55	42.8	42.3	42.30	41.66	42.13
30.6	30	19		18	Top
Top wall		edge		gut.	

7+84.4 = P.C. of cb. on Rt.

41.50	41.97
18	Top = P.C.
gut.	

7+76 - 30.6' Lt. = Beg. 10' Conc. wall

43.38	42.8
Top wall	30.6 = gr.

7+60

44.4	42.9	41.9	42.00	41.74	41.29	41.77
40	30	20		15	28.7	Top
		edge		gut.		

7+43 - 65.8' Lt. = ± New Sing. Grav. Conc. floor
No drain yet.

48.77
65.8 = floor.

Lt.

±

Rt.

6

Set B.M. = D in ± of Sw. Ret.

250.86

check B.M. = 40' P.C. Cross
N.E. - Tulip + Juniper

254.15

See Plans for Tulip Paving under Coast.

end of cb. as staked = Top = 52.15

10 + 09 = about opp. Prop. Cor. on Lt. (Tulip)

53.3
30

51.3

23 =
edge of
oil

51.07 = on edge of A.C. 50.88
15

9 + 84 = P.C. of cb. on Rt.

52.2

51.8

51.7

50.1

50.35

49.58

50.07

40

30

27

23

edge

19

9 =

Top

INDEXED

MGR
SEP 16 1953

X-Sect. Sycamore Dr. - from 39th
to Marigold St. 7-29-53 - 70.
w.o. 32062 - Sketch - P. 1

1+35.5-24.8' Rt. = Beg. 4 Cyclone fence

1+22-26.5' Rt. = E.P. pole # P.A. 2399

1+00

0+85-25.1' Lt. = end Conc. apron

0+77-22.4' Rt. = E 8' Conc. Dr.

0+67-25' Lt. = Beg. Conc. apron to Doub. Gar.

0+60

0+49-18' Rt. = E of 14" Acacia

0+42-25.1' Rt. = end fence

0+40-15' Lt. = E 30" Pepper

0+25

0+16-23.8' Rt. = Beg. Board fence

0+00 = E and E.L. of 39th - Sect. along E.L.

B.M. = spike in Pole - S.E. Cor.

39th & Sycamore

245.53

Lt.

E

Rt.

7

42.4 35	42.0 25	41.4 15	41.1	40.8 15	40.5 25		
		42.76 25.1 = apron					
				40.93 22.4 Apr.	39.71 44.6 = floor gar.		
	43.54 32.7 floor.	43.16 25 = apron					
	43.7 25	42.7 18	41.8 10	42.0	41.5 15	41.4 25	41.1 35
	45.6 25 Lawn	45.4 17	43.2 10	43.6	43.3 15	43.0 25	
	47.2 25.43 Prop. Cor.	47.0 17	45.7 13	45.8	45.7 12	44.7 25.43 = Prop. Cor.	

200' fig. Not Noted.

Actual Elev. Shows.

Lt.

±

Rt.

8

3+13-23' Lt. = ± Shrub.

3+04-22.5' Lt. = ± Shrub.

3+00

43.5	43.2	42.5	41.0	41.2	40.7	41.6	41.4	41.2
35	25	15	9		9	14	25	35

2+88-22' Lt. = ± Shrub.

2+78-24.8' Lt. = Beg. Lath fence

2+63-22' Lt. = ± Shrub.

2+53-14.8' Lt. = ± 3' Brick + Conc. walk

43.54	43.44	42.08	42.22					
31.5		25.3	14.8 = walk					
at	Beg.	Brick						
Porch	Conc.							

2+50

43.3	43.0	42.3	41.0	41.0	40.8	41.7		41.5
35	25	16	10		9	13		25
					41.43			41.50
					24.5			35.7 = porch
					walk			

2+48-24.5' Rt. = ± 3' Conc. walk

2+17-25.5' Rt. = End ± Hedge

2+14-16' Rt. = ± 12" Olive

2+00

42.1	41.7	40.9	41.0	40.6	41.5	41.1	40.9
25	15	11		9	13	25	35

1+97-16.5' Rt. = ± 8" Olive

1+78-25.5' Rt. = Beg. ± of 5' Hedge - 5' High

1+77-25' Rt. = end fence

1+64-24.5' Lt. = ± 9' Conc. apron

44.09	41.91
44.2 =	24.5 = apron
flow-gar.	

1+57-16' Rt. = ± 8" Acacia

1+50

41.5	41.6	41.1	41.0	40.5	41.1	41.2
35	25	15		9	11	25

1+45-16.2' Rt. = ± 7" Acacia

Lt. ← Rt.

Sycamore + Marigold
Set B.M. = spike in S.W. Pole 244.65

5+06.78 = ± Marigold + on Sewer M.H.

45.7 45.3 45.09 = 44.8 44.9
50 25 on Cross-wly Rim 25 50

4+81.78 = w.l. of Marigold - 25' Lt. = end fence

45.3 44.5 43.3 43.7 43.2 43.8 44.1
50 25 18 15 25 50

4+50

44.7 44.5 44.1 42.7 42.7 42.6 43.1 43.0
35 25 14 12 15 25 35

4+02 - 24.2' Lt. = end wire + Beg Picket fence

4+00 -

44.3 44.2 43.9 41.7 42.0 41.6 42.2 42.0 41.7
35 25 14 10 10 13 25 35

3+50

44.4 44.1 43.8 40.9 41.4 41.2 41.8 41.5
35 25 16 10 10 14 25

3+23 - 24.8' Lt. = end Lath + Beg. wire fence

3+22 - 23' Lt. = ± shrub

INDEXED
 JER
 SEP 16 1953

X-Sect. 39th from Juniper to Pepper

Dr. - See sketch - P. 1

- W.O. 32062 7-29-53 - 7.0.

1+80

38.4 38.5 38.5 39.0 38.3 38.0 38.46
 35. 25 9 14 25 Top
 edge edge wall

1+40

36.2 36.6 36.7 37.1 36.4 37.1 37.94
 35 25 8 15 25 Top
 edge edge wall

1+37 - 16.5' Lt. = ± Dead man

1+17 - 16.7 Lt. = ± P. pole #

1+14 - 25' Rt. = Beg. 8" Conc. wall

35.9 37.68 = Top
 25 = gr.

1+00

35.0 35.6 35.7 35.9 35.5 35.6 36.4 35.9
 35 25 6 7 25 26 35
 edge edge

0+63 = end C.L. Dr. on Lt.

34.7 34.66 34.81 34.8 35.0 34.8 35.1
 25 20 12 5 19 25
 End Dr. edge edge

0+45

33.54 33.78 33.97 34.2 34.5 34.4 34.3 34.6 34.3
 28.6 25 12 5 15 20 25 35
 edge C.L. Dr. edge edge

0+15 - Note C.L. Dr. to Gas Co.

30.85 31.80 32.15 34.3 33.2 33.4 33.3 33.2 33.5
 35 25 22.5 18 4 15 23 25
 on Dr. on Dr. edge of Dr. edge edge

Rough oil strip of Pav. - all the way.
 0+00 = ± at N.H. of Juniper - Sect. along N.H.

33.7 33.0 32.4 32.6 32.7 32.6
 25.4 10 4 15 25.4 - edge
 edge oil of oil

B.M. = spike in Pole

234.44

Actual Elev. Shown.

Lt. \oplus

Rt.

11

4+15-25.2 Rt. = Beg. 8" Conc. Block wall - 4 High
Now Used as House

50.9 at Cor.

4+05-25.1 Rt. = \oplus 8" Conc. Dr. - To Gar.

25.2 pr.

50.61

49.64

25.1

40' along House

Dr.

4+00

50.4	51.3	51.6	51.1	51.6	51.0	50.5	49.6
35	25	17	14		12	25	35
			edge		edge		

T.P. = Nail in Post

250.68

3+60

48.9	49.8	50.4	49.6	50.0	49.3	49.7	48.7	48.0
35	25	16	13		12	15	25	35
			edge		edge			

3+24

47.4	48.3	49.8	48.1	48.7	47.9	48.1	47.2
35	25	15	12		10	14	25 = Prop Cor.
			edge		edge		

3+09.2 - 0.4 Rt. = Sewer MH.

248.44

R.P.

on Cross
Sly Rim

3+00

46.4	47.2	47.9	47.0	47.8	47.8	45.9
35	25	14	11		11	25
			edge		edge	

check B.M. on Pole Below

245.53

2+80

45.6	46.4	47.0	45.8	46.2	45.9	45.3
35	25	14	11		13	25
			edge		edge	

2+78-25.5' Rt. = \oplus Tel. pole # 527823-H

2+40

43.4	43.4	43.9	43.0	43.3	42.8	42.9	42.5
35	25	15	10		14	25	35
			edge		edge		

2+19-25.1' Rt. = \oplus 8" Conc. Dr.

41.33

41.24

25.1
Dr.

40' gar

2+00

39.9	40.2	40.4	39.8	40.2	39.5	40.0	40.0	40.0
35	25	12	9		14	17	25	35
			edge		edge			

1+93.5 - 25.1 Rt. = end wall at Wall to R.

38.67

40.40

25.1

Top-N+S
Wall

25.1

Top wall
to E.

39+4

12

Lt. ± Rt.

5+78.27 = D.C.

49.2	50.0	50.6	50.5	51.10	50.7	51.2	51.6	52.08
35	25	17	13	on PK.	13	15	25	25.1
			edge		edge			Top Conc.

5+63.5 - 24.8 Rt. = Req. 5" Conc. base for Cyclone fence

52.13
24.8 = Top Conc.

5+57 - 24.9 Rt. = ± 12' Conc. Dr.

52.12 52.19
24.9 40 = Dr.
Dr.

5+50

50.5	51.6	52.0	51.7	52.1	52.1	52.2
35	25	16	13		10	25
			edge		edge	

5+38 - 25.1' Rt. = ± 12' Conc. Dr. = fence ends

52.56 52.48
25.1 40 = Dr.
Dr.

5+20

52.2	52.9	53.2	52.7	53.1	52.8	52.6	52.77
35	25	15	13		10	25	25.2 = Top Conc. Found.
					edge		

5+17 - 25.2' Rt. = ± 3' Conc. Walk

52.62 52.59
25.2 = walk 38.6
at step.

with 6" Conc. found.

4+93.5 - 25.3' Rt. = end wall + Req. wood fence

52.66
25.3 =
Top Conc. Found.

4+80

51.7	52.7	53.6	52.9	53.3	53.0	52.5
35	25	15	13		11	25 = By wall
			edge		edge	

4+74 - 25.9 Rt. = ± of 10' Conc. Dr. Thru wall

52.35 51.46
25.9 40 = Dr.
Dr.

4+40

51.2	52.0	52.5	52.1	52.7	52.3	51.9
35	25	16	14		12	25 = By wall
			edge		edge	

Pepper Dr.

INDEXED
YER
SEP 16 1953

13

7+50

52.5 52.7 52.2 52.6 52.2 52.6
25 14 15 8 25
By wall edge edge

7+46 - 23.8' Rt. = ± Dead man

7+37 - 25.2' Lt. = Beg. 8" Conc. Block wall - 4'H

51.6
25.2 at
cor.

7+26 - 25.2' Rt. = ± 3' Conc. walk

52.21 52.34
25.2 34.4 = at Step

7+04 - 25' Rt. = ± Beg. Picket fence
end Conc. wall + fence

52.16
25 = Top wall

7+00

49.5 50.0 50.2 50.8 50.4 51.1 51.8 52.12
35 25 17 11 13 25
edge edge gr. Top wall

6+90 - 37.9' Lt. = ± 9' Conc. Dr.

48.59 49.16
50 37.9 = Dr.
Dr.

6+77.38 = EC

48.8 49.2 49.7 50.33 50.4 51.4 52.09
35 25 15 on PK 13 25
edge edge gr. Top wall

6+73 - 18.2' Lt. = ± 2.5' Conc. Walk

48.64 49.53
35 18.2
walk walk

6+60.3 - 23.2' Lt. = ± P. pole # 3801

6+52.61

48.1 48.8 49.3 49.3 49.9 50.1 50.9 52.11 51.4
35 25 13 11 16 22.8 25
edge edge gr. Top wall Lawn

6+27.83

Note: End of 29th
+ Beg. Pepper Dr.

47.6 48.5 49.6 49.8 50.0 49.9 51.0 52.06 51.5
35 25 12 10 17 22.2 25
edge edge gr. Top wall lawn

6+03.05

48.1 48.9 50.1 49.9 50.3 50.2 51.2 52.0
35 25 13 10 16 22.6
edge edge gr. wa

Curve in 4 parts - Sect. Radial

Pepper Dr

Lt.

±

Rt.

14

8+48-24.4 Rt. = ± 3 Conc walk

56.64

56.79

8+38-26.3 Lt. = end apron

55.71

24.4
walk

39.5 = at
step

Sect. Radial

26.3 = apron

8+32.18 = BC - Curve in 4 parts

56.00

55.68

55.4

55.6

55.79

55.4

55.8

56.16 =

8+26-25.3 Rt. = Beg. Picket Fence - Conc. found.

41

26.3

25

15

on Hub.

9

25

25.1

flop
gar

Dr.

edge

edge

edge

edge

edge

Top found

8+20-25.3 Rt. = ± 7' Dr. - 2' 13" Conc. strips

55.32

55.31

8+18-26.1 Lt. = Beg. Conc. Apron to Sing. Gar.

55.95

55.68

25.3

50 = Dr.

40.5
at Gar.

26.1 = Cr.

Dr.

8+10-33.9 Lt. = ± 10' Conc. apron to Sing. Gar.

53.90

53.70

38.8

33.9 = apron

floor gar.

8+03-23.8 Lt. = end Conc. wall

55.65

54.6

Top wall

23.8 = gr.

8+00-25.3 Rt. = ± 2.5' Conc. walk

54.6

55.60

54.6

54.5

54.7

54.2

54.8

54.84

54.90

25

Top

23.7

15

9

9

25

25.3

48.5

wall

By wall

edge.

edge.

edge.

edge.

walk

walk

at
step.

7+77-22.6 Lt. = Beg. 6" Conc. wall

54.99

54.0

7+76-22' Lt. = ± P. pole # 569073-H

Top

wall

22.6 = gr.

7+69-23.3 Lt. = ± 10' Conc. Dr.

53.14

53.97

53.60

7+66-24 Rt. = ± P. pole # J.P. 3851

40.3

25.3

23.3 = Dr.

floor gar.

P.R.

7+64-25.3 Lt. = end wall at Dr.

53.5

53.91

6+64-25.2 Rt. = end fence

25.3 =

gr.

25.3 = on

Dr.

at wall

at wall

Cur.

Pepper Dr.

Lt.

←

Rt.

15

9+64.46 - E.C.

Natural
Drain

← 51.7 53.1 54.6 55.2 55.2 56.5 56.7
35 25 10 14 25 35
edge edge

9+51.5 - 23.5' Rt. = 4" 12" Acacia

9+40 - 23.3' Rt. = 4" Tree

9+31.39

51.7 52.9 54.7 55.7 55.5 56.7 57.1
35 25 12 12 25 35
edge oil edge oil

9+14 - 18' Lt. = end Conc. found

54.93

9+06 - 20.7' Rt. = 15' Conc. Dr.

18" Top
Conc.

56.91 57.08 57.46
20.7 25 50
Dr. Dr.

8+98.32

54.6 55.0 55.39 55.7 56.0 55.9 57.0 57.2
35 25 19.7 13 11 25 35
Conc. found edge edge

8+97 - 21.3' Rt. = end fence

8+95 - 35.5' Lt. = 4" walk at porch

54.75
35.5
walk

8+88.5' 18.9' Lt. = 3.5' Conc. walk

55.35 55.86
20.1 18.9 = walk
Curves walk Bot. step

8+79 - 21.1' Lt. = Beg. Conc. found to fence

56.00
21.1 = Top
Conc.

8+68 - 21.5' Lt. = 4" P. pole # J.P. 4028

8+65.25

55.5 55.7 56.1 56.5 56.2 57.2
35 25 14 12 25
edge edge

8+65 - 23.5' Rt. = 4" P. pole # B.M. = 257.21 = spike
J.P. 3861
+ Beg. Picket fence

8+63 - 24.5' Rt. = end Conc. found to fence

57.21
24.5 = Top
found

8+49 - 24' Lt. = 3.5' Conc. Walk

55.76 55.77
39 24 = walk
at step.

Pepper Dr.

Lt.

±

Rt.

16

10+68-24.3' Rt. = ± P. pole # = BM. 257.81 = spike
J.P. 3875

10+67-24.5' Rt. = end fence

10+61-22.8' Rt. = ± 10" Palm

End W.O. 32062 + Beg. W.O. 32061

See sketch in Book 1748 - P. 46

oil Pave on Road Continues on Thru Park

10+52.95 = Ang. Pt. = Beg. Park

57.1 57.2 57.1 56.5 56.8 56.4 57.2 57.2
.35 25 14 8 12 14 25.
edge edge

10+52.5-22.3' Rt. = ± 8" Palm

10+52-23.1' Lt. = ± Tel. pole # 589431-H

10+44-22' Rt. = ± 10" Palm

10+40-26' Rt. = ± 3' Conc. walk

57.00 56.92
26 44.5 = at
walk step

10+36-22.5' Rt. = ± 10 Palm

10+31-22.4' Lt. = ± 4' Conc. walk

56.86 56.61
38.9 22.4 = walk
at step

10+28-22.8' Rt. = ± 12" Palm

10+21-22.7' Rt. = ± 8" Palm

10+15-24.2' Lt. = ± 11 Conc. Dr.

57.39 56.25
41.4 24.2 = Dr.
door of gar.

10+10

56.13 55.9 55.5 56.0 55.8 56.2 56.1
24.2 24 8 14 25 35
on Conc. Dr. edge edge

9+78-24.3' Rt. = Beg. Cyclone fence

9+70-23.5' Rt. = ± 3' Conc. walk

56.65 56.65
23.5 35
walk

Pepper Dr.

Lt. Rt.

17

2+50-24.7' Rt. = \pm 3' Conc. Walk

63.8	64.8	65.7	65.2	65.8	65.8	66.27	66.39
35	25	16	13		11	24.7	41.2
			edge		edge	walk	at step

2+13-25.2 Lt. = \pm 8' Conc. Dr.

66.39	65.66
44 = floor	25.2 = Dr.
gar.	

2+00-23' Rt. = \pm F.H.

65.8	65.0	65.1	64.6	65.3	64.9	64.7	64.9
35	25	17	15		12	25	35
			edge		edge		

1+91-25' Rt. = end fence

1+91-23.5' Rt. = \pm P. pole # IP 3923-
BM = 265.53 = spike

1+87.5'-25' Lt. = \pm 3.5 Conc. Walk

65.95	65.40
40	25 walk
at step	

1+56-25.2' Rt. = Beg. Cyclone fence

1+55 = end of Park = B.C. - Sect. Radial

62.3	63.4	64.6	64.3	64.8	64.2	65.0	65.2	65.7
35	25	18	15		12	14	25	35
					edge			

1+00

63.1	64.0	64.2	63.7	64.1	63.4	65.2	65.4	65.2
35	25	17	14		13	15	25	35
			edge		edge			

0+50

61.5	62.0	62.5	62.2	62.5	62.4	64.6	64.1	63.2
35	25	17	14		13	16	25	35
			edge		edge			

P 46 - for sketch

Sec B. 1748 - P. Co. for orig. Notes

12+10.95 = Hub = \pm Road to S. = 0+00 ahead

59.9	60.5	60.9	60.7	60.5	60.6	60.4	60.1
35	25	15	13		9	25	50
			edge		edge		

11+50

59.0	59.2	59.2	58.5	58.7	58.3	58.9	58.7	58.5
35	25	12	10		11	13	25	35
			edge		edge			

11+00

58.4	58.3	58.1	57.4	57.7	57.3	57.8	57.8	57.8
35	25	10	9		12	13	25	35
			edge		edge			

Lt.

±

Rt.

18

4+77-25.3' Lt. = end apron

69.17

25.3 = Cor.

4+59-25.4' Lt. = Beg. Conc. apron

68.68
4469.05
25.4 = Cor.

4+50

69.0	69.0	69.4	69.0	69.5	69.4	69.2	68.7
35	25	11	9		18	25	35
			edge		edge		

4+11-25.1' Lt. = ± 3' Conc. walk

69.15 at step
38.5 = at step69.21 = walk
25.1

4+00

69.2	69.1	69.1	68.4	68.9	68.9	69.1	69.1
35	25	12	10		16	25	35
			edge		edge		

3+80-24.9' Rt. = ± 8' Conc. Dr.

68.99

68.81

3+79-40.6' Lt. = ± Sing. Gar. Conc. floor

68.96

40.6 = floor

24.9
Dr.

35 = Dr.

3+71-23' Rt. = ± P. pole # 3943

3+62-25.6' Lt. = ± 18" Conc. walk

68.77

68.73

3+58-13.5' Rt. = ± 6" Pepper

38.7

25.6 = walk

at step

3+50-24.2' Rt. = ± 3' Conc. walk

68.7	68.0	68.0	67.5	67.8	68.0	68.31	68.05
35	25	13	11		11	24.2	50
			edge		edge	walk	walk

3+42-25' Lt. = ± 8' Conc. Dr.

67.65

68.00

3+40-13.5' Rt. = ± 6" Pepper

40

25 = Dr.

Dr.

3+22-19.4' Lt. = ± 3' Conc. walk

67.65

67.61

67.58

35.5

25

19.4 = walk

at step

walk

3+00- Lt. = on Ely. of 12' Conc. Dr.

67.09	66.69	66.7	66.3	66.6	66.7	66.8	67.0
40.3	25.1	14	12		11	25	35
Floor gar.	Dr.		edge		edge		

Lt. ± Rt.

6+34- 23.4 Rt. = end Dr.

75.48 75.63
23.4 40
- Dr. -

6+12.66 = E.C. - 20.9 Rt. = Beg. Conc. Dr.

73.2 73.8 74.0 73.5 74.0 74.6 75.44 75.45 75.68
35 25 " 9 15 20.9 25 40
edge edge Conc. Dr. floor
Gar.

6+04- 21.3 Rt. = end fence

6+02- 23.5' Rt. = Pepper

5+87

71.8 72.4 73.1 72.5 73.0 73.6 74.1 74.2
35 25 12 9 15 25 35
edge edge

5+71- 23' Rt. = E 12" Pepper

5+69- 20.7 Rt. = Beg. Picket Fence

5+61.35

71.1 71.4 71.8 71.5 72.0 72.6 73.1 73.4
35 25 " 9 16 25 35
edge edge

5+50 - 24.5 Rt. = ± 2.5' Conc. walk

72.69 72.70
24.5 35
walk

5+35.69

69.2 70.2 70.8 70.5 71.2 71.7 71.8 71.7
35 25 " 9 17 25 35
edge edge

5+15- 24.2 Rt. = ± P. pole # J.P. 3963

5+10.04

69.5 70.1 70.19 69.8 70.1 69.8 70.6 70.7 70.6 70.4
35 25 Top 23.7 12 9 16 25 35
6' conc wall 9' edge edge

4+94- 28.4 Rt. = ± 2.5' Conc. Dr. walk

70.29 70.19
28.4 50
walk

4+84.38 = P.C.C. - Sect. Radial

69.4 69.4 69.7 69.4 69.9 70.0 70.0 70.2
35 25 " 9 16 25 35
edge edge

Set B.M. on F.H.

280.61

7+96.75 = w.L. Violet - Sect. along w.L.

7+72.83 = opp. P.C. on Rt - 23.4 Rt = ± F.H.

7+52.99 = opp. P.C. on Lt - 24.5 Rt = ± Tel. pole # 569064

7+17 - 25.4 Rt = ± 5' Slab. walk 69.9
40

6+84 - 25.3 Rt = end wall

6+80

6+69.5 - 25.1 Rt = Beg. 6' Brick wall - 5' High.

6+56 - 24.4 Rt = ± P. pole # J.P. 3975

6+50

Lt.

±

Rt.

20

79.0	78.4	79.0	79.2	78.7	79.4	78.8
37	33	15		19	22	40
	edge			edge		

78.5	78.8	77.8	78.3	78.4	78.4	78.6
40	20	15		13	25	35
		edge		edge		

-H	77.7	78.0	78.0	77.1	77.8	78.0	78.5	78.1	78.3
	35	25	14	10		14	15	25	35
			edge			edge			

76.1	76.7	77.3	76.4	77.0	77.0	77.1	77.34	77.37
35	25	14	9		15	25	25.4	35
			edge		edge		walk	

74.2	76.2	76.4	75.6	76.2	76.5	76.5		
35	25	12	9		16	25		
			edge		edge	By wall	76.3	
							25.1 = at Cor.	

75.0	75.4	75.6	74.8	75.4	75.9	76.0	76.0
35	25	12	9		15	25	35
			edge		edge		

76.6
25.3
at Cor.

X-Sect. Violet St. from Sycamore S.
 To End. - See B. 1748 - P. 44 for sketch.
 W.O. 32061 - 8-4-53 7.0

INDEXED
 SEP 16 1953

1+26 = 17.1 Rt. = \pm 2' x 2' Brick base for Mail ^{Box}

1+20 = 25.2 Rt. = \pm 7.5' Conc. Dr.

1+12 = 23.5 Rt. = end Brick Border

1+00

0+99 = 16' Rt. = \pm 3' Diam. Brick base for Mail Box

0+96.5 = 24.9 Rt. = \pm 3' Conc. walk

0+82 = 23.5 Rt. = Beg. Brick Border for planting

0+78 = 25.2 Rt. = \pm 7' Conc. Dr.

0+69 = 26.6 Lt. = \pm 16' Conc. Dr.

0+65 = 25.2 Rt. = \pm 8' Conc. Dr.

0+50

0+41 = 25' Rt. = \pm 4' Conc. walk

0+35 = 19.6 Lt. = \pm 3' Conc. walk

Traces of Rough oil Pave - Not Noted.

0+00 = S.L. of Sycamore Prod. from E. ^{Sect. along S.}

B.M. = Spike in S.W. Pole

275.67

Violet & Sycamore
 D. 2075 - P 49

Lt.

\pm

Rt.

21

73.2 73.3 73.2 73.5 73.2 73.40 73.2 73.1
 35 25 12 12 23.6 25 35
 Dr. Dr. ^{Top of Brick}

73.12 73.09
 24.9 walk 36.3 = at Porch

73.71 73.09
 25.2 = Dr. 40 = Dr.

74.47 74.55
 45 26.6
 Dr. Dr.

74.58 73.85
 25.2 45 = Dr.
 Dr.

74.9 74.8 74.5 74.1 74.4 74.3 74.5 74.1
 35 25 17 14 12 25 35

74.50 74.30
 25 35
 walk at step

75.45 75.19 75.08
 33 25 19.6 = walk
 at step

76.1 76.0 75.4 75.4 75.0 75.3 75.0 74.7
 27 17 14 12 14 27 40

Actual Elev. Shown

54.30
16.99
70.19

Lt. ± Rt.

Note - outs are from ± Produced

2+90- 21.4 Rt. = end edge of Hedge

2+82- 21.3 Lt. = Beg. 12" Dobe Brick wall

70.8 69.7
Top wall 21.3=qv.

19' Lt. = Beg. edge of Rosee Shrub Planting
2+70.79 = ± at 30' Rad. - 23 Lt. = end Guava Hedge

70.1 70.0 69.6 70.0 69.5 69.3
30 20 18 15 24.6 ± edge of Hedge 30

edge of 7' Hedge
2+54.30 = opp. P.C. on P.L. - 23.5 Rt. = Beg. Near

70.0 70.2 69.8 70.5 69.9 69.8 69.7
35 25 21 ± Hedge 17 12 25 35

2+36- 19.5 Lt. = Beg. ± of Guava tree Hedge

2+34- 17.3 Rt. = ± P. pole = B.M. spike - 270.98

2+32- 17.5 Lt. = ± 8' Conc. Dr. - Normal to lot (along Lot Line)

70.07 70.60
35 Dr. 17.5

2+27- 16.3 Lt. = ± of wly. of 3' Hedge - 5' High

2+00

71.1 71.0 71.3 71.2 71.4 71.0
25 12 12 25 35

1+94- 25.7 Lt. = ± 7' Dr. - 2-2 Conc. Strips for Mail Box

70.77 71.23
40 Dr. 25.7

1+90- 14' Lt. = ± 2.5 x 2.5' Brick base

1+71.5- 17.2 Rt. = ± Dead man

1+67- 25.6 Lt. = 3' Conc. walk

71.93 72.08
40 walk 25.6

1+54- 17.3 Rt. = ± P. pole # P. 2540

1+50- 25.8 Lt. = ± 7' Dr. - 2-2 Conc. strips

72.20 72.49 72.4 72.2 72.6 72.3 72.6 72.6
40 25.8 25 12 12 25 35
Dr. Dr.

1+42- 3.7 Lt. = ± Sewer M.H. 272.91 = U-Rim

Lt. # Rt.

0+95 = edge of Canyon

50.0

0+60

60.0

0+30

66.2

0+00 = Prop. Line - Lots 14 + 15

69.1

get more complete notes if needed.

Will show profile along Lot Line

Lots 15 + 14 - should be in # to Miss Trees + Hedge

Prop. Drain Can go along lot line bet.

3+02.79 = # at end of Banjo - 30' Rad.

69.4 69.2 69.0
17 17
edge of Dr.

2+91 - 24' Lt - edge of Dabo wall
cont Heavy Planting - shrubs back of wall

70.7
TOP wall 69.5 69.6
24 = 91 14 = in Cold Lay Dr.

X-Sect. Violet st. - from Sycamore
Nly. to Popular - Sketch - B. 1748 - P. 45
+ T.P. 21 - P. 122

1+45

78.7	78.7	78.5	78.8	78.8	79.5
35	25	8		10	25
		edge			

1+34 - 24.7 Lt. = ± 12' Conc. Dr.

78.25	78.61
40	24.7 = Dr.

1+26 - 25.4' Rt. = end Dr.

79.28
25.4 = Dr.

1+10 - 25.5' Rt. = Beg. Conc. Dr.

78.0	77.8	78.3	78.4	79.0	79.12	79.93
25	12		10	25	25.5	39.6
By wall	edge oil		edge		Dr.	floor gar.

1+00 - Beg. Rough oil pave

0+99 - 24.5' Lt. = ± 4' Conc. walk - Thru wall

77.38	77.80
50	24.5 = walk
walk	

0+80

77.0	77.0	77.0	77.4	78.0	78.5
25.2	25	15		12	25
by Stucco wall					

0+50 = N.L. Sycamore

74.3	76.2	77.0	77.4	77.3	77.9
50	25	15		12	25

0+34 - 19.6 Lt. = ± Sewer M.H. 76.97 = S. Rim

0+25

74.9	76.5	76.8	77.3
60	25		25

0+09 - 56 Lt. = ± P. Pole # P. 2599

1.5 Rt. = ± Dead Man

0+08 - 8.5 Lt. = ± Guy Pole

0+01.5 - 10.8 Lt. = ± F.H.

0+00 = S.L. of Sycamore to E.

75.4	75.5	75.9	76.5	76.73	76.88	76.9
41.8	27	25		14.3	23.9	25
± Violet				Cor. of Dr.	edge of walk	
B.S. = 0+00						

B.M. = Spike in S.W. Pole

275.67

Violet + Sycamore

Uiolet

Lt.

±

Rt.

3+50- 17' Lt. = ± 16" Pepper

3+40-24.9' Lt. = ± 4' Conc. walk

3+32- 16.5' Lt. = ± 20" Pepper

3+16- 30' Rt. = ± F.H.

3+14.83 = 2-L. Pepper Dr.

81.09
39.5
at step walk

80.97
24.9

80.5
35
80.4
25
80.4
8
edge
80.6
80.8
12
edge
81.0
25

2+80

79.5
25
79.4
15
edge
80.3
80.4
10
edge
81.0
25
25.6 = wall

2+50 - 15.3' Rt. = 3' from N. edge of 9' Conc. Dr.

check B.M. = Top Hyd.

280.65 - .61 - P. 20

78.6
25
79.6
15
80.2
80.1
10
edge
80.56
15.3
Dr.
80.80
25
Dr.
80.90
35

2+20

79.3
25
79.7
15
80.0
79.9
10
edge
80.3
25
25.6 = wall

2+14- 22.2' Rt. = ± 4' Conc. walk thro wall

80.38
22.2
walk
80.51
35

1+95

1+82 = ± Sewer M.H.

79.66 S. Rim

- 24.5' Lt. = E P. pole + J.P. 2698

1+75 - Beg. Cold Lay Pave

79.5
25
79.1
17
edge
79.8
79.7
9
edge
80.1
25
80.1
25.7 = By wall

78.8
25
79.2
9
edge
79.5
79.3
10
edge
79.5
25
80.2
50
in Alley

1+69- 25.4' Lt. = ± 4' Conc. walk

1+56- 24' Lt. = ± Dead man

78.80
40
walk
79.05
25.4

Violet

5+00

4+91- 32.5' Lt. = \pm 7' Conc. Dr.

4+85- 24.3' Lt. = \pm Pole # J.P. 2770

4+50

4+38- 25.8' Lt. = \pm 7' Dr. - 2-2' Conc. strips

4+24- 25.1' Lt. = \pm 3' Conc. walk

4+00

3+99- 24.8' Lt. = \pm 7' Dr. - 2-2' Conc. strips

3+90- 16.2' Lt. = \pm 3" Acacia

3+85- 24.8' Lt. = \pm 3' Conc. walk

3+76- 16.5' Lt. = \pm 4" Acacia

3+66- 23.6' Lt. = \pm Pole # J.P. 2730 = B.M. 281.55

3+64.83 = N.L.

3+61- 24.6' Lt. = \pm 7' Dr. - 2-2' Conc. strips

Lt. \pm

Rt.

26

82.3	82.4	82.9	83.2	83.3	83.8	84.3
35	25	7		11	25	50
		edge		edge		in Alley

81.51	82.11
45	32.5
	Dr.

81.6	81.8	82.3	82.4	82.8	83.2	83.4
35	25	7		12	25	35
		edge		edge		

81.45	81.87
40 = Dr.	25.8 = Dr.

81.25	81.89
43.9	25.1 = walk
at step.	

81.4	81.7	81.9	81.9	82.3
25	7		12	25
	edge		edge	

80.99	81.39
40	24.8 = Dr.
Dr.	

81.06	81.35
39.5	24.8 = walk
at step	

80.9	81.2	81.1	81.3	81.4	81.7
35	25	7		14	25
		edge		edge	

80.67	81.04
40	24.6
	Dr.

Lt.

±

Rt.

27

Popularr Violet

Set B.M. = on S.E. F.H.

286.40

Det. obs.

7+15 = opp. P.C. & end of cb. - Rough oil pave

83.20	82.71	83.5	83.56	84.04
Top = end cb.	18 gut.		18 gut.	Top = P.C.

6+98 = approx. N. cb.

6+87 = 24' Lt. = ± P. pole # P. 2802

81.2	81.7	82.5	82.9	83.3	83.5	83.61	84.26
35	25	11		15	25	35	Top = P.C.
		edge oil				gut.	

6+70

6+59 = 10.6' Rt. = ± 4.5 x 3' Gas. Co. M.H. 83.49 = W. Rim

78.4	80.9	82.4	83.0	83.2	83.8	83.8	84.4
50	25	15	5		15	25	50
			edge				on Cold Lay Pave

6+42 = approx. S. cb. Line of Popularr - Prod from

78.9	81.6	82.8	83.0	83.4	83.8	84.0	84.32	84.96
50	25	17	7		15	25	58.1	Top = P.C.
			edge				gut.	

6+13.5 = 19.7' Rt. = end of cb. = Cr. Type

6+00.84 = Disk - See T.P. 21 - P. 122

83.45	83.97	84.08
19.9	Top	Cor. S' walk
gut.	cb	Radial.

6+00

81.7	82.5	83.4	83.7	83.6	84.6	84.7	84.9
35	25	9		14	20	25	35
		edge		edge			

5+50

82.3	82.6	83.2	83.6	83.7	84.4	84.6
35	25	10		11	25	35
		edge		edge		

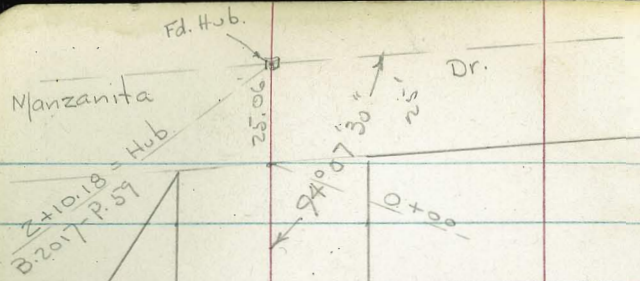
5+39 = 25.2' Rt. = ± 3' Conc. walk

5+13 = 32.6' Lt. = ± 3.5' Conc. walk

82.64	82.49	84.32	84.83
44.8	32.6	25.2	37.2
at step	walk	walk	at step

5+09 = 24.8' Rt. = ± 7' Dr. = 2-7' Conc. Strips

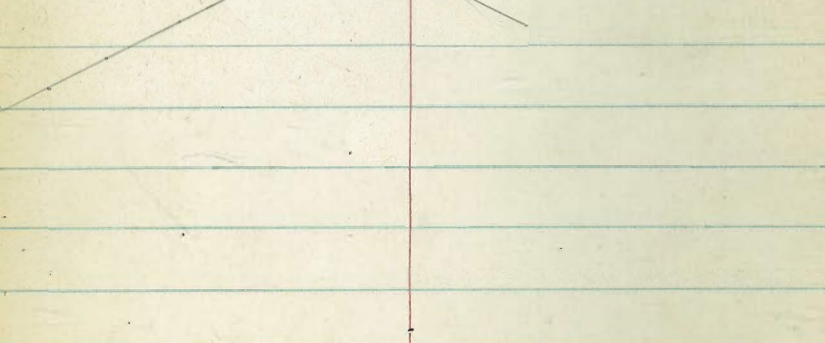
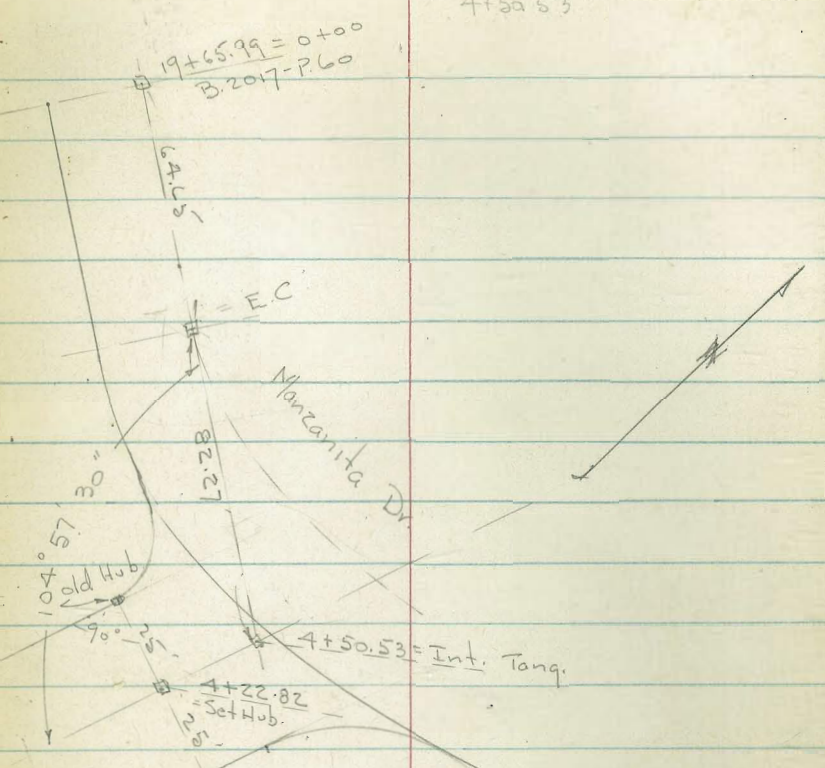
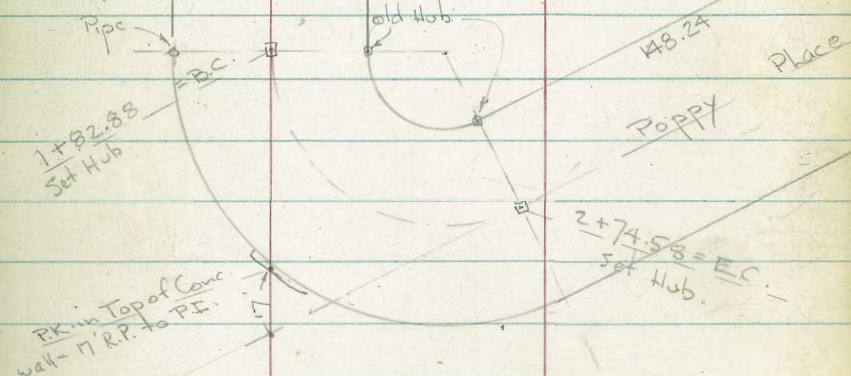
84.28	84.54
24.8	40
Dr.	Dr.



104° 57' 30" 28
4+50.53 82.27

25' 25'

Poppy
 $\Delta = 116^\circ 45'$
 $\pm \text{Rad.} = 45'$
 $T = 73.08'$
 $L = 91.70'$



X-Sect. Poppy Place -
 sketch - P. 28
 W.O. 32062 8-11-53 - 7.0

INDEXED
 SEP 16 1953

1+61 - 25' Rt. = ± 3' Conc. walk ✓

1+43 - 15.3 Rt. = ± P. pole # 2937 ✓

1+40

1+22 - 11' Lt. = ± Rough 2.5' Conc. walk ✓

1+00

0+60

0+53 - 24.9' Lt. = ± 6' Conc. Walk ✓

0+30

0+15

0+06 - 24.1 Rt. = ± F.H. ✓
 See B. 2017 - P. 64

0+00 = SL. Manzanita - Sect. along S. Line

B.M. = spike in Pole - Nly. 27893

Poppy Pl. & Manzanita - B-2017-P. 64

Lt. ± Rt. 29

76.44 75.11
 25 36
 walk

79.8 79.3 77.7 77.8 77.4 75.8 74.7
 25 13 9 12 25 35

80.92 79.94 78.64
 .40 25.3 11 = walk
 Beg. good
 walk

79.5 78.3 77.3 77.1 76.6 74.4 72.5
 25 15 9 13 25 35

78.8 78.2 77.1 76.9 76.5 70.8 66.9
 25 15 10 15 25 40

79.84 79.31
 29 24.9 = walk
 at step

79.2 79.0 76.9 76.9 76.6 72.7 70.1
 25 17 10 14 25 35

79.6 79.3 77.1 77.0 76.8 74.2 70.7
 25 16 10 15 25 35

79.9 79.5 77.4 77.2 76.8 77.3 76.4
 25 18 11 11 13 25

3+50

3+47 - 13.4' Lt. = ± P. pole P. 3970 ✓

3+27 - 12.2' Lt. = ± Dead Man ✓

3+00

2+74.58 = E.C. 58° 22' 30"

2+56.24 = on 8' Conc. Dr. on Rt. ✓
46° 42'

2+37.90 25° 01' 30"

2+29 - 20' Lt. = ± Guy Pole ✓

2+29 - 20.8' Rt. = ± P. pole # P 3947 ✓

2+19.56 23° 21'

Set B.M. on 17' R.P. = P.K. 279.77

1+01.22 - 11° 40' 30"

Curve in 5 parts - Sect. Radial - ch = 18.21

1+92.58 = B.C.

1+74 - 25.2' Rt. = ± 8.5' Conc. Dr. ✓

1+68 - 13.8' Lt. = ± 2.5' Conc. walk ✓

LT.	±	Rt.
81.6 25	81.0 10	80.8 15
80.5	80.2	
80.7 25	80.4 11	79.8 8
79.8	79.6 15	78.8 25
77.4 35		
80.0 25	79.8 13	79.0 11
79.1	79.2 15	79.1 25
79.8 25	79.5 15	78.7 12
78.8	78.8 15	79.0 25
79.10 27.5	79.06 40	Dr.
79.8 25	79.5 15	78.5 11
78.6	78.5 15	78.1 25
79.8 25	79.5 14	78.5 11
78.5	77.8 15	77.4 25
79.9 25	79.5 13	78.3 10
78.3	77.6 15	77.0 25
76.66 27	76.43 35	Conc. walk
80.5 35	80.1 25	79.5 15
78.2 10	78.1	77.8 12
76.7 25	75.7 35	
81.03 42.8 at step	80.18 25 walk	79.60 13.5
76.59 25.2 Dr.	75.40 38.3 floor Grav.	

Lt.

±

Rt.

check B.M. = Pole - B. 2017 - P. 8 286.10

A+60 = in Int. Sec B. 2017 - P. 7

84.2	84.1	84.0	84.1	84.25
25		15	30	33.5
				Porch

4+49- 29' Rt. = Cor. of Conc. Porch

84.22
29 = Conc.

A+22.82 = opp. P.C. on Lt. - on 3' Conc. walk on Lt.

83.59	83.56	83.1	83.1	82.5	82.8	82.8
372	26.1	25	15		15	25
at Step = Sly. of walk						

3+80

82.8	82.0	81.8	81.3	81.0	80.8
50	25	15		15	25
in Alley					

INDEXED
JER
SEP 16 1953

Re - X-Section Sycamore from Tulip
to Violet. - See B. 1748 - P. 54 for
Orig. Notes and P. 43 for Sketch.

W.O. 32061

8-11-53

7.0

1+56.94 = P.C. of Prop. on Lt

62.57 61.9 60.3 60.0 59.4 57.6 55.0 52.6
25.4 20 18 8 15 25 40
Top Conc. Wall

Lot. Line

1+33.5 - 37.8 Lt. = ± 14 Conc. Dr. - Normal to
B.M. 262.07

63.87 63.57
20 N. along 37.8 - W.
± of Dr.

1+32.5 - 26.5 Lt. = ± P. pole # P. 3910

1+70

62.2 61.8 61.5 60.4 58.3 56.5 54.6
35 25 15 15 25 35

0+90

62.8 62.1 61.2 60.4 57.2 55.6
25 15 20 25 35

0+60

62.3 62.0 61.3 60.2 60.4 56.1
25 15 18 25 35

50.33 ahead on ± of Tulip prod. - See sketch
End of curbs opp. P.C. of Prop. line on Lt

61.51 61.04 60.21 60.67
Top-end gut gut. Top-end db

0+32 - Sect. Rad - Show Profile of New obs

61.20 60.73 59.89 60.38
Top 20.8 gut. Top.

0+00 = B.C. = Prop. Line on Rt.

60.52 60.06 59.55 60.02
Top 18 gut. Top. Not Paved yet. Topcb.

B.M. - spike in Pole
NE. Tulip + Sycamore

262.07

Actual Elev. Shown.

Lt.

±

Rt.

wall ends at House
 2+76.5 - 20.5 Lt. = Cor. of addition to Grava

wood floor =

Sleeping Quarters

64.0
 20.5 = By Cor.

2+76 - 12.5 Lt. = Beg. Rock + Conc. wall - Rough

63.81 62.0
 Top wall 12.5 - gr.

2+70

65.00 64.7 64.1 61.3 61.2 60.4 61.0 59.4 } 56.7
 Top wall 24.2 15 9 12 14 25 40

2+40

64.85 64.2 63.7 60.6 60.5 60.1 60.6 59.8 58.0
 Top wall 24.1 19 10 12 15 25 35

2+30 - 24.2 Lt. = Brk. in wall at lot line

64.85 64.45 63.7
 Top ahead 24.2 24.2
 Top Brk 9

2+17 - 14.4 Lt. = end wall

61.83 60.7
 Top wall 14.4 = gr.

2+10

63.8 63.34 62.9 61.73 60.3 59.9 59.7 59.6 57.5
 35 Top wall 24.3 15.8 14 15 25 35
 Top wall

2+06 - 17.2 Lt. = ± 2' Brk. wall
 24.4 ± Beg. Rough Brick wall

63.15 62.82 61.40
 Top wall 24.4 17.2 = walk
 wall ent at Conc. wall

1+80

62.75 62.0 60.2 59.9 59.5 58.6 58.7 55.3 54.5 53.9
 25 25 20 10 8 15 22 25 40
 Top wall

1+74 - 20.5 Lt. = ± 3.5' Conc. walk

62.72 62.27 61.85 61.21
 35 walk Top of step 25 Bot. of step 20.5 walk

1+66 = ± of. wash on Rt.

62.62 62.0 60.2 59.9 59.2 58.1 50.3 45.9
 25.3 25 20 8 13 25 45
 Top wall in wash ± wash

Lt.

±

Rt.

3+96-24.5' Lt. = ± 10' Conc. Dr.

67.29	64.80
51.5	24.5
floor	Dr.
gar.	

3+56.65 = Mid. Pt. of Curve - Sect. Radial

66.1	63.6	63.1	62.3	61.6	62.2	62.0	58.7	51.5
43.2	25	15		11	13	20	25	40
at Picket								
fence								

3+41-15' Lt. = ± P. pole # 3944

B.M. = 264.28

3+25.5-15' Lt. = Cor. of Picket fence ←

3+22-22.6' Lt. = end wall

64.02
22.6 = Top wall

3+12.61 = B.C. - Same Sect.

3+12.34 = E.C.

64.3	63.8	63.40	62.5	61.8	60.9	55.2	47.5
34.6	25	19.4	15		16	25	50
By House		Top wall					

3+00

64.2	63.9	63.42	62.3	61.5	60.7	61.1	60.7	56.3	51.9
30.4	25	16	16		11	12	18	25	40
by House		Top wall							

2+98.2-25.7 Lt. = Cor. of Porch

64.0
25.7 = at Cor.

2+94-24.6 Lt. = Top of Conc. Steps at Cor. of

Ser. Porch

66.82	66.81
28.5	24.6 = Top
at Reg. House	

2+91-14' Lt. = ± 2.5' Rock Steps Thru wall

64.89	64.82	64.30	62.54
27.7	23.8	18.7	14
By House	Bot. of end		Bot. step.

2+85.6-23' Lt. = Beg. edge of Conc. walk

65.18	64.85
30	walk 23 =

2+85.6-21.4' Lt. = Cor. end of Add.

65.13	64.3
wood floor	21.4 = By Cor.

6+30 - Note Block wall & Walk by House

6+19.5 - 15.5' Rt = Reg. Conc. Block wall - 2.5' High

X6+04.91 = E.C. - 23.7' Rt. = Board fence

5+76.41 = 24.4' Lt = ± F.H.

5+75 = 25.5' Lt = ± P. Pole # JP 3952 = BM. 269.75

See B. 1749-P. 57 for fence on Lt - Conc. walk is out of st.

5+63.5 - 0.7' Lt = ± Sewer M.H. 77.31 N. Rim

5+47.91 = opp. P.C. on Rt.

5+23.28

5+00 - 3.9' Rt. = ± Sewer M.H. 66.68 N. Rim

4+98.66

4+74.04 = opp. P.C. on Rt.

4+53.23

Sect's Radial

4+32.41 = P.C. 75 Rad. Curve on Lt.

4+00.69 = E.C.

Lt. ±

Rt. 67.55 35
26.4 = walk

68.7	67.4	68.1	68.4	68.5	68.8	68.79
25	16		16.3	18	25	25.7
			By wall			Top wall

68.6	67.0	67.5	67.3	66.8
25	17		15	25

68.2	68.2	66.6	67.3	67.7	67.6
25	22	17		15	25

67.4	67.4	66.3	67.1	66.8	66.9
25	20	15		15	25

67.3	67.2	66.0	66.8	66.9	66.9	66.8
25	20	13		15	25	40

66.9	66.5	65.6	66.4	66.3	66.3	67.1
25	18	12		15	25	49 by fence

67.0	66.9	65.2	65.7	66.0	65.9
25	18	14		15	25

66.3	65.9	64.4	65.0	65.2	64.7	63.8
25	19	15		15	25	35

65.7	65.2	63.8	64.2	63.7	63.1	61.6
25	18	15		15	25	35

65.0	64.2	63.4	63.1	62.6	62.4	61.5
25	15	12		15	25	35

Lt. ± Rt

7+89.52

72.7 72.2 71.7 71.6 70.9
25 15 15 25

7+60.97 - Sect's Radial

72.3 71.4 71.1 70.8 70.5
25 15 15 25

7+44-24 Lt = end wall

7+41- 24.8' Lt. = ± 3' Conc. walk

71.90 71.95
27 24.8 = walk
end-walk

7+32.43 = BC.

72.25 71.5 70.8 70.6 70.7 70.2
Top Brick wall 25 15 15 25

7+30- 17.5' Rt. = ± Guy Pole

7+18-23 Lt = ± P. pole # J.P. 3966

7+00 - 34.6 Rt = Bp. found. - Cor. - for Moved House

70.7 70.1 70.0 69.8 68.9 69.30
25 15 15 25 34.6
Top-New found

6+95- 20.2 Rt = end Conc. Footing = Cor.

69.10 69.06
20.2 34 = end
Cor. Conc.

6+76- 16.3 Rt = ± 4' Conc. walk

69.51 69.50 68.91 68.90
16.3 19.3 19.3 29.9 = By
walk Top Bot. step

6+70

70.8 70.6 69.0 69.3 69.4 68.89 68.8 68.9
25 18 15 15 18.6 25 33
edge Conc. By House

6+51- 17.3 Rt = Beg. 12" Conc. footing

68.74
17.3 = Conc. footing

6+51 - 17.6 - Rt. = end 2.5 Conc. wall

Re-x-Sect. Shamrock St. - Sycamore
 South to End. - See B. 1777 - P. 66 for
 Orig. Sections. & Sketch

W.O. 32061 - 8-13-53 - 7.0.

Lt.

±

Rt.

38

INDEXED
 JER
 SEP 16 1953

1+35 = end - Ground falls steeply ^{of Canyon.} to Bottom

29.7 28.4 27.3
 10 10

1+00

40.2 36.8 36.2
 10 10

0+50

50.2 47.5 46.5
 10 10

0+25

53.9 51.9 50.8
 10 10

0+00 = E.L. Shamrock at Sub line

54.9

Sub. Line - East. from Shamrock

Begin Levels along ± of prop Drain along

B.M. = spike in pole

268.75
 See P. 35

Actual Elev shown

Reg. Regular Sections of Shamrock.

1+38.13 = E.C. - 23' Lt. = E P. pole # 2440
 1+37.5 - 16.6' Rt. = E Tel. pole = B.M. 260.55
 1+26 - 26.5' Lt. = E 7' Dr. - 2-18" Conc. Strips
 1+18 - 24.5' Rt. = E 8' Conc. Dr.

1+05.89 = Middle of curve - 24.4' Rt. to Picket fence

1+04.5 - 24' Rt. = E 2' Conc. walk

0+90 - 24.8' Lt. = E 3' Conc. walk

0+89 - 23.8' Rt. = E 7.5' Conc. Dr.

Sect. Radial

0+73.66 = B.C. = on 8' Conc. Dr. on Rt.
 with shrubs outside

0+66 - 23' Lt. = end Picket + Reg. wire fence

0+40

0+01.5 - 20.8' Lt. = Beg. Picket fence

0+00 = Sub line = end of st.

0-17 - 30.3' Rt. = E F.H.

0-35 = E Prod. S.

Lt. ± Rt. 39

59.2 58.8 59.2 59.5 60.0
 25 15 15 25

57.76 58.78
 40 26.5
 Dr.

60.00 59.93
 24.5 40
 Dr.

58.3 58.3 59.0 59.0 59.5 59.6
 26 25 15 9 12 25
 at fence

59.61 59.63
 24 35.6
 walk at step

57.38 58.12
 39.1 24.8
 at step walk

59.00 58.88
 23.8 40
 Dr. Dr.

57.8 57.9 58.1 58.4 58.5 58.70 58.71
 25 15 15 25 25.2 40.7
 Dr. door
 gar.

56.5 56.3 56.8 57.0 57.2
 25 15 15 25

54.0 54.4 54.9 54.8 54.9
 25 15 15 25

53.6 53.8 53.7 53.4 53.2
 25 15 15 25

3+04 - 25' Lt. = ± 2' Conc. walk

3+00

7+95 - 21.6' Rt. = ± 9' Conc. Dr.

Ends at Dr.

Req. Brick wall to W.

2+67 - 20.9' Lt. = wly. of Conc. Block wall +

7+50

7+27 - 22.7' Lt. = ± 9' pole # 2486 walk

2+16 - 24' Lt. = end 4" Conc. at Sly. of 2.5' Conc.

2+00

1+87.5 - 23.6' Lt. = Req. 4" Conc. found. for fence

1+87 - 19.8' Rt. = End fence

1+78 - 22.8' Lt. = ± 9.5' Conc. Dr.

1+70

1+58.5 - 19.8' Rt. = Req. Picket fence

1+53 - 25.3' Rt. = ± 10' Conc. Dr.

Lt.

±

Rt.

40

62.43
39.6 at stop. 62.59
25 = walk

62.56 62.4 62.3 62.8 62.8 63.1
Top 25 .15 15 25
4" Conc. 9v.
found for fence

63.15 63.30
21.6 40 = floor
Dr. 9v

62.6 63.10
20.9 Top
9v. Brick wall

61.3 61.3 61.6 61.6 61.5
25 15 15 25

60.60 60.50
35 24 = Conc.
walk + walk

60.3 60.20 59.9 60.1 60.3 60.3
25 24 15 15 25
Top Conc.

59.98 59.6
23.6 9v
Top Conc.

58.88 59.47
40 Dr. 22.8

59.2 59.1 59.6 59.7
25 15 15 25

59.96 59.96
25.3 40
Dr.

5+00 - 25.3' Lt. = ± 7' Conc. Dr.

4+95 - 24.9' Lt. = fence

4+69 - 25' Rt. = end fence + Bsq. wire fence

4+45 - 24.7' Lt. = lath fence

4+41 - 25.5' Lt. = ± 2' Conc. walk

14.5' Rt. = Bsq. 2-2 Conc Strips for Dr.

4+36 - 10.5' Rt. = ± 8' Conc. Slab.

24.5' Rt. = Bsq. Picket Fence.

4+28.3 - 11.8' Rt. = wly. of 6" Conc. found

4+24 - 24.7' Lt. = ± 8' Conc. Dr.

4+00

3+68.5 - 23.6' Lt. = ± P. pole # I.P. 2502

3+56 - 19.7' Rt. = ± 8' Conc. Dr.

3+50

3+38.6 - 0.5' Lt. = ± Sewer M.H. 64.03 E Rim

3+35 - 22' Rt. = ± 8' Conc. Dr.

Lt.

±

Rt.

41

66.21 66.48
40 25.3
- Dr.

66.1 66.0 66.0 66.4 66.3
25 15 15 25

65.4 65.1 65.3 65.8 66.0
25 15 15 25

65.98 65.91
40 25.5
- walk

65.67 65.67 65.76 65.87
10.5 14.5 25 40
slab. Dr. Dr.

65.53 65.07
11.8 24.5
Top conc.

65.89 65.98
24.7 40
- Dr.

64.5 64.2 64.5 65.0 65.5
25 15 15 25

64.38 64.74
19.7 40 = floor
Dr. gar.

63.8 63.5 64.0 64.0 64.4
25 15 15 25

63.94 64.08
22 40 = floor
Dr. gar.

Lt

#

Rt-

42

5+49.36 = opp. P.C. on Lt. = end

5+18.65 = opp. P.C. on Rt. - 25' Lt. = Nly of 2.5

5+18 - 26' Rt. = end fence

5+08 - 23' Lt. = E P. pole # J.P. 2548

67.0	67.0	66.7	66.9	66.9	66.6
25	15		15	25	40
By fence					

66.98	66.82	67.0	66.6	66.8	67.1
40	25.1	15	15	25	
walk					

X-Sect. Marigold St. from Juniper

LT ± RT 43

To Park - sketch - P. 1

w.O. 32062

8-14-53

7.0

3+05 - 3' Rt. - Sewer M.H.

244.89

R.P. cross on
N. Rim

Sect. Radial

2+78.63 = B.C. - Curve in 3 parts

43.6 44.1 43.8 44.5 44.7 44.8 44.4
25 16 14 10 16 25

2+45

43.6 44.0 ~~43.7~~ 44.2 44.4 44.3 46.3 48.7
25 12 10 10 19 25 35

2+06.86 = Cross on M.H. Rim

244.04

2+00

42.1 42.9 43.8 43.2 42.8 43.8 43.7 46.7 48.5
35 25 12 8 10 19 25 27

1+50

41.7 42.3 41.8 42.2 42.5 42.2 44.3 46.8
25 10 7 15 22 25 29

1+00

39.4 40.7 41.0 40.5 40.7 41.0 40.7 41.9 44.2
35 25 10 6 15 23 25 30

0+50

39.3 40.0 39.9 39.3 39.5 39.9 39.8 42.2
25 15 8 4 15 25 35

0+28

38.7 39.1 38.5 38.6 38.9 38.8
25 15 5 15 25

0+00 = N.L. Juniper ± Sect. along N.L.

37.3 37.2 36.5 37.0 38.2 38.8
40 30 10 25 40

B.M. = spike in SW Pole
Sycamore & Marigold

244.65

Marigold

8° 17' 50"
16 35 45
24 53 30

Lt. ±

Rt.

44

5+17- 19' Rt. = ± Shrub.

4+96- 18.3' Rt. = ± 6" Palm

4+80- Thru sly. 2' conc. strip of Dr. on Rt.

4+68- 18.5' Rt. = ± 10" Palm

4+55- 18.5' Rt. = ± 10" Palm

4+50

4+49- 19' Rt. = ± Shrub.

4+41- 18.7' Rt. = ± 8" Palm

4+34- 19' Rt. = ± Shrub.

4+27- 18.7' Rt. = ± 10" Palm

4+25.26 = N.L. - 24.9' Lt. = Beg. Picket fence

4+20- 19' Rt. = ± Shrub.

4+14- 18.7' Rt. = ± 8" Palm

4+00.26 - 0.3' Lt. = ± Sewer M.H.

45.09 wly Rm

3+75.26 = E.C. = 5L Sycamore
24° 53' 30"

3+71- 22' Lt. = ± P. pole # P.

B.M. = 244.65

3+43.05 16° 35' 40"

3+10.84 d = 8° 17' 50"

47.0	47.0	46.1	46.7	46.9	48.2	49.30	50.28
25	15	10		9	15	24.3	40
						Conc strip	Dr.

45.3	45.5	45.0	45.7	45.9	47.9	48.7
25	15	11		10	14	25

44.5	44.7	44.0	44.8	45.3	45.2	47.0	47.8
25	17	15	9		10	15	25

43.7	44.2	45.09	45.1	45.8	47.3
25	15	Rm	11	12	25

43.9	44.1	43.4	44.2	44.8	44.9	45.8	46.2
25	20	19	10		11	13	25

43.4	44.0	43.9	44.8	44.8	46.4
35	25	15		12	25

43.8	43.9	44.7	44.8	47.0	47.2
25	15		14	25	35

Mangold

INDEXED
SER
SEP 16 1953

Lt.

±

Rt.

45

See B. 1748 for Sect. Thru Park - same

6+65.34 = E.C.

38° 14'

55.9	55.5	54.1	54.5	54.0	54.9	54.8
25	12	9		13	15	25

6+40.31

28° 40' 30"

55.1	53.8	53.1	53.3	52.9	54.0	53.9
25	10	7		13	15	25

6+37- 25.6 Lt. = end Conc. wall - (straight thru)

55.63	55.0
end	Top wall
	25.6 = gr.

6+15.29

19° 07'

54.4	54.31	53.5	52.4	52.3	52.0	53.0	53.2
25	Top wall	15.9 gr.	7		13	15	25

5+90.27

9° 33' 30"

52.3	52.4	52.0	51.4	51.4	51.1	51.9	52.6
25	15.2	12	8		12	15	25
	Top wall						

5+82- 28.6 Rt. = ± 8' Conc. Dr.

curve in 4 parts - Sect Radial.

5+65.25 = B.C. - 25' Lt. = Beg. 6" Conc. Ret wall

Sewer MH

5+58.88 = R.P. Cross - Nly of 250.84

50.1	51.04	50.5	50.3	50.8	50.1	51.5	51.7
50	25	25	15		12	17	25
Nly of Alley	Top wall						

5+50- 24.7 Lt. = end fence

5+25- 24.8 Lt. = fence

48.8	48.7	48.2	48.7	48.4	50.3	50.9
25	15	10		10	13	25

5+23- 18.3 Rt. = ± 10" Palm

Re. X-Sect. Tuberosa St. from Popular
 S. to End. - See B-174-P. 22 for Sketch
 + Orig. Sections. - Note: used \pm for Base line
 on New Sections -

INDEXED
 JER
 SEP 16 1953

Lt.

\pm

Rt.

46

W.O. 3206.1 8-18-53 - 7.0.

1+32.5 - 3.5' Lt. = \pm Sewer Mt. 88.61 W. Rim

1+10 - 23.4' Lt. = \pm 3' Brick walk

86.53 86.48
 33 23.4
 at step walk

1+00

86.5 86.4 85.7 85.4 86.1 86.2
 25 15 12 15 25

10+91 - 16.7' Rt. = \pm Coy Pole

10+75.5 - 17.7' Rt. = \pm 3' Conc. walk

87.03 87.18 87.25
 17.7 25 30.6
 walk at step

0+50

86.6 86.6 86.2 86.0 86.4 86.6
 25 15 13 14 25

10+47 - 21' Lt. = \pm shrub.

10+40.5 - 15.5' Rt. = \pm 3' Conc. walk

87.04 87.18 87.29
 15.5 25 31.1
 walk at steps

0+05 = edge of Pavement end cbs.

86.88 86.87 86.36 86.5 86.21 86.68 86.78
 23 Top = 18.9
 Cor. of walk EC. gut
 18 Top = 23
 gut. EC. at walk

0-12 = S. cb. Line of Popular - curbs in (Cold by Pavement)

87.02 86.25 86.5 86.6 86.3 86.26 86.90
 TOP 35 20 20 35 Top = PC
 = PC gut gut

Set B.M. on S.E. 4' Disk - Popular. 287.02

Pepper + Violet - See P. 26

check B.M. - spike - N.W. Cor. 281.55

B.M. = spike in S.W. Pole 284.02

Pepper + Tuberosa
 174-P. 22

			lt.	±	rt.					
2+59.01	1° 59' 24"		83.2	83.3	83.5	83.1	83.5	83.2		
			25	15		15	20	25		
Curve in 5 parts.										
1+24.22 = P.R.C.	19° 25' 30"		84.5	84.3	84.0	83.3	83.9	83.9		
			25	15		17	20	25		
1+12 = 36.6' Lt. = ± 8' Conc Dr.			85.25	85.23						
			50	36.6						
1+96.13	12° 57'		85.8	85.4	84.9	84.5	83.7	84.8		
			25	15	13		20	25		
1+94 = 25.8' Lt. = ± 2.5' Conc walk			86.49	86.00						
			47	25.8						
1+74 = 26.2' Lt. = end Hedge			at step	walk						
1+69 = 20.5' Rt. = ± Tel. pole # 594524-H										
1+68.05	6° 28' 30"		86.4	86.0	85.2	84.1	85.4	85.2		
			25	15		17	20	25		
1+62 = 21.2' Lt. = ± 3' Conc. walk - Thru Hedge			86.39	86.32						
			35.4	21.2						
1+52 = 23.1' Lt. = ± 2' Hedge - 3' High			at step	walk						
1+51 = 15.5' Rt. = ± Dead man										
1+47 = 24.2' Lt. = ± 7' Conc. Dr.			86.64	86.32						
			47.5	24.2						
curve in 3 parts: Sect; Radial			floor gar.	Dr.						
16 Rt. = ± P pole # P.2748										
1+39.97 = B.C. = S.L. of Alley			86.6	86.6	86.1	85.4	84.7	85.7	85.7	85.6
			50	25	15		12	15	25	50

Tuberose

7° 57' 36"

9° 57'

Lt.

±

Rt.

48

25.3' Rt. = end fence
 ✓ A+80 - 24.5' Lt. = ± 8.5' Conc. Dr.

82.89 82.68
 35 24.5 = Dr.
 Above 82.81 82.85
 gate 40 24.5
 walk

✓ A+57 - 24.5' Lt. = ± 3' Conc. walk ✓

✓ A+40 - 25' Rt. = fence

82.8 82.7 82.2 82.5 82.4 84.0 84.5
 27.2 25 12 13 16 25
 By Porch

✓ A+28 - 25' Rt. = ± 2.5' Conc. walk

84.66 84.93
 25 40
 walk

✓ A+18 - 25' Lt. = ± 12' Conc. Slab. for Car Parking

82.63 82.61
 35 25
 Conc.

✓ A+07 - 24.5' Rt. = Beg. Picket fence

3+98 .18 = E.C. 9° 57'

78.94 80.4 82.3 82.5 82.5 84.0 84.3
 40 25 15 14 17 25
 on walk
 by House

B+63.38 7° 57' 36"

77.0 79.5 82.0 82.6 82.6 83.4 84.0
 35 25 15 14 17 25

✓ A+60 - 25.8' Lt. = ± 2" Pine

✓ 3+57 - 17.5' Rt. = ± Tel. pole

New. - B.M. 285.12
 # 594525.H
 = B.M.

✓ 3+52 - 17.5' Rt. = ± P. pole # P 2698 284.02

✓ 3+50 - Low House on Lt.

78.45 77.0 79.7 82.3 82.6 82.7 83.6 84.0
 Top 35.2 25 13 15 18 25 - approx
 Porch 91 Prop. Car

✓ 3+28.59 5° 58' 12"

79.7 80.6 82.5 82.7 83.0 83.4
 35 25 12 15 25

✓ 2+93.90 3° 58' 48"

82.4 82.8 83.0 83.0 83.3
 25 15 15 25

Tuberose

6+54- 23.7' Lt. = ± F.H.
6+51.5- 24.8' Lt. = Beg. 6" Conc. Wall
6+48- 0.3' Rt. = ± Sewer M.H. 79.78 E. Rim
6+28 = Prop. Cor. on Rt. - (Sycamore)

6+12- 22.6' Lt. = wly. of 8" Conc. Ret. wall
6+10.5- 14.7' Lt. = ± Tel. pole # 577322-H
5+80 - Thru Mly. of 9' Conc. Dr. on Lt. 81.28
floor gar. 39.3

5+60- 25.2' Lt. = ± 9' Conc. Dr.
5+35

5+34- 25.5' Rt. = ± 2.5' Conc. walk
5+28- 35.6' Lt. = end Conc. Slab.

4+97- 35.7' Lt. = wly. of Conc. Slab along House + gar.
4+96- 17.2' Rt. = ± P. pole # P. 2648
4+92- 14.7' Lt. = ± Crup. Pole

4+90

Lt. ± Rt. 49

77.45
24.8
Top wall

76.0 77.6 79.3 80.0 80.1 80.9 81.2
35 25 13 15 17 25

80.24 A
76.49 78.0 79.37 78.3
40 gr. Top 25 Top 22.6
Top gr. wall gr. wall gr. Top

81.03 80.96 80.9 80.3 80.7 80.8 81.9 82.3
25 22 15 11 13 15 25
Dr.

81.31 81.13
39.2 25.2
Door Dr.
gar.

80.9 81.0 81.4 81.4 82.5 83.0
25 12 12 16 25

83.13 83.39
25.5 40
walk

81.09
35.6

81.39 81.28
40.7 35.7
Door. gar.

82.7 82.5 81.8 82.1 82.3 83.9 84.8
25 15 11 12 25 50
in Alley

INDEXED
 JER
 SEP 16 1953

7+92.78 = opp: E.C. on Rt. = ^{3' Conc. walk on Lt.} along sly. of

✓ 7+83 - 25.6' Lt. = Φ 18" Acacia

✓ 7+71 - 24' Lt. = Φ P. pole # 2549

7+50

7+20.

✓ 7+13 - 20.8' Lt. = Φ Φ Conc. walk - ^{wall ends at walk}

✓ 7+06 - 17.2' Rt. = Φ Dead man

6+98 - 24.6' Lt. = Beg. Conc. found for fence

24.2 - Lt. = Beg. Picket fence

✓ 6+92 - 24.8' Lt. = end wall

✓ 6+85 - 17.3' Rt. = Φ P. pole # ^{B.M. = 280.50 = spike} P 2598

✓ 6+82 = opp Prop. Cor.

✓ 6+71 - 14.9' Lt. = Φ 3' Conc. walk

6+60 =

Lt. Φ Rt. 50

74.39 75.44 75.4 76.1 76.6 76.4 77.6 77.8
 40 25.9 25 15 11 15 25
 - walk

74.9 75.9 76.9 77.4 77.3 78.2 78.5
 35 25 15 11 15 25

76.8 77.4 78.0 77.9 79.0 79.2
 25 15 12 15 25

76.25 76.93 77.15
 40 25 20.8
 walk walk

77.34
 24.6
 Top wall

77.51
 24.8 = Top wall

77.50 77.3 77.9 78.4 79.0 79.7 79.7
 25.1 25 15 13 15 25
 Top wall

77.45 77.46 78.15
 29.5 25 14.9
 Top of - walk

Step Down. 77.43 78.4 79.4 79.8 80.1
 24.7 15 15 25
 Top wall

Tuberose

Lt.

±

Rt.

51

Suggest - Run Drain down ^(or Alley) Primrose Lane
to Wash - Use Notes in 1714 - P. 30

8+90 = ± Profile

71.4

8+76.03 = end of Circle on ±

70.9 71.8 72.9 73.2 73.5
25 15 10 25

8+60 - 20.7 Rt. = ± P. pole # 2548 →
B.M. = 275.50

8+46.03 = opp. P.C. on Lt. = ± on 30' Rad

71.6 72.8 73.9 74.9 75.2 75.3 75.3
35 25 15 15 25 50

8+20

73.3 74.4 75.2 75.8 75.8 77.1 77.1 77.0
35 25 15 15 20 25 40

Re-X-Sect. Snowdrop st. - from
Sycamore Dr. S. to End.

Lt.

±

Rt.

52

See sketch + Orig. Notes - Book 1695-P. 39

W.O. 32061 - 9-15-53 - 7.0.

0 + 74.8 = opp. Prop. Cor. on Lt. ± Thru 7 Conc. Dr. on Rt.

80.0	79.8	77.4	77.5	77.36	77.73	77.78	78.01
25	17	15		17	22	25	29.5
					Req. Dr.	Dr.	Clear Gar.

0 + 68 - 17.9 Rt. = end cb. - angles back to Dr.

77.6 77.91
got Top

0 + 50

79.1	78.4	78.3	78.1	78.40	78.42	78.5
25	12		18	Top	21.5	25
			got		edge of	cl. walk

+ 3.5' Cold Lay walk
+ Beg. Private curb.

0 + 42.5 - 18.1 Rt. = end. Req. G curb.

78.20 78.69
18.1 Top

is 0.7' in St. on Lt. at Cor. of Conc got

Note: edge of A.C. is on Prop. on Rt. - But.

0 + 29.1 = N.L. of Sycamore Prod. Wly. 79.6
Sect along N.L. - on edge of A.C. 25

79.47	79.01	79.09	79.00	78.39	78.85
Top = 22.9	21.7			18.5	Top cb.
end. got	Cor. of A.C. on Edge	-0.4'	ahead.	got - online	
cb. on Line	+ Conc. - 0.7' ahead				

0 + 13.5 = P.C. 15' Rad. Ret. on Lt.

79.76	79.27	79.38	78.76
Top	18.1		18.1
	got.		got in Dr.

on New cb. + A.C. pave

0 + 00 = E.C. - 5 + 88.13 - 1695 - P. 29

Note: This cb. + Cold-lay walk
is not stb. does not follow in any
alignments, nor grade
stems put in by owner apparently
without permit or ins. Paction

80.02	79.55	79.66	79.01	79.50
Top	18.1		18.1	Top
	got.		got.	

Set New spike - Higher

280.49

Sycamore + Snowdrop - B. 1695 - P. 39

check B.M. = spike in S.E. Pole

280.02

280.05 - B. 1695

B.M. = spike in S.E. Pole

287.02

Pepper + Tuberose - P. 46

Actual Elev. shown

1+37-17' Rt. = Beg. cb. ✓

74.5
17 = gut. 75.02
Top

1+30-20.9' Rt. = ± 10' Conc. Dr. ✓

75.56 75.74 75.87
20.9 = Dr. 2.5 3.5
Dr.

1+23.3-17.5" Rt. = end cb. - no angle ✓

75.3 75.69
17.5
gut. Top

1+22-21' Rt. = Fly. of 6" Conc. wall ✓

76.24 76.20
21
wall 33
wall

1+19.6-17.6 Rt = Beg. cb. = Cor. ✓

75.6 75.93
17.6
gut. Top.

1+14-21' Rt. = ± 7' Conc. Dr. ✓

76.47 76.84
21 36.5
Dr. floor Gar.

1+08- end. cb. on Rt. - angles to Dr. ✓

78.1 78.6 78.4 75.9 75.9 76.2 76.58 76.54 76.5
35 25 17 16 17.3 Top = 21 25
gut. Cor. edge
walk

1+06.5-21.2' Rt. = ± 3' Conc. walk from back of c.l. walk ✓

76.60 76.84
21.2
walk 36.2 = gut
step

0+95-17.6 Lt. = ± Deadman ✓

0+82-22' Rt. = Fly. of 6" Conc. wall ✓

77.47 77.53 77.83
22 25 35
Cor. wall wall wall

0+81.5-17' Rt. = ± Gray Pole ✓

0+79.8-17.6' Rt. = Beg. curb. - after angle to Dr. ✓

77.3 77.46
17.6
gut. Top

0+78-17.5' Lt. = ± P. pole # P. 2599 - B.M. ✓

= 280.49

Re - X-Sect. Sycamore Dr. - from
Snowdrop E. to Park.

Lt

±

Rt.

55

Orig. Notes + Sketch - B. 1695 - P. 34 - 27

W.O. 32061 - 9-15-53 7.0.

0+67 - 15.8' Rt. = ± 6" Acacia ✓

0+61 - 17' Rt. = Beg. 8" Conc. wall ✓

80.06

17' - Top
wall

0+60

83.0	82.4	81.7	80.1	80.1	79.8	80.0	80.0
35	25	17	11		12	15	25

0+50.5 - 12.8' Rt. = ± 4.5' Conc. walk ✓

80.23 80.05 79.93

12.5 25 36.5
walk at step

0+47 - 25.5' Lt. = ± 3' Conc. walk ✓

82.94 82.61

27 - walk 25.5

0+37 - 16.5' Rt. = ± 6" Acacia ✓

0+35 - 17.5' Rt. = Nly. of 8" Conc. wall ✓

80.30 80.27 80.20
17.5 25 35
wall wall

0+25

82.6	82.1	81.6	80.2	80.0	80.0	80.3	79.9
35	25	17	11		12	13	25

0+19 - 16' Rt. = ± Tel. pole ✓ # D 28598-T

0+11.5 - 24.8' Rt. = ± F.H. ✓

0+05 - Sect. at 90°

81.8	81.3	79.5	79.4	79.1	80.4	80.1
25	17	16		12	14	25

0+00 - 15.5' Rt. = ± Dead man ✓

0+00 E.L. of Snowdrop - Sect. along Prop ✓

79.6	79.6	79.1	79.7	80.2	80.0
25.5	20		12	14	25.5

B.M. = S.E. Pole - P. 52

280.49

Lt. ⊕ Rt.

2+82.5 - 19' Lt. = ⊕ 6" Acacia ✓

2+80 - Thru ⊕ of 10' Conc. Dr. ✓ Thru Planting

82.5 82.3 81.4 81.5 81.6 82.08 82.05
 25 14 10 10 25 25
 Dr. 35

2+61 - 25' Rt. = ⊕ 4' Conc. walk ✓

2+50 - 17' Rt. = ⊕ 14" Acacia ✓

81.50 81.49
 25 walk 35

2+35

80.3 79.9 80.1 80.0 80.9 80.5
 25 11 13 13.5 25 = By
 Top fence
 Conc.

2+32 - 17' Rt. = ⊕ 10" Acacia ✓

2+14.5 - 17.3' Rt. = ⊕ 12" Acacia ✓

2+12 - 13' Rt. = Rough Rock + Conc. Border ✓ for Planting

2+05.5 - 17' Rt. = ⊕ P. pole - # P. 4147 ✓

1+90

81.0 79.6 79.2 79.0 78.6 78.2
 35 25 11 11 25 = By wall

1+77.5 - 25.4' Rt. = ⊕ 3' Conc. walk Thru wall ✓

78.30 78.29
 25.4 38
 walk at step

1+45

81.0 80.8 79.1 79.1 78.3 77.7
 35 25 11 12 25
 By wall

1+00

82.2 81.8 81.3 79.6 79.6 78.9 78.8
 35 25 17 11 12 25

0+75.3 - 17.1' Rt. = end wall at 2' Conc. walk ✓

0+68 - 10' Lt. = ⊕ 9' Conc. Dr. ✓

83.33 82.09 79.98 79.70 79.35 78.83 77.91
 40.2 25 10 wall 17.1 25 42.7
 Floor Grav. Dr. Dr. end. walk walk

check B.M. on Hub. - N.L. - 83.03

83.06 - 1.95
2.38

Lt. ±

Rt. 83.03 57

4+70.58 = opp. N.L. + edge of Park.

83.7 83.4 82.1 76.5 74.4 72.2
25 10 12 25 35

4+56

83.6 83.2 82.9 82.2 78.4 75.0
25 12 12 25 35

4+34.5 - 24.3 Rt. = ± F.H. ✓

B.M. = Top - 282.92

4+30

84.5 84.2 83.4 83.2 82.5 81.5 79.6
25 16 11 12 25 35

4+10 - 16.8 Rt. = ± 2" Tree ✓

4+00

84.5 84.3 83.9 83.7 83.4 82.6
25 13 10 11 25

3+92 - 16.2 Rt. = ± 2" Tree ✓

3+73.5 - 16.5 Rt. = ± 2" Tree ✓

3+60

84.3 84.0 83.2 83.4 83.1 83.0
25 16 11 11 25

3+55 - 17' Rt. = ± 2" Tree ✓

3+46 - 17' Rt. = ± Deadman ✓

3+37.5 - 25.6 Lt. = ± 3' Conc. walk ✓

84.47 84.27
38.8 25.6
at step walk

3+36.5 - 17' Rt. = ± 4" Chinese Flon ✓

3+25 - 17' Rt. = ± P. pole # P-4175 ✓

3+24 - 13.2 Rt. = end Rock Border + Planting ✓

3+20

83.6 83.2 82.3 82.5 82.4 82.9 83.7 83.0
25 14 10 11 13.2 13.2 25

3+13.5 - 17.4 Rt. = ± 8" Acacia ✓

Top By
Conc. fence

2+94.5 - 17' Rt. = ± 12" Acacia ✓

Lt.

←

Rt.

4+85 - into Canyon - Can Put Drain
Any where

83.7
3583.1
2579.1
12

76.4

73.6
1269.8
25

LT ± RT ±

2+07 = ± Main wash

06.8 7.0
± wash 4

1+89.8 = Cross 2" water pipe

12.8 = Top pipe

1+80

16.8 14.5
 4

1+50

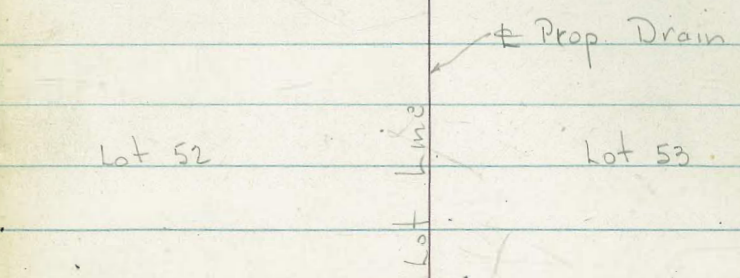
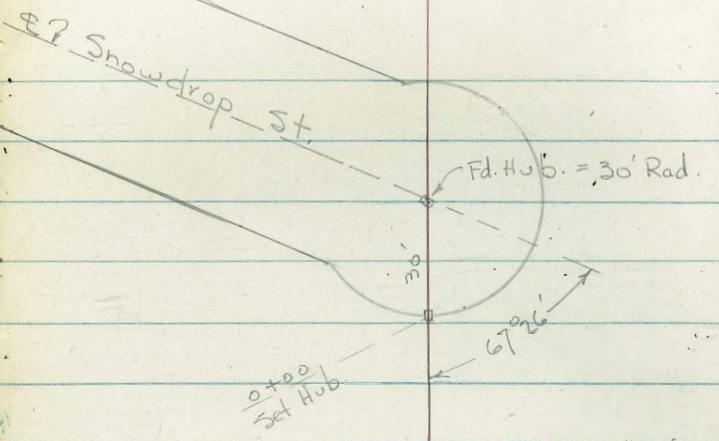
27.2 27.0
 4

1+25

38.7 38.4 37.2
 2 5

0+95

51.3 50.2 48.6
 10 15
 ± wash



1+41.76 = Hub
 = Lot Cor.
 Line of Alley



Lt. # Rt.

Survey for Prop. Drain Bet. Lots
52 + 53 in Block 25 - Lexington Park
See Notes - P. 54 + Book 1695 - P. 28
Sketch - P. 62

HER
FEB 17 1954

W.O. 32061 - 12-9-53 - 7.0

1+00

231.2
15.4

0+75

240.5
6.1

T.P. 0.45 246.61 1740 246.16

246.61

0+52 = Toe of New fill

249.8
13.8

0+42 = Top of Bank

256.6
7.0

0+00 = Prop. Cor.

260.9
26.8
on Hub

B.M. 0.85 263.56 262.71 = \$ Hub.
30' Rad = P. 54

263.57

Ties Snowdrop at
Sycamore

C.H.S.
Begg
Schelin
Pullen

2-16-54

IMPROVED
JER
FEB 17 1954
Fd. Nail
on B.C.

Gone

3/17/55

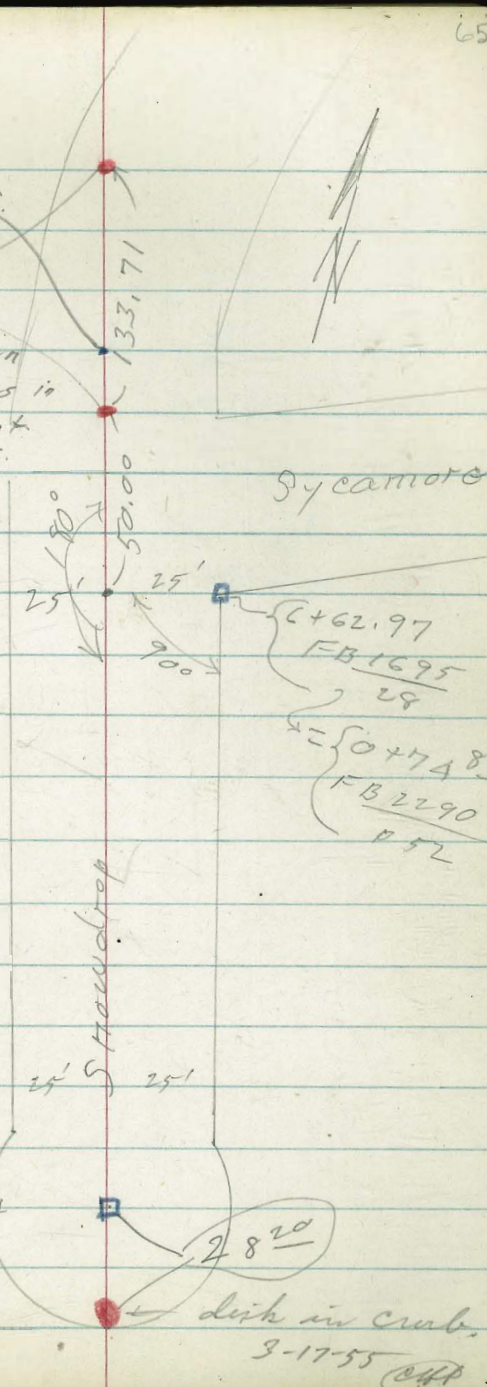
These have been
pulled out. Holes in
Pavo still evident.
C.H.S.

Ref. - FB 1695 - p. 28

□ denotes Fd Hub + Tack or disk

• " Set. P.K. Conc. nail in
A.C. Pavo

0+7484



Sycamore

Snowdrop

3+04.65 - p. 54

22981

disk in crab.
3-17-55
CHP

Snowdrop.

Stations continued from
page 54 this book.

(Note Lenker rod out of order.
Figures shown are rods, not
elevations.)

2+02- 20' ~~rod~~ = ± 6" wide Conc. wall

269.6
4.4
25
End

268.9
5.1
25
B.W.

271.3
2.7
25
T.W.

270.1
3.9
20
End

270.0
4.0
20
B.W.

271.3
2.7
20
T.W.

2+00 = (2+00 - page 54)

265.0	264.9	269.5	271.3	270.8	271.3	270.9	271.3	271.4	271.4
9.0	9.1	3.5	2.7	3.2	2.7	3.1	2.7	2.6	2.6
75	53	40	25	5		10	15	25	35

North line Sycamore to 2+09:
runs from existing pavement ^{at}
20' wide - 2" thick oiled strip

274.03

T.P. 1.58 274.03 9.61 272.45

Sat. B.M. SS 2.27 279.79

2.01 282.06 280.05

(Sycamore + Snowdrop
chiseled □ Nly. end N.E. cb. Ret

+ Snowdrop
spike in pole S.E. Cor. Sycamore
(see page 52)

5 now drop.

255.23

T.P. 0.87

256.10

256.00

265.28
10.05

255.13

265.98

255.23

0.87

3+85

256.10

274.03

T.P. 2.51

265.28

11.26

262.77

262.97

2.51

3+34⁶⁵

265.28

256.8

8.5

35

257.7

7.6

25

259.3

6.0

3

258.4

6.9

25

257.7

7.6

35

265.28

261.0

13.0

35

261.4

12.6

25

261.2

12.8

35

260.3

13.7

25

259.5

14.5

35

3+04⁶⁵

= 30 Rad. for Banjo

262.3

11.7

45

262.5

11.5

35

262.9

11.1

25

262.77

11.26

Hub

261.8

12.2

13

262.0

12.0

25

260.3

13.7

35

2+70

269.9

9.1

35

265.0

9.0

25

264.9

9.1

35

265.1

8.9

10

264.2

9.8

12

263.4

10.6

25

262.8

11.2

35

2+35

269.9

6.1

40

268.3

5.7

25

268.0

6.0

35

267.8

6.2

10

266.0

8.0

25

265.2

8.8

35

2+03

264.9

9.1

53

270.4

3.6

40

271.0

3.0

25

270.5

3.5

5

271.1

2.9

35

270.9

3.1

15

269.6

4.4

25

268.5

5.5

35

274.03

Snowdrop

68

unchanged from here to South

4+35

248.7	249.0	249.7	250.4	251.1	251.0
7.4	7.1	6.4	5.7	5.0	5.1
35	25	10		25	35

4+15

251.1	251.9	254.2	255.4	255.2
5.0	4.2	1.9	0.7	0.9
35	25		25	35

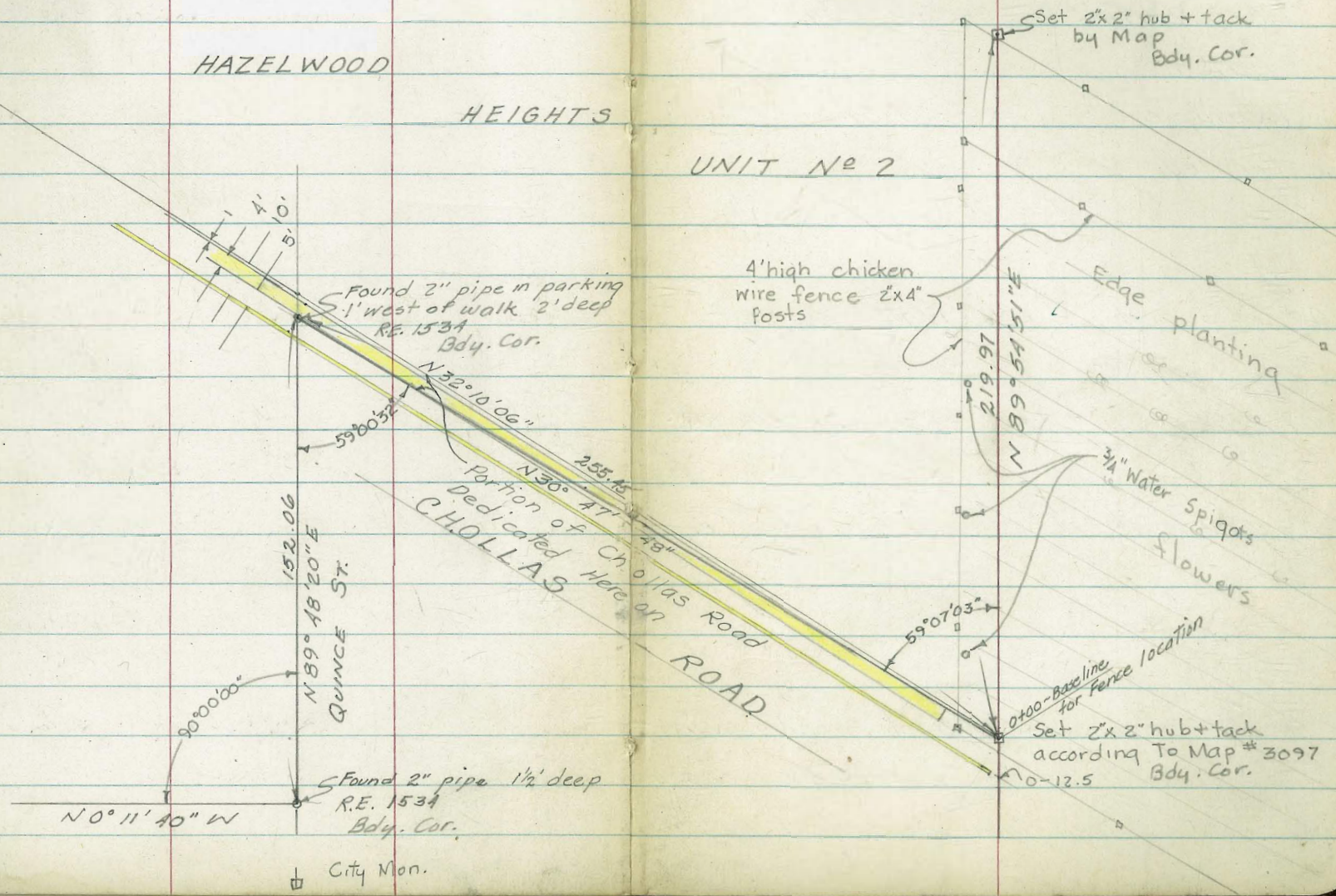
256.00 256.10

CHOLLAS ROAD ENCROACHMENT



HAZELWOOD HEIGHTS

UNIT No 2



Chollas Road fence encroachment

Hazelwood Heights Unit #2

Map No. 3097 Sheet 3-11391-1

W.O. 23764 Sketch Page 69

Hatch

Whipple 8-19-54

Presley

1+60 ~ end planting, which parallels Chollas Rd.

1+13.4 - 10.8 Lt. = E 8" holly tree

1+12.5 - 10.3 Lt. = 3/4" Water spigot

1+00 ~ 11.8 Lt. = wire fence

0+64.5 ~ 11 Lt. = 3/4" Water spigot

0+27.5 ~ 11.7 Lt. = 3/4" Water spigot

0+03.4 ~ 13.5 Lt. = Corner of fence

0+00 = 2x2 hub

0-4.4 cross 4' high chicken wire fence supported by 2"x4" posts - see sketch.
also begin flower beds, roses, daisys, etc.

0-12.5 Curb line produced ~ Curb is 3.6 left.

2+24 ~ 9.8 Lt. = Cor. of fence

2+19.97 = 2x2 hub set by Map dis-
tances and angles Bdy. Cor. of
Hazelwood Heights Unit # 2

2+18.5 cross 4' high chicken wire fence

2+12.5 ~ 5' Lt. = E of Nut tree

2+00 ~ 10' Lt. to 4' east and west wire fence

1+98.5 ~ .2 Lt. = E 3" avocado tree

1+88.5 ~ 1.4 Lt. = E 3" orange tree

1+91 ~ cross 4' high chicken wire fence supported by 2"x4" posts
11.5 Lt. to east and west fence (see sketch)

Bench Levels along Muirlands Drive
 from BP in lamp base on line of $\frac{1-2}{19}$ Muirlands
 along Muirlands Drive Nly of 6604 Muirlands Dr
 To a city Monument on La Jolla Scenic Dr
 and on sly line PL. 1256

Cont on Page 73

TP ₁₇	12.865	562.136	0.555	549.271
TP ₁₆	12.835	549.826	- 7.301	536.991
TP ₁₅	0.962	544.292	- 10.451	543.330
TP ₁₄	2.050	553.781	- 9.309	551.731
TP ₁₃	11.856	561.040	- 0.030	549.184
TP ₁₂	7.955	549.214	- 0.805	541.259
TP ₁₁	9.325	542.064	- 0.490	532.739
TP ₁₀	7.404	533.229	- 2.879	525.825
TP ₉	5.978	528.704	- 2.130	522.726
TP ₈	12.500	524.856	- 0.130	512.356
TBM ₇	12.590	512.486	- 1.021	499.896
TP ₆	12.601	500.917	- 0.220	488.316
TP ₅	11.640	488.536	- 0.470	476.896
TP ₄	12.758	477.366	- 0.230	464.608
TP ₃	11.280	464.838	- 0.240	453.558
TP ₂	11.328	453.798	- 0.309	442.470
TP ₁	11.760	442.779	- 0.201	431.019
BM.	12.890	431.220		418.33
	+	+	-	elev

INDEXED
 JER
 DEC 11 1954

+ La Jolla Scenic Drive
 on City Monument & intersection in La Jolla Rancho Dr
 La Jolla Scenic Dr

Top Fire Hyd. Swly cor La Jolla Rancho Dr +

Near Nly end of catch basin
 NELY BP Muirlands Drive + Carrino Del Teatro

on Muirlands Drive North of 6604 Muirlands Dr
 BP Conc lamp post base on line of $\frac{1-2}{19}$ Muirlands

CONT ON Page 74

TP ₃₆	0.190	439.218-13.304	439.028	
TP ₃₅	0.070	452.332-9.963	452.262	NE BP Muirlands Dr + EL Paso Real
TP ₃₄	0.241	462.225-12.810	461.984	
TP ₃₃	0.159	474.794-12.945	474.635	
TP ₃₂	0.200	487.580-12.830	487.380	
TP ₃₁	0.318	500.210-7.781	499.892	TBM ₇ Page 72 NE 1/4 BP Muirlands Dr + Camino del Teatro
TP ₃₀	2.941	507.673-9.210	504.732	
TP ₂₉	0.100	513.947-12.372	513.842	
TBM ₂₈	3.750	526.214-5.324	522.464	BP in sly end curb in front of 6318 Muirlands Dr
TP ₂₇	5.640	527.788-9.767	522.148	
TP ₂₆	1.724	531.915-10.655	530.191	
TBM ₂₅	1.920	540.846-4.413	538.926	Near Fire Hydrant SE 1/4 BP La Jolla Mesa Dr + La Jolla Rancho Dr
TP ₂₄	2.08	543.339-8.247	541.259	
TP ₂₃	0.320	549.506-11.450	549.186	
TP ₂₂	8.943	560.636-4.173	551.693	
TP ₂₁	12.536	555.866-8.916	543.330	
TP ₂₀	0.901	552.246-12.676	551.345	
TBM ₁₉	10.606	564.021-7.220	553.415	+ sly line P.L. 1256 ON City Monument S. La Jolla Scenic Drive
TP ₁₈	4.350	560.635-5.851	556.285	

TP38 - starting BM-P72r 8.690 <418.330>
418.345

730 1.109 427.035-13.292 425,926
+ ↑ - EL

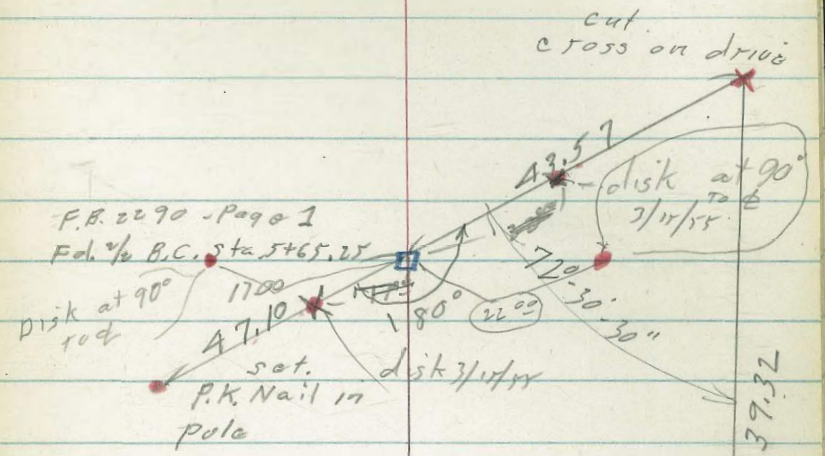
CONT from page 73

Muirlands Dr - Nly of 6604 Muirlands
BP in conc base at lamp post on line 1-2
79

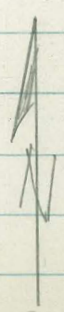
Ties for Point show
on page 1 this book.

C.H.S.

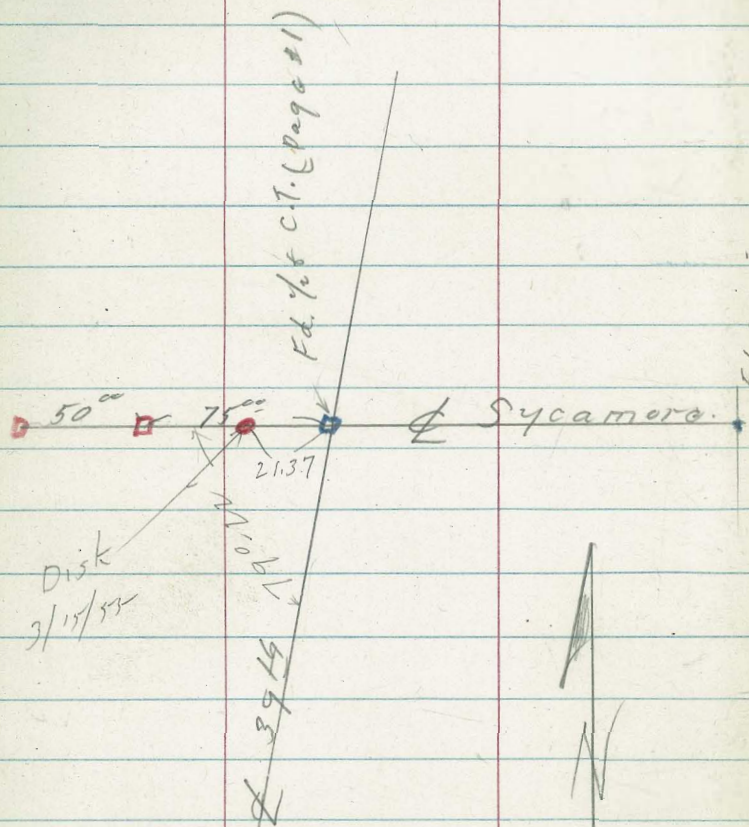
1-12-55



of Marigold

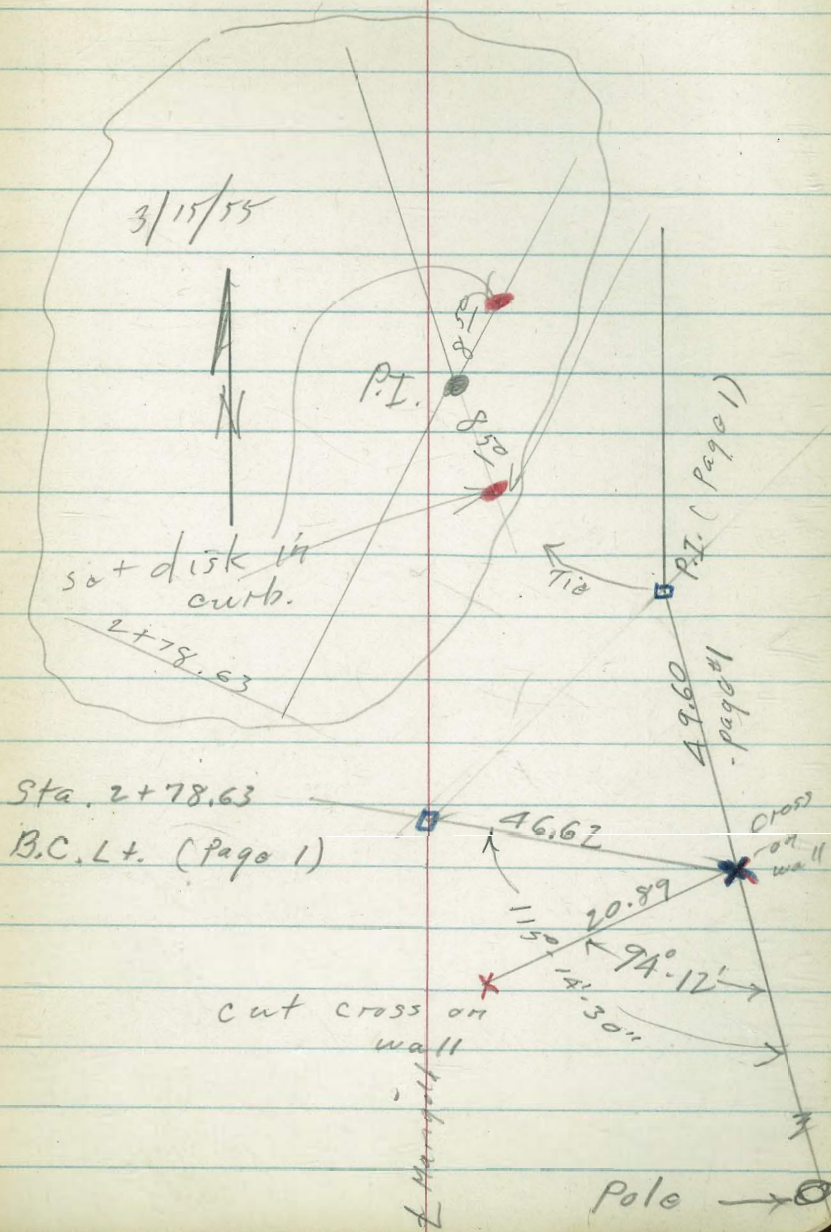


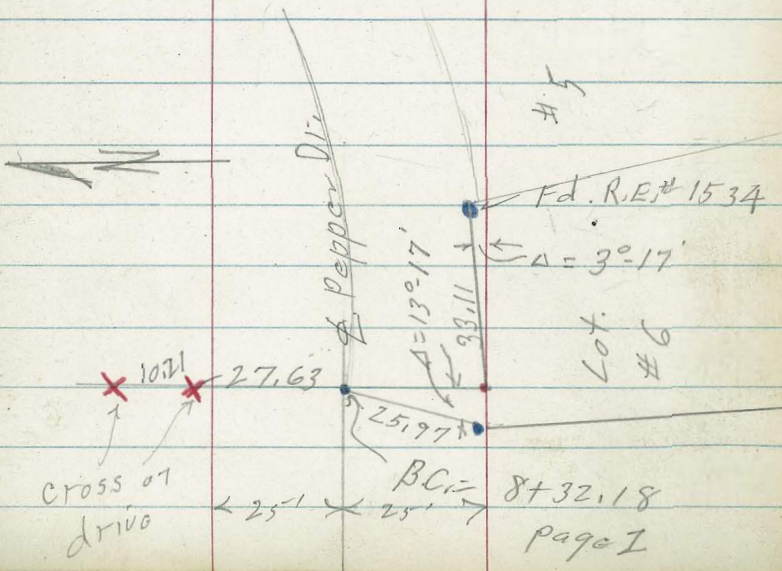
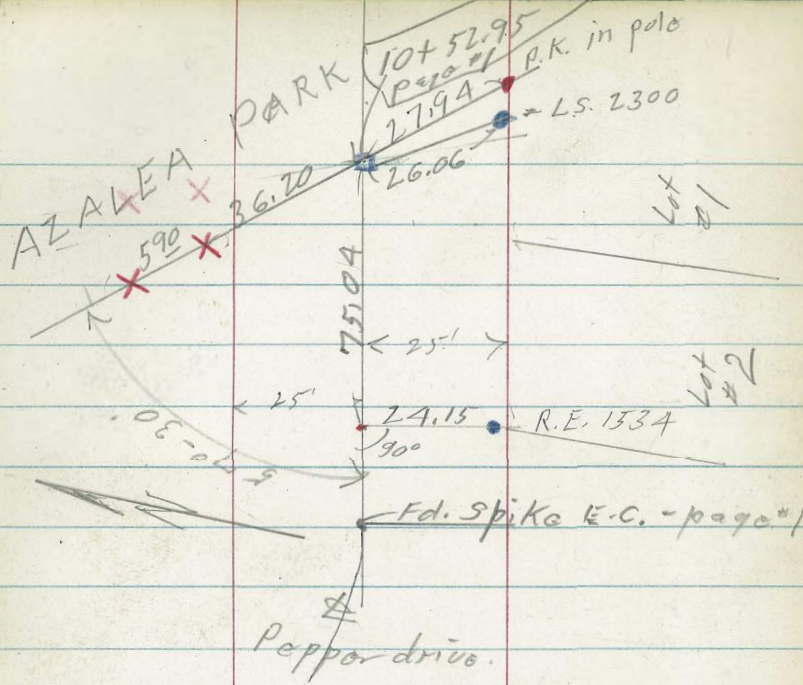
Ties 39th + Sycamore

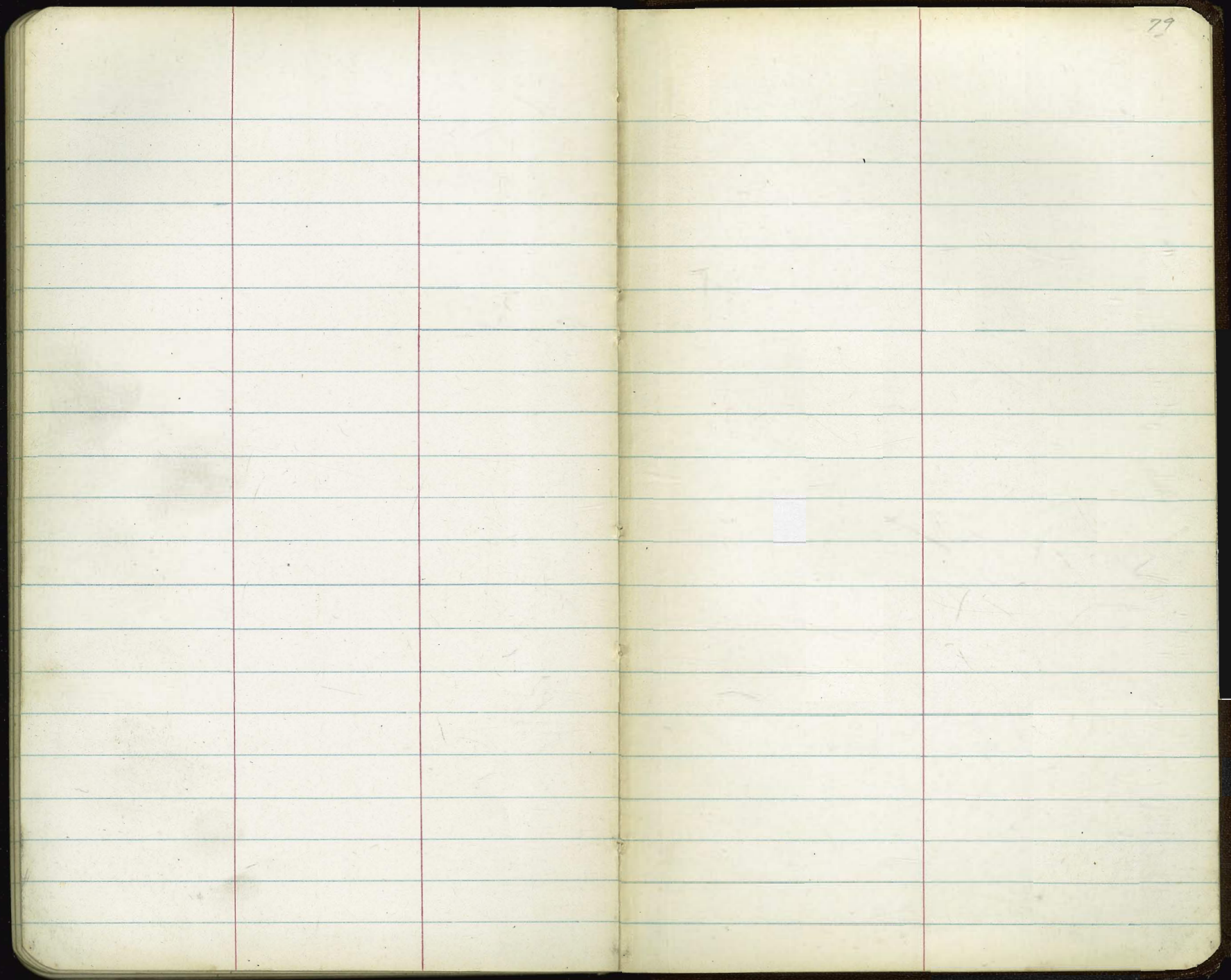


Ed. C.T. in Tar on M.H. set by F.O.

Ties Marigold







1 + 35

2 - 0° 25' 30"

+50 0° 54'

3 - 1° 22' 30"

+50 1° 50' 45"

4 - 2° 19' 15"

+50 2° 47' 30"

+84.38 = E.C. 3° 07' 15"

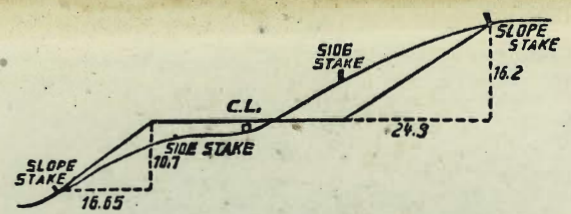
7° 16'

57 83
 43

 11483

 65.25
 58.88

 6.37



DISTANCES FROM SIDE STAKES FOR CROSS-SECTIONING.
 SLOPE 1 1/2 TO 1. ROADWAY OF ANY WIDTH.

	0	.1	.2	.3	.4	.5	.6	.7	.8	.9	
0	0.00	0.15	0.30	0.45	0.60	0.75	0.90	1.05	1.20	1.35	0
1	1.50	1.65	1.80	1.95	2.10	2.25	2.40	2.55	2.70	2.85	1
2	3.00	3.15	3.30	3.45	3.60	3.75	3.90	4.05	4.20	4.35	2
3	4.50	4.65	4.80	4.95	5.10	5.25	5.40	5.55	5.70	5.85	3
4	6.00	6.15	6.30	6.45	6.60	6.75	6.90	7.05	7.20	7.35	4
5	7.50	7.65	7.80	7.95	8.10	8.25	8.40	8.55	8.70	8.85	5
6	9.00	9.15	9.30	9.45	9.60	9.75	9.90	10.05	10.20	10.35	6
7	10.50	10.65	10.80	10.95	11.10	11.25	11.40	11.55	11.70	11.85	7
8	12.00	12.15	12.30	12.45	12.60	12.75	12.90	13.05	13.20	13.35	8
9	13.50	13.65	13.80	13.95	14.10	14.25	14.40	14.55	14.70	14.85	9
10	15.00	15.15	15.30	15.45	15.60	15.75	15.90	16.05	16.20	16.35	10
11	16.50	16.65	16.80	16.95	17.10	17.25	17.40	17.55	17.70	17.85	11
12	18.00	18.15	18.30	18.45	18.60	18.75	18.90	19.05	19.20	19.35	12
13	19.50	19.65	19.80	19.95	20.10	20.25	20.40	20.55	20.70	20.85	13
14	21.00	21.15	21.30	21.45	21.60	21.75	21.90	22.05	22.20	22.35	14
15	22.50	22.65	22.80	22.95	23.10	23.25	23.40	23.55	23.70	23.85	15
16	24.00	24.15	24.30	24.45	24.60	24.75	24.90	25.05	25.20	25.35	16
17	25.50	25.65	25.80	25.95	26.10	26.25	26.40	26.55	26.70	26.85	17
18	27.00	27.15	27.30	27.45	27.60	27.75	27.90	28.05	28.20	28.35	18
19	28.50	28.65	28.80	28.95	29.10	29.25	29.40	29.55	29.70	29.85	19
20	30.00	30.15	30.30	30.45	30.60	30.75	30.90	31.05	31.20	31.35	20
21	31.50	31.65	31.80	31.95	32.10	32.25	32.40	32.55	32.70	32.85	21
22	33.00	33.15	33.30	33.45	33.60	33.75	33.90	34.05	34.20	34.35	22
23	34.50	34.65	34.80	34.95	35.10	35.25	35.40	35.55	35.70	35.85	23
24	36.00	36.15	36.30	36.45	36.60	36.75	36.90	37.05	37.20	37.35	24
25	37.50	37.65	37.80	37.95	38.10	38.25	38.40	38.55	38.70	38.85	25
26	39.00	39.15	39.30	39.45	39.60	39.75	39.90	40.05	40.20	40.35	26
27	40.50	40.65	40.80	40.95	41.10	41.25	41.40	41.55	41.70	41.85	27
28	42.00	42.15	42.30	42.45	42.60	42.75	42.90	43.05	43.20	43.35	28
29	43.50	43.65	43.80	43.95	44.10	44.25	44.40	44.55	44.70	44.85	29
30	45.00	45.15	45.30	45.45	45.60	45.75	45.90	46.05	46.20	46.35	30
31	46.50	46.65	46.80	46.95	47.10	47.25	47.40	47.55	47.70	47.85	31
32	48.00	48.15	48.30	48.45	48.60	48.75	48.90	49.05	49.20	49.35	32
33	49.50	49.65	49.80	49.95	50.10	50.25	50.40	50.55	50.70	50.85	33
34	51.00	51.15	51.30	51.45	51.60	51.75	51.90	52.05	52.20	52.35	34
35	52.50	52.65	52.80	52.95	53.10	53.25	53.40	53.55	53.70	53.85	35
36	54.00	54.15	54.30	54.45	54.60	54.75	54.90	55.05	55.20	55.35	36
37	55.50	55.65	55.80	55.95	56.10	56.25	56.40	56.55	56.70	56.85	37
38	57.00	57.15	57.30	57.45	57.60	57.75	57.90	58.05	58.20	58.35	38
39	58.50	58.65	58.80	58.95	59.10	59.25	59.40	59.55	59.70	59.85	39
40	60.00	60.15	60.30	60.45	60.60	60.75	60.90	61.05	61.20	61.35	40
41	61.50	61.65	61.80	61.95	62.10	62.25	62.40	62.55	62.70	62.85	41
42	63.00	63.15	63.30	63.45	63.60	63.75	63.90	64.05	64.20	64.35	42
43	64.50	64.65	64.80	64.95	65.10	65.25	65.40	65.55	65.70	65.85	43
44	66.00	66.15	66.30	66.45	66.60	66.75	66.90	67.05	67.20	67.35	44
45	67.50	67.65	67.80	67.95	68.10	68.25	68.40	68.55	68.70	68.85	45
46	69.00	69.15	69.30	69.45	69.60	69.75	69.90	70.05	70.20	70.35	46
47	70.50	70.65	70.80	70.95	71.10	71.25	71.40	71.55	71.70	71.85	47
48	72.00	72.15	72.30	72.45	72.60	72.75	72.90	73.05	73.20	73.35	48
49	73.50	73.65	73.80	73.95	74.10	74.25	74.40	74.55	74.70	74.85	49
50	75.00	75.15	75.30	75.45	75.60	75.75	75.90	76.05	76.20	76.35	50

THE NATIONAL BLANK BOOK COMPANY
 HOLYOKE MASSACHUSETTS
 NEW YORK CHICAGO BOSTON SAN FRANCISCO