

DISTANCES FROM SIDE STAKES FOR CROSS-SECTIONING
SLOPE 1 TO 1. ROADWAY OF ANY WIDTH

	0	.1	.2	.3	.4	.5	.6	.7	.8	9	
0	0.00	0.10	0.20	0.30	0.40	0.50	0.60	0.70	0.80	0.90	0
1	1.00	1.10	1.20	1.30	1.40	1.50	1.60	1.70	1.80	1.90	1
2	2.00	2.10	2.20	2.30	2.40	2.50	2.60	2.70	2.80	2.90	2
3	3.00	3.10	3.20	3.30	3.40	3.50	3.60	3.70	3.80	3.90	3
4	4.00	4.10	4.20	4.30	4.40	4.50	4.60	4.70	4.80	4.90	4
5	5.00	5.10	5.20	5.30	5.40	5.50	5.60	5.70	5.80	5.90	5
6	6.00	6.10	6.20	6.30	6.40	6.50	6.60	6.70	6.80	6.90	6
7	7.00	7.10	7.20	7.30	7.40	7.50	7.60	7.70	7.80	7.90	7
8	8.00	8.10	8.20	8.30	8.40	8.50	8.60	8.70	8.80	8.90	8
9	9.00	9.10	9.20	9.30	9.40	9.50	9.60	9.70	9.80	9.90	9
10	10.00	10.10	10.20	10.30	10.40	10.50	10.60	10.70	10.80	10.90	10
11	11.00	11.10	11.20	11.30	11.40	11.50	11.60	11.70	11.80	11.90	11
12	12.00	12.10	12.20	12.30	12.40	12.50	12.60	12.70	12.80	12.90	12
13	13.00	13.10	13.20	13.30	13.40	13.50	13.60	13.70	13.80	13.90	13
14	14.00	14.10	14.20	14.30	14.40	14.50	14.60	14.70	14.80	14.90	14
15	15.00	15.10	15.20	15.30	15.40	15.50	15.60	15.70	15.80	15.90	15
16	16.00	16.10	16.20	16.30	16.40	16.50	16.60	16.70	16.80	16.90	16
17	17.00	17.10	17.20	17.30	17.40	17.50	17.60	17.70	17.80	17.90	17
18	18.00	18.10	18.20	18.30	18.40	18.50	18.60	18.70	18.80	18.90	18
19	19.00	19.10	19.20	19.30	19.40	19.50	19.60	19.70	19.80	19.90	19
20	20.00	20.10	20.20	20.30	20.40	20.50	20.60	20.70	20.80	20.90	20
21	21.00	21.10	21.20	21.30	21.40	21.50	21.60	21.70	21.80	21.90	21
22	22.00	22.10	22.20	22.30	22.40	22.50	22.60	22.70	22.80	22.90	22
23	23.00	23.10	23.20	23.30	23.40	23.50	23.60	23.70	23.80	23.90	23
24	24.00	24.10	24.20	24.30	24.40	24.50	24.60	24.70	24.80	24.90	24
25	25.00	25.10	25.20	25.30	25.40	25.50	25.60	25.70	25.80	25.90	25
26	26.00	26.10	26.20	26.30	26.40	26.50	26.60	26.70	26.80	26.90	26
27	27.00	27.10	27.20	27.30	27.40	27.50	27.60	27.70	27.80	27.90	27
28	28.00	28.10	28.20	28.30	28.40	28.50	28.60	28.70	28.80	28.90	28
29	29.00	29.10	29.20	29.30	29.40	29.50	29.60	29.70	29.80	29.90	29
30	30.00	30.10	30.20	30.30	30.40	30.50	30.60	30.70	30.80	30.90	30
31	31.00	31.10	31.20	31.30	31.40	31.50	31.60	31.70	31.80	31.90	31
32	32.00	32.10	32.20	32.30	32.40	32.50	32.60	32.70	32.80	32.90	32
33	33.00	33.10	33.20	33.30	33.40	33.50	33.60	33.70	33.80	33.90	33
34	34.00	34.10	34.20	34.30	34.40	34.50	34.60	34.70	34.80	34.90	34
35	35.00	35.10	35.20	35.30	35.40	35.50	35.60	35.70	35.80	35.90	35
36	36.00	36.10	36.20	36.30	36.40	36.50	36.60	36.70	36.80	36.90	36
37	37.00	37.10	37.20	37.30	37.40	37.50	37.60	37.70	37.80	37.90	37
38	38.00	38.10	38.20	38.30	38.40	38.50	38.60	38.70	38.80	38.90	38
39	39.00	39.10	39.20	39.30	39.40	39.50	39.60	39.70	39.80	39.90	39
40	40.00	40.10	40.20	40.30	40.40	40.50	40.60	40.70	40.80	40.90	40
41	41.00	41.10	41.20	41.30	41.40	41.50	41.60	41.70	41.80	41.90	41
42	42.00	42.10	42.20	42.30	42.40	42.50	42.60	42.70	42.80	42.90	42
43	43.00	43.10	43.20	43.30	43.40	43.50	43.60	43.70	43.80	43.90	43
44	44.00	44.10	44.20	44.30	44.40	44.50	44.60	44.70	44.80	44.90	44
45	45.00	45.10	45.20	45.30	45.40	45.50	45.60	45.70	45.80	45.90	45
46	46.00	46.10	46.20	46.30	46.40	46.50	46.60	46.70	46.80	46.90	46
47	47.00	47.10	47.20	47.30	47.40	47.50	47.60	47.70	47.80	47.90	47
48	48.00	48.10	48.20	48.30	48.40	48.50	48.60	48.70	48.80	48.90	48
49	49.00	49.10	49.20	49.30	49.40	49.50	49.60	49.70	49.80	49.90	49
50	50.00	50.10	50.20	50.30	50.40	50.50	50.60	50.70	50.80	50.90	50

Distance of slope stake from side or shoulder stake for any width roadway, slope 1 to 1. If ground is nearly level, the cut or fill at side stake is located by the double entry method in left column and top row. The number in body of table in same row and column gives distance from side stake to slope stake. If ground is not level estimate the difference in elevation between the side stake and slope stake, lower target by this amount if cut, elevate if fill. Add this amount to cut or fill and find distance in table. Set up rod at this point, and line of sight should cut target. If it does not make the slight adjustment necessary.

TABLE XIII—CORRECTIONS FOR TANGENTS AND EXTERNALS

These corrections are to be added to the approximate values, found by dividing the tangent, or external, for a 1° curve (Table VIII) by the degree of curve, in order to obtain the true tangents, or externals. Intermediate values may be obtained by interpolation.

FOR TANGENTS ADD

Central Angle	DEGREE OF CURVE													
	5°	10°	15°	20°	25°	30°	35°	40°	45°	50°	55°	60°	65°	70°
10°	.03	.06	.09	.13	.16	.19	.22	.25	.28	.31	.34	.38	.42	.46
15°	.04	.10	.14	.19	.24	.29	.34	.39	.45	.51	.58	.63	.68	.74
20°	.06	.13	.19	.26	.32	.39	.45	.51	.58	.65	.72	.79	.84	.90
25°	.08	.16	.24	.33	.40	.49	.58	.67	.75	.83	.90	.99	1.06	1.14
30°	.10	.19	.29	.39	.49	.59	.69	.79	.89	.99	1.09	1.20	1.29	1.39
35°	.11	.22	.34	.47	.58	.69	.79	.89	1.00	1.11	1.21	1.32	1.42	1.54
40°	.13	.26	.40	.53	.67	.80	.93	1.06	1.20	1.34	1.49	1.64	1.79	1.94
45°	.15	.30	.44	.60	.76	.91	1.06	1.21	1.37	1.52	1.70	1.87	2.04	2.21
50°	.17	.34	.51	.68	.85	1.02	1.19	1.36	1.54	1.72	1.91	2.10	2.29	2.48
55°	.19	.38	.57	.76	.95	1.14	1.32	1.52	1.72	1.92	2.14	2.35	2.56	2.77
60°	.21	.42	.63	.84	1.05	1.27	1.49	1.71	1.94	2.17	2.38	2.60	2.83	3.07
65°	.23	.46	.69	.93	1.16	1.40	1.64	1.88	2.13	2.38	2.63	2.88	3.13	3.39
70°	.25	.51	.76	1.02	1.28	1.54	1.80	2.06	2.33	2.60	2.88	3.16	3.44	3.72
75°	.27	.56	.83	1.12	1.40	1.69	1.98	2.27	2.57	2.87	3.16	3.47	3.78	4.09
80°	.30	.61	.91	1.22	1.53	1.84	2.15	2.46	2.78	3.10	3.44	3.78	4.12	4.46
85°	.33	.66	1.00	1.33	1.68	2.02	2.36	2.70	3.05	3.40	3.77	4.14	4.55	4.89
90°	.36	.72	1.09	1.45	1.83	2.20	2.57	2.94	3.32	3.70	4.10	4.50	4.91	5.32
95°	.39	.79	1.19	1.55	2.00	2.40	2.80	3.20	3.61	4.02	4.40	4.98	5.38	5.83
100°	.43	.86	1.30	1.74	2.18	2.62	3.06	3.50	3.95	4.40	4.88	5.37	5.85	6.34
110°	.51	1.03	1.56	2.08	2.61	3.14	3.67	4.21	4.76	5.31	5.86	6.43	7.01	7.60
120°	.62	1.25	1.93	2.52	3.16	3.81	4.45	5.11	5.77	6.44	7.12	7.80	8.50	9.22

FOR EXTERNALS ADD

Central Angle	DEGREE OF CURVE													
	5°	10°	15°	20°	25°	30°	35°	40°	45°	50°	55°	60°	65°	70°
10°	.001	.003	.004	.006	.007	.008	.009	.011	.012	.014	.015	.017	.018	.020
15°	.003	.007	.010	.014	.018	.023	.027	.029	.032	.035	.039	.043	.047	.051
20°	.006	.011	.017	.022	.028	.034	.038	.045	.051	.057	.063	.070	.076	.083
25°	.009	.018	.027	.036	.046	.056	.065	.074	.083	.093	.106	.120	.127	.135
30°	.013	.025	.038	.051	.065	.078	.090	.103	.116	.129	.149	.170	.179	.188
35°	.018	.035	.054	.072	.086	.109	.131	.153	.175	.197	.213	.230	.247	.264
40°	.023	.046	.070	.093	.117	.141	.172	.203	.234	.265	.277	.290	.315	.341
45°	.030	.060	.093	.119	.153	.184	.216	.254	.289	.325	.351	.378	.411	.445
50°	.037	.075	.116	.151	.189	.227	.266	.305	.345	.384	.425	.467	.508	.550
55°	.046	.093	.142	.188	.236	.283	.332	.381	.420	.479	.530	.582	.641	.700
60°	.056	.112	.168	.225	.283	.340	.398	.457	.516	.575	.636	.697	.774	.851
65°	.067	.135	.204	.273	.343	.412	.483	.554	.625	.697	.711	.845	.922	1.01
70°	.080	.159	.240	.321	.403	.485	.568	.652	.735	.819	.906	.994	1.08	1.17
75°	.095	.182	.266	.353	.440	.528	.617	.707	.797	.877	1.07	1.18	1.29	1.39
80°	.110	.220	.332	.445	.558	.671	.787	.903	1.02	1.13	1.25	1.38	1.50	1.62
85°	.128	.259	.391	.524	.657	.790	.926	1.06	1.20	1.34	1.47	1.62	1.76	1.91
90°	.149	.299	.450	.603	.756	.910	1.07	1.22	1.38	1.54	1.70	1.87	2.03	2.20
95°	.174	.350	.522	.706	.985	1.06	1.25	1.43	1.62	1.80	1.99	2.18	2.38	2.58
100°	.200	.401	.604	.809	1.01	1.22	1.43	1.64	1.85	2.06	2.28	2.50	2.73	2.96
110°	.268	.536	.806	1.08	1.35	1.63	1.91	2.20	2.48	2.76	3.05	3.35	3.66	3.96
120°	.360	.721	1.08	1.45	1.82	2.19	2.57	2.95	3.33	3.72	4.11	4.50	4.91	5.32

INDEX

X-sec Berk 119 - Univ. Hts

X-SECT. Russ Blvd. 25th to 26th

X-SECT. Gregory - Ocean View to Florence

Pg
1

9

33

X-Sect. 20 N+S Alley in Block 119

Univ. Hts - Notes - P. 2

7074

7-18-53 - 7.0

W.O. 32170

El Cajon Blvd

INDEXED
Law

JUL 20 1953

st

Block 119

st

Fd. pipe
RE. 913

1+75.04

Kansas

st
30

14

156.50

ct

4.5

AC. Pavc

Howard

0+00

313.00

Set PK

Ave

X-Sect. N+S. Alley - Blk. 119 - sketch-P.

1+00
 0+90 - 99 Rt. = outlet of 4" Drain thru. wall ✓
 0+75 - 102 Lt. = fence - Posts Set. in Conc. ✓
 0+50
 0+49 - 9.5' Rt. = end Drain under Slab. of Conc. ✓
 0+46 - 10' Rt. = E 3.2' Vent. = Nly ✓
 0+45 - 8.5' Lt. = E 2' Conc. walk ✓
 0+43.5 - 99' Lt. = Beg. board fence ✓
 0+28 - 10' Rt. = E 3' Vent. = Sly. of 4 - Same elev. ✓
 0+25 - 10' Rt. = end Ramp at Church - Conc. ✓
 0+12.5 - 11' Lt. = E 4.5' wide chimney to Hous ✓
 0+01 - 8.8' Rt. = E Tel pole # 307180 - H ✓
 10' Rt. = Beg. Conc. Ramp to church
 9.6 Rt. = Beg. 6" Tin Drain + Conc. filter
 0+00 = N.L. Howard and edge of A.C. pave

0-14 = N. cb.
 Set B.M. = NW. 7' ct. 30th + Howard 367.70
 B.M. = SE. B.P. - Howard + Ohio 364.47

Lt. Rt.

68.7
10
68.6
68.7
10 = by Bldg.
68.60
9.9 = I.E. of pipe
7
68.7
10
68.6
69.0
10 = along Bldg.
69.61
9.5
Top of Conc. 69.46
10 = Bottom of Vent.
69.40 69.39 68.90
15
walk 10 8.5 = walk
Top step
69.25 = Bot. of Vent.
10
69.18
9.6
Top of Drain & Conc. 71.36
10 = Top of Ramp
69.3
11 = ground
69.20 68.65 68.42 68.52 68.48 69.21
Top end. 9.9 ft. 1.6 I.E. of drain 10 gut. Top ch. + Ramp.
69.39 68.79 68.95 68.42 68.44 68.36 68.95 67.90 68.45
Top 55 gut. Top 10 3 Rad. 50 Top
3 Rad. gut. 300' g. Not stated.

Actual Elev. Shown

Lt. E Rt.

1+85.04 = ± E.+w. Alley - on A.C.

68.37 68.21 68.03 67.96 67.85
30 10 over Sewer Mt. 10 30

- 10.1' Rt. end fence
Pave

1+75.04 = S.L. of E.+w. Alley = edge of Rough A.C.

68.57 68.37 68.27 68.22 68.62 68.05
30 10 on A.C. 10 AC. 30 AC.
AC. Alley Parking Lot.

1+73.5 - 9' Lt. = ± P. pole # A2924

1+73 - 8.4' Rt. = ± Dead Man.

1+54 - 8.4' Rt. = ± Tel. Pole # 49' 8126 - H ✓

1+51 - 9.3' Lt. = ± Dead man

1+40

68.2 68.7 68.7 68.9 69.09
15 10 10 10.1 = AC. at fence.

1+25 - 10.8' Lt. = end fence

1+25 - 9' Lt. = ± P. Pole # A4225 B.M. site 369.54 ✓

± AC. parking Lot.

1+12 - 10' Rt. = end Bldg. + Big Cyclone fence

68.7 68.92 = on AC.
10 ground. By Cor.

HAINES ST

21.

L

17. 5

0+00 Cont.

6875 6874 684 684
31.1 365 40 45
Walk Walk

0+00 = NW Garnet

6863 6916 6929 6918 6902 6861 6885 6871 6832 6866
60 40 362 308 23 20 10 189 189
Pav. Pav. Walk Walk Pav. Pav. Pav. Gut. cb.

0-17 = End Exist cb

6903 6862
2087 2087
cb. Gut.

0-14 Cont.

6826 6767 6800 6858 6763 6822
65 65 40 46 70 70
cb. Gut. Gut. cb. Gut.

0-14 = N. cb. Garnet ST

6907 6840 6909 6850 6858 6882 6835 6810 6852
36 36 31 31 21.5 189 239
cb. Gut. cb. Gut. Gut.

TR' NW 7' Tack Garnet & Haines 6217

TR 6421

~~TR~~ NE 7' DISC Grand & Haines 55.13

TR 55.16

TR 56.08

51.84

NW B.P. GRAND & JEWELL ST.

HAINES ST

Lt. L Ft. 6

TP 6755

1700 Approx. First Post on Lt

6842 6857 6863 6907 693 688 694 688
60 40 33 20 20 22 40
Post Post Post Post

0480

6817 6850 6850 6882
60 40 33 20
Post Post Post Post

0468

6837 6860 6860 6873
60 40 33 20
Post Post Post Edge Post

0450

6842 6855 6859 6870 687 686 690 684 684
60 40 33 20 5 19 22 40 45
Post Post Post Edge Post Post Post Post

1401 = 2 16" Pepper Tree 25.3' Ht.

0484

" " " "

0468

" " " "

0453

" " " "

0436

" " " "

0421 = 2 16" Pepper 25.3' Ht.

0415

6858 6875 6883 6866 686 684 684 684
60 40 37 21 19 40 45
Post Post Post Edge Post Post Post

HAINES ST. W

£

7

2 + 00 4" Tile wall = 326' Lt.

70.7 70.3 70.0 699 705 698
40 16 18 20 40

1 + 93 = 2 Elec Pole 20.5' Lt.

1 + 70.3 = End Conc. Porch

1 + 67 = 2 3' Conc. Walk

71.56 71.56 71.13 71.00
418 378 37.8 19.5
Porch Conc. Porch walk walk
at House

1 + 58.3 = End 1.5' Walk = Beg Conc. Porch

1 + 48

70.7 70.92 70.7 699 695 703 699
40 38 17 19 21 40
Walk

1 + 48 = 2 10" Peppor 20.6' Lt.

1 + 45 = N. No Alley = Beg 1.5' Walk 38' Lt.

70.25 6990 701
90 40 16
Por

1 + 35 = 2 Alley

6962 6938 701 698 694 692 688
90 40 16 0 20 40 80
Por Por

2 Elec Pole 20.2' Lt.

1 + 25 = South Edge Alley

6999 6970
90 40
Conc. Conc. Por
Por

1 + 20 = 2 Garage on Rt. Conc. Floor

6923 6945
38.6 40 Conc.
Toe Gar. Floor
Conc. Apron

HAINES ST

Lt. Lt. Rt. 8

~~0.0~~
 51.84
 Chk NW SP Grand & Jewell 51.83

TP
 Grand & Haines 56.05

TP Chk NE T' DISC 55.13

TP 61.66

~~TP 56.63~~

~~TP 54.9~~

NW T Tuck Garnet

TP & Haines P.S 62.17

2+89.78 - South Curb Haines

6995 = Grade Boot 29/26
 6997 6934 6986 7006 7015 6982
 50 50 15 23 50
 Curb Gut Gut
 IN DINE

2+69.78 = South Line Felaper St.

SW T' DISC

TP Haines & Felaper 70.11

Pl. 7010 7008 7000 6938 7007 6981 7047 7048 7051 705
 393 363 313 215 214 218 221 313 363 40
 Ground Walk Cb. Gut Gut Cb. Walk Walk
 Wall Walk Ret.

2+50

7205 705 698 700 699 706 702
 40 394 17 18 20 40
 Top at 3/4
 Wall Wall on Ground

2+14 = Pole Anchor 20.5' Lt.

1+70 = Beg 3 1/2" Conc. Tile 37.6 Lt.

X- SECT. RUSS BLVD:
25th to 26th

Clark
Shepherd
Bruner
O'Neil

12-18-53

N.O. 32360

INDEXED

JER

DEC 22 1953

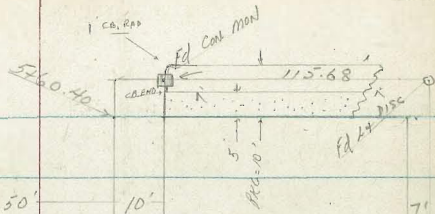
REF: F.R. #1453

M.P. #309

Tie-spot #100

Sketch not to scale
Notes by 10

26th ST
(A.C. Pav.)



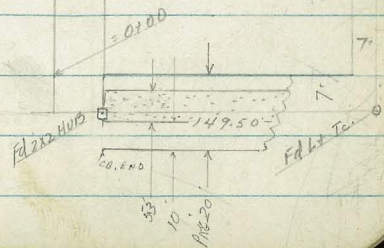
P A R K A R E A

RUSS BLVD

BASE-LINE

Set 2x2 P.O.T
2+92.45

50' x 10'



25th ST (A.C. Pav.)

X-SECT. RUSS BLVD.

(N4) LT.

BASE LINE

RT. (SLY)

0+5.5 9.8 RT END WALL

0+00

NOTE: Trees & shrubs in Park Area planted in RT of Way, Russ Blvd. Far too numerous to show - thus only those which fall within 30' of SLY line Russ are noted

205.8	206.4	205.8	203.9	204.4	204.0	205.0	205.0	206.5	206.5	206.5
3.8	3.2	2.8	4.7	5.2	5.6	4.6	4.6	3.1	3.1	3.1
60	50	20	10	7		4	9.8	11	15	
							DIRT	DIRT	DIRT	FLUSH WITH GRD
								DIRT BK WALL		

206.45

3.15
5.3
7.3
wall

9.6 RT Beg 1' wide stone-BLK WALL / E of West WALL

0-01

6.2 RT NLY END 6" wide - 1' high NLY SOUTH WALL (meets E of West wall 9.6 RT)

206.45 203.15

3.15 6.45
9.6 9.6
TR WALL TIC WALL

0-4.7

10.10 RT. Edge WALK BK

203.22

6.38
10.10
edge walk

0-10

10.10 RT = Edge WALK - Front

203.15

6.45
10.10
END WALL

0-18

203.0	205.1	208.8	204.3	203.9	203.9	203.2
3.6	4.5	4.7	5.3	5.7	6.2	6.4
50	20	14	10	9		10
				DIRT		

0-20 = Ely CB Line 25' h - 10 RT CB END - NO RETURN (STD. CB'S)

205.7	204.3	203.8	203.2	203.2	203.0	202.52	202.12	202.64	201.95	202.00
3.9	5.3	5.8	6.4	6.85	6.60	7.40	6.96	7.65	7.12	7.12
50	20	10	DIRT	10	10	15	50	50	70	70
				G CB	G CB	G CB	G CB	G CB	G CB	G CB
				END G	END G	END G	END G	END G	END G	END G

0-22 = approx. Ely Edge AC PAV - 25' h - NLY OF SLY LINE Russ Blvd. (Patched & Broken)

204.99	204.04	203.69	203.12	202.70	202.58
4.61	5.56	5.91	6.48	6.90	7.02
50	20	10	10	10	15
	edge	P.C.			

0-50 = E 25' h

205.63	205.34	204.30	203.60	203.27	202.79	202.63
3.97	4.26	5.30	6.00	6.33	6.81	6.87
75	50	20		10	50	75

(P.C. Pav)

B.M.

7.65 209.60

201.95 = N.W.

B.P.A. 125' h

209.60

X-SECT. RUSS BLDG (CONT.)

0+64.2 4.1 RT E 8" WID. CONC. OPEN-DRAIN

0+63.8 4.1 RT ELY EDGE WALK

0+57.8 4.1 RT WLY END 6.0' CON. WALK

0+57.5 10.2 RT Dry 4' high LATTICE Fence

0+50

0+48 13.2 RT E Base - WINDOW

0+36.5 13.4 RT E Base - WINDOW

0+26 13.4 RT E 2.5' x 2.5' BASEMENT WINDOW

0+18.5 7.9 RT E 1.5' CON. WALK

T.P. 6.89 214.22 2.27 207.33

0+13: Brk

BASE LINE

207.13 207.18 207.19
7.09 7.04 7.03
4.1 10 20
P.LINE

207.28 207.32 207.28
6.94 6.90 6.94
4.1 10 20
LIP WALK

207.33 207.38 207.4
6.89 6.84 6.80
4.1 10 20
LIP WALK WALK

208.2 207.4 206.8 206.7 207.1 207.4
6.0 6.8 7.4 7.5 7.1 6.8
5.0 2.0 1.0 1.0 1.0 1.3

207.42
6.80
13.2
SILL

207.39
6.83
13.4
SILL

207.49
6.73
13.4
OK. LOWER SILL

206.78
7.44 7.25 6.96
7.9 10 13
LIP WALK WALK

214.22

2076 207.1 206.6 205.1 204.9 206.6 206.8 207.1
2.3 2.5 3.0 4.5 4.7 3.0 2.8 2.5
5.0 2.0 1.3 1.0 4 10 15
P.L E P.L
209.60

X SECT Russ Blvd (Cont)

LT.

RT.

12

1450 = E 20' Alley (5LY) as per the sheet 100 (is this

alby closed?)

212.2	211.6	210.6	210.5	211.0	211.1	211.6
2.0	2.6	3.6	3.7	3.2	3.1	2.6
50	20	10		10	20	40

1441.25 10.2 RT @ 2.5' Con. Walk

210.65	210.62
3.57	3.60
10.2	20
LP	Walk

1440 10.2 RT END APT Bldg

1438 10.2 RT END 2-car gar

210.26
3.76
10.2
FI

1418 10.4 RT Beg 2-car gar in apt Bldg

210.22
4.00
10.4
FI

1400

209.8	209.8	209.8	208.8	208.6	208.6	208.9
4.4	4.4	4.4	5.4	5.6	5.6	5.3
50	30	13	10	9		10

0498 10.4 RT Beg apt Bldg (newly-STA Ftg)

207.2
7.0
10.4
FTG

0494 9.2 RT END apron - 12.3 end gar

208.24	208.39
5.98	5.83
9.2	12.3
LP	FI

0474

9.5 RT Beg Con apron - 2 car gar 12.7 Floor
9.8 RT END Fence

208.0	208.26
6.20	5.96
9.8	12.7
LP	FI

214.22

X-SECT. Russ Blvd. (Cont.)

BASE-LINE

2132.5 10.1 RT Brk

213.34 213.39
5.81 5.76
10.1 14.1
Lip Fl

2113.5 10.1 RT Beg Apron 4-Car gar: 14.1 to Floor

213.27 213.42
5.88 5.73
10.1 14.1
Lip Floor

T.P. 619 219.15 1.26 212.96

219.15
K

2112.5 10.1 RT 2.5' Conc. Walk

213.27 213.38
6.95 0.84
10.1 20
Lip Walk

2407 10.7 RT End 4 Car Garage

213.8
1.4
10.7 (5th Flg)
Brt

2704 6.7' RT End Conc. Apron

212.76 212.92
1.46 1.30
6.7 10.8
Apron Floor

2400

213.7 212.8 212.6 212.1 212.5 212.75
0.5 1.4 2.2 2.1 1.7 1.57
50 20 10 6.7 6.7
9th Lip

1486 Brk Floor

212.33 212.94
1.89 1.28
6.9 10.9
Apron Floor

1481.5 Brk Floor Elev.

212.24 212.20
1.98 2.02
6.9 10.9
Apron Floor

1463 7.2 RT Begin Conc. Apron

211.80 212.16
2.42 2.06
7.2 11.2
Apron Floor

1460 11.2 RT Begin 4 Car Garage (5th Flg)

211.3
2.9
11.2
Brt

214.22
K

X-SECT. RUSS BLD (Cont)

2184 ♀ 3rd gar Conc. Floor 98 ft

215.35
3.80
98
conc.

2175 ♀ 2nd gar

214.9
4.8
9.9
Dirt Floor

2166 = E 1st gar

214.5
4.7
9.9
Dirt Floor

21615 9.9 RT. Bay 4-car gar
each gar on diff level
garages 9' wide - NO FOUNDATIONS

214.3
4.9
9.9
Dirt Floor

2160.5 15.1 RT ♀ 2' CONC WALK

219.58 214.60
4.62 4.55
10.1 20
4ip WALK

2159.5 10.1 RT ELY edge WALK

214.35 214.40
4.80 4.75
18.1 20
4ip WALK

10.1 RT APRON meets 6' wide CONC. WALK-WAY (measured)

2153.5 17.1 RT END 4-CAR GAR

214.15 214.37
5.00 4.78
10.1 20
4ip WALK

2152.5 10.1 RT BRK APRON

213.91 214.04
5.24 5.11
10.1 14.1
4ip FI

2150

215.0 214.7 213.8 213.9 214.0 213.92 214.04
4.2 4.5 5.4 5.3 5.2 5.23 5.11
50 20 10 10 10 10.1 14.1
9rd 4ip FI

2137.5 10.1 RT BRK

213.84 213.99
5.31 5.16
10.1 14.1
4ip FI

219.15

X-SECT. Russ Blvd (Cont)

LT

Base-Line

RT

3+53 2' 4 RT E 6" x 10" Wooden Culvert
impossible to trace underground
apparently drains water off
flat top of garage.

212.95
6.20
2.14
FL

3+50

213.2 213.9 213.8 212.9 212.9 212.9 213.0 214.7 214.9
6.0 5.3 5.4 6.3 6.3 6.3 5.2 4.5 4.3
30 20 12 10 15 3.5 10 20

3+47 10 RT Beg 6" Picket Fence
10 RT END 4-Car gar, 9.4 to apron

214.60 214.64 213.60
4.55 4.51 5.35
9.4 10 FTG
4P FL

3+39 15' LT E 5" Tree

3+38 9 RT Brk Lip Apron

214.61 214.64
4.54 4.51
4P FL

3+37 8.5 RT Brk Flood

215.31 215.57
3.84 3.58
8.5 10
LIP FL

3+28 9.9 RT Beg 2-Car gar 9.3 to apron

215.60 215.60 214.30
3.55 3.55 4.85
9.3 9.9 FTG
4P FL

3+25 Brk

215.7 216.2 215.9 215.4 215.5 216.1 216.1
3.5 3.0 3.3 3.8 3.7 3.1 3.1
30 20 15 10 10 20

3+00

216.7 216.5 215.7 215.7 216.1 216.3
2.5 2.7 3.5 3.5 3.1 2.9
30 20 10 10 10 20

2+97.5 10 RT END 4-Car gar

2157
3.4
10.1
DIRT

2+93 E 4' 4" gar

215.8
3.4
10.1
DIRT FL

219.15

X-SECT. RUSS BLVD. (CONT)

BASE-LINE

208.5	208.7	209.5	207.0	206.90	207.6	208.3	209.0
10.7	11.0	11.7	12.2	12.25	11.6	10.9	10.2
50	20	10	9		6	10.9	14
						9.2	

4400

3493.5 } 10' RT & 2" DRAIN IN WALL
 10' RT END WALK Beg. conc. Ret. WALL (Flush with WALK) 8' wide

208.79 209.47 208.17
 10.36 9.68 10.78
 10 10
 FL TP WALL FTG
 2" DRAIN 4" WALK WALL

3485.5 9.95 RT. Beg 2.5' Conc WALK // to alley

209.52 209.02
 9.63 10.13
 9.95 FTG
 4" WALK

3485 9.8 RT END GAR

209.4 209.75
 9.8 9.40
 9.8 9.8
 9rd 17

3480 15.5 LT & 24" Tree

3471. } 15 LT & 6" tree
 9.8 RT END Shed - Beg Single gar. (not in)

209.87
 7.28
 9.8
 Cal. Floor gar.

3470.5 9.75 RT & N.Y.S. Ret. WALL

211.6	211.2	210.9	210.0	210.1	210.3	210.9
7.6	8.0	8.3	9.2	9.1	8.8	8.3
50	20	12	10		3.5	10

3468 8' RT & 4" Tree

3461.5 } 15 LT & 8" tree
 10 RT END Fence & Beg Shed - supported on 4" x 4" Posts - No FORTH.

219.20
 4.95
 10
 Fl. shed

3455 16 LT & 12" Tree (Note Next Row Trees) Av. 4.5' to 6.0' N.Y.S.

219.15

X-SECT. RUSS BLVD (CONT.)

RAIL LINE

4450

204.0 203.7 204.0 203.9 203.1 204.5
 $\frac{41}{50}$ $\frac{44}{20}$ $\frac{41}{10}$ 4.2 4.0 3.6
 10 20

4448

11.4 RT END GAR 7.1 to Apron
 (No FOTW - Sets on 4" thick Conc slab)

203.92 204.45
 $\frac{4.13}{7.1}$ $\frac{3.60}{11.4}$
 2p 4.

4437

(11.1 RT END FENCE
 11.1 RT Bq Single gar 7.8 RT Bq CON APRON
 (Broken)

204.45 204.75
 $\frac{3.60}{7.8}$ $\frac{3.30}{11.1}$
 2p 4.

4436

16.1 LT & 2.5' Tree

4434

10.0 RT LATTICE FENCE

205.1 205.4 205.4 205.1 205.0 205.7 206.2 206.5
 $\frac{3.0}{5.8}$ $\frac{2.7}{20}$ $\frac{2.7}{10}$ $\frac{3.0}{9}$ 3.1 $\frac{2.4}{10}$ $\frac{1.9}{12}$ $\frac{1.6}{20}$

4425



4422

15.4 LT & 12" Tree

4419

15.2 LT & 10" Tree

4411

(10.3 RT E N'S Ret. WALL (same elev as E+W WALL)
 9.7 RT Bq 4'5" LATTICE FENCE

4410.5

10.1 RT END Ret. WALL

206.14 207.55
 $\frac{4.31}{10.1}$ $\frac{0.50}{FTC}$
 WALL WALL

T.P.

1.16 208.05 17.26 206.89

208.05
 ^

X-SECT. RUSS BLVD (CONT)

BASE LINE

T.P. 6.17 208.55 567 202.38
 5446 15' HT (APPROX E) END Bushes + shrubs

208.55

5425 16.7 LT @ 18" TREE

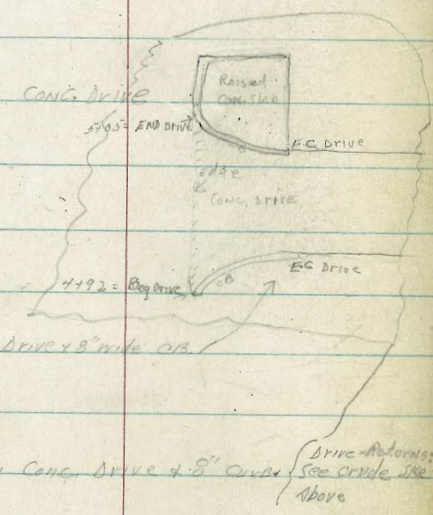
5410.5 6.2 RT END CB = 4 CB

203.1	202.55	204.12	204.26
5.0	5.50	3.93	3.79
6.2	6.2	11.6	15
9th	CB	CB	ON SLAB
		9th DRG	ON RAISED SLAB

5405.5 7.6 RT END DRIVE + CONTINUE CB

203.1	202.44	202.97
5.0	5.61	5.08
7.6	7.6	7.6
9th	LIP	CB

5402.5 17.8 RT EC CONC DRIVE



204.20	204.44	204.59
3.85	3.61	3.46
17.8	17.8	25
drive	(on raised)	ON DRIVE
	(CONCRETE)	

5400

202.1	202.3	203.0	202.7	202.9	202.53	202.93	204.17
6.0	5.8	5.1	5.4	5.2	5.32	5.2	3.88
5.0	20	10		7.4	7.4	10	17.4
				9th	on LIP	DRIVE	DRIVE

4495 17.4 RT EC DRIVE + 8" WIDE CB

204.23	204.95	204.62
3.82	3.10	3.43
17.4	17.4	25.0
drive	CB	DRIVE
9th DRG		

4492 7.2 RT Bay Conc. Drive + 8" CURB
 Drive Returns - See CRUDE SKETCH ABOVE

203.2	202.65	202.89
4.9	5.40	5.16
7.2	7.2	7.2
9th	LIP	CB

4470 15' LT (APPROX. S) NUMEROUS SHRUBS + SMALL TREES

BASE-LINE

CHK. 3.52 205.03 = 205.04 = N.W. B.P. 264h + A

5790.40 = C 264h

202.28	202.60	202.83	202.15	203.83
6.27	5.95	5.72	5.40	4.72
30	10		10.2	50
	4c		edge	
	PAV		Calc	
			PAV	

201.34	201.68	202.17	202.57
7.21	6.87	6.38	5.88
20	10		10

5+72 = CUTT. (EX. SHALLOW CUTT. BY CA. RT (see note below))
LINE

Note: Very shallow Roll Gutt. Begs RT S.W. CB RT + EXTENDS WY ON 264h

201.7	201.88	202.19	202.45	202.45	203.05	203.03	203.19	203.43	203.91
6.9	6.67	6.36	6.10	6.10	5.50	5.52	4.76	5.12	4.34
20	10		10.2	11.2	11.2	50	50	63	63
			6	6	6	6	6	6	6
						CB	CB	CB	CB
						ETC.			9' side

5+70.40 = N. CB LINE 264h { 264h PAVED CURB FROM
SLY LINE RISS - SLY. + WITH LAC. N. WY OF
SLY LINE RISS. (NO CB. N. WY OF S. LINE RISS ON
WY 264h

5769.40 10.2 RT CB BC

203.16	203.2
5.39	5.4
10.2	10.2
7" CB	9" P
4" WALK	

5765.40 = 10.2' RT
FRONT WALK + CA. END (FLUSH FOR ALIGNMENT + E.P.C.)

203.21	203.2
5.34	5.4
10.2	10.2
7" CB	9" P
4" WALK	

5760.40 = W. LINE 264h

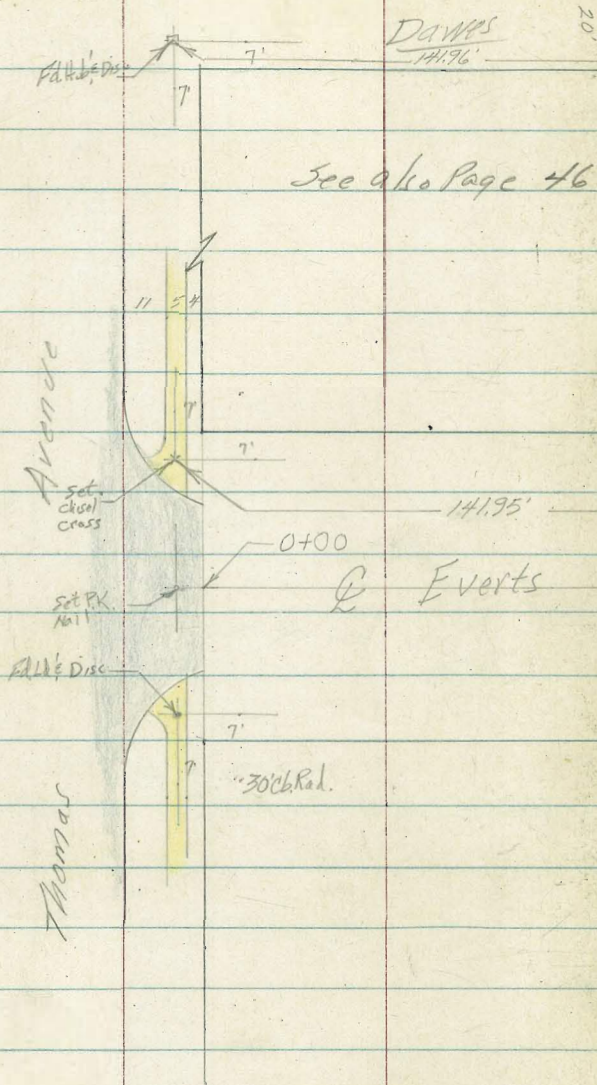
199.8	202.2	202.3	202.3	202.4	203.27	203.49
8.8	6.4	6.3	6.3	6.2	5.28	5.06
50	20	10		5	10.3	20
					END	WALK
					WALK BK.	

208.55

Roberts
Cota
Moore
Moraloz
7-24-54
M.O. # 32072

HER
JUL 27 1954

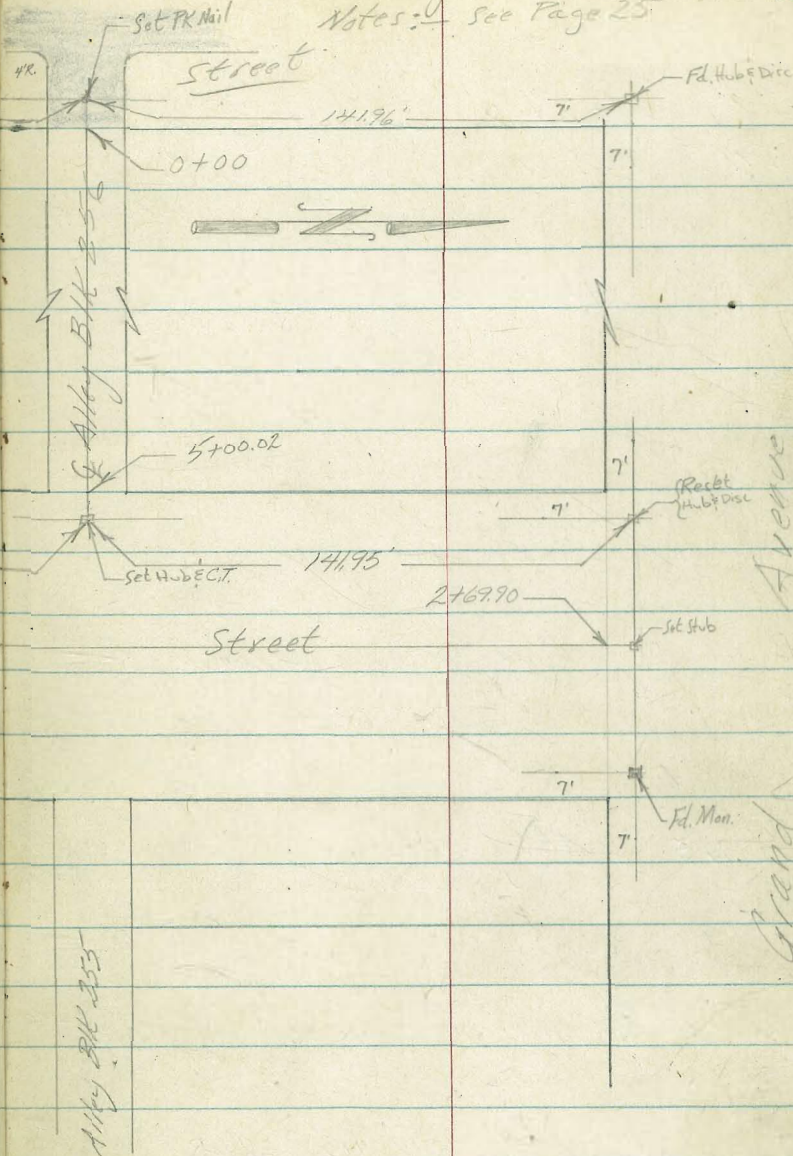
X-Section Everts Street Thomas to Grand



X-Section Alley BIK 256, Pac. Beh.

20

Notes: See Page 25



0+70 50' Rt E Double garage

0+71 34' Lt begin picket fence
Stations OK.

0+50 21' Rt E 3' Conc Walk

0+15

0+00 North Line Thomas Avenue

Midpoint Existing Return

0-20 No. Curb Line Thomas

T.P. 8.24 30.84 ∇ 113 22.60

BM 889 23.73

14.84 Thomas & Dawes

25.8
50 48 43 41 36 161 130
50 40 19 17 272 40
conc conc
guard for Dut

29.89
0.71
50' Floor

25.54
50 5.1 5.0 6.1 6.1 5.8 5.0 3.4 2.4 2.2 1.6
50 40 18 15 18 19 30 35 40 50

24.4 24.1 23.96 23.35 23.78 23.86 24.55 25.0
64 6.7 6.98 7.49 7.06 6.98 6.29 5.8 4.6
40 23 212 212 212 212 30 40
cut cut cut cut cut cut

23.75 23.44
709 770 695 634
cut cut cut cut

21.61 23.47 22.79 23.4 24.61 24.46 25.13
100 9.23 7.37 8.05 7.40 6.84 6.23 6.28 5.91
cut cut cut cut cut cut cut cut
cut cut cut cut cut cut cut

30.84 ∇

1435

21.8
 $\begin{array}{r} 8.1 \\ 40 \end{array}$ $\begin{array}{r} -26.8 \\ 17 \end{array}$ $\begin{array}{r} 28.5 \\ 52 \end{array}$ $\begin{array}{r} 4.4 \\ 17 \end{array}$ $\begin{array}{r} 30.6 \\ 31 \\ 35 \end{array}$ $\begin{array}{r} 30 \\ 40 \end{array}$ $\begin{array}{r} 29 \\ 50 \end{array}$

1426 19' R to center P.Pole # JPA 1202

1422.5 25' Lt to center P.Pole # 4324

1422 35° Lt End pickett fence

1421 39° Lt End walk

$\begin{array}{r} 26.91 \\ 6.79 \\ 46.8 \\ conc \end{array}$ $\begin{array}{r} 6.89 \\ 39.2 \\ conc \end{array}$ $\begin{array}{r} 26.81 \end{array}$

1400

$\begin{array}{r} 26.63 \\ 7.07 \\ 39.3 \\ conc \end{array}$ $\begin{array}{r} 6.8 \\ 17 \end{array}$ $\begin{array}{r} 26.9 \\ 5.6 \\ 16 \end{array}$ $\begin{array}{r} 28.1 \\ 4.9 \\ 20 \end{array}$ $\begin{array}{r} 28.8 \\ 3.1 \\ 40 \end{array}$ $\begin{array}{r} 30.6 \\ 3.2 \\ 40 \end{array}$ $\begin{array}{r} 30.5 \\ 2.8 \\ 50 \end{array}$

0475 39° Lt begin walk

$\begin{array}{r} 26.58 \\ 7.12 \\ 47 \\ conc \end{array}$ $\begin{array}{r} 7.19 \\ 39.2 \\ conc \end{array}$ $\begin{array}{r} 26.51 \end{array}$

T.P. 557 33.70 ∇ 2.71 28.13

33.70 ∇

30.84 ∇

2+43 - 40 Lt & conc step

6.92 7.1
40 40
conc GRD

26.6

2+30 32 Lt begin picket fence

2+29 40' ^{3'} begin walk parallel to st.

142
40
conc

2+18 40 Lt & conc landing, porch or step

6.90 7.1 6.8 6.2 5.7 2.4 2.4 higher
40 40 20 20 30 40
conc GRD

25.6

26.9

27.5

28.0

31.3

2+00

7.3 7.2 6.8 6.3 5.8 2.7 2.6 higher
50 40 17 26 36 40
conc GRD

25.1

26.9

27.4

27.9

31.10

1+88 40 Lt & conc landing 3x4

6.93 7.3
40 40
conc GRD

1+81 40 Rt & conc step (landing) 4x4

2.96
40
conc GRD SAME

1+61 40 Rt & conc step on porch 4x4

6.87 7.4 7.2 5.9 5.2 3.3 3.3 3.0
40 40 20 18 30 40 40
conc GRD

26.3

26.5

27.8

28.5

30.4

30.4

33.70

33.70

J.P.

#61 29.09 S.E. 7' Man. Grand & Everett

So. line plus 30 feet

			29.6	21.9	
7.9	7.1	6.1	5.8	5.2	
100	50		50	100	

2+69.90 So. line GRAND AVE.

			29.6	28.0	29.9	30.1
7.0	6.9	6.6	6.1	5.7	3.8	3.6
50	40	20		20	28	40
					50	50

2+59 22 3/4 to center P.P. #4398

2+58 40 ft End walk

1.98
40
cut

2+57 32 ft End picket fence

2+50

			26.6	26.9	27.5	29.0	31.6
7.1	7.1	6.8	6.2	5.7	2.3	2.1	1.77
43	40	20		21	29	40	40
100						50	50

33.70 A

33.70 A

0+50

20.4
3.2
20
19.9
3.7
10
19.8
3.8
19.8
3.8
92

0+48.5

11° Lt ♀ 2nd Conc Walk

20.75
2.83
Conc

0+47

11° Lt End house

0+30

19.9
3.7
10
19.7
3.9
4.0
9.9
GPD
19.6
4.6
9.9
Foot
19
3.7
9.9
Top
19.9
3.7
12
House

0+15

11° Lt begin house

0+00

(About 3' AC. Paint gone!)
East Line Dawes Street
9th Rt begin picket fence on conc. base

19.05
4.53
10
cb
18.72
4.85
10
Gut
18.5
5.1
Dirt
18.57
5.01
10
Gut
18.73
4.85
10
cb
18.7
4.9
9.9
Foot
19.9
3.7
9.9
Top

0-20

East Curb Line Dawes

19.59
3.99
50
cb
18.95
4.63
50
Gut
18.93
4.65
14
cb
18.27
5.31
14
Gut
18.10
5.18
14
Gut
17.86
5.72
14
cb
18.49
5.09
14
cb
17.16
6.42
50
Gut
17.82
5.76
50
cb

{ Make field check - Some Paving needs to be replaced }
{ from cb. Line to Property. }

BM

8.74 23.58 T

SE 7' Mon.
14.84 Thomas & Dawes

23.58 T

2+00 10 Rt begin, Wood fence

20.5 20.2

5.4	5.7	6.0	5.7	6.3
20	10	10	10	20

-19.9 20.2 19.6

1+76.5 10° Rt End Conc block wall

19.9 18.8 24.8

6.2	7.1	1.1
10	10	10
SPD	Foot	Top

1+50

20.5 19.8

5.4	6.1	6.2	6.2
20	10	10	10

-19.7 19.2

T.P. 6.10 25.87A 381 19.77

25.87A

1+00 { 89 Rt to center P. Pole # PA1120
 104 Rt begin conc block wall
 105 Rt End Picket fence on conc base
 92 Lt End conc platform

20.49 20.38 20.13

3.10	3.20	3.45	3.8	3.9	4.5	3.7	5.1	+1.1
20	10	92	10	10	10	10	10	10
CONC	CONC	CONC	SPD	Foot	79	Foot	Top	Top

19.8 19.7 19.1 19.9 19.5 24.7

0+80 92 Lt begin conc platform

20.46 20.34 20.03

3.12	3.24	3.55
17	10	92
CONC	CONC	CONC

23.58A

23.58A

Cont'd From Page 26

Lt

S

Rt 27

2+96 Rt End garages

20.22
5.05
145
conc
Apron

20.22
4.75
175
Floor

2+78 Rt to garages

20.65
5.22
145
conc
Apron

20.73
4.94
175
Floor

2+76 Rt to garages

20.25
5.62
145
conc
Apron

20.42
5.44
175
Floor

2+58 17⁵ Rt begin garages

20.21
5.60
145
conc
Apron

20.42
5.45
175
Floor

2+50 9² Rt to center P.Plo #PA150

21
4.9
20

20.5
5.4
10

20.3
5.6

20.6
5.3
10

20.4
5.5
15

2+37 17³ Rt & Double garage

20.25
5.38
173
conc
Floor

2+24 10 Rt End wood fence.

25.87A

25.87A

4700

R

$\frac{24.1}{6.7}$	$\frac{24.1}{6.7}$	$\frac{23.6}{7.2}$	$\frac{23.7}{7.1}$	$\frac{24.2}{6.6}$	$\frac{24.2}{6.6}$
20	10		6	10	20

3+91

10° Rt & 3' conc walk

$\frac{23.91}{6.87}$	$\frac{23.91}{6.87}$
10 conc	18.5 conc

T.P.

6.29 30.84 π 1.32 2455

30.84 π

3+50

$\frac{22.6}{3.3}$	$\frac{22.3}{3.6}$	$\frac{22.11}{3.8}$	$\frac{22.3}{3.6}$	$\frac{22.3}{3.6}$
26	10		10	20

3+42

Rt Exp GARAGES

$\frac{21.54}{4.33}$	$\frac{21.63}{4.24}$
14.4 conc Apron	17.2 Floor

3+03

Rt begin garages

$\frac{21.52}{4.35}$	$\frac{21.58}{4.29}$
14.5 conc Apron	17.5 Floor

3+00

$\frac{21.3}{4.7}$	$\frac{21.2}{4.7}$	$\frac{20.6}{2.0}$	$\frac{21.2}{4.7}$	$\frac{21.3}{4.6}$
20	10		10	20

25.87 π

25.87 π

4493 13² Rt begin conc slab

26.91
3.93
13²
conc

4485 13⁸ Lt & conc slab 6x4'

26.36 26.28
448 45L
17⁸ 13⁸
conc conc
(misc)

4471 11² Rt & 4' conc walk

26.57 26.48
4.27 4.36
11 15
conc conc

4469 11⁰ Rt End conc slab

26.24 26.17
4.60 4.67
11 20
conc conc

4450.5 10⁵ Rt begin conc slab

25.74
5.00 5.01
10⁵ 20
conc conc

4450 9⁸ Rt begin picket fence

25.0 24.6 24.7 25.3 25.4
5.8 6.2 6.2 6.1 5.5 5.4
20 10 6 10 20

4401 8⁹ Rt to center P.P. # PA1174

30.84 π

30.84 π

J.P.

1.75 29.09 = 29.09 see TP pg. 24

Radneab & Hedtke
plotted by
Edmonds

5+00.4 13¹/₂ R+ End conc slab

5+00.02 West Line Everts.

<u>25.7</u>	<u>25.54</u>	<u>25.7</u>	<u>26.3</u>
5.1	5.3	5.1	4.5
10	6	10	

403
138
conc

26.81

30.847

30.847

X-Section Gregory from Ocean View Sly to End

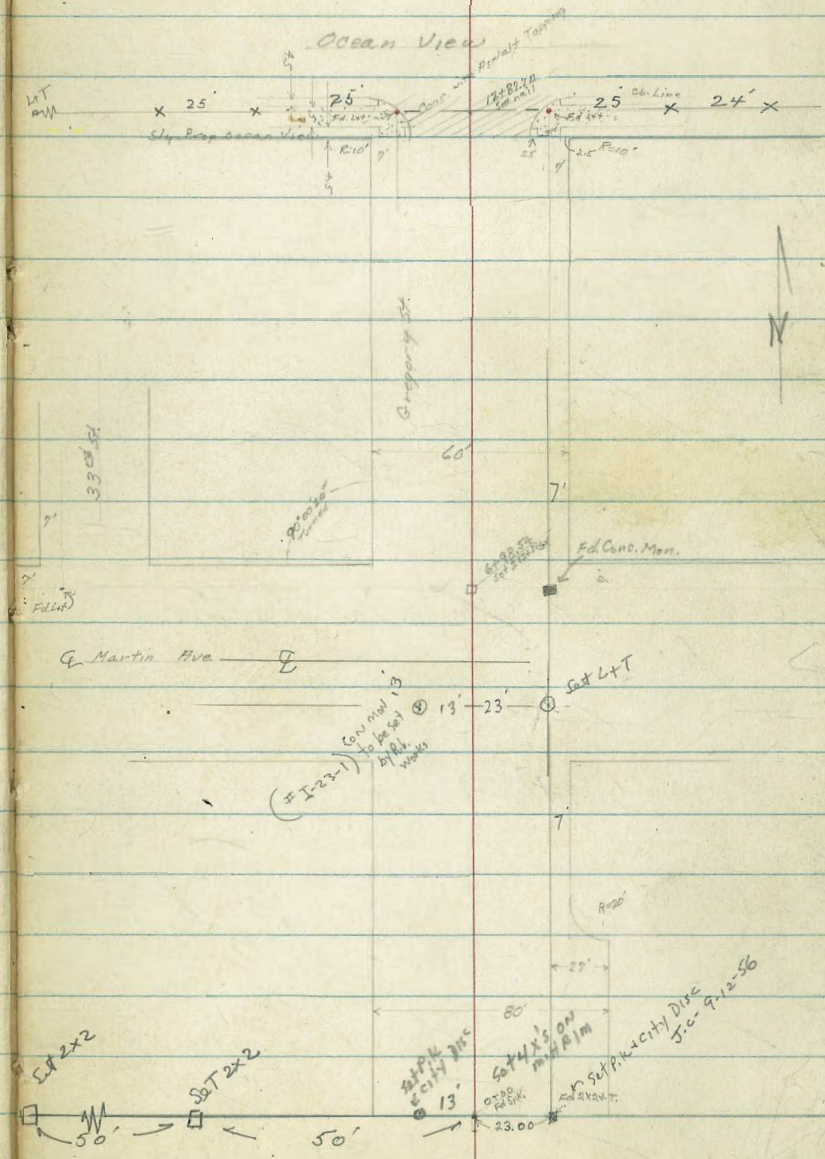
Shepard
Bruner
O'Neill
11-22-54
410.31595

Ref. FB. 527

INDEXED
JEA
DEC 1 1954

Soil sample at 6100

698.54
43
635.54



X-SECT GREGORY

2700 21.4 LTR Ble # 818
T.P. 6.32 13.21 4.67 6.89

14.50

1401 30.2 LTR Reg 5' steel-norm tone

1400

0+50

0+40.5 20.9 LTR Ble # 590146-H

0+22 20.8 LTR Deadman

0+00 N. Line France Lane
As per F.B. # 577

0-50

T.P. 4.44 11.56 5.70 7.12

1.18 12.82

11.64 S.W.A.P.
33rd NATIONAL

H E RT

6.8 6.8 7.1 6.5 6.9 6.1 6.6 6.9 6.6 6.8
6.4 6.4 6.1 6.7 6.3 7.1 6.6 6.3 6.6 6.4
5.0 3.0 1.3 1.1 1.3 1.5 3.0 5.0 6.5

6.6 6.6 7.0 6.5 6.9 5.9 6.7 6.7 6.5 6.4
5.0 5.0 4.6 5.1 4.7 5.7 4.9 4.9 5.1 5.2
5.0 3.0 1.3 1.1 1.7 1.3 1.5 3.0 5.0 6.5

6.4 6.4 7.0 6.5 6.6 6.0 6.6 6.2 6.2 6.1 9.39
5.2 5.2 4.6 5.1 5.0 5.6 5.0 5.4 5.4 5.5 2.17
5.0 3.0 1.4 1.1 5.0 1.2 1.4 3.0 5.0 7.2 8.75

6.5 6.5 6.4 6.1 6.5 5.9 6.5 6.3 6.1 6.0
5.1 5.1 5.2 5.3 5.1 5.7 5.1 5.3 5.5 5.6
5.0 3.0 1.3 1.1 1.2 1.4 3.0 5.0 6.0

7.2 7.1 6.8 6.9 5.8 6.3 6.4 6.2 9.26
4.4 4.5 4.8 4.7 5.8 5.3 5.2 5.4 2.4 2.34
5.0 3.0 1.0 1.7 1.0 1.3 3.0 5.0 6.0 6.2

Reduced
12-9-54
A20. 9096

5.9
5.7

11.56

GREGORY (CONT.)

LT

E

RT

3+55	21.1 RT end Picket Fence	8.0	8.0	7.9	7.4	8.0	7.9	8.1	8.2
		5.2 30	5.2 30	5.3 5	5.8 14	5.2	5.3 15	5.1 30	5.0 40
3+50									
								8.16	8.24
3+25.5	19.1 RT - E 3.0 CON. WALK							5.05 23.5 LIP	4.97 30 ON WALK
3+00		7.6	7.3	7.2	7.0	7.4	7.4	7.9	8.1
		5.6 50	5.9 30	6.0 13	6.2 11	5.8	5.8 15	5.3 30	5.1 45
2+99	44.5 RT END 2-CAR GAR. (N.W. CORN.)								7.97
									5.24 44.5 P. GAR.
2+97	{ = 4 Fence 21.7 RT 82.5.5 RT. 25.6 RT = END CON. APRON							7.82	
								5.37 25.6 40	
2+82	25.8 RT Bdy. CON. APRON							7.57	
								5.64 25.8 LIP APRON	
2+80	44.5 RT - S.W. 24 CORN DOUBLE GAR.								8.01
									5.20 44.5 P. GAR.
2+77	25.5 RT Bdy. 3' Picket Fence								
2+50	30.2 LT END 5' GAL. WIRE FENCE	7.0	6.9	6.9	6.7	6.9	6.4	6.9	7.0 6.8 6.8
		6.2 30	6.3 30	6.3 13	6.5 11	6.3	6.8 13	6.3 15	6.2 30 6.4 50 6.4 60
2+21	27.7 LT E 2.0 CON. WALK	7.07	7.11						
		6.4 30	6.10 27.7 40						13.21

GREGORY (CONT.)

LT

E

-RT

34

3706	28.9 RT Bay 4' Board Fence	8.7	8.5	8.2	7.9	8.2	8.2	8.8	9.1	9.2
5100		4.5 50	4.7 30	5.0 15	5.3 13	5.0	5.0 10	4.4 12	4.1 30	4.0 50
4491.5	23.5 RT End Board Fence	8.54	8.46	8.47						
4486	26.6 LT & 2.5 Con. Walk	4.67 37 Walk	4.75 30 Walk	4.74 26.6 4P						
4466	30' LT & 2.0 Ribbon (Nily) 7/2 LT 90°	8.69	8.48	8.31						
		4.52 91 Flag	4.73 32 Walk	4.90 30 4P						
4462	30' LT & 2.0 Ribbon - drive 5/4	8.44	8.31							
		4.77 32 Walk	4.90 30 4P							
4455	22.3 LT & Pole 7/4									
4450		8.2	8.2	8.2	7.8	8.1	8.2	8.6	8.8	8.9
		5.0 45	5.0 30	5.0 15	5.4 11	5.1	5.0 10	4.6 12	4.4 30	4.3 50
4415	30.1 LT & 8' Con. Drive: 5/4 LT 90°	8.57	8.32							
		4.64 34 Flag	4.89 30.1 2P							
4400		8.3	8.4	7.9	7.8	8.1	8.2	8.5	8.8	8.7
		4.9 50	4.8 30	5.3 14	5.4 12	5.1	5.0 10	4.7 12	4.4 30	4.5 40
3487	21.6 RT Bay 4' Board Fence									
3456	22.2 LT & Pole P. 798									

GREGORY (CONT.)

LT.

Σ

RT

35

6100

9.0 8.6 8.3 8.7 8.3 8.5 8.6 8.7
 5.5 5.9 6.2 5.8 6.2 6.0 5.9 5.8
 50 30 13 13 15 30 50

5167

31.2 LT & 8' Con. Drive : 49' LT 94'

9.20 8.89
 5.26 5.55
 49 31.2
 41.94 41

5156

30.1 RT 109' Little Fence - 3' High
 29 RT end Picket Fence

27

5155

22.4 LT & Pole P-728

9.2 9.0 8.2 8.5 8.0 8.3 8.9
 5.3 5.5 6.3 6.0 6.5 6.2 5.6
 50 30 13 12 15 30

5150

5148

30.4 RT Σ 8' Con. Drive : 72' RT 94'

9.04 9.18
 5.42 5.28
 30.4 72
 41 41.94

T.P.

5.09 14.46 3.84 9.37

14.46

9.25 9.05

3.96 4.16
 40 30.9
 41 41

5135

30.9 LT & 30' WALL - Cont.

9.01 9.03
 4.20 4.18
 29 35
 41 41

5125

29.1 RT & 2.0' Con. WALL

5118

27.5 RT & 36" Palm Tree

9.09 8.96 8.78
 4.18 4.43
 41 30.4
 41.94 41

5112.5

30.7 LT 6.0' Con. Drive : 94' LT 94'

13.21

GREGORY (cont.)

Lt. E RT 36

7250
7117 31 LT E 8.0 Con. Drive 64' LT gate

7405.54 10 LT E S.D.G. 7E GATE
- N. Line MARTIN

6793.8 04 LT E W.M.H. - Sewer

6780.54 E MARTIN - dirt graded rd.

6755.54 = { 28.1 LT E Pole = P 702
30.7 LT END Fence
S. Line MARTIN
28.1 RT E Anchor Pole

6746 21.2 RT E Fire-HYD.

6737.5 29.9 RT E 30 Con. WALK

6731 30.5 LT E 30 WALK - CONC.

6725 30.7 LT BY 3' P. set Fence

6724 30.1 RT END LATHE Fence

10.2 10.1 9.7 9.0 9.7 9.4 9.8 9.7
4.3 4.4 4.8 5.5 4.8 5.1 4.7 4.8
50 30 15 15 30 50

10.17 9.87
4.29 4.59
64 31
4. M.C. 2P

10.1 10.0 9.4 9.1 9.37 9.5 9.1 9.5 9.3 9.4
4.4 4.5 5.1 5.4 5.09 5.0 5.4 5.0 5.2 5.1
75 50 30 13.0 18 14 30 30 75

9.45
5.01
0.17
P.M. 21.14

9.3 9.1 9.1 9.2 9.1 9.2 9.5 11.17
5.2 5.4 5.4 5.3 5.4 5.3 5.0 3.29
110 50 30 100 117
77 CONC
- CONC

9.3 9.1 9.0 8.9 8.5 9.1 8.7 9.2 9.2 9.2 9.1
5.2 5.4 5.5 5.6 6.0 5.4 5.8 5.3 5.2 5.3 5.4
15 50 30 17 15 15 20 30 50 75

8.98 9.01
5.48 5.45
29.9 59
2P WALK

9.02 8.92
5.4 5.54
70 30.5
WALK 2P

11. 46

GREGORY (cont.)

WT.

♀

RT.

37

8472 30.1 LT & 10' Con. Drive 50.6 LT 944

11.99 11.04
392 4.87
50.6 30.1
Fl 901 4p

8463 25.3 RT & Pole # 641

8450

11.2 11.1 10.3 9.9 10.3 10.0 10.3 10.4
4.7 4.8 5.6 6.0 5.6 5.9 5.6 5.5
~~50.70~~ 30 15 12 56 15 20 30

8447 31.3 RT & 10' Con. Drive 57.5 RT. 944

10.35 10.85
5.56 5.06
31.3 5.25
4p Fl 944

8438.5 31.3 RT & 30' Con. Walk

10.38 10.65
5.53 5.26
31.3 4.9 5.5
4p walk

5 of A.M.

T.P. 7.33 15.91 588 8.58 on N. 7' Walk
GREGORY + MARTIN

15.91 ✓
X

8400

10.1 10.1 10.1 9.5 10.1 9.8 10.3 10.0 10.0
4.4 4.4 4.4 5.0 4.4 4.7 4.2 4.5 4.5
50 30 15 12 4.4 15 20 30 40

7493 30.6 RT & 30' Con Walk

9.97 9.97
4.47 4.49
30.6 4.0
4p walk

7481.5 22.3 RT & Pole # 678

7467 31.8 RT & 25' Con Walk

9.76 9.67 9.84
4.70 4.79 4.62
31.8 4.0 6.5
4p walk walk

14.46

GREGORY (CONT)

LT.

Q

RT

38

10700
9497 31.3 LTg B Con. Drive : 51.2 LT gar

9481 22.0 LT & Pole # P-598

9464 33.7 RTg 7.5' Con. Drive : 43.9 RT gar

9457 28.3 RT end wall

9456 29.9 LT end Picket Fence

9450

9439.5 27.6 RTg 4.0' Con. Walk

9412 28.5 RT end Picket Fence - Bay 3.5' high Con. Bk. Walk

9400

8499 2 gar 698 RT

8480 (30.2 LT Bay 5' Picket Fence

(22.3 LT & Pole # P-640

8475 29.3 RT Bay 4' Picket Fence

11.8	11.5	11.0	10.5	10.9	10.6	11.0	11.0	11.0
4.1	4.4	4.9	5.4	5.0	5.3	4.9	4.9	4.9
50	30	19	12		15	20	30	50
	12.04		11.64					
	3.87		4.27					
	5.12		3.13					
	H. 900		LP					

11.21 11.45

4.70 4.46
33.7 43.9
LP H. 900

10.21

5.20
28.3
FFC
wall

11.3	11.2	11.1	10.5	10.7	10.5	10.9	11.1	11.1
4.6	4.7	4.8	5.4	5.2	5.4	5.0	4.8	4.8
50	30	16	13		15	20	30	50

11.01 11.03 11.04

4.90 4.88 4.87
27.6 30
LP wall

10.51

5.40
28.5
FFC
wall

10.9	10.9	10.9	10.5	10.6	10.2	10.9	10.6	10.4
5.0	5.0	5.0	5.4	5.3	5.7	5.0	5.3	5.5
30	30	20	13		15	20	30	50

10.69

5.22
6.98
H. 900

15. 91

GREGORY (CONT)

39

H.

E

RT.

11707	28' RT E 2.0 Cor MARK					12.24	12.12				
						4.71	4.83				
						2.8	4.0				
						2.1	4.0				
11700		11.8	11.7	11.7	11.1	11.7	11.2	11.7	11.9	11.5	
		5.1	5.2	5.2	5.8	5.2	5.7	5.2	5.0	5.4	
		5.1	3.0	1.8	1.3		1.5	2.0	3.0	5.0	
		2.0									
10787	29 RT E 3" Tree										
10781	{ 29.3 LT End Picket of Beg of the Fence 22. LT E 1.6 P 564										
10756	28 RT Beg 2.5 Picket Fence										
10750		11.4	11.4	11.2	10.7	11.1	10.6	11.2	11.2	11.2	
		5.5	5.5	5.7	6.2	5.8	6.3	5.7	5.7	5.7	
		5.0	3.0	1.9	1.2		1.6	2.0	3.0	5.0	
10737	29.9 RT E 3.0' Cor MARK						11.62	11.78			
							5.33	5.17			
							2.99	4.3			
							2.1	4.0			
10724	29.1 LT E 3.5' Cor MARK	11.70	11.65								
		5.25	5.30								
		3.5	2.91								
		1.014	2.1								
10705	{ 23.6 LTE 4" Tree 29.5 LT Beg 4' Picket Fence										
T.P.	4.78 16.95 3.74 12.17					16.95					

GREGORY (CONT.)

LT.

Q

RT.

40

11481 - 8.10M sewer

12.17
4.78
RT
WALK

11479 299 LT END LATHE FENCE - BOP 5 Steel Wire Fence

11478 223 LTE P.10 # P. 528

11463 28.5 RTG 5.0 CON. WALK

12.18 12.21
4.77 4.74
28.5 35
LIP WALK

11437 29.5 LTE 3.0 CON. WALK

12.37 12.54
4.56 4.61
40 29.5
WALK LIP

11450 11.9 11.9 11.7 11.3 11.8 11.6 11.9 12.0 11.8
5.0 5.0 5.2 5.6 5.1 5.3 5.0 4.9 5.1
50 30 18 13 15 20 30 50

11441 28.7 RTE 8' CON. WIRE: 58' RT GAK

12.17 12.45
4.78 4.50
28.7 58
LIP F199

11431 29.5 LT G 12.0 DRIVE 49.4 LT GAK

12.22 12.00
4.73 4.95
48.4 29.5
F199 LIP

11430 28.2 RT END 2.5 PICKET FENCE & BOP 5 STEEL-WIRE FENCE

12.33 12.19
4.62 4.76
40 29.8
WALK LIP

11414 29.8 LTE 3.0 CON. WALK

16.95

GREGORY (CONT.)

LT.

♀

RT.

41

20' LT = CB END
- Beg. Cont Pav. - ASPH. overlay

12+80.72 = S. Line Ocean View Blvd.

16.7	16.9	16.88	16.82	16.65	16.28	16.65	16.52	17.16	17.33	17.51	17.6	17.6
5.9	5.7	5.69	5.75	5.92	6.29	5.92	6.05	5.41	5.24	5.06	5.0	5.0
40	30	27.5	22.5	20	20	Edge Pav	17.7	19.9	22.5	27.5	30	35
		WALK	EDGE WALK	78	6	(NOT EXIST)	CB	EDGE WALK	82	WALK		

12+70

15.9	16.2	15.9	16.1	15.9	16.7	17.3
6.7	6.4	6.7	6.5	6.6	5.9	5.3
40	30	14		16	23	35

12+60

12.7	12.6	15.4	15.5	15.2	16.1	16.5	16.6
8.9	10.0	7.2	7.1	7.4	6.5	6.0	5.6
40	30	15		16	22	30	40

T.P.

5.95

22.57

0.33

16.62

22.57

12+40

12.4	12.1	13.7	14.2	13.7	15.1	15.9	16.6
4.5	4.8	3.2	2.7	3.2	1.8	1.0	0.3
40	30	15		15	24	30	30

12+31

30.3' RT END Steel Wire Fence

12.2	11.9	13.3	13.1	13.6	13.1	12.7	12.7
4.7	5.0	3.6	3.8	3.3	3.8	4.2	4.2
40	30	15	13		15	30	30

12+13

30.45 END CON. APRON - 38' LT END GAR

12.36	12.33
4.59	4.62
38	30
1/4" P	2/4" P

12+00

12.2	12.1	11.8	12.4	12.1	12.4	12.2	12.2
4.7	4.8	4.1	4.5	4.8	4.5	4.7	4.7
29.9	18	13	15	15	21	30	30
9.4							

11+91

29.9 LT Beg. CON. APRON - 38' LT GAR. 2-CAR

12.44	12.24
4.51	4.71
38	29.9
1/4" P	1/4" P

16.95

GREGORY (CONT.)

LT

E

RT

42

CHK

11.50 = 11.07 = 11.05

= FIRE HYD S.E. CORN. (Do not use Hyd For Bench for
MARTIN & GREGORY) CONST. - MAY be moved etc

13420.72

(ACK over Cont.)

12794.72 = S. CB LINK

mid-pts - CB RET'S

12784.72 = CB B.C.'S

{ 10' CB RADII (BADLY-BROKEN CB RET'S)
{ WORKS GOOD

16.11 15.57 16.47 16.27 16.64 16.04 16.06 16.28 16.42 16.58 17.20 16.64 17.21 17.04 17.66 18.05 18.68

6.46 7.00 6.10 6.65 5.87 6.53 6.51 6.29 6.15 5.99 5.37 5.73 5.96 5.58 4.91 4.52 3.87
 100 100 50 50 30 30 20 20 20 30 30 38 38 61 61 90 90
 CB C CB C EC EC C PI PI EC EC CB C CB CB CB CB CB CB

5.86 6.43 16.71 16.14 16.53 17.13
 CB C CB

6.03 5.25 6.04 5.44
 CB CB C CB

(5.24 CB.89 CURVE STATION VIEW) (P.R.C. 10' CB) (E.M.T. - 90' CB) (S.V. CB LINK)

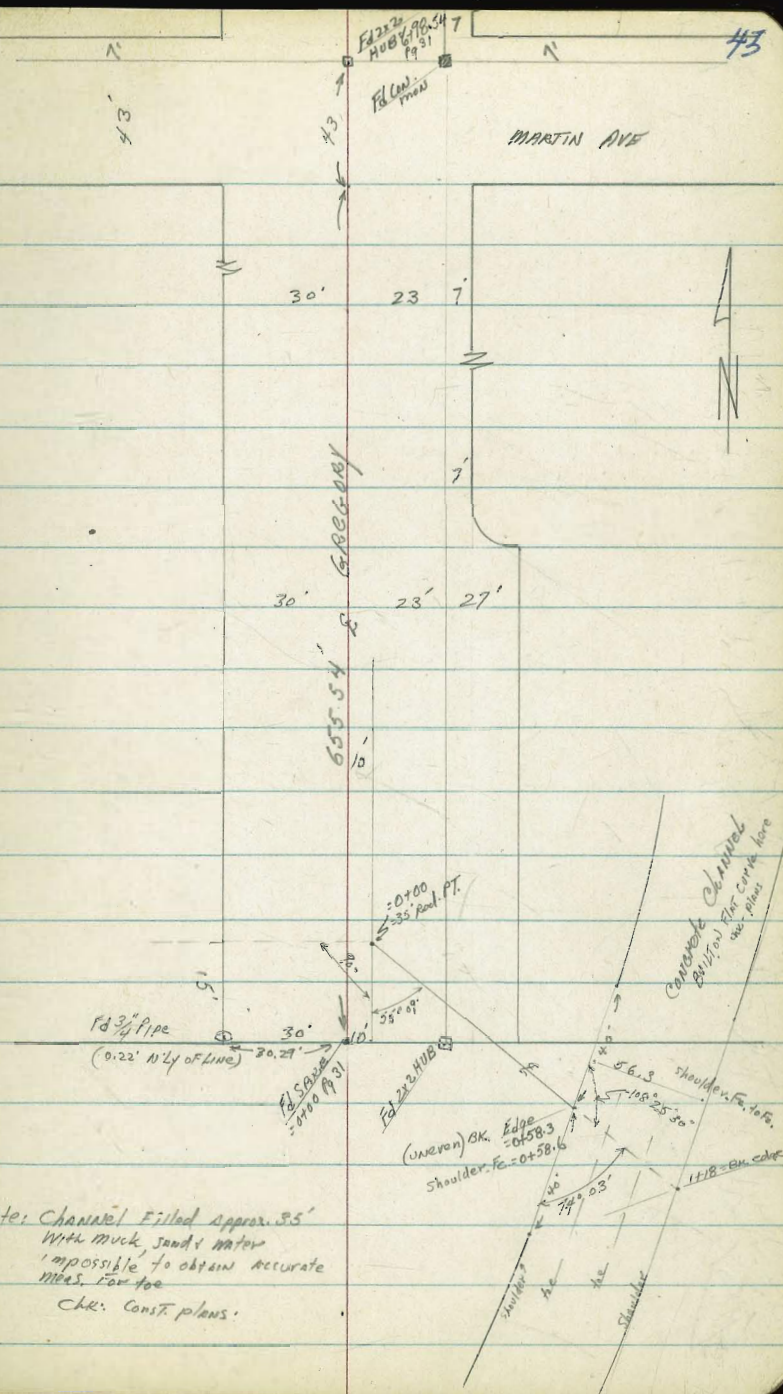
22.57

Clark
Shepherd
O'Neil
3-18-55
W.O. 31595

Levels For
Prop. DRAIN - GREGORY AT Florence

Ref: P 31
Dwg: unnumbered!

INDEXED
MAR 21 1955



Note: Channel Filled approx. 35'
with muck, sand & water
impossible to obtain accurate
meas. for top
CHK: Const plans.

Levels - DRAIN

LT.

E

RT

9.19
2.19
40

9.10
2.28

9.05
2.30
40

0+58.6 = Fc. shoulder Conc. wall (outs along shoulder)

0+58.3 = BK. edge (inner) Con. Channel

0+54.5 = Fence-Line at 4" Steel wire # high

0+54 = Top BANK - cuts // to line channel

0+53 = 4.0' RT = N. by Fc. Pole # A 3380

0+46 = Toe BANK

0+42 = Toe Ditch - BANK 10' LT

0+35

0+00

T.P. 4.62 11.38 6.12 6.76

B.M. 4.30 12.88

8.58 = T' NELY CON. MAN
GREGORY & MARTIN

9.3
2.1
20

9.4
2.0

9.3
2.1
20

9.1
2.3
17
TOP BANK

7.4
4.0
10

6.1
5.3

6.4
5.0
10

6.2
5.2
10
TOE

6.1
5.3

6.6
4.8
10

6.2
5.2
20

6.3
5.1

6.2
5.2
20

5.7
5.7

11.38
↑

LT.

♀

RT

45

Levels - Drain

dr.

3.93 8.57 = 8.58 - STE
B.M.

T.P.

5.98 12.50 4.86 6.52

Notes: no acc. sta's could be obtained on the
channel - See Note Sketch
shots along Bottom Channel

$$\begin{array}{r} 3.02 \\ 14.40 \\ \hline 20 \end{array}$$

$$\begin{array}{r} 3.01 \\ 14.45 \\ \hline \end{array}$$

$$\begin{array}{r} 3.12 \\ 14.50 \\ \hline 20 \end{array}$$

11.38

Re-x-sec Everts 21
Thomas Ave to Grand Ave
See Page 20 for sketch

1+24⁹⁵ - Sly Line 20' alley.

1400

0+80

0+60

0+40

0+20

No change from x-sec Page 21

0+000 Nly Line Thomas Ave

See Page 20 + etal

LT = Wly & RT = eLy. 46
These sections taken for yardage
improvements, Poles & so on NOT
shown.

26 ³	26 ³	28 ⁵	29 ⁵	30 ⁹	31 ¹
40	21		17	19	40

26 ⁶	27 ⁰	28 ¹	28 ⁸	30 ²	30 ⁴
40	20		15	18	40

26 ⁴	26 ⁷	27 ⁸	28 ⁴	29 ⁴	29 ⁸
40	20		16	20	40

26 ⁰	26 ⁶	27 ¹	27 ⁸	28 ⁴	29 ⁵
40	20		16	18	40

26 ¹	26 ³	26 ¹	26 ⁷	27 ⁴	28 ⁶	29 ³
40	20		16	18	28	40

25 ⁹	26 ⁰	25 ²	24 ⁹	25 ⁴	26 ⁴	28 ⁴	28 ⁸
40	17	16		17	19	35	40

Direct Rod - elevs are True

2707⁵⁰

26⁵ 26⁷ 27² 27⁴ 29⁴ 31⁰ 31¹
40 20 18 30 36 40

30⁷
40

1776.25

26⁵ 26⁷ 27⁴ 28⁰ 28⁶ 30⁵
40 23 20 26 33

1744.95 = Nly Line Alley

25⁶ 25⁷ 26⁷ 24⁸ 29¹ 30⁷
40 37 18 18 40

24⁸?

17447⁰ = Nly edge Alley Pavc to Ely-

25⁶ 25⁷ 26⁷ 28⁴ 28⁹ 28² 28³²
40 36 18 14 26 40
Nully
OK
Pavc

17349.5 = ♀ Sewer Man hole

28⁷⁸
Pitt
S1114

1725²⁰ = Sly edge Alley Pavement to Ely-

26³ 26³ 28⁵ 29² 28⁷ 27⁹⁷
40 21 16 20 40²
Sully cor
Pavc

Pitt Road

Re-x-Sea EVRETS CONT

LT=WHY

♀

RT=chy. 48

Shot A.C. Pave Grand

21⁶ LT= 3ly end SWly Return

2+69⁹⁰ } 22⁰ RT= 3ly end SFLY Return

26 ⁰	27 ⁴³	27 ³⁰	26 ⁹⁸	27 ⁷²	27 ⁷⁰	28 ²⁷	28 ⁵⁸	30 ⁰
40	31 ⁵	21 ⁰	21 ⁶		22 ⁰	22 ⁰	31 ²	40
	W4 of	T.C.	90T		90T	T.C.	shot	Walk
	Walk							

2+38.75

26 ⁷	26 ⁹
40	20

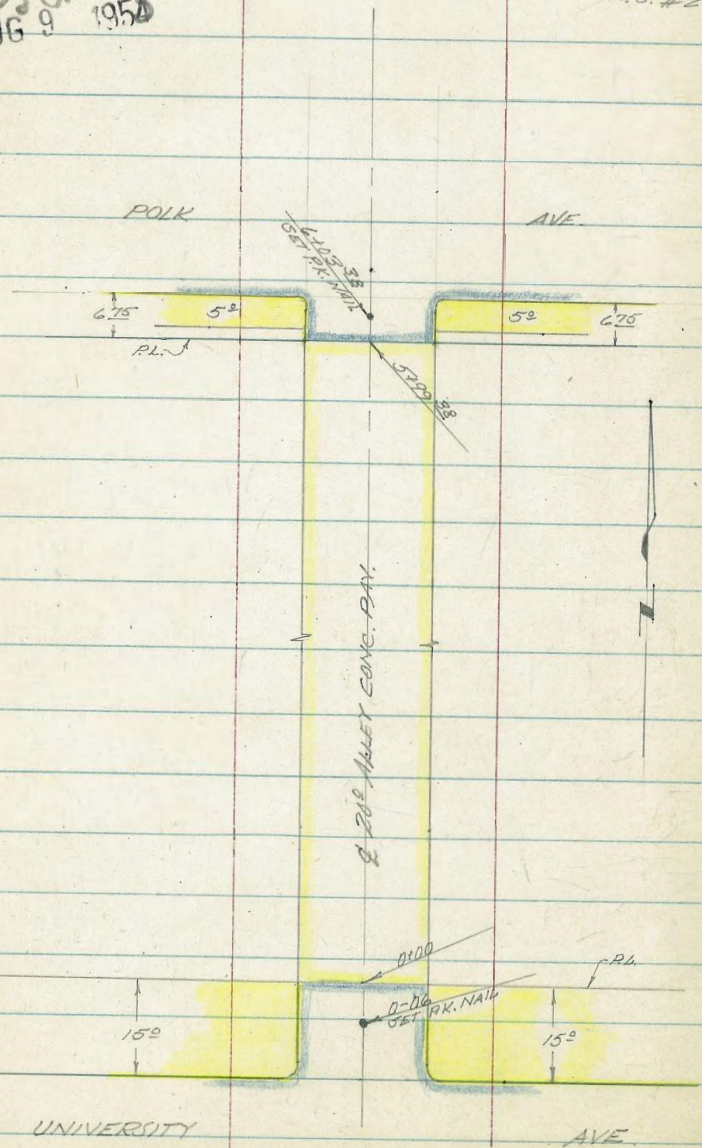
27 ⁴	27 ⁵	28 ⁶	31 ⁵	32 ⁰
18	20	29	40	

Direct Prod

2 SECTIONS ALLEY 15, CITY HTS.

INDEXED
AUG 9 1956

COTA
GABBER
KELLEY
PULLEN
7-29-55
W.O. # 20006



361

360

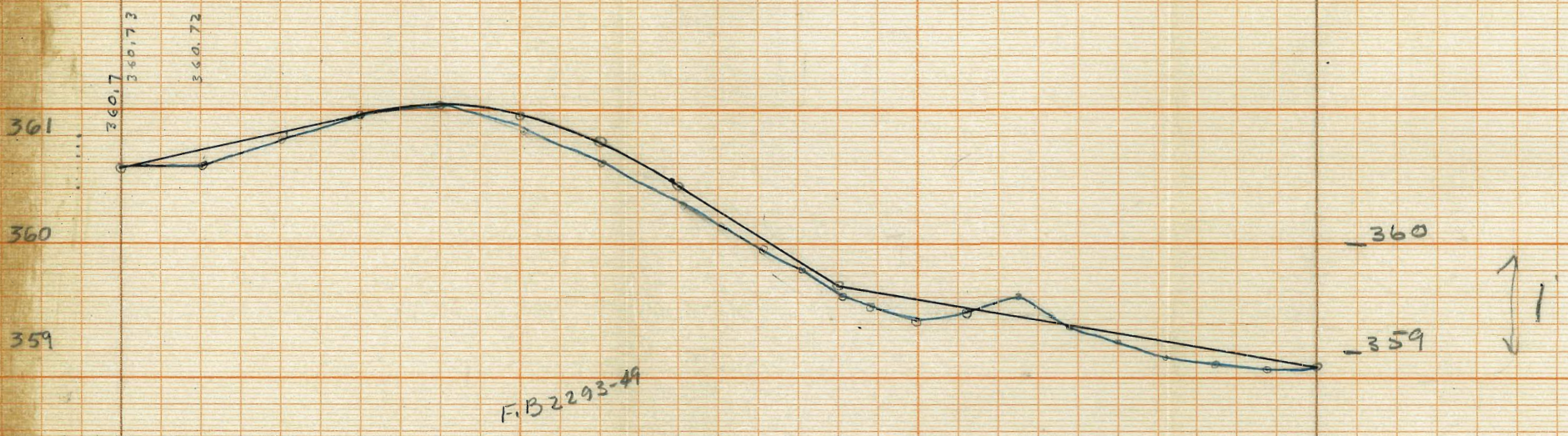
359

360

359



152222A



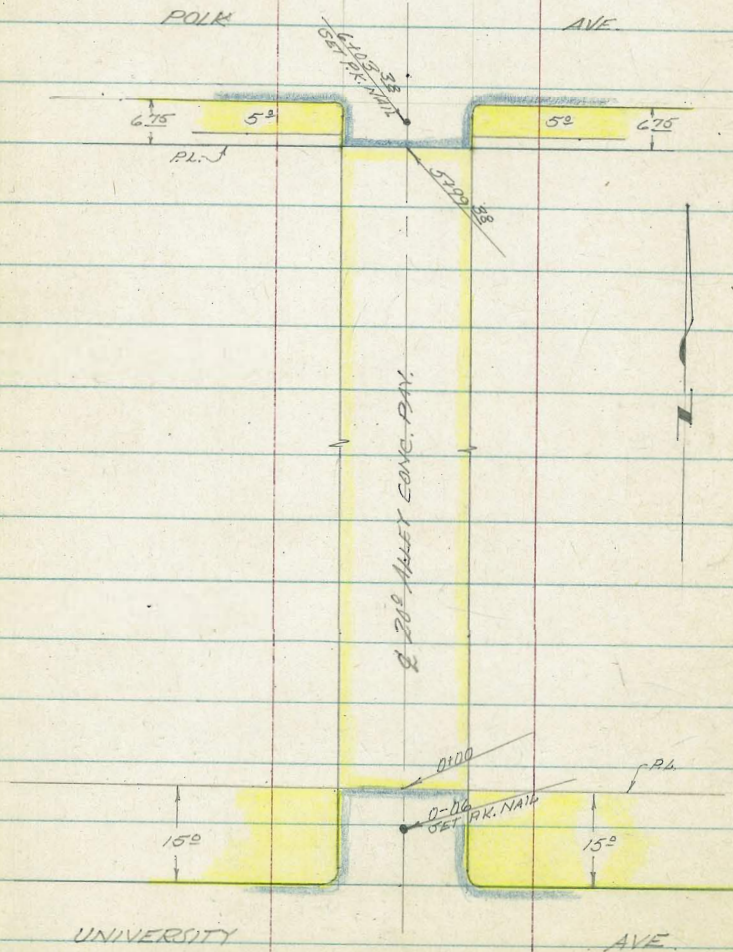
2 SECTIONS ALLEY 45, CITY HTS.

INDEXED

AUG 9 1955

COTA
GABER
KELLEY
PULLEN
7-29-55
W.O. # 20006

REFERENCE: 36284



E

LT.

RT.

1425

359.36
10F004
359.21359.50
10

1400

359.31
10F006
359.09

359.36

0475

359.28

F015
358.94359.23
10

0450

359.05
10F013
358.88359.21
10

0425

359.09
10F009
358.84

359.09

0400 NRY LINE UNIN.

359.07
10GRADE
358.85359.06
10

B.M. 358.85 = E ALLEY AT 0400

DIRECT ALLEY ROD USED.

2458A

359.88
10

^{F008}
359.76

360.01
10

2438A

359.79
10

^{F0.10}
359.50

359.82
10

2425

359.65
10

359.42

359.74
10

2400

359.39
10

^{F0.21}
359.28

359.68
10

1475

359.55

^{F0.06}
359.35

359.61
10

1450

359.59
10

^{00.19}
359.52

359.82
10

	LT.	GRADE	RT.
A+384	361.45 10	361.29	361.50 10
3+984	361.14 10	F0.15 361.05	361.30 10
3+584	361.01 10	F0.16 360.79	361.15 10
3+184 P.V.C.	360.65 10	F0.18 360.37	360.58 10
2+984	360.28 10	F0.15 360.16	360.18 10
2+784	360.06 10	F0.16 359.92	360.25 10

LT

±

RT.

B.M. CHECK 360.78 = 360.70 ± ALLEY AT S.W.Y. PL. PARK.

5199³⁸ S.W.Y. PROP. LINE PARK. AVE.

360.90
10

G.O.03
360.73

360.88
10

5158⁴

361.01
10

F.O.14
360.72

360.88
10

5118⁴

361.27
10

F.O.06
360.98

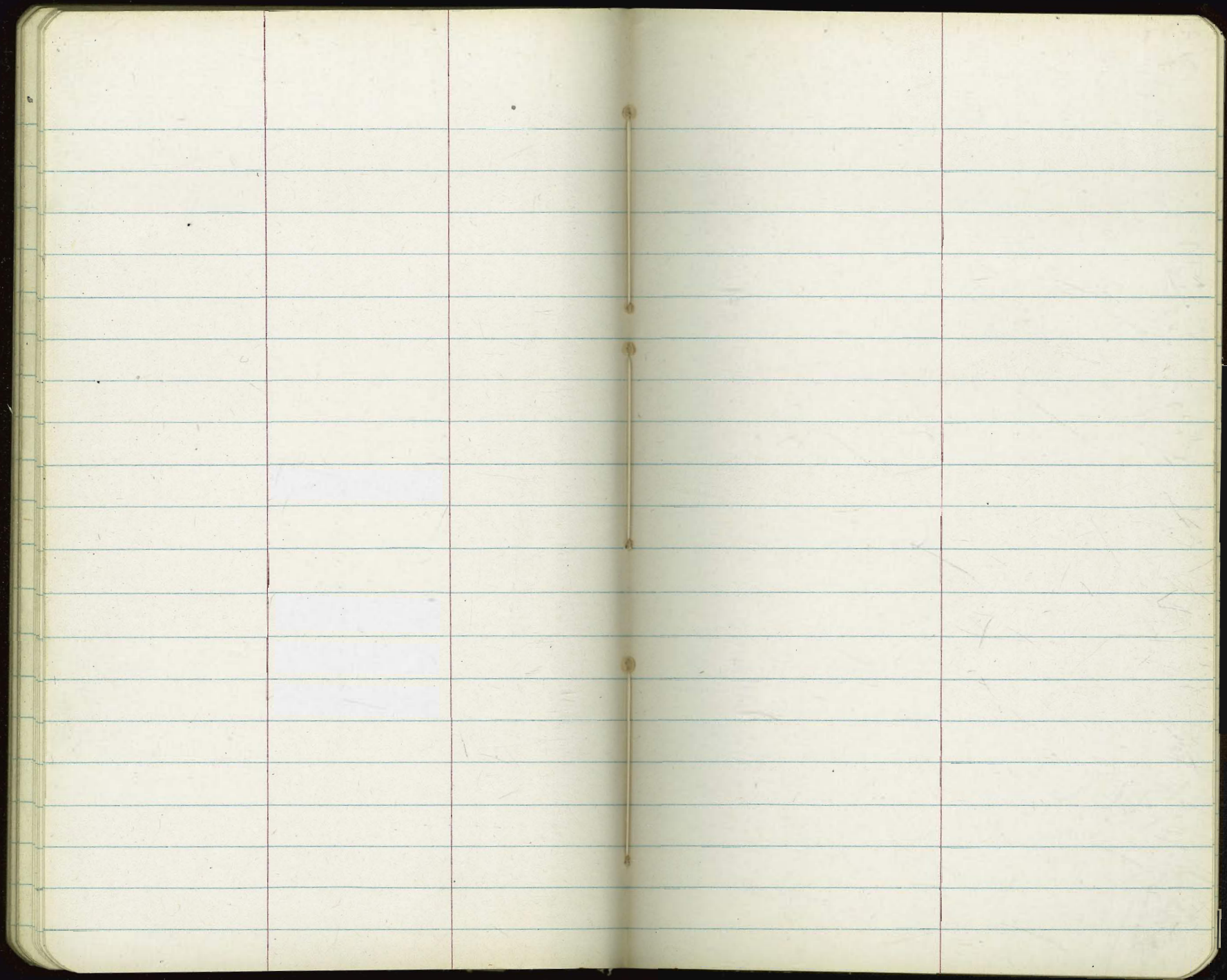
361.29
10

4178⁴ E.V.C.

361.34
10

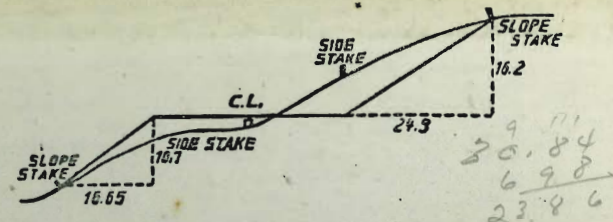
GRADE
361.20

361.43
10



39.50
20.87
18.93

283.72
141.96



DISTANCES FROM SIDE STAKES FOR CROSS-SECTIONING.

SLOPE 1 1/2 TO 1. ROADWAY OF ANY WIDTH.

	0	.1	.2	.3	.4	.5	.6	.7	.8	.9	
0	0.00	0.15	0.30	0.45	0.60	0.75	0.90	1.05	1.20	1.35	0
1	1.50	1.65	1.80	1.95	2.10	2.25	2.40	2.55	2.70	2.85	1
2	3.00	3.15	3.30	3.45	3.60	3.75	3.90	4.05	4.20	4.35	2
3	4.50	4.65	4.80	4.95	5.10	5.25	5.40	5.55	5.70	5.85	3
4	6.00	6.15	6.30	6.45	6.60	6.75	6.90	7.05	7.20	7.35	4
5	7.50	7.65	7.80	7.95	8.10	8.25	8.40	8.55	8.70	8.85	5
6	9.00	9.15	9.30	9.45	9.60	9.75	9.90	10.05	10.20	10.35	6
7	10.50	10.65	10.80	10.95	11.10	11.25	11.40	11.55	11.70	11.85	7
8	12.00	12.15	12.30	12.45	12.60	12.75	12.90	13.05	13.20	13.35	8
9	13.50	13.65	13.80	13.95	14.10	14.25	14.40	14.55	14.70	14.85	9
10	15.00	15.15	15.30	15.45	15.60	15.75	15.90	16.05	16.20	16.35	10
11	16.50	16.65	16.80	16.95	17.10	17.25	17.40	17.55	17.70	17.85	11
12	18.00	18.15	18.30	18.45	18.60	18.75	18.90	19.05	19.20	19.35	12
13	19.50	19.65	19.80	19.95	20.10	20.25	20.40	20.55	20.70	20.85	13
14	21.00	21.15	21.30	21.45	21.60	21.75	21.90	22.05	22.20	22.35	14
15	22.50	22.65	22.80	22.95	23.10	23.25	23.40	23.55	23.70	23.85	15
16	24.00	24.15	24.30	24.45	24.60	24.75	24.90	25.05	25.20	25.35	16
17	25.50	25.65	25.80	25.95	26.10	26.25	26.40	26.55	26.70	26.85	17
18	27.00	27.15	27.30	27.45	27.60	27.75	27.90	28.05	28.20	28.35	18
19	28.50	28.65	28.80	28.95	29.10	29.25	29.40	29.55	29.70	29.85	19
20	30.00	30.15	30.30	30.45	30.60	30.75	30.90	31.05	31.20	31.35	20
21	31.50	31.65	31.80	31.95	32.10	32.25	32.40	32.55	32.70	32.85	21
22	33.00	33.15	33.30	33.45	33.60	33.75	33.90	34.05	34.20	34.35	22
23	34.50	34.65	34.80	34.95	35.10	35.25	35.40	35.55	35.70	35.85	23
24	36.00	36.15	36.30	36.45	36.60	36.75	36.90	37.05	37.20	37.35	24
25	37.50	37.65	37.80	37.95	38.10	38.25	38.40	38.55	38.70	38.85	25
26	39.00	39.15	39.30	39.45	39.60	39.75	39.90	40.05	40.20	40.35	26
27	40.50	40.65	40.80	40.95	41.10	41.25	41.40	41.55	41.70	41.85	27
28	42.00	42.15	42.30	42.45	42.60	42.75	42.90	43.05	43.20	43.35	28
29	43.50	43.65	43.80	43.95	44.10	44.25	44.40	44.55	44.70	44.85	29
30	45.00	45.15	45.30	45.45	45.60	45.75	45.90	46.05	46.20	46.35	30
31	46.50	46.65	46.80	46.95	47.10	47.25	47.40	47.55	47.70	47.85	31
32	48.00	48.15	48.30	48.45	48.60	48.75	48.90	49.05	49.20	49.35	32
33	49.50	49.65	49.80	49.95	50.10	50.25	50.40	50.55	50.70	50.85	33
34	51.00	51.15	51.30	51.45	51.60	51.75	51.90	52.05	52.20	52.35	34
35	52.50	52.65	52.80	52.95	53.10	53.25	53.40	53.55	53.70	53.85	35
36	54.00	54.15	54.30	54.45	54.60	54.75	54.90	55.05	55.20	55.35	36
37	55.50	55.65	55.80	55.95	56.10	56.25	56.40	56.55	56.70	56.85	37
38	57.00	57.15	57.30	57.45	57.60	57.75	57.90	58.05	58.20	58.35	38
39	58.50	58.65	58.80	58.95	59.10	59.25	59.40	59.55	59.70	59.85	39
40	60.00	60.15	60.30	60.45	60.60	60.75	60.90	61.05	61.20	61.35	40
41	61.50	61.65	61.80	61.95	62.10	62.25	62.40	62.55	62.70	62.85	41
42	63.00	63.15	63.30	63.45	63.60	63.75	63.90	64.05	64.20	64.35	42
43	64.50	64.65	64.80	64.95	65.10	65.25	65.40	65.55	65.70	65.85	43
44	66.00	66.15	66.30	66.45	66.60	66.75	66.90	67.05	67.20	67.35	44
45	67.50	67.65	67.80	67.95	68.10	68.25	68.40	68.55	68.70	68.85	45
46	69.00	69.15	69.30	69.45	69.60	69.75	69.90	70.05	70.20	70.35	46
47	70.50	70.65	70.80	70.95	71.10	71.25	71.40	71.55	71.70	71.85	47
48	72.00	72.15	72.30	72.45	72.60	72.75	72.90	73.05	73.20	73.35	48
49	73.50	73.65	73.80	73.95	74.10	74.25	74.40	74.55	74.70	74.85	49
50	75.00	75.15	75.30	75.45	75.60	75.75	75.90	76.05	76.20	76.35	50

THE NATIONAL BLANK BOOK COMPANY
 HOLYOKE MASSACHUSETTS
 NEW YORK CHICAGO BOSTON SAN FRANCISCO