

DISTANCES FROM SIDE STAKES FOR CROSS-SECTIONING
SLOPE 1 TO 1. ROADWAY OF ANY WIDTH

	0	.1	.2	.3	.4	.5	.6	.7	.8	.9	
0	0.00	0.10	0.20	0.30	0.40	0.50	0.60	0.70	0.80	0.90	0
1	1.00	1.10	1.20	1.30	1.40	1.50	1.60	1.70	1.80	1.90	1
2	2.00	2.10	2.20	2.30	2.40	2.50	2.60	2.70	2.80	2.90	2
3	3.00	3.10	3.20	3.30	3.40	3.50	3.60	3.70	3.80	3.90	3
4	4.00	4.10	4.20	4.30	4.40	4.50	4.60	4.70	4.80	4.90	4
5	5.00	5.10	5.20	5.30	5.40	5.50	5.60	5.70	5.80	5.90	5
6	6.00	6.10	6.20	6.30	6.40	6.50	6.60	6.70	6.80	6.90	6
7	7.00	7.10	7.20	7.30	7.40	7.50	7.60	7.70	7.80	7.90	7
8	8.00	8.10	8.20	8.30	8.40	8.50	8.60	8.70	8.80	8.90	8
9	9.00	9.10	9.20	9.30	9.40	9.50	9.60	9.70	9.80	9.90	9
10	10.00	10.10	10.20	10.30	10.40	10.50	10.60	10.70	10.80	10.90	10
11	11.00	11.10	11.20	11.30	11.40	11.50	11.60	11.70	11.80	11.90	11
12	12.00	12.10	12.20	12.30	12.40	12.50	12.60	12.70	12.80	12.90	12
13	13.00	13.10	13.20	13.30	13.40	13.50	13.60	13.70	13.80	13.90	13
14	14.00	14.10	14.20	14.30	14.40	14.50	14.60	14.70	14.80	14.90	14
15	15.00	15.10	15.20	15.30	15.40	15.50	15.60	15.70	15.80	15.90	15
16	16.00	16.10	16.20	16.30	16.40	16.50	16.60	16.70	16.80	16.90	16
17	17.00	17.10	17.20	17.30	17.40	17.50	17.60	17.70	17.80	17.90	17
18	18.00	18.10	18.20	18.30	18.40	18.50	18.60	18.70	18.80	18.90	18
19	19.00	19.10	19.20	19.30	19.40	19.50	19.60	19.70	19.80	19.90	19
20	20.00	20.10	20.20	20.30	20.40	20.50	20.60	20.70	20.80	20.90	20
21	21.00	21.10	21.20	21.30	21.40	21.50	21.60	21.70	21.80	21.90	21
22	22.00	22.10	22.20	22.30	22.40	22.50	22.60	22.70	22.80	22.90	22
23	23.00	23.10	23.20	23.30	23.40	23.50	23.60	23.70	23.80	23.90	23
24	24.00	24.10	24.20	24.30	24.40	24.50	24.60	24.70	24.80	24.90	24
25	25.00	25.10	25.20	25.30	25.40	25.50	25.60	25.70	25.80	25.90	25
26	26.00	26.10	26.20	26.30	26.40	26.50	26.60	26.70	26.80	26.90	26
27	27.00	27.10	27.20	27.30	27.40	27.50	27.60	27.70	27.80	27.90	27
28	28.00	28.10	28.20	28.30	28.40	28.50	28.60	28.70	28.80	28.90	28
29	29.00	29.10	29.20	29.30	29.40	29.50	29.60	29.70	29.80	29.90	29
30	30.00	30.10	30.20	30.30	30.40	30.50	30.60	30.70	30.80	30.90	30
31	31.00	31.10	31.20	31.30	31.40	31.50	31.60	31.70	31.80	31.90	31
32	32.00	32.10	32.20	32.30	32.40	32.50	32.60	32.70	32.80	32.90	32
33	33.00	33.10	33.20	33.30	33.40	33.50	33.60	33.70	33.80	33.90	33
34	34.00	34.10	34.20	34.30	34.40	34.50	34.60	34.70	34.80	34.90	34
35	35.00	35.10	35.20	35.30	35.40	35.50	35.60	35.70	35.80	35.90	35
36	36.00	36.10	36.20	36.30	36.40	36.50	36.60	36.70	36.80	36.90	36
37	37.00	37.10	37.20	37.30	37.40	37.50	37.60	37.70	37.80	37.90	37
38	38.00	38.10	38.20	38.30	38.40	38.50	38.60	38.70	38.80	38.90	38
39	39.00	39.10	39.20	39.30	39.40	39.50	39.60	39.70	39.80	39.90	39
40	40.00	40.10	40.20	40.30	40.40	40.50	40.60	40.70	40.80	40.90	40
41	41.00	41.10	41.20	41.30	41.40	41.50	41.60	41.70	41.80	41.90	41
42	42.00	42.10	42.20	42.30	42.40	42.50	42.60	42.70	42.80	42.90	42
43	43.00	43.10	43.20	43.30	43.40	43.50	43.60	43.70	43.80	43.90	43
44	44.00	44.10	44.20	44.30	44.40	44.50	44.60	44.70	44.80	44.90	44
45	45.00	45.10	45.20	45.30	45.40	45.50	45.60	45.70	45.80	45.90	45
46	46.00	46.10	46.20	46.30	46.40	46.50	46.60	46.70	46.80	46.90	46
47	47.00	47.10	47.20	47.30	47.40	47.50	47.60	47.70	47.80	47.90	47
48	48.00	48.10	48.20	48.30	48.40	48.50	48.60	48.70	48.80	48.90	48
49	49.00	49.10	49.20	49.30	49.40	49.50	49.60	49.70	49.80	49.90	49
50	50.00	50.10	50.20	50.30	50.40	50.50	50.60	50.70	50.80	50.90	50

Distance of slope stake from side or shoulder stake for any width roadway, slope 1 to 1. If ground is nearly level, the cut or fill at side stake is located by the double entry method in left column and top row. The number in body of table in same row and column gives distance from side stake to slope stake. If ground is not level estimate the difference in elevation between the side stake and slope stake, lower target by this amount if cut, elevate if fill. Add this amount to cut or fill and find distance in table. Set up rod at this point, and line of sight should cut target. If it does not make the slight adjustment necessary.

TABLE XIII—CORRECTIONS FOR TANGENTS AND EXTERNALS

These corrections are to be added to the approximate values, found by dividing the tangent, or external, for a 1° curve (Table VIII) by the degree of curve, in order to obtain the true tangents, or externals. Intermediate values may be obtained by interpolation.

FOR TANGENTS ADD

Central Angle	DEGREE OF CURVE													
	5°	10°	15°	20°	25°	30°	35°	40°	45°	50°	55°	60°	65°	70°
10°	.03	.06	.09	.13	.16	.19	.22	.25	.28	.31	.34	.38	.42	.46
15°	.04	.10	.14	.19	.24	.29	.34	.39	.45	.51	.53	.58	.63	.68
20°	.06	.13	.19	.26	.32	.39	.45	.51	.58	.65	.72	.79	.84	.90
25°	.08	.16	.24	.33	.40	.49	.58	.67	.75	.83	.90	.99	1.06	1.14
30°	.10	.19	.29	.39	.49	.59	.69	.79	.89	.99	1.09	1.20	1.29	1.39
35°	.11	.22	.34	.47	.58	.69	.79	.81	.92	1.04	1.29	1.42	1.54	1.66
40°	.13	.26	.40	.53	.67	.80	.93	1.06	1.20	1.34	1.49	1.64	1.79	1.94
45°	.15	.30	.44	.60	.76	.91	1.06	1.21	1.37	1.52	1.70	1.87	2.04	2.21
50°	.17	.34	.51	.68	.85	1.02	1.19	1.36	1.54	1.72	1.91	2.10	2.29	2.48
55°	.19	.38	.57	.76	.95	1.14	1.32	1.52	1.72	1.92	2.14	2.35	2.56	2.77
60°	.21	.42	.63	.84	1.05	1.27	1.49	1.71	1.94	2.17	2.38	2.60	2.83	3.07
65°	.23	.46	.69	.93	1.16	1.40	1.64	1.88	2.13	2.38	2.63	2.88	3.13	3.39
70°	.25	.51	.76	1.02	1.28	1.54	1.80	2.06	2.33	2.60	2.88	3.16	3.44	3.72
75°	.27	.56	.83	1.12	1.40	1.69	1.98	2.27	2.57	2.87	3.16	3.47	3.78	4.09
80°	.30	.61	.91	1.22	1.53	1.84	2.15	2.46	2.78	3.10	3.44	3.78	4.12	4.46
85°	.33	.66	1.00	1.33	1.68	2.02	2.36	2.70	3.05	3.40	3.77	4.14	4.55	4.89
90°	.36	.72	1.09	1.45	1.83	2.20	2.57	2.94	3.32	3.70	4.10	4.50	4.91	5.32
95°	.39	.79	1.19	1.55	2.00	2.40	2.80	3.20	3.61	4.02	4.40	4.98	5.38	5.83
100°	.43	.86	1.30	1.74	2.18	2.62	3.06	3.50	3.95	4.40	4.88	5.37	5.85	6.34
110°	.51	1.03	1.56	2.08	2.61	3.14	3.67	4.21	4.76	5.31	5.86	6.43	7.01	7.60
120°	.62	1.25	1.93	2.52	3.16	3.81	4.45	5.11	5.77	6.44	7.12	7.80	8.50	9.22

FOR EXTERNALS ADD

Central Angle	DEGREE OF CURVE													
	5°	10°	15°	20°	25°	30°	35°	40°	45°	50°	55°	60°	65°	70°
10°	.001	.003	.004	.006	.007	.008	.009	.011	.012	.014	.015	.017	.018	.020
15°	.003	.007	.010	.014	.018	.023	.027	.032	.035	.039	.043	.047	.051	
20°	.006	.011	.017	.022	.028	.034	.038	.045	.051	.057	.063	.070	.076	.083
25°	.009	.018	.027	.036	.046	.056	.065	.074	.083	.093	.106	.120	.127	.135
30°	.013	.025	.038	.051	.065	.078	.090	.103	.116	.129	.149	.170	.179	.188
35°	.018	.035	.054	.072	.086	.109	.131	.153	.175	.197	.213	.230	.247	.264
40°	.023	.046	.070	.093	.117	.141	.172	.203	.234	.265	.277	.290	.315	.341
45°	.030	.060	.093	.119	.153	.184	.216	.254	.289	.325	.351	.378	.411	.445
50°	.037	.075	.116	.151	.189	.227	.266	.305	.345	.384	.425	.467	.508	.550
55°	.046	.093	.142	.188	.236	.283	.332	.381	.420	.479	.530	.582	.641	.700
60°	.056	.112	.168	.225	.283	.340	.398	.457	.516	.575	.636	.697	.774	.851
65°	.067	.135	.204	.273	.343	.412	.483	.554	.625	.697	.711	.845	.922	1.01
70°	.080	.159	.240	.321	.403	.485	.568	.652	.735	.819	.906	.994	1.08	1.17
75°	.095	.182	.286	.383	.480	.578	.678	.777	.877	.977	1.07	1.18	1.29	1.39
80°	.110	.220	.332	.445	.558	.671	.787	.903	1.02	1.13	1.25	1.38	1.50	1.62
85°	.128	.259	.391	.524	.657	.790	.926	1.06	1.20	1.34	1.47	1.62	1.76	1.91
90°	.149	.299	.450	.603	.756	.910	1.07	1.22	1.38	1.54	1.70	1.87	2.03	2.20
95°	.174	.350	.522	.706	.885	1.06	1.25	1.43	1.62	1.80	1.99	2.18	2.38	2.58
100°	.200	.401	.604	.809	1.01	1.22	1.43	1.64	1.85	2.06	2.28	2.50	2.73	2.96
110°	.268	.536	.806	1.08	1.35	1.63	1.91	2.20	2.48	2.76	3.05	3.35	3.66	3.96
120°	.360	.721	1.08	1.45	1.82	2.19	2.57	2.95	3.33	3.72	4.11	4.50	4.91	5.32

INDEX

	Page
EL CATON TO MEASE	
X-SECT ALLEY BIK I WILSHIRE PL.	1
Proposed Drain BIK I Wilshire PL	9-13
Revision of Above Line Wilshire PL	14-16
Mission Hills Park	20

CLARK
Shepherd
Brewer
8-14-53
W.O. 32149-
R.F.; F.B. # 1524-67

X-SECT. ALLEY BKT.
WILSHIRE PL. - EL CAJON to MEADE
Reduced - G.W. Reynolds
10-1-53

LT

E

RT

NOTE: For alignment (sketch) see F.B. # 1524-67

0+33.5 6.75' LT Pole # PA 4305

0+33 8.5' LT Beg Bldg (Store-Room)

0+27.25 8.3' LT 4.5 Conc. WAK

0+25 8.5' LT END Bldg

0+15 7.0' LT & headman

0+11 8.5' LT Beg silty (Rest. Room Golf Course)

0+02 → 5.3' LT Gas-gate valve

0+00 - N.L. EL CAJON 7.5' RT Beg Bldg (Store)

Part in alley from 12' BK N. CB LINE Broken & Settled

0-018 4' RT & water valve-gate

0-25 = N/Ly CB LINE EL CAJON

(0+00 = N.L. EL CAJON)

NOTE: 25' PKG - N/Ly LINE EL CAJON: 2' CB RADII AT ALLEY Pkts. (STO GAS)

5' Conc. WAK'S - 7' BK CB Fc. to sty edge walk

PAVED WITH CONC. From CB. Line to Prep From E. Line alley to Fairway - (ALY Pkts. & water-out 2' by)

No CB From Pkts. to Prep. Ely side alley

T.P. 5.49 357.28 9.68 357.79

357.28

B.M. 3.74 361.47

357.73 S.W. B.P
13' rd + EL CAJON

352.98 352.89
4.30 4.39
16.0 1.3
WAK L.P.
WAK

352.7 352.4 352.4
4.5 4.8 4.9
7.5 7.5

352.28
5.0 8.5
FTG 352.91
FNT W 352.80
7.37 4.48 352.24
7.53 7.53 5.04
TP. CO 6
F.P. 6

352.25 352.87
4.95 4.41
7.49 7.49
C C
TP
L.P.
PAV. WAK

355.16 354.68 353.64 353.74 352.44 351.94 351.03 351.77 351.67 351.14 352.32
212 260 364 414 484 529 535 5.51 5.67 5.84 5.25 5.77 6.24 5.85
100 100 50 50 9.5 9.5 7.5
CB C CB C CB C P.I
7.5 9.5 9.5 2.9 50 100 100
P.I C CB C WAK C CB

4.96 351.81 351.75
4.5
9.40 valve
352.09

X-SECT ALLEY (CONT.)

1+50

1+47

6.3 LT. & Pole FPA 4321

1+41

9.0 LT END GAR

1+19

8.0 IT Beg Single gar - opens sly -
CON. Floor No OPEN

1+00

0+80

7.4' RT END Bldg.

0+75

0+63

7.25 RT END Doorway

0+57

5.5' LT & Deadman

0+53

7.1 RT Beg Doorway to Bldg (Commercial)
5.0 RT END CONC Slab

0+50

0+47

5.0 RT Beg CONC Slab (2.5' wide)

0+42

8.3 LT END SHOE-ROOM (NO F&M)

LT						RT
349.3	349.7	349.2	349.2			349.2
8.0	7.8	8.1	8.1			8.3
10	7.5	5				15

350.74

6.54
13.5
CON. Floor

351.0	350.8	350.2	350.2	350.2	350.2
6.3	6.5	7.1	7.1	7.1	7.1
20	7.5	5		7.5	25

351.9	351.8	350.9	350.9		351.1
5.4	5.5	6.4	6.4		6.2
15	7.5	5			7.4

Ground

351.7
5.7
DIRT
4.32
Floor
Bldg

352.0
5.3
DIRT
4.32
FL
Elev. Bldg

352.6	352.6	351.8	351.8		351.9
4.6	4.6	5.4	5.4		5.3
10	7.5	5			7.5

DIRT

357.28

ALLEY BIK I (CONT)

LT. ♀ RT.

3400

348.3 348.7 349.3 349.5 349.4 349.66
5.5 4.7 4.5 4.3 4.4 4.09
10 7.5 5 7.5 7.5 14.5
LIP

2197

6.5 LT ♀ Pole⁺ JPA 43 45
71.0' RT ♀ M.H. - SEWER (least sand traps)

349.43
4.32
1.0
FIN

2182

19.3 RT ♀ 4-Car gar

349.56 350.10
4.19 3.65
14.5 19.3
LIP Floor

2160

19.3 RT Bay 4-Car gar 14.5 RT Apron

349.24 350.11
4.31 3.64
14.5 19.3
LIP Floor

2150

349.0 348.8 348.8 349.1 348.9
4.8 5.0 5.0 4.7 4.9
2.5 7.5 7.5 7.5 2.5

2100

349.5 349.2 348.7 348.83 348.9 348.9
5.3 4.6 5.0 4.92 4.9 4.9
2.5 7.5 5 7.5 7.5 10

1498

33.5 LT END 2-Car gar

348.51 348.50
5.24 5.45
33.5 31.5
Floor LIP

1482

33.5 LT Bay 2-Car gar
6.5 RT ♀ Con. Apron - 8.1 RT ♀ Single Car gar

348.52 348.38
5.23 5.37
33.5 31.5
FINP LIP
Apron Apron

348.79 349.08
4.96 4.67
6.5 8.1
LIP Floor
Apron Floor

1474

8.5 RT ♀ 2.5 Con. Walk

349.11 349.22
4.53 4.53
8.5 15
LIP WALK

T.P.

4.85 353.75 8.38 348.90

353.75

Alley 4 (cont.)

3450 7.9 LT END Dwelling

3447 15.8 RT & 2-car gar

3440 → 43 LTB 2nd ornament L

3436 { 7.8 LT & 5' WIDE WINDOW IN Dwelling
15.8 RT Beg 2-Car gar - 12.5 RT Lip APRON
APRON & 3' CON. WALK meet here.

3431 5 LT end Flag-walk

3429.5 7.80 LT & Doorway Dwelling (and)
5 LT to edge FLAG WALK here

3418.5 12.5 RT Beg 3' wide CONC. WALK // to Alley

3417 6 LTB 5' shrub

3414 { 12.5 RT & 8.5 wide CON. Par. det steps // to Alley
9.3 LT & Doorway Dwelling - 2 LT & FLAG WALK
7.5 LT END 1.5' wide CON. WALK (temporary)
5 LT Beg FLAG WALK // to Alley

3408.5 12.6 RT & 3.0' CON WALK

3407 3.0' RT & M.H. Sewer

3406 2.5 LT & 5' shrub

3404 19.3 RT END 4-CAR GAR - 14.5 Lip APRON

3402 { 15.0 LT Beg Dwelling (very Low) (ally has comp to 292)
7.5 LT Beg 1.5' wide CONC. WALK // to Alley.

348.7
5.1
2.2
7.9
ground
house

349.30
4.45
7.9
Floor

349.4
4.4
7.5
ground

350.2
3.6
7

350.2
3.6

350.4
3.4
7.5
350.72
3.03
12.5
Lip
Apron

350.72
12.3
2.0

350.61
3.14
12.5

351.01
2.74
15.8
Elev.

351.02
2.73
15.8
Elev. gar

349.12
4.63
7.8
Elev.

348.9?
4.78
5
edge
walk

350.18
3.57
12.5
edge
walk

350.28
3.47
15.3
edge
walk

349.83
4.92
7.3
Floor
elev.
Dwelling

348.63
5.12
7.5
edge
1.5' wide
walk //
to ally

351.62
2.13
12.5
To Par.

349.89
3.86
12.6
Lip

350.16
3.65
20
walk

349.72
4.03
3.0
Rim

349.73
4.02
3.98
17.5
Lip

350.13
3.62
19.3
FT.

348.9
4.9
15
Elev.

348.33
6.72
7.5
walk

Alley BK - 41 (Cont.)

LT.

£

RT.

4120.5 13.95 RT £ car gar

4118 7.55 LT END CONC BERM

4107 6.5 LT Bay 3' wide conc BERM roughly // to alley

4105 13.95 RT Bay 3-car gar 12.85 RT Lip Apron

4100

3198 6.6 LT £ Pole # JPA 4365

3165 18.7 RT £ Single gar conc fl. no apron

3160 10.1 LT £ Single gar dirt floor

T.P. 666 357.50 2.91 350.84

3158 15.8 RT END 2-car gar

3152

351.67
583 6.12
7 7.55
T.P. BERM LIP

351.61 351.49
589 6.01
T.P. BERM 6.5 LIP

352.59 352.70
4.91 4.80
12.85 13.95
LIP FL.

352.51 352.72
4.99 4.78
12.85 13.95
LIP FL.

351.0 351.2 351.3
6.5 6.3 6.2
15 15 20
351.5 352.6 353.7
6.0 4.9 4.8
7.5 11 20

351.49
6.03
18.7
CON. FL.

350.0
7.5
10.1
DIRT

357.50

350.84 351.09
2.91 2.66
12.5 15.8
LIP Floor
350.2
3.6
349.4 350.0
4.3 3.8
25 15
(plots to show level ground LT.)
Beyond 3450

Alley -4- (cont.)

LT. S RT

4197 1/2 LT end house
 4194 7.7 LT END WALK // to Alley
 4174 14.7 RT 3.5' WALK

352.8
 51.20
 7.7 edge WALK
 352.24
 5.26 7.85 edge WALK
 352.11
 5.14 7.5 ground
 352.20
 4.7 7.5
 352.8
 4.7 14.7
 352.8
 4.38 14.7
 352.13
 4.37 18 WALK

4172 1/2 LT E. Door way Low House

352.40
 51.10
 11.2
 Elev

4157 11.2 LT Beg house - Low

4150.5 7.55 LT Beg Con WALK // to alley (3' wide here).
 7.2 LT Beg 6' steel wire Fence

351.97
 5.53
 7.35 edge WALK

4150

352.0
 5.0 7.0
 See DRAIN below
 352.2
 5.3 7.5
 352.6
 4.9 7.5
 353.0
 4.5 10

4149 7.05 LT E 3' wide CONC OPEN DRAIN
 has 6" CB across Ely Edge drain

351.57
 5.73 15 DRAIN
 351.96
 5.84 7.55 DRAIN
 352.25
 5.25 7.05 TP 018

4147 7.5 LT END 1.8' wide WALK

352.26
 5.24 8.85
 352.23
 5.27 7.95 edge

4136 13.95 RT END 3' CAR GAR

352.70
 4.80 12.85 HP
 352.77
 4.73 13.95 HP

4135 7.05 LT Beg 1.8' wide CONC WALK // to Alley - runs along rear House

352.16
 5.34 8.85 edge
 352.15
 5.35 7.05 21' edge WALK

357.50

Alley # (CONT.)

LT. E RT.

5780

352.6 352.1 351.90 352.5 352.6
4.9 5.4 5.6 5.0 4.9
15 7.5 7.5 15

5778

5.5' LT & Pole # 571029-H.
7.7' RT END Bldg

5758

14.1' LT & Single gir 11.0' LT Apron
7.7' RT Beg Bldg (Commercial) No FRTN

352.35 352.27
5.15 5.23
14.1 11.
Fl 4p

5750

352.0 352.2 352.4 352.5 352.5 352.5
5.5 5.3 5.1 5.0 5.0 5.0
25 15 ground 7.5 13 ground

5749

16.5' RT & Single gir 13.0' RT Lip Apron

352.36 352.15
5.14 4.75
13 16.5
4p 4p

5744

15.5' LT & Single gir 14.1' LT Lip Apron

352.14 352.00
5.36 5.50
15.5 14.1
Fl 4p

5717

16.5' RT & Single gir 14.6' RT Lip Apron

352.54 352.67
7.96 7.83
14.6 16.5
4p 4p

5712

6.2' LT & Deadman

5700

7.5' LT END Steel Wire Fence
6.0' LT & Pole # JPA 4385

351.0 351.6 352.2 352.5 352.5 352.7
6.5 5.9 5.3 5.0 5.0 4.8
30 15 7.5 7.5 2.5

357.50

Alley 41 (Cont)

LT.

RT.

RT.

8

CHK: 7.85 352.46 = 352.41 N.W.B.P MEADE 444.4h

T.P. 5.21 357.31 2.36 352.10

6+47.26 = 5' GRADE

6+22.26 - ok ^{Line marks} 10/21/53 675/10/5/53

6+21.26

6+22.26 = 5'ly CB Line Meade

NOTE: { 2' CO RADII AT ALLEY RETURNS.
5' WALKS - 5' BK CO FG. TO NLY EDGE WALKS
15' PRG
570' CBS MEADE

6+07.26

9.2 RT END Rot WALL
7.5 RT to CB END
5'ly Line Meade
7.65 RT to CB END

6+00

5498

6.5 LT 5' Deadwood

5+85.5

9.1 LT Beg 5" Conc Rot WALL

T.P.

3.15 354.46 6.19 351.31

348.54
5.92
100

349.02
5.44

349.36
5.10
100

348.78	348.13	348.99	348.90	348.19	348.57	348.58	348.82	348.67	348.72	349.25	348.93	349.44	349.44	349.69
5.68	6.31	5.47	6.06	5.27	5.89	5.89	5.84	5.79	5.74	5.21	5.53	5.02	5.32	4.77
100	100	50	50	9.5	7.5	7.5		7.5	9.5	7.5	50	50	100	100
CG	G	CG	G	CG	G	R1		R1	G	CG	G	CG	G	CG

348.96
5.50
9.2
FTG
WALL

349.26
354.76
7.51
M.C.B.
END

349.09
354.59
7.5
G

348.93
348.96
5.53
Edge
WALL

349.05
5.41
7.5
G

349.39
5.07
7.45
7.8

352.2
2.3
10
RT
WALL

350.9
3.6
9
BK
WALL

350.4
4.1
7.5

350.7
7.8
15

351.7
2.8

351.46
3.00
9.1
FTG
FOOT

352.2
2.3
9.1
9.1
9.1

INDEXED
JER
AUG 19 1953

354.46

Meade Ave

Proposed Drain

Through Block #1

Wilshire Place

Between Lots

12+13-

See page 1 for x-sec

Alley

See FB 1524-67

10/19/53-

C. Allen

D. Sisson

C. Powell-

W# 32149.

Ref Plat # 2529.

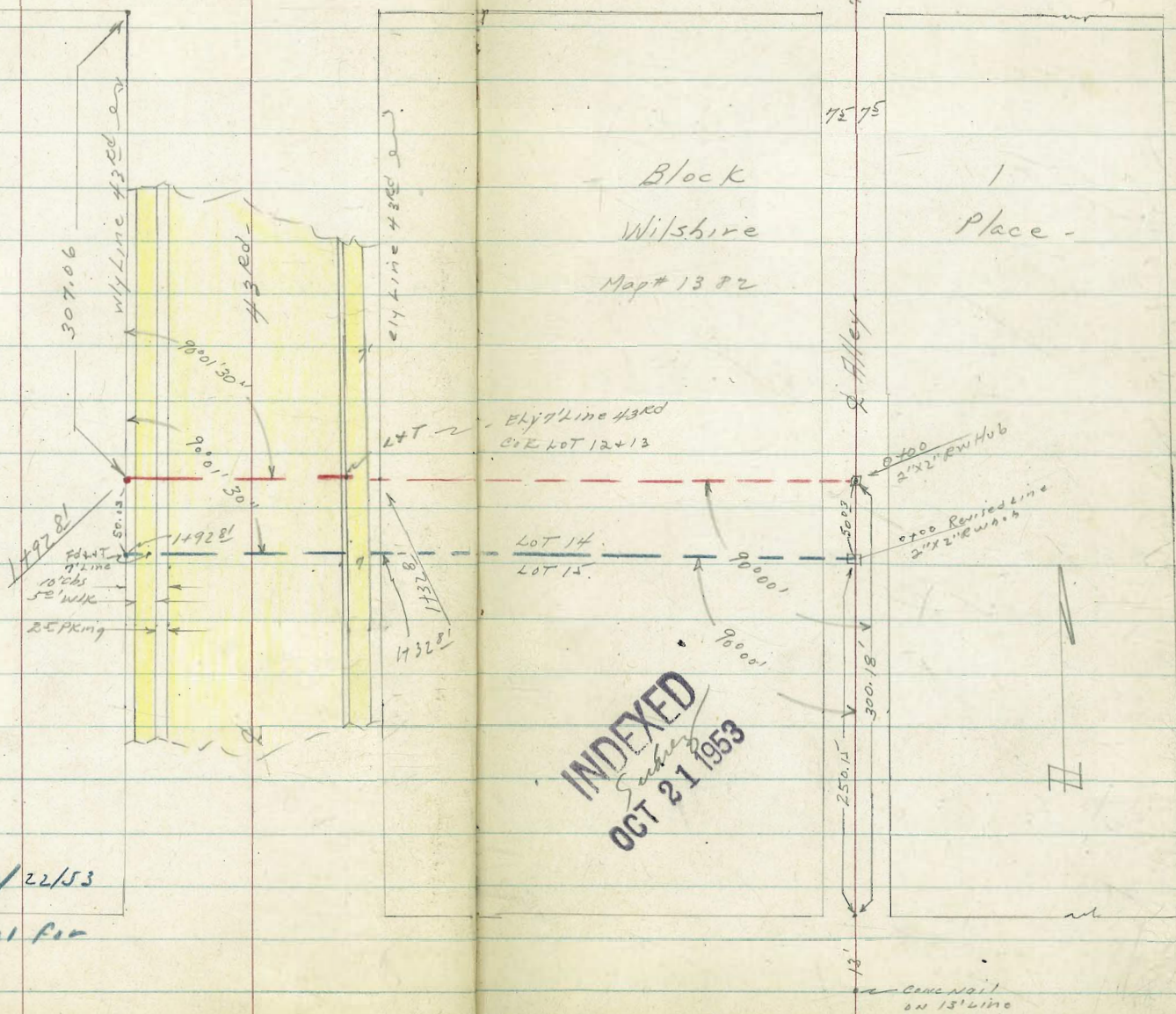
Blue Line:

Revised Line 10/22/53

See page 14 et al for

Levels

S. C. A.



El Cajon Blvd

INDEXED
OCT 21 1953

Levels for Proposed Drain
Between Lots 12+13 in BIK 1
Whitshire Place

Reduced
10/20/53
G.W. Reynolds

See fol. Page 9 - X-sec Alley Page 1

0+13⁵ } 14² LT = SE COR stucco garage
 } 4² LT = NE COR stucco garage

0+09³ 1⁰ RT = sly 1⁵ wide conc walk
Walk runs N+S.

0+07⁸ - 1⁰ RT = sly 1⁵ wide conc walk

0+07⁸ = NEly cor 4⁵ high barb fence

0+06⁵ 3⁰ LT = 4 Power pole # JPA 4345

0+01 - 3⁵ LT = 4 SMH - East San Diego MH Sealed

0+00 = 4 Alley + line Between 12+13 extended

TP ₁	329	354.32	9.27	351.03
BM	2.57	360.30		357.73

LT = 314

Prop
Drain

RT = 214 10

34840
592
Floor garage
CONC

34833
599
1⁰
SW COR

34833
599
1⁰
SE COR
WALK

34987
485
35
RIM

34922 3494
520 42
ON Hub 29r

354.32 π

SW 1/3 P - 42 rd + EL Cañon -

Levels for Proposed Drain
Alley BIK 1, Wilshire Pt.

0+75^E } 10⁸ Rt = NW COR Stucco garage
0⁸ Rt = SW COR Stucco garage

0+57- } 10⁸ Rt = NE COR Stucco garage
30⁸ Rt = SE COR Stucco garage

0+57- 2 = Sly edge Flagstone Patio - SW COR Patio

0+46- 3³ Rt = 2 18" Clump of Pepper trees.

SE COR Patio -
0+35^E } 2 = Sly edge Flagstone Patio Drive
5^E LT = Nly edge. E+W CONC Ribbon
13² LT = SW COR Stucco garage
3² LT = NW COR Stucco garage

0+33^E 1^L Rt = SW COR Frame Dwelling

0+28- 1^L Rt = 2 entrance to Frame house

0+15^E 1^L Rt = SE COR Frame Dwelling

LT = Sly

Rt = Sly

11

347.5
6⁸

347.5 347.54
6⁸ 6⁷ 8
0⁸ 0⁸
9^r Floor

347.60
6⁷
10
ground

347.61
6⁷

347.67
6⁶ 5
10
ON Patio

348.36
5⁹ 6
Sly edge
Patio

348.37
5⁹ 5
10
AN. Patio

348.40
5⁹ 2
3²
CONC Floor

348.80

5⁵ 2
1^L
Floor

348.80

5⁵ 2

1^L
Floor
& Door

348.32

348.86

6²

5⁴ 6

354.32

9^r at
House Floor
Dwelling

Prop Drain BIK 1, Wilshire Place

LT = Sly

±

RT = Nly

12

1+38.31 = cly edge 5' NWS side walk

347.63
398
10

347.40
421

347.35
426
20

TP₂ 4.25 351.61 6.96

ON LOT ELY 9th Line 43rd ST
between LOTS 12+13.
347.36

351.61 ±

0² RT = Sly Ribbon Drive ^{curves to south.}
0¹ LT = Nly Ribbon Drive

1+32.81 = Ely Prop Line 43rd ST

347.41
691
0¹
Nly Drive

347.3
70

347.32
700
0²
Sly Drive

1+13 - 10² LT = NW COR stucco House

2² RT = Sly Ribbon Drive

1+00 } 0² LT = Nly Ribbon Drive

0+79 } 10² LT = NE COR stucco House

347.24
708
0²
Drive

347.2
71

347.20
712
2²
Drive

2-15² Ribbons
2³ RT = Sly 7' wide Ribbon Drive
7' wide - 2-15² Ribbons
0¹ LT = Nly edge Ribbon Drive

0+75.5 = end E & W. Board fence

354.32 ±

Proposed Drain in Alley BIK 1,
Wiltshire Place

TP₄ - Starting BM- 372 357.74
 TP₃ 10.27 361.46 0.42 351.19
 1492.81 = Wily Property Line 43rd ST

237' RT = 4 Type A-2 inlet
 1482.81 = Wily Curb Line 43rd

No information on Location of Drain in 43rd

1462.81 = 4 43rd Portland Concrete

237' RT = 4 Type A-2 inlet
 4 Drive No curb at 4
 1442.81 = Ely Curb Line 43rd ST

1440³¹ = Wily edge 5' N + S. Work

LT = S/W

4
Prop
Drain

RT = N/W 12

INDEXED
 OCT 21 1953

347.9
 37
 346.43
 5' 0"
 237⁰
 Topch
 337.81
 13 80
 237⁰
 BOTTOM
 B.I.X.
 447.26
 435
 382
 90TTC
 2
 347.09
 452
 10
 90T
 347.67
 394
 10
 90T
 345.47
 6.6
 237⁰
 grate
 347.28
 433
 14788
 423
 10⁰
 cb
 346.91
 470
 10
 90T
 346.69
 492
 90TTC
 346.64
 497
 10
 90T
 347.24
 437
 10
 cb
 347.34
 425
 351.61

Levels for Proposed Drain between
 Lots 14+15 - Block 1 Wildfire Place
 See Blue line on sketch page 9.

LT = 54

Blue
 Line
 Page 9.

RT = 14

0+63³ - 2⁹ RT - SECOR Stucco Dwelling

347.9 347.9 348.7
 5⁵ 5⁴ 5⁰⁰
 2⁹ 2⁹
 9" Floor

0+50

347.8 347.8 347.8
 4⁶ 5⁶ 2⁶
 4⁻ 5⁻ 2⁻

0+31 - 5⁰ RT = 16" Pepper tree -

348.0 348.0 348.0
 5⁴ 5⁴ 5⁴
 5⁻ 5⁻ 5⁻

0+25

0+20 - 4³ RT = 8" Nival berry tree -

348.8 348.8 348.8
 4⁹ 4⁹ 4⁹
 5 5 5

0+07⁵ - Wly Line Alley + Begin E/W 4⁵ high
 board fence -

0+00 = 4 Alley BKT + Lot Line projected

348.8 348.67
 4⁹ 5⁰
 Hub 2
 9"

Note! 4⁵ high solid board fence on lot line

353.67 X

BM - 4.35 353.67 349.32

2" X 2" RW Hub. 0+00 Redline Page 9.

Proposed Drain Alley BIK 1
Wilshire Place

LT=514

2

RT=Nly- 15

TP, 5,06 353.97 4.76 348.91

353.97 x

1412⁸ } 3² Nly- To house
 } 4⁹ LT= Stucco Pilaster attached
 } 17⁵ RT= SW COR Stucco Dwelling

348.5 350.57 348.5 348.6
5² 3¹⁰ 5² 5¹
4⁹ 4⁹ 1-
9¹ at Floor

1400- 4⁹ LT= Nly side stucco Dwelling

348.5 348.5 348.5
5² 5² 5²
4⁹ 5⁰
Nly house

0493⁷ - 2⁸ RT= House Jogs to Nly-
SW COR Jog in stucco House

348.6 348.3 348.69
5¹ 5⁴ 5⁰⁰
2⁸ 2⁸
9¹ Floor

0479² 4⁸ LT= NE COR Stucco Dwelling

350.57 348.4 348.4
3¹⁰ 5³ 5³
4⁸ 4⁸
Floor 9¹

0475

348.2
5⁵

353.67 x

Proposed Drains B/L 1, W/15th Place
 T.P. Top curb - 1442²¹ Page 13 - 6.19 - 347.78

LT = 514 . 2 . et = N/4 . 16

1485³¹ = Ely edge 5° N+S WALK

Reduced
 Reynolds
 10/2/53

350.02	349.32	348.67
395	465	530
ELY WALK		20
		ELY WALK

1482²¹ = Wly curb Line 43rd

349.47	350.00	349.34	348.83	348.67	348.17
450	397	463	514	530	580
20	20	CB	70T	20 ^e	20 ^e
90T	CB			CB	90T

See Page 13 for information on catch basins to N/4.

1462²¹ = 43rd ST. Portland CONC

349.62	348.89	348.26
445	508	571
20		20

1442²¹ = Ely curb Line 43rd ST

349.77	349.72	348.80	348.24	348.16	346.58
520	465	517	573	581	639
20	20	TOP	70T	20	20
90T	CB	CB		CB	90T

1440³¹ = Wly edge 5° N+S WALK

348.52
 515

1435³¹ = Ely edge 5° N+S WALK

349.75	348.94	348.80
482	503	517
10		10

1432²¹ = Ely Line 43rd ST.

349.2	348.9	348.4
48	51	56
10		10

353.977

D. Smith
J. Rorer
R. Taylor
B. Fish

"X" Sec. Alley BIK 31 University Hts.

btwn Madison + Golden Gate and New York Ct + Rhode Island Ct.

INDEXED
law

Ref FB 1554-74 use APR 2 - 1954

Note; I believe Miller's data fits better
than the new pipe I found for line
Note Golden Gate Ave at this BIK location
is not out through and useable

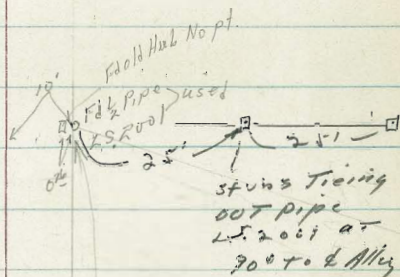
Golden Gate

2400
set Hub

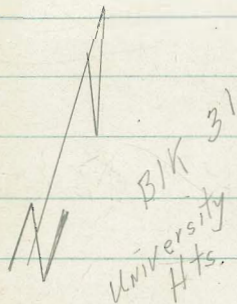
12
West
32426
4/1/54

Dr.

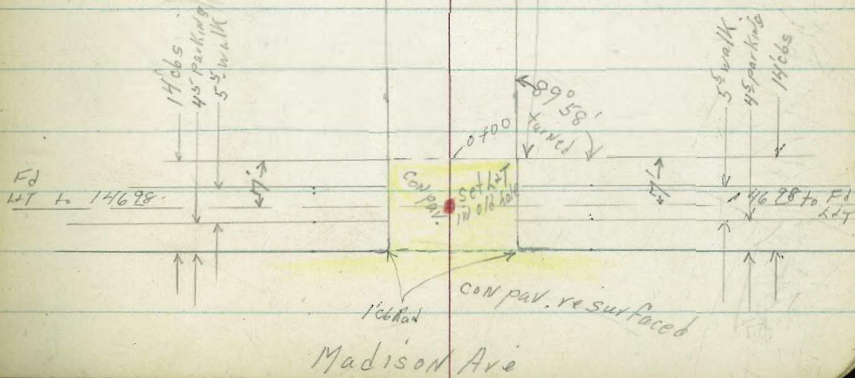
Hub gone



Rhode Island Ct.



New York Ct



"X" Sec Alley B/K 31 University Hts.

0+92 10³ Lt. & double garage con floor & apron

Lt = W/4
340.09
5¹⁶ 5⁴³
14³ 10³
Floor apron

RT = Ely 178

INDEXED

Law

APR 2 - 1954

0+75

340.5 340.3
4⁸ 5² 5² 5¹ 5²
17 10 10 20

0+50

340.9 340.6 340.4 340.6 340.6
4⁴ 4² 4⁹ 4² 4²
20 10 10 20

0+25

340.75 340.7 340.2 340.3 340.5
4⁵ 4⁶ 5¹ 5⁰ 4⁸
20 10 10 20

0+22 8^e RT & 12" P.Pole # PA 4608

0+03 8² RT & dead man

339.78
5⁴⁷ 5⁵¹ 5²⁹
10 10 20
out out out

0+00 Nly Madison end con pav. & cbs

339.66 339.23 339.80
5⁵⁹ 6⁰² 5⁴⁵
10 10
out out out

0-09⁵ B/K

339.16 338.53 339.44 338.80 339.95 339.01 339.56 339.29 339.92
6²⁹ 6⁷² 5⁸¹ 6³⁷ 6³² 6²⁴ 5⁶⁹ 5²⁶ 5³²
50 50 10 10 10 10 50 50
out out out out out out out out

0-14 Nly Cb Line Madison Ave

BM 474 345²⁵

340⁵¹ SWBP.
Madison.
New York Co

7 345²⁵

BM starting

474 340.5

2+00

1483 0³RT&SMH

1476⁶ on Lt sly Golden Gate Dr

1455⁵ on Rt sly Golden Gate Dr

1455 8⁶ RT& 12" pole # PA 4696

1425

1412.10² RT & single garage cov floor

1400

Lt-Wly

2

Rt-Ely

19

3381.1	3381.2	3379	3379	3371.7
72	71	74	74	76
20	10		10	15

338.51

3381.7	3381.7	3381.6	3381.2	3381.0
66	66	62	71	73
20	10		10	15

3391.3	3391.4	3391.3	3381.9	3381.7
60	52	60	64	66
18	10		10	20

3391.9	3391.1	3391.3	3391.2	3391.0
54	56	60	61	63
20	10		10	20

3391.9	3391.7	340.0	340.1
54	56	53	52
10		10	20

TT 345.25

Cross Section Portion of
Mission Hills Park
Randolph + Washington

C.H.S.
Huffman
Schellin
Pullen.

5-12-54
NO. 21132

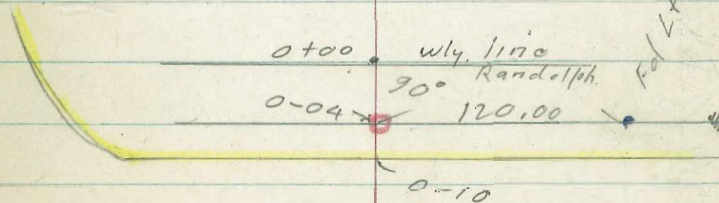
For trees see topographic map
of Mission Hills Park.

INDEXED
JER
MAY 13 1954

B.L.

20

Washington



Randolph St

Fed L & N. W. line of park + Randolph St

T.P. 1.85 269.53 5.24 267.68

link fence.
0+11^E = 119' Rt. = start 5' high chain

return.
0+10 46' Lt. = face of ch. on

267.16	267.60	266.92	265.67	267.92	266.82	267.82
51.76	51.32	6.6	7.3	5.6	6.1	5.1
46	46		30	65	100	120
G	cc + 0.2					

return.
0+00 = 39' Lt. = face of curb on wly line Randolph

267.72	267.76	267.52	268.02	268.22	268.52
51.60	51.16	51.4	41.9	41.7	41.4
39	39		50	100	120
G	cc + 0.2				

0-0A = 1/2 hub

267.68
5.24
Hub

12^E Lt. = ch. B.C.
112 Rt. = 6' ch. inlet
0-10 = wly ch. Randolph

268.17	267.68	268.47	267.97
41.75	51.24	41.45	41.95
50	50	120	120
cc	cc	G	ch

267.55	267.98	268	267.50	268.01	267.92
51.37	41.94	41.92	51.42	41.85	51.60
12 ^E	12 ^E	ch	G	112	112
G	cc			cc	G

272.92

B.M. 2.81 272.92 - 270.11

N.E.B.P. Ft. Stockton + Randolph

T.P. 4.37 264.95 8.95 260.58

1+00

264.89	265.33	267.73	267.73	267.13	267.03	260.73	259.13
4.64	4.20	5.8	6.3	7.4	6.5	8.8	10.4
50	50	25		40	50	90	120
Q	ok &						
	Brd.						

wide ditch. Not shown in levels.
Pipe empties into 2' deep x 3'

0+96 7' Lt. = end 8" pipe

261.73
7.8
7
I.E.

0+81 13' Lt. = 1' x 2' grate + catch basin

262.33	263.93
7.2	5.6
13	13
I.E. 8"	grate
Pipe	

0+75

265.74	265.80	265.53	264.13	267.93	264.73	264.43	261.13
4.19	3.73	4.0	5.4	5.6	5.3	5.1	8.4
492	492	49	20		25	70	120
G	ok						

0+65 - Catch Basin
29' Lt. = Ctr. 2' x 2' grate to

262.53	264.33
7.0	5.2
29	29
I.E.	grate
8" pipe	

0+25 - 49' Lt. = ob. E.C.

266.95	267.49	265.93	265.73	265.53	266.53	265.63	265.63
2.58	2.04	3.6	3.8	4.0	3.0	3.9	3.9
498	498	20		30	70	100	120
G	ok						

269.53

T.P, 3.61 263.97 4.59 260.36

8.3
120

263.78	264.20	243.45	249.95	252.85	253.75
11.7	0.75	215	15.0	12.1	11.6
624	624	93	100	105	115
a	Grnd				
	oc				

2+00

263.75	262.55	260.95	260.35	258.85	258.15	256.75	249.75	242.45
110	214	410	416	6.1	6.8	8.2	15.7	22.5
53	40	30	16		3	24	50	70

244.35	264.72
0.60	0.23
53.8	33.8
G	oc.4
	Grnd.

1+50

264.45	262.55	261.05	259.45	259.55	258.45	255.05	255.25
0.5	214	313	315	5.6	6.5	9.9	9.7
40	35	20	5		35	68	120

1+25

264.6	264.89	264.75	263.15	261.75	260.15	260.45	258.75	257.75
0.35	10.06	0.0	1.8	3.6	4.8	4.5	6.2	7.2
51.3	512	47	30		18	60	85	120
G	oc.4							
	Grnd.							

264.95

270.11 ✓
3.07 270.10 orig. B.M.

TIP. 9.55 273.17 0.35 263.62

262.93	263.44	259.17	232.07.	240.97.
1.04	0.53	4.8	31.9	23.0
83	83	71	95	120
Q	alt			

2+80

261.27	261.07	255.97	255.17	250.87	235.97	227.67	231.57
2.7	2.9	5.0	8.8	13.1	25.0	26.3	32.4
65	53	47	23		31	47	65

263.34	263.90	238.67.	234.97.	247.77.
0.58	70.07	25.3	29.0	16.7
713	713	76	92	120
G.	alt. + alt			

2+40

fence
120' RT. end chain link

263.67	261.57	260.87	256.47	256.17	255.07	243.77	241.07
0.3	2.4	3.1	7.3	7.8	8.9	20.2	22.9
62	56	33	10		12	50	60

263.97

Ref. Map 209
T.S. 378

11-30-54

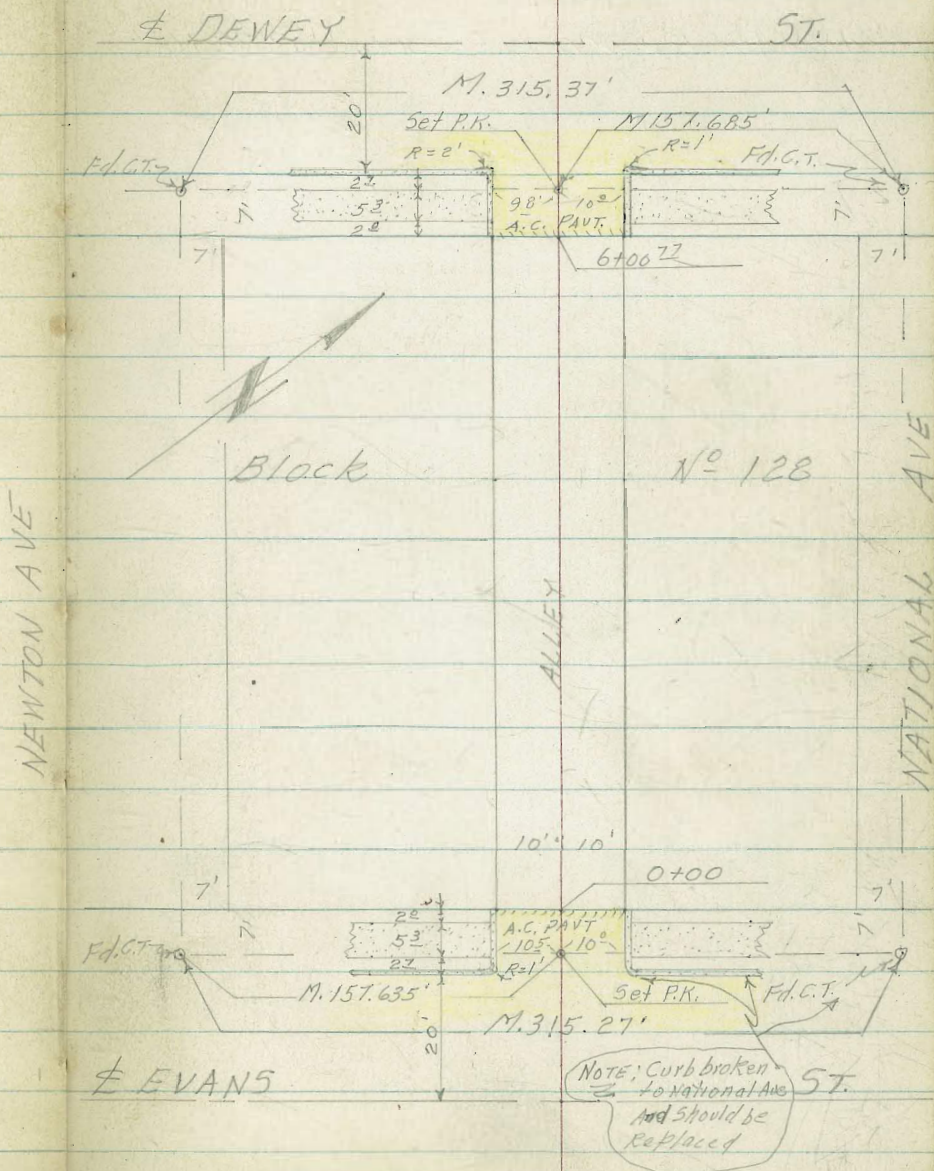
(29)

T.A. Stampler

CROSS SECTIONS OF ALLEY BLK N^o 128
MANNASSE & SCHILLER SUB. W.O. 32467

INDEXED
MER
DEC 1 1954

Reduced
By Olms 12/7/54



NEWTON AVE

NATIONAL AVE

E DEWEY ST.

ST.

Block

N^o 128

E EVANS ST.

ST.

NOTE: Curb broken to National Ave and should be replaced

CROSS SECTIONS OF ALLEY BLK. 128
 MANNASSE & SCHILLER SUB. W.O. 32467

0+00 = N 1/4 A. Evans; End Pavt & Curbs

0-09 E.C. Cb. Ref.

0-10 N 1/4 Cb. Evans St.

0-30.4 Evans

+ 11.86 49.26

B.M.

37.40

S.W. B.P. Newton & Evans

Lt. & Rt. (26)
 11-30-54

Stampper
 T Huffman
 ♀ Nordahl
 ♀ Elmore

44.1	44.29	44.26	44.29	44.89	45.29	45.9
5.2	4.97	5.00	4.97	4.37	3.97	3.4
25	10 ²	10 ²	0	10 ²	10 ²	25
	cb	G		G	cb	

44.18	43.86	44.14	44.75	45.16
5.08	5.40	5.2	4.51	4.10
10 ²	10 ²	0	10 ²	10 ²
cb	G		G	cb

43.66	43.10	44.08	43.64	43.73	44.11	44.54	45.12	45.07	45.66
5.60	6.16	5.18	5.62	5.53	5.15	4.72	4.14	4.19	3.60
25	25	11 ²	11 ²	10 ²	0	10 ²	10 ²	25	25
cb	G	cb	G			G	cb	G	cb
		B.G.	B.G.						

41.39	42.38	43.40	44.47	45.43	46.44	47.49
7.87	6.88	5.86	4.79	3.83	2.82	1.77
75	50	25	0	25	50	75
			M.H.			
			W.H. Kim			

T 49.26

ALLEY BLK. 128

0+50

Lt. Rt. (27)
11-30-54

42.9	43.9	44.2	44.7	45.2
6.4	5.4	5.1	4.6	4.1
25	10	0	10	25

0+46-11³ Lt. & 7' Conc. Pad for Clothesline

44.61	44.11
4.65	5.13
21 ³	11 ³
& Conc. Pad	& Conc.

0+40-9² Rt. & 16' (Converted to bldg) Gar.

45.01	45.17
4.25	4.09
9 ²	11 ²
Apron	floor

0+29-9⁶ Rt. & 4' Conc. Walk

45.10	45.69
4.16	3.57
9 ⁶	19 ⁶
on Walk	& Walk

0+23-9² Rt. End Frame Bldg on Rt.

0+00-10¹ Rt. Begin frame Bldg on Conc. End.

49.26

ALLEY BLK 128

Lt. 11-30-54 Rt. (28)

42.6	43.2	43.2	43.4	43.78	44.08
6.7	6.1	6.1	5.9	5.48	5.18
15	10	0	5	10.2	14.2
				conc.	conc. @ bldg

1-100-10¹ Rt. Begin 4' Conc. Apron

0+95-15⁴ Lt. & Sing Gar (conc floor)

43.22
6.04
15.2
floor

0+87-10² Rt. & 2-Car Gar

44.38	45.05
4.88	4.21
10.2	14.2
Apron	floor

0+68-14⁵ Lt. & Sing Gar (Dirt floor)

43.6
5.7
14.3
Dirt.

0+67-9⁶ Rt. End frame Shed

0+55-8² Rt. & Tel P. N^o 498922-H

0+50-9² Rt. begin frame Shed

49.26

ALLEY BLK. 128

1+75-8⁸ Rt. & 1' Wide Conc. Drain (lateral)

1+83⁵ +2.63' 46.43

Set Nail T.P.

TP. No JPA-2065 -546 43.80

1+75-9⁶ Rt. End 6-Car Gar.

1+75 8⁸ Rt. & TR No 84021-H

1+50-8⁸ Lt. End 8' High Plyboard fence

1+37-9⁶ Lt. Begin 8' High Plyboard fence

1+32-10⁶ Lt. & Sing Gar (Dirt floor)

1+25-9¹ Lt. & PP No 33

1+04-10¹ Rt. Begin 6-Car Garage

Lt. & Rt. 11-30-54

(29)

42.89 43.31

3.54 3.12

8⁸ 18⁸

FL. & Drain.

46.43

43.32 44.07

5.94 5.19

9⁶ 13⁵

Conc. Apron Conc. Floor

43.6 42.6 42.6 42.9 43.44 43.42 44.08

5.7 6.7 6.764 5.82 5.89 5.18

25 10 07'98 10 14⁰

Apron floor

42.9

6.6

10⁶

Dirt

43.80

44.11

5.96

5.15

10¹

14²

Conc. Apron

Car Floor

49.26

ALLEY BLK 128

(Cons. Clotkes line slab in back)

2+50-10⁰ Rt. End 8" Conc. Ftg & Ret. Wall

41.0	41.6	41.7	42.0	41.85	43.53	43.12
5.4	4.8	4.7	4.4	4.58	2.90	2.80
25	10	0	10 ⁰	10 ⁰	10 ⁰	19 ⁰
			Ground Ftg	Top Conc. Wall	Top Conc. Wall	Top Conc. Slab
			43.5			
			2.9			
			2.5			

2+34⁵-10³ Lt. & Sing. Grav. Dirt floor

41.9
4.5
10 ⁰
Dirt

2+26-9² Lt. & PPN⁰ A-2070

5' Woven Wire on top in & Ftg.

2+01-9⁶ Rt. Begin 8" Conc. Ftg & Ret. Wall

42.6	42.47	43.91
3.8	3.96	2.52
9 ⁶	9 ⁶	9 ⁶
Ground Ftg	Top Wall	Top Wall

2+00

41.2	42.1	42.0	42.6	43.3
5.2	4.3	4.4	3.8	3.1
25	10	0	10	20

1+83⁵-9⁰ Rt. End 5' Board fence

1+77-9⁰ Rt. Begin 5' High Board fence

46.43

ALLEY BLK 128

+ 5.20 44.55

Sta 426 Set, Nail

TP. PPN^o A-2036
9^o Lt.

-7.08

39.35

34

3+50

3+40-15^o Lt. & 2-Cor Ggr. Conc. Floor

3+39-9^o Rt. End 4⁵ Wire fence

3+30⁵ & Sewer M. H.

3+26-9^o Lt & PPN^o A-2060

3+02⁵ 9^o Rt & 3' Conc. Walk

3+00-9^o Rt. Begin 4⁵ Wire fence

3+00-9^o Rt. End frame bldg.

2+99-8⁵ Rt & PPN^o JPA-2045

2+83-9^o Rt. Begin frame Dwelling

2+66-15^o Rt. & Sing Ggr. Conc. Floor

Lt.

&

Rt.

(31)

11-30-54

39.5	39.7	39.7	40.1	40.2	41.3
6.9	6.7	6.7	6.3	5.8	5.1
20	10	0	6	10	25

40.39 40.18

6.04 6.25

15^o 13^o

Floor Conc.

Apron 40.77

5.66

51^o Em

41.78 41.98

4.65 4.45

9^o 19^o

Top Walk & Walk

40.6 41.1 40.9 41.6

5.8 5.3 5.5 4.8

25 10 0 10

42.71

3.72

15^o

Conc floor

46.43

ALLEY BLK. 128

3+99-12⁶ Rf. & 2⁵ Conc Walk

3+78-14³ Rf. & Sing Gar Cool floor

3+72-11⁸ Lt. & Sing Gar (Dirt floor)

3+59-14⁴ Lt. & Sing Gar (Dirt floor)

3+53-14⁰ Rf. & 2⁵ Conc Walk

Lt € Rf. (32)
11-30-54

39.90	40.40
4.65	4.15
12 ⁶	22 ⁶
€ Walk	on Walk

40.10
4.45
14³
Cool floor

39.6
5.0
11⁸
Dirt.

39.6
4.9
14⁴
Dirt.

41.00	41.40
3.55	3.15
14 ⁰	24 ⁰
Conc Walk	on Walk

44.55

Lt

E

Rt

(33)

11-30-54

ALLEY BLK. 128

4+75-9² Rt. Beam 5' High Board fence4+75-9³ Rt. End frame bldg9³ Rt. Beam frame Bldg4+65-9³ Rt. End 5' Board fence

4+50

37.7	37.8	38.2	38.2	39.9	38.1	38.5	38.8
6.8	6.7	6.3	6.3	6.6	6.4	6.0	5.7
25	13	12	10	0	6	10	25

4+26-9² Lt. EPR N° A-20364+26-8² Rt. EPR N° JPA-20314+26-10⁰ Rt. End Conn. Patio

39.60	39.35
4.95	4.80
10°	20°
Patio	Patio

4+01-10⁰ Rt. Beam Conn. Patio

39.99	40.15
4.56	4.40
10°	20°
Conn. Sub	Conn. Patio

10⁰ Rt. Beam 5' Board fence

4+00

39.5	38.8	38.6	38.9	39.4	39.4
5.0	5.7	5.9	5.6	5.1	4.1
25	10	0	6	10	25

Δ 44.55

ALLEY BLK. 128

5+50

+2.46 40.70

Set Nail P.P. No A-2018

T.P. Sta 5+25-9²Lt. -6.31 38.24

5+33-11⁵Lt. & Sing Gar Cont floor

5+26-9⁶Rt. Begm 4⁵Picket fence

5+26-9⁶Rt. End 5' Board fence

5+25-9²Lt. & P.P. No A-2018

5+00

4+91 - 11³Lt. & 3' Cont Walk

4+82 - 11³Lt. & Sing Gar (cont floor)

Lt. & Rt. (94)

11-30-54

36.1	36.8	36.4	36.4	36.6	37.2	37.5
4.6	3.9	4.3	4.3	4.1	3.5	3.2
25	10	9	0	6	10	23

37.19 ↑ 40.70

47.19

7.36

11⁵

Cont floor

37.2	37.8	37.4	37.3	38.1	38.5
47.1	47.7	47.3	47.2	48.0	48.4
7.4	6.8	7.2	7.3	6.5	6.1
25	10	0	6	10	25

37.45
47.45

7.10

21³

Walk

37.85
47.85

6.70

11³

cont floor

37.9
47.8

6.7

11³

Dirt.

↑ 44.55

Corrected Oyling
1-14-55

ALLEY BLK. 128

6+09²⁷ BC. Ch Ref Rt.

6+08²⁷ BL. Ch Ref Lt.

6+00²⁷ Sly Rt Dewey End Part of Curbs

5+99-9² Rt. End Stucco Bldg

5+69-9⁸ Rt. Beam Stucco Bldg

5+69-9² Rt. End of Rocket fence

5+60-13² Rt. & 9' Conc. Slab (Car Port.)

5+53-8² Rt. & TP. No 22

(35)

Lt	+	Rt		
	11-30-54			
35.58	35.03	35.18	35.42	35.98
5.12	5.67	5.52	5.28	4.72
9 ⁸	9 ⁸	0	10 ⁰	10 ⁰
cb	G		G	cb

35.90	35.61	35.47	35.92	36.15
4.80	5.09	5.23	4.78	4.55
10 ⁰	10 ⁰	0	9 ²	9 ²
cb	G		G	cb

36.7	36.08
4.0	4.62
9 ⁸	9 ⁸
Gravel	ftg

37.29
3.41
13 ²
Conc Slab

40.70

ALLEY BLK. 128

11-30-54
Lt. & Rt.

B. M.

-8.75

31.95

31.95 N.W. BR Dewey & Newton

6+30⁷⁷ & Dewey St.

33.50	34.18	34.80	35.34	35.92	36.56	37.20
7.20	6.52	5.90	5.36	4.78	4.14	3.56
75	50	25	0	25	50	75

6+10⁷⁷ S1/4 Cb Line Dewey St.

35.02	34.27	35.42	34.61	34.85	35.05	35.24	35.26	36.02	35.60	36.36
5.68	6.43	5.28	6.03	5.85	5.65	5.46	5.44	4.68	5.10	4.89
25	25	118	118	98	0	100	110	110	25	25
cb	G	EC	EC			G	cb	G	cb	
		cb	G							

20.70

40.70

$28 + 51.42 = PK.$
+ JelleHe

$90^{\circ} 00' 30''$

150.48

PK on E of "L" Line
Semi tangent - Sta. 185 + 22.35
in Book 2229-P71 - New Morena
Freeway

Frank
Osborne

(37)

+ JelleHe

INDEXED
M E R
APR 18 1955

= P.O.T.
 $26 + 91.57 = Hub.$
= P.C. of RR.

50'
From E of
Tracks
fd. ct.

90°

Pacific Hwy.

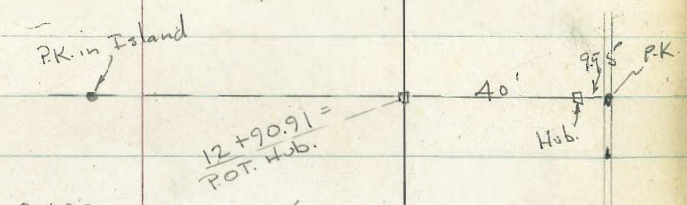
+ or Base Line = Edge of RR. Row.

RR Tracks

50'
From E of
Tracks

Cont. from P. 38

Red Hatch
in D-Glass - Elec

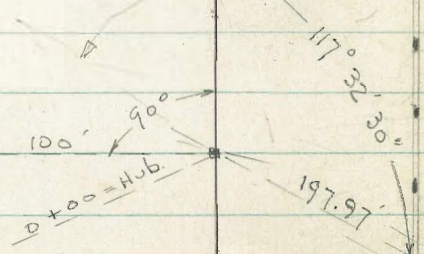


00-14
01-20
06-10

100' offset line

Base Line = 100' Raw Line

50'
To ϕ of
Track



ϕ of Morena

Fd. City
Disk

100' offset
= Nail

ϕ of Littlefield to East.



Req. Levels on Prop. State Park Bet.
Pac. Hwy + RR. R.O.W. - from Littlefield to
Jellotte. - See Sketch - P. 27-38

W.O. 65034 - 4-12-55 7.0.

2+50

2+00

1+50

1+14.5 - 7.5 ft = ± 16" Gas Valve cap. 5.75

T.P. - bath by 2+00 7.06

1+00

0+50

0+22.7 - 172' Lt. = ± of inlet of 24" R.C. Culvert
+ 7.5' Headwall.

0+23 - 35.7' Lt. = ± Deadman

0+14 - 15.5' Lt. = ± P. pole # C 5501

0+01.5 - 123' Lt. = wly. of Sign.

0+00 - 1' N. of ± of Littlefield prod. 1.50

0-01.7 - 73.7' Lt. = Ely. of 49.5' long Sign
179 = edge of AC = inside of AC.Cb.

B.M. = □ in Signal Base - E. of 12.00

Tracks - in Littlefield

Lt.

3.00
2.48
-0.52

Baseline
↙ = ±

(39)

Rt.

1.92 -0.8 0.8 3.9 7.4 6.6
164 149 100 50 15

1.94 -1.1 0.5 3.7 6.2 6.2
167 150 100 50 15

2.0 -1.3 0.3 3.3 6.1 5.8
169 156 100 50 15

1.80 0.6 -1.6 0.5 2.8 6.3 6.4
173 = 162 155 100 50 15
edge AC.

1.68 0.8 -1.7 1.0 2.5 6.6 6.6
176.4 = 163 155 100 50 15
-3.47 edge of AC -0.52
I-E of 172 = Top wall
inlet

0.9 -2.6 -1.7 1.6 0.5 1.5 3.5 06.22 6.5
170 160 100 90 70 50 40 on Hub. 15

Actual Elev. Shown.

← edge of RR. R.O.W.

6+00

2.83	-0.7	1.4	2.2	3.7	3.8
141		123	80	50	15
A.C.					

5+50

2.77	-1.2	1.5	1.9	4.2	3.7
145		127	80	50	15
A.C.					

5+00 - 129.5' Lt. = end of Rock Drain

2.59	-1.87	-0.43	1.7	2.0	2.8	2.4
148		129.5 =	80	50		15
A.C.	I.E. of Drain					

Sect. in E of Drain - Cont.

4+79.3 = sta. of E of Rock Drain - 100' Lt. = Shows angle

-0.92	-4.40				
Top wall	132.6 = I.E.	inlet of 30" R.C. Culvert 9' Headwall			

5.5 wide at Top - 2.7 High = E. end - outs
 4+73.1 = E of - open Rock + Conc. Drain - 3.2' Bottom
 5.5' Hed wall + 3.7' wings

4+69.5 - 31.8' Rt. = E of outlet of 30" R.C. Culvert

4+64.5 - 131.5' Lt. = Beg. E of 3' Rock op^{Conc} en Drain to Culvert.

-0.23	-3.05 = I.E.	0.35	-2.10	-1.68	1.17	-0.72	1.90
Top	130 =	End Rock Drain at Cross	Top I.E. Drain	50 I.E. Drain	Top 16" Gas Main	I.E. Grosses Drain	Top wall
							1.9
							1.61
							31.8
							I.E. of outlet

Set B.M. on B.P. in Headwall

6.84 6.66 = Marked

4+50

2.70	-1.3	-0.3	0.8	2.7	4.1	2.8
151		133	127	100	50	15
A.C.						

4+00

2.52	-0.7	0.6	3.9	6.2	5.8	4.5
154.5		137	100	50		8 15

3+50

2.34	-0.8	0.7	4.1	6.7	6.8
157		139	100	50	15
A.C.					

3+00 - 168.5' Lt. = outside of Reg. pave Lane

2.17	-0.8	0.9	4.0	7.1	6.8
160.5		142	100	50	15
A.C.					

TP = 3.07

11+00

			LT.	±	41	RT.
3.82	3.8	1.1	2.4	5.7	8.1	8.3
108	103	90	60	30		15
AC.						

10+50

3.72	3.4	1.0	2.7	5.2	7.4	7.1
110	105	95	60	30		15
AC.						

10+00

3.75	3.3	0.6	1.2	4.3	6.6	5.0
114	109	100	70	35		15
AC.						

9+50

3.62	3.0	0.4	1.4	3.8	5.9	4.4
117	112	105	70	35		15
AC.						

9+00

3.46	2.9	0.0	1.5	3.5	5.1	4.2
120	114	105	70	35		15
AC.						

8+50

3.34	3.0	0.2	1.1	3.3	4.6	3.3
122	118	110	70	35		15
AC.						

8+00

3.34	3.0	-0.3	1.1	3.1	3.8	2.4
127	122	111	75	40		15
AC.						

7+50

3.20	2.8	-0.3	1.0	2.6	3.2	2.7
130	125	116	85	50		15
AC.						

7+00

3.11	-0.8	1.3	2.1	2.6	2.1
134	119	80	50		15
AC.					

6+50

3.00	-0.7	1.4	1.8	3.3	2.4
138	121	80	50		15
AC.					

						Lt.	+	Rt.		
16+00				2.88 74 A.C.	2.2 60	2.9 50	3.8 25	5.0 15	4.2 5.4 15	
15+50				3.00 78 A.C.	2.5 63	2.9 50	4.2 20	6.0 15	5.1 15	
15+00				3.04 81 A.C.	2.2 70	3.7 40	4.7 15	6.2 15	5.7 15	
14+50				3.11 84 A.C.	2.4 75	2.5 68	3.6 45	4.5 25	6.5 6.5 15	
14+00				3.16 88 A.C.	2.9 79	2.5 70	4.6 50	5.2 25	7.2 6.7 15	
13+50				3.22 90 A.C.	3.2 85	2.3 75	3.4 50	5.0 30	7.6 7.6 15	
Set B.M. = spike in RR Post (Morena)	9.05									
13+00				3.45 94 A.C.	3.1 85	2.4 75	2.3 65	3.7 50	5.2 25	8.1 8.2 15
Set B.M. on Hub. - 12+90.94	7.98									
12+50				3.48 97 A.C.	3.3 93	2.2 83	2.1 65	4.5 30	6.5 6.9 15	
12+00 - 110' Lt. - outside of Reg. Pav. Lane				3.53 100 A.C.	3.1 95	2.0 85	2.0 65	5.0 30	8.2 8.5 15	
11+50				3.72 104 A.C.	3.3 98	1.7 88	1.8 70	4.1 50	5.1 30	8.3 8.6 15

TP 292

21+00

		Lt.			Rt.	
2.28	1.7	2.0	1.0	3.1	3.1	
43	35		2.6 =		15	
A.C.		Top	± of 4' Ditch			
			Bottom			

20+50

1.96	1.5	3.1	2.5	2.6
47	35	15		15
A.C.				

20+00

2.23	1.4	2.5	2.3	2.0
50	35	20		15
A.C.				

19+50

2.22	1.8	2.3	2.7	2.1
52	37	25		15
A.C.				

19+00

2.22	1.8	2.3	2.5	2.4	1.7
55	40	35	20		15
A.C.					

18+50

2.40	1.6	2.3	2.9	2.3
58	42	33		15
A.C.				

18+00

2.49	1.7	2.4	2.9	3.6	3.0
61	45	40	16		15
A.C.					

17+50

2.60	1.9	2.5	2.8	4.2	3.6
64	48	40	20		15
A.C.					

17+00

2.77	2.1	2.8	3.0	4.8	4.1
68	53	40	20		15
A.C.					

16+50

2.82	2.0	2.9	3.5	5.0	5.1
72	57	45	20		15

24+03.5 - 18' Lt. = E. end. of 7' sign

T.P. = spike in sign Jelleffe

4.15

Lt.

±

Rt.

24+00

3.48	3.5	2.9	1.2
30	25		15
AC.			

23+50

3.33	3.4	2.4	1.9
31	20		15
AC.			

23+00 - 41.6 Lt. = outside of Reg. Pave

3.09	2.8	2.8	2.8
32	20		15
AC.			

22+50

3.06	2.8	1.9	3.7	3.9
34	Top	17.5 = Bot ± Ditch - 3' wide (Dirt)		15
AC.				

22+22.5 - 18' Lt. = End. ± of Rock Conc. Ditch

2.19	1.21	2.14
19.5	18	16.5
Top	Bot	Top

Set B.M. on Bolt in ± of Headwall

2.77

2.60 = state El.

22+15 - 18.4' Lt. = ± Rock drain at Top of sloping wall
26.8' Headwall

2.54	1.09	2.72
20.4	18.4	16.7
Top	Bot	Top

- 33.7' Lt. = ± of inlet of 10' opening Box Culvert = Dirt in Bottom

22+04 - 11.1 Lt. = ± of outlet of 66" RC. Pipe - 1/2 full of Dirt

2.76	- 0.6	- 0.1	- 3.01	4.7	4.6	4.7
Top Headwall	33.7 Top Dirt at inlet of Box	Top of Dirt	11.1 = I.E. of outlet		15	40.8 Sand in Bottom of 7.5' wide Wood Culvert under RR

21+93 - 19.5' Lt. = ± Drain at edge of Sloping Conc. wall
for Basin for Big Drain

2.48	0.92	2.61
21.2	19.6	18
Top	Bot	Top

21+86 = 19.5' Lt. = Beg. ± of Rock and Conc. Drain
Ditch

1.95	1.01	2.04
21	19.5	18
Top	Bot	= Top

21+50

2.51	3.2	2.4	1.3	3.3	3.4	3.1
42	38	23	21	12		15
AC.			± Ditch			

T.P. 6.90

26.5' Lt. = E.P. pole # —

28+23-29.6 Lt. = E of inlet of 15" R.C. pipe

28+11.42 = S.L. Jelletto - Prod.

28+05.5-28' Lt. = E Deadman

S.W. Jelletto + Morena

check P.M. = Cross in Signal Base 12.76 12.79

28+00 = 50.2' Lt. = outside of Pauc

27+50

27+00

26+50

26+00 - 41' Lt. = outside of pauc

25+50

25+00

24+50

	LT	RT	45
2.96			
29.6			
IE of inlet	4.24	3.9	5.5
	36	30	27
	AC		
			6.5
			7.2
			15

Morena Data.

4.30	3.8	5.5	6.5	6.5
37	31	27		15
AC				

4.19	5.1	5.4	5.3
37	20		15
AC			

4.20	5.2	5.1	4.5
35	20		15
AC			

4.10	5.3	3.8
33		15
AC		

3.74	4.5	3.2
30.6		15
AC		

3.66	3.6	3.6	4.1	2.6
29	23	12		15
AC				

3.60	3.5	3.2	3.4	2.0
30	25	12		15
AC				

3.47	3.5	3.0	3.0	1.4
29.5	26	15		15
AC				

Lt.

±

Rt.

46

28 + 51.42 = ± Jollette - end.

4.83	5.71	8.44	9.71	12.37
54.7	30		15	43.7 - gauge of
on Hwy				Main Line Nearest Track

LOCATION & ELEVATIONS OF PROPOSED
SLUDGE DISPOSAL AREA IN
MISSION BAY PARK W.O. 20019

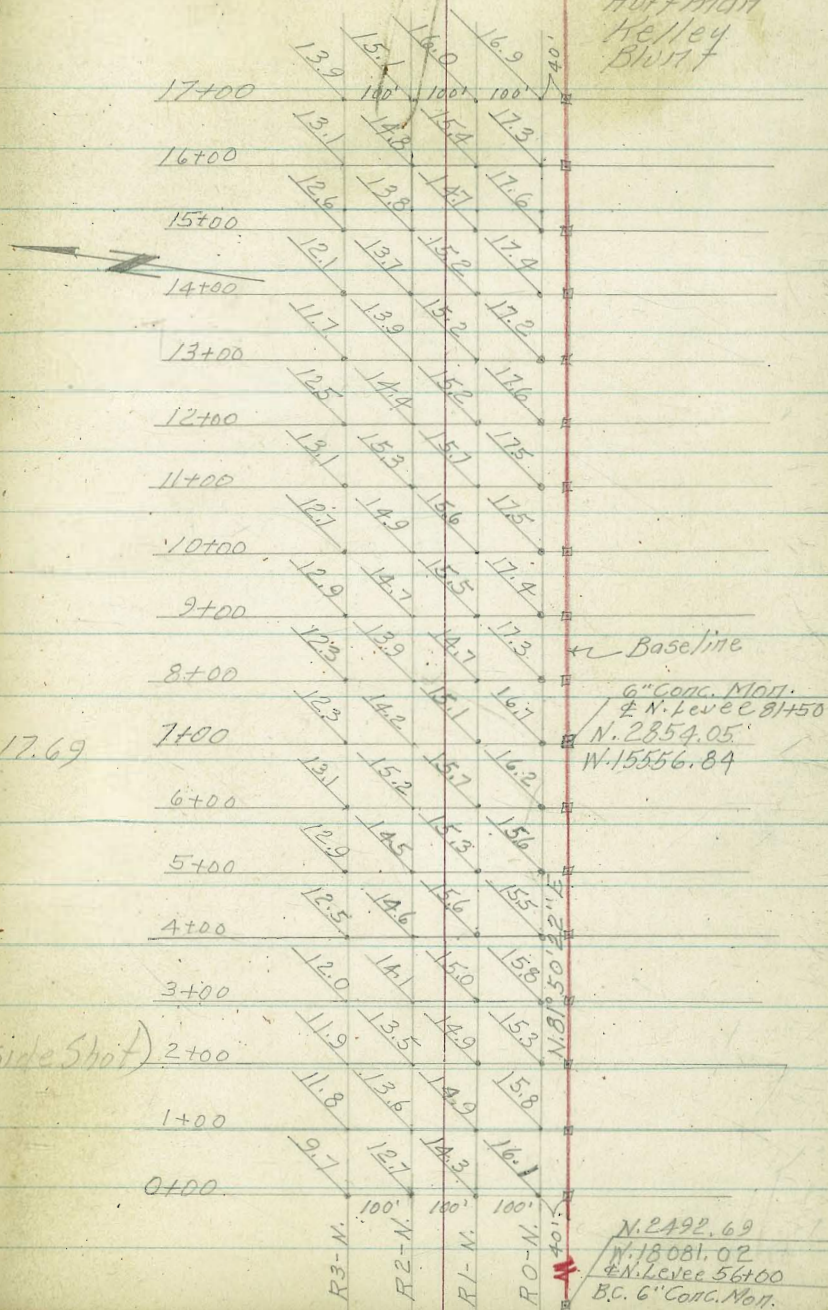
NOTE: Set Stubs @ 100' Sta's along Baseline
Direct Elev. Rod used.

B.M.	-2.76	27.10 + 27.10
+12.17	29.86	
TP.	-5.99	17.69 ~ 17.69
+6.60	23.68	
Top 6" Conc. Mon.		
T.B.M. 7+00.	-6.47	17.08
+5.86	23.55	
Top Stub.		
17+00 B/L.	-12.18	17.69
Top ch'nl @ W.W. Wall		
T.B.M. @ Nly End	-3.15	26.72 (side shot)
+2.77	29.87	
Top West Wing Wall @ bk Wall		
B.M. N. Abut. Sunset Cliffs Blvd Bridge		U.S.C. & G.S. M.L.L.W.
		27.10
		N.B. N°55
		55

Ref. Fd. M.B. N°55
" DW9. 3098-D

8-29-55

Stamper
Huffman
Kelley
Blunt



SLUDGE DISPOSAL AREA MISSION
BAY Contd. W.O. 20019

NOTE: Set stubs on 100' Sta's.
2

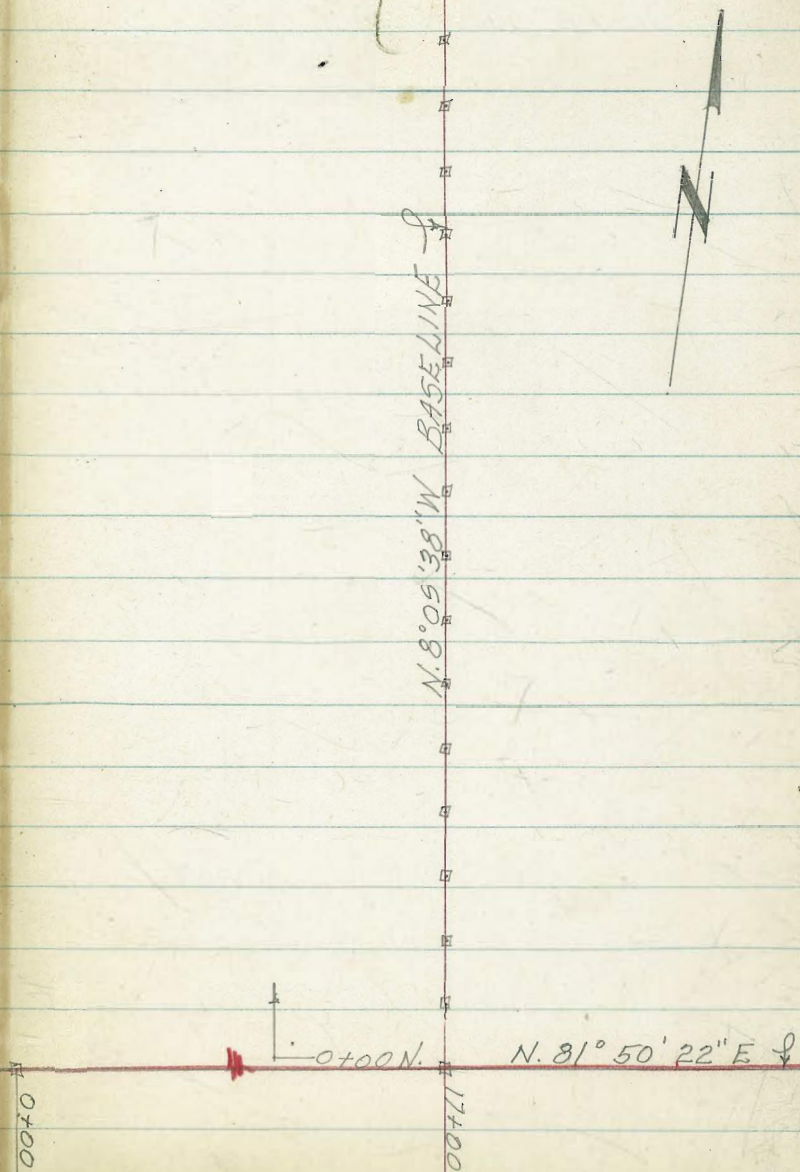
X-sec. Notes Pg. 49

T.A. Stampet (48)

9-12-55

18+00 N.
5¢ 2x2" Hub & TK.

17+75 N. 5¢ 2x2" Hub



ADDITIONAL CROSS SECTIONS FOR
SLUDGE DISPOSAL AREA W.O. 20019

NOTE: Direct Elev. Rod
used
See B/L Sketch
Pg. 48

9-12-55
Stamper
Garber
Kelley
Blunt

(49)

Sta.	Lt.	+	+	+	+	+	+	+	Rt.
5+00 N.	10.9 116 Top	10.7	12.1 0	13.8 100	14.3 200	15.4 300	14.8 400	14.3 448 Toe	
4+00 N.	11.4 185 Top bank	12.5 100	13.2 0	13.9 100	14.5 200	15.5 300	15.1 364 Toe		
3+00 N.				14.4 0	15.1 100	15.6 200	15.4 288 Toe		
2+00 N.				15.6 0	16.1 100	17.1 200	17.1 205 Toe		
1+00 N.				16.2 0	15.7 83 Toe				
B.M.	17.69			Top "2x2" Hub 17+00 B/L N81°50'22"E (See Pg. 47)					

9-12-55

et.

LT.

CROSS SECTIONS SLUDGE DISPOSAL AREA

11+00 N.

11.5
1.16

11.6 11.8 11.6 12.1 11.6 11.7 11.1 10.2 10.7
100 200 300 400 500 600 667

10+00 N.

10.9 11.2 11.6 12.6 12.1 12.0 11.7 10.9 11.2
96 100 200 300 400 500 600 650
Top Toe

9+00 N.

10.8 10.7 11.4 12.7 12.6 12.3 12.4 10.7 11.6
95 100 200 300 400 500 600 650
Top Toe

8+00 N.

10.5 11.1 12.2 12.8 13.0 12.7 12.2 11.9 11.7
95 100 200 300 400 500 600 654
Top Toe

T.P.
7+00 N. Top Stub B/L.

11.13

11.1 11.1 12.3 12.7 12.6 12.8 11.9 11.6
97 100 200 300 400 500 608
Top Toe

6+00 N.

10.4 10.8 12.5 13.8 14.0 14.0 13.0 12.8
95 100 200 300 400 500 517
Top Toe

9-12-55 Rt.

(51)

CROSS SECTIONS SLUDGE DISPOSAL

AREA

17+00 N.	10.6 485	10.1 400	11.0 300	10.9 200	10.9 100	11.3 0	11.0 100	10.6 200	10.1 300	10.9 400	Toe		
16+00 N.		10.1 400	10.5 300	11.1 200	11.0 100	11.1 0	11.0 100	10.6 200	10.7 300	10.1 400	10.7 467 Toe		
15+00 N.	9.6 450	9.6 400	10.2 300	10.9 200	11.1 100	11.5 0	11.5 100	11.0 200	10.8 300	10.8 400	10.4 500	10.4 510 Toe	
14+00 N.	10.6 350	10.7 300	11.4 200		11.2 100	11.3 0	11.4 100	11.4 200	11.2 300	11.2 400	10.5 500	10.6 555 Toe	
13+00 N.	11.0 308	11.0 300	10.7 200		11.2 100	11.5 0	11.8 100	11.4 200	11.2 300	11.2 400	11.1 500	10.7 600	11.1 611 Toe
TP. 12+00 N. Top Stub B/L.	11.42		10.7 218 Top	10.8 200	10.7 100	11.4 0	12.1 100	11.7 200	11.1 300	11.1 400	11.1 500	10.6 600	11.3 664 Toe

Lt.

E 9-12-55 Rt

(52)

X-SEC'S SLUDGE DISPOSAL AREA

B.M.

17.67

17.69

Starting Bench

TP.

16.15

TP.

11.11

TP.

11.42

17+75 N.

10.2
500

10.8
400

10.9
300

11.1
200

11.2
100

12.6
0

100 200 300

Lt.

±

Rt.

53

Lt.

±

Rt

(59)

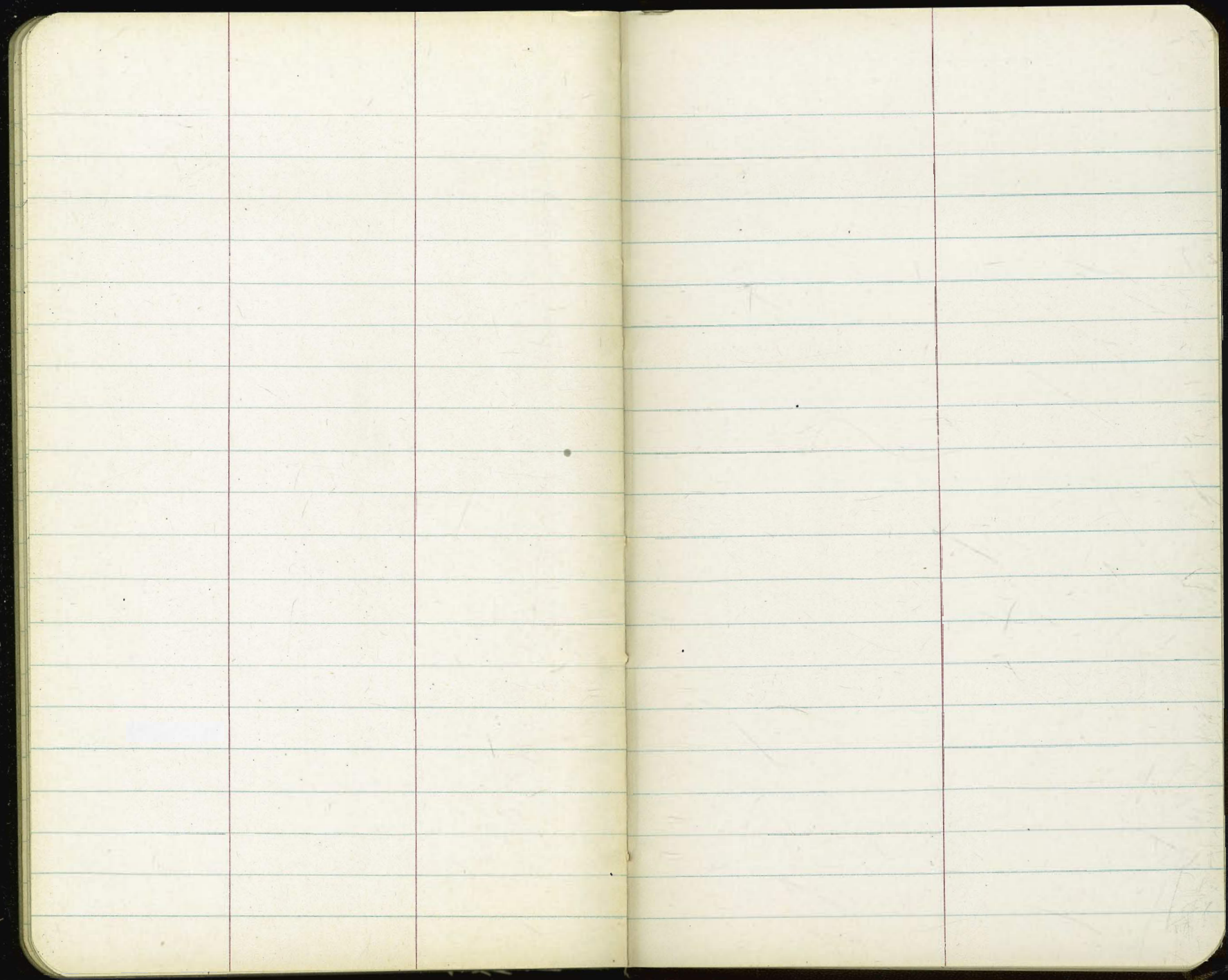
1

lt

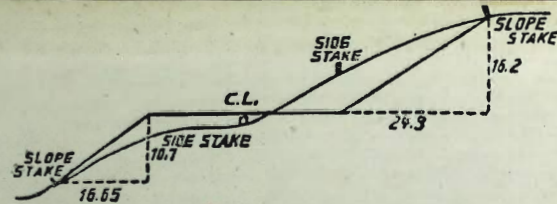
ε

rt.

55



31.95 N.W. B.P. DeWey & Newton



DISTANCES FROM SIDE STAKES, FOR CROSS-SECTIONING.

SLOPE 1 1/2 TO 1. ROADWAY OF ANY WIDTH.

	0	.1	.2	.3	.4	.5	.6	.7	.8	.9	
0	0.00	0.15	0.30	0.45	0.60	0.75	0.90	1.05	1.20	1.35	0
1	1.50	1.65	1.80	1.95	2.10	2.25	2.40	2.55	2.70	2.85	1
2	3.00	3.15	3.30	3.45	3.60	3.75	3.90	4.05	4.20	4.35	2
3	4.50	4.65	4.80	4.95	5.10	5.25	5.40	5.55	5.70	5.85	3
4	6.00	6.15	6.30	6.45	6.60	6.75	6.90	7.05	7.20	7.35	4
5	7.50	7.65	7.80	7.95	8.10	8.25	8.40	8.55	8.70	8.85	5
6	9.00	9.15	9.30	9.45	9.60	9.75	9.90	10.05	10.20	10.35	6
7	10.50	10.65	10.80	10.95	11.10	11.25	11.40	11.55	11.70	11.85	7
8	12.00	12.15	12.30	12.45	12.60	12.75	12.90	13.05	13.20	13.35	8
9	13.50	13.65	13.80	13.95	14.10	14.25	14.40	14.55	14.70	14.85	9
10	15.00	15.15	15.30	15.45	15.60	15.75	15.90	16.05	16.20	16.35	10
11	16.50	16.65	16.80	16.95	17.10	17.25	17.40	17.55	17.70	17.85	11
12	18.00	18.15	18.30	18.45	18.60	18.75	18.90	19.05	19.20	19.35	12
13	19.50	19.65	19.80	19.95	20.10	20.25	20.40	20.55	20.70	20.85	13
14	21.00	21.15	21.30	21.45	21.60	21.75	21.90	22.05	22.20	22.35	14
15	22.50	22.65	22.80	22.95	23.10	23.25	23.40	23.55	23.70	23.85	15
16	24.00	24.15	24.30	24.45	24.60	24.75	24.90	25.05	25.20	25.35	16
17	25.50	25.65	25.80	25.95	26.10	26.25	26.40	26.55	26.70	26.85	17
18	27.00	27.15	27.30	27.45	27.60	27.75	27.90	28.05	28.20	28.35	18
19	28.50	28.65	28.80	28.95	29.10	29.25	29.40	29.55	29.70	29.85	19
20	30.00	30.15	30.30	30.45	30.60	30.75	30.90	31.05	31.20	31.35	20
21	31.50	31.65	31.80	31.95	32.10	32.25	32.40	32.55	32.70	32.85	21
22	33.00	33.15	33.30	33.45	33.60	33.75	33.90	34.05	34.20	34.35	22
23	34.50	34.65	34.80	34.95	35.10	35.25	35.40	35.55	35.70	35.85	23
24	36.00	36.15	36.30	36.45	36.60	36.75	36.90	37.05	37.20	37.35	24
25	37.50	37.65	37.80	37.95	38.10	38.25	38.40	38.55	38.70	38.85	25
26	39.00	39.15	39.30	39.45	39.60	39.75	39.90	40.05	40.20	40.35	26
27	40.50	40.65	40.80	40.95	41.10	41.25	41.40	41.55	41.70	41.85	27
28	42.00	42.15	42.30	42.45	42.60	42.75	42.90	43.05	43.20	43.35	28
29	43.50	43.65	43.80	43.95	44.10	44.25	44.40	44.55	44.70	44.85	29
30	45.00	45.15	45.30	45.45	45.60	45.75	45.90	46.05	46.20	46.35	30
31	46.50	46.65	46.80	46.95	47.10	47.25	47.40	47.55	47.70	47.85	31
32	48.00	48.15	48.30	48.45	48.60	48.75	48.90	49.05	49.20	49.35	32
33	49.50	49.65	49.80	49.95	50.10	50.25	50.40	50.55	50.70	50.85	33
34	51.00	51.15	51.30	51.45	51.60	51.75	51.90	52.05	52.20	52.35	34
35	52.50	52.65	52.80	52.95	53.10	53.25	53.40	53.55	53.70	53.85	35
36	54.00	54.15	54.30	54.45	54.60	54.75	54.90	55.05	55.20	55.35	36
37	55.50	55.65	55.80	55.95	56.10	56.25	56.40	56.55	56.70	56.85	37
38	57.00	57.15	57.30	57.45	57.60	57.75	57.90	58.05	58.20	58.35	38
39	58.50	58.65	58.80	58.95	59.10	59.25	59.40	59.55	59.70	59.85	39
40	60.00	60.15	60.30	60.45	60.60	60.75	60.90	61.05	61.20	61.35	40
41	61.50	61.65	61.80	61.95	62.10	62.25	62.40	62.55	62.70	62.85	41
42	63.00	63.15	63.30	63.45	63.60	63.75	63.90	64.05	64.20	64.35	42
43	64.50	64.65	64.80	64.95	65.10	65.25	65.40	65.55	65.70	65.85	43
44	66.00	66.15	66.30	66.45	66.60	66.75	66.90	67.05	67.20	67.35	44
45	67.50	67.65	67.80	67.95	68.10	68.25	68.40	68.55	68.70	68.85	45
46	69.00	69.15	69.30	69.45	69.60	69.75	69.90	70.05	70.20	70.35	46
47	70.50	70.65	70.80	70.95	71.10	71.25	71.40	71.55	71.70	71.85	47
48	72.00	72.15	72.30	72.45	72.60	72.75	72.90	73.05	73.20	73.35	48
49	73.50	73.65	73.80	73.95	74.10	74.25	74.40	74.55	74.70	74.85	49
50	75.00	75.15	75.30	75.45	75.60	75.75	75.90	76.05	76.20	76.35	50

THE NATIONAL BLANK BOOK COMPANY
 HOLYOKE MASSACHUSETTS
 NEW YORK CHICAGO BOSTON SAN FRANCISCO