

DISTANCES FROM SIDE STAKES FOR CROSS-SECTIONING
SLOPE 1 TO 1. ROADWAY OF ANY WIDTH

	0	.1	.2	.3	.4	.5	.6	.7	.8	9
0	0.00	0.10	0.20	0.30	0.40	0.50	0.60	0.70	0.80	0.90
1	1.00	1.10	1.20	1.30	1.40	1.50	1.60	1.70	1.80	1.90
2	2.00	2.10	2.20	2.30	2.40	2.50	2.60	2.70	2.80	2.90
3	3.00	3.10	3.20	3.30	3.40	3.50	3.60	3.70	3.80	3.90
4	4.00	4.10	4.20	4.30	4.40	4.50	4.60	4.70	4.80	4.90
5	5.00	5.10	5.20	5.30	5.40	5.50	5.60	5.70	5.80	5.90
6	6.00	6.10	6.20	6.30	6.40	6.50	6.60	6.70	6.80	6.90
7	7.00	7.10	7.20	7.30	7.40	7.50	7.60	7.70	7.80	7.90
8	8.00	8.10	8.20	8.30	8.40	8.50	8.60	8.70	8.80	8.90
9	9.00	9.10	9.20	9.30	9.40	9.50	9.60	9.70	9.80	9.90
10	10.00	10.10	10.20	10.30	10.40	10.50	10.60	10.70	10.80	10.90
11	11.00	11.10	11.20	11.30	11.40	11.50	11.60	11.70	11.80	11.90
12	12.00	12.10	12.20	12.30	12.40	12.50	12.60	12.70	12.80	12.90
13	13.00	13.10	13.20	13.30	13.40	13.50	13.60	13.70	13.80	13.90
14	14.00	14.10	14.20	14.30	14.40	14.50	14.60	14.70	14.80	14.90
15	15.00	15.10	15.20	15.30	15.40	15.50	15.60	15.70	15.80	15.90
16	16.00	16.10	16.20	16.30	16.40	16.50	16.60	16.70	16.80	16.90
17	17.00	17.10	17.20	17.30	17.40	17.50	17.60	17.70	17.80	17.90
18	18.00	18.10	18.20	18.30	18.40	18.50	18.60	18.70	18.80	18.90
19	19.00	19.10	19.20	19.30	19.40	19.50	19.60	19.70	19.80	19.90
20	20.00	20.10	20.20	20.30	20.40	20.50	20.60	20.70	20.80	20.90
21	21.00	21.10	21.20	21.30	21.40	21.50	21.60	21.70	21.80	21.90
22	22.00	22.10	22.20	22.30	22.40	22.50	22.60	22.70	22.80	22.90
23	23.00	23.10	23.20	23.30	23.40	23.50	23.60	23.70	23.80	23.90
24	24.00	24.10	24.20	24.30	24.40	24.50	24.60	24.70	24.80	24.90
25	25.00	25.10	25.20	25.30	25.40	25.50	25.60	25.70	25.80	25.90
26	26.00	26.10	26.20	26.30	26.40	26.50	26.60	26.70	26.80	26.90
27	27.00	27.10	27.20	27.30	27.40	27.50	27.60	27.70	27.80	27.90
28	28.00	28.10	28.20	28.30	28.40	28.50	28.60	28.70	28.80	28.90
29	29.00	29.10	29.20	29.30	29.40	29.50	29.60	29.70	29.80	29.90
30	30.00	30.10	30.20	30.30	30.40	30.50	30.60	30.70	30.80	30.90
31	31.00	31.10	31.20	31.30	31.40	31.50	31.60	31.70	31.80	31.90
32	32.00	32.10	32.20	32.30	32.40	32.50	32.60	32.70	32.80	32.90
33	33.00	33.10	33.20	33.30	33.40	33.50	33.60	33.70	33.80	33.90
34	34.00	34.10	34.20	34.30	34.40	34.50	34.60	34.70	34.80	34.90
35	35.00	35.10	35.20	35.30	35.40	35.50	35.60	35.70	35.80	35.90
36	36.00	36.10	36.20	36.30	36.40	36.50	36.60	36.70	36.80	36.90
37	37.00	37.10	37.20	37.30	37.40	37.50	37.60	37.70	37.80	37.90
38	38.00	38.10	38.20	38.30	38.40	38.50	38.60	38.70	38.80	38.90
39	39.00	39.10	39.20	39.30	39.40	39.50	39.60	39.70	39.80	39.90
40	40.00	40.10	40.20	40.30	40.40	40.50	40.60	40.70	40.80	40.90
41	41.00	41.10	41.20	41.30	41.40	41.50	41.60	41.70	41.80	41.90
42	42.00	42.10	42.20	42.30	42.40	42.50	42.60	42.70	42.80	42.90
43	43.00	43.10	43.20	43.30	43.40	43.50	43.60	43.70	43.80	43.90
44	44.00	44.10	44.20	44.30	44.40	44.50	44.60	44.70	44.80	44.90
45	45.00	45.10	45.20	45.30	45.40	45.50	45.60	45.70	45.80	45.90
46	46.00	46.10	46.20	46.30	46.40	46.50	46.60	46.70	46.80	46.90
47	47.00	47.10	47.20	47.30	47.40	47.50	47.60	47.70	47.80	47.90
48	48.00	48.10	48.20	48.30	48.40	48.50	48.60	48.70	48.80	48.90
49	49.00	49.10	49.20	49.30	49.40	49.50	49.60	49.70	49.80	49.90
50	50.00	50.10	50.20	50.30	50.40	50.50	50.60	50.70	50.80	50.90

Distance of slope stake from side or shoulder stake for any roadway width and any height of slope stake. If ground is nearly level, the cut or fill at side stake is located by the number in the same row and column and top row. The number in body of table is same as the number in the same row and column. If ground is not level, estimate the height of the slope stake and slope stake, lower target by this amount, and use the number in the same row and column to find distance in table. Set up road with the same width of roadway and slope stake. If it does not make the slight adjustment necessary.

Index

Pg

2-Alley BIK 199 Pacific Beach

11 " " 220 " "

18-X-sec intersection 47th + Beech

EXIST. Elev's } (N.E. & S.W. Pct's
MARLBOROUGH & MONROE

X-SECT ALLEY BIK 8 LATINA PK - Pearl N. 4y

PRE-X-SECT - SANTA MARGARITA - SAN JACINTO }
to 55th

47
58

Alley BIK. 199 Pacific Beach

8/7/53

C.H.S.
Beqq
Oltman
Schelin

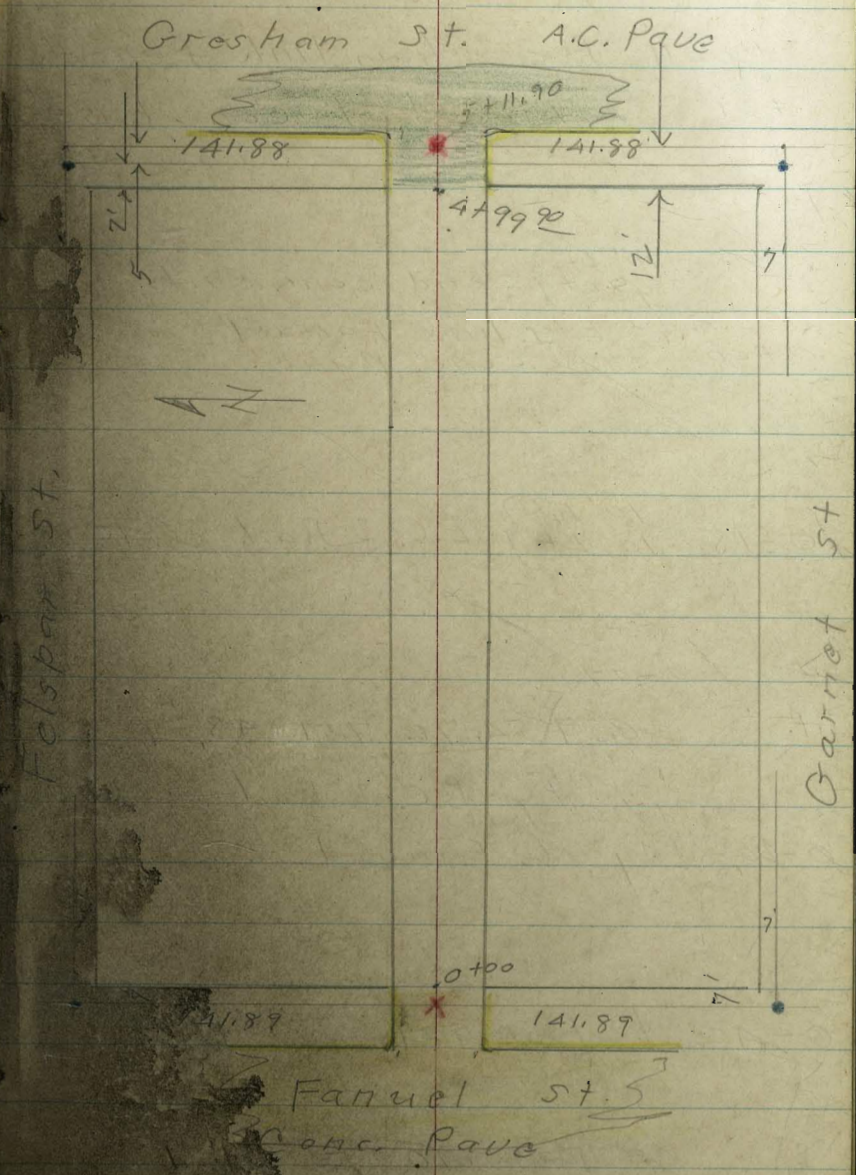
W.O.# 31958

T.P. sheets 1750+
1751

FB 1020-42

- denotes fd. city disk or L.T.
- " set. conc. nail
- X " cut cross
- cb " curb top
- G " gutter
- B.W. " base of wall
- T.W. " top of wall
- yellow " concrete
- green " A.C. Pave.

Reduced 10-14-53 F.A. Habiguchi



Alley BIK 199 P.B.

wall for chain link fence
0+01 - 10' RT. = start conc base

{ 10' Lt
98 Rt } = end conc curbs
= Ely. line Fanuel
0+00 = end conc pave.

0-18 - { 10' RT
10' Lt } = E.C. 2' Rad. cl. Ret.

cross-stao-07

T.P. 6.37 54.76 7.51 48.39

{ 12' RT
10' Lt } = B.C. 2' Rad. cl. Ret.
0-20 = Ely. cl. Fanuel

0-40 = ϕ Fanuel

(+) H I (-)

4.69 55.90 - 51.21

L+

P+

48.8 48.6 49.3
6.0 6.2 5.5
10 10 10
end B.W. T.W

49.31 48.81 48.39 48.56 48.96
5.45 5.95 6.37 6.20 5.80
10 10 98 98
cc c c cc

49.11 48.53 48.33 48.30 48.84
5.65 6.23 6.43 6.46 5.92
10 10 10 10
cc c c cc

54.76

49.90 49.23 49.15 48.47 48.29 48.22 48.80 47.14 47.75
6.67 4.75 7.43 7.61 7.68 7.10 8.76 8.15
12 12 12 12 12 12 90 90
cc c c cc c cc c cc

49.30 48.43 48.32 48.17 47.15
6.70 7.47 7.58 7.73 8.75
10 10 90
55.90

N.W. 7 Lt. Felspar & Fanuel.

Alley BIK 199

£

4

conc. apron to Sing. Con
1+59 - 11" Lt. = £ 10' wide level

50.50
4.26
1A
Con. floor
50.22
4.54
11"
apron

1+50

50.2
4.6
10
49.9
4.9
50.00
4.8
10

1+19 197 Rt. = Leadman

10' Rt. = end conc. base for
1400 9' Rt. = 14" pole # PA. 1320

49.8
5.0
10
49.7
5.1
10
49.6
5.2
10
49.2
5.6
10
50.00
4.8
10
B.W. T.W

Conc. apron to Sing. Con
0+92 11" Lt. = £ 10' wide level

50.04
4.72
1A
Con. floor
49.71
5.05
11"
apron

0+60 - 14" Lt. = £ 15' wide Con. floor

49.61
5.5
23
49.80
4.96
14"

base for
0+50 10' Rt. = line of

49.4
5.4
10
49.2
5.6
10
49.2
5.6
10
48.7
6.1
10
49.5
5.3
10
B.W. T.W

54.76

2+33- 10² Lt. end Conc. apron

50.77
4.76
10²
apron

2+28- 17' Lt. = £ 2nd door

51.08
4.45
17
Floor
50.71
4.76
10¹⁵
apron

2+18- 17' Lt. = £ 1st door

51.08
4.45
17
Car. floor
50.71
4.82
10¹
apron

2+08- 10¹ Lt. = start Conc. apron to double Car.

50.73
4.80
10¹
apron

2+03- 12⁵ Lt. = £ 4' Conc. walk

51.12
4.41
17
walk
51.09
4.44
17
walk
50.82
4.71
12⁵

T.P. 4.80 55.53 4.03 50.73

55.53

1+01 A.C. strip to come out
2+01- 4' Lt. = £ start 12' wide walk

2+00 9' Lt. = 16" pole # P.A. 13

50.6
4.2
10
50.4
4.7
10
50.6
4.2
10

54.76

Bik. 199 P.B.

3+17- 13^E Lt. = ϕ 2nd door

52.45
3.08
13^E
floor

3+09- 13^E Lt. = ϕ 1st door

52.47
3.08
13^E
floor

to 4 car. Gar.
3+03- 10^L Lt. = start conc. apron

51.60
3.93
10^L
apron

3+01 - 10^L Lt. = ϕ 3' conc. walk

52.26
3.27
20^L

51.57
3.96
10^L

3+00

51.3
4.2
10

51.1
4.4

51.3
4.2
10 A.C.

2+56- 9^E Lt. = start A.C. parking area

50.81
4.72
9^E

50.79
4.74
10

50.69
4.84
30

2+50. 4' Lt. = ϕ end of A.C. strip

51.0
4.5
10

50.7
4.8

50.7
4.8
10

55.53

Alloy BIK 199 P.B.

⊕

7

T.P. 6.69 58.82 3.40 52.13

19' RT.

3+53- = Δ 17 A.C.

52.1

3.4

9

A.C.

3+50 10' RT. = Δ in A.C.

52.2

51.8

51.7

52.1

3.3

3.7

3.8

3.4

10

5

10

A.C.

3+49 8' RT = 12" pole # J.P.A. 1380

3+48⁵ 10' Lt. = ⊕ 3' conc walk

52.83

52.42

2.70

3.11

10

10

3+47 - 10' Lt. = end conc apron

52.38

3.15

10

3+36 - 13' Lt. = ⊕ 4th door

52.47

3.06

13⁶

Floor

3+27 13' Lt. = ⊕ - 3rd door

52.47

3.06

13⁶

Floor

55.53

Alley BIK 199 P.B.

A+50 10² Lt. = 10" pole # 577157 H

53.5
5.3
10

53.4
5.4

53.6
5.2
10
A.C.
+ End.

10' Lt. = end fence.
lot.
also start A.C. parking

A+49 10' Rt. = end conc. slab

53.69
5.13
10
conc.
+ A.C.

53.67
5.15
30
conc. +
A.C.

A+34 10' Rt. = end office
also start conc. slab
on blocks

53.4
5.4
10

53.0
5.8

53.1
5.7
7
10
end
+ slab

53.69
5.14
30
end
slab

A+25 10' Rt. = start used

A+24 10' Rt. = end conc. wall

52.1
6.7
10
B.W.

53.6
5.2
10
T.W.

on wall
10² Lt. = start board fence
10² Lt. = start board fence
10' Rt. = start conc. wall
A+00 18' Rt. = end A.C. parking lot

53.6
5.2
10
T.W.

52.0
6.8
20
A.C.

52.8
6.0
10

52.6
6.2

52.6
6.2
7

52.9
5.9
8
A.C.

52.9
5.9
10
A.C.

52.3
6.5
10
B.W.

58.82

Alley BIK 199. P.B.

ENail 540620

T.P. 5.15 59.29 4.68 54.14

lot,
10⁵ Rt. = end A.C. parking
= wby line. Grestiam

A+99 9⁰ 10' Lt. = start alley chs.
10' Rt. = start A.C. Pave.

A+95 10² Lt. = end apron

A+86 14⁶ Lt. = £ 2nd double door

A+66 14⁶ Lt. = £ 1st double door

to 4 car car.

A+60 10³ Lt. start conc apron

A+52 - 17 Lt. = £ 3' walk

£

9

54.62

4.12

10⁵

A.C. parking lot

54.96	54.63	54.24	54.59	54.75
3.80	4.19	4.58	4.23	4.07
10	10		10	10
cc	G		Q	cb

54.39

4.43

10²

54.74	54.37
4.08	4.45
14 ⁵	10 ²
Floor	Apron

54.81	54.35
4.01	4.47
14 ⁵	10 ²
Floor	Apron

54.21	54.11	53.6	53.81
4.61	4.7	5.2	4.95
10 ³	10		10
			End + A.C.

54.06	53.7
4.70	5.1
	17
	Gnd

58.82

Alley BIK 199 - P.B.

10

+ .01
(58.09)

1,19 58.10

12' rt } = F.C. 2' Rad. cl.
12' Lt }

5+19 9' } = Wly. cl. Grestham

10' Lt } Ret.
10' Rt } = B.C. 2' Rad. cl.

5+10 - 9' Rt - 12" pole # J.P.A. 1390

Grestham + Felspar
N.Wly 3' Tie back disk

55.43	54.95	53.39	53.88
3.86	4.34	5.90	5.41
60	60	60	60
cl	B	G	cl

54.61	54.11	55.01	53.76	54.26
4.68	5.18	4.28	5.53	5.03
12	12	12	12	12
cl	G	G	G	cl

54.56	54.07	54.05	53.83	54.32
4.78	5.22	5.24	5.46	4.97
10	10	10	10	10
cl	G	G	G	cl

59.29

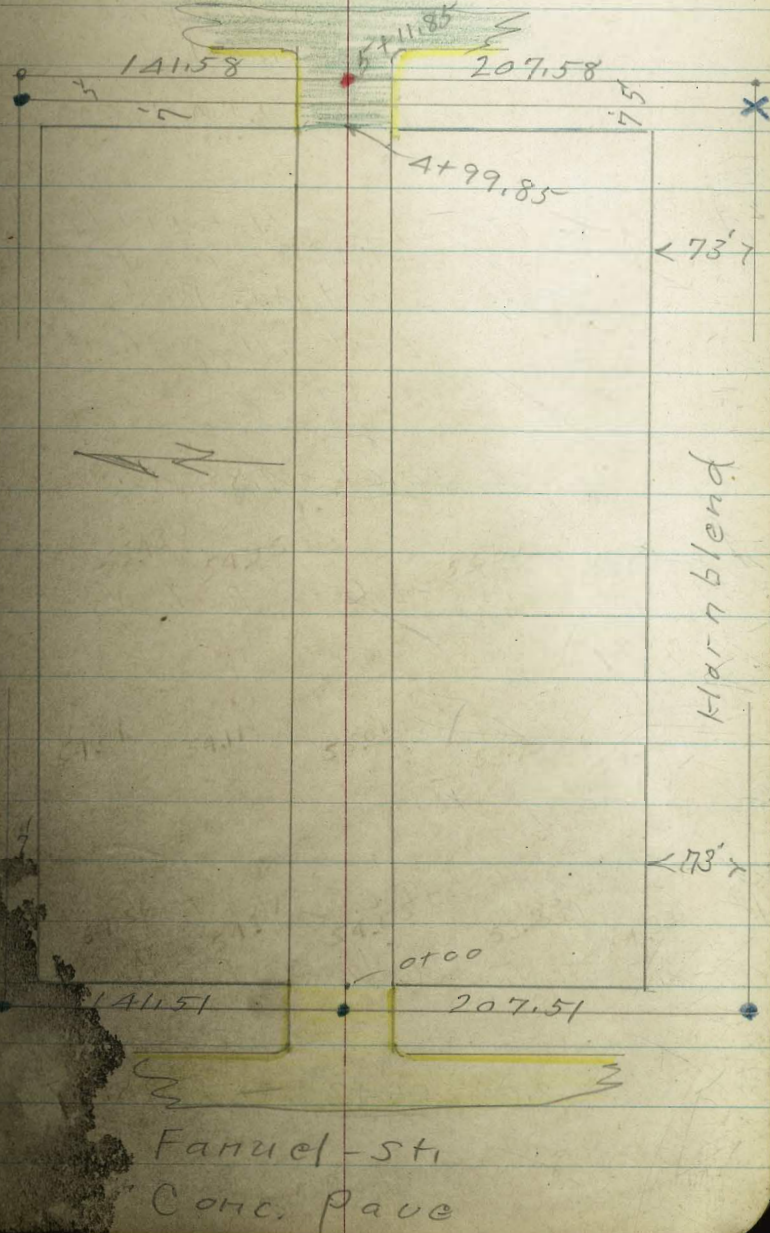
Alley BIK 220 Pacific
Beach

C.H.S. 8-7-53
Bogg W.O. 31958
Altman T.P. sheet 1750
Scholin " " 1751

- denotes Fd. ^{city} disk or L+T
- x " Fd cross in conc.
- " set P.K. Conc. Mail
- cl. " top of curb
- G " gutter
- B.W. " base of wall
- T.W. " top of wall
- yellow " concrete
- Green " A.C. pave.

A.C. Pave
Gresham St.

11



Alley BIK. 220-P.B

8²Lt. = A.C. area.
 10²Lt. = start conc. parking
 0+21 - 11²Lt. = end Motel -?
 0+01 8⁸Lt. = 14" pole. J.P.A 1305

11⁵RT = start Motel Bldg
 10²Lt. = start wire fence.
 10⁴Lt. = start A.C. parking lot.
 10' RT }
 0+00 { 10²Lt. } = End alley obs.
 = End Conc. pave

T.P. 7.06 50.61 7.88 43.55

0-18 - 10' RT } = E.C. 2' Rad. Cl. Ret
 10²Lt }

12' RT }
 12⁴Lt } = B.C. 2' Rad. Cl. Ret
 0-20 } = Ely. Cl. lime Fanne

3.04 51.43 - 48

12

45.2	45.2	44.51	44.5	44.5	44.59	44.71
51.4	51.4	6.1	6.1	6.1	6.02	5.90
10	82	7		10	10	20
					Conc.	

44.44	44.07	43.66	43.21	44.05
6.17	6.54	6.95	6.80	6.56
10L	10	10	10	10
A.C. + cl	G	G	G	cl

T.P. Disk 0-07 50.61

44.21	43.60	43.21	43.34	43.96
7.22	7.83	8.02	8.09	7.47
10	10	10	10	10
cl	G	G	G	cl

45.53	45.06	42.55
5.90	6.37	8.88
100	100	100
cl	G	cl

44.26	43.63	43.21	43.23	43.89	41.23
7.18	7.80	8.02	8.20	7.54	9.50
2	12	12	12	12	100
G	G	51.43	G	cl	G

Cross Sta. 0-07 page 3

1+75 { 8² RT = 14" pole # A1332 platform
 1+50 { 10' Lt = end conc. loading
 1+49 { 9² Lt = 16" pole # D18256T platform
 10' Lt = start conc. loading

46.4
4.2
10

46.0
4.6
10

46.0
4.6
10

45.8
4.8
20

1+25 - 8' Lt = end A.C.
 10² RT = end of conc.

48.2
2.4
30
A.C.

47.9
2.7
20
A.C.

46.2
4.4
10
A.C.

46.0
4.6
8
A.C.

45.9
4.7
10

45.9
4.7
10

45.91
4.70
103
Conc.

46.01
4.60
20
conc.

1+00 7' Lt = edge of A.C.
 10² RT = edge of conc.

46.9
3.7
20

45.9
4.7
10

45.7
4.9
7

45.7
4.9

45.6
5.0
10

45.6
4.95
10

45.91
4.80
20
conc.

0+97 - 7' Lt = edge A.C.

47.1
3.5
30

46.1
3.7
20

46.1
4.5
10

45.6
5.0
7

0+94 - 7' Lt = edge of A.C.

46.9
3.7
15

46.9
3.8
10

45.6
5.0
7
on A.C.

0+88 11² Lt = end fence

0+54 - 9² RT = 14" pole # A1311

0+50 8² Lt = edge of A.C.

46.0
5.5
7

46.0
5.5

45.1
5.5

45.1
5.3

45.3
5.26
10

45.35
5.26
10
Edge of
conc.

50.61

T.P. 51.41 54.67 2.97 49.26

4+00 7⁸ Lt. = start Conc. block Bldg
8² Rt. = 12" pole # A1376
+ lath fence.

3+99 9⁸ Lt. = end pipe post

3+50

3+49 10⁴ Rt. = end board fence
lath fence

3+25 10' Lt. = start pipe post. +

3+06 { 9² Rt. = start board fence
9² Lt. = end lath fence
9² Lt. = pole D 1825 5T (10")

T.P. 4.15 52.23 2.53 48.08

2+97. 8² Rt. = 16" pole # A1354

2+50

2+19 9² Rt. = start lath fence

2+09 13' Rt. = 2 sing Bars Conc
floor

2+00

47⁶/₁₀ 47²/₁₀ 47¹/₆ 47⁴/₁₀ 47⁰/₁₀ 46³/₁₀
4.6 5.0 5.1 4.8 5.2 5.9
10 6 7 10 20

47³/₁₀ 47⁰/₁₀ 47⁰/₆ 47³/₁₀ 46⁸/₁₀
4.9 5.2 5.2 4.9 5.4
10 6 7 10

47⁶/₂₀ 47²/₁₀ 46³/₁₀ 46³/₆ 47¹/₇ 47¹/₁₀
4.6 5.0 5.4 5.4 5.1 5.1
20 10 52.23 6 7 10

47¹/₂₀ 46³/₁₀ 46³/₈ 46⁵/₁₀ 46³/₂₀
3.5 3.7 3.8 4.1 4.5
20 10 10 20

46⁶/₁₃ 46⁷/₁₃
4.0 3.90
13 13
Conc.

46⁵/₁₀ 46³/₁₀ 46³/₁₀
4.1 4.3 4.3
10 10

50.61

Alley B/K. 220 - P. B.

4

15

(54114)

T.P. Nail
sta. 5106⁸⁵

4.37 54.16

T.P. Nail sta 5106.90 Page 9

9.16 58.53 5.30 49.37

47.45
7.22
100
c

47.92
6.75
100
cc

Ret.
12' RT } = E.C. 2' Rad. cl.
12' LT }
X+19⁸⁵ } = wly cl. line Gresham

51.47	50.94	50.03	49.54	49.36	49.06	48.54
20	3.73	4.64	5.13	5.31	5.61	5.13
95	95	12	12		12	12
cc	c	cc	c		c	cc

92 LT } = B.C. 2' Rad cl. Rot
92 RT }

49.95	49.47	49.35	49.10	49.67
4.72	5.10	5.32	5.57	5.07
95	95		92	92
cc	c		c	cc

92 RT = }
95 LT = } start Alley cl.
98 LT = } end Conc. block Bldg

A+99⁸⁵ } = wly line Gresham
 } = start A.C. Pauc.

50.4	49.82	49.32	49.61	49.95
4.31	4.85	5.35	5.06	4.72
95	95		92	92
cc	c		c	cc

A+75

49.1	48.9	49.2
5.6	5.8	5.5
98		10

A+50 8' LT = 14" pole # D 1825

48.9	48.3	48.1	48.0	47.4
5.8	6.4	6.6	6.7	7.3
78	7		10	20

54.67

Alley BIK. 220 - P.B.

4

16

INDEXED

HER
AUG 11 1953

Alley BIK. 220. P. B.

£

17

X-sec intersection Beech + 47th

W₀ # 25020

8-24-51

C. Allen, D. Sissell, C. Powell

Ref. unnumbered L-sheet on improvement

of Beech + 47th adjacent to View Hts Manor

TP sheet # 3379.

See Page 19 for levels

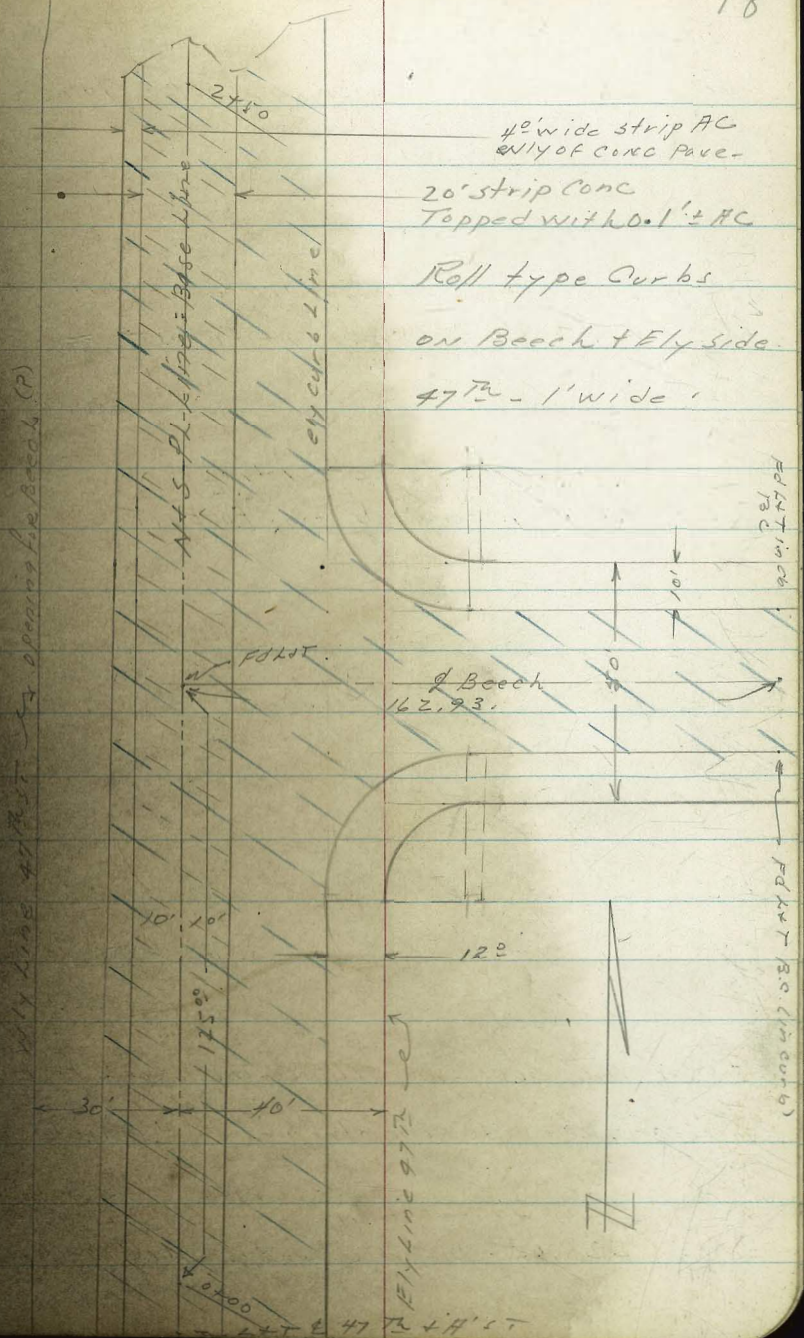
North + South P.L. line used for

Base Line - NOT centered in 47th

per TP sheet 3379 - opening on west (P)

L + T & 47th + Federal

18



X-sec Beech + 47th St
See sketch Page 18

0707-22⁵ LT = ϕ 12' power pole # 177220

LT = W14

Base
Line
N+5
P.A. Line

Et. elev 19

21 ⁵	21 ⁵	20 ⁷⁴	21 ²	20 ²⁵	20 ⁵⁸
80	40	100	100	140	140
		9UT	CB	9UT	CB

1400 Prop to east same elev as top curb to east

1410 = 51/2 curb line Beech st to east

22 ⁸	21 ⁴	21 ⁷⁵	22 ¹⁰	22 ³¹	22 ³¹	21 ⁸⁵	21 ⁵¹	21 ²²	21 ⁷⁰
20	18	14	10	10	10	28	40	58	58
		edge	AC	AC	AC	9UT	9UT	9UT	9UT
		AC	over	over	over	conc	conc	conc	conc

29² Rt = Top curb B.C. Roll type curb

0480 (?) 28² Rt = gutter curb B.C. to East

20 ⁶	20 ⁸	21 ⁴	20 ⁹	21 ²	21 ³³	21 ⁵⁸	21 ⁶²	21 ²⁵	21 ⁴⁴	21 ²¹
80	30	20	18	14	10	10	10	28 ³	29 ²	40
				edge	AC	AC	AC	9UT	TOP	CB
				AC	over	over	over	conc	conc	conc

0750

19 ⁴	19 ²	20 ⁴	20 ³⁵	20 ⁵⁷	20 ⁸⁵	20 ⁸⁴	20 ⁵⁴	20 ⁸⁵	20 ⁶
30	30	18	14	10	10	10	28 ²	29 ²	40
			edge	AC	AC	AC	9UT	TOP	CB
			AC	over	over	over	Rolltype	conc	conc

0725

19 ⁴	19 ⁶	19 ⁸⁹	20 ⁰⁰	20 ²⁶	20 ²⁴	20 ⁰²	20 ²⁶	19 ⁸
30	30	18	14	10	10	28	29	40
			edge	AC	AC	9UT	TOP	CB
			AC	over	over	Roll	Roll	conc
			conc	conc	conc	type	type	conc

0700 = 100' south of south line Beech to east

A.C. topping over 20' conc strip is 0¹/₂ ± thick

18 ⁸	18 ⁵	19 ⁰	19 ²³	19 ⁴⁵	19 ⁶⁵	19 ⁶⁰	19 ⁴⁵	19 ⁶⁹	19 ⁵
30	30	18	14	10	10	10	28	29 ²	40
			edge	AC	AC	AC	9UT	TOP	CB
			AC	over	over	over	Rolltype	conc	conc
			conc	conc	conc	conc	conc	conc	conc

± L+D 47th + Federal.

B.M. = 228.05 - Direct elevation reduced

all elevations as shown

X-sec Beech ST + 47th

LT = W 1/4

Base
Line
N/S
PLine

Rt = e 1/4

20

23¹₈₀ 23⁷₄₀ 23⁹₃₀

29⁰ Rt = Tap cb BC Beech ST to east
1470 = 28⁰ Rt = gutter BC Beech ST to east

23⁷₂₀ 23¹₁₈ 23¹⁵_{14 edge AC} 23²⁹_{10 AC over CONC} 23⁵⁵ 23⁶⁰_{10 AC over CONC} 23²²_{280 GUT} 23⁴⁶_{290 cb} 24²₄₀

22⁷₈₀ 22⁶₄₀ 21²¹_{100 GUT} 21⁶⁰_{100 Top cb} 20⁸³_{140 GUT} 21²⁰_{140 Top cb}

1440 = Nly curb Line Beech ST to East

22⁹₃₀ 22²₂₀ 22²₁₈ 22³⁷_{14 edge AC} 22⁶⁹_{10 AC over CONC} 22⁹² 22⁹⁶_{10 AC over CONC} 22⁴²₂₈₀ 22¹²₄₀ 21⁷⁹_{58 Top cb} 22¹²₅₈

1425 = E Beech ST to east

22⁰₈₀ 22¹₄₀

22⁴₃₀ 22⁶₂₀ 22⁰₁₈ 22⁰_{14 edge AC} 22⁴¹_{10 AC over CONC} 22⁵⁹ 22⁶³_{10 AC over CONC} 22⁰⁹₂₈ 21⁸⁶₄₀ 21¹⁸₁₀₀ 20⁷⁴₁₄₀

No information on proposed improvements on Beech ST to east

Add 200' to all elevations shown -

X-sec intersection Beech + 47th

LT=WT4

Base
Line
N+5
PL+110

Et=ely. 2)

2750

24²
80

25⁵
40

25⁸
30

25⁹
17

25⁰²
14
edge
AC

25¹⁹
10
AC
over
conc

25³⁰ 25³²
10
AC
over
conc

25²⁵
28⁰
90^r

25⁴⁵
29⁰
top
cb

26⁴
40

2725

24¹
80

25²
40
edge
cyclic
fence

25⁰
30

25¹
25

24⁴⁹
14
edge
AC

24⁶³
10
AC
over
conc

24⁷⁶ 24⁸⁰
10
AC
over
conc

24⁶¹
28⁰
90^r

24⁸⁹
29⁰
top
cb

25⁹
40

2700

24¹
80

24²
30

23⁸
16

23⁸⁸
14
edge
AC

24⁰⁵
10
AC
over
conc

24²⁹ 24³⁰
10
AC
over
conc

24⁰⁰
28⁰
90^r

24²⁶
29⁰
cb

25¹
40

INDEXED
JER
AUG 25 1953

add 200' to all elevations shown

CROSS SECTION ALLEY BLK. 45

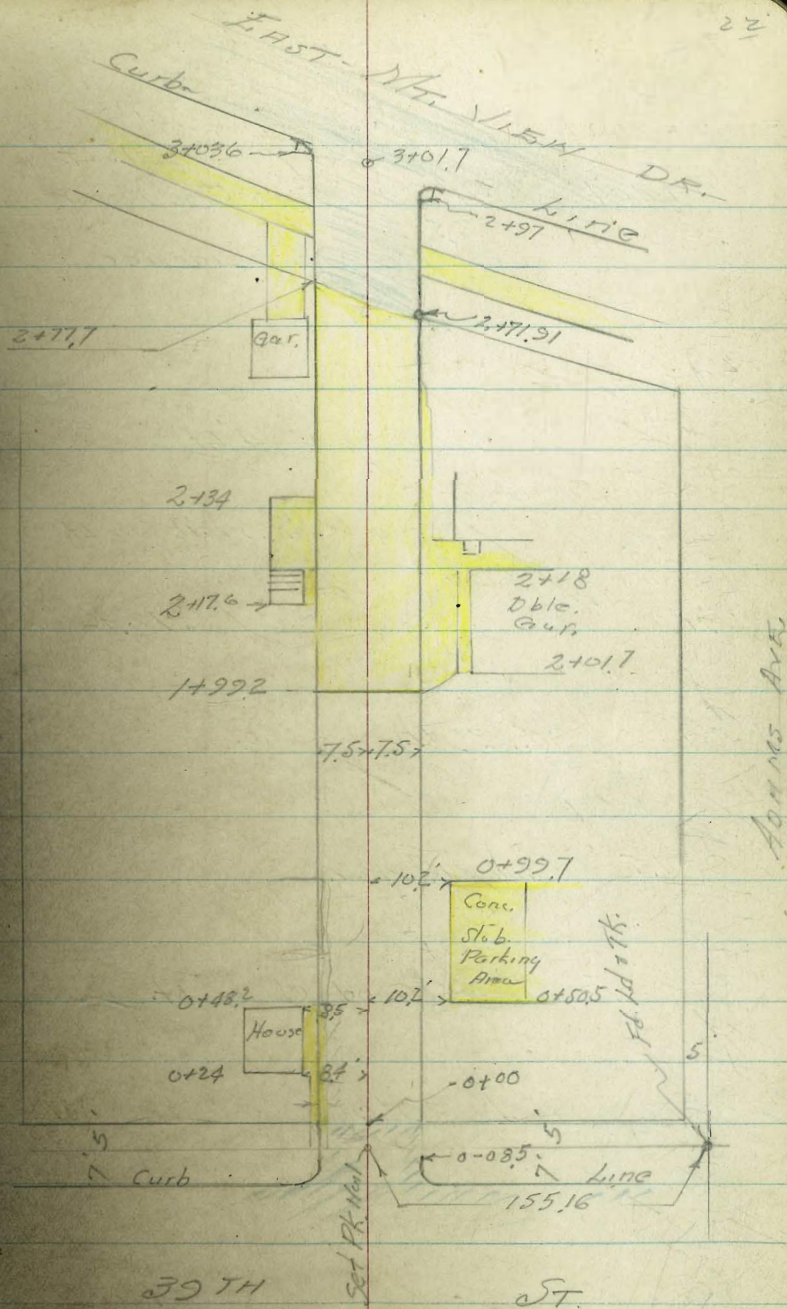
NORMAL HTS.

Walker
Pope
Pullen
Olson

NO. 32336

INDEXED
OCT 1953

0119, Sec. 17 FB 1277
76



Alley Blk. 45

0+51 - ♀ Pole 8.5' RT # J.P.A. 3891
7.5 Lt.

0+46.4 - ♀ 3/4" Gas Riser to Gas Meter.

0+43.8 - ♀ Doorway to Residence

372.50 | 372.30
8.5 6.5
Floor House on Landing
 Conc.

0+42.3

372.30
6.5

0+31 = ♀ Pole Anchor 74' RT

(0+48.2 = End House 8.5' Lt
0+24 = bog. House 2.4' Lt.)

0+24.4 = Brk. in 1.9' wide Conc. Walk on Lt.

Top Cobble wall on Lt

TP 0+00

372.46

371.75 371.8 372.2 372.11
6.5 7.5 16
on Walk ♀ Door W/lf
 Garage Conc. Floor.

0+00 = W.L. 32' b

371.4 371.35 370.8 371.2 372.15
12 +6.6 7.5 12.3
Conc. walk SE Cor Bld
Parallel to Alley Conc. Floor

0-1.5 = End Blk. Pav.

371.12 370.83 370.76 370.87 371.07
7.5 5 5 7.5
Top Walk
= Top cb

0-0.85 = End of Good cb on Rt.

371.06
7.5
cb

0-12 = W cb 32' b

370.68 370.68 370.89 370.88 370.30 370.35 370.37 370.43 370.97 370.68 371.28
50 50 9 7.5 Pav. 7.5 9 9 50 50
Cut Top cb Gut Pav. Gut Gut Gut Gut cb

370.87

S.M.S.F.B.P. ADAMS 6 32' b ST.

Direct Elev. Rod Used.

Alley Riv. 4.5.

1+50 T.S.R. - Pole JPA 2851

3738 3738 3738 3742 3740
12 7.5

1+49.4 = End 6" Conc. Wall

37413 3738
7.8 7.8

1+25.3 = 1/2 3' Conc. Walk

Not Good

37386 37345 3734 3734 3735
14.5 7.5
Walk Walk 7.5 17

1+15.8 = Beg 6" Conc. Wall

37325 3735
7.4 7.4
Top Wall Ground

1+06 = 1/2 Garage on Lt. Dirt Floor.

3732
30.3

1+00.8 = End 10" Conc. Wall

37334
7.2
Top 10" Wall

0+99.7 = End Conc. Slab = Parking Area

37334 3732 3733 37346 37360
7.2 7.2
Top Ground 19.2 26
10" Wall Conc. Slab Conc. Slab

0+78 = Beg. 10" Conc. Wall 6.7' Lt.

End 6" Wall

0+78 = End Garage 6.7' Lt.

0+68.8 = 1/2 Garage on Lt. Garage used as Storage Room
Door Sets on 6" Conc. Wall = 6.7' Lt.

37292 37352
7.3 6.7
Conc. Floor Top

0+63.3 = Beg. Garage, Conc. Floor, 6.7' Lt.

Steps Down.

0+50.5 = Beg Conc. Slab Parking Area

37312 37348
10.3 26
Conc. Slab Conc. Slab

Alley Blk. 45

Lt.

Rt.

Rt.

25

2+40 7.3 Rt = Pole JPA 3821

2+34 = End Conc. walk on Lt. Parallel to Alley

37492 37494 37488 37489

12.5 7.7 Conc. 8.5 Edge Conc. Floor

2+24

37483 3748 37484 37485

8.5 11.5 13.5 13.6 Land. up Conc.

2+18 End Dble Cur. Rt

37701 37504 37495 37495 37492 37492 37481 37481
2.6 9.5 7.5 7.5 11.5 11.6 15.5
Top step Conc. Apron Floor

2+07

37488 37478 37473
7.5 7.5

2+01.7 = Beg. Dble Curvaga on Rt

3746 3746 37481 37498 37468 37479 37472 37488
12.5 7.7 7.6 5.5 11.5 11.6 15.5
Conc. Conc. Conc. Conc. Apron Floor Good

TR

374.67

1+99.2 = Beg. Conc. Pav

3743 37491 37470 37468 3746
12 7.8 Conc. Conc. 7.5 12

1+80

3739 3741 3741 3743 3744
12 7.5 7.5 12

Alley 816. 45

lt.

2

1st

26

2+777

37351
79
Dirty
St. Ent.

37261 37245 37254
75 Black 7.5
Cb. Per Conc.

wrong ft mark

2+748

37352 37241
Conc. = Black Per.

2+7121

37400 37293 37276 37271 37282 37290
79 7.3 7.5 7.5 7.5
Top Drive Black Per
St. Ent. Conc.

2+66

37452
8
Gar. Floor
St. Ent.

2+61

37378 37375 37376 3747 3747
7.5 7.5 9.5 12.5
Low 17. Low 17

2+56

37406 37402 37421 3749 3750
7.5 7.5 9.5 12
Low 17. Low 17

2+47

37451 37451 37446 37482
7.7 4 8.2
Edge

2+38

37477 37462 37471 37463 37496
7.5 4 4.3 8.4
Edge Per
Per

Alley Blk. 45

Lt.

2

RA

27

003

2+71.91

Chk. NE Top cb

372.93 = 2+71.5
372.90 FB 1271
78

3+01.7 Cont.

372.11 372.57
276 276
Gut. cb

East Mt. View Dr.

3+01.7 Dig Sec. E cb Line

37178 37133 37156 37171 37182 37190 37224
175 175 83 8 114 114
cb Gut. Gut. Gut. cb. cb.
EC. ES
Ret Ret

(3+03.6 - B.C. 2' R outt.)

37199 37164
77 77
cb Gut.

2+97 B.C. 2' Alley R outt. Bt

37188 37233
72 72
Gut. cb

2+84

37294 37247 37230 37216 37230 37267
78 78 75 72 72
Drive Gut. cb
at Ent.

Reduced by
W. Ferguson
Plotted by Pearson

INDEXED
JER
DEC 18 1953

CROSS SECTION ALLEY B/W PT. LOMA

HTS. FROM GUIZOT TO SANTA BARBARA

W.O. 31282

Ref. Map No 1106 Pt. Loma Hts.

Tie Sheet No 764

12-17-53

Stampen 28
Huffman
Nordahl
Sherry

Set P.K.

(131.67)

(131.70)

Fd. C.T.

M 290.69'

M 148.87'

Fd. C.T.

GUIZOT

6+30.22

ST.

A.C. PAVT.

Set P.K. C&R=3'

Fd. Pipe L.S. 2317

(131.70)

(131.70)

6+00.22

10' 10'

(78)

Set P.K.

0+00

Fd. C.T.

(131.70)

(131.93)

99' J&E

A.C. PAVT.

C&R=2'

8" Curb

Fd. Pipe & TR

Fd. RR. Spike

To P.L. Cor

SANTA BARBARA

M. 148.81'

M. 320.85

(131.96)

P.L. LINE & POINT LOMA AVE

BERMUDA AVE

Stamper
Huffman
Kordahl
Sherry

12-17-53

29

CROSS SECTIONS ALLEY BLK 78 PT.
LOMA HTS FROM SANTA BARBARA TO GUIZOT.

NOTE! E. Pavt. 15 @ Sta 0+00.5

0+00 = NWly Line Santa Barbara.

Begin 3' Picket fence — 11.3' Lt.

0-04.5 Begin 3' Picket fence — 14.3' Lt.

0-07 & P.P. N° P-1436 15.5' Lt.

0-08 E.C. Cb. Ref.

0-10 NWly curb Line Santa Barbara

0-30 & Santa Barbara

+5.46 199.32

T.B.M. - 11.77 193.86

+4.61 205.63

B.M. 201.02

192.3	192.2	193.55	193.27	193.48	194.16	194.66	193.8	194.3
7.0	7.1	5.77	6.05	5.84	5.16	4.66	5.5	5.0
25	12	22	22	0	10.2	10.2	14	25
		cb	Gut		Gut	cb		

193.33	192.97	193.45	194.00	194.70
5.99	6.35	5.87	5.32	4.62
22	22	0	10.2	10.2
cb	Gut		Gut	cb

191.15	190.64	192.50	192.09	193.22	192.83	192.93	193.49	194.00	194.11	194.72	194.83	195.44		
2.17	8.68	6.82	7.23	6.10	6.49	6.39	5.83	5.32	5.21	4.60	4.49	3.88	3.13	2.47
50	50	25	25	12	12	10	0	10	12	12	25	25	50	50
cb	Gut	cb	Gut	cb	Gut			Gut	cb	Gut	cb	Gut	cb	Gut

190.15	191.42	192.77	194.24	195.57	197.05	198.43
9.17	7.84	6.55	5.08	3.75	2.27	0.89
75	50	25	0	25	50	75
			ETOP.M.H.			
199.32						

5-7 P.K. 10 P.P. N° JPA-4408 Sta 0+01 9.2' Lt.

5-10 Tie Back 7' Ct. Bermudas & Santa Barbara

12-17-53

X-SEC'S ALLEY BLK 78 CONTD

Lt. & Rt

1+36⁵/₁₁ Lateal Conc Block Wall 3²' Lt.

176.8 ³	177.01	175.36	175.4
10.50	10.32	11.97	11.9
10	3 ² '	3 ² '	3
Topwall No Fly	Topwall	fg	Ground
		(Flush)	

1+00 Begin 8" Conc Blk Wall ~10⁵' Lt

176.6	181.18	176.14	179.6	179.6	180.3	180.5	182.1	182.8
10.7	6.15	11.10	7.7	7.7	7.0	6.8	5.2	4.5
11 ²	10 ⁵	10 ⁵	10 ⁵	10	0	10	18	25
Ground back Wall	Top Wall	fg	Ground					
		186.1						
		11.7		187.33				
		25						

0+99 & PP. N^o SPA-0416 8⁶' Lt

+0.05 187.33

TP -12.04 187.28

0+50

187.0 ²	187.6	187.0	187.1	187.2	188.7
123	117	123	122	121	106
25	10	5	0	10	25

0+49 End 3' Picket fence 13⁵' Rt.

0+49 End 3' Picket fence 11²' Lt.

199.32

0+05 & 4" Tobacco Tree 7²' Lt

0+01 & PP. N^o SPA 4408 9⁶' Lt

199.32

12-17-53

(31)

X-SEC'S ALLEY BLK 78 CONTD.

Lt. E Pt.

2+99 & 14" Cypress 11° Lt.

2+50

162.8	163.5	164.3	164.2	163.9	163.9	164.5	165.0
12.5	11.8	11.0	11.1	11.4	11.4	10.8	10.3
25	10	8	0	1	7	10	25

2+48⁵ End 4⁵ High Woven Wire fence 15² RA

E PR N^o JPA-4434 - B2LT

2+00 End 8" Conc Block Wall 10² Lt

168.1	175.01	167.99	169.3	169.3	169.3	169.0	169.4	169.8	170.8
7.0	0.29	7.31	6.0	6.0	6.0	6.3	5.9	5.5	4.5
11	10 ²	10 ²	10 ²	10	0	3	10	13	25

Ground Top Wall Fig. Ground

2+00 Begin 4⁵ High Woven Wire fence 16² RA

1+89 & 3' Clustered Shumac. 20' High 7° Lt.

7.7
25 Δ 175.30

TR. +0.64 175.30 - 12.67 174.66

1+50

171.83	172.0	177.54	171.54	174.6	174.6	174.9	174.4	174.9	176.2	177.0
15.5	15.3	9.79	15.79	12.7	12.7	12.4	12.9	12.4	11.1	10.3
25	11	10 ²	10 ²	10 ²	10 ²	0	8	10	15	25

Top Fig. @ Wall

1+38⁵ & 7' Conc. Walk & Brick Step

1736.3	1742.4	1747.3
13.70	13.09	12.60
21.8	18.8	10.5

at Wall Top Walk Top Brick Walk Step

187.33

Δ 187.33

12-17-53

X-SEC ALLEY BLK 7B CONTD

Lt. E Rt.

4+50 fd. 3/4" Pipe L.S. 2334 10° Rt.

4+50 End 4' Lath fence 10° Lt.

4+48⁵ E P.P. N° JPA-4482 8° Lt

Begin 4' Lath fence?
4+16 End 6' Lath House } 99' Lt.

Begin 3' Board fence 10° Rt.
4+00 Begin 6' Lath House 98' Lt.

150.3	151.0	151.1	150.8	150.8	151.1	151.8	152.4
13.6	12.9	12.8	13.1	13.1	12.8	12.1	11.5
25	10	7	5	0	6	10	25

End 3' Picket fence 10° Rt.
3+50 End 4⁵' Board fence 10° Lt.
3+50 E P.P. N° JPA-4458 8° Lt.

152.5	154.3	154.5	154.4	154.6	155.2	155.8
11.4	9.6	9.4	9.5	9.3	8.7	8.1
25	10	6	0	7	10	25

Begin 3' Picket fence 10° Rt.
3+00 Begin 4⁵' Board fence 10° Lt.

157.4	158.7	159.3	159.0	159.0	159.2	159.7	159.9
6.5	5.2	4.6	4.9	4.9	4.7	4.2	4.0
25	10	3	1	0	6	10	25

+1.61 163.88

163.88

TP - 13.03 162.27

175.30

12-17-53

X-SEC ALLEY BLK 7B CONTD.

Lt. £ Rt.

4+66 Begin 3' High Bd. fence 9² Lt.
4+65 to 2' Conc. Walk 9⁶ Lt.

145.98 146.44
5.73 5.27
19.6 9.6
Walk Walk

4+57 to 9' Sing Gar 10² Lt. Ramp

146.21 146.31
5.50 5.40
11.5 10.2
floor Ramp
conc. conc.

4+53 Begin Drive 2-Car Gar 30' Rt. floor

151.21
0.94
30⁰
conc. floor

4+50 End 4' Board fence 10⁵ Rt

147.3 147.6 147.6 147.6 148.1 150.5
4.4 4.1 4.1 4.1 3.6 1.2
25 10 0 7 10 25

+ 0.98 151.71

Σ 151.71

T.P. 100 -13.15 150.73

Set P.K. P.P.N. JPA-4482 82' Lt. Sta 4+485

163.88

12-17-53

X-5E ALLEY BLK 7B CONTD

Lt. & Rt.

5+08⁵ & 9' Garage 9± Lt.

141.57	141.51
10.14	10.20
141	94
Gar. floor	on Ramp
conc.	conc.

5+01 Begin Conc Slab Attached To Gar. 9⁵ Lt.

141.64	141.59
10.07	10.12
141	95
conc	conc
Bldg	
line	

5+00 End 8" Timber Retaining Wall 10⁵ Lt.

143.6	144.0	143.3	142.6	142.5	143.7	147.51	146.7
8.1	7.7	8.4	9.1	9.2	8.0	4.20	5.0
25	10	8	0	7	10	105	25
						Top Timber	
						Ret Wall	

4+74 Begin 8" Timber Ret Wall 11⁵ Lt.

146.51	147.48
5.2	4.23
11	11.5
Ground	Top Timber
	Ret Wall

4+70 End 3' Board fence 9± Lt.

4+68 End Drive 2¹/₂ Car Gar 30' Lt.

151.25
0.46
30±
conc. floor
Gar.

151.71

151.71

12-17-53

35

X-5EC ALLEY BLK 7B CONTD.

Lt. E Rt.

5+50

138.1	139.4	139.6	136.7	135.4	135.1	135.8	136.5
13.6	12.3	12.1	15.0	16.3	16.6	15.9	15.2
25	10	9	5	0	10	12	25

5+47 E PR, N^o JPA 4496 9^o Lt.

5+44 End 8" Conc Blk Wall 11^o Lt.

144.26	138.66	139.7
7.95	13.05	12.0
11 ^o	11 ^o	11 ^o
Top Wall	ftg	Ground

5+19 Beg 8" Conc Blk Wall 11^o Lt.

144.21	140.71	141.2
7.50	11.00	10.5
11 ^o	11 ^o	11 ^o
Top Wall	ftg	Ground

Continues from Sta 5+01

5+19 End Conc Slab 9^o Lt.

141.52	141.45
10.19	10.46
14 ^o	9 ^o
Conc Slab @ Wall	Conc Slab

151.71

151.71

12-17-53

X-SEC'S ALLEY BLK 78 CONTD.

Lt. E Rt

6+12.22 SELY Curb Line Quizot

125.78	126.31	127.37	126.91	127.03	127.45	127.98	128.20	128.71	128.66	129.19
465	512	406	452	440	3.98	345	323	272	277	224
25	25	13	13	10	0	10	13	13	25	25
cb	gut	cb	gut	cb		gut	cb	gut	cb	
		EC	EC			EC	EC			

+ 2.67 131.43
Set P.K. 5/9 Side Tol. P. Nly

T.B.M. Line Alley Quizot St. -11.39

128.76

131.43

6+09²² E.C. Curb Ret.

127.55	127.24	127.47	128.18	128.68
1260	1291	1268	1197	1147
92	92	0	102	102
cb	gut		gut	cb
EC	EC		EC	EC

6+00.22 SELY Line Quizot

127.6	128.4	127.64	127.47	127.69	128.29	128.70	129.5	130.0
12.5	11.7	12.51	12.68	12.46	11.86	11.45	10.6	10.1
25	11	92	92	0	102	102	12	25
		cb	gut		gut	cb		

5+90 Break Sec.

+ 0.32 140.15

130.9	131.7	131.1	129.1	129.1	129.4	130.0	130.7	131.8	132.4
92	8.4	90	11.0	11.0	10.7	10.1	9.4	8.3	7.7
25	10	5	2	0	7	10	12	20	25

140.15

T.P.

-11.88

139.83

Set P.K. P.P.N.E JPA-4496 9° Lt. Sta. 5+47

151.71

12-17-53

X-5EC'S ALLEY BLK 78 CONTD.

Lt.

¢

Rt.

B.M.

-11.27

120.16

120.15 S.E. BR. Pt. Loma & Guizot

6 + 30.22 & Guizot St.

123.78	125.04	126.25	127.40	128.55	129.87	131.04
7.65	6.39	5.18	4.03	2.88	1.56	0.39
100	75	50	25	0	25	50
					75	

TOP
M.H.

131.43

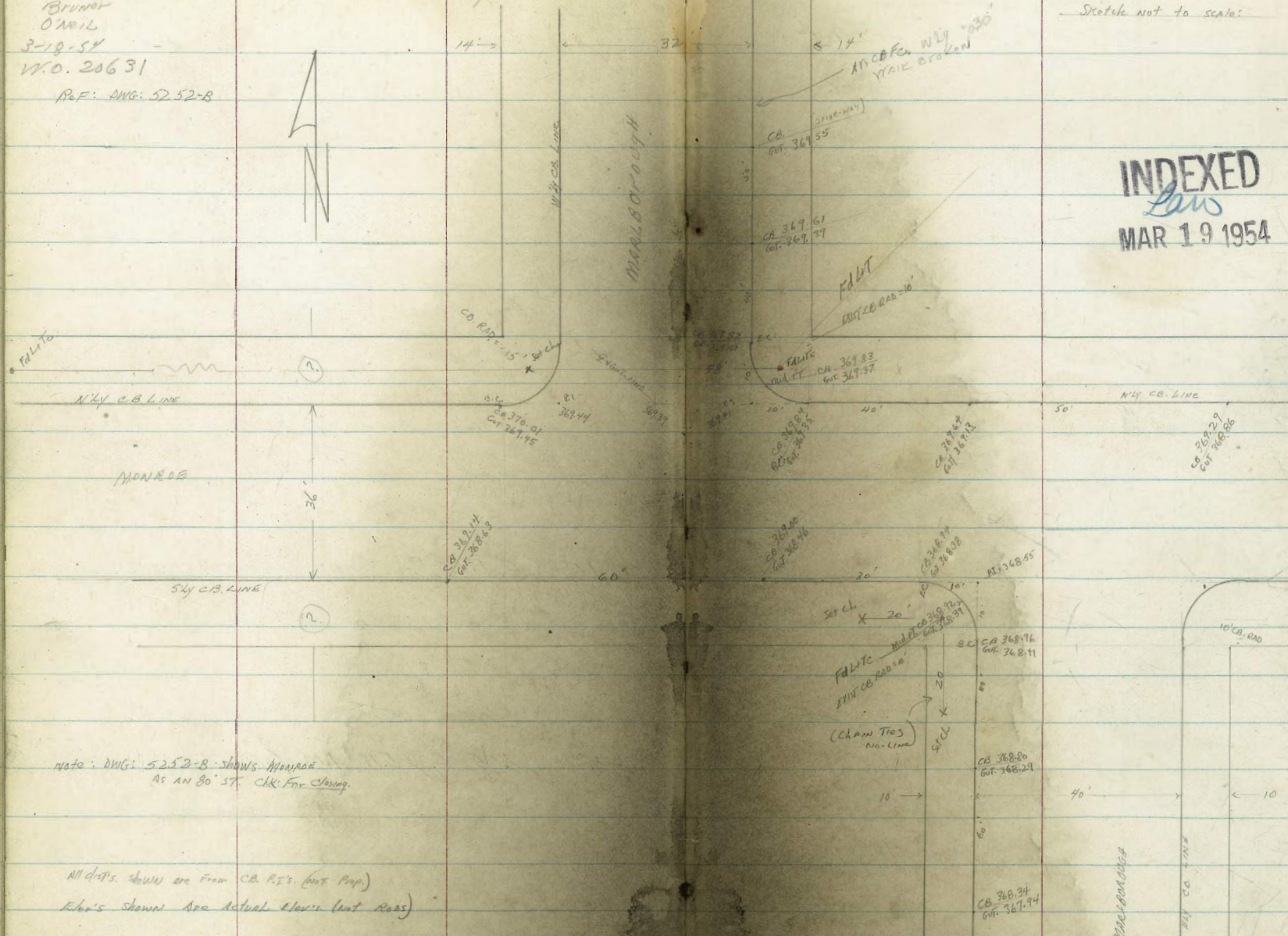
131.43

Clark
Shepherd
Bruner
O'Neil
3-18-54
V.O. 28631

EXIST. Elev's: N'ELY & S'WLY
Rts: MARLBOROUGH & MONROE

Sketch not to scale

INDEXED
Law
MAR 19 1954



note: DWG: 5252-B shows MONROE
AS AN 80' ST. CLK. FOR CHANG.

All elev's shown are from C.B. P.S.' (not Prop.)
Elev's shown are actual elev's (not roads)

B.M. (Dr. Elev. P.S.)

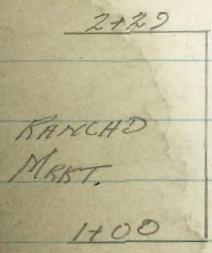
366.07 N.W. B.P. MARLBOROUGH

CURB LEVELS - ON Univ. Ave.
For Proposed Sidewalk
Front of Rancho Market

Walker
Pope
Altman 8-31-54
Olson

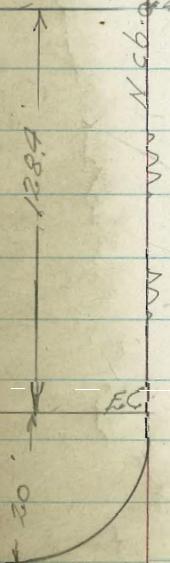
W.O. - 20006

Base
Line



0700

B.M. Top cb
400.00 = Assumed Elev.



Univ. Ave

COLLEGE AVE.

Warr Ave

Base
= N
cb.
LITE

0+91 = End Driveway

	<u>.53</u>	<u>.23</u>		
40349	40251	40223	40220	40193
35	10	5	4	cb.
AC.	AC.	AC.	AC.	

0+75

	<u>.73</u>	<u>.43</u>		
40304	40218	40191	40178	40113
35	10	5	3	on cb in drive Wof.
AC.	AC.	AC.	AC.	

0+64.5 = Beg. Drive

	<u>.90</u>	<u>.60</u>		
40276	40191	40155	40153	40130
35	10	5	2.5	cb.
AC.	AC.	AC.	AC.	Par.

0+50

	<u>.62</u>	<u>.32</u>		
40260	40157	40135	40122	40102
34.5	10	5	2.5	cb.
AC.	AC.	AC.	AC.	Par.

0+25

	<u>.13</u>	<u>.83</u>		
40200	40107	40083	40070	40053
35	10	5	2.5	cb.
AC.	AC.	AC.	AC.	Par.

0+00

	<u>.60</u>	<u>.30</u>		
40140	40065	40030	40019	40000
35	10	5	2.5	cb.
AC.	AC.	AC.	AC. Par.	

Assumed Elev. → 400.00

S.M. Top cb 0+00

2+00

40595	40598	40496	40466	40448	40422
31.9	17	10	5	2.3	Cb.
A.C.	A.C.	A.C.	A.C.		
at Bid.					

1+75

40587	40520	40468	40426	40394	40374
32.3	17	10	5	2.3	Cb.
A.C.	A.C.	A.C.	A.C.		
at Bid.					

1+50

40590	40484	40430	40383	40360	40315
32.7	17	10	5	2.2	Cb.
Conc. Pav.	A.C.	A.C.	A.C.	A.C.	
Doorway					
- Floor					

1+25

40566	40431	40367	40320	40298	40262
33	17	10	5	2.5	Cb.
A.C.	A.C.	A.C.	A.C.		
at Bid.					

1+11

40543	40379	40323	40280	40262	40232
33.1	17	10	5	2.5	Cb.
A.C.			A.C.	A.C.	
at Bid.					

1+00

40402	40310	40272	40240	40225	40212
33.5	17	10	5	2.5	Cb.
	A.C.	A.C.	A.C.		

Utah Ave

3+22 = End Drive

40709
30
A.C.

7.48 7.18
40694 40682 40674 40670 40688
16.5 10 5 2
A.C. A.C. A.C. A.C. Cb

2
Page
= 11
Cb.

3+09.5 = Drive Way

40682
30
A.C.

.76 .46
40671 40658 40647 40636 40616
16.5 10 5 17
A.C. A.C. A.C. A.C. Drive

TR

40635

2+27 = Beg. Drive

6.95 6.65
40660 40627 40618 40611 40635
30 10 5 2
A.C. A.C. A.C. A.C. Cb.

2+68

6.31 6.01
40558 40548 40538 40528 40571
30 10 5 15
A.C. A.C. A.C. A.C. Cb

2+55.8 = Drive Way

5.55 5.25
40533 40514 40506 40499 40495
30 10 5 17
A.C. A.C. A.C. A.C. Drive

2+43.5 = Beg. Drive

.77 .47
40504 40488 40481 40478 40517
30 10 5 15
A.C. A.C. A.C. A.C. Cb.

2+27

40550
31.3
A.C.

5.47 5.17
40506 40491 40479 40470 40487
17 10 5 2
A.C. A.C. A.C. A.C. Cb

\$
Base
= N. db.

4+00

410.60
27.5
Conc.
in Doorway

9.16 8.86
407.55 407.20 407.04 408.56
10 5 2 db
P.C. P.C. Brk.
P.C.

3+57 = Ford Drive

8.37
410.58 408.84 407.93 407.67
28.6 8.8 1
Conc. Brk. Brk.
in Doorway P.C. P.C.

3+50.5 = 2nd Drive

7.68
410.60 410.30 408.93 407.07
28.6 24.2 10.2 db
P.C. End- Brk. in
of 81d. Conc. Encl Conc. Drive
= 81d. P.C.

= Beg. Drive

411.01 = Top Wall
28.6

3+41.3 = E. Face Ret Wall
410.56 410.33 410.01
28.6 24.3 17
Conc. Conc. on
Wall

8.15 7.85
408.80 408.00 407.59 407.45 407.31
17 14.6 9 2.4 db
Gut Conc.

3+40.7 = Beg Ret Wall = West Face

7.88 7.58
407.76 407.50 407.29 407.30 407.28
2.3 5 5 2.7 db
P.C. 8.9 P.C.
Conc.

Clark
Shepherd
Brimer
Ozell

11-30-54
W.O. 3/279

X-SECT ALLEY BIRP - LA JOLLA
PARK: 1 Park NLY to EXIST PAVE.

Ref. F.B. 1853 - 37

Notes For Sketch See F.B. 1853 - 37

0+33 12.1 RT Bay Street - metal - 94% Comp
121 ENAC LAY PRG

0+31 10.1 LT Bay Drive in gar. Bldg.

0+02.5 96 LT E Water - Spout.

0+00.30 { 10.7 RT Cold-Lay Pkg Lot (Bay AT BK Edge)
10 LT Bay Stucco Bldg garage Comp

0+00 = N Line Pearl

Note: Asphl. Con. standard on Conc.
Asphl. Prop. A.C. has been raised to present
thickness into alley

0-14 = N. CA Line Pearl

0-40 = E Pearl A.C. surface

note: N Line Pearl - 0+00 (F1 PK wall AT 0+00)

{ 14' PRG
15' CB Fc to wall
5' WALK
11.6' CB. Radii - 25

B.M.

0+17

115.34

115.17 = S.E. CP Pearl
7' CURB

LT

E
12/9/54

RT

44

INDEXED
MER
DEC 7 1954

Reduced
By Olan

109.40 109.50 106.74 109.57
5.24 5.84 8.60 5.77
12.1 12.1 12.1 2.5
Clay Filgar PRG Clay

109.12 107.53 109.5 108.0
6.22 7.81 7.8 7.3
20, 10.1 10
Asphl. 10
Fl. Elev. 7.8
7.8

108.7 109.3
6.6 6.0
10 12.1
edge CLAY

109.12
6.22
10
Fl. Elev.

110.09 110.39
5.25 4.95
10.7 5.0
edge conc. LAY
Clay

109.77 109.63 109.50 109.34 109.63 109.73 109.85 110.05
5.57 5.71 5.84 6.60 5.71 5.61 5.49 5.29
10 10 10 10 10 10 10
CB. A.C. CONC. CONC. CONC. CONC. CONC.

107.81 108.84 108.55 109.49 109.08 109.07 109.18 109.37 109.39 109.83 109.74 110.08 110.68
100 7.53 6.50 6.77 5.85 6.26 6.27 6.6 5.97 5.25 5.51 5.60 5.26 4.66 Drive
100 6 20 6 12 12 10 10 10 12 12 20 50 100
10 10 10 10 10 10 10 10 10 10 10 10 100

108.86
6.40
100

109.68
5.66
50

110.43
4.97

111.21
4.13
50

112.15
3.17
100

115.34

ALLEY BIK 8 -

LT

£

45

1400

1005 RT Beg Lumber Yd. Bldg.

104.3

4.5
20

103.8

50
10

103.7

51

104.0, 104.6, 107.2, 103.36

48 42 149 540
8 10 1005 1005
Fl Fl

108.42, 104.56

0.34 4.26
122 12.2
Fl Fl
Elev ESTN

0497.5

12.2 RT End sheet metal Bldg. (Comm. gar)

105.99

2.77
12.5
Fl gar

0487

19.5 LT END 2-CAR GAR

105.7

3.1
19

105.3

3.5
10

104.8

40

105.6, 106.3, 106.6

3.2 2.5 2.2
9 10 12

0475

0466

19.6 LT Beg 2-CAR GAR

106.00

2.76
19.6
Fl
Elev

T.P.

3.71 108.76 10.29 105.05

108.76

0450

10.3 LT END Comm. gar Bldg

109.12

6.22
10.3
Fl gar

106.8

8.5
10

106.5

8.8

107.0 107.7

8.3 7.6
10 12

0449

9.6 LT Pole # D-36472-T

0448

7.9 LT & Water Sprout

0444

10.2 LT End wire into gar Bldg.

107.38

7.96
10.2
Lip

115.34

CHK. 0.18 115.19 = 115.17 - ST & B.M.

T.P. 6.93 115.37 0.32 108.44

2450

2100

Section ahead to show grade B.M.T. PAR.

99.17

99.05

99.33

$\frac{9.59}{10}$

$\frac{9.71}{10}$

$\frac{9.43}{10}$

100.62

$\frac{8.14}{10}$

Notes: Set Chk ON CONC. Pkt. AT 1451
 10. RT END CONC. Pkt. Lumber Bldg.
 1450.12 = Edge FIRST CONC. Pkt.
 (grid floor with par)

102.9

102.51

102.40

102.70 102.06

$\frac{5.9}{20}$

$\frac{6.25}{20}$

$\frac{6.36}{20}$

$\frac{6.06}{10}$

$\frac{6.70}{10}$

103.4

103.2

102.9

102.9

$\frac{5.4}{20}$

$\frac{5.6}{10}$

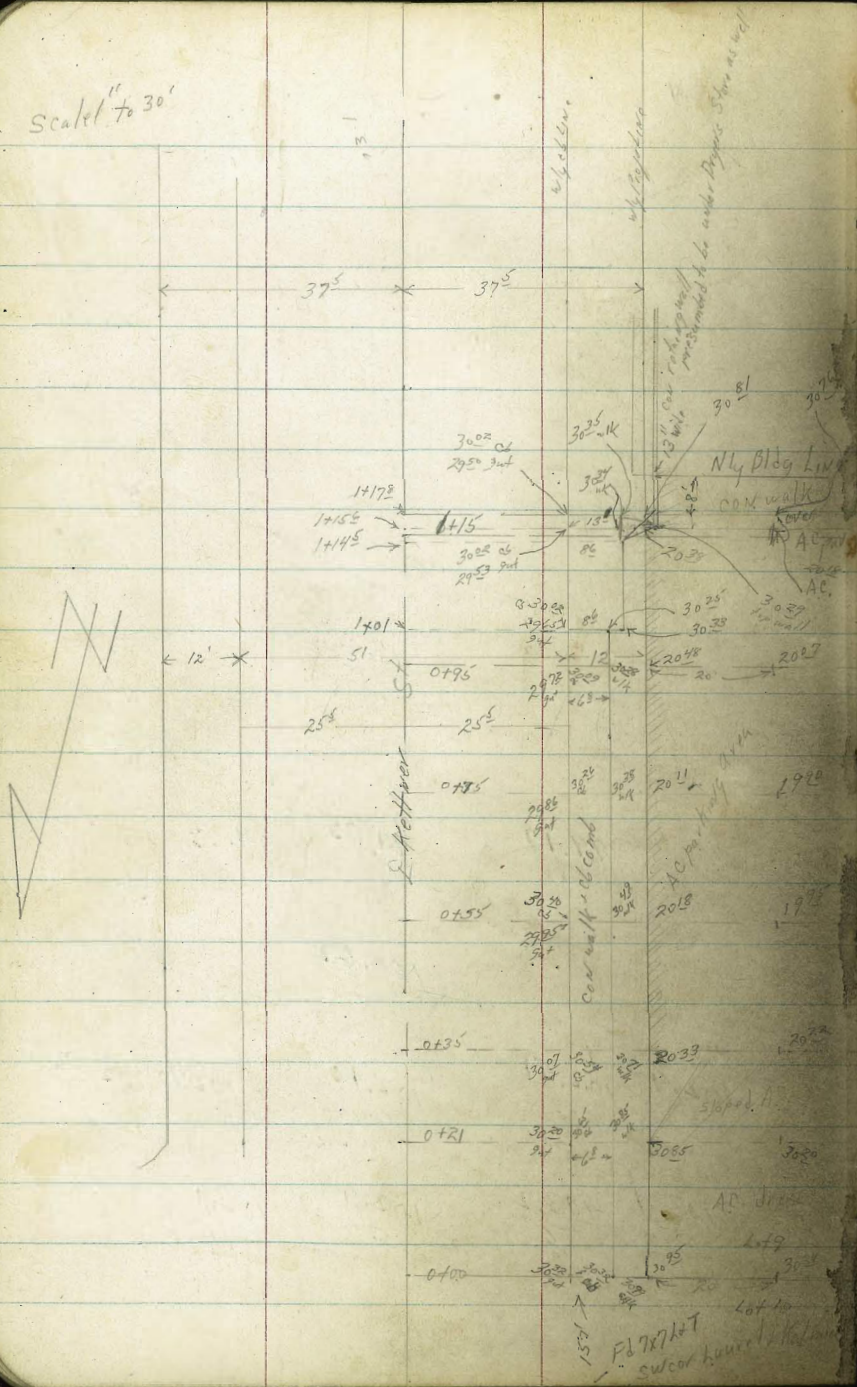
$\frac{5.7}{10}$

$\frac{5.9}{10}$

1425

108.76

Scale 1" = 30'



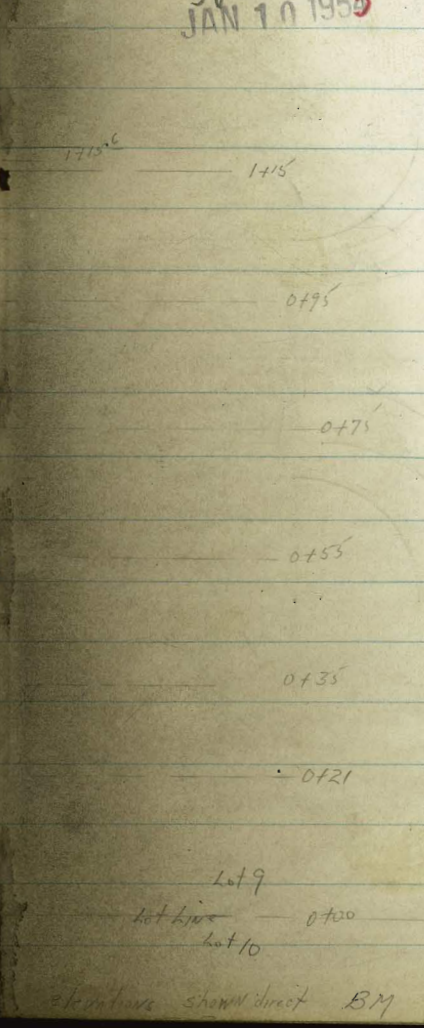
X Sec Parking area Nly of Dryers 47

Furniture Store

NO #212917
1/5/55

D. Smith
J. Rice
D. Chipman

INDEXED
JER
JAN 10 1955



NW 8P
JUNIPER
Kettner

Levels for Construction of Concrete
Cross Gutter 5 Ely Cor 69th St &
Mandalay Road.

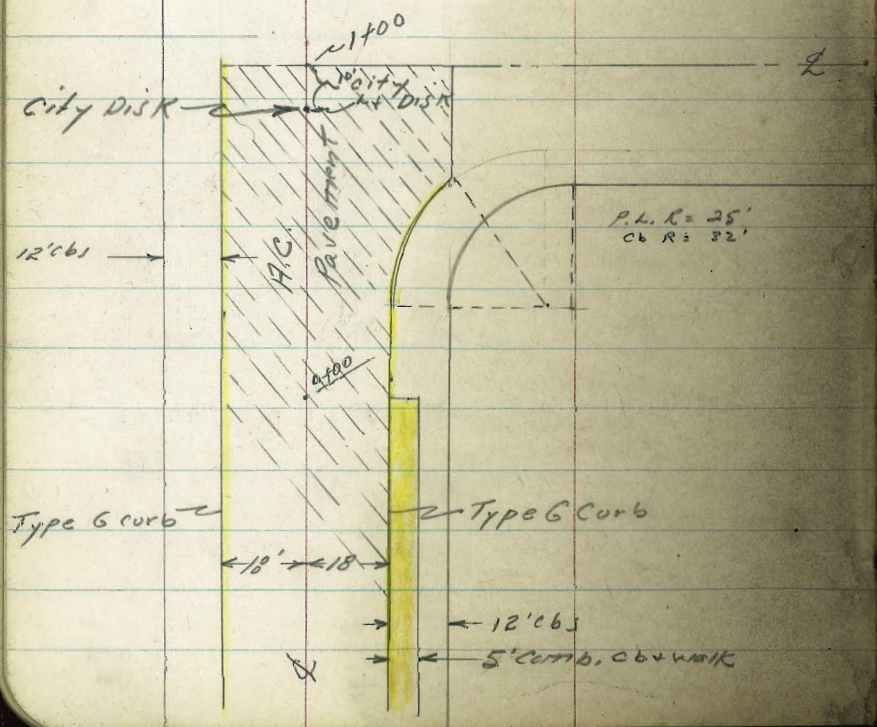
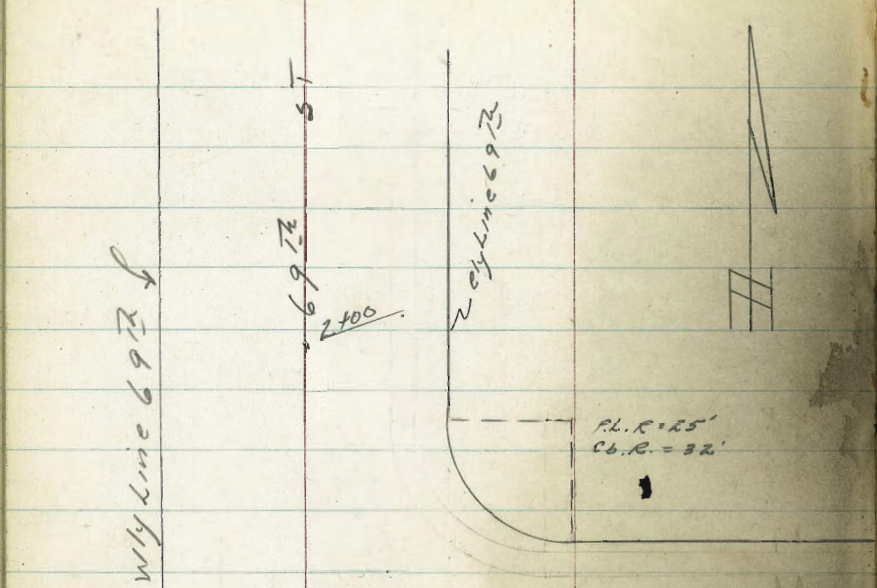
WO # 21355- 5/5/55.

C. Allen, D. Sisson, C. Powell, R. Parks.

Ref 11995-L

See page 49 for Levels.

INDEXED
JER
MAY 5 1955



Levels Corner of 69th + Mandalay Road

32' Rad
 0+50 - 18° RT = B.C. S Ely Return 69 + Mandalay

0+25

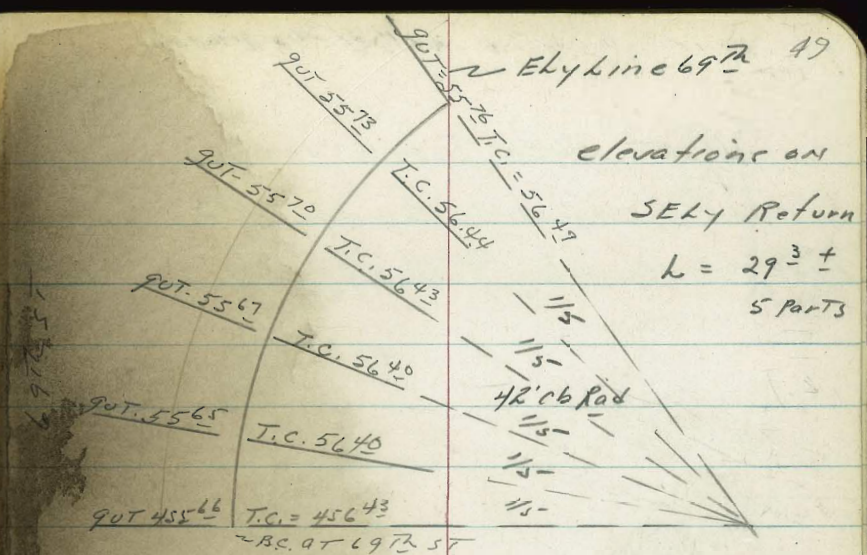
18° RT = Nly end of 5' Comb. Cb + Walk

0+00 = \angle 69th + 100' Sly of \angle Mandalay Road

Elev = 455.84

TBM - Lcity Disk \angle 69th + 10' \pm Sly of \angle Mandalay Rd

BM = BP SE cor school porch at 69th
 and Mohawk - EL = 462.25



55 ⁶⁰	55 ¹⁹	55 ⁸⁵	55 ⁶⁶	56 ⁴³
18°	18°		18°	18°
T.C.	90T		90T	T.C.

55 ⁸¹	55 ³⁴	55 ⁹⁸	55 ⁸⁵	56 ⁵⁷
18°	18°		18°	18°
T.C.	90T		90T	T.C.

55 ⁹⁰	55 ⁴⁴	56 ¹²	55 ⁹²	56 ⁶⁷	56 ⁸⁰
18°	18°	95	18°	18°	23°
T.C.	90T		90T	T.C.	end of Walk

Direct elev Rod Used - add 400' to each elevation shown.

Levels CONT. 69th + Mandalay

LT = Wly

d
69

RT = Ely.

50

18° LT = Nly End Type G Curb
 = Nly edge A.C. Paving 69th
 1700 = $\frac{1}{2}$ Mandalay Road to ely

55^{72}
 18° 55^{90}
 30
 ely edge
 A.C.

55^{54} 55^{06} 55^{89} | 25 wide ditch | 55^{86}
 18° 18° 9
 T.C. 9UT

55^{94}
 30
 ely edge
 A.C.

0 0+90

55^{58} 55^{09} 55^{85} | 25 wide ditch | 55^{66}
 18° 18° on city | 18
 T.C. 9UT Dike a.c. in Poor Cond

88 RT = $\frac{1}{2}$ 25 wide ditch dug thru
 A.C.
 A.C. Paving + NOT Replaced - extends
 To Nly edge A.C. Paving

0 0+82 = Future Curb P.I. on RT

55^{61} 55^{11} 55^{80} 55^{83} 55^{71} 55^{87}
 18° 18° 30
 T.C. 9UT ely edge
 A.C.

0 0+70

55^{65} 55^{16} 55^{79} 55^{67} 55^{75} 55^{45}
 18° 18° 255 \pm 255 \pm
 T.C. 9UT 9UT T.C.

0 0+60

55^{32} 55^{10} 55^{82} 55^{66} 56^{40}
 18° 18° 192 \pm 192
 Hip of Dr 9UT 9UT T.C.
 IN Drive No
 T.C.

Direct Rid used - add 400 to elevs

Levels 69th + Mandlay CONT.

LT=V17

69th

RT=ely-

51

2+00

$56^{\frac{4}{30}}$ $56^{\frac{1}{22}}$ 55° 54° $53^{\frac{9}{9}}$ $53^{\frac{8}{18}}$ $53^{\frac{6}{20}}$ $54^{\frac{9}{30}}$ $55^{\frac{4}{30}}$

1+75

$57^{\frac{4}{30}}$ $56^{\frac{8}{22}}$ 56° $54^{\frac{1}{16}}$ $54^{\frac{5}{9}}$ $54^{\frac{4}{18}}$ $54^{\frac{4}{20}}$ $55^{\frac{6}{30}}$ $56^{\frac{2}{30}}$

1+50

$56^{\frac{4}{30}}$ $55^{\frac{1}{18}}$ 55° 55° 55° $54^{\frac{9}{9}}$ $54^{\frac{9}{18}}$ $55^{\frac{9}{20}}$ $56^{\frac{4}{30}}$

1+25

$57^{\frac{8}{30}}$ 58° 55° $55^{\frac{3}{16}}$ $55^{\frac{2}{9}}$ $55^{\frac{3}{18}}$ $55^{\frac{4}{30}}$

Direct Rod used - add 400'
To eley.

0-25

175.2	176.5	177.1	179.0	179.4	179.7	181.8	183.9	186.4
8.7	6.8	6.2	4.3	3.9	3.6	1.5	10.6	7.1
50	30	20		20	27	30	84	50

0-29.5 = 33.2' LT, BK. edge & comb. walk

176.53
6.77
33.2
BK
WALK

#2 - CB B.C.
TACINTO

172.66	173.15
10.64	10.15
6	CB B.C.

NELY Ret. From end of
EXIST CB BK to BC
ON TACINTO
(CB. L = 36.6 ±)

#1 = mid pt
18.3 BK

174.37	174.87
8.93	8.43
Q	CB

0-36.5 = 27.6' LT
= END of CB - NELY Ret.

176.41
175.95

6.87	7.35
27.6	27.6
CB	C
end	

0-49.51 = Edge A.C. Pav Q (Sect along edge Pav)

175.95	176.58	176.71	176.74	176.70
7.35	6.72	6.59	6.56	6.90
30.8	15.4		11.2	22.4
C				C

(0-36.5 at B.E)

0-60.24 = $\left\{ \begin{array}{l} 20' RT = \text{edge A.C. Pav} \\ 20' RT = \text{END of EXIST TYPE "C" CB ON RT.} \end{array} \right.$

175.38	176.09	176.30	176.85	177.05	177.20	179.30	180.1	183.8
7.92	7.21	6.80	6.15	6.25	6.1	4.0	3.2	4.5
20		20	20	27.5	20	33	39	45
		C	CB					
				15' edge				
				5' walk				

183.30

SANTA MARGARITA (CONT.)

(N4) LT.

Q

RT

54

0+96
0+93

42.1 LT = SELV CorN. garage
26.4 LT END CON. DRIVE

180.66
6.44
26.4

0+78

29.2 LT END WALL
27.2 LT Bsq. CON. DRIVE : 429 LT = SW CORN. 2-car garage

180.18
6.98
179.2
92.9
FTG
WALL

179.2
7.9
27.2
FTG
WALL

180.4
6.68
27.2
1.0

0+75

179.3
7.8
50

179.9
7.2
30

180.6
6.5
20

181.5
5.6

181.8
5.3
17

182.4
4.7
20

186.1
1.0
30

189.1
+2.0
50

0+50

28.8 LT To Fc. Wall here

178.1
8.4
50

178.8
8.3
30

171.8
9.3
28.8
FTG
WALL
here

180.6
6.5
20

181.4
5.7

181.5
5.6
17

182.0
5.1
20

186.8
0.3
30

189.5
+2.4
50

0+36

29.0 LT & 5.0 wide (5 steps)
CONC. STEPS & WALK
WALK angles w/ly of radial to ST.

178.49
8.61
40
WALK

178.56
8.54
33.5
5/8" -
STEP
(CONC)

180.61
6.49
29.0
FTG
STEP

0+25

177.6
7.5
50

180.1
7.0
30

179.8
7.3
20

180.9
6.2

180.9
6.2
18

181.5
5.6
20

185.5
1.6
30

187.6
+0.5
50

0+24

23.4 RTE Pole # 219364

0+00.5

30.9 LT Bsq 2' CONC. BLK WALL

177.6
9.5
30.9
FTG
WALL

graded toiled SURFACE

0+00

S. MARGARITA opp. Prop B.C.S. LT & RT
See sketch F.B. 1712

177.4
7.7
30

177.6
9.5
30

178.2
8.9
20

180.1
7.0

180.1
7.0
20

184.8
2.3
30

186.8
0.3
50

T.P

10.57 187.10 6.77 176.53

187.10
1

1483 30.2 LT END CONC. COPING

9.0	8.65																		
30.2	30.2	178.4	178.0	177.9	177.7	177.5	178.6	181.4	185.06	184.76	184.5	184.6							
FTG	TP	8.7	9.1	9.2	9.4	9.6	8.5	5.7	2.04	2.34	2.6	2.5							
		50	30	20		12	20	30	39.8	39.8	40	50							
									CA	90T = Drive	90T = Drive								

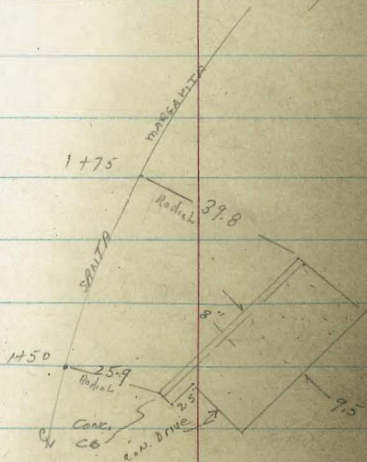
1475 39.8 RT END DRIVE

1454 29.1 LT Bay 8" wide CONC. COPING (BUILT ON TERRACE)

178.19	178.52
8.91	8.58
29.1	29.1
FTG	TP

1453 29.1 FTG 2.2 CONC. WALK - CURVES ELY From Bed to SK

178.46	178.52
8.62	8.58
40	29.1
ON	4P
WALK	



1450 25.9 RT Bay Conc. OB + DRIVE

178.4	178.6	178.7	179.5	179.4	179.3	180.8	180.6	182.84	182.5	182.71
8.7	8.5	8.4	7.6	7.7	7.8	6.3	6.5	4.26	4.6	4.39
50	30	27	20		15	20	25.9	25.9	25.9	35.4
							FTG	TP	90T	4P
							CA	CA	= Drive	Drive

1425

177.9	179.2	180.0	180.6	180.5	180.9	182.7	183.9	185.9
9.2	7.9	7.1	6.5	6.6	6.2	4.4	3.2	1.2
50	30	20		17	20	30	40	50

1400

179.6	180.6	180.7	181.2	181.3	181.9	182.4	185.8	188.3
7.5	6.5	6.4	5.9	5.8	5.2	4.9	1.3	1.2
50	30	20		17	20	23	30	50
			187.10					

SANTA MARGARITA (CONT.)

56

2+61.46 = P.C.C.

173.6	LT.	170.5	RT.
5.9	171.8	170.2	169.7
50	7.7	9.0	170.8
	30	20	8.7
			172.8
			7.7
			50

2+59 28.5 LTE Pole # 573682-H ± 465LT E Deadman

2+50

175.2	173.0	171.6	171.2	170.7	173.1	173.4
4.3	6.5	7.9	8.3	8.8	6.4	6.1
50	30	20		20	30	50

2+37 24.8 RTE Deadman

2+25

177.47	177.57	175.77	173.97	173.47	173.3	173.8	175.1	176.5
2.0	2.1	3.7	5.5	6.0	6.2	5.7	4.4	3.0
50	32	30	20		16	20	30	50

2+16 24.2 LTE Anchor Pole

2+13

32.6 LTE 2.5 Con. Walk BUILT almost Radial to ST.

177.57	177.07
1.9	2.45
40	32.6
Walk	Lip

2+11 24.5 RTE Pole # 277365

T.P. 5.03 179.49 12.66 174.44

179.47

2+00

177.6	177.3	175.9	175.0	175.6	176.7	178.5	181.8
9.5	9.8	11.2	11.3	11.5	10.4	8.6	5.3
50	30	20		12	20	30	50

187.10

= F.C - 53' rd

4
157.39
9.54
PT.
157.88
9.05
CB

3
157.72
9.21
C
158.20
8.73
CB

2
158.28
8.65
C
158.76
8.17
CB

1
159.0
7.90
C
159.51
7.42
CB

NW 1/4 Ret.

CB. L = 4/4

divided into 4 P.T.'s

From B.C. to E.C.
maru. (53' rd)

160.51
159.82
6.22
20
20
CB
C
B.C.

3744.52

20 AT = CB, B.C. - NW 1/4 Ret 53' rd + MARGARITA

3730

20 LT = Beq. Type "G" CB.

165.7
12
40
164.1
2.8
30
164.1
2.8
23
161.41
5.52
20
CB
and
(Not B.C.)
CB.
160.91
6.02
20
6
160.10
5.83
18.5
PT
up
163.3
3.6
168.9
3.0
20
164.9
2.0
30
166.1
0.8
40

T.P.

0.12

166.93

12.66

166.81

166.93

3700

Soil Sample #1 - here

169.5
10.0
40
169.0
10.5
30
168.8
10.7
27
167.2
12.3
20
166.4
13.1
166.5
18.0
20
167.3
12.2
30
170.1
9.4
42
170.3
9.2
50

2792

29.2 LT & 2.5 Con. Walk

(Suit Radial)
+

170.34
9.13
38
Con Walk
169.86
9.61
29.2
-10

179.47

MARGARITA (Cont.)

NELY Ret.

C.A. L = 38.9 ±

Divided 4 pts

From B.C. to E.C.
(margin) (53rd)

426.7 ± = C.A. B.C. 18.3 LT. - NELY Ret.

445 ± 17' LT = Edge A.C.

440.5 ± = E MARGARITA + INT. ELY CB 53rd - Projected
outs along CB line

4700

383.4 ± = E MARGARITA + E 53rd (outs along E 53rd)

3476 16.5 RTE roadman

3765.3 ± = E MARGARITA + WLY CB LINE 53rd Projected
outs along CB line

3457 22.5 AT & Pk # 373278

3452.5 20.4 LT = Edge A.C. Pav. AT NWLY Ret. (Curry edge)

3450

LT.

E

RT.

58

E.C. 53rd
#1 157.20 157.29
9.23 9.24
C CB
#3 157.41 157.88
9.52 9.55
C CB
#2 157.52
9.41 Drive
C CB
#1 157.61
9.32 Drive
C CB

158.30 157.77
8.63 9.16
18.3 18.3
CB C

158.7 151.25 156.4 156.74 157.89 157.20 158.44 158.85 158.9 159.1 160.1
11.26 11.68 10.8 10.77 9.24 9.73 8.49 8.4 8.0 7.8 6.8
14.5 14.5 7.5 7.5 CB 4.5 14 14
CB C C C Edge 9rd
(50' WLY E.C.) 9.5 E.C. AC

158.43 158.5 159.0 159.2 160.0 161.2 163.9
8.50 8.4 7.9 7.7 6.9 5.7 3.0 20
14.4 14
Edge 9rd
AC
(radial outs)

156.40 157.62 158.78-158.8 159.6 159.7 160.7
10.53 9.31 8.15 8.1 7.3 7.2 6.2
10.0 5.0 15.3 1.5 11 20
Edge 9rd
AC

158.98 158.50 156.57 156.10 157.88 157.89 159.10 159.3 160.6 160.7 161.5
10.9 11.43 10.36 10.83 9.05 9.54 7.83 7.6 6.3 6.2 5.4
14.5 14.5 7.5 7.5 CB 4.5 16.9 1.5
CB C C C Edge 9rd
(50' WLY E.C.) 9.5 E.C. AC

162.4 160.1 159.89 159.36 159.4 161.7 162.6 163.9 165.4 165.9
4.5 6.8 7.05 7.57 7.5 5.2 4.3 3.0 1.5 1.0
10 23 20.8 20.8 18 20 30 32 40

16.6 93

MARGARITA (CONT.)

(N4) LT.

E

Rt.

59

5450

5409

25' RT E Fire-Hyd

5405

28.2 RT E Deadman

5404

19.2 RT E Pole # 573684-H

5400

T. P.

7.01

165.54

8.40

158.53

202.25

WE AT EC

165.54

Note: E FOR SECTIONS ahead is 5.84 = E 50 ST. AHEAD

4471.08 = { L = E.C. - Beg. 144' Tang. B.C. MARGARITA - 4471.52
 P.R.C. MARGARITA
 13' LT = END EXIST TYPE G CB

4447

14.91 T = E. CURVE CA.

4432.5+

16.75 T = END TANG. CB + Beg. CURVE

Note: CHK: CONST. PLANS - AS BUILT There is 16' TANG. CB Beg. AT
 CB. B.C. 4416.76 Sta. + ending at 4432.5+

159.1

158.9

159.3

158.7

159.5

159.7

160.2

160.5

160.5

161.5

6.4

6.6

6.2

6.8

6.0

5.8

5.3

5.0

5.0

4.0

40

25

18

15

10

12

18

25

40

159.2

158.7

159.0

158.4

159.4

159.4

159.9

160.1

164.2

6.3

6.8

6.5

7.1

6.1

6.1

5.6

5.4

4.3

40

25

18

15

10

18

25

40

158.6

158.59

158.13

158.21

158.7

159.0

159.5

160.4

161.4

8.3

8.34

8.80

8.72

8.2

7.9

7.4

6.5

5.5

25

13

180

11.5

6

14

20

30

40

158.0

158.35

157.89

158.4

158.9

160.1

160.2

160.4

161.3

8.9

8.58

9.04

8.5

8.0

6.8

6.7

6.5

5.6

25

17.9

14.9

6

15

19

20

30

40

158.29

158.82

8.64

9.11

16.75

16.75

CB

6

166.93

MARGARITA (Cont.)

8150

8147

15.8 RT = E Deadman

8100

7184

18.5 LJE ornamental shrub (3'x2')

7178

18.5 LJE ornamental shrub (3'x3')

7150

7148

16' RT & Pole # JP 398916

7100

6150

6127

15.5 RT & Pole # P374600 - 25'3 RT & Deadman

6107

14.5 RT & Deadman

6101.96 = E.C. SANTA MARGARITA

5163

5' RTE M.H.

160.6 4.9 40	160.8 4.7 25	161.0 4.5 18	161.2 4.3 15	160.9 4.6 11	LT E 161.4 4.1	RT 161.3 4.2 13	161.7 3.8 14	162.1 3.4 18	162.4 3.1 25	162.7 2.8 40
--------------------	--------------------	--------------------	--------------------	--------------------	-------------------------	--------------------------	--------------------	--------------------	--------------------	--------------------

160.9 4.6 40	160.7 4.8 25	160.7 4.8 18	160.8 4.7 15	160.5 5.0 12	160.9 4.6	160.2 4.9 13	161.1 4.4 14	161.4 4.1 18	161.6 3.9 25	162.1 3.4 40
--------------------	--------------------	--------------------	--------------------	--------------------	--------------	--------------------	--------------------	--------------------	--------------------	--------------------

159.9 5.6 40	160.1 5.4 25	160.2 5.3 18	160.4 5.1 14	160.0 5.5 15	160.4 5.1	160.2 5.3 12	160.8 4.7 18	161.1 4.5 25	162.3 3.8 40
--------------------	--------------------	--------------------	--------------------	--------------------	--------------	--------------------	--------------------	--------------------	--------------------

159.6 5.9 40	159.7 5.8 25	159.4 6.1 18	160.1 5.4 16	159.4 6.1 14	160.0 5.5	160.0 5.5 11	160.6 4.9 18	161.3 4.2 25	163.3 2.9 40
--------------------	--------------------	--------------------	--------------------	--------------------	--------------	--------------------	--------------------	--------------------	--------------------

158.7 6.8 40	159.0 6.5 25	159.2 6.3 18	159.6 5.9 16	159.0 6.5 15	159.8 5.7	160.0 5.5 10	160.2 5.3 18	160.6 4.9 25	163.0 2.5 40
--------------------	--------------------	--------------------	--------------------	--------------------	--------------	--------------------	--------------------	--------------------	--------------------

158.5 7.0 40	158.5 7.0 25	159.4 6.1 18	158.9 6.6 15	159.5 6.0	159.5 6.0 10	160.2 5.3 18	161.1 4.4 25	163.3 2.2 31	163.7 1.9 40
--------------------	--------------------	--------------------	--------------------	--------------	--------------------	--------------------	--------------------	--------------------	--------------------

159.58
5.96
5
RIM

165.54
↑

MARGARITA (CONT)

♀

61

10136 25.1 LT end Picket Fence

10132 22.7 LT E 8" Pepper Tree

10109 23.1 LT E 6" Pepper-Tree

10100
9195 — 23.5 LT E 4" Pepper-Tree

9193 25' LT end Wire Fence + 24.7 LT. Bog 3' Picket Fence

9178 16.5 RT E Pole # JP 378914

9150

9103 24.9 LT Bog 4' — Wire Fence

TR 5.63 168.03 3.14 162.40

9100

8472.5 0.15 RT E MH

8467 15.9 RT E Pole # P 77617

162.6
51
40
162.8
52
25
163.0
50
18
163.2
48
12
162.9
51
10
163.3
47
13
163.6
44
18
162.8
42
18
164.4
36
25
165.0
30
40

162.1
57
40
162.3
57
25
162.5
55
18
162.7
53
12
162.0
6.0
10
162.6
54
14
162.5
55
15
163.0
50
18
162.2
48
18
162.4
46
25
163.6
44
40

161.1
44
10
161.5
40
25
161.8
37
18
161.7
38
13
161.5
40
11
161.9
36
13
161.8
37
13
162.2
33
14
162.5
30
18
163.0
25
25
163.5
20
40

168.03

117.59
3.95
0.15
Rim

115.54

169.54

MARGARITA (CONT.)

11432.8 0.5' LT E M.H.

11431.84 = E MARGARITA + E 54' L

11422 23.9 RT END Picket Fence + Beq 6' High Hedge 24.5 RT Hedge
3' wide

Σ OF MARGARITA
11416.84 = 1 INT. W'ly edge Conc. Pav. 54' L - Proj.
24' LT - edge Pav.

11402 24.2 RT. Beq 5' Picket Fence

177 RTE Pole #JP77965
11401.84 = w'ly line 54' L

10492 21.7 RTE 2.5' Conc. Walk + Steps

10455 24.7 LT E 5' wide Conc. Steps

10450

10444 24.9' LT E 5' wide Conc. Steps - 4 Steps

162.05 162.30 162.8 162.84 165.5 163.86
5.78 5.73 5.2 5.19 2.5
100 75 24 24 70
Edge Pav. DNT edge Pav.
163.9 163.9
164.0 164.4 164.3 165.2
4.6 3.6 3.7 2.8
14 18 25 40

161.81 162.12 163.74 163.7 163.7
6.22 5.91 4.29 4.3 4.3
100 75 24 24
Edge Pav. DNT edge Pav.
164.6
3.4
25

162.9 163.0 162.9 163.6 163.7
5.1 5.0 5.1 5.0 4.3
50 25 18 11 9
164.0 164.4 164.4 165.0 166.1
7.0 3.6 3.6 3.0 1.9
14 15 18 25 70

164.89 165.25 165.73 166.14 166.82
3.14 2.78 2.30 1.87 1.41
2.7 26.8 26.8 29.6 29.6
Lip 2.7' Step Lower Step TP Upper Step
2.7' Lower Step TP Upper Step
2.7' Step 2.7' Step 2.7' Step 2.7' Step

165.37 163.71
2.66 4.32
2.74 2.7
2.74 2.7
2.74 2.7
163.7 163.6 163.5 163.5 163.3 163.6
1.3 4.4 4.5 4.5 4.7 4.7
30 25 18 12 10
163.7 164.4 164.1 165.7 167.2 167.4
4.3 3.6 3.5 2.3 0.8 0.6
15 16 18 25 30 70

165.37 163.75
2.66 4.28
2.74 2.7
2.74 2.7
2.74 2.7

168.03

MARGARITA (CONT.)

12+76 E 215' LT 3' CONCL. WALL

12+60 173 RT E Pole # 50172560

12+50

12+10 E 20.6 LT 2.5 CONC. WALL

12+00 Soil Sample # II here

T.P. 6.27 170.54 3.76 164.27

11+61.84 = E. Line 54' H

11+58.5 19.8 LT Beg 3' Steel Wire Fence

11+55 25.5 RT E End Hedge

11+49 17.9 RT E FIRE HD

11+46.84 = E MARGARITA ELY Edge Corn Par

LT
164.84 164.88 164.90
5.70 5.66 5.64
30 25 21.5
ON WALL 4P

E

RT

63

164.5 164.5 164.5 164.5 164.2 164.8
6.0 6.0 6.0 6.0 6.3 5.7
40 25 18 10 9 12
165.2 166.1 166.2 168.6
5.3 4.4 3.9 1.9
12 18 25 40

164.34 164.34 164.35
6.20 6.20 6.19
30 25 20.6
ON WALL 4P

164.3 164.3 164.3 164.2 163.6 164.2
6.2 6.2 6.2 6.3 6.9 6.3
40 30 25 18 11 8
164.6 165.3 166.2 166.7
5.9 5.2 4.3 3.8
12 18 25 40

170.54

163.5 163.7 163.9 163.6 163.0 163.9 164.3 164.7 165.2 166.0
4.5 4.3 4.1 4.4 5.0 4.1 3.7 3.3 2.8 2.0
50 25 18 12 10 13 18 25 40

161.98 162.14 162.58 162.7 163.8 165.0
6.15 5.89 5.45 5.3 4.2 3.0
100 75 24 24 12 2.5
ELY Edge PAR Edge PAR DIST

168.03

MARGARITA (CONT.)

13400

13491

13472

13462

13450

13432

13430

134095

13401

13400

12496

{ 573 RT 9M.
36.1 RT E Con. Drive - 8'

26.3 RT End BIK wall

23 LT Beg 3' Steel-wire Fence

26.2 RT Beg. 4' wide Con. BIK wall

20.1 LT E 3' Con. walk

34.5 LT E 5.8' Conc. Ribbon (Fly Ribbon)

{ 36.5 LT E 4.0' Conc. Ribbon (W Fly Ribbon)
91' LT gar.

21.9 LT End 3' Steel-wire Fence

165.0	165.1	165.1	165.1	165.5	165.5	166.1	166.9	168.9
5.5	5.4	5.4	5.4	5.0	5.0	4.4	3.6	1.6
40	25	18	11		11	18	25	40

168.88	170.88
166	+0.34
36.1	573
2P	F199R

167.58	166.3
2.96	4.2
26.3	26.3
TP	FTL

164.7	165.0	165.1	165.2	164.9	165.3	165.6	166.0	167.0	167.3	170.8	170.7
5.8	5.5	5.4	5.3	5.6	5.2	4.9	4.5	3.5	3.2	4.3	4.7
40	25	18	12	10		13	18	25	27	35	40

168.01	167.2
25.3	3.3
26.2	26.2
TP	FTL

165.31
165.27
165.26
523 527 528
3025 201
4P

164.52
6.02
36.5

164.14
6.40
21
F199R

164.54
6.00
36.5
2P

164.4	164.7	164.8	165.1	164.7	165.2	165.5	166.5	168.0	168.9
6.1	5.8	5.7	5.4	5.8	5.3	5.0	4.0	2.5	1.6
40	25	18	11	10		12	18	25	40

170.54

MARGARITA (CONT.)

(N₂) LT

E

RT

LS

16700

166.6	166.8	166.9	167.1	166.9	167.4	167.2	168.2	168.3	168.6	168.8
7.9	7.7	7.6	7.4	7.6	7.1	7.3	6.3	6.2	5.9	5.7
40	25	18	10	9		13	15	18	25	40

15450

166.5	166.5	166.6	166.8	166.4	166.9	166.9	168.0	168.2	168.1	168.1
8.0	8.0	7.9	7.7	8.0	7.6	7.6	6.5	6.3	6.4	6.4
40	25	18	10	9		12	14	18	25	40

15147

16' RT E Pole # JP 378913

T.P.

7.13

174.45

3.22

167.32

174.45

15400

165.9	166.2	166.3	166.4	166.2	166.4	166.4	167.0	167.0	167.4	167.6
4.6	4.3	4.2	4.1	4.3	4.1	4.1	3.5	3.5	3.1	2.9
40	25	18	10	9		12	14	18	25	40

14778

27.8 LTE 4' CON. MARK

165.66	165.55
4.88	4.99
40	25
MARK	LIP

14457

25.1 LTE 3' CON. MARK

165.66	165.91
4.88	4.63
40	25
MARK	LIP

14450

165.6	165.5	165.5	165.5	165.9	166.0	166.7	167.7	168.5
4.9	5.0	5.0	5.0	4.6	4.5	3.8	2.8	2.0
40	25	18	10		11	18	25	40

14432

16.7 RT E Pole # P170015

165.40	165.55
5.14	4.99
40	25
MARK	LIP

14416

24.3 LTE 2.5 MARK

14412

2.4 LT END Steel-wire Fence

170.54

SANTA MARGARITA (cont.)

T.P. 2.28 166.14 6.59 163.86
 T.P. 3.42 170.45 7.42 7.42 167.03

17+83.77+ - Ely Line

17+58.77- E 55' 1/2 (cuts along E 55' 1/2)

17+32.78+ - W Line 55' 1/2 (cuts along W 1/2 line)

17+30 10.1 RT. E Gate-Valve

17+25 13.7 RT Water-gate

17+21 23.6 RT & F Hyd.

17+00

16+99 17.3 RT & Deadman

16+91 16.8 RT & Deadman

16+70 16.3 RT & Pk # P171185

16+50

LT. E RT. LL

168.2 168.5 169.4 170.1 171.1
 6.3 6.0 5.1 4.4 3.4
 50 25 25 50

166.8 167.8 168.5 169.5 170.2 171.0
 7.7 6.7 6.0 5.0 4.3 3.5
 70 50 25 25 30

168.8 168.9 168.9 168.3 169.9 169.3 169.8 169.8 170.1
 5.7 5.6 5.6 6.2 5.6 5.2 4.7 4.7 4.1
 50 25 18 17 56 15 18 25 40

168.3 168.3 168.1 168.0 168.2 168.4 169.2 169.5 169.7 170.0
 6.2 6.2 6.4 6.5 6.3 6.1 5.3 5.0 4.8 4.5
 70 25 18 9 13 13 15 18 25 40

167.5 167.4 167.5 167.5 167.4 169.8 167.7 168.4 168.5 169.1 169.2
 7.0 7.1 7.0 7.0 7.1 6.7 6.8 6.1 6.0 5.4 5.3
 70 25 18 10 9 13 14 18 25 40

174.45
 X

SANTA MARGARITA

CHK:

1.70 189.49 - 189.45 = STG BM

T.P.

10.17

191.19

3.18

181.02

T.P.

11.88

184.20

0.32

172.32

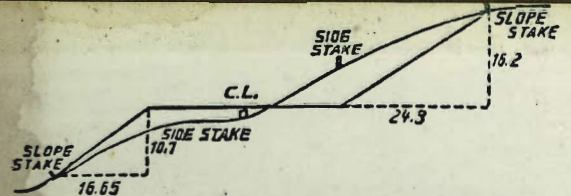
T.P.

12.48

172.64

5.98

160.16



DISTANCES FROM SIDE STAKES FOR CROSS-SECTIONING.
SLOPE 1 1/2 TO 1. ROADWAY OF ANY WIDTH.

	0	.1	.2	.3	.4	.5	.6	.7	.8	.9	
0	0.00	0.15	0.30	0.45	0.60	0.75	0.90	1.05	1.20	1.35	0
1	1.50	1.65	1.80	1.95	2.10	2.25	2.40	2.55	2.70	2.85	1
2	3.00	3.15	3.30	3.45	3.60	3.75	3.90	4.05	4.20	4.35	2
3	4.50	4.65	4.80	4.95	5.10	5.25	5.40	5.55	5.70	5.85	3
4	6.00	6.15	6.30	6.45	6.60	6.75	6.90	7.05	7.20	7.35	4
5	7.50	7.65	7.80	7.95	8.10	8.25	8.40	8.55	8.70	8.85	5
6	9.00	9.15	9.30	9.45	9.60	9.75	9.90	10.05	10.20	10.35	6
7	10.50	10.65	10.80	10.95	11.10	11.25	11.40	11.55	11.70	11.85	7
8	12.00	12.15	12.30	12.45	12.60	12.75	12.90	13.05	13.20	13.35	8
9	13.50	13.65	13.80	13.95	14.10	14.25	14.40	14.55	14.70	14.85	9
10	15.00	15.15	15.30	15.45	15.60	15.75	15.90	16.05	16.20	16.35	10
11	16.50	16.65	16.80	16.95	17.10	17.25	17.40	17.55	17.70	17.85	11
12	18.00	18.15	18.30	18.45	18.60	18.75	18.90	19.05	19.20	19.35	12
13	19.50	19.65	19.80	19.95	20.10	20.25	20.40	20.55	20.70	20.85	13
14	21.00	21.15	21.30	21.45	21.60	21.75	21.90	22.05	22.20	22.35	14
15	22.50	22.65	22.80	22.95	23.10	23.25	23.40	23.55	23.70	23.85	15
16	24.00	24.15	24.30	24.45	24.60	24.75	24.90	25.05	25.20	25.35	16
17	25.50	25.65	25.80	25.95	26.10	26.25	26.40	26.55	26.70	26.85	17
18	27.00	27.15	27.30	27.45	27.60	27.75	27.90	28.05	28.20	28.35	18
19	28.50	28.65	28.80	28.95	29.10	29.25	29.40	29.55	29.70	29.85	19
20	30.00	30.15	30.30	30.45	30.60	30.75	30.90	31.05	31.20	31.35	20
21	31.50	31.65	31.80	31.95	32.10	32.25	32.40	32.55	32.70	32.85	21
22	33.00	33.15	33.30	33.45	33.60	33.75	33.90	34.05	34.20	34.35	22
23	34.50	34.65	34.80	34.95	35.10	35.25	35.40	35.55	35.70	35.85	23
24	36.00	36.15	36.30	36.45	36.60	36.75	36.90	37.05	37.20	37.35	24
25	37.50	37.65	37.80	37.95	38.10	38.25	38.40	38.55	38.70	38.85	25
26	39.00	39.15	39.30	39.45	39.60	39.75	39.90	40.05	40.20	40.35	26
27	40.50	40.65	40.80	40.95	41.10	41.25	41.40	41.55	41.70	41.85	27
28	42.00	42.15	42.30	42.45	42.60	42.75	42.90	43.05	43.20	43.35	28
29	43.50	43.65	43.80	43.95	44.10	44.25	44.40	44.55	44.70	44.85	29
30	45.00	45.15	45.30	45.45	45.60	45.75	45.90	46.05	46.20	46.35	30
31	46.50	46.65	46.80	46.95	47.10	47.25	47.40	47.55	47.70	47.85	31
32	48.00	48.15	48.30	48.45	48.60	48.75	48.90	49.05	49.20	49.35	32
33	49.50	49.65	49.80	49.95	50.10	50.25	50.40	50.55	50.70	50.85	33
34	51.00	51.15	51.30	51.45	51.60	51.75	51.90	52.05	52.20	52.35	34
35	52.50	52.65	52.80	52.95	53.10	53.25	53.40	53.55	53.70	53.85	35
36	54.00	54.15	54.30	54.45	54.60	54.75	54.90	55.05	55.20	55.35	36
37	55.50	55.65	55.80	55.95	56.10	56.25	56.40	56.55	56.70	56.85	37
38	57.00	57.15	57.30	57.45	57.60	57.75	57.90	58.05	58.20	58.35	38
39	58.50	58.65	58.80	58.95	59.10	59.25	59.40	59.55	59.70	59.85	39
40	60.00	60.15	60.30	60.45	60.60	60.75	60.90	61.05	61.20	61.35	40
41	61.50	61.65	61.80	61.95	62.10	62.25	62.40	62.55	62.70	62.85	41
42	63.00	63.15	63.30	63.45	63.60	63.75	63.90	64.05	64.20	64.35	42
43	64.50	64.65	64.80	64.95	65.10	65.25	65.40	65.55	65.70	65.85	43
44	66.00	66.15	66.30	66.45	66.60	66.75	66.90	67.05	67.20	67.35	44
45	67.50	67.65	67.80	67.95	68.10	68.25	68.40	68.55	68.70	68.85	45
46	69.00	69.15	69.30	69.45	69.60	69.75	69.90	70.05	70.20	70.35	46
47	70.50	70.65	70.80	70.95	71.10	71.25	71.40	71.55	71.70	71.85	47
48	72.00	72.15	72.30	72.45	72.60	72.75	72.90	73.05	73.20	73.35	48
49	73.50	73.65	73.80	73.95	74.10	74.25	74.40	74.55	74.70	74.85	49
50	75.00	75.15	75.30	75.45	75.60	75.75	75.90	76.05	76.20	76.35	50

2172
 31 ✓
 3489.6