

DISTANCES FROM SIDE STAKES FOR CROSS-SECTIONING
SLOPE 1 TO 1. ROADWAY OF ANY WIDTH

	0	.1	.2	.3	.4	.5	.6	.7	.8	.9	
0	0.00	0.10	0.20	0.30	0.40	0.50	0.60	0.70	0.80	0.90	0
1	1.00	1.10	1.20	1.30	1.40	1.50	1.60	1.70	1.80	1.90	1
2	2.00	2.10	2.20	2.30	2.40	2.50	2.60	2.70	2.80	2.90	2
3	3.00	3.10	3.20	3.30	3.40	3.50	3.60	3.70	3.80	3.90	3
4	4.00	4.10	4.20	4.30	4.40	4.50	4.60	4.70	4.80	4.90	4
5	5.00	5.10	5.20	5.30	5.40	5.50	5.60	5.70	5.80	5.90	5
6	6.00	6.10	6.20	6.30	6.40	6.50	6.60	6.70	6.80	6.90	6
7	7.00	7.10	7.20	7.30	7.40	7.50	7.60	7.70	7.80	7.90	7
8	8.00	8.10	8.20	8.30	8.40	8.50	8.60	8.70	8.80	8.90	8
9	9.00	9.10	9.20	9.30	9.40	9.50	9.60	9.70	9.80	9.90	9
10	10.00	10.10	10.20	10.30	10.40	10.50	10.60	10.70	10.80	10.90	10
11	11.00	11.10	11.20	11.30	11.40	11.50	11.60	11.70	11.80	11.90	11
12	12.00	12.10	12.20	12.30	12.40	12.50	12.60	12.70	12.80	12.90	12
13	13.00	13.10	13.20	13.30	13.40	13.50	13.60	13.70	13.80	13.90	13
14	14.00	14.10	14.20	14.30	14.40	14.50	14.60	14.70	14.80	14.90	14
15	15.00	15.10	15.20	15.30	15.40	15.50	15.60	15.70	15.80	15.90	15
16	16.00	16.10	16.20	16.30	16.40	16.50	16.60	16.70	16.80	16.90	16
17	17.00	17.10	17.20	17.30	17.40	17.50	17.60	17.70	17.80	17.90	17
18	18.00	18.10	18.20	18.30	18.40	18.50	18.60	18.70	18.80	18.90	18
19	19.00	19.10	19.20	19.30	19.40	19.50	19.60	19.70	19.80	19.90	19
20	20.00	20.10	20.20	20.30	20.40	20.50	20.60	20.70	20.80	20.90	20
21	21.00	21.10	21.20	21.30	21.40	21.50	21.60	21.70	21.80	21.90	21
22	22.00	22.10	22.20	22.30	22.40	22.50	22.60	22.70	22.80	22.90	22
23	23.00	23.10	23.20	23.30	23.40	23.50	23.60	23.70	23.80	23.90	23
24	24.00	24.10	24.20	24.30	24.40	24.50	24.60	24.70	24.80	24.90	24
25	25.00	25.10	25.20	25.30	25.40	25.50	25.60	25.70	25.80	25.90	25
26	26.00	26.10	26.20	26.30	26.40	26.50	26.60	26.70	26.80	26.90	26
27	27.00	27.10	27.20	27.30	27.40	27.50	27.60	27.70	27.80	27.90	27
28	28.00	28.10	28.20	28.30	28.40	28.50	28.60	28.70	28.80	28.90	28
29	29.00	29.10	29.20	29.30	29.40	29.50	29.60	29.70	29.80	29.90	29
30	30.00	30.10	30.20	30.30	30.40	30.50	30.60	30.70	30.80	30.90	30
31	31.00	31.10	31.20	31.30	31.40	31.50	31.60	31.70	31.80	31.90	31
32	32.00	32.10	32.20	32.30	32.40	32.50	32.60	32.70	32.80	32.90	32
33	33.00	33.10	33.20	33.30	33.40	33.50	33.60	33.70	33.80	33.90	33
34	34.00	34.10	34.20	34.30	34.40	34.50	34.60	34.70	34.80	34.90	34
35	35.00	35.10	35.20	35.30	35.40	35.50	35.60	35.70	35.80	35.90	35
36	36.00	36.10	36.20	36.30	36.40	36.50	36.60	36.70	36.80	36.90	36
37	37.00	37.10	37.20	37.30	37.40	37.50	37.60	37.70	37.80	37.90	37
38	38.00	38.10	38.20	38.30	38.40	38.50	38.60	38.70	38.80	38.90	38
39	39.00	39.10	39.20	39.30	39.40	39.50	39.60	39.70	39.80	39.90	39
40	40.00	40.10	40.20	40.30	40.40	40.50	40.60	40.70	40.80	40.90	40
41	41.00	41.10	41.20	41.30	41.40	41.50	41.60	41.70	41.80	41.90	41
42	42.00	42.10	42.20	42.30	42.40	42.50	42.60	42.70	42.80	42.90	42
43	43.00	43.10	43.20	43.30	43.40	43.50	43.60	43.70	43.80	43.90	43
44	44.00	44.10	44.20	44.30	44.40	44.50	44.60	44.70	44.80	44.90	44
45	45.00	45.10	45.20	45.30	45.40	45.50	45.60	45.70	45.80	45.90	45
46	46.00	46.10	46.20	46.30	46.40	46.50	46.60	46.70	46.80	46.90	46
47	47.00	47.10	47.20	47.30	47.40	47.50	47.60	47.70	47.80	47.90	47
48	48.00	48.10	48.20	48.30	48.40	48.50	48.60	48.70	48.80	48.90	48
49	49.00	49.10	49.20	49.30	49.40	49.50	49.60	49.70	49.80	49.90	49
50	50.00	50.10	50.20	50.30	50.40	50.50	50.60	50.70	50.80	50.90	50

Distance of slope stake from side or shoulder stake for any width roadway, slope 1 to 1. If ground is nearly level, the cut or fill at side stake is located by the double entry method in left column and top row. The number in body of table in same row and column gives distance from side stake to slope stake. If ground is not level estimate the difference in elevation between the side stake and slope stake, lower target by this amount if cut, elevate if fill. Add this amount to cut or fill and find distance in table. Set up rod at this point, and line of sight should cut target. If it does not make the slight adjustment necessary.

TABLE XIII—CORRECTIONS FOR TANGENTS AND EXTERNALS

These corrections are to be added to the approximate values, found by dividing the tangent, or external, for a 1° curve (Table VIII) by the degree of curve, in order to obtain the true tangents, or externals. Intermediate values may be obtained by interpolation.

FOR TANGENTS ADD

Central Angle	DEGREE OF CURVE													
	5°	10°	15°	20°	25°	30°	35°	40°	45°	50°	55°	60°	65°	70°
10°	.03	.06	.09	.13	.16	.19	.22	.25	.28	.31	.34	.38	.42	.46
15°	.04	.10	.14	.19	.24	.29	.34	.39	.45	.51	.53	.58	.63	.68
20°	.06	.13	.19	.26	.32	.39	.45	.51	.58	.65	.72	.79	.84	.90
25°	.08	.16	.24	.33	.40	.49	.58	.67	.75	.83	.90	.99	1.06	1.14
30°	.10	.19	.29	.39	.49	.59	.69	.79	.89	.99	1.09	1.20	1.29	1.39
35°	.11	.22	.34	.47	.58	.69	.79	.81	.92	1.04	1.29	1.42	1.54	1.66
40°	.13	.26	.40	.53	.67	.80	.93	1.06	1.20	1.34	1.49	1.64	1.79	1.94
45°	.15	.30	.44	.60	.76	.91	1.06	1.21	1.37	1.52	1.70	1.87	2.04	2.21
50°	.17	.34	.51	.68	.85	1.02	1.19	1.36	1.54	1.72	1.91	2.10	2.29	2.48
55°	.19	.38	.57	.76	.95	1.14	1.32	1.52	1.72	1.92	2.14	2.35	2.56	2.77
60°	.21	.42	.63	.84	1.05	1.27	1.49	1.71	1.94	2.17	2.38	2.60	2.83	3.07
65°	.23	.46	.69	.93	1.16	1.40	1.64	1.88	2.13	2.38	2.63	2.88	3.13	3.39
70°	.25	.51	.76	1.02	1.28	1.54	1.80	2.06	2.33	2.60	2.88	3.16	3.44	3.72
75°	.27	.56	.83	1.12	1.40	1.69	1.98	2.27	2.57	2.87	3.16	3.47	3.78	4.09
80°	.30	.61	.91	1.22	1.53	1.84	2.15	2.46	2.78	3.10	3.44	3.78	4.12	4.46
85°	.33	.66	1.00	1.33	1.68	2.02	2.36	2.70	3.05	3.40	3.77	4.14	4.55	4.89
90°	.36	.72	1.09	1.45	1.83	2.20	2.57	2.94	3.32	3.70	4.10	4.50	4.91	5.32
95°	.39	.79	1.19	1.55	2.00	2.40	2.80	3.20	3.61	4.02	4.40	4.98	5.38	5.83
100°	.43	.86	1.30	1.74	2.18	2.62	3.06	3.50	3.95	4.40	4.88	5.37	5.85	6.34
110°	.51	1.03	1.56	2.08	2.61	3.14	3.67	4.21	4.76	5.31	5.86	6.43	7.01	7.60
120°	.62	1.25	1.93	2.52	3.16	3.81	4.45	5.11	5.77	6.44	7.12	7.80	8.50	9.22

FOR EXTERNALS ADD

Central Angle	DEGREE OF CURVE													
	5°	10°	15°	20°	25°	30°	35°	40°	45°	50°	55°	60°	65°	70°
10°	.001	.003	.004	.006	.007	.008	.009	.011	.012	.014	.015	.017	.018	.020
15°	.003	.007	.010	.014	.018	.023	.027	.032	.035	.039	.043	.047	.051	.051
20°	.006	.011	.017	.022	.028	.034	.038	.045	.051	.057	.063	.070	.076	.083
25°	.009	.018	.027	.036	.046	.056	.065	.074	.083	.093	.106	.120	.127	.135
30°	.013	.025	.038	.051	.065	.078	.090	.103	.116	.129	.149	.170	.179	.188
35°	.018	.035	.054	.072	.086	.109	.131	.153	.175	.197	.213	.230	.247	.264
40°	.023	.046	.070	.093	.117	.141	.172	.203	.234	.265	.277	.290	.315	.341
45°	.030	.060	.093	.119	.153	.184	.216	.254	.289	.325	.351	.378	.411	.445
50°	.037	.075	.116	.151	.189	.227	.266	.305	.345	.384	.425	.467	.508	.550
55°	.046	.093	.142	.188	.236	.283	.332	.381	.420	.479	.530	.582	.641	.700
60°	.056	.112	.168	.225	.283	.340	.398	.457	.516	.575	.636	.697	.774	.851
65°	.067	.135	.204	.273	.343	.412	.483	.554	.625	.697	.711	.845	.922	1.01
70°	.080	.159	.240	.321	.403	.485	.568	.652	.735	.819	.906	.994	1.08	1.17
75°	.095	.182	.286	.383	.480	.578	.678	.777	.877	.977	1.07	1.18	1.29	1.39
80°	.110	.220	.332	.445	.558	.671	.787	.903	1.02	1.13	1.25	1.38	1.50	1.62
85°	.128	.259	.391	.524	.657	.790	.926	1.06	1.20	1.34	1.47	1.62	1.76	1.91
90°	.149	.299	.450	.603	.756	.910	1.07	1.22	1.38	1.54	1.70	1.87	2.03	2.20
95°	.174	.350	.522	.706	.885	1.06	1.25	1.43	1.62	1.80	1.99	2.18	2.38	2.58
100°	.200	.401	.604	.809	1.01	1.22	1.43	1.64	1.85	2.06	2.28	2.50	2.73	2.96
110°	.268	.536	.806	1.08	1.35	1.63	1.91	2.20	2.48	2.76	3.05	3.35	3.66	3.96
120°	.360	.721	1.08	1.45	1.82	2.19	2.57	2.95	3.33	3.72	4.11	4.50	4.91	5.32

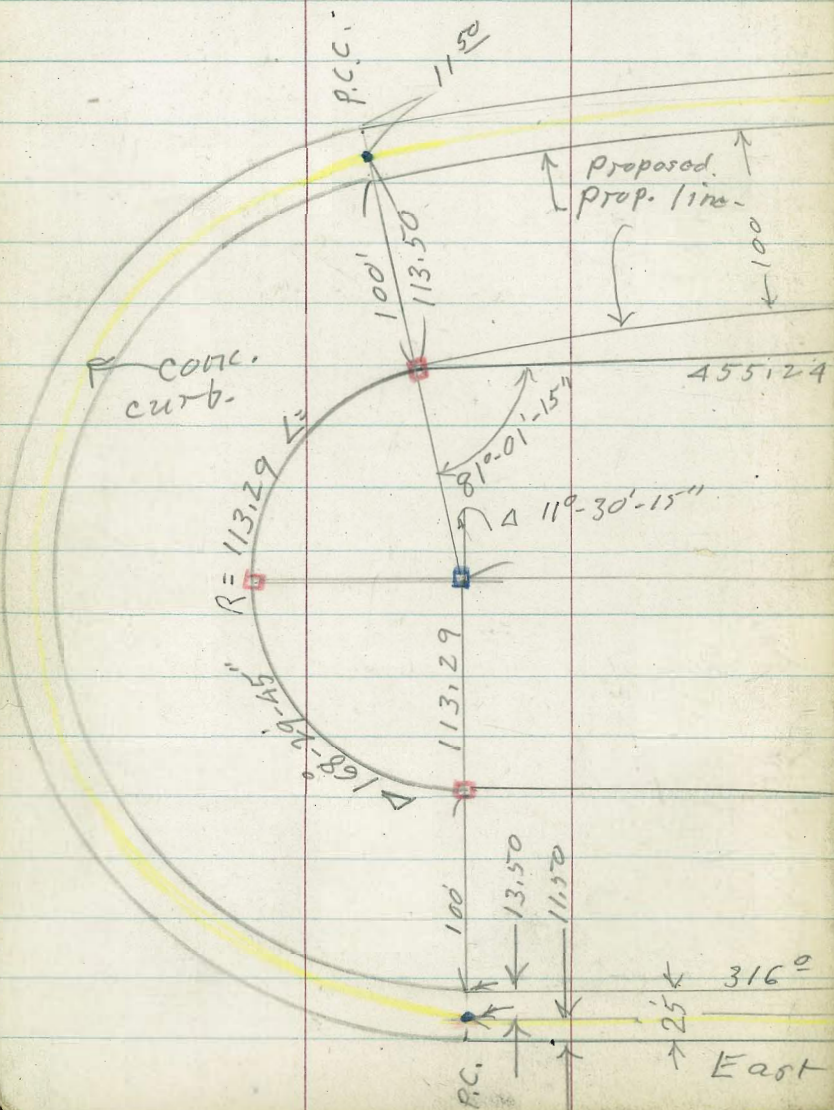
Page
Linda Vista Boys Club (P.L.# 1189) 2-4

X Sec Everts St Grand Ave Nly to 1/2 Blk Sky Canal 5-9

LINDA VISTA BOYS CLUB GROUNDS.

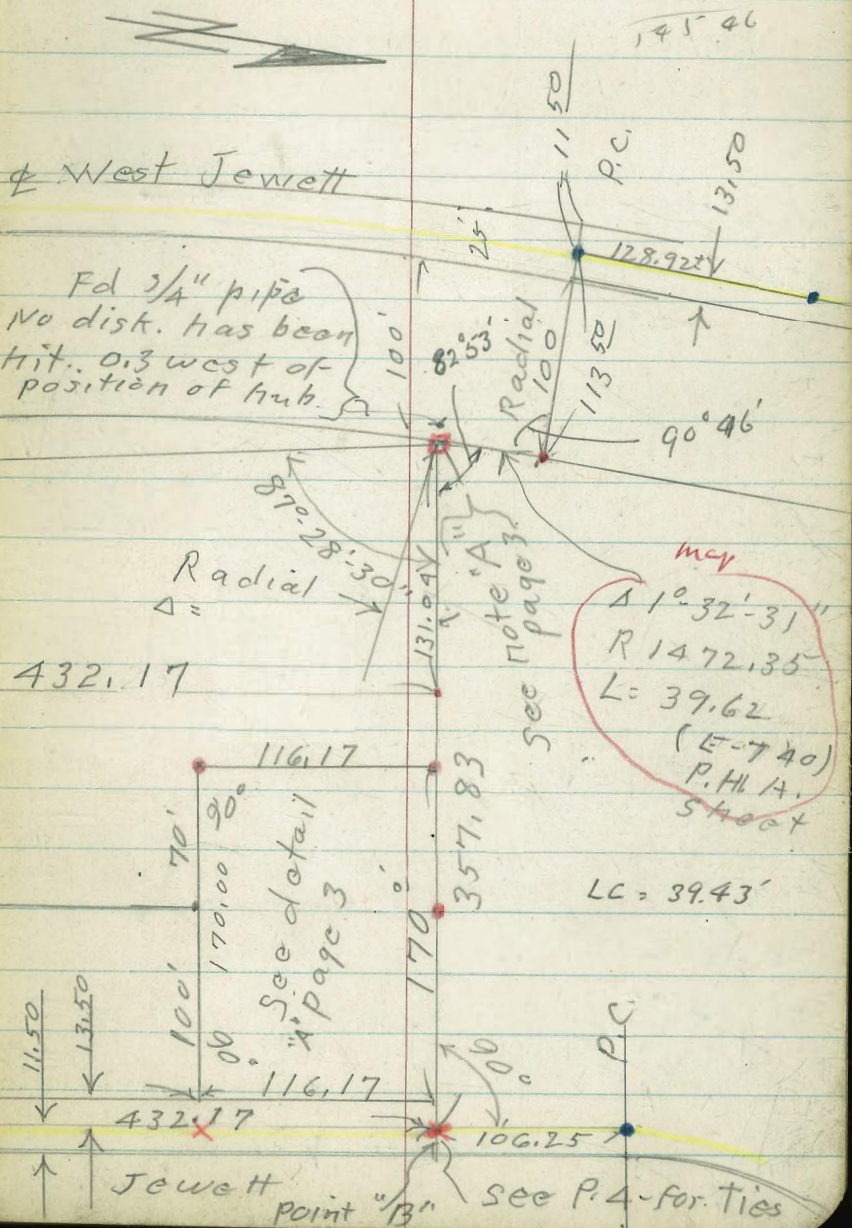
- = Fd. L&T
- = Fd. Hub
- × = cut cross
- ◻ = set Hub + disk
- = " Nail

WO#
11-1-53
CHS
Bogg
Oltman
Scholin



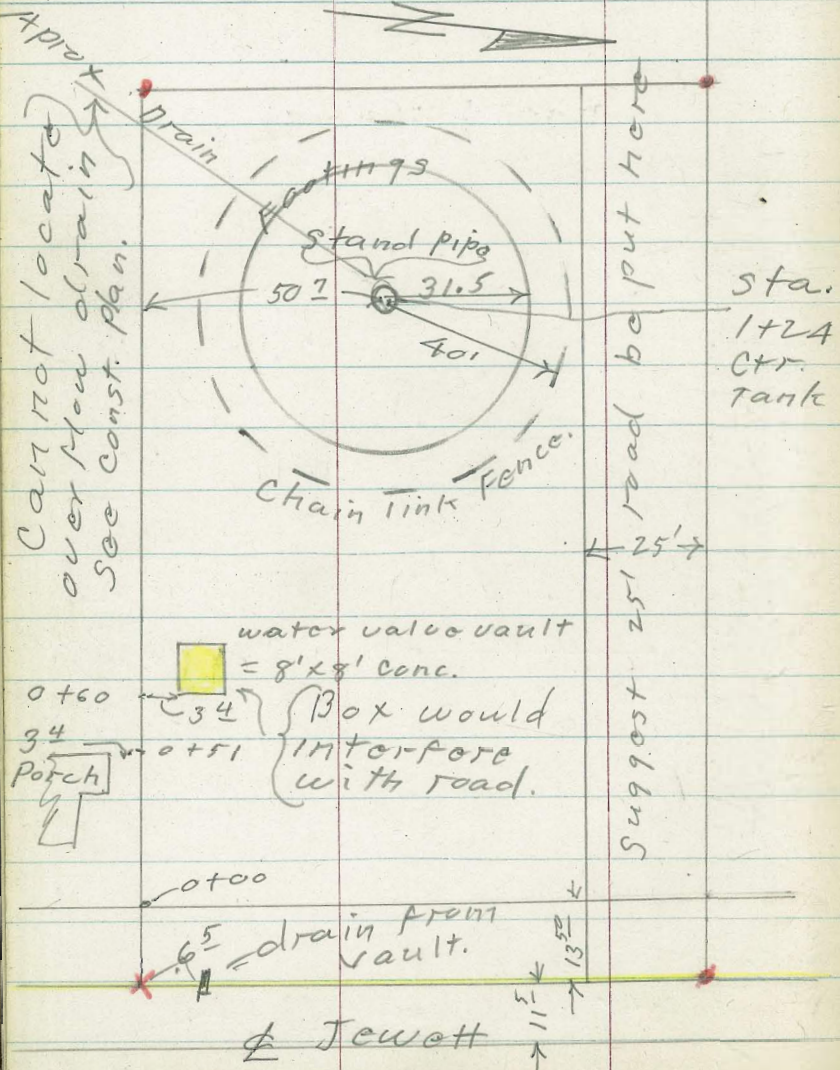
P.H.A. sheet (Linda Vista) # E-740 2
Map # 2883 - sheet # 3

432.17
11.3.29
145.46



Detail "A" - see page 2

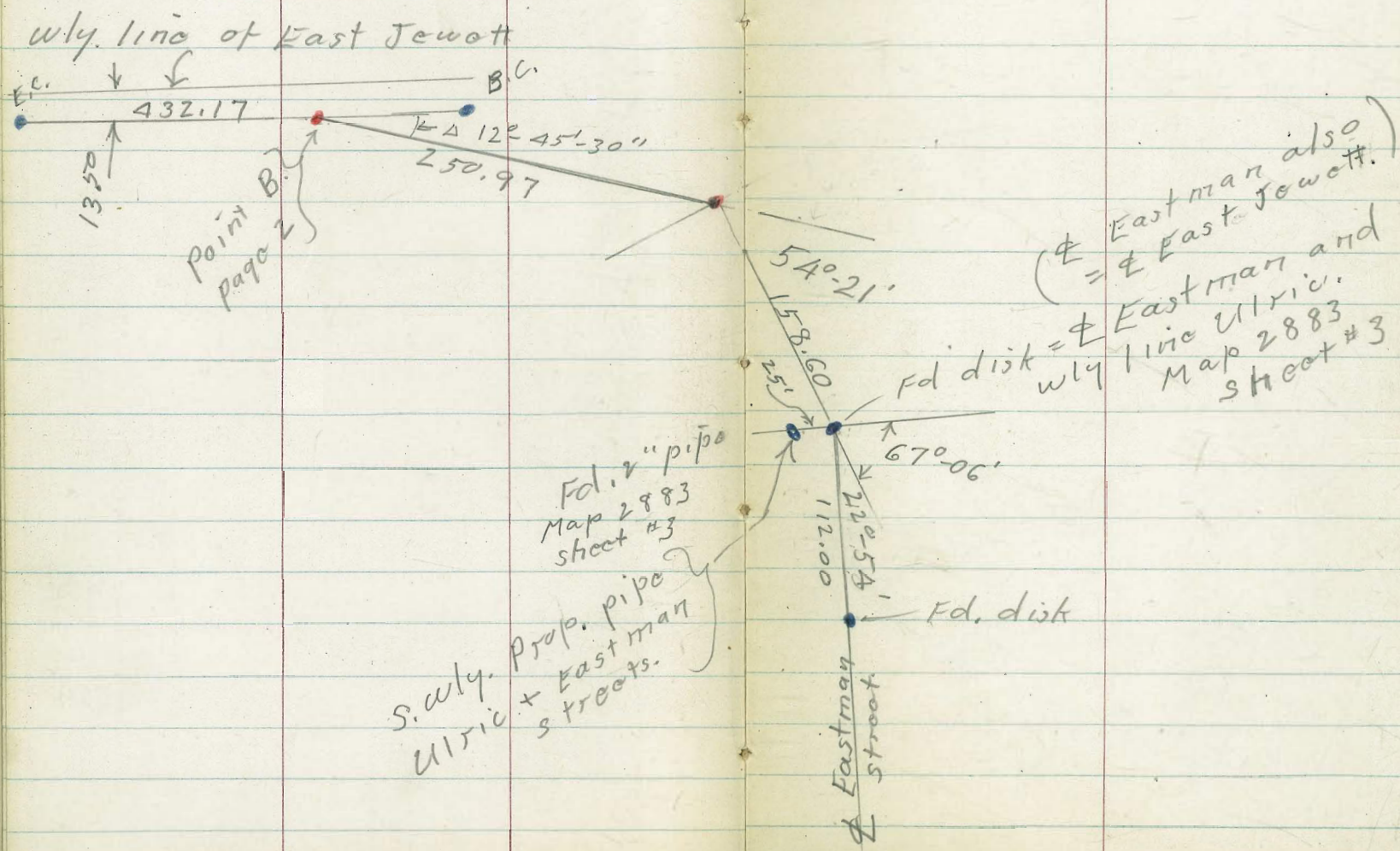
Water tank + fence.
(Sheet E-740)



Note "A" - (See page 2)

Calculate new curve datum & put point A on new curve.

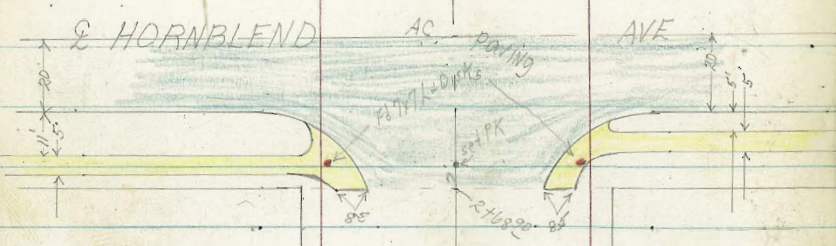
Ties from Point B
(Page 2)



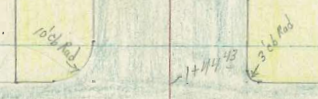
Cross Sec. EVERTS St. 5
 Grand Ave to existing paving
 Nly of Alley Btwn Garnet & Hornblend

INDEXED
 DEC 7 1953

Wot 32218
 12-3-53



← 20 × 20 × 20 × 20 →



172143

EVERTS

EVERTS



Nly Line GRAND AVE
 sec X Sec Same FB 2187

El Col Mark 752

R. F. H. 7/7

AC. PAVING

1413 RT³ RT E 1" Elm tree

1402 RT⁵ Lt E dead man

1401 34° RT E 1" Elm tree

1400 35° RT 2⁵ walk jogs to 37° RT still 11s live

32.57
47
35° 37°
32.53

0490

29.57	29.58	30.00	29.58	29.58	30.00	30.00	30.00	30.00	30.00	30.00	30.00	30.00	30.00	30.00	30.00	30.00	30.00	30.00	30.00
82	71	62	75	82	68	71	62	51	47	41	41	41	41	41	41	41	41	41	41
60	40	24	23	18	17	18	28	35°	40										

0450

29.57	29.58	30.00	29.58	29.58	30.00	30.00	30.00	30.00	30.00	30.00	30.00	30.00	30.00	30.00	30.00	30.00	30.00	30.00	30.00
81	75	72	76	82	72	78	62	50	47	41	41	41	41	41	41	41	41	41	41
60	40	27	26	20	17	18	28	35°	40										

0422 35° RT Begin 2⁵ walk 11 to live

32.58
42°
35°
41

0405

29.57	30.00	30.00	30.00	30.00	30.00	30.00	30.00	30.00	30.00	30.00	30.00	30.00	30.00	30.00	30.00	30.00	30.00	30.00	30.00
76	62	92	83	86	78	62	48	41	41	41	41	41	41	41	41	41	41	41	41
40	30	18	17	18	30	40													

0400 Nly Live Grand Ave.

BM

964

37²⁸

2764

Nail in PRL
#4398
SW of Everts
Grand
Feb 2187

29.57	30.00	30.00	30.00	30.00	30.00	30.00	30.00	30.00	30.00	30.00	30.00	30.00	30.00	30.00	30.00	30.00	30.00	30.00	30.00
72	71	92	84	85	88	88	62	62	62	62	62	62	62	62	62	62	62	62	62
40	30	18	14	17	18	40													

37²⁸

2468⁹⁰ Sly Hon Nblend Ave
edge AC paving 2 ch a walks

2466 21 1/2 L+E 14" p pole #4445

2430

2423 40² L+E 2⁵ con walk

2411 30¹ R+E 5 con walk

2411 40¹ L+E 9⁰ con drive

1490

1462 40³ L+E 3⁵ con walk

1444⁴⁵ Nly Alley

1434⁴⁵ E cross SMH

1424⁴⁵ Sly Alley

1424 At end 2⁵ con walk // to line

1421 21 1/2 L+E 14" p pole #4424

H. Wly
32.4
50 47 42 5.1 31.77
40 Wk 30.8 21.2 21.2 10 5 32.8
end end end

31.4 0 2 1.0 1.2
31.4 31.4 31.4 31.4 31.4
52 54 51 63 56
60 40 23 19 16

31.24 31.48
604 580
502 402
Wk Wk

586 606
43 402
Floor drive

31.42 31.42
82 64 52 60 65 56
60 40 32 24 20 17

702 659
502 405
Wk Wk

28 30 31 30
24 62 65 72 62 66 52 54 50 45 35
90 40 23 21 17 19 31 32 40 90

32.25
443
375
Wk

37.28

0755 21³ LT 2 8" 4.18 1/4 # D32309 T

0740

Nly Hornblend Ave.
0700 edge existing paving obs & walks

Mid Pt existing Returns

3720²⁰ Nly Cb Line Hornblend

3708²⁰ 2 Hornblend

2788⁹⁰ Sly Cb Line Hornblend

Mid Pt existing Returns

TP, BM 8²² 40 76^v

4⁷⁴

32⁵⁴

SW Lark
Everts,
Hornblend

Lt-Wly

P

Rt-Ely

8⁷⁶ 33.76
2⁷⁶ 34.76
2⁷⁶ 34.76
2⁷⁶ 33.76
2⁷⁶ 33.76
6⁷⁶ 33.56
9⁷⁶ 34.06
9⁷⁶ 34.06
3⁷⁶ 35.24

70 66 66 76 68 72 62 52 55
60 40 23 21 21 23 38 40

5⁷⁶ 33.76
7⁷⁶ 33.56
7⁷⁶ 33.46
7⁷⁶ 32.86
7⁷⁶ 33.15
7⁷⁶ 33.34
7⁷⁶ 33.39
7⁷⁶ 33.41
7⁷⁶ 33.97
7⁷⁶ 34.18
8⁷⁶ 34.76

32.52
8⁷⁴ 758
32.18
33.93
7⁷⁵ 745

22.40 31.73 33.02 32.36 32.53 32.89 33.16 33.14 33.45 33.57 34.16 34.55 35.15
8⁷⁴ 9⁰³ 7⁷⁴ 8⁷⁰ 8²³ 7⁸⁷ 7⁶⁰ 7⁶² 7⁷¹ 7⁷⁹ 6⁶⁰ 8²² 5⁶¹
100 100 100 50 40 20 20 40 40 50 50 100 100
cb gut cc gut cc cc cc cc cc cc cc

31.78 32.45 32.60 32.82 32.96 32.91 33.31 33.58 34.45
8²⁸ 8³¹ 8⁶⁶ 7⁸⁴ 7⁸⁰ 7⁸⁵ 7⁴⁵ 7¹⁸ 6³¹
40 50 40 20 20 40 50 100

30.95 32.13 31.63 31.95 32.40 32.68 32.61 32.77 33.39 32.84 32.30 33.67
8⁸¹ 8⁶⁵ 9¹³ 8⁸¹ 8³⁶ 8¹⁸ 8¹⁵ 7²⁹ 7²⁷ 7⁷⁸ 7⁶ 7²⁹
100 50 50 40 20 20 20 40 40 50 100 100
out in drive cc gut cc gut cc gut cc gut cc gut

32.56 32.86 32.62 32.20
8⁷⁸ 8¹⁴ 7⁵⁶
94 94 cc

T 40 76^v

Lt-Wly

Rt-Elg

9

BM

119

3957

3953
NWBP
Everts
Caret

1494¹³

3718	3758	3759	3831
358	414	317	245
20	20	20	20
66	cut	cut	66

1444¹³ Nly Alley

3520	3664	3585	3648	3581	3646	3583	3576	3671	3680	3690	3759	3715	3767	3724
556	418	421	428	425	420	423	500	405	326	326	317	361	329	330
80	46	40	30	30	66	94	20		20	23	23	40	40	90
66	cut	66	cut	66	cut	cut			cut	cut	cut	cut	cut	cut
end		xc												

1424¹³ Sly Alley edge A.C. part see sketch

3528	3525	3525	3595	3647	3655	3661	3688	3724
548	501	501	481	429	421	415	388	31
62	40	20	10	10	20	40	90	

1423 2nd Lt E 12" P.P. # 4474

0780

3920	3925	3925	3925	3925	3925	3925	3925	3925
60	56	52	60	58	63	53	50	50
60	10	24	21	23	24	40		
4	34	36	64	43	floor			

0767 4th Lt E double garage dirt floor

40 76

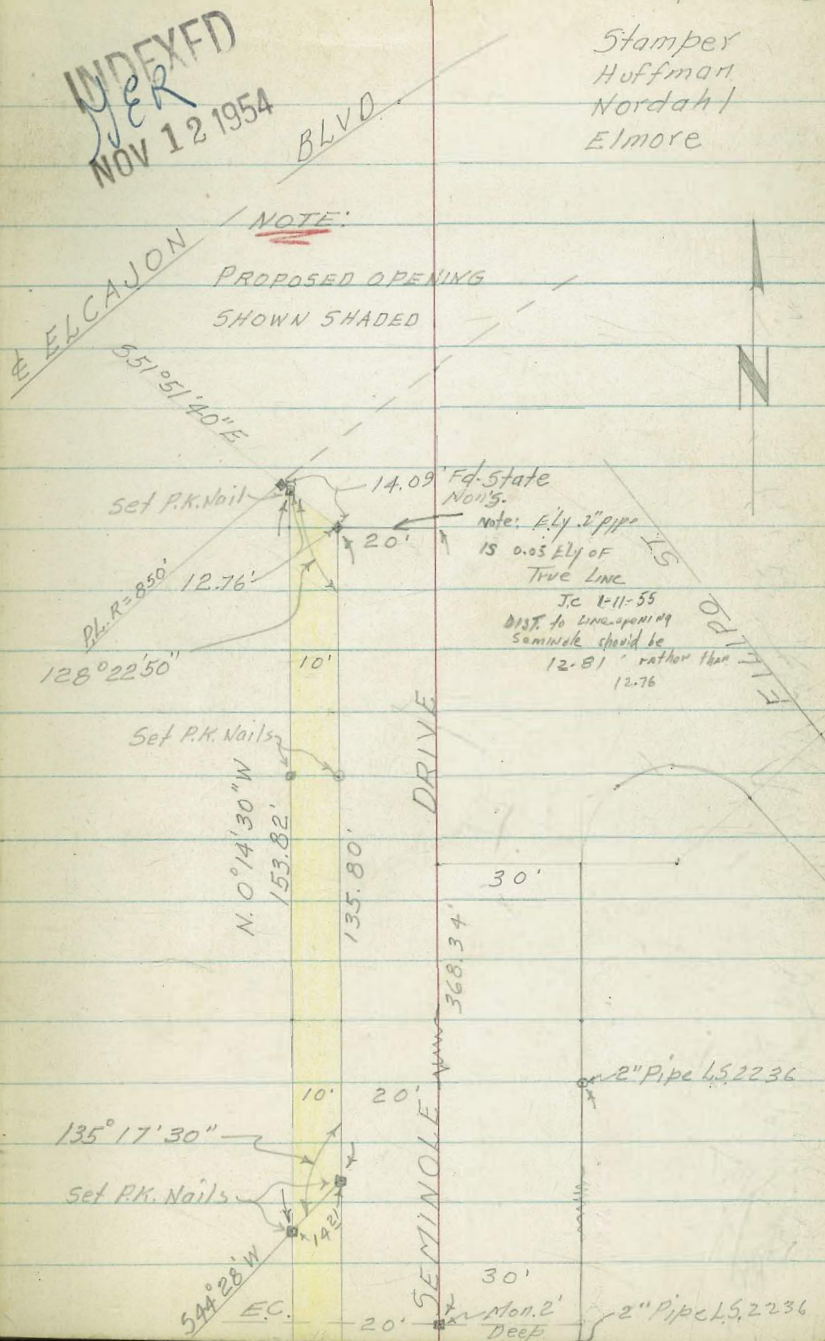
SURVEY OF EASEMENTS TO BE ACQUIRED
 IN LOT 23 LAMESA COLONY FOR
 OPENING SEMINOLE ST W.O. 31814

Ref Dwg 5431-B

F.B. 2254
 16

Tie PLN# 29

LAMESA
 COLONY



Alley BIK "D" Sterling worth.

" BIK I - Orange Hill.

11-17-54

W.O. 32337

C.H.S.
Betty
Scholarin
Pulley

T.P. sheet # 3576

F.B. 1841 - Page 49

Field notes in F.B. 1841 are in
2 places + old. For the sake of
ease in reduction + plotting, I
am re-taking entire Alley.

For existing walks + curbs in

El. Cajon + in Meade see F.B. 1841
p. 49.

• - denotes Fd. City Lt.

• " set P.K. Nail

outs to poles = to Prop. side
of poles

INDEXED
MEER
NOV 19 1954

Meade

Ave.

139.48

139.48

6+0708

BIK D
Sterling worth

Swift

53'

185.20

BIK #1
Orange Hill

139.20

El. Cajon Blvd.

3576 54

Alley { BIK "D" - Sterlingworth

BIK I Orange Hill
wood floors

0+15 - 10⁵ Rt = 10' long Restroom

0+09 - 9⁴' Lt = 4' wide stop to Bldg.
10³ Rt = end slab.

0+00 - 10⁸ Rt = start Conc. slab.
10³ Lt = start store Bldg.

0-00 4 = end alley curbs + Pave

0-23 } 10' Rt } E.C. V' Rad cl. Rot
10' Lt }

0-25 } = Nly. cl. El Cajon.

B.M. #1 7.42 386.69 - 379.27

382.51
4.18
10⁵
17 doorway

382.31
4.32
9⁴
stop.

382.19
4.50
10⁸
slab.

381.8
4.19
10

381.5
5.2

381.8
4.9
10

382.18
4.51
10⁸
slab

381.88
4.81
9⁷
cc

381.72
4.97
9⁷
cc

381.44
5.25

381.69
5.00
9⁷
cc

381.79
4.90
9⁷
cc

381.35
5.34
10
cc

381.09
5.60
10
cc

381.14
5.55
10
cc

381.46
5.23
10
cc

381.08
5.61
50
cc

380.75
5.94
50
cc

381.27
5.42
15
cc

381.54
5.15
45
cc

381.17
5.52
12
d.B.C.

380.95
5.74
12
cc

380.96
5.73
10

380.99
5.70

381.08
5.61
10

381.09
5.60
12
cc

381.31
5.38
12
cc

386.69

SW. B.P. El Cajon + Swift 701841
50

From P. 12

under apartments.

13^e Rt. = start 10 car Gar.

wooden steps to 2nd floor.

0+57⁵ 9⁸ Rt. = s.wly. cor. of

{ (also used as drain)
0+56 - 9⁷ Rt. = 2 3' walk -

0+51 - 10th Lt. = end Bldg.

0+50

Service door.

0+45 = 9' Lt. = 9' wide apron to

T.P.

5.20 387.57 1.32 382.37
386.69

4

13

383.18
4.39
13^e
Car. floor

383.15 383.30
4.42 4.27
9⁷ 20
on walk

382.3
5.3 5.2
10

382.4
5.0
10

382.42 382.36
5.15 5.21
10³ 9⁵
17 doorway apron

387.57

From - P-13

4

14

1+17 10³ Lt. = 3' walk.

383.27
4.30
102
walk

Ratio East of garages.
be kept open to drain
under Bldg. This must

1+07 8th Rt. = 4" drain from
(drain cased in conc.)

383.00
4.57
84
I.P. Elev.

1+05 13th Rt. = Sly end 6th Gar door
9th Lt. = pole # JPA, 4317
10' Lt. = start picket fence

383.55
4.02
134
Gar floor

1+03 13th Rt. = Sly end of 5th Gar door

383.39
4.18
134
Gar floor

1+00

383.0
4.6 50
382.7
4.9 10
382.7
4.9
382.4
4.2 10

0+80- 13th Rt. = 3rd door in 9 garages

382.5
5.1 100
382.4
5.2 50
382.4
5.2 10
382.5
5.1
383.1
4.5 10
383.20
4.37 13th Floor

387.57

From P-14

surface drain.

1+54-13⁴ - 3' wide conc.

drain shown at sta. 1+54,
could be diverted to surface
cannot be met. drainage

Bldgs. to east. if this

1+53 } 9⁴ RT. = 4" drain from

1+52 - 13³ RT. = end Bldg.

1+51 13⁴ RT. = end 10th Cor. door.

1+50

1+27 13⁴ RT. = 8th Cor. door

383.34

4.23

13⁴

14

drain

383.49

4.08

20

382.94

4.63

9⁴

I.E.

383.6

4.00

13⁴

Floor

383.1

4.0

10

383.3

4.3

383.5

4.1

10

383.56

4.01

13⁵

Floor

387.57

From p. 15

T.P. 5.73 389.73 3.57 384.00

2+25^E 10^E Lt. = ϕ Conc. wall.

2+25 9^E Lt. end board fence.

2+00

1+88

1+87 13^g Rt. = end ~~of~~ Apt.

1+84 { 9^E Lt. = pole # J.P.A. 4331
 10⁴ Lt. = start board fence.
 10² Lt. = end picket fence

1+71 Rt. = start Apt.

1+69^E 13^E Rt. = ϕ 3' walk

1+67 9' Lt. = dead man.

1+61 13² Rt. = ϕ 8' Conc. drive.

ϕ

383.7
 3.9
 10^E
 B.W.

384.2
 3.4
 10^E
 ord.

383.7
 3.9
 10

383.6
 4.0

383.7
 3.9
 10

383.9
 3.7
 10

383.7
 3.9

383.9
 3.7
 10

384.0
 3.6
 30

383.89
 3.68
 13^E
 walk

383.65
 3.92
 13²
 on drive

383.75
 3.82
 23

387.57

from P-16

3+00

2+87 10² Rt. = end fence.

2+65- 10¹ Lt. = start wire fence

2+63 10⁰ Lt. = ϕ 3' walk

2+63 9² Lt. = Pole T.P.A. 4345

2+62 11' Lt. = end. Apt. Bldg.

2+55- 10⁵ Rt. = start board fence.

2+54 10⁶ Rt. = 9" diam tree.

2+50

2+36 10⁵ Rt. = ϕ 8" very rough
to Sing Gar.
conc. apron

2+28³ 10⁸ Lt. = start 2 story Apt.

2+27 9³ Lt. ϕ 2⁵ Conc. walk

385.2

4.5

50

384.6

5.1

10

384.6

5.1

10

384.9

4.8

10

385.3

4.4

50

385.26

4.47

35

on walk

385.05

4.68

104

on walk

384.4

5.3

10

384.4

5.3

10

384.5

5.2

10

384.06

5.67

105

apron

384.23

5.50

112

Gar. floor

384.59

5.15

209

on walk

384.42

5.31

109

on walk

384.22

5.51

92

on walk

389.73

from P. 17

3+47 Pole 9.4 Lt JFA 4359
Beg fence 10.4R

3+45 2' walk 11'7"

3+37 11' Rt = end of apron
3 car. Gar

3+16 11' Lt = 3' wide conc. porch

3+12 11' = end N+S walk at
bottom of conc. steps.

3+08 11' Rt start conc. apron to
3 car Gar
98' Lt = start wire fence

3+03 108' Lt = S. Ely. Car, N+S. walk
105' Rt = E+W fence
105' Lt = end fence

385.79
3.94
11
385.85
388
30

385.84
389
11
apron
385.91
376
13
Gar. floor

386.38
385
11
on porch

384.96
477
11
walk

385.61
412
11
apron
385.88
385
13
Gar. floor

384.99
474
108
walk.

389, 73

from P-18

+ Plant mix, To come out,
thick rough conc. - A.C.

4+25 = start 10' wide 1" to 2"

4+00

386.2	386.0	386.3	386.3	386.7
6.4	6.6	6.3	6.3	5.9
70	50	10		10

3+97- 10' ^{to Sing Bar} ~~10'~~ 8' wide Conc. apron

TP 6.78 392.59 3.99 385.81

392.59

386.79	386.82
5.80	5.37
10L	123
apron	Conc.
	Plan

3+89 end of fence 9.7 R

3+88 end of fence 10.2 R

3+87 4" Peffer 9.0 R

3+50

385.5	385.2	385.4
4.2	4.5	4.3
10		10

3+48 Break in fence 9.7 L
389.73

389.73

From page 19.

4+54 10² Lt. = \pm 4' walk thru wall

387.59
5.00
10²
walk

4+50 on Conglomerate Pond

387.5
5.1
10

387.6
5.0

387.99
4.60
88

388.22
4.37
10

4+37 14¹ Rt. = start 3 car Gar.

387.84
4.75
88
apron

388.49
4.10
141
Car. floor

4+35 - 8⁸ Rt. = start Conc. apron to 3 car Gar.

387.69
4.90
88
apron.

4+34 { 105' Lt. = start 6" wide Conc. wall.
96' Lt. = pole # J.P.A. 4373
95' Rt. = 6" F+W conc. wall.

386.7
5.9
105
B.W.

386.9
5.7
95
B.W.

392.4
0.2
98
T.W.

4+30 - 99 Rt = \pm 3' walk

387.32
5.29
99
walk

392.59

from p-20
 5+45 9⁵ RT. = dead man.
 { 10² Lt. = start lath house
 5+42 } 10⁴ Lt. = end fence

388.3
 389.13
 5.7 4.91
 10.2 10.2
 (Bottom) lath house
 foundation
 top

394.04

T.P. 5.40 394.04 3.95 388.64
 10' RT. = end fence
 5+19 9² Lt. = pole # J.P.A. A387

387.9 387.9 388.1 388.3 388.3
 4.7 4.7 4.5 4.3 4.3
 50 15 10 10

5+00
 A+98 - 10² Lt. = start picket fence

10⁵ RT. = start 2' wide 8' high hedge.
 A+77 9⁵ RT. = start picket fence.
 A+76 10⁵ Lt. = end conc. wall

387.4
 5.2
 10⁵
 B.W.

A+73 - 11' RT. = end Bldg.

{ 11' RT. = start conc. Bldg.
 A+63 } 9' RT. = end conc. apron.

388.22 388.27 388.52
 4.37 4.32 4.07
 9 10 14.2
 apron 6.4
 floor

392.59

From P. 21

98 Rt = end fence.
98 Rt. } = start curbs
98 Lt. }

6407.08 } = Sly. line Meade
= start A.C. Paue.

6404 9' Lt. = Triple deadman

6400

5498 12² Lt. = end house.

5485

5484 9⁴ Lt. = pole # J.P.A. 4395
= start Picket fence.

5470 10' Rt. = end board fence.

5463 - 12⁵ Lt. = start frame house
10' Rt. = start Board fence

5461 9⁵ Rt. = pole # 82347H

5460 10^c Lt. = end bath House

5450

387.42	387.18	387.28	387.14	387.52
662	686	676	660	642
98	98		98	98
cl.	G		G	cl.

388.2	388.0	388.1
518	610	519
10		10

388.7	388.7	388.7
513	513	513
10		10

388.9	389.14
516	490
106	106
Bottom	Top foundation
Foundation	

388.7	388.9	388.9	388.4	389.1
513	511	511	516	499
10		9	10	50

394.04

From P-22

check. to B.M. #1		7.37	0.01	379.28
T.P.	3.44	386.65	6.84	383.24
T.P.	1.81	390.08	4.78	388.27
	SS	5.93		387.12

6+19 = sly. cl. line Meade

6+17 99 Pt. = }
99 Lt. = } B.C. 2' Rad Cl. Rot

T.P. 5.84 393.05 6.83 387.21

6+13 }
to } Replaced on Lt.
6+07 08 } Curb should be

394.04

(379.27)

0119, B.M. - P-12

(386.81)

N.W. B.P. Meade + 35th

387.38	387.00
5.67	6.05
50	50
Cl.	G

386.65	387.03
6.40	6.02
50	50
G	Cl.

387.19	386.80	386.83	386.88	386.85	386.88	387.31
5.86	6.25	6.22	6.17	6.20	6.17	5.74
12	12	10		10	12	12
Cl. Ec.	G			G	G	Cl. Ec.

387.33	386.92	386.95	387.40
5.72	6.13	6.10	5.65
99	99	99	99
G	G	G	Cl.

393.05

Alley BIK 37 (Resub. Lots H+I)

Teralta Sub

Orange to El Cajon - west of 35th

11-17-54
w.o.# 32337

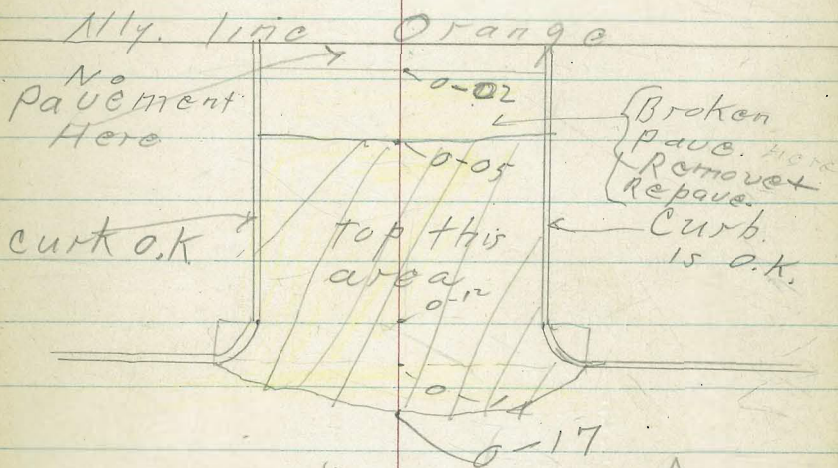
Sketch FB1657-P-53

Alley 15' wide

C.H.S.
Boyer
Schelin
Pulley

(W) denotes Ctr. of water meter box

outs to pole = Prop. side of pole



386.86	386.36	387.16	387.57
4.90	5.40	4.60	4.19
50	50	50	50
cl.	c	c	cl.

377.16	376.71	376.74	376.60	376.67	376.76	377.09
4.60	5.05	5.02	5.16	5.09	5.00	4.68
95	95	75	75	75	95	95
cl.	c		381.76	c	c	cl.

(95 RK / 95 LT) } B.C. 2' Rad. Cl. Rot.

0-14 = Nly. cl. Orange

BM#1 5883 381.76 - 375.93

N.W.B.P. Orange + Swift.

INDEXED
JER
NOV 19 1954

7⁶ Lt = start wire fence,
 0+49 6⁶ Lt = Pole # PA 4205
 0+47 7² Lt } = (W)
 0+44 8⁸ Rt = start dwelling

378.2
 5.8
 75
 377.1
 6.3
 75
383.98
 377.9

0+30 0+34 - 7⁶ Lt. = (W)
 T.P. 6.20 383.98 3.98 377.78

0+26 - 6⁵ Lt. = double deadman
 0+17 = end row of cypress

Cypress
 0+07 } 7² Rt = start row of 7
 8' Lt. = 10" Cypress
 0+01 - 7⁸ Rt = 6" Cypress
 0+00 = Nly line Orange

377.8
 4.10
 75
 377.66
 4.10
 72
 cc
 377.1
 4.7
 72
 cc
 377.16
 4.60
 72
 cc
 377.2
 4.6
 75

0-01 - 3' Lt. = 2¹ X 2³ Gas Co. vault

376.96
 4.80
 3-100.

0-05 on pare

377.56
 4.20
 77
 cc
 377.13
 4.63
 77
 cc
 376.71
 5.05
 77
 cc
 376.79
 4.87
 72
 cc
 377.22
 4.54
 72
 cc

381.75

From p. 25

4

26

1+51 8^S RT = start picket fence
end wire fence

1+50 6^E RT = (W)

379.6	379.6	378.8	378.8	379.3
4.4	4.4	5.2	5.2	4.7
15	75	4		75

7^E Lt. = start wire fence
on blocks - can be moved

1+42 } 7^E Lt. = end shed

1+39 6^E Lt. = (W)

1+27 6^E RT = (W)

1+23 } 7^E Lt. = start shed
7^E Lt. = end fence

1+21 6^E Lt. = (W)

1+00 } 8^E RT = { start wire fence
End wood fence +
+ start wood fence
7^E Lt. = end wire fence

378.8	378.7	378.7
5.2	5.3	5.3
75		75

0+86 8^E RT. = end dwelling
+ start fence

0+84 7' RT = (W)

0+61 6^E Lt. = (W)

0+50

378.3	378.1	378.2
5.7	5.9	5.8
75		75

383.98

From page 26

±

27

2+50 7⁸ Lt. = start wire fence

379.1
4.3
15

379.6
4.4
75

379.5
4.5
75

379.3
4.7
75

379.5
4.5
30

2+47 14' Lt. = Gar.
8' Lt. = end apron

379.48
4.50
14
Gar. floor

379.34
4.64
8'
apron

379.6
4.4
75

379.5
4.5

379.4
4.6
75

2+39 7⁶ RT = (W)

To A Car Gar + Apt.

2+05 8' Lt. = start conc. apron

379.38
4.60
14
Gar. floor

379.33
4.65
8'
apron

To Sing Gar

2+04 10⁵ RT = ± 8' wide apron

379.53
4.45
10'
apron

379.58
4.40
14'
floor

2+00 8⁷ RT = end fence
7⁷ Lt. = end fence

379.2
4.8
75

379.1
4.9

379.2
4.8
5

379.6
4.4
75

+98 7⁵ RT = (W)

1+87 6' Lt. = (W)

start wire fence

1+78 8⁵ RT = end picket fence
7' Lt. = dead man

1+60 7' Lt. = pole # P.A. 4225

383.98

4+30 7' Lt. = end fence of steps.

4+12 7' Lt. = N.E. Cor. & bottom

4+11 9' Rt. = start fence.

4+06 7' Lt. = 4 wide Conc. porch

{ 7' Lt. = start wire fence.
8' Lt. = end wire fence
6' Lt. = pole # J.P.A. 4267

3+99 9' Rt. = (W)

3+91 6' Lt. = (W)

3+50 7' Lt. = start wire fence
7' Lt. = end wood fence

3+35 6' Lt. = (W)

3+29 9' Rt. = (W)

T.P. 5.37 384.95 4.40 379.58

7' Lt. = pole # J.P.A. 4247

3+00 7' Lt. = { start wood fence
end wire fence

2+9A 7' Lt. = (W)

2+82 10' Rt. = (W)

2+75 7' Lt. = 3' walk

379.6
5.4
7' end.

381.04 379.7
3.91 5.3
7' porch end.

379.7 379.9 380.0
5.3 5.1 5.0
7' 7'

379.5 379.3 379.7 379.8 379.9
5.5 5.7 5.3 5.2 5.1
60 75 75 30

384.95

379.6 379.5 379.4 379.6
4.4 4.5 4.6 4.4
7' 75 50

379.71 379.67
4.27 4.31
10' on walk 7'

383.98

from p-28

4

29

A+98 6⁵ Lt. = Pole # J.P.A. 4287

A+87 { 7² Lt. = start shed.
7² Lt. = end fence

A+84 - 9² Rt. = end fence

A+76 5² Lt. = (W)

A+74 7² Rt. = (W)

A+71 { 8' Lt. = 2' walk
7² Lt. = 4' long Conc. block
to come out.

379.73
5.22
8
walk
380.02
4.93
7²
top. of block

~~A+7~~

A+50 7² Lt. = start picket fence.

379.8
5.2
7²
379.8
5.2
7²
379.8
5.2
7²

A+46 6⁵ Lt. = (W)

A+43 9² Rt. = 3' walk

Conc. floor.

A+41 14² Lt. = 2 double Gar.

379.53
5.42
14²
Gar. floor

379.91
5.04
9²
walk
380.05
4.90
20
walk

A+30⁵ 8' Rt. = (W)

384.95

from p 29

Mix. to come out.
Start Full width plant.

5+27 7⁵ Lt. (on slab)

380.27
4.68
75

5+16 - 6⁵ Lt = dead run

5+14 7² Rt. = (W)

5+04 8² Rt = 2' conc. walk

380.12
4.83
87
on walk

380.38
4.57
19

(Take out)
slab around meter.

5+01^E 5² Lt = 2' x 1² conc.

380.20
4.75
59
slab

7² Lt. = start conc. slab.

5+01 7' Lt. = (W) 2' conc. slab
around meter

380.20
4.75
72
slab

5+00^E 7² Lt. = 6" E. + W. Conc. wall.

379.6
5.4
72
B. W.

5+00 7¹ Lt. = end shed.

380.1
4.9
75

380.0
5.0

380.2
4.8
75

384.95

from p-30

6+05 7⁴ Lt. Pole # J.P.A. 1297

6+00

T.P. 5.06 385.34 4.67 380.28

5+86 6² Lt. = (W)

5+51 7⁵ Lt. = end slab + start store Bldg

5+50

5+48 7² Lt. = end slab + start store Bldg

5+39 7⁵ Lt. Ely edge slab.

7⁵ Rt. = start conc. slab

5+38 { 7⁵ Lt. = dip in slab for drain

380.2
5.1
7⁵
at Bldg

380.1
5.2

380.3
5.0
7⁵
at Bldg.

385.34

380.17
4.78
7⁵ slab.

380.1
4.9
7³
at Bldg.

379.9
5.1

380.2
4.8
7⁵

380.25
4.70
7⁵
slab.

380.27
4.68
17⁵
in dip of
slab.

380.17
4.78
7⁵

384.95

380.13
4.82
7⁵
slab

380.23
4.72
20
slab.

orig. B.M. 6.06 ^{0.03} 375.96

B.M. #1 P 24 (39593)

T.P. 4.21 382.02 6.48 377.81

T.P. 4.88 384.29 5.93 379.41

B.M. #1 - page 12 (379.27)

380.04
5.30 5.65
50 50
cl G

380.36 380.37
4.98 4.97
50 50
G 17 drive

95RX }
95LT } = E.C. 2' Rad. cl. Ret.

G+27^z = sly cl. line El. Cajon

380.27 380.02 380.00 379.94
5.07 5.32 5.34 5.40
95 95 75
cl G

379.99 380.02 380.34
5.35 5.32 5.00
75 95 95
G cl E.C.

G+25^z }
75 RA }
75 LT } = B.C. 2' Rad. cl. Ret.

380.24 380.10
5.10 5.24
75 75
cl G

380.04 380.37
5.30 4.97
75 75
G cl

G+17

380.16 380.31 380.13
4.88 4.97 5.21
75 75
cl G

380.19 380.39
5.15 4.95
75 75
G cl

77 Lt = End Bldg. + start cl.
79 Rt = End Bldg. + start cl.

G+07^z } = sly. line El. Cajon.
= start A.C. Pav.

380.26 380.26 380.22
5.08 5.08 5.12
75 75
cl G

380.34 380.41
5.00 4.93
75 75
G cl

385.34

INDEXED

HEA

JAN 31 1954

X-Sect. Altadena Ave - from S.L. of Oak Park Annex to S. end.

Sec Book 2105 - P. 20

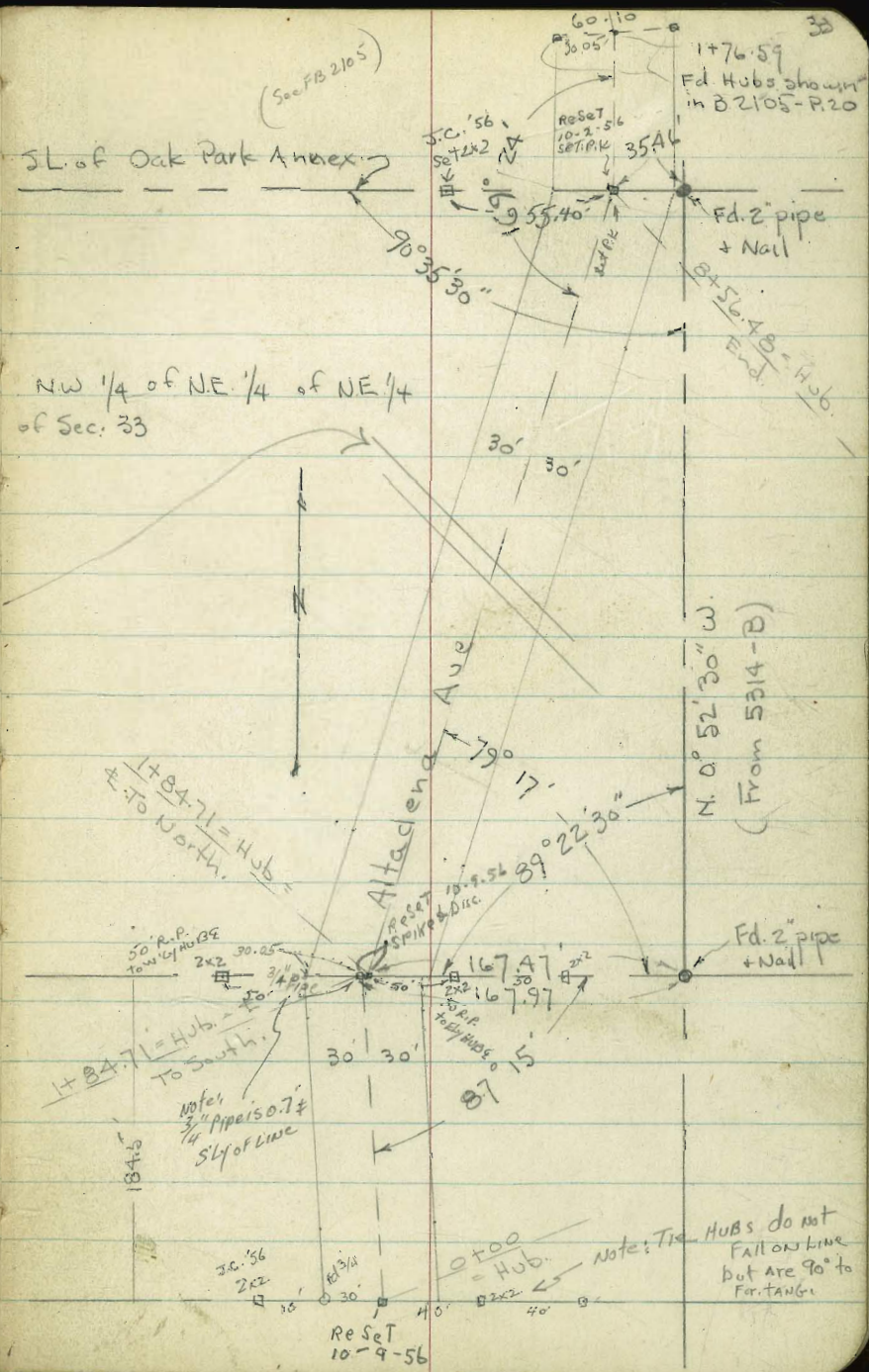
5314-B - 5315-B 5316-B.

5253-B.

W.O. 31793 - 1-28-55 Osborne Hatch Whipple Prestley

See Sections - P. 34

See p. 37 for water lines.



Req. X-Sections of Altadena -
See sketch - P. 33.

Lt. † Rt. 34

1+50

15.8 15.3 14.1 13.2 13.0 12.3 12.3
40 30 10 5 15 30

1+26 - 14.5 Lt. = 10" Dead. Euc.

1+00

19.1 18.3 16.2 14.0 13.6 13.2 12.7 12.5
40 30 13 9 15 30 33.7 = By well

33.7 Rt. - Beg. 8" Rock + Conc. wall

0+86.5 - 31.5 Rt. = end Gar

13.32
31.5
floor

0+67.5 - 32' Rt. = end fence at Cor. of Doub. Gar
Conc. floor

13.25
32' floor.

0+50

22.8 21.1 20.0 14.1 13.8 13.3 13.7
40 30 20 9 15 30

0+25

23.8 22.4 21.2 14.1 14.0 14.0 14.0
40 30 23 10 15 30

0+08 - 25' Lt. = 14" Euc. Tree

0+03 - 31.3 Rt. = Beg. 4 Cyclone fence + BM
Fence Cor.

Set BM. - on 1/2 pipe at 314.60

0+00 = † at S. end of Road - Sect. along S.L.

23.5 22.5 21.6 13.9 13.62 13.7 13.7
40 30 25 12 on Hub 15 30
graded Rd.

0-50 - Profile

21.3 19.8 12.9 12.7 10.8
40 30 23 30

B.M. - Nail in Pole - S.W. Cor. 317.23

Altadena + Sterling (west)
B. 2105 - P. 23

300' fig. not noted
Actual Elev. Shown

Attadema

35

Lt. ♀ Rt.

5+50	16.0 40	16.5 30	17.8 15	17.8	18.5 5	19.7 26 oil	21.2 30	23.2 37 ^{Top}
5+00	14.0 40	14.2 30	15.5 15	16.2	16.1 5	18.1 28 oil	19.5 30	21.7 40
4+50 - Beg. Rough oil pave	12.1 40	12.9 30	13.1 15	14.1	14.1 5	15.2 27 oil	15.3 30	15.4 40
4+00	12.0 40	11.9 30	12.5 15	12.8	13.0 15	13.1 30	13.4 40	
3+50		11.4 30	11.9 15	11.6	11.6 15	11.3 30		
3+00	09.8 40	10.2 30	11.0 15	10.7	10.4 15	09.7 30	09.3 40	
2+50		11.2 30	11.4 15	10.9	11.0 15	09.9 30		
2+00	12.4 40	12.4 30	12.2 15	12.0	11.7 15	11.6 30	11.3 40	

1+84.71 = Ang. + Jsq. in ♀ - outs along Sec. Line

13.4
40

13.3
30.5

12.9
15

12.4

11.9
15

12.0
30.5

11.7
40

1+84.2 - 31.8' Rt. = Cor. of Cyclone fence

= from
♀ to S.

1+77 - 31.6' Rt. = end wall + Beg. wire gate.

wly. of 2 HJbs - 0.50 apart

1+72.5 - 14.5' Lt. = ♀ 10" Dead Esc.

Altadena

Lt.

E

Rt.

36

Set B.M. on 2" pipe - 35.46 Rt.

326.30

See B. 21.05 - P. 32

8+56.48 - S.L. of Oak Park Annex - Sect. along S.L.

26.6	26.3	25.4	25.55	25.8	26.7
30.5	15	5	on Hub.	18	30.5
			oil		

8+30

27.9	28.3	28.4	26.8	27.0	27.7	27.9
40	30	14		oil 20	30	40

8+00

30.1	30.2	30.2	27.1	27.1	27.4	27.5	27.7
40	30	14		5	oil 26	30	40

7+50

29.4	30.0	30.5	28.9	26.6	26.7	26.6	27.1
40	30	10		7	oil 26	30	40

7+00

25.8	26.1	26.1	26.2	25.2	25.6	25.8	26.0
40	30	15		6	oil 26	30	40

6+50

22.8	23.2	23.3	23.2	23.1	23.5	24.2	25.5
40	30	15		6	oil 26	30	34
							top

6+00

19.0	19.9	20.2	20.8	20.4	21.4	22.6	24.4
40	30	15		5	oil 26	30	37
							top

Elevations of pipe lines in
Altadena South of Oak
Park Annex. (see page 33)

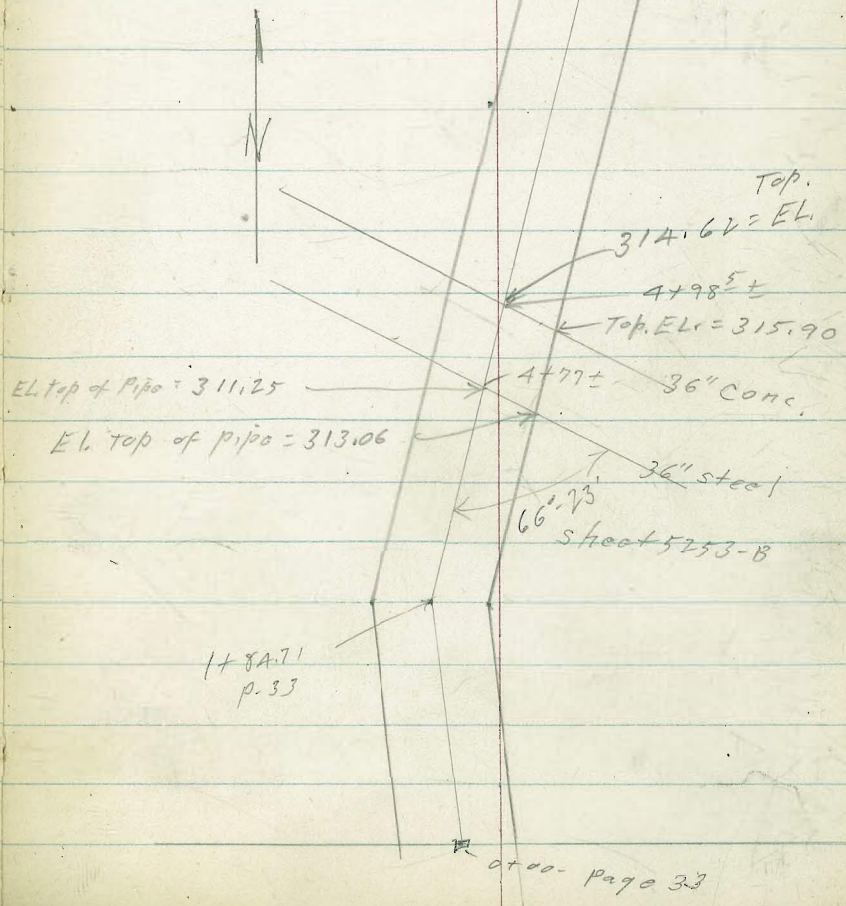
C.H.S.
Begg
Schelin
Pullon

4-17-55
W.O.# 31793

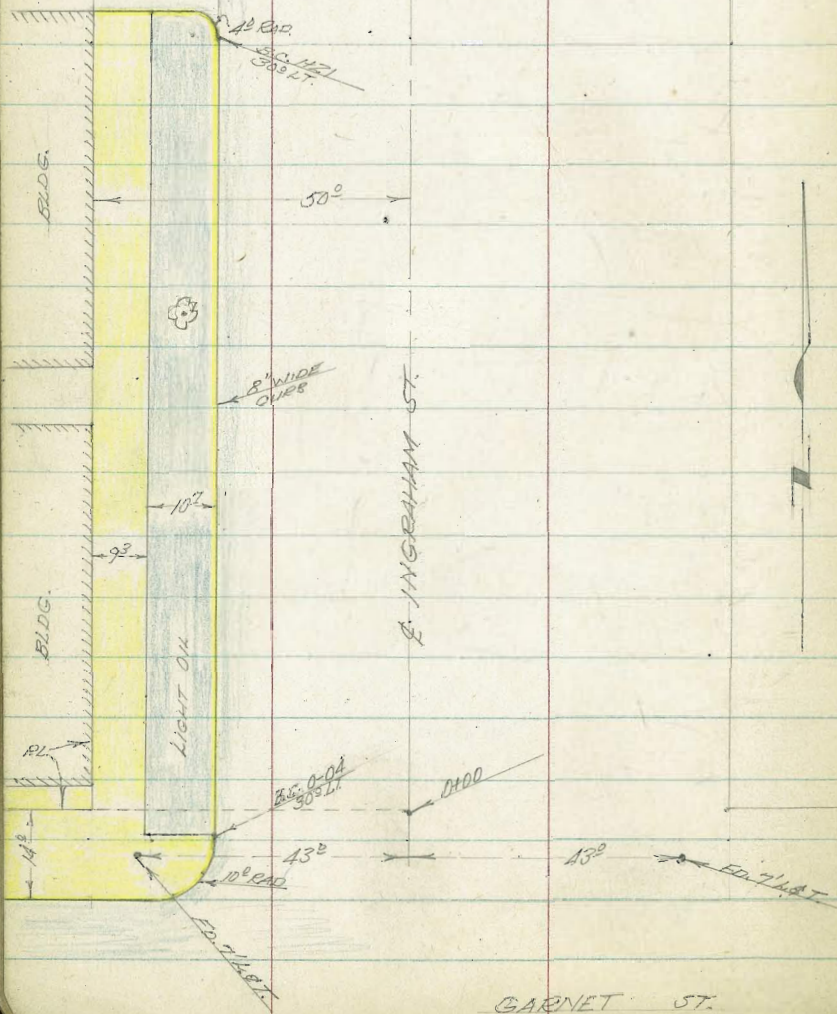
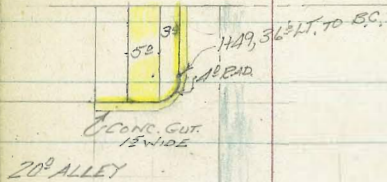
Sly line Oak Park Annex

8+56.48
p.33

INDEXED
MER
APR 20 1955



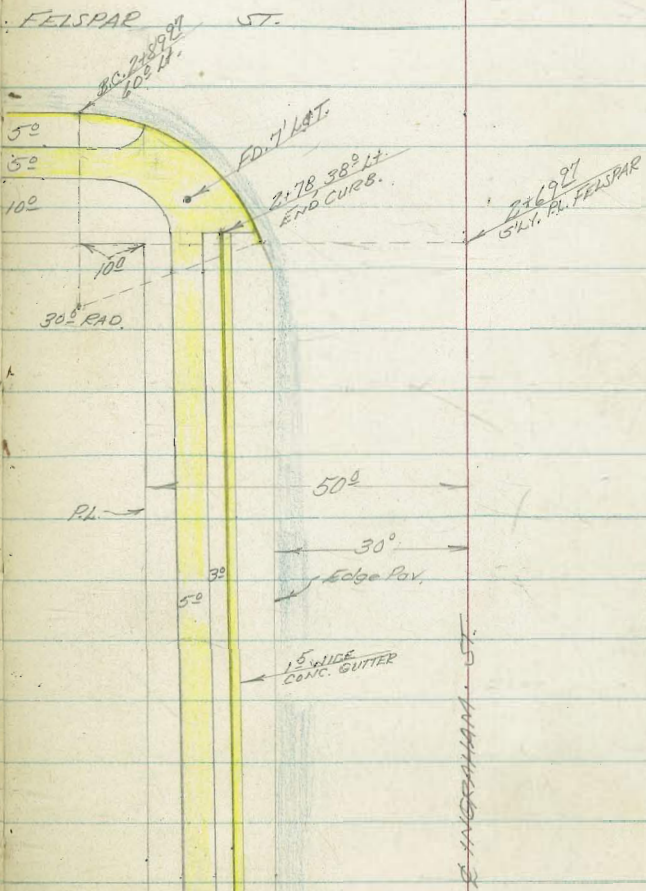
INDEXED
 JUL 27 1955



7-SEC. INGRAHAM, GARNET TO FELSPAR - WEST SIDE ONLY.
 COSTA
 GARBER
 FULLER
 KELLEY
 7-26-55
 W.O.# 62916

REFERENCES
 F.B. 1739 13. 13
 THE SHEET 1618

SEE 7-SEC. NOTES FOR OTHER IMPROVEMENTS



GARNET ST.

INGRAHAM ST.

2-SEC. INGRAHAM - CONT'D.

39

NOTE! SECTIONS TAKEN TO WEST OF ϕ
INGRAHAM - ONLY

Lt. ϕ Rt.

{ 32° Lt. TO METAL ST. SIGN POST.

0-100 { N.Y. PROP. LINE GARNET

6352 6331 6276 6279 6318
50 30 30 20
cb. gut.

0-0A B.C. OF CURB RETURN - 30° LT.

6319 6272 629A 6305
30 30 20
cb. gut.

MID POINT OF RETURN (N.W. COR.)

6311 627A
cb. gut.

0-12 50° Lt. to ϕ Metal st. Light Post (Signals)

6310 6345
85 85
gut. cb.

0-1A N.Y. CB. LINE GARNET.

6321 6298 6313 6282 621A 6285
60 60 10 10 30
cb. gut. cb. gut.

EC. OF RETURN

0-40 ϕ GARNET

6344 6299 6258 6250
85 60 35

B.M. 6326 = N.W. 7' LT. INGRAHAM ϕ GARNET

USED DIRECT ELEV. ROD.

1421 30° Lt. B.C. OF ALLEY RETURN

Lt.	¢	Rt.
6488	6440	
30	30	
06.	94.	

0478 35° Lt. to 2" DIAM. PALM TREE

0475

6467	6429	6382	6411	6433
50	30	30	20	
	06.	94.		

0469 50° Lt. BEGIN BLDG.

0460 50° Lt. END BLDG.

0441 31° Lt. GUY WIRE ENTERS GRD.

0425

6390	6367	6308	6338	6365
50	30	30	20	
	06.	94.		

0420 32° Lt. to 2" POWER POLE #1504

0404 10° Lt. BEGIN BLDG.

7-SEC INGRAHAM - CONT'D.

1449 36⁶ ft. to S.C. OF ALLEY RETURN

Lt. C Rt.
65.49 65.03
36⁶ 36⁶
Cb. GUT.

1448, 50¹ ft. BEGIN 2⁵ HIGH BRICK. RET. WALL

65.07 65.58
50 50
gut Cb. top
 (end cb.)

1445 N.Y. LINE ALLEY

65.31 64.80 64.19 65.14 65.22
20⁶ 40⁶ 30 20
Cb. gut edge
 Pav.
E.C.
Return

1435 C ALLEY

65.6 64.9 64.51 65.13
85 50 30 20
 edge
 Paving

(50⁰ ft. END BLDG.

1425 } SOUTH LINE ALLEY

65.1 65.22
50 50
dirt Cb. top
gut (end cb.)
64.94 64.7 64.42 64.85 65.00
34 34 30 20
Cb. dirt Edge
 gut Paving
E.C.
Return

1421⁵, 31⁵ ft. to C POWER POLE # P452A

Z-SEC INGRAHAM - CONT'D.

2475 37² Lt. BEGIN 8' WIDE CONC. DRIVE TO SINGLE GARAGE.

68.74
73
Conc.
Floor

66.85	66.55	66.44	65.95	65.87
50	45.4	40.4	37.2	37.2
			LIP	gut
			drive	

4198 37⁰ Lt. BEGIN 8' WIDE CONC. DRIVE TO SINGLE GARAGE

66.59 68.30
73 40
Conc.
Floor

66.29	66.17	65.65	65.53
45	40	37.0	37.0
		LIP	gut.
		drive	

65.8 68.2 68.2
50 50.1 60

65.72 65.36 65.17 65.31 65.65
36.9 36.2 30 20
cb gut edge
Pat.

1459 38⁴ Lt. to 4" x 4" SIGN POST.

65.35
25.1
LIP 1.8' gut.

I-SEC. INGRAHAM - CONT'D.

Lt. \$ Rt.

2488 { 550 Lt. to FIRE HYD.
520 Lt. to STOP SIGN

2471 38° Lt. END OF CURB.

67.0A 66.57
382 382
Cb. 94.

2469⁹⁷ { 315 Lt. END OF 30° RADIUS CURB. RETURN
50 Lt. END BRCK. RET. WALL
5'LY. PROP. LINE OF FENCE

67.0A 67.2 68.8 69.0
379 50 50.1 60
Cb. top

66.57 67.05 66.25 66.89 67.03
372 315 315 20
94 Cb. 94

2469 35° Lt. to & POWER POLE # 1518

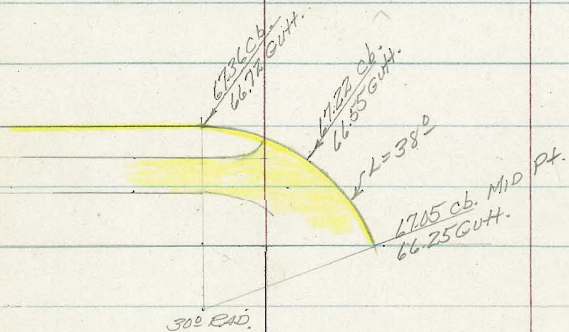
66.2
364
LIP OF 18" GUT.

66.7 68.5 68.6
60 60.1 70

2475

66.40 65.9A 65.80 66.25 66.33
374 374 30 20
Cb. 94. edge
15.98 Pav.
25.9
LIP 18" GUTT.

7-SEC. INGRAHAM - CONT'D.



S.W. CB. RETURN INGRAHAM
& FELSPAR.

CHECK B.M. 6721 = 6721 SW. 7' DISC. INGRAHAM &
FELSPAR

34.09.97 & FELSPAR

24.89.97 SW. CURB LINE FELSPAR

Lt.

¢

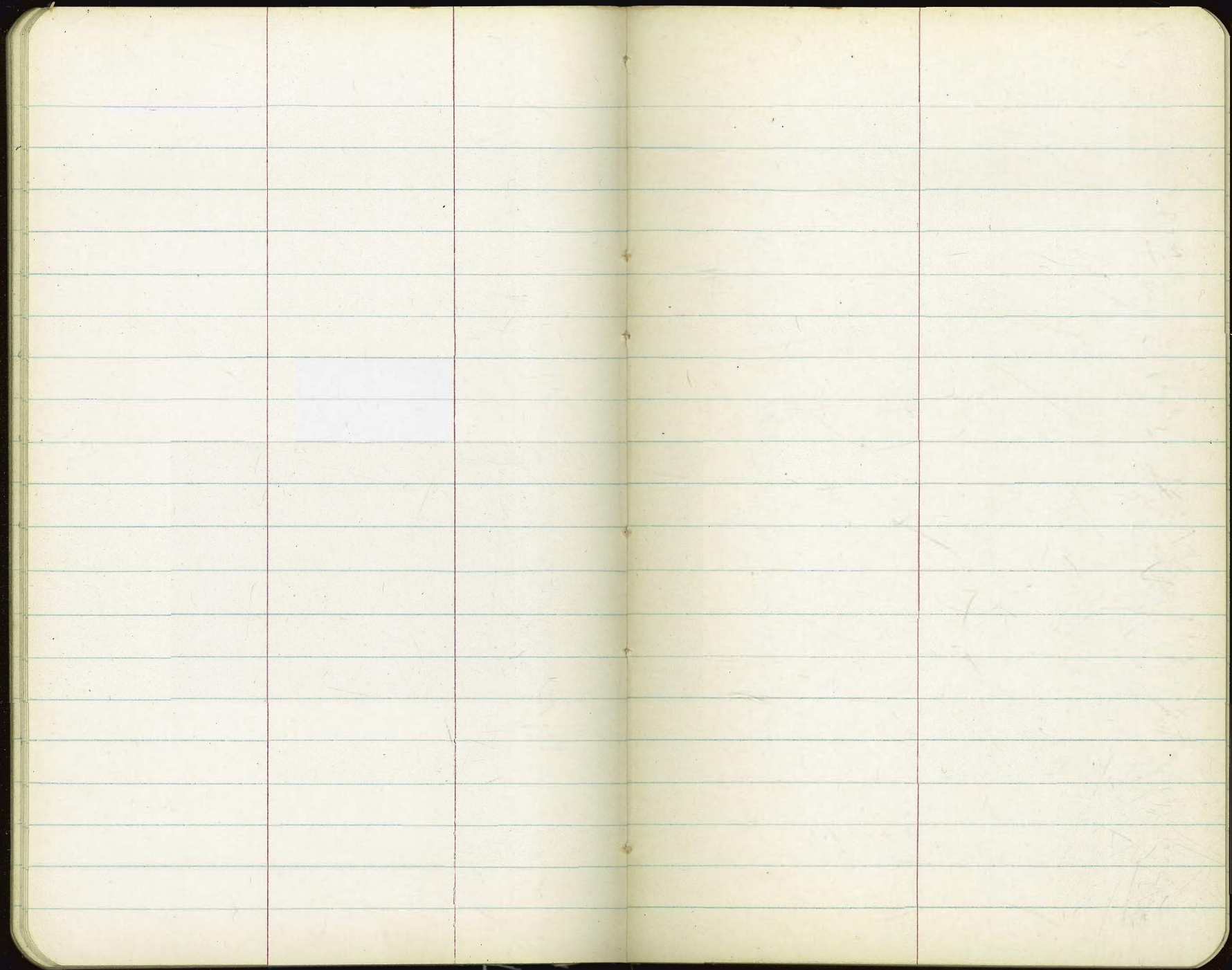
Rt.

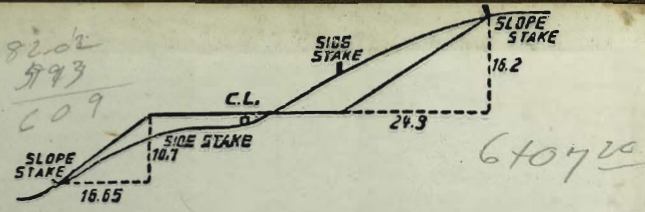
6772	6730	66.86	6736	6749
110	60	30	70	

66.89	6757	6700	6773
85	85	110	110
	cb.	Gut.	cb.

6736	66.72	66.61	6714	6727
60	60	30	20	
cb.	Gut.			

B.C. OF 30°
CB. RETURN





DISTANCES FROM SIDE STAKES FOR CROSS-SECTIONING.
 SLOPE 1 1/4 TO 1. ROADWAY OF ANY WIDTH.

	0	.1	.2	.3	.4	.5	.6	.7	.8	.9	
0	0.00	0.15	0.30	0.45	0.60	0.75	0.90	1.05	1.20	1.35	0
1	1.50	1.65	1.80	1.95	2.10	2.25	2.40	2.55	2.70	2.85	1
2	3.00	3.15	3.30	3.45	3.60	3.75	3.90	4.05	4.20	4.35	2
3	4.50	4.65	4.80	4.95	5.10	5.25	5.40	5.55	5.70	5.85	3
4	6.00	6.15	6.30	6.45	6.60	6.75	6.90	7.05	7.20	7.35	4
5	7.50	7.65	7.80	7.95	8.10	8.25	8.40	8.55	8.70	8.85	5
6	9.00	9.15	9.30	9.45	9.60	9.75	9.90	10.05	10.20	10.35	6
7	10.50	10.65	10.80	10.95	11.10	11.25	11.40	11.55	11.70	11.85	7
8	12.00	12.15	12.30	12.45	12.60	12.75	12.90	13.05	13.20	13.35	8
9	13.50	13.65	13.80	13.95	14.10	14.25	14.40	14.55	14.70	14.85	9
10	15.00	15.15	15.30	15.45	15.60	15.75	15.90	16.05	16.20	16.35	10
11	16.50	16.65	16.80	16.95	17.10	17.25	17.40	17.55	17.70	17.85	11
12	18.00	18.15	18.30	18.45	18.60	18.75	18.90	19.05	19.20	19.35	12
13	19.50	19.65	19.80	19.95	20.10	20.25	20.40	20.55	20.70	20.85	13
14	21.00	21.15	21.30	21.45	21.60	21.75	21.90	22.05	22.20	22.35	14
15	22.50	22.65	22.80	22.95	23.10	23.25	23.40	23.55	23.70	23.85	15
16	24.00	24.15	24.30	24.45	24.60	24.75	24.90	25.05	25.20	25.35	16
17	25.50	25.65	25.80	25.95	26.10	26.25	26.40	26.55	26.70	26.85	17
18	27.00	27.15	27.30	27.45	27.60	27.75	27.90	28.05	28.20	28.35	18
19	28.50	28.65	28.80	28.95	29.10	29.25	29.40	29.55	29.70	29.85	19
20	30.00	30.15	30.30	30.45	30.60	30.75	30.90	31.05	31.20	31.35	20
21	31.50	31.65	31.80	31.95	32.10	32.25	32.40	32.55	32.70	32.85	21
22	33.00	33.15	33.30	33.45	33.60	33.75	33.90	34.05	34.20	34.35	22
23	34.50	34.65	34.80	34.95	35.10	35.25	35.40	35.55	35.70	35.85	23
24	36.00	36.15	36.30	36.45	36.60	36.75	36.90	37.05	37.20	37.35	24
25	37.50	37.65	37.80	37.95	38.10	38.25	38.40	38.55	38.70	38.85	25
26	39.00	39.15	39.30	39.45	39.60	39.75	39.90	40.05	40.20	40.35	26
27	40.50	40.65	40.80	40.95	41.10	41.25	41.40	41.55	41.70	41.85	27
28	42.00	42.15	42.30	42.45	42.60	42.75	42.90	43.05	43.20	43.35	28
29	43.50	43.65	43.80	43.95	44.10	44.25	44.40	44.55	44.70	44.85	29
30	45.00	45.15	45.30	45.45	45.60	45.75	45.90	46.05	46.20	46.35	30
31	46.50	46.65	46.80	46.95	47.10	47.25	47.40	47.55	47.70	47.85	31
32	48.00	48.15	48.30	48.45	48.60	48.75	48.90	49.05	49.20	49.35	32
33	49.50	49.65	49.80	49.95	50.10	50.25	50.40	50.55	50.70	50.85	33
34	51.00	51.15	51.30	51.45	51.60	51.75	51.90	52.05	52.20	52.35	34
35	52.50	52.65	52.80	52.95	53.10	53.25	53.40	53.55	53.70	53.85	35
36	54.00	54.15	54.30	54.45	54.60	54.75	54.90	55.05	55.20	55.35	36
37	55.50	55.65	55.80	55.95	56.10	56.25	56.40	56.55	56.70	56.85	37
38	57.00	57.15	57.30	57.45	57.60	57.75	57.90	58.05	58.20	58.35	38
39	58.50	58.65	58.80	58.95	59.10	59.25	59.40	59.55	59.70	59.85	39
40	60.00	60.15	60.30	60.45	60.60	60.75	60.90	61.05	61.20	61.35	40
41	61.50	61.65	61.80	61.95	62.10	62.25	62.40	62.55	62.70	62.85	41
42	63.00	63.15	63.30	63.45	63.60	63.75	63.90	64.05	64.20	64.35	42
43	64.50	64.65	64.80	64.95	65.10	65.25	65.40	65.55	65.70	65.85	43
44	66.00	66.15	66.30	66.45	66.60	66.75	66.90	67.05	67.20	67.35	44
45	67.50	67.65	67.80	67.95	68.10	68.25	68.40	68.55	68.70	68.85	45
46	69.00	69.15	69.30	69.45	69.60	69.75	69.90	70.05	70.20	70.35	46
47	70.50	70.65	70.80	70.95	71.10	71.20	71.40	71.55	71.70	71.85	47
48	72.00	72.15	72.30	72.45	72.60	72.75	72.90	73.05	73.20	73.35	48
49	73.50	73.65	73.80	73.95	74.10	74.25	74.40	74.55	74.70	74.85	49
50	75.00	75.15	75.30	75.45	75.60	75.75	75.90	76.05	76.20	76.35	50

THE NATIONAL BLANK BOOK COMPANY
 HOLYOKE MASSACHUSETTS
 NEW YORK CHICAGO BOSTON SAN FRANCISCO