

DISTANCES FROM SIDE STAKES FOR CROSS-SECTIONING
SLOPE 1 TO 1. ROADWAY OF ANY WIDTH

	0	.1	.2	.3	.4	.5	.6	.7	.8	9	
0	0.00	0.10	0.20	0.30	0.40	0.50	0.60	0.70	0.80	0.90	0
1	1.00	1.10	1.20	1.30	1.40	1.50	1.60	1.70	1.80	1.90	1
2	2.00	2.10	2.20	2.30	2.40	2.50	2.60	2.70	2.80	2.90	2
3	3.00	3.10	3.20	3.30	3.40	3.50	3.60	3.70	3.80	3.90	3
4	4.00	4.10	4.20	4.30	4.40	4.50	4.60	4.70	4.80	4.90	4
5	5.00	5.10	5.20	5.30	5.40	5.50	5.60	5.70	5.80	5.90	5
6	6.00	6.10	6.20	6.30	6.40	6.50	6.60	6.70	6.80	6.90	6
7	7.00	7.10	7.20	7.30	7.40	7.50	7.60	7.70	7.80	7.90	7
8	8.00	8.10	8.20	8.30	8.40	8.50	8.60	8.70	8.80	8.90	8
9	9.00	9.10	9.20	9.30	9.40	9.50	9.60	9.70	9.80	9.90	9
10	10.00	10.10	10.20	10.30	10.40	10.50	10.60	10.70	10.80	10.90	10
11	11.00	11.10	11.20	11.30	11.40	11.50	11.60	11.70	11.80	11.90	11
12	12.00	12.10	12.20	12.30	12.40	12.50	12.60	12.70	12.80	12.90	12
13	13.00	13.10	13.20	13.30	13.40	13.50	13.60	13.70	13.80	13.90	13
14	14.00	14.10	14.20	14.30	14.40	14.50	14.60	14.70	14.80	14.90	14
15	15.00	15.10	15.20	15.30	15.40	15.50	15.60	15.70	15.80	15.90	15
16	16.00	16.10	16.20	16.30	16.40	16.50	16.60	16.70	16.80	16.90	16
17	17.00	17.10	17.20	17.30	17.40	17.50	17.60	17.70	17.80	17.90	17
18	18.00	18.10	18.20	18.30	18.40	18.50	18.60	18.70	18.80	18.90	18
19	19.00	19.10	19.20	19.30	19.40	19.50	19.60	19.70	19.80	19.90	19
20	20.00	20.10	20.20	20.30	20.40	20.50	20.60	20.70	20.80	20.90	20
21	21.00	21.10	21.20	21.30	21.40	21.50	21.60	21.70	21.80	21.90	21
22	22.00	22.10	22.20	22.30	22.40	22.50	22.60	22.70	22.80	22.90	22
23	23.00	23.10	23.20	23.30	23.40	23.50	23.60	23.70	23.80	23.90	23
24	24.00	24.10	24.20	24.30	24.40	24.50	24.60	24.70	24.80	24.90	24
25	25.00	25.10	25.20	25.30	25.40	25.50	25.60	25.70	25.80	25.90	25
26	26.00	26.10	26.20	26.30	26.40	26.50	26.60	26.70	26.80	26.90	26
27	27.00	27.10	27.20	27.30	27.40	27.50	27.60	27.70	27.80	27.90	27
28	28.00	28.10	28.20	28.30	28.40	28.50	28.60	28.70	28.80	28.90	28
29	29.00	29.10	29.20	29.30	29.40	29.50	29.60	29.70	29.80	29.90	29
30	30.00	30.10	30.20	30.30	30.40	30.50	30.60	30.70	30.80	30.90	30
31	31.00	31.10	31.20	31.30	31.40	31.50	31.60	31.70	31.80	31.90	31
32	32.00	32.10	32.20	32.30	32.40	32.50	32.60	32.70	32.80	32.90	32
33	33.00	33.10	33.20	33.30	33.40	33.50	33.60	33.70	33.80	33.90	33
34	34.00	34.10	34.20	34.30	34.40	34.50	34.60	34.70	34.80	34.90	34
35	35.00	35.10	35.20	35.30	35.40	35.50	35.60	35.70	35.80	35.90	35
36	36.00	36.10	36.20	36.30	36.40	36.50	36.60	36.70	36.80	36.90	36
37	37.00	37.10	37.20	37.30	37.40	37.50	37.60	37.70	37.80	37.90	37
38	38.00	38.10	38.20	38.30	38.40	38.50	38.60	38.70	38.80	38.90	38
39	39.00	39.10	39.20	39.30	39.40	39.50	39.60	39.70	39.80	39.90	39
40	40.00	40.10	40.20	40.30	40.40	40.50	40.60	40.70	40.80	40.90	40
41	41.00	41.10	41.20	41.30	41.40	41.50	41.60	41.70	41.80	41.90	41
42	42.00	42.10	42.20	42.30	42.40	42.50	42.60	42.70	42.80	42.90	42
43	43.00	43.10	43.20	43.30	43.40	43.50	43.60	43.70	43.80	43.90	43
44	44.00	44.10	44.20	44.30	44.40	44.50	44.60	44.70	44.80	44.90	44
45	45.00	45.10	45.20	45.30	45.40	45.50	45.60	45.70	45.80	45.90	45
46	46.00	46.10	46.20	46.30	46.40	46.50	46.60	46.70	46.80	46.90	46
47	47.00	47.10	47.20	47.30	47.40	47.50	47.60	47.70	47.80	47.90	47
48	48.00	48.10	48.20	48.30	48.40	48.50	48.60	48.70	48.80	48.90	48
49	49.00	49.10	49.20	49.30	49.40	49.50	49.60	49.70	49.80	49.90	49
50	50.00	50.10	50.20	50.30	50.40	50.50	50.60	50.70	50.80	50.90	50

Distance of slope stake from side or shoulder stake for any width roadway, slope 1 to 1. If ground is nearly level, the cut or fill at side stake is located by the double entry method in left column and top row. The number in body of table in same row and column gives distance from side stake to slope stake. If ground is not level estimate the difference in elevation between the side stake and slope stake, lower target by this amount if cut, elevate if fill. Add this amount to cut or fill and find distance in table. Set up rod at this point, and line of sight should cut target. If it does not make the slight adjustment necessary.

TABLE XIII—CORRECTIONS FOR TANGENTS AND EXTERNALS

These corrections are to be added to the approximate values, found by dividing the tangent, or external, for a 1° curve (Table VIII) by the degree of curve, in order to obtain the true tangents, or externals. Intermediate values may be obtained by interpolation.

FOR TANGENTS ADD

Central Angle	DEGREE OF CURVE													
	5°	10°	15°	20°	25°	30°	35°	40°	45°	50°	55°	60°	65°	70°
10°	.03	.06	.09	.13	.16	.19	.22	.25	.28	.31	.34	.38	.42	.46
15°	.04	.10	.14	.19	.24	.29	.34	.39	.45	.51	.53	.58	.63	.68
20°	.06	.13	.19	.26	.32	.39	.45	.51	.58	.65	.72	.79	.84	.90
25°	.08	.16	.24	.33	.40	.49	.58	.67	.75	.83	.90	.99	1.06	1.14
30°	.10	.19	.29	.39	.49	.59	.69	.79	.89	.99	1.09	1.20	1.29	1.39
35°	.11	.22	.34	.47	.58	.69	.79	.81	.92	1.04	1.29	1.42	1.54	1.66
40°	.13	.26	.40	.53	.67	.80	.93	1.06	1.20	1.34	1.49	1.64	1.79	1.94
45°	.15	.30	.44	.60	.76	.91	1.06	1.21	1.37	1.52	1.70	1.87	2.04	2.21
50°	.17	.34	.51	.68	.85	1.02	1.19	1.36	1.54	1.72	1.91	2.10	2.29	2.48
55°	.19	.38	.57	.76	.95	1.14	1.32	1.52	1.72	1.92	2.14	2.35	2.56	2.77
60°	.21	.42	.63	.84	1.05	1.27	1.49	1.71	1.94	2.17	2.38	2.60	2.83	3.07
65°	.23	.46	.69	.93	1.16	1.40	1.64	1.88	2.13	2.38	2.63	2.88	3.13	3.39
70°	.25	.51	.76	1.02	1.28	1.54	1.80	2.06	2.33	2.60	2.88	3.16	3.44	3.72
75°	.27	.56	.83	1.12	1.40	1.69	1.98	2.27	2.57	2.87	3.16	3.47	3.78	4.09
80°	.30	.61	.91	1.22	1.53	1.84	2.15	2.46	2.78	3.10	3.44	3.78	4.12	4.46
85°	.33	.66	1.00	1.33	1.68	2.02	2.36	2.70	3.05	3.40	3.77	4.14	4.55	4.89
90°	.36	.72	1.09	1.45	1.83	2.20	2.57	2.94	3.32	3.70	4.10	4.50	4.91	5.32
95°	.39	.79	1.19	1.55	2.00	2.40	2.80	3.20	3.61	4.02	4.40	4.98	5.38	5.83
100°	.43	.86	1.30	1.74	2.18	2.62	3.06	3.50	3.95	4.40	4.88	5.37	5.85	6.34
110°	.51	1.03	1.56	2.08	2.61	3.14	3.67	4.21	4.76	5.31	5.86	6.43	7.01	7.60
120°	.62	1.25	1.93	2.52	3.16	3.81	4.45	5.11	5.77	6.44	7.12	7.80	8.50	9.22

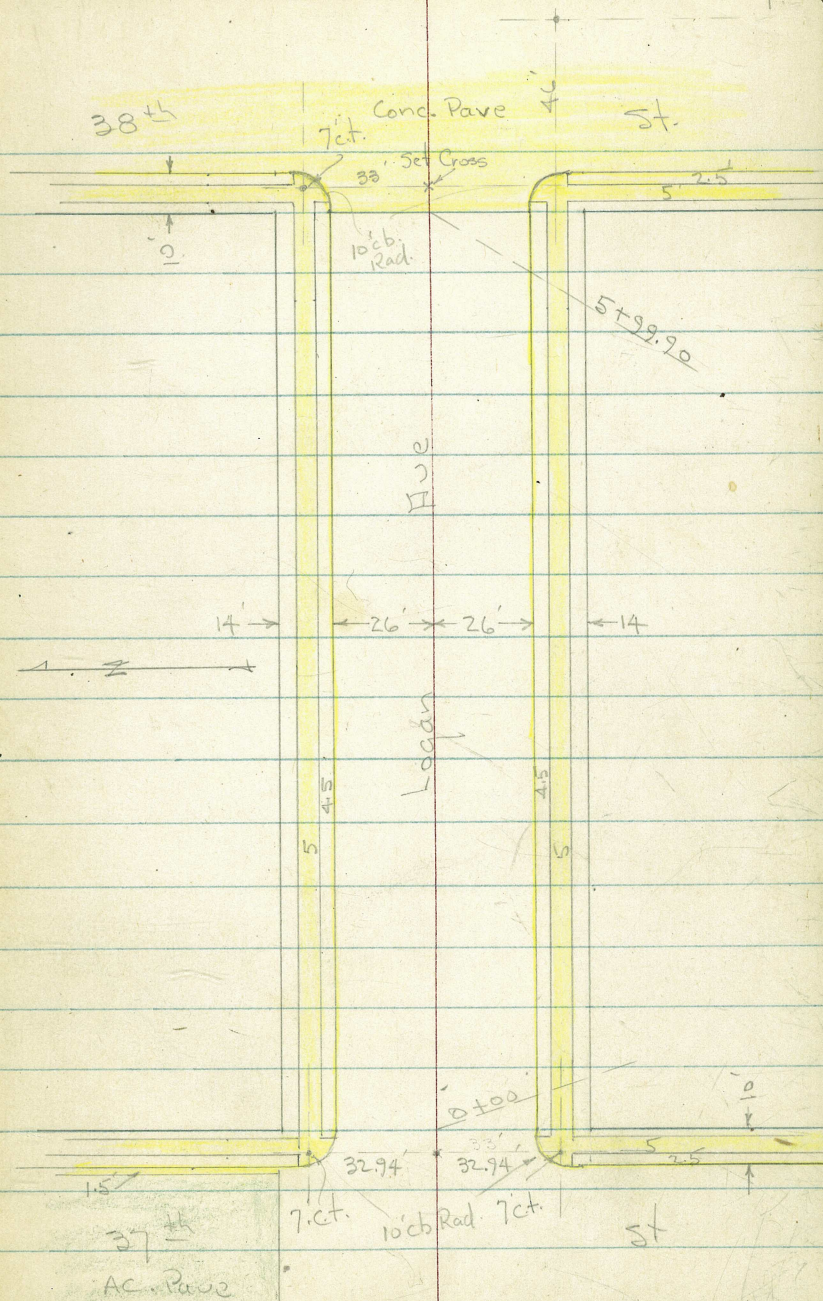
FOR EXTERNALS ADD

Central Angle	DEGREE OF CURVE													
	5°	10°	15°	20°	25°	30°	35°	40°	45°	50°	55°	60°	65°	70°
10°	.001	.003	.004	.006	.007	.008	.009	.011	.012	.014	.015	.017	.018	.020
15°	.003	.007	.010	.014	.018	.023	.027	.029	.032	.035	.039	.043	.047	.051
20°	.006	.011	.017	.022	.028	.034	.038	.045	.051	.057	.063	.070	.076	.083
25°	.009	.018	.027	.036	.046	.056	.065	.074	.083	.093	.106	.120	.127	.135
30°	.013	.025	.038	.051	.065	.078	.090	.103	.116	.129	.149	.170	.179	.188
35°	.018	.035	.054	.072	.086	.109	.131	.153	.175	.197	.213	.230	.247	.264
40°	.023	.046	.070	.093	.117	.141	.172	.203	.234	.265	.277	.290	.315	.341
45°	.030	.060	.093	.119	.153	.184	.216	.254	.289	.325	.351	.378	.411	.445
50°	.037	.075	.116	.151	.189	.227	.266	.305	.345	.384	.425	.467	.508	.550
55°	.046	.093	.142	.188	.236	.283	.332	.381	.420	.479	.530	.582	.641	.700
60°	.056	.112	.168	.225	.283	.340	.398	.457	.516	.575	.636	.697	.774	.851
65°	.067	.135	.204	.273	.343	.412	.483	.554	.625	.697	.771	.845	.922	1.01
70°	.080	.159	.240	.321	.403	.485	.568	.652	.735	.819	.906	.994	1.08	1.17
75°	.095	.182	.266	.353	.440	.528	.618	.707	.797	.887	.977	1.07	1.18	1.29
80°	.110	.220	.332	.445	.558	.671	.787	.903	1.02	1.13	1.25	1.38	1.50	1.62
85°	.128	.259	.391	.524	.657	.790	.926	1.06	1.20	1.34	1.47	1.62	1.76	1.91
90°	.149	.299	.450	.603	.756	.910	1.07	1.22	1.38	1.54	1.70	1.87	2.03	2.20
95°	.174	.350	.522	.706	.885	1.06	1.25	1.43	1.62	1.80	1.99	2.18	2.38	2.58
100°	.200	.401	.604	.809	1.01	1.22	1.43	1.64	1.85	2.06	2.28	2.50	2.73	2.96
110°	.268	.536	.806	1.08	1.35	1.63	1.91	2.20	2.48	2.76	3.05	3.35	3.66	3.96
120°	.360	.721	1.08	1.45	1.82	2.19	2.57	2.95	3.33	3.72	4.11	4.50	4.91	5.32

Page

1- X-Sect, Logan - 37th to 38th

INDEXED
MAY 18 1954



X- Sect. Logan Ave - 37th to 38th
 W.O. 31379 - 5-14-54 - 7.0 - Sketch - P. 1

1+50 69.48 68.3 68.7 68.9 68.6 68.3 69.19
 Top 26 13 13 26 26 Top
 gut. gut.

1+25 67.38 66.4 66.8 66.9 66.6 66.5 67.23
 Top 25.8 13 13 26 26 Top
 gut. gut.

1+00 65.25 64.5 64.7 64.9 64.6 64.4 65.06
 Top 25.7 13 13 26 26 Top
 gut. gut.

0+85 = Φ 8 Conc. Dr. onlt.
 0+68.5 - 26' Rt. = Beg. cb.
 0+60 = end cb on Rt.
 64.37 63.63
 30.5 walk 26 Dr.
 62.52
 26 Top
 ed.

0+20 62.51 61.4 61.6 61.7 61.4 61.1 61.86
 Top 26 13 13 26 26 Top
 gut. gut.

0+100 59.26 58.1 58.7 58.7 58.5 57.7 58.65
 Top 26 13 13 26 26 Top
 gut. gut.

0+00 = E.L. 37th
 57.73 57.0 57.5 57.6 57.3 57.0 57.05
 Top 26 13 13 26 26 Top = P.C.
 P.C. gut.

Mid pt. of Returns - 10' Rad. 20.4' Prop. to Prop.
 57.45 57.0 NE SE 56.6 56.94
 Top gut. Re Ret. gut. Top

0-10 = E. cb Line.
 check B.M. - SE 7' ct. Florence + 37th 68.92
 59.33 58.63 57.73 57.08 56.7 57.2 56.7 56.3 56.96 56.0 56.3
 Top 80 Top 40 26 26 40 Top 90 Top
 gut. gut. gut. gut. gut. gut.

B.M. = SE B.P. - 37th + Logan 56.98

(conc.)

Logan

Lt. #

Rt.

3

3+00

75.77	75.0	75.3	75.4	75.2	74.9	75.71
Top	26 gut.	13		13	25.9 gut.	Top

2+88 = ± 11' Conc. Dr. on Lt.

75.66	75.15
30.4 walk	25.9 Dr.

2+75

75.37	74.4	74.7	75.0	74.7	74.5	75.30
Top	26 gut.	13		13	25.9 gut.	Top

2+59.5 - end Dr. on Rt.

74.36	75.19
25.9 - Dr.	30.5 walk

2+50

74.70	73.6	74.1	74.4	74.0	74.03	74.70
Top	26 gut.	13		13	25.9 Dr.	30.5 walk

2+37 - 26' Rt. = Beg. Conc. Dr.

73.62	74.21
26 Dr.	30.5 walk

2+25

73.79	72.6	73.2	73.4	73.1	72.7	73.67
Top	26 gut.	13		13	26 gut.	Top

2+00

72.62	71.4	72.1	72.3	72.0	71.5	72.48
Top	26 gut.	13		13	26 gut.	Top

1+90 = T.P. on cb. - Rt.

71.90

1+75

71.20	70.1	70.5	70.7	70.4	69.9	71.01
Top	26.1 gut.	13		13	26 gut.	Top

1+58.2 = ± 16' Conc. Dr. on Rt.

69.31	69.96
26 Dr.	30.5 walk

Logan

LT.

±

RT.

4

5+00

78.46 77.7 78.4 78.8 78.3 77.5 78.00
 Top 26 13 13 26 Top
 gut. gut.

4+75

77.76 77.4 77.9 78.1 77.8 77.0 77.37
 Top 26 13 13 26 Top
 gut. gut.

4+55 = ± 10' Conc. Dr. on Lt.

77.62 76.87
 30.5 25.9
 walk Dr.

4+50

77.47 77.0 77.5 77.7 77.4 76.5 77.12
 Top 26 13 13 26 Top
 gut. gut.

4+12.5 = end Dr. on Rt.

76.16 76.87
 26 30.5 = walk
 Dr.

4+00

76.98 76.3 76.8 77.1 76.7 75.90 76.71
 Top 25.9 13 13 25.9 30.5
 gut. in Dr. walk

3+92 = ± 9' Conc. Dr. on Lt.

76.96 76.34
 30.5 25.9
 walk Dr.

3+87.5 = 26' Rt. = Beg. Conc. Dr.

75.92 76.55
 26 30.5
 Dr.

3+50

76.39 75.7 76.1 76.4 76.0 75.6 76.11
 Top 26.1 13 13 25.9 Top
 gut. gut.

3+42.5 = ± 10' Conc. Dr. on Rt.

75.48 76.14
 25.8 30.4
 Dr. walk

3+40 = ± 10' Conc. Dr. on Lt.

76.44 75.85
 30.4 26
 walk Dr.

Lt. Rt.

Soil Sample - 3+90 - \pm

check S.E. B.P. - 38th + National 76.56

Set B.M. on N.W. 7^{ct} - 38th + Logan 83.98

82.49 83.00
26
gut Top

6+09.90 = w. cb. Line

85.30 84.78 83.98 83.50 83.45 83.63 83.47 83.14 82.80 82.60 83.03 81.69 82.13
Top 13 26 26 26 26 26 13 13 26 26 26 26 26
gut Top gut Top gut Top gut Top

Mid. pt. of Returns - 15.4 around Prop. to Prop.

N.W. Ret. 83.32 83.83 82.62 83.02
gut Top gut Top

5+99.90 = w.L. 38th + edge of Conc. Pavc

83.84 83.21 83.33 83.17 82.86 82.44 82.99
Top 25.9 13 13 26 26 26
= Pl gut Top = Pl

5+70

81.99 80.9 81.1 81.3 80.9 80.5 81.32
Top 25.9 13 13 26 26 26
gut Top gut Top

5+43 = \pm 12' Conc. Dr. on Lt.

80.68 79.93
20.5 25.9
walk Dr.

5+35

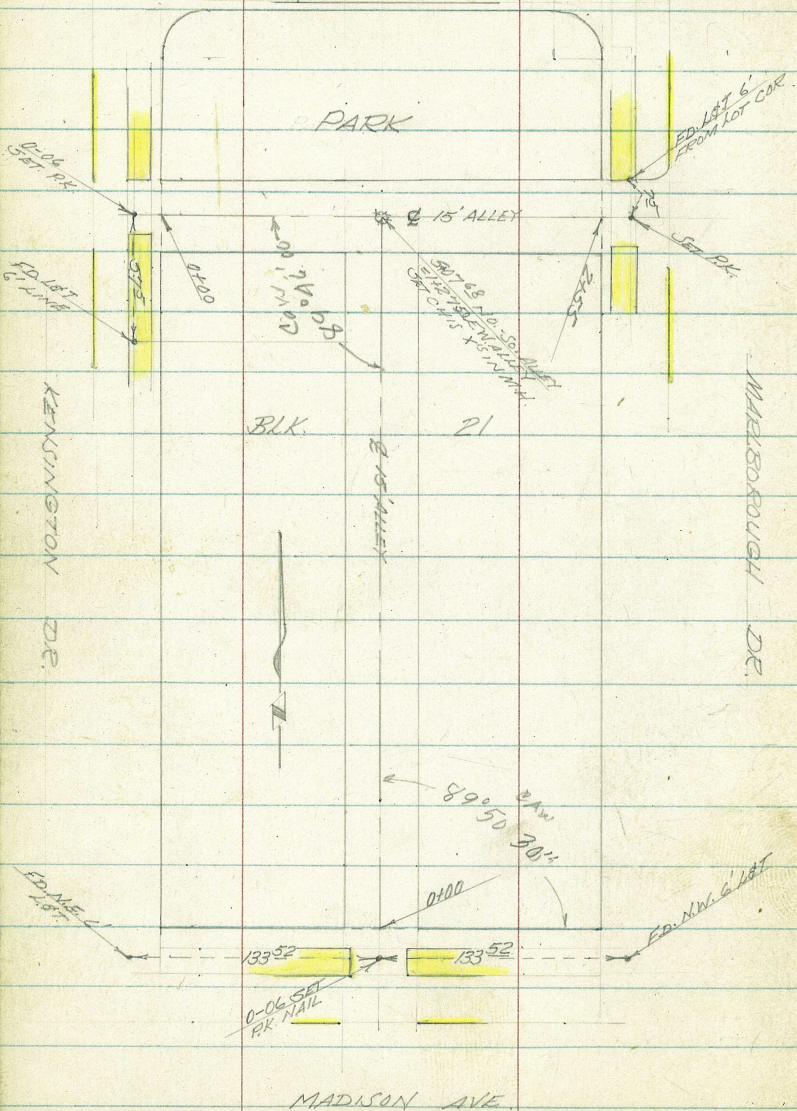
80.15 79.3 79.5 79.7 79.3 78.7 79.45
Top 26 13 26 26 26
gut Top gut Top

5+08.5 = \pm 11' Conc. Dr. on Rt.

77.94 78.40
26 30.5
Dr. walk

PARK PLACE

INDEXED
JEN
APR 29 1935



7-SEC. ALLEY BLK. 21, KENSINGTON PARK
FOR GRADE ORD.

COTA
GABLER
KELLEY
MOORE
W.O.# 25620
A-24-55

REFERENCES
SUB. MAP 1215

MADISON AVE.
100' ST.
60' ROADWAY
7' CB. TO WK.
5' WIDE WK.
A.C. PAVING

MARLBOROUGH DR.
60' ST.
32' ROADWAY
7' CB. TO WK.
5' WIDE WK.
A.C. PAVING

KENSINGTON DR.
60' ST.
32' ROADWAY
7' CB. TO WK.
5' WIDE WK.
A.C. PAVING

NOTE! THERE IS A THIN OIL COATING ON ALLEY

2-SEC. ALLEY BLK 21, KENSINGTON PARK
EAST & WEST ALLEY-CONT'D

Lt. (No.) \$ Rt. (So.)

0+10 366.7 366.6 366.7 366.7 366.8 366.7 366.7
20 7.5 6 A 7.5 20

0+00 366.1 366.1 366.1 366.12 366.5 366.1 366.1
20 7.5 6 A 7.5 20

0-07 { 4' LT. BEGIN SIDE WK. TO NO.
1' RT. BEGIN SIDE WK. TO SO.
WEST EDGE OF SIDEWALK

362.89 362.93 362.6 363.04 363.14
20 7 A 20

361.90 362.16 362.71 362.71
50 50 50 50
944 944 944 944

NO ALLEY RETURNS, JUST CR. OPENING

0-14 { EAST CR. LINE KENSINGTON.

362.78 362.20 362.20 362.07 362.31 362.36 362.92
9 9 7 6 1/2 7 8 8
Cb. 944 944 944 944 944 Cb.

OPENING

0-30 \$ KENSINGTON

361.78 362.20 362.53 362.93 363.50
100 50 50 50 100

7th SEC. ALLEY BLK 21, KENSINGTON PARK
EAST & WEST ALLEY - CONT'D.

8

LT (No.)

\$

RT (So.)

1400 26° RT. TO ♀ SINGLE GARAGE

367.9
17

367.8
7.5

367.5

367.7
7.5

367.68
20
CONC.
FLOOR

0491 17° LT. TO ♀ DOUBLE GAR.

367.91
17
CONC.
FLOOR

0488 7¹/₂° RT. END 4° HIGH PICKET FENCE

0463 7³/₄° RT. BEGIN 4° HIGH PICKET FENCE

0450

367.8
20

367.8
7.5

367.0
5

367.0

367.2
5

367.7
7.5

367.5
15

0441 24° LT. TO ♀ DOUBLE GARAGE

367.74
24
CONC.
FLOOR

0439 6³/₄° RT. TO ♀ P.P. A4111

0430

367.5
20

367.3
7.5

366.3
5

366.3

366.3
A

367.3
5

367.5
7.5

367.5
14

7-SEC. ALLEY BLK. 21, KENSINGTON PARK
EAST & WEST ALLEY-CONT'D.

LT. (No.)

£

Rt. (So.)

1450

3677
15

3675
75

3675

3676
75

3678
15

1442

LT TO £ DOUBLE GARAGE

36780

17.2

CONC
Floor

1436 6³ FT. BEGIN 2⁰ WIDE, 10' HIGH EUGENIA
HEDGE.

1427⁵⁰

{ 8' LT. END CONC. WK NEXT TO HOUSE
{ SEWER M.H. ON £ BOTH ALLEYS
{ £ OF NORTH & SOUTH ALLEY

36792
8L
CONC.
WK.

3679
75

36749
M.H.
RIM

3676
75

1419 7¹ FT. END 10' HIGH WOOD FENCE

1408 7¹ FT. BEGIN 10' HIGH WOOD FENCE

1401 7⁶ FT. BEGIN 15' WIDE WK. RUNNING PARALLEL
TO ALLEY £ - AGAINST HOUSE

3679A

3679A

76
CONC.

2-SEC. ALLEY B/LK. 21, KENSINGTON PARK
EAST & WEST ALLEY - CONT'D.

LT. (No.) \$ Rt. (So.)

1 2130

367.08 367.08 366.6 366.8 367.3 367.5
75 55 1 75 12
CONC. CONC.

2110 6' RT. TO 3' WIDE CONC. WALK.

367.75
61

2408 5' LT. BEGIN 2' WIDE CONC. WALK RUNNING
PARALLEL TO ALLEY & (AGAINST HOUSE)

367.60 367.60
75 55

2400

367.5 367.5 367.3 367.3 367.5
15 7.5 7.5 15

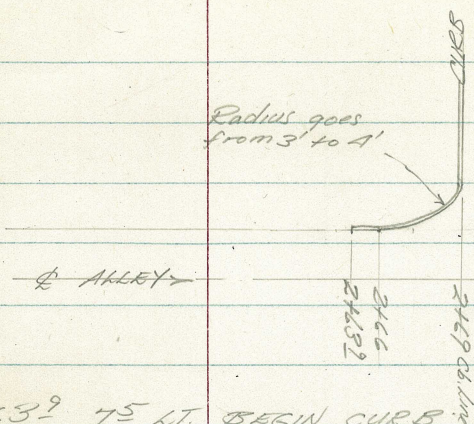
1 177A 10' LT. END CONC. DRIVE

367.81 367.71
116 106
Floor Lip

1 1753⁰ 10' LT. BEGIN CONC. DRIVE TO DOUBLE
GARAGE

367.89 367.64
116 106
CONC. Lip
Floor

X-SEC. ALLEY BLK 21, KENSINGTON PARK
EAST & WEST ALLEY-CONT'D.



Lt. (No.) \$ Rt. (So.)

2463⁹ 75¹ LT. BEGIN CURB (SEE SKETCH)

363.54 363.4
75 75
06 944

2463⁸ { 73¹ LT. BEGIN SIDE WALK TO NO.
6¹ RT. BEGIN WK. TO SO.
EKY EDGE SIDE WALK

363.58 363.63 363.60 363.81
70 72 61 70

2457 5³ LT. END CONC. WALK RUNNING
PARALLEL TO ALLEY

363.68 363.68
73 53
CONC

2455⁰⁰ WEST PROP. LINE MARLBOROUGH

364.1 364.3 364.25 364.1 364.2 364.7 364.9
15 75 53 5 7.5 20
WK

2444

366.60 366.60 366.0 365.6 365.7 367.1 367.3
73 53 5 4 7.5 15
CONC. WK.

1/2 SEC. ALLEY B/LK 21 KENSINGTON PARK
EAST & WEST ALLEY - CONT'D.

Lt. (No.)

¢

Rt. (So.)

2485 ¢ MARLBOROUGH

362.92	363.11	363.20	363.46	363.66
100	50		50	100

362.81	363.25
50	50
↑ 944	06.

363.70
27
06.

2469 { 100 Rt. BEGIN OB. TO SOUTH
W/AY OB. LINE MARLBOROUGH

363.40	363.04	362.9	363.00	363.46	363.30
115	115		10	10	27
06.	80		944	06.	944
80	944				
Return					

2466 75 AT BC OF RETURN

363.55	363.3
75	75
06.	944

7 SEC. ALLEY BLK 21, KENSINGTON PARK.
NORTH & SOUTH ALLEY

L.T. (W/4)

±

R.T. (E/4)

0+20 16⁵ Rt. to ± SINGLE GARAGE

366.89
165
Conc.
Floor

0+00 NLY PROP. LINE MADISON

367A 367B 367C 366B 3659 3665 366A
15 7.5 6.9 6.8 7.5 15

0-04⁵ 6.8 FT. BEGIN CONC. WALL 12 HIGH 0⁴ WIDE

3662 365.9
6.8 6.8
GRD Foot

0-10 { 6.8 FT. BEGIN WK. TO WEST
6.5 FT. BEGIN WK. TO EAST
5'± EDGE SIDE WALK

366.20 366.15 366.04 365.98
20 6 6.5 20

0-20 { 8⁰ FT. BEGIN CURB TO EAST
8⁰ FT. BEGIN CURB. TO WEST
NLY CB. LINE MADISON

2
°
↙ ↘

365.98 365.94 365.85 365.89 365.5 365.53 365.88 365.54 365.68
50 50 8 8 8 8 50 50
06. 944 08 944 944 08. 944 08.

0-50 ± MADISON

367.01 366.94 366.89 366.5A 366.22
100 50 50 100

7-SEC. ALLEY BLK. 21, KENSINGTON PARK
No. 850 ALLEY - CONT'D.

LT. (NLY)

RT. (ELY)

1400

367.5 367.1 367.0 367.1 367.3
15 7.5 7.5 15

0499 7⁵ RT END CONC. DRIVE TO 4 GAR.

367.10 367.29
7.5 15
LIP CONC.
 Floor

0462 11⁷⁴ LT TO 17⁰ WIDE CONC. APRON TO
DOUBLE GARAGE

368.23 367.41
15.5 7.4
CONC. LIP
Floor

0455 7⁵ RT. BEGIN CONC. DRIVE FOR 4 GARAGES

367.18 367.27
7.6 13.5
LIP CONC.
 Floor

0451 6⁸ LT TO 6 RR# PA. 1609

0450 6⁹ LT END 1⁰ HIGH CONC. WALL

367.9 367.7 367.1 366.9 366.9 367.2 367.3
15 7.5 6.9 6.9 4.5 15
 2RD Foot

0444 9⁰ LT TO 3⁸ WIDE OPENING IN WALL

367.75
9.0

7-SEC ALLEY BLK 21, KENSINGTON PARK
No. of So. ALLEY - CONT'D.

LT. (WLY)

RT. (ELY)

2425 8' LT. TO & 35' OPENING IN WALL

367.68
8'
CONC.

2401 8' LT. BEGIN 50' HIGH PLASTER WALL

367.5 366.7
8
GRD. FOOT.

2400

367.9 367.1 367.0 367.5 367.3
20 7.5 7.5 15

1450 6' LT. TO & P.P. # J.P.A. 1625

367.6 367.3 367.0 367.3 367.0
20 7.5 7.5 15

1441 14' RT. TO & SINGLE GARAGE

367.25
14'
CONC.
FLOOR

1420⁵ 125' RT. TO & DOOR TO HOUSE

367.20
125
FLOOR

2-SEC ALLEY BLK 21, KENSINGTON PARK
 No. & So. ALLEY - CONT'D

LT. (WHY)

¢

RT. (ELY)

3425 7⁵ LT TO ¢ 3⁵ WIDE WK.

367.70
 17⁵

367.80
 7⁵

3424 7⁸ RT. TO ¢ 2⁰ WIDE CONC. WK

367.75
 7⁸

367.65
 17⁸

3406 14³ RT. TO ¢ SINGLE GAR CONC. FLOOR

367.60
 14³
 Conc.
 Floor

3400 7⁵ LT END 8⁰ HIGH LATH FENCE

367.6
 15

368.0
 7⁵

367.4

367.7
 7⁵

367.8
 15

2175 7² LT TO ¢ 2⁰ WIDE CONC. WK.

367.4
 7²
 Conc.

2150 { 8⁰ LT END PLASTER WALL
 7⁰ LT, BEGIN 8⁰ HIGH LATH FENCE
 6² LT. TO RR# JPA 1659

367.7
 20

367.9
 8²

366.9
 8²

367.4

367.8
 7⁵

367.5
 20

GED, FOOT

7-SEC. ALLEY BLK 21, KENSINGTON PARK
 No. & So. ALLEY - CONT'D.

367.0
 368.0

4+00 7 $\frac{1}{2}$ LT BEGIN 3 $\frac{1}{2}$ HIGH STUCCO WALL

367.7	367.8	367.5	367.5	367.8	367.1
20	7.6	7.6		7.5	20
	GRD	Foot			

3+99 7 $\frac{1}{2}$ LT. END 6 $\frac{1}{2}$ HIGH WALL

368.0	367.0
7.5	7.5
GRD.	Foot

3+81 7 $\frac{1}{2}$ LT. BEGIN 6 $\frac{1}{2}$ HIGH STUCCO WALL

368.0	367.0
7.6	7.6
GRD.	Foot

3+79 7 $\frac{1}{2}$ LT. TO & 3 $\frac{1}{2}$ WK.

367.70	367.89
17.5	7.5

3+76 7 $\frac{1}{2}$ LT. END STUCCO RIDG.

3+50 7 $\frac{1}{2}$ LT. BEGIN STUCCO RIDG.

367.2	368.0	367.1	367.6	367.2
20	7.1		7.5	15

3+49 6 $\frac{1}{2}$ LT. TO & P.P.# JPA 4649

Z-SEC. ALLEY BLK. 21, KENSINGTON PARK
NO. 8 So. ALLEY, -CONT'D.

Lt. (W. 11)

¢

Rt. (E 24)

5100 18' } C⁸ LT. TO C PP# AA659
 { SOUTH LINE OF EAST WEST ALLEY

3679
7.5

3676

3677
7.5

4178 6' LT. TO C PP# JPA 1655

43' RT. END 50" HIGH BOARD FENCE

4130 7' LT. END 35" HIGH STUCCO WALL

3675
20

3677
7.8

3674
7.8

3676

3677
7.5

3678
15

GRD. FOOT

4132 7' LT. TO C 15" WIDE CONC. WK.

3673A
17.8

3674A
7.8

4123 7' RT. END CONC. SLAB

3679
7.0

3678
15

4101 { 7' RT. BEGIN 50" HIGH BOARD FENCE
 { 7' RT. BEGIN CONC. SLAB FOR PATIO

3679
7.1

3678
12

Roberts
5-18-55
W/O # 25010

X-Section Folsom Drive
La Cañada to Dodge

La Cañada

La Cañada! -
60' Street
30' Roadway
5' Walks Comb.
conc. Paving

Folsom

5

Folsom

FOLSOM

1+62.25

DRIVE

DODGE

0+46.6±

0+00

0+09.20

R=500'

Folsom

Folsom! -
50' Street
26' Roadway
5' Comb. Walk
Conc. Paving

$\frac{1}{2} = 9^{\circ} 17.8'$ 0+00 to 1+62.25
 $\frac{1}{2} = 9^{\circ} 21.0'$ 1+62.25 to 3+25.43

40

2

Dodge! -
50' Street
26' Roadway
5' Comb. Walk
Conc. Paving

INDEXED

MAY 20 1955

Cont'd From Page 19

20

T.P. 12.30 165.71 0.12 153.41

T.P. 12.83 153.53 0.31 140.70

T.P. 12.91 141.01 0.10 128.10

T.P. 12.85 128.20 0.07 115.35

T.P. 13.02 115.42 0.07 102.40

T.P. 13.06 102.47 0.14 89.41

BM 13.13 89.55

76.42
NEBP
La Jolla

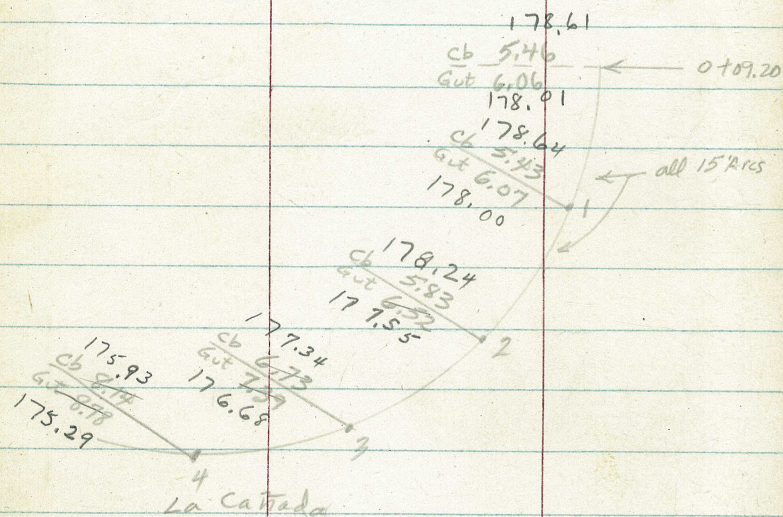
Blvd. & La Cañada

Note!

From 0+00 to 1+62.25 a coat of AC has been laid from gutter out to width of from 6' to 8' on the East side.

0-25

Sections now radial to ^{eyeball} Q



La Cañada

0-46.6

Approx. Q La Cañada

Section
(Parallel to La Cañada)

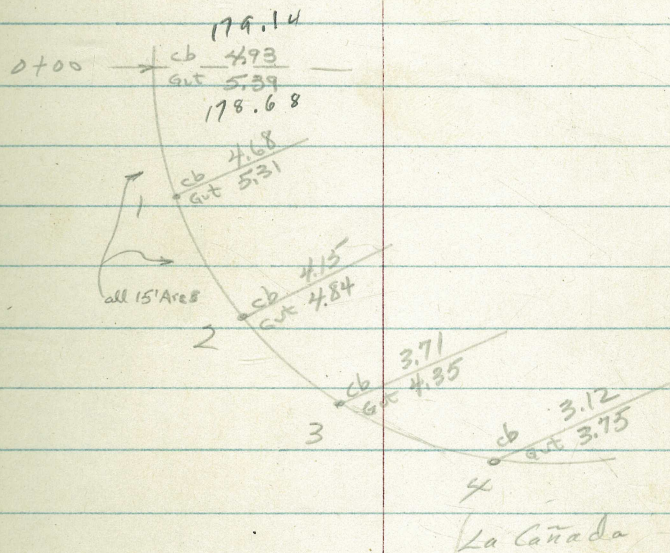
T.P. 5.64 184.07 ∇ 0.10 178.43

T.P. 12.89 178.53 0.06 165.65

165.71 ∇

6.36	7.00	6.21	5.77	5.26	4.88	4.22
296	296	13		13	247	247
cb	Gut				Gut	cb

Follow



La Cañada

8.32	6.63	6.01	5.47	4.97	4.41	3.63
50	30	15		15	30	50

184.07 ∇

0+75

5.2	5.21	5.30	5.39	5.38	5.35	4.83	4.76	4.3
25	18 walk	13 cb	13 gut		13 gut	13 cb	18 walk	25 GRD at wall
178.9	178.86	178.77	178.18	178.69	178.72	179.24	179.31	179.8

0+50

5.79	5.87	5.43	5.38	4.90	4.75	4.4
13 lip	13 gut		13 gut	13 cb	18 walk	25 GRD at wall
178.28	178.20	178.64	178.69	179.17	179.32	179.7

0+48

Lt E 13th Drive opening

5.80	5.91	5.23	5.80	5.89
43 TRUCK	39	18 walk	13 lip	13 gut
178.27	178.18	178.84	178.27	178.18

0+25

7.5	5.3	4.7	5.23	5.41	5.96	5.49	5.39	4.94	4.82	4.5
28 ²	28 ² wall	23	18 walk	13 cb	13 gut		13 gut	13 cb	18 walk	25 GRD at wall
176.1	178.8	179.4	178.84	178.66	178.11	178.58	178.68	179.03	179.25	179.6

0+13

Rt E 6' Conc walk & steps

4.78	4.39	3.85
18 conc	25 conc	25 Top 12" step
179.29	179.68	180.22

0+00

Radially opposite PRC NE Corner

7.6	5.3	4.7	5.30	5.41	6.06	4.55	5.39	4.93	4.78	4.3
31 ²	31 ² wall	25	18 ⁴ walk	13 ⁴ cb	13 ⁴ gut		13 gut	13 cb	18 walk	25 GRD at wall
176.5	178.8	179.4	178.77	178.66	178.01	179.52	179.68	179.04	179.29	179.8

184.07A

184.07A

Cont'd From Page 22

1775

Lt & 16 opening in curb

267
43
Floor

178.85

1750

1738

Lt & 22 drive opening in cb

177.96
174.86
178.27
178.65
179.32
178.92
178.91
179.43
178.34

Residence of Complainant

1725

1705

Lt & 3rd conc walk

1700

T.P.

857 188.52K 4.12 179.95

184.87K

178.65
78.6
7.88
18
walk

Lt
179.44
7.10
16
walk

179.00
9.52
13
lip

178.90
9.62
13
gut

179.69
8.83

179.77
8.75
13.6
gut

180.33
8.19
13.6
cb

180.43
8.09
18.5
walk

180.7
7.8
26
FRD
wall

178.1
10.4
30

179.0
9.5
19
Grd
at

178.96
9.63
13
cb

178.89
9.66
13
gut

179.08
9.44

179.28
9.24
13
gut

179.63
8.89
13
cb

179.71
8.81
18
walk

184.3
7.2
25

178.65
9.37
28
conc

179.32
9.20
20
conc

178.92
9.59
18
walk

178.91
9.61
16
walk

179.43
10.09
13
lip

178.34
10.18
13
gut

178.4
10.1
18
walk

178.92
9.60
18
walk

178.80
9.72
13
cb

178.19
10.33
13
gut

178.77
9.75

178.94
9.58
13
gut

179.36
9.16
13
cb

179.42
9.08
18
walk

184.0
7.5
25

178.37
10.15
30
conc
walk
at wall

178.85
9.67
18
walk

178.6
9.7
30
Grd
at
wall

178.86
9.66
18
walk

178.86
9.76
13
cb

178.19
10.33
13
gut

178.78
9.84

178.81
9.71
13
gut

179.28
9.24
13
cb

179.39
9.13
18
walk

182.5
6.0
25

188.52K

ON D. & C.T. EAST SIDE FOLSOM (Sta. 1762.25)

Cont'd From Page 23

T.P. 0.15 139.80 12.09 139.65

T.P. 0.29 152.74 12.99 152.45

T.P. 0.11 165.44 13.32 165.33

T.P. 0.38 178.65 10.25 178.27

2+75 You should need no more. We are
over the high point

2+50

2+25

2+00

188.52K

Lt.

♀

Rt

24

179.2	179.2	181.71	181.65	181.12	182.23	183.18	184.17	185.86
9.3	9.3	6.81	6.87	7.40	6.79	5.34	4.35	2.66
30	19	12	13	13	15	15	30	50
		walk	cb	gut				
180.2	181.89	181.79	181.29	182.37	183.15	183.87	184.69	185.44
9.3	6.63	6.73	7.23	6.25	5.37	4.65	3.83	3.08
30	12	13	13	15	30	29	49	
	walk	cb	gut			gut	cb	
180.2	181.30	181.17	180.65	181.54	182.24	182.40	182.54	183.15
8.3	7.22	7.35	7.87	6.98	6.28	6.12	5.94	5.37
30	18	13	13	17	30	30	33	36
	walk	cb	gut		gut	zip	walk	walk
179.5	180.33	180.24	179.77	180.59	180.89	181.42	181.58	181.7
9.0	8.19	8.28	8.75	7.93	7.63	7.10	6.94	6.8
30	18	13	13	18	18	24	31	31
	walk	cb	gut	gut	cb	walk	GRD	GRD
								walk

188.52K

check (at last)

$$12.50 \quad 76.45 = 76.72$$

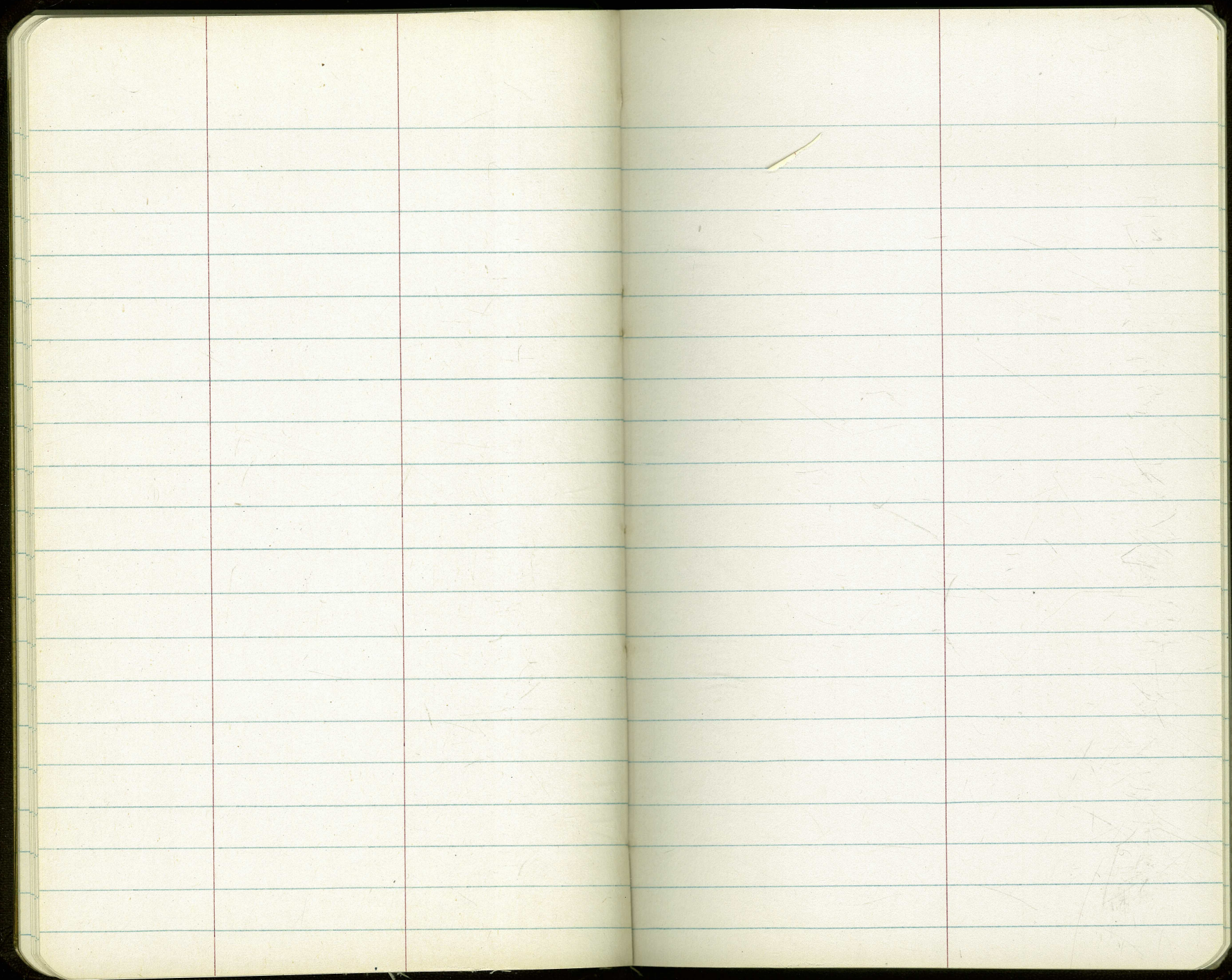
T.P.	0.72	88.95	13.03	88.23
------	------	-------	-------	-------

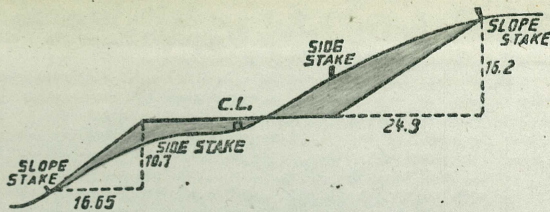
T.P.	0.47	101.26	13.08	100.79
------	------	--------	-------	--------

T.P.	0.07	113.87	13.08	113.80
------	------	--------	-------	--------

T.P.	0.17	126.88	13.09	126.71
------	------	--------	-------	--------

$$139.80 \text{ } \nabla$$





DISTANCES FROM SIDE STAKES FOR CROSS-SECTIONING.

SLOPE 1½ TO 1. ROADWAY OF ANY WIDTH.

	0	.1	.2	.3	.4	.5	.6	.7	.8	.9	
0	0.00	0.15	0.30	0.45	0.60	0.75	0.90	1.05	1.20	1.35	0
1	1.50	1.65	1.80	1.95	2.10	2.25	2.40	2.55	2.70	2.85	1
2	3.00	3.15	3.30	3.45	3.60	3.75	3.90	4.05	4.20	4.35	2
3	4.50	4.65	4.80	4.95	5.10	5.25	5.40	5.55	5.70	5.85	3
4	6.00	6.15	6.30	6.45	6.60	6.75	6.90	7.05	7.20	7.35	4
5	7.50	7.65	7.80	7.95	8.10	8.25	8.40	8.55	8.70	8.85	5
6	9.00	9.15	9.30	9.45	9.60	9.75	9.90	10.05	10.20	10.35	6
7	10.50	10.65	10.80	10.95	11.10	11.25	11.40	11.55	11.70	11.85	7
8	12.00	12.15	12.30	12.45	12.60	12.75	12.90	13.05	13.20	13.35	8
9	13.50	13.65	13.80	13.95	14.10	14.25	14.40	14.55	14.70	14.85	9
10	15.00	15.15	15.30	15.45	15.60	15.75	15.90	16.05	16.20	16.35	10
11	16.50	16.65	16.80	16.95	17.10	17.25	17.40	17.55	17.70	17.85	11
12	18.00	18.15	18.30	18.45	18.60	18.75	18.90	19.05	19.20	19.35	12
13	19.50	19.65	19.80	19.95	20.10	20.25	20.40	20.55	20.70	20.85	13
14	21.00	21.15	21.30	21.45	21.60	21.75	21.90	22.05	22.20	22.35	14
15	22.50	22.65	22.80	22.95	23.10	23.25	23.40	23.55	23.70	23.85	15
16	24.00	24.15	24.30	24.45	24.60	24.75	24.90	25.05	25.20	25.35	16
17	25.50	25.65	25.80	25.95	26.10	26.25	26.40	26.55	26.70	26.85	17
18	27.00	27.15	27.30	27.45	27.60	27.75	27.90	28.05	28.20	28.35	18
19	28.50	28.65	28.80	28.95	29.10	29.25	29.40	29.55	29.70	29.85	19
20	30.00	30.15	30.30	30.45	30.60	30.75	30.90	31.05	31.20	31.35	20
21	31.50	31.65	31.80	31.95	32.10	32.25	32.40	32.55	32.70	32.85	21
22	33.00	33.15	33.30	33.45	33.60	33.75	33.90	34.05	34.20	34.35	22
23	34.50	34.65	34.80	34.95	35.10	35.25	35.40	35.55	35.70	35.85	23
24	36.00	36.15	36.30	36.45	36.60	36.75	36.90	37.05	37.20	37.35	24
25	37.50	37.65	37.80	37.95	38.10	38.25	38.40	38.55	38.70	38.85	25
26	39.00	39.15	39.30	39.45	39.60	39.75	39.90	40.05	40.20	40.35	26
27	40.50	40.65	40.80	40.95	41.10	41.25	41.40	41.55	41.70	41.85	27
28	42.00	42.15	42.30	42.45	42.60	42.75	42.90	43.05	43.20	43.35	28
29	43.50	43.65	43.80	43.95	44.10	44.25	44.40	44.55	44.70	44.85	29
30	45.00	45.15	45.30	45.45	45.60	45.75	45.90	46.05	46.20	46.35	30
31	46.50	46.65	46.80	46.95	47.10	47.25	47.40	47.55	47.70	47.85	31
32	48.00	48.15	48.30	48.45	48.60	48.75	48.90	49.05	49.20	49.35	32
33	49.50	49.65	49.80	49.95	50.10	50.25	50.40	50.55	50.70	50.85	33
34	51.00	51.15	51.30	51.45	51.60	51.75	51.90	52.05	52.20	52.35	34
35	52.50	52.65	52.80	52.95	53.10	53.25	53.40	53.55	53.70	53.85	35
36	54.00	54.15	54.30	54.45	54.60	54.75	54.90	55.05	55.20	55.35	36
37	55.50	55.65	55.80	55.95	56.10	56.25	56.40	56.55	56.70	56.85	37
38	57.00	57.15	57.30	57.45	57.60	57.75	57.90	58.05	58.20	58.35	38
39	58.50	58.65	58.80	58.95	59.10	59.25	59.40	59.55	59.70	59.85	39
40	60.00	60.15	60.30	60.45	60.60	60.75	60.90	61.05	61.20	61.35	40
41	61.50	61.65	61.80	61.95	62.10	62.25	62.40	62.55	62.70	62.85	41
42	63.00	63.15	63.30	63.45	63.60	63.75	63.90	64.05	64.20	64.35	42
43	64.50	64.65	64.80	64.95	65.10	65.25	65.40	65.55	65.70	65.85	43
44	66.00	66.15	66.30	66.45	66.60	66.75	66.90	67.05	67.20	67.35	44
45	67.50	67.65	67.80	67.95	68.10	68.25	68.40	68.55	68.70	68.85	45
46	69.00	69.15	69.30	69.45	69.60	69.75	69.90	70.05	70.20	70.35	46
47	70.50	70.65	70.80	70.95	71.10	71.25	71.40	71.55	71.70	71.85	47
48	72.00	72.15	72.30	72.45	72.60	72.75	72.90	73.05	73.20	73.35	48
49	73.50	73.65	73.80	73.95	74.10	74.25	74.40	74.55	74.70	74.85	49
50	75.00	75.15	75.30	75.45	75.60	75.75	75.90	76.05	76.20	76.35	50

THE NATIONAL BLANK BOOK COMPANY

HOLYOKE



MASSACHUSETTS

NEW YORK

CHICAGO

BOSTON

SAN FRANCISCO