

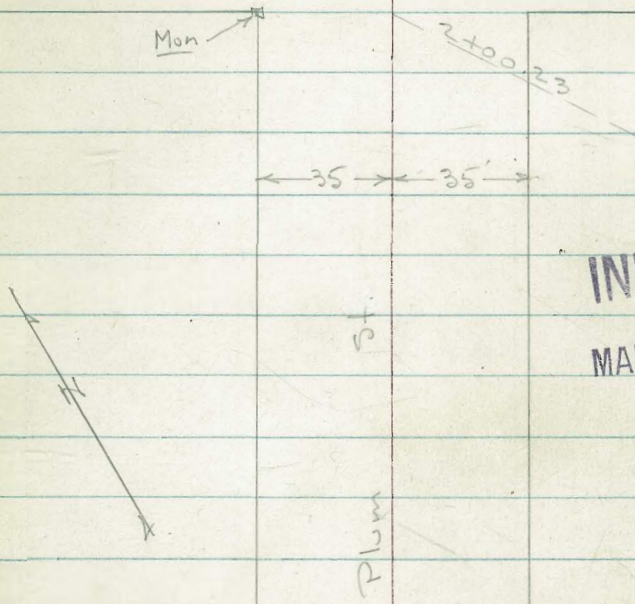
DISTANCES FROM SIDE STAKES FOR CROSS-SECTIONING
SLOPE 1 TO 1. ROADWAY OF ANY WIDTH

	0	.1	.2	.3	.4	.5	.6	.7	.8	.9	
0	0.00					0.50	0.60	0.70	0.80	0.90	0
1	1.00	0.10	0.20	0.30	0.40	0.50	0.60	0.70	0.80	0.90	1
2	2.00	1.10	1.20	1.30	1.40	1.50	1.60	1.70	1.80	1.90	2
3	3.00	2.10	2.20	2.30	2.40	2.50	2.60	2.70	2.80	2.90	3
4	4.00	3.10	3.20	3.30	3.40	3.50	3.60	3.70	3.80	3.90	4
5	5.00	4.10	4.20	4.30	4.40	4.50	4.60	4.70	4.80	4.90	5
6	6.00	5.10	5.20	5.30	5.40	5.50	5.60	5.70	5.80	5.90	6
7	7.00	6.10	6.20	6.30	6.40	6.50	6.60	6.70	6.80	6.90	7
8	8.00	7.10	7.20	7.30	7.40	7.50	7.60	7.70	7.80	7.90	8
9	9.00	8.10	8.20	8.30	8.40	8.50	8.60	8.70	8.80	8.90	9
10	10.00	9.10	9.20	9.30	9.40	9.50	9.60	9.70	9.80	9.90	10
11	11.00	10.10	10.20	10.30	10.40	10.50	10.60	10.70	10.80	10.90	11
12	12.00	11.10	11.20	11.30	11.40	11.50	11.60	11.70	11.80	11.90	12
13	13.00	12.10	12.20	12.30	12.40	12.50	12.60	12.70	12.80	12.90	13
14	14.00	13.10	13.20	13.30	13.40	13.50	13.60	13.70	13.80	13.90	14
15	15.00	14.10	14.20	14.30	14.40	14.50	14.60	14.70	14.80	14.90	15
16	16.00	15.10	15.20	15.30	15.40	15.50	15.60	15.70	15.80	15.90	16
17	17.00	16.10	16.20	16.30	16.40	16.50	16.60	16.70	16.80	16.90	17
18	18.00	17.10	17.20	17.30	17.40	17.50	17.60	17.70	17.80	17.90	18
19	19.00	18.10	18.20	18.30	18.40	18.50	18.60	18.70	18.80	18.90	19
20	20.00	19.10	19.20	19.30	19.40	19.50	19.60	19.70	19.80	19.90	20
21	21.00	20.10	20.20	20.30	20.40	20.50	20.60	20.70	20.80	20.90	21
22	22.00	21.10	21.20	21.30	21.40	21.50	21.60	21.70	21.80	21.90	22
23	23.00	22.10	22.20	22.30	22.40	22.50	22.60	22.70	22.80	22.90	23
24	24.00	23.10	23.20	23.30	23.40	23.50	23.60	23.70	23.80	23.90	24
25	25.00	24.10	24.20	24.30	24.40	24.50	24.60	24.70	24.80	24.90	25
26	26.00	25.10	25.20	25.30	25.40	25.50	25.60	25.70	25.80	25.90	26
27	27.00	26.10	26.20	26.30	26.40	26.50	26.60	26.70	26.80	26.90	27
28	28.00	27.10	27.20	27.30	27.40	27.50	27.60	27.70	27.80	27.90	28
29	29.00	28.10	28.20	28.30	28.40	28.50	28.60	28.70	28.80	28.90	29
30	30.00	29.10	29.20	29.30	29.40	29.50	29.60	29.70	29.80	29.90	30
31	31.00	30.10	30.20	30.30	30.40	30.50	30.60	30.70	30.80	30.90	31
32	32.00	31.10	31.20	31.30	31.40	31.50	31.60	31.70	31.80	31.90	32
33	33.00	32.10	32.20	32.30	32.40	32.50	32.60	32.70	32.80	32.90	33
34	34.00	33.10	33.20	33.30	33.40	33.50	33.60	33.70	33.80	33.90	34
35	35.00	34.10	34.20	34.30	34.40	34.50	34.60	34.70	34.80	34.90	35
36	36.00	35.10	35.20	35.30	35.40	35.50	35.60	35.70	35.80	35.90	36
37	37.00	36.10	36.20	36.30	36.40	36.50	36.60	36.70	36.80	36.90	37
38	38.00	37.10	37.20	37.30	37.40	37.50	37.60	37.70	37.80	37.90	38
39	39.00	38.10	38.20	38.30	38.40	38.50	38.60	38.70	38.80	38.90	39
40	40.00	39.10	39.20	39.30	39.40	39.50	39.60	39.70	39.80	39.90	40
41	41.00	40.10	40.20	40.30	40.40	40.50	40.60	40.70	40.80	40.90	41
42	42.00	41.10	41.20	41.30	41.40	41.50	41.60	41.70	41.80	41.90	42
43	43.00	42.10	42.20	42.30	42.40	42.50	42.60	42.70	42.80	42.90	43
44	44.00	43.10	43.20	43.30	43.40	43.50	43.60	43.70	43.80	43.90	44
45	45.00	44.10	44.20	44.30	44.40	44.50	44.60	44.70	44.80	44.90	45
46	46.00	45.10	45.20	45.30	45.40	45.50	45.60	45.70	45.80	45.90	46
47	47.00	46.10	46.20	46.30	46.40	46.50	46.60	46.70	46.80	46.90	47
48	48.00	47.10	47.20	47.30	47.40	47.50	47.60	47.70	47.80	47.90	48
49	49.00	48.10	48.20	48.30	48.40	48.50	48.60	48.70	48.80	48.90	49
50	50.00	49.10	49.20	49.30	49.40	49.50	49.60	49.70	49.80	49.90	50

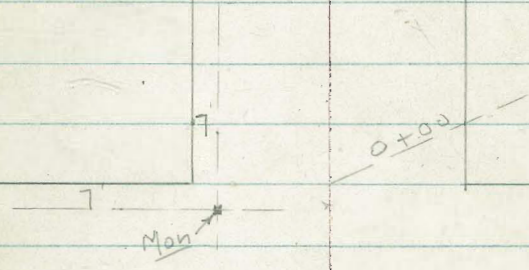
Distance of slope stake from side or shoulder stake for any width roadway, slope 1 to 1. If ground is nearly level, the cut or fill at side stake is located by the double entry method in left column and top row. The number in body of table in same row and column gives distance from side stake to slope stake. If ground is not level estimate the difference in elevation between the side stake and slope stake, lower target by this amount if cut, elevate if fill. Add this amount to cut or fill and find distance in table. Set up rod at this point, and line of sight should cut target. If it does not make the slight adjustment necessary.

Newell St RG
Cloue = 70'

St.



INDEXED
Law
MAR 25 1953



Macaulay = 70'

St.

LT RT

X-Section Plum St. - McCaulay to Newell

INDEXED
Law
MAR 25 1953

6790 3-16-53 - 7.0.

W.O. 31738 - Sketch - P.1

See Book 1705 - P. 68 for old sections

P. 69 = improvements shown in St. to 1+0

Marked with ✓ are o.k.

1+00

96.29 93.9 93.5 93.0 92.9 90.9 89.8
35 24 12 3 20 35
on Conc. edge

0+75

97.89
35.7
Top wall

96.9 95.7 95.2 95.0 95.3 94.0 93.2
35 25 12 2 20 35
edge

0+54 - 29.5' Rt. = E 4" Pepper

0+40 = on 8' Conc. Dr. on Rt.

99.6 98.5 98.1 97.8 97.7 97.43 97.51
35 24 12 20 31.7 42
edge Dr. floor Gar.

0+32 - end planting on Rt.

0+20

100.3 99.8 99.3 99.6 99.8 99.3 99.4
35 25 12 20 35 41.8
edge By House

0+00 = N.L. McCaulay - 15' Rt. = Beg. Shrubs
flower planting

99.4 99.3 99.0 99.9 100.3 100.0
35 25 15 20 35
edge Cold lay pave

B.M. = S.W. Mon. - Newell
+ Plum.

90.75 = O.K.

Note: 90.85 = B. 2038 - P. 69
DC -

Actual Elev. Shown.

Lt. # Rt.

2+00.23 = S.L. Newell - end C.L.

91.2 89.2 88.4 87.5 87.2 84.5 82.8 80.5
35 24 12 3
edge

1+95 = Nly. of Dr.

84.63 84.42
24.9 Dr. 42 = at Drain

1+78 = Sly. of Conc. Dr. - C.L. to st.

84.76 84.46
25 Dr. 47 = floor/gar.

1+69 - 25' Rt. = E 3.5' Conc. walk

84.97 85.11
25 walk 40.8 at ~~86.61~~

1+65

95.0 93.3 91.1 90.0 89.2 88.7
45 35 24 12 4
edge

85.6 85.2 85.2
20 35 41
By House

1+53 - 25' Rt. = ± 3.5' Conc. walk

85.63 84.84
25 40

1+44 = Nly. of Dr. on Rt.

86.27 85.81 86.05
25 Dr 35 47 floor.

1+27 = sly. of Cold Lay + Conc. Dr. on Rt.

95.9 94.7 92.8 92.6 92.1 91.1 90.8
45 35 27 24 12 3
edge

88.6 86.65 86.12 86.05
12 on C.L. 25 Beq. 35 47 floor/gar.
Conc. Dr.

1+12 = Nly. of Dr.

96.30 95.01 94.23
50 Dr 35.4 Brk. 32.2 Dr.

1+01 = sly. of 11' Conc Dr. on Lt. + 3.5' Conc. walk on Rt.

96.40 95.04 94.39
50 Dr 35.2 Brk. 32.1 Dr.

89.73 89.07
25 walk 40

Lt. ← Rt.

2+70.23 = N.L. Newell = end.

83.9	81.5	77.7	74.6	70.9	68.3
35	20		20	35	50

2+57-34 Lt. = E Guy Pole # 582421-H

2+52

86.4	84.6	81.7	80.3	77.6	75.3	72.0
35	20		12	26	35	50

2+35.23 = E

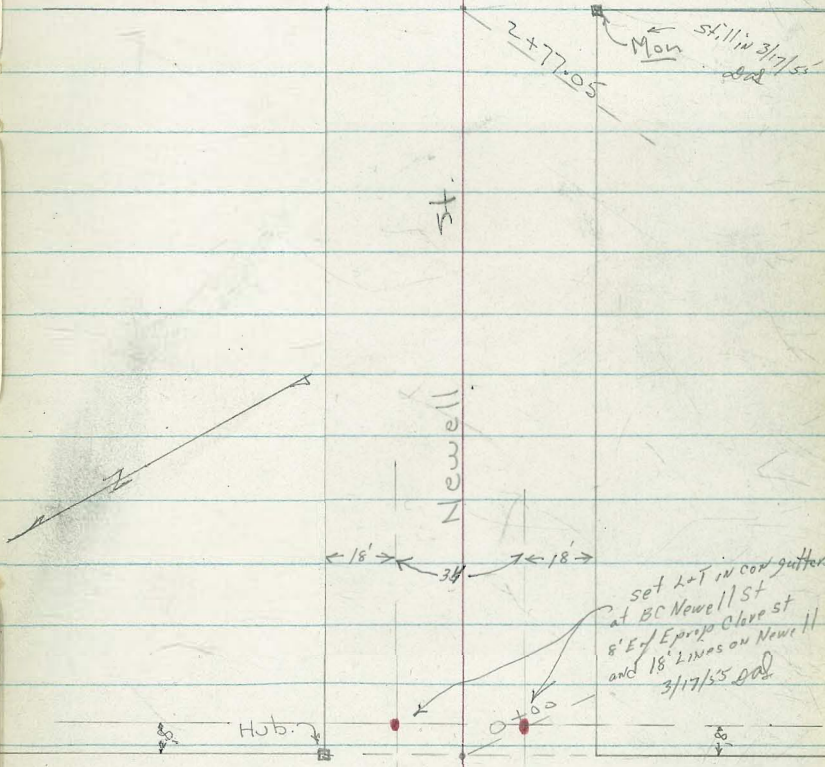
89.0	87.5	84.6	79.9	77.1	73.7
35	15		20	35	50

2+20

89.4	88.5	87.2	84.1	80.7	77.2
35	20		20	35	50

Plum

St.



Clave

St.

Lt. Rt.

7-Sect. Newell - Clave to Plum

w.O. 31738 - 3-16-53 F.O.

Sec B. 2038 - P. 67 for Orig. Notes.

Sketch - P. 5

Note: All Newell st. sections should be 0.10 lower.

INDEXED
Plum
MAR 25 1953

1+37.5 - 35.2 Rt. = 2.5' Conc. step + walk

03.80 04.42 04.38
35.2 36.2 48.5
step 04.68
35.3 = Top walk

1+28 - 35.3 Rt. = Beg. 6" Conc. wall

1+27 - 35.1 Lt. = end fence

1+17 - 35.5 Rt. = 2.5' Conc. walk

05.94 06.03
35.5 50
walk walk

1+10

03.2 03.4 04.7 05.2 05.4 06.9 06.9
45 35 20 20 35 45

0+80

06.8 07.6 08.0 07.9 08.0 09.1 08.9
45 35 20 20 35 45

0+78 - 33' Rt. = 1" P. pole # 3435

0+75 - 35.3 Lt. = 8' Conc. Dr.

06.55 07.78
55 35.3
Dr. Dr.

0+40

35.4 Lt. = Beg. Board fence

08.7 08.9 09.4 09.7 09.9 10.5 11.3
45 35 20 20 35 42.7
at House

0+38 - 21.6 Lt. = 1" Tel. pole # 582 423-H

0+00 = E. Line of Clave

08.7 09.5 110.7 11.4 11.7
35 20 20 35

B.M. = S.W. Prop. Mon.

90.86 = 0.10

Higher than Plum st. Data

Plum + Newell - B. 2038 - P. 69 Set B.M.

109.31 = spike

in N.E. pole - Should be 109.21 Clave + Newell

Lt. # Rt.

2+68.7 = Ely. of Conc. Dr.

83.41 85.47 87.66 89.16
51.5 35 18 6.2 = Cor.
Dr. Dr. Dr.

2+56.4 = wly. of Conc. Dr. + face of Conc. wall = end of E + W wall

88.57 88.34 85.70 88.37 88.03 88.38 89.93
51.5 51.5 35 35 18 18 = 6.2 = end
Dr. Top on Dr. Top Pr. Cor. Conc. Dr.
wall end wall wall

2+40

87.9 88.47 89.6 92.4 93.6 94.5 95.4 96.2
45 35 20 23 25 35 45
Lawn Top wall + ground

2+28 = 35.1 Lt. = Beg. 8" Conc. Block wall

88.85
35.1
Top wall

2+00

89.4 92.0 93.8 95.6 97.0 97.3 98.8 99.1 99.4
45 35 30 15 23 25 35 45

1+78.5 - 21.8' Lt. = # Tel. pole # B.M. 98.74. 582+22.H

1+78 - 25.3 Rt. = # P. pole # P-2421

1+77 - 35.3 Rt. = end Gar. + Beg. wire fence

1+75

96.5 97.0 98.9 99.1 99.6 100.8 00.6
45 35 20 24 25 35

1+60 - 35.3 Rt. = Beg. Doub. Gar. - Dirt floor

01.0
35.3 = floor.

1+47 - 35.3 Rt. = end Conc. wall

Make 0.10 Lower

02.6 04.64
35.3 Top wall

1+45

00.2 00.2 00.9 01.6 02.0 02.7 04.65 04.3
45 35 20 20 35 35 45
Top wall

Lt. # Rt.

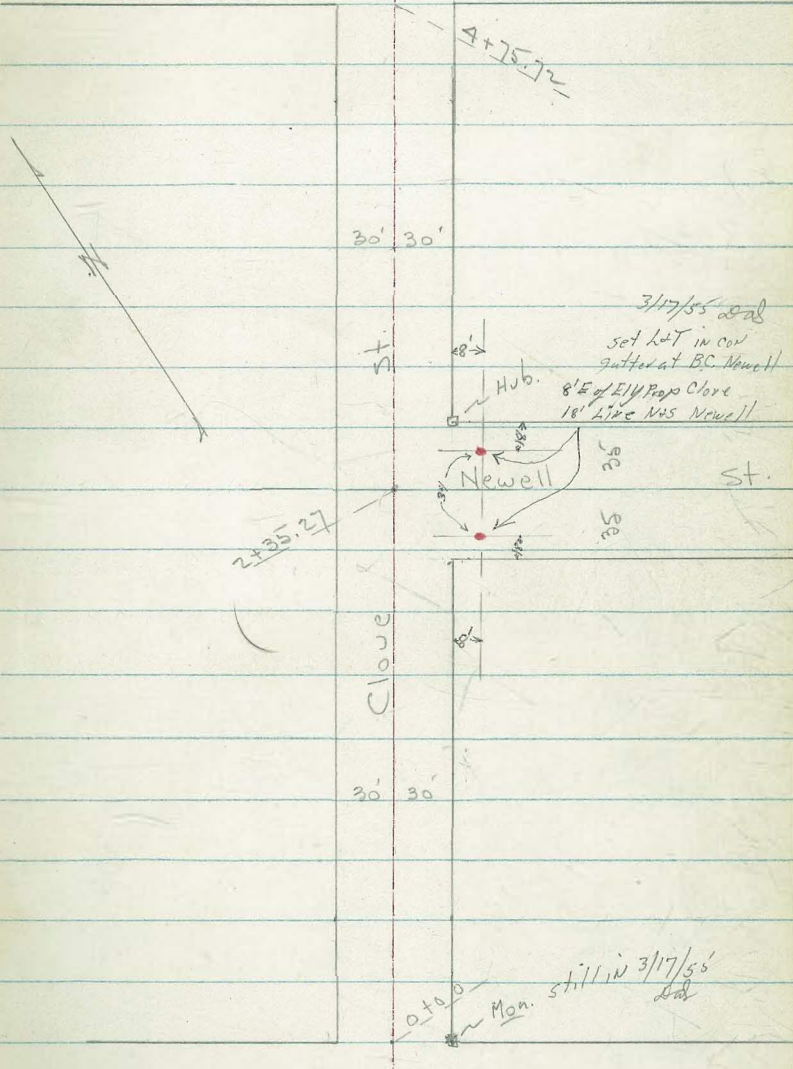
2+77.05' = WL. of Plum.

82.2	83.9	85.9	88.7	89.1	89.4	89.5	91.1	91.2
50	35	20	10		20	27	30	35

2+76-186 Lt = sty. of 8" Conc. Block wall

83.61	85.27	86.57
50	35	19.6
Top wall	Top	Top wall

Sheet 3/16/55 \rightarrow Cross on MH. Rim B.1803-P.4 9
 Oliphant ± 2 30' 30' st.



3/17/55 \rightarrow set lat in cor gutter at BC. Newell
 8' E of EIV Prop Cloue
 18' like NUS Newell

2+35.27

4+75.72

Macauley st.

X-Section - Clove - from Macaulley to

Oliphant - 2-16-53 7.0

w.o. 31738 - sketch - p. 9

0+80 - 30.4 Lt. = end Brick + Bes. Conc. wall

0+77 - 27' Lt. = ± 16" Palm

0+71 - 19.5 Rt. = ± Tel. pole # 582456-H

0+64 - 27' Lt. = ± 14" Palm

0+60

0+53 - 27' Lt. = ± 14" Palm

0+40 - 27' Lt. = ± 14" Palm

0+28 - 27' Lt. = ± 7" Palm

0+25 =

0+19 - 27' Lt. = ± 8" Palm

0+10 - 20' Rt. = ± F.H.

0+08 - 27.6 Lt. = ± 10" Palm

0+01 - 30.7 Lt. = Beg. brick wall

0+00 = N.L. of Macaulley

Macaulley + Clove.

Set B.M. on N.E. Top Hyd.

B.M. = spike in N.E. Pole

Clove + Newell

118.75 (118.65) = True

(109.3) (109.21) = True

18.65 16.4
Top 30.4
Conc. wall ground

20.0 17.96 17.1 16.2 15.8 15.6 14.9 14.3
40 30.3 30 15 15 30 40
Top wall Lawn

21.54 18.2 17.5 17.0 16.8 15.85 15.84
35.1 30.5 15 15 29.9 35.3
Top of step 2 + walk Bot. of Conc. steps on Lawn wly. of 5' conc walk at Porch

20.40 30.7
Top wall 19.6 18.5 17.3 17.0 16.3
30 15 15 30

Note: All Clove st. Sections are 0.10 High

Actual Elev. Shown.

INDEXED
Law
MAR 25 1953

2+35.27 = ±

	Lt.	±		Rt.		
11.6	11.3	11.3	09.8	09.8	10.5	10.7
40	30	20	15		15	30

2+00.27 = Sl. of Newell

13.9	12.3	11.7	11.6	11.8	11.7
50	30	15		15	30

1+76- 21.5 Rt. = ± Tel. pole

1+75- 25.7' Lt. = Beg. 3' Conc. walk

15.23	14.35	13.91	
46.7	30.8	25.7 = Brick	
at step	Conc. walk		

1+59.6- 30.4 Lt. = end wall

16.15	14.4
Top wall	30.4

1+50

16.17	14.7	13.8	13.2	13.0	12.68	12.74
30.3	30	15		15	29.9	40 Dr.
Top wall					Dr.	

1+48- 29.9- Rt. = ± 10' Conc. Dr.

12.72	12.78
29.9	45 = floor
Dr.	gar

1+41- 30.3 Lt. = ± 5.5' Conc. walk

16.90	15.76	15.74
34.8	33.2	30.3
Top of steps	Bot. of step	walk

1+26- 29.9 Rt. = 8' Conc. Dr.

13.19	12.66
29.9	45
Dr.	floor

1+21- 30.3 Lt. = Beg. 8" Conc. block wall

16.51	18.34	15.6
30.3	Top wall	29.9

1+20- 29.9 Lt. = end Conc. wall

1+00

17.80	15.9	15.0	14.6	14.5	13.8	13.5
30.4	30	15		15	30	40
Top wall						

0+98- 21.1 Lt. = ± 2.5' Broken Conc. walk

16.06	15.90	15.68	15.37
31.6	30	27.5	21.1 =
Top step	Beg. Reg. walk	Broken walk	

0+94- 30.1 Rt. = ± 3.5' Conc. walk

0.10 High

13.79	13.59
30.1	46.6
walk	at step

4+40 - 23.1 Rt. = wly. of 8" Conc. Block wall

4+21 - 27.2 Lt. = £ 16" Acacia

4+15

4+11 - 27.7 Lt. = £ 20" Acacia

4+04 - 30.4 Lt. = £ 3.5' Brick walk

3+80 - along sly. of 9' Conc. Dr.

3+60 - 30.4 Lt. - end picket + Bsq. Cyclone fence

3+40

3+34 - 30.4 Lt. = £ 4' Conc. walk

3+29 - 30.2 Lt. = Bsq. Picket fence

3+24 - 30.3 Lt. = £ 8' Conc. Dr.

3+00

2+70.27 = N.L. Newell - 22' Rt. = £ Tel. pole # 582424 - H

2+49 - 21.7 Lt. = £ 24" Palm

Lt. £ Rt.

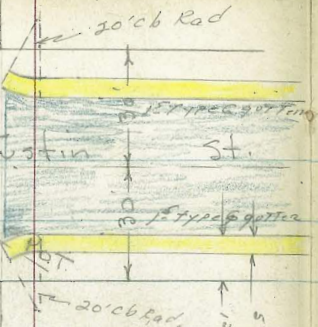
95.9 40	95.2 30	94.7 15	94.7	95.0 15	96.2 18	98.07 23.1	98.3 30	98.7 40
						Top wall		
98.3 40	98.0 30	97.5 15	97.0	97.2 15	98.5 30	98.5 40		
	99.41 40	99.40 30.4 = walk						
01.5 40	01.5 30	00.5 15	00.1	100.0 15	99.44 26.7 Dr.	99.37 30 Dr.	99.06 50 Dr.	
		02.1 30	01.8 15	01.7	01.8 18	03.1 21	03.7 30	04.0 40
	04.1 40	03.4 30	03.3 15	03.1	02.9 17	04.4 20	05.2 30	05.8 40
	04.46 50 walk	04.39 30.4 = walk						
	04.78 50 Dr.	04.73 30.3 Dr.						
	06.1 40	06.3 30	05.0 18	05.7 12	05.7	05.8 18	07.0 18	07.6 30
								07.7 40
	08.6 40	08.7 30	08.3 20	07.5 17	07.7	07.8 15	08.4 18	08.8 30

0.10 High

B-3107
Shannon

4 Crosses
on M.H.
= Both ways

set Le Disk in cov. gutter
6x6
3/17/55 rad

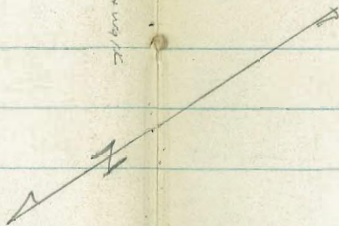


Reset 3/16/55
5+49.80
= Cross on M.H.

Clave
St.

30'
30'

±
N



15' Alley

RR = ct. in fence
Foundation

30'

1+185+ = POT Hub

Oliphant

Oliphant
St.



Capistrano

New A.C. pave

St.

Tustin

2+85.03
= POT. M.H.

St.

Lt. ♀ Rt.

X- Sect. Oliphant - Capistrano to
Cloue - See B. 1803-P-4 for Orig. Section.

W.O. 31738 - 3-17-53 7.0.

Sketch - P. 14

INDEXED
Law
MAR 25 1953

Elev. are OK.

0+85 - 32.1' Rt. - end wall

25.6 27.17
32.1 Top
gr.

0+70 - 29.5' Lt. = end Dr. + Beg. Conc. base for board

22.03 22.0 22.1 23.7 25.6 25.6 27.16
29.5 15 15 30 32.1 Top
Conc. by well

+ 29.5' Lt. = end wall + Beg. Conc. Dr.

0+54 = end planting - Both Sides

22.03 22.71 22.00
44.2 Top 29.5 = Dr.
floor. wall
gar.

0+40

22.64 21.9 21.5 20.3 20.5 20.9 22.4 24.8 25.4
Top 29.8 10 6 7 10 30 32.2
wall by wall

0+33 - 29.8' Lt. = Beg. Brick wall

22.66 21.8
Top 29.8 = gr.
wall

0+26 - 32' Rt. = Beg. Brick wall

25.0 26.96
32 Top
gr.

0+10 - 11 Rt. + 13 Lt. = Beg. Planting + Lawn

21.4 19.9 17.1 17.0 17.1 20.5 23.4
30 15 8 6 11 30

0+00 = E.L. of Capistrano = edge of A.C. pave.

16.15 15.95 15.46 15.85 16.16 16.17 16.19 16.92 17.27
30 Top = 20 10 10 19.6 Top = 30
Cor. Ret. end. gut. gut. end. Cor. Ret.

0-10 = E. cb. Line

14.97 14.20 15.94 15.17 15.36 15.66 16.03 16.18 16.92 16.28 17.04
Top 50 Top 30 20 20 30 Top 50 Top
Actual Elev. shown. gut. = P.C. gut

B.M. S.F. 7' ct. - Capistrano + Oliphant

116.91

Lt ± Rt.

2+15- 312 Rt. = ± 10" Acacia
2+12- 305 Rt. = end wall + 34' Rt. Beg. Conc. porch
2+10- 29' Lt. = ± 8' Conc. Dr.

2+06- 29.5' Lt. = end wall
2+05- 31' Rt. = end fence + 30' Rt. = Beg. Conc. wall

1+92- 30' Lt. = ± 3' Conc. walk
1+76- 30.2' Lt. = Beg. 8" Conc. wall

1+75
1+71- 23' Rt. = ± 16" Pepper.

1+45
1+35- 30 Rt. = Beg. old wire fence

1+27 - Thru rough graded Alley S

1+18.5- 29.6 Lt. = end Conc. base for fence - goes N.

1+17- 21' Rt. = ± P. pole # P3527 = B.M. = 125.01

1+15- 29.6 Lt. = Drop in Conc. base

1+00 = 34.1 Rt. = ± Doub. Cur. Conc. floor

12.23 12.85
43 29 = Dr.
Dr.

12.89
29.8
TOP wall
13.17 13.9 14.5
29.8 15
Top wall
± ground.

15.89 15.88
40.8 30
at porch walk
15.88
30.2 = Top wall

16.4 16.9 17.7 17.6
40 30 11

19.3 19.8 20.4 20.2
40 30 15 11

18.4 19.5 20.4 21.3
50 30 15 15

15.5 20.80 20.95 19.3
qr. 69.5 Top at 29.6
Top-end. cor. qr.

20.95 21.83
Top to 29.6 = Top to W.
E.

21.88 22.6 22.8
29.6 15 15
Top Conc. floor

16.2 17.68 17.56
30.5 30.5 34 =
qr. Top wall Porch

14.7 15.8 16.7 17.78
13 15 30 Top wall

18.1 19.9 20.8 20.6
11 20 30 40

20.8 22.5 23.2 23.6
11 12 30 40

22.5 23.4 24.3
15 30 50

23.9 25.6 26.59
15 30 34.1 floor

3+15.03 = E.L. Tustin

	Lt		Rt.				
	97.7	97.6	98.1	98.8	99.2	00.1	01.78
	40	30	15		15	30	30.5
	By House						Top wall

2+11.5 - 30.4 Rt = Beg. 6" Conc. wall

01.80	00.2		
Top wall	30.4		
	9r.	98.28	100.88
	40	29.6	29.6 = walk
	walk	Top wall	

3+02 - 29.6 Lt = end wall + wly of 3' Conc. walk

2+85.03 = ±

01.7	02.1	02.20	02.5	03.2	03.9
29.7	15	= wly. Cross on M.H. 15		30	50
By wall		02.25 B. 1803			

2+76 - 29.7 Lt = ± 3' walk Thru wall

02.63
29.7
walk

2+73 - 29.7 Lt = end Dr. + Beg. Conc. wall

02.47	05.80	03.20
41	Top wall	29.7 = Dr.
Dr.		

2+61 - 29.7 Lt = end wall + Beg. Conc. Dr.

02.54	03.49	03.70
45	36.6	29.7
floor	Dr.	Dr.
gar.		

2+56 - 29.7 Lt = Beg. 8' Conc. Block wall

06.26	04.5
Top wall	29.7 = 9r

2+55.03 = w.L. Tustin + 30.5' Rt = end fence

04.6	04.8	05.6	06.6	07.2	07.8	08.4
40	30	15		18	20	30

2+54 - 29.2 Rt = ± P. pole # 3501

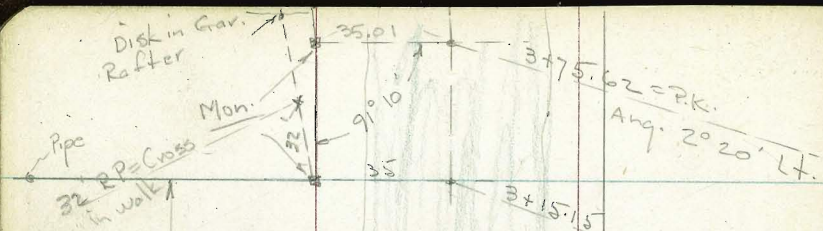
2+30

08.0	08.9	10.7	10.9	11.4	22.4	22.3	22.6
40	30	15		16	18	30	40

2+29 - 21' Rt = ± 8" Pepper
34' Rt = end Porch

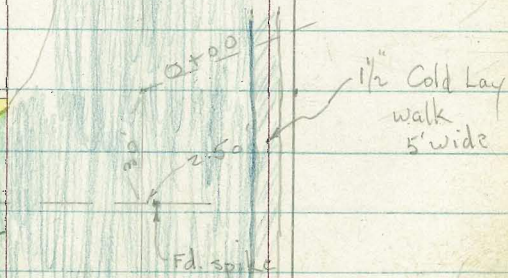
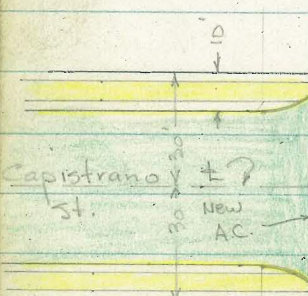
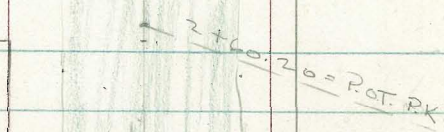
2+21 - 30.9 = Rt = Beg. wire fence

14.1	17.54
34	Top porch
9r.	



Tustin St.

Macaulley St.



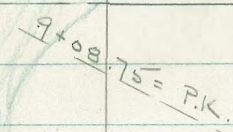
Plum St.

Mon.

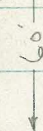
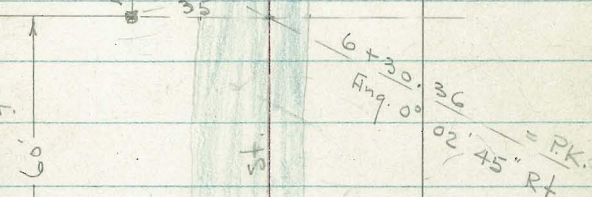
st. 11/10 3/17/50

old water meter

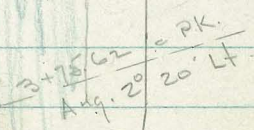
new water meter



Cloue St.



Macaulley St.



Lt. ⊕ Rt.

X-Section Macauley St. from Capistrano to Plum - See Sketch - P. 19

W.D. 31738 - 3-18-53 - 7.0.

1+00 - 39.3' Rt. = fence

43.3	43.0	42.4	40.96	41.34	41.47	41.19	40.70	41.0	41.1	41.3
40	35	27	22	12		15	27	29	34	40
			edge	AC			edge	walk		

0+60

39.4	38.9	37.84	38.60	39.77	38.54	37.92	38.3	38.2	39.2
35	27	23	12		15	28	30	34	40
		edge				edge	walk		

0+58 - 27' Lt. = 3 Conc. walk

39.85	39.37	38.92
43.3	35	27
at porch		walk

0+25 - 26.6' Lt. = ⊕ Tel. pole # D 3144 TT

37.1	37.0	36.6	35.48	36.00	36.17	36.01	35.32	35.7	35.6	35.9
37.8	35	25	23	12		15	28	31	35	40
P. House			edge				edge	walk	edge	

41' Rt. = High cyclone fence for school.

0+00 = E.L. of Capistrano

32.4	33.4	33.30	34.08	34.44	34.27	33.81	34.2	35.3
35	29	25	15		15	28	31	40
		edge				edge		

0-04 - 37.5' Rt. = ⊕ P. pole # 3597

0-05.5 - 34.8' Lt. = end of cb. on Ret.

32.05	31.42
Top = end.	34.8 - gut.

0-10 = E. cb.

30.79	30.10	31.41	30.67	31.32	33.01	33.57	33.77	33.60	33.19	33.6	35.2
Top.	60	Top	47.2	35	21	10		15	28	31	40
	gut	PC. of 20' rad. = gut.							edge		

0-30 = ⊕

29.59	30.63	32.00	32.52	32.17	31.76	32.4	34.3
60	35	15		15	28	31	40
			Req. New AC.		edge		

B.M. = N.W. B.P. Capistrano + Macduley

129.33

Actual Elev. Shown.

Lt

±

Rt.

3+45-36.4' Lt. = ± 3.5' Conc. walk

43.10

43.05	43.0	42.6	41.39	41.92	42.07	42.12	41.89	42.0	43.5	50.2
36.4	35	30	22	12		15	25	31.6	38	40
walk			edge				edge	walk		Top

3+20 - - 25.5' Lt. = ± F.H.

41
at
step

3+15.15' = E.L. Tustin

45.9	45.8	43.62	44.10	44.32	44.47	44.12	44.4	45.5	55.6
35	30	21.6	12		15	25.6	32	38	40
		edge				edge	walk		Top

2+85.15' = ±

46.5	45.96	46.13	46.23	46.42	46.22	46.5	47.0	56.1
35	21.6	12		15	25.6	31.5	36	40
	edge				edge	walk		Top

2+60-33.4' Rt. = ± P. pole # 3501-B.M. = 148.69

spike

2+55.15' = w.L. Tustin

49.2	49.3	47.65	47.56	47.50	47.43	47.40	47.7	48.5	55.8
35	26	21.6	12		15	25.2	30.6	36	40
		edge				edge	walk		

2+49-27' Lt. = ± Tel. pole # D 31448-T

2+30-25.2' Lt. = on Conc. floor. of Sing. Gar

48.00	47.83	47.76	47.72	47.44	47.21	47.6	47.7	49.9	56.1
35.2	21	12		15	25.2	27	32	37	40
	edge				edge	walk			Top

2+00

53.1	48.4	48.7	46.65	46.83	46.80	46.70	46.35	46.7	46.8	55.0
40	35	26	21	12		15	25.6	28	33	37
			edge				edge	walk		Top

1+99-27' Lt. = ± Tel. pole # 573971-H

1+80-37.4' Rt. = end fence

1+73-33.6' Rt. = ± P. pole # 3511

1+50

49.8	45.7	45.9	44.10	44.27	44.30	44.16	43.95	44.3	44.5	44.9
40	35	26	21	12		15	26	28	33	40
			edge				edge	walk		

1+36-26.8' Lt. = ± Tel. pole # 582390-H

1+30 - in Alley on Lt.

45.7	44.3	43.07	43.17	43.21	43.06	42.70	43.0	43.2	43.7
60	35	21	12		15	26	28	34	40
		edge				edge		walk	

1+09-55.7' Lt. = ± Doub. Gar. - Conc. floor

45.21
55.7 = floor

Macaulay

22

Lt. ± Rt.

5+54- 32.5' Rt. = ± P. pole # 3455

5+43- 27.2' Lt. = end ± Hedge

5+38- 27.2' Lt. = ± Tel. pole # D 16764-T

5+30

25.4 24.8 23.80 24.15 24.14 23.87 24.0 24.0 24.7 28.5
 35 25 17 9 15 26 32 36 40
 edge edge walk

5+08- 28' Lt. = Beg. ± 2' Hedge 4' High

4+85

29.9 29.9 28.32 28.59 28.60 28.64 28.72 28.5 28.8 31.8
 35 30 19 10 10 19 31 37 40
 edge edge walk

4+52- 38.2' Lt. = wly Cor. of Gar.

32.58

38.2 = Conc. floor

4+47- 32.2' Rt. = ± Guy Pole # 582455-H = B.M. 134.21

4+40

32.0 32.9 33.2 32.95 33.00 33.12 33.26 33.07 32.9 33.7 37.9
 70 50 35 22 13 13 22 31 36 40
 edge edge walk

4+33- 24' Lt. = end Dr.

34.94 33.66
 35 24 = Dr.

4+10

35.01
 50.3
 floor
 gar.

35.72 35.40 36.11 36.16 36.28 35.90 36.0 37.0 41.0
 35 22 12 15 23.6 32 37 40
 Dr. Dr. + edge AC. edge walk Top

4+03- 23' Lt. = Beg. Conc. Dr.

36.13 35.93
 35 23 = Dr.

3+80- 35' Lt. = ± 3' Conc. walk

40.91 40.18
 50 35 = walk
 walk

3+77- 28.2' Lt. = ± P. pole J.P. 3532

3+75.62 = Ang. Pt. = Sect. on split

40.2 39.6 38.79 39.40 39.45 39.49 39.23 39.4 41.2 46.2
 35 28 23.6 12 15 24 31 37 40
 edge edge walk Top

3+65- 32.7' Rt. = ± P. pole # 3491

7+17.5 = 35.4 Rt. = End Conc. Dr.

06.95
35.4
Dr. 07.32
50
Dr.

7+11 = 31' Lt. = Beg. of 2' Hedge = 4' High

7+10 = 31.7 Lt. = 2' Conc walk

07.65
50
walk 31.7
07.63

7+07 = 35' Rt. = Beg. Conc. Dr. - 8" wall along edge

07.70 07.29
35 Top
Dr. wall

7+03 = 33' Rt. = 4 P. pole # 3435

7+02 = 31' Rt. = 4" Tree

7+00

08.2 08.4 08.0 07.49 07.84 07.90 07.67 08.5 09.9 12.1 12.4
40 35 25 16 10 9 15 25 40 50
edge edge

6+92 = 40' Rt. = 3' Conc walk

13.12 13.69
40
walk 50

6+91 = 18' Lt. = end of Dr.

08.83 08.61 08.65 08.31
52 35 20 18 = Dr.
Dr. Brk

6+71 = 18' Lt. = Beg.

08.96 09.07 10.52 10.02
52 33 22 18 = Dr.
edge Brk Brk

6+65

12.4 12.0 12.3 10.60 11.03 11.18 11.17 12.5 14.6
40 35 24 17 10 9 20 40
edge edge

6+53 = 26.2 Lt. = 4 Tel. pole # D31425-T

6+30 = 36 = E.L. of Cloue

16.1 15.8 14.17 14.58 14.54 14.42 16.0 18.1 19.6
35 25 17 5 11 20 32 40
edge edge

6+20 = 20.9' Rt. = 4 Tel. pole # 582459-H

6+00 = 36 = 4

17.2 17.76 17.59 17.62 17.39 17.08 18.4 19.5 21.4
35 23 19 10 7 13 25 40
cl. edge edge

5+78 = end Cold Lay walk on Rt.

5+70 = 36 = wk. of Cloue

20.2 20.18 20.42 20.33 20.21 22.0 22.5 23.0
35 20 10 9 27 32 40
edge edge walk

				Lt.	±	Rt.								
8+84	- 25.5' Lt.	= ± Tel. pole # 92655-H												
8+78	- 34.9 Rt.	= ± 3' Conc. walk				95.75 34.9 walk	95.12 53.3 at step							
8+70														
8+61	- 20.5' Lt.	= Req. Sly. of 6.5' Brick border		99.5 35	99.7 25	98.84 18	98.19 10	97.23	96.36 9	96.1 20	95.8 35	95.2 50		
	- 35.2' Lt.	= ± 7' Dr. - 2-2' Conc. strips				edge		edge						
8+53	- 10' Rt.	= ± 15' Conc. Dr.			00.60 50 Dr.		00.31 35.2 Dr.		96.97 10 Dr.	97.08 35.6 Req. 9' Dr.		96.43 50		
8+48	- 32' Lt.	= end wall												
8+35				01.0 35	01.04 Top wall	00.7 32	99.92 19	99.35 10	98.58	97.92 7.5	97.7 10	98.0 15	97.5 35	97.5 40
8+11	- 32' Lt.	= Req. Brick wall				edge			edge					
8+10	- 35' Lt.	= end wall												
8+08	- 33' Rt.	= ± P. pole # 3415												
8+00	- Thru Dr. on Lt.	± of 35' Conc. walk on Rt.		02.75 50 Dr.	02.58 35 Req.	02.23 28 Rough Cont.	01.33 18.5	01.15 10	100.57	09.04 8.5 edge	00.4 20	00.79 35.2 walk	100.82 50 walk	
7+65	- 35.2 Rt.	= ± 10' Conc. Dr.								02.63 35.2 Dr.		02.56 50 Dr.		
7+59	- 26.5' Rt.	= ± Tel. pole # D31426-T												
7+57.5	- 35' Lt.	= Req. 8" Block wall												
7+50	= Thru " Conc. Dr. on Lt.			05.05 50	04.68 31.5 Dr.	03.87 18	04.03 10	03.78	03.32 9	04.2 25	05.2 35	05.6 50		
7+44	- 31' Lt.	= End ± Hedge				edge			edge					
7+38	- 35.4' Rt.	= ± 3' Conc. walk								06.21 35.4 walk		06.64 51.5 at porch		
7+30	- 31.3' Lt.	= ± 4' Conc. walk - Thru Hedge			06.44 46 at porch		06.16 31.3 walk							

Lt.

=

Rt.

See Book 1705 - P. 68-73 - for Plum +
Macaulay To S + E. Sect. are o.k. for profile

9+08.75 = WL plum

20.8' Lt. = end sly. of Brick Border.

99.4	98.9	97.40	97.06	96.55	95.07	92.88	93.6
35	25	15	6.5 edge		15	32 edge	35

X-sec Tustin St. - SWly line
Oliphant 100' SWly - Recent construction.

Ref: TP sheet 712

FB 2308-15 (This Book)

Wo # 31738-

8-6-53-

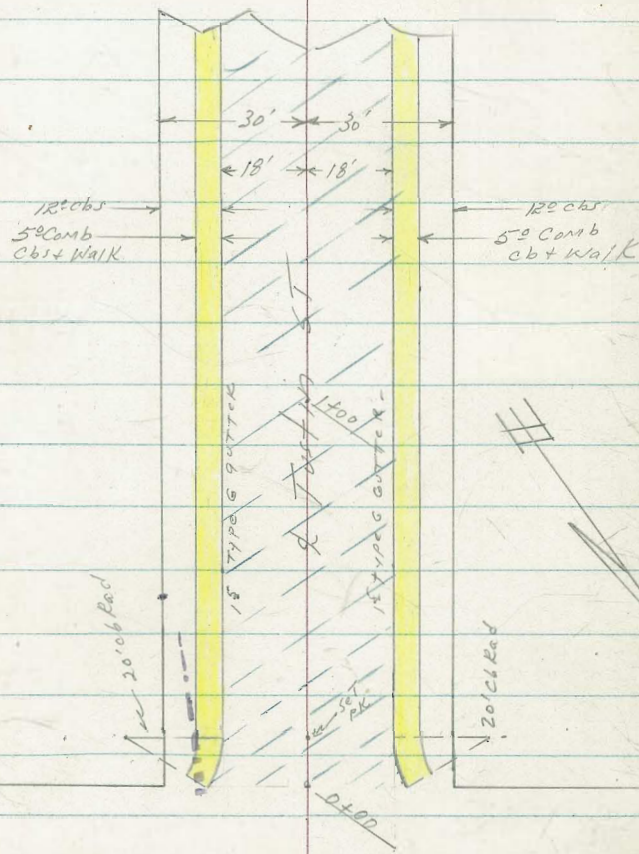
C. Allen

D. Sisson

C. Powell

See page 27 for levels.

M 90



Oliphant

50

INDEXED
SER
AUG 10 1953

X-see New construction Justin St
 from SWly Line Oliphant to 100
 SWly of SWly Line Oliphant St
 See SKETCH page 26.

LT

RT
 $\frac{678}{230}$ $\frac{68}{24}$ $\frac{22}{27}$ $\frac{18}{30}$
 Back edge walk

0+10- 18° LT + 18° RT = Curb E.C'a. 8³
 30

101.57 101.10
 8³ 8³ 8⁸⁰ 8⁸⁸ 9³⁵ 8⁶⁵
 26 28° 18° 18°
 Back CB 90T 9
 edge walk

103.05 103.54
 8⁰² 7⁶⁶ 7⁴⁰ 6⁹¹
 9 18° 18°
 90T Ter 70P
 CB

Side walks - on Radial Line
 0+03 - 25° LT + 25° = back edges end

929
 25°
 Back Walk

651
 25°
 Back Walk

Due to curbs being constructed on Radial
 0+00 20° LT + 20° RT = Fly end curbs.

101.01 100.54
 944 991
 20° 20°
 CB 90T

103.30 103.81
 715 664
 20° 20°
 90T CB

0+00

10³ 9⁴ 9⁵ 6⁶ 6³ 2³ 1⁸
 30 27 22 21 26 28 30

1.5.4.94
 27° LT = Nly end lateral conc wall (6" wide)
 Oliphant St
 0+00 = Nly edge A.C. Pav. + SWly line

981 974 911 821 779 724 717
 19° 18 9 9 18° 19°
 Lip Type Lip Type
 6 90T Ter 110.45 6 90T Ter

BM. 12.21 110.45 98.24

Wly edge 3' conc walk left Sta 3+02 - Page 7

X-sec 100' Tostin - SWly of
oliphant

LT

4

pt. 28

TP, Starting BM. 12.21 98.24. ✓

1+00

227 236 282 220 172 164 180 138 128
23° 18° 18° 9 9 18° 18° 23°
BKWK CB 9UT CB BKWK

0+75

458 470 517 447 402 390 403 357 350
23° 18° 18° 9 9 18° 18° 23°
BKWK CB 9UT CB BKWK

0+50

634 644 690 623 584 579 586 537 529
23° 18° 18° 9 9 18° 18° 23°
BKWK CB 9UT CB BKWK

64 04
24 30

0+25

82 786 795 841 783 737 715 723 675 664
30 23° 18° 18° 9 9 18° 18° 23°
Back CB 9UT CB BK
WALK

110.44

Recross-section Oliphant ST
Capistrano ST. to Clove ST

No # 31738

8-7-53

C. Allen, D. Sisson, C. Powell

See Page 14 et al - FB 1803 - P. 4.

See Sketch Page 14 -

LT

\$

RT

29

16¹⁵
30
Back
COR. RET

17²⁷
30
Back
COR. RET

0+00 - Fly Line Capistrano = edge A.C. Pave

15⁹⁵ 15⁴⁶ 15⁸⁵ 16¹⁶ 16¹⁷ 16¹⁹ 16⁹²
20 20 10 10 19⁶ 19⁶
TIP 90T 10 90T TOP
cb

116²⁸ 117⁰⁴
50 50
90T TOP
cb

0-10 Fly Curb Line Capistrano

14⁹⁷ 14²⁰ 15⁹⁴ 15¹⁷ 115.36 115.66 116.03 116.18 116.92
50 50 30 30 20 20 30 30
TOP 90T TOP 90T TIP
cb cb bc bc

BM Auto Rod used

116.91

SE 7' C.T. Capistrano + Oliphant ST
Actual elevations shown

X-seo Oliphant ST-

29⁵ LT = end brick wall + Begin CONC DRIVE

0+54 = end planting both sides

0+50

LT. RT. 30

22 ⁰³	22 ⁷¹	22 ⁰⁰				
44 ^E	29 ⁵	29 ⁵				
F/00K	TOP	DRIVE				
94 ^r	WALL					

21 ⁹	22 ⁰	20 ⁸	21 ⁴	21 ⁸	22 ⁹	25 ²
29 ⁸	13	7		7	12	30
edge						
wall						

0+40

21 ⁹	21 ⁶	20 ²	20 ⁵	20 ⁹	22 ⁷	25 ⁰
30	10	7		7	10	30
(29 ⁸)						

0+33 - 29⁸ LT = begin brick wall (planter)

22 ⁶⁶	21 ⁸
29 ⁸	29 ⁸
TOP	GROUND

0+26 - 3² RT = brick wall (planter)

25 ⁰	26 ⁹
32	32
GROUND	TOP

0+25

21 ⁸	20 ⁸	18 ⁶	18 ⁹	19 ⁰	21 ⁷	24 ⁹
30	12 ⁰	8 ⁰		55	8	30

0+10 - 11⁰ RT + 13⁰ LT = begin planting

21 ⁶	20 ⁰	20 ⁰	17 ⁰	17 ¹	16 ⁸	20 ¹	23 ⁰
30	24	14	8.		7	8	30

add 100' to elevations shown

X-sec Oliphant

LT

♀

rt

31

2080	2080	2095
695	695	296
Top end	gr.	Top wall
Wid 4		at cor

296¹ end conc base - base goes Nly -

1718.54 Nwly Line 15' alley.

1717 - 21° rt - ♀ Power pole # P3527 -

19 ³	21 ⁷	22 ¹	21 ⁴	21 ⁸	22 ²	23 ³	25 ¹	25 ³
296	29	15	11	9	19	21	30	
ground								

1718.54 - 296, LT = drop in conc base

2095	2183
296	396
Top to	Top to w
E.	

1700 - 34' rt - ♀ Double garage conc floor

22°	22 ⁵	22°	22 ⁴	23°	25°	25 ⁶	26 ⁵
295	12	9	9	20	30	34 ²	floor
ground							
Base fence							

0485 - 32' rt - end brick wall (Planton)

256	277
32 ¹	32 ¹
ground	Top wall

0475

22 ²	22 ²	21 ⁸	22 ²	22 ⁸	25 ⁹
295	14	9	8°	30	
ground					
at Base					
fence					

for board fence

0470 - 295 LT = end Drive + beg conc base

22 ⁸	22 ⁰
295	295
Top Base	Drive

X-sec. Oliphant

1492 - 30° LT = d 3' conc wall

1476 - 30° LT = begin 8" conc wall

1471 - 23° rt = d 16" Pepper tree

1470

1435 - 30° rt = begin old wire fence

1433⁵⁴ - Line Alley

~~1435 - 30° rt = begin old wire fence~~

1426⁰⁴ = d 15' Alley

1420

LT

d

rt

32

15⁸⁹
40°
Walk

15⁸⁸
30°
Walk

15⁸
30°
9v

15⁸⁸
30°
T & P
Wall

16 ²	17 ⁴	17 ⁷	17 ⁹	18 ¹	18 ⁴	20 ⁷	21 ¹	21 ²
50	30	22	13		11	19	20	50

19 ⁸	20 ⁵	21 ⁹	21 ⁷	22 ⁹	24 ¹
30	12		11	19	30

14 ⁹	18 ⁵	19 ⁵	20 ⁶	21 ⁴	22 ¹	23 ⁴	24 ³	26 ⁶
100	50	30	13		10	30	50	100

19 ⁴	20 ⁵	21 ⁸	22 ⁵	23 ²	23 ⁸
30	16	11	24	30	

add 100' to elevations shown

X-sec Oliphant St
Capistrano to Clave

2+25

34° pt = end porch

2+21 - 30' pt = begin wire fence

2+15 - 31' pt = ϕ 10" acacia tree

Porch

2+12 - 30' pt = end wall + 34° pt = begin conc

2+10 - 29° LT = ϕ 8' conc drive

2+06 - 29' LT = end wall

conc wall

2+05 - 31° pt = end fence + 30' pt = begin

2+00

LT

ϕ

pt

33

09 ⁴	11 ⁴	11 ¹	11 ⁵	11 ¹	13 ³	13 ⁶
30	15	10		15	16	20

14 ^L	17 ⁵⁴
34° grat Porch	34° Top Porch

16 ^E	17 ⁶⁸	17 ⁸⁶
30 ⁵ gr	30 ⁵ Top Wall	34 ⁰ Top Porch

12 ²³	12 ⁸⁵
43° drive	29 ⁰ Drive

12 ⁸⁹	12 ⁸
29 ⁸ Tip Wall	29 ⁸ gr

16 ⁷	17 ⁷⁸
30° gr	30° Tip Wall

14 ⁷	14 ³	14 ⁸	15 ¹	14 ²	16 ¹	17 ⁵	17 ⁴
50	30	12		12	13	20	50

add 100' to elevations shown.

X-sec Oliphant

3465 - 30² Rt = end Wall at conc drive

96⁶⁴ 97⁴³ 97⁸⁵
 24⁵ 30² 33²
 Drive Drive Floor
 98²

89⁴⁰
 .50
 in Drive

3457

89⁴⁰ 94⁴⁰ 94¹ 95⁵ 95¹ 95⁶ 95⁶ 97⁸ 97⁸
 28² 38² 38⁴ 13 9 14 30 30²
 Grate Top Grate Grate
 Ely Wall Wall Wly Wall Wall
 Drive

40² LT = begin 8" conc block wall
 under north house - faces Sly.

3444 - 40² LT = Car conc Block house garage

89⁴³ 96⁰⁷ 96⁶
 40 40² 40²
 Drive on Top fr. wly side
 Ely side Wall Wall

3415⁰³ - Ely line Tustin

97² 97⁵ 97⁹ 99³ 98⁹ 99⁶ 99³ 100² 101⁸⁰ 97⁸
 40 30 19 13 10 17 30 38² 10
 Ely side Top Wall

3411⁵ 30⁴ Rt = begin 6" Conc Wall.

100² 101⁸⁰
 30⁴ 30⁴
 9^r Top Wall

and wly of 3' conc walk

3402 - 29⁶ LT = end 8" conc Block Wall

98²⁸ 100⁸⁸ 98²⁴
 40 29⁶ 29⁶
 Walk Top Walk
 Wall

actual elevations shown.

X-sec Oliphant
Capistrano to Clove

LT

Q

RT

36

30[±] RT = Extend Lateral conc block wall

4451 - 30[±] RT = begin cyclone fence

4450 - 23[±] RT = P. Pole # P 3475

4449 - 17[±] LT = Guy Pole

4443 ± of Alley. To wly.

85⁸

86⁶

88²

89⁰

88³

88⁵

89²

90⁰

90²

89⁶

90⁰

92¹

94⁸

81
Topfill.

64

50

45

40

32

30

13

10

18

30

50

4400

86[±]

86⁵

86⁶

89³

88⁶

88⁰

89⁶

90⁵

91⁶

91⁵

91⁹

91⁸

94⁹

95⁶

114
Topfill

100

90

70

50

40

30

19

16

10

14

20

50

3480 - 33[±] RT = begin conc base for fence

96[±]

96⁵⁵

33[±]
Ground

33[±]
Topwall

3476 - 24³ RT = end conc drive

95⁶⁷

97⁸²

24³
DRIVE

33[±]
Floor
99r

3470 - 29⁹ LT = end of 8" Curved conc block

Wall

91³²

90³

29⁹
Topwall

29⁹ gr

actual elevations shown

X-sec Oliphant

5499⁸⁰

5497- 18² LT = ϕ 10" telephone pole #582425

See Page 10 for Levels on Clove

5469⁸⁰ = wh. clove

5469 - 31² rt = end cyclone fence

and 35² perpendicular to oliphant
House is 2.2² wide facing oliphant
102² LT Back edge house

House has two levels - one in front + one in rear
5435-67² LT = ϕ Small Red Frame House

5400

4479- 29² rt = ϕ 8" acacia tree

4474- 23² rt = ϕ Deadman

4470

LT

ϕ rt.

33

77 ²	80 ²	83 ²	86 ⁵	86 ⁸	87 ⁵	90 ⁶	95 ⁸	97 ⁹
50	30	13	Top Fill		9	30	80	100
		Toe Fill	Fill					

79 ⁶	82 ⁴	82 ⁷	84 ⁶	87 ²	88 ⁹	90 ⁷	end disturbs
50	31	30	25		18	20	
	Toe Fill		Top Fill				

73⁸⁰
102
Floor Elev
Rear elev

80 ⁴⁶	81 ⁵	84 ⁵	85 ⁵	86 ⁶	88 ¹	88 ³	90 ²	93 ²	93 ⁵
67 ²	52 ²	45	30	18		7	9	30	40
Floor Front Elevation	Toe fill	Top fill							

85 ⁴	85 ²	87 ⁶	89 ¹	89 ²	88 ⁹	92 ⁹	93 ⁵
58	40	30	18		9	30	50
Top Fill							

INDEXED
AUG 10 1953

85 ¹	86 ⁸	88 ²	89 ⁵	89 ⁴	89 ⁶	89 ³	92 ⁷	92 ⁹
71	50	30	26	12		70	30	50
Top fill								

LT

✱

et

30

TPBM-

Nail in pole 23 RT 4450 page 18

92.92

93 ^L	95 ^S
58	63

(54)

6+29.20 = E.L. Clove.

73 ⁰	77 ^L	84 ⁰	84 ^L	86 ^L	89 ^L	92 ⁰
50	30		6	10	30	58

6+28.5^S et = Power pole #1871.

6+20

70 ⁰	83 ^L	86 ^S	86 ^L	88 ⁰	90 ⁰
30	9		5	9	30

Toe Fill

6+13 - 6⁰ LT = De Dead man

D. Smith
J. Rorer
R. Taylor
B. Fish

Cross Sec Alley B/K 3 La Mesa
See sketch + Notes in
FB 1840-27-38

IN
MAY 21 1954

1425'

1400

0+75

0+50

0+25 @ 90°

0+00

Ely 67th St. taken along line of.

Note:

see FB 1840 p 28 for sections in 67th St. unchanged

Note: all poles dead men etc are the same as before, also

are showing a profile as today and any new
improvements only, add.

BM

267 456³⁷

453⁷⁰ SW.B.P.
67th & Ely

Colony

Lt. Wly

wo # 31040

39

5/26/54

451.5
42 42 46 43 43
10 7 8 10

451.5
42 48 50 42 48 51
20 10 7 8 10

451.4
50 48 48 51 42 42 51
20 10 7 6 8 10

452.8
36 39 51 50 42 50
20 10 6 8 10

452.6
38 48 53 51 42 54 52
20 10 6 8 10 20

452.5
32 42 53 55 42 51 58
30 10 8 9 10 30

456³⁷

J.R.B.

2151² 10° Lt & double garage con floor + apron

2150

2125

TP

4^B

45903

147

454²⁰

1479⁵ in P.M. #25P 78383

2100

1775

1750

1741 11° Rt. & 11⁵ con slab maybe a garage later

Lt-Nly

Q

Nt-Sly

4°

454.64
439 476
172 102
floor apron

454.2
48 50 51 51 52
10 8 10 15

454.3 454.1 453.8 453.7 453.7 453.8 453.6
42 42 53 53 53 52 54
20 10 6 8 10 20

45903
453.9 453.5 453.5 453.4 453.7 453.4
25 22 22 30 22 30
10 6 7 8 10

453.1 453.0 453.0 452.9 453.3
33 31 31 35 31
10 6 7 10

452.6 452.2 452.3 452.5 452.8
38 42 44 32 36
10 6 7 10

452.19
418
112

456 37

Lt = Nly

£

Rt = Sly

41

453.0	452.9	452.7	452.7	452.4
60	61	63	63	66
10		7	10	15

453.3	453.3	453.3	453.2	453.2	452.5
52	52	52	58	58	65
10	6		7	10	15

454.4	453.9	453.7	453.7	454.0	453.2
46	51	53	53	50	58
10	7		7	10	18

453.36	453.34
567	569
145	18
apron	floor

454.3
42
102
floor

454.3	454.2	454.0	453.7	453.55	453.51	453.3
42	48	50	53	54	552	52
20	10		7	8	102	18
				wk	wk	wk

454.4	454.2	453.9	453.8	453.9	453.2
46	48	51	52	51	58
20	10		8	10	15

TT 45903

3475

3450

3430 10² Lt St cor garage

3425

3421 14⁵ Rt £ single garage con floor + apron

to be removed (owner says temporary) dirt floor now

3410 10² Lt SW cor garage + double doors + wly

3400 8⁰ Rt £ 3⁰ cor walk

2475

TP₂ 3⁹⁰ 458⁵⁸ 4³⁵ 454⁶⁸

5422 7² RT & single garage cov floor & apron

5400

4489 13² LT top sewer cleavout vent.
Note & is drain area to ally

4477 10² LT & 29¹/₂ cold lay parking area

4475

4463 9² LT SE cor Stucco apt bldg.

4450

4425 9⁵ LT SW cor Stucco Apt Bldg

4400

L to Wly & RT = Sly



454.11
4²⁵
13²

453.9.
5¹
10

453.5.
5⁵
8

453.5.
5⁵
10

453.58
5¹⁵
7²
apron

453.63
5⁴⁰
50

453.65
5³⁸
11.5
floor

453.76
5²⁷
10²

453.7
5³
10

453.5
5⁵
7

453.3
5²
10

453.3
5²
10

452.7
6³
15

453.8.
5²²
9²

453.4.
5⁶
7

453.0.
6⁰
10

453.1.
5⁹
10

452.3.
6²
15

453.81
5²²
10²
C of
S of
S.E. cor.

453.6
5⁵
9⁵

453.2
5⁸
7

453.0
6⁰
10

452.8
6³
10

452.5
6⁵
15

453.4.
5⁶
10

453.0
6⁰
8

452.8.
6²
10

452.8.
6²
10

452.6
6⁴
15

459⁰³

BM

122

SWBP
68th St
El Cajon
FB 1840-30

6751⁰⁰ Wly c6 Line 68th St new

6741⁰⁰ Wly 68th St sub new c6 + cond pad.

6725

6706 10⁶ Lt end 4' wire fence

6704 7⁵ At to 2" water main runs N to Alley

6700

5788 10⁶ Lt Begin 4' wire fence

5775

5750

Lt - Nly

455.00 454.54 454.27 453.82 453.78 453.57 453.38 453.33 453.80 452.57 453.02

3⁵⁸ 4⁰⁴ 4³¹ 4¹⁶ 4²⁰ 5⁰¹ 5²⁰ 5²⁵ 4²⁸ 6⁰¹ 5⁵⁶

30 50 12 12 10 10 12 12 50 50

26 27 24 24 20 20 26 26 24 26

454.35 453.97 453.61 453.81 454.02

4²³ 4⁰¹ 4²⁷ 4²⁷ 4³⁶

22 28 30 10

66 24 end 24 end

455.0 454.4 453.9 454.4 454.6 454.4

3⁶ 4² 4² 4² 4⁰ 4²

10 7 10 13 20

454.8 454.4 453.9 454.5 454.4

3⁸ 4² 4² 4⁴ 4²

10 7 10 15

453.58

5⁰⁰

7⁵

7⁰ main toward

454.4 454.1 453.8 453.6 453.6

4² 4⁵ 4⁸ 5⁰ 5⁰

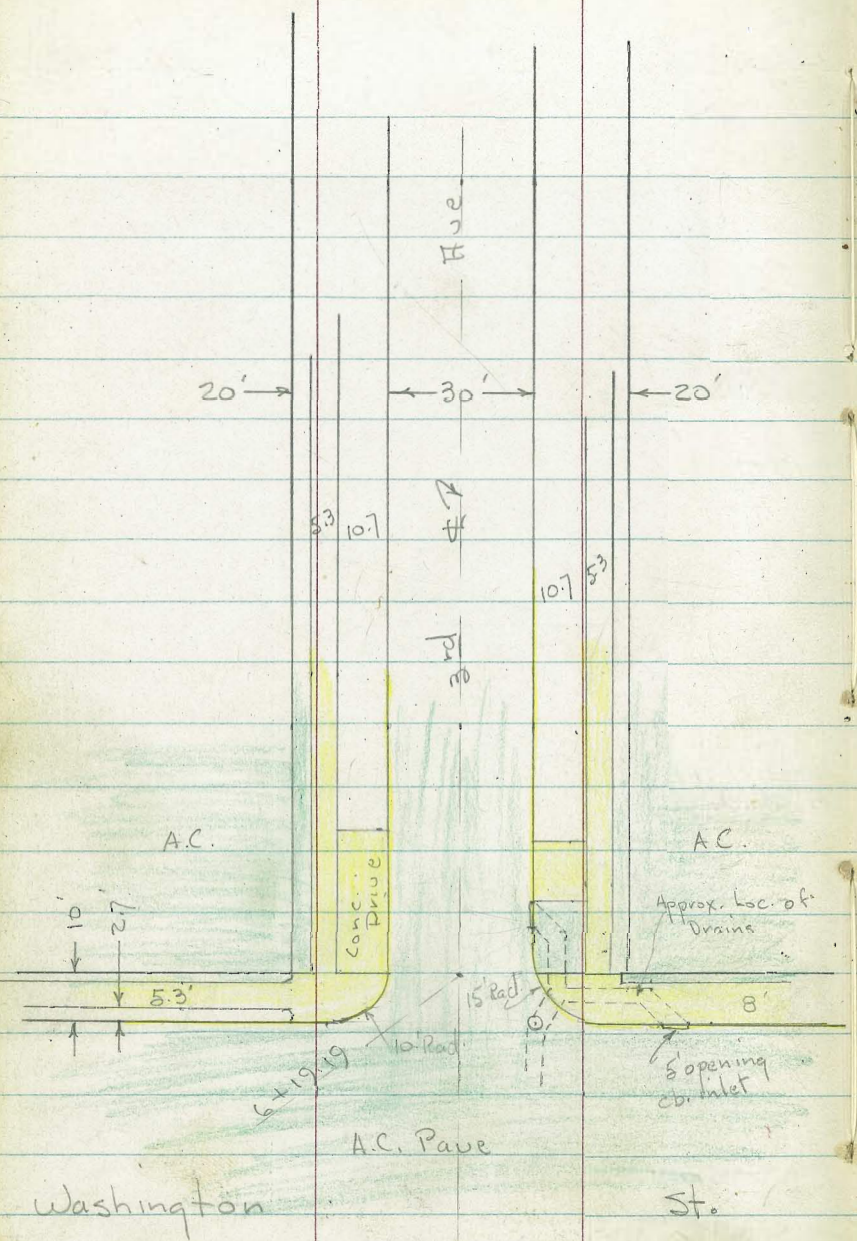
10 6 10 10

454.2 454.1 453.8 453.6 453.4 453.2

4⁴ 4⁵ 5⁸ 5⁰ 5² 5⁴

10 8 7 10 15

458.58



Beq. X-Sections of 3rd Ave - from
University to Washington - for widening

W.O. 32435 - 9-14-54 7.O. -Sketch P. 44

0+47.5 = end Conc. Dr. on Lt.

0+42. - end Dr. on Rt.

0+31.5 = Beq. Conc. Dr. on Lt.

0+25.3 + 16.6 Lt. = Φ W.M.

0+12 - Beq. Conc. Dr. on Rt. - See Sketch

0+10.8 - 33' Lt. = end Brick Box

0+01.6 - 17' Lt. = Φ 4" x 4" Stop Sign

0+01.4 - 16.5' Rt. = Φ Fire Alarm Box

0+01 - 34' Lt. = Beq. Brick flower box - 2' High

0+00 = N.L. Univ. Ave

0-03.7 - 31.6' Rt. = Φ Bell M.H. 85.10 W. Rim

0-08 - 35.4' Rt. = Φ 24" Conc. base for St. Light

0-10 = N. cb.

0-14 - 25.8' Rt. = Φ Bell M.H. 84.59 W. Rim

0-20

0-32 = Approx. Φ of Univ. Roadway

B.M. = N.W. B.P. 3rd + Univ. 284.52

INDEXED
JER
SEP 19 1954

Lt.

Φ

Rt.

46

Note: sprinkler systems in Most of lawn in
Parking - Bot. cb + walk - lawns back of walk
are level.

84.74	84.63	84.53	83.96	84.48	84.42	84.95	85.03	85.18
35	25.7	Top	15.7		14.9	Top	25.6	35
			gut.			gut.		

83.46	82.73	84.47	83.73	84.00	84.24	84.30	84.36	84.94	84.65	85.24
Top	85	Top	35	15		15	35	Top	85	Top
	gut.		gut.				gut.		gut.	

83.62	84.49	84.69	84.83	84.93	85.10	85.37
85	35	15		15	35	85

84.16	85.02	85.23	85.38	85.49	85.61	85.94
85	35	15		15	35	85

200' Cg. Not Noted.

Actual Elev. Shown

3rd Aug.

1+50

1+34-16.7 Rt. = ± w.M.

1+24 = Brk. in walk on Rt.

1+23.2 = ± 3' Conc walk - from cb. back

1+15.8 = ± 4.3' Conc. walk on Rt. - from cb. - back

1+09 - Brk. in walk - Lt.

1+00 = 20.8' Rt. = ± 20" Palm (Palms are Cocos Plumbeas)

0+99 - 20' Lt. = ± 40" Pepper

0+93.5 = ± 4' Conc. walk cb. to prop.

0+84 - 16.5' Lt. = ± w.M.

0+91 - Brk. in walk

0+83 - 20.5' Rt. = ± 16" Palm

0+80 - 20.4' Lt. = ± 30" Pepper

0+77 - 15' Rt. = ± outlet of 4" C.I. Drain

0+75 - 16.6' Rt. = ± w.M.

0+71 - 16.6' Rt. = ± w.M.

0+74.4 = Brk. in walk

0+65.5 - 20.5' Lt. = ± 24" Pepper

0+60 - 31.1' Lt. = Ely. of 6' Board fence

0+50

0+47 - 17' Rt. = ± w.M.

Lt. ± Rt.

47

85.35 85.33 85.14 84.73 85.14 84.92 85.48 85.68 85.66
31.1 25.7 Top 15 14.9 Top 25.6 31
walk gut gut walk

85.41
25.7
edge

85.11
25.7
edge

84.98 84.89 84.85 84.42 84.99 84.68 85.28 85.48 85.62
31.1 25.7 Top 15.1 14.9 Top 25.6 31
walk gut gut walk

84.78
25.6
edge

85.07
25.6
edge walk

84.8 84.86 84.80 84.78 84.33 84.77 84.51 85.12 85.34 85.54
35 31.1 25.7 Top 15 15 35
walk gut Top walk

3rd Ave

2+74 = ± 5' Conc. walk on Rt. - cb. back

2+67 = ± 16' Broken out place in cb. for DGT. Drive

2+50

2+49.5 - 21' Lt. = ± 14" Palm

2+49 = 20.5' Rt. = ± 20" Palm

2+33 = 17.4' Rt. = ± W.M.

2+27.5 = ± 5' Conc. walk on Rt. - cb. - back

2+07 = ± 3' Conc. walk on Lt. - cb. - back

2+00

1+99.5 - 20.8' Rt. = ± 20" Palm

1+99 - 21' Lt. = ± 20" Palm

1+92.5 - ± 4' Conc. walk on Rt. - cb. - back

1+90 - 17' Lt. = ± W.M.

1+83 - 17.2' Rt. = ± W.M.

1+76 - 21' Lt. = ± 16" Palm

1+67.5 - 15' Lt. = ± 8' Conc. Dr. - cb. - back

1+66 - 15' Rt. = ± 8' Conc. Dr. - Not back of walk

1+58.3 = ± 2' Conc. walk on Rt. - cb. - back

1+55 - 17' Lt. = ± W.M.

1+50.5 - 20.6' Rt. = ± 20" Palm

Lt.

Rt.

18

85.79	85.85	85.54	85.17	85.57	85.11	85.93	86.07	86.18
31	25.6	Top	14.9		14.9	Top	25.7	31.1
walk			gut		gut		walk	

85.63	85.57	85.45	85.01	85.38	84.96	85.67	85.88	85.89
31	25.7	Top	14.9		14.9	Top	25.6	31
walk			gut		gut		walk	

1+60 To 2+00
walk on Lt. in
Poor Cond.

3rd Ave

4+00.5 - 20.6 Lt. = Φ 16" Palm

4+00

3+99.5 - 20.8 Rt. = Φ 18" Palm

3+80.5 = Φ 4' Conc. walk on Lt. - cb. back

3+80 - 16.5 Rt. = Φ w.M.

3+63.8 = Φ 4" U.C. Drain thru cb. - on Rt.

3+55 - 16.6 Lt. = Φ w.M.

3+54 = Brk.m walk

3+50

3+49.5 - 20.8 Rt. = Φ 16" Palm

3+48 - 21 Lt. = Φ 16" Palm

3+36.5 = Φ 5' Conc. walk on Lt. - cb. back

3+23.5 - 21 Lt. = Φ 18" Palm

3+20.7 = Φ 6.5' Conc. walk on Rt. - cb. back

3+09 - 16.6 Rt. = Φ w.M.

3+00

2+99.5 - 21 Lt. = Φ 20" Palm

2+99 - 20.8 Rt. = Φ 16" Palm

2+84.5 - 16.6 Lt. = Φ w.M.

2+83.5 = Φ outlet of 4" U.C. Drain thru cb. on Rt.

Lt.

Rt.

49

86.44	86.39	86.30	85.93	86.17	85.53	86.40	86.61	84.66
31	25.6	Top	14.9		14.9	Top	25.6	31
walk	/		gut		gut.		walk	/

86.17
25.5 = edge

86.32	86.23	86.09	85.72	86.08	85.38	86.25	86.44	86.60
31.1	25.5	Top	14.9		14.9	Top	25.6	31
walk	-		gut		gut.		walk	/

86.14	86.08	85.88	85.51	85.83	85.30	86.08	86.23	86.40
31	25.6	Top	14.9		14.9	Top	25.6	31
walk	/		gut.		gut.		walk	/

23 → Ave

5+17.5 - 16.8' Lt. = ± w.P.P.

5+11.5 = ± u.c. Drain thru cb. on Rt.

5+09.5 = Beg. Conc. from cb. to Prop. on Rt.

5+00

4+99 - 20.5' Lt. = ± 16" Palm

4+98.5 - 20.8' Rt. = ± 20" Palm

4+89 - 17' Lt. = ± w.M.

4+88.5 = ± 5' Conc. walk on Rt. - cb. - back

4+85.5 = ± 5' Conc. walk on Lt. - cb. back

4+78 - 17' Rt. = ± w.M.

4+62.5 = Brk in walk on Rt.

4+57 - 14.9 = ± outlet. 3" u.c. Drain thru cb.

4+52 - 16.5' Lt. = ± w.M.

4+50

4+49 - 20.5' Lt. = ± 15" Palm

4+43.5 = ± 5' Conc. walk on Lt. - cb. back

4+33 - 16.5 - Rt. = ± w.M.

4+22.5 = ± 3.5' Conc. walk on Rt. - cb. back

4+04 - 16.5' Lt. = ± w.M.

4+02 = ± 2' Conc. walk on Rt. - cb. to walk

4' walk from walk back

Lt. # Rt. 20

86.92	86.84	86.77	86.30	86.59	86.25	85.83	86.78	86.96	87.05
31	25.6	Top	15	8	14.9	Top	25.6	31	
-walk			gut.		gut		walk		

86.75
25.6 - edge

86.69	86.73	86.50	86.10	86.44	85.65	86.57	86.78	86.86
31	25.6	Top	14.8		14.9	Top	25.6	31
-walk			gut		gut.		walk	

5+80

5+69.2 Cont.

5+69.2 - S. cb. Line - 25' Rt. = wly. of 4.5' x 2' inlet and grate

5+67.7 - 35' Lt. = 4" Pipe R-199

5+67.1 - 38.7 Lt. = 4" x 4" Bus stop

5+59.5 - 17.7 Rt. = 4" x 4" stop sign outlet on Rt. = end Dr. on Lt.

5+59.19 = S.L. of Washington = Nly. of 2' wide

5+56.6 - 16.5 Rt. = 4" F.H.

5+52 - 16.6 Rt. = 4" W.M.

5+51.5 = end Dr. at cb. on Rt. + sly. of 2' outlet + grate

5+50 - 19.3 Rt. = 4" 2" Cap. for Fuel intake

Check B.M. = N.W. B.P. 3rd + Washington 287.52

5+41.5 - 19.6 Rt. = 4" 12' x 1' Cover To fuel intake pipe

5+37 = 4" of opening in Bldg. = will need Drive

5+26.5 = edge of Dr. at edge of walk 25.6 Lt.

5+25

5+21 = Beg. edge of Conc. Dr. at cb. on Lt. (to Ser. Stair)

5+19 16.8 Rt. = 4" Gas - valve Cap.

86.71 87.09 87.25 87.29 87.33 87.33 87.33 87.44
85 35 15 15 35 40 85

86.83 87.29
85 Top
gut.

86.60 86.13 86.97 86.55 86.75 87.09 87.10 87.08 85.96 86.43 87.00
Top 85 Top 35 15 15 35 IE 40 Top
gut. gut. Top cb. Inlet. gut
Inlet. gut.

87.27 87.14 86.99 86.58 86.82 87.00 86.96 86.98 85.82 87.18 87.25
33 walk 25.6 Top 14.9 8 12.4 15 IE 25.7 35
inlet Top Cov. Top cb. Inlet gut. walk

87.39 87.24 87.08 86.55 86.77 86.89 86.71 85.12 85.90 86.90 87.06 87.24 87.37
35 on AC. 31 walk 15.6 14.8 8 7 13 15 Top 25.7 31 35
gut. in Dr. gut. walk Conc.

287.50 = Book

Pipe

87.06 87.18 87.87
25.7 31 35
walk Conc.

87.20 87.04 86.95 86.39 86.66 86.74 86.97 85.90 86.98 87.11 87.36
35 A.C. 31 walk 15 8 8 14.8 25.6 31 35
gut. in Dr. gut. walk by Bldg. Conc.

10-26-54

7.0.

Lt. \pm

Rt.

53

6+50 = end.

87.73	87.27	87.67	87.24	87.70
Top	15 gut		15 gut.	Top

6+40 = Thru \pm of 12' Conc. Dr. on Rt.

88.0	87.90	87.16	87.56	87.26	87.74	87.9
35 on A.C.	25.8 walk	4.9 gut-in Dr.		17 gut-in Dr.	25.8 walk	35 in A.C.

6+31.2 = \pm 5' opening Inlet on Rt.

87.20	86.78	87.60
13 Bk.	15 I.E. \pm gut.	Top.

6+24.19 = PC. of 15' Rad. Ret. on Rt.

87.9	87.80	87.07	87.63	87.08	87.51	87.69	87.8
35	25.7 walk	14.8 gut-in Dr.		15 gut	Top = PC.	35.3 edge walk	35

6+19.19 = N.L. Washington

87.88	87.56	87.06	87.60	87.26	87.58	87.73	87.8
35 on Conc.	Top	15 gut		15.7 gut	Top	34 Cor. Conc.	48 on A.C.

6+11.3 = 32' Rt. = \pm Bell Co. M.H. 87.57 = \pm

6+09.19 = Cont.

87.14	86.66	87.58	86.76	87.65	87.18
Top	75 gut	35 Top	45 \pm 5' inlet ch. I.E. = gut.	Top	75 = gut-in Dr.

6+09.19 = N. cb. Line

87.57	86.99	87.48	87.13	87.34	87.63	87.52	87.16	87.58	87.18
Top	35 gut	Top = Pt.	25 gut	15		15 on M.H.	30 gut.	Top = PCI 15' Rad.	35 gut

6+03 = 34.5' Rt. = \pm Bell Co. M.H. 87.48 = \pm M.H.6⁵+99.19

87.04	87.32	87.51	87.59	87.63	87.60	87.65
75	35	15		15	35	75

6⁵+89.19 = \pm Washington

87.17	87.43	87.53	87.57	87.60	87.61	87.79
75	35	15		15	35	75

sections Cont. from P. 51 - See Sketch - P. 45

6+09.5 = 16' Rt. = \pm Clean out - Conn. to Culverts shown at SE. Cor.

87.53	86.13
16 Sly Rim	I.E.

X Sec Viola St Cont. From FB 2387-79

6725 25° 43.1822'

6719 2° Lt & 2° Right shrub

6707 2° Rt & 2° Shrub

6700 19° 26.8199'

c = 24.9'

5795 6° Rt & 2° Shrub

5775 13° 10.4572'

5771 15° Rt end 6" con block wall

$\Delta = 90^\circ$

$L_1 = 114.17$

$L_2 = 179.34$

$d_1 = 15.0545$

5754 2° My Prop P.R.C. 7° 57.829' c = 31.4 l = 31.74

$\Delta = 75^\circ 55' 40''$

5743 17° Rt & 3' con steps & walk

716

11.36

78.12

~~78.12~~

34.9

66.76

~~66.74~~

ON BC AND N.P. STR 254

5722 56 BC, RT 0° 00'

5716 23° Rt Begin 6" con block wall

70.25

~~70.23~~

H2 brought ahead from FB 2387-79

D. Smith
S. Morar
R. Taylor

Lt = Nly

74.4 73.6 74.2 74.1 74.0 73.7 74.0
32 45 32 40 41 42 42
25 14 10 15 25 36

72.0 71.8 71.1 71.9 72.3 72.3 72.5
62 63 70 62 58 58 56
25 15 5 10 25 35

69.6 69.6 69.3 69.9 70.7 71.1 71.4
85 85 88 82 74 70 62
25 15 8 15 25 35

70.5 68.9 69.1 67.7 67.9 67.8 67.5 68.4 69.7 70.45 70.5 70.9
76 92 90 104 102 103 106 97 84 76 76 72
70 25 23 22 13 11 13 20 20 25 35

68.51 70.25 70.46 71.05
94 78 76 70
143 203 25 35
wall wall
top wall
step wall

70.25 68.5 66.8 66.5 65.7 65.6 65.3 66.1 68.3 70.03 70.1 70.3
00 18 35 38 52 42 50 42 20 022 02 00
70 28 25 18 16 10 15 23 23 25 35

70.03 67.03
028 322
237 237
top wall footing

25

70

(9-8-55)
8:30 P.M.
P.F.L.

0725 11° 01.3

c=2485

"L" Lino

0700 P.N. Nly Prop

7701 9° E.C. 45° 00'

c=2684

6775 38° 15.9172

6770 16° RT & shrub

6763 16° RT & 6" Fire Hyd

6759 11° RT & shrub

6750 31° 59.5447'

6748 63 RT & shrub

6739 2° RT & shrub

6729 2° 11 & shrub

$\Delta = 105.56'$
 $\Sigma R = 6427$ calcs
 $c = 10323$ mea
 $L = 12012$

Lt. Nly Fly

RT = Sly Wly

54

71.9 70.6 69.7 69.5 69.9 69.8 70.7 71.0 ✓
63 75 84 86 82 83 74 71
40 25 22 15 8 17 25

70.4 68.9 69.0 67.7 68.0 67.9 67.7 68.5 69.7 70.4 70.5 ✓
72 98 91 102 101 102 102 96 84 73 76
40 25 23 22 9 10 13 20 27 25

83.1 81.6 80.5 79.3 79.7 79.4 79.6 79.9 80.1 ✓
+5° +35 +21 +12 +15 +13 +15 +18 +20
25 22 13 11 11 12 25 35

79.4 78.1 77.3 77.8 77.7 78.0 78.2 77.3 80.0 ✓
+13 0° 05 05 06 04 +01 08 +12
25 15 13 8 16 25 35

76.5 76.0 75.8 76.6 76.0 76.1 75.8 ✓
16 21 23 15 21 20 23
25 13 1 15 23 35

78.12

~~78.10~~

X Sec 2" Line Gertrude Shillan

Lt = NW 1/4

E

Rt = SE 1/4

58

(7)

40

1720 24° 41' Begin 4' P. Pole

TP 7 BM

774⁷⁷ ON EC Hub
14 20 12 L. Line
065 77⁴⁵ 3457 46 Lillian
2.0° 03' 44"

1720 12 EC 52° 58'

74.9 76.3 77.1 77.1 77.7 77.5 80.1 ✓
33 18 10 10 04 06 +20
40 25 15 12 13 25

7-8-53
4:55 PM
B.E.D.

1700 44° 05.2'

74.5 75.6 76.1 76.0 76.3 76.4 76.6 77.2 ✓
36 25 20 21 18 17 15 09
40 25 16 11 10 17 25

0775 33° 03.9'

73.6 74.2 74.3 74.0 73.6 73.9 74.7 75.1 ✓
45 39 38 41 45 42 34 30
40 25 16 11 10 12 25

0770 16.5 Lt 2 12" P. Pole # P4902

0750 22° 02.6

72.6 72.4 72.2 71.0 71.7 72.3 73.0 ✓
55 51 52 71 64 58 51
40 25 20 17 12 25

78 12

~~78 10~~

X Sec Lillian St
 (Dorcas to Bertrude)
 { 24³ Lt and 4' Picket Fence
 1450 { 17⁰ Lt & 16" P.P. # P4771

TP 018 92²² 12³⁹ 91²⁴

0490 24⁵ Lt Begin 4' Picket Fence

0475

0450

0443 16³ Lt & 4" tree

0437 20⁰ Lt & clump of cactus 5' dia

0430 16³ Lt & 7" tree

0425

0423 20⁰ Lt & 18" Century cactus plant

0416 15⁵ Lt & 8" tree

0409 21⁰ Lt & 3" cactus yacca

{ 16³ & 2" water Hyd.

0400 Nly Dorcas St

0-08 20³ Lt & 8" P.P. # JP2298

0-09 23³ Lt & 4" tree

0-25⁰ & Dorcas St

TP 7²¹ 104¹³ 3²⁴ 96⁴²

BM 12²² 99⁶⁶

86²⁴

2 Hds
 BC 6714
 Envid
 FA2299-33

Lt-Wly
 88.3 89.1 89.2 88.3 88.2 88.0 88.9 89.1 88.5 90.8 91.7
 32 31 30 32 40 42 33 31 32 14 05
 40 25 15 11 10 11 18 25 30 40

92²²
 90.8 92.4 92.6 92.1 91.5 91.7 91.8 92.9 93.4 92.8 94.3
 133 112 115 120 126 122 123 112 102 112 98
 40 25 19 12 11 10 11 17 25 40

92.9 94.2 94.5 93.9 94.4 94.7 95.8 96.8 95.4 98.5 99.6
 113 92 96 102 97 94 83 73 82 56 45
 40 28 12 11 11 12 18 25 27 40

93.2 94.2 95.6 95.2 95.7 96.6 97.3 98.1 99.9 100.7
 102 92 85 82 84 72 72 68 62 42 34
 40 25 12 11 13 14 23 25 31 40

93.0 94.3 95.7 95.5 96.2 97.3 98.5 100.5
 112 98 82 86 72 68 56 36
 40 25 14 11 12 25 40

8:00
 272

94.4 95.9 97.3 98.8 100.2
 92 82 68 53 38
 25 12 12 25

(omitted)
 BEV

104¹³

2150

2125

2112 23° L+E 6" Fire Hyd.

2100

TP₃ 452 84 41 12³³ 79⁸⁹

1498 20° L+E 10" PP. 1/2 # P4725

1479²² Lt wly Prop. BC.

1477⁵ S SMH

1462 295 L+E 1/2 cov drive

1750

1725

Lt-Wly
 73.0
 11² 10³ 9² 9⁸ 9² 8³ 7² 6⁴ 4⁵
 40 25 12 11 10 15 21 40
 74.0 75.6 76.7 76.1 76.5 76.6 78.3 78.6 79.9 ✓
 10⁴ 8⁸ 7² 8³ 7² 7⁸ 7¹ 5⁸ 3²
 40 25 12 10 10 12 25 40

76.6
 77.3 77.2 77.6 78.0 77.8 78.7 81.2 83.6
 7² 7¹ 6³ 6⁸ 6⁴ 6⁶ 5² 3² 0⁸ 1²⁵
 40 25 12 11 10 11 25 27 40

844
 79.8 79.6 79.5 79.1 79.7 79.1 80.4 81.6 82.8 86.4 ✓
 12⁴ 12⁶ 12² 13¹ 12⁵ 13¹ 11⁸ 10⁶ 9⁴ 5²
 40 25 12 11 11 12 23 25 40

7991
12³¹

82.47
81.51

975 1021
529 293
Floor

81.5 82.0 81.9 81.6 82.1 82.0 82.7 82.7 84.1 85.0 87.9 ✓
 10² 10² 10³ 10⁶ 10¹ 10² 9⁵ 9⁵ 8¹ 7² 4³
 40 25 12 11 11 12 21 25 27 40

85.4 85.0 85.5 84.4 84.9 84.9 86.5 89.1 ✓
 6⁸ 7² 6² 7⁸ 7³ 7³ 5² 3¹
 40 25 13 11 13 25 40

9722
710

4400

3475

TP4 BM 10⁶³ 88⁰⁸ 6⁹⁶ 77⁴⁵

3467 18² L+E 10" P/Bk # 5P4910

L+L 0°03'

3451⁴⁶ ES prop L in Wly

3441 30° RT & 16⁵ con drive

3425

3418 31° L+E 12" P/Bk # P4902

3400

2475

2461 30° RT & 10^e con drive

Lt = Wly

RT = Ely

58

80.1	79.7	80.3	80.8	81.1	83.6	85.1	88.1
8° 8'	7° 7'	7° 3'	7° 2'	4° 5'	3° 3'	0°	
40	25	12	13	22	25	40	
79.1	79.1	78.8	79.4	79.5	81.1	83.1	85.9
9° 9'	9° 9'	8° 7'	8° 6'	7° 5'	5° 2'		
40	25	12	14	18	25	40	

77⁴⁵ 79⁵⁵
on Hut 3451⁴⁶

1420²⁵ 1420²⁵

75.0	76.3	77.0	77.8	77.6	78.5	80.8	83.4
9° 8'	7° 4'	6° 6'	6° 8'	5° 9'	3° 6'	1°	
40	25	12	14	16	25	40	

73.9	74.8	75.2	76.1	76.3	78.4	81.9	83.4
10° 5'	9° 6'	9° 2'	8° 3'	8° 4'	6° 2'	2° 5'	1°
40	25	13	13	25	37	38	

71.1	72.7	73.8	75.0	75.4	76.4	77.7	80.7	83.2
13° 3'	11° 2'	10° 6'	9° 4'	9° 8°	6° 2'	3° 2'	1° 2'	
40	25	12	11	15	25	37	38	

71.2	72.6	73.7	74.8	75.6	76.2	77.3	79.1	81.2
13° 3'	11° 8'	10° 2'	9° 6'	8° 8'	8° 2'	7° 1'	5° 3'	3° 2'
40	25	12	11	13	25	37	38	

78.61
81.34
5° 0' 30"
5° 0' 50"

8441

80.76
82.08
41° 23'

5750 25° L+E 35' cov walk

5750 18° Rt to wly and 2' hedge L to line

5725 24° L+E 8° cov slab
23° Rt & deadman

5723 17° Rt & 6" Ancor Pole

5719 17° L+E 12" PPole #P4920

5700

4475

4464 25° L+E single garage dirt floor

4452 17° L+E 6" tree

4450

4442 20° L+E 2' cov walk

4438 23° Rt & 15' cov drive

4425

4409 25° L+E 8' cov drive

59

Lt = Wly Rt = Ely

76.29 76.20 76.3 76.1 76.3 75.8 77.0 77.8 78.7 ✓

117° 118° 118° 120° 118° 123° 114° 103° 94°

35 25 16 12 13 18 25 40

76.97 76.87 78.0 78.4 77.9 79.0 79.2 80.2 81.1 ✓

114 112 101 97 102 94 82 72 70

35 24 16 13 16 22 25 40

78.8 79.5 80.0 80.3 80.3 81.9 84.8 ✓

93 86 81 78 78 63 33

40 25 12 12 25 40

79.6 80.3 81.2 81.7 81.5 81.7 81.8 82.6 83.7 83.7 84.4 87.5 ✓

85 78 62 64 66 64 63 55 44 44 32 06

40 30 25 14 12 12 22 23 25 27 40

63
25
Floor

81.43 81.69 80.8 81.7 82.3 82.1 82.2 82.6 84.5 87.7 ✓

73 66 58 60 52 55 35 04

40 25 16 12 12 25 40

80.90 80.24 80.5 81.2 81.6 81.9 82.4 83.8 84.5 84.28 86.53

76 62 65 62 52 43 36 03

40 25 11 13 23 25 40

768 784

403 23

Floor

88.08

✓ 6458 16° LT & 7" Acacia tree

✓ 6450

✓ 6448 18° LT & 1" bush

✓ 6439 17° LT & 8" Acacia tree

✓ 6425 18° RT end Rock + con wall

✓ 6420 24° LT & 24" Palm tree

✓ 6410 22° LT & 12" con drive

✓ 6402 17° RT Begon Rock + con wall

✓ 6401 18° RT & 15" con walk

✓ 6400

✓ 5790 24° LT & 3" Pepper tree

✓ 5780 25° LT & 19" con drive

✓ 5775

TP5 020 754 132 742

✓ 5765 20° RT & 9" con drive

LT=WH

RT=ELY

60

69.2 69.0 68.7 67.9 67.4 66.8 67.1 67.1 68.4 68.2 68.8 69.2 ✓
 52 64 64 72 72 83 82 82 67 69 63 52
 35 25 17 15 10 9 13 16 23 25 20

72.10 70.8 70.7 70.2 69.7 69.4 69.1 69.7 70.2 70.1 72.61 71.0 70.8 ✓
 501 43 44 42 54 62 57 65 54 49 50 250 41 213
 27 265 25 17 11 10 12 13 18 18 18 25 40

71.81 71.87 71.87 71.49
 330 324 324 362
 35 25 24 220

72.96 73.43 74.37 72.93 72.93
 25 160 074 29 28 28
 18 25 35 54 175 175
 54 100 wall 54 100 100

72.8 72.0 71.5 71.6 71.4 72.8 73.7 74.5 ✓
 23 31 36 35 32 22 14 06
 40 25 12 12 18 25 35

74.50 74.49
 061 067
 354 254

74.49 74.44 74.33 73.9 73.9 73.6 74.7 75.6 76.7 ✓
 062 067 08 12 13 15 04 405 716
 35 254 25 12 12 17 25 40

754

75.76 76.35 76.97 77.52
 1232 1123 11 105
 202 25 32 42
 04

8808

Lillian St

Stawly

Stawly

6

60²⁹ FO 2387
SF. Prop. Mod 74
Gertrude
Lillian

TP BM

45⁰

60¹⁹

7+4961 E Gertrude St ESMH

7+2461 Sly Prop Gertrude St

7+17 16² Lt & 6" Acacia tree

7+00

6+97 16² Lt & 6" Acacia tree

TP₆ 0²⁸ 64⁶⁹ 10⁸⁷ 64²⁴

6+78 16² Lt & 10" Acacia tree

6+75

58.8
59.0
59.3
59.09
59.1
58.7

59 57 54 56 56 60
25 15 20 17 15 25

60.9
60.6
59.9
60.3
60.4
60.2

38 41 42 44 43 45
28 13 11 14 2

64.5
64.3
64.1
63.1
62.3
62.3
62.2
63.1
63.7
63.8
65.3
65.7

03 04 06 16 24 24 25 16 10 02 106 110
10 28 17 16 8 14 17 25 28 30 40

66.5
67.1
67.5
66.1
65.4
64.6
64.7
64.6
65.8
66.5
67.2

86 80 76 90 92 103 104 105 93 86 79
10 28 18 12 11 9 13 17 25 40

75.11

10:45 AM
9-16-55
B.E.W.

X-sec Alley Block 49, ocean Beach

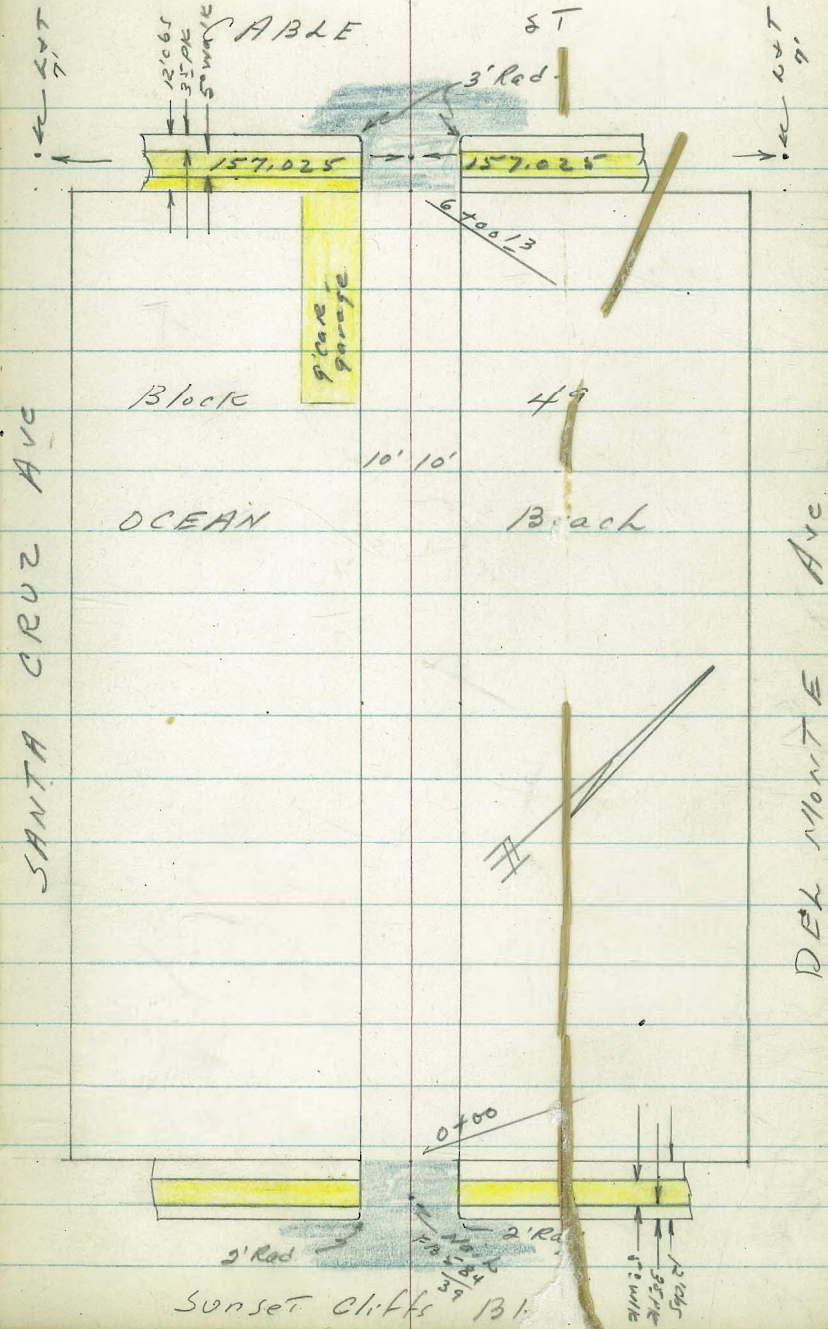
WO# 32519- Friday, May 13, 1955

C. Allen, C. Powell, R. PARKS

REF. TP. Sheet 782

F13584-39.

INDEXED
MAY 19 1956



Levels Alley Block 49, Ocean Beach
 See sketch Page 62
 See Also FB 584-39.

5° RT = 2 1/2" Gasco Gate cover

9¹ LT = end curb

9² RT = end curb

NWly edge A.C. Paving

0+00 = NWly Line sunset cliffs

9¹ LT = Cb BC 2' Radius

0-10- 9² RT = Cb BC 2' Radius

TBM

43.57

Return on Left is Broken

0-12 = NWly curb Line sunset cliffs

BM

54.23

LT = Swly

20
 Alley

RT = NEly - 63

4432	4399	4351	4350	4354	4363
99	99		50	98	98
T.C.	9UT		Rim	9UT	T.C.

4334	4391
99	99
T.C.	9UT
BC	BC

4318	4343
98	98
9UT	T.C.
BC	BC

2 Alley & on NWly Line sunset cliffs
 on P.K. Nail at 0+00 Page 62

4639	4608
50	50
T.C.	9UT

4082	4130
50	50
9UT	T.C.

4449	4412	4399	4355	4312	4293	4328
12°	12°	10		10	12°	12°
T.C.	9UT			9UT	T.C.	
BC	Cb BC			Cb BC	BC	

Shown in walkers BM's as 54.08
 SEly BP - Sunset cliffs Blvd Santa Cruz

All elevations are true elev.
 Direct elevations red

X-sec 49 cont

TBM- 38.08

0+50 - 10' RT = begin 5' picket fence

0+40

96' ends house
Conc Floor + Apron

0+39 - 10' LT = end 2 car garage

0+36 - 5' RT = 2' conc walk

10' LT = Conc Apron + Floor
begin 2' car garage

0+20 } 10' LT = Jog in Stucco House

0+00 - 10' LT = begin Stucco Apt House

LT = SWly 20' Alley RT = NEly 64'

Spike in pip. # PA 4820 LT of 1700

40⁷ 40² 40⁴ 41⁷
10 4 10

41⁹⁰ 40⁹⁵
132 109
Conc Floor Apron

41⁰⁸ 41⁶⁰
55 100
walk walk

41⁹³
136
grat Floor

41⁸⁰ 42¹ 42¹ 41⁷ 42¹ 42⁹
106 109 10 75 10
Apron grat House

44³
109
grat House

True elev.

X-sec Alley B/K 49, cont

conc Apron + Floor

1+11- 9⁰ RT = 2 single garage

LT = SW 1/4

2

RT = NE 1/4 45

35⁸² 35⁹³
9⁰ 13¹
Apron Conc Floor

1+03- 9⁰ RT = 2 6' wide conc walk

35⁹² 35⁹² 35⁹⁴
9⁰ 10⁰ 19⁰
Walk Walk Walk

9⁰ LT = 10' Power pole # PA4820

1+00- 9⁶ RT = end 5' picket fence

36⁴ 36¹ 36⁰ 35⁹ 36³
25 10 10 25

0+86- 9⁶ LT = end 2 car garage
conc apron + floor

38⁴⁵ 37⁷²
13¹ 9⁰
Conc Floor Apron

0+80

37⁸⁷ 37⁸³ 37⁰ 37³ 38² 38⁵
10 9⁰ 5 10 25
5N Conc edge Apron

0+68- 9⁶ LT = begin 2 car garage
conc apron + floor

38⁶³ 38¹²
13¹ 9⁰
Conc Floor Apron

0+60

39⁰ 38⁵ 38⁷ 39⁴
10 5 10
Direct Rod

Alley 135K 49 cont

2400-10^S LT = begin 5' chain link fence

1475

1450-9^o LT = end 5' Board Fence
1450-9^o LT = 2 1/2" power pole # PA 4828

1443-11^E RT = 2 Single Garage
Dirt Floor

1438-10^E RT = end 6' Redwood fence

1425

1418-10^o RT = begin 6' Redwood board fence

1414-10^o LT = begin 6' board fence

1413-11^o LT = 2" concrete walk

LT = SWly

2

RT = NEly 66

34⁶
25

34²
10

33⁹

34⁰
10

33⁹
25

34⁶
10

34²

34³
10

35²
25

35⁰
10

34⁵

34³
10

34³
25

34^L

115

Dirt Floor

35⁴
10

35⁰

35¹
10

36⁰⁷
213
Walk

35⁹³
113
Walk

Direct Rod

Alley BIK 49 cont

2+75

2+70-14^{1/2} RT = ^{Dirt Floor} single garage

TBM

34.45

2+52-9² LT = 1/2" power pile # PA 4836

14¹ RT = ^{Dirt Floor} end 3 car garage

2+50-10⁴ LT = end 5' chain link fence

2+26-14⁰ RT = ^{Dirt Floor} begin 3 car garage

2+25

• Garage is ± 75' back of P.L.

2+20-11⁸ LT = 1/2" 11' wide cone drive

LT = S.W. 1/4

RT = N.W. 1/4 67

20'
Alley

33⁷
10

33⁴

33⁶
10

33⁷

14²

Dirt Floor

9² LT Sta 2+52

NAIL in power pole # PA 4836

34³
25

34⁰
10

33⁶

33⁷
10

33⁶
14²

Dirt Floor

33⁷

14⁰

Dirt Floor

34¹
10

33⁸

33⁸
10

34³⁸

34²¹

31⁰

11⁸

Drive

Drive

Direct end

Alley BIK 49 CONT

3+80

3+40-12' RT = ϕ Single garage
Dirt Floor

3+31-8' RT = ϕ Home Made - Rough Finish
4' Wide Conc Walk

3+25

3+20-11' RT = ϕ Single garage
Conc Floor

3+04-11' LT = ϕ Single garage
Dirt Floor

3+01 = ϕ Sewer Manhole

3+00

LT = SWly

ϕ

RT = NELY 68

33⁴₂₅ 33¹₁₀

32⁹

33⁰₁₀

33²₂₅

33²

12'
Dirt Floor

33²⁹ 33⁴¹
8' Walk 10' Walk

33⁵₁₀

33¹

33⁴₁₀

33⁷²

11'
Conc Floor

33⁷

11'
Dirt Floor

33⁴⁹

RITT

33⁰₂₅

33⁵₁₀

33⁵

33⁴₁₀

33⁵₂₅

Direct Rod

Alley BIK 49 cont

LT = SWly

⊘

RT = NELY 69

4+14-9⁴ LT = ⊘ deadman

Conc Floor

4+08-10¹ RT = begin 4 car garage

32³²

10^L
Conc Floor

4+04-12⁶ RT = ⊘ 2⁵ conc walk

32⁵⁰

32⁶¹

12⁶

22⁶

Walk

Walk

4+00

32⁸⁰

32⁷

32⁴

32⁵

32³

25⁷

10

10

25

3+99-11² LT = ⊘ 2⁵ conc walk

32⁹⁰

32⁸²

21²

11²

Walk

Walk

3+90-9⁰ LT = ⊘ 10" pole # PA 4068

3+75⁵

32⁹

32⁷

32²

10

10

3+59-11⁹ RT = ⊘ single garage
DIRT FLOOR

32⁷

11⁹

Direct Rod

DIRT FLOOR

X-See Alley Bk 49

CONT

Conc Floor + Apron

4+86-12² RT = begin 4 car garage

Conc Apron + Floor

4+77-10⁰ LT = begin 2 car garage

4+77-10² LT = end 4⁵ board fence

4+78

DIRT Floor

4+70-14² RT = 2 Single Garage

10² LT = begin 4⁵ board fence

Conc Floor

4+50-11¹ RT = end 4 car garage

DIRT Floor

4+39-14⁵ LT = single garage

4+25

LT = Swly

2

RT = NELY 70

31³⁷

31⁵⁷

12²
Apron

14²
Conc
Floor

32¹²

31⁹⁵

13⁹
Conc Floor

10⁰
Apron

32¹
10

31⁷

31⁶
10

31⁶

14²

DIRT Floor

32³
10

32⁰

32²
10

32⁴²

11^L
gar Floor

32⁶

14⁵

DIRT FLOOR

32⁶
10

32¹

32²
10

32³⁷

10^L
gar Floor

DIRT Rod

Alley B 1K 49 cont

5+23- 14⁰ RT= 2' conc Walk

Conc Apron + Floor

5+22-13⁰ RT= end 4 car garage

5+20

Note! Garage Has Stepped down Levels

Apron + Floor shown every 20'

5+05^E 9⁰ LT= begin 9 car garage - stucco.

Conc Apron + Floor - APTS Above

5+03- 9⁰ LT= 2 5' Conc Walk

5+00- 8⁰ LT= 2 12" pole # PA 4886

4+97- 10¹ LT= end 2 car garage

Conc Apron + Floor

LT= SWly

2

RT= NEly 71

3134

14⁰

Walk

3135

24⁰

Walk

3133

13⁰

Apron

3160

15⁰

Floor

3196

14⁰

Floor

3143

9⁰

edge
Apron

312

313

10

3133

13⁰

Conc Apron

3160

15⁰

Floor

3195

14⁰

Floor

3171

9⁰

Apron

3156

20⁰

Walk

3176

10⁰

Walk

3176

9⁰

Walk

318

25

310

10

315

10

316

10

3136

14¹

edge
Conc Apron

3211

14⁰

Conc Floor

3195

10¹

Apron

Direct Rod

BIKH 9 cont

9² RT = begin Alley curbs } Alley
10² LT = begin Alley curbs } Curbs are
3 Ely edge A.C. Paving } in poor
Condition

6400¹³ = 5 Ely Line cable ST

5490-10² LT = 4' conc walk

5495-10² LT = end 9 car garage
conc Apron + Floor

5480

5460

5440

5430-13⁵ RT = 9 Single garage
Dirt Floor

LT = SW 1/4

RT = NE 1/4 72
Alley

25⁹² 25⁷⁷ 25⁴⁰ 25⁸⁰ 25⁹²
10² 10² A.C. 9² 9²
T.C. 90T 90T T.C.

26⁷⁴ 26⁷³ 26²⁴
25² 15² 10²
Walk Walk Walk

27⁷⁵ 26⁴⁷
15² 10²
Floor Apron

28³³ 27⁸⁹ 27⁹ 27² 27¹ 30¹ 30²
15² 10¹ 10² 4 7 10
90T Floor edge Apron

29⁵⁷ 29³⁹ 29⁰ 20⁸ 30⁴ 30⁷
14² 10¹ 5 7 10
Conc Floor edge Apron

30⁸² 30⁵¹ 30⁵ 30³ 30⁸
14² 9² 5 10
Floor edge Apron

30⁸
13⁵
Direct Rod Dirt Floor

Alley BIK 49. Cont

LT=SWly

RT=NEly 73

Levels Chec Ked. into Sely (Sly) B.P. Del

Monte + Cable - ^(25.17) FL=25.11 per FB 584-39

6+30¹³ = cable ST

2587	2573	2565	2551	2534
100	50		50	100

2597	2526	2581	2518	2484	2545	2466	2528
100	100	50	50	50	50	100	100
T.C.	90T	T.C.	90T	90T	T.C.	90T	T.C.

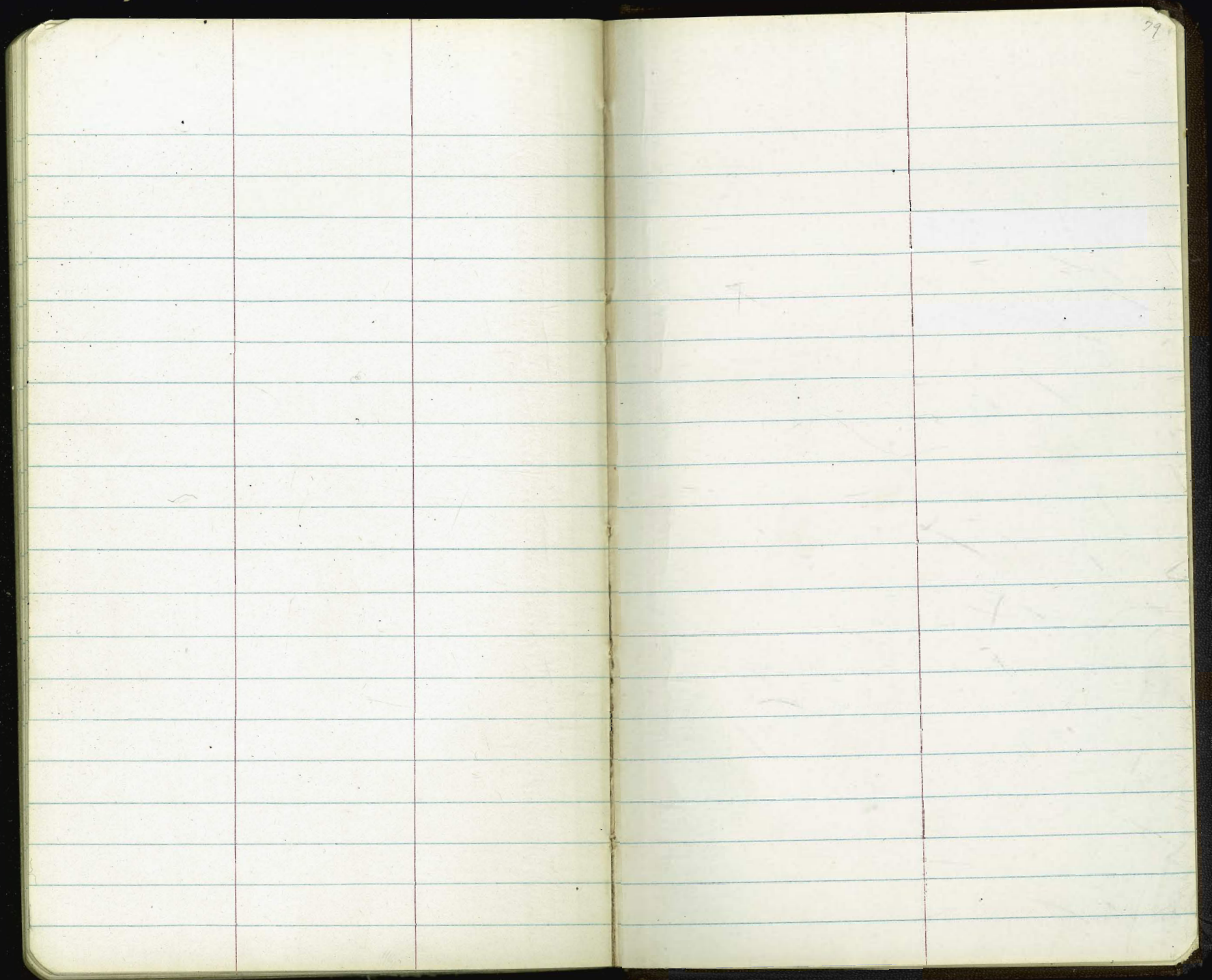
6+12¹³ = Sely Curve Line Cable ST

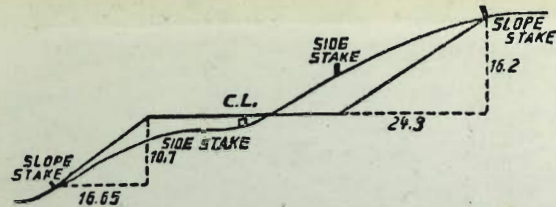
2567	2506	2505	2499	2496	2493	2552
132	132	10		10	132	132
T.C.	90T				90T	T.C.
EC	EC				EC	EC

} 9² RT = B.C. Alley Return
 3' Radius
 6+09¹³ - 10² LT = B.C. Alley Return

2574	2533	2533	2568
10 ²	10 ²	92	92
T.C.	90T	90T	T.C.
BC	BC	BC	

Direct Rod





DISTANCES FROM SIDE STAKES FOR CROSS-SECTIONING.
SLOPE 1 1/2 TO 1. ROADWAY OF ANY WIDTH.

	0	.1	.2	.3	.4	.5	.6	.7	.8	.9	
0	0.00	0.15	0.30	0.45	0.60	0.75	0.90	1.05	1.20	1.35	0
1	1.50	1.65	1.80	1.95	2.10	2.25	2.40	2.55	2.70	2.85	1
2	3.00	3.15	3.30	3.45	3.60	3.75	3.90	4.05	4.20	4.35	2
3	4.50	4.65	4.80	4.95	5.10	5.25	5.40	5.55	5.70	5.85	3
4	6.00	6.15	6.30	6.45	6.60	6.75	6.90	7.05	7.20	7.35	4
5	7.50	7.65	7.80	7.95	8.10	8.25	8.40	8.55	8.70	8.85	5
6	9.00	9.15	9.30	9.45	9.60	9.75	9.90	10.05	10.20	10.35	6
7	10.50	10.65	10.80	10.95	11.10	11.25	11.40	11.55	11.70	11.85	7
8	12.00	12.15	12.30	12.45	12.60	12.75	12.90	13.05	13.20	13.35	8
9	13.50	13.65	13.80	13.95	14.10	14.25	14.40	14.55	14.70	14.85	9
10	15.00	15.15	15.30	15.45	15.60	15.75	15.90	16.05	16.20	16.35	10
11	16.50	16.65	16.80	16.95	17.10	17.25	17.40	17.55	17.70	17.85	11
12	18.00	18.15	18.30	18.45	18.60	18.75	18.90	19.05	19.20	19.35	12
13	19.50	19.65	19.80	19.95	20.10	20.25	20.40	20.55	20.70	20.85	13
14	21.00	21.15	21.30	21.45	21.60	21.75	21.90	22.05	22.20	22.35	14
15	22.50	22.65	22.80	22.95	23.10	23.25	23.40	23.55	23.70	23.85	15
16	24.00	24.15	24.30	24.45	24.60	24.75	24.90	25.05	25.20	25.35	16
17	25.50	25.65	25.80	25.95	26.10	26.25	26.40	26.55	26.70	26.85	17
18	27.00	27.15	27.30	27.45	27.60	27.75	27.90	28.05	28.20	28.35	18
19	28.50	28.65	28.80	28.95	29.10	29.25	29.40	29.55	29.70	29.85	19
20	30.00	30.15	30.30	30.45	30.60	30.75	30.90	31.05	31.20	31.35	20
21	31.50	31.65	31.80	31.95	32.10	32.25	32.40	32.55	32.70	32.85	21
22	33.00	33.15	33.30	33.45	33.60	33.75	33.90	34.05	34.20	34.35	22
23	34.50	34.65	34.80	34.95	35.10	35.25	35.40	35.55	35.70	35.85	23
24	36.00	36.15	36.30	36.45	36.60	36.75	36.90	37.05	37.20	37.35	24
25	37.50	37.65	37.80	37.95	38.10	38.25	38.40	38.55	38.70	38.85	25
26	39.00	39.15	39.30	39.45	39.60	39.75	39.90	40.05	40.20	40.35	26
27	40.50	40.65	40.80	40.95	41.10	41.25	41.40	41.55	41.70	41.85	27
28	42.00	42.15	42.30	42.45	42.60	42.75	42.90	43.05	43.20	43.35	28
29	43.50	43.65	43.80	43.95	44.10	44.25	44.40	44.55	44.70	44.85	29
30	45.00	45.15	45.30	45.45	45.60	45.75	45.90	46.05	46.20	46.35	30
31	46.50	46.65	46.80	46.95	47.10	47.25	47.40	47.55	47.70	47.85	31
32	48.00	48.15	48.30	48.45	48.60	48.75	48.90	49.05	49.20	49.35	32
33	49.50	49.65	49.80	49.95	50.10	50.25	50.40	50.55	50.70	50.85	33
34	51.00	51.15	51.30	51.45	51.60	51.75	51.90	52.05	52.20	52.35	34
35	52.50	52.65	52.80	52.95	53.10	53.25	53.40	53.55	53.70	53.85	35
36	54.00	54.15	54.30	54.45	54.60	54.75	54.90	55.05	55.20	55.35	36
37	55.50	55.65	55.80	55.95	56.10	56.25	56.40	56.55	56.70	56.85	37
38	57.00	57.15	57.30	57.45	57.60	57.75	57.90	58.05	58.20	58.35	38
39	58.50	58.65	58.80	58.95	59.10	59.25	59.40	59.55	59.70	59.85	39
40	60.00	60.15	60.30	60.45	60.60	60.75	60.90	61.05	61.20	61.35	40
41	61.50	61.65	61.80	61.95	62.10	62.25	62.40	62.55	62.70	62.85	41
42	63.00	63.15	63.30	63.45	63.60	63.75	63.90	64.05	64.20	64.35	42
43	64.50	64.65	64.80	64.95	65.10	65.25	65.40	65.55	65.70	65.85	43
44	66.00	66.15	66.30	66.45	66.60	66.75	66.90	67.05	67.20	67.35	44
45	67.50	67.65	67.80	67.95	68.10	68.25	68.40	68.55	68.70	68.85	45
46	69.00	69.15	69.30	69.45	69.60	69.75	69.90	70.05	70.20	70.35	46
47	70.50	70.65	70.80	70.95	71.10	71.25	71.40	71.55	71.70	71.85	47
48	72.00	72.15	72.30	72.45	72.60	72.75	72.90	73.05	73.20	73.35	48
49	73.50	73.65	73.80	73.95	74.10	74.25	74.40	74.55	74.70	74.85	49
50	75.00	75.15	75.30	75.45	75.60	75.75	75.90	76.05	76.20	76.35	50

THE NATIONAL BLANK BOOK COMPANY
 HOLYOKE MASSACHUSETTS
 NEW YORK CHICAGO BOSTON SAN FRANCISCO

5+59.19
 60.
 6+19.19