

DISTANCES FROM SIDE STAKES FOR CROSS-SECTIONING
SLOPE 1 TO 1. ROADWAY OF ANY WIDTH

	0	.1	.2	.3	.4	.5	.6	.7	.8	.9	
0	0.00	0.10	0.20	0.30	0.40	0.50	0.60	0.70	0.80	0.90	0
1	1.00	1.10	1.20	1.30	1.40	1.50	1.60	1.70	1.80	1.90	1
2	2.00	2.10	2.20	2.30	2.40	2.50	2.60	2.70	2.80	2.90	2
3	3.00	3.10	3.20	3.30	3.40	3.50	3.60	3.70	3.80	3.90	3
4	4.00	4.10	4.20	4.30	4.40	4.50	4.60	4.70	4.80	4.90	4
5	5.00	5.10	5.20	5.30	5.40	5.50	5.60	5.70	5.80	5.90	5
6	6.00	6.10	6.20	6.30	6.40	6.50	6.60	6.70	6.80	6.90	6
7	7.00	7.10	7.20	7.30	7.40	7.50	7.60	7.70	7.80	7.90	7
8	8.00	8.10	8.20	8.30	8.40	8.50	8.60	8.70	8.80	8.90	8
9	9.00	9.10	9.20	9.30	9.40	9.50	9.60	9.70	9.80	9.90	9
10	10.00	10.10	10.20	10.30	10.40	10.50	10.60	10.70	10.80	10.90	10
11	11.00	11.10	11.20	11.30	11.40	11.50	11.60	11.70	11.80	11.90	11
12	12.00	12.10	12.20	12.30	12.40	12.50	12.60	12.70	12.80	12.90	12
13	13.00	13.10	13.20	13.30	13.40	13.50	13.60	13.70	13.80	13.90	13
14	14.00	14.10	14.20	14.30	14.40	14.50	14.60	14.70	14.80	14.90	14
15	15.00	15.10	15.20	15.30	15.40	15.50	15.60	15.70	15.80	15.90	15
16	16.00	16.10	16.20	16.30	16.40	16.50	16.60	16.70	16.80	16.90	16
17	17.00	17.10	17.20	17.30	17.40	17.50	17.60	17.70	17.80	17.90	17
18	18.00	18.10	18.20	18.30	18.40	18.50	18.60	18.70	18.80	18.90	18
19	19.00	19.10	19.20	19.30	19.40	19.50	19.60	19.70	19.80	19.90	19
20	20.00	20.10	20.20	20.30	20.40	20.50	20.60	20.70	20.80	20.90	20
21	21.00	21.10	21.20	21.30	21.40	21.50	21.60	21.70	21.80	21.90	21
22	22.00	22.10	22.20	22.30	22.40	22.50	22.60	22.70	22.80	22.90	22
23	23.00	23.10	23.20	23.30	23.40	23.50	23.60	23.70	23.80	23.90	23
24	24.00	24.10	24.20	24.30	24.40	24.50	24.60	24.70	24.80	24.90	24
25	25.00	25.10	25.20	25.30	25.40	25.50	25.60	25.70	25.80	25.90	25
26	26.00	26.10	26.20	26.30	26.40	26.50	26.60	26.70	26.80	26.90	26
27	27.00	27.10	27.20	27.30	27.40	27.50	27.60	27.70	27.80	27.90	27
28	28.00	28.10	28.20	28.30	28.40	28.50	28.60	28.70	28.80	28.90	28
29	29.00	29.10	29.20	29.30	29.40	29.50	29.60	29.70	29.80	29.90	29
30	30.00	30.10	30.20	30.30	30.40	30.50	30.60	30.70	30.80	30.90	30
31	31.00	31.10	31.20	31.30	31.40	31.50	31.60	31.70	31.80	31.90	31
32	32.00	32.10	32.20	32.30	32.40	32.50	32.60	32.70	32.80	32.90	32
33	33.00	33.10	33.20	33.30	33.40	33.50	33.60	33.70	33.80	33.90	33
34	34.00	34.10	34.20	34.30	34.40	34.50	34.60	34.70	34.80	34.90	34
35	35.00	35.10	35.20	35.30	35.40	35.50	35.60	35.70	35.80	35.90	35
36	36.00	36.10	36.20	36.30	36.40	36.50	36.60	36.70	36.80	36.90	36
37	37.00	37.10	37.20	37.30	37.40	37.50	37.60	37.70	37.80	37.90	37
38	38.00	38.10	38.20	38.30	38.40	38.50	38.60	38.70	38.80	38.90	38
39	39.00	39.10	39.20	39.30	39.40	39.50	39.60	39.70	39.80	39.90	39
40	40.00	40.10	40.20	40.30	40.40	40.50	40.60	40.70	40.80	40.90	40
41	41.00	41.10	41.20	41.30	41.40	41.50	41.60	41.70	41.80	41.90	41
42	42.00	42.10	42.20	42.30	42.40	42.50	42.60	42.70	42.80	42.90	42
43	43.00	43.10	43.20	43.30	43.40	43.50	43.60	43.70	43.80	43.90	43
44	44.00	44.10	44.20	44.30	44.40	44.50	44.60	44.70	44.80	44.90	44
45	45.00	45.10	45.20	45.30	45.40	45.50	45.60	45.70	45.80	45.90	45
46	46.00	46.10	46.20	46.30	46.40	46.50	46.60	46.70	46.80	46.90	46
47	47.00	47.10	47.20	47.30	47.40	47.50	47.60	47.70	47.80	47.90	47
48	48.00	48.10	48.20	48.30	48.40	48.50	48.60	48.70	48.80	48.90	48
49	49.00	49.10	49.20	49.30	49.40	49.50	49.60	49.70	49.80	49.90	49
50	50.00	50.10	50.20	50.30	50.40	50.50	50.60	50.70	50.80	50.90	50

Distance of slope stake from side or shoulder stake for any width roadway, slope 1 to 1. If ground is nearly level, the cut or fill at side stake is located by the double entry method in left column and top row. The number in bottom of table in same row and column gives distance from side stake to slope stake. If ground is not level estimate the difference in elevation between the side stake and slope stake, lower target by this amount if cut, elevate if fill. Add this amount to cut or fill and find distance in table. Set up rod at this point, and line of sight should cut target. If it does not make the slight adjustment necessary.

106 + 84.85
68.33

107 + 53.18

DIRECTIONS FOR USE OF TABLES

TABLE No. XIV

Distance of slope stake from side as shown
state for any width roadway, slope 1:1 to 1
If ground is nearly level the use of this table

IMPROVED TABLES
AND
INFORMATION

TABLE No. VIII

To find Tangent and Distance for curve of
any other degree divide by degree of curve and
add correction found in column of correction
Degree of curve was given I may be found
by dividing tangent for station opposite I by
given tangent (or equivalent).

The distance from a point on the tangent to
the curve is very nearly the square of the tangent
length divided by twice the tangent.

TABLE XIII—CORRECTIONS FOR TANGENTS AND EXTERNALS

These corrections are to be added to the approximate values, found by dividing the tangent, or external, for a 1° curve (Table VIII) by the degree of curve, in order to obtain the true tangents, or externals. Intermediate values may be obtained by interpolation.

FOR TANGENTS ADD

Central Angle	DEGREE OF CURVE													
	5°	10°	15°	20°	25°	30°	35°	40°	45°	50°	55°	60°	65°	70°
10°	.03	.06	.09	.13	.16	.19	.22	.25	.28	.31	.34	.38	.42	.46
15°	.04	.10	.14	.19	.24	.29	.34	.39	.45	.51	.53	.58	.63	.68
20°	.06	.13	.19	.26	.32	.39	.45	.51	.58	.65	.72	.79	.84	.90
25°	.08	.16	.24	.33	.40	.49	.58	.67	.75	.83	.90	.99	1.06	1.14
30°	.10	.19	.29	.39	.49	.59	.69	.79	.89	.99	1.09	1.20	1.29	1.39
35°	.11	.22	.34	.47	.58	.69	.79	.81	.92	1.04	1.29	1.42	1.54	1.66
40°	.13	.26	.40	.53	.67	.80	.93	1.06	1.20	1.34	1.49	1.64	1.79	1.94
45°	.15	.30	.44	.60	.76	.91	1.06	1.21	1.37	1.52	1.70	1.87	2.04	2.21
50°	.17	.34	.51	.68	.85	1.02	1.19	1.36	1.54	1.72	1.91	2.10	2.29	2.48
55°	.19	.38	.57	.76	.95	1.14	1.32	1.52	1.72	1.92	2.14	2.35	2.56	2.77
60°	.21	.42	.63	.84	1.05	1.27	1.49	1.71	1.94	2.17	2.38	2.60	2.83	3.07
65°	.23	.46	.69	.93	1.16	1.40	1.64	1.88	2.13	2.38	2.63	2.88	3.13	3.39
70°	.25	.51	.76	1.02	1.28	1.54	1.80	2.06	2.33	2.60	2.88	3.16	3.44	3.72
75°	.27	.56	.83	1.12	1.40	1.69	1.98	2.27	2.57	2.87	3.16	3.47	3.78	4.09
80°	.30	.61	.91	1.22	1.53	1.84	2.15	2.46	2.78	3.10	3.44	3.78	4.12	4.46
85°	.33	.66	1.00	1.33	1.68	2.02	2.36	2.70	3.05	3.40	3.77	4.14	4.55	4.89
90°	.36	.72	1.09	1.45	1.83	2.20	2.57	2.94	3.32	3.70	4.10	4.50	4.91	5.32
95°	.39	.79	1.19	1.55	1.93	2.30	2.68	3.06	3.44	3.84	4.24	4.64	5.05	5.46
100°	.43	.86	1.30	1.74	2.18	2.62	3.06	3.50	3.95	4.40	4.88	5.37	5.85	6.34
110°	.51	1.03	1.56	2.08	2.61	3.14	3.67	4.21	4.76	5.31	5.86	6.43	7.01	7.60
120°	.62	1.25	1.93	2.52	3.16	3.81	4.45	5.11	5.77	6.44	7.12	7.80	8.50	9.22

FOR EXTERNALS ADD

Central Angle	DEGREE OF CURVE													
	5°	10°	15°	20°	25°	30°	35°	40°	45°	50°	55°	60°	65°	70°
10°	.001	.003	.004	.006	.007	.008	.009	.011	.012	.014	.015	.017	.018	.020
15°	.003	.007	.010	.014	.018	.023	.027	.032	.035	.039	.043	.047	.051	.055
20°	.006	.011	.017	.022	.028	.034	.038	.045	.051	.057	.063	.070	.076	.083
25°	.009	.018	.027	.036	.046	.056	.065	.074	.083	.093	.106	.120	.127	.135
30°	.013	.025	.038	.051	.065	.078	.090	.103	.116	.129	.149	.170	.179	.188
35°	.018	.035	.054	.072	.086	.109	.131	.153	.175	.197	.213	.230	.247	.264
40°	.023	.046	.070	.093	.117	.141	.172	.203	.234	.265	.277	.290	.315	.341
45°	.030	.060	.093	.119	.153	.184	.216	.254	.289	.325	.351	.378	.411	.445
50°	.037	.075	.116	.151	.189	.227	.266	.305	.345	.384	.425	.467	.508	.550
55°	.046	.093	.142	.188	.236	.283	.332	.381	.420	.470	.530	.582	.641	.700
60°	.056	.112	.168	.225	.283	.340	.398	.457	.516	.575	.636	.697	.774	.851
65°	.067	.135	.204	.273	.343	.412	.483	.554	.625	.697	.771	.845	.922	1.01
70°	.080	.159	.240	.321	.403	.485	.568	.652	.735	.819	.906	.994	1.08	1.17
75°	.095	.182	.266	.353	.440	.528	.617	.707	.797	.877	.971	1.07	1.18	1.29
80°	.110	.220	.332	.445	.558	.671	.787	.903	1.02	1.13	1.25	1.38	1.50	1.62
85°	.128	.259	.391	.524	.657	.790	.926	1.06	1.20	1.34	1.47	1.62	1.76	1.91
90°	.149	.299	.450	.603	.756	.910	1.07	1.22	1.38	1.54	1.70	1.87	2.03	2.20
95°	.174	.350	.522	.706	.885	1.06	1.25	1.43	1.62	1.80	1.99	2.18	2.38	2.58
100°	.200	.401	.604	.809	1.01	1.22	1.43	1.64	1.85	2.06	2.28	2.50	2.73	2.96
110°	.268	.536	.806	1.08	1.35	1.63	1.91	2.20	2.48	2.76	3.05	3.35	3.66	3.96
120°	.360	.721	1.08	1.45	1.82	2.19	2.57	2.95	3.33	3.72	4.11	4.50	4.91	5.32

Page

1- X-SECT. C - 33rd to 34th

18 X-SECT. QUINCE: NILE to HALLER

49 and 52 Quince at Nile - Drain

INDEXED
Law
APR 23 1953

34th

St.

13' Mon

6400.18

12

3460 POT. 446.

← 40' → ← 40' →

← Z. →

12

← 13' →

0700

33rd

43'

St.

13' Mon

Plan on pg 1

Lt.

Pole = 141.30 2

Rt.

INDEXED

APR 23 1953

X-Section "C" Sta. from 33rd to 34th

7018 - Sketch - P. 1

W.O. 32199 - 4-16-53 7.0.

1+65

43.7 42.2 40.6 37.8 37.7
50 40 25 9

34.3 31.8 30.6
20 40 50

1+30

41.7 41.1 39.4 36.1 35.9
54.6 40 25 11
by House

34.1 32.9 30.6 29.6
10 20 40 50

0+90

41.5 40.4 36.3 33.0
50 40 20

31.2 29.1 27.5
20 40 50

0+75

37.8 39.0 35.0 33.2 31.9
55 44 40 20
Top Top

30.0 28.0 26.7
20 40 50

0+50 - 39.4 Rt. - end wall

38.2 37.9 36.1 32.5 30.7 29.5
54.6 44 40 35 20
by House Top

27.8 26.40 25.6
20 39.4 50
Top wall

0+26 - 39.3 Rt. = Beg. 6" Rock + Conc. wall

37.5 34.1 29.2 28.3 27.0 27.1
46 40 30 12 11
Top

26.1 24.8 26.37 23.60
20 39.3 Top wall 47
by House (Conc.)

0+00 = E.L. of 33rd - 39.6 Rt. = Beg. Picket fence

37.5 Rt. = P. pole # 1099 - B.M.

0-08 - 34 Lt. = P. Guy pole

29.8 26.5 25.7 24.2 23.8
90 40 12 11

22.8 21.8 18.6
20 40 90

0-15 - about Ely. of Old Lay strip along 33rd

28.17 24.82 23.71 22.64 21.47
90 40 20 20 40 90

20.15 16.70
20 40 90

Set B.M. - spike in SE Pole - 33rd + C 122.53

B.M. = N.W. Mon. 33rd + Budy. 106.55

Actual Elev. Shown

100 ft. Not Noted.

C
/

Lt. # Rt

5+35

40.6 39.6 36.4 33.5 31.3 28.9 28.0
50 40 20 20 40 50

5+00

42.2 41.3 39.5 37.4 35.5 32.7 31.7
50 40 20 20 40 50

4+50

47.2 45.9 43.0 40.6 38.4 35.5 34.0
50 40 20 20 40 50

4+00 - 40.9' Lt. = end fence

53.7 51.9 48.0 44.4 40.2 36.7 35.3
50 40 20 20 40 50

3+70

55.0 54.3 49.4 45.2 41.2 38.7 37.0
50 40 20 20 40 50

3+40 - 40.4' Lt. = end Conc. found + Beg. wire fence

55.65 54.7
Top Conc 40.4 = 9'

3+35

56.0 55.45 54.3 50.2 46.0 42.0 38.7 36.9
50 40.4 40 20 20 40 50
Top Conc

3+26 - 28.2' Rt. = ± P. pole # 3361 = B.M. 141.30

3+00 - 40.3' Lt. = Beg. 6" Conc. found for picket fence 53.4 53.32 51.7 48.6 44.7 41.5 37.9 35.8
50 40.3 40 20 20 40 50
Top Conc

2+50

48.2 46.7 43.8 40.7 37.3 34.6 33.0
50 40 20 20 40 50

2+00

45.0 44.2 41.4 39.6 35.6 33.0 31.7
50 40 20 20 40 50

C st

Lt Rt

checked Starting Bench

6+45 - in Rough Graded Road

41.4 36.3 33.6 30.9 28.0 24.9 19.3
80 40 20 20 40 80

6+30

40.5 34.7 31.7 29.5 26.3 23.4 17.9
80 40 20 20 40 80

(probably moved by fence Post)
check BM = NE Mon.

138.02

-137.88 = Book

= B.M. - 130.18

6+11 - $\Phi = \Phi$ of Pipe # J.P 1102

6+10

39.4 32.6 29.9 27.2 24.6 21.3 17.3
80 40 20 20 40 80

6+00.18 = W.L. 34th

38.0 31.1 28.0 25.0 22.7 20.4 17.8
80 40 20 20 40 80

5+90 - Thru wash

31.0 29.8 27.3 24.8 23.3 22.3 21.5
50 40 20 20 40 50

5+65

34.6 33.8 31.8 29.5 27.6 26.1 25.3
50 40 20 20 40 50

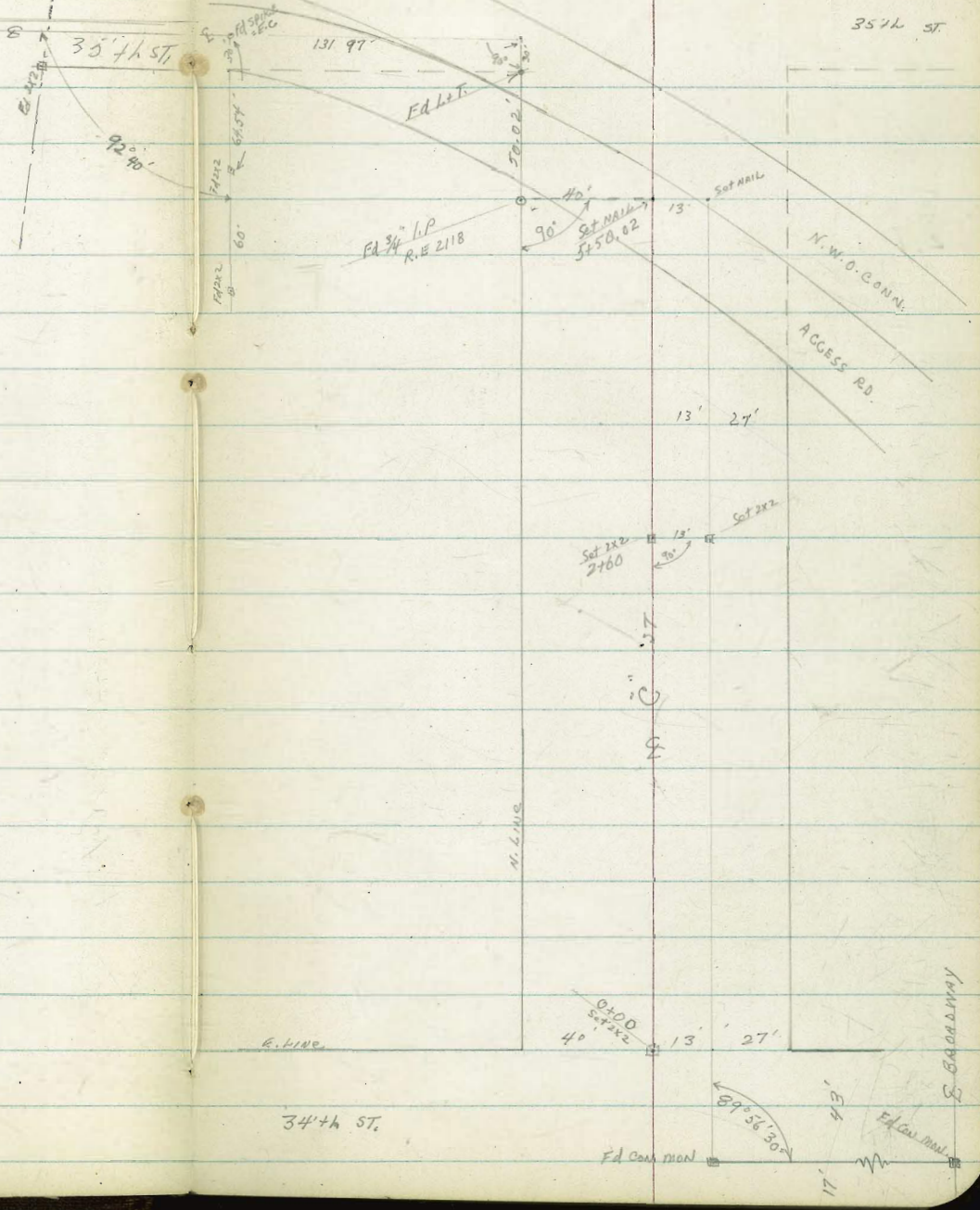
Clark
Shepherd
Bruner
O'Neil
2-8-54
W.O. 32199

INDEXED
J.C. Roy
FEB 9 1954

X-SECT. "C" ST.
to CANYON - E'LY
34th ST.

Ref. T.P.B. # 19-10
F.B. # 2070-10
Tie-Sheet - 113

(See F.B. # 2070-10 For ties this Area)



34th ST.

FD connection

S. BOUNDARY

Clark
Shepard
BRUNEY
ONEIL
28-54
W.O. 32199

N-SECT. "C" ST.
34th to CANYON, E.W.

(144) LT.

♀

RT. (5th)

6

0453 28.0 RT ♀ DEADMAN

0430 2.1 2.6 7.6 13.3 14.9 16.0
50 40 level 36 40 50

0426 34.3 17 ♀ Anchor-Pole # 561952

0408 29.3 RT ♀ Pole # 3401

0405 BYE

2.6 8.2 14.0
40 40

0400 - E.W. LINE 34th

2.4 3.6 9.1 15.1 16.9
50 40 P.L. 40 P.L. 50

0-15 = App ♀ Graded Portion 34th

2.9 9.9 17.1
50 50

0-30 = ♀ 34th (INT - graded rd)

4.0 11.6 18.9
50 50

CLK. N.E. Bench Man

2.67 13203 (see pg 4)

B.M. 10.52 140.70

130.18 = Nail P.P. J.P. 1102 - Pg 4
STA. 6+11 ♀

140.70

LT

S

RT

7

"C" ST. (cont.)

2130

2.4
503.0
40

6.6

10.5
3611.6
4015.4
5016.5
70

2102

32.6 LTR Pole #561953-A

2100

5.4
506.1
40

9.2

13.5
4014.4
50

1478

Shoulder Gully

8.6
509.7
40

13.0

15.7
4016.4
50

T.P.

6.56 135.79 0.42 129.23

135.79
X

1453

END - Gully (44)

9.5
509.8
40

12.9

14.6
4016.0
50

1430

Mt South
Peg Gully (W'ly toe)
Camp Flat Bottom8.6
509.6
40

12.5

15.1
4016.3
50

1400

10.10
500.8
40

6.2

10.9
4012.0
50

T.P.

1.97 129.65 13.02 127.68

129.65
X

0463

28.0 RT S DEADMAN

0460

4.9
505.4
40
PL

10.5

15.0
2916.4
3716.6
4017.0
50

Level

140.70
PL

"C" ST. (CONT.)

LT. E RT.

4490 = 670' RT (N.W. ly ACCESS Rd)

13.0	12.7	12.0	12.0	8.82	9.40
50	40		28	40	41.0
			the hill	70	Par.
			Access Rd	Arm	Access Rd

4443 = Tee Canyon Slope (tee-canyon approx. 90° to E "C" ST.)

10.4	10.5	8.9	10.8	10.8
50	40		40	50

T.P. 1.44 79.24 12.69 77.80

79.24
↑

4435 = END Grove Trees E

T.P. 0.38 90.49 12.77 90.11

4403 = Steep Blk 40' RT

12.1	12.6	11.7	15.0	10.0	8.3
50	40	28		40	50
				Blk	

3494 = Big Grove eucalyptus Trees E
Extreme cuts (18' RT
grove: 23' LT)

3488 = Steep Blk, E

6.8	7.0	6.4	7.5	8.3
50	40	Blk	40	50
	P.L.		P.L.	

T.P. 1.06 102.89 11.35 101.82

102.89
↑

3460 = 670' RT. END House (N.W. ly corner)

17.6
67.0
near Elev

113.17
↑

"C" ST. (CONT.)

LT.

Σ

RT.

CHK: 12.96 66.28 = 66.13

= N.W.B.P HEADWALL 3-72" Culvert
11+04 N.W.O. Cont. F.B # 2070 -10

5450.02 = RT. Σ 90° to EXIST. Prop Canal. (See opening sheet)
(R.E. 2118 - 3/4 I.P.)

135	12.7	10.25	10.81	10.19	10.05	8.35	7.58
50	40	TP	22.4	ON PAT	9	40	50
	TP	FORM	edge berm	ACCESS Rd.	Edge	Pav.	"Bav.
	FILL				N.W.O. Cont.	N.W.O. Cont.	

5428 = E. Berm - N.W.O. ACCESS Rd RT. Σ "C"

9.7	10.20
TP	PAT
Berm	Σ
Σ	

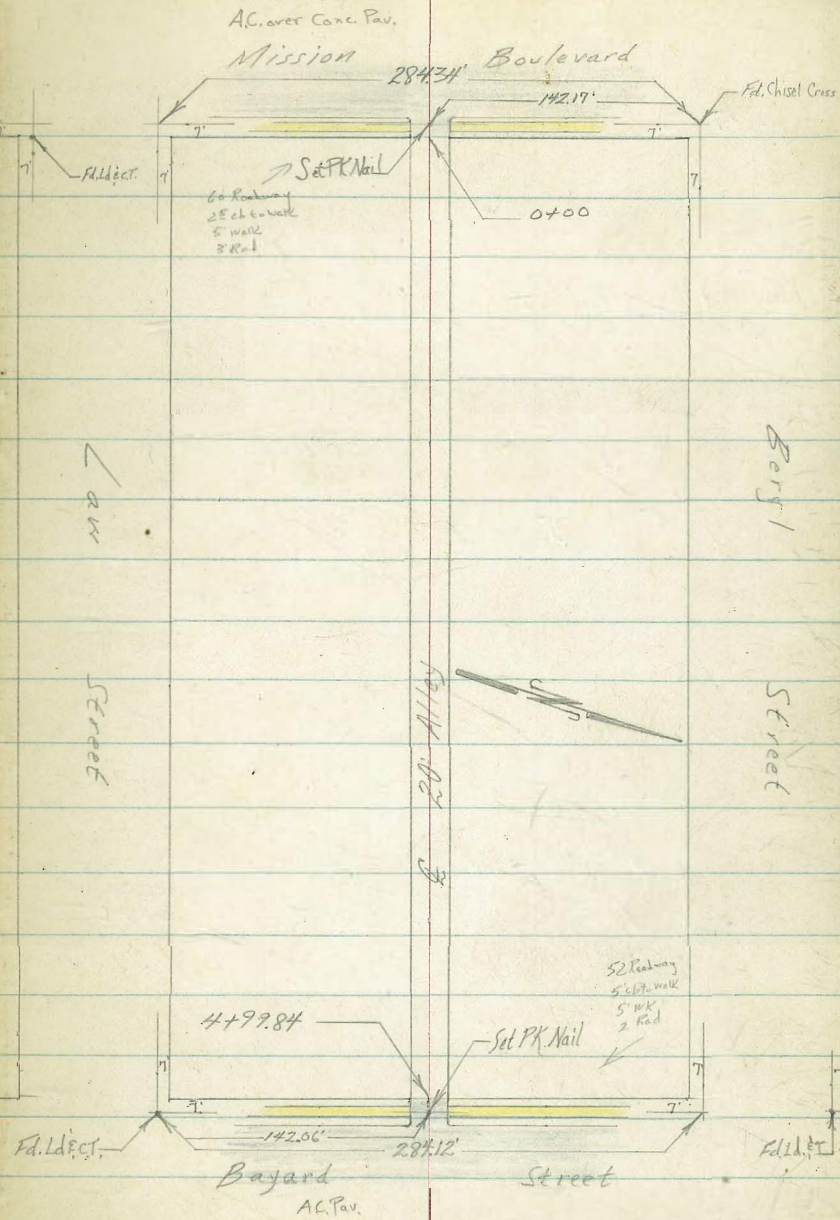
5419 = Tie FILL ACCESS Rd, Σ

13.3	13.2	12.1	9.46	10.100
50	40		10.7	11.7
			TP	PAT
			Berm	

Roberts X-Section Alley Block 80, Pac. Branch

Cota
O'Neil
9-23-54
No. # 32102

INDEXED
SEP 30 1954



Cont'd From Page 11

0+50

Lt		E		Rt	12
	57.8				
	4.3	57.3	57.3	57.2	57.2
	20	4.8	4.8	4.9	4.9
		10		10	20

0+47 10^E Rt End conc. apron

				57.32	57.49
				4.50	4.63
				10 ^E	13 ^E
				conc	Floor

0+30 13^E Lt E. Single garage

	57.66	57.30			
	4.46	4.02			
	13 ^E	10 ^E			
	Floor	Apron			

0+28 10^E Rt begin conc. Apron DBL Garage

	57.14	57.43
	4.98	4.69
	10 ^E	13 ^E
	curb	Floor

0+25 10^E Rt End walk

	57.11
	5.01
	10 ^E
	Walk

0+00 { 10^E Rt begin 2' conc. walk parallel to E
EAST LINE MISSION BLVD.

	57.54	57.14	57.71	56.87	57.10	57.06
	4.56	4.98	5.41	5.25	5.02	5.06
	10	10		10	10	10 ^E
	cb	cut		cut	cb	Walk

0-10 East Curb Line Mission Blvd.

	58.08	57.47	57.50	56.94	56.72	56.57	57.06	56.08	56.74
	4.04	4.65	4.62	5.18	5.40	5.61	5.06	6.04	5.38
	50	50	12 ^E	12 ^E		12 ^E	12 ^E	38	38
	cb	cut	cb	cut		cut	cb	cut	cb

BM 8.30 62.12 ∇

5382 ^{N.W. 1/4 Sec. 1} Mission Blvd ∇ Low

62.12 ∇

Contd From Page 12

L6

E

R 13

2+29 10² Rt E 3^E conc walk

60.79
4.56
10²
conc

2+00

50.5
4.9
20
50.2
5.2
10
57.8
5.6
10
59.8
5.6
10
59.43
5.0
20

1+60 10⁶ Rt E conc apron double garage

59.02
6.33
10.5
conc
59.43
5.92
13.5
Floor

1+50

59.5
5.9
20
59.1
6.3
10
58.7
6.7
10
58.9
6.5
10
58.8
6.6
20

1+13 11⁰ Rt E conc apron double garage

57.97
7.38
conc
58.11
7.24
30^E
Floor

(When apron nearly level only going the center.)

TP 7.36 65.35 N 413 57.99

65.35 N

1+00 8⁶ Rt to Near Edge P. Pole # P820

58.1
4.0
20
58.3
3.8
10
57.8
4.3
10
58.0
4.1
10
58.0
4.1
20

62.12 N

62.12 N

3+45.5 10th Lt End conc apron

64.30
4.53
1.42
Floor

63.45
5.38
1.05
conc

3+32.5 9th Rt to deadman

64.30
4.53
1.42
Floor

63.13
5.70
1.05
conc

3+30 10th Lt begin conc apron

RP 5.28 68.83 ∇ 180 63.55

68.83 ∇

3+18.5 10th Rt End wall

62.4
3.0
10.4
GED

61.6
3.8
10.4
Foot

67.9
12.5
10.4
Top

3+00 10th Rt begin conc block wall

62.5
2.9
20

62.3
3.1
10

61.9
3.5

62.1
3.3
10
GED

61.2
4.2
10th
Foot

67.9
12.5
10th
Top

2+50

61.4
4.0
20

61.1
4.3
10

60.8
4.6
10

60.6
4.8
10

61.0
4.4
20

2+49.5 8th Rt to N.E. Pole # PA 850

65.35 ∇

65.35 ∇

4+31.5 10° Lt ♀ 3' conc. walk

64.51
4.32
10
conc

4+18.5 10° Rt ♀ 3' conc. walk

63.44
5.39
10°
conc

4+00 { 10° Lt begin conc block wall
10° Rt begin conc block wall

68.1	63.2	64.0	64.0	63.6	63.4	62.6	68.1
0.4	5.6	4.8	4.8	5.2	5.4	6.2	0.4
10 [±] Top	10 [±] Foot	10 [±] GRD	10		10 GRD	10 Foot	10 Top

3+88 10° Lt ♀ conc. apron, double garage

65.03
3.80
12[±]
Floor

64.56
4.27
10[±]
conc

3+77.5 15° Rt ♀ double garage

63.69
5.14
9[±]
conc.
Apron

63.78
5.05
15[±]
Floor

3+74 10° Lt End Walk

64.02
4.81
10[±]
conc

3+50 { 10[±] Lt to 3[±] conc. walk parallel to ♀
8[±] Rt to N.E. P. Pole #A870

64.03	63.9	63.2	63.2
4.80	4.9	5.6	5.6
10 [±] conc	10		10

Cont'd From Page 15

T.P. 5.10 67.28 \nearrow 6.65 62.18

5713.84 West Curb line Bayard Street

63.43	62.79	62.69	61.99	61.71	61.43	62.08	60.58	61.20
5.40	6.05	6.19	6.84	7.06	7.40	6.75	8.25	7.63
45.5	45.5	12	12		12	12	50	50
cb	cut	cb	cut		cut	cb	cut	cb

4499.84 West Line Bayard Street

62.76	62.31	61.86	61.98	62.27
6.07	6.52	6.97	6.85	6.56
10	10		10	10
cb	cut		cut	cb

4780

64.1	63.1	63.0	62.9
4.7	5.4	5.8	5.9
20	10		10

4479 10th Rt End wall

62.9	62.5	62.1
5.9	6.3	6.1
10 th	10 th	10 th
GRD	Foot	Top

4450 8th Rt to N.E. P. Pole # JPA880

64.8	64.3	63.6	63.3
4.0	4.5	5.2	5.5
20	10		10

4449.5 { 9th Lt End wall
10th Rt to wall

68.6	67.3	67.0	63.3	62.7	68.5
0.2	5.5	4.8	5.5	6.4	0.3
9 th	9 th	9 th	10 th	10 th	10 th
Top	Foot	GRD	GRD	Foot	Top

68.83 \nearrow

68.83 \nearrow

Cont'd From Page 16

Lt

£

RE 17

Check

8.35 58.93 = 58.87

NWBP Law & Bayard

5739.84

Q BAYARD STREET

63.67

3.64
50

62.48

4.80

61.37

5.91
50

67.28

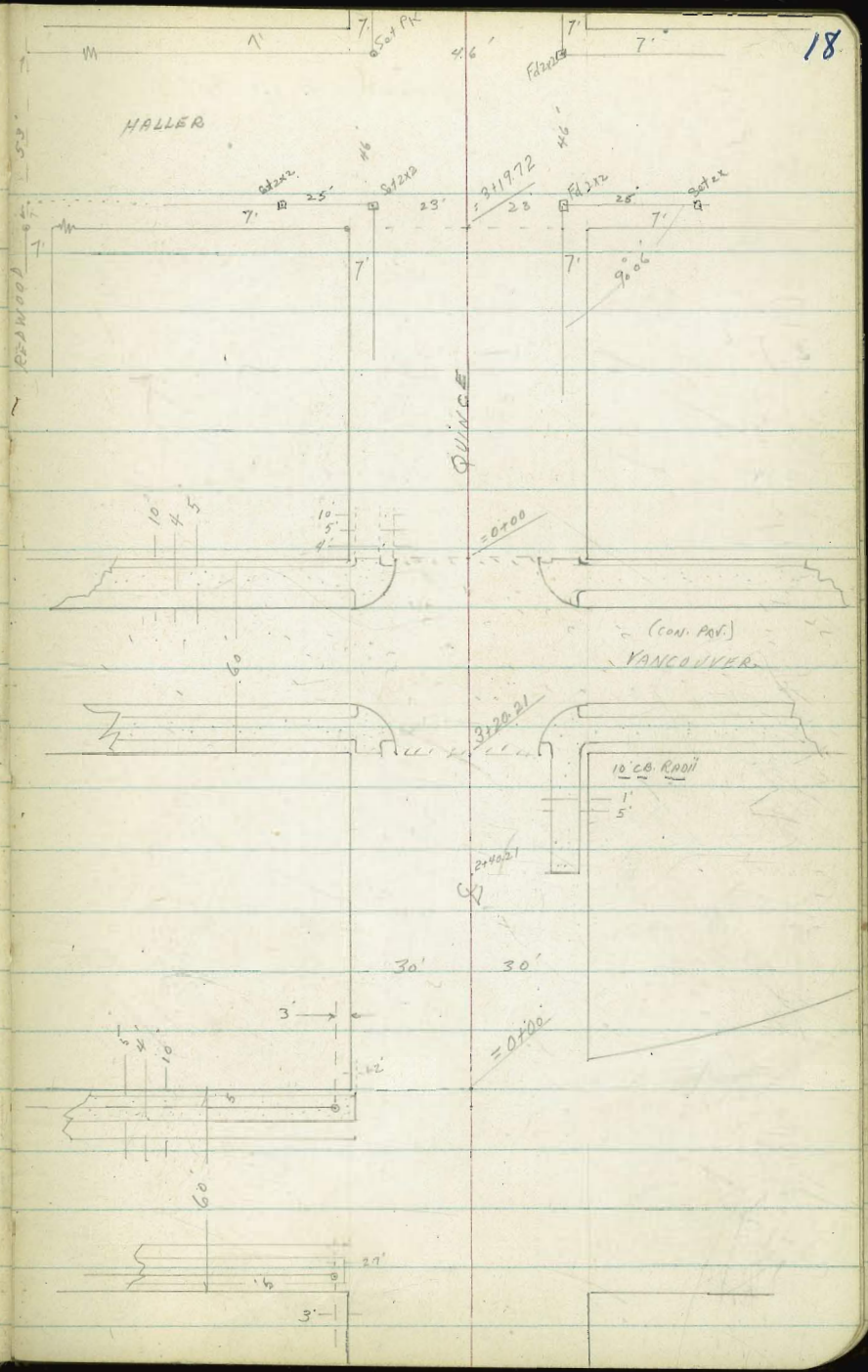
67.28

Clark
Garber
Bruner
Owll
12-30-54
W.O. 32500

K SECT QUINCE ST.
KILE ST. to HALLER

INDEXED
JAN 6 1955

NOTE: 30' p. 49 457
for notes on
transmission in
Quince S. of Hill



X-SECT QUINGES Nile to HALLER

LT.

Σ

RT.

19

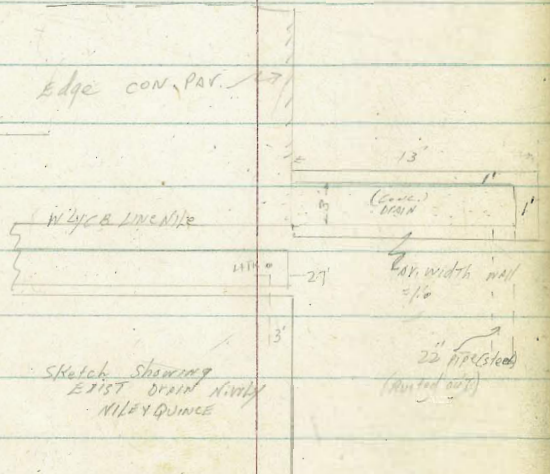
0-20 0.4 LT - E.M.H.

0-30 - E Nile (N.K.Y.)

0-50 = W.C.B. LINE Nile

0-54 30.3 LT Front edge walk

0-59 30.3 LT END WALK (AK edge)



279.39
 278.83
 278.90
 278.30
 278.44
 277.81
 275.12
 278.0
 278.0
 277.9
 276.8
 278.43
 278.40
 9.24
 30.3
 End walk (front)
 9.21
 Edge
 30.3

8.25 8.30 8.78 7.20
 70 50 29.2 8.20
 8.15 8.30 8.78 7.20
 70 50 29.2 8.20
 10.4 10.6
 30 50
 9.4 9.6 9.7 10.8
 30 30 30 50
 18 17
 FLING TP
 DRAIN
 (See on sketch below)

Note: (Both Drain shows on sketch grade from edge par. to low of drain 12' out of edge par.)

0-60 = N. Prop. Line Nile & shoulder canyon

0-68 = Toe (Bench - area, not the canyon)

278.0 277.5 271.0 277.0 273.9
 9.6 10.1 16.6 10.6 13.7
 50 30 30 30 50
 270.7 267.8 267.7
 285.95 285.66 285.65
 16.9 19.8 19.9
 50 50 50

B.M. 195 287.64 279.69 N.E. B.A Nile & Quince 287.64

X-SECT QUINCE.

1400

0+85

0+82

0+50

0+46

0+44.85

0+01

0+00 = E. line Nite (to N4)

0-01 =

0-06

0-10 = E. CA. line Nite

28.7 RT G 2.3 con. wall

28.9 RT End Rock wall

29 RT Beg. loose rock wall

28.9 RT BK edge wall

28.7 LT = Front. Edge wall

LT.

E

RT.

20

284.9
27 3.7 4.9 6.3 6.6
40 32 30 20 19

282.1 281.4 280.7
5.5 6.2 6.7
30 21 20

282.0 281.3 280.6
5.6 6.3 7.0
30 21 20

281.9 281.4 280.4 279.8
5.7 6.2 7.3 7.8
35 30 33 28

280.1 279.9 278.7
7.5 7.7 8.9
30 27 22

280.1 279.84 279.7 278.6
7.5 7.8 7.9 7.0
50 30 27 22

279.82
7.82
28.9
BK
wall

280.52 279.87 280.07 279.45 279.26 279.01
7.12 7.71 7.57 8.11 7.79 8.63
70 70 50 50 70 80
LB 6 6 6 6 6 6
7.72 28.7
28.7
60 4.5 PAT

280.8

280.4

280.3

279.5

(276.5)
282.5(?)
5.7
9.1(?)

281.64

280.6

280.2

280.0

279.0

278.0

278.3

7.3

280.8

280.5

280.0

279.7

278.1

277.6

10.2

281.3

280.9

280.0

279.6

277.8

277.4

5.0

282.0 280.42 280.24
7.22 7.40
28.7 38.7
5.68 5.58 28.06
28.9 28.9
TP 28.9
wall 28.9
28.9
7.56 3.8
28.9 30
5.9
40

drops off

QUINCE (CONT.)

Soil Sample at 2950
(Uniform Soil From Mile to Marker)

T.P.	4.15	297.14	3.75	<u>292.99</u>	NEUTR VANCOUVER & QUINCE	297.14
T.P.	9.47	296.74	0.37	287.27		

2700

1472 30.1 LT Beg 3' Conc. Rik Walk - 0.5 wide

1470.10 = N. Line Alley

1460.10

= 9' M.H.
8.20' Alley to N^W
22.48' RT E. Fl. 8575

1458

1454 31.5 RT end drive

1450.10 = S. Line Alley

{ 31.5 RT Beg Conc. Drive - 8' wide; 85.3 RT Fl. gar.
30.6 LT end Drive 46.4 RT Fl. gar.

1436 30.2 LT Beg 10' Conc. Drive

287.8	286.7	285.8	286.2	285.6	286.4	286.0	284.6	
+0.2 30	0.9 22	1.8 18	1.4	2.0 10	1.2 12	1.6 30	3.0 50	
290.0	286.44	286.8	284.2	284.6	284.1	285.0	284.4	284.0
+2.4 75	1.6 50	1.2 30	3.4 18	3.0	3.5 10	2.6 13	3.2 30	3.6 50
284.8	285.3	283.8	284.29	283.6	284.6	284.2	283.1	
2.8 30	1.3 30	1.8 18	3.35 10	1.0 10	2.0 13	3.4 30	4.5 30	
290.1	289.3	287.3	284.7	283.2	283.4	282.9	283.0	283.0
+2.3 75	+1.7 50	0.3 40	2.9 30	4.4 19	4.2	4.7 10	4.6 11	4.6 30
285.00	284.93	283.34	282.84	282.94	282.9	282.9	279.67	
2.64 Fl	2.71 81K	4.30 30.4 4P	4.20 30.5 4P	4.70 40	3.15 40	5.35 47 8P	7.97 85 M	
							281.64	

QUINCE (cont.)

3430.21 = W. CB Line

Mid-RT CB Pts (10' CB. RADII)

3420.21 = W. Line Ancon
= Edge CON. PAR (grd flush with Pav.)

3419 29 LT & END Hedge

3400

2484 29.8 LT & 4' high Hedge

2481 30 LT END Black Wall

2472 29 RT & 8' CONC DRIVE (ends WALK)
49 RT Fl. ggr.

2458 & 3.5 wide Conc. Steps 28.0 LT to Bottom Step - 3 Steps -
tread: 1.0'
Rise: .065'

2450

2440.21 24 RT Beg 5' wide Conc. Walk

LT £ RT 22

292.88	292.70	292.21	292.58	292.03	291.89	291.48	291.02	290.86	290.54	290.28	290.85	288.70	
Dirce	7.26	4.44	4.73	4.6	5.11	5.25	5.66	6.12	6.28	5.60	6.86	6.27	8.44
7.2	7.0	3.0	5.0	3.0	3.0	2.0	2.0	2.0	3.0	3.0	5.0	5.0	1.00
292.56	291.96	292.63	292.54	292.46	291.93	291.66	291.02	291.56	291.56	291.58	291.5	291.06	291.53
4.58	5.18	4.51	4.60	4.68	5.21	5.418	6.12	5.58	5.58	5.56	5.6	6.08	5.61
3.0	2.9	2.9	2.9	2.0	2.0	2.0	6.0	2.0	2.4	2.9	3.0	5.0	5.0
BR	F	F	CB	CB	CB	CB	G	G	F	F	B	W	W
W	WALK	WALK	W	W	W	W	W	W	W	W	W	W	W

293.5	292.2	291.5	291.1	291.1	290.9	291.5	290.74	290.79	291.1	291.6
3.6	4.9	5.6	6.0	6.0	6.2	5.6	6.40	6.35	6.0	5.5
7.0	3.0	2.1	2.0	2.0	1.6	2.3	2.4	2.9	3.0	4.0
WALK	WALK	WALK	WALK	WALK	WALK	WALK	WALK	WALK	WALK	WALK

290.1	291.5
7.0	5.6
3.0	3.0
WALK	9'rd

289.33	290.59
7.01	6.55
2.9	4.9
BR WALK	FL. ggr.
SLIP	WALK

291.6	290.93	288.9	288.4	288.3	289.7	288.07	288.16	288.9	288.9
5.5	7.0	8.2	8.7	7.0	7.4	7.0	7.3	7.3	7.3
32	30	21	12	14	22	24	24	30	40
WALK	WALK	WALK	WALK	WALK	WALK	WALK	WALK	WALK	WALK

287.70	287.79
9.44	9.35
2.4	2.9
WALK	BR WALK

297.14

QUINCE (CONT.) - Vancouver -

0+59 29.7 LT E 6' Comb. Conc. walk & TRACK CAN PLATFORM

292.24
4.90 2.11
35 29.9
4.4

0+56 18 RT Beg 10' Con. Drive 29.9 RT gate
29.9 RT END Fence 1 Beg Garage

294.7 294.6 294.3 293.7 293.6 293.5 293.8 293.7 293.7
2.4 2.5 2.8 3.7 3.5 3.6 3.3 3.4 3.4
40 30 20 17 30 16 10 30 40

294.01 294.24
3.13 2.90
1.8 2.97
4.1 5.1
4.4

0+48 29.9 LT END Picket, Beg 6' Board Fence

0+40 29.8 RT END House - Beg Fence Flush with House

0+25 29.8 RT END Brick Wall 1 Beg House

292.29 293.70
7.85 3.44
2.98 2.98
Fence wall wall

0+05 21.5 RT E Fire-Hyd

21.5 RT E Pole 360°
E. Line VANCOUVER
3+80.21 = 0+00 Ely to HALLER = Edge Con Pat 9' H. Fend
30' LT Beg / Picket Fence

3+79.21 29.95 RT Beg Brick wall 8" wide

Mid-PTS CB Poles (10' Max)

293.3 293.17 293.07 293.00 292.34 292.25
3.8 3.97 4.07 4.14 4.86 4.89
30 29 24 20 20 6

292.97 292.28
4.15 4.86
Nely CB C

291.50 291.10 291.19 292.25 292.1
5.64 5.04 4.95 4.89 5.0
20 20 20 20 30
C CB Walk 8' 8' 8' W

5.67 4.64
29.75 29.75
Fence

5.69 5.02 5.64
C CB

3+70.21 = E. CA. LINE

293.77 293.58 293.16 292.58 293.03 292.59 292.19 291.96 291.57 291.43 292.08 290.68 291.30 288.94 289.55
3.36 3.86 3.99 4.36 4.11 4.75 4.95 5.8 5.63 5.71 5.46 6.46 5.84 8.20 7.59
100 100 50 50 20 20 20 20 20 20 30 50 50 100 100
CB C CB C C C C C C C C C C C C

293.42 292.74 292.89 292.02 291.52 290.85 289.21
3.72 4.40 4.55 5.11 5.62 6.29 7.93
100 50 30 30 30 50 100

3+50.21 = E. Vancouver

297.14

QUINCE

(CONT.)

VANCOUVER

to HALLEA

LT

8

RT

24

T.P. 8.01 295.24 11.61 287.23 = NAIL SWAY
Pole #P3649 -
HALLEA QUINCE

1470 21.5 RT & Pole P3627

14696 30.2 RT END PAR. ALLEY

(1459.46 = 9. ALLEY)
According to dist.
through BIK.

1459.9 29.9 RT: & PAR.

1450.2 29.6 RT. Bay 20 CONC. PAR. ALLEY
(Actual with PAR. 19.2)

1417 30.6 LT & 3' CON. WALL

T.P. 4.65 298.84 2.95 294.19

1400 29.7 LT END BOARD FENCE

0776 29.9 RT END 29.4 ALLEY

0466 18.1 RT END DRIVE

2937 2936 2936
5.1 5.2 5.2
30 20 18

2944 2941 2935 2935
4.4 4.7 5.3 5.3
15 30 20 18

2958 2943 2939 2939 291.89
3.8 4.5 4.9 4.9 6.95
15 30 20 18 29.9 RT

294.98 294.93
3.86 3.91
40 30.6
WALK LIP

298.84
294.9 294.6 294.3 294.1 294.1
2.2 2.5 2.8 3.0 3.0
40 30 20 17 17

293.8 294.1 293.9 293.6
3.3 3.0 3.2 3.5
17 18 30 40

294.07
3.07
181
LIP

297.14

QUINCY (Cont'd) to HALLER

25

3+49.72 = S HALLER

3+35

8+30

3+19.72 = W. LINE HALLER

3+16

22.0 RT S Pole # P 3649

3+00

2+95

28.6 RT END BANK

2+50

2+45

28.1 RT Beg 2.5 Conc. WALK to ST

2+00

1+81

30.7 L/E 3.0 CONC. WALK

281.4 LT
13.8
100
282.4
12.8
50
282.6
12.6
30

281.7
13.5
100
282.6
12.6
50
283.1
12.1
30
283.4
11.8
20

284.2
11.0
100
284.9
10.3
50
285.2
10.0
35
283.4
11.8
50
284.2
11.0
20

285.7
9.5
100
286.3
8.9
50
286.3
8.9
30
286.3
8.9
24
284.6
10.6
20

289.3
5.9
40
289.3
5.9
30
288.4
6.8
15
287.2
8.0
13

291.6
3.6
40
291.3
3.9
30
291.0
4.2
15
290.5
4.7
14

293.0
2.2
40
293.2
2.0
30
293.0
2.2
15
292.4
2.8
14

293.81
1.43
40.7
WALK
293.79
1.45
30.7
HP

RT

281.1
14.1

282.8
12.4

283.8
11.4

285.1
10.1

287.6
7.6

290.6
4.6

292.7
2.5

295.34 ✓

RT

280.1
15.1
30
280.1
16.0
50

281.2
14.0
16
280.1
15.1
30
279.1
16.1
50

283.1
12.1
9
285.1
10.1
16
284.6
11.6
30
283.6
11.6
50

284.6
10.6
8
286.3
8.9
12
286.9
8.3
30
287.1
8.1
50
286.2
9.0
100

287.2
8.0
11
287.9
7.3
12
288.4
6.8
30
288.5
6.7
50

288.91
6.33
28.6
E Edge
WALK
289.7
5.5
14
290.1
4.5
20
290.6
4.6
30
290.6
4.6
40

291.6
3.6
18
292.7
2.5
20
292.4
2.8
30
290.90
4.34
28.1
WALK
292.2
3.0
50

QUINCE - (CONT)

LT.

±

RT.

26

chk: 8.79 279.78 = 279.69 = STG B.M

T.P. 1.52 288.57 8.19 287.05

3+79.72 F. Line Haller

3172

3165

265.2

300

ht. 50' Ely of
B. Line to show slope into
CANYON ahead

276.7 18.5 50	277.0 18.2 30	276.4 18.8	274.7 20.5 30	274.2 21.0 50
276.4 18.8 50	277.0 18.2 30	277.3 17.9	276.6 18.6 30	275.5 19.7 30
277.6 15.6 30	279.8 15.4 30	279.8 15.4	279.2 16.0 30	278.9 16.3 50

295.24

RETRACEMENT SURVEY

BIOLOGICAL ROAD

17 PUEBLO LOT 1298

Walker
Pope
Stittman
Olson 1-13-55

W/O = 20575

Note: This survey Backed in from
North Line Pl. 1298
as per Drawing 571-L
on Account of Difference
in Bearings S.W. Plat 1298 per WMS Map
and The Bearings Per Map 571-L.

Locate Old Conl. Pav
Strip as per this
Alignment see P-45-51

• = set Nail in Pav.

□ = set 2" x 2" Hub & Disc.

24 x 72"
24 x 50"

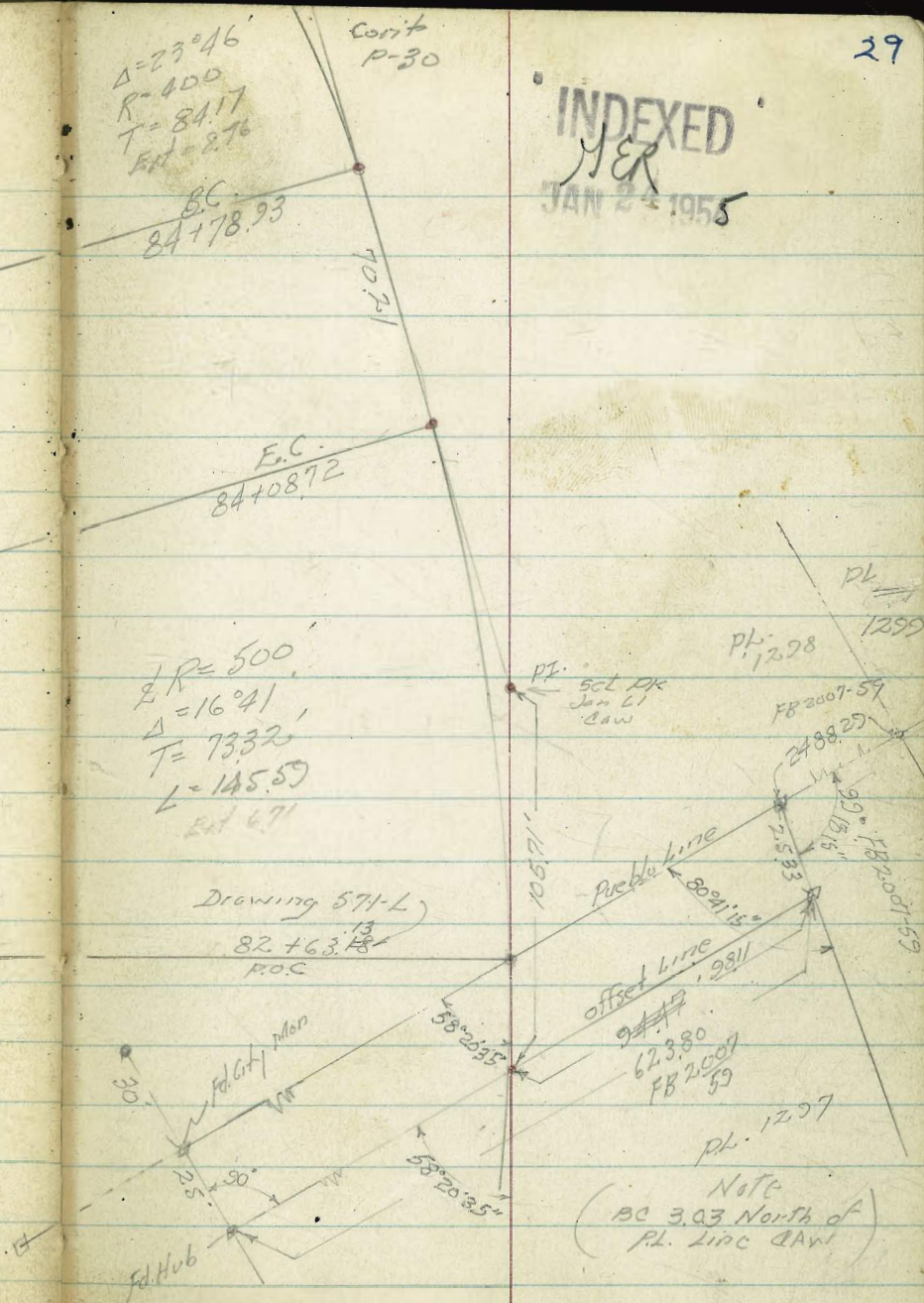
$\Delta = 23^{\circ}46'$
 $R = 400$
 $T = 84.17$
 $Ext = 2.76$

Cont
P-30

29

INDEXED

JAN 24 1955



Cont.
P-31
P.I.

$\Delta = 6^{\circ}50'$
 $E.R. = 1000'$
 $T = 59.70$
 $Ext. = 1.78$

88+83.97
B.C.

23914

86+44.85
B.C.

$\Delta = 23^{\circ}46'$
 $E.R. = 400'$
 $T = 84.17$
 $L =$
 $Ext = 876$

B.C.
84+78.93

Ed Jan 61
1 1/4 Deep

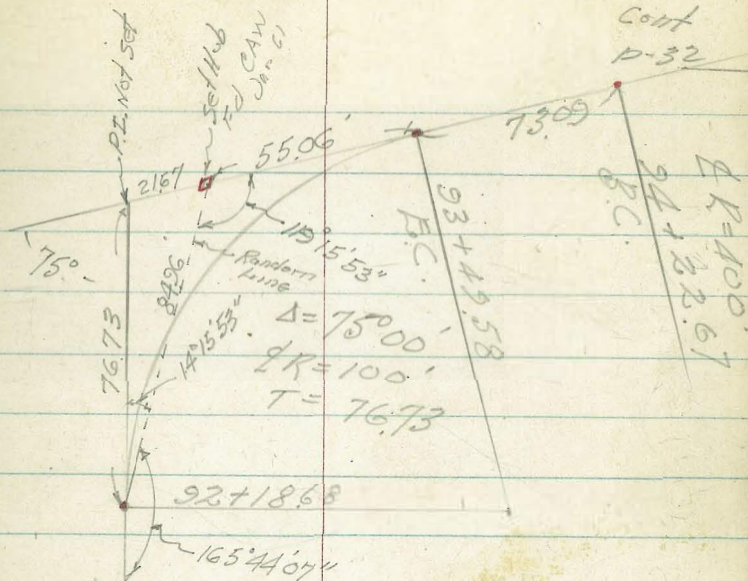
Note
These are
Cement Nails
in First Layer
of AC Pave

Cont. from P-29

140
62 AF
713.05

165 14.07
14 18.53
180 00.00

31



$\Delta R = 400.67$
 $92 + 18.67$
B.C.

F.C.

$\Delta = 75^{\circ} 00'$
 $\Delta R = 100'$
 $T = 76.73$

F.D. Jan 61
Cav 1/2 Deep

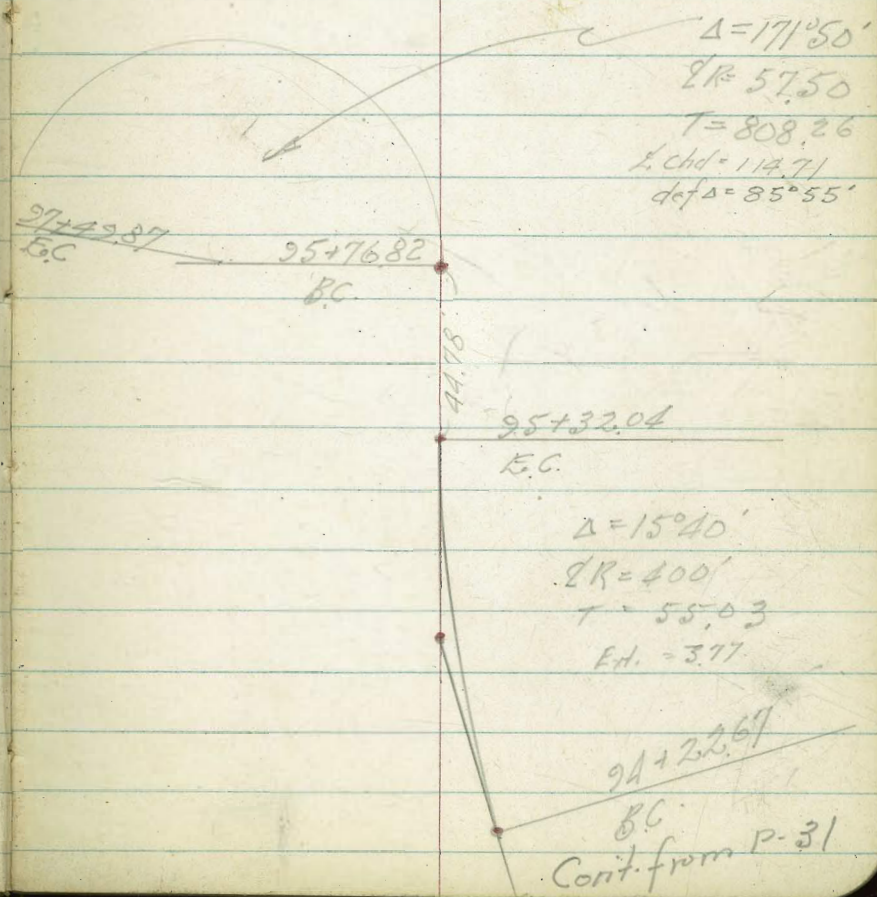
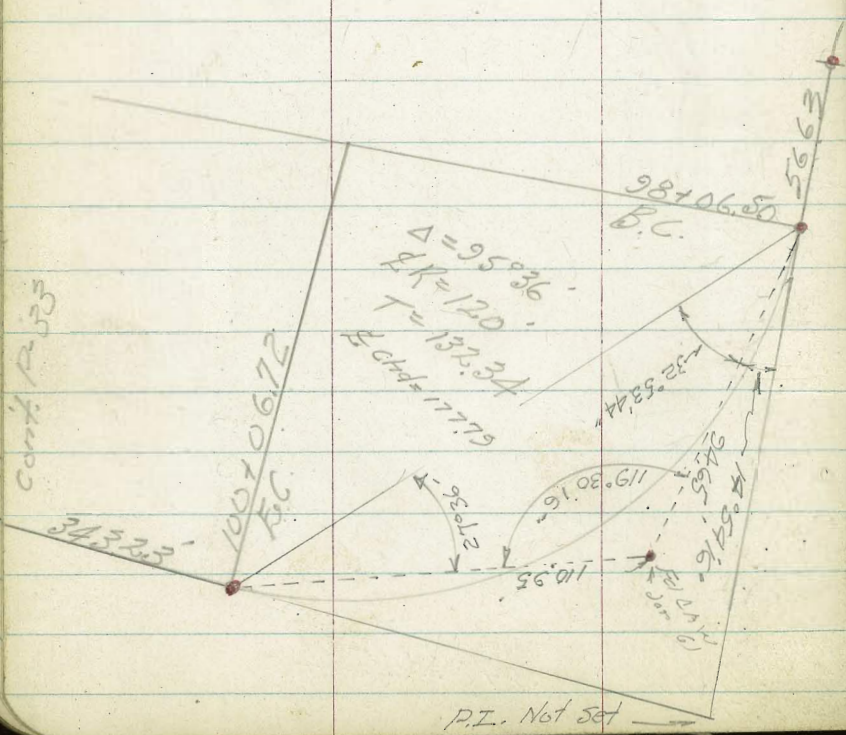
90+03.23
E.C.

F.D. Jan 61
1/2 Deep

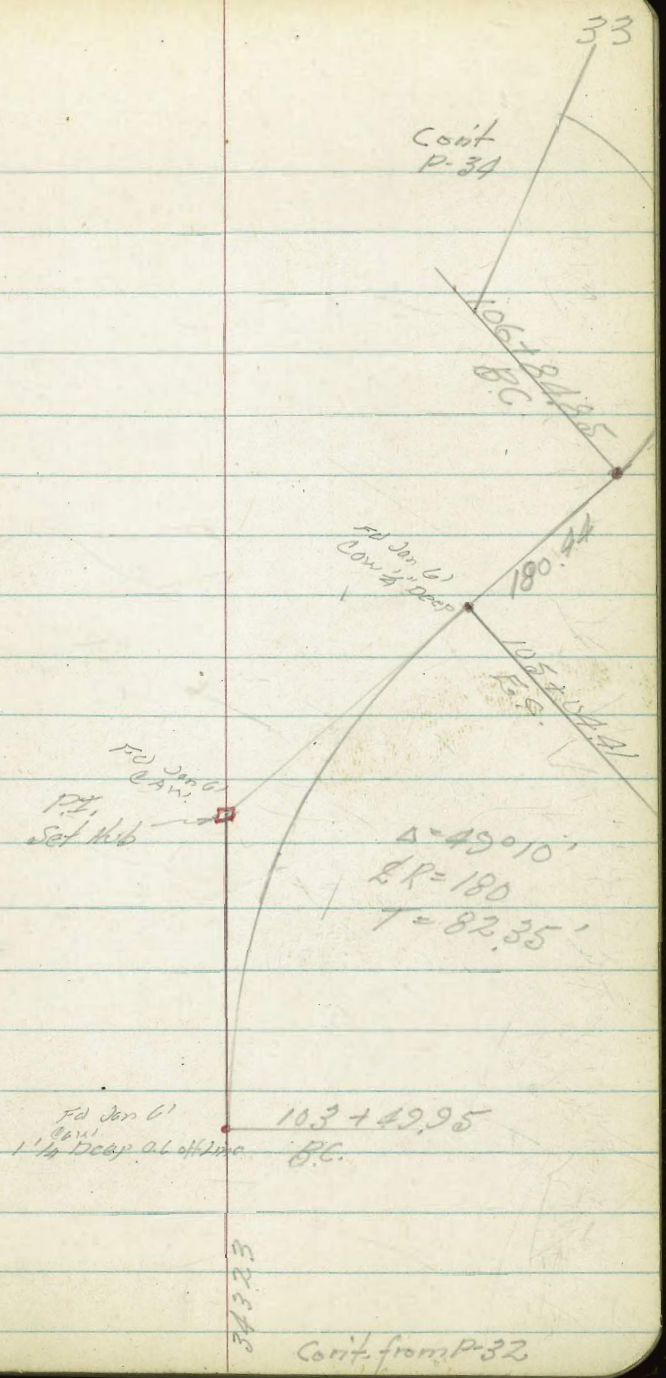
$\Delta = 6^{\circ} 50'$
 $\Delta R = 1000'$
 $T = 59.70$
 $Ext. = 1.78$

Cont. from
P-30

88+83.97
B.C.

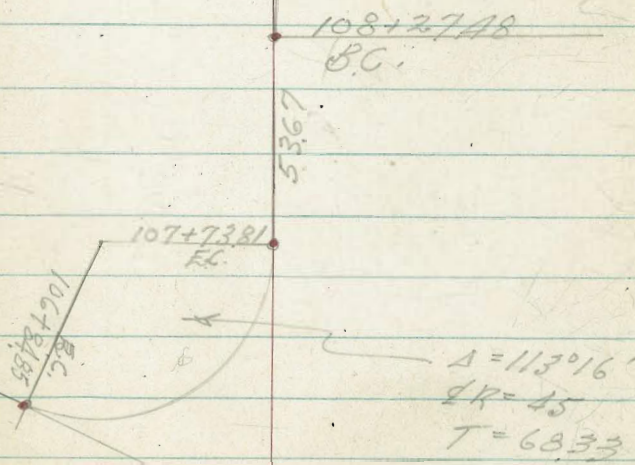
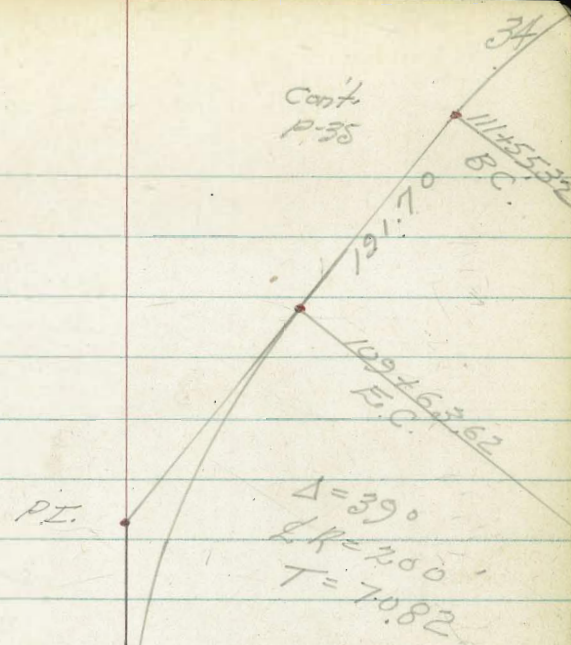
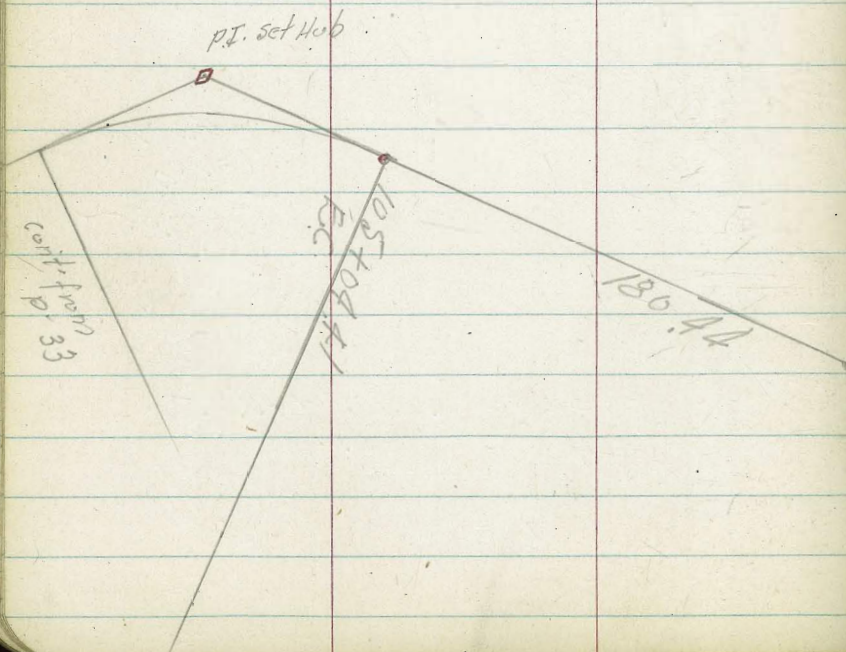


103+49.95
82 35
104+32 30



34323

Cont. from P-32



47.81
Cont.
P-36

11426740
E.C.

$\Delta = 37^{\circ}41'$
 $R = 120$
 $T = 40.95$

B.C.
11378848

76.70

113711.78
E.C.

$\Delta = 52^{\circ}44'$
 $T = 84.27$
 $R = 170$

P.I.
H.V.

11125532
B.C.

191.70

Cont.
from
P-34

$\Delta = 27^{\circ}00'$
 $ER = 474.84'$
 $T = 114.00'$

114.00
cont
p-37

119781.23
B.C.

S $3^{\circ}17'30''$ E

P.I.

118479.92

$\Delta = 149^{\circ}56'$
 $ER = 299.97'$
 $T = 111.22'$

121128.81
 $\Delta = 1^{\circ}00'$
 $ER = 600'$
 $T = 209.25'$

117492.55
 $\Delta = 4^{\circ}$
 $ER = 600'$
 $T = 209.25'$

117450.66

P.I.
Set PK

$\Delta = 8^{\circ}36'$
 $ER = 731.48'$
 $T = 55.00'$

P.C.C.

116440.87

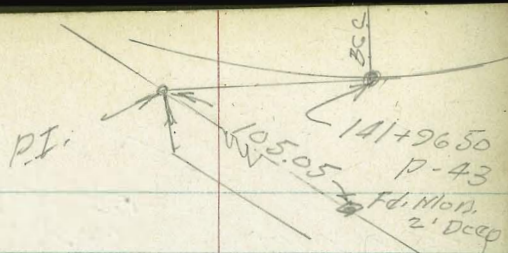
$\Delta = 9^{\circ}00'$
 $ER = 800'$
 $T = 62.96'$

B.C.

115415.21

47.81

E.C.
114767.40
cont. from
p-35



$\Delta = 27^{\circ}00$
 $R = 474.84$
 $T = 114.00$

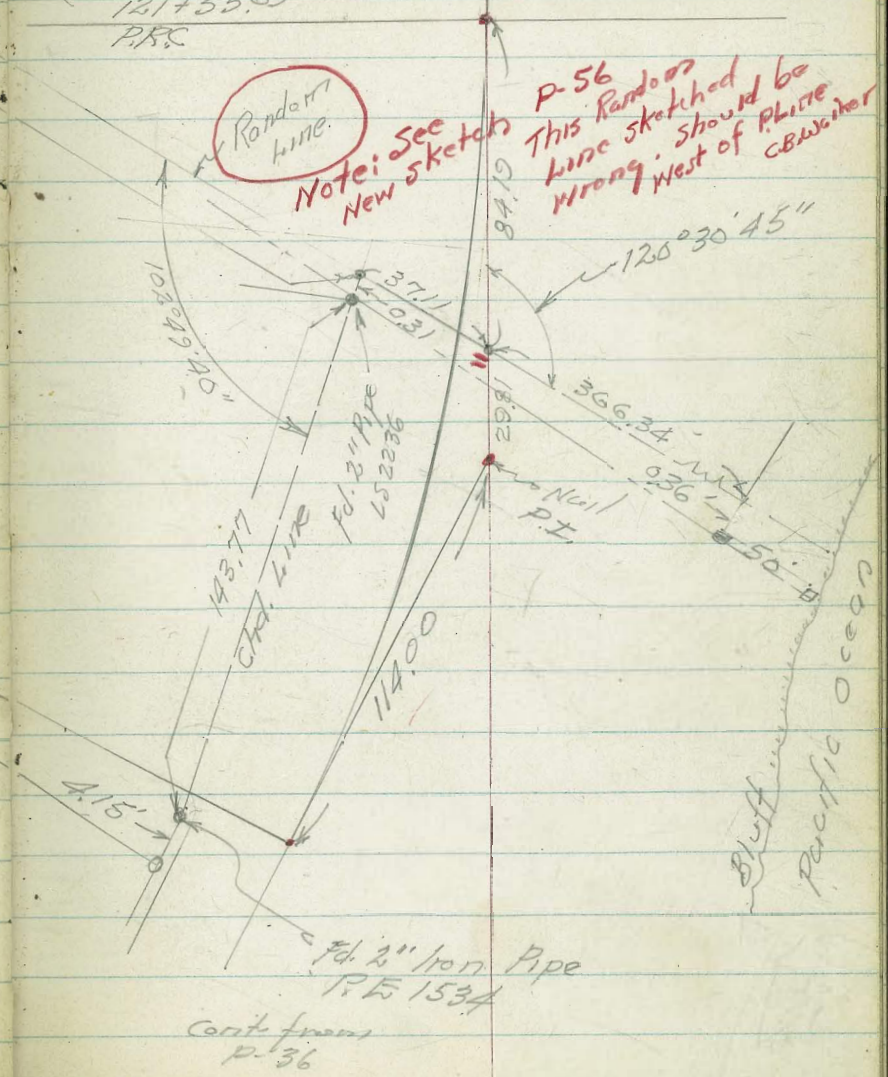
119+31.93
 B.C.

Cont. P-38 37
 $\Delta = 15^{\circ}00$
 $R = 580'$
 $T = 65.83$

121+55.69
 P.K.

(Random line)

Note: See New sketches
 P-56 This Random line sketched is wrong. Should be West of P.Hire CBW.



Bluff
 Pacific Ocean

2" Iron Pipe
 P.E. 1534
 Cont. from P-36

cont
p-39

30.47
124+87.48
E.C.

$\Delta = 45^{\circ}44'$
 $R = 200$
 $T = 84.35$

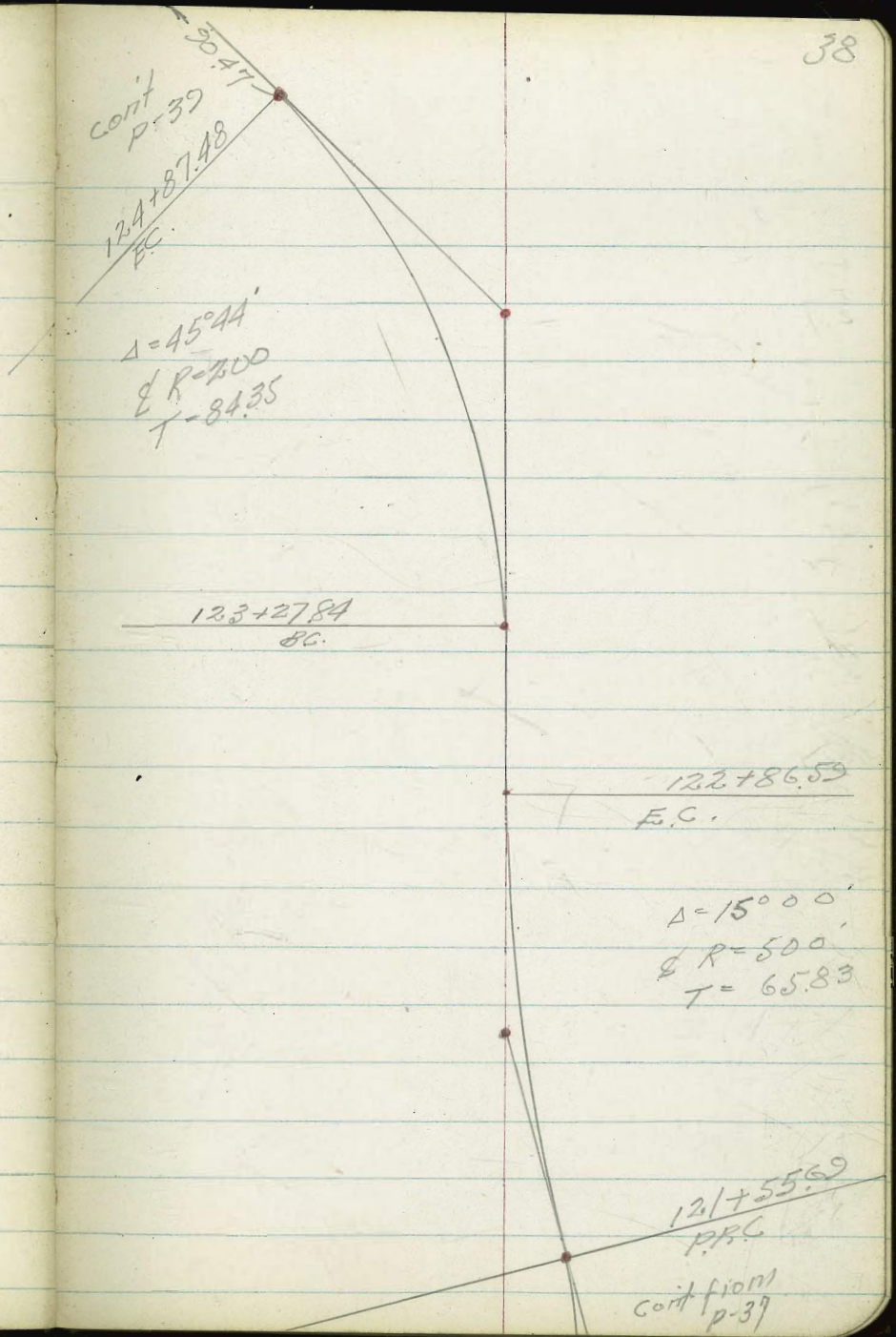
123+27.84
E.C.

122+86.53
E.C.

$\Delta = 15^{\circ}00'$
 $R = 500$
 $T = 65.83$

121+55.69
P.C.

cont from
p-39



2736
 E.C.
 127+24.12

$\Delta = 33^{\circ}30'$
 $E.R. = 250$
 $T = 75.74$

B.C.
 145+77.95

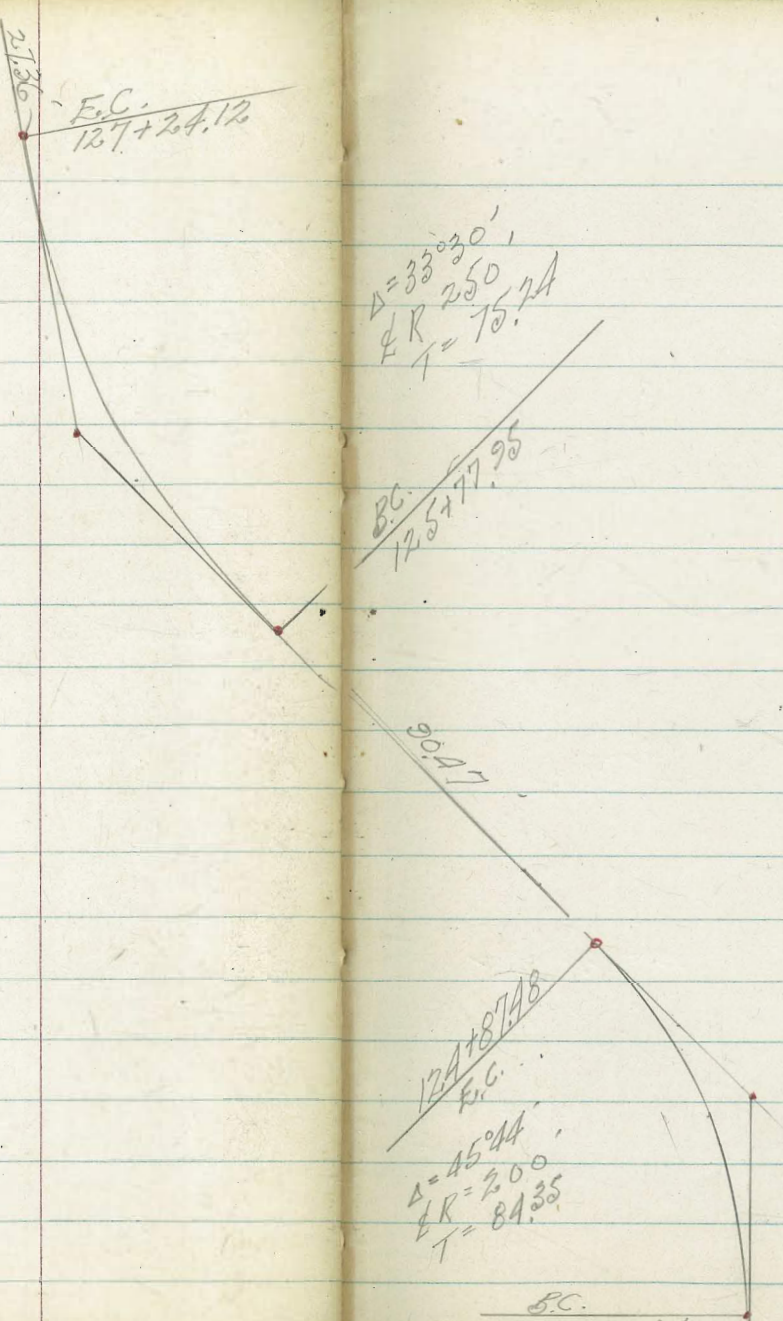
30.47

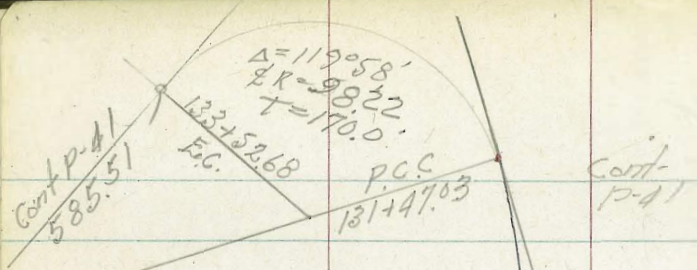
12A+87AB
 E.C.

$\Delta = 45^{\circ}44'$
 $E.R. = 200$
 $T = 84.35$

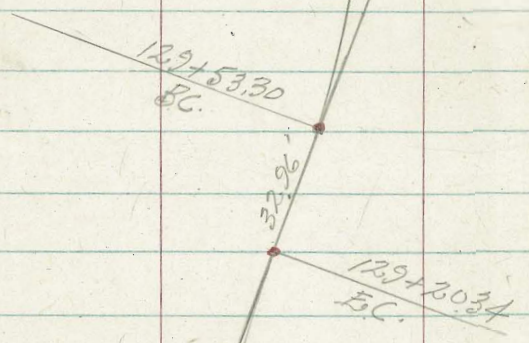
B.C.
 123+27.84

cont from P-38

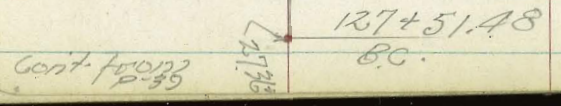




$\Delta = 36^{\circ}15'$
 $R = 306.20$
 $T = 100.23$



$\Delta = 71^{\circ}30'$
 $R = 21^{\circ}30'$
 $R = 450$
 $T = 85.44$



Cont.
P-4B

$\Delta = 37^{\circ} 00'$
 $R = 400'$
 $T = 133.84$

139+38.19
BC

585.5'

133+52.68
EC

$\Delta = 119^{\circ} 58'$
 $R = 98.22$
 $T = 170'$

Cont. from
p-40

131+27.03
BC

Set P.I.
Hub + DISC.

Cont
P-43

42

$$\Delta R = 491.22$$

P.C.C
141+96.50

$$\Delta = 37^{\circ}00'$$
$$\Delta R = 400$$
$$T = 133.81$$

139+38.19
B.C.

Cont (from)
P-41

Cont. p. 44

43

$$\Delta = 71^{\circ}24'$$
$$R = 311.35$$
$$T = 223.73$$

145+00.64

P.R.C.

$$\Delta = 35^{\circ}28'30''$$
$$R = 491.22$$
$$T = 157.12$$

Set Disc. in Curb
15.63

Fd. Conc. Mon
2' Deep

105.05

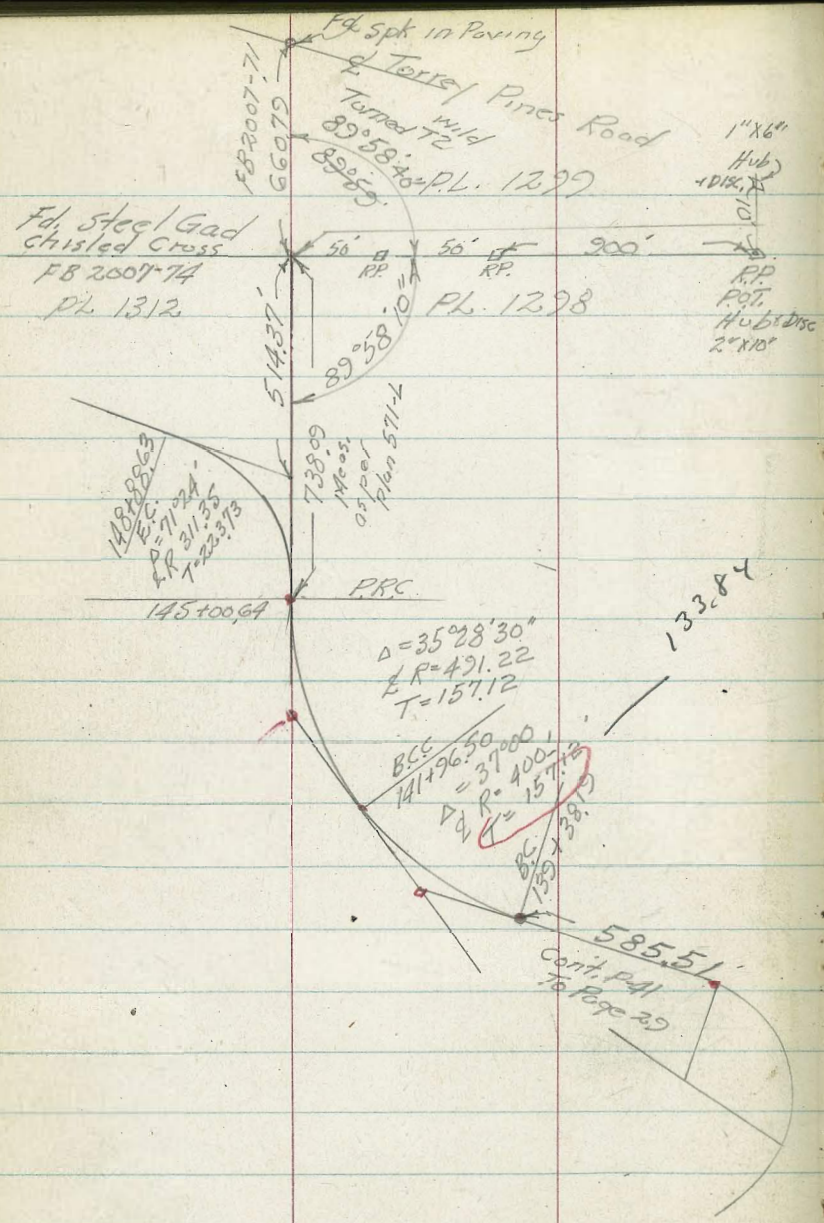
141+26.50
B.C.C.

P.L. 1512

Backs Line

P.L. 1398

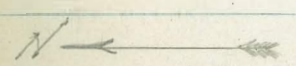
Cont.
p. 42



P.L. 1299

F.B. 2007-66
2629.50

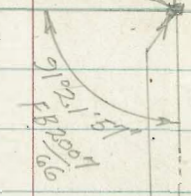
P.L. 1298



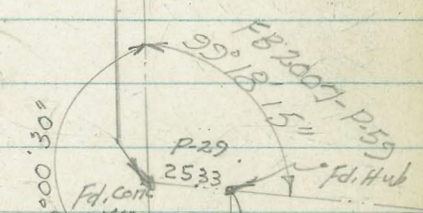
P.L. 1296

F.B. 2007-74

P.L. 1297



2489.94
F.B. 2007-66



Cont. P. 29 To P. 41
70.21
Biological
Grade

E.C.
81148.12
E.P. 300
Δ = 16°41'
T = 13.22

P.O.C.
82 x 6.313
B.C.

105.11
58°20'35\"/>

98.11
P. 29

offset
LITRE

Location East Conc. Pouring Strip

- Biological Grade
in Relation to E. as Run

Page 29 to Page 43

1-20-45

Walker

Pope

Olman

Olori

ctr. Curve

Lt
Edge
Conc.
Pour

Rt
Edge
Conc.
Pour

45

88 + 93.87 = 85

6.7

10.6

7.2

10.1

86 + 44.85 = E.C.

7.6

9.5

85 + 61.89 = app PT

7.9

10

84 + 78.93 = 80

6.7

10

84 + 08.72 = E.C.

7.0

10.3

83 + 36.92

4.3

11.9

82 + 63.13

5.5
EP

11
EP

Cont. from P-45

Biological Road

97+49.87

8

8'

95+76.82=BC

7.2

10.6

95+32.04=EC

6.2

10.9

94+22.67=BC

6.5

10.9

93+49.89=EC

6.8

11.9

92+18.68=BC

7.0

11.0

90+03.23=BC

6.9

10.6

Lt.
Edge
Conc.
Pov

2

Rt.
Edge
Conc.
Pov

46

Cont. from P-46
Biological Road

109 + 63.62

9.1

8.5

108 + 27.48 = BC RT

9.6

8

107 + 73.81 = EG

9.4

8 RT

106 + 81.85 = BC LT

8.4

9.7

105 + 04.41 = EG

8.5

10

103 + 49.95 = BC RT

8.2

9.4

100 + 06.72 = EG

7.8

9.5

98 + 06.5

7.8

7

Lt.
Edge
Center
Pov

6

RT
Edge
Center
Pov

47

Cont. on
page 50

Cont. from P-47

~~Association Old Conc. Pav Strip~~

Biological Grade

Lt.
Edge
Conc.
Pav

Rt. 48
Edge
Conc.
Pav

117+92.55 = B.C.C.

117+50.66 B.C.C.

116+40.87 B.C.C.

115+15.21 = B.C. Rt

114+67.40 = EC

113+88.48 = B.C. Lt

113+11.78 = EC

111+55.32 = B.C. R

9.0

8.8

8.9

8.8

8.5

8.4

9'

8.6

8.5

8.5

8.5

9

9

8.3

Storm Drain
Quince St West of Nile

C.H.S. 1-27-55
Begg W.O.# 32500
Schelin
Pullen Ref F.B. 2311 - P-18
Map 1684

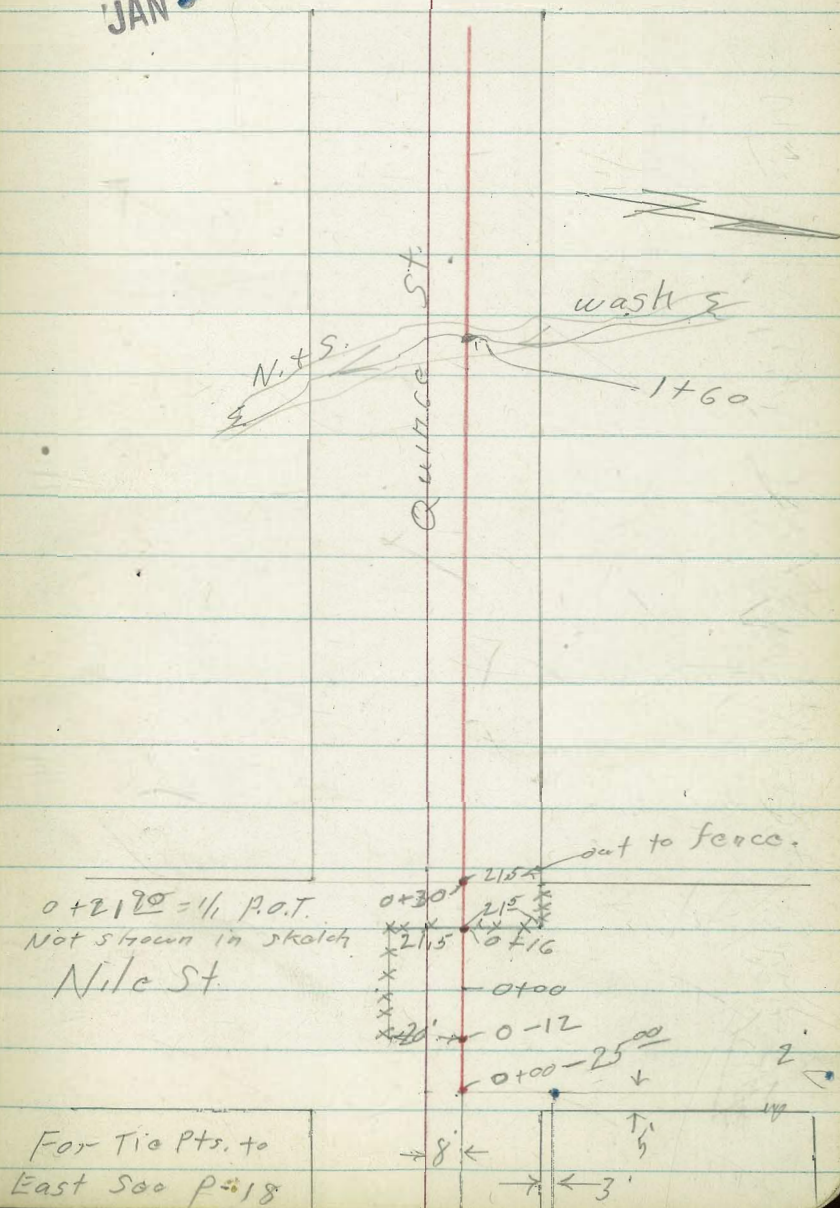
- denotes Fd. L&T.
- " set nail
- xxxxxx " post + 2 1/6" double rail fence.
- 0+00 = Nile St.

Levels on Page 52
I did not notice skipped page

#49

49

INDEXED
MYER
JAN 27 1955



For Tie Pts. to
East See P#18

Cont. from P-48

Biological Rd.

		Lt Edge Conc. Pov.	50 Rt Edge Conc. Pov.
131+47.03	B.C. Lt	8.2	9.3
129+53.3	B.C. Lt	8.7	8.7
129+20.34	E.C.	9.1	8.6
127+51.98	B.C. Rt	8.5	8.9
127+24.12	E.C.	8.6	8.3
125+77.95	B.C. Rt	8.0	9.3
124+87.48	E.C.	8.0	9.3
123+27.84	B.C. Lt	8.6	8.7
122+86.59	E.C.	8.4	9.1

Biological Road.

Cont. from P-50

145+00.64
=P.R.C.

141+96.50 = B.C.C.

139+38.19 = B.C.R.H.

133+52.68 = E.C.

Lt
Edge
Conc.
Pov.

4

Rt.
Edge
Conc.
Pov.

51

85

91

80

92

83

89

86

91

Quinco St. drain

sketch page 49

BK.

52

T.P. 0.20 269.12 13.30 268.92

0+40

^{269.8} 12.4 15	^{267.7} 14.5 10	14.4	^{267.8} 13.5 6	^{268.7} 16.6 11	^{265.6} 9.0 20	^{273.2}
--------------------------------	--------------------------------	------	-------------------------------	--------------------------------	-------------------------------	------------------

0+30 = Wly line Nile

^{274.0} 8.2 15	9.4	^{272.8} 11.0 6	^{271.2} 7.3 15	^{274.9}
-------------------------------	-----	-------------------------------	-------------------------------	------------------

Note. { be replaced.
This catch basin should

0+20 11² RR = & outlet catch basin

^{275.16}
7.06
11²
I.E. outlet

0+16

^{278.4} 3.8 5	3.9	^{278.3} 4.0 5	^{278.2}
------------------------------	-----	------------------------------	------------------

0+00 = & Nile

^{278.5}
3.7
282.22

2.53 282.22 - 279.69

N.E.B.P. Quinco & Nile

Quince

#

53

0+95

250.6	248.6	241.9	242.2	247.0	250.0	243.2	246.1	252.4
6.9	8.9	15.6	15.3	10.5	7.5	14.3	11.4	5.1
25	15	10	2		8	9	29	30

254.9
2.6
40

T.P.

1.35

257.45

13.02

256.10

257.45

245.6	246.1	257.4	260.1
23.5	23.0	11.7	9.0
15	20	23	30

0+78

256.6	256.6	248.1	247.4	247.6	257.4	257.4
12.5	12.5	21.0	21.7	21.5	11.7	11.5
20	16	9	3	4	13	

0+70

258.5	257.8	248.6	248.6	248.6	259.1	260.7
9.6	11.3	20.5	20.5	20.5	10.0	8.4
20	12	10		4	5	20

0+68

260.0	259.9	260.3	261.1
9.1	9.2	8.8	8.0
20	10		20

0+58

263.1	262.8	264.3	262.5	262.4
6.0	6.3	4.8	6.6	6.7
15	5		4	15

269.12

Quince

0.50 279.68

12.48 280.18 1.00 267.70

T.P. 11.64 268.70 0.40 257.06

T.P. 13.06 257.46 0.13 244.40

1+70

(279.69) Starting B.M. - P 52

8.7 8.5 8.0

10 10 10

235.8 236.0 236.5

1+60 = £ N.t.s. wash

13.4 12.2

20

IN £ N.t.s. wash

231.1 232.3

1+53

13.5 11.2 10.8 10.3 12.2 9.4 8.6

22 16 10 3 16 20

£ N.t.s. wash

231.0 233.3 233.7 234.2 232.3 235.1 235.9

6.5 6.0 8.5 5.5

20 16 15 30

238.0 238.5 236.0 239.0

(Sealed)

1+31 } 7² Lt. = £ sewer M.H.

8.5 6.49 7.4 6.7 6.5 9.0 9.3 6.0

10 72 5 17 19 23 25

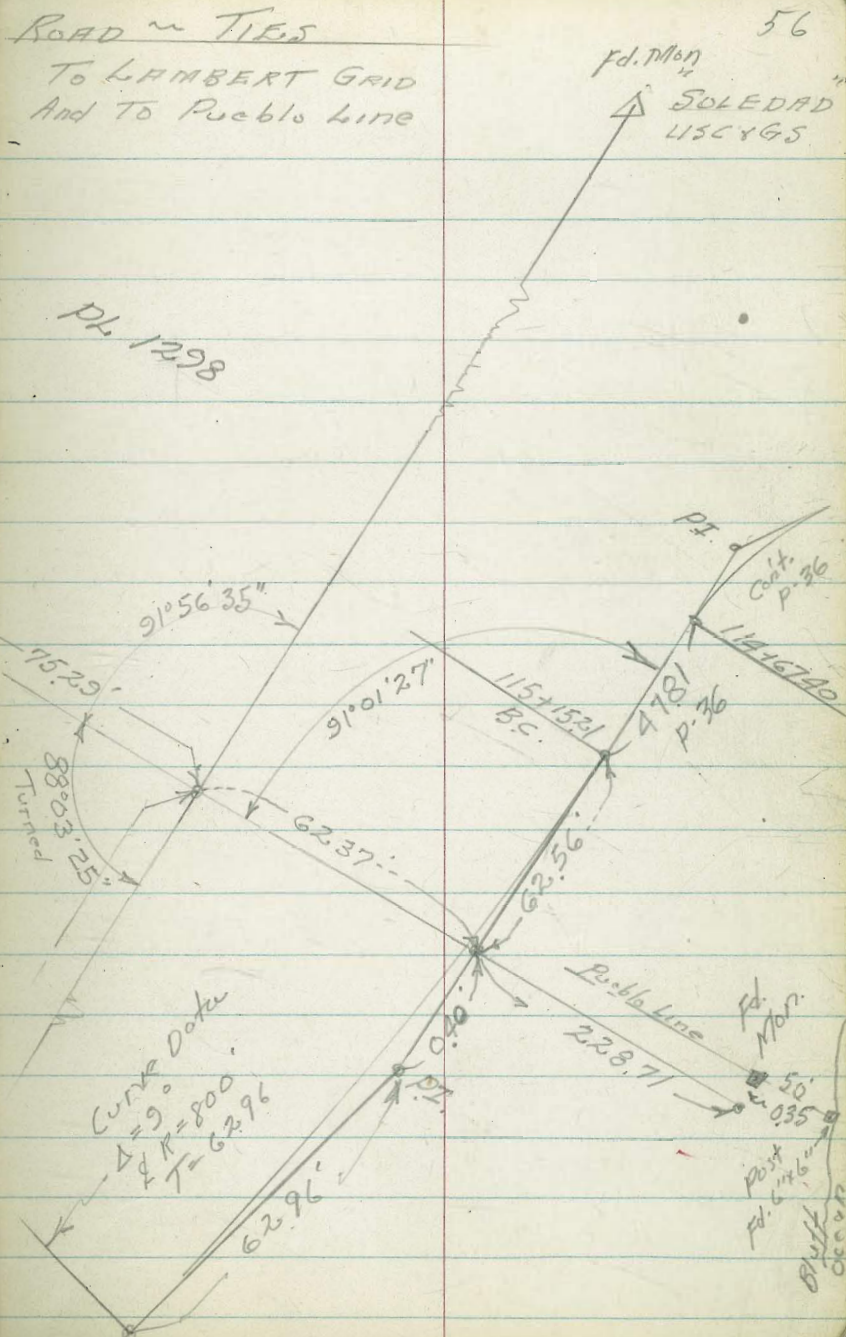
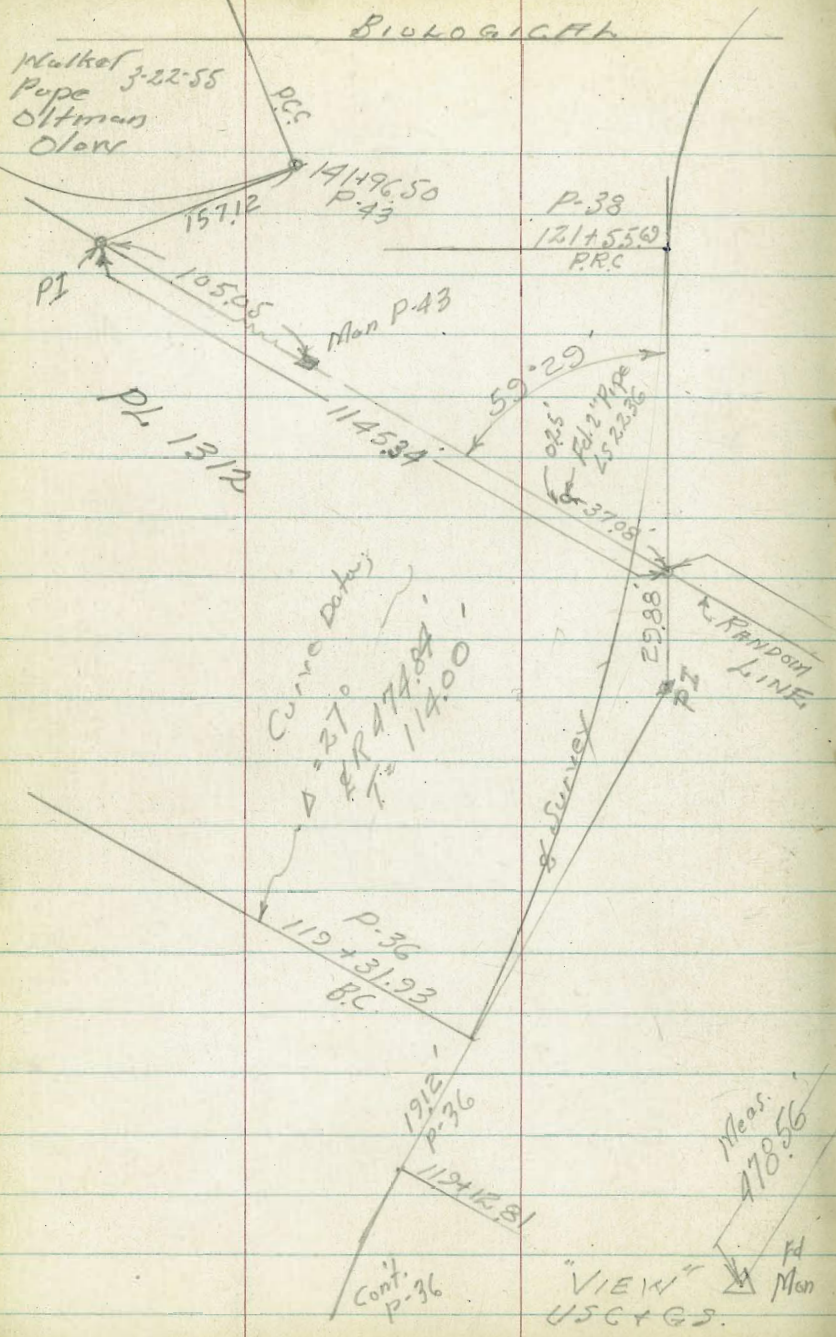
ctr. M.H.

236.0 238.04 237.1 237.8 238.0 235.5 235.2 238.5

T.P. 0.13 244.53 13.05 244.40

257.45

244.53

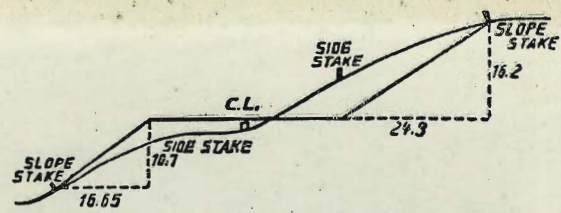


See
~~Handwritten~~ Bagyard NWBT 5229

670 608
 13 125
 763

6483
 6229
 155

1225
 35
 N2 P2 1298
 1137.48 From P.I. To Int. L



DISTANCES FROM SIDE STAKES FOR CROSS-SECTIONING.
 SLOPE 1 1/2 TO 1. ROADWAY OF ANY WIDTH.

	0	.1	.2	.3	.4	.5	.6	.7	.8	.9	
0	0.00	0.15	0.30	0.45	0.60	0.75	0.90	1.05	1.20	1.35	0
1	1.50	1.65	1.80	1.95	2.10	2.25	2.40	2.55	2.70	2.85	1
2	3.00	3.15	3.30	3.45	3.60	3.75	3.90	4.05	4.20	4.35	2
3	4.50	4.65	4.80	4.95	5.10	5.25	5.40	5.55	5.70	5.85	3
4	6.00	6.15	6.30	6.45	6.60	6.75	6.90	7.05	7.20	7.35	4
5	7.50	7.65	7.80	7.95	8.10	8.25	8.40	8.55	8.70	8.85	5
6	9.00	9.15	9.30	9.45	9.60	9.75	9.90	10.05	10.20	10.35	6
7	10.50	10.65	10.80	10.95	11.10	11.25	11.40	11.55	11.70	11.85	7
8	12.00	12.15	12.30	12.45	12.60	12.75	12.90	13.05	13.20	13.35	8
9	13.50	13.65	13.80	13.95	14.10	14.25	14.40	14.55	14.70	14.85	9
10	15.00	15.15	15.30	15.45	15.60	15.75	15.90	16.05	16.20	16.35	10
11	16.50	16.65	16.80	16.95	17.10	17.25	17.40	17.55	17.70	17.85	11
12	18.00	18.15	18.30	18.45	18.60	18.75	18.90	19.05	19.20	19.35	12
13	19.50	19.65	19.80	19.95	20.10	20.25	20.40	20.55	20.70	20.85	13
14	21.00	21.15	21.30	21.45	21.60	21.75	21.90	22.05	22.20	22.35	14
15	22.50	22.65	22.80	22.95	23.10	23.25	23.40	23.55	23.70	23.85	15
16	24.00	24.15	24.30	24.45	24.60	24.75	24.90	25.05	25.20	25.35	16
17	25.50	25.65	25.80	25.95	26.10	26.25	26.40	26.55	26.70	26.85	17
18	27.00	27.15	27.30	27.45	27.60	27.75	27.90	28.05	28.20	28.35	18
19	28.50	28.65	28.80	28.95	29.10	29.25	29.40	29.55	29.70	29.85	19
20	30.00	30.15	30.30	30.45	30.60	30.75	30.90	31.05	31.20	31.35	20
21	31.50	31.65	31.80	31.95	32.10	32.25	32.40	32.55	32.70	32.85	21
22	33.00	33.15	33.30	33.45	33.60	33.75	33.90	34.05	34.20	34.35	22
23	34.50	34.65	34.80	34.95	35.10	35.25	35.40	35.55	35.70	35.85	23
24	36.00	36.15	36.30	36.45	36.60	36.75	36.90	37.05	37.20	37.35	24
25	37.50	37.65	37.80	37.95	38.10	38.25	38.40	38.55	38.70	38.85	25
26	39.00	39.15	39.30	39.45	39.60	39.75	39.90	40.05	40.20	40.35	26
27	40.50	40.65	40.80	40.95	41.10	41.25	41.40	41.55	41.70	41.85	27
28	42.00	42.15	42.30	42.45	42.60	42.75	42.90	43.05	43.20	43.35	28
29	43.50	43.65	43.80	43.95	44.10	44.25	44.40	44.55	44.70	44.85	29
30	45.00	45.15	45.30	45.45	45.60	45.75	45.90	46.05	46.20	46.35	30
31	46.50	46.65	46.80	46.95	47.10	47.25	47.40	47.55	47.70	47.85	31
32	48.00	48.15	48.30	48.45	48.60	48.75	48.90	49.05	49.20	49.35	32
33	49.50	49.65	49.80	49.95	50.10	50.25	50.40	50.55	50.70	50.85	33
34	51.00	51.15	51.30	51.45	51.60	51.75	51.90	52.05	52.20	52.35	34
35	52.50	52.65	52.80	52.95	53.10	53.25	53.40	53.55	53.70	53.85	35
36	54.00	54.15	54.30	54.45	54.60	54.75	54.90	55.05	55.20	55.35	36
37	55.50	55.65	55.80	55.95	56.10	56.25	56.40	56.55	56.70	56.85	37
38	57.00	57.15	57.30	57.45	57.60	57.75	57.90	58.05	58.20	58.35	38
39	58.50	58.65	58.80	58.95	59.10	59.25	59.40	59.55	59.70	59.85	39
40	60.00	60.15	60.30	60.45	60.60	60.75	60.90	61.05	61.20	61.35	40
41	61.50	61.65	61.80	61.95	62.10	62.25	62.40	62.55	62.70	62.85	41
42	63.00	63.15	63.30	63.45	63.60	63.75	63.90	64.05	64.20	64.35	42
43	64.50	64.65	64.80	64.95	65.10	65.25	65.40	65.55	65.70	65.85	43
44	66.00	66.15	66.30	66.45	66.60	66.75	66.90	67.05	67.20	67.35	44
45	67.50	67.65	67.80	67.95	68.10	68.25	68.40	68.55	68.70	68.85	45
46	69.00	69.15	69.30	69.45	69.60	69.75	69.90	70.05	70.20	70.35	46
47	70.50	70.65	70.80	70.95	71.10	71.25	71.40	71.55	71.70	71.85	47
48	72.00	72.15	72.30	72.45	72.60	72.75	72.90	73.05	73.20	73.35	48
49	73.50	73.65	73.80	73.95	74.10	74.25	74.40	74.55	74.70	74.85	49
50	75.00	75.15	75.30	75.45	75.60	75.75	75.90	76.05	76.20	76.35	50

THE NATIONAL BLANK BOOK COMPANY
 HOLYOKE MASSACHUSETTS
 NEW YORK CHICAGO BOSTON SAN FRANCISCO