

DISTANCES FROM SIDE STAKES FOR CROSS-SECTIONING
SLOPE 1 TO 1. ROADWAY OF ANY WIDTH

	0	.1	.2	.3	.4	.5	.6	.7	.8	.9	
0	0.00	0.10	0.20	0.30	0.40	0.50	0.60	0.70	0.80	0.90	0
1	1.00	1.10	1.20	1.30	1.40	1.50	1.60	1.70	1.80	1.90	1
2	2.00	2.10	2.20	2.30	2.40	2.50	2.60	2.70	2.80	2.90	2
3	3.00	3.10	3.20	3.30	3.40	3.50	3.60	3.70	3.80	3.90	3
4	4.00	4.10	4.20	4.30	4.40	4.50	4.60	4.70	4.80	4.90	4
5	5.00	5.10	5.20	5.30	5.40	5.50	5.60	5.70	5.80	5.90	5
6	6.00	6.10	6.20	6.30	6.40	6.50	6.60	6.70	6.80	6.90	6
7	7.00	7.10	7.20	7.30	7.40	7.50	7.60	7.70	7.80	7.90	7
8	8.00	8.10	8.20	8.30	8.40	8.50	8.60	8.70	8.80	8.90	8
9	9.00	9.10	9.20	9.30	9.40	9.50	9.60	9.70	9.80	9.90	9
10	10.00	10.10	10.20	10.30	10.40	10.50	10.60	10.70	10.80	10.90	10
11	11.00	11.10	11.20	11.30	11.40	11.50	11.60	11.70	11.80	11.90	11
12	12.00	12.10	12.20	12.30	12.40	12.50	12.60	12.70	12.80	12.90	12
13	13.00	13.10	13.20	13.30	13.40	13.50	13.60	13.70	13.80	13.90	13
14	14.00	14.10	14.20	14.30	14.40	14.50	14.60	14.70	14.80	14.90	14
15	15.00	15.10	15.20	15.30	15.40	15.50	15.60	15.70	15.80	15.90	15
16	16.00	16.10	16.20	16.30	16.40	16.50	16.60	16.70	16.80	16.90	16
17	17.00	17.10	17.20	17.30	17.40	17.50	17.60	17.70	17.80	17.90	17
18	18.00	18.10	18.20	18.30	18.40	18.50	18.60	18.70	18.80	18.90	18
19	19.00	19.10	19.20	19.30	19.40	19.50	19.60	19.70	19.80	19.90	19
20	20.00	20.10	20.20	20.30	20.40	20.50	20.60	20.70	20.80	20.90	20
21	21.00	21.10	21.20	21.30	21.40	21.50	21.60	21.70	21.80	21.90	21
22	22.00	22.10	22.20	22.30	22.40	22.50	22.60	22.70	22.80	22.90	22
23	23.00	23.10	23.20	23.30	23.40	23.50	23.60	23.70	23.80	23.90	23
24	24.00	24.10	24.20	24.30	24.40	24.50	24.60	24.70	24.80	24.90	24
25	25.00	25.10	25.20	25.30	25.40	25.50	25.60	25.70	25.80	25.90	25
26	26.00	26.10	26.20	26.30	26.40	26.50	26.60	26.70	26.80	26.90	26
27	27.00	27.10	27.20	27.30	27.40	27.50	27.60	27.70	27.80	27.90	27
28	28.00	28.10	28.20	28.30	28.40	28.50	28.60	28.70	28.80	28.90	28
29	29.00	29.10	29.20	29.30	29.40	29.50	29.60	29.70	29.80	29.90	29
30	30.00	30.10	30.20	30.30	30.40	30.50	30.60	30.70	30.80	30.90	30
31	31.00	31.10	31.20	31.30	31.40	31.50	31.60	31.70	31.80	31.90	31
32	32.00	32.10	32.20	32.30	32.40	32.50	32.60	32.70	32.80	32.90	32
33	33.00	33.10	33.20	33.30	33.40	33.50	33.60	33.70	33.80	33.90	33
34	34.00	34.10	34.20	34.30	34.40	34.50	34.60	34.70	34.80	34.90	34
35	35.00	35.10	35.20	35.30	35.40	35.50	35.60	35.70	35.80	35.90	35
36	36.00	36.10	36.20	36.30	36.40	36.50	36.60	36.70	36.80	36.90	36
37	37.00	37.10	37.20	37.30	37.40	37.50	37.60	37.70	37.80	37.90	37
38	38.00	38.10	38.20	38.30	38.40	38.50	38.60	38.70	38.80	38.90	38
39	39.00	39.10	39.20	39.30	39.40	39.50	39.60	39.70	39.80	39.90	39
40	40.00	40.10	40.20	40.30	40.40	40.50	40.60	40.70	40.80	40.90	40
41	41.00	41.10	41.20	41.30	41.40	41.50	41.60	41.70	41.80	41.90	41
42	42.00	42.10	42.20	42.30	42.40	42.50	42.60	42.70	42.80	42.90	42
43	43.00	43.10	43.20	43.30	43.40	43.50	43.60	43.70	43.80	43.90	43
44	44.00	44.10	44.20	44.30	44.40	44.50	44.60	44.70	44.80	44.90	44
45	45.00	45.10	45.20	45.30	45.40	45.50	45.60	45.70	45.80	45.90	45
46	46.00	46.10	46.20	46.30	46.40	46.50	46.60	46.70	46.80	46.90	46
47	47.00	47.10	47.20	47.30	47.40	47.50	47.60	47.70	47.80	47.90	47
48	48.00	48.10	48.20	48.30	48.40	48.50	48.60	48.70	48.80	48.90	48
49	49.00	49.10	49.20	49.30	49.40	49.50	49.60	49.70	49.80	49.90	49
50	50.00	50.10	50.20	50.30	50.40	50.50	50.60	50.70	50.80	50.90	50

Distance of slope stake from side or shoulder stake for any width roadway, slope 1 to 1. If ground is nearly level, the cut or fill at side stake is located by the double entry method in left column and top row. The number in body of table in same row and column gives distance from side stake to slope stake. If ground is not level estimate the difference in elevation between the side stake and slope stake, lower target by this amount if cut, elevate if fill. Add this amount to cut or fill and find distance in table. Set up rod at this point, and line of sight should cut target. If it does not make the slight adjustment necessary.

TABLE XIII—CORRECTIONS FOR TANGENTS AND EXTERNALS

These corrections are to be added to the approximate values, found by dividing the tangent, or external, for a 1° curve (Table VIII) by the degree of curve, in order to obtain the true tangents, or externals. Intermediate values may be obtained by interpolation.

FOR TANGENTS ADD

Central Angle	DEGREE OF CURVE													
	5°	10°	15°	20°	25°	30°	35°	40°	45°	50°	55°	60°	65°	70°
10°	.03	.06	.09	.13	.16	.19	.22	.25	.28	.31	.34	.38	.42	.46
15°	.04	.10	.14	.19	.24	.29	.34	.39	.45	.51	.53	.58	.63	.68
20°	.06	.13	.19	.26	.32	.39	.45	.51	.58	.65	.72	.79	.84	.90
25°	.08	.16	.24	.33	.40	.49	.58	.67	.75	.83	.90	.99	1.06	1.14
30°	.10	.19	.29	.39	.49	.59	.69	.79	.89	.99	1.09	1.20	1.29	1.39
35°	.11	.22	.34	.47	.58	.69	.79	.81	.92	1.04	1.29	1.42	1.54	1.66
40°	.13	.26	.40	.53	.67	.80	.93	1.06	1.20	1.34	1.49	1.64	1.79	1.94
45°	.15	.30	.44	.60	.76	.91	1.06	1.21	1.37	1.52	1.70	1.87	2.04	2.21
50°	.17	.34	.51	.68	.85	1.02	1.19	1.36	1.54	1.72	1.91	2.10	2.29	2.48
55°	.19	.38	.57	.76	.95	1.14	1.32	1.52	1.72	1.92	2.14	2.35	2.56	2.77
60°	.21	.42	.63	.84	1.05	1.27	1.49	1.71	1.94	2.17	2.38	2.60	2.83	3.07
65°	.23	.46	.69	.93	1.16	1.40	1.64	1.88	2.13	2.38	2.63	2.88	3.13	3.39
70°	.25	.51	.76	1.02	1.28	1.54	1.80	2.06	2.33	2.60	2.88	3.16	3.44	3.72
75°	.27	.56	.83	1.12	1.40	1.69	1.98	2.27	2.57	2.87	3.16	3.47	3.78	4.09
80°	.30	.61	.91	1.22	1.53	1.84	2.15	2.46	2.78	3.10	3.44	3.78	4.12	4.46
85°	.33	.66	1.00	1.33	1.68	2.02	2.36	2.70	3.05	3.40	3.77	4.14	4.55	4.89
90°	.36	.72	1.09	1.45	1.83	2.20	2.57	2.94	3.32	3.70	4.10	4.50	4.91	5.32
95°	.39	.79	1.19	1.55	2.00	2.40	2.80	3.20	3.61	4.02	4.40	4.98	5.38	5.83
100°	.43	.86	1.30	1.74	2.18	2.62	3.06	3.50	3.95	4.40	4.88	5.37	5.85	6.34
110°	.51	1.03	1.56	2.08	2.61	3.14	3.67	4.21	4.76	5.31	5.86	6.43	7.01	7.60
120°	.62	1.25	1.93	2.52	3.16	3.81	4.45	5.11	5.77	6.44	7.12	7.80	8.50	9.22

FOR EXTERNALS ADD

Central Angle	DEGREE OF CURVE													
	5°	10°	15°	20°	25°	30°	35°	40°	45°	50°	55°	60°	65°	70°
10°	.001	.003	.004	.006	.007	.008	.009	.011	.012	.014	.015	.017	.018	.020
15°	.003	.007	.010	.014	.018	.023	.027	.029	.032	.035	.039	.043	.047	.051
20°	.006	.011	.017	.022	.028	.034	.038	.045	.051	.057	.063	.070	.076	.083
25°	.009	.018	.027	.036	.046	.056	.065	.074	.083	.093	.106	.120	.127	.135
30°	.013	.025	.038	.051	.065	.078	.090	.103	.116	.129	.149	.170	.179	.188
35°	.018	.035	.054	.072	.086	.109	.131	.153	.175	.197	.213	.230	.247	.264
40°	.023	.046	.070	.093	.117	.141	.172	.203	.234	.265	.277	.290	.315	.341
45°	.030	.060	.093	.119	.153	.184	.216	.254	.289	.325	.351	.378	.411	.445
50°	.037	.075	.116	.151	.189	.227	.266	.305	.345	.384	.425	.467	.508	.550
55°	.046	.093	.142	.188	.236	.283	.332	.381	.420	.479	.530	.582	.641	.700
60°	.056	.112	.168	.225	.283	.340	.398	.457	.516	.575	.636	.697	.774	.851
65°	.067	.135	.204	.273	.343	.412	.483	.554	.625	.697	.711	.845	.922	1.01
70°	.080	.159	.240	.321	.403	.485	.568	.652	.735	.819	.906	.994	1.08	1.17
75°	.095	.182	.286	.383	.480	.578	.678	.777	.877	.977	1.07	1.18	1.29	1.39
80°	.110	.220	.332	.445	.558	.671	.787	.903	1.02	1.13	1.25	1.38	1.50	1.62
85°	.128	.259	.391	.524	.657	.790	.926	1.06	1.20	1.34	1.47	1.62	1.76	1.91
90°	.149	.299	.450	.603	.756	.910	1.07	1.22	1.38	1.54	1.70	1.87	2.03	2.20
95°	.174	.350	.522	.706	.885	1.06	1.25	1.43	1.62	1.80	1.99	2.18	2.38	2.58
100°	.200	.401	.604	.809	1.01	1.22	1.43	1.64	1.85	2.06	2.28	2.50	2.73	2.96
110°	.268	.536	.806	1.08	1.35	1.63	1.91	2.20	2.48	2.76	3.05	3.35	3.66	3.96
120°	.360	.721	1.08	1.45	1.82	2.19	2.57	2.95	3.33	3.72	4.11	4.50	4.91	5.32

INDEX

X- Sec T street - 45th to 47th 1

X-SECT NILEY BIK H - ALTA VISTA: LOGAN to "T" ST 18

(making to E. 185th) (Hilger to 69 41) (Alta see F. 8th 2274-1)

X-SECT. HILGER & TARBAX For MPA, this area. 25

X-sec 69th St Amherst to El Cajon 55-

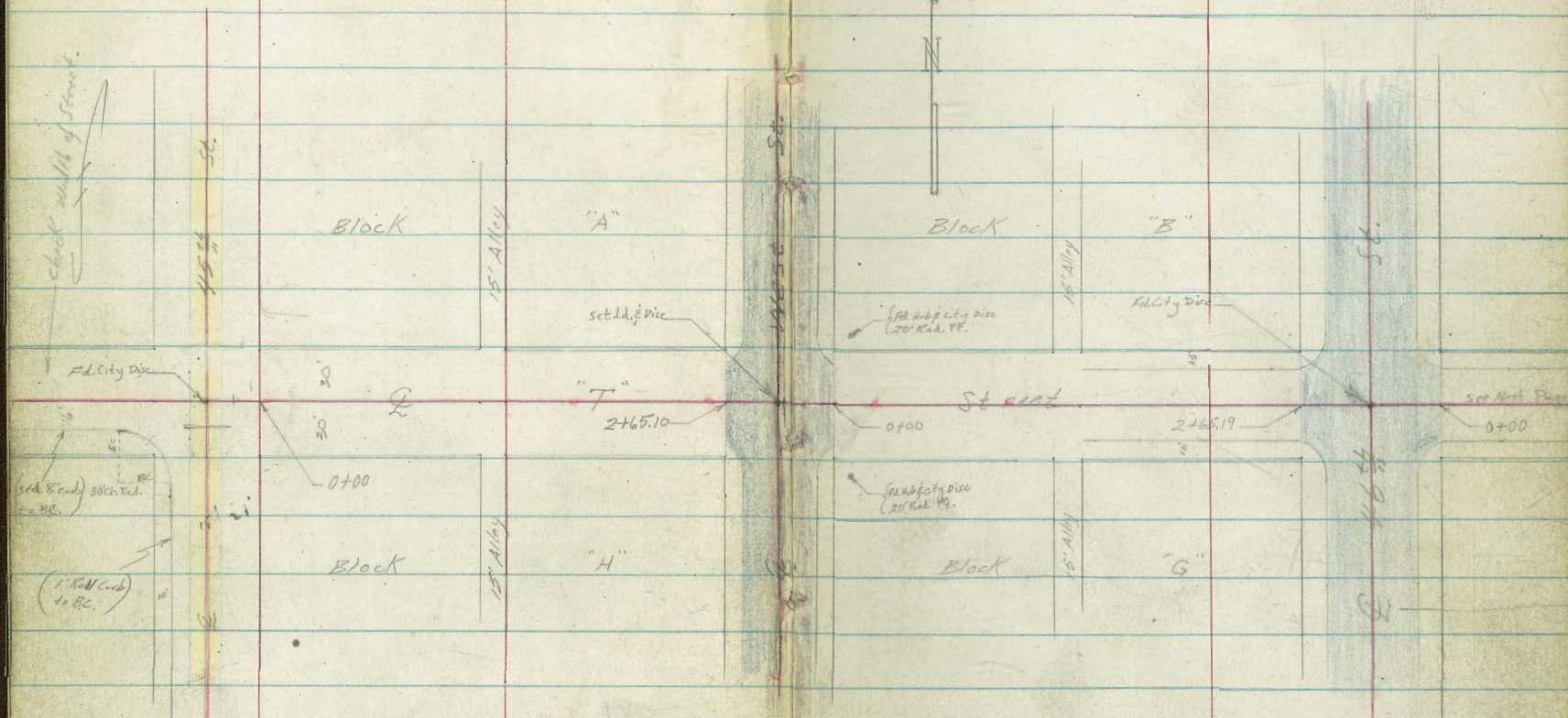
Guy - from Courts 200' southeast 59

Roberts
 Co. A
 Moore
 Miller
 No. 22251
 4-28-53

X-Section "T" Street

45th to 47th
 Map 1008
 Altavista Subdivision
 FB 1854 pg. 66 FB 551 pg 23

INDEXED
Law
 APR 30 1953

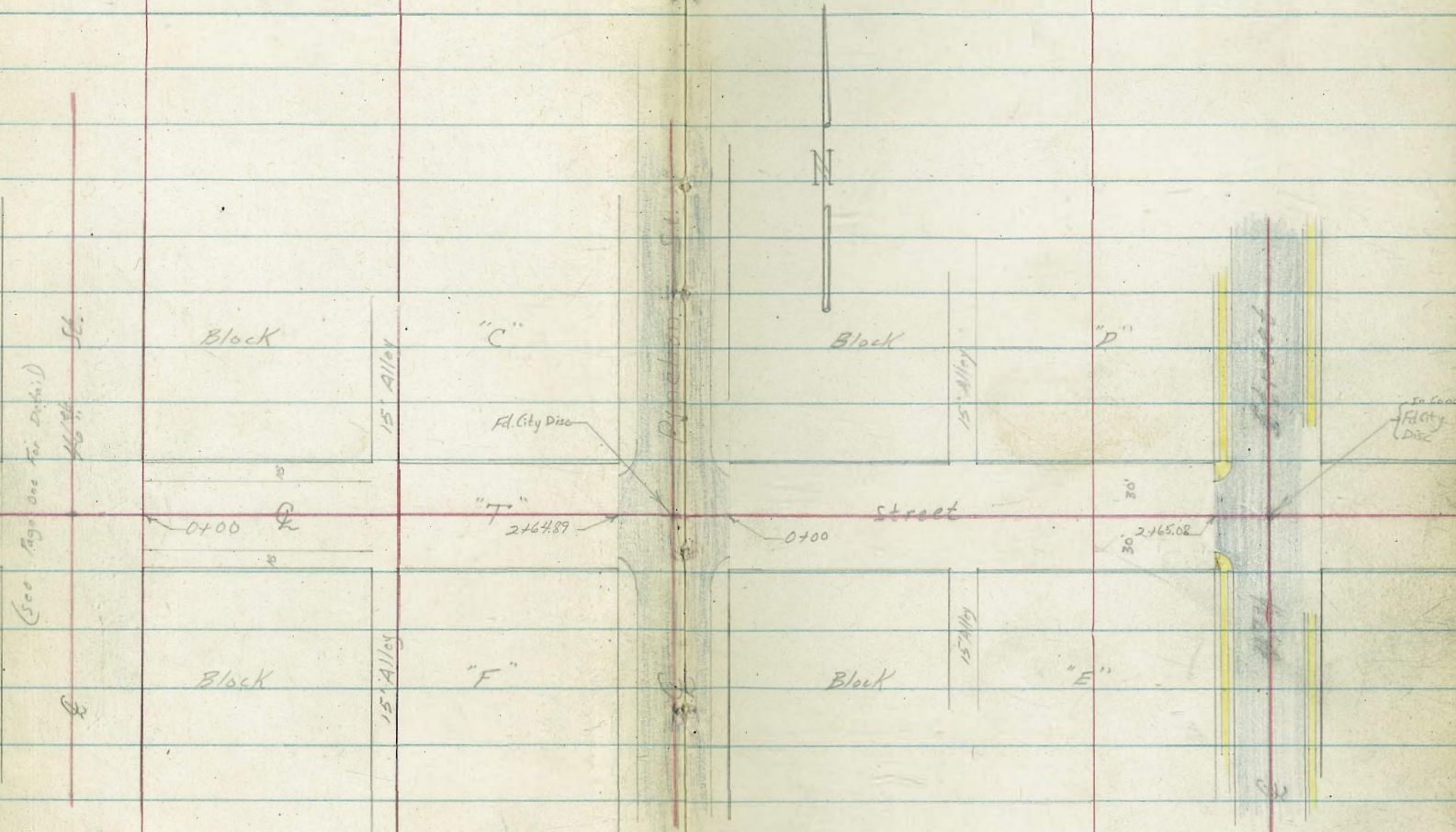


Additional Notes
 see page 23

45th Street:
 20' Street?
 18' Conc. Paving Strip in center
 No Curb or Walk on East

West Street:
 60' Street
 40' Roadway
 20' Curb Radii
 Just Sections of walk in.
 A.C. Paving

46th Street:
 80' Street
 52' Roadway
 20' Curb Radii
 Just Section of walk in.
 A.C. Paving



Rynbar St. : 00
 60' Street
 40' Roadway
 20' Curb Rd. II
 Just sections of walk in.
 A.C. Paving

47th St. : 00
 60' Street
 40' Roadway
 10' Curb Rd. II
 A.C. over Conc. Paving
 25' Curb Face to walk
 5' walk

0+18 23° Lt to center 12" Palm Tree

Reduced BLC
5/6/53

0+04 23° Rt to center PPole # 373374

0+00 East Line 45th Street

85.6	85.6	85.4	85.2	85.4	85.0	85.1
48	48	50	52	46	44	43
40	30		13	19	30	40

0-10 } 16" Lt & 18" Corr. Iron Culvert - Plugged up!
Could not find south end.

83.6
6.5
16
INVERT

0-15 } 16" Lt & 21" Corr. Iron Culvert East End of E.W. Culvert
Has headwall see FB 155, 163
Could not locate west end.

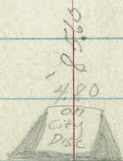
83.47
6.93
16
INVERT

0-21 East Edge Paving Strip

85.75	85.57	85.46	85.57	85.70
462	483	474	483	470
100	50		50	100

Q 45th Street

85.88	85.66	85.66	85.80
452	474	474	460
100	50	50	100



T.P. 3/4 90.40 T 6.84 87.26

90.40 T

B.M. 8.66 9410.

at Q 45th St
85.44 2 Corner View from NW

1732.55 Q Alleys

87.5	87.4	86.9	86.8	86.4	87.3	86.4	87.0	87.1	87.3	87.0
2.9	3.0	3.5	3.6	4.0	3.1	4.0	3.4	3.3	3.1	3.4
100	50	30	20	17		12	16	30	50	100

1422 22nd Rt to center P.P. # 3758621404 19th Rt to Deadman

1400

86.8	86.8	86.1	86.6	86.0	86.8	86.6	86.6
3.6	3.6	4.3	3.8	4.4	3.6	3.8	3.8
40	30	14		10	14	30	40

0+89 23rd Rt Q 9' Conc. Drive

86.53	86.88	87.05
3.27	3.52	3.33
23'	30'	36'
conc.	conc.	Floor

0+85 21st Lt to center 10' Palm Tree0+67 17th Lt Q 9' Conc. Drive

86.68	86.54	86.36	86.54
3.72	3.86	4.04	4.32
40	30	20	172
Floor	conc.	conc.	conc.

0+54 22nd Lt to center 12" Palm Tree0+50 29th Rt Q 4' Conc. Walk

86.1	85.9	85.7	85.9	86.6	86.0	86.14	86.17
4.3	4.5	4.7	4.5	4.8	4.4	4.26	4.23
40	30	15		12	14	29'	35'
						conc.	conc.

90.40T

90.40T

2405 28° Lt Q 12' Conc Drive.

59.89	59.33	58.64
6.30	6.86	7.50
382	305	280
Floor	conc	conc

2400

59.3	58.9	58.4	57.7	57.9	56.9	57.9	58.2	58.2
6.9	7.3	7.8	9.0	8.3	9.3	8.3	8.0	8.0
38	30	21	14		13	15	30	40

1497 29¹ Rt begin conc Block Wall

58.2	57.6	92.3
8.0	8.6	3.9
292	292	292
GRD	Foot	Top

1488 28² Rt Q 16³ conc Drive

58.23	58.40
7.96	7.79
282	312
conc	Floor

1477.3 29² Rt End Conc Block Wall

57.9	57.1	92.9
8.3	9.1	3.3
292	292	292
GRD	Foot	Top

T.P. 8.46 96.19T 2.67 87.73 76.19T

1454 23¹ Rt to center Guy Pole1440 29¹ Rt begin conc Block Wall

57.5	56.9	92.7
2.9	3.5	4.3
292	292	292
GRD	Foot	Top

90.40T

90.40T

West Street

89.42 6.77 100	89.17 7.02 59	88.83 7.66 Disc 20	88.13 8.06 20	88.46 7.73 50	88.66 7.51 100
----------------------	---------------------	-----------------------------	---------------------	---------------------	----------------------

West Curb Line

89.09 7.10 100 cb	88.61 7.58 100 Gutt	88.70 7.49 40 cb	88.22 7.97 40 Gutt	88.36 7.83 20	88.28 7.91	87.80 8.39 20	87.54 8.65 40 Gutt	88.03 8.16 40 cb	87.76 8.43 100 Gutt	88.22 7.77 100 cb
----------------------------	------------------------------	---------------------------	-----------------------------	---------------------	---------------	---------------------	-----------------------------	---------------------------	------------------------------	----------------------------

Midpoint Existing Return

88.60 7.57 Curb	88.14 8.05 Gutt	87.51 8.68 Gutt	88.02 8.17 Curb
-----------------------	-----------------------	-----------------------	-----------------------

2+65.10 West Line West St.

88.5 7.7 30	88.40 7.79 23 cb	87.92 8.27 23 Gutt	88.16 8.03	87.44 8.75 223 Gutt	87.92 8.27 222 cb	88.0 8.2 30
-------------------	---------------------------	-----------------------------	---------------	------------------------------	----------------------------	-------------------

2+64 21' Rt to center P.P. #3789.86 (POLE MUST BE MOVED)

2+63

90.0 6.2 40	89.9 6.3 30	89.7 6.5 17	88.0 8.2 15	88.2 8.0	87.5 8.7 15	87.5 6.7 17	89.6 6.6 30	89.4 6.4 40
-------------------	-------------------	-------------------	-------------------	-------------	-------------------	-------------------	-------------------	-------------------

2+40 30' End Conc Block Wall

89.2 7.0 30 9.0	88.2 8.0 30 Foot	93.1 3.1 30 Top
--------------------------	---------------------------	--------------------------

1407 20⁶R & 2^E Conc. Walk

92.63	92.72	92.96
356	347	323
20 ⁶	30	38
conc	conc	conc

1400

92.1	92.1	92.1	91.8	92.0	91.3	92.0	92.5	93.0
41	41	41	44	42	49	42	37	32
40	30	20	18		15	17	30	40

0+50

91.7	91.7	91.5	90.9	91.2	90.6	91.0	91.7	91.0
45	45	47	53	50	56	52	45	42
40	30	20	18		13	15	30	40

0+25

91.5	91.4	91.3	90.2	90.3	90.2	90.8	91.4	91.7
47	48	49	60	59	60	54	48	45
40	30	20	18		13	15	30	40

0+00 East Line of West Street

91.0	91.0	89.63	89.14	88.99	88.51	89.01	91.0
52	52	656	705	720	768	718	52
30	24	22 ²	22 ²		226	226	30
		cb	Gutt		Gutt	cb	

Midpoint Existing Returns

89.69	89.07	88.34	88.54
660	712	785	731
Curb	Gutt	Gutt	Curb

East Curb Line

89.80	89.22	89.54	89.06	89.01	88.54	88.94	88.32	88.83	88.66	89.02
639	687	665	713	718	735	775	787	736	763	719
100	100	40	40	20		20	40	40	100	100
cb	Gutt	cb	Gutt			Gutt	Gutt	cb	Gutt	cb

96.197

96.197

2+15

95.2	95.07	94.4	94.7	94.4	95.09	95.6
76	96.8	10.4	10.1	10.4	76	9.2
30	20 cb	20 Gutt		20 Gutt	20 cb	30

2+13 293' Rt begin Picket Fence

2+04

Rt Q 16' Opening in Curb (Driveway)

94.01	94.70	94.69	95.42	95.62
10.74	10.05	10.06	7.33	9.13
20 4P	23 conc	25.2 conc	28.6 conc	32 Floor

1+94

Lt Q 17' Opening in curb (Driveway)

94.63	94.50	94.43	93.79
10.12	10.25	10.32	10.80
20 conc	30 conc	23.5 conc	20 4P

1+92^E

292' Rt End Picket Fence

T.P.

10.94 104.75 π 238 93.81104.75 π

289' Rt begin Picket Fence

1+40

Lt & Rt begin Placed Curb (Needs to be Replaced)

92.5	93.04	92.7	92.9	92.2	92.70	92.9
3.7	3.15	3.5	3.3	4.0	3.49	3.3
30	19.2 cb	19.2 Gutt		20 Gutt	20 cb	30

1+3259

Q Alleys

92.5	92.3	92.5	92.5	92.6	92.7	92.1	92.7	92.8	93.1	93.7
3.7	3.9	3.7	3.4	3.6	3.5	4.1	2.5	3.4	3.1	2.5
100	50	30	20	11		16	20	30	50	100

1+15

206' Rt Q 8' Conc Drive

92.64	92.71	92.74
3.55	3.48	3.45
206 conc	30 conc	32.2 Floor

96.19 π 96.19 π

East Curb Line 46th Street

98.06	96.60	97.49	97.02	97.63	98.13	98.03	97.94	98.41	98.71	99.19
777	843	737	801	740	6.90	7.00	7.09	6.62	6.32	5.84
100	100	40	40	20		20	40	40	100	100
cb	Gutt	cb	Gutt			Gutt	cb	cb	Gutt	cb

T.P. 582 ✓ 105.03 ⌈ 554 99.21 ✓

105.03 ⌈

Q 46th Street

97.05	97.29	97.62	97.47	97.95	98.73
770	746	713	728	6.80	6.02
100	50	Disc	20	50	100

West Curb Line 46th Street

96.58	96.06	96.53	96.53	96.77	97.11	96.68	96.40	96.87	97.61	98.09
817	866	792	842	798	7.64	8.07	8.32	7.28	7.14	6.66
100	100	40	40	20		20	40	40	100	100
cb	Gutt	cb	Gutt			Gutt	cb	cb	Gutt	cb

Midpoint Existing Returns

96.73	96.25	96.15	96.66
8.02	8.50	8.60	8.49
Curb	Gutt	Gutt	Curb

↳ 29^E Rt End Picket Fence

2+65.19 West Line 46th Street

96.4	96.47	96.00	96.67	95.93	96.41	96.8
8.4	8.28	8.75	8.08	8.82	8.34	8.0
30	20 ²	20 ²		20 ²	20 ²	30
	cb	Gutt		Gutt	cb	

2+61 Lt & Rt End Plastered Curbs (Needs to be Replaced)

96.3	96.35	95.9	96.5	95.9	96.2	96.8
8.5	8.40	8.9	8.3	8.7	8.60	8.0
30	20	20		20	20	30
	cb	Gutt		Gutt	cb	

104.75 ⌈

104.75 ⌈

1400

106.6	106.3	106.39	105.4	105.8	106.2	106.93	109.0	110.0
8.9	9.2	9.07	10.1	9.7	9.3	8.53	6.5	5.5
40	30	46	19E Gutt	19E Gutt	30E Gutt	20E cb	30	40

T.P.

10.82 115.46T 0.39 104.64

115.46T

0+54 20" 1462' conc walk

99.95	101.68	102.59
5.08	3.35	2.14
40 conc	30 conc	20E conc

0+50

99.9	101.4	102.2	102.4	101.6	102.1	102.1	102.5	102.9	104.2
5.1	3.6	2.8	3.1	3.4	2.9	2.9	3.21	1.1	0.8
40	30	23	19E cb	19E Gutt	20E Gutt	20E cb	20E cb	30	40

0+01 Lt & Rt begin Parterred Curb (Needs to be Replaced)

98.7	98.8	98.89	98.4	99.0	98.7	98.1	98.7	101.0	102.10
6.3	6.2	6.14	6.6	6.0	6.3	5.71	5.3	4.0	3.0
40	30	19E cb	19E Gutt	20E Gutt	20E Gutt	20E cb	21	30	40

0+00 East Line 46th St.

98.73	98.82	98.3	98.96	98.7	98.21	99.7	100.8
6.3	6.2	6.71	6.07	6.31	5.82	5.3	4.2
30	30E cb	20E Gutt	20E Gutt	20E Gutt	20E cb	22	30

Midpoint Existing Returns

97.93	97.44	98.03	98.52
7.10	7.59	7.00	6.51
Curb	Gutt	Gutt	Curb

105.03T

105.03T

2700

112.7	113.4	113.8	113.4	113.4	113.4	113.9	113.5	114.7	117.9	115.5
38	2.1	1.7	2.1	2.1	2.1	1.6	2.0	0.8	0.6	0
40	30	20	18			17	18	25	26	30

1796

32³ Lt E Ribbon drive

{ 7' Overall
2' Ribbons

112.57	113.33
2.89	2.13
70 ²	32 ²
conc	conc

1790

29² Lt. End Picket Fence

111.3	111.9	112.0	111.4	111.5	111.1	113.6	114.6
42	3.6	3.5	4.1	4.0	3.4	1.9	0.9
40	30	21	18		17	30	40

1770

4

1755

34¹ Rt. E Double Garage

113.47	113.67
1.99	1.77
30 ²	39 ²
conc	conc
Apron	Flar
1954	

1740

29² Lt begin Picket Fence

107.6	108.5	108.9	106.1	106.6	109.3	110.7	111.4	109.3
79	70	6.6	7.4	6.9	6.2	4.8	4.1	6.2
100	50	30	19		19	30	50	100

1732.45

E Alleys

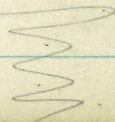
1726

22² Rt to center P.P. # JPA 278865

108.3	108.3	108.34	107.4	108.0	108.5	105.55	110.2	110.8
72	72	7.02	8.1	7.5	7.0	6.61	5.3	4.7
40	30	192	192		20 ²	20 ²	30	40
		cb	6.4		cut	cb		

1725

24² Rt End Plastered Curbs (Needs to be Replaced)



115.46 T

115.46 T

West Curb Line Pyncheon St.

110.40	107.70	111.56	110.93	111.74	111.96	111.77	111.31	111.97	111.01	111.65
7.48	10.10	7.32	7.75	7.14	6.72	7.11	7.57	6.91	7.87	7.25
cb.	Gutt.	cb.	Gutt.	20		20	Gutt	cb	Gutt	cb

Midpoint Existing Returns

111.80	111.26	111.41	112.03
7.08	7.70	7.49	6.83
Curb	Gutter	Gutter	Curb

2+64.89 West Line Pyncheon St.

111.9	112.02	111.37	111.85	111.42	112.07	112.14
7.0	6.86	7.51	7.03	7.46	6.81	6.5
30	22	22		22	22	30
	cb	Gutt		Gutt	cb	

2+63 28' Rt to center P. Pole * 121762

2+62

114.0	114.0	114.0	112.1	112.0	111.6	112.0	111.7	112.9	113.1	116.9	116.4
4.9	4.9	4.9	6.8	6.9	7.3	6.7	7.2	6.0	5.8	2.7	2.5
40	30	29	26	22	21		21	22	30	31	40

2+40 20' Rt to Deadman

113.9	114.0	112.9	113.0	112.8	113.0	113.1	114.2	114.2	116.9	116.5
5.0	4.9	6.0	5.9	6.1	5.9	5.8	4.6	4.7	2.7	2.4
40	30	26	21	19		16	18	29	30	40

T.P. 676 11.888 X 3.34 112.12

118.88 X

2+15

113.4	113.6	113.5	113.6	113.8	113.7	114.1	114.1	115.1	115.6	116.4
2.1	1.9	1.7	1.9	1.7	1.8	1.4	1.4	0.1	0.1	0.9
40	30	20	18		17	18	27	29	30	40

115.46 X

115.46 X

0+60 30° Rt End Conc. Block Ret. Wall

115.8	114.5	117.3
31	44	16
30	30	30
GRD	Foot	Top

0+35

113.9	114.6	114.5	115.1	114.8	115.0
5.0	4.5	4.4	3.8	4.1	3.9
33	30	20		18	30

0+25 30° Rt to wall Break in Footing

114.7	113.9	117.0
4.2	5.0	1.9
30°	30°	30°
GRD	Foot	Top

0+00 { 30° Rt begin Conc. Block Wall (Retaining)
East Line Pyncheon Street.

112.8	112.85	112.23	112.52	112.15	112.50	112.8	111.9	116.9
6.1	6.03	6.65	6.36	6.73	6.08	6.1	7.0	3.0
30	225	225		225	225	302	302	302
	cb	Gutt		Gutt	cb	GRD	Foot	Top

Midpoint Existing Returns

112.43	111.81	111.96	112.63
6.45	7.07	6.92	6.25
cb	Gutt	Gutt	cb

East Curb Line Pyncheon St.

109.87	109.26	112.12	111.47	112.21	112.42	112.6	111.58	112.52
9.01	9.62	6.76	7.41	6.67	6.46	6.62	7.00	6.36
100	100	40	40	20		20	40	40
cb	Gutt	cb	Gutt			Gutt	cb	Gutt
								100
								100
								cb

R Pyncheon Street

109.59	111.38	112.22	112.07	111.76
9.29	7.50	6.86	6.81	7.13
100	50	50	50	100
		Disc		

1425 30³ Rt End Conc Block Wall

117.7	116.7	115.8
15.1	11.1	5.0
30 ³	30 ³	30 ³
GRD	Foot	TOP

1422 22¹ Rt to center P Pole # P14277

1406 22² Rt to Deadman

1400

114.6	114.8	116.0	116.0	116.3	116.1	116.4	116.2	116.2
12.2	13.0	11.8	11.8	11.5	11.7	11.4	11.6	11.6
40	33	30	22	14	13		16	30

0478 30³ Rt begin conc block wall

115.9	115.0	115.0
11.9	12.8	7.4
30	30	30
GRD	Foot	TOP

T.P. 12.03 127.79x 3.12 115.76 127.79x

0470

114.1	114.4	114.8	113.7	111.4	111.7	111.7	116.1
48	45	3.1	3.2	3.5	3.2	3.2	2.8
40	33	30	21	20		20	30

0468 35³ Rt & Double Garage

116.17	116.55
2.71	2.33
2.9	3.5
Conc	Floor
April	
12.7.76	

118.88x

118.88x

1474 } 21² Lt to center 7" Banana Tree
 { 21² Rt End Eugenia Hedge

1469 27² Lt to center 6" Banana Tree

1462 27² Lt to center 6" Banana Tree

1460 28² Lt begin Rock wall

120.5	118.6	118.7	118.7	118.2	118.4	118.7	119.0	119.5	119.5
7.3	9.2	9.1	9.1	9.6	9.4	9.1	8.8	8.3	8.3
282	282	282	15	12		15	18	30	33
Top	Foot	GRD							

1455 28² Lt & 8" Conc Drive

110.09	118.66
8.70	9.13
46	289
Floor	conc

1450 29² Lt End board Fence

1443 29² Lt begin board Fence

1440 22⁰ Rt begin Eugenia Hedge

1432.54 Q Alleys

117.5	116.6	117.0	117.2	117.2	117.0	117.3	117.1	117.6	116.4	119.1	119.7
10.3	11.2	10.4	10.6	10.6	10.8	10.5	10.7	10.2	9.4	8.7	10.1
100	50	30	22	13	"		16	30	50	75	100

2+11 29⁹Rt Q 8' Conc Apron123.10
469
29
CRD123.14
465
333
Floor2+02 29²Lt Q 3⁵' Conc Walk (Opening in wall)141.23
6.56 141.14
393 293
CRD CRD

2+00

121.3 120.8 120.8 120.2 120.5 120.7 122.1 121.2
6.5 7.0 7.0 7.6 7.3 7.1 5.7 5.6
40 30 15 13 16 30 331+91 27⁸Rt End Eugenia Hedge1+87 29²Lt begin conc block wall122.2 119.8 120.2
5.6 8.0 7.6
29² 29² 29²
Top Foot CRD1+84 27⁵Rt begin Eugenia Hedge1+81 29²Lt Q 11' Conc Drive (Goes to Garage at Station 1+55)119.9 120.0
7.87 7.73
353 29²
Conc Conc1+77 29²Rt Q 7' Conc Drive120.97 121.37
6.92 6.42
29² 44
Conc Floor1+76 29²Lt End Rock wall121.3 119.1 119.7
6.5 8.7 8.1
29² 29² 29²
Top Foot CRD

Check 8.29 116.44 = 116.49 SWBP Ocean View Blvd. $\frac{1}{2}$ 47th
 T.P. 1.70 124.73 476 123.03

E 47th Street

124.64 125.43 125.89 125.60 125.02
 3.15 2.36 1.90 2.19 2.77
 100 50 50 50 100

WEST?
East Curb Line 47th St.

51 39
 124.90 124.39 125.67 125.25 125.45 125.65 125.33 125.22 125.78 124.56 125.09
 2.89 3.40 2.12 2.51 2.34 2.14 2.46 2.57 2.61 3.23 2.70
 80 80 30 30 20 20 30 30 30 80 80
 cb gutt cb gutt 20 gutt cb gutt cb

Midpoint Existing Returns

125.59 125.20 125.21 125.75
 2.20 2.59 2.58 3.04
 cb gutt gutt cb

2+65.08 } 30' Lt End Conc. block wall
 West Line 47th Street

127.7 125.4 125.81 125.55 125.16 125.46 125.07 125.76 126.03
 0.1 2.4 1.88 2.24 2.63 2.34 2.71 2.83 1.76
 30 30 30 20 20 30 30 30 30
 Tip Foot wall cb gutt gutt cb wall

2+64 2¹/₂" R to center P. Pole # P178444

2+35

123.7 123.7 123.4 122.9 122.2 122.7 123.0 124.4 125.0
 4.1 4.1 4.4 4.9 5.6 5.1 4.8 3.4 2.8
 35 30 29 17 15 17 30 40

Clark
Shepherd
Brumer
owner
5-11-53
NO. 32251

X-SECT ALLEY BKH ALTA VISTA Sub.
LOGAN to "T" - bet. 75° 14' WEST

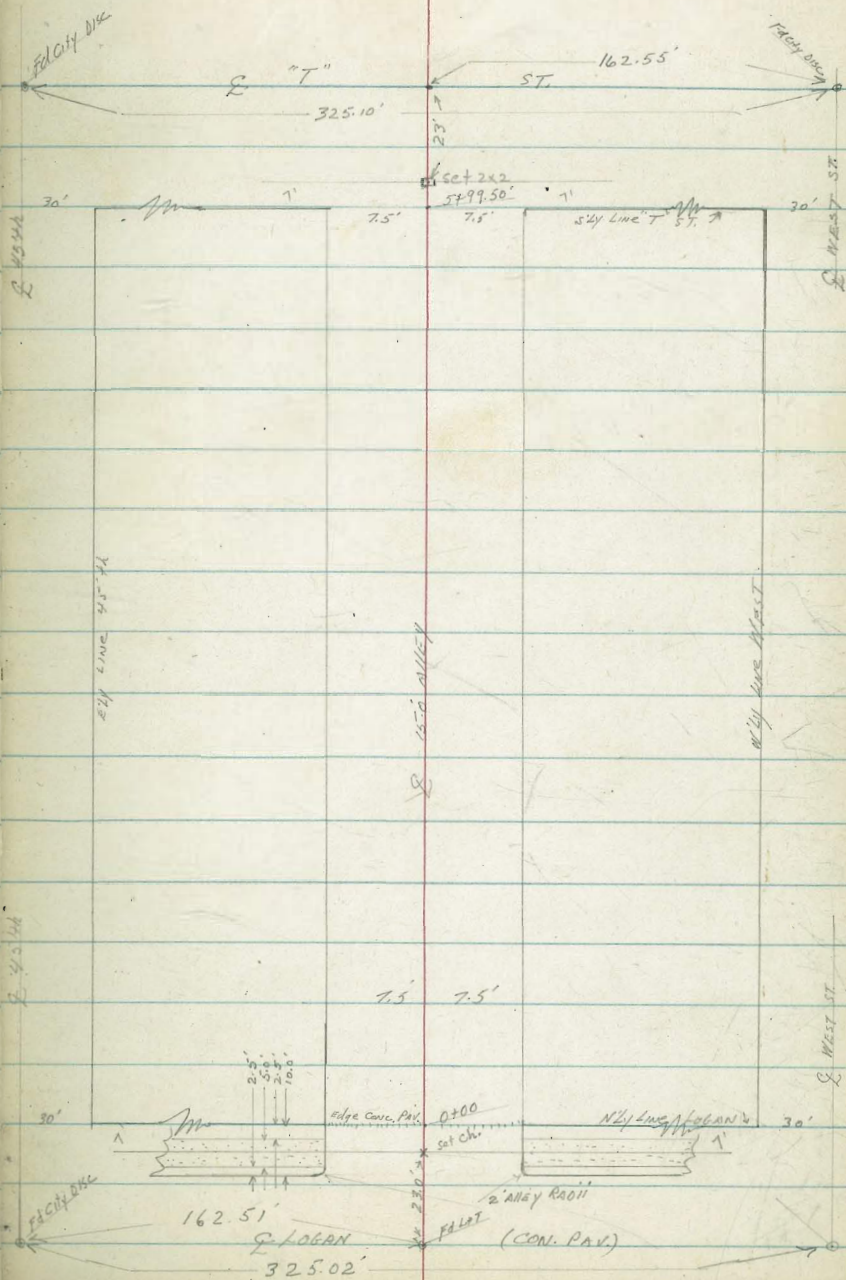
DATA: F.B. 2314 Pg 1
MAP: 100B

Notes: Pg. 19

Sketch not to scale:

INDEXED
RAW
MAY 10 1953

Reduced B.L.C.
5/27/53



X-SECT: ALLEY BKH ALTA-VISTA
 LOGAN to "T" ST.

(WLY) LT. ♀ RT. (ELY)

2+00

7.7 RT. END. Picket Fence
 7.8 RT. Beg 5' Board Fence

88.6 88.6 88.7 88.5 88.7
 4.7 4.7 4.6 4.5 4.6
 25 7.5 25 7.5 25

1+51

6.6' LT ♀ Pole # TP 275398

88.1 88.3 88.2 88.3 88.5
 5.2 5.0 5.1 5.0 4.8
 25 7.5 25 7.5 25

1+50

1+25

7.7 RT ♀ 2.0' CON. WALL

88.1 88.1 88.0 88.3 88.4
 5.2 5.2 5.3 5.0 4.9
 20 7.5 7.5 25 25

4.75 4.54
 7.7 25
 WALL

1+00

7.7 RT Beg 3' Picket Fence

0+90

15.0 LT end gate in warehouse

0+50

7.0' LT ♀ Pole # No Number
 15.0' LT to S.E. CORN. 2-CAR GARAGE FACING S'LY - CON. FLOOR
 4-STEP POLE
 (JERRY'S MKTS)

88.27 88.1 88.2 88.6 87.5 86.5
 5.04 5.2 5.1 4.7 5.5 4.8
 15. 7.5 7.5 7.5 15 25
 Floor

0+30

6.5' LT ♀ DEALMAN

0+00 = N 1/4 Line LOGAN = Edge CONC. Pav.

87.8 87.5 87.70 87.80 88.05 88.74 89.2
 5.5 4.96 5.61 5.57 5.26 4.57 4.1
 20 7.2 7.2 5.42 7.5 7.5 20
 CB G CB Pav. C CB

0-20 = 1/4 CB Line LOGAN

86.26 85.62 87.33 86.73 87.17 87.57 87.69 87.85 87.90 88.22 88.89 89.22 89.99 91.07
 7.05 7.67 8.38 8.38 5.14 5.74 5.71 5.46 5.41 4.74 4.42 3.89 3.72 3.74
 100 100 50 50 7.5 7.5 7.5 7.5 7.5 20 20 20 100 100
 CB G CB G CB C P1 C C C C C C C

0-30 = ♀ LOGAN

86.15 87.14 87.17 87.21 90.49
 7.16 6.17 5.44 4.84 2.82
 100 50 (CON. Pav) 50 100

B.M.

8.28

93.31

85.03 = LEVISE & LOGAN
 + 8.45' H

93.31

ALLEY BLK H (CONT.)

			LT	E	RT		
4447	7.4' LT Pole # P176187						
4425	7.6' LT E 12' gateway 1' wide conc. strip across gateway		88.04				
			5.92				
			7.6				
			Edge conc.				
4400	7.6' RT END 6' cyclone fence		88.5	88.5	88.4	88.7	88.9
	" " Req 3' " "		5.4	5.4	5.5	5.2	5.0
			15	7.5		7.5	2.5
3476	7.6' LT E 12' GATEWAY CONC. STRIP 1' wide across gateway		88.73				
			5.2				
			7.6				
			Edge 1' wide conc. strip				
3450			88.8	88.7	88.5	89.2	89.3
			5.1	5.2	5.1	4.7	4.6
			15	7.5		7.0	1.5
3419	7.7' LT Req 5' CONC. BLK WALL		87.5				
			6.4				
			7.7				
3417	7.9' LT E 2.0' CONC. WALL		88.45	88.44			
			5.49	5.50			
			2.5	7.9			
			WALL	cup			
3416	8.5' LT END Shed						
3400	8.3' LT SIE CORN. SHED - CON. FLOOR		88.5	87.5	88.6	88.5	88.7
	7.65' RT END cyclone Req 6' cyclone		5.4	6.1	5.10	5.4	5.2
			2.5	8.3	8.3	7.5	
				FTB Floor			
2475	7.7' RT E 3/4" CONC. WALL					88.9	88.6
						5.0	4.3
						7.5	2.5
2474	7.0' LT Pole # P75833					5.01	4.54
						7.7	2.5
							WALL
2450	7.7' RT Req cyclone (#) fence		87.8	88.3	88.4	88.6	88.7
	7.7' RT END 5' BOARD FENCE		6.1	5.6	5.5	5.3	5.2
			5.0	7.5		7.5	2.5
T.P.	5.30	73.94	4.67	88.64			
					93.94		

7.6 RT END 5' Conc. BIK WALL.
 7.6 LT END 6' Board Fence.
 5799.47 = 5'x Line "T" ST. (unimproved)

86.9 87.3 87.2 87.7 86.7 87.8
 4.0 3.6 3.7 3.5 4.2 3.1
 2.0 7.5 7.5 7.5 7.6 2.0
 FTG WALL

T.P. 3.59 90.88 6.65 87.29 90.88 ✓
 ↑

5750 { 7.9 LT Bay 6' Board Fence
 7.8 LT END 4' Board Fence
 7.8 RT Bay 5' Conc. BIK WALL
 7.4 RT END 1' Conc. Coping + 4' Cyclone Fence
 5719 { 7.8 RT E 4' cyclone Fence, top of Conc. Coping
 7.5 RT Edge 1' wide Conc. Coping
 15.7 RT end 2-car garage

87.0 87.2 87.3 86.3 86.9 87.4 87.5
 6.9 6.7 6.5 6.5 6.5 6.5 7.1 6.4
 15 7.5 7.4 7.4 7.5 7.8 15
 TO FTG WALL WALL ahead
 87.09 86.56 87.33
 6.85 7.38 6.61
 TO WALL FTG WALL 15.7 Floor

5701 15.8 RT Bay 2-car garage, Con. Floor - NO apron

87.29
 6.65
 15.8 Floor

5700 { 7.6 LT Bay 4.5 Board Fence
 7.8 RT END 4' Cyclone Fence

86.2 86.7 86.4 86.8 86.9 87.0
 7.7 7.2 7.0 7.1 7.0 6.9
 2.5 7.5 7.0 7.0 7.5 2.0

4470 { 7.8 RT Bay 4' cyclone Fence
 12.6 RT END apron 2-car garage 15.7 to Floor

87.39 87.59
 6.55 6.35
 12.6 15.7 Floor
 UP

4451 12.6 RT Bay apron 2-car garage 15.7 Con. Floor

87.38 87.61
 6.56 6.33
 12.6 15.7 Floor
 UP

4450 7.6 LT END 5' Conc. BIK WALL
 7.6 RT END 3' cyclone Fence

87.7 86.9 87.7 87.2 87.4 87.4
 6.2 7.0 6.2 6.7 6.5 6.5
 2.5 7.6 7.5 7.5 7.5 1.5
 FTG WALL 73.94
 ↑

LT. £ RT.

CHK: 6.56 85.05 = 85.03 (see B.M.
0919)

T.P. 484 91.61 4.11 86.77

6+29.47 = $\frac{1}{2}$ T ST
+ = 2 M.H

86.4
4.5
50

87.41
3.49
R.M.
M.H

87.5
3.1
50

6+17.5 EX. DIST. GUTT.

86.1
4.8
50

86.4
4.5
75

86.5
4.4

86.6
4.3
75

87.1
3.8
50

6+15 BRK

87.2
3.7
25

87.1
3.8
25

87.1
3.8

87.3
3.6
75

87.7
3.2
25

6+16.5 10' LT. & Pole P75832

Roberts
Cota
Moore
Marler
6-2-53.

Additional Notes on Intersection

45th & T Streets

WA #32251

See Page One

0-66 30" North & 3' Conc. Walk

INDEXED

JUN 3 1953

0-50 Gutter Edge of 1' Roll Curb

0-39 West Edge Paving Strip

0+00 East Line 45th Street (See Page 3)

T&N

481

90.41 T

85.60

& City Rise
45th & T

90.41 T

North



86.02
439
40
conc

85.82
459
302
conc

{ Gutter 4.82 - 85.59
BC { Curb 4.56 - 85.85

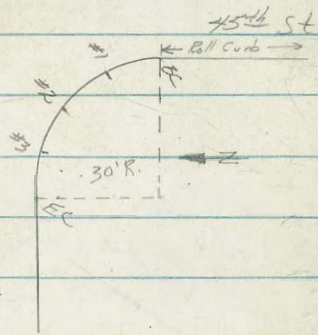
#1 curb 4.66 85.75

#2 curb 4.74 85.67

#3 curb 4.82 85.59

EC curb 4.87 85.54

75' L



South



85.6
48
100

85.5
49
50

85.4
50

85.59
482
46
gutt

85.85
456
46
cb

91.576
465
100
gutt

86.06
435
100
cb

85.81
460
100

85.69
484
50

85.51
490

85.69
483
50

86.58
467
100

Cont'd From Page 23

North
M

Q

South
M

24

-1-80

85.9	85.3	84.2	83.9	84.1	83.9	84.60	84.5
5.1	6.2	6.5	6.3	6.3	5.8	5.9	5.9
35	30	25			16 ⁺ Gutt	16 ⁺ Cb.	252 Fence

0-80

opposite Curb Return EC.

85.9	85.8	85.2	85.1	84.9	85.54	85.7	
4.2	4.6	5.2	5.3	5.5	4.87	4.7	4.7
	30	22		15 ²⁵ Gutt	15 ²⁵ Curb	30	31 ² Horse

90.4/π

90.4/π

INDEXED
JUL 30 1953

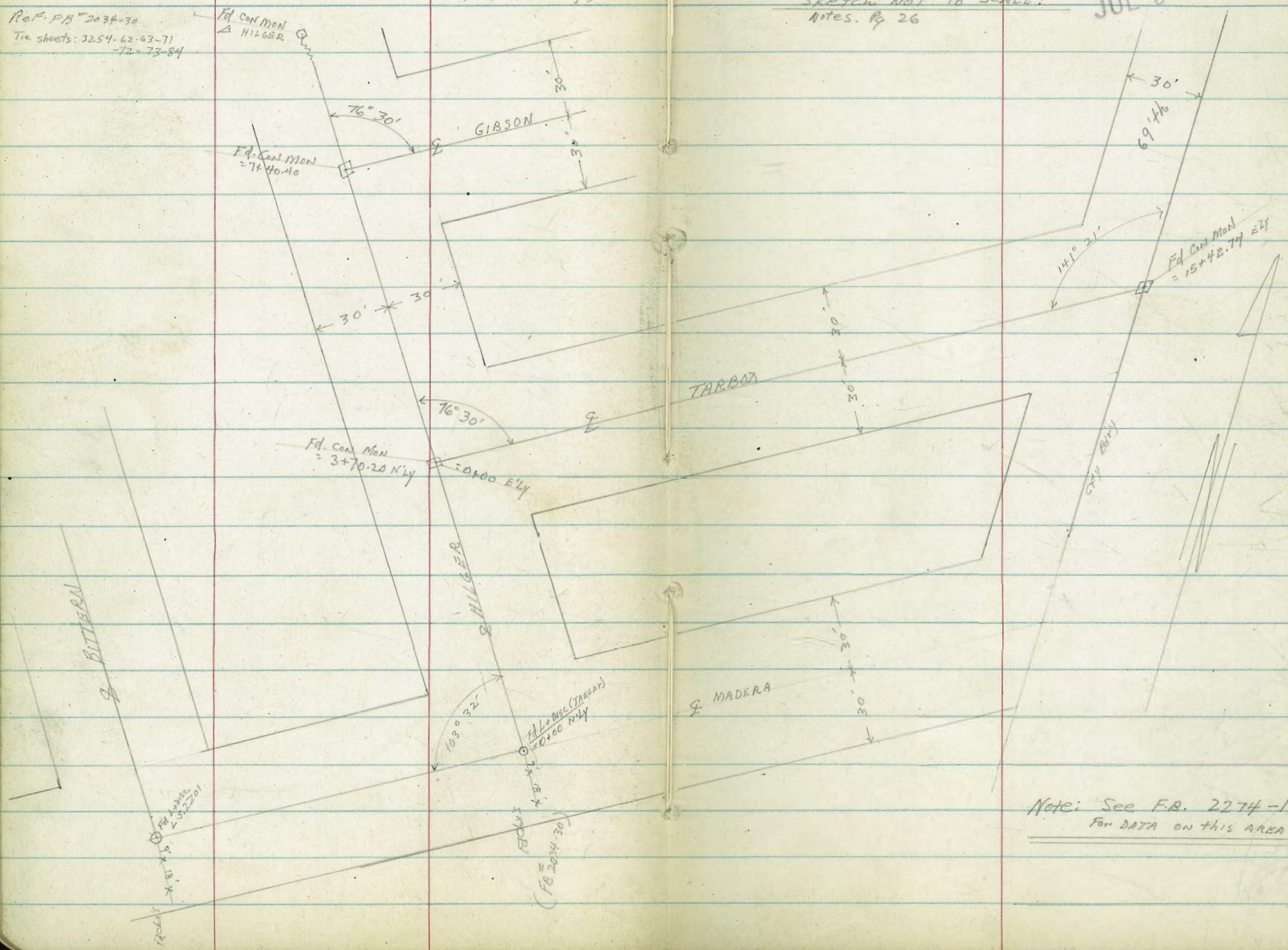
Clark
Shepherd
Brewer
Owens
7-28-53
W.O. 32294

X-SECT. HILGER-MADERA to GIBSON
Y-SECT. TARBOX - HILGER to 69.46

NOTE: For ADDIT. INF. this AREA - See F.A. # 2274 - Pg 1-38
(Sewer Survey)

Sketch not to scale:
Notes, Pg 26

Ref. F.B. # 2034-30
Tie sheets: 3254-62-63-71
-72-73-84



Note: See F.A. 2274-1
For DATA ON THIS AREA

X-SECT HILGER
MADERA to GIBSON

LT.

E.

RT.

0+91 30 RT E 16" Pepper Tree

0+74 220 LT E Pole # D32899T

0+50 21.5 LT E Deadman

284.0	281.9	280.8	279.7	280.2	280.5	278.9
3.7	5.8	6.7	8.0	7.5	7.2	8.3
50	30	4		18	30	50
	PL				PL	

0+30.8± Sect. along Line MADERA

281.7	280.3	278.6	278.4	279.0	279.5	278.9
6.0	7.4	9.1	9.3	8.7	8.2	8.8
50	30.8±	7		20	30.8±	50
	PL				PL	

0+30 11.5 LT E Water gate

0+22 19 LT E Deadman 33 LT E Pole # P76613

0+20.3± Sect. along Edge Conc. Pav.

276.43	277.19	277.41	277.65	278.13	278.58	279.97
11.22	10.46	10.24	10.00	9.52	9.07	7.68
100	50	30.8±	100	30.8±	50	100
		PL		PL		
			pav. edge			

0+00 Sect. along E. MADERA

276.75	277.54	278.10	278.91	280.31
10.90	10.11	9.52	8.74	7.34
100	50		50	100
		conc. Pav.		

T.P. 2.29 287.65 11.08 285.36

287.65

(0+00 = Lt Disc E. HILGER + MADERA)

Ex. MAN = 0+00 Sewer Survey = 1.9' Ahead Lt Disc

Note: See sketch Pg 1 - F.P. # 22.71

B.M. 1.64 296.44

294.80 = CON. MON
E. HILGER + TARBOX

HILGER (CONT.)

LT. ♀ RT

3+00

(Soil-sample taken here)

292.7	291.9	291.2	292.5	293.7	295.5	297.7	298.2
5.2	6.0	6.7	5.4	4.2	2.4	0.2	10.3
10	30	11		19	21	30	50

2+50

289.7	289.1	288.9	290.3	291.4	292	294.5	296.9
8.2	8.8	9.0	7.6	6.5	4.7	3.4	1.0
50	30	14		18	20	30	50

2+25

22' LT ♀ Pole # P76618

287.9	287.1	288.5	288.2	288.6	290.0	291.3	294.4
10.0	10.2	9.4	9.7	9.3	7.9	6.6	5.5
50	30		2	20	21	30	50

2+00

1+64

32.0' LT ♀ 944 - Con Fl.

1160
32
Cm. P. Elev

287.2	285.8	285.9	286.7	287.6	289.1
10.7	12.1	12.0	11.2	10.3	8.8
50	30		20	30	50

1+50

T.P.

10.51 297.92 0.24 287.41

297.92
1

1+14

30.9 RT ♀ 15" Pepper Tree

1+03

30.2 RT ♀ 3" Pepper Tree

285.3	283.1	284.0	283.6	284.1	284.9	285.0	285.7
2.4	4.6	3.7	4.1	3.6	2.8	2.7	2.0
50	30	1	20	21	30	30	50
	ML				PL		

1+00

287.65

HILGER (CONT.)

LT.

E

RT.

5454 68.5 LT E 94K CONF 65 LT Conf Apron

303.37	303.27
5.23	6.08
68.5	65
PL/PL	apron

5450

303.7	304.4	305.5	304.9	305.9	309.3	310.5
5.6	4.9	3.8	4.4	3.4	0.0	+1.2
50	30	11		22	30	50

5426

21 LT E P/6 # JP 392394

5400

300.5	300.8	302.7	302.0	303.1	306.5	307.6
8.8	8.5	6.6	7.3	6.2	2.8	1.7
50	30	5		24	30	50

4450

296.9	296.7	300.2	299.8	301.0	303.6	307.9
12.4	12.6	9.1	9.5	7.8	5.7	4.4
50	30	4		25	30	50
	PL				PL	

4111

21.2 LT E P/6 # P76619

4+01.05+ = N'ly Line TarBox (")

293.3	293.1	293.3	297.3	296.9	300.0
16.9	16.2	16.0	12.0	12.4	9.3
50	30	27	4		30.85
					PL

T.P.

12.30

309.30

0.92

297.00

309.30

chk: E man (see B.m)

3.10

294.82 = 294.90

293.2	293.6	294.3	295.7	298.2
4.7	4.3	3.6	2.2	+0.3
50	30	14	0.8	30.85
			0.8	PL

3+170.20 = E TARBOX

(")

292.7	293.2	294.3	295.2	297.1	298.1
5.2	4.7	3.6	2.7	0.8	+0.2
50	30		19	22	30.85
					PL

3+39.35+ = S'ly Line TarBox (sect along line TarBox)

297.92

HILGER (CONT)

LT. E RT.

CHK: F MAN GIBSON
+ HILGER

#73 315.38 - 315.32

7+40.40 = E Gibson

311.2	312.8	310.4	319.3	322.5
8.9	7.3	3.7	0.8	+2.4
50	30.85±	0HT	30.85±	50

7+32 21.6 LT & Pak #P171173

7+09.55± = Sly Line Gibson (sect Along Line Gibson)

311.6	314.4	313.9	314.4	315.4	316.3	317.8	320.9
8.5	5.7	6.2	5.7	4.7	3.8	2.3	7.8
30	3		20	21	24	30	50

7+00

309.5	311.0	313.1	313.2	313.2	313.6	314.5	314.9	317.4	318.9
10.6	9.1	6.4	6.9	6.7	6.5	5.6	5.2	2.7	1.2
50	30	45	2.5	6.7	20	21	25	30	50

6+50

307.4	309.1	311.2	310.8	310.6	310.9	314.3	316.4
12.7	11.0	8.9	7.8	7.5	9.2	5.8	3.7
50	30	6	3	5	24	30	50

6+42

21.5 LT & Pak #P 76625

6+00

27.7 17g 2.0 Can WALK

304.61	304.74	301.4	302.6	306.0	308.3	308.5	307.9	309.1	311.9	313.1
16.5	15.32	13.7	13.50	13.31	11.8	12.6	12.2	11.0	8.2	7.0
50	50	30	30	27.7	6	35		25	30	50
WALK	WALK	WALK	WALK	LIP						

T.P.

11.61 320.11 0.80 308.50

320.11

5+68

25.5 LT & 18" Pepper Tree

X SECT. TARBOX
HILGER to 69th

LT

E

RT

3042.3 3042.6 303.70
7.02 8.99 9.55
35.6 35.6 50
HIP E. R.H. E.R.H.

1+44 35.6 E Ribbon Dr (3' con. Rd) 93 RT to 94V
1+43 21' LTR 5" Pepper Tree
1+35 28.8 RT END BOARD Fence - Beg 5' Wire Fence

T.P. 8.34 313.25 2.17 304.91

313.25
/

1+00

306.9 306.3 305.7 303.6 303.3 304.1 302.9 302.1
0.2 0.8 1.4 3.5 3.8 3.0 1.2 5.0
50 30 24 22 3 30 50

0+96 28.8 RT Beg 5' Board Fence

0+92 53.1' LTR 2' CON. WALL

301.87 301.87
5.21 5.21
53.1 63
HIP WALL

0+66 22 3' RT & Pole # P76620

0+50 22 RT E Deadman

302.1 302.3 301.7 300.5 300.1 300.6
4.4 7.8 5.7 6.6 7.0 6.5
50 30 25 23 2 30 50

0+47 22' RT E Deadman

0+30.85+ = Ely Line Hilger (cont along Hilger)

300.5 299.8 298.1 296.1 299.1 297.8
6.6 7.3 9.0 9.0 8.0 9.3
308.5+ 28 3 5 30.85+

0+01 28.3 LT Beg 5' Wire Fence (Cacti growing along fence)

295.7

0+00 (See Page 28 For Hilger)

11.7

DNT

Note: E MON HILGER & TARBOX - 0+00 to FACILITATE Proposed Sewer Survey - F.B. 2274 - Page 28

B.M. 12.28 307.08

294.80 E MON HILGER
& TARBOX

307.08
/

TARBOX (CONT.)

T.P. 5.89 315.69 3.45 309.80

315.69

3700

314.4	312.9	310.9	309.4	309.2	308.7	306.9	305.8
+1.2	0.3	2.3	3.8	7.0	4.5	6.3	7.4
50	30	16	14		8	30	50

2491 31.0 RT 2 Ribbon Dr (2' under RR) 87.5 RT to par.

6.25 6.3 8.77
31 31 89.5
WLP 4P 5 Fl. conc.

2480 21.3 RT Pole P 76621

2479 29.9 RT END WIRE FENCE

2476 21.5 LT 18" Pepper Tree

2453 21 LT 12" Pepper Tree

2450

312.9	312.1	310.1	308.7	308.4	307.7	306.4	306.6	305.4
0.3	1.1	3.0	4.5	7.8	5.5	4.8	6.6	7.8
50	30	16	14		7	8	30	50

2400

312.2	309.7	308.9	307.5	307.1	306.7	304.7	305.1	304.5
1.0	3.5	4.3	5.7	6.0	6.5	5.5	7.5	8.7
50	30	16	15		5	6	30	50

1487 21 LT 18" Pepper Tree

1480 29.5 LT END WIRE FENCE

1450

308.6	308.0	306.3	305.8	305.8	305.9	304.2	303.6
4.6	5.2	4.9	7.4	7.4	7.3	7.0	9.6
50	30	20	17		5	30	50

313.25

TARBOX (CONT.)

LT. E RT.

5+11 { 19.8 LT E 24" Pepper
22 RT E 8" P. Tree

315.5
314.1 313.2 312.9 311.3 311.0 310.6 310.1 310.7 309.5 308.6
22 1.6 2.5 2.8 4.4 4.7 5.1 5.6 5.0 6.2 7.1
50 33 32 30 8 6 14 16 30 50

5+00 22 RT E 8" Pepper Tree

4+93 19.3 LT E 24" Pepper Tree

4+58 20.5 LT E 24" Pepper Tree

4+50 11.2 LT E 9" Pine

317.6 314.4 312.6 310.6 310.2 309.7 310.1 309.0 307.9
+1.9 1.3 3.1 5.1 5.5 6.0 5.6 6.7 7.8
112 50 30 9 13 14 30 50
H

4+28 22 RT E 18" Pepper Tree

4+23 21.5 RT E P. Pale # P. 78737

4+07 20 LT E 24" Pepper Tree

4+00

313.4 312.7 310.6 310.0 309.9 308.3 307.5
2.3 3.0 5.1 5.7 5.8 7.4 8.2
50 30 10 11 30 50

3+63 20 LT E 20" Pepper Tree

3+50

313.1 312.0 309.8 309.2 304.7 307.9 306.8
2.0 3.7 5.9 6.5 6.0 7.8 8.9
50 30 10 11 30 50

315.69

TARBOX (CONT.)

		LT.	Σ	RT.
8+00		312.8 2.0 30	317.8 3.0 30	316.4 4.4 7
7+93	24.9 RT Beg 3' wire Fence		315.7 5.1	314.9 5.9 15
7+50		317.8 2.0 30	317.1 3.7 30	315.1 5.7
7+37	116 RT E 94r.			314.9 5.6 16
7+24	22.5 RT E Pole P 170306			315.2 6.7 30
7+00	(soil-sample taken here)			314.1 6.7 30
T.P.	7.72 320.76 2.65 313.04			312.1 7.7 15
6+54	29.2 LT END 4' wire Fence			312.1 8.7 50
6+50		317.7 3.1 30	316.8 4.0 30	314.8 6.0 7
6+00				314.2 6.6 16
5+74	22.5 RT E Pole #P76422			314.7 7.6 18
5+50				313.9 6.9 15
5+38	21.8' RT E 8" Pop. Tree			313.1 7.7 15
5+27	29' Lt Beg 4' wire Fence			313.1 8.1 30
	110' LT E 94r			312.1 8.7 50
				311.5 4.2 30
				311.5 5.2 16
				311.2 4.5 15
				311.2 5.5 16
				310.5 5.2 15
				310.5 4.6 16
				309.4 6.8 30
				318.9 3.2 110 DIRT H.
				320.76
				315.69

TARBOX (CONT.)

11+11 217' RT & Deadman
11+00

LT.	Q	RT.
323.2 3.6 50	322.3 4.2 30	321.2 5.6 17
320.7 6.1 16	319.5 7.3	318.8 8.0 9
		319.4 7.4 11
		318.5 8.3 30
		317.2 7.6 50

10+89 215' RT & Pole # P 76624

10+50

321.9 4.9 50	320.8 6.0 30	319.3 7.5 9	318.8 8.0 8	318.5 8.3	318.0 8.8 10	318.4 8.4 12	317.3 7.5 30	315.3 11.5 50
--------------------	--------------------	-------------------	-------------------	--------------	--------------------	--------------------	--------------------	---------------------

J.P. 9.49 326.79 3.46 317.30

326.79

10+00 29.7 LT END 3' Fence

322.2 7.4 50	320.5 0.3 30	318.1 2.7 8	317.6 3.0 7	317.6 3.2	317.1 3.7 14	317.4 3.4 15	316.6 4.2 30	315.8 5.0 50
--------------------	--------------------	-------------------	-------------------	--------------	--------------------	--------------------	--------------------	--------------------

9+50

320.7 0.1 50	319.2 1.6 30	317.3 2.5 7	316.5 4.3 6	316.4 4.4	316.0 4.8 15	316.4 4.4 16	315.7 5.4 30	315.0 5.8 50
--------------------	--------------------	-------------------	-------------------	--------------	--------------------	--------------------	--------------------	--------------------

9+00

319.6 1.2 50	318.2 2.6 30	316.4 3.9 7	315.9 4.9 6	315.9 4.9	315.5 5.3 15	315.9 4.9 17	315.2 5.6 30	314.4 6.4 50
--------------------	--------------------	-------------------	-------------------	--------------	--------------------	--------------------	--------------------	--------------------

8+60 22' RT & Pole # P 76623

8+59 25' RT END Fence

8+50

318.9 1.9 50	318.0 2.8 30	316.8 4.0 7	315.7 5.1 6	315.1 5.1	315.2 5.6 15	315.7 5.1 16	314.6 6.2 30	314.0 6.8 50
--------------------	--------------------	-------------------	-------------------	--------------	--------------------	--------------------	--------------------	--------------------

8+10 30 LT Beg 3' Wire Fence

320.76

TAR BOX (cont.)

LT. E RT.

14750					328.4 6.3 50	326.9 7.8 30	326.2 8.5	324.4 10.3 30	324.1 10.0 50			
14700					328.8 5.9 50	327.7 7.0 30	325.1 9.0	323.9 10.8 30	322.1 12.6 50			
13794	21	RT E Road main										
13781	29.6	LT Beg 5' wire Fence										
13766	21	RT E pole #	3716.76									
13750					328.5 6.2 50	327.6 7.1 30	325.8 8.9	324.3 10.4 30	323.2 11.5 50			
T.P.	881	334.67	0.93	325.86			334.67					
13700					327.0 40.2 50	326.1 0.7 30	324.8 2.0	324.1 2.7 30	323.6 3.2 50			
12750					325.5 1.3 50	324.2 2.6 30	323.3 3.8 9	322.9 3.9	322.4 4.4 9	322.7 4.1 10	322.3 4.5 30	321.2 5.6 50
12700					* 324.9 1.9 50	323.9 2.7 30	322.1 4.7 10	321.5 5.3 9	321.5 5.3 9	321.5 5.0 10	320.9 5.9 30	320.6 6.2 50
11773	27	RT E 8' Con. Drive	153	RT E 900'				320.14 6.62 27 4.9	320.13 6.66 30 4.9	319.85 6.94 30 4.9		
11750					324.6 2.2 50	323.0 3.8 30	321.0 5.8 8	320.7 6.1	320.5 6.3 9	320.9 5.9 10	319.1 7.7 30	318.6 8.2 50

326.79

TARBOX (cont.)

LT.

E

RT.

CHK: COMMON E TARBOX
4 E. LINE 694L

5.57 329.10 = 329.17

15142.77 = Man. E. Line 694L + E TARBOX (sect. along city side)

15132 30 FT. end 5' wire fence

14194.70 = W. Ly Line 694L (sect. along line)

330.7	330.9	329.2	321.2	326.3
2.0	38	5.5	7.5	9.7
100	48±	(RMT)	48±	100

330.4	330.0	327.4	326.5	324.0
4.3	4.7	7.3	9.2	10.7
75	48±		48±	75
	N 24° E.		54° TATTAN	
	TARBOX			

334.67

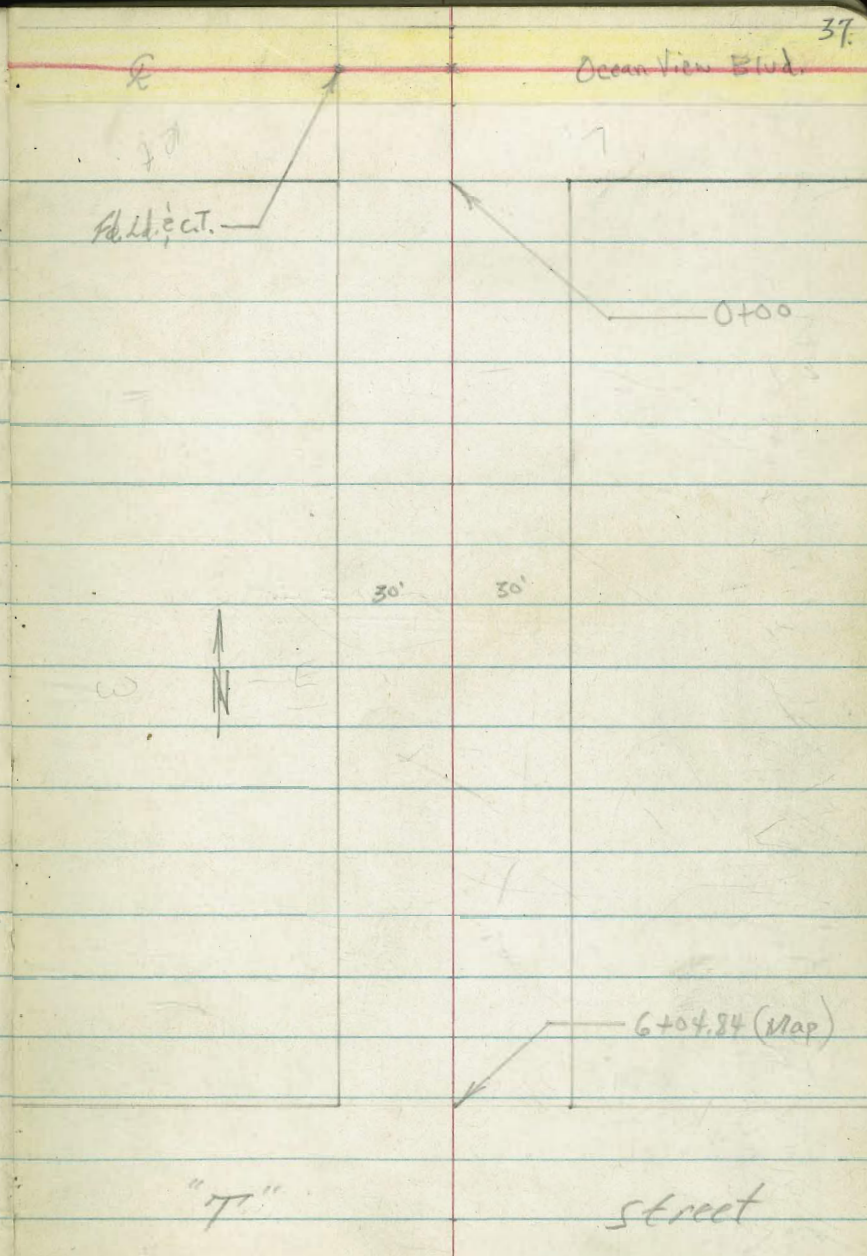
Roberts
Cota
Moore
Morales
12-21-53
W.O.# 31577

X-Section Elisabeth Street
Ocean View Blvd. to "T"

FB1574pg14 FB1047pg69

INDEXED
JER
DEC 24 1953

REDUCED by D. Chipman 1-25-54



Y Line From RE649 Disc in Logan

0+10 24² Lt to center Fire Hydrant

T.P. 2.61 76.57 T 2.00 73.96

Top of Hydrant

76.57 T

30.1 ft begin Rock wall
30.2 Lt begin conc. BK Ret. Wall

0+00 South line Ocean View Blvd.

Edge of this AC. Pav = E.

74.8	70.7	72.1	71.6	70.4	70.2	69.5	69.4	69.4	71.9
12.53	3.9	4.4	5.6	5.8	6.5	6.6	6.6	4.1	
30 ²	30	22	8	E	15	30	30 ²	30 ²	30 ²
Top	Foot				E.		Foot		Top

0-13

72.1	3	69.4	68.4	67.1
12.06	1.26			
3.9	4.7	6.1	7.7	8.9
50	30		30	50

0-20 So Edge Paving Strip

74.74	72.2	71.6	70.11	68.64	67.40	64.24
1.22	3.54	4.50	5.85	7.32	8.56	11.72
100	50	30		30	50	100

Q Ocean View Blvd. also E Paving Strip 0-30

74.77	72.52	71.56	70.18	68.73	67.52	64.41
1.19	3.44	4.40	5.78	7.23	8.44	11.55
100	50	30		30	50	100

T.P. 1.42 75.96 T 11.45 74.54

75.96 T

B.M. 055 85.99

c.t. on Q 450 and Q Ocean View Blvd. from west.

0+94.5 30⁹ Lt E 8 Single Drive

~~23.89~~
2.68
40
conc

~~11.95~~
4.62
30
conc

0+68 30⁶ Rt E 9 Single Drive

~~11.81~~
1.7

~~11.5~~
5.3

~~11.94~~
4.4

~~11.84~~
5.23
30
conc

~~12.62~~
4.05
40
conc

0+55 30^E Lt End conc BK Ret Wall

~~11.41~~
1.7
30^E
Top

~~11.53~~
5.3
30^E
Foot

~~11.44~~
4.4
30^E
GRD

~~11.41~~
4.2

~~11.94~~
5.7

~~11.6~~
6.1

~~11.5~~
6.1

~~11.0~~
6.6

~~11.3~~
6.3

~~11.3~~
5.3

0+50

~~11.41~~
4.2
30

~~11.94~~
5.7
19

~~11.6~~
6.1
E

~~11.5~~
6.1

~~11.0~~
6.6
15
E

~~11.3~~
6.3
22

~~11.3~~
5.3
30

0+49 30⁹ Rt E 9 single Drive

~~11.86~~
1.71

~~11.10~~
3.47

~~11.81~~
5.10

~~11.91~~
4.10

30⁹
conc

30⁹
conc

0+44.5 30⁴ Lt E 8⁴ single Drive

~~11.71~~
4.02
conc

~~11.47~~
3.47
30⁴
conc

~~11.9~~
5.7

~~11.8~~
5.8

~~11.1~~
4.5

0+43 29⁹ Rt End Rock Stone wall

~~11.81~~
5.7
29⁹
GRD

~~11.91~~
5.8
29⁹
Foot

~~11.1~~
4.5
29⁹
Top

0+18 25⁸ Rt to E 2⁸ Walk

~~11.24~~
6.33

~~11.91~~
6.10

~~11.57~~
6.00

~~11.91~~
4.60

25⁸
conc.

30
conc

31⁴
Bet. Steps

32⁸
Top Step

76.57

76.57

178.5 29^E Rt E 3 conc walk

~~71.8~~
~~71.5~~
~~72.0~~
~~72.5~~

71.09
5.48
29^E
conc

71.25
5.32
39^E
conc

1755 30 Lt begin conc block Ret. Wall

2.2 4.6 4.2
30 Top 30 Foot 30 GRD

~~73.7~~
~~73.6~~
~~72.7~~
~~71.5~~
~~71.2~~
~~71.2~~
~~71.3~~

70.7
70.0
70.9
71.2
5.9 5.6 5.7 5.4
17 22 30 40
E

1750

2.9 4.5 5.1
40 30 23

E

1743 30^E Lt END brick Ret. Wall

~~71.5~~
~~71.5~~
~~72.0~~
~~72.0~~
2.2 5.1 4.5
30^E Top 30^E Foot 30^E GRD

1722 21^E Lt E 4^E Brick walk

71.9
4.7 5.0
30 Brick 30 Brick
~~71.3~~
~~71.3~~
~~71.3~~
~~71.3~~
~~71.3~~
~~71.3~~
~~71.3~~

1705 30 Lt begin brick Ret. Wall

2.3 5.3 4.8
30 Top 30 Foot 30 GRD

~~73.4~~
~~73.4~~
~~72.9~~
~~71.8~~
~~71.3~~
~~71.3~~
~~71.3~~
~~71.3~~
~~71.3~~

1700

2.7 4.6 5.3 5.8
40 30 22 E

70.8
70.3
70.8
71.1
71.6
72.5
6.3 5.8 4.9 4.1
16 26 30 40
E

Cont'd From Page 40

2+50

71.87	73.17	72.42	71.92	72.62	71.98	71.87	71.87	71.87	71.87
18	34	42	47	45	459	52	50	50	50
40	30	23	14	E		17	20	30	40
						E			

2+45E 29E Lt E 8 Conc Drive

74.87	75.87
1.70	2.70
40	39E
conc	conc

2+31 26E Rt E 3 Conc Walk

71.53	71.57	71.59
5.04	5.00	4.98
26E	30	40
conc	conc	conc

2+135 27E Rt E 6E Conc Drive

74.87	75.87	76.87
4.99	5.04	5.33
27E	30	40
conc	conc	conc

2+06 29E Lt begin conc blk Ref Well

74.87	75.87	76.87
21	42	39
29E	29E	29E
Top	Foot	GRD

2+00.5 29E Lt E 10E Single Drive

74.61	72.79
1.96	3.78
39E	29E
conc	conc

2+00

71.87	71.87	71.87	71.87	71.87	71.87	71.87
38	51	49	49	55	53	55
30	14	8		17	30	40
		E		E		

76.57T

76.57T

3715 28^E Rt E 7 conc Drive

71.69	71.61	70.77
4.88	4.96	5.80
28 ^E	30	53
conc	conc	conc

3704 { 29^o Rt begin picket fence
28^I Rt End picket fence

71.72	71.72	71.72	71.72	71.72	71.72	71.72	71.72	71.72	71.72
1.8	3.2	3.9	4.3	4.3	4.3	4.9	4.8	5.0	5.2
40	30	24	13	7	7	15	20	30	40
				E		E			

3700

2793 30^I Lt E 8 conc walk

75.96	75.96
1.51	3.09
42 ^I	30 ^I
conc	conc

2774 30^I Lt E 3 conc walk

74.60	74.60
1.73	2.97
40 ^I	30 ^I
conc	conc

2769 28^I Rt begin picket fence

71.63	71.70	71.90
-------	-------	-------

2764 26^I Rt E 7 conc Drive

71.5	71.5	71.5
71.5	71.5	71.5
4.94	4.84	5.17
26 ^I	30	41
conc	conc	conc

2755 30 Lt End conc Pk. Pct. Wall

2.1	3.8	3.4
40	30	30
Top	Rt	GRD

76.57

76.57

Cont'd From Page 42

4+47 { 30.8 Lt & 8 conc Drive
27.5 Rt " 6.5 " " "

Lt	Rt	43
79.10	75.25	72.65
8.53	7.38	9.98
51	30.8	10.33
conc	conc	30
		54.7
		Floor

4+05 28^{1/2} Rt End of Picket fence.

76.18	75.58	75.98	72.98	73.18	73.28	72.68	72.98	72.58	71.98	70.98
6.5	7.1	8.8	9.7	9.5	9.4	10.0	9.7	10.3	10.7	11.7
40	30	26	13	7		17	19	27	30	40
				E		E				

3+94 30^{1/2} Lt & 10 Drive (Just Forms)

76.88	75.89	
6.15	8.74	
442	306	
conc	Form	
		72.07
		71.91
		71.29

3+63 27^{1/2} Rt & 7^{1/2} Conc Drive

10.56	10.72	11.34
27 ^{1/2}	30	40
conc	conc	conc

T.P. 10.40 82.63 ∇ 434 72.23

82.63 ∇

3+50

6X	1X	1X	1X	6X	6X	120	1X	8X	1X
7.8	7.8	7.8	7.2	7.2	7.2	7.2	7.2	7.1	7.1
1.8	2.5	2.9	4.2	4.1	4.0	4.6	4.5	4.7	5.0
40	30	28	12	11.8		1.7	1.9	3.0	4.6
						E			

3+36 28^{1/2} Rt & 3 Conc Walk

71.90	71.82	71.57
4.67	4.75	5.21
28 ^{1/2}	30	40
conc	conc	conc

76.57 ∇

76.57 ∇

		Lt				Q	Rt			
6704.84	No. Line "T" Street	81.9	80.8	79.2	78.4	78.0	77.6	78.0	77.6	76.5
		0.7	2.1	3.4	4.2	4.4	5.0	4.6	5.0	6.1
		50	30	20	7	E	16	22	30	50
5795	24 ^e Rt to center fire hydrant	78.8	75.7	76.6	76.0	75.9	75.5	75.0	74.5	
5750		4.1	5.1	6.0	6.6	6.7	7.3	7.6	8.5	
		40	30	28	21	E	18	30	40	
5746	28 ^e Rt Q 8 Conc Drive						74.95	74.8	74.05	
							7.70	7.79	8.55	
							28 ^e	30	40	
							conc	conc	conc	
5730	28 ^e Rt Q 3 Conc Walk						74.95	74.80	74.76	
							7.68	7.83	8.87	
							28 ^e	30	40	
							conc	conc	conc	
5700		76.8	75.6	75.0	74.6	74.7	73.9	74.6	75.8	75.5
		5.7	7.0	7.6	8.0	7.9	8.7	8.4	8.8	9.1
		40	30	23	11	E	18	20	29	30
							E			47
4750		77.1	75.3	74.8	73.8	73.9	73.2	73.1	72.3	70.5
		5.5	7.3	7.8	8.8	8.8	8.7	9.4	9.3	10.3
		40	30	28	14	E	17	20	30	40
							E			50

82.63A

82.63A

check

7.07 85.44 = 85.44

T.P.

6.90

92.51

3.48

85.61

City Disc
85.44 ET

T.P.

8.36

89.09

1.90

80.73

Hydrant
NE Corner

Q "T" STREET

plus 30

80.54	79.94	79.24	78.94				
21	27	34	37			77.6	
50	30	9				5.0	76.9
						30	57
							50
80.24	80.44	78.94	78.44	77.94	78.24	78.04	77.24
19	25	37	40	47	44	46	54
50	30	8		18	22	30	50

Street Line plus 10'

82.63 T

82.63 T

Roberts

X-Section 45th Street

Cost

Work

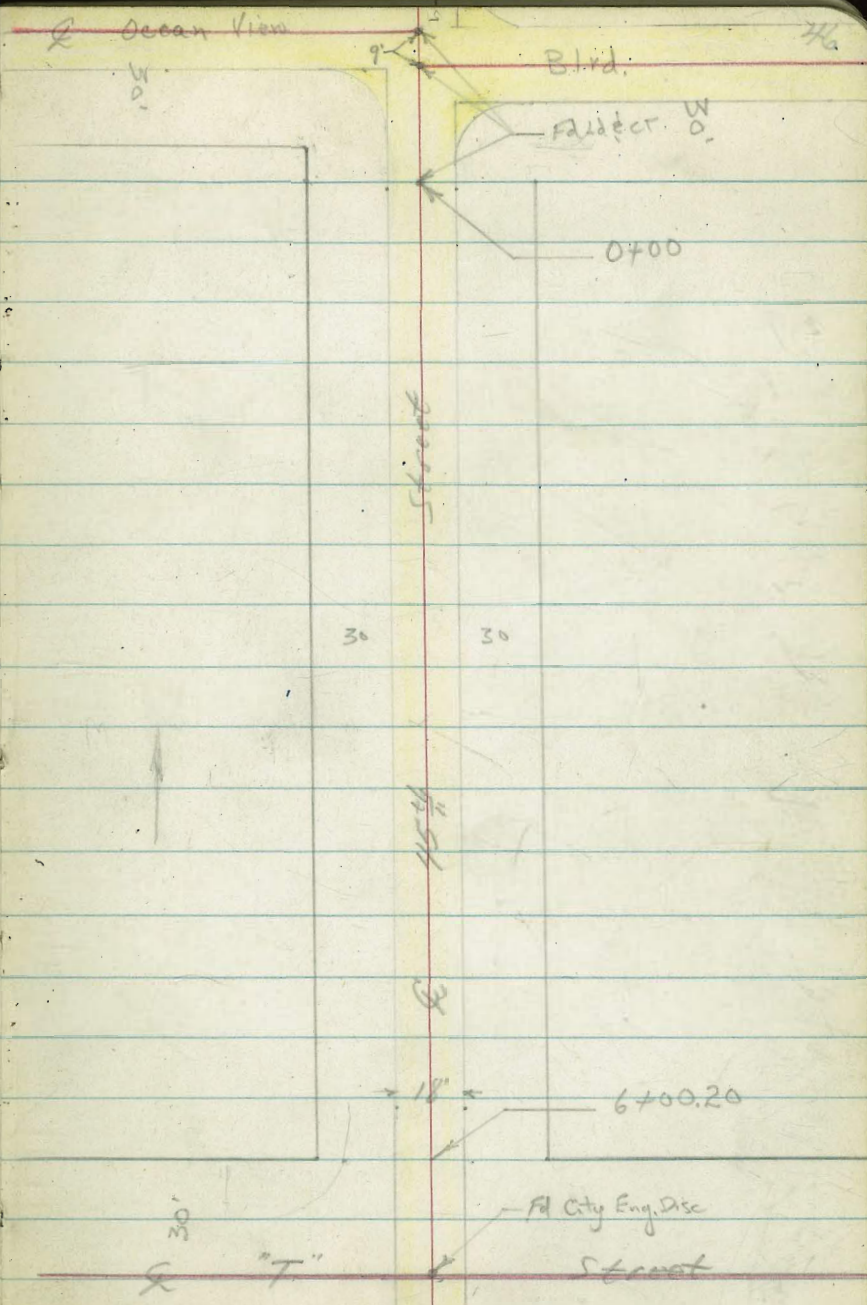
12-22-53

W.D. # 31577

Ocean View Blvd. to T Street

TR 24 pg 21

Reduced by D. Chipman 1-25-54



At City Eng. Disc

Street

W

W

0+02.5 { 29th Rt begin House
25th Rt to begin conc. slab (3rd wide)

86.14
532 525
25th 29th
conc conc

0+00 So. Line Ocean View Blvd from East

87.6
37 48 5.2 4.90 4.94
40 30 18 9

0-09 Pk. from West

86.27
519 545 56 61 65 68
9 15 20 30 40

0-20 So. Edge Pav. from East

88.35
3.11 4.85 5.44 5.59 5.45 5.50
100 30 30 24 9

0-29 So. Edge Pav. from West

88.74
570 596 638 666 756 991
9 22 30 50 100

Q Ocean View Blvd from East 0-30

88.8
3.11 4.88 5.49 5.80 5.75 5.75
100 30 30 23 9

BM 602 91.46 ∇

85.44 ^{Edge on Es} 45th St and Ocean View Blvd from West 91.46 ∇

Contd From Page 47

Lt

Q

Rt 48

1+00

91.44	91.44	91.5	91.5	91.5
71.0	0.0	2.8	2.43	2.32
40	30	14	9	

0+56.5 29th Rt Q 8 conc. Drive

91.76	91.76	91.2	90.7	89.6	87.8
+0.3	0.8	1.9	3.7	3.5	3.46
40	32	30	18	9	

0+50

0+47.5 22nd Rt to center Guy Pole

0+40 29th Rt End of House

0+14.5 25th Rt to End Slab

0+11 21st Lt to center fire hydrant

0+06

91.76	91.76	90.9	90.9	88.5	86.8
0.6	0.6	3.0	4.1	4.79	4.79
45	38	30	24	9	

91.76	91.76	91.5	91.5	91.5
3.81	2.92	4.0	4.1	4.5
40	30	30	40	40

86.25	86.25	86.33
5.21	2.52	2.92
40	30	40

91.46 T

91.46 T

Contd from Page 48

2+50. 292 Rt G 8 Conc Drive

Lt		Rt		49	
90.96	90.0	88.76	88.2	87.88	87.88
3.7	4.0	4.9	5.46	5.78	
40	30	15	29.2	40	

2+28 294 Lt G 3 Conc Walk

Lt		Rt	
90.14	90.14	89.5	89.2
3.52	3.60	4.5	4.39
40	29.4	14	9
Conc	Conc		

90.3	90.3	89.26	89.26	88.6	88.6
3.4	3.8	4.5	4.39	4.4	5.1
40	30	14	9	9	20

90.96	91.0	89.76	89.8	89.4	89.4
2.7	2.9	4.4	4.6	4.3	4.3
40	30	22	9	20	30

1+50

1+475 292 Rt G 2 Conc Walk

89.40	89.40	89.06	89.06
4.26	4.60	4.6	4.6
29.2	40		
Conc	Conc		

T.P. 460 93.66 T 2.40 89.06

93.66 T

1+03 30 Rt G 8 Conc Drive

89.10	89.10	88.78	88.78
2.36	2.68		
35	40		
Conc	Conc		

91.46 T

91.46 T

3754 216 Lt to center 10" Acacia Tree

3750

3749 30 Rt to center 40" Palm Tree

37215 293 Rt to center 36" Palm Tree

3711 217 Lt to center 8" Acacia Tree

3706 292 Rt Q 73 Conc Drive

3700 { 294 Lt begin wire fence
 Wat so good
 Begin walk on left. No good
 No good

274.5 292 Rt Q 3 Conc Walk

275.5 302 Lt Q 12 Conc Drive

87.4 87.2 87.1
 87.66 87.99 87.97 87.66 87.74 87.79 87.72 87.74 87.6
 6.5 6.0 5.67 5.69 6.0 5.92 5.87 5.94 6.1 5.5 5.9
 40 30 28 23 14 9 9 13 30 40
 Walk

89.0 88.8 88.59
 88.76 88.74 88.74 88.50 88.56 88.30 88.23 88.20 88.96 88.82
 5.70 5.84
 292 40
 Conc Conc
 88.0 87.6
 47 49 5.07 5.16 5.1 5.36 5.33 5.46 5.7 6.1
 40 30 29 24 17 9 9 30 40
 Walk

89.91 89.73
 3.75 3.93
 40 30
 Conc Conc

88.61 87.92
 5.65 5.74
 292 40
 Conc Conc

Cont'd From Page 50

4+51 23³ Lt End Walk on left

4+38.5 21³ Lt to center 14" Acacia Tree

4+26 19³ Lt ^{Near Edge} to center 6' Slab next to walk

4+17.5 22 Lt to center 24" Acacia

T.P. 456 90.95 π 7.27 86.39

4+00

3+98 29³ Lt End fence

3+97 21⁴ Lt to center 12" Acacia Tree

3+75 21³ Lt to center 14" Acacia Tree

93.66 π

~~86.3~~ Lt ~~86.5~~ ~~86.52~~ ~~86.4~~ π ~~86.76~~ ~~86.72~~ ~~86.4~~ R ~~86.1~~ ~~86.1~~ 51
 47 45 443 445 46 433 419 423 45 43 43
 40 30 282 237 17 9 9 15 30 40
 walk

96.72
4.17
192
conc

90.95 π

~~87.3~~ ~~87.3~~ ~~87.0~~ ~~87.0~~ ~~87.2~~ ~~87.2~~ ~~87.2~~
 6.4 6.4 6.7 6.43 6.33 6.39 6.7 6.5 6.5
 40 30 16 9 9 18 30 40
 woodlot

93.66 π

Cont'd from Page 51

Lt

♀

Rt

52

5+41 20³ Lt to center 15" Palm Tree

5+24 30 Rt ♀ 3² Conc Walk

5+22 20³ Lt ♀ 3 Conc Walk

5+00

4+84 23 Lt to center 10" Palm Tree

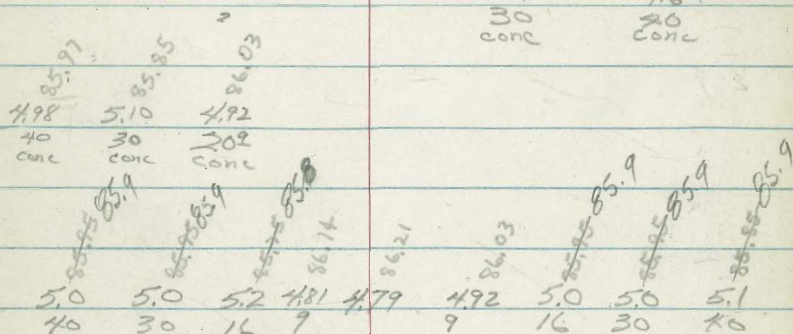
4+81.5 28² Rt ♀ 2' Conc Walk

4+67 27² Rt ♀ 3⁸ Conc Walk

④4+6.0 22⁶ Lt to center 12" Palm Tree

4+51.5 28² Lt begin wire fence

90.95π



86.18	86.28
4.77	4.67
30	20
conc	conc

86.55	86.44
4.40	4.51
28 ²	40
conc	conc

86.64	86.71
4.31	4.24
27 ²	40
conc	conc

90.95π

check

5.35 85.60 = 85.61

see pg 45 This F.B.

Q "T" Street

see X-Section T for Drains in Intersection

5.4	5.6	5.48	5.35	5.45	5.7	5.9
50	30	9	9	9	30	50



30' Lt End fence

6+00.20 No. Line "T" Street

5.3	5.3	5.42	5.33	5.42	5.2	5.5
50	30	9	9	9	30	50

5+87 21' Lt to center 12" Pipe

5+81.5 27' Rt Q 4" Conc Walk

4.99	4.99
27'	40'
conc	conc

5+73 30' Lt Q 3 Conc Walk

5.16	5.24
40	30
conc	conc

5+5 29' Lt End Wire fence begin cyclone fence

5.0	5.1	5.7	5.27	5.14	5.26	5.4	5.7	5.0
40	30	15	9	9	9	21	30	40

90.95 T

90.95 T

Cont'd From Page 53

Levels on "T" St.
45th to Elizabeth

(Project)
N. C. 140
(10 off Prop.)

54

3+00

80.3

2+50

81.8

2+00

82.9

1+50

83.9

1+00

84.7

0+50

85.1

0+00 @ 45th St.

85.60

(Direct Elevation Rod)

D. Smith
 J. Forer
 R. Taylor
 B. Fish

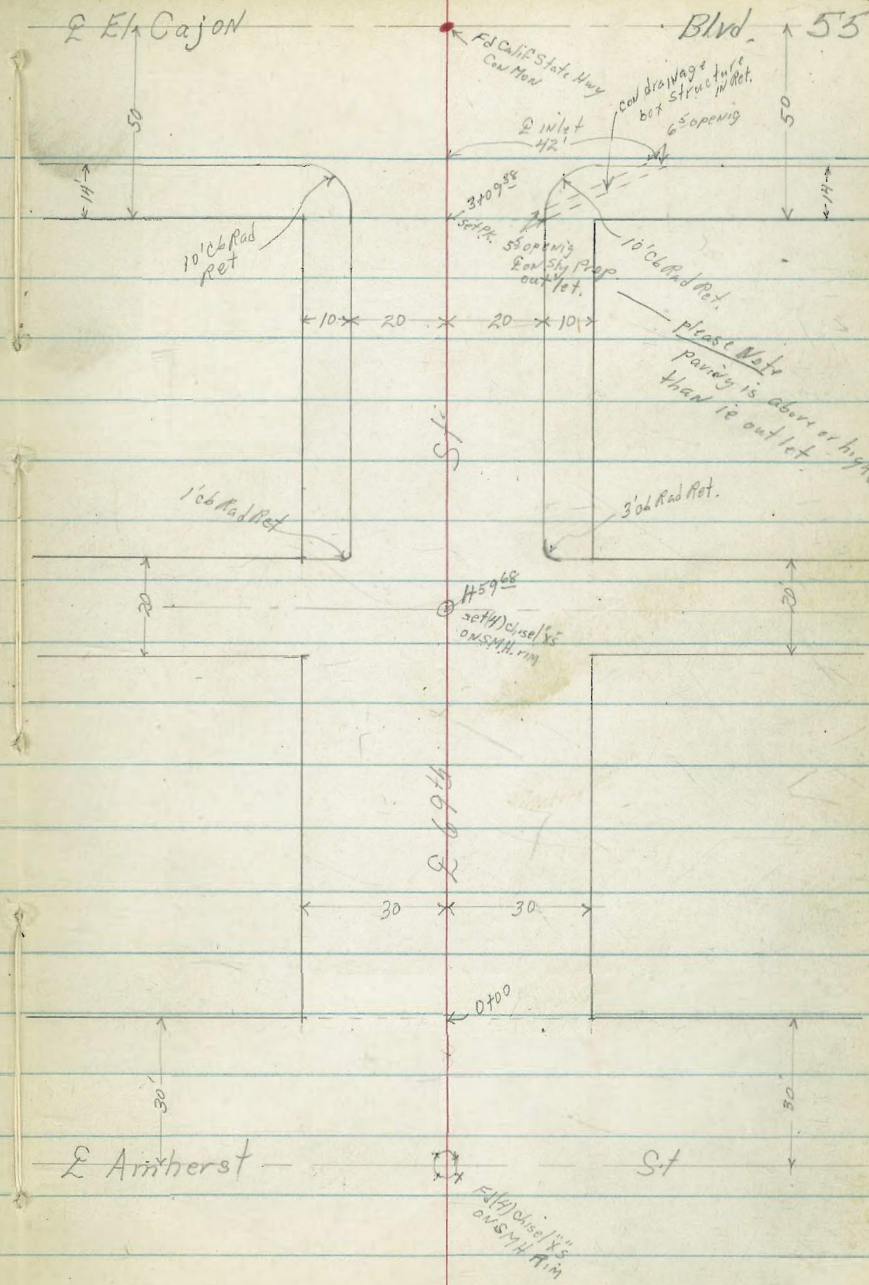
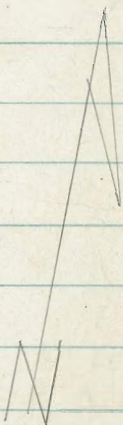
Cross Sec 69th St

Wot# 32410

7/15/54

Amherst to El Cajon Blvd.

INDEXED
 JUL 16 1954



Lt-Wly

2

Rt-Ely

1400

454 ²	453 ²	454 ²	454 ²	453 ²	454 ²	454 ²	454 ²	455 ²	455 ²
52	61	54	54	63	59	56	56	54	49
50	30	28	20	18	10		10	14	20

0493 21° RT 14' con drive

454 ²	455 ²
50	41
25	30

0470 21° RT 13' con drive

454 ²	454 ²	454 ²	454 ²	454 ²	454 ²	454 ²	455 ²	455 ²
54	58	57	64	61	58	59	52	46
50	39	19	17	10		13	20	30

0450

0440 18° RT 2° con walk

454 ²	454 ²	454 ²	453 ²	453 ²	453 ²	453 ²	454 ²	455 ²
58	58	56	65	63	62	63	62	53
50	30	22	20	10		10	15	20

0400 Nly Amherst St

454 ²	454 ²	454 ²	453 ²	453 ²	453 ²	453 ²	454 ²	455 ²
58	58	56	65	63	62	63	62	53
50	30	22	20	10		10	15	20

0-03 7° RT 2 Water MH

453 ²	453 ²	453 ²	453 ²	453 ²	453 ²	454 ²	454 ²	454 ²
64	63	65	62	58	58	57	54	53
50	30	20	10		10	20	30	50

0-20 Nly AC edge

453 ²	453 ²	453 ²	453 ²	453 ²	453 ²	454 ²	454 ²	454 ²
64	63	65	62	58	58	57	54	53
50	30	20	10		10	20	30	50

0-30 2 Amherst St and of approx 20' wide poor AC parking

453 ²	453 ²	453 ²	453 ²	453 ²	453 ²	454 ²	454 ²	454 ²
64	63	65	62	58	58	57	54	53
50	30	20	10	r.m.	10	20	30	50

BM

314 459⁸⁹

456⁷⁵ SWBP 694451 EICAN BLK

FB.2012 55

459⁸⁹

2+40

2+32 20° Lt & 18° con driveway

2+00

1491 30° Lt & 4° con walk

1487 20° Rt & 24° con driveway

1469⁶⁸ Nly Alleys

1454 11° Lt & 2° Rt con vault gas Co.

1459⁶⁸ E Alleys 1° Lt & SMH

1449⁶⁸ Sly Alleys

1449 27° Lt & 14° PPA 7/029

1421 26° Lt & deadman

Lt = Wly

455	457	455	454	454	457	457	457	457	457
42	43	42	54	5	42	52	40	44	38
50	30	20	20	10	10	20	20	30	50
		out	out			out	out		

Rt = Ely

148 450 516

455	455	455	455	455	455	455	455	455	455
42	42	48	5	54	5	52	48	43	40
50	30	20	20	10	10	20	20	30	50
		out	out			out	out		

455
1102
302
walk

455	455	455	455	455	455	455	455	455	455
44	491	53	505	58	53	53	55	473	52
50	20	30	20	20	10	10	20	20	20
	out	out	out	out			out	out	out

529

455	455	455	455	455	455	455	455	455	455
42	53	57	53	56	52	52	56	56	42
50	30	20	10	10	10	10	20	30	50

455	455	455	455	455	455	455	455	455	455
46	46	46	58	52	52	55	44	43	48
30	30	23	19	10	14	17	30	50	

459⁸⁹

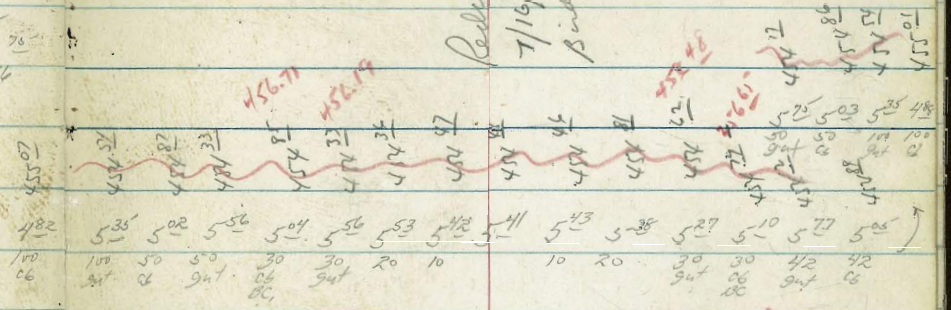
BM starting

500 456.75

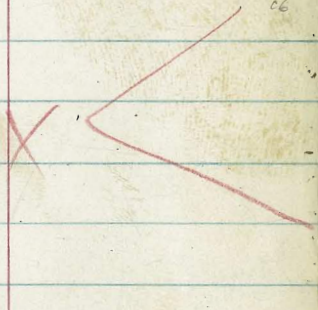
456.70
P9 34

Revised
7/16/54
Sinnel

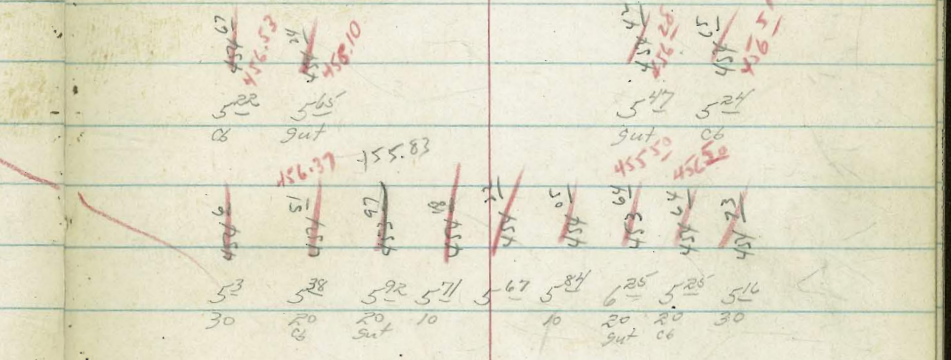
3423³⁸ Sly C6 Airt El Cajon Blvd.



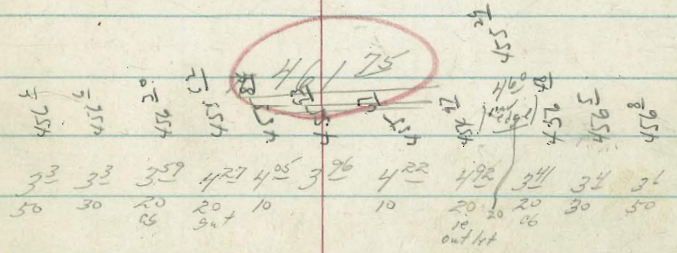
Mid Pt C6 Returns



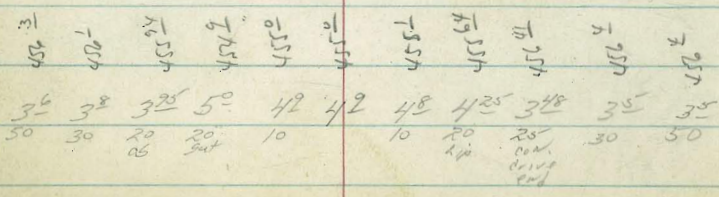
3413³⁸ Rt+L 20' BC C6 Returns



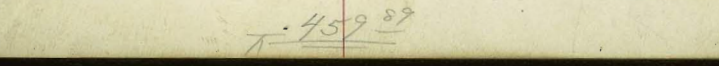
TP, 5²⁴ 461.76 3³⁸ 456.51



3409³⁸ Sly El Cajon Blvd edge AC paving

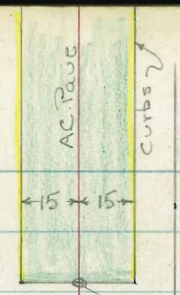


2780 20' Rt+L 20' cov driveway

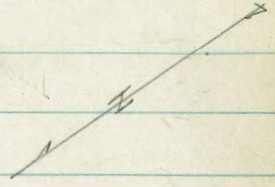


T = 459.89

INDEXED
 JER
 NOV 3 1954



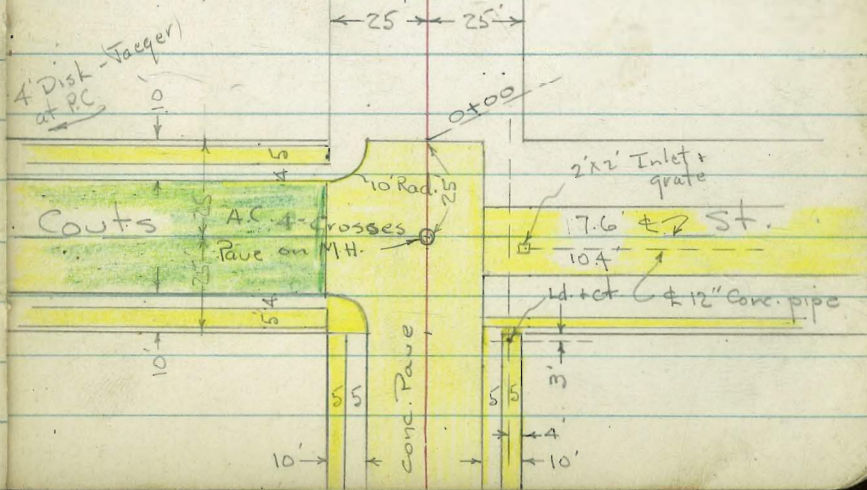
1+99.77 = 2" Pipe - RE 1534



St.

St.

25' 25'



X-Sept. Gray St. from Couts to SF.
 To New cbs. & Pave - for Paving Plans.
 W.O. 31764 - 10-28-54 - 7.0.

sketch - P. 59

0+00 = EL. Couts + end Conc. Pave - Beg. oil

0-07.5 - 16.5 Rt. = ϕ P. pole # P. 2149

0-10 = E. cb.

0-17.4 = edge Conc. Strip
~50

0-25 = ϕ

0-27.5 = 25.5 Rt. = ϕ of 2' x 2' Grate to inlet - 12"
Conc. Pipe to S.

0-35.4 = edge of Conc. Strip to S.

0-40 =

0-50 = W.L. of Couts

Set B.M. on S.W. ct. - Couts + Gray 241.47

Set B.M. on Pole - at Sub. - S. side 240.60

B.M. - N.E. B.P. at B.C. Arden 260.53

way + Orizaba

Lt. ϕ Rt.

43.66	43.48	42.74	42.40	41.85	41.6
on walk i.w.	Top	15.1 got.	on Sewer	15	25
			At H. Cor. Conc.		

42.10	45.44	43.46	42.70	42.40	41.75	41.45	41.0
Top	50 got	Top	25	15		15 edge Conc.	25

41.60	41.19	40.38	36.78
	15	25	50

45.66	43.00	42.36	41.56	40.94	39.88	36.60
50	25	15		15	25	50

39.73	37.00
25.5 Top grate	I.E. of Box

41.25	40.98	40.07	36.77
15	25	50	

45.35	44.78	42.46	41.89	41.69	41.42	40.95	40.1
Top	50 got	Top	25	15		15 edge Conc.	25
			got = end Conc. + Beg. A.C.				

42.67	42.05	41.92	40.82	41.23
Top	15		15 got.	Top

Actual Elev. Shown.

1+95-23 Lt. = ± 7' Dr. - 2-2' Conc. Strips

44.51 41.43

1+85-25 Rt. = ± 20' Gravel Dr. = B.M. = 240.60

48 23
Dr. Dr.

39.5 39.3
25 Dr. 40

1+68-17.2 Rt. = ± P. pole # J.R. 2119

1+64.5-25.5 Rt. = end Conc. Dr.

41.05 41.36
25.5 = Dr. 45

1+50

43.5 42.4 41.1 40.7
35 25 18
Lawn edge

40.5 41.35
15 25.5
edge

1+48.5-25.5 Rt. = Beg. Conc. Dr.

41.39 41.48
25.5 15
Dr. Dr.

1+31-20.5 Rt. = ± 4' Conc. walk

42.17 42.27 42.55
20.5 25.4 36
walk at step.

1+00

44.8 43.7 42.2 42.2 42.2 43.8 43.7
35 25 18 11 25 35
edge oil edge

0+72-25 Lt. = end Conc. apron

45.09
25

0+55-25 Lt. = Beg. Conc. apron to Doub. Gar.

47.42 45.62
40 25
floor

0+50

46.8 45.9 43.6 43.0 42.9 44.0 43.7
35 25 15 11 25 35
edge edge

0+25-28.1 Lt. = ± 3' Conc. walk

46.96 45.98 45.6 43.3 42.8 42.7 43.3 42.6
36.5 28.1 26 15 11 25 35
at step. walk Ben. Let. edge oil

Lt.

±

Rt.

2+50

40.22	39.77	39.97	39.27	39.76
Top	15 gut.		15 gut.	Top

New:
1 + 99.77 = Beg. obs. + New AC pairs

41.1	40.86	40.36	40.42	39.81	40.34	39.6
25	Top	15 gut.		15 gut.	Top	25

D. Smith
J. Rorer
R. Taylor
R. Hamilton

Cross Sec. Macaulay St
Plum to Willow

Wot 31462
12/1/54

Willow St

63

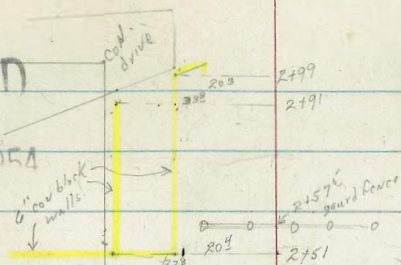
Ref FB-1705-67

FB 1777-22

Plan 11146-L pave plum + Newell st

Willow + Macaulay int still as
shown by Plan FB 1777-22 obs etc

INDEXED
MER
DEC 20 1954



70'

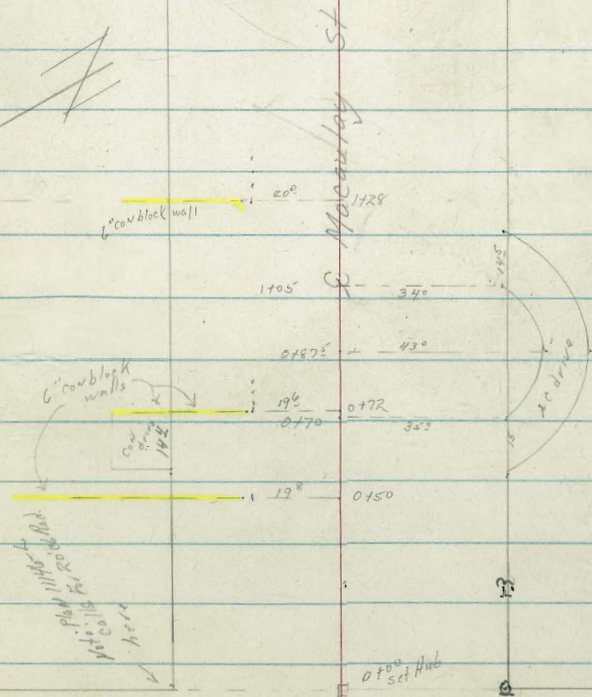
soil sample taken at Sta 2400 10' N of S
of E

Note: used 7x7 Man NW cor Macaulay + Plum
also NE prop Man Macaulay + Clove
these were used in construction of Plum + Clove

Prop Man NW cor Plum + Willow now covered
by a big private con driveway

Proposed 17' cbc
Plan 11146-L

Plum St



Lt=Mly.

Nt=Sty

64

0+45 23⁵ Lt E 10" PPA # JP3336

D+25

99.6	99.8	99.0	98.0	97.0	97.5	97.1	95.8	94.2	92.6	91.3	89.0
13	13	24	31	41	38	40	52	68	85	98	121
50	35	24	16	14		3	14	25	35	40	42

D+22 34⁵ Rt E deadman

0+10 } 322 Rt E 3' con walk
22² Rt E 3' Loose Brick walk

99.58	97.88	97.93	99.95
100	120	155	113
22	329	35	75

0+00 342 Rt E 10" PPA # 3337 Ely Live Plum

99.8	100.0	99.6	98.1	97.8	98.0	96.6	95.1	93.3	90.5
13	14	15	30	33	34	45	60	78	100
50	35	23	14		6	10	25	35	80

0-17 21² Lt. Begin Plow + bush planting

99.9	100.3	99.8	96.2	97.6	96.3	93.0	91.3
13	08	13	22	35	48	81	98
50	35	23	14		17	35	50

0-35 E Plum St

96.1	96.8	97.4	97.1	96.1	95.0	93.8	92.20
50	43	37	40	50	61	70	88
50	35	25	15		15	35	50

Note: the intersection of Plum + Maculay is under Plum St
construction grading going on at this time so dirt
may change.

BM

13⁸⁶

101⁰⁸

87²²

SWBP Plum
Lowell

101⁰⁸

1428 20° Lt to Sly end 6" con block wall L to line

LT-Nly 2 RT-Sly 65
88.87 92.08 89.38
119 120 02
20 20 20
Footing Wall 91

TR, 124 90° 1224 8884

Nail in PRL

1425 32° RT 12" PRL # 3327

92.1 92.3 92.04 89.8 90.4 90.5 90.3 89.2 88.6 88.8
92 88 90 113 102 106 108 112 125 123
40 35 21 20 11 8 13 38 50

1411 34° RT 14" AC drive

89.11 89.11 89.04
1127 1127 1209
34 35 45

1400

91.4 96.8 94.9 92.2 91.8 89.9 89.2 89.2 89.00
32 43 63 78 86 82 93 113 112 1187 1209
50 35 20 13 11 8 20 35 39 51
AC AC
420

0475

91.7 97.8 96.9 95.7 95.1 94.4 94.0 93.8 90.9 89.6 89.56 89.04
34 33 43 54 60 67 71 73 103 115 118 1204
50 35 25 20 15 11 7 28 35 39 51
AC AC
420

0472 19° Lt to Sly end 6" con block wall L to line

96.96 95.08 95.5
43 60 56
192 192 196
Footing Wall 91

0466 35° Lt 14" con drive

95.94 95.89 95.81
514 519 527
505 48 35
Floor

0461 35° RT 15" AC drive

90.28 88.96 89.11
1020 1225 1197
35 51 58
AC AC
420

0450 19° Lt to Sly end 6" con block wall L to line

96.2 96.3 97.2 95.77 96.2 95.9 95.8 95.9 95.0 93.0 91.4 88.9
42 48 34 52 42 52 53 58 61 81 92 123
50 35 192 192 20 13 8 12 25 35 50
Footing Wall 91

10108

2450

2432 62° N+E single garage

con floor & apron

2425 34° N to Nly end 3⁵ high board fence to line

2400

1475

1460 21⁵ 11.2 8' 4.1 10.6 # 39758H

1450

1436 38° L+E 14' con drive

Lt = Nly Rt = Sly

75.1	76.9	74.4	79.3	79.8	80.2	80.3	80.3	79.8	79.2
15°	13°	11°	10°	10°	9°	9°	9°	10°	10°
50	35	20	10	8		12	25	35	30

76.4	80.0	80.9	81.6	82.1	82.2	81.8	79.9	79.3	79.0	80.42	80.57
11°	10°	9°	8°	8°	7°	8°	10°	10°	11°	9°	9°
50	35	20	11			12	25	35	50	60	62 64 65

Grand Floor

74.4	81.3	82.1	82.6	82.5	81.9	82.7	82.1	81.3
10°	8°	8°	7°	7°	7°	7°	8°	8°
50	35	20	12	10		17	35	50

84.1	83.1	83.9	85.1	83.1	85.1	84.2	83.4	82.6
6°	5°	4°	5°	5°	5°	5°	6°	7°
50	35	15	9		16	25	35	50

87.3	87.5	87.5	87.3	87.3	87.1	86.1	85.1	84.8	83.7
2°	2°	2°	2°	2°	3°	4°	5°	5°	6°
50	35	25	10		10	15	25	35	50

89.2	89.3	89.0	88.9	89.0	88.8	87.6	86.7	86.0	84.1
0°	0°	1°	1°	1°	1°	1°	2°	3°	4°
50	35	20	10		9	14	25	35	50

89.78	89.68	89.77
0°	0°	0°
48°	42°	38°
Floor	84	

90.08

Lt=Nly

Q

Rt=Sty

67

BM starting pg 63

104 87²²

87²²

TP₃

846 88⁸⁶ 676 80⁴⁰

See FB 1777 pg 22 for Willow & Macaulay Sts intersection. is the same no cb or dirt

(willow)

is closed or assumed to be closed to Nly

change of note just new house drive + garage

2485

3 to 13⁶ Lt & dead man

2497 Rt & 16" P.P. 1/4 P1730

2475

70.9	72.68	74.37	75.1	72.4	74.6	74.8	72.2	70.4	71.3	76.6	76.9	77.2
10 ⁸	8 ⁴⁸	6 ⁸³	8 ⁴	8 ⁸	6 ⁶⁴	9 ⁰	10 ⁸	9 ⁹	4 ⁶	4 ³	4 ⁰	
36	20 ²	20 ⁴	20	14	10	4	12	25	32	35	50	

footing wall
top
sh

72.2	72.2	73.9	74.9	75.7	76.0	76.4	76.6	76.2	71.2	71.4	78.0	77.6	77.0
9 ⁰	9 ⁰	5 ³	6 ³	5 ⁵	5 ²	4 ⁸	4 ⁶	5 ⁰	4 ⁰	3 ⁸	3 ²	3 ⁶	4 ²
20	35	21	20	15	11	2	3	15	25	35	50		

TP₂

258 81¹⁶ 1150 78⁵²

2473 19² Lt & 8" P.P. 1/4 P3308

π 81¹⁶

2470 27⁰ Rt & 12" Anchor Pole no #

2461 24⁰ Rt & dead man

2459 49⁵ Rt to NW cor house

33⁸ Lt Begin 6" cov Black wall 11/4 line

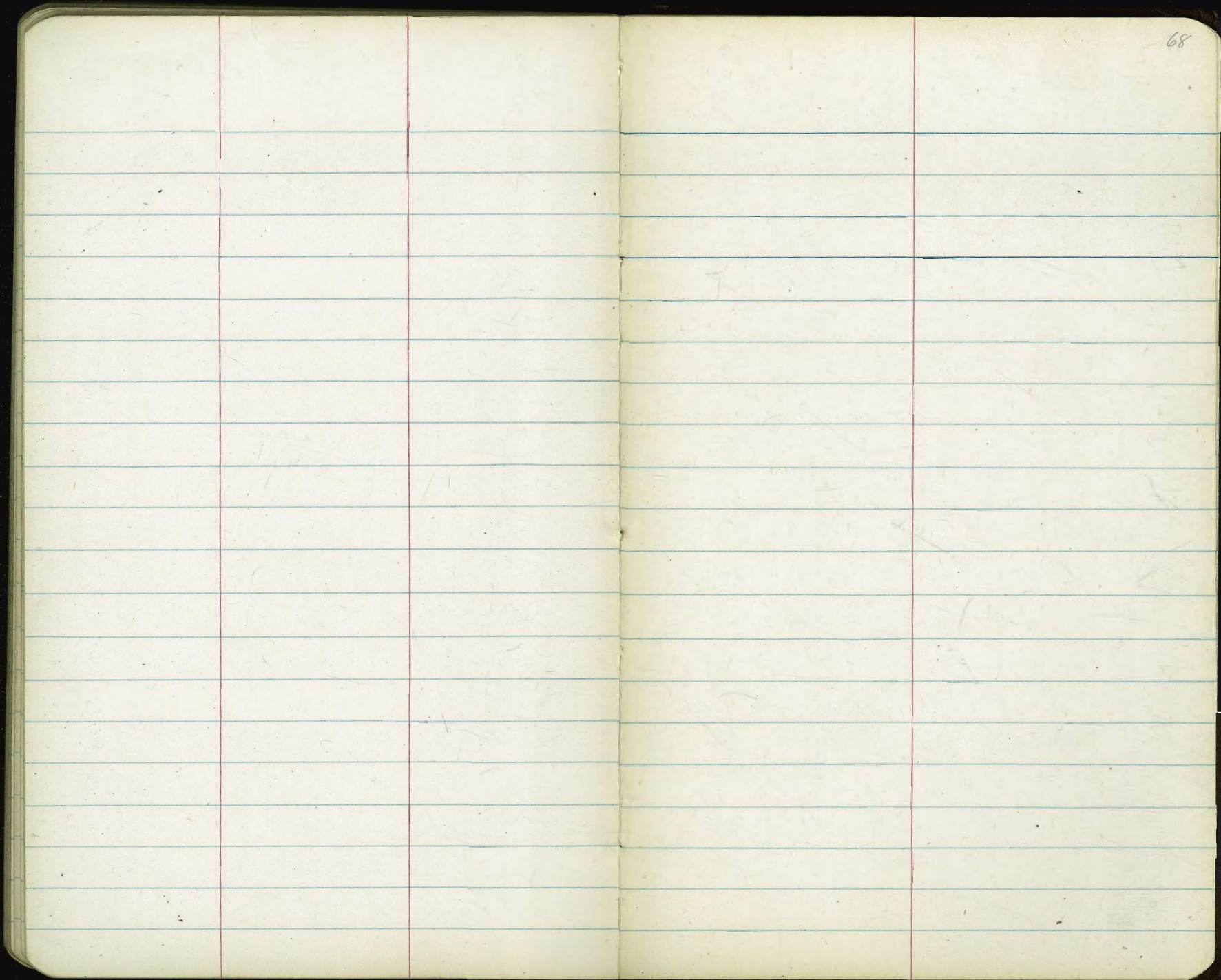
2451 20⁴ Lt Begin 6" cov Black wall Lt to and 11/4 line

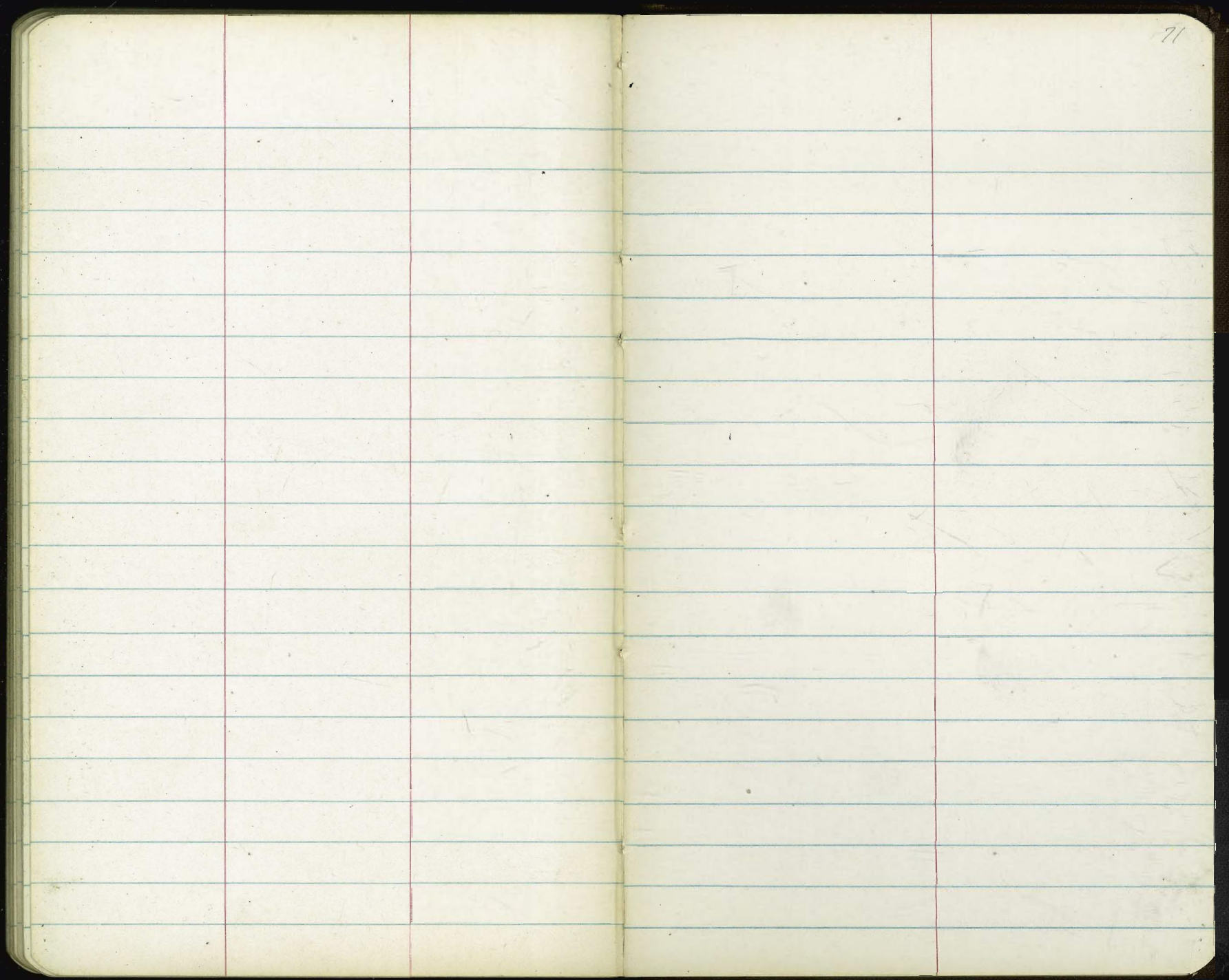
72.0	74.29	74.5	78.57	78.1
18 ⁴	13 ²²	13 ¹³	11 ⁵¹	12 ⁰
33 ⁸	23 ⁸	20 ⁴	20 ⁴	20 ⁴

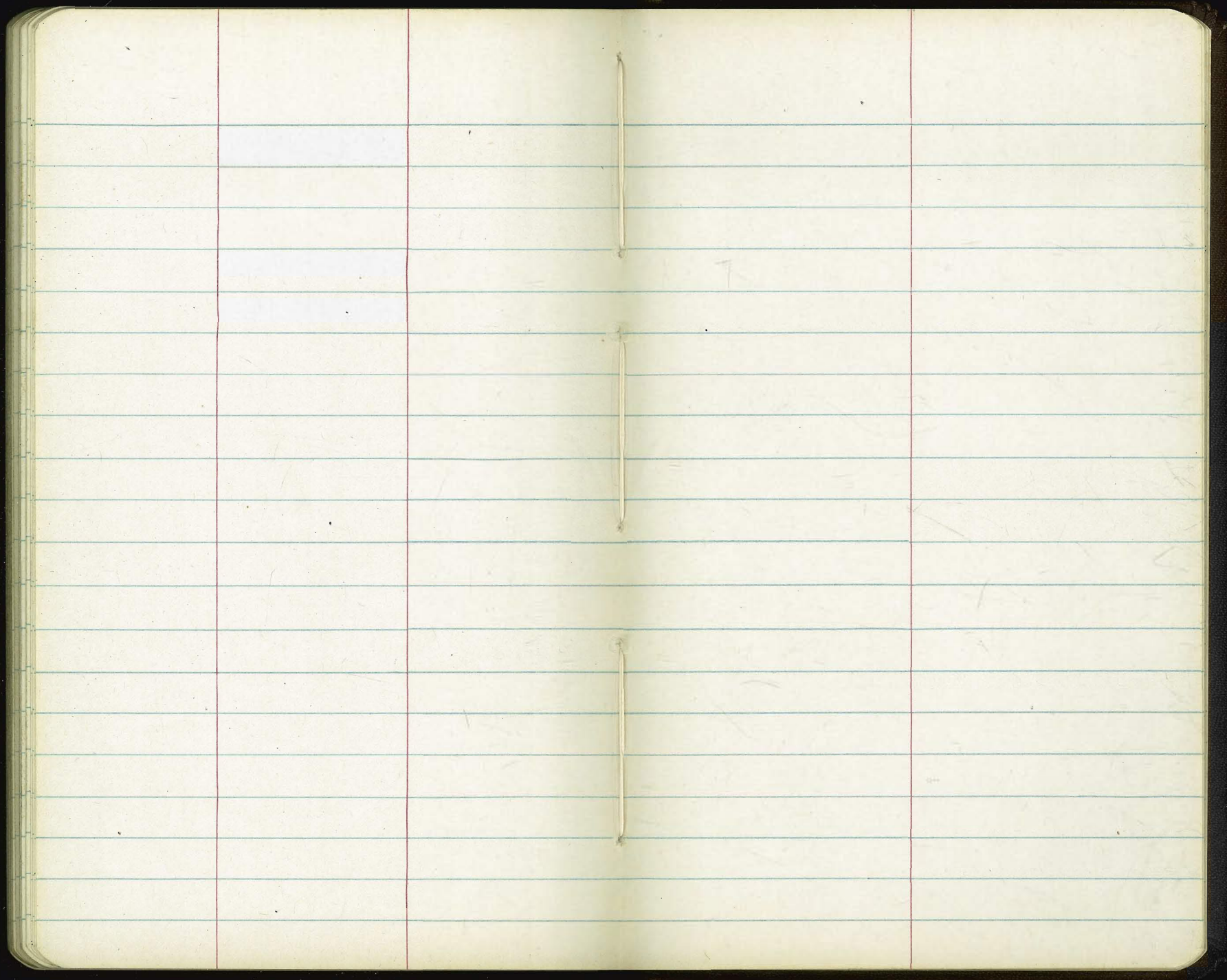
footing wall
top
sh

77⁴⁵
10⁶³
49³
floor
house

π 90⁰⁸







HAND LEVEL T + 45TH

HI.

5.6

97.20

EL

85.60

FRONT S.W

5.5

85.70

FLOOR HOUSE

4.4

86.80

YARD

5.5

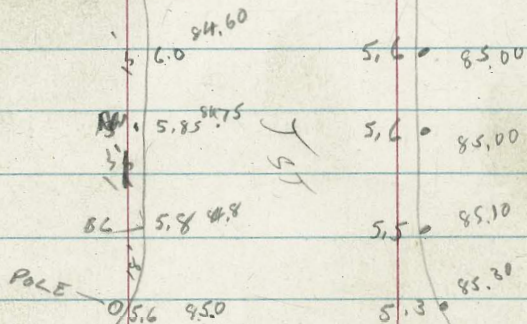
85.70

HI

5.0

90.60

85.60



45TH

116 43 SW 3P 47th E ON EN

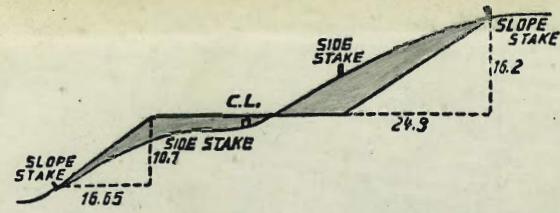


Handwritten notes and scribbles.

423

6.5

Handwritten notes: 76.5, 76.6, 76.7, 76.8, 76.9



DISTANCES FROM SIDE STAKES FOR CROSS-SECTIONING.
SLOPE 1 1/2 TO 1. ROADWAY OF ANY WIDTH.

	0	.1	.2	.3	.4	.5	.6	.7	.8	.9	
0	0.00	0.15	0.30	0.45	0.60	0.75	0.90	1.05	1.20	1.35	0
1	1.50	1.65	1.80	1.95	2.10	2.25	2.40	2.55	2.70	2.85	1
2	3.00	3.15	3.30	3.45	3.60	3.75	3.90	4.05	4.20	4.35	2
3	4.50	4.65	4.80	4.95	5.10	5.25	5.40	5.55	5.70	5.85	3
4	6.00	6.15	6.30	6.45	6.60	6.75	6.90	7.05	7.20	7.35	4
5	7.50	7.65	7.80	7.95	8.10	8.25	8.40	8.55	8.70	8.85	5
6	9.00	9.15	9.30	9.45	9.60	9.75	9.90	10.05	10.20	10.35	6
7	10.50	10.65	10.80	10.95	11.10	11.25	11.40	11.55	11.70	11.85	7
8	12.00	12.15	12.30	12.45	12.60	12.75	12.90	13.05	13.20	13.35	8
9	13.50	13.65	13.80	13.95	14.10	14.25	14.40	14.55	14.70	14.85	9
10	15.00	15.15	15.30	15.45	15.60	15.75	15.90	16.05	16.20	16.35	10
11	16.50	16.65	16.80	16.95	17.10	17.25	17.40	17.55	17.70	17.85	11
12	18.00	18.15	18.30	18.45	18.60	18.75	18.90	19.05	19.20	19.35	12
13	19.50	19.65	19.80	19.95	20.10	20.25	20.40	20.55	20.70	20.85	13
14	21.00	21.15	21.30	21.45	21.60	21.75	21.90	22.05	22.20	22.35	14
15	22.50	22.65	22.80	22.95	23.10	23.25	23.40	23.55	23.70	23.85	15
16	24.00	24.15	24.30	24.45	24.60	24.75	24.90	25.05	25.20	25.35	16
17	25.50	25.65	25.80	25.95	26.10	26.25	26.40	26.55	26.70	26.85	17
18	27.00	27.15	27.30	27.45	27.60	27.75	27.90	28.05	28.20	28.35	18
19	28.50	28.65	28.80	28.95	29.10	29.25	29.40	29.55	29.70	29.85	19
20	30.00	30.15	30.30	30.45	30.60	30.75	30.90	31.05	31.20	31.35	20
21	31.50	31.65	31.80	31.95	32.10	32.25	32.40	32.55	32.70	32.85	21
22	33.00	33.15	33.30	33.45	33.60	33.75	33.90	34.05	34.20	34.35	22
23	34.50	34.65	34.80	34.95	35.10	35.25	35.40	35.55	35.70	35.85	23
24	36.00	36.15	36.30	36.45	36.60	36.75	36.90	37.05	37.20	37.35	24
25	37.50	37.65	37.80	37.95	38.10	38.25	38.40	38.55	38.70	38.85	25
26	39.00	39.15	39.30	39.45	39.60	39.75	39.90	40.05	40.20	40.35	26
27	40.50	40.65	40.80	40.95	41.10	41.25	41.40	41.55	41.70	41.85	27
28	42.00	42.15	42.30	42.45	42.60	42.75	42.90	43.05	43.20	43.35	28
29	43.50	43.65	43.80	43.95	44.10	44.25	44.40	44.55	44.70	44.85	29
30	45.00	45.15	45.30	45.45	45.60	45.75	45.90	46.05	46.20	46.35	30
31	46.50	46.65	46.80	46.95	47.10	47.25	47.40	47.55	47.70	47.85	31
32	48.00	48.15	48.30	48.45	48.60	48.75	48.90	49.05	49.20	49.35	32
33	49.50	49.65	49.80	49.95	50.10	50.25	50.40	50.55	50.70	50.85	33
34	51.00	51.15	51.30	51.45	51.60	51.75	51.90	52.05	52.20	52.35	34
35	52.50	52.65	52.80	52.95	53.10	53.25	53.40	53.55	53.70	53.85	35
36	54.00	54.15	54.30	54.45	54.60	54.75	54.90	55.05	55.20	55.35	36
37	55.50	55.65	55.80	55.95	56.10	56.25	56.40	56.55	56.70	56.85	37
38	57.00	57.15	57.30	57.45	57.60	57.75	57.90	58.05	58.20	58.35	38
39	58.50	58.65	58.80	58.95	59.10	59.25	59.40	59.55	59.70	59.85	39
40	60.00	60.15	60.30	60.45	60.60	60.75	60.90	61.05	61.20	61.35	40
41	61.50	61.65	61.80	61.95	62.10	62.25	62.40	62.55	62.70	62.85	41
42	63.00	63.15	63.30	63.45	63.60	63.75	63.90	64.05	64.20	64.35	42
43	64.50	64.65	64.80	64.95	65.10	65.25	65.40	65.55	65.70	65.85	43
44	66.00	66.15	66.30	66.45	66.60	66.75	66.90	67.05	67.20	67.35	44
45	67.50	67.65	67.80	67.95	68.10	68.25	68.40	68.55	68.70	68.85	45
46	69.00	69.15	69.30	69.45	69.60	69.75	69.90	70.05	70.20	70.35	46
47	70.50	70.65	70.80	70.95	71.10	71.25	71.40	71.55	71.70	71.85	47
48	72.00	72.15	72.30	72.45	72.60	72.75	72.90	73.05	73.20	73.35	48
49	73.50	73.65	73.80	73.95	74.10	74.25	74.40	74.55	74.70	74.85	49
50	75.00	75.15	75.30	75.45	75.60	75.75	75.90	76.05	76.20	76.35	50

THE NATIONAL BLANK BOOK COMPANY
HOLYOKE MASSACHUSETTS
NEW YORK CHICAGO BOSTON SAN FRANCISCO