

TABLE XIII—CORRECTIONS FOR TANGENTS AND EXTERNALS

These corrections are to be added to the approximate values, found by dividing the tangent, or external, for a 1° curve (Table VIII) by the degree of curve, in order to obtain the true tangents, or externals. Intermediate values may be obtained by interpolation.

FOR TANGENTS ADD

Central Angle	DEGREE OF CURVE													
	5°	10°	15°	20°	25°	30°	35°	40°	45°	50°	55°	60°	65°	70°
10°	.03	.06	.09	.13	.16	.19	.22	.25	.28	.31	.34	.38	.42	.46
15°	.04	.10	.14	.19	.24	.29	.34	.39	.45	.51	.58	.65	.72	.79
20°	.06	.13	.19	.26	.32	.39	.45	.51	.58	.65	.72	.79	.84	.90
25°	.08	.16	.24	.33	.40	.49	.58	.67	.75	.83	.90	.99	1.06	1.14
30°	.10	.19	.29	.39	.49	.59	.69	.79	.89	.99	1.09	1.20	1.29	1.39
35°	.11	.22	.34	.47	.58	.69	.79	.81	.92	1.04	1.29	1.42	1.54	1.66
40°	.13	.26	.40	.53	.67	.80	.93	1.06	1.20	1.34	1.49	1.64	1.79	1.94
45°	.15	.30	.44	.60	.76	.91	1.06	1.21	1.37	1.52	1.70	1.87	2.04	2.21
50°	.17	.34	.51	.68	.85	1.02	1.19	1.36	1.54	1.72	1.91	2.10	2.29	2.48
55°	.19	.38	.57	.76	.95	1.14	1.32	1.52	1.72	1.92	2.14	2.35	2.56	2.77
60°	.21	.42	.63	.84	1.05	1.27	1.49	1.71	1.94	2.17	2.38	2.60	2.83	3.07
65°	.23	.46	.69	.93	1.16	1.40	1.64	1.88	2.13	2.38	2.63	2.88	3.13	3.39
70°	.25	.51	.76	1.02	1.28	1.54	1.80	2.06	2.33	2.60	2.88	3.16	3.44	3.72
75°	.27	.56	.83	1.12	1.40	1.69	1.98	2.27	2.57	2.87	3.16	3.47	3.78	4.09
80°	.30	.61	.91	1.22	1.53	1.84	2.15	2.46	2.78	3.10	3.44	3.78	4.12	4.46
85°	.33	.66	1.00	1.33	1.68	2.02	2.36	2.70	3.05	3.40	3.77	4.14	4.55	4.89
90°	.36	.72	1.09	1.45	1.83	2.20	2.57	2.94	3.32	3.70	4.10	4.50	4.91	5.32
95°	.39	.79	1.19	1.55	2.00	2.40	2.80	3.20	3.61	4.02	4.40	4.98	5.38	5.83
100°	.43	.86	1.30	1.74	2.18	2.62	3.06	3.50	3.95	4.40	4.88	5.37	5.85	6.34
110°	.51	1.03	1.56	2.08	2.61	3.14	3.67	4.21	4.76	5.31	5.86	6.43	7.01	7.60
120°	.62	1.25	1.93	2.52	3.16	3.81	4.45	5.11	5.77	6.44	7.12	7.80	8.50	9.22

FOR EXTERNALS ADD

Central Angle	DEGREE OF CURVE													
	5°	10°	15°	20°	25°	30°	35°	40°	45°	50°	55°	60°	65°	70°
10°	.001	.003	.004	.006	.007	.008	.009	.011	.012	.014	.015	.017	.018	.020
15°	.003	.007	.010	.014	.018	.023	.027	.029	.032	.035	.039	.043	.047	.051
20°	.006	.011	.017	.022	.028	.034	.038	.045	.051	.057	.063	.070	.076	.083
25°	.009	.018	.027	.036	.046	.056	.065	.074	.083	.093	.106	.120	.127	.135
30°	.013	.025	.038	.051	.065	.078	.090	.103	.116	.129	.149	.170	.179	.188
35°	.018	.035	.054	.072	.086	.109	.131	.153	.175	.197	.213	.230	.247	.264
40°	.023	.046	.070	.093	.117	.141	.172	.203	.234	.265	.277	.290	.315	.341
45°	.030	.060	.093	.119	.153	.184	.216	.254	.289	.325	.351	.378	.411	.445
50°	.037	.075	.116	.151	.189	.227	.266	.305	.345	.384	.425	.467	.508	.550
55°	.046	.093	.142	.188	.236	.283	.332	.381	.420	.479	.530	.582	.641	.700
60°	.056	.112	.168	.225	.283	.340	.398	.457	.516	.575	.636	.697	.774	.851
65°	.067	.135	.204	.273	.343	.412	.483	.554	.625	.697	.711	.845	.922	1.01
70°	.080	.159	.240	.321	.403	.485	.568	.652	.735	.819	.906	.994	1.08	1.17
75°	.095	.182	.286	.383	.480	.578	.678	.777	.877	.977	1.07	1.18	1.29	1.39
80°	.110	.220	.332	.445	.558	.671	.787	.903	1.02	1.13	1.25	1.38	1.50	1.62
85°	.128	.259	.391	.524	.657	.790	.926	1.06	1.20	1.34	1.47	1.62	1.76	1.91
90°	.149	.299	.450	.603	.756	.910	1.07	1.22	1.38	1.54	1.70	1.87	2.03	2.20
95°	.174	.350	.522	.706	.885	1.06	1.25	1.43	1.62	1.80	1.99	2.18	2.38	2.58
100°	.200	.401	.604	.809	1.01	1.22	1.43	1.64	1.85	2.06	2.28	2.50	2.73	2.96
110°	.268	.536	.806	1.08	1.35	1.63	1.91	2.20	2.48	2.76	3.05	3.35	3.66	3.96
120°	.360	.721	1.08	1.45	1.82	2.19	2.57	2.95	3.33	3.72	4.11	4.50	4.91	5.32

Index

X-sec J ST-43rd to Toyne 1-to 5
 Villa Terrace & Pershing University & Slightmat 6to 11
 Alley BIK 95 Ocean Bay Beach 12-21
 Alley BIK 18 La Mesa Colony 30-35
 Re-x-sect. 31st Cedar to ELM 36
 See also 2227
 Re-x-sec Alley BIK 274 Pacific Beach 50

X-sec 'J' ST - 43rd wly to Toyne ST.

WO #32193-

4-24-53

E. Allen

D. Sirson

C. Powell

Ret - 1638 - Page 14

Map #1844-

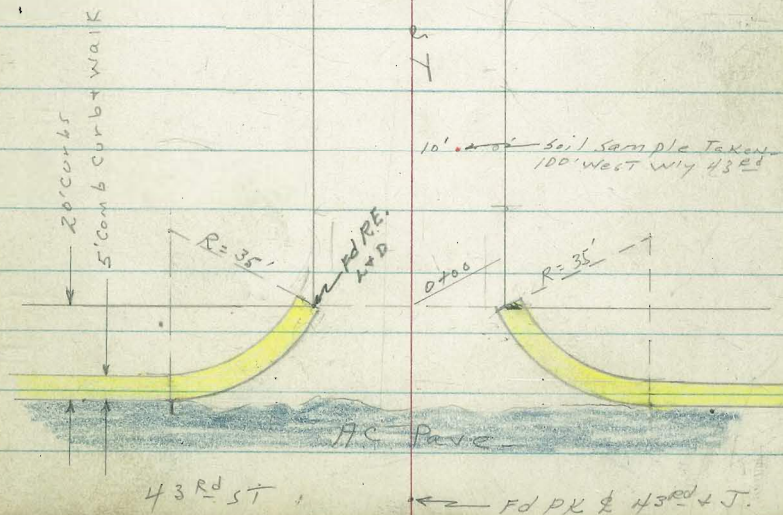
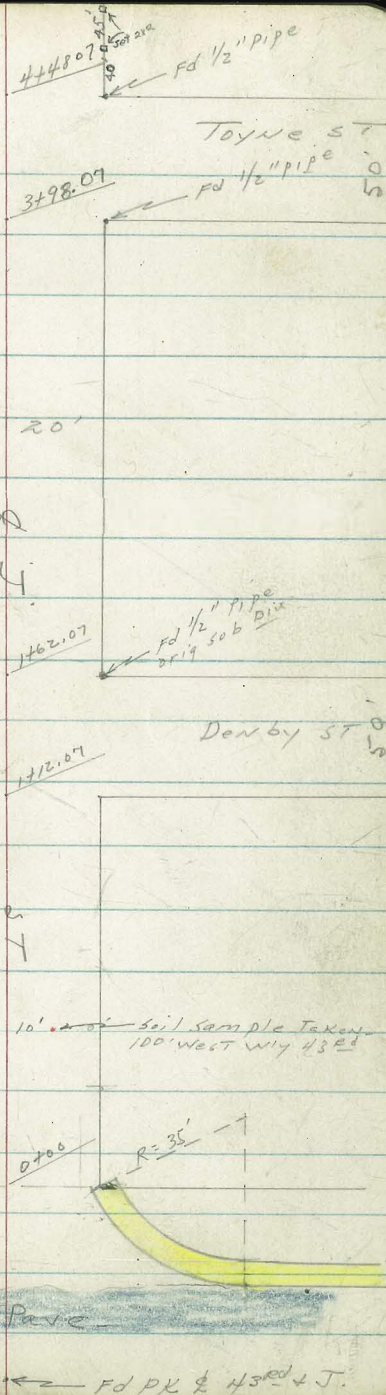
INDEXED

APR 27 1953

Reduced
D.L.C.
4/27/53

See also
FR 1638-14.

Note: 1/2" pipe found
at NW cor Denby +
'J' checks tie points
to North



X-sec J ST. 43rd Wly to Toyne ST

LT = 514

4 ft = Nly.
'J' ST

1

0+00 = Wly line 43rd

133.44	133.27	132.22	132.0	131.8	131.1	130.8	131.54	131.65
368	385	49	51	53	60	63	558	527
234	184	184	10		10	184	184	234
BK	cb	GUT				GUT	cb	BK
WK								WALK

Midpoint Curb Returns - Rad = 35' - L = 40'

131.62	133.0	132.6	131.35
350	41	16.5	577
cb	GUT	GUT	cb

behind curbs

0-02-26⁸ Rt = 4 12" power pole #173486

134.90	134.42	135.19	134.90	135.10	135.14
222	270	173	222	152	128
200	200	175	175	150	150
cb	GUT	cb	GUT	cb	GUT
		RVC			

Curb line 43rd to wly line 43rd

Wly PC 43rd ST. Pavc Broken and gone from Wly
0-20 = } Wly Curb line 43rd - 43rd paved with P.C.

135.29	134.75	134.14	133.61	132.84	132.07	131.25	130.31	130.91	128.53	129.4
183	237	298	352	418	505	584	681	65	859	720
100	100	50	50	25	25	50	50	100	100	
cb	GUT	cb	GUT	bc		bc	bc	GUT	cb	

TP1 673 137.12 224 130.39

137.12 - 7

BM 5.09 132.63

SE BP - 43rd + Market
127.54

LT=514

4

RT=141-

2

0402-15⁸ RT= 4 10" power pole JP 470058

1400

130.2	129.4	129.3	129.1	129.4	129.4
68	72	78	80	77	77
20	12		9	10	20

0483-15⁶ RT= 4 Deadman-

0482-19⁸ LT= 4 3' conc walk w/step

131.92	131.72	131.21	131.25
52.0	54.0	58.1	58.7
32 ⁸	22 ⁸	22 ⁸	19 ⁸
WIK	TOP STEP	BOTT. STEP	WALK

0465-19⁸ RT= begin 4' high chicken wire fence

0458-20² RT= 4 single garage. Conc floor ^{Apron}

131.22	131.23
59.0	58.9
20 ²	23 ²
Apron	Floor

0450

131.6	131.6	131.2	131.1	131.0	131.3	131.1	131.5
55	55	59	60	61	58	60	56
30	20	10		10	11	20	30

0429-23² LT= 4 3' conc walk

133.74	133.47
338	365
33 ²	23 ²
WK	WK

0425

133.7	133.3	132.8	131.0	131.5	131.6	131.9	131.7	131.7
34	38	43	51	56	55	52	54	54
30	20	15	12		11	12	20	30

137.12 X

LT=514

RT= N14- 3

1486- 16² LT= 2 3' CONC WALK

128.40	127.93	127.78
87 ²	92 ⁹	93 ⁴
30 ^e	20 ^e	16 ^e
WK	WK	WK

1464- 15⁵ RT= 2 12" power pole # PI 70008-

1462.07- Wly line Denby

128.8	128.2	127.9	128.0	127.6	128.0	127.5	127.0	125.2
8 ³	8 ²	9 ²	9 ¹	9 ⁵	9 ¹	9 ⁵	10 ¹	11 ²
30	20	12		10	12	20	50	100

1461- 14² LT= 2 9' wide CONC Drive

128.75	128.48	128.19
83 ⁷	86 ⁴	89 ³
32 ^e	22 ^e	14 ²
Dr	Dr	Dr

1437- 2 = SMH

128.55
85⁷
R14
SMH

1423- 22⁸ LT= 2 3' CONC WALK

130.14	130.06
69 ⁸	70 ⁶
32 ^e	22 ^e
WK	WK

20² RT= end 4' high Chicken wire fence
Went check sub DIVISION MAP

1412.07 = Fly line Denby from North -

131.0	130.0	129.3	128.9	128.5	129.1	127.9
6 ^L	7 ^L	7 ⁸	8 ²	8 ³	8 ⁰	9 ²
40	20	12		10	20	50
						100

137.12
x

X-sec J's 43rd to Toyne

LT=514

ct=N/y.

±

3+27-20³ LT= & 3' CONC WALK

126.01
3'±
30±
WK

125.97
3'±
20±
WK

3+18-22° Rt & Doublegarage - DIRT FLOOR

124.9
4±
22
DIRT
FLOOR

3+00

126.3
28
40

126.0
31
20

125.6
35
10

125.4
37

124.8
43
10

125.3
38
12

125.7
37
20

124.9
42
50

2+83-15° Rt- & 12" power pole # P277933

2+76-21° LT= & 3' CONC WALK

126.28
28±
31±
WK

126.10
30±
21±
WK

TP₂ 3.17 129.13 11.16 125.96

129.13 X

2+50.16^E LT= & 16' wide conc Driveway

127.0
10'±
31±
Dr

126.57
10'±
21±
Dr

126.25
10'±
16±
Dr

126.0
11'±
10

125.9
11±

125.7
11±

126.0
11±
20

125.6
11±
50

2+00

128.2
8±
40

127.4
9±
20

126.9
10±
10

127.1
10±
11

126.8
10±
11

127.0
10±
20

125.7
11±
70

137.12 X

TP4-Start BM- 8.12 127.55

T13 8.12 135.67 1.58 127.55

4+420.07 W14 Line Toyne ST

123.3	123.1	123.0	122.0	122.8	123.5	122.5
58	60	61	61	63	56	65
50	20	10		10	20	50
						RIM CANYON

4
B+26 20² LT= & 3' CONC Walk

123.97	123.93
516	520
30 ² WK	20 ² WK

3+498.07 Fly Line Toyne ST

124.2	124.1	124.0	123.8	123.5	124.3	123.4	116.4
49	50	51	53	56	48	52	123
50	20	10	10	20	60	100	
					RIM CANYON		

3+50

125.0	124.6	124.5	124.1	124.6	124.6
42	45	45	50	45	45
20	10		10	11	20

2-3' wide strips
3+44=16² LT= & 8' Wide Ribbon Drive with Apron

125.89	125.81	125.44
324	332	369
30 ² Drive	20 ² 514 Apron + N14 Ribbon Drive	16 ² N14 Apron

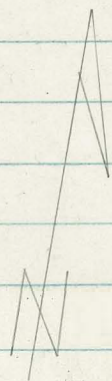
129.13

D. Smith
G. Cota
R. Taylor

X Sec Alley BIK 67
Park Villas

W0#32230
7-29-53

INDEXED
Lillo
JUL 30 1953



12' Obs.
5' parking
5' walks

Villa Terrace
26455

Set Hub
125725

Hub
125725

80.5

21777
Lot

10 Obs.
25 parking
5' walks

Wright mail

27907
13953

University

AC. road (22.6 ft) set PK.

AVE

14' Obs.
25 parking
5' walks

21777
Lot

15

16

17

18

19

20

21

22

23

24

BIK

67
Park Villas

Pershing Ave

90° 17' 30"

040
10173
Set Hub + Disk

13964

27929

AC. road

St.

10 Obs.
25 parking
5' walks

21777
Lot

Lt = Wly

Rt = Ely

2

325.03
10.18
73
wly

0+52 79 RT & 3rd con walk

TPR 119 333³¹ 1135 322¹² 0+73¹² & Hub & drain Lt

0+51 7¹ RT & 6" PP 1/4 # JPA 3820

0+50 78 RT end Bldg

0+32 12' Lt & 4th con walk

end poor A.C.
0+30 12th Lt End 3 garages con floor

0+15
0+01 6th Lt & 16" PP 1/4 # A3803

0+00 12th Lt Begin 3 garages con floor

0+00 78 RT Begin Bldg
begin poor A.C.

0+00 Nly Wightman end good A.C. paving

0-10 Nly cb Wightman

TP 558 333⁴⁷ 1197 327⁸⁹ SW BP Wightman + Ferstling

BM E 184 339 86 338 02

326.24
7.23
12.8
wly
327.82
327.8
327.2
326.1
327.4
5.65
5.2
6.3
6.0
6.1
12.0
7.5
5
7.5
328.2
327.9
327.2
327.2
328.4
5.65
5.5
5.5
5.5
5.1
12
7.5
6
7.5
5.77
327.9
327.4
327.8
328.2
329.0
12.0
Floor
5.57
5.73
5.60
5.86
4.40
7.5
9.4
7.5
7.5
end
end

324.01
323.45
327.18
326.23
326.85
327.66
328.18
328.82
328.97
331.17
9.4
5.0
5.0
6.29
6.24
6.52
5.81
5.29
5.05
4.50
2.100
5.0
9.4
9.4
10.5
10.5
8.0
8.0
9.4
end

333⁴⁷

2150⁴⁰ Sly University endcso AP, paving

TP3 623 338⁶⁹ 137 331⁹⁴

21346² RT & deadman

2131 7' RT & 6" Acacia tree

RT25

2112 7' RT & 12" tel pole #464200H

2100 12' RT SW cor single garage dirt floor open Sly

1779⁸⁰ LT Begin 3' walk con 11 to line

1779 8' LT End con 6" Retaing wall

1775

1760 8' LT Begin con Retaing wall 6"

1758 6' LT & 16" P.P. #3891

1750

LT-Wly

RT-Ely

9.

4 ⁹⁰	5 ³⁵	5 ¹³⁰	4 ⁹⁰	4 ⁸⁰
7 ²	7 ²	7 ²	7 ²	7 ²
6 ²	9 ²		9 ²	6 ²
333 ²⁵	333 ²²	333 ³²	333 ²²	333 ²²

338⁶⁹ ✓

331 ⁴⁹	331 ²	330 ²	330 ²	331 ²	331 ²	332 ¹
1 ⁸⁰	2 ²	2 ²	2 ⁵	2 ³	1 ⁴	1 ²
8 ²	7 ⁵	4		5	7 ⁵	1 ²

329 ²⁷	329 ²	329 ²	329 ²	329 ²	330 ⁶	330 ²
-------------------	------------------	------------------	------------------	------------------	------------------	------------------

344	36	4 ¹	4 ²	36	27	31
8 ²	7 ²	4 ¹		7 ⁵	10	12 ²
w/k						floor

328⁴¹
4⁹⁰
8²
w/k

328 ¹³	326 ¹	326 ¹	327 ²	327 ²	327 ²	329 ²	331 ²
7 ³	7 ³	7 ³	5 ²	5 ⁸	5 ⁴	3 ⁶	2 ¹⁰
15	9 ²	7 ²	7 ²	7 ⁵	13	20 ¹⁰	

326 ³⁶	324 ²	326 ²	327 ²	327 ²	327 ²	327 ²	327 ²
6 ⁴⁵	9 ²	7 ³	5 ²	5 ⁴	3 ⁶	2 ¹⁰	
Top	8 ²	7 ³	7 ²	7 ⁵	13	20 ¹⁰	
	Footg	5 ²					

333³¹

0750

2nd RT Begin con wall + slab walk area

0739 12th RT Begin 3' picket fence

0738 End con stepping stone walk on line

0733^S 1st LT NWly cor garage

0733 3rd RT SWly cor garage

0725

0715 3rd RT SEly cor garage

0713 1st LT NEly cor garage

0710 Begin con stepping stone walk on line

0705

0700 E Alley 2' sly Prop line on storm drain

Begin Storm Drain Proposed

TP4

141 327³⁸ 12th 325⁹⁷

2764⁴⁰ sly of University

Lt=Wy

RT=Ely

10

319²

319²

319²

757

20
42
1ap

321²

100

322⁴

510

322²

51

329⁵⁴

94

50

66

329²¹

946

50

94

333⁴²

518

75

60

332⁷¹

52

95

94

332⁸²

578

75

94

333¹²

564

75

94

333⁴⁰

580

75

94

333⁵¹

516

95

94

334⁴⁰

477

93

94

335⁰³

364

50

94

335²²

335

50

94

338⁶⁷

BM starting
 TP 11⁸⁵ 340⁸⁵ 2⁸² 338⁰³ 338⁰³
 TP 12³⁵ 329³⁷ 6³⁷ 329⁰⁰ 329⁰⁰
 1744⁵ c&h line Ely Villa Terrace 6⁵⁴ 317⁰² 338⁰³ 338⁰³

1739⁶⁵ wly walk
 04 Lt end 2' cow walk 11 to Line

1734⁶⁵ Ely walk
 TP 5 4⁸² 323⁵⁶ 8²¹ 318⁶⁷

1726 2³ Rt end wall 18"x18" pillar at end

1725 02 Rt 8 6" Bush oleander

1700

0790

0789 04 Lt Begin Myedge 2' cow walk

0782

0775

Redwood 9/11/53
 L. B. Russell

317² 316⁵⁶ 318²⁴ 317⁵⁷ 318⁶⁶ 319³⁷
 50 50 50 50 50 50
 06 947 06 947 06 947 06

318⁴² 318²⁴ 318²⁵ 318¹³ 323⁵⁶

318⁶¹ 318²¹ 319¹⁰
 8²⁷ 90 8²⁰
 04 04 22
 wlk wlk wall

318² 318⁶¹ 319¹³
 8⁵⁶ 8⁸ 8¹³
 04 04 22
 wlk wlk wall
 Tex

319⁰² 319² 319² 319² 319²
 8⁰⁰ 8³⁶ 8³⁶ 8³⁶ 8³⁶
 04 04 04 04 04
 wlk wlk wlk wlk wlk

319² 319² 319² 319² 319²

327³⁸

Alley Bk. 95-Ocean Bay Beach

12-3-53

W.O. # 32330

C.H.S.

Begg

Altman

Scholin

Ref. Map # 1189

T.P. sheet # 699

• denotes found L&T.

• " set P.K. Conc. nail

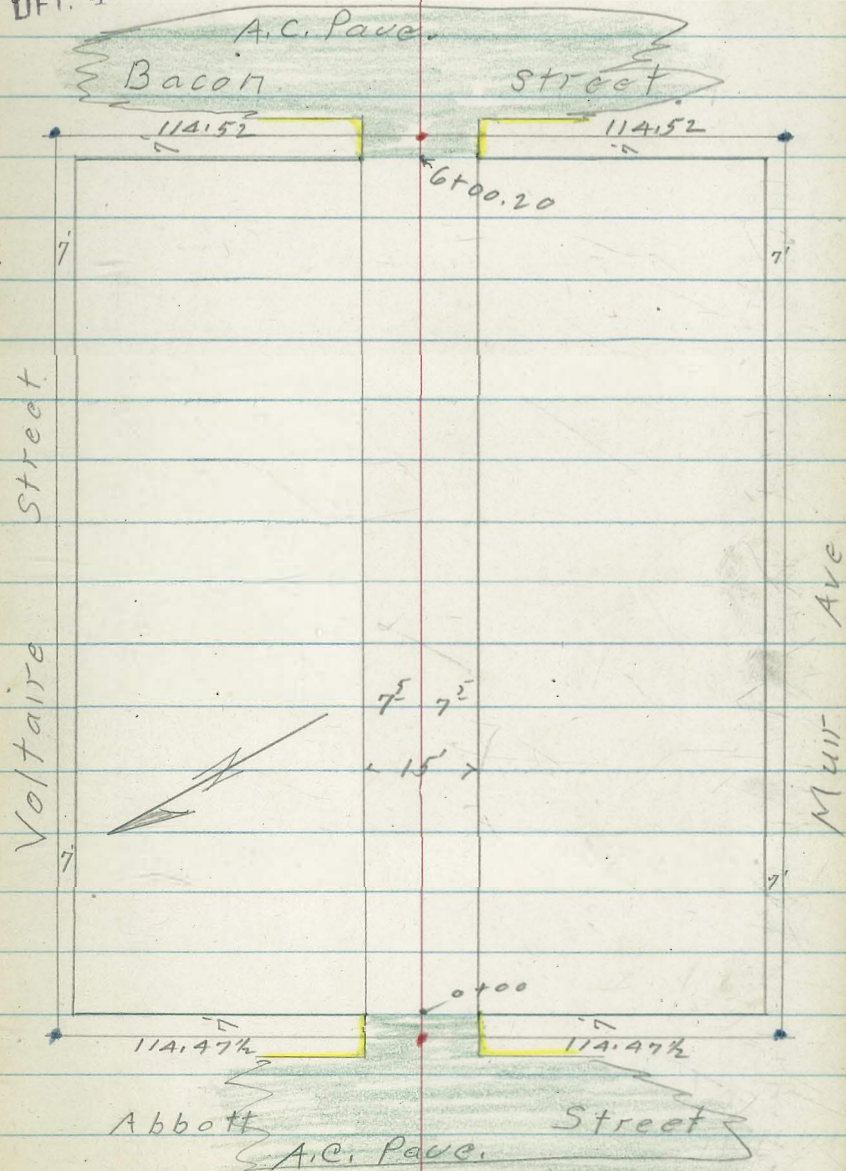
yellow " conc.

Green " A.C. Pavc.

INDEXED

Reduced by
H. Ferguson

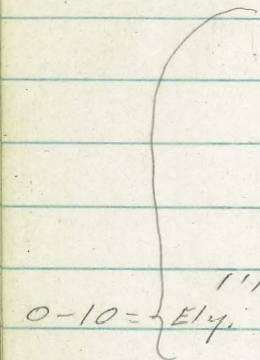
MEP
DEC 4 1953



Alley BIK 95 Ocean Bay Beach

- 0+45 - { 7th Rt = start fence.
- 0+45 - { 8th Rt = end fence.
- 0+32 - 6th Rt = deadman ✓
- 0+24 - 6th Lt = 9" pole # 446785H. ✓
- 0+02 - 8th Rt = start 3' high 2' wide hedge ✓

7th Rt } = end curbs
 7th Lt }
 0+00 = Ely. Abbot. = end A.C. Pauc.



0-10 = { 1' Rad. Alley cl. Rot.
 Ely. cl. Abbott.

0-30 = ~~cl~~ Abbott

4.75 7.22 - 2.47

2.7	2.90	2.36	2.18 3.18	2.39	2.63	-0.20
4.5	4.52	4.86	5.04	4.83	4.59	7.5
75	73	73	71	71	73	75
	0	0		0		

2.75	2.23	2.65	1.97	2.46	1.82	2.30
4.47	4.99	4.57	5.25	4.76	5.40	4.92
100	100	50	50	50	100	100
0	0	0	0	0	0	0

2.07	Broken	2.06	2.06	1.96	2.02	2.02	2.43
5.15		5.16	5.16	5.26	5.20	5.20	4.79
50	85	85	75		75	0	0
0	0	0				85	85

2.48	2.39	2.97
4.74	4.83	5.25
100	7.22	100

S.W. B.P. Abbott & Voltaire

1+26 - 8' wly. ~~from~~ Emt. RT = N. wly. Cor. Gar. ↙

3.42
4.30
125
± Gar.
on Floor.

1+21 to westerly from Sing Gar. 7' RT = N. wly. Cor conc. apron ↖

2.52
5.20
75
2.52
5.20
125
± Apron.

1+00
2.7
5.0
75
2.2
5.5
2.2
5.5
4
2.7
5.0
5
2.7
5.0
75

0+88 25' RT = ± double Gar. conc. ^{Floor} ↘

2.60
5.12
25
Floor level
7.72

T.P. 5.08 7.72 4.58 2.64

0+82 - 12' Lt. = end 3 car. Gar. ↖

2.6
4.6
12.4
dirt floor

0+72 - 7' RT = end fence.

0+50 12' Lt. = start 3 car. Gar. dirt ^{Floor} ↖

2.4
4.8
12.4
dirt Floor
2.4
4.8
75
2.1
5.1
5
2.0
5.2
6
2.6
4.6
6
2.2
5.0
75

0+48 6' RT = 14" pole # A 5080 ↙

7.22
7.22
4.58
2.6

BIK 95
Ocean Bay Beach

11 RT = Gar.

1+61 10³ RT = start apron to A car. ✓

3.25 3.38
4.70 4.57
103 112
Apron Floor

1+59 - 15² Lt. = 2 1st door ✓

3.82
4.13
152
Floor

15³ Lt. = Gar.

1+53 13 Lt. = start apron to 4 car. Gar. ✓

3.82 3.71 3.2 2.6 2.6 2.7 3.4
4.13 4.24 4.7 5.3 5.3 5.2 4.6
152 13 75 5 4 75
Floor apron

T.P. 5.33 7.95 5.10 2.62
2.62

7.95

1+51 { 13' Lt. = 2⁵' conc. walk ✓
7⁴ RT. = 18" pole A5070 ✓

3.76 3.66
3.96 4.06
23 13
on walk

1+51 - 6³ Lt. = 8" pole J.P.A. 5071 ✓

1+50 8² RT. = old Gar. ✓

2.9 2.6 2.6 2.6 3.8 3.8
4.8 5.1 5.1 5.1 3.9 3.9
75 6 4 75 8² at Gar.

dirt floor

1+38 - 12² Lt. = double Gar. ✓

3.2
4.5
12²
Floor

7.72

Blk 95
Ocean Bay Beach

16

11.111
5.6

sty Ent.

2105 7² Rt. = ϕ 10' wide board Gar. ✓

2100 6² Rt. = start fence. ✓

3.1 2.8 2.9 3.4
4.8 5.1 5.0 4.5
7.5 3 7.5

1197 { 15² Lt. = end Garage. ✓
13² Lt. = end conc. apron ✓
11⁶ Rt. = end Gar.
10² Rt. = end conc. apron ✓

3.85 3.72 3.30 3.41
4.10 4.23 4.65 4.54
Floor load 13 10² 11E
apron apron Floor

1191 - 15² Lt. = ϕ 4th door ✓

3.86
4.09
15²
Floor

1180 - 15² Lt. = ϕ 3rd door ✓

3.93
4.102
15²
Floor

1179 11² Rt. = ϕ 4 car. Gar. ✓

3.26 3.38
4.69 4.57
10² 112
Apron Floor

1169 15² Lt. = ϕ 2nd door ✓

3.93
4.102
15²
Floor

15.3
1.5
1.00

7.95

apron to double Gar ✓
2+79- 6³ Lt. = start rough conc.

4.33 4.1
3.62 3.8
134 62
Floor Apron

2+72- 7⁵ Lt. = end apron ✓

4.34 4.30 4.05
3.61 3.65 3.90
14 9 75
Floor apron

double Gar.
2+54 7⁵ Lt. = start conc. apron to ✓

4.30 4.12 3.90
3.65 3.83 4.05
14 9 75
Cor. Floor apron

2+52 7² Rt. = 14" pole # A5066 ✓

2+50 ✓ 7¹ Rt. = end fence (4 x A post + wire) ✓

3.5 3.2 3.2 3.7
4.4 4.7 4.7 4.2
75 4 75

2+48- 10' Lt. = end apron ✓

3.85
4.10
10
apron

to double Gar.
2+31 10' Lt. = start rough conc. apron ✓

4.20 3.77
3.75 4.18
16 10
Cor. Floor apron

Floor level - no apron
2+15- 12⁹ Lt. = double Gar. conc. floor ✓

3.74
4.21
122
Floor

7.95

BIK. 95-

Ocean Bay Beach

TIP 5.93 10.01 3.87 4.08

3+60 7^E Rt. = 4' wide porch + drain ✓

3+56 11' Lt. = 3' wide Conc. walk ✓
7^E Rt. = end 2' walk ✓

3+50

3+32 7^E Rt. = 4' porch over walk!

3+25

3+20 7^E Rt. = 4' wide porch over walk ✓

3+02 10' Rt. = start dwelling!

3+00 7^E Rt. = start 2' wide E. + W. conc. walk ✓

2+99 { 7^E Lt. = 8" pole # (# 90110)
13⁴ Lt. = end Cor.
6² Lt. = end apron

4.31 4.2
3.64 3.7
13⁴ 6²
Gov. floor apron

7. 95-

4.85 4.75 4.1 4.0 4.2 4.55
3.10 3.20 3.8 3.9 3.7 3.40
21 11 7^E 7^E 7^E
walk walk

4.1 4.0 4.2 4.53
3.8 3.9 3.7 3.42
7^E 7^E
walk

4.1 4.0 4.1 4.35
3.8 3.9 3.8 3.60
7^E 7^E
walk

4.1 4.0 4.01
3.8 3.9 3.94
7^E 7^E
walk.

€

4+61 - 11' Lt. = € 2 car Gar. dirt floor

5.4
4.6
11
Floor

4+50 7' Lt. = 6" pole # J.P. 5025

54
4.6 4.9 5.1
7.5 5.1 4.9
7.5 7.5

4+42 - 12' RA = € 2' Conc. walk

5.15 5.26
4.86 4.75
12 22
walk

4+36 - 7' RT = end fence

4+00 { 8' RT = ctr. 14" cypress
7' RT = start 5' board fence4.6 4.4 4.4 4.7
5.4 5.6 5.6 5.3
7.5 4 7.53+99^E 7' RT = end walk + Ely line
2' wide N+S. walk4.87 4.74
5.14 5.27
7.6 20
cov. walk on. N+S.
walk3+95 - 7' RT = start 2' E+W. walk
11' Lt. = € 3' wide conc. walk4.96 5.01
5.05 5.00
21 11
walk walk4.87
5.14
7.6
walk

3+92 - 7' RT = € 4' wide porch

3+62 8' RT = 10" pole # A 5040

10.01

Bik 95
ocean Bay Beach

#

20

7⁵ RT }
7⁵ RT } cb broken. is N.G.
= start A.C. pave.
6+00²⁰ = Wly. line Bacon

8.36	8.15	7.90	8.07	8.1
4.87	4.66	4.41	4.58	4.6
5.14	5.35	5.60	5.43	5.4
8	7.5		7.5	7.5
walk	pave +	13.50	pave.	Grd.
	ord.			

T.P. 5186 13.50 2.37 7.64
10.01 5.86
7.64 13.50

5+88 7² RT = start fence.

8.0	7.8	8.1
2.0	2.2	1.9
7.5		7.5

5+75[✓] 7¹ RT = 12" pole # D 12681T

5+60- 7² RT = end fence. ✓

7.5	7.0	6.6	6.5	6.7
		6.4		
2.5	3.0	3.4	3.5	3.3
2.0	7.5	5		7.5

5+50

start fence. ✓

+34 7² RT = end lath house +

5+25- 7² RT = start lath house ✓

5+18 13' RT = Sing Gov. dirt floor

6.1
3.9
13

5+00[✓] 6² RT = 20" pole # A 5018 ✓

6.2	5.8	5.6	5.7	6.2
3.8	4.2	4.4	4.3	3.8
7.5	5		5	7.5

10.01

B/K 95.
Ocean Bay Beach

21

			5.22	2.50	Error to 103
T.P.	5.12	7.72	5.74	2.60	
T.P.	4.30	8.34	7.96	4.04	
	SS		6.09	5.91	(5.98)
Set. B.M.	4.35	12.00	5.85	7.65	

S.W.B.P. Voltaire + Bacon (orig. B.M. EL. = 2.47)

N.W. 7' L & T. Longbranch + Bacon (5.98)
= \neq P.K. Nail 6107²⁰

0+30²⁰ = \neq Bacon

8.90	8.68	8.40	8.02	7.60
4.60	4.82	5.10	5.48	5.90
77	40		50	100

6+30²⁰

8.68			
8.78	8.14	6.86	7.45
4.82	5.36	6.64	6.05
77	77	100	100
cc	0	G	cc

6+10²⁰ = wly. cl. Bacon.

8.35	7.85	7.60	7.57	7.23	7.79
5.15	5.65	5.90	5.93	6.27	5.71
40	40	75	75	50	50
cl	G	pave	pave	G	cc

13.50

0+14

309.4	312.1	313.4	313.5	313.3	314.4	314.0	313.8
8.7	60	47	46	48	37	41	43
50	30	16		12	18	30	40
Edge Ac. Thick. cut.							

0+05

315.6	315.5	314.8	314.7	314.5	315.2	314.7
25	26	33	34	36	29	30
40	30	16		14	16	30

0+00 North Line University (Paving Edge)

315.6	315.72	315.30	315.52	315.01	315.42	315.2
25	240	282	260	311	270	29
30	152	159		152	152	30
cb			Gut		cb	

Midpoint Curb Returns

315.29	315.68	315.41	315.05
2.85	2.74	2.71	3.07
Gutter	Curb	cb	Gutter

0-10 North Cb Line University

313.46	312.99	315.20	314.69	315.62	315.12	315.35	315.66	315.22	314.85	315.30	313.41	313.82	311.82	312.22
466	519	292	343	250	300	277	246	290	327	282	471	430	630	590
100	100	50	50	26	26	16		16	26	26	70	70	100	100
cb	Gut	cb	Gut	cb	Gut			Gut	cb	cb	Gut	cb	Gut	cb

0-30 E University

313.86	315.70	316.14	315.98	316.33	312.99
4.26	2.42	1.98	2.14	2.79	5.13
100	50		20	50	100

BM

2.55 318.12 X

315.57 NNBV University 52nd

318.12 X

Cont'd From Page 25

Lt

Rt

Rt

24

291.86
1438
21
INVERT

1+17 21⁵ Rt & 26" steel pipe drain

1+08 20⁵ Lt to Deadman

1+00

305.5	305.7	304.6	303.5	302.3	302.3	302.1	301.2	299.1	293.9	294.5
+0.7	+0.5	1.6	2.7	3.9	3.9	4.1	3.0	12.1	12.3	11.7
48	34	30	28	19		7	8	22	30	50

0+85 20² Lt to center P.Pole # 589469A

0+70

305.0	305.3	306.0	305.5	305.6	305.2	306.1	298.9	298.0	296.1
+1.2	+0.9	+0.2	0.7	0.6	1.0	0.1	7.3	8.2	10.1
48	34	30	26		8	10	22	30	50

T.P.

1.20 306.24 ∇ 13.08 305.04

306.24 ∇

0+48

28⁶ Lt End Entrance

308.6	309.2	308.8	308.7	308.1	308.6	308.8	308.4	309.3	309.3	306.0	304.6	301.4
9.5	8.9	9.3	7.4	10.0	9.5	9.3	7.7	8.8	8.8	13.1	13.5	16.7
50	35	30	28	22	16		10	11	13	24	30	50
AL	AL	AL	AL									

0+37.5

28¹ Lt Entrance to Parking Lot

308.5	309.5	309.5	309.1	310.0	310.2	309.9	310.9	310.5	306.9	303.9
7.6	8.6	8.6	7.0	8.1	7.9	8.2	7.2	7.6	11.2	14.2
50	30	28	25	14		11	12	16	30	50
AL	AL	AL								

310.12 ∇

318.12 ∇

Cont'd From Page 24

Lt

R

Rt 25

3+31

19⁵ Lt End AC Drive

304.6	304.6	302.3
10.1	10.1	11.4
50	30	19 ⁰
AC	AC	AC

3+08

16⁵ Lt AC Drive to Storage Yard

304.7	304.4	302.5
10.0	10.3	12.2
50	30	16 ⁵
AC	AC	AC

T.P.

10.36 314.71 T 1.89 304.35

314.71 T

3+00

304.6	304.7	302.5	307.1	302.1	298.9	299.0	302.0	305.7
1.6	1.5	3.7	4.1	4.1	7.3	7.2	4.2	0.5
50	30	20		4	10	16	30	50

2+50

304.9	304.7	304.4	301.5	301.2	301.1	301.9	295.2	295.9	299.1	300.7
1.3	1.5	1.8	4.7	5.0	5.1	4.3	11.0	10.3	9.1	3.5
50	31	30	23		5	6	18	24	30	50

2+00

305.7	305.3	303.3	302.3	300.4	301.5	301.2	294.6	294.6	294.7	297.4	
0.5	0.9	2.7	5.9	5.9	5.8	4.7	5.0	11.6	11.6	11.5	8.8
48	34	30	24		5	6	13	23	30	44	50

1+50

305.9	305.5	304.5	302.1	300.6	300.1	300.0	300.7	300.5	295.0	295.0	294.5	
0.3	0.7	1.7	4.1	5.6	6.1	6.2	5.5	5.7	11.2	11.2	11.7	9.6
48	32	30	28	15		5	6	10	21	30	41	50

306.24 T

306.24 T

Cont'd From Page 25

4+44.99 South Line Ottilie Place

4+20.5 27⁵/₈ Lt & 3' Conc. Walk

4+00

3+95.5 { 28.6 Lt End Curb
28.2 Lt End fence

3+60.5 28³/₈ Lt to near edge begin 6" Curb

3+60 28³/₈ Lt begin fence

3+56 27³/₈ Lt & Car port

3+50

3147/A

Lt

£

Rt

26

308.5	308.5	308.7	308.2	308.0	309.0	306.0	307.0
6.2	6.2	6.5	6.5	6.7	5.7	8.7	11.2
50	30	20		9	12	30	50

307.96	307.88
6.75	6.93
37 ⁵ / ₈	27 ⁵ / ₈
conc	conc

307.6	307.8	306.8	305.9	306.6	306.9	306.9	305.6	306.8	302.4	302.2	302.6
7.1	6.9	7.9	8.8	8.1	7.8	7.9	9.1	7.9	12.3	12.5	12.1
40	30	26	20	11		6	10	14	30	33	50

305.50

9.21
43⁸/₈
conc

305.5	305.0	303.9	304.1	304.2	305.0	304.7	301.6	301.6	305.7
9.2	9.7	10.8	10.6	10.5	9.7	10.0	13.1	13.1	9.0
43	30	20		5	6	9	14	30	50

3147/A

Cont'd from Page 26

6+00

T.P. 10.04 322.87 ∇ 1.88 312.83

5+54 29[±] Lt @ 5[±] Conc walk

5+50

5+32 28[±] Lt End curb

5+15 28[±] Lt @ 3[±] Conc walk

4+94.99 28[±] Lt begin 0.8 conc curb

4+51.5 39[±] Lt to center fire hydrant

314.71 ∇

Lt.

Rt.

Rt. 27

314.4	314.3	313.1	313.1	312.9	313.2	312.2	312.0
8.5	8.6	9.8	9.8	10.0	9.7	10.7	10.9
40	30	17		12	14	30	40

322.87 ∇

1.10	1.40
39 [±]	29 [±]
conc	conc

313.4	312.0	311.5	311.6	311.4	312.0	311.0	309.9
13	17	3.2	3.1	3.3	2.7	3.7	4.8
40	30	17		13	17	30	50

312.27	312.78	312.36
1.44	1.93	2.35
40	30	28 [±]
conc	conc	conc

312.3	312.1	310.2	309.9	309.6	310.7	309.0	306.8
2.4	2.6	4.5	4.8	5.1	4.0	5.7	7.9
50	30	18		12	16	30	50

309.8	309.9	309.3	308.4	308.4	308.2	309.3	306.1	303.7
4.9	4.8	5.4	6.3	6.3	6.5	5.4	8.0	11.0
50	38	30	18		9	13	30	50

314.71 ∇

7+60

319.4

35
100

319.3	319.8	317.1	318.1	318.5	319.1	318.9	318.5	318.2	318.1
36	6.1	5.8	4.8	4.4	3.8	4.0	4.4	4.7	4.8
90	74	50	30	16	14		15	30	40

7+58.5

175° Rt to Deadman
9° Rt to center P. Pole #4099

7+44.88

62° Lt End Fence
South Line Polk Ave

319.4	318.0	316.3	317.8	318.1	318.7	318.4	318.1	317.8	317.6
3.5	4.9	6.6	5.1	4.8	4.2	4.5	4.8	5.1	5.3
100	55	50	30	14	11		15	30	40

7+40

55° Lt L. Point in fence

7+31

51° Lt L. point in fence

7+00

317.4	316.5	315.0	315.9	316.5	316.2	316.8	316.5	316.0
5.5	6.4	7.9	7.0	6.4	6.7	6.1	6.4	6.9
50	30	29	25	5		20	30	40

6+97

43° Lt begin picket fence

6+50

315.8	315.6	315.6	314.3	314.7	314.8	315.2	314.3	314.1
7.1	7.3	7.3	8.6	8.2	8.1	7.7	8.6	8.8
40	30	27	22		6	7	30	40

6+25

30° Lt Q 9 Conc Drive

315.15	314.75
7.72	8.12
40	30
conc	conc

322.87A

322.87A

67 Check

3,22 319.65 = 319.67

Mon M.L. Polk $\frac{5}{11}$ £ 52nd

317.0 317.5 318.2 318.6 319.4 319.0 318.8 318.6 318.6

5.9 5.4 4.7 4.3 3.5 3.9 4.1 4.3 4.3
100 50 30 11 15 15 30 40

67 7+65

322.87

322.87

CROSS SECTION ALLEY BLK. 18

LA MESA COLONY

Between El Cajon Blvd and Amherst
From TRND. to HARRISON

Walker

Pape 8-13-54

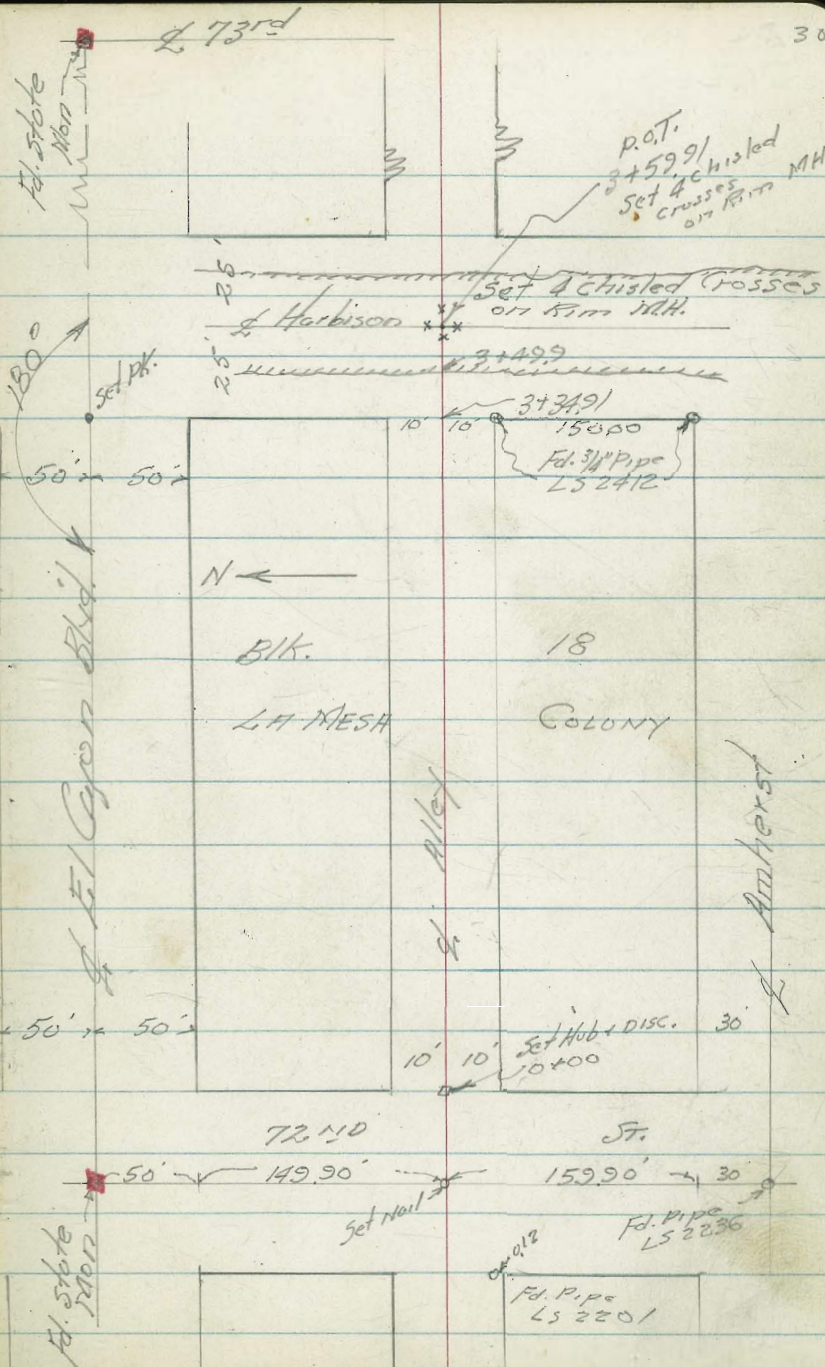
Olson

140.32151

INDEXED

MEP
AUG 16 1954

Plotted - C.R.D.
8/15/54



Alley Blk. - 18
La Mesa Colony

Lt. ♀ Rt. 31

1+17 = ♀ Garage on Lt. Dirt Floor

476.82
11'

Req. 4.5 Picket Fence = 9.9 Rt.

1+10 = End 3' Picket Fence 9.9 Rt.

T.P. 476.49

1+00

477.4 477.0 476.2 476.4 476.7 477.3 477.5
15' 10' 8' 6' 10' 20'
in yard.

0+60 = Req 3' Picket Fence
9.3 Rt.

End. 4' Picket Fence
9.3 Rt.

5+60 = ♀ Pole 517315-H 8.6 Rt.

0+50

477.3 476.8 476.3 476.3 476.5 476.9 476.9
12' 10' 8' 6' 10' 15'
at 8th
Lath House

0+00 = E. Line 72ND

Req. 4' Picket Fence
9.8 Rt.

477.4 477.1 476.5 476.4 476.6 476.6 477.2
15' 10' 9' 0' 6' 10'
at Hub
Ground

0-14 = E. Edge oiled Post

477.4 476.87 477.5
50' 50'

0-30 = ♀ 72ND

477.98 477.55 477.54
50' 50'
oil Post. oil Post.

Direct Elev. Rod used.

480.46

B.M. = S.M.B.P. E. Cajon & 72ND

Alley Blk. 18
La Mesa Colony

Lt

¢

Rt

32

1+84 = End Conc. Apron

476.05
9.9
Conc.
Apron

1+81.5 = Edge Doorway Dble Garage

4741
50

4740 4744 4750 4745 4749 4752 47611 476.55
40 20 10 5 7 9.9 16.1
in yard Conc. Apron Conc. Floor

1+65 = Beg. Doorway Dble Garage

476.41 476.55
10 16.4
Conc. Apron Conc. Floor

1+63 = Beg. Conc. Apron TWO Car Garage

476.44
10
Conc.
Apron

1+60.5 = End 4.5' Picket Fence 10.4' Rl

1+50

476.5 476.5 476.9 476.0 476.6 476.6
10 6 6 10 15
at Blk.
Corrugated
Iron Garage

1+42 = 1/2 Garage on Lt.

476.5
10.2

1+33 = 1/2 Garage on Lt. Dirt Floor

476.8
10.7

Alley Blk. 18
La Mesa Colony

2+55 = Beg. Conc. Ret wall on Lt.

TP

469.72

472.79 470.5

Top Ground
10.1 10.1

2+535 = L. 3' Conc. Walk

472.51 470.6A

13.1 10.1
Conc. Conc.
Landing Walk

2+50

470.1 470.1 470.0 469.9 470.3 470.8
10.2 6 6 10 20
at
Stucco House
(Court)

2+47 = L. Graveled Drive

470.3 471.2
10 35

2+23 = West End
Landing To Duplex

Faces West
To DIRT
DRIVE

472.73

22.5
Conc. Landing

2+18 = L. DIRT Drive on Lt.

Serves Court.
Thru. To El Cajon

475.4
100

472.8 472.4 472.2 471.9 472.4 472.1 472.6 472.4
7.6 5.0 10 6 6 10 14

Ground
at House

2+09 = Beg. chain wire fence 10.1 Rt
L. Pole 517316-H 89' Rt

TP

474.62

2+00

473.9 473.6 473.2 473.6 473.7 474.6 474.7
20 10 5 7 10 15

Alley Bk. 18
Lorraine Colony

Lt Lt Rt 34

3+34.91 = W Line Harbison

47192	468.7	46972	469	4683	4680	4684	4675
10	10.2	10	10	0	6	10	25
Top Wall	Bottom Footing	Top					

3+34.5 = End chain wire fence 10.2 Rt.

3+00

47199	4690	468.7	468.6	468.4	468.9	468.5
10.1	10	5		6	10	15
Top Wall						

2+188 = 2 3.5 Conc. Walk

470.60	469.25
12.8	10.1
Conc. Landing	Top Bottom Step

2+184.5 = 2 8" Conc. Tile Wall Ref.

468.7	472.0	469.2
10.1	10.1	10.1
Bottom Footing	Top	Ground

2+183 = End Conc. Apron 2 Cur Garage

47013	469.85
14	9.9
Conc. Floor	Conc. Apron

2+163 2 6" Conc. Apron 2 Cur Garage

47011	469.89
14	10
Conc. Floor	Conc. Apron

2+160 = End 6" Conc. Red. Wall

472.76	469.4	470.1
10	10.1	10.1
Top	Footing	Bottom

Alley Blk. 18 - LINDSEY COLONY

Lt.

L

Rt.

35

	0.01
chk. Starting B.M.	480.46
	480.45
TP	477.52
TP	472.78

3+59.91 = S. Herbison

47107	46994	46847	46807	46646
50	10	10	10	50
Peri.	Peri.	Peri.	Peri.	Peri.

3+49.9 = West edge AC. Paving

47081	46890	46845	46790	46640
50	10	10	10	50
Peri.	Peri.	Peri.	Peri.	Peri.

3+44.3 = S. Pole #517317-11 86 ft

3+41.16 = Lip Conc. Gut. on Lt.

47053	46233
40	10.2
Conc. Lip	Lip Conc. Gut.

3+39.9' = Top cb Face

Type B-2 curb on Lt.

47091	40
40	cb

47043	46278	46228	46219
40	12.2	12.2	10.2
Gut	Tapeb	Gut	Conc. Gut.
		at cb	85.

Clark
Shepherd
Brewer
Owens
11.3.54
W.O. 31036

P.F. X-SECT 31ST ST.
CEDAR to ELM

(WLY) LT

FOR SECTIONS OF
LINE 30 NEAR OF
Ely Ave 31ST.

36
RT (ELY)

REF: F.B. 1741 - 37-38-79 to
T.P.S. = 159 = 158
(NO SUBMISSION MADE)

INDEXED
HER
NOV 4 1954

Note: FOR ALIGNMENT - SKETCH SEE F.B. 1741/79

note: E FOR X-SECTIONS = Line 30' WLY OF E LING
31ST ST.

0+00.6 { 14.7 LT = E.C. CB
10.8 RT = END CB + WALK
= END AC Pav.
= 17.5 = 17.1 F.B.

MID-RT WLY Ret (10' CURB RAD STR. COV)

0-08 = WLY CB LINE CEDAR WLY

0-09 10.8 RT = E.C. CB.

MID RT, CB Ret. WLY 31ST + CEDAR { 10' CURB RAD
STR. COV

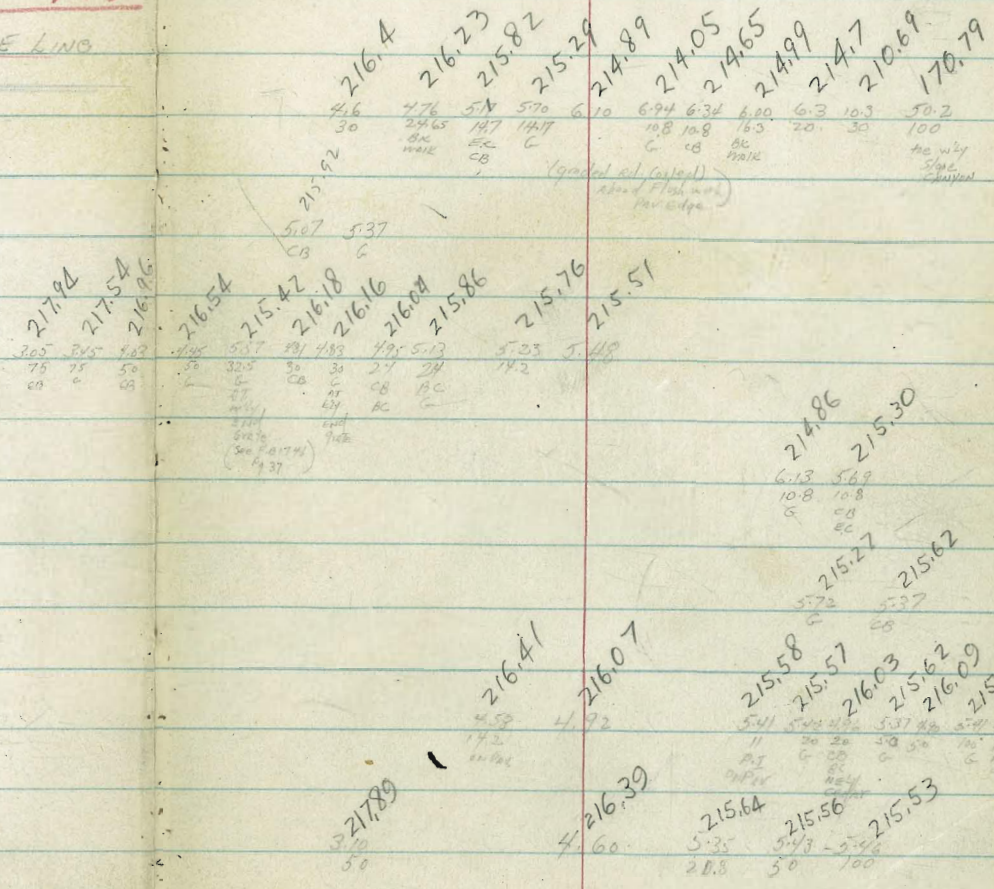
0-19 = CB Line ELY CEDAR

[0+00 = N Line CEDAR - WLY OF 31ST]

0-28 = E CEDAR - WLY (A.C. SURFACE)

T.P. 4.87 220.99 9.84 216.12

B.M. 0.49 225.96 225.47 = S.W. A.P
CEDAR + GROVE



220.99

1438 19.7 LT DEADMAN
 1436 23.0 LT END shrubs
 1416.5 23.0 LT & Begin Row shrubs (4)

1413.5 21' LT & Pole # P1632

1411.76 { 29.1 LT Beg 5' high - 8" wide - Conc. walk
 13.10 LT Beg STD CB & WALK (5' Conc.)
 10.1 LT to Edge 3' Conc. gutt.

1400

T.P. 0.03 208.07 ✓ 12.95 208.04 ✓

0450 30. LT = NE Corn gar.

0431 30.3 LT = SE Corn. Ancient Board garage
 Supported on rubble & Conc.

0430 24.2 LT & Tree 8"

0424 21.2 RT & DEADMAN

0405 21.3 RT & Pole (Ancient) 582 331-H

0402.5 16.6 LT = NEW CORN 4'x4' S.D. G.I.E. MH

204.38
 204.25
 203.61
 203.68
 369 382 446 439
 18.1 13.1 13.1 10.1
 BK CG
 210.4 211.1 208.0 205.7 205.4 204.9 205.0
 + 2.3 + 3.0 0.1 2.4 2.7 3.2 3.1
 15 34 30 23 17 12.5
 BK BK
 204.3 204.8 204.8 198.6 193.4 188.8
 38 33 3.3 9.5 14.7 19.3
 12.5 14 22 30 37 57
 BK Shoulder BK BK
 (Not Best Coupon)

215.5 215.4 211.3 210.7 210.1 210.1 208.07
 5.5 5.6 9.7 10.3 10.9 10.9
 40 30 26.19 24 16 14.5
 BK
 4.80
 30.3
 51
 209.5 209.8 209.4 203.9 193.0
 11.5 11.2 11.6 17.1 28.0
 11.5 13 22 30 40
 BK Shoulder on slope

216.12 215.97
 4.87 5.02
 20.6 16.6
 NW
 CORR

220.99

31st. (Cont.)

LT

E

RT

38

3106

12.45 LT Bay 5th CB

187.51
186.74
186.96
827 9.04 8.82
1245 1245 7.3
CB G LIP

301.4
290.6
10.8

3103

LT Bay 3' Con. gut. (ca. broken out)

186.80
186.99
878 8.79
12.25 7.25
GUT LIP

3101.4

12.55 RT Bay 5th CB - 3' Con. gut.

190.2
188.4
187.48
187.2
5.6 7.4 8.30 8.6
7.0 3.0 12.5 10.5

187.6
187.28
187.02
187.67
187.7
182.58
180.78
8.2 8.50 8.76 8.11 8.1 13.2 5.0
9.55 12.55 12.55 19
30 34
LIP G CB Shoulder toe

2150

190.8
197.2
192.0
191.2
190.3
190.5
7.9 4.4 3.8 7.6 5.5
4.0 3.0 2.5 12.5 10
GUT HX

190.2
190.6
190.5
186.1
178.0
5.3 5.6 5.2 5.3 9.7 17.8
12.5 15 24
Shoulder toe

T.P.

0.39 195.78 12.68 195.39

195.78

2700

(Soil Sample)

204.9
203.7
196.1
195.2
194.5
3.2 4.4 12.0 12.9 13.6
4.0 3.0 2.2 12.5 10
GUT

194.6
194.1
195.3
195.3
191.4
175.6
13.5 14.0 12.9 12.8 16.7 32.5
12.5 16 26 30 6.6
Shoulder toe slope

1193.20 - E R7020

1162.20

9.70 LT - END CB - WALL & GUT

199.35
199.70
198.60
198.64
8.72 8.87 9.47 9.43
17.7 12.7 12.7 9.7
CB G LIP

1162.00

28.5 Hand gars

1153

E 18' Drive LT (Conc. BK WALL & FL GARS)

200.49
199.73
199.87
7.58 8.34 8.20
17.8 12.8 9.8
BX G LIP

199.7
199.5
200.0
200.2
197.9
190.8
184.6
8.4 8.6 8.1 7.7 10.2 17.3 23.5
12.5 14 26 30 40 50
Shoulder on Slope

11450

1145

28.5 LT Bay 2-car gars

201.71
6.76
28.5

208.07

31st (Cont.)

57.50

T.P. 12.76 221.30 0.27 208.54

54.065

Box 5.6 Comb Milk 4CB

57.00

4451.5 19' LT E Pile (Anchor)

4450

4431

19' LTE DEBRID

T.P.

13.06 208.81 0.03 195.75

4400

3791.4

Box 5.67 (Comb Milk 4CB) 4CB

3750

14.6 Rt. = E Sewer M.H.

3718

Note: See F.B. 1741-38-42 For details Culvert

3710.5

LT RT E 2'x2.5' grates - located 54' end 60' CB in pipe

208.67 LT
 12.65 12.76 13.37 13.19 12.9
 18.05 12.45 12.45 9.45
 CB CB 25 UP
 208.54
 12.77 12.96 12.34 12.26
 7.85 12.55 12.55 18.22
 UP C CB CB
 208.34
 208.96
 209.04 39

221.30

203.67
 5.14 5.33
 18.05 12.45
 UP WALL CB
 204.0 204.1 203.29 202.69 202.86 203.2
 4.8 4.7 5.52 6.2 5.95 5.6
 34 30 12.45 12.45 7.45
 Shoulder CB G UP
 203.28 203.01 203.76 205.5
 5.55 5.80 Drive 5.05 3.3
 9.58 12.55 18.22 30
 UP G CB BK WALL

1950 191.8 197.6 198.1 197.43 197.70 197.8
 23.8 17.0 11.2 10.75 11.38 15.1 11.0
 44 30 21 12.45 12.45 9.45
 toe CB G UP
 197.83 197.62 198.25 198.32
 10.28 11.49 10.56 10.49
 9.55 12.55 12.55 18.22 30
 UP G CB BK WALL

208.81

193.8 195.6 192.6 192.94 192.33 192.49 192.7
 12.0 12.0 10.2 3.2 2.81 3.46 3.29 3.1
 25 30 19 12.45 12.45 9.45
 toe CB G UP
 191.6 190.8 198.3 198.33 197.72 197.99 198.4
 14.2 15.4 7.5 7.45 8.16 7.77 7.4
 40 30 19 12.45 12.45 9.45
 CB G UP
 198.65 198.68 192.54 192.34 193.12
 5.24 3.44 Drive 2.66
 7.55 12.55 12.55 18.15
 UP G CB
 188.03 187.85 188.48 188.8 189.1 187.3
 7.15 7.23 12.30 7.0 3.55
 9.55 12.55 12.55 2.5 30 40
 UP G CB BK WALL
 186.70 184.06
 7.08 11.72
 12.55 12.55
 G FL

195.78

31' ST (CONT.)

(7408.3 at GUT)
7404.7

9.45 LT = Edge Con Pav / Lip Con. gut.

7401.8 = Edge Con Pav. E (ELM CON. Pav.)

6497.25 = Edge Con Pav. AT CB RT

mid. pt S.E. Rot.

6494.5 12.6 RT = CB BC. (15' CUR. RAD.)

6492 = Grd Bnk CB 12.55 RT

6484 9.55 RT END 3' CON. GUT.

T.P. 11.19 231.65 0.84 220.46

6450

6400

LT
223.99

E

RT

40

7.66
9.45
EDGE
PAV

224.19
7.46
9.45

223.75
7.90 7.34
G CB
on curve
224.31

224.01
7.64 7.19
G CB
224.46

223.6
8.1 7.40 7.18
DNT CB BK W
12.6 18.22
224.25

223.5
8.2 7.47
DNT CB
12.55
224.18

222.84
8.01 8.92 8.36
9.53 12.55 12.53
Lip G Co
222.73
223.29

219.00
2.30 2.45 3.10 2.89 2.6
18.05 12.45 12.45 9.45
BK CB G Lip

218.85
218.20
218.41

213.2
8.1
30
BK W

213.81
7.49
18.05
BK W

213.69
7.61
12.45
CB

213.06
8.24
12.45
G

213.34
7.96
9.45
Lip

213.7
7.6

219.2
2.10 2.27 1.63 1.46
9.55 12.55 12.53 18.22
Lip G Co BK W

213.91
7.39
9.05
Lip

213.75
7.55
12.55
G

219.03
DNT
12.53
CB

219.67
6.55
18.22
BK W

219.24
30
ON
DRUP

214.45
186

221.30

OK ✓
 Edge Cont. Pav. AT. DB. RT. 31ST 790 = 223.75 - 223.69 = Edge
 Elm (Sly 31ST. Elm) Ret.

Can Pav. Elm
 Y Elm CB Line 31ST
 F. B. 1741-48

7+40.84 = E Elm - Wly

7+25.84 = Sly CB Line Elm - Westly

7+22.30 = Approx Imp's Elm - Ely

7+17.84 = Ltc E 31ST + Sly 7' Line Elm - Wly

mid-pt Swly Ret (15' DB Pav)

7+10.7 12.5 Lt CB B.C Swly Ret.

7+09.8 = Sly CB Line Elm - Ely

227.25
 226.81
 226.51
 226.05
 226.20
 225.78
 225.56
 225.33
 225.77
 225.65
 225.15
 224.35
 223.81

225.39
 225.15
 224.52
 225.76
 225.32

225.03
 224.36
 224.53
 224.35
 223.90
 224.25
 222.63
 222.98

231.65

Roberts
Cota
Moralez
Kelly
12-30-54
N.D. # 31655

X-Section Alley Block 39, Ocean Beach

See FB 1667 pg 70

Lt & R 42
INDEXED
JER
JAN 6 1955

0+49.5 8³ Rt to near edge P. Pole #PA 4784

0+35.3 10 Rt begin conc block wall

33.4	31.9	38.1
40	5.5	+0.7
10	10	10
GRD	Foot	Top

0+29.5 9 Rt to deadman

0+08 { conc. base continues to next wall
Rt End conc block wall on conc base

0+00 { 10 Rt to base conc block wall.
Easterly Line Sunset Cliffs Boulevard
10 Lt begin conc. wall - turns into retaining wall.

34.3	33.2	33.16	33.56	33.30	33.39	33.51	32.5	36.3
31	42	3.63	3.83	4.09	4.00	3.82	4.9	1.1
10	10	10	10	10	10	10	10	10
top	foot	cb	gut	gut	cb	foot	top	

Easterly Curb Line Sunset Cliffs 0-12

34.37	33.73	33.64	33.11	32.89	32.72	33.32	32.21	32.70
3.02	3.66	3.75	4.28	4.50	4.67	4.07	5.18	4.69
50	50	12	12	12	12	50	50	
cb	gut	cb	gut	gut	cb	gut	cb	

Q Sunset Cliffs Boulevard 0-30

34.19	33.28	32.46
3.20	4.11	4.93
50		50

BM 127 37.39 T 36.12 NWBP Sunset Cliffs ED 11 Mar

37.39 T

Cont'd From Page 42

Lt

Rt

Rt 43

1+49.6 10 Lt End conc apron

35.53 35.19
4.77 5.31
15 Floor 10 Conc apron

J.P. 6.71 40.50 $\bar{\wedge}$ 360 33.79

40.50 $\bar{\wedge}$

1700 10 Lt begin conc apron of 4-car garage

35.59 34.42 33.8 33.8 33.7
1.80 2.97 3.6 3.6 3.7
15 Floor 10 Conc 10 20

0799 10 Rt End conc block wall

33.7 33.0 38.0
3.7 4.4 4.6
10 GRD 10 Foot 10 Top

0761 15⁶ Lt $\bar{\wedge}$ Single garage

32.99 33.86
3.40 3.53
15⁶ Floor 10 Conc Apron

0756 10 Rt $\bar{\wedge}$ 2⁵ opening in wall

33.69
3.70
10 Conc

0754 10 Lt End conc Ret. Wall

35.3 33.5 33.9
2.1 3.9 3.5
10 Top 10 Foot 10 GRD

0750

34.0 33.4 33.5
3.4 4.0 3.9
10 10

3739 $\bar{\wedge}$

3739 $\bar{\wedge}$

2407 16¹/₂ Lt & Single garage

36.92
358
162
CONC
Floor

2400

36.7 37.4 37.5 37.1 37.0 37.2 36.7 36.4
3.8 3.1 3.0 3.4 3.5 3.3 3.8 4.1
20 10 7 3 7 10 20

1491 17¹/₂ Lt & Single Garage

36.51 36.56
3.77 3.74
178 108
CONC CONC
Floor Apron

14753 10 Lt End pickoff fence

1473.5 8⁰ Rt to near edge P.Pole #PA 4766.

1460 { 9¹/₂ Lt begin picket fence
18 Rt & double garage

35.00
5.50
18
CONC
Floor

1455 10 Lt & Car port

35.60 35.4
490 51
20 10
Floor sloppy
Apron
of
CONC

1450

35.4 35.2 34.9 34.8 34.8
5.1 5.3 5.6 5.7 5.7
20 10 10 20

Cont'd From Page 44

3+50

3+25

10⁹ Rt End conc block wall w/fence

3+19

18 Lt & single garage

3+00

{ 10⁸ Rt begin conc block wall w/fence atop.
8⁰ Rt to near edge P.Pole # PA4750

2+65

20² Rt & Double garage

2+59

11 Lt End conc apron

T.P.

11.12 50.27 π 135 39.15

Nail in
Four Feet

50.27 π

2+50

11 Lt begin conc apron

40.50 π

Lt

48.0 48.4 48.5 48.1 48.0
2.3 1.9 1.8 2.2 2.3
20 10 6 5

Rt

47.8 48.3 48.3 48.5
2.5 2.0 2.0 1.8
5 7 10 20

46.3 45.3 46.9
4.0 5.0 3.4
10² 10² 10²
GRD Foot Top wall

45.6

7.7
18
Dirt
Floor

44.4 44.5 44.5 44.1 44.2 44.6 43.5 46.9
5.7 5.8 5.8 6.2 6.1 5.7 6.8 3.4
20 10 6 4 10² 10²
Foot Top wall

41.44

41.36

8.83 8.91
20.5 19
Floor conc apron

41.05 40.87

9.22 9.40
16 11
Floor CONC

41.15 40.9 40.8 40.4 40.1 40.1 40.6 40.6
+0.65 +0.4 +0.3 0.1 0.4 0.4 +0.1 +0.1
16 11 10 7 5 10 20
Floor CONC

40.50 π

Cont'd From Page 45

Lt

Rt

Rt 46

4+01 13² Lt & 4⁵ ginning in wall

52.81
10.05
13²
conc

4+00

52.8 52.5 52.2 52.0 52.3 52.4 52.8 53.1 53.0
191 10.4 10.7 10.9 10.6 10.5 10.1 9.8 9.9
20 10 7 5 5 7 10 20

3+99 8² Rt to near edge P. Pole # PA 4734

54.8 48.9 49.8

3+75 13¹ Lt begin conc block wall

81 140 13.1
13¹ 13¹ 13¹
Top Foot GFD

3+73.5 11² Rt & 4 conc walk

50.01 49.96
12.85 12.90
11² 21²
conc conc

T.P. 12.70 62.86A 0.11 50.16

62.86A

3+65 11 Rt End conc apron

49.47 49.65
0.80 0.52
11 14
conc Floor

3+55 11 Rt begin conc apron

49.44 49.75
0.83 0.52
11 14
conc Floor

50.27A

50.27A

Cont'd From Page 46

Lt

Rt

Rt

47

5+00

61.6	61.56	61.19	61.1	61.3	61.83
13	130	167	18	16	103
17	10	5		10	13

4+96

10⁺ Lt End conc apron.

61.09	61.03
177	183
17	183
Floor	10 ⁺ conc

4+90

center garage on Right

60.60	61.10
226	176
10 conc	13 Floor

4+77

10⁺ Lt begin conc apron - double garage

61.05	60.12
181	274
17	10 ⁺ conc
Floor	

4+76

10 Rt begin conc apron - 3 car garage

59.98	60.48
288	238
10 conc	13 Floor

4+50

57.4	57.4	57.3	56.7	56.5	56.4	57.3	57.3	57.3
55	55	56	62	64	65	56	56	56
16	10	8	5		5	8	10	20

4+10

18⁺ Rt & Double garage

53.82	53.84
904	902
16 conc apron	18 Floor

4+09

13⁺ Lt End conc blk wall begin conc blk shed.

57.7	52.7	53.3
52	102	96
13 ⁺	13 ⁺	13 ⁺
Top	Foot	GRD

62.86 π

62.86 π

5+68 10 Rt End conc apron

68.48
721 6.87
10 18
conc Floor

5+55 10 Rt End wall & begin conc apron

67.5 66.8 67.5 67.5 68.2
83 8.9 8.2 8.2 6.87
10 10 10 10 13
GRD Foot Top Apron Floor

5+50

65.3 65.1 65.9 65.9 65.9 66.3 66.4
10.4 10.6 9.8 9.8 9.8 9.4 9.3
16 12 10 5 7 10

5+40 10² Rt break in wall

65.0 65.0 66.1 67.7
10.7 10.7 9.6 8.0
10² 10² 10² 10²
GRD Foot Top Top

5+26 { 8⁴ Rt to near edge P.Pole #PA4718
10 Rt begin conc ret wall
16 Lt E 3 conc wall

64.93
10.76
16
conc
64.0 63.7 66.0
11.7 12.0 9.7
10 10 10
GRD Foot Top

T.P. 12.87 75.69 Δ 0.04 62.82

75.69 Δ

5+07 10 Rt End apron - 3 car garage

61.74 61.86
11.2 1.00
10 13
conc Floor

62.86 Δ

62.86 Δ

6+28.30 £ Ebers

76.90

73.03

73.03

367
50

554

754
50

6+10.30 West Curb Line of Ebers

76.54

75.98

75.26

64.66

74.09

73.73

74.29

72.30

72.82

703
50
cb

759
50
gut

531
12
cb

591
12
gut

648

684
12
gut

628
12
cb

827
50
gut

775
50
cb

T.P. 613 80.57 π 4.25 74.44

80.57 π

5+98.30 West Line of Ebers

check
7523

74.77

74.10

74.15

74.44
check

0.45
10
cb

0.92
10
gut

1.59

1.54
10
gut

1.25
10
cb

5+85

72.2

71.6

71.5

71.9

72.5

72.8

73.3

3.5
10

4.1
5

4.2

3.8
6

3.2
8

2.9
10

2.4
11.6

5+74 106 Lt to Bldg. $\frac{1}{2}$ East Side of Window

543

694

5+72 116 Rt NW Corner of garage

106
on Window Sill

75.69 π

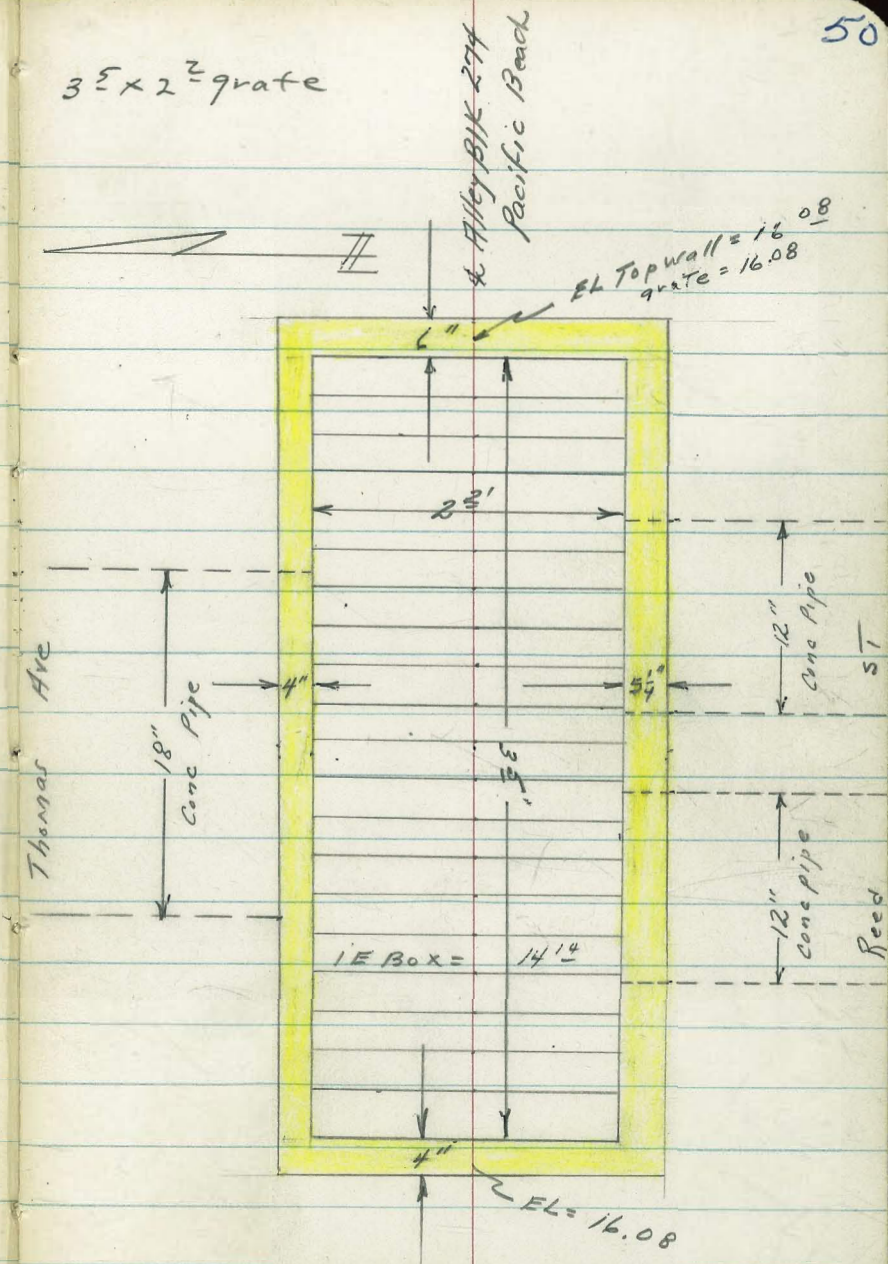
75.69 π

6.3
116
Fdn. Foot

Re. X-sec Alley Block 274, Pacific
 Beach - see sketch FB 2227-25
 WO # 32604 - April 17, 1955
 C. Allen, J. Reer, B. Parks, R. Martinez
 Ref. FB 2227-25

See Page 51 for levels.

INDEXED
 JER
 APR 19 1955



Details of Catch Basin in Alley Block
 274, Pacific Beach

Levels Alley 131K 274 -

LT = Nly

2

RT = sly.

51

0+75

$31\frac{4}{20}$	$31\frac{1}{10}$	$30\frac{7}{10}$	$30\frac{7}{10}$	$30\frac{6}{30}$
------------------	------------------	------------------	------------------	------------------

$\left\{ \begin{array}{l} 9^{\circ} \text{ LT} = \text{begin } 6^{\frac{1}{2}} \text{ high board fence} \\ 11^{\circ} \text{ RT} = \text{end } 7' \text{ high Hedge} \end{array} \right.$

32°	$31\frac{7}{10}$	$31\frac{6}{10}$	$31\frac{4}{10}$	$31\frac{1}{30}$
--------------	------------------	------------------	------------------	------------------

0+25

$32\frac{9}{10}$	$32\frac{3}{10}$	$32\frac{4}{10}$
------------------	------------------	------------------

0+07 - 10° RT - begin 7' high Hedge

0+01 - 10° RT \angle 8" Tel pole # 448809

0+00 - Ely Morrell ST

33°	$33\frac{4}{30}$	$33\frac{4}{10}$	33°	$33\frac{2}{10}$	$32\frac{6}{30}$	$31\frac{2}{50}$
--------------	------------------	------------------	--------------	------------------	------------------	------------------

No Change on Morrell - See FB 2227

Direct elev. Rod used.

B.M.

34.13

Rim SMH. 0-40 FB 2227-26.

1+25-10² RT= end Conc Block wall

28² 27⁵ 27⁵ 27⁶ 27⁶ 26⁸ 30⁵⁸
 20 10 10 10² 10² 10²
 9" Foot Top
 wall

1+24- 9⁰ RT= ⊥ 8" Top pole #A 2024

1+04 11⁰ LT= ⊥ 1⁷ Conc walk

8⁹⁷ 8⁸⁷
 21⁰ 11⁰
 walk walk

1+02- 9⁷ RT= ⊥ dead man

1+00- 10² RT= begin Conc Block wall.

29⁷ 29⁵ 29² 29⁴ 29⁷ 28⁷ 30³⁸
 20 10 6 10 10² 10²
 Foot Top
 wall

0+98- 9⁶ LT= end 6⁵ board fence

0+87- 27⁸ RT= ⊥ double garage
 Conc floor

30⁶⁵
 27⁸
 Floor

0+77⁴ 10³ RT= ⊥ 1⁵ wide Conc walk

30⁸⁸ 30⁷⁸
 10³ 20³
 walk walk

Direct Rod.

Alley 274, R.B. Shed out of

LT = Nly

℄

RT = Sly

53

9² RT = begin conc wall with
1+74- 9² RT = end Picket fence

23⁵ 24^{7.3}
9² 9²
Foot Topwall

1+65 = 10⁰ RT = ℄ 1⁵ conc walk

25^{9.2} 24^{6.7}
10⁰ 20
Walk

1+62 - 9² RT = begin 4' picket fence

1+50

25⁸
10

25⁷ 25⁷ 26³
4 10

Floor + Apron
1+45 - 10⁵ RT = ℄ Single garage conc

264² 266⁵
10⁵ 13⁰
Apron Floor

1+38 - 11⁰ RT = end conc walk R to ℄

27^{1.6}
11⁰
walk

Conc Floor + Apron
1+37 - 14⁹ LT = ℄ Single garage

276⁷ 275⁴
20⁰ 14⁹
Floor Apron

1+30 - 10⁰ RT = begin 2⁵ walk R to ℄

Direct Rod

27^{1.7}
10⁹
walk

2+25 - 11° RT = begin 2⁵ conc walk

19⁹ 19³ 19³ 19² 18¹ 18¹ 18⁰
 20 10 8 9 10 11²
 walk

2+23 - 14⁴ LT = end Conc Block wall

23¹⁶ 19² 20⁰
 14⁴ 14⁴ 14⁴
 Top wall FOOT ground

2+21 - 7⁸ RT = 28" Olive Tree

2+00

21⁶ 20⁰ 20² 21⁴ 21⁶
 25 10 5 10

1+95 - 14² LT = begin Conc Block wall

23⁰⁸ 20⁸ 21⁷
 14² 14² 14²
 Top FOOT ground
 wall

1+90 - 9⁷ RT = end Conc wall - Shed on Top

22³ 24³
 9⁷ 9⁷
 FOOT Top wall

1+75

23³ 23⁸ 23 23⁸ 24⁴
 20 10 6 10

Direct Rod

Alley 274

LT = Nly

£

RT = Sly. 55

3+24-8¹ RT = begin 3' Picket fence

3+07-11⁹ RT = 2⁵ conc walk

17²
11⁹
Walk

3+00

18⁹ 18¹ 17⁹ 19⁵ 19³ 17⁷ 17⁸
20 10 3 5 10 15⁵
grat
Nly of
House

2+87-8⁸ RT = NEly cor Addition on House
House is Stucco

2+78-9⁰ RT = NWly cor addition on House

18⁴ 18⁴
9⁰ 9⁰
grat House Floor

2+75-10⁰ RT = end Picket fence

18⁴ 18³ 19⁷ 18⁷ 18⁰
10 3 6 10

2+74-7⁸ RT = 2 6" pole # A 2054 (Power + Tel.)

2+50-11¹ RT = end 2⁵ conc walk TP to £

19⁰ 18⁶ 18⁵ 19⁶ 19⁴ 18⁴ 18² 17⁹
20 10 3 4 6 10 11⁵
Direct Rod

Alley 274, PA cont

LT=Nly

±

RT=Sly. 36

Water flows from Nly to Sly.

inlet on Thomas St and exits thru
surface drain on Reed St.

(See sketch page 50)

3+99 = Wly edge Catch Basin

16⁰⁸ 14¹⁴
ON Wly I.E. Box
Wall.

3+97 - 12⁵ LT = end Car Port - dirt floor

3+75

17⁰
10

16⁴ 17⁶ 16⁶ 16⁶
4 8 10

3+80 - 8⁴ RT = end 3' picket fence

3+69 - 12⁵ LT = begin car port (dirt floor)
Dirt floor

3+57 - 12⁵ LT = end Car Port

3+50

18⁹ 17⁵ 17⁰ 16⁷ 17⁶ 17⁰ 16⁶
20 10 4 8 10 15
Under
Car port

This Port Has dirt floor -

3+29 - 12⁵ LT = begin Car Port

3+25

17⁸ 17⁴ 17⁴ 18⁰ 18⁰
10 5 7 10

Direct Rod

Qiles 274, P. 13. cont

LT = Nly

RT = Sly

57

4+41-15⁴ RT = end of CAR garage ^{131dg carries Thru} Floor conc

176⁸
15⁴
conc Floor

Side Walk in FB 2227 - Combined with Slab.
4+27-15⁰ LT = end Conc Slab (SELY COR)

174⁴
15⁰
conc slab

4+25-15⁴ RT = Nly of Garage Floor

16⁹ 17⁰ 17⁶ 17⁶ 17⁶
10 6 10 15⁴
conc Floor

Conc Floor No Apron
4+04⁵-15⁴ RT = begin of CAR garage

176⁵
15⁴
conc Floor

4+03-15⁶ LT = begin conc slab

174² 17⁰
25⁶ 15⁶
conc conc
swly cor
slab

4+04-8³ RT = 8" pole # JPA 2076

17² 16⁹ 16¹⁰ 16¹ 17³ 17⁰ 17⁰
20 10 ON Grate 2 5 10 20
of Drain

4+00

Direct Rod

ground at house

4+65- 14⁸ RT = begin stucco House

4+60

4+59- 10² RT = begin 3 car garage ^{Floor + Apron} Conc

4+50- } 10⁰ RT = begin Conc slab ^{NWly cor}
 13⁴ RT = end 1² wide Conc walk ^{R to 4}

4+47- 15⁴ RT = end garage Bldg.

4+42- 13⁶ RT = begin 1² wide walk R to 4

19³
 14⁸
 ground

18⁴ 18⁵ 18¹ 17⁸⁴
 15 10
 10²
 Nly of
 Conc Apron

17⁸³ 17⁸⁹
 10² 15²
 Apron Floor

17⁵⁴ 17⁴³
 10⁰ 20
 NWly cor on slab

18⁷ 17⁸ 17⁷ 17⁶ 17⁸³ 17⁶⁵
 20 10 10 13⁴ 21⁰
 Walk Conc

17⁸²
 13⁶
 Walk

Alley BIK 274, P.B.

Noyes ST Sections

4 See FB 2227 - Page 30 for

4 } Wall - Same Footing + Top as 489
10^z RT = end Conc Block Retaining
4+99.95 = Wly of Noyes ST

23^o 22⁷ 22⁴ 22^o 22⁴ 22³
25 18 10 10 20

4 } Wall -
4+89 - 10^z RT = begin Conc Block Retaining

17⁴ 22⁴⁹
10^z 10^z
Foot Topwall

4+89 - 10^z RT = end 3 Car garage
Conc Floor + Apron

17⁶ 17⁸⁰
10^z 15^z
Apron Floor

4
4+80

20⁴ 19⁶ 17⁸¹
10 10^z
Wly of Conc Apron

4 4+86 - 14^o LT = end Stucco House

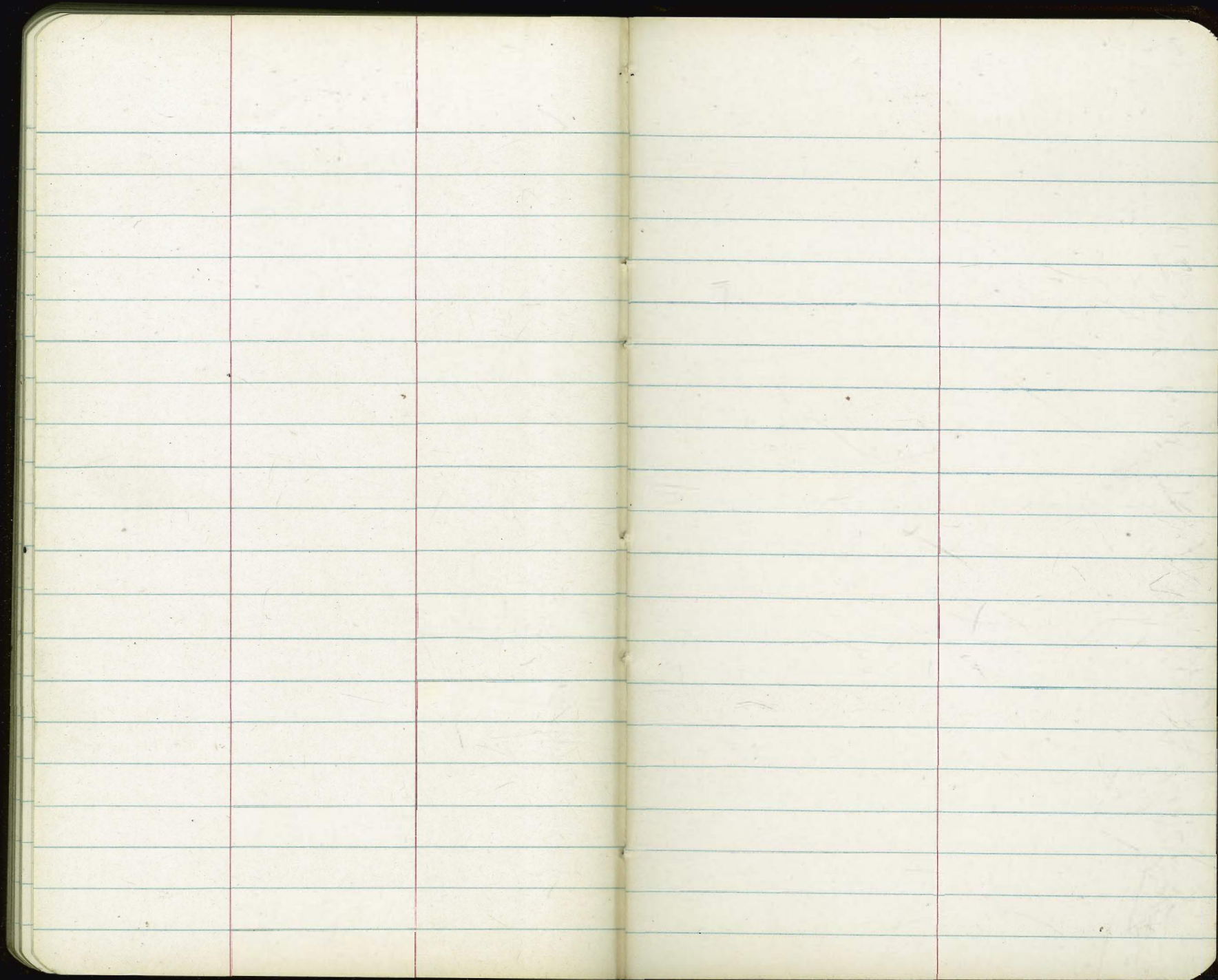
21^z
14⁸
ground
at House
Direct Rod

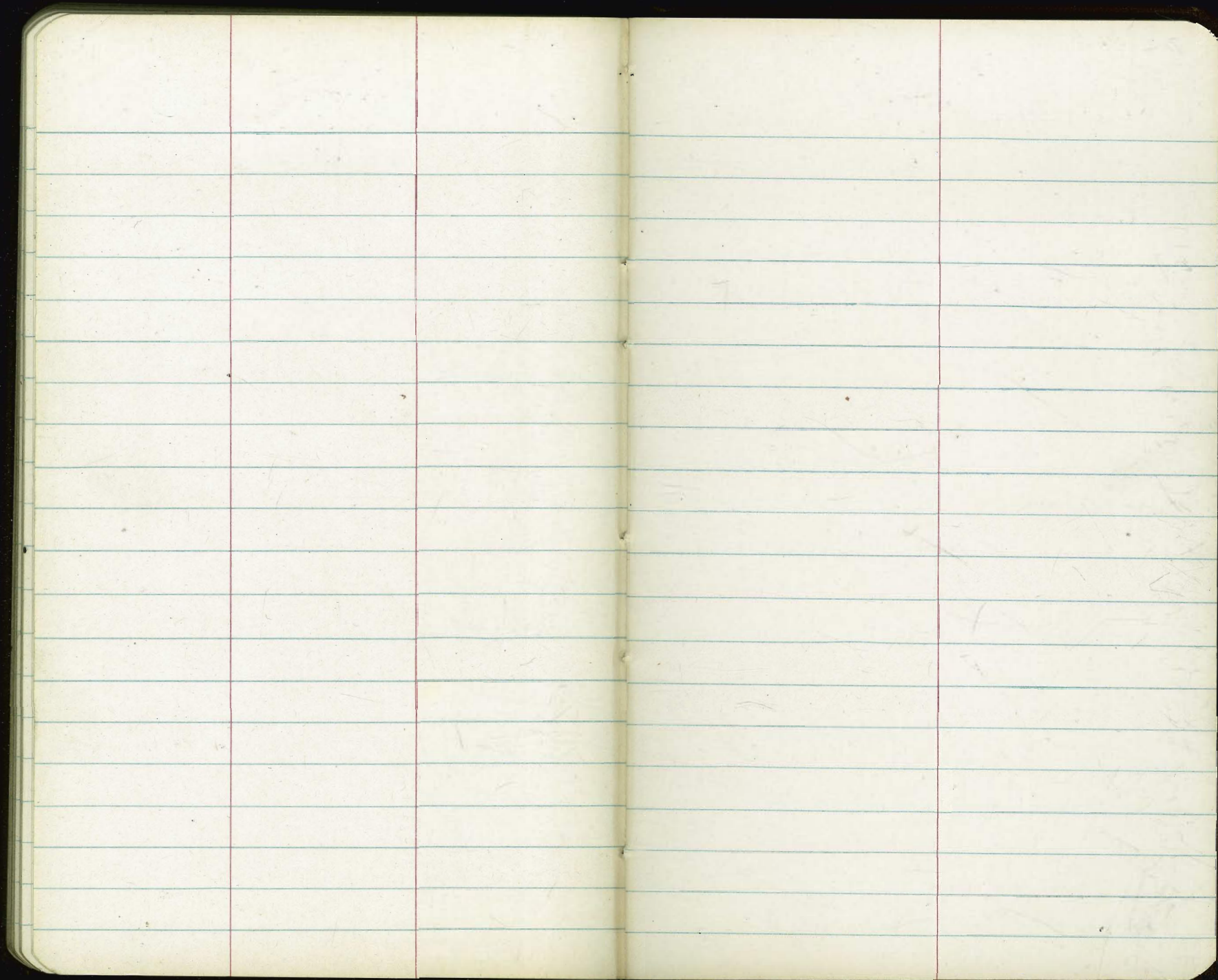
LT = N1/2

2

RT = S1/2

59





4499

399

2(3'5

1.75

33

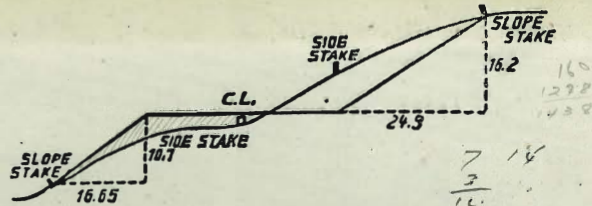
2.08

4711

21 db 75.23
24 db 74.44

57 78.30

3.3 491
54
37



DISTANCES FROM SIDE STAKES FOR CROSS-SECTIONING.
SLOPE 1½ TO 1. ROADWAY OF ANY WIDTH.

	0	.1	.2	.3	.4	.5	.6	.7	.8	.9	
0	0.00	0.15	0.30	0.45	0.60	0.75	0.90	1.05	1.20	1.35	0
1	1.50	1.65	1.80	1.95	2.10	2.25	2.40	2.55	2.70	2.85	1
2	3.00	3.15	3.30	3.45	3.60	3.75	3.90	4.05	4.20	4.35	2
3	4.50	4.65	4.80	4.95	5.10	5.25	5.40	5.55	5.70	5.85	3
4	6.00	6.15	6.30	6.45	6.60	6.75	6.90	7.05	7.20	7.35	4
5	7.50	7.65	7.80	7.95	8.10	8.25	8.40	8.55	8.70	8.85	5
6	9.00	9.15	9.30	9.45	9.60	9.75	9.90	10.05	10.20	10.35	6
7	10.50	10.65	10.80	10.95	11.10	11.25	11.40	11.55	11.70	11.85	7
8	12.00	12.15	12.30	12.45	12.60	12.75	12.90	13.05	13.20	13.35	8
9	13.50	13.65	13.80	13.95	14.10	14.25	14.40	14.55	14.70	14.85	9
10	15.00	15.15	15.30	15.45	15.60	15.75	15.90	16.05	16.20	16.35	10
11	16.50	16.65	16.80	16.95	17.10	17.25	17.40	17.55	17.70	17.85	11
12	18.00	18.15	18.30	18.45	18.60	18.75	18.90	19.05	19.20	19.35	12
13	19.50	19.65	19.80	19.95	20.10	20.25	20.40	20.55	20.70	20.85	13
14	21.00	21.15	21.30	21.45	21.60	21.75	21.90	22.05	22.20	22.35	14
15	22.50	22.65	22.80	22.95	23.10	23.25	23.40	23.55	23.70	23.85	15
16	24.00	24.15	24.30	24.45	24.60	24.75	24.90	25.05	25.20	25.35	16
17	25.50	25.65	25.80	25.95	26.10	26.25	26.40	26.55	26.70	26.85	17
18	27.00	27.15	27.30	27.45	27.60	27.75	27.90	28.05	28.20	28.35	18
19	28.50	28.65	28.80	28.95	29.10	29.25	29.40	29.55	29.70	29.85	19
20	30.00	30.15	30.30	30.45	30.60	30.75	30.90	31.05	31.20	31.35	20
21	31.50	31.65	31.80	31.95	32.10	32.25	32.40	32.55	32.70	32.85	21
22	33.00	33.15	33.30	33.45	33.60	33.75	33.90	34.05	34.20	34.35	22
23	34.50	34.65	34.80	34.95	35.10	35.25	35.40	35.55	35.70	35.85	23
24	36.00	36.15	36.30	36.45	36.60	36.75	36.90	37.05	37.20	37.35	24
25	37.50	37.65	37.80	37.95	38.10	38.25	38.40	38.55	38.70	38.85	25
26	39.00	39.15	39.30	39.45	39.60	39.75	39.90	40.05	40.20	40.35	26
27	40.50	40.65	40.80	40.95	41.10	41.25	41.40	41.55	41.70	41.85	27
28	42.00	42.15	42.30	42.45	42.60	42.75	42.90	43.05	43.20	43.35	28
29	43.50	43.65	43.80	43.95	44.10	44.25	44.40	44.55	44.70	44.85	29
30	45.00	45.15	45.30	45.45	45.60	45.75	45.90	46.05	46.20	46.35	30
31	46.50	46.65	46.80	46.95	47.10	47.25	47.40	47.55	47.70	47.85	31
32	48.00	48.15	48.30	48.45	48.60	48.75	48.90	49.05	49.20	49.35	32
33	49.50	49.65	49.80	49.95	50.10	50.25	50.40	50.55	50.70	50.85	33
34	51.00	51.15	51.30	51.45	51.60	51.75	51.90	52.05	52.20	52.35	34
35	52.50	52.65	52.80	52.95	53.10	53.25	53.40	53.55	53.70	53.85	35
36	54.00	54.15	54.30	54.45	54.60	54.75	54.90	55.05	55.20	55.35	36
37	55.50	55.65	55.80	55.95	56.10	56.25	56.40	56.55	56.70	56.85	37
38	57.00	57.15	57.30	57.45	57.60	57.75	57.90	58.05	58.20	58.35	38
39	58.50	58.65	58.80	58.95	59.10	59.25	59.40	59.55	59.70	59.85	39
40	60.00	60.15	60.30	60.45	60.60	60.75	60.90	61.05	61.20	61.35	40
41	61.50	61.65	61.80	61.95	62.10	62.25	62.40	62.55	62.70	62.85	41
42	63.00	63.15	63.30	63.45	63.60	63.75	63.90	64.05	64.20	64.35	42
43	64.50	64.65	64.80	64.95	65.10	65.25	65.40	65.55	65.70	65.85	43
44	66.00	66.15	66.30	66.45	66.60	66.75	66.90	67.05	67.20	67.35	44
45	67.50	67.65	67.80	67.95	68.10	68.25	68.40	68.55	68.70	68.85	45
46	69.00	69.15	69.30	69.45	69.60	69.75	69.90	70.05	70.20	70.35	46
47	70.50	70.65	70.80	70.95	71.10	71.25	71.40	71.55	71.70	71.85	47
48	72.00	72.15	72.30	72.45	72.60	72.75	72.90	73.05	73.20	73.35	48
49	73.50	73.65	73.80	73.95	74.10	74.25	74.40	74.55	74.70	74.85	49
50	75.00	75.15	75.30	75.45	75.60	75.75	75.90	76.05	76.20	76.35	50

THE NATIONAL BLANK BOOK COMPANY
HOLYOKE MASSACHUSETTS
NEW YORK CHICAGO BOSTON SAN FRANCISCO