

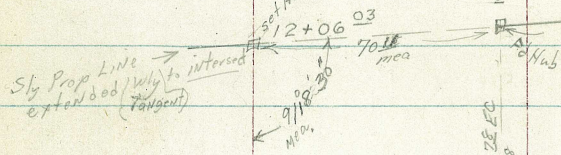
DISTANCES FROM SIDE STAKES FOR CROSS-SECTIONING
SLOPE 1 TO 1. ROADWAY OF ANY WIDTH

	0	.1	.2	.3	.4	.5	.6	.7	.8	.9	
0	0.00	0.10	0.20	0.30	0.40	0.50	0.60	0.70	0.80	0.90	0
1	1.00	1.10	1.20	1.30	1.40	1.50	1.60	1.70	1.80	1.90	1
2	2.00	2.10	2.20	2.30	2.40	2.50	2.60	2.70	2.80	2.90	2
3	3.00	3.10	3.20	3.30	3.40	3.50	3.60	3.70	3.80	3.90	3
4	4.00	4.10	4.20	4.30	4.40	4.50	4.60	4.70	4.80	4.90	4
5	5.00	5.10	5.20	5.30	5.40	5.50	5.60	5.70	5.80	5.90	5
6	6.00	6.10	6.20	6.30	6.40	6.50	6.60	6.70	6.80	6.90	6
7	7.00	7.10	7.20	7.30	7.40	7.50	7.60	7.70	7.80	7.90	7
8	8.00	8.10	8.20	8.30	8.40	8.50	8.60	8.70	8.80	8.90	8
9	9.00	9.10	9.20	9.30	9.40	9.50	9.60	9.70	9.80	9.90	9
10	10.00	10.10	10.20	10.30	10.40	10.50	10.60	10.70	10.80	10.90	10
11	11.00	11.10	11.20	11.30	11.40	11.50	11.60	11.70	11.80	11.90	11
12	12.00	12.10	12.20	12.30	12.40	12.50	12.60	12.70	12.80	12.90	12
13	13.00	13.10	13.20	13.30	13.40	13.50	13.60	13.70	13.80	13.90	13
14	14.00	14.10	14.20	14.30	14.40	14.50	14.60	14.70	14.80	14.90	14
15	15.00	15.10	15.20	15.30	15.40	15.50	15.60	15.70	15.80	15.90	15
16	16.00	16.10	16.20	16.30	16.40	16.50	16.60	16.70	16.80	16.90	16
17	17.00	17.10	17.20	17.30	17.40	17.50	17.60	17.70	17.80	17.90	17
18	18.00	18.10	18.20	18.30	18.40	18.50	18.60	18.70	18.80	18.90	18
19	19.00	19.10	19.20	19.30	19.40	19.50	19.60	19.70	19.80	19.90	19
20	20.00	20.10	20.20	20.30	20.40	20.50	20.60	20.70	20.80	20.90	20
21	21.00	21.10	21.20	21.30	21.40	21.50	21.60	21.70	21.80	21.90	21
22	22.00	22.10	22.20	22.30	22.40	22.50	22.60	22.70	22.80	22.90	22
23	23.00	23.10	23.20	23.30	23.40	23.50	23.60	23.70	23.80	23.90	23
24	24.00	24.10	24.20	24.30	24.40	24.50	24.60	24.70	24.80	24.90	24
25	25.00	25.10	25.20	25.30	25.40	25.50	25.60	25.70	25.80	25.90	25
26	26.00	26.10	26.20	26.30	26.40	26.50	26.60	26.70	26.80	26.90	26
27	27.00	27.10	27.20	27.30	27.40	27.50	27.60	27.70	27.80	27.90	27
28	28.00	28.10	28.20	28.30	28.40	28.50	28.60	28.70	28.80	28.90	28
29	29.00	29.10	29.20	29.30	29.40	29.50	29.60	29.70	29.80	29.90	29
30	30.00	30.10	30.20	30.30	30.40	30.50	30.60	30.70	30.80	30.90	30
31	31.00	31.10	31.20	31.30	31.40	31.50	31.60	31.70	31.80	31.90	31
32	32.00	32.10	32.20	32.30	32.40	32.50	32.60	32.70	32.80	32.90	32
33	33.00	33.10	33.20	33.30	33.40	33.50	33.60	33.70	33.80	33.90	33
34	34.00	34.10	34.20	34.30	34.40	34.50	34.60	34.70	34.80	34.90	34
35	35.00	35.10	35.20	35.30	35.40	35.50	35.60	35.70	35.80	35.90	35
36	36.00	36.10	36.20	36.30	36.40	36.50	36.60	36.70	36.80	36.90	36
37	37.00	37.10	37.20	37.30	37.40	37.50	37.60	37.70	37.80	37.90	37
38	38.00	38.10	38.20	38.30	38.40	38.50	38.60	38.70	38.80	38.90	38
39	39.00	39.10	39.20	39.30	39.40	39.50	39.60	39.70	39.80	39.90	39
40	40.00	40.10	40.20	40.30	40.40	40.50	40.60	40.70	40.80	40.90	40
41	41.00	41.10	41.20	41.30	41.40	41.50	41.60	41.70	41.80	41.90	41
42	42.00	42.10	42.20	42.30	42.40	42.50	42.60	42.70	42.80	42.90	42
43	43.00	43.10	43.20	43.30	43.40	43.50	43.60	43.70	43.80	43.90	43
44	44.00	44.10	44.20	44.30	44.40	44.50	44.60	44.70	44.80	44.90	44
45	45.00	45.10	45.20	45.30	45.40	45.50	45.60	45.70	45.80	45.90	45
46	46.00	46.10	46.20	46.30	46.40	46.50	46.60	46.70	46.80	46.90	46
47	47.00	47.10	47.20	47.30	47.40	47.50	47.60	47.70	47.80	47.90	47
48	48.00	48.10	48.20	48.30	48.40	48.50	48.60	48.70	48.80	48.90	48
49	49.00	49.10	49.20	49.30	49.40	49.50	49.60	49.70	49.80	49.90	49
50	50.00	50.10	50.20	50.30	50.40	50.50	50.60	50.70	50.80	50.90	50

Distance of slope stake from side or shoulder stake for any width roadway, slope 1 to 1. If ground is nearly level, the cut or fill at side stake is located by the double entry method in left column and top row. The number in body of table in same row and column gives distance from side stake to slope stake. If ground is not level estimate the difference in elevation between the side stake and slope stake, lower target by this amount if cut, elevate if fill. Add this amount to cut or fill and find distance in table. Set up rod at this point, and line of sight should cut target. If it does not make the slight adjustment necessary.

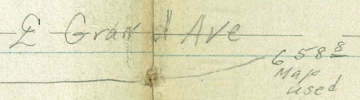
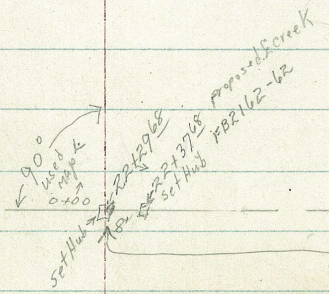
D. Smith
 J. Rorer
 R. Taylor
 E. Nordahl

INDEXED
JER
JUN 3 1954



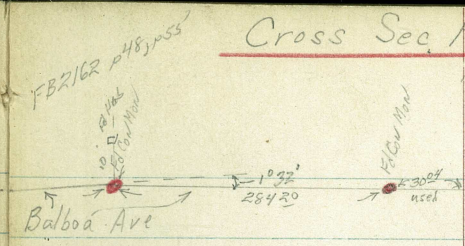
Red P.P.T. Hub
 747850

R Pico St



Note: Stabilizer is in according to FB MB-53 p1

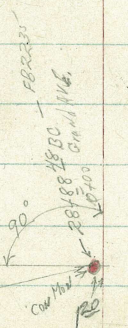
Cross Sec Pico St woth 21061
 for Rose Creek Channel
 5/27/54



89°48' turned

- G1052
- 1760
- Ref. FB 2273
- 2162
- 2235
- G237
- MB-53
- File Map #1530

E Bond St
 ditto FB 2273-12-13



3700

42	92	118	118	114	138	143	99	10	98	73	51	53	57
122	112	75	58	38	35	22	11	12	27	39	47	75	100

2775

52	01	04	02	02	12	50	01	02	02	22	42	52	52			
33	92	92	113	115	105	108	146	152	141	11	103	80	74	53	55	52
120	109	100	75	55	42	30	25	11	11	25	34	43	49	75	100	

2750

52	62	03	35	03	41	62	62	32	02	12	12	22	22	42
32	22	92	112	105	132	158	163	153	105	88	78	52	52	55
110	100	76	40	14	7	9	17	21	35	44	52	71	100	

2725

52	52	10	11	20	02	16	22	52	52	02	01	01	01	01	01	01
42	32	106	116	105	112	123	142	162	142	112	82	76	52	52	62	
110	100	83	61	41	24	16	7	9	16	21	38	49	56	80	100	

2708 82° N + E 10" to Pole #464073H

52	52	103	113	115	130	132	152	152	152	102	96	69	63	52
100	70	70	50	17	10	8	16	24	30	50	66	80	100	

2700

1775

46	32	07	01	02	22	32	32	52	42	12	12	12	12	12	12
50	52	103	105	118	118	122	145	163	163	114	82	54	60		
100	88	70	50	31	12	8	13	29	37	58	72	100			

1755

through in FB 2162 pg 62

0700

FBR235pg 52

BM = TP27

524

963

1439

Nail in Pole #2599 21445 43541

963

Lt = Wly

♀

RT = Fly

3

4475

74	20	05	-16	-02	05	11	13	22	06	-41	-40	05	00	27	33	30	39	24	55	57
194	181	157	152	121	114	91	80	67	59	53	37	33	22	5	14	30	44	57	76	

4450

72	32	00	-21			-19	02	12	00	-10	-41	05	12	10	22	32	27	32	38	36	24	56	55
185	170	150	140			119	87	64	52	47	33	28	17	8	5	8	15	26	37	42	53	76	

4143 85' RT N.W. corner house

4425

67	00	07	-20	-02	-09	06	00	11	10	-43	-41	11	04	15	02	39	39	35	55	61	58
177	162	140	117	105	100	90	82	65	55	47	28	22	14	7	11	23	40	51	75	84	

4422.5 85' RT S.W. corner house

Direct Rod Readings

TP, 1072 x 1090 945 018

Note: here on ground elevations are shown and until noted.

4400

72	07	02	12	22	02	02	02	03	42	43	02	11	02	25	2	42	84
21	93	90	114	118	105	104	92	142	132	108	94	71	62	53	50		
160	145	125	120	100	88	61	44	38	20	16	11	23	37	53	75		

3775

68	0	02	12	20	02	02	12	45	44	10	02	02	02	22	42	42
28	96	82	113	116	102	102	114	141	142	106	90	85	95	72	52	53
156	140	115	112	80	62	48	37	34	18	8	11	27	37	50	75	90

3750

72	02	02	12	12	02	12	42	42	02	3	5	3	12	12	12	12
24	98	82	112	113	102	112	141	143	92	150	90	93	82	53	52	53
140	125	103	100	75	67	38	33	14	9	12	30	40	54	65	90	

3725

72	0	02	12	12	02	02	42	42	12	02	02	12	12	12	12	12
17	96	92	112	112	102	103	142	143	112	92	98	92	98	72	12	52
135	120	85	82	65	60	38	33	12	10	5	15	31	40	48	90	

T 963

Lt = wly

♀

RT = Fly

4

6450

62 19	-18	05 16 23	-02 33	35 14 37	49 3 ⁵	38 75 79
220 200	186	169 126 92	82 79 42 30 27 14			26 43 94

6425

46

6400

65 20	21	-17	-16	-01	-01	10	15	02	02	34	37	03	31	26	49	47	32	35	57	62	61
231 213 195	187	180	168	146	127		95	84	67	60	45	41	28	21	4		14	30	45	53	78

5475

27

5450

57	07	-14	02	09	07	16	13	01	-40	-420	22	34	22	26	44	32	56	52
225	205	175	164	137	113	103	66	56	53	41	36	25	11	5	8	25	38	80

5425

54	06	04	-17	-02	23	12	08	-25	-42	36	14	25	13	36	41	44	34	61	54
212	196	182	172	135	120	76	81	56	52	39	34	13	10	5	21	35	53	80	

69 RT ♀ 2 dead men

5420 81 RT ♀ p.pole 10" #A2610

5400 Poison Oak

32

kt=Wh

RT=EL

5

TP₃ 9⁸⁰ 1513

533

TP₂ 1061 1594

557

533

stub
7180

8400

53 62 -02 210 190 176
-02 02 02 20 10 -02 -02 02 24 51 56 78 80
141 110 82 65 54 46 30 7 7 20 28 70

7478⁵⁰ Pot. Hub
7475

42 62
225 204
02 -02 11 16 25 -02 -12 -04 50 58 71 80 72
115 130 120 98 66 33 37 10 23 26 40 65

7450.5 39' RT. N.W. corner house

7450

60

7426 39' RT. S.W. corner house

7425

62
230

62 -04 04 25 20 -11 -10 40 50 52 40 61 71
212 193 155 116 85 73 47 29 12 21 27 71

7400

36

6475

-01 -05 -20 -18 03 03 12 -17 -14 -21 26 27 33 53 52 45
220 184 178 164 155 135 103 77 67 58 34 20 4 51 82

Lt-Wly

2

Rt-Wly

6

10750

86	85	82	86	28	31	15	18	11	14	14	95	90	87
135	112	85	82	67	45	25		25	30	78	95	130	160

to wall

10725 51' Lt wall Rip Rap L's Wly

10700

85	75	73	08	20	14	21	32	05	12	06	16	24	27	70	73	95	86	85
160	140	125	100	70	55	50	40	35	12	10		25	40	50	73	76	110	150

to wall

9750

75	92	60	-12	-12	02	12	10	02	02	14	25	65	75	88	82	80
170	140	120	97	92	74	60	46	40	23		15	45	55	57	75	145

to wall

9700

66	76	-07	-12	-15	03	13	52	05	05	08	12	80	78	76
180	155	140	115	100	75	60	46	40	25		20	45	75	100

to wall

87575 36 Rt E 14" Tel Pole # 578852H

87575 21 Rt E deadman

8750

63	75	10	02	05	-02	08	50	-07	-05	-02	16	08	92	80	74
196	157	135	126	104	82	63	50	44	30	5		12	29	50	100

to wall

8737 40' Rt NW cor stucco house

12' Rip Rap Wly of it

87187 50' Lt Sly end 6' plank rock cutoff wall

8713 40' Rt SW cor stucco house

58	00
56	50
44	Low

Rip Rap

FB2272-36

BM 13⁰⁷

1352

FB2162-53

DPS & Bridge
walk

Lt - Wly

9

Rt - Ely

7

TP5

5³⁰

1369

see X-sec notes Balboa Ave FB2162-53

12406²³ sly Balboa Ave taken along taxi.

12 ⁰	12 ¹	12 ²	12 ³	12 ⁴	12 ⁵	12 ⁶	12 ⁷	12 ⁸	12 ⁹
6 ³	6 ²	6 ¹	6 ⁰	6 ⁹	6 ⁸	6 ⁷	6 ⁶	6 ⁵	6 ⁴
50	25	30	65	78	100	105	150	175	165
9 ¹	9 ²	9 ³	9 ⁴	9 ⁵	9 ⁶	9 ⁷	9 ⁸	9 ⁹	9 ⁰
225	240	275	300						

11775

9 ¹	9 ²	9 ³	9 ⁴	9 ⁵	9 ⁶	9 ⁷	9 ⁸	9 ⁹	9 ⁰
10 ⁰	9 ²	8 ¹	7 ⁸	9 ²	11 ²	17 ⁴	17 ⁵	16 ⁶	17 ⁸
50	25	25	48	63	82	105	135	180	170

11430

9 ²	9 ¹	9 ⁰	8 ⁹	8 ⁸	8 ⁷	8 ⁶	8 ⁵	8 ⁴	8 ³
9 ⁴	9 ²	9 ¹	9 ⁰	10 ⁸	10 ¹	13 ⁵	16 ⁰	17 ⁶	16 ⁸
80	50	4	12			25	45	60	90
						138	170	200	225

11400

10 ³	9 ⁸	9 ⁴	9 ²	9 ¹	9 ⁰	9 ⁹	9 ⁸	9 ⁷	9 ⁶
8 ⁸	9 ³	10 ²	15 ⁸	16 ⁴	17 ²	17 ²	17 ³	17 ⁰	9 ¹
100	60	38	23		25	60	75	108	132
						150	175	200	

TP4

4²³ 19⁰⁹

097

14¹⁶

11 19⁰⁹

End of ground elev. reduce!

10775

9 ¹	5 ⁸	3 ¹	5 ⁸	7 ⁴	5 ³	2 ⁶	7 ⁷	7 ²	2 ⁰
145	114	105	94	68	50	30	25	20	45
									70
									100
									135
									170

10770

105' Lt. end plank & rock wall & riprap

Roberts
Rorer
Moore
Morales
6-27-55
W.D.#21381

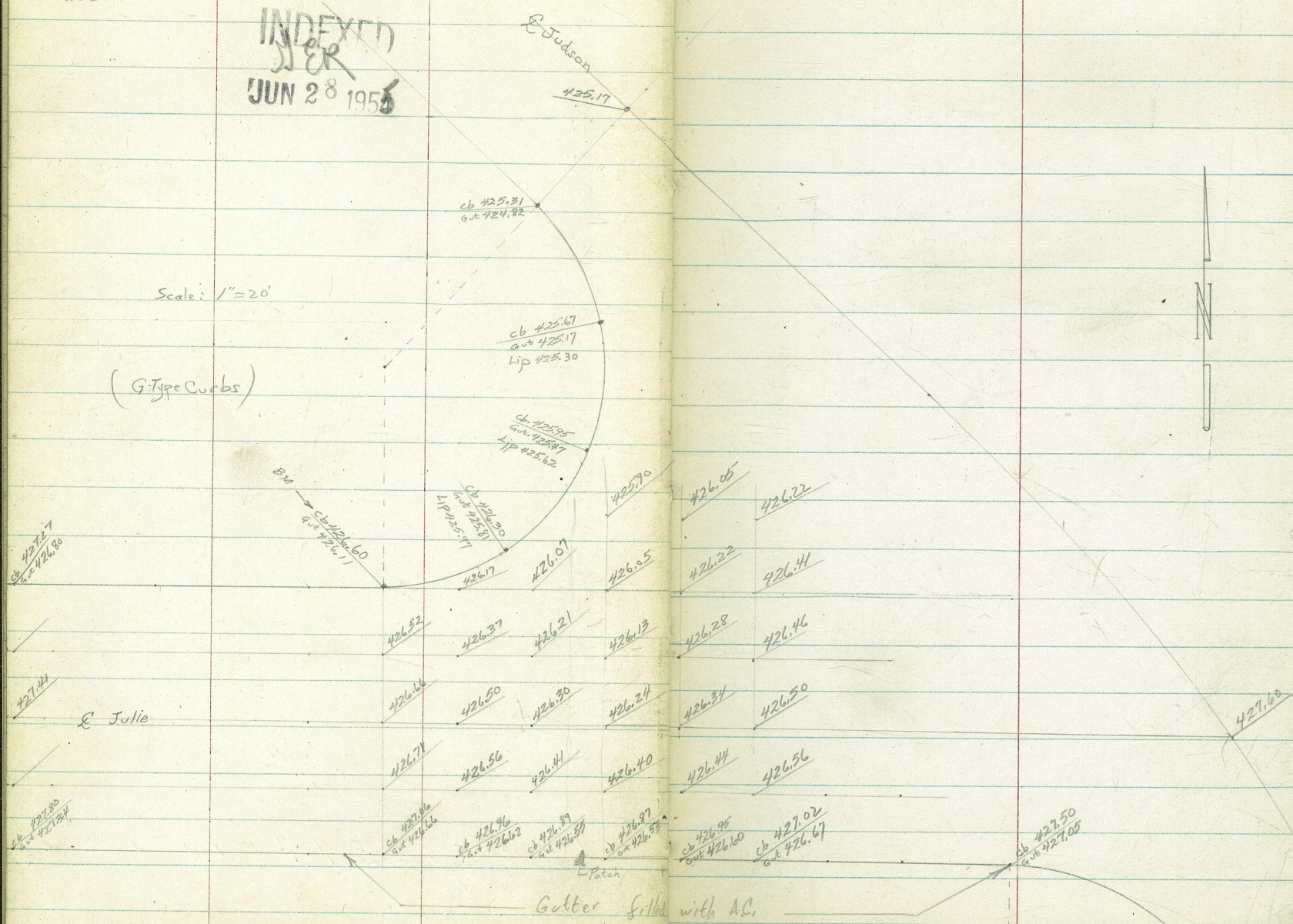
Elevations Intersection of Julie & Judson

9032L

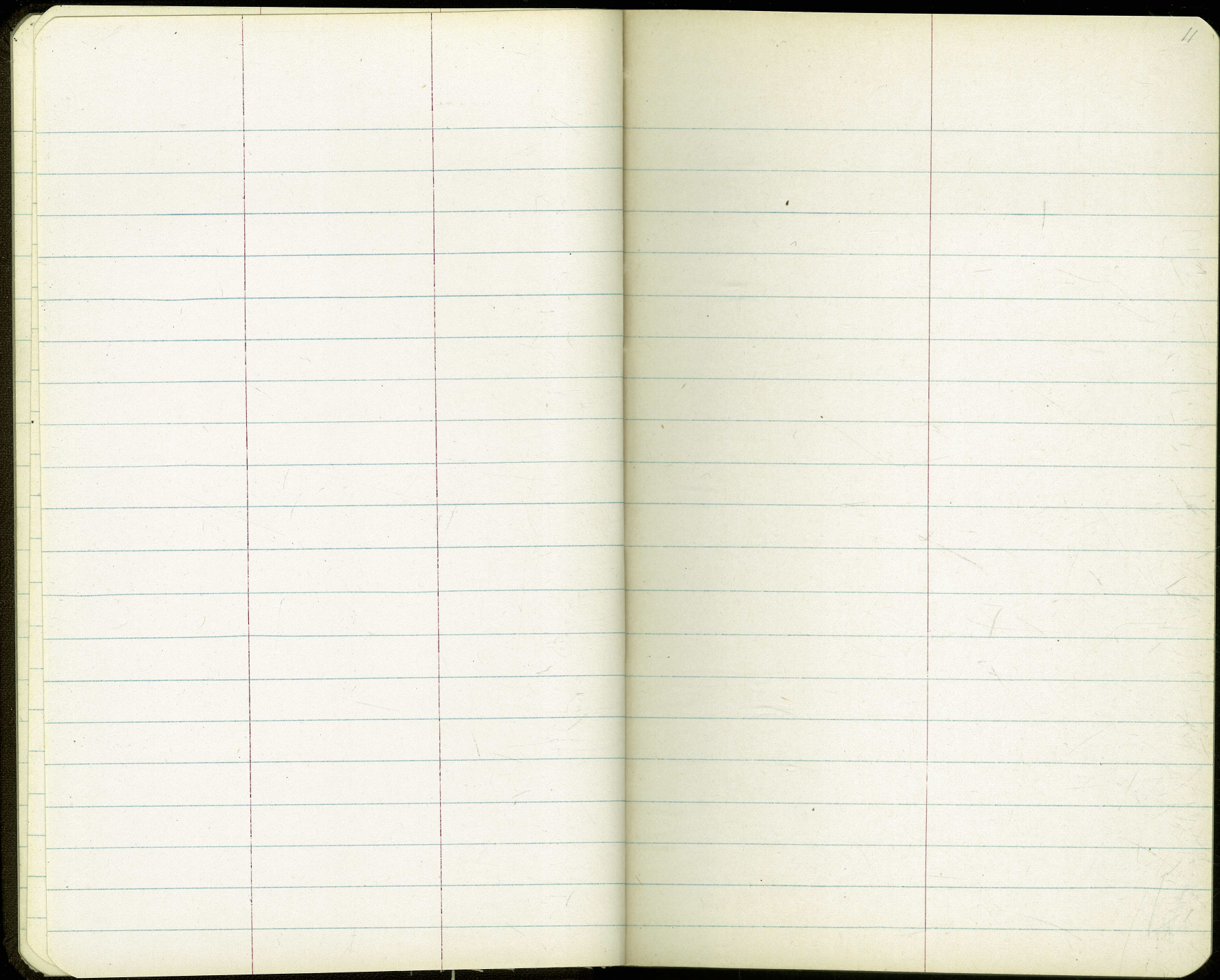
INDEXED
JER
JUN 28 1956

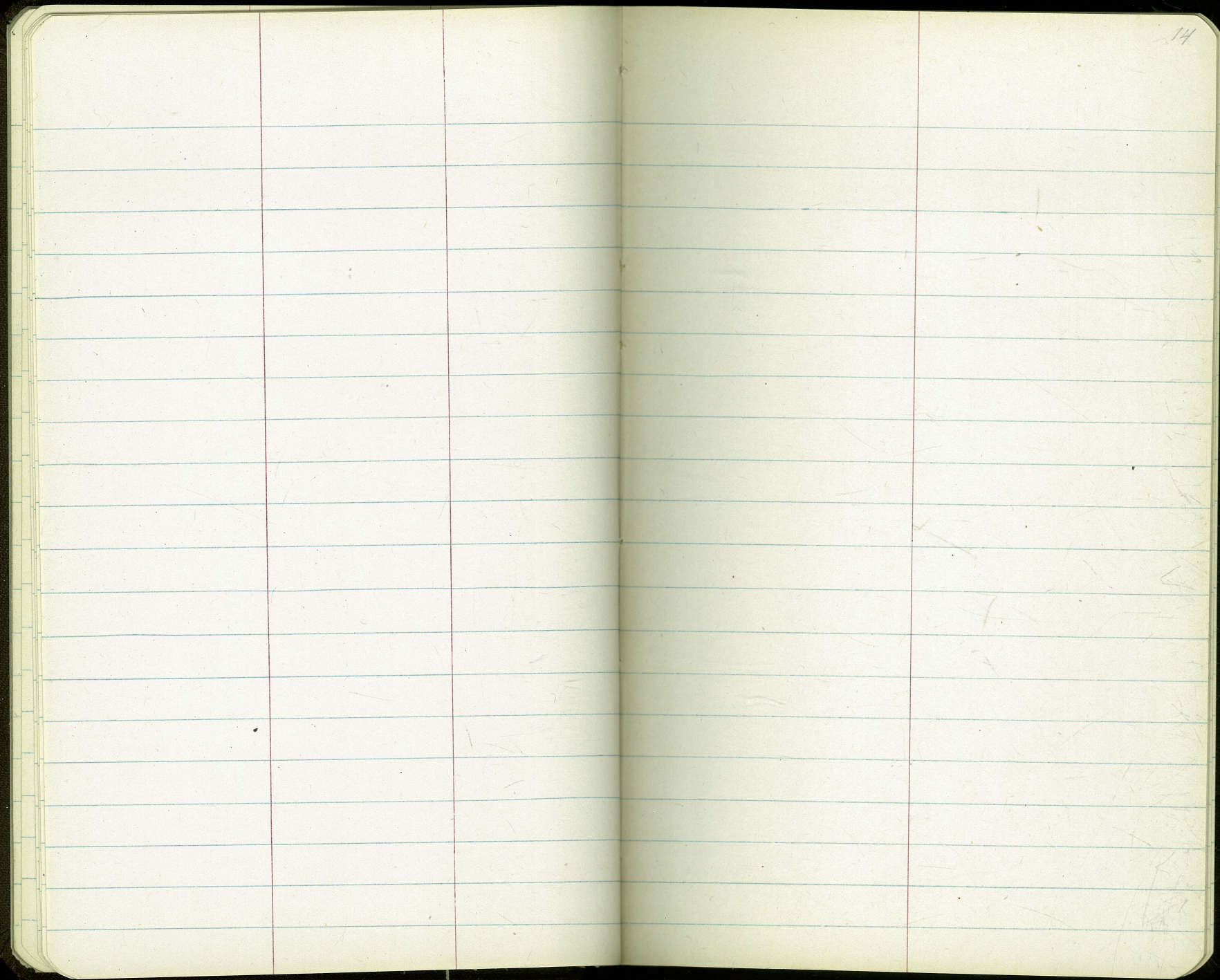
Scale: 1"=20'

(G-Type Curbs)



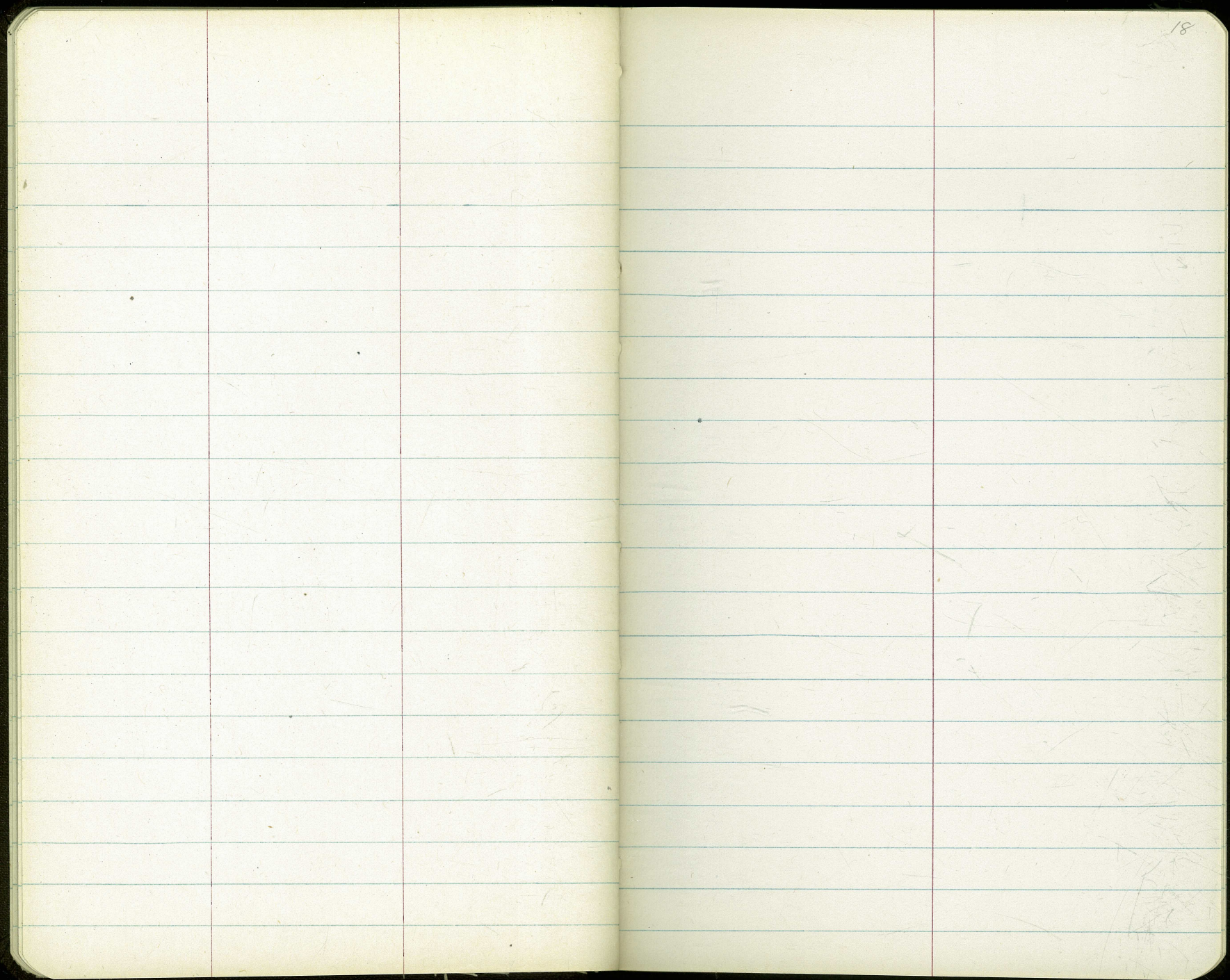
Gutter filled with A.C.





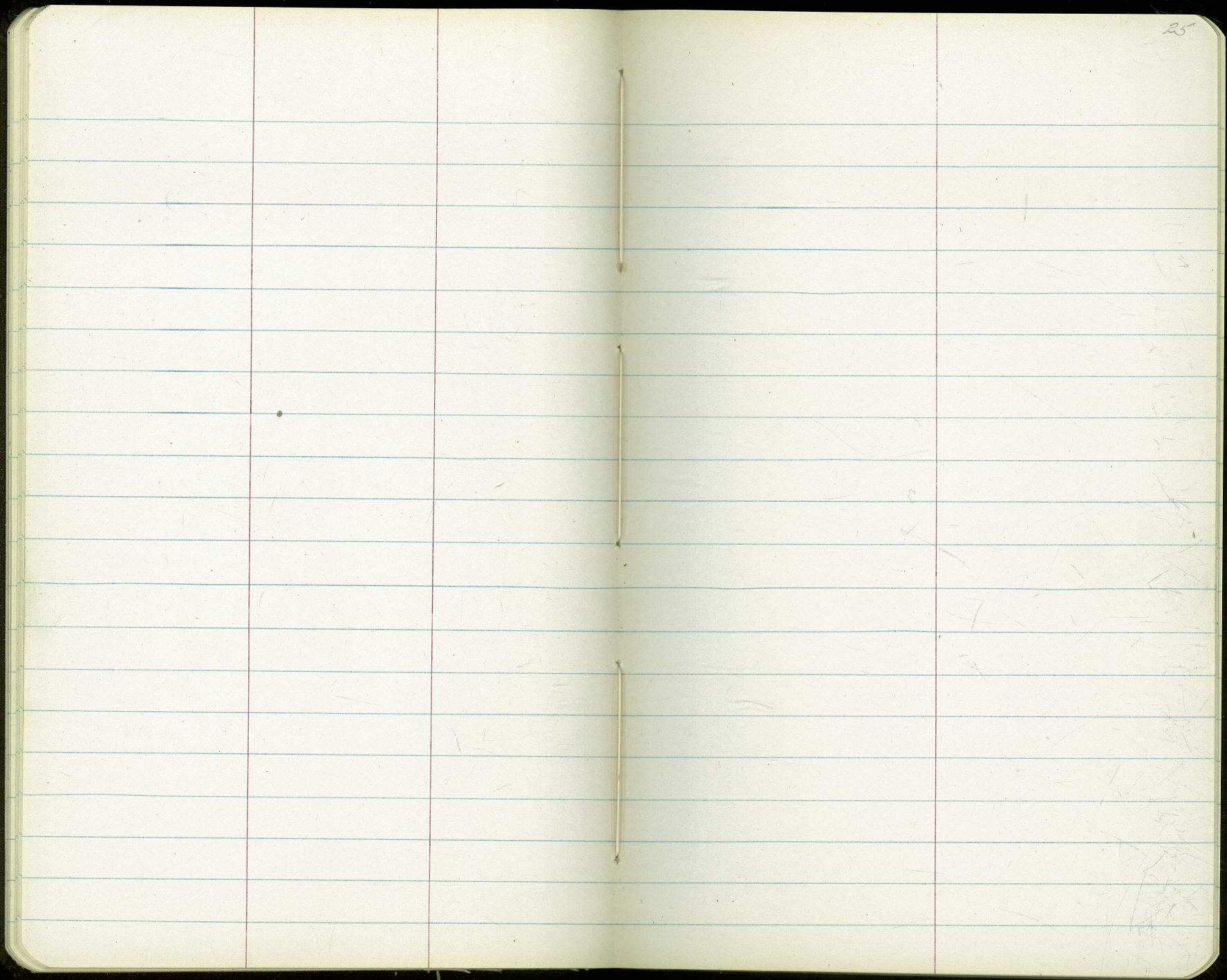
14

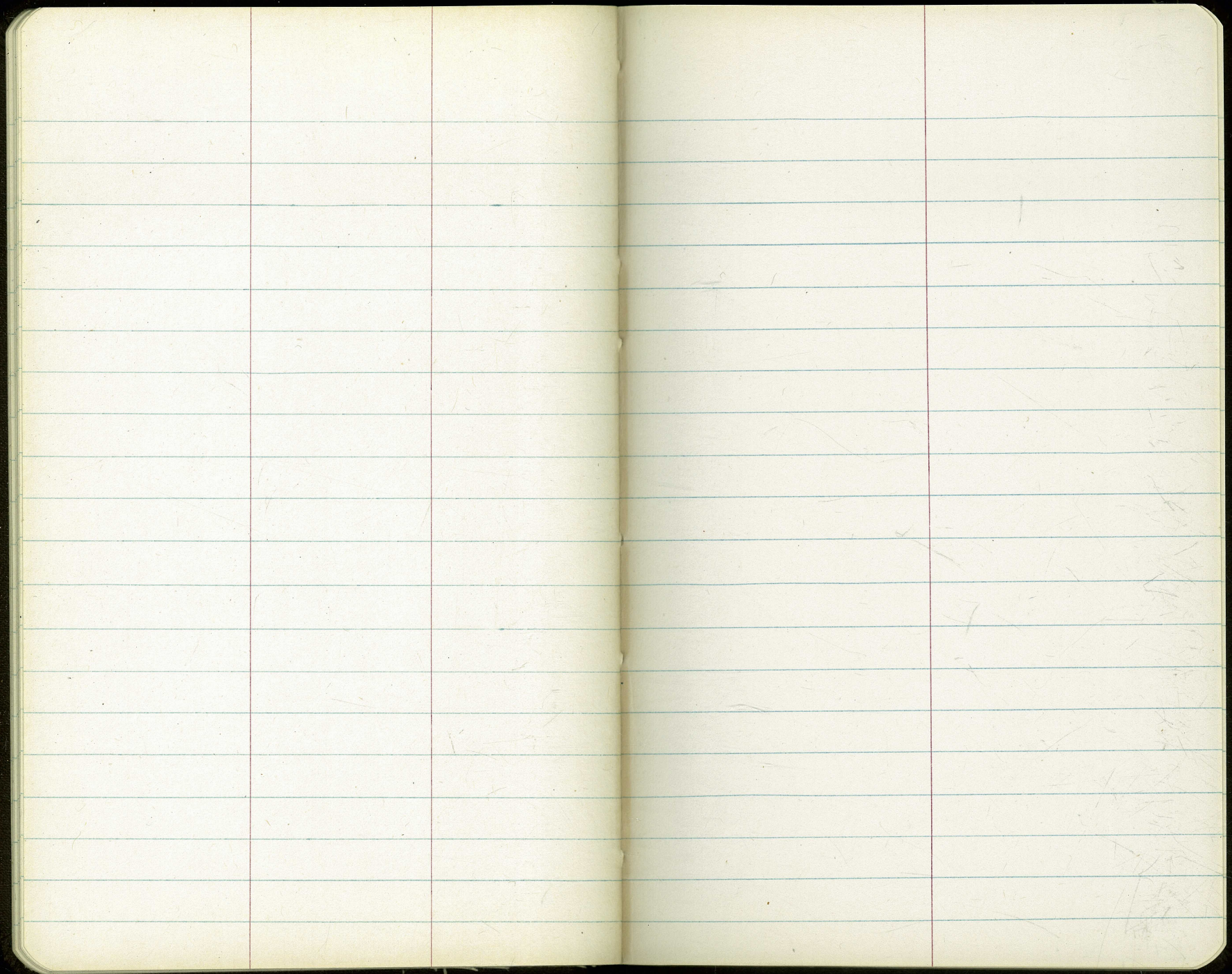
The image shows an open notebook with two facing pages. The pages are cream-colored and feature light blue horizontal ruling. The notebook is bound in the center, with visible stitching or staples. The right page is numbered '15' in the top right corner. The pages are otherwise blank, with some faint, illegible markings or smudges. The notebook is set against a dark background.

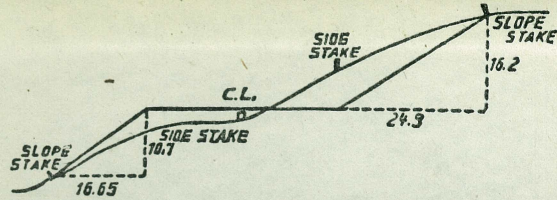


18

The image shows an open notebook with two facing pages. The pages are cream-colored and feature light blue horizontal ruling. Each page is divided into three vertical columns by two red lines. The left page has a red margin line on the left side, and the right page has a red margin line on the right side. The notebook is bound in the center, and the dark cover is visible at the edges. The pages are otherwise blank, with only some faint smudges and a small dark speck on the right page.







DISTANCES FROM SIDE STAKES FOR CROSS-SECTIONING.
SLOPE 1 1/2 TO 1. ROADWAY OF ANY WIDTH.

	0	.1	.2	.3	.4	.5	.6	.7	.8	.9	
0	0.00	0.15	0.30	0.45	0.60	0.75	0.90	1.05	1.20	1.35	0
1	1.50	1.65	1.80	1.95	2.10	2.25	2.40	2.55	2.70	2.85	1
2	3.00	3.15	3.30	3.45	3.60	3.75	3.90	4.05	4.20	4.35	2
3	4.50	4.65	4.80	4.95	5.10	5.25	5.40	5.55	5.70	5.85	3
4	6.00	6.15	6.30	6.45	6.60	6.75	6.90	7.05	7.20	7.35	4
5	7.50	7.65	7.80	7.95	8.10	8.25	8.40	8.55	8.70	8.85	5
6	9.00	9.15	9.30	9.45	9.60	9.75	9.90	10.05	10.20	10.35	6
7	10.50	10.65	10.80	10.95	11.10	11.25	11.40	11.55	11.70	11.85	7
8	12.00	12.15	12.30	12.45	12.60	12.75	12.90	13.05	13.20	13.35	8
9	13.50	13.65	13.80	13.95	14.10	14.25	14.40	14.55	14.70	14.85	9
10	15.00	15.15	15.30	15.45	15.60	15.75	15.90	16.05	16.20	16.35	10
11	16.50	16.65	16.80	16.95	17.10	17.25	17.40	17.55	17.70	17.85	11
12	18.00	18.15	18.30	18.45	18.60	18.75	18.90	19.05	19.20	19.35	12
13	19.50	19.65	19.80	19.95	20.10	20.25	20.40	20.55	20.70	20.85	13
14	21.00	21.15	21.30	21.45	21.60	21.75	21.90	22.05	22.20	22.35	14
15	22.50	22.65	22.80	22.95	23.10	23.25	23.40	23.55	23.70	23.85	15
16	24.00	24.15	24.30	24.45	24.60	24.75	24.90	25.05	25.20	25.35	16
17	25.50	25.65	25.80	25.95	26.10	26.25	26.40	26.55	26.70	26.85	17
18	27.00	27.15	27.30	27.45	27.60	27.75	27.90	28.05	28.20	28.35	18
19	28.50	28.65	28.80	28.95	29.10	29.25	29.40	29.55	29.70	29.85	19
20	30.00	30.15	30.30	30.45	30.60	30.75	30.90	31.05	31.20	31.35	20
21	31.50	31.65	31.80	31.95	32.10	32.25	32.40	32.55	32.70	32.85	21
22	33.00	33.15	33.30	33.45	33.60	33.75	33.90	34.05	34.20	34.35	22
23	34.50	34.65	34.80	34.95	35.10	35.25	35.40	35.55	35.70	35.85	23
24	36.00	36.15	36.30	36.45	36.60	36.75	36.90	37.05	37.20	37.35	24
25	37.50	37.65	37.80	37.95	38.10	38.25	38.40	38.55	38.70	38.85	25
26	39.00	39.15	39.30	39.45	39.60	39.75	39.90	40.05	40.20	40.35	26
27	40.50	40.65	40.80	40.95	41.10	41.25	41.40	41.55	41.70	41.85	27
28	42.00	42.15	42.30	42.45	42.60	42.75	42.90	43.05	43.20	43.35	28
29	43.50	43.65	43.80	43.95	44.10	44.25	44.40	44.55	44.70	44.85	29
30	45.00	45.15	45.30	45.45	45.60	45.75	45.90	46.05	46.20	46.35	30
31	46.50	46.65	46.80	46.95	47.10	47.25	47.40	47.55	47.70	47.85	31
32	48.00	48.15	48.30	48.45	48.60	48.75	48.90	49.05	49.20	49.35	32
33	49.50	49.65	49.80	49.95	50.10	50.25	50.40	50.55	50.70	50.85	33
34	51.00	51.15	51.30	51.45	51.60	51.75	51.90	52.05	52.20	52.35	34
35	52.50	52.65	52.80	52.95	53.10	53.25	53.40	53.55	53.70	53.85	35
36	54.00	54.15	54.30	54.45	54.60	54.75	54.90	55.05	55.20	55.35	36
37	55.50	55.65	55.80	55.95	56.10	56.25	56.40	56.55	56.70	56.85	37
38	57.00	57.15	57.30	57.45	57.60	57.75	57.90	58.05	58.20	58.35	38
39	58.50	58.65	58.80	58.95	59.10	59.25	59.40	59.55	59.70	59.85	39
40	60.00	60.15	60.30	60.45	60.60	60.75	60.90	61.05	61.20	61.35	40
41	61.50	61.65	61.80	61.95	62.10	62.25	62.40	62.55	62.70	62.85	41
42	63.00	63.15	63.30	63.45	63.60	63.75	63.90	64.05	64.20	64.35	42
43	64.50	64.65	64.80	64.95	65.10	65.25	65.40	65.55	65.70	65.85	43
44	66.00	66.15	66.30	66.45	66.60	66.75	66.90	67.05	67.20	67.35	44
45	67.50	67.65	67.80	67.95	68.10	68.25	68.40	68.55	68.70	68.85	45
46	69.00	69.15	69.30	69.45	69.60	69.75	69.90	70.05	70.20	70.35	46
47	70.50	70.65	70.80	70.95	71.10	71.25	71.40	71.55	71.70	71.85	47
48	72.00	72.15	72.30	72.45	72.60	72.75	72.90	73.05	73.20	73.35	48
49	73.50	73.65	73.80	73.95	74.10	74.25	74.40	74.55	74.70	74.85	49
50	75.00	75.15	75.30	75.45	75.60	75.75	75.90	76.05	76.20	76.35	50

472
18

THE NATIONAL BLANK BOOK COMPANY
 HOLYOKE MASSACHUSETTS
 NEW YORK CHICAGO BOSTON SAN FRANCISCO