

DISTANCES FROM SIDE STAKES FOR CROSS-SECTIONING
SLOPE 1 TO 1, ROADWAY OF ANY WIDTH

	0	.1	.2	.3	.4	.5	.6	.7	.8	.9	
0	0.00	0.10	0.20	0.30	0.40	0.50	0.60	0.70	0.80	0.90	0
1	1.00	1.10	1.20	1.30	1.40	1.50	1.60	1.70	1.80	1.90	1
2	2.00	2.10	2.20	2.30	2.40	2.50	2.60	2.70	2.80	2.90	2
3	3.00	3.10	3.20	3.30	3.40	3.50	3.60	3.70	3.80	3.90	3
4	4.00	4.10	4.20	4.30	4.40	4.50	4.60	4.70	4.80	4.90	4
5	5.00	5.10	5.20	5.30	5.40	5.50	5.60	5.70	5.80	5.90	5
6	6.00	6.10	6.20	6.30	6.40	6.50	6.60	6.70	6.80	6.90	6
7	7.00	7.10	7.20	7.30	7.40	7.50	7.60	7.70	7.80	7.90	7
8	8.00	8.10	8.20	8.30	8.40	8.50	8.60	8.70	8.80	8.90	8
9	9.00	9.10	9.20	9.30	9.40	9.50	9.60	9.70	9.80	9.90	9
10	10.00	10.10	10.20	10.30	10.40	10.50	10.60	10.70	10.80	10.90	10
11	11.00	11.10	11.20	11.30	11.40	11.50	11.60	11.70	11.80	11.90	11
12	12.00	12.10	12.20	12.30	12.40	12.50	12.60	12.70	12.80	12.90	12
13	13.00	13.10	13.20	13.30	13.40	13.50	13.60	13.70	13.80	13.90	13
14	14.00	14.10	14.20	14.30	14.40	14.50	14.60	14.70	14.80	14.90	14
15	15.00	15.10	15.20	15.30	15.40	15.50	15.60	15.70	15.80	15.90	15
16	16.00	16.10	16.20	16.30	16.40	16.50	16.60	16.70	16.80	16.90	16
17	17.00	17.10	17.20	17.30	17.40	17.50	17.60	17.70	17.80	17.90	17
18	18.00	18.10	18.20	18.30	18.40	18.50	18.60	18.70	18.80	18.90	18
19	19.00	19.10	19.20	19.30	19.40	19.50	19.60	19.70	19.80	19.90	19
20	20.00	20.10	20.20	20.30	20.40	20.50	20.60	20.70	20.80	20.90	20
21	21.00	21.10	21.20	21.30	21.40	21.50	21.60	21.70	21.80	21.90	21
22	22.00	22.10	22.20	22.30	22.40	22.50	22.60	22.70	22.80	22.90	22
23	23.00	23.10	23.20	23.30	23.40	23.50	23.60	23.70	23.80	23.90	23
24	24.00	24.10	24.20	24.30	24.40	24.50	24.60	24.70	24.80	24.90	24
25	25.00	25.10	25.20	25.30	25.40	25.50	25.60	25.70	25.80	25.90	25
26	26.00	26.10	26.20	26.30	26.40	26.50	26.60	26.70	26.80	26.90	26
27	27.00	27.10	27.20	27.30	27.40	27.50	27.60	27.70	27.80	27.90	27
28	28.00	28.10	28.20	28.30	28.40	28.50	28.60	28.70	28.80	28.90	28
29	29.00	29.10	29.20	29.30	29.40	29.50	29.60	29.70	29.80	29.90	29
30	30.00	30.10	30.20	30.30	30.40	30.50	30.60	30.70	30.80	30.90	30
31	31.00	31.10	31.20	31.30	31.40	31.50	31.60	31.70	31.80	31.90	31
32	32.00	32.10	32.20	32.30	32.40	32.50	32.60	32.70	32.80	32.90	32
33	33.00	33.10	33.20	33.30	33.40	33.50	33.60	33.70	33.80	33.90	33
34	34.00	34.10	34.20	34.30	34.40	34.50	34.60	34.70	34.80	34.90	34
35	35.00	35.10	35.20	35.30	35.40	35.50	35.60	35.70	35.80	35.90	35
36	36.00	36.10	36.20	36.30	36.40	36.50	36.60	36.70	36.80	36.90	36
37	37.00	37.10	37.20	37.30	37.40	37.50	37.60	37.70	37.80	37.90	37
38	38.00	38.10	38.20	38.30	38.40	38.50	38.60	38.70	38.80	38.90	38
39	39.00	39.10	39.20	39.30	39.40	39.50	39.60	39.70	39.80	39.90	39
40	40.00	40.10	40.20	40.30	40.40	40.50	40.60	40.70	40.80	40.90	40
41	41.00	41.10	41.20	41.30	41.40	41.50	41.60	41.70	41.80	41.90	41
42	42.00	42.10	42.20	42.30	42.40	42.50	42.60	42.70	42.80	42.90	42
43	43.00	43.10	43.20	43.30	43.40	43.50	43.60	43.70	43.80	43.90	43
44	44.00	44.10	44.20	44.30	44.40	44.50	44.60	44.70	44.80	44.90	44
45	45.00	45.10	45.20	45.30	45.40	45.50	45.60	45.70	45.80	45.90	45
46	46.00	46.10	46.20	46.30	46.40	46.50	46.60	46.70	46.80	46.90	46
47	47.00	47.10	47.20	47.30	47.40	47.50	47.60	47.70	47.80	47.90	47
48	48.00	48.10	48.20	48.30	48.40	48.50	48.60	48.70	48.80	48.90	48
49	49.00	49.10	49.20	49.30	49.40	49.50	49.60	49.70	49.80	49.90	49
50	50.00	50.10	50.20	50.30	50.40	50.50	50.60	50.70	50.80	50.90	50

Distance of slope stake from side or shoulder stake for any width roadway, slope 1 to 1. If ground is nearly level, the cut or fill at side stake is located by the double entry method in left column and top row. The number in body of table in same row and column gives distance from side stake to slope stake. If ground is not level estimate the difference in elevation between the side stake and slope stake, lower target by this amount if cut, elevate if fill. Add this amount to cut or fill and find distance in table. Set up rod at this point, and line of sight should cut target. If it does not make the slight adjustment necessary.

Roberts
Cota
Moore
Morales
7-29-54
NO# 32288

Preliminary Survey For Switzer Storm Drain (Line Change)

INDEXED
JER
AUG 10 1954

1.



Old Survey Sec. 209 pg. 41

$\Delta = 54^{\circ}35.1'$
 $R = 100'$
 $T = 51.60'$
 $L = 95.27'$

CITY PARK

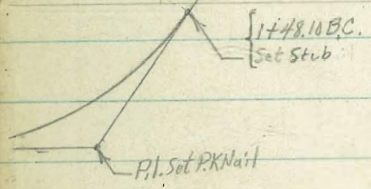
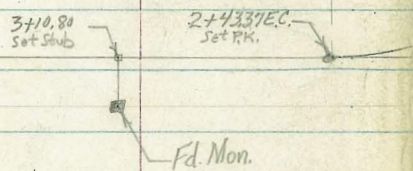
P.I. }
Set Hub }
O.H.I. SEC. }
Set Hub & D.C. }

{ 0+00 Equals
9+72.25 Sec. 209 pg. 41
Fd. Hub & D.C.

$\Delta = 10^{\circ}00'$
 $R = 100'$
 $T = 8.75'$
 $L = 17.45'$

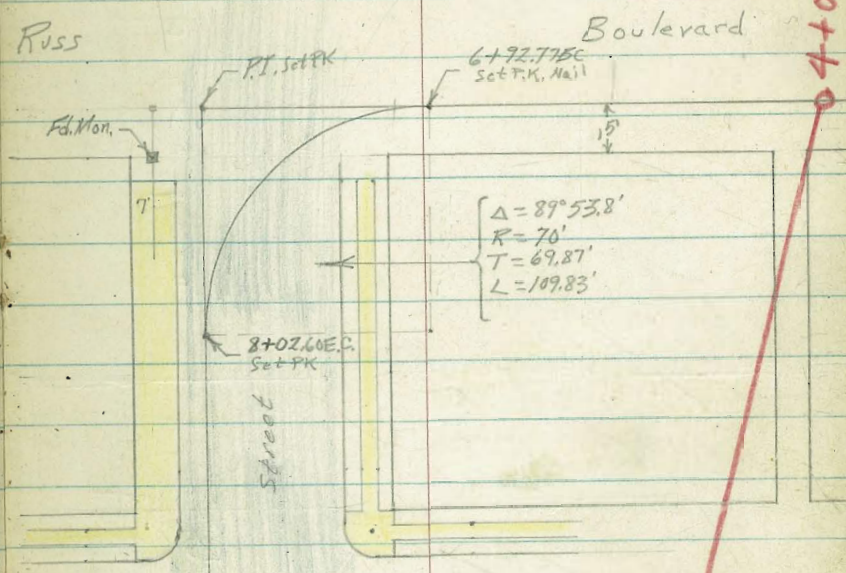
Russ Boulevard

CITY YARDS



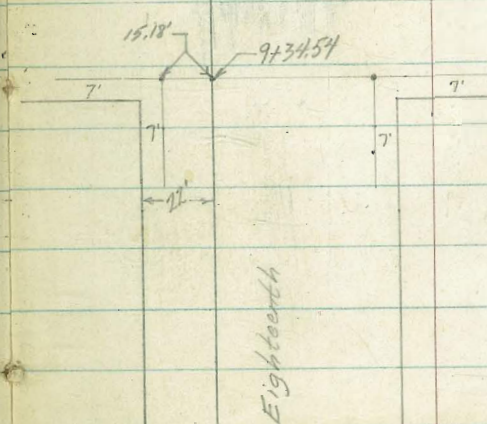
CITY PARK

61.85
63.22
3



"A"

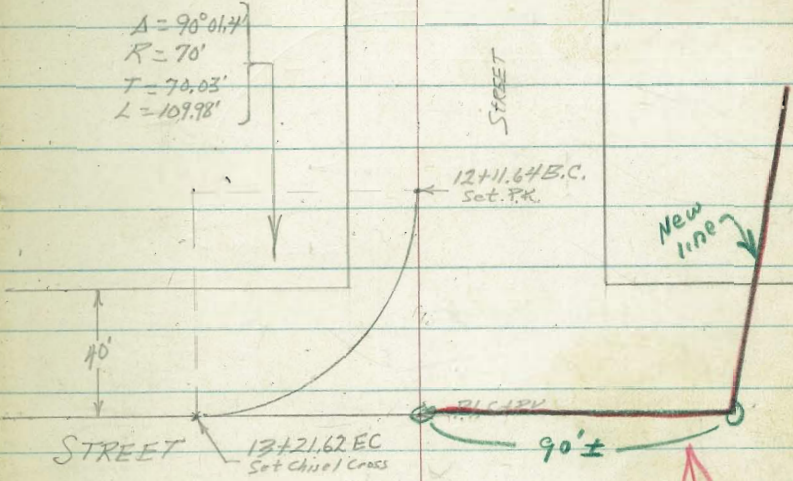
Street "A"



New line

See G-21
Dated 1-4-57
W.O. 21269

SEVENTEENTH
STREET





STREET

"B" STREET

P1 Set PK

17+06.118C.
Switch set cross

40'

18+16.08EC.
Set PK

18+28.08
equals
9+36.61
See FB. 2311 pg 2

$\Delta = 90^{\circ}00.5'$
 $R = 70'$
 $T = 70.01'$
 $L = 109.97'$

STREET

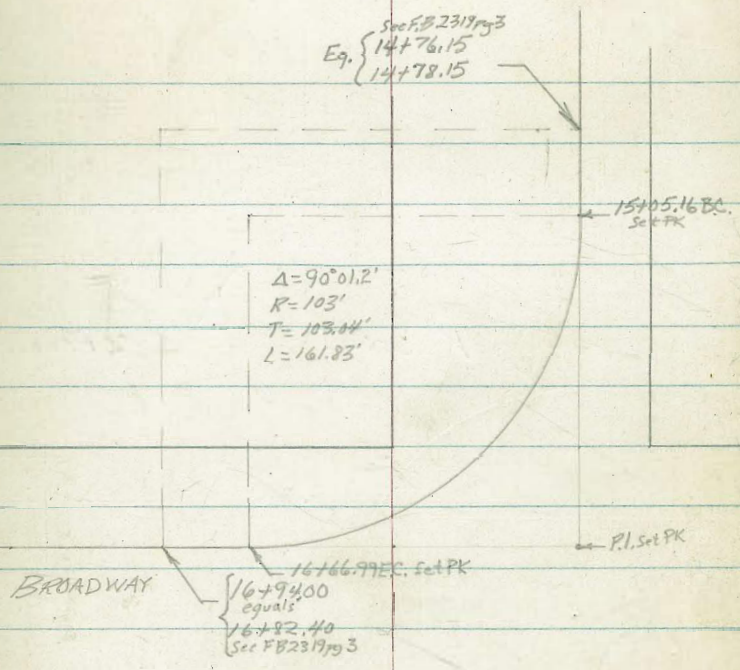
Sec FB 2311 D. B

Change at Broadway.

See FB 2319 pg. 3

5.

Eq. $\left\{ \begin{array}{l} \text{See FB 2319 pg 3} \\ 14+76.15 \\ 14+78.15 \end{array} \right.$



SIXTEENTH
STREET

Line Continued From "K" Street South.

See F.B. 2319 P. 8

"K" STREET

"L" STREET

56+90.62
(50.76)

52+44.62

← 2' →

THIRTEENTH STREET

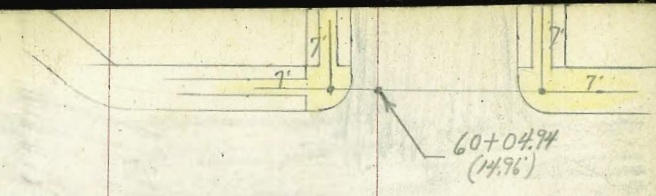
THIRTEENTH STREET

THIRTEENTH

THIRTEENTH

curving





IMPERIAL AVENUE

Closed

Commercial Avenue 7.



NATIONAL AVENUE

THIRTEENTH STREET

66+63 Edge Pav.

NEWTON AVENUE

63+78.24 Set. PK

Closed.

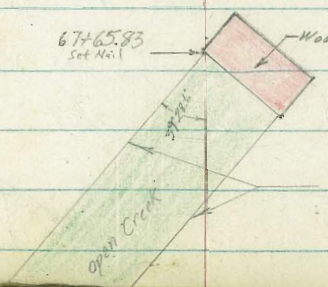
Commercial Avenue



67+65.83 Set Nail

Wooden Railroad bridge.

roughly edge of weed cut heads.



1400

692	692	692	722
10.4	9.4	9.3	12
10		6	20

higher

0+67 18° R2 to center P.P. # 7

692	692	692	710
10.8	10.8	10.5	9.8
10		.5	20

higher

0+50

692	692	692
10.7	10.0	8.9
10		10

0+17.45 EC

692	692	792
10.7	10.2	10.0
10		10

P.I. plus 5' 55° H to center 24" Evn. Tree

0+00 BC = 9472.25

692
10.1

T.P. 6.84 74.13A 9.35 67.29

74.13A

T.P. 11.50 76.64 5.29 65.14

BM 0.20 70.43

SEBP 1
70.23 20th FEB

P.I. plus 06.5 19² Lt to N.E. Corner Bldg.

BC plus 33.6 semi tan hits fence

BC plus 31.1 7¹ Lt to center Sewer DXXH

56.7±
INVERT
ELEVATION

71.01
INVERT of Pipe
8" from West

BC plus 27.9 semi tan hits dam face

BC plus 8' 13¹ Rt to £ begin of 60" Drain

60.7
13.96
1/3 of Semi-Tan
INVERT

1+48.10 BC. ^{In Mud and water.} Approx. begin of Conc. at dam and wing walls of 60" inlet.

60.2
13.2
6
conc

61.2
12.9
7.8

1+15

65.5
106
10

69.2
9.9

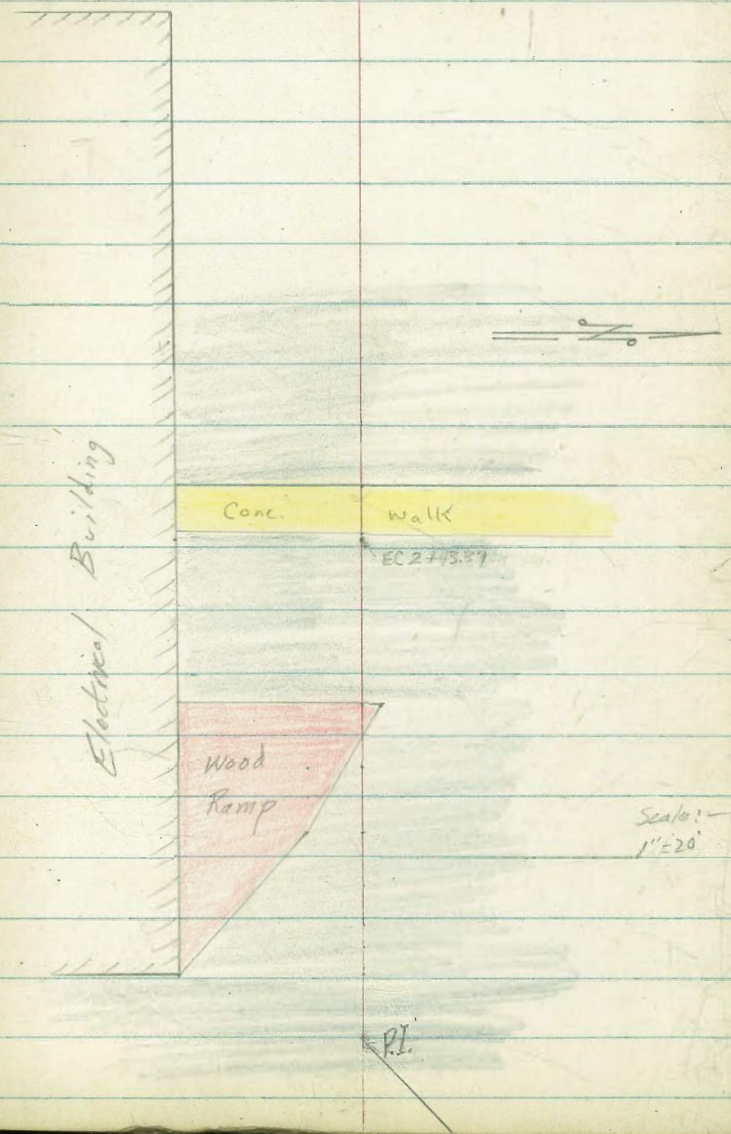
65.8
8.3
10
Toe

1+11 21⁰ Rt to £ 30" corr. Steel Culvert "you have it."

7/13 T

7/13 T

P.I. plus 36.0 { 231 Rt to center P.P. 1st?
 280 Rt SW Corner Bldg
 P.I. plus 16.0 254 Rt to SE Corner Bldg



2+00

7402
9.51
10

7401
8.52

7591
7.12
10

1+83.5 } 11 ft End of Fence
♀ Hits fence

1+81.7

7428
9.15
10

7423
8.30

7603
6.50
5

7558
6.95
10

1+79.2

7541
7.12

7423
7.60

J.P. 817 82.53A 037 7376

82.53A

1+78.4 ♀ Hits Dam face

7368
0.45

7521
+1.18

1+56.2 ♀ Hit headwall 60" drain

6684
7.19
10

6650
7.63
3

602
13.96
Inv.

6650
7.63
Top
Wall

6650
7.63
3

6582
8.24
10

74.BA

74.13A

2+74.5 8^E 4 to center Pole

Radio Tower

2+69.5 17^L 4 to center Pole

2+43.9 F Hits conc. walk

2+43.37 E.C.

77.29

77.25

77.20

5.14
10

5.17

5.23
10

77.22

2+37

5.24

77.21

2+33

5.52

77.54

2+27.5

4.97

2+25

77.2

77.50

77.50

77.05

77.07

77.08

8.3

5.03

4.95

5.48

5.66

5.34

100

10

0.6

2

10

GRD

wood

wood

82.53A

82.53A

3+38 14⁴ Lt to center 26" Pepper Tree

3+26

In Russ. Cold Lay Pav. varies from
1 to 2 inches ± thick.

3+13

3+02 6³ Lt to center MH

2+97 E Hits fence

2+96

T.P. 10.81 93.08π 0.26 82.27[✓]

2+91 END AC Pavc.

2+89.5 17¹ Lt to center Pole (Radio Tower)

82.53π

860	872	872	898	
6.3	5.8	5.9	3.3	higher
10		7	10	
Edge AC			Edge AC	

867	865	865	
6.8	6.6	6.6	
10		10	
Edge AC		Top Edge AC	

855	852	852
7.6	7.9	7.9
10		10

93.08π[✓]

798	794	793
3.1	3.4	3.2
10		10

82.53π[✓]

5+50

84.9
11.7
15
Edge AC
AV

84.2
11.0
9
Edge AC
Top

85.0
10.7
9
Top

T.P.

10.84

95.68 ∇

8.24

84.84 ∇

95.68 ∇

5+00

85.1
8.0
15
Edge AC

86.1
7.0

86.5
6.7
9
Toe
Edge AC

89.5
3.5 higher
15

4+76

6" Lt to center N.H.

81.76
INVERT
ELEV.
6"

87.1
6.0
11
Edge AC

87.5
5.7

87.5
5.6
8
Toe
Edge AC

4+50

4+00

88.0
5.1
11
Edge AC

88.0
5.0

88.2
4.9
8
Toe
Edge AC

92.1
1.0 higher
15

3+50

87.5
5.2
10
Edge AC

87.2
5.2

88.0
5.1
7
Toe
Edge AC

93.08 ∇

93.08 ∇

6+59

82.8	82.50	88.33	88.2	87.2	87.1	87.5	90.0
14.8	14.41	8.6	8.8	9.8	9.9	9.6	4.0
20	17	102	9	7		11	20
conc	conc	Top Wall				Toe	Top

6+41

82.31	82.21	86.81	86.6	85.8	85.0	86.2	93.0
14.68	14.28	10.58	10.4	11.2	11.2	10.8	4.0
15	9.6	8.8	7	5		10	21
conc	Slab Drive	Top Wall				Toe	Top

6+32.5 Begin ^{Wood} Rail fence on near side Ret. Wall.

6+17

7' Lt to near edge conc. Ret. Wall (0.7 thick at top)

84.27	84.23	85.00	84.8	84.8	85.2	89.2	
12.90	12.76	11.11	12.2	12.2	11.7	7.3	higher
13	7.8	7.2	5		10	16	
conc	Top Slab	Top			Toe		

6+15

7' Lt begin conc. slab (N.E. corner)

84.27	12.77
7	conc

6+09

AC. has left us.
21' Lt begin conc. slab (S.E. corner)

84.99	12.50
21.6	conc

T.P.

11.05

96.99 \checkmark

9.74

85.94 \checkmark 96.99 \checkmark

6+00

83.8	84.8	85.0	90.5
11.9	11.3	10.7	5.2
15	11	18	
Top	AC	Toe	

95.68 \checkmark 95.68 \checkmark

BC. plus 25 33° Lt to Street Sign

BC. plus 165 16° Lt End conc wall & slab; there is more conc., but is in bad shape.

BC plus 155 Semi-tan crosses edge A.C. Pavint.

BC. plus 134 15° Lt to St. Sign

BC. plus 12 15° Lt END Rail fence

6+92.77 BC

8813	8823	9112	906	907	911	923	912	9183
886	866	580	64	63	59	47	587	516
26	153	145	10		7	12	16	20
conc at Bldg	conc slab drive	Top wall					AC	Finishing

6+86.5 18° Rt to Street Sign

6+85 } 19° Rt to Water Meter
21° Rt to center P. Pole #120774H

6+76 16° Rt to dead man

96.99

96.99

7+09 Section across break in wall

89.26	89.90	92.13	91.37	91.32	91.15	91.20
7.53	7.01	4.86	5.6	5.6	5.84	5.29
25.51 conc	15.61 slab	14.82 Top Wall	12	5		20 BC

P1 plus 65° water meter on right

P1 plus 63^E water meter on right

P1 plus 46^L 45^L Lt water meter

P1 plus 41 45^L Lt to center T. Pole #468780H

P1 plus 246 8° Rt. begin curb & walk

P1 plus 16 10° Rt to center P. Pole # P1398

P1 plus 11 9° Rt to near edge base of St. Light #8806

BC plus 26 32^E Lt begin East. Curb

96.99A

96.99A

Cont'd from Page 17

Lt

E

Rt

18.

8+29 { 4" Drain in curb on Right
10⁵ Rt to center P. Pole # 1308

8+10 47° Lt to center ^{40"} Palm tree

T.P. 3.67 90.72 ∇ 9.94 87.05

90.72 ∇

8+02.60 E.C.

7.88	8.75	8.72
8.48		9.02 Drive
18		8
		Gut cb

7+75

8.48	8.75	8.72
7.61	7.40	7.58
15		15
		Gut Drive

7+50

9.06	9.50	9.05
6.93	6.43	6.14
15		15

7+14.5

End wall & slab

8.00	9.53	9.02	9.1	9.02	9.02	9.03
7.11	6.46	6.17	5.9	6.09	5.97	5.36
30	15 ²	14 ²	11	5		20
conc	conc	Top				
	slab	well				

96.99 ∇

96.99 ∇

8+58 45' Lt to center T. Pole # 415361H

8+50

86.52

86.52

85.22

4.10
18

4.29

4.15

Drive

8

8

g.t

cb

8+48 47' Lt to center 40" Palm tree.

8+43.0 18' Lt center MH

80.65
18
Inv. Elev.

8+40.5 Sewer lateral on left

8+39.5 water meter on left.

8+36.5 47' Lt to center 48" palm tree.

8+34 Gas Lateral on left

8+32.5 Water Meter on Right

90.72 π 90.72 π

10+50

79.28

79.10

78.67

79.33

11.44
6

11.62

12.05
8
Gut11.40
8
Cb

10+00

82.19

82.06

81.56

82.18

8.53
6

8.66

9.16
8
Gut8.54
8
Cb

9+50

84.26

84.82

84.53

85.03

5.76
6

5.90

6.19
8
Gut5.69
8
Cb

9+38.0 Opposite curb B.K.

85.25

85.27

84.25

85.52

5.37
6

5.49

5.77
8
Gut5.20
8
Cb

9+00

85.79

85.63

85.32

4.93
6

5.09

5.40
8

8+65.6 Opposite C.B. B.C.

86.34

86.12

85.76

86.26

4.48
6

4.60

4.96
8
Gut4.46
8
Cb8+60.6 } 46'-2" to center 30" Palm tree
4" Drain in curb on right

90.72 X

90.72 X

Cant'd From Page 20

Lt

♀

R

21.

T.P. 794 76.10[✓] 10.73 68.16[✓]

12+50

12+25

12+11.64 B.C.

12+00

11+50

11+00

T.P. 0.24 78.89[✓] 12.07 78.65[✓]

90.72[✓]

67.49
67.52
11.40 11.36
8
11.22 10.70 10.6
57 52 8
6ut cb

68.57
68.81
9.95 10.02
6 10.32 9.86 9.7
69 69 8
6ut cb

69.21
69.45
9.08 9.21
6 9.65 9.14
8 8
6ut cb

70.50
70.26
8.39 8.53
6 8.92 8.40
8 8
6ut cb

72.51
72.21
5.38 5.58
6 5.94 5.42
8 8
6ut cb

76.22
76.21
2.47 2.68
6 3.13 No Gut
8 8
6ut cb

78.89[✓]

14+75

7085
526
67113
4877120
490
6

14+50

7051
539
67022
5397082
528
6

14+00

6931
677
66915
6496922
638
6

13+21.62 EC

6726
834
66787
8136815
795
6

13+00

6784
866
66765
8456776
834
6

12+75

6722
883
66784
8666752
858
6

76.10A

76.10A

T.P. 5.53 78.63[✓] 3.00 73.10[✓]

16+50

72.27	72.53	72.67
3.83	3.57	3.43
6		6

16+00

71.64	71.82	72.21
4.16	4.18	4.09
6		6

15+56

71.4	71.23	71.44
4.99	4.67	4.66
6		6

15+39

70.80	70.87	71.15
5.30	5.13	5.00
6		6

15+10

71.05	71.26	71.38
5.05	4.84	4.72
6		6

14+88

70.74	70.27	71.09
5.36	5.13	5.06
6		6

76.10[✓]76.10[✓]

17+82

♀ Leaves curb

71.20	71.51
6.73	7.12
cb	Gut

17+75

72.15	72.15	72.03	71.61	71.69
6.48	6.50	6.60	7.03	6.94
6		22 cb	22 Gut	6

17+69

♀ Hits curb

71.65	71.88
6.97	6.64
Gut	cb

17+50

72.20	72.67	72.73
6.43	5.96	5.50
6		6

17+25

72.88	73.25	73.56
5.75	5.38	5.13
6		6

17+06.11 BC

72.81	73.18	73.27
5.82	5.45	5.26
6		6

78.63A

78.63A ✓

15+05.16 NEW B.C.

Drive 5.09
8
cb gut

56.02

58.57

4.54

#35
6

14+78.15 OLD B.C. +4.14 61.11A

61.11A

56.97 for BM

69.84 = 69.82 See FB 2319 P 919

18+28.08 = 9+36.61

8.79

18+16.08 EC

Drive 8.39
8
cb gut

70.28

70.20

8.33

70.26

8.37

6

18+00

7.28
64
cb gut

70.28

70.21

7.72

70.25

7.68

6

78.63A

78.63A

Cont'd from Page 25

Lt

E

Rt

26.

16+10

$\begin{array}{r} 55.89 \\ \hline 5.62 \\ 6 \end{array}$	$\begin{array}{r} 55.82 \\ \hline 5.69 \\ 4 \end{array}$	$\begin{array}{r} 55.76 \\ \hline 5.95 \end{array}$	$\begin{array}{r} 54.7 \\ \hline 6.40 \\ 43 \\ \hline \text{cut} \end{array}$	$\begin{array}{r} 55.72 \\ \hline 5.39 \\ 43 \\ \hline \text{cut} \end{array}$	$\begin{array}{r} 55.22 \\ \hline 5.38 \\ 6 \end{array}$
--	--	---	---	--	--

16+06

opposite center drain

$\begin{array}{r} 55.85 \\ \hline 5.60 \\ 6 \end{array}$	$\begin{array}{r} 55.81 \\ \hline 5.70 \\ 3 \end{array}$	$\begin{array}{r} 55.81 \\ \hline 5.70 \end{array}$	$\begin{array}{r} 54.61 \\ \hline 6.00 \\ 45 \\ \hline \text{cut} \end{array}$	$\begin{array}{r} 55.74 \\ \hline 5.37 \\ 45 \\ \hline \text{cut} \end{array}$	$\begin{array}{r} 55.75 \\ \hline 5.36 \\ 6 \end{array}$
--	--	---	--	--	--

16+00

$\begin{array}{r} 55.57 \\ \hline 5.34 \\ 6 \end{array}$	$\begin{array}{r} 55.58 \\ \hline 5.77 \end{array}$	$\begin{array}{r} 54.85 \\ \hline 6.18 \\ 63 \\ \hline \text{cut} \end{array}$	$\begin{array}{r} 55.70 \\ \hline 5.41 \\ 65 \\ \hline \text{cut} \end{array}$
--	---	--	--

15+75

$\begin{array}{r} 55.93 \\ \hline 5.18 \\ 6 \end{array}$	$\begin{array}{r} 55.85 \\ \hline 5.18 \end{array}$	$\begin{array}{r} 55.81 \\ \hline 5.20 \\ 6 \end{array}$
--	---	--

15+50

$\begin{array}{r} 56.08 \\ \hline 4.03 \\ 6 \end{array}$	$\begin{array}{r} 56.24 \\ \hline 4.87 \end{array}$	$\begin{array}{r} 56.35 \\ \hline 4.78 \\ 6 \end{array}$
--	---	--

15+25

$\begin{array}{r} 56.09 \\ \hline 4.02 \\ 6 \end{array}$	$\begin{array}{r} 56.25 \\ \hline 4.76 \end{array}$	$\begin{array}{r} 56.51 \\ \hline 4.52 \\ 6 \end{array}$
--	---	--

61.117

61.117

16+94.00 = 16+82.40

16+66.99 E.C.

16+50

16+25

6.11A

56.22 = 56.21
489
B23197929

50.95	56.04	55.87
5.02	5.07	5.24
6		6
55.85	55.81	55.69
5.17	5.30	5.47
6		6
55.75	55.95	55.12
5.00	5.65	5.97
6		93
		51
		55
		93
		51

6.11A

Cont'd from Page 27.

Lt

E

Rt

28.

53+50

	$\frac{10.62}{5.38}$	$\frac{10.32}{5.68}$	$\frac{9.25}{6.05}$	$\frac{10.01}{5.19}$
	6		gut	cb

53+44

10^E Rt to center 12" Acacia Tree

53+29

10^E Rt to center 8" Acacia Tree

53+24

	$\frac{11.21}{4.71}$	$\frac{10.21}{5.09}$	$\frac{10.21}{5.79}$	$\frac{10.13}{5.87}$	$\frac{11.31}{4.69}$
	6		6	gut	cb

53+20.5

4" Drain in curb on right

53+18

18 Lt to center MH

$\frac{6.25}{9.25}$
18
INVERT

53+17.6

Gutter Drain

	$\frac{11.66}{4.34}$	$\frac{11.52}{4.47}$	$\frac{11.41}{4.59}$	$\frac{10.21}{5.79}$	$\frac{10.25}{5.75}$	$\frac{11.21}{4.57}$
	6		5 ^E	gut	gut	cb

53+05.5

21^E Rt to center P.Pole #1299

52+77

	$\frac{12.52}{3.43}$	$\frac{12.55}{3.45}$	$\frac{12.57}{3.43}$
	6		8

BM

2.13

16.00 ∇

13.87 = 13.95 NW

BP "K" $\frac{14th}{11}$ See FB231989 75

16.00 ∇

Cont'd From Page 28

T.P. 4.44 12.22 \checkmark 8.22 7.78 \checkmark
55+00

54+70 15° Rt to Wall

54+51.5 22° Rt to Conc. Wall around Gas Tank

54+50

54+31 10° Rt to leadman

54+20.5 10° Rt to center Guy Pole

54+00 47° Lt to Oil Refill.

53+92.5 98° Rt to Gas Valve

53+68 4" Drain in curb on right

16.00 \checkmark

Lt

Rt

Rt

29.

7.92 7.29 7.97 8.06
8.04 8.22 8.53 7.94
6 8
6 6

8.85 8.25 10.92 8.97
7.15 7.30 7.57 7.03
6 8
6 6

9.21 9.52 9.24 9.96
6.29 6.47 6.76 6.04
6 8
6 6

16.00 \checkmark

11.3
24
IN WELL
BEHIND
WALL

55+95 } 45 Lt to Deadman
 } 9 Rt to Deadman

55+91 46 Lt Parking Meter

55+85 4" Drain in curb on left

55+52.5 22⁵ Rt End Conc Wall

55+50

709

687

659

719

5.18

5.35

5.63

5.08

6

8

8

55+42 46 Lt to Parking Meter

9.6

6.6

55+40 16² Rt to conc wall

5

55+37 46 Lt to St Sign

5

55+20 46 Lt to Parking Meter

5

55+17 4" drain in curb on left

5

55+03 10¹ Rt to conc wall

57+37 9th Rt to center Guy Pole

56+94 Opposite BC Curb

56+57

56+51 6th Rt to MH

56+21.6 Opposite B.C. Curb

56+16.5 9th Rt to center P. Pole # 20056+14.5 4th Lt to center Guy Pole56+06.5 10th Rt to center 12" Acacia

56+00

12.22

$$\begin{array}{r} 520 \\ 693 \\ 6 \end{array}$$

$$\begin{array}{r} 55 \\ 671 \\ 6 \end{array}$$

$$\begin{array}{r} 528 \\ 644 \\ 6 \end{array}$$

$$\begin{array}{r} 6 \\ 611 \\ 6 \end{array}$$

$$\begin{array}{r} 514 \\ 708 \end{array}$$

$$\begin{array}{r} 521 \\ 691 \end{array}$$

$$\begin{array}{r} 558 \\ 664 \end{array}$$

$$\begin{array}{r} 592 \\ 630 \end{array}$$

$$\begin{array}{r} 489 \\ 738 \\ 8 \\ \text{gut} \end{array}$$

$$\begin{array}{r} 497 \\ 725 \\ 8 \end{array}$$

$$\begin{array}{r} 538 \\ 684 \\ 8 \\ \text{gut} \end{array}$$

$$\begin{array}{r} 569 \\ 653 \\ 8 \\ \text{gut} \end{array}$$

$$\begin{array}{r} 595 \\ 677 \\ 8 \\ \text{cb} \end{array}$$

$$\begin{array}{r} 591 \\ 631 \\ 8 \\ \text{cb} \end{array}$$

$$\begin{array}{r} 624 \\ 598 \\ 8 \\ \text{cb} \end{array}$$

$$\begin{array}{r} 192 \\ 1030 \\ \text{INVERT} \end{array}$$

12.22

58+98.3 Sewer lateral on Lt.

58+89 46" Lt to Oil Refill

58+79 4" Drain in curb on left

58+61 Water Meter on Left

58+50

4.02	3.82	5.1	4.5
4.71	4.90	5.20	4.58
6		8	8
		cut	cb

T.P.

4.90

8.73

8.39

3.83

8.73

58+00

4.44	4.25	3.99	4.27
7.78	7.97	8.28	7.85
6		8	8
		cut	cb

57+99

45" Lt to center T. Pole # 412278H

4.21	4.28	4.27	
7.31	7.64	7.85	Pipe
6		8	8
		cut	cb

57+50

12.22

12.22

60+01.9 Opposite Curb B.C.

2.80	2.67	2.20	2.86
5.93	6.16	6.33	5.87
6		8	8
		Gut	Cb

59+97 { 76° Lt to center T. Pole # 303884#
10° Rt to Str Sign

59+56 19° Rt to near edge 48" Palm Tree

59+51 4" Drain in curb on left

3.25	3.01	2.22	2.30
5.47	5.72	6.00	5.43
6		8	8
		Gut	Cb

59+47 96° Rt to center Guy Pole

59+36 10° Rt to deadman

59+00

3.65	3.22	3.08	3.46
5.08	5.30	5.65	5.27
6		8	8
		Gut	Cb

58+99 4" Drain in curb on left.

8.73 A

8.73 A

61+00

2.01 2.01 2.15
5.63 5.63 5.38
6 8

60+95 16° Lt to St Sign

60+83.6 ♀ Leaver cb Line

60+81 { 45° Lt to Fire Hydrant
30° Lt to Gate Valve

2.01 2.01 2.15
- 0.06 5.63 5.12
Gut cb
8.79
178
INVERT

60+79 17° Lt to X/H

60+65.5 { 16° Lt to near edge base St. Light
91° Rt to near edge base Traffic Sig.

60+64 { 43° Lt to ♀ cb Inlet
♀ Crosses
Curb Line

2.22 2.24 2.25 2.60 3.05 3.06 3.60 3.00 3.02
10.95 5.49 6.28 5.13 5.68 5.67 5.13 5.65 5.11
43 43 43 6 6 6 8 8
INV. cb GATE cb Gut cb Gut cb

60+38

2.22 2.21 2.22
5.44 5.42 5.44
6 8

60+09 { 46° Lt to cb Inlet
11° Rt to cb Inlet

8.73A

2.52 2.08 2.10 2.24 2.25 2.28
9.32 5.65 6.43 6.49 5.78 9.01
46 46 46 11 11 11
INV. cb Gut cb INV.

8.73A

61+99 10 Rt to center P. Pole ^{#P7L} (All Poles and hydrants are in center of 4' dia. curb.)

61+95 15 Rt to gas Valve

T.P. 6.64 8.94 \nearrow 6.43 2.30

61+53 15 Rt to \leftarrow in gas Main

61+50

636 616 603
6 6 6
2 2 2
2 2 2

61+20 42 \leftarrow Lt to curb Inlet

11.24 5.67 6.62
42 \leftarrow 42 \leftarrow 42 \leftarrow
Inv. cb Gut
-2 57 3 06 2 11

61+19.1 Q Leaves cb on Island

5.59 5.57 5.01 5.63 5.06 5.76
6 4 4 6 6 8
Gut cb Gut cb
3 15 3 16 3 22 3 10 3 17 2 97

61+15.75 Q Crosses Curb face

5.60 5.57 5.00 5.02 5.14 5.69
6 Gut cb cb Gut
3 13 3 16 3 27 3 21 3 09 3 05

8.73 \nearrow

8.73 \nearrow

Cont'd From Page 35

Lt

R

Rt 36.

62+76 Water lateral on left

62+51 45⁶ Lt to center P. Pole #?

62+50

2 98	2 20	2 53
6.00	6.16	6.41
6		6

62+33.5 Sewer lateral on right

62+29 10⁺ Rt to center Guy Pole

62+07 10⁺ Rt to leadmen

62+04.5 59^{RT} to drain (near edge) ^{35x22}

- 320

2 02

1 90	1 86
7.04	10.90
59	59
CRATE	INV.

62+03 42² Lt to drain (near edge) ^{45x35}

12.14	6.92
.42 ²	.42 ²
INV.	CRATE

62+00

2 54	2 30	2 00
6.40	6.64	6.94
6		6

8.94 ✓

8.94 ✓

Cont'd from Page 36.

Lt

S

Rt 37.

63+86.2	♀	Crosses Track	} This rail road Track dead!
63+81.2	♀	Crosses Track	

63+73 46² Lt to Hydrant

63+67 45² Lt to center P. Pole #31795T

63+60 45³ Lt to St. Sign

63+51.5 18 Lt to MMH

63+50

63+08 10⁰ Rt to center P. Pole #2

63+05 10¹ Rt to St. Sign

63+00

8.94X

119
-
10.13
18
INT

51	51	51
5.37	5.35	5.37
6		6

320	318	309
5.64	5.76	5.90
6		6

8.94X

64+28.3 ♀ crosses Rail

64+23.3 ♀ crosses Rail

64+18 21⁸ Rt to MH

64+15.5 18 Lt to MH

64+12.7 ♀ crosses Rail

64+07.7 ♀ crosses rail

64+00

63+93 10² Rt to center P. Pole #600CP63+89 10⁵ Rt to St. Sign

8.94 A

8.94 A

10.75

18
INX.

3.02

3.02

3.25

5.11
6

5.11

5.11
6

cannot get IF

Cont'd From Page 38

Lt

♀

Rt

39.

65+60 47⁵ Lt to center T. Pole # ?

7.9

1.9

65+47.5 42¹ Lt to Drain ^{33 X 23} (Near edge)

15.05 6.95

42¹ 42¹
INV. GRATE

65+00 old ditch comes in from left. (water line)
♀ is on edge old ditch

3.20

3.26

3.39

5.64
6

5.58

5.55
6

64+91 10⁶ Rt to St. Sign

64+86.5 10⁵ Rt to center P. Pole # P100

64+81 10⁰ Rt to Water Main MH

64+59 41³ Lt to Water Main MH

3.25

3.25

3.25

64+50

5.19
6

5.19

5.19
6

64+42.5 16³ Rt to gas Valve

8.94

8.94

66+26 ♀ crosses old Ditch (Gas)

66+15.5 ♀ Crosses Rail

66+10.5 ♀ Crosses Rail

66+05.7 ♀ Crosses Rail

66+00.7 ♀ Crosses Rail

66+00 Still on edge old water Ditch.

6 T.P. 3.76 9.32 $\bar{\wedge}$ 3.38 5.56 ^(Pole)

6 65+70 48° $\bar{\wedge}$ to dead man

6 65+50

8.94 $\bar{\wedge}$

3.28

3.22

3.24

6.04
6

6.00
6

5.98
6

9.32 $\bar{\wedge}$

3.21

3.22

3.24

6.03
6

5.92
6

5.83
6

8.94 $\bar{\wedge}$

67+00

32

40

40

5.4
6

5.3

5.3
6

66+75.7 ♀ Crosses Rail

66+71 15⁶ Rt to center Sign Post66+70 18² Rt to center P. Pole # D31797T

66+69.3 ♀ Crosses Rail

66+63 No sign of old Ditch from
here on. End AC. Pave.

32

38

36

6.20
6

6.14

5.7
6

66+50

22

25

22

6.40
6

6.27

6.09
666+36 { 11² Rt to center P. Pole # 148
Limestone with curbing around.

9.32 X

9.32 X

check 5.42 3.00 = 3.00

I.P. 4.66 8.42 5.56 3.76

NEBP Imperial E 134

INVERT ELEVATION SEWER WEIR UNDER HARBOR DRIVE BRIDGE → 1.17

INVERT ELEVATION OF EDGE SPILLWAY AT THE EDGE OF CREEK → -4.56

Elevation of Inside Top of Conc. box

Culvert ending at RR bridge →

+0.92

Not a Rod.

-0.22

C.R. 10-13-54

Producing back tangent on past Lt it intersects face of bridge at 67+66.94

67+65.83 } intersects line Nly Bulkhead dch. section taken at 90° to FORWARD

4.5	0.68	5.2	5.2	4.62	
4.7	10.0	14.6	14.6	4.7	4.7
3.4	30	17	21	Deck	15

67+60.0 ♀ Crosses Rail

4.85
4.47
Top
Rail

67+53.4 ♀ Crosses Rail

67+50

4.4	4.6	4.2
4.9	4.7	4.6
6	6	6

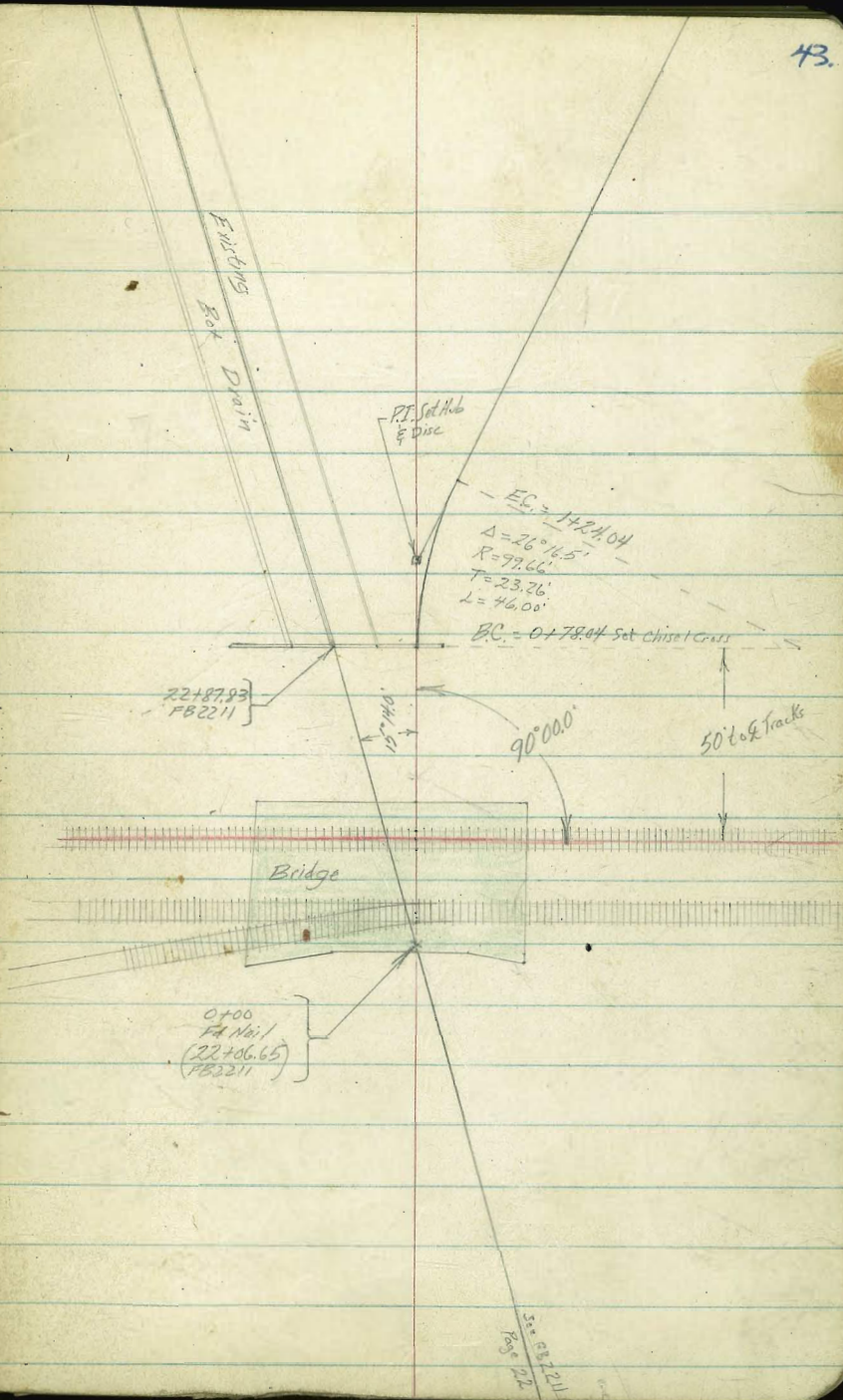
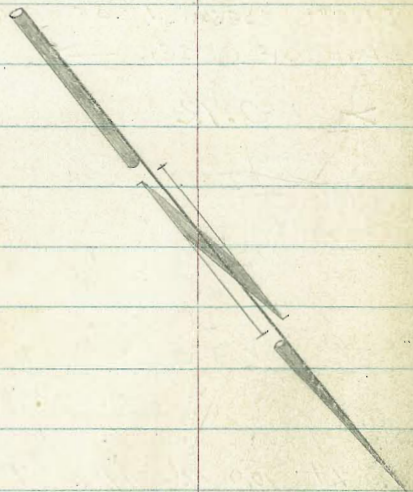
Roberts Preliminary Survey For Storm Drain
Cola
Moore Railroad to San Diego Bay

SWITZER DRAIN

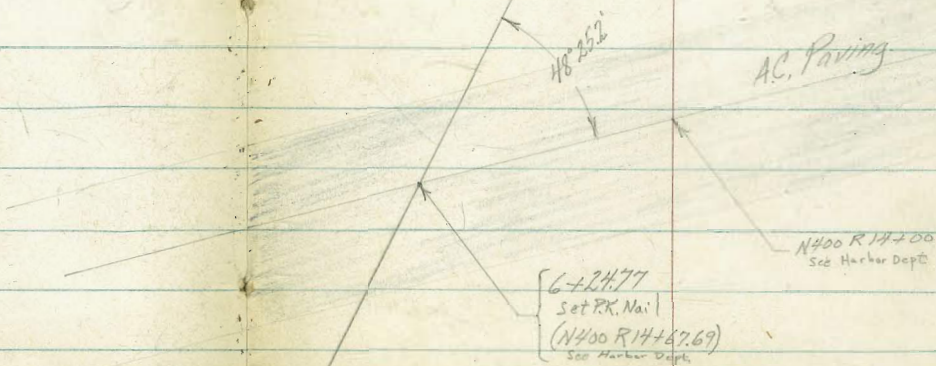
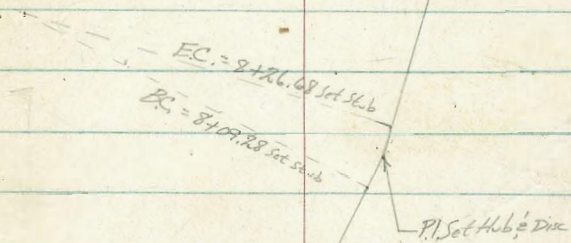
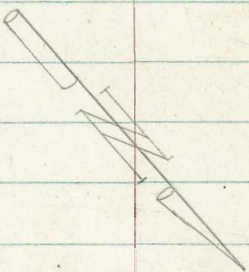
9-8-54
MO# 21269

See FB 2211 page 22

See page 69
for new alinement.



$$\begin{cases} \Delta = 9^{\circ}58.0' \\ R = 100.00' \\ T = 8.72' \\ L = 17.40' \end{cases}$$



Contd from Page 45

Lt

£

Rt

16.

0+79

12
47
50

14
50

15
48
50

0+77.9 Headwall

12
47
50
12
12.6
32
12

14
115

15
49
12
50

0+68 & Ditch coming in from right.

18
46
52
02
55
47
-32
10.3
45
-62
12.6
32
-62
12.4
12

16
116

15
10.9
9
10.2
25
9.9
50

0+63 39.8 Rt to center gate valve

15
48
52
02
6.0
47
-45
10.9
45
-62
12.7
33
-62
12.5
13

14
114

15
11.2
11
9.5
20
7.1
34
7.6
45
9.9
57

0+62 36.5 Rt to center MH (water)

18
46
52
02
6.3
47
-45
11.2
41
-62
12.5
33
-62
12.4
13

16
117

15
10.9
13
6.8
35
7.4
50

0+37.2 Edge R.R. Bridge

16
48
50
12
52
42
-45
10.4
41.6
-62
12.7
36
-62
12.3
14
-62
11.5
13

14
112

15
10.5
15
9.3
27
5.2
30
4.6
50

T.B.M.

421 6.44A

2.43 Top Headwall
Sec FB2211 pg. 49

6.44A

Cont'd From Page 46.

Lt

Q

Rt 47.

T.P. #74 7.98 N 340 3.04 N

3+00

3.3
50

3.4

3.9
50

2+50

4.0

2+00

4.4
50

4.2

4.1
50

1+39.5 15 Rt to center Fire Hydrant

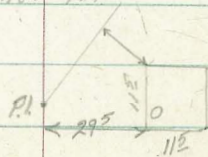
1+24.04 E.C.

4.7
50

4.9

4.9
50

PI plus 19 20⁰ Rt to SW corner MH



BC plus 19 29⁰ Rt to SE corner conc. MH (water)

6.44 N

6.44 N

Cont'd From Page 47

Lt

£

RR 48

5+60

Section Parallel to Paved Road.

$\frac{32}{4.3}$	$\frac{32}{4.7}$	$\frac{32}{4.8}$	$\frac{32}{4.1}$	$\frac{43}{3.7}$
50		10	12	50

5+50

$\frac{32}{4.8}$

5+00

$\frac{31}{4.9}$	$\frac{27}{5.1}$	$\frac{38}{5.0}$
50		50

4+50

$\frac{30}{5.0}$

4+00

$\frac{34}{4.6}$	$\frac{31}{4.9}$	$\frac{35}{5.5}$
50		50

3+50

$\frac{30}{5.0}$

7.987

7.987

Cont'd From Page 48

Lt

R

Rt 49.

8+09.28 BC

32
4.9
50

32
4.7

32
4.5
50

7+50

32
4.5

T.P. 4.51 8.15 π 4.34 3.64

8.15 π

7+00

32
4.1
50

32
4.3

32
4.1
50

6+51.5 Edge Paving section Parallel to Road

4.59
3.39
50

4.48
3.50

4.36
3.62
50

6+20.7 π Paving section Parallel to Road

4.41
3.37
50

4.66
3.32

4.55
3.43
50

5+90 Edge Paving section Parallel to Road

4.57
3.41
50

4.48
3.50

4.38
3.60
50

7.98 π

7.98 π

Cont'd From Page 49

Lt

E

Rt

50.

10+50

01
2
6.1
50

14
6.7
20

22
22
5.9

41
21
5.7
50

10+00

41
21
5.8
50

26
26
5.6

27
27
5.5
50

9+50

20
20
5.3

9+00

41
21
4.8
50

22
22
5.0

29
29
4.8
50

8+50

26
26
4.5

8+26.68 EC

26
26
4.6

8.15 A

8.15 A

$$\begin{array}{r} 1375 \\ 468 \\ \hline 907 \\ 283 \\ \hline 1290 \end{array}$$

check

5.84 2.43[↓] = 2.43

TP

3.98 8.27[↓]3.86 4.29[↓]

check

3.47

4.68[↓] = 13.75

Believe this is Harbor Dept. Bilt on "I Beam
approximately 50 Nly. of Beginning of pier.

11+03

Water's Edge 3:10 PM 9-8-54

water

15.3^{-5.2}6.4^{1.8}
206.3^{1.9}
50

10+94

Roughly Top Edge Fill.
Loose Job of Rock Riprap.12.
6.5
3.2
ON
PIER
GRADE10.7^{-2.5}
166.4^{1.8}6.1^{2.0}
508.15 π 8.15 π

Roberts
Cota
Moore

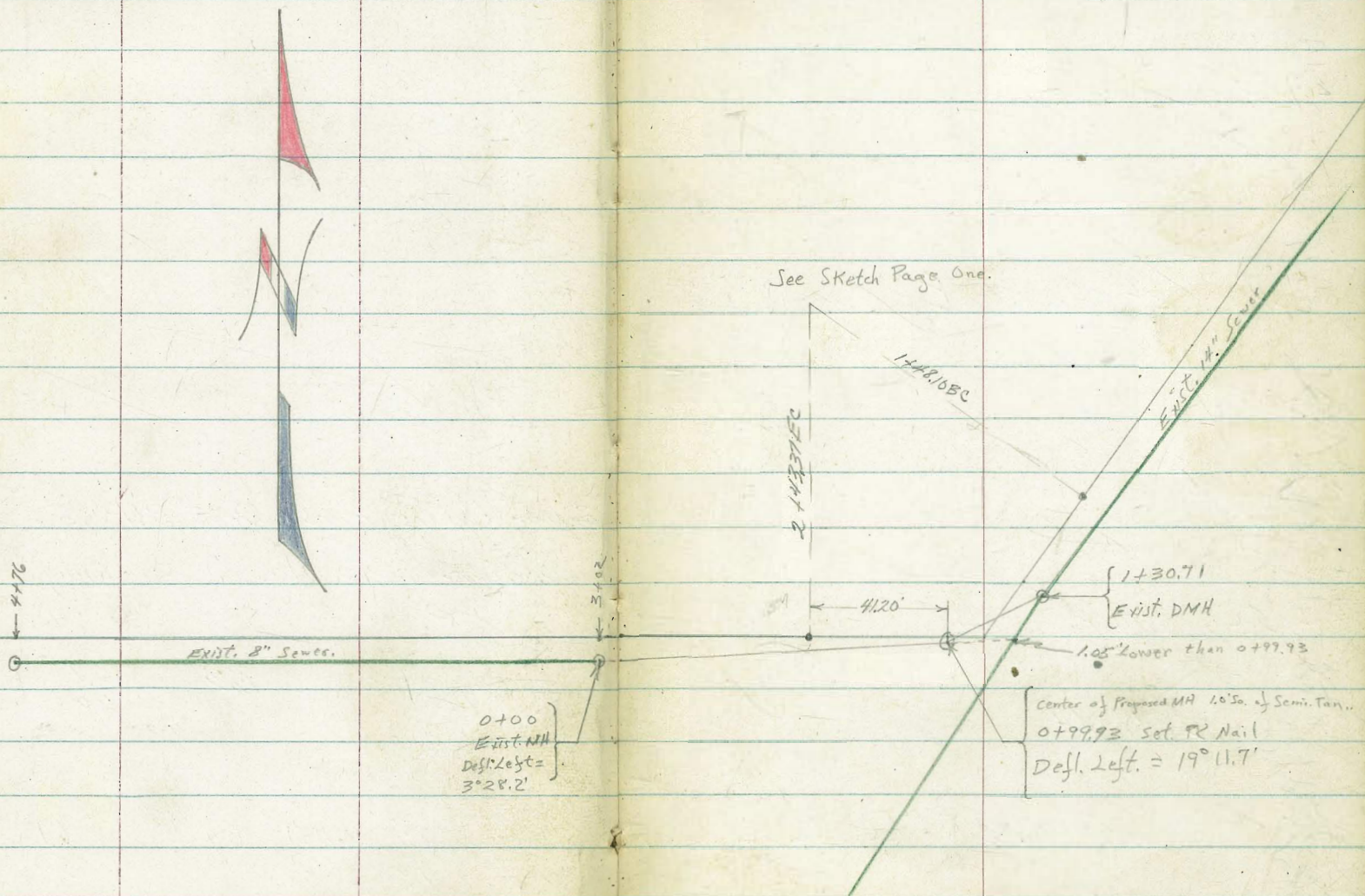
Proposed Change in Exist. Sewer Line In Russ Blvd. at City Yds.

9-10-54

From MH opposite Sta. 3+02 (see pg 13) to DMH (see pg 9)

W.D. # 32288

52



0+57.9 Leaves conc walk

0+53 Hit conc. walk

0+50

77.5

9.5

0+27 2nd Rt to Near Edge Pole (Radio Tower)

79.5

7.6

0+10

85.5

1.5

0+07

0+05.2 9 Hits Fence

85.0

0+00 Exist. MH

1.9

Rim

T.P. 0.67 86.99[✓] 6.69 86.32[✓]86.99[✓]

TBM

7.13 93.01[✓]

85.88 Top wall opposite 6+17 See page 15

Contd From Page 53

Lt

R

Rt 54.

check

9.64

77.35 = 77.36

EC. See pg 12

1+30.71

Exist. DMH

75.67

13.32

RM

0+99.93

Prog. M.H.

75.3

13.7

0+82.4

Leave Ramp

77.5

9.5

75.4

11.9

Wood
Deck

AC.
Pave

0+74.4

Hit Wood Ramp

77.5

9.4

0+72

77.0

10.0

0+68.5

77.5

9.7

0+66

86.99

86.99

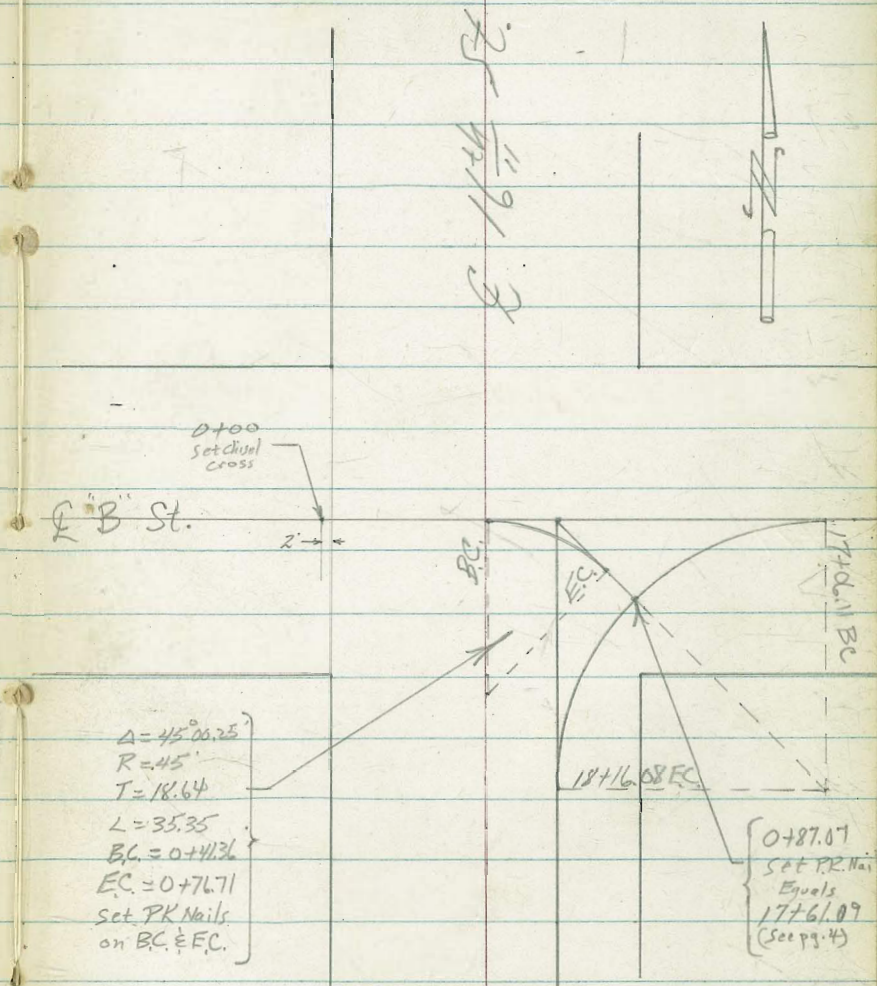
Roberts
Cota
Moore

Survey To Connect Existing 24" RCP
Drain to Proposed "Switzer" Drain
16th and "B" Streets

9-10-54

N.O. # 32288

See page four.



Lt /

±

0+76.71 EC

72.24
4.64

0+59.03 Midpoint

73.27
4.11

0+41.36 BC

72.52
4.79

0+19

57.42
5.95

0+06 7 1/2 Rt to center MH

66.19
11.19
72
INVERT

0+00 2' West of W. Line 16 1/2

72.05
5.33

TBM 420 77.38 ∇ 73.18 ± 17+06.11 BC see pg 24

77.38 ∇

Cont'd From Page 56.

24

2

Rt 57.

checked flat.

$$0+87.07 = 17+61.09$$

7738A

72.06

5.32

7738A

Levels Proposed Sewer

Lt

Rt

Rt 59.

3+00

59.20

4.19

2+00

58.17

5.30

1+00

56.29

6.68

0+38.47 Angle Point

56.29

7.23

0+30.2

0+30.2

55.22

7.97

Gutt

55.27

7.18

Co.

0+00 Exist MH @ 16th & No. Line Bldg.

55.21

7.56

Rim

TBM

6.60 63.47

56.97 Proposed Drain

(14+78.15)

63.47

Cont'd From Page 59

Lt

Rt

Rt

60.

3+92.1

59.87	60.58
360	2.89
Gut.	cb

3+76

60.02
3.40

3+50

59.25
3.53

3+43

59.25
3.72

3+33

59.12
4.35

3+25.0

59.08	59.60
1.39	3.87
Gut.	cb

63.47A

63.47A

Cont'd From Page 60

Lt

E

Rt

61.

4473.67 PE

63.47A

$\frac{63.95}{69}$

0.02

63.47A

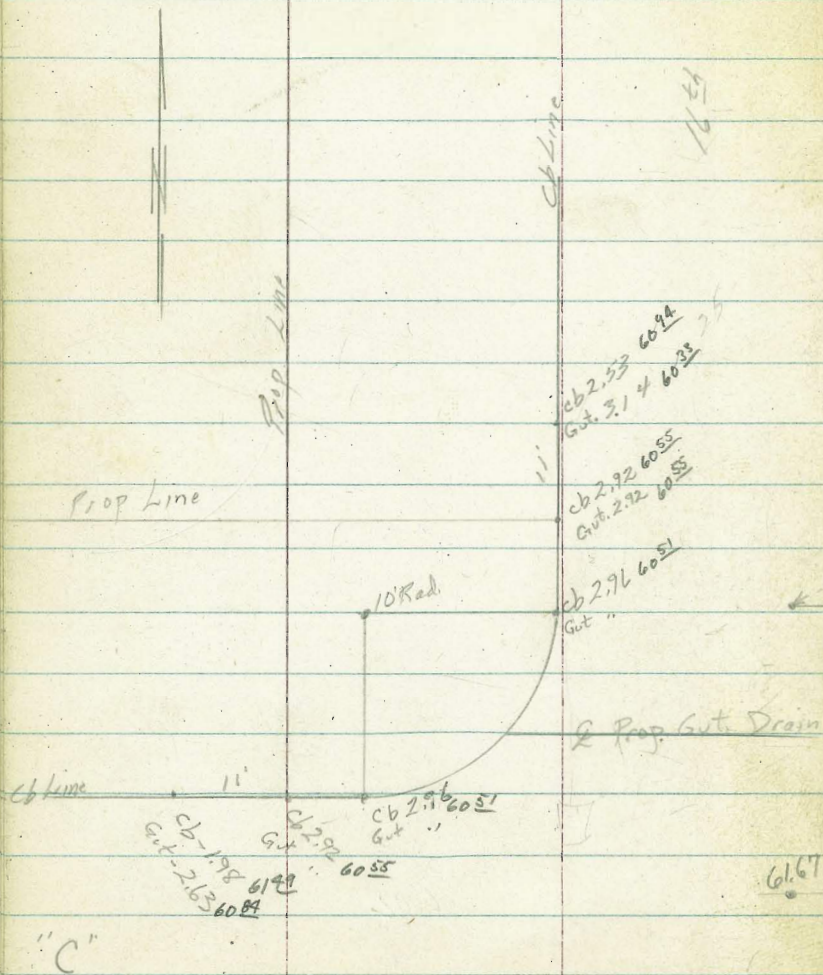
Levels Gutter Drain

Lt

Rt

Rt

62.



63.47

61.67

60.90

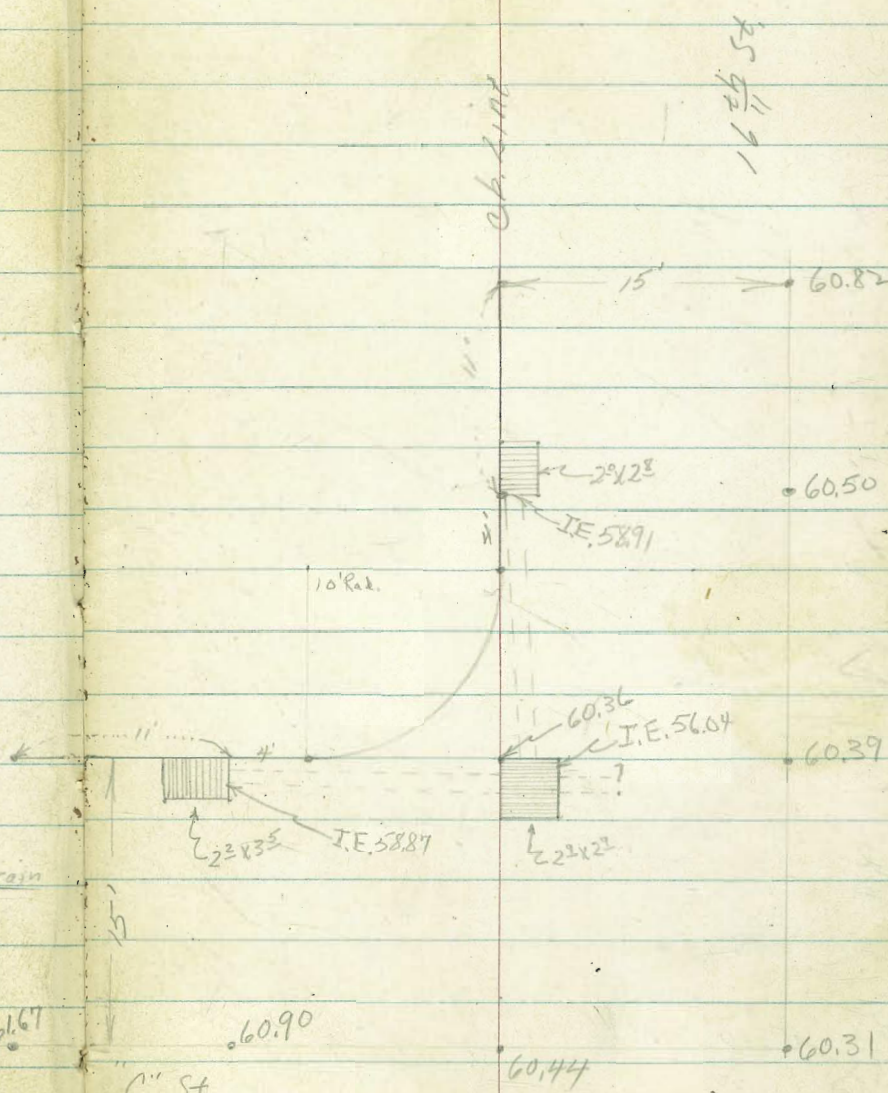
C" St.

60.44

60.31

Paving

Elevations



35 1/2 1/1

15' 60.82

60.50

2' x 2'

I.E. 58.91

10 Rad.

60.36
I.E. 56.04

60.39

2' x 3'

I.E. 58.87

2' x 2'

11'

11'

11'

checked flat.

0+4680 = 12+05.65 £ Switzer

60.20

3.27

0+29

60.22

3.04

0+00 Cb face NW Ch Return

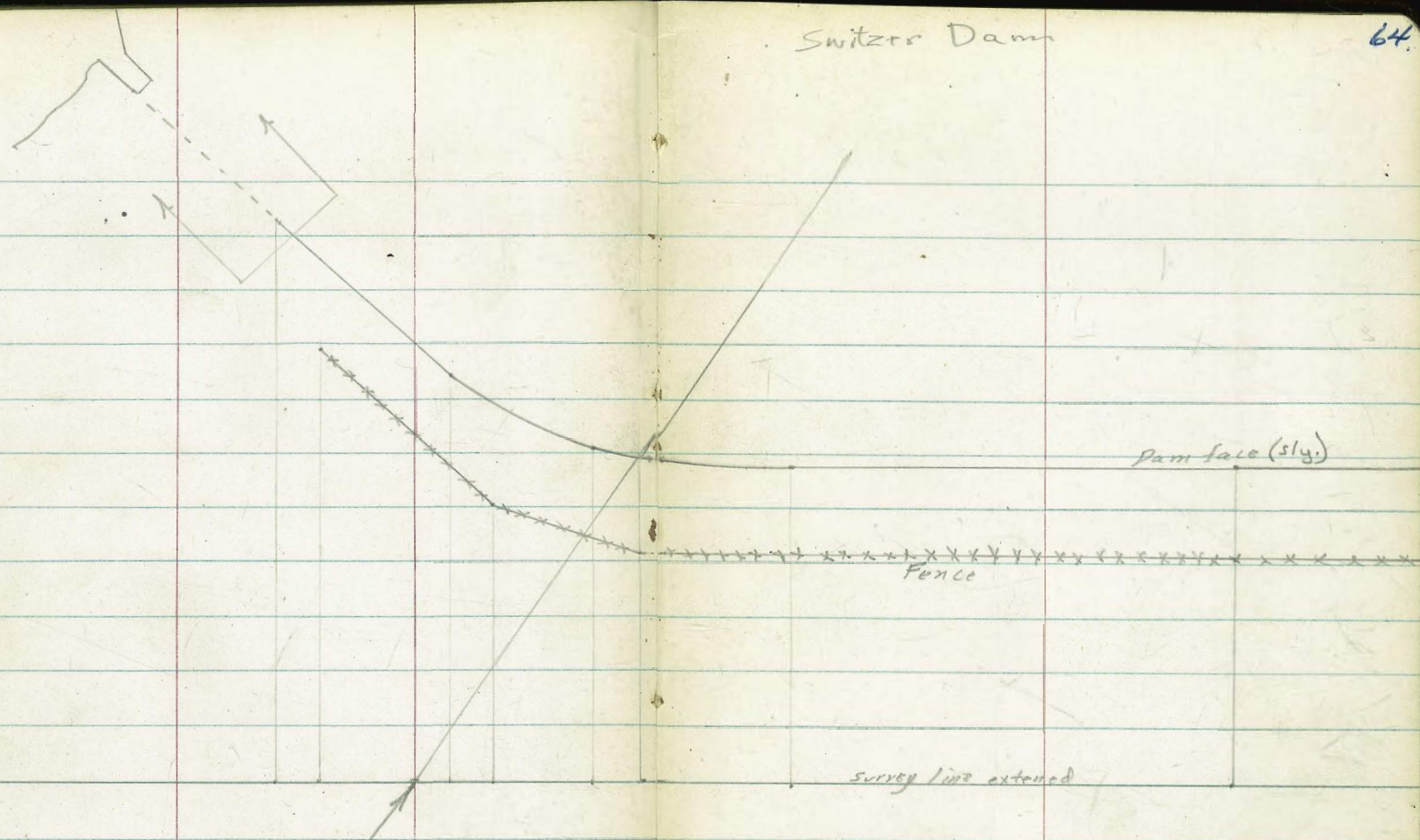
60.22

3.00

cb Gtr

63.47A

63.47A

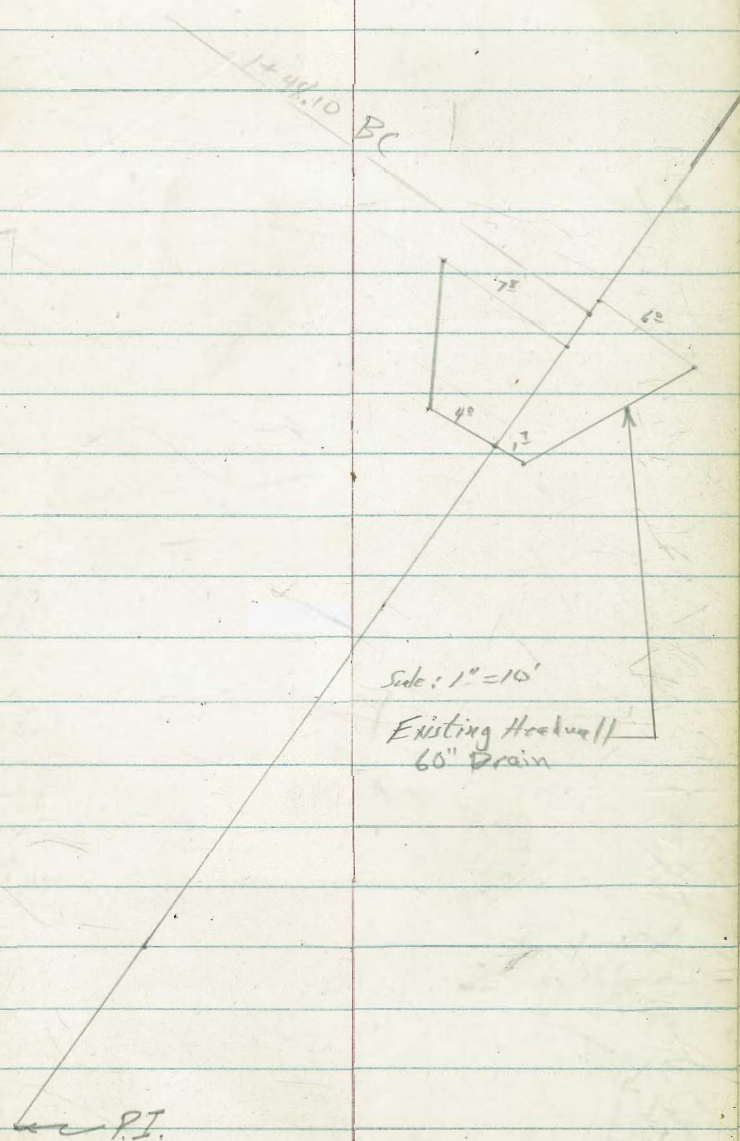
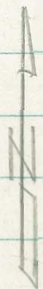
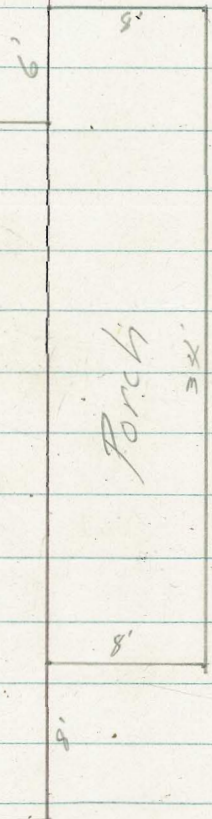


P.I. See page 1
 Curve from 2+43.37 to
 1+42.10



Scale :- 1" = 10'

Electrical Storage Building
at water End Dam



See pg. 1
1+48.27 EC
1+48.10 EC

PROPOSED HEADWALL

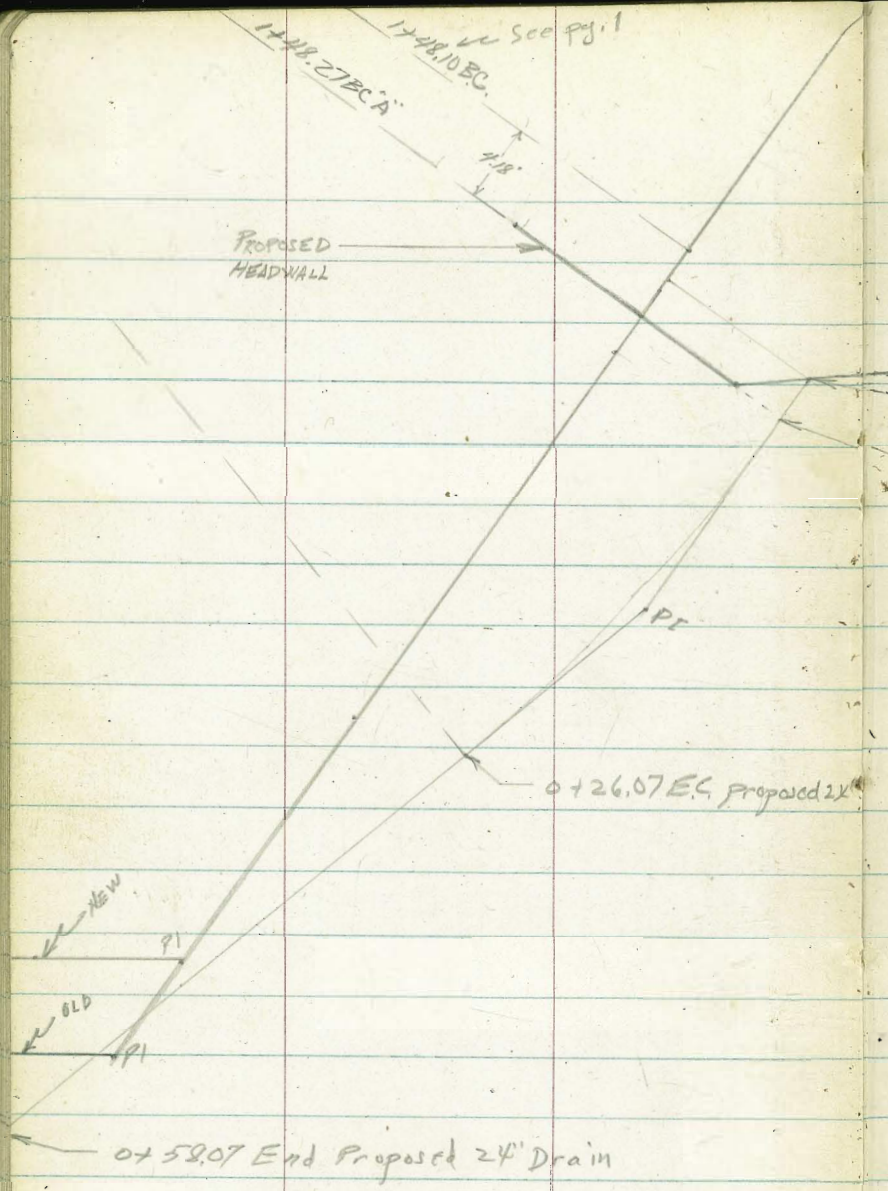
0+00 Begin 24" RCP Drain

0+12.25 EC 24" Proposed Drain

0+26.07 EC Proposed 24"

0+58.07 End Proposed 24" Drain

NEW
PI
PI
OLD



Profile Proposed 24" Drain at Switzer Drain
see Pg. 66

0+58.07 End 24" Proposed Drain

72.35

0+26.07 EC

74.11

0+28

73.72

0+23.1

74.21 74.78

0+22.3

73.59 75.27

0+02.25 BC

64.23

0+00 Begin Drain

63.02

Actual Elevation on Proposed Headwall
at Your Station 1+48.27 B.C.A.
See Page 66

2

1+48.27 B.C.A.

63.11

+75 Gravel
End
Proposed
Headwall

63.58	63.84	60.92	60.56	61.02	63.74	63.90
6	3	3		6	6	9
Angle Point	Top W.W.	Set W.W.		Est. W.W.	Top W.W.	End Proposed Headwall
Proposed Headwall						

Req. Levels along \pm of Prop. Drain
at 10th Ave. Terminal - sketch - P. 69

W.O. 21269 - 6-27-55 7.0.

3+00

2+50

2+00

1+50

0+97.76 = E.C.

0+60.45 = B.C.

0+52 = ground

0+50.29 = Cross on Headwall

0+09.2 = S. edge of Bridge

Bottom of Rail

Top of Rail - 0+00

Elev. of Top of Cap = Bottom of Stringer =

Deck planks - 2" x 10" Solid

Bridge Data. - Caps - 14" High - 12" wide

B.M. = Cross on Headwall - P. 46 2.43

70.

Lt. \pm Rt.

3.2

3.0

2.4

2.0

1.6

1.5

1.6

2.41

Elev. of Top of Cap

-0.16	-0.11	-0.14	-0.10	-0.07	-0.13
34.8	20.8	6.8	7.3	21.3	36
face of wall	\pm of Bents + Caps				face of wall

1.95 = Bot.

2.40 = Top.

under Rails =

in between + outside Solid 8"x8" on 4" filler

Stringers under Rails - 12" High - 3" wide Solid

Actual Elev. shown

9+52.68 = E.C.

2.04

= B.C. -36.6' Lt. = Near Rail of spur to

9+37.76 - 24.9 Rt. = Near Cor. of Conc. Ramp:

Pier.

3.49

2.13 on PK

3.45

9+00

9+00

36.6 = Top rail

2.35

24.9 = Cor. of Conc.

8+93.8 - 55.7 Rt. = Sewer Mt.

3.13

55.7 = Rim

8+78.6 - 75.3 Rt. = Near Cor. of Conc. Ramp to 15" to N. - 18" to N.

Warehouse

8+62.2 - 18.8 Rt. = E of 3.5' x 1.8' inlet

-3.06

2.33

8+50 - 34.4 Lt. = near rail of spur.

3.67

2.64

18.8 = I.E. of Pox

Top of Grate

34.4 = Rail Top

2.95

8+00

7+77 - 134.5 Rt. = E of 2' x 1.8' inlet + 15" RC to S.

3.22
134.5 Top of grate

-2.05 = I.E. of Proj

7+50

2.17

7+00 - T.P.

3.35 = on PK

6+74.3 S. Rail

3.65

6+68.1 = gauge of N. Rail

3.65

6+50

4.03

6+00 solid to end

4.62

5+51 = Beg. A.C. pave

4.46

5+00

3.4

4+50

2.9

4+00

3.0

3+50

3.3

Lt. ±

Rt.

72.

Hatch

Checked benches 8-8-55 found 1.02 error

CHECKED BY HATCH 8-8-55 JCR

2.81 8-9-55

Set B.M. on Cross on end of Conc. wall

~~2.82~~

Marked 11.82

10 + 74.8 - 0.3' Lt. = ± of outlet of 24" R.C. pipe

10 + 69 = Top of Rock Rip Rap

10 + 64 - 14.2' Lt. = ± Light Pole

10 + 59.1 = ± of 1.5' A.C. Curb. - outls show curve

+ 18" To E.

10 + 53.8 - 0.8' Rt. = ± 3.5' x 15" inlet - end 18"

10 + 39.2 - 80.6' Lt. = ± 3.5' x 15" inlet - end of 18"

10 + 30

10 + 27

10 + 00 - 35.7' Lt. = Near Rail

9 + 74 - 2.8' Rt. = ± 3.5' x 15" inlet - 18" R.C.

City = 3.83
 9.01

 12.84
 11.82

 1.02

-4.15 = approx water Level Now.
 I.E. of pipe 1.0

22.5	271	1.8	2.60	2.10
got	23.7 = ± cb		8.4 = ± cb = P.C.	got
	Top		Top	

236	274	2.16	2.63
got	15 = Top - ± cb	got	Top

-3.73	2.07
0.8 = I.E. of Box	Top of grate

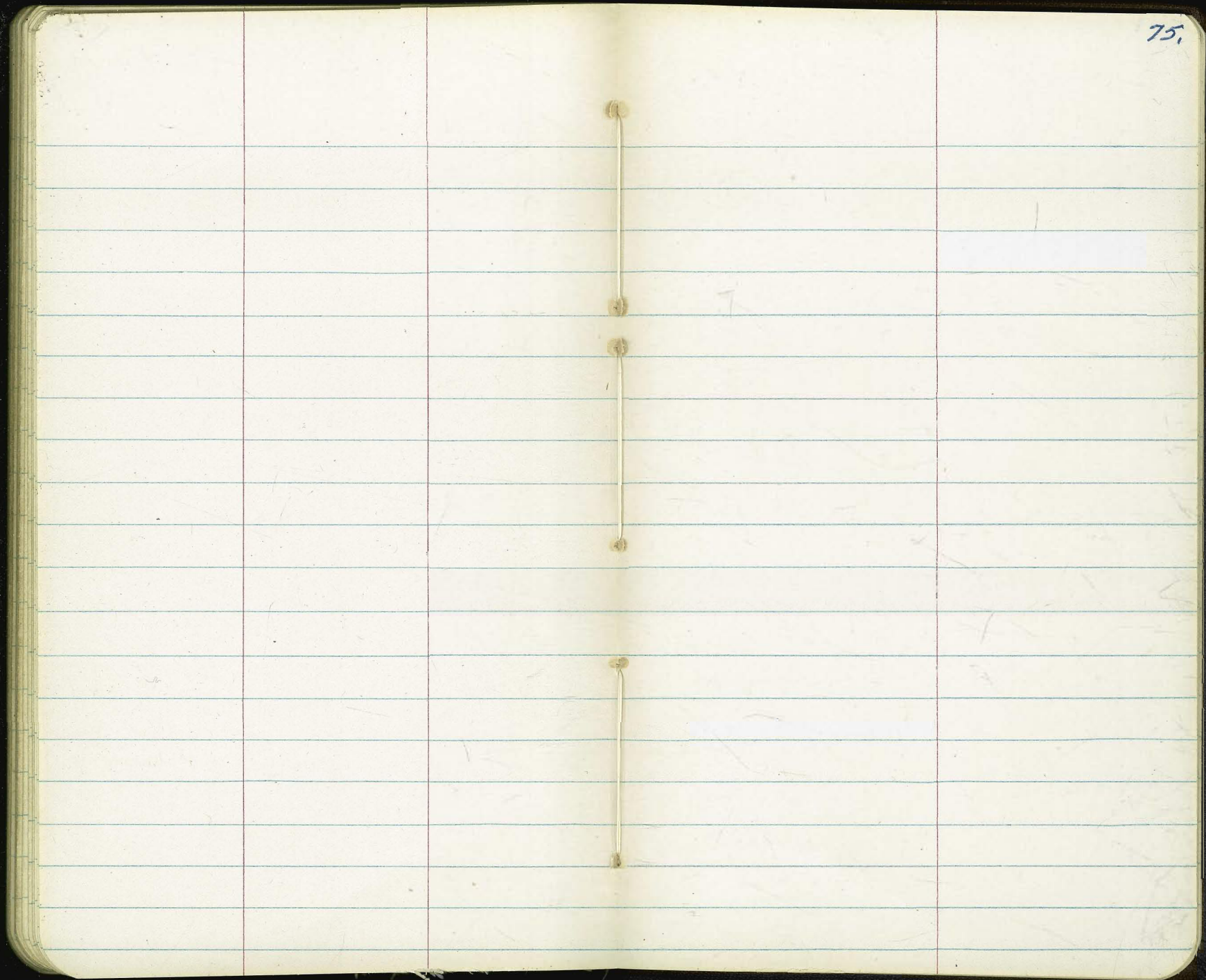
2.58

3.28	2.54	2.18
35.7 = Top of Rail		40

Thru.

1.83

-3.62	1.81
2.8	Top of grate
I.E.	



13.75

52+62.5

52+37.5

575
866
1441

304
243
5.47
430
147

51.60
237
27.9
205
257
311

82.53

316
180
336

17.0
Rim 1
P19

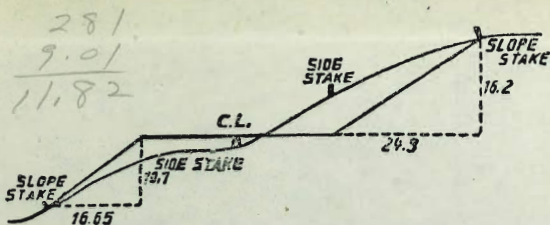
1803
577
456

81532
66

31340
113

6036
432
5604

60.53
168
3887
60.53
164
58.91



DISTANCES FROM SIDE STAKES FOR CROSS-SECTIONING.
SLOPE 1 1/2 TO 1. ROADWAY OF ANY WIDTH.

	0	.1	.2	.3	.4	.5	.6	.7	.8	.9	
0	0.00	0.15	0.30	0.45	0.60	0.75	0.90	1.05	1.20	1.35	0
1	1.50	1.65	1.80	1.95	2.10	2.25	2.40	2.55	2.70	2.85	1
2	3.00	3.15	3.30	3.45	3.60	3.75	3.90	4.05	4.20	4.35	2
3	4.50	4.65	4.80	4.95	5.10	5.25	5.40	5.55	5.70	5.85	3
4	6.00	6.15	6.30	6.45	6.60	6.75	6.90	7.05	7.20	7.35	4
5	7.50	7.65	7.80	7.95	8.10	8.25	8.40	8.55	8.70	8.85	5
6	9.00	9.15	9.30	9.45	9.60	9.75	9.90	10.05	10.20	10.35	6
7	10.50	10.65	10.80	10.95	11.10	11.25	11.40	11.55	11.70	11.85	7
8	12.00	12.15	12.30	12.45	12.60	12.75	12.90	13.05	13.20	13.35	8
9	13.50	13.65	13.80	13.95	14.10	14.25	14.40	14.55	14.70	14.85	9
10	15.00	15.15	15.30	15.45	15.60	15.75	15.90	16.05	16.20	16.35	10
11	16.50	16.65	16.80	16.95	17.10	17.25	17.40	17.55	17.70	17.85	11
12	18.00	18.15	18.30	18.45	18.60	18.75	18.90	19.05	19.20	19.35	12
13	19.50	19.65	19.80	19.95	20.10	20.25	20.40	20.55	20.70	20.85	13
14	21.00	21.15	21.30	21.45	21.60	21.75	21.90	22.05	22.20	22.35	14
15	22.50	22.65	22.80	22.95	23.10	23.25	23.40	23.55	23.70	23.85	15
16	24.00	24.15	24.30	24.45	24.60	24.75	24.90	25.05	25.20	25.35	16
17	25.50	25.65	25.80	25.95	26.10	26.25	26.40	26.55	26.70	26.85	17
18	27.00	27.15	27.30	27.45	27.60	27.75	27.90	28.05	28.20	28.35	18
19	28.50	28.65	28.80	28.95	29.10	29.25	29.40	29.55	29.70	29.85	19
20	30.00	30.15	30.30	30.45	30.60	30.75	30.90	31.05	31.20	31.35	20
21	31.50	31.65	31.80	31.95	32.10	32.25	32.40	32.55	32.70	32.85	21
22	33.00	33.15	33.30	33.45	33.60	33.75	33.90	34.05	34.20	34.35	22
23	34.50	34.65	34.80	34.95	35.10	35.25	35.40	35.55	35.70	35.85	23
24	36.00	36.15	36.30	36.45	36.60	36.75	36.90	37.05	37.20	37.35	24
25	37.50	37.65	37.80	37.95	38.10	38.25	38.40	38.55	38.70	38.85	25
26	39.00	39.15	39.30	39.45	39.60	39.75	39.90	40.05	40.20	40.35	26
27	40.50	40.65	40.80	40.95	41.10	41.25	41.40	41.55	41.70	41.85	27
28	42.00	42.15	42.30	42.45	42.60	42.75	42.90	43.05	43.20	43.35	28
29	43.50	43.65	43.80	43.95	44.10	44.25	44.40	44.55	44.70	44.85	29
30	45.00	45.15	45.30	45.45	45.60	45.75	45.90	46.05	46.20	46.35	30
31	46.50	46.65	46.80	46.95	47.10	47.25	47.40	47.55	47.70	47.85	31
32	48.00	48.15	48.30	48.45	48.60	48.75	48.90	49.05	49.20	49.35	32
33	49.50	49.65	49.80	49.95	50.10	50.25	50.40	50.55	50.70	50.85	33
34	51.00	51.15	51.30	51.45	51.60	51.75	51.90	52.05	52.20	52.35	34
35	52.50	52.65	52.80	52.95	53.10	53.25	53.40	53.55	53.70	53.85	35
36	54.00	54.15	54.30	54.45	54.60	54.75	54.90	55.05	55.20	55.35	36
37	55.50	55.65	55.80	55.95	56.10	56.25	56.40	56.55	56.70	56.85	37
38	57.00	57.15	57.30	57.45	57.60	57.75	57.90	58.05	58.20	58.35	38
39	58.50	58.65	58.80	58.95	59.10	59.25	59.40	59.55	59.70	59.85	39
40	60.00	60.15	60.30	60.45	60.60	60.75	60.90	61.05	61.20	61.35	40
41	61.50	61.65	61.80	61.95	62.10	62.25	62.40	62.55	62.70	62.85	41
42	63.00	63.15	63.30	63.45	63.60	63.75	63.90	64.05	64.20	64.35	42
43	64.50	64.65	64.80	64.95	65.10	65.25	65.40	65.55	65.70	65.85	43
44	66.00	66.15	66.30	66.45	66.60	66.75	66.90	67.05	67.20	67.35	44
45	67.50	67.65	67.80	67.95	68.10	68.25	68.40	68.55	68.70	68.85	45
46	69.00	69.15	69.30	69.45	69.60	69.75	69.90	70.05	70.20	70.35	46
47	70.50	70.65	70.80	70.95	71.10	71.25	71.40	71.55	71.70	71.85	47
48	72.00	72.15	72.30	72.45	72.60	72.75	72.90	73.05	73.20	73.35	48
49	73.50	73.65	73.80	73.95	74.10	74.25	74.40	74.55	74.70	74.85	49
50	75.00	75.15	75.30	75.45	75.60	75.75	75.90	76.05	76.20	76.35	50

THE NATIONAL BLANK BOOK COMPANY
HOLYOKE MASSACHUSETTS
NEW YORK CHICAGO BOSTON SAN FRANCISCO